

1 **Short Title**

2 Vector competence of mosquitoes for arboviruses

3

4 **Not all mosquitoes are created equal: incriminating mosquitoes as vectors**
5 **of arboviruses**

6

7 Morgan P. Kain,^{1,2*} Eloise B. Skinner^{1,3}, Tejas S. Athni¹, Ana L. Ramirez⁴, Erin A.

8 Mordecai¹, Andrew F. van den Hurk^{5*}

9

10 ¹Department of Biology, Stanford University, Stanford, CA, 94305, USA

11 ²Natural Capital Project, Woods Institute for the Environment, Stanford University, Stanford,
12 CA 94305, USA

13 ³Centre for Planetary Health and Food Security, Griffith University, Gold Coast, QLD, 4222,
14 Australia

15 ⁴Department of Pathology, Microbiology, and Immunology, University of California, Davis,
16 Davis, CA 95616

17 ⁵Public Health Virology, Forensic and Scientific Services, Department of Health, Queensland
18 Government, Brisbane, Queensland, Australia

19

20 ***Corresponding authors:** mkk6087@psu.edu (alt: morganpkain@gmail.com);

21 Andrew.VanDenHurk@health.qld.gov.au

22

23

24

NOTE: This preprint reports new research that has not been certified by peer review and should not be used to guide clinical practice.

25 **Abstract**

26 The globalization of mosquito-borne arboviral diseases has placed more than half of the
27 human population at risk. Understanding arbovirus ecology, including the role individual
28 mosquito species play in virus transmission cycles, is critical for limiting disease. Canonical
29 virus-vector groupings, such as *Aedes*- or *Culex*-associated flaviviruses, have historically
30 been defined using phylogenetic associations, virus isolation in the field, and mosquito
31 feeding patterns. These associations less frequently rely on vector competence, which
32 quantifies the intrinsic ability of a mosquito to become infected with and transmit a virus
33 during a subsequent blood feed. Herein, we quantitatively synthesize data from 80 laboratory
34 vector competence studies of 115 mosquito-virus pairings of Australian mosquito species and
35 viruses of public health concern to further substantiate existing canonical vector-virus
36 groupings, uncover new associations, and quantify variation within these groupings. Our
37 synthesis reinforces current canonical vector-virus groupings but reveals substantial variation
38 within them. While *Aedes* species were generally the most competent vectors of canonical
39 “*Aedes*-associated flaviviruses” (such as dengue, Zika, and yellow fever viruses), there are
40 some notable exceptions; for example, *Aedes notoscriptus* is an incompetent vector of dengue
41 viruses. *Culex* spp. were the most competent vectors of many traditionally *Culex*-associated
42 flaviviruses including West Nile, Japanese encephalitis and Murray Valley encephalitis
43 viruses, although some *Aedes* spp. are also moderately competent vectors of these viruses.
44 Conversely, many mosquito genera were associated with the transmission of the arthritogenic
45 alphaviruses, Ross River, Barmah Forest, and chikungunya viruses. We also confirm that
46 vector competence is impacted by multiple barriers to infection and transmission within the
47 mesenteron and salivary glands of the mosquito. Although these barriers represent important
48 bottlenecks, species that were susceptible to infection with a virus were often likely to

49 transmit it. Importantly, this synthesis provides essential information on what species need to
50 be targeted in mosquito control programs.

51

52 **Keywords**

53 Mosquito; arbovirus; vector competence; public health; Australia; infection barriers

54

55 **Author summary**

56 There are over 3,500 species of mosquitoes in the world, but only a small proportion are
57 considered important vectors of arboviruses. Vector competence, the physiological ability of
58 a mosquito to become infected with and transmit arboviruses, is used in combination with
59 virus detection in field populations and analysis of vertebrate host feeding patterns to
60 incriminate mosquito species in virus transmission cycles. Here, we quantified the vector
61 competence of Australian mosquitoes for endemic and exotic viruses of public health concern
62 by analyzing 80 laboratory studies of 115 mosquito-virus pairings. We found that Australia
63 has species that could serve as efficient vectors for each virus tested and it is these species
64 that should be targeted in control programs. We also corroborate previously identified virus-
65 mosquito associations at the mosquito genus level but show that there is considerable
66 variation in vector competence between species within a genus. We also confirmed that
67 vector competence is influenced by infection barriers within the mosquito and the
68 experimental protocols employed. The framework we developed could be used to synthesize
69 vector competence experiments in other regions or expanded to a world-wide overview.

70

71

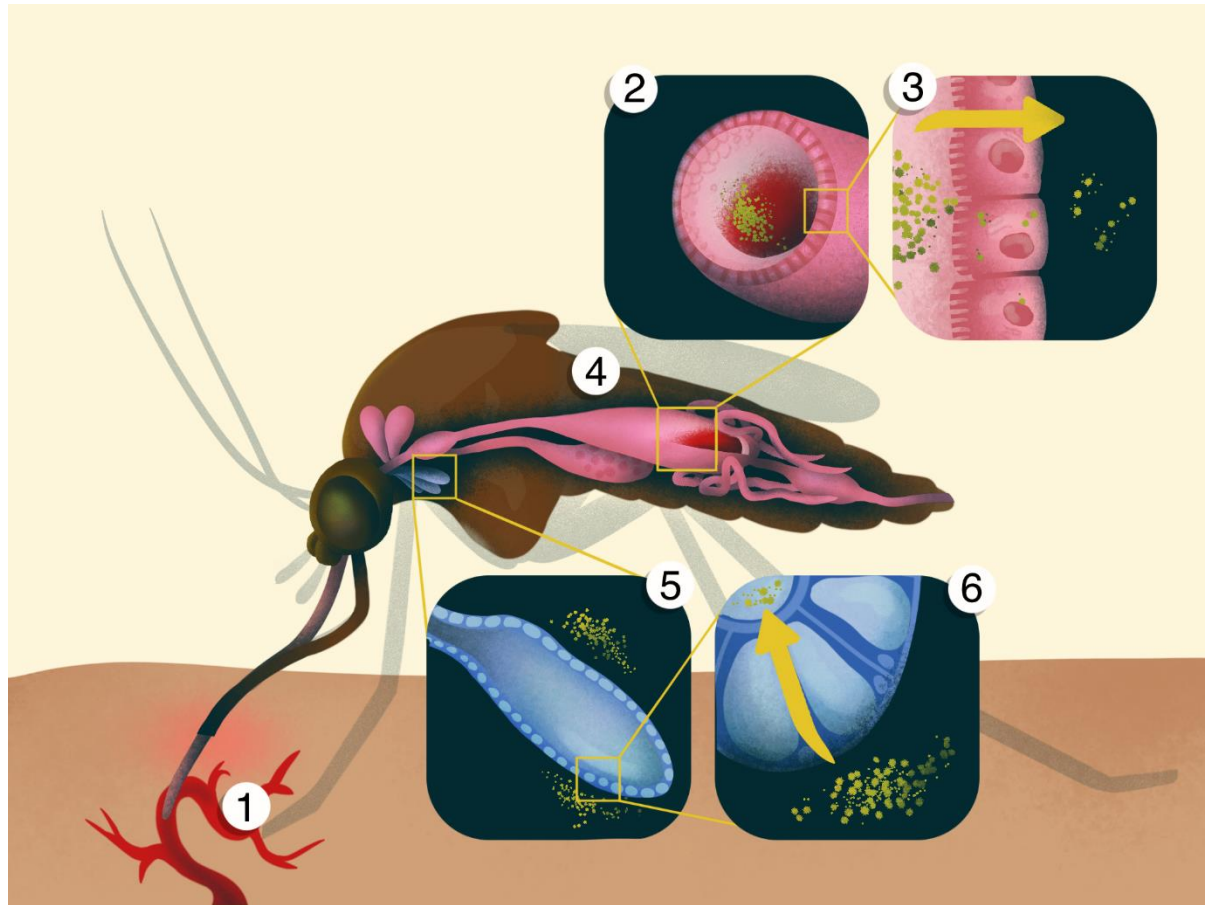
72 **Introduction**

73 Mosquito-borne arboviruses infect hundreds of millions of people and animals annually thus
74 representing a major global public and veterinary health threat [1, 2]. The viruses responsible
75 for severe clinical disease predominately belong to the viral families *Flaviviridae* and
76 *Togaviridae* [2]. Globally important flaviviruses include the dengue viruses (DENVs) which
77 cause 50 to 100 million symptomatic infections each year, the encephalitogenic Japanese
78 encephalitis (JEV) and West Nile (WNV) viruses, which have expanded their geographical
79 ranges in the last 25 years, and Zika virus (ZIKV), which is now recognized as a potential
80 cause of severe congenital abnormalities [3-5]. Alphaviruses in the family *Togaviridae* from
81 the Americas, such as eastern, western and Venezuelan encephalitis viruses are associated
82 with encephalitis, whilst chikungunya (CHIKV) and Ross River (RRV) viruses, which
83 originated in Africa and Australasia, respectively, have caused explosive epidemics of
84 debilitating polyarthritis as they have invaded virgin ecosystems [6].

85 Combating mosquito-borne disease begins with understanding which mosquito
86 species can transmit these viruses and how effectively they do so. Broad and extensive
87 knowledge regarding the importance of different mosquito genera as arbovirus vectors has
88 been gained in previous studies through phylogenetic analyses of the genetic groupings of
89 arboviral families and their correlation with known associated mosquito genera. Phylogenetic
90 analysis of non-structural five (NS5) gene sequences coupled with their respective vector
91 associations initially classified the flaviviruses into three clusters: viruses without a known
92 vector, tick-borne viruses, and mosquito-borne viruses [7]. Further analyses by Gaunt et al.
93 [8] and Moureau et al. [9] using additional genes and more comprehensive datasets
94 subdivided the mosquito-borne flaviviruses into *Aedes*-associated flaviviruses (AAFVs; e.g.,
95 DENVs in *Ae. aegypti* [10]) and *Culex*-associated flaviviruses (CAFVs; e.g., WNV in
96 members of the *Culex pipiens* species complex [11]). Isolation of viruses from mosquitoes in

97 the field and identification of mosquito host-feeding patterns, specifically whether vector
98 species feed on vertebrate hosts of the virus [8], has been used to reinforce these
99 classifications.

100 Groupings based on these criteria can only provide an indirect or inferred measure of
101 the importance of different mosquito genera as arbovirus vectors. Assessing the innate
102 physiological ability of each mosquito species to act as a vector can strengthen mosquito
103 genus–viral family groupings and help to quantify variation within them. Laboratory-based
104 vector competence studies provide quantitative measures of a mosquito’s physiological
105 ability to become infected with and transmit arboviruses by assessing the progression of a
106 pathogen through four different barriers primarily associated with the mosquito mesenteron
107 (midgut) and salivary glands (Fig 1), all of which must be overcome for the virus to
108 ultimately be transmitted to a susceptible host [12-15]. After a mosquito takes a virus-laden
109 blood meal, the virus must first overcome the mosquito's mesenteronal infection barrier by
110 binding to specific receptors on the epithelial cells (Fig 1, part 2). Passage of this barrier is
111 measured by detecting virus in an infected mosquito’s body or the dissected mesenteron. The
112 pathogen must then bypass the mesenteronal escape barrier, which limits dissemination of the
113 pathogen from the mesenteronal epithelial cells [16, 17] (Fig 1, part 3). The detection of virus
114 in the legs, wings or head of a mosquito indicates that the virus has disseminated from the
115 mesenteron via the hemolymph to other tissues and organs (Fig 1, part 4; [18]). Finally, the
116 pathogen must successfully travel to, infect and replicate within, the salivary glands to a level
117 sufficient for transmission [14, 19-21] (Fig 1, parts 5-6). Alternatively, if the virus does not
118 infect the salivary glands or is not released in the saliva during probing and/or feeding, then
119 the mosquito is considered to possess salivary gland infection or escape barriers, respectively.
120 Expression of one or more of these barriers ultimately limits the ability of a given mosquito
121 to transmit a virus.



122

123 **Figure 1. The steps involved in the successful transmission of an arbovirus by a**
124 **mosquito.** 1. Virus is ingested along with the blood meal from a viremic host; 2. The
125 infected blood meal is deposited in the posterior section of the mesenteron (midgut). 3. The
126 virus infects and replicates in the epithelial cells of the mesenteron; 4. The virus disseminates
127 from the mesenteronal epithelial cells via the hemolymph and infects other tissues, such as fat
128 bodies or neural tissue, where it can undergo another round of replication. 5. The virus then
129 infects the cells of the salivary glands. 6. The virus is then released in the saliva when the
130 mosquito probes another vertebrate host.

131

132 In vector competence experiments, mosquitoes are exposed to either a previously
133 infected animal or an artificial blood meal containing the virus [22]. At different time points
134 post-exposure, mosquito infection and disseminated infection status is tested by processing
135 whole bodies or body parts, such as mesenterons, heads, legs and/or wings. Mosquitoes are

136 then assessed for their ability to transmit the pathogen using either a susceptible animal
137 model [18, 23] or an *in vitro* system of saliva collection [24]. Mosquitoes that do not express
138 barriers to infection, dissemination, and transmission from the salivary glands are considered
139 competent vectors. Conversely, species that strongly express any barriers that limit
140 transmission are considered either poorly competent or incompetent; species whose
141 mesenterons do not get infected after being exposed to an infectious blood meal are
142 refractory to infection.

143 As single experiments tend to focus on the competence of specific mosquito species
144 for a specific virus, a synthesis of many vector competence experiments is needed to
145 corroborate known, identify new, and quantify variation within virus–mosquito associations
146 across a broad range of mosquito and virus species. Australia is a particularly interesting case
147 study for assessing vector competence because the island continent is climatically and
148 biologically diverse, contains many ecologically distinct native and introduced mosquito
149 species, and has experienced historical and emerging arbovirus threats. Australia has a
150 history of outbreaks of endemic and exotic mosquito-borne arboviruses, the latter initiated by
151 arrival of viremic travelers [25-28], and is potentially receptive to transmission of globally
152 emergent arboviruses, such as ZIKV, CHIKV and the highly pathogenic North American
153 WNV strains [29-31]. Thus, numerous laboratory-based experiments have been undertaken to
154 assess the vector competence of Australian mosquito species for a range of virus species,
155 with the overall aims of incriminating vectors and aiding targeted control strategies. Using
156 data and measures of vector competence from 80 publications on Australian mosquito
157 species, this study broadly assesses patterns of vector competence between mosquito genera
158 and medically important viruses of the *Togaviridae* and *Flaviviridae* families. Importantly,
159 by focusing on a single geographical region where common mosquito species have been
160 tested for a range of endemic and exotic viruses, we avoid the issues of using data on a global

161 scale, which is disproportionately centered on a limited number of mosquito species and
162 viruses that present the largest public health threats. The Australian vector competence
163 studies provide the ideal data for us to address four primary sets of questions:

- 164 1. Do mosquito–virus associations derived from Australian vector competence
165 experiments reinforce or refute canonical associations based on phylogenetic
166 relationships, virus isolation studies, and analysis of host feeding patterns? For
167 example, are the canonical groupings of *Aedes*- or *Culex*-associated flaviviruses
168 supported at the genus level, and are AAFVs and CAFVs only transmitted by *Aedes*
169 spp. and *Culex* spp. respectively?
- 170 2. How much variation exists among mosquito species within a genus in their
171 competence for the viruses within a given group?
- 172 3. What is the strength of the correlation between infection, dissemination, and
173 transmission and which barriers to these processes are most limiting for vector
174 competence?
- 175 4. What implications do the experimental design, methodology and extensiveness of
176 individual studies have, and how does this affect our understanding of vector
177 competence?

178

179 **Methods**

180 ***Data collection***

181 All available Australian vector competence studies were collected by a single author (AvdH)
182 using electronic databases, reference lists, hand searches, and institutional reports. A second
183 author (EBS) then systematically searched for additional publications using a combination of
184 the following search terms on Google Scholar: (mosquito* OR vector*) AND (competence
185 OR infection OR dissemination OR transmission) AND (virus OR arbovirus OR flavivirus

186 OR alphavirus) AND Australia. Studies were included if: a) they were original research; b)
187 the viruses used were of human health importance; c) they assessed at least one mosquito
188 species with an Australian genetic background. These studies were then filtered to ensure
189 that: a) viruses originated from field isolates and were not derived from infectious clones or
190 recombinants (i.e. [32]); b) mosquitoes had not been modified so that virus replication was
191 impacted (i.e. *Wolbachia* transinfected [33]); c) mosquitoes were exposed to virus by feeding
192 on a viremic animal or an artificial infectious blood meal (i.e. not by intrathoracic inoculation
193 [34], whereby the mesenteron infection and escape barriers are bypassed); d) all mosquitoes
194 were tested individually (i.e. transmission was not measured in batches); e) a minimum
195 sample size of five mosquitoes at the experimental endpoint for each mosquito-vector pair;
196 and f) transmission was measured via feeding on a suitable animal model or detection in
197 saliva expectorates collected using *in vitro* saliva collection methods (as opposed to detection
198 of virus in salivary glands which does not take into account the presence of a salivary gland
199 escape barrier to transmission). In total, we gathered data from 80 publications, which
200 included 295 individual experimental treatments (i.e., the exposure of a single cohort of
201 mosquitoes of a given species to a given virus in a set of experimental conditions) on more
202 than 25,000 total individual mosquitoes across 27 species spanning 6 genera and 13 viruses
203 spanning 2 families (counting the four dengue virus serotypes separately) (Table 1). All data
204 are available in the S1 File. The following data were extracted from each study:

- 205 • Vector characteristics: Mosquito species; origin
- 206 • Arbovirus characteristics: Virus species; isolate or strain
- 207 • Study methods: Virus dose to which mosquitoes were exposed; unit of measure of
208 viral titer of the infectious blood meal (such as plaque forming units (PFU), tissue
209 culture infectious dose₅₀ (TCID₅₀), suckling mouse intracerebral inoculation lethal
210 dose₅₀ (SMIC ID₅₀) which were all converted to infectious units per milliliter (IU/mL)

211 for the analysis); method of virus exposure; method used to demonstrate transmission;
212 assay to detect evidence of infection and/or transmission; days post exposure (DPE)
213 to virus that infection, dissemination, and transmission were assessed; temperature at
214 which mosquitoes were maintained; total number of mosquitoes exposed to the virus
215 that were tested for infection, dissemination, and transmission
216 • Study results: proportion of mosquitoes that were exposed to the virus that were
217 positive for infection, dissemination, and transmission
218

219 **Table 1. Arboviruses assessed in vector competence experiments involving Australian mosquito species and included in the analysis**

Virus family	Virus species	Geographical distribution	Disease syndrome^a	Vertebrate hosts^b	Associated mosquito genera^c
<i>Flaviviridae</i>	Dengue types 1-4	Asia, Africa, South and Central America	Haemorrhagic fever	Humans, non-human primates	<i>Aedes</i>
	Yellow fever	Africa, South America	Haemorrhagic fever	Humans, non-human primates	<i>Aedes</i> , <i>Haemagogus</i> , <i>Sabethes</i>
	Zika	Africa, Asia, South and Central America	Congenital malformations, Guillain-Barré syndrome	Humans, non-human primates	<i>Aedes</i>
	Japanese encephalitis	Asia, Australasia	Encephalitis, meningitis	Birds, Pigs	<i>Culex</i>
	Murray Valley encephalitis	Australasia	Encephalitis	Birds	<i>Culex</i>

	West Nile ^d	Africa, Asia, Australasia, North and South America, Europe	Encephalitis, meningitis	Birds	<i>Culex</i>
<i>Togaviridae</i>	Barmah Forest	Australasia	Arthritis	Mammals, birds	<i>Aedes, Culex,</i> <i>Coquillettidia,</i> <i>Verrallina</i>
	Chikungunya	Africa, Asia, South and Central America	Arthritis	Humans, non- human primates	<i>Aedes</i>
	Ross River	Australasia	Arthritis	Marsupials, humans	<i>Aedes, Culex,</i> <i>Coquillettidia,</i> <i>Verrallina</i>

220 ^aMany arbovirus infections cause non-specific febrile illness; the syndromes presented are the severe manifestations of disease.

221 ^bThese are the major vertebrate hosts associated with transmission.

222 ^cAssociation of mosquito genera with the virus is based on virus isolation from the field and interaction with the vertebrate host as based on
223 blood feeding patterns

224 ^dIncludes the highly pathogenic North American strain and the Kunjin subtype which occurs in Australasia.

225 ***Vector competence metrics and analysis***

226 *Maximal proportion infected, disseminated, and transmitting*

227 Across each unique mosquito species–virus pairing assessed in the vector competence
228 experiments, we extracted the highest observed proportion of mosquitoes of a given species
229 that became infected with a given virus after ingestion of an infectious blood meal,
230 irrespective of the dose administered or the day tested. We similarly identified the highest
231 observed proportion of mosquitoes that developed a disseminated infection and that
232 transmitted the virus. For each mosquito-virus pair, these maximal measures captured the
233 single highest proportion observed across all viral doses the mosquito species was exposed to
234 and all the days on which the species was tested. We chose this maximal measure, instead of
235 a metric such as an average, to ensure that potentially meaningful mosquito-virus associations
236 were not diluted by larger numbers of mosquitoes infected at low doses or tested at early time
237 points post-exposure. Due to destructive sampling, experimentally observed proportions of
238 mosquitoes positive for infection, dissemination, and transmission are conditioned on
239 exposure (i.e., transmission is not conditioned on those already testing positive for
240 dissemination).

241 For each virus, infection data were available for at least three species of mosquitoes
242 (median of 7.5 species per virus) and dissemination data for at least two mosquito species per
243 virus (median of 4 species per virus). Whilst transmission by individual mosquitoes was not
244 assessed for some viruses (i.e. dengue virus type 1 (DENV-1)), the median number of species
245 tested for transmission capability per virus was higher than for both infection and
246 dissemination (median of 9 species per virus).

247 We statistically tested for differences in maximal infection proportion and maximal
248 transmission proportion among the mosquito genera in our data set (*Aedes*, *Anopheles*,
249 *Coquillettidia*, *Culex*, *Mansonia*, and *Verrallina*) for the following virus groups: *Aedes*-

250 associated flaviviruses (AAFVs; yellow fever [YFV], ZIKV, DENV 1-4; *Culex*-associated
251 flaviviruses (CAFVs; JEV, West Nile New York strain [WNV_{NY99}], West Nile Kunjin strain
252 [WNV_{KUN}], Murray Valley encephalitis [MVEV]); and arthritogenic alphaviruses (CHIKV,
253 RRV and Barmah Forest virus [BFV]). To do so we fit two regression models, each with a
254 Binomial error distribution, that used the maximum detected proportion of mosquitoes
255 infected or transmitting as the response variable; for weights (sample size) we used the
256 number of mosquitoes included in the experimental treatment(s) in which the maximum
257 proportion infected or transmitting was found. Each model included the following fixed
258 effects: an interaction of mosquito genus and virus group, experimental dose, the number of
259 DPE that mosquitoes were tested for infection or transmission, and the total mosquitoes
260 exposed across all experimental infections as a measure of total research effort. Given our
261 interest in identifying differences in the ability of mosquito genera to become infected with
262 and transmit different viral groups, each unique mosquito species–virus pair within a broader
263 mosquito genus–virus group pairing was considered a replicate for that mosquito genus–virus
264 group. If more than one experimental treatment for a given mosquito-virus pair found an
265 equivalent maximum, we summed the number of mosquitoes across the experimental
266 treatments and used the average of virus titer the mosquitoes were exposed to and the number
267 of DPE that the mosquitoes were tested to keep the total number of replicate data points for
268 all mosquito genus–virus group pairings equal to the total number of unique combinations of
269 mosquito species exposed to viruses within that virus group.

270 We fitted these regression models using the *glm* function in R [35] using the penalized
271 maximum likelihood estimation procedure *brglmFit* from the *brglm2* package [36]. This
272 procedure implements a quasi-Fisher scoring iteration [37] to allow for the estimation of
273 confidence intervals (CI) in the presence of complete separation (groups with all zeros) [38]
274 (e.g. all *Culex* mosquitoes tested negative for transmission of AAFVs). We extracted

275 estimates and 95% CI for the average response of each mosquito genera–viral group pairing
276 from the fitted models using the function *emmeans* in the package *emmeans* [39]. Finally, we
277 estimated the strength of the overall correlation between the maximum detected proportions
278 of mosquitoes infected and transmitting across all mosquito–virus pairs using a simple
279 correlation test (using the R function *cor.test*).

280 For these statistical analyses we focused on infection and transmission because they
281 are the critical components of vector competence and were historically measured most
282 frequently in experiments. Quantifying dissemination of the virus is a relatively recent
283 addition to measurements used to assess the vector competence of mosquitoes for arboviruses
284 [18], so including this metric in our statistical testing may limit the inclusion of studies
285 reported prior to its introduction.

286

287 *Dose- and time-dependent measures*

288 Continuous dose- and time-response curves can better capture the full spectrum of conditions
289 experienced by mosquitoes feeding on viremic vertebrate hosts in real-world conditions.
290 However, a lack of comprehensive data for all mosquito-virus pairings prevented us from
291 fully examining dose- and time-dependent infection, dissemination, and transmission for each
292 mosquito-virus pair. As sufficient data was available, we fitted time- and dose-dependent
293 regression models for *Ae. aegypti* as a case study to: 1) explore variation in the shapes of
294 infection and transmission curves across viruses; and 2) highlight the differences between a
295 single metric obtained across all experiments (e.g., maximum observed) and the full infection
296 and transmission functions estimated using all available experimental data. We fitted the
297 proportion of *Ae. aegypti* infected, disseminated, and transmitting using generalized linear
298 mixed effects models (GLMM) with Binomial error distributions in R using the package *lme4*
299 [40]. For each model, the proportion of mosquitoes that became infected, developed a

300 disseminated infection, or transmitted the virus was taken as the response variable and the
301 total numbers of mosquitoes exposed were used as weights.

302 The model for infection included an interaction between virus species and virus dose,
303 a fixed effect for DPE, and a random intercept of “study” to control for variation among
304 citations not captured by the included fixed effects. The models for both dissemination and
305 transmission included an interaction between virus species and DPE, a fixed effect for virus
306 dose, and a random intercept for citation. Logistic regression assumes that probability reaches
307 an asymptote of one, which implies that at some dose and day, all *Ae. aegypti* individuals are
308 expected to become infected, develop a disseminated infection and transmit each virus. While
309 a model that explicitly estimates the asymptotic value is desirable, we were unable to
310 estimate variable asymptotes by virus species due to paucity of data, even for the relatively
311 well-studied *Ae. aegypti*. Confidence intervals for the fitted models were obtained using 500
312 parametric bootstraps.

313

314 **Results**

315 ***Virus group and mosquito genera associations***

316 *Aedes-associated flaviviruses*

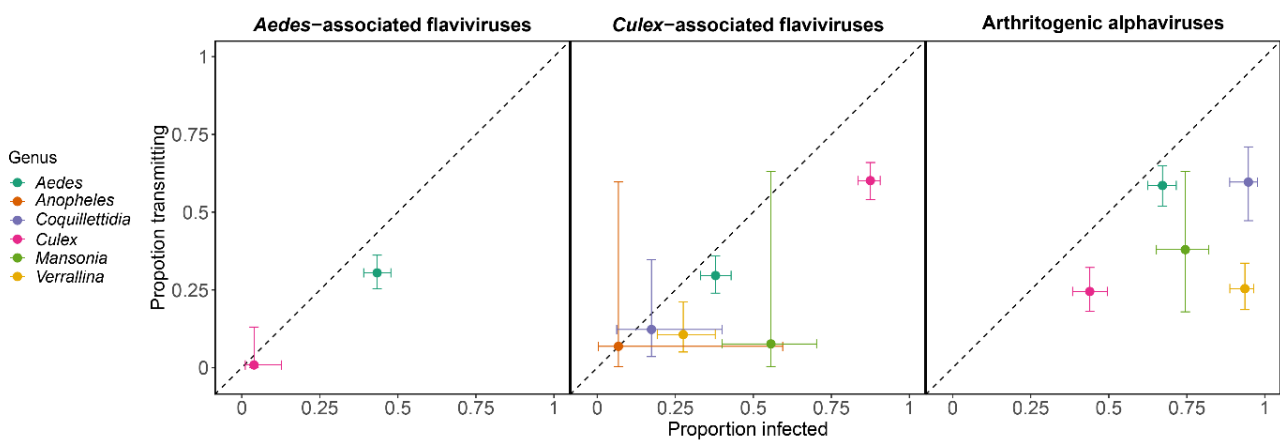
317 Only two Australian mosquito genera, *Aedes* and *Culex*, have been tested for their
318 competence for AAFVs. Of these, a significantly larger proportion of *Aedes* individuals
319 became infected with (mean: 43%; 95% CI: 39%-48%) and could transmit (mean: 30%; 95%
320 CI: 25%-36%) these viruses than *Culex* individuals (infection: mean: 4%; 95% CI: 1.1%-
321 13%; transmission: mean: 0.9%; 95% CI: .05%-13%) (Fig 2).

322

323 *Culex-associated flaviviruses*

324 A significantly higher proportion of *Culex* mosquitoes became infected with CAFVs (mean:
325 88%, 95% CI: 84%-91%) than any of the other five genera; significantly more *Culex*

326 transmitted (mean: 60%, 95% CI: 54%-66%) than *Aedes*, *Coquillettidia*, and *Verrallina* (Fig
327 2). Wide 95% confidence intervals for both *Anopheles* and *Mansonia*, due to small sample
328 sizes in these genera (8-9 mosquitoes tested), obscured our ability to statistically differentiate
329 their transmission ability from that of *Culex* despite large differences in their estimated means
330 (Fig 2). The CAFVs were the only group in the data set that contained at least one response
331 from each mosquito genus for both infection and transmission, which strengthens the
332 evidence for the importance of *Culex* as vectors of these viruses.
333



334
335 **Figure 2. Estimated proportion of mosquitoes (grouped by genus: color) infected by (x-**
336 **axis) and transmitting (y-axis) three virus groups (panels).** Points show mean estimates
337 and intervals show 95% confidence intervals (CI) obtained from the logistic regression
338 models. Non-overlapping horizontal and vertical CI between two mosquito genera for a given
339 viral group indicate statistically different infection and transmission capabilities, respectively,
340 for those genera.

341
342 *Arthritogenic alphaviruses*
343 There were some clear differences among mosquito genera for vector competence for
344 arthritogenic alphaviruses. In particular, the largest proportion of *Coquillettidia* and
345 *Verrallina* mosquitoes became infected with arthritogenic alphaviruses, although more

346 *Coquillettidia* transmitted these viruses than *Verrallina* (Fig 2). Although *Aedes* were
347 generally less susceptible to infection than *Coquillettidia*, a similar proportion transmitted the
348 virus (Fig 2). Overall, arthritogenic alphaviruses stood out as having the strongest ability to
349 infect and be transmitted by multiple mosquito genera. A larger proportion of mosquitoes
350 across all genera became infected with and transmitted arthritogenic alphaviruses than for
351 CAFVs (difference in infection: $\beta = 1.21$, SE = 0.17, $p < 0.05$; transmission: $\beta = 1.25$, SE =
352 0.20, $p < 0.05$; coefficient on the logit-scale) and AAFVs (difference in infection: $\beta = 0.98$,
353 SE = 0.15, $p < 0.05$; transmission: $\beta = 1.21$, SE = 0.19, $p < 0.05$; coefficient on the logit-
354 scale).

355

356 ***Variation within virus groups and mosquito genera***

357 These results reveal many clear differences in the mean response of mosquito genera to
358 exposure to different virus groups (Fig 2). However, mosquito species within a genus vary
359 substantially in their ability to become infected with, disseminate, and transmit each of the
360 virus species within each viral group.

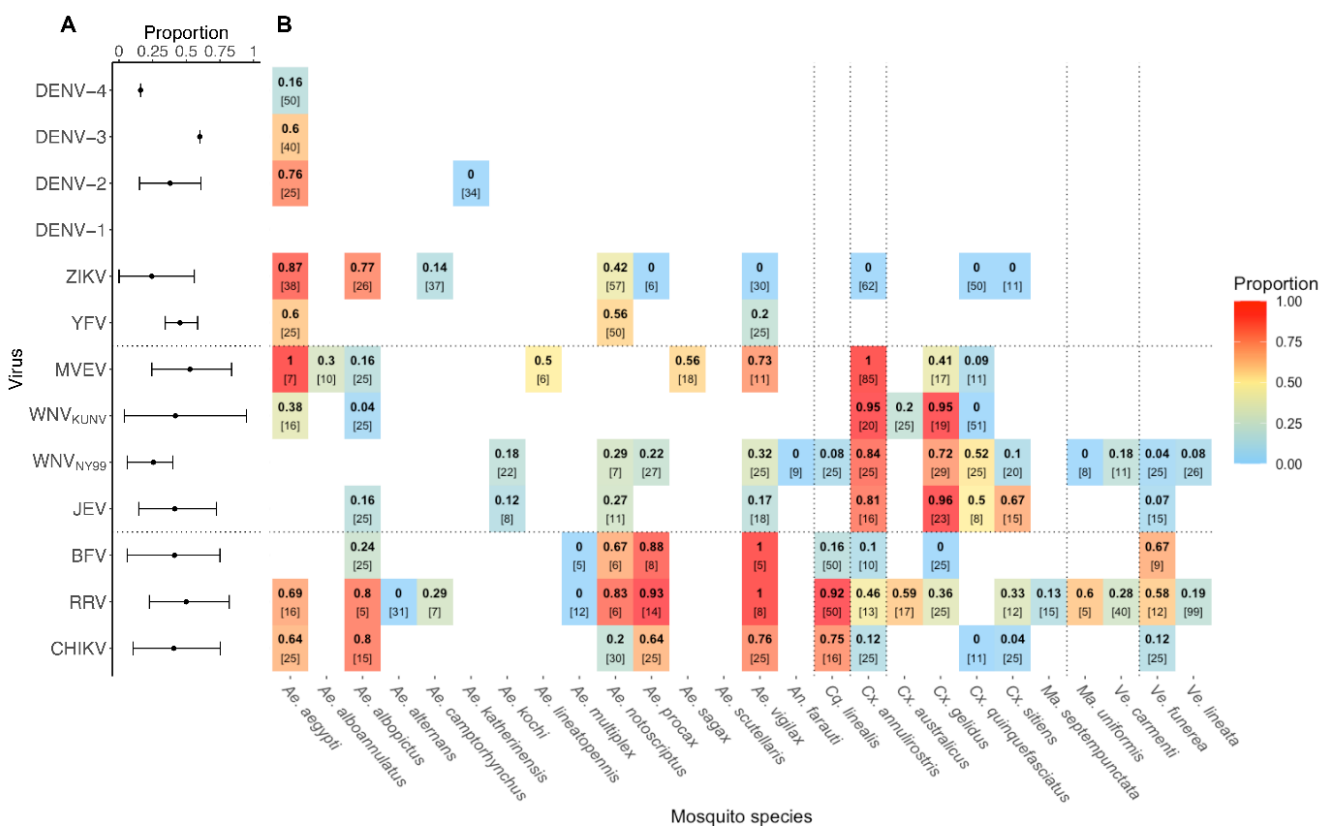
361

362 *Aedes-associated flaviviruses*

363 *Aedes* spp. varied strongly in their ability to become infected with different AAFVs, from a
364 minimum of 3% of *Aedes notoscriptus* individuals becoming infected with DENV-4 to a
365 maximum of 100% of *Ae. aegypti* individuals becoming infected with each DENV strain and
366 100% of *Aedes albopictus* individuals becoming infected with ZIKV (Fig 3B). Similar to the
367 variation in infection, *Aedes* species also varied in their ability to transmit AAFVs, from zero
368 percent of *Aedes katherinensis* transmitting DENV-2, or *Aedes procax* and *Aedes vigilax*
369 transmitting ZIKV, to a maximum of 87% of *Ae. aegypti* transmitting ZIKV (Fig 4B). In
370 contrast to the large variation among *Aedes* spp., none of the three *Culex* species (*Culex*

386 and dengue [DENV, separated by serotype]; *Culex-associated flaviviruses* (Japanese
 387 Encephalitis [JEV], West Nile New York strain [WNV_{NY99}], West Nile Kunjin strain
 388 [WNV_{KUNV}] and Murray Valley encephalitis [MVEV]); and *arthritogenic alphaviruses*
 389 (chikungunya [CHIKV], Ross River [RRV] and Barmah Forest [BFV]). Vertical dotted lines
 390 separate mosquito genera, from left to right: *Aedes* [*Ae*], *Anopheles* [*An*], *Coquillettidia* [*Cq*],
 391 *Culex* [*Cx*], *Mansonia* [*Ma*] and *Verrallina* [*Ve*].

392



393

394 **Figure 4.** A) Maximum proportion of mosquitoes positive for transmission across all
 395 mosquito species tested for each virus (median and 80% quantiles across all mosquitoes). B)
 396 Maximum proportion of each mosquito species found positive for transmission among all of
 397 the laboratory experiments for each mosquito-virus pair (represented by color and the bold-
 398 face top number in each box). The number of experimental mosquitoes tested in the study[s]
 399 in which the maximum proportion was observed is displayed in square brackets (in the case

400 of multiple experiments finding the same maximum, the sample sizes were summed). Viruses
401 are organized into three groups and mosquito species are grouped into genera as in Figure 2.

402

403 *Culex-associated flaviviruses*

404 Variation among the CAFVs was more difficult to generalize than that of the other viral
405 groups. MVEV had the highest average overall infection and transmission proportions (78%
406 and 53%, respectively) of all viruses within the group, and one of the highest across all
407 viruses (Fig 3, 4). By contrast, WNV (New York 1999 strain; WNV_{NY99}) had the lowest
408 infection and transmission proportions (43% and 26%, respectively) of all CAFVs (Fig 3, 4).

409 All *Culex* species were highly susceptible to infection with CAFVs except *Cx. sitiens*
410 exposed to WNV_{NY99} (Fig 3B). *Cx. annulirostris* and *Culex gelidus* transmitted the CAFVs at
411 rates above 40% (Fig 4B). Although not as susceptible as *Culex* species for the CAFVs, the
412 majority of *Aedes* spp. including *Ae. aegypti*, *Ae. vigilax*, *Aedes sagax*, and *Aedes*
413 *lineatopennis* demonstrated relatively high infection proportions (>50%) with MVEV (Fig
414 3B). All examined *Verrallina* and *Mansonia* species were susceptible to infection with
415 CAFVs, but in almost all cases, the proportion infected and transmitting these viruses were
416 lower than *Culex* spp. (Fig 3B, 4B).

417

418 *Arthritogenic alphaviruses*

419 The high susceptibility to infection and subsequent transmission of arthritogenic alphaviruses
420 by most Australian mosquitoes (Fig 3, 4) potentially points to a general virus genus attribute,
421 especially given the high number of mosquito species (19 out of 27) representing different
422 genera that were exposed to these viruses. *Aedes* spp. were generally highly susceptible to
423 infection and readily transmitted most arthritogenic arboviruses (Fig 3, 4). For example, both
424 *Ae. aegypti* and *Ae. albopictus* were highly susceptible to RRV and CHIKV, and readily

425 transmitted these viruses at rates above 60%. However, both species had low infection
426 proportions for BFV ($< 9\%$ and $\leq 40\%$, respectively; Fig 3B). There was more variation
427 among *Culex* spp. in competence for arthritogenic alphaviruses than for other mosquito
428 genera. All species of *Culex* were highly susceptible to infection with RRV ($> 60\%$) but had
429 very low susceptibility to CHIKV and BFV (Fig 3B). All *Culex* spp. were capable of
430 transmitting RRV, although they had a much lower probability than either *Aedes* or
431 *Coquillettidia*. *Verrallina* were highly susceptible to infection with all arthritogenic
432 alphaviruses, but like *Culex*, had lower transmission proportions than other mosquito genera
433 tested (Fig 3, 4).

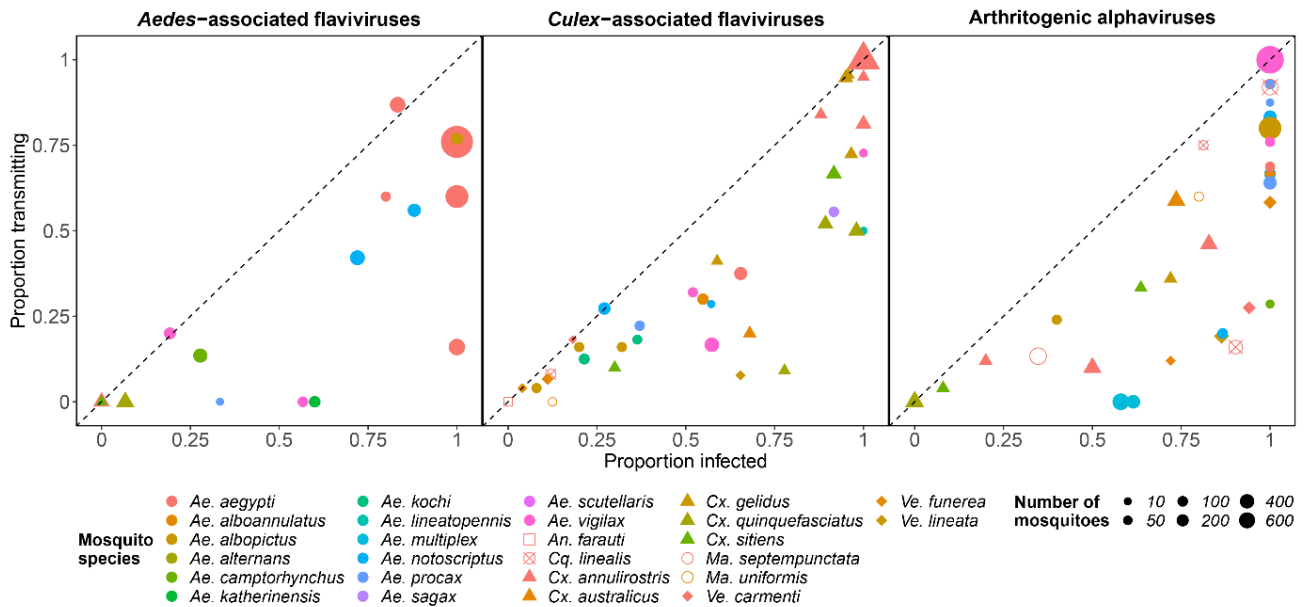
434

435 ***Correlations among Infection, Dissemination, and Transmission***

436 Across all mosquito species and viruses, we found a strong positive correlation ($r = 0.80$,
437 95% CI: 0.71-0.87) between mosquito species' maxima for infection and transmission (Fig 5).
438 While some of this correlation can be attributed to research effort (mosquitoes studied more
439 for infection are also studied more for transmission (S1 Fig), and detected maxima increase
440 with increased sample sizes ($p < 0.05$, S2 Fig)), the strength of this correlation points to the
441 strong biological link between infection and transmission within mosquitoes.

442 *Aedes* spp. typified this relationship, falling close to the 1:1 line, with similar infection
443 and transmission probabilities for all viral groups (Fig 5). Other mosquito genera and many
444 individual species stood apart from this general trend. For instance, *Verrallina lineata* had the
445 largest difference between their average (across all species) maximum infection and
446 transmission probabilities (infection: 76%; transmission: 13%) for the two viruses (WNV and
447 RRV) they were exposed to in our dataset. Similarly, those *Culex* spp. that did become
448 infected with arthritogenic alphaviruses transmitted these viruses at very low rates, especially
449 when compared with other genera (Fig 3, 4). Among all mosquitoes tested for both infection

450 and transmission with at least five viruses, *Cx. quinquefasciatus* had the largest difference
 451 (infection: 53%; transmission: 19%) and *Ae. notoscriptus* had the smallest difference in
 452 average observed maxima across all viruses (infection: 52%; transmission: 49%).



453
 454 **Figure 5. Infection and transmission probabilities for each mosquito-virus pairing**
 455 **tested.** Multiple points of the same color and shape within a viral group represent results
 456 from different viruses within that group. The dashed line is a 1:1 line; points beneath the line
 457 represent mosquito-virus pairings with a greater infection probability than transmission
 458 probability.

459
 460 While these data make it difficult to quantitatively compare the impacts of each
 461 barrier (only 19% of all mosquito-virus pairings were assessed for infection, dissemination,
 462 and transmission, and only a small subset of these were assessed in the same laboratory
 463 setting), we obtained a coarse measure of the proportion of mosquitoes where the virus was
 464 unable to pass through each successive barrier using a sample size weighted average across
 465 all mosquito-virus pairs for each barrier. Across all mosquito-virus pairs and all experiments,

466 conditional on exposure, 72% of mosquitoes became infected, 56% of mosquitoes
467 disseminated virus, and 38% transmitted, implying that on average 72% of mosquitoes
468 became infected, 77% of infected mosquitoes developed a disseminated infection, and 68%
469 of mosquitoes with a disseminated infection went on to transmit. Although this method
470 provides only a coarse measure of barrier importance relative to using single studies
471 measuring infection, dissemination, and transmission for each vector – virus pair [41], these
472 results indicate that no single barrier stands out as the sole restriction to transmission ability,
473 suggesting that all three are important.

474

475 ***Variation among experimental design and study effort***

476

477 Vector competence studies vary greatly in their experimental design, which can influence
478 study outcomes. In particular, the experimental doses that mosquitoes were exposed to varied
479 strongly both within and between viruses (S3 Fig, S4 Fig). For example, only a single dose
480 was used for WNV_{NY99} (6.7 log₁₀ infectious units (IU)/mL), while doses spanned a wide
481 range for other viruses, capturing more of the potential range of natural exposure to a viremic
482 host (e.g., 3.2 to 10 log₁₀ IU/mL for DENV-4 and 2.9 to 9.3 log₁₀ IU/mL for RRV; S3 Fig).
483 For species that were exposed to a range of virus doses, the dose that infected the maximum
484 number of mosquitoes was generally among the higher of the doses that the mosquitoes were
485 exposed to (S3 Fig). Similarly, the DPE on which mosquitoes were tested also varied among
486 studies (S3 Fig - S6 Fig).

487

488 ***Dose- and time-dependent vector competence responses of *Aedes aegypti* exposed to 489 dengue, chikungunya and Zika viruses***

490

491 As a case study, we used a GLMM to model the continuous dose- and time-dependent
492 responses (instead of just maximum potential) of *Ae. aegypti*, which has been the subject of
493 the most extensive assessment of vector competence of all Australian mosquito species. Even

494 for the best-studied pairings, *Ae. aegypti* exposed to CHIKV, ZIKV, and DENV-3,
495 confidence intervals were wide mostly due to few data points and highly variable results at
496 single doses and days across experiments (S7 Fig). Despite this uncertainty, these dose- and
497 time-dependent continuous functions help to illustrate how relying on a single maximal
498 competence measure could bias estimates of competence in practice, as it does not capture
499 the conditions mosquitoes will experience when transmitting under natural conditions.
500 However, until the substantial uncertainty is reduced, estimates from dose- and time-
501 dependent continuous functions are unlikely to be more useful than a maximal measure.

502

503 **Discussion**

504 Our analysis of vector competence experiments, involving 115 mosquito-virus
505 pairings across 295 total experimental treatments, quantified virus group–mosquito genus
506 associations, corroborated existing canonical groupings, and refined our understanding of
507 variation in the ability for different mosquito species to become infected with and transmit
508 different arboviruses. Our synthesis reinforced the canonical groupings of *Aedes*- and *Culex*-
509 associated flaviviruses; *Aedes* spp. were more competent than *Culex* spp. for AAFVs (the
510 only two genera tested in our data set), whilst *Culex* spp. had the highest infection and
511 transmission potential for CAFVs of all six genera tested (Fig 2). The association of CAFVs
512 with *Culex* spp. in the Australian context is supported by field studies that have detected the
513 majority of CAFVs in *Culex* spp., particularly *Cx. annulirostris* [42-44]. Though AAFVs are
514 not endemic to Australia, a few instances of field evidence of AAFV carriage by Australian
515 mosquitoes provide some independent support for our vector competence-based *Aedes*-
516 flaviviruses associations. For example, DENV-2 RNA was detected in *Ae. aegypti* collected
517 during a dengue outbreak in north Queensland in 2003 [45], and early experiments by
518 Bancroft [46] and Cleland et al. [47] conducted during dengue outbreaks in the early 20th

519 century in Australia demonstrated that *Ae. aegypti* were infected with DENV as evidenced by
520 transmission of the viruses to susceptible humans. Further, no *Cx. quinquefasciatus* tested by
521 Cleland et al. [47] transmitted the virus, suggesting a low or negligible field infection rate and
522 reinforcing the overall poor vector competence of members of the *Culex* genus for AAFVs.
523 There have been no reported autochthonous cases of ZIKV or YFV in Australia.

524 In contrast to the flaviviruses, our analysis revealed that no single mosquito genus was
525 clearly the most competent for infection with and transmission of the alphaviruses, which fits
526 their previous description of vector promiscuity [48, 49]. Broadly, *Culex* spp. had the lowest
527 vector competence, *Coquillettidia* had the highest vector competence, and *Aedes* spp. had
528 average susceptibility to infection but higher than average ability to transmit alphaviruses
529 (Fig 2, 5). These results concur with the plasticity in vector utilization observed for the
530 arthritogenic alphaviruses [49] and the diversity of mosquitoes found infected with RRV and
531 BFV in Australian mosquito populations [50-52]. Like the exotic flaviviruses, to date, there
532 has been no evidence of local transmission of CHIKV nor field isolation of this virus from
533 Australian mosquitoes, despite the presence of populations of highly competent vectors,
534 including *Ae. aegypti* and *Ae. albopictus* in the state of Queensland and close geographical
535 proximity of Australia to CHIKV endemic regions, such as Indonesia.

536 As vector competence tends to cluster by mosquito genus and virus sub-family (Fig
537 2), using genus and family-level information could help to constrain uncertainty about an
538 unmeasured mosquito species-virus pair. This is potentially useful for predicting the
539 consequences of an invading virus into a location with indigenous mosquito fauna not
540 historically associated with the virus, or for the range expansion of a mosquito species that
541 brings them into contact with circulating viruses in their new ecological niche. Whilst
542 mosquito genus-level virus group associations were relatively robust, we did find substantial
543 variation in vector competence at the mosquito species level (Fig 3-5). Although many of the

544 *Aedes* spp. established as global vectors of AAFVs had high competence for many AAFVs,
545 we observed substantial variation in competence among *Aedes* species for individual AAFVs
546 (Fig 3, 4). Commensurate with its role globally, Australian *Ae. aegypti* are highly susceptible
547 to infection and readily transmit DENV, YFV and ZIKV. In contrast, *Ae. notoscriptus*, which
548 shares an overlapping ecological niche with *Ae. aegypti*, was an efficient laboratory vector of
549 YFV, varied in response to challenge with different ZIKV strains, and was a poor vector of
550 DENVs (Fig 3, 4). Although it could not be captured in our analysis, there is also
551 considerable intraspecific variation in vector competence. For instance, *Cx. annulirostris* and
552 *Ae. aegypti* collected from different locations in Australia significantly differed in their
553 response to exposure to WNV [53, 54] and DENVs [55], respectively.

554 There are numerous intrinsic and interacting viral and vector traits that could
555 determine the specificity or promiscuity of arbovirus-mosquito associations. Amino acid
556 changes, even as a result of a single point mutation in an envelope protein, can facilitate virus
557 adaptation to local mosquito vectors increasing the efficiency of their transmission [56-58].
558 While mutations that give rise to virus adaptation have the capacity to occur through a single
559 passage in the mosquito [59], they are more likely to arise after many transmission
560 generations. We found multiple instances where viruses were efficiently transmitted by a
561 mosquito species they have never encountered in the field, a situation exemplified by the high
562 vector competence of *Ae. vigilax* and *Ae. procax* for CHIKV, and of *Ae. notoscriptus* for
563 YFV. This indicates that viral mutations and adaptation to local mosquito species are not
564 necessarily a prerequisite for transmission by mosquito species the virus has not encountered.
565 This supports a study in Thailand that found no evidence of adaptation of sympatric or
566 allopatric isolates of DENVs to local *Ae. aegypti* populations [60]. It also indicates that some
567 molecular determinants of vector competence may be conserved within mosquito and/or virus
568 taxa, while others may be more specific. For example, *Aedes* spp. potentially possess a

569 receptor or multiple receptors on the mesenteron epithelial cells to which the envelope
570 glycoproteins on the surface of AAFVs bind, thus initiating infection of the mesenteron [12].
571 In contrast, *Culex* spp. may not possess these specific receptors (or they may be restricted in
572 density or diversity), limiting the number of binding sites for this group of viruses. Other
573 intrinsic factors that influence virus–vector interactions are linked to diversity in the mosquito
574 microbiome [61] and virome [62], and antiviral mechanisms in the mosquito [63]. Any of
575 these factors could not only explain the virus-mosquito associations described above, but also
576 how viruses that invade a virgin ecosystem are able to exploit the resident mosquito
577 population, as occurred with WNV in North America [11] and establishment of YFV in
578 *Haemagogus/Sabethes*-driven sylvatic cycles in South America [64].

579 We also found considerable variation in experimental conditions among the vector
580 competence studies; mosquito and virus genotype, temperature, virus dose (S3 Fig), the DPE
581 on which mosquitoes were tested (S4 Fig - S6 Fig), and the nutritional status of the mosquito
582 are just a few of the many factors that varied among studies that have been known to strongly
583 influence the outcomes of individual mosquito-virus pairings [14, 22]. Further, experimental
584 methods, such as the feeding protocol used to expose mosquitoes to the virus (e.g., live
585 animal, membrane or blood-soaked pledget), virus isolate and passage used, origin of
586 mosquito, mosquito laboratory generation number, and method used to assess transmission or
587 assay to detect the presence of virus varied greatly among studies (see Online Supplemental
588 Data Files).

589 On one hand, such variation makes it more difficult to predict the realized ability of a
590 given mosquito to transmit a given virus and likely added much experimental uncertainty to
591 the intrinsic variation within mosquito genera-virus family groupings. On the other hand,
592 identifying the conditions a species requires to reach maximal transmission potential requires
593 variation between and within experiments given the vast amount of variation that occurs

594 during a transmission cycle under natural conditions. That is, when mosquitoes have been
595 infected with only a single dose (e.g., see WNV_{NY99} in S3 Fig), and measured at the same
596 time points (e.g., see YFV in S4 Fig), we are limited to an understanding of which species are
597 more competent under a narrowly-bounded setting and not the range of conditions that a
598 mosquito would experience in nature when biting viremic hosts. By contrast, when
599 mosquitoes are exposed to a wide range of doses and measured on many different DPE (e.g.,
600 see RRV in S3 Fig - S6 Fig), we are better able to capture variation in maxima among species
601 and can take steps to quantify the full dose- and time-dependency of infection and
602 transmission.

603 Dose- and time-dependent infection and transmission functions that utilize the full
604 range of experimental conditions are powerful tools for quantifying the role different
605 mosquito species play in viral transmission cycles. Specifically, when these continuous
606 functions are combined with additional data, such as host viremia, mosquito feeding patterns,
607 and/or climate conditions favorable to mosquito longevity, we are best able to gain
608 understanding of the circumstances that allow different species to have increased
609 transmission potential (i.e., vectorial capacity; see [65, 66]). Regression models like those we
610 used for *Ae. aegypti* (S7 Fig) can provide the required data but are useful for only very well
611 studied mosquito-virus pairs as they are more data intensive than calculating a maxima.
612 Ultimately, using the maxima is necessary for most mosquito-virus pairs (for many of which
613 there is little data) and despite collapsing much variation it enables rapid incrimination of
614 mosquitoes as arbovirus vectors.

615 This synthesis of vector competence studies provides a foundational tool for
616 understanding the vector competence of mosquitoes for many of the medically important
617 arboviruses. Although we focused our analysis on mosquitoes originating from Australia, a
618 synthesis of vector competence experiments from around the world would potentially

619 reinforce and expand on the outcomes of the current study. The degree of variation within
620 each of the taxonomic levels highlights that although general virus–mosquito associations can
621 help incriminate mosquitoes as vectors of arboviruses, location-specific experiments
622 assessing the susceptibility and transmission ability of uncharacterized virus–mosquito
623 pairing are still critical for establishing the role of a mosquito species in transmission cycles.
624 When combined with data on vector abundance and human contact patterns [67], this
625 information can guide public health responses to arbovirus outbreaks with view to limiting
626 the disease incidence in susceptible populations.

627 **Acknowledgements**

628 We thank Marissa Childs and Nicole Nova for their feedback on early versions of the
629 analysis and data visualizations. We also thank John Mackenzie and Alyssa Pyke for
630 discussions on virus phylogeny and evolution. Alyssa Pyke also provided valuable comments
631 on the manuscript. EAM was supported by the National Science Foundation and the Fogarty
632 International Center (DEB-2011147), Stanford's Center for Innovation in Global Health,
633 Woods Institute for the Environment, and King Center for Global Development, and the
634 Terman Award. EAM, MPK, and EBS were supported by the National Institute of General
635 Medical Sciences (R35GM133439). MPK was supported by the Natural Capital Project.
636 AvdH states that: ``The opinions, interpretations and conclusions are those of the author and
637 do not necessarily represent those of the organization."

638

639 **Competing interests**

640 The authors declare no competing interests

641

642 **Data availability**

643 All data and code used in this study are available in the online supplemental materials. Code
644 is hosted at: <https://github.com/morgankain/VectorCompetence>

645

646

647 **References**

648

649 1. Ketkar H, Herman D, Wang P. Genetic determinants of the re-emergence of arboviral
650 diseases. *Viruses*. 2019; 11: 150.

651 2. Weaver SC, Charlier C, Vasilakis N, Lecuit M. Zika, chikungunya, and other
652 emerging vector-borne viral diseases. *Ann Rev Med*. 2018;69: 395-408.

653 3. Mackenzie JS, Gubler DJ, Petersen LR. Emerging flaviviruses: the spread and
654 resurgence of Japanese encephalitis, West Nile and dengue viruses. *Nat Med*. 2004;10: S98-
655 S109.

656 4. Rasmussen SA, Jamieson DJ, Honein MA, Petersen LR. Zika virus and birth defects--
657 reviewing the evidence for causality. *N Engl J Med*. 2016;374: 1981-1987.

658 5. Stanaway JD, Shepard DS, Undurraga EA, Halasa YA, Coffeng LE, Brady OJ, et al.
659 The global burden of dengue: an analysis from the Global Burden of Disease Study 2013.
660 *Lancet Infect Dis*. 2016;16(6): 712-723.

661 6. Azar SR, Campos RK, Bergren NA, Camargos VN, Rossi SL. Epidemic alphaviruses:
662 ecology, emergence and outbreaks. *Microorganisms*. 2020;8: 1167.

663 7. Kuno G, Chang G-JJ, Tsuchiya KR, Karabatsos N, Cropp CB. Phylogeny of the
664 Genus *Flavivirus*. *J Virol*. 1998;72: 73-83.

665 8. Gaunt MW, Sall AA, de Lamballerie X, Falconar AK, Dzhivanian TI, Gould EA.
666 Phylogenetic relationships of flaviviruses correlate with their epidemiology, disease
667 association and biogeography. *J Gen Virol*. 2001;82: 1867-1876.

668 9. Moureau G, Cook S, Lemey P, Nougairede A, Forrester NL, Khasnatinov M, et al.
669 New insights into flavivirus evolution, taxonomy and biogeographic history, extended by
670 analysis of canonical and alternative coding sequences. *PLoS One*. 2015;10: e0117849.

671 10. Carrington LB, Simmons CP. Human to mosquito transmission of dengue viruses.
672 *Front Immunol*. 2014;5: 290.

- 673 11. Rochlin I, Faraji A, Healy K, Andreadis TG. West Nile virus mosquito vectors in
674 North America. *J Med Entomol.* 2019;56: 1475-1490.
- 675 12. Franz AW, Kantor AM, Passarelli AL, Clem RJ. Tissue barriers to arbovirus infection
676 in mosquitoes. *Viruses.* 2015;7: 3741-3767.
- 677 13. Hardy JL. Susceptibility and resistance of vector mosquitoes. In: Monath TP, editor.
678 *The Arboviruses: Epidemiology and Ecology. I.* Boca Raton, Florida: CRC Press; 1988. pp.
679 87-126.
- 680 14. Hardy JL, Houk EJ, Kramer LD, Reeves WC. Intrinsic factors affecting vector
681 competence of mosquitoes for arboviruses. *Ann Rev Entomol.* 1983;28: 229-262.
- 682 15. Lee WS, Webster JA, Madzokere ET, Stephenson EB, Herrero LJ. Mosquito antiviral
683 defense mechanisms: a delicate balance between innate immunity and persistent viral
684 infection. *Parasit Vectors.* 2019;12: 165.
- 685 16. Kramer LD, Hardy JL, Houk EJ, Presser SB. Characterization of the mesenteron
686 infection with Western equine encephalomyelitis virus in an incompetent strain of *Culex*
687 *tarsalis*. *Am J Trop Med Hyg.* 1989;41: 241-250.
- 688 17. Kramer LD, Hardy JL, Presser SB, Houk EJ. Dissemination barriers for western
689 equine encephalomyelitis virus in *Culex tarsalis* infected after ingestion of low viral doses.
690 *Am J Trop Med Hyg.* 1981;30: 190-197.
- 691 18. Turell MJ, Gargan II TP, Bailey CL. Replication and dissemination of Rift Valley
692 fever virus in *Culex pipiens*. *Am J Trop Med Hyg.* 1984;33: 176-181.
- 693 19. Kramer LD, Ebel GD. Dynamics of flavivirus infection in mosquitoes. *Adv Virus*
694 *Res.* 2003;60: 187-232.
- 695 20. Mellor PS. Replication of arboviruses in insect vectors. *J Comp Pathol.* 2000;123:
696 231-247.

- 697 21. Richards SL, Anderson SL, Lord CC, Smartt CT, Tabachnick WJ. Relationships
698 between infection, dissemination, and transmission of West Nile virus RNA in *Culex pipiens*
699 *quinquefasciatus* (Diptera: Culicidae). J Med Entomol. 2012;49: 132-142.
- 700 22. Azar SR, Weaver SC. Vector competence: what has Zika virus taught us? Viruses.
701 2019;11: 867.
- 702 23. Kay B. Three modes of transmission of Ross River virus by *Aedes vigilax* (Skuse).
703 Aust J Exp Biol Med Sci. 1982;60: 339-344.
- 704 24. Aitken THG. An *in vitro* feeding technique for artificially demonstrating virus
705 transmission by mosquitoes. Mosq News. 1977;37: 130-133.
- 706 25. Bennett NM. Murray Valley encephalitis, 1974. Clinical features. Med J Aust.
707 1976;2: 446-450.
- 708 26. Hanna JN, Ritchie SA, Phillips DA, Shield J, Bailey MC, Mackenzie JS, et al. An
709 outbreak of Japanese encephalitis in the Torres Strait, Australia, 1995. Med J Aust. 1996;165:
710 256-260.
- 711 27. Jansen CC, Shivas MA, May FJ, Pyke AT, Onn MB, Lodo K, et al. Epidemiologic,
712 entomologic, and virologic factors of the 2014-15 Ross River virus outbreak, Queensland,
713 Australia. Emerg Infect Dis. 2019;25: 2243-2252.
- 714 28. Ritchie SA, Pyke AT, Hall-Mendelin S, Day A, Mores CN, Christofferson RC, et al.
715 An explosive epidemic of DENV-3 in Cairns, Australia. PLoS One. 2013;8: e68137.
- 716 29. Jansen CC, Ritchie SA, van den Hurk AF. The role of Australian mosquito species in
717 the transmission of endemic and exotic West Nile virus strains. Int J Environ Res Public
718 Health. 2013;10: 3735-3752.
- 719 30. Viennet E, Knope K, Faddy HM, Williams CR, Harley D. Assessing the threat of
720 chikungunya virus emergence in Australia. Commun Dis Intell Q Rep. 2013;37: E136-43.

- 721 31. Viennet E, Mincham G, Frentiu FD, Jansen CC, Montgomery BL, Harley D, et al.
722 Epidemic potential for local transmission of Zika virus in 2015 and 2016 in Queensland,
723 Australia. PLoS Curr. 2016;8.: ecurrents.outbreaks.73d82b08998c6d729c41ef6cdcc80176.
- 724 32. Melian EB, Hall-Mendelin S, Du F, Owens N, Bosco-Lauth AM, Nagasaki T, et al.
725 Programmed ribosomal frameshift alters expression of West Nile virus genes and facilitates
726 virus replication in birds and mosquitoes. PLoS Pathog. 2014;10: e1004447.
- 727 33. Moreira LA, Iturbe-Ormaetxe I, Jeffery JA, Lu G, Pyke AT, Hedges LM, et al. A
728 *Wolbachia* symbiont in *Aedes aegypti* limits infection with dengue, Chikungunya, and
729 Plasmodium. Cell. 2009;139: 1268-1278.
- 730 34. McLean DM. Multiplication of viruses in mosquitoes following feeding and injection
731 into the body cavity. Aust J Exp Biol Med Sci. 1955;33: 53-66.
- 732 35. R Core Team. R: A language and environment for statistical computing. Vienna,
733 Austria: R Foundation for Statistical Computing; 2021.
- 734 36. Kosmidis I. brglm2: Bias reduction in generalized linear models. R package version
735 0.1.4. 2017.
- 736 37. Kosmidis I, Firth D. Jeffreys-prior penalty, finiteness and shrinkage in binomial-
737 response generalized linear models. Biometrika. 2021;108: 71-82.
- 738 38. Allison PD, editor Convergence Failures in Logistic Regression. SAS Global Forum
739 2008; 2008.
- 740 39. Lenth R, Lenth MR. Package 'lsmeans'. The American Statistician. 2018;34: 216-
741 221.
- 742 40. Bates D, Mächler M, Bolker B, Walker S. Fitting linear mixed-effects models using
743 lme4. arXiv. 2014;1406.5823.

- 744 41. Tesla B, Demakovsky LR, Packiam HS, Mordecai EA, Rodriguez AD, Bonds MH, et
745 al. Estimating the effects of variation in viremia on mosquito susceptibility, infectiousness,
746 and R_0 of Zika in *Aedes aegypti*. PLoS Negl Trop Dis. 2018;12: e0006733.
- 747 42. Broom AK, Lindsay MD, Wright AE, Smith DW, Mackenzie JS. Epizootic activity of
748 Murray Valley encephalitis and Kunjin viruses in an aboriginal community in the southeast
749 Kimberley region of Western Australia: results of mosquito fauna and virus isolation studies.
750 Am J Trop Med Hyg. 2003;69: 277-283.
- 751 43. Doherty RL, Carley JG, Mackerras MJ, Marks EN. Studies of arthropod-borne virus
752 infections in Queensland, III. Isolation and characterisation of virus strains from wild-caught
753 mosquitoes in north Queensland. Aust J Exp Biol Med Sci. 1963;41: 17-40.
- 754 44. Ritchie SA, Phillips D, Broom A, Mackenzie J, Poidinger M, van den Hurk A.
755 Isolation of Japanese encephalitis virus from *Culex annulirostris* in Australia. Am J Trop
756 Med Hyg. 1997;56: 80-84.
- 757 45. Ritchie SA, Long S, Smith G, Pyke A, Knox TB. Entomological investigations in a
758 focus of dengue transmission in Cairns, Queensland, Australia, by using the sticky ovitraps. J
759 Med Entomol. 2004;41: 1-4.
- 760 46. Bancroft TL. On the etiology of dengue fever. Aust Med Gaz. 1906;25: 17-18.
- 761 47. Cleland JB, Bradley B, McDonald W. On the transmission of Australian dengue by
762 the mosquito *Stegomyia fasciata*. Med J Aust. 1916;2: 179-184, 200-205.
- 763 48. Coffey LL, Forrester N, Tsetsarkin K, Vasilakis N, Weaver SC. Factors shaping the
764 adaptive landscape for arboviruses: implications for the emergence of disease. Future
765 Microbiol. 2013;8: 155-176.
- 766 49. Hanley KA, Weaver SC. Arbovirus evolution. In: Domingo E, Parrish CR, J.J. H,
767 editors. Origin and Evolution of Viruses. London: Academic Press; 2008. pp. 351–92.

- 768 50. Harley D, Ritchie S, Phillips D, van den Hurk A. Mosquito isolates of Ross River
769 virus from Cairns, Queensland, Australia. *Am J Trop Med Hyg.* 2000;62: 561-565.
- 770 51. Lindsay MD, Johansen CA, Smith DW, Wallace MJ, Mackenzie JS. An outbreak of
771 Barmah Forest virus disease in the south-west of Western Australia. *Med J Aust.* 1995;162:
772 291-294.
- 773 52. Ritchie SA, Fanning ID, Phillips DA, Standfast HA, McGinn D, Kay BH. Ross River
774 virus in mosquitoes (Diptera: Culicidae) during the 1994 epidemic around Brisbane,
775 Australia. *J Med Entomol.* 1997;34: 156-159.
- 776 53. Jansen CC, Webb CE, Northill JA, Ritchie SA, Russell RC, van den Hurk AF. Vector
777 competence of Australian mosquito species for a North American strain of West Nile virus.
778 *Vector-Borne Zoonotic Dis.* 2008;8: 805-811.
- 779 54. Kay BH, Fanning ID, Carley JG. The vector competence of Australian *Culex*
780 *annulirostris* with Murray Valley encephalitis and Kunjin viruses. *Aust J Exp Biol Med Sci.*
781 1984;62: 641-50.
- 782 55. Knox TB, Kay BH, Hall RA, Ryan PA. Enhanced vector competence of *Aedes*
783 *aegypti* (Diptera: Culicidae) from the Torres Strait compared with mainland Australia for
784 dengue 2 and 4 viruses. *J Med Entomol.* 2003;40: 950-956.
- 785 56. Anderson JR, Rico-Hesse R. *Aedes aegypti* vectorial capacity is determined by the
786 infecting genotype of dengue virus. *Am J Trop Med Hyg.* 2006;75: 886-892.
- 787 57. Ebel GD, Carricaburu J, Young D, Bernard KA, Kramer LD. Genetic and phenotypic
788 variation of West Nile virus in New York, 2000-2003. *Am J Trop Med Hyg.* 2004;71: 493-
789 500.
- 790 58. Tsetsarkin KA, Vanlandingham DL, McGee CE, Higgs S. A single mutation in
791 chikungunya virus affects vector specificity and epidemic potential. *PLoS Pathog.* 2007;3:
792 e201.

- 793 59. Stapleford KA, Coffey LL, Lay S, Borderia AV, Duong V, Isakov O, et al.
794 Emergence and transmission of arbovirus evolutionary intermediates with epidemic potential.
795 Cell Host Microbe. 2014;15: 706-716.
- 796 60. Fansiri T, Pongsiri A, Klungthong C, Ponlawat A, Thaisomboonsuk B, Jarman RG, et
797 al. No evidence for local adaptation of dengue viruses to mosquito vector populations in
798 Thailand. Evol Appl. 2016;9: 608-618.
- 799 61. Ramirez JL, Souza-Neto J, Torres Cosme R, Rovira J, Ortiz A, Pascale JM, et al.
800 Reciprocal tripartite interactions between the *Aedes aegypti* midgut microbiota, innate
801 immune system and dengue virus influences vector competence. PLoS Negl Trop Dis.
802 2012;6: e1561.
- 803 62. Bolling BG, Olea-Popelka FJ, Eisen L, Moore CG, Blair CD. Transmission dynamics
804 of an insect-specific flavivirus in a naturally infected *Culex pipiens* laboratory colony and
805 effects of co-infection on vector competence for West Nile virus. Virology. 2012;427: 90-97.
- 806 63. Xi Z, Ramirez JL, Dimopoulos G. The *Aedes aegypti* toll pathway controls dengue
807 virus infection. PLoS Pathog. 2008;4: e1000098.
- 808 64. Silva NIO, Sacchetto L, de Rezende IM, Trindade GS, LaBeaud AD, de Thoisy B, et
809 al. Recent sylvatic yellow fever virus transmission in Brazil: the news from an old disease.
810 Virol J. 2020;17: 9.
- 811 65. Jetten TH, Focks DA. Potential changes in the distribution of dengue transmission
812 under climate warming. Am J Trop Med Hyg. 1997;57: 285-297.
- 813 66. Kain MP, Skinner EB, van den Hurk AF, McCallum H, Mordecai EA. Physiology and
814 ecology combine to determine host and vector importance for Ross River virus. Elife.
815 2021;10: 67018.

816 67. Jansen CC, Williams CR, van den Hurk AF. The usual suspects: comparison of the
817 relative roles of potential urban chikungunya virus vectors in Australia. PLoS One. 2015;10:
818 e0134975.
819

820 **Supporting information**

821 **S1 Fig. Number of mosquitoes of each species assessed for infection and transmission in vector**

822 **competence experiments.** Mosquito species frequently measured in infection experiments (total
823 sample size across all experiments; X axis) were also more frequently measured in transmission
824 experiments (total sample size across all experiments; Y axis). Each point for a mosquito species
825 represents a different virus.

826

827 **S2 Fig. Total number of mosquitoes assessed for infection, dissemination and transmission in**

828 **vector competence experiments.** Increased research effort leads to a higher maximum proportion for
829 infection, dissemination, and transmission (logistic regression, $p < 0.05$). Increased dose does not lead
830 to a detectable increase in maximum proportion (logistic regression, $p > 0.05$). Each point represents a
831 single virus-species pair.

832

833 **S3 Fig. Viral doses mosquitoes were exposed to across all laboratory experiments that measured**

834 **infection.** Blue points show experimental doses that did not lead to the highest detected proportion of
835 infected mosquitoes; red points show the infectious dose[s] that resulted in the highest observed
836 infected proportion.

837

838 **S4 Fig. Days post viral exposure on which mosquitoes were tested for infection status.** Blue

839 points show experimental days that did not lead to the highest detected proportion of infected
840 mosquitoes; red points show the day[s] that resulted in the highest observed infected proportion.

841

842 **S5 Fig. Viral doses mosquitoes were exposed to across all laboratory experiments that measured**

843 **transmission.** Blue points show experimental doses that did not lead to the highest detected
844 proportion of transmitting mosquitoes; red points show the infectious dose[s] that resulted in the
845 highest observed transmitting proportion.

846

847 **S6 Fig. Days post viral exposure on which mosquitoes were tested for their ability to transmit**
848 **viruses.** Blue points show experimental days that did not lead to the highest detected proportion of
849 transmitting mosquitoes; red points show the day[s] that resulted in the highest observed transmitting
850 proportion.

851

852 **S7 Fig. Continuous functions for mosquito infection over dose (top), and for dissemination and**
853 **transmission over time (middle and bottom, respectively).** The results pictured here are from a
854 generalized linear mixed effects model (GLMM) using *Aedes aegypti* for all viruses they have been
855 tested with in the lab; however, here we only show the three viruses for which more than one data
856 point exist for infection, dissemination, and transmission. For infection (top), medians (solid lines)
857 and 95% confidence intervals (grey bands) are estimated using twelve days post inoculation; for
858 dissemination (middle) and transmission (bottom) estimates are drawn for a dose of $7 \log_{10}$ IU/mL.

859

860 **S1 File. Australian mosquito vector competence source data.**

861