

Psychosis spectrum symptoms among individuals with schizophrenia-associated copy number variants and evidence of cerebellar correlates of symptom severity

Esra Sefik^{1,2*}, Ryan M. Guest^{2*}, Katrina Aberizk², Roberto Espana², Katrina Goines², Derek Novacek^{3,4}, Melissa M. Murphy⁵, Adam E. Goldman-Yassen⁶⁻⁷, Joseph F. Cubells^{1,8}, Opal Ousley⁸, Longchuan Li^{5,9}, Sarah Shultz^{5,9}, Elaine F. Walker^{2**}, Jennifer G. Mulle^{10***#}

¹Department of Human Genetics, Emory University School of Medicine, Atlanta, GA, USA.

²Department of Psychology, Emory University, Atlanta, GA, USA.

³Department of Psychiatry and Biobehavioral Sciences, University of California, Los Angeles, CA, USA.

⁴Desert Pacific Mental Illness, Research, Education, and Clinical Center, VA Greater Los Angeles Healthcare System, Los Angeles, CA, USA.

⁵Department of Pediatrics, Emory University School of Medicine, Atlanta, GA, USA.

⁶Department of Radiology, Children's Healthcare of Atlanta, Atlanta, GA, USA.

⁷Department of Radiology and Imaging Sciences, Emory University School of Medicine, Atlanta, GA, USA.

⁸Department of Psychiatry and Behavioral Science, Emory University School of Medicine, Atlanta, GA, USA.

⁹Marcus Autism Center, Children's Healthcare of Atlanta and Emory University School of Medicine, Atlanta, GA, USA.

¹⁰Department of Psychiatry, Robert Wood Johnson Medical School, Rutgers University, New Brunswick, NJ, USA.

*Indicates joint first authorship.

**Indicates joint last authorship.

#Correspondence: Jennifer G. Mulle, MHS, PhD

Associate Professor

Department of Psychiatry

Robert Wood Johnson Medical School

Rutgers University

Tel: (848) 445-9866 / Email: jennifer.mulle@rutgers.edu

Running title: Psychosis-spectrum symptoms in copy number variants

Keywords: "3q29 deletion syndrome" "22q11.2 deletion syndrome" "psychosis" "SIPS" "structural magnetic resonance imaging" "cerebellum"

Number of words in the abstract: 250

Number of figures: 2

Number of words in the main text: 5,176

Number of tables: 3

Supplemental information: One supplemental materials document that includes 5 supplemental figures, 7 supplemental tables, and extended methods / results.

Abstract

Background: The 3q29 deletion (3q29Del) is a copy number variant (CNV) with the highest known effect size for psychosis-risk (>40-fold increased risk). Systematic research on this CNV offers promising avenues for identifying mechanisms underlying psychosis and related disorders. Relative to other high-impact CNVs like 22q11.2Del, far less is known about the phenotypic presentation and pathophysiology of 3q29Del. Emerging findings indicate that posterior fossa abnormalities are common among 3q29Del carriers; however, their clinical relevance is unknown.

Methods: Here, we report the first in-depth evaluation of psychotic symptoms in study participants with 3q29Del ($N=23$), using the Structured Interview for Psychosis-Risk Syndromes (SIPS), and compare to SIPS data from 22q11.2Del participants ($N=31$) and healthy controls ($N=279$). We also investigate the relationship between psychotic symptoms, cerebellar morphology, and cystic/cyst-like malformations of the posterior fossa in 3q29Del by structural brain imaging.

Results: Cumulatively, 48% of the 3q29Del sample exhibited a psychotic disorder ($N=4$) or attenuated positive symptoms ($N=7$), with three individuals with attenuated symptoms meeting the frequency and timing criteria for clinical high risk for psychosis. Males with 3q29Del scored higher in negative symptoms than females. 3q29Del participants had more severe ratings than controls on all domains and exhibited less severe negative symptoms than 22q11.2Del participants. An inverse relationship was identified between positive symptom severity and cerebellar cortex volume in 3q29Del, while cystic/cyst-like malformations yielded no clinical link with psychosis.

Conclusions: Overall, our findings establish the unique and shared profiles of psychotic symptoms across two CNVs and highlight cerebellar involvement in elevated psychosis-risk in 3q29Del.

Introduction

The identification of copy number variants (CNVs) that confer high risk for serious mental illnesses has provided new substrates to investigate the etiology of psychotic disorders. The 3q29 and 22q11.2 deletions (Del) are two CNVs that significantly increase risk for a range of neuropsychiatric disorders, especially schizophrenia and other psychotic disorders (1-12). Thus, systematic research on these CNVs holds promise for shedding light on the neuropathology underlying psychosis.

22q11.2Del is caused by a hemizygous 1.5- to 3.0-Mb deletion involving 45 protein-coding genes. The deletion affects 1 in 2,148-4,000 individuals (13-17) and is estimated to convey a >20-fold increased risk for developing schizophrenia (18, 19). Standardized measures have been used to examine the clinical high risk (CHR) or the “prodromal” symptoms that may precede the onset of psychosis in 22q11.2Del syndrome and the general population. Before the first psychotic episode, typically during late adolescence and early adulthood, individuals often exhibit a period of functional decline coinciding with the emergence of attenuated psychotic symptoms (20-23). Those identified at CHR present with these “warning” signs and are at substantial risk for future psychosis (24). Published reports in 22q11.2Del have shown that about 30-60% of study participants manifest attenuated psychotic symptoms which are known to be linked with elevated risk for subsequent conversion to psychosis (25, 26).

Individuals with 3q29Del are hemizygous for a 1.6-Mb interval containing 21 protein-coding genes. Compared to 22q11.2Del, 3q29Del was only recently identified (27) and is less common, with a prevalence of approximately 1 in 30,000 individuals (10); consequently the associated phenotypes are just now being documented. Like 22q11.2Del, 3q29Del is pleiotropic; it elevates risk for a range of physical and psychiatric disabilities, including low birth weight, failure to thrive, cardiac defects, cognitive deficits, and autism spectrum disorder (9, 28). Current evidence suggests that 3q29Del confers an equal or greater risk for psychosis than 22q11.2Del. Recent reports revealed that the 3q29 deletion confers a >40-fold increased risk for schizophrenia (1, 8, 29). It is not known whether early clinical signs of psychosis risk are elevated among individuals with 3q29Del.

Our team recently documented the neurodevelopmental and psychiatric manifestations associated with 3q29Del (10, 30). 3q29Del individuals participated in in-depth evaluation of psychiatric symptoms and magnetic resonance imaging (MRI). Here, we report detailed results on psychotic symptoms in study participants with

3q29Del, as assessed by the Structured Interview for Psychosis-Risk Syndromes (SIPS) (31, 32). Using this gold-standard instrument, we determined the proportion of 3q29Del participants with attenuated or florid psychotic symptoms and contrasted this with the symptom profile in 22q11.2Del participants and healthy controls (HC).

Next, we asked whether psychosis susceptibility in 3q29Del is associated with morphometric features of the brain measured by structural MRI. Recent radiological findings by our team have revealed that cerebellar hypoplasia and cystic/cyst-like malformations of the posterior fossa, are significantly elevated in 3q29Del (10). Our group has also shown quantitatively that study participants with 3q29Del exhibit abnormal cerebellar volumes compared with HCs (33). In the current study, we demonstrate that these neuroanatomical phenotypes may have clinical relevance. This is the first known investigation of the relationship between psychotic symptoms and neuroimaging findings in 3q29Del syndrome and suggests the cerebellum may be a primary site of pathology.

Methods and Materials

Participants

The 3q29Del sample: Twenty-three individuals with 3q29Del, ages 8.08-39.12 (mean \pm SD = 16.94 \pm 8.24 years) were evaluated using the SIPS (31, 32). Study participants were ascertained from the 3q29 registry (28) and between August 2017-February 2020 traveled to Atlanta, GA for deep phenotyping with gold-standard instruments and MRI. Deletion status was confirmed from the clinical genetics report and/or medical records. The project protocol and a summary of findings have been previously described (10, 30).

Comparison samples: The HC comparison sample included 279 healthy individuals, ages 12.07-34.41 (mean \pm SD = 20.08 \pm 4.61 years), from the second cohort of the North American Prodromal Longitudinal Study (NAPLS2), who were evaluated with the SIPS between June 2009-October 2012. NAPLS2 is a multi-site consortium investigating the trajectories of individuals at CHR (34). These HCs chosen for the present analysis neither met criteria for any psychotic disorder nor reported any attenuated psychotic symptoms and had no history of a central nervous system disorder, intellectual disability, substance dependence in the previous six months, or a first-degree relative with a psychotic disorder.

The 22q11.2Del comparison sample included SIPS data from 31 individuals with 22q11.2Del, ages 13.85-29.77 (mean \pm SD = 19.75 \pm 4.12 years), from the 22q11.2 Clinic in Atlanta, GA (25, 26, 35). Participants were ascertained from a case registry, with the deletion confirmed via fluorescence in situ hybridization (FISH). Participants were often referred for FISH as minors due to cardiovascular defects, language difficulties or immunological problems. Individuals identified as adults were referred as part of clinical care within a genetics or heart clinic, as described in (25). Data were collected between February 2006-June 2007.

Assessment of attenuated and florid psychotic symptoms

All study participants were administered the SIPS semi-structured clinical interview by trained personnel. The 19 items in the SIPS are grouped within four domains: positive, negative, disorganization, and general. Each item is rated on a scale from 0 (*Absent*) to 6 (*Severe and Psychotic* for positive symptoms, *Extreme* for others), with a rating of 3 (*Moderate*) indicating clinical significance. Item ratings were summed to produce a total score for each domain. For adolescents and adults with 3q29Del meeting criteria for a psychotic disorder, the Structured Clinical Interview for DSM-5 (SCID-5) (36) specified the diagnosis. All study participants provided informed consent to participate. These studies were approved by Emory University's Institutional Review Board.

Structural MRI acquisition and processing in 3q29Del

T1- and T2-weighted structural MRI was performed in 17 3q29Del participants with available SIPS data, ages 8.08-39.12 (mean \pm SD = 18.13 \pm 9.03 years). Of the six 3q29Del participants who had SIPS data but did not complete MRI, five were medically ineligible and one declined to participate. Images were acquired on a Siemens Magnetom Prisma 3T scanner in the sagittal plane using a 32-channel Prisma head coil and an 80mT/m gradient. T1-weighted 3D images were acquired in the sagittal plane using a single-echo MPRAGE sequence (37) with the following parameters: TE=2.24ms, TR=2400ms, TI=1000ms, bandwidth=210Hz/pixel, FOV=256x256mm, resolution=0.8mm isotropic. T2-weighted 3D images were acquired in the sagittal plane using a SPACE sequence (38) with the following parameters: TE=563ms, TR=3200ms, bandwidth=745Hz/pixel, FOV=256x256mm, resolution=0.8mm isotropic. Further details on neuroimaging parameters have been described (10, 33).

All MR images were processed using the “minimal structural pre-processing” pipeline established by the Human Connectome Project (HCP, v.4.1.3) with FreeSurfer (v.6.0) (<http://surfer.nmr.mgh.harvard.edu/>). We performed automatic segmentation as described in (39), using a previously described probabilistic atlas and Bayesian classification rule that assigns anatomical labels to each voxel based on estimates derived from a manually labeled training set (40). Since it is currently unfeasible to achieve a topologically correct reconstruction and automatic segmentation of the cerebellar cortical surface from *in vivo* MRI data, we treated the cerebellum as a volumetric structure and extracted cerebellar cortex and cerebellar white matter volumes for each 3q29Del participant, using a “coarse parcellation” scheme (41). Tissue-specific volumes were then summed to derive a global metric of total cerebellar volume; these three measures constitute the regions of interest (ROI) in the present study. A similar approach has been successfully used in previous literature (42-50), allowing for methodological consistency.

Finally, we used estimated total intracranial volume (eICV) as a proxy for premorbid brain size (51). eICV was calculated by FreeSurfer as described in (52) and has been reported to show high correlations with manually delineated intracranial volume (53-55). We report results from both eICV-adjusted and unadjusted analyses (56), given previous reports of microcephaly (27, 57, 58), and eICV reduction in 3q29Del (33). See Supplemental Materials for extended methods.

Statistical analyses

All analyses were conducted using *R* v.4.0.3 (59). The frequencies of florid or attenuated psychotic symptoms were compared between the 3q29Del and 22q11.2Del groups using Fisher's exact test. To assess the variation in symptom profiles between groups, a series of analyses of covariance (ANCOVA) were performed; first, by domain and then item-wise to identify symptoms that may be elevated in 3q29Del. Partial eta-squared (η^2_p) was used to assess effect sizes. Pairwise comparisons for 3q29Del vs. HC and 3q29Del vs. 22q11.2Del were performed using Tukey's test. Since we observed several violations of the statistical assumptions required for ANCOVA (partially due to a likely floor effect in the HC sample), SIPS scores were log-transformed in between-group analyses. Age and sex were considered as potential covariates.

For neuroimaging analyses in 3q29Del, we used multiple linear regression to examine the relationship between ROI volumes and SIPS ratings for positive, negative and disorganization symptom domains separately.

In models where a significant relationship was identified, we subsequently added eICV as an additional covariate to test whether results reflect a link with the cerebellum beyond global variability in head size. We also employed an additional categorical approach that relies on diagnostic criteria to determine the presence of either a psychotic disorder or attenuated psychotic symptom syndrome (APSS). Binary logistic regression was used to estimate the probability that either of these diagnoses are present in the 3q29Del sample given cerebellar volumes as the predictor. Multiple comparisons correction was applied at the ROI level using the Bonferroni method, with a rounded *p-value* threshold of 0.02 (0.05/3 ROIs).

In all models, age and sex were considered as covariates. Standard diagnostics were performed for testing regression assumptions. Multicollinearity was assessed in models with eICV by computing variance inflation factor scores. Given observed violations of linear regression assumptions using ordinary least squares, we additionally calculated heteroscedasticity-robust estimates (estimation-type: HC1) (60); final inferences from linear regression are based on robust estimates.

Finally, we tested whether psychotic symptoms differ between 3q29Del participants with versus without cystic/cyst-like malformations of the posterior fossa, which were identified by a board-certified neuroradiologist (33). Fisher's exact test was used for diagnostic comparisons. Student's t-test and Wilcoxon signed-rank test were used for dimensional comparisons. Given limited power due to smaller sample size in the neuroimaging arm, we also report trend-level associations using a less conservative alpha ($p \leq 0.10$) to inform future hypotheses. All analyses were two-tailed. See Supplemental Materials for extended methods.

Results

Presence of attenuated and florid psychotic symptoms in 3q29Del and 22q11.2Del.

Demographics of the 3q29Del sample are presented in Table 1 and Fig. S1; information for 22q11.2Del and HCs are provided in Table S1. Four out of the 23 3q29Del participants (17%) met criteria for a psychotic disorder: schizophrenia ($N = 1$); schizoaffective disorder, bipolar type ($N = 1$); and unspecified schizophrenia spectrum and other psychotic disorder ($N = 2$). Two of these individuals had a prior diagnosis of a psychotic disorder; two did not. These four individuals (3 males, 1 female) tended to be older than those without a psychotic disorder (with psychosis: mean age = 26.66; without psychosis: mean age = 14.89). However, cognitive ability was similar between the groups (with psychosis: mean FSIQ = 73.00; without psychosis: mean FSIQ = 73.89). Those

participants meeting criteria for a psychotic disorder reported past or current symptoms that met a rating of *Severe and Psychotic* for unusual thought content, suspiciousness, and/or perceptual abnormalities; these participants reported prodromal symptoms beginning in late childhood or early adolescence (on average between ages 11-12). In contrast, only one out of the 31 22q11.2Del participants (3%) met criteria for a psychotic disorder.

We next excluded individuals with a psychotic disorder and sought to analyze sub-threshold symptoms of psychosis in the remaining individuals with complete data ($N = 19$ in 3q29Del, $N = 29$ in 22q11.2Del). Seven 3q29Del participants (37%) exhibited clinically significant attenuated positive symptoms (i.e., at least one positive symptom ≥ 3). Three of these individuals (16%) met the frequency and timing criteria to qualify for APSS (31). Nineteen 22q11.2Del participants (66%) exhibited clinically significant attenuated positive symptoms. The information necessary for assessing APSS was unavailable for this group.

Cumulatively, 48% of the 3q29Del sample showed either florid or attenuated psychotic symptoms, as compared to 67% of the 22q11.2Del sample (Table 2); the comparison of these frequencies revealed no significant difference between the groups ($p = 0.26$). Too few participants with 3q29Del ($N = 3$) were taking antipsychotics to determine treatment effects.

Group differences in demographics and symptom profiles.

SIPS symptom ratings are presented in Table 3 for each study group. There was a significant age difference between the 3q29Del sample and HCs ($p \leq 0.01$), and between the 3q29Del and 22q11.2Del samples ($p \leq 0.05$), with 3q29Del participants being younger on average. Given these age differences, as well as evidence from community samples indicating increases in psychotic-like experiences through adolescence followed by a decline in early adulthood (61-63), we first assessed whether the relationship between age and symptom severity differs between study samples. Results are presented in Table S2 and Fig. S2. The correlations between symptom severity and age were positive and often highest in magnitude for 3q29Del, positive and modest in 22q11.2Del, but negative in HCs, which is consistent with the group differences in the mean and range of age.

Next, ANCOVAs were performed to contrast the average symptom ratings by domain of the 3q29Del sample against HCs and 22q11.2Del, adjusting for sex. As the mean age and correlations between symptom severity and age varied between groups, age was initially not adjusted for in the comparison of symptom profiles, as

covariate adjustment using the ANCOVA framework assumes homogeneity between groups. There was a significant effect of diagnostic group on all domains: positive [$F(2, 328) = 112.87, p \leq 0.001, \eta^2_p = 0.41$], negative [$F(2, 329) = 135.00, p \leq 0.001, \eta^2_p = 0.45$], disorganization [$F(2, 329) = 166.30, p \leq 0.001, \eta^2_p = 0.50$], general [$F(2, 328) = 74.56, p \leq 0.001, \eta^2_p = 0.31$]. Pairwise contrasts between 3q29Del and the two other groups were conducted correcting for multiple comparisons, with a rounded *p-value* threshold of 0.01 for each domain (0.05/4 domains). Comparisons revealed that individuals with 3q29Del were rated significantly higher than HCs on all SIPS domains (p 's ≤ 0.01): positive [$t(328) = 8.12, p \leq 0.001$], negative [$t(329) = 8.21, p \leq 0.001$], disorganization [$t(329) = 11.10, p \leq 0.001$], and general [$t(328) = 6.59, p \leq 0.001$]. In contrast, the average ratings for the 3q29Del group did not significantly differ from ratings in 22q11.2Del for positive [$t(328) = -2.84, p = 0.01$], disorganization [$t(329) = -1.81, p = 0.16$], or general [$t(328) = -2.24, p = 0.06$]. However, the 22q11.2Del group exhibited greater negative symptoms than 3q29Del [$t(329) = -3.75, p \leq 0.001$].

To compare group profiles of specific items, a series of ANCOVAs were conducted with the same approach. Bonferroni correction was applied, with a rounded *p-value* threshold of 0.003 (0.05/19 items). For almost all items on the SIPS, there was a significant effect of diagnostic group on severity (p 's ≤ 0.003). Fig. 1 presents the symptom profile for each diagnostic group. Comparing the 3q29Del sample with HCs revealed more severe ratings on all items (p 's ≤ 0.003), except for sleep disturbance, $t(329) = 2.55, p = 0.01$, which was nominally significant. Differences between 3q29Del and 22q11.2Del groups were primarily in the negative symptom domain. Participants with 22q11.2Del exhibited more severe social anhedonia [$t(329) = -6.09, p \leq 0.001$], avolition [$t(329) = -4.19, p \leq 0.001$], experience of emotions and self [$t(329) = -4.16, p \leq 0.001$], and impaired ideational richness [$t(329) = -3.10, p = 0.002$]. Lastly, individuals with 22q11.2Del were rated as more impaired in personal hygiene [$t(329) = -4.27, p \leq 0.001$], and as experiencing greater dysphoric mood [$t(328) = -4.43, p \leq 0.001$]. The only group difference in positive symptoms was more severe suspiciousness in 22q11.2Del [$t(329) = -4.18, p \leq 0.001$]. When the above analysis was conducted with the inclusion of age as an additional covariate, the same pattern of results was found.

The pairwise comparisons are presented in Table 3, along with the untransformed values for the means and standard errors of each group for interpretability on the original scale. See Table S3 for adjusted means and standard errors after log-transformation. Of note, the 3q29Del group was found to exhibit similar estimates for

general cognitive ability compared with the 22q11.2Del group (Table S1), which mitigates the potential confounding effect of IQ on between-group differences.

Sex differences within groups.

We also examined sex differences for the three diagnostic groups (Fig. S3). Statistical analyses included a set of ANCOVAs adjusted for age, given the absence of violations in homogeneity of slopes within group. As these analyses were conducted to explore whether there were sex differences in symptoms similar to those observed in research on CHR and psychotic patients, multiple comparisons correction was not made. The differences in domain scores between males and females with 3q29Del were significant only for negative symptoms [$F(1, 20) = 4.85, p = 0.04, \eta^2_p = 0.20$], with males exhibiting more severe symptoms than females. Similarly, negative symptoms differed by sex among the 22q11.2Del group [$F(1, 28) = 5.10, p = 0.03, \eta^2_p = 0.15$], and the HC group [$F(1, 276) = 6.94, p = 0.01, \eta^2_p = 0.02$], with males exhibiting more severe symptoms than females. Lastly, only among HCs, positive symptoms varied between sexes [$F(1, 276) = 3.93, p = 0.05, \eta^2_p = 0.01$], with males demonstrating greater severity. Notably, relatively small effect sizes were found in the HC group for both symptom domains.

Structural cerebellar correlates of psychosis-risk in 3q29Del.

Prior work by our group using structural MRI scans acquired from a larger 3q29Del sample (including the scans analyzed in the present study) has shown that cerebellar hypoplasia and posterior fossa arachnoid cysts are frequently observed among individuals with 3q29Del (10). Our team has also shown in the same sample that 3q29Del participants exhibit smaller cerebellar cortex and larger cerebellar white matter volumes than healthy controls, and the prevalence of cystic/cyst-like malformations of the posterior fossa is significantly elevated in this syndrome (33).

To determine whether the severity of psychotic symptoms in participants with 3q29Del is associated with structural cerebellar abnormalities previously documented in this population (10, 33) (see Fig. 2A for a representative MR image), we first modeled the dimensional relationship between SIPS ratings for three major symptom domains relevant to psychotic disorders (positive, negative, disorganization) and global and tissue-specific cerebellar volumes in participants with 3q29Del. Table S4 summarizes demographic, clinical, and

volumetric data from the 3q29Del subsample with available neuroimaging and SIPS data. Note that there were no significant differences between left and right hemispheric cerebellar volumes (p 's > 0.05) (Fig. S4); hence, each ROI reflects bilateral volumes.

Our results (Fig. 2B-D, Tables S5A-J) indicate a significant inverse relationship between positive symptom severity and cerebellar cortex volume in 3q29Del, while correcting for age and sex. Smaller cerebellar cortical volumes were associated with greater positive symptoms ($b = -0.43$, $p = 0.02$), and this effect remained significant in a secondary model that includes eICV for head size correction ($b = -0.29$, $p = 0.03$) (Fig. 2B, Tables S5B-C). Results also indicate a trend-level inverse association between positive symptom severity and total cerebellum volume ($b = -0.27$, $p = 0.10$) (Fig. 2D, Table S5A), and a trend-level positive association between disorganization symptom severity and cerebellar white matter volume ($b = -0.28$, $p = 0.09$) (Fig. 2C, Table S5J), while correcting for age and sex. There was no relationship between negative symptom severity and ROI volumes (p 's > 0.10).

Given ongoing discussions regarding the merits and limitations of dimensional versus categorical assessment of psychosis (64-66), we next took a categorical approach and asked whether the probability of meeting diagnostic criteria for either a psychotic disorder or APSS would recapitulate the results from our dimensional approach. Our findings from logistic regression indicate no significant relationship between interrogated volumes and the likelihood of these outcomes in 3q29Del, while correcting for age and sex (p 's > 0.10) (Tables S6A-C). Detailed regression results can be found in Tables S5-6. See Fig. S5 for sensitivity analysis.

Finally, we found no significant association between diagnostic and dimensional indices of psychotic symptoms and the presence of cystic/cyst-like malformations of the posterior fossa in 3q29Del (p 's > 0.05) (Table S7). There was a trend-level relationship between these radiological findings and the odds of APSS ($p = 0.08$), which may warrant future consideration. See Supplemental Materials for extended results.

Discussion

Rare pathogenic CNVs that arise from recurrent chromosomal rearrangements are now robustly implicated in psychosis-risk (2-4, 67, 68), with eight CNV loci surpassing genome-wide significance (1). Among these loci, the 3q29 deletion has the largest estimated effect size (1, 8), offering a promising opportunity to link a specific

genetic mechanism to brain and behavioral phenotypes underlying at least one form of psychosis. Recently, we documented the broader phenotypic spectrum of 3q29Del by direct evaluation of the largest sample of 3q29Del study participants reported to date (10, 30). In the present study, we substantially extended these findings by systematically characterizing the comprehensive profile of psychotic symptoms in 3q29Del and investigating the potential effects of sex and age on severity. Furthermore, we compared the profiles of 3q29Del to HCs and 22q11.2Del. This is particularly important since cross-CNV similarities or differences in symptomology may suggest overlapping or divergent pathogenic mechanisms. Finally, we investigated the neuroanatomical correlates of psychosis-risk in 3q29Del by employing a hypothesis-driven approach, focusing on macrostructural properties of the cerebellum. Overall, our findings target important gaps in our understanding of the link between 3q29Del and exceptionally increased genetic risk for psychotic illnesses.

First, the present study confirmed that a significant proportion of 3q29Del participants meet diagnostic criteria for psychosis (4/23, 17%) or manifest one or more clinically significant attenuated positive symptoms (7/23, 30%), with 43% (3/7) meeting the frequency and timing criteria for APSS. Cumulatively, 48% of the 3q29Del sample showed either florid or attenuated psychotic symptoms, as compared to 67% of the 22q11.2Del sample. The rates of psychosis-related phenotypes observed here are especially striking considering the young ages of the 3q29Del participants. Based on published demographic data on CHR groups, the mean age at ascertainment is between 17 and 18 (69-71). Among those 3q29Del individuals not already meeting criteria for a psychotic disorder, the mean age was 15. Thus, most of the 3q29Del sample is below the typical age of onset for psychosis and the prodrome. Notably, the prevalence of psychosis or clinically significant attenuated positive symptoms is 67% (6/9) among 3q29Del individuals aged 17 and older (Fig. S1). Given this finding and previously published rates of transition to psychosis in CHR groups (72), it is likely that more transitions to florid psychosis are to be expected in the present 3q29Del sample.

In this context, we note that the 22q11.2Del sample was ascertained through cardiology or immunology clinics, whereas 3q29Del participants were ascertained through a registry. Contrary to the expectation that a clinically ascertained sample may be more severely affected, there were no significant differences in the rates of florid or attenuated psychotic symptoms between the 3q29Del and 22q11.2Del samples. However, since we were unable to determine the prevalence of APSS among 22q11.2Del participants, the true frequency of formal psychosis-risk syndromes could not be compared between these samples. 3q29Del participants with a psychotic

disorder presented with prodromal symptoms around late childhood to early adolescence, consistent with several reports in 22q11.2Del (11, 73-75), although findings vary (76-79). The profile documented in the current sample indicates that monitoring and identification of early signs among individuals with 3q29Del are warranted. Proper assessment and treatment is necessary to reduce distress and improve functioning; among CHR, interventions may delay or prevent the onset of florid psychosis (80); thus, early intervention among 3q29Del may also attenuate psychosis severity and improve outcomes.

Further, the relation of sex and age with symptoms in the 3q29Del group is similar to that observed in CHR and psychotic samples (61-63). Males tend to score higher in negative symptoms than females, and both positive and negative symptoms tend to increase with age, although due to the small sample of 3q29Del participants this correlation was not statistically significant. It should be noted that studies of both community and clinical samples reveal increases in psychotic-like experiences during adolescence that extends to about 19 years of age, then begins to decline for those who do not transition to psychosis. The mean age and age-range of the HC group in the present study is in the period when experiences are normatively in decline, hence the inverse relation between age and severity in that group. Given this finding, we performed both age-adjusted and unadjusted analyses to assess the variation in psychotic symptom profiles between groups; both approaches produced the same pattern of results.

Our findings from these group comparisons indicate that individuals with 3q29Del are rated significantly higher than HCs on all SIPS domains, while they show remarkable similarity to individuals with 22q11.2Del in average ratings for the positive, disorganization, and general symptom domains. However, the 22q11.2Del group exhibited a more severe profile than 3q29Del in the negative symptom domain. This finding parallels an earlier study that compared individuals at CHR with 22q11.2Del to individuals at CHR without 22q11.2Del; the 22q11.2Del group had greater negative symptoms, although the two groups showed comparable positive and global symptoms (81). Interestingly, individuals with 22q11.2Del also present with greater negative symptoms when compared to Williams Syndrome or idiopathic developmental disabilities (82). Several lines of evidence also point to higher rates of major depressive disorder in 22q11.2Del (83, 84), which is a potential secondary source of negative symptoms. In contrast, most individuals with 3q29Del had relatively well-preserved hedonic experiences and social motivation (9). It is conceivable that the pronounced profile of negative symptoms observed in 22q11.2Del compared to 3q29Del reflects some level of divergence in etiopathogenetic

mechanisms. Disturbances of the brain reward system have been suggested to be central in the pathogenesis of negative symptoms (85); hence, reward processing may be an important future direction for cross-comparison studies in these CNVs. We also note that the less severe negative symptoms seen in 3q29Del may suggest a more favorable profile for functional outcomes and response to intervention in psychotic symptoms, considering the previously reported inverse relationship between negative symptom severity and global functioning (86, 87), as well as prior reports of negative symptoms being more resistant to treatment (88).

Moreover, our results revealed a significant relationship between cerebellar morphology and severity of psychosis-risk symptoms in 3q29Del, driven by both a tissue-specific and symptom-specific association between cerebellar cortex volume and positive symptoms. Cystic/cyst-like malformations of the posterior fossa yielded no link with psychotic symptoms, suggesting the relationship is specific to cerebellar cortex. Besides its critical role in motor coordination, the cerebellum has been suggested to perform a parallel role in the coordination of thoughts (89-92) through internal models that enable predictive function. An internal model is a system that, when given its current state, can predict the outcome of an action without performing the action (93). The cerebellum is proposed to be a key node in the neural systems that enable the formation and implementation of such models (94). Accordingly, cerebellar dysfunction has been hypothesized to lead to perceptual abnormalities, such as auditory hallucinations (95, 96) and a loss of coherence in speech output (97, 98), which are among the core symptoms of psychosis. Notably, perceptual abnormalities and disorganized communication showed the most severe positive symptom ratings in the present 3q29Del sample.

The potential involvement of cerebellar dysfunction in schizophrenia has been speculated since the 1990s (99-101). Congruently, emerging findings indicate an increased prevalence of psychosis among patients with cerebellar pathology (102, 103). The cerebellar cognitive-affective syndrome, which follows from cerebellar lesions, has substantial overlap with the phenomenology of psychosis (104-107). In addition, there are reports of cerebellar abnormalities in idiopathic psychosis (108-119) and pathology in Purkinje cells, the output neurons of the cerebellar cortex, has been documented in schizophrenia (120-122). Further, altered functional or structural connectivity and morphology of the cerebellum has been identified in CHR groups (50, 123-131). Notably, a recent study of the Philadelphia Neurodevelopmental Cohort found cerebellar gray matter volume to be a robust predictor of psychotic-like experiences in a large community sample of youths (132), which is consistent with our findings.

Thus, various lines of evidence point to cerebellar involvement in psychotic symptoms. However, how exactly cerebellar abnormalities relate to psychosis remains unknown and the considerable heterogeneity reported in extant literature constitutes a major challenge in addressing this gap. The association that we identified between cerebellar cortex volume and positive symptom severity in 3q29Del may help elucidate one part of this question, as this finding suggests that one or more genes affected by the hemizygous deletion of the 3q29 interval modulate the link between cerebellar development and psychosis-risk. In fact, many genes located in this interval, including *DLG1* and *BDH1*, which have been proposed as drivers of neuropsychiatric phenotypes (133, 134), show medium-high expression in the cerebellum (<https://www.proteinatlas.org/>). Its protracted development may increase the cerebellum's susceptibility to perturbations of these genes (135, 136).

Our results indicate that diagnostic dichotomization does not recapitulate the dimensional brain-behavior relationship identified in 3q29Del. There may be several reasons for this finding. One explanation is the statistical drawback (reduced power) associated with dichotomizing continuous variables (137). Another explanation may be misclassification bias (138); young participants have not yet moved through the highest risk period for psychosis and may transition to APSS or psychosis at a later timepoint; this may have biased the categorical results toward the null. Additionally, a binary split presupposes a true cutpoint between opposite sides of diagnostic criteria. For example, an APSS diagnosis requires attenuated psychotic symptoms to have begun within the past year or to have been rated one or more points higher compared to 12 months ago (31), which could lead to the diagnostic exclusion of individuals who have a longer and more gradual prodrome (139). Hence, such criteria, although useful in other applications, may lead to arbitrary divisions of a complex continuum. To conclude, our findings support cerebellar cortex morphology as a likely trait marker of psychosis-risk in 3q29Del, which we operationalize as a multidimensional continuum with varying degrees of severity, distress, and functional impairment.

Our study has several limitations. First, our sample size was limited due to the rare prevalence of 3q29Del, which prevented analyses of interactions. Demands of study participation (e.g., travel to GA) may have barred individuals with more severe presentations from participating; thus, symptom severity could be underestimated. Additionally, the complex architecture of the cerebellum presents challenges for MRI; future work with improved segmentation techniques will explore finer associations with cerebellar subregions. Furthermore, cerebellar connections with cerebral association cortices (140), as well as the basal ganglia (141), warrant future

investigation to address questions related to circuitry. Finally, given the cross-sectional design, our findings do not necessarily reflect causation. Longitudinal follow-up as well as targeted investigations of the cerebellum in the mouse model of 3q29Del (142) will be conducted for causal inference and mechanistic insights.

Altogether, our findings indicate that clinical signs of psychosis risk are elevated in 3q29Del participants. Furthermore, our results establish the unique and shared profiles of psychotic symptoms across 3q29Del and 22q11.2 DS and highlight cerebellar involvement in elevated psychosis-risk in 3q29Del.

Acknowledgements and disclosures

We acknowledge the 3q29Del study population, their families and the 3q29 Project members. We thank the Marcus Autism Center for providing clinical assessment resources. Funding for this work was provided by National Institutes of Health (NIH) grants R01 MH110701, R01 MH118534, and National Institutes of Mental Health (NIMH) grant U01MH081988. REDCap is supported by grant UL1 TR000424. Funding for work in 22q11.2Del was provided by grants awarded to Joseph Cubells and Opal Ousley from the Robert W. Woodruff Fund and the Predictive Health Initiative of Emory University. We would like to thank the following NAPLS2 PIs for their contributions to the healthy control dataset: Jean Addington, Carrie E. Bearden, Kristin Cadenhead, Tyrone D. Cannon, Barbara A. Cornblatt, Daniel H. Mathalon, Thomas H. McGlashan, Diana O. Perkins, Larry J. Seidman, Ming T. Tsuang, and Scott W. Woods.

The authors have no competing financial interests related to this study to declare.

Data availability

The 3q29Del data collected in this study are deposited in the NIMH Data Archive (nda.nih.gov) (behavioral data: collection 2614, embargoed until September 2022; neuroimaging data: collection 3126, embargoed until November 2023). Prior to these dates, the 3q29Del data are available from the corresponding author upon reasonable request. The NAPLS2 data used in this article are available from Elaine F. Walker on behalf of the NAPLS Consortium upon reasonable request. The 22q11.2Del data used in this article are available from Opal Ousley and Joseph F. Cubells upon reasonable request.

References

1. Marshall CR, Howrigan DP, Merico D, Thiruvahindrapuram B, Wu W, Greer DS, et al. (2017): Contribution of copy number variants to schizophrenia from a genome-wide study of 41,321 subjects. *Nat Genet.* 49:27-35.
2. Malhotra D, Sebat J (2012): CNVs: harbingers of a rare variant revolution in psychiatric genetics. *Cell.* 148:1223-1241.
3. Rees E, Walters JT, Georgieva L, Isles AR, Chambert KD, Richards AL, et al. (2014): Analysis of copy number variations at 15 schizophrenia-associated loci. *Br J Psychiatry.* 204:108-114.
4. Stefansson H, Rujescu D, Cichon S, Pietilainen OP, Ingason A, Steinberg S, et al. (2008): Large recurrent microdeletions associated with schizophrenia. *Nature.* 455:232-236.
5. Clements CC, Wenger TL, Zoltowski AR, Bertollo JR, Miller JS, de Marchena AB, et al. (2017): Critical region within 22q11.2 linked to higher rate of autism spectrum disorder. *Mol Autism.* 8:58.
6. Ousley O, Evans AN, Fernandez-Carriba S, Smearman EL, Rockers K, Morrier MJ, et al. (2017): Examining the Overlap between Autism Spectrum Disorder and 22q11.2 Deletion Syndrome. *Int J Mol Sci.* 18.
7. Serur Y, Sofrin Frumer D, Daon K, Sobol-Havia D, Weinberger R, Shulman C, et al. (2019): Psychiatric disorders and autism in young children with 22q11.2 deletion syndrome compared to children with idiopathic autism. *Eur Psychiatry.* 55:116-121.
8. Mulle JG (2015): The 3q29 deletion confers >40-fold increase in risk for schizophrenia. *Mol Psychiatry.* 20:1028-1029.
9. Pollak RM, Murphy MM, Epstein MP, Zwick ME, Klaiman C, Saulnier CA, et al. (2019): Neuropsychiatric phenotypes and a distinct constellation of ASD features in 3q29 deletion syndrome: results from the 3q29 registry. *Mol Autism.* 10:30.
10. Sanchez Russo R, Gambello MJ, Murphy MM, Aberizk K, Black E, Burrell TL, et al. (2021): Deep phenotyping in 3q29 deletion syndrome: recommendations for clinical care. *Genet Med.* 23:872-880.
11. Vorstman JAS, Morcus MEJ, Duijff SN, Klaassen PWJ, Heineman-de Boer JA, Beemer FA, et al. (2006): The 22q11.2 deletion in children: high rate of autistic disorders and early onset of psychotic symptoms. *J Am Acad Child Adolesc Psychiatry.* 45:1104-1113.

12. Schneider M, Debbane M, Bassett AS, Chow EW, Fung WL, van den Bree M, et al. (2014): Psychiatric disorders from childhood to adulthood in 22q11.2 deletion syndrome: results from the International Consortium on Brain and Behavior in 22q11.2 Deletion Syndrome. *Am J Psychiatry*. 171:627-639.
13. Devriendt K, Fryns JP, Mortier G, van Thienen MN, Keymolen K (1998): The annual incidence of DiGeorge/velocardiofacial syndrome. *J Med Genet*. 35:789-790.
14. Botto LD, May K, Fernhoff PM, Correa A, Coleman K, Rasmussen SA, et al. (2003): A population-based study of the 22q11.2 deletion: phenotype, incidence, and contribution to major birth defects in the population. *Pediatrics*. 112:101-107.
15. McDonald-McGinn DM, Kirschner R, Goldmuntz E, Sullivan K, Eicher P, Gerdes M, et al. (1999): The Philadelphia story: the 22q11.2 deletion: report on 250 patients. *Genet Couns*. 10:11-24.
16. Mcdonald-Mcginn DM, Tonnesen MK, Laufer-Cahana A, Finucane B, Driscoll DA, Emanuel BS, et al. (2001): Phenotype of the 22q11. 2 deletion in individuals identified through an affected relative: Cast a wide FISH ing net! *Genetics in Medicine*. 3:23-29.
17. Blagojevic C, Heung T, Theriault M, Tomita-Mitchell A, Chakraborty P, Kernohan K, et al. (2021): Estimate of the contemporary live-birth prevalence of recurrent 22q11.2 deletions: a cross-sectional analysis from population-based newborn screening. *CMAJ Open*. 9:E802-E809.
18. McDonald-McGinn DM, Sullivan KE, Marino B, Philip N, Swillen A, Vorstman JA, et al. (2015): 22q11.2 deletion syndrome. *Nat Rev Dis Primers*. 1:15071.
19. Fung WL, McEvelly R, Fong J, Silversides C, Chow E, Bassett A (2010): Elevated prevalence of generalized anxiety disorder in adults with 22q11.2 deletion syndrome. *Am J Psychiatry*. 167:998.
20. Vorstman JA, Breetvelt EJ, Duijff SN, Eliez S, Schneider M, Jalbrzikowski M, et al. (2015): Cognitive decline preceding the onset of psychosis in patients with 22q11.2 deletion syndrome. *JAMA Psychiatry*. 72:377-385.
21. Goulding SM, Holtzman CW, Trotman HD, Ryan AT, Macdonald AN, Shapiro DI, et al. (2013): The prodrome and clinical risk for psychotic disorders. *Child Adolesc Psychiatr Clin N Am*. 22:557-567.
22. Yung AR, McGorry PD (1996): The initial prodrome in psychosis: descriptive and qualitative aspects. *Aust N Z J Psychiatry*. 30:587-599.

23. Yung AR, McGorry PD (1996): The prodromal phase of first-episode psychosis: past and current conceptualizations. *Schizophr Bull.* 22:353-370.
24. Salazar de Pablo G, Radua J, Pereira J, Bonoldi I, Arienti V, Besana F, et al. (2021): Probability of Transition to Psychosis in Individuals at Clinical High Risk: An Updated Meta-analysis. *JAMA Psychiatry.* 78:970-978.
25. Shapiro DI, Cubells JF, Ousley OY, Rockers K, Walker EF (2011): Prodromal symptoms in adolescents with 22q11.2 deletion syndrome and schizotypal personality disorder. *Schizophr Res.* 129:20-28.
26. Weisman O, Guri Y, Gur RE, McDonald-McGinn DM, Calkins ME, Tang SX, et al. (2017): Subthreshold Psychosis in 22q11.2 Deletion Syndrome: Multisite Naturalistic Study. *Schizophr Bull.* 43:1079-1089.
27. Cox DM, Butler MG (2015): A clinical case report and literature review of the 3q29 microdeletion syndrome. *Clin Dysmorphol.* 24:89-94.
28. Glassford MR, Rosenfeld JA, Freedman AA, Zwick ME, Mulle JG, Unique Rare Chromosome Disorder Support G (2016): Novel features of 3q29 deletion syndrome: Results from the 3q29 registry. *Am J Med Genet A.* 170A:999-1006.
29. Singh T, Neale BM, Daly MJ, Consortium obotSEM-A (2020): Exome sequencing identifies rare coding variants in 10 genes which confer substantial risk for schizophrenia. *medRxiv.2020.2009.2018.20192815.*
30. Murphy MM, Lindsey Burrell T, Cubells JF, Espana RA, Gambello MJ, Goines KCB, et al. (2018): Study protocol for The Emory 3q29 Project: evaluation of neurodevelopmental, psychiatric, and medical symptoms in 3q29 deletion syndrome. *BMC Psychiatry.* 18:183.
31. Miller TJ, McGlashan TH, Rosen JL, Cadenhead K, Cannon T, Ventura J, et al. (2003): Prodromal assessment with the structured interview for prodromal syndromes and the scale of prodromal symptoms: predictive validity, interrater reliability, and training to reliability. *Schizophr Bull.* 29:703-715.
32. Miller TJ, McGlashan TH, Rosen JL, Somjee L, Markovich PJ, Stein K, et al. (2002): Prospective diagnosis of the initial prodrome for schizophrenia based on the Structured Interview for Prodromal Syndromes: preliminary evidence of interrater reliability and predictive validity. *Am J Psychiatry.* 159:863-865.
33. Sefik E, Li Y, Sholar B, Evans L, Pincus J, Ammar Z, et al. (2022): Structural deviations of the posterior fossa and the cerebellum and their cognitive links in a neurodevelopmental deletion syndrome. *medRxiv.2022.2003.2001.22271659.*

34. Addington J, Liu L, Buchy L, Cadenhead KS, Cannon TD, Cornblatt BA, et al. (2015): North American Prodrome Longitudinal Study (NAPLS 2): The Prodromal Symptoms. *J Nerv Ment Dis.* 203:328-335.
35. Rockers K, Ousley O, Sutton T, Schoenberg E, Coleman K, Walker E, et al. (2009): Performance on the Modified Card Sorting Test and its relation to psychopathology in adolescents and young adults with 22q11.2 deletion syndrome. *J Intellect Disabil Res.* 53:665-676.
36. First MB, Williams JB, Karg RS, Spitzer RL (2015): Structured clinical interview for DSM-5—Research version (SCID-5 for DSM-5, research version; SCID-5-RV). *Arlington, VA: American Psychiatric Association.* 1-94.
37. Mugler JP, 3rd, Brookeman JR (1990): Three-dimensional magnetization-prepared rapid gradient-echo imaging (3D MP RAGE). *Magn Reson Med.* 15:152-157.
38. Mugler JP, 3rd, Bao S, Mulkern RV, Guttman CR, Robertson RL, Jolesz FA, et al. (2000): Optimized single-slab three-dimensional spin-echo MR imaging of the brain. *Radiology.* 216:891-899.
39. Glasser MF, Sotiropoulos SN, Wilson JA, Coalson TS, Fischl B, Andersson JL, et al. (2013): The minimal preprocessing pipelines for the Human Connectome Project. *Neuroimage.* 80:105-124.
40. Fischl B, Salat DH, Busa E, Albert M, Dieterich M, Haselgrove C, et al. (2002): Whole brain segmentation: automated labeling of neuroanatomical structures in the human brain. *Neuron.* 33:341-355.
41. Schmahmann JD, Doyon J, McDonald D, Holmes C, Lavoie K, Hurwitz AS, et al. (1999): Three-dimensional MRI atlas of the human cerebellum in proportional stereotaxic space. *Neuroimage.* 10:233-260.
42. Hoogendam YY, van der Geest JN, van der Lijn F, van der Lugt A, Niessen WJ, Krestin GP, et al. (2012): Determinants of cerebellar and cerebral volume in the general elderly population. *Neurobiol Aging.* 33:2774-2781.
43. Laidi C, d'Albis MA, Wessa M, Linke J, Phillips ML, Delavest M, et al. (2015): Cerebellar volume in schizophrenia and bipolar I disorder with and without psychotic features. *Acta Psychiatr Scand.* 131:223-233.
44. McDonald CR, Hagler DJ, Jr., Ahmadi ME, Tecoma E, Iragui V, Dale AM, et al. (2008): Subcortical and cerebellar atrophy in mesial temporal lobe epilepsy revealed by automatic segmentation. *Epilepsy Res.* 79:130-138.
45. Cerasa A, Messina D, Nicoletti G, Novellino F, Lanza P, Condino F, et al. (2009): Cerebellar atrophy in essential tremor using an automated segmentation method. *AJNR Am J Neuroradiol.* 30:1240-1243.

46. Lisdahl KM, Thayer R, Squeglia LM, McQueeney TM, Tapert SF (2013): Recent binge drinking predicts smaller cerebellar volumes in adolescents. *Psychiatry Res.* 211:17-23.
47. Walhovd KB, Fjell AM, Reinvang I, Lundervold A, Dale AM, Eilertsen DE, et al. (2005): Effects of age on volumes of cortex, white matter and subcortical structures. *Neurobiol Aging.* 26:1261-1270; discussion 1275-1268.
48. Zhao G, Walsh K, Long J, Gui W, Denisova K (2018): Reduced structural complexity of the right cerebellar cortex in male children with autism spectrum disorder. *PLoS One.* 13:e0196964.
49. Laidi C, Boisgontier J, Chakravarty MM, Hotier S, d'Albis MA, Mangin JF, et al. (2017): Cerebellar anatomical alterations and attention to eyes in autism. *Sci Rep.* 7:12008.
50. Cao H, Chen OY, Chung Y, Forsyth JK, McEwen SC, Gee DG, et al. (2018): Cerebello-thalamo-cortical hyperconnectivity as a state-independent functional neural signature for psychosis prediction and characterization. *Nat Commun.* 9:3836.
51. Davis P, Wright E (1977): A new method for measuring cranial cavity volume and its application to the assessment of cerebral atrophy at autopsy. *Neuropathology and applied neurobiology.* 3:341-358.
52. Buckner RL, Head D, Parker J, Fotenos AF, Marcus D, Morris JC, et al. (2004): A unified approach for morphometric and functional data analysis in young, old, and demented adults using automated atlas-based head size normalization: reliability and validation against manual measurement of total intracranial volume. *Neuroimage.* 23:724-738.
53. Shen L, Saykin AJ, Kim S, Firpi HA, West JD, Risacher SL, et al. (2010): Comparison of manual and automated determination of hippocampal volumes in MCI and early AD. *Brain Imaging Behav.* 4:86-95.
54. Nordenskjold R, Malmberg F, Larsson EM, Simmons A, Brooks SJ, Lind L, et al. (2013): Intracranial volume estimated with commonly used methods could introduce bias in studies including brain volume measurements. *Neuroimage.* 83:355-360.
55. Malone IB, Leung KK, Clegg S, Barnes J, Whitwell JL, Ashburner J, et al. (2015): Accurate automatic estimation of total intracranial volume: a nuisance variable with less nuisance. *Neuroimage.* 104:366-372.
56. O'Brien LM, Ziegler DA, Deutsch CK, Frazier JA, Herbert MR, Locascio JJ (2011): Statistical adjustments for brain size in volumetric neuroimaging studies: some practical implications in methods. *Psychiatry Res.* 193:113-122.

57. Willatt L, Cox J, Barber J, Cabanas ED, Collins A, Donnai D, et al. (2005): 3q29 microdeletion syndrome: clinical and molecular characterization of a new syndrome. *Am J Hum Genet.* 77:154-160.
58. Ballif BC, Theisen A, Coppinger J, Gowans GC, Hersh JH, Madan-Khetarpal S, et al. (2008): Expanding the clinical phenotype of the 3q29 microdeletion syndrome and characterization of the reciprocal microduplication. *Mol Cytogenet.* 1:8.
59. R Development Core Team (2021): R: A Language and Environment for Statistical Computing. Vienna, Austria: R Foundation for Statistical Computing.
60. MacKinnon JG, White H (1985): Some heteroskedasticity-consistent covariance matrix estimators with improved finite sample properties. *Journal of econometrics.* 29:305-325.
61. Sullivan SA, Kounali D, Cannon M, David AS, Fletcher PC, Holmans P, et al. (2020): A Population-Based Cohort Study Examining the Incidence and Impact of Psychotic Experiences From Childhood to Adulthood, and Prediction of Psychotic Disorder. *Am J Psychiatry.* 177:308-317.
62. Hafner H (2019): From Onset and Prodromal Stage to a Life-Long Course of Schizophrenia and Its Symptom Dimensions: How Sex, Age, and Other Risk Factors Influence Incidence and Course of Illness. *Psychiatry J.* 2019:9804836.
63. Waford RN, MacDonald A, Goines K, Novacek DM, Trotman HD, Elaine FW, et al. (2015): Demographic correlates of attenuated positive psychotic symptoms. *Schizophr Res.* 166:31-36.
64. Helzer JE, Kraemer HC, Krueger RF (2006): The feasibility and need for dimensional psychiatric diagnoses. *Psychol Med.* 36:1671-1680.
65. Allardyce J, Suppes T, Van Os J (2007): Dimensions and the psychosis phenotype. *Int J Methods Psychiatr Res.* 16 Suppl 1:S34-40.
66. Potuzak M, Ravichandran C, Lewandowski KE, Ongur D, Cohen BM (2012): Categorical vs dimensional classifications of psychotic disorders. *Compr Psychiatry.* 53:1118-1129.
67. Girirajan S, Campbell CD, Eichler EE (2011): Human copy number variation and complex genetic disease. *Annu Rev Genet.* 45:203-226.
68. Sullivan PF (2017): Schizophrenia and the dynamic genome. *Genome Med.* 9:22.
69. Addington J, Cadenhead KS, Cornblatt BA, Mathalon DH, McGlashan TH, Perkins DO, et al. (2012): North American Prodrome Longitudinal Study (NAPLS 2): overview and recruitment. *Schizophr Res.* 142:77-82.

70. Cui H, Giuliano AJ, Zhang T, Xu L, Wei Y, Tang Y, et al. (2020): Cognitive dysfunction in a psychotropic medication-naive, clinical high-risk sample from the ShangHai-At-Risk-for-Psychosis (SHARP) study: Associations with clinical outcomes. *Schizophr Res.* 226:138-146.
71. Bourgin J, Duchesnay E, Magaud E, Gaillard R, Kazes M, Krebs MO (2020): Predicting the individual risk of psychosis conversion in at-risk mental state (ARMS): a multivariate model reveals the influence of nonpsychotic prodromal symptoms. *Eur Child Adolesc Psychiatry.* 29:1525-1535.
72. Fusar-Poli P, Bonoldi I, Yung AR, Borgwardt S, Kempton MJ, Valmaggia L, et al. (2012): Predicting psychosis: meta-analysis of transition outcomes in individuals at high clinical risk. *Arch Gen Psychiatry.* 69:220-229.
73. Debbane M, Glaser B, David MK, Feinstein C, Eliez S (2006): Psychotic symptoms in children and adolescents with 22q11.2 deletion syndrome: Neuropsychological and behavioral implications. *Schizophr Res.* 84:187-193.
74. Usiskin SI, Nicolson R, Krasnewich DM, Yan W, Lenane M, Wudarsky M, et al. (1999): Velocardiofacial syndrome in childhood-onset schizophrenia. *J Am Acad Child Adolesc Psychiatry.* 38:1536-1543.
75. Chawner S, Niarchou M, Doherty JL, Moss H, Owen MJ, van den Bree MBM (2019): The emergence of psychotic experiences in the early adolescence of 22q11.2 Deletion Syndrome. *J Psychiatr Res.* 109:10-17.
76. Murphy KC, Jones LA, Owen MJ (1999): High rates of schizophrenia in adults with velo-cardio-facial syndrome. *Arch Gen Psychiatry.* 56:940-945.
77. Ivanov D, Kirov G, Norton N, Williams HJ, Williams NM, Nikolov I, et al. (2003): Chromosome 22q11 deletions, velo-cardio-facial syndrome and early-onset psychosis. Molecular genetic study. *Br J Psychiatry.* 183:409-413.
78. Bassett AS, Chow EW, AbdelMalik P, Gheorghiu M, Husted J, Weksberg R (2003): The schizophrenia phenotype in 22q11 deletion syndrome. *Am J Psychiatry.* 160:1580-1586.
79. Bassett AS, Hodgkinson K, Chow EW, Correia S, Scutt LE, Weksberg R (1998): 22q11 deletion syndrome in adults with schizophrenia. *Am J Med Genet.* 81:328-337.
80. Preti A, Cella M (2010): Randomized-controlled trials in people at ultra high risk of psychosis: a review of treatment effectiveness. *Schizophr Res.* 123:30-36.

81. Armando M, Girardi P, Vicari S, Menghini D, Digilio MC, Pontillo M, et al. (2012): Adolescents at ultra-high risk for psychosis with and without 22q11 deletion syndrome: a comparison of prodromal psychotic symptoms and general functioning. *Schizophrenia research*. 139:151-156.
82. Mekori-Domachevsky E, Guri Y, Yi J, Weisman O, Calkins ME, Tang SX, et al. (2017): Negative subthreshold psychotic symptoms distinguish 22q11.2 deletion syndrome from other neurodevelopmental disorders: A two-site study. *Schizophr Res*. 188:42-49.
83. Antshel KM, Fremont W, Roizen NJ, Shprintzen R, Higgins AM, Dhamoon A, et al. (2006): ADHD, major depressive disorder, and simple phobias are prevalent psychiatric conditions in youth with velocardiofacial syndrome. *J Am Acad Child Adolesc Psychiatry*. 45:596-603.
84. Antshel KM, Shprintzen R, Fremont W, Higgins AM, Faraone SV, Kates WR (2010): Cognitive and psychiatric predictors to psychosis in velocardiofacial syndrome: a 3-year follow-up study. *J Am Acad Child Adolesc Psychiatry*. 49:333-344.
85. Barch DM, Dowd EC (2010): Goal representations and motivational drive in schizophrenia: the role of prefrontal-striatal interactions. *Schizophr Bull*. 36:919-934.
86. Ventura J, Helleman GS, Thames AD, Koellner V, Nuechterlein KH (2009): Symptoms as mediators of the relationship between neurocognition and functional outcome in schizophrenia: a meta-analysis. *Schizophr Res*. 113:189-199.
87. Schneider M, Armando M, Schultze-Lutter F, Pontillo M, Vicari S, Debbane M, et al. (2019): Prevalence, course and psychosis-predictive value of negative symptoms in 22q11.2 deletion syndrome. *Schizophr Res*. 206:386-393.
88. Fusar-Poli P, Papanastasiou E, Stahl D, Rocchetti M, Carpenter W, Shergill S, et al. (2015): Treatments of Negative Symptoms in Schizophrenia: Meta-Analysis of 168 Randomized Placebo-Controlled Trials. *Schizophr Bull*. 41:892-899.
89. Schmahmann JD (1998): Dysmetria of thought: clinical consequences of cerebellar dysfunction on cognition and affect. *Trends Cogn Sci*. 2:362-371.
90. Ito M (1993): Movement and thought: identical control mechanisms by the cerebellum. *Trends Neurosci*. 16:448-450; discussion 453-444.

91. Ito M (2008): Control of mental activities by internal models in the cerebellum. *Nat Rev Neurosci.* 9:304-313.
92. Moberget T, Gullesen EH, Andersson S, Ivry RB, Endestad T (2014): Generalized role for the cerebellum in encoding internal models: evidence from semantic processing. *J Neurosci.* 34:2871-2878.
93. Wolpert DM, Ghahramani Z, Jordan MI (1995): An internal model for sensorimotor integration. *Science.* 269:1880-1882.
94. Ito M (2006): Cerebellar circuitry as a neuronal machine. *Progress in neurobiology.* 78:272-303.
95. Ford JM, Mathalon DH (2005): Corollary discharge dysfunction in schizophrenia: can it explain auditory hallucinations? *International Journal of Psychophysiology.* 58:179-189.
96. Frith C (2005): The neural basis of hallucinations and delusions. *Comptes rendus biologiques.* 328:169-175.
97. Picard H, Amado I, Mouchet-Mages S, Olie JP, Krebs MO (2008): The role of the cerebellum in schizophrenia: an update of clinical, cognitive, and functional evidences. *Schizophr Bull.* 34:155-172.
98. Moberget T, Ivry RB (2019): Prediction, psychosis, and the cerebellum. *Biological Psychiatry: Cognitive Neuroscience and Neuroimaging.* 4:820-831.
99. Andreasen NC, Paradiso S, O'leary DS (1998): "Cognitive dysmetria" as an integrative theory of schizophrenia: a dysfunction in cortical-subcortical-cerebellar circuitry? *Schizophrenia bulletin.* 24:203-218.
100. Andreasen NC, O'Leary DS, Cizadlo T, Arndt S, Rezai K, Ponto L, et al. (1996): Schizophrenia and cognitive dysmetria: a positron-emission tomography study of dysfunctional prefrontal-thalamic-cerebellar circuitry. *Proceedings of the National Academy of Sciences.* 93:9985-9990.
101. Andreasen NC, Nopoulos P, O'Leary DS, Miller DD, Wassink T, Flaum M (1999): Defining the phenotype of schizophrenia: cognitive dysmetria and its neural mechanisms. *Biological psychiatry.* 46:908-920.
102. Leroi I, O'Hearn E, Marsh L, Lyketsos CG, Rosenblatt A, Ross CA, et al. (2002): Psychopathology in patients with degenerative cerebellar diseases: a comparison to Huntington's disease. *Am J Psychiatry.* 159:1306-1314.
103. Liszewski CM, O'Hearn E, Leroi I, Gourley L, Ross CA, Margolis RL (2004): Cognitive impairment and psychiatric symptoms in 133 patients with diseases associated with cerebellar degeneration. *J Neuropsychiatry Clin Neurosci.* 16:109-112.

104. Schmahmann JD, Sherman JC (1998): The cerebellar cognitive affective syndrome. *Brain: a journal of neurology*. 121:561-579.
105. Schmahmann JD (2004): Disorders of the cerebellum: ataxia, dysmetria of thought, and the cerebellar cognitive affective syndrome. *The Journal of neuropsychiatry and clinical neurosciences*. 16:367-378.
106. Schmahmann JD, Weilburg JB, Sherman JC (2007): The neuropsychiatry of the cerebellum - insights from the clinic. *Cerebellum*. 6:254-267.
107. Argyropoulos GPD, van Dun K, Adamaszek M, Leggio M, Manto M, Masciullo M, et al. (2020): The Cerebellar Cognitive Affective/Schmahmann Syndrome: a Task Force Paper. *Cerebellum*. 19:102-125.
108. Shenton ME, Dickey CC, Frumin M, McCarley RW (2001): A review of MRI findings in schizophrenia. *Schizophr Res*. 49:1-52.
109. Shepherd AM, Laurens KR, Matheson SL, Carr VJ, Green MJ (2012): Systematic meta-review and quality assessment of the structural brain alterations in schizophrenia. *Neurosci Biobehav Rev*. 36:1342-1356.
110. Moberget T, Doan N, Alnæs D, Kaufmann T, Córdova-Palomera A, Lagerberg T, et al. (2018): Cerebellar volume and cerebellocerebral structural covariance in schizophrenia: a multisite mega-analysis of 983 patients and 1349 healthy controls. *Molecular psychiatry*. 23:1512-1520.
111. Wassink TH, Andreasen NC, Nopoulos P, Flaum M (1999): Cerebellar morphology as a predictor of symptom and psychosocial outcome in schizophrenia. *Biol Psychiatry*. 45:41-48.
112. Bottmer C, Bachmann S, Pantel J, Essig M, Amann M, Schad LR, et al. (2005): Reduced cerebellar volume and neurological soft signs in first-episode schizophrenia. *Psychiatry Res*. 140:239-250.
113. Kim T, Lee KH, Oh H, Lee TY, Cho KIK, Lee J, et al. (2018): Cerebellar Structural Abnormalities Associated With Cognitive Function in Patients With First-Episode Psychosis. *Front Psychiatry*. 9:286.
114. Gupta CN, Calhoun VD, Rachakonda S, Chen J, Patel V, Liu J, et al. (2015): Patterns of Gray Matter Abnormalities in Schizophrenia Based on an International Mega-analysis. *Schizophr Bull*. 41:1133-1142.
115. Chen YL, Tu PC, Lee YC, Chen YS, Li CT, Su TP (2013): Resting-state fMRI mapping of cerebellar functional dysconnections involving multiple large-scale networks in patients with schizophrenia. *Schizophr Res*. 149:26-34.

116. Levitt JJ, McCarley RW, Nestor PG, Petrescu C, Donnino R, Hirayasu Y, et al. (1999): Quantitative volumetric MRI study of the cerebellum and vermis in schizophrenia: clinical and cognitive correlates. *Am J Psychiatry*. 156:1105-1107.
117. Nopoulos PC, Ceilley JW, Gailis EA, Andreasen NC (1999): An MRI study of cerebellar vermis morphology in patients with schizophrenia: evidence in support of the cognitive dysmetria concept. *Biol Psychiatry*. 46:703-711.
118. Keller A, Castellanos FX, Vaituzis AC, Jeffries NO, Giedd JN, Rapoport JL (2003): Progressive loss of cerebellar volume in childhood-onset schizophrenia. *Am J Psychiatry*. 160:128-133.
119. He H, Luo C, Luo Y, Duan M, Yi Q, Biswal BB, et al. (2019): Reduction in gray matter of cerebellum in schizophrenia and its influence on static and dynamic connectivity. *Hum Brain Mapp*. 40:517-528.
120. Maloku E, Covelo IR, Hanbauer I, Guidotti A, Kadriu B, Hu Q, et al. (2010): Lower number of cerebellar Purkinje neurons in psychosis is associated with reduced reelin expression. *Proceedings of the National Academy of Sciences*. 107:4407-4411.
121. Mavroudis IA, Petrides F, Manani M, Chatzinikolaou F, Ciobica AS, Padurariu M, et al. (2017): Purkinje cells pathology in schizophrenia. A morphometric approach. *Rom J Morphol Embryol*. 58:419-424.
122. Greenstein D, Lenroot R, Clausen L, Chavez A, Vaituzis AC, Tran L, et al. (2011): Cerebellar development in childhood onset schizophrenia and non-psychotic siblings. *Psychiatry Res*. 193:131-137.
123. Dean DJ, Bernard JA, Orr JM, Pelletier-Baldelli A, Gupta T, Carol EE, et al. (2014): Cerebellar Morphology and Procedural Learning Impairment in Neuroleptic-Naive Youth at Ultrahigh Risk of Psychosis. *Clin Psychol Sci*. 2:152-164.
124. Smieskova R, Fusar-Poli P, Allen P, Bendfeldt K, Stieglitz RD, Drewe J, et al. (2010): Neuroimaging predictors of transition to psychosis--a systematic review and meta-analysis. *Neurosci Biobehav Rev*. 34:1207-1222.
125. Pantelis C, Velakoulis D, McGorry PD, Wood SJ, Suckling J, Phillips LJ, et al. (2003): Neuroanatomical abnormalities before and after onset of psychosis: a cross-sectional and longitudinal MRI comparison. *Lancet*. 361:281-288.

126. Borgwardt SJ, McGuire PK, Aston J, Berger G, Dazzan P, Gschwandtner U, et al. (2007): Structural brain abnormalities in individuals with an at-risk mental state who later develop psychosis. *Br J Psychiatry Suppl.* 51:s69-75.
127. Merritt K, Luque Laguna P, Irfan A, David AS (2021): Longitudinal Structural MRI Findings in Individuals at Genetic and Clinical High Risk for Psychosis: A Systematic Review. *Front Psychiatry.* 12:620401.
128. Bernard JA, Orr JM, Mittal VA (2017): Cerebello-thalamo-cortical networks predict positive symptom progression in individuals at ultra-high risk for psychosis. *Neuroimage Clin.* 14:622-628.
129. Borgwardt SJ, Riecher-Rossler A, Dazzan P, Chitnis X, Aston J, Drewe M, et al. (2007): Regional gray matter volume abnormalities in the at risk mental state. *Biol Psychiatry.* 61:1148-1156.
130. Koutsouleris N, Schmitt GJ, Gaser C, Bottlender R, Scheuerecker J, McGuire P, et al. (2009): Neuroanatomical correlates of different vulnerability states for psychosis and their clinical outcomes. *Br J Psychiatry.* 195:218-226.
131. Koutsouleris N, Gaser C, Bottlender R, Davatzikos C, Decker P, Jager M, et al. (2010): Use of neuroanatomical pattern regression to predict the structural brain dynamics of vulnerability and transition to psychosis. *Schizophr Res.* 123:175-187.
132. Moberget T, Alnæs D, Kaufmann T, Doan NT, Córdova-Palomera A, Norbom LB, et al. (2019): Cerebellar gray matter volume is associated with cognitive function and psychopathology in adolescence. *Biological psychiatry.* 86:65-75.
133. Sefik E, Purcell RH, Emory 3q P, Walker EF, Bassell GJ, Mulle JG (2021): Convergent and distributed effects of the 3q29 deletion on the human neural transcriptome. *Transl Psychiatry.* 11:357.
134. Carroll LS, Williams HJ, Walters J, Kirov G, O'Donovan MC, Owen MJ (2011): Mutation screening of the 3q29 microdeletion syndrome candidate genes DLG1 and PAK2 in schizophrenia. *Am J Med Genet B Neuropsychiatr Genet.* 156B:844-849.
135. Wang VY, Zoghbi HY (2001): Genetic regulation of cerebellar development. *Nat Rev Neurosci.* 2:484-491.
136. ten Donkelaar HJ, Lammens M, Wesseling P, Thijssen HO, Renier WO (2003): Development and developmental disorders of the human cerebellum. *J Neurol.* 250:1025-1036.
137. Altman DG, Royston P (2006): The cost of dichotomising continuous variables. *BMJ.* 332:1080.

138. Kirkwood BRSJACBS (2019): *Essential medical statistics*. Malden, MA: Blackwell Science.
139. Powers AR, Addington J, Perkins DO, Bearden CE, Cadenhead KS, Cannon TD, et al. (2020): Duration of the psychosis prodrome. *Schizophrenia research*. 216:443-449.
140. Palesi F, Tournier JD, Calamante F, Muhlert N, Castellazzi G, Chard D, et al. (2015): Contralateral cerebello-thalamo-cortical pathways with prominent involvement of associative areas in humans in vivo. *Brain Struct Funct*. 220:3369-3384.
141. Bostan AC, Dum RP, Strick PL (2010): The basal ganglia communicate with the cerebellum. *Proc Natl Acad Sci U S A*. 107:8452-8456.
142. Rutkowski TP, Purcell RH, Pollak RM, Grewenow SM, Gafford GM, Malone T, et al. (2021): Behavioral changes and growth deficits in a CRISPR engineered mouse model of the schizophrenia-associated 3q29 deletion. *Mol Psychiatry*. 26:772-783.

Table and Figure Legends

Table 1. Demographic and relevant clinical information for individuals with 3q29Del. Descriptive statistics are reported separately for the total 3q29Del sample, and the sample stratified by the presence/absence of a psychotic disorder. Abbreviations: deletion, Del; mean, *M*; standard deviation, *SD*.

Table 2. Rates of clinically significant psychotic symptoms (i.e., at least one SIPS item rated ≥ 3) among participants with 3q29Del and 22q11.2Del. For P5 and the positive symptom domain total, 22q11.2Del *N* = 30 due to missing data from one 22q11.2Del participant. Note that 13 3q29Del participants and 10 22q11.2Del participants had more than one P item with a ≥ 3 rating. *Abbreviations:* Structured Interview for Psychosis-Risk Syndromes, SIPS; deletion, Del.

Figure 1. The unadjusted means of individual SIPS ratings for each diagnostic group. Standard error bars are shown. In panel **A)** SIPS domain totals are presented for each group. In panel **B)** item-specific SIPS ratings are presented for each group. For P5 and the positive symptom domain total, 22q11.2Del *N* = 30 due to missing data from one 22q11.2Del participant. For G2 and the general symptom domain total, HC *N* = 278 due to missing data from one HC. *Abbreviations:* Structured Interview for Psychosis-Risk Syndromes, SIPS; healthy controls, HC; deletion, Del.

Table 3. The overall results of the ANCOVA between the SIPS ratings of each diagnostic group and pairwise comparisons. The unadjusted means and standard errors for both DS groups and HCs are shown. Pairwise comparisons reflect p-values calculated on log-transformed sex-adjusted data. Refer to Table S3 for log-transformed sex-adjusted means and standard errors for each group. ^{'a'} indicates significant difference ($p \leq 0.01$ for domain, $p \leq 0.003$ for item) between 3q29Del and HC; ^{'b'} indicates significant difference ($p \leq 0.01$ for domain, $p \leq 0.003$ for item) between 3q29Del and 22q11.2Del. For P5 and the positive symptom domain total, 22q11.2Del *N* = 30 due to missing data from one 22q11.2Del participant. For G2 and the general symptom domain total, HC *N* = 278 due to missing data from one HC. *Abbreviations:* Structured Interview for Psychosis-

Risk Syndromes, SIPS; healthy controls, HC; deletion, Del; deletion syndrome, DS; analysis of covariance, ANCOVA; standard, std.

Figure 2. The relationships between cerebellar structure and psychosis-risk symptoms in 3q29Del. A)

The sagittal view of a representative T1-weighted structural MRI scan from a 3q29Del participant with cerebellar hypoplasia and a cystic/cyst-like malformation of the posterior fossa (yellow arrow). **B-D)** Predictor effect plots show the relationships between SIPS ratings for three major symptom domains relevant to psychotic disorders and global and tissue-specific cerebellar volumes among individuals with 3q29Del ($N = 17$). Predicted values of positive, negative and disorganization symptom ratings indexed by the SIPS (y-axis) were computed from the best-fit multiple linear regression models from Table S5, while covariates (age and sex) were held fixed. The shaded area is a pointwise confidence band for the fitted values. Rug plots on both sides of each graph show the distribution of the predictor and outcome variables and data points represent partial residuals. Schematic illustrations of the three ROIs are provided next to their corresponding predictor effect plots for clarity. Parameter estimates on each plot reflect the main effect of **B)** cerebellar cortex volume, **C)** cerebellar WM volume and **D)** total cerebellum volume on domain-specific symptom severity ratings and reflect heteroskedasticity-robust estimates. Regression results indicate a significant inverse relationship between cerebellar cortex volume and positive symptom severity, with smaller volumes predicting more severe symptoms among 3q29Del participants (bold panel). “**” indicates significant association after Bonferroni correction ($p \leq 0.02$). “[†]” indicates trend-level association ($p \leq 0.10$). *Abbreviations:* Magnetic resonance imaging, MRI; region of interest, ROI; Structured Interview for Psychosis-Risk Syndromes, SIPS; white matter, WM; deletion, Del.

Tables

Table 1

	3q29Del (N = 23)		
	3q29Del (N = 23)	With a psychotic disorder (N = 4)	Without a psychotic disorder (N = 19)
Age (in years)			
<i>M ± SD</i>	16.94 ± 8.24	26.66 ± 9.55	14.89 ± 6.51
Median [Range]	15.89 [8.08 – 39.12]	25.70 [16.13 – 39.12]	14.01 [8.08 – 34.64]
Sex, N (%)			
Male	14 (61%)	3 (75%)	11 (58%)
Female	9 (39%)	1 (25%)	8 (42%)
Race, N (%)			
White	20 (87%)	4 (100%)	16 (84%)
More than one race	3 (13%)	0 (0%)	3 (16%)
Ethnicity, N (%)			
Hispanic/Latino	1 (4%)	0 (0%)	1 (5%)
Non-Hispanic/Latino	22 (96%)	4 (100%)	18 (95%)
General cognitive abilities			
<i>M ± SD</i>	73.74 ± 11.98	73.00 ± 14.72	73.89 ± 11.80
Median [Range]	75 [46 – 99]	76 [61 – 94]	76 [46 – 99]
Antipsychotic usage, N (%)	3 (13%)	1 (25%)	2 (11%)

Table 2

	3q29Del (N = 23)	22q11.2Del (N = 31)
	Clinically significant, <i>N</i> (%)	Clinically significant, <i>N</i> (%)
Positive Symptom Domain	11 (48%)	20 (67%)
P1. Unusual Thought Content	5 (22%)	4 (13%)
P2. Suspiciousness	3 (13%)	9 (29%)
P3. Grandiosity	2 (9%)	4 (13%)
P4. Perceptual Abnormalities	7 (30%)	6 (19%)
P5. Disorganized Communication	7 (30%)	7 (23%)

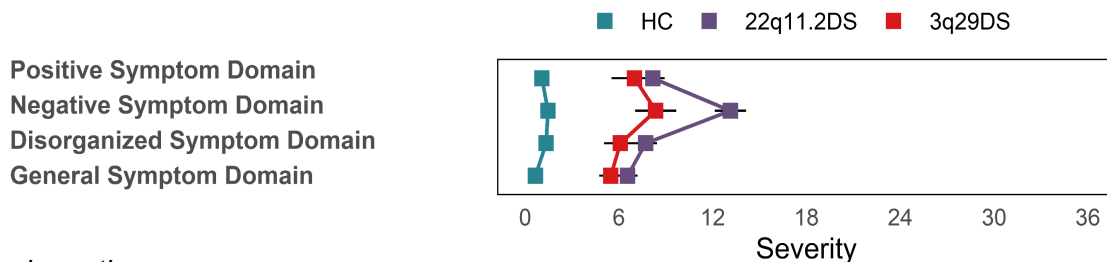
Table 3

SIPS symptom domains and items	HC (N = 279)		22q11.2Del (N = 31)		3q29Del (N = 23)		Pairwise comparisons	
	Mean	Std. Error	Mean	Std. Error	Mean	Std. Error	3q29Del vs. HC	3q29Del vs. 22q11.2Del
Positive Symptom Domain^a	1.07	0.10	8.17	0.75	7.00	1.48	< 0.001	0.01
P1. Unusual Thought Content ^a	0.25	0.03	1.68	0.23	1.52	0.47	< 0.001	0.01
P2. Suspiciousness ^{a,b}	0.26	0.03	1.74	0.23	1.00	0.34	< 0.001	< 0.001
P3. Grandiosity ^a	0.21	0.03	0.94	0.26	0.74	0.23	0.002	0.35
P4. Perceptual Abnormalities ^a	0.22	0.03	1.81	0.25	1.91	0.43	< 0.001	0.37
P5. Disorganized Communication ^a	0.13	0.02	1.83	0.21	1.83	0.34	< 0.001	0.38
Negative Symptom Domain^{a,b}	1.46	0.13	13.13	1.00	8.35	1.32	< 0.001	< 0.001
N1. Social Anhedonia ^{a,b}	0.27	0.04	3.00	0.28	1.35	0.31	< 0.001	< 0.001
N2. Avolition ^{a,b}	0.29	0.05	2.23	0.28	1.17	0.31	< 0.001	< 0.001
N3. Expression of Emotion ^a	0.11	0.02	1.65	0.26	1.35	0.36	< 0.001	0.04
N4. Experience of Emotion and Self ^{a,b}	0.09	0.02	1.26	0.26	0.57	0.23	< 0.001	< 0.001
N5. Ideational Richness ^{a,b}	0.26	0.03	2.90	0.28	2.13	0.40	< 0.001	0.002
N6. Occupational Functioning ^a	0.44	0.07	2.10	0.28	1.78	0.37	< 0.001	0.17
Disorganization Symptom Domain^a	0.66	0.07	6.55	0.65	5.48	0.74	< 0.001	0.16
D1. Odd Behavior or Appearance ^a	0.08	0.02	1.58	0.26	1.26	0.28	< 0.001	0.10
D2. Bizarre Thinking ^a	0.04	0.01	0.81	0.19	0.87	0.28	< 0.001	0.78
D3. Trouble with Focus and Attention ^a	0.46	0.05	2.68	0.15	2.74	0.38	< 0.001	0.36
D4. Personal Hygiene ^{a,b}	0.09	0.02	1.48	0.28	0.61	0.21	< 0.001	< 0.001
General Symptom Domain^a	1.34	0.13	7.71	0.72	6.09	1.04	< 0.001	0.63
G1. Sleep Disturbance	0.48	0.05	1.71	0.25	1.13	0.32	0.01	0.02
G2. Dysphoric Mood ^{a,b}	0.41	0.05	2.52	0.29	1.17	0.33	0.002	< 0.001
G3. Motor Disturbances ^a	0.20	0.03	1.81	0.28	1.78	0.31	< 0.001	0.86
G4. Impaired Tolerance to Normal Stress ^a	0.25	0.04	1.68	0.24	2.00	0.36	< 0.001	0.55

Figures

Figure 1

A Domain-wise ratings



B Item-wise ratings

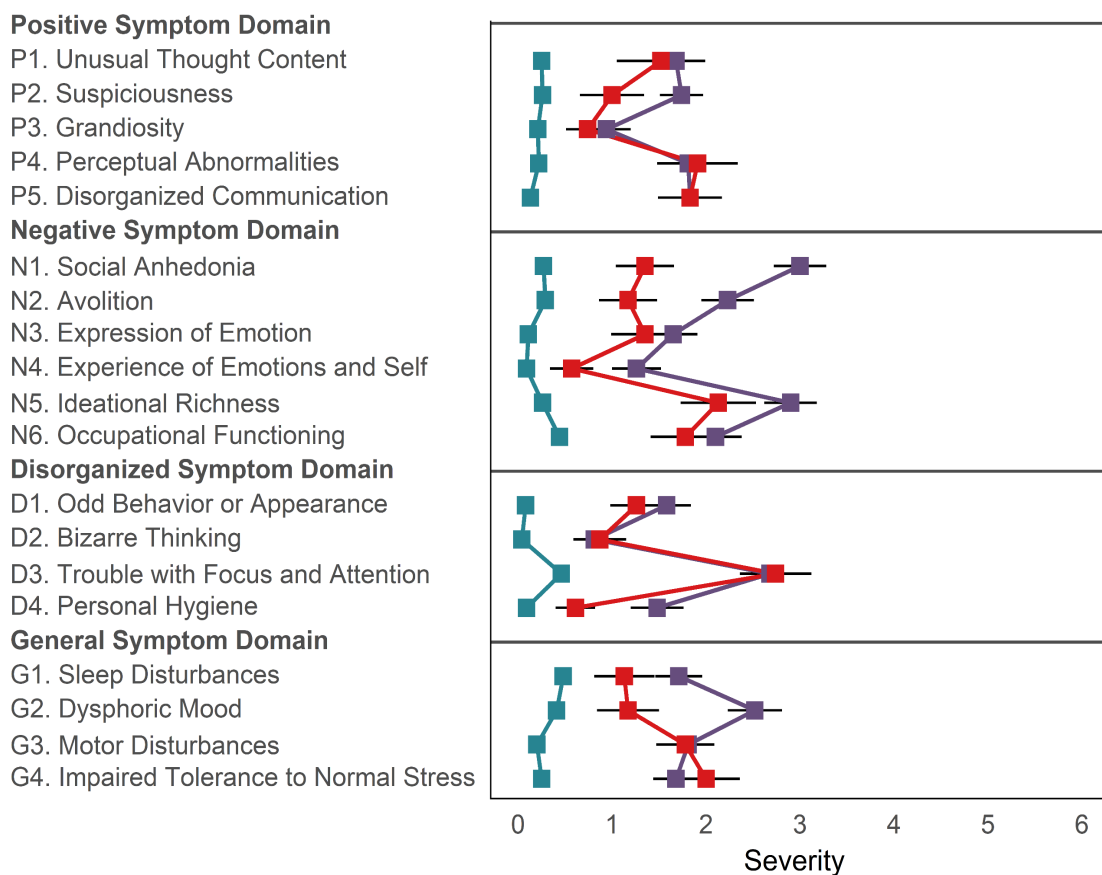
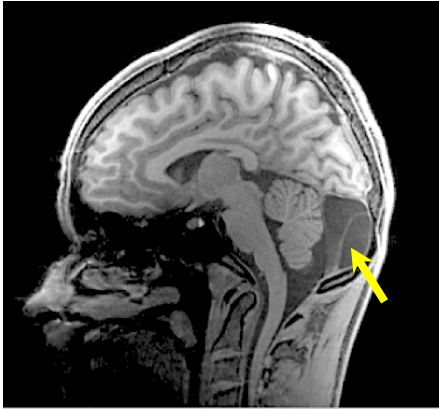


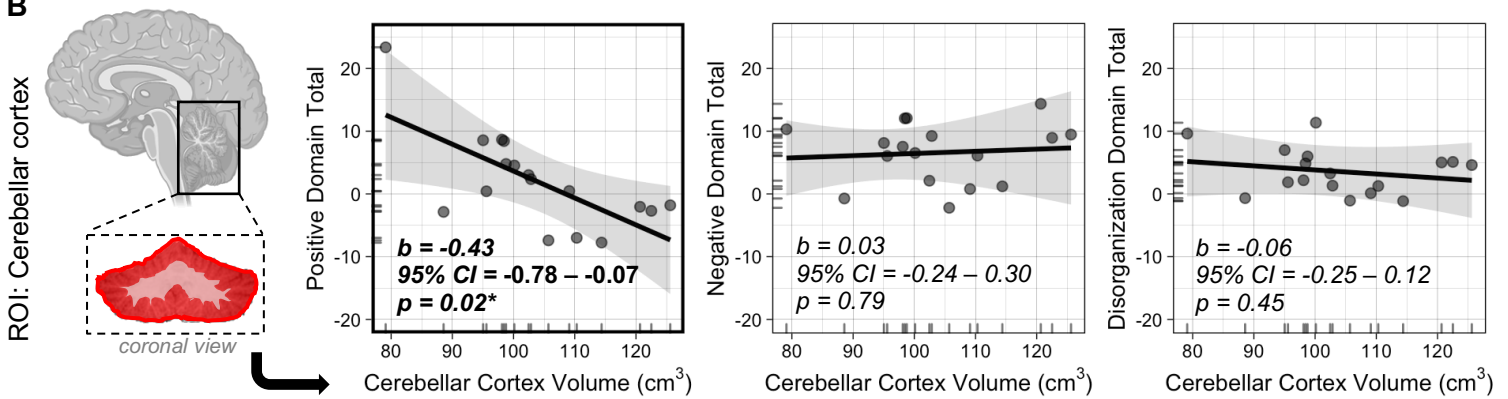
Figure 2

A

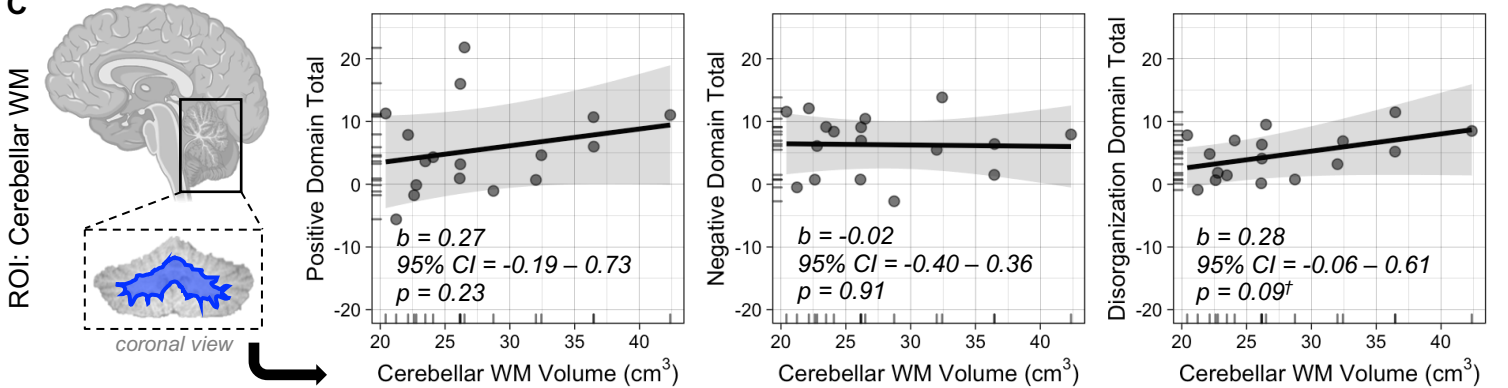


A representative T1-weighted structural MR image of a 3q29Del patient with cerebellar hypoplasia and a cystic/cyst-like malformation of the posterior fossa.

B



C



D

