

1 **Descriptive epidemiology of cardiorespiratory fitness in UK adults: The Fenland Study.**

2 Tomas I. Gonzales, Kate Westgate, Stefanie Hollidge, Tim Lindsay, Katrien Wijndaele, Nita

3 G. Forouhi, Simon Griffin, Nick Wareham, Soren Brage\*

4

5 MRC Epidemiology Unit, University of Cambridge, Cambridge, UK

6

7

8 **Short title:** Cardiorespiratory fitness: The Fenland Study

9

10

11

12 **\*Corresponding author:** Soren Brage, MRC Epidemiology Unit, University of Cambridge,

13 School of Clinical Medicine, Box 285, Institute of Metabolic Science, Cambridge Biomedical

14 Campus, Cambridge CB22 0QQ, UK, Email: [Soren.brage@mrc-epid.cam.ac.uk](mailto:Soren.brage@mrc-epid.cam.ac.uk), Phone: +44

15 (0) 1223 769116, Fax: +44 (0) 1223 330316

16

17

18

19

20

21 **NOTE:** This preprint reports new research that has not been certified by peer review and should not be used to guide clinical practice.

**Word count:** 2949

## 22 **ABSTRACT**

### 23 *Background*

24 Cardiorespiratory fitness is rarely measured in population studies. Most studies of fitness do  
25 not examine differences by population subgroups or seasonal trends.

### 26 *Methods*

27 We used a validated submaximal exercise test to measure fitness in 5976 women and 5316  
28 men, residing in England. We expressed fitness as maximal oxygen consumption per  
29 kilogram total body mass ( $VO_{2max_{t_{bm}}}$ ) and fat free mass ( $VO_{2max_{ffm}}$ ). Descriptive statistics  
30 were computed across anthropometric and sociodemographic characteristics, as well as  
31 across the year. Progressive multivariable analyses were performed to examine mediation by  
32 physical activity energy expenditure (PAEE) and BMI.

### 33 *Results*

34 Mean $\pm$ SD  $VO_{2max_{t_{bm}}}$  was lower in women ( $35.4\pm 7.6$  ml $\cdot$ min $^{-1}\cdot$ kg $^{-1}$ ) than men ( $42.1\pm 7.4$   
35 ml $\cdot$ min $^{-1}\cdot$ kg $^{-1}$ ) but  $VO_{2max_{ffm}}$  was similar (women:  $59.7\pm 11.8$  ml $\cdot$ min $^{-1}\cdot$ kg $^{-1}$ ; men:  $62.5\pm 10.4$   
36 ml $\cdot$ min $^{-1}\cdot$ kg $^{-1}$ ). Fitness was inversely associated with age but not after adjustment for PAEE.  
37 People in more physically demanding jobs were fitter compared to those in sedentary jobs but  
38 this association was attenuated in women and reversed in men following adjustment for total  
39 PAEE. PAEE and BMI and were positively associated with fitness at all levels of adjustment  
40 when fitness was expressed relative to fat-free mass. Fitness during summer was 4% higher  
41 than the winter among women, but did not differ by season among men.

### 42 *Conclusions*

43 Fitness was inversely associated with age but less steeply than anticipated, suggesting older  
44 generations are comparatively fitter than younger generations. PAEE and BMI were stronger

45 determinants of the variance in fitness than any other characteristic including age. This  
46 emphasizes the importance of modifiable physical activity behaviours in public health  
47 interventions.

48 **KEYWORDS**

49 Cardiorespiratory fitness, sociodemographic, physical activity, energy expenditure, aging

50 **KEY MESSAGES**

- 51 • Fitness was inversely associated with age but less steeply than anticipated, suggesting  
52 older generations are comparatively fitter than younger generations
- 53 • Relationships between cardiorespiratory fitness and sociodemographic characteristics  
54 were primarily mediated by physical activity.
- 55 • A one standard deviation difference in physical activity had the same impact on  
56 cardiorespiratory fitness as being 25 years younger

## 57 INTRODUCTION

58 Cardiorespiratory fitness (referred to hereafter as 'fitness') is inversely related to  
59 mortality and cardiometabolic disease risk<sup>1-5</sup> but is not widely recognised as a clinical vital  
60 sign in the UK. Most UK primary care providers do not routinely measure fitness, and only a  
61 few epidemiological studies have documented fitness levels in UK population subgroups. The  
62 Welsh Heart Health Survey<sup>6</sup> and Tuxworth et al<sup>7</sup> are the earliest epidemiological studies of  
63 fitness in UK adults. The Allied Dunbar National Fitness Survey was the first to establish  
64 normative fitness data for the UK population<sup>8</sup>. These data were extended by the Northern  
65 Ireland Health and Activity Survey<sup>9</sup> and the 2008 Health Survey for England<sup>10</sup>. The above  
66 studies have several strengths: they use dynamic exercise testing to measure differences in  
67 fitness levels by anthropometric characteristics. Exercise test selection bias limits  
68 generalisability of their findings to the UK population, however, and data on relationships  
69 between fitness, sociodemographic characteristics, and clinical characteristics are scarce. It is  
70 also unclear how these relationships may be mediated through modifiable behaviours, such as  
71 physical activity. These limitations impede public health action for improved fitness in the  
72 population. Here we examine how fitness levels vary by anthropometric, sociodemographic,  
73 and behavioural characteristics in a population-based cohort of UK adults (the Fenland  
74 Study).

## 75 METHODS

### 76 *Study population*

77 The Fenland Study included 12 435 participants born between 1950 and 1975 and  
78 recruited from general practice lists around Cambridgeshire, UK from January 2005 until  
79 April 2015, as described in more detail elsewhere<sup>11</sup>. Exclusion criteria for participation in  
80 the Fenland study were prevalent diabetes, pregnancy or lactation, inability to walk unaided

81 for at least 10 minutes, psychosis, or terminal illness. Participant eligibility for exercise  
82 testing was assessed using a 12-lead resting ECG (Seca CT6i), excluding those presenting  
83 with unstable angina. The present analysis included 5976 women and 5316 men with  
84 available data on fitness. The Health Research Authority NRES Committee East of England-  
85 Cambridge Central approved the study in accordance with the Declaration of Helsinki. All  
86 participants gave written informed consent. The Fenland Study has a dedicated Patient and  
87 Public Involvement panel, who provided input on the acceptability of the study protocols and  
88 participant data confidentiality. This study complied with the items listed in the  
89 Strengthening the Reporting of Observational Studies in Epidemiology (STROBE)  
90 guidelines.

91 ***Anthropometric, sociodemographic, clinical characteristics, and physical activity***

92 During the Fenland clinic visit, height was measured with a rigid stadiometer (SECA  
93 240; Seca, Birmingham, UK). Total body mass was measured in light clothing with calibrated  
94 scales (TANITA model BC-418 MA; Tanita, Tokyo, Japan). Fat-free mass was measured  
95 using dual-energy x-ray absorptiometry (DEXA; Lunar-DPX)<sup>12</sup>. Self-report questionnaires  
96 were used to determine sociodemographic characteristics, including participant sex, age,  
97 ethnicity (White, South Asian, Black, East Asian, other or unknown), education level (basic –  
98 compulsory schooling, further - A level/apprenticeship/sub-degree level, higher - degree level  
99 or above), work type (sedentary, standing, manual, retired, unemployed, unknown), annual  
100 household income level (<£20 000, £20 000 - £40 000, >£40 000), marital status (single,  
101 married/living as married, widowed/separated/divorced), smoking status (never, ex-smoker,  
102 current), and testing location (Cambridge, Ely, Wisbech). Resting heart rate was measured  
103 while supine using a 12-lead ECG (Seca CT6i). Following the clinic visit, objective physical  
104 activity was assessed using a combined heart rate and uniaxial movement sensor (Actiheart,

105 CamNtech, Cambridge, UK), worn continuously for at least 72 hours and at most 6 days.  
106 Heart rate was individually calibrated <sup>13</sup> and total physical activity energy expenditure  
107 (PAEE) was computed for the wear period as described and validated elsewhere <sup>11,14</sup>.

### 108 *Cardiorespiratory fitness assessment*

109 We used an incremental, multistage, and submaximal treadmill test to estimate fitness  
110 as maximal oxygen consumption ( $VO_{2max}$ ). A diagram and description of the testing  
111 procedure is provided in Supplemental Figure 1. Heart rate was monitored and recorded  
112 during testing using the combined heart rate and movement sensor (Actiheart, CamNtech,  
113 Cambridge, UK) <sup>15</sup>. The test ended if one of the following criteria were satisfied: 1) levelling-  
114 off of heart rate (<3bpm per min) despite an increase in work rate; 2) reaching 90% of the  
115 participant's age-predicated maximal heart rate <sup>16</sup>; 3) exercising above 80% of age-predicted  
116 max heart rate for over 2 minutes; 4) heart rate reaches 90% of the age-predicted maximal  
117 value 5) a respiratory exchange ratio of 1.1 is reached; 6) the participant wanted to stop; 7)  
118 participant indication of angina, light-headedness, or nausea; or 8) failure of the testing  
119 equipment. For participants on beta blockers, the test was terminated after 5 minutes.

120 To estimate  $VO_{2max}$  per kg total body mass ( $VO_{2max_{tbn}}$ ) from exercise test  
121 performance, we extrapolated the linear relationship between heart rate and work rate <sup>17</sup> to  
122 age-predicted maximal heart rate <sup>16</sup>, converted the extrapolated work rate value to net  $VO_2$   
123 using a caloric equivalent for oxygen <sup>18</sup>, and then added an estimate of resting energy  
124 expenditure <sup>19</sup>. A substudy was conducted to validate this approach against directly measured  
125  $VO_{2max}$ , demonstrating acceptable agreement (see Supplemental Methods and Results).  
126  $VO_{2max}$  per kg fat-free mass ( $VO_{2max_{ffm}}$ ) was estimated by multiplying estimated  
127  $VO_{2max_{tbn}}$  values by total body mass and dividing by fat-free mass.

### 128 *Statistical analyses*

129 Descriptive statistics were computed across BMI groups and sociodemographic  
130 characteristics by sex and age stratified groups. Cuzick's test<sup>20</sup> was performed to test for  
131 trend across participant characteristics. Differences in fitness by age, BMI groups (<25, 25 to  
132 30, and >30 kg·m<sup>-2</sup>) and PAEE groups (<40, 40 to 60, and >60 kJ·day<sup>-1</sup>·kg<sup>-1</sup>) were visualised  
133 using boxplots. Univariate associations of fitness with age, BMI, and PAEE were computed  
134 as Pearson's r; bivariate relationships were investigated using linear regression.

135 We used sex-stratified and sequentially-adjusted multivariable linear regression to  
136 evaluate associations between fitness and sociodemographic characteristics (Model 1) with  
137 additional adjustment for PAEE (Model 2) and BMI (Model 3). The season of the year when  
138 fitness was measured was considered in these analyses by including two orthogonal sine  
139 functions in the regression model: "Winter" peaking at 1 on January 1<sup>st</sup> and reaching a  
140 minimum of -1 on July 1<sup>st</sup>, and "Spring" peaking at 1 on April 1<sup>st</sup> and reaching a minimum of  
141 -1 on October 1<sup>st</sup>. Seasonal trends were further described on a monthly basis using a binned  
142 regression procedure, controlling for seasonal variation in the measurement of  
143 sociodemographic characteristics<sup>21</sup>. All analyses were performed in Stata/SE 16.1  
144 (StataCorp, Texas, USA). Statistical significance was set at  $p < 0.05$ .

## 145 **RESULTS**

146 In women, mean  $\pm$  SD  $VO_{2max_{t_{bm}}}$  was  $35.4 \pm 7.6$  ml O<sub>2</sub>·min<sup>-1</sup>·kg<sup>-1</sup> and  $VO_{2max_{ffm}}$   
147 was  $59.7 \pm 11.8$  ml O<sub>2</sub>·min<sup>-1</sup>·kg<sup>-1</sup>. In men,  $VO_{2max_{t_{bm}}}$  was  $42.1 \pm 7.4$  ml O<sub>2</sub>·min<sup>-1</sup>·kg<sup>-1</sup> and  
148  $VO_{2max_{ffm}}$  was  $62.5 \pm 10.4$  ml O<sub>2</sub>·min<sup>-1</sup>·kg<sup>-1</sup>. Per five years,  $VO_{2max_{t_{bm}}}$  was lower on  
149 average by 0.2 ml O<sub>2</sub>·min<sup>-1</sup>·kg<sup>-1</sup> in women and by 0.3 ml O<sub>2</sub>·kg<sup>-1</sup>·min<sup>-1</sup> in men.  $VO_{2max_{ffm}}$   
150 was not associated with age in women, however in men  $VO_{2max_{ffm}}$  was on average 0.05 ml  
151 O<sub>2</sub>·min<sup>-1</sup>·kg<sup>-1</sup> lower per five years. Trends for other characteristics are reported in Table 1.

152 Figure 1 shows differences in  $VO_{2max_{t_{bm}}}$  and  $VO_{2max_{ffm}}$  by age, BMI groups, and  
153 PAEE groups. The association of fitness with age, BMI, and PAEE was strongest when  
154 expressed as  $VO_{2max_{t_{bm}}}$  compared to  $VO_{2max_{ffm}}$ . We investigated this further by conducting  
155 univariate and bivariate analyses of  $VO_{2max_{t_{bm}}}$  and  $VO_{2max_{ffm}}$  with BMI, PAEE, and age  
156 (Supplemental Figures 2 and 3). The association of  $VO_{2max_{t_{bm}}}$  with PAEE (Pearson's r for  
157 women: 0.39; men: r: 0.39) was higher than associations with BMI (Pearson's r for women: -  
158 0.34; men: -0.23) and age (Pearson's r for women: -0.06; men: -0.11). The combination of  
159 BMI and PAEE explained more variance in  $VO_{2max_{t_{bm}}}$  (20% for women, 18% for men) than  
160 bivariate combinations with age. For  $VO_{2max_{ffm}}$ , univariate and bivariate analyses had  
161 weaker associations and less explained variance than analogous results for  $VO_{2max_{t_{bm}}}$ .

162 Unadjusted mean  $VO_{2max_{t_{bm}}}$  values, stratified by sex and sociodemographic  
163 characteristics, are provided in Table 2.  $VO_{2max_{t_{bm}}}$  was generally higher in women with  
164 more educational attainment (Higher education:  $36.2 \pm 7.3$  ml  $O_2 \cdot \text{min}^{-1} \cdot \text{kg}^{-1}$ ; No education:  
165  $34.6 \pm 8.6$  ml  $O_2 \cdot \text{min}^{-1} \cdot \text{kg}^{-1}$ ), but did not differ by education in men (Higher education:  $42.1 \pm$   
166  $7.2$  ml  $O_2 \cdot \text{min}^{-1} \cdot \text{kg}^{-1}$ ; No education:  $42.4 \pm 6.9$  ml  $O_2 \cdot \text{min}^{-1} \cdot \text{kg}^{-1}$ ). Workers in more physically  
167 demanding jobs (Female manual workers:  $36.4 \pm 8.3$  ml  $O_2 \cdot \text{min}^{-1} \cdot \text{kg}^{-1}$ ; male manual workers:  
168  $42.7 \pm 7.9$  ml  $O_2 \cdot \text{min}^{-1} \cdot \text{kg}^{-1}$ ) were fitter than those in sedentary jobs (Female sedentary  
169 workers:  $35.1 \pm 7.2$  ml  $O_2 \cdot \text{min}^{-1} \cdot \text{kg}^{-1}$ ; male sedentary workers:  $41.8 \pm 7.0$  ml  $O_2 \cdot \text{min}^{-1} \cdot \text{kg}^{-1}$ ).  
170 Current smokers had higher  $VO_{2max_{t_{bm}}}$  (Female smokers:  $38.1 \pm 8.5$  ml  $O_2 \cdot \text{min}^{-1} \cdot \text{kg}^{-1}$ ; male  
171 smokers:  $44.2 \pm 8.1$  ml  $O_2 \cdot \text{min}^{-1} \cdot \text{kg}^{-1}$ ) than non-smokers (Female non-smokers:  $35.0 \pm 7.4$  ml  
172  $O_2 \cdot \text{min}^{-1} \cdot \text{kg}^{-1}$ ; male non-smokers:  $41.8 \pm 7.2$  ml  $O_2 \cdot \text{min}^{-1} \cdot \text{kg}^{-1}$ ).  $VO_{2max_{t_{bm}}}$  differed by  
173 ethnicity, however sample sizes were disproportionate between whites and other racial and  
174 ethnic groups (See Supplemental Tables 1 and 2).  $VO_{2max_{t_{bm}}}$  differences were not apparent  
175 between income levels, marital status, and testing sites. Analogous results for  $VO_{2max_{ffm}}$  are  
176 presented in Table 3.



177           Sequentially adjusted multivariable analyses of associations between  $VO_{2max_{t_{bm}}}$  and  
178 sociodemographic characteristics are reported in Table 2. Age was still inversely associated  
179 with  $VO_{2max_{t_{bm}}}$  but was attenuated to the null with adjustment for PAEE. Occupation type  
180 was not associated with differences in  $VO_{2max_{t_{bm}}}$  among women after adjustment. Among  
181 men,  $VO_{2max_{t_{bm}}}$  was lower in manual workers ( $-0.9 \text{ ml O}_2 \cdot \text{min}^{-1} \cdot \text{kg}^{-1}$ , 95% CI:  $-1.4$  to  $-0.4$ ),  
182 retirees ( $-1.5 \text{ ml O}_2 \cdot \text{min}^{-1} \cdot \text{kg}^{-1}$ , 95% CI:  $-2.8$  to  $-0.1$ ), and the unemployed ( $-2.0 \text{ ml O}_2 \cdot \text{min}^{-1} \cdot \text{kg}^{-1}$ , 95% CI:  $-3.7$  to  $-0.3$ ) relative to sedentary workers. Current smokers still had higher  
183  $VO_{2max_{t_{bm}}}$  (women:  $2.2 \text{ ml O}_2 \cdot \text{min}^{-1} \cdot \text{kg}^{-1}$ , 95% CI:  $1.6$  to  $2.8$ ; men:  $1.3 \text{ ml O}_2 \cdot \text{min}^{-1} \cdot \text{kg}^{-1}$ ,  
184 95% CI:  $-0.7$  to  $1.9$ ) relative to non-smokers.  $VO_{2max_{t_{bm}}}$  did not differ by education level,  
185 income, and marital status in both women and men after adjustment. Table 3 presents  
186 analogous results for  $VO_{2max_{ffm}}$ . The direction and magnitude of differences in  $VO_{2max_{ffm}}$   
187 across sociodemographic factors were largely similar to those found for  $VO_{2max_{t_{bm}}}$ , however  
188 Black men had lower  $VO_{2max_{ffm}}$  ( $-7.2 \text{ ml O}_2 \cdot \text{min}^{-1} \cdot \text{kg}^{-1}$ , 95% CI:  $-11.0$  to  $-3.4$ ) relative to  
189 White men.

191           Women tested in the winter had lower  $VO_{2max_{t_{bm}}}$  and  $VO_{2max_{ffm}}$  than those tested at  
192 other times of the year. Seasonal variation in  $VO_{2max_{t_{bm}}}$  and  $VO_{2max_{ffm}}$  was not observed in  
193 men after adjustment for PAEE. To investigate this further, we analysed seasonal variation in  
194 fitness when stratified by higher ( $\geq 50 \text{ kJ} \cdot \text{day}^{-1} \cdot \text{kg}^{-1}$ ) and lower ( $< 50 \text{ kJ} \cdot \text{day}^{-1} \cdot \text{kg}^{-1}$ ) PAEE  
195 levels (Figure 2). Seasonal fitness variation persisted in men and women with higher PAEE  
196 levels. Women with lower PAEE levels also demonstrated seasonal variation, however  
197 fitness measurements did not differ by season in men with lower PAEE.

## 198 **DISCUSSION**

199           Here we have examined how fitness varies by anthropometric, sociodemographic, and  
200 behavioural characteristics in a population-based sample of UK adults (The Fenland Study).

201 Physical activity was a more important determinant of fitness than chronological age,  
202 highlighting the importance of maintaining an active lifestyle in adulthood. Our findings  
203 extend previous reports of fitness in the UK and provide directions for future population-  
204 based studies of fitness.

205 Fitness was lower in older versus younger UK adults, however the magnitude of  
206 difference per five years (approximately  $0.3 \text{ ml O}_2 \cdot \text{kg}^{-1} \cdot \text{min}^{-1}$ ) was less than values published  
207 in some national fitness registries. Fitness declined by approximately  $2 \text{ ml O}_2 \cdot \text{kg}^{-1} \cdot \text{min}^{-1}$  per  
208 five years in the US-based FRIEND registry<sup>22</sup>, Brazil-based Fleury study<sup>23</sup>, and Norway-  
209 based HUNT study<sup>24</sup>. Similarly, the German-based Prevention First Registry was  $1.5 \text{ ml}$   
210  $\text{O}_2 \cdot \text{kg}^{-1} \cdot \text{min}^{-1}$ , German-based SHIP study<sup>25</sup> was  $1 \text{ ml O}_2 \cdot \text{kg}^{-1} \cdot \text{min}^{-1}$ , and both the Danish  
211 Health Examination Survey<sup>26</sup> and Korean-based KISS FitS study<sup>27</sup> were  $1.3 \text{ ml O}_2 \cdot \text{kg}^{-1} \cdot \text{min}^{-1}$   
212 <sup>1</sup>. These values are similar to those reported by previous UK-based population studies of  
213 fitness<sup>5-9</sup>, where absolute fitness values were generally lower than those reported in the  
214 present study. While it is possible that fitness in UK adults has improved compared to  
215 previous UK studies of fitness, the difference in the magnitude of fitness decline with age  
216 between those and the present study may also be due to participant selection bias in the  
217 Fenland cohort. Healthy and enthusiastic people may have volunteered for study participation  
218 more often than unhealthy people (the “healthy participant effect”). We investigated this in a  
219 previous study<sup>11</sup>, finding the Fenland cohort to be slightly healthier than the population from  
220 which they were sampled. Thus, it is possible that higher fitness values reported here reflect  
221 regional differences in health across the UK.

222 The association between fitness and physical activity was stronger than that for age; a  
223 one standard deviation higher PAEE equates to the same difference in fitness ( $\sim 2 \text{ ml O}_2 \cdot \text{kg}^{-1} \cdot \text{min}^{-1}$   
224 <sup>1</sup> higher) as being 25 years younger. Similarly, a one standard deviation higher BMI  
225 was associated with lower fitness ( $1.2 - 1.6 \text{ ml O}_2 \cdot \text{kg}^{-1} \cdot \text{min}^{-1}$ ), adjusted for age, physical

226 activity and other sociodemographic characteristics. Thus, physical activity and BMI were  
227 stronger determinants of fitness than age and other factors examined. Physical activity is  
228 known to improve and explain a majority of the variance in fitness among adults<sup>28–30</sup>, but  
229 age-related decline in fitness is not wholly due to physical inactivity<sup>31,32</sup>. Reduced cardiac  
230 output and impaired skeletal muscle oxidative capacity with age are also contributing factors,  
231 particularly after the seventh decade of life<sup>33–35</sup>. We did not directly measure cardiac output  
232 or skeletal muscle function, and therefore cannot investigate whether the preservation of  
233 fitness with age is related to maintenance of these factors. We also did not measure fitness in  
234 adults aged 70 years and over, when the impact of higher physical activity on improved  
235 fitness may wane. Nevertheless, our data suggest that higher physical activity can alter the  
236 trajectory of fitness decline with age in generally healthy adults. It is unclear whether this  
237 finding is reflective of health promotion strategies to increase physical activity and fitness  
238 within the Cambridgeshire region<sup>36</sup>. If so, future work could seek how these strategies may  
239 be adapted to UK regions with high cardiometabolic disease prevalence.

240       People in more physically demanding occupations were fitter than those in sedentary  
241 occupations. When accounting for PAEE and BMI, however, fitness did not differ by  
242 occupation in women; in men, fitness was statistically lower in manual, retired, and  
243 unemployed workers compared to sedentary workers. Other studies report that manual  
244 workers may have greater muscle strength but less overall fitness than the general population  
245<sup>37,38</sup>. While it is not immediately clear as to the mechanism by which manual work would  
246 lower fitness in men, it is likely occupation specific and could be related to diminished lung  
247 function<sup>39</sup>. Previously we reported that manual workers in the Fenland cohort had greater  
248 physical activity levels than other occupation types<sup>11</sup>. It is therefore reassuring to observe  
249 that the negative effect of manual work on fitness - whatever the mechanism – is partly  
250 ameliorated by higher physical activity among male workers. Alternatively, the observed

251 association between low fitness and manual work could be due to residual confounding for  
252 socioeconomic status. Previous research suggest that lower fitness in retired and unemployed  
253 male workers is related to advanced age and cardiovascular deconditioning after long-lasting  
254 physical inactivity<sup>40</sup>.

255 We present fitness results scaled by both total body mass ( $VO_{2max_{t_{bm}}}$ ) and fat free  
256 mass ( $VO_{2max_{ffm}}$ ). In multivariable analysis,  $VO_{2max_{t_{bm}}}$  was negatively associated with  
257 BMI, however  $VO_{2max_{ffm}}$  was positively associated. Other studies demonstrate that fitness is  
258 independent of adiposity when scaled by fat free mass and suggest  $VO_{2max_{ffm}}$  can be  
259 considered an indirect measure of musculoskeletal tissue metabolic quality<sup>41,42</sup>. More direct  
260 measurements of muscle oxidative capacity, such as tissue biopsy or imaging<sup>43</sup>, could be  
261 used to elucidate whether this is preserved in otherwise overweight and obese participants  
262 with higher  $VO_{2max_{ffm}}$  values. Indeed, ectopic fat infiltration of skeletal muscle may be more  
263 related to impaired muscle oxidative capacity and reduced force production than overall  
264 adiposity<sup>44,45</sup>.

265 Fitness measurements were generally higher in the summer compared to the spring  
266 and winter. Physical activity measurements had a similar pattern in previous analyses<sup>11</sup>.  
267 PAEE adjustment negated seasonal variation of fitness in men, however in women seasonal  
268 variation persisted. Given the cross-sectional analysis used in this study, we recognise that  
269 the results regarding fitness seasonality should be interpreted cautiously and a repeated  
270 measures design could be more appropriate. Such a design would be largely unfeasible for a  
271 population-based study of fitness, however, since increased test frequency would be costly to  
272 scale and would increase lost-to-follow-up rates. Future work could elucidate whether  
273 seasonal variation in fitness among women is related to seasonal variation in endogenous  
274 factors such as circannual hormonal rhythms<sup>46</sup>.

275           Our study has strengths and limitations. We objectively assessed fitness in a large  
276 participant sample, enabling the investigation of differences by sociodemographic  
277 characteristics in the UK. We also quantified and compared the influence of objectively  
278 measured PAEE and BMI on associations between fitness and these characteristics, which  
279 allow judgement of their relative importance. A limitation of our study includes using heart  
280 rate response to a submaximal exercise test, rather than directly measured maximal oxygen  
281 consumption; however, as we show here, the fitness estimates from this method agree with  
282 direct measurements which provides reassurance of our findings. Another potential limitation  
283 is the non-representativeness of the Fenland cohort compared to the random population  
284 sampling frame. Compared to non-responders, participants were slightly older, leaner, less  
285 likely to smoke, more likely to drink alcohol, and more likely to live in deprived  
286 neighbourhoods; these differences were small, however. In addition, observed physical  
287 activity levels - the strongest determinant of fitness - were similar to those observed in the  
288 general UK population <sup>11,47</sup>, suggesting findings may generalise more widely.

289           We have described variation in fitness within a UK adult population by  
290 sociodemographic factors and lifestyle behaviours. Fitness was inversely associated with age  
291 but less steeply than anticipated, suggesting older generations are comparatively fitter than  
292 younger generations. Physical activity and body size were stronger determinants of the  
293 variance in fitness than any other factor including age. A one standard deviation difference in  
294 physical activity had the same impact on cardiorespiratory fitness as being 25 years younger.  
295 This emphasizes the importance of maintaining physical activity across adulthood.

296

297 **ETHICS APPROVAL**

298 The participants in the Fenland study were recruited from general practice lists as the  
299 population-based sampling frame. The National Research Ethics Service (NRES), the body  
300 that approves the ethics of research involving NHS patients, considered and approved the  
301 study through its East of England Cambridge Central Committee in accordance with the  
302 Declaration of Helsinki. All participants provided written informed consent.

303 **AUTHOR CONTRIBUTIONS**

304 The authors contributed to the present manuscript as follows: Idea for analysis (T.G., S.B.);  
305 acquisition and analysis of cardiorespiratory fitness data (K.We., S.H., S.B.); acquisition and  
306 analysis of raw physical activity data (K.We., S.H., S.B.); analysis of epidemiological data  
307 (T.G., T.L.); drafting of the manuscript (T.G.); revising work critically for important  
308 intellectual content (all authors); approval of the final version before submission (all authors).  
309 Chief Investigator (N.W.) and Principal Investigators (NF, SG, SB) of the Fenland Study.

310 **DATA AVAILABILITY**

311 The datasets generated and analysed during the current study are available at request via the  
312 MRC Epidemiology website (<http://www.mrc-epid.cam.ac.uk/research/data-sharing/>).

313 **SUPPLEMENTARY DATA**

314 Supplementary data are available at IJE online.

315 **FUNDING**

316 The Fenland study was funded by the Medical Research Council and the Wellcome Trust.  
317 The current work was supported by the Medical Research Council (T.G., S.B., K.Wi., S.H.,  
318 grant number MC\_UU\_12015/3), (S.G., grant number MC\_UU\_12015/4), (N.W., grant  
319 number MC\_UU\_12015/1), (N.G.F., grant number MC\_UU\_12015/5); the National Institute

320 of Health Research Cambridge (NIHR) Biomedical Research Centre (K.We., S.B., N.G.F.,  
321 and N.W., grant number IS-BRC-1215-20014); and the Cambridge Trust and St Catharine's  
322 College (T.L.). The funders had no role in the design, analysis or writing of this manuscript.

### 323 **ACKNOWLEDGEMENTS**

324 We are grateful to the Fenland Study participants for their willingness and time to take part.

325 We thank all members of the following teams responsible for practical aspects of the study;

326 Study Coordination, Field Epidemiology, Anthropometry Team, Physical Activity Technical

327 Team, IT, Data Management, and Statistics.

### 328 **CONFLICT OF INTEREST**

329 None declared.

330 **REFERENCES**

- 331 1. Blair SN, Kampert JB, Kohl HW III, et al. Influences of cardiorespiratory fitness and  
332 other precursors on cardiovascular disease and all-cause mortality in men and women.  
333 *JAMA*. 1996 Jul 17;**276**(3):205–210.
- 334 2. Lee D, Sui X, Church TS, Lee I-M, Blair SN. Associations of cardiorespiratory fitness  
335 and obesity with risks of impaired fasting glucose and type 2 diabetes in men. *Diabetes*  
336 *Care*. 2009 Feb 1;**32**(2):257–262.
- 337 3. Kodama S, Saito K, Tanaka S, et al. Cardiorespiratory fitness as a quantitative predictor  
338 of all-cause mortality and cardiovascular events in healthy men and women: a meta-  
339 analysis. *Jama*. 2009;**301**(19):2024–2035.
- 340 4. Kaminsky LA, Arena R, Ellingsen Ø, et al. Cardiorespiratory fitness and cardiovascular  
341 disease - The past, present, and future. *Progress in Cardiovascular Diseases*. 2019  
342 Mar;**62**(2):86–93.
- 343 5. Gonzales TI, Westgate K, Strain T, et al. Cardiorespiratory fitness assessment using risk-  
344 stratified exercise testing and dose–response relationships with disease outcomes. *Sci*  
345 *Rep*. 2021 Jul 28;**11**(1):15315.
- 346 6. Cooke C, Smith G, Hoinville G, Catford J, Tuxworth W. Two national surveys of  
347 activity, fitness and health: The Allied Dunbar National Fitness Survey and the Welsh  
348 Heart Health Survey. In: Norgan N, editor. *Physical activity and health*. Cambridge  
349 University Press; 1992.



- 350 7. Tuxworth W, Nevill A, White C, Jenkins C. Health, fitness, physical activity, and  
351 morbidity of middle aged male factory workers. I. *Occupational and Environmental*  
352 *Medicine*. 1986 Nov 1;**43**(11):733–753.
- 353 8. Fentem P, Collins M, Tuxworth W, et al. Allied Dunbar National Fitness Survey:  
354 Technical report. Activity and Health Research; 1994 Nov.
- 355 9. MacAuley D, Crum E, Stott G, et al. Levels of physical activity, physical fitness and their  
356 relationship in the Northern Ireland Health and Activity Survey. *Int J Sports Med*. 1998  
357 Oct;**19**(7):503–511.
- 358 10. O’Donovan G, Hillsdon M, Ukoumunne O, Stamatakis E, Hamer M. Objectively  
359 measured physical activity, cardiorespiratory fitness and cardiometabolic risk factors in  
360 the Health Survey for England. *Preventive Medicine*. 2013;5.
- 361 11. Lindsay T, Westgate K, Wijndaele K, et al. Descriptive epidemiology of physical activity  
362 energy expenditure in UK adults (The Fenland study). *Int J Behav Nutr Phys Act*. 2019  
363 Dec 9;**16**(1):126.
- 364 12. Salamone LM, Fuerst T, Visser M, et al. Measurement of fat mass using DEXA: a  
365 validation study in elderly adults. *Journal of Applied Physiology*. 2000 Jul 1;**89**(1):345–  
366 352.
- 367 13. Brage S, Ekelund U, Brage N, et al. Hierarchy of individual calibration levels for heart  
368 rate and accelerometry to measure physical activity. *Journal of Applied Physiology*.  
369 American Physiological Society; 2007 Aug 1;**103**(2):682–692.

- 370 14. Brage S, Westgate K, Franks PW, et al. Estimation of free-living energy expenditure by  
371 heart rate and movement sensing: A doubly-labelled water study. *PLOS ONE*. 2015 Sep  
372 8;**10**(9):e0137206.
- 373 15. Brage S, Brage N, Franks PW, Ekelund U, Wareham NJ. Reliability and validity of the  
374 combined heart rate and movement sensor Actiheart. *Eur J Clin Nutr*. 2005  
375 Apr;**59**(4):561–570.
- 376 16. Tanaka H, Monahan KD, Seals DR. Age-predicted maximal heart rate revisited. *J Am*  
377 *Coll Cardiol*. 2001 Jan;**37**(1):153–156.
- 378 17. Maritz JS, Morrison JF, Peter J, Strydom NB, Wyndham CH. A practical method of  
379 estimating an individual’s maximal oxygen intake. *Ergonomics*. 1961 Apr;**4**(2):97–122.
- 380 18. Prampero PE di. Energetics of muscular exercise. *Rev Physiol Biochem Pharmacol*.  
381 1981;**89**:143–222.
- 382 19. Henry C. Basal metabolic rate studies in humans: measurement and development of new  
383 equations. *Public Health Nutrition*. 2005 Oct;**8**(7a):1133–1152.
- 384 20. Cuzick J. A Wilcoxon-type test for trend. *Statist Med*. 1985 Jan;**4**(1):87–90.
- 385 21. Cattaneo MD, Crump RK, Farrell MH, Feng Y. Binscatter Regressions.  
386 *arXiv:190209615*. 2021 Aug 6;
- 387 22. Kaminsky LA, Arena R, Myers J. Reference standards for cardiorespiratory fitness  
388 measured with cardiopulmonary exercise testing: Data from the fitness registry and the  
389 importance of exercise national database. *Mayo Clinic Proceedings*. 2015  
390 Nov;**90**(11):1515–1523.

- 391 23. Neto JMR, Tebexreni AS, Alves ANF, et al. Cardiorespiratory fitness data from 18,189  
392 participants who underwent treadmill cardiopulmonary exercise testing in a Brazilian  
393 population. *PLOS ONE*. 2019 Jan 9;**14**(1):e0209897.
- 394 24. Loe H, Nes BM, Wisløff U. Predicting VO<sub>2</sub>peak from submaximal and peak exercise  
395 models: The HUNT 3 Fitness Study, Norway. *PLOS ONE*. 2016 Jan 21;**11**(1):e0144873.
- 396 25. Koch B, Schäper C, Ittermann T, et al. Reference values for cardiopulmonary exercise  
397 testing in healthy volunteers: the SHIP study. *European Respiratory Journal*. 2009 Feb  
398 1;**33**(2):389–397.
- 399 26. Eriksen L, Grønbaek M, Helge JW, Tolstrup JS. Cardiorespiratory fitness in 16025 adults  
400 aged 18–91 years and associations with physical activity and sitting time. *Scandinavian  
401 Journal of Medicine & Science in Sports*. 2016;**26**(12):1435–1443.
- 402 27. Jang WY, Kim W, Kang DO, et al. Reference values for cardiorespiratory fitness in  
403 healthy Koreans. *Journal of Clinical Medicine*. 2019 Dec;**8**(12):2191.
- 404 28. Skinner JS, Wilmore KM, Krasnoff JB, et al. Adaptation to a standardized training  
405 program and changes in fitness in a large, heterogeneous population: the HERITAGE  
406 Family Study. *Medicine & Science in Sports & Exercise*. 2000 Jan;**32**(1):157.
- 407 29. O'Donovan G, Owen A, Bird SR, et al. Changes in cardiorespiratory fitness and coronary  
408 heart disease risk factors following 24 wk of moderate- or high-intensity exercise of  
409 equal energy cost. *Journal of Applied Physiology*. 2005 May 1;**98**(5):1619–1625.
- 410 30. Lakoski SG, Barlow CE, Farrell SW, Berry JD, Morrow JR, Haskell WL. Impact of body  
411 mass index, physical activity, and other clinical factors on cardiorespiratory fitness (from

- 412 the Cooper Center Longitudinal Study). *The American Journal of Cardiology*. 2011 Jul  
413 1;**108**(1):34–39.
- 414 31. Stratton JR, Levy WC, Cerqueira MD, Schwartz RS, Abrass IB. Cardiovascular  
415 responses to exercise. Effects of aging and exercise training in healthy men. *Circulation*.  
416 1994 Apr;**89**(4):1648–1655.
- 417 32. Fleg JL, Morrell CH, Bos AG, et al. Accelerated longitudinal decline of aerobic capacity  
418 in healthy older adults. *Circulation*. 2005 Aug 2;**112**(5):674–682.
- 419 33. Betik AC, Hepple RT. Determinants of VO<sub>2</sub>max decline with aging: An integrated  
420 perspective. *Appl Physiol Nutr Metab*. 2008 Feb 1;**33**(1):130–140.
- 421 34. Proctor DN, Joyner MJ. Skeletal muscle mass and the reduction of VO<sub>2</sub> max in trained  
422 older subjects. *Journal of Applied Physiology*. 1997 May 1;**82**(5):1411–1415.
- 423 35. Short KR, Vittone JL, Bigelow ML, et al. Impact of aerobic exercise training on age-  
424 related changes in insulin sensitivity and muscle oxidative capacity. *Diabetes*. 2003 Aug  
425 1;**52**(8):1888–1896.
- 426 36. Simmons RK, Sluijs EM van, Hardeman W, Sutton S, Griffin SJ, the ProActive project  
427 team. Who will increase their physical activity? Predictors of change in objectively  
428 measured physical activity over 12 months in the ProActive cohort. *BMC Public Health*.  
429 2010 Apr 30;**10**(1):226.
- 430 37. Ruzic L, Heimer S, Misigoj-Durakovic M, Matkovic BR. Increased occupational physical  
431 activity does not improve physical fitness. *Occupational and Environmental Medicine*.  
432 2003 Dec 1;**60**(12):983–985.

- 433 38. Savinainen M, Nygård C, Ilmarinen J. A 16-year follow-up study of physical capacity in  
434 relation to perceived workload among ageing employees. *Ergonomics*. 2004 Aug  
435 15;**47**(10):1087–1102.
- 436 39. Norheim KL, Samani A, Bønløkke JH, Omland Ø, Madeleine P. Physical performances  
437 show conflicting associations in aged manual workers. *Sci Rep*. 2020 Feb 10;**10**(1):2254.
- 438 40. Kreuzfeld S, Preuss M, Weippert M, Stoll R. Health effects and acceptance of a physical  
439 activity program for older long-term unemployed workers. *Int Arch Occup Environ*  
440 *Health*. 2013 Jan 1;**86**(1):99–105.
- 441 41. Goran M, Fields DA, Hunter GR, Herd SL, Weinsier RL. Total body fat does not  
442 influence maximal aerobic capacity. *Int J Obes*. 2000 Jul;**24**(7):841–848.
- 443 42. Schnurr TM, Gjesing AP, Sandholt CH, et al. Genetic correlation between body fat  
444 percentage and cardiorespiratory fitness suggests common genetic etiology. *PLOS ONE*.  
445 2016 Nov 15;**11**(11):e0166738.
- 446 43. Correa-de-Araujo R, Harris-Love MO, Miljkovic I, Fragala MS, Anthony BW, Manini  
447 TM. The need for standardized assessment of muscle quality in skeletal muscle function  
448 deficit and other aging-related muscle dysfunctions: A symposium report. *Front Physiol*.  
449 2017 Feb 15;**8**:87.
- 450 44. Miljkovic I, Zmuda JM. Epidemiology of myosteatorsis. *Curr Opin Clin Nutr Metab*  
451 *Care*. 2010 May;**13**(3):260–264.
- 452 45. Harris-Love MO, Gonzales TI, Wei Q, et al. Association between muscle strength and  
453 modeling estimates of muscle tissue heterogeneity in young and old adults. *Journal of*  
454 *Ultrasound in Medicine*. 2019;**38**(7):1757–1768.

- 455 46. Tandler A, Bar A, Mendelsohn-Cohen N, et al. Hormone seasonality in medical records  
456 suggests circannual endocrine circuits. *Proc Natl Acad Sci U S A*. 2021 Feb  
457 16;**118**(7):e2003926118.
- 458 47. Brage S, Lindsay T, Venables M, et al. Descriptive epidemiology of energy expenditure  
459 in the UK: Findings from the National Diet and Nutrition Survey 2008–15. *International*  
460 *Journal of Epidemiology*. 2020 Jun 1;**49**(3):1007–1021.
- 461

Table 1. Participant characteristics by sex-specific age groups. The Fenland Study 2005 to 2015.

Sex	Women								P-value
Age group (y)	Pooled	29-34	35-39	40-44	45-49	50-54	55-59	60-64	
N	5976	184	736	1210	1322	1269	972	283	
Height (cm)	164 ± 6	165 ± 6	165 ± 7	165 ± 6	165 ± 6	164 ± 6	163 ± 6	163 ± 6	< 0.01
Total body mass (kg)	70.6 ± 13.9	67.0 ± 12.3	70.0 ± 15.2	71.0 ± 14.7	71.0 ± 13.8	70.8 ± 13.3	70.4 ± 13.1	69.7 ± 12.8	< 0.01
Body mass index (kg·m <sup>-2</sup> )	26.2 ± 5.0	24.6 ± 4.2	25.7 ± 5.3	26.2 ± 5.2	26.2 ± 5.0	26.4 ± 4.8	26.4 ± 4.7	26.3 ± 4.6	< 0.01
Fat-free mass (kg)	41.4 ± 5.2	40.9 ± 4.5	42.0 ± 5.5	42.1 ± 5.5	41.9 ± 5.2	41.0 ± 5.0	40.3 ± 5.0	39.9 ± 4.9	< 0.01
Resting heart rate (bpm)	64 ± 8	64 ± 8	64 ± 9	64 ± 8	65 ± 9	64 ± 8	64 ± 8	63 ± 8	0.07
VO <sub>2</sub> max per kg bodyweight (ml O <sub>2</sub> ·min <sup>-1</sup> ·kg <sup>-1</sup> )	35.4 ± 7.6	36.1 ± 6.2	36.2 ± 7.1	35.8 ± 7.2	35.5 ± 7.7	35.1 ± 7.8	34.9 ± 8.1	34.7 ± 8.4	< 0.01
VO <sub>2</sub> max per kg fat-free mass (ml O <sub>2</sub> ·min <sup>-1</sup> ·kg <sup>-1</sup> )	59.7 ± 11.8	58.5 ± 8.8	59.2 ± 10.2	59.3 ± 10.5	59.5 ± 11.7	60.0 ± 12.6	60.3 ± 13.3	60.0 ± 14.0	0.13
PAEE (kJ·day <sup>-1</sup> ·kg <sup>-1</sup> )	51 ± 20	59 ± 21	57 ± 21	53 ± 20	51 ± 20	48 ± 19	46 ± 19	43 ± 16	< 0.01
Sex	Men								P-value
Age group (y)	Pooled	29-34	35-39	40-44	45-49	50-54	55-59	60-64	
N	5316	161	735	1010	1135	1072	929	274	
Height (cm)	178 ± 7	179 ± 7	178 ± 7	179 ± 7	178 ± 7	177 ± 7	176 ± 7	177 ± 7	< 0.01
Bodyweight (kg)	85.9 ± 13.9	84.6 ± 13.6	84.7 ± 14.6	86.2 ± 13.9	86.1 ± 13.9	86.4 ± 13.3	85.8 ± 13.9	85.4 ± 14.2	0.03
Body mass index (kg·m <sup>-2</sup> )	27.2 ± 4.0	26.4 ± 3.8	26.7 ± 4.2	27.0 ± 3.9	27.2 ± 4.0	27.5 ± 4.0	27.5 ± 4.0	27.3 ± 3.9	< 0.01
Fat-free mass (kg)	57.3 ± 6.8	57.6 ± 6.8	57.4 ± 7.0	58.1 ± 6.7	57.6 ± 6.7	57.3 ± 6.7	56.3 ± 6.7	56.3 ± 7.0	< 0.01
Resting heart rate (bpm)	61 ± 9	62 ± 9	60 ± 9	61 ± 9	61 ± 9	61 ± 9	62 ± 9	62 ± 9	< 0.01
VO <sub>2</sub> max per kg bodyweight (ml O <sub>2</sub> ·min <sup>-1</sup> ·kg <sup>-1</sup> )	42.1 ± 7.4	42.5 ± 6.1	43.3 ± 7.0	43.0 ± 7.0	42.4 ± 7.3	41.3 ± 7.1	41.2 ± 8.2	40.6 ± 9.0	< 0.01
VO <sub>2</sub> max per kg fat-free mass (ml O <sub>2</sub> ·min <sup>-1</sup> ·kg <sup>-1</sup> )	62.5 ± 10.4	61.5 ± 8.5	63.1 ± 9.7	63.2 ± 9.5	62.9 ± 10.4	62.0 ± 10.2	62.1 ± 11.5	61.2 ± 13.2	< 0.01
PAEE (kJ·day <sup>-1</sup> ·kg <sup>-1</sup> )	59 ± 23	65 ± 25	66 ± 24	64 ± 24	60 ± 23	57 ± 22	52 ± 21	47 ± 21	< 0.01

Values are mean ± standard deviation, unless otherwise indicated. VO<sub>2</sub>max: Maximal oxygen consumption. PAEE: Physical activity energy expenditure. P-value computed from Cuzick's test for trend.

Table 2. Sequentially-adjusted multivariable analysis of maximal oxygen consumption (VO<sub>2</sub>max) per kg total body mass (ml O<sub>2</sub>·min<sup>-1</sup>·kg<sup>-1</sup>) by sociodemographic characteristics. The Fenland Study 2005 to 2015.

Sex (N) Model	Women (5784)				Men (5209)			
	Unadjusted	Model 1	Model 2	Model 3	Unadjusted	Model 1	Model 2	Model 3
Reference mean		35.6** (34.2; 37.0)	35.2** (33.9; 36.5)	34.7** (33.4; 35.9)		42.2** (40.8; 43.7)	42.2** (40.8; 43.5)	41.7** (40.4; 43.1)
Age group (y)								
29-34	36.1 ± 6.2	Reference	Reference	Reference	42.5 ± 6.1	Reference	Reference	Reference
35-39	36.2 ± 7.1	-0.6 (-1.9; 0.7)	-0.4 (-1.6; 0.8)	-0.1 (-1.2; 1.0)	43.3 ± 7.0	0.0 (-1.3; 1.3)	-0.1 (-1.3; 1.1)	0.0 (-1.2; 1.1)
40-44	35.8 ± 7.2	-1.1 (-2.3; 0.1)	-0.3 (-1.5; 0.8)	0.0 (-1.1; 1.1)	43.0 ± 7.0	-0.5 (-1.8; 0.8)	-0.2 (-1.4; 1.0)	-0.1 (-1.3; 1.1)
45-49	35.5 ± 7.7	-1.3* (-2.5; -0.0)	-0.2 (-1.3; 0.9)	0.1 (-1.0; 1.2)	42.4 ± 7.3	-1.1 (-2.4; 0.1)	-0.3 (-1.5; 0.9)	-0.2 (-1.4; 1.0)
50-54	35.1 ± 7.8	-1.7** (-2.9; -0.5)	-0.3 (-1.4; 0.9)	0.0 (-1.1; 1.1)	41.3 ± 7.1	-2.1** (-3.4; -0.8)	-0.8 (-2.0; 0.4)	-0.7 (-1.8; 0.5)
55-59	34.9 ± 8.1	-2.1** (-3.4; -0.8)	-0.3 (-1.5; 0.9)	-0.1 (-1.2; 1.0)	41.2 ± 8.2	-2.4** (-3.7; -1.1)	-0.5 (-1.8; 0.7)	-0.4 (-1.6; 0.8)
60-64	34.7 ± 8.4	-2.3** (-3.8; -0.8)	-0.2 (-1.6; 1.3)	0.0 (-1.4; 1.3)	40.6 ± 9.0	-3.0** (-4.5; -1.5)	-0.4 (-1.8; 1.1)	-0.4 (-1.8; 1.0)
Ethnicity								
White	35.6 ± 7.6	Reference	Reference	Reference	42.3 ± 7.5	Reference	Reference	Reference
South Asian	34.6 ± 10.4	-1.1 (-3.0; 0.7)	-0.1 (-1.8; 1.6)	-0.2 (-1.9; 1.5)	40.8 ± 7.6	-1.4 (-3.1; 0.4)	-0.5 (-2.1; 1.1)	-0.9 (-2.5; 0.7)
Black	35.0 ± 8.1	-1.4 (-4.6; 1.8)	-1.4 (-4.4; 1.5)	-0.8 (-3.7; 2.1)	39.8 ± 8.5	-3.2* (-5.9; -0.4)	-2.1 (-4.6; 0.5)	-1.9 (-4.4; 0.6)
East Asian	38.6 ± 10.3	2.9* (0.5; 5.3)	3.7** (1.5; 5.9)	2.8* (0.6; 4.9)	43.5 ± 8.3	1.8 (-1.5; 5.1)	2.5 (-0.5; 5.6)	1.8 (-1.3; 4.8)
Others or unknown	33.0 ± 6.8	-2.2** (-3.1; -1.2)	-1.6** (-2.5; -0.7)	-1.9** (-2.8; -1.1)	39.8 ± 6.2	-2.3** (-3.3; -1.3)	-1.7** (-2.6; -0.8)	-1.8** (-2.7; -0.9)
Education level								
None	34.6 ± 8.6	-1.6 (-4.3; 1.0)	-1.4 (-3.9; 1.1)	-1.5 (-3.9; 0.9)	42.4 ± 6.9	-0.3 (-3.5; 2.9)	0.3 (-2.6; 3.3)	0.5 (-2.4; 3.4)
Basic	35.2 ± 8.2	Reference	Reference	Reference	42.4 ± 8.0	Reference	Reference	Reference
Further	35.0 ± 7.5	0.1 (-0.5; 0.6)	-0.1 (-0.6; 0.4)	-0.2 (-0.7; 0.3)	42.0 ± 7.4	-0.2 (-0.8; 0.3)	-0.1 (-0.6; 0.4)	-0.1 (-0.6; 0.4)
Higher	36.2 ± 7.3	1.1** (0.5; 1.7)	0.7* (0.1; 1.3)	0.2 (-0.4; 0.8)	42.1 ± 7.2	0.4 (-0.3; 1.1)	0.5 (-0.1; 1.2)	0.2 (-0.5; 0.8)
Work type								
Sedentary	35.1 ± 7.2	Reference	Reference	Reference	41.8 ± 7.0	Reference	Reference	Reference
Standing	35.7 ± 7.8	0.9** (0.4; 1.3)	-0.1 (-0.5; 0.3)	0.0 (-0.4; 0.4)	42.4 ± 7.7	0.9** (0.2; 1.5)	-0.3 (-0.8; 0.3)	-0.1 (-0.7; 0.5)
Manual	36.4 ± 8.3	1.6** (0.8; 2.4)	-0.3 (-1.1; 0.4)	0.0 (-0.7; 0.7)	42.7 ± 7.9	1.2** (0.6; 1.7)	-1.0** (-1.5; -0.5)	-0.9** (-1.4; -0.4)
Retired	34.5 ± 7.8	0.3 (-1.0; 1.6)	-0.3 (-1.6; 0.9)	-0.2 (-1.4; 1.0)	40.2 ± 7.3	-0.6 (-2.0; 0.9)	-1.5* (-2.9; -0.2)	-1.5* (-2.8; -0.1)
Unemployed	35.3 ± 8.3	-0.6 (-2.5; 1.3)	-0.5 (-2.3; 1.2)	0.2 (-1.5; 1.9)	40.2 ± 6.6	-1.8 (-3.7; 0.0)	-2.3** (-4.0; -0.6)	-2.0* (-3.7; -0.3)
Income								
<£20 000	35.4 ± 8.0	-0.2 (-0.8; 0.4)	0.2 (-0.3; 0.8)	0.2 (-0.3; 0.8)	42.0 ± 8.1	0.2 (-0.6; 0.9)	0.8* (0.0; 1.5)	0.6 (-0.1; 1.3)
£20 000 - £40 000	35.2 ± 7.6	Reference	Reference	Reference	41.9 ± 7.9	Reference	Reference	Reference
>£40 000	35.7 ± 7.2	0.4 (-0.0; 0.9)	0.1 (-0.3; 0.6)	0.1 (-0.3; 0.5)	42.2 ± 7.1	0.6* (0.1; 1.0)	0.3 (-0.1; 0.8)	0.4 (-0.0; 0.9)
Marital status								
Single	36.3 ± 7.3	0.3 (-0.5; 1.1)	0.2 (-0.6; 1.0)	0.3 (-0.5; 1.0)	42.7 ± 8.3	0.0 (-0.9; 0.8)	0.3 (-0.5; 1.0)	0.1 (-0.7; 0.8)
Married/living as married	35.7 ± 7.6	Reference	Reference	Reference	42.3 ± 7.5	Reference	Reference	Reference
Widowed/separated/divorced	36.2 ± 7.9	0.5 (-0.2; 1.3)	0.4 (-0.3; 1.1)	0.4 (-0.3; 1.1)	42.9 ± 7.3	0.6 (-0.3; 1.5)	0.4 (-0.4; 1.2)	0.4 (-0.5; 1.2)
Smoker status								
Never smoked	35.0 ± 7.4	Reference	Reference	Reference	41.8 ± 7.2	Reference	Reference	Reference
Ex-smoker	35.3 ± 7.4	0.4 (-0.0; 0.8)	0.0 (-0.3; 0.4)	0.3 (-0.1; 0.7)	41.9 ± 7.4	0.3 (-0.2; 0.7)	0.0 (-0.4; 0.5)	0.2 (-0.2; 0.6)
Current smoker	38.1 ± 8.5	3.3** (2.7; 4.0)	2.0** (1.3; 2.6)	2.2** (1.6; 2.8)	44.2 ± 8.1	2.6** (1.9; 3.2)	1.3** (0.7; 1.9)	1.3** (0.7; 1.9)
Test site								
Cambridge	35.8 ± 7.7	Reference	Reference	Reference	42.0 ± 7.6	Reference	Reference	Reference
Ely	35.3 ± 7.5	0.3 (-0.2; 0.8)	0.6* (0.1; 1.0)	0.8** (0.4; 1.2)	42.2 ± 7.3	0.8** (0.3; 1.3)	0.9** (0.4; 1.3)	1.2** (0.7; 1.7)
Wisbech	35.1 ± 7.6	-0.2 (-0.8; 0.3)	0.0 (-0.5; 0.5)	0.4 (-0.1; 0.9)	42.2 ± 7.5	0.4 (-0.2; 1.0)	0.3 (-0.2; 0.9)	0.9** (0.3; 1.4)
Seasonality								
Spring		0.0 (-0.2; 0.3)	0.1 (-0.2; 0.3)	0.1 (-0.1; 0.3)		-0.2 (-0.4; 0.1)	-0.1 (-0.3; 0.2)	-0.1 (-0.4; 0.2)
Winter		-0.7** (-1.0; -0.4)	-0.4** (-0.7; -0.2)	-0.5** (-0.7; -0.2)		-0.4** (-0.7; -0.1)	0.0 (-0.3; 0.2)	0.0 (-0.3; 0.3)
PAEE (kJ·day <sup>-1</sup> ·kg <sup>-1</sup> )			0.1** (0.1; 0.2)	0.1** (0.1; 0.1)			0.1** (0.1; 0.1)	0.1** (0.1; 0.1)
BMI (kg·m <sup>-2</sup> )				-0.4** (-0.4; -0.3)				-0.3** (-0.4; -0.3)

Unadjusted values represent mean ± SD VO<sub>2</sub>max values computed within each substratum. Model values are mean (95% confidence interval). Model 1 is mutually adjusted for sociodemographic characteristics. Model 2 is additionally adjusted for PAEE (kJ·day<sup>-1</sup>·kg<sup>-1</sup>). Model 3 is additionally adjusted for BMI (kg·m<sup>-2</sup>). Mean ± SD PAEE for women: 49 ± 20 kJ·day<sup>-1</sup>·kg<sup>-1</sup>; for men: 59 ± 23 kJ·day<sup>-1</sup>·kg<sup>-1</sup>. Mean ± SD BMI for women: 26.5 ± 5.3 kg·m<sup>-2</sup>; for men: 27.3 ± 4.1 kg·m<sup>-2</sup>. \* p < 0.05, \*\* p < 0.01. Frequencies across sociodemographic characteristics are reported in Supplementary Table 1.



Table 3. Sequentially-adjusted multivariable analysis of maximal oxygen consumption (VO<sub>2</sub>max) per kg fat free mass (ml O<sub>2</sub>·min<sup>-1</sup>·kg<sup>-1</sup>) by sociodemographic characteristics. The Fenland Study 2005 to 2015.

Sex (N) Model	Women (5530)				Men (4980)			
	Unadjusted	Model 1	Model 2	Model 3	Unadjusted	Model 1	Model 2	Model 3
Reference mean		59.3** (57.0; 61.5)	59.0** (56.8; 61.2)	59.5** (57.3; 61.7)		61.5** (59.4; 63.7)	61.5** (59.4; 63.6)	62.2** (60.1; 64.3)
Age group (y)								
29-34	58.5 ± 8.8	Reference	Reference	Reference	61.5 ± 8.5	Reference	Reference	Reference
35-39	59.2 ± 10.2	-0.7 (-2.8; 1.3)	-0.6 (-2.6; 1.4)	-0.9 (-2.9; 1.1)	63.1 ± 9.7	0.4 (-1.6; 2.3)	0.3 (-1.6; 2.1)	0.1 (-1.7; 2.0)
40-44	59.3 ± 10.5	-0.9 (-2.9; 1.1)	-0.3 (-2.3; 1.6)	-0.7 (-2.6; 1.3)	63.2 ± 9.5	0.2 (-1.7; 2.1)	0.4 (-1.5; 2.3)	0.2 (-1.6; 2.1)
45-49	59.5 ± 11.7	-0.6 (-2.6; 1.3)	0.1 (-1.9; 2.0)	-0.2 (-2.1; 1.7)	62.9 ± 10.4	-0.1 (-2.0; 1.8)	0.5 (-1.3; 2.4)	0.4 (-1.5; 2.2)
50-54	60.0 ± 12.6	-0.1 (-2.1; 1.9)	0.9 (-1.1; 2.8)	0.6 (-1.4; 2.5)	62.0 ± 10.2	-1.1 (-3.0; 0.8)	-0.0 (-1.9; 1.9)	-0.2 (-2.1; 1.6)
55-59	60.3 ± 13.3	-0.2 (-2.3; 1.8)	1.0 (-1.0; 3.1)	0.8 (-1.2; 2.9)	62.1 ± 11.5	-1.2 (-3.2; 0.7)	0.3 (-1.6; 2.2)	0.1 (-1.7; 2.0)
60-64	60.0 ± 14.0	-0.6 (-3.1; 1.8)	0.9 (-1.5; 3.3)	0.8 (-1.6; 3.2)	61.2 ± 13.2	-2.0 (-4.2; 0.3)	0.2 (-1.9; 2.4)	0.2 (-2.0; 2.4)
Ethnicity								
White	59.9 ± 11.8	Reference	Reference	Reference	62.7 ± 10.5	Reference	Reference	Reference
South Asian	60.2 ± 15.4	1.3 (-1.6; 4.3)	2.0 (-0.9; 5.0)	2.1 (-0.8; 4.9)	62.7 ± 12.0	0.3 (-2.2; 2.7)	1.0 (-1.4; 3.4)	1.5 (-0.8; 3.9)
Black	56.7 ± 13.1	-2.9 (-7.9; 2.1)	-3.0 (-7.9; 2.0)	-3.6 (-8.5; 1.3)	55.3 ± 12.1	-7.6** (-11.6; -3.6)	-6.9** (-10.8; -3.0)	-7.2** (-11.0; -3.4)
East Asian	61.7 ± 15.5	3.0 (-0.8; 6.7)	3.5 (-0.2; 7.2)	4.4* (0.7; 8.0)	62.3 ± 12.1	1.2 (-3.4; 5.9)	1.8 (-2.7; 6.4)	2.9 (-1.6; 7.4)
Others or unknown	55.0 ± 10.3	-3.6** (-5.2; -2.0)	-3.3** (-4.9; -1.7)	-3.0** (-4.6; -1.5)	59.4 ± 8.3	-2.4** (-4.0; -0.9)	-1.9* (-3.4; -0.4)	-1.9* (-3.4; -0.4)
Education level								
None	60.0 ± 15.4	-2.7 (-7.1; 1.7)	-2.8 (-7.2; 1.5)	-2.9 (-7.2; 1.4)	63.5 ± 11.0	-0.1 (-5.0; 4.7)	0.8 (-3.9; 5.5)	0.4 (-4.3; 5.0)
Basic	60.7 ± 13.2	Reference	Reference	Reference	63.7 ± 10.9	Reference	Reference	Reference
Further	59.5 ± 11.8	-0.5 (-1.3; 0.3)	-0.6 (-1.5; 0.2)	-0.5 (-1.3; 0.3)	62.8 ± 10.6	-0.4 (-1.3; 0.4)	-0.4 (-1.2; 0.5)	-0.4 (-1.2; 0.4)
Higher	59.2 ± 10.9	-0.5 (-1.5; 0.4)	-0.9 (-1.8; 0.1)	-0.4 (-1.3; 0.6)	61.7 ± 10.0	-0.8 (-1.8; 0.2)	-0.7 (-1.7; 0.3)	-0.3 (-1.3; 0.7)
Work type								
Sedentary	59.1 ± 11.1	Reference	Reference	Reference	62.1 ± 9.8	Reference	Reference	Reference
Standing	60.1 ± 12.2	0.8* (0.1; 1.5)	0.1 (-0.7; 0.8)	0.0 (-0.7; 0.7)	63.3 ± 11.1	0.9 (-0.0; 1.8)	0.0 (-0.9; 0.8)	-0.2 (-1.1; 0.7)
Manual	61.2 ± 13.7	1.6* (0.4; 2.9)	0.3 (-1.0; 1.5)	0.0 (-1.2; 1.2)	63.2 ± 11.0	0.3 (-0.5; 1.1)	-1.6** (-2.3; -0.8)	-1.7** (-2.5; -0.9)
Retired	60.2 ± 13.8	0.7 (-1.4; 2.7)	0.2 (-1.8; 2.2)	0.0 (-2.0; 2.0)	60.2 ± 10.6	-2.4* (-3.7; 0.4)	-2.4* (-4.5; -0.4)	-2.5* (-4.5; -0.5)
Unemployed	61.1 ± 13.1	0.7 (-2.3; 3.8)	0.7 (-2.3; 3.7)	0.1 (-2.9; 3.1)	60.2 ± 9.3	-3.0* (-5.7; -0.3)	-3.2* (-5.8; -0.6)	-3.7** (-6.3; -1.1)
Income								
<£20 000	60.6 ± 12.8	0.2 (-0.8; 1.2)	0.5 (-0.5; 1.5)	0.6 (-0.4; 1.5)	63.0 ± 11.9	0.6 (-0.5; 1.8)	1.1* (0.0; 2.2)	1.3* (0.2; 2.4)
£20 000 - £40 000	59.8 ± 12.0	Reference	Reference	Reference	62.4 ± 11.0	Reference	Reference	Reference
>£40 000	59.2 ± 11.0	0.1 (-0.6; 0.9)	-0.1 (-0.8; 0.6)	0.0 (-0.8; 0.7)	62.5 ± 9.8	0.8* (0.1; 1.5)	0.6 (-0.1; 1.3)	0.5 (-0.2; 1.2)
Marital status								
Single	60.8 ± 11.9	0.7 (-0.6; 2.0)	0.6 (-0.7; 1.9)	0.5 (-0.7; 1.8)	62.6 ± 12.0	-0.3 (-1.5; 0.8)	-0.1 (-1.2; 1.0)	0.2 (-0.9; 1.3)
Married/living as married	60.0 ± 11.9	Reference	Reference	Reference	62.8 ± 10.5	Reference	Reference	Reference
Widowed/separated/divorced	61.1 ± 12.4	0.5 (-0.7; 1.6)	0.3 (-0.8; 1.5)	0.3 (-0.9; 1.5)	63.3 ± 10.5	0.4 (-0.9; 1.7)	0.2 (-1.1; 1.4)	0.2 (-1.0; 1.5)
Smoker status								
Never smoked	58.9 ± 11.5	Reference	Reference	Reference	61.7 ± 10.0	Reference	Reference	Reference
Ex-smoker	59.7 ± 11.7	0.7* (0.1; 1.4)	0.5 (-0.2; 1.2)	0.3 (-0.4; 0.9)	62.8 ± 10.4	1.2** (0.5; 1.8)	1.0** (0.4; 1.6)	0.7* (0.1; 1.3)
Current smoker	63.7 ± 13.3	4.6** (3.5; 5.7)	3.6** (2.5; 4.6)	3.4** (2.4; 4.4)	65.2 ± 11.7	3.5** (2.5; 4.4)	2.4** (1.5; 3.3)	2.4** (1.5; 3.3)
Test site								
Cambridge	59.5 ± 11.7	Reference	Reference	Reference	61.7 ± 10.6	Reference	Reference	Reference
Ely	59.1 ± 11.9	0.5 (-0.3; 1.3)	0.7 (-0.0; 1.5)	0.5 (-0.2; 1.3)	62.4 ± 10.0	1.1** (0.4; 1.9)	1.2** (0.5; 1.9)	0.7* (0.0; 1.5)
Wisbech	60.8 ± 11.9	1.0* (0.2; 1.9)	1.2** (0.3; 2.1)	0.8 (-0.0; 1.7)	64.0 ± 10.7	2.1** (1.2; 2.9)	2.0** (1.1; 2.8)	1.2** (0.4; 2.1)
Seasonality								
Spring		-0.1 (-0.5; 0.4)	-0.1 (-0.5; 0.4)	-0.1 (-0.5; 0.3)		-0.4 (-0.8; 0.0)	-0.3 (-0.7; 0.1)	-0.3 (-0.7; 0.1)
Winter		-1.4** (-1.9; -1.0)	-1.3** (-1.7; -0.8)	-1.2** (-1.6; -0.8)		-0.4 (-0.8; 0.0)	-0.1 (-0.5; 0.3)	-0.1 (-0.5; 0.3)
PAEE (kJ·day <sup>-1</sup> ·kg <sup>-1</sup> )			0.1** (0.1; 0.1)	0.1** (0.1; 0.1)			0.1** (0.1; 0.1)	0.1** (0.1; 0.1)
BMI (kg·m <sup>-2</sup> )				0.4** (0.3; 0.4)				0.5** (0.4; 0.5)

Unadjusted values represent mean ± SD VO<sub>2</sub>max values computed within each substratum. Model values are mean (95% confidence interval). Model 1 is mutually adjusted for sociodemographic characteristics. Model 2 is additionally adjusted for PAEE (kJ·day<sup>-1</sup>·kg<sup>-1</sup>). Model 3 is additionally adjusted for BMI (kg·m<sup>-2</sup>). Mean ± SD PAEE for women: 49 ± 20 kJ·day<sup>-1</sup>·kg<sup>-1</sup>; for men: 59 ± 23 kJ·day<sup>-1</sup>·kg<sup>-1</sup>. Mean ± SD BMI for women: 26.5 ± 5.3 kg·m<sup>-2</sup>; for men: 27.3 ± 4.1 kg·m<sup>-2</sup>. \* p < 0.05, \*\* p < 0.01. Frequencies across sociodemographic characteristics are reported in Supplementary Table 2.



Figure 1. Sex stratified maximal oxygen consumption per kilogram total body mass ( $VO_{2max_{t_{bm}}}$ ; top panel) and per kilogram fat free mass ( $VO_{2max_{ffm}}$ ; bottom panel) by age, body mass index (BMI), and physical activity energy expenditure (PAEE). Box plots represent medians, interquartile ranges, and minimum–maximum ranges without outliers. The Fenland Study 2005 to 2015.

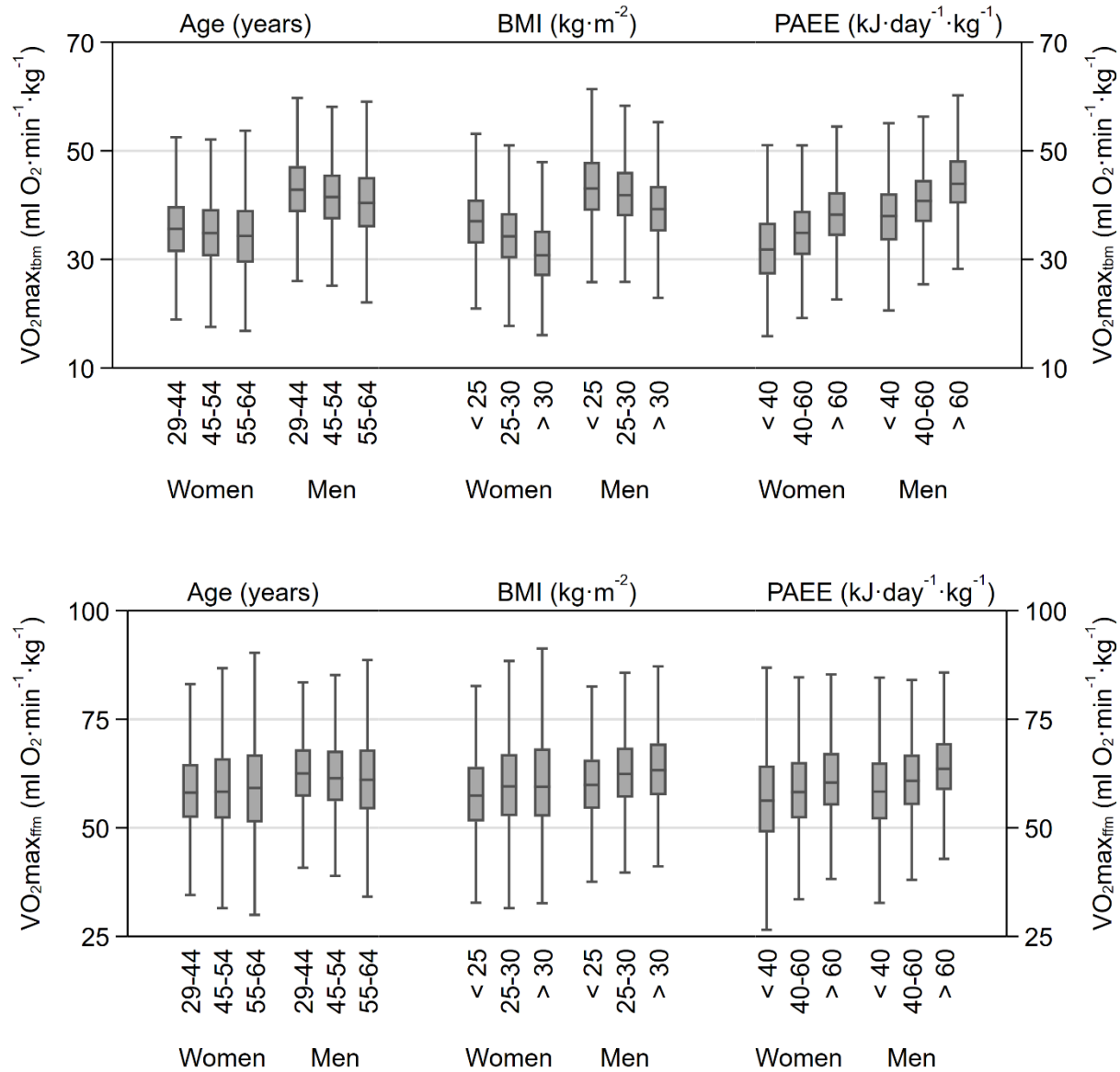
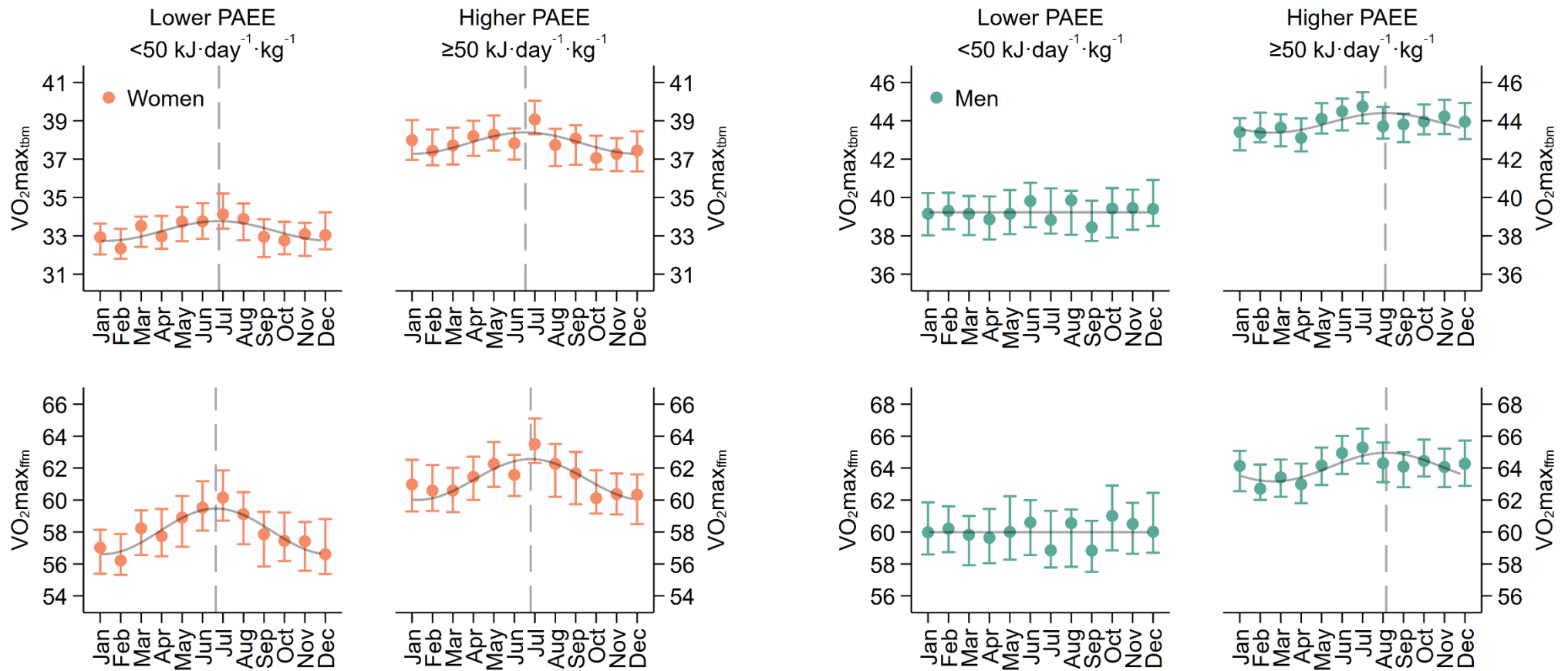


Figure 2. Seasonal variation in maximal oxygen consumption per kilogram total body mass ( $VO_{2max_{t_{bm}}}$ ) and per kilogram fat free mass ( $VO_{2max_{f_{fm}}}$ ) stratified by sex and physical activity energy expenditure (PAEE) levels. Dots and bars represent point estimates and 95% confidence intervals from a binned regression procedure, adjusted for age, ethnicity, education level, work type, income, marital status, smoker status, and fitness testing site. Superimposed curves represent seasonal fitness values derived from an unadjusted cosinor model. Vertical dashed lines represent seasonal peaks in fitness values where seasonal variation is observed.



## **Descriptive epidemiology of cardiorespiratory fitness in UK adults: The Fenland Study.**

Tomas I. Gonzales, Kate Westgate, Stefanie Hollidge, Tim Lindsay, Katrien Wijndaele, Nita

G. Forouhi, Simon Griffin, Nick Wareham, Soren Brage

MRC Epidemiology Unit, University of Cambridge, Cambridge, UK

### **Supplemental Materials**

### *Validation sub-study participant characteristics*

We examined the validity of several methods for predicting VO<sub>2</sub>max from HR response to the Cambridge Ramped Treadmill Test (CRTT), a submaximal exercise test used in the present study to estimate fitness. The test was originally designed for individual calibration of HR-to-energy expenditure for the quantification of physical activity energy expenditure during free-living, but has been adapted to estimate fitness in population-based studies.

We recruited 97 participants (51 females, 46 males) for the validation study. Nine participants were excluded from the present analyses for terminating the treadmill test early and 5 participants for equipment failure, resulting in a final sample of 42 females and 41 males with valid measures of VO<sub>2</sub>max. Participant characteristics are described below:

Characteristic	Female (n = 42)	Male (n = 41)
Age (y)	39.6 ± 12.3	41.7 ± 13.5
Height (cm)	165.1 ± 6.4	177.5 ± 6.9
Weight (kg)	63.4 ± 7.5	78.9 ± 11.7
BMI (kg·m <sup>-2</sup> )	23.2 ± 2.6	25.1 ± 3.6
Fat free mass (kg)	44.5 ± 3.4	62.9 ± 6.4
RHR (bpm)	60.9 ± 8.5	60.1 ± 10.7
Measured HRmax (bpm)	186.3 ± 11.4	186.7 ± 10.6
Age-predicted HRmax (bpm)	180.3 ± 8.6	178.8 ± 9.4
Measured REE (J·kg <sup>-1</sup> ·min <sup>-1</sup> )	59.4 ± 7.7	60.6 ± 8.4
Predicted REE (J·kg <sup>-1</sup> ·min <sup>-1</sup> )	62.6 ± 4.4	64.4 ± 4.4
VO <sub>2</sub> max per kg bodyweight (ml O <sub>2</sub> ·kg <sup>-1</sup> ·min <sup>-1</sup> )	39.7 ± 6.7	46.0 ± 9.5
VO <sub>2</sub> max per kg fat-free mass (ml O <sub>2</sub> ·kg <sup>-1</sup> ·min <sup>-1</sup> )	56.0 ± 7.9	56.8 ± 8.7

BMI: body mass index; RHR: resting heart rate; HRmax: maximal heart rate; REE: Resting energy expenditure; VO<sub>2</sub>max: maximal oxygen consumption; Age-predicted HRmax = 208 - 0.7 · age(y); Predicted REE was computed according to Henry (2005)

### ***Measurement of VO<sub>2</sub>, resting energy expenditure, and VO<sub>2</sub>max***

VO<sub>2</sub> during rest and during the CRTT was measured using a computerised metabolic cart (Oxycon Pro, Erich Jaeger GmbH, Hoechberg, Germany); this system has been validated previously (15). Energy expenditure was calculated by indirect calorimetry according to Weir (16). REE was measured in the supine position with a ventilated hood positioned over the participant's head for 15 minutes; the mean of the last 5 min was used in analysis.

The CRTT was conducted according to methods described in the main study, however in the validation study the test was extended with an additional stage to allow direct measurement of VO<sub>2</sub>max. After Stage IV of the original protocol, treadmill speed was increased by 0.25 km·h<sup>-1</sup> and incline by 0.5% every 15s until exhaustion was reached. Breath-by-breath values of VO<sub>2</sub> were averaged in 15s epochs, filtering out the highest and lowest breath values, and VO<sub>2</sub>max was computed as the average of the two largest VO<sub>2</sub> values in the last 45s of the test. The test was terminated if one of the following three criteria were satisfied: 1) the participant wanted to stop despite verbal encouragement; 2) participant indication of angina, light-headedness, or nausea; and 3) failure of the testing equipment. In analysis, VO<sub>2</sub>max was considered reached if two of the four following criteria were achieved: 1) respiratory exchange ratio value > 1.2; 2) leveling-off in VO<sub>2</sub> (< 2.5 ml O<sub>2</sub>·kg<sup>-1</sup>·min<sup>-1</sup> change) despite an increase in work rate; 3) leveling-off in HR (< 3bpm per min) despite an increase in WR; and 4) reaching 100% of the participant's age-predicted HRmax.

### ***Statistical analyses***

Correlations between predicted and directly measured VO<sub>2</sub>max were quantified using Pearson's *r* and Spearman's *rho*. Bias was computed as the difference between predicted and directly measured VO<sub>2</sub>max. One-sample t-tests were performed to determine whether mean biases were statistically significantly different from zero. Differential bias was examined by

sex and across combinations of test endpoints (CRTT stages and percentages of age-predicted HRmax). Prediction precision was expressed as the root mean square error (RMSE). Statistical significance was set to 0.05.

## Results

We examined the validity of estimated VO<sub>2</sub>max values computed from data terminated after stages II, III, and IV, and at percentages of age-predicted HRmax. The table below demonstrates levels of agreement between predicted and directly measured VO<sub>2</sub>max when scaled by total body mass and across these test endpoints.

Test endpoint	RMSE	Pearson's <i>r</i>	Spearman's $\rho$	Pooled bias	Female bias	Male bias
Stage IV	6.2	0.79	0.77	-3.1 ± 5.5*	-2.9 ± 5.1*	-3.3 ± 5.9*
Stage III	7.3	0.67	0.64	-2.5 ± 6.9*	-3.6 ± 6.5*	-1.3 ± 7.2
Stage II	16.9	0.11	0.17	-14.2 ± 9.2*	-13.4 ± 7.6*	-15.2 ± 10.8*
100% age-predicted HRmax	6.0	0.79	0.76	-2.6 ± 5.5*	-2.9 ± 5.7*	-2.2 ± 5.3*
90% age-predicted HRmax	6.5	0.76	0.72	-3.0 ± 5.8*	-3.4 ± 6.1*	-2.6 ± 5.5*
80% age-predicted HRmax	6.8	0.72	0.67	-2.9 ± 6.2*	-3.5 ± 6.3*	-2.3 ± 6.1*
70% age-predicted HRmax	7.4	0.64	0.63	-2.3 ± 7.0*	-3.2 ± 6.8*	-1.5 ± 7.3
60% age-predicted HRmax	8.1	0.58	0.58	-1.6 ± 8.0	-3.0 ± 8.0*	-0.1 ± 7.9
50% age-predicted HRmax	10.0	0.57	0.55	-3.0 ± 9.6*	-6.0 ± 9.4*	0.1 ± 8.9

Age-predicted HRmax = 208 - 0.7 · age(y); RMSE: root mean squared error; Bias values are mean ± standard deviation ml O<sub>2</sub>·kg<sup>-1</sup>·min<sup>-1</sup>; \*: One-sample t-test *p* < 0.05

The VO<sub>2</sub>max estimation method developed for the CRTT demonstrated good levels of agreement with measured VO<sub>2</sub>max when the end of stages III and IV were used as test endpoints (Pearson's *r* range: 0.67 to 0.79; mean bias range: -3.1 to -2.5 ml O<sub>2</sub>·kg<sup>-1</sup>·min<sup>-1</sup>) or when the attainment of 80% to 100% of the participants age-predicted HRmax was used as a test endpoint (Pearson's *r* range: 0.72 to 0.79; mean bias range: -3.0 to -2.6 ml O<sub>2</sub>·kg<sup>-1</sup>·min<sup>-1</sup>). All other test endpoint criteria examined resulted in worse levels of agreement.

We also examined agreement for estimated VO<sub>2</sub>max when scaled by fat free mass:



Test endpoint	RMSE	Pearson's $r$	Spearman's $\rho$	Pooled bias	Female bias	Male bias
Stage IV	8.0	0.59	0.59	-3.9 ± 7.0*	-4.1 ± 7.1*	-3.7 ± 7.0*
Stage III	9.6	0.38	0.40	-3.2 ± 9.1*	-5.1 ± 9.1*	-1.2 ± 8.8
Stage II	22.2	-0.15	-0.13	-18.9 ± 11.7*	-18.8 ± 10.2*	-19.1 ± 13.2*
100% age-predicted HRmax	7.9	0.60	0.59	-3.3 ± 7.3*	-4.2 ± 8.0*	-2.4 ± 6.5*
90% age-predicted HRmax	8.6	0.55	0.52	-3.8 ± 7.7*	-4.8 ± 8.6*	-2.8 ± 6.7*
80% age-predicted HRmax	9.0	0.46	0.43	-3.7 ± 8.2*	-4.9 ± 8.9*	-2.5 ± 7.4*
70% age-predicted HRmax	9.7	0.33	0.34	-2.9 ± 9.3*	-4.4 ± 9.5*	-1.4 ± 8.9
60% age-predicted HRmax	10.8	0.25	0.29	-2.0 ± 10.7	-4.3 ± 11.2*	0.4 ± 9.8
50% age-predicted HRmax	13.7	0.30	0.28	-4.1 ± 13.1*	-8.7 ± 13.6*	0.6 ± 11.0

Age-predicted HRmax =  $208 - 0.7 \cdot \text{age}(y)$ ; RMSE: root mean squared error; Bias values are mean ± standard deviation ml O<sub>2</sub>·kg<sup>-1</sup>·min<sup>-1</sup>; \*: One-sample t-test  $p < 0.05$

Levels in agreement were largely similar to those attained when VO<sub>2</sub>max was scaled by total body mass.

In the main study sample, we examined on average which test endpoint criteria were used across age half-decade groups:

Sex	Women						
Age group (y)	29-34	35-39	40-44	45-49	50-54	55-59	60-64
N	184	736	1210	1322	1269	972	283
Age-predicted HRmax	185 ± 1	182 ± 1	178 ± 1	175 ± 1	171 ± 1	168 ± 1	165 ± 1
HRmax reached	160 ± 11	156 ± 12	152 ± 12	150 ± 12	146 ± 12	143 ± 12	139 ± 11
% age-predicted HRmax reached	86 ± 6	86 ± 7	86 ± 7	86 ± 7	85 ± 7	85 ± 7	84 ± 6
Test duration (minutes)	15 ± 1	15 ± 2	15 ± 2	15 ± 2	15 ± 2	14 ± 2	14 ± 2
Sex	Men						
Age group (y)	29-34	35-39	40-44	45-49	50-54	55-59	60-64
N	161	735	1010	1135	1072	929	274
Age-predicted HRmax	185 ± 1	182 ± 1	178 ± 1	175 ± 1	171 ± 1	168 ± 1	165 ± 1
HRmax reached	156 ± 11	153 ± 12	149 ± 12	147 ± 13	143 ± 12	139 ± 13	137 ± 11
% age-predicted HRmax reached	84 ± 6	84 ± 7	84 ± 7	84 ± 7	83 ± 7	83 ± 8	83 ± 7
Test duration (minutes)	17 ± 2	17 ± 2	17 ± 2	16 ± 2	16 ± 2	16 ± 2	15 ± 2

These results indicate that test endpoint criteria used in the main study participant sample resulted in fitness estimates with acceptable levels of agreement, irrespective of participant age.

Supplementary Table 1. Descriptive statistics in women by sociodemographic characteristics. The Fenland Study 2005-2015.

	Count (%)	Age	Total body mass (kg)	BMI (kg·m <sup>-2</sup> )	FFM (kg)	RHR (bpm)	VO <sub>2</sub> max <sub>tbm</sub>	VO <sub>2</sub> max <sub>fmm</sub>	PAEE
Age group (y)									
29-34	191 (2.9%)	33 ± 1	66.8 ± 12.4	24.6 ± 4.2	40.8 ± 4.5	64 ± 8	36.1 ± 6.2	58.5 ± 8.8	58 ± 21
35-39	770 (11.5%)	38 ± 1	70.2 ± 15.7	25.8 ± 5.5	42.0 ± 5.6	65 ± 9	36.2 ± 7.1	59.2 ± 10.2	57 ± 22
40-44	1281 (19.1%)	43 ± 1	71.7 ± 15.7	26.4 ± 5.5	42.2 ± 5.7	65 ± 9	35.8 ± 7.2	59.3 ± 10.5	52 ± 20
45-49	1433 (21.4%)	48 ± 1	71.5 ± 14.5	26.5 ± 5.3	42.0 ± 5.3	65 ± 9	35.5 ± 7.7	59.5 ± 11.7	50 ± 20
50-54	1451 (21.7%)	52 ± 1	71.8 ± 14.1	26.9 ± 5.2	41.1 ± 5.1	65 ± 9	35.1 ± 7.8	60.0 ± 12.6	47 ± 19
55-59	1182 (17.7%)	57 ± 1	71.5 ± 14.3	26.9 ± 5.1	40.4 ± 5.2	64 ± 9	34.9 ± 8.1	60.3 ± 13.3	44 ± 18
60-64	383 (5.7%)	61 ± 1	71.7 ± 16.1	27.2 ± 5.6	39.9 ± 5.2	64 ± 9	34.7 ± 8.4	60.0 ± 14.0	41 ± 17
Ethnicity									
White	6172 (92.2%)	49 ± 7	71.6 ± 14.8	26.6 ± 5.3	41.5 ± 5.3	65 ± 9	35.6 ± 7.6	59.9 ± 11.8	49 ± 20
South Asian	78 (1.2%)	46 ± 8	62.7 ± 11.4	25.4 ± 4.4	35.7 ± 4.7	68 ± 9	34.6 ± 10.4	60.2 ± 15.4	44 ± 20
Black	30 (0.4%)	44 ± 7	77.0 ± 19.5	28.7 ± 6.6	45.6 ± 8.2	64 ± 9	35.0 ± 8.1	56.7 ± 13.1	49 ± 22
East Asian	48 (0.7%)	47 ± 7	58.7 ± 8.5	23.3 ± 2.9	36.2 ± 4.2	66 ± 10	38.6 ± 10.3	61.7 ± 15.5	46 ± 20
Others or unknown	363 (5.4%)	44 ± 8	70.6 ± 15.2	26.3 ± 5.3	40.7 ± 5.1	64 ± 8	33.0 ± 6.8	55.0 ± 10.3	48 ± 19
Education level									
None	48 (0.7%)	51 ± 6	75.5 ± 16.0	28.6 ± 6.1	42.3 ± 5.6	64 ± 9	34.6 ± 8.6	60.0 ± 15.4	46 ± 21
Basic	1459 (21.8%)	50 ± 7	73.4 ± 15.6	27.7 ± 5.6	41.3 ± 5.4	66 ± 9	35.2 ± 8.2	60.7 ± 13.2	48 ± 21
Further	3031 (45.3%)	49 ± 7	72.1 ± 15.0	26.9 ± 5.4	41.4 ± 5.4	65 ± 9	35.0 ± 7.5	59.5 ± 11.8	49 ± 20
Higher	2153 (32.2%)	48 ± 8	68.8 ± 13.6	25.2 ± 4.8	41.4 ± 5.3	64 ± 8	36.2 ± 7.3	59.2 ± 10.9	51 ± 20
Work type									
Sedentary	3124 (46.7%)	48 ± 7	71.3 ± 14.8	26.4 ± 5.3	41.5 ± 5.4	65 ± 9	35.1 ± 7.2	59.1 ± 11.1	46 ± 18
Standing	2093 (31.3%)	49 ± 7	70.8 ± 14.1	26.4 ± 5.1	41.2 ± 5.3	64 ± 9	35.7 ± 7.8	60.1 ± 12.2	52 ± 21
Manual	501 (7.5%)	48 ± 7	71.2 ± 14.6	26.7 ± 5.3	41.8 ± 5.3	64 ± 9	36.4 ± 8.3	61.2 ± 13.7	59 ± 23
Retired	240 (3.6%)	59 ± 4	72.0 ± 14.9	27.4 ± 5.3	40.0 ± 5.2	66 ± 9	34.5 ± 7.8	60.2 ± 13.8	42 ± 17
Unemployed	77 (1.2%)	47 ± 7	74.9 ± 18.4	27.9 ± 6.5	42.1 ± 6.6	66 ± 9	35.3 ± 8.3	61.1 ± 13.1	45 ± 19
Unknown	656 (9.8%)	47 ± 8	72.6 ± 16.8	27.0 ± 6.1	41.6 ± 5.3	66 ± 9	35.5 ± 8.4	59.2 ± 12.1	51 ± 22
Income									
<£20 000	1103 (16.5%)	49 ± 8	72.9 ± 15.9	27.5 ± 5.7	41.2 ± 5.5	66 ± 9	35.4 ± 8.0	60.6 ± 12.8	47 ± 21
£20 000 - £40 000	2367 (35.4%)	49 ± 8	71.8 ± 15.1	26.8 ± 5.5	41.3 ± 5.4	65 ± 9	35.2 ± 7.6	59.8 ± 12.0	49 ± 20
>£40 000	2995 (44.8%)	48 ± 7	70.3 ± 14.0	25.9 ± 5.0	41.5 ± 5.2	64 ± 9	35.7 ± 7.2	59.2 ± 11.0	51 ± 19
Unknown	226 (3.4%)	51 ± 7	72.5 ± 16.2	27.6 ± 5.8	40.8 ± 5.7	66 ± 10	35.8 ± 10.3	61.1 ± 16.6	48 ± 23
Marital status									
Single	438 (6.6%)	46 ± 7	72.4 ± 16.3	26.6 ± 5.8	41.9 ± 5.8	65 ± 9	36.3 ± 7.3	60.8 ± 11.9	51 ± 21
Married/living as married	4114 (61.6%)	50 ± 7	71.0 ± 14.3	26.4 ± 5.2	41.3 ± 5.3	65 ± 9	35.7 ± 7.6	60.0 ± 11.9	49 ± 20
Widowed/separated/divorced	593 (8.9%)	51 ± 7	71.5 ± 15.2	26.7 ± 5.4	41.2 ± 5.3	65 ± 9	36.2 ± 7.9	61.1 ± 12.4	48 ± 20
Unknown	1538 (23.0%)	46 ± 7	71.9 ± 15.7	26.8 ± 5.6	41.6 ± 5.5	64 ± 8	34.2 ± 7.4	57.6 ± 11.2	50 ± 21
Smoker status									
Never smoked	3737 (55.9%)	49 ± 7	70.5 ± 14.7	26.3 ± 5.3	41.0 ± 5.4	65 ± 9	35.0 ± 7.4	58.9 ± 11.5	48 ± 19
Ex-smoker	2141 (32.0%)	49 ± 8	72.7 ± 15.0	27.0 ± 5.4	41.9 ± 5.3	64 ± 8	35.3 ± 7.4	59.7 ± 11.7	49 ± 20
Current smoker	727 (10.9%)	47 ± 7	71.3 ± 14.6	26.6 ± 5.3	41.6 ± 5.4	64 ± 9	38.1 ± 8.5	63.7 ± 13.3	56 ± 24
Unknown	78 (1.2%)	48 ± 7	71.8 ± 13.6	26.6 ± 5.3	42.0 ± 4.9	62 ± 8	34.7 ± 6.2	58.5 ± 10.8	52 ± 23
Test site									
Cambridge	2329 (34.8%)	49 ± 7	69.3 ± 13.5	25.5 ± 4.8	40.9 ± 5.3	64 ± 9	35.8 ± 7.7	59.5 ± 11.7	50 ± 20
Ely	2557 (38.2%)	48 ± 7	71.7 ± 14.9	26.7 ± 5.4	41.9 ± 5.3	65 ± 9	35.3 ± 7.5	59.1 ± 11.9	49 ± 20
Wisbech	1805 (27.0%)	49 ± 7	73.5 ± 15.9	27.6 ± 5.6	41.4 ± 5.5	66 ± 9	35.1 ± 7.6	60.8 ± 11.9	49 ± 20
BMI group (kg·m <sup>-2</sup> )									
<25	3085 (46.1%)	48 ± 8	60.7 ± 6.3	22.3 ± 1.7	38.8 ± 4.1	64 ± 8	37.5 ± 7.5	58.3 ± 11.0	55 ± 21
25-30	2159 (32.3%)	49 ± 7	72.6 ± 6.7	27.1 ± 1.4	41.5 ± 4.4	65 ± 9	34.8 ± 7.2	60.7 ± 12.3	48 ± 18
>30	1444 (21.6%)	50 ± 7	92.2 ± 13.6	34.6 ± 4.5	46.8 ± 5.2	67 ± 9	31.5 ± 6.9	61.1 ± 12.8	39 ± 16
PAEE group (kJ·day <sup>-1</sup> ·kg <sup>-1</sup> )									
<40	2341 (35.0%)	50 ± 7	76.2 ± 17.3	28.5 ± 6.2	41.8 ± 6.0	68 ± 9	32.4 ± 7.4	57.5 ± 12.7	30 ± 7
40-60	2529 (37.8%)	48 ± 7	70.2 ± 13.4	26.1 ± 4.7	41.0 ± 5.1	64 ± 8	35.4 ± 6.9	59.6 ± 11.3	49 ± 6
>60	1821 (27.2%)	47 ± 7	66.7 ± 11.1	24.5 ± 3.9	41.4 ± 4.8	61 ± 8	39.0 ± 7.2	62.1 ± 11.0	75 ± 14

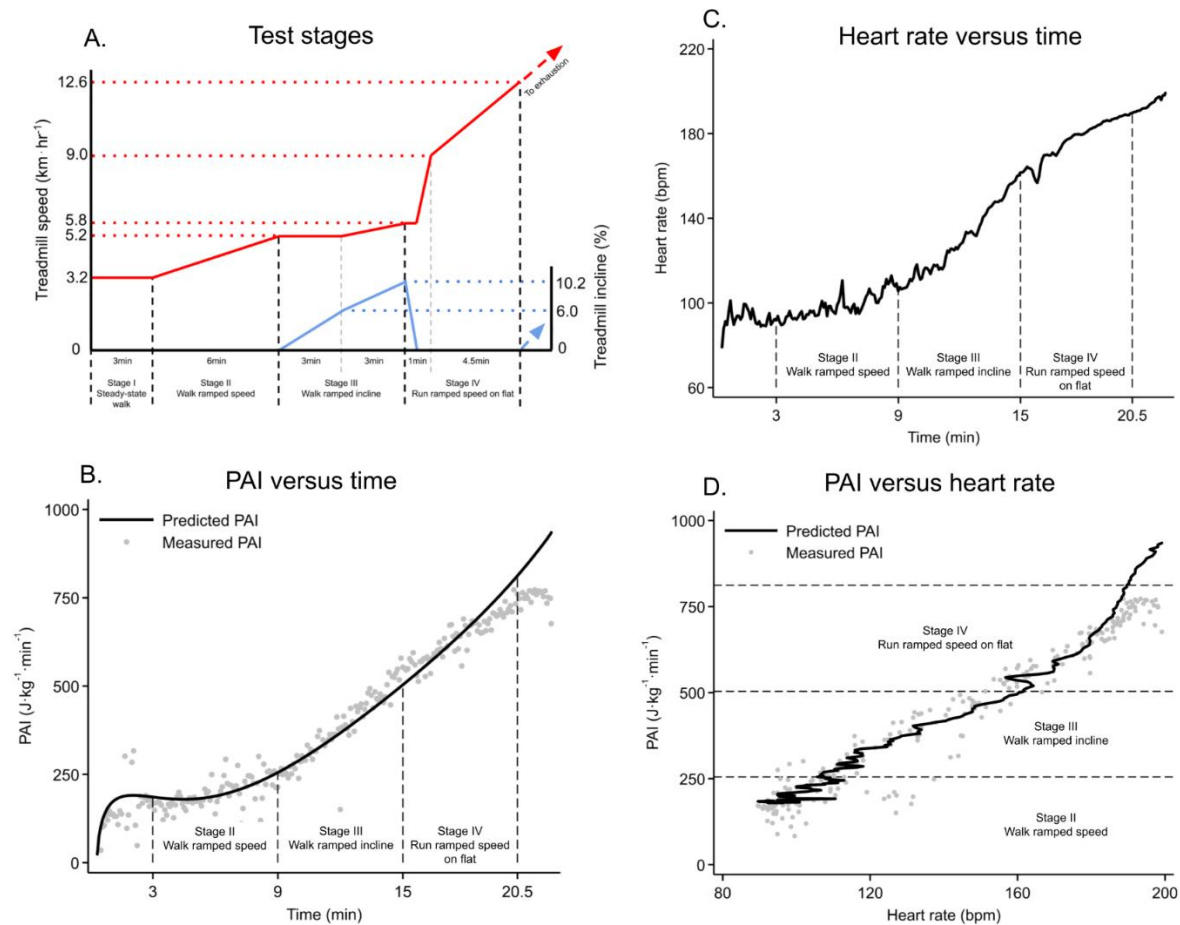
Values are mean ± standard deviation, unless otherwise indicated. BMI: Body mass index. FFM: Fat free mass. SBP: Systolic blood pressure. DBP: Diastolic blood pressure. RHR: Resting heart rate. VO<sub>2</sub>max<sub>tbm</sub>: Maximal oxygen consumption per kilogram total body mass (ml O<sub>2</sub>·min<sup>-1</sup>·kg<sup>-1</sup>). VO<sub>2</sub>max<sub>fmm</sub>: Maximal oxygen consumption per kilogram fat free mass (ml O<sub>2</sub>·min<sup>-1</sup>·kg<sup>-1</sup>). PAEE: Physical activity energy expenditure (kJ·day<sup>-1</sup>·kg<sup>-1</sup>).

Supplementary Table 2. Descriptive statistics in men by sociodemographic characteristics. The Fenland Study 2005-2015.

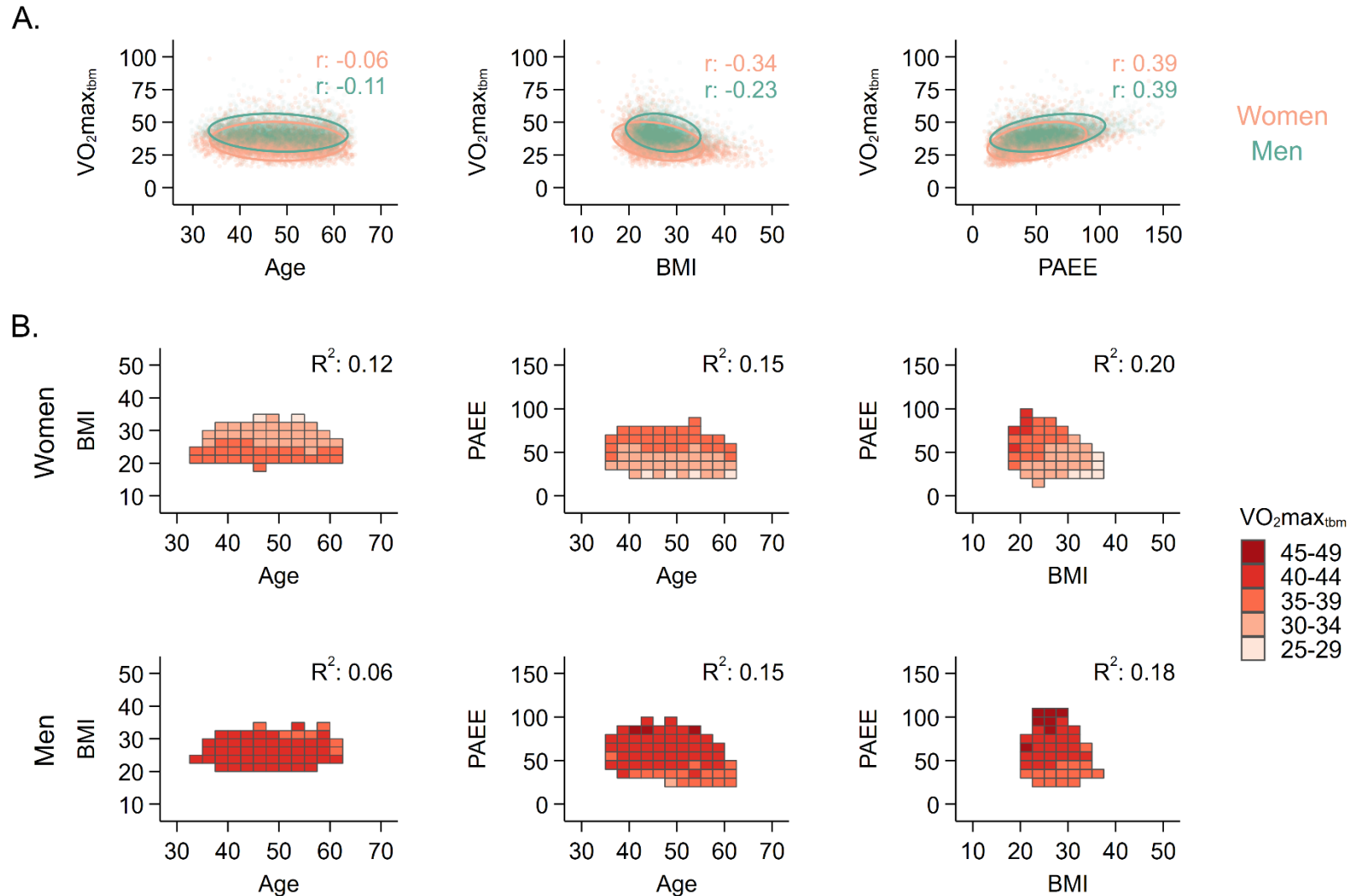
	Count (%)	Age	Total body mass (kg)	BMI (kg·m <sup>-2</sup> )	FFM (kg)	RHR (bpm)	VO <sub>2</sub> max <sub>tbbm</sub>	VO <sub>2</sub> max <sub>rfm</sub>	PAEE
Age group (y)									
29-34	161 (2.8%)	33 ± 1	84.6 ± 13.6	26.4 ± 3.8	57.6 ± 6.8	62 ± 9	42.5 ± 6.1	61.5 ± 8.5	65 ± 25
35-39	753 (13.1%)	38 ± 1	84.7 ± 14.7	26.7 ± 4.2	57.4 ± 7.1	60 ± 9	43.3 ± 7.0	63.1 ± 9.7	66 ± 24
40-44	1062 (18.5%)	43 ± 1	86.4 ± 14.2	27.1 ± 4.0	58.1 ± 6.8	61 ± 9	43.0 ± 7.0	63.2 ± 9.5	64 ± 24
45-49	1193 (20.8%)	47 ± 1	86.5 ± 14.3	27.3 ± 4.1	57.6 ± 6.7	61 ± 9	42.4 ± 7.3	62.9 ± 10.4	60 ± 23
50-54	1172 (20.4%)	52 ± 1	86.9 ± 13.8	27.7 ± 4.1	57.3 ± 6.7	61 ± 9	41.3 ± 7.1	62.0 ± 10.2	56 ± 22
55-59	1059 (18.4%)	57 ± 1	86.1 ± 14.1	27.7 ± 4.0	56.2 ± 6.8	62 ± 10	41.2 ± 8.2	62.1 ± 11.5	52 ± 21
60-64	344 (6.0%)	61 ± 1	86.6 ± 15.4	27.8 ± 4.3	56.5 ± 7.2	63 ± 10	40.6 ± 9.0	61.2 ± 13.2	47 ± 21
Ethnicity									
White	5315 (92.5%)	49 ± 8	86.5 ± 14.2	27.4 ± 4.1	57.4 ± 6.8	61 ± 9	42.3 ± 7.5	62.7 ± 10.5	59 ± 23
South Asian	78 (1.4%)	48 ± 7	76.0 ± 12.5	25.8 ± 4.0	49.0 ± 6.6	64 ± 7	40.8 ± 7.6	62.7 ± 12.0	49 ± 17
Black	31 (0.5%)	46 ± 7	85.8 ± 13.8	27.0 ± 3.5	60.8 ± 7.6	62 ± 9	39.8 ± 8.5	55.3 ± 12.1	54 ± 27
East Asian	21 (0.4%)	47 ± 7	70.5 ± 9.3	23.9 ± 3.0	48.8 ± 5.2	67 ± 10	43.5 ± 8.3	62.3 ± 12.1	52 ± 22
Others or unknown	299 (5.2%)	43 ± 8	85.7 ± 13.6	27.2 ± 3.9	57.0 ± 6.4	61 ± 9	39.8 ± 6.2	59.4 ± 8.3	57 ± 22
Education level									
None	35 (0.6%)	51 ± 8	87.2 ± 16.4	28.5 ± 5.5	56.7 ± 8.0	63 ± 8	42.4 ± 6.9	63.5 ± 11.0	57 ± 19
Basic	1005 (17.5%)	49 ± 7	87.1 ± 15.2	28.0 ± 4.3	56.9 ± 7.1	62 ± 9	42.4 ± 8.0	63.7 ± 10.9	62 ± 26
Further	2673 (46.5%)	49 ± 7	87.8 ± 14.5	27.9 ± 4.2	57.9 ± 7.0	62 ± 9	42.0 ± 7.4	62.8 ± 10.6	60 ± 24
Higher	2031 (35.4%)	48 ± 8	83.7 ± 12.9	26.2 ± 3.7	56.6 ± 6.5	61 ± 9	42.1 ± 7.2	61.7 ± 10.0	55 ± 21
Work type									
Sedentary	2941 (51.2%)	48 ± 7	86.1 ± 14.0	27.0 ± 4.0	57.2 ± 6.7	61 ± 9	41.8 ± 7.0	62.1 ± 9.8	53 ± 20
Standing	794 (13.8%)	49 ± 8	86.6 ± 15.0	27.6 ± 4.3	57.0 ± 7.3	61 ± 9	42.4 ± 7.7	63.3 ± 11.1	61 ± 23
Manual	1672 (29.1%)	49 ± 7	86.4 ± 14.1	27.7 ± 4.1	57.7 ± 6.8	61 ± 9	42.7 ± 7.9	63.2 ± 11.0	69 ± 25
Retired	135 (2.4%)	59 ± 4	85.5 ± 14.9	27.3 ± 4.2	56.1 ± 7.4	62 ± 10	40.2 ± 7.3	60.2 ± 10.6	49 ± 22
Unemployed	74 (1.3%)	48 ± 8	87.0 ± 15.4	28.1 ± 5.2	57.1 ± 7.3	63 ± 10	40.2 ± 6.6	60.2 ± 9.3	53 ± 25
Unknown	128 (2.2%)	50 ± 8	85.3 ± 15.9	28.0 ± 4.8	55.5 ± 7.8	64 ± 10	42.1 ± 9.9	62.7 ± 14.5	46 ± 21
Income									
<£20 000	565 (9.8%)	50 ± 8	85.0 ± 15.9	27.5 ± 4.8	55.4 ± 7.4	64 ± 10	42.0 ± 8.1	63.0 ± 11.9	55 ± 25
£20 000 - £40 000	1908 (33.2%)	49 ± 8	86.5 ± 14.6	27.6 ± 4.2	57.3 ± 7.0	62 ± 9	41.9 ± 7.9	62.4 ± 11.0	61 ± 25
>£40 000	3147 (54.8%)	48 ± 7	86.3 ± 13.7	27.1 ± 4.0	57.7 ± 6.6	61 ± 9	42.2 ± 7.1	62.5 ± 9.8	58 ± 22
Unknown	124 (2.2%)	49 ± 8	84.0 ± 14.5	27.3 ± 3.8	55.4 ± 7.0	63 ± 8	43.0 ± 7.9	64.6 ± 12.7	56 ± 23
Marital status									
Single	434 (7.6%)	47 ± 8	82.9 ± 15.3	26.4 ± 4.5	55.5 ± 7.1	62 ± 10	42.7 ± 8.3	62.6 ± 12.0	57 ± 25
Married/living as married	3690 (64.3%)	50 ± 7	86.5 ± 14.0	27.4 ± 4.1	57.5 ± 6.8	61 ± 9	42.3 ± 7.5	62.8 ± 10.5	58 ± 23
Widowed/separated/divorced	317 (5.5%)	51 ± 6	85.8 ± 14.2	27.2 ± 4.0	57.4 ± 7.3	62 ± 9	42.9 ± 7.3	63.3 ± 10.5	59 ± 22
Unknown	1295 (22.6%)	45 ± 7	86.5 ± 14.4	27.5 ± 4.1	57.1 ± 6.7	61 ± 9	41.2 ± 6.9	61.3 ± 9.5	60 ± 23
Smoker status									
Never smoked	2959 (51.6%)	48 ± 7	85.4 ± 14.1	27.0 ± 4.1	57.1 ± 6.8	62 ± 9	41.8 ± 7.2	61.7 ± 10.0	57 ± 22
Ex-smoker	1951 (34.0%)	50 ± 8	87.7 ± 13.9	27.8 ± 4.1	57.7 ± 6.8	61 ± 9	41.9 ± 7.4	62.8 ± 10.4	58 ± 23
Current smoker	768 (13.4%)	47 ± 8	85.3 ± 15.0	27.2 ± 4.2	57.0 ± 7.3	61 ± 9	44.2 ± 8.1	65.2 ± 11.7	67 ± 27
Unknown	58 (1.0%)	48 ± 8	88.7 ± 18.3	27.9 ± 5.4	57.7 ± 7.1	62 ± 9	40.6 ± 7.4	60.3 ± 9.2	60 ± 26
Test site									
Cambridge	2153 (37.5%)	49 ± 8	83.3 ± 13.1	26.2 ± 3.8	56.1 ± 6.6	61 ± 9	42.0 ± 7.6	61.7 ± 10.6	57 ± 23
Ely	2034 (35.4%)	48 ± 8	87.2 ± 13.9	27.7 ± 4.0	58.1 ± 6.7	61 ± 9	42.2 ± 7.3	62.4 ± 10.0	58 ± 23
Wisbech	1557 (27.1%)	49 ± 7	89.0 ± 15.5	28.4 ± 4.3	57.9 ± 7.2	62 ± 9	42.2 ± 7.5	64.0 ± 10.7	62 ± 25
BMI group (kg·m <sup>-2</sup> )									
<25	1694 (29.5%)	48 ± 8	73.2 ± 7.2	23.0 ± 1.5	52.7 ± 5.5	60 ± 9	43.7 ± 7.7	60.6 ± 10.2	62 ± 25
25-30	2785 (48.5%)	49 ± 7	85.9 ± 7.8	27.3 ± 1.4	57.4 ± 5.5	61 ± 9	42.3 ± 7.1	63.2 ± 10.3	59 ± 23
>30	1259 (21.9%)	50 ± 7	104.4 ± 12.8	33.2 ± 3.2	63.5 ± 6.4	64 ± 10	39.4 ± 7.1	63.9 ± 10.9	52 ± 21
PAEE group (kJ·day <sup>-1</sup> ·kg <sup>-1</sup> )									
<40	1275 (22.2%)	51 ± 8	88.8 ± 16.8	28.3 ± 4.9	56.5 ± 7.3	66 ± 10	38.0 ± 7.7	58.9 ± 11.7	31 ± 7
40-60	1945 (33.9%)	49 ± 7	86.7 ± 14.1	27.4 ± 4.1	57.3 ± 7.0	62 ± 9	41.2 ± 6.7	61.7 ± 9.9	50 ± 6
>60	2524 (43.9%)	47 ± 7	84.5 ± 12.7	26.8 ± 3.7	57.7 ± 6.5	59 ± 8	44.7 ± 6.8	64.9 ± 9.6	80 ± 17

Values are mean ± standard deviation, unless otherwise indicated. BMI: Body mass index. FFM: Fat free mass. SBP: Systolic blood pressure. DPB: Diastolic blood pressure. RHR: Resting heart rate. VO<sub>2</sub>max<sub>tbbm</sub>: Maximal oxygen consumption per kilogram total body mass (ml O<sub>2</sub>·min<sup>-1</sup>·kg<sup>-1</sup>). VO<sub>2</sub>max<sub>rfm</sub>: Maximal oxygen consumption per kilogram fat free mass (ml O<sub>2</sub>·min<sup>-1</sup>·kg<sup>-1</sup>). PAEE: Physical activity energy expenditure (kJ·day<sup>-1</sup>·kg<sup>-1</sup>).

Supplemental Figure 1. A: Treadmill speed (solid red lines) and incline (solid blue lines) over different stages (time periods between dashed black vertical lines) of the Cambridge Ramped Treadmill Test (CRTT). The test has four stages. The first stage consists of walking at  $3.2 \text{ km}\cdot\text{h}^{-1}$  at 0% incline for 3 min. The second stage consists of walking while treadmill speed increases from  $3.2$  to  $5.2 \text{ km}\cdot\text{h}^{-1}$  at 0% incline for 6 min. The third stage consists of walking while incline increases from 0 to 6% for 3 min, and then walking while treadmill speed increases from  $5.2$  to  $5.8 \text{ km}\cdot\text{h}^{-1}$  and incline from 6 to 10.2% for 3 min. The fourth consists of running while treadmill speed increases from  $5.8$  to  $9.0 \text{ km}\cdot\text{h}^{-1}$  and incline decreases to 0% for 1 min, and then running while treadmill speed increases from  $9.0$  to  $12.6 \text{ km}\cdot\text{h}^{-1}$  and at 0% incline for 4.5 min. Instantaneous work rate values, expressed as physical activity intensity ( $\text{J}\cdot\text{kg}^{-1}\cdot\text{min}^{-1}$ ), were computed from treadmill speed and incline according to measured physical activity intensity. Dotted red horizontal lines represent treadmill speeds. Dotted blue horizontal lines represent treadmill inclines. Dashed vertical grey lines divide sub-phases within stages III and IV. To measure  $\text{VO}_2\text{max}$  in the validation substudy, stage IV was extended (dashed red and blue arrowed lines) until exhaustion was achieved. B: Exemplar data of predicted (solid line) and directly measured (grey dots) physical activity intensity (PAI) across stages II-IV. C: Exemplar data of heart rate across stages II-IV. D: Exemplar data demonstrating PAI-to-heart rate relationship across stages II-IV.



Supplemental Figure 2. A: Scatterplots and 95% confidence interval ellipses demonstrating univariate associations of  $VO_{2max_{t_{bmi}}}$  with age, BMI, and PAEE. Dots represent values for individual participants.  $r$  values are Pearson correlation coefficients. B: Heat plots demonstrating bivariate associations of  $VO_{2max_{t_{bmi}}}$  with age, BMI, and PAEE. Values for rectangular fields were computed as the median  $VO_{2max_{t_{bmi}}}$  for all participants within a given range on each axis. Rectangular fields were omitted if less than 30 participants fell within that range.  $R^2$  values were computed by multiple linear regression using  $VO_{2max_{t_{bmi}}}$  as the dependent variable.



Supplemental Figure 3. A: Scatterplots and 95% confidence interval ellipses demonstrating univariate associations of  $VO_2\max_{ffm}$  with age, BMI, and PAEE. Dots represent values for individual participants.  $r$  values are Pearson correlation coefficients. B: Heat plots demonstrating bivariate associations of  $VO_2\max_{ffm}$  with age, BMI, and PAEE. Values for rectangular fields were computed as the median  $VO_2\max_{ffm}$  for all participants within a given range on each axis. Rectangular fields were omitted if less than 30 participants fell within that range.  $R^2$  values were computed by multiple linear regression using  $VO_2\max_{ffm}$  as the dependent variable.

