

## Prescription-opioid amygdalar & thalamic network alterations

### **Prescription opioid-related alterations to amygdalar and thalamic functional networks in chronic knee pain: A retrospective case control resting-state connectivity study.**

Marianne Marta Drabek<sup>1,2,3</sup>, PhD; William Joseph Cottam<sup>1,2,3</sup>, PhD; Sarina Jennifer Iwabuchi<sup>1,2,3</sup>, PhD; Arman Tadjibaev<sup>1,2,3</sup>, PhD; Ali-Reza Mohammadi-Nejad<sup>2,3</sup>, PhD; Dorothee P Auer<sup>1,2,3</sup>, PhD

1. Pain Centre Versus Arthritis, University of Nottingham, Nottingham, UK, NG5 1PB.
2. NIHR Nottingham Biomedical Research Centre, Queen's Medical Centre, University of Nottingham, Nottingham, UK, NG7 2UH.
3. Sir Peter Mansfield Imaging Centre, School of Medicine, University of Nottingham, Nottingham, UK, NG7 2UH.

Corresponding author: Prof. Dr. med. Dorothee Auer, Room W/B 1441 Queen's Medical Centre, Nottingham, NG7 2UH, [dorothee.auer@nottingham.ac.uk](mailto:dorothee.auer@nottingham.ac.uk)

**Funding:** We are grateful to Versus Arthritis for providing financial support (Grant 20777). AT received PhD scholarship support from the Haydn Green Foundation and AMN is supported by the NIHR Nottingham Biomedical Research Centre.

There are no conflicts of interest or disclosures from any co-author.

## Prescription-opioid amygdalar & thalamic network alterations

### Abstract

**Objective:** Long-term opioid use is associated with diminished pain relief, hyperalgesia, and addiction which is not well understood. This study aimed to characterise opioid-related brain network alterations in chronic pain, focused on the right amygdala, and left mediodorsal thalamic nuclei that play key roles in affective pain processing, and are particularly rich in mu opioid receptors (MOR).

**Subjects:** Participants on opioid prescriptions with painful knee osteoarthritis and matched non-opioid using control pain participants.

**Methods and design:** Seed-based functional connectivity (FC) maps from resting-state fMRI data were compared between groups.

**Results:** We found right amygdala hyperconnectivity with the posterior default mode network (pDMN) and the dorsomedial prefrontal cortex in opioid users in contrast to anti-correlations in controls. Conversely, opioid users showed predominant hypoconnectivity of the left dorsomedial thalamic seed with the cingulate cortex except for the subgenual part displaying an anti-correlation in opioid users and no association in non-users. Opioid users also showed higher negative affect in exploratory post-hoc tests suggesting a potential contribution of trait anxiety to amygdala-pDMN FC alteration.

**Conclusion:** Opioid use related hyperconnectivity of the right amygdalar network likely reflects maladaptive mechanisms involving negative affect and network plasticity. Hypoconnectivity of the mediodorsal thalamic nuclei with the anterior and mid cingulate on the other hand may reflect impaired resilience in line with previously reported compensatory MOR upregulation. In conclusion, this study provides new insight into possible brain mechanisms underlying adverse effects of prolonged opioids in chronic pain and offer candidate network targets for novel interventions.

### Key words:

Prescription opioids, chronic knee pain, amygdala, thalamus, default mode network, fMRI seed-based functional connectivity

## Prescription-opioid amygdalar & thalamic network alterations

### Introduction

Prolonged use of prescription opioids comes with reduced efficacy for pain relief, even paradoxical opioid-induced hyperalgesia, sleep and endocrine impairment [1] and often addiction, further opioid use, and fatalities. Given that most opioid prescriptions are for pain treatment, the opioid crisis can only be tackled with better understanding of opioid and pain interactions [2] rather than basing inferences only on non-pain opioid use disorder patients. Although opioid-induced neuroplastic changes are still poorly understood in humans, work has begun to illustrate these (briefly reviewed in [3]).

The amygdala is arguably the most relevant target due to its extensive reciprocal connections with pain and emotion processing and regulatory brain areas, its key roles in pain processing pathways, pain augmentation and negative affect circuit [4], pain progression [5, 6], hyperkatifeia<sup>1</sup> [7], and the transition to substance addiction [8]. Moreover, the amygdala is the brain region with the densest mu opioid receptor (MOR) availability [9]. MOR have been shown in an animal study to be particularly relevant in opioid-induced hyperalgesia [10] and analgesic tolerance [11].

Opioid-related changes in amygdala connectivity was reported in opioid use disorder [12] but the reported hypoconnectivity may be specific to the underlying addiction. Opioid-related effects on amygdala network in chronic pain are not investigated but are likely given the link between MOR availability and migraine attacks frequency [13]. Interestingly, dominance of right amygdala relative to its left counterpart fits right amygdala dominance in pain progression [14], reported opioid-related volumetric changes [15], and even MOR availability in pain-free controls [16]; findings from a recent meta-analyses corroborate arguments on

---

<sup>1</sup> withdrawal induced hypersensitivity to negative emotions

## Prescription-opioid amygdalar & thalamic network alterations

lateralisation when the left but not right amygdala was linked with positive emotions and mu opioid release [17].

The mediodorsal thalamic nuclei are similarly important regions for affective aspects of pain processing [18] and display a particularly high MOR density but also richness in kappa- and delta opioids receptors [19]. Indeed, a PET study identified the thalamus as the region with the highest opioid receptor density and demonstrated reduced thalamic opioid binding in response to experimental pain [20]. Interestingly, a left-sided predominance in thalamic opioid receptors has been suggested in direct opposition to the amygdala [16]. Such an opposite laterality was also found to be associated with chronicity of migraine as participants with chronic migraine demonstrated lower MOR availability in the left thalamus and the right amygdala relative to episodic migraineurs [13].

To address the knowledge gap of opioid-related alterations in these two networks in chronic pain we undertook a retrospective fMRI study on participants with chronic knee Osteoarthritis (OA) using opioids and matched pain participants without opioid prescription and compared right amygdala and left thalamic seed-whole brain functional connectivity maps between the two groups. We investigated resting state connectivity as inferences are not restricted to a specific paradigm and therefore have increased ecological validity that may be representative of effects on a person's everyday life whilst also being more sensitive to changes that may not have manifested structurally yet. To explore associations between observed network changes and maladaptive symptoms, we undertook post-hoc correlations focused on psychometric and behavioural group differences.

## Prescription-opioid amygdalar & thalamic network alterations

### **Methods**

#### **Participants and inclusion criteria**

This retrospective study used a subset of data from a multimodal pain phenotyping study that recruited participants with chronic knee Osteoarthritis (OA) pain, defined as pain for at least 3 months, and pain-free matched controls.

All participants gave informed consent and the study was approved by NRES Committee East Midlands - Nottingham 2 (REC reference number: 10/H0408/115) and performed in accordance with the declaration of Helsinki. Exclusion criteria at enrolment included contraindication to MRI or significant neurological, psychiatric or other significant health problem. Further information on the subject pool (whilst recruitment was ongoing) as well as data not reported here can be found in [21].

For the current analyses, participants were selected if they reported to take medical opioids for pain relief (KOPOp+). A control OA pain group (KOPOp-) not reporting to take any opioids was manually matched to age- and sex of the opioid use group on an individual basis and balanced at group level for pain burden (ICOAP) while being blinded about other characteristics of the data sets.

#### **Data for current analysis**

MRI and phenotypic data relevant for the current analyses included quality controlled T1 and resting state fMRI data. Included questionnaires are summarised in table 1.

## Prescription-opioid amygdalar & thalamic network alterations

**Table 1: Questionnaires and demographic questions**

Intermittent and Constant Osteoarthritis Pain questionnaire (ICOAP) [45]	This questionnaire captures how much pain disturbed the patient's life in the past 4 weeks. The questionnaire provides subscales for intermittent and for chronic pain.
BDI-II questionnaire [46]	Questionnaire on assessing depressive symptoms
Spielberger's Trait anxiety (STAI-T subscale from version STAI-Y) [47],	Questionnaire on anxiety levels
Pain Catastrophizing Scale (PCS) [48]	Questionnaire on pain catastrophizing tendencies.
laterality of affected knee or handedness	1-item question on whether the most affected knee is the left or the right one.
education	1-item questionnaire asking to tick the respective education level (with 1 being the highest), described in supplementary.
pain duration	1-item question on how long participants have been suffering from chronic pain, measured in years.
average daily pain severity	0-100 visual analogue scale
pain severity during scanning	0-100 visual analogue scale
sex	Male or female.
age	At time of participation, assessed in years
prescriptions	Participants were asked to list all their current prescriptions as accurately as possible.

## Prescription-opioid amygdalar & thalamic network alterations

### Scan parameters

All participants were scanned at 3T (GE MR 750 Discovery, 32-channel head coil) following a multimodal protocol, with the current analysis focused on the standard anatomical (MPRAGE, TE/TR: 3.6/9.1s, flip angle: 12, sagittal acquisition, dimensions: 256x256x124, voxel size: 1mm<sup>3</sup>) and standard resting state functional scans using gradient echo echoplanar acquisition (200 volumes, TE/TR: 3.0/2.0s, voxel size: 3x3x 3.5mm, flip angle: 77, FOV 240, matrix 64x64x37, axial acquisition, phase encoding direction: A> P). Participants were asked to focus on a fixation cross in the middle of the screen, keep their eyes open and not to think of anything specific.

### Quality control and preprocessing

Preprocessing (brain extraction, motion correction with Eddy, slice timing correction, spatial smoothing with 5mm FWHM, ICA-AROMA for denoising, high-pass filtering) was performed with an in-house matlab script as described in [22]. MRI-QC software was used for quality control [23] with framewise displacement > 3mm or average framewise displacement >1mm as exclusion criteria.

Visual inspection of data was done at preprocessing individual and group analysis stage to check for any obvious coverage, signal drop-out or registration errors to MNI space.

All quality assurance was done blinded to participant characteristics of the respective data sets.

### Seed-based functional connectivity analysis

Analyses were performed with FSL feat version 6.0.1; all seeds were analysed separately.

## Prescription-opioid amygdalar & thalamic network alterations

Amygdala seeds: Harvard-Oxford amygdala masks at 80% probability thresholds were chosen (see supplementary) and registered to individual functional space to extract amygdala time series (left amygdala results are in supplementary).

Mediodorsal thalamic seeds: 5mm diameter spheres around MNI coordinates  $x=8$   $y=-15$   $z=6$  and  $x=-6$   $y=-15$   $z=7$  depicting the centre of gravity of the mediodorsal thalamic nuclei according to WFU Pick Atlas v3.0.5 were used as thalamic seed regions (figure in supplementary). Only left thalamus FC is reported here (results for the right counterpart are in supplementary).

### **Network reconstruction**

FSL's FAST was used to segment T1-weighted images into cerebrospinal fluid (CSF) and white matter (WM) which were then thresholded (volume x probability) to avoid partial volume effects using an in-house matlab script [22], registered to individual functional space via FSL's FLIRT, and used as masks to extract CSF and WM time series for each data set (using fslmeans) from the denoised functional images (for regressors of no interest).

First level analysis of the time-series was performed on the denoised data in native space separately for each seed's time series. For this, amygdala masks were non-linearly registered to subject space and time series extraction was performed with fslmaths. The extracted time series was inserted as a variable of interest in FSL's FEAT while correcting for CSF and WM as covariates of no interest using the time series extracted as described above. This step further used FILM in FSL's FEAT for autocorrelation correction (prewhitening) [24].



## Prescription-opioid amygdalar & thalamic network alterations

### **Group comparisons and statistical inference:**

Independent samples t-tests were performed to check for demographic or pain-related group differences.

To compare fc networks of each seed region between opioid prescribed and non-prescribed participants, a general linear model was used. The fsl flameo command was performed on the 4D file containing all subjects after individual network maps from first level analysis were non-linearly registered to MNI template. The design matrix was set up via FSL and included demeaned relative motion, sex, and age, per person as covariates of no interest. A gray matter mask was used to limit multiple comparison correction to gray matter voxels only. Cluster-based p-value threshold was set at 0.05, z-values >2.3 to enable comparisons with published reports typically still based on this threshold. In addition, we report results at the more stringent recently recommended z-value >3.1 threshold; significant clusters for both z thresholds are overlaid in figure 1.

Within-group maps are provided in the supplementary for reference.

### **Post-hoc tests**

We visually compared within-group FC maps for amygdala and thalamic networks to discern whether significant group differences indicate increased positive or decreased negative functional connectivity.

To explore whether FC changes may be related to negative affect, we extracted z-scores from most prominent clusters and undertook Pearson correlations with trait anxiety scores across both groups. Scatterplots of these correlations are in the supplementary.

## Prescription-opioid amygdalar & thalamic network alterations

### Results

#### Demographic and pain-related data

Fourteen participants (8 males), reporting to take prescription opioids, had high quality FC data and were matched with 13 participants (8 males) as opioid-free knee OA control group (KOPOp-) (table 2). Apart from depressive symptoms and trait anxiety levels, characteristics did not significantly differ between the groups (table 2).

**Table 2: Characteristics of opioid (KOPOp+) and non-opioid using pain participant (KOPOp-) groups**

	KOPOp+			KOPOp-			T-test p-value
	mean	range	SD	mean	range	SD	
Age (years)	63.2	48-80	8.45	63.6	52-75	6.83	0.87
ICOAP (cont)	51.7	15-85	20.2	43.4	10-85	19.08	0.28
ICOAP(int)	59.5	25-87	17.6	50	29-87	18.03	0.19
Pain duration (years)	10.1	0.75-37	10.6	15.5	1-48	14.1	0.28
Average daily pain (0-100 VAS)	44.3	1-85	27.25	25.7	0-80	29.8	0.10
Pain during scanning (0-100 VAS)	5.3	0-40	11.5	3.4	0-30	8.98	0.63
PCS	21.0	0-48	14.2	16.8	4-48	13.55	0.43
BDI-II	17.6	2-40	10.8	8.07	2-31	8.29	<b>0.01</b>
STAI-T	45.6	30-72	11.9	31.5	24-55	8.39	<b>0.002</b>
Education <sup>2</sup>	6	3-8	2.03	4.69	1-8	2.28	0.13

<sup>2</sup> Level ranges from 8: none to 1: higher degree, postgraduate degree. See supplementary for more details.

## Prescription-opioid amygdalar & thalamic network alterations

### **Functional connectivity results: Amygdala FC**

Relative hyperconnectivity of the right amygdala functional network was seen in participants with chronic knee OA pain reporting to take opioids relative to their matched control pain participants. The network changes included occipital areas, the precuneus and other parts of the default mode network (DMN), fronto-parietal areas and the dorsomedial prefrontal cortex (dmPFC) (Figure 1, table 3). Inspection of within-group network maps as post-hoc tests demonstrated that clusters are anti-correlated with the right amygdala in KOPOp- but are positively correlated in KOPOp+ (see supplementary), indicating a reversal of coupling characteristics with prolonged prescription opioid use. The opposite contrast (relative hypoconnectivity changes in KOPOp+) did not detect clusters at the chosen cluster extent threshold (table 3 but see figure 1 without minimum cluster size). To explore interrelationship with higher negative affect scores in prescription opioid users, further post-hoc tests showed a significant positive correlation between right amygdala-posterior DMN connectivity and trait anxiety scores ( $p=0.001$ ,  $r=0.61$ ).

The same directionality was found for the amygdala-dmPFC group difference (Figure 1, table 3 and supplementary material for within-group FC maps) but there was no correlation with trait anxiety.

Left amygdala network differences between the two groups were beyond the scope of the current study but show similar findings and are included in the supplementary material for completeness.

### **Dorsomedial thalamic FC**

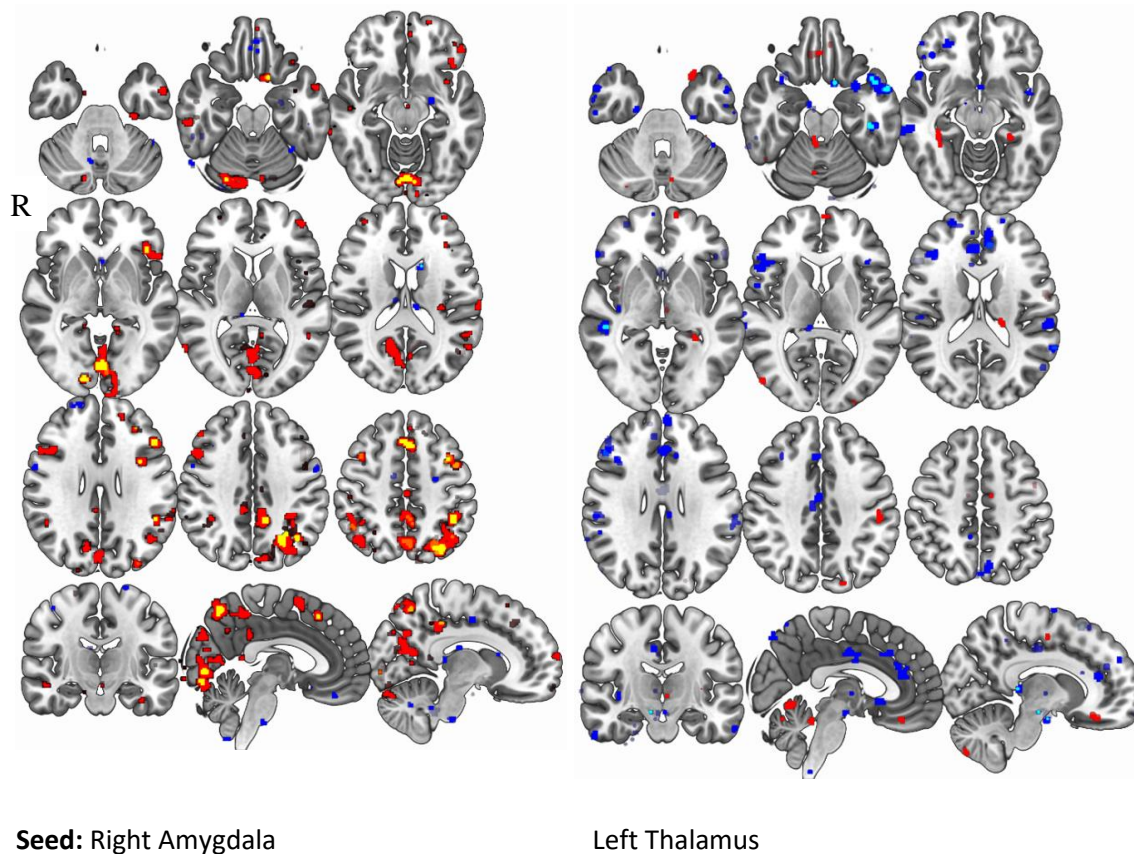
In the left thalamic network on the other hand, there was predominant hypoconnectivity with cingulate, frontolateral and temporal areas (esp. left temporopolar) and right supramarginal

## Prescription-opioid amygdalar & thalamic network alterations

cortex in opioid users relative to controls (table3, figure 1) whilst there were some foci of hyperconnectivity, such as with the hippocampus. Comparison with within-group FC maps as post-hoc tests reveals that cingulate clusters denote positive connectivity for both groups, confirming less positive FC for these regions with the mediodorsal thalamic nucleus in the KOPOp+ group with the notable exception of the subgenual anterior cingulate cluster which was anti-correlated with the seed region in KOPOp+. The latter clusters were absent in controls (see supplementary material). Supplementary material also includes group differences in right mediodorsal thalamic network with visually similar patterns.

No tendency for correlations between mediodorsal thalamic-mid cingulate and mediodorsal thalamic-anterior cingulate FC and trait anxiety was found.

## Prescription-opioid amygdalar & thalamic network alterations



### Figure 1: Group differences in right amygdala and left mediadorsal thalamic FC networks

The left side of figure 1 shows the results for the right amygdala seed region while the other part of the figure shows results for the left thalamus seed. The figure shows the contrast Opioid prescribed knee pain participants > control participants: red (z-score min. 2.3)- yellow (z-score min. 3.1) and Control participants > opioid prescribed participants: blue (z-score min. 2.3)- lightblue (z-score min. 3.1).

Prescription-opioid amygdalar & thalamic network alterations

**Table 3: Network FC group differences for clusters with > 20 voxels**

<b>Seed: Right Amygdala</b>					
<b><i><u>Opioid participants &gt; Control participants</u></i></b>	Voxel count	MAX Z	MAX X (vox)	MAX Y (vox)	MAX Z (vox)
Left Lateral Occipital Cortex	947	4.57	58	32	55
Left Lingual Gyrus	746	3.78	46	24	31
Right Precuneus	400	3.61	43	31	63
Left Precuneus	306	3.38	50	39	56
Left Middle Frontal Gyrus	276	4.49	64	68	65
Right Lateral Occipital Cortex	237	3.51	22	36	62
Right Cuneus	174	3.04	40	29	45
Superior Frontal Gyrus/dmPFC	171	3.38	46	74	60
Left Middle Frontal Gyrus	167	3.5	69	74	49
Left Frontal Orbital Cortex	130	3.32	65	77	33
Left Precuneus	127	3.51	48	33	42
Right Middle Frontal Gyrus	92	3.24	20	70	56
Cerebellum	68	3.58	53	40	7
Cuneus	62	2.98	44	24	51
Left Superior Frontal Gyrus	61	3.08	49	77	67
Left Supramarginal Gyrus	50	3.15	70	40	50
Right Middle Frontal Gyrus	45	3.4	25	69	62
Left Frontal Pole	40	3.03	66	89	42
Right Occipital Pole	39	3.74	38	18	35
Left Posterior Cingulate	37	3	51	52	58
Left Lateral Occipital Cortex	32	3.21	62	20	51
Right Inferior Temporal Gyrus	32	2.93	16	49	25
Posterior Cingulate	29	2.92	42	41	41
Left Frontal Orbital Cortex	23	3.24	52	69	25
Right Lateral Occipital Cortex	22	2.68	31	33	66
Right Middle Frontal Gyrus	22	3.42	21	78	54
<b><i><u>Control participants &gt; Opioid participants</u></i></b>					
No cluster with min. 20 voxels.					

## Prescription-opioid amygdalar & thalamic network alterations

<b>Seed: Left thalamus</b>					
<b><u>Opioid participants &gt;</u></b> <b><u>Control participants</u></b>	Voxel count	MAX Z	MAX X (vox)	MAX Y (vox)	MAX Z (vox)
Left Hippocampus	35	2.69	57	44	33
Left Supramarginal Gyrus	29	3.55	71	50	53
Cerebellum	25	2.62	43	32	32
Left Frontal Orbital Cortex	25	3.32	58	72	22
Right vmPFC	22	2.78	41	80	26
<b><u>Control participants &gt;</u></b> <b><u>Opioid participants</u></b>					
Left Temporal Pole	174	3.44	73	65	24
Anterior Cingulate	133	3.78	50	83	43
Right Middle Frontal Gyrus	105	3.29	20	77	51
Posterior Cingulate	68	2.99	41	54	56
Right Inferior Frontal Gyrus	61	2.87	18	75	43
Right Superior Frontal Gyrus	59	4.09	37	74	67
Left Supramarginal Gyrus	56	2.75	76	47	48
Right Middle Temporal Gyrus	45	3.18	20	47	35
Right Frontal Gyrus	40	2.88	37	91	46
Right Middle Temporal Gyrus	40	3.05	10	48	30
Right Supramarginal Gyrus	37	3.22	14	44	42
Cerebellum	35	3.01	34	29	8
Right Middle Temporal Gyrus	34	2.88	15	61	22
Left Supramarginal Gyrus	33	3.42	78	38	44
Left Precuneus	30	2.75	49	28	60
Subgenual Anterior Cingulate	28	3.41	46	70	33
Anterior Cingulate	27	3.01	46	78	50
Right Supramarginal Gyrus	26	2.84	17	50	49
Cerebellum	24	3.34	33	42	14
Cerebellum	20	3.7	24	34	11
dmPFC	20	2.93	47	92	50

## Prescription-opioid amygdalar & thalamic network alterations

### Discussion

Using seed-based functional connectivity analysis in participants with chronic painful knee OA, we report distinct brain network changes of MOR rich hubs of the affective pain processing in association with opioid prescription status. The main right amygdala fc change associated with opioid status was a distributed pattern of hyperconnectivity involving the posterior DMN, the visual cortex, left supramarginal gyrus and dorso-medial prefrontal cortex significant at  $z > 3.1$ . Medio-dorsal thalamic networks changes related to opioid prescription consisted of a predominant hypoconnectivity pattern with several cingulate regions and the left anterior temporal pole, were detected at  $Z > 2.3$ , but did not survive the  $Z > 3.1$  threshold. We chose to report results at both thresholds to allow comparisons across most published reports because the switch to a more conservative  $Z > 3.1$  is still relatively recent and because the small sample size of this discovery study intends to inform further work which justifies a more inclusive approach.

We found stronger positive coupling between the right amygdala and posterior DMN (pDMN) in opioid prescribed knee OA participants compared to controls whilst controls showed an anti-correlation between the right amygdala and the pDMN. Contrary to this study in opioid using participants, however, a previous FC study in participants with opioid addiction reported reduced amygdala functional connectivity with the pDMN [12]. The cause of that discrepancy is unclear but may be due differences in the type and cumulative dose of opioids and study populations (opioid addiction versus prescription opioids for analgesia in the present study) and different comparison groups (healthy controls versus matched pain participants in the present study). Interestingly, acute oxycodone exposure in animals [25]



## Prescription-opioid amygdalar & thalamic network alterations

and humans [26] was reported to decrease DMN FC including the amygdala which suggests that the observed opioid-related amygdala-DMN FC hyperconnectivity in our study does not simply reflect acute opioid effects and more likely represents a marker of network plasticity. We also found that the between group FC hyperconnectivity was driven by a remarkable directionality shift from anticorrelation in non-opioid users to positive coupling in opioid users. There are two main possible causes for this circuit abnormality either as pre-existing endophenotypic trait predisposing the need for stronger pain killers or a consequence of such, which we cannot discern in our cross-sectional study.

We observed a moderately strong positive correlation across both groups between the right amygdala–pDMN FC and trait anxiety making a maladaptive nature of the circuit change more likely. This is well in line with reports on increased FC of the amygdala-pDMN in affective disorders compared to healthy populations. Enhanced FC in the amygdala-pDMN circuit was shown in major depression even after remission, and FC changes were linked to high levels of rumination [27]. Similarly, increased amygdala-pDMN FC was linked to late life depression [28]. Stress alone may increase amygdala-pDMN FC [29] as shown in a stress induction task in healthy controls providing a relevant context for interpretation in chronic pain beyond depression.

Indeed, higher FC between the pDMN (labelled as ventral DMN by the authors) and parts of the amygdala was linked to less resilience but irrespective of depression [30], which would suggest that our observation may be linked more generally to decreased resilience in opioid using pain participants as additional maladaptive mechanisms beyond dispositional anxiety and negative affect. Further complexity may arise from frequent co-administration of antidepressants in the opioid using pain group as antidepressant infusion reversed a positive

## Prescription-opioid amygdalar & thalamic network alterations

correlation between amygdala and DMN in depressed patients [31]. This makes antidepressant co-medication highly unlikely to have contributed to our observed pattern of increased amygdala-pDMN FC.

We observed a noteworthy amygdala-dmPFC hyperconnectivity in opioid using compared to opioid-free pain participants and a similar shift from an anti-correlated relationship between these two brain structures in opioid-free controls. The dmPFC is considered an ‘aversive amplification’ circuit [32], that underlies ‘negative bias’ [33], and may even enable maintenance of anxiety in healthy volunteers [34] and the development of clinical anxiety [35] which suggests a link with anxiety even if some of the labelling should be taken with caution; however our post-hoc tests showed no tendency for a correlation between this connection and trait anxiety. A shift towards synchronization between the amygdala and the dmPFC from prolonged opioid use may therefore contribute to maladaptive behavioural developments through a more complex mechanism. Interestingly, serotonin depletion, an experimental model of depression, was linked with increased amygdala-dmPFC FC in healthy volunteers [33] while antidepressant treatment and symptom improvement were linked to decreased dmPFC FC [36]. This again suggests that common co-medication with antidepressants in opioid prescribed chronic pain participants is unlikely to drive the observed hyperconnectivity of this circuit in opioid users.

Conversely, we found predominant hypoconnectivity of the mediodorsal thalamo-cortical network in association with opioid prescription status involving several clusters in the cingulum.

Similar to the thalamus and the amygdala, the cingulate is tightly linked to affective processing in pain. Specifically, posterior parts of the anterior cingulate have been implicated

## Prescription-opioid amygdalar & thalamic network alterations

with unpleasantness, anterior parts of the mid cingulate (ACC) have been implicated with processing fear whilst subgenual parts are linked with negative stimuli [37] and play a prominent role in depression [38]; ACC hyperactivity has even been found to be characteristic of pain-induced depression and anxiety [39, 40] but our post-hoc correlations showed no tendency for a simple link with trait anxiety.

More generally, animal literature suggested that anterior cingulate hyperactivity plays a key role in pain progression [40-42] but how this hyperactivity relates to thalamic-cingulate connectivity has not been investigated in humans.

An animal study, however, showed that neurons within the ACC responded less strongly to mediodorsal thalamic input as a consequence of induced chronic pain such that the ACC was inhibited which in turn was shown to be directly enhancing pain-related aversion [43]. In the context of the current findings it would suggest that prolonged use of exogenous opioids exacerbates pain-related aversion through mediodorsal thalamic-cingulate hypoconnectivity; this in turn could reflect either maladaptive circuit alterations or impaired compensatory mechanisms. Against the background of Zubieta et al.'s finding that more mu-opioid receptor binding in the cingulate was linked with less negative affect in sad settings [44], one may speculate that the cingulum is normally part of a pain compensatory circuit which appears to be altered after prolonged opioid use. This could potentially reflect receptor fatigue but remains to be studied further.

The main limitations of the current work are the small sample size and its retrospective and cross-sectional design which makes it impossible to disentangle opioid-related from co-medicated antidepressants or pre-existing circuit abnormalities biasing towards the need for

## Prescription-opioid amygdalar & thalamic network alterations

opioidergic pain killers. Further, due to the retrospective nature of this study we lack information on opioid use duration or any opioid induced hyperalgesia or tolerance.

Overall however, the current work shows that resting state amygdalar and thalamic networks are differentially altered in chronic pain participants on prolonged opioid use compared to opioid-free participants suggestive of opioid-related maladaptive developments.

### **Author contributions**

DPA provided the concept for this study, DPA and MMD contributed the design and analysis plan; MMD analysed the data with support by WJC, SJI and AMN; data interpretation and manuscript drafting was done by MMD and DPA; WJC, SJI, MMD, AT collected data. All co-authors were involved in editing and proof-reading.

### **Acknowledgements**

We thank all participants who kindly volunteered their time to this study. We are also thankful to Nadia Frowd and Dr Bonnie Millar for administrative support and recruitment, Andrew Cooper for scanning with us as radiographer, Sarah Wilson as the centre's dedicated receptionist and admin, and to the KPIC data collection team for helping our recruitment efforts by sharing contact details of participants who consented to be contacted for further studies and met eligibility for the current one. We additionally thank Prof. D. Walsh for comments.

## Prescription-opioid amygdalar & thalamic network alterations

### References

1. Davis, M.P. and Z. Mehta, *Opioids and Chronic Pain: Where Is the Balance?* Current Oncology Reports, 2016. **18**(12).
2. Massaly, N. and J.A. Moron, *Pain And Opioid Systems, Implications In The Opioid Epidemic.* Current Opinion in Behavioral Sciences, 2019. **26**: p. 69-74.
3. Ballantyne, J.C., *The brain on opioids.* Pain, 2018. **159**(9): p. S24-S30.
4. LeDoux, J., *The amygdala.* Current Biology, 2007. **17**(20): p. R868-R874.
5. Rouwette, T., et al., *The amygdala, a relay station for switching on and off pain.* European Journal of Pain, 2012. **16**(6): p. 782-792.
6. Neugebauer, V., *Amygdala pain mechanisms.* Handb Exp Pharmacol, 2015. **227**: p. 261-84.
7. Shurman, J., G.F. Koob, and H.B. Gutstein, *Opioids, Pain, the Brain, and Hyperkatifeia: A Framework for the Rational Use of Opioids for Pain.* Pain Medicine, 2010. **11**(7): p. 1092-1098.
8. Koob, G.F., *Brain stress systems in the amygdala and addiction.* Brain Research, 2009. **1293**: p. 61-75.
9. Daunais, J.B., et al., *Functional and anatomical localization of mu opioid receptors in the striatum, amygdala, and extended amygdala of the nonhuman primate.* Journal of Comparative Neurology, 2001. **433**(4): p. 471-485.
10. Khomula, E.V., D. Araldi, and J.D. Levine, *In Vitro Nociceptor Neuroplasticity Associated with In Vivo Opioid-Induced Hyperalgesia.* Journal of Neuroscience, 2019. **39**(36): p. 7061-7073.
11. Corder, G., et al., *Loss of mu opioid receptor signaling in nociceptors, but not microglia, abrogates morphine tolerance without disrupting analgesia.* Nat Med, 2017. **23**(2): p. 164-173.
12. Upadhyay, J., et al., *Alterations in brain structure and functional connectivity in prescription opioid-dependent patients.* Brain, 2010. **133**: p. 2098-2114.
13. Jassar, H., et al., *Impact of chronic migraine attacks and their severity on the endogenous mu-opioid neurotransmission in the limbic system.* Neuroimage-Clinical, 2019. **23**.
14. Ji, G.C. and V. Neugebauer, *Hemispheric Lateralization of Pain Processing by Amygdala Neurons.* Journal of Neurophysiology, 2009. **102**(4): p. 2253-2264.
15. Younger, J.W., et al., *Prescription opioid analgesics rapidly change the human brain.* Pain, 2011. **152**(8): p. 1803-1810.
16. Kantonen, T., et al., *Interindividual variability and lateralization of mu-opioid receptors in the human brain.* Neuroimage, 2020. **217**.
17. Nummenmaa, L. and L. Tuominen, *Opioid system and human emotions.* British Journal of Pharmacology, 2018. **175**(14): p. 2737-2749.
18. Huang, T.W., et al., *Identifying the pathways required for coping behaviours associated with sustained pain.* Nature, 2019. **565**(7737): p. 86-+.
19. Mansour, A., et al., *Autoradiographic differentiation of mu, delta, and kappa opioid receptors in the rat forebrain and midbrain.* J Neurosci, 1987. **7**(8): p. 2445-64.
20. Wey, H.Y., et al., *Simultaneous fMRI-PET of the opioidergic pain system in human brain.* Neuroimage, 2014. **102**: p. 275-282.
21. Iwabuchi, S.J., et al., *Brain perfusion patterns are altered in chronic knee pain: a spatial covariance analysis of arterial spin labelling MRI.* Pain, 2020. **161**(6): p. 1255-1263.
22. Mohammadi-Nejad, A.-R., et al. *Multi-modal neuroimaging pipelines for data preprocessing.*
23. Esteban, O., et al., *MRIQC: Advancing the automatic prediction of image quality in MRI from unseen sites.* Plos One, 2017. **12**(9).
24. Woolrich, M.W., et al., *Temporal autocorrelation in univariate linear modeling of FMRI data.* Neuroimage, 2001. **14**(6): p. 1370-1386.

## Prescription-opioid amygdalar & thalamic network alterations

25. Nasseef, M.T., et al., *Oxycodone-Mediated Activation of the Mu Opioid Receptor Reduces Whole Brain Functional Connectivity in Mice*. ACS Pharmacol Transl Sci, 2019. **2**(4): p. 264-274.
26. Gorka, S.M., et al., *Opioid modulation of resting-state anterior cingulate cortex functional connectivity*. Journal of Psychopharmacology, 2014. **28**(12): p. 1115-1124.
27. Peters, A.T., et al., *Aberrant resting-state functional connectivity in limbic and cognitive control networks relates to depressive rumination and mindfulness: A pilot study among adolescents with a history of depression*. J Affect Disord, 2016. **200**: p. 178-81.
28. Li, W., et al., *Amygdala network dysfunction in late-life depression phenotypes: Relationships with symptom dimensions*. J Psychiatr Res, 2015. **70**: p. 121-9.
29. Veer, I.M., et al., *Beyond acute social stress: Increased functional connectivity between amygdala and cortical midline structures*. Neuroimage, 2011. **57**(4): p. 1534-1541.
30. Leaver, A.M., et al., *Resilience and amygdala function in older healthy and depressed adults*. Journal of Affective Disorders, 2018. **237**: p. 27-34.
31. Dutta, A., et al., *Regional default mode network connectivity in major depressive disorder: modulation by acute intravenous citalopram*. Translational Psychiatry, 2019. **9**.
32. Robinson, O.J., et al., *The adaptive threat bias in anxiety: Amygdala-dorsomedial prefrontal cortex coupling and aversive amplification*. Neuroimage, 2012. **60**(1): p. 523-529.
33. Robinson, O.J., et al., *The role of serotonin in the neurocircuitry of negative affective bias: Serotonergic modulation of the dorsal medial prefrontal-amygdala 'aversive amplification' circuit*. Neuroimage, 2013. **78**: p. 217-223.
34. Vytal, K.E., et al., *Sustained anxiety increases amygdala-dorsomedial prefrontal coupling: a mechanism for maintaining an anxious state in healthy adults*. Journal of Psychiatry & Neuroscience, 2014. **39**(5): p. 321-329.
35. Robinson, O.J., et al., *Towards a mechanistic understanding of pathological anxiety: the dorsal medial prefrontal-amygdala 'aversive amplification' circuit in unmedicated generalized and social anxiety disorders*. Lancet Psychiatry, 2014. **1**(4): p. 294-302.
36. Wang, L., et al., *The effects of antidepressant treatment on resting-state functional brain networks in patients with major depressive disorder*. Hum Brain Mapp, 2015. **36**(2): p. 768-78.
37. Vogt, B.A., *Pain and emotion interactions in subregions of the cingulate gyrus*. Nature Reviews Neuroscience, 2005. **6**(7): p. 533-544.
38. Hamani, C., et al., *The subcallosal cingulate gyrus in the context of major depression*. Biol Psychiatry, 2011. **69**(4): p. 301-8.
39. Barthas, F., et al., *The Anterior Cingulate Cortex Is a Critical Hub for Pain-Induced Depression*. Biological Psychiatry, 2015. **77**(3): p. 236-245.
40. Sellmeijer, J., et al., *Hyperactivity of Anterior Cingulate Cortex Areas 24a/24b Drives Chronic Pain-Induced Anxiodepressive-like Consequences*. J Neurosci, 2018. **38**(12): p. 3102-3115.
41. Zhao, R.H., et al., *Neuropathic Pain Causes Pyramidal Neuronal Hyperactivity in the Anterior Cingulate Cortex*. Frontiers in Cellular Neuroscience, 2018. **12**.
42. Elina, K.C., et al., *The Effect of Optogenetic Inhibition of the Anterior Cingulate Cortex in Neuropathic Pain Following Sciatic Nerve Injury*. Journal of Molecular Neuroscience, 2020.
43. Meda, K.S., et al., *Microcircuit Mechanisms through which Mediodorsal Thalamic Input to Anterior Cingulate Cortex Exacerbates Pain-Related Aversion*. Neuron, 2019. **102**(5): p. 944-+.
44. Zubieta, J.K., et al., *Regulation of human affective responses by anterior cingulate and limbic mu-opioid neurotransmission*. Arch Gen Psychiatry, 2003. **60**(11): p. 1145-53.
45. Hawker, G.A., et al., *Development and preliminary psychometric testing of a new OA pain measure - an OARSI/OMERACT initiative*. Osteoarthritis and Cartilage, 2008. **16**(4): p. 409-414.
46. Beck, A.T., et al., *Comparison of Beck Depression Inventories -IA and -II in psychiatric outpatients*. J Pers Assess, 1996. **67**(3): p. 588-97.

## Prescription-opioid amygdalar & thalamic network alterations

47. Spielberger, G., Lushene, Vagg, Jacobs *Manual for the State-Trait Anxiety Inventory*, Consulting Psychologists Press. Palo Alto, CA, 1983.
48. Sullivan, M.J.L., S.R. Bishop, and J. Pivik, *The Pain Catastrophizing Scale: Development and validation*. *Psychological Assessment*, 1995. **7**(4): p. 524-532.