

Hereditary haemochromatosis beyond liver cancer: increased risk of prostate cancer during an 11-year follow-up

Janice L Atkins, PhD¹, Luke C Pilling, PhD¹, Suzy V Torti², Frank M Torti³, George A Kuchel⁴, David Melzer, MBBCh PhD¹

¹Epidemiology and Public Health Group, University of Exeter Medical School, Exeter, UK

²Department of Molecular Biology and Biophysics, University of Connecticut Health Center, Farmington, CT, USA

³Department of Medicine, University of Connecticut Health Center, Farmington, CT, USA

⁴UConn Center on Aging, University of Connecticut, Farmington, CT, USA

Corresponding author: Professor David Melzer. Epidemiology and Public Health Group, University of Exeter Medical School, College House, St. Luke's Campus, Exeter, EX1 2LU, UK. Email: D.Melzer@exeter.ac.uk Telephone: (+44) 01392 726806.

Short title: Hereditary haemochromatosis: increased risk of prostate cancer

Key words: haemochromatosis; iron; prostate cancer; UK Biobank

Abbreviations: HR, hazard ratio; HH, hereditary haemochromatosis; ICD-10, International Classification of Diseases 10th revision; OR, odds ratio; SD, standard deviation SIR, standardized incident ratio;

Article category: Research Article

Novelty and impact of the work: Male *HFE* p.C282Y homozygotes, at risk of iron overload disorder hereditary haemochromatosis, have known increased liver cancer risks. We have shown, for the first time, that the male p.C282Y homozygotes also have a 32% increased risk of prostate cancer; with an excess proportion of 3.8% by age 75 compared to those without mutations. Those reporting *HFE* genotype status or monitoring p.C282Y homozygous males need to ensure vigilance for both excess liver and prostate cancers.

Abstract

In European ancestry populations, the iron overload disorder Hereditary Haemochromatosis (HH) is predominantly caused by the *HFE* p.C282Y mutation. Male p.C282Y homozygotes have markedly increased hepatic malignancy risks but risks for other cancers in both male and female homozygotes are unclear. We studied data from 451,143 UK Biobank European ancestry community participants (aged 40-70 years; 54.3% female) followed for a mean 11.6 years via hospital admission and national cancer registry data. We estimated risks of incident bladder, blood (with sub-analyses of leukemia and lymphoma), bone, brain, breast, colorectal, kidney, lung, melanoma, oesophageal, ovarian, pancreatic, prostate and stomach cancers in the 2,890 p.C282Y homozygotes, compared to participants without *HFE* mutations. Male p.C282Y homozygotes (12.1% with baseline diagnosed HH) had increased risks of prostate cancer (6.8% versus 5.4% without mutations, hazard ratio HR=1.32, 95% CI=1.07-1.63, p=0.01.). In lifetable estimates from ages 40-75 years, 14.4% of male p.C282Y homozygotes are projected to develop prostate cancer (versus 10.7% without mutations, excess 3.8%, 95% CI = 1.3-6.8). There was no excess of studied cancers in female p.C282Y homozygotes, or in p.C282Y/p.H63D compound heterozygotes of either sex. In a large community sample of male p.C282Y homozygotes, there was a 32% increase in prostate cancer risk, in addition to the known increased liver cancer risk. Those reporting *HFE* genotype status or monitoring p.C282Y homozygous males may need to ensure clinical monitoring for both liver and prostate cancers.

Introduction

Hereditary haemochromatosis (HH) is a common genetic disorder of iron overload, predominantly caused by the *HFE* p.C282Y mutation and to a lesser extent the *HFE* p.H63D mutation¹. The p.C282Y variant is carried by 10 to 15% of people with northern European Ancestries, with approximately 1 in 150 being p.C282Y homozygous¹. Iron is an essential element that aids in cell proliferation and growth, but at elevated levels can be toxic. High iron levels have been linked to cancer due to its contribution to tumour initiation and growth^{2 3}. The iron overload associated with haemochromatosis is well established in playing a causal role in the development of liver disease and liver cancer⁴⁵. We previously showed in UK Biobank that male p.C282Y homozygotes have a ten-fold increase in the risk of hepatic malignancies compared to those without the mutations⁴. Female p.C282Y homozygotes however have shown no significant increase in risk of hepatic malignancies⁴ perhaps due to partial protection from severe iron overload through menstrual iron losses⁶.

The reports of risk of other types of cancer in individuals with the haemochromatosis-risk mutations is variable, and studies have often not separately examined cancer risk in males and females. A population-based cohort study of almost 7,000 Swedish haemochromatosis patients followed for up to 48 years examined the risk of non-hepatic gastrointestinal cancers compared to the background population. Male and female HH patients had a significantly increased standardized incidence ratio (SIR) of oesophageal squamous cell carcinoma (SIR = 3.2, 95% CI = 1.3–6.6) and colon adenocarcinoma (SIR = 1.4, 95% CI = 1.1–1.9)⁷. However, this study consisted of diagnosed HH patients, with information on *HFE* mutation status unavailable. The Melbourne Collaborative Cohort Study found that p.C282Y homozygotes had an increased risk of colorectal cancer (HR = 2.28; 95% CI = 1.22, 4.25; p = 0.01) and female p.C282Y homozygotes had an increased risk of breast cancer (HR = 2.39; 95% CI = 1.24, 4.61; p = 0.01), but male p.C282Y homozygotes were not at increased risk of prostate cancer⁸. A study of Finnish cancer patients showed that frequency of *HFE* mutations (p.C282Y and p.H63D) did not significantly differ between male prostate cancer patients the population-based controls⁹. A large case-control study in the U.S. did not observe a significant association between haemochromatosis and risk of pancreatic cancer in men and women aged over 66 years¹⁰.

Given the uncertainty about cancer risks (outside the liver) in community populations with haemochromatosis related genotypes, we estimated the risk of several types of cancer by HH genotype status (p.C282Y/p.H63D) compared to those without the mutations, stratified by sex in a large community genotyped sample of participants of European descent. Clarifying these risks is

important given the spread of direct to consumer and clinical testing of asymptomatic individuals for iron related genotypes.

Methods

Participants were from the UK Biobank cohort, a large prospective study of more than 500,000 community volunteers, who were assessed between 2006 and 2010 at baseline in 22 centers throughout England, Scotland and Wales¹¹. Participants were aged 40 to 70 years at baseline and assessment included collecting information on demographics, lifestyle variables and disease history, including providing a blood sample for genotyping. UK Biobank gained ethical approval from the North West Multi-Centre Research Ethics Committee (Research Ethics Committee reference 11/NW/0382). At the baseline assessment, participants gave written informed consent for the collection of data, genotyping from blood samples, and linkage to electronic medical records for follow-up.

Genotyping

Data were available for 451,143 UK Biobank participants of European descent, with *HFE* p.C282Y (rs1800562) and *HFE* p.H63D (rs1799945) genotype information. UK Biobank used Affymetrix microarrays (800,000 markers directly genotyped); *HFE* p.H63D was directly genotyped on the microarray but *HFE* p.C282Y was imputed by the central UK Biobank team¹². 98.7% of participants were imputed with 100% confidence. 1.26% were recoded (i.e. estimated genotype dose between 0 and 0.25 set to 0, values between 0.75 and 1.25 set to 1, and finally between 1.75 and 2 to 2) and the remaining 0.04% of participants (n=183) were excluded due to imprecise p.C282Y imputation.

Cancer Outcomes

Prevalent cancer diagnoses were from baseline self-reported questionnaires, plus hospital inpatient data (National Health Service Hospital Episode Statistics) coded with International Classification of Diseases 10th revision (ICD-10) codes from 1996 to baseline assessment. Incident cancer diagnoses were from baseline assessment (2006 to 2010) to the end of follow-up from hospital inpatient data (to March 2021) and national cancer registry (to July 2019). Information on cancer deaths were obtained from death registrations available until March 2021. We examined any cancer (excluding non-melanoma) and 16 of the most common cancer types: bladder, blood (with sub-analyses of leukemia and lymphoma), bone, brain, breast, colorectal, kidney, lung, melanoma, oesophageal, ovarian, pancreatic, prostate and stomach (see Supplementary Table 1 for ICD-10 coding used). We did not examine liver cancer as we have previously published data on this outcome⁴. Primary care follow-up

data were not included for cancer diagnoses as the completeness of case ascertainment in cancer registry data in England is high at around 98-99%¹³.

Statistical Analysis

Cox proportional hazards regression models were used to test genotype associations with the risk of incident cancer. Each incident cancer outcome excluded participants with any respective baseline prevalent cancer diagnosis. All models were stratified by sex, and adjusted for age, assessment center, genotyping array and ten genetic principal components generated in European-descent participants, accounting for population genetics sub-structure. We report significant associations based on simple p-values without correction for multiple testing ($p < 0.05$). In addition, we report Bonferroni corrected p-values dividing the 0.05 significance level by 17 cancer types ($p < 0.003$). We estimated lifetable probabilities of incident cancer outcomes from age 40 to 75 years in 5-year bands by sex and *HFE* genotypes, applying observed incidence rates in each age group to a notional cohort, estimating cumulative incidence proportions from age 40 to 75 years. All analyses were performed in Stata version 15.1

Results

Characteristics of Participants

We included 451,143 participants of European descent in analyses. The mean age of participants was 56.8 years (standard deviation, SD 8.0, range 40 to 70 years) and 54.3% were female. 2,890 (0.6%) of the cohort were p.C282Y homozygotes. At baseline, 12.1 % of male and 3.4% of female p.C282Y homozygotes were diagnosed with hereditary haemochromatosis. Participants were followed-up from baseline for incident cancer diagnoses for a mean period of 11.6 years (maximum 15.0 years). Non-melanoma skin cancer was not included in our analyses.

In males, 16.9% of p.C282Y homozygotes had an incident diagnosis of any cancer compared to 13.4% in those without mutations. In males, prostate cancer was the most common cancer in both p.C282Y homozygotes (6.8%) and in those with no mutations (5.4%) (Table 1a; Supplementary Table 2a). In females, 9.8% of p.C282Y homozygotes had an incident diagnosis of any cancer compared to 10.2% in those without mutations. In females, breast cancer was the most common cancer in both p.C282Y homozygotes (3.6%) and in those with no mutations (3.9%) (Table 1b; Supplementary Table 2b).

Hazard Ratios for Incident Cancer Outcomes

In male p.C282Y homozygotes, there was a significant increase in the risk of any cancer (HR = 1.29, 95% CI = 1.12-1.48, p=0.0003, n=206). Male p.C282Y homozygotes were also at a significantly increased risk of prostate cancer (HR = 1.32, 95% CI = 1.07-1.63, p = 0.01, n =87) compared to those with no mutations. There is not a significantly increased risk in prostate cancer deaths in male p.C282Y homozygotes, but power was limited due to low case numbers. (HR = 0.73, 95% CI = 0.27-1.94, p = 0.53, n = 4). Male p.C282Y heterozygotes also had a borderline significant increase in risk of prostate cancer (HR = 1.06, 95% CI = 1.00-1.13, p = 0.04, n = 1,381). There was no excess of any type of cancer in male p.C282Y/p.H63D compound heterozygotes. There was also no increased risk of any cancers in female p.C282Y homozygotes or female p.C282Y/p.H63D compound heterozygotes. Unexpectedly, male p.C282Y heterozygotes had a significantly decreased risk of blood cancer (and also the subtypes leukemia and lymphoma). Female p.C282Y/p.H63D compound heterozygotes had a significantly decreased risk of blood cancer and pancreatic cancer. Female p.H63D homozygotes had a significantly lower risk of colorectal cancer. However, following Bonferroni correction for multiple testing, only the association between male p.C282Y homozygotes and an increased risk of any cancer remained significant (see Table 2a and 2b; Supplementary Table 3a and 3b).

Lifetable Risks of Incident Cancer Diagnoses During Follow-up

In lifetable estimates based on observed incidence rates in 5-year age-band from 40 to 75 years, 14.4% (95% CI = 11.7-17.7) of male p.C282Y homozygotes were projected to develop prostate cancer by age 75, compared to 10.7% (95% CI = 10.4-10.9) in those with no mutations – this is an excess proportion of 3.8% (95% CI = 1.3-6.8).

Discussion

Our study represents the largest study of community genotyped haemochromatosis participants reported to date, with over 10-fold more p.C282Y homozygotes than previously analyzed²¹. In this UK Biobank study, male *HFE* p.C282Y homozygotes had previously reported markedly increased liver cancer rates⁴ but also a modest 32% increase in the risk of prostate cancer compared to participants without the mutations. In female *HFE* p.C282Y homozygotes, and in male and female p.C282Y/p.H63D compound heterozygotes, there were no significant increases in risk of any types of cancer.

The increased risk of prostate cancer in male p.C282Y homozygotes observed in our study is a novel result which has not been seen previously in other studies. Though the association was not statistically significant after correcting for studying 17 cancer types, Bonferroni correction is known to be conservative and there is considerable *a priori* evidence for *HFE* p.C282Y homozygous males experiencing excess disease. Prostate cancer was the most common cancer in UK Biobank males and is also the most common cancer in the UK for males accounting for more than one quarter of male cases (27%)¹⁷. We found an excess 3.8% of male p.C282Y homozygotes projected to get prostate cancer by age 75 compared to those without mutations (14.4% compared to 10.7%). In contrast, a study of Finnish cancer patients showed that male p.C282Y homozygotes were not at an increased likelihood of prostate cancer compared to those without the mutations (OR = 1.66, 95% CI = 0.45–6.16, $p = 0.45$)⁹. However, this study comprised of a smaller number of 843 p.C282Y homozygotes, of which only 9 had prostate cancer⁹ compared to 87 of 1,294 male p.C282Y homozygotes with prostate cancer in our study. Similarly, the Melbourne Collaborative Cohort Study found no increased risk of prostate cancer in male p.C282Y homozygotes (HR = 0.96; 95% CI 0.43-2.15; $p = 0.92$)⁸. This study also had a much smaller number of 193 p.C282Y homozygotes (of which only 6 had prostate cancer) but were a very similar age with 99.3% also being aged 40 to 69 years⁸.

Beyond the previously reported increase in liver cancer⁴ and the increase in prostate cancer seen here, we found no significant increase in risk of any other type of cancer in male or female p.C282Y homozygotes. We found no association between *HFE*-genotypes and the risk of pancreatic cancer, despite the previous suggestion that higher serum iron is associated with pancreatic cancer¹⁸. In contrast to our results, a case control study in a Chinese Han population found that with each additional copy of p.H63D allele there was a 21% increase in risk of pancreatic cancer (OR = 1.21, 95% CI 1.05–1.39, $P = 7.72 \times 10^{-3}$)¹⁹. However, in line with our results a large case-control study in the U.S. also did not find a significant association between haemochromatosis and risk of pancreatic cancer, in older men and women¹⁰. We also found no association between p.C282Y homozygous status and colorectal cancer, although the Melbourne Collaborative Cohort Study found over a two-fold increase in risk. However, the Melbourne study included just 193 p.C282Y homozygotes compared to 2,890 in the current study.⁸ In male p.C282Y heterozygotes we found a significant but modest decrease in the risk of blood cancers which has not been seen before, and therefore warrants further investigation. In women, we found no association between *HFE*-genotypes and the risk of breast cancer in our study despite a previous study in Sweden showing a significant positive association between serum iron and breast cancer risk in postmenopausal women²⁰, and an Australian cohort study which showed a 2.4-fold increase in the risk of breast cancer in female p.C282Y homozygotes⁸.

Strengths and Limitations

This was a large study of community genotyped participants, with more than ten times the number of p.C282Y homozygotes compared to the previous largest study²¹. The study had objective classification of cancer diagnoses from hospital inpatient data, and also the cancer registry which has high levels of case ascertainment completeness (98-99%)¹³. There was a long prospective follow-up period of over a mean of 11 years, in 40 to 70 year olds. However, the study has some limitations. Firstly, at baseline UK Biobank participants were healthier than the general population²²; however risk estimates are from incident cancer during follow-up so this should be less susceptible to any baseline bias. Secondly, we included participant of European ancestry so results may not be applicable to other populations. Third data on ferritin concentrations and transferrin saturation were not available in UK Biobank so we do not have information to comment on iron loading specifically. Fourth, although our findings were adjusted for chronological age, we did not evaluate heterogeneity between individuals in terms of extent or rate of biological aging which may interact with alterations in iron-mediated cellular metabolism associated with specific HH genotypes in determining cancer risk.

Conclusions

In male p.C282Y homozygotes, beyond the known increased in risk of liver cancer, there was also a modest increase in the risk of prostate cancer. Female p.C282Y homozygotes, and male and female p.C282Y/p.H63D compound heterozygotes were not at an increased risk of any types of cancer.

Conflict of interest disclosures: None reported.

Data Availability Statement: Data are available on application to the UK Biobank (<https://www.ukbiobank.ac.uk/enable-your-research/register>).

Acknowledgements: This research was conducted using the UK Biobank resource, under application 14631. We thank the UK Biobank participants and coordinators for the dataset.

Funding: This research was funded by an award to DM by the UK Medical Research Council (MR/S009892/1). JA is supported by an NIHR Advanced Fellowship (NIHR301844). DM and LCP are supported by the University of Exeter Medical School. SVT and FMT acknowledge support from the National Cancer Institute and (R01 CA188025 [SVT] and R01 CA233636 [FMT]). GAK

acknowledges support from the National Institute on Aging (P30 AG067988; R33 AG061456), as well as the Travelers Chair in Geriatrics and Gerontology.

Role of the Funder: The funders had no role in the design and conduct of the study; collection, management, analysis, and interpretation of the data; preparation, review, or approval of the manuscript; and decision to submit the manuscript for publication.

References

1. Bomford A. Genetics of haemochromatosis. *Lancet*. 2002;360(9346):1673-1681. doi:10.1016/S0140-6736(02)11607-2
2. Torti S V., Torti FM. Iron and cancer: More ore to be mined. *Nat Rev Cancer*. 2013;13(5):342-355. doi:10.1038/nrc3495
3. Torti S V., Torti FM. Iron and cancer: 2020 vision. *Cancer Res*. 2020;80(24):5435-5448. doi:10.1158/0008-5472.CAN-20-2017
4. Atkins JL, Pilling LC, Masoli JAH, et al. Association of Hemochromatosis *HFE* p.C282Y Homozygosity With Hepatic Malignancy. *JAMA*. 2020;324(20):2048. doi:10.1001/jama.2020.21566
5. Pilling LC, Tamosauskaite J, Jones G, et al. Common conditions associated with hereditary haemochromatosis genetic variants: cohort study in UK Biobank. *BMJ*. 2019;364:k5222. doi:10.1136/bmj.k5222
6. Harrison-Findik DD. Gender-related variations in iron metabolism and liver diseases. *World J Hepatol*. 2010;2(8):302-310. doi:10.4254/wjh.v2.i8.302
7. Lagergren K, Wahlin K, Mattsson F, Alderson D, Lagergren J. Haemochromatosis and gastrointestinal cancer. *Int J Cancer*. 2016;139(8):1740-1743. doi:10.1002/ijc.30229
8. Osborne NJ, Gurrin LC, Allen KJ, et al. *HFE* C282Y homozygotes are at increased risk of breast and colorectal cancer. *Hepatology*. 2010;51(4):1311-1318. doi:10.1002/hep.23448
9. Syrjäkoski K, Fredriksson H, Ikonen T, et al. Hemochromatosis gene mutations among Finnish male breast and prostate cancer patients. *Int J Cancer*. 2006;118(2):518-520. doi:10.1002/ijc.21331
10. Julián-Serrano S, Yuan F, Barrett MJ, Pfeiffer RM, Stolzenberg-Solomon RZ. Hemochromatosis, Iron Overload–Related Diseases, and Pancreatic Cancer Risk in the Surveillance, Epidemiology, and End Results (SEER)-Medicare. *Cancer Epidemiol Biomarkers Prev*. Published online 2021:1-5. doi:10.1158/1055-9965.epi-21-0476
11. Sudlow C, Gallacher J, Allen N, et al. UK Biobank: An Open Access Resource for Identifying the Causes of a Wide Range of Complex Diseases of Middle and Old Age. *PLoS Med*. 2015;12(3):e1001779. doi:10.1371/journal.pmed.1001779
12. Bycroft C, Freeman C, Petkova D, et al. The UK Biobank resource with deep phenotyping and genomic data. *Nature*. 2018;562(7726):203-209. doi:10.1038/s41586-018-0579-z
13. Møller H, Richards S, Hanchett N, et al. Completeness of case ascertainment and survival time error in English cancer registries: Impact on 1-year survival estimates. *Br J Cancer*. 2011;105(1):170-176. doi:10.1038/bjc.2011.168
14. Allen KJ, Gurrin LC, Constantine CC, et al. Iron-overload-related disease in *HFE* hereditary hemochromatosis. *N Engl J Med*. 2008;358(3):221-230. doi:10.1056/NEJMoa073286
15. Niederau C, Strohmeyer G, Stremmel W. Epidemiology, clinical spectrum and prognosis of

- hemochromatosis. *Adv Exp Med Biol*. 1994;356:293-302.
16. Ellervik C, Birgens H, Tybjaerg-Hansen A, Nordestgaard BG. Hemochromatosis genotypes and risk of 31 disease endpoints: Meta-analyses including 66,000 cases and 226,000 controls. *Hepatology*. 2007;46(4):1071-1080. doi:10.1002/hep.21885
 17. Cancer Research UK. Accessed December 2, 2021. <https://www.cancerresearchuk.org/health-professional/cancer-statistics/incidence/common-cancers-compared#ref-2>
 18. Friedman GD, Van Den Eeden SK. Risk factors for pancreatic cancer: An exploratory study. *Int J Epidemiol*. 1993;22(1):30-37. doi:10.1093/ije/22.1.30
 19. Zhao Z, Li C, Hu M. Plasma ferritin levels , HFE polymorphisms , and risk of pancreatic cancer among Chinese Han population. Published online 2014:7629-7633. doi:10.1007/s13277-014-1978-x
 20. Gaur A, Collins H, Wulaningsih W. Iron metabolism and risk of cancer in the Swedish AMORIS study. *Cancer Causes Control*. Published online 2013:1393-1402. doi:10.1007/s10552-013-0219-8
 21. Adams PC, Barton JC, McLaren GD, et al. Screening for Iron Overload: Lessons from the HEmochromatosis and IRon Overload Screening (HEIRS) Study. *Can J Gastroenterol*. 2009;23(11):769-772. doi:10.1155/2009/839308
 22. Fry A, Littlejohns TJ, Sudlow C, et al. Comparison of Sociodemographic and Health-Related Characteristics of UK Biobank Participants With Those of the General Population. *Am J Epidemiol*. 2017;186(9):1026-1034. doi:10.1093/aje/kwx246

Table 1. Baseline characteristics of sample and number of incident cancer diagnoses during follow-up, by genotype

	Males			Females		
	No mutations	C282Y+/H63+	C282Y +/-	No mutations	C282Y+/H63+	C282Y +/-
Total participants	122,845	4,954	1,294	145,708	5,745	1,596
Age at baseline, mean (SD)	56.99 (8.10)	56.95 (8.14)	56.85 (8.18)	56.62 (7.94)	56.46 (7.87)	56.94 (7.98)
HH diagnosis at baseline, (%)	30 (0.02)	29 (0.59)	156 (12.06)	8 (0.01)	12 (0.21)	54 (3.38)
Number of incident diagnoses*						
Cancer (any, excluding non-melanoma)	15,333 (13.42)	607 (13.19)	206 (16.93)	13,340 (10.22)	493 (9.70)	142 (9.83)
Bladder cancer	1,239 (1.01)	52 (1.05)	15 (1.16)	423 (0.29)	23 (0.40)	8 (0.50)
Blood cancer (any)	1,809 (1.48)	63 (1.28)	27 (2.10)	1,393 (0.96)	36 (0.63)	16 (1.01)
Leukemia	639 (0.52)	23 (0.47)	7 (0.54)	405 (0.28)	13 (0.23)	4 (0.25)
Lymphoma	922 (0.75)	32 (0.65)	15 (1.16)	793 (0.55)	20 (0.35)	10 (0.63)
Bone cancer	2,112 (1.72)	83 (1.68)	17 (1.32)	1,638 (1.13)	73 (1.27)	20 (1.25)
Brain cancer	301 (0.25)	11 (0.22)	3 (0.23)	230 (0.16)	12 (0.21)	1 (0.06)
Breast cancer		N/A		5,471 (3.92)	212 (3.88)	55 (3.58)
Colorectal cancer	2,171 (1.78)	84 (1.71)	25 (1.95)	1,702 (1.17)	62 (1.09)	19 (1.20)
Kidney cancer	658 (0.54)	21 (0.42)	10 (0.78)	373 (0.26)	16 (0.28)	6 (0.38)
Lung cancer	1,495 (1.22)	54 (1.09)	14 (1.08)	1,404 (0.96)	57 (0.99)	19 (1.19)
Melanoma	992 (0.81)	39 (0.79)	8 (0.62)	1,012 (0.70)	32 (0.56)	10 (0.63)
Oesophageal cancer	586 (0.48)	22 (0.44)	5 (0.39)	235 (0.16)	5 (0.09)	1 (0.06)
Ovarian cancer		N/A		806 (0.56)	34 (0.59)	7 (0.44)
Pancreatic cancer	506 (0.41)	22 (0.44)	4 (0.31)	419 (0.29)	7 (0.12)	1 (0.06)
Prostate cancer	6,517 (5.40)	279 (5.73)	87 (6.78)		N/A	
Stomach cancer	459 (0.37)	19 (0.38)	3 (0.23)	199 (0.14)	7 (0.12)	3 (0.19)

n=451,143 participants of European descent. Participants followed from baseline (2006-2010) via electronic medical records: Hospital Episode Statistics (to March 2021) and cancer registry (to July 2019).

p.C282Y heterozygous, p.H63D heterozygous and p.H63D homozygous individuals are not shown (see Supplementary Table 2a and b for details).

*Excludes prevalent diagnoses at baseline.

Table 2a. Hazard Ratio (95% CI) for risk of incident cancer by p.C282Y/p.H63D status compared to those with no mutations

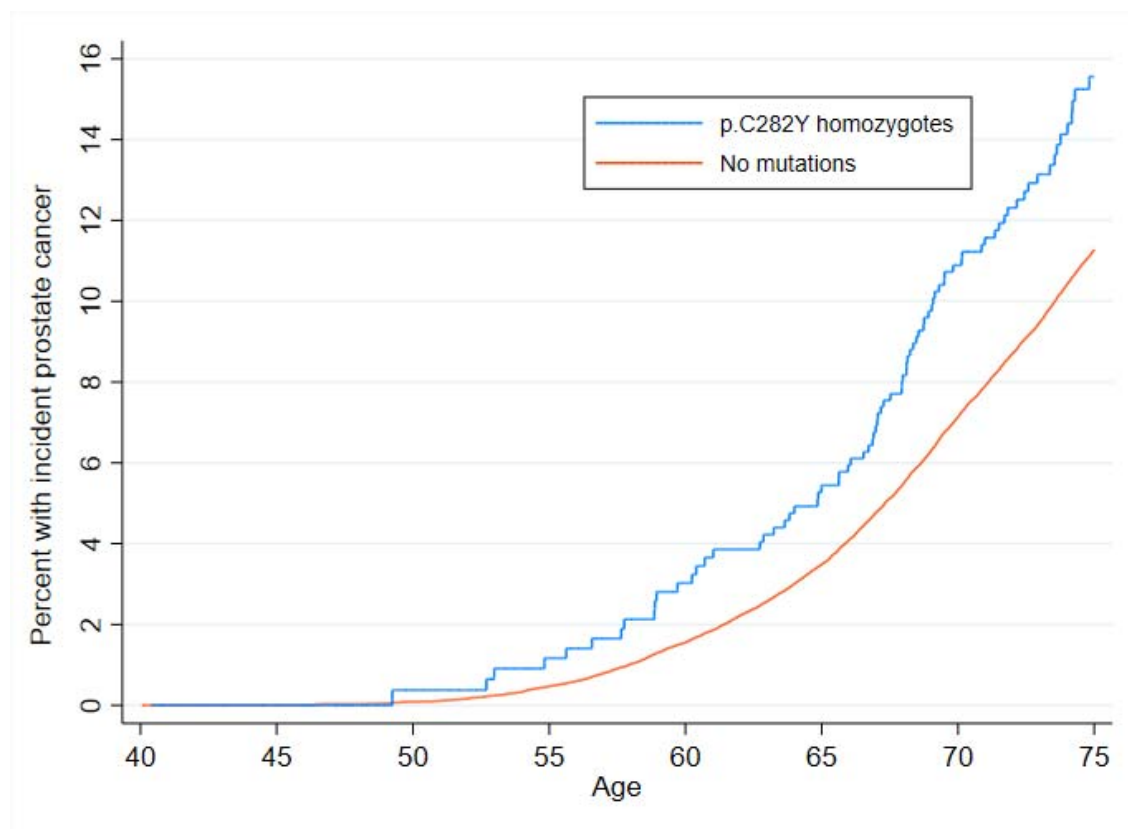
	Men														Women					
	No mutations	C282Y+/H63D+				C282Y +/-				C282Y+/H63D+				C282Y +/-						
		HR	HR	95% CI	p value	HR	95% CI	p value	HR	95% CI	p value	HR	95% CI	p value						
Cancer (any, excluding non-melanoma)	1.00	0.97	0.90	1.06	0.54	1.29	1.12	1.48	0.0003**	0.95	0.86	1.03	0.23	0.93	0.79	1.09	0.37			
Bladder cancer	1.00	1.06	0.80	1.40	0.69	1.22	0.73	2.02	0.45	1.41	0.93	2.14	0.11	1.65	0.82	3.32	0.16			
Blood cancer (any)	1.00	0.87	0.67	1.11	0.26	1.44	0.99	2.11	0.06	0.67	0.48	0.93	0.02*	1.03	0.63	1.69	0.91			
Leukemia	1.00	0.89	0.59	1.36	0.60	1.06	0.50	2.23	0.88	0.83	0.48	1.45	0.51	0.88	0.33	2.37	0.80			
Lymphoma	1.00	0.86	0.61	1.23	0.41	1.56	0.94	2.61	0.09	0.65	0.41	1.01	0.05	1.12	0.60	2.10	0.71			
Bone cancer	1.00	0.97	0.78	1.21	0.82	0.78	0.48	1.26	0.31	1.14	0.90	1.44	0.28	1.09	0.70	1.69	0.71			
Brain cancer	1.00	0.91	0.50	1.66	0.76	0.97	0.31	3.03	0.96	1.34	0.75	2.40	0.32	0.39	0.05	2.79	0.35			
Breast cancer	1.00	N/A							0.99	0.87	1.14	0.93	0.90	0.69	1.18	0.45				
Colorectal cancer	1.00	0.93	0.75	1.16	0.53	1.06	0.71	1.57	0.77	0.93	0.72	1.20	0.57	0.98	0.62	1.54	0.93			
Kidney cancer	1.00	0.79	0.51	1.22	0.29	1.48	0.79	2.77	0.22	1.10	0.67	1.82	0.71	1.40	0.62	3.13	0.42			
Lung cancer	1.00	0.87	0.66	1.14	0.31	0.84	0.50	1.43	0.52	1.00	0.77	1.31	0.97	1.12	0.71	1.77	0.62			
Melanoma	1.00	0.97	0.71	1.34	0.87	0.77	0.38	1.54	0.45	0.92	0.80	1.04	0.19	1.05	0.84	1.31	0.68			
Oesophageal cancer	1.00	0.90	0.59	1.38	0.63	0.78	0.32	1.89	0.59	0.54	0.22	1.30	0.17	0.35	0.05	2.52	0.30			
Ovarian cancer	1.00	N/A							1.08	0.76	1.52	0.67	0.76	0.36	1.60	0.47				
Pancreatic cancer	1.00	1.08	0.70	1.65	0.74	0.75	0.28	2.01	0.57	0.43	0.20	0.90	0.03*	0.21	0.03	1.49	0.12			
Prostate cancer	1.00	1.08	0.95	1.21	0.23	1.32	1.07	1.63	0.01*	N/A										
Stomach cancer	1.00	1.01	0.64	1.59	0.98	0.61	0.20	1.90	0.39	0.88	0.41	1.87	0.74	1.25	0.40	3.92	0.70			

n=451,143 participants of European descent. Participants followed from baseline (2006-2010) via electronic medical records: Hospital Episode Statistics (to March 2021) and cancer registry (to July 2019). Adjusted for age, assessment centre, genotype chip, and PC1-PC10. Excludes prevalent diagnoses at baseline. p.C282Y heterozygous, p.H63D heterozygous and p.H63D homozygous individuals are not shown (see Supplementary Table 3a and b for details).

* p<0.05

** p<0.003 (Bonferroni corrected p-value)

Figure 1. Kaplan-Meier curve for the incidence of prostate cancer in male *HFE* p.C282Y homozygotes compared to those with no mutations



Participants followed from baseline (2006-2010) via electronic medical records: Hospital Episode Statistics (to March 2021) and cancer registry (to July 2019). Excludes prevalent diagnoses at baseline.

Supplementary Table 1. Cancer disease coding

Cancer	ICD-10 codes
Cancer (any, excluding non-melanoma)	C00; C01; C02; C03; C04; C05; C06; C07; C08; C09; C10; C11; C12; C13; C14; C15; C16; C17; C18; C19; C20; C21; C22; C23; C24; C25; C26; C27; C28; C29; C30; C31; C32; C33; C34; C35; C36; C37; C38; C39; C40; C41; C42; C43; C45; C46; C47; C48; C49; C50; C51; C52; C53; C54; C55; C56; C57; C58; C59; C60; C61; C62; C63; C64; C65; C66; C67; C68; C69; C70; C71; C72; C73; C74; C75; C76; C77; C78; C79; C80; C81; C82; C83; C84; C85; C86; C87; C88; C89; C90; C91; C92; C93; C94; C95; C96; C97
Bladder cancer	C67
Blood cancer (all)	C81; C82; C83; C84; C85; C86; C87; C88; C89; C90; C91; C92; C93; C94; C95; C96
Leukaemia	C91; C92; C93; C94; C95
Lymphoma	C81; C82; C83; C84; C85; C86; C87; C88
Bone cancer	C40; C41; C79.5; C90
Brain cancer	C71
Breast cancer	C50
Colorectal cancer	C18; C19; C20
Kidney cancer	C64
Lung cancer	C34
Melanoma	C43
Oesophageal cancer	C15
Ovarian cancer	C56
Pancreatic cancer	C25
Prostate cancer	C61
Stomach cancer	C16

ICD-10 = International Classification of Diseases 10th revision codes.

Supplementary Table 2a. Baseline characteristics of sample and number of incident cancer diagnoses during follow-up in males, by genotype

	Males						Total
	No mutations	H63D+/-	H63D+/+	C282Y+/H63+	C282Y+/-	C282Y +/+	
Total participants	122,845	47,988	4,674	4,954	24,575	1,294	206,330
Age at baseline, mean (SD)	56.99 (8.10)	57.02 (8.13)	56.99 (8.08)	56.95 (8.14)	57.02 (8.12)	56.85 (8.18)	57.0 (8.11)
HH diagnosis at baseline, (%)	30 (0.02)	17 (0.04)	8 (0.17)	29 (0.59)	27 (0.11)	156 (12.06)	267 (0.13)
Number of incident diagnoses*							
Cancer (any, excluding non-melanoma)	15,333 (13.42)	6,164 (13.78)	566 (13.07)	607 (13.19)	3,143 (13.72)	206 (16.93)	26,019 (13.55)
Bladder cancer	1,239 (1.01)	501 (1.05)	56 (1.21)	52 (1.05)	270 (1.10)	15 (1.16)	2,133 (1.04)
Blood cancer (any)	1,809 (1.48)	683 (1.43)	62 (1.33)	63 (1.28)	300 (1.23)	27 (2.10)	2,944 (1.44)
Leukemia	639 (0.52)	273 (0.57)	17 (0.36)	23 (0.47)	103 (0.42)	7 (0.54)	1,062 (0.52)
Lymphoma	922 (0.75)	337 (0.70)	33 (0.71)	32 (0.65)	148 (0.60)	15 (1.16)	1,487 (0.72)
Bone cancer	2,112 (1.72)	822 (1.72)	85 (1.82)	83 (1.68)	416 (1.70)	17 (1.32)	3,535 (1.72)
Brain cancer	301 (0.25)	129 (0.27)	7 (0.15)	11 (0.22)	69 (0.28)	3 (0.23)	520 (0.25)
Breast cancer				N/A			
Colorectal cancer	2,171 (1.78)	873 (1.83)	71 (1.53)	84 (1.71)	434 (1.78)	25 (1.95)	3,658 (1.79)
Kidney cancer	658 (0.54)	264 (0.55)	23 (0.49)	21 (0.42)	150 (0.61)	10 (0.78)	1,126 (0.55)
Lung cancer	1,495 (1.22)	608 (1.27)	46 (0.99)	54 (1.09)	302 (1.23)	14 (1.08)	2,519 (1.22)
Melanoma	992 (0.81)	398 (0.84)	41 (0.88)	39 (0.79)	213 (0.87)	8 (0.62)	1,691 (0.83)
Oesophageal cancer	586 (0.48)	248 (0.52)	30 (0.64)	22 (0.44)	135 (0.55)	5 (0.39)	1,026 (0.50)
Ovarian cancer				N/A			
Pancreatic cancer	506 (0.41)	193 (0.40)	18 (0.39)	22 (0.44)	107 (0.44)	4 (0.31)	850 (0.41)
Prostate cancer	6,517 (5.40)	2,608 (5.52)	239 (5.20)	279 (5.73)	1,381 (5.71)	87 (6.78)	11,111 (5.47)
Stomach cancer	459 (0.37)	169 (0.35)	19 (0.41)	19 (0.38)	98 (0.40)	3 (0.23)	767 (0.37)

Supplementary Table 2b. Baseline characteristics of sample and number of incident cancer diagnoses during follow-up in females, by genotype

	Females						Total
	No mutations	H63D+/-	H63D+/+	C282Y+/H63+	C282Y+/-	C282Y +/+	
Total participants	145,708	57,023	5,584	5,745	29,157	1,596	244,813
Age at baseline, mean (SD)	56.62 (7.94)	56.58 (7.93)	56.59 (8.08)	56.46 (7.87)	56.49 (7.98)	56.94 (7.98)	56.60 (7.94)
HH diagnosis at baseline, (%)	8 (0.01)	6 (0.01)	2 (0.04)	12 (0.21)	5 (0.02)	54 (3.38)	87 (0.04)
Number of incident diagnoses*							
Cancer (any, excluding non-melanoma)	13,340 (10.22)	5,261 (10.30)	502 (10.06)	493 (9.70)	2,648 (10.15)	142 (9.83)	22,386 (10.21)
Bladder cancer	423 (0.29)	148 (0.26)	16 (0.29)	23 (0.40)	78 (0.27)	8 (0.50)	696 (0.28)
Blood cancer (any)	1,393 (0.96)	531(0.94)	57 (1.02)	36 (0.63)	283 (0.97)	16 (1.01)	2,316 (0.95)
Leukemia	405 (0.28)	172 (0.30)	22 (0.39)	13 (0.23)	93 (0.32)	4 (0.25)	709 (0.29)
Lymphoma	793 (0.55)	286 (0.50)	25 (0.45)	20 (0.35)	150 (0.52)	10 (0.63)	1,284 (0.53)
Bone cancer	1,638 (1.13)	593 (1.04)	48 (0.86)	73 (1.27)	325 (1.12)	20 (1.25)	2,697 (1.10)
Brain cancer	230 (0.16)	94 (0.16)	8 (0.14)	12 (0.21)	40 (0.14)	1 (0.06)	385 (0.16)
Breast cancer	5,471 (3.92)	2,214 (4.05)	228 (4.27)	212 (3.88)	1,058 (3.79)	55 (3.58)	9,238 (3.94)
Colorectal cancer	1,702 (1.17)	686 (1.21)	46 (0.83)	62 (1.09)	353 (1.22)	19 (1.20)	2,868 (1.18)
Kidney cancer	373 (0.26)	152 (0.27)	15 (0.27)	16 (0.28)	89 (0.31)	6 (0.38)	651 (0.27)
Lung cancer	1,404 (0.96)	560 (0.98)	57 (1.02)	57 (0.99)	286 (0.98)	19 (1.19)	2,383 (0.97)
Melanoma	1,012 (0.70)	388 (0.69)	34 (0.61)	32 (0.56)	195 (0.67)	10 (0.63)	1,671 (0.69)
Oesophageal cancer	235 (0.16)	99 (0.17)	8 (0.14)	5 (0.09)	46 (0.16)	1 (0.06)	394 (0.16)
Ovarian cancer	806 (0.56)	285 (0.50)	27 (0.49)	34 (0.59)	149 (0.51)	7 (0.44)	1,308 (0.54)
Pancreatic cancer	419 (0.29)	164 (0.29)	16 (0.29)	7 (0.12)	104 (0.36)	1 (0.06)	711 (0.29)
Prostate cancer				N/A			
Stomach cancer	199 (0.14)	73 (0.13)	5 (0.09)	7 (0.12)	43 (0.15)	3 (0.19)	330 (0.13)

n=451,143 participants of European descent. Participants followed from baseline (2006-2010) via electronic medical records: Hospital Episode Statistics (to March 2021) and cancer registry (to July 2019).

*Excludes prevalent diagnoses at baseline.

Supplementary Table 3a. Hazard Ratio (95% CI) for risk of incident cancer by p.C282Y/p.H63D status compared to those with no mutations in males

	Men																		
	No mutations				H63D+/-			H63D+/+			C282Y+/H63D+			C282Y+/-			C282Y +/+		
	Ref	HR	95% CI	p value	HR	95% CI	p value	HR	95% CI	p value	HR	95% CI	p value	HR	95% CI	p value	HR	95% CI	p value
Cancer (any, excluding non-melanoma)	1.00	1.03	1.00 1.06	0.10	0.98	0.90 1.06	0.56	0.97	0.90 1.06	0.54	1.01	0.97 1.05	0.61	1.29	1.12 1.48	0.00			
Bladder cancer	1.00	1.04	0.94 1.15	0.49	1.21	0.93 1.58	0.16	1.06	0.80 1.40	0.69	1.10	0.96 1.25	0.17	1.22	0.73 2.02				
Blood cancer (any)	1.00	0.97	0.89 1.06	0.45	0.91	0.70 1.17	0.44	0.87	0.67 1.11	0.26	0.83	0.73 0.93	0.002*	1.44	0.99 2.11				
Leukemia	1.00	1.10	0.95 1.26	0.21	0.70	0.44 1.14	0.15	0.89	0.59 1.36	0.60	0.80	0.65 0.99	0.04*	1.06	0.50 2.23				
Lymphoma	1.00	0.94	0.83 1.06	0.30	0.94	0.67 1.33	0.74	0.86	0.61 1.23	0.41	0.80	0.67 0.95	0.01*	1.56	0.94 2.61				
Bone cancer	1.00	0.99	0.92 1.08	0.89	1.07	0.86 1.32	0.57	0.97	0.78 1.21	0.82	0.98	0.88 1.09	0.67	0.78	0.48 1.26				
Brain cancer	1.00	1.10	0.89 1.35	0.37	0.61	0.29 1.29	0.20	0.91	0.50 1.66	0.76	1.15	0.89 1.50	0.29	0.97	0.31 3.03				
Breast cancer	1.00									N/A									
Colorectal cancer	1.00	1.02	0.95 1.11	0.54	0.86	0.68 1.08	0.20	0.93	0.75 1.16	0.53	0.97	0.88 1.08	0.60	1.06	0.71 1.57				
Kidney cancer	1.00	1.03	0.89 1.18	0.73	0.92	0.61 1.40	0.71	0.79	0.51 1.22	0.29	1.13	0.95 1.35	0.17	1.48	0.79 2.77				
Lung cancer	1.00	1.03	0.94 1.14	0.50	0.80	0.60 1.08	0.15	0.87	0.66 1.14	0.31	0.97	0.86 1.10	0.64	0.84	0.50 1.43				
Melanoma	1.00	1.03	0.91 1.15	0.66	1.09	0.80 1.49	0.59	0.97	0.71 1.34	0.87	1.06	0.92 1.23	0.41	0.77	0.38 1.54				
Oesophageal cancer	1.00	1.08	0.93 1.25	0.32	1.36	0.94 1.96	0.10	0.90	0.59 1.38	0.63	1.12	0.93 1.35	0.24	0.78	0.32 1.89				
Ovarian cancer	1.00									N/A									
Pancreatic cancer	1.00	0.97	0.83 1.15	0.75	0.94	0.59 1.50	0.79	1.08	0.70 1.65	0.74	1.04	0.85 1.29	0.68	0.75	0.28 2.01				
Prostate cancer	1.00	1.02	0.98 1.07	0.31	0.97	0.85 1.10	0.66	1.08	0.95 1.21	0.23	1.06	1.00 1.13	0.04*	1.32	1.07 1.63				
Stomach cancer	1.00	0.94	0.79 1.12	0.48	1.09	0.69 1.73	0.71	1.01	0.64 1.59	0.98	1.04	0.84 1.30	0.70	0.61	0.20 1.90				

Supplementary Table 3b. Hazard Ratio (95% CI) for risk of incident cancer by p.C282Y/p.H63D status compared to those with no mutations in females

	Women																				
	No mutations				H63D+/-			H63D+/+			C282Y+/H63D+			C282Y+/-			C282Y +/+				
	Ref	HR	95% CI	P value	HR	95% CI	P value	HR	95% CI	P value	HR	95% CI	P value	HR	95% CI	P value	HR	95% CI	P value		
Cancer (any, excluding non-melanoma)	1.00	1.01	0.98	1.04	0.56	0.98	0.90	1.07	0.71	0.95	0.86	1.03	0.23	0.99	0.95	1.03	0.71	0.93	0.79	1.09	0.37
Bladder cancer	1.00	0.90	0.74	1.08	0.26	0.98	0.60	1.62	0.94	1.41	0.93	2.14	0.11	0.92	0.72	1.17	0.51	1.65	0.82	3.32	0.16
Blood cancer (any)	1.00	0.98	0.89	1.08	0.68	1.07	0.82	1.40	0.60	0.67	0.48	0.93	0.02*	1.03	0.90	1.17	0.70	1.03	0.63	1.69	0.91
Leukemia	1.00	1.09	0.91	1.30	0.34	1.42	0.92	2.18	0.11	0.83	0.48	1.45	0.51	1.16	0.93	1.46	0.19	0.88	0.33	2.37	0.80
Lymphoma	1.00	0.93	0.81	1.06	0.27	0.83	0.55	1.23	0.35	0.65	0.41	1.01	0.05	0.95	0.80	1.13	0.57	1.12	0.60	2.10	0.71
Bone cancer	1.00	0.93	0.84	1.02	0.11	0.76	0.57	1.02	0.06	1.14	0.90	1.44	0.28	1.00	0.88	1.12	0.94	1.09	0.70	1.69	0.71
Brain cancer	1.00	1.05	0.82	1.33	0.72	0.90	0.45	1.82	0.77	1.34	0.75	2.40	0.32	0.88	0.63	1.23	0.46	0.39	0.05	2.79	0.35
Breast cancer	1.00	1.04	0.99	1.09	0.16	1.09	0.96	1.25	0.19	0.99	0.87	1.14	0.93	0.97	0.91	1.04	0.36	0.90	0.69	1.18	0.45
Colorectal cancer	1.00	1.03	0.94	1.13	0.51	0.70	0.52	0.94	0.02*	0.93	0.72	1.20	0.57	1.04	0.92	1.16	0.54	0.98	0.62	1.54	0.93
Kidney cancer	1.00	1.04	0.86	1.26	0.67	1.04	0.62	1.75	0.87	1.10	0.67	1.82	0.71	1.19	0.94	1.50	0.14	1.40	0.62	3.13	0.42
Lung cancer	1.00	1.02	0.92	1.12	0.72	1.04	0.80	1.36	0.75	1.00	0.77	1.31	0.97	0.99	0.87	1.12	0.85	1.12	0.71	1.77	0.62
Melanoma	1.00	0.98	0.87	1.10	0.77	0.88	0.63	1.24	0.46	0.81	0.57	1.15	0.23	0.97	0.83	1.13	0.67	0.89	0.48	1.66	0.71
Oesophageal cancer	1.00	1.08	0.85	1.36	0.53	0.88	0.43	1.77	0.71	0.54	0.22	1.30	0.17	0.96	0.70	1.32	0.80	0.35	0.05	2.52	0.30
Ovarian cancer	1.00	0.90	0.79	1.03	0.14	0.87	0.59	1.27	0.47	1.08	0.76	1.52	0.67	0.92	0.78	1.10	0.38	0.76	0.36	1.60	0.47
Pancreatic cancer	1.00	1.01	0.84	1.20	0.95	1.00	0.60	1.64	0.99	0.43	0.20	0.90	0.03*	1.24	1.00	1.54	0.05	0.21	0.03	1.49	0.12
Prostate cancer	1.00																				
Stomach cancer	1.00	0.94	0.72	1.23	0.65	0.65	0.27	1.59	0.35	0.88	0.41	1.87	0.74	1.06	0.77	1.48	0.71	1.25	0.40	3.92	0.70

n=451,143 participants of European descent. Participants followed from baseline (2006-2010) via electronic medical records: Hospital Episode Statistics (to March 2021) and cancer registry (to July 2019). Adjusted for age, assessment centre, genotype chip, and PC1-PC10. Excludes prevalent diagnoses at baseline.

* p<0.05

** p<0.003 (Bonferroni corrected p-value)