

Ammonium Sulfate Addition Reduces the Need for Guanidinium Isothiocyanate in the Denaturing Transport Medium Used for SARS-COV-2 RNA Detection

1 Ge Liu¹, Jiaoyan Jia², Jianfeng Zhong², Hanfang Jiang³, Yongqi Yang², Xiuqing Lu^{4*}, Zhendan
2 He^{1*}, Qinchang Zhu^{1, 2*}

3
4 ¹College of Pharmacy, Shenzhen Technology University, Shenzhen, 518118, PR China
5 ²School of Pharmaceutical Sciences, Shenzhen University, Shenzhen, 518060, PR China
6 ³Clinical Laboratory, Shenzhen Children's Hospital, Shenzhen, 518038, PR China
7 ⁴GBCBIO Technologies Inc., Guangzhou, 511434, PR China

8
9 * Correspondence:

10 Xiuqing Lu: Email: lu3002@163.com ; Zhendan He: Email: hezhendan@sztu.edu.cn ;
11 Qinchang Zhu: Email: zhuqc@szu.edu.cn

12

13

14 Abstract

15 Rapid identification of SARS-CoV-2 infected individuals through viral RNA detection followed by
16 effective personal isolation remains the most effective way to prevent the spread of this virus. Large-
17 scale RNA detection involves mass specimen collection and transportation. For biosafety reasons,
18 denaturing viral transport medium has been extensively used during the pandemic. But the high
19 concentrations of guanidinium isothiocyanate (GITC) in such media have raised issues around
20 sufficient GITC supply and laboratory safety. Here, we tested whether supplementing media
21 containing low concentrations of GITC with ammonium sulfate (AS) would affect the throat-swab
22 detection of SARS-CoV-2 pseudovirus or a viral inactivation assay targeting both enveloped and
23 non-enveloped viruses. Adding AS to the denaturing transport media reduced the need for high levels
24 of GITC and improved SARS-COV-2 RNA detection without compromising virus inactivation.

25

26 **Keywords:** COVID-19, RNA detection, denaturing transport media, guanidinium isothiocyanate,
27 ammonium sulfate

28

29

30

31

32

33 **1 Introduction**

34 The ongoing COVID-19 pandemic has resulted in more than 422 million infections and 5.8 million
35 deaths worldwide since its emergence in late 2019 [1, 2]. It appears to have now entered a new wave
36 of infection sparking by the heavily mutated Omicron variant [3]. Although several vaccines (e.g.,
37 mRNA vaccines, inactivated vaccines, and viral vector vaccines) have been conditionally approved
38 in some countries [4, 5] and various antiviral agents are in various stages of clinical trial [6, 7], there
39 is currently no effective way to control the COVID-19 pandemic. Before all susceptible populations
40 are fully protected, it remains extremely important to deal with the pandemic by controlling the
41 infection sources and blocking the transmission routes, both of which rely on rapidly
42 identifying SARS-CoV-2 infected individuals and isolating them from the population. Nucleic acid-
43 based methods are the fastest methods for detecting SARS-CoV-2, especially in the early infection
44 stages [8]. Such methods have played irreplaceable roles in the mass screening for SARS-CoV-
45 2 infection. Large-scale nucleic acid testing has been implemented following local case reports where
46 possible community transmission is indicated and this approach has supported China's sustained
47 containment of COVID-19 [9]. Wuhan (Hubei Province) performed city-wide mass screening using
48 reverse-transcriptase quantitative polymerase chain reaction (RT-qPCR) testing for nearly 10 million
49 people over a 10-day period [10], and Qingdao (Shandong Province) tested 10.9 million people for
50 SARS-CoV-2 RNA in 5 days [11].

51 Large-scale nucleic acid testing involves large-scale specimen collection and transportation.
52 Nasopharyngeal swabs and throat swabs are usually used in the specimen collection for SARS-CoV-
53 2 RT-PCR testing [8]. After collection, specimens are generally preserved and transported in
54 nondenaturing or denaturing media. Nondenaturing media, such as conventional viral transport
55 medium and Amies transport medium, mainly contain saline buffer and antibiotics [12-14].
56 Nondenaturing media are used to maintain the integrity and infectivity of the viruses in the specimen.
57 Therefore, nondenaturing media are used to detect viral nucleic acids and antigens or for culture-
58 based viral detection. However, laboratory personnel risk infection when handling infectious
59 specimens during the testing process, especially during large-scale testing [15]. Denaturing transport
60 media usually contain guanidinium isothiocyanate (GITC) or other virus-inactivating denaturants,
61 which is why they are only suitable for nucleic acid detection. One advantage of denaturing transport
62 medium is its potential to reduce the risk of infection of laboratory personnel and improve SARS-
63 CoV-2 RNA detection [16-18]. Both denaturing and nondenaturing viral transport media are widely
64 used [13, 17, 19], and the former are recommended in China for large-scale nucleic acid testing [20].
65 Although various commercially available and in-house denaturing viral transport media exist, there
66 are no uniform formulation standards. The core component of denaturing viral transport media is
67 usually GITC, whose concentrations are mostly between 30%–50% (2.5M–4.2M) [17]. GITC is a
68 chaotropic agent with a strong protein denaturing function. It is commonly used as a nucleic
69 acid protector during RNA and DNA extraction because it denatures RNases and DNases. GITC is
70 also used to deactivate many viruses including SARS-CoV-2 [17, 21, 22].

71 However, with the growing demand for denaturing viral transport media in large-scale nucleic
72 acid testing, a GITC supply shortage occurred and its price doubled in early 2021 in China.
73 Therefore, optimizing the formulation by reducing the GITC content may be a way to help meet the
74 demand for SARS-CoV-2 nucleic acid screening and reduce the testing costs. Ammonium sulfate
75 (AS) is a low-cost inorganic salt with high water solubility from its ionic nature. It is often used for
76 protein precipitation and purification in the laboratory. High-concentration AS is also used to

77 enhance RNA stability in tissue samples [23, 24]. Here, we report that reducing the amount of GITC
78 in denaturing viral transport media while adding AS to them can improve the sensitivity of SARS-
79 CoV-2 RNA detection without affecting the virus inactivation effect.

80 **2 Materials and methods**

81 **2.1 Cells and viruses**

82 Vero cells (ATCC, CCL-81) were cultured in Dulbecco's modified Eagle's medium (Gibco, NY,
83 USA) supplemented with 10% (v/v) fetal calf serum. SARS-CoV-2 pseudovirus (FNV-2019-nCoV-
84 abEN, $>10^8$ copies/mL) was purchased from Fubio Biological Technology Co., Ltd. (Hangzhou,
85 China). Herpes simplex virus type 1 (HSV-1, VR-733) originated from the American Type Culture
86 Collection. Enterovirus 71 (EV71, C4 strain) was kindly provided by Dr Tao Peng, Guangzhou
87 Medical University, China. Both HSV-1 and EV71 were propagated and titred in Vero cells. SARS-
88 CoV-2 pseudovirus was used directly.

89 **2.2 Denaturing solutions**

90 Modified Primestore MTM (Molecular Transport Medium), which we used as a reference medium,
91 contains 3M GITC, 25 mM sodium citrate, 0.5% SLS (sodium lauryl sulfate) and 20 mM
92 ethylenediaminetetraacetic acid. Basing on the modified Primestore MTM, we prepared the
93 denaturing transport medium with various GITC concentrations and/or AS as indicated.

94 **2.3 SARS-CoV-2 RNA detection**

95 A throat swab sample from a healthy person was collected in 4 mL saline, and the 100 μ L of SARS-
96 CoV-2 pseudovirus ($>10^7$ copies) we added to the sample was mixed in by vortexing. Next, 200 μ L
97 of the SARS-CoV-2 pseudovirus-containing throat swab sample was added to 1 mL of each
98 denaturing solution we prepared or to PBS. The solutions were kept at room temperature (RT) or
99 37°C, and RNA was extracted from them using the Virus DNA/RNA Kit (GBCBIO) after incubation
100 for 24 h, 72 h, 120 h or 5 d. RT-qPCR detection of SARS-CoV-2 RNA was performed in 20- μ L
101 reactions. The BeyoFast™ Probe One-Step qRT-PCR Kit (Beyotime) and primer and probe
102 sequences targeting the ORF1ab gene and N gene were used in accordance with the protocols for
103 COVID-19 Prevention and Control Guidelines (Seventh Version) issued by China's National Health
104 Commission. The cycle threshold (Ct value) for each sample was recorded and used for cross-sample
105 comparisons. Graphs and statistical analyses (multiple t tests) were prepared with GraphPad Prism
106 8.0.2 (GraphPad Software, Inc, La Jolla, CA, United States). Statistical significance determined using
107 the Holm-Sidak method, with alpha of 0.01.

108 **2.4 Virus inactivation assay**

109 The viral inactivation abilities of the denaturing solutions containing different GITC concentrations
110 and/or AS were investigated using a plaque reduction assay. HSV-1 virus (100 μ L, 4.135×10^8
111 plaque forming units (PFUs)/mL) or EV71 virus (5×10^7 PFUs/mL) was added to 0.9 mL of each
112 denaturing solution, and each solution was mixed and incubated for 1 h at RT. After incubation, each
113 mixture was serially diluted and filtered through Millex-GP 0.22 μ m membrane filters (Millipore)
114 and finally used in a plaque reduction assay using previously described procedures [25, 26].

115 **3 Results and discussion**

116 **3.1 Effects of the test solutions on SARS-CoV-2 RNA detection**

117 To evaluate the effect of adding AS to denaturing transport media on SARS-CoV-2 RNA detection, a
118 modified commercial denaturing transport medium containing 3M GITC was used as the basic
119 formula and reference reagent in the experiments. To mimic the sampling of SARS-CoV-2, a throat
120 swab sample from a healthy person was mixed with SARS-CoV-2 pseudovirus. It was then placed
121 into denaturing media containing different concentrations of GITC and AS and incubated at room
122 temperature or 37°C for 24 h, 72 h, 120 h or 5 d as indicated. After RNA extraction, qRT-PCR on the
123 SARS-CoV-2 ORF1ab and N genes was performed and comparatively analysed.

124 The results showed that reducing the GITC concentrations increased the Ct values, but adding
125 1M AS to the transport media reduced the Ct values of the ORF1ab gene and the N gene irrespective
126 of the 24-h, 72-h or 120-h incubation period (Fig. 1A and 1B). A further assay on the samples
127 incubated at RT or 37°C for 5 days revealed that adding 1M AS to transport media containing lower
128 GITC concentrations significantly reduced the Ct values when compared with PBS or the transport
129 medium containing 3M GITC ($p < 0.01$) (Fig. 1C). A clear dose-dependent effect was observed when
130 AS was added to each transport medium containing a fixed GITC concentration (Fig. 1D). Because
131 lower Ct values indicate higher qRT-PCR detection efficiency, these results clearly suggest that
132 adding AS to the transport media can reduce the amount of GITC required for sample denaturation
133 and increase the detection efficiency for SARS-CoV-2 RNA.

134 GITC is commonly used at high concentrations in denaturing viral transport media [17, 21].
135 However, the sharp increase in demand for large-scale nucleic acid testing is causing a shortage of
136 GITC during the ongoing COVID-19 pandemic. Another issue is that the high GITC concentrations
137 used in the viral testing platforms can react with bleach (sodium hypochlorite) to produce harmful
138 cyanide gas [27]. Therefore, reducing the GITC concentrations in transport media is worthwhile.
139 However, we found that simply reducing its concentration in transport medium decreased the
140 detection efficiency towards SARS-CoV-2 RNA (Fig. 1A and 1B). Here, we showed that adding AS
141 to the transport media not only recovered but also improved the detection efficiency when low
142 concentrations of GITC were present. The use of AS to precipitate proteins out of solution is known,
143 and AS have been reported to suppress more than 90% of RNase A activity [28, 29]. Therefore, the
144 improved RNA detection efficiency observed in this study possibly resulted from AS-induced
145 denaturation of the RNase A protein, but further research is needed to confirm it.

146 **3.2 Inactivation effects on enveloped and non-enveloped viruses**

147 To compare the virus inactivation effects of denaturing transport media containing low
148 concentrations of GITC and 1M AS with a commonly used denaturing transport medium, a plaque
149 reduction assay designed for enveloped and non-enveloped viruses was performed. SARS-CoV-2 is
150 an enveloped virus. However, the biosafety hazards relating to conducting experiments with a live
151 SARS-CoV-2 virus caused us to use a common enveloped virus, HSV-1, to evaluate the inactivation
152 effect of various transport media against this virus. We also tested EV71, a non-enveloped virus with
153 a typical icosahedral capsid structure. After subjecting the viruses to various denaturing solutions at
154 RT for 1 h, each virus was subjected to a plaque reduction assay.

155 The results showed that a common denaturing viral transport medium containing 3M GITC
156 completely inactivated both HSV-1 and EV71 (Fig. 2A and 2B). No difference was observed in
157 HSV-1 inactivation when 1M AS was added to the media even when the GITC concentrations were
158 reduced to 0.1M (Fig. 2A). In the EV71 inactivation experiments, the effect of supplementing the
159 transport media with 0.5 M GITC plus 1M AS was equal to that where 3M GITC was present, and
160 EV71 was completely inactivated (Fig 2B). These results suggest that decreasing the GITC

161 concentrations but adding AS to the transport media did not affect the virus inactivation effect when
162 compared with general denaturing transport medium containing GITC at high concentration.

163 **4 Conclusions**

164 Faced with the ongoing global COVID-19 pandemic, we sought a safer, low-cost denaturing viral
165 transport medium for preserving SARS-CoV-2 RNA without compromising the effectiveness of viral
166 detection. Based on the components of the modified commercial transport medium we used as a
167 reference reagent, we reduced the GITC concentrations in the media, added AS, and obtained a new
168 formula. We tested the different transport media by detecting SARS-CoV-2 pseudovirus in a throat
169 swab sample and via a viral inactivation assay targeting both enveloped and non-enveloped viruses.
170 We found that adding AS to the denaturing transport media reduced the use of GITC, improved
171 SARS-COV-2 RNA detection, and did not compromise the virus inactivation effect of the media.
172 These findings suggest that AS is a potential component that when added to denaturing transport
173 medium may reduce the cost and improve the detection efficiency towards SARS-COV-2 RNA.

174 **Conflict of Interest**

175 Author Xiujing Lu was employed by GBCBIO Technologies Inc.. The remaining authors declare that
176 the research was conducted in the absence of any commercial or financial relationships that could be
177 construed as a potential conflict of interest.

178 **Author Contributions**

179 LG conceived, planned the experiments and wrote the manuscript. JJY, ZJF and YYQ carried out the
180 experiment. JHF analyzed the data and reviewed the manuscript. LXJ, HZD and ZQC conceived the
181 original idea, acquired financial support and supervised the project.

182 **Funding**

183 This project was funded by the Science and Technology Program of Guangdong Province
184 (2018A030313252), the Shenzhen Science and Technology Project (JCYJ20190808122605563), the
185 Shenzhen Peacock Plan and the Fundamental Research Funds for Shenzhen Technology University.

186 **Acknowledgments**

187 We thank Professor Tao Peng of Guangzhou Medical University for providing enterovirus 71. We
188 also thank Dr. Sandra Cheesman for editing the language of a draft of this manuscript.

189

190 **References**

- 191 1. Wang, C., et al., *A novel coronavirus outbreak of global health concern*. Lancet, 2020. **395**(10223): p.
192 470-473.
- 193 2. WHO, *Weekly epidemiological update on COVID-19 - 22-February-2022*.
194 [https://www.who.int/publications/m/item/weekly-epidemiological-update-on-covid-19---22-february-](https://www.who.int/publications/m/item/weekly-epidemiological-update-on-covid-19---22-february-2022)
195 [2022, 2022](https://www.who.int/publications/m/item/weekly-epidemiological-update-on-covid-19---22-february-2022)
- 196 3. Callaway, E., *Heavily mutated Omicron variant puts scientists on alert*. Nature, 2021. **600**(7887): p.
197 21.
- 198 4. Li, Y., et al., *A Comprehensive Review of the Global Efforts on COVID-19 Vaccine Development*. ACS

- 199 Central Science, 2021. **7**(4): p. 512-533.
- 200 5. Sharma, O., et al., *A Review of the Progress and Challenges of Developing a Vaccine for COVID-19*.
201 Front Immunol, 2020. **11**: p. 585354.
- 202 6. Espano, E., et al., *COVID-19 Antiviral and Treatment Candidates: Current Status*. Immune Netw,
203 2021. **21**(1): p. e7.
- 204 7. Simsek Yavuz, S. and S. Unal, *Antiviral treatment of COVID-19*. Turk J Med Sci, 2020. **50**(SI-1): p.
205 611-619.
- 206 8. Tsang, N.N.Y., et al., *Diagnostic performance of different sampling approaches for SARS-CoV-2 RT-
207 PCR testing: a systematic review and meta-analysis*. The Lancet Infectious Diseases.
- 208 9. Li, Z., et al., *Comprehensive large-scale nucleic acid-testing strategies support China's sustained
209 containment of COVID-19*. Nature Medicine, 2021. **27**(5): p. 740-742.
- 210 10. Cao, S., et al., *Post-lockdown SARS-CoV-2 nucleic acid screening in nearly ten million residents of
211 Wuhan, China*. Nature Communications, 2020. **11**(1): p. 5917.
- 212 11. Xing, Y., et al., *Rapid Response to an Outbreak in Qingdao, China*. N Engl J Med, 2020. **383**(23): p.
213 e129.
- 214 12. Smith, K.P., et al., *Large-Scale, In-House Production of Viral Transport Media To Support SARS-CoV-
215 2 PCR Testing in a Multihospital Health Care Network during the COVID-19 Pandemic*. J Clin
216 Microbiol, 2020. **58**(8).
- 217 13. Penrod, Y., D. Garcia, and S.T. Dunn, *Evaluation of transport media for laboratory detection of SARS-
218 CoV-2 in upper respiratory tract swab specimens*. J Med Virol, 2021. **93**(5): p. 2774-2781.
- 219 14. Johnson, F.B., *Transport of viral specimens*. Clin Microbiol Rev, 1990. **3**(2): p. 120-31.
- 220 15. Karthik, K., et al., *Biosafety Concerns During the Collection, Transportation, and Processing of
221 COVID-19 Samples for Diagnosis*. Arch Med Res, 2020. **51**(7): p. 623-630.
- 222 16. Carvalho, A.F., et al., *The use of denaturing solution as collection and transport media to improve
223 SARS-CoV-2 RNA detection and reduce infection of laboratory personnel*. Brazilian Journal of
224 Microbiology, 2021. **52**(2): p. 531-539.
- 225 17. Welch, S.R., et al., *Analysis of Inactivation of SARS-CoV-2 by Specimen Transport Media, Nucleic
226 Acid Extraction Reagents, Detergents, and Fixatives*. Journal of clinical microbiology, 2020. **58**(11): p.
227 e01713-20.
- 228 18. Erster, O., et al., *Improved sensitivity, safety, and rapidity of COVID-19 tests by replacing viral
229 storage solution with lysis buffer*. PLoS One, 2021. **16**(3): p. e0249149.
- 230 19. van Bockel, D., et al., *Evaluation of Commercially Available Viral Transport Medium (VTM) for
231 SARS-CoV-2 Inactivation and Use in Point-of-Care (POC) Testing*. Viruses, 2020. **12**(11).
- 232 20. China, N.H.C.o.t.P.s.R.o., *SARS-CoV-2 Nucleic Acid Test Workbook for Medical Institutions (Trial
233 Version 2)*. <http://www.nhc.gov.cn/yzygj/s7659/202012/b89bcd0813da41788688eb14787b3c72.shtml>,
234 2020.
- 235 21. Pastorino, B., et al., *Evaluation of Chemical Protocols for Inactivating SARS-CoV-2 Infectious
236 Samples*. Viruses, 2020. **12**(6).
- 237 22. Westhaus, S., et al., *Evaluation of stability and inactivation methods of SARS-CoV-2 in context of
238 laboratory settings*. bioRxiv, 2020: p. 2020.09.11.292581.
- 239 23. Daum, L.T., et al., *A clinical specimen collection and transport medium for molecular diagnostic and
240 genomic applications*. Epidemiol Infect, 2011. **139**(11): p. 1764-73.
- 241 24. Mutter, G.L., et al., *Comparison of frozen and RNALater solid tissue storage methods for use in RNA
242 expression microarrays*. BMC Genomics, 2004. **5**(1): p. 88.
- 243 25. Zhu, Q.C., Y. Wang, and T. Peng, *Herpes simplex virus (HSV) immediate-early (IE) promoter-directed
244 reporter system for the screening of antiherpetics targeting the early stage of HSV infection*. J Biomol
245 Screen, 2010. **15**(8): p. 1016-20.
- 246 26. Zhu, Q.C., et al., *Inhibition of enterovirus 71 replication by chrysofenetin and penduletin*. Eur J
247 Pharm Sci, 2011. **44**(3): p. 392-8.
- 248 27. Paik, S. and X. Wu, *Measuring toxic gases generated from reaction of guanidine isothiocyanate-
249 containing reagents with bleach*. Chemical Health & Safety, 2005. **12**(4): p. 33-38.
- 250 28. Allewell, N.M. and A. Sama, *The effect of ammonium sulfate on the activity of ribonuclease A*.
251 Biochim Biophys Acta, 1974. **341**(2): p. 484-8.

252 29. ES, L., *Methods and reagents for preserving RNA in cell and tissue samples*. US Patent,
253 2001(6,204,375).

254

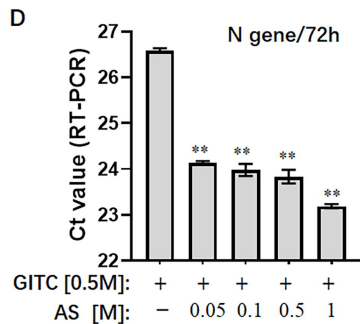
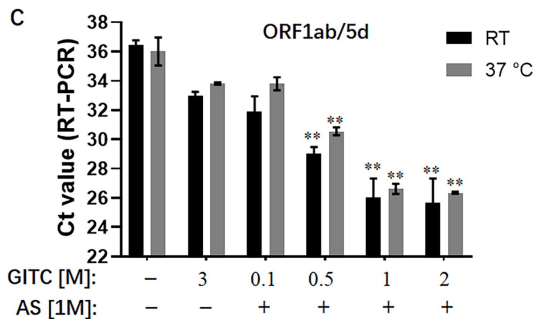
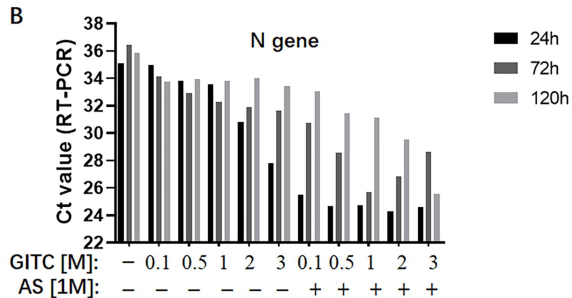
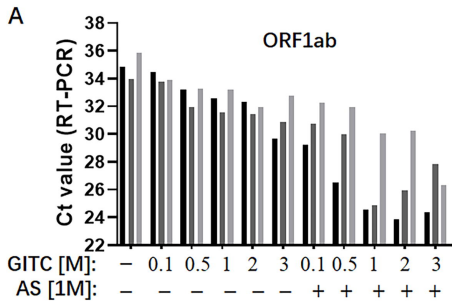
255

256 Figure 1. Effects of ammonium sulfate (AS) addition to denaturing transport media on SARS-CoV-2
257 RNA detection. (A) ORF1ab gene detection for various samples in denaturing media or PBS for 24 h,
258 72 h and 120 h at room temperature (RT). (B) N gene detection for various samples in denaturing
259 media or PBS for 24 h, 72 h and 120 h at RT. (C) ORF1ab gene detection for various samples in
260 denaturing media or PBS for 5 d at RT or 37°C. ** $p < 0.01$ vs. 3M GITC group. (D) N gene detection
261 for various samples in denaturing media across an AS concentration gradient for 72 h at RT.
262 ** $p < 0.01$ vs. Control group. GITC: guanidinium isothiocyanate. Samples without GITC and AS are
263 the PBS controls.

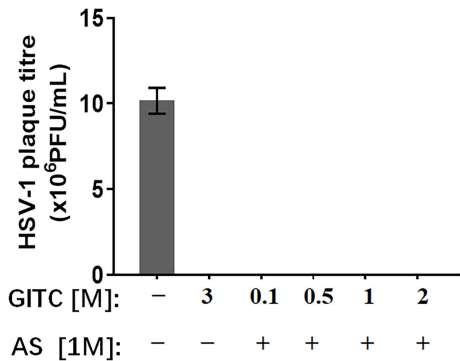
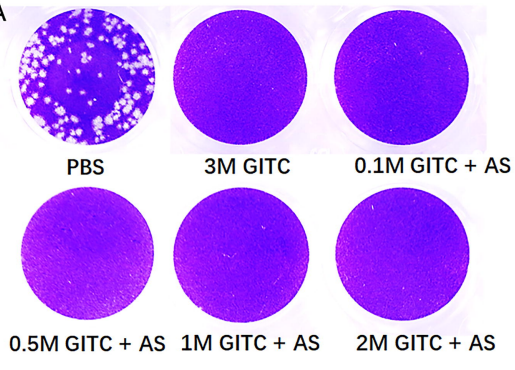
264

265 Figure 2. Effects of denaturing transport media containing low concentrations of guanidinium
266 isothiocyanate (GITC) and ammonium sulfate supplementation on virus inactivation. (A) Plaque
267 assay targeting the enveloped HSV-1 virus. (B) Plaque assay targeting the EV71 non-enveloped
268 virus. Viruses were incubated in PBS or transport media containing the indicated components,
269 followed by plaque assays on Vero cells. Plaques were visualized by crystal violet staining. Left
270 panels: representative plaques. Right bar charts: virus titres calculated from the plaque assays. Data
271 represent the average \pm SD from three independent experiments.

272



A



B

