

1 **Elevated fecal mitochondrial DNA from symptomatic norovirus infections suggests**  
2 **potential health relevance of human mitochondrial DNA in fecal source tracking**

3  
4 Kevin J. Zhu, Brittany Suttner, Jackie Knee, Drew Capone, Christine L. Moe, Christine E.  
5 Stauber, Kostas T. Konstantinidis, Thomas E. Wallach, Amy J. Pickering, Joe Brown  
6

7 **Corresponding Author**  
8

9 **Joe Brown** – Department of Environmental Sciences and Engineering, Gillings School of Global  
10 Public Health, University of North Carolina at Chapel Hill, Chapel Hill, North Carolina 27599,  
11 United States  
12

13 **Author Information**  
14

15 **Kevin J. Zhu** – School of Civil and Environmental Engineering, Georgia Institute of  
16 Technology, Atlanta, Georgia 30332, United States  
17

18 **Brittany Suttner** – School of Civil and Environmental Engineering, Georgia Institute of  
19 Technology, Atlanta, Georgia 30332, United States  
20

21 **Jackie Knee** – Department of Disease Control, London School of Hygiene and Tropical  
22 Medicine, London, United Kingdom  
23

24 **Drew Capone** – Department of Environmental Sciences and Engineering, Gillings School of  
25 Global Public Health, University of North Carolina at Chapel Hill, Chapel Hill, North Carolina  
26 27599, United States  
27

28 **Christine L. Moe** – Center for Global Safe Water, Sanitation, and Hygiene, Rollins School of  
29 Public Health, Emory University, Atlanta, Georgia 30322, United States  
30

31 **Christine E. Stauber** – Department of Population Health Sciences, School of Public Health,  
32 Georgia State University, Atlanta, Georgia 30302, United States  
33

34 **Kostas T. Konstantinidis** – School of Civil and Environmental Engineering, Georgia Institute  
35 of Technology, Atlanta, GA 30332, United States  
36

37 **Thomas E. Wallach** – Division of Pediatric Gastroenterology, SUNY Downstate Health  
38 Sciences University, Brooklyn, New York 11203, United States  
39

40 **Amy J. Pickering** – Department of Civil and Environmental Engineering, University of  
41 California, Berkeley, California 94720, United States

42 **Abstract**

43 An end goal of fecal source tracking (FST) is to provide information on risk of transmission of  
44 waterborne illnesses associated with fecal contamination. Ideally, concentrations of FST markers  
45 in ambient waters would reflect exposure risk. Human mtDNA is an FST marker that is exclusively  
46 human in origin and may be elevated in feces of individuals experiencing gastrointestinal  
47 inflammation. In this study, we examined whether human mtDNA is elevated in fecal samples  
48 from individuals with symptomatic norovirus infections using samples from the US, Mozambique,  
49 and Bangladesh. We quantified hCYTB484 (human mtDNA) and HF183/BacR287 (human-  
50 associated *Bacteroides*) FST markers using droplet digital PCR. We observed the greatest  
51 difference in concentrations of hCYTB484 when comparing samples from individuals with  
52 symptomatic norovirus infections versus individuals without norovirus infections or diarrhea  
53 symptoms:  $\log_{10}$  increase of 1.42 in US samples (3,820% increase,  $p$ -value = 0.062), 0.49 in  
54 Mozambique (308% increase,  $p$ -value = 0.061), and 0.86 in Bangladesh (648% increase,  $p$ -value  
55 = 0.035). We did not observe any trends in concentrations of HF183/BacR287 in the same samples.  
56 These results suggest concentrations of fecal mtDNA increase during symptomatic norovirus  
57 infection and that mtDNA in environmental samples may represent an unambiguously human  
58 source-tracking marker that correlates with enteric pathogen exposure risk.

## 59 **Introduction**

60 Fecal source tracking (FST) aims to detect fecal contamination in environmental samples and  
61 identify the source using a variety of chemical and biological methods. Method validation studies  
62 to date have demonstrated FST markers targeting human-associated microbial DNA to have  
63 variable sensitivity (true positive rate) and specificity (true negative rate) across geographies<sup>1-5</sup>.  
64 Human mitochondrial DNA (mtDNA) markers, having been demonstrated to have high sensitivity  
65 <sup>6-9</sup> and high specificity <sup>6-9</sup> across varying geographies, may complement the use of microbial FST  
66 targets, especially in settings or environmental matrices where other FST markers have not been  
67 previously validated<sup>9</sup>.

68

69 In addition to retaining high sensitivity and specificity, an ideal FST marker would also convey  
70 information about the risk associated with detected fecal contamination: increasing concentration  
71 of FST markers in environmental samples should indicate increasing risk of gastrointestinal and  
72 other waterborne illnesses associated with exposure<sup>10</sup>. This increasing risk may be due to an  
73 increase in fecal input generally increasing chances of pathogens being present or due to a fecal  
74 source present with particularly high concentrations of infectious pathogens. However, such a  
75 marker has not yet been identified. mtDNA FST markers differ from microbial markers because  
76 they target host DNA instead of host-associated microbial DNA. The main cellular sources of fecal  
77 mtDNA are thought to be intestinal epithelial cells (IEC)<sup>6,7</sup> and white blood cells (leukocytes)<sup>6,11</sup>.  
78 IECs constitute the intestinal epithelium that prevents the entry of harmful substances into the body  
79 while selectively allowing entry of beneficial nutrients. Leukocytes transmigrate into the intestinal  
80 lumen during enteric infections. Because of these origins, fecal mtDNA concentrations may  
81 exhibit baseline levels during homeostasis (e.g., IEC shedding to balance IEC proliferation) with

82 elevated levels during inflammatory events (e.g., infection triggering leukocyte transmigration,  
83 increased apoptosis, IEC extrusion and shedding) <sup>12,13</sup>.

84

85 A key assumption often used when assessing risk associated with fecal indicators is that  
86 concentrations of fecal indicators covary with concentrations of sewage present and, therefore,  
87 concentrations of pathogens. If concentrations of mtDNA FST markers increase during cases of  
88 enteric infections, specifically in symptomatic cases where vomiting and/or diarrhea facilitates the  
89 shedding of pathogens, mtDNA markers may advance the capabilities of FST markers by  
90 providing risk information beyond the assumed covariance between concentrations of indicator  
91 and pathogen. Associations between mtDNA FST markers and enteric infections have not yet been  
92 studied, and it is unknown whether concentrations of fecal mtDNA are indicative of symptomatic  
93 enteric infections.

94

95 The aim of this study was to investigate whether concentrations of a human mtDNA FST marker  
96 are higher in feces from individuals with symptomatic norovirus infections than feces from  
97 individuals without. We used archived fecal samples from participants in studies conducted in the  
98 US, Mozambique, and Bangladesh, and compared fecal mtDNA concentrations across three  
99 groups: (1) no detected enteric infection and no diarrhea, (2) norovirus infection and no diarrhea,  
100 and (3) norovirus infection and diarrhea. We hypothesized that concentrations of fecal mtDNA  
101 will be highest in feces from symptomatic norovirus infections versus those from individuals with  
102 asymptomatic norovirus infections or no enteric infections.

103

104 **Materials and Methods**

105 **Feces Samples.** We obtained human fecal samples from three different studies conducted in the  
106 US, Mozambique, and Bangladesh. We first investigated the US samples, using pairs of one pre-  
107 and one post-challenge sample per subject from a norovirus Genogroup I (GI) challenge study in  
108 which norovirus-spiked oysters were used as the intentional exposure <sup>14</sup>. These pre- and post-  
109 challenge pairs were from six subjects who developed asymptomatic norovirus infections and five  
110 subjects who developed symptomatic norovirus infections (Table 1). In the challenge study,  
111 symptoms (chills, cramping, diarrhea, fatigue, fever, headache, myalgia, nausea, vomiting, white  
112 blood cell shift) were recorded during the challenge period and follow-up visits <sup>14</sup>. To be classified  
113 as symptomatic, a subject had to have at least one of the above symptoms, with fever requiring at  
114 least one other associated symptom.

115  
116 Following initial results from the US samples (Figure S1), we expanded the analysis to include  
117 archived fecal samples from two other studies: 1) a cross-sectional study of child (under four years  
118 of age) enteric infections in urban Maputo, Mozambique <sup>15,16</sup> and 2) an experimental trial  
119 evaluating the effect of passive chlorination devices at shared water points on child (under five  
120 years of age) diarrhea prevalence in urban Bangladesh <sup>17,18</sup>. We classified the fecal samples using  
121 the following criteria: 1) no enteric pathogens detected and from individuals with no reported  
122 diarrhea (hereafter referred to as enteric<sup>-</sup>asymptomatic), 2) norovirus GI/GII detected and from  
123 individuals with no reported diarrhea (noro<sup>+</sup>asymptomatic), 3) norovirus GI/GII detected, and from  
124 individuals with reported diarrhea (noro<sup>+</sup>symptomatic). Detection of enteric pathogens in the  
125 archived Mozambique and Bangladesh samples was determined by the Luminex (Austin, Texas,  
126 US) xTAG® Gastrointestinal Pathogen Panel RUO (GPP) in previous studies <sup>15,18</sup>. The GPP  
127 detects the nucleic acid markers of 15 bacterial, viral, and parasitic enteric pathogens, including

128 norovirus GI/GII with a limit of detection for norovirus GI/GII on the order of  $10^6$  genome  
129 copies/gram of feces <sup>19</sup>. There were low numbers of norovirus-positive feces in the Mozambique  
130 and Bangladesh samples, and feces positive for norovirus were often positive for another GPP  
131 target <sup>15,18</sup>. Because of this, we included norovirus-positive feces that were positive for additional  
132 pathogen(s) in the noro<sup>+</sup>asymptomatic and noro<sup>+</sup>symptomatic groups. We identified  
133 enteric<sup>-</sup>asymptomatic samples by selecting feces that were negative for all Luminex GPP targets.  
134 Reported diarrhea in the Bangladesh and Mozambique studies was based on caregiver-reported  
135 diarrhea criteria of  $\geq 3$  loose or watery feces in a 24-hr period with a 1-week recall period. Because  
136 the Bangladesh <sup>17</sup> and Mozambique <sup>15</sup> studies observed low prevalence of caregiver-reported  
137 diarrhea, we were limited in the number of noro<sup>+</sup>symptomatic samples we could examine (Table  
138 1).

139  
140 **DNA Extraction and ddPCR.** Prior to DNA extraction, we stored fecal samples at  $-80^{\circ}\text{C}$ . For US  
141 samples, we performed DNA extractions using 0.1 g of fecal sample and the MO BIO PowerSoil®  
142 kit (Carlsbad, CA, USA) following manufacturer's instructions. For Mozambique and Bangladesh  
143 samples, we performed DNA extractions using 0.1 g of fecal sample and the Qiagen QIAamp®  
144 96 PowerFecal QIAcube® HT Kit automated on the Qiagen QIAcube® HT platform (Hilden,  
145 Germany) following manufacturer's instructions, using soil grinding SK38 bead tubes (Bertin  
146 Corp., Rockville, MD, USA) containing 650  $\mu\text{l}$  pre-warmed Buffer PW1 and homogenizing the  
147 bead tubes on a vortexer for 10 minutes. Following DNA extraction, we stored all extracts at -  
148  $80^{\circ}\text{C}$  until analysis. We quantified hCYTB484 <sup>9</sup> and HF183/BacR287 <sup>20</sup> markers through droplet  
149 digital PCR (ddPCR) on Bio-Rad QX200™ Droplet Digital™ PCR (Hercules, CA, USA) using  
150 methods developed previously <sup>9</sup> and normalized marker concentrations to nanograms of double

151 stranded DNA (ng dsDNA) as measured by Qubit 3.0 Fluorometer with Qubit High Sensitivity  
152 DNA kits (ThermoFisher Scientific, Waltham, MA, USA) to account for differences in moisture  
153 content between feces and any potential differential recovery between kits <sup>21</sup>. Results of biological  
154 replicates for a subset of samples are in supporting information (Table S1). Minimum Information  
155 for Publication of Quantitative Digital PCR Experiments <sup>22</sup> is included in the supporting  
156 information (Table S2). For both assays, we classified samples as not detected if amplification was  
157 below our analytical limit of detection of three positive partitions per ddPCR well <sup>9</sup>. For the  
158 analytical lower limit of quantification, we used previously established assay-specific limits <sup>9</sup>.

159  
160 **Data Analysis.** Because the US samples were collected pre- and post-challenge from each subject,  
161 we applied the Wilcoxon signed rank paired test. For the Mozambique and Bangladesh sample  
162 sets (cross-sectional data), we used the Kruskal-Wallis test, followed with the Dunn test with  
163 Benjamini-Hochberg adjustment. We calculated effect sizes for log<sub>10</sub> transformed concentrations  
164 through a difference in means approach using Cohen's *d*, the difference between the two means  
165 divided by the pooled standard deviation. To compare the relative influences of potential  
166 confounders, we fitted a generalized linear model (GLM) using a Gaussian identity function to the  
167 Mozambique and Bangladesh sample sets using reported diarrhea and norovirus GI/GII  
168 detected/not detected (as determined by the GPP) as the independent variables and log<sub>10</sub> values of  
169 hCYTB484 normalized to ng of dsDNA as the dependent variable while adjusting for number of  
170 pathogens detected (as determined by the GPP), sex, age (continuous, number of months), and  
171 study population (Mozambique or Bangladesh). More information on model fitting can be found  
172 in the supporting information. We performed data analyses in R version 4.0.1.

173

174 **Results and Discussion**

175 We detected hCYTB484 above quantifiable levels in 100% of the samples in this study and found  
176 increases in hCYTB484 in samples from symptomatic norovirus infections. We observed the  
177 largest differences in median hCYTB484 copies / ng dsDNA between the enteric<sup>-</sup>asymptomatic  
178 and noro<sup>+</sup>symptomatic groups (Figure 1, Table 2): a log<sub>10</sub> increase of 1.42 for US samples (3,820%  
179 increase, *p*-value of 0.062, effect size = 4.3), 0.49 increase for Mozambique samples (308%  
180 increase, *p*-value of 0.061, effect size = 0.70), and 0.86 increase for Bangladesh samples (648%  
181 increase, *p*-value of 0.035, statistically significant at  $\alpha = 0.05$  level, effect size = 1.5). The larger  
182 effect sizes between enteric<sup>-</sup>asymptomatic and noro<sup>+</sup>symptomatic versus enteric<sup>-</sup>asymptomatic  
183 and noro<sup>+</sup>asymptomatic across all three countries (Table 2) suggest that fecal mtDNA  
184 concentrations are higher in symptomatic norovirus infections than in asymptomatic norovirus  
185 infections (effect sizes calculated as the difference between means normalized to the pooled  
186 standard deviation). To investigate what variables influenced fecal mtDNA concentrations, we  
187 standardized the GLM regression coefficients to account for different units of measurements and  
188 variances of each variable. The standardized GLM regression coefficients (Table S3) show  
189 reported diarrhea (0.16, 95% CI: 0 – 0.32, *p*-value = 0.045), norovirus detected (0.12, 95% CI: -  
190 0.16 – 0.39, *p*-value = 0.38), age in months (-0.12, 95% CI: -0.28 – 0.03, *p*-value = 0.12), and  
191 study population (Bangladesh or Mozambique) (0.19, 95% CI: -0.36 – -0.03, *p*-value = 0.018) as  
192 having the largest magnitudes. However, only reported diarrhea and study population had *p*-values  
193 < 0.05 (0.045 and 0.018, respectively). Comparison of the standardized regression coefficients  
194 after adjusting for other potential biological confounders suggest that, of the variables tested,  
195 diarrhea and study population had the largest influences on fecal mtDNA concentrations.

196



197 The largest increase in concentrations of fecal mtDNA occurred in the US samples, for several  
198 possible reasons. Firstly, epithelial cell proliferation declines with age<sup>23</sup>. Compared to the adults  
199 in the US study, the children in the Mozambique and Bangladesh studies may have had higher  
200 levels of proliferation even when not experiencing diarrhea. Secondly, fecal mtDNA  
201 concentrations may have varied due to environmental enteric dysfunction (EED)<sup>24</sup>. The  
202 Mozambique and Bangladesh study settings had high prevalence of enteric pathogen exposure<sup>15,18</sup>  
203 as measured by frequency of pathogen detection in feces<sup>25</sup>: estimated 86% and 88% of feces  
204 containing one or more pathogens in Mozambique and Bangladesh samples, respectively. EED, a  
205 condition caused by persistent exposure to enteric pathogens, infections, or perturbations and  
206 characterized by deleterious changes in the intestinal epithelium, can result in malabsorption and  
207 diminished growth and development in children. Despite deleterious changes associated with EED  
208 that may potentially change fecal mtDNA concentrations, such as reduced intestinal villi, EED  
209 typically presents with few or no acute symptoms, potentially reducing in the effect size we  
210 observed in samples from Mozambique and Bangladesh. Lastly, the method of reporting diarrhea  
211 differed between the US versus Mozambique and Bangladesh samples: clinical monitoring versus  
212 caregiver reported. Caregiver-reported diarrhea is subject to recall biases<sup>26,27</sup>, which may have  
213 resulted in misclassification of samples.

214  
215 We did not observe any increases in HF183/BacR287 marker copies / ng dsDNA between the  
216 enteric<sup>-</sup>asymptomatic and noro<sup>+</sup>symptomatic groups (Figure 1), indicating that the elevated  
217 mtDNA concentrations may be specific to mtDNA and not due to a bulk increase in fecal markers.  
218 Furthermore, we detected the HF183/BacR287 marker in 52% of samples, with only 31% of  
219 samples above the analytical lower limit of quantification (quantifiable), a finding consistent with

220 assessments of HF183 in individual human feces across the globe <sup>5,28</sup>. In contrast, we quantified  
221 100% of samples in this study for hCYTB484. HF183/BacR287 was quantifiable in less than a  
222 third of the samples and did not exhibit any consistent pattern between the enteric<sup>-</sup>asymptomatic  
223 and noro<sup>+</sup>symptomatic groups, suggesting that HF183/BacR287 is not widely quantifiable across  
224 individual humans nor are levels of HF183/BacR287 concentration indicative of changes in  
225 intestinal inflammatory status. For these reasons, these results suggest HF183/BacR287 would be  
226 less useful as a biomarker of intestinal inflammation.

227  
228 A variety of sources and processes related to the health of the gastrointestinal system influence  
229 fecal mtDNA concentrations. Because the integrity of the intestinal epithelium is essential to the  
230 host's health, IECs proliferate and are removed in a highly active and regulated cycle <sup>29</sup>. IEC  
231 removal likely depends on the epithelium and host's health, including various potential  
232 mechanisms: engulfment following apoptosis <sup>30,31</sup>, shedding into the intestinal lumen <sup>32-35</sup>,  
233 shedding in response to pathogen or pathogen-associated insults <sup>36-38</sup>, and shedding during other  
234 pathological states such as inflammatory bowel disease, neoplastic growth <sup>39</sup>, and wound healing  
235 <sup>34</sup>. Additionally, current evidence of norovirus infection in humans points towards enterocytes in  
236 the small intestines as the primary tropism <sup>40,41</sup>. Noroviruses, as non-enveloped viruses, are  
237 presumed to have lytic effects on their host cells <sup>42</sup>, potentially releasing host mtDNA into the  
238 intestinal lumen. Leukocytes can be found in feces from individuals with inflammatory diarrhea  
239 <sup>40,43,44</sup>, and neutrophils are highly abundant first responders, transmigrating across the intestinal  
240 epithelium during enteric infections <sup>45</sup>. Lastly, there is emerging evidence of mtDNA's immune-  
241 signaling role in inflammatory diseases: pathogen-associated signal <sup>46</sup> and damage-associated  
242 molecular pattern <sup>13,47</sup>. Many of these processes through which mtDNA is shed in feces are

243 involved with gastrointestinal health, lending plausibility to our observation of increased fecal  
244 mtDNA during symptomatic norovirus infections. However, non-pathogenic diseases such as  
245 inflammatory bowel disease and neoplastic growth may also cause elevated fecal mtDNA.

246  
247 Several limitations qualify our results. Prevalences of reported diarrhea in the Bangladesh <sup>17</sup> and  
248 Mozambique <sup>15</sup> trials were low, limiting the number of samples in our analysis and constraining  
249 statistical power. Reported diarrhea in these studies was assessed through a caregiver survey and  
250 is subject to observational and recall biases <sup>26,27</sup>. Multiple pathogens were commonly detected in  
251 the Bangladesh and Mozambique fecal samples, with norovirus rarely detected alone. Co-  
252 infections may have affected fecal mtDNA concentrations as well as symptomology; norovirus  
253 may not have always been the cause of symptoms. While norovirus is an important cause of  
254 gastroenteritis globally, there are other enteric pathogens that can be transmitted through exposure  
255 to fecal contamination in the environment and are relevant to FST.

256  
257 A human-specific FST marker that is informative of risk of illness is needed because fecal indicator  
258 bacteria exhibit non-specificity in the environment (cross-reactivity and regrowth) and because  
259 human fecal contamination represents an important risk to human health <sup>48-52</sup>. In this study, we  
260 observed increased concentrations of mtDNA in feces from individuals with symptomatic  
261 norovirus infections when compared to feces from individuals without norovirus infections or  
262 diarrhea symptoms. This suggests that mtDNA markers may serve as biomarkers of intestinal  
263 inflammation and may provide risk-relevant information by increasing in concentration when an  
264 individual is at higher risk of transmitting norovirus infection <sup>53</sup>. However, more work needs to be  
265 done to understand current limitations of human mtDNA in FST <sup>9</sup>. We need better understanding

266 of the cellular sources of fecal mtDNA, intactness of fecal mtDNA after defecation, and what  
267 conditions modulate fecal mtDNA concentrations. Approaches investigating processes relevant to  
268 gastrointestinal health (e.g., expression of IEC proliferation genes) could also help identify  
269 relevant mechanisms that modulate fecal mtDNA. Studies on the fate and persistence of fecal  
270 mtDNA<sup>8,55</sup> are needed to understand how the signal is attenuated in environments relative to that  
271 of infectious pathogens<sup>56,57</sup>. Before human mtDNA, a nucleic acid marker, can serve as a risk-  
272 relevant FST marker, we need to understand its relationship with infectious pathogens<sup>54</sup>. Because  
273 human mtDNA FST markers are typically found at lower concentrations in sewage than those of  
274 other human-associated FST markers, improved concentration and recovery methods of mtDNA  
275 are needed<sup>10,58-61</sup>. Better understanding of potential non-fecal sources of mtDNA and at what  
276 concentrations non-fecal sources shed mtDNA are also needed<sup>62</sup>. Potential carry over from  
277 consumption of meat or feces of other species should also be investigated<sup>6,9</sup>. Despite these  
278 knowledge and technical gaps, results from this study add to previous evidence supporting the  
279 utility of human mtDNA as FST markers.

280

## 281 **Acknowledgements**

282 This material is based upon work supported by the National Science Foundation under Grant  
283 Number 1511825 and the United States Geological Survey under Project ID 2018GA388B. We  
284 received further support from the Bill and Melinda Gates Foundation grant OPP1137224 and the  
285 World Bank Strategic Impact Evaluation Fund (SIEF). The funders had no role in study design,  
286 data collection and analysis, decision to publish, or preparation of the manuscript. We  
287 acknowledge Janet Hatt, Minjae Kim, Angela Peña-Gonzalez, Trent Sumner, Sid Patel, and  
288 Victoria Dean.

289 **Tables**

290 **Table 1.** Sample frame for this study.

Study population	Individuals from which samples were collected	Ages of individuals	enteric <sup>-</sup> asymptomatic	noro <sup>+</sup> asymptomatic	noro <sup>+</sup> symptomatic
US <sup>a</sup>	11	Adult (18 to 50 years of age)	11	6	5
Mozambique	66	Children (< 4 years of age)	26	29	11
Bangladesh	120	Children (< 5 years of age)	49	68	3

291 <sup>a</sup> All US samples were part of paired samples (pre-challenge and post-challenge) from 11  
 292 individuals. 6 individuals did not develop symptoms; 5 individuals did develop symptoms.

293  
 294 **Table 2.** Comparison of log<sub>10</sub> human mtDNA copies normalized to ng of dsDNA amongst the  
 295 different health status groups.

Sample Set	Kruskal-Wallis test	enteric <sup>-</sup> asymptomatic versus noro <sup>+</sup> asymptomatic			noro <sup>+</sup> asymptomatic versus noro <sup>+</sup> symptomatic			enteric <sup>-</sup> asymptomatic versus noro <sup>+</sup> symptomatic		
	<i>p</i> -value	log <sub>10</sub> increase in mean hCYTB484 copies / ng dsDNA	<i>p</i> -value	effect size <sup>c</sup>	log <sub>10</sub> increase in mean hCYTB484 copies / ng dsDNA	<i>p</i> -value	effect size <sup>c</sup>	log <sub>10</sub> increase in mean hCYTB484 copies / ng dsDNA	<i>p</i> -value	effect size <sup>c</sup>
US	N/A	0.25 (168 %)	1 <sup>b</sup>	0.60	N/A	N/A	N/A	1.42 (3,820 %)	0.062 <sup>b</sup>	4.3
Mozambique	0.068	0.22 (138 %)	0.36 <sup>a</sup>	0.32	0.27 (223 %)	0.15 <sup>a</sup>	0.39	0.49 (308 %)	0.061 <sup>a</sup>	0.70
Bangladesh	0.024	0.16 (111 %)	0.14 <sup>a</sup>	0.27	0.70 (585 %)	0.057 <sup>a</sup>	1.2	0.86 (648%)	0.035 <sup>a*</sup>	1.5

296 \* Statistically significant result at the  $\alpha = 0.05$  level

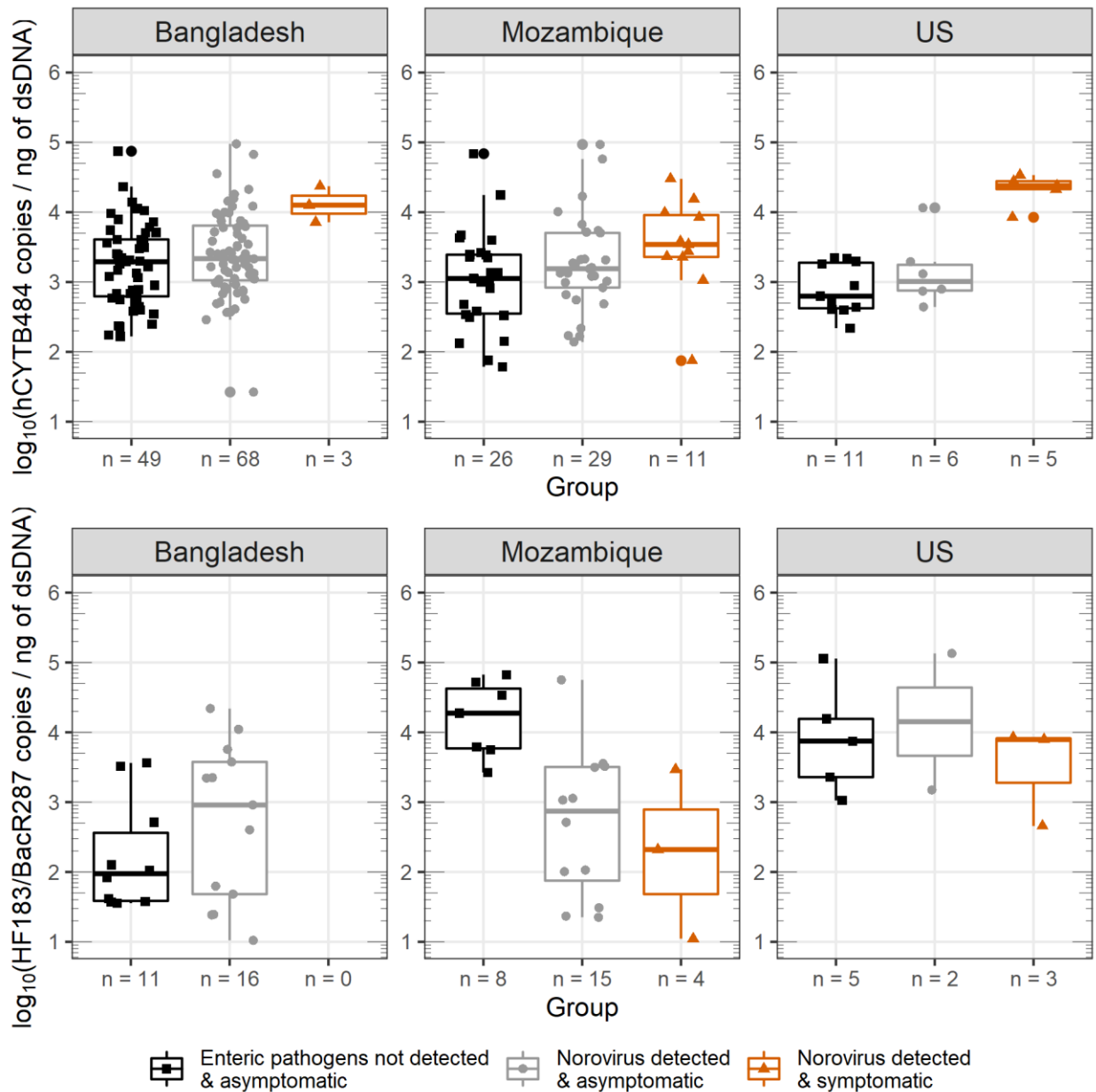
297 <sup>a</sup> Dunn test adjusted with the Benjamini-Hochberg method for multiple comparisons

298 <sup>b</sup> Wilcoxon signed rank paired test for paired pre- and post-challenge samples for each individual

299 <sup>c</sup> Effect size reported as the difference between the two sample means divided by the pooled  
 300 standard deviation of the log<sub>10</sub> transformed data (Cohen's *d*). The larger the effect size, the larger  
 301 the difference between the mean of the two sample distributions.

302

303 **Figures**  
 304



305  
 306 **Figure 1.** Box and whisker plots of hCYTB484 (top plot) and HF183/BacR287 (bottom plot)  
 307 concentrations for the various health statuses in this study. Horizontal lines (box) denote the 25<sup>th</sup>,  
 308 50<sup>th</sup>, and 75<sup>th</sup> percentiles and the end of the vertical lines (whiskers) denote the maximum or  
 309 minimum value of the data that is within 1.5 times the interquartile range over the 75<sup>th</sup> percentile  
 310 or under the 25<sup>th</sup> percentile. All concentrations are plotted as  $\log_{10}(\text{concentration} + 1)$  and  
 311 concentrations from feces are normalized to concentration of dsDNA (ng of dsDNA determined  
 312 by Qubit). The number of quantifiable samples is shown at x-axis tick mark of each box and  
 313 whisker (“n = #”). HF183/BacR287 plots have different numbers of quantifiable samples because  
 314 HF183/BacR287 was detected in only 52% of all samples and quantifiable in 31% of all samples.  
 315

316 **References**

- 317
- 318 (1) Boehm, A. B.; Van De Werfhorst, L. C.; Griffith, J. F.; Holden, P. A.; Jay, J. A.; Shanks,  
319 O. C.; Wang, D.; Weisberg, S. B. Performance of Forty-One Microbial Source Tracking  
320 Methods: A Twenty-Seven Lab Evaluation Study. *Water Research* **2013**, *47* (18), 6812–  
321 6828. <https://doi.org/10.1016/j.watres.2012.12.046>.
- 322 (2) Harris, A. R.; Pickering, A. J.; Harris, M.; Doza, S.; Islam, M. S.; Unicomb, L.; Luby, S.;  
323 Davis, J.; Boehm, A. B. Ruminants Contribute Fecal Contamination to the Urban  
324 Household Environment in Dhaka, Bangladesh. *Environmental Science and Technology*  
325 **2016**, *50* (9), 4642–4649. <https://doi.org/10.1021/acs.est.5b06282>.
- 326 (3) Nshimiyimana, J. P.; Cruz, M. C.; Thompson, R. J.; Wuertz, S. Bacteroidales Markers for  
327 Microbial Source Tracking in Southeast Asia. *Water Research* **2017**, *118*, 239–248.  
328 <https://doi.org/10.1016/j.watres.2017.04.027>.
- 329 (4) Odagiri, M.; Schriewer, A.; Hanley, K.; Wuertz, S.; Misra, P. R.; Panigrahi, P.; Jenkins,  
330 M. W. Validation of Bacteroidales Quantitative PCR Assays Targeting Human and  
331 Animal Fecal Contamination in the Public and Domestic Domains in India. *Science of The*  
332 *Total Environment* **2015**, *502*, 462–470. <https://doi.org/10.1016/j.scitotenv.2014.09.040>.
- 333 (5) Reischer, G. H.; Ebdon, J. E.; Bauer, J. M.; Schuster, N.; Ahmed, W.; Åström, J.; Blanch,  
334 A. R.; Blöschl, G.; Byamukama, D.; Coakley, T.; Ferguson, C.; Goshu, G.; Ko, G.; de  
335 Roda Husman, A. M.; Mushi, D.; Poma, R.; Pradhan, B.; Rajal, V.; Schade, M. A.;  
336 Sommer, R.; Taylor, H.; Toth, E. M.; Vrajmasu, V.; Wuertz, S.; Mach, R. L.; Farnleitner,  
337 A. H. Performance Characteristics of QPCR Assays Targeting Human- and Ruminant-  
338 Associated Bacteroidetes for Microbial Source Tracking across Sixteen Countries on Six

- 339           Continents. *Environmental Science & Technology* **2013**, 47 (15), 8548–8556.
- 340           <https://doi.org/10.1021/es304367t>.
- 341 (6)   Caldwell, J. M.; Raley, M. E.; Levine, J. F. Mitochondrial Multiplex Real-Time PCR as a  
342           Source Tracking Method in Fecal-Contaminated Effluents. *Environmental Science &*  
343           *Technology* **2007**, 41 (9), 3277–3283. <https://doi.org/10.1021/es062912s>.
- 344 (7)   Schill, W. B.; Mathes, M. V. Real-Time PCR Detection and Quantification of Nine  
345           Potential Sources of Fecal Contamination by Analysis of Mitochondrial Cytochrome b  
346           Targets. *Environmental Science and Technology* **2008**, 42 (14), 5229–5234.  
347           <https://doi.org/10.1021/es800051z>.
- 348 (8)   He, X.; Liu, P.; Zheng, G.; Chen, H.; Shi, W.; Cui, Y.; Ren, H.; Zhang, X.-X. Evaluation  
349           of Five Microbial and Four Mitochondrial DNA Markers for Tracking Human and Pig  
350           Fecal Pollution in Freshwater. *Scientific Reports* **2016**, 6 (1), 35311.  
351           <https://doi.org/10.1038/srep35311>.
- 352 (9)   Zhu, K.; Suttner, B.; Pickering, A.; Konstantinidis, K. T.; Brown, J. A Novel Droplet  
353           Digital PCR Human MtDNA Assay for Fecal Source Tracking. *Water Research* **2020**,  
354           183, 116085. <https://doi.org/10.1016/j.watres.2020.116085>.
- 355 (10) *Microbial Source Tracking: Methods, Applications, and Case Studies*; Hagedorn, C.,  
356           Blanch, A. R., Harwood, V. J., Eds.; Springer New York: New York, NY, 2011.  
357           <https://doi.org/10.1007/978-1-4419-9386-1>.
- 358 (11) Martellini, A.; Payment, P.; Villemur, R. Use of Eukaryotic Mitochondrial DNA to  
359           Differentiate Human, Bovine, Porcine and Ovine Sources in Fecally Contaminated  
360           Surface Water. *Water Research* **2005**, 39 (4), 541–548.  
361           <https://doi.org/10.1016/j.watres.2004.11.012>.



- 362 (12) Peña-Gonzalez, A.; Soto-Girón, M. J.; Smith, S.; Sistrunk, J.; Montero, L.; Páez, M.;  
363 Ortega, E.; Hatt, J. K.; Cevallos, W.; Trueba, G.; Levy, K.; Konstantinidis, K. T.  
364 Metagenomic Signatures of Gut Infections Caused by Different Escherichia Coli  
365 Pathotypes. *Applied and Environmental Microbiology* **2019**, *85* (24), 1–18.  
366 <https://doi.org/10.1128/AEM.01820-19>.
- 367 (13) Boyapati, R. K.; Dorward, D. A.; Tamborska, A.; Kalla, R.; Ventham, N. T.; Doherty, M.  
368 K.; Whitfield, P. D.; Gray, M.; Loane, J.; Rossi, A. G.; Satsangi, J.; Ho, G. Mitochondrial  
369 DNA Is a Pro-Inflammatory Damage-Associated Molecular Pattern Released During  
370 Active IBD. *Inflammatory Bowel Diseases* **2018**, *24* (10), 2113–2122.  
371 <https://doi.org/10.1093/ibd/izy095>.
- 372 (14) Leon, J. S.; Kingsley, D. H.; Montes, J. S.; Richards, G. P.; Lyon, G. M.; Abdulhafid, G.  
373 M.; Seitz, S. R.; Fernandez, M. L.; Teunis, P. F.; Flick, G. J.; Moe, C. L. Randomized,  
374 Double-Blinded Clinical Trial for Human Norovirus Inactivation in Oysters by High  
375 Hydrostatic Pressure Processing. *Applied and Environmental Microbiology* **2011**, *77* (15),  
376 5476–5482. <https://doi.org/10.1128/AEM.02801-10>.
- 377 (15) Knee, J.; Sumner, T.; Adriano, Z.; Berendes, D.; de Bruijn, E.; Schmidt, W. P.; Nalá, R.;  
378 Cumming, O.; Brown, J. Risk Factors for Childhood Enteric Infection in Urban Maputo,  
379 Mozambique: A Cross-Sectional Study. *PLoS Neglected Tropical Diseases* **2018**, *12* (11),  
380 1–19. <https://doi.org/10.1371/journal.pntd.0006956>.
- 381 (16) Brown, J.; Cumming, O.; Bartram, J.; Cairncross, S.; Ensink, J.; Holcomb, D.; Knee, J.;  
382 Kolsky, P.; Liang, K.; Liang, S.; Nala, R.; Norman, G.; Rheingans, R.; Stewart, J.; Zavale,  
383 O.; Zuin, V.; Schmidt, W.-P. A Controlled, before-and-after Trial of an Urban Sanitation  
384 Intervention to Reduce Enteric Infections in Children: Research Protocol for the Maputo

- 385 Sanitation (MapSan) Study, Mozambique. *BMJ Open* **2015**, 5 (6), e008215–e008215.  
386 <https://doi.org/10.1136/bmjopen-2015-008215>.
- 387 (17) Pickering, A. J.; Crider, Y.; Sultana, S.; Swarthout, J.; Goddard, F. G.; Anjerul Islam, S.;  
388 Sen, S.; Ayyagari, R.; Luby, S. P. Effect of In-Line Drinking Water Chlorination at the  
389 Point of Collection on Child Diarrhoea in Urban Bangladesh: A Double-Blind, Cluster-  
390 Randomised Controlled Trial. *The Lancet Global Health* **2019**, 7 (9), e1247–e1256.  
391 [https://doi.org/10.1016/S2214-109X\(19\)30315-8](https://doi.org/10.1016/S2214-109X(19)30315-8).
- 392 (18) Berendes, D.; Capone, D.; Knee, J.; Holcomb, D.; Sultana, S.; Pickering, A. J.; Brown, J.  
393 Associations between Enteric Pathogen Carriage and Height-for-Age, Weight-for-Age and  
394 Weight-for-Height in Children under 5 Years Old in Urban Dhaka, Bangladesh.  
395 *Epidemiology and Infection* **2020**, 148, e39. <https://doi.org/10.1017/S0950268820000369>.
- 396 (19) Navidad, J. F.; Griswold, D. J.; Gradus, M. S.; Bhattacharyya, S. Evaluation of Luminex  
397 XTAG Gastrointestinal Pathogen Analyte-Specific Reagents for High-Throughput,  
398 Simultaneous Detection of Bacteria, Viruses, and Parasites of Clinical and Public Health  
399 Importance. *Journal of Clinical Microbiology* **2013**, 51 (9), 3018–3024.  
400 <https://doi.org/10.1128/JCM.00896-13>.
- 401 (20) Green, H. C.; Haugland, R. A.; Varma, M.; Millen, H. T.; Borchardt, M. A.; Field, K. G.;  
402 Walters, W. A.; Knight, R.; Sivaganesan, M.; Kelty, C. A.; Shanks, O. C. Improved  
403 HF183 Quantitative Real-Time PCR Assay for Characterization of Human Fecal Pollution  
404 in Ambient Surface Water Samples. *Applied and Environmental Microbiology* **2014**, 80  
405 (10), 3086–3094. <https://doi.org/10.1128/AEM.04137-13>.
- 406 (21) Kelty, C. A.; Varma, M.; Sivaganesan, M.; Haugland, R. A.; Shanks, O. C. Distribution of  
407 Genetic Marker Concentrations for Fecal Indicator Bacteria in Sewage and Animal Feces.

- 408 *Applied and Environmental Microbiology* **2012**, 78 (12), 4225–4232.
- 409 <https://doi.org/10.1128/AEM.07819-11>.
- 410 (22) Whale, A. S.; De Spiegelaere, W.; Trypsteen, W.; Nour, A. A.; Bae, Y.-K.; Benes, V.;
- 411 Burke, D.; Cleveland, M.; Corbisier, P.; Devonshire, A. S.; Dong, L.; Drandi, D.; Foy, C.
- 412 A.; Garson, J. A.; He, H.-J.; Hellemans, J.; Kubista, M.; Lievens, A.; Makrigiorgos, M.
- 413 G.; Milavec, M.; Mueller, R. D.; Nolan, T.; O’Sullivan, D. M.; Pfaffl, M. W.; Rödiger, S.;
- 414 Romsos, E. L.; Shipley, G. L.; Taly, V.; Untergasser, A.; Wittwer, C. T.; Bustin, S. A.;
- 415 Vandesompele, J.; Huggett, J. F. The Digital MIQE Guidelines Update: Minimum
- 416 Information for Publication of Quantitative Digital PCR Experiments for 2020. *Clinical*
- 417 *Chemistry* **2020**, 66 (8), 1012–1029. <https://doi.org/10.1093/clinchem/hvaa125>.
- 418 (23) Pentinmikko, N.; Katajisto, P. The Role of Stem Cell Niche in Intestinal Aging.
- 419 *Mechanisms of Ageing and Development* **2020**, 191, 111330.
- 420 <https://doi.org/10.1016/j.mad.2020.111330>.
- 421 (24) Liu, T. C.; Vanbuskirk, K.; Ali, S. A.; Kelly, M. P.; Holtz, L. R.; Yilmaz, O. H.; Sadiq,
- 422 K.; Iqbal, N.; Amadi, B.; Syed, S.; Ahmed, T.; Moore, S.; Ndao, I. M.; Isaacs, M. H.;
- 423 Pfeifer, J. D.; Atlas, H.; Tarr, P. I.; Denno, D. M.; Moskaluk, C. A. A Novel Histological
- 424 Index for Evaluation of Environmental Enteric Dysfunction Identifies Geographic-
- 425 Specific Features of Enteropathy among Children with Suboptimal Growth. *PLoS*
- 426 *Neglected Tropical Diseases* **2020**, 14 (1), 1–21.
- 427 <https://doi.org/10.1371/journal.pntd.0007975>.
- 428 (25) Brown, J.; Cumming, O. Stool-Based Pathogen Detection Offers Advantages as an
- 429 Outcome Measure for Water, Sanitation, and Hygiene Trials. *American Journal of*

- 430 *Tropical Medicine and Hygiene* **2020**, *102* (2), 260–261. <https://doi.org/10.4269/ajtmh.19->  
431 0639.
- 432 (26) Baqui, A. H.; Black, R. E.; Yunus, M.; Hoque, A. R. A.; Chowdhury, H. R.; Sack, R. B.  
433 Methodological Issues in Diarrhoeal Diseases Epidemiology: Definition of Diarrhoeal  
434 Episodes. *International Journal of Epidemiology* **1991**, *20* (4), 1057–1063.  
435 <https://doi.org/10.1093/ije/20.4.1057>.
- 436 (27) Arnold, B. F.; Galiani, S.; Ram, P. K.; Hubbard, A. E.; Briceño, B.; Gertler, P. J.; Colford,  
437 J. M. Optimal Recall Period for Caregiver-Reported Illness in Risk Factor and  
438 Intervention Studies: A Multicountry Study. *American Journal of Epidemiology* **2013**, *177*  
439 (4), 361–370. <https://doi.org/10.1093/aje/kws281>.
- 440 (28) Mayer, R. E.; Reischer, G. H.; Ixenmaier, S. K.; Derx, J.; Blaschke, A. P.; Ebdon, J. E.;  
441 Linke, R.; Egle, L.; Ahmed, W.; Blanch, A. R.; Byamukama, D.; Savill, M.; Mushi, D.;  
442 Cristóbal, H. A.; Edge, T. A.; Schade, M. A.; Aslan, A.; Brooks, Y. M.; Sommer, R.;  
443 Masago, Y.; Sato, M. I.; Taylor, H. D.; Rose, J. B.; Wuertz, S.; Shanks, O. C.; Piringer,  
444 H.; Mach, R. L.; Savio, D.; Zessner, M.; Farnleitner, A. H. Global Distribution of Human-  
445 Associated Fecal Genetic Markers in Reference Samples from Six Continents.  
446 *Environmental Science & Technology* **2018**, *52* (9), 5076–5084.  
447 <https://doi.org/10.1021/acs.est.7b04438>.
- 448 (29) Williams, J. M.; Duckworth, C. A.; Burkitt, M. D.; Watson, A. J. M. M.; Campbell, B. J.;  
449 Pritchard, D. M. Epithelial Cell Shedding and Barrier Function: A Matter of Life and  
450 Death at the Small Intestinal Villus Tip. *Veterinary Pathology* **2015**, *52* (3), 445–455.  
451 <https://doi.org/10.1177/0300985814559404>.

- 452 (30) Hall, P. A.; Coates, P. J.; Ansari, B.; Hopwood, D. Regulation of Cell Number in the  
453 Mammalian Gastrointestinal Tract: The Importance of Apoptosis. *J Cell Sci* **1994**, *107* (  
454 *Pt 1* (12), 3569–3577.
- 455 (31) Barkla, D. H.; Gibson, P. R. The Fate of Epithelial Cells in the Human Large Intestine.  
456 *Pathology* **1999**, *31* (3), 230–238. <https://doi.org/10.1080/003130299105043>.
- 457 (32) Watson, A. J. M.; Hall, L. J.; Hughes, K. R. Cell Shedding: Old Questions Answered.  
458 *Gastroenterology* **2012**, *143* (5), 1389–1391. <https://doi.org/10.1053/j.gastro.2012.09.025>.
- 459 (33) Eisenhoffer, G. T.; Loftus, P. D.; Yoshigi, M.; Otsuna, H.; Chien, C.-B.; Morcos, P. A.;  
460 Rosenblatt, J. Crowding Induces Live Cell Extrusion to Maintain Homeostatic Cell  
461 Numbers in Epithelia. *Nature* **2012**, *484* (7395), 546–549.  
462 <https://doi.org/10.1038/nature10999>.
- 463 (34) Bullen, T. F.; Forrest, S.; Campbell, F.; Dodson, A. R.; Hershman, M. J.; Pritchard, D. M.;  
464 Turner, J. R.; Montrose, M. H.; Watson, A. J. M. Characterization of Epithelial Cell  
465 Shedding from Human Small Intestine. *Laboratory Investigation* **2006**, *86* (10), 1052–  
466 1063. <https://doi.org/10.1038/labinvest.3700464>.
- 467 (35) Patterson, A. M.; Watson, A. J. M. Deciphering the Complex Signaling Systems That  
468 Regulate Intestinal Epithelial Cell Death Processes and Shedding. *Frontiers in*  
469 *Immunology* **2017**, *8* (JUL), 1–7. <https://doi.org/10.3389/fimmu.2017.00841>.
- 470 (36) Williams, J. M.; Duckworth, C. A.; Watson, A. J. M.; Frey, M. R.; Miguel, J. C.; Burkitt,  
471 M. D.; Sutton, R.; Hughes, K. R.; Hall, L. J.; Caamano, J. H.; Campbell, B. J.; Pritchard,  
472 D. M. A Mouse Model of Pathological Small Intestinal Epithelial Cell Apoptosis and  
473 Shedding Induced by Systemic Administration of Lipopolysaccharide. *Disease Models &*  
474 *Mechanisms* **2013**, *6* (6), 1388–1399. <https://doi.org/10.1242/dmm.013284>.

- 475 (37) Knodler, L. A.; Vallance, B. A.; Celli, J.; Winfree, S.; Hansen, B.; Montero, M.; Steele-  
476 Mortimer, O. Dissemination of Invasive Salmonella via Bacterial-Induced Extrusion of  
477 Mucosal Epithelia. *Proceedings of the National Academy of Sciences* **2010**, *107* (41),  
478 17733–17738. <https://doi.org/10.1073/pnas.1006098107>.
- 479 (38) Boshuizen, J. A.; Reimerink, J. H. J.; Korteland-van Male, A. M.; van Ham, V. J. J.;  
480 Koopmans, M. P. G.; Büller, H. A.; Dekker, J.; Einerhand, A. W. C. Changes in Small  
481 Intestinal Homeostasis, Morphology, and Gene Expression during Rotavirus Infection of  
482 Infant Mice. *Journal of Virology* **2003**, *77* (24), 13005–13016.  
483 <https://doi.org/10.1128/JVI.77.24.13005-13016.2003>.
- 484 (39) Ahlquist, D. A.; Harrington, J. J.; Burgart, L. J.; Roche, P. C. Morphometric Analysis of  
485 the “Mucocellular Layer” Overlying Colorectal Cancer and Normal Mucosa: Relevance to  
486 Exfoliation and Stool Screening. *Human Pathology* **2000**, *31* (1), 51–57.  
487 [https://doi.org/10.1016/S0046-8177\(00\)80198-7](https://doi.org/10.1016/S0046-8177(00)80198-7).
- 488 (40) Atmar, R. L.; Ramani, S.; Estes, M. K. Human Noroviruses. *Current Opinion in Infectious*  
489 *Diseases* **2018**, *31* (5), 422–432. <https://doi.org/10.1097/QCO.0000000000000476>.
- 490 (41) Estes, M. K.; Ettayebi, K.; Tenge, V. R.; Murakami, K.; Karandikar, U.; Lin, S. C.; Ayyar,  
491 B. V.; Cortes-Penfield, N. W.; Haga, K.; Neill, F. H.; Opekun, A. R.; Broughman, J. R.;  
492 Zeng, X. L.; Blutt, S. E.; Crawford, S. E.; Ramani, S.; Graham, D. Y.; Atmar, R. L.  
493 Human Norovirus Cultivation in Nontransformed Stem Cell-Derived Human Intestinal  
494 Enteroid Cultures: Success and Challenges. *Viruses* **2019**, *11* (7), 9–11.  
495 <https://doi.org/10.3390/v11070638>.

- 496 (42) Karst, S. M.; Tibbetts, S. A. Recent Advances in Understanding Norovirus Pathogenesis.  
497 *Journal of Medical Virology* **2016**, 88 (11), 1837–1843.  
498 <https://doi.org/10.1002/jmv.24559>.
- 499 (43) Guerrant, R. L.; Araujo, V.; Soares, E.; Kotloff, K.; Lima, A. A. M.; Cooper, W. H.; Lee,  
500 A. G. Measurement of Fecal Lactoferrin as a Marker of Fecal Leukocytes. *Journal of*  
501 *Clinical Microbiology* **1992**, 30 (5), 1238–1242. <https://doi.org/10.1128/JCM.30.5.1238->  
502 1242.1992.
- 503 (44) Mercado, E. H.; Ochoa, T. J.; Ecker, L.; Cabello, M.; Durand, D.; Barletta, F.; Molina,  
504 M.; Gil, A. I.; Huicho, L.; Lanata, C. F.; Cleary, T. G. Fecal Leukocytes in Children  
505 Infected with Diarrheagenic Escherichia Coli. *Journal of Clinical Microbiology* **2011**, 49  
506 (4), 1376–1381. <https://doi.org/10.1128/JCM.02199-10>.
- 507 (45) Luissint, A. C.; Parkos, C. A.; Nusrat, A. Inflammation and the Intestinal Barrier:  
508 Leukocyte–Epithelial Cell Interactions, Cell Junction Remodeling, and Mucosal Repair.  
509 *Gastroenterology* **2016**, 151 (4), 616–632. <https://doi.org/10.1053/j.gastro.2016.07.008>.
- 510 (46) Ingelsson, B.; Söderberg, D.; Strid, T.; Söderberg, A.; Bergh, A.-C.; Loitto, V.; Lotfi, K.;  
511 Segelmark, M.; Spyrou, G.; Rosén, A. Lymphocytes Eject Interferogenic Mitochondrial  
512 DNA Webs in Response to CpG and Non-CpG Oligodeoxynucleotides of Class C.  
513 *Proceedings of the National Academy of Sciences* **2018**, 115 (3), E478–E487.  
514 <https://doi.org/10.1073/pnas.1711950115>.
- 515 (47) Boyapati, R. K.; Tamborska, A.; Dorward, D. A.; Ho, G.-T. Advances in the  
516 Understanding of Mitochondrial DNA as a Pathogenic Factor in Inflammatory Diseases.  
517 *F1000Res* **2017**, 6 (0), 169. <https://doi.org/10.12688/f1000research.10397.1>.

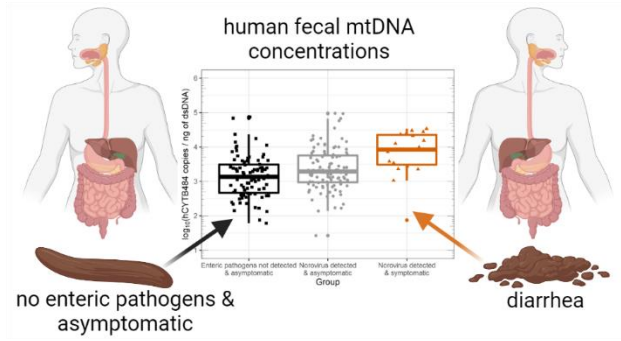
- 518 (48) Colford, J. M.; Wade, T. J.; Schiff, K. C.; Wright, C. C.; Griffith, J. F.; Sandhu, S. K.;  
519 Burns, S.; Sobsey, M.; Lovelace, G.; Weisberg, S. B. Water Quality Indicators and the  
520 Risk of Illness at Beaches With Nonpoint Sources of Fecal Contamination. *Epidemiology*  
521 **2007**, *18* (1), 27–35. <https://doi.org/10.1097/01.ede.0000249425.32990.b9>.
- 522 (49) Dwight, R. H.; Baker, D. B.; Semenza, J. C.; Olson, B. H. Health Effects Associated with  
523 Recreational Coastal Water Use: Urban Versus Rural California. *American Journal of*  
524 *Public Health* **2004**, *94* (4), 565–567. <https://doi.org/10.2105/AJPH.94.4.565>.
- 525 (50) Wade, T. J.; Calderon, R. L.; Sams, E.; Beach, M.; Brenner, K. P.; Williams, A. H.;  
526 Dufour, A. P. Rapidly Measured Indicators of Recreational Water Quality Are Predictive  
527 of Swimming-Associated Gastrointestinal Illness. *Environmental Health Perspectives*  
528 **2006**, *114* (1), 24–28. <https://doi.org/10.1289/ehp.8273>.
- 529 (51) Wade, T. J.; Calderon, R. L.; Brenner, K. P.; Sams, E.; Beach, M.; Haugland, R.; Wymer,  
530 L.; Dufour, A. P. High Sensitivity of Children to Swimming-Associated Gastrointestinal  
531 Illness. *Epidemiology* **2008**, *19* (3), 375–383.  
532 <https://doi.org/10.1097/EDE.0b013e318169cc87>.
- 533 (52) Yau, V. M.; Schiff, K. C.; Arnold, B. F.; Griffith, J. F.; Gruber, J. S.; Wright, C. C.;  
534 Wade, T. J.; Burns, S.; Hayes, J. M.; McGee, C.; Gold, M.; Cao, Y.; Boehm, A. B.;  
535 Weisberg, S. B.; Colford, J. M. Effect of Submarine Groundwater Discharge on Bacterial  
536 Indicators and Swimmer Health at Avalon Beach, CA, USA. *Water Research* **2014**, *59*,  
537 23–36. <https://doi.org/10.1016/j.watres.2014.03.050>.
- 538 (53) Sukhrie, F. H. A.; Teunis, P.; Vennema, H.; Copra, C.; Thijs Beersma, M. F. C.;  
539 Bogerman, J.; Koopmans, M. Nosocomial Transmission of Norovirus Is Mainly Caused



- 540 by Symptomatic Cases. *Clinical Infectious Diseases* **2012**, *54* (7), 931–937.
- 541 <https://doi.org/10.1093/cid/cir971>.
- 542 (54) Haas, C. N. Quantitative Microbial Risk Assessment and Molecular Biology: Paths to  
543 Integration. *Environmental Science and Technology*. American Chemical Society July 21,  
544 2020, pp 8539–8546. <https://doi.org/10.1021/acs.est.0c00664>.
- 545 (55) He, X.; Chen, H.; Shi, W.; Cui, Y.; Zhang, X.-X. Persistence of Mitochondrial DNA  
546 Markers as Fecal Indicators in Water Environments. *Science of The Total Environment*  
547 **2015**, *533*, 383–390. <https://doi.org/10.1016/j.scitotenv.2015.06.119>.
- 548 (56) Korajkic, A.; McMinn, B.; Harwood, V. Relationships between Microbial Indicators and  
549 Pathogens in Recreational Water Settings. *International Journal of Environmental*  
550 *Research and Public Health* **2018**, *15* (12), 2842. <https://doi.org/10.3390/ijerph15122842>.
- 551 (57) Korajkic, A.; Wanjugi, P.; Brooks, L.; Cao, Y.; Harwood, V. J. Persistence and Decay of  
552 Fecal Microbiota in Aquatic Habitats. *Microbiology and Molecular Biology Reviews*  
553 **2019**, *83* (4). <https://doi.org/10.1128/MMBR.00005-19>.
- 554 (58) Kapoor, V.; Smith, C.; Santo Domingo, J. W.; Lu, T.; Wendell, D. Correlative Assessment  
555 of Fecal Indicators Using Human Mitochondrial DNA as a Direct Marker. *Environmental*  
556 *Science & Technology* **2013**, *47* (18), 130826150654007.  
557 <https://doi.org/10.1021/es4020458>.
- 558 (59) Malla, B.; Haramoto, E. Host-Specific Mitochondrial DNA Markers for Tracking the  
559 Sources of Fecal Pollution. *Current Opinion in Environmental Science and Health*.  
560 Elsevier B.V. August 1, 2020, pp 34–46. <https://doi.org/10.1016/j.coesh.2020.02.006>.
- 561 (60) Tanvir Pasha, A. B. M.; Hinojosa, J.; Phan, D.; Lopez, A.; Kapoor, V. Detection of  
562 Human Fecal Pollution in Environmental Waters Using Human Mitochondrial DNA and

- 563 Correlation with General and Human-Associated Fecal Genetic Markers. *Journal of Water*  
564 *and Health* **2020**, *18* (1), 8–18. <https://doi.org/10.2166/wh.2019.197>.
- 565 (61) Villemur, R.; Imbeau, M.; Vuong, M. N.; Masson, L.; Payment, P. An Environmental  
566 Survey of Surface Waters Using Mitochondrial DNA from Human, Bovine and Porcine  
567 Origin as Fecal Source Tracking Markers. *Water Research* **2015**, *69*, 143–153.  
568 <https://doi.org/10.1016/j.watres.2014.10.063>.
- 569 (62) Zimmerman, B. D.; Ashbolt, N. J.; Garland, J. L.; Keely, S.; Wendell, D. Human  
570 Mitochondrial DNA and Endogenous Bacterial Surrogates for Risk Assessment of  
571 Graywater Reuse. *Environmental Science and Technology* **2014**, *48* (14), 7993–8002.  
572 <https://doi.org/10.1021/es501659r>.
- 573
- 574

575 **For Table of Contents Only**



576