

Increase in SARS-CoV-2 RBD-specific IgA and IgG Antibodies in Breast Milk from Lactating Women Following the COVID-19 Booster Vaccination

Andrea M. Henle^{1*}

¹Biology Department, Carthage College, 2001 Alford Park Drive, Kenosha, WI, 53140 USA

*Corresponding author

Abstract

The CDC recommended a booster dose of the Pfizer-BioNTech Comirnaty (BNT162b2) COVID-19 mRNA vaccine in September 2021 for high-risk individuals. Pregnant and high-risk lactating women were encouraged to receive the booster to obtain potential prolonged protection for themselves and their infants. This study investigated the ability of the booster vaccine to increase IgA and IgG antibodies specific to the receptor binding domain (RBD) of the SARS-CoV-2 spike protein in breast milk compared to levels pre-booster. We found a significant increase in both anti-RBD-specific IgA and IgG antibodies in breast milk following the Pfizer-BioNTech booster and this increase was present in the majority of participants at the study endpoint (60 days post-booster). These results suggest the booster enhances SARS-CoV-2 specific immunity in human breast milk, which may be protective for infants.

Background

The CDC recommended a booster dose of the Pfizer-BioNTech Comirnaty (BNT162b2) COVID-19 mRNA vaccine in September 2021 for people ages 65 and older, adults with underlying health conditions, and frontline workers¹. Pregnant and lactating women in these groups were advised to consider the booster for potential prolonged protection for themselves and their infants. Previous studies reported an increase in severe acute respiratory syndrome coronavirus 2 (SARS-CoV-2)-specific IgG and IgA immunity in breast milk following the first and second doses of the Pfizer-BioNTech vaccine²⁻⁵. This study investigated the ability of the booster vaccine to increase IgA and IgG antibodies specific to the receptor binding domain (RBD) of the SARS-CoV-2 spike protein in breast milk compared to levels pre-booster.

Methods

Participants were prospectively recruited through social media posts in academic and regional mom groups. Participants needed to be lactating, must have received the standard two-dose Pfizer-BioNTech vaccination series at least 6-months prior, had no known diagnosis or suspected infection for COVID-19, and provide written informed consent. Changes in health status were monitored with a post-study survey. The study was approved by the Institutional Review Board at Carthage College (IRB# 1817816-1).

Participants collected milk at 30-days and 1-day pre-booster, and 7-, 14-, 21-, 30-, 45-, and 60-days post-booster. 200 µl of blood was collected from each participant in January 2022 (≥60

days post-booster). Samples were stored at -20°C until analysis. The negative control was milk from July 2019.

Anti-RBD IgA and IgG levels were assessed via enzyme-linked immunosorbent assay (ELISA) (Ansell Corp.). Blood from a COVID-19 positive patient was serially-diluted into negative control milk to generate a standard curve. IgA and IgG levels were converted to units/ml. A one-way ANOVA with Dunnett's multiple comparisons test was used to determine differences between the mean levels of IgA and IgG pre-booster (day -1) to all other time points. The significance threshold was $p < 0.05$. Analyses were performed with Prism 7.

Results

12 women provided a total of 87 milk samples (Table). Women were a mean (SD) age of 35.45 (4.17) years and infants 3.58 (1.8) months at the time of booster. The mean (SD) time between the second dose of the vaccine and the booster was 7.01 (0.62) months. 91.67% of women reported a vaccine-related adverse event after the booster, with injection site soreness the most frequent event (75%). 58.33% of women had anti-RBD-specific IgA antibodies and 100% of women had anti-RBD-specific IgG antibodies in their blood at ≥ 60 days post-booster.

Anti-RBD-specific IgA antibodies in milk significantly increased by day 7; 71.43% of participants had an increased level at day 7 compared to pre-booster (day -1) (Figure). At day 60, 50% of participants had significantly increased RBD-specific IgA antibodies. Anti-RBD-specific IgG antibodies in milk significantly increased by day 14; 90% of participants had an increased level

at day 14 compared to pre-booster (day -1). The anti-RBD-specific IgG levels remained significantly increased compared to the pre-booster level at 21 days, 45 days, and 60 days. 77.78%, 72.73%, 83.33% of participants had significantly increased IgG levels at 21, 45, and 60 days, respectively. On an individual level, 11/12 participants (91.67%) had a significant increase in RBD-specific IgA levels at one or more time points post-booster, whereas 12/12 (100%) had a significant increase in RBD-specific IgG at ≥ 2 time points post-booster (individual data not shown).

Discussion

We found a significant increase in anti-RBD-specific IgA and IgG antibodies in breast milk following the Pfizer-BioNTech booster. Other studies have reported high IgG levels in breast milk following the standard two-dose vaccination against SARS-CoV-2²⁻⁴, and we observe a similar effect post-booster. Previous research suggests IgG in breast milk may be important for protection against viral infections^{6,7}. Another study⁸ reported that the IgA and IgG antibodies induced following COVID-19 infection are capable of neutralizing SARS-CoV-2 *in vitro*, which suggests that the immunoglobulins induced following the booster vaccination may potentially offer enhanced protection for both the mother and infant.

Limitations

The sample size was limited and should be expanded to include participants from other races and ethnicities and an age range more representative of the average child-bearing population. No functional assays were performed to assess the protective activity of the immunoglobulins.

This study did not assess immunoglobulins following a booster with the Moderna vaccine or a mix-and-match (Pfizer-BioNTech, Moderna, or Johnson & Johnson) approach to doses 1, 2, and the booster. Participants were not tested for SARS-CoV-2 via real-time reverse transcriptase polymerase chain reaction (RT-PCR) as part of this study. However, no participants reported any known exposures to COVID-19 or any positive at-home or RT-PCR test results.

References

1. Coronavirus Disease 2019. Centers for Disease Control and Prevention. Published September 27, 2021. Accessed February 22, 2022. <https://www.cdc.gov/media/releases/2021/p0924-booster-recommendations-.html>
2. Baird JK, Jensen SM, Urba WJ, Fox BA, Baird JR. SARS-CoV-2 Antibodies Detected in Mother's Milk Post-Vaccination. *J Hum Lact*. 2021;37(3):492-498. doi:10.1177/08903344211030168
3. Perl SH, Uzan-Yulzari A, Klainer H, et al. SARS-CoV-2-Specific Antibodies in Breast Milk After COVID-19 Vaccination of Breastfeeding Women. *JAMA*. 2021;325(19):2013-2014. doi:10.1001/jama.2021.5782
4. Low JM, Gu Y, Ng MSF, et al. Codominant IgG and IgA expression with minimal vaccine mRNA in milk of BNT162b2 vaccinees. *NPJ Vaccines*. 2021;6:105. doi:10.1038/s41541-021-00370-z
5. Valcarce V, Stafford LS, Neu J, et al. Detection of SARS-CoV-2-Specific IgA in the Human Milk of COVID-19 Vaccinated Lactating Health Care Workers. *Breastfeed Med*. 2021;16(12):1004-1009. doi:10.1089/bfm.2021.0122
6. Mazur NI, Horsley NM, Englund JA, et al. Breast Milk Prefusion F Immunoglobulin G as a Correlate of Protection Against Respiratory Syncytial Virus Acute Respiratory Illness. *J Infect Dis*. 2019;219(1):59-67. doi:10.1093/infdis/jiy477
7. Fouda GG, Yates NL, Pollara J, et al. HIV-specific functional antibody responses in breast milk mirror those in plasma and are primarily mediated by IgG antibodies. *J Virol*. 2011;85(18):9555-9567. doi:10.1128/JVI.05174-11
8. Pace RM, Williams JE, Järvinen KM, et al. Characterization of SARS-CoV-2 RNA, Antibodies, and Neutralizing Capacity in Milk Produced by Women with COVID-19. *mBio*. 2021;12(1):e03192-20. doi:10.1128/mBio.03192-20

Additional Contributions: We thank Joan Donner and Paul Everson (Ansell Corp.) for technical assistance with the ELISA assays. Neither were compensated for their contributions.

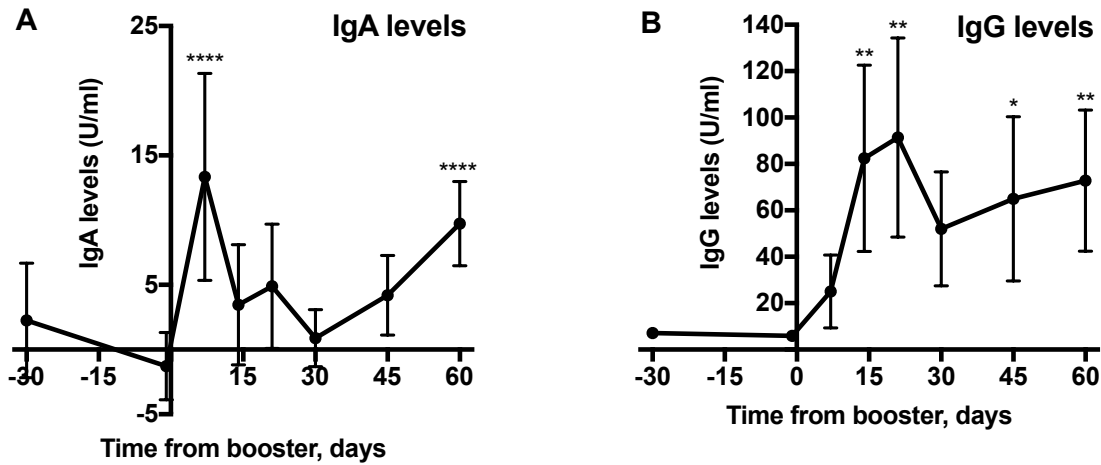


Figure. Levels of anti-RBD-specific IgA and IgG in Human Breast Milk Following the Pfizer-BioNTech Booster Vaccine. Each time point is compared to the pre-booster levels of (A) IgA and (B) IgG at day -1. ** indicates $p < 0.05$, * $p < 0.01$, **** $p \leq 0.0001$. Data points represent means; error bars, 95% CIs.

Table. Participant Characteristics

	No. (%)	
Study participants, No.	12	
Maternal features		
White, not Hispanic or Latino or Spanish origin	12 (100)	
Maternal Age, mean (SD), y	35.45 (4.17)	
Weight, mean (SD), kg	83.50 (23.57)	
Height, mean (SD), m	1.654 (0.075)	
Asthma	1 (8)	
Antibiotic use in last six months	2 (17)	
Pregnancy features		
Gestational Diabetes	5 (42)	
Hypertension	2 (17)	
Gravidity, mean (SD)	2.75 (1.42)	
Birth week, mean (SD)	39.30 (0.74)	
First vaccine during pregnancy		
Pregnancy week at first Pfizer dose, mean (SD)	22.02 (7.21)	
Pregnancy week at second Pfizer dose, mean (SD)	25.02 (7.31)	
Infant age when mother received booster, mean (SD), mo	3.58 (1.8)	
First vaccine after pregnancy		
Infant age when mother received booster, mean (SD), mo	10.84 (0.64)	
Time between 2nd vaccine dose and booster, mean (SD), mo	7.01 (0.62)	
Booster vaccine adverse effects		
Injection site soreness	9 (75)	
Injection site rash	1 (8)	
Injection site swelling	3 (25)	
Injection site redness	4 (33)	
Headache	2 (17)	
Muscle or body aches	4 (33)	
Joint pain	3 (25)	
Fatigue or tiredness	4 (33)	
Fever	3 (25)	
Chills	5 (42)	
Syncope	1 (8)	
IgA positive serum at day ≥ 60	7 (58)	
IgG positive serum at day ≥ 60	12 (100)	
Participants represented at each time point, No. (%)		
Day -30	8 (67)	IgA analysis 8 (67)
Day -1	10 (83)	IgG analysis 10 (83)
Day 7	7 (58)	9 (75)
Day 14	10 (83)	10 (83)
Day 21	9 (75)	9 (75)
Day 30	11 (92)	11 (92)
Day 45	11 (92)	11 (92)
Day 60	12 (100)	12 (100)