

Automated detection of speech timing alterations in autopsy-confirmed non-fluent/agrammatic variant primary progressive aphasia

Adolfo M. García,^{1,2,3,4,#} Ariane E. Welch,^{5,#} Maria Luisa Mandelli,⁵
Maya L. Henry,⁶ Sladjana Lukic,^{5,7} María José Torres-Prioris,^{8,9,10} Jessica Deleon,⁵
Buddhika M. Ratnasiri,⁵ Diego L. Lorca Puls,^{5,11} Bruce L. Miller,⁵ William W. Seeley,⁵
Adam P. Vogel,^{12,13} Maria Luisa Gorno-Tempini^{5,*}

¹ Global Brain Health Institute, University of California, San Francisco, CA, USA

² Cognitive Neuroscience Center, Universidad de San Andrés, Buenos Aires, Argentina

³ National Scientific and Technical Research Council (CONICET), Buenos Aires, Argentina

⁴ Departamento de Lingüística y Literatura, Facultad de Humanidades, Universidad de Santiago de Chile, Santiago, Chile

⁵ Memory and Aging Center, Department of Neurology, University of California, San Francisco, CA, USA

⁶ Department of Communication Sciences and Disorders, University of Texas at Austin, USA

⁷ Department of Communication Sciences and Disorders, Adelphi University, Garden City, NY, USA

⁸ Cognitive Neurology and Aphasia Unit, Centro de Investigaciones Médico-Sanitarias, University of Malaga, Malaga, Spain

⁹ Instituto de Investigación Biomédica de Málaga - IBIMA, Malaga, Spain

¹⁰ Area of Psychobiology, Faculty of Psychology and Speech Therapy, University of Malaga, Malaga, Spain

¹¹ Department of Speech, Language and Hearing Sciences, Faculty of Medicine, Universidad de Concepción, Concepción, Chile

¹² Centre for Neuroscience of Speech, Department of Audiology & Speech Pathology, The University of Melbourne, Melbourne, Australia

¹³ Redenlab, Melbourne, Australia

First authors

* **Corresponding author:** Maria Luisa Gorno-Tempini, Memory and Aging Center, Department of Neurology, University of California San Francisco, 675 Nelson Rising Lane, Suite 190, San Francisco, CA 94158, USA. Email: MariaLuisa.GornoTempini@ucsf.edu

Abstract

Background and Objectives: Motor speech function, including speech timing, is a key domain for diagnosing non-fluent/agrammatic variant primary progressive aphasia (nfvPPA). Yet, standard assessments employ subjective, specialist-dependent evaluations, undermining reliability and scalability. Moreover, few studies have examined relevant anatomico-clinical alterations in patients with pathologically-confirmed diagnoses. This study overcomes such caveats via automated speech timing analyses in a unique cohort of autopsy-proven cases. **Methods:** In a cross-sectional study, we administered an overt reading task and quantified articulation rate, mean syllable and pause duration, and syllable and pause duration variability. Neuroanatomical disruptions were assessed via cortical thickness and white matter atrophy analysis. **Results:** We evaluated 22 persons with nfvPPA (mean age: 67.3; 13 females) and confirmed underlying four-repeat tauopathy, 15 persons with semantic variant primary progressive aphasia (svPPA; mean age: 66.5; 8 females), and 10 healthy controls (HCs; 70 years; 5 females). All five speech timing measures revealed alterations in persons with nfvPPA relative to both the HC and svPPA groups, controlling for dementia severity. Articulation rate robustly discriminated individuals with nfvPPA from HCs (AUC = .95), outperforming specialist-dependent perceptual measures of dysarthria and apraxia of speech severity. Patients with nfvPPA exhibited structural abnormalities in left precentral and middle frontal as well as bilateral superior frontal regions, including their underlying white matter. Articulation rate was associated with atrophy of the left pars opercularis and supplementary/presupplementary motor areas. Secondary analyses showed that, controlling for dementia severity, all measures yielded greater deficits in patients with nfvPPA and corticobasal degeneration (nfvPPA-CBD, $n = 12$) than in those with progressive supranuclear palsy pathology (nfvPPA-PSP, $n = 10$). Articulation rate robustly discriminated between individuals in each subgroup (AUC = .82). More widespread cortical thinning was observed for the nfvPPA-CBD than the nfvPPA-PSP group across frontal regions. **Discussion:** Automated speech timing analyses can capture specific markers of nfvPPA while potentially discriminating between patients with different tauopathies. Thanks to its objectivity and scalability, this approach could support standard speech assessments.

Keywords: Non-fluent/agrammatic variant primary progressive aphasia, corticobasal degeneration, progressive supranuclear palsy, automated speech analysis, speech timing, cortical thickness, white matter atrophy.

Introduction

Non-fluent/agrammatic variant primary progressive aphasia (nfvPPA) is a clinical phenotype of frontotemporal dementia (FTD) spectrum disorders, often caused by frontotemporal lobar degeneration (FTLD). Most cases present with corticobasal degeneration (CBD) or progressive supranuclear palsy (PSP) pathology,¹⁻⁴ two types of FTLD-four-repeat tauopathy (4Rtau).⁴⁻⁷ Both involve aberrant deposition of the microtubule-associated protein tau; varying patterns of frontal, insular, and/or striatal atrophy; underlying white matter (WM) abnormalities; and early motor speech deficits that may be accompanied by agrammatism.⁴⁻⁷ While isolated agrammatism is rare, motor speech deficits are a defining clinical feature of nfvPPA and often appear on their own –a pattern sometimes termed primary progressive apraxia of speech (PPAOS).⁸

Prominent among these deficits is abnormal speech timing, a form of dysprosody affecting the rhythm, pace, and duration of oral production. Speech timing disruptions are variant-specific markers of nfvPPA, including path-confirmed cases.^{2,9-13} Most patients show slow articulation rate and/or prolonged syllables and extended pauses between syllables or words. Speech timing measures have thus been proposed as targets for diagnosis and follow-up.¹¹ Indeed, these alterations might discriminate between CBD and PSP pathology, although the link remains unclear. Some studies report that abnormal speech timing and other prosodic disturbances are predominant in PPAOS caused by PSP,⁸ while others note their distinct presence in CBD.^{2,10}

Yet, evidence on these deficits in path-confirmed nfvPPA comes from perceptual evaluations, limiting its translational potential. Subjective impressions are prone to expertise and perceptual bias effects,^{14,15} thereby presenting low validity and reliability.^{16,17} Also, they are typically scored via short rating scales,¹⁸ bound to ceiling effects and blind to pathological differentiations. Furthermore, their administration requires trained experts, who may be unavailable across centers, especially in low-income countries.¹⁹

These limitations can be overcome with automated speech analysis, an objective, scalable approach which detects patterns that escape human raters²⁰ and outperforms perceptual evaluations.²⁰ In studies on clinically diagnosed nfvPPA, automated speech timing measures (e.g., articulation rate as well as sound and pause duration, rate, and variability) differentiate patients from healthy controls (HCs) and other PPA groups,^{12,15,21} capture disease progression,²¹ and correlate with phosphorylated tau level¹² and atrophy of left motor and inferior frontal cortices.^{12,15,21} In particular, articulation rate is positively associated with cortical thickness of the left primary motor cortex (PMC) and supplementary/presupplementary motor areas (SMA, preSMA).²¹ Validating these measures in autopsy-proven nfvPPA would be critical to expand current assessments and discover differential markers of CBD and PSP pathology.

This study aimed to capture speech timing signatures in a well-characterized, autopsy-proven FTLD-4Rtau nfvPPA cohort relative to HCs and patients with svPPA. We administered an overt reading task;¹⁸ analyzed five relevant measures; assessed their correlations with specialist-dependent motor speech ratings; and examined underlying patterns of cortical thickness and WM atrophy. We hypothesized that automated speech timing measures would (a) differentiate persons with nfvPPA from both HCs and persons with svPPA, (b) robustly classify individuals with nfvPPA, and (c) reveal distinctions that are only partly captured by perceptual assessments. Moreover, we expected such deficits to

correlate with atrophy of the left PMC, SMA, preSMA, and/or inferior frontal regions.^{21, 22} As a secondary aim, we explored whether speech timing deficits can discriminate between individuals with nvPPA-CBD and nvPPA-PSP.

Methods

Participants

The study involved 47 English-speaking participants completing prospective longitudinal assessments at the Memory and Aging Center (University of California, San Francisco) between 2001 and 2018 (for demographics, see Table 1; for neurological details, see eAppendix 1, eTable1). These comprised 22 persons with nvPPA, 15 with svPPA, and 10 HCs. The study focused on persons with clinical diagnosis of nvPPA caused by 4Rtau, with post-mortem confirmation of CBD or PSP pathology.

Clinical nvPPA diagnoses were made by a multidisciplinary team including neurologists, neuropsychologists, and speech-language pathologists, following validated criteria.²³ In all cases, speech production challenges were the first and main complaint as well as the primary cause of functional impairment. Subtle grammatical deficits were noted in most patients. Postmortem, these individuals were autopsied at the University of California, San Francisco, the University of Pennsylvania, or the Vancouver General Hospital. Pathological diagnoses were made following consensus FTLD guidelines²⁴ and standard procedures.²⁵ FTLD-4R-tau analysis revealed that primary pathological diagnosis was CBD for 12 individuals and PSP for the remaining 10. Following tau immunohistochemistry, all CBD patients exhibited astrocytic plaques and threadlike inclusions,²⁶ while those with PSP presented globose tangles and tufted astrocytes.²⁷ These subgroups had partly distinct clinical profiles (Supplement, eAppendix 2) and they were sociodemographically matched (Supplement, eAppendix 3).

The remaining participants comprised 10 HCs (with normal neurological, cognitive, speech, and language profiles) and 15 persons with svPPA (included to establish the syndromic specificity of predicted deficits). The study's goal did not include assessments of logopenic variant PPA, although sufficient recordings will be available for future reports. Persons with svPPA were diagnosed following the abovementioned consensus criteria. No pathological information was required for these patients to enter the study, although we note that TDP Type C pathology is most common in our historical cohort. They exhibited naming and word comprehension deficits with preserved grammar and motor speech. These two groups were matched to the overall nvPPA sample (Table 1) and its pathologically-defined subgroups (Supplement, eAppendix 3, eTable 2) in terms of sex, age, years of education, and handedness. Our sample size reached a power of 0.93 for the three-group analyses (nvPPA, HCs, svPPA) and 0.90 for the four-group analyses (nvPPA-CBD, nvPPA-PSP, HCs, svPPA) –for details, see Supplement, eAppendix 4.

Perceptual assessments of videotaped sessions by certified speech pathologists, based on the validated Motor Speech Evaluation,¹⁸ indicated that all patients with nvPPA exhibited dysarthria (with mixed spastic, flaccid, and/or hypokinetic speech features)¹⁸ and/or apraxia of speech (with abnormal articulation characterized by slow speech rate, sound distortions, and sequencing errors).²⁸ Clinical ratings of dysarthria or apraxia of speech severity did not

differ significantly between the nvPPA-CBD and nvPPA-PSP subgroups. No signs of dysarthria or apraxia of speech were observed in HCs or patients with svPPA. Results of these assessments are presented alongside linguistic and cognitive results in Table 1 and in Supplement, eAppendix 3 (eTable 2).

Standard Protocol Approvals, Registrations, and Patient Consents

All participants or their caregivers provided written informed consent before inclusion, in accordance with the Declaration of Helsinki. The UCSF Human Research and Protection Program Institutional Review Board approved the three studies participants consented to (10-03946, 10-00619, 12-10512).

[TABLE 1]

Automated Speech Assessment

All participants performed an overt reading task, using the Grandfather Passage (Supplement, eAppendix 5). This 129-word text was designed to elicit all phonemes and main phoneme clusters in English.¹⁸ Unlike spontaneous or semi-spontaneous speech tasks, overt reading tasks keep verbal information constant across participants, circumventing potential confounds related to linguistic demands. Moreover, they prove sensitive to speech timing alterations in nvPPA and other neurodegenerative conditions.^{15, 29} Participants were asked to read at their own pace, with normal volume and cadence. Their speech was recorded, saved as .wav files (44.1 KHz, 16 bits), and analyzed to capture five timing measures: *articulation rate* (syllables per second of phonated time, upon pause removal), *syllable duration* (mean across all syllables), *pause duration* (mean across all pauses, defined as silent intervals between speech sound offset and onset), *syllable duration variability* (standard deviations of syllabic durations), and *pause duration variability* (standard deviation of pause durations).

Acoustic features were extracted using onset detection functions and custom MATLAB scripts. Onset and offset detection was based on acoustic power and summed spectral energy measures across frequencies between 20-4000 Hz, using validated methods adapted here³⁰ and at The University of Melbourne. Time series of these features were smoothed within 50-ms windows and normalized to yield values between 0 and 1. Time points above or below 0.1 were considered onsets or offsets. An 80-ms threshold between offset/onsets was used to limit inclusion of intra-syllabic pauses.

Analysis of Speech Features

Speech timing variables were compared among groups via factorial ANCOVAs, covarying for MMSE score as a measure of dementia severity –as in previous work.³¹ Widely used in PPA research,^{4, 5, 9, 12, 15, 18, 22, 32-34} the MMSE was chosen over the CDR and the FTLCD as these two measures have a restricted range of possible scores, little variance across our (fairly mild) patients, and scores of 0 (null variability) across HCs, thus proving suboptimal

as potential covariates. Analyses were conducted in a three-group setting (nfvPPA, HCs, svPPA) and in a four-group setting (nfvPPA-CBD, nfvPPA-PSP, HCs, svPPA). For each variable, participants with values ≥ 2.5 SDs from the group's mean were removed as outliers. Data were excluded from (a) a single HC for three variables (syllable duration variability, pause duration, pause duration variability) in both the primary and secondary analyses; and (b) a single patient with nfvPPA-PSP for a single variable, only in the secondary analyses. No further participants had outlier values in any analysis. Missing data represented $< 5\%$ in each group for primary analyses and it was restricted to a single person with nfvPPA. Significant effects ($p < .05$) were further analyzed via Tukey's HSD post-hoc tests. Effect sizes were calculated with η_p^2 for ANCOVAs and Cohen's d for pairwise comparisons.

Moreover, we ran binary logistic regressions to examine whether speech timing features could classify (a) individuals with nfvPPA from HCs and (b) persons with nfvPPA-CBD from those with nfvPPA-PSP. To overcome multicollinearity issues, the most sensitive automated measure across both groups (as seen in effect sizes) was used as a single predictor. For comparison, we also ran regression models including perceptual scores of apraxia of speech and dysarthria (Table 1) as separate predictors. Classification accuracy was evaluated considering the area under the ROC curve (AUC). For exploratory purposes, we used Pearson's r to examine correlations between each automated measure and specialist-dependent perceptual ratings of apraxia of speech and dysarthria severity in the overall nfvPPA sample. Analyses were run on R (R Core Team, 2020) and JASP v.0.14.1 (JASP Team, 2020).

Neuroimaging Analyses

Data Acquisition and Preprocessing

All participants underwent whole-brain structural MRI on a 1.5T Siemens, 3T Siemens Trio or 3T Siemens Prisma scanners, with a T1-weighted 3D magnetization-prepared rapid-acquisition gradient echo sequence. Standard parameters were used for the 1.5T scanner (164 coronal slices; voxel size = $1.0 \times 1.5 \times 1.0$ mm³; FoV = 256×256 mm²; matrix size = 256×256 ; TR = 10 ms; TE = 4 ms; T1 = 300 ms; flip angle = 15°), the 3T Trio scanner (160 sagittal slices; voxel size = $1.0 \times 1.0 \times 1.0$ mm³; FoV = 256×256 mm; matrix size = 256×256 ; TR = 2300 ms; TE = 2.98 ms; flip angle = 9°), and the 3T Prisma scanner (160 sagittal slices; voxel size = $1.0 \times 1.0 \times 1.0$ mm³; FoV = 256×256 mm; matrix size = 256×256 ; TR = 2300 ms; TE = 2.90 ms; flip angle = 9°). MRI data for patient groups were compared with those of a group of HCs (matched for sex, age, education, and scanner type) selected from the Hillblom Aging Network Project.

Cortical Thickness and White Matter Atrophy Analysis

T1-weighted images were visually inspected to ensure the absence of artifacts or excessive motion. Images were processed through the Computational Anatomy Toolbox (<http://dbm.neuro.uni-jena.de/cat>) in Statistical Parametric Mapping software (<http://www.fil.ion.ucl.ac.uk/spm/software/spm12>) running under MATLAB. Images were bias-field corrected with a spatial adaptive non-local means denoising filter³⁵ and segmented

into gray matter (GM), WM, and cerebrospinal fluid (CSF). All these tissue classes underwent local intensity transformation before the final adaptive maximum a posteriori segmentation,³⁶ refined by applying a partial volume.³⁷ Segmented images were spatially normalized to the Montreal Neurological Institute space using geodesic shooting registrations³⁸ and modulated by scaling with the amount of volume changes due to spatial registration. WM images were smoothed for a voxel-based morphometry analysis with an 8-mm full-width at half-maximum Gaussian kernel.

Cortical thickness was estimated via surface-based morphometry, a measure that surpasses standard voxel-based analysis as brain surface meshes increase brain registration accuracy.³⁹ To this end, the skull-stripped brain was parcellated into left and right hemisphere, subcortical regions, and cerebellum. Cortical thickness estimation and reconstruction of the central surface were performed using a projection-based thickness method.⁴⁰ Final maps were resampled and smoothed using a 15-mm Gaussian heat kernel.⁴¹

Whole-brain analyses of between-group differences in cortical thickness and WM volume were performed via ANOVAs, including sex, age, handedness, and scanner type as nuisance variables. Total intracranial volume (TIV) was included for WM voxel-based morphometry but not for cortical thickness analysis, given that head size is associated only with the former measure.⁴² Alpha levels were set at $p < .05$. Family-wise error (FWE) correction was used to detect areas of peak cortical thinning and of WM volume loss. For better visualization, of between-group comparisons were also performed with a less stringent threshold ($p < .001$, uncorrected).

Brain-Behavior Analyses

Considering previous research,²¹ we assessed whether articulation rate was associated with cortical atrophy in our target ROIs. To this end, we performed linear regressions with sex, age, and TIV as covariates. We used a liberal uncorrected threshold ($p < .05$). While this is suitable given our moderate sample size and hypothesis-driven analyses,²¹ we report adjusted R-squares values, controlling for the number of terms in the model. We targeted the following left-hemisphere ROIs in specific Brodmann areas (BAs): PMC (BA4), SMA (BA6), and preSMA (BA8). We also included additional ROIs over the inferior frontal gyrus (IFG), namely: pars opercularis (BA44) and pars triangularis (BA45). All ROIs were based on the Human Brainnetome Atlas.⁴³

Data Availability

Public archiving of anonymized data is not contemplated by the study's IRB approval. Specific requests can be submitted through the UCSF MAC Resource Request form. Following a UCSF-regulated procedure, access will be granted to designated individuals in line with ethical guidelines on the reuse of sensitive data. This would require submission of a Material Transfer Agreement. Commercial use will not be approved.

Results

Automated Speech Analysis Results

ANCOVA Results

In the three-group setting (collapsing all patients with nvPPA), the five speech timing measures yielded significant effects of group, adjusting for MMSE scores. Post-hoc analyses consistently revealed impaired motor speech in the nvPPA group relative to both HCs and patients with svPPA, there being no significant differences between the latter two groups (Figure 1 and Supplement, eAppendix 6, eTable 3).

[FIGURE 1]

Results from the four-group analysis revealed that abnormal speech timing in the nvPPA group was primarily driven by patients with nvPPA-CBD, who differed from HCs and patients with svPPA across all five automated measures. Conversely, deficits in the nvPPA-PSP group were confined to articulation rate. Moreover, all five measures showed greater deficits in the nvPPA-CBD than in the nvPPA-PSP group, adjusting for MMSE scores (Figure 2 and Supplement, eAppendix 6, eTable 4).

[FIGURE 2]

Binary Logistic Regression Results

Binary logistic regressions were run based on articulation rate, namely, the measure yielding the largest effect size in the three-group analyses and the only one revealing deficits in both nvPPA subgroups. The logistic regression model showed that this predictor discriminated between patients with nvPPA and HCs [Wald χ^2 (1) = 6.53, p = .012] with high accuracy (AUC = .95). This single-predictor model correctly classified 90% of persons with nvPPA and 80% of HCs. Group membership was not predicted when based on independent models of apraxia of speech [Wald χ^2 (1) = 1.60, p = .99] or dysarthria [Wald χ^2 (1) = 0, p = .99] severity ratings, both yielding less accurate classification than the articulation rate model (AUC = .88 and .86, respectively) –Figure 3A.

Also, articulation rate discriminated between pathologically-defined subgroups [Wald χ^2 (1) = 5.51, p = .019]. This single-predictor model yielded high classification accuracy (AUC = .82), correctly identifying 92% of persons with nvPPA-CBD and 78% of persons with nvPPA-PSP. Conversely, apraxia of speech severity did not predict group membership [Wald χ^2 (1) = 0.003, p = .954], correctly identifying 100% of persons with nvPPA-CBD but 0% of persons with nvPPA-PSP (AUC = .57). Likewise, group membership was not predicted by dysarthria severity [Wald χ^2 (1) = 1.20, p = .273],

identifying 82% of persons with nvPPA-CBD and only 30% of persons with nvPPA-PSP (AUC = .64) –Figure 3B.

[FIGURE 3]

Correlations Between Automated and Perceptual Speech Measures

Across all patients with nvPPA, perceptual ratings of apraxia of speech severity correlated negatively with articulation rate ($p = .04$, $r = -0.45$) and positively with mean syllable duration ($p = .04$, $r = 0.46$). Non-significant results were observed for every other correlation between speech timing measures and perceptual ratings of apraxia of speech and dysarthria severity (all p -values $> .19$). For details, see Supplement, eAppendix 7, eTable 5.

Cortical Thinning and WM Loss Across Patient Groups

The combined nvPPA group exhibited cortical thinning in the left precentral and caudal/rostral middle frontal cortices as well as the bilateral superior frontal gyrus (including the supplementary motor area), together with atrophy in the underlying WM ($p < .05$, FWE-corrected) –Figure 4A. Patients with svPPA exhibited reduced cortical thickness in the left temporal pole (extending onto inferior, middle, and superior temporal gyri) and lower volume in the underlying WM ($p < .05$, FWE-corrected) –Figure 4B. Secondary analyses in the nvPPA-CBD and nvPPA-PSP subgroups revealed structural abnormalities in the same areas as the combined nvPPA group, with the nvPPA-CBD subgroup showing more involvement and additional thinning of the left pars opercularis ($p < .05$, FWE-corrected) relative to HCs; and the nvPPA-PSP subgroup exhibiting compromise of the angular gyrus as well as the bilateral dentate nucleus, the left thalamus, and the left midbrain (though not surviving FWE correction) relative to HCs. Structural abnormality was more widespread in patients with CBD than in those with PSP (Figure 4C-D).

[FIGURE 4]

Brain-Behavior Associations

Across the nvPPA group, articulation rate was associated with cortical atrophy in the left SMA ($p = .03$, adjusted $R^2 = 0.18$), preSMA ($p = .02$, adjusted $R^2 = 0.34$), and pars opercularis ($p < .01$, adjusted $R^2 = 0.47$), but not in the PMC ($p = .07$, adjusted $R^2 = 0.14$) or the pars triangularis ($p = .65$, adjusted $R^2 = -0.07$).

Classification of Evidence

This study provides Class III evidence that objective speech timing measures can identify persons with autopsy-confirmed nvfPPA and discriminate between those with CBD and PSP pathology.

Discussion

We employed automated speech timing analysis to identify patients with autopsy-confirmed nvfPPA. All five measures discriminated these individuals from HCs and from patients with svPPA, and articulation rate surpassed specialist-dependent perceptual evaluations in distinguishing individuals with nvfPPA. Abnormal speech timing was accompanied by GM and WM alterations in left frontal cortices, and significantly associated with motor region atrophy. Also, relative to patients with nvfPPA-PSP, those with nvfPPA-CBD exhibited greater deficits in all automated metrics and more widespread frontal atrophy. Finally, articulation rate robustly discriminated between patients in each subgroup. These findings suggest that automated speech timing measures are sensitive tools for nvfPPA assessments.

Relative to HCs and patients with svPPA, the nvfPPA group produced fewer syllables per phonated second as well as longer and less isochronous syllables and pauses. While variant-specific alterations of speech timing and other prosodic dimensions have been reported in clinically diagnosed nvfPPA,^{11, 12} our study successfully captured them automatically in autopsy-confirmed patients. This finding extends evidence from perceptual measures in persons with confirmed FTLD-tauopathy,⁵ indicating that speech timing markers are critically linked to such pathology.¹² Notably, these distinctions proved significant upon controlling for dementia severity, which is notable given that cognitive impairment can influence motor speech deficits.²⁹

Articulation rate (our most sensitive automated measure) classified individuals with nvfPPA from HCs with an AUC of .95. This result surpassed the highest AUC scores in the nvfPPA literature, based on both single and combined motor speech measures.¹² As observed in other diseases,^{20, 44} the classifier based on articulation rate outperformed those based on perceptual measures. Though useful when administered by specialists, listener-based assessments may yield inconsistent results and overlook fine-grained speech dimensions.^{16, 17} The latter point may account for the better performance of our automated tools.

Both articulation rate and mean syllable duration were correlated with apraxia of speech (but not with dysarthria) severity ratings. This might reflect the prominence of phonated segment length (as opposed to pausing) in perceptual assessments, as both automated measures lean heavily on such a factor. Still, no other correlation between automated and perceptual measures reached significance, suggesting that they capture partly different phenomena. Briefly, regression results support the value of automated speech timing assessments for nvfPPA,¹¹ showing that subtle dysfunctions can be objectively established at a probabilistic single-patient level.

The nvfPPA group exhibited cortical thinning across left precentral, left middle frontal, and bilateral superior frontal regions, including the SMA –alongside atrophy of the underlying WM. These regions (in particular, the precentral and supplementary motor cortices) are central hubs of the motor speech network,³² likely accounting for the patients'

behavioral profile. Moreover, WM alterations beneath these and other substrates are typical of nfvPPA with FTLT-tau.³³ In fact, damage to frontal regions, especially including the SMA, is typically observed in non-agrammatic patients with motor speech disorders.⁸ Interestingly, while prosodic alterations may also involve non-cortical degeneration (e.g., in the superior cerebellar peduncle),⁴⁵ our study suggests that at least some such disruptions (namely, speech timing alterations) may become significant without marked subcortical damage.

Articulation rate was associated with atrophy in the left SMA and preSMA, as observed by Cordella et al. (2019).²¹ However, unlike that work, we also observed an association with atrophy of the left pars opercularis, while failing to find associations with PMC or the pars triangularis. These differences may reflect the fact that brain-behavior correlations in Cordella et al. (2019)²¹ were conducted upon collapsing patients from all three PPA variants, each presenting distinct atrophy patterns.

As seen in secondary analyses, all automated measures revealed greater deficits in nfvPPA-CBD than in nfvPPA-PSP –the latter group, indeed, was impaired only on articulation rate. This measure classified persons in each subgroup with an AUC of .82 – unlike perceptual speech measures, which failed to discriminate between groups. Interestingly, a previous study found that prosodic deficits were more strongly related to PSP than CBD pathology.⁸ Yet, that study targeted (semi)spontaneous speech while we used overt reading. These tasks’ discrepant demands elicit distinct predominant motor speech disruptions, with prosodic alterations proving more salient during reading.²⁹ Also, no specific assessment of speech timing was conducted therein. Furthermore, dysprosodic signs have been highlighted in CBD,^{2, 10} and slow syllabically segmented prosody is a diagnostic criterion⁴⁶ for a speech-predominant disorder more likely caused by CBD than PSP.⁴⁷ Thus, automated timing assessments could capture distinct signatures of nfvPPA-CBD that may be underestimated in listener-based studies.

Neuroimaging results inform these differentiations. Structural abnormality along premotor speech regions and underlying WM was present in both subgroups, as previously observed.^{8, 45} Yet, such patterns proved markedly more pronounced and widespread in persons with nfvPPA-CBD, potentially accounting for their more severe speech timing impairments. This finding opens new avenues to investigate the role of neocortical motor-network hubs in speech timing.

This study underscores the usefulness of automated acoustic measures for nfvPPA assessments. Perceptual evaluations may not always be valid or reliable,¹⁴⁻¹⁷ they are not well suited to monitoring change,⁴⁸ and their optimal administration may be unfeasible in low-income countries lacking specialized staff.¹⁹ Conversely, computerized systems offer an affordable and objective framework that can be applied remotely. In particular, unlike dimensions like loudness or pitch, speech timing measures are robust to variability in noise and recording conditions, highlighting their scalability. By corroborating their sensitivity in autopsy-confirmed patients, this study addresses current calls to complement standard protocols with cutting-edge metrics.

Moreover, the potential to discriminate between CBD and PSP pathology holds clinical promise. Each of those tauopathies may be prodromal to either corticobasal syndrome (typified by asymmetric movement abnormalities, myoclonus, and dystonia) or PSP syndrome (with symmetric motor symptoms and vertical supranuclear palsy),^{2, 10} whose differentiation in early clinical testing is very challenging. Also, CBD and PSP pathology might entail distinct tau prion conformations,⁴⁹ potentially requiring different therapies.⁵

Thus, these and other tools enabling automatic identification of nfvPPA-CBD and nfvPPA-PSP may optimize individualized treatment, prognosis, and monitoring. Note, however, that the reported measures may only discriminate between these subgroups if administered in early stages, as both will likely become more pervasive, less distinguishable speech deficits as disease progresses.

Finally, some researchers do not consider that isolated motor speech deficits constitute aphasia, and they use the term PPAOS instead. Still, current criteria indicate that clinical nfvPPA diagnosis is warranted even if patients exhibit core motor speech deficits without agrammatism and complex sentence comprehension deficits. Moreover, not all patients with predominant motor speech deficits are characterized by apraxia of speech (as the PPAOS label would suggest), but rather by dysarthria or some combination thereof. Also, subtle grammatical difficulties were observed in our cohort during clinical interviews, supporting the view that nfvPPA is a spectrum, as the weight of motor speech and grammatical deficits varies across patients and throughout time. Future studies should address these definitional questions in greater depth.

Limitations and avenues for further research

Our study is not without limitations. First, although we assembled the largest autopsy-confirmed cohort in the automated speech analysis literature, our sample size was modest. Future replications should involve more participants, especially for subgroup analyses. Second, inconsistent recording conditions (e.g., divergent volume and noise levels) over our 17-year data collection period precluded analysis of other acoustic dimensions, such as articulation and phonation. Relevant breakthroughs could be made, under standardized recording conditions, by comparing the predominance of different motor speech alterations in each nfvPPA subgroup, as done elsewhere.^{8, 45} Third, our approach could be more stringently tested through comparisons between nfvPPA and lvPPA, whose clinical differentiation proves particularly challenging when using standard speech measures.^{13,15} Also, post-mortem confirmation for svPPA participants would be useful to refine pathology-related conclusions. Fourth, while the MMSE was statistically preferable to other severity measures for covariance analyses, it relies heavily on speech and language functions. In this sense, each group mainly missed different items (sentence comprehension, repetition, and writing for nfvPPA-CBD and nfvPPA-PSP; object naming and backward spelling for svPPA). Future studies could further explore how speech timing is affected by different language profiles and employ relevant, non-verbal measures for covariance analyses. Fifth, since data was collected through various protocols over 17 years, we lacked a single, objective grammatical measure across patients. While this precludes detailed characterizations of the patients' aphasic profile, future research could use morphosyntactic analyses of other recorded samples to elucidate the issue. Sixth, our cohort included too few persons with Pick's disease, preventing their inclusion for statistical analysis and inviting new research on their particular speech timing profiles. Finally, our approach could be implemented on platforms offering remote audio recording. Free open-source applications already provide user-friendly capabilities for clinical research. These tools could foster continual remote testing, opening exciting opportunities for longitudinal research and disease progression monitoring.

Conclusion

Automated speech timing measures can discriminate persons with autopsy-confirmed nfvPPA from HCs and patients with svPPA, identify persons with autopsy-confirmed nfvPPA at the probabilistic single-person level, capture distinct atrophy patterns across syndrome-sensitive regions, and potentially differentiate between patients with CBD and PSP pathology. Computerized speech tools could, thus, contribute to differential diagnosis and pathology prediction in this population. New avenues can be envisaged towards developing scalable, objective innovations in clinicopathological FTL assessments.

Conflicts of interest

None to declare.

Funding

A. M. García is an Atlantic Fellow at the Global Brain Health Institute (GBHI) and is supported with funding from GBHI, Alzheimer's Association, and Alzheimer's Society (GBHI ALZ UK-22-865742); as well as CONICET; ANID (FONDECYT Regular 1210176); and Programa Interdisciplinario de Investigación Experimental en Comunicación y Cognición (PIIECC), Facultad de Humanidades, USACH. A. E. Welch reports no disclosures relevant to the manuscript. M. L. Mandelli reports no disclosures relevant to the manuscript. M. L. Henry is supported by the National Institutes of Health (NIDCD R01DC016291). S. Lukic reports no disclosures relevant to the manuscript. M. J. Torres-Prioris has been funded by a postdoctoral fellowship under the program Plan Andaluz de Investigación, Desarrollo e Innovación (PAIDI 2020) (DOC_00421). J. Deleon is supported by the National Institutes of Health (NIDCD K23 DC018021). B. M. Ratnasiri reports no disclosures relevant to the manuscript. D. L. Lorca-Puls is supported by a postdoctoral fellowship from the National Agency for Research and Development (ANID BECAS-CHILE 74200073). B. L. Miller reports no disclosures relevant to the manuscript. W. W. Seeley reports no disclosures relevant to the manuscript. A. P. Vogel is Chief Science Officer of Redenlab Inc. The Memory and Aging Center is also supported by the Larry L. Hillblom Foundation; John Douglas French Alzheimer's Foundation; Koret Family Foundation; Consortium for Frontotemporal Dementia Research; and McBean Family Foundation. Maria Luisa Gorno-Tempini is supported by grants from the National Institutes of Health (NINDS R01 NS050915, NIDCD K24 DC015544; NIA U01 AG052943).

Acknowledgments

We thank all participants and their families for contributing to this research.

References

1. Josephs KA, Duffy JR. Apraxia of speech and nonfluent aphasia: a new clinical marker for corticobasal degeneration and progressive supranuclear palsy. *Curr Opin Neurol*. 2008;21(6):688-692.
2. Peterson KA, Patterson K, Rowe JB. Language impairment in progressive supranuclear palsy and corticobasal syndrome. *J Neurol*. 2021;268:796-809.
3. Marshall CR, Hardy CJD, Volkmer A, et al. Primary progressive aphasia: a clinical approach. *J Neurol*. 2018;265:1474-1490.
4. Spinelli EG, Mandelli ML, Miller ZA, et al. Typical and atypical pathology in primary progressive aphasia variants. *Ann Neurol*. 2017;81:430-443.
5. Santos-Santos MA, Mandelli ML, Binney RJ, et al. Features of patients with nonfluent/agrammatic primary progressive aphasia with underlying progressive supranuclear palsy pathology or corticobasal degeneration. *JAMA Neurol*. 2016;73:733-742.
6. Josephs KA, Duffy JR, Strand EA, et al. Clinicopathological and imaging correlates of progressive aphasia and apraxia of speech. *Brain*. 2006;129:1385-1398.
7. Grossman M. Primary progressive aphasia: clinicopathological correlations. *Nat Rev Neurol*. 2010;6:88-97.
8. Josephs KA, Duffy JR, Clark HM, et al. A molecular pathology, neurobiology, biochemical, genetic and neuroimaging study of progressive apraxia of speech. *Nat Comm*. 2021;12:3452.
9. Karnik NS, D'Apuzzo M, Greicius M. Non-fluent progressive aphasia, depression, and OCD in a woman with progressive supranuclear palsy: neuroanatomical and neuropathological correlations. *Neurocase*. 2006;12:332-338.
10. Kertesz A, McMonagle P. Behavior and cognition in corticobasal degeneration and progressive supranuclear palsy. *J Neurol Sci*. 2010;289:138-143.
11. Matias-Guiu JA, Suárez-Coalla P, Pytel V, et al. Reading prosody in the non-fluent and logopenic variants of primary progressive aphasia. *Cortex*. 2020;132:63-78.
12. Nevler N, Ash S, Irwin DJ, Liberman M, Grossman M. Validated automatic speech biomarkers in primary progressive aphasia. *Ann Clin Trans Neurol*. 2019;6:4-14.
13. Haley KL, Jacks A, Jarrett J, et al. Speech metrics and samples that differentiate between nonfluent/agrammatic and logopenic variants of primary progressive aphasia. *J Speech Lang Hear Res*. 2021;64:754-775.
14. Kent RD. Hearing and Believing. *Am J Speech Lang Path*. 1996;5:7-23.
15. Ballard KJ, Savage S, Leyton CE, Vogel AP, Hornberger M, Hodges JR. Logopenic and nonfluent variants of primary progressive aphasia are differentiated by acoustic measures of speech production. *PLOS ONE*. 2014;9:e89864.
16. Cernak M, Orozco-Arroyave JR, Rudzicz F, Christensen H, Vásquez-Correa JC, Nöth E. Characterisation of voice quality of Parkinson's disease using differential phonological posterior features. *Comp Speech Lang*. 2017;46:196-208.
17. Aronson AE, Bless D. *Clinical Voice Disorders*. New York: Thieme. 2011.
18. Ogar JM, Dronkers NF, Brambati SM, Miller BL, Gorno-Tempini ML. Progressive nonfluent aphasia and its characteristic motor speech deficits. *Alz Dis Assoc Dis*. 2007;21:S23-S30.

19. Parra MA, Baez S, Allegri R, et al. Dementia in Latin America: Assessing the present and envisioning the future. *Neurology*. 2018;90:222-231.
20. Huh YE, Park J, Suh MK, et al. Differences in early speech patterns between Parkinson variant of multiple system atrophy and Parkinson's disease. *Brain Lang*. 2015;147:14-20.
21. Cordella C, Quimby M, Touroutoglou A, Brickhouse M, Dickerson BC, Green JR. Quantification of motor speech impairment and its anatomic basis in primary progressive aphasia. *Neurology*. 2019;92:e1992-e2004.
22. Mandelli ML, Welch AE, Vilaplana E, et al. Altered topology of the functional speech production network in non-fluent/agrammatic variant of PPA. *Cortex*. 2018;108:252-264.
23. Gorno-Tempini ML, Hillis AE, Weintraub S, et al. Classification of primary progressive aphasia and its variants. *Neurology*. 2011;76:1006-1014.
24. Mackenzie IR, Neumann M, Bigio EH, et al. Nomenclature and nosology for neuropathologic subtypes of frontotemporal lobar degeneration: an update. *Acta Neuropathol*. 2010;119:1-4.
25. Lee SE, Rabinovici GD, Mayo MC, et al. Clinicopathological correlations in corticobasal degeneration. *Ann Neurol*. 2011;70:327-340.
26. Feany MB, Dickson DW. Widespread cytoskeletal pathology characterizes corticobasal degeneration. *Am J Pathol*. 1995;146:1388-1396.
27. Yamada T, McGeer PL, McGeer EG. Appearance of paired nucleated, Tau-positive glia in patients with progressive supranuclear palsy brain tissue. *Neurosci Letters*. 1992;135:99-102.
28. Duffy J. *Motor Speech Disorders*. St. Louis: Mosby. 1995.
29. García AM, Arias-Vergara T, J CV-C, et al. Cognitive determinants of dysarthria in Parkinson's disease: An automated machine learning approach. *Mov Dis*. 2021. 36(12):2862-2873.
30. Schultz BG, O'Brien I, Phillips N, McFarland DH, Titone D, Palmer C. Speech rates converge in scripted turn-taking conversations. *App Psycholing*. 2016;37:1201-1220.
31. Marczyński CA, Kertesz A. Category and letter fluency in semantic dementia, primary progressive aphasia, and Alzheimer's disease. *Brain Lang*. 2006;97:258-265.
32. Mandelli ML, Caverzasi E, Binney RJ, Henry ML, Lobach I, Block N. Frontal white matter tracts sustaining speech production in primary progressive aphasia. *J Neurosci*. 2014;34:9754-9767.
33. Caso F, Mandelli ML, Henry M, et al. In vivo signatures of nonfluent/agrammatic primary progressive aphasia caused by FTLTD pathology. *Neurology*. 2014;82:239-247.
34. Wilson SM, Dronkers NF, Ogar JM, et al. Neural correlates of syntactic processing in the nonfluent variant of primary progressive aphasia. *J Neurosci*. 2010;30:16845-16854.
35. Manjón JV, Coupé P, Martí-Bonmatí L, Collins DL, Robles M. Adaptive non-local means denoising of MR images with spatially varying noise levels. *J Magn Res Imag*. 2010;31:192-203.
36. Rajapakse JC, Giedd JN, Rapoport JL. Statistical approach to segmentation of single-channel cerebral MR images. *IEEE Trans Med Imag*. 1997;16:176-186.
37. Tohka J, Zijdenbos A, Evans A. Fast and robust parameter estimation for statistical partial volume models in brain MRI. *NeuroImage*. 2004;23:84-97.

38. Ashburner J, Friston KJ. Diffeomorphic registration using geodesic shooting and Gauss-Newton optimisation. *NeuroImage*. 2011;55:954-967.
39. Desai R, Liebenthal E, Possing ET, Waldron E, Binder JR. Volumetric vs. surface-based alignment for localization of auditory cortex activation. *NeuroImage*. 2005;26:1019-1029.
40. Dahnke R, Yotter RA, Gaser C. Cortical thickness and central surface estimation. *NeuroImage*. 2013;65:336-348.
41. Yotter RA, Nenadic I, Ziegler G, Thompson PM, Gaser C. Local cortical surface complexity maps from spherical harmonic reconstructions. *NeuroImage*. 2011;56:961-973.
42. Barnes J, Ridgway GR, Bartlett J, et al. Head size, age and gender adjustment in MRI studies: a necessary nuisance? *NeuroImage*. 2010;53:1244-1255.
43. Fan L, Li H, Zhuo J, et al. The Human Brainnetome Atlas: A new brain atlas based on connectonal architecture. *Cereb Cor*. 2016;26:3508-3526.
44. Eliasova I, Mekyska J, Kostalova M, Marecek R, Smekal Z, Rektorova I. Acoustic evaluation of short-term effects of repetitive transcranial magnetic stimulation on motor aspects of speech in Parkinson's disease. *J Neural Trans*. 2013;120:597-605.
45. Utianski RL, Duffy JR, Clark HM, et al. Prosodic and phonetic subtypes of primary progressive apraxia of speech. *Brain Lang*. 2018;184:54-65.
46. Höglinger GU, Respondek G, Stamelou M, et al. Clinical diagnosis of progressive supranuclear palsy: The movement disorder society criteria. *Mov Dis*. 2017;32:853-864.
47. Ali F, Martin PR, Botha H, et al. Sensitivity and specificity of diagnostic criteria for progressive supranuclear palsy. *Mov Dis*. 2019;34:1144-1153.
48. Vogel AP, Maruff P. Monitoring change requires a rethink of assessment practices in voice and speech. *Logoped Phoniat Vocol*. 2014;39:56-61.
49. Sanders DW, Kaufman SK, DeVos SL, et al. Distinct tau prion strains propagate in cells and mice and define different tauopathies. *Neuron*. 2014;82:1271-1288.

Table 1. Participants' demographic, speech, language, and cognitive profiles in the three-group setting.

	Patients with nfvPPA (<i>n</i> = 22)	Patients with svPPA (<i>n</i> = 15)	Healthy controls (<i>n</i> = 10)	<i>p</i> -value
Demographics				
% Male	40.9%	46.7%	50%	.876
% Right-handed	95.4%	93.3%	80%	.332
Age	67.3 (7.1)	66.5 (5.8)	70 (6.9)	.260
Years of education	16.5 (3.2)	17.9 (2.4)	17 (1)	.573
Disease duration				
Years post onset	3.6 (1.3)	5.6 (3.3)	-----	.094
Perceptual speech assessment				
Apraxia of speech severity (1 = minimal, 7 = profound)	1.6 (1.5) ^{b,c}	0 (0) ^a	0 (0) ^a	< .001*
Dysarthria severity (1 = minimal, 7 = profound)	1.9 (1.6) ^{b,c}	0 (0) ^a	0 (0) ^a	< .001*
Language measures				
Boston Naming Test (15 items)	12.7 (2.4) ^b	6.2 (3.8) ^{a,c}	14.7 (0.5) ^b	< .001*
WAB spontaneous speech fluency (max score: 10)	7.2 (1.9)	9.1 (0.6)	-----	.004*
Syntactic processing (% correct from Wilson et al., 2010) ³⁴	93.1 (10.4)	96.1 (4.8)	99.4 (1.5)	.106
Cognitive measures				
CDR (sum of boxes)	0.5 (0.3) ^c	0.6 (0.2) ^c	0 (0) ^{a,b}	< .001*
Language	1.5 (0.6)	1(0.3)	-----	.018* [†]
FTLD CDR	4.4 (2) ^c	5 (2.1) ^c	0 (0) ^{a,b}	< .001*
MMSE	25.3 (4.4) ^c	25.7 (3.4) ^c	29.4 (0.8) ^{a,b}	< .001*
Digits forwards	4.7 (1.1)	6.3 (1.4)	-----	.005* [†]
Digits backwards	3.4 (1.1)	4.7 (1.2)	-----	.003* [†]
Design fluency	6.7 (3.1)	9.6 (2.8)	-----	.006* [†]
Benson recall	10.1 (3.7)	9.8 (3.3)	-----	.714 [†]
GDS	7.2 (6.5)	7.8 (6.0)	-----	.676 [†]

Asterisks (*) indicate significant differences at $p < .05$. Demographic information and performance between groups were compared via Kruskal Wallis or Mann-Whitney tests, as needed. The cross (†) indicates p -value for the pairwise comparison between nfvPPA and svPPA patients. Superscript letters indicate the group showing significant differences in the Dunn post-hoc pairwise comparisons (Holm's correction). a: nfvPPA; b: svPPA; c: healthy controls. Sex and handedness were compared with χ^2 tests. NfvPPA: non-fluent variant primary progressive aphasia; svPPA: semantic variant primary progressive aphasia; WAB: Western Aphasia Battery; FTLD CDR: Frontotemporal Lobar Degeneration Clinical Dementia Rating; MMSE: Mini-Mental State Examination; GDS: Geriatric Depression Scale.

Figure Titles and Legends

Figure 1. Results for the three-group setting (all nvfPPA patients together).

All five speech timing measures revealed significant impairments in nvfPPA patients relative to both healthy controls and svPPA patients. No differences were observed between the latter two groups. In the box plot, middle horizontal lines show each group's median, with lower and upper lines representing the 25th and 75th percentiles, respectively. The whiskers represent the smallest and largest values in the distribution. Colored dots indicate each participant's individual value. Black dots represent the group's mean. The asterisk (*) denotes significant differences at $p < .05$. All statistics were calculated after outlier removal (namely, a single nvfPPA-PSP participant). NfvPPA: non-fluent variant primary progressive aphasia; svPPA: semantic variant primary progressive aphasia.

Figure 2. Results of the four-group analysis (separating nvfPPA-CBD from nvfPPA-PSP patients).

All five speech timing measures captured significant impairments in nvfPPA-CBD patients compared to both healthy controls and svPPA patients. In contrast, only articulation rate was impaired in the nvfPPA-PSP patients. Deficits in all measures were significantly greater for nvfPPA-CBD than nvfPPA-PSP patients. In the box plot, middle horizontal lines show each group's median, with lower and upper lines representing the 25th and 75th percentiles, respectively. The whiskers represent the smallest and largest values in the distribution. Colored dots indicate each participant's individual value. Black dots represent the group's mean. Asterisks (*) denote significant differences at $p < .05$. All statistics were calculated after outlier removal (namely, a single nvfPPA-PSP participant). NfvPPA-CBD: non-fluent variant primary progressive aphasia with corticobasal degeneration pathology; nvfPPA-PSP: non-fluent variant primary progressive aphasia with progressive supranuclear palsy pathology; svPPA: semantic variant primary progressive aphasia.

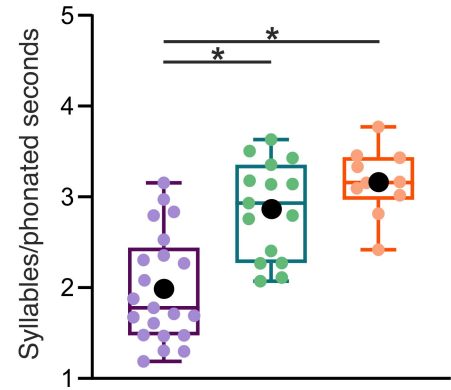
Figure 3. Binary logistic regression results.

(A) Classification between nvfPPA patients and HCs was significant for the automated measure of articulation rate (top inset) as well as the perceptual measures of apraxia of speech severity (middle inset) and dysarthria severity (bottom inset), with maximal AUC score for the former. **(B)** Classification between nvfPPA-CBD and nvfPPA-PSP patients was significant for the automated measure of articulation rate (top inset) but not for the perceptual measures of apraxia of speech severity (middle inset) and dysarthria severity (bottom inset), the former yielding a robust AUC value. ROC: receiving operating characteristic; AUC: area under the ROC curve; nvfPPA: non-fluent variant primary progressive aphasia; nvfPPA-CBD: non-fluent variant primary progressive aphasia with corticobasal degeneration pathology; nvfPPA-PSP: non-fluent variant primary progressive aphasia with progressive supranuclear palsy pathology; svPPA: semantic variant primary progressive aphasia; HCs: healthy controls.

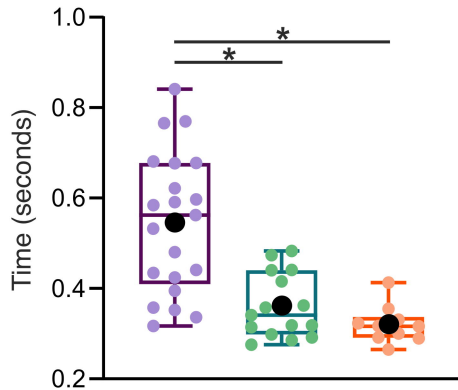
Figure 4. Brain structural abnormality patterns of each patient group.

The combined nvPPA group (panel **A**) and the svPPA group (panel **B**), as well as subgroups with nvPPA-CBD (panel **C**) and nvPPA-PSP (panel **D**), were compared with HCs to estimate their patterns of cortical thickness (top insets) and white matter volume (bottom insets) via surface-based and voxel-based morphometry, respectively. For better visualization of differences and similarities across groups, *t*-map values are reported at an uncorrected $p < .001$ threshold. NfvPPA: non-fluent variant primary progressive aphasia; nvPPA-CBD: non-fluent variant primary progressive aphasia with corticobasal degeneration pathology; nvPPA-PSP: non-fluent variant primary progressive aphasia with progressive supranuclear palsy pathology; svPPA: semantic variant primary progressive aphasia.

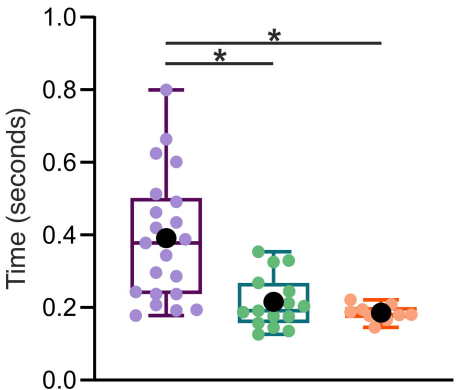
A. Articulation rate



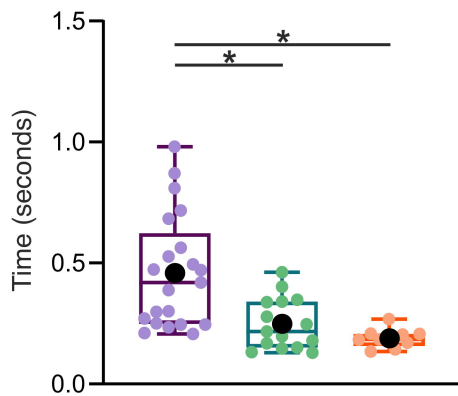
B. Mean syllable duration



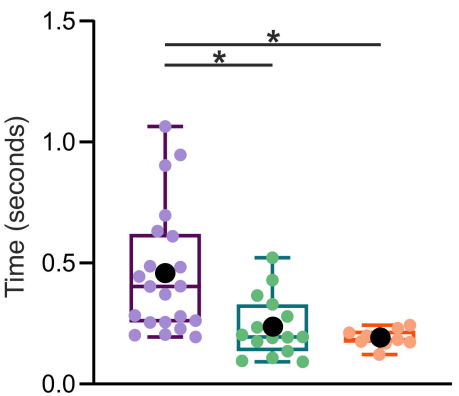
C. Mean pause duration



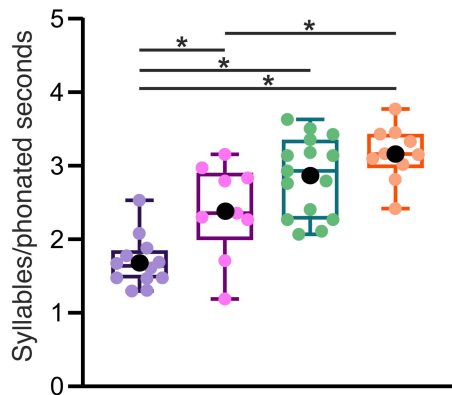
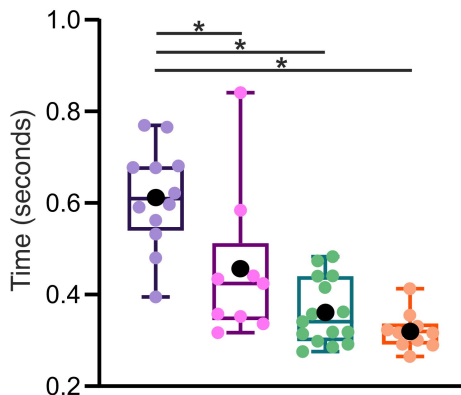
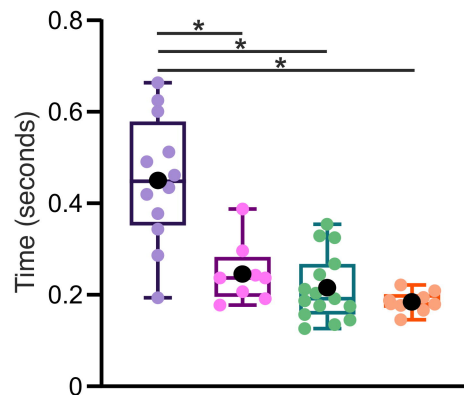
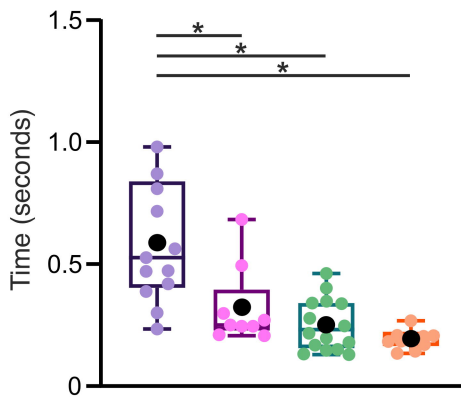
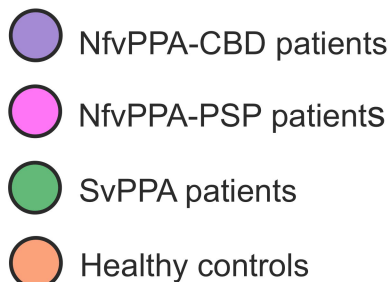
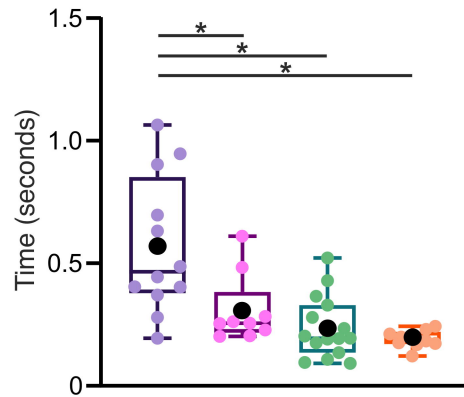
D. Syllable duration variability



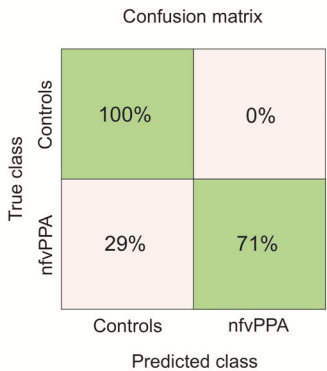
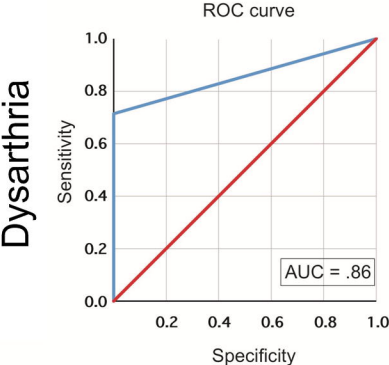
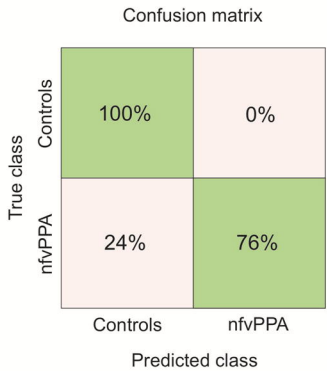
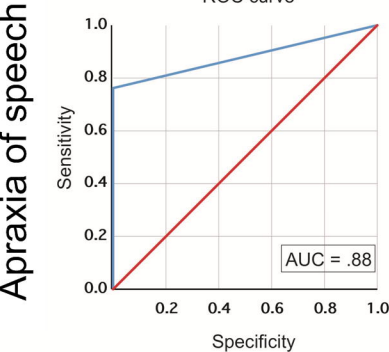
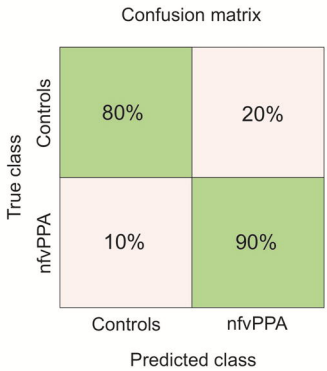
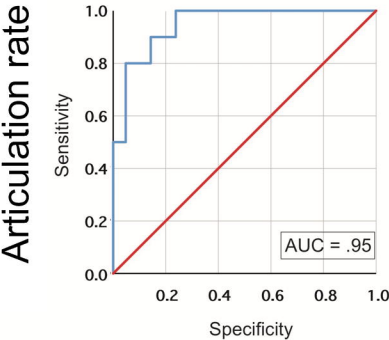
E. Pause duration variability



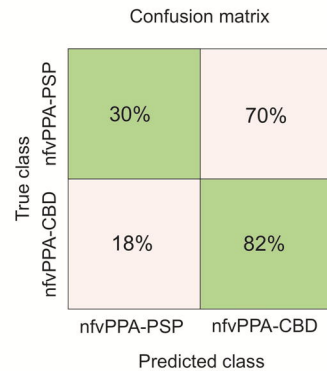
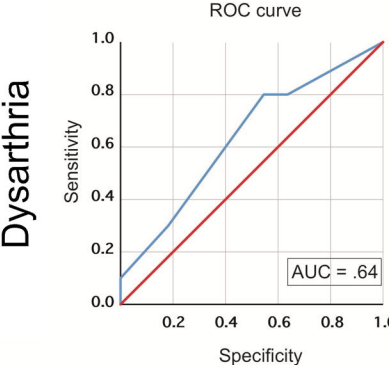
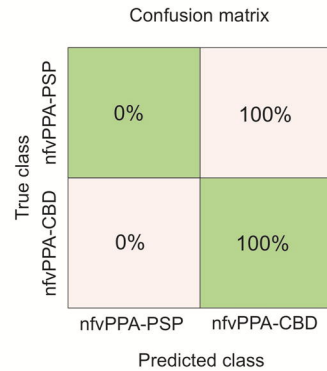
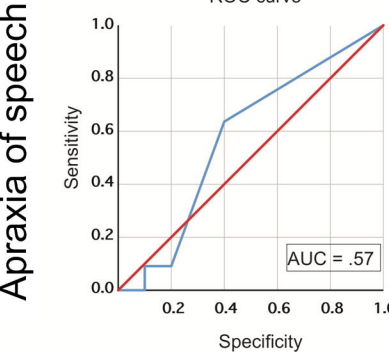
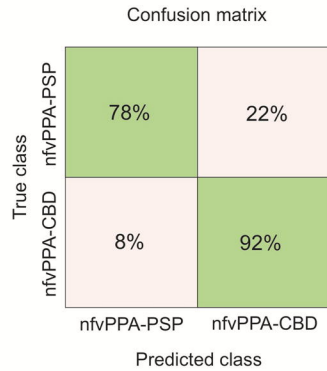
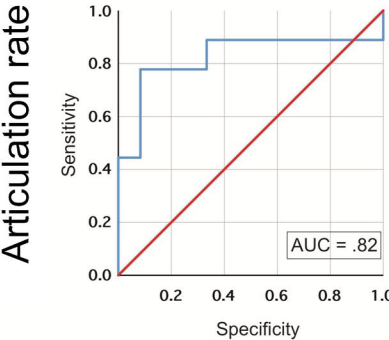
- NfvPPA patients
- SvPPA patients
- Healthy controls

A. Articulation rate**B. Mean syllable duration****C. Mean pause duration****D. Syllable duration variability****E. Pause duration variability**

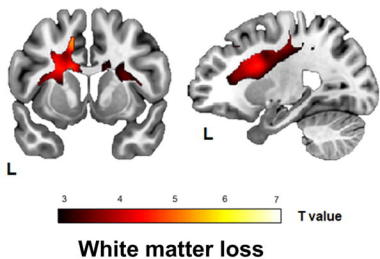
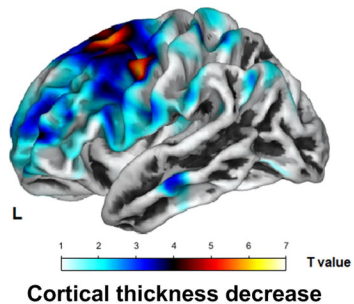
A. nfvPPA patients vs. HCs



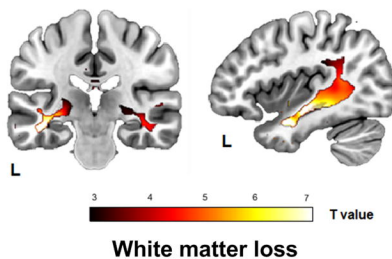
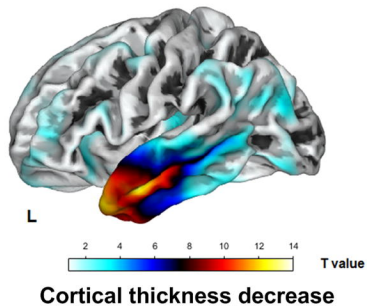
B. nfvPPA-CBD vs. nfvPPA-PSP patients



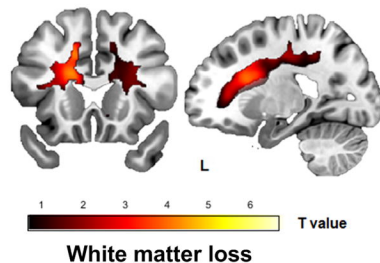
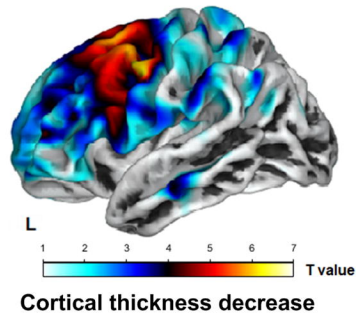
A. nvfPPA patients



B. svPPA patients



C. nvfPPA-CBD patients



D. nvfPPA-PSP patients

