

1 **Resurgence of malaria in Uganda despite sustained indoor residual spraying and repeated**
2 **long lasting insecticidal net distributions**

3
4 Adrienne Epstein^{1,2}, Catherine Maiteki-Ssebuguzi³, Jane F. Namuganga⁴, Joaniter I.
5 Nankabirwa^{4,5}, Samuel Gonahasa⁴, Jimmy Opigo³, Sarah G. Staedke⁶, Damian Rutazaana³,
6 Emmanuel Arinaitwe⁴, Moses R. Kanya^{4,5}, Samir Bhatt^{7,8}, Isabel Rodríguez-Barraquer⁹, Bryan
7 Greenhouse⁹, Martin J. Donnelly¹, Grant Dorsey⁹

8
9 ¹Department of Vector Biology, Liverpool School of Tropical Medicine, Liverpool, UK

10
11 ²Department of Epidemiology and Biostatistics, University of California San Francisco, San
12 Francisco, California, United States of America

13
14 ³National Malaria Control Division, Ministry of Health, Kampala, Uganda

15
16 ⁴Infectious Diseases Research Collaboration, Kampala, Uganda

17
18 ⁵Makerere University, College of Health Sciences, Kampala, Uganda

19
20 ⁶London School of Hygiene and Tropical Medicine, London, United Kingdom

21
22 ⁷Department of Infectious Disease Epidemiology, Imperial College, St Mary's Hospital, London,
23 UK

24
25 ⁸Section of Epidemiology, Department of Public Health, University of Copenhagen,
26 Copenhagen, Denmark

27
28 ⁹Department of Medicine, University of California San Francisco, San Francisco, California,
29 United States of America

30
31
32 **Corresponding author:**

33 Adrienne Epstein
34 Liverpool School of Tropical Medicine
35 Pembroke Pl, Liverpool L3 5QA
36 Adrienne.Epstein@lstm.ac.uk

37

38 **Abstract**

39 Five years of sustained indoor residual spraying (IRS) of insecticide from 2014 to 2019, first
40 using a carbamate followed by an organophosphate, was associated with a marked reduction in
41 the burden of malaria in five districts of Uganda. We assessed malaria burden over an additional
42 21 months, corresponding to a change in IRS formulations using clothianidin with and without
43 deltamethrin and the start of the COVID-19 pandemic. We document an unprecedented
44 resurgence in malaria burden: in years 4-5 of sustained IRS cases were 84% lower than the pre-
45 IRS period, in year 6 this increased to a 43% reduction, and in the first 9 months of year 7, cases
46 were 39% higher than pre-IRS levels. The timing of this resurgence corresponded to a change of
47 active ingredient to clothianidin, a new IRS active ingredient. Further research is needed to
48 determine mechanisms leading to this resurgence.

49

50

51 **Introduction**

52 Major gains have been made in reducing the burden of malaria in sub-Saharan Africa over the
53 past two decades, resulting in a 44% decline in malaria deaths between 2000 and 2019.^{1,2}
54 However, progress has slowed in recent years, particularly in highest burden countries.¹ A
55 majority of the decline in malaria burden has been attributed to vector control interventions,
56 including long-lasting insecticidal nets (LLINs) and indoor residual spraying of insecticide
57 (IRS). Scale-up of LLINs coverage has occurred rapidly, with the proportion of households in
58 sub-Saharan Africa with at least one LLIN increasing from 5% in 2000 to 68% in 2019.¹
59 Conversely, the percent of at-risk populations covered by IRS has been much lower and even
60 declined from 5% in 2010 to 2% in 2019.¹ Challenges to the scale-up of IRS coverage include
61 high cost, complex implementation logistics, and community acceptance.³ Furthermore, evidence
62 from controlled trials is mixed on the added benefit of implementing IRS in communities where
63 LLIN coverage is high.⁴

64
65 Uganda is illustrative of high burden countries where progress in reducing malaria burden has
66 slowed in recent years.¹ The Ugandan Ministry of Health has made a strong commitment to
67 ensuring high LLIN coverage, delivering LLINs through 3 universal coverage campaigns (UCC)
68 taking place in 2013-2014, 2017-2018, and 2020-21. These campaigns have been successful: for
69 example, in 2018-2019, 83% of households reported owning at least one LLIN, the highest
70 coverage globally.⁵ IRS was reintroduced into Uganda in 2006 for the first time since the 1960s,
71 however, geographic coverage of IRS to date has been much lower than LLINs. From 2007 to
72 2014, IRS was implemented in 10 districts in Northern Uganda initially using pyrethroid
73 insecticides and later switching to a carbamate.⁶ In 2014, the IRS campaign was moved to 14

74 historically high burden districts in North-Eastern Uganda in 2014. The IRS campaign in the
75 northeast initially deployed a carbamate insecticide (2014-2016) before changing to an
76 organophosphate for the third, fourth, and fifth years (2017-2019). In this part of the country,
77 IRS has been considered highly successful: in the first 3 years of sustained IRS campaigns
78 (2014-2017), malaria cases at sentinel surveillance sites in 5 of these districts fell by 50%, and in
79 the fourth and fifth years (2018-2019), by 85% compared to pre-IRS levels.⁷

80

81 In this study, we use data from a network of health facility-based malaria surveillance sites to
82 examine the impact of sustained IRS in the 5 districts mentioned above. This study had two
83 objectives. First (Objective 1), to estimate the impact of IRS on malaria burden in 5 districts
84 relative to a baseline period before IRS was initiated after extending our prior analysis⁷ to the 6th
85 and 7th years of sustained IRS (January 2020 through October 2021). This extended evaluation
86 period coincided with a shift in insecticide formulations from the organophosphate pirimiphos-
87 methyl (Actellic 300CS®) to products containing the active ingredient clothianidin alone
88 (SumiShield®) or combined with deltamethrin (Fludora® Fusion WP-SB), the beginning of the
89 COVID-19 pandemic, and the third LLIN UCC (2020-2021). Second (Objective 2), we
90 compared temporal changes in malaria burden during the 6th and 7th years of sustained IRS
91 (January 2020 through October 2021) at the 5 sites receiving sustained IRS to 10 sites in
92 neighboring districts that have not received IRS since 2017.

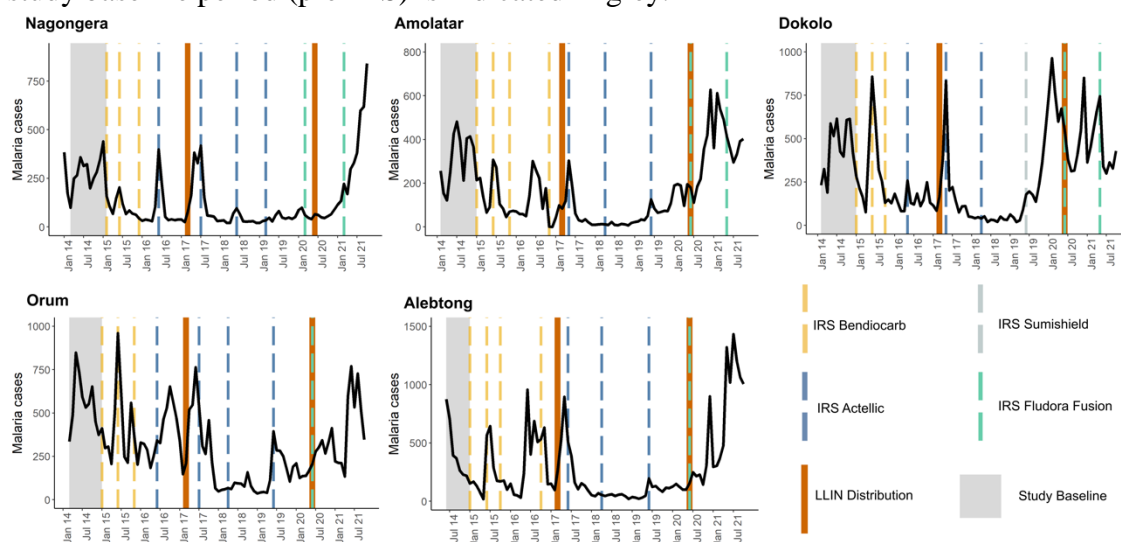
93

94 **Results**

95 **Study Objective 1**

96 Across the 5 sites receiving sustained IRS, a total of 769,561 outpatient visits were recorded
97 from the baseline period covering up to 12 months before IRS started through October 2021
98 (Table 1). During the baseline period, average monthly cases adjusted for testing ranged from
99 278-657 and TPR ranged from 25.2%-67.0%. By years 4 and 5 (months 37 to 60) of sustained
100 IRS these metrics had decreased to 30-90 and 8.5%-26.3%, respectively. However, in year 6 and
101 the first 9 months of year 7 (months 61 to 81) of sustained IRS, average monthly cases adjusted
102 for testing increased to a range of 209-431 and TPR ranged from 27.0%-52.9%. Figure 1 shows
103 plots of laboratory-confirmed malaria cases and vector control interventions over time across the
104 5 sites. Each of these sites demonstrate similar patterns of a decline in malaria cases after the
105 initiation of IRS with seasonal peaks during the first three years of IRS (through 2017), a
106 substantial decline in burden in years four and five of sustained IRS (through 2019), and an
107 increase in burden in years 6 and 7 of sustained IRS (2020-2021) equal to or higher than the
108 burden in the baseline period before IRS was implemented.

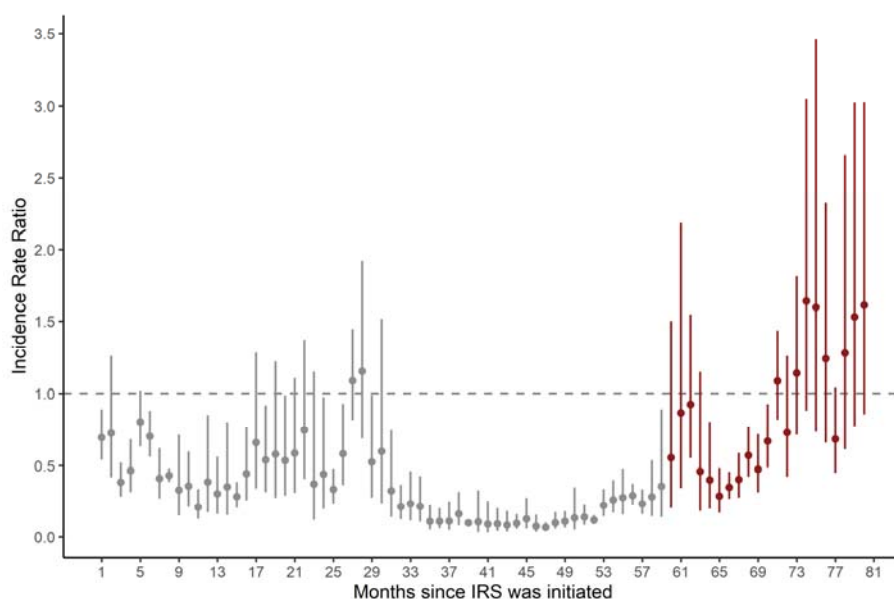
109 **Figure 1. Malaria case counts and vector control interventions over time at 5 IRS sites.** The
110 study baseline period (pre-IRS) is indicated in grey.



111

112 Monthly adjusted IRRs and 95% confidence intervals (CI) for the 5 sites combined are presented
113 in Figure 2 and in Supplemental Table 1. These results show there was an initial 52% reduction
114 in malaria burden in months 1 through 36 of sustained IRS (adjusted IRR = 0.48, 95% CI 0.36-
115 0.64), followed by a continued improvement to an 84% reduction in burden in months 37
116 through 60 of sustained IRS (adjusted IRR = 0.16, 95% CI 0.12-0.22). In months 61 through 72,
117 however, malaria burden increased and was only 43% lower than the baseline period before IRS
118 was implemented (adjusted IRR = 0.57, 95% CI 0.44-0.74). During months 73 through 81 after
119 the initiation of IRS, there was a trend towards a higher malaria burden than the pre-IRS period
120 (adjusted IRR = 1.39, 95% CI 0.97-1.97). These results were consistent when including only
121 laboratory-confirmed cases unadjusted for testing rate as the model outcome (Supplemental
122 Figure 1) and when repeating the analysis leaving out the 2 sites that halted IRS campaigns after
123 2020 (Orum and Alebtong) (Supplemental Figure 2).

124 **Figure 2. Adjusted IRR from multilevel negative binomial model comparing the period**
125 **after IRS was initiated to the period before IRS was initiated.** Vertical bars represent the 95%
126 CI around adjusted IRR. Effect estimates in grey are published previously.



127

128

129 **Study Objective 2**

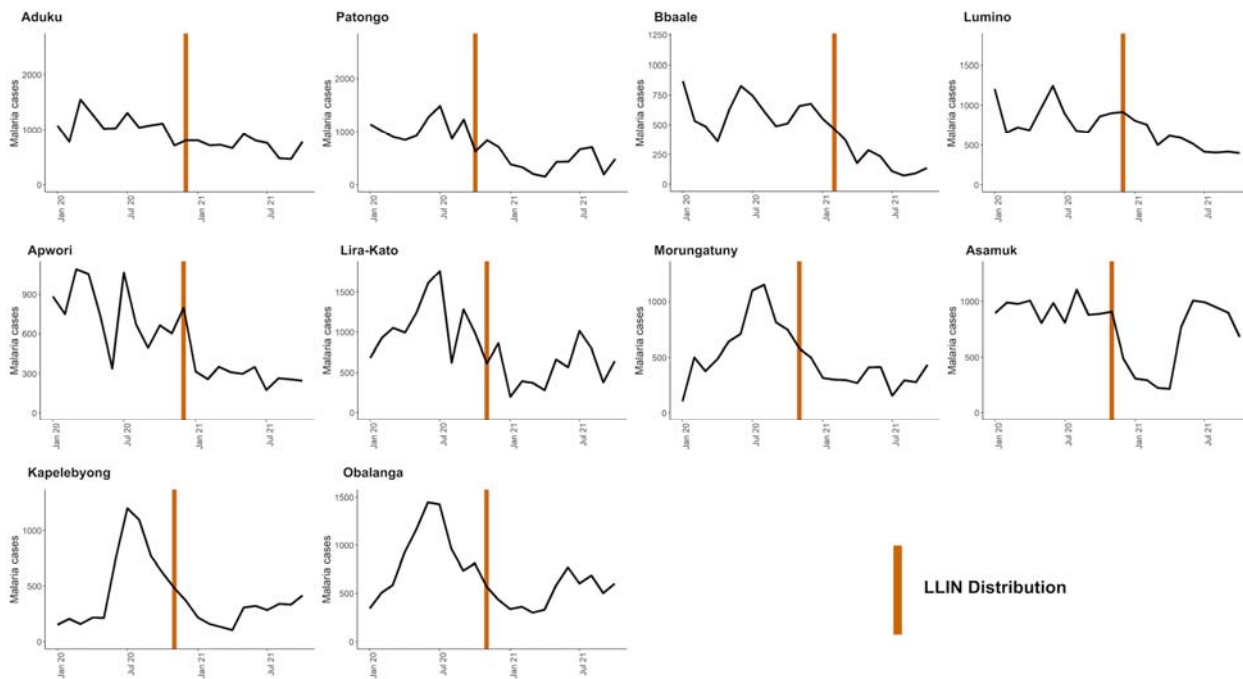
130 Across the 15 sites over a 22 month period (January 2020 through October 2021) included in the
131 analysis for Objective 2, 583,344 outpatient visits were recorded (Table 2). From January 2020
132 through December 2020, average monthly cases at IRS sites ranged from 64-594 and TPR
133 ranged from 10.9%-51.0%. From January 2021 through October 2021, these figures increased to
134 371-849 and 43.4%-60.1%, respectively. Average monthly cases increased in 4 of the 5 IRS sites
135 comparing January 2020 through December 2020 to January 2021 through October 2021, with
136 the exception of Dokolo (the first site to switch to IRS with a clothianidin-based formulation in
137 2019), which already experienced a large increase in monthly malaria cases by January 2020.

138

139 In sites that had not received IRS recently, average monthly cases from January 2020 through
140 December 2020 ranged from 518-1,068 and TPR from 47.5%-71.1%. These figures decreased to
141 251-716 and 32.5%-50.4%, respectively, from January 2021 through October 2021. Figure 3
142 shows plots of laboratory-confirmed malaria cases and the timing of the recent LLIN distribution
143 across the 10 non-IRS sites from January 2020 through October 2021. These figures indicate a
144 substantial increase in cases the first year of observation for some sites, but a general downward
145 trend in cases across the 10 sites over the 22 month study period for Objective 2.

146

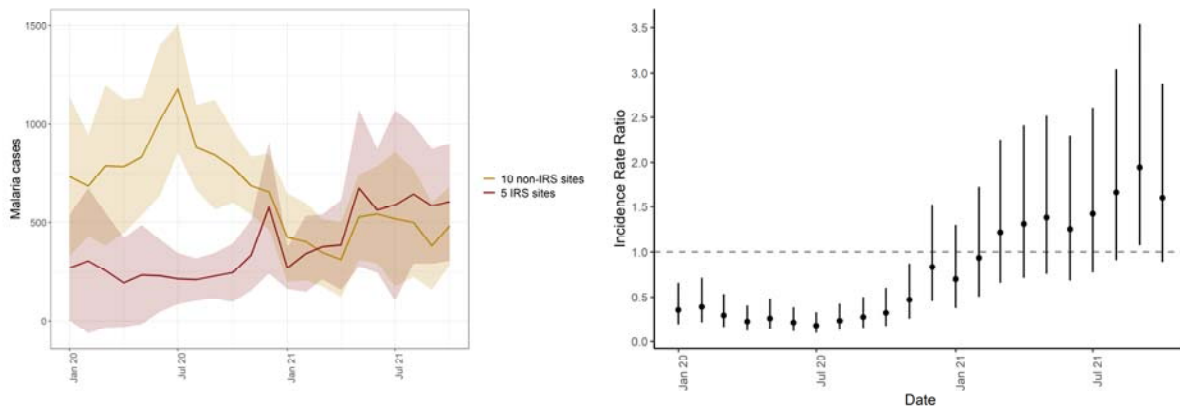
147 **Figure 3. Malaria case counts and vector control interventions over time at 10 sites that**
148 **have not received IRS recently.**



149
150 Figure 4 shows the mean number of cases across the 5 IRS sites and the 10 sites that have not
151 received IRS recently from January 2020 to October 2021 (corresponding to months 60 through
152 81 of IRS for the 5 sites where IRS was initiated and sustained). This figure shows an increase in
153 cases at IRS sites, particularly in the latter half of the observation window, while cases at non-
154 IRS sites trended downward over the same time period. Figure 4 also shows the adjusted IRR
155 comparing cases at IRS sites to sites that have not received IRS recently. Coefficients and 95%
156 confidence intervals are also presented in Supplemental Table 2. These findings indicate that
157 from January 2020 to November 2020, cases were significantly lower in IRS sites compared to
158 non-IRS sites. From December 2020 onward, the IRR crossed 1, indicating that cases at IRS sites
159 were higher than non-IRS sites, although we could not rule out a null or negative association in
160 these months. These results show that cases were 67% lower in IRS sites than non-IRS sites from
161 January 2020 through December 2020 (adjusted IRR = 0.33, 95% CI 0.17-0.63) and 38% higher

162 from January through October 2021 (adjusted IRR = 1.38, 95% CI 0.90-2.11). Results were
163 consistent when including only laboratory-confirmed cases unadjusted for testing as the outcome
164 (Supplemental Figure 3).

165 **Figure 4. Mean case counts in 5 IRS sites and 10 non-IRS sites from January 2020 through**
166 **July 2021 (left) and adjusted IRR comparing IRS sites to non-IRS sites over the study**
167 **period. Shaded areas represent standard deviations. Vertical bars represent the 95% CI around**
168 **adjusted IRR.**



169

170 Discussion

171 We utilized enhanced health facility surveillance data from 5 sites in North-Eastern Uganda that
172 have undergone sustained IRS since 2014 to evaluate the impact of repeated IRS campaigns in
173 their 6th and 7th years. Our findings point to a resurgence in the burden of malaria at these 5
174 health facilities, despite sustained IRS and repeated LLIN UCCs conducted every 3 years. In the
175 final 9 months of observation (months 61-81 of sustained IRS), malaria burden reached similar
176 levels, and in some instances higher levels, than the period before IRS was initiated in late 2014.
177 We did not observe corresponding increases in burden at 10 surveillance sites in neighboring
178 non-IRS districts that, unlike IRS districts, received “next generation” LLINs over the study
179 period. These findings suggest that in the setting of universal coverage with conventional
180 pyrethroid-only LLINs, the marked benefit of adding sustained IRS over the first five years had

181 been lost over the subsequent 18 months that coincided with a change in active ingredient and
182 the start of the COVID-19 pandemic.

183
184 This study highlights the importance of high quality routine surveillance to monitor the impact of
185 population level malaria control interventions using clinically relevant indicators such as
186 symptomatic cases diagnosed at health facilities. The assessment of vector control interventions
187 often focuses on entomologic outcomes such as mosquito mortality in controlled settings. This is
188 understandable, given that measuring the impact of control interventions on clinical burden in
189 “real world” settings is difficult. Nevertheless, the findings from this analysis underscore the
190 potential feasibility of and need for robust epidemiologic surveillance systems to document the
191 impact of vector control interventions on population health as they are applied.

192
193 Routine surveillance in areas undergoing IRS is particularly necessary because published studies
194 from controlled trials on the added value of IRS in areas with high LLIN coverage has produced
195 mixed results. A recent Cochrane review reported that adding IRS using a “pyrethroid-like”
196 insecticide to LLINs did not provide any benefits, while adding IRS with a “non-pyrethroid-like”
197 insecticide produced mixed results.⁴ It is of note that none of the trials that evaluated the impact
198 of adding IRS with a “non-pyrethroid-like” insecticide assessed outcomes beyond two years.
199 More recently, observational studies evaluating the effectiveness of pirimiphos-methyl (Actellic
200 300CS®) in “real world” settings have documented impressive impacts of IRS in Mali^{8,9},
201 Ghana¹⁰, Zambia¹¹, Kenya¹², and Uganda.⁷ This analysis contributes to observational data on the
202 impacts of sustained IRS beyond 6 years, in the context of the COVID-19 pandemic and a switch
203 to products containing the active ingredient clothianidin.

204
205 There are several potential factors that may be driving the increase in malaria burden in districts
206 receiving IRS. First, the timing of the increase corresponds to a shift in active ingredient from
207 pirimiphos-methyl to clothianidin-based formulations (primarily Fludora® Fusion, a
208 combination of clothianidin and deltamethrin). This change may have led to a partial loss of the
209 combined impact of the dual intervention (combining pirimiphos-methyl to pyrethroid LLINs),
210 which would be particularly detrimental as wide-spread pyrethroid resistance has been described
211 in Uganda.¹³⁻¹⁵ Given that IRS districts received conventional pyrethroid LLINs in the 2020-
212 2021 UCC campaign, pyrethroid resistance may also explain why burden increased at IRS sites
213 despite the campaign. Conversely, the 10 sites in neighboring districts where increases in burden
214 were not observed received “next generation” nets designed for areas with wide-spread
215 pyrethroid resistance. Of note, the one site (Dokolo) that received a single round of IRS with
216 clothianidin-based SumiShield® 50WG in 2019 (before the shift to Fludora® Fusion WP-SB
217 across all sites in 2020) experienced an increase in burden immediately following the round of
218 SumiShield® 50WG. Increases were not documented at other sites until the initiation of
219 Fludora® Fusion WP-SB in 2020. This is added evidence for the change in active ingredient
220 contributing to the observed resurgence of malaria. To date, studies on the effectiveness of
221 clothianidin alone (SumiShield ®)¹⁶⁻²⁰ and clothianidin with deltamethrin (Fludora® Fusion WP-
222 SB)^{16,21-23} are limited to susceptibility studies focused on entomological outcomes, both in lab
223 and in experimental huts. These studies document that clothianidin-based products succeed at
224 killing mosquitoes, but none have evaluated clinically relevant outcomes in “real world” settings.
225

226 A second potential contributor to the observed resurgence of malaria at sites receiving IRS is the
227 COVID-19 pandemic. An important concern has been the potential for delayed or inadequate
228 implementation of vector control measures due to the pandemic.^{24,25} In Uganda, the LLIN
229 distribution campaign was delayed by 5 months but successfully distributed over 28 million nets,
230 achieving over 90% coverage. Given that the delay in the UCC was country-wide, we do not
231 believe an increase in burden resulting from delayed net distribution would be observed strictly
232 in IRS sites as was the case in this study. The implementation of IRS campaigns did not appear
233 impacted by the COVID-19 pandemic; annual campaigns in 2020 and 2021 were not delayed and
234 coverage remained high (>90%, see Supplemental Table 3). We cannot rule out the potential for
235 undocumented differences in implementation (for example, if spray operators spent less time in
236 homes due to fear of acquiring COVID-19) that may have contributed to the observed
237 resurgence. The pandemic may also have impacted patient behavior; for example, patients may
238 have delayed seeking care for malarial illness which could have led to increased transmission.
239 However, because sites that have not recently received IRS did not observe an increase in
240 transmission, this explanation is less tenable. Furthermore, an analysis assessing the potential
241 impact of the first year of the COVID-19 pandemic at Uganda Malaria Surveillance Program
242 (UMSP) sites found no impact of the pandemic on malaria cases and non-malarial visits at health
243 facilities.²⁶
244
245 Another potential explanation is a shift in mosquito species composition or mosquito behavior to
246 outdoor biting, circumventing vector control interventions that target indoor biting mosquitoes.²⁷
247 This, however, would be unlikely to have occurred rapidly and simultaneously at all IRS sites at
248 a pace that would explain the resurgence observed in this study. In addition, this would not

249 explain the observation that the resurgence was observed only in the IRS sites and not in the non-
250 IRS sites that only received LLINs, as a shift to outdoor biting would have a negative impact on
251 both IRS and LLINs. Similarly, a shift in the predominant species from *Anopheles gambiae* and
252 *Anopheles funestus* to *Anopheles arabiensis* may have led to a change from predominately
253 indoor to outdoor biting.²⁸ Recent data demonstrate that *Anopheles gambiae* and *Anopheles*
254 *funestus* remain the primary vectors in Uganda¹⁵, but other work has documented the near
255 collapse of *Anopheles gambiae* and *Anopheles funestus* in areas with an LLIN distribution and
256 repeated IRS campaigns.²⁸

257
258 This study is not without limitations. First, we used an observational study design, with measures
259 of impact based on comparisons made before-and-after the implementation of IRS and
260 comparisons of IRS and non-IRS districts. While cluster randomized controlled trials remain the
261 gold standard design for estimating the impact of IRS, withholding IRS may be unethical, given
262 what is known about its beneficial impacts, particularly in Uganda.⁷ Similarly, comparisons of
263 IRS sites and sites that have not recently received IRS are strictly descriptive, given that districts
264 receiving IRS and not receiving IRS are not exchangeable. Second, while we hypothesize
265 potential mechanisms that may explain the observed resurgence in malaria burden in IRS sites,
266 we cannot rule potential secular trends or other unmeasured contributing factors. For example,
267 while we attempt to control for seasonal effects and climate-related drivers of malaria burden
268 over time, it is certainly possible that more recent months over the observation period correspond
269 to an unusually high burden period in Uganda. However, overall secular trends are an unlikely
270 cause given the contemporaneous decline in malaria burden at nearby non-IRS sites. Third, the
271 outcome for this analysis is limited to case counts of laboratory-confirmed malaria captured at

272 health facilities. We do not have additional data on other metrics of transmission intensity,
273 including entomologic measures, residual efficacy, nor on malaria mortality.

274

275 Despite these limitations, this analysis has important scientific and policy implications. First,
276 additional research is needed on the driving factors contributing to the observed resurgence of
277 malaria burden in IRS districts, including targeted entomology and residual efficacy.

278 Furthermore, the Ministry of Health should be prepared to make timely changes in malaria
279 control interventions based on on-going surveillance. For example, in IRS districts, policy
280 makers may consider switching to the use of newer generation LLINs containing PBO which
281 have been shown to be more effective than traditional pyrethroid treated LLINs in Uganda.²⁹

282 Future changes to the IRS active ingredient should take into consideration on-going surveillance,
283 in line with Uganda's resistance management strategy. Consideration should also be made to key
284 logistical factors including cost, procurement, and community acceptability. The unprecedented
285 increase in malaria burden in areas where incidence had declined by 85% underscores the need
286 to remain vigilant and responsive. Indeed, two of the five IRS districts included in this analysis
287 stopped receiving IRS altogether in 2021, highlighting the challenge of maintaining gains in the
288 face of inadequate resources and the need for rational exit strategies when IRS cannot be
289 sustained. Finally, maintaining high quality, continuous surveillance systems to assess the impact
290 of population level malaria control interventions remains essential in order to generate timely,
291 actionable data.

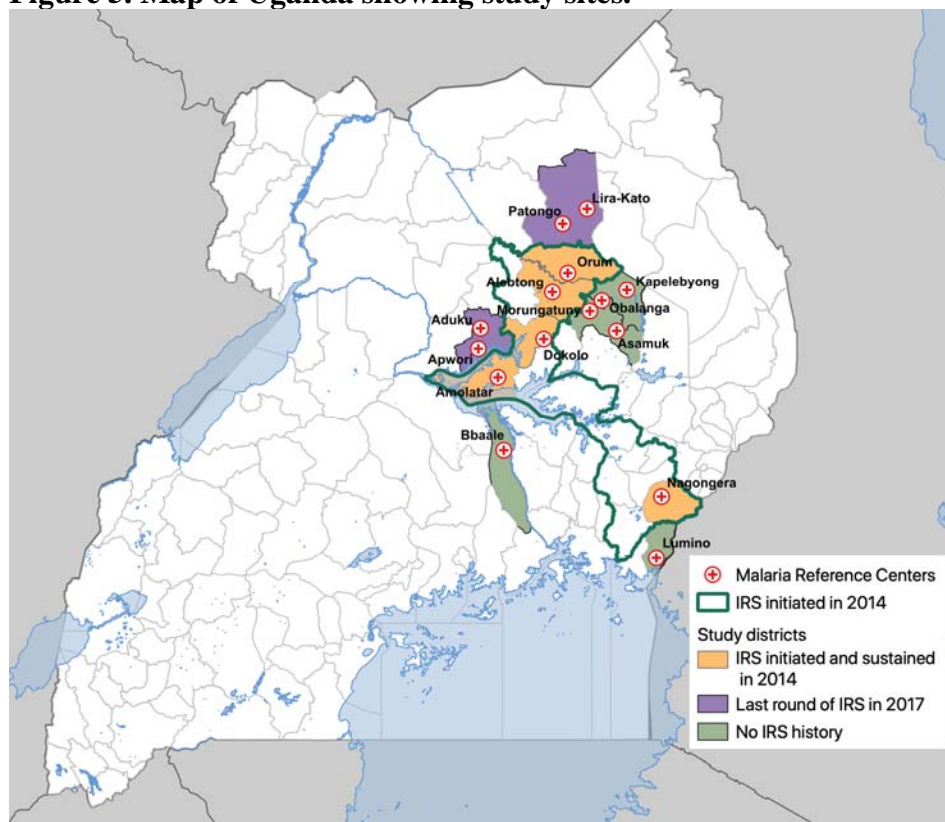
292

293 **Methods**

294 **Study sites and vector control interventions**

295 This study utilized enhanced health facility surveillance data from 15 health facilities in Uganda.
296 Five of these health facilities are among the 14 districts that have received repeated rounds of
297 IRS since December 2014 (the remaining 9 districts did not have surveillance sites). Ten health
298 facilities are in neighboring districts that have never received IRS (6 sites) or where IRS was last
299 implemented in 2017 (4 sites, Figure 5). All facilities included in the analysis are part of a
300 surveillance network called the UMSP. National LLIN UCCs were conducted in 2013-2014,
301 2017-2018, and 2020-2021, where LLINs were distributed free-of-charge by the Uganda
302 Ministry of Health targeting one LLIN for every two household residents throughout the entire
303 country (following WHO recommendations). During the most recent campaign (2020-2021), the
304 Ministry of Health distributed conventional LLINs containing pyrethroid in addition to two types
305 of “next generation” LLINs due to evidence of pyrethroid resistance: one containing
306 deltamethrin and piperonyl butoxide (PBO; Permanet® 3·0) and one containing alpha-
307 cypermethrin and pyriproxyfen (Royal Guard®). Among the surveillance sites included in this
308 study, the 5 sites in IRS districts were in sub-counties that received conventional pyrethroid nets
309 and the 10 sites in neighboring districts were in sub-counties that received “next generation” nets
310 (5 received Permanet® 3·0 nets and 5 received Royal Guard® nets).
311

312 **Figure 5. Map of Uganda showing study sites.**



313
314 In the 5 study districts where IRS was first implemented in late 2014, the insecticide formulation
315 initially consisted of a carbamate (bendiocarb) with rounds repeated approximately every 6
316 months until 2016 when the active ingredient was changed to the organophosphate pirimiphos-
317 methyl (Actellic 300CS®) administered annually until 2019. In 2019, one study district (Dokolo)
318 received a single round of IRS with SumiShield® 50WG, a new IRS product containing
319 clothianidin. In 2020, all IRS districts began receiving IRS with Fludora® Fusion WP-SB, a new
320 IRS insecticide containing a mixture of clothianidin and deltamethrin. Changes of IRS
321 insecticides were made in accordance with the Ugandan Ministry of Health’s insecticide
322 resistance management plan which, in line with WHO recommendations, requires changing IRS
323 formulations every three years to preempt the development of resistance.^{30,31} In two study
324 districts (Otuke and Alebtong), IRS was discontinued in 2021 due to lack of funding. For a

325 complete timeline of all IRS campaigns, including insecticides and coverage, see Supplemental
326 Table 3.

327

328 **Health-facility based surveillance**

329 A network of enhanced malaria surveillance sites embedded in public health facilities was
330 established by UMSP in 2006, as previously described.³² In brief, UMSP currently operates
331 Malaria Reference Centers (MRCs) at 70 level III/IV public health facilities across Uganda.
332 Level III and IV health facilities are parish and sub-county level facilities, respectively, and
333 provide diagnostic testing and treatment free of charge to populations of 20,000 to 100,000
334 people per facility. At MRCs, individual-level data are collected for all outpatients using
335 outpatient registers (HMIS 002) and entered monthly into a database by on-site data entry
336 officers. Information collected includes sociodemographic data (age, sex, and village of
337 residence), whether malaria was suspected, results of laboratory testing for malaria (rapid
338 diagnostic test [RDT] or microscopy), diagnoses (laboratory-confirmed and clinical), and
339 treatments prescribed. UMSP places emphasis on high quality data, ensuring minimal
340 missingness on key variables including age and place of residence, and providing training and
341 materials to maximize diagnostic testing among patients suspected of having malaria. For
342 Objective 1 (to evaluate the impact of IRS on malaria burden in 5 districts over 6-75 of sustained
343 use), we utilized data from 5 MRCs from districts with where IRS was implemented in 2014.
344 These MRCs were selected because they had been active UMSP sites for at least 6 months prior
345 to the initiation of IRS. To compare changes in malaria burden from January 2020 through
346 October 2021 (years 6 & 7 following implementation of IRS) at sites receiving sustained IRS to
347 sites in neighboring districts that have not received IRS recently, we used data from 10 additional

348 MRCs. These sites were selected because they were in districts that neighbor the 5 IRS sites and
349 have been active UMSP sites since at least January 2020. Four of these sites were in 2 districts
350 that received IRS in the past; however, IRS was last implemented in 2017. The impact of these
351 previous IRS campaigns was no longer evident during the study period.⁷

352

353 **Measures**

354 For Objective 1, the exposure was specified as an indicator variable representing each month
355 since IRS was initiated. In separate models, an indicator variable, representing months 1-36
356 (years 1, 2, and 3), 37-60 (years 4 and 5), 61-72 (year 6), and 73-81 (the first 9 months of year 7)
357 of sustained IRS was included as the primary exposure variable. The baseline period was defined
358 as the 12 months before IRS was implemented in 2014; if a site had less than 12 months of
359 baseline data available, we included the maximum amount of time available.

360

361 For Objective 2, the primary exposure was specified as a binary variable representing whether a
362 site was an IRS site or a non-IRS site.

363

364 For both objectives, the primary outcome was the monthly count of laboratory-confirmed
365 malaria cases at each MRC. To correct for monthly testing rates, we adjusted this count by
366 multiplying the number of individuals with suspected malaria but not tested each month by the
367 test positivity rate (TPR, the number who tested positive divided by the total number tested) in
368 that month. We then added the result to the number of laboratory-confirmed positive cases in that
369 month. As a sensitivity analysis, we re-specified the models including only laboratory-confirmed
370 case counts as the outcome.

371
372 We adjusted for time-varying variables that impact malaria burden and malaria case detection at
373 the health facility. This includes monthly precipitation³³ which was modeled non-linearly using
374 restricted cubic splines. Lags of 0, 1, 2, and 3 months were considered for precipitation; the
375 appropriate lag was selected by running univariable regressions with each lag and selecting that
376 which demonstrated the lowest Akaike's information criterion (AIC). We also included indicator
377 variables for month of the year (to adjust for season), the proportion of tests that were RDT
378 (vs. microscopy) in that month, and the number of individuals who attended the health facility
379 but were not suspected of having malaria in that month (to adjust for potential changes in care-
380 seeking behaviors, particularly during the COVID-19 lockdown in Uganda).

381

382 **Statistical analysis**

383 For Objective 1, we specified mixed effects negative binomial regression models with random
384 intercepts for health facility.⁷ Coefficients for the exposure variable were exponentiated to
385 represent the incidence rate ratio (IRR) comparing the incidence of malaria in the month of
386 interest relative to the baseline pre-IRS period. These models test the null hypothesis of no
387 difference of changes in IRS burden after the initiation of IRS compared to before the initiation
388 of IRS, adjusting for seasonal effects and time-varying changes in diagnostic testing and care
389 seeking.

390

391 For Objective 2, models were specified as mixed effects negative binomial regression models
392 with random intercepts for health facility. The binary indicator variable representing whether a
393 site was an IRS site or a non-IRS site was interacted with an indicator variable representing time

394 (an indicator representing month/year and, in a separate model, a categorical variable
395 representing January 2020-December 2020 and January 2021-October 2021). Coefficients for the
396 exposure variable combined with the interaction term were exponentiated to represent the
397 incidence rate ratio (IRR) comparing the burden of malaria IRS sites versus non-IRS sites over a
398 given period of time. These models test the null hypothesis of no difference between malaria
399 burden at IRS sites compared to non-IRS sites, adjusting for seasonal effects and time-varying
400 changes in diagnostic testing and care seeking.

401

402 **Data availability**

403 The datasets generated during and/or analysed during the current study are available in GitHub at
404 the URL <https://github.com/aepstein/resurgence-irs-uganda>

405

406 **Acknowledgements**

407 We would like to acknowledge the health workers at the health facilities that contributed data for
408 this study. We would like to thank the Ugandan Ministry of Health National Malaria Control
409 Division, and USAID – President’s Malaria Initiative. This work was supported by the National
410 Institutes of Health as part of the International Centers of Excellence in Malaria Research
411 (ICMER) program (U19AI089674). Funding for this work was also supported by the National
412 Institute of Allergy and Infectious Diseases (F31AI150029).

413

414

415 **Author contributions**

416 AE and GD conceived of the study. JFN led the data collection activities with support from
417 CMS, JIN, EA, and SG. AE led the data analysis with support from GD, SB, IRB, and BG. AE
418 and GD drafted the manuscript with support from CMS, JFN, SGS, IRB, BG, MRK, and MJD.
419 All authors contributed to interpretation of the results and edited the manuscript. All authors read
420 and approved the final manuscript.

421

422 **Competing Interests**

423 The authors declare no competing interests.

424

425
426
427
428
429
430
431
432
433
434
435
436
437
438
439
440
441
442
443
444
445

References

- 1 World malaria report 2020: 20 years of global progress and challenges. (World Health Organization, Geneva, 2020).
- 2 Bhatt, S. *et al.* The effect of malaria control on *Plasmodium falciparum* in Africa between 2000 and 2015. *Nature* **526**, 207-211, doi:10.1038/nature15535 (2015).
- 3 Sherrard-Smith, E. *et al.* Systematic review of indoor residual spray efficacy and effectiveness against *Plasmodium falciparum* in Africa. *Nat Commun* **9**, 4982, doi:10.1038/s41467-018-07357-w (2018).
- 4 Choi, L., Pryce, J. & Garner, P. Indoor residual spraying for preventing malaria in communities using insecticide-treated nets. *Cochrane Database Syst Rev* **5**, CD012688, doi:10.1002/14651858.CD012688.pub2 (2019).
- 5 Uganda National Malaria Control Division (NMCD), Uganda Bureau of Statistics (UBOS) & ICF. Uganda Malaria Indicator Survey 2018-19. (NMCD, UBOS, and ICF, Kampala, Uganda, and Rockville, Maryland, USA, 2020).
- 6 Raouf, S. *et al.* Resurgence of Malaria Following Discontinuation of Indoor Residual Spraying of Insecticide in an Area of Uganda With Previously High-Transmission Intensity. *Clin Infect Dis* **65**, 453-460, doi:10.1093/cid/cix251 (2017).
- 7 Namuganga, J. F. *et al.* The impact of stopping and starting indoor residual spraying on malaria burden in Uganda. *Nat Commun* **12**, 2635, doi:10.1038/s41467-021-22896-5 (2021).

- 446 8 Wagman, J. *et al.* Rapid reduction of malaria transmission following the introduction of
447 indoor residual spraying in previously unsprayed districts: an observational analysis of
448 Mopti Region, Mali, in 2017. *Malar J* **19**, 340, doi:10.1186/s12936-020-03414-2 (2020).
- 449 9 Kane, F. *et al.* Performance of IRS on malaria prevalence and incidence using
450 pirimiphos-methyl in the context of pyrethroid resistance in Koulikoro region, Mali.
451 *Malar J* **19**, 286, doi:10.1186/s12936-020-03357-8 (2020).
- 452 10 Gogue, C. *et al.* An observational analysis of the impact of indoor residual spraying in
453 Northern, Upper East, and Upper West Regions of Ghana: 2014 through 2017. *Malar J*
454 **19**, 242, doi:10.1186/s12936-020-03318-1 (2020).
- 455 11 Hast, M. A. *et al.* The Impact of 3 Years of Targeted Indoor Residual Spraying With
456 Pirimiphos-Methyl on Malaria Parasite Prevalence in a High-Transmission Area of
457 Northern Zambia. *Am J Epidemiol* **188**, 2120-2130, doi:10.1093/aje/kwz107 (2019).
- 458 12 Abong'o, B. *et al.* Impact of indoor residual spraying with pirimiphos-methyl (Actellic
459 300CS) on entomological indicators of transmission and malaria case burden in Migori
460 County, western Kenya. *Sci Rep* **10**, 4518, doi:10.1038/s41598-020-61350-2 (2020).
- 461 13 Tchouakui, M. *et al.* Pyrethroid Resistance Aggravation in Ugandan Malaria Vectors Is
462 Reducing Bednet Efficacy. *Pathogens* **10**, doi:10.3390/pathogens10040415 (2021).
- 463 14 Okia, M. *et al.* Insecticide resistance status of the malaria mosquitoes: *Anopheles*
464 *gambiae* and *Anopheles funestus* in eastern and northern Uganda. *Malar J* **17**, 157,
465 doi:10.1186/s12936-018-2293-6 (2018).
- 466 15 Lynd, A. *et al.* LLIN Evaluation in Uganda Project (LLINEUP): a cross-sectional survey
467 of species diversity and insecticide resistance in 48 districts of Uganda. *Parasit Vectors*
468 **12**, 94, doi:10.1186/s13071-019-3353-7 (2019).

- 469 16 Oxborough, R. M. *et al.* Susceptibility testing of *Anopheles malaria* vectors with the
470 neonicotinoid insecticide clothianidin; results from 16 African countries, in preparation
471 for indoor residual spraying with new insecticide formulations. *Malar J* **18**, 264,
472 doi:10.1186/s12936-019-2888-6 (2019).
- 473 17 Marti-Soler, H. *et al.* Effect of wall type, delayed mortality and mosquito age on the
474 residual efficacy of a clothianidin-based indoor residual spray formulation (SumiShield
475 50WG) in southern Mozambique. *PLoS One* **16**, e0248604,
476 doi:10.1371/journal.pone.0248604 (2021).
- 477 18 Agossa, F. R. *et al.* Efficacy of a novel mode of action of an indoor residual spraying
478 product, SumiShield(R) 50WG against susceptible and resistant populations of
479 *Anopheles gambiae* (s.l.) in Benin, West Africa. *Parasit Vectors* **11**, 293,
480 doi:10.1186/s13071-018-2869-6 (2018).
- 481 19 Ngwej, L. M. *et al.* Indoor residual spray bio-efficacy and residual activity of a
482 clothianidin-based formulation (SumiShield((R)) 50WG) provides long persistence on
483 various wall surfaces for malaria control in the Democratic Republic of the Congo. *Malar*
484 *J* **18**, 72, doi:10.1186/s12936-019-2710-5 (2019).
- 485 20 Kweka, E. *et al.* Novel Indoor Residual Spray Insecticide With Extended Mortality
486 Effect: A Case of SumiShield 50WG Against Wild Resistant Populations of *Anopheles*
487 *arabiensis* in Northern Tanzania. *Glob Health Sci Pract* **6**, 758-765, doi:10.9745/GHSP-
488 D-18-00213 (2018).
- 489 21 Fongnikin, A. *et al.* Efficacy of Fludora(R) Fusion (a mixture of deltamethrin and
490 clothianidin) for indoor residual spraying against pyrethroid-resistant malaria vectors:

- 491 laboratory and experimental hut evaluation. *Parasit Vectors* **13**, 466,
492 doi:10.1186/s13071-020-04341-6 (2020).
- 493 22 Fuseini, G., Phiri, W. P., von Fricken, M. E., Smith, J. & Garcia, G. A. Evaluation of the
494 residual effectiveness of Fludora fusion WP-SB, a combination of clothianidin and
495 deltamethrin, for the control of pyrethroid-resistant malaria vectors on Bioko Island,
496 Equatorial Guinea. *Acta Trop* **196**, 42-47, doi:10.1016/j.actatropica.2019.05.006 (2019).
- 497 23 Agossa, F. R. *et al.* Small-scale field evaluation of the efficacy and residual effect of
498 Fludora((R)) Fusion (mixture of clothianidin and deltamethrin) against susceptible and
499 resistant *Anopheles gambiae* populations from Benin, West Africa. *Malar J* **17**, 484,
500 doi:10.1186/s12936-018-2633-6 (2018).
- 501 24 Seelig, F. *et al.* The COVID-19 pandemic should not derail global vector control efforts.
502 *PLoS Negl Trop Dis* **14**, e0008606, doi:10.1371/journal.pntd.0008606 (2020).
- 503 25 Guerra, C. A. *et al.* Malaria vector control in sub-Saharan Africa in the time of COVID-
504 19: no room for complacency. *BMJ Glob Health* **5**, doi:10.1136/bmjgh-2020-003880
505 (2020).
- 506 26 Namuganga, J. F. *et al.* Impact of COVID-19 on routine malaria indicators in rural
507 Uganda: an interrupted time series analysis. *Malar J* **20**, 475, doi:10.1186/s12936-021-
508 04018-0 (2021).
- 509 27 Lindsay, S. W., Thomas, M. B. & Kleinschmidt, I. Threats to the effectiveness of
510 insecticide-treated bednets for malaria control: thinking beyond insecticide resistance.
511 *Lancet Glob Health* **9**, e1325-e1331, doi:10.1016/S2214-109X(21)00216-3 (2021).

- 512 28 Mawejje, H. D. *et al.* Impact of seasonality and malaria control interventions on
513 Anopheles density and species composition from three areas of Uganda with differing
514 malaria endemicity. *Malar J* **20**, 138, doi:10.1186/s12936-021-03675-5 (2021).
- 515 29 Staedke, S. G. *et al.* Effect of long-lasting insecticidal nets with and without piperonyl
516 butoxide on malaria indicators in Uganda (LLINEUP): a pragmatic, cluster-randomised
517 trial embedded in a national LLIN distribution campaign. *Lancet* **395**, 1292-1303,
518 doi:10.1016/S0140-6736(20)30214-2 (2020).
- 519 30 WHO. Global Plan for Insecticide Resistance Management in Malaria Vectors. (2012).
- 520 31 Ministry of Health. The Uganda Malaria Reduction Strategic Plan 2014-2020. (Kampala,
521 Uganda, 2014).
- 522 32 Sserwanga, A. *et al.* Improved malaria case management through the implementation of a
523 health facility-based sentinel site surveillance system in Uganda. *PLoS One* **6**, e16316,
524 doi:10.1371/journal.pone.0016316 (2011).
- 525 33 Funk, C. *et al.* The climate hazards infrared precipitation with stations--a new
526 environmental record for monitoring extremes. *Sci Data* **2**, 150066,
527 doi:10.1038/sdata.2015.66 (2015).
- 528

Table 1. Summary statistics from health-facility based surveillance sites for study objective 1

MRC (District)	Time period	Total outpatient visits, n	Suspected malaria cases, n (% of outpatient visits)	Tested for malaria, n (% of suspected malaria cases)	RDT performed (versus microscopy), n (% of tested)	Confirmed malaria cases, n (% of tested [TPR])	Confirmed malaria cases adjusted for testing	Mean monthly malaria cases adjusted for testing
Nagongera HCIV (Tororo)	Baseline (12 months pre-IRS)	20,828	13,251 (63.6)	13,096 (98.8)	760 (5.8)	3,298 (25.2)	3,337	278
	Months 1-36 of IRS	63,289	23,315 (38.4)	24,084 (99.0)	9,615 (40.0)	4,004 (16.6)	4,042	112
	Months 37-60 of IRS	35,745	12,616 (35.2)	12,608 (99.9)	3,798 (30.1)	1,067 (8.5)	1,067	30
	Months 61-81 of IRS	38,462	16,237 (42.2)	16,233 (99.9)	12,219 (75.3)	4,386 (27.0)	4,386	209
Amolatar HCIV (Amolatar)	Baseline (12 months pre-IRS)	19,552	8,547 (43.7)	6,512 (76.2)	5,923 (91.0)	3,701 (56.8)	4,845	404
	Months 1-36 of IRS	55,570	18,118 (32.6)	15,082 (83.2)	13,440 (89.1)	3,924 (26.0)	4,956	138
	Months 37-60 of IRS	35,231	7,038 (20.0)	7,034 (99.9)	6,279 (89.3)	908 (12.9)	1,088	30
	Months 61-81 of IRS	34,512	13,211 (38.3)	13,180 (99.8)	11,176 (84.8)	6,974 (52.9)	6,992	332
Dokolo HCIV (Dokolo)	Baseline (12 months pre-IRS)	25,570	12,854 (50.3)	8,875 (69.0)	8,212 (92.5)	5,211 (58.7)	7,889	657
	Months 1-36 of IRS	78,969	30,846 (39.1)	29,476 (95.6)	27,006 (91.6)	7,734 (26.2)	8,266	230
	Months 37-60 of IRS	52,550	16,361 (31.1)	16,273 (99.5)	15,997 (98.3)	2,524 (15.6)	3,243	90
	Months 61-81 of IRS	54,489	23,142 (42.5)	23,084 (99.8)	20,671 (89.5)	10,887 (47.2)	10,913	520
Orum HCIV (Otuke)	Baseline (11 months pre-IRS)	16,120	9,324 (57.8)	8,929 (95.8)	3,990 (44.7)	5,974 (66.9)	6,236	566
	Months 1-36 of IRS	42,632	26,642 (62.5)	25,583 (96.0)	11,008 (43.0)	13,619 (53.2)	14,207	394
	Months 37-60 of IRS	23,424	11,064 (47.2)	11,064 (100.0)	8,717 (78.9)	2,911 (26.3)	3,072	85
	Months 61-81 of IRS	21,092	13,875 (65.8)	13,875 (100.0)	8,287 (59.7)	6,979 (50.3)	6,979	332
Alebtong HCIV (Alebtong)	Baseline (8 months pre-IRS)	15,359	6,694 (43.6)	4,789 (71.5)	4,620 (96.5)	3,209 (67.0)	4,317	540
	Months 1-36 of IRS	62,161	30,226 (48.6)	25,863 (85.6)	22,373 (86.5)	10,452 (40.4)	12,251	340
	Months 37-60 of IRS	33,201	11,091 (33.4)	10,810 (97.5)	10,399 (96.2)	1,638 (15.1)	1,745	48
	Months 61-81 of IRS	39,711	22,318 (56.2)	22,318 (100.0)	19,121 (85.7)	11,155 (50.0)	11,155	531

Table 2. Summary statistics from health-facility based surveillance sites for study objective 2

MRC (District)	Time period	Total outpatient visits, n	Suspected malaria cases, n (% of outpatient visits)	Tested for malaria, n (% of suspected malaria cases)	RDT performed (versus microscopy), n (% of tested)	Confirmed malaria cases, n (% of tested [TPR])	Confirmed malaria cases adjusted for testing	Mean monthly malaria cases adjusted for testing
IRS SITES								
Nagongera HCIV (Tororo)	January-December 2020	20,079	7,033 (35.0)	7,031 (100.0)	5,706 (69.2)	767 (10.9)	767	64
	January-October 2021	20,405	9,827 (48.2)	9,825 (99.9)	6,797 (83.3)	3,706 (57.7)	3,706	371
Amolatar HCIV (Amolatar)	January-December 2020	18,995	6,360 (33.5)	6,349 (99.8)	5,198 (81.9)	2,965 (46.7)	2,969	247
	January- October 2021	17,230	7,311 (42.2)	7,289 (99.7)	6,415 (88.0)	4,198 (57.6)	4,213	421
Dokolo HCIV (Dokolo)	January-December 2020	32,042	13,984 (43.6)	13,947 (99.7)	12,842 (92.1)	7,110 (51.0)	7,130	594
	January- October 2021	25,250	10,477 (41.6)	10,446 (99.7)	9,117 (87.2)	4,519 (43.3)	4,531	453
Orum HCIV (Otuke)	January-December 2020	11,161	6,807 (61.0)	6,807 (100.0)	5,672 (83.3)	2,925 (43.0)	2,925	244
	January- October 2021	10,955	7,632 (70.0)	7,632 (100.0)	3,126 (41.0)	4,264 (55.9)	4,264	426
Alebtong HCIV (Alebtong)	January-December 2020	19,027	8,877 (46.7)	8,877 (100.0)	7,763 (87.5)	2,797 (31.5)	2,797	233
	January- October 2021	21,861	13,953 (63.4)	13,953 (100.0)	11,851 (84.9)	8,485 (60.8)	8,485	849
NON-IRS SITES								
Aduku HCIV (Kwania)	January-December 2020	26,537	19,136 (72.1)	19,133 (99.9)	12,770 (66.7)	12,818 (67.0)	12,821	1,068
	January- October 2021	22,196	14,220 (64.1)	14,213 (100.0)	7,308 (51.4)	7,160 (50.4)	7,164	716
Patongo HCIII (Agago)	January-December 2020	21,138	18,076 (85.6)	18,071 (99.9)	17,417 (96.4)	11,911 (65.9)	11,914	993
	January- October 2021	11,656	9,023 (77.4)	9,023 (100.0)	7,522 (83.4)	4,009 (44.4)	4,009	401
Bbaale HCIV (Kayunga)	January-December 2020	25,382	15,691 (61.8)	15,591 (99.4)	11,856 (76.0)	7,401 (47.5)	7,450	621
	January- October 2021	15,266	8,185 (53.6)	8,154 (99.6)	6,187 (75.9)	2,502 (30.7)	2,511	251
Lumino HCIII (Busia)	January-December 2020	21,885	17,783 (81.2)	17,783 (100.0)	16,094 (90.5)	10,409 (58.5)	10,409	867
	January- October 2021	14,354	11,018 (76.8)	11,018 (100.0)	8,542 (77.5)	5,435 (49.3)	5,435	544
Apwori HCIII (Kwania)	January-December 2020	14,759	13,783 (93.4)	13,781 (99.9)	12,189 (88.5)	9,164 (66.5)	9,166	764
	January- October 2021	9,506	8,058 (84.8)	8,058 (100.0)	8,014 (99.5)	2,826 (35.1)	2,826	283
Lira-Kato HCIII (Agago)	January-December 2020	20,059	17,825 (88.9)	17,814 (99.9)	17,801 (99.9)	12,670 (71.1)	12,679	1057
	January- October 2021	12,064	9,715 (80.5)	9,714 (100.0)	6,871 (70.7)	5,313 (54.7)	5,313	531
Morungatuny HCIII (Amuria)	January-December 2020	15,053	13,964 (92.7)	13,964 (100.0)	13,940 (99.8)	7,698 (55.1)	7,698	642
	January- October 2021	10,320	9,759 (94.5)	9,759 (100.0)	9,758 (100.0)	3,168 (32.5)	3,168	317
Asamuk HCIII (Amuria)	January-December 2020	20,504	18,065 (88.1)	18,045 (99.9)	17,633 (97.7)	10,728 (59.5)	10,742	895
	January- October 2021	18,230	15,668 (85.9)	15,668 (100.0)	15,387 (98.2)	6,325 (40.4)	6,325	633
Kapelebyong HCIV (Kapelebyong)	January-December 2020	16,975	10,720 (63.2)	10,711 (99.9)	10,652 (99.5)	6,215 (58.0)	6,219	518
	January- October 2021	15,579	7,858 (50.4)	7,858 (100.0)	7,849 (99.9)	2,596 (33.0)	2,596	260
Obalanga HCIII (Kapelebyong)	January-December 2020	17,438	15,855 (90.9)	15,852 (99.9)	12,833 (81.0)	9,917 (62.6)	9,919	827
	January- October 2021	12,438	11,397 (91.6)	11,397 (100.0)	9,834 (86.3)	5,079 (41.6)	5,079	508