

Autoantibodies linked to autoimmune diseases associate with COVID-19 outcomes

Gabriela Crispim Baiocchi^{1,*}, Aristo Vojdani^{2,3,*}, Avi Z Rosenberg⁴, Elroy Vojdani⁵, Gilad Halpert^{6,7,8}, Yuri Ostrinski^{6,7,8}, Israel Zyskind^{9,10}, Igor Salerno Figueiras¹, Lena F. Schimke¹, Alexandre H. C. Marques¹, Lasse M. Giiil¹¹, Yael Bublil Lavi¹², Jonathan I. Silverberg¹³, Jason Zimmerman¹⁰, Dana Ashley Hill¹⁴, Amanda Thornton¹⁴, Myungjin Kim¹⁵, Roberta De Vito¹⁶, Dennyson Leandro M. Fonseca¹⁷, Desireé Rodrigues Praça¹⁷, Paula Paccielli Freire¹, Niels Olsen Saraiva Camara¹, Vera Lúcia Garcia Calich¹, Harald Heidecke¹⁸, Miriam T. Lattin¹⁹, Hans D. Ochs²⁰, Gabriela Riemekasten²¹, Howard Amital^{22,6,23,7}, Otavio Cabral-Marques^{1,17,24*}, Yehuda Shoenfeld^{7,6,8,*}

¹Department of Immunology, Institute of Biomedical Sciences, University of São Paulo, São Paulo, SP, Brazil.

²Department of Immunology, Immunosciences Laboratory, Inc., Los Angeles, CA, United States.

³Cyrex Laboratories, LLC 2602 S. 24th St., Phoenix, AZ 85034 USA

⁴Department of Pathology, Johns Hopkins University, Baltimore, Maryland, USA

⁵Regenera Medical 11860 Wilshire Blvd., Ste. 301, Los Angeles, CA 90025 USA

⁶Ariel University, Israel

⁷Zabludowicz Center for Autoimmune Diseases, Sheba Medical Center, , Tel-Hashomer, Israel

⁸Saint Petersburg State University Russia

⁹Department of Pediatrics, NYU Langone Medical Center, New York, NY, USA

¹⁰Maimonides Medical Center, Brooklyn, NY, USA

¹¹Department of Internal Medicine, Haralds plass Deaconess Hospital, Bergen, Norway

¹²Department of Chemistry Ben Gurion University Beer-Sheva, 84105, Israel

¹³Department of Dermatology, George Washington University School of Medicine and Health Sciences, Washington, DC, USA

¹⁴ResourcePath, Sterling, VA

¹⁵Data Science Initiative at Brown University, Providence, RI, USA

¹⁶Department of Biostatistics and the Data Science Initiative at Brown University, Providence, RI, USA

¹⁷Department of Clinical and Toxicological Analyses, School of Pharmaceutical Sciences, University of São Paulo, São Paulo, SP, Brazil

¹⁸CellTrend Gesellschaft mit beschränkter Haftung (GmbH), Luckenwalde, Germany

¹⁹Department of Biology, Yeshiva University, Manhattan, NY, USA

²⁰Department of Pediatrics, University of Washington School of Medicine, and Seattle Children's Research Institute, Seattle, WA, USA

²¹Department of Rheumatology, University Medical Center Schleswig-Holstein Campus Lübeck, Lübeck, Germany

²²Department of Medicine B, Sheba Medical Center, Tel Hashomer, Israel

²³Sackler Faculty of Medicine, Tel-Aviv University, Tel-Aviv, Israel

²⁴Network of Immunity in Infection, Malignancy, and Autoimmunity (NIIMA), Universal Scientific Education and Research Network (USERN), São Paulo, SP, Brazil

*Contributed

equally

Corresponding authors:

Yehuda Shoenfeld, MD, FRCP, MaACR
Zabludowicz Center for Autoimmune Diseases,
Sheba Medical Center, affiliated with the Sackler
Faculty of Medicine, Tel-Aviv University
Tel-Hashomer 5265601, Israel
Email: shoenfel@post.tau.ac.il
Tel: 972-3-5308070
Fax: 972-3-5352855

Otavio Cabral-Marques, MSc, PhD
Department of Immunology
Institute of Biomedical Sciences
University of São Paulo
Lineu Prestes Avenue, 1730, São Paulo, SP, 05508-
900, Brazil
Email: otavio.cmarques@usp.br
Phone: +55 11 97464202
Fax: +55 11 30917397

Gabriela Crispim Baiocchi

Department of Immunology
Institute of Biomedical Sciences
University of São Paulo
Lineu Prestes Avenue, 1730, São Paulo,
SP, 05508-900, Brazil
Email: gabrielacbaiocchi@icb.usp.br
Phone: +55 11 990005454

ABSTRACT

1
2 The SARS-CoV-2 infection is associated with increased levels of autoantibodies targeting
3 immunological proteins such as cytokines and chemokines. Reports further indicate that COVID-
4 19 patients may develop a wide spectrum of autoimmune diseases due to reasons not fully
5 understood. Even so, the landscape of autoantibodies induced by SARS-CoV-2 infection remains
6 uncharted territory. To gain more insight, we carried out a comprehensive assessment of
7 autoantibodies known to be linked to diverse autoimmune diseases observed in COVID-19
8 patients, in a cohort of 248 individuals, of which 171 were COVID-19 patients (74 with mild, 65
9 moderate, and 32 with severe disease) and 77 were healthy controls. Dysregulated autoantibody
10 serum levels, characterized mainly by elevated concentrations, occurred mostly in patients with
11 moderate or severe COVID-19 infection, and was accompanied by a progressive disruption of
12 physiologic IgG and IgA autoantibody signatures. A similar perturbation was found in patients
13 with anosmia. Notably, autoantibody levels often accompanied anti-SARS-CoV-2 antibody
14 concentrations, being both indicated by random forest classification as strong predictors of
15 COVID-19 outcome, together with age. Moreover, higher levels of autoantibodies (mainly IgGs)
16 were seen in the elderly with severe disease compared with young COVID-19 patients with
17 severe disease . These findings suggest that the SARS-CoV-2 infection induces a broader loss of
18 self-tolerance than previously thought, providing new ideas for therapeutic interventions.

19
20 **Key words:** Autoantibodies, autoimmune diseases, SARS-CoV-2 infection, COVID-19
21 outcomes

22

23

24 Introduction

25 Since the first case in December 2019, more than 395 million confirmed cases of the
26 Coronavirus disease 2019 (COVID-19), including 5,7 million deaths, were reported¹. COVID-19
27 is caused by the severe acute respiratory syndrome coronavirus 2 (SARS-CoV-2), a single-
28 stranded RNA virus that belongs to the Coronaviridae family². Subsequently, new SARS-CoV-2
29 variants have kept on emerging, each presenting with selective advantages³⁻⁵ and threatening the
30 possibility to dominate the COVID-19 pandemic⁶. Concurrently, a massive scientific endeavor to
31 understand COVID-19 pathophysiology has found evidence that patients with severe COVID-19
32 may present with systemic immune dysregulation of both the innate and adaptive immune
33 responses. This manifests mainly as cytokine storm syndrome⁷, hyperactivation of both myeloid
34 and lymphoid cells^{7,8}, characterized by neutrophilia and lymphopenia⁹. . In addition, recent
35 reports from our group and others^{10,11,12} indicate that patients with COVID-19 have high levels of
36 autoantibody production, suggesting that SARS-CoV-2 can trigger features resembling systemic
37 autoimmune disease¹³⁻¹⁷.

38 In healthy individuals, autoantibodies are present at physiological levels regulating a
39 myriad of physiological functions, which are essential to maintain body homeostasis¹⁸⁻²¹.
40 However, abnormal levels of autoantibodies often predict preclinical autoimmune diseases^{22,23} as
41 well as promote or exacerbate inflammatory conditions by triggering or exacerbating
42 inflammation, dysregulating biological pathways, and inducing cell lysis²⁴. Therefore,
43 autoantibody levels in COVID-19 may have clinical implications. The identified link between
44 SARS-CoV-2 and altered autoantibody profiles suggest that similar to other viruses²⁵⁻²⁸, SARS-
45 CoV-2 infection may result in a life-threatening generalized loss of self-tolerance^{13-15,29}. This
46 includes antiphospholipid syndrome³⁰, Guillain-Barré syndrome³¹, polyneuritis cranialis³², new-

47 onset type 1 diabetes³³, autoimmune hemolytic anemia³⁴, Graves' disease³⁵, immune
48 thrombocytopenic purpura³⁶, arthritis³⁷, and systemic lupus erythematosus^{16,38}. However, the full
49 spectrum of autoantibodies observed in COVID-19 patients which could indicate a broad loss of
50 self-tolerance, has not been fully characterized. Among the recently reported autoantibodies
51 identified in COVID-19 are those targeting immune related proteins such as type I interferons
52 (IFNs)¹¹, the exoproteome (cytokine, chemokine, and their receptors as well as complement
53 factors)¹⁰, G protein-coupled receptors (GPCRs) and renin-angiotensin system (RAS)-related
54 molecules¹².

55 While a select group of autoantibodies observed in classical autoimmune diseases have
56 been associated with COVID-19 severity such as anti-nuclear antibodies (ANAs³⁹), ribosomal P
57 proteins, chromatin proteins, and thyroid antigens⁴⁰ although comprehensive studies broadly
58 characterizing autoantibodies induced by SARS-CoV-2 are lacking. Furthermore, high levels of
59 antiphospholipid autoantibodies were linked to severe COVID-19 by inducing neutrophil
60 extracellular traps (NETs) and venous thrombosis^{16,41-44}. Based on these observations,
61 autoantibodies associated with diverse autoimmune diseases and the loss of self-tolerance might
62 be associated with the severity of COVID-19 as previously indicated^{14,16,17,40,45,46} and by
63 extension suggest that loss of self-tolerance is a feature of severe COVID-19. To better
64 characterize the immunopathology of COVID-19 it is imperative to determine the landscape of
65 autoantibodies associated with the severity of SARS-CoV-2 infection, which will lead to
66 improve therapeutic interventions. To achieve this goal, we have characterized the spectrum of
67 autoantibodies linked to autoimmune diseases in patients with different COVID-19 clinical
68 outcomes, using a systems immunology approach.

69

70 **METHODS**

71 **Study Participants**

72 A total of 248 adults belonging to Jewish communities from 5 states of the United States of
73 America were enrolled in this study. Of these, 171 patients had COVID-19 symptoms
74 (**Supplementary Table 1**) and a positive SARS-CoV-2 test by nasopharyngeal swab and PCR
75 analysis (polymerase chain reaction) before receiving any SARS-CoV-2 vaccine. These patients
76 participated in an online survey developed to determine the most common symptoms and
77 outcomes of SARS-CoV-2 infection^{47,48}. The SARS-CoV-2 positive cohort was classified as
78 mild COVID-19 (n=74; fever duration \leq 1 day; peak temperature of 37.8 C), moderate COVID-
79 19 (n=63; fever duration \geq 7 days; peak fever of \geq 38.8 C), and severe COVID-19 groups (n=32;
80 severe symptoms and requiring supplemental oxygen therapy) according to the World Health
81 Organization (WHO) severity classification⁴⁹. Details of the survey study, patient demographics,
82 and symptoms were previously described^{47,48} and can be found in **Supplementary Table 1**. We
83 also included 77 randomly selected age- and sex-matched healthy controls from the same Jewish
84 population who were SARS-CoV-2 negative and did not present any COVID-19 symptoms. All
85 healthy controls and all patients provided informed written consent to participate in the study,
86 which was performed in accordance with the Declaration of Helsinki. The study was approved
87 by the IntegReview institutional review board (Coronavirus Antibody Prevalence Study, CAPS-
88 613). In addition, this study followed the reporting guidelines of Strengthening the Reporting of
89 Observational Studies in Epidemiology (STROBE).

90

91 **Measurements of anti-SARS-CoV-2 antibody and autoantibodies linked to autoimmune**
92 **diseases**

93 All collected sera were tested for IgG anti-SARS-CoV-2 antibody using the ZEUS
94 SARS-CoV-2 ELISA Test System according to the manufacturer's instructions (ZEUS
95 Scientific, New Jersey, USA). This is an ELISA test that measures IgG antibodies to spike and
96 nucleoprotein combined. Serum IgG autoantibodies against nuclear antigen (ANA), extractable
97 nuclear antigen (ENA), double-stranded DNA (dsDNA), actin, mitochondrial M2, and
98 rheumatoid factor (RF) were measured using commercial ELISA kits obtained from INOVA
99 Diagnostics (San Diego, CA, USA). In addition, IgG and IgA antibodies against 52 different
100 autoantigens⁵⁰⁻⁵⁸ were measured by in-house ELISA procedure at Immunosciences Lab., Inc.
101 (Los Angeles, CA USA) in blinded fashion. See **Supplementary Table 2** for the autoantigens
102 tested.. For the measurement of these antibodies, one hundred mL of each autoantigen at the
103 optimal concentration, prepared in 0.01 M PBS pH 7.4 were added to a series of microtiter
104 plates. A set of plate wells were also coated with 2% bovine serum albumin (BSA) or human
105 serum albumin (HSA) and used as controls. The ELISA plates were incubated overnight at 4°C
106 and then were washed five times with 250 ml of 0.01 M PBS containing 0.05% Tween 20 pH
107 7.4. The non-specific binding of immunoglobins was prevented by the addition of 200 mL of 2%
108 BSA in PBS, which was then incubated overnight at 4°C. Plates were washed and the serum
109 samples from healthy controls and the SARS-CoV-2 patients were diluted at 1:50 for the
110 determination of IgA antibody, and 1:100 for the determination of IgG antibody in serum diluent
111 buffer or 1% BSA in PBS containing 0.05% Tween 20 was added to the wells of ELISA plates,
112 which were then incubated for one hour at room temperature. Plates were washed, followed by
113 the addition of alkaline phosphatase goat anti-human IgG or IgA F(ab)₂ fragments (KPI,
114 Gaithesburg, MD, USA) at an optimal dilution of 1:200 for IgA and 1:600 for IgG in 1% BSA-
115 PBS. The plates were then incubated for another hour at room temperature. After five washings

116 with PBS-Tween buffer, the enzyme reaction was started by adding 100 mL of para-
117 nitrophenylphosphate in 0.1 mL diethanolamine buffer 1 mg/mL containing 1 mM MgCl₂ and
118 sodium azide pH 9.8. Forty-five minutes later, the reaction was stopped with 50 mL of 1 N
119 NaOH. The optical density (OD) was read at 405 nm with a microtiter plate reader. The ODs of
120 the control wells containing only HSA or BSA which were less than 0.15 were subtracted from
121 all other wells to exclude non-specific binding. The ELISA index for each antibody was
122 calculated and the background of the ELISA assay was not more than 0.150 O.D.

123

124 **Multistudy factor analysis**

125 Multistudy factor analysis (MSFA) was performed using the R package called MSFA⁵⁹, which
126 uses either a fast expectation conditional-maximization algorithm and a Gibbs Sampling
127 algorithm⁶⁰ for the parameter estimate. Here, we adopt the Gibbs Sampling algorithm to estimate
128 the parameter in a Bayesian framework⁶⁰. MSFA is an unsupervised and inferential analysis used
129 to identify common and study-specific factors shared by the control and COVID-19 groups as
130 previously described⁶¹.

131

132 **Differences in autoantibody levels**

133 Box plots showing differences in autoantibodies from COVID-19 patient groups (mild, moderate
134 and severe) and healthy controls were generated using the R version 4.0.5 (The R Project for
135 Statistical Computing. <https://www.r-project.org/>), R studio Version 1.4.1106 (R-Studio.
136 <https://www.rstudio.com/>), and the R packages ggpubr, lemon, and ggplot2. Statistical
137 differences in autoantibody levels were assessed using a two-sided Wilcoxon rank-sum¹⁰.

138

139 **Principal component analysis (PCA)**

140 PCA with spectral decomposition^{62,63} was carried out to measure the stratification power of the
141 autoantibodies in distinguishing COVID-19 (mild, moderate, and severe patients) and healthy
142 controls. PCA was performed using the R functions `prcomp` and `princomp`, through the
143 `factoextra` package (PCA in R: `prcomp` vs `princomp`)⁶⁴.

144

145 **Machine learning model and autoantibody ranking**

146 We employed random forest model to construct a classifier for discriminating controls and mild,
147 moderate, and severe COVID-19 patients. The aim of this approach was to identify the most
148 significant predictors for severe COVID-19. We trained the random forest model using the
149 functionalities of the R package `randomForest` (version 4.6.14)⁶⁵. Five thousand trees were used,
150 and 3 variables were resampled. A follow-up analysis was conducted with the Gini decrease, the
151 number of nodes and mean minimum depth as criteria to determine variable importance. The
152 adequacy of the random forest model as a classifier was assessed through the out-of-bags error
153 rate and the ROC curve. For cross-validation, we split the dataset into training and testing sets,
154 using 75% of the observations for training and 25% for testing.

155

156 **Autoantibody correlation signatures**

157 Bivariate correlation analyses of autoantibodies for each group (controls and mild, moderate and
158 severe COVID-19 patients) were performed using the `corrgram`, `psych` and `inlmisc` R packages.
159 In addition, circle plots of autoantibody correlation were built using the R packages `qgraph`,

160 ggplot2, psych, inlmisc to visualize the patterns of Spearman's rank correlation coefficients
161 between autoantibodies.

162

163 **RESULTS**

164 **Progressive increase of autoantibodies in COVID-19 patients according to disease severity**

165 Here we investigated the serum levels of IgG and IgA autoantibodies targeting 58 and 52
166 self-antigens, respectively, that are linked to a variety of autoimmune diseases (**Fig. 1**). See
167 **Supplementary Table 1** for autoantibody levels, **Supplementary Table 2** for their
168 abbreviations and targets, and **Supplementary Table 3** for autoantibody and disease association.
169 Multi-study factor analysis (MSFA) (**Fig. 2 and Supplementary Table 6**) revealed a
170 progressive dysregulation in the number of latent factors from mild COVID-19 patients to those
171 with moderate and severe disease. The two latter groups presented fewer latent factors when
172 compared with control and mild COVID-19 groups, indicating by this statistical inference
173 approach that the perturbation of normal autoantibody levels mostly occurs in patients with
174 moderated and severe COVID-19.

175 We found significantly elevated levels of IgG (**Supplementary Fig. 1**) and IgA
176 (**Supplementary Fig. 2**) autoantibodies targeting a total of 42 and 25 antigens, respectively,
177 when comparing COVID-19 groups (mild, moderate, and severe) versus healthy controls (**Fig.**
178 **3a**). In general, while patients with mild COVID-19 exhibited only slight differences in the
179 serum levels of autoantibodies when compared to healthy controls, patients with moderate
180 COVID-19 exhibited more evident differences, with the highest levels of autoantibodies noted
181 in the severe group. In agreement with the results obtained by MSFA, we observed a progressive

182 increase of the autoantibodies targeting autoantigens such as those associated with Alzheimer's
183 disease (rabaptin-5, tau protein), antiphospholipid syndrome (cardiolipin), multiple sclerosis and
184 other neuroimmune disorders (myelin basic protein), celiac disease (transglutaminases, zonulin),
185 neuropsychiatric and neurodegenerative disorders (NMDAR), gut motility disorders (enteric
186 nerve), liver autoimmunity (liver microsomal antigen), immune thrombocytopenia (platelet
187 glycoprotein), myasthenia gravis (acetylcholine receptor, somatotropin), neurodegenerative
188 diseases (neurofilament proteins), Parkinson's disease (α -synuclein), pemphigus vulgaris or
189 foliaceus (Desmoglein-E-Cadherin 1), neurological disorders (S100B), rheumatic heart disease
190 (α -myosin), rheumatoid arthritis (α -enolase, fibulin), systemic lupus erythematosus (cardiolipin,
191 dsDNA, rabaptin-5), type 1 diabetes (islet cell antigen), immune thrombotic thrombocytopenia
192 (heparin), and vitiligo (tyrosinase) (**Supplementary Table 3, Supplementary Fig. 1-2 and Fig.**
193 **3a, 3d-e**). In addition, we also identified reduced levels of IgG autoantibodies such as those
194 against α -myosin, rabaptin-5, S100B, and cerebellar as well as IgA autoantibodies targeting the
195 NMDA R and cerebellar. Thus, indicating a broad breakdown of physiological autoantibody
196 levels/self-tolerance in patients with COVID-19 that paralleled disease severity. Of note, the
197 progressive perturbation of autoantibody levels was accompanied by increased serum
198 concentration of anti-SARS-CoV-2 antibodies (**Fig. 3e**).

199 **Fig. 3b and Fig. 3c** display the functional associations of the autoantibody targets, which
200 are represented by functional enrichment analysis (gene ontology or GO). These results indicate
201 that, among others, COVID-19 patients have dysregulated levels of autoantibodies affecting in
202 neurological functions such as memory, learning, and cognition⁶⁶⁻⁶⁸ (**Supplementary Table 4**
203 **and Supplementary Fig. 3**). Taken together, our data indicate that autoantibodies may also be

204 involved with altered learning, memory and neuroplasticity⁶⁸ recently reported during SARS-
205 CoV-2 infection, which promotes a systemic inflammation milieu that might be neurotoxic.

206

207 **Autoantibody generation correlates with severe SARS-CoV-2 infection and anosmia**

208 Based on the concept that signatures of autoantibody correlations are associated with
209 physiological and pathological immune homeostasis^{10,12,40}, we investigated the correlation
210 between signatures of the IgA and IgG autoantibodies and disease severity. Bivariate correlation
211 analysis revealed (**Supplementary Table 5 and Fig. 4a**) that patients with mild COVID-19
212 exhibited few differences in the autoantibody correlation signatures when compared to healthy
213 controls. In contrast, patients with moderate COVID-19 started to exhibit new positive and
214 negative correlations between autoantibodies while the severe group displayed the most disparate
215 topological correlation pattern, increasingly with preferentially positive correlations between
216 autoantibodies.

217 We then assessed whether anosmia (loss of smell), which was one of the most consistent
218 symptoms associated with SARS-CoV-2 infections⁶⁹, also correlated with autoantibody
219 signatures in patients with mild or moderate COVID-19. Due to the extreme clinical condition
220 requiring oxygen replacement therapy that precludes the characterization of anosmia, patients
221 with severe COVID-19 were excluded from this analysis. We observed that the interconnections
222 among the autoantibodies are reduced in both mild and moderate COVID-19 with anosmia when
223 compared with those without (**Supplementary Fig. 4e and Fig. 3b**). Taken together, this
224 suggests the presence of multilayered factors that influence the autoantibody signatures,
225 including both disease severity and anosmia that affect relationships among autoantibodies
226 differently.

227

228 **Ranking autoantibodies as predictors of COVID-19 severity**

229 To investigate the classification power of autoantibodies, we used random forest modeling,
230 which predicts outcomes based on decision trees⁷⁰, to rank the top 10 autoantibodypredictors of
231 COVID-19 outcomes. Random forest classification of COVID-19 patients presented a stable
232 curve showing the highest error rate (out-of-bag OOB) for the severe COVID-19 group based on
233 both IgA or IgG autoantibodies (**Supplementary Fig. 6a, 6d, 6g, and 6h**). The confusion matrix
234 showed that the random forest model was unable to distinguish moderate from severe COVID-19
235 groups (**Supplementary Fig. 6b and 6e**). These results indicate that moderate and severe
236 COVID-19 patients may present a similar autoantibody signature. Therefore, we lumped
237 moderate and severe COVID-19 patients into the same group. Using this approach, the out-of-
238 bag (OOB) estimate of the error rate for all groups changed from 37% to 22% for IgA (**Fig. 5d**)
239 and from 25% to 12% for IgG autoantibodies (**Fig. 5a**). This way, the model was considered
240 adequate to classify the COVID-19 patients by severity according to IgA and IgG autoantibodies,
241 showing areas under the ROC curve of 0.91%, 0.85%, and 0.90% for the healthy control,
242 moderate, and severe COVID-19 groups for IgA (**Supplementary Fig. 6j**) and 0.98%. 0.96%
243 and 0.99% for IgG (**Supplementary Fig. 6i**). In this context, autoantibodies tracked with anti-
244 SARS-CoV-2 antibodies and age as predictive factors for COVID-19 outcome. Among them are
245 IgG autoantibodies targeting the NMDA R, insulin, PG, LSPC, human RO60, claudin, heparin,
246 and S100B, as well as IgA autoantibodies targeting cardiolipin, the NMDA R, HEK, cerebellar,
247 ICA, AbP, DEC, α -synucleins, and tyrosinase. Thus, IgA and IgG autoantibodies stratify
248 COVID-19 according to disease severity.

249 To better understand the stratification power of the autoantibody predictors of COVID-19
250 outcomes, we performed principal component analysis (PCA) with a spectral decomposition
251 approach^{40,41} to analyze whether the top 10 ranked variables (IgA and IgG autoantibodies and
252 age) as predictors of COVID-19 severity have stratification power. This approach indicated, in
253 accordance with the random forest modeling, that the ranked autoantibodies stratify COVID-19
254 patients according to disease severity. (**Fig. 5g and 5h**). While healthy controls and patients with
255 mild COVID-19 presented with similar autoantibody patterns, moderate and severe COVID-19
256 groups clustered closely. Together, these results indicate that the immune responses against
257 SARS-CoV-2 not only are associated with an increase of serum autoantibody levels linked to
258 autoimmune diseases, but also have predictive stratification values for COVID-19 patients.

259

260 **SARS-CoV-2 infection dysregulates autoantibody levels in an age-dependent manner**

261 Considering age as a major predictor of severe outcomes in COVID-19, which was also
262 identified by our data (Random forest)⁷¹, we investigated the effect of age on the top IgG and
263 IgA autoantibody predictors of COVID-19 severity. We classified control and disease groups by
264 age (young < 60 and elderly ≥ 60) and found that both moderately and severely affected elderly
265 COVID-19 patients show an overall tendency to have elevated autoantibody levels when
266 compared with younger patients (**Fig. 6a**). However, only elderly patients with severe COVID-
267 19 presented with significant differences in most of the top 10 IgG (**Fig. 6b**) and IgA (**Fig. 6c**)
268 autoantibodies when compared with young patients with severe disease. Of note, except for
269 autoantibodies targeting α -enolase, cardiolipin, CS, DEC, dsDNA, ENA, elderly patients with
270 severe COVID-19 had significant differences in all other IgG autoantibodies (**Supplementary**
271 **Fig. 7a**). In turn, IgA autoantibodies against 10 antigens displayed significant differences

272 comparing young COVID-19 patients to severe COVID-19 patients (**Supplementary Fig. 7b**).
273 No age-dependent differences were observed regarding the levels of anti-SARS-CoV-2
274 antibodies.

275 Of note, there were only a few (IgG autoantibodies targeting heparin and LSPC; SARS-
276 CoV-2 antibodies; IgA autoantibodies targeting cardiolipin, DEC, ICA, and tyrosinase) age-
277 dependent significant differences in patients with anosmia versus no anosmia regarding the top
278 10 autoantibody predictors of COVID-19 severity (**Supplementary Fig. 8**). Furthermore, we
279 asked whether sex also impacts the levels of autoantibodies during SARS-Co-2 infections. IgG
280 anti-cardiolipin-aab was elevated in males from all three disease groups (but only significantly in
281 mild and moderate COVID-19 cohorts) when compared to females. Except for this, there were
282 no significant sex differences in the levels of the top 10 IgG and IgA autoantibody predictors of
283 COVID-19 severity (**Supplementary Fig. 9**).

284

285 **DISCUSSION**

286 This work sheds light on the immunopathogenesis of COVID-19 demonstrating the
287 presence of increased levels of IgG and IgA autoantibodies linked to diverse number of
288 autoimmune diseases. Among them, are autoantibodies not yet reported in COVID-19 patients
289 such as those targeting neuronal antigens (e.g., α -synuclein, acetylcholine receptor, myeloid- β
290 peptide, β -catenin, brain-derived neurotrophic factor, cerebellar antigen, chondroitin sulphate,
291 dopamine receptors [D1 and D2], enteric nerve, ganglioside, glutamic acid decarboxylase,
292 myelin basic protein, myelin oligodendrocyte glycoprotein, neurofilament proteins, NMDA
293 receptor, rabaptin-5, somatotropin, S100B, tau protein, and transglutaminases 6) and non-
294 neuronal antigens (e.g., α -enolase, α -myosin, claudin-5 and -7, collagen, desmoglein-E-cadherin

295 1, epithelial sodium channel α , fibulin, fibrinogen, human epidermal keratin, insulin receptor,
296 islet cell antigen, occluding, platelet glycoprotein, transglutaminases 2 and 3, tyrosinase, and
297 zonulin).

298 Importantly, autoantibodies correlate with clinical features of SARS-CoV-2 infection
299 such as disease severity and anosmia. Besides expanding the spectrum of autoantibodies
300 associated with COVID-19 (e.g., cardiolipin⁷², dsDNA⁷², epithelial cell antigen⁷³, heparin⁷⁴,
301 human RO60⁷⁵, liver microsomal antigen⁴⁰, lung surfactant protein C)⁷⁶, our data also indicate
302 that both disease severity and anosmia disrupt the physiological IgG and IgA autoantibody
303 signatures. These findings are consistent with the notion that autoantibodies are natural
304 components of human physiology and become dysregulated under pathological
305 conditions^{19,20,77,78}. Further supporting the concept that COVID-19 disrupts antibody physiology,
306 anti-SARS-CoV-2 antibody levels accompany the levels of autoantibodies. Those antibodies
307 targeting self- and non-self-antigens, along with age, are predictors of disease severity as
308 classified by random forest modeling. Viral-induced autoimmune diseases are due to multiple
309 mechanisms such as molecular mimicry⁷⁹, epitope spreading⁸⁰, and bystander activation, all of
310 which could possibly be involved in SARS-CoV-2 induced autoimmunity. Indeed, evidence has
311 been provided for strong, chronic inflammation promoting the release of self-antigens and high
312 cytokine levels activating bystander T-cells⁸¹, and for molecular mimicry⁸²⁻⁸⁴, all of which have
313 been associated with severe COVID-19. Molecular mimicry has been explored by assessing the
314 SARS-CoV-2 proteome, which revealed the existence of 21 viral peptides that show at least 90%
315 homology with human proteins known to be involved in autoimmune diseases such as multiple
316 sclerosis and rheumatoid arthritis⁸². Furthermore, it has been shown that monoclonal antibodies
317 generated against SARS-CoV-2 proteins reacted with 28 out of 55 tested autoantigens⁷⁰⁻⁷¹. These

318 observations may explain why the multiple serum autoantibodies causative to autoimmune
319 diseases dysregulate their levels, perturbing their physiologic function. These findings are in line
320 with reports from ours²⁰ and other groups^{10,40} demonstrating that changes in autoantibody
321 signatures affect physiologic and pathological immune homeostasis²⁰.

322 Of note, the random forest model suggests that anti-SARS-CoV-2 antibodies and
323 autoantibodies, together with the major risk factor age⁷¹, are important predictors of COVID-19
324 severity. Our finding that the highest levels of anti-SARS-CoV-2 antibodies are achieved by
325 patients with severe COVID-19 is in agreement with previous reports demonstrating a similar
326 pattern of humoral immune response in critically ill COVID-19 patients^{75,85}. In addition, it was
327 shown that the levels of anti-SARS-CoV-2 antibodies accompany longitudinally with the
328 dysregulation of autoantibody levels⁴⁰. While we found no age effect on the levels of anti-SARS-
329 CoV-2 antibodies, severe SARS-CoV-2 infection induces higher autoantibody levels in elderly
330 patients compared with young patients. Thus, our data point to novel mechanisms involved in the
331 risk intersection of immunosenescence and COVID-19⁷¹, suggesting that SARS-CoV-2
332 infection induces a broader loss of self-tolerance than previously thought, particularly in elderly
333 patients. In this context, several age-associated factors such as chronic inflammation in ageing
334 (inflammaging⁸⁶) might promote the production of autoantibodies as well as the tendency to
335 naturally progress to immune dysregulation of innate⁸⁷ and adaptive⁸⁸ immune cells. Therefore,
336 our data support the idea that the induction of high levels of serum autoantibodies in elderly
337 COVID-19 patients contribute to the increased risk for negative outcomes in older persons⁸⁹.

338 Because autoantibodies are strong predictors of COVID-19 severity, our findings expand
339 the number of autoantibodies that qualify as biomarkers for the severity of SARS-CoV-2
340 infection. Among them are those targeting molecules involved in neurological functions (e.g.,

341 cognition, learning, memory, synaptic transmission) and glucose metabolism. For instance, while
342 anti-cardiolipin antibodies were previously associated with the development of
343 hyperinflammatory syndromes⁹⁰, the high levels of autoantibodies targeting neuronal-associated
344 molecules could provide clues why the respiratory symptoms of COVID-19 patients are often
345 accompanied by short- and long-term neuropsychiatric symptoms and brain sequelae⁶⁸. It has
346 been convincingly shown that SARS-CoV-2 is able enter the brain by crossing the blood-brain
347 barrier (BBB) because inflammatory cytokines induce BBB instability^{68,91,92}. Our data indicate
348 that the array of autoantibodies targeting neuronal molecules is an additional molecular layer that
349 could contribute to the neurological manifestations^{66,67} occurring in COVID-19 patients.

350 There are limitations of our work that need consideration. For instance, our study did not
351 have longitudinal data to analyze the pharmacokinetics of the IgG and IgA autoantibodies, from
352 disease onset to convalescence or post-acute COVID-19 syndrome. Our study cohort did not
353 include asymptomatic patients. Moreover, we cannot exclude the possibility that at least some of
354 our patients had high levels of autoantibodies prior to SARS-CoV-2 infection, or that
355 autoantibodies to some antigens (e.g., heparin) could have been induced by anticoagulant therapy
356 with heparin. In addition, we did not assess alterations in the number of circulating B
357 lymphocytes and whether this could explain the higher serum levels of autoantibodies. In
358 addition, future studies are required to clarify the role of virus and host genetics in the production
359 of autoantibodies. On the other hand, our work raises new questions such as whether the
360 dysregulated levels of autoantibodies remain after COVID-19 remission and these levels are in
361 patients with post-COVID-19 syndrome.

362 Taken together, our work provides a comprehensive view of the spectrum of
363 autoantibodies linked with autoimmune diseases that are induced by SARS-CoV-2 infection.

364 This work maps the intersection of COVID-19 and autoimmunity⁹³⁻⁹⁵, demonstrating the
365 dysregulation of multiple autoantibodies that are linked to autoimmune diseases during SARS-
366 CoV-2 infections, and the altered correlation signatures according to disease severity and
367 anosmia. The data presented suggest a gradual involvement of autoantibodies in the severity of
368 COVID-19. We identified several new clinically relevant autoantibodies that can be used as
369 biomarkers that predict COVID-19 severity and to open avenues to develop new treatment
370 strategies.

371

372 **Acknowledgments**

373 We acknowledge the patients for participation in this study. We would like to acknowledge the
374 contributions of Lev Rochel Bikur Cholim of Lakewood (led by Rabbi Yehuda Kasirer and Mrs.
375 Leeba Prager) and their hundreds of volunteers who participated in collecting samples for this
376 research through the MITZVA Cohort. We thank Immunosciences and Cyrex Laboratories for
377 financial support and INOVA Diagnostics for providing their diagnostic ELISA kits for
378 autoimmunity at a very discounted rate Furthermore, we would like to thank Vilma Samayoa,
379 David Cisneros, Roberto Melgar, Dana Ashley Hill and Amanda Thornton for technical
380 assistance.. We also thank the São Paulo Research Foundation (FAPESP grants: 2020/07972-1 to
381 GCB; 2020/09146-1 to PPF; 2020/11710-2 to DRP, 2018/18886-9, 2020/01688-0, and
382 2020/07069-0 to OCM), and the Coordination for the Improvement of Higher Education
383 Personnel (CAPES) Financial Code 001 (grant to ISF) for financial support.

384

385 **Data availability**

386 All data present in this manuscript are provided as Supplementary files. All R packages used in
387 this manuscript are available at the following link:
388 [https://github.com/gabrielacbaiocchi/Autoantibodies-linked-to-autoimmune-diseases-associated-](https://github.com/gabrielacbaiocchi/Autoantibodies-linked-to-autoimmune-diseases-associated-with-COVID-19-outcomes.git)
389 [with-COVID-19-outcomes.git](https://github.com/gabrielacbaiocchi/Autoantibodies-linked-to-autoimmune-diseases-associated-with-COVID-19-outcomes.git)

390

391 **Author contributions**

392 YS, AZR, IZ, AV, and EV conceived the project; YS, AZR, IZ, and GH designed the study. JIS,
393 AZR, IZ, and MTL diagnosed, recruited or followed-up the patients. AV and EV performed the
394 experiments. AZR, DAH, AT, GH, JZ, JIS, AZR, IZ, MTL, EV, YBL, HA, and YS coordinated
395 the serum collection and databank. GCB, AHCM, ISF, DLMF, DRP, PPF, MK, RDV, and OCM
396 performed data and bioinformatics analyses. GCB, AV, LMG, HDO, and OCM wrote the
397 manuscript. JS, HH, YO, AZR, VLGC, NOSC, RDV, IZ, GCB, AV, LFS, LMG, HDO, and
398 OCM edited the manuscript; GCB, AV, AZR, YO, LFS, IZ, AHCM, EV, DAH, AT, LMG,
399 YBL, JIS, JZ, NOSC, VLGC, HH, GR, HA, OCM, and YS, provided scientific insights.

400

401 **Competing interests**

402 The authors declare no competing interests.

403

404 **REFERENCES**

- 405
- 406 1. WHO Coronavirus (COVID-19) Dashboard | WHO Coronavirus (COVID-19) Dashboard
407 With Vaccination Data.
- 408 2. Gorbalenya, A. E. *et al.* The species Severe acute respiratory syndrome-related
409 coronavirus: classifying 2019-nCoV and naming it SARS-CoV-2. *Nat. Microbiol.* 2020 54
410 **5**, 536–544 (2020).
- 411 3. Konings, F. *et al.* SARS-CoV-2 Variants of Interest and Concern naming scheme
412 conducive for global discourse. *Nat. Microbiol.* **6**, 821–823 (2021).
- 413 4. Maslo, C. *et al.* Characteristics and Outcomes of Hospitalized Patients in South Africa
414 During the COVID-19 Omicron Wave Compared With Previous Waves. *JAMA* (2021)
415 doi:10.1001/JAMA.2021.24868.
- 416 5. Hacısuleyman, E. *et al.* Vaccine Breakthrough Infections with SARS-CoV-2 Variants. *N.*
417 *Engl. J. Med.* **384**, 2212–2218 (2021).
- 418 6. Karim, S. S. A. & Karim, Q. A. Omicron SARS-CoV-2 variant: a new chapter in the
419 COVID-19 pandemic. *Lancet* **398**, 2126–2128 (2021).
- 420 7. Webb, B. J. *et al.* Clinical criteria for COVID-19-associated hyperinflammatory
421 syndrome: a cohort study. *Lancet. Rheumatol.* **2**, e754–e763 (2020).
- 422 8. Koutsakos, M. *et al.* Integrated immune dynamics define correlates of COVID-19 severity
423 and antibody responses. *Cell reports. Med.* **2**, (2021).
- 424 9. Lourda, M. *et al.* High-dimensional profiling reveals phenotypic heterogeneity and
425 disease-specific alterations of granulocytes in COVID-19. *Proc. Natl. Acad. Sci. U. S. A.*
426 **118**, (2021).
- 427 10. Wang, E. Y. *et al.* Diverse functional autoantibodies in patients with COVID-19. *Nat.*
428 *2021 5957866* **595**, 283–288 (2021).
- 429 11. Bastard, P. *et al.* Autoantibodies against type I IFNs in patients with life-threatening
430 COVID-19. *Science (80-.).* **370**, (2020).
- 431 12. Cabral-Marques, O. *et al.* The relationship between autoantibodies targeting GPCRs and
432 the renin-angiotensin system associates with COVID-19 severity. *medRxiv*
433 2021.08.24.21262385 (2021) doi:10.1101/2021.08.24.21262385.
- 434 13. Khamisi, R. Rogue antibodies could be driving severe COVID-19. *Nature* **590**, 29–31
435 (2021).
- 436 14. Ehrenfeld, M. *et al.* Covid-19 and autoimmunity. *Autoimmun. Rev.* **19**, (2020).
- 437 15. Lichtman, A. H. Anti-body antibodies in COVID-19. *Sci. Immunol.* **6**, (2021).
- 438 16. Dotan, A. *et al.* The SARS-CoV-2 as an instrumental trigger of autoimmunity.
439 *Autoimmun. Rev.* **20**, (2021).
- 440 17. Halpert, G. & Shoefeld, Y. SARS-CoV-2, the autoimmune virus. *Autoimmun. Rev.* **19**,
441 102695 (2020).
- 442 18. Amendt, T. *et al.* Autoreactive antibodies control blood glucose by regulating insulin
443 homeostasis. *Proc. Natl. Acad. Sci.* **119**, e2115695119 (2022).
- 444 19. Nagele, E. P. *et al.* Natural IgG Autoantibodies Are Abundant and Ubiquitous in Human
445 Sera, and Their Number Is Influenced By Age, Gender, and Disease. *PLoS One* **8**, e60726
446 (2013).
- 447 20. Cabral-Marques, O. *et al.* GPCR-specific autoantibody signatures are associated with
448 physiological and pathological immune homeostasis. *Nat. Commun.* **9**, 5224 (2018).
- 449 21. Lutz, H. U., Binder, C. J. & Kaveri, S. Naturally occurring auto-antibodies in homeostasis

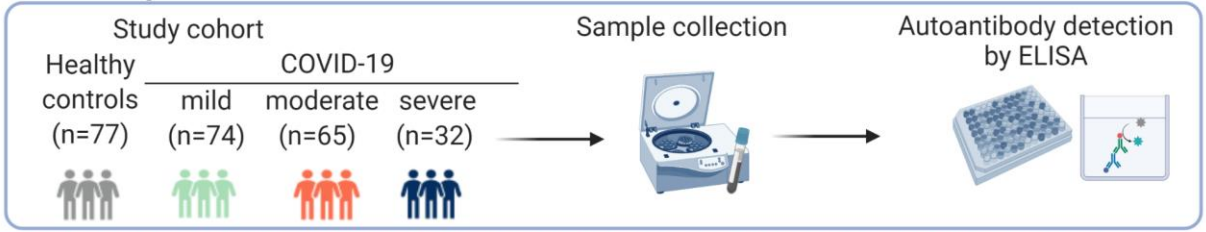
- 450 and disease. *Trends Immunol.* **30**, 43–51 (2009).
- 451 22. Leslie, D., Lipsky, P. & Louis Notkins, A. Autoantibodies as predictors of disease. *J. Clin.*
452 *Invest.* **108**, 1417 (2001).
- 453 23. Deane, K. D. & El-Gabalawy, H. Pathogenesis and prevention of rheumatic disease: focus
454 on preclinical RA and SLE. *Nat. Rev. Rheumatol.* **2014 104 10**, 212–228 (2014).
- 455 24. Pedroza-Pacheco, I. & Borrow, P. Targeting autoantibodies in COVID-19. *Nat. Rev.*
456 *Immunol.* **2021 213 21**, 134–134 (2021).
- 457 25. Pavlovic, M., Kats, A., Cavallo, M. & Shoenfeld, Y. Clinical and Molecular Evidence for
458 Association of SLE with parvovirus B19. *Lupus* **19**, 783–792 (2010).
- 459 26. Maya, R., Gershwin, M. E. & Shoenfeld, Y. Hepatitis B virus (HBV) and autoimmune
460 disease. *Clin. Rev. Allergy Immunol.* **34**, 85–102 (2008).
- 461 27. Barzilai, O. *et al.* Epstein-Barr virus and cytomegalovirus in autoimmune diseases: are
462 they truly notorious? A preliminary report. *Ann. N. Y. Acad. Sci.* **1108**, 567–577 (2007).
- 463 28. Barzilai, O., Ram, M. & Shoenfeld, Y. Viral infection can induce the production of
464 autoantibodies. *Curr. Opin. Rheumatol.* **19**, 636–643 (2007).
- 465 29. Lucchese, G. Cerebrospinal fluid findings in COVID-19 indicate autoimmunity. *The*
466 *Lancet. Microbe* **1**, e242 (2020).
- 467 30. Taha, M. & Samavati, L. Antiphospholipid antibodies in COVID-19: a meta-analysis and
468 systematic review. *RMD Open* **7**, e001580 (2021).
- 469 31. Khan, F. *et al.* COVID-19-associated Guillain-Barre syndrome: Postinfectious alone or
470 neuroinvasive too? *J. Med. Virol.* **93**, 6045–6049 (2021).
- 471 32. Gutiérrez-Ortiz, C. *et al.* Miller Fisher syndrome and polyneuritis cranialis in COVID-19.
472 *Neurology* **95**, e601–e605 (2020).
- 473 33. Boddu, S. K., Aurangabadkar, G. & Kuchay, M. S. New onset diabetes, type 1 diabetes
474 and COVID-19. *Diabetes Metab. Syndr.* **14**, 2211–2217 (2020).
- 475 34. Jacobs, J. & Eichbaum, Q. COVID-19 associated with severe autoimmune hemolytic
476 anemia. *Transfusion* **61**, 635–640 (2021).
- 477 35. Mateu-Salat, M., Urgell, E. & Chico, A. SARS-COV-2 as a trigger for autoimmune
478 disease: report of two cases of Graves’ disease after COVID-19. *J. Endocrinol. Invest.* **43**,
479 1527–1528 (2020).
- 480 36. Bhattacharjee, S. & Banerjee, M. Immune Thrombocytopenia Secondary to COVID-19: a
481 Systematic Review. *Sn Compr. Clin. Med.* **2**, 1 (2020).
- 482 37. Parisi, S., Borrelli, R., Bianchi, S. & Fusaro, E. Viral arthritis and COVID-19. *Lancet*
483 *Rheumatol.* **2**, e655–e657 (2020).
- 484 38. Zamani, B., Moeini Taba, S. M. & Shayestehpour, M. Systemic lupus erythematosus
485 manifestation following COVID-19: a case report. *J. Med. Case Rep.* **15**, 1–4 (2021).
- 486 39. Woodruff, M. C. *et al.* Relaxed peripheral tolerance drives broad de novo autoreactivity in
487 severe COVID-19. *medRxiv Prepr. Serv. Heal. Sci.* (2021)
488 doi:10.1101/2020.10.21.20216192.
- 489 40. Chang, S. E. *et al.* New-onset IgG autoantibodies in hospitalized patients with COVID-19.
490 *Nat. Commun.* **2021 121 12**, 1–15 (2021).
- 491 41. Zuo, Y. *et al.* Prothrombotic autoantibodies in serum from patients hospitalized with
492 COVID-19. *Sci. Transl. Med.* **12**, 3876 (2020).
- 493 42. Zuniga, M. *et al.* Autoimmunity to the Lung Protective Phospholipid-Binding Protein
494 Annexin A2 Predicts Mortality Among Hospitalized COVID-19 Patients. *medRxiv*
495 2020.12.28.20248807 (2021) doi:10.1101/2020.12.28.20248807.

- 496 43. Losartan for Patients With COVID-19 Requiring Hospitalization - Full Text View -
497 ClinicalTrials.gov.
- 498 44. Cavalli, E. *et al.* Entangling COVID-19 associated thrombosis into a secondary
499 antiphospholipid antibody syndrome: Diagnostic and therapeutic perspectives (Review).
500 *Int. J. Mol. Med.* **46**, 903–912 (2020).
- 501 45. Galeotti, C. & Bayry, J. Autoimmune and inflammatory diseases following COVID-19.
502 *Nat. Rev. Rheumatol.* 2020 168 **16**, 413–414 (2020).
- 503 46. Ramos-Casals, M., Brito-Zerón, P. & Mariette, X. Systemic and organ-specific immune-
504 related manifestations of COVID-19. *Nat. Rev. Rheumatol.* 2021 176 **17**, 315–332 (2021).
- 505 47. Silverberg, J. *et al.* Association of Varying Clinical Manifestations and Positive Anti-
506 SARS-CoV-2 IgG Antibodies: A Cross-Sectional Observational Study. *J. allergy Clin.*
507 *Immunol. Pract.* (2021) doi:10.1016/J.JAIP.2021.06.046.
- 508 48. Zyskind, I. *et al.* SARS-CoV-2 Seroprevalence and Symptom Onset in Culturally Linked
509 Orthodox Jewish Communities Across Multiple Regions in the United States. *JAMA*
510 *Netw. open* **4**, (2021).
- 511 49. COVID-19 Clinical management: living guidance.
- 512 50. Baggi, F. *et al.* Breakdown of Tolerance to a Self-Peptide of Acetylcholine Receptor α -
513 Subunit Induces Experimental Myasthenia Gravis in Rats. *J. Immunol.* **172**, 2697–2703
514 (2004).
- 515 51. Vojdani, A. & Turnpaugh, C. C. Antibodies against Group A Streptococcus, dopamine
516 receptors, and ganglioside GM1 cross-react with a variety of food antigens, potentially
517 interfering with biomarkers for PANS and PANDAS. *Biomarkers in Neuropsychiatry* **3**,
518 100023 (2020).
- 519 52. Swedo, E. *et al.* Brain Human Monoclonal Autoantibody from Sydenham Chorea Targets
520 Dopaminergic Neurons in Transgenic Mice and Signals Dopamine D2 Receptor:
521 Implications in Human Disease. *J. Immunol.* **191**, 5524–5541 (2013).
- 522 53. Vojdani, A. & Vojdani, E. Amyloid-Beta 1-42 Cross-Reactive Antibody Prevalent in
523 Human Sera May Contribute to Intraneuronal Deposition of A-Beta-P-42. *Int. J.*
524 *Alzheimers. Dis.* **2018**, (2018).
- 525 54. Wood, J. D., Liu, S., Drossman, D. A., Ringel, Y. & Whitehead, W. E. Anti-Enteric
526 Neuronal Antibodies and the Irritable Bowel Syndrome. *J Neurogastroenterol Motil* **18**,
527 78–85 (2012).
- 528 55. Demchyshyn, L. L., Sugamori, K. S., Lee, F. J. S., Hamadanizadeh, S. A. & Niznik, H. B.
529 The Dopamine D1D Receptor: CLONING AND CHARACTERIZATION OF THREE
530 PHARMACOLOGICALLY DISTINCT D1-LIKE RECEPTORS FROM Gallus
531 domesticus(*). *J. Biol. Chem.* **270**, 4005–4012 (1995).
- 532 56. Omdal, R. *et al.* Neuropsychiatric disturbances in SLE are associated with antibodies
533 against NMDA receptors. *Eur. J. Neurol.* **12**, 392–398 (2005).
- 534 57. Kaniakova, M. *et al.* Key amino acid residues within the third membrane domains of NR1
535 and NR2 subunits contribute to the regulation of the surface delivery of N-methyl-D-
536 aspartate receptors. *J. Biol. Chem.* **287**, 26423–26434 (2012).
- 537 58. Vojdani, A., Vojdani, E., Saidara, E. & Kharrazian, D. Reaction of Amyloid- β Peptide
538 Antibody with Different Infectious Agents Involved in Alzheimer’s Disease. *J.*
539 *Alzheimers. Dis.* **63**, 847–860 (2018).
- 540 59. GitHub - rdevito/MSFA. <https://github.com/rdevito/MSFA>.
- 541 60. Vito, R. De, Bellio, R., Trippa, L. & Parmigiani, G. Bayesian multistudy factor analysis

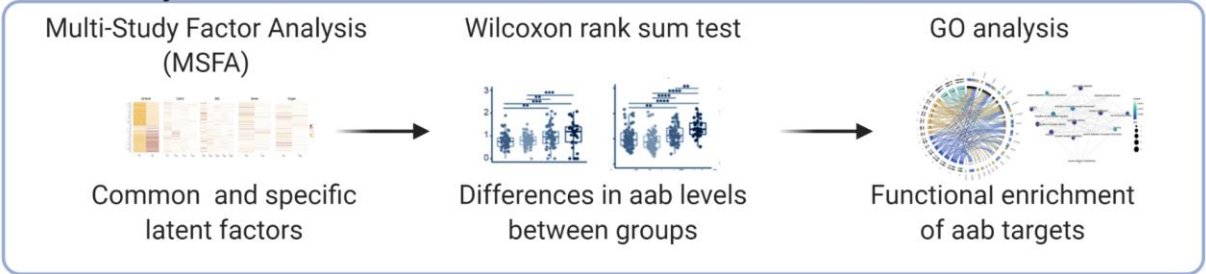
- 542 for high-throughput biological data. <https://doi.org/10.1214/21-AOAS1456> **15**, 1723–1741
543 (2021).
- 544 61. De Vito, R., Bellio, R., Trippa, L. & Parmigiani, G. Multi-study Factor Analysis. (2016).
545 62. Lever, J., Krzywinski, M. & Altman, N. Points of Significance: Principal component
546 analysis. *Nature Methods* vol. 14 641–642 (2017).
547 63. Ringnér, M. What is principal component analysis? *Nature Biotechnology* vol. 26 303–
548 304 (2008).
- 549 64. Kotlyar, M. *et al.* IID 2021: towards context-specific protein interaction analyses by
550 increased coverage, enhanced annotation and enrichment analysis. *Nucleic Acids Res.* **1**,
551 13–14 (2021).
- 552 65. Liaw, A. & Wiener, M. (8) (PDF) Classification and Regression by RandomForest.
553 66. Becker, J. H. *et al.* Assessment of Cognitive Function in Patients After COVID-19
554 Infection. *JAMA Netw. Open* **4**, e2130645–e2130645 (2021).
555 67. Alnefeesi, Y. *et al.* Impact of SARS-CoV-2 Infection on Cognitive Function: A
556 Systematic Review. *Front. Psychiatry* **11**, 1629 (2021).
557 68. Boldrini, M., Canoll, P. D. & Klein, R. S. How COVID-19 Affects the Brain. *JAMA*
558 *Psychiatry* **78**, 682–683 (2021).
- 559 69. Sudre, C. H. *et al.* Anosmia, ageusia, and other COVID-19-like symptoms in association
560 with a positive SARS-CoV-2 test, across six national digital surveillance platforms: an
561 observational study. *Lancet. Digit. Heal.* **3**, e577–e586 (2021).
562 70. Liaw, A. & Wiener, M. Classification and Regression by randomForest. **2**, (2002).
563 71. Bartleson, J. M. *et al.* SARS-CoV-2, COVID-19 and the aging immune system. *Nat.*
564 *Aging* 2021 19 **1**, 769–782 (2021).
- 565 72. Lerma, L. A. *et al.* Prevalence of autoantibody responses in acute coronavirus disease
566 2019 (COVID-19). *J. Transl. Autoimmun.* **3**, (2020).
567 73. Yang, Y. H. *et al.* Autoantibodies against human epithelial cells and endothelial cells after
568 severe acute respiratory syndrome (SARS)-associated coronavirus infection. *J. Med.*
569 *Virol.* **77**, 1–7 (2005).
- 570 74. Pang, E., Ghosh, S., Chemmanam, T., Grove, C. & Phillips, T. Cerebral arterial and
571 venous thrombosis due to COVID-19 vaccine-induced immune thrombotic
572 thrombocytopenia. *BMJ Case Rep.* **15**, e245445 (2022).
- 573 75. Lerma, L. A. *et al.* Prevalence of autoantibody responses in acute coronavirus disease
574 2019 (COVID-19). *J. Transl. Autoimmun.* **3**, 100073 (2020).
575 76. Sinnberg, T. *et al.* IgA autoantibodies target pulmonary surfactant in patients with severe
576 COVID-19. *medRxiv* 2021.02.02.21250940 (2021) doi:10.1101/2021.02.02.21250940.
577 77. Cabral-Marques, O. & Riemekasten, G. Functional autoantibodies targeting G protein-
578 coupled receptors in rheumatic diseases. *Nat. Rev. Rheumatol.* 2017 1311 **13**, 648–656
579 (2017).
- 580 78. Watanabe, M. *et al.* Anti-cytokine autoantibodies are ubiquitous in healthy individuals.
581 *FEBS Lett.* **581**, 2017–2021 (2007).
582 79. Rojas, M. *et al.* Molecular mimicry and autoimmunity. *J. Autoimmun.* **95**, 100–123
583 (2018).
- 584 80. Powell, A. M. & Black, M. M. Epitope spreading: protection from pathogens, but
585 propagation of autoimmunity? *Clin. Exp. Dermatol.* **26**, 427–433 (2001).
586 81. Gregorova, M. *et al.* Post-acute COVID-19 associated with evidence of bystander T-cell
587 activation and a recurring antibiotic-resistant bacterial pneumonia. *Elife* **9**, 1–13 (2020).

- 588 82. Karami Fath, M. *et al.* SARS-CoV-2 Proteome Harbors Peptides Which Are Able to
589 Trigger Autoimmunity Responses: Implications for Infection, Vaccination, and Population
590 Coverage. *Front. Immunol.* **12**, 3174 (2021).
- 591 83. Vojdani, A., Vojdani, E. & Kharrazian, D. Reaction of Human Monoclonal Antibodies to
592 SARS-CoV-2 Proteins With Tissue Antigens: Implications for Autoimmune Diseases.
593 *Front. Immunol.* **11**, (2021).
- 594 84. Vojdani, A. & Kharrazian, D. Potential antigenic cross-reactivity between SARS-CoV-2
595 and human tissue with a possible link to an increase in autoimmune diseases. *Clin.*
596 *Immunol.* **217**, (2020).
- 597 85. Yan, X. *et al.* Anti-SARS-CoV-2 IgG levels in relation to disease severity of COVID-19.
598 *J. Med. Virol.* **94**, 380–383 (2022).
- 599 86. Ferrucci, L. & Fabbri, E. Inflammageing: chronic inflammation in ageing, cardiovascular
600 disease, and frailty. *Nat. Rev. Cardiol.* **2018 159** **15**, 505–522 (2018).
- 601 87. Shaw, A. C., Goldstein, D. R. & Montgomery, R. R. Age-dependent dysregulation of
602 innate immunity. *Nat. Rev. Immunol.* **2013 1312** **13**, 875–887 (2013).
- 603 88. Rocamora-Reverte, L., Melzer, F. L., Würzner, R. & Weinberger, B. The Complex Role
604 of Regulatory T Cells in Immunity and Aging. *Front. Immunol.* **11**, 3566 (2021).
- 605 89. Poletti, P. *et al.* Association of Age With Likelihood of Developing Symptoms and
606 Critical Disease Among Close Contacts Exposed to Patients With Confirmed SARS-CoV-
607 2 Infection in Italy. *JAMA Netw. Open* **4**, e211085–e211085 (2021).
- 608 90. Xu, Y. M., Chu, Y. Q. & Wang, H. Correlation Analysis of Anti-Cardiolipin Antibody/D
609 Dimer/C-Reactive Protein and Coronary Artery Lesions/Multiple-Organ Damage in
610 Children With Kawasaki Disease. *Front. Pediatr.* **9**, 1001 (2021).
- 611 91. Zhang, L. *et al.* SARS-CoV-2 crosses the blood–brain barrier accompanied with basement
612 membrane disruption without tight junctions alteration. *Signal Transduct. Target. Ther.*
613 **2021 61** **6**, 1–12 (2021).
- 614 92. Rhea, E. M. *et al.* The S1 protein of SARS-CoV-2 crosses the blood–brain barrier in mice.
615 *Nat. Neurosci.* **2020 243** **24**, 368–378 (2020).
- 616 93. Liu, Y., Sawalha, A. H. & Lu, Q. COVID-19 and autoimmune diseases. *Curr. Opin.*
617 *Rheumatol.* **33**, 155–162 (2021).
- 618 94. Knight, J. S. *et al.* The intersection of COVID-19 and autoimmunity. *J. Clin. Invest.* **131**,
619 (2021).
- 620 95. Saad, M. A. *et al.* COVID-19 and Autoimmune Diseases: A Systematic Review of
621 Reported Cases. *Curr. Rheumatol. Rev.* **17**, 193–204 (2021).
- 622

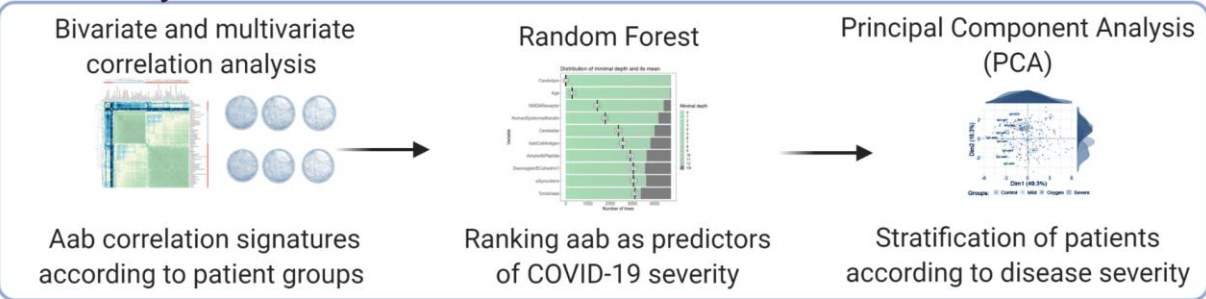
Data acquisition



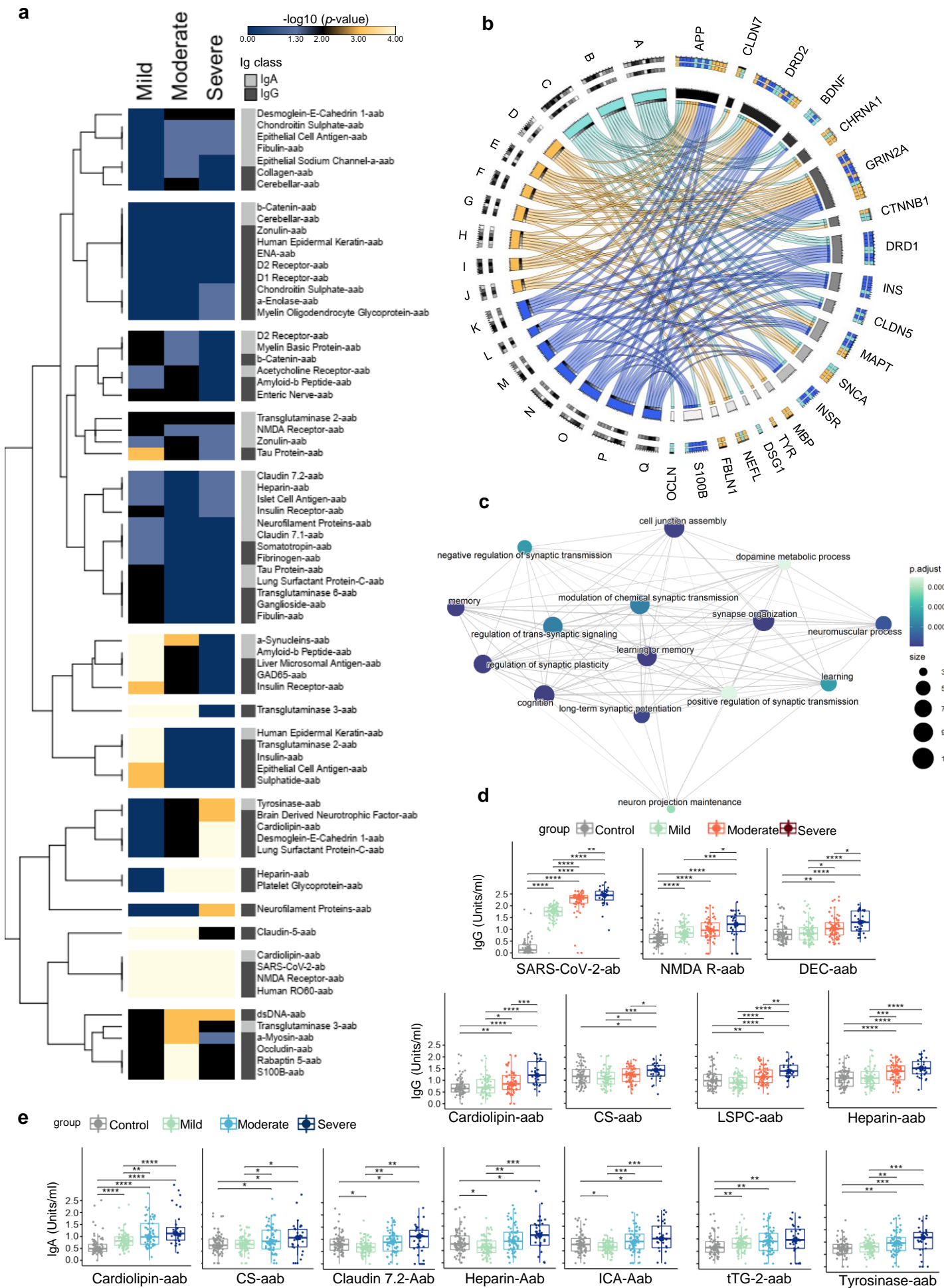
Data analysis



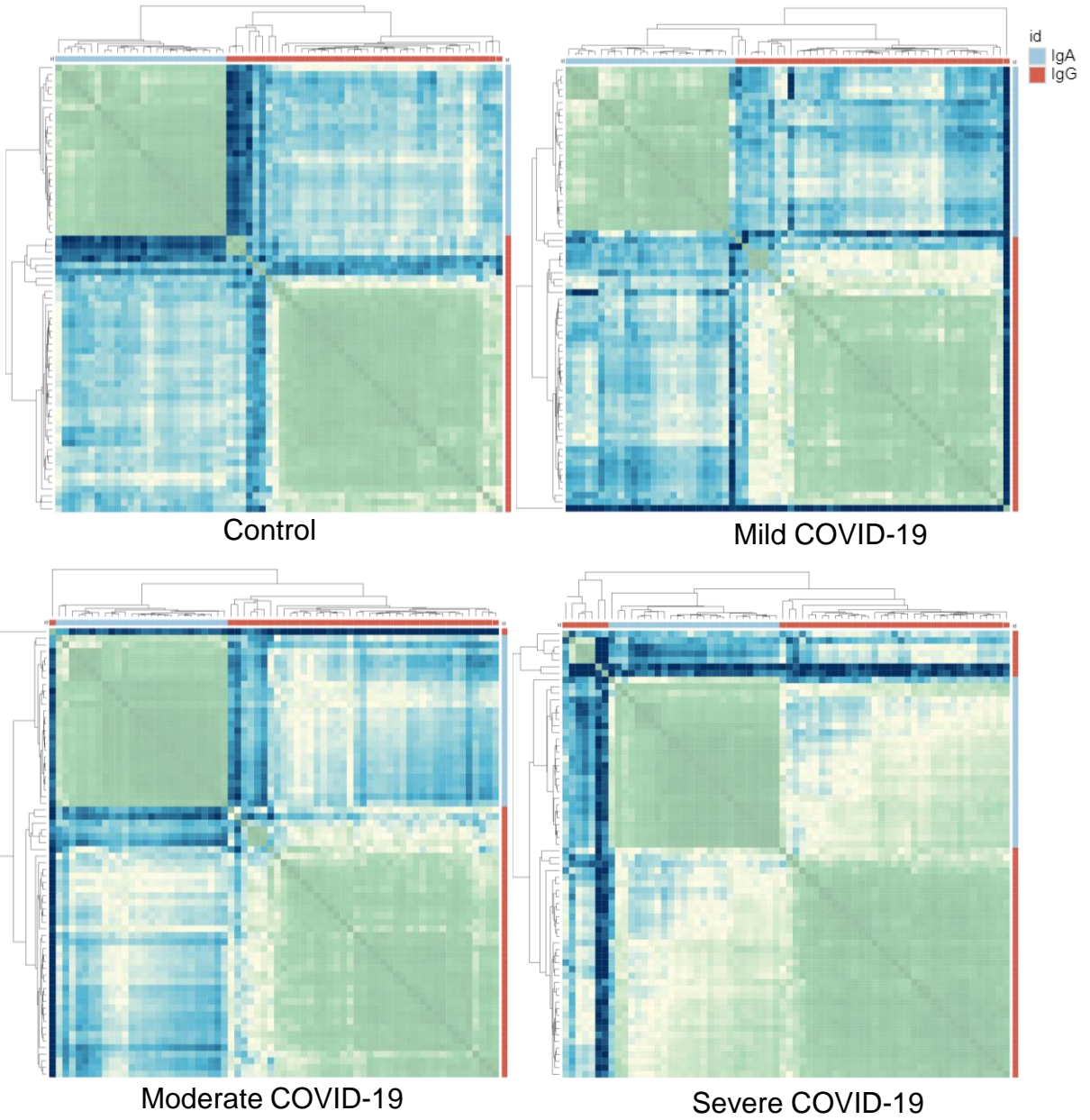
Data analysis



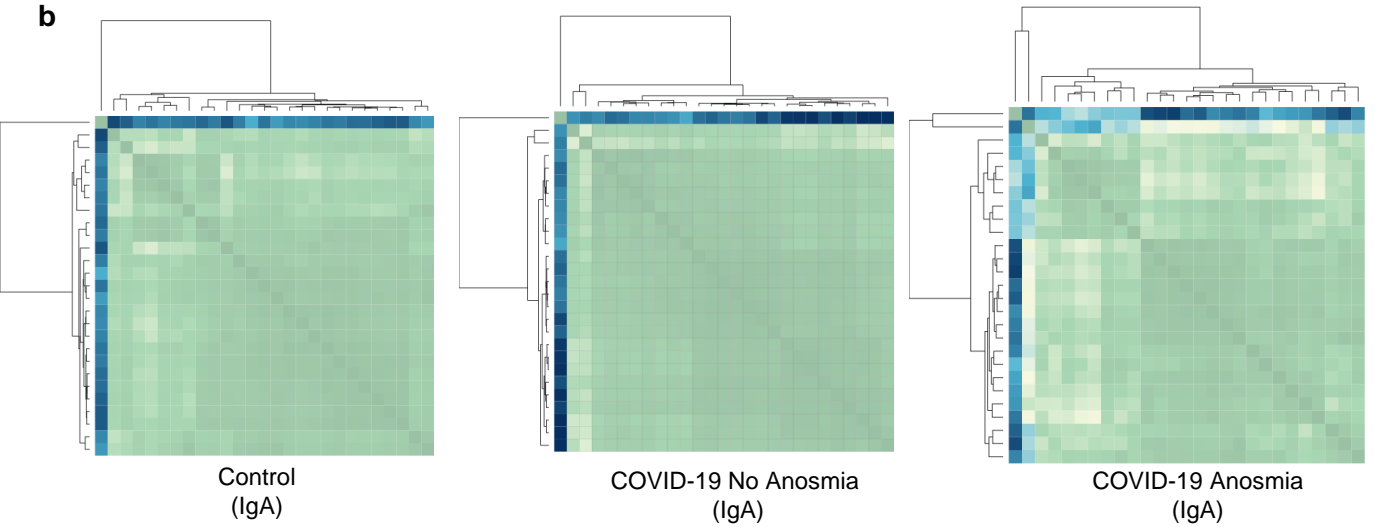


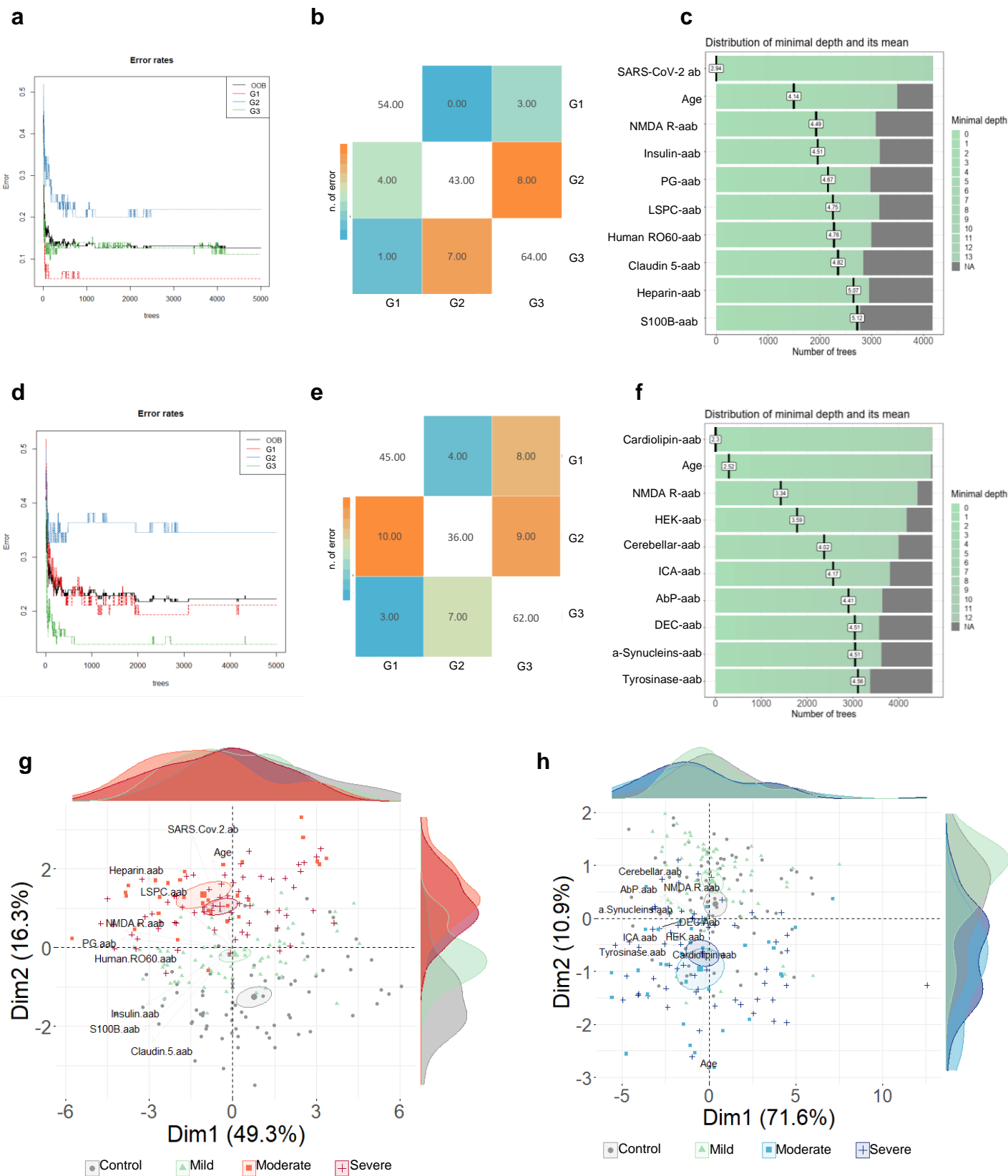


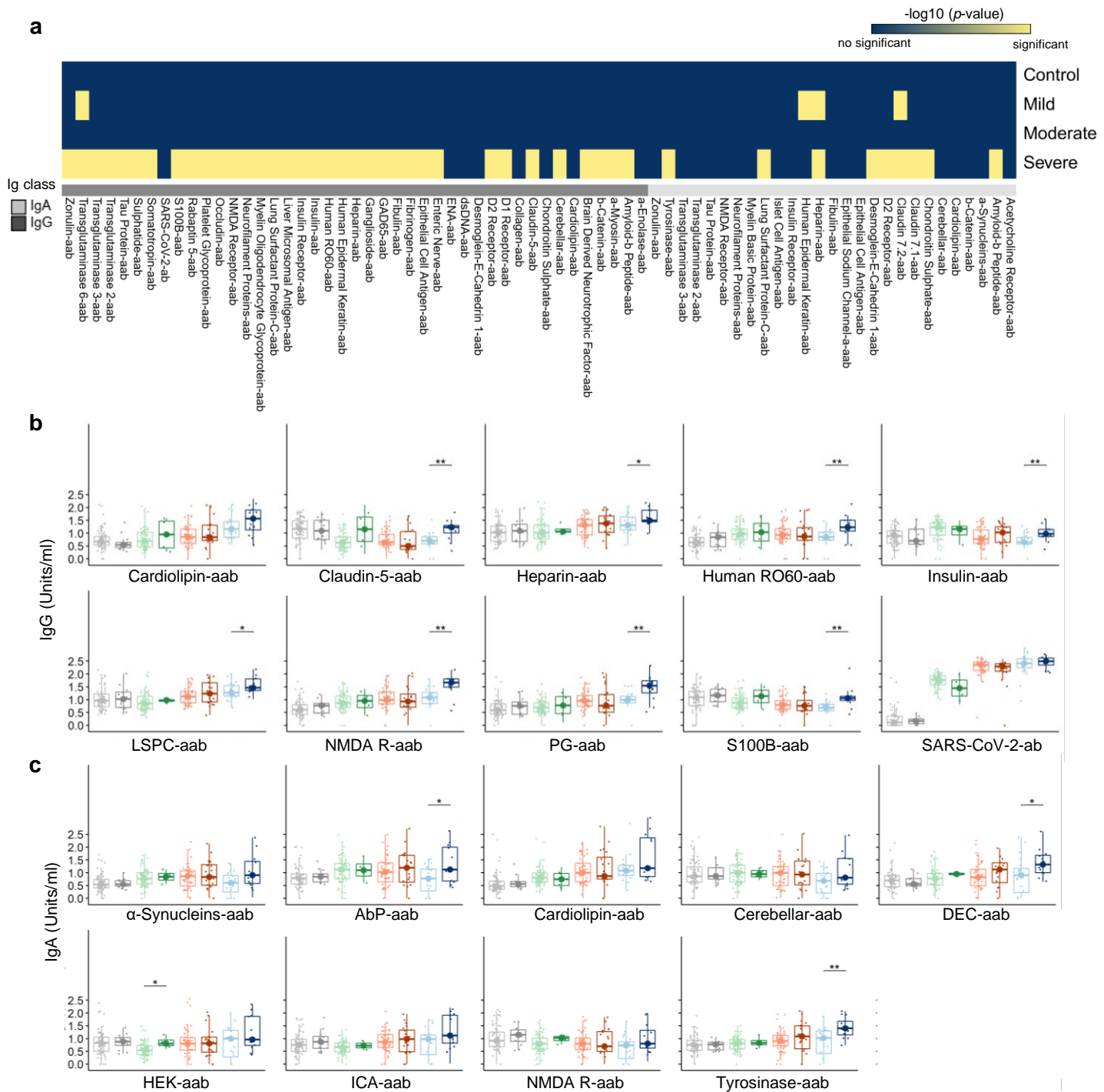
a



b







FIGURES

Figure 1. Study workflow. a) Schematic overview of study cohorts, statistics and bioinformatics analyses carried out to characterize the spectrum of autoantibodies linked to diverse autoimmune diseases that associate with COVID-19 outcomes.

Figure 2. Perturbation of normal autoantibody settings in COVID-19. Multi-study factor analysis (MSFA) of all IgA and IgG autoantibodies as well as anti-SARS-CoV-2 IgG antibodies that were analyzed. The heatmaps show estimated factor loadings of common (ϕ) and specific (λ) latent factors of each group. Positive and negative loadings range from -1 (green) to 1 (grey), respectively. Autoantibody number shown according to their names in **Supplementary Table 1**. See **Supplementary Table 6** for the loadings.

Figure 3. Autoantibodies and functional association of their targets. a) Heatmap showing the hierarchical cluster of IgG and IgA autoantibodies significantly different when comparing each COVID-19 cohort (mild, moderate, and severe groups) with healthy controls. The bar, ranging from blue to black and light yellow, shows the range of significance from $-\log_{10}(p\text{-value}) = 0$ to 4 . Rows were clustered using Euclidean distance between $-\log_{10}(p\text{-values})$. Ig, immunoglobulin. b) The barplots exhibit the number of IgG and IgA autoantibodies that were evaluated and found as significant or not. c) Network of biological processes (BP) enriched (adjusted $p\text{-value} < 0.05$) by the autoantibody targets. The edges connect related BPs. The circles' colors and size correspond to the adjusted $p\text{-value}$ and number of autoantibody targets enriching BPs, respectively. d) Circos plot illustrates the top 10 BPs enriched by both IgA and IgG autoantibody targets. **Supplementary Table 4 and Supplementary Fig. 3** show all gene ontology (GO) categories (BPs and signaling pathways) enriched by the autoantibody targets. For this analysis, we selected autoantibody targets from significantly different autoantibodies among the groups. BPs are denoted by letters A-Q (A: synapse organization; B: learning or memory; C: cell junction assembly; D: positive regulation of peptidase activity; E: response to alcohol; F: excitatory postsynaptic potential; G: neuromuscular process; H: positive regulation of proteolysis; I: chemical synaptic transmission, postsynaptic; J: phenol-containing compound metabolic process; K: long-term synaptic potentiation; L: neuron projection maintenance; M: positive regulation of synaptic transmission; N: regulation of synaptic plasticity; O: memory; P: cognition; Q: learning). The blue, yellow, and green colors correspond to IgA, IgG, and shared terms, respectively. Box plots exemplifying d) IgG and e) IgA autoantibodies significantly (different between healthy controls and COVID-19 groups. See **Supplementary Table 2** for full names and abbreviations of autoantibodies and their targets. All autoantibodies with significant differences between at least two groups are shown in **Supplementary Figures 1 and 2**. Each box plot shows the median with first and third interquartile range (IQR), whiskers representing minimum and maximum values within IQR, and individual data points. Significance was determined using two-sided Wilcoxon rank-sum tests and is indicated by asterisks (* $p \leq 0.05$, ** $p \leq 0.01$, *** $p \leq 0.001$, and **** $p \leq 0.0001$). Control ($n = 77$); mild ($n = 74$), moderate ($n = 65$), and severe ($n = 32$) COVID-19.

Figure 4. Hierarchical clustering of the autoantibody correlation signatures according to disease severity and anosmia. Heatmap of significant different aab vs. aab correlations: a) IgG and IgA autoantibodies in healthy control and COVID-19 groups and b) IgA autoantibodies of COVID-19 patients with or without anosmia versus healthy controls. See **Supplementary Fig. 4a-4d** for correlograms with the autoantibody names; **Supplementary Fig. 4e** for IgG autoantibody correlations in patients with anosmia versus no anosmia; and **Supplementary Fig. 5 a-b** for IgG and IgA autoantibody correlations for healthy controls and COVID-19 groups. The color scale bar ranging from 0 to 1 represents Spearman's rank correlation coefficient. Rows and columns were clustered based on Euclidean distance. See **Supplementary Table 5**

It is made available under a [CC-BY-NC-ND 4.0 International license](https://creativecommons.org/licenses/by-nc-nd/4.0/) for correlations matrices with the correlation coefficient values. Control ($n = 77$); mild ($n = 74$), moderate ($n = 65$), and severe ($n = 32$) COVID-19. No anosmia ($n = 69$) and anosmia ($n = 101$).

Figure 5. Ranking autoantibodies as predictors of COVID-19 severity. Stable curve showing number of trees and error rates for **a**) IgG and **d**) IgA autoantibodies with out-of-bag (OOB) estimate of 12,5% and 22.28% error rate, respectively. Heatmap presents the confusion matrix of **b**) IgG and **e**) IgA autoantibodies, the number of individuals classification by group (healthy controls = G1; mild = G2; moderate+severe = G3). The color scale ranging from blue to orange corresponds to the number of errors or hits by groups denoted inside the colored or white squares, respectively. Control ($n = 77$); mild ($n = 74$), moderate+severe ($n = 97$) COVID-19. Bar plots of the top 10 strongest **c**) IgG (also anti-SARS-CoV-2 IgG antibodies and age) and **f**) IgA autoantibodies predictors of COVID-19 patient classification according to disease severity. The variables are shown according to minimal depth and number of trees. The color scale bar ranging from 0 to 13 represents the minimal and maximum minimal depth. The small dark vertical bars represent the mean of minimal depth for each variable. Principal component analysis (PCA) with spectral decomposition shows that **g**) IgG and **h**) IgA autoantibodies stratify COVID-19 patients according to disease severity, revealing the overlap between the moderate and severe cohorts. The PCA was carried out based on the top 10 most important variables as listed in **c** and **f**, respectively. Control ($n = 77$); mild ($n = 74$), moderate ($n = 65$), and severe ($n = 32$) COVID-19. See **Supplementary Table 2** for full names and abbreviations of autoantibodies and their targets.

Figure 6. Age-dependent elevation of autoantibody levels in patients with severe SARS-CoV-2 infection. **a**) Heatmap showing the hierarchical cluster of IgG and IgA autoantibodies significantly different when comparing young versus elderly controls or young versus elderly of each COVID-19 cohort. The colors blue and light yellow indicate autoantibodies with or without significant differences between the young versus elderly in each group. **b**) Box plots display changes in the autoantibody levels by age (young < 60 and elderly ≥ 60). Each box plot shows the median with first and third interquartile range (IQR), whiskers representing minimum and maximum values within IQR, and individual data points. Significance was determined using two-sided Wilcoxon rank-sum tests and is indicated by asterisks (* $p \leq 0.05$, ** $p \leq 0.01$, *** $p \leq 0.001$, and **** $p \leq 0.0001$). control-young ($n = 65$) and control-elderly ($n = 12$); mild-young ($n = 70$), mild-elderly ($n = 4$), moderate-young ($n = 45$), moderate-elderly ($n = 20$), severe-young ($n = 20$), severe-elderly ($n = 12$) COVID-19 patients. All autoantibodies with significant differences between at least two groups are shown in **Supplementary Fig. 7**.