

1 **Title:** Presence of Symptoms 6 Weeks After COVID-19 Among Vaccinated and Unvaccinated
2 U.S. Healthcare Personnel

3
4 **Running Head:** COVID-19 Symptoms at 6 Weeks

5
6 **Authors:** Nicholas M. Mohr, MD, MS^{1†}; Ian D. Plumb, MBBS, MSc^{2†}; Karisa K. Harland,
7 PhD¹; Tamara Pilishvili, PhD²; Katherine E. Fleming-Dutra, MD²; Anusha Krishnadasan, PhD³;
8 Karin F. Hoth, PhD¹; Sharon H. Saydah, PhD²; Zachary Mankoff, BS⁴; John P. Haran, MD,
9 PhD⁵; Melissa Briggs-Hagen, MD²; Eliezer Santos León, MPH¹; David A. Talan, MD^{1,3} for the
10 Project PREVENT Network

11
12 **Institutional Affiliations:** ¹University of Iowa, Iowa, City Iowa; ²CDC COVID-19 Response
13 Team; ³Olive View-and Ronald Reagan University of California Los Angeles Medical Center,
14 Los Angeles, California; ⁴Thomas Jefferson University Hospital, Philadelphia, Pennsylvania;
15 ⁵University of Massachusetts Chan Medical School, Worcester, Massachusetts

16
17 **Corresponding Author:** Nicholas Mohr, MD, MS, University of Iowa Carver College of
18 Medicine, 200 Hawkins Drive, 1008 RCP, Iowa City, Iowa 52242; Tel 319-384-8285; E-mail:
19 nicholas-mohr@uiowa.edu

20
21 **Joint First Authorship[†]:** Dr. Mohr and Dr. Plumb have contributed equally to the development
22 of this manuscript and are listed as co-first authors.

23
24 **The Project PREVENT Network includes the following:** Howard A. Smithline, MD, MS;
25 Peter C. Hou, MD; Lilly C. Lee, MD, SM; Stephen C. Lim MD; Gregory J. Moran, MD; Mark
26 T. Steele, MD; David G. Beiser, MD, MS; Brett Faine, PharmD, MS; Utsav Nandi, MD MSCI;
27 Walter A. Schradling, MD; Brian Chinnock MD; Anne Chipman, MD, MS; Megan Fuentes, BS;
28 Frank LoVecchio, DO, MPH; Bradley Clinansmith, BS; Shannon Landers, BA; Alysia Horcher,
29 MPAS, PA-C; Kelli Wallace, MS; Lisandra Uribe BS; Kavitha Pathmarajah, MPH; Kye E.
30 Poronsky, MS; Dean M. Hashimoto, MD; Monica Bahamon, MPH; Michelle St. Romain, MD ;
31 Efrat Kean, MD; Elizabeth Krebs, MD, MSc; Amy Stubbs, MD; Sara Roy, MSCR; Gregory
32 Volturo, MD; Amanda Higgins, MS, James Galbraith, MD; James C. Crosby, MD; Mary
33 Mulrow, MA, MN, Eva Gonzalez, BA; Ryan Gierke, MPH, Jennifer L. Farrar, MPH, Wei Xing;
34 Yunmi Chung, MPH; Anna Yousaf, MD; Jennifer Onukwube Okaro, MPH; Melissa Briggs-
35 Hagen, MD, MPH; Glen R. Abedi, MPH; Sankan Nyanseor, MPH; Christopher K. Watts, MPH

36
37 **Word Count:** 80 words (key points), 286 words (abstract), 2702 words (manuscript)

38
39 **Conflicts of Interest:** The authors report no conflicts of interest.

40
41 **CDC Disclaimer:** The findings and conclusions in this report are those of the authors and do not
42 necessarily represent the official position of the Centers for Disease Control and Prevention
43 (CDC).

44
45 **Funding:** This project was funded by the Centers for Disease Control and Prevention (CDC)
46 (U01CK000480). The project is additionally supported by the Institute for Clinical and

- 47 Translational Science at the University of Iowa through a grant from the National Center for
- 48 Advancing Translational Sciences at the National Institutes of Health (UL1TR002537).

1 **KEY POINTS (80/75–100)**

2 **Question:** Does vaccination lead to improved recovery of symptoms and return to work
3 following COVID-19?

4 **Findings:** In this nested cohort study of healthcare personnel, participants with COVID-19 who
5 had received two doses of a COVID-19 mRNA vaccine were less likely to report symptoms 6
6 weeks after illness onset than participants with COVID-19 who were unvaccinated. Return to
7 work was sooner if previously vaccinated.

8 **Meaning:** Vaccination is associated with improved recovery from COVID-19, in addition to
9 prevention of infection and disease.

1 **ABSTRACT [286/350 WORDS]**

2 **Importance:** Although COVID-19 vaccines protect against infection and severe disease, the role
3 of vaccination in preventing prolonged symptoms in those with subsequent infection is unclear.

4 **Objective:** To determine differences in symptoms stratified by prior vaccination reported by
5 healthcare personnel (HCP) 6 weeks after onset of COVID-19, and whether there were
6 differences in timing of return to work.

7 **Design:** Nested cohort study within a multicenter vaccine effectiveness study. HCP with
8 COVID-19 between December 2020 and August 2021 were followed up 6 weeks after illness
9 onset.

10 **Setting:** Health systems in 12 U.S. states.

11 **Participants:** HCP participating in a vaccine effectiveness study were eligible for inclusion if
12 they had confirmed COVID-19 with either verified mRNA vaccination (symptom onset ≥ 14 days
13 after two doses) or no prior COVID-19 vaccination. Among 681 eligible participants, 419 (61%)
14 completed a follow-up survey approximately 6 weeks after illness onset.

15 **Exposures:** Two doses of a COVID-19 mRNA vaccine compared with no COVID-19 vaccine.

16 **Main outcomes and measures:** Presence of symptoms 6 weeks after onset of COVID-19 illness
17 and days to return to work after COVID-19 illness.

18 **Results:** Among 419 HCP with confirmed COVID-19, 298 (71%) reported one or more COVID-
19 like symptoms 6 weeks after illness onset, with a lower prevalence among vaccinated
20 participants (60.6%) compared with unvaccinated participants (60.6% vs. 79.1%; aRR 0.70, 95%

21 CI 0.58-0.84). Vaccinated HCP returned to work a median 2.0 days (95% CI 1.0–3.0) sooner
22 than unvaccinated HCP (aHR 1.37; 95% CI, 1.04–1.79).

23 **Conclusions:** A history of two doses of COVID-19 mRNA vaccine among HCP with COVID-
24 19 illness was associated with decreased risk of COVID-like symptoms at 6 weeks and earlier to
25 return to work. Vaccination is associated with improved recovery from COVID-19, in addition to
26 preventing symptomatic infection.

27

28

29 **Keywords:** COVID-19; post-acute COVID-19 syndrome; COVID-19 vaccines

1 **MANUSCRIPT [2702/3000 WORDS]**

2

3 ***INTRODUCTION***

4 Since December 2020, two approved messenger RNA (mRNA) vaccines, BNT162b2
5 (Pfizer-BioNTech) and mRNA-1273 (Moderna), have been available in the United States to
6 prevent severe acute respiratory syndrome coronavirus 2 (SARS-CoV-2) infection,
7 hospitalization, and death.¹⁻⁴ Prolonged and debilitating symptoms associated with COVID-19
8 have been widely recognized in a proportion of survivors.⁵ Prolonged symptoms occur in both
9 hospitalized and non-hospitalized COVID-19 patients.⁶ Commonly reported symptoms include
10 fatigue, dyspnea, and neurocognitive deficits. Ongoing symptoms can impair survivors' ability to
11 function and work.^{7,8} The prevalence of these symptoms, however, varies significantly among
12 reports, and the mechanisms underlying these symptoms have not been elucidated.⁹⁻¹⁴

13 Vaccination may prevent prolonged COVID-19 symptoms through several mechanisms:
14 preventing COVID-19 infection, limiting the severity of acute illness through vaccine-mediated
15 immunity, and affecting the ongoing immune response even after acute infection. In a case series
16 of 39 infections among healthcare workers vaccinated with two doses, symptoms at 6 weeks
17 were common.¹⁵ A separate study of self-reported vaccination status and symptoms among the
18 general public found that COVID-19 symptoms 4 weeks after infection were less prevalent
19 among the vaccinated.¹⁶ An analysis of electronic medical record data suggested that vaccination
20 might also prevent other post-acute sequelae such as cardiovascular events, coagulation
21 disorders, pulmonary disorders, and others that comprised a comprehensive risk of symptoms
22 associated with prolonged recovery.¹⁷

23 In this study our primary objective was to measure the association between prior mRNA
24 COVID-19 vaccination and symptoms 6 weeks after initial COVID-19 illness among healthcare
25 personnel (HCP). We hypothesized that symptoms would be less common after 6 weeks among
26 the vaccinated because the initial illness among vaccine breakthrough cases is less often severe,
27 and severity of illness is one predictor of the likelihood of prolonged symptoms.^{14,18} We
28 conducted a secondary analysis to evaluate recovery from COVID-19 by assessing whether it
29 took longer to return to work if unvaccinated.

30

31 ***METHODS***

32 **Study Design, Data Collection, and Population**

33 As part of the PREventing Emerging Infections through Vaccine EffectiveNess Testing
34 Project (Project PREVENT), we enrolled HCP who were working on-site at participating
35 academic medical centers who had been tested for SARS-CoV-2. Characteristics of the 15
36 participating sites are summarized in **Supplemental Table S1**, and details of study protocols and
37 forms for the parent study are available online.¹⁹ Vaccine coverage reached 84% (interquartile
38 range [IQR] 73% to 91%) at participating sites by September 2021. Data from PREVENT sites
39 and other platforms contributed to vaccine effectiveness analyses that have been reported
40 previously.^{3,20}

41 For this nested cohort study, we included HCP with symptomatic SARS-CoV-2 infection
42 (COVID-19) if they had a positive SARS-CoV-2 nucleic acid amplification test or antigen test
43 and had consistent symptoms (as listed in **Supplemental Table S2**) within 14 days before or
44 after the positive test. Participants provided data by electronic surveys or interviews (online, by

45 phone, or in person). Each participant completed an enrollment survey 14 to 60 days after his/her
46 positive test and was offered a follow-up survey 6 weeks (42 days) after symptom onset (or at
47 the time of enrollment if later than 42 days). We excluded participants from the analysis who had
48 partial vaccination, had received a non-mRNA COVID-19 vaccine, did not have available
49 vaccination records, did not complete the baseline survey within 60 days, or did not complete the
50 follow-up survey by 10 weeks after symptom onset. No participants had received more than 2
51 vaccine doses.

52 This activity was reviewed by CDC and was conducted consistent with applicable federal
53 law and CDC policy.²¹ All participants provided informed consent prior to participation. This
54 report satisfies the Strengthening the Reporting of Observational Studies in Epidemiology
55 (STROBE) criteria (Supplemental Table S8).²²

56

57 **Definitions and Data Collection**

58 The 6-week follow-up survey included questions on a variety of symptoms which we
59 categorized into three overlapping groups. We considered *COVID-like symptoms* to be fever,
60 cough, shortness of breath, chills, fatigue, joint pains or muscle aches, headache, loss of taste or
61 smell, sore throat, sinus congestion, diarrhea, nausea, or vomiting.^{23,24} We defined *neurologic*
62 *symptoms* based on potential etiology as dizziness, headache, muscle weakness, movement
63 problems, confusion, memory difficulties, concentration problems, or loss of taste or smell.^{12,25,26}
64 We defined *any 6-week symptoms* as the symptoms listed above or others included in the 6-week
65 survey: trouble sleeping, exercise problems, chest pain, or abdominal pain. For each symptom

66 included in the 6-week survey, participants were asked to rate perceived severity as mild,
67 moderate, or severe.

68 The study team verified vaccine status and testing results via occupational health clinics,
69 vaccine cards, state registries, or medical records. We considered participants to be unvaccinated
70 if they had not received any COVID-19 vaccine doses and vaccinated if they had received a
71 second dose of a SARS-CoV-2 mRNA vaccine ≥ 14 days prior to the positive test. We considered
72 comorbidities to be present at the time of infection if reported on the survey or identified in
73 medical records from the period of acute illness. We classified participants as having two or
74 more comorbidities if they had at least two diagnoses from our predefined list including
75 cardiopulmonary, immunologic, and mental health-related comorbidities (full list available in
76 **Supplemental Table S2**). Several of these conditions have been identified both as risk factors
77 for severe COVID-19 outcomes and as possible risk factors for long term symptoms following
78 COVID-19 illness.^{27,28}

79 As part of the follow-up survey, we asked participants to report the dates when they
80 resumed work. We calculated time to return to work as the number of days from onset of
81 symptoms until the first day at work after illness.

82

83 **Statistical Analysis**

84 We defined our primary outcome as the presence of COVID-like symptoms at the time of
85 the 6-week follow-up survey. We conducted additional analyses for neurologic symptoms and
86 for any 6-week symptoms, and we assessed whether symptoms at 6 weeks were also present
87 within 14 days of the date of the positive test. For assessment of all symptom groups, we

88 performed a sensitivity analysis restricted to symptoms rated by participants as “moderate” or
89 “severe.”

90 We used multivariable Poisson regression with a sandwich variance estimator to model
91 the relative risk of having symptoms at the 6-week follow-up for complete vaccination compared
92 with no vaccination.²⁹ In the multivariable model we included categorical variables of age, race
93 and ethnicity, and co-morbidities selected a priori. Comorbidities were represented in a
94 dichotomous variable of two or more comorbidities at baseline to indicate whether chronic
95 illness was present.³⁰ We included categorical variables for calendar month of illness and number
96 of weeks from symptom onset and follow-up survey completion to account for temporal changes
97 in the prevalence of symptoms. We also calculated the adjusted risk difference as the difference
98 in proportions of participants reporting symptoms in the follow-up survey by vaccination status,
99 using Poisson regression.³¹

100 We compared median differences in time to return to work by vaccination status using
101 the Wilcoxon rank sum test. To compare the rate of return to work by vaccination status we
102 constructed Kaplan-Meier survival curves and used the log-rank test. We used a Cox
103 proportional hazards model to calculate an adjusted hazard ratio (aHR) to compare time to return
104 to work between vaccinated and unvaccinated participants, counting zero days if there were no
105 days off work after symptom onset. We included the same covariates as we did in our
106 multivariable Poisson regression, except for time to follow-up survey response. We assessed
107 Schoenfeld residuals to ensure that the proportional hazards assumption was met.

108 We compared individual symptoms on the follow-up survey between vaccinated and
109 unvaccinated cohorts, using unadjusted prevalence, relative risk, and risk difference (defined as
110 the prevalence in vaccinated minus the prevalence in unvaccinated participants).³²

111

112 ***RESULTS***

113 Among 1012 HCP with confirmed COVID-19, 331 were excluded because they were
114 partially vaccinated, they received a non-mRNA vaccine, or vaccination records were
115 unavailable. Among the remaining 681 HCP, 419 (61.5%) completed the baseline survey by 60
116 days and the follow-up survey between 42 and 70 days after symptom onset. Those who did not
117 complete the follow-up survey had fewer comorbidities and were less likely to be White non-
118 Hispanic (**Supplemental Table S4**). We included 419 HCP with symptom onset between
119 December 28, 2020 and August 26, 2021: 180 (43.0%) who were vaccinated with two doses of
120 an mRNA vaccine and 239 (57.0%) who were not vaccinated (**Figure 1**). Among vaccinated
121 participants there was a median of 24.1 weeks (IQR 15.3–28.1 weeks) between the 2nd vaccine
122 dose and the date of illness onset. Most vaccinated participants received the Pfizer-BioNTech
123 vaccine (n=158, 87.8%); 22 (12.2%) received the Moderna vaccine. Vaccination status varied by
124 race/ethnicity and education (**Table 1, Supplemental Table S5**). Among the 419 participants
125 included in the analysis, 260 (62.1%) participants provided direct clinical care, and 296 (70.6%)
126 worked in acute care hospitals. Only 1 participant (0.2%) required hospital admission for acute
127 COVID-19, and no participants died.

128 Among participants included in the analysis, follow-up surveys were completed at a
129 median of 6.0 weeks after first symptoms (IQR 6.0–6.3). Symptoms were common at 6 weeks,

130 with 298 (71.1%) reporting at least one COVID-like symptom, 236 (56.3%) reporting at least
131 one neurologic symptom, and 318 (75.9%) reporting any symptom (**Figure 2**). Among those
132 with COVID-like symptoms at 6 weeks, 245 (95.7%) had symptoms that were also reported from
133 the time of the initial diagnosis. Within 2 weeks of symptom onset, 323 (77.1%) participants had
134 returned to work; by 6 weeks, only seven (1.7%) still had not returned.

135 Vaccinated participants had lower prevalence of COVID-like symptoms at the 6-week
136 survey compared to those who were not vaccinated (60.6% vs. 79.1%). The relative risk for
137 COVID-like symptoms was 0.77 (95% confidence interval [CI], 0.67–0.88) before adjustment
138 and 0.70 (CI, 0.58–0.84) after adjustment for covariates. This risk ratio corresponds to an
139 adjusted risk difference after 6 weeks of 24.1-percentage points (95% CI, 11.6–36.6 percentage
140 points). Other classifications of symptoms were also less likely after vaccination—for neurologic
141 symptoms the adjusted risk ratio (aRR) was 0.71 (95% CI 0.55–0.93) with a 17.9 percentage
142 point reduction (95% CI 5.1–30.7); for any 6-week symptoms the aRR was 0.76 (95% CI 0.65–
143 0.90), with 20.1 percentage point reduction (95% CI 8.0–32.1; **Figure 3, Supplemental Table**
144 **S6**).

145 Symptoms that were associated with being unvaccinated included dyspnea, myalgia,
146 muscle weakness, fatigue, chills, loss of taste or smell, headache, and nausea; prevalence of other
147 individual symptoms at 6 weeks did not differ significantly between vaccinated and unvaccinated
148 participants (**Figure 2**). The sensitivity analysis restricted to persistent symptoms revealed
149 similar findings (**Supplemental Figure S1**).

150 The median time from symptom onset to return to work was 13 days (IQR 11–16 days).
151 Vaccinated participants returned to work a median of 2.0 days (95% CI 1.0–3.0) sooner than the

152 unvaccinated and were less likely to return to work more than 10 days after illness onset (78.9%
153 vs. 87.5%; RR 0.90; 95% CI 0.82–0.99). Adjusting for covariates, vaccinated participants
154 returned to work sooner than unvaccinated participants (aHR, 1.37; 95% CI 1.04–1.79;
155 **Supplemental Table S7**). Vaccinated participants were also less likely to have COVID-like
156 symptoms on return to work, although without statistical significance (49.4% vs 66.2%, RR 0.83;
157 95% CI 0.67–1.03). Participants who reported COVID-like symptoms on return to work were
158 more likely than those without to report COVID-like symptoms at 6 weeks (84.7% vs 50.9%, RR
159 1.36; 95% CI 1.11–1.67). The time to return to work for each vaccination cohort is shown in
160 **Figure 4**.

161

162 *DISCUSSION*

163 In this study of HCP diagnosed with COVID-19 between December 2020 and August
164 2021, we observed that 71% of participants with a confirmed diagnosis of COVID-19 had at
165 least one COVID-like symptom at 6 weeks after symptom onset; nearly 76% had COVID-like or
166 other symptoms, such as neurologic symptoms. This high proportion of symptoms suggests that
167 HCP might be experiencing significant persistent disease burden. We observed that COVID-19
168 infection after full vaccination (breakthrough infection) was associated with a 24-percentage
169 point absolute risk reduction of symptoms at 6 weeks compared with COVID-19 in unvaccinated
170 HCP. Previous reports from the same study have estimated that COVID-19 vaccination is $\geq 88\%$
171 effective at preventing COVID-19.³ Reduced likelihood of experiencing prolonged symptoms
172 after COVID-19 is an additional benefit of vaccination and indicates that vaccine effectiveness
173 against developing COVID-19 with prolonged symptoms is higher than vaccine effectiveness

174 against COVID-19 alone. Together with evidence for vaccine effectiveness, our findings indicate
175 that vaccination prevents prolonged symptoms both by preventing infection in the first place, and
176 by hastening recovery if infection occurs.

177 Furthermore, vaccinated participants also returned to work 2 days sooner than non-
178 vaccinated participants; it appears that vaccinated HCP were able to return to work sooner after
179 infection due to fewer ongoing symptoms. Any effect, magnified over 22 million HCP in the
180 U.S., is in addition to the benefit of vaccines in preventing infections, and can impact health
181 system capacity and the ability to respond to public health emergencies.³³ Similar effects might
182 be expected among vaccinated employees in other critical industries.

183 While the effectiveness of COVID-19 vaccination at preventing infection and
184 hospitalization is well described, the effect on duration of symptoms following infection is less
185 clear. The UK-based COVID Symptom Study using self-reported data from a mobile app-based
186 data collection instrument with unvalidated vaccination status and COVID-19 diagnosis found
187 that any of 32 symptoms lasting ≥ 28 days was less prevalent among those who were vaccinated
188 with two doses (aOR 0.51, 95% CI 0.32–0.82).¹⁶ This effect size is similar to findings in our
189 study. The validation of testing and vaccination status in our defined HCP cohort are strengths of
190 the current investigation.

191 We found that several specific symptoms 6 weeks after illness onset were most strongly
192 associated with having no prior vaccination, including nausea, dyspnea, muscle weakness,
193 myalgia, loss of taste or smell, and headache. Other symptoms had point estimates in the
194 direction of vaccine effectiveness, even if the magnitude of effect did not reach statistical
195 significance. These findings are important because neurologic and other symptoms are frequently

196 reported several months after COVID-19.¹³ The differential association with vaccination of these
197 symptoms might provide insight into their pathophysiology. Lower frequency of these symptoms
198 following vaccination could be associated with decreased severity of initial illness, as
199 vaccination is known to decrease severity of disease, and prior studies have found that prolonged
200 symptoms might be more common among those with severe COVID-19 illness.^{18,28} Since an
201 effect of vaccines in preventing prolonged symptoms is likely to be mediated by the immune
202 response, further research is needed to understand the mechanisms of prolonged symptoms that
203 might be amenable to other prevention strategies.

204 Our study has several limitations. First, our follow-up was limited to 6 weeks after
205 symptom onset. While our survey response was robust and we validated test results and
206 vaccinations, the prevalence of symptoms is likely to decay over time and we did not assess
207 longer term effects. We were also not able to determine whether symptoms were caused by
208 SARS-CoV-2 infection, although other evidence indicates that symptoms are usually specific to
209 COVID-19 if reported 6 weeks after illness onset.⁹ Second, we relied on self-reported symptoms
210 in participants who knew their vaccination status. Many reported symptoms are subjective,
211 leaving open the possibility that vaccinated participants had more confidence that their
212 symptoms would resolve quickly. It is also possible that symptom severity affected response
213 rates, although our findings were similar after excluding symptoms that were rated as mild by
214 participants. Third, our study period precluded analysis of booster doses, which are now
215 recommended for adults in the United States.³⁴ It is possible that booster doses might provide
216 additional protection against symptoms after initial COVID-19. Our analysis was also limited to
217 infections before introduction of the Omicron variant. Finally, there could be unmeasured
218 differences between those vaccinated and unvaccinated that predispose some participants to

219 having persistent symptoms or returning to work more quickly. We attempted to account for
220 some of these factors in our regression models, and sensitivity analyses yielded similar findings
221 to our primary analysis, but residual or unmeasured confounding could still have impacted our
222 results.

223 In conclusion, a primary series of COVID-19 vaccination was associated with decreased
224 risk of having new or persistent symptoms at 6 weeks and returning to work sooner in a cohort of
225 HCP. Future work is warranted to assess the effect of vaccination on longer term symptoms,
226 daily function, quality of life, and the effect in other populations.

227 **Acknowledgements**

228 The authors would like to acknowledge the following participating Project PREVENT medical
229 centers: Baystate Medical Center, Springfield, Massachusetts; Brigham and Women's Hospital,
230 Boston, Massachusetts; Jackson Memorial Hospital, Miami, Florida; University Medical Center
231 New Orleans, LSU Health Sciences Center New Orleans, Louisiana; Olive View- University of
232 California Los Angeles Medical Center, Los Angeles, California; Jefferson Health, Philadelphia,
233 Pennsylvania; University Health-Truman Medical Center/University of Missouri-Kansas City,
234 Kansas City, Missouri; University of Chicago, Chicago, Illinois; University of Iowa, Iowa City,
235 Iowa; University of Massachusetts Chan Medical School, Worcester, Massachusetts; University
236 of Mississippi Medical Center, Jackson, Mississippi; University of Alabama at Birmingham,
237 Birmingham, Alabama; Community Medical Centers, Fresno, California; University of
238 Washington, Seattle, Washington; and Valleywise Health Medical Center, Phoenix, Arizona.

239 The authors would also like to acknowledge the following individuals: Allison Schuette; Brianna
240 M. DiFronzo; Karen Hopcia; Theresa M. Orechia; Alexander B. Hill; Gabrielle Donohoe; Lily
241 R. Johnsky; Jordyn M. Fofi; Steven E. Miyawaki; Jenson J. Kaithamattam; Michelle Chung;
242 Nikita A. Umale; Mohammad Adrian Hasdianda; Guruprasad Jambaulikar; Tala Teymour; Maria
243 Davila; Suzette Fernandez; Joshua Tiao; Alexandria Henderson; Reynaldo Padilla; Cynthia
244 Delgado; Madeleine Manahan; Melanie Potts; Jessica Kuo; Alyssa Fowlds; Zoe Speight; Laurie
245 Kemble; Danielle Beckham; Lori Wilkerson; Geneatra Green; Rachel Marrs; Katherine
246 Schneider; Cathy Fairfield; Fred Ullrich; Virginia Mangolds; Morgan Nelson; Abigail Lopes;
247 Scott Pelletier; Gloria Essien; Rebekah Peacock; Alan Jones; Bhagyashri Navalkele; Savannah
248 Vann; Andrea William; Brooke Park; Eugene Melvin; Joel Rodgers; Nivedita Patkar; Delissa
249 Tidwell-Hand; Whitney Covington; Michael C. Kurz; Peter Poerzgen; Layla A. Anderson; Kyle

250 A. Steinbock; Jennifer Smith; Amy Dakos; Denise Tritt; Stacey Wisniewski; Gaynell Bernadas-

251 Hunt; Christine D. Crider; Susana Hacopian; Vincent E. Yu; Lidia Choxom; and Nathan R.

252 Kramer.

253

References

1. Polack FP, Thomas SJ, Kitchin N, et al. Safety and Efficacy of the BNT162b2 mRNA Covid-19 Vaccine. *New England Journal of Medicine*. 2020-12-31 2020;383(27):2603-2615. doi:10.1056/nejmoa2034577
2. Baden LR, El Sahly HM, Essink B, et al. Efficacy and Safety of the mRNA-1273 SARS-CoV-2 Vaccine. *New England Journal of Medicine*. 2020;384(5):403-416. doi:10.1056/NEJMoa2035389
3. Pilishvili T, Gierke R, Fleming-Dutra KE, et al. Effectiveness of mRNA Covid-19 Vaccine among U.S. Health Care Personnel. *New England Journal of Medicine*. 2021;doi:10.1056/NEJMoa2106599
4. Tenforde MW, Patel MM, Ginde AA, et al. Effectiveness of SARS-CoV-2 mRNA Vaccines for Preventing Covid-19 Hospitalizations in the United States. *Clin Infect Dis*. Aug 6 2021;doi:10.1093/cid/ciab687
5. Tenforde MW, Kim SS, Lindsell CJ, et al. Symptom Duration and Risk Factors for Delayed Return to Usual Health Among Outpatients with COVID-19 in a Multistate Health Care Systems Network - United States, March-June 2020. *MMWR Morb Mortal Wkly Rep*. 2020;69(30):993-998. doi:10.15585/mmwr.mm6930e1
6. Bell ML, Catalfamo CJ, Farland LV, et al. Post-acute sequelae of COVID-19 in a non-hospitalized cohort: Results from the Arizona CoVHORT. *PLOS ONE*. 2021;16(8):e0254347. doi:10.1371/journal.pone.0254347
7. Post-COVID Conditions. National Center for Immunization and Respiratory Diseases (NCIRD), Division of Viral Diseases. Accessed 12 Nov 2021, <https://www.cdc.gov/coronavirus/2019-ncov/long-term-effects/index.html>
8. Carfi A, Bernabei R, Landi F, Group ftGAC-P-ACS. Persistent Symptoms in Patients After Acute COVID-19. *JAMA*. 2020;324(6):603-605. doi:10.1001/jama.2020.12603
9. Sudre CH, Murray B, Varsavsky T, et al. Attributes and predictors of long COVID. *Nature Medicine*. 2021/04/01 2021;27(4):626-631. doi:10.1038/s41591-021-01292-y
10. Lund LC, Hallas J, Nielsen H, et al. Post-acute effects of SARS-CoV-2 infection in individuals not requiring hospital admission: a Danish population-based cohort study. *Lancet Infect Dis*. Oct 2021;21(10):1373-1382. doi:10.1016/s1473-3099(21)00211-5
11. Amin-Chowdhury Z, Ladhani SN. Causation or confounding: why controls are critical for characterizing long COVID. *Nature Medicine*. 2021/07/01 2021;27(7):1129-1130. doi:10.1038/s41591-021-01402-w
12. Nalbandian A, Sehgal K, Gupta A, et al. Post-acute COVID-19 syndrome. *Nature Medicine*. 2021/04/01 2021;27(4):601-615. doi:10.1038/s41591-021-01283-z
13. Groff D, Sun A, Ssentongo AE, et al. Short-term and Long-term Rates of Postacute Sequelae of SARS-CoV-2 Infection: A Systematic Review. *JAMA Netw Open*. Oct 1 2021;4(10):e2128568. doi:10.1001/jamanetworkopen.2021.28568
14. Blomberg B, Mohn KG, Brokstad KA, et al. Long COVID in a prospective cohort of home-isolated patients. *Nat Med*. Sep 2021;27(9):1607-1613. doi:10.1038/s41591-021-01433-3
15. Bergwerk M, Gonen T, Lustig Y, et al. Covid-19 Breakthrough Infections in Vaccinated Health Care Workers. *New England Journal of Medicine*. 2021;385(16):1474-1484. doi:10.1056/NEJMoa2109072
16. Antonelli M, Penfold RS, Merino J, et al. Risk factors and disease profile of post-vaccination SARS-CoV-2 infection in UK users of the COVID Symptom Study app: a

- prospective, community-based, nested, case-control study. *The Lancet Infectious Diseases*. doi:10.1016/S1473-3099(21)00460-6
17. Ziyad A-A, Benjamin B, Yan X. Long Covid after Breakthrough COVID-19: the post-acute sequelae of breakthrough COVID-19. *Nature Portfolio*. 2021/12/03 2021;doi:10.21203/rs.3.rs-1062160/v1
 18. Tenforde MW, Self WH, Adams K, et al. Association Between mRNA Vaccination and COVID-19 Hospitalization and Disease Severity. *JAMA*. 2021;326(20):2043-2054. doi:10.1001/jama.2021.19499
 19. PREventing Emerging Infections through Vaccine EffectiveNess Testing (PREVENT) Project: Project Tools. Project PREVENT Study Team. Accessed 1 Nov 2021, <https://medicine.uiowa.edu/content/project-tools>
 20. Pilishvili T, Fleming-Dutra KE, Farrar JL, et al. Interim Estimates of Vaccine Effectiveness of Pfizer-BioNTech and Moderna COVID-19 Vaccines Among Health Care Personnel - 33 U.S. Sites, January-March 2021. *MMWR Morb Mortal Wkly Rep*. May 21 2021;70(20):753-758. doi:10.15585/mmwr.mm7020e2
 21. 45 C.F.R. part 46.102(l)(2), 21 C.F.R. part 56; 42 U.S.C. §241(d); 5 U.S.C. §552a; 44 U.S.C. §3501 et seq.
 22. von Elm E, Altman DG, Egger M, Pocock SJ, Gøtzsche PC, Vandenbroucke JP. The Strengthening the Reporting of Observational Studies in Epidemiology (STROBE) statement: guidelines for reporting observational studies. *The Lancet*. 2007;370(9596):1453-1457. doi:10.1016/S0140-6736(07)61602-X
 23. Symptoms. Accessed 1 December 2021, <https://www.cdc.gov/coronavirus/2019-ncov/symptoms-testing/symptoms.html>
 24. Parisi S, Borrelli R, Bianchi S, Fusaro E. Viral arthritis and COVID-19. *The Lancet Rheumatology*. 2020;2(11):e655-e657. doi:10.1016/S2665-9913(20)30348-9
 25. Zubair AS, McAlpine LS, Gardin T, Farhadian S, Kuruvilla DE, Spudich S. Neuropathogenesis and Neurologic Manifestations of the Coronaviruses in the Age of Coronavirus Disease 2019: A Review. *JAMA Neurology*. 2020;77(8):1018-1027. doi:10.1001/jamaneurol.2020.2065
 26. Rogers JP, Watson CJ, Badenoch J, et al. Neurology and neuropsychiatry of COVID-19: a systematic review and meta-analysis of the early literature reveals frequent CNS manifestations and key emerging narratives. *Journal of Neurology, Neurosurgery & Psychiatry*. 2021;92(9):932. doi:10.1136/jnnp-2021-326405
 27. Underlying Medical Conditions Associated with Higher Risk for Severe COVID-19: Information for Healthcare Providers. CDC. Accessed 2 December 2021, <https://www.cdc.gov/coronavirus/2019-ncov/hcp/clinical-care/underlyingconditions.html>
 28. Crook H, Raza S, Nowell J, Young M, Edison P. Long covid—mechanisms, risk factors, and management. *BMJ*. 2021;374:n1648. doi:10.1136/bmj.n1648
 29. Zou GY, Donner A. Extension of the modified Poisson regression model to prospective studies with correlated binary data. *Stat Methods Med Res*. Dec 2013;22(6):661-70. doi:10.1177/0962280211427759
 30. CDC. Chronic Diseases in America 2021;
 31. Spiegelman D, Hertzmark E. Easy SAS Calculations for Risk or Prevalence Ratios and Differences. *American Journal of Epidemiology*. 2005;162(3):199-200. doi:10.1093/aje/kwi188
 32. Rothman KJ. *Epidemiology: An Introduction, 2nd Ed*. Oxford University Press; 2012.

33. Laughlin L, Anderson A, Martinez A, Gayfield A. 22 Million Employed in Health Care Fight Against COVID-19. United States Census Bureau. Accessed 16 Nov 2021, <https://www.census.gov/library/stories/2021/04/who-are-our-health-care-workers.html>
34. Prevention CfDca. COVID-19 Vaccine Booster Shots. Accessed 12/16/2021, <https://www.cdc.gov/coronavirus/2019-ncov/vaccines/booster-shot.html>

TABLES

Table 1. Demographic Characteristics and Comorbidities of Vaccinated and Unvaccinated U.S. Healthcare Personnel with COVID-19.

	All Participants (n=419) n (%)	Vaccinated (n=180) n (%)	Not Vaccinated (n=239) n (%)	p ¹
Age Group (Years)				0.019
18–29	90 (21.5)	27 (15.0)	63 (26.4)	
30–39	167 (39.9)	73 (40.6)	94 (39.3)	
40–49	85 (20.3)	45 (25.0)	40 (16.7)	
50–64	77 (18.4)	35 (19.4)	42 (17.6)	
Sex				0.342
Male	64 (15.3)	32 (17.8)	32 (13.4)	
Female	352 (84.0)	146 (81.1)	206 (86.2)	
Non-binary	1 (0.2)	1 (0.6)	0	
Missing data	2 (0.5)	1 (0.6)	1 (0.4)	
Race and Ethnic Group				<0.001
White, non-Hispanic	303 (72.3)	145 (80.6)	158 (66.1)	
Black, non-Hispanic	47 (11.2)	9 (5.0)	38 (15.9)	
Hispanic or Latino	41 (9.8)	13 (7.2)	28 (11.7)	
Other, non-Hispanic	28 (6.7)	13 (7.2)	15 (6.3)	
Education Level				<0.001
High school or less	25 (6.0)	6 (3.3)	19 (8.0)	
Undergraduate or technical degree	293 (69.9)	109 (60.6)	184 (77.0)	
Graduate or professional degree	101 (24.1)	65 (36.1)	36 (15.1)	
Job Classification				<0.001
Non-clinical	128 (30.5)	46 (25.6)	82 (34.3)	
Physician	20 (4.8)	18 (10.0)	2 (0.8)	
Advanced Practice Provider	12 (2.9)	10 (5.6)	2 (0.8)	
Nurse/Nurse Assistant	164 (39.1)	57 (31.7)	107 (44.8)	
Housekeeping	2 (0.5)	0	2 (0.8)	
Other Clinical	48 (11.5)	27 (15.0)	21 (8.8)	
Other	45 (10.7)	22 (12.2)	23 (9.6)	
Health Insurance				0.004
Private	385 (91.9)	175 (97.2)	210 (87.9)	
Government	17 (4.1)	3 (1.7)	14 (5.9)	
None	3 (0.7)	0	3 (1.3)	
Unknown	14 (3.3)	2 (1.1)	12 (5.0)	
Presence of 2 or more Comorbidities (see Supplemental Table 3 for Details)	216 (51.6)	98 (54.4)	118 (49.4)	0.325

¹Calculated using Fisher's exact test

FIGURE LEGENDS

Figure 1. Enrollment of COVID-19 Vaccinated and Unvaccinated U.S. Healthcare Personnel.

Figure 2. Prevalence of New or Persistent Symptoms 6 Weeks after COVID-19 Symptom Onset among U.S. Healthcare Personnel. Each bar in the left pane shows the percentage of participants reporting symptoms at the 6-week follow-up, stratified by vaccination status. For each symptom, the relative risk (RR, unadjusted) and 95% confidence interval are shown on the forest plot to the right. For $RR < 1.0$, the symptom is less prevalent among the vaccinated. Note that several symptoms are part of both COVID-19 symptoms and neurologic symptoms.

COVID-like symptoms included fever, cough, dyspnea, chills, fatigue, myalgia, headache, new loss of taste or smell, sore throat, nasal congestion, diarrhea, and nausea or vomiting. *Neurologic symptoms* included dizziness, headache, muscle weakness, movement disorders, confusion, memory difficulties, concentration problems, or loss of taste or smell. *Any symptoms* included trouble sleeping, exercise problems, chest pain, or abdominal pain, in addition to COVID-19 symptoms and neurologic symptoms, defined above. *RR, relative risk.*

Figure 3. New or Persistent Symptoms at 6 Weeks after COVID-19 Symptom Onset in Vaccinated versus Unvaccinated U.S. Healthcare Personnel. Each bar in the left pane shows the percentage of participants reporting symptoms at the 6-week follow-up, stratified by vaccination status. This forest plot in the right pane shows the estimated risk of new or persistent symptoms present at the 6-week survey. The relative risk (RR) shows the ratio between the probability of having symptoms in the vaccinated vs. the unvaccinated (values < 1.0 indicate that the prevalence of symptoms is lower in the vaccinated group than the unvaccinated). Grey circles show the unadjusted estimates, and black squares show the estimates adjusted for age, race, ethnicity, comorbidities, calendar month of diagnosis, and weeks since symptoms started. Error bars indicate 95% confidence intervals around the point estimate.

COVID-like symptoms included fever, cough, dyspnea, chills, fatigue, myalgia, headache, new loss of taste or smell, sore throat, nasal congestion, diarrhea, and nausea or vomiting. *Neurologic symptoms* included dizziness, headache, muscle weakness, movement disorders, confusion, memory difficulties, concentration problems, or loss of taste or smell. *Any symptoms* included trouble sleeping, exercise problems, chest pain, or abdominal pain, in addition to COVID-19 symptoms and neurologic symptoms, defined above.

* Adjusted for age, race, ethnicity, comorbidities, calendar month of diagnosis, and weeks since symptoms started.

Figure 4. Kaplan-Meier Plot of Proportion of U.S. Healthcare Personnel Returning to Work after Onset of COVID-19 Symptoms, Stratified on COVID-19 Vaccination.

The Kaplan-Meier plot shows the actual time to return to work, stratified on vaccination status (log-rank test, $p < 0.001$). A Cox proportional hazards model was constructed, adjusting for age, race, ethnicity, comorbidities, and calendar month of diagnosis. The adjusted hazards ratio (aHR) for the adjusted model is 1.37 (95% CI 1.04 to 1.79). Note that $aHR > 1.0$ indicates that participants *resume work* more quickly.

Participants with COVID-19

n = 1012

Excluded (n=331)

Partial vaccination (n=73)

Non-mRNA vaccine (n=5)

Unable to verify vaccine (n=253)

Enrolled Population

n = 681

Excluded (n=262)

Baseline survey completed after 60 days (n=84)

Follow-up survey not completed by 70 days (n=178)

Included

n = 419

Unvaccinated

n = 239

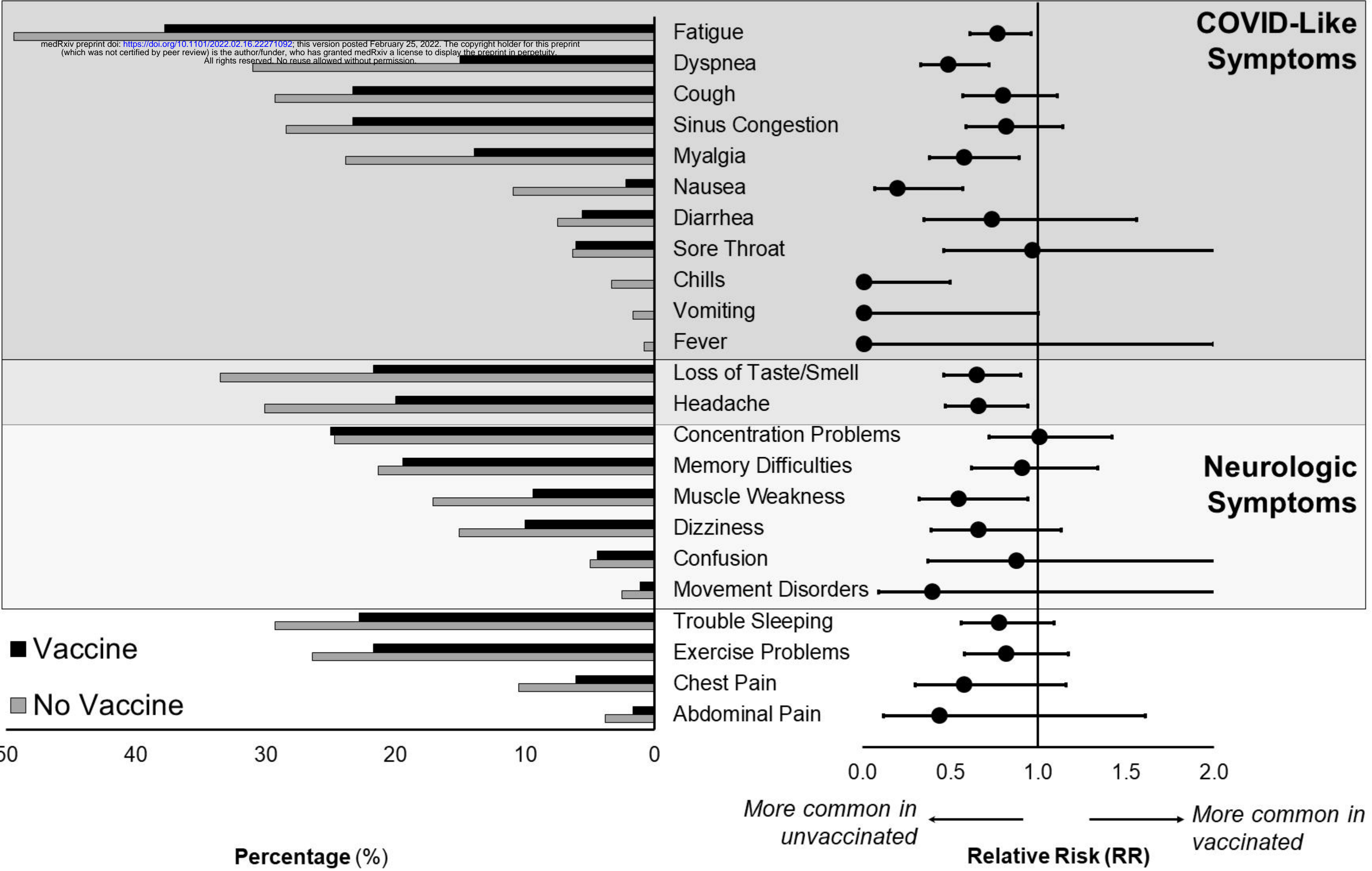
Vaccinated with 2 doses of
an mRNA Vaccine

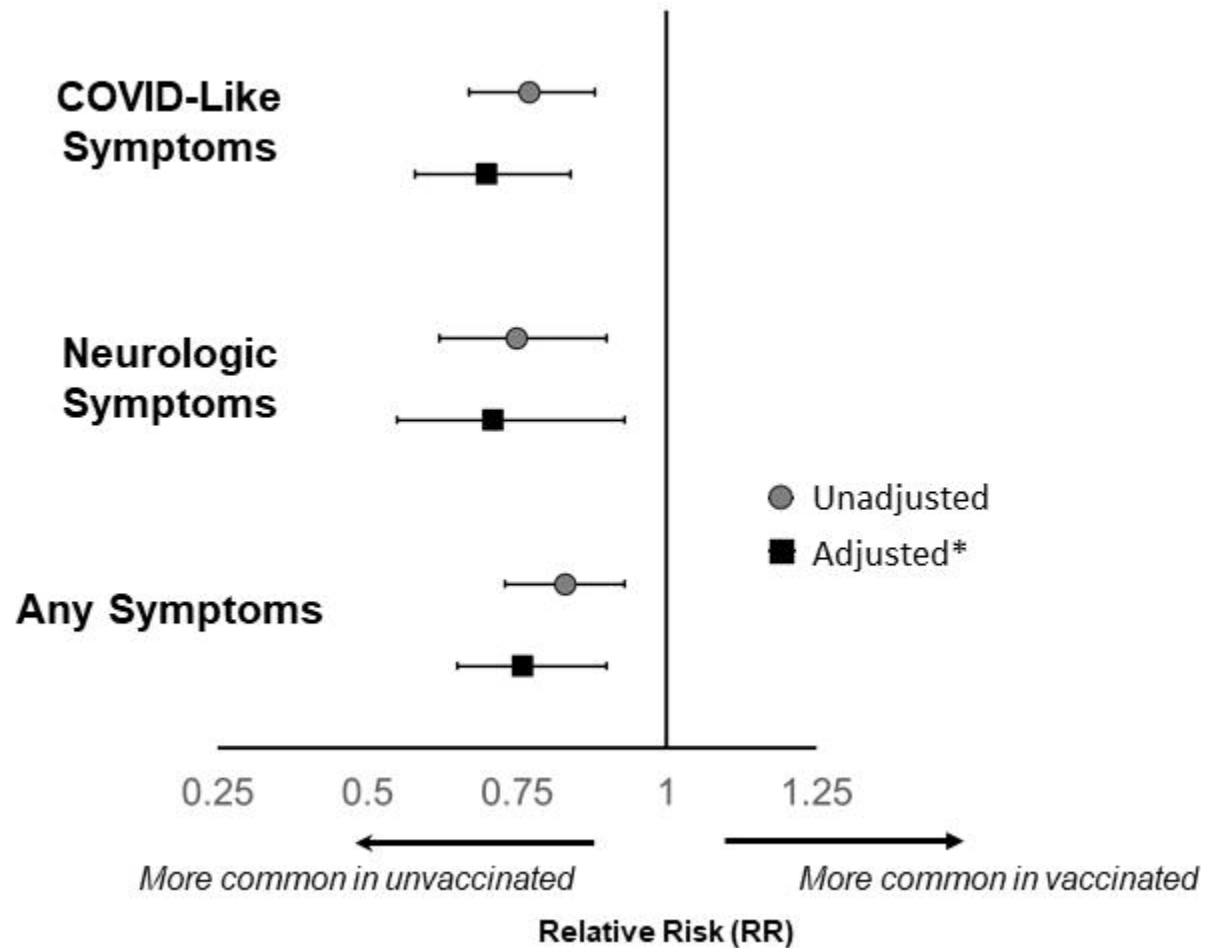
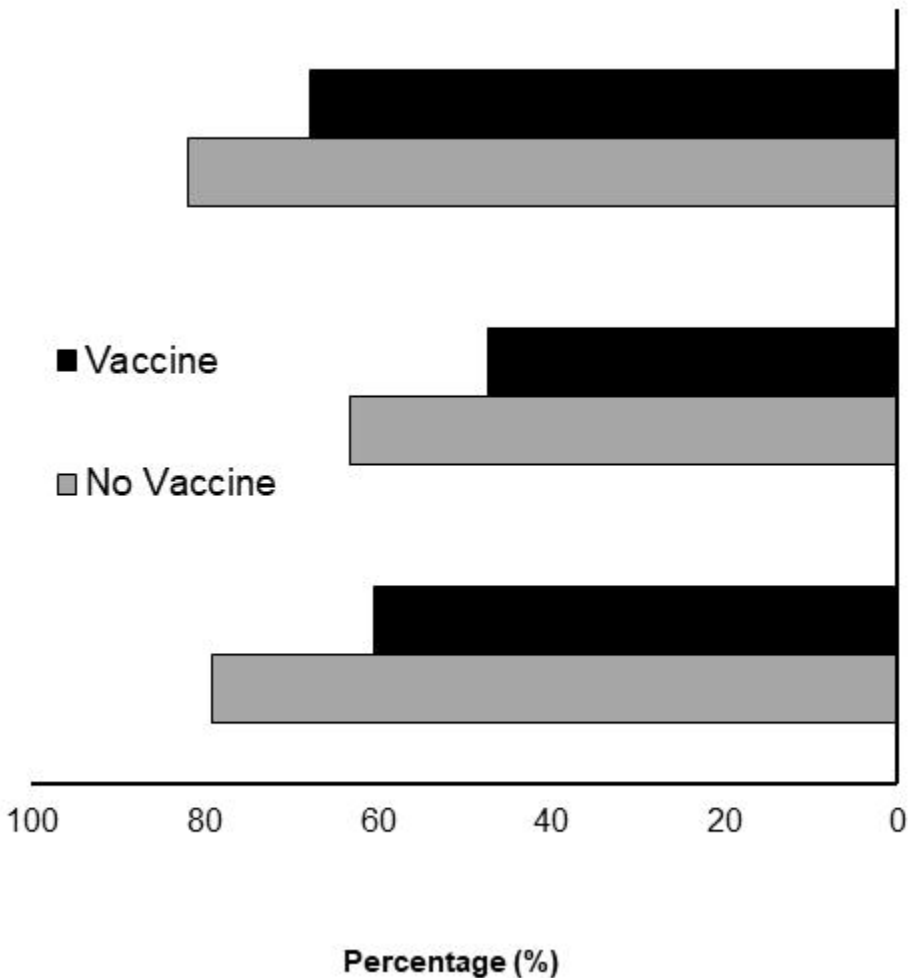
n = 180

medRxiv preprint doi: <https://doi.org/10.1101/2022.02.16.22271092>; this version posted February 25, 2022. The copyright holder for this preprint (which was not certified by peer review) is the author/funder, who has granted medRxiv a license to display the preprint in perpetuity. All rights reserved. No reuse allowed without permission.

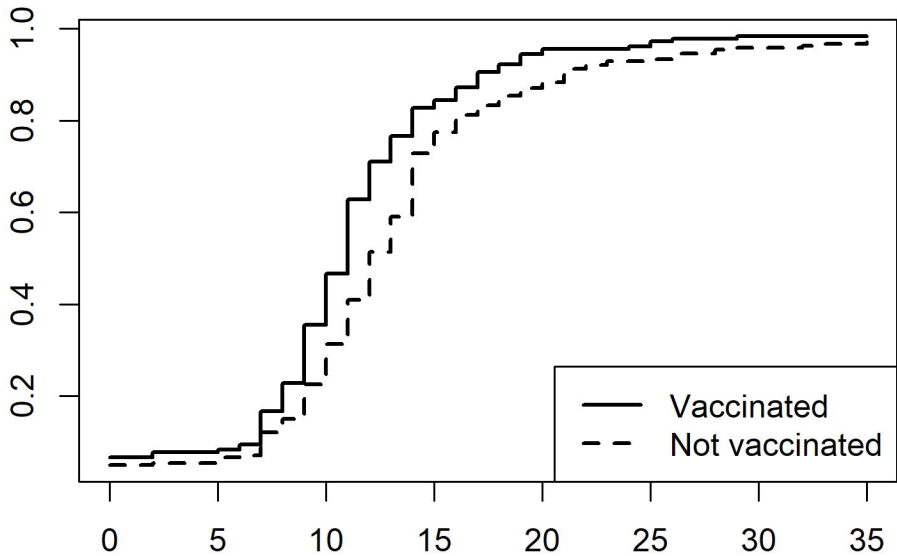
COVID-Like Symptoms

Neurologic Symptoms





Proportion of Participants who Returned to Work



Days since Symptom Onset