

1 **Integrated metagenomic and bile acid metabolomic analysis of human fecal microbiota**
2 **transplantation for recurrent *Clostridioides difficile* and/or inflammatory bowel diseases.**

3
4 Ruben Jesus Faustino Ramos¹, Chencan Zhu², Dimitri F Joseph^{3#a}, Shubh D Thaker³, Joseph F
5 LaComb³, Katherine Markarian⁴, Eric R. Littmann^{5†}, Hannah J Lee^{3#b}, Jessica C Petrov^{3#c}, Farah
6 Monzur³, Bradley M Morganstern^{3#d}, Juan Carlos Bucobo³, Jonathan M Buscaglia³, Anupama
7 Chawla³, Lesley Small-Harary⁴, Grace Gathungu⁴, Jeffrey A Morganstern⁴, Jie Yang^{2,6,7}, Jinyu
8 Li^{6,8}, Charles E Robertson⁹, Eric G. Pamer⁵, Daniel N Frank⁹, Justin R Cross¹, Ellen Li^{3*}

9
10 ¹Donald B. and Catherine C. Marron Cancer Metabolism Center, Memorial Sloan Kettering
11 Cancer Center, New York City, New York, United States of America

12 ²Department of Applied Mathematics and Statistics, Stony Brook University, Stony Brook, New
13 York, United States of America

14 ³of Medicine, Stony Brook University, Stony Brook, New York, United States of America

15 ⁴Department of Pediatrics, Stony Brook University, Stony Brook, New York, United States of
16 America

17 ⁵Department of Medicine, University of Chicago, Chicago, Illinois, United States of America

18 ⁶Department of Family, Population and Preventive Medicine, Stony Brook University, New York,
19 United States of America

20 ⁷Biostatistics and Data Science Stony Brook Cancer Center Shared Resource, Stony Brook
21 University, New York, United States of America

22 ⁸Department of Pathology, Stony Brook University, Stony Brook, New York, United States of
23 America

24 ⁹Department of Medicine, University of Colorado - Denver, Aurora, Colorado, United States of
25 America

26 ^{#a}D.O-Ph.D program, Michigan State University, East Lansing, United States of America

27 #^bInternal Medicine-Pediatrics Residency Program, University of Texas Southwestern, Dallas,
28 United States of America

29 #^cInternal Medicine Residency Program, Yale University, New Haven, Connecticut, United States
30 of America

31 #^dNew York University-Langone Hospital-Long Island, Mineola, New York, United States of
32 America

33 *Corresponding author, e-mail: ellen.li@stonybrookmedicine.edu

34 †deceased

35

36

37 Abstract

38 Background

39 Fecal microbiota transplantation (FMT) is an effective treatment of recurrent *Clostridioides difficile*
40 infections (rCDI). In comparison, FMT has more limited efficacy in treating either ulcerative colitis
41 (UC) or Crohn's disease (CD), two major forms of inflammatory bowel diseases (IBD). We
42 hypothesize that FMT recipients with rCDI and/or IBD have baseline fecal bile acid (BA)
43 compositions that differ significantly from that of their healthy donors and may be normalized by
44 FMT.

45 Aim

46 To study the effect of single colonoscopic FMT on the microbial composition and function of
47 recipients with rCDI and/or IBD.

48 Methods

49 Multi-omic analysis was performed on stools from 55 pairs of subjects and donors enrolled in two
50 prospective single arm FMT clinical trials [ClinicalTrials.gov ID:NCT03268213, 479696, (IND)
51 15642, ClinicalTrials.gov ID: NCT03267238, IND 16795]. Fitted linear mixed models were used
52 to examine the effects of four recipient groups (rCDI - IBD, rCDI + IBD, UC - rCDI, CD - rCDI),
53 FMT status (Donor, pre-FMT, 1-week post-FMT, 3-months post-FMT) and first order Group*FMT
54 interactions.

55 Results

56 FMT was effective in preventing rCDI for up to one year in 92% of the rCDI - IBD group and 75%
57 of the rCDI + IBD recipients. The donor-recipient Sørensen similarity index was < 0.6 in all donor-
58 CDI recipient pairs but > 0.6 in some donor-IBD only recipient pairs at baseline. Increasing post-
59 FMT similarity indices > 0.6 in IBD recipients, was not clearly associated with reduced fecal
60 calprotectin levels. Fecal secondary BA levels were lower in rCDI ± IBD and CD – rCDI recipients
61 compared to donors. FMT restored secondary BA levels in these recipients. Metagenomic *baiE*

62 gene and some of the 8 bile salt hydrolase (BSH) phylotype abundances were significantly
63 correlated with fecal BA levels.

64 **Conclusion**

65 Restoration of multiple secondary BA levels, including those recently implicated in
66 immunomodulation, are associated with restoration of fecal *baiE* gene counts, suggesting that the
67 7- α -dehydroxylation step is rate-limiting.

68

69 **Introduction**

70 FMT of healthy donor stool is a highly effective treatment of rCDI [1-4]. Patients with IBD,
71 particularly UC, indeterminate colitis (IC) and Crohn's colitis (CC), are at increased risk of
72 developing CDI [5-9], and FMT is an effective treatment of rCDI in these patients [10-15].
73 However, studies thus far on the effectiveness of FMT in the treatment of IBD, absent concomitant
74 CDI, have utilized different protocols and have yielded mixed results [16-27].

75 Restoration of bacterial metabolism of primary BA to secondary has been implicated in
76 the mechanism by which FMT promotes resistance to CDI [28]. Primary conjugated BA
77 synthesized in the liver are released into the gut lumen upon feeding and serve to emulsify dietary
78 fats. Within the gut lumen, conjugated BA undergo deconjugation by bacterial bile salt hydrolases
79 (BSH) in the small intestine [29]. While most of BA from the small intestine by enterohepatic
80 circulation and transported back to the liver, a fraction reaches the colon and undergoes further
81 conversion by bacterial enzymes, such as 7-alpha dehydroxylase, to form secondary BA. 7-alpha
82 dehydroxylating bacteria, such as *Clostridium scindens*, have been shown to be reduced in rCDI
83 patients and replenishment of these bacteria was demonstrated to inhibit CDI in an animal model
84 [28]. More recently, epimers of deoxycholic and lithocholic acids (e.g. iso-deoxycholic, 3-oxo-
85 lithocholic, isoallo-lithocholic acids) have been demonstrated to have *in vitro* immunomodulatory

86 activity [30-32]. Modified BA pool composition has been observed in IBD patients [33-35], with
87 altered levels of some BA epimers that exhibit potential immunomodulatory effects.

88 At Stony Brook University Medical Center (SBUMC), we have been conducting two
89 prospective single arm clinical trials: 1.) ClinicalTrials.gov ID:NCT03268213, 479696, UC only
90 Investigational New Drug (IND) 15642 and 2.) ClinicalTrials.gov ID: NCT03267238, CD only IND
91 16795, to examine the longitudinal microbiological and clinical effects of single donor FMT on the
92 fecal microbiome in four groups of recipients: rCDI without IBD (rCDI – IBD); rCDI with IBD (rCDI
93 + IBD); UC without rCDI (UC – rCDI); CD without rCDI (CD – rCDI, see Fig 1). Each FMT recipient
94 selected their own donor, who was subsequently screened for pathogens and antibiotic resistant
95 bacteria. This FMT study is unique in that it includes prospective collection of a relatively large
96 set of healthy donor stools. The results of 16S rRNA sequence analysis of single donor
97 colonoscopic FMT performed on a subset of 19 recipients was previously reported [36], which
98 included: 1) 11 rCDI – IBD; 2) 3 rCDI + UC; and 3) 5 UC - rCDI. The previous results indicated
99 marked changes in β diversity (i.e. overall microbiome composition differences between groups)
100 in the rCDI + UC and rCDI – IBD groups (compared to donors). The rCDI - IBD and rCDI + UC
101 recipients had a marked decreased abundances of anaerobic taxa in the Ruminococcaceae, (e.g.
102 Faecalibacterium) and Lachnospiraceae groups, and marked increased abundances of
103 microaerophilic taxa in the Bacilli group, and Proteobacteria and Fusobacteria phyla, which were
104 restored post FMT. In contrast the pre-FMT differences in β -diversity were much more subtle in
105 the UC - rCDI group compared to their healthy donors. These differences were characterized by
106 increased abundances of microaerophilic taxa in the Bacilli, Proteobacteria and Fusobacteria in
107 the UC - rCDI group.

108

109 **Fig 1. Schematic diagram of recipient group and donor fecal sample collection.**

110

111 We now report the results of multi-omic analysis (16S rRNA gene sequencing,
112 metabolomics analysis and shotgun DNA metagenomics sequencing) of the effect of
113 colonoscopic single donor FMT in an expanded set of recipients separated into four categories:
114 1.) rCDI - IBD; 2.) rCDI + IBD; 3.) UC - rCDI; 4.) CD - rCDI (see Fig 1).

115

116 **Materials and methods**

117 **Study protocols**

118 The patient and donors were recruited through two open label study protocols (See S1-S2 text
119 for IRB approved protocols). Clinical Trials.gov ID NCT03268213, 479696, UC no rCDI \geq 2x IND
120 15642, was approved by the Stony Brook Institutional Review Board (479696) on 11/14/2013.
121 Clinical Trials.gov ID NCT03267238, IND 16795, was approved by Stony Brook Institutional
122 Review Board (973349) on 06/16/2017 (see S1 Table Transparent Reporting of Evaluations with
123 Nonrandomized Designs (TREND) checklist). The initial recipient/donor pair was recruited on
124 12/05/2013. The final recipient/donor included in this report were recruited 06/19/2019. There was
125 a delay in the registration of NCT03268213 on Clinical Trials.gov relative to the initial recruitment
126 of the first recipient/donor pairs as described previously [37], but no delay in the registration of
127 NCT03267238 relative to the initial recruitment of patient/donor pairs. For the patients with rCDI
128 (with or without IBD), the inclusion criteria were \geq 2 recurrences despite treatment with antibiotics,
129 documented by \geq 3 positive stool tests for CDI (see Fig 1). For the patients with UC without a
130 history of rCDI \geq 2x, the inclusion criterion was medication refractory UC, requiring step up therapy
131 beyond mesalamine alone. Only one of the patients in this group had a distant prior history of CDI
132 with the last episode 2 years prior to the procedure. For the patients with CD without a history of
133 rCDI \geq 2x, the inclusion criterion was medication refractory CD, requiring step up therapy beyond
134 mesalamine alone. None of the CD patients had a history of previous CDI. Exclusion criteria for
135 all of the recipients included: a) scheduled for abdominal surgery within 12 weeks of the study, b)

136 pregnancy, c) Grade 4 anemia (Hemoglobin < 6 g/dL), d) Grade 1 neutropenia (Absolute
137 Neutrophil Count <1500), e) known diagnosis of graft vs. host disease, f) major abdominal surgery
138 within the past 3 months, g) administration of any investigational drug within the past 2 months.,
139 h) use of a TNF- α antagonist within 2 weeks of the proposed date of transplantation, i) bacteremia
140 within past 4 weeks. (28 days), and j.) adults \geq 18 years unable to or unwilling to give informed
141 consent. The CONSORT flow diagram is outlined in Fig 2. Recruitment and collection of data
142 and processing of patient samples were conducted as previously described in Mintz *et al.*
143 [36]. The IBD subphenotypes were classified using the Montreal classification in terms of disease
144 location (L1, ileal CD; L2, Crohn's colitis; L3, ileocolitis; L4, upper gastrointestinal) for CD and
145 extent of disease (E1, proctitis ; E2, left-sided UC; E3, extensive UC proximal to splenic flexure)
146 for UC [37]. Mucosal disease activity in the colon and the terminal ileum at the time of the
147 colonoscopic FMT was scored using the Mayo endoscopic subscore for UC - rCDI recipients [38]
148 and the simple endoscopic score for CD - rCDI (SES-CD) [39].

149

150 **Fig 2. CONSORT 2010 flow diagram.**

151

152 **Dietary information**

153 The recipients and donors were asked to record daily dietary intake on the Stony Brook University
154 Medical Center Department of Pediatrics Food Diary/Calorie Count for 7 days prior to the
155 collection of each stool sample. Patients were grouped into three categories on review of their
156 dietary logs and interviews: 1.) animal protein-meat (mostly standard "western" diet); 2.)
157 vegetarian (predominantly plant based but animal protein from eggs and dairy); and 3.) plant
158 based protein source (vegan but could include honey).

159 **Fecal calprotectin analysis**

160 Levels of the neutrophilic fecal calprotectin protein, a clinical marker of gut mucosal inflammation,
161 was measured using the PhiCal Test (Calpro AS, Norway) enzyme-linked immunosorbent assay
162 (ELISA) following the manufacturer's recommended protocol as previously described [36].

163 **16S rRNA sequence analysis**

164 16S rRNA sequencing targeting the V3V4 variable region of the 16S rRNA gene: primers 338F
165 (5' ACTCCTACGGGAGGCAGCAG) and 806R (5' GGACTACHVGGGTWTCTAAT) was carried
166 out by the Frank laboratory at the U of Colorado as previously described [36]. All de-multiplexed,
167 paired-end 16S rRNA sequencing data along with the metadata were deposited into the NCBI
168 Sequence Read Archive under BioProject accession number PRJNA739170.

169 **BA metabolomics analysis by liquid chromatography-mass spectrometry (LC-MS).**

170 Human stool samples (~400 mg) were weighed into 7 mL bead tubes containing 1.4 mm ceramic
171 beads (Omni International) and extracted using 80% methanol containing deuterated labeled
172 internal standards [ISTDS: chenodeoxycholic acid-d4 (CDCA-d4), taurochenodeoxycholic acid-
173 d4 (T-CDCA-d4), glycochenodeoxycholic acid-d4 (G-CDCA-d4), cholic acid-d4 (CA-d4),
174 taurocholic acid-d4 (T-CA-d4), glycocholic acid-d4 (G-CA-d4), deoxycholic acid-d4 (DCA-d4),
175 taurodeoxycholic acid-d4 (T-DCA-d4), glycodeoxycholic acid-d4 (G-DCA-d4), lithocholic acid-d4
176 (LCA-d4), tauro-lithocholic acid (T-LCA-d4), glycolithocholic acid-d4 (G-LCA-d4), ursodeoxycholic
177 acid-d4 (UDCA-d4), T-UDCA-d4, and β -muricholic acid-d5 (β -MCA-d5)] for a final concentration
178 of 100 mg/mL (see S2 Table). The ISTDs were purchased from Cambridge Isotope Laboratories
179 (Tewksbury, MA); except β -MCA-d5 that was purchased from Isosciences (Ambler,
180 PA). Samples were homogenized using a Bead Ruptor (Omni International, Kennesaw, GA) at 6
181 m/s for 6 cycles of 30 s at 4°C, then stored at -80°C overnight. Stool extracts were then vortexed,
182 transferred to 5 mL Eppendorf tubes, centrifuged at 20,000 \times g for 20 min at 4°C and diluted with
183 Milli-Q water to 50% methanol content. Samples were then filtered using 96-well Acroprep
184 Advance plates (Pall Corporation, Port Washington, NY) and analyzed by LC-MS analysis BA
185 were separated using two chromatographic methods: 1.) Agilent 1290 Infinity LC system coupled

186 to an Agilent 6550 iFunnel Q-TOF with a 1.6 μm , 2.1 \times 50 mm CORTECS T3 column (Waters)
187 and 2.) Agilent 1290 Infinity II LC system coupled to an Agilent 6546 Q-TOF with a 1.7 μm , 2.1 \times
188 150 mm ACQUITY UPLC BEH Shield RP18 column (Waters). Active reference mass correction
189 was used according to the manufacturer's instructions. Mobile phase A was 0.1% formic acid in
190 water, mobile phase B was 0.1% formic acid in acetone. LC gradient for Method 1: 30% B to 65%
191 B over 14 min (flow rate: 0.4 mL/min) and for Method 2: 30% B to 80% B over 30 min (flow rate:
192 0.3 mL/min). Both methods ended with 100% B for 2 min and re-equilibration for 6 min. Acquisition
193 was from m/z 50-1,700 at 2 Hz. Mass spectrometer source conditions for both methods: gas
194 temperature: 240°C; drying gas flow: 10 L/min; nebulizer: 60 psi; sheath gas temperature and
195 flow: 400°C and 10 L/min, respectively. The voltages used were: fragmentor: 175 V; skimmer: 45
196 V; capillary: 4000 V; and nozzle: 500 V. Sample injection volume was 5 μL , and data was collected
197 in negative ionization mode. A pooled sample was injected regularly throughout the batch to
198 monitor instrument performance. Data files were converted to Agilent SureMass format and
199 analyzed in Agilent MassHunter Quantitative Analysis software (version 10.1, Agilent
200 Technologies, Santa Clara, CA). Concentrations were estimated by referencing peak areas to a
201 specified ISTDs of known concentration (S2 Table), except for sulfated-BAs and 3-oxo-LCA,
202 which used an external calibration curve.

203 **Shotgun DNA metagenomics analysis**

204 Shotgun DNA metagenomics sequencing was carried out on fecal DNA samples at Novogene
205 Corp Inc. (Beijing, China). DNA samples were assessed using Qubit Fluorimeter while agarose
206 gel electrophoresis was carried out to check for DNA degradation. The NEBNext UltraTMII DNA
207 Library PrepKit for Illumina® (Ipswich, MA) was used to prepare the sequencing libraries
208 according to the manufacturer's protocols and Illumina 150 bp paired end (PE150) sequencing
209 was conducted on the HiSeqX instruments with a targeted depth of 20 million. Quality filtering
210 (e.g., removal of adapters, human sequences, low-quality sequences) was conducted using
211 KneadData version 5.1 (<http://huttenhower.sph.harvard.edu/kneaddata>) as previously described

212 [33]. All de-multiplexed, paired-end shotgun DNA metagenomic sequencing data along with the
213 metadata were deposited into the Sequence Read Archive under BioProject accession number
214 PRJNA739170. Reads corresponding to BA metabolizing enzymes were identified by a
215 translated search with DIAMOND [40] and a manually curated protein sequence database (see
216 S3 Table), respectively at two threshold levels: 1.) 80% identity over 80% sequence and 2.) 50%
217 identity over 80% sequence. Reads corresponding to antibiotic resistance genes were identified
218 using the Comprehensive Antimicrobial Resistance Database (CARD).

219 **Statistical analysis**

220 Baseline patient characteristics were compared between the donors and the four groups of FMT
221 recipients. Alpha diversity indices (e.g. Chao1, Shannon complexity H, Shannon Evenness
222 H/Hmax) were calculated inferred through 1000 replicate resamplings using Explicitet [41], and β -
223 diversity (Bray-Curtis distances) were calculated between the recipient samples and their paired
224 donor samples as previously described [36]. The Sørensen similarity score is defined as 1 - Bray-
225 Curtis index, and 0.6 was selected as the threshold level for successful implantation of the donor
226 microbiota [27]. P-values less than 0.05 were considered as statistically significant. Because
227 many of the 385 operational taxonomic units (OTUs) exhibited zero counts across multiple
228 libraries, generalized linear mixed models (GLMM) or generalized estimating equation (GEE)
229 models were used to analyze 108 OTUs after eliminating OTUs with an average relative
230 abundance of $< 0.001\%$ in the donor and recipient pre-FMT samples, and after discarding OTUs
231 where more than 75% of the samples had a zero count. To compare the relative abundance of
232 each OTU between donors and recipient time points before and after FMT (pre-transplant, 1 week
233 post-FMT, 3 months post-FMT) within each disease group (rCDI - IBD, rCDI + IBD, UC - rCDI,
234 CD - rCDI), GLMMs or GEEs were used by taking the actual counts of each OTU as the outcomes
235 that were assumed to follow a negative binomial distribution [36]. The log-transformed overall
236 sequence count for each individual at each time point was considered as an offset. Two-way
237 interaction terms (Group*FMT) were used to estimate the difference between the time points

238 within a specific disease group. Possible covariance structures to model correlation among
239 longitudinal measurement from the same patient and measurement in the corresponding donor
240 were unstructured (UN) and compound symmetry (CS). In GEE, the dependence structure was
241 chosen based on Quasi Information Criteria (QIC). Pair-wise P-values were based on the T-test
242 for GLMM, and the Z-test for GEE. The P-values were adjusted for multiple comparisons by the
243 Bonferroni correction (P threshold = 0.05/number of multiple comparison) or by the Benjamini-
244 Hochberg method (false discovery rate or FDR < 0.05) as described further in the text. Kruskal-
245 Wallis tests were used to compare BA levels between donor and four pre-FMT recipient groups.
246 Post-hoc Dunn's tests with Benjamini-Hochberg adjustments were then performed in comparison
247 of recipient groups and donor. Linear mixed models were used to estimate the pairwise BA
248 differences between pre-FMT recipient and donor as well as response post-FMT in each disease
249 group. UN or CS covariance structures were selected to model the correlation among longitudinal
250 measurements from the same patient and his/her corresponding donor based on (Aikaike
251 Information Criteria (AIC). Log-transformation was applied if the normality assumption was not
252 satisfied. If log-transformation was performed, pre-FMT recipient/donor ratios were shown;
253 otherwise, donor- pre-FMT recipient differences were shown. Kruskal-Wallis tests were also used
254 to compare bacterial gene abundances (cpm) at 80% identity between donor and four pre-FMT
255 recipient groups. Estimated correlation coefficients were generated from linear mixed models
256 treating FMT groups as clustering effect, in order to assess the correlations between bacterial
257 gene abundances (cpm). Log transformation was applied to bacterial gene abundances if
258 normality assumption was not met. All analysis was performed in SAS 9.4 (SAS institute Inc.,
259 Cary, NC) and R 3.6.1 (R Foundation for Statistical Computing, Vienna, Austria).

260

261 Results

262 Patient characteristics of FMT donors and recipient samples analyzed.

263 The characteristics of the 55 recipient/donor pairs, segregated according to donors and the four
 264 groups of recipients, are summarized in Table 1. The median age in the rCDI – IBD group was
 265 significantly higher than the donor and the other three recipient groups. Significant differences in
 266 the proportion of males between groups was also observed, being particularly high in the UC -
 267 rCDI and CD - rCDI groups. Donors and recipients in all groups had predominantly
 268 White/European Ancestry (EA) and no Black/African Ancestry (AA) subjects. While only a
 269 minority of patients were current smokers, there were differences in the proportion of former
 270 smokers and never smokers between groups. All of the rCDI recipient groups received antibiotics
 271 within a month prior to the FMT in order to prevent recurrence of CDI, whereas none of the donors
 272 (within 3 months of donating the stool sample), UC - rCDI or CD - rCDI recipients (within one
 273 month of undergoing FMT) received antibiotics. 20% of rCDI - IBD recipients and 56-62% of the
 274 IBD recipients with or without rCDI had abnormal fecal calprotectin levels ($> 120 \mu\text{g/g}$). Of the 43
 275 donors measured, only two had borderline values ($> 50 \mu\text{g/g}, \leq 120 \mu\text{g/g}$) and the rest had normal
 276 values ($\leq 50 \mu\text{g/g}$).

277

278 **Table 1. Baseline characteristics of donors and the four groups of FMT recipients.** The
 279 median values and interquartile range (IQR) are listed for each group. Fecal calprotectin ≤ 50
 280 $\mu\text{g/g}$, normal; $50.1\text{-}120 \mu\text{g/g}$, borderline; $> 120 \mu\text{g/g}$, abnormal.

Variable	Donor	Group 1	Group 2	Group 3	Group 4
		rCDI - IBD	rCDI + IBD	UC - rCDI	CD - rCDI
	n = 55	n = 27	n = 8	n = 11	n = 9
Age (y) ± IQR	43 ± 25	66 ± 21	37 ± 29	37 ± 18	18 ± 4
Sex n (%)					
Males	23 (42%)	8 (30%)	3 (38%)	6 (54%)	8 (89%)
Race n (%)					

White/EA	52 (95%)	27 (100%)	8 (100%)	10 (82%)	7 (78%)
Black/AA	0 (0%)	0 (0%)	0 (0%)	0 (0%)	0 (0%)
Asian	3 (5%)	0 (0%)	0 (0%)	2 (18%)	2 (22%)
Ethnicity					
Hispanic n (%)	8 (15%)	2 (7%)	2 (25%)	2 (18%)	0 (0%)
Smoking n (%)					
Current	5 (9%)	4 (15%)	0 (0%)	1 (9%)	0 (0%)
Former	9 (16%)	13 (48%)	2 (25%)	4 (36%)	1 (11%)
Never	41 (75%)	10 (37%)	6 (75%)	6 (55%)	8 (89%)
Body mass index (BMI)					
kg/m² ± IQR	23.8 ± 7	27.1 ± 7.6	23 ± 7	27 ± 9	20 ± 5
Diet n (%)					
Meat	49 (89%)	27 (100%)	8 (100%)	10 (91%)	8 (89%)
Vegetarian (dairy)	5 (9%)	0 (0%)	0 (0%)	1 (9%)	1 (11%)
Plant based	1 (2%)	0 (0%)	0 (0%)	0 (0%)	0 (0%)
Antibiotics n (%)					
within 3 month	0 (0%)	27 (100%)	8 (100%)	1 (9%)	0 (0%)
IBD medications n (%)					
5-ASA	0 (0%)	0 (0%)	6 (75%)	7 (64%)	5 (56%)
Steroids	0 (0%)	0 (0%)	1 (12%)	4 (36%)	3 (33%)
Immunomodulators	0 (0%)	0 (0%)	5 (62%)	4 (36%)	4 (44%)
Biologics	0 (0%)	0 (0%)	2 (25%)	4 (36%)	4 (44%)
None	55 (100%)	27 (100%)	1 (12%)	1 (12%)	2 (22%)
Fecal calprotectin n (%)					
Abnormal	0 (0%)	6 (22%)	5 (62%)	7 (64%)	5 (56%)

Borderline	2 (4%)	6 (22%)	3 (38%)	2 (18%)	0 (0%)
Normal	41 (74%)	15 (56%)	0 (0%)	2 (18%)	3 (33%)
Missing	12 (22%)	0 (0%)	0 (0%)	0 (0%)	1 (11%)

281

282 **Clinical outcomes for the four recipient groups.**

283 The primary endpoint for rCDI was defined as no further rCDI at 12 months after FMT in
284 rCDI recipients with or without IBD. FMT was 92% effective in preventing rCDI in the rCDI - IBD
285 group and 75% effective in the rCDI + IBD group. These results compare favorably to the
286 previously reported 91% efficacy in in donor FMT compared to 67% effectiveness of the sham
287 FMT [2] and previously reported uncontrolled FMT studies performed in rCDI patients with IBD
288 [10-15].

289 The primary endpoint for gut inflammation as measured by fecal calprotectin levels was
290 one week after FMT for all recipients because many IBD patients were prescribed changes in
291 their medications between one week and 3 month time points. We did not observe a clear effect
292 of a single colonoscopic FMT on gut inflammation in IBD recipients as measured by decreased
293 fecal calprotectin.

294 Serious adverse events (SAEs) were reported in six patients as listed in S4-S7 Tables.
295 The SAEs in three rCDI – IBD recipients and one UC - rCDI recipient, were deemed unrelated to
296 the FMT procedure on review by the Data Safety Monitoring Board. The remaining two SAEs
297 observed in one rCDI + IBD (CD) and one CD – rCDI recipient could have reflected progression
298 of their underlying disease but could also have been related to the procedure, since flares have
299 been previously reported in other IBD patients post FMT [12].

300 **16S rRNA gene sequencing results.**

301 16S rRNA gene profiling of fecal bacterial communities was accomplished for 165 fecal
302 DNA samples, collected from 43 of 55 donors, 18 of 27 rCDI - IBD recipients, 8 of 8 rCDI + IBD
303 recipients, 9 of 11 UC - rCDI recipients and 8 of 9 CD - rCDI recipients.

304 Linear mixed models comparing the ShannonH α -diversity index between donor and
305 recipient pairs in each of the four groups (Fig 3) revealed significant differences between the
306 donor group and both the rCDI - IBD ($P = 0.0001$) and rCDI + IBD ($p < 0.0001$) groups at baseline
307 (Pre-FMT), with resolution of these differences at the 1 week and three month time points. In
308 contrast, differences in α -diversity between donor and recipient did not reach significance for
309 either the UC - rCDI or CD - rCDI groups.

310

311 **Fig 3. α -diversity (ShannonH) in the donor and four recipient groups Pre-FMT, 1 week Post-**
312 **FMT and 3 month Post-FMT.**

313

314 A recent report of a clinical FMT trial in CD patients [27] set successful implantation of
315 donor stools as achieving a Sørensen similarity index > 0.6 (the maximum value of 1 indicates
316 identical communities) between paired donors and recipients. We therefore adopted the same
317 endpoint in analyzing our 16S rRNA gene sequencing results. The pre-FMT Sørensen similarity
318 indices were below the endpoint in all of the rCDI recipients with and without IBD (Table 2), with
319 overall increases in these indices post-FMT. Individually the endpoint of > 0.6 was reached post
320 FMT in 73% of the rCDI recipients. Among the IBD - rCDI groups prior to FMT, 5 of 9 (56%) UC -
321 rCDI recipients and 5 of 7 (71%) CD - rCDI recipients had donor-recipient pre-FMT Sørensen
322 similarity indices below the endpoint. Three of these recipients had evidence of active disease
323 based on their initial fecal calprotectin level and endoscopic score (Mayo or SES-CD). Three of
324 the 5 UC - rCDI donor-recipient pairs and 3 of 5 CD - rCDI recipients reached the endpoint
325 post-FMT at either the 1 week and/or 3 month time point. However, achieving this endpoint was
326 not necessarily associated with reduction of gut inflammation measured using fecal calprotectin

327 levels. Note that none of the CD recipients in the previously published sham controlled FMT study
 328 of CD recipients achieved a Sørensen similarity index > 0.6 at the 6 week post-FMT time point
 329 [27].

330
 331 **Table 2. Median Sørensen similarity index ± IQR between paired donors and recipients at**
 332 **Pre-FMT, 1 week post FMT and 3 months post FMT**

Group	Pre-FMT	1 week Post-FMT	3 month Post-FMT
rCDI - IBD (n = 18)	0.26 ± 0.28	0.65 ± 0.09	0.66 ± 0.16 (3 missing)
rCDI + IBD (n = 8)	0.08 ± 0.26	0.55 ± 0.28	0.49 ± 0.15
UC - rCDI (n = 9)	0.54 ± 0.27	0.62 ± 0.14	0.61 ± 0.22 (3 missing)
CD - rCDI (n = 8)	0.52 ± 0.14 (1 missing)	0.62 ± 0.19	0.63 ± 0.17

333
 334 We next analyzed how abundances of individual bacterial taxa (from 16S rRNA gene
 335 sequencing) differed between recipient groups (rCDI – IBD, rCDI + IBD, UC – rCDI, CD – rCDI),
 336 and healthy donors as previously described [36]. Pairwise comparisons of the estimated
 337 recipient/donor ratios were then carried out. 72 OTUs demonstrating significant estimated pre-
 338 FMT recipient/donor ratios with 95%CI in at least one of the four recipient groups with a FDR (q)
 339 <0.05 are listed in S7 – S14 Tables and selected taxa are highlighted in Table 3.

340
 341 **Table 3. Significant (FDR <0.05) estimated pre-FMT recipient/donor ratios (95% CI) of the**
 342 **relative abundances of selected genus level OTUs for each of the four recipient groups.**

343 **See also S7 – S14 Tables).** A ratio > 1 indicates ↑ relative abundance in recipient pre-FMT
 344 compared to donor samples. A ratio of < 1 indicated ↓ relative abundance in pre-FMT samples
 345 compared to donor samples. The 95% CI are shown in parenthesis. Only the estimated ratios
 346 with an FDR < 0.05 are listed. The * indicates those OTUs that also had significant estimated
 347 ratios of post-FMT/pre-FMT relative abundances at with 1 week and/ or 3 month time point,
 348 indicating that FMT had a significant effect.

OTU	rCDI - IBD	rCDI + IBD	UC - rCDI	CD - rCDI
<i>Actinomyces</i>				4.15* (1.71,10.04)
<i>Collinsella</i>	0.04* (0.006,0.22)	0.001* (0,0.002)		0.34* (0.18,0.62)
<i>Bacteroides</i>	0.15* (0.06,0.37)	0.08 (0.01,0.63)		
<i>Prevotella</i>		0.03* (0.005,0.19)		
<i>Faecalibacterium</i>	0.004* (0.002,0.007)	0.003* (0.002,0.004)		
<i>Ruminococcus</i>	0.02* (0.003,0.14)	0.02* (0.003,0.07)	0.37 (0.23,0.61)	
<i>Dorea</i>	0.003* (0.001,0.008)	0.003* (0.001,0.005)		
<i>Enterococcus</i>	147.86* (32.5,673.0)		39.72 (12.4,127.0)	17.23* (5.33,55.7)
<i>Lactobacillus</i>	151.55* (40.7,564.4)	891.53* (300.8,2642.3)	94.61* (29.7,301.4)	

<i>Escherichia-</i>	15.59*	43.75*	76.65
<i>Shigella</i>	(4.29,56.7)	(12.1,158.7)	(9.39,625.7)
<i>Fusobacterium</i>	640.51*	3209.89*	13.51*
	(147.2,2786.8)	(875.9,11763.4)	(1.88,96.8)

349

350 The expanded dataset with 16S rRNA gene sequence data generated from 7 additional
351 recipients in the rCDI – IBD group, confirmed 47 of 51 OTUs previously reported [36] with a
352 significant estimated pre-FMT recipient/donor ratio. The expanded dataset for the rCDI + IBD
353 recipients generated from 5 additional recipients, including 3 with underlying CD [36] confirmed
354 54 of 71 OTUs previously reported with a significant estimated pre-FMT recipient/donor ratio. The
355 expanded dataset for the UC -rCDI recipients generated from 4 additional recipients [36],
356 confirmed only 15 of 29 OTUs previously reported with a significant estimated pre-FMT
357 recipient/donor ratio. Increased recipient/donor ratios for Bacilli, Proteobacteria and Fusobacteria
358 OTUs were among those confirmed for the UC - rCDI group. The results of 16S rRNA gene
359 sequence analysis for the fourth recipient group, CD - rCDI, detected significant estimated pre-
360 FMT recipient/donor ratios in 27 OTUs, including decreased ratios in Actinobacteria, Bacteroides
361 and *Ruminococcaceae* OTUs and increased ratios in Bacilli, Gamma-proteobacteria and
362 Fusobacteria OTUs.

363 **Quantitative targeted analysis of BA metabolites.**

364 We initially observed relative peak differences in BA on a subset of samples, which
365 suggested that secondary BA metabolites were reduced not only in a subset of the rCDI – IBD
366 and rCDI + IBD groups [36], but also in the CD - rCDI group (data not shown) . To further pursue
367 these findings, 23 bile acid metabolites including secondary BA epimers (see Fig 4), which have
368 recently been implicated in regulating immune function [30-32], were quantitatively measured in
369 212 samples in 55 donor/recipient pairs by targeted LC-MS (S15 Table). Prior to FMT, 19 BA
370 metabolites differed significantly from the donor group by a post-hoc Dunns test with Benjamini-

371 Hochberg adjustments (see S16 Table). The unconjugated secondary BA, lithocholic acid (LCA)
372 and deoxycholic acid (DCA), were the predominant metabolites in the healthy donors, but low
373 levels of secondary bile acid epimers, 3-oxo-lithocholic acid (3-oxo-LCA), iso-lithocholic acid (iso-
374 LCA) and isoallo-lithocholic acid (isoallo-LCA) were also detected (see Fig 4 and 5). In contrast,
375 the unconjugated primary BA, chenodeoxycholic acid (CDCA) and cholic acid (CA), were the
376 predominant metabolites detected in the rCDI-IBD recipients, with significant reduction of
377 secondary BA and epimers. For the rCDI + IBD recipients, in addition to the increased levels of
378 primary unconjugated BA (CDCA and CA) and reduced secondary BA levels, increased levels of
379 conjugated primary BA, taurocholic acid (T-CA), glycochenodeoxycholic acid (G-CDCA) and
380 glycocholic acid (G-CA), were also observed. The BA metabolite profile for the UC - rCDI
381 recipients was very similar to that of the healthy donors, whereas a reduction of unconjugated
382 secondary BA and epimers was observed for the CD - rCDI recipients (Fig 5).

383
384 **Fig 4. BA metabolic pathways.** Chenodeoxycholate (CDCA) is synthesized in the liver and
385 conjugated with taurine and glycine before being secreted to the small intestine.
386 Taurochenodeoxycholate (T-CDCA) and glycochenodeoxycholate (G-CDCA) are then
387 deamidated to chenodeoxycholate (CDCA) (1) by gut bacteria containing the bile salt hydrolase
388 (BSH) enzyme. CDCA can be further 7 α -dehydroxylated to lithocholic acid (LCA) (2) by the
389 concerted action of 6 enzymes in the *bai* operon (*baiA2*, *baiB*, *baiCD*, *baiE*, *baiF*, and *baiH*). LCA
390 can be further transformed to 3-oxo-LCA (3) by action of 3 α -hydroxysteroid dehydrogenases (3 α -
391 HSDH), and transformed to iso-LCA (4) if the ketone at position C3 of 3-oxo-LCA is reduced to a
392 3 β -alcohol, by action of 3 β -HSDH, or (5) isoallo-LCA by the concerted action of 5 β/α -reductases
393 and 3 β -HSDH.

394
395 **Fig 5. Fecal BA metabolites in donors and the four recipient groups at baseline.** The total
396 median \pm IQR concentrations of conjugated primary BAs (T-CA, G-CDCA, G-CA), unconjugated

397 primary BAs (CDCA, CA), unconjugated secondary BAs (LCA, DCA) and unconjugated
 398 secondary BA epimers implicated in immune regulation (3-oxo-LCA, iso-LCA, isoallo-LCA) are
 399 shown.

400
 401 In order to measure the effect of FMT on the BA metabolites, fitted linear mixed models
 402 with pairwise comparisons were conducted for 16 BA metabolites that required log transformation
 403 to measure the estimated pre-FMT recipient donor ratios and response post-FMT (see Table
 404 4). Fitted linear mixed models with pair wise comparisons were conducted for the remaining 3
 405 BA metabolites that did not require log transformation to measure the estimated donor-pre-FMT
 406 recipient differences and response post-FMT (see Table 5). These results indicate that FMT has
 407 a significant effect on restoring secondary BA metabolite levels in rCDI – IBD, rCDI + IBD and CD
 408 - rCDI recipients.

409
 410 **Table 4. Estimated pre-FMT recipient/donor BA ratios (95% CI) in the four recipient groups.**
 411 A ratio > 1 indicates ↑ recipient pre-FMT BA level compared to donor. A ratio of < 1 indicated ↓
 412 recipient pre-FMT level compared to donor. Only the estimated ratios with an unadjusted p-value
 413 < 0.05 are listed. The * indicates those BA that also had a significant estimated ratios of post-
 414 FMT/pre-FMT ratios at the 1 week and/or 3 month time point, indicating that FMT had a significant
 415 effect.

BA	rCDI – IBD	rCDI + IBD	UC – rCDI	CD – rCDI
<u>Primary conjugated</u>				
T-CA		29*		
		(3,333)		
G-CDCA	5*	21*		
	(2,12)	(4,100)		

G-CA	6*	33*	
	(2,20)	(4,250)	
<u>Primary unconjugated</u>			
CDCA	6*		13
	(1.4,29)		(1.03,143)
CA	24*		26
	(7,77)		(4,200)
CDCA-3-sulfate	43*		12
	(14,143)		(2,77)
CA-3-sulfate	15*		
	(6,38)		
<u>Secondary conjugated</u>			
G-DCA	0.2*		0.2
	(0.07,0.4)		(0.05,0.85)
<u>Secondary unconjugated</u>			
iso-CDCA	3*		20*
	(1.01,8)		(4,111)
iso-LCA	0.008*	0.27*	0.03*
	(0.003,0.027)	(0.004,0.207)	(0.005,0.22)
isoallo-LCA	0.06*		0.11
	(0.03,0.13)		(0.03,0.41)
3-oxo-DCA	0.014*	0.047*	0.04*
	(0.005,0.04)	(0.008,0.29)	(0.008,0.24)
3-oxo-CA	6.6*		9.3
	(2.4,18)		(1.9,48)

3-oxo-LCA	0.016*	0.04*	0.017*
	(0.004, 0.06)	(0.004,0.44)	(0.002,0.15)
3-oxo-CDCA	8.5*		7.4
	(3,23)		(1.4,38)
UCDA-3-sulfate	27*		
	(9,77)		

416

417

418 **Table 5. Estimated donor – pre-FMT recipient BA differences (*pmol/g* wet weight stool or**
 419 ***μM*, 95% CI) in the four recipient groups.** A positive difference indicates that the donor
 420 secondary unconjugated BA level was greater than the pre-FMT recipient level. The (*) indicates
 421 significant paired end differences between the pre-FMT and the 1 week and/or 3 month post-FMT
 422 (p-value < 0.05).

Secondary unconjugated BA	rCDI – IBD	rCDI + IBD	UC – rCDI	CD – rCDI
DCA	6204*	3749		
	(4444,7694)	(685,6813)		
LCA	10596*	7968		5621
	(7785,13408)	(3063,12873)		(996,10246)
iso-DCA	1871*	1314		715*
	(1491,2251)	(656,1972)		(94,1335)

423

424 **Shotgun DNA metagenomics data**

425 Shotgun DNA metagenomics sequencing was performed on samples from 32
 426 donor/recipient pairs (118 samples). After removing human sequences, an average of
 427 21,513,616 sequences (range 220,028 - 59,164,588) was obtained for each sample. We initially
 428 screened the samples for extended-spectrum beta lactamase (ESBL) genes given the recent

429 report of a fatality from transmission of an ESBL producing *E. coli* from donor to recipient
430 [42]. OXA-137, an ESBL gene was detected in one rCDI no IBD recipient prior to the procedure
431 and at one week post-FMT but not at three months post-FMT [43]. No ESBL genes were
432 detected in the 32 donor stools sequenced.

433 Conversion of unconjugated primary BA to secondary BA (e.g. CA to DCA, and CDCA to
434 LCA), is mediated by enzymes encoded by 8 genes in the BA-inducible (*bai*) operon (see Fig 4),
435 which is carried by a small population of commensal bacteria, including *Clostridium scindens*,
436 *Clostridium hylemonae*, *Clostridium hiranonis* [29]. It has been reported that fecal *baiCD* gene
437 copy numbers is negatively correlated with CDI in humans [44], although concomitant presence
438 of *C. scindens* and *C. difficile* has been reported in a metagenomics study [45]. The abundances
439 of the *baiCD* gene, (coding the 5 β -reductase), and the *baiE* gene, (which encodes the 7 α -
440 dehydroxylase), were estimated by translated searches of the shotgun metagenomics sequence
441 data with DIAMOND [40] using the *C. scindens* protein sequence for the *baiE* and *baiCD* genes
442 at two threshold levels: 1.) 80% identity over 80% sequence and 2.) 50% identity over 80%
443 sequence to calculate the counts per million (cpm). There were high correlations between the
444 *baiE* cpm and *baiCD* cpm at both homology thresholds, consistent with both genes being in the
445 same operon (see S17 Table). Lowering the threshold for identity from 80% to 50% markedly
446 increased the *baiCD* gene cpm, but had only a modest effect on the *baiE* gene cpm. This
447 suggested that a much larger number of bacterial genes, which may include genes not involved
448 in the BA metabolism pathways, share protein sequence homology with the *baiCD* protein than
449 the *baiE* encoded 7 α -dehydroxylase.

450 Previous studies have reported a correlation between *baiCD* gene counts measured using
451 degenerate PCR primers and rCDI [28,43]. Using these degenerate primers, we observed
452 multiple amplicons with a large range of sizes after analyzing the PCR reactions by gel
453 electrophoresis, but only observed single amplicon bands using specific *C. scindens* and *C.*

454 *hiranonis* primers. Consistent with previous studies, a higher proportion of rCDI ± IBD recipients
455 lacked detectable *baiE* cpm compared to donors (see Fig 6).

456

457 **Fig 6. Detection of *baiE* gene (50% identity DIAMOND search of shotgun metagenomics**
458 **data) in donors and the 4 recipient groups at baseline.**

459

460 In contrast to the limited number of *baiE* 7 α -dehydroxylase protein sequences in relatively
461 few strains, there are hundreds of bacterial bile salt hydrolase (BSH) protein sequences
462 distributed among 591 intestinal bacterial strains within 119 genera in the human microbiome
463 [46]. Song *et al.* [46] categorized these sequences into 8 BSH phylotypes (BSH-T0 to BSH-
464 T7). The custom DIAMOND search used in this study, included 31 BSH protein sequences from
465 eight BSH phylotypes (S1 Table). The abundance of each BSH phylotype was calculated as the
466 sum of the individual BSH protein sequence cpms at 80% identity. As shown in Fig 7, the pattern
467 of BSH phylotypes for the donors, UC-rCDI and CD-rCDI observed in this study was similar to the
468 pattern described for the US population by Song *et al.* [46], with a relative prominence of the BSH-
469 T6 phylotype. In contrast, the relative abundances of all BSH phylotypes were reduced in the rCDI
470 – IBD and rCDI + IBD recipients prior to FMT.

471

472 **Fig 7. Median BSH phylotype abundances ± IQR (80% identity DIAMOND search of shotgun**
473 **metagenomics data) in donors and 4 recipient groups at baseline.**

474

475 The 3- α - and 3- β - hydroxysteroid dehydrogenases (HSDHs) from *R. gnavus* and *E. lenta*,
476 metabolize LCA to 3-oxo-LCA and then to iso-LCA (see Fig 4), which exhibit *in vitro* activity on T-
477 cell regulation [30-32]. Not surprisingly, the correlations were significant between the gene counts
478 of HSDHs (80% identity) from the same taxa, however the correlation between the 3 β -HSDH
479 between *R. gnavus* and *E. lenta* was not significant (see S18 Table). No significant differences in

480 the median *R. gnavus* 3 α -HSDH cpm or 3 β -HSDH cpm were observed between the donors and
481 the pre-FMT levels of the four recipient groups, although decreased estimated pre-FMT
482 recipient/donor ratios for Ruminococcus genus rRNA gene was observed in the rCDI - IBD and
483 rCDI + IBD groups (see Table 3). A significant difference was observed for median *E. lenta* β -
484 HSDH cpms between the donors and the Pre-FMT levels of the four recipient groups ($P = 0.0117$),
485 with significant difference between the rCDI - IBD and the UC - rCDI groups ($P = 0.0184$), and
486 between the rCDI + IBD and UC - rCDI groups ($P = 0.0200$). Similarly, a significant difference
487 was also observed for median *E. lenta* α -HSDH cpms between the donors and the pre-FMT levels
488 of the four recipient groups ($P = 0.0065$), with significant difference between the rCDI - IBD and
489 the UC - rCDI groups ($P = 0.0252$), and between the rCDI + IBD and UC - rCDI groups ($P =$
490 0.0157).

491 Because *B. dorei* has been reported to convert iso-LCA to isoallo-LCA, a DIAMOND
492 search was conducted for the putative *B. dorei* 5 β -reductase, 5 α -reductase and 3 β -HSDH
493 enzymes identified by BLAST searches reported by Li *et al.* [32]. All three of these protein
494 sequences are significantly correlated with each other (see S19 Table). The median cpms for
495 each of these candidate genes were significantly decreased in the rCDI + IBD group compared
496 to donors ($P = 0.0003, 0.0003, <.0001$ for 3 β -HSDH, 5 β -reductase and 5 α -reductase respectively)
497 and the UC - rCDI groups ($P = 0.0076, 0.0059, 0.0056$ for 3 β -HSDH, 5 β -reductase and 5 α -
498 reductase respectively) and decreased in the rCDI - IBD groups compared to donors ($P = 0.0002,$
499 0.0007, $<.0001$ for 3 β -HSDH, 5 β -reductase and 5 α -reductase respectively) and the UC - rCDI
500 groups ($P = 0.0144, 0.0202, 0.0167$ for 3 β -HSDH, 5 β -reductase and 5 α -reductase
501 respectively). This is consistent with the marked decrease in the estimated pre-FMT recipient
502 donor ratios for the Bacteroides genus rRNA gene in the rCDI - IBD and rCDI + IBD groups (see
503 Table 3).

504 In order to integrate the shotgun metagenomics data with the BA metabolite data, we
505 measured the correlation between the abundances of the BA metabolizing genes (cpms) and

506 fecal BA levels using linear mixed models, which clustered values from each FMT group, to
507 calculate the estimated coefficient and 95% confidence interval (CI) (see Tables 6 and 7). Log
508 transformation was applied if the normality assumption was not satisfied. As shown in Table 6,
509 significant negative relationships between the *baiE* gene abundance (cpm) were observed for
510 fecal chenodeoxycholic acid and cholic acid levels with negative estimated coefficients and p-
511 values < 0.05. Significant positive relationships between the *baiE* gene abundance were
512 observed for fecal secondary BA (DCA and LCA) levels with positive estimated coefficients and
513 p-values < 0.05. Significant positive relationships between the *baiE* gene abundance were also
514 observed for fecal secondary BA epimer, (iso-LCA acid and isoallo-LCA) and the secondary BA
515 intermediate (3-oxo-LCA) levels. No significant correlation was observed between any of the four
516 HSDHs and either 3-ox-LCA or iso-LCA levels. No significant relationships were observed
517 between the gene counts for any of the three candidate *B. dorea* enzymes (5 β -reductase, 5 α -
518 reductase and 3 β -HSDH) and fecal isoallo-LCA levels, which is present in very low levels across
519 donors and all four recipient groups. Taken together these results suggest that the *baiE* encoded
520 7 α -hydroxylase step may be also rate limiting for the generation of the secondary BA epimers
521 implicated in immunomodulation.

522

523 **Table 6. Estimated coefficient and 95% CI for selected unconjugated BA for *baiE* cpm (50%
524 identity threshold) in linear mixed models treating FMT group as clustering effect. ***

525 indicates that the value was log-transformed, since the normality assumption was not satisfied.

Unconjugated BA	Estimated coefficient (95% CI)	P-value
<u>primary</u>		
CDCA*	-0.57 (-0.84, -0.29)	< .0001
CA*	-0.64 (-0.92, -0.35)	< .0001
<u>secondary</u>		

DCA	455.63 (27.48, 883.77)	0.0373
LCA	1133.55 (329.45, 1937.65)	0.0063
<u>secondary intermediate</u>		
3-oxo-LCA*	0.57 (0.28, 0.86)	0.0002
<u>secondary epimer</u>		
iso-LCA	161.14 (36.43, 285.86)	0.0120
isoallo-LCA*	0.37 (0.16, 0.58)	0.0008

526

527

528 **Table 7. Estimated coefficient and 95% CI for each conjugated primary BA for 7 of the 8**
 529 **BSH phylotype cpm (80 % identity threshold) in linear mixed models treating FMT group**
 530 **as clustering effect. * indicates that value was log-transformed.**

BSH phylotype	Conjugated primary BA	Estimated coefficient (95% CI)	P-value
BSH-T0*	T-CA	0.0002 (-0.0004, 0.0007)	0.5513
	G-CDCA	-0.0001 (-0.0002, 0.00001)	0.0674
	G-CA	-0.00006 (-0.0001, 0.00001)	0.0914
BSH-T1	T-CA	-0.06 (-0.09, -0.02)	0.0064
	G-CDCA	-0.0091 (-0.0161, -0.0021)	0.0123
	G-CA	-0.0096 (-0.0168, -0.0012)	0.0119
BSH-T2*	T-CA	-0.0004 (-0.0009, 0.00004)	0.0739
	G-CDCA	-0.00013 (-0.0002, -0.0001)	0.0006
	G-CA	-0.00014 (-0.0002, -0.0001)	0.0008
BSH-T4*	T-CA	-0.0004 (-0.0014, 0.0002)	0.0104
	G-CDCA	-0.00013 (-0.0002, -0.0001)	0.0006

	G-CA	-0.00014 (-0.0002, -0.0001)	0.0008
BSH-T5	T-CA	-0.04 (-0.06, -0.01)	0.0016
	G-CDCA	-0.0052 (-0.0090, -0.0015)	0.0071
	G-CA	-0.0055 (-0.0094, -0.0016)	0.0061
BSH-T6	T-CA	-0.11 (-0.18,-0.04)	0.0035
	G-CDCA	-0.0154 (-0.0278, -0.0029)	0.0162
	G-CA	-0.0164 (-0.0292, -0.0035)	0.0133
BSH-T7	T-CA	-0.05 (-0.07, -0.02)	0.0027
	G-CDCA	-0.0063 (-0.0115, -0.0010)	0.0208
	G-CA	-0.0032 (-0.0057, -0.0007)	0.0135

531

532 Because there were multiple zero counts for BSH-T3 phylotype abundance, this phylotype
533 was excluded from our analysis. BSH-T3 is composed of lactobacillus BSH genes. To correct for
534 multiple comparisons between the remaining 7 BSH phylotype relative abundances (cpm) and
535 the fecal levels of the three conjugated primary BAs, T-CA, G-CDCA and G-CA we applied the
536 Bonferroni correction to set the threshold p-value as $0.05/7 = 0.007$. Based on this threshold, we
537 observed significantly negative relationships between BSH-T1, BSH-T5 BSH-T6 and BSH-T7
538 phylotype relative abundances (cpm) and fecal T-CA levels. We observed significantly negative
539 relationships between BSH-T2 and BSH-T4 phylotype abundances (cpm) and fecal G-CDCA and
540 G-CA. These results may be consistent with varying substrate specificities of bacterial BSH
541 enzymes for the taurine and glycine BA conjugates [47,48].

542

543 Discussion

544 We report the results of integrating 16S RNA gene sequencing, shotgun metagenomics
545 sequencing and quantitative BA metabolomic analysis in human stools collected during two

546 colonoscopic single donor fecal microbial FMT clinical trials conducted at SBUMC (2013-
547 2020). Our quantitative analysis of primary and secondary BA metabolites in human stool is novel
548 in that secondary BA epimers, which have recently reported to exhibit immunoregulatory activity
549 *in vitro*, were also measured in this study.

550 Decreases in secondary BA have been observed in rCDI and more recently in IBD
551 [28,49]. In this study, we observed a general reduction in the levels of secondary BA including
552 the immunomodulatory derivatives of LCA in the rCDI – IBD, the rCDI + IBD and CD - rCDI groups
553 but not in the UC-rCDI group at baseline prior to transplant. Post FMT, the levels of secondary
554 BA were restored in the rCDI – IBD group and to various extents in the rCDI + IBD and CD – rCDI
555 groups.

556 Parallel estimation of the abundance of secondary BA pathway related protein/gene
557 sequences by polymerase chain reaction assays or shotgun metagenomics sequence analysis
558 and correlating these abundances with metabolite levels could potentially help us predict BA
559 metabolic potential in the human gut [50]. Our approach has been to search the shotgun
560 metagenomics data based on protein sequences of relevant BA-metabolizing enzymes. Because
561 of the knowledge base accumulated on the bacterial metabolism of primary to secondary BA we
562 focused initially on the genes in the *bai* operon, which is present in only a select number of
563 *Clostridium* species. Based on our analysis supplemented by qualitative PCR assays, we have
564 identified the *baiE* gene cpm (measured at 50% identity over 80% sequence) as the biomarker
565 associated with a rate-limiting step in the conversion of unconjugated primary BAs to secondary
566 BAs. It is not clear why a significant correlation between the abundances of the other genes, such
567 as *baiCD*, in the *bai* operon and secondary BA metabolite levels were detected in this study.
568 Based on gel electrophoresis analysis of products of the *baiCD* gene PCR assay, we suspect
569 there may be significant homology between that gene sequence and other genes which are
570 unrelated to the BA transformation pathway.

571 Primary BA must be deconjugated prior to transformation to secondary BA. Consequently
572 loss of BSH activity may also affect secondary BA levels. In contrast to the limited number of taxa
573 involved in the initial conversion of unconjugated primary BA to secondary BA, multiple BSH gene
574 sequences from multiple taxa are implicated in deconjugation of conjugated primary
575 BA. Furthermore some of the homologous gene sequences are pseudogenes that may not
576 contribute to BSH activity [46]. Our approach to estimating BSH activity based on BSH gene
577 abundances was to calculate the sum of selected BSH phylotype gene sequence abundances at
578 80% homology for each of 8 BSH phylotype described by Song *et al* [46]. This approach yielded
579 donor profiles of BSH phylotype abundances that matched those reported for the US population
580 [46]. BSH phylotype abundances were markedly reduced particularly in the rCDI + IBD recipients
581 prior to FMT compared to healthy donors. Furthermore reduced BSH phylotype abundances
582 were significantly correlated with increased levels of conjugated primary BA levels. These results
583 suggest that IBD patients with rCDI have reduced secondary BA levels due to loss of both 7- α
584 hydroxylase and BSH activities.

585 *B. dorei* 5 β -reductase, 5 α -reductase and 3 β -HSDH gene abundances are reduced in rCDI
586 \pm IBD recipients compared to healthy donors. It has been reported that centenarians have
587 microbiomes that are enriched for *B. dorei* and additional bacterial strain isolates capable of
588 producing isoallo-LCA acid [51]. However it should also be pointed out that LCA levels are also
589 reduced in the rCDI \pm IBD recipients along with reduced abundance of the *baiE* gene encoding
590 the 7-alpha hydroxylase step. The contribution of alterations in the abundances of the 5 β -
591 reductase, 5 α -reductase and 3 β -HSDH genes to the production of secondary BA epimers may
592 be reduced simply because more upstream processes drastically reduce levels of secondary BA
593 substrates, such as LCA and DCA.

594 A major limitation of this study is the small number of subjects in each of the three IBD
595 recipient groups and that these studies were single arm in design. Unfortunately, the COVID
596 pandemic has essentially forced a halt to these clinical trials. Nevertheless, the samples and

597 multi-omic datasets generated from these samples will continue to provide an important resource
598 for characterizing the effect of FMT on microbial function as further progress is made in identifying
599 bacterial strains and enzymes involved in the biotransformation of BAs and other metabolites.

600

601 Conclusion

602 Secondary BA metabolite levels, including epimers implicated in immune regulation, are
603 reduced in rCDI ± IBD and CD – rCDI recipients compared to donors. Single donor colonoscopic
604 FMT restored many of those levels in these recipients. Integration of shotgun metagenomics and
605 quantitative targeted BA metabolomics analyses indicate that reduction of *baiE* gene abundance
606 is correlated with reduction of secondary BA metabolite levels. In addition BSH phylotype gene
607 abundance is also reduced in particularly rCDI + IBD recipients and is negatively correlated with
608 conjugated primary BA levels.

609

610 Acknowledgements

611 We want to thank the recipients and donors for participating in this study. We acknowledge
612 the contributions of Drs. Ramona Rajapakse, Michael J Clores, Lionel D'Souza, Alexandra
613 Guillaume in the Division of Gastroenterology and Hepatology, for performing some of the FMT
614 procedures. We acknowledge the biostatistical consultation provided by Junying Wang and the
615 Biostatistics and Data Science Shared Resource at the Stony Brook Cancer Center, Stony Brook
616 University. We thank Dr. Daniel Littman for his helpful comments on the manuscript.

617

618 References

619 1. Yoon SS, Brandt LJ. Treatment of refractory/recurrent *C. difficile*-associated disease by
620 donated stool transplanted *via* colonoscopy: a case series of 12 patients. *J Clin Gastroenterol*
621 2010; 44: 562-566.

- 622 2. Kelly CR, Khoruts A, Staley C, Sadowsky MJ, Abd M, Alani M, et al. Effect of fecal microbiota
623 transplantation on recurrence in multiply recurrent *Clostridium difficile* infection: a randomized
624 trial. *Ann Intern Med* 2016; 165: 609-616.
- 625 3. Mattila E, Uusitalo-Seppälä R, Wuorela M, Lehtola L, Nurmi H, Ristikankare M, et al. Fecal
626 transplantation, through colonoscopy, is effective therapy for recurrent *Clostridium difficile*
627 infection. *Gastroenterology* 2012; 142: 490-496.
- 628 4. Cammarota G, Ianiro G, Tilg H, Rajilić-Stojanović M, Kump P, Satokari R, et al. European
629 consensus conference on faecal microbiota transplantation in clinical practice. *Gut* 2017; 66: 569-
630 580.
- 631 5. Rodemann JF, Dubberke ER, Reske KA, Seo DH, Stone CD. Incidence of *Clostridium difficile*
632 infection in inflammatory bowel disease. *Clin Gastroenterol Hepatol* 2007; 5: 339-344.
- 633 6. Ananthkrishnan AN, Binion DG. Impact of *Clostridium difficile* on inflammatory bowel disease.
634 *Expert Rev Gastroenterol Hepatol* 2010; 4: 589-600.
- 635 7. Pascarella F, Martinelli M, Miele E, Del Pezzo M, Roscetto E, Staiano A. Impact of *Clostridium*
636 *difficile* infection on pediatric inflammatory bowel disease. *J Pediatr* 2009; 154: 854-858.
- 637 8. Martinelli M, Strisciuglio C, Veres G, Paerregaard A, Pavic AM, Aloï M, et al. *Clostridium difficile*
638 and pediatric inflammatory bowel disease: a prospective, comparative, multicenter, ESPGHAN
639 study. *Inflamm Bowel Dis* 2014; 20: 2219-2225.
- 640 9. Saffouri G, Gupta A, Loftus EV Jr, Baddour LM, Pardi DS, Khanna S. The incidence and
641 outcomes from *Clostridium difficile* infection in hospitalized adults with inflammatory bowel
642 disease. *Scand J Gastroenterol* 2017; 52: 1240-124.
- 643 10. Hourigan SK, Chen LA, Grigoryan Z, Laroche G, Weidner M, Sears CL, et al. Microbiome
644 changes associated with sustained eradication of *Clostridium difficile* after single faecal
645 microbiota transplantation in children with and without inflammatory bowel disease. *Aliment*
646 *Pharmacol Ther* 2015; 42: 741-752.

- 647 11. Fischer M, Kao D, Kelly C, Kuchipudi A, Jafri SM, Blumenkehl M, Rex D, Mellow M, Kaur N,
648 Sokol H, Cook G, Hamilton MJ, Phelps E, Sipe B, Xu H, et al. Fecal microbiota transplantation is
649 safe and efficacious for recurrent or refractory *Clostridium difficile* infection in patients with
650 inflammatory bowel disease. *Inflamm Bowel Dis* 2016; 22: 2402-2409.
- 651 12. Khoruts A, Rank KM, Newman KM, Viskocil K, Vaughn BP, Hamilton MJ, et al. Inflammatory
652 bowel disease affects the outcome of fecal microbiota transplantation for recurrent *Clostridium*
653 *difficile* infection. *Clin Gastroenterol Hepatol* 2016; 14: 1433-1438.
- 654 13. Khanna S, Vazquez-Baeza Y, González A, Weiss S, Schmidt B, Muñoz-Pedrogo DA, et al.
655 Changes in microbial ecology after fecal microbiota transplantation for recurrent *C. difficile*
656 infection affected by underlying inflammatory bowel disease. *Microbiome* 2017; 5: 55.
- 657 14. Tabbaa OM, Aboelsoud MM, Mattar MC. Long-term safety and efficacy of fecal microbiota
658 transplantation in the treatment of *Clostridium difficile* infection in patients with and without
659 inflammatory bowel disease: a tertiary care center's experience. *Gastroenterology Res* 2018; 11:
660 397-403.
- 661 15. Chin SM, Sauk J, Mahabamunuge J, Kaplan JL, Hohmann EL, Khalili H. Fecal microbiota
662 transplantation for recurrent *Clostridium difficile* infection in patients with inflammatory bowel
663 disease: a single-center experience. *Clin Gastroenterol Hepatol* 2017; 15: 597-599.
- 664 16. Kump PK, Gröchenig HP, Lackner S, Trajanoski S, Reicht G, Hoffmann KM, et al. Alteration
665 of intestinal dysbiosis by fecal microbiota transplantation does not induce remission in patients
666 with chronic active ulcerative colitis. *Inflamm Bowel Dis* 2013; 19: 2155-2165.
- 667 17. Kump P, Wurm P, Gröchenig HP, Wenzl H, Petritsch W, Halwachs B, et al. The taxonomic
668 composition of the donor intestinal microbiota is a major factor influencing the efficacy of faecal
669 microbiota transplantation in therapy refractory ulcerative colitis. *Aliment Pharmacol Ther* 2018;
670 47: 67-77.

- 671 18. Kunde S, Pham A, Bonczyk S, Crumb T, Duba M, Conrad H Jr, et al. Safety, tolerability, and
672 clinical response after fecal transplantation in children and young adults with ulcerative colitis. *J*
673 *Pediatr Gastroenterol Nutr* 2013; 56: 597-601.
- 674 19. Moayyedi P, Surette MG, Kim PT, Libertucci J, Wolfe M, Onischi C, et al. Fecal microbiota
675 transplantation induces remission in patients with active ulcerative colitis in a randomized
676 controlled trial. *Gastroenterology* 2015; 149: 102-109.
- 677 20. Mizuno S, Nanki K, Matsuoka K, Saigusa K, Ono K, Arai M, et al. Single fecal microbiota
678 transplantation failed to change intestinal microbiota and had limited effectiveness against
679 ulcerative colitis in Japanese patients. *Intest Res* 2017; 15: 68-74.
- 680 21. Nishida A, Imaeda H, Ohno M, Inatomi O, Bamba S, Sugimoto M, et al. Efficacy and safety of
681 single fecal microbiota transplantation for Japanese patients with mild to moderately active
682 ulcerative colitis. *J Gastroenterol* 2017; 52: 476-482.
- 683 22. Paramsothy S, Kamm MA, Kaakoush NO, Walsh AJ, van den Bogaerde J, Samuel D, et al.
684 Multidonor intensive faecal microbiota transplantation for active ulcerative colitis: a randomised
685 placebo-controlled trial. *Lancet* 2017; 389: 1218-1228.
- 686 23. Costello SP, Hughes PA, Waters O, Bryant RV, Vincent AD, Blatchford P, et al. Effect of fecal
687 microbiota transplantation on 8-week remission in patients with ulcerative colitis: a randomized
688 clinical trial. *JAMA* 2019; 321: 156-164.
- 689 24. Fuentes S, Rossen NG, van der Spek MJ, Hartman JH, Huuskonen L, Korpela K, et al.
690 Microbial shifts and signatures of long-term remission in ulcerative colitis after faecal microbiota
691 transplantation. *ISME J* 2017; 11: 1877-1889.
- 692 25. Vermeire S, Joossens M, Verbeke K, Wang J, Machiels K, Sabino J, et al. Donor species
693 richness determines faecal microbiota transplantation success in inflammatory bowel disease. *J*
694 *Crohns Colitis* 2016; 10: 387-394.

- 695 26. Gutin L, Piceno Y, Fadrosch D, Lynch K, Zydek M, Kassam Z, et al. Fecal microbiota transplant
696 for Crohn disease: a study evaluating safety, efficacy, and microbiome profile. *United European*
697 *Gastroenterol J* 2019; 7: 807-814.
- 698 27. Sokol H, Landman C, Seksik P, Berard L, Montil M, Nion-Larmurier I, et al. Fecal microbiota
699 transplantation to maintain remission in Crohn's disease: a pilot randomized controlled study.
700 *Microbiome* 2020; 8: 12.
- 701 28. Buffie CG, Bucci V, Stein RR, McKenney PT, Ling L, Gobourne A, et al. Precision microbiome
702 reconstitution restores bile acid mediated resistance to *Clostridium difficile*. *Nature* 2015; 517:
703 205-208.
- 704 29. Ridlon JM, Harris SC, Bhowmik S, Kang DJ, Hylemon PB. Consequences of bile salt
705 biotransformations by intestinal bacteria. *Gut Microbes* 2016; 7: 22-39.
- 706 30. Hang S, Paik D, Yao L, Kim E, Trinath J, Lu J, et al. Bile acid metabolites control T_H17 and
707 T_{reg} cell differentiation. *Nature* 2019; 576: 143-148.
- 708 31. Campbell C, McKenney PT, Konstantinovskiy D, Isaeva OI, Schizas M, Verter J, et al. Bacterial
709 metabolism of bile acids promotes generation of peripheral regulatory T cells. *Nature* 2020; 581:
710 475-479.
- 711 32. Li W, Hang S, Fang Y, Bae S, Zhang Y, Zhang M, et al. A bacterial bile acid metabolite
712 modulates T_{reg} activity through the nuclear hormone receptor NR4A1. *Cell Host Microbe* 2021;
713 29: 1366-1377.
- 714 33. Franzosa EA, Sirota-Madi A, Avila-Pacheco J, Fornelos N, Haiser HJ, Reinker S, et al. Gut
715 microbiome structure and metabolic activity in inflammatory bowel disease. *Nat Microbiol* 2019;
716 4: 293-305.
- 717 34. Paik D, Yao L, Zhang Y, Bae S, D'Agostino GD, Kim E, Franzosa EA, et al. Human gut bacteria
718 produce T_H17-modulating bile acid metabolites. *bioRxiv*. 2021; doi: 10.1101/2021.01.08.425913.

- 719 35. Connors J, Dunn KA, Allott J, Bandsma R, Rashid M, Otley AR, et al. The relationship between
720 fecal bile acids and microbiome community structure in pediatric Crohn's disease. *ISME J* 2020;
721 14: 702-713.
- 722 36. Mintz M, Khair S, Grewal S, LaComb JF, Park J, Channer B, et al. Longitudinal microbiome
723 analysis of single donor fecal microbiota transplantation in patients with recurrent *Clostridium*
724 *difficile* infection and/or ulcerative colitis. *PLoS One* 2018; doi: 10.1371/journal.pone.0190997.
- 725 37. Satsangi J, Silverberg MS, Vermeire S, Colombel JF. The Montreal classification of
726 inflammatory bowel disease: controversies, consensus, and implications. *Gut* 2006; 55: 749-753.
- 727 38. Vashist NM, Samaan M, Mosli MH, Parker CE, MacDonald JK, Nelson SA, et al. Endoscopic
728 scoring indices for evaluation of disease activity in ulcerative colitis. *Cochrane Db Syst Rev.* 2018;
729 doi: ARTN CD01145010.1002/14651858.CD011450.pub2.
- 730 39. Khanna R, Zou G, Stitt L, Feagan BG, Sandborn WJ, Rutgeerts P, et al. Responsiveness of
731 endoscopic indices of disease activity for Crohn's disease. *Am J Gastroenterol* 2017; 112: 1584-
732 1592.
- 733 40. Buchfink B, Xie C, Huson DH. Fast and sensitive protein alignment using DIAMOND. *Nat*
734 *Methods* 2015; 12: 59-60.
- 735 41. Robertson CE, Harris JK, Wagner BD, Granger D, Browne K, Tatem B, et al. Explicet:
736 graphical user interface software for metadata-driven management, analysis and visualization of
737 microbiome data. *Bioinformatics* 2013; 29: 3100-3101.
- 738 42. DeFilipp Z, Bloom PP, Torres Soto M, Mansour MK, Sater MRA, Huntley MH, et al. Drug-
739 resistant *E. coli* bacteremia transmitted by fecal microbiota transplant. *N Engl J Med* 2019; 381:
740 2043-2050.
- 741 43. Leung V, Vincent C, Edens TJ, Miller M, Manges AR. Antimicrobial resistance gene
742 acquisition and depletion following fecal microbiota transplantation for recurrent *Clostridium*
743 *difficile* infection. *Clin Infect Dis* 2018; 66: 456-457.

744 44 Solbach P, Chhatwal P, Woltemate S, Tacconelli E, Buhl M, Gerhard M, et al. BaiCD gene
745 cluster abundance is negatively correlated with *Clostridium difficile* infection. PLoS One 2018; doi:
746 10.1371/journal.pone.0196977.

747 45. Amrane S, Bachar D, Lagier JC, Raoult D. *Clostridium scindens* is present in the gut
748 microbiota during *Clostridium difficile* infection: a metagenomic and culturomic analysis. J Clin
749 Microbiol 2018; doi: 10.1128/JCM.01663-17.

750 46. Song Z, Cai Y, Lao X, Wang X, Lin X, Cui Y, et al. Taxonomic profiling and populational
751 patterns of bacterial bile salt hydrolase (BSH) genes based on worldwide human gut microbiome.
752 Microbiome 2019; doi: 10.1186/s40168-019-0628-3.

753 47. Dong Z, Lee BH. Bile salt hydrolases: structure and function, substrate preference, and
754 inhibitor development. Protein Sci 2018; 27: 1742-1754.

755 48. Foley MH, O'Flaherty S, Barrangou R, Theriot CM. Bile salt hydrolases: gatekeepers of bile
756 acid metabolism and host-microbiome crosstalk in the gastrointestinal tract. PLoS Pathog 2019;
757 15: doi: 10.1371/journal.ppat.1007581.

758 49. Duboc H, Rajca S, Rainteau D, Benarous D, Maubert MA, Quervain E, et al. Connecting
759 dysbiosis, bile-acid dysmetabolism and gut inflammation in inflammatory bowel diseases. Gut
760 2013; 62: 531-539.

761 50. Das P, Marcišauskas S, Ji B, Nielsen J. Metagenomic analysis of bile salt biotransformation
762 in the human gut microbiome. BMC Genomics 2019; doi: 10.1186/s12864-019-5899-3.

763 51. Sato Y, Atarashi K, Plichta DR, Arai Y, Sasajima S, Kearney SM, et al. Novel bile acid
764 biosynthetic pathways are enriched in the microbiome of centenarians. Nature 2021; 599: 458-
765 464.

766

767 **Supporting information**

768 **S1 text. Institutional review board approved protocol for ClinicalTrials.gov**
769 **ID:NCT03268213.**

770 **S2 text. Institutional review board approved protocol for Clinical Trials.gov ID**
771 **NCT03267238.**

772 **S1 Table. Transparent Reporting of Evaluations with Nonrandomized Designs (TREND)**
773 **checklist.**

774 **S2 Table. Chromatographic and quantitation strategy for the BA and internal standards**
775 **(ISTD) measured.**

776 **S3 Table. Bile acid metabolizing enzyme genes used in DIAMOND custom search.**

777 **S4 Table. Individual characteristics of the rCDI – IBD recipients.**

778 **S5 Table. Individual characteristics of the rCDI + IBD recipients.**

779 **S6 Table. Individual characteristics of the UC - rCDI recipients.**

780 **S7 Table. Individual characteristics of the CD - rCDI recipients.**

781 **S8 Table. Significant (FDR < 0.05) estimated pre-FMT recipient/donor ratios (95% CI) of the**
782 **relative abundances of Actinobacteria genus level OTUs for each of the four recipient**
783 **groups.**

784 **S9 Table. Significant (FDR < 0.05) estimated pre-FMT recipient/donor ratios (95% CI) of the**
785 **relative abundances of Bacteroidetes genus level OTUs for each of the four recipient**
786 **groups.**

787 **S10 Table. Significant (FDR < 0.05) estimated pre-FMT recipient/donor ratios (95% CI) of**
788 **the relative abundances of Ruminococcaceae (Clostridium Group IV) genus level OTUs for**
789 **each of the four recipient groups.**

790 **S11 Table. Significant (FDR < 0.05) estimated pre-FMT recipient/donor ratios (95% CI) of**
791 **the relative abundances of Lachnospiraceae (Clostridium Group XIVa) genus level OTUs**
792 **for each of the four recipient groups.**

793 **S12 Table. Significant (FDR < 0.05) estimated pre-FMT recipient/donor ratios (95% CI) of**
794 **the relative abundances of Bacilli genus level OTUs for each of the four recipient groups.**

795 **S13 Table. Significant (FDR < 0.05) estimated pre-FMT recipient/donor ratios (95% CI) of**
796 **the relative abundances of Proteobacteria genus level OTUs for each of the four recipient**
797 **groups.**

798 **S14 Table. Significant (FDR < 0.05) estimated pre-FMT recipient/donor ratios (95% CI) of**
799 **the relative abundances of genus level OTUs in “Other Taxa” for each of the four recipient**
800 **groups.**

801 **S15 Table. Median Pre-FMT BA levels (pmol/g wet weight of stool or μM) \pm IQR in donor**
802 **and four recipient groups.**

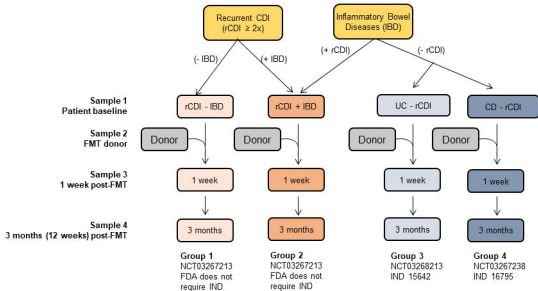
803 **S16 Table. Post-hoc Dunns test P-values with Benjamini–Hochberg adjustments, for 19**
804 **pre-FMT median BA metabolite levels in the four recipient groups (see S15 Table).**

805 **S17 Table. Estimated coefficient (95% CI) with baiE cpm as covariate and baiCD cpm as**
806 **outcome in linear mixed model treating FMT group as clustering effect.**

807 **S18 Table. Estimated coefficient (95% CI) with *R. gnavus* 3 α -HSDH/E. lenta 3 α -HSDH/E.**
808 **lenta 3 β -HSDH cpm as covariate and *R. gnavus* 3 β -HSDH/E. lenta 3 α -HSDH cpm at 80%**
809 **identity as outcome in linear mixed model treating FMT group as clustering effect**

810 **S19 Table. Correlation between *B. dorei* 3 β -reductase, 5 β -reductase and 3 β -HSDH.**

811





CONSORT

TRANSPARENT REPORTING of TRIALS

Enrollment

Assessed for eligibility
(n=216)

Excluded (n=149)

- No response during pre-screening (n=93)
- Not meeting inclusion criteria (n=26)
- Declined to participate (n=11)
- Uninsured/out-of-pocket cost (n=12)
- No qualifying donor (n=4)
- Other (n=3)

Allocation

Reasons: 2 subjects withdrew consent during the screening period but prior to intervention. 3 subjects did not receive intervention due to the 2019 FDA nationwide hold on FMT studies.

Allocated to intervention (n=67)

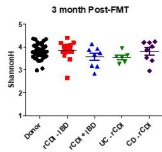
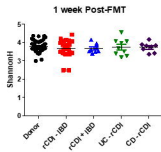
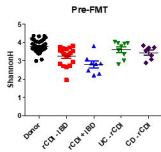
- Received allocated intervention (n=62)
- Did not receive allocated intervention (n=5)

Analysis

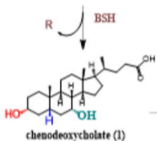
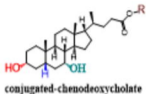
Reason: 20 subjects were excluded from this current analysis due to budgetary constraints. All subjects were rCDI - IBD.

Analyzed (n=42)

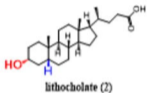
- Excluded from analysis (give reasons) (n=20)



R - taurine
glycine
other amino acids

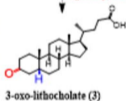


Bai operon



3 ω -HSDH

E. faecalis sp:CBW1099.1.G8D_EGGLE
R. ginsengii sp:470M37.1.G8DP_R13MG7



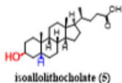
5 β -reductase

R. solis sp:BAH8N3.B6W8V2_SB6CT
C. scindens sp:P79416.BACD_CLO5V

5 α -reductase

R. solis sp:BAH8N2.B6W8V1_SB6CT

3 β -HSDH



3 β -HSDH

R. solis sp:BAH8N1.B6W8V1_SB6CT
E. faecalis sp:CBW1099.1.B810Q_EGGLE
R. ginsengii sp:470M37.1.B810P_R13MG7

