

1
2
3
4
5
6
7
8
9
10
11
12
13
14
15
16
17
18
19
20
21
22
23
24
25



Spatial and temporal epidemiology of SARS-CoV-2 virus lineages in Teesside, UK, in 2020: effects of socio- economic deprivation, weather, and lockdown on lineage dynamics

Moss, E.D.¹, Rushton, S.P.², Baker, P.³, Bashton, M.⁴, Crown,
M.R.⁴, dos Santos, R.N.⁵, Nelson, A.⁵, O’Brien, S.J.², Richards, Z.⁵,
Sanderson, R.A.^{2*}, Yew, W.C.⁵, Young, G.R.⁴, McCann, C.M.⁴ and
Smith, D.L.^{4**}

¹ Population Health Sciences Institute, Newcastle University – Newcastle upon Tyne, UK

² School of Natural and Environmental Sciences, Newcastle University – Newcastle upon Tyne, UK

³ South Tees Hospitals NHS Foundation Trust – Newcastle upon Tyne, UK

⁴ Hub for Biotechnology in the Built Environment, Northumbria University – Newcastle upon Tyne, UK

⁵ Department of Applied Sciences, Northumbria University – Newcastle upon Tyne, UK

*Corresponding author

Correspondence: roy.sanderson@newcastle.ac.uk

**On behalf of the COVID-19 Genomics UK (COG-UK) consortium. See Supplementary Material for full list of COVID-19 Genomics UK Consortium names and affiliations.

NOTE: This preprint reports new research that has not been certified by peer review and should not be used to guide clinical practice.

26

27 **ABSTRACT**

28 **Background:** SARS-CoV-2 emerged in the UK in January 2020. The UK government
29 introduced control measures including national ‘lockdowns’ and local ‘tiers’ in England to
30 control virus transmission. As the outbreak continued, new variants were detected through
31 two national monitoring programmes that conducted genomic sequencing. This study aimed
32 to determine the effects of weather, demographic features, and national and local COVID-19
33 restrictions on positive PCR tests at a sub-regional scale.

34 **Methods:** We examined the spatial and temporal patterns of COVID-19 in the Teesside sub-
35 region of the UK, from January to December 2020, capturing the first two waves of the
36 epidemic. We used a combination of disease mapping and mixed-effect modelling to
37 analyse the total positive tests, and those of the eight most common virus lineages, in
38 response to potential infection risk factors: socio-economic deprivation, population size,
39 temperature, rainfall, government interventions, and a government restaurant subsidy (“Eat
40 Out to Help Out”).

41 **Results:** Total positive tests of SARS-CoV-2 were decreased by temperature and the first
42 national lockdown (the only one to include school closures), while deprivation, population,
43 the second national lockdown, and the local tiered interventions were associated with
44 increased cases. The restaurant subsidy and rainfall had no apparent effect. The
45 relationships between positive tests and covariates varied greatly between lineages, likely
46 due to the strong heterogeneity in their spatial and temporal distributions. Cases during the
47 second wave appeared to be higher in areas that recorded fewer first-wave cases, however,
48 an additional model showed the number of first-wave cases was not predictive of second-
49 wave cases.

50 **Discussion:** National and local government interventions appeared to be ineffective at the
51 sub-regional level if they did not include school closures. Examination of viral lineages at the
52 sub-regional scale was less useful in terms of investigating covariate associations but may be
53 more useful for tracking spread within communities. Our study highlights the importance of
54 understanding the effects of government interventions in local and regional contexts, and
55 the importance of applying local restrictions appropriately within such settings.

56

57 **Keywords:** COVID-19, variant, autoregressive model, non-pharmaceutical interventions, local
58 restrictions

59

60

61

Introduction

62 It is widely understood that many factors can affect COVID-19 transmission via social and/or
63 epidemiological mechanisms, including weather, lineage of SARS-CoV-2 (the virus causing COVID-19),
64 mask wearing, and government control measures (non-pharmaceutical interventions) that limit social
65 contact (Bo et al., 2021; Volz et al., 2021; Ganslmeier et al., 2021; Ge et al., 2022). The risk of contracting
66 COVID-19 can also be affected by demographic factors such as socio-economic deprivation and race
67 (Whittle & Diaz-Artiles, 2020; Brainard et al., 2022; Holt et al., 2022). However, these relationships are
68 complex and there is considerable variation in the observed impact of these factors between different
69 countries, at national vs. regional scales, and during different waves of the pandemic (Gao et al., 2021; Bo
70 et al., 2021; Hunter et al., 2021; Ganslmeier et al., 2021; Brainard et al., 2022; Ge et al., 2022). It is
71 imperative that these relationships are better understood to improve future pandemic/epidemic
72 responses, especially in countries like the United Kingdom, which experienced high case numbers and
73 excess deaths relative to its neighbours (Islam et al., 2021; Hunter et al., 2021). While there is evidence
74 that strict national restrictions reduced cases and mortality on a national-scale in the UK (Hunter et al.,
75 2021; Sharma et al., 2021), there has been very little evaluation at local or regional scales or in socio-
76 economically deprived populations.

77 Government interventions (national lockdowns) introduced during the first wave of the pandemic in
78 the UK were successful in reducing cases, which was also seen in other countries, with school closures
79 and measures that reduce social gatherings proving the most effective (Brauner et al., 2021; Hunter et al.,
80 2021; Mendez-Brito et al., 2021; Ge et al., 2022). However, the picture is less clear for later waves of the
81 pandemic, as the effectiveness of control measures changed and as countries diverged in terms of both
82 the implementation of interventions and patterns of cases (Pozo-Martin et al., 2021; Mendez-Brito et al.,
83 2021; Ge et al., 2022). The UK government introduced a heterogeneous “tier” system of restrictions in
84 England during the second wave, which were applied on local scales and were intended to be more
85 responsive and appropriate to the local disease context (UK Government, 2020c). While analysis of the
86 tier system across the entirety of England has revealed the more stringent tiers to be more effective than
87 the less stringent ones (Davies et al., 2021; Laydon et al., 2021), there has been very little consideration
88 of these tiers, or comparison with the national-level restrictions, within their specific geographic and
89 community contexts.

90 The relationship between socio-economic deprivation and COVID-19 mortality has been well-
91 documented, with a majority of studies demonstrating increased mortality in areas of high deprivation,
92 including in the UK (Brainard et al., 2022; McGowan & Bambra, 2022). This is due to a combination of
93 underlying factors that can be summarised as unequal exposure due to employment and living conditions
94 and unequal vulnerability due to pre-existing health conditions (McGowan & Bambra, 2022). However,
95 the relationship between deprivation and COVID-19 infection is more complicated and less clear; the UK
96 context is typical of the broader picture with some studies finding an increase in infections linked to
97 higher deprivation while others find the opposite or no relationship (Niedzwiedz et al., 2020; Brainard et
98 al., 2022; McGowan & Bambra, 2022).

99 The relationship between COVID-19 infection and weather is also complex. Higher temperatures have
100 been associated with a reduction in cases in many countries including the UK (Ganslmeier et al., 2021;
101 Alaniz et al., 2023; Nottmeyer et al., 2023), though a minority of studies have reported a positive effect
102 (Tan & Schultz, 2022). Increased rainfall effects are more uncertain due to less research focus, with a
103 meta-analysis finding evidence of increased infections (Tan & Schultz, 2022), while other research
104 detected no relationship (Ganslmeier et al., 2021). The impacts of weather on COVID-19 infections are
105 complicated by the interaction between several mechanisms. Weather can affect transmission directly,

106 e.g. increased temperatures reduce the viability of the virus particles (Ganslmeier et al., 2021), and also
107 indirectly via social behaviours, e.g. colder temperatures or higher rainfall could discourage outdoor
108 socialising and reduce transmission, or encourage indoor socialising and increase transmission. Several
109 studies have also shown that the presence and strength of these indirect effects is mediated by other
110 factors, such as how closely the timing of weather patterns and events coincides with mealtimes and the
111 presence/absence of government control measures (Ganslmeier et al., 2021; Fetzer, 2022). This is
112 particularly relevant in England, where the government introduced a subsidy that encouraged people to
113 eat in restaurants during August 2020 (Fetzer, 2022).

114 Previous research has demonstrated that transmissibility of COVID-19 varies greatly between
115 different lineages of the SARS-CoV-2 virus, which can explain how some lineages become dominant at
116 certain points in time (Volz et al., 2021; Panovska-Griffiths et al., 2022). For example, lineage B.1.1.7 (the
117 Alpha variant) has been estimated to be between 20-100% more transmissible than the wild type
118 (estimates vary by study), which likely explains how this lineage became dominant across the UK in
119 autumn/winter 2020 (Volz et al., 2021; Hinch et al., 2022; Panovska-Griffiths et al., 2022). However, there
120 are also examples of lineages that became dominant despite no, or only a small, increase in
121 transmissibility, like that of lineage B.1.177 during autumn 2020 in the UK (Hodcroft et al., 2021;
122 Vöhringer et al., 2021; Hinch et al., 2022). Establishment of a lineage is subject to epidemiological factors
123 as well as transmissibility, such as the number of introductions (Grubaugh et al., 2020), which could be
124 facilitated by a relaxation of travel restrictions (Hodcroft et al., 2021). It seems likely that other non-
125 pharmaceutical interventions and other environmental factors could also affect the number of cases of
126 different COVID-19 lineages, regardless of whether they demonstrate increased transmissibility. While
127 some research has investigated the impact of interventions and vaccinations on the spread of specific
128 lineages (Hinch et al., 2022; Panovska-Griffiths et al., 2022), there has been very little comparison across
129 many lineages, and no investigations that also incorporate other factors like weather and socio-economic
130 deprivation.

131 Our aim was to investigate how a range of variables that can influence COVID-19 cases affected
132 positive tests in the Teesside sub-region of North East England during 2020. We wanted to understand
133 how the national and local government interventions introduced over the course of this year affected the
134 population of this sub-region, which has high levels of deprivation and is reasonably geographically
135 isolated. Examining cases in this context also allows us make policy recommendations aiming to improve
136 outcomes in future epidemics, for this and other vulnerable populations in the UK. We used Generalised
137 Linear Mixed Effect Models (GLMMs) to investigate how local and national government interventions,
138 weather, levels of socio-economic deprivation, and the government restaurant subsidy impacted: 1) the
139 total number of COVID-19 cases; and 2) the number of cases of each of the most common lineages in
140 Teesside. We also used Bayesian spatial models to determine patterns of disease risk across Teesside
141 during 2020.

142 **Methods**

143 **Location and timeframe**

144 The wider Teesside area is a sub-region of the North East region of England, centred around the
145 mouth of the river Tees. While Teesside has reasonably good local and national transport links, it is
146 relatively isolated geographically as it borders the North Sea to the north east, The North York Moors
147 national park to the south east, and extensive farmland to the west. Teesside has a distinct cultural
148 identity due to its industrial history, which has also left its population with a greater burden of diseases
149 and socio-economic deprivation that stigmatises and further culturally isolates the area (Bush et al.,
150 2001). Teesside contains a mixture of urban, suburban, and rural environments and is formed from a

151 collection of separate communities including Middlesbrough, Redcar, Thornaby-on-Tees, Billingham,
152 Hartlepool, and Stockton-on-Tees, each with their own identities, facilities, schools, etc. All of these
153 characteristics make Teesside an interesting case study that deserves research focus.

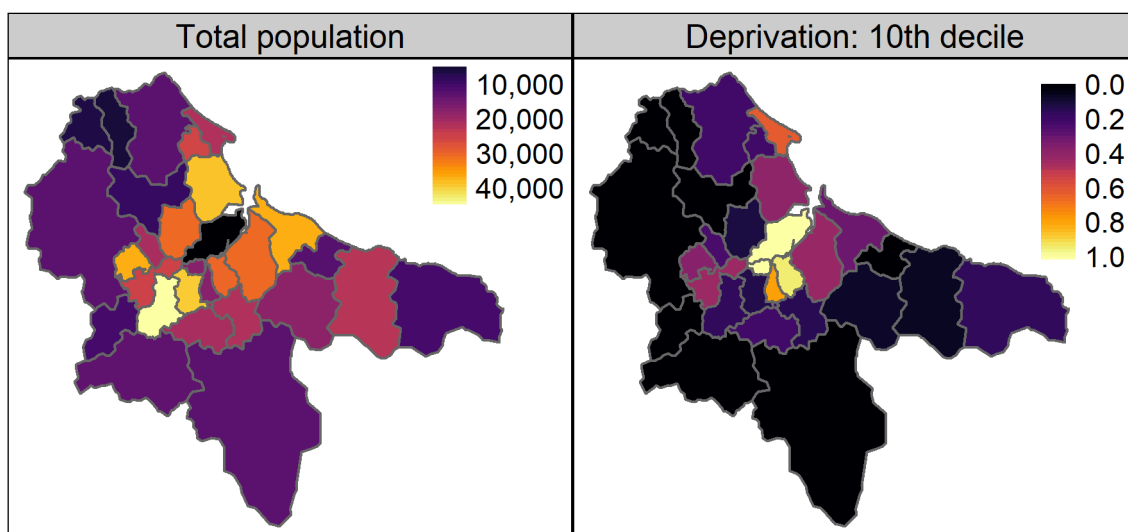
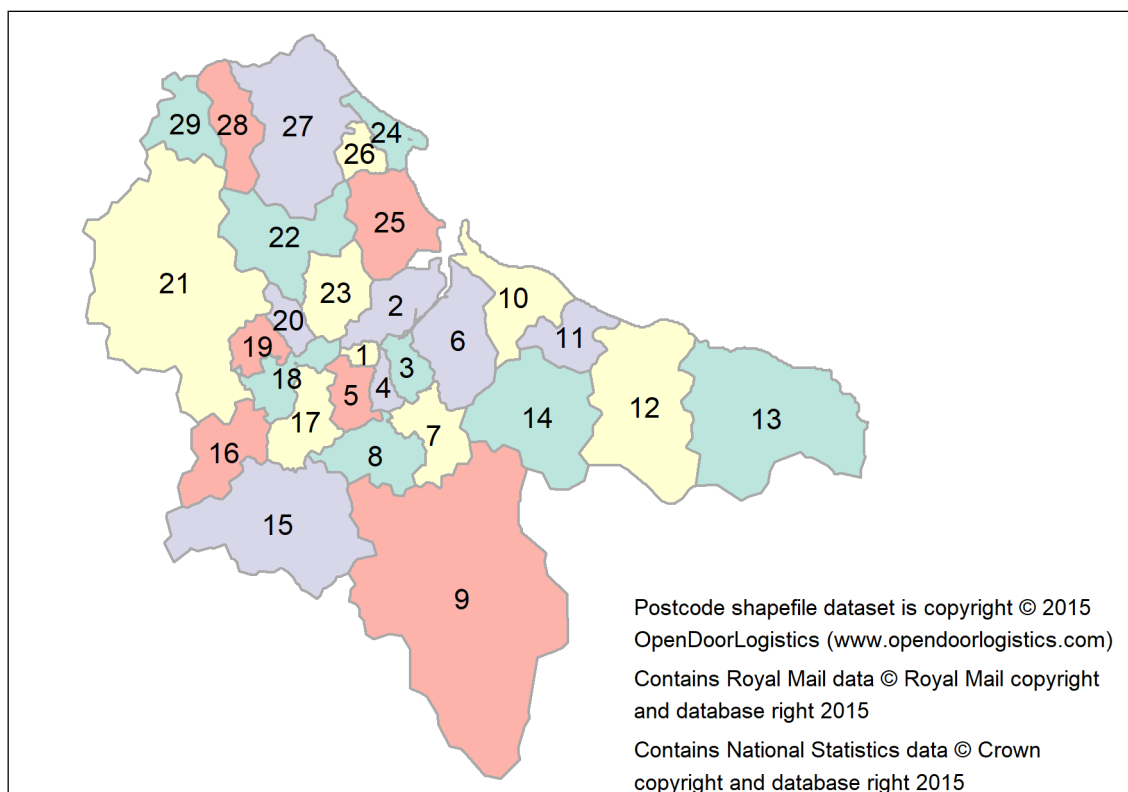
154 We chose to examine positive tests within Teesside during only 2020 for several reasons. Firstly, the
155 local tiered restrictions were abandoned when the country entered a new national lockdown in early
156 January 2021, and were not reinstated (UK Government, 2021), which means there were no further
157 locally applied restrictions that could be examined. Secondly, the UK's vaccination programme began in
158 December 2020, which means that analysing data that included cases into 2021 would have required
159 additional data to properly adjust for this confounder. Inclusion of vaccination uptake information would
160 have been needed, rather than numbers/proportion of eligible people in the population, as uptake is
161 lower amongst deprived people (Mounier-Jack et al., 2023), but this would have been difficult to
162 ascertain at the necessary spatial and temporal scales. And finally, including data collected over a longer
163 time period would open up the analysis to other potential sources of confounding that cannot easily be
164 controlled for, such as 'pandemic fatigue'.

165 **Data collation**

166 The UK government introduced two 'pillars' of COVID-19 testing, which utilised polymerase chain
167 reaction (PCR) to identify positive cases. Pillar 1 testing was of staff and patients in hospitals and care
168 homes, mainly focussing on symptomatic individuals, but also included asymptomatic staff (e.g. contacts
169 of confirmed cases). Pillar 2 was community testing of symptomatic individuals, which also began to
170 include asymptomatic testing of suspected cases and high-risk situations (e.g. confirming lateral flow
171 results, elective care settings, care homes, and contacts of confirmed cases) from autumn 2020 (Dept.
172 Health & Social Care, 2020; UK Health Security Agency, 2023). Genomic sequencing was conducted on a
173 random sample of the PCR samples that tested positive for SARS-CoV-2, which permitted characterisation
174 of genetic lineages in individual cases, and the information was stored in the Covid-19 Genomics UK
175 (COG-UK) dataset (COVID-19 Genomics UK (COG-UK) Consortium, 2020; Smallman-Raynor et al., 2022).
176 We collated records of PCR tests positive for SARS-CoV-2 in the Teesside area during 2020, from the COG-
177 UK genomic dataset, which provided the dates, postcodes, and viral lineages of all sequenced positive
178 tests from January 2020 to January 2021. We summarised the number of cases for all lineages, and each
179 lineage separately, by week of year and individual postcode districts (TS1 to TS29, see Figure 1). In
180 addition, we also summarised the total number of cases of each lineage recorded by each pillar during
181 the period when sampling was run contemporaneously for both pillars (from week of year 19 to 53),
182 creating a dataset of total cases of each lineage summed across time for each pillar (each lineage had one
183 value per pillar). We ran a Spearman's correlation on this dataset, to check for a sampling bias for
184 different lineages between the two pillars, as only pillar 1 tested the most severely ill patients, and illness
185 severity can vary between lineages (Sievers et al., 2022; Goethem et al., 2022).

186 We used recent demographic data on socio-economic deprivation (Index of Multiple Deprivation IMD
187 (UK Government, 2019)) to calculate the proportion of the population in each postcode district that was
188 in the most deprived category (10th decile), relative to England as a whole (Figure 1 and Table S1 in
189 Supplementary Material). Mean weekly temperature and rainfall values were summarised from raw daily
190 data (calculated from daily means and daily totals respectively) obtained from weather stations in
191 Teesside International Airport (temperature) and Hartlepool (rainfall) (we assumed weather to be
192 homogenous across the area at this temporal scale). We collated the start and end dates of the national
193 government interventions (lockdowns) and the local tier system of interventions (where higher tiers had
194 greater restrictions) as applied to Teesside in 2020. The tier system was applied at the local government
195 level, but during 2020 the same tier restrictions were applied to all local authority areas in Teesside. We
196 also collated the start/end dates of the government restaurant subsidy ("Eat Out to Help Out Scheme")

197 that was introduced to support hospitality businesses, which provided customers with a 50% discount at
198 participating restaurants. The interventions and subsidy dates were converted to week of year format,
199 where values counted the number of weeks since the measure was introduced (weeks before
200 introduction and after stoppage were given a value of zero). The national lockdowns in England were
201 defined by: stay-at-home orders, closure of all non-essential businesses, prohibition of all social
202 gatherings and events (UK Government, 2020a; d), and the first lockdown also included school closures
203 (UK Government, 2020b) (Table 1). The local tier 2 and 3 restrictions in England (Local Covid Alert Levels
204 'High' and 'Very High') allowed for some non-essential businesses to remain open and permitted outdoor
205 socialising in small groups (UK Government, 2020c) (see Table 1 for details). The end date of the first
206 lockdown is complicated, as different restrictions were lifted at different times (Table 2). We used the
207 earliest end date applicable to Teesside to define the final week of the first lockdown (week 23).



209 **Figure 1** - Labelled map of the 29 Teesside postcode districts ("TS" prefixes have been omitted for
210 clarity and colours are purely to aid discrimination between polygons), and maps of the total
211 resident population and proportion of the population within the 10th decile of the Index of Multiple
212 Deprivation (when assessed at the scale of England as a whole) for each Teesside postcode district
213 (Source: Office for National Statistics licensed under the Open Government Licence v.3.0). The north
214 east boundary meets the North Sea, to the south east is a national park, and to the west is
215 farmland.

216 **Table 1** - Summary of the control measures included in each national and local restriction category
217 in England. Business closures during tier 3 varied across England, those shown below were applied
218 to Teesside during 2020.

Included measures	1st Lockdown	2nd Lockdown	Tier 1	Tier 2	Tier 3	Tier 4
Stay at home orders	X	X				X
School closures	X					
Face masks indoors in public spaces		X	X	X	X	X
<i>Business/venue closures:</i>						
Pubs, bars, and restaurants	X	X			X	X
Retail	X	X				X
Personal care	X	X				X
Leisure and entertainment	X	X			X	X
Gyms	X	X				X
Places of worship	X	X				
<i>Prohibition of social gatherings:</i>						
Indoors up to 6 people	X	X		X	X	X
Indoors more than 6 people	X	X	X	X	X	X
Outdoors up to 6 people	X	X				X

219

220 **Table 2** - First and last dates of government control measures applied in Teesside, restaurant
221 subsidy, and school and university terms in Teesside during 2020.

Event	First date	Last date	First week	Last week
National lockdown:	23/03/2020	08/06 - 03/07/2020	13	23-27
Business closures (hospitality, entertainment etc.)	21/03/2020	03/07/2020	12	27
Other non-essential businesses	23/03/2020	15/06/2020	13	25

Teesside school closures	23/03/2020	07-14/06/2020	13	23-24
Restrictions on social gathering	23/03/2020	01/06/2020	13	23
Restaurant subsidy	04/08/2020	26/08/2020	32	35
Local Tier 2 (Teesside)	14/10/2020	04/11/2020	42	44
National lockdown	05/11/2020	01/12/2020	45	48
Local Tier 3 (Teesside)	02/12/2020	30/12/2020	49	53
Local Tier 4 (Teesside)	31/12/2020	--	53	--
Teesside school autumn term dates	01/09/2020	23/10/2020	36	43
	02/11/2020	18/12/2020	45	51
Teesside University term dates	21/09/2020	18/12/2020	39	51

222

223 **Disease mapping**

224 To help us define and visualise the spatial heterogeneity of COVID-19 in Teesside, we used Bayesian
 225 spatial models (Riebler et al., 2016) to assess the area-specific relative risk of a positive test in each
 226 postcode district across the study period. We separately modelled all disease cases (regardless of
 227 lineage), and cases of each of the most common lineages in Teesside that had sufficient data. We used
 228 the most recent version of the Besag, York, Mollie “BYM” model (Besag et al., 1991), the “BYM2” (Riebler
 229 et al., 2016), which is a conditional autoregressive model that adjusts for spatial dependency between
 230 adjacent spatial units, as numbers of cases in one district are likely to be partially dependent on those
 231 arising in neighbouring districts, with which there may be contact leading to enhanced transmission. We
 232 included the expected number of cases for each postcode district (calculated using district population
 233 sizes, total population across all districts, and total cases in all districts) in our models as an offset, which
 234 converts the output to the risk of a positive test in each district relative to the overall risk across all
 235 districts (Blangiardo & Cameletti, 2015). These models were fitted using Integrated Nested Laplace
 236 Approximation via the “INLA” package (version 22.05.07) (Rue et al., 2009) in R version 4.2.2 (R Core
 237 Team, 2022). As the response variables in these models are aggregated counts or rates, we fit the models
 238 with negative binomial error distributions (using log link functions) and penalised complexity priors,
 239 which reduce the chance of overfitting (Riebler et al., 2016). We used the default penalised complexity
 240 priors for the BYM2 model (Riebler et al., 2016) throughout, as a sensitivity analysis using different
 241 hyperparameter values showed no improvement to model fit. Model validation, via PIT (probability
 242 integral transforms) and plotting observed values against a sample generated from the posterior
 243 distribution, demonstrated a poor fit to the data for three of our lineages (B.1.1.309, B.1.1.315, and
 244 B.1.1.37), which have been dropped from the results section of the paper (see section 3.1 in the
 245 supplementary material for model validation and hyperparameter sensitivity analyses). The shapefiles for
 246 the Teesside postcode districts that were used in this analysis (and figures) were downloaded from:
 247 <https://www.opendoorlogistics.com/data/>.

248 **Mixed-effect modelling**

249 We used generalised linear mixed-effect models (GLMMs) to investigate the role of socio-economic
 250 deprivation (proportion of the population in the 10th Decile of IMD), weather (mean weekly temperature

251 and rainfall), UK government interventions (national lockdowns and local tiers), and government
252 restaurant subsidy on the frequency of positive PCR tests recorded each week of 2020 in each postcode
253 district. These models were non-Bayesian and were fitted using maximum likelihood estimation. We
254 separately modelled all disease cases (regardless of lineage), cases of each of the most common lineages
255 in Teesside that had sufficient data, and the total cases of the most common second wave lineages. We
256 included an autoregressive term of order 1 (AR1) for week of year for each postcode district to account
257 for temporal auto-correlation (non-independence) of cases over time within each separate district. We
258 included a random intercept for postcode district to account for repeated measures of postcodes across
259 time and for unmeasured geographical variation that might have influenced the recording of cases. We
260 controlled for population size by including district total population (rescaled to measure population in
261 thousands rather than single people) as a fixed effect. The second-wave lineages model also included the
262 total cases of the most common first wave lineages for each postcode district as an additional fixed
263 effect, which allowed us to investigate the potential for increased immunity between successive waves of
264 the epidemic due to previous infections. We fitted an additional model to the all-case data, including the
265 same fixed effects and the random intercept for postcode, but this model did not include an AR1 term
266 and instead used a random gradient for week for each postcode district (allowing the effect of week on
267 cases to vary by postcode), which allowed us to map and compare the rate of change in cases reported
268 each week across the different postcodes.

269 To account for variation in symptom onset and testing delay after infection, we applied a two-week
270 time lag to all temporal variables (temperature, rainfall, and the government interventions and subsidy).
271 Because we aggregated case numbers and summarised temporal variables by week, a one-week delay
272 could have artificially assumed a greater separation between cases and temporal events than actually
273 happened. Additionally, the sensitivity analyses in Hunter et al. (2021) demonstrated that non-
274 pharmaceutical interventions in the UK did not show an impact on numbers of cases until after 14 days.

275 As our response variable (positive tests) is a count, we fit our models with Poisson and negative
276 binomial distributions (using log link functions) before validating them with the “DHARMA” R package
277 (Hartig, 2022), which uses a simulation approach to create interpretable scaled residuals. We used
278 DHARMA’s test and plotting functions to assess deviations from the expected distribution, dispersion,
279 heteroskedasticity, temporal autocorrelation, and zero-inflation, alongside plots of observed values
280 against those fitted from the models, which demonstrated that Poisson was a better fit for the data in all
281 models, except for the all-cases model fit with a random gradient (for full details and output see section
282 3.2 of the supplementary material). Because it would be reasonable to assume that the number of cases
283 over time would follow a non-linear trajectory, we also fit several alternative model specifications that
284 included week of year as a fixed effect with either a smooth or restricted cubic spline instead of an AR1
285 term, however, these models were a poorer fit for all datasets than the AR1 models (see section 3.2 of
286 the supplementary material). All regression models were fit using the package “glmmTMB” (Brooks et al.,
287 2017) in R version 4.2.2.

288 We chose to retain all variables in the models regardless of AIC or significance as they are all
289 biologically/epidemiologically meaningful. Predictor variables were only removed if they were found to
290 be collinear via variance inflation factor (VIF) (calculated using the “performance” R package (Lüdtke et
291 al., 2021)), whereupon we followed the procedure defined by Zuur et al. (2010) of removing variables
292 sequentially until none of the recalculated VIF values are above 3. We also confirmed variable removal via
293 redundancy analysis and variable clustering (conducted using the “Hmisc” R package (Harrell & Dupont,
294 2021)) (see section 3.2 of supplementary materials for further details, redundancy analysis outputs, and
295 variable clustering plots).

296 Full details of all the model specifications (disease mapping and GLMMs) can be seen in the analysis
297 scripts (<https://doi.org/10.25405/data.ncl.23815077>) and section 2 of the supplementary material.

298

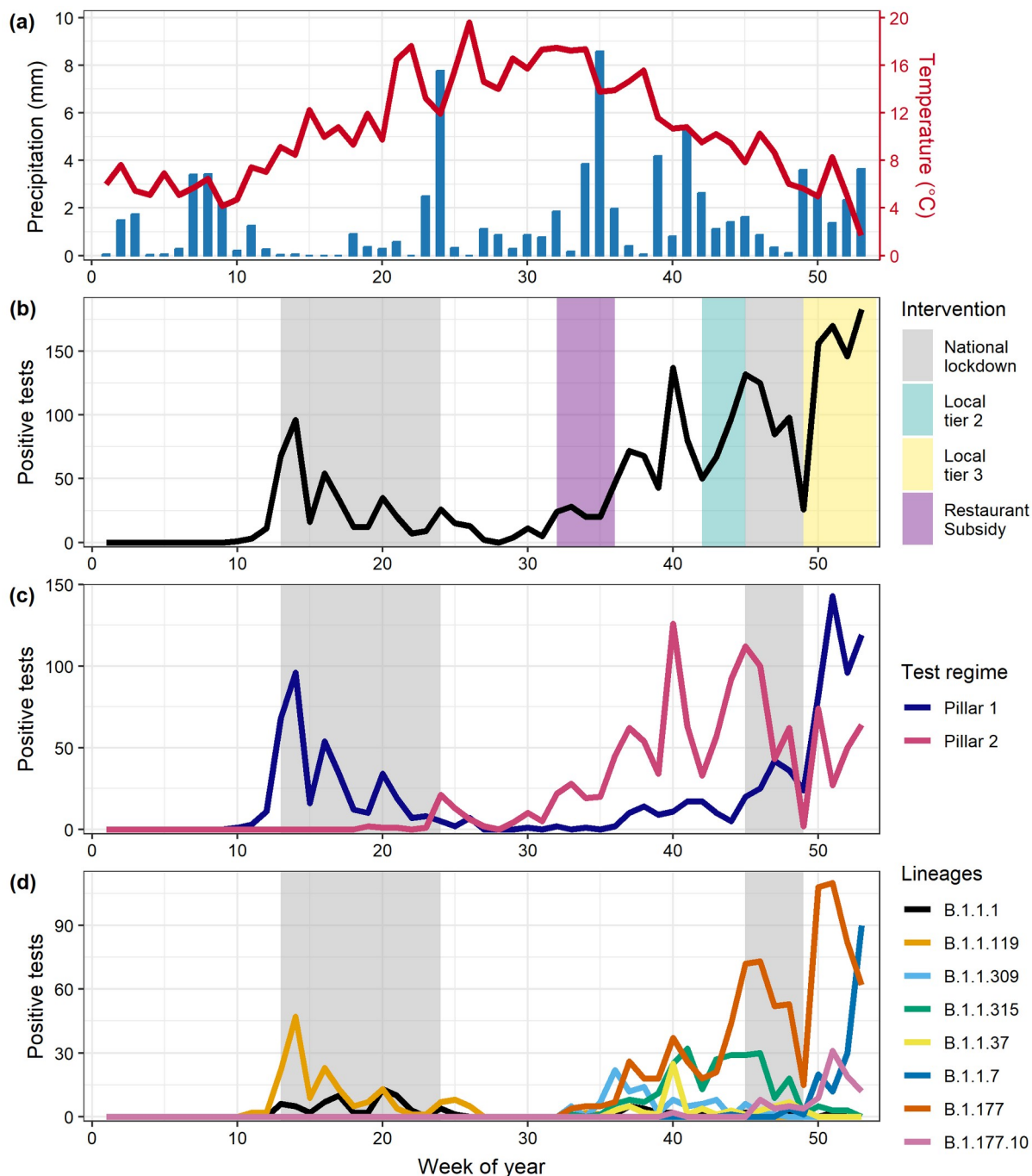
Results

299 Data and trends

300 The Teesside postal area had a population of 599,600 people across the 29 postcode districts, with
301 considerable variation in the proportion of the total population in the 10th IMD decile (Figure 1, Table S1).
302 The populations of urban postcode districts of central Middlesbrough (TS1, TS4 and TS3) all had high
303 proportions of their populations in the 10th decile for IMD, whereas many of the suburban and rural
304 postcode districts had little to none of their population in this decile. There were 2,328 positive COVID-19
305 tests for all lineages of which 1,073 were pillar 1 and 1,255 were pillar 2. Temperature was highest in
306 summer while rainfall was generally lowest in spring and summer, but there were also periods of heavy
307 rain in early and late summer (Figure 2a).

308 The overall temporal trend in positive tests was bimodal with a first wave in spring (cases peaked in
309 week 14, early April 2020) followed by a decline through the summer after introduction of the first
310 lockdown, before the onset of the second wave of the epidemic in the early autumn (week 36) (Figure
311 2b). There was a large spike in cases around week 40 that were mainly detected via pillar 2 community
312 testing (Figure 2c), which coincided with the start of school and university autumn terms in Teesside
313 (Table 2). There was a strong positive correlation between the total number of cases of each lineage that
314 were recorded by the two different pillars ($\rho=0.65$, $S=14017$, $df=60$, $P<0.001$), suggesting that both
315 pillars were reflecting similar patterns of infection across Teesside.

316 Out of 86 distinct lineages recorded in Teesside during 2020, only 8 were recorded more than 60
317 times: B.1.1.1, B.1.1.119, B.1.1.309, B.1.1.315, B.1.1.37, B.1.1.7, B.1.177 and B.1.177.10 (Figure 2d). These
318 8 lineages were recorded elsewhere in the UK before being recorded in Teesside. There were two
319 dominant lineages in the first wave of the epidemic, B.1.1.1 and B.1.1.119, records for which declined to
320 minimal levels during the late spring and summer. Patterns for other lineages were more complex in the
321 second wave. B.1.177 and B.1.1.315 both increased in frequency during weeks 32 to 45 before declining
322 during the second lockdown. However, after the end of this lockdown, B.1.177 increased substantially
323 whilst B.1.1.315 did not. The more transmissible SARS-CoV-2 variant, B.1.1.7 (Alpha variant; VoC
324 202012/1), was first detected in the UK in December 2020 (Public Health England, 2021) and cases
325 increased rapidly in Teesside after the end of the second national lockdown.



326

327

328

329

330

331

332

333

Figure 2 - Trends in weather and positive tests of COVID-19 over the course of 2020, in Teesside. (a) Mean temperature and rainfall per week. (b) Total positive tests per week (across all lineages), coloured areas represent the periods of different interventions: national lockdown, weak local restrictions (Local tier 2), stricter local restrictions (Local tier 3), and the 'Eat out to help out' government subsidy to promote eating within restaurants. (c) Positive tests detected via the two testing regimes per week. (d) Positives tests of the eight most commonly detected lineages in Teesside per week.

334 Disease mapping

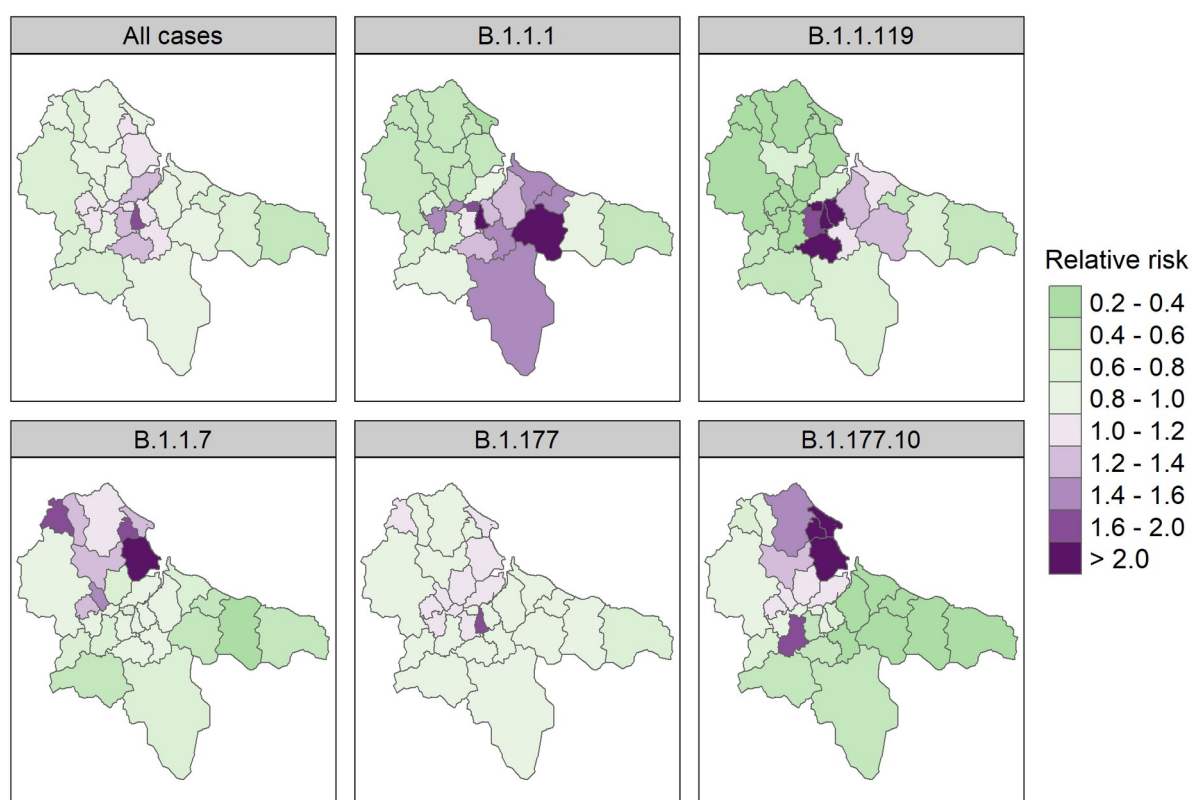
335

336

337

The relative risk of a positive test for COVID-19 in each Teesside postcode varied greatly amongst the lineages and between the two waves of the epidemic (Figure 3). The spatial pattern of risk of a positive test for any lineage was highest in some of the central areas, particularly in central Middlesbrough (40-

338 60% higher in TS4), while the lowest risks were in the more rural eastern and western districts (20-60%
339 lower). The spatial pattern does not follow a clear urban-rural divide however, as some urban and
340 suburban areas had relative risks up to 20% lower than the overall risk across all districts (e.g., Thornaby
341 (TS17), Redcar (TS10), and Eston (TS6)). During the first wave of the pandemic (lineages B.1.1.1 and
342 B.1.1.119), risk was highest in the central areas of Teesside, particularly Middlesbrough (TS4, TS1, TS3,
343 and TS8) and Guisborough (TS14), while northern and western districts had a very low risk. One of the
344 second wave lineages (B.1.177) showed a more homogenous risk pattern, except for a raised risk in
345 central Middlesbrough (TS4), though there is a high degree of uncertainty around this value (see Figures
346 S1 and S2 in supplementary material for exceedance probabilities). The remaining two second wave
347 lineages (B.1.1.7 and B.1.177.10) are those that occurred mainly towards the end of 2020; the spatial risk
348 pattern for these lineages is less uniform and more focussed in northern districts with the highest risks in
349 Hartlepool (TS24, TS25, and TS26), Trimdon (TS29), and Thornaby (TS17), with relative risk increase likely
350 exceeding 50% for Hartlepool (Figures S1, S2).



351

352 **Figure 3** - Area-specific relative risk of a positive test for any SARS-CoV-2 lineage (“All cases”), and 5
353 of the most common lineages, in each Teesside postcode district during 2020 (from the spatial CAR
354 models). Maps for 3 of the lineages are not shown due to poor model fit (B.1.1.309, B.1.1.315, and
355 B.1.1.37). Values are a ratio: green colours indicate a risk of infection that is lower than the overall
356 risk for the entire study area (< 1), while purple colours indicate a higher risk (>1), and colour
357 intensity indicates the strength of this effect. See Figures S1 and S2 in Supplementary Material for
358 corresponding exceedance probabilities.

359 **Mixed-effect modelling**

360 Most of the GLMMs had one fixed effect covariate that was identified as redundant and had a VIF
361 value over 3 (the all-cases, B.1.1.1, and B.1.1.119 models did not), so the models reported here are the
362 simplified ones where these fixed effects have been dropped (Figure 4). See Supplementary Materials for
363 model output from both the full and final (simplified) versions (the coefficients from the full models are

364 accurate in terms of the magnitude and direction of any effects, but the errors are unreliable). This
365 collinearity was between the temporal variables and was most often strongest for the weather variables,
366 though the collinearity was also very strong for the interventions or subsidy where lineages had a very
367 narrow temporal window (e.g. B.1.1.7). The model for lineage B.1.1.309 was refit without the postcode
368 random intercept as it had a variance that was almost 0 and the model showed temporal autocorrelation,
369 which was controlled upon refitting.

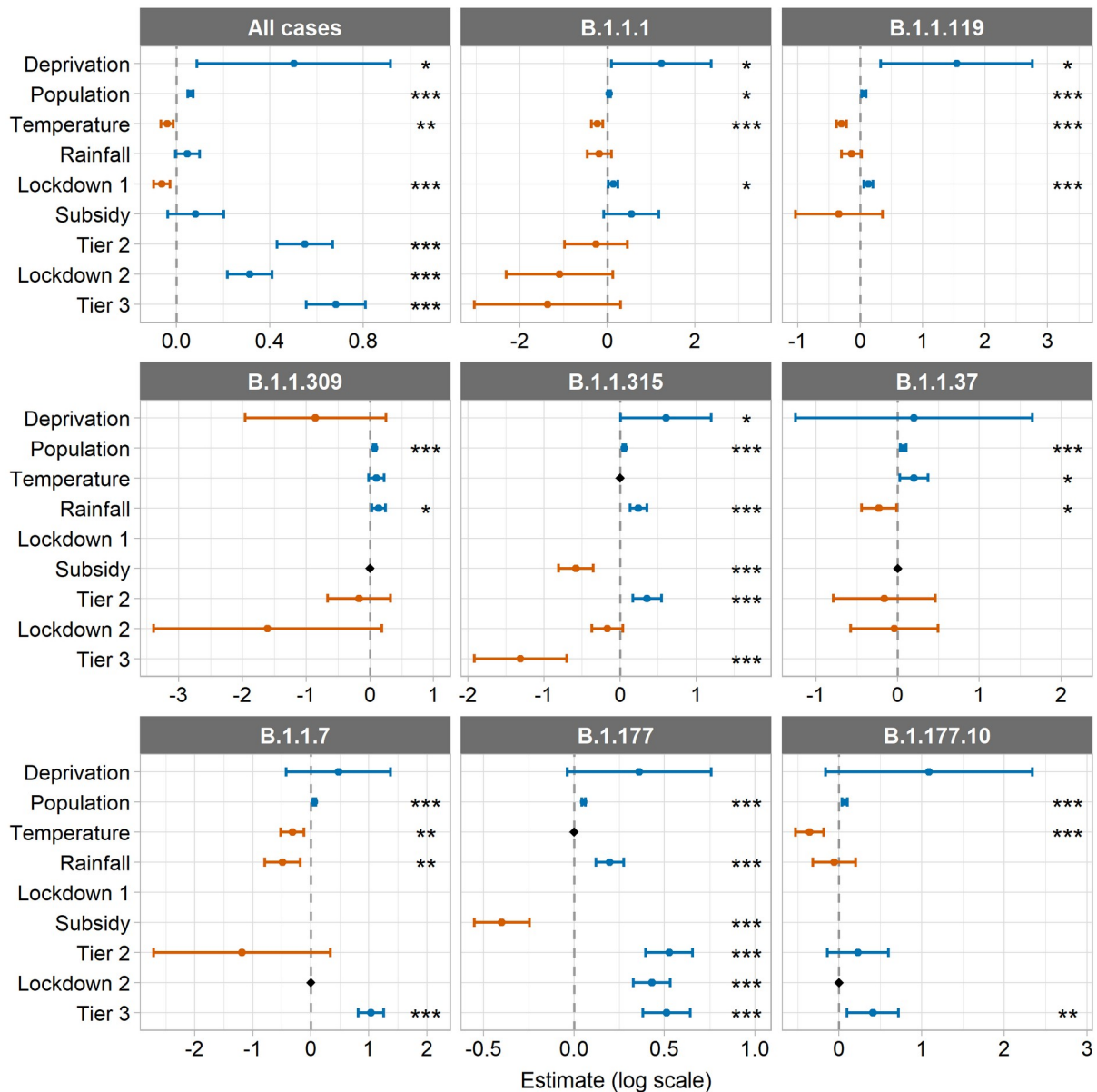
370 There were significant negative relationships between total positive tests of COVID-19 and mean
371 weekly temperature and the first lockdown (Figure 4, Table S3). There were significant positive
372 relationships between cases and total population, socio-economic deprivation (proportion of the
373 population in the most deprived IMD decile), local tier 2, the second national lockdown, and tier 3. Mean
374 weekly rainfall and the restaurant subsidy had no significant effect. The rate of increase in the total
375 number of cases over time relative to the mean, was slower in many of the areas that experienced higher
376 case numbers during the first wave, and faster in many areas that experienced more records during the
377 second wave (Figures 5, 3 and S4, Table S5, see Figure S3 for observed records per week per postcode).

378 The relationships between cases and covariates for the two first wave lineages (B.1.1.1 and B.1.1.119)
379 were similar, with a significant negative relationship for temperature, and significant positive
380 relationships for deprivation, population, and the first lockdown (Figure 4, Table S6). Rainfall, the
381 restaurant subsidy, tier 2, tier 3, and the second lockdown had no effect.

382 The patterns for the second wave lineages are less uniform, the only consistent relationship was a
383 significant positive association with population in all models (Figure 4, Table S6). The only significant
384 association with deprivation was a positive one with cases of B.1.1.315. Temperature had a significant
385 negative relationship with cases of B.1.1.7 and B.1.177.10, and a positive relationship with cases of
386 B.1.1.37. There were significant negative relationships between rainfall and cases of B.1.1.37 and B.1.1.7,
387 and positive relationships with cases of B.1.1.309, B.1.1.315, and B.1.177. Cases were significantly
388 decreased in relation to the restaurant subsidy for B.1.1.315 and B.1.177. There were significant positive
389 relationships between cases and tier 2 for B.1.1.315 and B.1.177, and cases and lockdown 2 for B.1.177.
390 Tier 3 was significantly negatively associated with cases of B.1.1.315, and positively associated with cases
391 of B.1.1.7, B.1.177, and B.1.177.10.

392 Finally, the second-wave lineages model showed no relationship between the total number of cases
393 of the two first wave lineages (B.1.1.1 and B.1.1.119) and the total number of cases of the six second
394 wave lineages (B.1.1.309, B.1.1.315, B.1.1.37, B.1.1.7, B.1.177, and B.1.177.10) (see Table S8 for model
395 output).

396



397

398

399

400

401

402

403

404

405

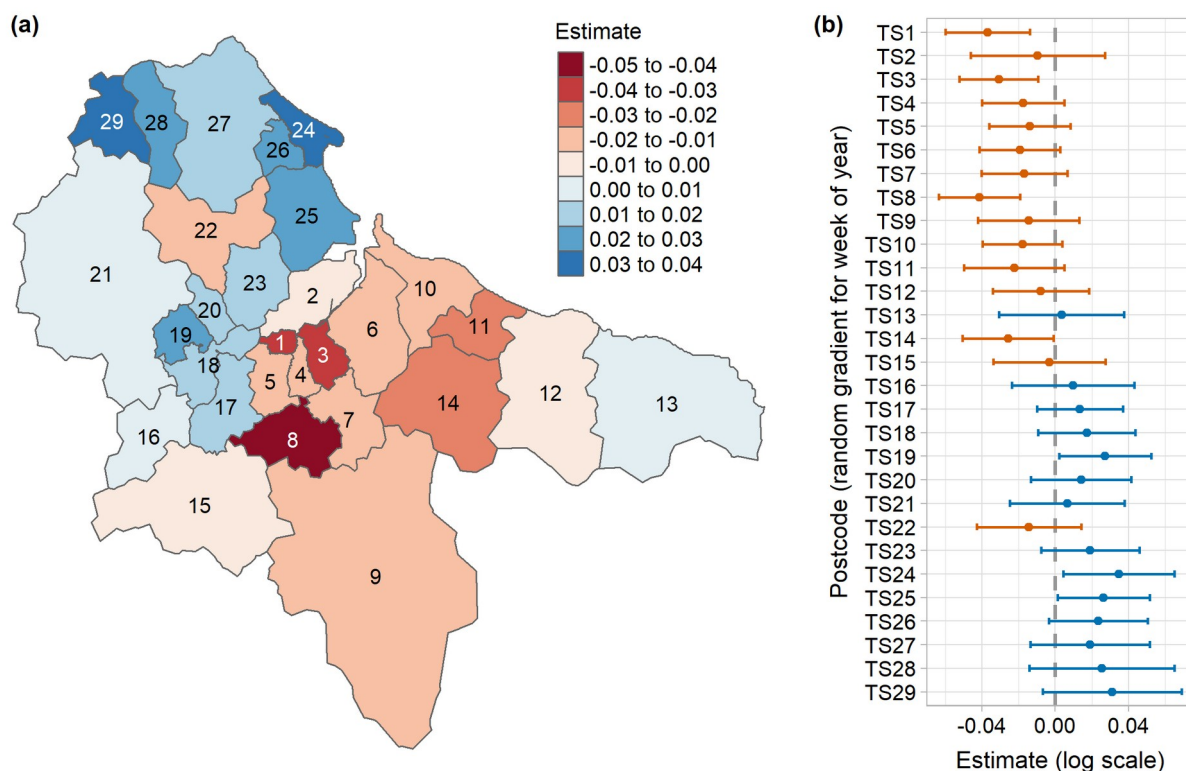
406

407

408

409

Figure 4 - Fixed effects estimates and 95% confidence intervals from the final versions of the GLMMs with an AR1 term for week for each postcode examining all cases and the 8 most common lineages in Teesside (see Tables S3 and S6 for values). All models include a random intercept for postcode, except where the model fitted better without it (B.1.1.309). Black diamonds indicate variables that were dropped from the models due to VIF values > 3 (see Table S7 for summary values from the full models), remaining absent values represent non-overlap between some of the lineages and temporal variables (see Figure 2). Display order of fixed effects is as follows: spatial variables, continuous temporal variables, transient temporal variables (in chronological order of imposition). Estimates are on the original model scale (log). Asterisks indicate significance level: '***' indicates $p \leq 0.001$, '**' indicates $p \leq 0.01$, and '*' indicates $p \leq 0.05$. Note that each panel has a different y axis scale.



410

411 **Figure 5** - Random gradient estimates from the all-cases GLMM that included a random gradient for
 412 week for each postcode district, showing (a) the estimates on a map, and (b) the estimates with
 413 their 95% confidence intervals. Values represent the rate of change in the number of cases over
 414 time relative to the mean, where blue values are higher than the mean and a faster rate of increase
 415 (a steeper and more curved gradient), and red values are lower and a slower rate of increase (a
 416 shallower and less curved gradient) (see Figure S4 for predicted rate of change curves for each
 417 postcode district from the same model). Estimates are on the original model scale (log) (see Table
 418 S5 for full random effect summary values).

419

Discussion

420 Our analyses indicate there was considerable spatial and temporal variation in occurrence of SARS-
 421 CoV-2 in Teesside during 2020 and that the patterns were related to demographic features, weather, and
 422 government interventions. These results must be interpreted with caution due to several limitations.
 423 Firstly, positive test ascertainment differed between the two epidemic waves during 2020. Community
 424 testing (pillar 2) was introduced later on in the first wave and did not become widespread until later in
 425 the year, which means that testing during the first wave will be biased towards severely ill individuals and
 426 healthcare workers. While the positive correlation between the number of pillar 1 vs pillar 2 tests for
 427 each lineage suggests that this bias did not affect the detection of different lineages, it is possible that it
 428 could have contributed to differences in the covariate associations that we found between the two
 429 waves. It is also possible that the timing of and access to tests could have differed between the two
 430 pillars, however, we believe the availability and promotion of local testing facilities and free at-home
 431 postal test kits, and the fact that both pillars included asymptomatic and symptomatic individuals, should
 432 minimise any related bias. Secondly, the resolution of the data aggregation may have been too coarse to
 433 detect some relationships. Aggregation was essential to ensure anonymity of records. However, the
 434 spatial resolution of postcode districts and the temporal resolution of one week, may have been too
 435 coarse to capture the spatial and temporal variation in the underlying epidemiological processes of

436 transmission or other social and environmental drivers. Thirdly, collinearity between temporal variables
437 was present in most of the separate lineage GLMM models. While we were able to assess and correct for
438 this using a systematic approach, our results must be viewed in the context of the variables that were
439 dropped. It is possible that some of the effects we see in our simplified models are actually being driven
440 by those variables that were not included. And finally, many covariates associated with disease
441 transmission, including proximity to infectious individuals and social contacts, could not be measured. We
442 also did not have access to mobility data of a sufficient spatial resolution to incorporate into our models
443 (due to cost). The covariates used in our models were therefore surrogates for the underlying
444 mechanisms associated with disease transmission and spread. However, this is less of an issue in the
445 context of our study, as we are more interested in highlighting the overall impact on cases in Teesside in
446 relation to the local and national restriction policies (and other covariates), rather than the specific
447 mechanisms that may be driving these relationships.

448 The spatial variation in total positive SARS-CoV-2 tests across the Teesside area was influenced by
449 demographic factors, as we found the number of positive tests was increased in postcode districts with a
450 higher population and those with higher levels of socio-economic deprivation. These are logical outcomes
451 as transmission is more likely to occur in more densely-populated areas and amongst people who have
452 higher exposure due to employment and living conditions (Niedzwiedz et al., 2020; Whittle & Diaz-Artilles,
453 2020; McGowan & Bamba, 2022). Our model output maps, when viewed in combination with the
454 demographic information and regional knowledge, did not demonstrate a clear pattern of risk of, or rate
455 of increase in, positive tests in relation to how urban or rural the postcode districts are. Research
456 conducted on pillar 1 testing during the first wave in the East of England region found higher risks of
457 infection in more urban areas (Brainard et al., 2022). Because we did not formally investigate land use in
458 any of our models, we do not know what the true effect was, though we can speculate as to why we did
459 not detect any sort of clear signal. It is possible that the size of our spatial units were too large and
460 heterogenous in terms of their social environments to be able to detect a relationship like that found by
461 Brainard et al. (2022), however, it is also possible that our longer timescale and inclusion of community
462 testing collected a more representative sample of positive tests, or that this relationship does not hold in
463 more urban and deprived areas like Teesside.

464 Our findings indicate that some weather variables affected the total positive tests across Teesside in
465 2020. We found positive tests were reduced by higher temperatures, in accordance with previous
466 research (Ganslmeier et al., 2021; Alaniz et al., 2023; Nottmeyer et al., 2023). This is probably due to both
467 indirect and direct mechanisms, as warmer weather encourages outdoor (rather than indoor) socialising
468 and increased indoor ventilation, while also reducing transmissibility of the virus particles (Ganslmeier et
469 al., 2021). However, we did not find an effect of rainfall on positive tests, and while some research has
470 also found no significant associations (Ganslmeier et al., 2021), other studies have found a relationship
471 (Tan & Schultz, 2022). Evidence from studies examining hourly rainfall and temperature data indicates
472 that the effects of weather variables on positive tests are stronger during periods that facilitate
473 transmission, such as mealtimes and when there are low/no restrictions on movement and socialising
474 (Ganslmeier et al., 2021; Fetzer, 2022). Therefore, a finer temporal resolution than was used in this study
475 is required to clarify the links between weather, transmission, and cases. It is also likely that the temporal
476 resolution we used was too coarse to detect an impact of the government restaurant subsidy on cases, as
477 the effects would have been limited to days when the subsidy applied (Monday-Wednesday) and
478 mealtimes. Other research has found that cases were increased by the subsidy, but this effect was
479 weaker when high rainfall coincided with mealtimes (Fetzer, 2022).

480 The government interventions introduced to manage COVID-19 cases during 2020 had mixed impacts
481 on the total number of positive tests in Teesside. The first lockdown was successful in reducing cases,
482 while all of the later interventions appeared to have the opposite effect. The only difference in

483 restrictions between the two national lockdowns was that the first included school closures, whereas the
484 second did not. A large body of evidence has demonstrated that school closures were one of the most
485 important interventions in controlling COVID-19 (Brauner et al., 2021; Davies et al., 2021; Hunter et al.,
486 2021; Ge et al., 2022; Torres et al., 2022). The length of the second lockdown was also shorter than the
487 first one, though in Teesside it was immediately followed by tier 3 restrictions, which only differed in
488 terms of the reopening of gyms, retail, and personal care non-essential businesses. The benefits of closing
489 such business is unclear, with some studies showing modest or no benefits (Brauner et al., 2021; Hunter
490 et al., 2021), while others show considerable benefits (Sharma et al., 2021), which makes it difficult to
491 infer whether the length of the second lockdown related to its apparent failure. However, it does seem
492 likely that school closures were an important factor of the success of the first lockdown relative to the
493 failure of the second. The apparent positive effect of the second lockdown and the tier 2 and 3
494 restrictions could be due to the timing of imposition coinciding with one or more events that are
495 epidemiologically important, such as the introduction of more transmissible lineages of the virus into the
496 region, like B.1.177 and B.1.1.7 (Volz et al., 2021; Hinch et al., 2022; Panovska-Griffiths et al., 2022); or
497 temporary changes in social behaviour or movement that facilitated transmission, like the reopening of
498 retail businesses during the Christmas season. Other research has also found no effect or positive effects
499 of non-pharmaceutical interventions on case counts, and it has been suggested that this could represent
500 an association with increases in testing capacity or with changes in testing policy (Giudici et al., 2023;
501 Lison et al., 2023). However, this effect will be minimised in our dataset (total sequenced PCR tests
502 rather than total positive PCR and/or antigen tests) by the sequencing capacity of the COG-UK
503 consortium, which did not increase at the same rate as testing capacity in 2020. It is also possible that the
504 difference in effectiveness could reflect differences in exposure between lockdowns due to changes in
505 behaviour or routine, e.g. increased use of public transport during the second wave. People experiencing
506 greater socio-economic deprivation in the UK have been shown to experience increased exposure to high
507 infection risk activities permitted during the lockdowns, and that this varied slightly over time between
508 different lockdowns/restrictions (Beale et al., 2022). Further research is needed to understand the factors
509 affecting lockdown success in different communities, particularly ones with high levels of deprivation,
510 such as Teesside.

511 Our findings suggest that the local tier system of interventions was less effective at reducing cases
512 than a long and strict national lockdown, which has also been found in other studies (Davies et al., 2021;
513 Torres et al., 2022). We also found that the tier restrictions were equally ineffective as the second
514 national lockdown, all of which were applied during the second wave. This suggests that if there are any
515 benefits to applying local-scale interventions in response to local-scale cases (rather than cases on the
516 national scale, which in this context were determined by more populous and distant regions), they are
517 masked by the effects of other factors, such as stringency and duration of restrictions, introduction
518 events, and transmissibility of present lineages. Another possibility is that the tiered restrictions were
519 not followed as rigorously as the national restrictions, either intentionally due to “pandemic fatigue” or
520 accidentally due to poor communication (Smith et al., 2022; Delussu et al., 2022), especially as the tier
521 levels in the UK could change at short notice and were not applied consistently across locations. While
522 the tier levels were consistent within Teesside during their periods of imposition, communication of the
523 restrictions was still unclear and complex as the tier levels were applied slightly differently in different
524 parts of England and the information was usually published in long lists.

525 The analyses of positive tests of the eight most common SARS-CoV-2 lineages in Teesside
526 demonstrated different spatial and temporal relationships between the lineages, which also differed to
527 those of total positive tests, with differences in both magnitude and direction. Some of this disparity
528 could be explained by the relatively small sample sizes of the lineage models; for example, the effect of
529 socio-economic deprivation was significant for three lineages (B.1.1.1, B.1.1.119, B.1.1.315), but the

530 confidence intervals for this variable were very large in all models. It seems likely that most of the
531 differences between the total cases model and the separate lineages models are caused by the restricted
532 spatial or temporal presence of the individual lineages when compared to all cases. For example, positive
533 tests of lineage B.1.1.37 were positively related to temperature, but case numbers were generally very
534 low and the only peak in cases occurred two weeks after a peak in temperature. While it is likely that
535 some of the differences we observed in the spatial and temporal patterns between the different lineages
536 are due to differences in transmissibility, particularly for B.1.1.7 (the alpha variant) (Volz et al., 2021;
537 Hinch et al., 2022; Panovska-Griffiths et al., 2022), differences in the timing, location, and number of
538 introductions are also likely to be a factor (Vöhringer et al., 2021). While the utility of examining covariate
539 relationships for individual lineages over small geographic areas (with low numbers of sequenced tests)
540 may appear to be low, the use of genomic sequencing to track community spread over such local scales
541 holds great potential (du Plessis et al., 2021). Such forensic tracking could be used to further increase
542 epidemiological understanding and perhaps target local interventions more effectively.

543 It has been well documented by large-scale studies that previous infections can confer natural
544 immunity to subsequent infections (Flacco et al., 2022; Hall et al., 2022; Murugesan et al., 2022).
545 Therefore, it is possible that natural immunity could explain some of the different spatial and temporal
546 patterns between lineages in our data, particularly as the relative risk and the rate of increase in cases
547 during the second wave tended to be higher in areas that had low relative risk and case numbers during
548 the first wave. However, when we included the number of cases of first-wave lineages as a fixed effect in
549 a GLMM modelling the number of cases of second-wave lineages, there was no apparent relationship. It
550 seems likely that we were unable to detect a natural immunity effect because of the low numbers of
551 sequenced positive tests in our study. This suggests that natural immunity, and possibly other disease
552 processes, are easier to detect at larger spatial scales and with larger datasets.

553 Our study has demonstrated the effects of weather and government interventions on the number of
554 SARS-CoV-2 positive tests at a sub-regional scale in Teesside, UK. The number of COVID-19 cases was
555 negatively related to temperature and the first national lockdown. There were positive relationships
556 between cases and total population, socio-economic deprivation, the second lockdown, and local tiered
557 restrictions. While further research is needed to investigate the factors affecting lockdown success in
558 different communities, we feel confident to make several recommendations regarding future epidemic
559 policy responses in local/regional contexts, based on both ours and other's findings. Firstly, school
560 closures are one of the most important interventions in controlling transmission and mortality (Brauner
561 et al., 2021; Davies et al., 2021; Hunter et al., 2021; Ge et al., 2022; Torres et al., 2022), therefore school
562 closures should be included in national and local/regional lockdowns. Secondly, interventions applied at
563 the local/regional scale are less effective if they are less strict or applied later (Davies et al., 2021; Torres
564 et al., 2022), therefore all tier levels (not just the highest) should be stringent and they should be
565 imposed early. It is also imperative that local restrictions are communicated clearly and effectively with
566 the public, and that the rules are simple and consistent across areas, so as to facilitate adherence (Smith
567 et al., 2022). Thirdly, transmission at the regional scale is dependent on introductions (da Silva Filipe et
568 al., 2021; du Plessis et al., 2021; Lane et al., 2021; Vöhringer et al., 2021), particularly during periods of
569 low restrictions (Lemey et al., 2021), so long-distance domestic and international travel restrictions
570 should be imposed quickly at the start of an epidemic and the latter maintained. And finally, regional and
571 local transmission is dependent on both the transmissibility, location, and number of introductions of
572 different lineages (da Silva Filipe et al., 2021; du Plessis et al., 2021; Lane et al., 2021; Vöhringer et al.,
573 2021), therefore the possibility of using genomic sequencing to conduct forensic tracking of community
574 spread should be investigated.

575

Acknowledgements

576 The authors thank colleagues within COG-UK and three anonymous reviewers for constructive
577 comments on earlier versions of this manuscript.

578

Data, scripts, code, and supplementary information availability

579 Data, scripts, code, and supplementary information are available online:
580 <https://doi.org/10.25405/data.ncl.23815077>

581

Conflict of interest disclosure

582 The authors declare that they comply with the PCI rule of having no financial conflicts of interest in
583 relation to the content of the article.

584

Funding

585 This research was funded under COG-UK; this is supported by funding from the Medical Research
586 Council (MRC) part of UK Research & Innovation (UKRI), the National Institute of Health Research (NIHR)
587 [grant code: MC_PC_19027], and Genome Research Limited, operating as the Wellcome Sanger Institute.

588

Ethics approval

589 The surveillance activities within which this study was conducted are part of Public Health England's
590 responsibility to monitor COVID-19 during the current pandemic. Public Health England has legal
591 permission, provided by Regulation 3 of The Health Service (Control of Patient Information) Regulations
592 2002 to process confidential patient information under Sections 3(i) a–c, 3(i) d(i and ii), and 3(iii) as part
593 of its outbreak response activities. This study falls within the research activities approved by the Public
594 Health England Research Ethics and Governance of Public Health Practice Group. Informed consent was
595 obtained from all individual participants included in the study. No individual patient data in any form is
596 included in this manuscript.

597

References

- 598 Alaniz AJ, Carvajal MA, Carvajal JG, Vergara PM (2023) Effects of air pollution and weather on the initial
599 COVID-19 outbreaks in United States, Italy, Spain, and China: A comparative study. *Risk Analysis*, **43**,
600 8–18. <https://doi.org/10.1111/risa.14080>
- 601 Beale S, Braithwaite I, Navaratnam AM, Hardelid P, Rodger A, Aryee A, Byrne TE, Fong EWL, Fragaszy E,
602 Geismar C, Kovar J, Nguyen V, Patel P, Shrotri M, Aldridge R, Hayward A (2022) Deprivation and
603 exposure to public activities during the COVID-19 pandemic in England and Wales. *Journal of*
604 *Epidemiology and Community Health*, **76**, 319–326. <https://doi.org/10.1136/jech-2021-217076>
- 605 Besag J, York J, Mollié A (1991) Bayesian image restoration, with two applications in spatial statistics.
606 *Annals of the Institute of Statistical Mathematics*, **43**, 1–20. <https://doi.org/10.1007/BF00116466>
- 607 Blangiardo M, Cameletti M (2015) *Spatial and Spatio-temporal Bayesian Models with R - INLA*. John Wiley
608 & Sons, Chichester, UK.
- 609 Bo Y, Guo C, Lin C, Zeng Y, Li HB, Zhang Y, Hossain MS, Chan JWM, Yeung DW, Kwok KO, Wong SYS, Lau
610 AKH, Lao XQ (2021) Effectiveness of non-pharmaceutical interventions on COVID-19 transmission in

- 611 190 countries from 23 January to 13 April 2020. *International Journal of Infectious Diseases*, **102**, 247–
612 253. <https://doi.org/10.1016/j.ijid.2020.10.066>
- 613 Brainard J, Rushton S, Winters T, Hunter PR (2022) Spatial Risk Factors for Pillar 1 COVID-19 Excess Cases
614 and Mortality in Rural Eastern England, UK. *Risk Analysis*, **42**, 1571–1584.
615 <https://doi.org/10.1111/risa.13835>
- 616 Brauner JM, Mindermann S, Sharma M, Johnston D, Salvatier J, Gavenčiak T, Stephenson AB, Leech G,
617 Altman G, Mikulik V, Norman AJ, Monrad JT, Besiroglu T, Ge H, Hartwick MA, Teh YW, Chindelevitch L,
618 Gal Y, Kulveit J (2021) Inferring the effectiveness of government interventions against COVID-19.
619 *Science*, **371**, eabd9338. <https://doi.org/10.1126/science.abd9338>
- 620 Brooks ME, Kristensen K, Benthem KJ van, Magnusson A, Berg CW, Nielsen A, Skaug HJ, Maechler M,
621 Bolker BM (2017) glmmTMB Balances Speed and Flexibility Among Packages for Zero-inflated
622 Generalized Linear Mixed Modeling. *The R Journal*, **9**, 378–400. <https://doi.org/10.32614/RJ-2017-066>
- 623 Bush J, Moffatt S, Dunn C (2001) ‘Even the birds round here cough’: stigma, air pollution and health in
624 Teesside. *Health & Place*, **7**, 47–56. [https://doi.org/10.1016/S1353-8292\(00\)00037-X](https://doi.org/10.1016/S1353-8292(00)00037-X)
- 625 COVID-19 Genomics UK (COG-UK) Consortium (2020) An integrated national scale SARS-CoV-2 genomic
626 surveillance network. *The Lancet Microbe*, **1**, e99–e100. [https://doi.org/10.1016/S2666-5247\(20\)30054-9](https://doi.org/10.1016/S2666-5247(20)30054-9)
- 627
- 628 Davies NG, Barnard RC, Jarvis CI, Russell TW, Semple MG, Jit M, Edmunds WJ (2021) Association of tiered
629 restrictions and a second lockdown with COVID-19 deaths and hospital admissions in England: a
630 modelling study. *The Lancet Infectious Diseases*, **21**, 482–492. [https://doi.org/10.1016/S1473-3099\(20\)30984-1](https://doi.org/10.1016/S1473-3099(20)30984-1)
- 631
- 632 Delussu F, Tizzoni M, Gauvin L (2022) Evidence of pandemic fatigue associated with stricter tiered COVID-
633 19 restrictions. *PLOS Digital Health*, **1**, e0000035. <https://doi.org/10.1371/journal.pdig.0000035>
- 634 Dept. Health & Social Care (2020) COVID-19 testing data: methodology note.
635 [https://web.archive.org/web/20200905041538/https://www.gov.uk/government/publications/
636 coronavirus-covid-19-testing-data-methodology/covid-19-testing-data-methodology-note](https://web.archive.org/web/20200905041538/https://www.gov.uk/government/publications/coronavirus-covid-19-testing-data-methodology/covid-19-testing-data-methodology-note).
- 637 Fetzer T (2022) Subsidising the spread of COVID-19: Evidence from the UK’S Eat-Out-to-Help-Out
638 Scheme*. *The Economic Journal*, **132**, 1200–1217. <https://doi.org/10.1093/ej/ueab074>
- 639 Flacco ME, Acuti Martellucci C, Baccolini V, De Vito C, Renzi E, Villari P, Manzoli L (2022) Risk of
640 reinfection and disease after SARS-CoV-2 primary infection: Meta-analysis. *European Journal of
641 Clinical Investigation*, **52**, e13845. <https://doi.org/10.1111/eci.13845>
- 642 Ganslmeier M, Furceri D, Ostry JD (2021) The impact of weather on COVID-19 pandemic. *Scientific
643 Reports*, **11**, 22027. <https://doi.org/10.1038/s41598-021-01189-3>
- 644 Gao Y, Ding M, Dong X, Zhang J, Kursat Azkur A, Azkur D, Gan H, Sun Y, Fu W, Li W, Liang H, Cao Y, Yan Q,
645 Cao C, Gao H, Brügggen M-C, van de Veen W, Sokolowska M, Akdis M, Akdis CA (2021) Risk factors for
646 severe and critically ill COVID-19 patients: A review. *Allergy*, **76**, 428–455.
647 <https://doi.org/10.1111/all.14657>
- 648 Ge Y, Zhang W-B, Liu H, Ruktanonchai CW, Hu M, Wu X, Song Y, Ruktanonchai NW, Yan W, Cleary E, Feng
649 L, Li Z, Yang W, Liu M, Tatem AJ, Wang J-F, Lai S (2022) Impacts of worldwide individual non-
650 pharmaceutical interventions on COVID-19 transmission across waves and space. *International
651 Journal of Applied Earth Observation and Geoinformation*, **106**, 102649.
652 <https://doi.org/10.1016/j.jag.2021.102649>
- 653 Goethem NV, Vandromme M, Oyen HV, Haarhuis F, Brondeel R, Catteau L, André E, Cuypers L,
654 Surveillance BCG on C-19 H, Consortium C-19 GB, Blot K, Serrien B (2022) Severity of infection with the
655 SARS-CoV-2 B.1.1.7 lineage among hospitalized COVID-19 patients in Belgium. *PLOS ONE*, **17**,
656 e0269138. <https://doi.org/10.1371/journal.pone.0269138>

- 657 Grubaugh ND, Hanage WP, Rasmussen AL (2020) Making Sense of Mutation: What D614G Means for the
658 COVID-19 Pandemic Remains Unclear. *Cell*, **182**, 794–795. <https://doi.org/10.1016/j.cell.2020.06.040>
- 659 Hall V, Foulkes S, Insalata F, Kirwan P, Saei A, Atti A, Wellington E, Khawam J, Munro K, Cole M,
660 Tranquillini C, Taylor-Kerr A, Hettiarachchi N, Calbraith D, Sajedi N, Milligan I, Themistocleous Y,
661 Corrigan D, Cromey L, Price L, Stewart S, de Lacy E, Norman C, Linley E, Otter AD, Semper A, Hewson J,
662 D’Arcangelo S, Chand M, Brown CS, Brooks T, Islam J, Charlett A, Hopkins S (2022) Protection against
663 SARS-CoV-2 after Covid-19 Vaccination and Previous Infection. *New England Journal of Medicine*, **386**,
664 1207–1220. <https://doi.org/10.1056/NEJMoa2118691>
- 665 Harrel FE, Dupont C (2021) Hmisc: Harrell Miscellaneous. R package version 4.5-0. [https://CRAN.R-](https://CRAN.R-project.org/package=Hmisc)
666 [project.org/package=Hmisc](https://CRAN.R-project.org/package=Hmisc).
- 667 Hartig F (2022) DHARMA: Residual Diagnostics for Hierarchical (Multi-Level / Mixed) Regression Models. R
668 package version 0.4.6. <https://CRAN.R-project.org/package=DHARMA>.
- 669 Hinch R, Panovska-Griffiths J, Probert WJM, Ferretti L, Wymant C, Di Lauro F, Baya N, Ghafari M, Abeler-
670 Dörner L, The COVID-19 Genomics UK (COG-UK) Consortium, Fraser C (2022) Estimating SARS-CoV-2
671 variant fitness and the impact of interventions in England using statistical and geo-spatial agent-based
672 models. *Philosophical Transactions of the Royal Society A: Mathematical, Physical and Engineering*
673 *Sciences*, **380**, 20210304. <https://doi.org/10.1098/rsta.2021.0304>
- 674 Hodcroft EB, Zuber M, Nadeau S, Vaughan TG, Crawford KHD, Althaus CL, Reichmuth ML, Bowen JE, Walls
675 AC, Corti D, Bloom JD, Veesler D, Mateo D, Hernando A, Comas I, González-Candelas F, Stadler T,
676 Neher RA (2021) Spread of a SARS-CoV-2 variant through Europe in the summer of 2020. *Nature*, **595**,
677 707–712. <https://doi.org/10.1038/s41586-021-03677-y>
- 678 Holt H, Talaei M, Greenig M, Zenner D, Symons J, Relton C, Young KS, Davies MR, Thompson KN, Ashman
679 J, Rajpoot SS, Kayyale AA, Rifai SE, Lloyd PJ, Jolliffe D, Timmis O, Finer S, Iliodromiti S, Miners A,
680 Hopkinson NS, Alam B, Lloyd-Jones G, Dietrich T, Chapple I, Pfeffer PE, McCoy D, Davies G, Lyons RA,
681 Griffiths C, Kee F, Sheikh A, Breen G, Shaheen SO, Martineau AR (2022) Risk factors for developing
682 COVID-19: a population-based longitudinal study (COVIDENCE UK). *Thorax*, **77**, 900–912.
683 <https://doi.org/10.1136/thoraxjnl-2021-217487>
- 684 Hunter PR, Colón-González FJ, Brainard J, Rushton S (2021) Impact of non-pharmaceutical interventions
685 against COVID-19 in Europe in 2020: a quasi-experimental non-equivalent group and time series
686 design study. *Eurosurveillance*, **26**, 2001401. [https://doi.org/10.2807/1560-](https://doi.org/10.2807/1560-7917.ES.2021.26.28.2001401)
687 [7917.ES.2021.26.28.2001401](https://doi.org/10.2807/1560-7917.ES.2021.26.28.2001401)
- 688 Islam N, Shkolnikov VM, Acosta RJ, Klimkin I, Kawachi I, Irizarry RA, Alicandro G, Khunti K, Yates T, Jdanov
689 DA, White M, Lewington S, Lacey B (2021) Excess deaths associated with covid-19 pandemic in 2020:
690 age and sex disaggregated time series analysis in 29 high income countries. *BMJ*, **373**, n1137.
691 <https://doi.org/10.1136/bmj.n1137>
- 692 Lane CR, Sherry NL, Porter AF, Duchene S, Horan K, Andersson P, Wilmot M, Turner A, Dougall S, Johnson
693 SA, Sait M, Gonçalves da Silva A, Ballard SA, Hoang T, Stinear TP, Caly L, Sintchenko V, Graham R,
694 McMahon J, Smith D, Leong LE, Meumann EM, Cooley L, Schwessinger B, Rawlinson W, van Hal SJ,
695 Stephens N, Catton M, Looker C, Crouch S, Sutton B, Alpren C, Williamson DA, Seemann T, Howden BP
696 (2021) Genomics-informed responses in the elimination of COVID-19 in Victoria, Australia: an
697 observational, genomic epidemiological study. *The Lancet Public Health*, **6**, e547–e556.
698 [https://doi.org/10.1016/S2468-2667\(21\)00133-X](https://doi.org/10.1016/S2468-2667(21)00133-X)
- 699 Laydon DJ, Mishra S, Hinsley WR, Samartsidis P, Flaxman S, Gandy A, Ferguson NM, Bhatt S (2021)
700 Modelling the impact of the tier system on SARS-CoV-2 transmission in the UK between the first and
701 second national lockdowns. *BMJ Open*, **11**, e050346. <https://doi.org/10.1136/bmjopen-2021-050346>
- 702 Lemey P, Ruktanonchai N, Hong SL, Colizza V, Poletto C, Van den Broeck F, Gill MS, Ji X, Lévassieur A, Oude
703 Munnink BB, Koopmans M, Sadilek A, Lai S, Tatem AJ, Baele G, Suchard MA, Dellicour S (2021)

- 704 Untangling introductions and persistence in COVID-19 resurgence in Europe. *Nature*, **595**, 713–717.
705 <https://doi.org/10.1038/s41586-021-03754-2>
- 706 Lüdecke D, Ben-Shachar MS, Patil I, Waggoner P, Makowski D (2021) performance: An R Package for
707 Assessment, Comparison and Testing of Statistical Models. *Journal of Open Source Software*, **6**, 3139.
708 <https://doi.org/10.21105/joss.03139>
- 709 McGowan VJ, Bambra C (2022) COVID-19 mortality and deprivation: pandemic, syndemic, and endemic
710 health inequalities. *The Lancet Public Health*, **7**, e966–e975. [https://doi.org/10.1016/S2468-
711 2667\(22\)00223-7](https://doi.org/10.1016/S2468-2667(22)00223-7)
- 712 Mendez-Brito A, El Bcheraoui C, Pozo-Martin F (2021) Systematic review of empirical studies comparing
713 the effectiveness of non-pharmaceutical interventions against COVID-19. *Journal of Infection*, **83**, 281–
714 293. <https://doi.org/10.1016/j.jinf.2021.06.018>
- 715 Mounier-Jack S, Paterson P, Bell S, Letley L, Kasstan B, Chantler T (2023) Covid-19 vaccine roll-out in
716 England: A qualitative evaluation. *PLOS ONE*, **18**, e0286529.
717 <https://doi.org/10.1371/journal.pone.0286529>
- 718 Murugesan M, Mathews P, Paul H, Karthik R, Mammen JJ, Rupali P (2022) Protective effect conferred by
719 prior infection and vaccination on COVID-19 in a healthcare worker cohort in South India. *PLOS ONE*,
720 **17**, e0268797. <https://doi.org/10.1371/journal.pone.0268797>
- 721 Niedzwiedz CL, O'Donnell CA, Jani BD, Demou E, Ho FK, Celis-Morales C, Nicholl BI, Mair FS, Welsh P,
722 Sattar N, Pell JP, Katikireddi SV (2020) Ethnic and socioeconomic differences in SARS-CoV-2 infection:
723 prospective cohort study using UK Biobank. *BMC Medicine*, **18**, 160. [https://doi.org/10.1186/s12916-
724 020-01640-8](https://doi.org/10.1186/s12916-020-01640-8)
- 725 Nottmeyer L, Armstrong B, Lowe R, Abbott S, Meakin S, O'Reilly KM, von Borries R, Schneider R, Royé D,
726 Hashizume M, Pascal M, Tobias A, Vicedo-Cabrera AM, Lavigne E, Correa PM, Ortega NV, Kynčl J,
727 Urban A, Orru H, Rytí N, Jaakkola J, Dallavalle M, Schneider A, Honda Y, Ng CFS, Alahmad B, Carrasco-
728 Escobar G, Holobâc IH, Kim H, Lee W, Íñiguez C, Bell ML, Zanobetti A, Schwartz J, Scovronick N, Coêlho
729 M de SZS, Saldiva PHN, Diaz MH, Gasparrini A, Sera F (2023) The association of COVID-19 incidence
730 with temperature, humidity, and UV radiation – A global multi-city analysis. *Science of The Total
731 Environment*, **854**, 158636. <https://doi.org/10.1016/j.scitotenv.2022.158636>
- 732 Panovska-Griffiths J, Swallow B, Hinch R, Cohen J, Rosenfeld K, Stuart RM, Ferretti L, Di Lauro F, Wymant
733 C, Izzo A, Waites W, Viner R, Bonell C, Fraser C, Klein D, Kerr CC, The COVID-19 Genomics UK (COG-UK)
734 Consortium (2022) Statistical and agent-based modelling of the transmissibility of different SARS-CoV-
735 2 variants in England and impact of different interventions. *Philosophical Transactions of the Royal
736 Society A: Mathematical, Physical and Engineering Sciences*, **380**, 20210315.
737 <https://doi.org/10.1098/rsta.2021.0315>
- 738 du Plessis L, McCrone JT, Zarebski AE, Hill V, Ruis C, Gutierrez B, Raghwani J, Ashworth J, Colquhoun R,
739 Connor TR, Faria NR, Jackson B, Loman NJ, O'Toole Á, Nicholls SM, Parag KV, Scher E, Vasylyeva TI,
740 Volz EM, Watts A, Bogoch II, Khan K, COVID-19 Genomics UK (COG-UK) Consortium, Aanensen DM,
741 Kraemer MUG, Rambaut A, Pybus OG (2021) Establishment and lineage dynamics of the SARS-CoV-2
742 epidemic in the UK. *Science*, **371**, 708–712. <https://doi.org/10.1126/science.abf2946>
- 743 Pozo-Martin F, Weishaar H, Cristea F, Hanefeld J, Bahr T, Schaade L, El Bcheraoui C (2021) The impact of
744 non-pharmaceutical interventions on COVID-19 epidemic growth in the 37 OECD member states.
745 *European Journal of Epidemiology*, **36**, 629–640. <https://doi.org/10.1007/s10654-021-00766-0>
- 746 Public Health England (2021) *Variant Of Concern 202012/01: Technical Briefing 2. Investigation of novel
747 SARS-CoV-2 variant.*

- 748 https://web.archive.org/web/20210210034324/https://assets.publishing.service.gov.uk/government/uploads/system/uploads/attachment_data/file/959361/Technical_Briefing_VOC202012-2_Briefing_2.pdf.
- 749
- 750
- 751 R Core Team (2022) R: A language and environment for statistical computing. R Foundation for Statistical
752 Computing, Vienna, Austria. <http://www.R-project.org/>.
- 753 Riebler A, Sørbye SH, Simpson D, Rue H (2016) An intuitive Bayesian spatial model for disease mapping
754 that accounts for scaling. *Statistical Methods in Medical Research*, **25**, 1145–1165.
755 <https://doi.org/10.1177/0962280216660421>
- 756 Rue H, Martino S, Chopin N (2009) Approximate Bayesian inference for latent Gaussian models by using
757 integrated nested Laplace approximations. *Journal of the Royal Statistical Society: Series B (Statistical
758 Methodology)*, **71**, 319–392. <https://doi.org/10.1111/j.1467-9868.2008.00700.x>
- 759 Sharma M, Mindermann S, Rogers-Smith C, Leech G, Snodin B, Ahuja J, Sandbrink JB, Monrad JT, Altman
760 G, Dhaliwal G, Finnveden L, Norman AJ, Oehm SB, Sandkühler JF, Aitchison L, Gavenčiak T, Mellan T,
761 Kulveit J, Chindelevitch L, Flaxman S, Gal Y, Mishra S, Bhatt S, Brauner JM (2021) Understanding the
762 effectiveness of government interventions against the resurgence of COVID-19 in Europe. *Nature
763 Communications*, **12**, 5820. <https://doi.org/10.1038/s41467-021-26013-4>
- 764 Sievers C, Zacher B, Ullrich A, Huska M, Fuchs S, Buda S, Haas W, Diercke M, Heiden M an der, Kröger S
765 (2022) SARS-CoV-2 Omicron variants BA.1 and BA.2 both show similarly reduced disease severity of
766 COVID-19 compared to Delta, Germany, 2021 to 2022. *Eurosurveillance*, **27**, 2200396.
767 <https://doi.org/10.2807/1560-7917.ES.2022.27.22.2200396>
- 768 da Silva Filipe A, Shepherd JG, Williams T, Hughes J, Aranday-Cortes E, Asamaphan P, Ashraf S, Balcazar C,
769 Bruncker K, Campbell A, Carmichael S, Davis C, Dewar R, Gallagher MD, Gunson R, Hill V, Ho A, Jackson
770 B, James E, Jesudason N, Johnson N, McWilliam Leitch EC, Li K, MacLean A, Mair D, McAllister DA,
771 McCrone JT, McDonald SE, McHugh MP, Morris AK, Nichols J, Niebel M, Nomikou K, Orton RJ, O’Toole
772 Á, Palmarini M, Parcell BJ, Parr YA, Rambaut A, Rooke S, Shaaban S, Shah R, Singer JB, Smollett K,
773 Starinskij I, Tong L, Sreenu VB, Wastnedge E, Holden MTG, Robertson DL, Templeton K, Thomson EC
774 (2021) Genomic epidemiology reveals multiple introductions of SARS-CoV-2 from mainland Europe
775 into Scotland. *Nature Microbiology*, **6**, 112–122. <https://doi.org/10.1038/s41564-020-00838-z>
- 776 Smallman-Raynor MR, Cliff AD, The COVID-19 Genomics UK (COG-UK) Consortium (2022) Spatial growth
777 rate of emerging SARS-CoV-2 lineages in England, September 2020–December 2021. *Epidemiology &
778 Infection*, **150**, e145. <https://doi.org/10.1017/S0950268822001285>
- 779 Smith LE, Potts HWW, Amlôt R, Fear NT, Michie S, Rubin GJ (2022) Tiered restrictions for COVID-19 in
780 England: knowledge, motivation and self-reported behaviour. *Public Health*, **204**, 33–39.
781 <https://doi.org/10.1016/j.puhe.2021.12.016>
- 782 Tan L, Schultz DM (2022) How Is COVID-19 Affected by Weather? Metaregression of 158 Studies and
783 Recommendations for Best Practices in Future Research. *Weather, Climate, and Society*, **14**, 237–255.
784 <https://doi.org/10.1175/WCAS-D-21-0132.1>
- 785 Torres AR, Rodrigues AP, Sousa-Uva M, Kislava I, Silva S, Antunes L, Dias C, Nunes B (2022) Impact of
786 stringent non-pharmaceutical interventions applied during the second and third COVID-19 epidemic
787 waves in Portugal, 9 November 2020 to 10 February 2021: an ecological study. *Eurosurveillance*, **27**,
788 2100497. <https://doi.org/10.2807/1560-7917.ES.2022.27.23.2100497>
- 789 UK Government (2019) English indices of deprivation 2019.
790 <https://www.gov.uk/government/statistics/english-indices-of-deprivation-2019>.
- 791 UK Government (2020a) Prime Minister’s statement on coronavirus (COVID-19): 23 March 2020.
792 [https://web.archive.org/web/20200325010057/https://www.gov.uk/government/speeches/pm-
793 address-to-the-nation-on-coronavirus-23-march-2020](https://web.archive.org/web/20200325010057/https://www.gov.uk/government/speeches/pm-address-to-the-nation-on-coronavirus-23-march-2020).

- 794 UK Government (2020b) Prime Minister's statement on coronavirus (COVID-19): 22 March 2020.
795 [https://web.archive.org/web/20200324014333/https://www.gov.uk/government/speeches/pm-](https://web.archive.org/web/20200324014333/https://www.gov.uk/government/speeches/pm-statement-on-coronavirus-22-march-2020)
796 [statement-on-coronavirus-22-march-2020](https://web.archive.org/web/20200324014333/https://www.gov.uk/government/speeches/pm-statement-on-coronavirus-22-march-2020).
- 797 UK Government (2020c) Local COVID alert levels: what you need to know.
798 [https://web.archive.org/web/20201014194215/https://www.gov.uk/guidance/local-covid-alert-](https://web.archive.org/web/20201014194215/https://www.gov.uk/guidance/local-covid-alert-levels-what-you-need-to-know#history)
799 [levels-what-you-need-to-know#history](https://web.archive.org/web/20201014194215/https://www.gov.uk/guidance/local-covid-alert-levels-what-you-need-to-know#history).
- 800 UK Government (2020d) New National Restrictions from 5 November.
801 [https://web.archive.org/web/20201105234705/https://www.gov.uk/guidance/new-national-](https://web.archive.org/web/20201105234705/https://www.gov.uk/guidance/new-national-restrictions-from-5-november)
802 [restrictions-from-5-november](https://web.archive.org/web/20201105234705/https://www.gov.uk/guidance/new-national-restrictions-from-5-november).
- 803 UK Government (2021) Prime Minister's address to the nation: 4 January 2021.
804 [https://web.archive.org/web/20210105084446/https://www.gov.uk/government/speeches/prime-](https://web.archive.org/web/20210105084446/https://www.gov.uk/government/speeches/prime-ministers-address-to-the-nation-4-january-2021)
805 [ministers-address-to-the-nation-4-january-2021](https://web.archive.org/web/20210105084446/https://www.gov.uk/government/speeches/prime-ministers-address-to-the-nation-4-january-2021).
- 806 UK Health Security Agency (2023) PCR testing for SARS-CoV-2 in the UK during the COVID-19 pandemic.
807 [https://www.gov.uk/government/publications/pcr-testing-for-sars-cov-2-during-the-covid-19-](https://www.gov.uk/government/publications/pcr-testing-for-sars-cov-2-during-the-covid-19-pandemic)
808 [pandemic](https://www.gov.uk/government/publications/pcr-testing-for-sars-cov-2-during-the-covid-19-pandemic).
- 809 Vöhringer HS, Sanderson T, Sinnott M, De Maio N, Nguyen T, Goater R, Schwach F, Harrison I, Hellewell J,
810 Ariani CV, Gonçalves S, Jackson DK, Johnston I, Jung AW, Saint C, Sillitoe J, Suciú M, Goldman N,
811 Panovska-Griffiths J, Birney E, Volz E, Funk S, Kwiatkowski D, Chand M, Martincorena I, Barrett JC,
812 Gerstung M (2021) Genomic reconstruction of the SARS-CoV-2 epidemic in England. *Nature*, **600**, 506–
813 511. <https://doi.org/10.1038/s41586-021-04069-y>
- 814 Volz E, Mishra S, Chand M, Barrett JC, Johnson R, Geidelberg L, Hinsley WR, Laydon DJ, Dabrera G,
815 O'Toole Á, Amato R, Ragonnet-Cronin M, Harrison I, Jackson B, Ariani CV, Boyd O, Loman NJ, McCrone
816 JT, Gonçalves S, Jorgensen D, Myers R, Hill V, Jackson DK, Gaythorpe K, Groves N, Sillitoe J,
817 Kwiatkowski DP, Flaxman S, Ratmann O, Bhatt S, Hopkins S, Gandy A, Rambaut A, Ferguson NM (2021)
818 Assessing transmissibility of SARS-CoV-2 lineage B.1.1.7 in England. *Nature*, **593**, 266–269.
819 <https://doi.org/10.1038/s41586-021-03470-x>
- 820 Whittle RS, Diaz-Artiles A (2020) An ecological study of socioeconomic predictors in detection of COVID-
821 19 cases across neighborhoods in New York City. *BMC Medicine*, **18**, 271.
822 <https://doi.org/10.1186/s12916-020-01731-6>
- 823 Zuur AF, Ieno EN, Elphick CS (2010) A protocol for data exploration to avoid common statistical problems.
824 *Methods in Ecology and Evolution*, **1**, 3–14. <https://doi.org/10.1111/j.2041-210X.2009.00001.x>