

Spatial and temporal epidemiology of SARS-CoV-2 virus lineages in Teesside, UK, in 2020: effects of socio-economic deprivation, weather, and lockdown on lineage dynamics

Moss, E.D.¹, Rushton, S.P.², Baker, P.³, Bashton, M.⁴, Crown, M.R.⁴, dos Santos, R.N.⁵, Nelson, A.⁵, O'Brien, S.J.², Richards, Z.⁵, Sanderson, R.A.^{2*}, Yew, W.C.⁵, Young, G.R.⁴, McCann, C.M.⁴ and Smith, D.L.^{4**}

¹Population Health Sciences Institute, Newcastle University – Newcastle upon Tyne, UK

²School of Natural and Environmental Sciences, Newcastle University – Newcastle upon Tyne, UK

³South Tees Hospitals NHS Foundation Trust – Newcastle upon Tyne, UK

⁴Hub for Biotechnology in the Built Environment, Northumbria University – Newcastle upon Tyne, UK

⁵Department of Applied Sciences, Northumbria University – Newcastle upon Tyne, UK

*Corresponding author

Correspondence: roy.sanderson@newcastle.ac.uk

**On behalf of the COVID-19 Genomics UK (COG-UK) consortium. See Supplementary Material for full list of COVID-19 Genomics UK Consortium names and affiliations.

ABSTRACT

Background: SARS-CoV-2 emerged in the UK in January 2020. The UK government introduced control measures including national ‘lockdowns’ and local ‘tiers’ in England to control virus transmission. As the outbreak continued, new variants were detected through two national monitoring programmes that conducted genomic sequencing. This study aimed to determine the effects of weather, demographic features, and national and local COVID-19 restrictions on positive PCR tests at a sub-regional scale.

Methods: We examined the spatial and temporal patterns of COVID-19 in the Teesside sub-region of the UK, from January to December 2020, capturing the first two waves of the epidemic. We used a combination of disease mapping and mixed-effect modelling to analyse the total positive tests, and those of the eight most common virus lineages, in response to potential infection risk factors: socio-economic deprivation, population size, temperature, rainfall, government interventions, and a government restaurant subsidy (“Eat Out to Help Out”).

Results: Total positive tests of SARS-CoV-2 were decreased by temperature and the first national lockdown (the only one to include school closures), while deprivation, population, the socio-economic deprivation, and the local tiered interventions were associated with

43 increased cases. The restaurant subsidy and rainfall had no apparent effect. The relationships
44 between positive tests and covariates varied greatly between lineages, likely due to the
45 strong heterogeneity in their spatial and temporal distributions. Cases during the second
46 wave appeared to be higher in areas that recorded fewer first-wave cases, however, an
47 additional model showed the number of first-wave cases was not predictive of second-wave
48 cases.

49 **Discussion:** National and local government interventions appeared to be ineffective at the
50 sub-regional level if they did not include school closures. Examination of viral lineages at the
51 sub-regional scale was less useful in terms of investigating covariate associations but may be
52 more useful for tracking spread within communities. Our study highlights the importance of
53 understanding the effects of government interventions in local and regional contexts, and the
54 importance of applying local restrictions appropriately within such settings.

55
56 **Keywords:** COVID-19, variant, autoregressive model, non-pharmaceutical interventions, local
57 restrictions

58
59

60

61

Introduction

62 It is widely understood that many factors can affect COVID-19 transmission via social and/or
63 epidemiological mechanisms, including weather, lineage of SARS-CoV-2 (the virus causing COVID-19), mask
64 wearing, and government control measures (non-pharmaceutical interventions) that limit social contact
65 (Bo et al., 2021; Volz et al., 2021; Ganslmeier et al., 2021; Ge et al., 2022). The risk of contracting COVID-
66 19 can also be affected by demographic factors such as socio-economic deprivation and race (Whittle &
67 Diaz-Artiles, 2020; Brainard et al., 2022; Holt et al., 2022). However, these relationships are complex and
68 there is considerable variation in the observed impact of these factors between different countries, at
69 national vs. regional scales, and during different waves of the pandemic (Gao et al., 2021; Bo et al., 2021;
70 Hunter et al., 2021; Ganslmeier et al., 2021; Brainard et al., 2022; Ge et al., 2022). It is imperative that these
71 relationships are better understood to improve future pandemic/epidemic responses, especially in
72 countries like the United Kingdom, which experienced high case numbers and excess deaths relative to its
73 neighbours (Islam et al., 2021; Hunter et al., 2021). While there is evidence that strict national restrictions
74 reduced cases and mortality on a national-scale in the UK (Hunter et al., 2021; Sharma et al., 2021), there
75 has been very little evaluation at local or regional scales or in socio-economically deprived populations.

76 Government interventions (national lockdowns) introduced during the first wave of the pandemic in
77 the UK were successful in reducing cases, which was also seen in other countries, with school closures and
78 measures that reduce social gatherings proving the most effective (Brauner et al., 2021; Hunter et al., 2021;
79 Mendez-Brito et al., 2021; Ge et al., 2022). However, the picture is less clear for later waves of the
80 pandemic, as the effectiveness of control measures changed and as countries diverged in terms of both
81 the implementation of interventions and patterns of cases (Pozo-Martin et al., 2021; Mendez-Brito et al.,
82 2021; Ge et al., 2022). The UK government introduced a heterogeneous “tier” system of restrictions in
83 England during the second wave, which were applied on local scales and were intended to be more
84 responsive and appropriate to the local disease context (UK Government, 2020c). While analysis of the tier
85 system across the entirety of England has revealed the more stringent tiers to be more effective than the
86 less stringent ones (Davies et al., 2021; Laydon et al., 2021), there has been very little consideration of
87 these tiers, or comparison with the national-level restrictions, within their specific geographic and
88 community contexts.

89 The relationship between socio-economic deprivation and COVID-19 mortality has been well-
90 documented, with a majority of studies demonstrating increased mortality in areas of high deprivation,
91 including in the UK (Brainard et al., 2022; McGowan & Bambra, 2022). This is due to a combination of
92 underlying factors that can be summarised as unequal exposure due to employment and living conditions
93 and unequal vulnerability due to pre-existing health conditions (McGowan & Bambra, 2022). However, the
94 relationship between deprivation and COVID-19 infection is more complicated and less clear; the UK
95 context is typical of the broader picture with some studies finding an increase in infections linked to higher
96 deprivation while others find the opposite or no relationship (Niedzwiedz et al., 2020; Brainard et al., 2022;
97 McGowan & Bambra, 2022).

98 The relationship between COVID-19 infection and weather is also complex. Higher temperatures have
99 been associated with a reduction in cases in many countries including the UK (Ganslmeier et al., 2021;
100 Alaniz et al., 2023; Nottmeyer et al., 2023), though a minority of studies have reported a positive effect
101 (Tan & Schultz, 2022). Increased rainfall effects are more uncertain due to less research focus, with a meta-
102 analysis finding evidence of increased infections (Tan & Schultz, 2022), while other research detected no
103 relationship (Ganslmeier et al., 2021). The impacts of weather on COVID-19 infections are complicated by
104 the interaction between several mechanisms. Weather can affect transmission directly, e.g. increased
105 temperatures reduce the viability of the virus particles (Ganslmeier et al., 2021), and also indirectly via
106 social behaviours, e.g. colder temperatures or higher rainfall could discourage outdoor socialising and
107 reduce transmission, or encourage indoor socialising and increase transmission. Several studies have also
108 shown that the presence and strength of these indirect effects is mediated by other factors, such as how
109 closely the timing of weather patterns and events coincides with mealtimes and the presence/absence of
110 government control measures (Ganslmeier et al., 2021; Fetzer, 2022). This is particularly relevant in
111 England, where the government introduced a subsidy that encouraged people to eat in restaurants during
112 August 2020 (Fetzer, 2022).

113 Previous research has demonstrated that transmissibility of COVID-19 varies greatly between different
114 lineages of the SARS-CoV-2 virus, which can explain how some lineages become dominant at certain points
115 in time (Volz et al., 2021; Panovska-Griffiths et al., 2022). For example, lineage B.1.1.7 (the Alpha variant)
116 has been estimated to be between 20-100% more transmissible than the wild type (estimates vary by
117 study), which likely explains how this lineage became dominant across the UK in autumn/winter 2020 (Volz
118 et al., 2021; Hinch et al., 2022; Panovska-Griffiths et al., 2022). However, there are also examples of
119 lineages that became dominant despite no, or only a small, increase in transmissibility, like that of lineage
120 B.1.177 during autumn 2020 in the UK (Hodcroft et al., 2021; Vöhringer et al., 2021; Hinch et al., 2022).
121 Establishment of a lineage is subject to epidemiological factors as well as transmissibility, such as the
122 number of introductions (Grubaugh et al., 2020), which could be facilitated by a relaxation of travel
123 restrictions (Hodcroft et al., 2021). It seems likely that other non-pharmaceutical interventions and other
124 environmental factors could also affect the number of cases of different COVID-19 lineages, regardless of
125 whether they demonstrate increased transmissibility. While some research has investigated the impact of
126 interventions and vaccinations on the spread of specific lineages (Hinch et al., 2022; Panovska-Griffiths et
127 al., 2022), there has been very little comparison across many lineages, and no investigations that also
128 incorporate other factors like weather and socio-economic deprivation.

129 Our aim was to investigate how a range of variables that can influence COVID-19 cases affected positive
130 tests in the Teesside sub-region of North East England during 2020. We wanted to understand how the
131 national and local government interventions introduced over the course of this year affected the
132 population of this sub-region, which has high levels of deprivation and is reasonably geographically
133 isolated. Examining cases in his context also allows us make policy recommendations aiming to improve
134 outcomes in future epidemics, for this and other vulnerable populations in the UK. We used Generalised
135 Linear Mixed Effect Models (GLMMs) to investigate how local and national government interventions,
136 weather, levels of socio-economic deprivation, and the government restaurant subsidy impacted: 1) the
137 total number of COVID-19 cases; and 2) the number of cases of each of the most common lineages in
138 Teesside. We also used Bayesian spatial models to determine patterns of disease risk across Teesside
139 during 2020.

140 **Methods**

141 **Location and timeframe**

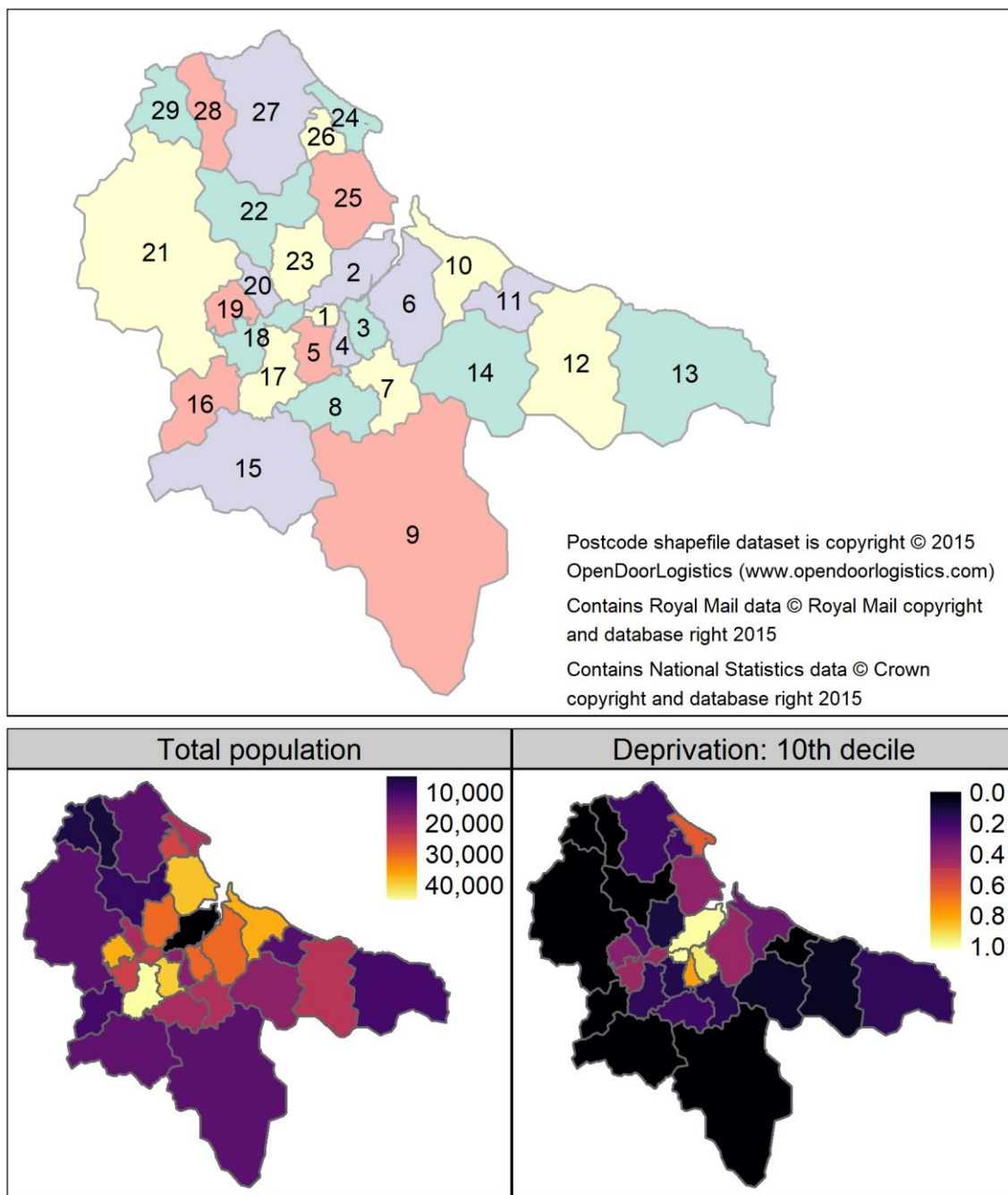
142 The wider Teesside area is a sub-region of the North East region of England, centred around the mouth
143 of the river Tees. While Teesside has reasonably good local and national transport links, it is relatively
144 isolated geographically as it borders the North Sea to the north east, The North York Moors national park
145 to the south east, and extensive farmland to the west. Teesside has a distinct cultural identity due to its
146 industrial history, which has also left its population with a greater burden of diseases and socio-economic
147 deprivation that stigmatises and further culturally isolates the area (Bush et al., 2001). Teesside contains a
148 mixture of urban, suburban, and rural environments and is formed from a collection of separate
149 communities including Middlesbrough, Redcar, Thornaby-on-Tees, Billingham, Hartlepool, and Stockton-
150 on-Tees, each with their own identities, facilities, schools, etc. All of these characteristics make Teesside
151 an interesting case study that deserves research focus.

152 We chose to examine positive tests within Teesside during only 2020 for several reasons. Firstly, the
153 local tiered restrictions were abandoned when the country entered a new national lockdown in early
154 January 2021, and were not reinstated (UK Government, 2021), which means there were no further locally
155 applied restrictions that could be examined. Secondly, the UK's vaccination programme began in
156 December 2020, which means that analysing data that included cases into 2021 would have required
157 additional data to properly adjust for this confounder. Inclusion of vaccination uptake information would
158 have been needed, rather than numbers/proportion of eligible people in the population, as uptake is lower
159 amongst deprived people (Mounier-Jack et al., 2023), but this would have been difficult to ascertain at the
160 necessary spatial and temporal scales. And finally, including data collected over a longer time period would
161 open up the analysis to other potential sources of confounding that cannot easily be controlled for, such
162 as 'pandemic fatigue'.

163 **Data collation**

164 The UK government introduced two ‘pillars’ of COVID-19 testing, which utilised polymerase chain
165 reaction (PCR) to identify positive cases. Pillar 1 testing was of staff and patients in hospitals and care
166 homes, mainly focussing on symptomatic individuals, but also included asymptomatic staff (e.g. contacts
167 of confirmed cases). Pillar 2 was community testing of symptomatic individuals, which also began to include
168 asymptomatic testing of suspected cases and high-risk situations (e.g. confirming lateral flow results,
169 elective care settings, care homes, and contacts of confirmed cases) from autumn 2020 (Dept. Health &
170 Social Care, 2020; UK Health Security Agency, 2023). Genomic sequencing was conducted on a random
171 sample of the PCR samples that tested positive for SARS-CoV-2, which permitted characterisation of genetic
172 lineages in individual cases, and the information was stored in the Covid-19 Genomics UK (COG-UK) dataset
173 (COVID-19 Genomics UK (COG-UK) Consortium, 2020; Smallman-Raynor et al., 2022). We collated records
174 of PCR tests positive for SARS-CoV-2 in the Teesside area during 2020, from the COG-UK genomic dataset,
175 which provided the dates, postcodes, and viral lineages of all sequenced positive tests from January 2020
176 to January 2021. We summarised the number of cases for all lineages, and each lineage separately, by week
177 of year and individual postcode districts (TS1 to TS29, see Figure 1). In addition, we also summarised the
178 total number of cases of each lineage recorded by each pillar during the period when sampling was run
179 contemporaneously for both pillars (from week of year 19 to 53), creating a dataset of total cases of each
180 lineage summed across time for each pillar (each lineage had one value per pillar). We ran a Spearman’s
181 correlation on this dataset, to check for a sampling bias for different lineages between the two pillars, as
182 only pillar 1 tested the most severely ill patients, and illness severity can vary between lineages (Sievers et
183 al., 2022; Goethem et al., 2022).

184 We used recent demographic data on socio-economic deprivation (Index of Multiple Deprivation IMD
185 (UK Government, 2019)) to calculate the proportion of the population in each postcode district that was in
186 the most deprived category (10th decile), relative to England as a whole (Figure 1 and Table S1 in
187 Supplementary Material). Mean weekly temperature and rainfall values were summarised from raw daily
188 data (calculated from daily means and daily totals respectively) obtained from weather stations in Teesside
189 International Airport (temperature) and Hartlepool (rainfall) (we assumed weather to be homogenous
190 across the area at this temporal scale). We collated the start and end dates of the national government
191 interventions (lockdowns) and the local tier system of interventions (where higher tiers had greater
192 restrictions) as applied to Teesside in 2020. The tier system was applied at the local government level, but
193 during 2020 the same tier restrictions were applied to all local authority areas in Teesside. We also collated
194 the start/end dates of the government restaurant subsidy (“Eat Out to Help Out Scheme”) that was
195 introduced to support hospitality businesses, which provided customers with a 50% discount at
196 participating restaurants. The interventions and subsidy dates were converted to week of year format,
197 where values counted the number of weeks since the measure was introduced (weeks before introduction
198 and after stoppage were given a value of zero). The national lockdowns in England were defined by: stay-
199 at-home orders, closure of all non-essential businesses, prohibition of all social gatherings and events (UK
200 Government, 2020a; d), and the first lockdown also included school closures (UK Government, 2020b)
201 (Table 1). The local tier 2 and 3 restrictions in England (Local Covid Alert Levels ‘High’ and ‘Very High’)
202 allowed for some non-essential businesses to remain open and permitted outdoor socialising in small
203 groups (UK Government, 2020c) (see Table 1 for details). The end date of the first lockdown is complicated,
204 as different restrictions were lifted at different times (Table 2). We used the earliest end date applicable
205 to Teesside to define the final week of the first lockdown (week 23).



206

207
208
209
210
211
212

Figure 1 - Labelled map of the 29 Teesside postcode districts ("TS" prefixes have been omitted for clarity and colours are purely to aid discrimination between polygons), and maps of the total resident population and proportion of the population within the 10th decile of the Index of Multiple Deprivation (when assessed at the scale of England as a whole) for each Teesside postcode district (Source: Office for National Statistics licensed under the Open Government Licence v.3.0). The north east boundary meets the North Sea, to the south east is a national park, and to the west is farmland.

213
214
215

Table 1 - Summary of the control measures included in each national and local restriction category in England. Business closures during tier 3 varied across England, those shown below were applied to Teesside during 2020.

Included measures	1st Lockdown	2nd Lockdown	Tier 1	Tier 2	Tier 3	Tier 4
Stay at home orders	X	X				X
School closures	X					

Face masks indoors in public spaces		X		X	X	X	X
<i>Business/venue closures:</i>							
Pubs, bars, and restaurants	X	X				X	X
Retail	X	X					X
Personal care	X	X					X
Leisure and entertainment	X	X				X	X
Gyms	X	X					X
Places of worship	X	X					
<i>Prohibition of social gatherings:</i>							
Indoors up to 6 people	X	X			X	X	X
Indoors more than 6 people	X	X		X	X	X	X
Outdoors up to 6 people	X	X					X

216

217
218

Table 2 - First and last dates of government control measures applied in Teesside, restaurant subsidy, and school and university terms in Teesside during 2020.

Event	First date	Last date	First week	Last week
National lockdown:	23/03/2020	08/06 - 03/07/2020	13	23-27
Business closures (hospitality, entertainment etc.)	21/03/2020	03/07/2020	12	27
Other non-essential businesses	23/03/2020	15/06/2020	13	25
Teesside school closures	23/03/2020	07-14/06/2020	13	23-24
Restrictions on social gathering	23/03/2020	01/06/2020	13	23
Restaurant subsidy	04/08/2020	26/08/2020	32	35
Local Tier 2 (Teesside)	14/10/2020	04/11/2020	42	44
National lockdown	05/11/2020	01/12/2020	45	48
Local Tier 3 (Teesside)	02/12/2020	30/12/2020	49	53
Local Tier 4 (Teesside)	31/12/2020	--	53	--
Teesside school autumn term dates	01/09/2020	23/10/2020	36	43
	02/11/2020	18/12/2020	45	51
Teesside University term dates	21/09/2020	18/12/2020	39	51

219

220 Disease mapping

221 To help us define and visualise the spatial heterogeneity of COVID-19 in Teesside, we used Bayesian
 222 spatial models (Riebler et al., 2016) to assess the area-specific relative risk of a positive test in each
 223 postcode district across the study period. We separately modelled all disease cases (regardless of lineage),
 224 and cases of each of the most common lineages in Teesside that had sufficient data. We used the most
 225 recent version of the Besag, York, Mollie “BYM” model (Besag et al., 1991), the “BYM2” (Riebler et al.,
 226 2016), which is a conditional autoregressive model that adjusts for spatial dependency between adjacent
 227 spatial units, as numbers of cases in one district are likely to be partially dependent on those arising in
 228 neighbouring districts, with which there may be contact leading to enhanced transmission. We included
 229 the expected number of cases for each postcode district (calculated using district population sizes, total
 230 population across all districts, and total cases in all districts) in our models as an offset, which converts the
 231 output to the risk of a positive test in each district relative to the overall risk across all districts (Blangiardo
 232 & Cameletti, 2015). These models were fitted using Integrated Nested Laplace Approximation via the
 233 “INLA” package (version 22.05.07) (Rue et al., 2009) in R version 4.2.2 (R Core Team, 2022). As the response
 234 variables in these models are aggregated counts or rates, we fit the models with negative binomial error
 235 distributions (using log link functions) and penalised complexity priors, which reduce the chance of

236 overfitting (Riebler et al., 2016). We used the default penalised complexity priors for the BYM2 model
237 (Riebler et al., 2016) throughout, as a sensitivity analysis using different hyperparameter values showed no
238 improvement to model fit. Model validation, via PIT (probability integral transforms) and plotting observed
239 values against a sample generated from the posterior distribution, demonstrated a poor fit to the data for
240 three of our lineages (B.1.1.309, B.1.1.315, and B.1.1.37), which have been dropped from the results
241 section of the paper (see section 3.1 in the supplementary material for model validation and
242 hyperparameter sensitivity analyses). The shapefiles for the Teesside postcode districts that were used in
243 this analysis (and figures) were downloaded from: <https://www.opendoorlogistics.com/data/>.

244 **Mixed-effect modelling**

245 We used generalised linear mixed-effect models (GLMMs) to investigate the role of socio-economic
246 deprivation (proportion of the population in the 10th Decile of IMD), weather (mean weekly temperature
247 and rainfall), UK government interventions (national lockdowns and local tiers), and government
248 restaurant subsidy on the frequency of positive PCR tests recorded each week of 2020 in each postcode
249 district. These models were non-Bayesian and were fitted using maximum likelihood estimation. We
250 separately modelled all disease cases (regardless of lineage), cases of each of the most common lineages
251 in Teesside that had sufficient data, and the total cases of the most common second wave lineages. We
252 included an autoregressive term of order 1 (AR1) for week of year for each postcode district to account for
253 temporal auto-correlation (non-independence) of cases over time within each separate district. We
254 included a random intercept for postcode district to account for repeated measures of postcodes across
255 time and for unmeasured geographical variation that might have influenced the recording of cases. We
256 controlled for population size by including district total population (rescaled to measure population in
257 thousands rather than single people) as a fixed effect. The second-wave lineages model also included the
258 total cases of the most common first wave lineages for each postcode district as an additional fixed effect,
259 which allowed us to investigate the potential for increased immunity between successive waves of the
260 epidemic due to previous infections. We fitted an additional model to the all-case data, including the same
261 fixed effects and the random intercept for postcode, but this model did not include an AR1 term and
262 instead used a random gradient for week for each postcode district (allowing the effect of week on cases
263 to vary by postcode), which allowed us to map and compare the rate of change in cases reported each
264 week across the different postcodes.

265 To account for variation in symptom onset and testing delay after infection, we applied a two-week
266 time lag to all temporal variables (temperature, rainfall, and the government interventions and subsidy).
267 Because we aggregated case numbers and summarised temporal variables by week, a one-week delay
268 could have artificially assumed a greater separation between cases and temporal events than actually
269 happened. Additionally, the sensitivity analyses in Hunter et al. (2021) demonstrated that non-
270 pharmaceutical interventions in the UK did not show an impact on numbers of cases until after 14 days.

271 As our response variable (positive tests) is a count, we fit our models with Poisson and negative
272 binomial distributions (using log link functions) before validating them with the “DHARMA” R package
273 (Hartig, 2022), which uses a simulation approach to create interpretable scaled residuals. We used
274 DHARMA’s test and plotting functions to assess deviations from the expected distribution, dispersion,
275 heteroskedasticity, temporal autocorrelation, and zero-inflation, alongside plots of observed values against
276 those fitted from the models, which demonstrated that Poisson was a better fit for the data in all models,
277 except for the all-cases model fit with a random gradient (for full details and output see section 3.2 of the
278 supplementary material). Because it would be reasonable to assume that the number of cases over time
279 would follow a non-linear trajectory, we also fit several alternative model specifications that included week
280 of year as a fixed effect with either a smooth or restricted cubic spline instead of an AR1 term, however,
281 these models were a poorer fit for all datasets than the AR1 models (see section 3.2 of the supplementary
282 material). All regression models were fit using the package “glmmTMB” (Brooks et al., 2017) in R version
283 4.2.2.

284 We chose to retain all variables in the models regardless of AIC or significance as they are all
285 biologically/epidemiologically meaningful. Predictor variables were only removed if they were found to be
286 collinear via variance inflation factor (VIF) (calculated using the “performance” R package (Lüdtke et al.,
287 2021)), whereupon we followed the procedure defined by Zuur et al. (2010) of removing variables
288 sequentially until none of the recalculated VIF values are above 3. We also confirmed variable removal via

289 redundancy analysis and variable clustering (conducted using the “Hmisc” R package (Harrell & Dupont,
290 2021)) (see section 3.2 of supplementary materials for further details, redundancy analysis outputs, and
291 variable clustering plots).

292 Full details of all the model specifications (disease mapping and GLMMs) can be seen in the analysis
293 scripts (<https://doi.org/10.25405/data.ncl.23815077>) and section 2 of the supplementary material.

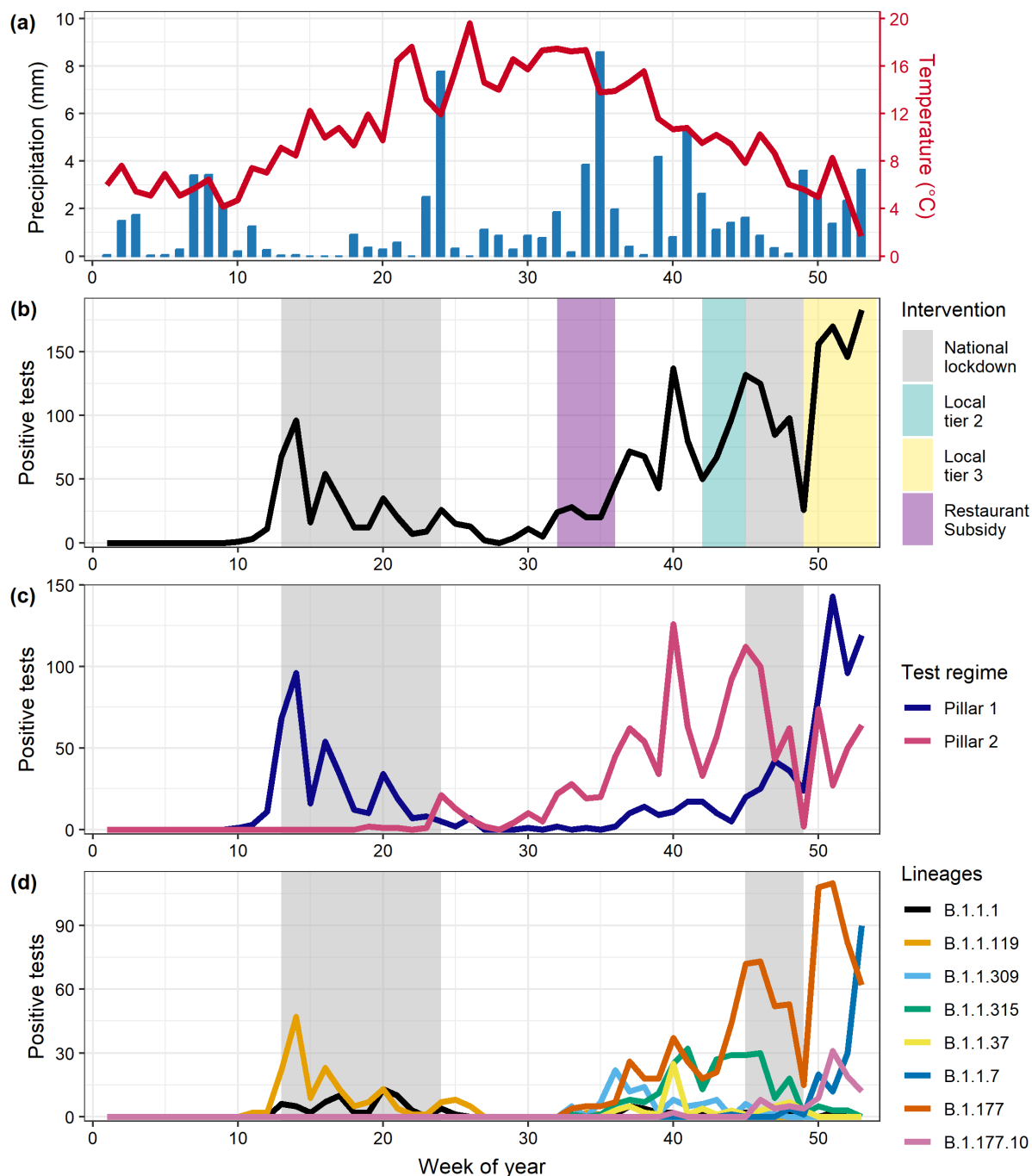
294 Results

295 Data and trends

296 The Teesside postal area had a population of 599,600 people across the 29 postcode districts, with
297 considerable variation in the proportion of the total population in the 10th IMD decile (Figure 1, Table S1).
298 The populations of urban postcode districts of central Middlesbrough (TS1, TS4 and TS3) all had high
299 proportions of their populations in the 10th decile for IMD, whereas many of the suburban and rural
300 postcode districts had little to none of their population in this decile. There were 2,328 positive COVID-19
301 tests for all lineages of which 1,073 were pillar 1 and 1,255 were pillar 2. Temperature was highest in
302 summer while rainfall was generally lowest in spring and summer, but there were also periods of heavy
303 rain in early and late summer (Figure 2a).

304 The overall temporal trend in positive tests was bimodal with a first wave in spring (cases peaked in
305 week 14, early April 2020) followed by a decline through the summer after introduction of the first
306 lockdown, before the onset of the second wave of the epidemic in the early autumn (week 36) (Figure 2b).
307 There was a large spike in cases around week 40 that were mainly detected via pillar 2 community testing
308 (Figure 2c), which coincided with the start of school and university autumn terms in Teesside (Table 2).
309 There was a strong positive correlation between the total number of cases of each lineage that were
310 recorded by the two different pillars ($\rho=0.65$, $S=14017$, $df=60$, $P<0.001$), suggesting that both pillars were
311 reflecting similar patterns of infection across Teesside.

312 Out of 86 distinct lineages recorded in Teesside during 2020, only 8 were recorded more than 60 times:
313 B.1.1.1, B.1.1.119, B.1.1.309, B.1.1.315, B.1.1.37, B.1.1.7, B.1.177 and B.1.177.10 (Figure 2d). These 8
314 lineages were recorded elsewhere in the UK before being recorded in Teesside. There were two dominant
315 lineages in the first wave of the epidemic, B.1.1.1 and B.1.1.119, records for which declined to minimal
316 levels during the late spring and summer. Patterns for other lineages were more complex in the second
317 wave. B.1.177 and B.1.1.315 both increased in frequency during weeks 32 to 45 before declining during
318 the second lockdown. However, after the end of this lockdown, B.1.177 increased substantially whilst
319 B.1.1.315 did not. The more transmissible SARS-CoV-2 variant, B.1.1.7 (Alpha variant; VoC 202012/1), was
320 first detected in the UK in December 2020 (Public Health England, 2021) and cases increased rapidly in
321 Teesside after the end of the second national lockdown.



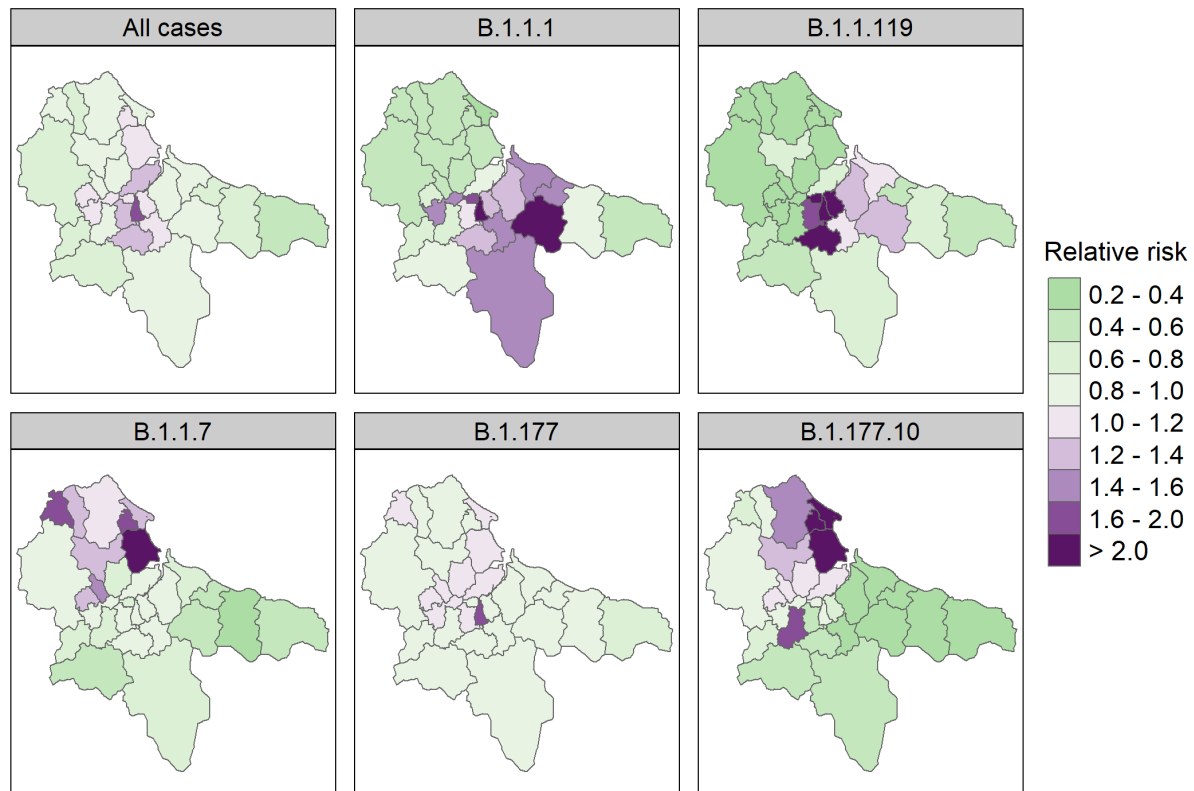
322

323 **Figure 2** - Trends in weather and positive tests of COVID-19 over the course of 2020, in Teesside. (a)
 324 Mean temperature and rainfall per week. (b) Total positive tests per week (across all lineages),
 325 coloured areas represent the periods of different interventions: national lockdown, weak local
 326 restrictions (Local tier 2), stricter local restrictions (Local tier 3), and the 'Eat out to help out'
 327 government subsidy to promote eating within restaurants. (c) Positive tests detected via the two
 328 testing regimes per week. (d) Positives tests of the eight most commonly detected lineages in
 329 Teesside per week.

330 Disease mapping

331 The relative risk of a positive test for COVID-19 in each Teesside postcode varied greatly amongst the
 332 lineages and between the two waves of the epidemic (Figure 3). The spatial pattern of risk of a positive test
 333 for any lineage was highest in some of the central areas, particularly in central Middlesbrough (40-60%
 334 higher in TS4), while the lowest risks were in the more rural eastern and western districts (20-60% lower).
 335 The spatial pattern does not follow a clear urban-rural divide however, as some urban and suburban areas

336 had relative risks up to 20% lower than the overall risk across all districts (e.g., Thornaby (TS17), Redcar
337 (TS10), and Eston (TS6)). During the first wave of the pandemic (lineages B.1.1.1 and B.1.1.119), risk was
338 highest in the central areas of Teesside, particularly Middlesbrough (TS4, TS1, TS3, and TS8) and
339 Guisborough (TS14), while northern and western districts had a very low risk. One of the second wave
340 lineages (B.1.177) showed a more homogenous risk pattern, except for a raised risk in central
341 Middlesbrough (TS4), though there is a high degree of uncertainty around this value (see Figures S1 and S2
342 in supplementary material for exceedance probabilities). The remaining two second wave lineages (B.1.1.7
343 and B.1.177.10) are those that occurred mainly towards the end of 2020; the spatial risk pattern for these
344 lineages is less uniform and more focussed in northern districts with the highest risks in Hartlepool (TS24,
345 TS25, and TS26), Trimdon (TS29), and Thornaby (TS17), with relative risk increase likely exceeding 50% for
346 Hartlepool (Figures S1, S2).



347

348 **Figure 3** - Area-specific relative risk of a positive test for any SARS-CoV-2 lineage (“All cases”), and 5
349 of the most common lineages, in each Teesside postcode district during 2020 (from the spatial CAR
350 models). Maps for 3 of the lineages are not shown due to poor model fit (B.1.1.309, B.1.1.315, and
351 B.1.1.37). Values are a ratio: green colours indicate a risk of infection that is lower than the overall
352 risk for the entire study area (<1), while purple colours indicate a higher risk (>1), and colour intensity
353 indicates the strength of this effect. See Figures S1 and S2 in Supplementary Material for
354 corresponding exceedance probabilities.

355 **Mixed-effect modelling**

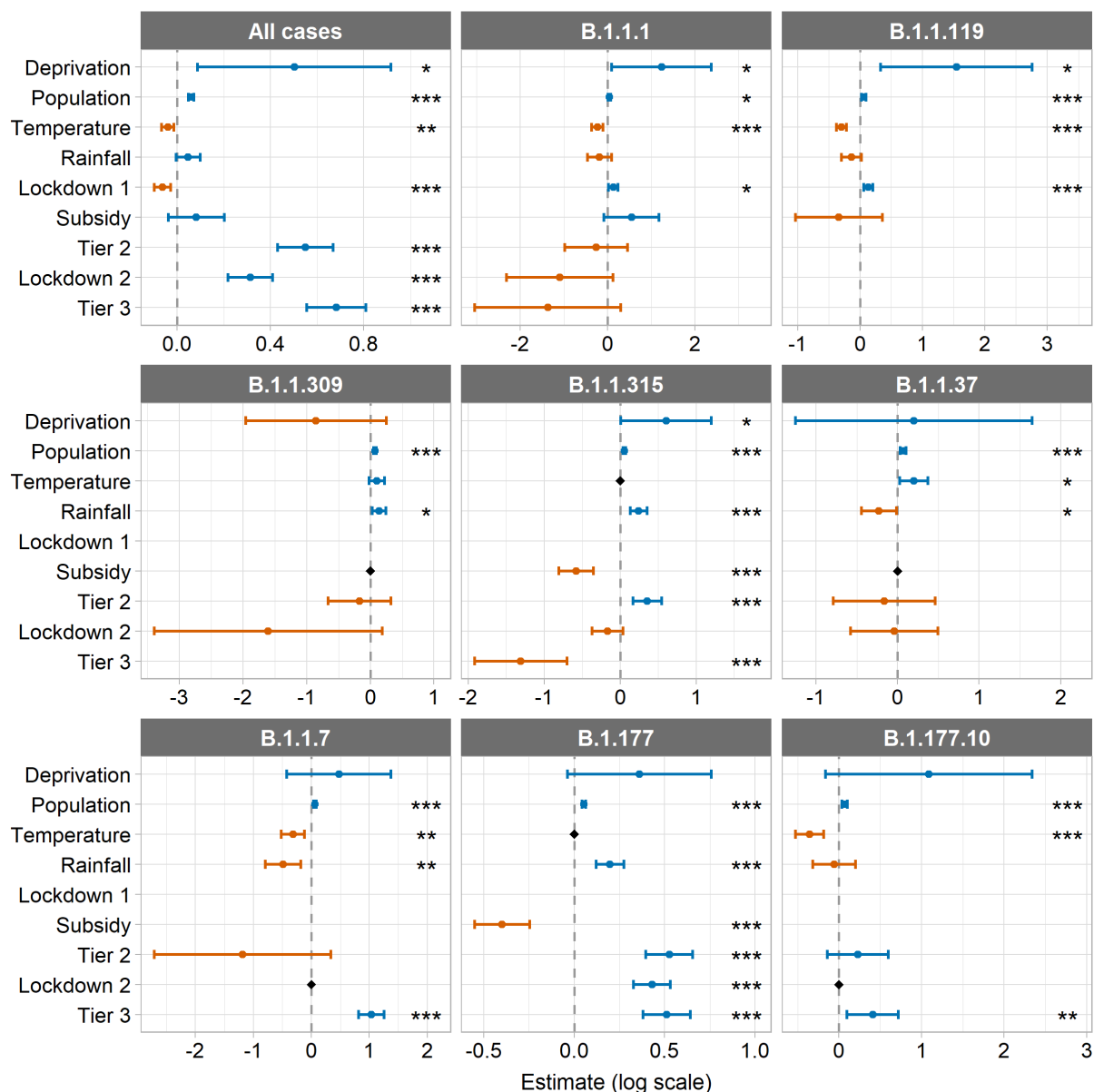
356 Most of the GLMMs had one fixed effect covariate that was identified as redundant and had a VIF value
357 over 3 (the all-cases, B.1.1.1, and B.1.1.119 models did not), so the models reported here are the simplified
358 ones where these fixed effects have been dropped (Figure 4). See Supplementary Materials for model
359 output from both the full and final (simplified) versions (the coefficients from the full models are accurate
360 in terms of the magnitude and direction of any effects, but the errors are unreliable). This collinearity was
361 between the temporal variables and was most often strongest for the weather variables, though the
362 collinearity was also very strong for the interventions or subsidy where lineages had a very narrow
363 temporal window (e.g. B.1.1.7). The model for lineage B.1.1.309 was refit without the postcode random
364 intercept as it had a variance that was almost 0 and the model showed temporal autocorrelation, which
365 was controlled upon refitting.

366 There were significant negative relationships between total positive tests of COVID-19 and mean
367 weekly temperature and the first lockdown (Figure 4, Table S3). There were significant positive
368 relationships between cases and total population, socio-economic deprivation (proportion of the
369 population in the most deprived IMD decile), local tier 2, the second national lockdown, and tier 3. Mean
370 weekly rainfall and the restaurant subsidy had no significant effect. The rate of increase in the total number
371 of cases over time relative to the mean, was slower in many of the areas that experienced higher case
372 numbers during the first wave, and faster in many areas that experienced more records during the second
373 wave (Figures 5, 3 and S4, Table S5, see Figure S3 for observed records per week per postcode).

374 The relationships between cases and covariates for the two first wave lineages (B.1.1.1 and B.1.1.119)
375 were similar, with a significant negative relationship for temperature, and significant positive relationships
376 for deprivation, population, and the first lockdown (Figure 4, Table S6). Rainfall, the restaurant subsidy, tier
377 2, tier 3, and the second lockdown had no effect.

378 The patterns for the second wave lineages are less uniform, the only consistent relationship was a
379 significant positive association with population in all models (Figure 4, Table S6). The only significant
380 association with deprivation was a positive one with cases of B.1.1.315. Temperature had a significant
381 negative relationship with cases of B.1.1.7 and B.1.177.10, and a positive relationship with cases of
382 B.1.1.37. There were significant negative relationships between rainfall and cases of B.1.1.37 and B.1.1.7,
383 and positive relationships with cases of B.1.1.309, B.1.1.315, and B.1.177. Cases were significantly
384 decreased in relation to the restaurant subsidy for B.1.1.315 and B.1.177. There were significant positive
385 relationships between cases and tier 2 for B.1.1.315 and B.1.177, and cases and lockdown 2 for B.1.177.
386 Tier 3 was significantly negatively associated with cases of B.1.1.315, and positively associated with cases
387 of B.1.1.7, B.1.177, and B.1.177.10.

388 Finally, the second-wave lineages model showed no relationship between the total number of cases of
389 the two first wave lineages (B.1.1.1 and B.1.1.119) and the total number of cases of the six second wave
390 lineages (B.1.1.309, B.1.1.315, B.1.1.37, B.1.1.7, B.1.177, and B.1.177.10) (see Table S8 for model output).
391



392

393

394

395

396

397

398

399

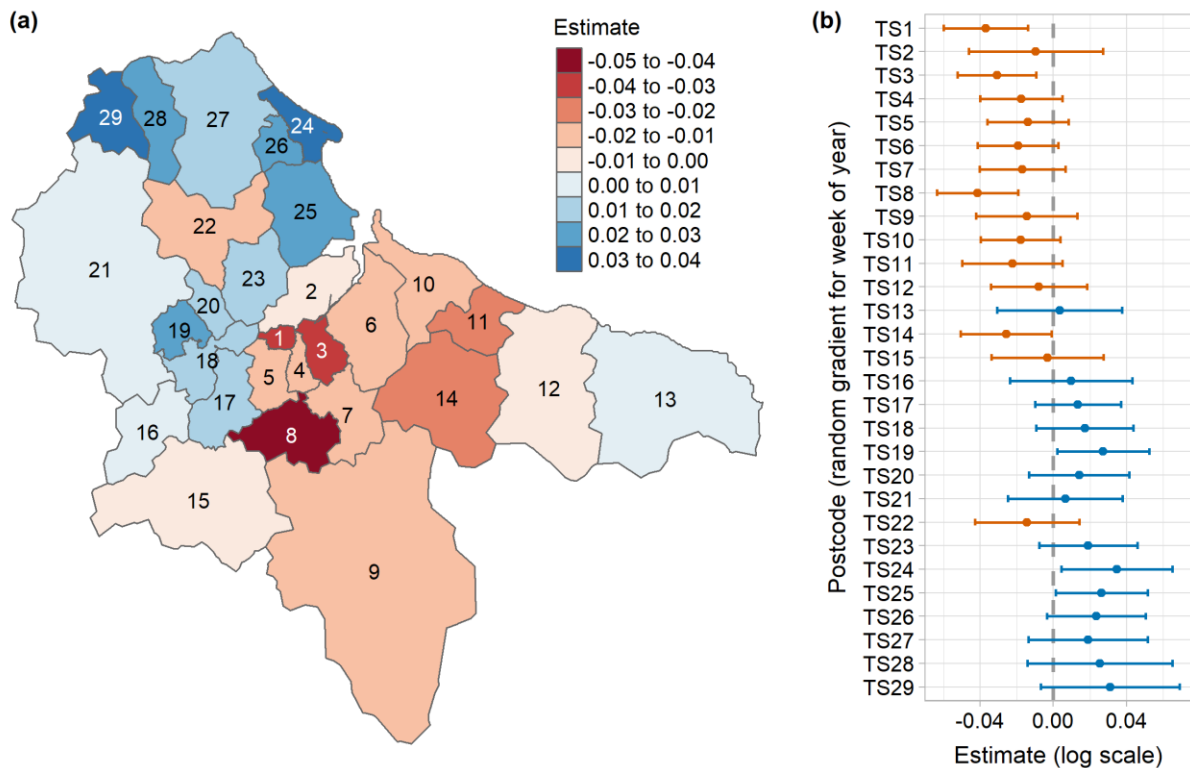
400

401

402

Figure 4 - Fixed effects estimates and 95% confidence intervals from the final versions of the GLMMs with an AR1 term for week for each postcode examining all cases and the 8 most common lineages in Teesside (see Tables S3 and S6 for values). All models include a random intercept for postcode, except where the model fitted better without it (B.1.1.309). Black diamonds indicate variables that were dropped from the models due to VIF values > 3 (see Table S7 for summary values from the full models), remaining absent values represent non-overlap between some of the lineages and temporal variables (see Figure 2). Display order of fixed effects is as follows: spatial variables, continuous temporal variables, transient temporal variables (in chronological order of imposition). Estimates are on the original model scale (log). Asterisks indicate significance level: '***' indicates $p \leq 0.001$, '**' indicates $p \leq 0.01$, and '*' indicates $p \leq 0.05$. Note that each panel has a different y axis scale.

403



404

405

406

407

408

409

410

411

412

Figure 5 - Random gradient estimates from the all-cases GLMM that included a random gradient for week for each postcode district, showing (a) the estimates on a map, and (b) the estimates with their 95% confidence intervals. Values represent the rate of change in the number of cases over time relative to the mean, where blue values are higher than the mean and a faster rate of increase (a steeper and more curved gradient), and red values are lower and a slower rate of increase (a shallower and less curved gradient) (see Figure S4 for predicted rate of change curves for each postcode district from the same model). Estimates are on the original model scale (log) (see Table S5 for full random effect summary values).

413

Discussion

414

415

416

417

418

419

420

421

422

423

424

425

426

427

428

429

430

431

432

433

Our analyses indicate there was considerable spatial and temporal variation in occurrence of SARS-CoV-2 in Teesside during 2020 and that the patterns were related to demographic features, weather, and government interventions. These results must be interpreted with caution due to several limitations. Firstly, positive test ascertainment differed between the two epidemic waves during 2020. Community testing (pillar 2) was introduced later on in the first wave and did not become widespread until later in the year, which means that testing during the first wave will be biased towards severely ill individuals and healthcare workers. While the positive correlation between the number of pillar 1 vs pillar 2 tests for each lineage suggests that this bias did not affect the detection of different lineages, it is possible that it could have contributed to differences in the covariate associations that we found between the two waves. It is also possible that the timing of and access to tests could have differed between the two pillars, however, we believe the availability and promotion of local testing facilities and free at-home postal test kits, and the fact that both pillars included asymptomatic and symptomatic individuals, should minimise any related bias. Secondly, the resolution of the data aggregation may have been too coarse to detect some relationships. Aggregation was essential to ensure anonymity of records. However, the spatial resolution of postcode districts and the temporal resolution of one week, may have been too coarse to capture the spatial and temporal variation in the underlying epidemiological processes of transmission or other social and environmental drivers. Thirdly, collinearity between temporal variables was present in most of the separate lineage GLMM models. While we were able to assess and correct for this using a systematic approach, our results must be viewed in the context of the variables that were dropped. It is possible that some of the effects we see in our simplified models are actually being driven by those variables that were

434 not included. And finally, many covariates associated with disease transmission, including proximity to
435 infectious individuals and social contacts, could not be measured. We also did not have access to mobility
436 data of a sufficient spatial resolution to incorporate into our models (due to cost). The covariates used in
437 our models were therefore surrogates for the underlying mechanisms associated with disease transmission
438 and spread. However, this is less of an issue in the context of our study, as we are more interested in
439 highlighting the overall impact on cases in Teesside in relation to the local and national restriction policies
440 (and other covariates), rather than the specific mechanisms that may be driving these relationships.

441 The spatial variation in total positive SARS-CoV-2 tests across the Teesside area was influenced by
442 demographic factors, as we found the number of positive tests was increased in postcode districts with a
443 higher population and those with higher levels of socio-economic deprivation. These are logical outcomes
444 as transmission is more likely to occur in more densely-populated areas and amongst people who have
445 higher exposure due to employment and living conditions (Niedzwiedz et al., 2020; Whittle & Diaz-Artiles,
446 2020; McGowan & Bamba, 2022). Our model output maps, when viewed in combination with the
447 demographic information and regional knowledge, did not demonstrate a clear pattern of risk of, or rate
448 of increase in, positive tests in relation to how urban or rural the postcode districts are. Research conducted
449 on pillar 1 testing during the first wave in the East of England region found higher risks of infection in more
450 urban areas (Brainard et al., 2022). Because we did not formally investigate land use in any of our models,
451 we do not know what the true effect was, though we can speculate as to why we did not detect any sort
452 of clear signal. It is possible that the size of our spatial units were too large and heterogenous in terms of
453 their social environments to be able to detect a relationship like that found by Brainard et al. (2022),
454 however, it is also possible that our longer timescale and inclusion of community testing collected a more
455 representative sample of positive tests, or that this relationship does not hold in more urban and deprived
456 areas like Teesside.

457 Our findings indicate that some weather variables affected the total positive tests across Teesside in
458 2020. We found positive tests were reduced by higher temperatures, in accordance with previous research
459 (Ganslmeier et al., 2021; Alaniz et al., 2023; Nottmeyer et al., 2023). This is probably due to both indirect
460 and direct mechanisms, as warmer weather encourages outdoor (rather than indoor) socialising and
461 increased indoor ventilation, while also reducing transmissibility of the virus particles (Ganslmeier et al.,
462 2021). However, we did not find an effect of rainfall on positive tests, and while some research has also
463 found no significant associations (Ganslmeier et al., 2021), other studies have found a relationship (Tan &
464 Schultz, 2022). Evidence from studies examining hourly rainfall and temperature data indicates that the
465 effects of weather variables on positive tests are stronger during periods that facilitate transmission, such
466 as mealtimes and when there are low/no restrictions on movement and socialising (Ganslmeier et al., 2021;
467 Fetzer, 2022). Therefore, a finer temporal resolution than was used in this study is required to clarify the
468 links between weather, transmission, and cases. It is also likely that the temporal resolution we used was
469 too coarse to detect an impact of the government restaurant subsidy on cases, as the effects would have
470 been limited to days when the subsidy applied (Monday-Wednesday) and mealtimes. Other research has
471 found that cases were increased by the subsidy, but this effect was weaker when high rainfall coincided
472 with mealtimes (Fetzer, 2022).

473 The government interventions introduced to manage COVID-19 cases during 2020 had mixed impacts
474 on the total number of positive tests in Teesside. The first lockdown was successful in reducing cases, while
475 all of the later interventions appeared to have the opposite effect. The only difference in restrictions
476 between the two national lockdowns was that the first included school closures, whereas the second did
477 not. A large body of evidence has demonstrated that school closures were one of the most important
478 interventions in controlling COVID-19 (Brauner et al., 2021; Davies et al., 2021; Hunter et al., 2021; Ge et
479 al., 2022; Torres et al., 2022). The length of the second lockdown was also shorter than the first one, though
480 in Teesside it was immediately followed by tier 3 restrictions, which only differed in terms of the reopening
481 of gyms, retail, and personal care non-essential businesses. The benefits of closing such business is unclear,
482 with some studies showing modest or no benefits (Brauner et al., 2021; Hunter et al., 2021), while others
483 show considerable benefits (Sharma et al., 2021), which makes it difficult to infer whether the length of
484 the second lockdown related to its apparent failure. However, it does seem likely that school closures were
485 an important factor of the success of the first lockdown relative to the failure of the second. The apparent
486 positive effect of the second lockdown and the tier 2 and 3 restrictions could be due to the timing of
487 imposition coinciding with one or more events that are epidemiologically important, such as the

488 introduction of more transmissible lineages of the virus into the region, like B.1.177 and B.1.1.7 (Volz et
489 al., 2021; Hinch et al., 2022; Panovska-Griffiths et al., 2022); or temporary changes in social behaviour or
490 movement that facilitated transmission, like the reopening of retail businesses during the Christmas
491 season. Other research has also found no effect or positive effects of non-pharmaceutical interventions on
492 case counts, and it has been suggested that this could represent an association with increases in testing
493 capacity or with changes in testing policy (Giudici et al., 2023; Lison et al., 2023). However, this effect will
494 be minimised in our dataset (total sequenced PCR tests rather than total positive PCR and/or antigen tests)
495 by the sequencing capacity of the COG-UK consortium, which did not increase at the same rate as testing
496 capacity in 2020. It is also possible that the difference in effectiveness could reflect differences in exposure
497 between lockdowns due to changes in behaviour or routine, e.g. increased use of public transport during
498 the second wave. People experiencing greater socio-economic deprivation in the UK have been shown to
499 experience increased exposure to high infection risk activities permitted during the lockdowns, and that
500 this varied slightly over time between different lockdowns/restrictions (Beale et al., 2022). Further research
501 is needed to understand the factors affecting lockdown success in different communities, particularly ones
502 with high levels of deprivation, such as Teesside.

503 Our findings suggest that the local tier system of interventions was less effective at reducing cases than
504 a long and strict national lockdown, which has also been found in other studies (Davies et al., 2021; Torres
505 et al., 2022). We also found that the tier restrictions were equally ineffective as the second national
506 lockdown, all of which were applied during the second wave. This suggests that if there are any benefits to
507 applying local-scale interventions in response to local-scale cases (rather than cases on the national scale,
508 which in this context were determined by more populous and distant regions), they are masked by the
509 effects of other factors, such as stringency and duration of restrictions, introduction events, and
510 transmissibility of present lineages. Another possibility is that the tiered restrictions were not followed as
511 rigorously as the national restrictions, either intentionally due to “pandemic fatigue” or accidentally due
512 to poor communication (Smith et al., 2022; Delussu et al., 2022), especially as the tier levels in the UK could
513 change at short notice and were not applied consistently across locations. While the tier levels were
514 consistent within Teesside during their periods of imposition, communication of the restrictions was still
515 unclear and complex as the tier levels were applied slightly differently in different parts of England and the
516 information was usually published in long lists.

517 The analyses of positive tests of the eight most common SARS-CoV-2 lineages in Teesside demonstrated
518 different spatial and temporal relationships between the lineages, which also differed to those of total
519 positive tests, with differences in both magnitude and direction. Some of this disparity could be explained
520 by the relatively small sample sizes of the lineage models; for example, the effect of socio-economic
521 deprivation was significant for three lineages (B.1.1.1, B.1.1.119, B.1.1.315), but the confidence intervals
522 for this variable were very large in all models. It seems likely that most of the differences between the total
523 cases model and the separate lineages models are caused by the restricted spatial or temporal presence
524 of the individual lineages when compared to all cases. For example, positive tests of lineage B.1.1.37 were
525 positively related to temperature, but case numbers were generally very low and the only peak in cases
526 occurred two weeks after a peak in temperature. While it is likely that some of the differences we observed
527 in the spatial and temporal patterns between the different lineages are due to differences in
528 transmissibility, particularly for B.1.1.7 (the alpha variant) (Volz et al., 2021; Hinch et al., 2022; Panovska-
529 Griffiths et al., 2022), differences in the timing, location, and number of introductions are also likely to be
530 a factor (Vöhringer et al., 2021). While the utility of examining covariate relationships for individual lineages
531 over small geographic areas (with low numbers of sequenced tests) may appear to be low, the use of
532 genomic sequencing to track community spread over such local scales holds great potential (du Plessis et
533 al., 2021). Such forensic tracking could be used to further increase epidemiological understanding and
534 perhaps target local interventions more effectively.

535 It has been well documented by large-scale studies that previous infections can confer natural
536 immunity to subsequent infections (Flacco et al., 2022; Hall et al., 2022; Murugesan et al., 2022). Therefore,
537 it is possible that natural immunity could explain some of the different spatial and temporal patterns
538 between lineages in our data, particularly as the relative risk and the rate of increase in cases during the
539 second wave tended to be higher in areas that had low relative risk and case numbers during the first wave.
540 However, when we included the number of cases of first-wave lineages as a fixed effect in a GLMM
541 modelling the number of cases of second-wave lineages, there was no apparent relationship. It seems likely

542 that we were unable to detect a natural immunity effect because of the low numbers of sequenced positive
543 tests in our study. This suggests that natural immunity, and possibly other disease processes, are easier to
544 detect at larger spatial scales and with larger datasets.

545 Our study has demonstrated the effects of weather and government interventions on the number of
546 SARS-CoV-2 positive tests at a sub-regional scale in Teesside, UK. The number of COVID-19 cases was
547 negatively related to temperature and the first national lockdown. There were positive relationships
548 between cases and total population, socio-economic deprivation, the second lockdown, and local tiered
549 restrictions. While further research is needed to investigate the factors affecting lockdown success in
550 different communities, we feel confident to make several recommendations regarding future epidemic
551 policy responses in local/regional contexts, based on both ours and other's findings. Firstly, school closures
552 are one of the most important interventions in controlling transmission and mortality (Brauner et al., 2021;
553 Davies et al., 2021; Hunter et al., 2021; Ge et al., 2022; Torres et al., 2022), therefore school closures should
554 be included in national and local/regional lockdowns. Secondly, interventions applied at the local/regional
555 scale are less effective if they are less strict or applied later (Davies et al., 2021; Torres et al., 2022),
556 therefore all tier levels (not just the highest) should be stringent and they should be imposed early. It is
557 also imperative that local restrictions are communicated clearly and effectively with the public, and that
558 the rules are simple and consistent across areas, so as to facilitate adherence (Smith et al., 2022). Thirdly,
559 transmission at the regional scale is dependent on introductions (da Silva Filipe et al., 2021; du Plessis et
560 al., 2021; Lane et al., 2021; Vöhringer et al., 2021), particularly during periods of low restrictions (Lemey et
561 al., 2021), so long-distance domestic and international travel restrictions should be imposed quickly at the
562 start of an epidemic and the latter maintained. And finally, regional and local transmission is dependent
563 on both the transmissibility, location, and number of introductions of different lineages (da Silva Filipe et
564 al., 2021; du Plessis et al., 2021; Lane et al., 2021; Vöhringer et al., 2021), therefore the possibility of using
565 genomic sequencing to conduct forensic tracking of community spread should be investigated.

566

Acknowledgements

567 The authors thank colleagues within COG-UK and three anonymous reviewers for constructive
568 comments on earlier versions of this manuscript.

569

Data, scripts, code, and supplementary information availability

570 Data, scripts, code, and supplementary information are available online:
571 <https://doi.org/10.25405/data.ncl.23815077>

572

Conflict of interest disclosure

573 The authors declare that they comply with the PCI rule of having no financial conflicts of interest in
574 relation to the content of the article.

575

Funding

576 This research was funded under COG-UK; this is supported by funding from the Medical Research
577 Council (MRC) part of UK Research & Innovation (UKRI), the National Institute of Health Research (NIHR)
578 [grant code: MC_PC_19027], and Genome Research Limited, operating as the Wellcome Sanger Institute.

579

Ethics approval

580 The surveillance activities within which this study was conducted are part of Public Health England's
581 responsibility to monitor COVID-19 during the current pandemic. Public Health England has legal
582 permission, provided by Regulation 3 of The Health Service (Control of Patient Information) Regulations
583 2002 to process confidential patient information under Sections 3(i) a–c, 3(i) d(i and ii), and 3(iii) as part of

584 its outbreak response activities. This study falls within the research activities approved by the Public Health
585 England Research Ethics and Governance of Public Health Practice Group. Informed consent was obtained
586 from all individual participants included in the study. No individual patient data in any form is included in
587 this manuscript.

588

References

- 589 Alaniz AJ, Carvajal MA, Carvajal JG, Vergara PM (2023) Effects of air pollution and weather on the initial
590 COVID-19 outbreaks in United States, Italy, Spain, and China: A comparative study. *Risk Analysis*, **43**, 8–
591 18. <https://doi.org/10.1111/risa.14080>
- 592 Beale S, Braithwaite I, Navaratnam AM, Hardelid P, Rodger A, Aryee A, Byrne TE, Fong EWL, Fragaszy E,
593 Geismar C, Kovar J, Nguyen V, Patel P, Shrotri M, Aldridge R, Hayward A (2022) Deprivation and
594 exposure to public activities during the COVID-19 pandemic in England and Wales. *Journal of*
595 *Epidemiology and Community Health*, **76**, 319–326. <https://doi.org/10.1136/jech-2021-217076>
- 596 Besag J, York J, Mollié A (1991) Bayesian image restoration, with two applications in spatial statistics. *Annals*
597 *of the Institute of Statistical Mathematics*, **43**, 1–20. <https://doi.org/10.1007/BF00116466>
- 598 Blangiardo M, Cameletti M (2015) *Spatial and Spatio-temporal Bayesian Models with R - INLA*. John Wiley
599 & Sons, Chichester, UK.
- 600 Bo Y, Guo C, Lin C, Zeng Y, Li HB, Zhang Y, Hossain MS, Chan JWM, Yeung DW, Kwok KO, Wong SYS, Lau
601 AKH, Lao XQ (2021) Effectiveness of non-pharmaceutical interventions on COVID-19 transmission in 190
602 countries from 23 January to 13 April 2020. *International Journal of Infectious Diseases*, **102**, 247–253.
603 <https://doi.org/10.1016/j.ijid.2020.10.066>
- 604 Brainard J, Rushton S, Winters T, Hunter PR (2022) Spatial Risk Factors for Pillar 1 COVID-19 Excess Cases
605 and Mortality in Rural Eastern England, UK. *Risk Analysis*, **42**, 1571–1584.
606 <https://doi.org/10.1111/risa.13835>
- 607 Brauner JM, Mindermann S, Sharma M, Johnston D, Salvatier J, Gavenčiak T, Stephenson AB, Leech G,
608 Altman G, Mikulik V, Norman AJ, Monrad JT, Besiroglu T, Ge H, Hartwick MA, Teh YW, Chindelevitch L,
609 Gal Y, Kulveit J (2021) Inferring the effectiveness of government interventions against COVID-19.
610 *Science*, **371**, eabd9338. <https://doi.org/10.1126/science.abd9338>
- 611 Brooks ME, Kristensen K, Benthem KJ van, Magnusson A, Berg CW, Nielsen A, Skaug HJ, Maechler M, Bolker
612 BM (2017) glmmTMB Balances Speed and Flexibility Among Packages for Zero-inflated Generalized
613 Linear Mixed Modeling. *The R Journal*, **9**, 378–400. <https://doi.org/10.32614/RJ-2017-066>
- 614 Bush J, Moffatt S, Dunn C (2001) ‘Even the birds round here cough’: stigma, air pollution and health in
615 Teesside. *Health & Place*, **7**, 47–56. [https://doi.org/10.1016/S1353-8292\(00\)00037-X](https://doi.org/10.1016/S1353-8292(00)00037-X)
- 616 COVID-19 Genomics UK (COG-UK) Consortium (2020) An integrated national scale SARS-CoV-2 genomic
617 surveillance network. *The Lancet Microbe*, **1**, e99–e100. [https://doi.org/10.1016/S2666-5247\(20\)30054-9](https://doi.org/10.1016/S2666-5247(20)30054-9)
- 619 Davies NG, Barnard RC, Jarvis CI, Russell TW, Semple MG, Jit M, Edmunds WJ (2021) Association of tiered
620 restrictions and a second lockdown with COVID-19 deaths and hospital admissions in England: a
621 modelling study. *The Lancet Infectious Diseases*, **21**, 482–492. [https://doi.org/10.1016/S1473-3099\(20\)30984-1](https://doi.org/10.1016/S1473-3099(20)30984-1)
- 623 Delussu F, Tizzoni M, Gauvin L (2022) Evidence of pandemic fatigue associated with stricter tiered COVID-
624 19 restrictions. *PLOS Digital Health*, **1**, e0000035. <https://doi.org/10.1371/journal.pdig.0000035>
- 625 Dept. Health & Social Care (2020) COVID-19 testing data: methodology note.
626 <https://web.archive.org/web/20200905041538/https://www.gov.uk/government/publications/coronavirus-covid-19-testing-data-methodology/covid-19-testing-data-methodology-note>.
- 627
- 628 Fetzer T (2022) Subsidising the spread of COVID-19: Evidence from the UK’S Eat-Out-to-Help-Out Scheme*.
629 *The Economic Journal*, **132**, 1200–1217. <https://doi.org/10.1093/ej/ueab074>
- 630 Flacco ME, Acuti Martellucci C, Baccolini V, De Vito C, Renzi E, Villari P, Manzoli L (2022) Risk of reinfection
631 and disease after SARS-CoV-2 primary infection: Meta-analysis. *European Journal of Clinical*
632 *Investigation*, **52**, e13845. <https://doi.org/10.1111/eci.13845>
- 633 Ganslmeier M, Furceri D, Ostry JD (2021) The impact of weather on COVID-19 pandemic. *Scientific Reports*,
634 **11**, 22027. <https://doi.org/10.1038/s41598-021-01189-3>

- 635 Gao Y, Ding M, Dong X, Zhang J, Kursat Azkur A, Azkur D, Gan H, Sun Y, Fu W, Li W, Liang H, Cao Y, Yan Q,
636 Cao C, Gao H, Brügggen M-C, van de Veen W, Sokolowska M, Akdis M, Akdis CA (2021) Risk factors for
637 severe and critically ill COVID-19 patients: A review. *Allergy*, **76**, 428–455.
638 <https://doi.org/10.1111/all.14657>
- 639 Ge Y, Zhang W-B, Liu H, Ruktanonchai CW, Hu M, Wu X, Song Y, Ruktanonchai NW, Yan W, Cleary E, Feng
640 L, Li Z, Yang W, Liu M, Tatem AJ, Wang J-F, Lai S (2022) Impacts of worldwide individual non-
641 pharmaceutical interventions on COVID-19 transmission across waves and space. *International Journal
642 of Applied Earth Observation and Geoinformation*, **106**, 102649.
643 <https://doi.org/10.1016/j.jag.2021.102649>
- 644 Goethem NV, Vandromme M, Oyen HV, Haarhuis F, Brondeel R, Catteau L, André E, Cuyppers L, Surveillance
645 BCG on C-19 H, Consortium C-19 GB, Blot K, Serrien B (2022) Severity of infection with the SARS-CoV-2
646 B.1.1.7 lineage among hospitalized COVID-19 patients in Belgium. *PLOS ONE*, **17**, e0269138.
647 <https://doi.org/10.1371/journal.pone.0269138>
- 648 Grubaugh ND, Hanage WP, Rasmussen AL (2020) Making Sense of Mutation: What D614G Means for the
649 COVID-19 Pandemic Remains Unclear. *Cell*, **182**, 794–795. <https://doi.org/10.1016/j.cell.2020.06.040>
- 650 Hall V, Foulkes S, Insalata F, Kirwan P, Saei A, Atti A, Wellington E, Khawam J, Munro K, Cole M, Tranquillini
651 C, Taylor-Kerr A, Hettiarachchi N, Calbraith D, Sajedi N, Milligan I, Themistocleous Y, Corrigan D, Cromey
652 L, Price L, Stewart S, de Lacy E, Norman C, Linley E, Otter AD, Semper A, Hewson J, D'Arcangelo S, Chand
653 M, Brown CS, Brooks T, Islam J, Charlett A, Hopkins S (2022) Protection against SARS-CoV-2 after Covid-
654 19 Vaccination and Previous Infection. *New England Journal of Medicine*, **386**, 1207–1220.
655 <https://doi.org/10.1056/NEJMoa2118691>
- 656 Harrel FE, Dupont C (2021) Hmisc: Harrell Miscellaneous. R package version 4.5-0. [https://CRAN.R-
657 project.org/package=Hmisc](https://CRAN.R-project.org/package=Hmisc).
- 658 Hartig F (2022) DHARMA: Residual Diagnostics for Hierarchical (Multi-Level / Mixed) Regression Models. R
659 package version 0.4.6. <https://CRAN.R-project.org/package=DHARMA>.
- 660 Hinch R, Panovska-Griffiths J, Probert WJM, Ferretti L, Wymant C, Di Lauro F, Baya N, Ghafari M, Abeler-
661 Dörner L, The COVID-19 Genomics UK (COG-UK) Consortium, Fraser C (2022) Estimating SARS-CoV-2
662 variant fitness and the impact of interventions in England using statistical and geo-spatial agent-based
663 models. *Philosophical Transactions of the Royal Society A: Mathematical, Physical and Engineering
664 Sciences*, **380**, 20210304. <https://doi.org/10.1098/rsta.2021.0304>
- 665 Hodcroft EB, Zuber M, Nadeau S, Vaughan TG, Crawford KHD, Althaus CL, Reichmuth ML, Bowen JE, Walls
666 AC, Corti D, Bloom JD, Velesler D, Mateo D, Hernando A, Comas I, González-Candelas F, Stadler T, Neher
667 RA (2021) Spread of a SARS-CoV-2 variant through Europe in the summer of 2020. *Nature*, **595**, 707–
668 712. <https://doi.org/10.1038/s41586-021-03677-y>
- 669 Holt H, Talaei M, Greenig M, Zenner D, Symons J, Relton C, Young KS, Davies MR, Thompson KN, Ashman
670 J, Rajpoot SS, Kayyale AA, Rifai SE, Lloyd PJ, Jolliffe D, Timmis O, Finer S, Iliodromiti S, Miners A,
671 Hopkinson NS, Alam B, Lloyd-Jones G, Dietrich T, Chapple I, Pfeffer PE, McCoy D, Davies G, Lyons RA,
672 Griffiths C, Kee F, Sheikh A, Breen G, Shaheen SO, Martineau AR (2022) Risk factors for developing
673 COVID-19: a population-based longitudinal study (COVIDENCE UK). *Thorax*, **77**, 900–912.
674 <https://doi.org/10.1136/thoraxjnl-2021-217487>
- 675 Hunter PR, Colón-González FJ, Brainard J, Rushton S (2021) Impact of non-pharmaceutical interventions
676 against COVID-19 in Europe in 2020: a quasi-experimental non-equivalent group and time series design
677 study. *Eurosurveillance*, **26**, 2001401. <https://doi.org/10.2807/1560-7917.ES.2021.26.28.2001401>
- 678 Islam N, Shkolnikov VM, Acosta RJ, Klimkin I, Kawachi I, Irizarry RA, Alicandro G, Khunti K, Yates T, Jdanov
679 DA, White M, Lewington S, Lacey B (2021) Excess deaths associated with covid-19 pandemic in 2020:
680 age and sex disaggregated time series analysis in 29 high income countries. *BMJ*, **373**, n1137.
681 <https://doi.org/10.1136/bmj.n1137>
- 682 Lane CR, Sherry NL, Porter AF, Duchene S, Horan K, Andersson P, Wilmot M, Turner A, Dougall S, Johnson
683 SA, Sait M, Gonçalves da Silva A, Ballard SA, Hoang T, Stinear TP, Caly L, Sintchenko V, Graham R,
684 McMahon J, Smith D, Leong LE, Meumann EM, Cooley L, Schwessinger B, Rawlinson W, van Hal SJ,
685 Stephens N, Catton M, Looker C, Crouch S, Sutton B, Alpren C, Williamson DA, Seemann T, Howden BP
686 (2021) Genomics-informed responses in the elimination of COVID-19 in Victoria, Australia: an
687 observational, genomic epidemiological study. *The Lancet Public Health*, **6**, e547–e556.
688 [https://doi.org/10.1016/S2468-2667\(21\)00133-X](https://doi.org/10.1016/S2468-2667(21)00133-X)

- 689 Laydon DJ, Mishra S, Hinsley WR, Samartsidis P, Flaxman S, Gandy A, Ferguson NM, Bhatt S (2021)
690 Modelling the impact of the tier system on SARS-CoV-2 transmission in the UK between the first and
691 second national lockdowns. *BMJ Open*, **11**, e050346. <https://doi.org/10.1136/bmjopen-2021-050346>
- 692 Lemey P, Ruktanonchai N, Hong SL, Colizza V, Poletto C, Van den Broeck F, Gill MS, Ji X, Levasseur A, Oude
693 Munnink BB, Koopmans M, Sadilek A, Lai S, Tatem AJ, Baele G, Suchard MA, Dellicour S (2021)
694 Untangling introductions and persistence in COVID-19 resurgence in Europe. *Nature*, **595**, 713–717.
695 <https://doi.org/10.1038/s41586-021-03754-2>
- 696 Lüdecke D, Ben-Shachar MS, Patil I, Waggoner P, Makowski D (2021) performance: An R Package for
697 Assessment, Comparison and Testing of Statistical Models. *Journal of Open Source Software*, **6**, 3139.
698 <https://doi.org/10.21105/joss.03139>
- 699 McGowan VJ, Bambra C (2022) COVID-19 mortality and deprivation: pandemic, syndemic, and endemic
700 health inequalities. *The Lancet Public Health*, **7**, e966–e975. [https://doi.org/10.1016/S2468-
701 2667\(22\)00223-7](https://doi.org/10.1016/S2468-2667(22)00223-7)
- 702 Mendez-Brito A, El Bcheraoui C, Pozo-Martin F (2021) Systematic review of empirical studies comparing
703 the effectiveness of non-pharmaceutical interventions against COVID-19. *Journal of Infection*, **83**, 281–
704 293. <https://doi.org/10.1016/j.jinf.2021.06.018>
- 705 Mounier-Jack S, Paterson P, Bell S, Letley L, Kasstan B, Chantler T (2023) Covid-19 vaccine roll-out in
706 England: A qualitative evaluation. *PLOS ONE*, **18**, e0286529.
707 <https://doi.org/10.1371/journal.pone.0286529>
- 708 Murugesan M, Mathews P, Paul H, Karthik R, Mammen JJ, Rupali P (2022) Protective effect conferred by
709 prior infection and vaccination on COVID-19 in a healthcare worker cohort in South India. *PLOS ONE*,
710 **17**, e0268797. <https://doi.org/10.1371/journal.pone.0268797>
- 711 Niedzwiedz CL, O'Donnell CA, Jani BD, Demou E, Ho FK, Celis-Morales C, Nicholl BI, Mair FS, Welsh P, Sattar
712 N, Pell JP, Katikireddi SV (2020) Ethnic and socioeconomic differences in SARS-CoV-2 infection:
713 prospective cohort study using UK Biobank. *BMC Medicine*, **18**, 160. [https://doi.org/10.1186/s12916-
714 020-01640-8](https://doi.org/10.1186/s12916-020-01640-8)
- 715 Nottmeyer L, Armstrong B, Lowe R, Abbott S, Meakin S, O'Reilly KM, von Borries R, Schneider R, Royé D,
716 Hashizume M, Pascal M, Tobias A, Vicedo-Cabrera AM, Lavigne E, Correa PM, Ortega NV, Kynčl J, Urban
717 A, Orru H, Rytí N, Jaakkola J, Dallavalle M, Schneider A, Honda Y, Ng CFS, Alahmad B, Carrasco-Escobar
718 G, Holobâc IH, Kim H, Lee W, Íñiguez C, Bell ML, Zanobetti A, Schwartz J, Scovronick N, Coêlho M de SZS,
719 Saldiva PHN, Diaz MH, Gasparrini A, Sera F (2023) The association of COVID-19 incidence with
720 temperature, humidity, and UV radiation – A global multi-city analysis. *Science of The Total
721 Environment*, **854**, 158636. <https://doi.org/10.1016/j.scitotenv.2022.158636>
- 722 Panovska-Griffiths J, Swallow B, Hinch R, Cohen J, Rosenfeld K, Stuart RM, Ferretti L, Di Lauro F, Wymant C,
723 Izzo A, Waites W, Viner R, Bonell C, Fraser C, Klein D, Kerr CC, The COVID-19 Genomics UK (COG-UK)
724 Consortium (2022) Statistical and agent-based modelling of the transmissibility of different SARS-CoV-
725 2 variants in England and impact of different interventions. *Philosophical Transactions of the Royal
726 Society A: Mathematical, Physical and Engineering Sciences*, **380**, 20210315.
727 <https://doi.org/10.1098/rsta.2021.0315>
- 728 du Plessis L, McCrone JT, Zarebski AE, Hill V, Ruis C, Gutierrez B, Raghwaní J, Ashworth J, Colquhoun R,
729 Connor TR, Faria NR, Jackson B, Loman NJ, O'Toole Á, Nicholls SM, Parag KV, Scher E, Vasylyeva TI, Volz
730 EM, Watts A, Bogoch II, Khan K, COVID-19 Genomics UK (COG-UK) Consortium, Aanensen DM, Kraemer
731 MUG, Rambaut A, Pybus OG (2021) Establishment and lineage dynamics of the SARS-CoV-2 epidemic in
732 the UK. *Science*, **371**, 708–712. <https://doi.org/10.1126/science.abf2946>
- 733 Pozo-Martin F, Weishaar H, Cristea F, Hanefeld J, Bahr T, Schaade L, El Bcheraoui C (2021) The impact of
734 non-pharmaceutical interventions on COVID-19 epidemic growth in the 37 OECD member states.
735 *European Journal of Epidemiology*, **36**, 629–640. <https://doi.org/10.1007/s10654-021-00766-0>
- 736 Public Health England (2021) *Variant Of Concern 202012/01: Technical Briefing 2. Investigation of novel
737 SARS-CoV-2 variant.*
738 [https://web.archive.org/web/20210210034324/https://assets.publishing.service.gov.uk/government/
739 uploads/system/uploads/attachment_data/file/959361/Technical_Briefing_VOC202012-
740 2_Briefing_2.pdf](https://web.archive.org/web/20210210034324/https://assets.publishing.service.gov.uk/government/uploads/system/uploads/attachment_data/file/959361/Technical_Briefing_VOC202012-2_Briefing_2.pdf).
- 741 R Core Team (2022) R: A language and environment for statistical computing. R Foundation for Statistical
742 Computing, Vienna, Austria. <http://www.R-project.org/>.

- 743 Riebler A, Sørbye SH, Simpson D, Rue H (2016) An intuitive Bayesian spatial model for disease mapping that
744 accounts for scaling. *Statistical Methods in Medical Research*, **25**, 1145–1165.
745 <https://doi.org/10.1177/0962280216660421>
- 746 Rue H, Martino S, Chopin N (2009) Approximate Bayesian inference for latent Gaussian models by using
747 integrated nested Laplace approximations. *Journal of the Royal Statistical Society: Series B (Statistical
748 Methodology)*, **71**, 319–392. <https://doi.org/10.1111/j.1467-9868.2008.00700.x>
- 749 Sharma M, Mindermann S, Rogers-Smith C, Leech G, Snodin B, Ahuja J, Sandbrink JB, Monrad JT, Altman
750 G, Dhaliwal G, Finnveden L, Norman AJ, Oehm SB, Sandkühler JF, Aitchison L, Gavenčiak T, Mellan T,
751 Kulveit J, Chindelevitch L, Flaxman S, Gal Y, Mishra S, Bhatt S, Brauner JM (2021) Understanding the
752 effectiveness of government interventions against the resurgence of COVID-19 in Europe. *Nature
753 Communications*, **12**, 5820. <https://doi.org/10.1038/s41467-021-26013-4>
- 754 Sievers C, Zacher B, Ullrich A, Huska M, Fuchs S, Buda S, Haas W, Diercke M, Heiden M an der, Kröger S
755 (2022) SARS-CoV-2 Omicron variants BA.1 and BA.2 both show similarly reduced disease severity of
756 COVID-19 compared to Delta, Germany, 2021 to 2022. *Eurosurveillance*, **27**, 2200396.
757 <https://doi.org/10.2807/1560-7917.ES.2022.27.22.2200396>
- 758 da Silva Filipe A, Shepherd JG, Williams T, Hughes J, Aranday-Cortes E, Asamaphan P, Ashraf S, Balcazar C,
759 Bruncker K, Campbell A, Carmichael S, Davis C, Dewar R, Gallagher MD, Gunson R, Hill V, Ho A, Jackson
760 B, James E, Jesudason N, Johnson N, McWilliam Leitch EC, Li K, MacLean A, Mair D, McAllister DA,
761 McCrone JT, McDonald SE, McHugh MP, Morris AK, Nichols J, Niebel M, Nomikou K, Orton RJ, O’Toole
762 Á, Palmarini M, Parcell BJ, Parr YA, Rambaut A, Rooke S, Shaaban S, Shah R, Singer JB, Smollett K,
763 Starinskij I, Tong L, Sreenu VB, Wastnedge E, Holden MTG, Robertson DL, Templeton K, Thomson EC
764 (2021) Genomic epidemiology reveals multiple introductions of SARS-CoV-2 from mainland Europe into
765 Scotland. *Nature Microbiology*, **6**, 112–122. <https://doi.org/10.1038/s41564-020-00838-z>
- 766 Smallman-Raynor MR, Cliff AD, The COVID-19 Genomics UK (COG-UK) Consortium (2022) Spatial growth
767 rate of emerging SARS-CoV-2 lineages in England, September 2020–December 2021. *Epidemiology &
768 Infection*, **150**, e145. <https://doi.org/10.1017/S0950268822001285>
- 769 Smith LE, Potts HWW, Amlôt R, Fear NT, Michie S, Rubin GJ (2022) Tiered restrictions for COVID-19 in
770 England: knowledge, motivation and self-reported behaviour. *Public Health*, **204**, 33–39.
771 <https://doi.org/10.1016/j.puhe.2021.12.016>
- 772 Tan L, Schultz DM (2022) How Is COVID-19 Affected by Weather? Metaregression of 158 Studies and
773 Recommendations for Best Practices in Future Research. *Weather, Climate, and Society*, **14**, 237–255.
774 <https://doi.org/10.1175/WCAS-D-21-0132.1>
- 775 Torres AR, Rodrigues AP, Sousa-Uva M, Kislaya I, Silva S, Antunes L, Dias C, Nunes B (2022) Impact of
776 stringent non-pharmaceutical interventions applied during the second and third COVID-19 epidemic
777 waves in Portugal, 9 November 2020 to 10 February 2021: an ecological study. *Eurosurveillance*, **27**,
778 2100497. <https://doi.org/10.2807/1560-7917.ES.2022.27.23.2100497>
- 779 UK Government (2019) English indices of deprivation 2019.
780 <https://www.gov.uk/government/statistics/english-indices-of-deprivation-2019>.
- 781 UK Government (2020a) Prime Minister’s statement on coronavirus (COVID-19): 23 March 2020.
782 [https://web.archive.org/web/20200325010057/https://www.gov.uk/government/speeches/pm-
783 address-to-the-nation-on-coronavirus-23-march-2020](https://web.archive.org/web/20200325010057/https://www.gov.uk/government/speeches/pm-address-to-the-nation-on-coronavirus-23-march-2020).
- 784 UK Government (2020b) Prime Minister’s statement on coronavirus (COVID-19): 22 March 2020.
785 [https://web.archive.org/web/20200324014333/https://www.gov.uk/government/speeches/pm-
786 statement-on-coronavirus-22-march-2020](https://web.archive.org/web/20200324014333/https://www.gov.uk/government/speeches/pm-statement-on-coronavirus-22-march-2020).
- 787 UK Government (2020c) Local COVID alert levels: what you need to know.
788 [https://web.archive.org/web/20201014194215/https://www.gov.uk/guidance/local-covid-alert-
789 levels-what-you-need-to-know#history](https://web.archive.org/web/20201014194215/https://www.gov.uk/guidance/local-covid-alert-levels-what-you-need-to-know#history).
- 790 UK Government (2020d) New National Restrictions from 5 November.
791 [https://web.archive.org/web/20201105234705/https://www.gov.uk/guidance/new-national-
792 restrictions-from-5-november](https://web.archive.org/web/20201105234705/https://www.gov.uk/guidance/new-national-restrictions-from-5-november).
- 793 UK Government (2021) Prime Minister’s address to the nation: 4 January 2021.
794 [https://web.archive.org/web/20210105084446/https://www.gov.uk/government/speeches/prime-
795 ministers-address-to-the-nation-4-january-2021](https://web.archive.org/web/20210105084446/https://www.gov.uk/government/speeches/prime-ministers-address-to-the-nation-4-january-2021).

- 796 UK Health Security Agency (2023) PCR testing for SARS-CoV-2 in the UK during the COVID-19 pandemic.
797 [https://www.gov.uk/government/publications/pcr-testing-for-sars-cov-2-during-the-covid-19-](https://www.gov.uk/government/publications/pcr-testing-for-sars-cov-2-during-the-covid-19-pandemic)
798 [pandemic](https://www.gov.uk/government/publications/pcr-testing-for-sars-cov-2-during-the-covid-19-pandemic).
- 799 Vöhringer HS, Sanderson T, Sinnott M, De Maio N, Nguyen T, Goater R, Schwach F, Harrison I, Hellewell J,
800 Ariani CV, Gonçalves S, Jackson DK, Johnston I, Jung AW, Saint C, Sillitoe J, Suciú M, Goldman N,
801 Panovska-Griffiths J, Birney E, Volz E, Funk S, Kwiatkowski D, Chand M, Martincorena I, Barrett JC,
802 Gerstung M (2021) Genomic reconstruction of the SARS-CoV-2 epidemic in England. *Nature*, **600**, 506–
803 511. <https://doi.org/10.1038/s41586-021-04069-y>
- 804 Volz E, Mishra S, Chand M, Barrett JC, Johnson R, Geidelberg L, Hinsley WR, Laydon DJ, Dabrera G, O’Toole
805 Á, Amato R, Ragonnet-Cronin M, Harrison I, Jackson B, Ariani CV, Boyd O, Loman NJ, McCrone JT,
806 Gonçalves S, Jorgensen D, Myers R, Hill V, Jackson DK, Gaythorpe K, Groves N, Sillitoe J, Kwiatkowski
807 DP, Flaxman S, Ratmann O, Bhatt S, Hopkins S, Gandy A, Rambaut A, Ferguson NM (2021) Assessing
808 transmissibility of SARS-CoV-2 lineage B.1.1.7 in England. *Nature*, **593**, 266–269.
809 <https://doi.org/10.1038/s41586-021-03470-x>
- 810 Whittle RS, Diaz-Artiles A (2020) An ecological study of socioeconomic predictors in detection of COVID-19
811 cases across neighborhoods in New York City. *BMC Medicine*, **18**, 271. [https://doi.org/10.1186/s12916-](https://doi.org/10.1186/s12916-020-01731-6)
812 [020-01731-6](https://doi.org/10.1186/s12916-020-01731-6)
- 813 Zuur AF, Ieno EN, Elphick CS (2010) A protocol for data exploration to avoid common statistical problems.
814 *Methods in Ecology and Evolution*, **1**, 3–14. <https://doi.org/10.1111/j.2041-210X.2009.00001.x>