

1

2 **SARS-CoV-2 Testing Strategies for Outbreak Mitigation**

3 **in Vaccinated Populations**

4 Chirag K. Kumar¹, Ruchita Balasubramanian², Stefano Ongarello³, Sergio Carmona^{3, 4}, and

5 Ramanan Laxminarayan^{1, 2, *}

6¹ Princeton University, Princeton NJ, USA

7² Center for Disease Dynamics, Economics & Policy, New Delhi, India

8³ Foundation for Innovative New Diagnostics, Geneva, Switzerland

9⁴ University of Witwatersrand, Johannesburg, South Africa

10* Corresponding author: ramanan@cddep.org

11

12Abstract

13 Although COVID-19 vaccines are globally available, waning immunity and emerging
14vaccine-evasive variants of concern have hindered the international response as COVID-19 cases
15continue to rise. Mitigating COVID-19 requires testing to identify and isolate infectious
16individuals. We developed a stochastic compartmentalized model to simulate SARS-CoV-2
17spread in the United States and India using Reverse Transcriptase Polymerase Chain Reaction
18(RT-PCR) assays, rapid antigen tests, and vaccinations. We detail the optimal testing frequency
19and coverage in the US and India to mitigate an emerging outbreak even in a vaccinated
20population: overall, maximizing frequency is more important, but high coverage remains
21necessary when there is sustained transmission. We show that a resource-limited vaccination
22strategy still requires high-frequency testing and is 16.50% more effective in India than the
23United States. Tailoring testing strategies to transmission settings can help effectively reduce
24cases more than if a uniform approach is employed without regard to differences in location.

25 **Key Words and Phrases:** COVID-19, SARS-CoV-2, individual-based modeling, agent-
26based modeling, vaccines, LMICs.

27 1. INTRODUCTION

28 Since the emergence of severe acute respiratory syndrome coronavirus 2 (SARS-CoV-2) in
29 Wuhan, China in late 2019, the coronavirus disease (COVID-19) pandemic has resulted in more
30 than 280 million reported cases and 5.4 million reported deaths worldwide as of January 1,
31 2022¹. Despite efforts to curb the spread of SARS-CoV-2 through restrictions on travel²,
32 business openings³, and personal measures⁴—including mask wearing and social distancing—
33 cases have continued to rise in many countries⁵. Although vaccines against COVID-19 are
34 available, the emergence of variants of concern⁶ that are only partially neutralized by existing
35 antibodies or prior vaccination⁷ and are more contagious along with waning immunity⁸ has
36 resulted in widespread COVID-19 outbreaks even in highly vaccinated populations⁹. Likewise,
37 many populations, particularly in low- and middle-income countries, still lack widespread access
38 to vaccines and continue to experience significant excess mortality¹⁰. All these factors must be
39 simultaneously considered when developing mitigation strategies for emerging outbreaks.
40 Consequently, it appears likely that SARS-CoV-2 will continue to pose a threat to public health
41 for many years even if vaccines are distributed widely because of the rapid evolution of variants
42 of concern. Thus, testing and containment will continue to be critical to COVID-19 response and
43 mitigation.

44 Because of the high transmission rate of SARS-CoV-2 and prevalence of asymptomatic
45 carriers¹¹, accurate, efficient, and pervasive testing methods are needed to track and contain
46 disease spread. Currently, two main diagnostic methods are widely used¹². *Reverse Transcriptase*
47 *Polymerase Chain Reaction* (RT-PCR), which is considered to be the gold standard, detects the
48 presence of viral RNA in respiratory samples¹³. Although highly sensitive, test results typically
49 require two to three days¹⁴, during which an infected individual may continue transmitting the

50virus. *Later flow rapid antigen tests* can be read in less than an hour¹⁵, and an individual who
51tests positive can immediately self-isolate. However, rapid antigen tests require a higher viral
52load for positive detection, must be tailored to the antigens on a specific variant, and may not
53return a positive result for infectious individuals past the early stages of their infection¹⁶.

54 Testing is only effective when individuals who test positive are quarantined, so they will not
55continue to transmit the disease further; essentially, testing and subsequent quarantining
56minimizes the effective duration during which an individual may spread the disease. However,
57testing usually only occurs in a reactionary fashion: for instance, an individual exhibits symptom
58that may be attributed to COVID-19 and the individual is tested, an individual comes in close
59contact with an infected person, or an individual seeks to travel and must show proof of a
60negative test. This type of testing is not optimized towards minimizing cases but rather just
61identifies current cases. Comparatively, proactive testing where testing is required within a
62community—such as with a college campus, business, or factory—is far more likely to be effective
63as it is more likely to capture asymptomatic spreaders.

64 Although both RT-PCR and antigen tests could play a role in COVID-19 containment, there
65is lack of clarity on the optimal coverage and frequency with which these tests should be used,
66and how they may be combined to greatest effect. Moreover, while COVID-19 has affected
67populations around the world regardless of socioeconomic status¹⁷, there are significant
68differences in transmission intensity by setting¹⁸. Tailored testing strategies that are specific to
69the local transmission context may be superior to applying a one-size-fits all method for all
70populations. Guidance on testing strategies may differ by transmission setting (i.e., in high-
71income countries, such as the United States, versus low- and middle-income countries, such as
72India) as not only do transmission dynamics differ¹⁸ but low- and middle-income countries

73(LMICs) now have the majority of confirmed COVID-19 cases¹ along with more barriers to
74adequate health care¹⁹. Significant effort has been directed at containment strategies across high
75income countries in Europe and North America^{20–24}, but these findings cannot be generalized to
76all countries worldwide²⁵ because of differences in transmission intensity. Moreover, for
77COVID-19 to become globally endemic, it must be controlled in all countries, so determining
78setting-specific mitigation strategies and characterizing how vaccines and testing may be used in
79tandem is critical to international public health efforts to move towards the post-pandemic phase.

80 Here, we used a stochastic, compartmentalized, agent-based model (ABM) to simulate
81COVID-19 transmission dynamics in the United States and India under different proactive
82testing scenarios and vaccination potentials. We evaluated various strategies for COVID-19
83control in both countries to identify their efficacy and costs and determine how testing
84recommendations may differ by transmission setting for mitigating an outbreak even in highly-
85vaccinated populations. Our simulation results can be directly applied to community settings,
86such as office buildings, factories, or campuses, that are trying to reopen safely and with minimal
87disease spread.

88 **2. RESULTS**

89 Before evaluating the effect of our testing scenarios, we ran our model without any
90mitigation (Fig. S1; Table S1) to validate our ability to recreate observed COVID-19
91characteristics. The model-estimated case-fatality ratio (CFR) for the United States is 2.66%
92[95% percentile credible interval from 200 independent realizations of the ABM 2.17–3.12%],
93and the actual CFR at time of writing is 3.05%²⁶; likewise, the model-estimated CFR for India is
941.85% [1.47–2.25%] and the actual CFR based on available data is 2.11%¹⁸. Since our model

95recreated the expected dynamics, we could justify the use of this model to identify the efficacy
96and trade-offs of testing strategies and vaccinations in both settings.

97 *Proactive Testing to Mitigate an Emerging Outbreak*

98 The B.1.1.529 SARS-CoV-2 variant (designated “Omicron” by the World Health
99Organization) has shown almost complete evasion to existing vaccines or immunity from prior
100infection. Based on Omicron’s observed infectivity even in highly vaccinated populations, we
101modeled the impact of RT-PCR or antigen testing on a representative population in the US (Fig.
1021) or India (Fig. 2) by proactively testing at various frequencies (quantified as days between
103tests) and coverages (quantified as the fraction of people surveilled each time testing is done).
104While the cost of the surveillance depended only on the rate of testing (i.e., average number of
105tests administered per day), the risk of infection depended on the frequency, coverage, type of
106test used, and transmission setting, with each test and setting placing different importance on
107frequency and coverage (Fig. S3).

108 Overall, for the same coverage and frequency of testing, using RT-PCR assays resulted in
10912.65% [7.01% – 18.30%] more cases than antigen tests in the US and 9.30% [4.75% – 13.85%]
110more cases in India (Figs. 1-2), likely because RT-PCR tests require a two-to-three-day
111turnaround time during which infected individuals may continue transmitting (Fig. S2). Rapid
112antigen tests are also up to 20 times cheaper, allowing for further screening than RT-PCR assays
113with the same financial budget (Fig. 2). Ultimately, when used frequently and widely, antigen
114tests were notably better than RT-PCR assays (Fig. S3, S4, S5). Nevertheless, at low coverage
115and frequency, neither test was effective at mitigation.

116 Explanatory regression models that predicted the percent infected for each setting from
117frequency, coverage, and test used (R^2 of all models $>90\%$; Table S2) indicated that use of

118antigen tests versus RT-PCR tests resulted in 3.12% [95% confidence interval on the regression
119coefficients 1.73–4.51] fewer cases in the United States and 1.99% [95% CI 1.02–2.97] fewer
120cases in India. Independent of test, maximizing frequency had a larger effect on mitigating cases
121than maximizing coverage, with a 3.71-fold [2.99–4.43] greater effect in the United States and a
1225.01-fold [4.15–5.87] greater effect in India. In other words, given resource constraints, the
123frequency of testing (i.e., the inverse of the number of days between subsequent test
124administrations) should be 3.71 and 5.01 times greater than the coverage (i.e., the number of
125testing administrations required to surveil the whole population) in the United States and India,
126respectively. Though frequency dominates overall, the importance of coverage differed by test.
127When RT-PCR tests were used rather than antigen tests, maximizing coverage has a 14.24%
128[10.71–17.76] greater effect on reducing cumulative infections in the United States and a 6.84%
129[4.89–8.79] greater effect in India. Nevertheless, use of antigen tests was more effective than use
130of RT-PCR tests, especially when used frequently.

131 While we observe the same general trends in both settings, frequency is more important in
132India than in the United States: Figs. 1 and 2 show a strong gradient of increasing cases as testing
133frequency is decreased, most noticeably for antigen testing and especially for India. However, we
134observe that at low coverage, the effect of frequency is much less in India. High-frequency, low-
135coverage testing can still be useful in the United States, but we did not observe the same pattern
136in India, where coverage must be relatively high for effective mitigation. Although increasing
137coverage when it was low had little benefit, increasing coverage from half of the population
138surveilled to the whole population surveilled had a larger effect in India. Ultimately, though
139frequency may still have dominated overall, increasing coverage was also critical in certain
140testing scenarios in India. Additionally, we conducted sensitivity analyses by running canonical

141 strategies with R_{eff} from 2.5 (used in all main figures and analyses; Fig. S6, Fig. S7) and
142 decreasing R_{eff} to $R_{\text{eff}} = 2$ (Fig. S8) and 1.5 (Fig. S9). Our main findings and trends still held
143 across all values of R_{eff} , though there are fewer cases with a lower R_{eff} .

144 *Utilizing Combinations of Tests and Vaccines*

145 Emerging variants of concern are not only vaccine-evasive but often more transmissible. To
146 identify and isolate transmissible individuals as quickly as possible, we propose a mixed strategy
147 that utilizes the complementary nature of antigen tests and RT-PCR assays (i.e., antigen tests
148 excel when used frequently whereas RT-PCR assays are more effective when used widely). All
149 individuals were tested weekly using antigen tests and all negative results were followed up
150 immediately by an RT-PCR assay (Fig. 3). Since RT-PCR assays have higher sensitivity, their
151 use as a follow-up should allow for the detection of individuals with a viral load too low to be
152 detected by an antigen test. Nevertheless, this was resource intensive: it potentially required
153 more than just one test per individual.

154 Such a mixed strategy was effective in both settings—resulting in minimal hospitalizations
155 and deaths—but more effective in reducing cases India than in the United States. Compared with
156 weekly antigen testing (Fig. S7), this approach did not significantly reduce cases in the United
157 States ($\lambda = 2.25$, $p = 0.13$) or India ($\lambda = 1.00$, $p = 0.32$). Nevertheless, this strategy resulted in
158 reaching 1% incidence 7.0 [0.0–14.0] ($\lambda = 9.25$, $p < 0.005$) days earlier in the United States and
159 7.0 [–7.0–7.0] days earlier ($\lambda = 5.81$, $p = 0.016$) in India. In practice, effective mitigation of
160 SARS-CoV-2 or conferring immunity through vaccination or booster shots can allow testing to
161 slow down and be less extensive, decreasing the required cost of testing. However, testing should
162 only stop after SARS-CoV-2 infections have dropped below a level where they are no longer
163 able to trigger widespread transmission or enough individuals are vaccinated (such external

164factors are not considered in our simulations as they are highly variable and differ between
165transmission setting). Nevertheless, we show that effective surveillance is critical especially in
166the early stages of transmission to mitigate disease burden from contagious variants of concern.

167 Likewise, the rapid emergence of variants of concern has placed an emphasis on widespread
168vaccination campaigns and now even booster shots for some populations. Nevertheless, key
169questions remain about optimal testing strategies and epidemic trajectories for populations as
170vaccines are administered or additional immunity is conferred through booster shots. Thus, we
171determined how proactive testing and simple vaccination strategies can be used together to
172promote SARS-CoV-2 reaching the endemic phase. Disease surveillance, continued testing, and
173vigilance remain critical even as more individuals become vaccinated. Note that while there are
174studies detailing optimal vaccine allocation strategies²⁷, our goal is not optimize the distribution
175of vaccines but rather determine the impact of vaccines in a resource-limited distribution scheme
176and how vaccines must be coupled with testing to mitigate disease spread. We couple daily
177vaccinations with antigen testing 100% of the population weekly and antigen testing 33.3% of
178the population weekly (i.e., see Fig. S7 for these scenarios but without vaccines) in both settings.

179 Overall, vaccines are mostly effective in reducing COVID-19 cases at both coverages and
180in both transmission settings. First, compared to there being no vaccinations or immunity, 20%
181vaccines coupled with weekly antigen testing 100% of the population resulted in 15.12% [6.39 –
18225.50] ($\lambda = 396.01$, $p < 10^{-6}$) fewer cases in India than without vaccines. However, surprisingly,
183the limited distributions of vaccines only reduced cases marginally in the US compared to
184weekly antigen testing alone ($\lambda = 1.69$, $p = 0.19$). Secondly, we observe that the increasing
185number of vaccinations resulted in a mitigated disease course; concretely, we observed that
186vaccines coupled with weekly antigen testing 100% of the population resulted in infections

187below 0.5% incidence 7.0 [0 - 15.0] ($\lambda = 45.00, p < 10^{-6}$) days faster in the US and 70.0 [34.83 –
188126.0] ($\lambda = 372.49, p < 10^{-6}$) days faster in India than the same testing strategy but with no
189vaccines. However, widespread testing is still critical, especially in early phases of vaccine
190distribution where we note many antigen-positive SARS-CoV-2 cases being captured. We also
191found marked differences between testing 100% of population weekly or 33.3% of the
192population weekly: specifically, testing 100% of the population weekly resulted in 30.83%
193[20.41 – 33.10] ($\lambda = 342.25, p < 10^{-6}$) fewer cases in the US and 12.99% [7.65 –18.58] ($\lambda =$
194396.01, $p < 10^{-6}$) fewer cases in India than testing 33.3% of the population weekly, suggesting
195high frequency testing remains critical even with vaccines.

196 Nevertheless, while vaccines are effective in both transmission settings, there are key
197differences in the corresponding disease courses and number of infections by transmission
198setting. In particular, as discussed above, cases peak earlier in the US than in India, and as a
199result of distributing vaccines while there is still transmission in India, there were 16.50% [3.83 –
20033.17] ($\lambda = 396.01, p < 10^{-6}$) fewer cases in India than the US for antigen testing 100% of the
201population weekly. Furthermore, we also noted that using vaccines reduced the cost of testing
202because vaccinated individuals are not tested. Ultimately, the use of vaccines is effective in
203minimizing cases when coupled with testing and can be a tailored strategy to mitigate ongoing
204outbreaks.

205 **4. DISCUSSION**

206 *Maximizing the Effectiveness of Testing Strategies*

207 Our results provide insight into constructing testing strategies with maximum effectiveness.
208First, antigen tests are more effective than RT-PCR tests across both transmission settings

209 because they enable faster action to reduce transmission; our results agree with real-world
210 evidence that antigen tests have been used successfully in nation-wide testing campaigns^{28,29}. We
211 observe that RT-PCR assays are more comparable to antigen tests as their turnaround time is
212 decreased³⁰ (Fig. S2). Nevertheless, the increased mitigation of antigen tests compared with RT-
213 PCR assays with standard turnaround times is most pronounced when 100% of the population is
214 tested weekly. Since antigen tests have a quicker turnaround time, infected individuals are more
215 likely to self-isolate faster. Our simulations show that use of antigen tests results in a lower peak
216 of daily cases compared with RT-PCR assays. Because disease spread is greatest in the early
217 stages, when most of the population is still susceptible, early isolation of infected individuals is
218 critical to mitigating disease spread³¹, especially critical when considering highly contagious and
219 vaccine-evasive variants of concern. Additionally, SARS-CoV-2 transmission to secondary
220 individuals is significant even immediately after initial infection³² (Fig. S9), further underscoring
221 the need for isolating infectious individuals quickly.

222 We show that that high-frequency testing must be prioritized when fighting an emerging
223 outbreak driven by a contagious variant of concern, though the relative importance of frequency
224 versus coverage differs by setting and the type of test used. Maximizing frequency has the
225 greatest importance for antigen testing. This is likely driven by its lower sensitivity but quicker
226 turnaround: since antigen tests are unable to detect infected individuals with low viral loads, they
227 must be used frequently to identify when individuals become infectious past detectable levels
228 and force them to isolation. On the other hand, RT-PCR assays can still be effective when used
229 widely because they can identify infectious individuals with low viral loads. Moreover, frequent
230 use of antigen tests is not substantially better than even more extensive disease mitigation

231 strategies, such as coupling antigen and RT-PCR tests, and is still effective in scenarios where
232 there may even be unmitigated disease spreaders.

233 *Comparison of Testing Effectiveness between the United States and India*

234 Although we observe mostly similar trends in mitigation strategies between the two
235 countries, some differences are important for tailoring mitigation solutions. First, while both
236 transmission settings have the same R_{eff} and are parametrized with the same incubation period
237 and transmission distribution, the disease trajectory is markedly different. Overall, transmission
238 is shorter, reaches a higher peak in percentage infected, peaks earlier, and the credible intervals
239 are substantially larger in the United States than India—all of which can be explained by the
240 contact matrices and the inherent variability in contact patterns¹⁸; moreover, our findings
241 generally agree with real world analyses of SARS-CoV-2 spread in the US^{33,34}. Notably, the
242 large credible intervals in the United States are likely driven by the high variability in the
243 distribution of infected secondary contacts³⁵. Moreover, these differences affect mitigation
244 effectiveness. We note that sustained transmission in India, which our simulation predicts, is
245 similar to what is actually occurring in India and contributing to observed resurgences of cases³⁶.

246 While our simulations overall indicate that high-frequency testing must be an urgent
247 priority, we also find that the importance of frequency and coverage differs by transmission
248 setting. Whereas increasing frequency is overall more important in India, increasing coverage
249 beyond half of the population surveilled at each testing occurrence is critical for markedly
250 improved mitigation and for the benefits of frequency to be most noticeable. Notably, at lower
251 coverages, increasing frequency is more beneficial than increasing coverage. Consequently, we
252 suggest that with limited resources, frequency should be prioritized unless coverage can be
253 increased beyond half of the population surveilled; likewise, at those high coverages, the

254 importance of frequency is most evident. Ultimately, the need for widespread and frequent
255 antigen testing is urgent in both countries, but the trade-off between frequency and coverage
256 should be tailored to community needs.

257 Moreover, we find antigen testing is not only more effective but also substantially cheaper
258 than use of RT-PCR assays. Our simulations show that given a constant budget constraint,
259 antigen testing can be done more frequently or at wider coverage and result in fewer cases than
260 use of RT-PCR assays. Nevertheless, we also observe that the same testing scenario may have
261 different costs in the United States versus India. In our simulation, we assume that all individuals
262 who have not been infected must be tested. Since in the United States the peak in cases occurs
263 earlier, more individuals are infected in the early stages and thus a typical individual is removed
264 from the testing pool faster than in India. Although the cost of testing thus should be lower in the
265 United States and we do observe this in many of our simulations, in certain scenarios (e.g., where
266 antigen tests are used at high frequency and coverage; Fig. 2), the cost is less in India because the
267 testing strategy is less effective. Since in India more individuals are infected and do not need to
268 be tested, the cost of the strategy falls. However, given the differential nature of disease spread,
269 testing frequency and coverage can change as the epidemic progresses, which may also change
270 the cost (not considered in our simulations). Finally, we do not consider the cost of hospital beds
271 or self-isolation, which likely differ heavily between settings. Additionally, our analysis does not
272 explicitly consider contact tracing or self-isolation of individuals who experience symptoms, so
273 our results more directly indicate the impact of proactive testing and immediate quarantining.

274 Finally, we show that vaccines and testing can be combined to create mitigation strategies
275 that mitigate the duration of sustained transmission and can usher in an endemic phase earlier.
276 Even a resource-limited vaccine allocation strategy of simply distributing vaccines randomly to

277susceptible individuals in addition to testing some of the population weekly is effective in
278minimizing cases and ending sustained transmission earlier in both transmission settings (Fig. 4).
279However, we show that vaccinations have different impacts in each transmission setting. In
280particular, the vaccination strategy utilized is more effective in reducing cases in India than the
281US. This is likely due to the sustained nature of SARS-CoV-2 transmission observed naturally in
282India (Fig. S1); consequently, the impact of continued vaccinations is greater in India as
283supposed to the US where infections peak much earlier. Thus, our findings show that vaccines
284are critical to minimizing the chance of future waves of COVID-19 cases especially as much of
285the world's population still remains susceptible to SARS-CoV-2. Nevertheless, we note that
286widespread testing is still critical, especially in the early phases of vaccine distribution when
287vaccines are limited. Moreover, testing will likely continue to be critical as further variants of
288concern that may be vaccine-resilient or even vaccine-resistant continue to emerge and must be
289monitored to ensure that resurgences of SARS-CoV-2 infections do not occur³⁷.

290 Generally, the most effective of the testing strategies discussed in this paper are frequently
291not the most expensive but rather those that are most closely tailored to the dynamics of the
292setting. Therefore, identifying transmission dynamics across a wide range of settings and
293applying specialized testing scenarios to specific environments are critical to effective
294mitigation. Our study suggests that contact matrices specific to the setting must be used as
295opposed to generic contact matrices³⁸ commonly used in modeling studies. Our simulation shows
296that social mixing patterns affect the efficacy of mitigation strategies. However, we acknowledge
297that in developing tailored scenarios, considering social factors is also crucial, since health
298behaviors have been shown to be related to social clustering³⁹⁻⁴¹. Nevertheless, we believe the

299 trade-offs presented in this paper present a useful set of heuristics that can inform testing
300 strategies and health policy across a wide range of settings.

301 **5. METHODS**

302 Accurately simulating SARS-CoV-2 dynamics requires two types of data: details of disease
303 outcomes (i.e., data regarding COVID-19's effects in humans), and attributes of virus spread
304 (i.e., properties of SARS-CoV-2 transmission). Details of disease outcomes include such effects
305 as whether an infection will result in hospitalization. Attributes of virus spread refer to the
306 disease's epidemiology, such as the R_{eff} and viral shedding by day. We gathered both kinds of
307 data through freely and publicly available sources for both transmission settings.

308 *COVID-19 Characteristics*

309 We obtained data on COVID-19 cases and death counts from the beginning of data
310 acquisition in the United States and India: US data were obtained from the National Center for
311 Health Statistics (of the US Centers for Disease Control and Prevention, CDC)²⁶, and data from
312 India were obtained from previous studies^{18,42}. We assign each individual an age, gender, and
313 comorbidity based on census data and comorbidity prevalence⁴³. We used these data to estimate
314 COVID-19 probability of death given age, gender, and comorbidities. Additionally, the CDC
315 keeps data on the probability of hospitalization and summary statistics (i.e., the 25th, 50th, and
316 75th percentile) for time spent in the hospital due to severe COVID-19 infection⁴⁴. Although
317 having the distribution of hospital stay duration would be ideal, based on empirical evidence that
318 such data follow a negative binomial distribution⁴⁵, we construct negative binomial distributions
319 with the same summary statistics to generate an estimated probability for various lengths of
320 hospital stays. We had different hospitalization rates in the United States and India, but we

321 assume that the pattern of hospital stay length is maintained between the two countries, since
322 there is a shortage of data on COVID-19 hospitalizations in India. Ultimately, drawing from
323 empirical evidence of COVID-19 effects, we project the expected outcome of individuals'
324 infection given their age, gender, and comorbidities, including whether they are hospitalized,
325 time spent in hospital, and whether they die.

326 *SARS-CoV-2 Tests*

327 We considered two types of tests in our simulations: RT-PCR assays and antigen tests. The
328 sensitivity and specificity as a function of viral load of each test are given in Table S3. From
329 current data, we used a turnaround time of three days for RT-PCR assays¹⁴. We assumed antigen
330 test results come back quickly enough that an infectious individual will not further spread the
331 virus while waiting for results. Finally, drawing from current estimates of costs for these tests,
332 we assumed a cost of each test (Table S3), but note that costs may change dramatically based on
333 setting and health insurance coverage. All individuals who do not yet have a documented
334 infection are tested. Likewise, based on current evidence, fully vaccinated individuals (i.e., either
335 those with a two-dose regiment of an mRNA vaccine or a single dose of another WHO approved
336 vaccine) experience a decreased probability of transmitting the disease, and further booster shots
337 increase the chance that a vaccinated but infected individual will not transmit to their contacts.

338 *SARS-CoV-2 Epidemiology*

339 Although the above data determine the effects of COVID-19 for an individual, they do not
340 detail how SARS-CoV-2 spreads in a population. Thus, to simulate SARS-CoV-2 transmission,
341 we gathered data on the incubation period⁴⁶, transmission probability since infection³², and
342 inferred viral load after symptoms⁴⁷. Together, these variables detailed the necessary information
343 for SARS-CoV-2 transmission from an infected individual to secondary contacts by day and

344 whether the individual will be flagged as infectious by a test. Despite extensive data along with
345 quantifiable uncertainty for the incubation period, transmission probability since infection, and
346 viral load after symptom onset of SARS-CoV-2 (see Table S3 for the parameters used in our
347 analysis), quantifying viral load prior to symptom onset is more difficult and there is sometimes
348 contradictory evidence on the peak viral load^{48,49}. Thus, we drew from previous viral kinetics
349 models to infer the viral load prior to symptom onset; note that our results are likely robust to
350 changes in viral load distribution as there is variability in our estimated viral loads by individual
351 (Fig. S9). Specifically, we say that viral load peaks anywhere from day 0 to day 4 after symptom
352 onset⁵⁰; the peak is anywhere from 5 to 11 log₁₀ virions per mL⁴⁷, that log₁₀ viral load increases
353 linearly from negative infinity on the day of infection to the aforementioned peak, and that log₁₀
354 viral load decays from peak to the end of the individual's infection linearly with a slope drawn
355 from meta-analyses⁴⁷. See Fig. S9 for our inferred viral load distributions.

356 Additionally, we gathered data on contact matrices and the distribution for the number of
357 secondary cases arising from an infected individual for each transmission setting^{18,51}. These
358 variables were used for determining how many infections may arise from a single infected
359 individual and the likely age of the consequently infected individuals. Table S3 shows a
360 complete list of parameters compiled to simulate SARS-CoV-2 transmission in our model. From
361 these parameters, we simulated realistic disease spread in a population across settings.

362 *Model Description*

363 We developed a stochastic, compartmentalized, empirically driven agent-based model
364 (ABM) to project COVID-19 cases, hospitalizations, and deaths given a variety of testing
365 strategies. We adopted the following structure in our model: individuals in the population start as
366 "susceptible" or "recovered" if they have previously been infected before entry into our

367simulation. Susceptible individuals can become “infected and not expressing symptoms” after a
368positive transmission event with another infected individual. Individuals can either stay as
369“infected and not expressing symptoms” (i.e., “asymptomatic”) for the duration of their infection
370or move to “infected and expressing symptoms”. Infected and symptomatic individuals may
371either recover or become hospitalized. Finally, hospitalized individuals may either recover or die
372(see Table S3 for the probability and duration of each event). Throughout each phase, the
373individual’s probability of transmitting the virus changes (peaking near symptom onset), as does
374the viral load (peaking shortly after symptom onset). We inferred the viral load before symptom
375onset based on previous studies³⁰ and drew the viral load after symptom onset from meta-
376analyses⁴⁷. Nevertheless, not all individuals will transmit the virus: in accordance with
377“superspreading”⁵², we drew the number of positive contacts for infected individuals from a
378negative binomial distribution, and whom they are likely to infect, from contact matrices.
379Individuals interacted homogeneously with each other in Brownian fashion in an open space
380with dimensions tuned to ensure the R_{eff} is 2.5 without any mitigation. ABMs present two
381benefits over traditional deterministic compartmentalized models: (i) implementing individual
382specificity is easier, and (ii) they are inherently stochastic and thus can provide credible ranges of
383the epidemic trajectory given initial conditions. Each model was run in the following way: there
384are 5,000 individuals with age and genders drawn from US and Indian census data, and
385comorbidities drawn from recorded prevalences given age and gender in 2017. Note that these
386parameters can be easily changed so that policymakers can determine which mitigation and
387testing strategies are most effective for specific communities. We ran each model for 200 days
388(until a steady state is reached), 200 times (i.e., independent replications), and present the 50th,
3892.5th, 25th, 75th, and 97.5th percentiles (i.e., the “credible intervals”) as summary statistics in

390figures; when reporting values in the main text, we simply provide the 50th percentile and the
3912.5th and 97.5th percentiles as the credible interval. We use standard methods of propagating
392uncertainty in variables to ensure meaningful credible intervals⁵³. Unless otherwise mentioned,
393to test for statistically significant difference in medians between two distributions, we use a two-
394sided paired Mood's Median test⁵⁴. The model was developed in Python⁵⁵ using the Mesa
395package under the Apache2 license⁵⁶. All subsequent analyses were done in Python.

396

397REFERENCES

3981. Dong, E., Du, H. & Gardner, L. An interactive web-based dashboard to track COVID-19 in
399 real time. *Lancet Infect. Dis.* **20**, 533–534 (2020).
4002. Wells, C. R. *et al.* Impact of international travel and border control measures on the global
401 spread of the novel 2019 coronavirus outbreak. *Proc. Natl. Acad. Sci.* **117**, 7504–7509
402 (2020).
4033. Brauner, J. M. *et al.* Inferring the effectiveness of government interventions against COVID-
404 19. *Science* (2020).
4054. Chernozhukov, V., Kasahara, H. & Schrimpf, P. Causal impact of masks, policies, behavior
406 on early Covid-19 pandemic in the US. *J. Econom.* **220**, 23–62 (2020).
4075. Chookajorn, T., Kochakarn, T., Wilasang, C., Kotanan, N. & Modchang, C. Southeast Asia
408 is an emerging hotspot for COVID-19. *Nat. Med.* **27**, 1495–1496 (2021).
4096. Walensky, R. P., Walke, H. T. & Fauci, A. S. SARS-CoV-2 variants of concern in the United
410 States—Challenges and opportunities. *Jama* **325**, 1037–1038 (2021).
4117. Cele, S. *et al.* SARS-CoV-2 Omicron has extensive but incomplete escape of Pfizer
412 BNT162b2 elicited neutralization and requires ACE2 for infection. *MedRxiv* (2021).
4138. Goldberg, Y. *et al.* Waning immunity after the BNT162b2 vaccine in Israel. *N. Engl. J. Med.*
414 **385**, e85 (2021).
4159. Brown, C. M. *et al.* Outbreak of SARS-CoV-2 infections, including COVID-19 vaccine
416 breakthrough infections, associated with large public gatherings—Barnstable County,
417 Massachusetts, July 2021. *Morb. Mortal. Wkly. Rep.* **70**, 1059 (2021).
41810. Lewnard, J. A. *et al.* All-cause mortality during the COVID-19 pandemic in Chennai, India:
419 an observational study. *Lancet Infect. Dis.* (2021).

42011. Lee, E. C., Wada, N. I., Grabowski, M. K., Gurley, E. S. & Lessler, J. The engines of SARS-
421 CoV-2 spread. *Science* **370**, 406 (2020).
42212. Smithgall, M. C., Dowlatshahi, M., Spitalnik, S. L., Hod, E. A. & Rai, A. J. Types of Assays
423 for SARS-CoV-2 Testing: A Review. *Lab. Med.* **51**, e59–e65 (2020).
42413. Williams, E., Bond, K., Zhang, B., Putland, M. & Williamson, D. A. Saliva as a non-
425 invasive specimen for detection of SARS-CoV-2. *J. Clin. Microbiol.* (2020).
42614. Quest Diagnostics. Quest Diagnostics Media Statement about COVID-19 Testing. (2020).
42715. Zhen, W., Smith, E., Manji, R., Schron, D. & Berry, G. J. Clinical evaluation of three
428 sample-to-answer platforms for detection of SARS-CoV-2. *J. Clin. Microbiol.* **58**, (2020).
42916. Hirotsu, Y. *et al.* Comparison of automated SARS-CoV-2 antigen test for COVID-19
430 infection with quantitative RT-PCR using 313 nasopharyngeal swabs, including from seven
431 serially followed patients. *Int. J. Infect. Dis.* **99**, 397–402 (2020).
43217. Chowdhury, R. *et al.* Dynamic interventions to control COVID-19 pandemic: a multivariate
433 prediction modelling study comparing 16 worldwide countries. *Eur. J. Epidemiol.* **35**, 389–
434 399 (2020).
43518. Laxminarayan, R. *et al.* Epidemiology and transmission dynamics of COVID-19 in two
436 Indian states. *Science* **370**, 691–697 (2020).
43719. Peters, D. H. *et al.* Poverty and access to health care in developing countries. *Ann. N. Y.*
438 *Acad. Sci.* **1136**, 161–171 (2008).
43920. Asgary, A., Cojocaru, M. G., Najafabadi, M. M. & Wu, J. Simulating preventative testing of
440 SARS-CoV-2 in schools: policy implications. *BMC Public Health* **21**, 1–18 (2021).
44121. Wilder, B. *et al.* Modeling between-population variation in COVID-19 dynamics in Hubei,
442 Lombardy, and New York City. *Proc. Natl. Acad. Sci.* **117**, 25904–25910 (2020).

44322. Hoertel, N. *et al.* A stochastic agent-based model of the SARS-CoV-2 epidemic in France.
444 *Nat. Med.* **26**, 1417–1421 (2020).
44523. Moghadas, S. M. *et al.* Projecting hospital utilization during the COVID-19 outbreaks in the
446 United States. *Proc. Natl. Acad. Sci.* **117**, 9122–9126 (2020).
44724. Kucharski, A. J. *et al.* Effectiveness of isolation, testing, contact tracing, and physical
448 distancing on reducing transmission of SARS-CoV-2 in different settings: a mathematical
449 modelling study. *Lancet Infect. Dis.* **20**, 1151–1160 (2020).
45025. Walker, P. G. *et al.* The impact of COVID-19 and strategies for mitigation and suppression
451 in low-and middle-income countries. *Science* **369**, 413–422 (2020).
45226. CDC. COVID-19 Cases, Deaths, and Trends in the US | CDC COVID Data Tracker. *Centers
453 for Disease Control and Prevention* <https://covid.cdc.gov/covid-data-tracker> (2020).
45427. Bubar, K. M. *et al.* Model-informed COVID-19 vaccine prioritization strategies by age and
455 serostatus. *Science* (2021).
45628. Pavelka, M. *et al.* The impact of population-wide rapid antigen testing on SARS-CoV-2
457 prevalence in Slovakia. *Science* **372**, 635–641 (2021).
45829. Boum, Y. *et al.* Performance and operational feasibility of antigen and antibody rapid
459 diagnostic tests for COVID-19 in symptomatic and asymptomatic patients in Cameroon: a
460 clinical, prospective, diagnostic accuracy study. *Lancet Infect. Dis.* (2021).
46130. Larremore, D. B. *et al.* Test sensitivity is secondary to frequency and turnaround time for
462 COVID-19 screening. *Sci. Adv.* eabd5393 (2020).
46331. Worobey, M. *et al.* The emergence of SARS-CoV-2 in Europe and North America. *Science*
464 **370**, 564–570 (2020).

46532. He, X. *et al.* Temporal dynamics in viral shedding and transmissibility of COVID-19. *Nat.*
466 *Med.* **26**, 672–675 (2020).
46733. Monod, M. *et al.* Age groups that sustain resurging COVID-19 epidemics in the United
468 States. *Science* **371**, (2021).
46934. Pei, S., Kandula, S. & Shaman, J. Differential effects of intervention timing on COVID-19
470 spread in the United States. *Sci. Adv.* **6**, eabd6370 (2020).
47135. Endo, A., Abbott, S., Kucharski, A. J. & Funk, S. Estimating the overdispersion in COVID-
472 19 transmission using outbreak sizes outside China. *Wellcome Open Res.* **5**, 67 (2020).
47336. Thiagarajan, K. Why is India having a covid-19 surge? (2021).
47437. Walensky, R. P., Walke, H. T. & Fauci, A. S. SARS-CoV-2 variants of concern in the United
475 States—Challenges and opportunities. *JAMA* **325**, 1037–1038 (2021).
47638. Mossong, J. *et al.* Social contacts and mixing patterns relevant to the spread of infectious
477 diseases. *PLoS Med* **5**, e74 (2008).
47839. Verelst, F., Willem, L. & Beutels, P. Behavioural change models for infectious disease
479 transmission: a systematic review (2010–2015). *J. R. Soc. Interface* **13**, 20160820 (2016).
48040. Reid, A. E., Cialdini, R. B. & Aiken, L. S. Social norms and health behavior. in *Handbook of*
481 *behavioral medicine* 263–274 (Springer, 2010).
48241. Christakis, N. A. & Fowler, J. H. The spread of obesity in a large social network over 32
483 years. *N. Engl. J. Med.* **357**, 370–379 (2007).
48442. Barman, M. P., Rahman, T., Bora, K. & Borgohain, C. COVID-19 pandemic and its
485 recovery time of patients in India: A pilot study. *Diabetes Metab. Syndr. Clin. Res. Rev.* **14**,
486 1205–1211 (2020).

48743. James, S. L. *et al.* Global, regional, and national incidence, prevalence, and years lived with
488 disability for 354 diseases and injuries for 195 countries and territories, 1990–2017: a
489 systematic analysis for the Global Burden of Disease Study 2017. *The Lancet* **392**, 1789–
490 1858 (2018).
49144. CDC. Healthcare Workers. *Centers for Disease Control and Prevention*
492 <https://www.cdc.gov/coronavirus/2019-ncov/hcp/planning-scenarios.html> (2020).
49345. Carter, E. M. & Potts, H. W. Predicting length of stay from an electronic patient record
494 system: a primary total knee replacement example. *BMC Med. Inform. Decis. Mak.* **14**, 26
495 (2014).
49646. McAloon, C. *et al.* Incubation period of COVID-19: a rapid systematic review and meta-
497 analysis of observational research. *BMJ Open* **10**, e039652 (2020).
49847. Weiss, A., Jellingsø, M. & Sommer, M. O. A. Spatial and temporal dynamics of SARS-CoV-
499 2 in COVID-19 patients: A systematic review and meta-analysis. *EBioMedicine* **58**, 102916
500 (2020).
50148. Cevik, M. *et al.* SARS-CoV-2, SARS-CoV, and MERS-CoV viral load dynamics, duration
502 of viral shedding, and infectiousness: a systematic review and meta-analysis. *Lancet Microbe*
503 **2**, e13–e22 (2021).
50449. Benefield, A. E. *et al.* SARS-CoV-2 viral load peaks prior to symptom onset: a systematic
505 review and individual-pooled analysis of coronavirus viral load from 66 studies. *medRxiv*
506 2020.09.28.20202028 (2020) doi:10.1101/2020.09.28.20202028.
50750. Chandrashekar, A. *et al.* SARS-CoV-2 infection protects against rechallenge in rhesus
508 macaques. *Science* **369**, 812–817 (2020).

50951. Mistry, D. *et al.* Inferring high-resolution human mixing patterns for disease modeling. *Nat.*

510 *Commun.* **12**, 1–12 (2021).

51152. Lloyd-Smith, J. O., Schreiber, S. J., Kopp, P. E. & Getz, W. M. Superspreading and the

512 effect of individual variation on disease emergence. *Nature* **438**, 355–359 (2005).

51353. Taylor, J. *Introduction to error analysis, the study of uncertainties in physical measurements.*

514 (1997).

51554. Mood, A. M. On the asymptotic efficiency of certain nonparametric two-sample tests. *Ann.*

516 *Math. Stat.* 514–522 (1954).

51755. Van Rossum, G. Python Programming Language. in vol. 41 36 (2007).

51856. Masad, D. & Kazil, J. MESA: an agent-based modeling framework. in 53–60 (Citeseer,

519 2015).

520

521

522

523 **ACKNOWLEDGEMENTS**

524 The authors are grateful for the computational resources managed and supported by Princeton

525 Research Computing, which were used for all simulations in this paper. This work was supported

526 by the Foundation for Innovative New Diagnostics.

527 **AUTHOR CONTRIBUTIONS**

528 R.L. conceived the study. C.K. and R.B. developed the models and performed the analyses. R.L.,

529 S.O., and S.C. provided validation of study findings. C.K. and R.B. prepared the first draft of the

530 manuscript; all authors contributed to the revised manuscript.

531 **COMPETING INTERESTS**

532 The authors declare no potential competing interests.

533 **DATA AVAILABILITY**

534 All data used in this paper is freely and publicly accessible through the US Center for Disease

535 Control or peer-reviewed studies. The provided supplement details data sources.

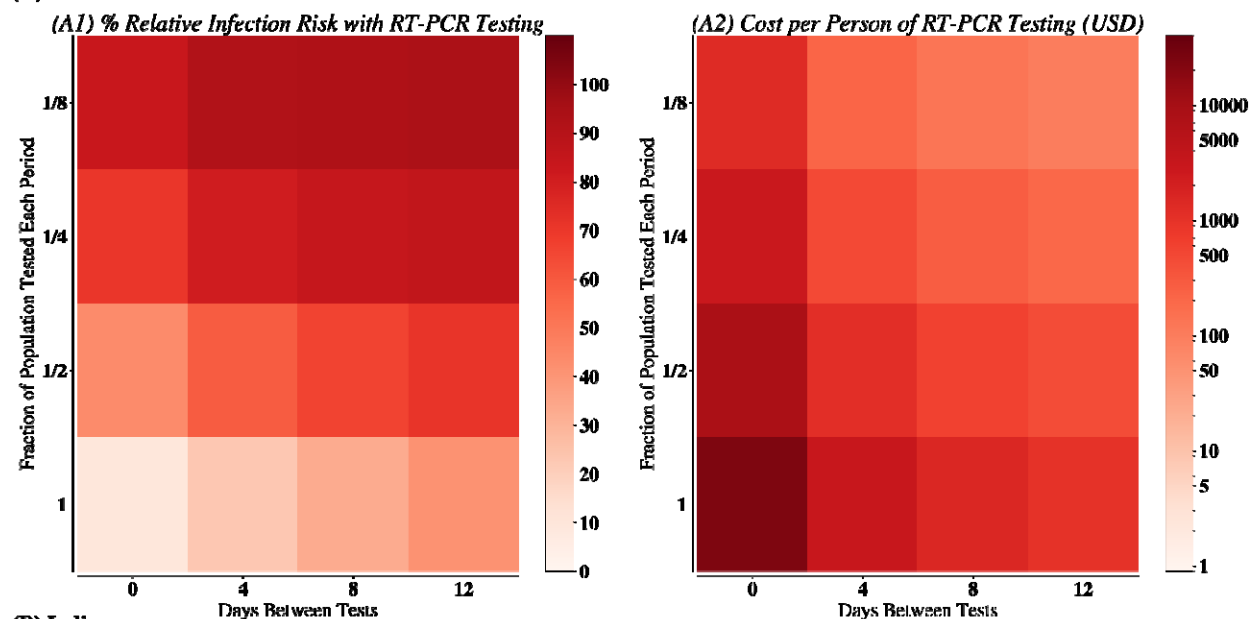
536 **CODE AVAILABILITY**

537 The code used in this paper is available upon request and is on [GitHub](#).

538

539 **FIGURES**

(A) United States



(B) India

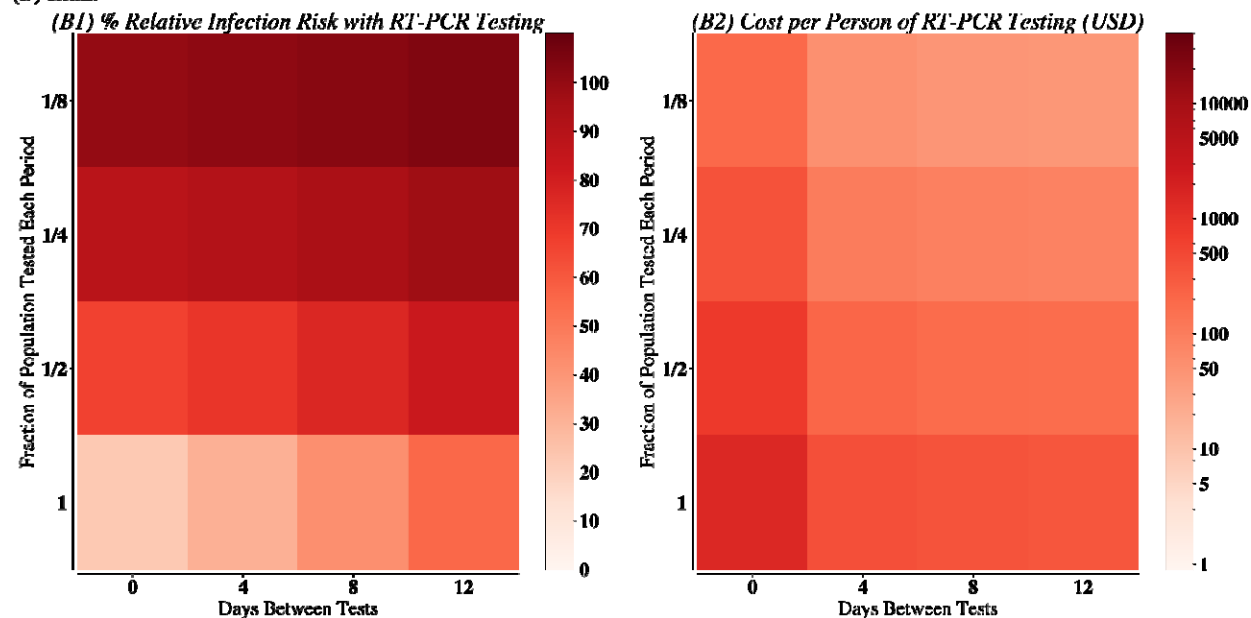
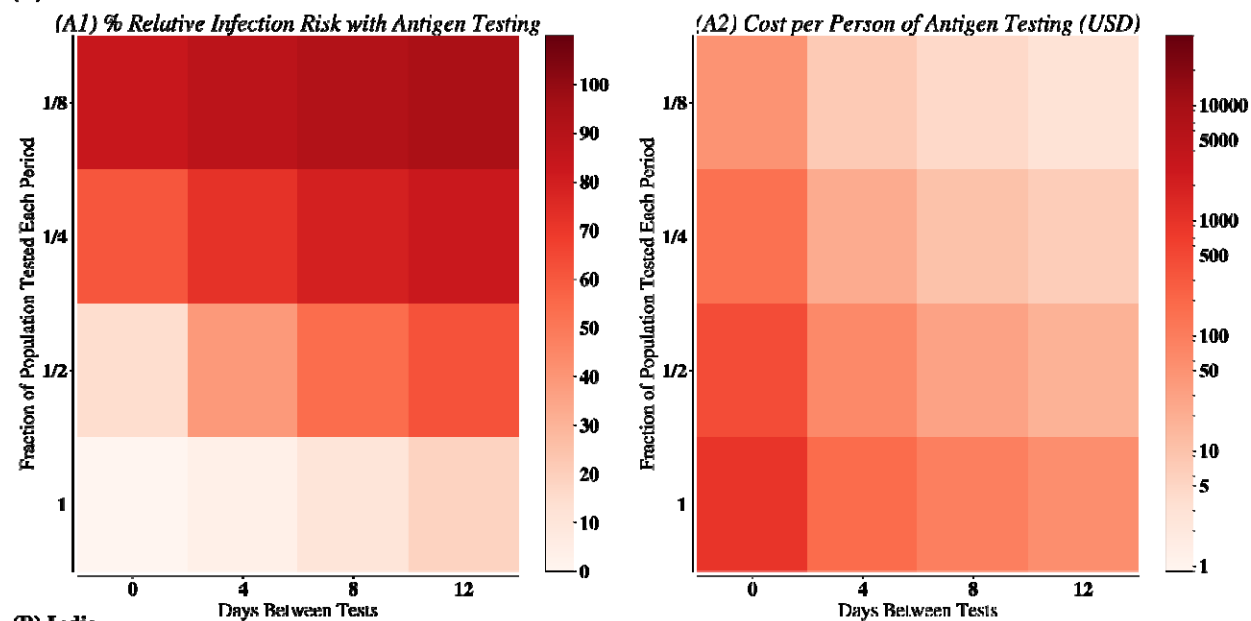


Figure 1: Relative infection risk and cost of testing for various RT-PCR scenarios in (A) United States and (B) India. (1) describes the relative infection risk of RT-PCR tests being used at the given frequency and coverage, compared with the scenario with no mitigation. (2) describes the cost of that testing scenario assuming that all susceptible individuals are tested at the appropriate frequency and coverage.

(A) United States



(B) India

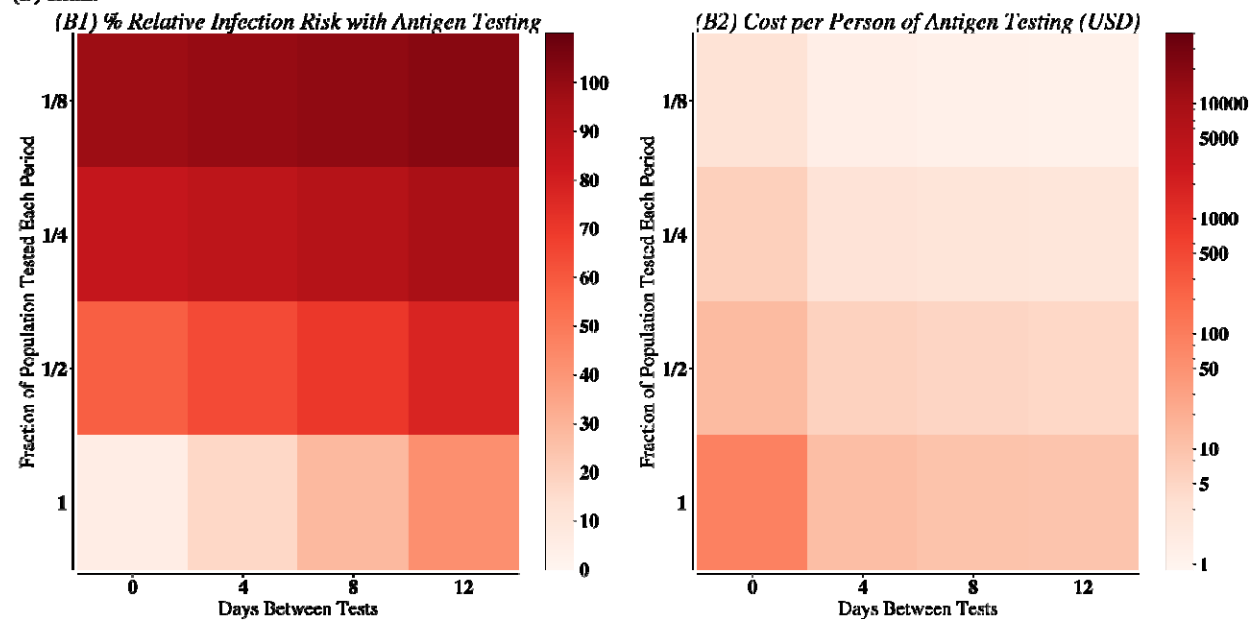


Figure 2: Relative infection risk and cost of testing for various antigen scenarios in (A) United States and (B) India. (1) describes the relative infection risk of antigen tests being used at the given frequency and coverage, compared with the scenario with no mitigation. (2) describes the cost of that testing scenario assuming that all susceptible individuals are tested at the appropriate frequency and coverage.

542
543
544
545
546
547
548
549
550

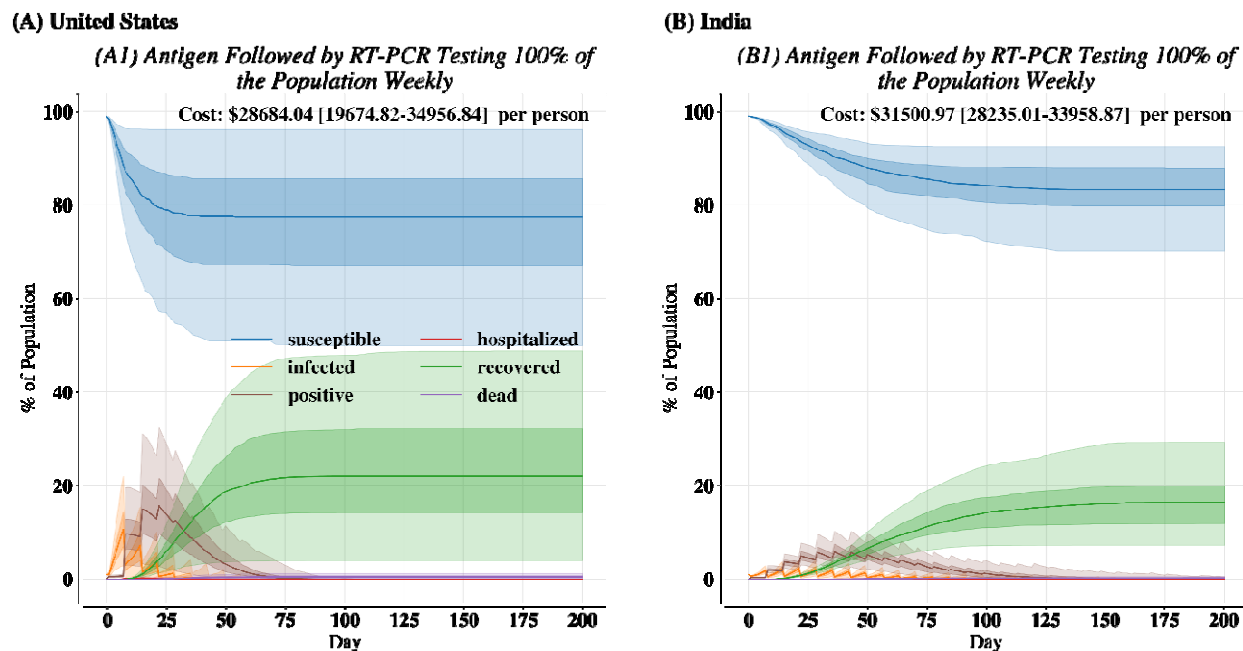
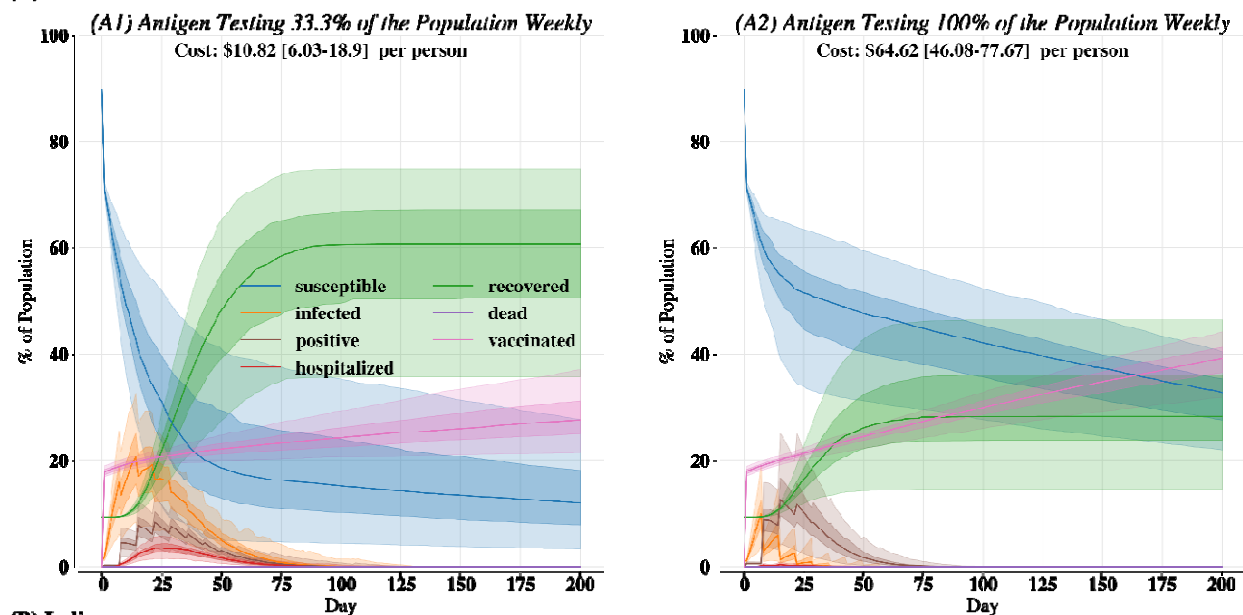


Figure 3: Disease course in (A) United States and (B) India for antigen testing followed by RT-PCR testing of antigen-negative individuals 100% of the population weekly. Bold lines are the median over 200 independent replicates. Dark-shaded regions are the 25th to 75th percentiles. Light-shaded regions are 2.5th to 97.5th percentiles.

551
552
553
554
555
556
557
558
559
560
561
562

(A) United States



(B) India

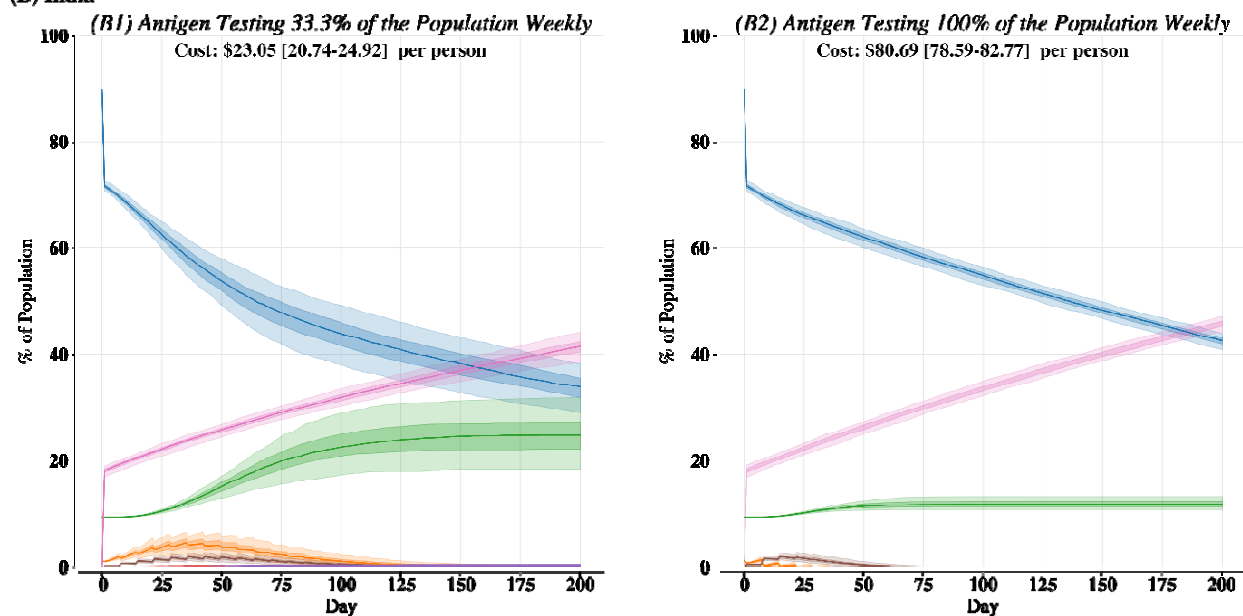


Figure 4: Disease course for (A) United States and (B) India with 20% of the population as initially vaccinated and then 0.25% of the susceptible population being vaccinated each subsequent day; vaccines are coupled with antigen testing (1) 33.3% or (2) 100% of the population weekly. Bold lines are the median over 200 independent replicates. Dark-shaded regions are the 25th to 75th percentiles. Light-shaded regions are 2.5th to 97.5th percentiles.