

## The Nicaraguan Pediatric Influenza Cohort Study, 2011-2019: influenza incidence, seasonality, and transmission

Hannah E. Maier<sup>1\*</sup>, Guillermina Kuan<sup>2,3\*</sup>, Lionel Gresh<sup>2</sup>, Gerardo Chowell<sup>6</sup>, Kevin Bakker<sup>1</sup>, Roger Lopez<sup>2,4</sup>, Nery Sanchez<sup>2</sup>, Brenda Lopez<sup>2</sup>, Amy Schiller<sup>1</sup>, Sergio Ojeda<sup>2</sup>, Eva Harris<sup>5</sup>, Angel Balmaseda<sup>2,4§</sup>, and Aubree Gordon<sup>1§</sup>

<sup>1</sup>Department of Epidemiology, School of Public Health, University of Michigan, Ann Arbor, Michigan, USA; <sup>2</sup>Sustainable Sciences Institute, Managua, Nicaragua; <sup>3</sup>Centro de Salud Sócrates Flores Vivas, Ministry of Health, Managua, Nicaragua; <sup>4</sup>Laboratorio Nacional de Virología, Centro Nacional de Diagnóstico y Referencia, Ministry of Health, Managua, Nicaragua; <sup>5</sup>Division of Infectious Diseases and Vaccinology, School of Public Health, University of California, Berkeley; <sup>6</sup>Population Health Sciences, School of Public Health, Georgia State University

\* co-first authors; § co-last authors

**Keywords.** Influenza; children; seasonality; transmission; infant immunity

**Running title.** Influenza in children

**Summary.** In this long-running influenza cohort, we found a substantial incidence of RT-PCR-confirmed influenza, and report by subtype/lineage. Infants born during influenza epidemics were protected from infection that first year. The mean effective reproduction number across years was 1.2.

**Corresponding author:** Aubree Gordon, Department of Epidemiology, School of Public Health, University of Michigan, Ann Arbor, 5622 SPH I, 1415 Washington Heights, Ann Arbor, MI 48109-2029; Tel. 1-510-409-5495; [gordonal@umich.edu](mailto:gordonal@umich.edu)

**Alternate corresponding author:** Hannah Maier, Department of Epidemiology, School of Public Health, University of Michigan, Ann Arbor, 5606 SPH I, 1415 Washington Heights, Ann Arbor, MI; [maierh@umich.edu](mailto:maierh@umich.edu)

1 **ABSTRACT**

2 **Background.** Children account for a large portion of global influenza burden and transmission,  
3 and a better understanding of influenza in children is needed to improve prevention and control  
4 strategies.

5 **Methods.** To examine the incidence and transmission of influenza we conducted a prospective  
6 community-based study of children aged 0-14 years in Managua, Nicaragua between 2011 and  
7 2019. Participants were provided with medical care through study physicians and symptomatic  
8 influenza was confirmed by RT-PCR. Wavelet analyses were used to examine seasonality.  
9 Generalized growth models (GGMs) were used to estimate effective reproduction numbers.

10 **Results.** From 2011-2019, 3,016 children participated, with an average of ~1,800 participants  
11 per year and median follow-up time of 5 years per child, and 48.3% of the cohort in 2019 had  
12 been enrolled their entire lives. The overall incidence rates per 100 person-years were 14.5  
13 symptomatic influenza cases (95%CI: 13.9-15.1) and 1.0 influenza-associated ALRI case  
14 (95%CI: 0.8-1.1). Symptomatic influenza incidence peaked at age 9-11 months. Infants born  
15 during peak influenza circulation had lower incidence in the first year of their lives. The mean  
16 effective reproduction number was 1.2 (range 1.02-1.49), and we observed significant annual  
17 patterns for influenza and influenza A, and a 2.5-year period for influenza B.

18 **Conclusions.** This study provides important information for understanding influenza  
19 epidemiology and informing influenza vaccine policy. These results will aid in informing  
20 strategies to reduce the burden of influenza.

21 Children make up a substantial portion of the considerable annual influenza burden [1,  
22 2], especially in low-and middle-income countries [3]. Estimates of influenza burden  
23 vary greatly, in part because of poor data availability, and because most are not subtype  
24 and lineage-specific [4]. This lack of data is especially acute in low- and middle-income  
25 countries where currently ~40% of the world's population resides [5]. Children also  
26 contribute importantly to influenza transmission in communities [6], as shown by lower  
27 transmission during school closures [7] and with vaccination of children [8].  
28 Early life influenza exposures are critical to the development of influenza immunity; it  
29 has been known for many years that prior influenza virus exposure impacts response to  
30 future strains [9-15]. In addition initial influenza exposures may provide protection  
31 against future pandemics of novel subtypes [14]. Understanding how early life  
32 exposures impact immunological response has major implications for public health, but  
33 requires that intensive long-term surveillance. The Nicaraguan Pediatric Influenza  
34 Cohort is the longest running influenza cohort that enrolls children from birth and is  
35 poised to provide critical data to aid in this understanding.  
36 To optimize influenza prevention and control measures, particularly in resource-limited  
37 settings, a more accurate and thorough understanding of influenza burden and  
38 transmission is needed, especially in children. Here we present influenza incidence,  
39 seasonality and transmission estimates across a nine year period, in a long-running,  
40 urban community-based prospective cohort study of children in Nicaragua, a tropical  
41 lower-middle income country.

42

## 43 **METHODS**

### 44 **Ethics Statement**

45 Parent or guardian consent was obtained for all participants. In addition, verbal assent was  
46 obtained for participants aged six years and older. No monetary incentives were provided, but a  
47 small gift was provided for yearly for participation. The study was approved by the institutional  
48 review boards at the Nicaraguan Ministry of Health, the University of Michigan, and the  
49 University of California, Berkeley.

50

### 51 **Study Population**

52 A detailed report on the design and methods of this cohort, including characteristics of the  
53 population, has been published previously [16]. Briefly, the Nicaraguan Pediatric Influenza  
54 Cohort Study (NPICS) is an ongoing prospective study (initiated in 2011) of children aged 0-14  
55 years. The study is conducted in District II of Managua, Nicaragua, at the Health Center  
56 Sócrates Flores Vivas (HCSFV), and molecular testing for influenza is performed at the National  
57 Virology Laboratory (NVL) of the Centro Nacional de Diagnóstico y Referencia (CNDR). Initial  
58 enrollment in 2011 was done through random sampling of children aged 3-11 years enrolled in a  
59 prior cohort study of influenza [17, 18]; additional children aged 0-2 years were recruited  
60 through house-to-house visits. Newborn infants  $\leq 4$  weeks are enrolled monthly into NPICS.  
61 Children may remain in the study until their 15<sup>th</sup> birthday. All participants live within the  
62 catchment area of the HCSFV.

63

### 64 **Follow-up and case identification**

65 Once enrolled, children are followed with annual surveys, and families are asked to bring their  
66 children to the HCSFV for medical care at the first sign of illness (study diagram in appendix  
67 p3). The criteria for influenza testing by real-time reverse-transcription polymerase chain  
68 reaction (RT-PCR) was measured or reported fever ( $37.8^{\circ}\text{C}$ ) or feverishness with cough, sore  
69 throat, or runny nose for children aged 2 years and older, and only fever or feverishness for  
70 children under 2. Primary medical care and laboratory testing are provided to all participants,

71 free of charge. Multiple attempts are made to reach the participants, including house visits,  
72 before considering them lost to follow-up. The primary outcome in this analysis is symptomatic  
73 RT-PCR-confirmed influenza infection. A secondary outcome is influenza-associated acute  
74 lower respiratory infection (ALRI), defined as pneumonia, bronchitis, bronchiolitis,  
75 bronchopneumonia, or bronchial hyper-reactivity occurring up to fourteen days prior to and 28  
76 days after a positive influenza RT-PCR test. Some children were also enrolled in influenza  
77 household transmission studies starting in 2012, which tested for influenza regardless of  
78 symptoms; influenza-positive RT-PCR tests from these children who did not meet the testing  
79 criteria were not included in this analysis. Six un-subtyped influenza A cases in 2017 and 2019  
80 were re-coded as H3N2, as that was the nearly exclusive circulating subtype those years.  
81 Lineage was not available for 50 influenza B infections.

82

### 83 **Statistical Analysis**

#### 84 ***Incidence***

85 Person-time was calculated as the amount of time between enrollment and December 31, 2019,  
86 or withdrawal. For those lost to follow-up, exit dates were calculated as the midpoint between  
87 the date of last contact and the date recorded by study personnel as lost to follow-up. Incidence  
88 and confidence intervals were calculated using intercept-only generalized linear models with  
89 Poisson distributions. Analyses were performed for all influenza, by type (A and B), by influenza  
90 A subtype (H1N1pdm and H3N2), and by influenza B lineage (Victoria and Yamagata).  
91 Participant age used in incidence models was calculated on a weekly basis. R version 4.1.0 was  
92 used to perform analyses and create figures [19].

93

#### 94 ***Effective Reproduction Numbers***

95 We used generalized growth models (GGMs) [20] to estimate the effective reproduction  
96 numbers of yearly influenza epidemics. GGMs allow sub-exponential epidemic growth early on,

97 by linking the serial interval (assumed here to be 2.85 (standard deviation 0.93) days [21, 22])  
98 with case incidence time series and estimating the transmission potential over time. The GGMs  
99 additionally estimate two more parameters, the epidemic growth rate and a scaling factor for the  
100 epidemic growth rate, which can range from zero (no growth) to one (exponential epidemic  
101 growth). We used Wilcoxon tests to compare parameter values between influenza (sub)types.

102

### 103 **Seasonality**

104 To analyze seasonal patterns, in addition to plotting weekly influenza incidence, wavelet  
105 analyses using pink noise were performed to identify dominant and significant seasonal cycles  
106 [23]. Data were analyzed using a log+1 transformation to better interpret the seasonal patterns.

107

## 108 **RESULTS**

### 109 **Study Participation**

110 Between 2011 and 2019, 3,016 children were enrolled, contributing a total of 16,352 person-  
111 years (table 1), with an average of ~1,800 participants enrolled per year and a median follow-up  
112 time of 5 years per child (IQR: 3-8 years, figure 1A,D,E). Overall, 35.7% of the cohort was  
113 enrolled for their whole lives (enrolled in their first 3 months of life), and by 2019, 48.3% of  
114 active participants in 2019 had been enrolled their whole lives, because most enrollees after  
115 2011 were newborns (figure 1B). A total of 607 children (20.1%) completed the study (most  
116 aged out but four moved out of the study catchment area), 544 children (18.0%) were ultimately  
117 lost to follow-up, 132 (4.4%) were ultimately withdrawn, and 7 (0.2%) died (figure 1C); 1,726  
118 children (57.2%) were still enrolled at the end of 2019. After being lost or withdrawn, eight  
119 children re-enrolled; one completed the study; two were lost again, and five were still enrolled at  
120 the end of 2019. The mean yearly loss to follow-up was 3.4% (range 1.9-5.7%, figure 1C). Six of  
121 the seven deaths were in children under one year of age, and the other death was a ten-year-  
122 old in 2016. This population has very low rates of influenza vaccination, with 13.3% ever

123 vaccinated and 2.7% vaccinated yearly (rates by age and year are presented in appendix p 4).  
124 Children presented at the health center 71,123 times, of which 17,531 (24.6%) visits met the  
125 study testing definition for influenza. Of these visits, 16,439 (93.8%) presented for care within  
126 four days of onset of symptoms.

127

## 128 **Influenza Cases**

129 Between 2011 and 2019, 2,176 suspected infections were RT-PCR-confirmed as influenza  
130 (table 2). Close to half of participants (1,411 [46.8%]) experienced at least one symptomatic  
131 influenza infection while enrolled; 36% ever had an influenza A infection (18% ever had  
132 H1N1pdm, 26% ever had H3N2) and 23% ever had an influenza B infection (12% ever had  
133 Victoria, and 12% ever had Yamagata), with up to 5 total influenza illnesses per child. There  
134 were two co-infections, both with H1N1pdm and H3N2 in 2011. The overall incidence of  
135 symptomatic influenza was 14.5 cases (95%CI: 13.9-15.1) and 1.0 influenza-associated ALRI  
136 case (0.8-1.2) per 100 person-years (table 2). Among children with two or more influenza  
137 illnesses, the mean time between illnesses was 2.0 years with a range of one week (different  
138 influenza types) to almost nine years. The mean time between influenza illnesses increased  
139 with age ( $p < 0.0001$ ), from 1.3 years for children aged 0-4 years to 2.4 years for children aged 5-  
140 14 years (appendix p 5).

141

## 142 **Incidence Comparisons by Age and Sex**

143 Children aged 9-11 months had the highest influenza burden, with 26.1 cases of symptomatic  
144 influenza (95%CI: 20.6-32.9) and 4.8 influenza-associated ALRI cases (95%CI: 2.8-8.3) per 100  
145 person-years, increasing from 7.2 symptomatic influenza cases (95%CI: 4.3-11.9) and 1.0  
146 influenza-associated ALRI case (95%CI: 0.2-3.8) in children aged <3 months and then  
147 decreasing by age 14 years to 7.8 symptomatic influenza cases (95%CI: 6.0-10.2) and 0.3  
148 influenza-associated ALRI cases (95%CI: 0.1-1.2, figure 2). By age groups 0-4, 5-10, and 11-14

149 years, incidence of symptomatic influenza was 20.2 (95%CI: 19.0-21.5), 13.2 (95%CI: 12.3-  
150 14.1), and 8.6 (95%CI: 7.7-9.6), and incidence of influenza-associated ALRI was 2.1 (95%CI:  
151 1.8-2.6), 0.4 (95%CI: 0.3-0.6), and 0.3 (95%CI: 0.2-0.5) per 100 person-years, respectively  
152 (table 2). The same age patterns were true of incidence for influenza A and both subtypes, but  
153 were somewhat different for influenza B, for which symptomatic influenza incidence was similar  
154 for ages 0-4 and 5-10 and lower by age 11-14, and influenza-associated ALRI incidence was  
155 higher for children aged 0-4 and similar for older ages (table 2). There were no significant  
156 differences by sex, but males had slightly more influenza-associated ALRI (M: 1.2, 95%CI: 0.9-  
157 1.4; F: 0.8, 95%CI: 0.6-1.0, (table 2).

158

### 159 **Infant Immunity**

160 We investigated immunity in children's first and second influenza seasons by selecting infants  
161 who were enrolled in their first six months of life and comparing incidence of symptomatic  
162 influenza by month born and month of infection, across all study years (figure 3). In their first  
163 year enrolled, incidence was highest for children born in May (31 cases per 100 person-years,  
164 95%CI: 18.7-51.5), while peak month of infection was 5 months later than their births, in  
165 October; incidence was lowest for children born in July (9.2 cases per 100 person-years,  
166 95%CI: 3.0-28.6, figure 3A). Children born from December-June had 23.8 cases per 100  
167 person-years (95%CI: 19.6-28.8), compared to only 13.9 cases per 100py in children born  
168 during the primary months of influenza circulation, July-November (95%CI: 9.2-20.9, figure 3B).  
169 This pattern was similar for influenza A and B in the first year enrolled, although for A this was  
170 primarily driven by H3N2 and there was no difference for H1N1pdm (figure 3B, appendix p 6).  
171 In their second year enrolled, this effect disappeared (figure 3A&B). Interestingly, for influenza B  
172 in the second year enrolled, there was a catch up in incidence for the children born during



173 primary influenza circulation months July-November (figure 3B), with 9.0 vs 5.4 cases per 100py  
174 compared to children born December-June (95%CI: 6.5-12.4 vs 3.7-7.8).

175

## 176 **Effective Reproduction Numbers**

177 The overall mean estimated effective reproduction number ( $R$  effective) was 1.20 (figure 4A),  
178 with a range in yearly estimates from 1.02 in 2012 to 1.49 in 2015 (figure 4B).  $R$  effective  
179 appeared marginally higher for influenza A vs B, however with a small number of seasons to  
180 compare ( $n = 9$  and  $n = 6$ ), we did not observe a statistically significant difference (A vs B:  $p =$   
181  $0.224$ , H3N2 vs B:  $p = 0.101$ ). The ascending period—the time in weeks from epidemic start to  
182 peak—ranged from 4 weeks in 2011 to 11 weeks in 2012 and was longest for influenza B (A vs  
183 B:  $p = 0.091$ , H3N2 vs B:  $p = 0.043$ , appendix p 7). The growth rate scaling parameter for  
184 influenza ranged from 0.26 in 2012 to 0.95 in 2016, indicating a range in growth behavior from  
185 sub-exponential to nearly exponential (appendix p 7).

186

## 187 **Seasonality**

188 Circulation of influenza subtypes and lineages alternated from 2011-2019 (figure 5A and  
189 appendix p 11), and 2007-2010 (data from a prior study[17], inset of figure 5A), with typically  
190 one epidemic per year unless there were large epidemics of multiple influenza types, as in  
191 2010, 2014, and 2017, which occurred close together in time (June/August peaks in 2010,  
192 August/September peaks in 2014 and June/August peaks in 2017). Years with the highest  
193 number of symptomatic influenza cases did not correspond to the years with the highest  
194 influenza-associated ALRI cases: for example, 2013 with H3N2 predominating had an average  
195 incidence of symptomatic influenza but the highest incidence of influenza-associated ALRI  
196 (appendix p 8). Interestingly, 2014, which had an even higher incidence of symptomatic H3N2  
197 cases, had lower H3N2-associated ALRI incidence (appendix p 8).

198 Seasonal influenza epidemic peaks alternated between June-August and September-  
199 December, but nearly all (97.3%) circulation occurred from June-December (Figure 5A&B,  
200 appendix p9). From 2011-2019, influenza circulated later and with more September-December  
201 peaks, compared to the earlier 2007-2010 cohort (Figure 5A&B, appendix p9). Wavelet analysis  
202 confirmed a significant annual pattern (appendix p 10); similar patterns are seen for influenza A  
203 (appendix p 10). For influenza B, wavelet analysis showed a 2.5-year dominant period; this fits  
204 with the semi-alternating years of influenza B circulation (figure 5A) and two large relatively  
205 early seasons with peaks in August 2014 and June 2017 (appendix p 10).

206

## 207 **DISCUSSION**

208 In this long-running prospective cohort study of influenza in children in Nicaragua, we found a  
209 significant burden of laboratory-confirmed symptomatic influenza. Children aged 9-11 months  
210 had the highest incidence, and incidence declined with age. Infants born during the primary  
211 months of influenza circulation had lower incidence compared to those born when influenza was  
212 not circulating. Across nine years, the overall mean effective reproduction number was 1.2, and  
213 one large annual epidemic occurred—sometimes one influenza type followed shortly by the  
214 other— with seasonal peaks alternating between June-August and September-December and  
215 nearly all circulation between June-December.

216 Compared to other community-based studies of multiple seasons, our reported childhood  
217 influenza burden (14.5 symptomatic influenza cases and 1.0 influenza-associated ALRI case  
218 per 100 person-years) was higher than in wealthier, more vaccinated settings of Michigan (10.7  
219 and 9.1 influenza cases per 100 person-seasons in children 0-4y and 5-17, respectively [24])  
220 and Finland (3.6 cases per 100 person years in children 0-2y [25]), and more comparable to  
221 (semi) tropical Peru (21.4, 25.6, 20.4, and 11.2 cases per 100 person years in children <2y, 2-  
222 4y, 5-11y, and 12-17y, respectively [26]) and Hong Kong (4-21 cases per 100 person-season

223 over 4 seasons, in children 2-19y [27]). To our knowledge, ours is the largest, longest-running  
224 community-based prospective pediatric cohort study. Because influenza epidemics vary in  
225 (sub)type, lineage, size, and severity from year-to-year, studying only a few seasons will not  
226 capture the variability in incidence and burden, especially since immunity develops over time,  
227 strongly influenced by first exposures. However, estimates averaged over multiple seasons will  
228 provide an accurate picture. While data exists on the incidence of influenza in wealthy and  
229 temperate regions, detailed reporting of influenza in the tropics, Latin America, and LMICs is  
230 much poorer, particularly in children [28, 29].

231 Others have shown patterns of influenza immunity by birth month: children in the US aged 2-5  
232 years were more likely to be vaccinated if their birthdays occurred between September and  
233 December, with those children also less likely to be diagnosed with influenza. This likely  
234 occurred because young children typically have their annual checkups near their birthday,  
235 meaning they'd be vaccinated [30]. Pregnant women are a priority group for influenza  
236 vaccination because of the protection afforded to newborns [31], and our finding that incidence  
237 was lower for infants born during influenza epidemics is likely related to passively acquired  
238 maternal immunity, which declines over the first 6-12 months of life [32]. Unfortunately, we do  
239 not have information on maternal vaccination status, but our results suggest that whether  
240 maternal antibodies were from infection or vaccination, they provided some protection to  
241 newborns. Protection among infants born during influenza epidemics and highest incidence  
242 among children aged 9-11 months highlight the importance in protecting infants of vaccinating  
243 pregnant women, postpartum women who breastfeed [33], and infants as soon as possible after  
244 the recommended age of six months.

245 Our estimate of the effective reproduction number for Nicaragua from 2011-2019 (1.2, range  
246 across years of 1.0-1.5) falls between estimates for seasonal influenza from 1996-2006 in  
247 Brazil, another (semi) tropical Latin American country, of 1.03 (95%CI: 1.02-1.04) [34], and a

248 median estimate for seasonal influenza from 24 studies and many years going as far back as  
249 1889, mostly from Israel, Europe, and North America, of 1.27 (IQR: 1.19-1.37) [35]. It was also  
250 below the median 2009 H1N1 pandemic estimate, summarized from 78 estimates from many  
251 locations, of 1.46 (IQR: 1.30-1.70) [35], but of note, our highest sub-type-specific R effective  
252 was for H1N1pdm in 2015 (1.5, 95% CI: 1.2-1.6).

253 Influenza has been thought to lack seasonality in the tropics [28, 29], however, we saw  
254 practically no influenza cases from January through May. This misconception may be due to the  
255 previous insufficient surveillance and reporting scale. For example, there were H1N1pdm peaks  
256 at the end of 2015, middle of 2016, and end of 2016 in Central America [29], but in Managua,  
257 we only saw H1N1pdm circulation at the end of 2015. It's possible that local transmission is  
258 seasonally distinct in the tropics, but there are enough important small-scale geographic  
259 differences that seasonality is blurred when aggregated. Influenza seasonality in Nicaragua has  
260 changed from two annual peaks, primary in June/July and secondary in November/December,  
261 prior to the 2009 H1N1 pandemic [17, 36], to one annual peak after 2009, alternating between  
262 earlier and later timing. The optimal timing for influenza vaccination in Managua is likely in the  
263 several months after the Southern Hemisphere vaccine becomes available in April. Seasonal  
264 differences between Managua and Central America suggest that the timing of epidemics vary,  
265 and that optimal timing of vaccination may vary by region.

266 Our ongoing long-running community-based prospective pediatric cohort study has added  
267 important details to our understanding of influenza burden in children and fills a gap in  
268 information on influenza in the tropics and in Latin America in particular [28, 29]. These results  
269 provide much-needed information on influenza in a tropical LMIC setting and will be invaluable  
270 in informing strategies to reduce the burden of influenza.

271

272 **FUNDING**

273 This work was supported by the National Institute for Allergy and Infectious Diseases at the  
274 National Institute of Health [award no. R01 AI149747-01 and contract no.  
275 HHSN272201400006C to A.G., U01 AI44616 to A.G., U01 AI088654 to A.G. and E.H.].

276

## 277 **ACKNOWLEDGEMENTS**

278 We are extremely grateful to the children who participated in this study and to their families, and  
279 to the incredibly dedicated teams at the Centro de Salud Sócrates Flores Vivas and the  
280 Nicaraguan National Virology Laboratory at the Nicaraguan Ministry of Health and at the  
281 Sustainable Sciences Institute.

282

## 283 **COMPETING INTERESTS**

284 Aubree Gordon serves on an advisory board for Janssen. All other authors report no competing  
285 interests.

## REFERENCES

1. Iuliano AD, Roguski KM, Chang HH, et al. Estimates of global seasonal influenza-associated respiratory mortality: a modelling study. *Lancet* **2018**; 391(10127): 1285-300.
2. G. B. D. Influenza Collaborators. Mortality, morbidity, and hospitalisations due to influenza lower respiratory tract infections, 2017: an analysis for the Global Burden of Disease Study 2017. *Lancet Respir Med* **2019**; 7(1): 69-89.
3. Wang X, Li Y, O'Brien KL, et al. Global burden of respiratory infections associated with seasonal influenza in children under 5 years in 2018: a systematic review and modelling study. *Lancet Glob Health* **2020**; 8(4): e497-e510.
4. Sullivan SG, Cowling BJ. Reconciling estimates of the global influenza burden. *Lancet Respir Med* **2019**; 7(1): 8-9.
5. World Bank. Available at: <https://data.worldbank.org/income-level/lower-middle-income>. Accessed 2021-09-17.
6. Worby CJ, Chaves SS, Wallinga J, Lipsitch M, Finelli L, Goldstein E. On the relative role of different age groups in influenza epidemics. *Epidemics* **2015**; 13: 10-6.
7. Cauchemez S, Valleron AJ, Boelle PY, Flahault A, Ferguson NM. Estimating the impact of school closure on influenza transmission from Sentinel data. *Nature* **2008**; 452(7188): 750-4.
8. Loeb M, Russell ML, Moss L, et al. Effect of influenza vaccination of children on infection rates in Hutterite communities: a randomized trial. *JAMA* **2010**; 303(10): 943-50.
9. Francis TJ. On the Doctrine of Original Antigenic Sin. *Proceedings of the American Philosophical Society* **1960**; 104: 572-8.
10. Lessler J, Riley S, Read JM, et al. Evidence for antigenic seniority in influenza A (H3N2) antibody responses in southern China. *PLoS Pathog* **2012**; 8(7): e1002802.
11. Kucharski AJ, Lessler J, Read JM, et al. Estimating the life course of influenza A(H3N2) antibody responses from cross-sectional data. *PLoS Biol* **2015**; 13(3): e1002082.
12. Miller MS, Gardner TJ, Krammer F, et al. Neutralizing antibodies against previously encountered influenza virus strains increase over time: a longitudinal analysis. *Sci Transl Med* **2013**; 5(198): 198ra07.
13. Cobey S, Hensley SE. Immune history and influenza virus susceptibility. *Curr Opin Virol* **2017**; 22: 105-11.
14. Gostic KM, Ambrose M, Worobey M, Lloyd-Smith JO. Potent protection against H5N1 and H7N9 influenza via childhood hemagglutinin imprinting. *Science* **2016**; 354(6313): 722-6.
15. Gostic KM, Bridge R, Brady S, Viboud C, Worobey M, Lloyd-Smith JO. Childhood immune imprinting to influenza A shapes birth year-specific risk during seasonal H1N1 and H3N2 epidemics. *PLoS Pathog* **2019**; 15(12): e1008109.
16. Gordon A, Kuan G, Aviles W, et al. The Nicaraguan pediatric influenza cohort study: design, methods, use of technology, and compliance. *BMC Infect Dis* **2015**; 15: 504.

17. Gordon A, Ortega O, Kuan G, et al. Prevalence and seasonality of influenza-like illness in children, Nicaragua, 2005-2007. *Emerg Infect Dis* **2009**; 15(3): 408-14.
18. Gordon A, Saborio S, Videa E, et al. Clinical attack rate and presentation of pandemic H1N1 influenza versus seasonal influenza A and B in a pediatric cohort in Nicaragua. *Clin Infect Dis* **2010**; 50(11): 1462-7.
19. R Core Team. R: A language and environment for statistical computing. Available at: <https://www.R-project.org/>.
20. Chowell G, Viboud C, Simonsen L, Moghadas SM. Characterizing the reproduction number of epidemics with early subexponential growth dynamics. *J R Soc Interface* **2016**; 13(123).
21. Wallinga J, Lipsitch M. How generation intervals shape the relationship between growth rates and reproductive numbers. *Proc Biol Sci* **2007**; 274(1609): 599-604.
22. Gordon A, Tsang TK, Cowling BJ, et al. Influenza Transmission Dynamics in Urban Households, Managua, Nicaragua, 2012-2014. *Emerg Infect Dis* **2018**; 24(10): 1882-8.
23. Meyers SDK, Brian G; and O'Brien, James J. An introduction to wavelet analysis in oceanography and meteorology: With application to the dispersion of Yanai waves. *Monthly weather review* **1993**; 121(10): 2858--66.
24. Malosh RE, Petrie JG, Callear A, et al. Effectiveness of Influenza Vaccines in the HIVE household cohort over 8 years: is there evidence of indirect protection? *Clin Infect Dis* **2021**.
25. Teros-Jaakkola T, Toivonen L, Schuez-Havupalo L, et al. Influenza virus infections from 0 to 2 years of age: A birth cohort study. *J Microbiol Immunol Infect* **2019**; 52(4): 526-33.
26. Tinoco YO, Azziz-Baumgartner E, Uyeki TM, et al. Burden of Influenza in 4 Ecologically Distinct Regions of Peru: Household Active Surveillance of a Community Cohort, 2009-2015. *Clin Infect Dis* **2017**; 65(9): 1532-41.
27. Wei VWI, Wong JYT, Perera R, et al. Incidence of influenza A(H3N2) virus infections in Hong Kong in a longitudinal sero-epidemiological study, 2009-2015. *PLoS One* **2018**; 13(5): e0197504.
28. Ng S, Gordon A. Influenza Burden and Transmission in the Tropics. *Curr Epidemiol Rep* **2015**; 2(2): 89-100.
29. Gentile A, Paget J, Bellei N, et al. Influenza in Latin America: A report from the Global Influenza Initiative (GII). *Vaccine* **2019**; 37(20): 2670-8.
30. Worsham C, Woo J, Jena AB. Birth Month and Influenza Vaccination in Children. *N Engl J Med* **2020**; 383(2): 184-5.
31. World Health Organization. WHO SAGE Seasonal Influenza Vaccination Recommendations during the COVID-19 Pandemic: Interim Guidance. Available at: [https://www.who.int/immunization/policy/position\\_papers/Interim\\_SAGE\\_influenza\\_vaccination\\_recommendations.pdf?ua=1](https://www.who.int/immunization/policy/position_papers/Interim_SAGE_influenza_vaccination_recommendations.pdf?ua=1).
32. Niewiesk S. Maternal antibodies: clinical significance, mechanism of interference with immune responses, and possible vaccination strategies. *Front Immunol* **2014**; 5: 446.
33. Maltezou HC, Fotiou A, Antonakopoulos N, et al. Impact of postpartum influenza vaccination of mothers and household contacts in preventing febrile episodes,

- influenza-like illness, healthcare seeking, and administration of antibiotics in young infants during the 2012-2013 influenza season. *Clin Infect Dis* **2013**; 57(11): 1520-6.
34. Chowell G, Viboud C, Simonsen L, Miller M, Alonso WJ. The reproduction number of seasonal influenza epidemics in Brazil, 1996-2006. *Proc Biol Sci* **2010**; 277(1689): 1857-66.
  35. Biggerstaff M, Cauchemez S, Reed C, Gambhir M, Finelli L. Estimates of the reproduction number for seasonal, pandemic, and zoonotic influenza: a systematic review of the literature. *BMC Infect Dis* **2014**; 14: 480.
  36. Caini S, Alonso WJ, Balmaseda A, et al. Characteristics of seasonal influenza A and B in Latin America: Influenza surveillance data from ten countries. *PLoS One* **2017**; 12(3): e0174592.

Table 1. Participant Characteristics

	Person-years*		Participants
	N	%	
Total	16352	100.0	3016
Age			
<1y	1035	6.3	
1-4y	4421	27.0	
5-10y	6409	39.2	
11-12y	2175	13.3	
13-14y	2312	14.1	
Sex			
F	8231	50.3	1513
M	8121	49.7	1503

\*counting every year partially enrolled



Table 2. Incidence of symptomatic influenza and influenza-associated ALRI in the Nicaraguan Pediatric Influenza Cohort Study (NPICS), 2011-2019

	PY	All Influenza		Influenza A		Influenza B		H1N1pdm		H3N2		Victoria		Yamagata	
		N	Inc (CI)	N	Inc (CI)	N	Inc (CI)	N	Inc (CI)	N	Inc (CI)	N	Inc (CI)	N	Inc (CI)
<b>Symptomatic Influenza</b>															
Everyone	14982.0	2176	14.5 (13.9, 15.1)	1403	9.4 (8.9, 9.9)	773	5.2 (4.8, 5.5)	541	3.6 (3.3, 3.9)	864	5.8 (5.4, 6.2)	368	2.5 (2.2, 2.7)	355	2.4 (2.1, 2.6)
<b>Age</b>															
0-4y	5176.6	1046	20.2 (19.0, 21.5)	752	14.5 (13.5, 15.6)	294	5.7 (5.1, 6.4)	286	5.5 (4.9, 6.2)	466	9.0 (8.2, 9.9)	145	2.8 (2.4, 3.3)	130	2.5 (2.1, 3.0)
5-10y	6246.1	825	13.2 (12.3, 14.1)	468	7.5 (6.8, 8.2)	357	5.7 (5.2, 6.3)	191	3.1 (2.7, 3.5)	279	4.5 (4.0, 5.0)	172	2.8 (2.4, 3.2)	166	2.7 (2.3, 3.1)
11-14y	3559.3	305	8.6 (7.7, 9.6)	183	5.1 (4.4, 5.9)	122	3.4 (2.9, 4.1)	64	1.8 (1.4, 2.3)	119	3.3 (2.8, 4.0)	51	1.4 (1.1, 1.9)	59	1.7 (1.3, 2.2)
<b>Sex</b>															
F	7553.9	1085	14.4 (13.5, 15.2)	706	9.3 (8.7, 10.1)	379	5.0 (4.5, 5.5)	266	3.5 (3.1, 4.0)	441	5.8 (5.3, 6.4)	181	2.4 (2.1, 2.8)	178	2.4 (2.0, 2.9)
M	7428.1	1091	14.7 (13.8, 15.6)	697	9.4 (8.7, 10.1)	394	5.3 (4.8, 5.9)	275	3.7 (3.3, 4.2)	423	5.7 (5.2, 6.3)	187	2.5 (2.2, 2.9)	177	2.4 (2.1, 2.8)
<b>Influenza-associated ALRI</b>															
Everyone	14982.0	147	1.0 (0.8, 1.2)	110	0.7 (0.6, 0.9)	37	0.2 (0.2, 0.3)	44	0.3 (0.2, 0.4)	66	0.4 (0.3, 0.6)	20	0.1 (0.1, 0.2)	11	0.1 (0.0, 0.2)
<b>Age</b>															
0-4y	5176.6	111	2.1 (1.8, 2.6)	88	1.7 (1.4, 2.1)	23	0.4 (0.3, 0.7)	37	0.7 (0.5, 1.0)	51	1.0 (0.7, 1.3)	16	0.3 (0.2, 0.5)	4	0.1 (0.0, 0.2)
5-10y	6246.1	26	0.4 (0.3, 0.6)	17	0.3 (0.2, 0.4)	9	0.1 (0.1, 0.3)	7	0.1 (0.1, 0.2)	10	0.2 (0.1, 0.3)	2	0.0 (0.0, 0.1)	5	0.1 (0.0, 0.2)
11-14y	3559.3	10	0.3 (0.2, 0.5)	5	0.1 (0.1, 0.3)	5	0.1 (0.1, 0.3)	0	-	5	0.1 (0.1, 0.3)	2	0.1 (0.0, 0.2)	2	0.1 (0.0, 0.2)
<b>Sex</b>															
F	7553.9	60	0.8 (0.6, 1.0)	44	0.6 (0.4, 0.8)	16	0.2 (0.1, 0.3)	14	0.2 (0.1, 0.3)	30	0.4 (0.3, 0.6)	7	0.1 (0.0, 0.2)	6	0.1 (0.0, 0.2)
M	7428.1	87	1.2 (0.9, 1.4)	66	0.9 (0.7, 1.1)	21	0.3 (0.2, 0.4)	30	0.4 (0.3, 0.6)	36	0.5 (0.3, 0.7)	13	0.2 (0.1, 0.3)	5	0.1 (0.0, 0.2)

PY= person-years, CI = 95% Confidence Interval. Incidence is expressed as cases per 100 person-years.

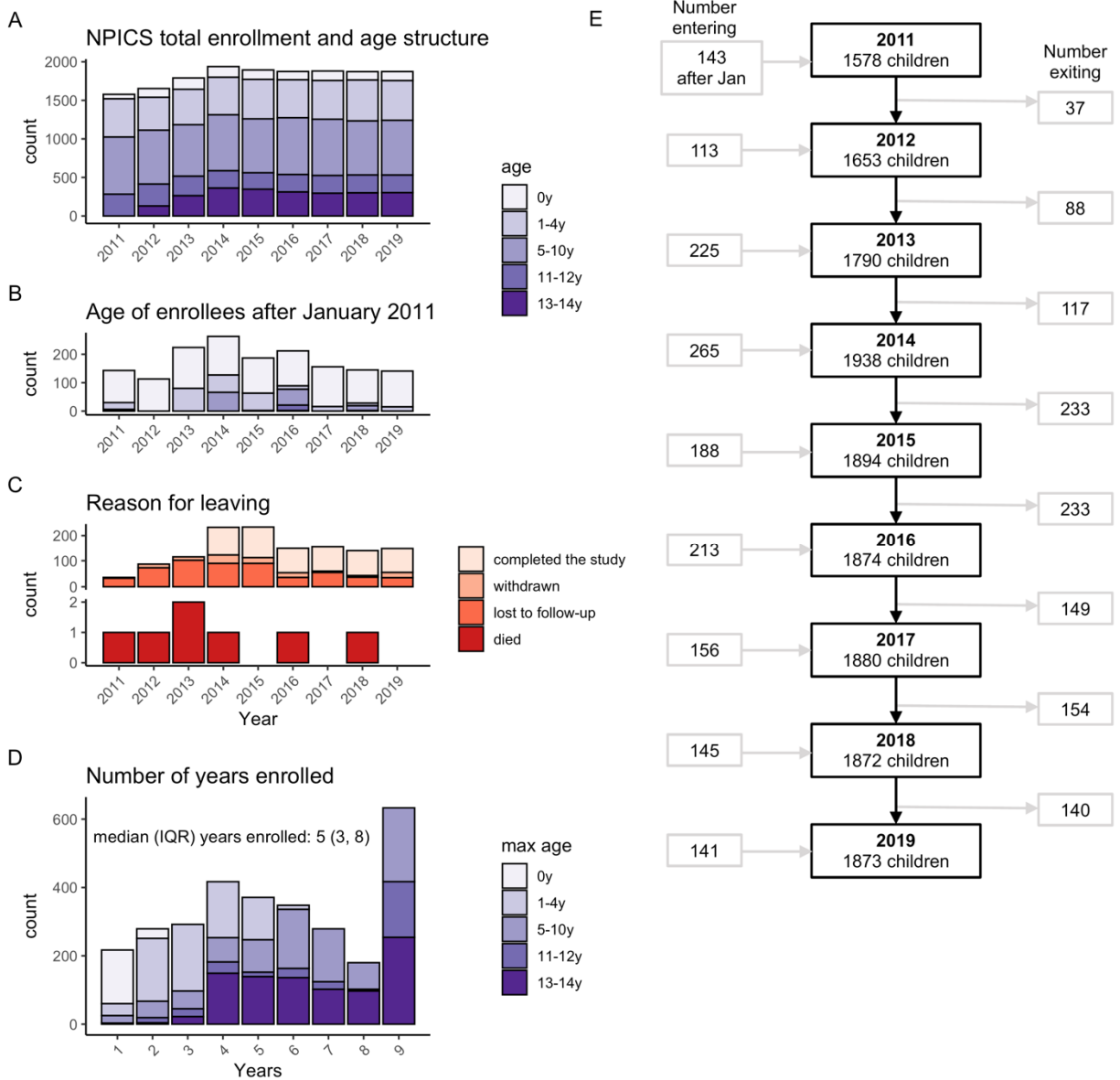


Figure 1. Characteristics of the Nicaraguan Influenza Pediatric Cohort (NPICS), by year, 2011-2019. A) Total enrollment over time by age, B) age of enrollees after the initial enrollment by year, C) reasons for leaving the cohort by year, D) number of years enrolled in the cohort by age, and E) flowchart of the number of participants by year. Note that some children exited and then re-entered in the same year.

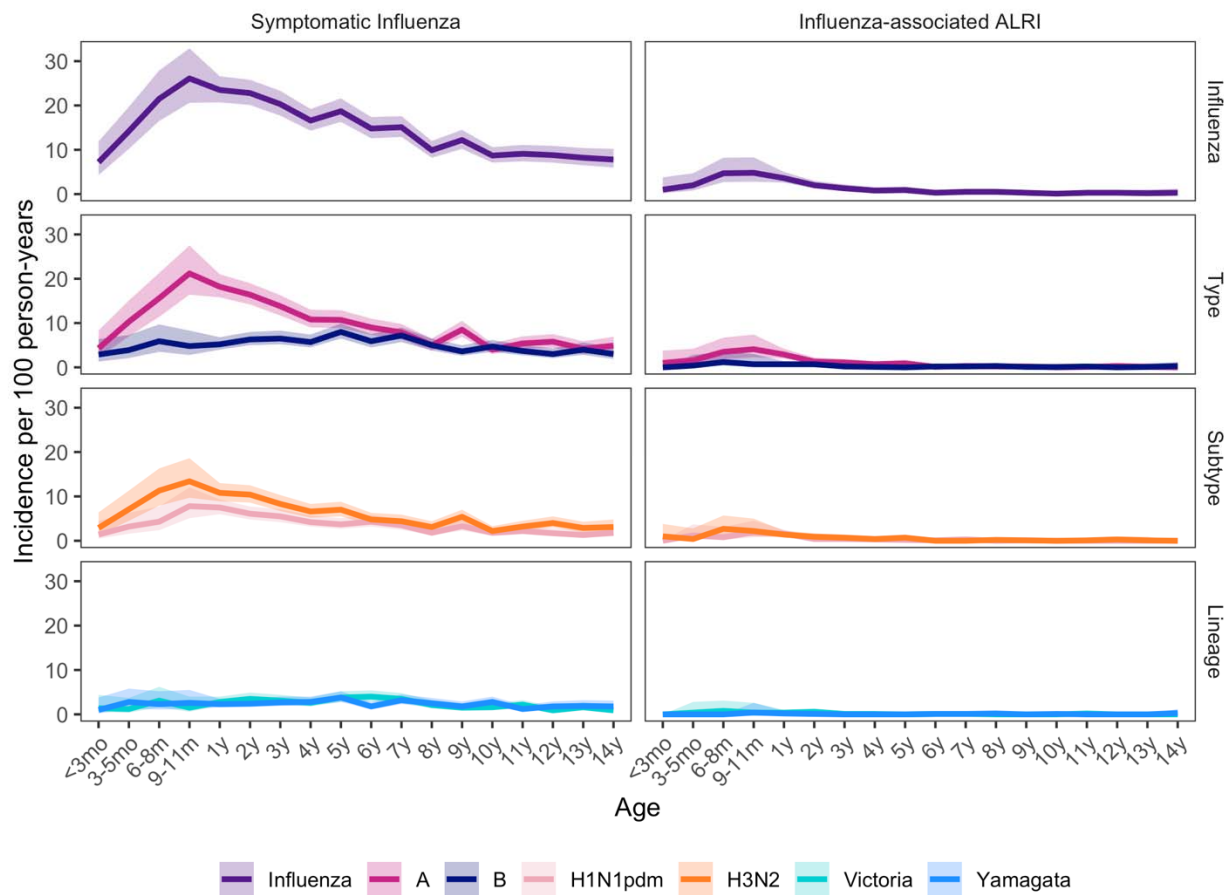


Figure 2. Incidence of symptomatic influenza and influenza-associated ALRI by age, for all influenza and by (sub)type and lineage. Age groups are every three months until age one year, then yearly thereafter. Shaded regions show 95% confidence intervals.

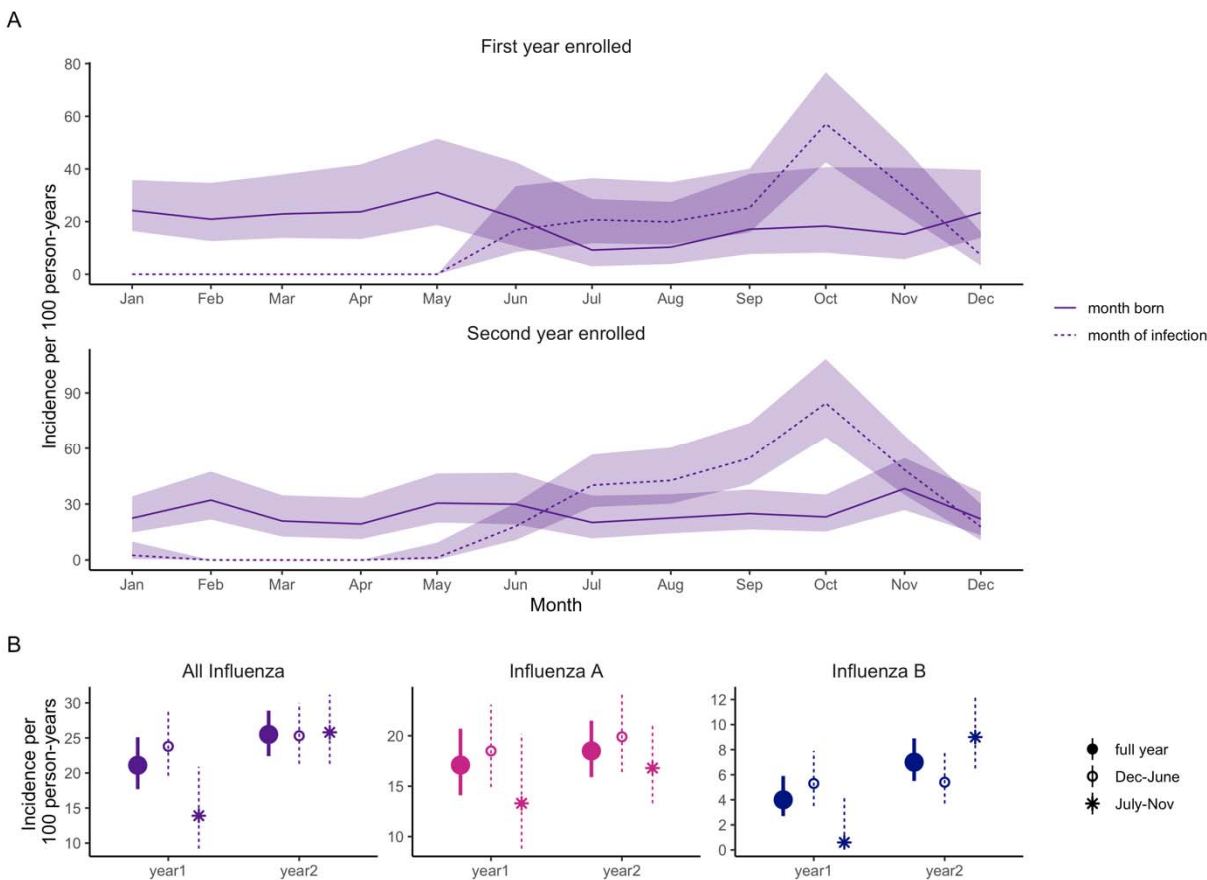


Figure 3. Symptomatic influenza incidence by month born. This figure only includes children enrolled in their first six months of life. Panel A shows symptomatic influenza incidence by month born (solid lines) and month of infection (dashed lines) in the first (top) and second (bottom) years enrolled. Panel B shows the overall symptomatic influenza incidence for the first two years enrolled (solid circles), and incidence categorized by month born (December-June births in open circles and July-November births in asterisks).

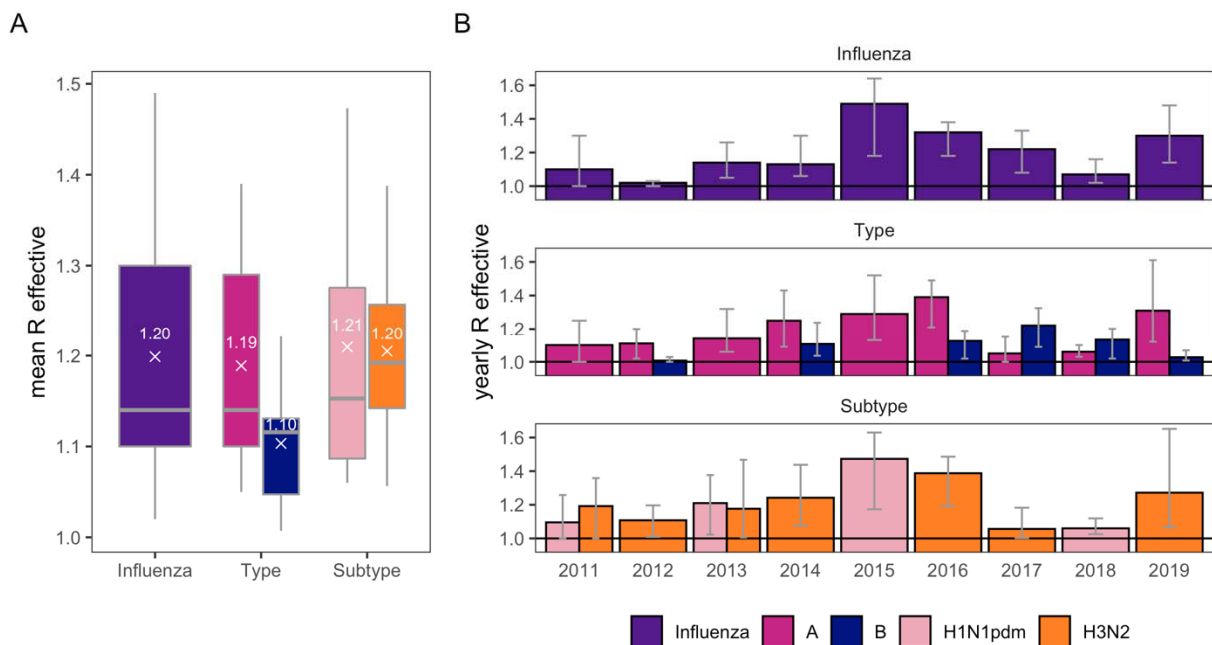


Figure 4. Effective reproduction numbers, for all influenza, by type (A and B), and by A subtype (H1N1pdm and H3N2). A) Mean effective reproduction numbers summarized across years. B) Effective reproduction numbers estimates and confidence intervals by year.

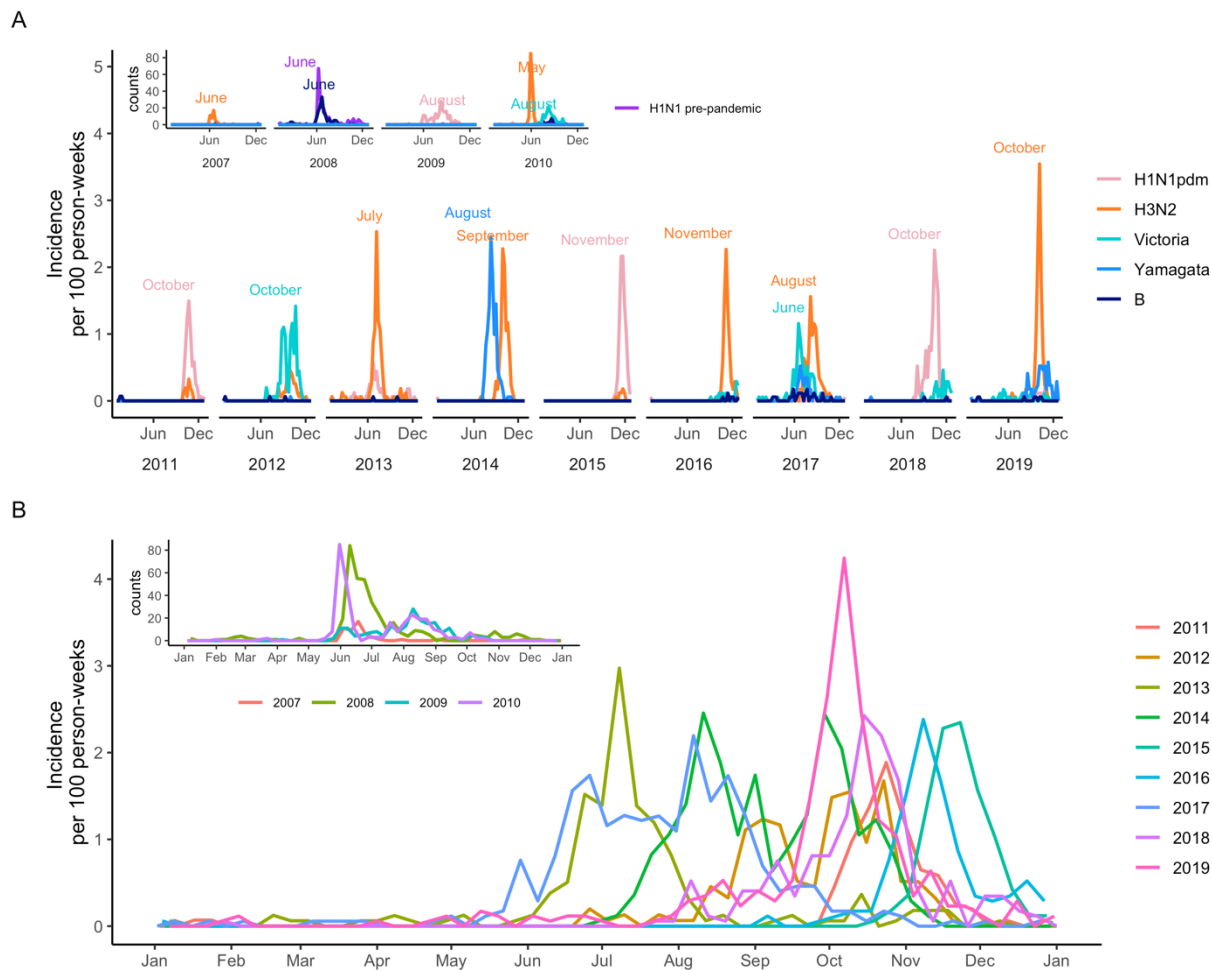


Figure 5. Symptomatic influenza incidence over time. A) Circulation of influenza subtypes and lineages over the study years 2011-2019. Lineage was not available for 50 influenza B infections. Peak months are listed. B) Yearly influenza epidemics by month (all subtypes and lineages combined). In both panels, insets show influenza counts from this study setting for years 2007-2010; data come from an earlier pilot study (described in Gordon et al. 2009).