

1

2

3

4 **Effectiveness and safety of acupuncture for insulin**
5 **resistance in women with polycystic ovary syndrome:**
6 **A systematic review and meta-analysis**

7

8

9 **Yu Liu¹, Hua-ying Fan¹, Jin-qun Hu¹, Ming Chen¹, Jiao Chen^{1*}**

10

11

12

13 **¹Department of Acupuncture-Moxibustion and Tuina, Chengdu University of**
14 **Traditional Chinese Medicine, Chengdu, China**

15

16

17 *** Corresponding author**

18 **E-mail: chenjiao@cdutcm.edu.cn**

19

20

21

22

NOTE: This preprint reports new research that has not been certified by peer review and should not be used to guide clinical practice.

23 **Abstract**

24 **Objective.** To perform a systematic review and meta-analysis of randomized
25 controlled trials (RCTs) to evaluate acupuncture's clinical effect of on insulin resistance
26 (IR) in women with polycystic ovary syndrome (PCOS).

27

28 **Methods.** PubMed, Cochrane Library, Embase databases, and Chinese databases,
29 including China National Knowledge Infrastructure (CNKI), Technology Journal
30 Database (VIP), and Wanfang Database, were searched without language restrictions
31 from inception to 20 December 2021. Only RCTs in which acupuncture had been
32 examined as the sole or adjunctive PCOS-IR treatment were included. Additionally,
33 only studies in Chinese databases that had been published in core journals of Peking
34 University were included. Our primary endpoint was homeostasis model assessment of
35 insulin resistance (HOMA-IR). The secondary outcomes were fasting blood glucose
36 (FBG), 2-h postprandial blood glucose (2h-PBG), fasting insulin (FINS), body mass
37 index (BMI), and adverse events. A random-effects model enabled reporting of
38 differences between groups as mean differences, thus minimizing the effects of
39 uncertainty associated with inter-study variability on the effects of different
40 interventions.

41

42 **Results.** Our analysis included seven eligible RCTs (N=728 participants). Compared
43 with other treatments, acupuncture therapy yielded a greater mean reduction in BMI
44 (-1.21; 95% CI, -2.41 to -0.02; P=0.05). No significant differences existed between

45 acupuncture and other studied treatments for changes in HOMA-IR (-0.33 ; 95% CI,
46 -0.87 to 0.22 ; $P>0.05$), FBG (-0.43 ; 95% CI, -0.88 to 0.03 ; $P=0.07$), 2h-PBG (-0.40 ;
47 95% CI, -0.90 to 0.10 ; $P>0.05$), and FINS (-0.65 ; 95% CI, -2.18 to 0.89 ; $P>0.05$).
48 Furthermore, compared with medication alone, a combination of acupuncture and
49 medication yielded a mean reduction in HOMA-IR of -0.63 (95% CI, -1.12 to -0.14 ;
50 $P=0.01$) and BMI of -1.36 (95% CI, -2.07 to -0.66 ; $P<0.01$).

51

52 **Conclusion.** Although acupuncture is not more effective than metformin, the
53 former could be an adjuvant strategy for improving PCOS-IR. Further large-scale, long-
54 term RCTs with strict methodological standards are justified.

55

56 **1 Introduction**

57 Polycystic ovary syndrome (PCOS), a complex endocrine and metabolic disorder, is
58 characterized by androgen excess (hirsutism and/or hyperandrogenemia) and ovarian
59 dysfunction (oligo-ovulation and/or polycystic ovarian morphology). To date, its
60 pathogenesis remains unclear. However, insulin resistance (IR) is considered the
61 primary pathological basis for the associated reproductive dysfunction. The prevalence
62 of IR in clamp studies in women with PCOS diagnosed on the basis of the Rotterdam
63 criteria and using age-appropriate lean healthy control women is reportedly 75% of lean
64 and 95% of overweight women (weight status according to WHO criteria) [1]. IR both
65 promotes and interacts with hyperandrogenemia, which affects the function of the
66 hypothalamic–pituitary–ovarian axis and causes abnormal follicular development [2].

67 Additionally, regardless of age, gestational diabetes mellitus, impaired glucose
68 tolerance, and type 2 diabetes are all significantly more prevalent in patients with PCOS.

69 Some studies have found that improving IR and reducing hyperinsulinemia can
70 reduce systemic androgen concentrations and improve some characteristics of PCOS
71 [3]. Metformin is often recommended to adult women or adolescents with PCOS or
72 women with BMI>25 kg/m² for management of weight and metabolic disorders [4].
73 However, the mechanism underlying metformin's effects on PCOS-IR is not yet fully
74 understood and it causes adverse effects, particularly diarrhea and nausea, in up to 25%
75 of patients [5]. Thus, metformin has limitations related to adverse effects and patient
76 compliance. There is therefore a need for inexpensive and easily administered
77 treatments with few adverse effects. Correlation meta-analysis has shown that
78 acupuncture has a beneficial effect on IR and fewer adverse reactions than other
79 treatments [6,7]. A recent meta-analysis also found that acupuncture can improve IR in
80 patients with PCOS [8]. However, this evidence is inadequate because of the poor
81 quality and methodology of the included studies. In addition, these authors did not
82 determine whether acupuncture has advantages over metformin in the treatment of
83 PCOS-IR. In the present study, we systematically reviewed data from recent studies,
84 aiming to provide clarity concerning the role of acupuncture in treatment of PCOS-IR,
85 especially compared with metformin.

86 In this systematic review of relevant randomized controlled trials, we aimed to
87 evaluate the efficacy and safety of acupuncture in improving PCOS-IR by assessing the
88 following key outcomes: homeostasis model assessment of insulin resistance (HOMA-

89 IR), fasting blood glucose (FBG), 2-h postprandial blood glucose (2h-PBG), fasting
90 insulin (FINS), body mass index (BMI), and adverse events.

91 **2 Methods**

92 This analysis was performed strictly in accordance with the PRISMA statement [9] (see
93 S1 File). Additionally, this review was registered with PROSPERO at
94 [http://www.crd.york.ac.uk/PROSPERO\(CRD42021285851\)](http://www.crd.york.ac.uk/PROSPERO(CRD42021285851)).

95 **2.1 Search strategy**

96 PubMed, Cochrane Library, and Embase databases were searched without language
97 restrictions from inception to 20 December 2021. We also searched Chinese databases,
98 including the China National Knowledge Infrastructure (CNKI), Technology Journal
99 (VIP), and Wanfang databases. Additionally, only studies in Chinese databases that had
100 been published in core journals of Peking University (such as *Chinese Acupuncture and*
101 *Moxibustion*) were included. The search terms consisted of four parts: acupuncture
102 (acupuncture, electroacupuncture, and manual acupuncture), insulin resistance (insulin
103 resistance and insulin sensitivity), polycystic ovary syndrome (polycystic ovary
104 syndrome, polycystic ovarian syndrome and Stein–Leventhal syndrome), and
105 randomized controlled trial. Details of the search strategies are presented in S2 File.

106 Additionally, ClinicalTrials.gov and the Chinese Clinical Trial Register were
107 searched to identify ongoing or recently completed studies.

108

109 **2.2 Inclusion criteria**

110 **2.2.1 Types of study** All randomized controlled trials (RCTs) involving use of
111 acupuncture for treating PCOS-IR were included.

112 **2.2.2 Types of participant** Patients diagnosed with PCOS-IR or PCOS patients
113 with HOMA-IR \geq 2.14 [10], regardless of race, or educational and economic status,
114 were included.

115 **2.2.3 Types of intervention** Interventions in the experimental group comprised
116 acupuncture or electroacupuncture either combined with medication or not. Controlled
117 interventions with sham acupuncture or metformin were included.

118 **2.2.4 Types of outcome measure** Studies that reported at least one clinical
119 outcome related to PCOS-IR were included. The primary outcome was HOMA-IR. The
120 secondary outcomes were FBG, 2h-PBG, FINS, BMI, and adverse events.

121

122 **2.3 Exclusion criteria**

123 **2.3.1 Types of study** Nonrandomized controlled trials, randomized crossover trials,
124 reviews, case reports, protocols, experimental animal articles were excluded.

125 **2.3.2 Participants** Participants with serious physical or mental disease were
126 excluded.

127 **2.3.3 Types of intervention** We did not include trials in which non-penetrating
128 acupuncture (such as via laser stimulation, acupressure, or transcutaneous electrical
129 nerve stimulation) was used or in which other traditional Chinese medicine was
130 administered to the experimental group. RCTs that compared different forms of
131 acupuncture or herbal medicine were also excluded.

132

133 **2.4 Study identification and data extraction**

134 Two independent appraisers (Yu Liu and Jin-qun Hu) assessed the eligibility of the
135 searched articles in accordance with the above criteria. The following data were
136 extracted independently from all included studies by two reviewers (Yu Liu and Ming
137 Chen): number of participants, age, interventions, intervention duration, change in
138 HOMA-IR (mean [SD]); change in FBG (mean [SD]); change in 2h-PBG (mean [SD]);
139 change in FINS (mean [SD]); change in BMI (mean [SD]), and number of participants
140 with any adverse events. Any disagreements regarding study identification and data
141 extraction were resolved by discussion and adjudication with a third investigator (Hua-
142 ying Fan).

143

144 **2.5 Quality assessment**

145 Two reviewers (Yu Liu and Jin-qun Hu) independently assessed the risk of bias of
146 RCTs using the Cochrane Collaboration's "risk of bias" tool, which is based on the
147 following six separate domains: random sequence generation (selection bias),
148 allocation concealment (selection bias), blinding of participants and personnel
149 (performance bias), blinding of outcome assessment (detection bias), incomplete
150 outcome data (attrition bias), selective reporting (reporting bias), and other bias. The
151 assessments were categorized into three levels of bias: low risk, high risk, or unclear
152 risk. For example, if the investigators described a random component in the sequence
153 generation process, such as using a computer random number generator or coin tossing,

154 “low risk” would be allocated for the domain of random sequence generation.

155 Disagreements were resolved by a third investigator (Hua-ying Fan).

156 We also used Grading of Recommendations Assessment, Development, and
157 Evaluation (GRADE) to assess the quality of evidence, using GRADEpro GOT online
158 software.

159

160 **2.6 Data synthesis**

161 We assessed the effect and safety of acupuncture for treating PCOS-IR on the basis of
162 six outcomes: HOMA-IR, FBG, 2h-PBG, FINS, incidence of adverse events, and BMI.

163 We analyzed HOMA-IR, FBG, 2h-PBG, FINS, and BMI as continuous variables and
164 have reported absolute differences between arithmetic means before and after
165 interventions. Adverse events were treated as a categorical variable and the risk ratio
166 calculated.

167 We calculated pooled estimates of the mean differences (MD) in HOMA-IR, FBG,
168 2h-PBG, FINS, and BMI between intervention groups using a random-effects model
169 (DerSimonian–Laird method) to minimize additional uncertainty associated with inter-
170 study variability regarding the effects of different interventions. We also calculated
171 pooled risk ratio estimates for categorical outcomes with a random-effects model
172 (DerSimonian–Laird method).

173 We used the Cochran Q test to assess heterogeneity between studies. P values less
174 than 0.1 were considered to denote statistical significance. We also did I^2 testing to
175 assess the magnitude of heterogeneity between studies, values greater than 50% being

176 regarded as indicative of moderate-to-high heterogeneity. If necessary, subgroup
177 analyses according to type of intervention were conducted. We used RevMan (version
178 5.4) for all statistical analyses.

179 **3 Results**

180 **3.1 Search results**

181 A flow chart of study selection is shown in Fig 1. Our preliminary search found a total
182 of 723 articles. Removing duplicate articles and reading the title and summary filters
183 left 62 full-text articles, 53 of which were excluded because they did not meet the
184 inclusion criteria. Two more articles were excluded because their data were unavailable
185 and we received no responses from the corresponding authors. Finally, seven studies
186 including 728 patients were included in this review.

187 **Fig 1. Literature screening process and results.**

188

189 **3.2 Description of included studies**

190 The seven eligible RCTs including 728 patients were conducted in China. Three of
191 them were listed in English databases and four in Chinese databases. All participants
192 had been diagnosed with PCOS in accordance with the Rotterdam criteria and had
193 HOMA-IR greater than 2.14, enabling diagnosis of IR [10]. The patients had a mean
194 baseline HOMA-IR of 4.02 (range 2.37–5.06) and mean baseline BMI of 27.18 kg/m²
195 (22.4–29.35). Electroacupuncture was compared with sham acupuncture in two studies
196 [11,12], acupuncture combined with medication was compared with medication alone

197 in two studies [13,14], and acupuncture was compared with metformin in three studies
198 [15–17]. Table 1 summarizes the basic characteristics of these studies.

199 **Table 1. Characteristics of included studies.**

Study ID	Sample size (TG/CG)	Intervention		Duration of intervention	Mean age (years)	Mean BMI (kg/m ²)	Mean HOMA-IR	Outcomes
		TG	CG					
Dong,2021[11]	27/27	EA	SA	16 weeks	22.8	22.4	2.37	①②④⑤
Gu,2019[12]	39/39	EA	SA	32 times	27.8	27.6	5.06	①②③④⑤⑥
Li,2014[13]	53/51	A+M	SA+M	6 months	26.1	29.35	3.75	①②④⑤⑥
Mao,2021[14]	54/54	EA+M+E	M+E	3 MC	Not available	28.32	3.83	①⑤
Wen,2021[15]	114/114	EA+P	SA+M	4 months	27.7	26.15	4.47	①②④⑤⑥
Yu,2020[16]	36/34	EA	M	3 months	30.5	Not available	4.81	①⑥
Zheng,2013[17]	43/43	A	M	6 months	25.7	29.25	3.85	①②③④⑤⑥

200 A, acupuncture; CG, control group; E, ethinylestradiol and cyproterone acetate tablets;
201 EA, electroacupuncture; M, metformin; MC, menstrual cycle; P, placebo; SA, sham
202 acupuncture; TG, treatment group; ①, HOMA-IR; ②, FBG; ③, 2h-PBG; ④, FINS;
203 ⑤, BMI; ⑥, adverse events.

204

205 **3.3 Assessment of risk of bias**

206 The participants were randomized using a random number table or computer program
207 in all seven studies. Assessment of allocation was described in three articles [11,15,17].
208 For blinding, three trials [11,13,15] were classified as “low risk” and the others as
209 “unclear risk”. Three articles [11,15,16] stated explicitly that third-party researchers
210 processed the data. Four studies[11,12,15,16] reported loss to follow-up. There was
211 attrition bias in two of these studies [11,15] as a result of differences in the proportion
212 of missing outcome data between the experimental and comparison groups. The other
213 three trials had a low risk of attrition bias, having reported that no participants dropped
214 out or were excluded from the primary analysis. Details of the assessments are shown
215 in Figs 2 and 3.

216 **Fig 2. Assessment of risk biases of the included studies.**

217 **Fig 3. Assessment of risk biases of the included studies.**

218

219 **3.4 Meta-analysis of primary outcomes**

220 A pooled meta-analysis analysis of the seven trials found no statistically significant
221 differences in changes in HOMA-IR (MD, -0.33; 95% CI, -0.87 to 0.22; P=0.24; Fig
222 4) between the two groups, with statistically significant heterogeneity ($P<0.1$; $I^2=82\%$).

223 To further analyze heterogeneity, we performed subgroup analysis of different
224 interventions to more accurately examine the effects of acupuncture. Sensitivity
225 analysis comparing acupuncture treatment with metformin or sham acupuncture
226 identified no significant differences (MD, 0.04; 95% CI, -0.7 to 0.78; P=0.92; Fig 4)
227 (MD, -0.64; 95% CI, -2.2 to 0.93; P=0.42; Fig 4). However, comparison of a

228 combination of acupuncture and medication with medication alone showed a greater
229 mean reduction in HOMA-IR with the former (MD, -0.63; 95% CI, -1.12 to -0.14;
230 P=0.01; Fig 4).

231 **Fig 4. Comparison of changes in HOMA-IR according to intervention.**

232

233 **3.5 Meta-analysis of secondary outcomes**

234 **3.5.1 FBG** Pooled analysis of the five studies that assessed changes in participants'
235 FBG after treatment showed a trend to improvement in FBG that was not statistically
236 significant (MD, -0.43; 95% CI, -0.88 to 0.03; P=0.07; Fig 5), with statistically
237 significant heterogeneity (P<0.1; $I^2=86%$).

238 Forest plots generated in further sensitivity analysis showed no significant difference
239 between acupuncture and metformin (MD, -0.17; 95% CI, -0.4 to 0.05; P=0.13; Fig
240 5). Additionally, combination treatment showed no benefit over medication alone (MD,
241 -0.4; 95% CI, -1.03 to 0.23; P=0.21; Fig 5).

242 **Fig 5. Comparison of changes in FBG according to intervention.**

243 **3.5.2 2h-PBG** Two studies (N=162 participants) assessed changes in 2h-PBG at the
244 end of the intervention. Pooling the data of these studies showed no significant
245 difference in mean reduction of 2h-PBG between acupuncture and other treatments
246 (MD, -0.40; 95% CI, -0.90 to 0.10; P=0.12; Fig 6), without between-study
247 heterogeneity.

248 **Fig 6. Comparison of changes in 2h-PBG according to intervention.**

249 **3.5.3 FINS** Five studies (N=502 participants) assessed changes in participants' FINS
250 after treatment. Pooled analysis of these studies' findings showed that acupuncture was
251 not more effective than other treatments regarding mean reduction in FINS (MD, -0.65;
252 95% CI, -2.18 to 0.89; P=0.41; Fig 7), with no significant between-study heterogeneity
253 (P>0.1; I²=37%).

254 **Fig 7 Comparison of changes in FINS according to intervention.**

255 **3.5.4 BMI.** Six studies assessed changes in participants' BMI after treatment.
256 Analysis of pooled data of these studies showed that acupuncture was associated with
257 a greater reduction in weight than other treatment (MD, -1.21; 95% CI, -2.41 to -0.02;
258 P=0.05; Fig 8), with statistically significant heterogeneity (P<0.1; I²=88%).

259 Sensitivity analysis revealed no statistically significant difference in changes in
260 BMI between acupuncture and metformin (MD, -0.75; 95% CI, -3.33 to 1.82; P=0.57;
261 Fig 8). However, a combination of acupuncture and medication achieved a greater mean
262 reduction in BMI than did medication alone (MD, -1.36; 95% CI, -2.07 to -0.66;
263 P<0.01; Fig 8).

264 **Fig 8. Comparison of changes in BMI according to intervention.**

265 **3.5.5 Adverse events** Five of the studies reported adverse events. Three of these
266 studies compared acupuncture with metformin, one compared combined treatment with
267 acupuncture and medication with medication alone and one compared
268 electroacupuncture with sham acupuncture. One [16] reported 29.4% cases of nausea,
269 emesis, diarrhea, and loss of appetite in the control group and 11.1% of subcutaneous
270 bruising and hematoma in the experimental group. One [15] reported 87.7% adverse

271 gastrointestinal events in the control group and 14.9% cases of subcutaneous bruising
 272 and hematoma in the experimental group. One [17] reported 48.8% adverse effects in
 273 the control group and none in the experimental group. One [13] reported 43.1% cases
 274 of nausea, emesis, diarrhea, and loss of appetite in the control group and 34% adverse
 275 events in the experimental group. Most adverse events were digestive tract reactions or
 276 subcutaneous bruising and hematoma and resolved quickly. There were no distressing
 277 symptoms or liver or kidney injury. Table 2 displays the reported details.

278 **Table 2. Reported adverse events.**

Study ID	Sample size		Intervention		Nausea, emesis, diarrhea, and loss of appetite		Subcutaneous bruising and hematoma	
	TG	CG	TG	CG	TG	CG	TG	CG
Gu,2019[12]	39	39	EA	SA	-	-	0	0
Li,2014[13]	53	51	A+M	SA+M	18	22	-	-
Wen,2021[15]	114	114	EA+P	SA+M	-	100	17	-
Yu,2020[16]	36	34	EA	M	-	10	4	-
Zheng,2013[17]	43	43	A	M	-	21	0	-

279 A, acupuncture; CG, control group; EA, electroacupuncture; M, metformin; P,
 280 placebo; SA, sham acupuncture; TG, treatment group.

281

282 **3.6 Quality of evidence.**

283 The quality of evidence assessed using the GRADE system varied from very low to
 284 low. According to this system, FINS had a low evidence level because the means of
 285 assessing allocation was not described, and the upper or lower confidence limits crossed
 286 an effect size of 0.5 in both directions. Further, HOMA-IR, FBG, 2h-PBG, and BMI
 287 had very low evidence levels. Details of assessment are shown in Table 3.

288 **Table 3. Assessment according to GRADE system.**

Outcome	Certainty assessment						Effect		Number of patients (studies)	Certainty of the evidence (GRADE)
	Study design	Risk of bias	Inconsistency	Indirectness	Imprecision	Other considerations	Relative (95%CI)	Absolute		
HOMA-IR	RCT	serious ^a	very serious ^b	not serious	serious ^c	none	-	MD 0.33 lower (0.87 lower to 0.22 higher)	669 (7 RCTs)	⊕⊕ ⊕⊕ Very low
FBG	RCT	serious ^a	very serious ^b	not serious	serious ^c	none	-	MD 0.43 lower (0.88 lower to 0.03 higher)	501 (5 RCTs)	⊕⊕ ⊕⊕ Very low

2h- PBG	RCT	serious ^a	not serious	not serious	very serious ^d	none	-	MD 0.4 lower (0.9 lower to 0.1 higher)	162 (2 RCTs)	⊕⊕ ⊕⊕ Very low
FINS	RCT	serious ^a	not serious	not serious	serious ^c	none	-	MD 0.65 lower (2.18 lower to 0.89 higher)	502 (5 RCTs)	⊕⊕ ⊕⊕ low
BMI	RCT	serious ^a	very serious ^b	not serious	not serious	none	-	MD 1.21 lower (2.41 lower to 0.02 lower)	612 (6 RCTs)	⊕⊕ ⊕⊕ Very low

289 ^a The means of assessing allocation is not described.

290 ^b $I^2 \geq 75\%$ in the Q statistics indicates serious inconsistency in the meta-analysis.

291 ^c The upper or lower confidence limit has crossed an effect size of 0.5 in either direction.

292 ^d Total cohort is less than 400, and effect size is considered small; the upper or lower
293 confidence limit has crossed an effect size of 0.5 in either direction.

294 Discussion

295 Main findings

296 The purpose of this review was to evaluate the effectiveness of acupuncture for IR in
297 patients with PCOS. We found acupuncture to be significantly associated with greater
298 loss of body weight (based on very low-certainty evidence) than other treatments.

299 However, we identified no significant differences for the other studied outcomes,
300 namely FINS (based on low-certainty evidence), and HOMA-IR, FBG, and 2h-PBG
301 (all based on very low-certainty evidence). Although acupuncture is not more effective
302 than metformin in improving IR, it does not cause nausea, emesis, or diarrhea, and any
303 subcutaneous hematoma will resolve quickly. Furthermore, we found that, compared
304 with medication alone, a combination of acupuncture and medication yields
305 improvements in HOMA-IR and BMI with fewer gastrointestinal adverse events.
306 Therefore, our findings indicate that acupuncture is a promising adjuvant strategy for
307 treating PCOS-IR.

308 The cause of PCOS is unknown. However, it is strongly associated with IR and the
309 risk of type 2 diabetes in PCOS patients is 5–10 times higher than that in the general
310 population [18]. Clinical and experimental evidence has shown that acupuncture is an
311 acceptable, adverse effect-free alternative or complement to pharmacological induction
312 of ovulation in women with PCOS and may also relieve other symptoms [19]. There is
313 also evidence that acupuncture can be an insulin sensitizer and may therefore contribute
314 to controlling obesity and type 2 diabetes [20,21]. Acupuncture ameliorates IR through
315 enhancing autophagy [22], affecting insulin receptor signal transduction, and increased
316 expression of insulin receptor substrate in the endometrium in a PCOS-like rat model
317 [23,24].

318

319 **Limitations**

320 First, most studies examined were small and some of them described the specifics of
321 assessing allocation and blinding poorly. Their quality was therefore mediocre. Besides,
322 according to the GRADE system, only one outcome was based on low-certainty
323 evidence, the other four outcomes being based on very low-certainty evidence. Second,
324 these studies lack follow-up data, hindering assessment of the long-term efficacy of
325 acupuncture for PCOS-IR.

326 Finally, there was heterogeneity in some outcomes. We accordingly performed
327 subgroup analyses; however, the likelihood of false negative and false positive findings
328 regarding significance increase rapidly with increasing numbers of subgroup analyses.
329 Of note, metabolic syndrome has varying clinical manifestations and biochemical
330 characteristics, age distribution, and abnormal glucose metabolism. Further, there were
331 differences in the details of the interventions, severity of disease, dosage of metformin,
332 and acupuncture protocols between studies.

333

334 **Implications for further clinical research**

335 Being a safe and simple treatment modality, acupuncture could be a good alternative or
336 adjuvant therapy for PCOS-IR, especially for overweight patients. Because it has fewer
337 adverse effects than metformin, patient acceptance and compliance may be higher.
338 Regardless of age, the prevalences of gestational diabetes mellitus, impaired glucose
339 tolerance, and type 2 diabetes are significantly greater in individuals with PCOS than
340 in those without it. The risk is not related to obesity but is increased by obesity [4].
341 Successful treatment of obesity therefore reduces IR [25]. It is gratifying that

342 acupuncture is significantly more effective at achieving weight loss than other
343 treatments. Unfortunately, the long-term effects of acupuncture are still unknown.
344 Additional long-term follow-up studies are needed to clarify the role of acupuncture in
345 the treatment of PCOS-IR.

346 In addition, some comparative studies of acupuncture and sham acupuncture have
347 found that these two interventions achieve equivalent results. A review of the designs
348 of these studies revealed that sham acupuncture involved needling non-acupuncture or
349 irrelevant acupuncture points, or superficial needling. However, insertion of a needle
350 into a recognized acupuncture or non-acupuncture point can produce a physiological
351 effect, partly by activating the pain inhibiting system in the spinal cord and diffuse
352 noxious inhibitory controls [26–29]. In addition, sham acupuncture applied at non-
353 acupuncture points may serve as an active control because acupoint areas can be
354 enlarged by increased expression of nociceptive substances in individuals with painful
355 conditions [30]. It has therefore been suggested that more research into applying non-
356 penetrating sham acupuncture at non-acupuncture points is necessary [31]. This would
357 avoid segmental analgesia and minimize any physiological effect in the sham
358 acupuncture group.

359

360

361 **Conclusions**

362 This review of seven RCTs shows that acupuncture can reduce body weight
363 significantly in individuals with PCOS-IR and that, while not being more effective than

364 metformin, it has fewer adverse effects. Additionally, combination treatment with
365 acupuncture and medication more effectively improves HOMA-IR and BMI, with less
366 gastrointestinal adverse events, than medication alone. Acupuncture may be an
367 effective adjuvant strategy for improving PCOS-IR. However, the evidence for this
368 conclusion is based on only a few studies with obvious limitations related to both
369 sample size and methodology. Further large-scale, long-term RCTs with strict
370 methodological standards are justified.

371

372 **Acknowledgment**

373 We thank Dr Trish Reynolds, MBBS, FRACP, from Liwen Bianji (Edanz)
374 (www.liwenbianji.cn/), for editing the English text of a draft of this manuscript.

375

376 **References**

- 377 **1.** Stepto NK, Cassar S, Joham AE, Hutchison SK, Harrison CL, Goldstein RF, et al. Women
378 with polycystic ovary syndrome have intrinsic insulin resistance on euglycaemic-
379 hyperinsulaemic clamp. *Hum Reprod.* 2013; 28:777–84. PMID: 23315061

- 380 **2.** Rosenfield RL, Ehrmann DA. The Pathogenesis of Polycystic Ovary Syndrome (PCOS): The
381 Hypothesis of PCOS as Functional Ovarian Hyperandrogenism Revisited. *Endocr Rev.* 2016;
382 37:467–520. PMID: 27459230

- 383 **3.** De Leo V, la Marca A, Petraglia F. Insulin-lowering agents in the management of polycystic
384 ovary syndrome. *Endocr Rev.* 2003; 24:633–67. PMID: 14570747

- 385 4. Teede HJ, Misso ML, Costello MF, Dokras A, Laven J, Moran L, et al. Recommendations
386 from the international evidence-based guideline for the assessment and management of
387 polycystic ovary syndrome. *Fertil Steril*. 2018; 110:364–79. PMID: 30033227
- 388 5. Flory J, Lipska K. Metformin in 2019. *JAMA*. 2019; 321:1926–7. PMID: 31009043
- 389 6. Song Ai-Qun, Zhang Yang-Pu, Chen Rui, Liang Feng-Xia. Is Acupuncture Effective for
390 Improving Insulin Resistance? A Systematic Review and Meta-analysis. *Curr Med Sci*. 2018;
391 38:1109–16. PMID: 30536077
- 392 7. Wu Liqun, Chen Xiaokun, Liu Yun, Lan Jiao, Wu Chunxiao, Li Zhixing, et al. Role of
393 acupuncture in the treatment of insulin resistance: A systematic review and meta-analysis.
394 *Complement Ther Clin Pract*. 2019; 37:11–22. PMID: 31445362
- 395 8. Zheng R, Qing P, Han M, Song J, Hu M, Ma H, et al. The Effect of Acupuncture on Glucose
396 Metabolism and Lipid Profiles in Patients with PCOS: A Systematic Review and Meta-
397 Analysis of Randomized Controlled Trials. *Evid Based Complement Alternat Med*. 2021;
398 2021:5555028. PMID: 33824676
- 399 9. Moher D, Liberati A, Tetzlaff J, Altman DG, PRISMA Group. Preferred reporting items for
400 systematic reviews and meta-analyses: the PRISMA statement. *BMJ*. 2009;339: b2535. PMID:
401 19622551
- 402 10. Chen Xiaoli, Yang Dongzi, Li Lin, Feng Shuying, Wang Liangan. Abnormal glucose
403 tolerance in Chinese women with polycystic ovary syndrome. *Hum Reprod*. 2006; 21:2027–
404 32. PMID: 28683241

- 405 **11.** Dong H-X, Wang Q, Wang Z, Wu X-K, Cheng L, Zhou Z-M, et al. Impact of Low Frequency
406 Electro-acupuncture on Glucose and Lipid Metabolism in Unmarried PCOS Women: A
407 Randomized Controlled Trial. *Chin. J. Integr. Med.* 2021; 27(10):737-743. PMID: 34319506
- 408 **12.** Gu Y, Xu X-F, He X-Y. Effect of acupuncture on improving glucose and lipid metabolism
409 disorder in polycystic ovary syndrome. *Shizhen national medicine.* 2019; 30:2431–3.
- 410 **13.** Li L, Mo H, Wen B, Zhang J, Li Y, Chen W-F, et al. Clinical study on acupuncture combined
411 with metformin in the treatment of infertility with obese polycystic ovary syndrome. *Chinese*
412 *Journal of traditional Chinese Medicine.* 2014; 29:2115–9.
- 413 **14.** Mao M-Y, Lin L-C. Clinical effect of Tongyuan acupuncture on polycystic ovary syndrome
414 of spleen deficiency and phlegm dampness type. *Journal of Guangzhou University of*
415 *traditional Chinese Medicine.* 2021; 38:2138–45.
- 416 **15.** Wen Q, Hu M, Lai M, Li J, Hu Z, Quan K, et al. Effect of acupuncture and metformin on
417 insulin sensitivity in women with polycystic ovary syndrome and insulin resistance: a three-
418 armed randomized controlled trial. *Hum Reprod.* 2021; deab272. PMID: 28274268
- 419 **16.** Yu L-Q, Cao L-Y, Xie J, Shi Y, Zhou L-Y, He T-F, et al. Effect and mechanism of
420 Electroacupuncture on insulin resistant polycystic ovary syndrome. *Chinese acupuncture.*
421 2020; 40:379–83.
- 422 **17.** Zheng Y-H, Wang X-H, Lai M-H, Yao H, Liu H, Ma H-X. Effectiveness of abdominal
423 acupuncture for patients with obesity-type polycystic ovary syndrome: A randomized
424 controlled trial. *J. Altern. Complement. Med.* 2013; 19:740–5. PMID: 23676106

- 425 **18.** Ovalle F, Azziz R. Insulin resistance, polycystic ovary syndrome, and type 2 diabetes mellitus.
426 Fertil Steril. 2002; 77:1095–105. PMID: 12057712
- 427 **19.** Stener-Victorin E, Jedel E, Mannerås L. Acupuncture in polycystic ovary syndrome: current
428 experimental and clinical evidence. J Neuroendocrinol. 2008; 20:290–8. PMID: 18047551
- 429 **20.** Liang F, Koya D. Acupuncture: is it effective for treatment of insulin resistance? Diabetes
430 Obes Metab. 2010; 12:555–69. PMID: 20590731
- 431 **21.** Firouzjaei A, Li G-C, Wang N, Liu W-X, Zhu B-M. Comparative evaluation of the therapeutic
432 effect of metformin monotherapy with metformin and acupuncture combined therapy on
433 weight loss and insulin sensitivity in diabetic patients. Nutr Diabetes. 2016;6: e209. PMID:
434 27136447
- 435 **22.** Peng Y, Guo L, Gu A, Shi B, Ren Y, Cong J, et al. Electroacupuncture alleviates polycystic
436 ovary syndrome-like symptoms through improving insulin resistance, mitochondrial
437 dysfunction, and endoplasmic reticulum stress via enhancing autophagy in rats. Mol Med.
438 2020; 26:73. PMID: 32698821
- 439 **23.** Zhang L, Li M, Yi W, Xu N-G, Sun J. Effect of acupuncture on PI3K p85 in skeletal muscle
440 of rats with insulin resistance. New traditional Chinese Medicine. 2010; 42:112-114+148.
- 441 **24.** Lai M-H, Ma H-X, Li J, Song X-H, Liu H. Effects of Electroacupuncture on IRS1 and IRS2
442 mRNA expression and insulin sensitivity in endometrium of PCOS rats. Chinese Journal of
443 integrated traditional Chinese and Western Medicine. 2016; 36:1082–6.

- 444 **25.** Greenfield JR, Campbell LV. Insulin resistance and obesity. *Clin Dermatol.* 2004; 22:289–
445 95. PMID: 15475228
- 446 **26.** Moffet HH. Sham acupuncture may be as efficacious as true acupuncture: a systematic review
447 of clinical trials. *J Altern Complement Med.* 2009; 15:213–6. PMID: 19250001
- 448 **27.** Le Bars D, Villanueva L, Bouhassira D, Willer JC. Diffuse noxious inhibitory controls (DNIC)
449 in animals and in man. *Patol Fiziol Eksp Ter.* 1992;55–65. PMID: 1303506
- 450 **28.** Cadden SW, Villanueva L, Chitour D, Le Bars D. Depression of activities of dorsal horn
451 convergent neurones by propriospinal mechanisms triggered by noxious inputs; comparison
452 with diffuse noxious inhibitory controls (DNIC). *Brain Res.* 1983; 275:1–11. PMID: 6626970
- 453 **29.** Liu X, Zhu B, Zhang S. Relationship between electroacupuncture analgesia and descending
454 pain inhibitory mechanism of nucleus raphe magnus. *Pain.* 1986; 24:383–96. PMID: 3485785
- 455 **30.** He W, Wang X-Y, Shi H, Bai W-Z, Cheng B, Su Y-S, et al. Cutaneous neurogenic
456 inflammation in the sensitized acupoints induced by gastric mucosal injury in rats. *BMC*
457 *Complement Altern Med.* 2017; 17:141. PMID: 28270193
- 458 **31.** Xu Shabei, Yu Lingling, Luo Xiang, Wang Minghuan, Chen Guohua, Zhang Qing, et al.
459 Manual acupuncture versus sham acupuncture and usual care for prophylaxis of episodic
460 migraine without aura: multicentre, randomised clinical trial. *BMJ.* 2020;368:m697. PMID:
461 32213509
- 462

463

464 **Supporting information**

465 **S1 File. PRISMA Checklist**

466 (DOC)

467 **S2 File. Search strategies used in English databases**

468 (DOC)

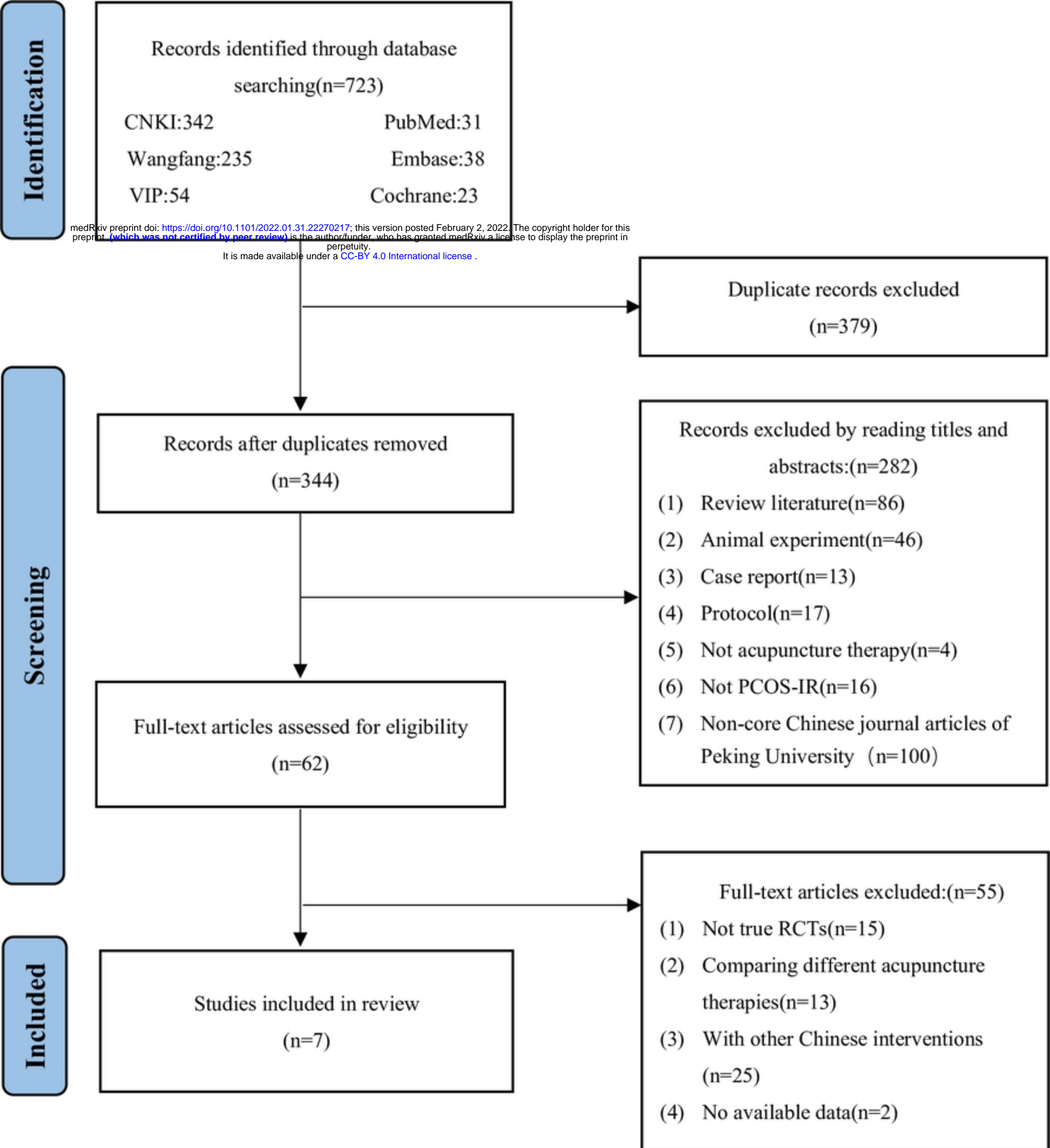


Fig 1

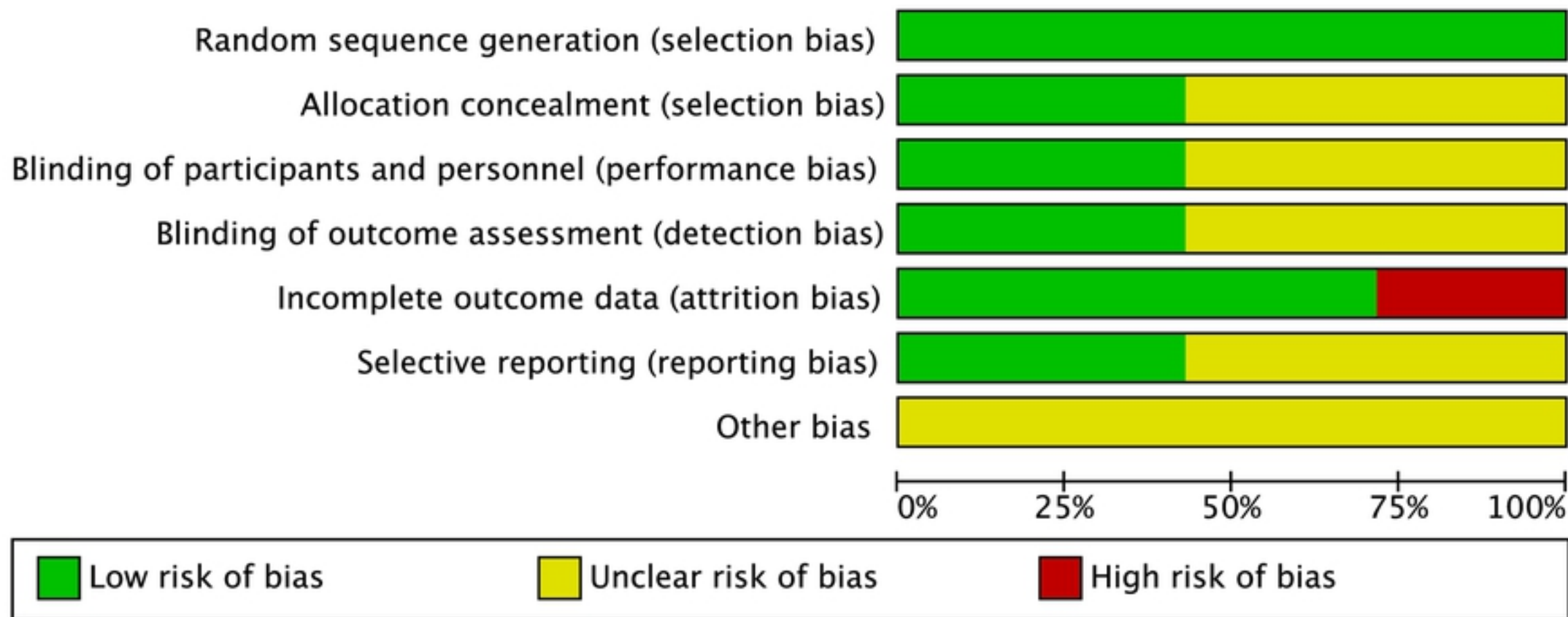


Fig2

medRxiv preprint doi: <https://doi.org/10.1101/2022.01.31.22270217>; this version posted February 2, 2022. The copyright holder for this preprint (which was not certified by peer review) is the author/funder, who has granted medRxiv a license to display the preprint in perpetuity. It is made available under a [CC-BY 4.0 International license](#).

	Random sequence generation (selection bias)	Allocation concealment (selection bias)	Blinding of participants and personnel (performance bias)	Blinding of outcome assessment (detection bias)	Incomplete outcome data (attrition bias)	Selective reporting (reporting bias)	Other bias
Dong 2021	+	+	+	+	-	+	?
Gu 2019	+	?	?	?	+	?	?
Li 2014	+	?	+	?	+	?	?
Mao 2021	+	?	?	?	+	?	?
Wen 2021	+	+	+	+	-	+	?
Yu 2020	+	?	?	+	+	?	?
Zheng 2013	+	+	?	?	+	+	?

Fig3

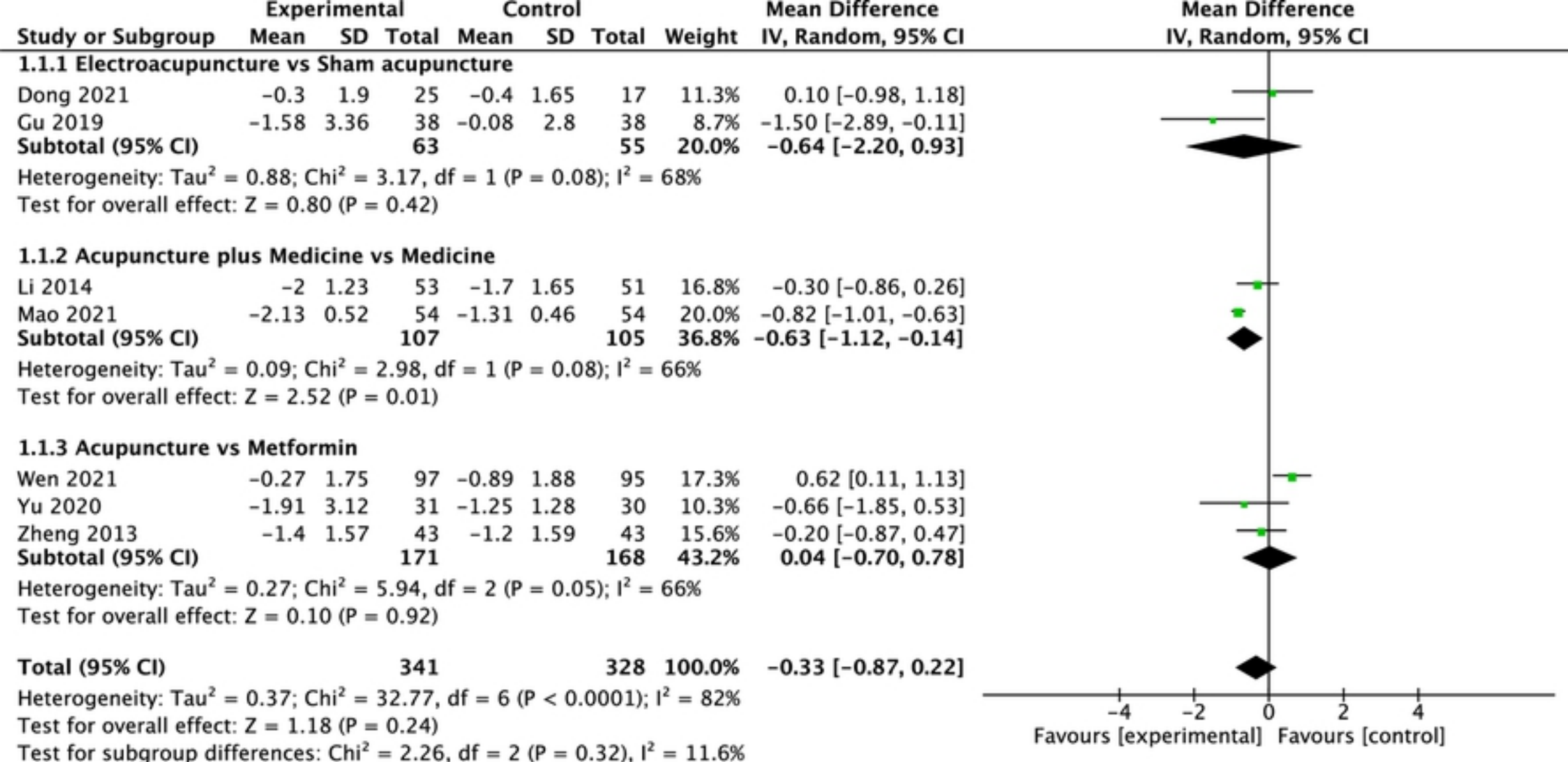


Fig4

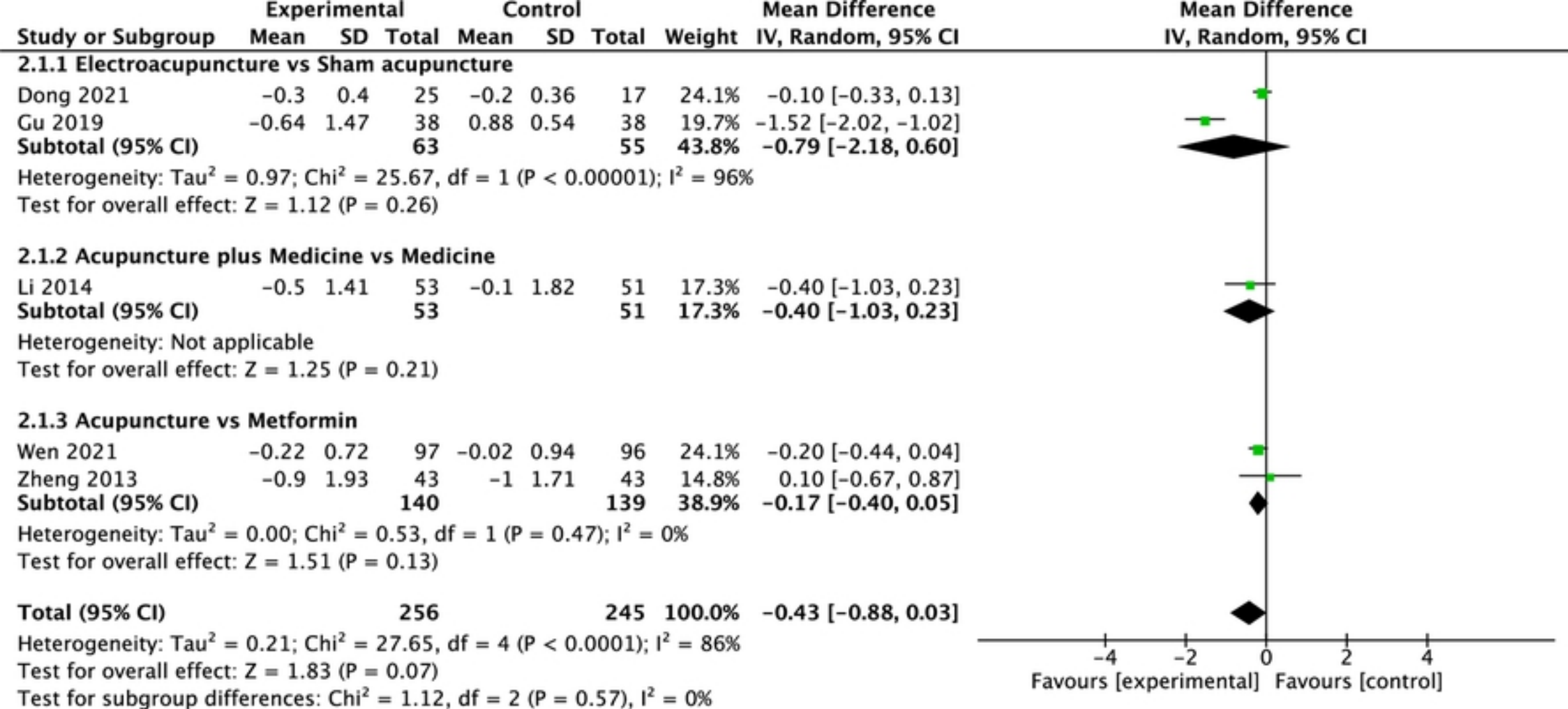


Fig5

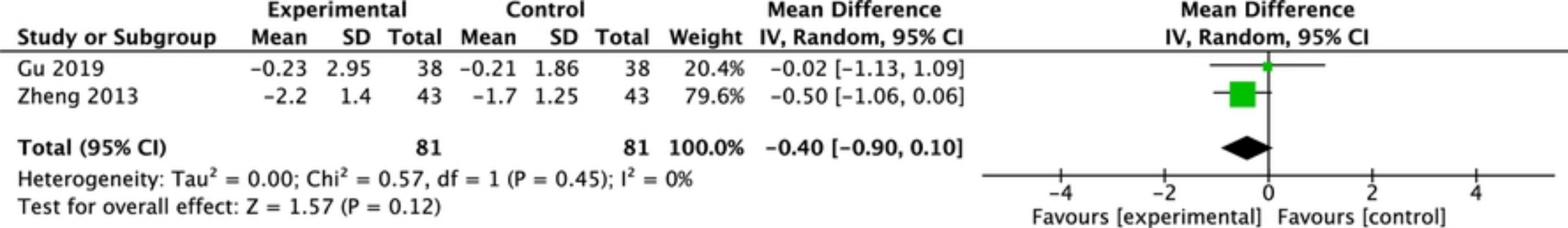


Fig6

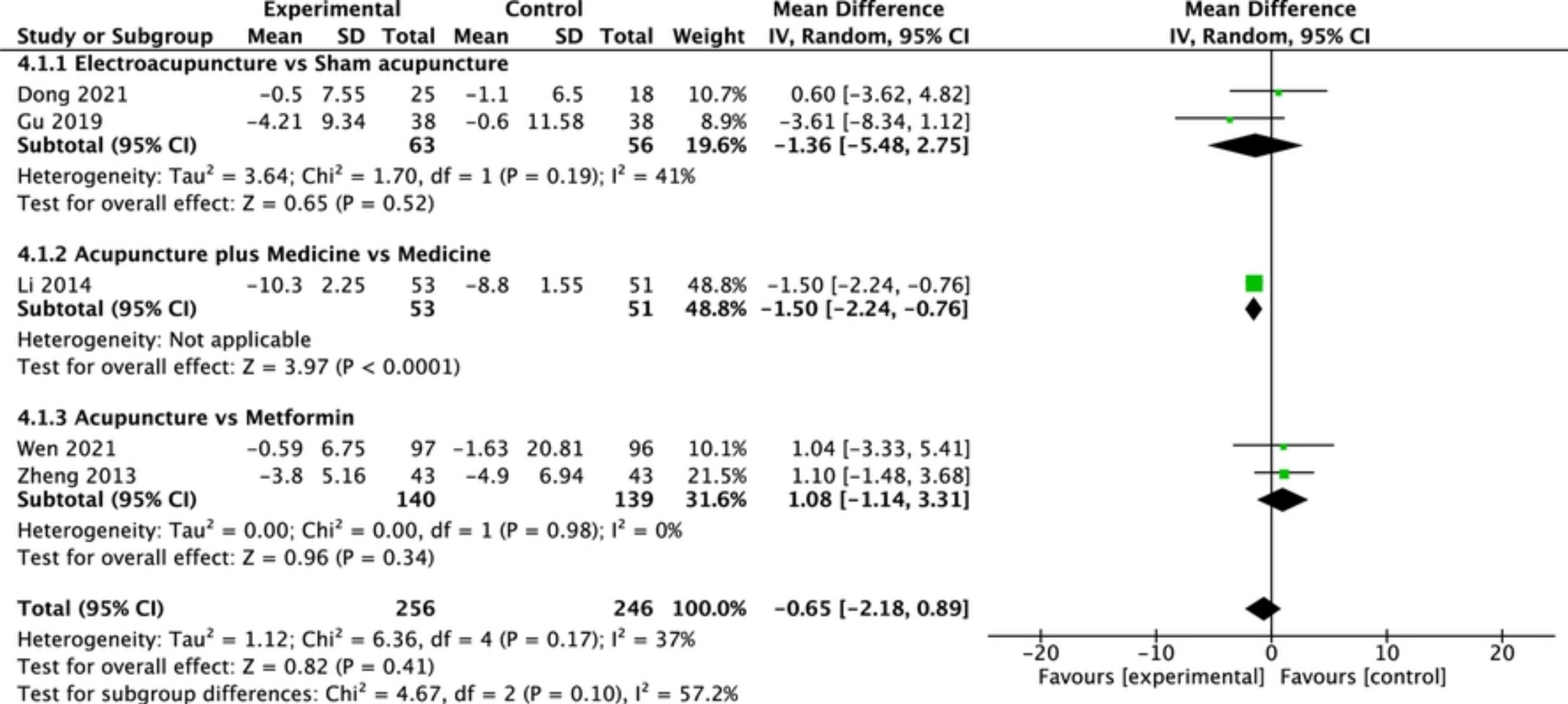


Fig7

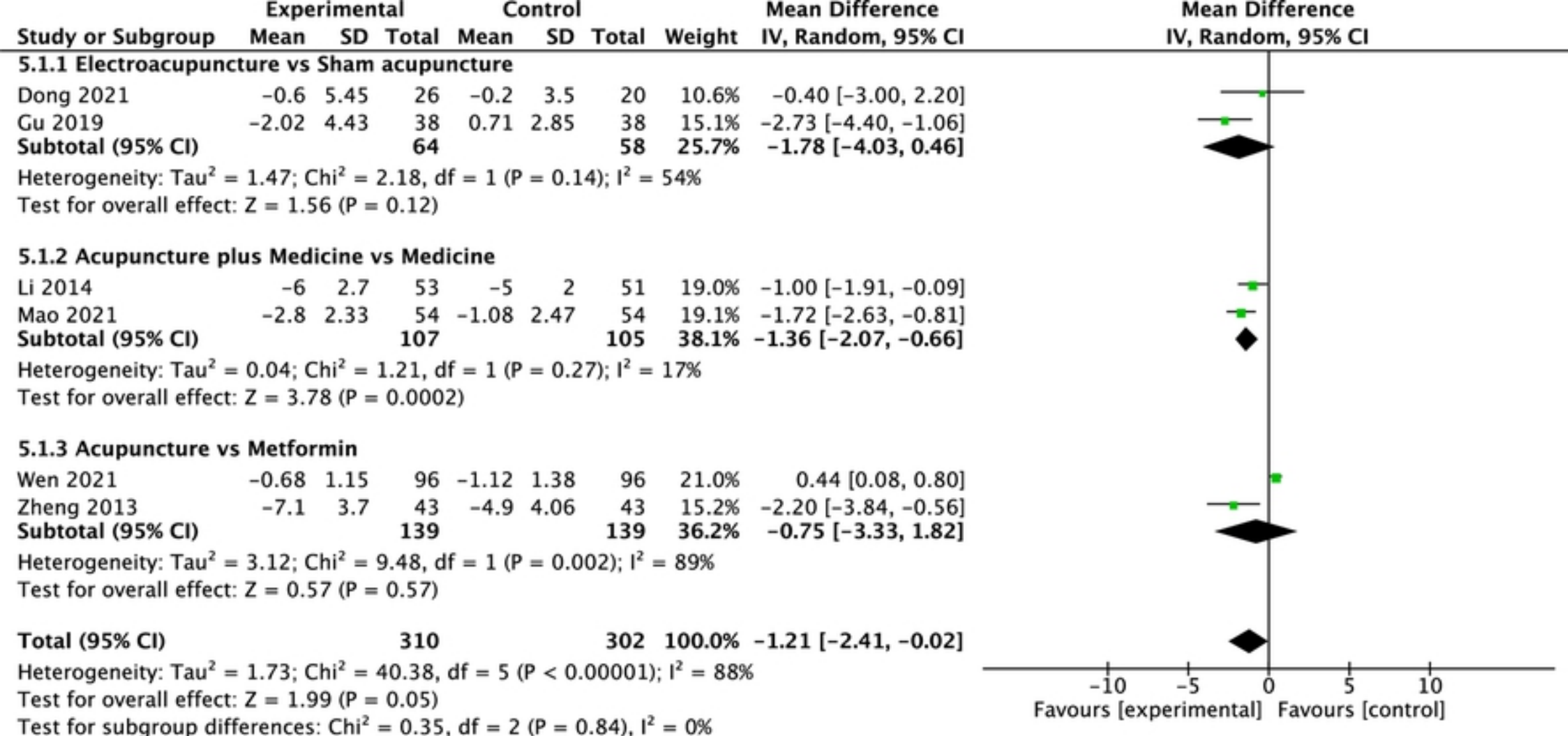


Fig8