

1 **Case-control investigation of invasive Salmonella disease in Malawi reveals no**
2 **evidence of environmental or animal transmission of invasive strains, and**
3 **supports human to human transmission.**

4
5 Leonard Koolman^{1,2#}, Reenesh Prakash^{1,2#}, Yohane Diness¹, Chisomo Msefula⁴,
6 Tonney S. Nyirenda⁴, Franziska Olgemoeller^{1,3}, Paul Wigley², Blanca Perez-
7 Sepulveda², Jay C. D. Hinton², Siân V. Owen², Nicholas A. Feasey^{1,3}, Philip M.
8 Ashton^{1,2*}, Melita A. Gordon^{1,2,4}

9
10 ¹ Malawi-Liverpool Wellcome Programme, Blantyre, Malawi

11 ² Institute of Infection, Veterinary & Ecological Sciences, University of Liverpool,
12 United Kingdom

13 ³ Department of Clinical Sciences, Liverpool School of Tropical Medicine, United
14 Kingdom

15 ⁴ Kamuzu University of Health Sciences, Blantyre, Malawi

16 # contributed equally

17 *Corresponding author

18 Email: philip.ashton@liverpool.ac.uk

19

20

21

22

23 Abstract (word count 299)

24 Background

25 Invasive *Salmonella* infections cause significant morbidity and mortality in Sub-
26 Saharan Africa. However, the routes of transmission are uncertain. We conducted a
27 case-control study of index-case and geographically-matched control households in
28 Blantyre, Malawi, sampling *Salmonella* isolates from index cases, healthy people,
29 animals, and the household environment.

30 Methodology

31 Sixty index cases of human invasive *Salmonella* infection were recruited (March 2015-
32 Oct 2016). Twenty-eight invasive Non-Typhoidal *Salmonella* (iNTS) disease and 32
33 typhoid patients consented to household sampling. Each index-case household was
34 geographically matched to a control household. Extensive microbiological sampling
35 included stool sampling from healthy household members, stool or rectal swabs from
36 household-associated animals and boot-sock sampling of the household environment.

37 Findings

38 1203 samples from 120 households, yielded 43 non-Typhoidal *Salmonella* (NTS)
39 isolates from 25 households (overall sample positivity 3.6%). In the 28 iNTS patients,
40 disease was caused by 3 STs of *Salmonella* Typhimurium, mainly ST313. In contrast,
41 the isolates from households spanned 15 sequence types (STs). Two *S.* Typhimurium
42 isolates from index cases closely matched isolates from their respective asymptomatic
43 household members (2 and 3 SNP differences respectively). Despite the recovery of
44 a diverse range of NTS, there was no overlap between the STs causing iNTS disease
45 with any environmental or animal isolates.

46 Conclusions

47 The finding of NTS strains from index cases that matched household members,
48 coupled with lack of related animal or environmental isolates, supports a hypothesis
49 of human to human transmission of iNTS infections in the household. The breadth of
50 NTS strains found in animals and the household environment demonstrated the
51 robustness of NTS sampling and culture methodology, and suggests a diverse ecology
52 of *Salmonella* in this setting. Healthy typhoid (*S. Typhi*) carrier state was not detected.
53 The lack of *S. Typhi* isolates from the household environment suggests that further
54 methodological development is needed to culture *S. Typhi* from the environment.

55 Author summary

56 Invasive *Salmonella* infections cause the loss of millions of disability adjusted life years
57 (DALYs) every year globally. The two main types of invasive *Salmonella* infections in
58 Africa are i) typhoid fever, caused by *Salmonella* Typhi, and ii) invasive Non-Typhoidal
59 *Salmonella* (iNTS) disease, primarily caused in our setting by *Salmonella*
60 Typhimurium. Despite the high disease burden, and the observed differences between
61 the epidemiology of typhoid and iNTS disease, we lack an understanding of the
62 reservoirs and transmission routes of iNTS. Therefore, we carried out extensive
63 microbiological sampling of the household members, domestic animals, and living
64 environments of patients with invasive *Salmonella* infections, and of geographically-
65 matched control households, and investigated the genetic relationships between
66 household *Salmonella* and index-case blood-stream isolates by whole genome
67 sequencing (WGS). We identified a wide range of NTS serovars / sequence types
68 across all households and sample-types, but only identified *Salmonella* that matched
69 iNTS that matched invasive cases strains in the stool of healthy people from the same
70 households. Our findings support, but cannot prove, the hypothesis that iNTS-
71 associated strains are transmitted from person-to-person. Boot-sock sampling of the
72 household environment gave the highest yield of *Salmonella* of any of our sampling
73 strategies. None of the 41 environmental *Salmonella* isolates from non-human
74 sources, including 4 domestic animal-associated isolates, matched the disease-
75 causing sequence types. Our findings are consistent with a hypothesis that the
76 reservoir of Typhimurium iNTS infections is the human gastrointestinal tract, and
77 transmission occurs within households. Longitudinal studies are required, however, to
78 confirm this hypothesis.

79

80 Introduction

81 In High Income Countries (HICs), a range of non-typhoidal *Salmonella* (NTS) serovars
82 are predominantly associated with enterocolitis and diarrhoeal disease which is often
83 self-limiting, and is associated with zoonotic transmission through industrialised food
84 production. In marked contrast, in Low-Middle Income Country (LMIC) settings
85 *Salmonella* are an important cause of invasive bloodstream infections (BSI)
86 associated with substantial morbidity and mortality. There are two distinct and
87 contrasting clinical illnesses in the African setting; typhoid fever is a long-recognised
88 illness, caused by the human-restricted pathogen *Salmonella* Typhi, while invasive
89 non-typhoidal *Salmonella* (iNTS) disease is a more recently emerged syndrome in
90 Africa, caused by several NTS serovars that have a wide potential host-range [1,2].

91
92 There were an estimated 14.3 million cases of typhoid and paratyphoid fever globally
93 in 2017, resulting in 135,900 deaths, 15.8% of which were in Sub-Saharan Africa [1].
94 *Salmonella* Typhi is a cause of BSI across the continent, with high incidence and
95 multiple outbreak reports since 2012 [3–7], and Malawi has a very high endemic
96 incidence of 444/100,000 person-years of observation [8].

97
98 Globally in 2017, invasive NTS (iNTS) disease was estimated to cause 535,000
99 illnesses and 77,500 deaths, reflecting its devastating estimated case-fatality of 14.7%
100 [2] [9]. Sub-Saharan Africa (SSA) carries the highest burden disease [10–15],
101 and accounts for 85.8% of global iNTS deaths [2]. While susceptibility to typhoid fever
102 is not associated with underlying conditions, iNTS disease in SSA is particularly
103 associated with immunocompromise, particularly HIV in adults, and malaria,
104 malnutrition or HIV in young children [12,14,16,17].

105 Two *Salmonella* serotypes, Typhimurium and Enteritidis, are the dominant causes of
106 iNTS across SSA. Data from Malawi, South Africa, Kenya, Mozambique and Mali,
107 show *S. Typhimurium* Sequence Type (ST) 313 (ST313) to be the most common
108 (approximately 80%), and *S. Enteritidis* ST11 to be the next most frequent
109 (approximately 15%) [17–25].

110

111 The transmission routes, sources and reservoirs of these specific strains of NTS
112 responsible for iNTS disease in Africa remain uncertain, but are critical to planning
113 preventive measures. Although they might be transmitted in a zoonotic fashion
114 (analogous with diarrhoeal disease in HICs), previous household or food-chain studies
115 have failed to find any evidence to link the NTS strains responsible for invasive disease
116 with either domestic animals or with food production, while disease case-control
117 studies have established genomic links between isolates from cases and from their
118 healthy household family-members. This raises the possibility that transmission is
119 predominantly human to human rather than zoonotic.

120

121 To address the knowledge gap concerning the reservoirs and transmission of NTS
122 *Salmonella* strains responsible for invasive *Salmonella* infections, we conducted a
123 cross-sectional case-control study following iNTS and typhoid disease, in index-case
124 households and geographically-matched control households across Blantyre, Malawi.
125 This is the first such study to combine simultaneous human, animal, and bootsock
126 household-environmental sampling. Whole genome sequencing of the resulting
127 isolates was used to interrogate at high resolution the relationships between isolates
128 causing invasive disease and isolates from human, animal and environmental
129 household sources.

130 Methods

131 Setting

132 Queen Elizabeth Central Hospital (QECH) provides free healthcare to the
133 approximately 1.3 million inhabitants of Blantyre District, Malawi, and is the tertiary
134 referral hospital for the southern region of Malawi. Since 1998, the Malawi-Liverpool-
135 Wellcome Trust Clinical Research Programme has provided a quality assured
136 diagnostic blood culture service for febrile adult and paediatric medical patients
137 admitted to QECH. This service is provided for admitted adults (>16 years old) with
138 axillary temperature over 37.5°C or clinical suspicion of sepsis, and for children (<16
139 years old) who were malaria slide negative, or positive and critically ill, or with clinical
140 suspicion of sepsis. Maps were obtained from the NAOMI project
141 (<https://github.com/mrc-ide/naomi/>).

142

143 Case and control recruitment

144 The first two eligible cases of blood culture-confirmed adult or paediatric invasive
145 *Salmonella* infection (one each of iNTS and typhoid fever) presenting each week at
146 QECH during two periods of recruitment (February to May 2015 and November 2015
147 to October 2016) were recruited. On 2 weeks when no iNTS case presented, it was
148 replaced with a second case of typhoid. Patients living outside the Blantyre district,
149 and those with recurrent iNTS disease (a known second blood culture positive episode
150 in the previous 30 days) were excluded. Following recruitment, the field team visited
151 the index cases in their households, where GPS co-ordinates were taken and a
152 household socio-demographic questionnaire was completed. Index case households
153 were sampled within a maximum of 14 days following initial presentation of the index
154 case to QECH. Control households were then selected by random bottle-spin and

155 pacing 100 m from the index case household, recruited with informed consent, and
156 GPS and questionnaire data were also collected. Exclusion criteria for individual
157 household members were current treatment for recent invasive *Salmonella* disease,
158 or declining consent. In the event of exclusion criteria being met, the next-nearest
159 house in the same direction was selected. Household members were defined as
160 people who usually sleep in the household.

161

162 **Sampling Methodology**

163 We carried out a microbiological survey of the index-case household and the control
164 household, comprising stool from household members, stool or rectal swabs from
165 domestic and household-associated animals and systematic boot-sock sampling of
166 the living environment (latrine, rubbish area, bedroom, cooking area and the house
167 perimeter).

168

169 *Stool (humans)*: Sample containers were provided 24-48 hours before the main
170 sample-collection visit, and we requested that up to three consecutive stools were
171 collected from each individual in the household who was available during that time
172 period. The three samples belonging to each person were pooled, to maximise
173 recovery of *Salmonella*.

174 *Stool (animals)*: Fresh stool or rectal swab samples were collected from domestic or
175 household-associated animals (cows, chickens, goats, pigs, dogs, cats, rats, doves,
176 guinea pigs or gecko lizards).

177 *Environmental*: The investigator's shoe was first covered with a waterproof sterile bag
178 to prevent cross-contamination, then a sterile bootsock was put over this, moistened
179 with sterile water, and single bootsocks were used to collect samples from each of the

180 follow sites: pit-latrines, outdoor rubbish area, cooking and bedroom areas, and from
181 the outside perimeter of the household, using a standardised protocol for location and
182 number of paces (10 paces), and a step and twist motion. Bootsocks were then
183 removed and placed into a sterile plastic bag for transport.

184 All samples were transferred from the field to the laboratory in cool boxes and
185 processed on the same day.

186

187 [Sample Enrichment and culture](#)

188 Supplementary Figure 1 shows a schematic of sample processing. A portion (~1g) of
189 stool was emulsified in 9ml of Selenite F selective enrichment broth (Oxoid, UK) and
190 incubated at 37°C for 18-24 hours. For samples other than stool (i.e. bootsocks,
191 swabs), we used a pre-enrichment step; these samples were incubated in Buffered
192 Peptone Water (BPW) at 37°C for 18-24 hours. One ml of the BPW sample was then
193 transferred into 9 ml Selenite broth and incubated for a further 18-24 hours at 37°C.

194

195 After incubation, 100µl of bacterial culture taken from the surface of the Selenite broth
196 was sub-cultured onto Xylose Lysine Deoxycholate (XLD) agar, incubated at 37°C for
197 18-24 hours and examined for suspected colonies of *Salmonella* (red/pink colonies
198 with black centres). Pure candidate colonies were biochemically confirmed as
199 *Salmonella* species using API 20E (BioMerieux). Putative *Salmonella* isolates were
200 sub-cultured onto Nutrient agar (Oxoid, UK) and incubated for 24 hours at 37°C.
201 Following growth, a drop of 0.85% saline was placed onto a microscope slide and a
202 single colony from the Nutrient agar was emulsified into the saline. Serotyping was
203 performed by the slide agglutination technique. Positive serotyping was confirmed if
204 agglutination occurred in antigens O4, O9, Vi, Hd, Hg, Hi, Hm. If an organism was

205 positive for Vi antigen but negative for O9 antigen, a dense suspension of the organism
206 was prepared in 0.85% saline, autoclaved at 121°C for 15 minutes and the
207 agglutination repeated. *S. Typhi* was differentiated from NTS isolates if agglutination
208 occurred for O9, Vi and Hd antigens. All API 20E confirmed *Salmonella* isolates which
209 were not *S. Typhi* were sent to the University of Liverpool, UK, for WGS.

210

211 Whole Genome Sequencing (WGS)

212 Bacterial genomic DNA was extracted from overnight cultures in LB (1% tryptone,
213 0.5% yeast extract, 0.5% NaCl; pH 7.0) using the DNeasy Blood and Tissue kit
214 (Qiagen), as per the Gram-negative bacteria protocol for the Quick-DNA Universal Kit
215 (Zymo Research), Biological Fluids & Cells protocol. Sequencing libraries were
216 constructed using the TruSeq DNA PCR-free library preparation kit (Illumina) or the
217 TruSeq Nano DNA HT library preparation kit (Illumina) using a target insert size of
218 550bp. Libraries were sequenced on an Illumina MiSeq instrument using a 2x250bp
219 paired end protocol at the Centre for Genomic Research, University of Liverpool, UK.
220 Raw sequencing reads were trimmed to remove Illumina adapter sequences using
221 Cutadapt [26] and further trimmed to remove poor quality sequence using Sickle [27]
222 version 1.2 with a minimum window quality score of 20, discarding reads which were
223 less than 10 bp after trimming. Trimmed reads were submitted to Enterobase
224 (<https://enterobase.warwick.ac.uk/>) for draft genome assembly, MLST assignment, *in*
225 *silico* serotype prediction and phylogenetic analysis [28]. SNP identification within
226 Enterobase was carried out via a mapping and SNP calling pipeline, and phylogenetic
227 tree construction done with RAxML [29–32] Determinants of antimicrobial resistance
228 genes were identified using the amr-finder-plus software version 3.9.8, using database
229 version 2020-12-17.1 [33].

230 Ethics

231 We sought written informed consent from adults, and written consent from the parent
232 or guardian of minors. Ethical permission for this study was granted by the University
233 of Malawi College of Medicine Research Ethics Committee, application number
234 COMREC P.08/14/1617.

235

236

237

238 Results

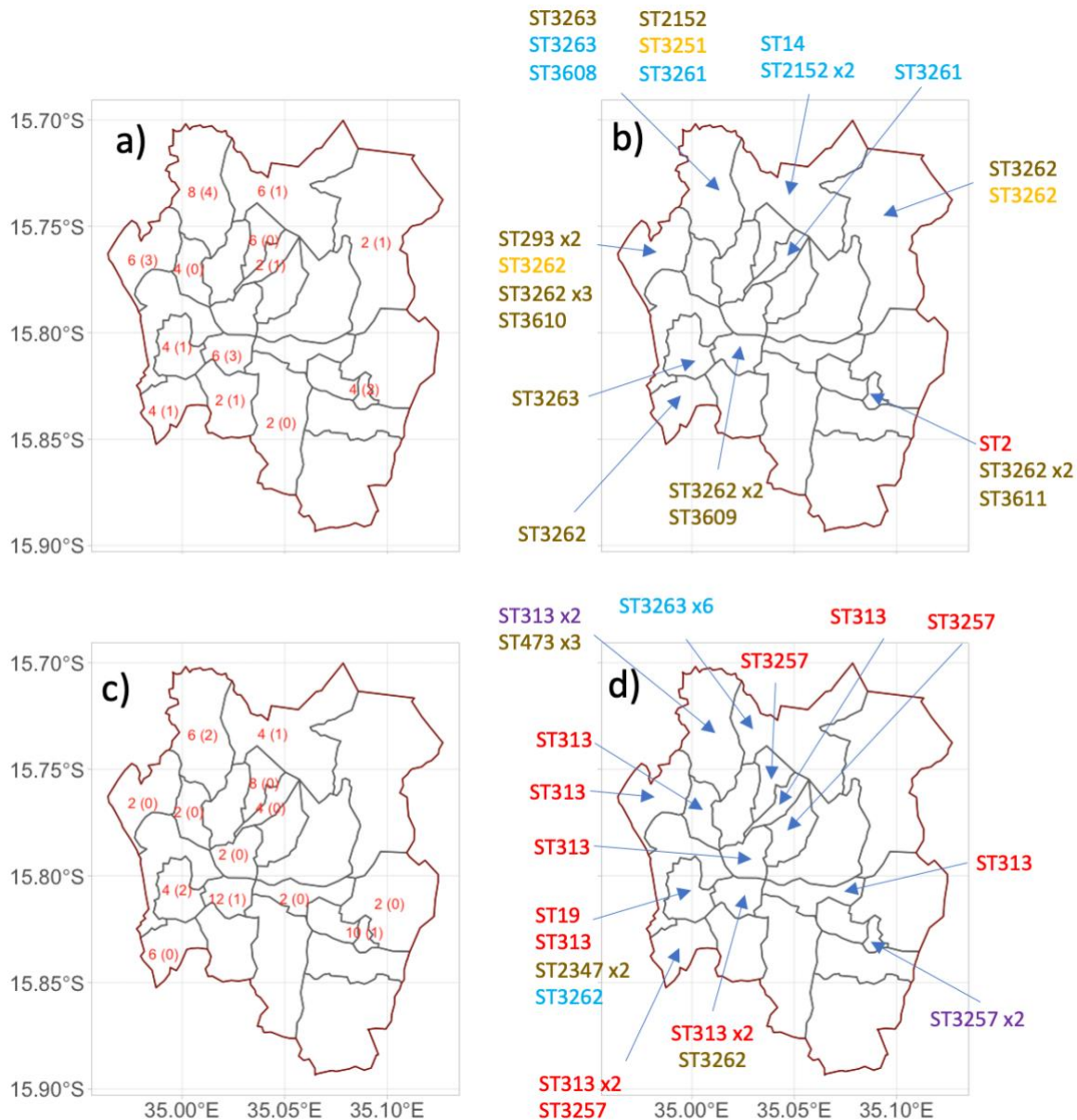
239 Sixty-seven index-case households (i.e. the households of people diagnosed with
240 invasive Salmonellosis) associated with 35 typhoid and 32 iNTS patients were eligible
241 for enrolment between March 2015 and October 2016. Seven index-case households
242 declined to participate, leaving 32 typhoid index-case households with 32 paired
243 control households, and 28 iNTS index case households, with 28 paired control
244 households recruited for the study, giving a total of 120 households (for geographic
245 distribution of cases and controls, see Figure 1a). All households were in high-density
246 low-income housing locations within Blantyre. No cases of recurrent iNTS disease
247 were excluded, and no household members were excluded because of current
248 antibiotic treatment for iNTS disease. Table 1 summarises demographic details and
249 sampling across the study for cases and controls.

250
251 Table 1: Summarised demographic information about cases, and case and control
252 households

	Cases	Controls
Median age of index case, years (IQR)	5 (3-10)	NA*
Number of male index cases (percentage of total)	25 (48%)	NA*
Median number of people in household (IQR)	5 (4-6)	5 (3-6)
Percentage of household under 15 years old (IQR)	42% (33-50%)	50% (33-53%)
Proportion of stool samples from people under 15 years old	53%	48%

253 * NA = non-applicable.

254



255

256 Figure 1: The geographic location of samples in this study a) & b) are for typhoid
 257 fever case and control households, while c) and d) are for iNTS case and control
 258 households. a) and c) indicate the number of households (case + control) that were
 259 sampled from each area, in parentheses is the number of households where
 260 *Salmonella* was isolated (not including the index case isolate). b) and d) indicated
 261 the sequence type of all the *Salmonella* isolated from that location, including the
 262 index case isolates. STs are coloured by the type of sample they were isolated from.
 263 Red is invasive *Salmonella*, blue is a household member of an invasive *Salmonella*
 264 case, purple is in both invasive *Salmonella* and a household member, brown is the
 265 environment and orange is animal.

266 *Isolation of Salmonella by culture: Salmonella* bacteria (all NTS) were isolated from
267 25/120 (21%) households, however, no *S. Typhi* were isolated from any category of
268 household samples, including healthy human family members. We collected a total of
269 1203 samples from the 120 households (a mean of 10 samples per household),
270 yielding 43 isolates (all NTS) which were confirmed as *Salmonella* by WGS, giving an
271 overall sample positivity of 3.6% (Table 2). Overall, sample positivity was similar for
272 human, animal and bootsock environment samples (human stool 16/491, 3.3%;
273 animals 4/110, 3.6%; bootsocks 23/620, 3.8%), and across different household
274 categories i.e. iNTS vs typhoid fever, case vs control (Table 2). Consistent sample
275 positivity rates suggest that sampling methods were robust. Animal sampling was from
276 110 animals in 71/120 (59%) households, and included both domesticated and non-
277 domesticated species (cows, chickens, pigs, dogs, cats, rats, doves, guinea pigs and
278 geckos). The reason for non-sampling from some households was non-ownership of
279 domestic animals.

Table 2: Sources of *Salmonella* isolates from case and paired control households linked to iNTS and typhoid patients. HH stands for household, and an index case refers a diagnosed case of invasive *Salmonellosis*.

	iNTS Index Case Households (HH) (n=28)						iNTS Control Households (HH) (n=28)					
	Total samples	No. samples with Salmonella	% positive samples	No. HH tested	No. HH with Salmonella	% Positive HH	Total samples	No. samples with Salmonella	% positive samples	No. HH tested	No. HH with Salmonella	% Positive HH
Human Stool	116	9	7.8	28	4	14.3	97	0	0.0	28	0	0.0
Animal stool/swab	27	0	0.0	20	0	0.0	38	0	0.0	17	0	0.0
HH environment	137	0	0.0	28	0	0.0	131	6	4.6	28	3	10.7
Total	280	9	3.2	28.0	4	14.3	266	6	2.3	28	3	10.7
	Typhoid Index Case households (HH) (n=32)						Typhoid Control households (HH) (n=32)					
Human Stool	157	4	2.5	32	2	6.3	121	3	2.5	32	3	9.4
Animal stool/swab	22	2	9.1	18	2	11.1	23	2	8.7	16	2	12.5
HH environment	168	5	3.0	32	4	12.5	166	12	7.2	32	9	28.1
Total	347	11	3.2	32	7	21.9	310	17	5.5	32	11	34.4

280

281

282 *Relatedness of Sequence Types from different sample categories.*

283 We isolated a wide wide diversity and relationships of Sequence Types (STs) from
284 different sample categories (invasive disease, healthy human stool, animals, and the
285 household environment) (Figure 1, Table 3, full line list in Supplementary Table 1).
286 Among invasive NTS disease cases, 8 of 27 index case NTS isolates could not be
287 resuscitated from the freezer archive and so could not be genome-sequenced. The
288 remaining 19 typed index NTS isolates were all *S. Typhimurium* and included just 3
289 STs; 13 were ST313, 5 were ST3257 and 1 was ST19. ST3257 varies from ST313
290 by only a single MLST locus. One representative typhoid index strain (ST2) was also
291 included for reference. Among healthy household members, 16 isolates represented
292 8 STs; among animals there were 4 isolates from 3 STs; and from environmental
293 samples there were 23 isolates from 9 different STs.

294

295 Table 3: The number of isolates belonging to each ST identified in this study, from
296 each niche

ST	Animal	Boot sock	Family member stool	Index case	Grand Total
2				1	1
14			1		1
19				1	1
293		2			2
313			1	13	14
316	1				1
473		3			3
2152		1	2		3
2347		2			2
3257			1	5	6
3261	1		2		3
3262	2	10	1		13
3263		2	7		9
3608			1		1
3609		1			1
3610		1			1
3611		1			1
Grand Total	4	23	16	20	63

297

298 Of the 19 index iNTS case isolates from blood culture, 19/19 were *S. Typhimurium*, of
299 3 different STs; ST313 (n=13), ST3257 (a Single Locus Variant of ST313, n=5) and
300 ST19 (n = 1) (Supplementary Table 1, Figure 2). There were two instances of the same
301 sequence type of *S. Typhimurium* being isolated from both invasive index-case
302 isolates and healthy human household samples. Specifically, 2 cases of invasive
303 disease caused by *S. Typhimurium* ST313 and ST3257 were linked to isolates from 2
304 healthy household members who shared the same address and also had ST313 and
305 ST3257 respectively isolated from their stools (Figure 2). In both cases the household
306 member carrying a matching isolate was an adult, whereas stool isolates of
307 *Salmonella* from household members were found equally among adults (n=7) and
308 children (n=8).
309

325 Figure 2 demonstrates the relationships of all sequence types and sample categories.
326 Figure 1 additionally demonstrates the geographical spread of sampling and of
327 isolation of Salmonellae across Blantyre, and the geographical distribution of all STs
328 isolates across different wards of the city. We found no overlap in STs between
329 isolates causing invasive human disease with any animal or environmental isolates,
330 despite evenly-spread geographical sampling and a well distributed and consistent
331 rate of isolation from all 3 sample-types. We did identify non-co-localised overlap
332 between some STs from healthy humans and household-associated animals. A
333 monophasic ST3262 was found in a cat, a gecko, and a human, but in geographically
334 distinct households (see Figure 1 map and Supplementary Table 1). Similarly, ST3261
335 (serovar Agoueve/Cubana) was isolated from 2 healthy humans and a chicken, but
336 these were in different households (Table 2). ST316 (serovar Montevideo) was found
337 only in an animal (gecko).

338
339 ST/serovars (as identified *in silico*) that were carried by healthy human family
340 members were ST3263 (Havana, n=7), ST313 (Typhimurium, n=2), ST2152
341 (Gaminara, n=2), ST3261 (Agoueve/Cubana, n=2), ST14 (Seftenberg, n=1) and
342 ST3608 (Ogbete, n=1). The wide range of ST/serovars found across the household
343 environment included monophasic II42:r-:IIIb 42:r-:[z50] (10), ST473 (Hadar n=3),
344 ST3263 (Havana, n=3), ST293 (Amager, n=2), ST3347 (Mgulani, n=2) ST3609
345 (Djama, n=1) and ST3610 (Aberdeen, n=1).

346
347 Some STs isolated from the environment overlapped with those from healthy humans,
348 and household animals. Of 9 STs found in the environment, 3 (ST3262 monophasic;
349 ST3263 Havana; ST2152 Gaminara) showed some overlap with healthy human or

350 animal isolates. However, a further 6 STs were found only in the household
351 environment, revealing the diversity of *Salmonella* strains in this setting.

352

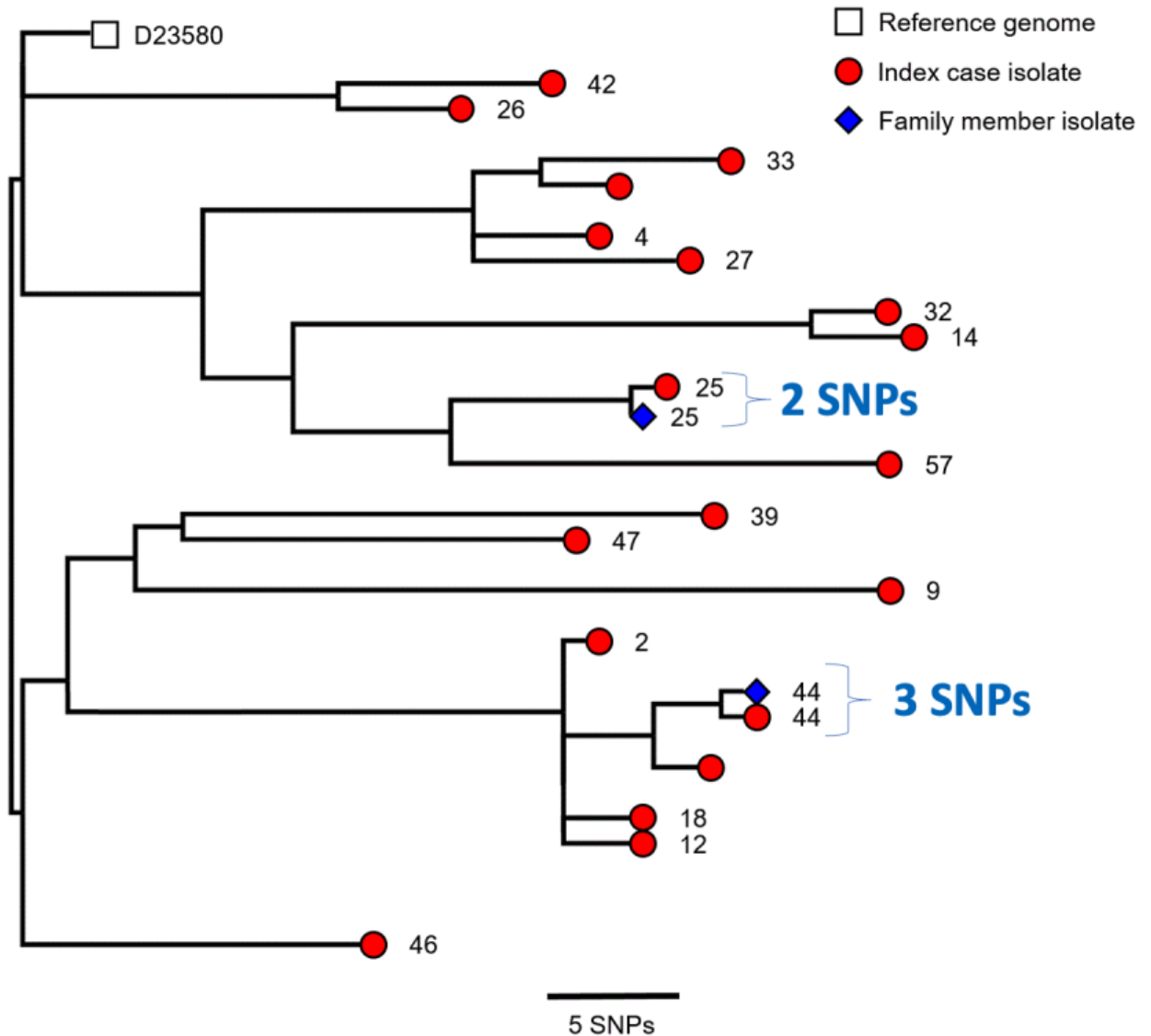
353 There was a wide diversity of ST/serovars, and many STs/serovars were represented
354 by just a single isolate. Where there were multiple isolations of the same serovar,
355 however, a large proportion were co-localised within the same household. Striking
356 examples of this are: of 9 isolates of ST 3263 (*S. Havana*), 6 arose from a single
357 household (9S), representing 6 out of 7 children sampled; of 3 isolates of ST 473 (*S.*
358 *Hadar*), all arose from the same household (25C, latrine, bedroom and cooking area);
359 of 12 isolates of monophasic II42:r-|IIIb 42:r-:[z50] there were multiple positive
360 samples in three households, originating from both animal and environmental samples
361 in the same households. Similarly, 2 isolates each of ST23347 (*S. Mgulani*) and ST
362 293 (*S. Amager*) isolates were isolated only from the same respective households
363 (16C and 56C). Thus the data indicated a very marked geographical diversity between
364 households, and a degree of homogeneity within households among NTS that were
365 not linked to invasive disease.

366

367 *Whole genome phylogeny of index/household pairs*

368 We used whole genome-derived phylogenetics to infer the high-resolution
369 relationship between the human invasive disease cases of *S. Typhimurium* ST313 &
370 ST3257 and the stool carriage isolates of their respective index household members.
371 In both the ST313 and ST3257 pairs, the isolate that caused the invasive disease
372 formed a monophyletic group with the carriage isolate from the same index
373 household (Figure 3). The SNP distance was 2 SNPs in one case, and 3 SNPs in the
374 other (Figure 3).

375 A summary of antimicrobial resistance genes present from WGS data for 63 isolates
376 from index cases of human invasive disease and household sampling is available in
377 Supplementary Table 1.



378

379 Figure 3: The close relationship between the index case and family member isolates
380 from households 25 and 44 shown with a phylogenetic tree. Whole genome
381 maximum likelihood tree of 19 *S. Typhimurium* isolates described in Table 2. The
382 numbers at the end of each branch indicate household, as described in the first
383 column of Table 2 (all these households are case households). Sequencing read
384 sets were compared against the reference genome D23580 as described in
385 Methods.

386

387 Discussion

388 Our findings support the overarching hypothesis that iNTS disease in sub-Saharan
389 Africa is transmitted from person to person. We studied 60 index cases of invasive
390 *Salmonella* disease (32 typhoid and 28 iNTS disease), and took 1203 samples from
391 120 index and geographically-matched control households, including samples from
392 110 animals and 491 family members. Nineteen bloodstream isolates sequenced from
393 iNTS cases were of just 3 STs of *S. Typhimurium*. 43 NTS strains were isolated,
394 including 16 from the stool of healthy household members, of which two closely
395 matched the strains from their corresponding household invasive index-case, being
396 within a 2-3 SNP distance from the index case isolate. None of the 27 other *Salmonella*
397 isolates from the environment and animals could be linked to iNTS case isolates.

398 The reservoirs and transmission route of the pathogens responsible for iNTS in SSA
399 remains unknown. Seasonal patterns of iNTS, and the close domestic association of
400 humans and animals in parts of SSA might suggest that environmental factors could
401 play a role [34,35]. However, numerous studies have failed to establish any
402 convincing link between strains causing invasive disease, with domestic or household
403 animals or with meat-production. Serotypes associated with iNTS have been isolated
404 from animals in South Africa, but these lacked higher-resolution genetic
405 characterisation at sequence level [36,37]. An early study from Kenya using Pulsed
406 field Gel Electrophoresis (PFGE) also found that iNTS-linked serotypes were only
407 rarely found in environmental samples such as water from nearby rivers, household
408 and market vendor food, or from household animals, but PFGE is a low resolution
409 method that is now superseded by Whole Genome Sequencing (WGS) [38]. More
410 recently, iNTS infections caused by *Salmonella* Typhimurium or Enteritidis in an
411 informal urban settlement in Kenya were not found to be epidemiologically associated

412 with the rearing of any domestic animals [39]. In The Gambia, no overlap was
413 observed between STs from iNTS cases and those from the rectal swabs from
414 domestic animals in the households of cases [40], while in Tanzania and Kenya,
415 extensive sampling of “meat pathway” isolates and human disease isolates only
416 isolated ST313 from human samples [41]. Although ST313 was isolated from pigs in
417 Nairobi, this was genomically related to an ST313 variant from the UK that is not
418 associated with invasive disease [42,43].

419 In contrast, in keeping with our study, several previous studies have provided evidence
420 of a link between strains causing a case of iNTS disease and strains from their healthy
421 family members. In a recent study in Burkina Faso of the households of 29 iNTS cases,
422 500 samples from humans, domestic animals and water yielded 34 Salmonella
423 isolates of a diversity of serovars. No matched-control households were studied. The
424 only isolates that matched corresponding index cases were obtained from the stool of
425 3 household members, which corresponded to 4 index cases (2 cases from one
426 house). Salmonella was not isolated from any water sample, and environmental
427 bootsock samples were not taken [44]. Recent microbiological investigations in Kenya,
428 based on whole genome sequencing, found isolates in the stool of healthy age-
429 matched control children that were genomically very closely related to index cases of
430 iNTS disease in the same community. These children were not, however, co-located
431 in the same households [45].

432 The Global Enteric Multicentre Study of moderate-severe diarrhoea also found strains
433 of invasive disease-related NTS in the stool of 42 children with diarrhoea and 17
434 healthy control children, highlighting the potential role of the human gut as a source of
435 iNTS infections, but these cases were not directly linked to cases of invasive disease
436 [46].

437 The findings in relation to *S. Typhi* the human-restricted causative agent of typhoid
438 fever in Africa, provide an interesting epidemiological and biological contrast to our
439 findings for iNTS disease. Although asymptomatic human carriage is known to be one
440 source of transmission of typhoid, we found no evidence of this in any household,
441 including the households of cases. This is unsurprising since a much larger
442 community-based study in a population of approx 100,000 individuals in Blantyre also
443 found no evidence of asymptomatic carriage in any age-group [8]. Since *S. Typhi* is
444 known to be human-restricted, it is likely that transmission of typhoid in Malawi is via
445 stool shedding from acute cases. *S. Typhi* is believed to be transmitted by poor
446 sanitation and contaminated water, entering a unique viable but non-culturable state
447 outside the human host, making it unsurprising that we did not isolate this organism
448 from an of our household samples. Delineating the relative contributions of long-cycle
449 transmission (i.e. waterborne or environmentally mediated) and short cycle
450 transmission (i.e. within the household) has remained difficult for typhoid, for these
451 specific biological and technical reasons [47,48]. It is, however, notable that there was
452 a high rate of isolation of NTS from all sample-types in both typhoid case and control
453 households.

454

455 This study also provides some wider insights into household and environmental
456 niches for NTS. Whilst previous case-control studies have focused on domestic
457 animals, adults and children in the same household, here we have additionally studied
458 the household environment. This yielded a similar culture positivity-rate to other
459 sample-types, suggesting that our culture methods were robust, and environmental
460 samples yielded a wide range of ST/serovar strains. Salmonellae appear to have a
461 wider range of relatively unique niches in the household environment than has been

462 previously appreciated in this setting. Although we identified a diversity of serovars,
463 the complete lack of overlap of strains causing invasive disease with either animal or
464 environmental strains was very striking. Overall, there was also a surprising lack of
465 mutual overlap between the ecological niches of serovars colonising the household
466 lived-in environment, health humans and animals. This suggests that NTS strains in
467 general are relatively adapted to their own niches, and this is perhaps in keeping with
468 the very narrow range of STs that are known to cause human invasive disease [49].
469 Where overlap in strains between healthy humans, animals and the environment did
470 occur, it appeared to be mostly localised to a single household, or a few households.
471
472 This study has several important strengths. It is the first to use a case-control
473 approach, and the first to link index case isolates with sampling from such a wide range
474 of simultaneous sources - healthy humans, domestic animals and the lived-in
475 household environment. Sampling was geographically well distributed across all areas
476 of the city. The average household size in Blanyre is 4.3, with 48% of the population
477 under the age of 18 [8]. Based on this, we would predict 528 “available” people in 60
478 households, and we actually obtained 491 samples, suggesting that 93% of predicted
479 total possible samples were collected (range 81%-113% of predicted in each
480 category), indicating good overall coverage of household members. From the same
481 census, we would expect 48% of the community to be aged less than 18, and the
482 actual percentage of samples from children was 46.6%, again suggesting highly
483 representative coverage of sampling between adults and children. Yield was similar
484 across all sample-categories, and similar across all areas of the city, suggesting that
485 our culture methods were robust and consistent.

486 Our methodology was able to identify microbiological connections between people and
487 their household environments at both the individual household level and the
488 community level. The presence of the same STs in multiple samples from the same
489 household indicates that our methodology can resolve this connectivity when it is
490 present in this setting, and this strengthens the significance the “negative” finding of
491 the absence of a link between *Salmonella* causing iNTS disease and animals or the
492 environment. This excellent yield from bootsocks for detecting *Salmonella* in other
493 contexts has been reported elsewhere [50], and substantially enriched the diversity of
494 data and environmental resolution in our study. We recommend that similar studies
495 carried out in the future also use this method.

496

497 There are also some limitations to our study. Both the index case and the ST313
498 colonised household members could have been simultaneously infected from an
499 unsampled environmental reservoir or source. In addition, there was a lag-time of a
500 maximum of 14 days between the presentation of the index case and investigation of
501 the household, which could mean that a common source might be missed. However,
502 this study provides the most comprehensive results from a wide range of simultaneous
503 potential household sources yet to be published, but despite consistent positive yields
504 from all categories of samples we were still unable to find evidence of a “common
505 source”. If the index-case were infected outside the home e.g. at work, school, or
506 nursery, which is a possible risk factor in our setting [47], then our study would not
507 identify that microbiological source. Another limitation of our sampling is that it is
508 possible that some household members were on antibiotics at the moment of
509 sampling, additionally, we did not collect information on the precise number of bowel

510 motions sampled by each participant, which could lead to differences in yield between
511 participants.

512

513 In addition, an intrinsic limitation of a cross sectional study is that it is not possible to
514 definitely demonstrate the transmission of isolates between reservoirs, sources and
515 cases, and a more comprehensive longitudinal study would be required to prove a
516 transmission route. The accumulated body of “negative” evidence from this and
517 previous cross-sectional studies may now justify the greater resources that would be
518 required to demonstrate “positive” proof of transmission. We had hoped to sample
519 food, but we found that in practice most households lacked refrigeration, and there
520 was rarely food in the house to sample, as meals were eaten at one sitting, so this
521 objective was not realistic in this study. Although previous household studies have not
522 achieved yield of NTS from household water, drinking and washing/cleaning water-
523 sources could be involved in the transmission of organisms causing iNTS, as is seen
524 for *S. Typhi* [47,51], but further methodological development to filter large volumes
525 would be required for these studies.

526

527 Conclusions

528 In summary, we conducted comprehensive environmental and contact sampling within
529 the households of patients with invasive *Salmonella* disease, and geographically
530 matched control households. Despite comparable yield from all sample types, the only
531 household isolates that matched iNTS cases came from the stool of household
532 members. This study contributes to accumulating evidence that the reservoir of iNTS
533 infections in Africa is likely to be the human gastrointestinal tract. Significantly, no
534 strains associated with human iNTS disease were identified among any household-

535 associated animals, despite extensive sampling and consistent recovery from animal
536 samples. The use of bootsocks to sample the lived-in household environment
537 uncovered a much wider range of NTS isolates that were not associated with invasive
538 disease, across all sampling sites, than has previously been appreciated. This is
539 consistent with a diverse ecology for *Salmonella* in the household environment, with
540 multiple ST/serovars apparently occupying relatively distinct niches.

541 [Acknowledgements](#)

542 We are grateful to Alistair Darby, John Kenny and staff at the Centre for Genomic
543 Research at the University of Liverpool for assistance with genome sequencing. For
544 the purpose of open access, the authors have applied a CC BY public copyright
545 licence to any Author Accepted Manuscript version arising from this submission.

546

547 References

- 548
- 549 1. Stanaway JD, Reiner RC, Blacker BF, Goldberg EM, Khalil IA, Troeger CE, et al. The
550 global burden of typhoid and paratyphoid fevers: a systematic analysis for the Global
551 Burden of Disease Study 2017. *The Lancet Infectious Diseases*. 2019;19: 369–381.
552 doi:10.1016/S1473-3099(18)30685-6
- 553 2. Stanaway JD, Parisi A, Sarkar K, Blacker BF, Reiner RC, Hay SI, et al. The global
554 burden of non-typhoidal salmonella invasive disease: a systematic analysis for the
555 Global Burden of Disease Study 2017. *The Lancet Infectious Diseases*. 2019;19: 1312–
556 1324. doi:10.1016/S1473-3099(19)30418-9
- 557 3. Feasey NA, Gaskell K, Wong V, Msefula C, Selemani G, Kumwenda S, et al. Rapid
558 Emergence of Multidrug Resistant, H58-Lineage Salmonella Typhi in Blantyre, Malawi.
559 *PLOS Neglected Tropical Diseases*. 2015;9: e0003748.
560 doi:10.1371/journal.pntd.0003748
- 561 4. Hendriksen RS, Leekitcharoenphon P, Lukjancenko O, Lukwesa-Musyani C,
562 Tambatamba B, Mwaba J, et al. Genomic Signature of Multidrug-Resistant Salmonella
563 enterica Serovar Typhi Isolates Related to a Massive Outbreak in Zambia between 2010
564 and 2012. Munson E, editor. *J Clin Microbiol*. 2015;53: 262–272.
565 doi:10.1128/JCM.02026-14
- 566 5. Marks F, von Kalckreuth V, Aaby P, Adu-Sarkodie Y, El Tayeb MA, Ali M, et al.
567 Incidence of invasive salmonella disease in sub-Saharan Africa: a multicentre
568 population-based surveillance study. *Lancet Glob Health*. 2017;5: e310–e323.
569 doi:10.1016/S2214-109X(17)30022-0
- 570 6. Neil KP, Sodha SV, Lukwago L, O-tipo S, Mikoleit M, Simington SD, et al. A Large
571 Outbreak of Typhoid Fever Associated With a High Rate of Intestinal Perforation in
572 Kasese District, Uganda, 2008–2009. *Clinical Infectious Diseases*. 2012;54: 1091–1099.
573 doi:10.1093/cid/cis025
- 574 7. N’cho HS, Masunda KPE, Mukeredzi I, Manangazira P, Govore E, Duri C, et al. *Notes*
575 *from the Field*: Typhoid Fever Outbreak — Harare, Zimbabwe, October 2017–February
576 2018. *MMWR Morb Mortal Wkly Rep*. 2019;68: 44–45.
577 doi:10.15585/mmwr.mm6802a5
- 578 8. Meiring JE, Shakya M, Khanam F, Voysey M, Phillips MT, Tonks S, et al. Burden of
579 enteric fever at three urban sites in Africa and Asia: a multicentre population-based
580 study. *The Lancet Global Health*. 2021;9: e1688–e1696. doi:10.1016/S2214-
581 109X(21)00370-3
- 582 9. Marchello CS, Birkhold M, Crump JA, Martin LB, Ansah MO, Breggi G, et al.
583 Complications and mortality of non-typhoidal salmonella invasive disease: a global
584 systematic review and meta-analysis. *The Lancet Infectious Diseases*. 2022;0.
585 doi:10.1016/S1473-3099(21)00615-0
- 586 10. Gilks CF, Brindle RJ, Newnham RS, Watkins WM, Waiyaki PG, Were JBO, et al. Life-
587 threatening bacteraemia in HIV-1 seropositive adults admitted to hospital in Nairobi,
588 Kenya. *The Lancet*. 1990;336: 545–549. doi:10.1016/0140-6736(90)92096-Z

- 589 11. Gordon MA, Walsh AL, Chaponda M, Soko D, Mbvwinji M, Molyneux ME, et al.
590 Bacteraemia and Mortality Among Adult Medical Admissions in Malawi –
591 Predominance of Non-typhi Salmonellae and *Streptococcus pneumoniae*. *Journal of*
592 *Infection*. 2001;42: 44–49. doi:10.1053/jinf.2000.0779
- 593 12. Berkley JA, Lowe BS, Mwangi I, Williams T, Bauni E, Mwarumba S, et al. Bacteremia
594 among Children Admitted to a Rural Hospital in Kenya. *New England Journal of*
595 *Medicine*. 2005;352: 39–47. doi:10.1056/NEJMoa040275
- 596 13. Reddy EA, Shaw AV, Crump JA. Community-acquired bloodstream infections in
597 Africa: a systematic review and meta-analysis. *The Lancet Infectious Diseases*. 2010;10:
598 417–432. doi:10.1016/S1473-3099(10)70072-4
- 599 14. Feasey NA, Dougan G, Kingsley RA, Heyderman RS, Gordon MA. Invasive non-
600 typhoidal salmonella disease: an emerging and neglected tropical disease in Africa. *The*
601 *Lancet*. 2012;379: 2489–2499. doi:10.1016/S0140-6736(11)61752-2
- 602 15. Uche IV, MacLennan CA, Saul A. A Systematic Review of the Incidence, Risk Factors
603 and Case Fatality Rates of Invasive Nontyphoidal Salmonella (iNTS) Disease in Africa
604 (1966 to 2014). *PLOS Neglected Tropical Diseases*. 2017;11: e0005118.
605 doi:10.1371/journal.pntd.0005118
- 606 16. Gordon MA, Graham SM, Walsh AL, Wilson L, Phiri A, Molyneux E, et al. Epidemics
607 of Invasive *Salmonella enterica* Serovar Enteritidis and *S. enterica* Serovar
608 Typhimurium Infection Associated with Multidrug Resistance among Adults and
609 Children in Malawi. *Clin Infect Dis*. 2008;46: 963–969. doi:10.1086/529146
- 610 17. Feasey NA, Masesa C, Jassi C, Faragher EB, Mallewa J, Mallewa M, et al. Three
611 Epidemics of Invasive Multidrug-Resistant *Salmonella* Bloodstream Infection in
612 Blantyre, Malawi, 1998–2014. *Clin Infect Dis*. 2015;61: S363–S371.
613 doi:10.1093/cid/civ691
- 614 18. Keddy KH, Musekiwa A, Sooka A, Karstaedt A, Nana T, Seetharam S, et al. Clinical
615 and microbiological features of invasive nontyphoidal *Salmonella* associated with HIV-
616 infected patients, Gauteng Province, South Africa. *Medicine (Baltimore)*. 2017;96.
617 doi:10.1097/MD.0000000000006448
- 618 19. Akullian A, Montgomery JM, John-Stewart G, Miller SI, Hayden HS, Radey MC, et al.
619 Multi-drug resistant non-typhoidal *Salmonella* associated with invasive disease in
620 western Kenya. *PLOS Neglected Tropical Diseases*. 2018;12: e0006156.
621 doi:10.1371/journal.pntd.0006156
- 622 20. Mandomando I, Macete E, Sigaúque B, Morais L, Quintó L, Sacarlal J, et al. Invasive
623 non-typhoidal *Salmonella* in Mozambican children. *Trop Med Int Health*. 2009;14:
624 1467–1474. doi:10.1111/j.1365-3156.2009.02399.x
- 625 21. Tapia MD, Tennant SM, Bornstein K, Onwuchekwa U, Tamboura B, Maiga A, et al.
626 Invasive Nontyphoidal *Salmonella* Infections Among Children in Mali, 2002–2014:
627 Microbiological and Epidemiologic Features Guide Vaccine Development. *Clin Infect*
628 *Dis*. 2015;61: S332–S338. doi:10.1093/cid/civ729

- 629 22. Kingsley RA, Msefula CL, Thomson NR, Kariuki S, Holt KE, Gordon MA, et al.
630 Epidemic multiple drug resistant Salmonella Typhimurium causing invasive disease in
631 sub-Saharan Africa have a distinct genotype. *Genome Res.* 2009;19: 2279–2287.
632 doi:10.1101/gr.091017.109
- 633 23. Okoro CK, Kingsley RA, Connor TR, Harris SR, Parry CM, Al-Mashhadani MN, et al.
634 Intra-continental spread of human invasive Salmonella Typhimurium pathovariants in
635 sub-Saharan Africa. *Nat Genet.* 2012;44: 1215–1221. doi:10.1038/ng.2423
- 636 24. Feasey NA, Hadfield J, Keddy KH, Dallman TJ, Jacobs J, Deng X, et al. Distinct
637 Salmonella Enteritidis lineages associated with enterocolitis in high-income settings and
638 invasive disease in low-income settings. *Nat Genet.* 2016;48: 1211–1217.
639 doi:10.1038/ng.3644
- 640 25. Pulford CV, Perez-Sepulveda BM, Canals R, Bevington JA, Bengtsson RJ, Wenner N,
641 et al. Stepwise evolution of Salmonella Typhimurium ST313 causing bloodstream
642 infection in Africa. *Nature Microbiology.* 2020; 1–12. doi:10.1038/s41564-020-00836-1
- 643 26. Martin M. Cutadapt removes adapter sequences from high-throughput sequencing reads.
644 *EMBnet.journal*; Vol 17, No 1: Next Generation Sequencing Data Analysis. 2011.
645 Available: <http://journal.embnet.org/index.php/embnetjournal/article/view/200/479>
- 646 27. Joshi N, Fass J. Sickle: A sliding-window, adaptive, quality-based trimming tool for
647 FastQ files. 2011. Available: <https://github.com/najoshi/sickle>
- 648 28. Alikhan N-F, Zhou Z, Sergeant MJ, Achtman M. A genomic overview of the population
649 structure of Salmonella. *PLOS Genetics.* 2018;14: e1007261.
650 doi:10.1371/journal.pgen.1007261
- 651 29. Zhou Z, Alikhan N-F, Mohamed K, Fan Y, Group the AS, Achtman M, et al. The
652 EnteroBase user’s guide, with case studies on Salmonella transmissions, Yersinia pestis
653 phylogeny, and Escherichia core genomic diversity. *Genome Res.* 2020;30: 138–152.
654 doi:10.1101/gr.251678.119
- 655 30. Creating a SNP Tree — EnteroBase documentation. [cited 26 Jan 2022]. Available:
656 <https://enterobase.readthedocs.io/en/latest/enterobase-tutorials/snp-tree-tutorial.html>
- 657 31. Zhou Z. EToKi (Enterobase Tool Kit). 2022. Available:
658 <https://github.com/zheminzhou/EToKi>
- 659 32. Kozlov AM, Darriba D, Flouri T, Morel B, Stamatakis A. RAxML-NG: a fast, scalable
660 and user-friendly tool for maximum likelihood phylogenetic inference. *Bioinformatics.*
661 2019;35: 4453–4455. doi:10.1093/bioinformatics/btz305
- 662 33. Feldgarden M, Brover V, Haft DH, Prasad AB, Slotta DJ, Tolstoy I, et al. Validating the
663 AMRFinder Tool and Resistance Gene Database by Using Antimicrobial Resistance
664 Genotype-Phenotype Correlations in a Collection of Isolates. *Antimicrob Agents
665 Chemother.* 2019;63. doi:10.1128/AAC.00483-19
- 666 34. Morpeth SC, Ramadhani HO, Crump JA. Invasive non-Typhi Salmonella disease in
667 Africa. *Clin Infect Dis.* 2009;49: 606–611. doi:10.1086/603553

- 668 35. Tack B, Vita D, Phoba M-F, Mbuyi-Kalonji L, Hardy L, Barbé B, et al. Direct
669 association between rainfall and non-typhoidal Salmonella bloodstream infections in
670 hospital-admitted children in the Democratic Republic of Congo. *Sci Rep.* 2021;11:
671 21617. doi:10.1038/s41598-021-01030-x
- 672 36. Gelaw AK, Nthaba P, Matle I. Detection of Salmonella from animal sources in South
673 Africa between 2007 and 2014. *Journal of the South African Veterinary Association.*
674 2018;89. doi:10.4102/jsava.v89i0.1643
- 675 37. Thomas KM, de Glanville WA, Barker GC, Benschop J, Buza JJ, Cleaveland S, et al.
676 Prevalence of Campylobacter and Salmonella in African food animals and meat: A
677 systematic review and meta-analysis. *International Journal of Food Microbiology.*
678 2020;315: 108382. doi:10.1016/j.ijfoodmicro.2019.108382
- 679 38. Kariuki S, Revathi G, Kariuki N, Kiiru J, Mwituria J, Muyodi J, et al. Invasive
680 multidrug-resistant non-typhoidal Salmonella infections in Africa: zoonotic or
681 anthroponotic transmission? *J Med Microbiol.* 2006;55: 585–591.
682 doi:10.1099/jmm.0.46375-0
- 683 39. Mbae C, Mwangi M, Gitau N, Irungu T, Muendo F, Wakio Z, et al. Factors associated
684 with occurrence of salmonellosis among children living in Mukuru slum, an urban
685 informal settlement in Kenya. *BMC Infectious Diseases.* 2020;20: 422.
686 doi:10.1186/s12879-020-05134-z
- 687 40. Dione MM, Ikumapayi UN, Saha D, Mohammed NI, Geerts S, Ieven M, et al. Clonal
688 Differences between Non-Typhoidal Salmonella (NTS) Recovered from Children and
689 Animals Living in Close Contact in The Gambia. *PLOS Neglected Tropical Diseases.*
690 2011;5: e1148. doi:10.1371/journal.pntd.0001148
- 691 41. Crump JA, Thomas KM, Benschop J, Knox MA, Wilkinson DA, Midwinter AC, et al.
692 Investigating the Meat Pathway as a Source of Human Nontyphoidal Salmonella
693 Bloodstream Infections and Diarrhea in East Africa. *Clinical Infectious Diseases.* 2020
694 [cited 10 Feb 2021]. doi:10.1093/cid/ciaa1153
- 695 42. Wilson CN, Pulford CV, Akoko J, Sepulveda BP, Predeus AV, Bevington J, et al.
696 Salmonella identified in pigs in Kenya and Malawi reveals the potential for zoonotic
697 transmission in emerging pork markets. *PLOS Neglected Tropical Diseases.* 2020;14:
698 e0008796. doi:10.1371/journal.pntd.0008796
- 699 43. Ashton PM, Owen SV, Kaindama L, Rowe WPM, Lane CR, Larkin L, et al. Public
700 health surveillance in the UK revolutionises our understanding of the invasive
701 Salmonella Typhimurium epidemic in Africa. *Genome Medicine.* 2017;9: 92.
702 doi:10.1186/s13073-017-0480-7
- 703 44. Post AS, Diallo SN, Guiraud I, Lompo P, Tahita MC, Maltha J, et al. Supporting
704 evidence for a human reservoir of invasive non-Typhoidal Salmonella from household
705 samples in Burkina Faso. *PLOS Neglected Tropical Diseases.* 2019;13: e0007782.
706 doi:10.1371/journal.pntd.0007782
- 707 45. Kariuki S, Mbae C, Puyvelde SV, Onsare R, Kawai S, Wairimu C, et al. High
708 relatedness of invasive multi-drug resistant non-typhoidal Salmonella genotypes among

- 709 patients and asymptomatic carriers in endemic informal settlements in Kenya. PLOS
710 Neglected Tropical Diseases. 2020;14: e0008440. doi:10.1371/journal.pntd.0008440
- 711 46. Kasumba IN, Pulford CV, Perez-Sepulveda BM, Sen S, Sayed N, Permala-Booth J, et
712 al. Characteristics of Salmonella recovered from stools of children enrolled in the
713 Global Enteric Multicenter Study. Clinical Infectious Diseases. 2021 [cited 10 Feb
714 2021]. doi:10.1093/cid/ciab051
- 715 47. Gauld JS, Olgemoeller F, Nkhata R, Li C, Chirambo A, Morse T, et al. Domestic River
716 Water Use and Risk of Typhoid Fever: Results From a Case-control Study in Blantyre,
717 Malawi. Clin Infect Dis. 2020;70: 1278–1284. doi:10.1093/cid/ciz405
- 718 48. Phelps MD, Azman AS, Lewnard JA, Antillón M, Simonsen L, Andreasen V, et al. The
719 importance of thinking beyond the water-supply in cholera epidemics: A historical
720 urban case-study. PLOS Neglected Tropical Diseases. 2017;11: e0006103.
721 doi:10.1371/journal.pntd.0006103
- 722 49. Piccini G, Montomoli E. Pathogenic signature of invasive non-typhoidal Salmonella in
723 Africa: implications for vaccine development. Hum Vaccin Immunother. 16: 2056–
724 2071. doi:10.1080/21645515.2020.1785791
- 725 50. Berghaus RD, Thayer SG, Law BF, Mild RM, Hofacre CL, Singer RS. Enumeration of
726 Salmonella and Campylobacter spp. in Environmental Farm Samples and Processing
727 Plant Carcass Rinses from Commercial Broiler Chicken Flocks. Appl Environ
728 Microbiol. 2013;79: 4106–4114. doi:10.1128/AEM.00836-13
- 729 51. Crump JA, Sjölund-Karlsson M, Gordon MA, Parry CM. Epidemiology, Clinical
730 Presentation, Laboratory Diagnosis, Antimicrobial Resistance, and Antimicrobial
731 Management of Invasive Salmonella Infections. Clin Microbiol Rev. 2015;28: 901–937.
732 doi:10.1128/CMR.00002-15

733

734 [Supporting information legends](#)

735

736 Supplementary Table 1: Salmonella isolates sequenced as part of this study. HH stands for
737 household.

738

739 Supplementary Figure 1: Flow diagram of sample processing.

740