

1 **TITLE: Behavioural Activation for Social IsoLation (BASIL⁺) trial (Behavioural**
2 **activation to mitigate depression and loneliness among older people with**
3 **long-term conditions): Protocol for a fully-powered pragmatic randomised**
4 **controlled trial**
5

6 **Authors from the BASIL⁺ trial collective**

7 Lauren Burke¹, Elizabeth Littlewood¹, Samantha Gascoyne¹, Dean McMillan^{1,2}, Carolyn A. Chew-
8 Graham³, Della Bailey¹, Claire Sloan¹, Caroline Fairhurst¹, Kalpita Baird¹, Catherine Hewitt¹,
9 Andrew Henry^{1,4}, Eloise Ryde^{1,4}, Leanne Shearsmith⁵, Peter Coventry¹, Suzanne Crosland¹,
10 Elizabeth Newbronner¹, Gemma Traviss-Turner⁵, Rebecca Woodhouse¹, Andrew Clegg⁵, Tom
11 Gentry⁶, Andrew Hill⁵, Karina Lovell⁷, Sarah Dexter Smith⁴, Judith Webster⁸, David Ekers^{1,4}, Simon
12 Gilbody^{1,2*}

13
14 **Corresponding author, e-mail: simon.gilbody@york.ac.uk Telephone number: 01904 321370*

15 *Declared competing interests of authors: none*

16

- 17 1. Department of Health Sciences, University of York, York, YO10 5DD, UK
18 2. Hull York Medical School, University of York, York, YO10 5DD, UK
19 3. School of Medicine, Keele University, Staffordshire, ST5 5BG, UK
20 4. Tees, Esk and Wear Valleys NHS FT, Research & Development, Flatts Lane Centre, Middlesbrough,
21 TS6 0SZ, UK
22 5. Leeds Institute of Health Sciences, University of Leeds, Leeds, LS2 9NL, UK
23 6. Age UK, Tavis House, 1-6 Tavistock Square, London WC1H 9NA
24 7. Division of Nursing, Midwifery & Social Work, University of Manchester, Oxford Road,
25 Manchester, M13 9PL
26 8. Patient and Public Representative, UK

27

28

29

30

31

32

33

34

35

36

37

38

39

40

41

NOTE: This preprint reports new research that has not been certified by peer review and should not be used to guide clinical practice.

42 Lauren Burke: lauren.burke@york.ac.uk
43 Liz Littlewood: liz.littlewood@york.ac.uk
44 Samantha Gascoyne: samantha.gascoyne@york.ac.uk
45 Dean McMillan: dean.mcmillan@york.ac.uk
46 Carolyn Chew-Graham: c.a.chew-graham@keele.ac.uk
47 Della Bailey: della.bailey@york.ac.uk
48 Claire Sloan: clairesloan21@gmail.com
49 Caroline Fairhurst: caroline.fairhurst@york.ac.uk
50 Kalpita Baird: kalpita.baird@york.ac.uk
51 Catherine Hewitt: Catherine.hewitt@york.ac.uk
52 Andrew Henry: andrewhenry95@googlemail.com
53 Eloise Ryde: eloise.ryde@nhs.net
54 Leanne Shearsmith: L.Shearsmith@leeds.ac.uk
55 Peter Coventry: peter.coventry@york.ac.uk
56 Suzanne Crosland: Suzanne.crosland@york.ac.uk
57 Liz Newbronner: liz.newbronner@york.ac.uk
58 Gemma Traviss-Turner: g.traviss@leeds.ac.uk
59 Rebecca Woodhouse: rebecca.woodhouse@york.ac.uk
60 Andrew Clegg: A.P.Clegg@leeds.ac.uk
61 Tom Gentry: Tom.Gentry@ageuk.org.uk
62 Andrew Hill: A.J.Hill@leeds.ac.uk
63 Karina Lovell: karina.lovell@manchester.ac.uk
64 Sarah Dexter Smith: sarah.dexter-smith@nhs.net
65 Judith Webster: ja.webster@hotmail.co.uk
66 David Ekers: david.ekers@nhs.net
67 Simon Gilbody: simon.gilbody@york.ac.uk

68
69
70
71
72
73
74
75
76
77
78
79
80
81
82
83
84
85
86
87
88

89 **Abstract**

90 ***Introduction***

91 Depression is a leading mental health problem worldwide. People with long-term conditions are at
92 increased risk of experiencing depression. The COVID-19 pandemic led to strict social restrictions
93 being imposed across the UK population. Social isolation can have negative consequences on the
94 physical and mental wellbeing of older adults. In the Behavioural Activation in Social IsoLation
95 (BASIL⁺) trial we will test whether a brief psychological intervention (based on Behavioural
96 Activation), delivered remotely, can mitigate depression and loneliness in older adults with long-
97 term conditions during isolation.

98

99 ***Methods***

100 We will conduct a two-arm, parallel-group, randomised controlled trial across several research sites,
101 to evaluate the clinical and cost-effectiveness of the BASIL⁺ intervention. Participants will be
102 recruited via participating general practices across England and Wales. Participants must be aged
103 ≥65 with two or more long-term conditions, or a condition that may indicate they are within a
104 ‘clinically extremely vulnerable’ group in relation to COVID-19, and have scored ≥5 on the Patient
105 Health Questionnaire (PHQ9), to be eligible for inclusion. Randomisation will be 1:1, stratified by
106 research site. Intervention participants will receive up to eight intervention sessions delivered
107 remotely by trained BASIL⁺ Support Workers and supported by a self-help booklet. Control
108 participants will receive usual care, with additional signposting to reputable sources of self-help and
109 information, including advice on keeping mentally and physically well.

110 A qualitative process evaluation will also be undertaken to explore the acceptability of the BASIL⁺
111 intervention, as well as barriers and enablers to integrating the intervention into participants’
112 existing health and care support, and the impact of the intervention on participants’ mood and
113 general wellbeing in the context of the COVID-19 restrictions. Semi-structured interviews will be

114 conducted with intervention participants, participant’s caregivers/supportive others and BASIL+
115 Support Workers.

116 Outcome data will be collected at one, three, and 12 months post-randomisation. Clinical and cost-
117 effectiveness will be evaluated. The primary outcome is depressive symptoms at the three-month
118 follow up, measured by the PHQ9. Secondary outcomes include loneliness, social isolation, anxiety,
119 quality of life, and a bespoke health services use questionnaire.

120

121 ***Discussion***

122 This study is the first large-scale trial evaluating a brief Behavioural Activation intervention in this
123 population, and builds upon the results of a successful external pilot trial.

124 ***Trial Registration***

125 ClinicalTrials.Gov identifier ISRCTN63034289, registered on 5th February 2021.

126 ***Funding***

127 This study was funded by National Institute for Health Research (NIHR) Programme Grants for
128 Applied Research (PGfAR) RP-PG-0217-20006

129

130

131

132

133

134

135

136

137

138

139

140 **Introduction**

141 Long-term health conditions (LTCs) are reported to be more prevalent in older people, and numbers
142 continue to increase. This includes the number of older people with multiple LTCs [1]. The co-
143 existence of two or more chronic conditions is termed ‘multiple long-term conditions’ (MLTCs) by
144 the National Institute for Health Research (NIHR) [2]. NICE guidance highlights the importance of
145 individualised treatment plans that address both physical and psychological conditions [3].

146
147 Depression is a major contributor to the overall global burden of disease according to the World
148 Health Organisation [4] and is set to become the highest among all health problems by 2030 [5]. A
149 two-to-three-fold increase in the prevalence of depression is found across the range of LTCs,
150 resulting in poorer outcomes, lower quality of life and increased mortality [6]. Additionally, people
151 with depression are more likely to have two or more LTCs and experience the greatest reduction in
152 quality of life [7]. This results in substantially increased treatment costs and a significant contribution
153 to health inequalities, particularly among older adults [8].

154
155 The Coronavirus 2 (SARS-CoV-2) virus (and the COVID-19 disease it causes) reached pandemic status
156 in March 2020 triggering a national Stay At Home order (“lockdown”), where the UK government
157 and devolved nations instructed individuals to follow compulsory social distancing and self-isolation
158 rules. In addition, more than 2.2 million people were identified by the NHS as ‘clinically extremely
159 vulnerable’ (including those with specific health conditions and older people) and were advised to
160 follow stricter forms of isolation (“shielding”) [9]. Restriction levels have varied throughout the
161 pandemic, with many people choosing to continue shielding, or maintain previous social distancing
162 guidance, regardless of restrictions being eased [10].

163
164 The population’s mental health has worsened as a consequence of the pandemic [11], with reports
165 of an increase in feelings of depression, anxiety and loneliness in older adults [12]. The social

166 restrictions imposed to attempt to contain the virus led to widespread social and economic
167 disruption. This rapid change to social norms increased isolation leading to loneliness and
168 depression, which are known factors in the development of poorer mental health outcomes [12].
169 Existing research supports these reports, highlighting how social isolation has a disproportionate
170 effect on the physical and mental wellbeing of older adults [13, 14]. Loneliness is also considered a
171 significant public health concern in those aged 60 years and over, with evidence showing a link
172 between persistent loneliness and increased healthcare utilisation, regardless of health status [13].
173 Furthermore, a longitudinal study of ageing indicated loneliness is linked to future depression, as
174 depressive symptoms increased over time among people with higher loneliness scores [15].
175 Loneliness is not an inevitable consequence of social isolation, and approaches to mitigate loneliness
176 were highlighted as population priority even before the COVID-19 pandemic [16, 17]. Such
177 approaches include focusing on social networks [18] or adapting strategies derived from cognitive
178 behavioural therapy in order to maintain social connectedness [19]. This emphasises the need for an
179 intervention incorporating both depression and loneliness, which could potentially mitigate the
180 immediate and longer lasting psychological impacts of COVID-19 on vulnerable populations,
181 including older people and those with LTCs [20].
182
183 Behavioural Activation (BA) is a clinically effective structured psychological treatment for depression,
184 encouraging individuals to reconnect with valued activities and positive reinforcement in their
185 environment [21]. The therapist (or 'case manager') and patient work together to reinstate (or
186 replace, if former activities are no longer possible) behaviours that improve mood and encourage
187 the patient to remain active. It has the potential to address the disrupted routines and reduced
188 opportunities for physical activity and social contact that have resulted from the increased social
189 isolation older adults have faced over the course of the pandemic, whilst also addressing the social
190 isolation that some older adults may have faced irrespective of the pandemic. BA is delivered within
191 a Collaborative Care framework, which is a way of organising care so that an intervention is

192 delivered in the most effective, patient-centred way. A Cochrane review has emphasised the
193 importance of Collaborative Care in relation to multiple long-term conditions [22]. Evidence supports
194 Collaborative Care for people with depression particularly if it includes a structured psychological
195 intervention [22]. Given the nature of the COVID-19 pandemic, it is crucial that such interventions
196 are able to be delivered remotely. Evidence suggests it is feasible and acceptable to use remote
197 interventions to mitigate the psychosocial consequences (including depression and loneliness) of
198 COVID-19 [23].

199

200 Recent research has described the impacts of the pandemic on the population's mental health [24,
201 25]. However, clinical trials to test interventions to prevent and alleviate the psychological impact of
202 COVID-19 have been limited, with drug and vaccine development trials prioritised [26]. By late 2019,
203 we had co-developed a brief and scalable psychological intervention (based on BA) as part of an
204 existing programme of work (Multi-Morbidity in Older Adults with Depression Study, MODS (RP-PG-
205 0217-20006)). The MODS intervention was designed to be delivered mostly by telephone (with a
206 face to face contact for the first session) for older adults with MLTCs and depression. Plans to test
207 the MODS intervention were halted in March 2020 due to the pandemic. In response to the
208 pandemic and in an effort to mitigate the psychological impacts of social isolation on older adults
209 with long-term health conditions, we drew on the accumulated knowledge from MODS to adapt the
210 MODS BA intervention to facilitate remote delivery – and developed the BASIL (Behavioural
211 Activation for Social Isolation) programme of work.

212

213 An external pilot Randomised Controlled Trial (RCT) commenced in April 2020 (BASIL-C19) to test the
214 feasibility and acceptability of the BASIL intervention and remote trial delivery. The pilot study
215 indicated that BA was a plausible intervention to mitigate the psychological impacts of COVID-19
216 isolation for older adults and is acceptable and feasibly delivered remotely [23]. The clinical and cost-

217 effectiveness of the BASIL intervention will now be tested in a fully-powered large-scale RCT
218 (BASIL+).

219

220 **Materials and Methods**

221 ***Research Aims***

222 The aim of the BASIL+ trial is to test the clinical and cost-effectiveness of a brief psychological
223 intervention (BA) with embedded process and economic evaluations:

224

- 225 ● Establish the clinical effectiveness of BA in preventing and mitigating depression and
226 loneliness among older people with multimorbidity during isolation.
- 227 ● Establish the cost effectiveness of BA in preventing and mitigating depression and loneliness
228 among older people with multimorbidity during isolation.
- 229 ● To explore barriers and facilitators to implementation, in healthcare services, of the BA
230 intervention for older people with multiple LTCs during isolation.

231

232 ***Design***

233 The BASIL+ trial is a two arm, parallel-group, multicentre, randomised controlled trial with embedded
234 qualitative process and economic evaluations. The trial also includes a methodological Study Within
235 a Trial (SWAT) to evaluate the impact of a study infographic on participant recruitment and response
236 rates. The schedule of enrolment, interventions and assessments is shown in Figure 1.

237

238

239

240

241 **Setting**

242 Participants will be identified via general practices across England and Wales. The intervention will
243 be delivered across a range of health care settings (e.g. primary care, secondary care,
244 voluntary/third sector).

245

246 **Identification**

247 Potential participants will be identified via searches of patient registers at general practices. Lists of
248 patients aged 65 and over with two or more long-term conditions (LTCs) or a condition that may
249 indicate they are ‘clinically extremely vulnerable’ in relation to COVID-19 (following UK Health
250 Security Agency (UKHSA), previously known as Public Health England guidance) will be generated.
251 Patient lists will be screened by General practitioner (GP) practice teams to remove patients meeting
252 exclusion criteria (detailed below).

253

254 LTCs will be based on the Department of Health (DoH) definition [27]. We will primarily focus on
255 commonly reported LTCs for older people (such as asthma/ chronic obstructive pulmonary disease,
256 diabetes, hypertension/coronary heart disease, and stroke) according to the primary care Quality
257 and Outcomes Framework (QOF) [28] but will also include conditions such as musculoskeletal
258 problems and chronic pain.

259

260 **Inclusion Criteria:**

- 261
- 262 • Older adults (65 years or over)
 - 263 • Two or more long-term conditions (LTCs) or a condition that may suggest they are within a
264 ‘clinically extremely vulnerable’ group in relation to COVID-19
 - 265 • A score of ≥ 5 at screening on the Patient Health Questionnaire (PHQ9) (a score of 5-9
266 indicates possible sub-threshold depression, 10 and above indicates possible depression)
[29]

267

268 **Exclusion Criteria:**

- 269 • Cognitive impairment
- 270 • Bipolar disorder/psychosis/psychotic symptoms
- 271 • Alcohol or drug dependence
- 272 • In the palliative phase of illness
- 273 • Have active suicidal ideation
- 274 • Currently receiving psychological therapy
- 275 • Unable to speak or understand English

276

277 Older adults will not be excluded on the basis of living in residential/care homes.

278

279 **Recruitment**

280 Identified potential participants will receive a study information pack (containing a practice letter-
281 headed invitation letter, Participant Information Sheet and an example consent form) and a text
282 message about BASIL⁺ (where possible) via their GP practice. Patients will be given the option to
283 complete an online consent form (via a link provided in the PIS, mirroring the example consent form
284 patients receive), or to contact the study team directly. Extended GP practice teams will contact the
285 remaining potential participants by telephone to determine interest in the study. Verbal permission
286 to pass on their contact details (permission to contact (PTC)) to the local BASIL⁺ study team will be
287 obtained from interested patients and recorded.

288

289 A BASIL⁺ study researcher will then make contact via telephone (or video call using an appropriate
290 online platform) to discuss the study, answer any questions and determine eligibility. Where
291 patients are eligible and wish to participate, informed consent will be obtained (where online
292 consent has not already been provided). In response to the need to deliver the trial remotely, the

293 informed consent process will involve taking consent verbally. Participants will be directed to the
294 example consent form provided in the study information pack; the a researcher will read out each of
295 the consent statements, and request that the participant respond to confirm whether they agree or
296 disagree with the statement, and creating a written record of their responses. Once informed
297 consent has been confirmed, the baseline questionnaire will then be completed over the telephone
298 with a researcher (either immediately following confirmation of eligibility or at a later date, in line
299 with participant preference, and ideally within one week).

300

301 ***Randomisation and blinding***

302 Following baseline questionnaire completion, eligible and consenting participants will be
303 randomised 1:1 to either receive the intervention (BA) or usual care with signposting information.
304 Randomisation will take place via a secure online randomisation service provided by the York Trials
305 Unit (YTU). A YTU statistician not involved with participant recruitment will generate the allocation
306 schedule, using block randomisation stratified by site with randomly varying block sizes. Participants
307 will be informed of their group allocation by telephone (and confirmed by letter). The participant's
308 GP will be informed by letter of the participant's group allocation; this will include information about
309 the participant's mood symptoms (with the participant's consent).

310

311 Researchers completing follow-up questionnaires (outcome measures) with participants over the
312 telephone will be blind to group allocation. Due to the nature of the intervention, it is not possible to
313 keep participants or the BASIL+ Support Workers delivering the intervention blind to allocation.

314

315 ***Intervention***

316 ***BASIL+ intervention***

317 The BASIL+ intervention uses BA set within a Collaborative Care framework. BA aims to help people
318 stay connected with the world by helping them to maintain activities which they value. Where

319 valued activities may no longer be possible, either in the short or long-term, BA prompts participants
320 to think about alternative activities which fulfil a similar function and help them to remain active.
321 Remaining active and staying connected with the world may benefit physical and emotional
322 wellbeing, which could be particularly important where COVID-19 restrictions have disrupted usual
323 routines and connections with the outside world. The BASIL Support Worker (BSW) and the
324 participant will work together using a self-help workbook to develop an individualised treatment
325 plan. The plan will take into account relevant COVID-19 guidance and aid in the establishment of
326 new daily routines. Support will be provided to help participants use technology to maintain contact
327 with those important to them or access services. The booklet also recognises that participants may
328 be worried about the current situation due to COVID-19, either about the pandemic itself or
329 recommencing activities they have not undertaken for some time. The BSW can work with the
330 participant to identify simple strategies to manage worry and help them to recommence activities in
331 a way which makes them feel most comfortable.

332

333 The Collaborative Care aspect of the intervention may involve the BSW supporting the participant to
334 take a proactive role in managing their mood and long-term health conditions. The BSW will liaise
335 with the participant's GP or other professionals involved in the participant's care, if appropriate.
336 They may also provide information about relevant support services or organisations running
337 activities relevant to the participant's interests.

338

339 Participants will be offered up to eight intervention sessions, delivered by a trained BSW and
340 supported by the self-help booklet. The self-help booklet has been developed over a number of
341 similar studies; most recently during the BASIL-C19 pilot study [23], where it was adapted for use
342 during the COVID-19 pandemic with help and feedback from older adults, BSWs and a range of
343 stakeholders, including members of the existing MODS/BASIL Patient and Public Involvement (PPI)
344 group. Further minor adaptations were made for BASIL+ following the BASIL-C19 pilot (including

345 minor design and wording changes to the self-help booklet). All sessions will be delivered remotely,
346 either over the telephone or by video call (where this is available and preferred) and according to
347 participant preference. The first session will last approximately one hour with subsequent sessions
348 lasting approximately 30 minutes.

349 The depression scale of the Depression Anxiety Stress Scale (DASS) [30] will be used as a within
350 session depression symptom monitoring tool. The DASS is a widely used and simple to score
351 monitoring tool with clear clinical cut off scores (non/mild/moderate/severe). DASS scores will be
352 used to aid decision making by BSWs in conjunction with their BASIL+ clinical supervisor. Where risk
353 or significant clinical deterioration is indicated the participant will be supported to access more
354 formal healthcare interventions.

355

356 ***BASIL+ Support Workers (BSWs)***

357 BSWs will have a range of backgrounds (clinical and non-clinical). They will be required to complete
358 bespoke intervention training (approximately 22 hours) facilitated by clinical members of the study
359 team. Materials, including recorded presentations, role-play demonstration of sessions and a
360 support worker treatment manual will be provided to the BSWs prior to three, two-hour
361 online/video group training sessions. The training will cover the components of the BA intervention
362 within the Collaborative Care framework, intervention delivery, and study procedures. BSWs will be
363 required to pass a telephone-based bespoke competency assessment with a training facilitator
364 before commencing delivery of the intervention. BSWs will receive regular supervision/support from
365 a clinical member of the BASIL+ study team.

366

367 ***Comparator***

368 Participants allocated to the usual care with signposting information group will receive their usual
369 care as provided by their current NHS and/or third sector providers. In addition, usual care (control)
370 participants will be signposted to sources of self-help and information, including advice on how to

371 keep mentally and physically well. Examples of such sources includes guidance from UK Health
372 Security Agency (UKHSA), previously known as Public Health England [31], and Age UK [32].

373

374 ***Outcome measures***

375 Data will be obtained at baseline and one, three, and twelve months post-randomisation. Baseline
376 data will be collected over the telephone with a researcher. Participants will be offered the option to
377 complete follow-up questionnaires online, via a secure emailed link, or over the telephone with a
378 researcher. A reminder system including emails and letters will be in place to use where appropriate.

379

380 The primary outcome will be self-reported depression severity (as measured by the PHQ9) [29] at
381 three months post-randomisation.

382

383 Secondary outcomes will include depression (PHQ9) [28] at one and twelve months, and loneliness
384 (De Jong Gierveld Scale – 11 items) [33]; social isolation (Lubben Social Network Scale - 6 items) [34];
385 anxiety (GAD7) [35]; and health related quality of life (SF-12v2 [36] and EQ-5D-3L [37]) at one, three
386 and twelve months post-randomisation. A bespoke questionnaire will be used to collect health
387 service use data at all time-points. Information regarding COVID-19 circumstances will be collected
388 at all-time points.

389

390 Demographic information will be collected at baseline, to include age, LTC types/health condition(s),
391 socio-economic status, ethnicity, education, cohabitation status, number of children.

392

393 ***Data management plan***

394 Data will be securely stored on University or NHS computers and in secure settings. For those
395 research staff working remotely, these servers will be accessed through secure organisation VPNs.

396 Where data will be stored at non-NHS sites, the process for secure data storage will be reviewed and
397 approved by the trial Sponsor. All data will be stored securely in line with GCP and GDPR guidance.
398 Access to participant data will be restricted according to researcher role. Participant confidentiality
399 will be maintained at all times unless significant risk to self or others is identified.

400

401 ***Study Within a Trial (SWAT)***

402 Relying on a text-heavy PIS has become the norm for many trials. There is conflicting evidence that
403 introducing infographics (visual representations of information) has the potential to improve the
404 participant experience [38, 39, 40].

405

406 A methodological Study Within a Trial (SWAT) will be embedded within BASIL+ to evaluate the
407 effectiveness of a single page infographic, to go alongside the PIS, on participant recruitment and
408 response rates. The infographic displays a participant's journey through the BASIL+ trial. The use of
409 the infographic will be tested in a cluster RCT embedded within the BASIL+ trial. Study sites (n=12
410 approx.) will be randomised 1:1 using simple randomisation to either the SWAT intervention group
411 (potential participants receive PIS as usual, and infographic) or the SWAT control group (potential
412 participants receive PIS as usual, and no infographic). Generation of the SWAT allocation sequence
413 will be undertaken independently by a statistician at YTU not involved with the BASIL+ recruitment
414 process. Study sites will be blind to SWAT group allocation.

415

416 The primary outcome of the embedded SWAT will be the participant recruitment rate into the BASIL+
417 trial. Secondary outcomes will be i) participant response rate in terms of expressions of interest in
418 BASIL+ (permission to contacts received, direct participant contacts, or participant completion of the
419 online consent form – see recruitment section above), and ii) retention in BASIL+ as measured by
420 response to the three month post-randomisation participant questionnaire.

421

422 The proportion of participants randomised into the BASIL+ trial will be compared between the SWAT
423 groups using a logistic regression model, adjusting for trial site as a random effect. The secondary
424 outcomes will be similarly analysed; the model for response rate at the three-month follow-up will
425 also include a covariate for BASIL+ allocation (intervention/usual care/not randomised). A simple
426 cost analysis will be conducted to estimate the cost per extra participant recruited associated with
427 the infographic.

428

429 ***Safety considerations***

430 A risk management protocol will be followed during all participant contact. Risk assessment training
431 and standard operating procedures will be provided to all researchers and BSWs. Clinical members
432 of local study teams will support the assessment of risk and communication of risk information to a
433 participant's GP or emergency services, as deemed appropriate.

434

435 Serious adverse events and adverse events will be monitored for by all researchers and BSWs and
436 reported in a timely manner.

437

438 ***Sample size***

439 For populations with case-level depression, a successful treatment outcome has been defined as 5
440 points on the PHQ9 [41]; however, this was calculated using distribution methods, which are not
441 currently advocated [42], and does not incorporate our wider population of interest. In an older
442 population with subthreshold depression a difference of 1.3 has been found to be clinically and cost-
443 effective [43] with a standard deviation of 4, equating to a standardised effect size of 0.325. An
444 effect size of 0.3 is assumed for this calculation, which is also in line with pooled standardised mean
445 differences found in a meta-analysis of previous trials of collaborative care [44]. Assuming 90%
446 power, 5% alpha, 0.3 effect size and 20% attrition (from mortality and loss to follow-up) the trial
447 would need to randomise 590 participants. However, this calculation is very conservative. In the

448 primary analysis, baseline PHQ9 score shall be included as a covariate, which will result in gains in
449 power. Therefore, accounting for the correlation between baseline and outcome PHQ9 score can
450 reduce the required sample size. In the external pilot trial, a correlation of 0.58 was observed
451 between the PHQ9 score at baseline and three months amongst participants who scored ≥ 5 at
452 baseline, and follow-up at three months was 90% [23]. Assuming a correlation of at least 0.5, 90%
453 power, 5% alpha, 0.3 effect size and 10% attrition, 392 participants would need to be recruited and
454 randomised into the trial. Calculations conducted using Stata v15.

455

456 ***Statistical analyses***

457 A detailed statistical analysis plan will be produced prior to data analysis and approved by the joint
458 Programme Steering and Data Monitoring and Ethics Committee. Analysis will be conducted on an
459 intention to treat basis, using two-sided statistical tests at the 5% significance level, using Stata v17
460 or later. The statistician will not be blinded to treatment allocation.

461

462 The flow of participants through the trial will be detailed in a CONSORT diagram [Figure 2]. The
463 number of individuals screened, eligible and randomised will be presented, with reasons for non-
464 participation provided where available. Intervention adherence will be recorded and reported,
465 including the number of sessions completed. The number of participants withdrawing from the
466 intervention and/or the trial and any reasons for withdrawal will be summarised by trial arm.

467

468 Participant baseline data will be summarised descriptively by trial arm, for all randomised
469 participants and for all who are included in the primary outcome analysis. No formal statistical
470 comparisons will be undertaken on baseline data. Continuous measures will be reported as means
471 and SD, while the categorical data will be reported as counts and percentages.

472

473 The primary outcome (PHQ9) will be analysed using a linear mixed model, incorporating data from
474 all post-randomisation follow-up time points (one, three and 12 months). The model will include
475 time, trial arm, an arm-by-time interaction, and baseline PHQ-9 score as fixed effects, with
476 participant nested within site as random effects. The model will provide an overall treatment effect
477 over time as well as estimates at individual time points, which will be reported as mean differences,
478 95% confidence intervals and p-values. The primary time-point of interest is pre-specified at three
479 months.

480

481 The secondary outcomes of GAD7, De Jong Gierveld Scale, Lubben Social Network Scale, and SF-12v2
482 (mental and physical health component scores separately) will be similarly analysed.

483

484 A complier average causal effect (CACE) analysis will be conducted for the primary outcome to
485 account for non-compliance with the intervention.

486

487 ***Economic Evaluation***

488 A trial-based economic evaluation from UK NHS and personal and social services (PSS) perspective
489 will be conducted in order to evaluate the cost-effectiveness of the BA intervention compared to
490 usual care for the target population. Health outcomes will be measured in terms of quality-adjusted
491 life years (QALYs) using the EQ-5D-3L [37] questionnaire and calculated using standard area-under-
492 the-curve method based on individual responses over the study period (45, 46). Costs of
493 intervention and health service use will be calculated using a bottom-up costing approach.

494 Resources used to deliver the intervention will be obtained from the study team, whereas health
495 and social service resource use will be measured using a brief, tailored resource-use questionnaire,
496 developed based on the questionnaire used in the BASIL C-19 pilot study [23]. Unit costs of health
497 and social service use will be obtained from the UK national reference costs [47] and the Unit Costs
498 of Health and Social Care report [48]. Cost of other professional support will be estimated from

499 relevant salary scales and published reports/literature. Uncertainty around the incremental cost-
500 effectiveness ratios (ICER) will be captured using non-parametric bootstrapping technique, and the
501 results will be presented in the conventional form of a cost-effectiveness acceptability curve (CEAC).
502 Sensitivity analyses will be conducted to assess the impact of using SF-12v2 to measure QALYs and
503 the impact of including costs of informal care and other additional support.

504

505 ***Qualitative process evaluation***

506 The qualitative process evaluation will further explore the acceptability of the intervention, including
507 important elements of the intervention and mode of delivery, barriers and enablers to integrating
508 the intervention into participants' existing health and care support, and the impact of the
509 intervention on participants' mood and general wellbeing in the context of the COVID-19
510 restrictions. Semi-structured interviews will be undertaken with samples of study participants, BSWs
511 and caregivers/supportive others (where they have been involved in the intervention).

512

513 Interviews will be conducted with 15-20 participants who complete the intervention ("completers"),
514 and up to 10 participants who were offered the intervention but who did not engage with or who
515 'dropped out' of the intervention. Up to 10 interviews will also be conducted with informal
516 caregivers/supportive others. All participant and caregiver interviews will take place after the
517 primary outcome has been completed.

518

519 Interviews will be conducted with up to 20 BSWs and will explore barriers and facilitators to delivery
520 of the intervention and how the intervention might be integrated within health care settings. In
521 order to assist with maximum variation in the experiences of the BSWs interviewed, factors such as
522 intervention site location and demographic factors (such as job role, age and ethnicity) will be used
523 to support selection for interview.

524

525 Interview topic guides will vary by participant group and will be modified iteratively as interviews
526 and analyses progress. All interviews will last up to approximately 30-45 minutes and will be
527 conducted over the telephone or a virtual platform.

528

529 Study participants provide consent to taking part in a qualitative interview as part of a set of optional
530 consent statements (with form part of the trial consent form) upon entry to BASIL+.

531 BSWs will obtain verbal permission from interested caregivers/supportive others for the BASIL+ study
532 team to send them (post/email) a study information pack (containing an invitation letter, participant
533 information sheet and example consent form) followed by telephone contact from the study team to
534 discuss the study. For caregivers/supportive others who agree to take part in an interview, verbal
535 consent will be taken (and audio recorded) prior to the interview.

536

537 BSWs will receive a study information pack (containing an invitation letter, information sheet and
538 example consent form) following BSW training. They will be invited to complete an online consent
539 form or to contact the qualitative study team directly to indicate their interest in taking part in an
540 interview.

541

542 All interviews will be digitally-recorded (with participant consent), anonymised and transcribed, the
543 transcripts forming the data for analysis. Verbal consent for interview participation will be taken
544 (and recorded) before the interview commences. An initial thematic analysis will be conducted.

545 Coding will be undertaken independently by members of the qualitative research team with

546 meetings to ensure emerging codes remain grounded in the original data. A framework approach

547 [49, 50] will be used to analyse the data, sensitised by the Normalisation Process Theory (NPT) [51]

548 to explore barriers and facilitators to rapid implementation of the BASIL+ intervention into routine

549 practice.

550

551 ***Patient and Public Involvement***

552 Our Patient and Public Involvement (PPI) Advisory Group (AG) was originally convened for the MODS
553 programme of research and currently consists of a group (N=8) of individuals with a range of lived
554 experience of physical and/or mental comorbidities and caregivers.

555

556 The PPI AG have extended their support to the BASIL research programme. Members of the research
557 team have met virtually with the PPI AG on several occasions since the start of the COVID-19
558 pandemic. The PPI AG members provided feedback on the design and implementation of the BASIL+
559 trial, including the development of remote recruitment methods and materials (including the
560 Participant Information Sheet) and plans for the remote delivery of the BASIL+ intervention and trial
561 to include adherence to COVID-19 restrictions.

562

563 In addition to the work with the advisory group, the MODS/BASIL research programmes have PPI
564 representation at Programme Management Group (PMG) meetings and on the independent
565 Programme Steering and Data Monitoring and Ethics Committee (PSC).

566

567 ***Status and timeline of the study***

568 Recruitment of participants began in February 2021 and is expected to be completed by January
569 2022. Intervention delivery is expected to be completed by March/April 2022 depending on
570 participant availability. The current protocol is version 4.0 dated 13/12/2021.

571

572 **Discussion**

573 To the best of our knowledge, BASIL+ represents the first large-scale mental health randomised
574 controlled trial conducted in response to the COVID-19 pandemic with the aim of mitigating the
575 psychological impacts of the pandemic and associated social restrictions on potentially vulnerable
576 older adults. The prevalence of depression and loneliness is expected to have increased in the

577 general population due to COVID-19; this increase may have a disproportionate negative impact on
578 older adults with existing long-term health conditions.

579

580 We adapted an evidence-based low intensity BA intervention, previously found to be effective at
581 reducing depressive symptoms in older adults [52], for use during the pandemic. The brief nature of
582 the intervention lends itself to remote delivery and could represent an efficient and effective way to
583 support vulnerable populations by reducing depression and loneliness, particularly during periods of
584 social isolation, such as the COVID-19 pandemic. The study has the potential to lead to significant
585 benefits to the NHS, health and social care settings, and society.

586

587 BASIL+ will also add to existing trial based evidence in this area. There are few trials of cognitive or
588 behavioural interventions [53], and we anticipate this will be the largest such trial. In time we
589 anticipate that the results of BASIL+ will contribute to Cochrane reviews in this topic [54].

590 BASIL+ builds on the work conducted in the BASIL-C19 external pilot RCT [23] and will provide further
591 lessons for the efficient delivery of mental health trials beyond the pandemic. The current work will
592 be important in contributing to the emerging knowledge that trials can be conducted more
593 efficiently and resourcefully when networks and research communities come together to work
594 collaboratively with a united goal.

595

596 **Ethical considerations and declarations**

597 The trial received ethical approval from Yorkshire and The Humber – Leeds West Research Ethics
598 Committee on 11 December 2021 (REC Ref: 20/YH/0347). The sponsor for BASIL+ is Tees, Esk and
599 Wear Valleys NHS Foundation Trust.

600

601 Although we are aware that the study population could be considered a vulnerable group, we do not
602 anticipate any major ethical issues. The study will be conducted to protect the human rights and

603 dignity of the participant as reflected in the 1996 version of the Helsinki Declaration. In order to
604 protect the study participants, the following provisions will be made/upheld; the study has been
605 designed to minimise pain, discomfort and fear and any foreseeable risk in relation to the
606 experiences/treatments involved, the explicit wishes of the participant will be respected including
607 the right to withdraw from the study at any time, the interest of the patient will prevail over those of
608 science and society, provision will be made for indemnity by the investigator and sponsor. Patients
609 will not be denied any form of care that is currently available in the NHS by participating in the
610 study.

611

612 Protocol amendments will be managed via the Health Research Authority, Research Ethics
613 Committee and sponsor approvals process during the study.

614

615 ***Contributions of Authors***

616 **Conceptualization:** Simon Gilbody, Elizabeth Littlewood, Dean McMillan, Carolyn A. Chew Graham,
617 Della Bailey, Claire Sloan, Samantha Gascoyne, Peter Coventry, Catherine Hewitt, Gemma Travis-
618 Turner, Karina Lovell, Sarah Dexter Smith, Judith Webster, David Ekers, Andrew Clegg, Tom Gentry,
619 Andrew J Hill, Karina Lovell

620 **Data curation:** Elizabeth Littlewood, Samantha Gascoyne, Lauren Burke, Catherine Hewitt, Rebecca
621 Woodhouse, Elizabeth Newbronner, Caroline Fairhurst, Kalpita Baird, Leanne Shearsmith

622 **Formal analysis:** Caroline Fairhurst, Catherine Hewitt, Kalpita Baird, Elizabeth Newbronner, Carolyn
623 A Chew-Graham, Peter Coventry, Leanne Shearsmith, Rebecca Woodhouse

624 **Funding acquisition:** Simon Gilbody, Elizabeth Littlewood, Carolyn A. Chew-Graham, Dean McMillan,
625 Catherine Hewitt, David Ekers

626 **Investigation:** Andrew Henry, Eloise Ryde, Leanne Shearsmith, Dean McMillan, Elizabeth
627 Newbronner, Samantha Gascoyne, Lauren Burke, Rebecca Woodhouse, Della Bailey, Suzanne
628 Crosland

629 **Methodology:** Elizabeth Littlewood, Carolyn A. Chew-Graham, Caroline Fairhurst, Catherine Hewitt,
630 Gemma Traviss-Turner, Andrew Clegg, David Ekers, Andrew J Hill, Karina Lovell, Claire Sloan, Simon
631 Gilbody, Dean McMillan, Peter Coventry

632 **Project administration:** Simon Gilbody, Dean McMillan, Lauren Burke, Elizabeth Littlewood,
633 Samantha Gascoyne, Della Bailey, Suzanne Crosland, Carolyn A Chew-Graham, Peter Coventry, David
634 Ekers

635 **Resources:** Dean McMillan, Della Bailey, Carolyn A Chew-Graham, David Ekers, Judith Webster,
636 Claire Sloan

637 **Software:** Caroline Fairhurst, Catherine Hewitt, Kalpita Baird

638 **Supervision:** Simon Gilbody, Dean McMillan, Carolyn A. Chew-Graham, Elizabeth Littlewood, Della
639 Bailey, Samantha Gascoyne, Suzanne Crosland, Rebecca Woodhouse, Lauren Burke

640 **Validation:** Caroline Fairhurst, Kalpita Baird, Catherine Hewitt, Simon Gilbody, David Ekers, Carolyn A
641 Chew-Graham

642 **Visualization:** Lauren Burke, Samantha Gascoyne, Elizabeth Littlewood

643 **Writing – original draft:** Lauren Burke, Elizabeth Littlewood, Samantha Gascoyne, Rebecca
644 Woodhouse, Andrew Henry, Eloise Ryde, Leanne Shearsmith, Kalpita Baird, Caroline Fairhurst, Simon
645 Gilbody, Della Bailey

646 **Writing – review & editing:** Lauren Burke, Simon Gilbody, Dean McMillan, Carolyn A. Chew-Graham,
647 Della Bailey, Samantha Gascoyne, Peter Coventry, Suzanne Crosland, Caroline Fairhurst, Andrew
648 Henry, Catherine Hewitt, Kalpita Baird, Eloise Ryde, Leanne Shearsmith, Gemma Traviss-Turner,
649 Rebecca Woodhouse, Andrew Clegg, Tom Gentry, Andrew J. Hill, Karina Lovell, Sarah Dexter Smith,
650 Judith Webster, David Ekers, Elizabeth Newbronner, Claire Sloan

651

652 **Competing interests**

653 We have read the journal’s policy and the authors of this manuscript have the following competing
654 interests.

655 DE and CCG are current committee members for the NICE Depression Guideline (update)
656 Development Group, and SG was a member between 2015-18. SG, PC and DMcM are supported by
657 the NIHR Yorkshire and Humberside Applied Research Collaboration (ARC) and DE is supported by
658 the North East and North Cumbria ARCs.

659

660 ***Acknowledgements***

661 We would like to thank: the participants for taking part in the trial, general practice and North East
662 and North Cumbria Local Clinical Research Network staff for identifying and facilitating recruitment
663 of participants, the independent Programme Steering Committee members for overseeing the study,
664 and our PPI AG members for their insightful contributions and collaboration.

665

666 ***Supporting Information***

667 S1 File. SPIRIT checklist. (DOC)

668 S2 File. BASIL+ MT Trial Protocol v4.0 13.12.2021 (DOC)

669

670

671

672

673

674

675

676

677

678

679

680 **References**

- 681 1. Long-term conditions and multi-morbidity [Internet]. The King's Fund. 2012 [cited 2021 23rd
682 November 2021]. Available from: [https://www.kingsfund.org.uk/projects/time-think-differently/trends-](https://www.kingsfund.org.uk/projects/time-think-differently/trends-disease-and-disability-long-term-conditions-multi-morbidity)
683 [disease-and-disability-long-term-conditions-multi-morbidity](https://www.kingsfund.org.uk/projects/time-think-differently/trends-disease-and-disability-long-term-conditions-multi-morbidity)
- 684 2. NIHR. Strategic Framework for Multiple Long-Term Conditions (Multimorbidity) MLTC-M Research
685 [cited 2021 23rd November 2021]. Available from: [https://www.nihr.ac.uk/documents/nihr-strategic](https://www.nihr.ac.uk/documents/nihr-strategic-framework-for-multiple-long-term-conditions-multimorbidity-mltc-m-research/24639)
686 [framework-for-multiple-long-term-conditions-multimorbidity-mltc-m-research/24639](https://www.nihr.ac.uk/documents/nihr-strategic-framework-for-multiple-long-term-conditions-multimorbidity-mltc-m-research/24639)
- 687 3. NICE. Multi-morbidity: clinical assessment and management. 2016.
- 688 4. World Health Organization. Depression. [cited 2021 23rd November 2021]. Available from:
689 <https://www.who.int/news-room/fact-sheets/detail/depression>
- 690 5. Whiteford HA, Degenhardt L, Rehm J, Baxter AJ, Ferrari AJ, Erskine HE, et al. Global burden of disease
691 attributable to mental and substance use disorders: findings from the Global Burden of Disease Study 2010.
692 2013;382(9904):1575-86.
- 693 6. Dickens C, Katon W, Blakemore A, Khara A, McGowan L, Tomenson B, et al. Does depression predict
694 the use of urgent and unscheduled care by people with long term conditions? A systematic review with meta-
695 analysis. *Journal of psychosomatic research*. 2012;73(5):334-42.
- 696 7. Mujica-Mota RE, Roberts M, Abel G, Elliott M, Lyratzopoulos G, Roland M, et al. Common patterns of
697 morbidity and multi-morbidity and their impact on health-related quality of life: evidence from a national
698 survey. 2015;24(4):909-18.
- 699 8. NHS England. Five year forward view. 2014.
- 700 9. Coronavirus and shielding of clinically extremely vulnerable people in England - Office for National
701 Statistics [Internet]. Ons.gov.uk. 2021 [cited 29 November 2021]. Available from:
702 [https://www.ons.gov.uk/peoplepopulationandcommunity/healthandsocialcare/conditionsanddiseases/bulleti](https://www.ons.gov.uk/peoplepopulationandcommunity/healthandsocialcare/conditionsanddiseases/bulletins/coronavirusandshieldingofclinicallyextremelyvulnerablepeopleinengland/9julyto16july2020)
703 [ns/coronavirusandshieldingofclinicallyextremelyvulnerablepeopleinengland/9julyto16july2020](https://www.ons.gov.uk/peoplepopulationandcommunity/healthandsocialcare/conditionsanddiseases/bulletins/coronavirusandshieldingofclinicallyextremelyvulnerablepeopleinengland/9julyto16july2020)
- 704 10. Wong SYS, Zhang D, Sit RWS, Yip BHK, Chung RY-n, Wong CKM, et al. Impact of COVID-19 on
705 loneliness, mental health, and health service utilisation: a prospective cohort study of older adults with
706 multimorbidity in primary care. *Brit J Gen Pract*. 2020;70(700):e817-e24.
- 707 11. Carr MJ, Steeg S, Webb RT, Kapur N, Chew-Graham CA, Abel KM, et al. Effects of the COVID-19
708 pandemic on primary care-recorded mental illness and self-harm episodes in the UK: a population-based
709 cohort study. *The Lancet Public Health*. 2021;6(2):e124-e35.
- 710 12. Robb CE, Jager-Loots D, Celeste A, Ahmadi-Abhari S, Giannakopoulou P, Udeh-Momoh C, et al.
711 Associations of social isolation with anxiety and depression during the early COVID-19 pandemic: a survey of
712 older adults in London, UK. *Frontiers in Psychiatry*. 2020;11:991.
- 713 13. Santini ZI, Jose PE, Cornwell EY, Koyanagi A, Nielsen L, Hinrichsen C, et al. Social disconnectedness,
714 perceived isolation, and symptoms of depression and anxiety among older Americans (NSHAP): a longitudinal
715 mediation analysis. *The Lancet Public Health*. 2020;5(1):e62-e70.
- 716 14. Gerst-Emerson K, Jayawardhana J. Loneliness as a public health issue: the impact of loneliness on
717 health care utilization among older adults. *American journal of public health*. 2015 May;105(5):1013-9.
- 718 15. Saul H, Gursul D. Loneliness is strongly linked to depression among older adults, a long term study
719 suggests. *BMJ (Clinical research ed.)*. 2021 Oct 29;375:n2524.
- 720 16. Mann F, Bone JK, Lloyd-Evans B, Frerichs J, Pinfold V, Ma R, Wang J, Johnson S. A life less lonely: the
721 state of the art in interventions to reduce loneliness in people with mental health problems. *Social psychiatry*
722 *and psychiatric epidemiology*. 2017 Jun;52(6):627-38.
- 723 17. Ma R, Mann F, Wang J, Lloyd-Evans B, Terhune J, Al-Shihabi A, Johnson S. The effectiveness of
724 interventions for reducing subjective and objective social isolation among people with mental health
725 problems: a systematic review. *Social psychiatry and psychiatric epidemiology*. 2020 Jul;55(7):839-76.
- 726 18. Lloyd-Evans B, Frerichs J, Stefanidou T, Bone J, Pinfold V, Lewis G, Billings J, Barber N, Chhapiya A,
727 Chipp B, Henderson R. The Community Navigator Study: Results from a feasibility randomised controlled trial
728 of a programme to reduce loneliness for people with complex anxiety or depression. *Plos one*. 2020 May
729 29;15(5):e0233535.
- 730 19. Eddy E, Heron PN, McMillan D, Dawson S, Ekers D, Hickin N, Littlewood L, Shafran R, Meader N,
731 Gilbody S. Cognitive or behavioural interventions (or both) to prevent or mitigate loneliness in adolescents,
732 adults, and older adults. *Cochrane database of systematic reviews (Online)*. 2020 Nov 18.
- 733 20. Donovan NJ. Timely insights into the treatment of social disconnection in lonely, homebound older
734 adults. *The American Journal of Geriatric Psychiatry*. 2020 Jul 1;28(7):709-11.

- 735 21. Ekers D, Webster L, Van Straten A, Cuijpers P, Richards D, Gilbody S. Behavioural activation for
736 depression; an update of meta-analysis of effectiveness and sub group analysis. *PloS one*. 2014 Jun
737 17;9(6):e100100.
- 738 22. Archer J, Bower P, Gilbody S, Lovell K, Richards D, Gask L, Dickens C, Coventry P. Collaborative care for
739 depression and anxiety problems. *Cochrane Database of Systematic Reviews*. 2012(10).
- 740 23. Gilbody S, Littlewood E, McMillan D, Chew-Graham CA, Bailey D, Gascoyne S, Sloan C, Burke L,
741 Coventry P, Crosland S, Fairhurst C. Behavioural activation to prevent depression and loneliness among socially
742 isolated older people with long-term conditions: The BASIL COVID-19 pilot randomised controlled trial. *PLoS*
743 *Medicine*. 2021 Oct 12;18(10):e1003779.
- 744 24. Carr MJ, Steeg S, Webb RT, Kapur N, Chew-Graham CA, Abel KM, Hope H, Pierce M, Ashcroft DM.
745 Effects of the COVID-19 pandemic on primary care-recorded mental illness and self-harm episodes in the UK: a
746 population-based cohort study. *The Lancet Public Health*. 2021 Feb 1;6(2):e124-35.
- 747 25. O'Connor RC, Wetherall K, Cleare S, McClelland H, Melson AJ, Niedzwiedz CL, O'Carroll RE, O'Connor
748 DB, Platt S, Scowcroft E, Watson B. Mental health and well-being during the COVID-19 pandemic: longitudinal
749 analyses of adults in the UK COVID-19 Mental Health & Wellbeing study. *The British Journal of Psychiatry*. 2021
750 Jun;218(6):326-33.
- 751 26. Gilbody S, Littlewood E, Gascoyne S, McMillan D, Ekers D, Chew-Graham CA, Creswell C, Wright J.
752 Mitigating the impacts of COVID-19: where are the mental health trials?. *The Lancet Psychiatry*. 2021 Jun 1.
- 753 27. Department of Health. Long Term Conditions Compendium of Information. 3rd ed. London:
754 Department of Health; 2012.
- 755 28. NHS Digital. The Quality and Outcomes Framework 2020 [cited 2021 23rd November 2021]. Available
756 from: [https://digital.nhs.uk/data-and-information/data-tools-and-services/data-services/general-practice-](https://digital.nhs.uk/data-and-information/data-tools-and-services/data-services/general-practice-data-hub/quality-outcomes-framework-qof)
757 [data-hub/quality-outcomes-framework-qof](https://digital.nhs.uk/data-and-information/data-tools-and-services/data-services/general-practice-data-hub/quality-outcomes-framework-qof).
- 758 29. Kroenke K, Spitzer RL. The PHQ-9: A new depression and diagnostic severity measure. *Psychiatr Ann*.
759 2002;32:509-21.
- 760 30. Henry JD, Crawford JR. The short-form version of the Depression Anxiety Stress Scales (DASS-21):
761 Construct validity and normative data in a large non-clinical sample. *British Journal of Clinical Psychology*.
762 2005;44(2):227-39
- 763 31. Public Health England. COVID-19: guidance for the public on mental health and wellbeing. Advice and
764 information on how to look after your mental health and wellbeing during the coronavirus (COVID-19)
765 outbreak: Public Health England; 2020 [29th March 2021]. Available from:
766 [https://www.gov.uk/government/publications/covid-19-guidance-for-the-public-on-mental-health-and-](https://www.gov.uk/government/publications/covid-19-guidance-for-the-public-on-mental-health-and-wellbeing)
767 [wellbeing](https://www.gov.uk/government/publications/covid-19-guidance-for-the-public-on-mental-health-and-wellbeing).
- 768 32. Age UK. Staying safe and well 2020 [29th March 2021]. Available from:
769 <https://www.ageuk.org.uk/information-advice/coronavirus/staying-safe-and-well-at-home/>.
- 770 33. De Jong-Gierveld J, Kamphuis F. The development of a Rasch-type loneliness scale. *Applied*
771 *Psychological Measurement*. 1985;9(3):289-99.
- 772 34. Lubben JE. Assessing social networks among elderly populations. *Family and community health*. 1988
773 Nov 1;11(3):42-52.
- 774 35. Spitzer RL, Kroenke K, Williams JBW, Lowe B. A Brief Measure for Assessing Generalized Anxiety
775 Disorder: The GAD-7. *Arch Intern Med*. 2006;166(10):1092-7.
- 776 36. Ware Jr JE, Kosinski M, Keller SD. A 12-Item Short-Form Health Survey: construction of
777 scales and preliminary tests of reliability and validity. *Medical care*. 1996;34(3):220-33.
- 778 37. EuroQual Group. EuroQol: A new Instrument for the measurement of Health Related Quality of Life.
779 1990;16(3):199-208.
- 780 38. Hill B, Perri-Moore S, Kuang J, Bray BE, Ngo L, Doig A, Zeng-Treitler Q. Automated pictographic
781 illustration of discharge instructions with Glyph: impact on patient recall and satisfaction. *Journal of the*
782 *American Medical Informatics Association*. 2016 Nov 1;23(6):1136-42.
- 783 39. McCrorie AD, Chen JJ, Weller R, McGlade KJ, Donnelly C. Trial of infographics in Northern Ireland
784 (TINI): Preliminary evaluation and results of a randomized controlled trial comparing infographics with text.
785 *Cogent medicine*. 2018 Jan 1;5(1):1483591.
- 786 40. Buljan I, Malički M, Wager E, Puljak L, Hren D, Kellie F, West H, Alfirević Ž, Marušić A. No difference in
787 knowledge obtained from infographic or plain language summary of a Cochrane systematic review: three
788 randomized controlled trials. *Journal of clinical epidemiology*. 2018 May 1;97:86-94.
- 789 41. Löwe B, Unützer J, Callahan CM, Perkins AJ, Kroenke K. Monitoring depression treatment outcomes
790 with the patient health questionnaire-9. *Medical care*. 2004 Dec 1;1194-201.

- 791 42. Cook JA, Julious SA, Sones W, Hampson LV, Hewitt CE, Berlin JA, Ashby D, Elmsley R, Fergusson DA,
792 Walters SJ, Wilson EC. Practical help for specifying the target difference in sample size calculations for RCTs:
793 the DELTA2 five-stage study, including a workshop. *Health technology assessment*. 2019 Oct 1.
- 794 43. Gilbody S, Lewis H, Adamson J, Atherton K, Bailey D, Birtwistle J, Bosanquet K, Clare E, Delgado J,
795 Ekers D, Foster D. Effect of collaborative care vs usual care on depressive symptoms in older adults with
796 subthreshold depression: the CASPER randomized clinical trial. *Jama*. 2017 Feb 21;317(7):728-37.
- 797 44. Gilbody S, Bower P, Fletcher J, Richards D, Sutton AJ. Collaborative care for depression: a cumulative
798 meta-analysis and review of longer-term outcomes. *Archives of internal medicine*. 2006 Nov 27;166(21):2314-
799 45. Drummond MF et al. *Methods for the Economic Evaluation of Health Care Programmes* (3rd ed.),
800 Oxford University Press, Oxford (2005)
- 801 46. Patrick DL and Erickson P. Ranking costs and outcomes of health care alternatives. *Health Status and*
802 *Health Policy: Quality of Life in Health Care Evaluation and Resource Allocation*, Oxford University Press, New
803 York (1993).
- 804 47. NHS Improvement. *National Cost Collection 2019*. 2020.
- 805 48. Curtis L, Burns A. *Unit costs of health and social care 2019*. Canterbury: University of Kent, 2020.
- 806 49. Gale NK, Heath G, Cameron E, Rashid S, Redwood S. Using the framework method for the analysis of
807 qualitative data in multi-disciplinary health research. *BMC medical research methodology*. 2013 Dec;13(1):1-8.
- 808 50. Ritchie J, Spencer L. Qualitative data analysis for applied policy research. In *Analyzing qualitative data*
809 2002 Sep 9 (pp. 187-208). Routledge.
- 810 51. May C, Finch T. Implementing, embedding, and integrating practices: an outline of normalization
811 process theory. *Sociology*. 2009 Jun;43(3):535-54.
- 812 52. Gilbody S, Lewis H, Adamson J, Atherton K, Bailey D, Birtwistle J, Bosanquet K, Clare E, Delgado J,
813 Ekers D, Foster D. Effect of collaborative care vs usual care on depressive symptoms in older adults with
814 subthreshold depression: the CASPER randomized clinical trial. *Jama*. 2017 Feb 21;317(7):728-37.
- 815 53. Hickin N, Käll A, Shafran R, Sutcliffe S, Manzotti G, Langan D. The effectiveness of psychological
816 interventions for loneliness: A systematic review and meta-analysis. *Clinical Psychology Review*. 2021:102066.
- 817 54. Eddy E, Heron PN, McMillan D, Dawson S, Ekers D, Hickin N, et al. Cognitive or behavioural
818 interventions (or both) to prevent or mitigate loneliness in adolescents, adults, and older adults. *Cochrane*
819 *Database of Systematic Reviews* (Online). 2020.

820

821

822

823

824

825

826

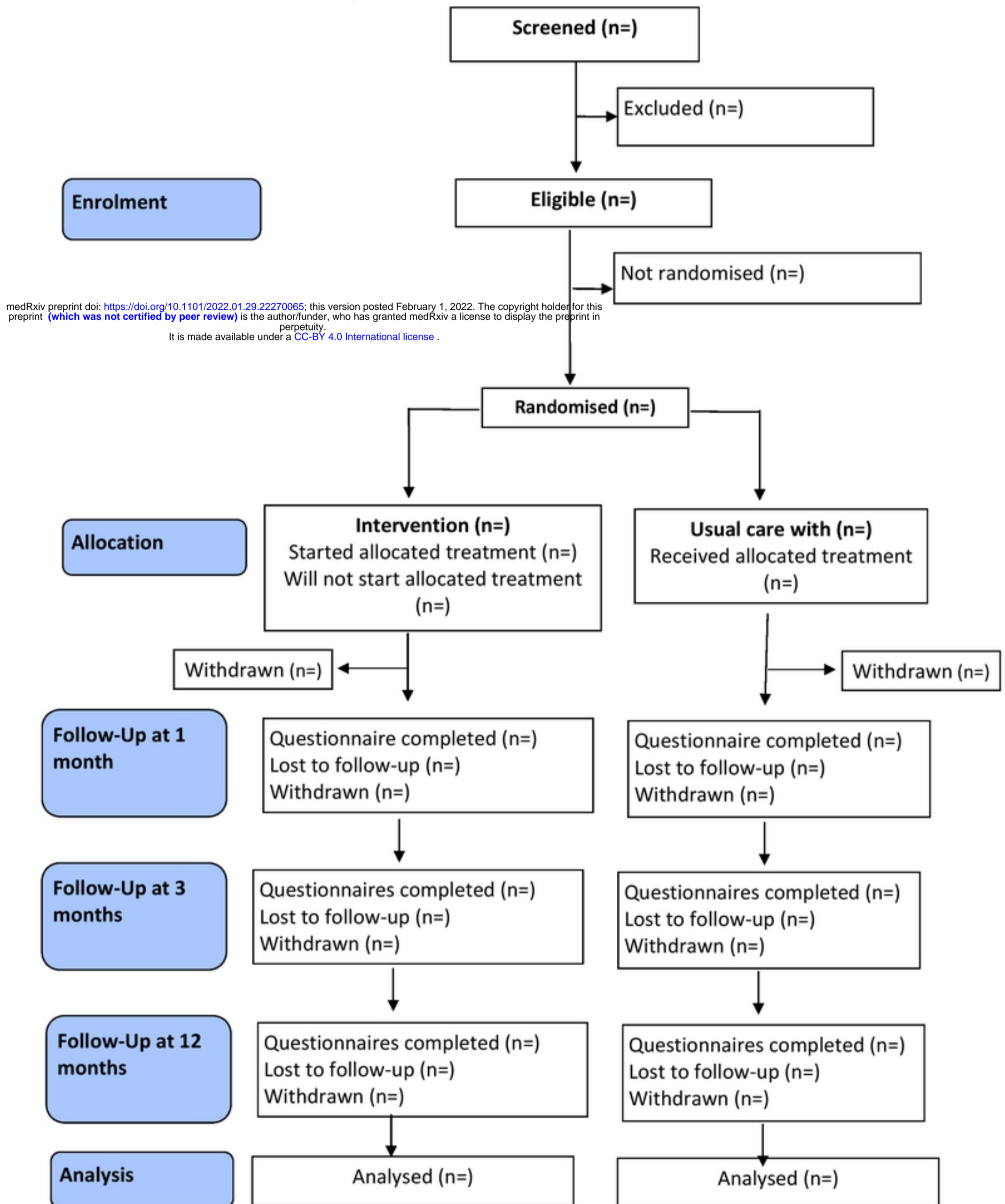
827

828

829

830

Figure 2: BASIL+ CONSORT flow diagram



Figure

