

1 **Simple and economical RNA extraction and storage packets for viral detection from serum**  
2 **or plasma**

3

4 **Running Title:** Economical RNA extraction and storage packets

5

6 Sarah Hernandez<sup>1</sup>, Fátima Cardozo<sup>2</sup>, David R. Myers<sup>3,4</sup>, Alejandra Rojas<sup>5</sup>, Jesse J. Waggoner<sup>1,6,#</sup>

7

8 <sup>1</sup> Emory University Department of Medicine, Division of Infectious Diseases, Atlanta, Georgia,  
9 USA

10 <sup>2</sup> Universidad Nacional de Asunción, Instituto de Investigaciones en Ciencias de la Salud,  
11 Departamento de Salud Pública, Paraguay

12 <sup>3</sup> Wallace H. Coulter Department of Biomedical Engineering, Emory University and Georgia  
13 Institute of Technology, Atlanta, Georgia, USA

14 <sup>4</sup> Aflac Cancer and Blood Disorders Center of Children's Healthcare of Atlanta, Emory  
15 University Department of Pediatrics, Atlanta, Georgia, USA

16 <sup>5</sup> Universidad Nacional de Asunción, Instituto de Investigaciones en Ciencias de la Salud,  
17 Departamento de Producción, Paraguay

18 <sup>6</sup> Rollins School of Public Health, Department of Global Health, Atlanta, Georgia, USA

19

20 # Corresponding Author: Jesse J. Waggoner, 1760 Haygood Drive NE, Room E-169, Bay E-1,  
21 Atlanta, GA, 30329. Email: [jjwaggo@emory.edu](mailto:jjwaggo@emory.edu). Telephone: +1 (404) 712-2360

22

23

24	Word Count
25	Abstract, 248; Total, 5564
26	Inserts
27	Tables 2, Supplemental Tables, 5
28	Figures 5, Supplemental Figures, 2

29 **Abstract**

30 RNA extraction is an essential step for detection and surveillance of common viral pathogens.  
31 Currently, sample processing and RNA extraction are costly and rely on proprietary materials  
32 that are difficult to acquire, maintain, and safely discard in low-resource settings. We developed  
33 an economical RNA extraction and storage protocol that eliminates the use of instrumentation,  
34 expensive materials, and cold chain requirements. Through an iterative process, we optimized  
35 viral lysis and RNA binding to and elution from glass fiber membranes. Protocol changes were  
36 evaluated by testing eluates in virus-specific real-time RT-PCRs (rRT-PCRs). Efficient, non-  
37 toxic viral lysis was achieved with a sucrose buffer including KCl, proteinase K and carrier  
38 RNA. Glass fiber membranes demonstrated concentration-dependent RNA binding of three  
39 arthropod-borne RNA viruses (arboviruses): dengue, chikungunya and Oropouche. Membrane  
40 binding was significantly increased in an acidic arginine binding buffer. For the clinical  
41 evaluation, 36 dengue virus (DENV)-positive serum samples were extracted in duplicate in the  
42 optimized protocol and results were compared to a commercial method. DENV RNA was  
43 successfully extracted from 71/72 replicates (98.6%) in the extraction packets, and rRT-PCR Ct  
44 values correlated between the techniques. Five clinical samples were selected to evaluate  
45 ambient-temperature storage up to 7 days on dried glass fiber membranes. DENV RNA was  
46 stable at 1, 3 and 7 days post extraction, with a mean difference in eluate RNA concentration of  
47 0.14 log<sub>10</sub> copies/μL. At a cost of \$0.08 /sample, RNA extraction and storage packets address  
48 key limitations to available protocols and may increase capacity for molecular detection of RNA  
49 viruses.

50

51 **Keywords:** ribonucleic acid, extraction, dengue virus, molecular testing

52 RNA viruses are the largest group of human viral pathogens and the most common cause of  
53 emerging infectious disease outbreaks.<sup>1,2</sup> Clinical management and disease containment rely on  
54 accurate laboratory diagnosis. For many RNA viruses, molecular methods provide the most  
55 sensitive and specific acute-phase diagnostics<sup>3-7</sup>, and RNA extraction remains a crucial step in  
56 sample preparation that ensures optimal performance of such methods. However, extraction  
57 presents many challenges owing to the relative instability of RNA compared to DNA and the  
58 presence of RNA degrading enzymes (RNases) and PCR inhibitors in clinical samples.<sup>8-10</sup>  
59 Extraction is generally performed using commercial kits that are costly and rely on proprietary  
60 materials that can be difficult to obtain in low-resource settings or emerging markets.<sup>11, 12</sup> Kits  
61 often require the use of dedicated instruments, corrosive and hazardous chemicals, and -80°C  
62 storage of the resulting eluate if testing will not be performed within 24 hours.<sup>8-10, 13, 14</sup> As a  
63 result, RNA extraction and storage remain major barriers to the implementation and use of  
64 molecular methods in low-resource settings.

65  
66 Arboviruses comprise the subset of RNA viruses transmitted by infected arthropod vectors such  
67 as mosquitoes and ticks. These have resulted in large, recent outbreaks caused by the  
68 introduction of viruses into naïve populations [e.g., chikungunya virus (CHIKV) and Zika virus  
69 (ZIKV) in the Americas in 2014-2016]<sup>15-18</sup> or re-emergence of viruses in populations residing in  
70 endemic regions [e.g., yellow fever virus (YFV) and dengue virus (DENV)].<sup>19-23</sup> Of the  
71 arboviruses, DENV is responsible for the greatest burden of human disease, causing an estimated  
72 100 million symptomatic infections (dengue cases) per year spread over 125 countries.<sup>24</sup> Dengue  
73 presents with nonspecific, systemic symptoms that cannot be clinically differentiated from other  
74 causes of an acute febrile illness, and diagnostic confirmation relies on the availability of

75 laboratory tests.<sup>7, 20</sup> However, in endemic countries such as Paraguay, DENV causes large  
76 seasonal outbreaks that exhaust laboratory reagent supply and testing capacity, resulting in under  
77 detection and potentially worse clinical outcomes.<sup>4, 25, 26</sup>

78  
79 In this study, we sought to address barriers to RNA virus detection that result from available  
80 extraction methods and the inherent challenges of working with RNA. We developed a simple,  
81 safe, and economical protocol for RNA extraction and storage from serum and plasma in  
82 resource-limited settings. The protocol was developed and optimized using contrived DENV  
83 clinical samples and RNA from species representing the 3 predominant genera of arboviruses:  
84 DENV, a flavivirus; CHIKV, an alphavirus; and Oropouche virus (OROV), an orthobunyavirus.  
85 Clinical evaluation of the optimized protocol was then performed on a set of 36 acute-phase  
86 samples from confirmed dengue cases in Paraguay.

87

88

## 89 **Results**

90 **Viral lysis.** Four experimental lysis buffers (deionized water, STET (8% Sucrose, 5% Triton™ X-  
91 100, 50mM Tris-HCl, and 50 mM EDTA), Sodium Dodecyl Sulfate-NaCl, and sucrose buffer)  
92 were evaluated for the ability to lyse DENV, followed by completion of RNA extraction in a  
93 commercial spin column protocol (QIAamp Viral RNA Mini Kit, Qiagen). SDS-NaCl and  
94 sucrose solutions performed similarly, yielding earlier DENV cycle threshold (Ct) values  
95 (indicating increased RNA yield) by rRT-PCR (Table S1). To eliminate potential SDS inhibition  
96 of downstream molecular testing, sucrose buffer was chosen as the lysis buffer for further  
97 experiments. To further enhance RNA recovery and prevent degradation, varying amounts of

98 poly-A carrier RNA and proteinase K were added to the lysis buffer. In side-by-side  
99 comparisons, carrier RNA (2.5µg/sample) and proteinase K (5.0µg/sample) independently  
100 increased RNA recovery. Higher concentrations of carrier RNA and proteinase K in the lysis  
101 mixture did not enhance RNA recovery (5 and 10µg/sample, respectively; Tables S2 and S3). In  
102 addition, the impact of lysis incubation on RNA recovery at room temperature was tested at  
103 various time durations from 1 to 60 minutes. Samples were stable for up to one hour in lysis  
104 mixture, however, longer incubation times did not result in increased RNA recovery after ten-  
105 minute sample incubation at room temperature (data not shown). Based on these data, a ten-  
106 minute incubation period was selected for the final procedure.

107

108 **Membranes.** Extraction packets were assembled as shown in Figure 1. Whatman 3, Fusion 5,  
109 and glass fiber (GF/D) membranes were evaluated as the RNA binding membrane. To compare  
110 RNA recovery from the different membranes, 15µL of purified DENV, CHIKV, and OROV  
111 RNA were mixed with lysis buffer and ethanol and added to packets containing one of the 3  
112 membranes. RNA was then eluted and tested by rRT-PCR. RNA recovery was successful for all  
113 viruses and concentrations on the GF/D membranes (12/12), whereas one extraction failed with  
114 both the Whatman 3 and Fusion 5 membranes (11/12 each; Table 1). Ct values were also lowest  
115 for RNA recovered from GF/D membranes, and based on these data, the GF/D membrane was  
116 selected for inclusion in the final RNA extraction packet.

117

118 **Amino acid binding buffers.** Arginine- and glutamine-based amino acid binding buffers were  
119 assessed as a method to modulate RNA-membrane interactions when the lysate was loaded on  
120 the packet. Contrived DENV-positive serum samples were lysed and then treated with either

121 amino acid buffer. Although results did not differ significantly, arginine treatment yielded  
122 increased RNA recovery, with lower Ct values overall and decreased variability (Figure S1).  
123 Based on these data, arginine was chosen for future experiments. To further evaluate the impact  
124 of arginine binding buffer, DENV, CHIKV and OROV RNA were added to the membranes in  
125 either the sucrose lysis buffer or an arginine buffer (plus ethanol in both cases). Relative to  
126 sucrose buffer, the arginine buffer demonstrated lower mean Ct values and decreased variability  
127 in Ct values with each membrane (Figure 2A). Ct values were significantly lower with the use of  
128 arginine buffer when data from all membranes were evaluated together (Figure 2A), and the  
129 relative increase in RNA yield is shown in Figure 2B.

130

131 Following the initial analytical evaluation with purified RNA, arginine buffer was evaluated as a  
132 viral lysis buffer in place of sucrose buffer. However, testing with contrived DENV samples  
133 resulted in worse RNA recovery (Figure S2A). The arginine buffer was subsequently integrated  
134 as a binding buffer that is added after incubation of the sample in lysis buffer. This allowed for  
135 both successful viral lysis and improved binding of viral RNA to the packet membrane (Figure  
136 S2B). With the addition of the arginine buffer to the procedural workflow, MgCl<sub>2</sub> in the sucrose  
137 buffer was changed to KCl to harmonize buffer preparations, which had no impact on RNA  
138 recovery (Table S4).

139

140 **Final workflow.** Figure 3 shows the final extraction packet workflow. 25µL of serum or plasma  
141 is added to a 1.5mL tube with 25µL lysis mixture (2.5µL carrier RNA, 5µL proteinase k and  
142 17.5µL lysis buffer). Following ten-minute incubation at ambient temperature, 100µL of amino  
143 acid binding buffer and 150µL of 90% ethanol are added to the lysate and mixed thoroughly by

144 pipette. The resulting mixture is loaded dropwise onto the packets. Membranes are subsequently  
145 washed with 100 $\mu$ L glycine buffer and transferred by pipette tip to a tube containing 50 $\mu$ L of TE  
146 elution buffer. Membranes are incubated in elution buffer for 1 min and then discarded.

147  
148 **Clinical evaluation.** 36 DENV-positive serum samples from Paraguay, collected from 2018-  
149 2020, were selected for the clinical evaluation of the extraction packets. Demographic  
150 information and laboratory data are shown in Table 2. Samples included serotypes DENV-1  
151 (20/36, 55.6%) and DENV-4 (16/36, 44.4%), which were the predominant DENV serotypes in  
152 Paraguay during those years. Viral loads ranged from 4.73 to 8.22 log<sub>10</sub> copies/mL of serum.  
153 Samples were extracted in duplicate with the extraction packets (72 total extractions) and once in  
154 an EMAG robotic extraction instrument. DENV RNA was successfully extracted from 71/72  
155 replicates (98.6%) in the extraction packets, and DENV multiplex rRT-PCR Ct values correlated  
156 with results following EMAG extraction (Figure 4, Table S5).

157  
158 Five DENV-1 samples were then selected for evaluation of RNA stability when stored on GF/D  
159 membranes at room temperature for up to 7 days. RNA was eluted on days 1, 3 and 7, and  
160 DENV RNA concentration in the eluates was calculated in the DENV multiplex rRT-PCR.  
161 Concentrations (Figure 5A) and Ct values (Figure S3) are shown for each time point. The median  
162 DENV RNA concentration in the eluates was 4.43 log<sub>10</sub> copies/ $\mu$ L on day 0 and 4.57 log<sub>10</sub>  
163 copies/ $\mu$ L on day 7 (0.14 log<sub>10</sub> copies RNA/ $\mu$ L difference). DENV RNA concentration  
164 fluctuated between time points but remained within the expected error for quantitative rRT-PCR  
165 ( $\pm$ 0.5 log<sub>10</sub> copies, Figure 5B).

166



167

## 168 **Discussion**

169 This study presents the development of an alternative, low-cost extraction method compatible  
170 with downstream rRT-PCR analysis for arboviral detection. Using the basic packet design of a  
171 previous method for viral DNA detection<sup>27</sup>, we developed and optimized a protocol that greatly  
172 improved extraction efficiency for RNA viruses. Our protocol is suitable for implementation in  
173 resource-limited settings as it eliminates the need for expensive proprietary materials, hazardous  
174 chemicals, or electricity during the extraction process. The final extraction packet protocol has  
175 an estimated cost of \$0.08 /sample and successfully detected 98.7% of DENV-positive clinical  
176 samples when compared to a commercial robotic extraction system that has an initial cost of  
177 USD \$115,000. Clinical samples were collected during two large DENV outbreaks in Paraguay  
178 (DENV-1 in 2018, DENV-4 in 2019-2020). Notably, the range of viral loads in samples that  
179 were available for extraction in the current study represent 92.7% of all DENV-positive samples  
180 with quantifiable viral loads from these two large outbreaks (Ref. 28, DENV-1; manuscript in  
181 progress, DENV-4). Samples with viral loads outside of this range were no longer available for  
182 extraction. These data indicate the potential utility of extraction packets in a real-world testing  
183 scenario outside of a high resource research laboratory.

184

185 In addition to examining the limitations posed by RNA extraction methods, in this study we  
186 address the temperature constraints of common RNA storage procedures. Existing  
187 methodologies require ultra-low storage temperatures that are costly to maintain and have limited  
188 capacity.<sup>8, 13, 14</sup> In addition, the need for cold chain storage complicates the shipment of samples  
189 from collection sites to reference laboratories. We report an alternative ambient temperature

190 technique where viral RNA is stored directly on the extraction membrane and integrity is  
191 maintained for downstream rRT-PCR analysis. This technique demonstrated RNA stability for  
192 up to 7 days post viral lysis for 5/5 clinical samples. Success of this technique likely results from  
193 washing with highly acidic buffers and drying the membrane, which serve to reduce RNA  
194 transesterification and RNase activity.<sup>28, 29</sup> The developed packets, therefore, address major  
195 concerns for specimen preparation and provide a robust alternative for extraction and short-term  
196 storage of RNA.

197  
198 To-date, there are few RNA extraction methods suitable for implementation in low-resource  
199 communities, none of which evaluate a system comparable to the extraction packet design.<sup>30-32</sup>  
200 Various efforts to provide a sustainable alternative to expensive commercial kits utilize magnetic  
201 bead technology or solid-phase extraction methods that include biohazardous reagents. Magnetic  
202 bead technologies provide adjustable surface chemistries and ease of use for nucleic acid  
203 isolation.<sup>32</sup> However, beads are relatively expensive and may be difficult to acquire and  
204 implement in limited resource settings. Other solid phase alternatives rely on toxic phenol and/or  
205 guanidine-based solutions that inhibit downstream molecular testing and require special handling  
206 in the laboratory.<sup>33-35</sup> To both reduce inhibitory reagents in the procedure and utilize safer  
207 reagents for distribution outside of standard molecular laboratories, we assessed an alternative  
208 sucrose-based lysis buffer. Sucrose solutions have been used in various DNA and RNA isolation  
209 protocols and have demonstrated a key role in increasing yield of extracted nucleic material and  
210 RNA stability, without compromising testing integrity.<sup>36, 37</sup> The RNA packet extraction protocol  
211 provides a simple alternative that relies on easily accessible reagents, including proteinase K, and  
212 can be prepared on site in a field setting.

213

214 In addition to the sucrose buffer, amino acid buffers were also examined as alternative lysis  
215 solutions to be used in lieu of chaotropic salts. A previous study found that several amino acid  
216 solutions provide favorable alternatives to standard buffers for nucleic acid recovery due to  
217 interactions between the amino acid, RNA and silica surface.<sup>38</sup> Positively charged arginine and  
218 polar uncharged glutamine were chosen for evaluation within the extraction packet protocol for  
219 their distinct chemical properties. In the RNA extraction packets, low-pH arginine buffer  
220 improved RNA yield. However, promising analytical findings did not translate to improved  
221 DENV RNA recovery from contrived samples when arginine buffer replaced the optimized  
222 sucrose buffer in our extraction protocol. A combined protocol, integrating the arginine solution  
223 as a binding buffer after lysis in sucrose buffer, leveraged the properties of both solutions. These  
224 data demonstrate the applicability of amino acid buffers in RNA extraction protocols and  
225 highlight the importance of rigorous clinical evaluation for findings obtained under optimal  
226 laboratory conditions.

227

228 Limitations of the current study include the use of serum and plasma with the extraction packets.  
229 These typically require centrifugation for preparation, though represent the most common  
230 specimen types for DENV diagnostic testing.<sup>4, 7, 13, 39, 40</sup> The use of carrier RNA and proteinase K  
231 within the lysis mixture also require cold storage following reconstitution, but both reagents can  
232 be shipped and stored in a lyophilized format. To address these limitations, future studies should  
233 evaluate adaptations to the extraction packets for use with whole blood and alternative methods  
234 for ambient temperature storage of carrier RNA and proteinase K.

235

236 Access to reliable and economical RNA extraction methods remains a significant barrier to viral  
237 molecular detection and surveillance. The packets developed during this study provide safe,  
238 economical, and reproducible RNA extraction from clinical samples. These RNA extraction and  
239 storage packets address key limitations to available protocols and may increase capacity for  
240 molecular detection of RNA viruses.

241

242

## 243 **Methods**

244 **Packet design.** The initial physical design of the packet was based on the filtration isolation of  
245 nucleic acids (FINA) method, as previously described.<sup>27</sup> Basic packet design consisted of a  
246 5.56mm diameter membrane disk, sandwiched between a square blotter pad base (2.5 x 2.5 cm;  
247 VWR International, Radnor, PA) and a Parafilm cover with a 3.96mm diameter opening  
248 (Research Products International, Mt. Prospect, IL) centered directly above the membrane disk  
249 (Figure 1). Packets were assembled with Whatman 3, Fusion 5, and glass microfiber (GF/D)  
250 membranes (all from MiliporeSigma, Burlington, MA). The initial extraction protocol consisted  
251 of 1) incubating 25µL of serum/plasma with a lysis mixture for 10 minutes, 2) addition of  
252 ethanol, 3) addition of the lysate-ethanol mixture to the extraction packet, 4) a single wash with  
253 100µL 10X glycine solution (pH 2.7; Polysciences, Warrington, PA), and 5) elution of RNA by  
254 transfer of the membrane to a 1.5mL tube containing 50µL 10mM TE buffer, pH 8.0 (Teknova,  
255 Hollister, CA). Membranes were incubated in TE for one minute and subsequently removed and  
256 disposed. Eluates were tested immediately by rRT-PCR or stored at 4°C for up to 24 hours.

257

258 **Lysis and binding buffers.** Four experimental lysis buffers were evaluated: deionized water,  
259 STET (8% Sucrose, 5% Triton™ X-100, 50mM Tris-HCl, and 50 mM EDTA; Teknova, Hollister,  
260 CA), Sodium Dodecyl Sulfate-NaCl,<sup>34</sup> and a sucrose buffer.<sup>36</sup> Lysis buffers were initially  
261 incorporated into and evaluated with a membrane-based commercial protocol (QiaAMP Viral  
262 RNA Mini Kit, Qiagen, Germantown, MD). Contrived DENV samples were either lysed with  
263 buffer AVL (as part of the kit) or an experimental lysis buffer and then extracted with the  
264 remaining steps in the manufacturer's protocol. Based on these experiments, the sucrose solution  
265 was chosen for the lysis buffer. Poly-A carrier RNA (2.5µg/sample, Qiagen, Germantown, MD)  
266 and proteinase K (5µg/sample; New England Biolabs, Ipswich, MA) were evaluated as  
267 additional components to the lysis mixture. Further experiments used 25µL/reaction of lysis  
268 mixture containing 17.5µL of lysis buffer, 2.5µL (2.5µg) carrier RNA and 5µL (5.0µg)  
269 proteinase K. All sucrose solution components were adjusted in an iterative manner for further  
270 optimization. NaCl, MgCl<sub>2</sub>, and KCl were evaluated as different chaotropic salts across a range  
271 of concentrations (50mM to 400mM) alongside varying sucrose concentrations (50mM to  
272 300mM). Solution pH was also evaluated at neutral and slightly alkaline pH values (7.0, 7.5, and  
273 8.0). The optimized sucrose lysis buffer contained 100mM sucrose (1.2 M; Boston BioProducts,  
274 Ashland, MA); 50mM Tris-HCL, pH 7.0; 100mM KCl (both from MilliporeSigma, USA).  
275  
276 Arginine and glutamine amino acid binding buffers were initially prepared as described.<sup>41</sup> The  
277 buffer contained 100mM L-arginine (MilliporeSigma, USA) and 400 mM KCl. Binding buffer  
278 pH was optimized across a range from 1.5-9.1, with a final buffer pH of 1.5. Lysis and binding  
279 buffers were stored at room temperature. Following preparation, the lysis mixture was used  
280 immediately or stored at 4°C until use.

281

282 **Clinical samples and RNA stability.** DENV-positive clinical samples were collected as part of  
283 an ongoing study to detect and characterize arboviral infections in Asunción, Paraguay in  
284 collaboration with the Instituto de Investigaciones en Ciencias de la Salud, Universidad Nacional  
285 de Asunción (IICS-UNA).<sup>4</sup> Samples were selected for the current study that had detectable and  
286 quantifiable DENV viral loads in the DENV multiplex rRT-PCR and had sufficient volume  
287 remaining for re-extraction (100 $\mu$ L). All samples had been shipped to Emory on dry ice, stored  
288 at -80°C, and thawed at 4°C immediately prior to extraction. For the clinical evaluation, side-by-  
289 side extractions were performed with the extraction packets in duplicate and on an EMAG  
290 robotic extraction instrument (bioMérieux, Durham, NC). RNA was extracted from 25 $\mu$ L of  
291 sample and eluted into 50 $\mu$ L for both the packets and comparator extraction protocols. Eluates  
292 were tested immediately by rRT-PCR.

293

294 For the stability study, 5 DENV-1 samples with sufficient remaining volume were individually  
295 re-extracted with the packets to evaluate RNA stability on days 0, 1, 3, and 7 post extraction. For  
296 this evaluation, 8 extraction packets were prepared, with duplicate packets for each time point.  
297 On day 0, DENV RNA was completely extracted, eluted off two membranes, and run in the  
298 DENV multiplex rRT-PCR to establish a baseline reference. For the remainder of the time  
299 points, DENV RNA was extracted with the packets through the glycine wash step and  
300 transferred to empty 1.5mL tubes to air dry at ambient temperature for 1 hour. After drying,  
301 tubes were closed and stored in airtight plastic bags with desiccant packets. RNA was eluted  
302 from dried membranes with 50 $\mu$ L TE buffer on days 1, 3, and 7 following extractions. Eluates  
303 were run in the DENV multiplex rRT-PCR for comparison with day 0 results. A four-point

304 standard curve was included on each run to calculate DENV-1 RNA concentration at each time  
305 point.<sup>42, 43</sup>

306

307 **Reference viral RNAs and contrived samples.** Packet membranes were initially evaluated with  
308 viral RNA from DENV, CHIKV and OROV. DENV RNA for this portion of the study was a  
309 135-base synthesized DENV-2 RNA oligonucleotide containing the DENV multiplex rRT-PCR  
310 target sequence (Ultramer RNA, Integrated DNA Technologies, Coralville, IA). For CHIKV and  
311 OROV, previously extracted (EMAG) genomic RNA was used. Contrived clinical samples were  
312 prepared by spiking negative human serum or plasma (MilliporeSigma, USA) with DENV-  
313 positive serum of known concentrations. Aliquots of contrived specimens were prepared and  
314 stored at -80°C until use.

315

316 **rRT-PCR.** Eluates from optimization and analytical evaluation experiments were tested in a  
317 single-reaction multiplex rRT-PCR for ZIKV, CHIKV, and DENV or a singleplex rRT-PCR for  
318 OROV, both performed as previously described.<sup>44, 45</sup> For the clinical evaluation, eluates were  
319 tested in the DENV multiplex rRT-PCR, which is a serotype-specific assay for DENV detection  
320 and quantitation.<sup>42, 43</sup> All rRT-PCR reactions were performed in 20µL reactions of the  
321 SuperScript III Platinum One-Step qRT-PCR kit (Thermo Fisher) containing 5µL of eluate and  
322 run on a Rotor-Gene Q instrument (Qiagen). Positive and negative controls were included on  
323 each run, and rRT-PCRs were analyzed and interpreted as previously described.<sup>42-45</sup>

324

325 **Statistics.** Basic statistical analyses were performed in Excel (Microsoft, Redmond, WA). Ct  
326 values obtained with lysis buffer and arginine binding buffer were compared by unpaired

327 student's t test (GraphPad Prism version 9.2, GraphPad, San Diego, CA). Graphs were prepared  
328 with GraphPad and Excel.



329 **Acknowledgements**

330 This research was supported by the Doris Duke Foundation (Clinical Scientist Development  
331 Award 2019089) and the National Institute of Allergy and Infectious Diseases (R21AI146443).  
332 We thank all members of the research team at the Instituto de Investigaciones en Ciencias de la  
333 Salud, Universidad Nacional de Asunción, and the participants and their family members who  
334 have contributed to ongoing studies of arboviral infections in Paraguay. We also thank Katherine  
335 Immergluck, Maxwell Su, and Victoria Stittleburg at Emory University for their assistance over  
336 the course of this project.

## 337 **References**

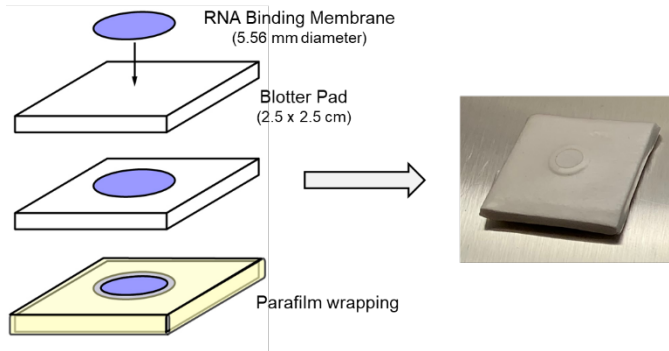
- 338 1. Carrasco-Hernandez, R.; Jácome, R.; López Vidal, Y.; Ponce De León, S., Are RNA Viruses  
339 Candidate Agents for the Next Global Pandemic? A Review. *ILAR Journal* **2017**, *58* (3), 343-358.
- 340 2. Rosenberg, R., Detecting the emergence of novel, zoonotic viruses pathogenic to humans.  
341 *Cellular and Molecular Life Sciences* **2015**, *72* (6), 1115-1125.
- 342 3. Natrajan, M. S.; Rojas, A.; Waggoner, J. J., Beyond Fever and Pain: Diagnostic Methods for  
343 Chikungunya Virus. *Journal of clinical microbiology* **2019**.
- 344 4. Rojas, A.; Cardozo, F.; Cantero, C.; Stittleburg, V.; Lopez, S.; Bernal, C.; Gimenez Acosta, F.  
345 E.; Mendoza, L.; Pinsky, B. A.; Arevalo de Guillen, I.; Paez, M.; Waggoner, J., Characterization of  
346 dengue cases among patients with an acute illness, Central Department, Paraguay. *PeerJ* **2019**, *7*, e7852.
- 347 5. Waggoner, J. J.; Pinsky, B. A., Zika Virus: Diagnostics for an Emerging Pandemic Threat.  
348 *Journal of clinical microbiology* **2016**, *54* (4), 860-7.
- 349 6. Waggoner, J. J.; Rojas, A.; Pinsky, B. A., Yellow Fever Virus: Diagnostics for a Persistent  
350 Arboviral Threat. *Journal of clinical microbiology* **2018**, *56* (10).
- 351 7. World Health Organization, *Dengue: guidelines for diagnosis, treatment, prevention and control*.  
352 WHO Press: France, 2009.
- 353 8. Fabre, A. L.; Colotte, M.; Luis, A.; Tuffet, S.; Bonnet, J., An efficient method for long-term  
354 room temperature storage of RNA. *Eur J Hum Genet* **2014**, *22* (3), 379-85.
- 355 9. Paul, R.; Ostermann, E.; Wei, Q., Advances in point-of-care nucleic acid extraction technologies  
356 for rapid diagnosis of human and plant diseases. *Biosens Bioelectron* **2020**, *169*, 112592.
- 357 10. Tan, S. C.; Yiap, B. C., DNA, RNA, and protein extraction: the past and the present. *J Biomed*  
358 *Biotechnol* **2009**, *2009*, 574398.
- 359 11. Domingo, C.; Niedrig, M.; Teichmann, A.; Kaiser, M.; Rumer, L.; Jarman, R. G.; Donoso-  
360 Mantke, O., 2nd international external quality control assessment for the molecular diagnosis of Dengue  
361 infections. *PLoS neglected tropical diseases* **2010**, *4* (10), e833.
- 362 12. Satyanarayana, M., Material shortages hamper testing for novel coronavirus. *C&EN* **2020**, *98*  
363 (12), 6.
- 364 13. Centers for Disease Control and Prevention, CDC DENV-1-4 Real-Time RT-PCR Assay:  
365 Instructions for Use. 2013.
- 366 14. Centers for Disease Control and Prevention, Triplex Real-time RT-PCR Assay: Instructions for  
367 Use. 2021.
- 368 15. Charrel, R. N.; Leparç-Goffart, I.; Gallian, P.; de Lamballerie, X., Globalization of  
369 Chikungunya: 10 years to invade the world. *Clinical microbiology and infection : the official publication*  
370 *of the European Society of Clinical Microbiology and Infectious Diseases* **2014**, *20* (7), 662-3.

- 371 16. Weaver, S. C.; Lecuit, M., Chikungunya virus and the global spread of a mosquito-borne disease.  
372 *The New England journal of medicine* **2015**, 372 (13), 1231-9.
- 373 17. Musso, D.; Gubler, D. J., Zika Virus. *Clinical microbiology reviews* **2016**, 29 (3), 487-524.
- 374 18. Waggoner, J. J.; Pinsky, B. A., How great is the threat of chikungunya virus? *Expert review of*  
375 *anti-infective therapy* **2015**, 13 (3), 291-3.
- 376 19. Bhatt, S.; Gething, P. W.; Brady, O. J.; Messina, J. P.; Farlow, A. W.; Moyes, C. L.; Drake, J.  
377 M.; Brownstein, J. S.; Hoen, A. G.; Sankoh, O.; Myers, M. F.; George, D. B.; Jaenisch, T.; Wint, G.  
378 R.; Simmons, C. P.; Scott, T. W.; Farrar, J. J.; Hay, S. I., The global distribution and burden of dengue.  
379 *Nature* **2013**, 496 (7446), 504-7.
- 380 20. Guzman, M. G.; Harris, E., Dengue. *Lancet* **2015**, 385 (9966), 453-65.
- 381 21. Shepard, D. S.; Undurraga, E. A.; Halasa, Y. A.; Stanaway, J. D., The global economic burden  
382 of dengue: a systematic analysis. *The Lancet. Infectious diseases* **2016**.
- 383 22. Zhao, S.; Stone, L.; Gao, D.; He, D., Modelling the large-scale yellow fever outbreak in Luanda,  
384 Angola, and the impact of vaccination. *PLoS neglected tropical diseases* **2018**, 12 (1), e0006158.
- 385 23. Dexheimer Paploski, I. A.; Souza, R. L.; Tauro, L. B.; Cardoso, C. W.; Mugabe, V. A.; Pereira  
386 Simoes Alves, A. B.; de Jesus Gomes, J.; Kikuti, M.; Campos, G. S.; Sardi, S.; Weaver, S. C.; Reis,  
387 M. G.; Kitron, U.; Ribeiro, G. S., Epizootic Outbreak of Yellow Fever Virus and Risk for Human  
388 Disease in Salvador, Brazil. *Annals of internal medicine* **2017**.
- 389 24. Messina, J. P.; Brady, O. J.; Golding, N.; Kraemer, M. U. G.; Wint, G. R. W.; Ray, S. E.;  
390 Pigott, D. M.; Shearer, F. M.; Johnson, K.; Earl, L.; Marczak, L. B.; Shirude, S.; Davis Weaver, N.;  
391 Gilbert, M.; Velayudhan, R.; Jones, P.; Jaenisch, T.; Scott, T. W.; Reiner, R. C.; Hay, S. I., The current  
392 and future global distribution and population at risk of dengue. *Nature Microbiology* **2019**, 4 (9), 1508-  
393 1515.
- 394 25. Rojas, A.; Aria, L.; de Guillen, Y. A.; Acosta, M. E.; Infanzón, B.; Diaz, V.; López, L.;  
395 Meza, T.; Riveros, O., Perfil clínico, hematológico y serológico en pacientes con sospecha de dengue del  
396 IICS-UNA, 2009-2013. *Mem Inst Investig Cienc Salud* **2016**, 14 (2), 68-74.
- 397 26. Balmaseda, A.; Hammond, S. N.; Tellez, Y.; Imhoff, L.; Rodriguez, Y.; Saborio, S. I.;  
398 Mercado, J. C.; Perez, L.; Videia, E.; Almanza, E.; Kuan, G.; Reyes, M.; Saenz, L.; Amador, J. J.;  
399 Harris, E., High seroprevalence of antibodies against dengue virus in a prospective study of  
400 schoolchildren in Managua, Nicaragua. *Tropical medicine & international health : TM & IH* **2006**, 11 (6),  
401 935-42.
- 402 27. McFall, S. M.; Wagner, R. L.; Jangam, S. R.; Yamada, D. H.; Hardie, D.; Kelso, D. M., A  
403 simple and rapid DNA extraction method from whole blood for highly sensitive detection and  
404 quantitation of HIV-1 proviral DNA by real-time PCR. *Journal of virological methods* **2015**, 214, 37-42.
- 405 28. Seyhan, A. A.; Burke, J. M., Mg<sup>2+</sup>-independent hairpin ribozyme catalysis in hydrated RNA  
406 films. *RNA* **2000**, 6 (2), 189-98.
- 407 29. Perreault, D. M.; Ansly, E. V., Unifying the Current Data on the Mechanism of Cleavage -  
408 Transesterification of RNA. *Angew. Chem. Int. Ed. Engl.* **1997**, 36, 432-450.

- 409 30. Han, P.; Go, M. K.; Chow, J. Y.; Xue, B.; Lim, Y. P.; Crone, M. A.; Storch, M.; Freemont, P.  
410 S.; Yew, W. S., A high-throughput pipeline for scalable kit-free RNA extraction. *Scientific Reports* **2021**,  
411 *11* (1).
- 412 31. Wozniak, A.; Cerda, A.; Ibarra-Henríquez, C.; Sebastian, V.; Armijo, G.; Lamig, L.; Miranda,  
413 C.; Lagos, M.; Solari, S.; Guzmán, A. M.; Quiroga, T.; Hitschfeld, S.; Riveras, E.; Ferrés, M.;  
414 Gutiérrez, R. A.; García, P., A simple RNA preparation method for SARS-CoV-2 detection by RT-qPCR.  
415 *Scientific Reports* **2020**, *10* (1).
- 416 32. Pearlman, S. I.; Leelawong, M.; Richardson, K. A.; Adams, N. M.; Russ, P. K.; Pask, M. E.;  
417 Wolfe, A. E.; Wessely, C.; Haselton, F. R., Low-Resource Nucleic Acid Extraction Method Enabled by  
418 High-Gradient Magnetic Separation. *ACS Applied Materials & Interfaces* **2020**, *12* (11), 12457-12467.
- 419 33. Yaffe, H.; Buxdorf, K.; Shapira, I.; Ein-Gedi, S.; Moyal-Ben Zvi, M.; Fridman, E.;  
420 Moshelion, M.; Levy, M., LogSpin: a simple, economical and fast method for RNA isolation from  
421 infected or healthy plants and other eukaryotic tissues. *BMC research notes* **2012**, *5*, 45.
- 422 34. Nwokeoji, A. O.; Kilby, P. M.; Portwood, D. E.; Dickman, M. J., RNASwift: A rapid, versatile  
423 RNA extraction method free from phenol and chloroform. *Anal Biochem* **2016**, *512*, 36-46.
- 424 35. Seok, Y.; Batule, B. S.; Kim, M. G., Lab-on-paper for all-in-one molecular diagnostics  
425 (LAMDA) of zika, dengue, and chikungunya virus from human serum. *Biosens Bioelectron* **2020**, *165*,  
426 112400.
- 427 36. Berendzen, K.; Searle, I.; Ravenscroft, D.; Koncz, C.; Batschauer, A.; Coupland, G.;  
428 Somssich, I. E.; Ulker, B., A rapid and versatile combined DNA/RNA extraction protocol and its  
429 application to the analysis of a novel DNA marker set polymorphic between *Arabidopsis thaliana*  
430 ecotypes Col-0 and Landsberg erecta. *Plant Methods* **2005**, *1* (1), 4.
- 431 37. Anjam, M. S.; Ludwig, Y.; Hochholdinger, F.; Miyaura, C.; Inada, M.; Siddique, S.; Grundler,  
432 F. M. W., An improved procedure for isolation of high-quality RNA from nematode-infected *Arabidopsis*  
433 roots through laser capture microdissection. *Plant Methods* **2016**, *12* (1).
- 434 38. Vandeventer, P. E.; Mejia, J.; Nadim, A.; Johal, M. S.; Niemz, A., DNA Adsorption to and  
435 Elution from Silica Surfaces: Influence of Amino Acid Buffers. *The Journal of Physical Chemistry B*  
436 **2013**, *117* (37), 10742-10749.
- 437 39. Waggoner, J. J.; Gresh, L.; Mohamed-Hadley, A.; Balmaseda, A.; Soda, K. J.; Abeynayake, J.;  
438 Sahoo, M. K.; Liu, Y.; Kuan, G.; Harris, E.; Pinsky, B. A., Characterization of Dengue Virus Infections  
439 Among Febrile Children Clinically Diagnosed With a Non-Dengue Illness, Managua, Nicaragua. *The*  
440 *Journal of infectious diseases* **2017**, *215* (12), 1816-1823.
- 441 40. Waggoner, J. J.; Gresh, L.; Vargas, M. J.; Ballesteros, G.; Tellez, Y.; Soda, K. J.; Sahoo, M.  
442 K.; Nunez, A.; Balmaseda, A.; Harris, E.; Pinsky, B. A., Viremia and Clinical Presentation in  
443 Nicaraguan Patients Infected With Zika Virus, Chikungunya Virus, and Dengue Virus. *Clinical infectious*  
444 *diseases : an official publication of the Infectious Diseases Society of America* **2016**, *63* (12), 1584-1590.
- 445 41. Vandeventer, P. E.; Mejia, J.; Nadim, A.; Johal, M. S.; Niemz, A., DNA adsorption to and  
446 elution from silica surfaces: influence of amino acid buffers. *J Phys Chem B* **2013**, *117* (37), 10742-9.

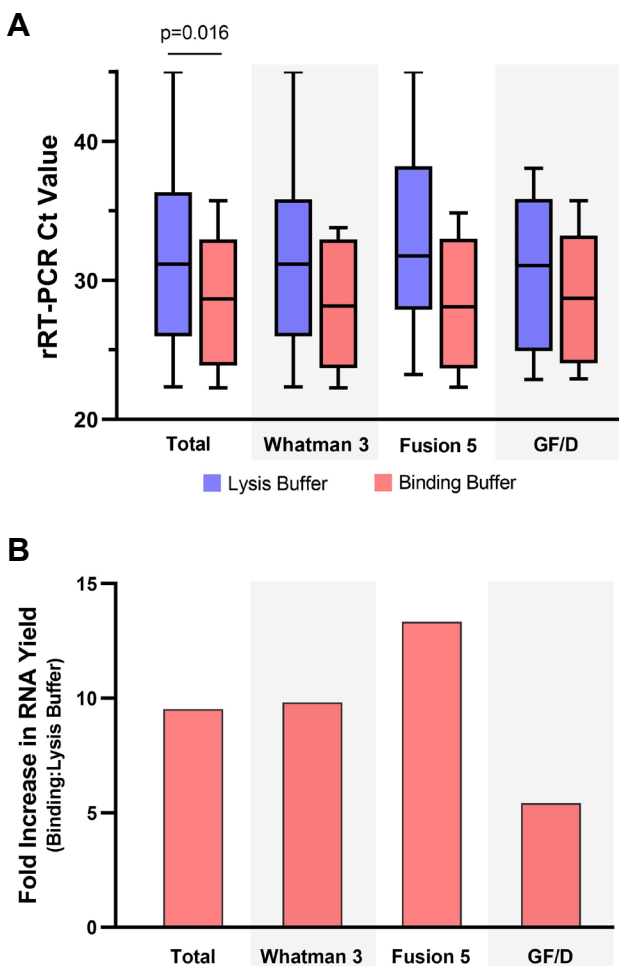
- 447 42. Waggoner, J. J.; Abeynayake, J.; Sahoo, M. K.; Gresh, L.; Tellez, Y.; Gonzalez, K.;  
448 Ballesteros, G.; Guo, F. P.; Balmaseda, A.; Karunaratne, K.; Harris, E.; Pinsky, B. A., Comparison of  
449 the FDA-approved CDC DENV-1-4 real-time reverse transcription-PCR with a laboratory-developed  
450 assay for dengue virus detection and serotyping. *Journal of clinical microbiology* **2013**, *51* (10), 3418-20.
- 451 43. Waggoner, J. J.; Abeynayake, J.; Sahoo, M. K.; Gresh, L.; Tellez, Y.; Gonzalez, K.;  
452 Ballesteros, G.; Pierro, A. M.; Gaibani, P.; Guo, F. P.; Sambri, V.; Balmaseda, A.; Karunaratne, K.;  
453 Harris, E.; Pinsky, B. A., Single-reaction, multiplex, real-time rt-PCR for the detection, quantitation, and  
454 serotyping of dengue viruses. *PLoS neglected tropical diseases* **2013**, *7* (4), e2116.
- 455 44. Waggoner, J. J.; Gresh, L.; Mohamed-Hadley, A.; Ballesteros, G.; Davila, M. J.; Tellez, Y.;  
456 Sahoo, M. K.; Balmaseda, A.; Harris, E.; Pinsky, B. A., Single-Reaction Multiplex Reverse  
457 Transcription PCR for Detection of Zika, Chikungunya, and Dengue Viruses. *Emerging infectious  
458 diseases* **2016**, *22* (7), 1295-7.
- 459 45. Rojas, A.; Stittleburg, V.; Cardozo, F.; Bopp, N.; Cantero, C.; Lopez, S.; Bernal, C.;  
460 Mendoza, L.; Aguilar, P.; Pinsky, B. A.; Guillen, Y.; Paez, M.; Waggoner, J. J., Real-time RT-PCR for  
461 the detection and quantitation of Oropouche virus. *Diagnostic microbiology and infectious disease* **2020**,  
462 *96* (1), 114894.
- 463

464 **Figures**

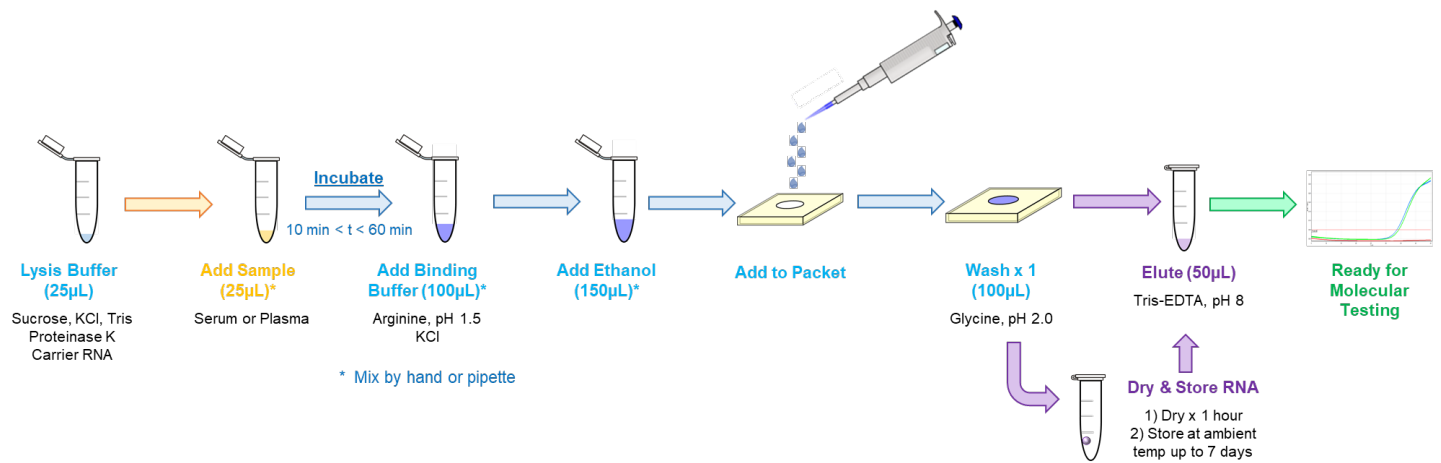


466 **Figure 1.** Components and assembly of RNA extraction packets (left) and an assembled packet

467 (right). Whatman 3, Fusion 5, and GF/D were evaluated as RNA binding membranes.



468 **Figure 2.** Amino acid binding buffers improve RNA yield from RNA extraction packets. **A)**  
469 Arginine binding buffer resulted in lower and more consistent rRT-PCR Ct values (improved  
470 RNA yield) following DENV, CHIKV and OROV RNA binding to and elution from extraction  
471 packets assembled with Whatman 3, Fusion 5, and GF/D membranes. Ct values were  
472 significantly lower when results from all membranes were pooled (Total; unpaired t-test);  
473 comparisons for individual membranes did not reach statistical significance. Box-and-whisker  
474 plots display median and range of all values. **B)** Fold increase in RNA yield with the use of  
475 arginine binding buffer compared to lysis buffer. Estimated based on expected 3.3 cycle  
476 *decrease* in Ct value for each 10-fold *increase* in RNA concentration in an rRT-PCR with 100%  
477 efficiency.

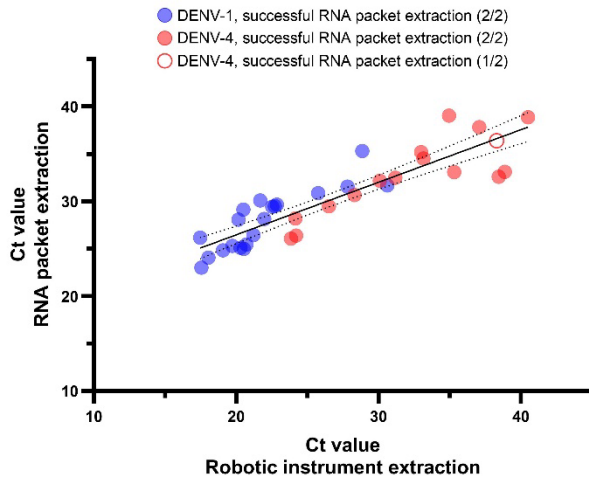


478

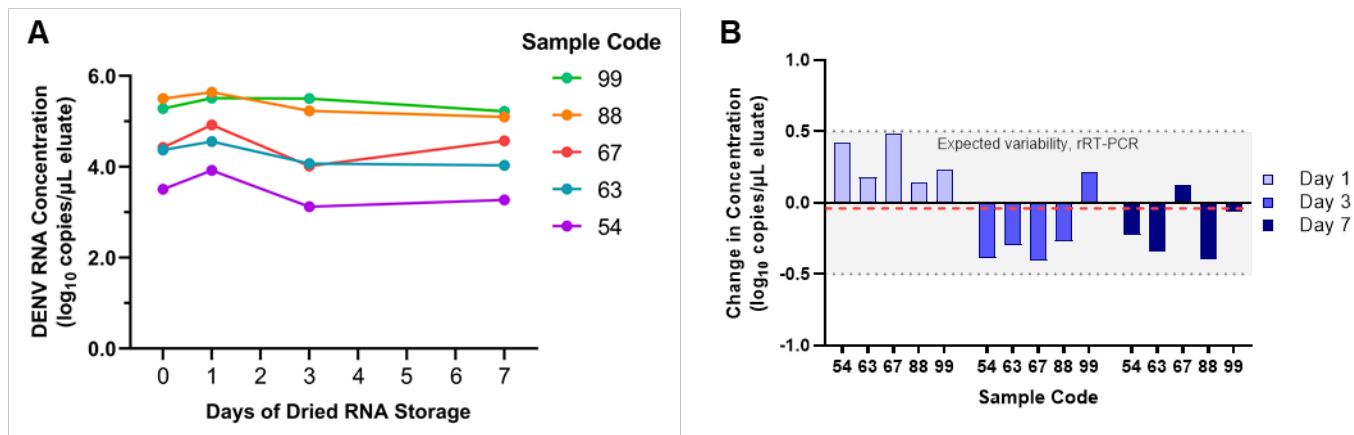
479 **Figure 3.** Optimized packet workflow for RNA extraction and storage. All steps are performed

480 at ambient temperature.





481 **Figure 4.** DENV RNA was successfully extracted from clinical samples using economical  
482 packets and rRT-PCR Ct values correlated with results following EMAG robotic extractions.  
483 Successful RNA extraction was defined as a positive result in the DENV multiplex rRT-PCR.<sup>42</sup>  
484 <sup>43</sup> Average Ct values from duplicate packet extractions are graphed versus the Ct following  
485 EMAG extraction for 36 serum samples positive for DENV-1 (n=20) and DENV-4 (n=16).  
486 71/72 eluates (98.6%) from the packets had detectable DENV RNA. The sample from which 1 of  
487 2 replicates was positive is displayed as a half-filled circle.



488

489 **Figure 5.** DENV RNA stored on dried extraction membranes is stable at ambient temperature for  
490 up to 7 days. **A)** Average DENV-1 RNA concentration in eluates from RNA extraction packets  
491 performed in duplicate is displayed for 5 clinical samples that were fully extracted on day 0 or  
492 that underwent lysis, addition to GF/D membrane-containing packets, glycine wash, drying and  
493 storage at ambient temperature. RNA was then eluted off the dried membranes and tested by  
494 rRT-PCR on days 1, 3 and 7. DENV RNA concentration was calculated from a 4-point standard  
495 curve included on each run. **B)** Change in RNA concentration between day 0 and days 1, 3, and  
496 7. The shaded region highlights the expected intra-run variability of rRT-PCR ( $\pm 0.5 \log_{10}$   
497 copies/ $\mu\text{L}$ ). Mean change in concentration across time points ( $-0.04 \log_{10}$  copies/ $\mu\text{L}$ ) is displayed  
498 (red dashed line).

499 **Table 1.** rRT-PCR Ct values for RNA of different arboviruses following binding to and elution  
500 from Whatman 3, Fusion 5, and GF/D membranes.

<b>Viral RNA</b>	<b>Whatman 3</b>	<b>Fusion 5</b>	<b>GF/D</b>
DENV sample 1	30.13	30.51	30.13
	31.49	30.32	30.64
DENV sample 2	38.20	37.18	36.84
	— <sup>a</sup>	38.52	36.44
CHIKV sample 1	27.07	27.71	25.05
	25.61	28.38	24.89
CHIKV sample 2	35.34	— <sup>a</sup>	34.02
	35.98	40.80	38.04
OROV sample 1	22.34	23.86	22.97
	23.21	23.22	22.87
OROV sample 2	31.22	33.32	32.75
	31.12	33.01	31.50

501 Abbreviations: CHIKV, chikungunya virus; DENV, dengue virus; OROV, Oropouche virus

502 <sup>a</sup> Extraction failed, no Ct value

503 **Table 2.** Clinical and DENV laboratory data for 36 clinical samples extracted with the RNA  
504 packets.

Category	Result
Total, n	36
Gender, female, n (%)	21 (58.3)
Age, mean (SD)	28.9 (14.1)
Day post-symptom onset, mean (SD)	3.6 (1.6)
Serotype, n (%)	
DENV-1	20 (55.6)
DENV-4	16 (44.4)
Viral load, mean (SD) <sup>a</sup>	7.1 (1.4)

514

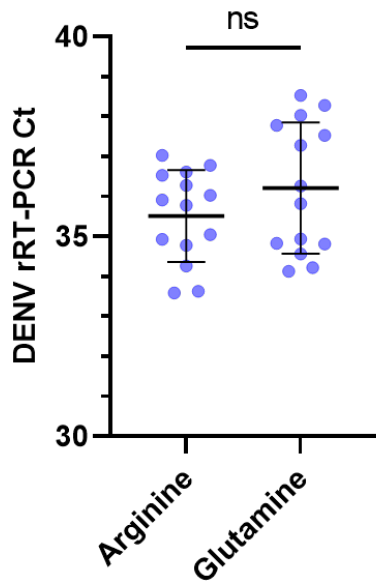
515 Abbreviations: DENV, dengue virus; SD, standard deviation

516 <sup>a</sup> Viral load expressed as log<sub>10</sub> copies/mL serum

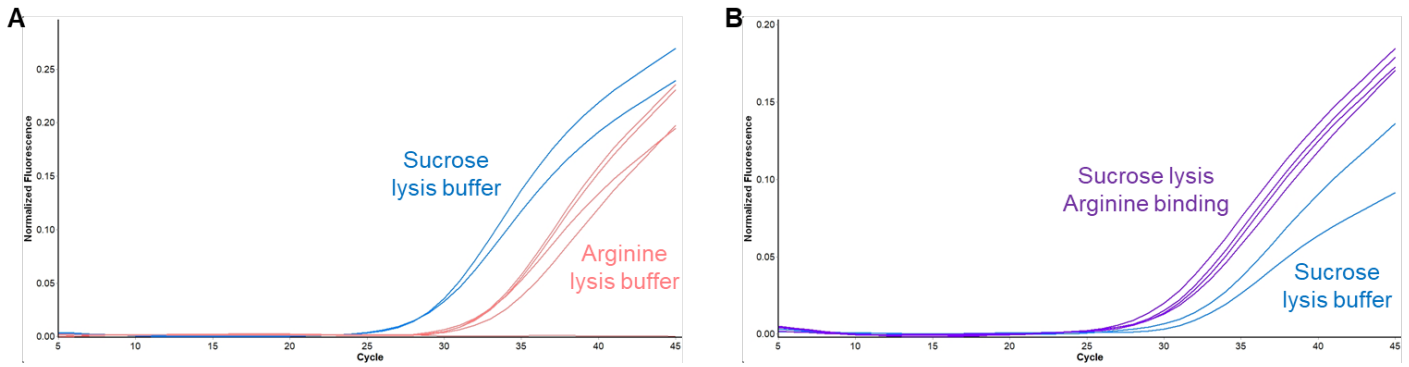
**Simple and economical RNA extraction and storage packets for viral detection from serum  
or plasma**

**Supplemental Material**

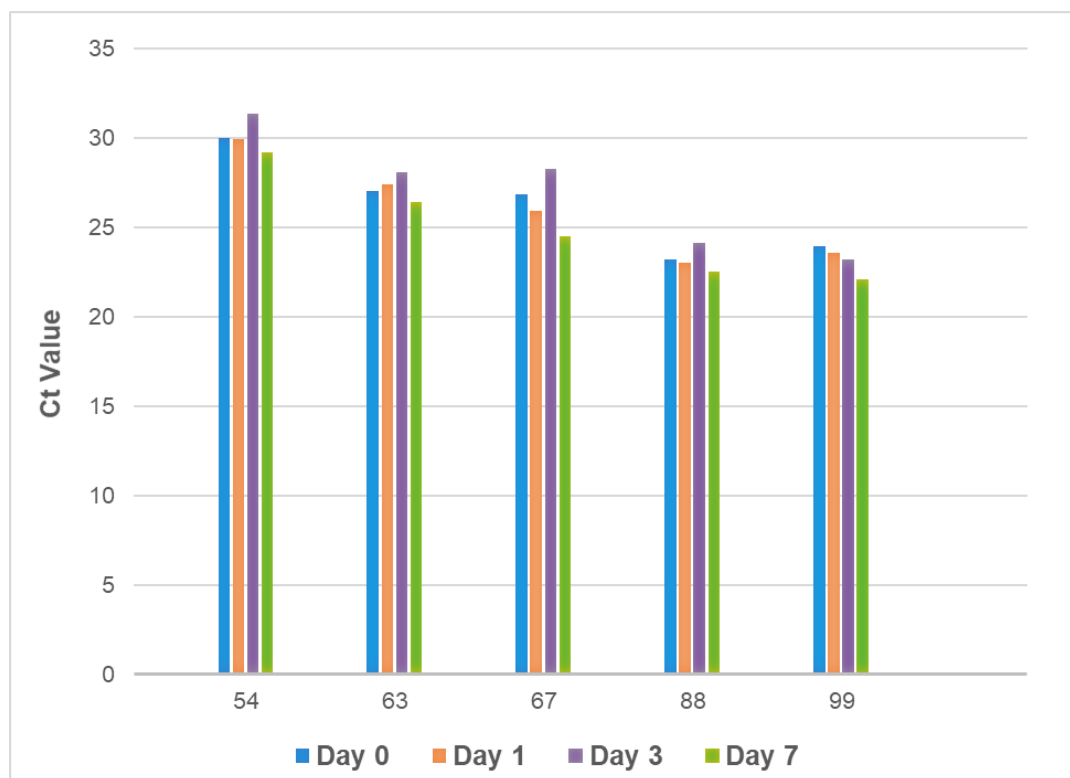
Sarah Hernandez, Fátima Cardozo, David R. Myers, Alejandra Rojas, Jesse J. Waggoner



**Figure S1.** rRT-PCR cycle threshold (Ct) values for lysed DENV-positive serum samples treated with glutamine versus arginine binding buffer prior to addition to extraction packets. All evaluations were done with glass fiber GF/D membranes. Ct values were not significantly different for samples treated with arginine (mean, 35.51; standard deviation, 1.15) versus glutamine (36.21; 1.64;  $p = 0.2$ ).



**Figure S2. A)** Use of arginine buffer for viral lysis results in reduced RNA yield from extraction packets. **B)** A combined protocol incorporating arginine buffer as a binding buffer after lysis in sucrose buffer results in increased RNA yield compared to an extraction protocol without a binding buffer. Different contrived samples were used on the two runs.



**Figure S3.** Stability of DENV Ct values from 5 clinical samples that were eluted from packets after complete extraction on day 0 or following storage at ambient temperature on the membranes prior to elution on days 1, 3, and 7. Ct values are averages of duplicate extractions tested in the DENV multiplex rRT-PCR. Sample numbers are displayed on the x-axis.



**Table S1.** Comparison of DENV Ct values following RNA extraction in experimental lysis

buffers.

<b>Buffer</b>	<b>Replicate</b>	<b>Ct</b>
AVL <sup>a</sup>	1	26.36
	2	26.10
Deionized water	1	33.57
	2	34.07
Sucrose solution	1	28.15
	2	29.14
STET <sup>b</sup>	1	40.64
	2	39.25
SDS-NaCl	1	28.94
	2	28.53

<sup>a</sup> Guanidine thiocyanate-based lysis buffer in the QIAamp Viral RNA Mini Kit

<sup>b</sup> 8% Sucrose, 5% Triton™ X-100, 50mM Tris-HCl, and 50 mM EDTA

**Table S2.** Comparison of DENV Ct values following RNA extraction in lysis mixtures with and without carrier RNA.

<b>Replicate</b>	<b>Sucrose buffer only</b>	<b>Carrier RNA (2.5ug/sample)</b>	<b>Carrier RNA (5.0ug/sample)<sup>a</sup></b>
1	29.30	27.27	27.10
2	30.13	26.75	27.79
3	30.27	27.27	—
4	30.08	26.75	—
5	30.51	27.03	—
6	29.72	27.42	—
Average	30.00	27.08	27.45

<sup>a</sup> “—” indicates not tested

**Table S3.** Comparison of DENV Ct values following RNA extraction in lysis mixtures with and without proteinase K.

<b>Replicate</b>	<b>Sucrose buffer + carrier RNA</b>	<b>Proteinase K (2.5ug/sample)</b>	<b>Proteinase K (5.0ug/sample) <sup>a</sup></b>
1	32.09	28.34	28.38
2	29.50	27.12	27.24
3	31.14	27.31	27.38
4	33.00	26.23	26.92
5	32.46	26.48	—
6	32.71	26.35	—
Average	31.82	26.97	27.48

<sup>a</sup> “—” indicates not tested

**Table S4.** Comparison of DENV Ct values following extractions using sucrose lysis buffer containing 100mM MgCl<sub>2</sub> or KCl.

Sample	Replicate	<u>Sucrose Lysis Buffer</u>	
		MgCl <sub>2</sub>	KCl
1	1	31.99	31.10
	2	30.90	31.33
2	1	34.73	34.66
	2	34.34	34.09

**Table S5.** Ct values following RNA extraction with economical packets and a commercial robotic system.

<b>Sample code</b>	<b>Serotype</b>	<b>Packet Replicate 1</b>	<b>Packet Replicate 2</b>	<b>Average Packet Ct</b>	<b>EMAG Ct</b>
16	D1	24.88	26.22	25.55	17.30
54	D1	28.65	28.60	28.63	23.65
60	D1	30.68	28.34	29.51	22.78
63	D1	27.02	26.92	26.97	21.27
65	D1	26.37	24.31	25.34	21.64
67	D1	26.41	27.48	26.95	21.92
69	D1	31.38	29.51	30.45	27.07
73	D1	25.47	25.29	25.38	21.88
80	D1	28.73	29.83	29.28	24.23
88	D1	23.32	23.31	23.32	18.03
89	D1	25.36	24.75	25.06	19.73
95	D1	35.42	34.31	34.87	29.58
99	D1	24.73	24.17	24.45	18.11
100	D1	27.71	29.13	28.42	23.46
109	D1	26.03	26.04	26.04	20.63
118	D1	25.83	28.00	26.92	22.53
121	D1	33.37	32.48	32.93	31.08
149	D1	25.99	26.49	26.24	21.94
167	D1	29.97	28.91	29.44	23.99
177	D1	30.55	32.17	31.36	28.26
2090	D4	28.66	27.70	28.18	24.81

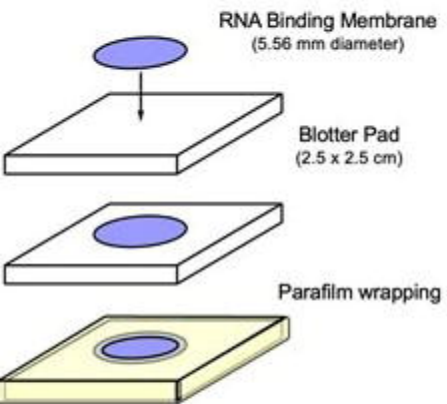
2140	D4	33.11	32.18	32.65	24.14
2176	D4	25.89	26.90	26.40	24.20
2257	D4	35.46	34.92	35.19	32.98
2260	D4	32.61	32.58	32.60	38.44
2353	D4	33.24	32.91	33.08	35.30
2410	D4	33.09	31.86	32.48	31.17
2424	D4	31.86	32.49	32.18	30.09
2431	D4	35.12	33.90	34.51	33.15
2435	D4	33.22	32.99	33.11	38.36
2470	D4	29.39	29.56	29.48	26.52
2481	D4	39.01	39.06	39.04	34.95
2499	D4	30.80	30.54	30.67	28.30
8242	D4	N*	36.39	36.39	38.29
8371	D4	36.11	39.53	37.82	37.07
8410	D4	38.29	39.44	38.87	40.50

---

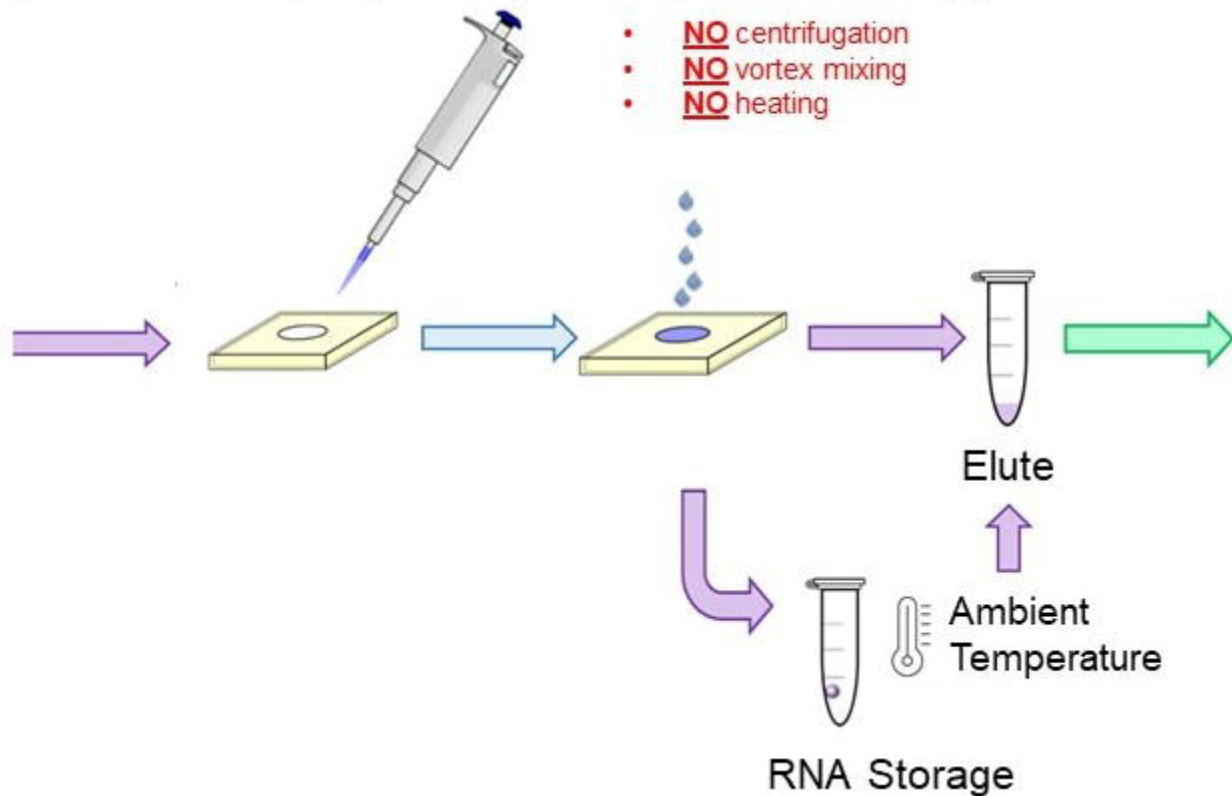
\* Indicates failed extraction

Abbreviations: EMAG, commercial extraction robot

## RNA Extraction Packet



## Simple, Rapid Sample Processing



## Molecular Testing

