

Investigating the Characteristics of Genes and Variants Associated with Self-Reported Hearing Difficulty in Older Adults in the UK Biobank

Morag A. Lewis¹, Bradley A. Schulte², Judy R. Dubno², Karen P. Steel¹.

¹Wolfson Centre for Age-Related Diseases, King's College London, SE1 1UL, UK

²The Medical University of South Carolina, SC, USA

Abstract

Background: Age-related hearing loss is a common, heterogeneous disease with a strong genetic component. More than 100 loci have been reported to be involved in human hearing impairment to date, but most of the genes underlying human adult-onset hearing loss remain unknown. Most genetic studies have focussed on very rare variants (such as family studies and patient cohort screens) or very common variants (genome-wide association studies). However, the contribution of variants present in the human population at intermediate frequencies is hard to quantify using these methods, and as a result, the landscape of variation associated with adult-onset hearing loss remains largely unknown.

Results: Here we present a study based on exome sequencing and self-reported hearing difficulty in the UK Biobank, a large-scale biomedical database. We have carried out variant load analyses using different minor allele frequency and impact filters, and compared the resulting gene lists to a manually-curated list of nearly 700 genes known to be involved in hearing in humans and/or mice. An allele frequency cutoff of 0.1, combined with a high predicted variant impact, was found to be the most effective filter settings for our analysis. We also found that separating the participants by sex produced markedly different gene lists. The gene lists obtained were investigated using gene ontology annotation, functional prioritisation and expression analysis, and this identified good candidates for further study.

NOTE: This preprint reports new research that has not been certified by peer review and should not be used to guide clinical practice.

Conclusions: Our results suggest that relatively common as well as rare variants with a high predicted impact contribute to age-related hearing impairment, and that the genetic contributions to adult hearing difficulty may differ between the sexes. Our manually-curated list of deafness genes is a useful resource for candidate gene prioritisation in hearing loss.

Keywords: adult hearing difficulty, UK Biobank, exome sequencing, hearing impairment, predicted variant impact

Background

Hearing impairment is one of the most common sensory deficits in the human population and has a strong genetic component. However, the auditory system is a complex system with many interacting parts, which offers many routes to loss of function. Accordingly, although over 150 genes have been identified as contributing to non-syndromic human hearing loss [1], the majority of genes involved in hearing remain unknown. Moreover, most of the genes identified so far are those where mutations result in early-onset, severe hearing loss. While age-related hearing loss (ARHL) is very common, it is also very heterogeneous, and the associated landscape of genetic variation remains unclear, both at the gene and at the variant level. Even when analysing rare variants in known deafness genes, a wide mutational spectrum can be observed, with a range of allele frequencies and predicted impacts which differ on a gene-by-gene basis [2].

As early as 1997 it was noted that single gene mutations can lead to early postnatal or adult-onset progressive hearing loss [3]. This remains the case 25 years later; 45 out of the 51 known human autosomal dominant deafness genes result in progressive hearing loss when mutated [1]. These mutations are rare, high-impact variants which have been identified through family studies and candidate gene screening of patient cohorts, for example [4-7]. However, most such variants are

ultra-rare or even private [5], and while they fully explain the hearing loss seen in the affected individual or family, they cannot explain all the ARHL seen in the population. On the other end of the scale, looking at common variants, very large genome wide association studies (GWAS) have recently uncovered several new loci [8, 9], but because GWAS work by identifying markers linked to disease loci, they cannot detect recent mutations or those which are not widespread throughout the population. A recent GWAS on hearing loss (made available as a preprint), which reports both common and rare variant association analyses, found that the rare variant association signals were mostly independent of the common variant associations nearby, confirming that it is important to include consideration of rare variants in the genetic landscape of ARHL [10].

Alternative approaches are therefore required to identify novel variants and genes associated with age-related hearing loss. Here we have investigated variants associated with self-reported hearing difficulty in 94,312 UK Biobank participants with available exome sequence data. We have assessed variant load in self-reported hearing difficulty at a range of variant minor allele frequencies, from rare variants (minor allele frequency (MAF) < 0.005) to very common variants, and compared the resulting gene lists to a much larger list of known deafness genes that we have curated and present here, based on work in mice as well as in humans. We found the optimal MAF cutoff to be 0.1, which is an intermediate frequency, neither rare nor common. Our results suggest that intermediate frequency variants with a high predicted impact contribute to hearing difficulty, and also that the genetic contributions to hearing impairment may differ between the sexes.

Results

After filtering, in the normal hearing group there were 18235 male (average age=62.37 years) and 30496 female (average age=62.20 years) participants (48731 people in total, overall average age 62.29). In the hearing difficulty group, there were 24237 male (average age=63.60 years) and 21344 female (average age=62.96 years) participants (45581 people in total, overall average age 63.28). It is notable that while the overall group sizes are similar, there are many more female participants

than male in the normal hearing group, reflecting the better hearing that women have later in life [11], although the average age of the participants (62-63 years) is later than the average onset of menopause, after which hearing tends to decline rapidly [12]. When we plotted the distribution of each broad ethnic grouping within each category (Additional File 2: Table S1, Fig S1), we found that there were many more Black people in the normal hearing group than in the hearing loss group (especially Black female participants) (Additional File 1: Fig S1). Similar results have been noted in previous studies [13]. The distribution of other self-reported ethnicities were broadly similar across the sex-separated groups, but it is notable that the largest difference in self-reported hearing phenotype between the sexes is in the White ethnic grouping (Additional File 1: Fig S1).

Outlier analysis of variant load

Outlier analyses of the genomic variant loads per gene in each group of people were carried out. Briefly, for each gene, the number of variants in people with hearing difficulty was compared to the number of variants in people with normal hearing using a linear regression. Each regression analysis resulted in two lists of outlier genes; those with a much higher variant load than expected (high variant load in hearing difficulty) and those with a much lower variant load than expected (which means a high variant load in normal hearing) (Fig 1. Additional File 2: Table S2). These lists were analysed to assess the effect of allele frequency and impact setting.

We tested different minor allele frequency limits to determine the optimal cutoff. We carried out regression analyses for six MAF cutoffs (0.005, 0.01, 0.05, 0.1, 0.2 and 1), and obtained the lists of outlier genes, those genes with more variants than expected in hearing difficulty or in normal hearing (Table 1a). To assess the potential biological relevance of these high variant load gene lists to hearing impairment, genes associated with deafness in humans and/or mice were compared with genes in the two outlier lists using our own manually-curated list of known deafness genes (using the human orthologues of deafness genes known only in mice where possible, resulting in 720 genes in total) (Additional File 2: Table S3). Our assumption is that enrichment for known deafness genes

supports biological relevance of the gene lists derived from the outlier analysis. We also compared the high variant load lists to our list of highly variable genes (Additional File 2: Table S4), genes which are often reported to have a high number of variants in sequencing projects. Our assumption is that enrichment for highly variable genes in the outlier gene lists is likely to reflect features unrelated to hearing. Hypergeometric tests were carried out to assess the significance of the number of deafness and highly variable genes in each outlier gene list.

Table 1. The number of genes, known deafness genes and highly variable genes in the high variant load lists at different minor allele frequencies and impacts.

Participants	Impact	MAF cutoff	Variant load in normal hearing			Variant load in hearing difficulty		
			Number of genes	Deafness genes	Highly variable genes	Genes	Deafness genes	Highly variable genes
A								
All	High	0.005	23	2 (adj.p=1)	3 (adj.p=1)	29	7 (adj.p=8.95x10 ⁻⁴)	4 (adj.p=0.98)
All	High	0.01	28	2 (adj.p=1)	4 (adj.p=0.88)	54	9 (adj.p=0.0016)	2 (adj.p=1)
All	High	0.05	135	6 (adj.p=1)	15 (adj.p=0.021)	116	15 (adj.p=1.60x10 ⁻⁵)	10 (adj.p=0.82)
All	High	0.1	222	18 (adj.p=0.011)	23 (adj.p=0.0029)	156	19 (adj.p=2.38x10 ⁻⁵)	12 (adj.p=1)
All	High	0.2	347	24 (adj.p=0.014)	35 (adj.p=9.35x10 ⁻⁵)	231	21 (adj.p=6.92x10 ⁻⁴)	24 (adj.p=0.0020)
All	High	1	635	32 (adj.p=0.29)	65 (adj.p=3.32x10 ⁻⁹)	630	39 (adj.p=0.0031)	72 (adj.p=1.49x10 ⁻¹²)
B								
All	Low	0.1	61	5 (adj.p=1)	9 (adj.p=0.033)	36	0 (adj.p=1)	8 (adj.p=0.0035)
C								
Male	High	0.1	181	17 (adj.p=7.67x10 ⁻⁴)	15 (adj.p=0.099)	156	9 (adj.p=0.56)	8 (adj.p=1)
Female	High	0.1	184	15 (adj.p=0.0086)	16 (adj.p=0.052)	158	20 (adj.p=1.87x10 ⁻⁶)	13 (adj.p=0.16)

D								
All	High (MSC)	0.1	27	4 (adj.p=1)	7 (adj.p=1.88x10 ⁻⁴)	11	4 (adj.p=0.21)	2 (adj.p=0.57)
Male	High (MSC)	0.1	14	2 (adj.p=1)	5 (adj.p=6.12x10 ⁻⁴)	18	4 (adj.p=1)	6 (adj.p=1.60x10 ⁻⁴)
Female	High (MSC)	0.1	13	1 (adj.p=1)	2 (adj.p=0.77)	8	3 (adj.p=0.45)	3 (adj.p=0.020)

A, Gene counts for high variant load lists when using high impact variants at different MAF cutoffs.

B, Gene counts for high variant load lists when using low impact variants, MAF<0.1. **C**, Gene counts for high variant load lists with sex segregation, MAF<0.1. **D**, Gene counts for high variant load lists using the MSC cutoff, showing the counts for all participants and separated by sex, MAF<0.1. The p values for the deafness gene counts are the probability of observing at least that many deafness genes in the high variant load list given the overall gene list and the total number of deafness genes it contains. The same calculations were carried out with the highly variable gene list to obtain the probabilities of observing the highly variable gene counts. Hypergeometric p values were calculated using R and adjusted with a Bonferroni correction. Significant p values (adj. p<0.05) are highlighted in orange.

As the MAF limit increased, the number of genes in the outlier lists also increased, as did the number of deafness and variable genes in each outlier list (Table 1a). However, while the number of deafness genes in the high variant load in hearing difficulty outlier list was significant at every MAF limit (Table 1a), the number of variable genes in the high variant load in hearing difficulty outlier lists did not reach significance until the MAF limit was set to 0.2 (20%). This suggests that a MAF of 0.1 is a good choice in order to obtain an outlier gene list which is relevant to hearing impairment and does not include too many highly variable genes. For the outlier genes with a high variant load in normal

hearing, the MAF cutoffs where the number of deafness genes was significant (MAF < 0.1, MAF < 0.2) also resulted in a significant number of highly variable genes (Table 1a).

The effect of including variants with a low impact (Additional File 2: Table S5) was then tested, using a MAF cutoff of 0.1, and we found that we did not obtain as many genes in the outlier lists, and only the number of highly variable genes in each outlier list was significant (Table 1), suggesting that relaxing the restriction on variant impact is likely to result in detecting naturally variable genes as outliers rather than genes linked to the phenotype under study. We therefore proceeded with analysing variants with a high impact and a minor allele frequency below 0.1. From these settings, we obtained 156 outlier genes with a high variant load in hearing difficulty, and 222 outlier genes with a high variant load in normal hearing (Figure 1, Table 1a).

Because a much higher proportion of the hearing difficulty group was male, the same analysis was carried out on participants separated by sex. The numbers of outlier genes in each case were similar (Table 1b), but the gene lists were markedly different. Twenty-five genes were present in both male and female hearing difficulty high variant load lists, including seven deafness genes (*CLIC5*, *MYH14*, *COL9A3*, *ELMO3*, *FSCN2*, *GJB2*, *SLC26A5*). Twenty-four genes were present in both normal hearing high variant load lists, including three deafness genes (*POLG*, *GLI3*, *MYO3A*) (Figure 2, Additional File 2: Table S2). There was a significant enrichment in deafness genes in the normal hearing outlier lists in both sexes, and in the hearing difficulty outlier list in female participants (Table 1c). There were no significant overlaps with the highly variable gene list (Table 1c).

We chose a stringent fixed cutoff for the CADD score of 25, but it is unlikely that a single cutoff will be uniformly accurate for every gene. The mutation significance cutoff (MSC) is a gene-specific cutoff value which uses data from HGMD and ClinVar [14]. Because most genes do not have sufficient high-quality mutations described in these databases, the outlier analysis was repeated on the 2947 genes which did (MAF<0.1). We found 27 genes with a high variant load in normal hearing and 11 with a high variant load in hearing difficulty in all participants (Table 1d). Numbers in the sex-separated

analyses were lower, and only the highly variable genes showed significant enrichment, in a subset of the lists (Table 1d) [15-19].

Characteristics of the variants in the high variant load lists

The large numbers of outlier genes in people with normal hearing was unexpected, so we asked if there might be different types of variants common in hearing difficulty compared with normal hearing. We investigated the characteristics of the variants in the high variant load lists, taking the most deleterious consequence for each variant in each gene (defined in order in Additional File 2: Table S5). Variant counts were normalised per person and per gene. We did not see any large differences in variant type (Additional File 1: Fig S2). In all analyses, missense variants made up a large proportion of the total variant counts per person per gene.

Weighted burden tests

Weighted burden analyses were carried out on the variants with MAF < 0.1 and a high predicted impact, using the geneVarAssoc and scoreassoc tools, which have been used before on the ethnically heterogeneous UK Biobank dataset [20]. Scoreassoc assigns a score per subject, per gene, and tests for the difference in average scores of cases vs controls, obtaining a p value for each gene. Variants were weighted by minor allele frequency (the lower the MAF, the higher the weight), but not by impact, since all variants included in this analysis were high impact. After correcting for multiple tests, none of the genes retained significant p-values. We therefore ranked the gene list by signed log P value (SLP) [21]. The SLP is the log₁₀ of the p-value, with a positive sign indicating that cases have more variants than controls, and a negative sign indicating the opposite. Thus, ranking the genes by SLP would result in one extreme of the list being genes with more variants in the people who did not report hearing difficulty (n=270 genes with SLP < -2), and the other extreme being genes with more variants in the people who did report difficulty hearing (n=362 genes with SLP > 2) (Additional File 2: Table S2). We carried out hypergeometric tests on these gene lists, comparing the

total number of genes with the number of deafness and highly variable genes (Additional File 2: Tables S3 and S4), and found no significant enrichment of either deafness or variable genes.

Gene ontology enrichment analysis

In order to look for any clues to pathological mechanisms, we carried out a gene ontology (GO) enrichment analysis using gProfiler [22] on the high variant load lists from the outlier analysis (Additional File 2: Table S2; high impact variants with $MAF < 0.1$). We restricted the output to GO terms with between 5 and 200 genes, since terms with more genes than that are overly general, and those with fewer genes are too specific. We found 33 GO terms enriched in the lists, including multiple terms specific to hearing (eg GO:0007605; sensory perception of sound) (Additional File 2: Table S6). The largest list of GO terms came from the genes with a high variant load in male participants with normal hearing (Additional File 2: Table S6), mostly because of a set of genes identified as being involved in stereocilium structure and function. There were 7 genes annotated with the term “stereocilium bundle”; *USH1C*, *USH2A*, *MYO3A*, *TMC2*, *ADGRV1*, *PDZD7* and *PKHD1L1*. Most are known human deafness genes, but *PKHD1L1* and *TMC2* have only been identified as mouse deafness genes to date [23, 24]. Far fewer specific GO terms were identified from the genes with a high variant load in female participants with hearing difficulty or with normal hearing (Additional File 2: Table S6), even though there was a similar number of known deafness genes in the lists (Table 1). The term “sensory perception of sound” was identified as enriched in the hearing difficulty outlier genes in female and all participants, and in the normal hearing outlier genes in male participants (Additional File 2: Table S6). Genes annotated with this term which had a high variant load in female participants with hearing impairment were *MYO3B*, *MYH14*, *CDH23*, *CLIC5*, *CHRNA10*, *FBXO11*, *TMC1*, *GJB2*, *NAV2*, *LOXHD1*, *SLC26A5* and *MYO6*. Genes annotated with this term which had a high variant load in all participants with hearing loss were *COL11A1*, *MYH14*, *CDH23*, *CLIC5*, *CHRNA10*, *FBXO11*, *TMC1*, *GJB2*, *LOXHD1*, *SLC26A5* and *MYO6*. Most of these are known human deafness genes, but to date, *FBXO11* has only been identified in the mouse, not in humans, and *MYO3B* and

CHRNA10 are not in our compiled list of known deafness genes (they are included in the GO term annotation through orthologous similarity rather than published evidence). In summary, the GO term analysis showed enrichment for terms relating to sensory hair cells or cytoskeletal elements known to be important to hair cell function, and this appears to be driven by the enrichment for known deafness genes in the lists analysed. Many more genes were included in the high variant load lists than were described by GO annotation terms, reflecting the limitations in current GO annotations of many genes.

Gene prioritisation

The lists of genes of interest from the outlier analyses contained many genes not previously associated with hearing impairment, too many to follow up in detail. Therefore, ToppGene [25] was used to prioritise the genes from the high variant load lists, using our manually-curated deafness gene list (Additional File 2: Table S3) as a training list. The remaining genes in each high variant load list were scored, ranked and assigned p-values; after correction for multiple testing, we obtained eight genes from the hearing difficulty lists (*NTRK1*, *TGFBR1*, *CACNA1S*, *P2RX7*, *MYLK*, *TTN*, *CACNB3* and *ITGB1*) and three from the normal hearing lists (*NRG1*, *CACNA1H* and *FLNA*) (Additional File 2: Table S7).

Using expression analysis to highlight new candidate genes

An analysis of the expression of candidate genes from our outlier analyses was carried out using single-cell RNAseq datasets from the gEAR database of mouse inner ear tissue analyses [26]. We reasoned that if a gene shows strong, specific expression in certain cell types in the inner ear, that suggests a potential functional role for the gene in those cell types, and would make it a good candidate for further investigation. Mouse datasets were chosen to cover as many inner ear cell types as possible between embryonic day (E) 16 and postnatal day (P) 35. We selected those candidate genes from the outlier analysis high variant load lists (Additional File 2: Table S2; high impact variants with $MAF < 0.1$) which had a high quality one-to-one mouse orthologue ($n=564$), and

we also plotted data for the genes known to underlie deafness in both mice and humans which were not already included (an additional 99 genes) as useful markers of cochlear cell types. After selecting those genes showing high variance in expression across the cell types, there were 234 genes from the high variant load lists and 78 more from the known deafness gene list. From the resulting heatmap, clusters of genes were annotated according to their expression, defining high expression levels (red) as 2-3, middle expression levels (orange) as 1-2 and low expression levels as 0-1 (yellow) (Additional File 1: Fig S3, Additional File 2: Table S8). Gene clusters were linked to specific cell types if they showed high or middle expression specific to those cell types, and the clusters were classified by known marker genes for specific cell types where these were present (Additional File 1: Fig S3, Additional File 2: Table S8). This allowed us to identify good candidate genes from those outlier genes which were not already known deafness genes. For example, there were three genes which appeared to be strongly and specifically expressed in pillar cells, *Col4a4* and *Col4a3*, which are known deafness genes [27], and *Thsd7a*, which is a gene with high variant loads in female and all participants with self-reported hearing difficulty (cluster 2K, Additional File 1: Fig S3). There were multiple clusters of genes strongly expressed in hair cells (clusters 1C, 1D, 1F, 1H, 1N, 1O, 1P, 1Q, 2E, 2F, 2G, 2I, 3B, 3H, Additional File 1: Fig S3), and candidate genes from this list included *Strip2* and *Brd4*, which had high variant loads in male participants reporting hearing difficulty, and *Vwa8* and *Chrna10*, which had high variant loads in female and all participants reporting hearing difficulty. Fewer genes were observed that were strongly and specifically expressed in the spiral ganglion neurons (SGN) and strial cell types, possibly because there were fewer datasets available in the gEAR database for these cell types compared to hair cells, pillar cells and supporting cells, but cluster 2D did show consistent SGN expression (Additional File 1: FigS3). Candidate genes from the SGN cluster include the mouse deafness gene *Ercc6* [28], which has a high variant load in female participants with normal hearing, and *Abr*, which has a high variant load in all three groups with hearing difficulty. Some genes were found which clustered in strial cell types (marginal, intermediate and basal cells, clusters 1J, 1M, 3I, 4A, Additional File 1: Fig S3). All the genes plotted on the heatmap are

listed with their classifications in Additional File 2: Table S8, and a summary of the clusters and their outlier genes is in Table 2. It is notable that outlier genes are found in all but two of the clusters, suggesting that there is no one cell type or cochlear location wholly or largely responsible for adult hearing difficulty in either sex (Figure 3, Table 2).

Table 2. Clusters from the heatmap and their outlier genes.

	Genes in hearing difficulty outlier lists	Genes in normal hearing outlier lists
Cluster 1A Middle in RM and OC, mid-low in LW, low in SGN and SC Cells of the cochlear duct (<i>Myh14</i>)	<i>Mrpl38</i> , <i>Trp53i13</i> , <i>Dnpep</i> , <i>Atp6v0a2</i> , <i>Arhgap17</i> , <i>Myh14</i> , <i>Tgfbr1</i> , <i>Itgb1bp1</i>	<i>Krt10</i> , <i>Yy1</i> , <i>Prkra</i> , <i>Txndc16</i> , <i>Nsrp1</i> , <i>Sap30bp</i> , <i>Gpr180</i> , <i>Maz</i> , <i>Rae1</i> , <i>Zfp11</i> , <i>Itgb1bp1</i> , <i>Dpp7</i> , <i>Proser2</i>
Cluster 1B High in HC, mid-high in rest of OC, middle in RM, mid-low in LW, low in SC Organ of Corti and fibrocytes	<i>Ddx52</i> , <i>Dxo</i> , <i>Acp6</i> , <i>Rrp9</i> , <i>Itsn2</i> , <i>Dlg5</i> , <i>Ptpn13</i>	<i>Lmf2</i> , <i>Gas8</i> , <i>Svil</i> , <i>Mus81</i>
Cluster 1C High in OHC, middle in rest of OC and RM, mid-low in LW, low in SC and SGN Outer hair cells	<i>Snapc3</i> , <i>Mink1</i>	<i>Mink1</i> , <i>Prdm2</i> , <i>4932438A13Rik</i>
Cluster 1D High in OHC, mid-high in rest of OC, mid-low in LW and SC, low in RM and SGN Hair cells (<i>Synj2</i>)	<i>Ube3b</i> , <i>Synj2</i> , <i>Tacc2</i>	<i>Mpdz</i> , <i>Tacc2</i> , <i>Hyou1</i>

	Genes in hearing difficulty outlier lists	Genes in normal hearing outlier lists
<p>Cluster 1E</p> <p>Mid-high in HC, middle in rest of OC, middle in fibrocytes, mid-low in RM and SC, low in rest of LW and SGN</p> <p>Hair cells</p>	<i>Madd</i>	<i>Ubr4, Peg3, Cadm1</i>
<p>Cluster 1F</p> <p>Mid-high in OHC, middle in rest of OC, middle in RM, fibrocytes, Hensen cells and IPhC, mid-low in rest of SC and rest of LW, low in SGN</p> <p>Outer hair cells</p>	<i>Brd4, Ubtf, Bri3bp, Sfxn5,</i> <i>Nav2</i>	<i>Srp68, Kdm5a, Nav2</i>
<p>Cluster 1G</p> <p>Mid-high in OC and RM, mid-low in LW, SC, low in SGN</p> <p>Organ of Corti and Reissner's membrane</p>	<i>Kmt2c, Agrn, Htt</i>	<i>Gramd1a, Kdm1a, Agrn, Leng8</i>
<p>Cluster 1H</p> <p>Mid-high in HC and RM, mid-low in rest of OC, LW, SC, low in SGN</p> <p>Hair cells and Reissner's membrane</p>	<i>Vwa8, Vps13b, Cgn</i>	<i>Atr, Sgip1</i>
<p>Cluster 1I</p> <p>Low in SC, SGN and marginal cells, middle in OC, RM and rest of LW</p>	<i>Numa1, Pdlim5, Hnrnpa0,</i> <i>Pam</i>	<i>Dmxl1, Arid1b, Polg, Numa1,</i> <i>Tjp1, Etl4</i>

	Genes in hearing difficulty outlier lists	Genes in normal hearing outlier lists
<p>Cluster 1J</p> <p>Middle in OHC, RM and rest of LW, low in rest of OC, spindle/root cells, SC and SGN</p>		<i>Rin2</i>
<p>Cluster 1K</p> <p>Mid-high in pillar cells, middle in rest of OC, fibrocytes and IPhC, low in rest of LW, rest of SC, SGN and RM</p> <p>Pillar cells</p>	<i>Adamts2, Me3, Col11a1, Lamb2, Itpr2, Fzd9</i>	<i>Zfpm1</i>
<p>Cluster 1L</p> <p>Middle in pillar cells and fibrocytes, mid-low in RM, OHC, basal cells, spindle and root cells, low in rest of OC, rest of LW, SC and SGN</p>	<i>Lama2</i>	<i>Hmcn1, Rgs3, Pgm5, Synm, Rcl1, Lama2</i>
<p>Cluster 1M</p> <p>Mid-high in LW, middle in OC, mid-low in SC, low in SGN and RM</p> <p>Stria vascularis (<i>Kcnj10</i>)</p>		<i>Slc12a2</i>
<p>Cluster 1N</p> <p>Mid-high in OC, low in LW, SGN, SC and RM</p> <p>Hair cells (<i>Pcdh15</i>)</p>	<i>Grwd1, Surf6, Tjap1, Tmprss9</i>	<i>Eif2b3, Grwd1, Nop9, Celsr1, Man2b2, Tcerg1, Cog4, Sema6d, Rgs11</i>

	Genes in hearing difficulty outlier lists	Genes in normal hearing outlier lists
<p>Cluster 1O</p> <p>High in HC, middle in PC, low in DC, SGN, RM, LW and SC</p> <p>Hair cells (<i>Atoh1, Pou4f3, Otof</i>)</p>	<i>Fscn2, Chrna10, Lmod3</i>	<i>Lmod3</i>
<p>Cluster 1P</p> <p>High in HC, low in rest of OC, SGN, RM, LW and SC</p> <p>Hair cells (<i>Myo7a, Ptprq</i>)</p>	<i>Cdh23, Loxhd1</i>	<i>Osbp2</i>
<p>Cluster 1Q</p> <p>High in HC, middle in DC, low in PC, SGN, RM, LW and SC</p> <p>Hair cells (<i>Tmc1</i>)</p>	<i>Tmc1, Strip2</i>	<i>Tmprss7</i>
<p>Cluster 1R</p> <p>High in OHC, mid-high in rest of OC, mid-low in SC, low in LW, RM and SGN</p> <p>Organ of Corti</p>		<i>Rnf128, Otog, Dnaja4, Ush1c</i>
<p>Cluster 2A</p> <p>Middle in OC and RM, mid-low in LW, low in SC and SGN</p>	<i>Atxn7, Noc2l, Nob1, Capn10, Cog1, Iqcb1, Elmo3, Slc9a8, Aldh4a1, Szt2, Dach1, Tcirg1, Pkp3, Chmp4c</i>	<i>Rfx7, Fggy, Cep295, Zfp142, Sec24d, Pld2, Lgr4, Dock6, Baz1a, Gli3, Sft2d3, Abca3, Slc39a3, Cnksr1</i>

	Genes in hearing difficulty outlier lists	Genes in normal hearing outlier lists
<p>Cluster 2B</p> <p>Middle in OC, mid-low in LW, low in RM, SC and SGN</p>	<p><i>Vps13a, Rbl2, Manea,</i> <i>Cep63</i></p>	<p><i>Diaph1, Vps13a, Ints1, Abcb8,</i> <i>Flna, Maml2, Nectin1,</i> <i>Klhdc10, Plec, Fam189b</i></p>
<p>Cluster 2C</p> <p>Low in DC, middle in rest of OC, low in LW, SC, RM and SGN</p>	<p><i>Frmpd1, Hgh1, Myom1</i></p>	<p><i>Hectd4, Frmpd1, Tsr1</i></p>
<p>Cluster 2D</p> <p>Middle in SGN and RM, mid-low in OC, low in SC and LW</p> <p>Spiral ganglion neurons</p>	<p><i>Tango2, Prune2</i></p>	<p><i>Ercc6, Kif1a</i></p>
<p>Cluster 2E</p> <p>Middle in HC, low in rest of OC, LW, SC, RM and SGN</p> <p>Hair cells (<i>Whrn</i>)</p>	<p><i>Dll3, Ppp6r2, Fer1l6, Rimk1a</i></p>	<p><i>Dll3, Pkhd1l1, Fam81b, Pdzd7,</i> <i>Adgrv1, Xirp2, Myo3a,</i> <i>Angpt1, Abca7, Obscn, Mn1,</i> <i>Dvl3, Pjvk, Ltbp1</i></p>
<p>Cluster 2F</p> <p>High in OHC, middle in IHC, low in rest of OC, LW, SC, RM and SGN</p> <p>Outer hair cells (<i>Slc26a5</i>)</p>	<p><i>Gpr152, Slc26a5</i></p>	
<p>Cluster 2G</p> <p>High in OHC, low in rest of OC, LW, SC, RM and SGN</p> <p>Outer hair cells</p>	<p><i>Bmp3</i></p>	<p><i>Tub, Sec16b</i></p>

	Genes in hearing difficulty outlier lists	Genes in normal hearing outlier lists
<p>Cluster 2H</p> <p>Middle in fibrocytes, mid-low in rest of LW and SC, low in RM, SGN and OC</p> <p>Fibrocytes</p>	<i>Mylk</i>	<i>Lamb1, Afap112, Fbln7, Wfdc1</i>
<p>Cluster 2I</p> <p>Mid-high in IHC, middle in DC and PC, low in OHC, LW, SGN, SC and RM</p> <p>Inner hair cells</p>		<i>Dmd, Piezo1</i>
<p>Cluster 2K</p> <p>Mid-high in PC, middle in RM, fibrocytes and spindle/root cells, low in rest of OC, rest of LW, SGN and SC</p> <p>Pillar cells</p>	<i>Thsd7a</i>	
<p>Cluster 2L</p> <p>Middle in RM and fibrocytes, mid-low in rest of LW, low in OC, SC and SGN</p>		<i>Pcolce, Ccdc141</i>
<p>Cluster 2M</p> <p>High in RM, mid-high in spindle/root cells, low in rest of LW, SGN, SC and OC</p> <p>Reissner's membrane</p>	<i>Ap1s3, Atp13a5, Slc26a7</i>	<i>Frem1, Slc26a4</i>

	Genes in hearing difficulty outlier lists	Genes in normal hearing outlier lists
<p>Cluster 3A</p> <p>Middle in OC, RM, LW and SC, low in SGN</p> <p>Cochlear epithelium (<i>Sox10</i>)</p>	<p><i>Eif5b, Tcn2, Sdf2l1, Auts2,</i> <i>Mpond, Sipa1l1</i></p>	<p><i>Abhd14b, Zfx3, Syne2, Nadk</i></p>
<p>Cluster 3B</p> <p>High in OHC, mid-high in IHC, middle in rest of OC, RM, LW and SC, low in SGN</p> <p>Hair cells (<i>Myo6</i>)</p>	<p><i>Nbeal1, Myo6</i></p>	<p><i>Brd2, Hspa4</i></p>
<p>Cluster 3C</p> <p>High in PC, low in marginal cells, RM and SGN, middle in rest of OC, rest of LW and SC</p> <p>Pillar cells</p>	<p><i>Txndc5, Irf2bpl</i></p>	<p><i>Ddrgk1</i></p>
<p>Cluster 3D</p> <p>Low in marginal cells and SGN, middle in OC, RM, rest of LW and SC</p>	<p><i>Dguok, Fndc3a, Asap1</i></p>	<p><i>Kdm6b</i></p>
<p>Cluster 3E</p> <p>Low in SGN, marginal and intermediate cells, high in PC, mid-high in rest of OC, fibrocytes and IPhC, middle in RM, rest of SC and rest of LW</p> <p>Sensory epithelia (<i>Six1</i>)</p>	<p><i>Igfbp5</i></p>	<p><i>P3h4, Col11a2</i></p>

	Genes in hearing difficulty outlier lists	Genes in normal hearing outlier lists
<p>Cluster 3F</p> <p>High in OC, middle in RM, SC and spindle/root cells, low in rest of LW and SGN</p> <p>Organ of Corti</p>	<i>Dpp4</i>	
<p>Cluster 3G</p> <p>High in OC, IPhC and spindle/root cells, middle in RM, rest of SC and fibrocytes, low in SGN and rest of LW</p> <p>Organ of Corti, inner phalangeal and spindle/root cells</p>		<i>Gpx2</i>
<p>Cluster 3H</p> <p>High in HC, mid-high in rest of OC, middle in SC, mid-low in LW and SGN, low in RM</p> <p>Hair cells</p>	<i>Ciabin1, Kif21a</i>	<i>Nceh1, Ciabin1</i>
<p>Cluster 3I</p> <p>Middle in DC, high in rest of OC, fibrocytes and spindle/root cells, middle in rest of LW and SC, mid-low in SGN, low in RM</p> <p>Cells of the cochlear duct</p>	<i>Prdx5, Ndufv3</i>	<i>Srp14, Capns1</i>
<p>Cluster 4A</p> <p>Middle in marginal cells, high in rest of LW, OC, RM and SC, low in SGN</p> <p>Cells of the cochlear duct</p>	<i>Gjb2</i>	

All the heatmap clusters which include outlier genes are listed with their expression description, their classification (if one had been assigned) and the outlier genes separated by whether they were from hearing difficulty outlier lists or normal hearing outlier lists. Thirteen genes are present in both a hearing difficulty outlier list and a normal hearing outlier list. Known deafness genes are in bold.

Discussion

Our data suggest that the genetic contributions to hearing difficulty in later life may differ between the sexes. That is, there may be some genetic impacts which have less effect on women than on men, and vice-versa. The differences observed in the prevalence, severity and onset of ARHL in men and women have been widely reported (for example [11, 13, 29-32], reviewed in [33]). Sex differences in complex traits and disease phenotypes may be attributed to environmental factors (in this case, noise exposure would be relevant, and drug exposure, which can affect hearing in a sex-specific manner [34]), and comorbidities which display sex-related variance may also play a role, for example cardiovascular disease [35-37]. Endogenous factors are also likely to contribute, such as hormone differences, epigenetic and regulatory differences and, of course, the different genetics involved in the XX and XY genomes. There are many studies linking estrogen to hearing sensitivity [38-40], and several genes in the estrogen pathway have been linked to hearing loss [41-43]. However, the average age of our participants was 62-63 years old, which is later than the average age of onset of menopause, so it is unlikely that hormones alone account for the observed effect. A sex-protective effect has been observed in other diseases, such that one sex requires a greater number of risk alleles to develop the disease. This was originally described by Carter et al [44, 45], who noted that women are less likely to suffer from pyloric stenosis but more likely to have children affected by the disease, but the phenomenon can apply to either sex. From our data, we found a similar number of genes bore a high load of variants in each sex, but the gene lists themselves were very different. Hearing impairment, including age-related hearing loss, while referred to as one

condition, is actually the end result of a wide range of inner ear pathologies, so it is plausible that different sets of risk alleles contribute to overall hearing impairment in different sexes.

From our outlier analyses, we found the most useful MAF cutoff to be 0.1. At this level, there were 156 genes with a high variant load in people who reported hearing difficulty, and this list was significantly enriched in deafness genes but not in highly variable genes (Table 1). Increasing the MAF cutoff resulted in a significant enrichment in highly variable genes, and reducing it reduced the number of genes in the list, although the enrichment in deafness genes remained significant at all the cutoffs we tested (Table 1). This suggests that relatively common variants ($MAF < 0.1$) with a high predicted impact do contribute to hearing impairment, which correlates with the findings of another recent UK Biobank study [10], which reports that 16.8% of SNP heritability is contributed by “low-frequency variants” ($0.001 < MAF \leq 0.05$). This is lower than our chosen cutoff ($MAF < 0.1$), but still higher than the standard cutoff of 0.001 recommended for autosomal dominant hearing loss [46]. Similarly, a recent report based on a very large GWAS meta-analysis also concluded that it is likely that a burden of common and rare impactful variants drives the risk of hearing loss [47]. Since ARHL is a complex disease rather than a Mendelian one, it is unsurprising that a different approach is needed when filtering for causative variants.

The burden tests we carried out did not identify any genes with a significant burden in cases (people reporting difficulty hearing) vs controls (people who did not report difficulty hearing). Burden tests compare the average of individual scores in cases and controls, while our outlier approach is an aggregated one, simply summing all the variants in cases and comparing them to the sum in controls. That has proved to be a useful approach for the UK Biobank cohort, which lacks all but the most basic auditory phenotyping data. In a cohort with more detailed auditory phenotyping, a burden test may prove to be a better approach. For example, Ivarsdottir *et al* recently reported identifying the candidate gene *AP1M2* using a loss-of-function gene-based burden test on data from a well-phenotyped Icelandic cohort [48].

Previous studies have concentrated on human hearing loss genes [2, 5], but we have compiled a larger list of nearly 700 genes based on human and mouse studies, and from this we have identified multiple candidate genes among our outliers, including *FSCN2*, *SYNJ2*, *FBXO11*, *NAV2*, *TMC2*, *ERCC6* and *PKHD1L1*. Of the 185 known human deafness genes, 118 are also mouse deafness genes (Additional File 2: Table S3), suggesting that mouse deafness genes are indeed good candidate human deafness genes. This is supported by the report from Praveen et al [10], who identified rare variant gene burdens in the mouse deafness genes *KLHDC7B*, *FSCN2* and *SYNJ2*, the latter two of which were also identified in our analyses (Table 2, Additional File 2: Table S8).

We took three approaches to explore the outlier gene lists, GO analysis, ToppGene prioritisation, and expression analysis. The GO analyses largely reiterated the comparisons with the deafness gene list (Additional File 2: Table S6). The lack of GO annotations linking the genes bearing a high variant load in hearing difficulty in the sex-separated analyses suggests that more pathways underlying hearing loss remain to be discovered and annotated. The ToppGene method is less constrained, because it uses more data sources as well as a training list to prioritise novel candidate genes, but it still relies on existing data and annotation to calculate scores and rankings. From our ToppGene prioritisation of all six high variant load lists, we obtained eleven candidate genes (Additional File 2: Table S7).

Our approach using the gEAR expression data is not limited by annotation, but is restricted to genes which have a high-quality one-to-one mouse orthologue, of which there were 564 (out of 674 outlier genes in total). It is also subject to ascertainment bias due to the relative lack of data on inner ear cell types which are not hair cells or supporting cells. We obtained 6 datasets from hair cells and supporting cells at different stages from E16 to P35, but only 2 datasets from cochlear lateral wall cell types at 2 adult ages (P20 and P30), and only one dataset from SGNs (P17-33). This means that any gene expressed during development in the lateral wall or SGNs, but not expressed in adult stages, will have been missed out of our heatmap. Additionally, most of the known deafness genes

which we plotted on the heatmap are hair cell or supporting cell genes, and this may have biased the clustering. This may be why there are more outlier genes assigned to clusters with expression in hair cells (Figure 3, most notably clusters 1D, 1E, 1N, 1O, 1P, 1Q, 2E, 3B and 3H). Despite that, we did observe several clusters with expression in the lateral wall and spiral ganglion (Figure 3, Additional File 1: Fig S3). We have identified multiple potential candidate genes based on their presence in the outlier gene lists and their expression in specific cell types within the cochlea (Table 2), such as *THSD7A*, which is expressed in pillar cells, and *PRUNE2*, a gene with expression in the spiral ganglion neurons, both of which have a high variant load in hearing difficulty (female and all participants). Three of the ToppGene candidates were included in the gEAR heatmap; *TGFBR1* and *FLNA*, which are mainly expressed in the organ of Corti, and *MYLK*, which is expressed in fibrocytes (Additional File 2: Table S8).

The nature of the regression analysis means that we detected outlier genes associated with normal hearing as well as with hearing impairment, and our enrichment analyses of the outlier gene lists (high impact variants with MAF < 0.1) showed almost all of them were significantly enriched in deafness genes (outliers with a high variant load in male participants with hearing difficulty was the only exception) (Table 1). This suggests that the high variant loads are driven by the association with the self-reported hearing phenotype, not just statistical noise, sequencing error and the natural genetic variability observed in some genes, particularly large genes like *TTN* and *USH2A*. This includes the high variant loads associated with normal hearing as well as those associated with hearing impairment. It is possible that there may be protective variants in some of these genes, for example, variants which result in protection against noise trauma or ototoxic drug exposure, or which simply improve the maintenance of the inner ear machinery. Such a variant has recently been reported in *GJB6* in mice; homozygotes for the deleterious Ala88Val mutation displayed better hearing at older ages, better neural output from the inner ear, and reduced hair cell loss [49]. This is not the only precedent for deleterious mutations having a beneficial impact on a phenotype, and such mutations may be attractive targets for drug development. For example, Akbari et al (2021)

recently reported that multiple rare protein-truncating variants in the gene *GPR75* were associated with protection from obesity, and mice lacking the orthologue, *Gpr75*, were resistant to weight gain on a high fat diet [50]. Similarly, rare deleterious variants in *B4GALT1* have been linked to decreased coronary artery disease via reduction of fibrinogen and low-density lipoprotein cholesterol [51]. Further investigation of the genes and variants linked to normal hearing and sex differences in hearing loss is needed.

Previously-reported GWAS of the UK Biobank which also used the self-reported hearing phenotype identified multiple overlapping loci; 71 in total, 19 of which were shared between all three studies (Figure 4) [8, 9, 48]. Four of those 19 were also identified in our study (*CHMP4C*, *NID2*, *SYNJ2* and *CDH23*). Five further genes from our outlier lists were shared between a subset of the GWAS lists; *TMPRSS9*, *LOXHD1*, and *TUB* were identified by Ivarsdottir *et al* and Kalra *et al*, and *SLC26A5* and *FSCN2* by Ivarsdottir *et al* alone. Those genes identified by multiple studies are obvious candidates for involvement in ARHL, but the differences in loci identified using the GWAS approach suggest there are many more to investigate, and the results of our exome sequencing analysis support that as well as suggesting further candidates (Table 2). It has recently been observed that rare variants do not account for the GWAS hits of common markers [10], so it is unsurprising to find different variants and different genes associated with ARHL in GWAS compared with exome/genome sequence analysis studies.

The biggest limitation of this study is the lack of measured hearing impairment (such as an audiogram) and detailed auditory phenotyping. Self-reported hearing difficulty has been shown to be sufficiently informative for general hearing capacity [9, 52], but there is more to hearing loss than just an average threshold shift. It is likely that we have missed mild or even moderate hearing loss, and also unilateral hearing loss. Most notably, we were not able to exclude participants who had experienced hearing impairment from a young age (with the exception of cochlear implant users, who were excluded). Being able to compare specific subtypes of true age-related hearing loss (for

example, using a classification system such as the one described in [53], [54], and [55]), offers the potential to link genes with a high variant load to specific inner ear pathologies, an important step for stratifying patient populations and developing therapeutics.

Conclusions

From this study, we have established that it is useful to include more common variants when investigating a heterogeneous disease such as adult hearing difficulty. In this case, we found the most useful MAF cutoff to be 0.1, but it is likely that this varies by condition. We also found that the genetic contributions to self-reported hearing difficulty differ between the sexes, suggesting that in future studies, it would be useful to separate study participants by sex, as well as analysing all participants together. Future studies would also benefit from more detailed auditory phenotyping data.

While these points are based on a study of adult self-reported hearing difficulties, it is likely that they apply to many other conditions. As the availability of large-scale exome and genome sequencing studies grows, it is important to explore questions which could not be asked using earlier paradigms such as genome-wide association studies. This work highlights several such avenues of exploration.

Methods

UK Biobank participant selection. UK Biobank is a large-scale biomedical database and research resource containing genetic, lifestyle and health information from half a million UK participants, aged between 40-69 years in 2006-2010, who were recruited from across the UK. Participants have consented to provide their data to approved researchers who are undertaking health-related research that is in the public interest. Participants were selected who were ≥ 55 years of age who had exome sequencing data available (200,619 exomes available in total, September 2020) and could be classified as having normal hearing or hearing difficulty, based on their self-report of hearing

difficulty, hearing difficulty in noise, or use of a hearing aid. If people reported no hearing difficulties or hearing aid use at any assessment and had been asked about their hearing at least once when they were ≥ 55 , we included them in the “normal hearing” group. If people reported consistent or worsening hearing impairment, or that they had at any point been a hearing aid user and had been asked at least once about their hearing when they were ≥ 55 , we included them in the “hearing difficulty” group. Participants who reported otologic disorders (eg Meniere’s disease) were excluded. People who reported high levels of noise exposure or moderate/severe tinnitus were also excluded from the normal hearing group (Additional File 1: Figure S4). This resulted in a total of 48731 people in the normal hearing group (18235 male and 30496 female participants), and 45581 people in the hearing loss group (24237 male and 21344 female participants). Overall, 106307 participants with exomes were excluded based on the above criteria. We did not filter by self-reported ethnicity. The vast majority (96%) of participants described themselves as “British”, “Irish”, “White”, or “any other White background”, or some combination thereof (hereafter referred to as White). In most of the broad ethnic groupings (Additional File 2: Table S1), there were more female than male volunteers (Additional File 1: Figure S1). Participants included in this study were compared to the entire UK Biobank, to the UK Biobank participants who had had exome sequencing, and to the data from the UK census 2011 [56], and we found that while the proportion of self-reported minority ethnicities was smaller in the UK Biobank than in the 2011 census [56], it was smaller still in the participants included in this study (Additional File 1: Fig S1). However, the distribution of self-reported ethnicities in the participants with exome sequencing reflected that of the entire Biobank (Additional File 1: Figure S1). The “healthy volunteer” effect, meaning that participants tend to be healthier in terms of lifestyle and health conditions, has been previously noted in the UK Biobank when compared to the UK 2011 census data, as has the greater proportion of people reporting their ethnicity as White [56]. It is not clear why the subset of the UK Biobank selected for this study, on the basis of their answers to questions about hearing and related issues, has an even greater proportion of participants who report their ethnicity as White.

Variant annotation and filtering. UK Biobank variant calls were made available following processing, variant calling and joint genotyping [57, 58], but without any filters applied at the sample or variant level. We annotated the variants using the Ensembl Variant Effect Predictor [59], including data from ReMM, which provides a measure of pathogenicity for regulatory variants [60], SpliceAI, which scores variants based on their predicted effect on splicing [61], Sutr, which provides annotations for 5'UTR variants, including a predicted effect on translation efficiency [62], and the deleteriousness predictor CADD [63]. Minor allele frequencies were obtained from gnomAD (African, admixed American, Ashkenazi Jewish, East Asian, Finnish, Non-Finnish European, Other) [64], the 1000 Genomes project (African, admixed American, East Asian, European, South Asian) [65], TopMed (not divided by population) [66] or ESP6500 (African, European) [67], and the maximum reported minor allele frequency (MAF) was used. Variants were then filtered based on the overall quality of the variant call (QUAL, minimum 20) and the read depth (DP, minimum 10) and genotype quality (GQ, minimum 10) of individual calls. Variants with more than 10% of calls missing were also excluded, as were those which had a high private allele frequency within the UKBB cohort (defined as the recorded minor allele frequency + 0.4) [68]. In order to exclude variants exhibiting excess heterozygosity, we excluded variants which failed the Hardy-Weinberg equilibrium test and which had excess heterozygosity >0.1 (excess heterozygosity was calculated by $(O-E)/E$, where O is the observed heterozygote count and E is the expected heterozygote count).

Variant classification filters. Variants were filtered based on their minor allele frequency and a combination of pathogenicity and consequence filters (Table 3). We defined two levels of impact upon a gene product, low impact and high impact. High impact variants were those in coding regions, intronic splice sites or mature miRNAs with a CADD score > 25 or a SpliceAI score > 0.5 , and those in 5'UTRs with a Sutr score > 1 . Low impact variants were all those in coding regions, intronic splice sites, mature miRNAs and 5'UTR regions, those in 3'UTR regions, and any variants with other classifications (eg regulatory region variants) which had a ReMM score > 0.95 (see Additional File 2:

Table S5 for the exact variant classification terms and filters). This is an inclusive classification, so the list of low impact variants includes the high impact variants.

Table 3. Classification criteria for variants by impact and minor allele frequency.

	Consequence	Pathogenicity	Minor allele frequency	Number of variants
Meaning	The effect of the mutation on the protein	How likely the mutation is to impair protein function	How rare the alternative allele is in the population	
Source	Ensembl, ReMM	CADD, Sutr, SpliceAI	gnomAD, 1000G, TOPMed, ESP6500	
High impact	5'UTR variants, splice site mutation, stop gain or loss, start loss, insertion, deletion, duplication, missense variants, and variants in mature miRNAs	CADD > 25 or Sutr > 1 (for 5'UTR variants only) or SpliceAI score > 0.5 (for splice site variants only)	<0.005	1141302
			<0.01	1151111
			<0.05	1160767
			<0.1	1162399
			<0.2	1163464
			<1	1165167
Low impact	All consequences except for intergenic and intronic variants, variants in transcripts subject to nonsense-mediated decay, and variants up- or downstream of a gene; All variants with a ReMM score > 0.95	Not assessed	<0.1	6398787

Regression outlier analysis. For each analysis, we assessed 21841 protein-coding genes and microRNAs (Additional File 2: Table S9). We summed the total number of variants in each gene in participants from the normal hearing group and compared them to the total number of variants in that gene from the hearing difficulty group using a linear regression. The residuals were obtained for each gene (the difference between the observed and predicted variant load in hearing impairment) and the first (Q1) and third (Q3) quartiles, and the interquartile distance (D, Q3-Q1), were calculated. Outlier genes with a high variant load in hearing difficulty were defined as those with residuals $> Q3 + 6D$, and outlier genes with a high variant load in normal hearing were defined as those with residuals $< Q1 - 6D$ [69]. All participants were subjected to these comparisons, and we also carried out sex-separated analyses. Hypergeometric distribution tests were carried out using R, and gProfiler [22] was used to carry out a GO enrichment analysis of the outlier gene lists. The Bonferroni correction was used to adjust for multiple testing.

Burden tests. Weighted burden tests were carried out using the geneVarAssoc/scoreassoc software [21, 70], which has been shown to be capable of handling heterogeneous datasets [20]. Population principal components were derived from common variants using plink v2.0, following reading in of variants from vcf files using plink v1.9 [71]. For each gene, scoreassoc assigns scores to subjects according to the variants carried, assigning weights according to minor allele frequency, such that rarer variants are assigned a higher weight. The software then tests whether the average score for cases is higher than the score for controls [21]. The Bonferroni correction was used to adjust for multiple testing.

Compilation of the list of deafness genes. We compiled a manually curated list of known deafness genes in humans and mice, including all genes listed in the Hereditary Hearing Loss Homepage [1], and genes which, when mutated, result in altered hearing thresholds in mutant mice, reported by the International Mouse Phenotyping Consortium (www.mousephenotype.org [72, 73]; average thresholds were individually checked for shifts $>10\text{dB}$ with small standard deviations). We also

included mouse and human deafness genes described in the literature (for example [74, 75]; for full reference list see Additional File 2: Table S3). There were 118 genes shown to underlie hearing in mice and humans, 67 human deafness genes (with 66 mouse orthologues) and 506 mouse deafness genes (with 535 human orthologues) (Figure 5, Additional File 2: Table S3). Although many of these known deafness genes have only been linked to early-onset, severe hearing impairment, they are still good candidates for involvement in milder hearing impairment, since different variants can result in very different phenotypes. For example, different variants in *TMC1* have been shown to result in either prelingual profound hearing loss or postlingual progressive hearing loss [76, 77], and several recent large-scale studies looking at adult-onset hearing loss have found multiple missense variants in Mendelian deafness genes with milder effects than previously reported [5, 10, 48].

Compilation of the list of highly variable genes. Some genes are often reported as having a high number of variants in multiple exome sequencing projects. This can be because they are large genes (eg *TTN*), or because they belong to groups of paralogues such as olfactory receptors, which are sufficiently similar to make correct alignment difficult, resulting in incorrect variant calls. Two such lists were compiled by Adams et al [78], and Fuentes Fajardo et al, [79], and consist of genes which contributed many variant calls to multiple exomes as well as human leukocyte antigen (HLA), taste receptor (*TAS*), olfactory receptor and mucin family genes. Additionally, some genes have been identified as prone to recurrent false positive calls, which are variants that did not validate with further genotyping and were not heritable [80]. We combined all three lists, resulting in 1213 genes in total (Additional File 2: Table S4).

Gene expression analysis using the gEAR. To assess the expression of lists of genes of interest in the inner ear, including the list of known mouse and human deafness genes, we used single cell RNAseq data from the mouse inner ear, accessed via the gEAR portal (<https://umgear.org/>) [26]. We chose datasets from mice aged between embryonic day (E) 16 and postnatal day (P) 35. The datasets we used came from E16 cochlea, P1 cochlea, P7 cochlea [81, 82], P15 cochlea [83, 84], P20 inner ear [85,

86], P28-35 cochlea [87-89], P30 stria vascularis [90, 91] and P17-33 spiral ganglion neurons [92, 93][92]. Expression levels were normalised to *Hprt* expression; where *Hprt* was not present in the dataset, or had an expression level of 0, we did not use the data. We then summarised the data, taking the maximum level per cell type without accounting for age. Because the expression levels ranged from 0 to 70.6 (*Ceacam16*, in outer hair cells), we transformed the data such that levels between 10 and 100 were scaled to between 2 and 3, and levels between 1 and 10 were scaled to between 1 and 2. We used R to plot a heatmap of the genes that showed the most variability between cell types, suggestive of specific expression patterns rather than non-specific expression (n=312, variance across datasets > 0.15), and to cluster cell types and genes. We further defined gene clusters first based on the R dendrograms and then on the gene expression levels within specific cell types or groups of cell types.

List of abbreviations:

ARHL – age-related hearing loss

MAF – minor allele frequency

GO – gene ontology

GWAS – genome-wide association study

Declarations

Ethics approval and consent to participate

UK Biobank has ethics approval from the North West Multi-centre Research Ethics Committee (MREC), as a Research Tissue Bank (RTB) approval (number 21/NW/0157). Informed consent was obtained from all participants. Use of the relevant data for this study has been approved by the UK Biobank (ID 49593).

Consent for publication

Not applicable.

Availability of data and materials

All UK Biobank data, including the exome sequence data and questionnaire data used in this study, are publicly available to registered researchers through the UK Biobank data access protocol. Further information about registration may be found at <http://www.ukbiobank.ac.uk/register-apply/>. The mouse single cell RNAseq data used in this study are publicly available from the gEAR database at <https://umgear.org>, and also from the GEO repository (<https://identifiers.org/geo:GSE181454>, <https://identifiers.org/geo:GSE114157>, <https://identifiers.org/geo:GSE136196>, <https://identifiers.org/geo:GSE137299>, <https://identifiers.org/geo:GSE117055>, <https://identifiers.org/geo:GSE111347>, <https://identifiers.org/geo:GSE1113478>) [81, 84, 86, 88-90, 93].

Competing interests

The authors declare that they have no competing interests.

Funding

This study was supported by the National Institutes of Health/National Institute on Deafness and Other Communication Disorders (NIH/NIDCD, grant number P50 DC 000422) and the National Institute for Health Research (NIHR) Biomedical Research Centre, King's College London.

Authors' contributions

MAL carried out the data processing, outlier analysis, burden analysis and gene expression analysis.

MAL and KPS wrote the paper. All authors read and approved the final manuscript.

Acknowledgements

This research has been conducted using data from UK Biobank, a major biomedical database (www.ukbiobank.ac.uk, project ID 49593). The authors are grateful to everyone involved in the UK Biobank, especially the participants, without whom there would be no data. We thank Maria Lachgar-Ruiz for helpful comments on the manuscript text.

Competing interests

The authors declare that they have no competing interests.

References

1. Van Camp G, Smith RJH. **Hereditary Hearing Loss Homepage**. <https://hereditaryhearingloss.org/>. Accessed December 2021.
2. Azaiez H, Booth KT, Ephraim SS, Crone B, Black-Ziegelbein EA, Marini RJ, Shearer AE, Sloan-Heggen CM, Kolbe D, Casavant T *et al*: **Genomic Landscape and Mutational Signatures of Deafness-Associated Genes**. *Am J Hum Genet* 2018, **103**(4):484-497.
3. Van Camp G, Willems PJ, Smith RJ: **Nonsyndromic hearing impairment: unparalleled heterogeneity**. *Am J Hum Genet* 1997, **60**(4):758-764.
4. Mencia A, Modamio-Hoybjor S, Redshaw N, Morin M, Mayo-Merino F, Olavarrieta L, Aguirre LA, del Castillo I, Steel KP, Dalmy T *et al*: **Mutations in the seed region of human miR-96 are responsible for nonsyndromic progressive hearing loss**. *Nat Genet* 2009, **41**(5):609-613.
5. Boucher S, Tai FWJ, Delmaghani S, Lelli A, Singh-Estivalet A, Dupont T, Niasme-Grare M, Michel V, Wolff N, Bahloul A *et al*: **Ultrarare heterozygous pathogenic variants of genes causing dominant forms of early-onset deafness underlie severe presbycusis**. *Proc Natl Acad Sci U S A* 2020, **117**(49):31278-31289.

6. Walsh T, Walsh V, Vreugde S, Hertzano R, Shahin H, Haika S, Lee MK, Kanaan M, King MC, Avraham KB: **From flies' eyes to our ears: mutations in a human class III myosin cause progressive nonsyndromic hearing loss DFNB30.** *Proc Natl Acad Sci U S A* 2002, **99**(11):7518-7523.
7. Baek JI, Oh SK, Kim DB, Choi SY, Kim UK, Lee KY, Lee SH: **Targeted massive parallel sequencing: the effective detection of novel causative mutations associated with hearing loss in small families.** *Orphanet J Rare Dis* 2012, **7**:60.
8. Kalra G, Milon B, Casella AM, Herb BR, Humphries E, Song Y, Rose KP, Hertzano R, Ament SA: **Biological insights from multi-omic analysis of 31 genomic risk loci for adult hearing difficulty.** *PLoS Genet* 2020, **16**(9):e1009025.
9. Wells HRR, Freidin MB, Zainul Abidin FN, Payton A, Dawes P, Munro KJ, Morton CC, Moore DR, Dawson SJ, Williams FMK: **GWAS Identifies 44 Independent Associated Genomic Loci for Self-Reported Adult Hearing Difficulty in UK Biobank.** *Am J Hum Genet* 2019, **105**(4):788-802.
10. Praveen K, Dobbyn L, Gurski L, Ayer AH, Staples J, Mishra S, Bai Y, Kaufman A, Moscati A, Benner C *et al*: **Population-scale analysis of common and rare genetic variation associated with hearing loss in adults.** *medRxiv* 2021:2021.2009.2027.21264091.
11. Cruickshanks KJ, Wiley TL, Tweed TS, Klein BE, Klein R, Mares-Perlman JA, Nondahl DM: **Prevalence of hearing loss in older adults in Beaver Dam, Wisconsin. The Epidemiology of Hearing Loss Study.** *Am J Epidemiol* 1998, **148**(9):879-886.
12. Hederstierna C, Hultcrantz M, Collins A, Rosenhall U: **The menopause triggers hearing decline in healthy women.** *Hear Res* 2010, **259**(1-2):31-35.
13. Helzner EP, Cauley JA, Pratt SR, Wisniewski SR, Zmuda JM, Talbott EO, de Rekeneire N, Harris TB, Rubin SM, Simonsick EM *et al*: **Race and sex differences in age-related hearing loss: the Health, Aging and Body Composition Study.** *J Am Geriatr Soc* 2005, **53**(12):2119-2127.

14. Itan Y, Shang L, Boisson B, Ciancanelli MJ, Markle JG, Martinez-Barricarte R, Scott E, Shah I, Stenson PD, Gleeson J *et al*: **The mutation significance cutoff: gene-level thresholds for variant predictions.** *Nat Methods* 2016, **13**(2):109-110.
15. Donaudy F, Snoeckx R, Pfister M, Zenner HP, Blin N, Di Stazio M, Ferrara A, Lanzara C, Ficarella R, Declau F *et al*: **Nonmuscle myosin heavy-chain gene MYH14 is expressed in cochlea and mutated in patients affected by autosomal dominant hearing impairment (DFNA4).** *Am J Hum Genet* 2004, **74**(4):770-776.
16. Faletta F, D'Adamo AP, Bruno I, Athanasakis E, Biskup S, Esposito L, Gasparini P: **Autosomal recessive Stickler syndrome due to a loss of function mutation in the COL9A3 gene.** *Am J Med Genet A* 2014, **164A**(1):42-47.
17. Kelsell DP, Dunlop J, Stevens HP, Lench NJ, Liang JN, Parry G, Mueller RF, Leigh IM: **Connexin 26 mutations in hereditary non-syndromic sensorineural deafness.** *Nature* 1997, **387**(6628):80-83.
18. Liu XZ, Ouyang XM, Xia XJ, Zheng J, Pandya A, Li F, Du LL, Welch KO, Petit C, Smith RJ *et al*: **Prestin, a cochlear motor protein, is defective in non-syndromic hearing loss.** *Hum Mol Genet* 2003, **12**(10):1155-1162.
19. Seco CZ, Oonk AM, Dominguez-Ruiz M, Draaisma JM, Gandia M, Oostrik J, Neveling K, Kunst HP, Hoefsloot LH, del Castillo I *et al*: **Progressive hearing loss and vestibular dysfunction caused by a homozygous nonsense mutation in CLIC5.** *Eur J Hum Genet* 2015, **23**(2):189-194.
20. Curtis D: **Multiple Linear Regression Allows Weighted Burden Analysis of Rare Coding Variants in an Ethnically Heterogeneous Population.** *Hum Hered* 2020, **85**(1):1-10.
21. Curtis D, Consortium UK: **Practical Experience of the Application of a Weighted Burden Test to Whole Exome Sequence Data for Obesity and Schizophrenia.** *Ann Hum Genet* 2016, **80**(1):38-49.

22. Raudvere U, Kolberg L, Kuzmin I, Arak T, Adler P, Peterson H, Vilo J: **g:Profiler: a web server for functional enrichment analysis and conversions of gene lists (2019 update)**. *Nucleic Acids Res* 2019, **47**(W1):W191-W198.
23. Wu X, Ivanchenko MV, Al Jandal H, Cicconet M, Indzhukulian AA, Corey DP: **PKHD1L1 is a coat protein of hair-cell stereocilia and is required for normal hearing**. *Nat Commun* 2019, **10**(1):3801.
24. Kawashima Y, Geleoc GS, Kurima K, Labay V, Lelli A, Asai Y, Makishima T, Wu DK, Della Santina CC, Holt JR *et al*: **Mechanotransduction in mouse inner ear hair cells requires transmembrane channel-like genes**. *J Clin Invest* 2011, **121**(12):4796-4809.
25. Chen J, Bardes EE, Aronow BJ, Jegga AG: **ToppGene Suite for gene list enrichment analysis and candidate gene prioritization**. *Nucleic Acids Res* 2009, **37**(Web Server issue):W305-311.
26. Orvis J, Gottfried B, Kancherla J, Adkins RS, Song Y, Dror AA, Olley D, Rose K, Chrysostomou E, Kelly MC *et al*: **gEAR: Gene Expression Analysis Resource portal for community-driven, multi-omic data exploration**. *Nat Methods* 2021, **18**(8):843-844.
27. Mochizuki T, Lemmink HH, Mariyama M, Antignac C, Gubler MC, Pirson Y, Verellen-Dumoulin C, Chan B, Schroder CH, Smeets HJ *et al*: **Identification of mutations in the alpha 3(IV) and alpha 4(IV) collagen genes in autosomal recessive Alport syndrome**. *Nat Genet* 1994, **8**(1):77-81.
28. Nagtegaal AP, Rainey RN, van der Pluijm I, Brandt RM, van der Horst GT, Borst JG, Segil N: **Cockayne syndrome group B (Csb) and group a (Csa) deficiencies predispose to hearing loss and cochlear hair cell degeneration in mice**. *J Neurosci* 2015, **35**(10):4280-4286.
29. Dubno JR, Lee FS, Matthews LJ, Ahlstrom JB, Horwitz AR, Mills JH: **Longitudinal changes in speech recognition in older persons**. *J Acoust Soc Am* 2008, **123**(1):462-475.
30. Dubno JR, Lee FS, Matthews LJ, Mills JH: **Age-related and gender-related changes in monaural speech recognition**. *J Speech Lang Hear Res* 1997, **40**(2):444-452.

31. Lee FS, Matthews LJ, Dubno JR, Mills JH: **Longitudinal study of pure-tone thresholds in older persons.** *Ear Hear* 2005, **26**(1):1-11.
32. Pearson JD, Morrell CH, Gordon-Salant S, Brant LJ, Metter EJ, Klein LL, Fozard JL: **Gender differences in a longitudinal study of age-associated hearing loss.** *J Acoust Soc Am* 1995, **97**(2):1196-1205.
33. Nolan LS: **Age-related hearing loss: Why we need to think about sex as a biological variable.** *J Neurosci Res* 2020, **98**(9):1705-1720.
34. Mills JH, Matthews LJ, Lee FS, Dubno JR, Schulte BA, Weber PC: **Gender-specific effects of drugs on hearing levels of older persons.** *Ann N Y Acad Sci* 1999, **884**:381-388.
35. Gates GA, Cobb JL, D'Agostino RB, Wolf PA: **The relation of hearing in the elderly to the presence of cardiovascular disease and cardiovascular risk factors.** *Arch Otolaryngol Head Neck Surg* 1993, **119**(2):156-161.
36. Tan HE, Lan NSR, Knuiman MW, Divitini ML, Swanepoel DW, Hunter M, Brennan-Jones CG, Hung J, Eikelboom RH, Santa Maria PL: **Associations between cardiovascular disease and its risk factors with hearing loss-A cross-sectional analysis.** *Clin Otolaryngol* 2018, **43**(1):172-181.
37. Regitz-Zagrosek V, Kararigas G: **Mechanistic Pathways of Sex Differences in Cardiovascular Disease.** *Physiol Rev* 2017, **97**(1):1-37.
38. Al-Mana D, Ceranic B, Djahanbakhch O, Luxon LM: **Alteration in auditory function during the ovarian cycle.** *Hear Res* 2010, **268**(1-2):114-122.
39. Coleman JR, Campbell D, Cooper WA, Welsh MG, Moyer J: **Auditory brainstem responses after ovariectomy and estrogen replacement in rat.** *Hear Res* 1994, **80**(2):209-215.
40. Souza DDS, Luckwu B, Andrade WTL, Pessoa LSF, Nascimento JAD, Rosa M: **Variation in the Hearing Threshold in Women during the Menstrual Cycle.** *Int Arch Otorhinolaryngol* 2017, **21**(4):323-328.

41. Buniello A, Ingham NJ, Lewis MA, Huma AC, Martinez-Vega R, Varela-Nieto I, Vizcay-Barrena G, Fleck RA, Houston O, Bardhan T *et al*: **Wbp2 is required for normal glutamatergic synapses in the cochlea and is crucial for hearing.** *EMBO Mol Med* 2016, **8**(3):191-207.
42. Konig O, Ruttiger L, Muller M, Zimmermann U, Erdmann B, Kalbacher H, Gross M, Knipper M: **Estrogen and the inner ear: megalin knockout mice suffer progressive hearing loss.** *FASEB J* 2008, **22**(2):410-417.
43. Nolan LS, Maier H, Hermans-Borgmeyer I, Girotto G, Ecob R, Pirastu N, Cadge BA, Hubner C, Gasparini P, Strachan DP *et al*: **Estrogen-related receptor gamma and hearing function: evidence of a role in humans and mice.** *Neurobiol Aging* 2013, **34**(8):2077 e2071-2079.
44. Carter CO: **The inheritance of congenital pyloric stenosis.** *Br Med Bull* 1961, **17**:251-254.
45. Carter CO, Evans KA: **Inheritance of congenital pyloric stenosis.** *J Med Genet* 1969, **6**(3):233-254.
46. Oza AM, DiStefano MT, Hemphill SE, Cushman BJ, Grant AR, Siegert RK, Shen J, Chapin A, Boczek NJ, Schimmenti LA *et al*: **Expert specification of the ACMG/AMP variant interpretation guidelines for genetic hearing loss.** *Hum Mutat* 2018, **39**(11):1593-1613.
47. Trpchevska N, Freidin MB, Broer L, Oosterloo BC, Yao S, Zhou Y, Vona B, Bishop C, Bizaki-Vallaskangas A, Canlon B *et al*: **Genome-wide association meta-analysis identifies 48 risk variants and highlights the role of the stria vascularis in hearing loss.** *Am J Hum Genet* 2022.
48. Ivarsdottir EV, Holm H, Benonisdottir S, Olafsdottir T, Sveinbjornsson G, Thorleifsson G, Eggertsson HP, Halldorsson GH, Hjorleifsson KE, Melsted P *et al*: **The genetic architecture of age-related hearing impairment revealed by genome-wide association analysis.** *Commun Biol* 2021, **4**(1):706.
49. Kelly JJ, Abitbol JM, Hulme S, Press ER, Laird DW, Allman BL: **The connexin 30 A88V mutant reduces cochlear gap junction expression and confers long-term protection against hearing loss.** *J Cell Sci* 2019, **132**(2).

50. Akbari P, Gilani A, Sosina O, Kosmicki JA, Khrimian L, Fang YY, Persaud T, Garcia V, Sun D, Li A *et al*: **Sequencing of 640,000 exomes identifies GPR75 variants associated with protection from obesity.** *Science* 2021, **373**(6550).
51. Montasser ME, Van Hout CV, Miloscio L, Howard AD, Rosenberg A, Callaway M, Shen B, Li N, Locke AE, Verweij N *et al*: **Genetic and functional evidence links a missense variant in B4GALT1 to lower LDL and fibrinogen.** *Science* 2021, **374**(6572):1221-1227.
52. Cherny SS, Livshits G, Wells HRR, Freidin MB, Malkin I, Dawson SJ, Williams FMK: **Self-reported hearing loss questions provide a good measure for genetic studies: a polygenic risk score analysis from UK Biobank.** *Eur J Hum Genet* 2020, **28**(8):1056-1065.
53. Dubno JR, Eckert MA, Lee FS, Matthews LJ, Schmiedt RA: **Classifying human audiometric phenotypes of age-related hearing loss from animal models.** *J Assoc Res Otolaryngol* 2013, **14**(5):687-701.
54. Vaden KI, Jr., Matthews LJ, Eckert MA, Dubno JR: **Longitudinal Changes in Audiometric Phenotypes of Age-Related Hearing Loss.** *J Assoc Res Otolaryngol* 2017, **18**(2):371-385.
55. Vaden KI, Eckert MA, Matthews LJ, Schmiedt RA, Dubno JR: **Metabolic and Sensory Components of Age-Related Hearing Loss.** *Journal of the Association for Research in Otolaryngology* 2022.
56. Fry A, Littlejohns TJ, Sudlow C, Doherty N, Adamska L, Sprosen T, Collins R, Allen NE: **Comparison of Sociodemographic and Health-Related Characteristics of UK Biobank Participants With Those of the General Population.** *Am J Epidemiol* 2017, **186**(9):1026-1034.
57. Szustakowski JD, Balasubramanian S, Kvikstad E, Khalid S, Bronson PG, Sasson A, Wong E, Liu D, Wade Davis J, Haefliger C *et al*: **Advancing human genetics research and drug discovery through exome sequencing of the UK Biobank.** *Nat Genet* 2021, **53**(7):942-948.
58. Van Hout CV, Tachmazidou I, Backman JD, Hoffman JD, Liu D, Pandey AK, Gonzaga-Jauregui C, Khalid S, Ye B, Banerjee N *et al*: **Exome sequencing and characterization of 49,960 individuals in the UK Biobank.** *Nature* 2020, **586**(7831):749-756.

59. McLaren W, Gil L, Hunt SE, Riat HS, Ritchie GR, Thormann A, Flicek P, Cunningham F: **The Ensembl Variant Effect Predictor**. *Genome Biol* 2016, **17**(1):122.
60. Smedley D, Schubach M, Jacobsen JOB, Kohler S, Zemojtel T, Spielmann M, Jager M, Hochheiser H, Washington NL, McMurry JA *et al*: **A Whole-Genome Analysis Framework for Effective Identification of Pathogenic Regulatory Variants in Mendelian Disease**. *Am J Hum Genet* 2016, **99**(3):595-606.
61. Jaganathan K, Kyriazopoulou Panagiotopoulou S, McRae JF, Darbandi SF, Knowles D, Li YI, Kosmicki JA, Arbelaez J, Cui W, Schwartz GB *et al*: **Predicting Splicing from Primary Sequence with Deep Learning**. *Cell* 2019, **176**(3):535-548 e524.
62. Pajusalu S. **5utr**. <https://github.com/lekclab/5utr>. 2021.
63. Rentzsch P, Witten D, Cooper GM, Shendure J, Kircher M: **CADD: predicting the deleteriousness of variants throughout the human genome**. *Nucleic Acids Res* 2019, **47**(D1):D886-D894.
64. Karczewski KJ, Francioli LC, Tiao G, Cummings BB, Alfoldi J, Wang Q, Collins RL, Laricchia KM, Ganna A, Birnbaum DP *et al*: **The mutational constraint spectrum quantified from variation in 141,456 humans**. *Nature* 2020, **581**(7809):434-443.
65. Genomes Project C, Auton A, Brooks LD, Durbin RM, Garrison EP, Kang HM, Korbel JO, Marchini JL, McCarthy S, McVean GA *et al*: **A global reference for human genetic variation**. *Nature* 2015, **526**(7571):68-74.
66. Taliun D, Harris DN, Kessler MD, Carlson J, Szpiech ZA, Torres R, Taliun SAG, Corvelo A, Gogarten SM, Kang HM *et al*: **Sequencing of 53,831 diverse genomes from the NHLBI TOPMed Program**. *Nature* 2021, **590**(7845):290-299.
67. Fu W, O'Connor TD, Jun G, Kang HM, Abecasis G, Leal SM, Gabriel S, Rieder MJ, Altshuler D, Shendure J *et al*: **Analysis of 6,515 exomes reveals the recent origin of most human protein-coding variants**. *Nature* 2013, **493**(7431):216-220.

68. Maffucci P, Bigio B, Rapaport F, Cobat A, Borghesi A, Lopez M, Patin E, Bolze A, Shang L, Bendavid M *et al*: **Blacklisting variants common in private cohorts but not in public databases optimizes human exome analysis.** *Proc Natl Acad Sci U S A* 2019, **116**(3):950-959.
69. Vuckovic D, Mezzavilla M, Cocca M, Morgan A, Brumat M, Catamo E, Concas MP, Biino G, Franze A, Ambrosetti U *et al*: **Whole-genome sequencing reveals new insights into age-related hearing loss: cumulative effects, pleiotropy and the role of selection.** *Eur J Hum Genet* 2018, **26**(8):1167-1179.
70. Curtis D: **A weighted burden test using logistic regression for integrated analysis of sequence variants, copy number variants and polygenic risk score.** *Eur J Hum Genet* 2019, **27**(1):114-124.
71. Chang CC, Chow CC, Tellier LC, Vattikuti S, Purcell SM, Lee JJ: **Second-generation PLINK: rising to the challenge of larger and richer datasets.** *Gigascience* 2015, **4**:7.
72. Birling MC, Yoshiki A, Adams DJ, Ayabe S, Beaudet AL, Bottomley J, Bradley A, Brown SDM, Burger A, Bushell W *et al*: **A resource of targeted mutant mouse lines for 5,061 genes.** *Nat Genet* 2021, **53**(4):416-419.
73. Dickinson ME, Flenniken AM, Ji X, Teboul L, Wong MD, White JK, Meehan TF, Weninger WJ, Westerberg H, Adissu H *et al*: **High-throughput discovery of novel developmental phenotypes.** *Nature* 2016, **537**(7621):508-514.
74. Ingham NJ, Pearson SA, Vancollie VE, Rook V, Lewis MA, Chen J, Buniello A, Martelletti E, Preite L, Lam CC *et al*: **Mouse screen reveals multiple new genes underlying mouse and human hearing loss.** *PLoS Biol* 2019, **17**(4):e3000194.
75. Ohlemiller KK, Jones SM, Johnson KR: **Application of Mouse Models to Research in Hearing and Balance.** *J Assoc Res Otolaryngol* 2016, **17**(6):493-523.
76. Kitajiri S, Makishima T, Friedman TB, Griffith AJ: **A novel mutation at the DFNA36 hearing loss locus reveals a critical function and potential genotype-phenotype correlation for amino acid-572 of TMC1.** *Clin Genet* 2007, **71**(2):148-152.

77. Kurima K, Peters LM, Yang Y, Riazuddin S, Ahmed ZM, Naz S, Arnaud D, Drury S, Mo J, Makishima T *et al*: **Dominant and recessive deafness caused by mutations of a novel gene, TMC1, required for cochlear hair-cell function.** *Nat Genet* 2002, **30**(3):277-284.
78. Adams DR, Sincan M, Fuentes Fajardo K, Mullikin JC, Pierson TM, Toro C, Boerkoel CF, Tiftt CJ, Gahl WA, Markello TC: **Analysis of DNA sequence variants detected by high-throughput sequencing.** *Hum Mutat* 2012, **33**(4):599-608.
79. Fuentes Fajardo KV, Adams D, Program NCS, Mason CE, Sincan M, Tiftt C, Toro C, Boerkoel CF, Gahl W, Markello T: **Detecting false-positive signals in exome sequencing.** *Hum Mutat* 2012, **33**(4):609-613.
80. Field MA, Burgio G, Chuah A, Al Shekaili J, Hassan B, Al Sukaiti N, Foote SJ, Cook MC, Andrews TD: **Recurrent miscalling of missense variation from short-read genome sequence data.** *BMC Genomics* 2019, **20**(Suppl 8):546.
81. Kelly MC, Kolla L, Kelley LA, Morell RJ. **Characterization of cochlear development at the single cell level.** GEO. 2020. <https://identifiers.org/geo:GSE137299>. Accessed December 2021.
82. Kolla L, Kelly MC, Mann ZF, Anaya-Rocha A, Ellis K, Lemons A, Palermo AT, So KS, Mays JC, Orvis J *et al*: **Characterization of the development of the mouse cochlear epithelium at the single cell level.** *Nat Commun* 2020, **11**(1):2389.
83. Ranum PT, Goodwin AT, Yoshimura H, Kolbe DL, Walls WD, Koh JY, He DZZ, Smith RJH: **Insights into the Biology of Hearing and Deafness Revealed by Single-Cell RNA Sequencing.** *Cell Rep* 2019, **26**(11):3160-3171 e3163.
84. Ranum PT, Smith RJ. **Insights into the Biology of Hearing and Deafness Revealed by Single-Cell RNA Sequencing.** GEO. 2019. <https://identifiers.org/geo:GSE114157>. Accessed December 2021.

85. Xue N, Song L, Song Q, Santos-Sacchi J, Wu H, Navaratnam D: **Genes related to SNPs identified by Genome-wide association studies of age-related hearing loss show restriction to specific cell types in the adult mouse cochlea.** *Hear Res* 2021, **410**:108347.
86. Xue N, Song L, Wu H, Navaratnam D. **scRNA-seq of P20 mouse cochlea.** GEO. 2021. <https://identifiers.org/geo:GSE181454>. Accessed December 2021.
87. Liu H, Chen L, Giffen KP, Stringham ST, Li Y, Judge PD, Beisel KW, He DZZ: **Cell-Specific Transcriptome Analysis Shows That Adult Pillar and Deiters' Cells Express Genes Encoding Machinery for Specializations of Cochlear Hair Cells.** *Front Mol Neurosci* 2018, **11**:356.
88. Liu H, Chen L, Giffen KP, Stringham ST, Li Y, Judge PD, Beisel KW, He DZZ. **RNA-sequencing of Adult Mouse Inner Hair Cells and Outer Hair Cells of the organ of Corti.** GEO. 2018. <https://identifiers.org/geo:GSE111348>. Accessed December 2021.
89. Liu H, Chen L, Giffen KP, Stringham ST, Li Y, Judge PD, Beisel KW, He DZZ. **RNA-sequencing of Adult Mouse Pillar and Deiters' Supporting Cells of the Organ of Cort.** GEO. 2018. <https://identifiers.org/geo:GSE111347>. Accessed December 2021.
90. Hoa M. **Characterizing cellular heterogeneity and homeostatic gene regulatory networks in the adult mammalian stria vascularis using single cell and single nucleus transcriptional profiling.** GEO. 2019. <https://identifiers.org/geo:GSE136196>. Accessed December 2021.
91. Korrapati S, Taukulis I, Olszewski R, Pyle M, Gu S, Singh R, Griffiths C, Martin D, Boger E, Morell RJ *et al*: **Single Cell and Single Nucleus RNA-Seq Reveal Cellular Heterogeneity and Homeostatic Regulatory Networks in Adult Mouse Stria Vascularis.** *Front Mol Neurosci* 2019, **12**:316.
92. Petitpre C, Wu H, Sharma A, Tokarska A, Fontanet P, Wang Y, Helmbacher F, Yackle K, Silberberg G, Hadjab S *et al*: **Neuronal heterogeneity and stereotyped connectivity in the auditory afferent system.** *Nat Commun* 2018, **9**(1):3691.
93. Petitpre C, Wu H, Sharma A, Tokarska A, Fontanet P, Wang Y, Helmbacher F, Yackle K, Silberberg G, Hadjab S *et al*. **Neuronal heterogeneity and stereotyped connectivity in the**

auditory afferent system. GEO. 2018. <https://identifiers.org/geo:GSE117055>. Accessed

December 2021.

Figures

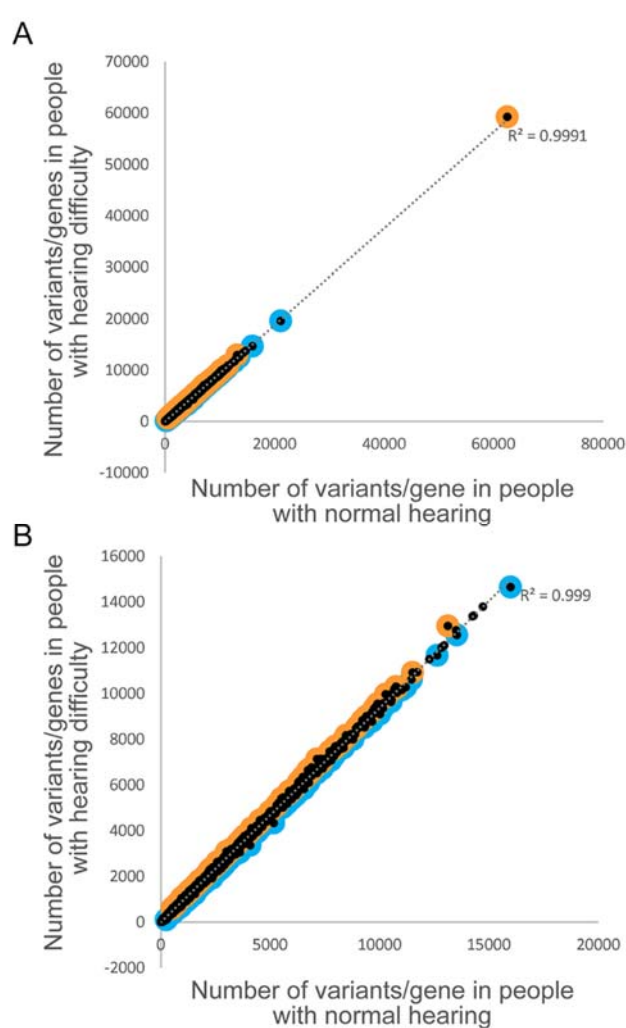


Figure 1. Comparison of variant load per gene for high impact variants (MAF < 0.1). Each point represents a gene. Outliers are marked in orange (for higher load in participants with hearing difficulty) or blue (for higher load in participants with normal hearing). **A** shows all the data, including *TTN* and *FBLN7*, genes with a much higher variant count than all the others, and **B** shows the data without those two genes.

Outlier genes in hearing difficulty

Outlier genes in normal hearing

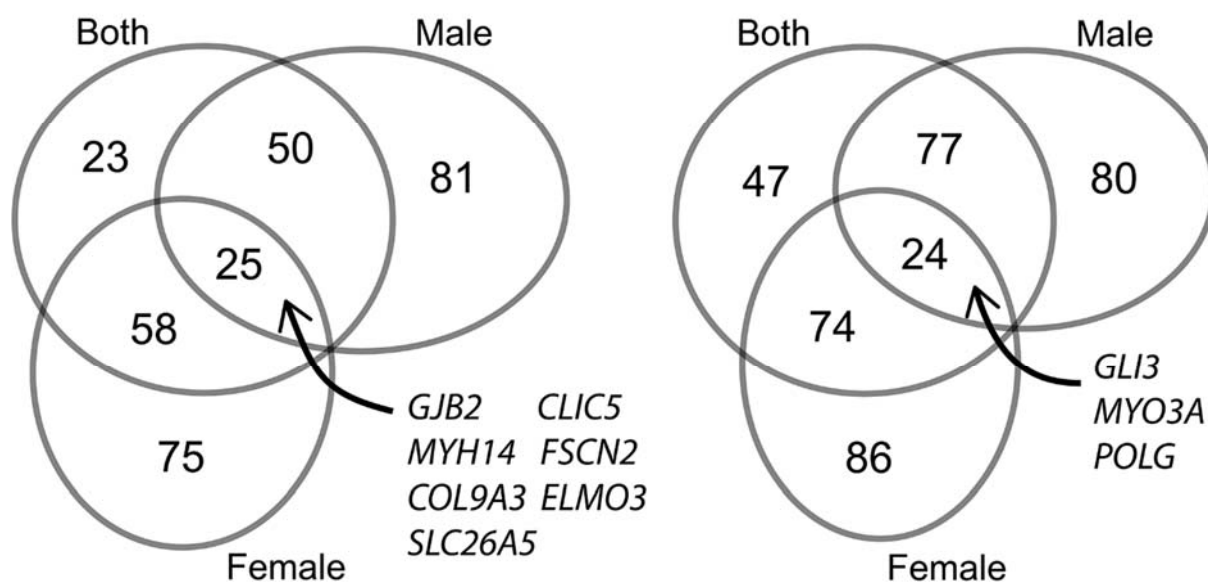


Figure 2. Venn diagrams showing the overlap of the outlier gene lists when looking at only male, only female, or all participants (outliers with intermediate variants with high impact). The known deafness genes in the intersection (7 in the outlier genes in hearing difficulty, 3 in the outlier genes in normal hearing) are labelled.

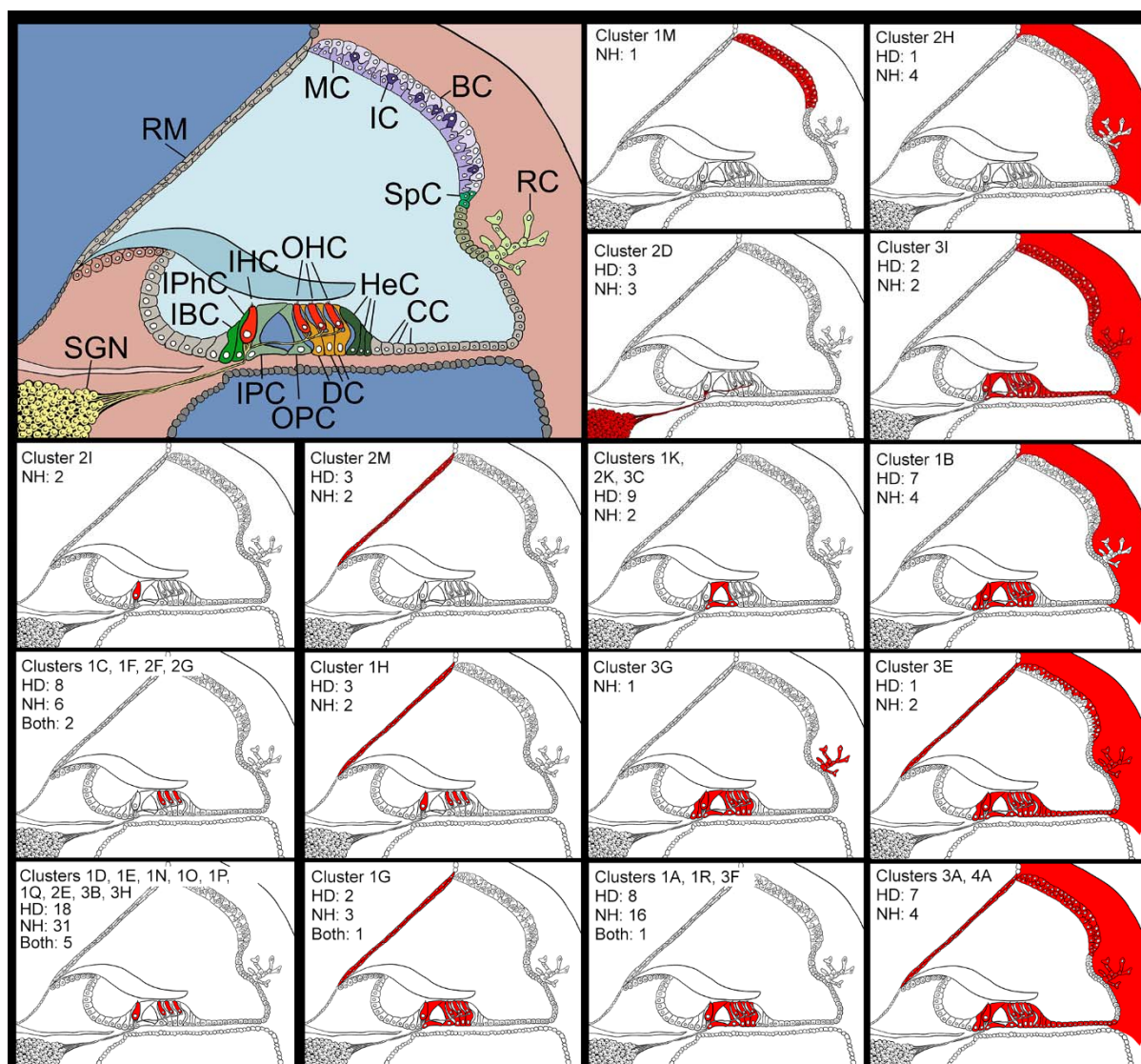


Figure 3. Schematic of the cochlear duct showing cell types (top left) and expression patterns based on the scRNAseq data downloaded from the gEAR database. The numbers show how many outlier genes were present in the cluster; “HD” for the number of outlier genes in hearing difficulty lists, “NH” for the number of outlier genes in normal hearing lists, and “Both” for where an outlier gene was present in a hearing difficulty list and a normal hearing list. See Table 2 for clusters and for gene names. RM=Reissner’s membrane; MC=marginal cells; IC=intermediate cells; BC=basal cells; RC=root cells; SpC = spindle cells; SGN=spiral ganglion neurons; IBC=inner border cells; IPhC=inner phalangeal cell; IHC=inner hair cell; OHC=outer hair cells; HeC=Hensen cells; CC=cells of Claudius; IPC=inner pillar cell; OPC=outer pillar cell; DC=Deiters’ cells.

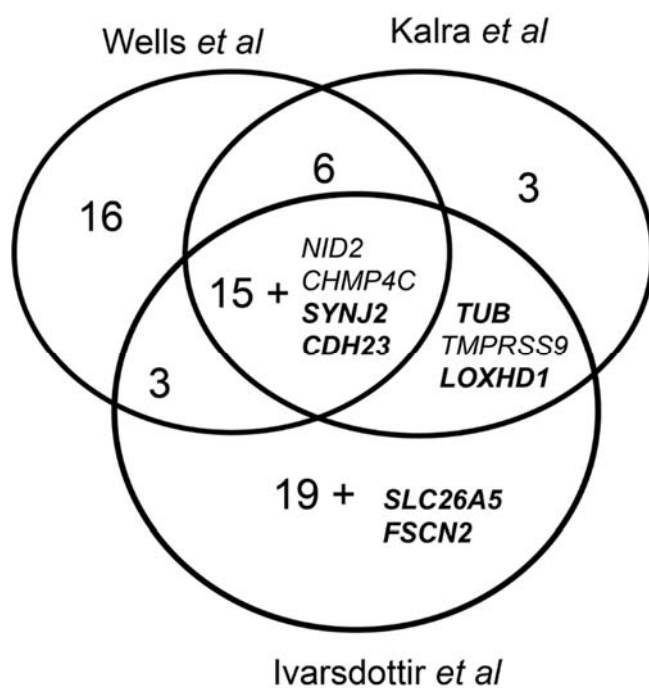


Figure 4. Comparison of gene lists from recent UK Biobank GWAS on self-reported hearing. Labelled genes are those also identified in this study, and are not included in the numbers for those sections. Known deafness genes are in bold. The Wells *et al* [9] and Kalra *et al* [8] analyses used the UK Biobank data only while the Ivarsdottir *et al* analysis [48] included other populations from Iceland.

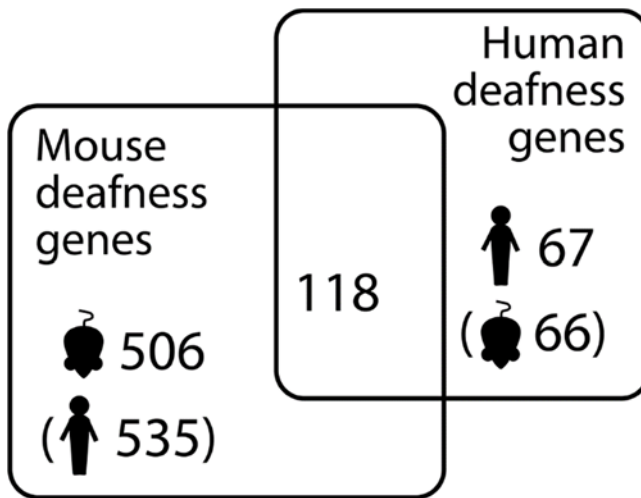


Figure 5. Deafness gene counts in mice and humans. Brackets indicate orthologues (eg there are 66 mouse orthologues of the 67 human deafness genes).