

## Tracking the progressive spread of the SARS-CoV-2 Omicron variant in Italy, December 2021 - January 2022

Paola Stefanelli<sup>1,§</sup>, Filippo Trentini<sup>2,3,§</sup>, Daniele Petrone<sup>1,§</sup>, Alessia Mammone<sup>4,5,§</sup>, Luigina Ambrosio<sup>1</sup>, Mattia Manica<sup>2,5</sup>, Giorgio Guzzetta<sup>2,5</sup>, Valeria d'Andrea<sup>2</sup>, Valentina Marziano<sup>2</sup>, Agnese Zardini<sup>2</sup>, Carla Molina Grane<sup>2,6</sup>, Marco Ajelli<sup>7</sup>, Angela Di Martino<sup>1</sup>, Flavia Riccardo<sup>1</sup>, Antonino Bella<sup>1</sup>, Monica Sane Schepisi<sup>4</sup>, Francesco Maraglino<sup>4</sup>, Piero Poletti<sup>2,5,\*</sup>, Anna Teresa Palamara<sup>1,#</sup>, Silvio Brusaferrò<sup>1,#</sup>, Giovanni Rezza<sup>4,#</sup>, Patrizio Pezzotti<sup>1,#</sup>, Stefano Merler<sup>2,5,#</sup> on behalf of the Genomic SARS-CoV-2 National Surveillance Working Group and the Italian Integrated Surveillance of COVID-19 Study Group

<sup>§</sup> these authors contributed equally to this article.

<sup>#</sup> these authors contributed equally as senior authors.

\* corresponding author: [poletti@fbk.eu](mailto:poletti@fbk.eu)

### AFFILIATIONS

<sup>1</sup> Istituto Superiore di Sanità, Rome, Italy

<sup>2</sup> Center for Health Emergencies, Bruno Kessler Foundation, Trento, Italy

<sup>3</sup> Dondena Centre for Research on Social Dynamics and Public Policy, Bocconi University, Milan, Italy

<sup>4</sup> Health Prevention Directorate, Ministry of Health, Rome, Italy

<sup>5</sup> Epilab-JRU, FEM-FBK Joint Research Unit, Trento, Italy

<sup>6</sup> University of Trento, Trento, Italy

<sup>7</sup> Laboratory for Computational Epidemiology and Public Health, Department of Epidemiology and Biostatistics, Indiana University School of Public Health, Bloomington, IN, USA

**Genomic SARS-CoV-2 National Surveillance Working Group:** Alessandra Lo Presti, Stefano Morabito, Gabriele Vaccari, Ilaria Di Bartolo, Arnold Knijn, Luca De Sabato, Liborio Stuppia, Giovanni Savini, Antonio Picerno, Teresa Lopizzo, Domenico Dell'Edera, Pasquale Minchella, Francesca Greco, Giuseppe Viglietto, Maria Teresa Fiorillo, Luigi Atripaldi, Antonio Limone, Davide Cacchiarelli, Pierlanfranco D'Agaro, Danilo Licastro, Stefano Pongolini, Tiziana Lazzarotto, Giada Rossini, Vittorio Sambri, Giorgio Dirani, Silvia Zannoli, Paola Affanni, Maria Eugenia Colucci, Maria Rosaria Capobianchi, Patricia Alba, Alice Massacci, Carlo Federico Perno, Maurizio Sanguinetti, Bianca Bruzzone, Giancarlo Icardi, Flavia Lillo, Andrea Orsi, Elena Pariani, Fausto Baldanti, Maria Rita Gismondo, Valeria Micheli, Fabrizio Maggi, Arnaldo Caruso, Ferruccio Ceriotti, Maria Beatrice Boniotti, Ilaria Barbieri, Alice Nava, Erminio Torresani, Fabiana Cro, Enzo Boeri, Marina Noris, Giulia Bassanini, Claudio Farina, Marco Arosio, Sergio Malandrini, Annalisa Cavallero, Patrizia Bagnarelli, Stefano Menzo, , Silvio Garofalo, Massimiliano Scutellà, Elisabetta Pagani, Lucia Collini, Valeria Ghisetti, Silvia Brossa, Giuseppe Ru, Elena Bozzetta, Maria Chironna, Antonio Parisi, Salvatore Rubino, Caterina Serra, Gabriele Ibba, Giovanna Piras, Giuseppe Mameli, Ferdinando Coghe, Francesco Vitale, Fabio Tramuto, Guido Scalia, Concetta Ilenia Palermo, Giuseppe Mancuso, Teresa Pollicino, Francesca Di Gaudio, Stefano Vullo, Stefano Reale, Maria Grazia Cusi, Gian Maria Rossolini, Mauro Pistello, Antonella Mencacci, Barbara Camilloni, Silvano Severini, Massimo Di Benedetto Terregino Calogero, Isabella Monne, Valeria Biscaro.

**Italian Integrated Surveillance of COVID-19 Study Group:** Del Manso Martina, Spuri Matteo, Sacco Chiara, Fabiani Massimo, Bressi Marco, Mateo-Urdiales Alberto, Vescio Maria Fenicia

## **Abstract**

The SARS-CoV-2 variant of concern Omicron was first detected in Italy in November 2021. Data from three genomic surveys conducted in Italy between December 2021 and January 2022 suggest that Omicron became dominant in less than one month (prevalence on January 3: 78.6%-83.8%) with a doubling time of 2.7–3.1 days. The mean net reproduction number rose from about 1.15 in absence of Omicron to a peak of 1.83 for symptomatic cases and 1.33 for hospitalized cases, while it remained stable for critical cases.

## **Main text**

The SARS-CoV-2 variant of concern (VOC) Omicron, characterized by a large number of mutations, has shown a marked growth advantage over pre-circulating lineages, causing a major upsurge of cases in multiple countries since November 2021 [1]. As Europe transitions rapidly from Delta to Omicron dominance, data on presence and prevalence of VOCs across distinct geographic contexts and over time can support assessments of the current and potential short-term implications for public health. Here, we report the results of three quick genomic prevalence surveys conducted biweekly in Italy between December 6, 2021, and January 3, 2022. The estimated prevalence of Omicron is combined with data gathered by the Italian Integrated Surveillance System to assess the impact of the variant spread on the overall circulation of SARS-CoV-2.

### **The spread of the Omicron variant in Italy**

Genomic prevalence surveys were conducted on December 6 and 20, 2021, and January 3, 2022. The initiative involved all 19 Regions and 2 Autonomous Provinces (APs) of Italy and was coordinated by the National Public Health Institute (Istituto Superiore di Sanità, ISS), in collaboration with the Ministry of Health, the Bruno Kessler Foundation, and 120 laboratories distributed across the national territory. Random samples were selected in each Region/AP and uniformly distributed across 4 macro-areas (North-East, North-West, Center, and South/Islands) among infections diagnosed with a real-time reverse transcription polymerase chain reaction (RT-PCR) on the dates of the surveys. The sample size was calculated to enable the detection of circulating SARS-CoV-2 variants with at least

5% prevalence within each macro-area with a 2% precision. Samples were subjected to whole genome sequencing (WGS) as the gold standard method for variants detection. Alternatively, results from Sanger or next generation sequencing (NGS) of the whole or partial S-gene were collected. Sequences with insufficient quality for variant assignment were discarded from the analysis. To robustly assess the temporal expansion of Omicron, the prevalence of this variant was estimated in each Region/APs using two alternative approaches. The first used Markov Chain Monte Carlo (MCMC) under the assumption of independence in prevalence across Regions/APs and surveys. The second fitted a generalized linear mixed model (GLMM) assuming a random intercept and a random slope for each Region/APs; the independent variable was the day when the survey took place. A binomial distribution for the identified number of Omicron sequences was assumed in both approaches. The procedures were replicated on data aggregated by macro-area.

On December 6, 2021, 2241 samples were collected and 2127 successfully sequenced; of these 4 resulted Omicron (0.2% of samples) and 2121 Delta (99.7%). Omicron was only found in Northern Italy (Emilia-Romagna, Lombardy and Veneto). Estimates of the national prevalence ranged from 0.2% to 2.1%.

On December 20, 2021, 2194 samples were collected and 2139 successfully sequenced; 462 resulted Omicron (21.6%) and 1676 Delta (78.4%). Omicron was detected in all Regions/APs, and it was the predominant variant in Umbria (Central Italy). Estimates of the national prevalence ranged from 17.1% to 23.5%.

By January 3, 2022 (2632 samples, 2571 successfully sequenced), Omicron had become largely dominant in the country, being confirmed in 2058 (80.0%) sequences (Delta: 512 sequences, 19.9%). Estimates of the national prevalence ranged from 78.6% to 83.8%. Results for the three surveys are reported in Figure 1 and Table 1. Corresponding prevalence estimates are reported in Table 2.

Multiplying the prevalence in each Region/AP by the corresponding number of notified cases yielded an estimate for the total numbers of Omicron cases in Italy in the three dates of the surveys. These were fitted with an exponential curve having growth rate  $r$ ; we then estimated the doubling time of Omicron as  $T = \log(2)/r$  and the net reproduction number as  $R = 1 + r * GT$ , where  $GT$  represents the average generation time. In the absence of estimates of

GT for Omicron, we considered values between 4 and 8 days, covering a range of estimates for previous lineages [2-6].

We estimated an average daily exponential growth rate  $r$  for new Omicron infections of 0.22-0.26 days<sup>-1</sup>, corresponding to an average doubling time of 2.7–3.3 days and reproduction numbers in the range 1.86–2.04 and 2.73–3.08, when a generation time of 4 and 8 days was assumed respectively (Table 2). We note that, despite the decrease in Delta prevalence, the total number of estimated Delta cases also increased in the observation period from 9302-9484 on December 6, 2021, to 11018-14590 on January 3, 2022 (see Appendix).

The upsurge of SARS-CoV-2 transmission in Italy due to the Omicron spread was additionally evaluated by estimating daily SARS-CoV-2 net reproduction numbers using data collected by the Italian Integrated Surveillance System. Separate estimates were obtained from the time series of symptomatic cases by date of onset ( $R_{sym}$ ), and from the time series of patients admitted to hospital ( $R_{hos}$ ) and to intensive care units ( $R_{icu}$ ) by date of admission. Methodological details are described in Appendix.  $R_{sym}$  increased from 1.15 (95% Credible Intervals, CrI: 1.15-1.15) on December 6, 2021, to a peak of 1.83 (95%CrI:1.82-1.84) on December 28 (Figure 2).  $R_{hos}$  increased from 1.14 (95%CI: 1.11-1.18) on December 6, 2021, to a peak of 1.33 (95%CrI: 1.30-1.36) on December 29, 2021.  $R_{icu}$  did not show a clear temporal trend, with mean estimates ranging between 1.09 and 1.21.

## Discussion

Omicron was first identified in Italy in the second half of November 2021 [7]. Three genomic surveys were successively conducted to evaluate the progressive spread of the variant in the country. The presented results shows that Omicron became dominant across the Italian territory in less than one month, significantly increasing SARS-CoV-2 transmission.

Our estimates for the doubling time (2.7-3.3 days) are in agreement with those obtained in other countries [8,9] . The reproduction number associated to the Omicron variant under the transmissibility conditions existing in Italy in December may be in the range of 1.8-3.1. This estimate is compatible with values of  $R_{sym}$  around 1.8 observed on December 28, 2021, when the replacement of Delta by Omicron was not complete and before control measures (decided on December 23 and 29) and behavior change had a chance to significantly affect transmission. Notably, changes in contact patterns due to the Christmas holidays may have had an effect that is hard to quantify. The lower increase of reproduction numbers associated to hospital admissions and the stable value of those from ICU admissions point to a reduced clinical severity of Omicron compared to Delta, as previously suggested [10,11]. Of note, we estimate the total number of Delta cases to have increased over the study period, suggesting that a considerable fraction of hospital patients may still be due to Delta. Continued monitoring of Delta prevalence is therefore recommended.

The three daily prevalence surveys were based on relatively small sample sizes and, despite the randomization of sampling for genomic sequencing, biases due to the presence of large clusters of cases in a region cannot be excluded. Moreover, estimates of the net reproduction numbers are based on the strong assumption that the Omicron generation time is comparable to that of pre-circulating strains [2]. The selective advantage of Omicron over Delta may be explained by increased transmissibility, partial immune escape, or a combination of both [12]. Early evidence from statistical analysis of reinfections [13,14] and breakthrough infections [8,15] suggests a significant capability of escape from natural and vaccine-acquired immunity. However, further efforts are needed to quantify the relative transmissibility and clinical severity of Omicron and its immune escape ability.

### **Ethical statement**

Ethical approval for sequencing SARS-CoV-2 genomes on clinical samples was obtained by ISS (ref. PRE BIO CE n.26259, July 29, 2020).

## Acknowledgements

SM, PPe, GG, and FR acknowledge funding from EU grant 874850 MOOD (catalogued as MOOD 000). The funders had no role in study design, data collection and analysis, decision to publish, or preparation of the manuscript.

**Conflict of interest:** MA has received research funding from Seqirus. The funding is not related to COVID-19. All other authors declare no competing interest.

**Authors' contributions:** PS, ATP, SB, GR, PPe, SM conceived the study. PPo, FT, MM wrote the first draft of the manuscript. AM, FT, PPo, MM, GG analyzed the data. AM, MSS, FM, DP, AB, FR, LA, ADM and the members of the Italian Integrated Surveillance of COVID-19 Study Group collected the epidemiological data. The members of the Genomic SARS-CoV-2 National Surveillance Working Group collected the samples and sequenced the RNA for the molecular typing. All authors revised critically the study and the results.

## References

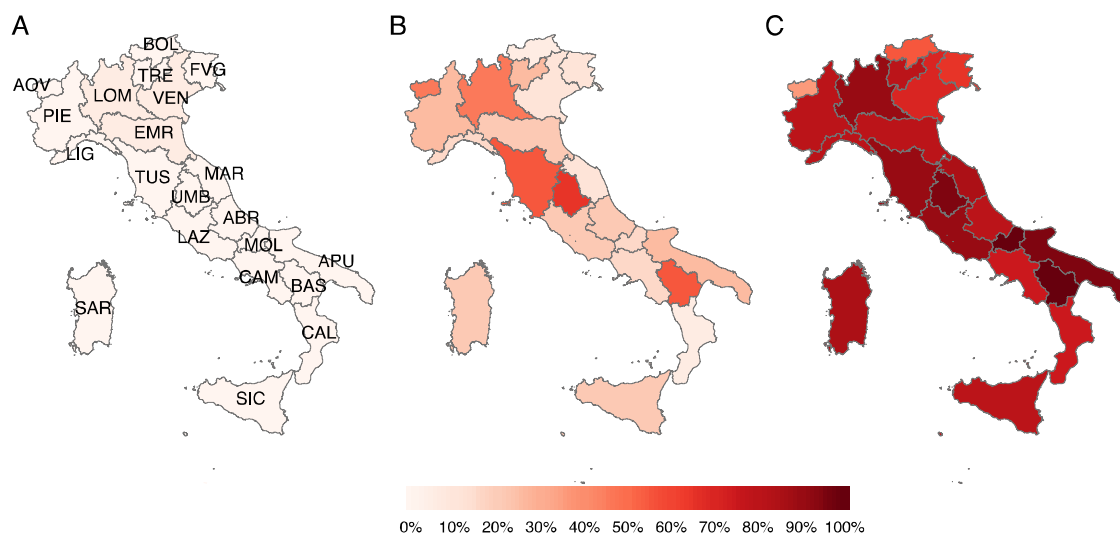
1. European Centre for Disease Prevention and Control (ECDC). Assessment of the further emergence and potential impact of the SARS-CoV-2 Omicron variant of concern in the context of ongoing transmission of the Delta variant of concern in the EU/EEA, 18th update". December 2021. Available at <https://www.ecdc.europa.eu/sites/default/files/documents/covid-19-assessment-further-emergence-omicron-18th-risk-assessment-december-2021.pdf>
2. Cereda D, Manica M, Tirani M, Rovida F, Demicheli V, Ajelli M, et al. The early phase of the COVID-19 epidemic in Lombardy, Italy. *Epidemics*. 2021 Dec;37:100528.
3. The COVID-19 Genomics UK (COG-UK) consortium, Volz E, Mishra S, Chand M, Barrett JC, Johnson R, et al. Assessing transmissibility of SARS-CoV-2 lineage B.1.1.7 in England. *Nature*. 2021 May 13;593(7858):266–9.
4. Griffin J, Casey M, Collins Á, Hunt K, McEvoy D, Byrne A, et al. Rapid review of available evidence on the serial interval and generation time of COVID-19. *BMJ Open*. 2020 Nov;10(11):e040263.

5. Hu S, Wang W, Wang Y, Litvinova M, Luo K, Ren L, et al. Infectivity, susceptibility, and risk factors associated with SARS-CoV-2 transmission under intensive contact tracing in Hunan, China. *Nat Commun*. 2021 Dec;12(1):1533.
6. Kremer Cécile, Ganyani Tapiwa, Chen Dongxuan, Torneri Andrea, Faes Christel, Wallinga Jacco, Hens Niel. Authors' response: Estimating the generation interval for COVID-19 based on symptom onset data. *Euro Surveill*. 2020;25(29):pii=2001269. <https://doi.org/10.2807/1560-7917.ES.2020.25.29.2001269>
7. Monitoraggio delle varianti del virus SARS-CoV-2 di interesse in sanità pubblica in Italia. Available at <https://www.epicentro.iss.it/coronavirus/sars-cov-2-monitoraggio-varianti>
8. Ferguson N. Report 49: Growth and immune escape of the Omicron SARS-CoV-2 variant of concern in England [Internet]. Imperial College London; 2021 Dec [cited 2022 Jan 19]. Available from: <http://spiral.imperial.ac.uk/handle/10044/1/93038>
9. Grabowski F, Kochańczyk M, Lipniacki T. Omicron strain spreads with the doubling time of 3.2—3.6 days in South Africa province of Gauteng that achieved herd immunity to Delta variant [Internet]. *Epidemiology*; 2021 Dec [cited 2022 Jan 19]. Available from: <http://medrxiv.org/lookup/doi/10.1101/2021.12.08.21267494>
10. European Centre for Disease Prevention and Control. Weekly epidemiological update: Omicron variant of concern (VOC) – week 2 (data as of 13 January 2022) EU/EEA [Internet]. ECDC; 2022 [cited 2022 Jan 20]. Available from: <https://www.ecdc.europa.eu/en/news-events/weekly-epidemiological-update-omicron-variant-concern-voc-week-2-data-13-january-2022>
11. Wolter N, Jassat W, Walaza S, Welch R, Moultrie H, Groome M, et al. Early assessment of the clinical severity of the SARS-CoV-2 omicron variant in South Africa: a data linkage study. *The Lancet*. 2022 Jan;S0140673622000174.
12. Willett BJ, Grove J, MacLean OA, Wilkie C, Logan N, Lorenzo GD, et al. The hyper-transmissible SARS-CoV-2 Omicron variant exhibits significant antigenic change, vaccine escape and a switch in cell entry mechanism [Internet]. *Infectious Diseases (except HIV/AIDS)*; 2022 Jan [cited 2022 Jan 19]. Available from: <http://medrxiv.org/lookup/doi/10.1101/2022.01.03.21268111>
13. Rössler A, Riepler L, Bante D, von Laer D, Kimpel J. SARS-CoV-2 Omicron Variant Neutralization in Serum from Vaccinated and Convalescent Persons. *N Engl J Med*. 2022 Jan 12;NEJMc2119236.
14. Pearson CAB, Silal SP, Li MWZ, Dushoff J, Bolker BM, Abbott S, et al. Bounding the levels of transmissibility & immune evasion of the Omicron variant in South Africa [Internet]. *Epidemiology*; 2021 Dec [cited 2022 Jan 19]. Available from: <http://medrxiv.org/lookup/doi/10.1101/2021.12.19.21268038>
15. Planas D, Saunders N, Maes P, Guivel-Benhassine F, Planchais C, Buchrieser J, et al. Considerable escape of SARS-CoV-2 Omicron to antibody neutralization. *Nature*

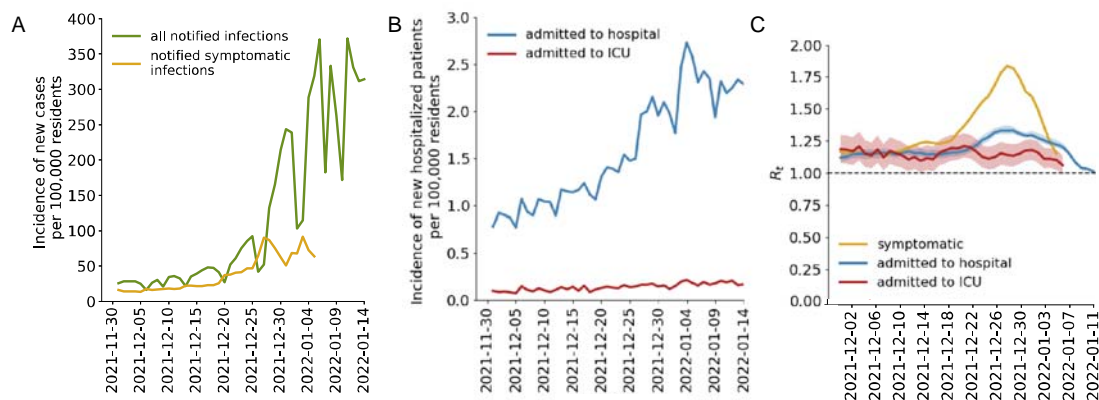
[Internet]. 2021 Dec 23 [cited 2022 Jan 19]; Available from:  
<https://www.nature.com/articles/s41586-021-04389-z>



## Figures and Tables



**Figure 1. Geographical distribution of SARS-CoV-2 variant Omicron.** Point prevalence of Omicron by the 19 Regions and 2 Autonomous Provinces of Italy as obtained from national surveys conducted on December 6, 2021, December 20, 2021, and January 3, 2022. Abbreviations of region names are reported in the leftmost panel and listed in the Appendix.



**Figure 2. The impact of Omicron spread on SARS-CoV-2 circulation.** A) Time series of total number of notified symptomatic and symptomatic cases by date of notification and symptom onset, respectively. B) Time series of total number of cases admitted to hospital and to intensive care unit (ICU), by date of admission. C) Net reproduction numbers  $R_t$  for symptomatic cases, cases admitted to hospital and to ICU, respectively in yellow, blue and red. The solid

line represents the mean of the estimated posterior distribution, and the shaded areas delimit 95% credible intervals.

**Table 1. Results across the 21 participating Regions/APs.**

		December 6th, 2021					December 20th, 2021					January 3rd, 2022							
MACRO-AREA	REGION	LABS	RT-PCR POSITIVE	SEQUENCED SAMPLES	ANALYZED SAMPLES	CONFIRMED SAMPLES (%)		LABS	RT-PCR POSITIVE	SEQUENCED SAMPLES	ANALYZED SAMPLES	CONFIRMED SAMPLES (%)		LABS	RT-PCR POSITIVE	SEQUENCED SAMPLES	ANALYZED SAMPLES	CONFIRMED SAMPLES (%)	
						Delta	Omicron					Delta	Omicron					Delta	Omicron
						SOUTH/ISLANDS	ABRUZZO					2	89					55	55
APULIA	11	53	53	53	53		0	11	59	57	57	44	13	11	76	74	74	6	68
BASILICATA	2	7	7	7	7		0	2	131	10	10	5	5	2	535	11	11	0	11
CALABRIA	4	224	45	39	39		0	4	475	80	71	69	2	4	1073	40	35	10	25
CAMPANIA	3	150	150	140	140		0	3	1770	134	131	114	17	3	9802	221	213	62	151
MOLISE	1	1	1	1	1		0	1	7	7	7	6	1	1	46	46	46	1	45
SARDINIA	10	223	30	30	30		0	10	338	31	30	25	5	10	1237	54	54	9	45
SICILY	4	209	159	159	159		0	5	354	246	246	203	43	5	1807	274	274	58	216
<b>TOTAL SOUTH</b>	<b>37</b>	<b>956</b>	<b>500</b>	<b>484</b>	<b>484</b>		<b>0</b>	<b>38</b>	<b>3313</b>	<b>628</b>	<b>614</b>	<b>518</b>	<b>96</b>	<b>38</b>	<b>16566</b>	<b>837</b>	<b>824</b>	<b>172</b>	<b>652</b>
																		<b>(20.9)</b>	<b>(79.1)</b>
CENTER	LAZIO	5	515	511	435	434	0	7	362	339	318	262	55	4	407	345	301	44	257
	MARCHE	5	62	62	62	62	0	5	92	68	67	63	4	5	82	50	50	9	41
	TUSCANY	3	155	73	71	71	0	3	260	84	84	42	42	3	276	139	139	15	124
	UMBRIA	4	164	44	44	44	0	4	498	68	68	24	44	5	1036	91	90	6	84
<b>TOTAL CENTER</b>	<b>17</b>	<b>896</b>	<b>690</b>	<b>612</b>	<b>611</b>	<b>0</b>	<b>19</b>	<b>1212</b>	<b>559</b>	<b>537</b>	<b>391</b>	<b>145</b>	<b>17</b>	<b>1801</b>	<b>625</b>	<b>580</b>	<b>74</b>	<b>506</b>	
																		<b>(12.8)</b>	<b>(87.2)</b>
NORTH-EAST	AP BOLZANO	1	61	58	58	58	0	1	94	45	45	43	2	1	371	24	24	10	13
	AP TRENTO	1	15	15	14	14	0	1	17	17	17	13	4	1	26	26	25	6	19
	EMILIA-ROMAGNA	3	106	106	106	105	1	3	133	133	133	111	22	3	131	131	131	27	104
	FRIULI VENEZIA GIULIA	6	377	150	146	146	0	6	254	60	59	54	5	8	422	96	96	34	62
	VENETO	12	234	234	234	232	2	12	219	219	219	201	18	13	316	316	316	107	209

					(99.1)	(0.9)					(91.8)	(8.2)				(33.9)	(66.1)		
	<b>TOTAL NORTH-EAST</b>	<b>23</b>	<b>793</b>	<b>563</b>	<b>558</b>	<b>555</b>	<b>3</b>	<b>23</b>	<b>717</b>	<b>474</b>	<b>473</b>	<b>422</b>	<b>51</b>	<b>26</b>	<b>1266</b>	<b>593</b>	<b>592</b>	<b>184</b>	<b>407</b>
					<b>(99.5)</b>	<b>(0.5)</b>						<b>(89.2)</b>	<b>(10.8)</b>					<b>(31.1)</b>	<b>(68.8)</b>
NORTH-WEST	AOSTA VALLEY	1	3	3	3	2	0	1	5	5	5	3	2	1	3	3	3	2	1
						(66.7)	(0.0)					(60.0)	(40.0)					(66.7)	(33.3)
	LIGURIA	9	247	57	53	53	0	10	610	52	48	42	6	8	815	30	30	7	23
						(100.0)	(0.0)					(87.5)	(12.5)					(23.3)	(76.8)
	LOMBARDY	16	346	332	324	323	1	16	460	350	339	202	137	16	443	443	443	50	393
					(99.7)	(0.3)					(59.6)	(40.4)					(11.3)	(88.7)	
PIEDMONT	11	96	96	93	93	0	11	126	126	123	98	25	14	101	101	99	23	76	
					(100.0)	(0.0)					(79.7)	(20.3)					(23.2)	(76.8)	
	<b>TOTAL NORTH-WEST</b>	<b>37</b>	<b>692</b>	<b>488</b>	<b>473</b>	<b>471</b>	<b>1</b>	<b>38</b>	<b>1201</b>	<b>533</b>	<b>515</b>	<b>345</b>	<b>170</b>	<b>39</b>	<b>1362</b>	<b>577</b>	<b>575</b>	<b>82</b>	<b>493</b>
					<b>(99.6)</b>	<b>(0.2)</b>						<b>(67.0)</b>	<b>(33.0)</b>					<b>(14.3)</b>	<b>(85.7)</b>
	<b>TOTAL ITALY</b>	<b>114</b>	<b>3337</b>	<b>2241</b>	<b>2127</b>	<b>2121</b>	<b>4</b>	<b>118</b>	<b>6443</b>	<b>2194</b>	<b>2139</b>	<b>1676</b>	<b>462</b>	<b>120</b>	<b>20995</b>	<b>2632</b>	<b>2571</b>	<b>512</b>	<b>2058</b>
					<b>(99.7)</b>	<b>(0.2)</b>						<b>(78.4)</b>	<b>(21.6)</b>					<b>(19.9)</b>	<b>(80.0)</b>

\* Percentages represent the proportion of confirmed infections over the total analyzed samples.

**Table 2. National level estimates from surveys data for the Omicron prevalence, exponential growth rate, doubling time and net reproduction number.**

		GLMM		MCMC	
		By Region/AP	By macro area	By Region/AP	By macro area
prevalence (%)	<b>December 6th, 2021</b>	1 (0.8 - 1.4)	1.1 (0.8 - 1.4)	1.4 (0.9 - 2.1)	0.5 (0.2 - 0.9)
	<b>December 20th, 2021</b>	18.7 (17.1 - 20.4)	19.1 (17.5 - 20.8)	21.5 (19.7 - 23.5)	21.5 (19.7 - 23.3)
	<b>January 3rd, 2022</b>	82.2 (80.6 - 83.8)	81.3 (79.7 - 82.8)	80.3 (78.6 - 81.9)	80.1 (78.6 - 81.6)
r (days <sup>-1</sup> )		0.228 (0.173 - 0.285)	0.225 (0.171 - 0.282)	0.216 (0.162 - 0.276)	0.26 (0.183 - 0.346)
T (days)		3.1 (2.44 - 4)	3.13 (2.46 - 4.05)	3.27 (2.51 - 4.29)	2.73 (2.01 - 3.79)
<b>R if GT=4 days</b>		1.91 (1.69 - 2.14)	1.9 (1.68 - 2.13)	1.86 (1.65 - 2.1)	2.04 (1.73 - 2.38)
<b>R if GT=6 days</b>		2.37 (2.04 - 2.71)	2.35 (2.03 - 2.69)	2.3 (1.97 - 2.65)	2.56 (2.1 - 3.07)
<b>R if GT=8 days</b>		2.82 (2.39 - 3.28)	2.8 (2.37 - 3.26)	2.73 (2.29 - 3.21)	3.08 (2.46 - 3.76)