

1 **Impact of low relative skeletal muscle mass and power on the**
2 **development of metabolic syndrome in Japanese women: a 7-year**
3 **prospective study**

4

5 Yosuke Yamada^{1*}, Haruka Murakami^{1,2}, Ryoko Kawakami^{1,3}, Yuko Gando^{1,4}, Hinako
6 Nanri¹, Takashi Nakagata¹, Daiki Watanabe¹, Tsukasa Yoshida¹, Yoichi Hatamoto¹,
7 Eiichi Yoshimura¹, Kiyoshi Sanada², Nobuyuki Miyatake⁵, Motohiko Miyachi^{1,3}

8

9 1 National Institute of Health and Nutrition, National Institutes of Biomedical
10 Innovation, Health and Nutrition, Tokyo 162-8636, Japan;
11 yamaday@nibiohn.go.jp, hnanri@nibiohn.go.jp, takashi.nakagata@gmail.com,
12 d2watanabe@nibiohn.go.jp, t-yoshida@nibiohn.go.jp, yhatamoto@nibiohn.go.jp,
13 eyoshi@nibiohn.go.jp
14 2 Faculty of Sport and Health Science, Ritsumeikan University, Kusatsu, Shiga 525-
15 8577, Japan; haruka-m@fc.ritsumei.ac.jp, ksanada@fc.ritsumei.ac.jp
16 3 Faculty of Sport Sciences, Waseda University, Tokorozawa, Saitama 359-1192,
17 Japan; r.kawakami@aoni.waseda.jp, miyachim@waseda.jp
18 4 Faculty of Sport Science, Surugadai University, Hanno, Saitama, 357-8555, Japan;
19 gando.yuko@surugadai.ac.jp
20 5 Department of Hygiene, Faculty of Medicine, Kagawa University, Miki, Kagawa,
21 761-0793, Japan; miyatake.nobuyuki@kagawa-u.ac.jp

22

23

NOTE: This preprint reports new research that has not been certified by peer review and should not be used to guide clinical practice.

24 * Correspondence: Yosuke Yamada, PhD
25 National Institute of Health and Nutrition, National Institutes of Biomedical
26 Innovation, Health and Nutrition, 1-23-1, Toyama, Shinjuku-ku, Tokyo 162-8636,
27 Japan; yamaday@nibiohn.go.jp
28
29

30 **Abstract:** Previous cross-sectional studies indicated that low relative skeletal muscle
31 mass against body weight (appendicular lean mass divided by body weight, ALM/Wt or
32 divided by body mass index, ALM/BMI) was negatively associated with metabolic
33 syndrome (MetS). The aim of this longitudinal study was to investigate the impact of
34 low relative skeletal muscle mass and leg muscle power on the development of MetS in
35 Japanese women in a 7-y prospective study. Subjects were 346 Japanese women aged
36 26 to 85 years. The reference values for Class I sarcopenia were defined as values one
37 SD below the sex-specific means of the young group. The longitudinal relation between
38 muscle mass or leg power and development of MetS was examined using Kaplan-Meier
39 curves and Cox regression models (average follow-up duration 7 years, range 1 to 10
40 years). During follow-up, 24 of subjects developed MetS. Both indices of ALM/Wt or
41 ALM/BMI, the incidence of MetS was higher in Class I sarcopenia group than normal
42 muscle mass group even after controlling variables (adjusted hazard ratio [AHR] = 3.22
43 [95%CI; 1.25-8.27] for ALM/Wt and 3.19 [95%CI; 1.31-7.74] for ALM/BMI). In
44 contrast, for the leg power per body weight, the incidence of MetS was not significantly
45 different between low leg power and normal leg power groups (AHR = 1.23 [95%CI;
46 0.50-3.04]). Current longitudinal study indicated that low relative skeletal muscle mass
47 but not low leg power was independent risk factors for the development of MetS in
48 Japanese women.

49

50 **Keywords:** relative skeletal muscle mass, sarcopenia, muscle power, metabolic
51 syndrome, longitudinal study

52

53 1. Introduction

54 Skeletal muscle mass (SMM) and its function are considered important biomarkers
55 of aging [1-3]. Age-related loss of SMM and its function is called as sarcopenia [4]. In
56 current measurable definition of sarcopenia is based on SMM and grip strength and/or
57 lower body physical performance [1, 2]. Skeletal muscle is a metabolically active organ
58 to mediate energy metabolism and exert beneficial effects on metabolic health [5, 6].
59 Thus, higher muscle mass or muscle function might have beneficial effect on preventing
60 metabolic syndrome (MetS) as well [7-11]. MetS is a cluster of conditions that occur
61 together, increasing the risk of heart disease, stroke and type 2 diabetes. These conditions
62 include the accumulation of visceral fat, increased blood pressure, dyslipidemia, and
63 hyperglycemia.

64 However, because the people who have higher body weight tend have higher muscle
65 mass and strength, previous studies indicated that the normalization of muscle mass and
66 strength by body weight or body mass index (BMI) is needed to see the association
67 between skeletal muscle mass or strength and MetS [7-14]. Previous cross-sectional
68 studies indicated that relative appendicular lean mass per kg weight or per body mass
69 index is inversely associated with MetS [7-14]. The present longitudinal study aimed to
70 examine the impact of low relative skeletal muscle mass and power on the development
71 of MetS in Japanese women.

72

73 2. Materials and Methods

74 2.1. Ethics approval and consent to participate

75 The study was performed in accordance with the guidelines of the Declaration of
76 Helsinki. All procedures were reviewed and approved by the ethics committees of the
77 National Institutes of Biomedical Innovation, Health and Nutrition (6008, Kenei14-02).
78 All participants provided written consent for participation in the study.

79

80 2.2. Participants

81 The participants were recruited from the community around the National Institute of
82 Health and Nutrition, Tokyo, Japan. From a total of 760 women, 346 women aged 26 to
83 85 years old (mean and SD of age, \pm years) were included in the current study who met
84 the following criteria: (1) they received anthropometric and physical activity
85 measurements, (2) underwent blood examinations, (3) dietary intake assessments, (4) no
86 history of MetS at the baseline measurement, and (5) underwent follow-up examinations.

87

88 2.3. Anthropometric and leg power measures

89 Height, weight, and waist circumference were measured and body mass index
90 was calculated. Body composition was determined by bioelectrical impedance analysis
91 (TANITA BC-600). The appendicular lean mass (ALM; kg) were obtained from the
92 sum of the four limbs (right and left upper and lower limbs). The skeletal muscle index

93 (SMI) was calculated as ALM divided by body weight \times 100 (%). The reference values
94 for Class I sarcopenia were defined as values one SD below the sex-specific means of
95 the young group, and 28.0% was the cutoff value for Class I sarcopenia. In addition,
96 ALM divided by BMI (ALM/BMI) was also calculated based on FNIH
97 recommendation. The cutoff value for Class I sarcopenia of ALM/BMI was 0.670. We
98 used these values to divide the subject into normal muscle mass group and Class I
99 sarcopenia group. No women fell into Class II sarcopenia in the current subjects.

100 The leg extension power was measured by using a dynamometer (Anaero Press
101 3500; Combi Wellness, Tokyo, Japan) in the sitting position [15]. The subjects were
102 advised to vigorously extend their legs. 5 trials were performed at 15-s intervals, and the
103 average of the 2 highest recorded power outputs (watt; W) was taken as the definitive
104 measurement. The leg extension power divided by body weight was obtained.

105

106 *2.4. Physical Activity*

107 The duration and intensity of physical activity were evaluated by a triaxial
108 accelerometer (Actimarker EW4800; Panasonic, Osaka, Japan) [16, 17], as described
109 previously [15]. Participants were asked to wear the physical activity monitor on their hip
110 for 28 days; we used data for 14 days, during which the accelerometer was worn
111 continuously from the time the participant awoke until she went to bed. Total volume of
112 physical activity (METs \times hour) was obtained.

113

114 *2.5. Blood samples*

115 Blood samples were taken from participants following an overnight fast of at least
116 10 hours [18]. Venous blood withdrawn from the antecubital vein was collected into tubes
117 without additives or EDTA and was immediately centrifuged at 3000 rpm for 20 minutes
118 to obtain serum or plasma. The levels of glucose, HbA1c, homeostasis model assessment
119 of insulin resistance (HOMA-IR), and HOMA- β in plasma and total cholesterol, high-
120 density and low-density lipoprotein (HDL and LDL) cholesterol, and triglycerides in
121 serum were determined [15].

122 According to the definition released by the Japanese Committee for the Diagnostic
123 Criteria of Metabolic Syndrome in April 2005, we defined metabolic syndrome as the
124 presence of 2 or more abnormalities in addition to visceral obesity (waist circumference:
125 85 cm or more in men, 90 cm or more in women). These three abnormalities are as
126 follows: 1, triglycerides ≥ 150 mg/dL and/or HDL-cholesterol < 40 mg/dL or under
127 treatment for this type of dyslipidemia, 2, systolic blood pressure ≥ 130 and/or diastolic
128 blood pressure ≥ 85 , or under treatment for hypertension, 3, fasting glucose ≥ 110 mg/dL
129 or under treatment for diabetes [19].

130

131 2.6. *Statistical analysis*

132 Results are presented as mean \pm standard deviation (SD). Differences were
133 analyzed using ANOVA. Cumulative event rates for incident MetS were estimated by
134 Kaplan-Meier curves, and the equalities were compared with the log-rank test. Cox
135 proportional hazard analysis was performed to determine the independent association
136 between either baseline SMI, ALM/BMI, or leg power against other variables. For

137 multivariate analysis, model 1 was a crude form; age was adjusted for in model 2; model
138 3 included model-2 adjustment and family history of diabetes, smoking status, and
139 physical activity. Alpha of 0.05 was employed to denote significant statistical deviation.
140 We performed all analyses using IBM SPSS Statistics for Windows, version 22.0 (IBM
141 Corp., Armonk, NY).

142

143 3. Results

144 Table 1 shows the baseline characteristics of the subjects according to SMI group.
145 The subjects with Class I sarcopenia had higher weight, waist circumference, fasting
146 glucose, HOMA-IR, SBP, DBP, triglycerides, and LDL cholesterol compared with
147 normal SMI subjects. In contrast, the subjects with Class I sarcopenia had lower SMI,
148 ALM/BMI, and leg power compared with normal SMI subjects.

149 Kaplan-Meier curves for events of incident MetS according to baseline SMI. Fig 1
150 shows the Kaplan-Meier curves for events of incident MetS according to baseline SMI,
151 and the subjects with Class I sarcopenia defined by SMI had significantly higher incident
152 of MetS during follow-up period ($P = 0.018$). Fig. 2 shows the subjects with Class I
153 sarcopenia defined by ALM/BMI had also significantly higher incident of MetS ($P <$
154 0.001). In contrast, high ALM/height² or high absolute ALM had significantly higher
155 incident of MetS ($P < 0.001$). Fig. 3 shows the Kaplan-Meier curves for events of incident
156 MetS according to baseline leg power, and the subjects with low leg power had
157 significantly higher incident of MetS ($P = 0.032$).

158 Cox proportional hazard regression analyses were performed in Table 2. We found
159 that the subjects with Class I sarcopenia defined by SMI or ALM/BMI was significantly
160 associated with an increased adjusted hazard ratio (AHR) for incident MetS (3.22, 95%CI
161 1.25-8.27 for SMI, and 3.19, 95%CI 1.31-7.74 for ALM/BMI) compared with the
162 subjects with normal relative skeletal muscle mass, after adjusting age, family history of
163 diabetes, smoking status, and physical activity. In contrast, for the leg power per body
164 weight, the incidence of MetS was not significantly different between low leg power and
165 normal leg power groups after adjusting those variables (AHR = 1.23, 95%CI; 0.50-3.04).

166

167 **4. Discussion**

168 The major findings of this 7-year prospective study was subjects with Class I
169 sarcopenia defined by SMI ($\text{ALM}/\text{weight} \times 100\%$) or ALM/BMI was significantly
170 associated with an increased adjusted HR for incident MetS compared with the subjects
171 with normal skeletal muscle mass, after adjusting age, family history of diabetes, smoking
172 status, and physical activity. In contrast, the incidence of MetS was not significantly
173 different between low leg power and normal leg power groups after adjusting those
174 variables.

175 Skeletal muscle mass (SMM) is strongly correlated with body size [20]. Thus,
176 EWGSOP2 stated that “when quantifying muscle mass, the absolute level of SMM or
177 ALM can be adjusted for body size in different ways, namely using height squared
178 ($\text{ALM}/\text{height}^2$), weight (ALM/weight) or body mass index (ALM/BMI) [2].” Preferred
179 adjustment has been a subject of debate. Janssen et al. indicated that SMM/weight is
180 associated with functional impairment and disability in NHANES III participants aged 18
181 and older [21]. Janssen also indicated that $\text{SMM}/\text{height}^2$ is associated with physical
182 disability in the subjects aged 65 and older in Cardiovascular Health Study (CHS)
183 database [22]. Furushima et al. indicated low $\text{ALM}/\text{height}^2$ is associated with bone
184 mineral density but not with MetS variables, and ALM/weight is associated with MetS
185 variables but not with bone mineral density [13]. Many previous studies also indicated
186 that ALM/weight is associated with MetS [9-13]. A recent study found the significant
187 association between low ALM/weight and MetS development in a 7-year retrospective

188 study [23]. The result of the current study is consistent with those cross-sectional studies
189 or the retrospective study, and this is the first prospective study to examine the association
190 of low ALM/weight or ALM/BMI and MetS development, to the best of our knowledge.
191 On the contrary, high ALM/height² or high absolute ALM had significantly higher
192 incident of MetS during the follow-up period. This is consistent with the recent cross-
193 sectional study [24] and previous studies [7-14]. It is because the people who have higher
194 body weight tend have higher muscle mass. Therefore, the normalization of muscle mass
195 by body weight or BMI is needed to examine the association between SMM and MetS.

196 The association between muscle strength or power and MetS has also been
197 examined. Jurca et al. indicated that low muscular strength index computed by combining
198 the one-repetition maximum score for the bench press and the leg press expressed as
199 weight lifted per kilogram body weight was significantly associated with high prevalence
200 of MetS [7, 8]. Very recently, Zhang et al. examined the association between the
201 prevalence of MetS and absolute or relative values of muscle strength in women [14].
202 They concluded that the prevalence of MetS increased with low relative grip and leg
203 strengths (per kilogram body weight). Conversely, low absolute muscle strength was
204 associated with low MetS prevalence [14]. The current longitudinal study showed the
205 significant association between low relative muscle power and the development of MetS,
206 but the association was no more significant after adjusting age, family history of diabetes,
207 smoking status, and physical activity.

208 Several mechanisms may affect the association between low relative skeletal
209 muscle mass and development of MetS, including physical inactivity, malnutrition,
210 insulin resistance, inflammation, and myokines [11]. Skeletal muscle is the main site of

211 glucose uptake and utilization. Low relative skeletal muscle mass may increase insulin
212 resistance and thereby induce MetS. Actually, the HOMA-IR was negatively associated
213 with low relative muscle mass.

214 This study has several limitations. First, because of limited sample size, we could
215 not test many adjusting variables in this study. There may be possible cofounders between
216 low relative skeletal muscle mass and development of MetS. Second, the muscle quality
217 and composition, such as fat infiltration [25, 26], fibrosis [27, 28], relative expansion of
218 extracellular compartments [3, 29, 30], are important issue to assess muscle tissues.
219 However, we could only assess ASM in this study. Further studies are needed to address
220 this issue. Third, recently, BIA is used many studies to assess ASM, but the BIA method
221 is a secondary indirect method to estimate body composition [31]. BIA is possibly
222 influenced by edema, exercise, circadian and seasonal variations [32-34]. Although BIA
223 was measured in the morning without any exercise and fasting state in this study, still
224 seasonal variations may affect the current results.

225

226 **5. Conclusions**

227 In conclusion, our results show the relative skeletal muscle mass against body
228 weight (ALM/weight) or body mass index (ALM/BMI) is negatively associated the future
229 development of MetS. The relative skeletal muscle mass was negatively associated with
230 HOMA-IR. To maintain the relative skeletal muscle mass is important to prevent
231 developing MetS in Japanese women.

232

233 **Funding:** The study was funded by the Ministry of Health, Labour and Welfare (Health
234 and Labour Sciences Research Grant: 200825016B and 201222028B).

235

236 **Acknowledgments:** The authors thank Dr. Kumpei Tanisawa, Dr. Harumi Ohno, Dr.
237 Kana Konishi, Dr. Michiya Tanimoto, Dr. Noriko Tanaka, Dr. Hiroshi Kawano, Dr.
238 Kenta Yamamoto, Dr. Motoyuki Iemitsu, Ms. Azusa Sasaki, Ms. Yumi Ohmori, Ms. Rie
239 Katayama, Mr. Zhenbo Cao, Ms. Eriko Kubo, Ms. Miyuki Hayashi, Mr. Satoshi Hanawa,
240 Ms. Naeko Kurose, Ms. Aiko Hirosako, Ms. Sayaka Nakamura, Ms. Hidemi Hara, Ms.
241 Miki Yoshida, Mr. Satoshi Kurita, Ms. Noriko Wada, Ms. Miho Okamoto, Ms. Hisako
242 Ito, Ms. Kinue Nakajima, Ms. Kaori Sato, Ms. Akie Morishita, and Ms. Kazumi Kajiwara,
243 who significantly contributed to the realization of this study through their long-term
244 involvement as researchers or research assistants. Moreover, the authors would like to
245 express their gratitude to all the subjects who participated in the study and to all research
246 professionals involved in the NEXIS protocol.

247

248 **Conflicts of Interest:** There is no conflicts of interest in this study.

249

250

251 **References**

- 252 1. Chen LK, Woo J, Assantachai P, Auyeung TW, Chou MY, Iijima K, et al. Asian
253 Working Group for Sarcopenia: 2019 Consensus Update on Sarcopenia Diagnosis
254 and Treatment. *J Am Med Dir Assoc*. 2020;21(3):300-7.e2. Epub 2020/02/09. doi:
255 10.1016/j.jamda.2019.12.012. PubMed PMID: 32033882.
- 256 2. Cruz-Jentoft AJ, Bahat G, Bauer J, Boirie Y, Bruyère O, Cederholm T, et al.
257 Sarcopenia: revised European consensus on definition and diagnosis. *Age Ageing*.
258 2019;48(1):16-31. Epub 2018/10/13. doi: 10.1093/ageing/afy169. PubMed PMID:
259 30312372; PubMed Central PMCID: PMC6322506.
- 260 3. Yamada Y, Buehring B, Krueger D, Anderson RM, Schoeller DA, Binkley N.
261 Electrical properties assessed by bioelectrical impedance spectroscopy as
262 biomarkers of age-related loss of skeletal muscle quantity and quality. *The Journals*
263 *of Gerontology Series A: Biological Sciences and Medical Sciences*.
264 2017;72(9):1180-6. doi: 10.1093/gerona/glw225.
- 265 4. Cruz-Jentoft AJ, Sayer AA. Sarcopenia. *The Lancet*. 2019;393(10191):2636-46.
266 doi: 10.1016/S0140-6736(19)31138-9.
- 267 5. Usui C, Takahashi E, Gando Y, Sanada K, Oka J, Miyachi M, et al. Resting energy
268 expenditure can be assessed by dual-energy X-ray absorptiometry in women
269 regardless of age and fitness. *Eur J Clin Nutr*. 2009;63(4):529-35. Epub 2008/02/21.
270 doi: 10.1038/sj.ejcn.1602980. PubMed PMID: 18285810.
- 271 6. Wang Z, Ying Z, Bosy-Westphal A, Zhang J, Schautz B, Later W, et al. Specific
272 metabolic rates of major organs and tissues across adulthood: evaluation by
273 mechanistic model of resting energy expenditure. *The American journal of clinical*
274 *nutrition*. 2010;92(6):1369-77. Epub 10/20. doi: 10.3945/ajcn.2010.29885.
275 PubMed PMID: 20962155.
- 276 7. Jurca R, Lamonte MJ, Church TS, Earnest CP, Fitzgerald SJ, Barlow CE, et al.
277 Associations of muscle strength and fitness with metabolic syndrome in men. *Med*
278 *Sci Sports Exerc*. 2004;36(8):1301-7. Epub 2004/08/05. doi:
279 10.1249/01.mss.0000135780.88930.a9. PubMed PMID: 15292736.
- 280 8. Jurca R, Lamonte MJ, Barlow CE, Kampert JB, Church TS, Blair SN. Association
281 of muscular strength with incidence of metabolic syndrome in men. *Med Sci Sports*
282 *Exerc*. 2005;37(11):1849-55. Epub 2005/11/16. doi:
283 10.1249/01.mss.0000175865.17614.74. PubMed PMID: 16286852.
- 284 9. Kim Y, Han BD, Han K, Shin KE, Lee H, Kim TR, et al. Optimal cutoffs for low
285 skeletal muscle mass related to cardiovascular risk in adults: The Korea National
286 Health and Nutrition Examination Survey 2009-2010. *Endocrine*. 2015;50(2):424-

- 287 33. Epub 2015/04/12. doi: 10.1007/s12020-015-0577-y. PubMed PMID:
288 25862070.
- 289 10. Mesinovic J, McMillan LB, Shore-Lorenti C, De Courten B, Ebeling PR, Scott D.
290 Metabolic Syndrome and Its Associations with Components of Sarcopenia in
291 Overweight and Obese Older Adults. *Journal of clinical medicine*. 2019;8(2). Epub
292 2019/01/30. doi: 10.3390/jcm8020145. PubMed PMID: 30691198; PubMed
293 Central PMCID: PMC6406767.
- 294 11. Kim SH, Jeong JB, Kang J, Ahn DW, Kim JW, Kim BG, et al. Association between
295 sarcopenia level and metabolic syndrome. *PloS one*. 2021;16(3):e0248856. Epub
296 2021/03/20. doi: 10.1371/journal.pone.0248856. PubMed PMID: 33739984;
297 PubMed Central PMCID: PMC7978348 salaries. This does not alter our
298 adherence to all PLOS ONE policies on sharing data and materials.
- 299 12. Kim BC, Kim MK, Han K, Lee SY, Lee SH, Ko SH, et al. Low muscle mass is
300 associated with metabolic syndrome only in nonobese young adults: the Korea
301 National Health and Nutrition Examination Survey 2008-2010. *Nutrition research*
302 (New York, NY). 2015;35(12):1070-8. Epub 2015/11/26. doi:
303 10.1016/j.nutres.2015.09.020. PubMed PMID: 26602833.
- 304 13. Furushima T, Miyachi M, Iemitsu M, Murakami H, Kawano H, Gando Y, et al.
305 Comparison between clinical significance of height-adjusted and weight-adjusted
306 appendicular skeletal muscle mass. *J Physiol Anthropol*. 2017;36(1):15. Epub
307 2017/02/15. doi: 10.1186/s40101-017-0130-1. PubMed PMID: 28193296; PubMed
308 Central PMCID: PMC5307800.
- 309 14. Zhang W, Zhao Z, Sun X, Tian X. Prevalence of Metabolic Syndrome According
310 to Absolute and Relative Values of Muscle Strength in Middle-Aged and Elderly
311 Women. *International journal of environmental research and public health*.
312 2021;18(17). Epub 2021/09/11. doi: 10.3390/ijerph18179073. PubMed PMID:
313 34501662; PubMed Central PMCID: PMC8431152.
- 314 15. Fuku N, Murakami H, Iemitsu M, Sanada K, Tanaka M, Miyachi M. Mitochondrial
315 macrohaplogroup associated with muscle power in healthy adults. *Int J Sports Med*.
316 2012;33(5):410-4. Epub 2012/03/02. doi: 10.1055/s-0031-1301317. PubMed
317 PMID: 22377945.
- 318 16. Yamada Y, Hashii-Arishima Y, Yokoyama K, Itoi A, Adachi T, Kimura M.
319 Validity of a triaxial accelerometer and simplified physical activity record in older
320 adults aged 64-96 years: a doubly labeled water study. *Eur J Appl Physiol*. 2018.
321 Epub 2018/07/19. doi: 10.1007/s00421-018-3944-6. PubMed PMID: 30019086.

- 322 17. Yamada Y, Yokoyama K, Noriyasu R, Osaki T, Adachi T, Itoi A, et al. Light-
323 intensity activities are important for estimating physical activity energy expenditure
324 using uniaxial and triaxial accelerometers. *Eur J Appl Physiol*. 2009;105(1):141-52
325 Erratum in: 16(6):1279. doi: DOI 10.1007/s00421-008-0883-7.
- 326 18. Gando Y, Yamamoto K, Murakami H, Ohmori Y, Kawakami R, Sanada K, et al.
327 Longer time spent in light physical activity is associated with reduced arterial
328 stiffness in older adults. *Hypertension*. 2010;56(3):540-6. Epub 2010/07/08. doi:
329 10.1161/hypertensionaha.110.156331. PubMed PMID: 20606102.
- 330 19. Arai H, Yamamoto A, Matsuzawa Y, Saito Y, Yamada N, Oikawa S, et al.
331 Prevalence of metabolic syndrome in the general Japanese population in 2000.
332 *Journal of atherosclerosis and thrombosis*. 2006;13(4):202-8. Epub 2006/08/16.
333 doi: 10.5551/jat.13.202. PubMed PMID: 16908953.
- 334 20. Kawakami R, Miyachi M, Tanisawa K, Ito T, Usui C, Midorikawa T, et al.
335 Development and validation of a simple anthropometric equation to predict
336 appendicular skeletal muscle mass. *Clinical Nutrition*. 2021;40(11):5523-30. doi:
337 10.1016/j.clnu.2021.09.032.
- 338 21. Janssen I, Heymsfield SB, Ross R. Low relative skeletal muscle mass (sarcopenia)
339 in older persons is associated with functional impairment and physical disability. *J*
340 *Am Geriatr Soc*. 2002;50(5):889-96. Epub 2002/05/25. doi: 10.1046/j.1532-
341 5415.2002.50216.x. PubMed PMID: 12028177.
- 342 22. Janssen I. Influence of sarcopenia on the development of physical disability: the
343 Cardiovascular Health Study. *J Am Geriatr Soc*. 2006;54(1):56-62. Epub
344 2006/01/20. doi: 10.1111/j.1532-5415.2005.00540.x. PubMed PMID: 16420198.
- 345 23. Kim G, Lee SE, Jun JE, Lee YB, Ahn J, Bae JC, et al. Increase in relative skeletal
346 muscle mass over time and its inverse association with metabolic syndrome
347 development: a 7-year retrospective cohort study. *Cardiovascular diabetology*.
348 2018;17(1):23. Epub 2018/02/07. doi: 10.1186/s12933-018-0659-2. PubMed
349 PMID: 29402279; PubMed Central PMCID: PMC5798183.
- 350 24. Lagacé JC, Marcotte-Chenard A, Paquin J, Tremblay D, Brochu M, Dionne IJ.
351 Increased odds of having the metabolic syndrome with greater fat-free mass:
352 counterintuitive results from the National Health and Nutrition Examination Survey
353 database. *J Cachexia Sarcopenia Muscle*. 2021. Epub 2021/11/27. doi:
354 10.1002/jcsm.12856. PubMed PMID: 34825787.
- 355 25. Goodpaster BH, Kelley DE, Thaete FL, He J, Ross R. Skeletal muscle attenuation
356 determined by computed tomography is associated with skeletal muscle lipid
357 content. *J Appl Physiol*. 2000;89(1):104-10.

- 358 26. Goodpaster BH, Carlson CL, Visser M, Kelley DE, Scherzinger A, Harris TB, et
359 al. Attenuation of skeletal muscle and strength in the elderly: The Health ABC
360 Study. *J Appl Physiol*. 2001;90(6):2157-65.
- 361 27. Fukumoto Y, Ikezoe T, Yamada Y, Tsukagoshi R, Nakamura M, Mori N, et al.
362 Skeletal muscle quality assessed from echo intensity is associated with muscle
363 strength of middle-aged and elderly persons. *Eur J Appl Physiol*.
364 2012;112(4):1519-25. Epub 2011/08/19. doi: 10.1007/s00421-011-2099-5 [doi].
365 PubMed PMID: 21847576.
- 366 28. Watanabe Y, Yamada Y, Fukumoto Y, Ishihara T, Yokoyama K, Yoshida T, et al.
367 Echo intensity obtained from ultrasonography images reflecting muscle strength in
368 elderly men. *Clin Interv Aging*. 2013;8:993-8. Epub 2013/08/09. doi:
369 10.2147/CIA.S47263
- 370 29. Yamada Y, Yoshida T, Yokoyama K, Watanabe Y, Miyake M, Yamagata E, et al.
371 The Extracellular to Intracellular Water Ratio in Upper Legs is Negatively
372 Associated With Skeletal Muscle Strength and Gait Speed in Older People. *The*
373 *Journals of Gerontology: Series A*. 2017;72(3):293-8. doi: 10.1093/gerona/glw125.
- 374 30. Yamada Y, Schoeller DA, Nakamura E, Morimoto T, Kimura M, Oda S.
375 Extracellular water may mask actual muscle atrophy during aging. *The Journals of*
376 *Gerontology Series A: Biological Sciences and Medical Sciences*.
377 2010;65A(5):510-6.
- 378 31. Yamada Y, Nishizawa M, Uchiyama T, Kasahara Y, Shindo M, Miyachi M, et al.
379 Developing and Validating an Age-Independent Equation Using Multi-Frequency
380 Bioelectrical Impedance Analysis for Estimation of Appendicular Skeletal Muscle
381 Mass and Establishing a Cutoff for Sarcopenia. *International journal of*
382 *environmental research and public health*. 2017;14(7). Epub 2017/07/30. doi:
383 10.3390/ijerph14070809. PubMed PMID: 28753945; PubMed Central PMCID:
384 PMCPMC5551247.
- 385 32. Shiose K, Yamada Y, Motonaga K, Sagayama H, Higaki Y, Tanaka H, et al.
386 Segmental extracellular and intracellular water distribution and muscle glycogen
387 after 72-h carbohydrate loading using spectroscopic techniques. *J Appl Physiol*
388 (1985). 2016;121(1):205-11. Epub 2016/05/28. doi:
389 10.1152/jappphysiol.00126.2016. PubMed PMID: 27231310.
- 390 33. Shiose K, Tanabe Y, Ohnishi T, Takahashi H. Effect of regional muscle damage
391 and inflammation following eccentric exercise on electrical resistance and the body
392 composition assessment using bioimpedance spectroscopy. *The journal of*

393 physiological sciences : JPS. 2019;69(6):895-901. Epub 2019/08/08. doi:
394 10.1007/s12576-019-00702-8. PubMed PMID: 31388975.
395 34. Shiose K, Yamada Y, Motonaga K, Takahashi H. Circadian variation of
396 extracellular and intracellular resistance of the leg, arm, and trunk in healthy
397 humans: a segmental bioimpedance spectroscopy study. Biomedical Physics &
398 Engineering Express. 2017;3(6):065007. doi: 10.1088/2057-1976/aa87c0.
399
400

401 Figure legend

402

403 **Fig. 1** Kaplan-Meier curves for events of incident metabolic syndrome (MetS) according
404 to baseline skeletal muscle index (SMI, %). Bold line shows normal SMI, and dashed line
405 shows Class I sarcopenia. The SMI was calculated as ALM divided by body weight \times
406 100 (%).

407

408 **Fig. 2** Kaplan-Meier curves for events of incident metabolic syndrome (MetS) according
409 to baseline ALM/BMI. Bold line shows normal ALM/BMI, and dashed line shows Class
410 I sarcopenia.

411

412 **Fig. 3** Kaplan-Meier curves for events of incident metabolic syndrome (MetS) according
413 to baseline leg power (W/kg). Bold line shows normal leg power, and dashed line shows
414 low leg power.

415

416

417

Table 1. Baseline characteristics of the study subjects according to SMI group (N = 346)

SMI (%)	Normal SMI			Class I sarcopenia			P value
	Above Ave.			Below Ave.			
	≥32%			28%-32%			
	n = 81			n = 184			
	mean	±	SD	mean	±	SD	
Age (y)	54.1	±	11.7	56.6	±	11.6	0.24
Weight (kg)	48.5	±	5.0	53.9	±	5.3	<0.001
BMI (kg/m ²)	19.7	±	1.5	21.9	±	2.1	<0.001
Waist circumference (cm)	73.3	±	6.2	80.4	±	7.1	<0.001
SMI (%)	33.4	±	1.4	30.0	±	1.1	<0.001
ALM/BMI	0.825	±	0.079	0.740	±	0.060	<0.001
HbA1c (%)	5.4	±	0.5	5.5	±	0.4	0.115
Fasting glucose (mg/dL)	89.2	±	14.2	89.6	±	11.1	0.015
HOMA-IR	0.69	±	0.38	0.86	±	0.36	<0.001
SBP (mmHg)	114.2	±	18.3	120.0	±	16.8	0.008
DBP (mmHg)	67.9	±	10.8	71.3	±	10.4	0.020
HR (bpm)	58.2	±	8.3	59.8	±	9.3	0.093
Total cholesterol (mg/dL)	210.0	±	37.7	221.1	±	35.4	0.055
Triglycerides (mg/dL)	70.1	±	31.4	83.0	±	43.1	<0.001
HDL cholesterol (mg/dL)	75.5	±	14.7	72.7	±	17.8	<0.001
LDL cholesterol (mg/dL)	120.1	±	32.0	131.4	±	30.4	0.004
PA (METs*hour)	4.4	±	2.9	3.8	±	1.7	0.077
Leg Power (W/kg)	16.3	±	3.4	14.7	±	4.1	<0.001

SMI, skeletal muscle mass index; BMI, body mass index; ALM, appendicular lean mass; SBP, systolic blood pressure; DBP, diastolic blood pressure; HR, heart rate; HDL, high density lipoprotein; LDL, low density lipoprotein; PA, physical activity.

418

419

Table 2 Association between baseline relative muscle mass or power and incidence of metabolic syndrome (Cox model) (N = 346)

	Model 1	Model 2	Model 3
	HR (95%CI)	HR (95%CI)	HR (95%CI)
Normal SMI	1 (ref)	1 (ref)	1 (ref)
Class I Sarcopenia	2.61 (1.14-5.98) P = 0.023	3.16 (1.35-7.39) P = 0.008	3.22 (1.25-8.27) P = 0.015
Normal ALM/BMI	1 (ref)	1 (ref)	1 (ref)
Class I Sarcopenia	3.88 (1.74-8.68) P = 0.001	3.52 (1.57-7.92) P = 0.002	3.19 (1.31-7.74) P = 0.010
Normal leg power	1 (ref)	1 (ref)	1 (ref)
Low leg power	2.34 (1.05-5.22) P = 0.037	1.67 (0.74-3.84) P = 0.214	1.23 (0.50-3.04) P = 0.654

SMI, skeletal muscle mass index; BMI, body mass index; ALM, appendicular lean mass; HR, hazard ratio; CI, confidence interval.

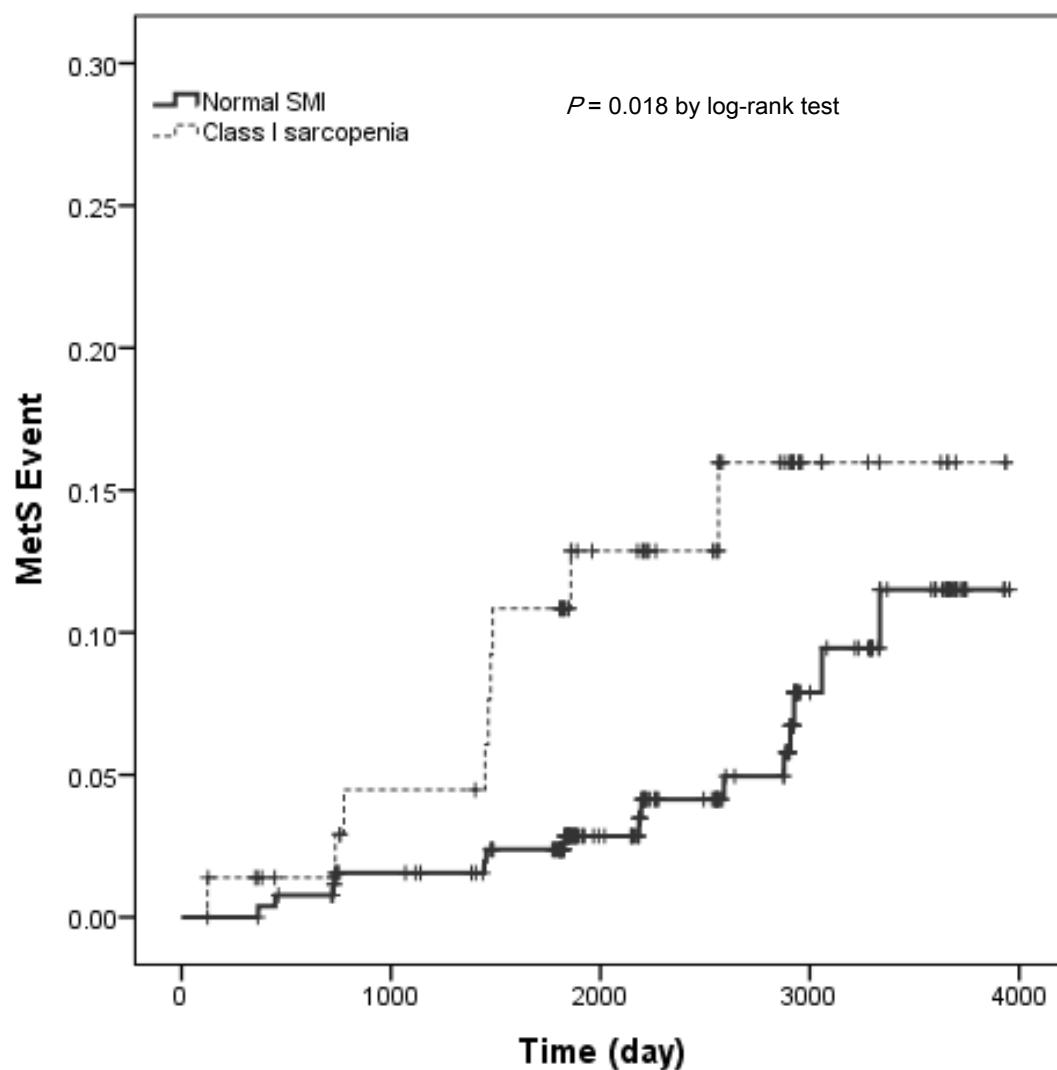
Model 1: crude

Model 2: Model 1 + further adjusted for age

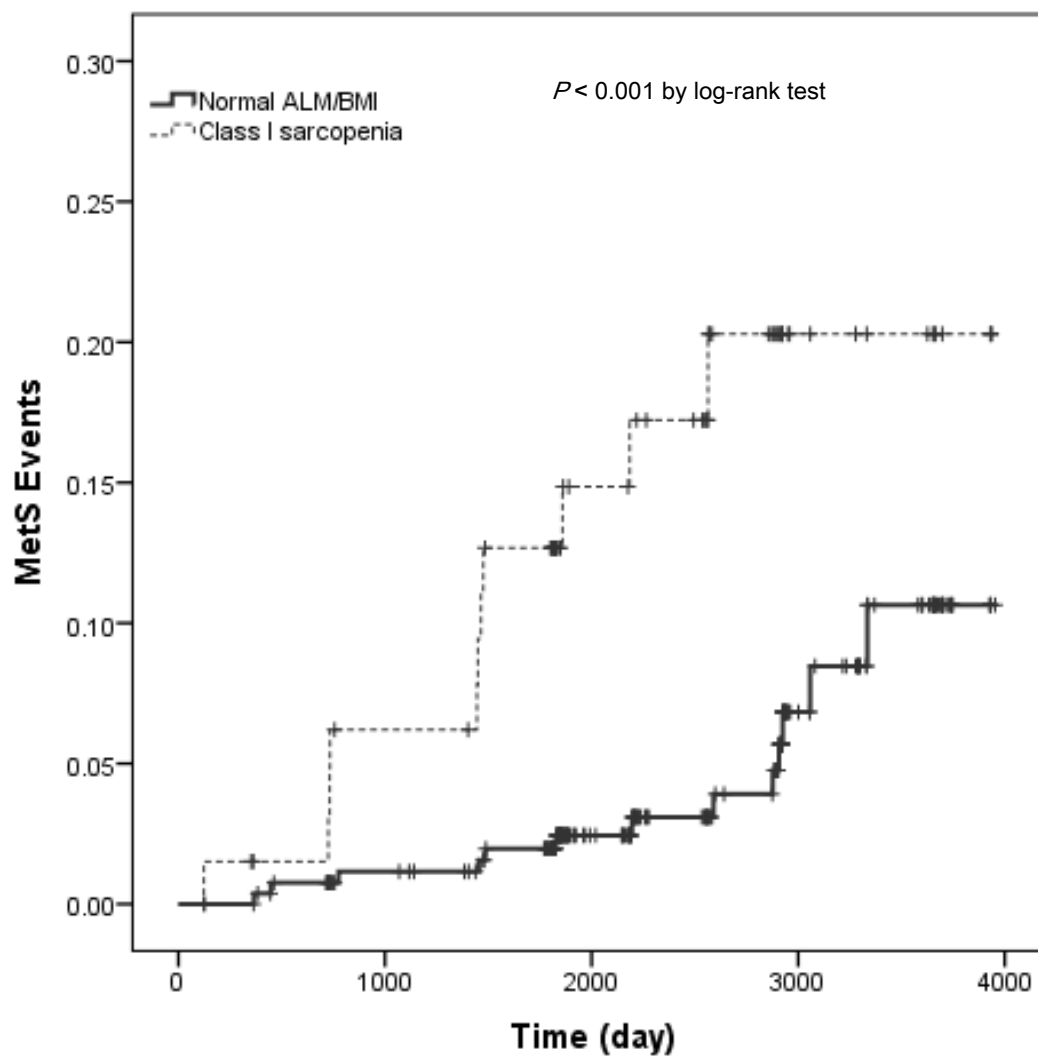
Model 3: Model 2 + further adjusted for family history of diabetes, smoking status, physical activity

420

421



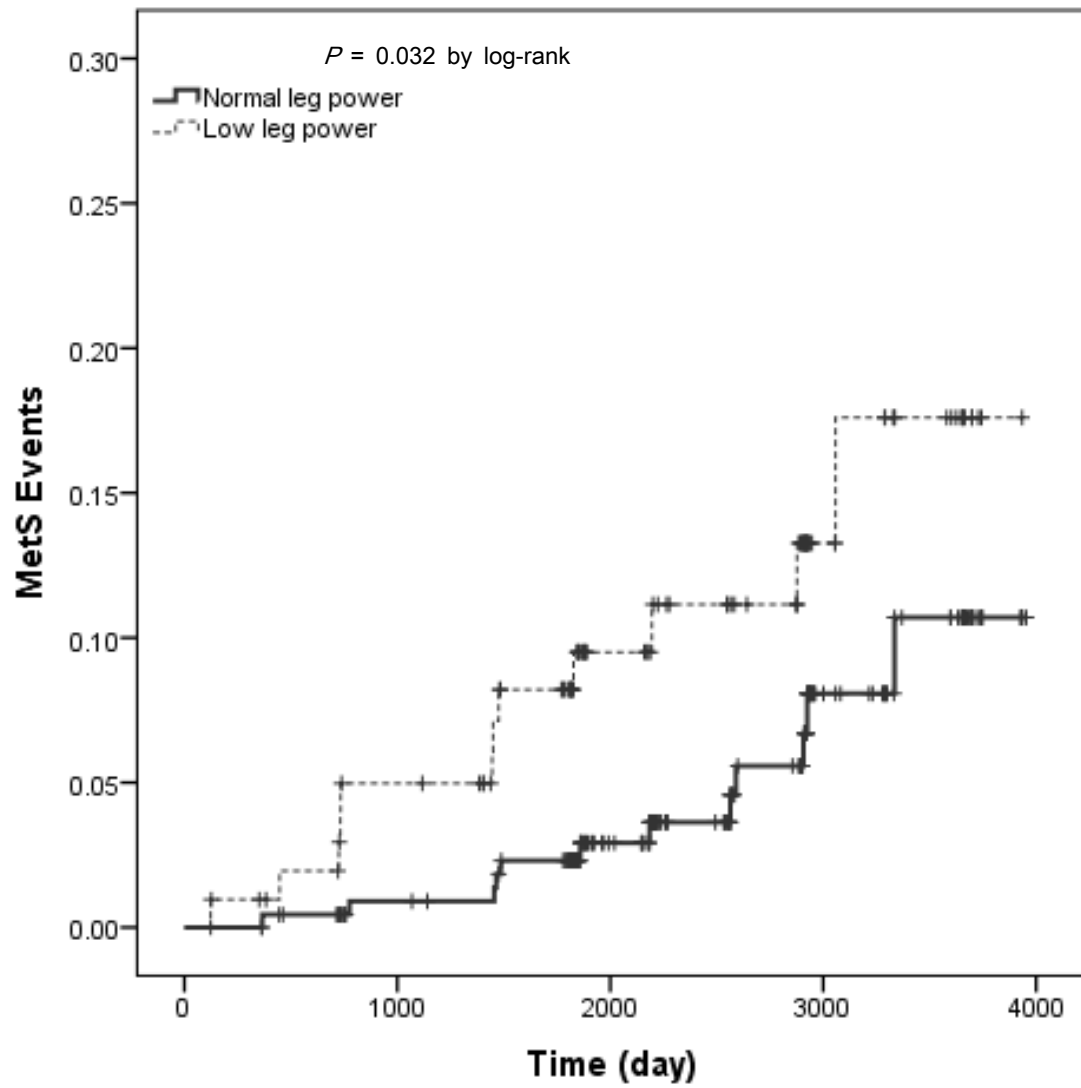
422 Fig. 1
423



424

425 **Fig. 2**

426



427

428 **Fig. 3**

429