

1 **Prevalence mapping of Schistosomiasis among Pre-school aged children in**  
2 **Rwanda**

3

4 Bayingana Jean Bosco<sup>1,2</sup>, Nyandwi Elias<sup>3</sup>, Ntakarutimana Amans<sup>2</sup>, Kagabo Joseph<sup>2</sup>, Shema  
5 Eliah<sup>2</sup>, Kanimba Philbert<sup>2</sup>, Mbonigaba Jean Bosco<sup>4</sup>, Ruberanziza Eugene<sup>4</sup>& Rujeni Nadine<sup>2#</sup>

6

7 <sup>1</sup> University of Rwanda, Single Project Implementation Unit

8 <sup>2</sup> University of Rwanda, College of Medicine and Health Sciences, School of Health Sciences

9 <sup>3</sup> University of Rwanda, College of Science and Technology, Centre for Geographic  
10 Information Systems and Remote Sensing (CGIS)

11 <sup>4</sup> Ministry of Health, Rwanda Biomedical Center, NTDs & Other Parasitic Diseases Unit

12

13 #Corresponding author email address: [nrujeni@gmail.com](mailto:nrujeni@gmail.com)

14

16 **Abstract**

17 Schistosomiasis is endemic in Rwanda and control programs have been implemented with a  
18 special focus on school-aged children (SAC) ignoring pre-school aged children (pre-SAC) for  
19 which the actual prevalence of the disease is not well established. This study consisted of a  
20 cross-sectional quantitative mapping of the distribution of schistosomiasis and identification  
21 of associated risk factors among pre-SAC throughout the country. The study covered all the  
22 17 Districts of Rwanda endemic for schistosomiasis with a total sample of 4675 children  
23 enrolled from 80 purposively selected villages. The Parasitological assessment of children's  
24 urine and stool samples was conducted using CCA and Kato Katz methods respectively for  
25 infection detection. A standard questionnaire was used to collect data on the risk factors and  
26 geospatial assessment was performed using tablets and GPS to record geographic coordinates  
27 for plotting locations on maps using ArcGIS software.

28 The overall prevalence of *S mansoni* infection across the surveyed areas was 24% and 0.8 by  
29 CCA and Kato-Katz, respectively. Infection was significantly associated with bathing  
30 children in open water bodies. Furthermore, pre-SAC looked after by siblings (sisters) were  
31 twice as much likely to be infected compared to those looked after by mothers.  
32 Schistosomiasis control interventions are needed for pre-SAC to limit their exposure to open  
33 water bodies with expectations of adapted chemotherapy to be availed. Community based  
34 deworming campaigns may be the best way to ensure good treatment coverage of pre-SAC in  
35 Rwanda.

36 Key words: Schistosomiasis, pre-school aged children, risk factors, *Schistosoma mansoni*,  
37 Rwanda

39 **Author summary**

40 Schistosomiasis is one of the Neglected Tropical Diseases (NTD) of public health concern in  
41 Rwanda like in many tropical countries. The recently published NTD roadmap by the World  
42 Health Organization indicates that schistosomiasis is targeted for elimination as a public  
43 health problem worldwide by 2030. For this target to be achieved, all at risk populations  
44 should be reached by control programs' interventions such as preventive chemotherapy,  
45 health education as well as water, sanitation and hygiene (WASH) practices. However, pre-  
46 school children (pre-SAC) are among populations at risk for whom infection burden is not  
47 fully documented. Implementation of the recent WHO guideline on schistosomiasis control  
48 and elimination that recommend inclusion of pre-SAC in control programs will be informed  
49 by detailed assessment of the infection burden and distribution in endemic countries. This  
50 study is showing for the first time a high burden of schistosomiasis among pre-SAC in high-  
51 risk areas of Rwanda. With the imminent availability of the paediatric formulation of  
52 Praziquantel (the drug of choice against the disease), the findings should guide the country in  
53 implementation strategies that include these children in mass deworming. The findings also  
54 highlight a number of risk factors including the passive exposure of these young children by  
55 their siblings while bathing them in open waters and the lack of knowledge of  
56 parents/guardians on the disease. Additional integrated interventions such as health  
57 education, improvement of water supply and sanitation as well as snail surveillance will lead  
58 to more sustainable solutions in the march towards schistosomiasis elimination.

60

## 61 **Introduction**

62 Schistosomiasis is a chronic parasitic infection that is caused by trematodes of the genus  
63 *Schistosoma*, transmitted through fresh water snails. It can cause vascular damage in  
64 individuals and is associated with growth retardation and impaired metabolism and cognition  
65 (1,2). Schistosomiasis remains a public health concern and highly prevalent in low and  
66 middle-income countries, including Rwanda, mostly affecting poor communities with no  
67 access to potable water (3). Globally, more than 250 million people are affected by  
68 schistosomiasis and Sub Saharan Africa accounts for 90% of all these infection burdens (4,5).  
69 Control interventions mainly rely on regular targeted treatments (using Praziquantel) of  
70 populations in endemic areas coupled with health education. Although the disease is targeted  
71 (as per the WHO roadmap) for elimination as a public health problem (defined as prevalence  
72 of <1% of heavy intensity schistosomiasis infections) by 2030 (6), control interventions do  
73 not currently reach all populations in need in most endemic areas.

74

75 For many years, pre-school aged children (pre-SAC) have been left out in most  
76 schistosomiasis treatment programs. This was partly due to the assumption that they are not  
77 at great risk of contracting schistosomiasis. However, considerable advances have been made  
78 in this regard and a number of studies have shown that most of the pre-SAC in endemic areas  
79 are significantly exposed to schistosomiasis in many countries (7–14). This has prompted the  
80 WHO to formulate a new guideline including recommendations to include pre-SAC aged 2  
81 years+ in preventive chemotherapy while those below 2 years should be treated on individual  
82 basis (15).

83

84 With the realization that pre-SAC are in need of treatment, came a number of challenges  
85 including the absence of an appropriate child friendly formulation of Praziquantel and the  
86 lack of information on the real burden of schistosomiasis in this young age group in some  
87 countries. Indeed, inclusion of pre-SAC in schistosomiasis control programs should be  
88 justified by quantification of the burden of infection in that age group in each country for  
89 optimal intervention. Furthermore, an assessment of their accessibility and local acceptability  
90 should guide implementation strategies.

91

92 Rwanda is among the countries where the burden of schistosomiasis among pre-SAC is not  
93 well documented. Our own study on Nkombo Island in the western part of the country  
94 reported an overall prevalence of 9.5% (9), but a countrywide assessment of the disease in  
95 this age group is necessary to better inform the control program. Nevertheless, the Rwandan  
96 Ministry of health has recently introduced a community-based deworming strategy whereby  
97 community health workers (CHWs) and community leaders coordinate MDAs with minimal  
98 supervision from the central level. Such a deworming strategy should be suitable for treating  
99 schistosomiasis among pre-SAC.

100

101 In light of the above, this study was conducted to estimate the prevalence, identify risk  
102 factors and produce an illustrative, countrywide map of schistosomiasis distribution in all  
103 moderate to high - risk areas of the country.

104

## 106 **Methods**

### 107 **Study design, population, and sample size**

108 This was a cross-sectional quantitative study that involved parasitological assessment of  
109 schistosomiasis among children aged 7 to 59 months. Structured interviews were also held  
110 with participants' parents/caregivers to assess risk factors of infection in this young  
111 population. The study covered all the 17 Districts of Rwanda at moderate to high risk of  
112 schistosomiasis (16,17) and targeted 40 Sectors reported with a prevalence of 10% and above  
113 among school children (based on incidence and mapping data). From each targeted sector, 2  
114 villages were selected based on their proximity to existing water body and/or wetlands. The  
115 villages layer was overlaid with layers of lakes, multipurpose water dam, fish pond and/or  
116 important wetlands (wetland of  $\geq 0.7$  ha hosting a socio-economic activity, mostly irrigated  
117 agriculture). From eligible villages (risky villages), final selection was purposively decided  
118 considering the spatial distribution pattern analysed visually by researchers and  
119 complemented with field verification, making 80 study villages with proximity to open water  
120 sources and wetlands. A total of 4675 children were enrolled from the selected villages.

121

### 122 **Parasitological assessment**

123 Urine samples were collected and tested for schistosomiasis circulating antigen using the  
124 Point-Of-Care Circulating Cathodic Antigen (POC-CCA or CCA) following manufacturer's  
125 instructions. CCA test results were recorded as negative (- or trace) or positive (+; ++ or +++  
126 according to the intensity of the test line in comparison to a test control). Stool samples were  
127 also collected and tested using the Kato Katz method for the detection of patient infection  
128 following published protocols (18). A single specimen was collected from which 2 slides  
129 were prepared and read by 2 laboratory technicians independently. Ten per cent (10%) of all

130 slides were re-tested by the National Reference Laboratory senior technicians for quality  
131 control.

132

### 133 **Risk factors and spatial assessment**

134 A standard questionnaire was designed in Kobo toolbox and used to collect data from  
135 parents/guardians by a well-trained data collector using a tablet. Geographic coordinates were  
136 recorded using tablets and ArcGIS software version 10.4 was used to produce maps.

137

### 138 **Statistical analysis**

139 Data collected were analysed by Stata 13 (STATA Corp, Lakeway, College Station, Texas,  
140 USA). Descriptive analysis was conducted. Categorical variables were presented as  
141 frequencies and their respective percentages. Numerical variables were presented as mean  
142 and standard deviations. For comparison purposes, cross-tabulation analyses were conducted  
143 and contingency tables were produced, while chi-square tests were used to compare  
144 proportions. To assess the association between variables, logistic regression was performed.  
145 For binary logistic regression, each risk factor was assessed with the outcome (infection  
146 status) separately while for multivariable logistic regression, a backward stepwise logistic  
147 regression was run and all risk factors with a p-value less or equal to 0.05 were considered.  
148 Odds ratios and the corresponding 95% confidence interval (CI) were reported. A two-tailed  
149 significance level of 0.05 was considered.

150

### 151 **Ethical consideration**

152 The current study was approved by the Institutional Review Board (IRB) of the University of  
153 Rwanda College of Medicine and Health Sciences (Approval Notice No  
154 148/CMHS/IRB/2019) and endorsed by the Ministry of Health. Local authorities, community

155 health workers and parents/guardians were informed about the aims, voluntary nature of their  
156 participation, potential risks and benefits of the study. A signed consent was obtained from  
157 parents/guardians before enrolling their child(ren) in the study.

158

## 159 **Results**

160 The results of this research are presented by study sites and do not represent the  
161 administrative District. Study sites are those sites in proximity with open water bodies and  
162 vary in number per District from one to six. These sites are the base for defining the targeted  
163 areas of control interventions.

164

### 165 **Demographic characteristics of the study participants**

166 The total sample was 4675 pre-SAC with a mean age of 37.5 months ( $\pm 13.0$ ), and a sex ratio  
167 M:F of 1.01: 1 (Table 1). Majority of the study participants (corresponding to 96.2%) were  
168 born in their respective villages (permanent residents).

169

170



172 **Table 1.** Characteristics of pre-school aged children enrolled in the study

	<b>n</b>	<b>%</b>
<b>Age in months (Mean, SD)</b>	(37.5, 13.0)	
<b>Age categories (in months)</b>		
12 months and less	73	1.6
13-24 months	842	18
25-36 months	1230	26.3
37-48 months	1359	29.1
49 months and above	1171	25
Total	4675	100
<b>Sex</b>		
Female	2317	49.6
Male	2358	50.4
Total	4675	100
<b>Child born in village</b>		
No	177	3.8
Yes	4498	96.2
Total	4675	100

173

174

176 **Water contact activities (exposure) for children in study areas**

177 More than 90% parents reported farming as their occupation and 83.3% (n= 3895) of the  
178 families use open water sources (lake, dam or swamp) for daily domestic activities. This  
179 result in more than 60% of enrolled children being regularly in contact with open water  
180 sources (Table 2).

181

182

183 **Table 2.** Water contact activities for parents and their children in the study areas

	<b>n</b>	<b>%</b>
<b>Parent's occupation</b>		
Casual worker	143	3.18
Farmer	4,060	90.26
Government employee	52	1.16
Self employed	157	3.49
Unemployed	86	1.91
Total	4,498	100
<b>Fetching water in the open water source</b>		
No	780	16.7
Yes	3895	83.3
Total	4675	100
<b>Child taken to open water source</b>		
No	1444	30.9
Yes	3222	69.1
Total	4666	100
<b>Frequency child taken to lake</b>		
Once a day	2055	63.4
Once a week	824	25.4
Once a month	185	5.7
Once a year	53	1.6
Once in his life	123	3.8
Total	3240	100
<b>Child bathed in the lake</b>		
No	1669	36.2
Yes	2937	63.8
Total	4606	100
<b>Frequency child bathed IN the lake</b>		
Once a day	1943	65.2

Once a week	761	25.5
Once a month	155	5.2
Once a year	38	1.3
Once in his life	83	2.8
Total	2980	100
<b>Child ever bathed using FETCHED lake water</b>		
No	947	20.3
Yes	3728	79.7
Total	4675	100

---

184

185

186

187 **Prevalence and infection intensity of schistosomiasis among pre-school aged children**

188 Prevalence of schistosomiasis among pre-school aged children was assessed using both KK

189 and POC-CCA. The POC-CCA results yielded a prevalence of 24% among children tested

190 (trace results considered negative), while the KK only yielded a 0.8% prevalence. The POC-

191 CCA estimate was considered as the overall prevalence given the high sensitivity of the assay

192 (16). For infection intensity, KK results were considered and the raw faecal worm egg count

193 (FWEC) was multiplied by 24 to estimate the eggs per gram (epg) (18,19). Based on WHO

194 guidelines (20), 16.2% (n= 6) of the 37 children who tested positive on Kato Katz had

195 moderate infection while the rest had light infection (Table 3).

196

197

198

199

200

201

202

203

204

205 **Table 3. Prevalence and infection intensity of the study population**

	<b>n</b>	<b>%</b>
<b>POC-CCA test</b>		
Negative	3554	76
Positive	1121	<b>24</b>
Total	4675	100
<b>KK test results</b>		
Negative	4638	99.2
Positive	37	0.8
Total	4675	100
<b>Intensity of infection</b>		
Light	31	83.8
Moderate	6	16.2
Heavy	0	0
Total	37	100

206

207

209 **Prevalence of schistosomiasis by age, gender, and location among pre-school children**

210 The results on the prevalence of schistosomiasis infection by gender revealed no statistically  
211 significant difference in infection between males and females. However, a statistically  
212 significant difference in infection was observed across age groups (Table 4).

213

214 **Table 4. Infection prevalence per age category and gender**

215

Age		CCA – traces considered negative		KK	
		Negative	Positive	Negative	Positive
≤12 months	n	52	21	73	0
	%	1.5	<b>1.9</b>	1.6	<b>0.0</b>
13-24 months	n	617	225	841	1
	%	17.4	<b>20.1</b>	18.1	<b>2.7</b>
25-36 months	n	915	315	1222	8
	%	25.7	<b>28.1</b>	26.3	<b>21.6</b>
37-48 months	n	1068	291	1346	13
	%	30.1	<b>26.0</b>	29.0	<b>35.1</b>
≥ 49 months	n	902	269	1156	15
	%	25.4	<b>24.0</b>	24.9	<b>40.5</b>
$\chi^2$ (P-value) = 11.7493 ( <b>0.019</b> )				$\chi^2$ (P-value) = 9.7921 ( <b>0.044</b> )	
<b>Gender</b>					
Female	n	1782	535	2298	19
	%	50.1	47.7	49.5	51.4
Male	n	1772	586	2340	18
	%	49.9	52.3	50.5	48.6
$\chi^2$ (P-value) = 1.9890 (0.158)				$\chi^2$ (P-value) = 0.0478 (0.827)	

216

217

218

219

220 There were significant differences in infection prevalence across study sites, Gisagara District  
221 having the highest prevalence with 60.4%, followed by Nyagatare and Gasabo Districts  
222 respectively with 46.8% and 40%, while Kamonyi District had the lowest prevalence (7.1%).

223 Infection distribution across study sites is illustrated on Fig 1.

224

225

226 **Factors associated with Schistosomiasis infection**

227 The logistic regression performed highlighted the age as a contributing factor to infection  
 228 status as expected. In addition, two behavioural factors were significantly associated with the  
 229 occurrence of infection: children taken care of by a sister and those who are bathed in the  
 230 lake/pond are approximately 2 times more at risk of being infected (OR = 1.9, p<0.0001 and  
 231 OR=1.8, p<0.0001 respectively) compared to their counterparts.

232

233 **Table 6. Association between behavioural factors and schistosomiasis**

CCA_Results	Odds Ratio	Std. Err.	P	[95% Conf.	Interval]
<b>Age group</b>					
≤ 12 months	REF				
13-24 months	0.800925	0.209265	0.3960	0.479945	1.336572
25-36 months	0.7182087	0.185582	0.2000	0.432816	1.191784
37-48 months	0.5782747	0.149883	0.0350	0.347946	0.961074
≥ 49 months	0.6029743	0.157244	0.0520	0.361678	1.005253
<b>Child carer</b>					
Mum	REF				
Dad	0.8052959	0.133487	0.1910	0.581915	1.114427
Sister	1.905744	0.323173	<b>0.0000</b>	1.366845	2.657111
Brother	0.3749097	0.200035	0.0660	0.131754	1.066813
Other	0.5014567	0.05911	0.0000	0.398012	0.631787
<b>Child bathed in Lake</b>					
No	REF				
Yes	1.825002	0.147079	<b>0.0000</b>	1.558347	2.137286

234

235

236

237

238

239

240

241

242 **Knowledge on Schistosomiasis and perception on community based deworming**

243 Approximately 35% (n=1629) of parents/ caregivers had never heard of schistosomiasis (or  
244 Bilharzia) before. However, out of the 155 community health workers (CHWs) interviewed,  
245 98.7% reported knowing the disease by name and 96.1% knew that it is contaminated through  
246 contact with water bodies and that pre-SAC are also at risk of contamination (Table 7).

247

248 **Table 7.** CHWs' general knowledge on schistosomiasis

249

	<b>n</b>	<b>%</b>
<b>Ever heard of Bilharzia</b>		
No	2	1.3
Yes	153	98.7
Total	155	100
<b>How is schistosomiasis/bilharzia acquired?</b>		
Don't know	6	3.9
Contact with water bodies	148	96.1
Total	154	100
<b>Can children under 5 years be infected?</b>		
No	1	0.6
Yes	151	97.4
Don't Know	3	1.9
Total	155	100

250

251 Regarding the implementation of a community-based mass drug administration (MDA),  
252 62.1% (n=95) of CHWs reported that this is implemented at their respective villages, while  
253 37.9% (n=58) reported that it is not. However, of those (n=58, i.e. 37.9%) who reported that  
254 MDA is not yet implemented at their villages, 87.9% (n=51) strongly support the idea of  
255 introducing it in their villages. Majority of the CHWs (99.3%, n=136) reported that they are  
256 willing to be involved in the implementation of community-based MDA campaigns in their  
257 village and 77.9% (n=113) suggested that the village leader would be the best person to  
258 coordinate this activity. CHWs also acknowledged some advantages of a community-based  
259 MDA such as full treatment coverage, time saving and an opportunity for health education

260 (Table 8). However, some challenges were also highlighted such as the lack of distribution  
261 spaces, poor management of drugs and poor knowledge of CHWs at the village level.



## 263 Discussion

264 The present study aimed to estimate the burden of schistosomiasis among pre-SAC in  
265 Rwanda and risk factors for the infection as well as to map the distribution of infection  
266 throughout the country for that category of population. This is the first comprehensive  
267 mapping exercise conducted in this young age group that has long been neglected by the  
268 Rwanda schistosomiasis control program. The study covered all the 17 Districts that had been  
269 highlighted by the previous school-based mapping as endemic areas (16,17). The 80 study  
270 villages as minimum units of observation (sampling units) within these endemic Districts  
271 were purposively selected for their proximity to open water bodies to allow for the focal  
272 nature of the disease distribution. From the targeted districts, the results are presented at the  
273 level of study sites which have been extrapolated to administrative sectors based on the  
274 layout of open water bodies, environmental sanitary conditions and exposed population.  
275 Overall, the prevalence of schistosomiasis was 24% using the CCA diagnostic method and  
276 0.8% using the KK method. This discrepancy was expected as the KK has shown a low  
277 sensitivity (21), especially in pre-SAC who are most likely carrying pre-patent and/or light  
278 infections (22). Nevertheless, the CCA prevalence detected was comparable to findings  
279 among SAC in the same areas (16), highlighting an urgent need to include these children in  
280 treatment campaigns. As expected, the distribution of infection was skewed, few Sectors  
281 harbouring most of the infection burden as highlighted by the significant differences between  
282 sites (i.e 60.5%, maximum and 7.1%, minimum). In agreement with the previous mapping  
283 among SAC (16,17), sectors of Nyagatare and Gisagara Districts showed the highest  
284 infection prevalence (in 4 sectors the prevalence exceeded 50%) but also the Districts of  
285 Ngoma, Bugesera, Gatsibo, Kayonza, Nyamasheke, Gicumbi and Karongi were heavily  
286 burdened. With regard to infection intensity, and based on WHO criteria (20), most of the  
287 pre-SAC showed light to moderate infection intensities.

288

289 In this study, 83.3% of parents/guardians fetched their water for domestic use from open  
290 water sources and 63.4% confirmed taking their children to these water sites every day. Most  
291 importantly, 63.8% of the parents/guardians interviewed bath their children in open water  
292 bodies and our logistic regression analysis indicate that their children are twice as much  
293 likely to be infected compared to those who are not bathed in these waters. Previous studies  
294 elsewhere have also reported this passive nature of exposure to schistosomiasis among pre-  
295 SAC (11,23,24). Interestingly, our logistic regression highlights that children who are looked  
296 after by a sibling (a sister in this case) –most likely while their parents conduct  
297 domestic/professional chores- are more likely to be infected compared to those who are  
298 constantly with their mothers. Although we were not able to conduct a thorough  
299 observational investigation, these findings suggest that older sisters play and/or bath their  
300 younger siblings at water contact points that are far enough from where mothers wash  
301 dishes/clothes, and therefore far from detergents that may destroy cercaria (25). The latter  
302 may protect –to some extent- those children who are constantly with their mothers.

303

304 At the time of the study, 65% of the parents/caregivers had some vague information on  
305 schistosomiasis “*yes I heard about schistosomiasis*” but no extensive assessment of the level  
306 of knowledge was done. Nevertheless, more than 90% of CHWs reported that  
307 “*schistosomiasis is transmitted through open waters*”. The study was however limited in  
308 terms of depth of health education assessment as the main focus was on screening infection in  
309 the child and interviewing the caregivers to assess exposure risk factors. Nevertheless, given  
310 the findings on infection prevalence, schistosomiasis control interventions are specifically  
311 needed that focus on health education for household members’ behaviour change and  
312 practices to (a) limit the children’s exposure to open water bodies, and (b) improve children’s

313 environmental sanitary conditions (26). Additional interventions such as provision of potable  
314 water supplies to these vulnerable communities as well as public latrines may provide longer  
315 term solutions. Indeed, more than 90% of the interviewed parents/guardians are farmers and  
316 most of our study sites were in close proximity to wetlands that are exploited for agriculture.  
317 Farmers generally spend several hours in the fields and, in the absence of latrines, are likely  
318 to defecate in these fields and contaminate the water bodies that are later used for bathing  
319 children.

320

321 The Rwandan Ministry of health has recently started implementing a community-based  
322 deworming that take place during the mother-child health (MCH) week. Our study involved  
323 interviews of CHWs to find out how they perceive this deworming approach and findings  
324 indicate that they strongly support it and highlight several advantages. This should be the best  
325 way to reach pre-SAC once the pediatric formulation of Praziquantel is availed.

326

327 Taken together, the present study findings stress that pre-SAC in Rwanda are part of the  
328 population at risk of schistosomiasis and control interventions of the disease in Rwanda must  
329 include them. In particular, we provide a detailed map of pre-SAC infection distribution that  
330 should guide intervention strategies countrywide. Further assessment of the parents/CHW  
331 knowledge, attitudes and practices towards schistosomiasis and WASH recommended  
332 practices is warranted.

333

335 **Acknowledgements**

336 This research was commissioned by the National Institute of Health Research (NIHR) Global  
337 Health Research programme (16/136/33) using UK aid from the UK Government. The  
338 authors would like to extend thanks to the study participants, the University of Rwanda,  
339 Rwanda Biomedical Center, Ministry of Health, district hospitals and health centers for all  
340 facilitations to the end of this research activity.

341

342 **Conflict of interest**

343 None

344

345

346

347

348

349

350

351

352

353

354

355

356

357

358

360 **References**

- 361 1. Gasparotto J, Senger MR, Telles de Sá Moreira E, Brum PO, Carazza Kessler FG,  
362 Peixoto DO, et al. Neurological impairment caused by *Schistosoma mansoni* systemic  
363 infection exhibits early features of idiopathic neurodegenerative disease. *The Journal*  
364 *of biological chemistry*. 2021;100979.
- 365 2. Osakunor DNM, Mduluzi T, Osei-Hyiaman D, Burgess K, Woolhouse MEJ, Mutapi  
366 F. *Schistosoma haematobium* infection is associated with alterations in energy and  
367 purine-related metabolism in preschool-aged children. *PLoS neglected tropical*  
368 *diseases*. 2020;14(12):e0008866.
- 369 3. Rujeni N, Morona D, Ruberanziza E, Mazigo HD. Schistosomiasis and soil-  
370 transmitted helminthiasis in Rwanda: An update on their epidemiology and control.  
371 *Infectious Diseases of Poverty*. 2017;6(1).
- 372 4. Engels D, Chitsulo L, Montresor A, Savioli L. The global epidemiological situation of  
373 schistosomiasis and new approaches to control and research. *Acta Tropica*.  
374 2002;82(2):139–46.
- 375 5. Sokolow SH, Wood CL, Jones IJ, Swartz SJ, Lopez M, Hsieh MH, et al. Global  
376 Assessment of Schistosomiasis Control Over the Past Century Shows Targeting the  
377 Snail Intermediate Host Works Best. *PLoS Neglected Tropical Diseases*.  
378 2016;10(7):1–19.
- 379 6. WHO. *Ending-the-neglect-to-attain-the-SDGs--NTD-Roadmap*. 2021;
- 380 7. Mutapi F, Rujeni N, Bourke C, Mitchell K, Appleby L, Nausch N, et al. *Schistosoma*  
381 *haematobium* treatment in 1-5 year old children: Safety and efficacy of the  
382 antihelminthic drug praziquantel. *PLoS Neglected Tropical Diseases*. 2011;5(5).
- 383 8. Imai N, Rujeni N, Nausch N, Bourke CD, Appleby LJ, Cowan G, et al. Exposure,  
384 infection, systemic cytokine levels and antibody responses in young children

- 385 concurrently exposed to schistosomiasis and malaria. *Parasitology*. 2011;138(12).
- 386 9. Rujeni N, Mazimpaka A, Tumusiime M, Nyandwi E, Rutayisire G, Kayiranga P, et al.  
387 Pre-school aged children are exposed to *Schistosoma* through Lake Kivu in Rwanda.  
388 AAS Open Research. 2019;
- 389 10. Stothard JR, Gabrielli AF. Schistosomiasis in African infants and preschool children:  
390 to treat or not to treat? Vol. 23, *Trends in Parasitology*. 2007. p. 83–6.
- 391 11. Poole H, Terlouw DJ, Naunje A, Mzembe K, Stanton M, Betson M, et al.  
392 Schistosomiasis in pre-school-age children and their mothers in Chikhwawa district,  
393 Malawi with notes on characterization of schistosomes and snails. *Parasites and*  
394 *Vectors*. 2014;
- 395 12. Sousa-figueiredo JC, Pleasant J, Day M, Betson M, Rollinson D, Montresor A, et al.  
396 Treatment of intestinal schistosomiasis in Ugandan preschool children : best diagnosis  
397 , treatment efficacy and side-effects , and an extended praziquantel dosing pole.  
398 2010;2:103–13.
- 399 13. Ekpo UF, Oluwole AS, Abe EM, Etta HE, Olamiju F, Mafiana CF. Schistosomiasis in  
400 infants and pre-school-aged children in sub-Saharan Africa: Implication for control.  
401 *Parasitology*. 2012.
- 402 14. Ekpo UF, Laja-deile A, Oluwole AS, Sam-wobo SO, Mafiana CF. Urinary  
403 schistosomiasis among preschool children in a rural community near Abeokuta,  
404 Nigeria \_ *Parasites & Vectors* \_ Full Text. 2010. p. 1–5.
- 405 15. World Health Organization (WHO). WHO Guideline on control and elimination of  
406 human schistosomiasis. Evidence-based recommendations. 2022.
- 407 16. Ruberanziza E, Wittmann U, Mbituyumuremyi A, Mutabazi A, Campbell CH, Colley  
408 DG, et al. Nationwide remapping of *Schistosoma mansoni* infection in Rwanda using  
409 circulating cathodic antigen rapid test: Taking steps toward elimination. *American*

- 410 Journal of Tropical Medicine and Hygiene. 2020;103(1):315–24.
- 411 17. Clark NJ, Umulisa I, Ruberanziza E, Owada K, Colley DG, Ortu G, et al. Mapping  
412 *Schistosoma mansoni* endemicity in Rwanda: A critical assessment of geographical  
413 disparities arising from circulating cathodic antigen versus Kato-Katz diagnostics.  
414 PLoS Neglected Tropical Diseases. 2019;
- 415 18. Barbosa CS, Gomes ECS, Marcelino JMR, Cavalcante KRLJ, Nascimento WRC.  
416 Quality control of the slides by Kato-Katz method for the parasitological diagnosis of  
417 schistosomiasis infection by *Schistosoma mansoni*. *Jornal Brasileiro de Patologia e*  
418 *Medicina Laboratorial*. 2017;53(2):110–4.
- 419 19. Leuenberger A, Nassoro T, Said K, Fenner L, Sikalengo G, Letang E, et al. Assessing  
420 stool quantities generated by three specific Kato-Katz thick smear templates employed  
421 in different settings. *Infectious Diseases of Poverty*. 2016;5(1):1–8.
- 422 20. Sturrock RF. Guidelines for the evaluation of soil-transmitted helminthiasis and  
423 schistosomiasis at community level: A guide for managers of control programmes. A.  
424 Montresor, DWT Crompton, DAP Bundy, A Hall & L. Savioli. Geneva: World Health  
425 Organization, 1998. *Transactions of the Royal Society of Tropical Medicine and*  
426 *Hygiene*. 1998;92(4):470–1.
- 427 21. Oliveira WJ, Magalh C, Mariana A, Elias S, Castro VN De, Favero V, et al. Evaluation  
428 of diagnostic methods for the detection of intestinal schistosomiasis in endemic areas  
429 with low parasite loads : Saline gradient , Helmintex , Kato-Katz and rapid urine test.  
430 2018;1–22.
- 431 22. Stothard JR, Sousa-figuereido JC, Betson M, Adriko M, Arinaitwe M, Rowell C, et al.  
432 *Schistosoma mansoni* Infections in Young Children : When Are Schistosome Antigens  
433 in Urine , Eggs in Stool and Antibodies to Eggs First Detectable ? 2011;5(1).
- 434 23. Osakunor DNM, Woolhouse MEJ, Mutapi F. Paediatric schistosomiasis : What we

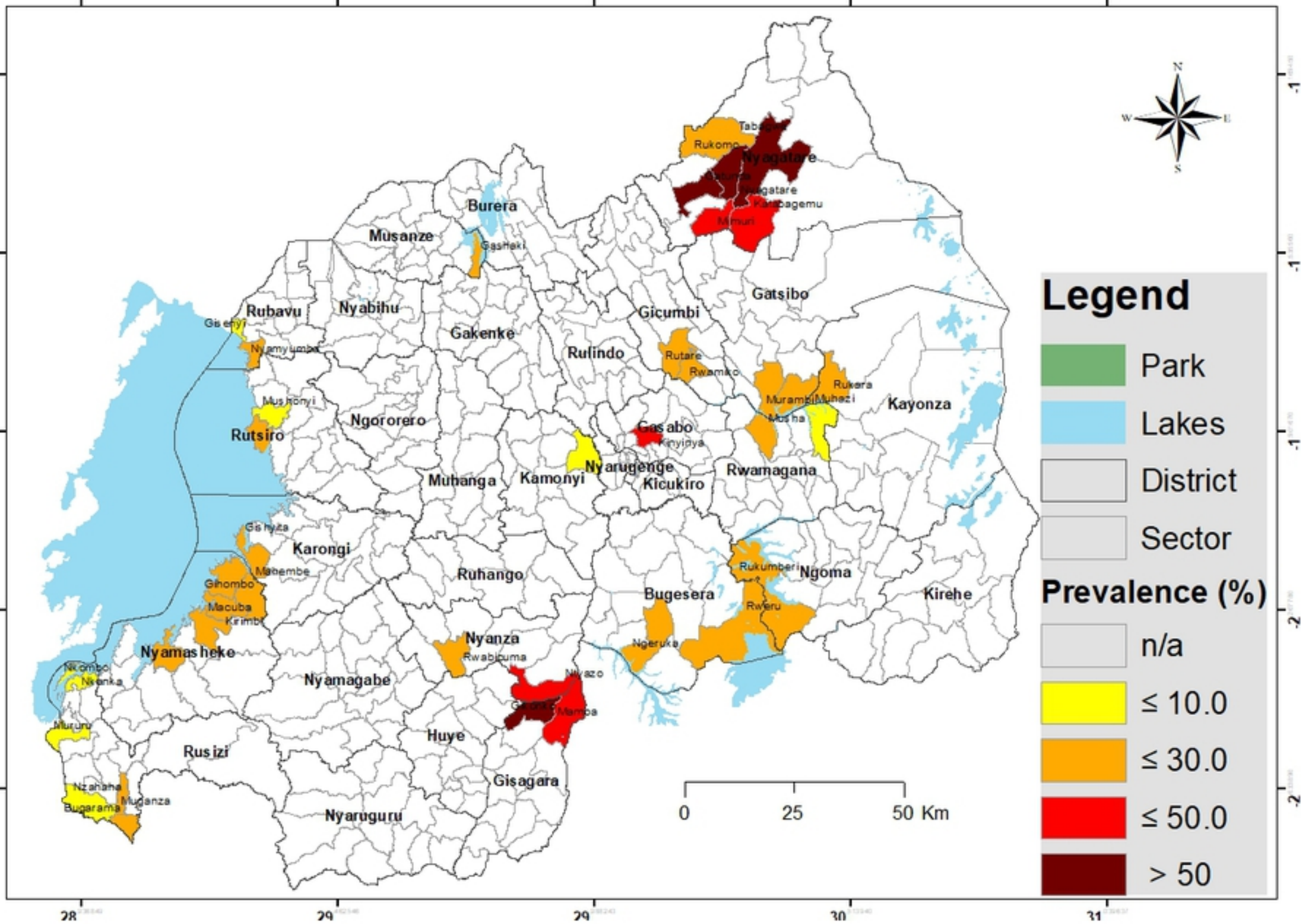
- 435 know and what we need to know. 2018;1–16.
- 436 24. Stothard JR; Gabrielli AF. Schistosomiasis in African infants and preschool children:  
437 to treat or not to treat? Trends Parasitology. 2007;(23):83–6.
- 438 25. Okwuosa, V N; Osuala FO. Toxicity of washing soaps to *Schistosoma mansoni*  
439 cercariae and effects of sublethal concentrations on infectivity in mice. Applied  
440 Parasitology. 1993;34(1):69–75.
- 441 26. World Health Organization (WHO). Children’s Environmental Health Indicators  
442 (CEHI): presenting regional successes learning for the future: summary.  
443  
444



446 Supporting information caption

447 **Fig 1. Map illustrating the distribution of schistosomiasis infection among pre-SAC in**  
448 **Rwanda.** Infection prevalence was based on CCA findings (trace as negative); Geographical  
449 coordinates were collected for each site (village) and were extrapolated to the lowest  
450 administrative boundary (sector).

451



figure