

## 1 Nucleocapsid antigenemia is a marker of acute SARS-CoV-2 infection

2 Hans P. Verkerke<sup>\*1,2</sup>, Gregory L. Damhorst<sup>\*3,4</sup>, Daniel S. Gracia<sup>3</sup>, Kaleb McLendon<sup>1</sup>, William O'Sick<sup>1</sup>,  
3 Chad Robichaux<sup>5</sup>, Narayanaiah Cheedarla<sup>1</sup>, Sindhu Potlapalli<sup>1</sup>, Shang-Chuen Wu<sup>2</sup>, Kristin R.V.  
4 Harrington<sup>5</sup>, Andrew Webster<sup>3</sup>, Colleen Kraft<sup>3</sup>, Christina A. Rostad<sup>6</sup>, Jesse J. Waggoner<sup>3,4,5,7</sup>, Neel R.  
5 Gandhi<sup>3,5</sup>, Jeannette Guarner<sup>1</sup>, Sara C. Auld<sup>5,8</sup>, Andrew Neish<sup>1</sup>, John D. Roback<sup>1</sup>, Wilbur A. Lam<sup>4,7,9,10</sup>, N.  
6 Sarita Shah<sup>†3,5</sup>, Sean R. Stowell<sup>†2</sup>

7 <sup>\*</sup>, <sup>†</sup> Equal contribution

### 8 Affiliations:

- 9 1. Department of Pathology and Laboratory Medicine, Emory University School of Medicine,  
10 Atlanta, GA, USA
- 11 2. Department of Pathology, Brigham and Women's Hospital, Harvard Medical School, Boston,  
12 MA, USA
- 13 3. Division of Infectious Diseases, Department of Medicine, Emory University School of Medicine,  
14 Atlanta, GA, USA
- 15 4. The Atlanta Center for Microsystems-Engineered Point-of-Care Technologies, Atlanta, GA, USA
- 16 5. Emory Healthcare, Atlanta, GA, USA
- 17 6. Department of Epidemiology, Emory University Rollins School of Public Health, Atlanta, GA,  
18 USA
- 19 7. Department of Pediatrics and Center for Childhood Infections and Vaccines, Emory University  
20 School of Medicine and Children's Healthcare of Atlanta, Atlanta, GA, USA
- 21 8. The Atlanta Center for Microsystems-Engineered Point-of-Care Technologies, Atlanta, GA, USA
- 22 9. Division of Pulmonary, Allergy, Critical Care and Sleep Medicine, Emory University School of  
23 Medicine, Atlanta, GA, USA
- 24 10. Aflac Cancer & Blood Disorders Center at Children's Healthcare of Atlanta, Atlanta, GA, USA
- 25 11. Wallace H. Coulter Department of Biomedical Engineering, Georgia Institute of Technology,  
26 Atlanta, GA, USA

27

28 Running title: Nucleocapsid antigenemia in acute SARS-CoV-2

29

30 Keywords: nucleocapsid, antigenemia, COVID-19, SARS-CoV-2

31

32 Corresponding authors:

33 Sean Stowell, MD, PhD, Brigham and Women's Hospital, Harvard Medical School,

34 [srstowell@bwh.harvard.edu](mailto:srstowell@bwh.harvard.edu), (617) 291-5755

35 Sarita Shah, MD, MPH, Emory University Rollins School of Public Health, [sarita.shah@emory.edu](mailto:sarita.shah@emory.edu), 404

36 727-7326

37 **Abstract**

38 **Background.** Reliable detection of SARS-CoV-2 infection is essential for diagnosis and treatment of  
39 disease as well as infection control and prevention during the ongoing COVID-19 pandemic. Existing  
40 nucleic acid tests do not reliably distinguish acute from resolved infection, as residual RNA is frequently  
41 detected in the absence of replication-competent virus. We hypothesized that viral nucleocapsid in serum  
42 or plasma may be a specific biomarker of acute infection that could enhance isolation and treatment  
43 strategies at an individualized level.

44 **Methods.** Samples were obtained from a retrospective serological survey using a convenience sampling  
45 method from adult inpatient and outpatient encounters from January through March 2021. Samples were  
46 categorized along a timeline of infection (e.g. acute, late presenting, convalescent) based on timing of  
47 available SARS-CoV-2 testing and symptomatology. Nucleocapsid was quantified by digital  
48 immunoassay on the Quanterix HD-X platform.

49 **Results.** In a large sample of 1860 specimens from 1607 patients, the highest level and frequency of  
50 antigenemia were observed in samples obtained during acute SARS-CoV-2 infection. Levels of  
51 antigenemia were highest in samples from seronegative individuals and in those with more severe disease.  
52 Using ROC analysis, we found that antigenemia exhibited up to 85.8% sensitivity and 98.6% specificity  
53 as a biomarker for acute COVID-19.

54 **Conclusions.** Nucleocapsid antigenemia is a sensitive and specific biomarker for acute SARS-CoV-2  
55 infection and may aid in individualized assessment of SARS-CoV-2 infection resolution or persistence,  
56 although interpretation is limited by absence of a diagnostic gold standard for active infection.

## 57 **Introduction**

58           Although the standard of care for SARS-CoV-2, reverse transcription polymerase chain reaction  
59 (RT-PCR) remains an imperfect diagnostic marker for coronavirus disease 2019 (COVID-19) because  
60 SARS-CoV-2 RNA commonly persists beyond the period of acute infection [1-3]. Accordingly, Centers  
61 for Disease Control and Prevention (CDC) guidelines do not recommend re-testing most individuals by  
62 RT-PCR within 90 days following diagnosis. Instead, isolation guidelines are based on time from  
63 symptom onset [4, 5]. This creates a dilemma when screening tests detect SARS-CoV-2 RNA in a patient  
64 without well-defined onset or resolution of COVID-like illness. Alternative molecular markers for acute  
65 infection are not widely available [6] and low sensitivity respiratory antigen testing may be effectively  
66 applied at a population level [7, 8], but there remains a need for more sensitive and specific diagnostics to  
67 provide individualized guidance.

68           The presence of viral nucleocapsid protein in peripheral blood (antigenemia) has been  
69 demonstrated in SARS-CoV-1 and SARS-CoV-2 infection [9-21]. A blood-based antigen biomarker may  
70 have inherent advantages over upper respiratory tract antigen testing, or biomarkers such as RT-PCR  
71 cycle threshold (Ct) value and sub-genomic RNA (sgRNA), because specimen quality and quantity can be  
72 standardized. Reports of antigenemia test performance as a diagnostic biomarker are inconsistent, likely  
73 due to varying assay composition and inconsistent reference standards as many studies compare against  
74 respiratory RT-PCR as a gold standard and fail to account for the persistence of RNA beyond acute  
75 infection.

76           In this study, we present evidence from a large serosurvey of adults in inpatient and outpatient  
77 settings to explore the hypothesis that nucleocapsid antigenemia is a sensitive and specific marker of  
78 acute infection as defined by a clinical timeline. Specifically, each blood sample was categorized through  
79 rigorous review of clinical history and respiratory SARS-CoV-2 testing in a schema that assumes a  
80 typical course of COVID-19 for all subjects. We find a strong association between acute infection and  
81 nucleocapsid antigenemia, which also correlates with serostatus and disease severity. Together our

82 findings suggest antigenemia may clarify disease timing and provide needed insight in many clinical  
83 settings.

84

## 85 **Methods**

### 86 *Clinical specimens*

87 We collected a convenience sample of residual plasma, serum, and whole blood specimens from  
88 the clinical chemistry laboratory of Emory Medical Laboratories one day per week between January 11,  
89 2021 and March 12, 2021. These specimens were originally collected for routine clinical testing from  
90 inpatient (medical/surgical wards, intensive care, obstetrics) and outpatient settings (clinics, emergency  
91 department, infusion centers, ambulatory surgery). Samples were transferred to a  $-80^{\circ}\text{C}$  repository after  
92 clinical testing was completed, but prior to being discarded. More than one blood sample from the same  
93 patient was permitted with a minimum time of five days between samples. This study was approved and  
94 granted complete HIPAA and consent waiver by the Emory University Institutional Review Board  
95 (STUDY00000510).

96

### 97 *Nucleocapsid assay*

98 Nucleocapsid antigenemia was quantified on the Quanterix HD-X platform. Residual serum and  
99 plasma samples were thawed once after storage at  $-80^{\circ}\text{C}$  and diluted 1 to 3 in assay sample diluent.  
100 Diluted samples were then run using the ultrasensitive SIMOA SARS-CoV-2 N Protein Antigen assay on  
101 the automated Quanterix HD-X platform (Quanterix, Billerica, MA, USA) which has a validated limit of  
102 detection of 0.099 pg/mL in respiratory and saliva samples. Samples with antigen levels too high for the  
103 linear range of the assay were further diluted 1 to 20 and re-tested. Final antigen concentrations were  
104 determined by interpolation after sigmoidal fitting of duplicate calibration curves run on each test plate.

105

### 106 *Serological Testing*

107 In-house developed single-dilution serological screening assays for SARS-CoV-2 receptor  
108 binding domain (RBD) and nucleocapsid antibodies were used to establish serological status at the time  
109 of antigenemia testing. Antibody class-specific RBD serologies were performed as previously described  
110 [22]. Nucleocapsid antibody testing was performed using an in-house developed ELISA (supplementary  
111 information).

112

### 113 *Medical record review*

114 Patient medical record number was recorded at the time of specimen collection. The Emory  
115 Healthcare Clinical Data Warehouse (CDW) was queried for SARS-CoV-2 nucleic acid amplification  
116 tests (NAAT), clinical notes, ICD-10 codes, laboratory values, mechanical ventilation, and date of death.  
117 All Ct values were obtained directly from reports produced by the manufacturer's software  
118 (supplementary information).

119 A COVID-19 status label (positive or negative) and a category (convalescent, late-presenting,  
120 acute, pre-COVID, and same-day negative) were assigned to each blood sample based on that patient's  
121 (1) SARS-CoV-2 respiratory testing (including NAAT or antigen), (2) date of earliest positive test, and  
122 (3) date of symptom onset (**Figure 1**).

123 Chart review began with automated review of NAAT results available in the medical record.  
124 Blood samples from a patient with a positive NAAT more than fourteen days prior to sample collection  
125 were labeled *convalescent* and no further review of the medical record for categorization purposes was  
126 performed. History and physical clinical notes dated within fourteen days before or after the date of the  
127 blood sample were then reviewed, if available, for all patients not labeled *convalescent*. Date of COVID-  
128 like symptom onset (including fever, fatigue, malaise, myalgia, headache, dyspnea, cough, wheezing,  
129 anosmia, ageusia, congestion, rhinorrhea, or diarrhea) and earliest positive SARS-CoV-2 testing (NAAT  
130 or antigen) was recorded if these had been described in the history narrative or clinician's assessment and  
131 plan.

132 The original medical records were then reviewed for all patients (other than those labeled  
133 *convalescent*) with a positive SARS-CoV-2 test who did not yet have date of symptom onset recorded in  
134 our data set. The entire medical record was available during this stage, but the reviewer was blinded to  
135 antigenemia status which was not considered in labeling of COVID-19 status or category assignment.

136 Given that re-infection with SARS-CoV-2 was rare at the time of this study [23], our approach  
137 assumed that no re-infection events were captured in our sample set, which spanned 3 months. Patients  
138 without any record of SARS-CoV-2 testing were excluded from analysis. Further detail is provided in  
139 Supplementary Information.

140

#### 141 *Data analysis*

142 Data obtained during specimen collection were stored in Microsoft Excel. CDW reports were  
143 provided in .csv format. All data were then imported into MATLAB (The MathWorks, Inc.) for analysis.  
144 Wilcoxon rank-sum test was used for comparisons.

145

## 146 **Results**

### 147 *Specimens & COVID-19 status assignments*

148 2,498 serum and plasma samples were targeted for evaluation during the study period (**Figure**  
149 **1B**). Eleven samples were not evaluated for antigenemia due to pre-analytical factors such as insufficient  
150 sample volume. 2,487 samples were available for quantification of antigenemia, of which 255 (10.2%)  
151 exhibited detectable nucleocapsid. 115 of 2,487 were excluded due to lack of patient identifiers and five  
152 additional samples were excluded as they had been collected on the same day as another blood sample  
153 from a single patient. Clinical data were examined for the remaining 2,367 samples from 2,101 unique  
154 patients (**Table 1**). 507 of 2,367 samples were excluded because of no record of SARS-CoV-2 testing,  
155 and 11 of these 507 (2.1%) had detectable antigenemia.

156 The remaining 1,860 samples from 1,607 patients had SARS-CoV-2 testing records to guide  
157 categorization and were classified as described in **Figure 1B** and **Table 2**.

158

159 *Diagnostic performance of antigenemia for acute COVID-19*

160 Nucleocapsid antigenemia was present at higher frequency and with a higher median  
161 concentration in acute COVID samples compared to samples categorized as late-presenting, convalescent,  
162 pre-COVID, or same-day negative ( $p < 0.001$  for all comparisons; **Figure 2A**). ROC analysis  
163 demonstrated area under the curve (AUC) of 0.902 in distinguishing samples from patients experiencing  
164 acute infection from all non-acute categories, and sensitivity and specificity were 85.2% and 89.9%,  
165 respectively (**Figure 2B**). Test characteristics with censoring of the potentially ambiguous late-presenting  
166 group showed AUC 0.914, sensitivity 85.8%, and specificity 93.7% while the most stringent comparison  
167 (censoring of the convalescent and late-presenting groups) demonstrated AUC 0.972, sensitivity 85.8%,  
168 and specificity 98.6%. Sensitivity improved to 93.9% when the comparison was only made among  
169 seronegative individuals (**Supplementary Figure 1**).

170 Test characteristics were also examined when adjusting the reference standard by varying  
171 parameters of the acuity window. Sensitivity decreased as the window start period increased beyond -11  
172 days (**Figure 2C**). Meanwhile, specificity consistently increased as the period of the acuity window was  
173 lengthened. Maximum AUC was observed with a window period opening at -12 days (AUC = 0.912 with  
174 window close at +3 days) with minimal effect of varying the post-sampling period from 0 to +3 days  
175 (**Figure 2D**).

176 Ct values from positive nasopharyngeal RT-PCR were available from the same day as a blood  
177 sample for 49 specimens. Only 6 of 17 samples with corresponding to Ct values greater than 33 had  
178 antigenemia and four of six of these were from the GeneXpert assay (**Figure 2E**). All except for two  
179 samples with corresponding Ct values less than 30 exhibited antigenemia.

180

181 *Temporal trends in antigenemia*

182 We analyzed the dynamics of antigen level over time in samples from the acute, late-presenting  
183 and convalescent groups. The frequency of detectable nucleocapsid and antigen concentration decreased



184 over time following diagnosis and reported symptom onset (**Figures 3A-B**). 18 samples were identified  
185 from patients who were asymptomatic at the time of COVID-19 diagnosis, 5 (27.7%) of which had  
186 detectable nucleocapsid antigenemia. Nucleocapsid antigen was detected more frequently (50.0%) in the  
187 subset of samples available from asymptomatic patients within 3 days of their diagnosis (**Figure 3C**).  
188 Among 55 samples from individuals with positive respiratory RT-PCR testing on the same day, seven  
189 convalescent samples did not exhibit antigenemia (**Figure 3D, Supplementary Table 1**) and acute  
190 infections primarily exhibited high antigenemia. Among this subset of patients, no antigenemia was  
191 observed more than fourteen days after the earliest known positive test (**Figure 3D**).

192

### 193 *Examination of outliers*

194 We reviewed medical records for individuals with unexpected presence or absence of  
195 antigenemia. Twenty-one samples in the convalescent group had antigenemia (**Supplementary Table 2,**  
196 **Supplementary Figure 2**). Among these, two individuals had clinical history consistent with re-infection  
197 by SARS-CoV-2, two were highly immunocompromised, and eleven samples (median time from  
198 diagnosis 20 days, IQR 16.5-28.5 days) had severe COVID-19 marked by need for high-flow oxygen,  
199 intubation or death. End-stage renal disease or dialysis was more common among samples in the  
200 convalescent group with antigenemia compared to those without antigenemia (fraction [95% confidence  
201 interval] = 0.41 [0.20-0.61] vs 0.13 [0.07-0.18]) whereas other co-morbidities were not significantly  
202 different (**Supplementary Figure 3**). Three individuals had negative respiratory SARS-CoV-2 testing  
203 and antigenemia on the same day, none of which had evidence of COVID-related symptoms  
204 (**Supplementary Table 3**). Eighteen samples had antigenemia after more than fourteen days of  
205 symptoms, of which fourteen were seropositive for both N IgG and RBG IgG, two seropositive for RBD  
206 IgG only, and two were seronegative for both. Thirteen had nucleocapsid level less than 46 pg/mL while  
207 the other five exceeded 700 pg/mL including both N and RBD seronegative patients and N-/RBD+  
208 sample (**Supplementary Table 4, Supplementary Figures 4 & 5**). Twenty individuals with samples

209 categorized in the acute COVID group did not have antigenemia – ten of these were collected ten or more  
210 days after symptom onset (**Supplementary Table 5, Supplementary Figure 6**).

211  
212 *Antigenemia trends by antibody serostatus*

213 Distribution of nucleocapsid levels in the acute COVID group were significantly different with  
214 higher median values in seronegative samples compared to seropositive samples for nucleocapsid IgG,  
215 RBD IgG, RBD IgA, and RBD IgM ( $p < 0.001$  for each comparison, **Figure 4**). Seropositive samples  
216 were also more likely to have undetectable antigenemia. Similar trends were seen in the late-presenting  
217 group except for the comparison based on IgM which was not significant (**Supplementary Figure 7**).

218  
219 *Association of Antigenemia with COVID-19 severity*

220 In the acute COVID group, distribution of nucleocapsid antigen was significantly different and  
221 median value was higher in samples from patients who died or required intubation within 30 days of  
222 sampling compared to those who survived or did not require intubation (**Figure 5A-C**). This observation  
223 held true for comparison based on the composite of intubation or mortality. Levels of nucleocapsid  
224 antigenemia were not significantly associated with elevated D-dimer (cutoff 500 ng/mL) but were  
225 associated with elevated CRP ( $p = 0.002$  in comparison based on 40 mg/L cutoff; **Figure 5D-E**).

226  
227 **Discussion**

228 This analysis of blood samples from routine clinical specimens collected during the ongoing  
229 COVID-19 pandemic demonstrates the following: First, antigenemia is a sensitive and specific marker for  
230 acute SARS-CoV-2 infection. Second, nucleocapsid is elevated in samples without evidence of anti-  
231 nucleocapsid (IgG) and anti-spike (IgG, IgM, and IgA) seroconversion. Third, antigenemia is associated  
232 with disease severity.

233 Evolving CDC isolation guidance during the COVID-19 pandemic reflects the difficulty of  
234 objectively defining resolution of SARS-CoV-2 infection. Underlying this is the persistence of RNA

235 targets beyond a period during which the immunocompetent individual is reasonably believed to harbor  
236 replication-competent virus [1-3]. Meanwhile, persistence of replication-competent virus for months has  
237 been demonstrated by viral culture in immunocompromised hosts [24-28]. This creates a diagnostic  
238 dilemma when RT-PCR is persistently positive for weeks after diagnosis, when re-infection with SARS-  
239 CoV-2 is a consideration, or when encountering positive SARS-CoV-2 RT-PCR test results in an  
240 asymptomatic individual without history of prior objective diagnosis or prior COVID-like illness. Our  
241 data suggest assessment of nucleocapsid antigenemia may assist providers in making judgments in these  
242 scenarios.

243 Further, our data compels interest in whether antigenemia may provide direct evidence of active  
244 viral replication, which aid in evaluation of infectiousness or guide therapeutics at an individualized level.  
245 For example, antiviral agents are not likely to benefit a patient without active SARS-CoV-2 replication.  
246 Clinical trial data therefore may be confounded by failure to stratify patients according to such a marker,  
247 as late presenters after cessation of viral replication would likely fail to show benefit or may even suffer  
248 harm from investigatory antiviral agents. In fact, recent evidence emphasizes benefit of antivirals early in  
249 infection [29]. In showing its association with acute SARS-CoV-2 infection and characterizing outliers,  
250 our data suggest that nucleocapsid should be further investigated as a marker of viral activity,  
251 infectiousness, and a predictor of therapeutic response.

252 Strengths of our study include a diverse cohort that is among the largest in which nucleocapsid  
253 antigenemia has been quantified to date and rigorous assignment of COVID-19 status through medical  
254 record review. Prior studies restricting the definition of a positive case to no more than two weeks after  
255 symptom onset report sensitivities between 90.9% and 97.5% and specificities between 94.2% and 100%  
256 [15-20] (see **Supplementary Table 6**), and our data are consistent with these findings. Of further interest,  
257 our data revealed detectable antigen in 11 (2.1%) of the blood samples obtained in the primary serosurvey  
258 even though these patients were never screened with nasopharyngeal RT-PCR testing in our healthcare  
259 system. These represent likely infectious patients who may have had a missed SARS-CoV-2 diagnosis

260 and suggest a potential role for antigenemia screening in a population for whom blood is already being  
261 sampled to complement existing infection control measures.

262 We also detected antigenemia in a small number of patients with subclinical SARS-CoV-2  
263 infection. Individuals who test positive for SARS-CoV-2 without antecedent or subsequent COVID-like  
264 symptoms either represent shedding of replication-competent virus *during* subclinical disease or  
265 persistent RNA shedding *following* subclinical disease. While we corroborate previous findings that  
266 levels of antigenemia are associated with disease severity [19, 20], the presence of antigenemia in five  
267 asymptomatic individuals with SARS-CoV-2 demonstrates that antigenemia can also be present in  
268 subclinical infection. Despite the difficulty associated with identifying these cases, further investigation of  
269 the prevalence of antigenemia in acute asymptomatic infection is needed to clarify its role in screening  
270 broad populations.

271 This study is limited by use of a convenience sampling approach and retrospective data  
272 collection. Symptom onset as recorded in the medical record can be subjective and influenced by recall  
273 bias. Because of the ubiquity of community-based testing, SARS-CoV-2 diagnosis was documented prior  
274 to evaluation in our healthcare system for a subset of these patients and was only known to us when  
275 documented in the clinical narrative in addition to being subject to biases and imprecision. In addition,  
276 nucleocapsid-specific immunoglobulin may interfere with quantitation of antigenemia in individuals who  
277 have seroconverted although it is currently unknown whether total (Ig-bound and unbound) antigen or  
278 free (unbound only) antigen is a more meaningful clinical indicator. The primary analysis relies on the  
279 assumption that each subject is immunocompetent, that immunocompetent hosts have similar duration of  
280 acute COVID-19, and that there are no other confounding factors which may result in prolonged  
281 antigenemia. Recognizing these limitations, we performed a post-hoc investigation of outlier cases, which  
282 facilitated hypothesis generation regarding reasons for prolonged antigenemia such as reduced renal  
283 function, prolonged critical illness, and immune compromise (**Supplementary Tables 1-5 & 7**). Several  
284 studies have demonstrated high specificity of antigenemia by evaluation of pre-pandemic samples [15, 17,  
285 20], suggesting many false positives in our study are likely to have active infection beyond the parameters

286 for acute infection defined in our reference standard schema. This will be further clarified as more robust  
287 comparisons to viral culture, sgRNA, RT-PCR Ct value, and respiratory antigen testing can be achieved.

288 Together our data demonstrate that nucleocapsid antigenemia is a sensitive and specific  
289 biomarker of acute COVID-19 wherein COVID-19 status is defined by time since earliest positive testing  
290 and symptom onset. We conclude that nucleocapsid antigenemia is a promising candidate biomarker for  
291 active viral replication – the definition of which is the presence of replication-competent virus in a host –  
292 recognizing that the available evidence points to this being an individualized process that cannot be  
293 broadly defined based on a timeline. Further prospective studies with rigorous documentation of clinical  
294 course and correlation with viral culture and other potential biomarkers of viral replication are needed.

295 **Acknowledgments**

296 The authors thank Lisa Cole, Cecillitha J Williams, and Mark Meyers for assistance with specimen  
297 collection and Heather Jones for assistance with obtaining Ct values.

298

299 **Funding**

300 This work was supported by funds from the Woodruff Health Sciences Center COVID-19 Center for  
301 Urgent Research Engagement (CURE), NIH 1 U54 CA260563-01: Immune regulation of COVID-19  
302 infection in cancer and autoimmunity to JDR, NIH R01 HL138656 COVID-19 supplement to SRS, NIH  
303 R01 AI138646 supplement to NSS, NIH K24 AI114444 to NRG, and NIH Grants U54 EB027690 03 and  
304 UL1TR002378.

305

306 **Conflicts of Interest**

307 C.A.R.'s institution has received funds to conduct clinical research unrelated to this manuscript from  
308 BioFire Inc, GSK, MedImmune, Micron, Janssen, Merck, Moderna, Novavax, PaxVax, Pfizer,  
309 Regeneron, Sanofi-Pasteur. She is co-inventor of patented RSV vaccine technology unrelated to this  
310 manuscript, which has been licensed to Meissa Vaccines, Inc.

311 All other authors report no conflicts of interest.

312

313 **Human Subjects Research**

314 This study was approved by the Institutional Review Board of Emory University for the use of residual  
315 clinical specimens. Written informed consent by the patients was not required.

## 316 References

- 317 1. Cevik M, Tate M, Lloyd O, Maraolo AE, Schafers J, Ho A. SARS-CoV-2, SARS-CoV, and  
318 MERS-CoV viral load dynamics, duration of viral shedding, and infectiousness: a systematic  
319 review and meta-analysis. *The Lancet Microbe* **2021**; 2(1): e13-e22.
- 320 2. Yan D, Zhang X, Chen C, et al. Characteristics of Viral Shedding Time in SARS-CoV-2  
321 Infections: A Systematic Review and Meta-Analysis. *Front Public Health* **2021**; 9: 652842.
- 322 3. Drain PK. Rapid Diagnostic Testing for SARS-CoV-2. *New England Journal of Medicine* **2022**.
- 323 4. Prevention CfDca. COVID-19 Quarantine and Isolation. Available at:  
324 <https://www.cdc.gov/coronavirus/2019-ncov/your-health/quarantine-isolation.html>. Accessed  
325 11/29/2021.
- 326 5. Prevention CfDca. CDC Updates and Shortens Recommended Isolation and Quarantine Period  
327 for General Population. *CDC Newsroom Releases* **2021**; 2021(December 29, 2021).
- 328 6. Binnicker MJ. Can Testing Predict SARS-CoV-2 Infectivity? The Potential for Certain Methods  
329 to be a Surrogate for Replication-Competent Virus. *J Clin Microbiol* **2021**; JCM0046921.
- 330 7. Mina MJ, Parker R, Larremore DB. Rethinking Covid-19 Test Sensitivity — A Strategy for  
331 Containment. *New England Journal of Medicine* **2020**; 383(22): e120.
- 332 8. Chin ET, Huynh BQ, Chapman LAC, Murrill M, Basu S, Lo NC. Frequency of Routine Testing  
333 for Coronavirus Disease 2019 (COVID-19) in High-risk Healthcare Environments to Reduce  
334 Outbreaks. *Clinical Infectious Diseases* **2020**.
- 335 9. Che X-Y, Hao W, Wang Y, et al. Nucleocapsid Protein as Early Diagnostic Marker for SARS.  
336 *Emerging Infectious Diseases* **2004**; 10(11): 1947-9.
- 337 10. Li Y-H, Li J, Liu X-E, et al. Detection of the nucleocapsid protein of severe acute respiratory  
338 syndrome coronavirus in serum: Comparison with results of other viral markers. *Journal of*  
339 *Virological Methods* **2005**; 130(1-2): 45-50.
- 340 11. Li T, Wang L, Wang H, et al. Serum SARS-COV-2 Nucleocapsid Protein: A Sensitivity and  
341 Specificity Early Diagnostic Marker for SARS-COV-2 Infection. *Front Cell Infect Microbiol*  
342 **2020**; 10: 470.
- 343 12. Lebedin YS, Lyang OV, Galstyan AG, Panteleeva AV, Belousov VV, Rebrikov DV. Serum  
344 SARS-CoV-2 nucleocapsid antigen detection is essential for primary diagnostics of SARS-CoV-  
345 2-associated pneumonia. medRxiv: Cold Spring Harbor Laboratory, **2020**.
- 346 13. Su B, Yin J, Lin X, et al. Quantification of SARS-CoV-2 antigen levels in the blood of patients  
347 with COVID-19. *Sci China Life Sci* **2021**; 64(7): 1193-6.
- 348 14. Ogata AF, Maley AM, Wu C, et al. Ultra-sensitive Serial Profiling of SARS-CoV-2 Antigens and  
349 Antibodies in Plasma to Understand Disease Progression in COVID-19 Patients with Severe  
350 Disease. *Clin Chem* **2020**.
- 351 15. Hingrat QL, Visseaux B, Laouenan C, et al. Detection of SARS-CoV-2 N-antigen in blood during  
352 acute COVID-19 provides a sensitive new marker and new testing alternatives. *Clin Microbiol*  
353 *Infect* **2020**.
- 354 16. Ahava M, Kurkela S, Kuivanen S, Lappalainen M, Jarva H, Jääskeläinen A. Detection of SARS-  
355 CoV-2 nucleocapsid antigen from serum can aid in timing of COVID-19 infection. medRxiv.  
356 medRxiv: Cold Spring Harbor Laboratory, **2021**.
- 357 17. Shan D, Johnson JM, Fernandes SC, et al. N-protein presents early in blood, dried blood and  
358 saliva during asymptomatic and symptomatic SARS-CoV-2 infection. *Nat Commun* **2021**; 12(1):  
359 1931.
- 360 18. Zhang Y, Ong CM, Yun C, et al. Diagnostic Value of Nucleocapsid Protein in Blood for SARS-  
361 CoV-2 Infection. *Clinical Chemistry* **2021**.
- 362 19. Wang H, Hogan CA, Verghese M, et al. SARS-CoV-2 Nucleocapsid Plasma Antigen for  
363 Diagnosis and Monitoring of COVID-19. *Clin Chem* **2021**.
- 364 20. Favresse J, Bayart J-L, David C, et al. Serum SARS-CoV-2 Antigens for the Determination of  
365 COVID-19 Severity. medRxiv: Cold Spring Harbor Laboratory, **2021**.

- 366 21. Thudium RF, Stoico MP, Hogdall E, et al. Early Laboratory Diagnosis of COVID-19 by Antigen  
367 Detection in Blood Samples of the SARS-CoV-2 Nucleocapsid Protein. *J Clin Microbiol* **2021**;  
368 59(10): e0100121.
- 369 22. Verkerke H, Horwath M, Saeedi B, et al. Comparison of Antibody Class-Specific SARS-CoV-2  
370 Serologies for the Diagnosis of Acute COVID-19. *J Clin Microbiol* **2021**; 59(4).
- 371 23. **!!! INVALID CITATION !!! [22].**
- 372 24. Choi B, Choudhary MC, Regan J, et al. Persistence and Evolution of SARS-CoV-2 in an  
373 Immunocompromised Host. *N Engl J Med* **2020**; 383(23): 2291-3.
- 374 25. Avanzato VA, Matson MJ, Seifert SN, et al. Case Study: Prolonged Infectious SARS-CoV-2  
375 Shedding from an Asymptomatic Immunocompromised Individual with Cancer. *Cell* **2020**;  
376 183(7): 1901-12 e9.
- 377 26. Hensley MK, Bain WG, Jacobs J, et al. Intractable COVID-19 and Prolonged SARS-CoV-2  
378 Replication in a CAR-T-cell Therapy Recipient: A Case Study. *Clin Infect Dis* **2021**.
- 379 27. Aydililo T, Gonzalez-Reiche AS, Aslam S, et al. Shedding of Viable SARS-CoV-2 after  
380 Immunosuppressive Therapy for Cancer. *N Engl J Med* **2020**; 383(26): 2586-8.
- 381 28. McCarthy KR, Rennick LJ, Nambulli S, et al. Recurrent deletions in the SARS-CoV-2 spike  
382 glycoprotein drive antibody escape. *Science* **2021**; 371(6534): 1139-42.
- 383 29. Gottlieb RL, Vaca CE, Paredes R, et al. Early Remdesivir to Prevent Progression to Severe  
384 Covid-19 in Outpatients. *New England Journal of Medicine* **2021**.
- 385



	Positive	Negative	Undefined
<b>N</b>	130	385	1622
<b>Age mean (IQR)</b>	60.6 (52.2–73.0)	54.2 (39.2–69.6)	55.0 (39.8–70.2)
<b>Female %</b>	47.7	57.1	55.5
<b>Vaccinated %</b>	1.5	4.7	9.9
<b>Race %</b>			
African American or Black	78.5	72.0	60.7
American Indian or Alaskan Native	0.0	0.0	0.2
Asian	0.8	1.0	1.6
Caucasian or White	13.1	20.0	29.0
Native Hawaiian or Other Pacific Islander	0.0	0.3	0.2
Multiple	0.0	0.5	0.4
Unknown, Unavailable or Unreported	7.7	6.2	7.9
<b>Ethnicity</b>			
Non-Hispanic or Latino	83.9	86.0	84.4
Unreported, Unknown, Unavailable	13.9	7.8	11.9
Hispanic or Latino	0.8	5.5	3.0
Not Recorded	1.5	0.8	0.7
<b>Antigenemia* %</b>	85.8	10.1	3.9
<b>Setting*</b>			
Inpatient	70.9	42.9	39.3
ER or CDU	29.1	27.2	14.1
Outpatient	0.0	26.7	45.3
Peripartum	0.0	3.3	1.1

**Table 1.** Summary of patient characteristics by COVID status.

\*Reflects all included samples (including multiple samples for a unique patient). CDU = clinical decision unit

	Samples	Unique patients
<b>Never SARS-CoV-2 positive</b>	1416	1249
Same-day negative NAAT	194	194
<b>Ever SARS-CoV-2 positive*</b>	444	360
Convalescent	182	153
Late-presenting	30	30
Acute	141	130
Sampled three or more days prior to diagnosis	42	34
Negative interim testing	21	16

**Table 2.** Categories determined by chart review for samples and patients included in the analysis.

NAAT = Nucleic acid amplification testing; \*Includes in-hospital NAAT as well as community NAAT or antigen testing if reported in the clinical narrative

## Figure captions

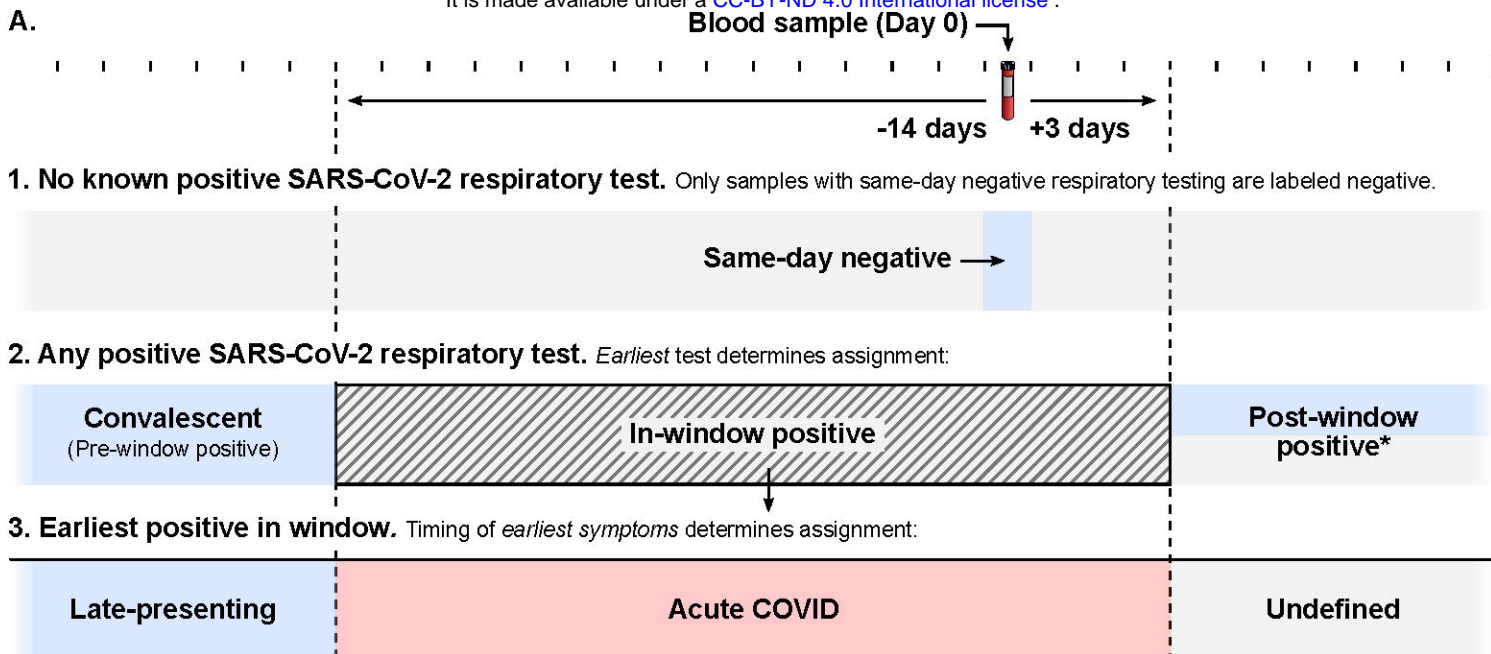
**Figure 1.** (A) Schematic of process for COVID status assignment. Samples from patients with no record of positive SARS-CoV-2 respiratory testing were only considered negative if corresponding negative respiratory testing occurred on the same day. Due to the lack of a gold standard for active SARS-CoV-2 infection, samples from individuals with history of positive SARS-CoV-2 testing are labeled based on earliest known positive SARS-CoV-2 respiratory test and time since symptom onset. (B) Flow chart of categorization and labeling process indicating number of samples assigned to each group.

**Figure 2.** (A) Prevalence of antigenemia and serum or plasma nucleocapsid levels for blood samples by category. Unexpected results (presence of nucleocapsid in the convalescent and same-day negative groups, absence of nucleocapsid in the acute group) are examined in Supplementary Information Tables 2-5. (B) ROC curve for diagnostic performance of detectable antigenemia with reference to a -14/+3 day window for acute infection. The additional curves progressively exclude ambiguous categories. (C) Impact on sensitivity and specificity of varying the window period, which defines the reference standard for acute COVID. (D) AUC for the same varied window periods. (E) Antigenemia compared to RT-PCR Ct value for those specimens with a Ct value available from the clinical laboratory on the same day. Symbols correspond to assay and gene target with horizontal line linking Ct values for different targets detected in the same sample. This includes data from four assays on three thermocycler platforms described in further detail in Supplementary Information.

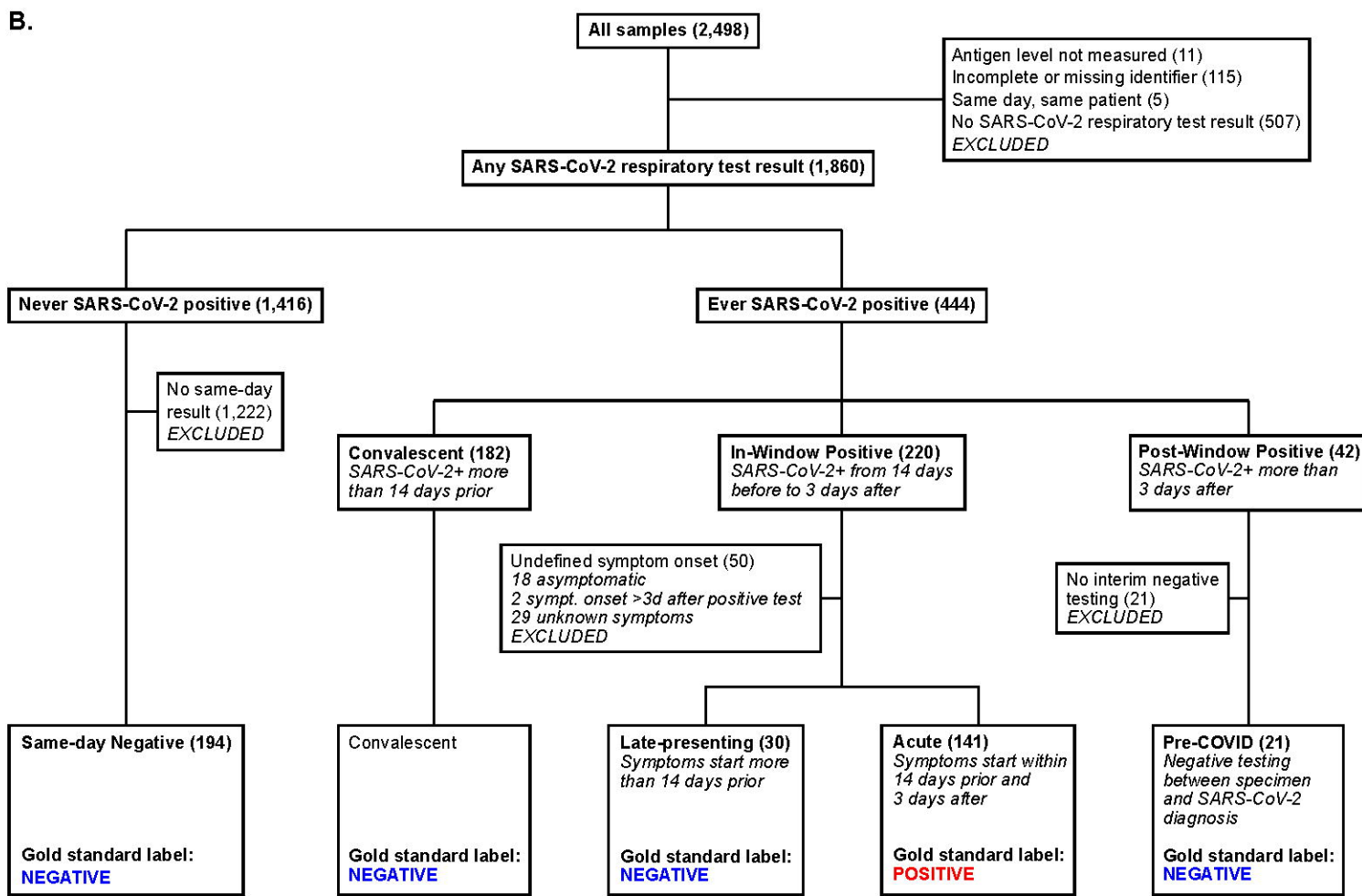
**Figure 3.** (A) Serum or plasma nucleocapsid plotted against time since diagnosis (top) and symptom onset (bottom, shown with an inverted y axis). Samples without antigen detected are shown stacked on the common horizontal axis. Four samples with antigenemia beyond 41 days are listed in the box and 93 samples without antigenemia between 41 and 351 days after earliest diagnosis are not shown. (B) Serum or plasma nucleocapsid in patients whose COVID-19 course was described as asymptomatic in clinical records. The x axis reflects time in between first known positive respiratory test and the day the blood sample used in our analysis was collected. (C) Serum or plasma nucleocapsid for individuals with positive nasopharyngeal RT-PCR on the same day as blood sample collection.

**Figure 4.** Comparison of serum or plasma nucleocapsid levels in individuals with and without SARS-CoV-2-specific antibodies. Samples were tested by in-house developed serological tests for nucleocapsid and receptor binding domain specific IgG as well as receptor binding domain specific IgA and IgM. Levels of nucleocapsid are plotted and compared in samples stratified by seropositivity for each antibody type.

**Figure 5.** Comparison of serum or plasma nucleocapsid levels by (A-C) severity and (D-E) inflammatory biomarkers. Intubation in figures B and C includes intubation within 30 days before or after the blood sample was collected. Individuals with severe COVID as defined by the composite of 30-day intubation or mortality are highlighted in D and E.



\*Samples with post-window positive SARS-CoV-2 testing are labeled "negative" if a negative SARS-CoV-2 test is available following the sample but before the positive test. Otherwise, the sample is labeled "unknown."



**Figure 1**

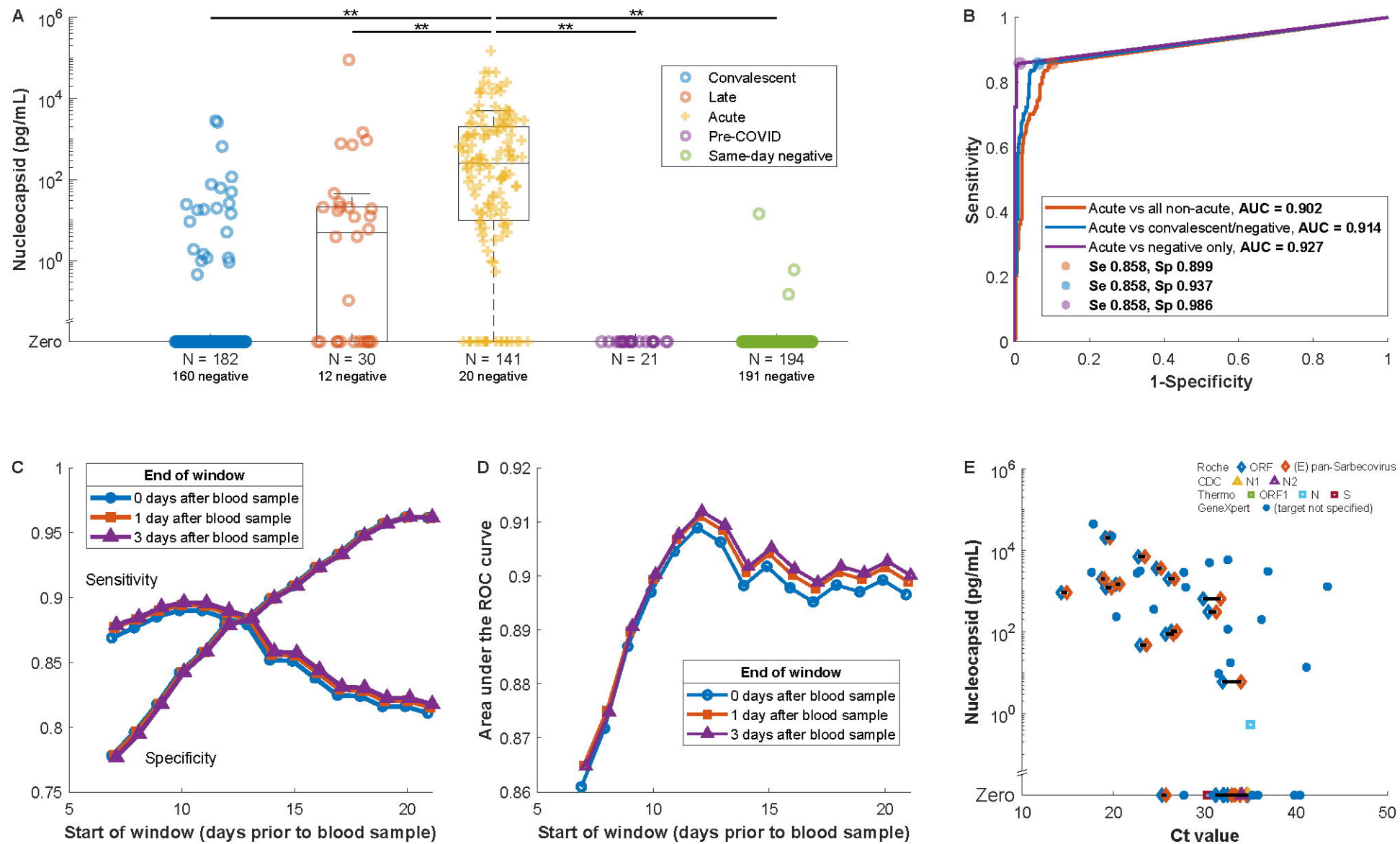


Figure 2

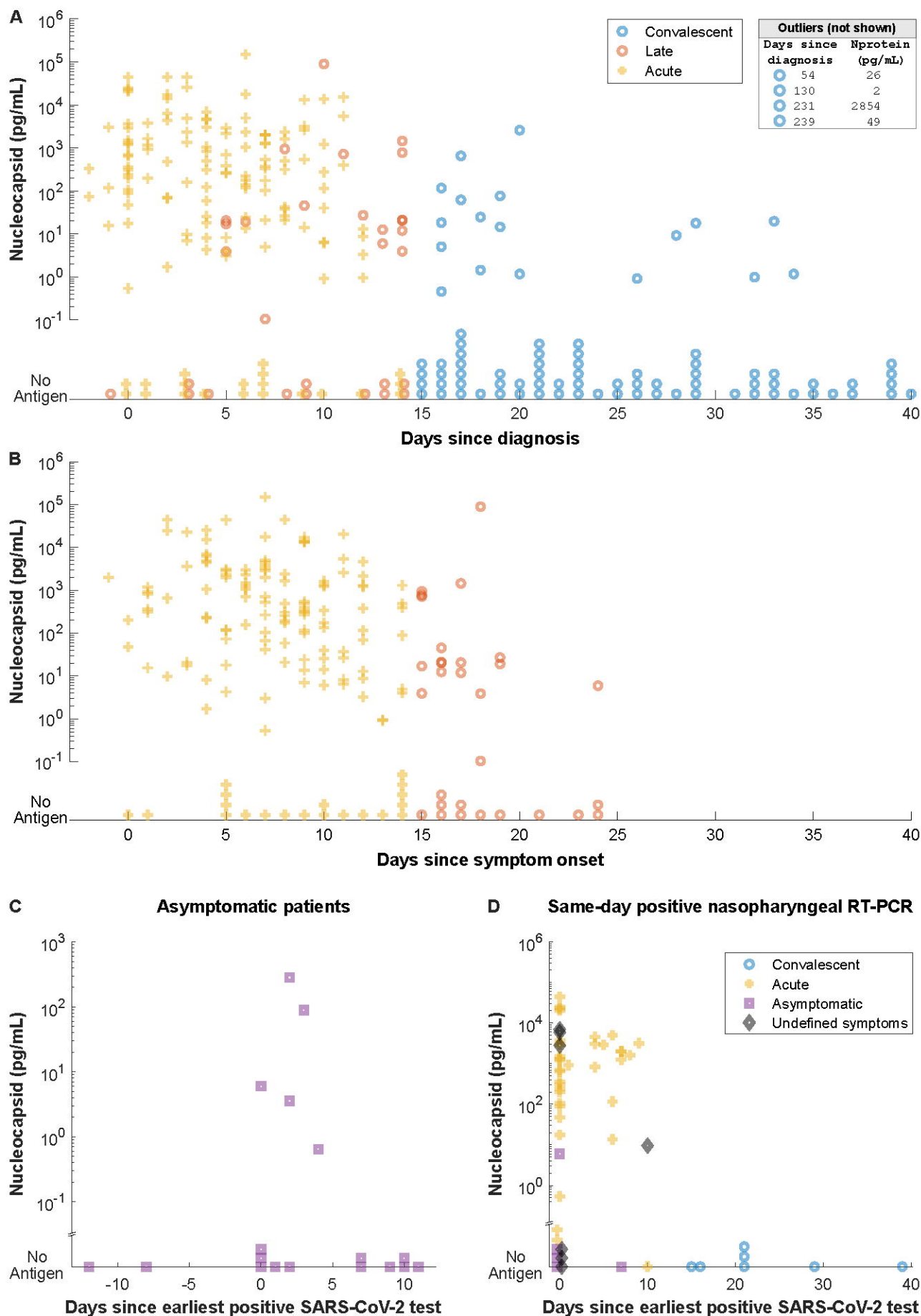


Figure 3

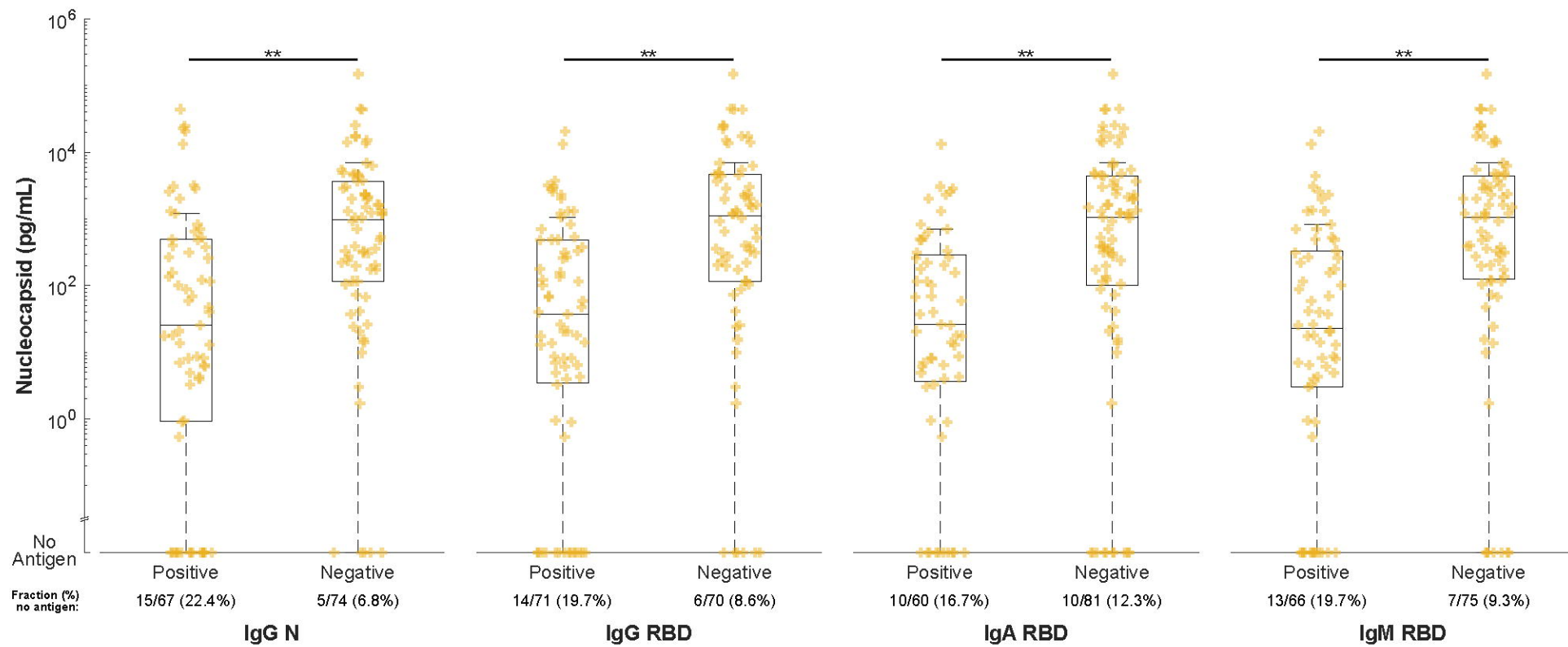


Figure 4



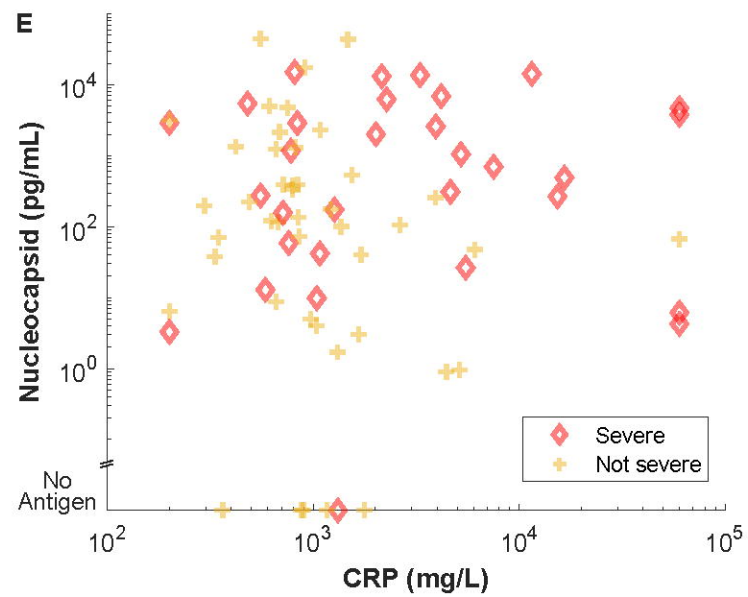
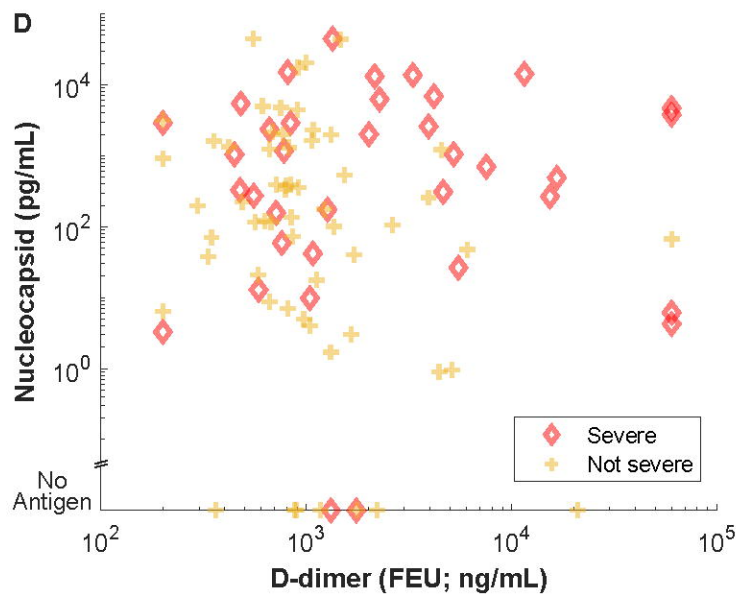
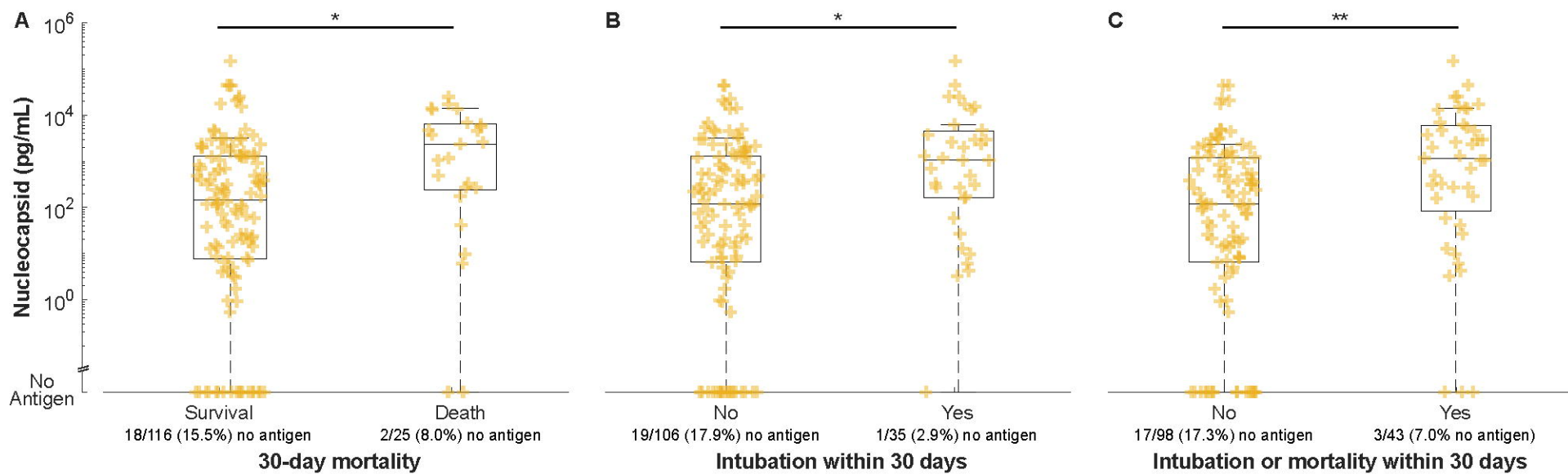


Figure 5