

1 Occurrence and transmission potential of asymptomatic and
2 presymptomatic SARS-CoV-2 infections: update of a living
3 systematic review and meta-analysis
4

5 Diana Buitrago-Garcia*^{1,2}

6 Aziz Mert Ipekci*¹

7 Leonie Heron *¹

8 Hira Imeri¹

9 Lucia Araujo-Chaveron^{3,4}

10 Ingrid Arevalo-Rodriguez⁵

11 Agustín Ciapponi⁶

12 Muge Cevik⁷

13 Anthony Hauser¹

14 Muhammad Irfanul Alam³

15 Kaspar Meili⁸

16 Eric A. Meyerowitz⁹

17 Nirmala Prajapati¹⁰

18 Xueting Qiu¹¹

19 Aaron Richterman¹²

20 William Gildardo Robles-Rodríguez¹³

21 Shabnam Thapa¹⁴

22 Ivan Zhelyazkov¹⁵

23 Georgia Salanti¹

24 Nicola Low¹

25

26 * These authors contributed equally to this work

27

28

29

30

31

32 NOTE: This preprint reports new research that has not been certified by peer review and should not be used to guide clinical practice.

- 33 1. Institute of Social and Preventive Medicine, University of Bern, Bern, Switzerland
- 34 2. Graduate School of Health Sciences, University of Bern, Bern, Switzerland
- 35 3. EHESP French School of Public Health La Plaine St Denis, Rennes, France
- 36 4. Institut Pasteur, Paris, France
- 37 5. Clinical Biostatistics Unit, Hospital Universitario Ramon y Cajal, IRYCIS, CIBER of
38 Epidemiology and Public Health, Madrid, Spain
- 39 6. Instituto de Efectividad Clínica y Sanitaria (IECS-CONICET), Buenos Aires, Argentina
- 40 7. Division of Infection and Global Health Research, School of Medicine, University of St.
41 Andrews, Fife, Scotland, United Kingdom
- 42 8. Department of Epidemiology and Global Health, Umeå University, Umeå, Sweden
- 43 9. Division of Infectious Diseases, Montefiore Medical Center, Bronx, New York, United States of
44 America
- 45 10. Université Paris-Saclay, Paris, France
- 46 11. Center for Communicable Disease Dynamics, Department of Epidemiology, Harvard TH Chan
47 School of Public Health, Boston, United States of America
- 48 12. Division of Infectious Diseases, University of Pennsylvania, Philadelphia, United States of
49 America
- 50 13. Fundación Universitaria de Ciencias de la Salud. Bogotá, Colombia.
- 51 14. Manchester Centre for Health Economics, University of Manchester, Manchester, United
52 Kingdom
- 53 15. University of Sheffield, Sheffield, United Kingdom
- 54
- 55 Word counts: Abstract, 468; main text 4945; 2 tables; 3 figures; 191 references
- 56 Supplementary material: 2 text files; 5 tables; 5 figures; 1 checklist; 2 appendices
- 57 Corresponding author: nicola.low@ispm.unibe.ch

58 **ABSTRACT**

59 **BACKGROUND**

60 Debate about the level of asymptomatic severe acute respiratory syndrome coronavirus 2 (SARS-
61 CoV-2) infection continues. The amount of evidence is increasing and study designs have changed
62 over time. We updated a living systematic review to address three questions: (1) Amongst people who
63 become infected with SARS-CoV-2, what proportion does not experience symptoms at all during
64 their infection? (2) What is the infectiousness of asymptomatic and presymptomatic, compared with
65 symptomatic, SARS-CoV-2 infection? (3) What proportion of SARS-CoV-2 transmission in a
66 population is accounted for by people who are asymptomatic or presymptomatic?

67 **METHODS AND FINDINGS**

68 The protocol was first published on 1 April 2020 and last updated on 18 June 2021. We searched
69 PubMed, Embase, bioRxiv and medRxiv, aggregated in a database of SARS-CoV-2 literature, most
70 recently on 6 July 2021. Studies of people with PCR-diagnosed SARS-CoV-2, which documented
71 symptom status at the beginning and end of follow-up, or mathematical modelling studies were
72 included. Studies restricted to people already diagnosed, of single individuals or families, or without
73 sufficient follow-up were excluded. One reviewer extracted data and a second verified the extraction,
74 with disagreement resolved by discussion or a third reviewer. Risk of bias in empirical studies was
75 assessed with a bespoke checklist and modelling studies with a published checklist. All data syntheses
76 were done using random effects models. Review question (1): We included 130 studies.

77 Heterogeneity was high so we did not estimate a mean proportion of asymptomatic infections overall
78 (interquartile range 14-50%, prediction interval 2-90%), or in 84 studies based on screening of
79 defined populations (interquartile range 20-65%, prediction interval 4-94%). In 46 studies based on
80 contact or outbreak investigations, the summary proportion asymptomatic was 19% (95% CI 15-25%,
81 prediction interval 2-70%). (2) The secondary attack rate in contacts of people with asymptomatic
82 infection compared with symptomatic infection was 0.32 (95% CI 0.16-0.64, prediction interval 0.11-
83 0-95, 8 studies). (3) In 13 modelling studies fit to data, the proportion of all SARS-CoV-2
84 transmission from presymptomatic individuals was higher than from asymptomatic individuals.

85 Limitations of the evidence include high heterogeneity and high risks of selection and information

86 bias in studies that were not designed to measure persistently asymptomatic infection, and limited
87 information about variants of concern or in people who have been vaccinated.

88 CONCLUSIONS

89 Based on studies published up to July 2021, most SARS-CoV-2 infections were not persistently
90 asymptomatic and asymptomatic infections were less infectious than symptomatic infections.
91 Summary estimates from meta-analysis may be misleading when variability between studies is
92 extreme and prediction intervals should be presented. Future studies should determine the
93 asymptomatic proportion of SARS-CoV-2 infections caused by variants of concern and in people with
94 immunity following vaccination or previous infection. Without prospective longitudinal studies with
95 methods that minimise selection and measurement biases, further updates with the study types
96 included in this living systematic review are unlikely to be able to provide a reliable summary
97 estimate of the proportion of asymptomatic infections caused by SARS-CoV-2.

98 REVIEW PROTOCOL: Open Science Framework (<https://osf.io/9ewys/>)

99

100 AUTHOR SUMMARY

101 Why was this study done?

- 102 ▪ The proportion of people who will remain asymptomatic throughout the course of infection with
103 severe acute respiratory syndrome coronavirus 2 (SARS-CoV-2), the cause of coronavirus disease
104 2019 (covid-19), is debated.
- 105 ▪ Studies that assess people at just one time point overestimate the proportion of true asymptomatic
106 infection because those who go on to develop covid-19 symptoms will be wrongly classified as
107 asymptomatic, but other types of study might underestimate the proportion if, for example, people
108 with symptoms are more likely to be included in a study population.
- 109 ▪ The number of published studies about SARS-CoV-2 is increasing continuously, types of studies
110 are changing and, since 2021, vaccines have become available, and variants of concern have
111 emerged.

112 What did the researchers do and find?

- 113 ▪ We updated a living systematic review through 6 July 2021, using automated workflows that
114 speed up the review processes, and allow the review to be updated when relevant new evidence
115 becomes available.
- 116 ▪ In 130 studies, we found an interquartile range of 14-50% (prediction interval 2-90%) of people
117 with SARS-CoV-2 infection that was persistently asymptomatic; owing to heterogeneity, we did
118 not estimate a summary proportion.
- 119 ▪ Contacts of people with asymptomatic SARS-CoV-2 infection are less likely to become infected
120 than contacts of people with symptomatic infection (risk ratio 0.38, 95% CI 0.16-0.64, prediction
121 interval 0.11-0.95, 8 studies).

122 What do these findings mean?

- 123 ▪ Up to mid-2021, most people with SARS-CoV-2 were not persistently asymptomatic and
124 asymptomatic infection was less infectious than symptomatic infection.
- 125 ▪ In the presence of high between-study variability, summary estimates from meta-analysis may be
126 misleading and prediction intervals should be presented.
- 127 ▪ Future studies about asymptomatic SARS-CoV-2 infections caused by variants of concern and in
128 people with immunity following vaccination or previous infection should be specifically
129 designed, using methods to minimise biases in the selection of study participants and in
130 ascertainment, classification and follow-up of symptom status.

131

132 Introduction

133
134 There is ongoing debate about the true proportion of severe acute respiratory syndrome coronavirus 2
135 (SARS-CoV-2) infection that remains asymptomatic [1]. A well-recognised source of overestimation
136 arises when people without symptoms at the time of testing are reported as having asymptomatic
137 infection, with such cross-sectional studies often reporting percentages of 80% or more [2,3]. These
138 studies overestimate the proportion of persistently asymptomatic infection because they misclassify
139 people with so-called presymptomatic infection, who will develop symptoms of coronavirus disease
140 2019 (COVID-19) if reassessed after an adequate follow-up period [1]. Other sources of bias can
141 result in over- or underestimation of the proportion with persistent asymptomatic infections, even
142 when participants are adequately followed up [1]. For example, studies that assess a limited range of
143 symptoms could overestimate the proportion asymptomatic through misclassification if they do not
144 ask participants about all possible symptoms. Since COVID-19 was first identified as a viral
145 pneumonia, the spectrum of symptoms has grown to include gastro-intestinal symptoms and
146 disturbances of smell and taste [1]. On the other hand, selection bias would be expected to
147 underestimate the proportion with asymptomatic SARS-CoV-2 if people with symptoms are more
148 likely to be tested for SARS-CoV-2 infection than those without symptoms [4].

149 Accurate estimates of the proportions of true asymptomatic and presymptomatic infections are needed
150 to determine the balance and range of control measures [5]. Recognition of asymptomatic and
151 presymptomatic infections showed the importance of control measures such as physical distancing,
152 active case-finding through testing of asymptomatic people [6] and the need for rapid quarantine [7]
153 in the first waves. Since late 2020, vaccines have become available [8] and several SARS-CoV-2
154 variants of concern have spread internationally, with varying viral characteristics [9]. The number of
155 published studies about SARS-CoV-2 is also increasing continuously and the types of published
156 studies are also changing [10], including the designs of studies about asymptomatic infection. In
157 systematic reviews of studies published to April 2021, reported point estimates from random effects
158 meta-analysis models range from 17 to 41% [11-16]. Authors of these reviews typically report values
159 of the I^2 statistic >90 [17,18], but heterogeneity is often not explored in detail and prediction

160 intervals, which give information about sampling error and variability between studies, are
161 recommended but rarely reported[17,19,20]. In this fifth update of our living systematic review [21]
162 we aimed to improve and understand the changing evidence over time for three review questions: (1)
163 Amongst people who become infected with SARS-CoV-2, what proportion does not experience
164 symptoms at all during their infection? (2) What is the infectiousness of people with asymptomatic
165 and presymptomatic, compared with symptomatic SARS-CoV-2 infection? (3) What proportion of
166 SARS-CoV-2 transmission is accounted for by people who are either asymptomatic throughout
167 infection, or presymptomatic?

168 **Methods**

169 We conducted an update of a living systematic review, a systematic review that provides an online
170 summary of findings and is updated when relevant new evidence becomes available [22]. The
171 protocol, which describes modifications for each update, was first published on 1 April 2020 and
172 amended for this version on 18 June 2021, (<https://osf.io/9ewys/>). Previous versions have been posted
173 as preprints [21,23] and published as a peer-reviewed article [12]. We report our findings according to
174 statements on preferred reporting items for systematic reviews and meta-analyses 2020 (S1 PRISMA
175 2020 Checklist) [24] and on synthesis without meta-analysis in systematic reviews (SWiM) [25].
176 Ethics committee review was not required for this review. Box 1 shows our definitions of symptoms,
177 asymptomatic infection and presymptomatic status.

178 **Box 1. Definitions of symptoms and symptom status in a person with SARS-CoV-2 infections**

Symptoms: symptoms that a person experiences and reports. We used the authors' definitions. We searched included manuscripts for an explicit statement that the study participant did not report symptoms that they experienced. Some authors defined 'asymptomatic' as an absence of self-reported symptoms. We did not include clinical signs observed or elicited on examination.

Asymptomatic infection: a person with laboratory-confirmed SARS-CoV-2 infection, who has no symptoms, according to the authors' report, at the time of first clinical assessment and had no symptoms at the end of follow-up. The end of follow-up was defined as any of the following: virological cure, with one or more negative RT-PCR test results; follow-up for 14 days or more after the last possible exposure to an index case; follow-up for seven days or more after the first RT-PCR positive result.

Presymptomatic: a person with laboratory-confirmed SARS-CoV-2 infection, who has no symptoms, according to the authors' report, at the time of first clinical assessment, but who

developed symptoms by the end of follow-up. The end of follow-up was defined as any of the following: virological cure, with one or more negative RT-PCR test results; follow-up for 14 days or more after the last possible exposure to an index case; follow-up for seven days or more after the first RT-PCR positive result.

179 Information sources and search

180 We conducted the first search on 25 March 2020 and updated it on 20 April 2020, 10 June 2020, 2
181 February 2021 and, for this update, 6 July 2021. We searched the COVID-19 living evidence database
182 [26], which uses automated workflow processes to: (1) aggregate simultaneous daily searches of four
183 electronic databases (Medline, PubMed, Ovid Embase, bioRxiv and medRxiv), using medical subject
184 headings and free-text keywords for SARS-CoV-2 infection and COVID-19; (2) de-duplicate the
185 records; (3) tag records that are preprints; and (4) allow searches of titles and abstracts using Boolean
186 operators. We used the search function to identify studies of asymptomatic or presymptomatic SARS-
187 CoV-2 infection using a search string of medical subject headings and free text keywords (S1 Text).
188 We also examined articles suggested by experts and the reference lists of retrieved studies. Reports
189 were planned to be updated at 3-monthly intervals, with continuously updated searches.

190 Eligibility criteria

191 We included studies, in any language, of people with SARS-CoV-2 diagnosed by RT-PCR that
192 documented follow-up and symptom status at the beginning and end of follow-up or investigated the
193 contribution to SARS-CoV-2 transmission of asymptomatic or presymptomatic infection. We
194 included contact tracing and outbreak investigations, cohort studies, case-control studies, and
195 mathematical modelling studies. We amended eligibility criteria after the third version of the review
196 [12] in two ways. First, we excluded studies that only reported the proportion of presymptomatic
197 SARS-CoV-2 because the settings and methods of these studies were very different and their results
198 were too heterogeneous to summarise [12]. Second, we aimed to reduce the risk of bias from studies
199 with inclusion criteria based mainly on people with symptoms, which would systematically
200 underestimate the proportion of people with asymptomatic infection. We therefore excluded the
201 following study types: case series restricted to people already diagnosed and studies that did not report
202 the number of people tested for SARS-CoV-2, from whom the study population was derived. We also
203 excluded case reports and contact investigations of single individuals or families, and any study

204 without sufficient follow-up (Box 1). Where data from the same study population were reported in
205 multiple records, we extracted data from the most comprehensive report.

206 Study selection and data extraction

207 Reviewers, including crowdsourced trained volunteers, worked in pairs to screen records using an
208 application programming interface in the electronic data capture system (REDCap, Vanderbilt
209 University, Nashville, TN, USA). One reviewer applied eligibility criteria to select studies and a
210 second reviewer verified all included and excluded studies. We reported the process in a flow
211 diagram, adapted for living systematic reviews [27] (S1 Fig). The reviewers determined which of the
212 three review questions each study addressed. One reviewer extracted data using a pre-piloted
213 extraction form in REDCap and a second reviewer verified the extracted data. For both study
214 selection and data extraction, a third reviewer adjudicated on disagreements that could not be resolved
215 by discussion. We contacted study authors for clarifications. The extracted variables included, study
216 design, country and/or region, study setting, population, age, sex, primary outcomes and length of
217 follow-up (full list of variables in S1 Appendix). We extracted raw numbers of individuals with an
218 outcome of interest and relevant denominators from empirical studies. From statistical and
219 mathematical modelling studies we extracted proportions and 95% credibility intervals.

220 The primary outcomes for each review question were (1) the proportion of people with asymptomatic
221 SARS-CoV-2 infection who did not experience symptoms at all during follow-up; (2) secondary
222 attack rate from asymptomatic or presymptomatic index cases, compared with symptomatic cases; (3)
223 model-estimated proportion of SARS-CoV-2 transmission accounted for by people who are
224 asymptomatic or presymptomatic.

225 Risk of bias in included studies

226 After the third version of the review [12], we developed a new tool to assess the risk of bias because
227 the study designs of included studies have changed. In previous versions, we used items from tools to
228 assess case series [28] and the prevalence of mental health disorders [29]. The new tool assessed
229 possible biases in studies of prevalence in general and COVID-19 in particular [4,30]. We developed
230 signalling questions in the domains of selection (two items), information (three items) and selective

231 reporting (one item) biases (S2 Text). For mathematical modelling studies, we used a checklist for
232 assessing relevance and credibility [31]. Two authors independently assessed the risk of bias, using a
233 customised online tool. A third reviewer resolved disagreements.

234 Synthesis of the evidence

235 The data extracted and the code used to display and synthesise the results are publicly available:

236 https://github.com/leonieheron/LSR_Asymp_v4. We used the *metaprop*, *metabin* and *metafor*

237 functions from the *meta* package (version 4.11-0) [32] and the *ggplot2* package (version 3.3.5) in R

238 (version 3.5.1). The 95% confidence intervals (CI) for each study were estimated using the Clopper-

239 Pearson method [33]. For review question 1, in contact or outbreak investigations, we subtracted the

240 index cases from the total with SARS-CoV-2 infection, because these people were likely to have been

241 identified because of their symptoms and their inclusion might lead to underestimation of the

242 asymptomatic proportion [16]. For all meta-analyses, we used stratified random effects models.

243 Where a meta-analysis was not done, we present the interquartile range (IQR) and describe

244 heterogeneity visually in forest plots, ordered by study sample size [25]. We calculated the I^2 statistic,

245 which is the approximate proportion of between-study variability that is due to heterogeneity other

246 than chance and τ^2 , the between-study variance. We calculated 95% prediction intervals for all

247 summary estimates, to give a likely range of proportions that would have been obtained in

248 hypothetical studies conducted in similar settings [17,19,20]. We did subgroup analyses for pre-

249 specified characteristics of study design, setting and risk of bias and post-hoc analyses according to

250 age group and geographic region, comparing groups using a χ^2 test. We used meta-regression for post-

251 hoc analyses examining associations with study size and publication date. To compare our findings

252 with other studies, we extracted the raw data from five systematic reviews [11,13-16] and calculated

253 prediction intervals [17]. For review question 2, as a measure of infectiousness, we calculated the

254 secondary attack rate as the number of SARS-CoV-2-infected contacts as a proportion of all close

255 contacts ascertained. For each included study, we compared the secondary attack rate from

256 asymptomatic or presymptomatic index cases with that from symptomatic cases in the same study. If

257 there were no events in a group, we added 0.5 to each cell in the 2x2 table. We did not account for

258 potential clustering of contacts because the included studies did not report the number and size of
259 infection clusters consistently. We used the Hartung-Knapp method for random effects meta-analysis
260 to estimate a summary risk ratio (with 95% CI) [34]. For review question 3, we reported the findings
261 descriptively because of large differences between study settings, methods and results. We did not
262 construct funnel plots to examine bias across studies because their utility in studies reporting on
263 proportions is not clear.

264 Results

265 The searches for studies about asymptomatic or presymptomatic SARS-CoV-2, on 25 March, 20 April
266 and 10 June 2020 and 2 February and 6 July 2021 resulted in 89, 230, 688, 4,213 and 3,018 records
267 for screening, respectively (S1 Fig). Owing to changes in eligible study designs, this update excludes
268 67 articles from earlier versions (S1 Table). We included a total of 146 studies addressing one or more
269 review questions; 130 empirical studies that estimate the proportion of people with asymptomatic
270 SARS-CoV-2 (summarised in Table 1 and S2 Table) [35-164], eight studies reporting on secondary
271 attack rates [35,81,131,142,165-168], and 13 mathematical modelling studies [7,165,169-179]. At the
272 time of the search on 6 July 2021, five records were preprints. We checked the publication status on
273 14 March 2022 and all were still preprints [61,62,88,169,171]. The review period from 1 January
274 2021 onwards includes 52 publications, three of which collected data during the period when the
275 alpha variant of concern [85,125,133] had been described and vaccines were being introduced.

276 Proportion of people with asymptomatic SARS-CoV-2 infection

277 The 130 studies reported on 28,426 people with SARS-CoV-2 infection (11,923 defined as having
278 asymptomatic infection) in 42 countries [35-164] (Table 1, S3Table). Amongst all 130 included
279 studies, 88 studies used more than one method of follow-up to ascertain asymptomatic status (Table 1,
280 S2 Table). Only 22 of 130 studies reported the median or mean age [38,47,70,76,77,83,85,95,99,119-
281 121,124,126,128,133,134,139,143,146,152,164] and only five studies included children only
282 [65,67,110,115,118]. Only 31 studies reported the sex of people with asymptomatic SARS-CoV-2
283 (Table 1, S2 Table) [38,47,51,53,70,71,75,76,83,85,95,99,107,119-
284 122,124,126,128,133,134,139,143,146,147,150,153,158,162,164]. The types of included studies

285 changed across the five versions of the review. In the first version [23], six of nine studies were
 286 contact tracing investigations of single-family clusters. In this version, two main types of study design
 287 generated the study populations of people with SARS-CoV-2: contact tracing or outbreak
 288 investigation methods were used to identify and test potentially infected contacts (46 studies, referred
 289 to as contact and outbreak investigations); and studies that involved screening of a defined group of
 290 people in settings in the community, institutions, such as long-term care facilities, or occupational
 291 groups (84 studies, referred to as screening studies).

292 **Table 1. Summary of characteristics of studies reporting on proportion of asymptomatic SARS-**
 293 **CoV-2 infections (review question 1)**
 294

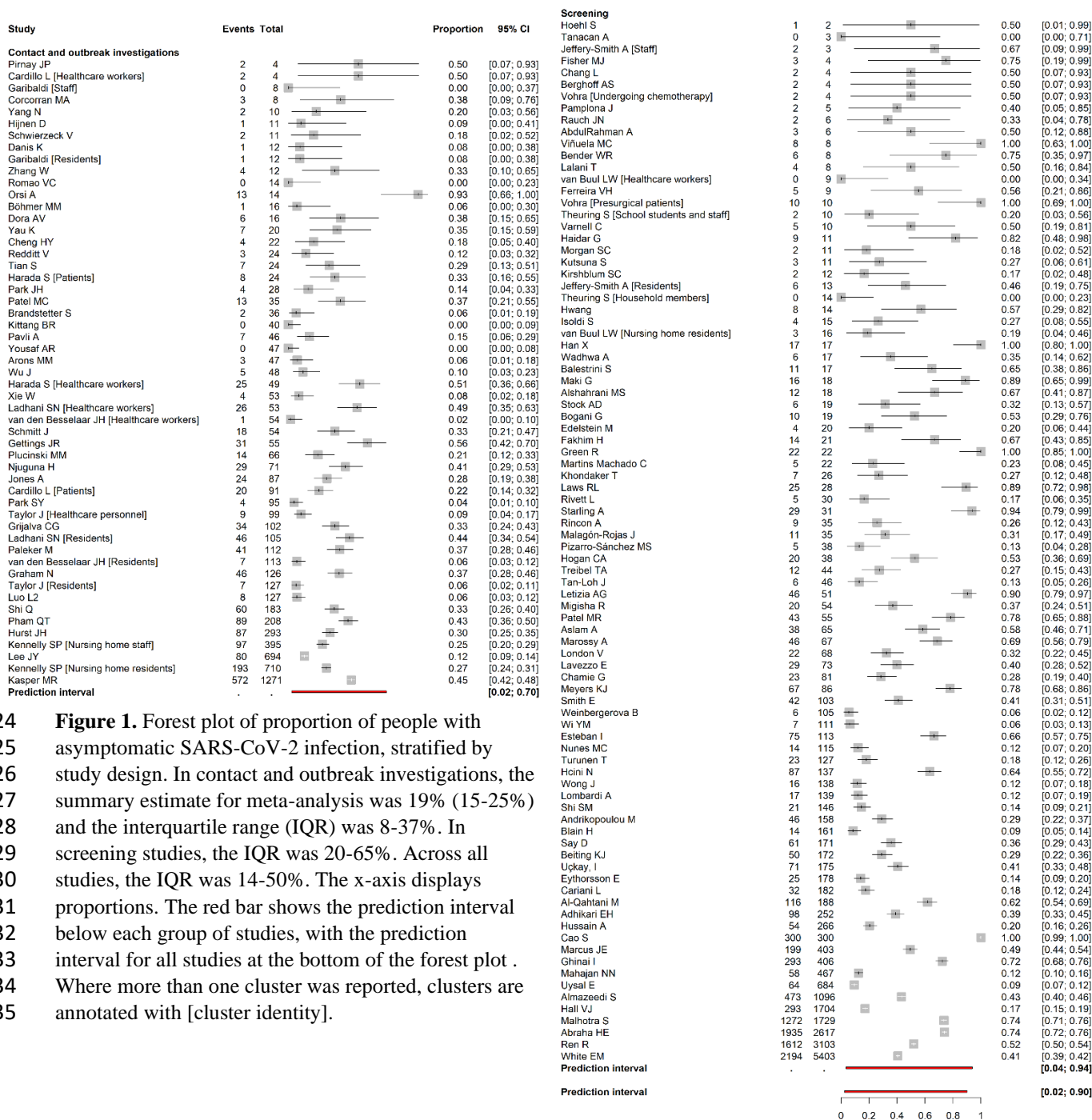
	Study design and setting					All studies
	Contact investigation	Outbreak investigation	Screening of defined population			
			Community	Institutional	Occupational	
Total studies, n	13	33	23	43	18	130
Publication date						
Jan 2020 – Jun 2020	5	9	3	3	4	24
Jul 2020 – Dec 2020	5	17	11	17	6	56
Jan 2021 onward	3	7	9	23	8	50
Region^b						
Africa	0	2	2	1	1	6
Americas	5	10	4	19	7	45
South-East Asia	0	3	2	2	1	7
Europe	2	13	7	18	5	45
Eastern Mediterranean	0	0	3	2	2	8
Western Pacific	6	6	5	1	2	19
Follow-up method^c						
14 days after last possible exposure	7	11	2	3	4	27
≥7 days after diagnosis	11	27	19	35	16	108
Until negative RT-PCR result	2	4	9	12	6	33
Two or more follow-up methods	8	21	17	28	14	88
Age range of study participants						
Children (<18 years)	1	1	0	3	0	5
Adults (18 – 65 years)	3	10	9	16	14	52
Older adults (>65 years)	0	7	0	6	0	13
All ages	7	14	10	15	2	48
No information about age	2	1	4	3	2	12
Total with SARS-CoV-2 infection, n	1076	4910	10652	8921	2867	28426
Asymptomatic SARS-CoV-2 infections	264	1409	6007	3658	585	11923
Gender of asymptomatic cases^c						
Male	1	33	1419	30	16	1499
Female	0	32	589	313	26	960

295 SARS-CoV-2, severe acute respiratory syndrome coronavirus 2; Jan, January; Jun, June; Jul, July; Dec,
296 December
297 ^a S2 Table reports the characteristics of each study included;
298 ^b World Health Organization regions;
299 ^c Studies could have more than one method of follow-up (S2 Table);
300 ^d 99 studies did not report the gender of asymptomatic cases.

301 Between-study heterogeneity was considerable, so we did not estimate a mean proportion of
302 asymptomatic infections overall, or for screening studies (Fig 1). The IQR of estimates for all 130
303 included studies (141 clusters) was 14-50% (prediction interval 2-90%). In 46 studies enrolling people
304 found through contact or outbreak investigations, for example in long-term care facilities, in
305 aeroplanes, or on cruise ships, we estimated a summary estimate for the proportion asymptomatic
306 (19%, 95% CI 15-25%, prediction interval 2-70%, IQR 8-37%). The estimated proportions of
307 asymptomatic SARS-CoV-2 infections were similar in studies of contact investigations (16%, 95% CI
308 9-27%, IQR 8-38%, 13 studies) and outbreak investigations (20%, 95% CI 15-28%, IQR 8-38%, 33
309 studies) (S2 Fig).

310 In 84 screening studies, the IQR for estimates from individual studies was 20-65% and the prediction
311 interval was 4-94% [41-48,50-54,56,58-63,67,69-71,73,74,79,83,86,88-97,99-101,103-
312 105,107,109,110,114-117,119,120,122,124-126,128,130,133-138,143-145,147,150-156,158-164].
313 The ranges of estimates were similar in three settings in which screening studies were conducted;
314 people in a community setting (23 studies, IQR 20-53%, prediction interval 2-96%), institutional
315 settings such as nursing homes (43 studies, IQR 26-67%, prediction interval 5-93%), and occupational
316 settings such as amongst groups of healthcare workers (18 studies, IQR 17-64%, prediction interval 3-
317 95%) (S2 Fig).

318 Three studies had data collection periods from 1 January 2021. In two nursing home outbreaks, 3/4
319 SARS-CoV-2 infections in partially vaccinated residents [133] and 13/14 infections (with the alpha
320 variant) [85] in full vaccinated residents were asymptomatic. One study among healthcare workers did
321 not report on symptom status according to vaccination or variant of concern but found that 76/155
322 (49%) with reinfection compared with 273/1704 (17%) with primary infection were asymptomatic
323 [125].



324 **Figure 1.** Forest plot of proportion of people with
 325 asymptomatic SARS-CoV-2 infection, stratified by
 326 study design. In contact and outbreak investigations, the
 327 summary estimate for meta-analysis was 19% (15-25%)
 328 and the interquartile range (IQR) was 8-37%. In
 329 screening studies, the IQR was 20-65%. Across all
 330 studies, the IQR was 14-50%. The x-axis displays
 331 proportions. The red bar shows the prediction interval
 332 below each group of studies, with the prediction
 333 interval for all studies at the bottom of the forest plot.
 334 Where more than one cluster was reported, clusters are
 335 annotated with [cluster identity].

336 Risk of bias in individual studies

337 There were risks of bias in all types of empirical studies (S3 Fig). In pre-specified subgroup analyses
338 according to risk of bias domains (S4 Table2), statistical heterogeneity remained very high ($I^2 \geq 84\%$)
339 and the prediction intervals remained wide. In screening studies, the summary proportion in was
340 lower in studies judged to be at low risk of information bias in the assessment of symptoms (29%,
341 95% CI 20-42%) than in studies at unclear or high risk of bias (47%, 95% CI 37-57%) ($p=0.03$, test
342 for subgroup differences). For all other domains, estimates of the proportion asymptomatic were not
343 associated with the assessment of the risk of bias.

344 Factors associated with proportion of asymptomatic SARS-CoV-2

345 Table 2 shows analyses for factors pre-specified in the protocol and post-hoc (Table 2). Study design
346 and setting was pre-specified and explained 16% of the variance in heterogeneity; estimates ranged
347 from 16% (8-29%) for contact investigations to 45% (35-56%) for screening studies in institutional
348 settings (S2 Fig). The date of publication was associated with the estimate of the proportion
349 asymptomatic (S4 Fig), increasing in more recent publications ($p 0.03$), although this only explained
350 4% of the variance in heterogeneity. There was some evidence of variability in different world regions
351 ($p=0.06$), explaining 9% of the heterogeneity. Sample size and age range of the study participants did
352 not appear to influence the estimated asymptomatic proportion. In three systematic reviews that we re-
353 analysed, prediction intervals were: 1-83% (241 studies [14]); 4-97% (95 studies [15]); and 3-89%
354 (170 studies [16]). I^2 values were between 94% and 99% (S2 Appendix).

355

356 **Table 2. Summary of findings of subgroup and meta-regression analyses of factors associated**
357 **with the proportion of asymptomatic SARS-CoV-2 infections**

Variable	Clusters ^a	Proportion at the reference value (95% CI)	τ^{2b}	p value (subgroup difference/intercept)	Heterogeneity variance explained ^c
Reference	141	0.32 (0.27–0.38)	2.19	-	-
Study design and setting^d					
Contact investigation	13	0.16 (0.08; 0.29)	1.87	<0.001	16%
Outbreak investigation	40	0.20 (0.14; 0.28)			
Screening: community	24	0.39 (0.26; 0.53)			
Screening: institutional	46	0.45 (0.35; 0.56)			
Screening: occupational	18	0.41 (0.26; 0.59)			
Age group^e					
All ages	57	0.28 (0.21-0.37)	2.11	0.38	4%
Adults (18-65 years)	52	0.36 (0.27-0.47)			
Older adults (>65 years) only	14	0.25 (0.13-0.44)			
Children (<18 years) only	5	0.27 (0.09-0.58)			
Not reported	13	0.45 (0.27-0.66)			
Geographic region^{e f}					
Americas	47	0.37 (0.27-0.47)	2.00	0.06	9%
Europe	52	0.24 (0.17-0.33)			
Western Pacific	20	0.35 (0.21-0.51)			
SE Asia	8	0.22 (0.09-0.43)			
East Mediterranean	8	0.59 (0.33-0.81)			
Africa	6	0.47 (0.22-0.74)			
Selection bias^{a d}					
Low risk	54	0.34 (0.25-0.44)	2.19	0.67	0%
Unclear/high risk	87	0.31 (0.25-0.39)			
Information bias, assessment of symptoms defining status^{a d}					
Low risk	33	0.25 (0.16-0.36)	2.15	0.14	2%
Unclear/high risk	108	0.35 (0.28-0.42)			
Information bias, misclassification based on follow-up^{a d}					
Low risk	107	0.32 (0.25-0.38)	2.19	0.65	0%
Unclear/ high risk	34	0.35 (0.24-0.47)			
Selective reporting bias^{a d}					
Low risk	126	0.33 (0.27-0.40)	2.17	0.37	1%
Unclear/ high risk	15	0.25 (0.13-0.43)			
Sample size^g					
Proportion at sample size 50	-	0.29 (0.14-0.51)	1.91	0.06	13%
Proportion at sample size 120	-	0.31 (0.24-0.39)			
Proportion at sample size 200	-	0.32 (0.24-0.40)			
Publication date					
Reference (first date, 19 Feb 2020)	-	0.21 (0.13–0.32)	2.09	<0.001	4%
Coefficient	-	0.50 (0.50–0.50)			

358 CI, confidence interval

359 ^a Total number of studies, 130; independent within-study clusters counted individually;

360 ^b Common heterogeneity parameter estimated within each subgroup;

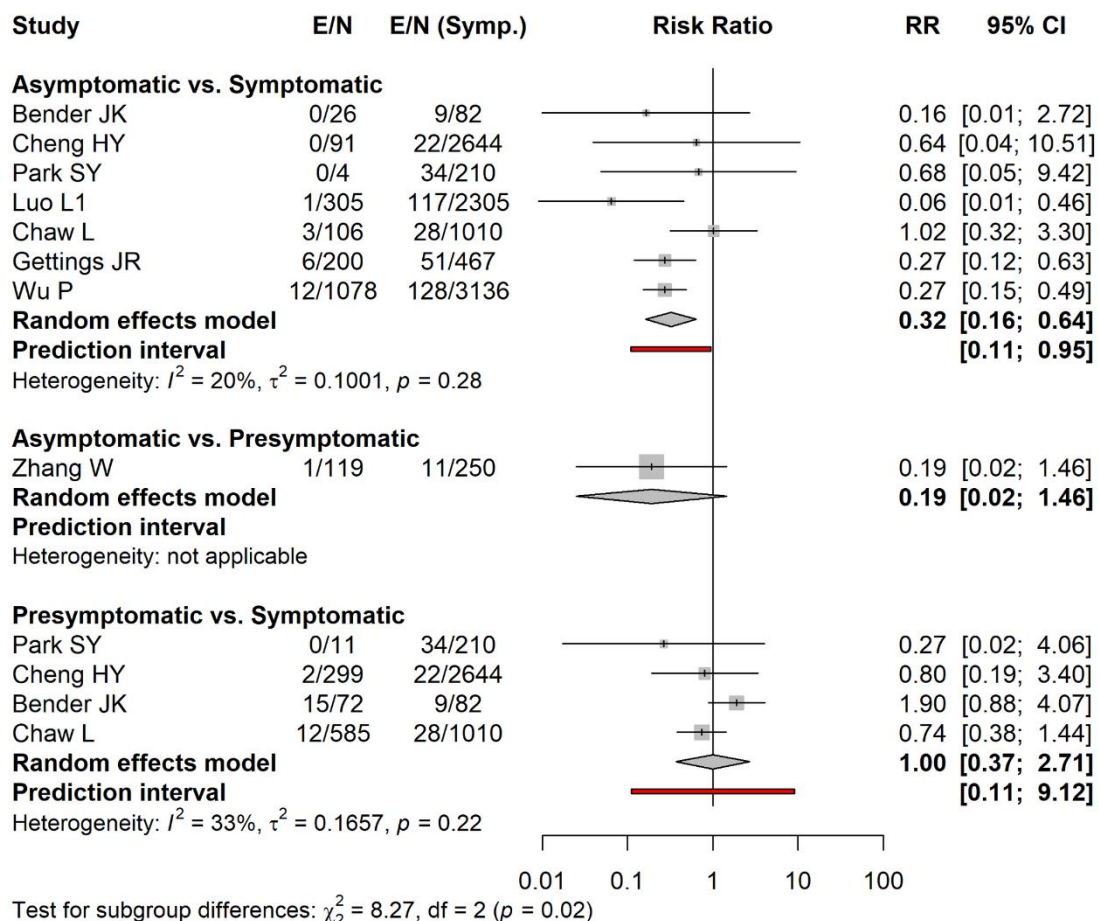
361 ^c Formula for proportion of heterogeneity variance explained, $\frac{\tau_{unadjusted}^2 - \tau_{adjusted}^2}{\tau_{unadjusted}^2}$

362 ^d Pre-specified analysis in review protocol

363 ^e Subgroup analysis not specified in review protocol

364 ^f World Health Organization regions;

365 ^g Prevalence estimated using the meta-regression model for the approximate values of the median (n=46), the
 366 mean (n=202) and the third quartile (n=126) of study sample sizes.
 367
 368 Infectiousness of people with asymptomatic or presymptomatic SARS-CoV-2
 369 Eight studies provided data to calculate and to compare secondary attack rates by symptom status of
 370 the index case (Fig 2) [35,81,131,142,165-168]. Seven studies compared the secondary attack rate
 371 from asymptomatic with symptomatic index cases (summary risk ratio 0.32 (95% CI 0.16-0.64,
 372 prediction interval 0.11-0.95) [81,131,142,165-167]. One study compared asymptomatic with
 373 presymptomatic index cases (summary risk ratio 0.19, 95% CI 0.02-1.46) [35] and four studies
 374 compared presymptomatic with symptomatic index cases (summary risk ratio 1.00 (95% CI 0.37-
 375 2.71, prediction interval 0.11-9.12) [81,142,166,167]. The risk of information bias, specifically in
 376 symptom assessment, was judged to be high or unclear in five of the eight studies included (S3 Fig).



377
 378 Figure 2. Forest plot of the secondary attack rate of SARS-CoV-2 infections comparing infections in contacts of
 379 asymptomatic and presymptomatic index cases with infections in contacts of symptomatic cases. The RR is on a
 380 logarithmic scale. The diamonds show the summary estimate and its 95% confidence interval. The red bar
 381 shows the prediction interval. CI, confidence interval; E, number of secondary transmission events; N, number
 382 of close contacts; RR, risk ratio; Symp. symptomatic individuals.

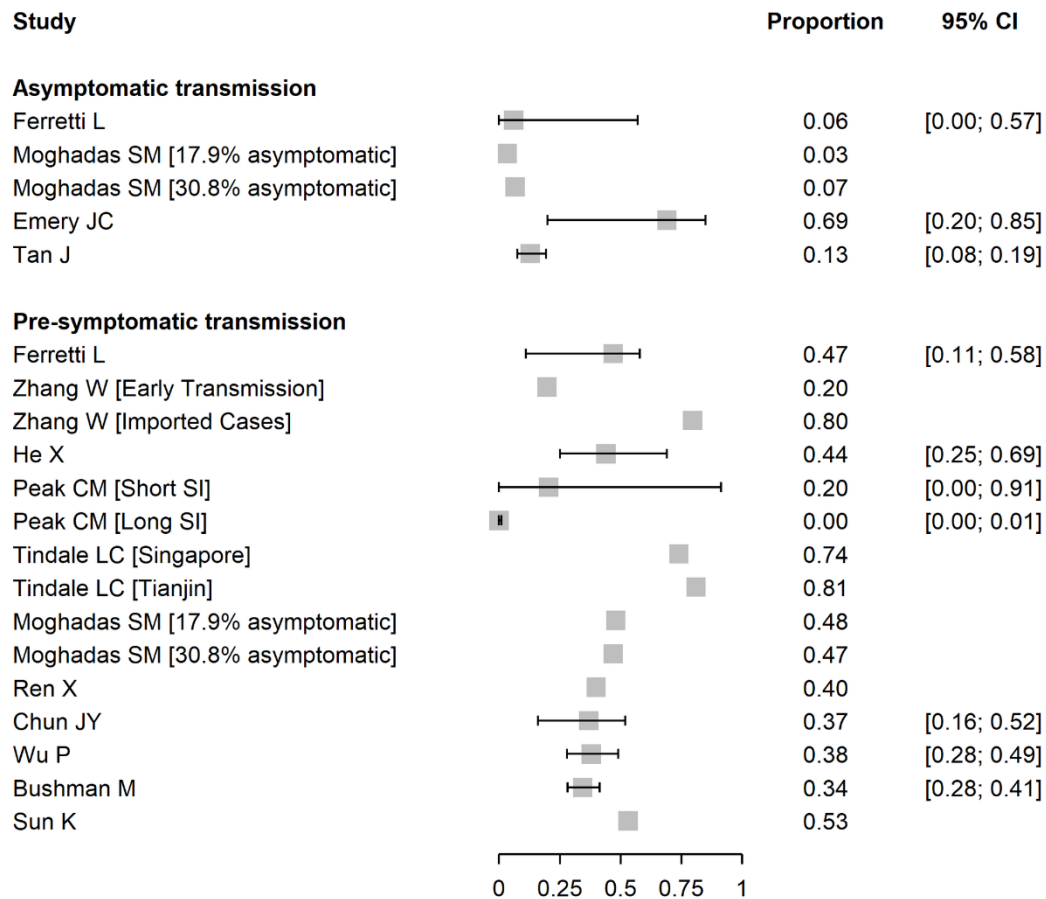
383

384 Contribution of asymptomatic and presymptomatic infection to SARS-CoV-2 transmission
385 We included 13 mathematical modelling studies (Fig 3, S5 Table) [7,165,169-179].The models in
386 nine studies were informed by analyses of data from contact investigations in China, South Korea,
387 Singapore, and from an outbreak on the *Diamond Princess* cruise ship, using data to estimate the
388 serial interval or generation time [7,165,170,172,173,176-179]. In three studies the authors did not
389 analyse any original data sources [169,174,175].

390 Estimates of the contributions of both asymptomatic and presymptomatic infections SARS-CoV-2
391 transmission were very heterogeneous. For asymptomatic SARS-CoV-2 infection, four studies
392 contributed five estimates [7,171,175,177]. In three studies, the estimates suggested a contribution to
393 SARS-CoV-2 transmission of asymptomatic infection of less than 15%. One study estimated a higher
394 proportion (69%, 95% CrI 20–85%) with a wide credibility interval [177] (Fig 3). The estimates have
395 large uncertainty intervals, and the disparate predictions result from differences in the proportion of
396 asymptomatic infections and relative infectiousness of asymptomatic infection.

397 We included 12 studies providing 16 estimates of the contribution of presymptomatic transmission
398 [7,165,169,170,172-179]. The models examined a range of epidemic settings and used different
399 assumptions about the durations and distributions of infection parameters such as incubation period,
400 generation time and serial interval (S5 Table). In seven studies, point estimates for the estimated
401 contribution of presymptomatic infection to all SARS-CoV-2 transmission in at least one reported
402 scenario were 40% or greater [7,169,170,172,173,175,176] (Fig 3). In one study that estimated a
403 contribution of <1% [174], the model-fitted serial interval was longer than observed in empirical
404 studies. The credibility of most modelling studies was limited by the absence of external validation
405 and of uncertainty intervals for the estimates cited. (S5 Fig). The estimates from studies that relied on
406 data from different published sources that might not have been compatible were assessed as providing
407 low quality evidence (S5 Table).

408



409

410 **Figure 3.** Forest plot of proportion of SARS-CoV-2 infection resulting from asymptomatic or presymptomatic
 411 transmission. For studies that report outcomes in multiple settings or with alternative assumptions, these are
 412 annotated in brackets. CI, confidence interval; SI, serial interval.

413 **Discussion**

414 **Summary of main findings**

415 1) For all 130 included studies, the IQR for the proportion of asymptomatic SARS-CoV-2 was 14-
 416 50%, prediction interval 2-90%) and for 84 studies based on screening of defined populations, IQR
 417 20-65% (prediction interval 4-94%). In 46 studies that identified participants through contact tracing
 418 of index cases and outbreak investigations, the summary proportion from meta-analysis was 19%
 419 (95% CI 15-25%, prediction interval 2-70%). 2) The risk ratio for the secondary attack rate from
 420 asymptomatic compared with symptomatic infections was 0.38 (95% CI 0.16-0.64, prediction interval
 421 0.11-0.95) and for presymptomatic infections compared with symptomatic infection was 1.00 (95%
 422 CI 0.37-2.71, prediction interval 0.11-9.12). 3) In mathematical modelling studies, estimated
 423 proportions of all SARS-CoV-2 infections that result from transmission from asymptomatic
 424 individuals were mostly below 15%, and from presymptomatic individuals mostly higher than 40%.

425 Evidence about asymptomatic infections caused by variants of concern, or with immunity following
426 infection or vaccination, is limited.

427 Strengths and weaknesses of the living systematic review methods

428 A strength of the methodology of this review is the transparent reporting, with openly available data
429 and changes over different versions reported in the protocol. Our inclusion criteria attempted to
430 reduce risks of bias and we developed a new tool to address potential biases in the studies included in
431 this review. In contact investigations, we subtracted index cases from the total number of people with
432 SARS-CoV-2 to avoid underestimation of the proportion asymptomatic [16]. We examined
433 heterogeneity in detail and, as a result of the wide prediction interval, we chose not to report an
434 overall summary estimate [18,25]. A limitation of the methods for this living systematic review is that
435 this update only includes published studies up to 6 July 2021. This covers the period when vaccines
436 started to be rolled out and the alpha variant of concern became dominant in high-income countries.
437 Although we made extensive efforts to comply with the planned 3-monthly updates, with weekly
438 searches and a continuous process of screening, data extraction and risk of bias assessment, the pace
439 of publications about SARS-CoV-2 exceeds the capacity of our crowd of reviewers [10,26]. Our
440 decision to include preprints compensates for some of the delay because these articles appear sooner
441 than peer-reviewed publications. In reviews of observational epidemiological studies, search terms are
442 broad so the number of studies that needs to be screened is high, but the yield of included studies is
443 low. The four databases that we searched are not comprehensive, but they cover the majority of
444 publications and we do not believe that we have missed studies that would change our conclusions.
445 We have also not considered the possible impact of false negative RT-PCR results, which might be
446 more likely to occur in asymptomatic infections [180] and would underestimate the proportion of
447 asymptomatic infections [181].

448 Comparison with other reviews and interpretation

449 The type of studies that provide estimates of the proportion of asymptomatic SARS-CoV-2 infections
450 and heterogeneity between them has changed over the course of the pandemic. In our living
451 systematic review, the prediction interval has widened from 23-37% in studies published up to 25
452 March 2020 [23], to 3-67% up to June 2020 [12], 2-89% up to 2 February 2021 [21] and remains at 2-

453 90% up to 6 July. We found three systematic reviews, in which authors reported restriction to studies
454 with adequate follow-up (S2 Appendix) [11,13,16]. In two of the reviews, authors also applied criteria
455 to reduce the risks of selection bias, with summary estimates of 18% (95% CI 9–26%, I^2 84%, 9
456 studies) [13] and 23% (95% CI 16–30%, I^2 92%, 21 studies) [11]. In both reviews, with studies
457 published up to mid-2020, many included studies used designs that we defined as contact or outbreak
458 investigations (Fig 1, S2 Table, S2 Fig). Sah et al. reviewed studies published up to April 2021 and
459 their subgroup estimate from studies in long-term care facilities, which include many outbreak
460 investigations, was 17.8%, 95% CI 9.7-30.3%, 15 studies [16]. The summary estimates from all these
461 reviews are compatible with our estimate from 46 studies in similar settings (19%, 95% CI 15-25%,
462 prediction interval 2-70%, I^2 90%) (Fig 1).

463 It may not be possible to obtain a single summary estimate from published literature of the proportion
464 of persistently asymptomatic SARS-CoV-2 infection. Estimates from meta-analysis might be precise,
465 but are likely to be unreliable owing to unacceptably high levels of heterogeneity. In three large
466 systematic reviews, overall estimates had narrow confidence intervals [14-16], but I^2 values were 94-
467 99% and prediction intervals, which show the extent of all between-study variability were not
468 reported [17]. The prediction intervals that we calculated extended more or less from zero to 100%
469 (S2 Appendix), making differences in estimates between these studies hard to interpret. We expected
470 this update to our living systematic review to provide a more precise and less heterogeneous estimate
471 of the proportion of people with asymptomatic SARS-CoV-2 than in the previous version [12]. In
472 particular, we expected that studies that detect SARS-CoV-2 through screening of defined populations
473 and follow up of those infected would be less affected by biases in study methodology [30] and would
474 provide a more accurate estimate of persistently asymptomatic SARS-CoV-2, which should be
475 influenced mainly by properties of the virus and the host response to infection [182]. Study design
476 was the factor that explained the largest proportion of variability in this review (S2 Appendix).
477 Information bias, resulting from the way in which asymptomatic status is determined, was the factor
478 most strongly associated with the estimated proportion of asymptomatic infection in screening studies
479 (Table 2). Studies based on contact and outbreak investigations might obtain more detailed data about

480 symptoms, resulting in lower estimates of the proportion that is classified as asymptomatic. Symptom
481 report also differs between different groups of study participants, even within the same study, and
482 could also contribute to heterogeneity [183]. Age might play a role as children appear more likely
483 than adults to have an asymptomatic course of infection, but age was poorly reported and could not be
484 examined in detail (Table 1, Table 2).

485 The analysis of secondary attack rates in this update now provides strong evidence of lower
486 infectiousness of people with asymptomatic than symptomatic infection (Fig 2). The difference in
487 secondary attack rates between asymptomatic and symptomatic index cases in our meta-analysis is
488 smaller and less biased than in systematic reviews that analyse groups of studies reporting
489 asymptomatic index cases and of symptomatic cases separately [182,184]. In meta-analyses of two
490 proportions, the direct comparison within studies reduces heterogeneity and is less biased [34]. Since
491 SARS-CoV-2 can be transmitted a few days before the onset of symptoms [185], presymptomatic
492 transmission likely contributes substantially to overall SARS-CoV-2 epidemics. If both the proportion
493 and transmissibility of asymptomatic infection are relatively low, people with asymptomatic SARS-
494 CoV-2 infection should account for a smaller proportion of overall transmission than presymptomatic
495 individuals. This is consistent with the findings of modelling studies in our review, although the
496 absence of descriptions of the epidemic context in many studies made it difficult to compare findings
497 across studies.

498 Implications and unanswered questions

499 This living systematic review shows the challenges of synthesising evidence from observational
500 epidemiological studies. Heterogeneity in systematic reviews of prevalence is a recognised challenge
501 [34,186]. Methodological guidance to refrain from meta-analysis, and to report prediction intervals,
502 when the variability between studies is extreme is often ignored in favour of summary estimates,
503 which are easy to cite [18,20]. Part of the heterogeneity in our review arises from the fact that many
504 studies were not designed to estimate the proportion of asymptomatic SARS-CoV-2 infection. The
505 incomplete descriptions of inclusion criteria, response rates, follow-up and of definitions of symptom

506 status [1] made it difficult to assess the risks of bias and to investigate their contribution to between-
507 study heterogeneity.

508 The finding that, in studies of contact and outbreak investigations, a substantial minority of people
509 with SARS-CoV-2 infection remains asymptomatic throughout the course of infection, and that
510 almost half of all transmission might occur before symptoms develop has already had implications for
511 prevention. When SARS-CoV-2 community transmission levels are high, physical distancing
512 measures and mask-wearing need to be sustained to prevent transmission from close contact with
513 people with asymptomatic and presymptomatic infection. Integration of evidence from
514 epidemiological, clinical and laboratory studies will help to clarify the relative infectiousness of
515 asymptomatic SARS-CoV-2. Studies using viral culture as well as RNA detection are needed since
516 RT-PCR defined viral loads appear to be broadly similar in asymptomatic and symptomatic people
517 [180,187].

518 Determining the viral dynamics and full clinical spectrum of infection with variants of concern is
519 important. Variants classed as omicron differ substantially from all earlier SARS-CoV-2 variants,
520 with high infectiousness and immune evasion [188], and viral characteristics and immunity could
521 influence the occurrence of asymptomatic infection. Studies published in early 2022 are already
522 reporting a wide range of estimates of asymptomatic omicron infection. In India, from the date of
523 emergence of the omicron variant, 24 November 2021 to 4 January 2022, authors reported a high
524 proportion of asymptomatic omicron variant infections (56.7% of 291) but did not report any follow-
525 up and >80% of participants had been vaccinated [189]. In contrast, authors of a cohort study of an
526 outbreak of omicron SARS-CoV-2 in Norway, found only 1 of 81 infections in a highly vaccinated
527 group was asymptomatic after 10 days of follow-up [190]. There are increasing challenges for studies
528 relying on routine health service or surveillance data; in many jurisdictions, indications for routine
529 testing are being reduced, which will make selection biases more likely, and mandated quarantine and
530 isolation periods for people with diagnosed SARS-CoV-2 infection are being reduced, which will
531 increase information biases in the ascertainment of persistent asymptomatic status. Researchers need
532 to design studies to address this specific research question for each variant of concern, taking into

533 account vaccination status and prior infection. There are ongoing prospective studies that collect
534 appropriate data [125], for which improved reporting could address the requirements for assessing
535 asymptomatic infection status fully, but ongoing funding for these studies is not secure [191]. Without
536 prospective longitudinal studies with methods that minimise selection and measurement biases,
537 further updates to this living systematic review are unlikely to provide a reliable summary estimate of
538 the proportion of asymptomatic infections caused by SARS-CoV-2.

539 References

540

541 1. Meyerowitz EA, Richterman A, Bogoch I, Low N, Cevik M. Towards an Accurate and
542 Systematic Characterisation of Persistently Asymptomatic Infection with Sars-Cov-2. *Lancet Infect*
543 *Dis* 2021;21(6):e163-e9. Epub 2020/12/11. [https://doi.org/10.1016/S1473-3099\(20\)30837-9](https://doi.org/10.1016/S1473-3099(20)30837-9) PubMed
544 PMID: 33301725; PubMed Central PMCID: 7834404.

545 2. Day M. Covid-19: Four Fifths of Cases Are Asymptomatic, China Figures Indicate. *BMJ*.
546 2020;369:m1375. Epub 2020/04/04. <https://doi.org/10.1136/bmj.m1375>. PubMed PMID: 32241884.

547 3. Ing AJ, Cocks C, Green JP. Covid-19: In the Footsteps of Ernest Shackleton. *Thorax*.
548 2020;75(8):693-4. <https://doi.org/10.1136/thoraxjnl-2020-215091>.

549 4. Griffith GJ, Morris TT, Tudball MJ, Herbert A, Mancano G, Pike L, et al. Collider Bias
550 Undermines Our Understanding of Covid-19 Disease Risk and Severity. *Nature Communications*.
551 2020;11(1):5749. <https://doi.org/10.1038/s41467-020-19478-2>.

552 5. Lipsitch M, Swerdlow DL, Finelli L. Defining the Epidemiology of Covid-19 - Studies
553 Needed. *N Engl J Med*. 2020. Epub 2020/02/20. <https://doi.org/10.1056/nejmp2002125>. PubMed
554 PMID: 32074416.

555 6. Liu Y, Morgenstern C, Kelly J, Lowe R, Jit M. The Impact of Non-Pharmaceutical
556 Interventions on Sars-Cov-2 Transmission across 130 Countries and Territories. *BMC Med*.
557 2021;19(1):40. Epub 20210205. <https://doi.org/10.1186/s12916-020-01872-8>. PubMed PMID:
558 33541353; PubMed Central PMCID: 7861967.

559 7. Ferretti L, Wymant C, Kendall M, Zhao L, Nurtay A, Abeler-Dorner L, et al. Quantifying
560 Sars-Cov-2 Transmission Suggests Epidemic Control with Digital Contact Tracing. *Science*.
561 2020;368(6491). Epub 2020/04/03. <https://doi.org/10.1126/science.abb6936>. PubMed PMID:
562 32234805; PubMed Central PMCID: PMC7164555.

563 8. World Health Organization. Covid-19 Vaccines [Access Date:16.03.2020]. Available from:
564 <https://www.who.int/emergencies/diseases/novel-coronavirus-2019/covid-19-vaccines>.

565 9. World Health Organization. Tracking Sars-Cov-2 Variants [Access Date:16.03.2020].
566 Available from: <https://www.who.int/en/activities/tracking-SARS-CoV-2-variants/>.

567 10. Ipekci AM, Buitrago-Garcia D, Meili KW, Krauer F, Prajapati N, Thapa S, et al. Outbreaks of
568 Publications About Emerging Infectious Diseases: The Case of Sars-Cov-2 and Zika Virus. *BMC*
569 *Med Res Methodol*. 2021;21(1):50. Epub 20210311. <https://doi.org/10.1186/s12874-021-01244-7>.
570 PubMed PMID: 33706715; PubMed Central PMCID: 7948668.

571 11. Beale S, Hayward A, Shallcross L, Aldridge R, Fragaszy E. A Rapid Review and Meta-
572 Analysis of the Asymptomatic Proportion of Pcr-Confirmed Sars-Cov-2 Infections in Community
573 Settings [Version 1; Peer Review: 1 Approved with Reservations]. *Wellcome Open Research*.
574 2020;5(266). <https://doi.org/10.12688/wellcomeopenres.16387.1>.

575 12. Buitrago-Garcia D, Egli-Gany D, Counotte MJ, Hossmann S, Imeri H, Ipekci AM, et al.
576 Occurrence and Transmission Potential of Asymptomatic and Presymptomatic Sars-Cov-2 Infections:
577 A Living Systematic Review and Meta-Analysis. *PLoS Med*. 2020;17(9):e1003346.
578 <https://doi.org/10.1371/journal.pmed.1003346>.

579 13. Byambasuren O, Cardona M, Bell K, Clark J, McLaws ML, Glasziou P. Estimating the
580 Extent of Asymptomatic Covid-19 and Its Potential for Community Transmission: Systematic Review

- 581 and Meta-Analysis. Official Journal of the Association of Medical Microbiology and Infectious
582 Disease Canada. 2020;Volume 5(Issue 4):pp. 223-34. <https://doi.org/10.3138/jammi-2020-0030>.
- 583 14. Chen X, Huang Z, Wang J, Zhao S, Wong MC-S, Chong KC, et al. Ratio of Asymptomatic
584 Covid-19 Cases among Ascertained Sars-Cov-2 Infections in Different Regions and Population
585 Groups in 2020: A Systematic Review and Meta-Analysis Including 130 123 Infections from 241
586 Studies. *BMJ Open*. 2021;11(12):e049752. <http://dx.doi.org/10.1136/bmjopen-2021-049752>.
- 587 15. Ma Q, Liu J, Liu Q, Kang L, Liu R, Jing W, et al. Global Percentage of Asymptomatic Sars-
588 Cov-2 Infections among the Tested Population and Individuals with Confirmed Covid-19 Diagnosis:
589 A Systematic Review and Meta-Analysis. *JAMA Network Open*. 2021;4(12):e2137257-e.
590 <https://doi.org/10.1001/jamanetworkopen.2021.37257>.
- 591 16. Sah P, Fitzpatrick MC, Zimmer CF, Abdollahi E, Juden-Kelly L, Moghadas SM, et al.
592 Asymptomatic Sars-Cov-2 Infection: A Systematic Review and Meta-Analysis. *Proc Natl Acad Sci U*
593 *S A*. 2021;118(34). Epub 2021/08/12. <https://doi.org/10.1073/pnas.2109229118>. PubMed PMID:
594 34376550; PubMed Central PMCID: 8403749.
- 595 17. Riley RD, Higgins JP, Deeks JJ. Interpretation of Random Effects Meta-Analyses. *BMJ*.
596 2011;342:d549. <https://doi.org/10.1136/bmj.d549>.
- 597 18. McKenzie JE, Brennan SE. Synthesizing and Presenting Findings Using Other Methods.
598 *Cochrane Handbook for Systematic Reviews of Interventions*2019. p. 321-47.
599 <https://doi.org/10.1002/9781119536604.ch12>.
- 600 19. Higgins JPT, Thompson SG, Spiegelhalter DJ. A Re-Evaluation of Random-Effects Meta-
601 Analysis. *J R Stat Soc Ser A Stat Soc*. 2009;172(1):137-59. [https://dx.doi.org/10.1111%2Fj.1467-](https://dx.doi.org/10.1111%2Fj.1467-985X.2008.00552.x)
602 [985X.2008.00552.x](https://dx.doi.org/10.1111%2Fj.1467-985X.2008.00552.x). PubMed PMID: 19381330.
- 603 20. Deeks JJ, Higgins J, Altman D. Chapter 10: Analysing Data and Undertaking Meta-Analyses.
604 2022. Available from: <https://training.cochrane.org/handbook/current/chapter-10#section-10-10-2>.
- 605 21. Buitrago-Garcia D, Ipekci AM, Heron L, Imeri H, Araujo-Chaveron L, Arevalo-Rodriguez I,
606 et al. Occurrence and Transmission Potential of Asymptomatic and Presymptomatic Sars-Cov-2
607 Infections: A Living Systematic Review and Meta-Analysis. *medRxiv [Preprint]*.
608 2022:2022.01.20.22269581. <https://doi.org/10.1101/2022.01.20.22269581>.
- 609 22. Elliott JH, Turner T, Clavisi O, Thomas J, Higgins JP, Mavergames C, et al. Living
610 Systematic Reviews: An Emerging Opportunity to Narrow the Evidence-Practice Gap. *PLoS Med*.
611 2014;11(2):e1001603. <https://doi.org/10.1371/journal.pmed.1001603>. PubMed PMID: 24558353;
612 PubMed Central PMCID: 3928029.
- 613 23. Buitrago-Garcia D, Egli-Gany D, Counotte M, Hossmann S, Imeri H, Salanti G, et al. The
614 Role of Asymptomatic Sars-Cov-2 Infections: Rapid Living Systematic Review and Meta-Analysis.
615 Version 1. *medRxiv [Preprint]*. 2020. <https://doi.org/10.1101/2020.04.25.20079103>
- 616 24. Page MJ, McKenzie JE, Bossuyt PM, Boutron I, Hoffmann TC, Mulrow CD, et al. The
617 Prisma 2020 Statement: An Updated Guideline for Reporting Systematic Reviews. *BMJ*.
618 2021;372:n71. <https://doi.org/10.1136/bmj.n71>.
- 619 25. Campbell M, McKenzie JE, Sowden A, Katikireddi SV, Brennan SE, Ellis S, et al. Synthesis
620 without Meta-Analysis (Swim) in Systematic Reviews: Reporting Guideline. *BMJ*. 2020;368:l6890.
621 <https://doi.org/10.1136/bmj.l6890>.

- 622 26. Counotte M, Imeri H, Ipekci M, Low N. Covid-19 Living Evidence Bern: Institute of Social and
623 Preventive Medicine, University of Bern; 2020 [Access Date; cited 2020 09.05.2020]. Covid-19
624 living evidence landing page]. Available from: <https://ispmbern.github.io/covid-19/living-review/>.
- 625 27. Kahale L, Elkhoury R, El Mikati I, Pardo-Hernandez H, Khamis A, Sch, nemann H, et al.
626 Tailored Prisma 2020 Flow Diagrams for Living Systematic Reviews: A Methodological Survey and
627 a Proposal [Version 2; Peer Review: 1 Approved, 1 Approved with Reservations]. F1000Research.
628 2021;10(192). <https://doi.org/10.12688/f1000research.51723.2>.
- 629 28. Joanna Briggs Institute. The Joanna Briggs Institute Critical Appraisal Tools for Use in Jbi
630 Systematic Reviews—Checklist for Case Series Adelaide2017 [Access Date:10.06.2020]. Available
631 from: https://joannabriggs.org/ebp/critical_appraisal_tools.
- 632 29. Boyle MH. Guidelines for Evaluating Prevalence Studies. Evid Based Ment Health.
633 1998;1(2):37-40. <http://ebmh.bmj.com/content/1/2/37.full.pdf>.
- 634 30. Accorsi EK, Qiu X, Rumpler E, Kennedy-Shaffer L, Kahn R, Joshi K, et al. How to Detect
635 and Reduce Potential Sources of Biases in Studies of Sars-Cov-2 and Covid-19. Eur J Epidemiol.
636 2021;179-96. Epub 2021/02/27. <https://doi.org/10.1007/s10654-021-00727-7>. PubMed PMID:
637 33634345; PubMed Central PMCID: 7906244.
- 638 31. Jaime Caro J, Eddy DM, Kan H, Kaltz C, Patel B, Eldessouki R, et al. Questionnaire to
639 Assess Relevance and Credibility of Modeling Studies for Informing Health Care Decision Making:
640 An Ispor-Amcp-Npc Good Practice Task Force Report. Value Health. 2014;17(2):174-82.
641 <https://doi.org/10.1016/j.jval.2014.01.003>. PubMed PMID: 24636375.
- 642 32. Balduzzi S, Rucker G, Schwarzer G. How to Perform a Meta-Analysis with R: A Practical
643 Tutorial. Evid Based Ment Health. 2019;22(4):153-60. Epub 2019/09/30.
644 <https://doi.org/10.1136/ebmental-2019-300117>. PubMed PMID: 31563865.
- 645 33. Newcombe RG. Two-Sided Confidence Intervals for the Single Proportion: Comparison of
646 Seven Methods. Stat Med. 1998;17(8):857-72. [https://doi.org/10.1002/\(sici\)1097-
647 0258\(19980430\)17:8%3C857::aid-sim777%3E3.0.co;2-e](https://doi.org/10.1002/(sici)1097-0258(19980430)17:8%3C857::aid-sim777%3E3.0.co;2-e).
- 648 34. Schwarzer G, Rucker G. Meta-Analysis of Proportions. Methods Mol Biol. 2022;2345:159-
649 72. https://doi.org/10.1007/978-1-0716-1566-9_10. PubMed PMID: 34550590.
- 650 35. Zhang W, Cheng W, Luo L, Ma Y, Xu C, Qin P, et al. Secondary Transmission of
651 Coronavirus Disease from Presymptomatic Persons, China. Emerg Infect Dis. 2020;26(8):1924-6.
652 Epub 2020/05/27. <https://doi.org/10.3201/eid2608.201142>. PubMed PMID: 32453686; PubMed
653 Central PMCID: 7392433.
- 654 36. Yousaf AR, Duca LM, Chu V, Reses HE, Fajans M, Rabold EM, et al. A Prospective Cohort
655 Study in Nonhospitalized Household Contacts with Severe Acute Respiratory Syndrome Coronavirus
656 2 Infection: Symptom Profiles and Symptom Change over Time. Clin Infect Dis. 2021;73(7):e1841-
657 e9. Epub 2020/07/29. <https://doi.org/10.1093/cid/ciaa1072>. PubMed PMID: 32719874; PubMed
658 Central PMCID: 7454397.
- 659 37. Yau K, Muller MP, Lin M, Siddiqui N, Neskovic S, Shokar G, et al. Covid-19 Outbreak in an
660 Urban Hemodialysis Unit. Am J Kidney Dis. 2020;76(5):690-5 e1. Epub 2020/07/19.
661 <https://doi.org/10.1053/j.ajkd.2020.07.001>. PubMed PMID: 32681983; PubMed Central PMCID:
662 7362862.

- 663 38. Yang N, Shen Y, Shi C, Ma AHY, Zhang X, Jian X, et al. In-Flight Transmission Cluster of
664 Covid-19: A Retrospective Case Series. *Infect Dis (Lond)*. 2020;52(12):891-901. Epub 2020/08/01.
665 <https://doi.org/10.1080/23744235.2020.1800814>. PubMed PMID: 32735163.
- 666 39. Xie W, Chen Z, Wang Q, Song M, Cao Y, Wang L, et al. Infection and Disease Spectrum in
667 Individuals with Household Exposure to Sars-Cov-2: A Family Cluster Cohort Study. *J Med Virol*.
668 2021;93(5):3033-46. Epub 20210212. <https://doi.org/10.1002/jmv.26847>. PubMed PMID: 33538342;
669 PubMed Central PMCID: PMC8014049.
- 670 40. Wu J, Huang Y, Tu C, Bi C, Chen Z, Luo L, et al. Household Transmission of Sars-Cov-2,
671 Zhuhai, China, 2020. *Clin Infect Dis*. 2020;71(16):2099-108. Epub 2020/05/12.
672 <https://doi.org/10.1093/cid/ciaa557>. PubMed PMID: 32392331; PubMed Central PMCID: 7239243.
- 673 41. Wong J, Abdul Aziz ABZ, Chaw L, Mahamud A, Griffith MM, Ying-Ru LO, et al. High
674 Proportion of Asymptomatic and Presymptomatic Covid-19 Infections in Travelers and Returning
675 Residents to Brunei. *J Travel Med*. 2020. <https://doi.org/10.1093/jtm/taaa066>.
- 676 42. Wi YM, Lim SJ, Kim SH, Lim S, Lee SJ, Ryu BH, et al. Response System for and
677 Epidemiological Features of Covid-19 in Gyeongsangnam-Do Province in South Korea. *Clin Infect*
678 *Dis*. 2021;72(4):661-7. Epub 2020/07/17. <https://doi.org/10.1093/cid/ciaa967>. PubMed PMID:
679 32672789; PubMed Central PMCID: 7454481.
- 680 43. White EM, Santostefano CM, Feifer RA, Kosar CM, Blackman C, Gravenstein S, et al.
681 Asymptomatic and Presymptomatic Severe Acute Respiratory Syndrome Coronavirus 2 Infection
682 Rates in a Multistate Sample of Skilled Nursing Facilities. *JAMA Intern Med*. 2020;180(12):1709-11.
683 Epub 2020/10/20. <https://doi.org/10.1001/jamainternmed.2020.5664>. PubMed PMID: 33074318;
684 PubMed Central PMCID: 7573793.
- 685 44. Weinbergerova B, Mayer J, Hrabovsky S, Novakova Z, Pospisil Z, Martykanova L, et al.
686 Covid-19's Natural Course among Ambulatory Monitored Outpatients. *Sci Rep*. 2021;11(1):10124.
687 Epub 20210512. <https://doi.org/10.1038/s41598-021-89545-1>. PubMed PMID: 33980931; PubMed
688 Central PMCID: PMC8115337.
- 689 45. Wadhwa A, Fisher KA, Silver R, Koh M, Arons MM, Miller DA, et al. Identification of
690 Presymptomatic and Asymptomatic Cases Using Cohort-Based Testing Approaches at a Large
691 Correctional Facility-Chicago, Illinois, USA, May 2020. *Clin Infect Dis*. 2021;72(5):e128-e35. Epub
692 2020/12/04. <https://doi.org/10.1093/cid/ciaa1802>. PubMed PMID: 33270101; PubMed Central
693 PMCID: 7799274.
- 694 46. Vohra LM, Jabeen D, Asif N, Ahad A. Covid-19 Pandemic and Breast Cancer Management:
695 A Retrospective Observational Clinical Study from Pakistan. *Ann Med Surg (Lond)*. 2021;63:102151.
696 Epub 20210204. <https://doi.org/10.1016/j.amsu.2021.01.099>. PubMed PMID: 33564461; PubMed
697 Central PMCID: PMC7860941.
- 698 47. Vinuela MC, De Leon-Luis JA, Alonso R, Catalan P, Lizarraga S, Munoz P, et al. Sars-Cov-2
699 Screening of Asymptomatic Women Admitted for Delivery Must Be Performed with a Combination
700 of Microbiological Techniques: An Observational Study. *Rev Esp Quimioter*. 2020;33(6):415-21.
701 Epub 2020/09/19. <https://doi.org/10.37201/req/088.2020>. PubMed PMID: 32945157; PubMed
702 Central PMCID: 7712338.
- 703 48. Varnell C, Jr., Harshman LA, Smith L, Liu C, Chen S, Al-Akash S, et al. Covid-19 in
704 Pediatric Kidney Transplantation: The Improving Renal Outcomes Collaborative. *Am J Transplant*.
705 2021;21(8):2740-8. Epub 2021/01/17. <https://doi.org/10.1111/ajt.16501>. PubMed PMID: 33452854;
706 PubMed Central PMCID: 8013281.

- 707 49. van den Besselaar JH, Sikkema RS, Koene F, van Buul LW, Oude Munnink BB, Frenay I, et
708 al. Are Presymptomatic Sars-Cov-2 Infections in Nursing Home Residents Unrecognised
709 Symptomatic Infections? Sequence and Metadata from Weekly Testing in an Extensive Nursing
710 Home Outbreak. *Age Ageing*. 2021;50(5):1454-63. Epub 2021/05/09.
711 <https://doi.org/10.1093/ageing/afab081>. PubMed PMID: 33963830; PubMed Central PMCID:
712 8136016.
- 713 50. van Buul LW, van den Besselaar JH, Koene F, Burman BM, Hertogh C, Group** C-N-S, et
714 al. Asymptomatic Cases and Limited Transmission of Sars-Cov-2 in Residents and Healthcare
715 Workers in Three Dutch Nursing Homes. *Gerontol Geriatr Med*. 2020;6:2333721420982800. Epub
716 2021/01/12. <https://doi.org/10.1177/2333721420982800>. PubMed PMID: 33426178; PubMed
717 Central PMCID: 7756037.
- 718 51. Uysal E, Kiliñer A, Cebeci H, Özer H, Demir NA, Öztürk M, et al. Chest Ct Findings in Rt-
719 Pcr Positive Asymptomatic Covid-19 Patients. *Clinical Imaging*. 2021;77:37-42.
720 <https://doi.org/10.1016/j.clinimag.2021.01.030>.
- 721 52. Uçkay I, Steinwender L, Burkhard J, Holy D, Strähl M, Farshad M. Outcomes of
722 Asymptomatic Hospital Employees in Covid-19 Post-Exposure Quarantine During the Second
723 Pandemic Wave in Zurich. *J Hosp Infect*. 2021;113:189-91. Epub 20210421.
724 <https://doi.org/10.1016/j.jhin.2021.04.010>. PubMed PMID: 33891983; PubMed Central PMCID:
725 PMC8057933.
- 726 53. Turunen T, Kontunen K, Sugulle K, Hieta P, Snellman O, Hussein I, et al. Covid-19 Outbreak
727 at a Reception Centre for Asylum Seekers in Espoo, Finland. *J Migr Health*. 2021;3:100043. Epub
728 20210416. <https://doi.org/10.1016/j.jmh.2021.100043>. PubMed PMID: 33880457; PubMed Central
729 PMCID: PMC8051004.
- 730 54. Treibel TA, Manisty C, Burton M, McKnight NA, Lambourne J, Augusto JB, et al. Covid-19:
731 Pcr Screening of Asymptomatic Health-Care Workers at London Hospital. *Lancet*. 2020.
732 [https://doi.org/10.1016/s0140-6736\(20\)31100-4](https://doi.org/10.1016/s0140-6736(20)31100-4).
- 733 55. Tian S, Wu M, Chang Z, Wang Y, Zhou G, Zhang W, et al. Epidemiological Investigation
734 and Intergenerational Clinical Characteristics of 24 Coronavirus Disease Patients Associated with a
735 Supermarket Cluster: A Retrospective Study. *BMC Public Health*. 2021;21(1):647. Epub 2021/04/03.
736 <https://doi.org/10.1186/s12889-021-10713-z>. PubMed PMID: 33794836; PubMed Central PMCID:
737 8016429.
- 738 56. Theuring S, Thielecke M, van Loon W, Hommes F, Hulso C, von der Haar A, et al. Sars-Cov-
739 2 Infection and Transmission in School Settings During the Second Covid-19 Wave: A Cross-
740 Sectional Study, Berlin, Germany, November 2020. *Euro Surveill*. 2021;26(34). Epub 2021/08/28.
741 <https://doi.org/10.2807/1560-7917.es.2021.26.34.2100184>. PubMed PMID: 34448448; PubMed
742 Central PMCID: 8393892.
- 743 57. Taylor J, Carter RJ, Lehnertz N, Kazazian L, Sullivan M, Wang X, et al. Serial Testing for
744 Sars-Cov-2 and Virus Whole Genome Sequencing Inform Infection Risk at Two Skilled Nursing
745 Facilities with Covid-19 Outbreaks - Minnesota, April-June 2020. *MMWR Morb Mortal Wkly Rep*.
746 2020;69(37):1288-95. Epub 2020/09/24. <https://doi.org/10.15585/mmwr.mm6937a3>. PubMed PMID:
747 32966272; PubMed Central PMCID: 7498172.
- 748 58. Tanacan A, Erol SA, Turgay B, Anuk AT, Secen EI, Yegin GF, et al. The Rate of Sars-Cov-2
749 Positivity in Asymptomatic Pregnant Women Admitted to Hospital for Delivery: Experience of a
750 Pandemic Center in Turkey. *Eur J Obstet Gynecol Reprod Biol*. 2020;253:31-4. Epub 2020/08/09.
751 <https://doi.org/10.1016/j.ejogrb.2020.07.051>. PubMed PMID: 32763728; PubMed Central PMCID:
752 7390745.

- 753 59. Tan-Loh J, Cheong BMK. A Descriptive Analysis of Clinical Characteristics of Covid-19
754 among Healthcare Workers in a District Specialist Hospital. *Med J Malaysia*. 2021;76(1):24-8. Epub
755 2021/01/30. <https://pubmed.ncbi.nlm.nih.gov/33510104/>. PubMed PMID: 33510104.
- 756 60. Stock AD, Bader ER, Cezayirli P, Inocencio J, Chalmers SA, Yassari R, et al. Covid-19
757 Infection among Healthcare Workers: Serological Findings Supporting Routine Testing. *Front Med*
758 (Lausanne). 2020;7:471. Epub 2020/09/26. <https://doi.org/10.3389/fmed.2020.00471>. PubMed
759 PMID: 32974370; PubMed Central PMCID: 7472984.
- 760 61. Starling A, White E, Showell D, Wyllie D, Kapadia S, Balakrishnan R. Whole Care Home
761 Testing for Covid-19 in a Local Authority Area in the United Kingdom. *medRxiv [Preprint]*. 2020.
762 <https://doi.org/10.1101/2020.08.06.20162859>.
- 763 62. Smith E, Aldus CF, Brainard J, Dunham S, Hunter PR, Steel N, et al. Testing for Sars-Cov-2
764 in Care Home Staff and Residents in English Care Homes: A Service Evaluation. *medRxiv [Preprint]*.
765 2020. <https://doi.org/10.1101/2020.08.04.20165928>.
- 766 63. Shi SM, Bakaev I, Chen H, Trivison TG, Berry SD. Risk Factors, Presentation, and Course of
767 Coronavirus Disease 2019 in a Large, Academic Long-Term Care Facility. *J Am Med Dir Assoc*.
768 2020;21(10):1378-83.e1. Epub 20200825. <https://doi.org/10.1016/j.jamda.2020.08.027>. PubMed
769 PMID: 32981664; PubMed Central PMCID: 7447263.
- 770 64. Shi Q, Hu Y, Peng B, Tang XJ, Wang W, Su K, et al. Effective Control of Sars-Cov-2
771 Transmission in Wanzhou, China. *Nat Med*. 2021;27(1):86-93. Epub 20201130.
772 <https://doi.org/10.1038/s41591-020-01178-5>. PubMed PMID: 33257893.
- 773 65. Schwierzeck V, Konig JC, Kuhn J, Mellmann A, Correa-Martinez CL, Omran H, et al. First
774 Reported Nosocomial Outbreak of Severe Acute Respiratory Syndrome Coronavirus 2 in a Pediatric
775 Dialysis Unit. *Clin Infect Dis*. 2021;72(2):265-70. Epub 2021/01/28.
776 <https://doi.org/10.1093/cid/ciaa491>. PubMed PMID: 33501962; PubMed Central PMCID: 7197625.
- 777 66. Schmitt J, Genet E, Danguy Des Deserts M, Chauvet-Atin S, Cungi PJ, Aries P, et al. Sars
778 Cov2 Outbreak Management on a Landing Helicopter Dock: An Observational Retrospective Study.
779 *Infect Dis Now*. 2021;51(5):424-8. Epub 20210619. <https://doi.org/10.1016/j.idnow.2021.06.303>.
780 PubMed PMID: 34157429; PubMed Central PMCID: PMC8214318.
- 781 67. Say D, Crawford N, McNab S, Wurzel D, Steer A, Tosif S. Post-Acute Covid-19 Outcomes in
782 Children with Mild and Asymptomatic Disease. *Lancet Child Adolesc Health*. 2021;5(6):e22-e3.
783 Epub 20210421. [https://doi.org/10.1016/s2352-4642\(21\)00124-3](https://doi.org/10.1016/s2352-4642(21)00124-3). PubMed PMID: 33891880;
784 PubMed Central PMCID: PMC8057863.
- 785 68. Romao VC, Oliveira-Ramos F, Cruz-Machado AR, Martins P, Barreira S, Silva-Dinis J, et al.
786 A Covid-19 Outbreak in a Rheumatology Department Upon the Early Days of the Pandemic. *Front*
787 *Med (Lausanne)*. 2020;7:576162. Epub 2020/10/27. <https://doi.org/10.3389/fmed.2020.576162>.
788 PubMed PMID: 33102507; PubMed Central PMCID: 7546334.
- 789 69. Rivett L, Sridhar S, Sparkes D, Routledge M, Jones NK, Forrest S, et al. Screening of
790 Healthcare Workers for Sars-Cov-2 Highlights the Role of Asymptomatic Carriage in Covid-19
791 Transmission. *Elife*. 2020;9. Epub 2020/05/12. <https://doi.org/10.7554/elife.58728>. PubMed PMID:
792 32392129.
- 793 70. Rincón A, Moreso F, López-Herradón A, Fernández-Robres MA, Cidraque I, Nin J, et al. The
794 Keys to Control a Covid-19 Outbreak in a Haemodialysis Unit. *Clinical Kidney Journal*.
795 2020;13(4):542-9. <https://doi.org/10.1093/ckj/sfaa119>.

- 796 71. Ren R, Zhang Y, Li Q, McGoogan JM, Feng Z, Gao GF, et al. Asymptomatic Sars-Cov-2
797 Infections among Persons Entering China from April 16 to October 12, 2020. *Jama*. 2021;325(5):489-
798 92. <https://doi.org/10.1001/jama.2020.23942>. PubMed PMID: 33528529; PubMed Central PMCID:
799 PMC7856538.
- 800 72. Redditt V, Wright V, Rashid M, Male R, Bogoch I. Outbreak of Sars-Cov-2 Infection at a
801 Large Refugee Shelter in Toronto, April 2020: A Clinical and Epidemiologic Descriptive Analysis.
802 *CMAJ Open*. 2020;8(4):E819-E24. Epub 2020/12/10. <https://doi.org/10.9778/cmajo.20200165>.
803 PubMed PMID: 33293331; PubMed Central PMCID: 7743908.
- 804 73. Rauch JN, Valois E, Ponce-Rojas JC, Aralis Z, Lach RS, Zappa F, et al. Comparison of
805 Severe Acute Respiratory Syndrome Coronavirus 2 Screening Using Reverse Transcriptase-
806 Quantitative Polymerase Chain Reaction or Crispr-Based Assays in Asymptomatic College Students.
807 *JAMA Netw Open*. 2021;4(2):e2037129. Epub 2021/02/12.
808 <https://doi.org/10.1001/jamanetworkopen.2020.37129>. PubMed PMID: 33570576; PubMed Central
809 PMCID: 7879237.
- 810 74. Plucinski MM, Wallace M, Uehara A, Kurbatova EV, Tobolowsky FA, Schneider ZD, et al.
811 Coronavirus Disease 2019 (Covid-19) in Americans Aboard the Diamond Princess Cruise Ship. *Clin*
812 *Infect Dis*. 2021;72(10):e448-e57. Epub 2020/08/14. <https://doi.org/10.1093/cid/ciaa1180>. PubMed
813 PMID: 32785683; PubMed Central PMCID: 7454359.
- 814 75. Pizarro-Sanchez MS, Avello A, Mas-Fontao S, Stock da Cunha T, Goma-Garces E, Pereira
815 M, et al. Clinical Features of Asymptomatic Sars-Cov-2 Infection in Hemodialysis Patients. *Kidney*
816 *Blood Press Res*. 2021;46(1):126-34. Epub 2021/01/28. <https://doi.org/10.1159/000512535>. PubMed
817 PMID: 33503627; PubMed Central PMCID: 7900451.
- 818 76. Pirnay JP, Selhorst P, Cochez C, Petrillo M, Claes V, Van der Beken Y, et al. Study of a Sars-
819 Cov-2 Outbreak in a Belgian Military Education and Training Center in Maradi, Niger. *Viruses*.
820 2020;12(9). Epub 2020/09/02. <https://doi.org/10.3390/v12090949>. PubMed PMID: 32867108;
821 PubMed Central PMCID: 7552053.
- 822 77. Thai PQ, Rabaa MA, Luong DH, Tan DQ, Quang TD, Quach HL, et al. The First 100 Days of
823 Severe Acute Respiratory Syndrome Coronavirus 2 (Sars-Cov-2) Control in Vietnam. *Clin Infect Dis*.
824 2021;72(9):e334-e42. Epub 2020/08/02. <https://doi.org/10.1093/cid/ciaa1130>. PubMed PMID:
825 32738143; PubMed Central PMCID: 7454342.
- 826 78. Pavli A, Smeti P, Papadima K, Andreopoulou A, Hadjianastasiou S, Triantafillou E, et al. A
827 Cluster of Covid-19 in Pilgrims to Israel. *J Travel Med*. 2020;27(5). Epub 2020/06/26.
828 <https://doi.org/10.1093/jtm/taaa102>. PubMed PMID: 32584403; PubMed Central PMCID: 7337872.
- 829 79. Patel MR, Kushwaha RS, Behera M, Bhadauria DS, Yachha M, Kaul A, et al. Aftermath of
830 Fortnightly Universal Testing for Severe Acute Respiratory Corona Virus-2 Infection in Maintenance
831 Hemodialysis Patients. *Semin Dial*. 2021;34(5):338-46. Epub 20210624.
832 <https://doi.org/10.1111/sdi.12997>. PubMed PMID: 34169574; PubMed Central PMCID:
833 PMC8447208.
- 834 80. Patel MC, Chaisson LH, Borgetti S, Burdsall D, Chugh RK, Hoff CR, et al. Asymptomatic
835 Sars-Cov-2 Infection and Covid-19 Mortality During an Outbreak Investigation in a Skilled Nursing
836 Facility. *Clin Infect Dis*. 2020;71(11):2920-6. Epub 2020/06/18. <https://doi.org/10.1093/cid/ciaa763>.
837 PubMed PMID: 32548628; PubMed Central PMCID: 7337684.
- 838 81. Park SY, Kim YM, Yi S, Lee S, Na BJ, Kim CB, et al. Coronavirus Disease Outbreak in Call
839 Center, South Korea. *Emerg Infect Dis*. 2020;26(8):1666-70. Epub 2020/04/24.

- 840 <https://doi.org/10.3201/eid2608.201274>. PubMed PMID: 32324530; PubMed Central PMCID:
841 7392450.
- 842 82. Park JH, Jang JH, Lee K, Yoo SJ, Shin H. Covid-19 Outbreak and Presymptomatic
843 Transmission in Pilgrim Travelers Who Returned to Korea from Israel. *J Korean Med Sci.*
844 2020;35(48):e424. Epub 2020/12/15. <https://doi.org/10.3346/jkms.2020.35.e424>. PubMed PMID:
845 33316860; PubMed Central PMCID: 7735917.
- 846 83. Pamplona J, Solano R, Ramírez M, Durandez R, Mohamed F, Pardo L, et al. High Prevalence
847 of Sars-Cov-2 Infection in Patients Scheduled for Digestive Endoscopy after the Peak of the First
848 Wave of the Pandemic. *Gastroenterol Hepatol.* 2021;44(9):614-9. Epub 20210420.
849 <https://doi.org/10.1016/j.gastrohep.2021.03.001>. PubMed PMID: 33862154; PubMed Central
850 PMCID: PMC8056966.
- 851 84. Paleker M, Tembo YA, Davies MA, Mahomed H, Pienaar D, Madhi SA, et al. Asymptomatic
852 Covid-19 in South Africa - Implications for the Control of Transmission. *Public Health Action.*
853 2021;11(2):58-60. <https://doi.org/10.5588/pha.20.0069>. PubMed PMID: 34159063; PubMed Central
854 PMCID: PMC8202632.
- 855 85. Orsi A, Domnich A, Pace VD, Ricucci V, Caligiuri P, Bottiglieri L, et al. Outbreak of Sars-
856 Cov-2 Lineage 20i/501y.V1 in a Nursing Home Underlines the Crucial Role of Vaccination in Both
857 Residents and Staff. *Vaccines.* 2021;9(6):591. PubMed PMID:
858 <https://doi.org/10.3390/vaccines9060591>.
- 859 86. Nunes MC, Baillie VL, Kwatra G, Bhikha S, Verwey C, Menezes C, et al. Severe Acute
860 Respiratory Syndrome Coronavirus 2 Infection among Healthcare Workers in South Africa: A
861 Longitudinal Cohort Study. *Clin Infect Dis.* 2021;73(10):1896-900.
862 <https://doi.org/10.1093/cid/ciab398>. PubMed PMID: 33949670; PubMed Central PMCID:
863 PMC8135922.
- 864 87. Njuguna H, Wallace M, Simonson S, Tobolowsky FA, James AE, Bordelon K, et al. Serial
865 Laboratory Testing for Sars-Cov-2 Infection among Incarcerated and Detained Persons in a
866 Correctional and Detention Facility - Louisiana, April-May 2020. *MMWR Morb Mortal Wkly Rep.*
867 2020;69(26):836-40. Epub 2020/07/03. <https://doi.org/10.15585/mmwr.mm6926e2>. PubMed PMID:
868 32614816; PubMed Central PMCID: 7332096.
- 869 88. Morgan SC, Aigner S, Anderson C, Belda-Ferre P, De Hoff P, Marotz CA, et al. Automated,
870 Miniaturized, and Scalable Screening of Healthcare Workers, First Responders, and Students for Sars-
871 Cov-2 in San Diego County. *medRxiv [Preprint]*. 2021:2021.06.25.21257885.
872 <https://doi.org/10.1101/2021.06.25.21257885>.
- 873 89. Migisha R, Kwesiga B, Mirembe BB, Amanya G, Kabwama SN, Kadobera D, et al. Early
874 Cases of Sars-Cov-2 Infection in Uganda: Epidemiology and Lessons Learned from Risk-Based
875 Testing Approaches - March-April 2020. *Global Health.* 2020;16(1):114. Epub 2020/11/27.
876 <https://doi.org/10.1186/s12992-020-00643-7>. PubMed PMID: 33239041; PubMed Central PMCID:
877 7686950.
- 878 90. Meyers KJ, Dillman B, Williams C, Jiang J, Clifford N, Miller JL, et al. Follow-up of Sars-
879 Cov-2 Positive Subgroup from the Asymptomatic Novel Coronavirus Infection Study. *J Med Virol.*
880 2021;93(5):2925-31. Epub 2021/01/20. <https://doi.org/10.1002/jmv.26810>. PubMed PMID:
881 33463731; PubMed Central PMCID: 8014630.
- 882 91. Marossy A, Rakowicz S, Bhan A, Noon S, Rees A, Virk M, et al. A Study of Universal
883 Severe Acute Respiratory Syndrome Coronavirus 2 Rna Testing among Residents and Staff in a Large

- 884 Group of Care Homes in South London. *J Infect Dis.* 2021;223(3):381-8. Epub 2020/09/06.
885 [10.1093/infdis/jiaa565](https://doi.org/10.1093/infdis/jiaa565). PubMed PMID: 32889532; PubMed Central PMCID: PMC7499645.
- 886 92. Marcus JE, Frankel DN, Pawlak MT, Casey TM, Cybulski RJ, Jr., Enriquez E, et al. Risk
887 Factors Associated with Covid-19 Transmission among Us Air Force Trainees in a Congregant
888 Setting. *JAMA Netw Open.* 2021;4(2):e210202. Epub 20210201.
889 <https://doi.org/10.1001/jamanetworkopen.2021.0202>. PubMed PMID: 33630090; PubMed Central
890 PMCID: PMC7907953.
- 891 93. Malhotra S, Rahi M, Das P, Chaturvedi R, Chhibber-Goel J, Anvikar A, et al.
892 Epidemiological Profiles and Associated Risk Factors of Sars-Cov-2 Positive Patients Based on a
893 High-Throughput Testing Facility in India. *Open Biol.* 2021;11(6):200288. Epub 20210602.
894 <https://doi.org/10.1098/rsob.200288>. PubMed PMID: 34062097; PubMed Central PMCID:
895 PMC8169211.
- 896 94. Malagon-Rojas J, Gomez-Rendon C, Parra EL, Almentero J, Palma R, Lopez R, et al. Sars-
897 Cov-2 and Rt-Per in Asymptomatic Patients: Results of a Cohort of Workers at El Dorado
898 International Airport in Bogota, 2020. *Biomedica.* 2020;40(Supl. 2):166-72. Epub 2020/11/06.
899 <https://doi.org/10.7705/biomedica.5802>. PubMed PMID: 33152200; PubMed Central PMCID:
900 7676845.
- 901 95. Maki G, Abdollah F, Dabaja A, Suleyman G. 462. Prevalence and Outcome of Asymptomatic
902 Procedural Patients with Covid-19 Infection. *Open Forum Infectious Diseases.*
903 2020;7(Supplement_1):S298-S. <https://doi.org/10.1093/ofid/ofaa439.655>.
- 904 96. Mahajan NN, Kesarwani SN, Shinde SS, Nayak A, Modi DN, Mahale SD, et al. Co-Infection
905 of Malaria and Dengue in Pregnant Women with Sars-Cov-2. *Int J Gynaecol Obstet.*
906 2020;151(3):459-62. Epub 2020/10/23. <https://doi.org/10.1002/ijgo.13415>. PubMed PMID:
907 33090458; PubMed Central PMCID: 7611276.
- 908 97. Machado CM, Kerbauy MN, Colturato I, Arcuri LJ, dos Santos ACF, Silva FR, et al. Clinical
909 Characteristics and Outcomes of Covid-19 in Hsct Recipients. *Blood.* 2020;136:19-. Epub
910 2021/08/03. <https://doi.org/10.1182/blood-2020-141959>. PubMed PMID: PMC8330389.
- 911 98. Luo L, Liu D, Liao X, Wu X, Jing Q, Zheng J, et al. Contact Settings and Risk for
912 Transmission in 3410 Close Contacts of Patients with Covid-19 in Guangzhou, China : A Prospective
913 Cohort Study. *Ann Intern Med.* 2020;173(11):879-87. Epub 2020/08/14.
914 <https://doi.org/10.7326/m20-2671>. PubMed PMID: 32790510; PubMed Central PMCID: 7506769.
- 915 99. London V, McLaren R, Jr., Atallah F, Cepeda C, McCalla S, Fisher N, et al. The Relationship
916 between Status at Presentation and Outcomes among Pregnant Women with Covid-19. *Am J*
917 *Perinatol.* 2020;37(10):991-4. Epub 2020/05/20. <https://doi.org/10.1055/s-0040-1712164>. PubMed
918 PMID: 32428964; PubMed Central PMCID: 7416203.
- 919 100. Lombardi A, Consonni D, Carugno M, Bozzi G, Mangioni D, Muscatello A, et al.
920 Characteristics of 1573 Healthcare Workers Who Underwent Nasopharyngeal Swab Testing for Sars-
921 Cov-2 in Milan, Lombardy, Italy. *Clin Microbiol Infect.* 2020;26(10):1413 e9- e13. Epub 2020/06/23.
922 <https://doi.org/10.1016/j.cmi.2020.06.013>. PubMed PMID: 32569835; PubMed Central PMCID:
923 7305713.
- 924 101. Letizia AG, Ramos I, Obla A, Goforth C, Weir DL, Ge Y, et al. Sars-Cov-2 Transmission
925 among Marine Recruits During Quarantine. *N Engl J Med.* 2020;383(25):2407-16. Epub 2020/11/12.
926 <https://doi.org/10.1056/nejmoa2029717>. PubMed PMID: 33176093; PubMed Central PMCID:
927 PMC7675690.

- 928 102. Lee JY, Hong SW, Hyun M, Park JS, Lee JH, Suh YS, et al. Epidemiological and Clinical
929 Characteristics of Coronavirus Disease 2019 in Daegu, South Korea. *Int J Infect Dis.* 2020;98:462-6.
930 Epub 2020/07/24. <https://doi.org/10.1016/j.ijid.2020.07.017>. PubMed PMID: 32702415; PubMed
931 Central PMCID: 7371586.
- 932 103. Laws RL, Biraro S, Kirungi W, Gianetti B, Aibo D, Awor AC, et al. Coronavirus Disease
933 2019 (Covid-19) Mitigation Efforts and Testing During an in-Person Training Event-Uganda, 12-29
934 October 2020. *Clin Infect Dis.* 2021;73(Suppl 1):S42-s4. <https://doi.org/10.1093/cid/ciab331>.
935 PubMed PMID: 33912911; PubMed Central PMCID: PMC8135603.
- 936 104. Lavezzo E, Franchin E, Ciavarella C, Cuomo-Dannenburg G, Barzon L, Del Vecchio C, et al.
937 Suppression of a Sars-Cov-2 Outbreak in the Italian Municipality of Vo'. *Nature.*
938 2020;584(7821):425-9. Epub 2020/07/01. <https://doi.org/10.1038/s41586-020-2488-1>. PubMed
939 PMID: 32604404.
- 940 105. Lalani T, Lee TK, Laing ED, Ritter A, Cooper E, Lee M, et al. Sars-Cov-2 Infections and
941 Serologic Responses among Military Personnel Deployed on the Usns Comfort to New York City
942 During the Covid-19 Pandemic. *Open Forum Infect Dis.* 2021;8(2):ofaa654. Epub 20210123.
943 <https://doi.org/10.1093/ofid/ofaa654>. PubMed PMID: 33553482; PubMed Central PMCID:
944 PMC7856331.
- 945 106. Ladhani SN, Jeffery-Smith A, Patel M, Janarthanan R, Fok J, Crawley-Boevey E, et al. High
946 Prevalence of Sars-Cov-2 Antibodies in Care Homes Affected by Covid-19: Prospective Cohort
947 Study, England. *EClinicalMedicine.* 2020;28:100597. Epub 2020/11/12.
948 <https://doi.org/10.1016/j.eclinm.2020.100597>. PubMed PMID: 33173854; PubMed Central PMCID:
949 7644437.
- 950 107. Kutsuna S, Suzuki T, Hayakawa K, Tsuzuki S, Asai Y, Suzuki T, et al. Sars-Cov-2 Screening
951 Test for Japanese Returnees from Wuhan, China, January 2020. *Open Forum Infect Dis.*
952 2020;7(7):ofaa243. Epub 2020/08/06. <https://doi.org/10.1093/ofid/ofaa243>. PubMed PMID:
953 32754627; PubMed Central PMCID: 7337761.
- 954 108. Kittang BR, Hofacker SV, Solheim SP, Kruger K, Loland KK, Jansen K. Outbreak of Covid-
955 19 at Three Nursing Homes in Bergen. *Tidsskr Nor Laegeforen.* 2020;140(11). Epub 2020/08/21.
956 <https://doi.org/10.4045/tidsskr.20.0405>. PubMed PMID: 32815356.
- 957 109. Kirshblum SC, DeLauter G, Lopreiato MC, Pomeranz B, Dawson A, Hammerman S, et al.
958 Screening Testing for Sars-Cov-2 Upon Admission to Rehabilitation Hospitals in a High Covid-19
959 Prevalence Community. *PM R.* 2020;12(10):1009-14. Epub 2020/07/24.
960 <https://doi.org/10.1002/pmrj.12454>. PubMed PMID: 32700434; PubMed Central PMCID: 7404891.
- 961 110. Khondaker T, Qader MA, Gosh K, Chowdhury GN, Ferdous T, Afroz S, et al. Clinical Profile
962 and Outcome of Covid -19 in Children with Pre-Existing Renal Disease. *J pediatric nephrol.*
963 2020;9(1):1-6. <https://doi.org/10.22037/jpn.v9i1.33008>.
- 964 111. Kennelly SP, Dyer AH, Noonan C, Martin R, Kennelly SM, Martin A, et al. Asymptomatic
965 Carriage Rates and Case Fatality of Sars-Cov-2 Infection in Residents and Staff in Irish Nursing
966 Homes. *Age Ageing.* 2021;50(1):49-54. Epub 2020/09/29. <https://doi.org/10.1093/ageing/afaa220>.
967 PubMed PMID: 32986806; PubMed Central PMCID: 7543256.
- 968 112. Kasper MR, Geibe JR, Sears CL, Riegodedios AJ, Luse T, Von Thun AM, et al. An Outbreak
969 of Covid-19 on an Aircraft Carrier. *N Engl J Med.* 2020;383(25):2417-26. Epub 2020/11/12.
970 <https://doi.org/10.1056/nejmoa2019375>. PubMed PMID: 33176077; PubMed Central PMCID:
971 7675688.

- 972 113. Jones A, Fialkowski V, Prinzing L, Trites J, Kelso P, Levine M. Assessment of Day-7
973 Postexposure Testing of Asymptomatic Contacts of Covid-19 Patients to Evaluate Early Release from
974 Quarantine - Vermont, May-November 2020. *MMWR Morb Mortal Wkly Rep.* 2021;70(1):12-3.
975 Epub 2021/01/08. <http://dx.doi.org/10.15585/mmwr.mm7001a3>. PubMed PMID: 33411700; PubMed
976 Central PMCID: 7790157.
- 977 114. Jeffery-Smith A, Dun-Campbell K, Janarthanan R, Fok J, Crawley-Boevey E, Vusirikala A,
978 et al. Infection and Transmission of Sars-Cov-2 in London Care Homes Reporting No Cases or
979 Outbreaks of Covid-19: Prospective Observational Cohort Study, England 2020. *Lancet Reg Health*
980 *Eur.* 2021;3:100038. Epub 20210122. <https://doi.org/10.1016/j.lanepe.2021.100038>. PubMed PMID:
981 33870248; PubMed Central PMCID: PMC7826003.
- 982 115. Isoldi S, Mallardo S, Marcellino A, Bloise S, Dilillo A, Iorfida D, et al. The Comprehensive
983 Clinic, Laboratory, and Instrumental Evaluation of Children with Covid-19: A 6-Months Prospective
984 Study. *J Med Virol.* 2021;93(5):3122-32. Epub 20210216. <https://doi.org/10.1002/jmv.26871>.
985 PubMed PMID: 33570199; PubMed Central PMCID: PMC8014060.
- 986 116. Hwang CE, Kussman A, Christle JW, Froelicher V, Wheeler MT, Moneghetti KJ. Findings
987 from Cardiovascular Evaluation of National Collegiate Athletic Association Division I Collegiate
988 Student-Athletes after Asymptomatic or Mildly Symptomatic Sars-Cov-2 Infection. *Clin J Sport Med.*
989 2022;32(2):103-7. <https://doi.org/10.1097/jsm.0000000000000954>. PubMed PMID: 34173780.
- 990 117. Hussain A, Satti L, Hanif F, Shoaib M, Ghauri MA, Khan Niazi GA, et al. Clinical and
991 Virological Course of Sars-Cov 2 Infected Patients in a Tertiary Care Hospital in Pakistan. *J Ayub*
992 *Med Coll Abbottabad.* 2020;32(Suppl 1)(4):S602-s6. <https://pubmed.ncbi.nlm.nih.gov/33754515/>.
993 PubMed PMID: 33754515; PubMed Central PMCID: 33754515.
- 994 118. Hurst JH, Heston SM, Chambers HN, Cunningham HM, Price MJ, Suarez L, et al. Severe
995 Acute Respiratory Syndrome Coronavirus 2 Infections among Children in the Biospecimens from
996 Respiratory Virus-Exposed Kids (Brave Kids) Study. *Clinical Infectious Diseases.* 2021;73(9):e2875-
997 e82. <https://doi.org/10.1093/cid/ciaa1693>.
- 998 119. Hogan CA, Gombar S, Wang H, Roltgen K, Shi RZ, Holubar M, et al. Large-Scale Testing of
999 Asymptomatic Healthcare Personnel for Severe Acute Respiratory Syndrome Coronavirus 2. *Emerg*
1000 *Infect Dis.* 2021;27(1). Epub 2020/12/02. <https://doi.org/10.3201/eid2701.203892>. PubMed PMID:
1001 33256889; PubMed Central PMCID: PMC7774535.
- 1002 120. Hoehl S, Rabenau H, Berger A, Kortenbusch M, Cinatl J, Bojkova D, et al. Evidence of Sars-
1003 Cov-2 Infection in Returning Travelers from Wuhan, China. *N Engl J Med.* 2020;382(13):1278-80.
1004 Epub 2020/02/19. <https://doi.org/10.1056/nejmc2001899>. PubMed PMID: 32069388; PubMed
1005 Central PMCID: 7121749.
- 1006 121. Hijnen D, Marzano AV, Eyerich K, GeurtsvanKessel C, Gimenez-Arnau AM, Joly P, et al.
1007 Sars-Cov-2 Transmission from Presymptomatic Meeting Attendee, Germany. *Emerg Infect Dis.*
1008 2020;26(8):1935-7. Epub 2020/05/12. <https://doi.org/10.3201/eid2608.201235>. PubMed PMID:
1009 32392125; PubMed Central PMCID: 7392453.
- 1010 122. Hcini N, Maamri F, Picone O, Carod JF, Lambert V, Mathieu M, et al. Maternal, Fetal and
1011 Neonatal Outcomes of Large Series of Sars-Cov-2 Positive Pregnancies in Peripartum Period: A
1012 Single-Center Prospective Comparative Study. *Eur J Obstet Gynecol Reprod Biol.* 2021;257:11-8.
1013 Epub 2020/12/15. <https://doi.org/10.1016/j.ejogrb.2020.11.068>. PubMed PMID: 33310656; PubMed
1014 Central PMCID: 7705341.
- 1015 123. Harada S, Uno S, Ando T, Iida M, Takano Y, Ishibashi Y, et al. Control of a Nosocomial
1016 Outbreak of Covid-19 in a University Hospital. *Open Forum Infect Dis.* 2020;7(12):ofaa512. Epub

- 1017 2020/12/18. <https://doi.org/10.1093/ofid/ofaa512>. PubMed PMID: 33330740; PubMed Central
1018 PMCID: 7665726.
- 1019 124. Han X, Wei X, Alwalid O, Cao Y, Li Y, Wang L, et al. Severe Acute Respiratory Syndrome
1020 Coronavirus 2 among Asymptomatic Workers Screened for Work Resumption, China. *Emerg Infect*
1021 *Dis.* 2020;26(9). Epub 2020/06/20. <https://doi.org/10.3201/eid2609.201848>. PubMed PMID:
1022 32553070; PubMed Central PMCID: 7454110.
- 1023 125. Hall VJ, Foulkes S, Charlett A, Atti A, Monk EJM, Simmons R, et al. Sars-Cov-2 Infection
1024 Rates of Antibody-Positive Compared with Antibody-Negative Health-Care Workers in England: A
1025 Large, Multicentre, Prospective Cohort Study (Siren). *Lancet.* 2021;397(10283):1459-69. Epub
1026 20210409. [https://doi.org/10.1016/s0140-6736\(21\)00675-9](https://doi.org/10.1016/s0140-6736(21)00675-9). PubMed PMID: 33844963; PubMed
1027 Central PMCID: PMC8040523.
- 1028 126. Haidar G, Ayres A, King WC, McDonald M, Wells A, Mitchell SL, et al. Preprocedural Sars-
1029 Cov-2 Testing to Sustain Medically Needed Health Care Delivery During the Covid-19 Pandemic: A
1030 Prospective Observational Study. *Open Forum Infectious Diseases.* 2021;8(2).
1031 <https://doi.org/10.1093/ofid/ofab022>.
- 1032 127. Grijalva CG, Rolfes MA, Zhu Y, McLean HQ, Hanson KE, Belongia EA, et al. Transmission
1033 of Sars-Cov-2 Infections in Households - Tennessee and Wisconsin, April-September 2020. *MMWR*
1034 *Morb Mortal Wkly Rep.* 2020;69(44):1631-4. Epub 2020/11/06.
1035 <http://dx.doi.org/10.15585/mmwr.mm6944e1>. PubMed PMID: 33151916; PubMed Central PMCID:
1036 7643897.
- 1037 128. Green R, Tulloch JSP, Tunnah C, Coffey E, Lawrenson K, Fox A, et al. Covid-19 Testing in
1038 Outbreak-Free Care Homes: What Are the Public Health Benefits? *J Hosp Infect.* 2021;111:89-95.
1039 Epub 2021/01/17. <https://doi.org/10.1016/j.jhin.2020.12.024>. PubMed PMID: 33453349; PubMed
1040 Central PMCID: 7837210.
- 1041 129. Graham NSN, Junghans C, Downes R, Sendall C, Lai H, McKirdy A, et al. Sars-Cov-2
1042 Infection, Clinical Features and Outcome of Covid-19 in United Kingdom Nursing Homes. *J Infect.*
1043 2020;81(3):411-9. Epub 2020/06/07. <https://doi.org/10.1016/j.jinf.2020.05.073>. PubMed PMID:
1044 32504743; PubMed Central PMCID: 7836316.
- 1045 130. Ghinai I, Davis ES, Mayer S, Toews KA, Huggett TD, Snow-Hill N, et al. Risk Factors for
1046 Severe Acute Respiratory Syndrome Coronavirus 2 Infection in Homeless Shelters in Chicago,
1047 Illinois-March-May, 2020. *Open Forum Infect Dis.* 2020;7(11):ofaa477. Epub 2020/12/03.
1048 <https://doi.org/10.1093/ofid/ofaa477>. PubMed PMID: 33263069; PubMed Central PMCID: 7665740.
- 1049 131. Gettings JR, Gold JAW, Kimball A, Forsberg K, Scott C, Uehara A, et al. Severe Acute
1050 Respiratory Syndrome Coronavirus 2 Transmission in a Georgia School District-United States,
1051 December 2020-January 2021. *Clin Infect Dis.* 2022;74(2):319-26.
1052 <https://doi.org/10.1093/cid/ciab332>. PubMed PMID: 33864375; PubMed Central PMCID:
1053 PMC8083290.
- 1054 132. Garibaldi PMM, Ferreira NN, Moraes GR, Moura JC, Espósito DLA, Volpe GJ, et al.
1055 Efficacy of Covid-19 Outbreak Management in a Skilled Nursing Facility Based on Serial Testing for
1056 Early Detection and Control. *Braz J Infect Dis.* 2021;25(2):101570. Epub 20210323.
1057 <https://doi.org/10.1016/j.bjid.2021.101570>. PubMed PMID: 33773990; PubMed Central PMCID:
1058 PMC7985963.
- 1059 133. Fisher MJ, Psevdos G. Asymptomatic Sars-Cov-2 Infection Following First Dose Mrna-1273
1060 Covid-19 Vaccine in a Veterans Affairs Long Term Care Facility. *Am J Infect Control.*

- 1061 2021;49(9):1210-1. Epub 20210625. <https://doi.org/10.1016/j.ajic.2021.06.010>. PubMed PMID:
1062 34175364; PubMed Central PMCID: PMC8225993.
- 1063 134. Ferreira VH, Chruscinski A, Kulasingam V, Pugh TJ, Dus T, Wouters B, et al. Prospective
1064 Observational Study and Serosurvey of Sars-Cov-2 Infection in Asymptomatic Healthcare Workers at
1065 a Canadian Tertiary Care Center. PLoS One. 2021;16(2):e0247258. Epub 2021/02/17.
1066 <https://doi.org/10.1371/journal.pone.0247258>. PubMed PMID: 33592074; PubMed Central PMCID:
1067 7886177.
- 1068 135. Fakhim H, Nasri E, Aboutalebian S, Gholipour S, Nikaeen M, Vaezi A, et al. Asymptomatic
1069 Carriers of Coronavirus Disease 2019 among Healthcare Workers in Isfahan, Iran. Future Virology.
1070 2021;16(2):93-8. <https://dx.doi.org/10.2217%2Ffv1-2020-0224>.
- 1071 136. Eythorsson E, Helgason D, Ingvarsson RF, Bjornsson HK, Olafsdottir LB, Bjarnadottir V, et
1072 al. Clinical Spectrum of Coronavirus Disease 2019 in Iceland: Population Based Cohort Study. BMJ.
1073 2020;371:m4529. Epub 2020/12/04. <https://doi.org/10.1136/bmj.m4529>. PubMed PMID: 33268329;
1074 PubMed Central PMCID: 7708618.
- 1075 137. Esteban I, Bergero G, Alves C, Bronstein M, Ziegler V, Wood C, et al. Asymptomatic Covid-
1076 19 in the Elderly: Dementia and Viral Clearance as Risk Factors for Disease Progression. TP92
1077 TP092 CLINICAL ADVANCES IN SARS-COV-2 AND COVID-19. 2021:A3826-A.
1078 <https://doi.org/10.1164/ajrccm-conference.2021.203.1.MeetingAbstracts.A3826>.
- 1079 138. Edelstein M, Obi C, Chand M, Hopkins S, Brown K, Ramsay M. Sars-Cov-2 Infection in
1080 London, England: Changes to Community Point Prevalence around Lockdown Time, March-May
1081 2020. J Epidemiol Community Health. 2021;75(2):185-8. Epub 2020/10/03.
1082 <https://doi.org/10.1136/jech-2020-214730>. PubMed PMID: 33004659; PubMed Central PMCID:
1083 7815898.
- 1084 139. Dora AV, Winnett A, Jatt LP, Davar K, Watanabe M, Sohn L, et al. Universal and Serial
1085 Laboratory Testing for Sars-Cov-2 at a Long-Term Care Skilled Nursing Facility for Veterans - Los
1086 Angeles, California, 2020. MMWR Morb Mortal Wkly Rep. 2020;69(21):651-5. Epub 2020/05/29.
1087 <https://doi.org/10.15585/mmwr.mm6921e1>. PubMed PMID: 32463809; PubMed Central PMCID:
1088 7269604.
- 1089 140. Danis K, Epaulard O, Benet T, Gaymard A, Campoy S, Bothelo-Nevers E, et al. Cluster of
1090 Coronavirus Disease 2019 (Covid-19) in the French Alps, 2020. Clin Infect Dis. 2020. Epub
1091 2020/04/12. <https://doi.org/10.1093/cid/ciaa424>. PubMed PMID: 32277759; PubMed Central
1092 PMCID: 7184384.
- 1093 141. Corcorran MA, Olin S, Rani G, Nasenbeny K, Constantino-Shor C, Holmes C, et al.
1094 Prolonged Persistence of Pcr-Detectable Virus During an Outbreak of Sars-Cov-2 in an Inpatient
1095 Geriatric Psychiatry Unit in King County, Washington. Am J Infect Control. 2021;49(3):293-8. Epub
1096 2020/08/23. <https://doi.org/10.1016/j.ajic.2020.08.025>. PubMed PMID: 32827597; PubMed Central
1097 PMCID: 7438365.
- 1098 142. Cheng HY, Jian SW, Liu DP, Ng TC, Huang WT, Lin HH, et al. Contact Tracing Assessment
1099 of Covid-19 Transmission Dynamics in Taiwan and Risk at Different Exposure Periods before and
1100 after Symptom Onset. JAMA Intern Med. 2020;180(9):1156-63. Epub 2020/05/02.
1101 <https://doi.org/10.1001/jamainternmed.2020.2020>. PubMed PMID: 32356867; PubMed Central
1102 PMCID: 7195694.
- 1103 143. Chang L, Zhao L, Gong H, Wang L, Wang L. Severe Acute Respiratory Syndrome
1104 Coronavirus 2 Rna Detected in Blood Donations. Emerg Infect Dis. 2020;26(7):1631-3. Epub

- 1105 2020/04/04. <https://doi.org/10.3201/eid2607.200839>. PubMed PMID: 32243255; PubMed Central
1106 PMCID: 7323524.
- 1107 144. Chamie G, Marquez C, Crawford E, Peng J, Petersen M, Schwab D, et al. Community
1108 Transmission of Severe Acute Respiratory Syndrome Coronavirus 2 Disproportionately Affects the
1109 Latinx Population During Shelter-in-Place in San Francisco. *Clin Infect Dis*. 2021;73(Suppl 2):S127-
1110 S35. Epub 2020/08/22. <https://doi.org/10.1093/cid/ciaa1234>. PubMed PMID: 32821935; PubMed
1111 Central PMCID: 7499499.
- 1112 145. Cariani L, Orena BS, Ambrogi F, Gambazza S, Maraschini A, Dodaro A, et al. Time Length
1113 of Negativization and Cycle Threshold Values in 182 Healthcare Workers with Covid-19 in Milan,
1114 Italy: An Observational Cohort Study. *Int J Environ Res Public Health*. 2020;17(15). Epub
1115 2020/07/29. <https://doi.org/10.3390/ijerph17155313>. PubMed PMID: 32718008; PubMed Central
1116 PMCID: 7432921.
- 1117 146. Cardillo L, de Martinis C, Viscardi M, Esposito C, Sannino E, Lucibelli G, et al. Sars-Cov-2
1118 Quantitative Real Time Pcr and Viral Loads Analysis among Asymptomatic and Symptomatic
1119 Patients: An Observational Study on an Outbreak in Two Nursing Facilities in Campania Region
1120 (Southern Italy). *Infect Agent Cancer*. 2021;16(1):45. Epub 20210622.
1121 <https://doi.org/10.1186/s13027-021-00388-x>. PubMed PMID: 34158108; PubMed Central PMCID:
1122 PMC8218569.
- 1123 147. Cao S, Gan Y, Wang C, Bachmann M, Wei S, Gong J, et al. Post-Lockdown Sars-Cov-2
1124 Nucleic Acid Screening in Nearly Ten Million Residents of Wuhan, China. *Nat Commun*.
1125 2020;11(1):5917. Epub 2020/11/22. <https://doi.org/10.1038/s41467-020-19802-w>. PubMed PMID:
1126 33219229; PubMed Central PMCID: 7679396.
- 1127 148. Brandstetter S, Roth S, Harner S, Buntrock-Dopke H, Toncheva AA, Borchers N, et al.
1128 Symptoms and Immunoglobulin Development in Hospital Staff Exposed to a Sars-Cov-2 Outbreak.
1129 *Pediatr Allergy Immunol*. 2020;31(7):841-7. Epub 2020/05/16. <https://doi.org/10.1111/pai.13278>.
1130 PubMed PMID: 32413201.
- 1131 149. Bohmer MM, Buchholz U, Corman VM, Hoch M, Katz K, Marosevic DV, et al. Investigation
1132 of a Covid-19 Outbreak in Germany Resulting from a Single Travel-Associated Primary Case: A Case
1133 Series. *Lancet Infect Dis*. 2020;20(8):920-8. Epub 2020/05/19. [https://doi.org/10.1016/s1473-
1134 3099\(20\)30314-5](https://doi.org/10.1016/s1473-3099(20)30314-5). PubMed PMID: 32422201; PubMed Central PMCID: 7228725.
- 1135 150. Bogani G, Ditto A, Bosio S, Brusadelli C, Raspagliesi F. Cancer Patients Affected by Covid-
1136 19: Experience from Milan, Lombardy. *Gynecol Oncol*. 2020;158(2):262-5. Epub 2020/06/15.
1137 <https://doi.org/10.1016/j.ygyno.2020.06.161>. PubMed PMID: 32534808; PubMed Central PMCID:
1138 7286266.
- 1139 151. Blain H, Gamon L, Tuailon E, Pisoni A, Giacosa N, Albrand M, et al. Atypical Symptoms,
1140 Sars-Cov-2 Test Results and Immunisation Rates in 456 Residents from Eight Nursing Homes Facing
1141 a Covid-19 Outbreak. *Age Ageing*. 2021;50(3):641-8. <https://doi.org/10.1093/ageing/afab050>.
1142 PubMed PMID: 33620381; PubMed Central PMCID: PMC7929417.
- 1143 152. Berghoff AS, Gansterer M, Bathke AC, Trutschnig W, Hungerlander P, Berger JM, et al.
1144 Sars-Cov-2 Testing in Patients with Cancer Treated at a Tertiary Care Hospital During the Covid-19
1145 Pandemic. *J Clin Oncol*. 2020;38(30):3547-54. Epub 2020/08/17.
1146 <https://doi.org/10.1200/jco.20.01442>. PubMed PMID: 32795227; PubMed Central PMCID: 7571795.
- 1147 153. Bender WR, Hirshberg A, Coutifaris P, Acker AL, Srinivas SK. Universal Testing for Severe
1148 Acute Respiratory Syndrome Coronavirus 2 in 2 Philadelphia Hospitals: Carrier Prevalence and
1149 Symptom Development over 2 Weeks. *Am J Obstet Gynecol MFM*. 2020;2(4):100226. Epub

- 1150 2020/09/22. <https://doi.org/10.1016/j.ajogmf.2020.100226>. PubMed PMID: 32954248; PubMed
1151 Central PMCID: 7485442.
- 1152 154. Beiting KJ, Huisingh-Scheetz M, Walker J, Graupner J, Martinchek M, Thompson K, et al.
1153 Management and Outcomes of a Covid-19 Outbreak in a Nursing Home with Predominantly Black
1154 Residents. *J Am Geriatr Soc.* 2021;69(5):1155-65. Epub 20210324.
1155 <https://doi.org/10.1111/jgs.17126>. PubMed PMID: 33739444; PubMed Central PMCID:
1156 PMC8218575.
- 1157 155. Balestrini S, Koepp MJ, Gandhi S, Rickman HM, Shin GY, Houlihan CF, et al. Clinical
1158 Outcomes of Covid-19 in Long-Term Care Facilities for People with Epilepsy. *Epilepsy Behav.*
1159 2021;115:107602. Epub 2020/12/07. <https://doi.org/10.1016/j.yebeh.2020.107602>. PubMed PMID:
1160 33279440; PubMed Central PMCID: 7643621.
- 1161 156. Aslam A, Singh J, Robilotti E, Chow K, Bist T, Reidy-Lagunes D, et al. Severe Acute
1162 Respiratory Syndrome Coronavirus 2 Surveillance and Exposure in the Perioperative Setting with
1163 Universal Testing and Personal Protective Equipment Policies. *Clin Infect Dis.* 2021;73(9):e3013-e8.
1164 Epub 2020/10/23. <https://doi.org/10.1093/cid/ciaa1607>. PubMed PMID: 33090210; PubMed Central
1165 PMCID: 7665395.
- 1166 157. Arons MM, Hatfield KM, Reddy SC, Kimball A, James A, Jacobs JR, et al. Presymptomatic
1167 Sars-Cov-2 Infections and Transmission in a Skilled Nursing Facility. *N Engl J Med.*
1168 2020;382(22):2081-90. Epub 2020/04/25. <https://doi.org/10.1056/NEJMoa2008457>. PubMed PMID:
1169 32329971; PubMed Central PMCID: 7200056.
- 1170 158. Andrikopoulou M, Madden N, Wen T, Aubey JJ, Aziz A, Baptiste CD, et al. Symptoms and
1171 Critical Illness among Obstetric Patients with Coronavirus Disease 2019 (Covid-19) Infection. *Obstet*
1172 *Gynecol.* 2020;136(2):291-9. Epub 2020/05/28. <https://doi.org/10.1097/aog.0000000000003996>.
1173 PubMed PMID: 32459701.
- 1174 159. Alshahrani MS, Alnimr A, Alnassri S, Alfarag S, Aljehani Y, Alabdali M. Prevalence of the
1175 Sars-Cov-2 Infection among Post-Quarantine Healthcare Workers. *J Multidiscip Healthc.*
1176 2020;13:1927-36. Epub 2020/12/29. <https://doi.org/10.2147/jmdh.s279469>. PubMed PMID:
1177 33363380; PubMed Central PMCID: 7752650.
- 1178 160. Almazeedi S, Al-Youha S, Jamal MH, Al-Haddad M, Al-Muhaini A, Al-Ghimlas F, et al.
1179 Characteristics, Risk Factors and Outcomes among the First Consecutive 1096 Patients Diagnosed
1180 with Covid-19 in Kuwait. *EClinicalMedicine.* 2020;24:100448. Epub 2020/08/09.
1181 <https://doi.org/10.1016/j.eclinm.2020.100448>. PubMed PMID: 32766546; PubMed Central PMCID:
1182 7335246.
- 1183 161. Al-Qahtani M, AlAli S, AbdulRahman A, Salman Alsayyad A, Otoom S, Atkin SL. The
1184 Prevalence of Asymptomatic and Symptomatic Covid-19 in a Cohort of Quarantined Subjects. *Int J*
1185 *Infect Dis.* 2021;102:285-8. Epub 2020/11/07. <https://doi.org/10.1016/j.ijid.2020.10.091>. PubMed
1186 PMID: 33157290; PubMed Central PMCID: 7607262.
- 1187 162. Adhikari EH, Moreno W, Zofkie AC, MacDonald L, McIntire DD, Collins RRJ, et al.
1188 Pregnancy Outcomes among Women with and without Severe Acute Respiratory Syndrome
1189 Coronavirus 2 Infection. *JAMA Netw Open.* 2020;3(11):e2029256. Epub 2020/11/20.
1190 <https://doi.org/10.1001/jamanetworkopen.2020.29256>. PubMed PMID: 33211113; PubMed Central
1191 PMCID: 7677755.
- 1192 163. Abraha HE, Gessesse Z, Gebrecherkos T, Kebede Y, Weldegiargis AW, Tequare MH, et al.
1193 Clinical Features and Risk Factors Associated with Morbidity and Mortality among Patients with
1194 Covid-19 in Northern Ethiopia. *Int J Infect Dis.* 2021;105:776-83. Epub 20210316.

- 1195 <https://doi.org/10.1016/j.ijid.2021.03.037>. PubMed PMID: 33741488; PubMed Central PMCID:
1196 PMC7962557.
- 1197 164. AbdulRahman A, AlAli S, Yaghi O, Shabaan M, Otoom S, Atkin SL, et al. Covid-19 and
1198 Sickle Cell Disease in Bahrain. *Int J Infect Dis*. 2020;101:14-6. Epub 2020/09/28.
1199 <https://doi.org/10.1016/j.ijid.2020.09.1433>. PubMed PMID: 32980556; PubMed Central PMCID:
1200 7833176.
- 1201 165. Wu P, Liu F, Chang Z, Lin Y, Ren M, Zheng C, et al. Assessing Asymptomatic,
1202 Presymptomatic, and Symptomatic Transmission Risk of Severe Acute Respiratory Syndrome
1203 Coronavirus 2. *Clin Infect Dis*. 2021;73(6):e1314-e20. <https://doi.org/10.1093/cid/ciab271>. PubMed
1204 PMID: 33772573; PubMed Central PMCID: PMC8083716.
- 1205 166. Luo L, Liu D, Liao X-l, Wu X-b, Jing Q-l, Zheng J-z, et al. Modes of Contact and Risk of
1206 Transmission in Covid-19 among Close Contacts. *bioRxiv [Preprint]*. 2020.
1207 <https://doi.org/10.1101/2020.03.24.20042606>.
- 1208 167. Chaw L, Koh WC, Jamaludin SA, Naing L, Alikhan MF, Wong J. Analysis of Sars-Cov-2
1209 Transmission in Different Settings, Brunei. *Emerg Infect Dis*. 2020;26(11):2598-606. Epub
1210 2020/10/10. <https://doi.org/10.3201/eid2611.202263>. PubMed PMID: 33035448; PubMed Central
1211 PMCID: 7588541.
- 1212 168. Bender JK, Brandl M, Höhle M, Buchholz U, Zeitlmann N. Analysis of Asymptomatic and
1213 Presymptomatic Transmission in Sars-Cov-2 Outbreak, Germany, 2020. *Emerging infectious
1214 diseases*. 2021;27(4):1159-63. Epub 2021/02/18. <https://dx.doi.org/10.3201%2Faid2704.204576>.
1215 PubMed PMID: 33600301.
- 1216 169. Zhang W. Estimating the Presymptomatic Transmission of Covid19 Using Incubation Period
1217 and Serial Interval Data. *bioRxiv [Preprint]*. 2020. <https://doi.org/10.1101/2020.04.02.20051318>.
- 1218 170. Tindale LC, Stockdale JE, Coombe M, Garlock ES, Lau WYV, Saraswat M, et al. Evidence
1219 for Transmission of Covid-19 Prior to Symptom Onset *Elife*. 2020;9. Epub 2020/06/23.
1220 <https://doi.org/10.7554/elife.57149>. PubMed PMID: 32568070; PubMed Central PMCID: 7386904.
- 1221 171. Tan J, Ge Y, Martinez L, Sun J, Li C, Westbrook A, et al. Transmission Roles of
1222 Symptomatic and Asymptomatic Covid-19 Cases: A Modeling Study. *medRxiv [Preprint]*.
1223 2021:2021.05.11.21257060. <https://doi.org/10.1101/2021.05.11.21257060>.
- 1224 172. Sun K, Wang W, Gao L, Wang Y, Luo K, Ren L, et al. Transmission Heterogeneities,
1225 Kinetics, and Controllability of Sars-Cov-2. *Science*. 2021;371(6526). Epub 2020/11/26.
1226 <https://doi.org/10.1126/science.abe2424>. PubMed PMID: 33234698; PubMed Central PMCID:
1227 7857413.
- 1228 173. Ren X, Li Y, Yang X, Li Z, Cui J, Zhu A, et al. Evidence for Pre-Symptomatic Transmission
1229 of Coronavirus Disease 2019 (Covid-19) in China. *Influenza Other Respir Viruses*. 2021;15(1):19-26.
1230 Epub 2020/08/09. <https://doi.org/10.1111/irv.12787>. PubMed PMID: 32767657; PubMed Central
1231 PMCID: 7436222.
- 1232 174. Peak CM, Kahn R, Grad YH, Childs LM, Li R, Lipsitch M, et al. Individual Quarantine
1233 Versus Active Monitoring of Contacts for the Mitigation of Covid-19: A Modelling Study. *Lancet
1234 Infect Dis*. 2020;20(9):1025-33. Epub 2020/05/24. [https://doi.org/10.1016/s1473-3099\(20\)30361-3](https://doi.org/10.1016/s1473-3099(20)30361-3).
1235 PubMed PMID: 32445710; PubMed Central PMCID: 7239635.
- 1236 175. Moghadas SM, Fitzpatrick MC, Sah P, Pandey A, Shoukat A, Singer BH, et al. The
1237 Implications of Silent Transmission for the Control of Covid-19 Outbreaks. *Proc Natl Acad Sci U S*

- 1238 A. 2020;117(30):17513-5. Epub 2020/07/08. <https://doi.org/10.1073/pnas.2008373117>. PubMed
1239 PMID: 32632012; PubMed Central PMCID: 7395516.
- 1240 176. He X, Lau EHY, Wu P, Deng X, Wang J, Hao X, et al. Temporal Dynamics in Viral
1241 Shedding and Transmissibility of Covid-19. Nat Med. 2020;26(5):672-5. Epub 2020/04/17.
1242 <https://doi.org/10.1038/s41591-020-0869-5>. PubMed PMID: 32296168.
- 1243 177. Emery JC, Russell TW, Liu Y, Hellewell J, Pearson CA, Group CC-W, et al. The
1244 Contribution of Asymptomatic Sars-Cov-2 Infections to Transmission on the Diamond Princess
1245 Cruise Ship. Elife. 2020;9. Epub 2020/08/25. <https://doi.org/10.7554/elife.58699>. PubMed PMID:
1246 32831176; PubMed Central PMCID: 7527238.
- 1247 178. Chun JY, Baek G, Kim Y. Transmission Onset Distribution of Covid-19. Int J Infect Dis.
1248 2020;99:403-7. Epub 2020/08/11. <https://doi.org/10.1016/j.ijid.2020.07.075>. PubMed PMID:
1249 32771633; PubMed Central PMCID: 7409940.
- 1250 179. Bushman M, Worby C, Chang HH, Kraemer MUG, Hanage WP. Transmission of Sars-Cov-2
1251 before and after Symptom Onset: Impact of Nonpharmaceutical Interventions in China. Eur J
1252 Epidemiol. 2021;36(4):429-39. Epub 2021/04/22. <https://doi.org/10.1007/s10654-021-00746-4>.
1253 PubMed PMID: 33881667; PubMed Central PMCID: 8058147.
- 1254 180. Chau NVV, Thanh Lam V, Thanh Dung N, Yen LM, Minh NNQ, Hung LM, et al. The
1255 Natural History and Transmission Potential of Asymptomatic Sars-Cov-2 Infection. Clin Infect Dis.
1256 2020. <https://doi.org/10.1093/cid/ciaa711>.
- 1257 181. Kucirka LM, Lauer SA, Laeyendecker O, Boon D, Lessler J. Variation in False-Negative
1258 Rate of Reverse Transcriptase Polymerase Chain Reaction-Based Sars-Cov-2 Tests by Time since
1259 Exposure. Ann Intern Med. 2020. Epub 2020/05/19. <https://doi.org/10.7326/M20-1495>. PubMed
1260 PMID: 32422057; PubMed Central PMCID: 7240870.
- 1261 182. Qiu X, Nergiz AI, Maraolo AE, Bogoch, II, Low N, Cevik M. The Role of Asymptomatic and
1262 Pre-Symptomatic Infection in Sars-Cov-2 Transmission-a Living Systematic Review. Clin Microbiol
1263 Infect. 2021;27(4):511-9. Epub 20210121. <https://doi.org/10.1016/j.cmi.2021.01.011>. PubMed
1264 PMID: 33484843; PubMed Central PMCID: 7825872.
- 1265 183. Goguet E, Powers JH, III, Olsen CH, Tribble DR, Davies J, Illinik L, et al. Prospective
1266 Assessment of Symptoms to Evaluate Asymptomatic Sars-Cov-2 Infections in a Cohort of Health
1267 Care Workers. Open Forum Infectious Diseases. 2022;9(3):ofac030.
1268 <https://doi.org/10.1093/ofid/ofac030>.
- 1269 184. Madewell ZJ, Yang Y, Longini IM, Jr, Halloran ME, Dean NE. Household Transmission of
1270 Sars-Cov-2: A Systematic Review and Meta-Analysis. JAMA Network Open. 2020;3(12):e2031756-
1271 e. <https://doi.org/10.1001/jamanetworkopen.2020.31756>.
- 1272 185. Wei WE, Li Z, Chiew CJ, Yong SE, Toh MP, Lee VJ. Presymptomatic Transmission of Sars-
1273 Cov-2 - Singapore, January 23-March 16, 2020. MMWR Morb Mortal Wkly Rep. 2020;69(14):411-5.
1274 Epub 2020/04/10. <http://dx.doi.org/10.15585/mmwr.mm6914e1>. PubMed PMID: 32271722; PubMed
1275 Central PMCID: 7147908
- 1276 186. Hoffmann F, Eggers D, Pieper D, Zeeb H, Allers K. An Observational Study Found Large
1277 Methodological Heterogeneity in Systematic Reviews Addressing Prevalence and Cumulative
1278 Incidence. J Clin Epidemiol. 2020;119:92-9. Epub 20191203.
1279 <https://doi.org/10.1016/j.jclinepi.2019.12.003>. PubMed PMID: 31809847.

- 1280 187. Long QX, Tang XJ, Shi QL, Li Q, Deng HJ, Yuan J, et al. Clinical and Immunological
1281 Assessment of Asymptomatic Sars-Cov-2 Infections. Nat Med. 2020. Epub 2020/06/20.
1282 <https://doi.org/10.1038/s41591-020-0965-6>. PubMed PMID: 32555424.
- 1283 188. Karim SSA, Karim QA. Omicron Sars-Cov-2 Variant: A New Chapter in the Covid-19
1284 Pandemic. Lancet. 2021;398(10317):2126-8. Epub 20211203. [https://doi.org/10.1016/s0140-6736\(21\)02758-6](https://doi.org/10.1016/s0140-6736(21)02758-6). PubMed PMID: 34871545; PubMed Central PMCID: 8640673.
- 1286 189. Sharma RP, Gautam S, Sharma P, Singh R, Sharma H, Parsoya D, et al. Clinico
1287 Epidemiological Profile of Omicron Variant of Sars Cov2 in Rajasthan. medRxiv [Preprint].
1288 2022:2022.02.11.22270698. <https://doi.org/10.1101/2022.02.11.22270698>.
- 1289 190. Brandal LT, MacDonald E, Veneti L, Ravlo T, Lange H, Naseer U, et al. Outbreak Caused by
1290 the Sars-Cov-2 Omicron Variant in Norway, November to December 2021. Euro Surveill.
1291 2021;26(50). <https://doi.org/10.2807/1560-7917.es.2021.26.50.2101147>. PubMed PMID: 34915975;
1292 PubMed Central PMCID: PMC8728491.
- 1293 191. The Guardian Dismay as Funding for Uk's 'World-Beating' Covid Trackers Is Axed
1294 12.03.2022 [Access Date:17.03.2022]. Available from:
1295 <https://www.theguardian.com/world/2022/mar/12/dismay-as-funding-for-uks-world-beating-covid-trackers-is-axed>.
1296
- 1297
- 1298 **Acknowledgements**
- 1299 We are very grateful to Dianne Egli-Gany, Michel J. Counotte, Stefanie Hossmann who were part of
1300 our original core team of reviewers and contributed to the first three versions of this living systematic
1301 review.
- 1302 **Author contributions**
- 1303 **Conceptualization:** Diana Buitrago-Garcia, Aziz Mert Ipekci, Leonie Heron, Nicola Low
- 1304 **Data Curation:** Diana Buitrago-Garcia, Aziz Mert Ipekci, Leonie Heron, Hira Imeri, Lucia Araujo-
1305 Chaveron, Ingrid Arevalo-Rodriguez, Agustín Ciapponi, Muge Cevik, Muhammad Irfanul Alam,
1306 Kaspar Meili, Eric A. Meyerowitz, Nirmala Prajapati, Xueting Qiu, Aaron Richterman, William
1307 Gildardo Robles-Rodríguez, Shabnam Thapa, Ivan Zhelyazkov.
- 1308 **Data extraction:** Diana Buitrago-Garcia, Aziz Mert Ipekci, Leonie Heron, Eric A. Meyerowitz,
1309 Aaron Richterman, Nirmala Prajapati, William Gildardo Robles-Rodríguez, Nicola Low
- 1310 **Risk of Bias assessment:** Diana Buitrago-Garcia, Aziz Mert Ipekci, Leonie Heron, Ingrid Arevalo-
1311 Rodriguez, Anthony Hauser, Aaron Richterman, Nirmala Prajapati, William Gildardo Robles-
1312 Rodríguez, Nicola Low
- 1313 **Formal Analysis:** Leonie Heron, Georgia Salanti, Nicola Low
- 1314 **Methodology:** Diana Buitrago-Garcia, Aziz Mert Ipekci, Leonie Heron, Anthony Hauser, Georgia
1315 Salanti, Nicola Low
- 1316 **Project Administration:** Diana Buitrago-Garcia, Aziz Mert Ipekci, Leonie Heron, Hira Imeri
- 1317 **Supervision:** Georgia Salanti, Nicola Low
- 1318 **Validation:** Diana Buitrago-Garcia, Aziz Mert Ipekci, Leonie Heron, Hira Imeri, Lucia Araujo-
1319 Chaveron, Ingrid Arevalo-Rodriguez, Agustín Ciapponi, Muge Cevik, Muhammad Irfanul Alam,
1320 Kaspar Meili, Eric A. Meyerowitz, Nirmala Prajapati, Xueting Qiu, Aaron Richterman, William
1321 Gildardo Robles-Rodríguez, Shabnam Thapa, Ivan Zhelyazkov, Anthony Hauser, Nicola Low

- 1322 **Writing-Original Draft:** Diana Buitrago-Garcia, Aziz Mert Ipekci, Leonie Heron, Nicola Low
- 1323 **Writing- review & editing:** Diana Buitrago-Garcia, Aziz Mert Ipekci, Leonie Heron, Hira Imeri,
1324 Lucia Araujo-Chaveron, Ingrid Arevalo-Rodriguez, Agustín Ciapponi, Muge Cevik, Muhammad
1325 Irfanul Alam, Kaspar Meili, Eric A. Meyerowitz, Nirmala Prajapati, Xueting Qiu, Aaron Richterman,
1326 William Gildardo Robles-Rodríguez, Shabnam Thapa, Ivan Zhelyazkov, Anthony Hauser, Georgia
1327 Salanti, Nicola Low.
- 1328 **Funding**
- 1329 Funding was received from the Swiss National Science Foundation (320030_176233, to
1330 NL), <http://www.snf.ch/en/Pages/default.aspx> ; European Union Horizon 2020 research
1331 and innovation programme (101003688, to NL), <https://ec.europa.eu/programmes/horizon2020/en> ;
1332 Swiss government excellence Scholarship (2019.0774, to
1333 DBG [https://www.sbf.admin.ch/sbf/en/home/education/scholarships-and-grants/swiss-government-](https://www.sbf.admin.ch/sbf/en/home/education/scholarships-and-grants/swiss-government-excellence-scholarships.html)
1334 [excellence-scholarships.html](https://www.sbf.admin.ch/sbf/en/home/education/scholarships-and-grants/swiss-government-excellence-scholarships.html) and the Swiss School of Public Health Global P3HS stipend (to
1335 DBG), [https://ssphplus.ch/en/](https://ssphplus.ch/en/globalp3hs/) globalp3hs/.
- 1336 The funders had no role in study design, data collection and analysis, decision to publish, or
1337 preparation of the manuscript
- 1338 **Competing interest statement**
- 1339 NL is an academic editor at PLOS Medicine, received the grant funding from the organisations
1340 declared above, is a member of the Swiss National COVID-19 Science Task Force, and is on the
1341 scientific board of Sefunda, a start-up company that develops point-of-care diagnostics for sexually
1342 transmitted infections.
- 1343 DBG receives funding from the organisations declared above.
- 1344 AMI, LH, HI receive salary support from the grants to NL from the Swiss National
1345 Science Foundation 320030_176233, and/or European Union H2020 101003688.
- 1346 **Supporting Information**
- 1347 S1. PRISMA Checklist
- 1348 S1 Text. Search strings
- 1349 S2 Text. Risk of Bias tool
- 1350 S1 Appendix. Data extraction forms
- 1351 S2 Appendix. Analysis of other systematic reviews on asymptomatic SARS-CoV-2
- 1352 S1 Table. Studies included in version 3.0 and excluded in version 4.0 of the living systematic review
- 1353 S2 Table. Characteristics of studies reporting on proportion of asymptomatic SARS-CoV-2 infections
1354 (review question 1 and question 2)
- 1355 S3 Table. Location of studies contributing data to review question 1
- 1356 S4 Table. Subgroup analysis according to risk of bias
- 1357 S5 Table. Characteristics of mathematical modelling studies
- 1358 S1 Fig. Flowchart of identified, excluded, and included records as of 6 July 2021
- 1359 S2 Fig. Forest plot of proportion of people with asymptomatic SARS-CoV-2 infection, stratified by
1360 study design.

- 1361 S3 Fig. Risk of bias assessment of studies in question 1 and 2
- 1362 S4 Fig. Forest plot of proportion of people with asymptomatic SARS-CoV-2 infection by date of
- 1363 publication.
- 1364 S5 Fig. Assessment of credibility of mathematical modelling studies.