

1
2
3
4 High prevalence of long-term olfactory disorders in healthcare workers after
5 COVID-19: a case-control study
6

7 Johannes Frasnelli^{1, 2¶}, Arnaud Tognetti^{1, 3¶}, Anja L. Winter¹, Evelina Thunell¹, Mats J. Olsson¹, Nina
8 Greilert⁴, Jonas K. Olofsson⁵, Sebastian Havervall⁴, Charlotte Thålin^{4&}, and Johan N. Lundström^{1, 6&}

9
10 ¹ Department of Clinical Neuroscience, Karolinska Institutet, Stockholm, Sweden

11 ² Department of Anatomy, Université du Québec à Trois-Rivières, Trois-Rivieres, QC, Canada

12 ³ CEE-M, CNRS, INRAE, Institut Agro, University of Montpellier, Montpellier, France

13 ⁴ Department of Clinical Sciences, Karolinska Institutet, Danderyd Hospital, Stockholm, Sweden

14 ⁵ Department of Psychology, Stockholm University, Stockholm, Sweden

15 ⁶ Monell Chemical Senses Center, Philadelphia, PA, USA

16

17 * Corresponding Author:

18 E-mail: Johan.Lundstrom@ki.se (JL)

19 ¶JF and AT share first authorship.

20 &CT and JNL are Joint Senior Authors.

21

22

23 Abstract

24 **Background** More than a year after recovering from COVID-19, a large proportion of individuals, many
25 of whom work in the healthcare sector, still report olfactory dysfunctions. However, olfactory dysfunction
26 was common already before the COVID-19 pandemic, making it necessary to also consider the existing
27 baseline prevalence of olfactory dysfunction. To establish the adjusted prevalence of COVID-19 related
28 olfactory dysfunction, we assessed smell function in healthcare workers who had contracted COVID-19
29 during the first wave of the pandemic using psychophysical testing.

30 **Methods:** Participants were continuously tested for SARS-CoV-2 IgG antibodies since the beginning of the
31 pandemic. To assess the baseline rate of olfactory dysfunction in the population and to control for the
32 possibility of skewed recruitment of individuals with prior olfactory dysfunction, consistent SARS-CoV-2
33 IgG naïve individuals were tested as a control group.

34 **Results:** Fifteen months after contracting COVID-19, 37% of healthcare workers demonstrated a
35 quantitative reduction in their sense of smell, compared to only 20% of the individuals in the control group.
36 Fifty-one percent of COVID-19-recovered individuals reported qualitative symptoms, compared to only 5%
37 in the control group. In a follow-up study 2.6 years after COVID-19 diagnosis, 24% of all tested recovered
38 individuals still experienced parosmia.

39 **Conclusions:** In summary, 65% of healthcare workers experienced parosmia/hyposmia 15 months after
40 contracting COVID-19. When compared to a control group, the prevalence of olfactory dysfunction in the
41 population increased by 41 percentage points. Parosmia symptoms were still lingering two-and-a half years
42 later in 24% of SARS-CoV-2 infected individuals. Given the amount of time between infection and testing,
43 it is possible that the olfactory problems may not be fully reversible in a plurality of individuals.

44

45 **Keywords:** COVID-19; Long COVID; Olfactory dysfunction; Parosmia;

46 **Introduction**

47 Olfactory dysfunction is the most specific symptom of acute COVID-19 [1–3] and our ability to smell can
48 be heavily impacted by the disease [4]. In many patients, olfactory function is regained after the acute phase
49 [5], yet a non-negligible proportion of patients exhibits chronic dysfunction [6]. Estimations of the
50 prevalence of olfactory dysfunction 6 months after COVID-19, the threshold for chronicity of olfactory
51 dysfunction, vary widely [5,7–13]. A recent assessment of olfactory dysfunction based on subjective reports
52 suggests that a staggering 61% still experience olfactory dysfunction two years after infection [6].

53 Despite the clear evidence that COVID-19 can result in long-term olfactory dysfunction, there are
54 several caveats in current prevalence estimates that may account for the large differences in reported
55 estimates. First, most of the estimations are based on self-reported olfactory dysfunction which is
56 notoriously unreliable [14,15]. Second, COVID-19 status is seldom determined by biological assays but
57 rather by self-reported status, which can bias the estimations. Third, the prevalence of olfactory dysfunction
58 unrelated to COVID-19 is usually not considered. In fact, olfactory dysfunction in the general population
59 was estimated to be around 20% before the pandemic [16–19], with leading causes being sinonasal diseases,
60 traumatic brain injuries, and viral infections of the upper respiratory tract [20]. Thus, an accurate estimate
61 of the prevalence of olfactory dysfunction after COVID-19 infection requires consideration of the
62 prevalence of olfactory dysfunction in a sample where COVID-19 infection can be ruled out.

63 Olfactory dysfunction encompasses various impairments to the sense of smell, categorized into
64 quantitative dysfunction, involving a reduction or loss of olfactory function (hyposmia or anosmia) [19],
65 and qualitative dysfunction, which involves altered odor perception such as parosmia or phantosmia.
66 Standardized assessments of parosmia and phantosmia can currently only be carried out using
67 questionnaires [21] due to their subjective nature. While self-evaluation questionnaires are commonly used
68 to assess quantitative dysfunction, their precision warrants caution in interpretation [14,15]. Therefore, when
69 estimating the prevalence of olfactory dysfunction after COVID-19, a comprehensive approach should

70 incorporate both questionnaires and well-validated gold standard psychophysical tests [22,23] for a more
71 accurate assessment of objective and subjective aspects.

72 Healthcare workers may be particularly affected by long-term consequences of COVID-19. For
73 example, mental health disorders were particularly high in this population both during and following
74 COVID-19 [24,25]. In line with this, nearly half of infected healthcare workers reported reduced
75 chemosensory abilities one year after COVID-19 [5], which is considerably higher than in the general
76 population [26]. It is therefore particularly valuable to study the long-term effects of COVID-19 on olfactory
77 function in this group. We designed this study to assess olfactory dysfunction in a sample of healthcare
78 workers where continuous serum assessments of SARS-CoV-2 infection were available. Specifically, we
79 included two groups of participants; one group that had undergone SARS-CoV-2 infection and a control
80 group that had not, as confirmed by the continuous serum testing. Our objective was to establish the
81 prevalence of olfactory dysfunction due to COVID-19 up to 15 months after infection by evaluating
82 olfactory dysfunction with validated olfactory tests in both groups. We hypothesized that the group who had
83 undergone SARS-CoV-2 infection would be afflicted by a significantly higher prevalence of olfactory
84 dysfunction compared to the control group.

85

86 **Materials and method**

87 **Participants**

88 All participants were recruited from the ongoing COMMUNITY (COVID-19 Immunity) study that enrolled
89 2149 healthcare workers employed at Danderyd Hospital, Stockholm in April 2020. All participants were
90 tested for SARS-CoV-2 IgG antibodies every four months since the beginning of the pandemic [2], see
91 <https://ki.se/en/kids/community> for more information. We screened out individuals with acute nasal
92 congestion/rhinorrhea, neurodegenerative diseases, and other conditions associated with reduced olfactory

93 function. All participants gave written informed consent, and the study was approved by the Swedish Ethical
94 Review Authority (dnr 2021-02052).

95 We recruited healthcare workers that had contracted COVID-19 during the first wave in Stockholm
96 between January and May 2020. Of a total of 320 SARS-CoV-2 IgG positive individuals, 100 participated
97 in the current study. Two were excluded due to an inability to perform the tests, leaving a final sample of
98 98 COVID+ participants (average age: 48 years; SD ± 12 ; 84 women; average time since infection 447, SD
99 ± 73 , days). All participants had experienced mild COVID-19 and had not required hospitalization. We
100 further invited an equal number of SARS-CoV-2 naïve, meaning SARS-CoV-2 IgG negative during all
101 sampling timepoints since enrollment, healthcare workers from the same cohort with a similar age profile.
102 A total of 44 individuals were included, with 3 individuals subsequently excluded due to olfactory-related
103 sickness, excessive construction noise during testing precluding concentration, and refusal to perform some
104 tests. This resulted in a final control sample of 41 COVID- participants (average age: 51 years; SD ± 11 ; 38
105 women).

106 **Chemosensory assessments**

107 **Quantitative olfactory dysfunction**

108 Quantitative olfactory dysfunction was assessed using two different approaches. First, we assessed
109 subjective quantitative olfactory function using a 10-point visual analog scale. Participants responded to the
110 question “*How has your sense of smell been during the last three days?*”; the scale ranged from 0 (no smell)
111 to 10 (very good sense of smell). Second, we assessed objective quantitative olfactory function
112 psychophysically, using the Sniffin’ Sticks test battery [23]. This test is based on felt-tip pen-like odor
113 dispensing devices and allows for separate assessments of the ability to discriminate (D) and identify (I)
114 odors as well as an olfactory detection threshold (T). To assess odor quality discrimination, 16 triplets of
115 pens were presented to the participant. Each triplet consisted of two pens with identical odorants and one
116 with an odorant of different quality. To evaluate odor identification abilities, we used a forced-choice cued
117 identification task using 16 different odorants. Each odor was presented together with a cue card listing four

118 alternative odor labels, and the participant picked the label that best described the quality of the perceived
119 odor. To estimate odor detection thresholds, we used the odor n-Butanol in a three-alternative forced-choice
120 staircase procedure with seven reversals in a 16-step binary dilution series. The individual sub-scores were
121 then combined to a global TDI score, for which normative data are available and allows for the diagnosis
122 of normosmia, hyposmia, and functional anosmia [27].

123 **Qualitative olfactory dysfunction**

124 Qualitative olfactory dysfunction was assessed using a questionnaire containing four items [21]. The
125 questionnaire addressed aspects of qualitative olfactory dysfunction with regards to alterations in food
126 perception, the presence of odors in absence of an odor source, pleasantness of perceived odors, and the
127 impact of the perception of altered odors; participants could respond using a 4-point scale ranging from 1
128 (never) to 4 (always). We analyzed the questionnaire in two ways: first, we calculated the sum score of all
129 four items (Parosmia score). Then, we counted the number of participants who responded *always*, *often*, or
130 *rarely* to the question “*the biggest problem is not that I do not or weakly perceive odors, but that they smell*
131 *different than they should* vs those who responded *never* (Parosmia presence).

132 **Serological analyses of antibodies**

133 A detailed description of serological analyses has been presented elsewhere [2]. Briefly, IgG reactivity was
134 measured towards three different SARS-CoV-2 virus protein variants, Spike trimers, Spike S1 domain, and
135 Nucleocapsid protein, and analyzed using a multiplex antigen bead array in high throughput 384-plates form
136 at using a FlexMap3D (Luminex Corp)[28]. To be assigned to the SARS-CoV-2 IgG positive group,
137 reactivity against at least two of the three different variants of the viral antigens was required, calculated to
138 have 99.2% sensitivity and 99.8% specificity [2]. We did not determine individual virus variants but random
139 sampling of the Stockholm population during the time participants in this study were infected showed that
140 three main strains of Variants Being Monitored (VBM) of the SARS-CoV-2 dominated, namely the
141 Wildtype, and to a lesser extent, the B.1.1/B.1.1.29 and B.1.1.1/C.14 [29].

142 **Procedure**

143 Olfactory dysfunction data were collected between June and November 2021. Upon inclusion, participants
144 responded to a questionnaire containing the VAS and the parosmia questions before the Sniffin' Sticks test
145 battery was administered. The total testing time was 1.5 h and participants received monetary compensation
146 for their participation.

147 **Follow-up**

148 To further estimate the persistence of qualitative olfactory dysfunction, participants diagnosed with
149 established parosmia were contacted approximately one year after their initial participation for a follow-up
150 conducted via phone. Out of the 48 participants contacted, 41 individuals responded to the follow-up
151 assessment (with an average time since infection of 963 days, i.e., over 2.6 years since onset; SD ± 64 days),
152 which featured identical questions and response options as those used during the initial assessment.

153 **Statistics**

154 To assess whether an infection with SARS-CoV-2 correlated with long-term quantitative and/or qualitative
155 olfactory dysfunction we compared scores on the (a) parosmia questionnaire (4 COVID+ and 3 COVID-
156 individuals refrained from answering this questionnaire), (b) quantitative subjective olfactory dysfunction
157 scale, and (c) Sniffin' Sticks test between COVID+ and COVID- groups. To correct for the uneven sample
158 size between the two groups as well as the non-normal distribution of the variables, we performed non-
159 parametric statistical group comparisons using a two-sided Wilcoxon rank sum test with continuity
160 correction. We also compared frequencies between groups using chi-square tests.

161 **Availability of data materials**

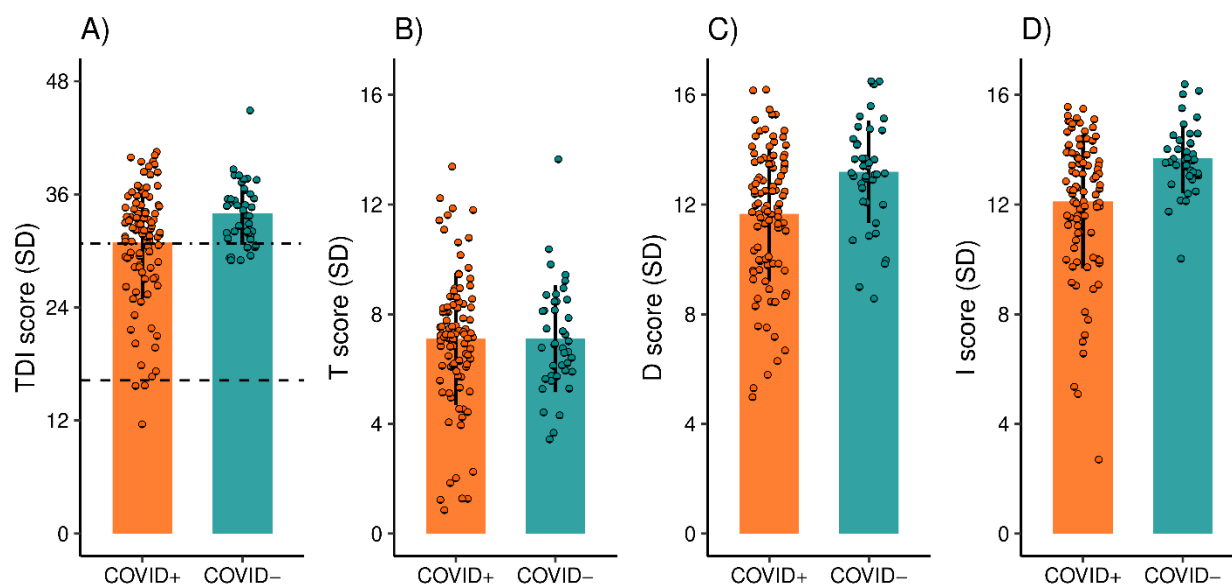
162 The datasets generated along with associated scripts and figures are available on the Open Science
163 Framework data depository https://osf.io/hja2p/?view_only=53d8bb21c06c48d2bee231f75797789c

164

165 Results

166 First, we assessed quantitative olfactory dysfunction. To do so, we explored potential differences in
167 subjective performance: here, participants from the COVID+ group (N = 98) evaluated their olfactory
168 function as significantly worse, 6.9 ($SD \pm 2.5$) out of a total of 10 points compared to the COVID- group (N
169 = 41), 8.9 points ($SD \pm 1.2$; $W = 955$; $N = 139$, $p < .0001$). In line with the subjective experience, the average
170 Sniffin' Sticks TDI score was also significantly lower in the COVID+ group according to a Wilcoxon rank
171 sum test, 30.9 points ($SD \pm 5.9$), compared to the COVID- group, 34.0 points ($SD \pm 3.4$; $W = 1416.5$; $N =$
172 139 , $p = .006$; Figure 1A). Interestingly, upon separate analysis of the TDI subscales, only discrimination
173 ($W = 1293$; $N = 139$, $p = .0008$; Figure 1C) and identification ($W = 1213.5$; $N = 139$, $p = .0002$; Figure 1D)
174 subscores were significantly lower in the COVID+ group ($D = 11.66 \pm 2.5$, $I = 12.11 \pm 2.5$) compared to
175 the COVID- group ($D = 13.19 \pm 1.9$, $I = 13.68 \pm 1.3$). However, no statistically significant difference ($W =$
176 2107 ; $N = 139$, $p = .65$; Figure 1B) was observed for the threshold subscore between the two groups
177 (COVID+ = 7.10 ± 2.4 , COVID- = 7.11 ± 2.0). We then assessed the proportion of individuals with a
178 clinically relevant quantitative olfactory dysfunction. Based on the TDI score, the frequency of quantitative
179 olfactory dysfunction was significantly higher ($X^2(1, N = 139) = 6.28$, $p = .01$) in the COVID+ group
180 compared to the COVID- group. A total of 37% of the COVID+ group suffered quantitative olfactory
181 dysfunction, with 4 individuals exhibiting anosmia (TDI score = 14.88 ± 2.0) and 32 individuals exhibiting
182 hyposmia (TDI score = 26.11 ± 3.9). In the COVID- group, 20% (N = 8) showed quantitative olfactory
183 dysfunction, all of whom had hyposmia (TDI score = 29.56 ± 0.8). The average TDI scores for individuals
184 with normosmia were 34.38 ($SD = 2.6$) and 35.06 ($SD = 2.8$) for the COVID+ and the COVID- groups,
185 respectively. Last, we investigated whether the degree of quantitative olfactory dysfunction was influenced
186 by the time since COVID-19 infection and individuals' age. A Spearman correlation test indicated that the
187 TDI score of individuals from the COVID+ group was not significantly affected by the number of days
188 since infection (N = 71, $r = -.1$, $p = .43$; see Supplementary Figure S1A). However, TDI significantly
189 declined with age in the COVID+ group (Spearman correlation test, $r = -.28$, $p = .005$, Supplementary Figure

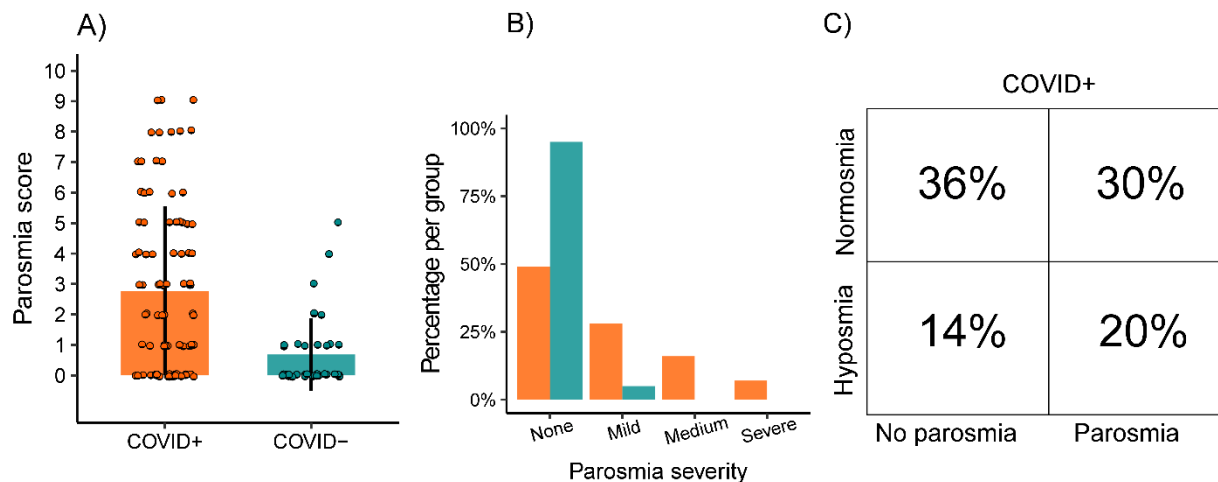
190 S1B). It's worth noting that in the COVID- group, a similar negative relationship between TDI and age was
191 observed, although it did not reach statistical significance ($r = -.27, p = .09$, Supplementary Figure S1B).



192
193 **Figure 1. Quantitative olfactory dysfunctions for COVID-19 positive (COVID+, N = 98) and COVID-19 naïve**
194 **(COVID-, N = 41) groups.** (A) Mean TDI scores for COVID+ and COVID- groups with error bars denoting standard
195 deviation (SD) as well as values for each participant indicated by circles. Dashed lines indicate cut-off scores for the
196 clinical diagnoses Hyposmia (threshold score: 30.75) and Anosmia (threshold score: 16.25). Higher TDI scores
197 (possible range 1-48) indicate better olfactory performance. TDI subscale scores for the COVID+ and COVID- groups
198 are presented with error bars denoting standard deviation (SD) for (B) Threshold, (C) Discrimination, and (D)
199 Identification scores separately.

200
201 Next, we assessed to what level individuals in the respective groups experienced qualitative
202 olfactory dysfunction using the 4-item parosmia scale. The average score was significantly higher in the
203 COVID+ group, 2.8 points ($SD \pm 2.8$), compared to the COVID- group, 0.7 points ($SD \pm 1.2$; Wilcoxon rank
204 sum, $W = 2595$; $N = 132, p < .0001$; Figure 2A). Correspondingly, we found that significantly more
205 individuals from the COVID+ group reported parosmia (48 of 94 participants, 51%) relative to individuals
206 from the COVID- group (2 of 38 participants, 5%; $X^2(1, N = 132) = 22.2, p < .0001$). To understand the

207 degree of symptom severity, we also assessed the answers to the parosmia severity question in each group.
 208 As can be seen in Figure 2B, slightly more than half of the individuals in the COVID+ group who reported
 209 parosmia symptoms experienced only minor symptoms (None 49%, Mild, 28%, Medium 16%, Severe 7%).
 210 This means that about a quarter of all individuals in the COVID+ group experienced medium to severe
 211 parosmia symptoms 15 months after COVID-19.



212
 213 **Figure 2. Distribution of parosmia score.** A) Distribution of scores per patient group (N = 94), COVID-19 positive
 214 (COVID+) and COVID-19 naïve (COVID-, N = 38), on the Landis parosmia questionnaire. B) Percentage of
 215 individuals in each patient group, grouped by reported parosmia severity score. C) Proportion of COVID+ participants
 216 (N = 94) in each olfactory dysfunction classification group.

217
 218 Further, we followed up with 48 individuals from the COVID+ group with established parosmia 2.6
 219 years after COVID-19 infection. Of the 41 individuals who responded, 23 (56% of sub-sample, 24% of total
 220 initial COVID+ sample) still experienced parosmia. In fact, 41% indicated that they experienced medium
 221 to severe parosmia symptoms (None 43.9%, Mild, 14.6%, Medium 31.7%, Severe 9.8%). This long-lasting
 222 qualitative olfactory dysfunction was also reflected by a high parosmia score (3.1 ± 2.3 points).

223 As to be expected, there was a considerable comorbidity between diagnoses. While 35% of the
 224 COVID+ group (total N = 94) experienced no olfactory dysfunction at all, 14% experienced
 225 anosmia/hyposmia but no parosmia, 29% experienced parosmia but no anosmia/hyposmia, and 22%

226 experienced both anosmia/hyposmia and parosmia. In other words, a total of 65% of COVID+ participants
227 experienced some form of olfactory dysfunction on average 15 months after COVID-19 (Figure 2C). This
228 frequency was lower in the COVID- group (N = 38) where only 24% experienced some form of olfactory
229 dysfunction, 76% experienced no olfactory dysfunction, none had anosmia, 18% experienced hyposmia but
230 no parosmia, 3% experienced parosmia but no hyposmia, and 3% experienced both hyposmia and
231 parosmia). As expected, the frequency of combined quantitative and qualitative olfactory dysfunction was
232 significantly lower in the COVID- group compared to the COVID+ group ($\chi^2(1, N = 132) = 32.4, p <$
233 $.0001$). This means that COVID-19 increased olfactory dysfunction (parosmia, hyposmia, or parosmia and
234 hyposmia) with 41 percentage points (COVID+: 65%; COVID-: 24%) 15 months after COVID-19 onset.

235

236 **Discussion**

237 More than a year after recovering from COVID-19, nearly two thirds (65%) of participating healthcare
238 workers still exhibited some form of olfactory dysfunction with more than a third (37%) showing a clinically
239 reduced sense of smell. In comparison, approximately a quarter (24%) of individuals without prior SARS-
240 CoV-2 infection displayed clinically altered sense of smell. Further, amongst the individuals who
241 experienced SARS-CoV-2 infection, about half (51%) experienced parosmia, compared to only 5% in the
242 SARS-CoV-2 naive group; an increase of parosmia due to COVID-19 with 46 percentage points. More
243 specifically, the first wave of COVID-19 nearly doubled the prevalence of olfactory dysfunction in this
244 population from 20% to 36% and increased the prevalence of any form of olfactory dysfunction by a full 41
245 percentage points compared to individuals whose immune system was never exposed to the virus. Perhaps
246 even more striking, 24% of all tested COVID-19 survivors still experience parosmia 2.6 years after COVID-
247 19 diagnosis, nearly half of which experience medium to severe symptoms.

248 Olfactory dysfunction is common also in the general population. Before the COVID-19 pandemic,
249 the rate of quantitative olfactory dysfunction was consistently estimated to approximately 20% [16,19]. In

250 our control sample of COVID-19 naïve individuals, we found a similar percentage with 20% of the
251 participants exhibiting quantitative olfactory dysfunction. As outlined above, olfactory dysfunction can have
252 different etiologies, including sinonasal disease, traumatic brain injury, neurodegenerative diseases, and
253 more [20,30]. It is therefore crucial to assess the prevalence of olfactory dysfunction due to COVID-19
254 against this background of olfactory dysfunction in the population. Our data suggests that COVID-19
255 roughly doubles the prevalence of quantitative olfactory dysfunction in the general population. A different
256 and bleaker picture emerges when considering also qualitative olfactory dysfunction, i.e., parosmia and
257 phantosmia. These conditions are relatively rare in the general population, which is also reflected by the
258 prevalence of 5% in the COVID-19 naïve group aligning with prior assessments of Swedish samples
259 [31,32]. However, nearly half of the COVID+ group exhibited qualitative olfactory dysfunction on average
260 15 months after contracting the disease.

261 Our study shows that 37% of COVID+ individuals still experienced reduction in their olfactory
262 performance, even on average 15 months after COVID-19 onset. This percentage is higher compared to
263 similar studies, see among others [13]. Notably, while there was a significant difference in overall olfactory
264 functions between the two groups, as operationalized by the TDI scores, this difference was restricted to
265 performance on the odor quality discrimination and odor identification subtests, but not in odor detection
266 threshold. This finding suggests that a potential underlying driver of the differences is the large difference
267 in parosmia that might distort the odor quality of the odors included in the two-odor subtest.

268 It is not yet completely understood how a SARS-CoV-2 infection leads to olfactory dysfunction.
269 The leading explanation of the acute olfactory dysfunction seen in patients is linked to the ability of the
270 virus to infect human cells that co-express ACE2 and TMPRSS2 proteins, such as the sustentacular cells of
271 the olfactory mucosa [33]. Upon infection, these cells degenerate, which disturbs the local environment and
272 crucially results in cell death of olfactory receptor neurons and consequently olfactory dysfunction [33,34].
273 The olfactory system demonstrates however a very good ability to regenerate [35], which might explain

274 why most SARS-CoV-2 infected individuals regain olfactory abilities within weeks following the acute
275 phase [5,9]. It is not yet clear why some individuals do not completely regain their olfactory abilities.

276 Recent data from the verbal track-and-trace program in the United Kingdom suggests that fewer
277 individuals report subjective olfactory dysfunction after infection with the later Omicron (BA.1. and BA.2)
278 variants than the original virus variants [36]. We do not know what specific virus variants individuals in our
279 sample was infected with or exactly what proportions of virus variants dominated in our specific sample,
280 but random sampling of the Stockholm population at the time indicated that the Wildtype and, to a lesser
281 extent the B.1.1/B.1.1.29 and B.1.1.1/C.14 strains, dominated [29]. Although tentative data suggest that
282 fewer individuals report subjective olfactory dysfunction after Omicron variant infection, these are based
283 on subjective data collected only a day or two after testing positive. Whether potential lower numbers of
284 olfactory dysfunction after Omicron or other later variants could be due to a delay in onset of olfactory
285 dysfunction that in turn might affect long-term outcomes, remains to be determined. Future studies should
286 address differences between virus variants in effects on olfactory function.

287 A significant strength of the present study is that all participants were continuously serologically
288 monitored from the onset of the pandemic, meaning that it can be firmly established not only that all
289 participants in the COVID+ group had undergone a SARS-CoV-2 infection, but also when. Critically, we
290 can firmly claim that no participants in the COVID- group, a control group from the same cohort, had
291 seroconverted at any point before sensory testing, thereby giving us a true baseline for existing olfactory
292 dysfunction prevalence. Likewise, most studies assessing olfactory dysfunction in a general population
293 suffer from collider bias, i.e., that individuals that experience olfactory problems are more likely to volunteer
294 for the study in the first place, thereby erroneously increasing the prevalence of dysfunction. By using a
295 control group undergoing the same recruitment strategy as the target group and the population being
296 healthcare professionals, possibly better informed and willing to participate in research without personal
297 gain, it can be assumed that collider bias acts in equal strength across groups. It can be argued that healthcare
298 workers, in general, are a group consisting of generally more healthy individuals than the general population.

299 Olfactory problems and their underlying mechanisms therefore could be different than other populations.
300 However, the fact that we obtained identical prevalence of olfactory dysfunction in the COVID- group as
301 the only two previously published prevalence studies in a Swedish sample do not support this notion [31,32].
302 That said, the strengths mentioned come from the fact that we sampled from a smaller group of closely
303 monitored individuals with a profession that was unfortunately highly taxed for time during a pandemic.
304 This meant that obtaining data from a large and diverse sample was not possible. In addition to the relatively
305 small sample sizes, the COVID+ group had nearly double the participants compared to the COVID- groups,
306 which we aim to statistically control for by using methods such as the Wilcoxon rank sum test. These tests
307 do not assume equal sample sizes and are therefore robust against differences in sample size. Another
308 weakness is that the sex ratio in both groups were skewed with more women participating, which, however,
309 also reflects the underlying population of healthcare workers. Women are also known to be slightly more
310 prone to experiencing long-term effects on olfactory function after upper respiratory infections [37].
311 Whether the skewed sex ratio of our sample affects the generalization of our results to other populations of
312 healthcare workers is not known.

313 **Conclusion**

314 We show that COVID-19 nearly doubles the already large prevalence of quantitative olfactory
315 dysfunction to approximately 37% in a sample of healthcare workers. Furthermore, about half of the
316 COVID-19 survivors exhibit qualitative olfactory dysfunction. Finally, nearly two thirds (65%) of COVID-
317 19 survivors in this group of healthcare workers exhibit olfactory dysfunction of some form 15 months and
318 24% reported parosmia 2.6 years after infection. Given the length of time, it is possible that these olfactory
319 problems may not be fully reversible in a plurality of individuals.

320

321 **Authorship contribution**

322 ALW, NG, ET, SH, CT, JKO, & JNL contributed to design and acquisition, JF, AT, & JNL analysed and
323 wrote the manuscript, all authors contributed to the interpretation of the data, revisions of the manuscript,
324 and provided final approval of the article before submission.

325

326 **Conflict of interest**

327 No conflicts of interest are reported for all authors.

328

329 **Funding**

330 Funding was provided by grants awarded to JNL and CT from the Knut and Alice Wallenberg Foundation
331 (KAW 2018.0152 and KAW 2020.0182, respectively), the Swedish Research Council (2021-06527) and a
332 donation from Stiftelsen Bygg-Göta för Vetenskaplig forskning to JNL, as well as the Swedish Heart Lung
333 Foundation to CT (20210017_HLF). JF is supported by the Fonds de Recherche du Québec – Santé, the
334 Natural Sciences and Engineering Council of Canada (RGPIN-2022-04813) and the Canadian Institutes of
335 Health Research (PJT 173514). The funders had no role in study design, data collection and analysis,
336 decision to publish, or preparation of the manuscript.

337

338 **References**

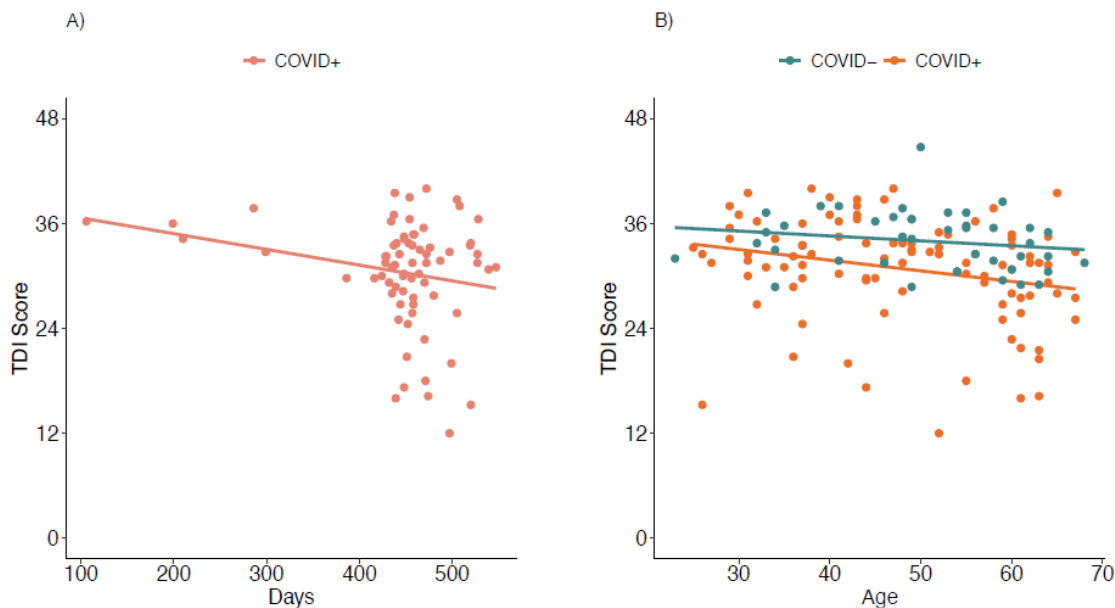
- 339 1. Gerkin RC, Ohla K, Veldhuizen MG, Joseph PV, Kelly CE, Bakke AJ, et al. Recent Smell Loss Is the
340 Best Predictor of COVID-19 Among Individuals With Recent Respiratory Symptoms. *Chem*
341 *Senses*. 2021;46. doi:10.1093/chemse/bjaa081
- 342 2. Rudberg A-S, Havervall S, Månberg A, Jernbom Falk A, Aguilera K, Ng H, et al. SARS-CoV-2
343 exposure, symptoms and seroprevalence in healthcare workers in Sweden. *Nat Commun*. 2020;11:
344 5064. doi:10.1038/s41467-020-18848-0

- 345 3. Bianco MR, Modica DM, Drago GD, Azzolina A, Mattina G, De Natale M, et al. Alteration of Smell
346 and Taste in Asymptomatic and Symptomatic COVID-19 Patients in Sicily, Italy. *Ear Nose Throat*
347 *J.* 2021;100: 182S-185S. doi:10.1177/0145561320981447
- 348 4. Parma V, Ohla K, Veldhuizen MG, Niv MY, Kelly CE, Bakke AJ, et al. More Than Smell-COVID-19
349 Is Associated With Severe Impairment of Smell, Taste, and Chemesthesis. *Chem Senses.* 2020;45:
350 609–622. doi:10.1093/chemse/bjaa041
- 351 5. Bussiere N, Mei J, Levesque-Boissonneault C, Blais M, Carazo S, Gros-Louis F, et al. Persisting
352 chemosensory impairments in 366 healthcare workers following COVID-19: an 11-month follow-
353 up. *Chem Senses.* 2022;47. doi:10.1093/chemse/bjac010
- 354 6. McWilliams MP, Coelho DH, Reiter ER, Costanzo RM. Recovery from Covid-19 smell loss: Two-
355 years of follow up. *Am J Otolaryngol.* 2022;43: 103607. doi:10.1016/j.amjoto.2022.103607
- 356 7. Boscolo-Rizzo P, Tofanelli M, Zanelli E, Gardenal N, Tirelli G. COVID-19-Related Quantitative and
357 Qualitative Olfactory and Gustatory Dysfunction: Long-Term Prevalence and Recovery Rate. *ORL*
358 *J Otorhinolaryngol Relat Spec.* 2022; 1–5. doi:10.1159/000525861
- 359 8. Capelli M, Gatti P. Anosmia in the first coronavirus disease 2019 outbreak in Europe: functional
360 recovery after eight months. *J Laryngol Otol.* 2021;135: 224–228.
361 doi:10.1017/S0022215121000670
- 362 9. Bussière N, Mei J, Lévesque-Boissonneault C, Blais M, Carazo S, Gros-Louis F, et al. Chemosensory
363 Dysfunctions Induced by COVID-19 Can Persist up to 7 Months: A Study of Over 700 Healthcare
364 Workers. *Chem Senses.* 2021;46. doi:10.1093/chemse/bjab038
- 365 10. Hopkins C, Surda P, Vaira LA, Lechien JR, Safarian M, Saussez S, et al. Six month follow-up of self-
366 reported loss of smell during the COVID-19 pandemic. *Rhinology.* 2021;59: 26–31.
367 doi:10.4193/Rhin20.544
- 368 11. Lechien JR, Chiesa-Estomba CM, Beckers E, Mustin V, Ducarme M, Journe F, et al. Prevalence and
369 6-month recovery of olfactory dysfunction: a multicentre study of 1363 COVID-19 patients. *J*
370 *Intern Med.* 2021;290: 451–461. doi:10.1111/joim.13209
- 371 12. Ohla K, Veldhuizen MG, Green T, Hannum ME, Bakke AJ, Moein ST, et al. A follow-up on
372 quantitative and qualitative olfactory dysfunction and other symptoms in patients recovering from
373 COVID-19 smell loss. *Rhinology.* 2022;60: 207–217. doi:10.4193/Rhin21.415
- 374 13. Bianco MR, Ralli M, Minni A, Greco A, de Vincentiis M, Allegra E. Evaluation of olfactory
375 dysfunction persistence after COVID-19: a prospective study. *Eur Rev Med Pharmacol Sci.*
376 2022;26: 1042–1048. doi:10.26355/eurrev_202202_28014
- 377 14. Landis BN, Hummel T, Hugentobler M, Giger R, Lacroix JS. Ratings of overall olfactory function.
378 *Chem Senses.* 2003;28: 691–694. doi:10.1093/chemse/bjg061
- 379 15. Lötsch J, Hummel T. Clinical Usefulness of Self-Rated Olfactory Performance-A Data Science-
380 Based Assessment of 6000 Patients. *Chem Senses.* 2019;44: 357–364. doi:10.1093/chemse/bjz029

- 381 16. Brämerson A, Johansson L, Ek L, Nordin S, Bende M. Prevalence of olfactory dysfunction: the
382 skövde population-based study. *Laryngoscope*. 2004;114: 733–737. doi:10.1097/00005537-
383 200404000-00026
- 384 17. Devanand DP, Lee S, Manly J, Andrews H, Schupf N, Masurkar A, et al. Olfactory identification
385 deficits and increased mortality in the community. *Ann Neurol*. 2015;78: 401–411.
386 doi:10.1002/ana.24447
- 387 18. Karpa MJ, Gopinath B, Rochtchina E, Jie Jin Wang, Cumming RG, Sue CM, et al. Prevalence and
388 neurodegenerative or other associations with olfactory impairment in an older community. *J Aging*
389 *Health*. 2010;22: 154–168. doi:10.1177/0898264309353066
- 390 19. Landis BN, Konnerth CG, Hummel T. A study on the frequency of olfactory dysfunction.
391 *Laryngoscope*. 2004;114: 1764–1769. doi:10.1097/00005537-200410000-00017
- 392 20. Temmel AFP, Quint C, Schickinger-Fischer B, Klimek L, Stoller E, Hummel T. Characteristics of
393 olfactory disorders in relation to major causes of olfactory loss. *Arch Otolaryngol Head Neck Surg*.
394 2002;128: 635–641. doi:10.1001/archotol.128.6.635
- 395 21. Landis BN, Frasnelli J, Croy I, Hummel T. Evaluating the clinical usefulness of structured
396 questions in parosmia assessment. *Laryngoscope*. 2010;120: 1707–1713. doi:10.1002/lary.20955
- 397 22. Doty RL, Shaman P, Kimmelman CP, Dann MS. University of Pennsylvania Smell Identification
398 Test: a rapid quantitative olfactory function test for the clinic. *Laryngoscope*. 1984;94: 176–178.
399 doi:10.1288/00005537-198402000-00004
- 400 23. Hummel T, Sekinger B, Wolf SR, Pauli E, Kobal G. “Sniffin” sticks’: olfactory performance
401 assessed by the combined testing of odor identification, odor discrimination and olfactory threshold.
402 *Chem Senses*. 1997;22: 39–52. doi:10.1093/chemse/22.1.39
- 403 24. Wahlster S, Hartog C. Coronavirus disease 2019 aftermath: psychological trauma in ICU
404 healthcare workers. *Curr Opin Crit Care*. 2022;28: 686–694. doi:10.1097/MCC.0000000000000994
- 405 25. Lee BEC, Ling M, Boyd L, Olsson C, Sheen J. The prevalence of probable mental health disorders
406 among hospital healthcare workers during COVID-19: A systematic review and meta-analysis. *J*
407 *Affect Disord*. 2023;330: 329–345. doi:10.1016/j.jad.2023.03.012
- 408 26. Tan BKJ, Han R, Zhao JJ, Tan NKW, Quah ESH, Tan CJ-W, et al. Prognosis and persistence of
409 smell and taste dysfunction in patients with covid-19: meta-analysis with parametric cure modelling
410 of recovery curves. *BMJ*. 2022;378: e069503. doi:10.1136/bmj-2021-069503
- 411 27. Oleszkiewicz A, Schriever VA, Croy I, Hähner A, Hummel T. Updated Sniffin’ Sticks normative data
412 based on an extended sample of 9139 subjects. *Eur Arch Otorhinolaryngol*. 2019;276: 719–728.
413 doi:10.1007/s00405-018-5248-1
- 414 28. Hober S, Hellström C, Olofsson J, Andersson E, Bergström S, Jernbom Falk A, et al. Systematic
415 evaluation of SARS-CoV-2 antigens enables a highly specific and sensitive multiplex serological
416 COVID-19 assay. *Clin Transl Immunology*. 2021;10: e1312. doi:10.1002/cti2.1312
- 417 29. Dyrdak R, Albert J. Utredning av den initiala smittspridningen av SARS-CoV-2 till och inom Sverige.
418 Swedish Government; 2021 Oct. Report No.: 2021:89.

- 419 30. Hummel T, Landis BN, Rombaux P. Disrupted Odor Perception. In: Buettner A, editor. Springer
420 handbook of odor. Cham: Springer International Publishing; 2017. pp. 79–80. doi:10.1007/978-3-
421 319-26932-0_31
- 422 31. Nordin S, Brämerson A, Millqvist E, Bende M. Prevalence of parosmia: the Skövde population-based
423 studies. *Rhinology*. 2007;45: 50–53.
- 424 32. Olofsson JK, Eksten F, Nordin S. Olfactory distortions in the general population. *Sci Rep*. 2022;12:
425 9776. doi:10.1038/s41598-022-13201-5
- 426 33. Cooper KW, Brann DH, Farruggia MC, Bhutani S, Pellegrino R, Tsukahara T, et al. COVID-19 and
427 the Chemical Senses: Supporting Players Take Center Stage. *Neuron*. 2020;107: 219–233.
428 doi:10.1016/j.neuron.2020.06.032
- 429 34. Xydakis MS, Albers MW, Holbrook EH, Lyon DM, Shih RY, Frasnelli JA, et al. Post-viral effects of
430 COVID-19 in the olfactory system and their implications. *Lancet Neurol*. 2021;20: 753–761.
431 doi:10.1016/S1474-4422(21)00182-4
- 432 35. Reden J, Mueller A, Mueller C, Konstantinidis I, Frasnelli J, Landis BN, et al. Recovery of olfactory
433 function following closed head injury or infections of the upper respiratory tract. *Arch Otolaryngol*
434 *Head Neck Surg*. 2006;132: 265–269. doi:10.1001/archotol.132.3.265
- 435 36. Vihta K-D, Pouwels KB, Peto TE, Pritchard E, House T, Studley R, et al. Omicron-associated changes
436 in sars-cov-2 symptoms in the united kingdom. *medRxiv*. 2022. doi:10.1101/2022.01.18.22269082
- 437 37. Seiden AM. Postviral olfactory loss. *Otolaryngol Clin North Am*. 2004;37: 1159–1166.
438 doi:10.1016/j.otc.2004.06.007
439
440

441 **Supporting Information**



442
443 **Supplementary Figure S1. Scatterplot illustrating the association between TDI score and (A) days**
444 **since infection or (B) age of individuals who had had COVID-19 (COVID+, in orange) and COVID-**
445 **19 naïve individuals (COVID-, in blue). Spearman correlations showed that TDI score was not**
446 **significantly affected by the number of days since infection ($N = 71$, $r = -.1$, $p = .43$), but significantly**
447 **declined with age in the COVID+ group ($r = -.28$, $p = .005$) but not in the COVID- group ($r = -.27$, $p =$**
448 **.09).**