

1 **Analysis of cell-specific peripheral blood biomarkers in severe allergic asthma identifies**
2 **innate immune dysfunction**

3

4 Ben Nicholas¹, Jane Guo², Hyun-Hee Lee², Alistair Bailey³, Rene de Waal Malefyt⁴, Milenko
5 Cicmil² and Ratko Djukanovic¹

6

7 1 Division of clinical and Experimental Sciences, University of Southampton Faculty of
8 Medicine, Southampton General Hospital, Hampshire, United Kingdom

9 2 Oncology & Immunology Discovery, Merck Research Laboratories, Boston, MA, United
10 States of America

11 3 Cancer Sciences, University of Southampton Faculty of Medicine, Southampton General
12 Hospital, Hampshire, United Kingdom

13 4 Merck Research Laboratories, Palo Alto, California, United States of America

14

15 **Abstract**

16 Asthma is a disease of complex origin and multiple pathologies. There are currently very few
17 biomarkers of proven utility in its diagnosis, management or response to treatment. Recent
18 studies have identified multiple asthma phenotypes following biofluid analysis; however,
19 such findings may be driven by the well-characterised alterations in immune cell populations
20 in asthma. We present a study designed to identify cell type-specific gene signatures of
21 severe allergic asthma in peripheral blood samples. Using transcriptomic profiling of four
22 magnetically purified peripheral blood cell types, we identify significant gene expression
23 changes in monocytes and NK cells but not T lymphocytes in severe asthmatics. Pathway
24 analysis indicates dysfunction of immune cell regulation and bacterial suppression in the NK
25 cells. These gene expression changes may be useful on their own as prognostic peripheral
26 blood cell markers of severe asthma, but also may indicate novel cell pathways for
27 therapeutic intervention.

28

NOTE: This preprint reports new research that has not been certified by peer review and should not be used to guide clinical practice.

29 **ORCIDs:**

30 Ben Nicholas: 0000-0003-1467-9643

31 Jane Guo:

32 Hyun-Hee Lee:

33 Alistair Bailey: 0000-0003-0023-8679

34 Rene de Waal Malefyt: 0000-0002-2663-383X

35 Milenko Cicmil:

36 Ratko Djukanovic: 0000-0001-6039-5612

37

38 **Running title:** Peripheral blood biomarkers of severe asthma

39

40 **Keywords:** Asthma, biomarkers, allergy, peripheral, transcriptomic

41

42 **Correspondence to:**

43 Dr Ben Nicholas

44 Centre for Proteomic Research

45 B85, Life Sciences Building

46 University of Southampton

47 University Road

48 Highfield

49 Southampton, Hants.

50 SO17 1BJ

51 Tel No: +44(0)2380 59 5503

52 **Introduction**

53 Asthma is a common chronic airways disease with complex aetiology, no single causative
54 genetic trigger and with multiple factors that appear to contribute to disease pathogenesis ¹.

55 Thus, asthma can manifest in a number of different pathologies related to severity and the
56 degree of allergy or response to therapeutic intervention.

57 Currently, the principal clinical biomarkers for initial diagnosis and staging of disease
58 severity include lung function and hyper-responsiveness tests. Sometimes FeNO is used as a
59 surrogate for direct measurement of eosinophils. Improvement of clinical symptoms
60 following therapeutic intervention and assessment of atopy and a history of wheeze are also
61 useful. Monitoring of the disease is generally through symptom assessment and therapeutic
62 dose requirements combined with periodic lung function tests. Novel approaches, such as
63 immunotherapy, have identified the utility of additional biomarkers such as IgE or sputum
64 inflammatory cell counts as inclusion criteria; however, in clinical practice, often the
65 principal read-outs remain the generalised clinical ones. No single test provides definitive
66 evidence of asthma, its severity or therapeutic efficacy of drugs.

67 Recent work using unbiased clustering of genomic and proteomic data from airway samples
68 has identified multiple disease phenotypes ². Similarly, recent work has identified mRNA
69 signatures of severe asthma in whole blood ³. Although such studies are important, they may
70 be confounded by known changes in inflammatory cell profiles in asthma. Thus, such
71 phenotypic clusters may define groups of subjects on the basis of inflammatory cell
72 predominance in biofluids and changes in blood cell sub-groups could be missed.

73 The aim of our study was to examine gene expression in four cell populations: monocytes,
74 NK cells, CD4⁺ T cells and CD8⁺ T cells, magnetically enriched from peripheral blood, and
75 to compare them between severe allergic asthmatics and matched healthy subjects in order to

76 search for cell-subtype specific biomarkers. These biomarkers may yield new information
77 about the status of the peripheral circulation in severe allergic asthma.

78

79 **Results and discussion**

80 To examine the effect of severe allergic asthma on peripheral blood cells, we recruited 11
81 severe allergic asthmatics on step 4 of BTS/Sign management, and 10 healthy control
82 subjects (see Supplementary methods for inclusion/exclusion criteria, and Table 1 for a
83 summary of patient characteristics).

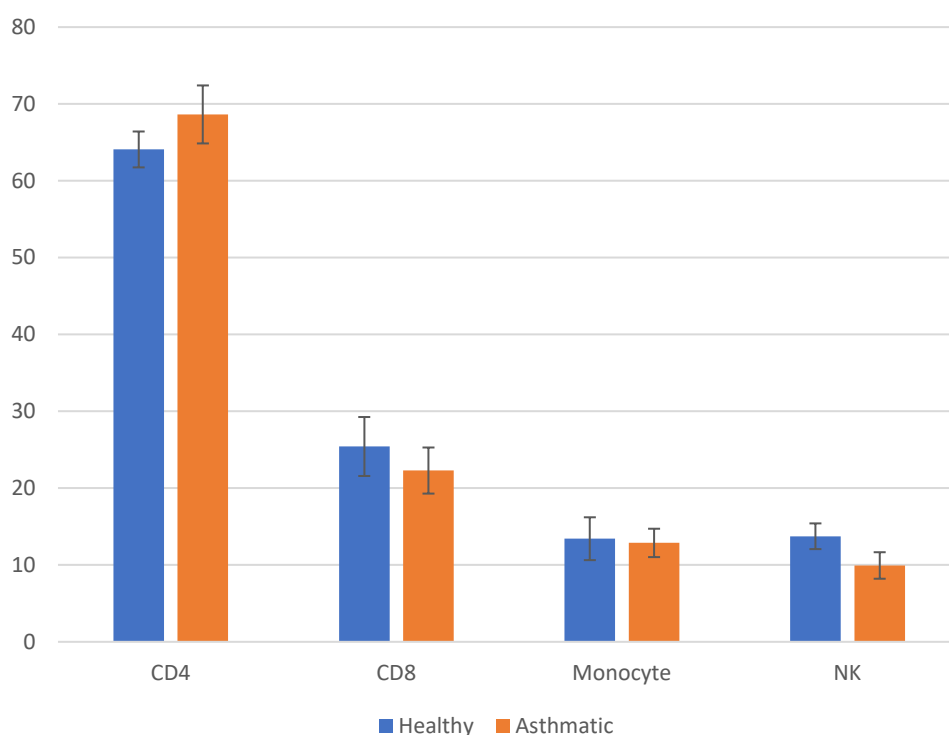
84 **Table 1 - Clinical characteristics for the healthy and moderate/severe allergic asthmatic**
85 **cohorts.**

Parameter	Healthy controls	Severe allergic asthmatics	p value
N	10	11	-
Gender (M/F)	3/7	3/8	-
Age	42.5 (30.75-52.25)	43 (31-50)	0.87
Atopy (yes)	0	11	-
Total blood IgE	16.45 (10.7-27.8)	163.9 (71.4-315)	0.0003***
Blood lymphocytes	1.9 (1.75-2.125)	1.9 (1.7-2.1)	0.345
Blood eosinophils (%)	0.1 (0.1-0.2)	0.2 (0.1-0.300)	0.212
Pre FEV1	3.11 (2.89-4.13)	2.58 (2.15-3.49)	0.043*
Pre FEV1 % predicted	111.4 (105.3-117.1)	100 (77.20-102.40)	0.016*
Post FEV1	3.19 (3.04-4.19)	3.00 (2.37-3.66)	0.067
Post FEV1 % predicted	114.1 (107.7-119.4)	100.6 (86.2-114.7)	0.055
Sputum eosinophils (%)	0	1.69 (0-3.68)	0.046*
Sputum neutrophils (%)	11.36 (7.125-15.72)	64.46 (21.91-74.2)	0.006**

86

87 *p<0.05, **p<0.01, ***p<0.001

88 Fresh blood was drawn and PBMCs were isolated from buffy coats (see supplementary
89 method section for experimental details). The relative proportions of four immune cell types,
90 monocytes, NK cells, CD4+ and CD8+ T cells were determined by flow cytometry. No
91 difference was found in the proportion of these cell populations in the peripheral blood of
92 healthy and severe asthmatic subjects (Figure 1, see Figure S1 for flow cytometric gating
93 strategy). NKT cells (CD3+CD56+ cells) were not quantified as they constituted less than
94 1% of peripheral cells (data not shown).

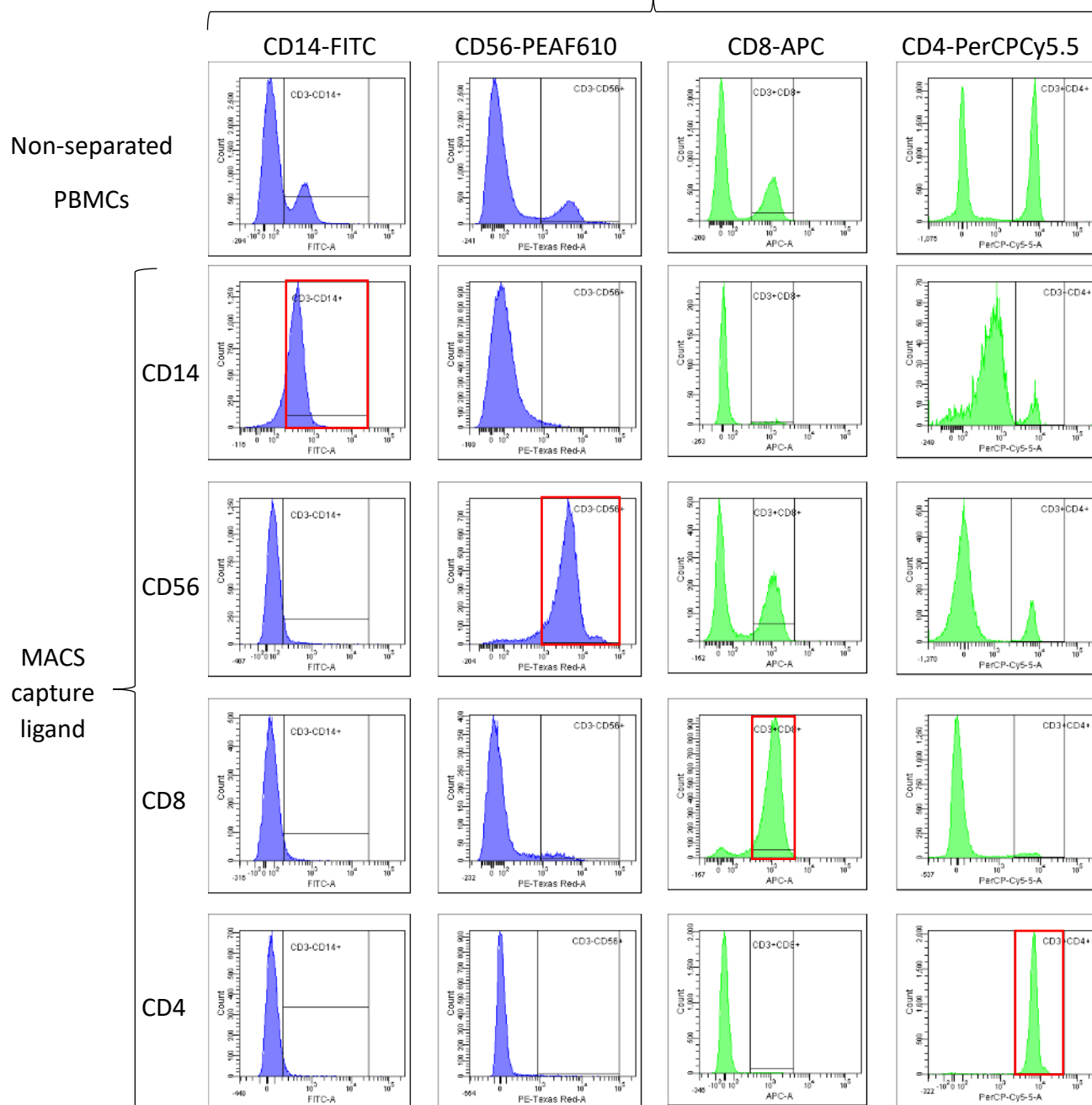


95

96 **Figure 1 – Relative proportions of monocytes, NK cells, CD4 and CD8 T cells in**
97 **peripheral blood of healthy and severe asthmatic subjects.** PBMCs isolated from the
98 peripheral blood of healthy and severe allergic asthmatic subjects was analysed for the
99 presence of cells expressing CD3, CD4, CD8, CD14 and CD56 by flow cytometry. CD4 and
100 CD8+ T cells are expressed as % of CD3+ cells. CD14 and CD56 are expressed as % of
101 CD3- cells. N=10 healthy and 11 asthmatic subjects.

102 Four cell populations were sequentially enriched from 4×10^7 PBMCs from each subject
 103 using magnetic beads conjugated to monoclonal antibodies targeting different cell surface
 104 markers, namely CD14 (monocytes), CD56 (NK cells), and CD8+ and CD4+ T cells in that
 105 order. These populations were highly enriched (>99%) for each selective marker (Figure 2).

Cell surface marker expression by flow cytometry



106

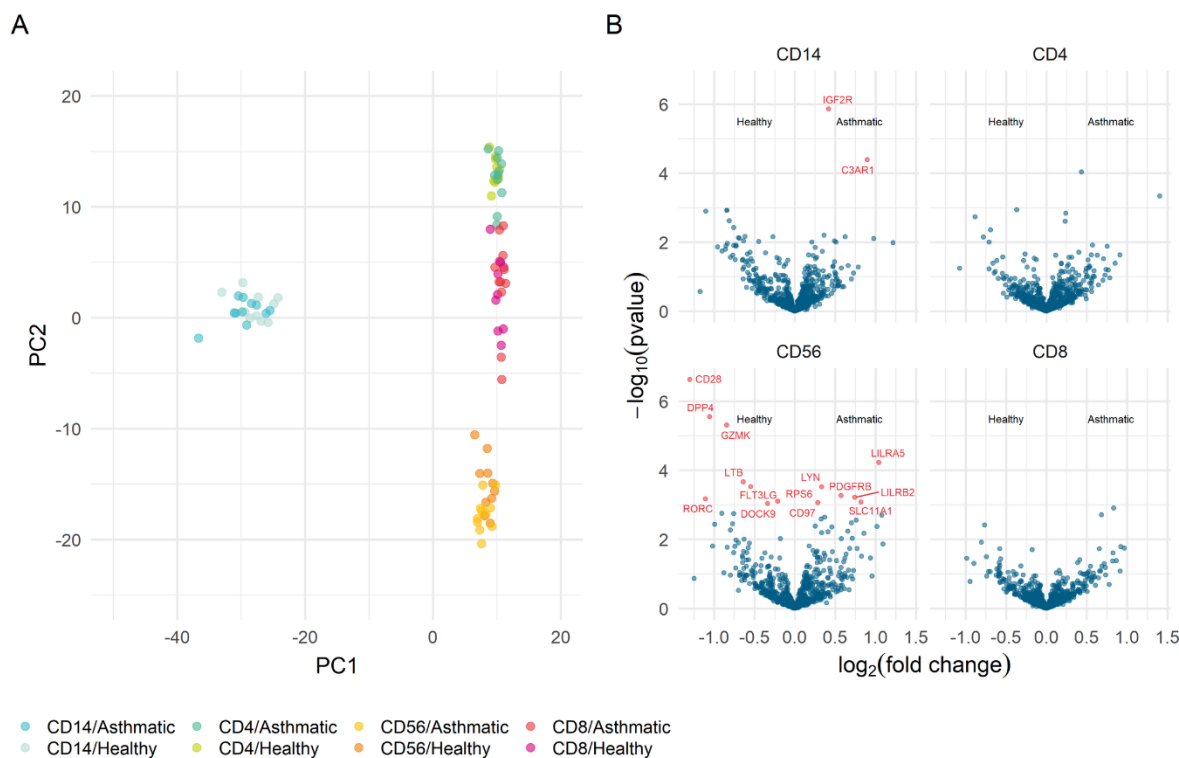
107 **Figure 2 – Cell surface marker co-expression in MACS separated PBMC populations.**

108 Co-expression of cell surface markers in MACS-isolated populations of cell from PBMCs.
109 CD14+, CD56+, CD8+ and CD4+ cell populations were magnetically isolated from PBMCs.
110 The simultaneous expression of these target cell surface markers was then measured by flow
111 cytometry in each purified population. Data shown are from one healthy subject and are
112 representative of typical marker distribution in these populations.

113 Flow cytometry indicated little co-expression of cell surface markers in each purified
114 population, but monocytes expressed low levels of CD4, as previously demonstrated⁴, and
115 CD56+ cells also expressed some CD8 and to a lesser extent, CD4, possibly reflecting the
116 presence of other CD56+ cell populations than NK cells, including NKT cells and NK-like
117 cells, both of which can also express these markers^{5,6}. Gene expression was quantified using
118 isolated RNA from the four enriched cell populations and analysed by a 770 gene nCounter
119 pan cancer immune profiling array (nanosttring Technologies).

120 *Cluster analysis of peripheral blood cells*

121 Unbiased PCA analysis of the gene expression profiles of these purified cell populations
122 indicated robust separation of the four target cell populations (Figure 3A). There was a small
123 degree of overlap between the CD4+ and CD8 + T cell clusters. We found little evidence of
124 segregation between health and asthma across the cell types.



125

126 **Figure 3 – Differential gene expression analysis in RNA transcripts in severe asthma.**

127 **(A)** PCA analysis of gene counts from all four cell types indicate clusters corresponding to
 128 each cell type. **(B)** Volcano plots indicating genes significantly up or down regulated in
 129 severe asthma in each cell type (p-adjusted < 0.05).

130 We then identified differentially expressed genes (DEGs) in asthma, adjusting for multiple
 131 tests for each cell type as appropriate (See appendix 1 for full differential gene expression
 132 results). Volcano plots indicate two genes upregulated in monocytes, and 6 upregulated and
 133 8 downregulated in NK cells from severe asthmatics (Figure 3B).

134 *DEGs in Monocytes*

135 Two genes, IGF2R and C3AR1 were upregulated in monocytes from asthmatics. IGF2R
 136 upregulation has been observed in monocytes during differentiation into macrophages⁷ and
 137 assists in efferocytosis. Changes in IGF2R expression by monocytes in asthma have not
 138 previously been observed, although sputum cells show upregulation².

139 C3AR1 has been previously identified as a susceptibility gene for bronchial asthma⁸. The
140 gene product acts as a G-protein coupled receptor for C3a, an anaphylotoxin released during
141 activation of the complement system. Binding of the receptor is thought to activate
142 chemotaxis, degranulation, superoxide production and bacterial opsonisation. C3AR1 has
143 been proposed as a therapeutic avenue for asthma⁹, as its ligand, C3a, is central to the
144 allergen-mediated Th2 response. TH17 cell-mediated secretion of IL-17 regulates C3a
145 secretion by epithelial cells in allergic asthma models¹⁰. To our knowledge, no previous
146 studies have identified elevation of the C3AR1 in monocytes of severe asthmatics. *DEGs in*
147 *NK-enriched cells*

148 Cells highly enriched for CD56 expression demonstrated upregulation of six genes (LILRA5,
149 LILRB2 and SLC11A1, PDGFRB, LYN, CD97) and downregulation of eight others (LTB,
150 RORC, GZMK, DPP4, RPS6, FLT3LG, DOCK9 and CD28).

151 *Upregulated genes in NK cells*

152 Several of the gene products found in this study to be upregulated in NK cells in asthma are
153 associated with immune cell activation, such as LILRA5 and CD97. Additionally, LYN-
154 dependent signalling controls DC activation of NK cells, affecting the magnitude of
155 inflammatory responses¹¹. CD97 is a GPCR which regulates leukocyte adhesion in
156 inflammation and granulocyte homeostasis but has not previously been directly implicated in
157 asthma.

158 Other genes are involved in pathogen resistance; for example SLC11A1 plays a role in
159 divalent metal ion transport, thought to enable sequestration of Fe²⁺ and Mn²⁺ and thus
160 promoting pathogen resistance. Little is known about the role of PDGFRB in immune cells
161 in asthma.

162 *Downregulated genes in NK cells*

163 Downregulated gene expression in CD56+ cells included genes involved in immune cell
164 signalling, cell activation and cytotoxic functions.

165 LTB is leukotriene B4 receptor, a chemoattractant well characterised for its role in
166 neutrophilic TH-17-mediated asthma inflammation. Elevation of LTB has been observed in
167 lung tissue of mouse models of OVA sensitisation ¹². Downregulation in peripheral blood
168 NK cells may indicate suppression by corticosteroid use.

169 FLT3 ligand (FLT3LG) is a growth factor which supports DC proliferation. Application in
170 mouse OVA models suppresses late allergen symptom onset in response to OVA application
171 ¹³.

172 RORC is a nuclear receptor thought to mediate cellular differentiation and lipid metabolism.
173 One isoform of the protein is thought to antagonise the Th1 pathway and promote Th17
174 differentiation. NK cells express IL17A in mouse OVA models, contributing to viral induced
175 asthma exacerbation through accumulation of neutrophils ¹⁴.

176 DPP4 is a receptor involved in the costimulatory signal for the TcR, it induces T cell
177 proliferation and nfkb activation. DPP4 shows increased expression in NK cell activation
178 and is thought to support NK cell cytokine production ¹⁵.

179 CD28 is a co-stimulatory receptor for T cells. Sputum CD8+ T cells have previously been
180 shown to express less CD28 ¹⁶ and may reflect an increase in NK-like CD8+ T cells with
181 regulatory properties ⁶.

182 GZMK encodes granzyme K, a component of the granules of cytotoxic lymphocytes,
183 including peripheral NK cells ¹⁷. Deficiencies in NK cell antiviral response in the form of
184 reduced cytotoxicity of NK cells in severe asthma, indicative of exhaustion, have recently
185 been observed ¹⁸.

186 Little is known about the expression of DOCK9 or RPS6 in relation to asthma or NK cells.

187 *Summary of changes in asthma*

188 Pathway analysis¹⁹ using the differentially expressed genes in the NK cell-enriched
 189 population (Table 2) confirmed that severe allergic asthma was associated with upregulation
 190 of pathways involved in metabolism, divalent metal ion transport, immune response
 191 inhibition, phosphate metabolism and immune regulation, and with downregulation of
 192 lymphocyte differentiation, lymph node development, mononuclear cell differentiation and
 193 immune system development.

194 **Table 2 – GO analysis of differentially expressed genes in CD56+ cells from healthy and**
 195 **severe allergic asthmatic subjects.**

id	source	term_id	term_name	term_size	p_value Healthy	p_value Asthmatic
1	GO:BP	GO:0070838	divalent metal ion transport	485	NA	1.2e-05
2	GO:BP	GO:0002774	Fc receptor mediated inhibitory signaling pathway	3	NA	1.7e-04
3	GO:BP	GO:0045937	positive regulation of phosphate metabolic process	1019	NA	5.1e-04
4	GO:BP	GO:0002767	immune response-inhibiting cell surface receptor signaling pathway	6	NA	8.3e-04
5	GO:BP	GO:0010562	positive regulation of phosphorus metabolic process	1019	NA	5.1e-04
6	GO:BP	GO:0051247	positive regulation of protein metabolic process	1578	NA	4.6e-03
7	GO:BP	GO:0033674	positive regulation of kinase activity	623	NA	6.2e-03
8	GO:BP	GO:0030098	lymphocyte differentiation	382	1.5e-02	NA
9	GO:BP	GO:0048535	lymph node development	18	3.0e-02	NA
10	GO:BP	GO:0002520	immune system development	1058	3.7e-02	NA
11	GO:BP	GO:0051338	regulation of transferase activity	1046	NA	4.8e-02
12	GO:BP	GO:1903131	mononuclear cell differentiation	437	2.5e-02	NA

196
 197 Overall, these data suggest that severe asthma is accompanied by NK cell dysfunctions that
 198 would impair the adaptive immune response and innate anti-microbial defences and could
 199 reflect exhaustion or generalised impairment of these cells. Additionally, monocytes in
 200 asthma appear to show increases in gene expression associated with apoptotic body clearance
 201 and chemotaxis. Thus, in our study, innate but not adaptive cell phenotypes were changed in
 202 peripheral blood cells from severe asthmatics. Given the increasing interest in innate
 203 immunity and its role in viral infections, it would be important to study the gene expression at

204 times of acute asthma exacerbations. These findings may help to identify new therapeutic
205 avenues for severe asthma, but also may serve as useful cell type-specific biomarkers.

206 As this was an exploratory study with no independent test group, further work would be
207 required to assess the potential utility of these genes as biomarkers of disease progression or
208 therapeutic response. The ability to assign these changes to cell populations, however, does
209 allow us to infer some biological meaning. Although NK and NK-like cells have been
210 examined in asthma, no fixed role for them has yet been assigned. Our study suggests that
211 further investigation of these cells is warranted. Recent evidence indicates abnormal anti-
212 viral response in NK cells in severe asthma associated with exhaustion ¹⁸, our data suggest
213 that other antimicrobial dysfunctions also exist.

214 The strengths of our study include the ability to assign gene expression changes in asthma to
215 highly enriched individual cell populations, and the well-defined severe allergic asthma and
216 matched healthy control cohorts. Limitations of the study include a small cohort size and the
217 potential, when enriching on the basis of cell surface markers, that those markers themselves
218 may be altered in asthma.

219 **References**

220

- 221 1. Holgate, S.T., *et al.* Asthma. *Nat Rev Dis Primers* **1**, 15025 (2015).
- 222 2. Takahashi, K., *et al.* Sputum proteomics and airway cell transcripts of current and ex-
223 smokers with severe asthma in U-BIOPRED: an exploratory analysis. *Eur Respir J*
224 **51**(2018).
- 225 3. Bigler, J., *et al.* A Severe Asthma Disease Signature from Gene Expression Profiling
226 of Peripheral Blood from U-BIOPRED Cohorts. *Am J Respir Crit Care Med* **195**,
227 1311-1320 (2017).

- 228 4. Zhen, A., *et al.* CD4 ligation on human blood monocytes triggers macrophage
229 differentiation and enhances HIV infection. *J Virol* **88**, 9934-9946 (2014).
- 230 5. Eger, K.A., *et al.* Human natural killer T cells are heterogeneous in their capacity to
231 reprogram their effector functions. *PLoS One* **1**, e50 (2006).
- 232 6. Lourenco, O., Fonseca, A.M. & Taborda-Barata, L. Human CD8+ T Cells in Asthma:
233 Possible Pathways and Roles for NK-Like Subtypes. *Front Immunol* **7**, 638 (2016).
- 234 7. Ohradanova-Repic, A., *et al.* The mannose 6-phosphate/insulin-like growth factor 2
235 receptor mediates plasminogen-induced efferocytosis. *J Leukoc Biol* **105**, 519-530
236 (2019).
- 237 8. Hasegawa, K., *et al.* Variations in the C3, C3a receptor, and C5 genes affect
238 susceptibility to bronchial asthma. *Hum Genet* **115**, 295-301 (2004).
- 239 9. Khan, M.A., Assiri, A.M. & Broering, D.C. Complement mediators: key regulators of
240 airway tissue remodeling in asthma. *J Transl Med* **13**, 272 (2015).
- 241 10. Lajoie, S., *et al.* Complement-mediated regulation of the IL-17A axis is a central
242 genetic determinant of the severity of experimental allergic asthma. *Nat Immunol* **11**,
243 928-935 (2010).
- 244 11. Krebs, D.L., *et al.* Lyn-dependent signaling regulates the innate immune response by
245 controlling dendritic cell activation of NK cells. *J Immunol* **188**, 5094-5105 (2012).
- 246 12. Ro, M., Kwon, S.Y. & Kim, J.H. Leukotriene B4 receptors mediate the production of
247 IL-17, thus contributing to neutrophil-dominant asthmatic airway inflammation.
248 *Allergy* **74**, 1797-1799 (2019).
- 249 13. Agrawal, D.K., Hopfenspirger, M.T., Chavez, J. & Talmadge, J.E. Flt3 ligand: a
250 novel cytokine prevents allergic asthma in a mouse model. *Int Immunopharmacol* **1**,
251 2081-2089 (2001).

- 252 14. Lunding, L. & Wegmann, M. NK cells in asthma exacerbation. *Oncotarget* **6**, 19932-
253 19933 (2015).
- 254 15. Klemann, C., Wagner, L., Stephan, M. & von Horsten, S. Cut to the chase: a review
255 of CD26/dipeptidyl peptidase-4's (DPP4) entanglement in the immune system. *Clin*
256 *Exp Immunol* **185**, 1-21 (2016).
- 257 16. Hamzaoui, A., Chaouch, N., Grairi, H., Ammar, J. & Hamzaoui, K. Inflammatory
258 process of CD8+ CD28- T cells in induced sputum from asthmatic patients. *Mediators*
259 *Inflamm* **2005**, 160-166 (2005).
- 260 17. Bade, B., *et al.* Differential expression of the granzymes A, K and M and perforin in
261 human peripheral blood lymphocytes. *Int Immunol* **17**, 1419-1428 (2005).
- 262 18. Devulder, J., *et al.* Aberrant anti-viral response of natural killer cells in severe asthma.
263 *Eur Respir J* **55**(2020).
- 264 19. Raudvere, U., *et al.* g:Profiler: a web server for functional enrichment analysis and
265 conversions of gene lists (2019 update). *Nucleic Acids Res* **47**, W191-W198 (2019).
- 266
- 267

268 **Supplementary material**

269

270 **Analysis of cell-specific peripheral blood biomarkers in severe allergic asthma identifies**
271 **innate immune dysfunction**

272

273 Ben Nicholas¹, Jane Guo², Hyun-Hee Lee², Alistair Bailey³, Rene de Waal Malefyt⁴, Milenko
274 Cicmil² and Ratko Djukanovic¹

275

276 1 Division of clinical and Experimental Sciences, University of Southampton Faculty of
277 Medicine, Southampton General Hospital, Hampshire, United Kingdom

278 2 Oncology & Immunology Discovery, Merck Research Laboratories, Boston, MA, United
279 States of America

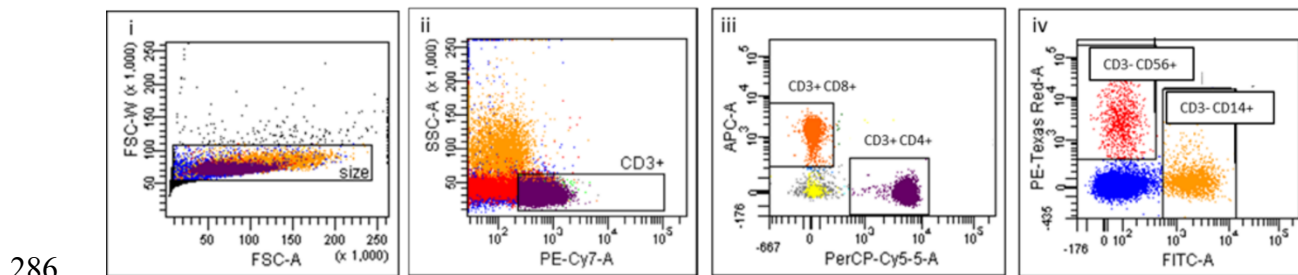
280 3 Cancer Sciences, University of Southampton Faculty of Medicine, Southampton General
281 Hospital, Hampshire, United Kingdom

282 4 Merck Research Laboratories, Palo Alto, California, United States of America

283

284

285 **Supplementary Figures**



287 **Figure S1 – Flow cytometry gating strategy to identify four immune cell populations in**
288 **peripheral blood of healthy and asthmatic subjects. i) Size gate to exclude doublets. ii)**
289 **CD3+ stain to positively identify T cells. iii) CD8 and CD4 staining of CD3+ cells identifies**
290 **T lymphocyte subpopulations. iv) Gating on CD3- cells, CD56+ (predominantly NK cells)**
291 **and CD14+ (monocytes) cell populations.**

292 **Supplementary Methods**

293

294 **Ethics approvals**

295 The study was approved by the regional Research Ethics Committee (REC), (Southampton
296 and South West Hampshire Research Ethics Committee, LREC no: 09/H0504/109) and was
297 conducted in accordance with Site Specific Assessment (SSA), and local Research and
298 Development (R&D) approvals.

299 **Sputum induction**

300 Sputum induction was performed as previously reported¹ at least 4 weeks after a respiratory
301 tract infection. The mucous elements were selected from the expectorated sample and treated
302 with 5 mM (final concentration) dithioerythritol in HEPES-buffered saline (HBS) to liquefy
303 the mucus and obtain sputum cell cytopsin slides. Differential cell counts were obtained
304 using the rapid Romanowski method. Cell counts were expressed as the percentage of total
305 respiratory cells (excluding squamous cell counts but including epithelial cells).

306 **Purification of blood cell populations**

307 Fresh blood drawn into heparinised tubes (60 ml) was mixed 1:1 with Dulbeccos PBS and
308 carefully layered onto Lymphoprep. Cells were centrifuged at 800 g for 30 min at room
309 temperature. Cells at the interface were then harvested and further diluted with PBS and
310 centrifuged at 400 g for 10 min at room temperature to remove excess density medium. Cells
311 were resuspended in a small volume of PBS and counted using a haemocytometer. In all
312 cases, cell viability was greater than 95%. 4×10^7 cells were then centrifuged at 400 g for 5
313 min and resuspended in 320 μ l of MACS isolation buffer (5% (w/v) BSA, 2 mM EDTA in
314 PBS) and the cell slurry incubated with 80 μ l of anti-CD14 magnetic beads at 4°C for 15

315 min. Then 2 ml of MACS buffer were added and the slurry washed by centrifuging at 400g,
316 4°C for 10 min. The cell pellet was resuspended in 0.5 ml of MACS buffer and applied to an
317 LS column. Retained cells were washed with MACS buffer as previously described. Eluted
318 cells were incubated with magnetic beads conjugated to anti-CD56, CD8 and CD4
319 monoclonal antibodies in succession using the same procedure. Purified cells of each type
320 were then counted using a haemocytometer, and 1×10^6 cells of each subtype were
321 centrifuged for 10 min, 4°C at 400 g, and each cell pellet resuspended RLT buffer containing
322 1% (v/v) mercaptoethanol. Cell lysates were stored at -80°C.

323 **Purity assessment of isolation procedure**

324 Purity of cell sub-populations isolated in this was assessed on a subset of PBMC purifications
325 using a mixture of healthy and asthmatic subjects. Cells (1×10^5 of purified cells and 1×10^6
326 of starting PBMCs) were resuspended in 100 μ l of MACS buffer containing 100 μ g of
327 human IgG as Fc γ block. An antibody cocktail was then added, containing 10 μ l each of
328 anti-CD14/FITC, Anti-CD56/PECF594, anti-CD8/APC and anti-CD4/PerCPCy5.5 and
329 incubated for 30 min on ice. Excess antibody was removed by the addition of 2 ml of MACS
330 buffer and centrifugation for 10 min, 400 g at 4°C. Cells were resuspended in MACS buffer
331 prior to analysis by flow cytometry using a FACSARIA (BD) equipped with relevant lasers
332 and filters.

333 **RNA profile analysis**

334 RNA from each cell type was extracted using an RNeasy mini kit (Qiagen), yielding between
335 0.5-1.5mg of RNA per sample, the quality of which was assessed using an RNA6000 Nano
336 kit (Agilent). Chips were read using an Agilent 2100 Bioanalyzer equipped with relevant
337 software. All samples gave RNA integrity numbers (RIN) >9.4. RNA quantity was assessed
338 using Nanodrop 2000 spectrophotometer (Thermo) and concentration readings were used to

339 aliquot 50 ng of RNA and apply to PanCancer immune profiling nCounter code set cartridges
340 (nanoString Technologies) measuring 770 genes. Read outputs in RCC file format were
341 analysed using Nanostring nSolver analysis software.

342 **Bioinformatic analysis**

343 The unnormalized gene counts for genes quantified in all samples were analysed in R using
344 associated packages to perform principal component analysis-based clustering, differential
345 gene expression and gene enrichment.²⁻⁶ An adjusted p-value threshold of 0.05 was set for
346 significantly differentially expressed genes. All other settings were package defaults.

347 **References**

- 348 1. Nicholas B. L, Skipp P, Barton S, Singh D, Bagmane D, Mould R, Angco G, Ward J,
349 Guha-Hiyogi B, Wilson S, Howarth P, Davies D.E, Rennard S, O'Connor C.D and
350 Djukanovic R, Identification of lipocalin and apolipoprotein A1 as biomarkers of
351 chronic obstructive pulmonary disease. Am. J. Respir. Crit. Care Med. 2010;
352 181(10)1049-60 doi: 10.1164/rccm.200906-0857OC
- 353
- 354 2. R Core Team. R: A language and environment for statistical computing. Vienna,
355 Austria; 2018. Available: <https://www.R-project.org/>
- 356 3. Pedersen TL. Patchwork: The composer of plots. 2019. Available: [https://CRAN.R-](https://CRAN.R-project.org/package=patchwork)
357 [project.org/package=patchwork](https://CRAN.R-project.org/package=patchwork)
- 358 4. Wickham H, Averick M, Bryan J, Chang W, McGowan LD, François R, et al.
359 Welcome to the tidyverse. Journal of Open Source Software. 2019;4: 1686.
360 doi:[10.21105/joss.01686](https://doi.org/10.21105/joss.01686)

- 361 5. Raudvere, U., Kolberg, L., Kuzmin, I., Arak, T., Adler, P., Peterson, H., Vilo, J. g:Profiler: a
362 web server for functional enrichment analysis and conversions of gene lists (2019
363 update). *Nucleic Acids Res*; 47:W191-W198. doi: 10.1093/nar/gkz369
- 364 6. Love, M. I., Huber, W., Anders, S. Moderated estimation of fold change and dispersion
365 for RNA-seq data with DESeq2. *Genome Biol.* 2014; 15(12)550.
366 doi:10.1186/s13059-014-0550-8

367

368

369

370

371

372