

1

2 **Cohort-specific serological recognition of SARS-CoV-2 variant RBD antigens**

3 Douglas D. Fraser^{a,b,c,d}, Michael R. Miller^{a,b}, Claudio M. Martin^{b,e}, Marat Slessarev^{b,e}, Paul Hahn^f, Ian Higgins^f,
4 Christopher Melo^f, Michael A. Pest^f, Nate Rothery^f, Xiaoqin Wang^f, Johannes Zeidler^f, Jorge A. Cruz-Aguado^{f*}.

5 a. Lawson Health Research Institute, London, ON N6C 2R5, Canada

6 b. Department of Pediatrics, Western University, London, ON N6A 3K7, Canada

7 c. Department of Clinical Neurological Sciences, Western University, London, ON N6A 3K7, Canada

8 d. Department of Physiology & Pharmacology, Western University, London, ON N6A 3K7, Canada

9 e. Lawson Health Research Institute, London, ON N6C 2R5, Canada

10 f. Diagnostics Biochem Canada Inc, London, ON N6M 1A1, Canada

11 *Corresponding author.

12

13 **Abstract**

14

15 **Background:** Estimating the response of different cohorts (e.g. vaccinated or critically ill) to new SARS-CoV-2
16 variants is important to customize measures of control. Thus, our goal was to evaluate binding of antibodies
17 from sera of infected and vaccinated people to different antigens expressed by SARS-CoV-2 variants.

18 **Methods:** We compared sera from vaccinated donors with sera from four patient/donor cohorts: critically ill
19 patients admitted to an intensive care unit (split in sera collected between 2 and 7 days after admission and
20 more than ten days later), a NIBSC/WHO reference panel of SARS-CoV-2 positive individuals, and ambulatory
21 or hospitalized (but not critically ill) positive donors. Samples were tested with an anti-SARS-CoV-2 IgG
22 serological assay designed with microplates coated with a SARS-CoV-2 RBD recombinant antigen. The same
23 sample sets were also tested with microplates coated with antigens harbouring RBD mutations present in
24 eleven of the most widespread variants.

25 **Results:** Sera from vaccinated individuals exhibited higher antibody binding ($P < 0.001$) than sera from infected
26 (but not critically ill) individuals when tested against the WT and each of 11 variants' RBD.

27 The optical density generated by sera from non-critically ill convalescence individuals upon binding to variant's
28 antigens was different ($P < 0.05$) from that of the WT in some variants—noteworthy, Beta, Gamma, Delta, and
29 Delta Plus variants.

30 **Conclusions:** Understanding differences in binding and neutralizing antibody titers against WT vs variant RBD
31 antigens from different donor cohorts can help design variant-specific immunoassays and complement other
32 diagnostic and clinical data to evaluate the epidemiology of new variants.

33 **Key Words:** COVID-19; SARS-CoV-2 vaccine; SARS-CoV-2 variants; RBD mutations; antibody specificity;
34 critically ill, immunoassays, serology.

1

35 **Introduction**

36 The race to understand the impact of new variants of the SARS-CoV-2 virus on the effectiveness of antibody
37 therapeutics, vaccines, and infection-elicited antibody responses has led to an unprecedented number of
38 converging studies, the majority showing that most potent 'immune escape' mutations are in the receptor-
39 binding motif (RBM), a region located within the receptor binding domain (RBD) of SARS-CoV-2's spike protein
40 [1]. Indeed, approximately 90% of plasma or serum neutralizing antibody activity targets the RBD [2] and
41 structural data support that RBD-based vaccines have a competitive position to deliver a fast response to the
42 COVID-19 pandemic [3].

43 Until now, a trend has been delineated for the most frequent Variants of Concern (VOC) B.1.1.7 (Alpha), B.1.351
44 (Beta), P.1 (Gamma) and B.1.617.2 (Delta) [4]. Some reports concur that sera from vaccinated or COVID-19
45 convalescent patients can efficiently neutralize viruses with just the N501Y mutation in the RBD, however,
46 variants including the E484K mutation render sera from both wild type (WT) infected and vaccinated patients
47 less efficient at virus neutralization [4-9]. Variants with sentinel mutation N439K decrease the activity of both
48 polyclonal convalescent sera and monoclonal antibodies from individuals recovering from infection [10]. Another
49 RBD mutation, L452R, present in variants B.1.429 and B.1.427 (Epsilon), and Indian Delta variant B.1.617.2
50 (Table 1), is thought to increase viral infectivity and potentially promote viral replication [11-15].

51 The published research, however, has scarcely addressed differences between naturally infected individuals of
52 the general population, critically ill hospitalized patients, and vaccinated subjects in the response to new
53 variants.

54 Personalizing the response to new variants of the virus is important to optimize measures of control; for
55 example, as precautionary warnings for travel within regions with a prevalent variant, or to better triage the
56 selection of individuals who should be prioritized for vaccination. Although neutralization assays could provide
57 answers to those questions, they are expensive and time consuming for practical testing of the population.

58 In this study, we set out to investigate first, how the recognition pattern of WT SARS-CoV-2 RBD antibodies
59 generated by vaccination distinguishes those patients compared to the recognition pattern of individuals after
60 infection, and furthermore, determine how this recognition pattern differs when these antibodies are presented
61 with the mutated variant-associated SARS-CoV-2 RBD proteins. Secondly, we aimed to examine whether
62 recognition of variant specific RBD differs between vaccine sera and antibodies produced by different post-
63 infection cohorts, information that could complement clinical data with variant-specific immunoassay-based

64 screenings to evaluate the potential epidemiological impact of new variants on previously infected and
65 vaccinated cohorts.

66 **Methods**

67 **Study population and Ethics**

68 We used SARS-CoV-2 serum positive samples from:

69 **a) Donors vaccinated with mRNA vaccines.** Commercial samples from individuals who were vaccinated with
70 two doses of either the Moderna mRNA-1273 or the Pfizer BioNTech COVID-19 vaccines during the first 3
71 months of 2021. The donor's serum was collected before and after the first and second doses.

72 **b) Critically-ill patients** (split in sera collected between 2 and 7 days after admission and more than ten days
73 later). Samples came from patients admitted to the level-3 academic ICU at London Health Sciences Centre
74 (London, Ontario), confirmed as COVID-19 with standard hospital testing by detection of two SARS-CoV-2 viral
75 genes using polymerase chain reaction [16].

76 **c) NIBSC/WHO reference panel of SARS-CoV-2 positive donors** from the NIBSC/WHO reference panels.

77 **d) Non-critically ill positive patient samples.** Commercial samples were collected during 2020. Donors were
78 ambulatory or hospitalized patients (AHP) COVID-19 positive based on RT-PCR tests and immunoassays and
79 tested again with the ELISA kit of this study. Three donors were hospitalized (not critically ill) and released.

80 Commercial samples were sourced through Access Biologicals (Vista, California, USA), Lampire Biological
81 Laboratories (Pipersville, PA, USA), or Plasma Services Group, Inc (Moorestown, NJ, USA), each of which
82 confirmed patient consent and participation in an Institutional Review Board (IRB) approved protocol. For
83 critically ill patient recruitment, waived consent was approved for a short, defined period (Western University,
84 Research Ethics Board [REB] number 1670). Samples obtained through the WHO database were originally
85 collected under WHO protocols and ethical considerations, and specifics are publicly available online via links
86 provided in S4. Ultimately, all patient samples were approved for research use by their respective sources.
87 Furthermore, all samples were assigned arbitrary Sample ID's to further anonymize personal data. Additional
88 information available on request.

89 Samples were collected in North America before the global spread of the variants. We inferred that most of the
90 studied positive specimens harbored antibodies raised against the WT virus, likely WA1/2020 (summarized in

91 Table 1). More detailed information about each sample and the demographics, infection/vaccination timeline,
 92 and patient outcomes can be viewed in Supplemental Tables S1-S4.

93
 94 **Table 1.** Summary of serum specimens used in this study. Additional patient data provided in Supplemental
 95 Material (Tables S1-S5).

Cohort	Number of serum samples	Age range		Number of days between vaccine immunization or detected infection and blood draw			Date of last drawn sample
				Median	Range		
		Minimum	Maximum		Lowest	Highest	
Vaccinated	60	19	76	14	12	17	April 6 th , 2021
ICU patients, 2 - 7 days	30	37	85	4.5 ^a	2	7	August 10 th , 2020
ICU patients, 10+ days	15	45	77	16 ^a	10	37	August 10 th , 2020
WHO reference panel	31	Unknown		At least 28 days			June 26 th , 2020
Ambulatory and hospitalized population (AHP) ^b	37	24	81	38	10	119	July 20 th , 2020

96 ^a Number of days after ICU admission; ^b 34 ambulatory and 3 hospitalized (but not critically ill) patients.

97 **Immunoassays**

98 Anti-SARS-CoV-2 IgG antibodies were detected with an enzyme-linked immunosorbent assay (ELISA) kit (DBC
 99 anti-SARS-CoV-2 ELISA, DBC-IGG-19) with interim authorization by Health Canada. In brief, the ELISA based
 100 assays were designed against antigens formulated by recombinant proteins (aa 319-541) created from the WT
 101 RBD sequence (original manufacturer's ELISA design) or those representing the RBD of prevalent VOCs (Table
 102 2) with their various mutation sets (N501Y, K417N-E484K-N501Y, K417T-E484K-N501Y, L452R, L452R-
 103 E484Q, L452R-T478K, K417NL452R-T478K, N439K, Y453F, S477N, K417T).

104 The original WT assay (CAN-IGG-19) uses a ratio between the optical density (OD) of the sample and the cut-
 105 off [**Ratio = OD of sample / Cut-Off**] to determine a 'positive' vs 'negative' result, where the Cut-Off [**Cut-Off**
 106 **(CO) = (Mean of 3 Negative Control results) x factor 1.5**] is used to generate a ratio which is then interpreted
 107 as a Positive (Ratio ≥ 1.2), Negative (Ratio ≤ 1.0), or Borderline (Ratio 1.0 – 1.2) result.

108 In this study, the ratio was used only to compare the results between cohorts within the same antigen. When
109 comparisons were made between antigens, we used the optical density (OD) generated by the binding of
110 samples' antibodies to the antigens (rather than the ratio); in this way isolating the antigen-antibody interaction
111 and avoiding bias generated by differences in binding between the antigens and the negative control.

112 More details on the layout and performance of the original test can be found in [16] and in the kit's IFU
113 (<https://dbc-labs.com/products/elisa/anti-sars-cov-2-igg/>).

114 DiaSorin Liaison SARS-CoV-2 S1/S2 IgG results were provided by the sample supplier.

115 **Neutralization antibodies study**

116 To establish the validity of the DBC-IGG-19 ELISA kit to detect neutralizing antibodies we ran a comparison
117 study against Genscript cPass™ SARS-CoV-2 Neutralization Antibody Detection/Surrogate Virus
118 Neutralization Test Kit (NJ, USA). This assay was previously validated against plaque reduction neutralization
119 tests PRNT50 and PRNT90 with 100% agreement (See manual for SARS-CoV-2 Surrogate Virus Neutralization
120 Test Kit).

121 The samples were run with both the Genscript Kit and the DBC ELISAs for each of the WT and variants listed
122 above following the instructions for use of each test.

123 **Variant-specific immunoassays**

124 To test the binding of antibodies to mutated antigens, microplates were coated with recombinant RBD
125 harbouring mutations present in 11 of the most widespread variants of the virus to date (Table 2). The
126 expression system used to generate the mutant antigen RBD was identical to that of the previously released
127 DBC kit (DBC-IGG-19) with the only difference being the mutations themselves. The mutated antigens were
128 coated under the same conditions used for the WT antigen currently in the commercial anti-SARS-CoV-2 IgG
129 immunoassay. All other reagents of the variant kits used and serological test conditions remained the same as
130 the WT unaltered assay (DBC-IGG-19).

131

132

133

134

135 **Table 2.** Classification of the variants and RBD mutations associated with the antigens of this study.

Variant name	Lineage (PANGO)	Clade (GISAID)	RBD mutations	Country of first detection
Wild Type	B	G	-	China
Alpha	B.1.1.7	GRY	N501Y	United Kingdom
Beta	B.1.351/501Y.V2	GH	K417N, E484K and N501Y	South Africa
Gamma	P.1/B.1.1.28.1.	GR	K417T, E484K, and N501Y	Brazil
Epsilon	B.1.427/429	GH	L452R	Denmark
Kappa	B.1.617.1	G	L452R, E484Q	India
Delta	B.1.617.2	G	L452R, T478K	India
Delta Plus	B.1.617.3	G	K417N, L452R, T478K	India
N439K	B.1.141/B.1.258	GR	N439K	United Kingdom
Y453F	N/A	N/A	Y453F	Denmark
S477N	B.1.526.2/B1.1.25	20.C	S477N	Australia
K417T	N/A	N/A	K417T	Brazil

136

137 **Statistical Analysis**

138 Statistical analysis was performed using Analyse-it software (Analyse-it Software, Ltd. (UK); [https://analyse-](https://analyse-it.com/)
139 [it.com/](https://analyse-it.com/)). Univariate group comparisons with non-parametric Steel pairwise ranking were calculated to compare
140 variants within each cohort (figure 2) and cohorts within each variant (figure 3). P-values at the 5% significance
141 level were used to establish differences between variables.

142 We compared the results of WT antigen to antigens with RBD mutations within each patient cohort based on
143 optical density (OD) which represents binding between antibodies in patient samples and the presented antigen
144 (i.e. the antigen coated onto the microplates), rather than ratios because the ratios are calculated using the
145 negative control as a reference of the cut-off. Therefore, the ratios are affected by changes in the binding of the
146 Negative control to the mutated antigens (Figure 2). To compare cohorts within each variant we used the ratio,
147 because as long as the same antigen is used, normalizing by the negative control enables assessment of the
148 clinical result (positive, borderline, or negative) (Figure 3).

149 **Results**

150 **Detection of neutralizing antibodies.**

151 To evaluate the capacity of the RBD variant DBC ELISA kits in this study to detect neutralizing antibodies we
152 compared patient sample results against the Genscript cPass™ SARS-CoV-2 Neutralization Antibody Kit.

153 All 168 samples that generated a positive neutralizing antibody result with the GenScript test were also
154 confirmed with the DBC ELISA for 100% positive agreement (See supplemental Table S5, borderline results
155 are counted as positive). We observed a positive exponential relationship between the inhibition rate produced
156 by the GenScript kit (x) and the ratio generated by the ELISA (y), $y = 0.4275e^{0.0385x}$, $r = 0.85$ (Figure 1).

157 Additionally, the GenScript neutralizing antibody kit reported a positive result in 98.2% (165 of 168) of COVID
158 seroconverters also detected by the DBC ELISA (counting borderline DBS results as negative). The few
159 seropositive samples that produced a negative neutralizing antibody result had a low serological positive ratio
160 (< 1.9) relatively close to the Cut-off.

161 **Reactivity of vaccine and infection sera with WT and mutated antigens**

162 To assess how the humoral immune response in vaccinated individuals compares to antibodies generated from
163 WT infection, and the further influence of the mutations present in the RBD of SARS-CoV-2 variants, we
164 purchased commercial samples of sera from individuals who had received two doses of the Moderna mRNA-
165 1273 or the Pfizer BioNTech COVID-19 vaccines during the first 3 months of 2021.

166 Even though the donors recruited for the study had declared themselves healthy and uninfected with COVID-
167 19, 25% had a positive pre-vaccine anti-SARS-CoV-2 IgG result with the DBC assay (18% with DiaSorin,
168 Tables S1 and S2 in Supplemental Material). In 80% of those donors, the ELISA signal was above the maximal
169 OD of 4 after the first vaccine dose suggesting that the asymptomatic infection might have been equivalent to
170 a first vaccine dose.

171 For the rest of the vaccinated donors, the ELISA ratio increased more than two times between the first and the
172 second vaccination doses. After the second vaccination dose, binding responses appear to converge, as we
173 no longer observed a higher SARS-CoV-2 IgG ELISA ratio among the subjects who had a viral infection before
174 the vaccination. In fact, only four (including one sample from a donor positive before the vaccination) of 60
175 samples did not produce a ratio higher than 15 after two vaccination doses (Supplemental Table S1). We,

176 therefore, estimate that a prior infection had a negligible effect in the load of anti-SARS-CoV-2 antibodies after
177 two vaccine doses

178 Sera from vaccinated individuals were compared to sera of three COVID-19 convalescent cohorts: a) ICU
179 patients, split into short (2-7 days) and longer (10+ days) hospitalization, b) a reference panel of samples from
180 SARS-CoV-2 positive donors produced by NIBSC/WHO (WHO), and c) infected ambulatory or hospitalized
181 population (AHP) samples.

182 For AHP and WHO samples, the ELISA OD response of the serological tests in four of the variants was not
183 different ($p>0.05$) from WT antigen (Figure 2)—all four variants had a single mutation in the RBD (N501Y,
184 L452R, K417T, or S477N). This pattern was different for the vaccinated, for whom three of the above single
185 mutations and two triple mutation antigens displayed no differences in relation to the WT antigen (Figure 2). No
186 significant differences ($p>0.05$) were observed between the WT and variants in the reactivity of ICU sera (Figure
187 2). We observed a consistent trend across individual donors (Supplemental Figure S1).

188 Sera from vaccinated individuals consistently exhibited a higher ratio ($p<0.001$) than sera from infected (but not
189 critically ill) individuals (AHP, WHO) when tested against the WT and each of the 11 variants (Figure 3). Only
190 the vaccinated cohort displayed a median ratio higher than 15 against all the mutated antigens—except the
191 N439K antigen, which significantly lowered the median of ratio results in all cohorts. Still, even against this
192 antigen, none of the samples from vaccinated donors produced a negative ratio result (<1.0). (Figure 3).

193 The second highest antibody response was from critically ill ICU patients who were hospitalized for more than
194 10 days. For seven of twelve of the antigens, including the WT antigen, this cohort was not different from the
195 vaccinated. ICU patients upon admission (2-7 days), WHO, and AHP samples presented lower positive ratios
196 (Figure 3).

197 To assess if the differences between the cohorts were due to lower age range of vaccinated and AHP in
198 comparison to ICU patients (Table 1), we split the ratio results of the vaccinated and AHP cohorts into those
199 from donors younger and older than 45 (since the ICU 10+ were all older than 45) and compared them. We
200 found no age-related differences ($p>>0.05$) (Supplemental Figures S2, S3).

201 **Discussion**

202 Differences in cross-variant seroreactivity between population cohorts, including vaccinated individuals and
203 severely ill patients, have been scarcely documented. Current concerns are that some variants might escape

204 neutralizing antibodies (an issue just recently developing with the recent multi-mutation bearing variant
205 Omicron), but it is unclear how factors such as vaccines and the severity of the disease can influence the
206 outcome. In this study, we used sera from vaccinated and previously infected individuals to evaluate their ability
207 to recognize mutations in the SARS-CoV-2 RBD. We show that vaccine sera exhibited higher reactivity than
208 convalescence sera from non-critically ill individuals against all twelve studied SARS-CoV-2 RBD antigens
209 tested, including the WT RBD, while the reactivity of critically ill sera bridged those cohorts in most variants.

210 Understanding the nature of viral and vaccine-induced immunity is critical to managing the course of an
211 epidemic [17]; in particular, how individuals infected early in the pandemic, or those who have been vaccinated
212 will be protected against emerging variants, more importantly, variants holding mutations in the RBD—a region
213 targeted by ~90% of the neutralizing antibody activity [2].

214 To establish the capability of the ELISA used in this study to detect neutralizing antibodies we compared its
215 performance against the Genscript cPass SARS-CoV-2 Neutralization antibody detection kit and found 100%
216 positive agreement. This performance was likely enabled by the fact that the antigen in the ELISA comprises
217 the critical RBD region of the virus. Indeed, immunoassays that use the full spike as antigen show a diminished
218 ability to detect neutralizing antibodies [18].

219 Having established the capacity of the serological test to detect neutralizing antibodies, we proceeded to
220 evaluate how sera from COVID infected critically ill patients recognize antigens harbouring RBD mutations.
221 Previously, we have shown that IgG levels increase soon after admission to the ICU [16]. Here, we found that
222 sera from ICU patients did not significantly distinguish any of the mutated antigens when compared to WT
223 ($p>0.05$, Figure 2). Perhaps, severe, and prolonged infection induces a broad polyclonal antibody variability
224 enabling reactivity to a wide range of antigenic variants.

225 For other cohorts, including the vaccinated, not all the mutations caused a decrease in the antigen's antibody
226 recognition (Figure 2). Vaccine sera did not discriminate five of the variants against the WT according to ELISA
227 OD values, while WHO and AHP samples showed that four of the mutated target antigens, all bearing a single
228 mutation, enabled the same level of antigen recognition in comparison to the WT. Conversely, mutations N439K
229 (present in deemed extinct lineages B.1.141 and B.1.258), K417N-E484K-N501Y (Beta variant), and L452R-
230 T478K (Delta variant) produced lower ODs ($p<0.05$) than the WT across the vaccinated, WHO and AHP panels.
231 Differences between vaccine sera and WHO or AHP sera might be expected since the antigen configuration
232 and display generated by the mRNA vaccines is dramatically different from that of the live viruses [3]. For

233 example, K417T-E484K-N501Y (Beta variant) and L452R-E484Q (Delta Plus variant) were distinguished from
234 the WT by WHO and AHP cohorts but not by the vaccinated.

235 It is noteworthy that the WHO and AHP panels, comprised of samples collected from two separate and unrelated
236 populations, yielded almost identical results (Figure 2). Both panels identified the antigens with mutations
237 corresponding to three VOCs (Beta, Gamma, Delta) Delta Plus, a fact that suggests that variant-specific
238 immunoassay-based screenings on existing sera samples could serve as prospective tests to assess the
239 potential impact of new variants before sufficient epidemiological data is available.

240 However, we believe that our results do not necessarily extrapolate to patterns in the *in vivo* neutralization of
241 variants because we are examining antigens constructed solely by the RBD, while the mutations' effect on virus
242 affinity to the ACE2 receptor is not considered here. Nor are we examining the influence of variants' full set of
243 concomitant mutations outside of the RBD. Nevertheless, considering that the RBD plays a critical role in the
244 antigenicity of new variants [2] we hypothesized that a relationship might exist between patient vulnerability to
245 infection and disease and the reactivity of antibodies to isolated variant RBD. This is important considering that
246 in a short time most of the worlds' population should have some degree of immunity either by infection or
247 vaccines' (57% of the world's population received at least one COVID-19 vaccine dose by December 23rd 2021,
248 according to Ourworldindata.org).

249 Our results tend to match previous findings. Compared to the WT, neutralization of B.1.1.7 (Alpha) and P.1
250 (Gamma) was found to be roughly equivalent [19], while neutralization of B.1.351 (Beta) spike protein was lower
251 but still relatively robust. Neutralization titers against mutant viruses containing key spike mutations: N501Y and
252 E484K-N501Y-D614G were found to be 1.46 and 0.81 in relation to the WT virus respectively [4] which matches
253 well with the results we obtained for WHO and AHP panels for those mutations (Figure 2). Similarly, Wu et al.
254 [5] detected reductions of the titer of neutralizing antibodies by a factor of 1.2 with pseudo-viruses encoding the
255 B.1.1.7 (Alpha) variant compared to a factor of 6.4 and 3.5 against the B.1.351 (Beta) and P.1 (Gamma)
256 variants. Those studies again align with our data showing that antibody binding to antigen with N501Y mutation
257 alone and WT antigen are the same in all tested cohorts. Conversely, mutants including E484K-N501Y
258 produced lower binding in WHO and AHP samples. Other reports, however, indicate that both B.1.1.7 (Alpha)
259 and B.1.351 (Beta) lead to a decrease in neutralization [9,14,20].

260 Epidemiological data is conflicting but tend to assign higher mortality to mutations associated with B.1.351
261 (Beta) than to B.1.1.7 (Alpha) [21]. However, a recent study found increased transmissibility of variants that
262 included mutations N501Y and E484K but not increased disease severity [22].

263 Residues N501 and E484 play different functions in the infectivity of the virus. Residue N501 is at the RBD-
264 ACE2 interface and mutation N501Y was found to result in an increase of affinity to ACE2 [23]. Mutation E484,
265 in turn, has been identified as an immunodominant spike protein residue with various mutations, including
266 E484K, supporting escape from several monoclonal antibodies [24]. This divergence of functions between
267 residues N501 and E484 might explain why we found E484K to reduce binding of WT-induced antibodies
268 whereas N501Y and WT did not differ.

269 Additionally, in studies with monoclonal antibodies, the spike's B.1.1.7 (Alpha) mutations were shown to reduce
270 neutralization mostly of antibodies specific to the spike's amino-terminal domain (NTD) but only with a small
271 proportion of RBD specific antibodies [25].

272 Considering the immunodominance of the RBD, this could explain some of the moderate reduction in
273 neutralizing activity of convalescence sera against authentic B.1.1.7 (Alpha) or pseudo-viruses carrying the
274 B.1.1.7 (Alpha) spike mutations [26, 27] and the lack of diminished seroreactivity to N501Y by any of the cohorts
275 of this study (Figure 2).

276 Furthermore, neutralization by some RBD-specific and NTD-specific monoclonal antibodies was found to be
277 unaffected by variation in the spike protein suggesting the presence of cross-neutralizing epitopes in both the
278 RBD and NTD [28].

279 Remarkably, mutation N439K produced one of the most consistent drops in ODs compared to WT and other
280 variants (Fig 2). Early in 2021, N439K was the second most prevalent mutation of the RBD sequence [29], but
281 currently is not one of the top ten most distributed mutations worldwide. This mutation is noteworthy because it
282 enhances the binding affinity for the ACE2 receptor and decreases the neutralizing activity of both monoclonal
283 antibodies and serum polyclonal antibodies of convalescence patients [10].

284 However, a deep mutational scanning (DMS) study did not find that mutation N439K significantly alters
285 neutralization by polyclonal antibodies in plasma [30] in contrast to the findings described above [10] and our
286 results (Figs 2 and 3). According to Harvey et al. [31], this discrepancy derives from the fact that the mechanism
287 of immune escape provided by N439K is based on increased affinity to ACE2 rather than by directly affecting

288 epitope recognition. Perhaps then, the experimental design of the DMS study is less sensitive to detecting
289 immune evasion mutations of this type—an inconsistency that exposes limitations of DMS [32] and highlights
290 the significance of testing the ability of immune (COVID-19 positive) sera to recognize new variants with real
291 human samples and serological-based assays.

292 Mutation S477N—that has emerged several times during the pandemic [31]—was found in one study to be
293 resistant to neutralization by a panel of monoclonal antibodies, but by contrast, responds similarly to the WT
294 when tested with convalescence (polyclonal) serum [33]—a result that aligns with the data of this study (Figure
295 2), once again underscoring the advantage of testing real patient sera to evaluate the antigenicity of new
296 mutations.

297 A recent study found lineage B.1.617.2 (Delta) to be associated with an increase in disease severity [34]. This
298 variant also caused a higher rate of vaccine breakthrough cases (17.4% compared to 5.8% for all other variants)
299 in Texas, with 8.4% of all COVID-19 cases occurring in fully vaccinated individuals [35]. In our study, the Delta
300 and kappa variants (which share the L452R mutation) eluded vaccine and infection sera antibodies more than
301 the WT in all cohorts except for critically ill patients (Figure 2).

302 However, in vaccinated individuals, we observed a shift towards higher ODs when mutation K417N was added
303 to the Delta variant mutations L452R and T478K to replicate the Delta Plus variant (B.1.617.3, K41N-L452R-
304 T478K) mutation set. These additional mutations diminished the decreased binding seen in the Delta variant
305 compared to Wild Type ($p < 0.001$), which ultimately demonstrated a similar binding profile for the Delta Plus
306 variant vs Wild Type (Figure 2). Not much epidemiology data have been collected so far about the Delta Plus
307 variant, but it has been pointed out that this variant spreads more easily and is potentially more infectious [36].

308 As the recently emerging Omicron variant begins to spread, it is relevant to this study to note that this VOC
309 bears 5 of the spike protein mutations examined (N501Y, K417N, E484A, T478K, S477N) [37]. While it is
310 beyond the scope of this study to evaluate the effects of these mutations individually or collectively in the
311 immunoreactivity of the Omicron variant, we believe evaluation of this VOC and future inevitable variants using
312 similar assay panels may give insight into immune escape effects.

313 Our study has some limitations. We have not investigated how antibodies generated by vaccines other than the
314 mRNA based Moderna and Pfizer products would respond to variant antigens; vaccines with different antigen
315 presentations might result in a different pattern of variant recognition. The study is also limited by the fact that

316 we were not able to examine how immune sera collected several months or years after infection or vaccination
317 would affect recognition of RBD in antigens of new variants.

318 **Conclusions**

319 In summary, our results indicate that:

320 a) Recognition of SARS-CoV-2 RBD in the sera of vaccinated individuals is significantly enhanced compared
321 to sera from non-critically infected patients regardless of the antigen variant.

322 b) The antibodies generated in critically ill individuals are less variant-specific than those of non-critically ill and
323 vaccinated subjects.

324 c) The antibodies present in the sera of non-critically ill convalescent donors distinguish some variants—
325 noteworthy, Beta, Gamma, Delta, and Delta Plus variants—in relation to the WT, a fact that could enable
326 variant-specific immunoassay-based screenings to aid evaluating the potential epidemiological impact of
327 new variants.

328

329 **References**

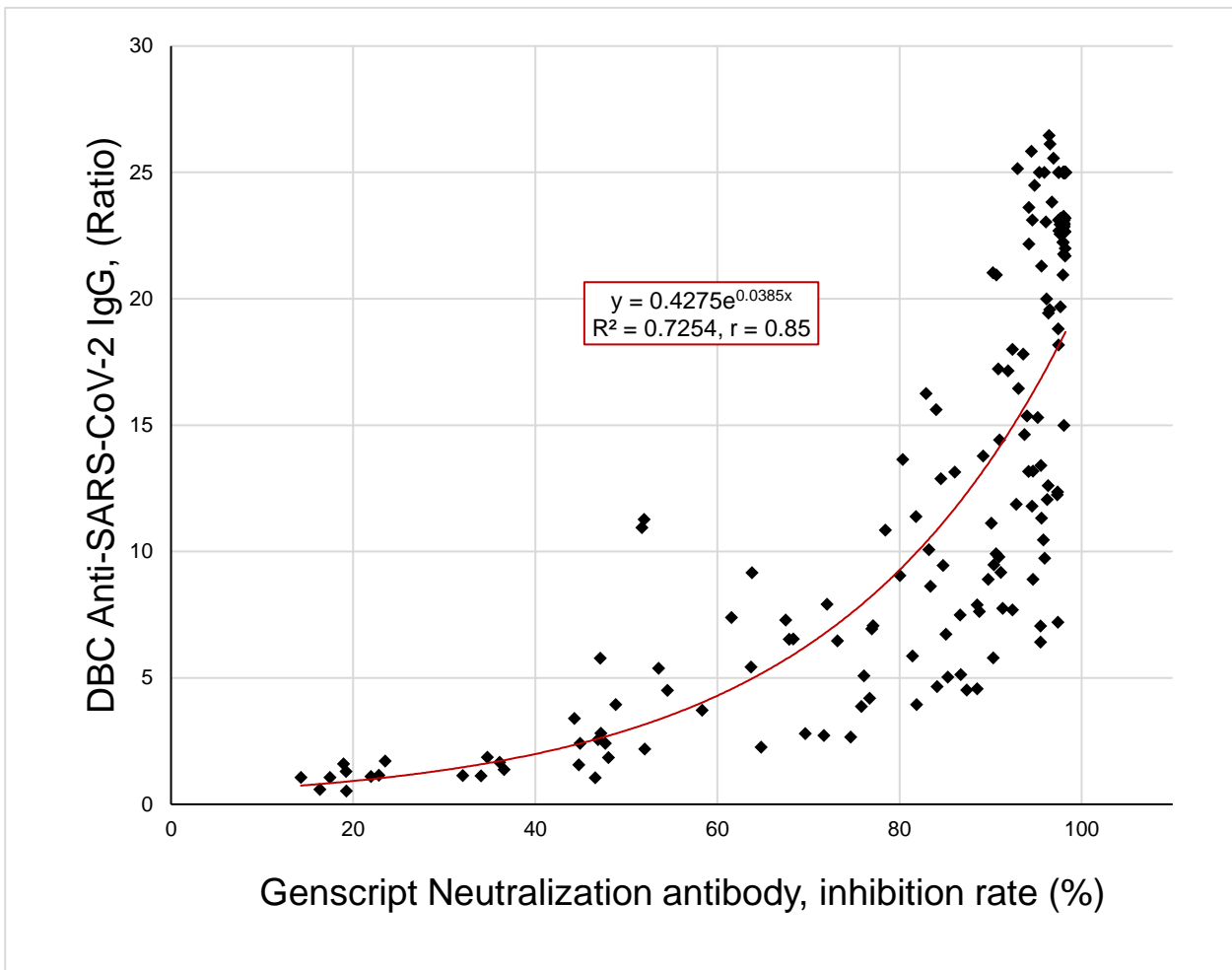
- 330 1. Deng X, Garcia-Knight MA, Khalid MM, Servellita V, Wang C, Morris MK, et al. Transmission, infectivity,
331 and neutralization of a spike L452R SARS-CoV-2 variant. *Cell*. 2021;184:3426-37 e8.
- 332 2. Piccoli L, Park YJ, Tortorici MA, Czudnochowski N, Walls AC, Beltramello M, et al. Mapping Neutralizing
333 and Immunodominant Sites on the SARS-CoV-2 Spike Receptor-Binding Domain by Structure-Guided
334 High-Resolution Serology. *Cell*. 2020;183:1024-42 e21.
- 335 3. Valdes-Balbin Y, Santana-Mederos D, Paquet F, Fernandez S, Climent Y, Chiodo F, et al. Molecular
336 Aspects Concerning the Use of the SARS-CoV-2 Receptor Binding Domain as a Target for Preventive
337 Vaccines. *ACS Cent Sci*. 2021;7:757-67.
- 338 4. Xie X, Liu Y, Liu J, Zhang X, Zou J, Fontes-Garfias CR, et al. Neutralization of SARS-CoV-2 spike 69/70
339 deletion, E484K and N501Y variants by BNT162b2 vaccine-elicited sera. *Nat Med*. 2021;27:620-1.
- 340 5. Wu K, Werner AP, Koch M, Choi A, Narayanan E, Stewart-Jones GBE, et al. Serum Neutralizing Activity
341 Elicited by mRNA-1273 Vaccine. *N Engl J Med*. 2021;384:1468-70.
- 342 6. Rathnasinghe R, Jangra S, Cupic A, Martínez-Romero C, Mulder L, Kehrer T, et al. The N501Y mutation
343 in SARS-CoV-2 spike leads to morbidity in obese and aged mice and is neutralized by convalescent and
344 post-vaccination human sera. *medRxiv : the preprint server for health sciences*, 2021.
345 <https://doi.org/10.1101/2021.01.19.2124959>
- 346 7. Edara VV, Hudson WH, Xie X, Ahmed R, Suthar MS. Neutralizing Antibodies Against SARS-CoV-2
347 Variants After Infection and Vaccination. *JAMA*. 2021;325:1896-8.

- 348 8. Chen RE, Zhang X, Case JB, Winkler ES, Liu Y, VanBlargan LA, et al. Resistance of SARS-CoV-2 variants
349 to neutralization by monoclonal and serum-derived polyclonal antibodies. *Nat Med.* 2021;27:717-26.
- 350 9. Wang P, Nair MS, Liu L, Iketani S, Luo Y, Guo Y, et al. Antibody resistance of SARS-CoV-2 variants
351 B.1.351 and B.1.1.7. *Nature.* 2021;593:130-5.
- 352 10. Thomson EC, Rosen LE, Shepherd JG, Spreafico R, da Silva Filipe A, Wojcechowskyj JA, et al. Circulating
353 SARS-CoV-2 spike N439K variants maintain fitness while evading antibody-mediated immunity. *Cell.*
354 2021;184:1171-87 e20.
- 355 11. Motozono C, Toyoda M, Zahradnik J, Ikeda T, Saito A, Tan TS, et al. An emerging SARS-CoV-2 mutant
356 evading cellular immunity and increasing viral infectivity. *bioRxiv.* 2021.
- 357 12. McCallum M, Bassi J, Marco A, Chen A, Walls AC, Julio JD, et al. SARS-CoV-2 immune evasion by variant
358 B.1.427/B.1.429. *bioRxiv.* 2021.
- 359 13. Hayashi T, Yaegashi N, Konishi I. Effect of RBD (Y453F) mutation in spike glycoprotein of SARS-CoV-2
360 on neutralizing IgG affinity. *medRxiv.* 2021.
- 361 14. Wang Z, Schmidt F, Weisblum Y, Muecksch F, Barnes CO, Finkin S, et al. mRNA vaccine-elicited
362 antibodies to SARS-CoV-2 and circulating variants. *Nature.* 2021;592:616-22.
- 363 15. Verdecchia P CC, Spanevello A, Angeli F. The pivotal link between ACE2 deficiency and SARS-CoV-2
364 infection. *Eur J Intern Med.* 2020;76:14-20.
- 365 16. Fraser DD, Cepinskas G, Slessarev M, Martin CM, Daley M, Patel MA, et al. Critically Ill COVID-19 Patients
366 Exhibit Anti-SARS-CoV-2 Serological Responses. *Pathophysiology.* 2021;28:212-23.
- 367 17. Meschi S, Matusali G, Colavita F, Lapa D, Bordi L, Puro V, et al. Predicting the protective humoral response
368 to a SARS-CoV-2 mRNA vaccine. *Clin Chem Lab Med.* 2021;59:2010-8.
- 369 18. Legros V, Denolly S, Vogrig M, Boson B, Siret E, Rigaille J, et al. A longitudinal study of SARS-CoV-2-
370 infected patients reveals a high correlation between neutralizing antibodies and COVID-19 severity. *Cell*
371 *Mol Immunol.* 2021;18:318-27.
- 372 19. Liu Y, Liu J, Xia H, Zhang X, Fontes-Garfias CR, Swanson KA, et al. Neutralizing Activity of BNT162b2-
373 Elicited Serum. *N Engl J Med.* 2021;384:1466-8.
- 374 20. Zhou D, Dejnirattisai W, Supasa P, Liu C, Mentzer AJ, Ginn HM, et al. Evidence of escape of SARS-CoV-
375 2 variant B.1.351 from natural and vaccine-induced sera. *Cell.* 2021;184:2348-61 e6.
- 376 21. Davies NG, Jarvis CI, Group CC-W, Edmunds WJ, Jewell NP, Diaz-Ordaz K, et al. Increased mortality in
377 community-tested cases of SARS-CoV-2 lineage B.1.1.7. *Nature.* 2021;593:270-4.
- 378 22. Nagano K, Tani-Sassa C, Iwasaki Y, Takatsuki Y, Yuasa S, Takahashi Y, et al. SARS-CoV-2 R.1 lineage
379 variants that prevailed in Tokyo in March 2021. *J Med Virol.* 2021;93:6833-6.
- 380 23. Starr TN, Greaney AJ, Hilton SK, Ellis D, Crawford KHD, Dingens AS, et al. Deep Mutational Scanning of
381 SARS-CoV-2 Receptor Binding Domain Reveals Constraints on Folding and ACE2 Binding. *Cell.*
382 2020;182:1295-310 e20.
- 383 24. Weisblum Y, Schmidt F, Zhang F, DaSilva J, Poston D, Lorenzi JC, et al. Escape from neutralizing
384 antibodies by SARS-CoV-2 spike protein variants. *Elife.* 2020;9.
- 385 25. Collier DA, De Marco A, Ferreira I, Meng B, Datir R, Walls AC, et al. SARS-CoV-2 B.1.1.7 sensitivity to
386 mRNA vaccine-elicited, convalescent, and monoclonal antibodies. *medRxiv.* 2021.
- 387 26. Rees-Spear C, Muir L, Griffith SA, Heaney J, Aldon Y, Snitselaar JL, et al. The effect of spike mutations
388 on SARS-CoV-2 neutralization. *Cell Rep.* 2021;34:108890.

- 389 27. Hu J, Peng P, Wang K, Fang L, Luo FY, Jin AS, et al. Emerging SARS-CoV-2 variants reduce neutralization
390 sensitivity to convalescent sera and monoclonal antibodies. *Cell Mol Immunol*. 2021;18:1061-3.
- 391 28. Dupont L, Snell LB, Graham C, Seow J, Merrick B, Lechmere T, et al. Neutralizing antibody activity in
392 convalescent sera from infection in humans with SARS-CoV-2 and variants of concern. *Nat Microbiol*.
393 2021;6:1433-42.
- 394 29. Li M, Lou F, Fan H. SARS-CoV-2 variants: a new challenge to convalescent serum and mRNA vaccine
395 neutralization efficiency. *Signal Transduct Target Ther*. 2021;6:151.
- 396 30. Greaney AJ, Loes AN, Crawford KHD, Starr TN, Malone KD, Chu HY, et al. Comprehensive mapping of
397 mutations in the SARS-CoV-2 receptor-binding domain that affect recognition by polyclonal human plasma
398 antibodies. *Cell Host Microbe*. 2021;29:463-76 e6.
- 399 31. Harvey WT, Carabelli AM, Jackson B, Gupta RK, Thomson EC, Harrison EM, et al. SARS-CoV-2 variants,
400 spike mutations and immune escape. *Nat Rev Microbiol*. 2021;19:409-24.
- 401 32. Fowler DM, Fields S. Deep mutational scanning: a new style of protein science. *Nat Methods*. 2014;11:801-
402 7.
- 403 33. Liu Z, VanBlargan LA, Bloyet LM, Rothlauf PW, Chen RE, Stumpf S, et al. Identification of SARS-CoV-2
404 spike mutations that attenuate monoclonal and serum antibody neutralization. *Cell Host Microbe*.
405 2021;29:477-88 e4.
- 406 34. Ong SWX, Chiew CJ, Ang LW, Mak TM, Cui L, Toh M, et al. Clinical and virological features of SARS-
407 CoV-2 variants of concern: a retrospective cohort study comparing B.1.1.7 (Alpha), B.1.315 (Beta), and
408 B.1.617.2 (Delta). *Clin Infect Dis*. 2021;23:ciab721.
- 409 35. Musser JM, Christensen PA, Olsen RJ, Long SW, Subedi S, Davis JJ, et al. Delta variants of SARS-CoV-
410 2 cause significantly increased vaccine breakthrough COVID-19 cases in Houston, Texas. *medRxiv*. 2021.
- 411 36. Roy B, Roy H. The Delta Plus variant of COVID-19: Will it be the worst nightmare in the SARS-CoV-2
412 pandemic? *Journal of Biomedical Sciences*. 2021;8:1-2.
- 413 37. Cele S, Jackson L, Khan K, et al. SARS-CoV-2 Omicron has extensive but incomplete escape of Pfizer
414 BNT162b2 elicited neutralization and requires ACE2 for infection. Preprint. *medRxiv*.
415 2021;2021.12.08.21267417. Published 2021 Dec 11. doi:10.1101/2021.12.08.21267417
- 416
- 417
- 418
- 419
- 420
- 421
- 422
- 423
- 424
- 425
- 426
- 427

428

429

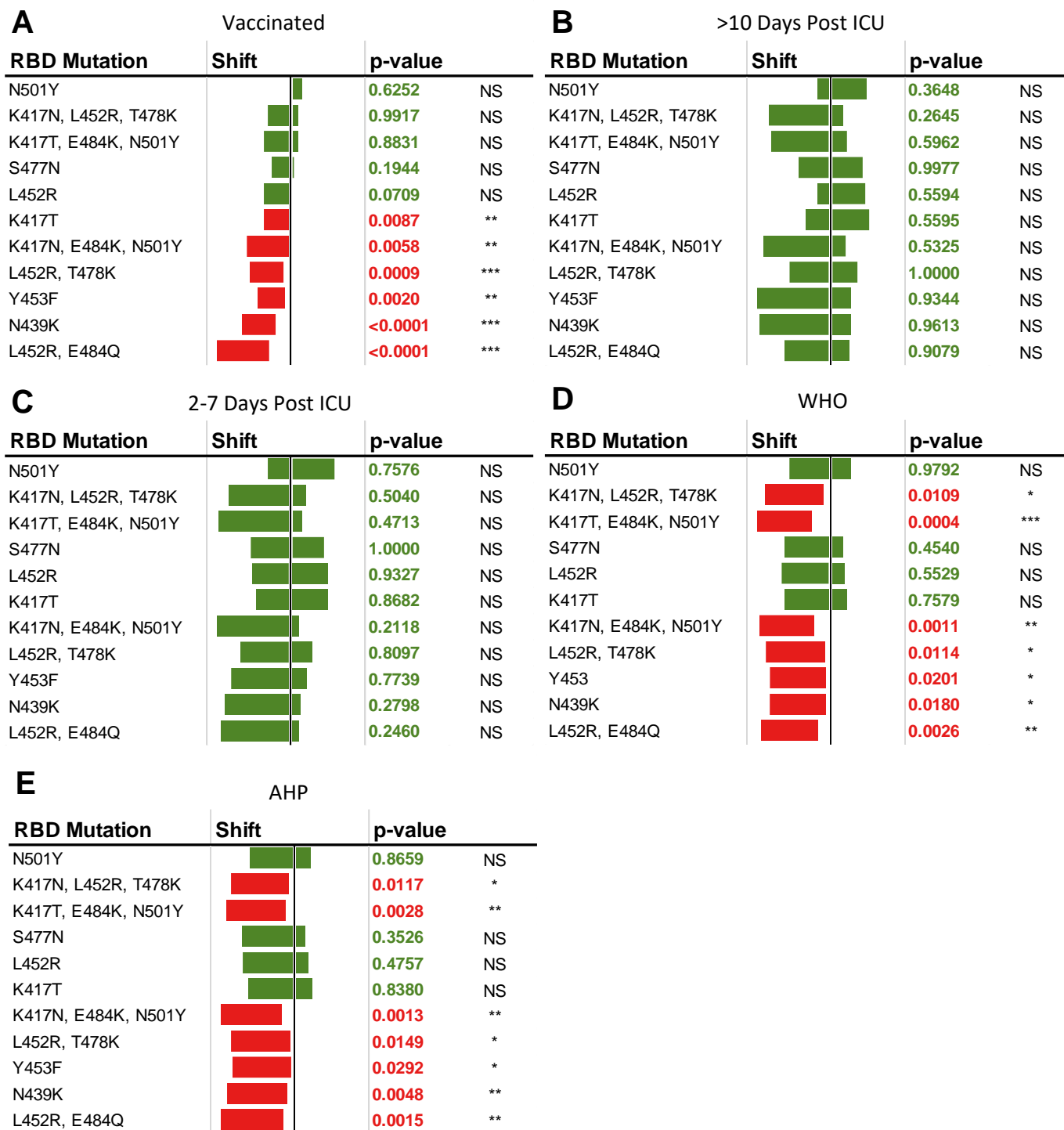


430

431 **Fig 1. Relationship between neutralization and IgG antibody ratio as determined by the Genscript**
432 **cPass™ SARS-CoV-2 Neutralization Antibody Detection/Surrogate Virus Neutralization Test Kit**
433 **(L00847) and DBC’s Health Canada authorized anti-SARS-CoV-2 IgG (CAN-IGG-19). Ratio (DBC kit) was**
434 **calculated based on a Cut Off [Cut-Off (CO) = (Mean of 3 Negative Controls) x factor 1.5] which is then used**
435 **to generate a ratio [Ratio = OD of sample / Cut-Off].**

436

437



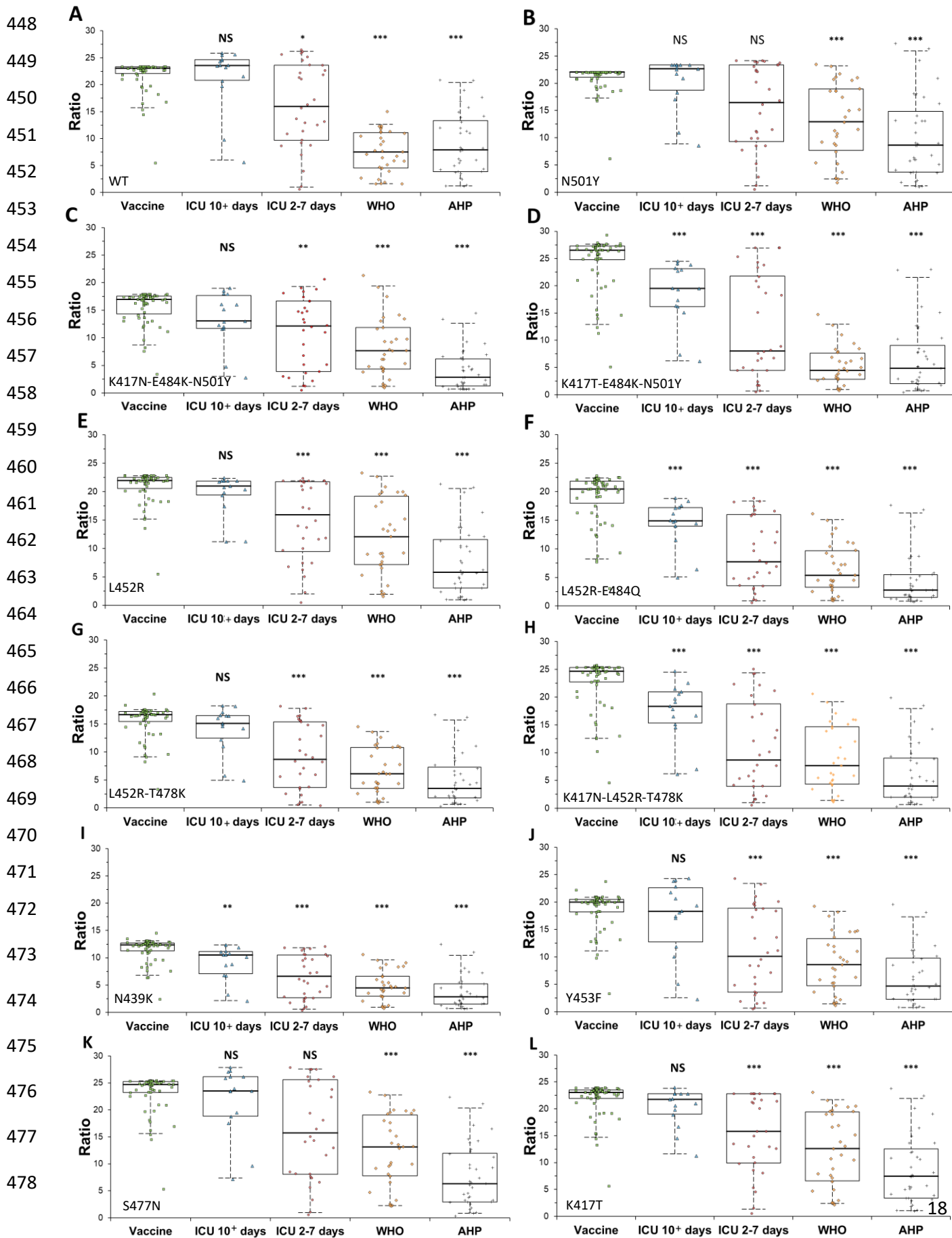
438 **Figure 2. Comparative evaluation of antibody recognition of mutated antigens against WT in five cohorts by**
 439 **optical density (OD). The OD, rather than the ratio, was used to prevent bias from differences in the ELISAs'**
 440 **negative control OD between antigens. Univariate Steel pairwise ranking non-parametric comparisons**
 441 **against the WT antigen.** Experimental datasets for cohorts (A) Vaccinated, (B) >10 days post ICU admission, (C)
 442 2-7 days post ICU admission, (D) WHO (E) Ambulatory or hospitalized population (AHP), (NS) nonsignificant, (*)
 443 P<0.05; (**) P<0.01, (***) P<0.001.

444

445

446

447 **Figure 3.**



479 **Figure 3. Reactivity of sera from vaccinated individuals (Vaccine), from patients 2-7 (ICU 2-7 days) and**
480 **more than 10 days (ICU 10+ days) after admission to ICU, from a NIBSC/World Health Organization**
481 **(WHO) panel, and from ambulatory and hospitalized population (AHP) to recombinant antigens**
482 **comprising the RBD of wild type (WT) SARS-CoV-2 or recombinant antigens with mutations present in**
483 **variants of the virus.** Ratio was calculated based on a Cut Off [Cut-Off (CO) = (Mean of 3 Negative
484 Controls) x factor 2.0] which is then used to generate a ratio [Ratio = OD of sample / Cut-Off]. The cohorts
485 were compared against the vaccinated using Steel pairwise ranking non-parametric method: (NS)
486 nonsignificant, (*) P<0.05; (**) P<0.01, (***) P<0.001. The median is plotted as a line. The box represents 1st
487 to 3rd quartiles and the whiskers the minimum and maximum of the 95% confidence interval. **(A)** WT, **(B)**
488 N501Y, **(C)** K417N-E484K-N501Y, **(D)** K417T-E484K-N501Y, **(E)** L452R, **(F)** L452R-E484Q, **(G)** L452R-
489 T478K, **(H)** K417N-L452R-T478K, **(I)** N439K, **(J)** Y453F, **(K)** S477N, **(L)** K417T.

490

491

492

493

494

495 **SUPPLEMENTAL MATERIAL**

496 **Table S1.** Analysis of samples from the Moderna COVID-19 Vaccine Serum Panel

Negative		Borderline	Positive				
Manufacturer:			DiaSorin			DBC	
Device:			LIAISON SARS-CoV-2 S1/S2 IgG			Anti-SARS-CoV-2 IgG (CAN-IGG-19)	
Device Interpretation:			AU/mL; <15 negative, ≥15 positive			Ratio; ≤1.0 negative, ≥1.2 positive, >1.0 and <1.2 borderline	
Count	Sample ID	Pre-Vaccine	Post-Vaccine 1 st Dose	Post-Vaccine 2 nd Dose	Pre-Vaccine	Post-Vaccine 1 st Dose	Post-Vaccine 2 nd Dose
1	101	<3	117	3,380	0.65	10.97	>25
2	102	60	27200	17,920	3.32	>25	>25
3	103	17.5	5400	4,280	0.78	>25	>25
4	104	882	4080	3,692	16.2	>25	>25
5	105	<3.80	172	1,150	0.65	15.6	>25
6	106	<3.80	189	4,760	0.54	17.12	>25
7	107	<3.80	100	880	0.73	8.9	20.06
8	108	8.1	256	1,580	2.16	>25	>25
9	109	<3	74	2,340	0.7	6.41	>25
10	110	<3	249	4,680	0.56	19	>25
11	111	<3.80	78	363	0.6	9.97	18.9
12	112	<3.80	172	4,340	0.65	15.06	>25
13	113	<3	229	2,420	0.63	15.8	>25
14	115	19.7	6360	12,160	1.55	>25	>25
15	117	<3.80	303	3,400	1.01	17.03	>25
16	118	<3.80	30	1,020	0.63	2.13	17.81
17	119	39.6	2420	5,600	4.07	>25	>25
18	120	<3	65	1,080	0.72	5.65	>25
19	121	<3	111	2,920	0.57	10.06	>25
20	122	<3	117	3,660	0.58	10.86	>25
21	123	<3	49	2,200	0.54	3.63	>25
22	124	14.1	115	1,884	0.74	12.61	>25
23	126	<3.80	128	1,360	0.7	12.3	>25
24	127	<3	103	1,360	0.59	6.77	20.5
25	128	<3	128	2,120	0.55	8.64	>25
26	129	<3	169	1,640	0.54	15.72	>25
27	130	<3.80	127	2,600	0.92	14.08	>25
28	132	<3.80	173	4,160	0.87	16.49	>25
29	133	<3	193	2,320	0.61	16.68	>25

30	134	<3	9	2,460	0.66	0.93	>25
31	135	<3	11	1,970	0.7	1.81	>25
32	136	<3	91	2,180	0.59	6.1	>25
33	137	<3	238	4,720	0.62	17.96	>25
34	138	<3	6	143	0.7	0.94	15.4
35	141	<3	79	1,440	0.75	7.22	>25
36	144	368	16800	17,920	20.64	>25	>25
37	145	86.4	14000	9,600	4.82	>25	>25
38	146	<3	40	253	0.55	2.5	16.7
39	150	58.2	3180	4,400	6.92	>25	>25
40	155	<3.80	10	208	0.64	1.65	15.92
41	156	<3	<3.00	176	0.62	0.65	14.9
42	157	<3	28	388	0.67	2.35	>25
43	158	<3.80	<3.80	145	2.98	3.16	14
44	159	<3	<3.00	180	0.74	1.07	13.5
45	160	<3	116972	1,321,064	0.48	4.21	>25

497
498
499
500
501
502
503
504
505
506
507
508
509
510
511
512
513
514
515
516
517

518 **Table S2.** Analysis of samples from the Pfizer COVID-19 Vaccine Serum Panel.

Negative		Borderline			Positive		
Manufacturer:		DiaSorin			DBC		
Device:		LIAISON SARS-CoV-2 S1/S2 IgG			Anti-SARS-CoV-2 IgG (CAN-IGG-19)		
Device Interpretation:		AU/mL; <15 negative, ≥15 positive			Ratio; ≤1.0 negative, ≥1.2 positive, >1.0 and <1.2 borderline		
Count	Sample ID	Pre-Vaccine	Post-Vaccine 1st Dose	Post-Vaccine 2nd Dose	Pre-Vaccine	Post-Vaccine 1st Dose	Post-Vaccine 2nd Dose
1	114	117	5,200	4,880	6.85	>25	>25
2	116	11.1	127	1,120	2.48	15.47	18.2
3	125	131	1,430	1,090	16.87	>25	18.1
4	131	<3.80	81	1,350	0.76	7.84	>25
5	139	<3.80	23	169	1.39	3.53	14.02
6	140	<3.80	98	50	0.74	9.89	4.82
7	142	<3.80	7	2,920	0.72	1.51	>25
8	143	<3.80	36	2,150	0.62	2.63	>25
9	147	<3.80	25	226	0.5	1.95	16.7
10	148	<3.80	102	4,080	0.58	9.16	>25
11	149	<3.80	25	2,070	0.84	1.91	>25
12	151	<3.80	34	1,640	0.7	3.58	>25
13	152	12.8	3,468	4,280	1.61	>25	>25
14	153	<3.80	33	261	0.53	4.21	18.54
15	154	100	7,760	8,240	6.63	>25	>25

519

520

521

522 **Table S3.** Age and sex of sample donor in the 4 Cohorts

Vaccinated		
Sample #	Age	Sex
101	<20	M
102	21-30	F
103	21-30	F
104	21-30	F
105	21-30	M
106	21-30	M
107	31-40	F
108	31-40	F
109	31-40	F
110	31-40	F
111	31-40	F
112	31-40	F
113	31-40	F
114	31-40	F
115	31-40	M
116	31-40	M
117	41-50	F
118	41-50	F
119	41-50	F
120	41-50	F
121	41-50	F
122	41-50	F
123	41-50	F
124	41-50	F
125	41-50	F
126	41-50	M
127	41-50	M
128	41-50	M
129	41-50	M
130	41-50	M
131	41-50	M
132	51-60	F
133	51-60	F
134	51-60	F
135	51-60	F
136	51-60	F
137	51-60	F
138	51-60	F

139	51-60	F
140	51-60	F
141	51-60	M
142	51-60	M
143	51-60	M
144	61-70	F
145	61-70	F
146	61-70	F
147	61-70	F
148	61-70	F
149	61-70	F
150	61-70	M
151	61-70	M
152	61-70	M
153	61-70	M
154	61-70	M
155	71-80	F
156	71-80	F
157	71-80	F
158	71-80	M
159	71-80	M
160	71-80	M
AVE	50.1	
Median	49.5	
SD	14.8	
Females		38
Males		22

523

AHP		
Sample #	Age	Sex
161	21-30	F
162	21-30	F
163	21-30	F
164	21-30	F
165	21-30	M
166	31-40	F
167	31-40	F
168	31-40	F
169	31-40	F
170	31-40	F
171	31-40	F

172	31-40	M
173	31-40	M
174	41-50	F
175	41-50	F
176	41-50	F
177	41-50	F
178	41-50	F
179	41-50	F
180	41-50	M
181	41-50	M
182	51-60	F
183	51-60	F
184	51-60	F
185	51-60	F
186	51-60	F
187	51-60	F
188	51-60	F
189	51-60	F
190	51-60	M
191	51-60	M
192	51-60	M
193	51-60	M
194	61-70	F
195	61-70	F
196	71-80	F
197	81-90	F
AVE	46.9	
Median	47	
SD	13.5	
Females		28
Males		9

524

ICU 2 – 7 days			
Sample #	Age	Sex	Outcome
198	31-40	M	ALIVE
199	41-50	F	ALIVE
200	41-50	M	ALIVE
201	41-50	M	ALIVE
202	41-50	M	DEAD
203	41-50	M	ALIVE
204	51-60	F	ALIVE

205	51-60	F	ALIVE
206	51-60	F	ALIVE
207	51-60	F	ALIVE
208	51-60	M	ALIVE
209	51-60	M	ALIVE
210	51-60	M	ALIVE
211	51-60	M	ALIVE
212	51-60	M	ALIVE
213	61-70	F	ALIVE
214	61-70	F	ALIVE
215	61-70	F	ALIVE
216	61-70	F	ALIVE
217	61-70	F	ALIVE
218	61-70	M	ALIVE
219	61-70	M	ALIVE
220	61-70	M	ALIVE
221	61-70	M	ALIVE
222	71-80	F	ALIVE
223	71-80	M	DEAD
224	71-80	M	ALIVE
225	71-80	M	ALIVE
226	81-90	F	DEAD
AVE	60.7		
Median	61		
SD	11.3		
Females		12	
Males		17	

525

ICU 10+ days			
Sample #	Age	Sex	Outcome
227	41-50	F	ALIVE
228	41-50	M	ALIVE
229	41-50	M	ALIVE
230	51-60	F	ALIVE
231	51-60	F	ALIVE
232	51-60	F	ALIVE
233	51-60	F	ALIVE
234	51-60	M	ALIVE
235	61-70	F	ALIVE
236	61-70	F	ALIVE
237	61-70	F	ALIVE

238	61-70	M	ALIVE
239	61-70	M	ALIVE
240	71-80	F	ALIVE
AVE	58.3		
Median	56		
SD	8.5		
Females		9	
Males		6	

526

527

528 **Table S4.** Links to sample NIBSC/WHO information.

Study Assigned	NIBSC/WHO	Website link	529
Sample ID	Sample ID		530
335	20/B770-1	https://www.nibsc.org/documents/ifu/20-B770.pdf	
336	20/B770-2	https://www.nibsc.org/documents/ifu/20-B770.pdf	
337	20/B770-3	https://www.nibsc.org/documents/ifu/20-B770.pdf	
338	20/B770-4	https://www.nibsc.org/documents/ifu/20-B770.pdf	
339	20/B770-5	https://www.nibsc.org/documents/ifu/20-B770.pdf	
340	20/B770-6	https://www.nibsc.org/documents/ifu/20-B770.pdf	
341	20/B770-7	https://www.nibsc.org/documents/ifu/20-B770.pdf	
342	20/B770-8	https://www.nibsc.org/documents/ifu/20-B770.pdf	
343	20/B770-9	https://www.nibsc.org/documents/ifu/20-B770.pdf	
344	20/B770-10	https://www.nibsc.org/documents/ifu/20-B770.pdf	
345	20/B770-11	https://www.nibsc.org/documents/ifu/20-B770.pdf	
346	20/B770-12	https://www.nibsc.org/documents/ifu/20-B770.pdf	
347	20/B770-13	https://www.nibsc.org/documents/ifu/20-B770.pdf	
348	20/B770-14	https://www.nibsc.org/documents/ifu/20-B770.pdf	
349	20/B770-15	https://www.nibsc.org/documents/ifu/20-B770.pdf	
350	20/B770-16	https://www.nibsc.org/documents/ifu/20-B770.pdf	
351	20/B770-17	https://www.nibsc.org/documents/ifu/20-B770.pdf	
352	20/B770-18	https://www.nibsc.org/documents/ifu/20-B770.pdf	
353	20/B770-19	https://www.nibsc.org/documents/ifu/20-B770.pdf	
354	20/B770-20	https://www.nibsc.org/documents/ifu/20-B770.pdf	
355	20/B770-21	https://www.nibsc.org/documents/ifu/20-B770.pdf	
356	20/B770-22	https://www.nibsc.org/documents/ifu/20-B770.pdf	
357	20/B770-23	https://www.nibsc.org/documents/ifu/20-B770.pdf	
327	20/130	https://www.nibsc.org/documents/ifu/20-130.pdf	
328	20/162	https://www.nibsc.org/documents/ifu/20-162.pdf	
329	20/B764-01	https://www.nibsc.org/documents/ifu/20-B764-xxx.pdf	
330	20/136	https://www.nibsc.org/documents/ifu/20-136.pdf	
331	20/140	https://www.nibsc.org/documents/ifu/20-268.pdf	
332	20/144	https://www.nibsc.org/documents/ifu/20-268.pdf	
333	20/148	https://www.nibsc.org/documents/ifu/20-268.pdf	
334	20/150	https://www.nibsc.org/documents/ifu/20-268.pdf	

531 **Table S5. Evaluation of Neutralizing Antibodies Detection by Anti-SARS-CoV-2 DBC Serological tests.**
 532 **Results of testing samples from 4 sources on GenScript cPass™ SARS-CoV-2 Neutralization Antibody**
 533 **Detection/Surrogate Virus Neutralization Test Kit and DBC IgG anti-SARS-CoV-2 authorized serological**
 534 **test.** Samples were sourced from (1) infected individuals PCR proven to be SARS-CoV-2 positive, (2) COVID-
 535 19 infected ICU patients, (3) fully vaccinated individuals (two doses of either Pfizer or Moderna vaccines), and
 536 (4) Reference samples from NIBSC/WHO. For the GenScript kit, a Positive outcome was considered at ≥30%.
 537 For the DBC kits, a Positive outcome was considered at a ratio of >1.2, Borderline 1.2-1.0, and Negative <1.0.

Sample ID	Sample Origin	GenScript		DBC	
		Neutralizing Antibodies		IgG ELISA	
		<30% Negative ≥30% Positive		<1 Negative >1.2 Positive	
		%NeutAbs	Diagnosis	Ratio	Diagnosis
161	1	95.9	POSITIVE	9.7	POSITIVE
162	1	17.5	NEGATIVE	1.1	BORD
163	1	47.7	POSITIVE	2.4	POSITIVE
164	1	44.3	POSITIVE	3.4	POSITIVE
165	1	76.1	POSITIVE	5.1	POSITIVE
166	1	34.1	POSITIVE	1.1	BORD
167	1	84.8	POSITIVE	9.5	POSITIVE
168	1	22.8	NEGATIVE	1.2	BORD
169	1	96.3	POSITIVE	12.6	POSITIVE
170	1	85.3	POSITIVE	5.0	POSITIVE
171	1	23.5	NEGATIVE	1.7	POSITIVE
172	1	89.8	POSITIVE	8.9	POSITIVE
173	1	47.2	POSITIVE	2.8	POSITIVE
174	1	80.1	POSITIVE	9.1	POSITIVE
175	1	14.3	NEGATIVE	1.1	BORD
176	1	75.8	POSITIVE	3.9	POSITIVE
177	1	97.4	POSITIVE	7.2	POSITIVE
178	1	63.7	POSITIVE	5.4	POSITIVE
179	1	64.8	POSITIVE	2.3	POSITIVE
180	1	94.2	POSITIVE	13.2	POSITIVE
181	1	48.1	POSITIVE	1.9	POSITIVE
182	1	92.4	POSITIVE	18.0	POSITIVE
183	1	95.6	POSITIVE	13.4	POSITIVE
184	1	90.6	POSITIVE	9.9	POSITIVE
185	1	92.4	POSITIVE	7.7	POSITIVE
186	1	69.7	POSITIVE	2.8	POSITIVE
187	1	88.5	POSITIVE	4.6	POSITIVE

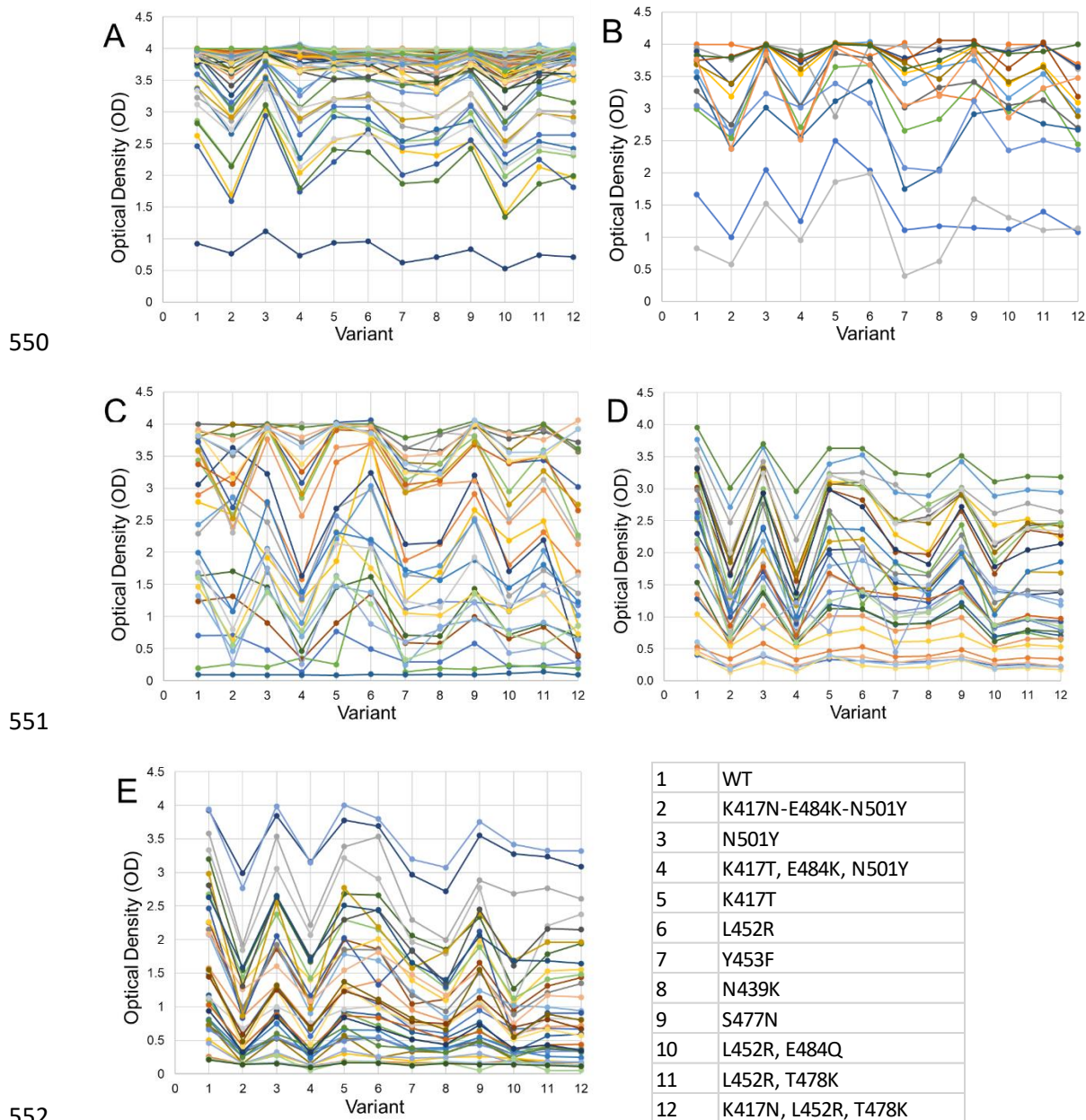
188	1	61.6	POSITIVE	7.4	POSITIVE
189	1	46.9	POSITIVE	2.6	POSITIVE
190	1	77.1	POSITIVE	7.1	POSITIVE
191	1	88.5	POSITIVE	7.9	POSITIVE
192	1	92.8	POSITIVE	11.9	POSITIVE
193	1	91.0	POSITIVE	14.4	POSITIVE
194	1	94.7	POSITIVE	13.2	POSITIVE
195	1	52.0	POSITIVE	2.2	POSITIVE
196	1	76.7	POSITIVE	4.2	POSITIVE
197	1	94.0	POSITIVE	15.4	POSITIVE
241	1	58.3	POSITIVE	3.7	POSITIVE
242	1	96.1	POSITIVE	20.0	POSITIVE
243	1	63.8	POSITIVE	9.2	POSITIVE
244	1	93.7	POSITIVE	14.6	POSITIVE
245	1	47.1	POSITIVE	5.8	POSITIVE
246	1	68.4	POSITIVE	6.6	POSITIVE
247	1	73.2	POSITIVE	6.5	POSITIVE
248	1	72.1	POSITIVE	7.9	POSITIVE
249	1	67.5	POSITIVE	7.3	POSITIVE
250	1	67.9	POSITIVE	6.5	POSITIVE
251	1	90.9	POSITIVE	17.2	POSITIVE
252	1	32.1	POSITIVE	1.1	BORD
253	1	54.5	POSITIVE	4.5	POSITIVE
254	1	71.7	POSITIVE	2.7	POSITIVE
198	2	91.9	POSITIVE	17.2	POSITIVE
200	2	97.5	POSITIVE	25.0	POSITIVE
202	2	90.3	POSITIVE	21.0	POSITIVE
204	2	96.9	POSITIVE	25.6	POSITIVE
205	2	81.8	POSITIVE	11.4	POSITIVE
206	2	94.2	POSITIVE	22.2	POSITIVE
207	2	94.2	POSITIVE	23.6	POSITIVE
208	2	48.8	POSITIVE	4.0	POSITIVE
209	2	80.4	POSITIVE	13.7	POSITIVE
210	2	22.0	NEGATIVE	1.1	BORD
211	2	84.0	POSITIVE	15.6	POSITIVE
214	2	77.0	POSITIVE	7.0	POSITIVE
215	2	82.9	POSITIVE	16.3	POSITIVE
216	2	96.5	POSITIVE	26.5	POSITIVE
218	2	19.3	NEGATIVE	0.5	NEGATIVE
219	2	94.8	POSITIVE	24.5	POSITIVE
220	2	93.0	POSITIVE	25.2	POSITIVE

221	2	86.1	POSITIVE	13.2	POSITIVE
223	2	95.6	POSITIVE	21.3	POSITIVE
224	2	83.4	POSITIVE	8.6	POSITIVE
226	2	91.1	POSITIVE	9.2	POSITIVE
227	2	90.9	POSITIVE	9.8	POSITIVE
240	2	95.9	POSITIVE	25.0	POSITIVE
255	2	46.6	POSITIVE	1.1	BORD
256	2	84.6	POSITIVE	12.9	POSITIVE
257	2	97.7	POSITIVE	23.2	POSITIVE
258	2	96.7	POSITIVE	23.8	POSITIVE
259	2	93.6	POSITIVE	17.8	POSITIVE
260	2	94.6	POSITIVE	23.1	POSITIVE
261	2	37.6	POSITIVE	17.6	POSITIVE
262	2	96.5	POSITIVE	26.1	POSITIVE
263	2	94.5	POSITIVE	25.8	POSITIVE
264	2	78.4	POSITIVE	10.9	POSITIVE
265	2	16.4	NEGATIVE	0.6	NEGATIVE
266	2	36.6	POSITIVE	1.4	POSITIVE
267	2	89.2	POSITIVE	13.8	POSITIVE
268	2	19.2	NEGATIVE	1.3	POSITIVE
269	3	95.4	POSITIVE	25.0	POSITIVE
270	3	98.1	POSITIVE	25.0	POSITIVE
271	3	97.4	POSITIVE	18.8	POSITIVE
272	3	95.2	POSITIVE	15.3	POSITIVE
273	3	98.2	POSITIVE	21.7	POSITIVE
274	3	98.1	POSITIVE	25.0	POSITIVE
275	3	53.6	POSITIVE	5.4	POSITIVE
276	3	96.1	POSITIVE	23.0	POSITIVE
277	3	97.8	POSITIVE	22.6	POSITIVE
278	3	97.6	POSITIVE	23.0	POSITIVE
279	3	98.0	POSITIVE	25.0	POSITIVE
280	3	98.1	POSITIVE	25.0	POSITIVE
281	3	98.0	POSITIVE	22.2	POSITIVE
282	3	97.7	POSITIVE	22.6	POSITIVE
283	3	98.0	POSITIVE	25.0	POSITIVE
284	3	98.0	POSITIVE	21.0	POSITIVE
285	3	98.0	POSITIVE	23.1	POSITIVE
286	3	98.2	POSITIVE	25.0	POSITIVE
287	3	98.2	POSITIVE	25.0	POSITIVE
288	3	97.7	POSITIVE	19.7	POSITIVE
289	3	98.1	POSITIVE	25.0	POSITIVE

290	3	98.0	POSITIVE	21.8	POSITIVE
291	3	98.1	POSITIVE	23.0	POSITIVE
292	3	98.1	POSITIVE	22.9	POSITIVE
293	3	97.5	POSITIVE	18.2	POSITIVE
294	3	98.2	POSITIVE	25.0	POSITIVE
295	3	98.1	POSITIVE	25.0	POSITIVE
296	3	98.0	POSITIVE	23.0	POSITIVE
297	3	98.2	POSITIVE	22.0	POSITIVE
298	3	98.2	POSITIVE	25.0	POSITIVE
299	3	98.2	POSITIVE	22.6	POSITIVE
300	3	98.0	POSITIVE	22.7	POSITIVE
301	3	97.5	POSITIVE	22.7	POSITIVE
302	3	97.6	POSITIVE	22.6	POSITIVE
303	3	98.2	POSITIVE	25.0	POSITIVE
304	3	98.0	POSITIVE	25.0	POSITIVE
305	3	98.0	POSITIVE	23.1	POSITIVE
306	3	98.1	POSITIVE	23.1	POSITIVE
307	3	98.2	POSITIVE	25.0	POSITIVE
308	3	98.1	POSITIVE	25.0	POSITIVE
309	3	98.2	POSITIVE	23.2	POSITIVE
310	3	98.2	POSITIVE	25.0	POSITIVE
311	3	97.9	POSITIVE	23.2	POSITIVE
312	3	98.2	POSITIVE	25.0	POSITIVE
313	3	96.5	POSITIVE	19.6	POSITIVE
314	3	93.1	POSITIVE	16.5	POSITIVE
315	3	98.2	POSITIVE	22.7	POSITIVE
316	3	98.1	POSITIVE	22.9	POSITIVE
317	3	96.4	POSITIVE	19.4	POSITIVE
318	3	98.0	POSITIVE	22.2	POSITIVE
319	3	97.5	POSITIVE	25.0	POSITIVE
320	3	98.0	POSITIVE	25.0	POSITIVE
321	3	90.7	POSITIVE	21.0	POSITIVE
322	3	98.2	POSITIVE	25.0	POSITIVE
323	3	98.0	POSITIVE	23.3	POSITIVE
324	3	98.1	POSITIVE	25.0	POSITIVE
325	3	97.5	POSITIVE	23.1	POSITIVE
326	3	98.2	POSITIVE	25.0	POSITIVE
327	4	90.4	POSITIVE	9.5	POSITIVE
328	4	98.1	POSITIVE	15.0	POSITIVE
329	4	34.7	POSITIVE	1.9	POSITIVE
330	4	96.2	POSITIVE	12.1	POSITIVE

331	4	19.0	NEGATIVE	1.6	POSITIVE
332	4	36.1	POSITIVE	1.7	POSITIVE
333	4	81.4	POSITIVE	5.9	POSITIVE
334	4	90.1	POSITIVE	11.1	POSITIVE
335	4	44.8	POSITIVE	1.6	POSITIVE
336	4	44.9	POSITIVE	2.4	POSITIVE
337	4	97.3	POSITIVE	12.3	POSITIVE
338	4	94.6	POSITIVE	11.8	POSITIVE
339	4	97.4	POSITIVE	12.4	POSITIVE
340	4	83.3	POSITIVE	10.1	POSITIVE
341	4	86.7	POSITIVE	7.5	POSITIVE
342	4	95.8	POSITIVE	10.5	POSITIVE
343	4	52.0	POSITIVE	11.3	POSITIVE
344	4	51.7	POSITIVE	11.0	POSITIVE
345	4	87.4	POSITIVE	4.5	POSITIVE
346	4	84.2	POSITIVE	4.7	POSITIVE
347	4	86.7	POSITIVE	5.1	POSITIVE
348	4	81.9	POSITIVE	4.0	POSITIVE
349	4	90.3	POSITIVE	5.8	POSITIVE
350	4	74.7	POSITIVE	2.7	POSITIVE
351	4	88.8	POSITIVE	7.6	POSITIVE
352	4	95.6	POSITIVE	11.3	POSITIVE
353	4	85.1	POSITIVE	6.7	POSITIVE
354	4	95.5	POSITIVE	6.4	POSITIVE
355	4	94.7	POSITIVE	8.9	POSITIVE
356	4	95.5	POSITIVE	7.1	POSITIVE
357	4	91.3	POSITIVE	7.8	POSITIVE

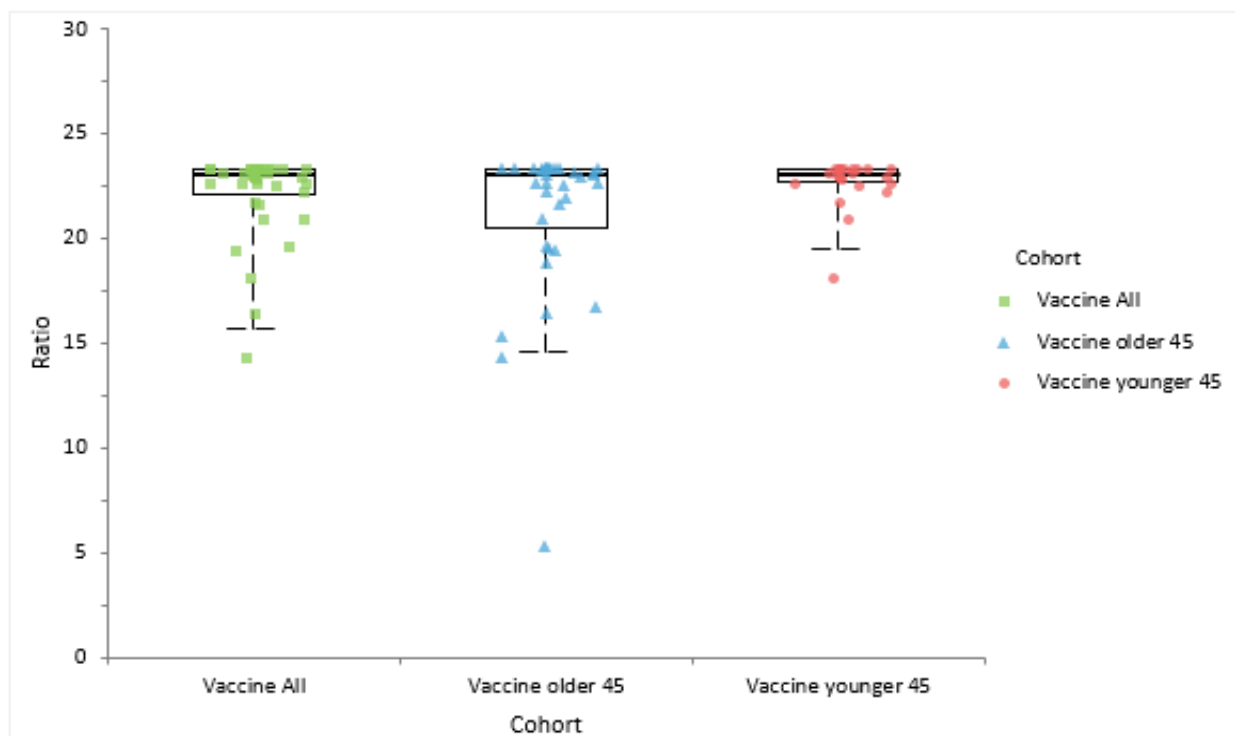
538
539
540
541
542
543
544
545
546
547
548
549



553 **Figure S1.** Individual variability in vaccine and convalescence sera reactivity to WT SARS-CoV-2 RBD antigen
 554 and antigens bearing mutations. Each line represents the optical density values from an individual donor.
 555 **A.** Vaccinated, **B.** ICU patients 10+ days, **C.** ICU patients 2-7 days, **D.** NIBSC/WHO (WHO) panel, **E.**
 556 Ambulatory and hospitalized (but not critically ill) population (AHP) panel.

557

Descriptives



Multiple Comparisons

Steel-Dwass-Critchlow-Fligner all pairs comparisons

Contrast	Hodges-Lehmann location shift	Simultaneous 95% CI	0	p-value
Vaccine younger 45 - Vaccine older 45	0.000000000	-0.147000000 to 0.819000000		1 0.6255
Vaccine younger 45 - Vaccine All	0.000000000	-0.150000000 to 0.385615160		1 0.8101
Vaccine All - Vaccine older 45	0.000000000	-0.179000000 to 0.378615160		1 0.8940

H0: $\theta = 0$

The shift in location between the distributions of the populations is equal to 0.

H1: $\theta \neq 0$

The shift in location between the distributions of the populations is not equal to 0.

¹ Do not reject the null hypothesis at the 5% significance level.

558

559

560

561

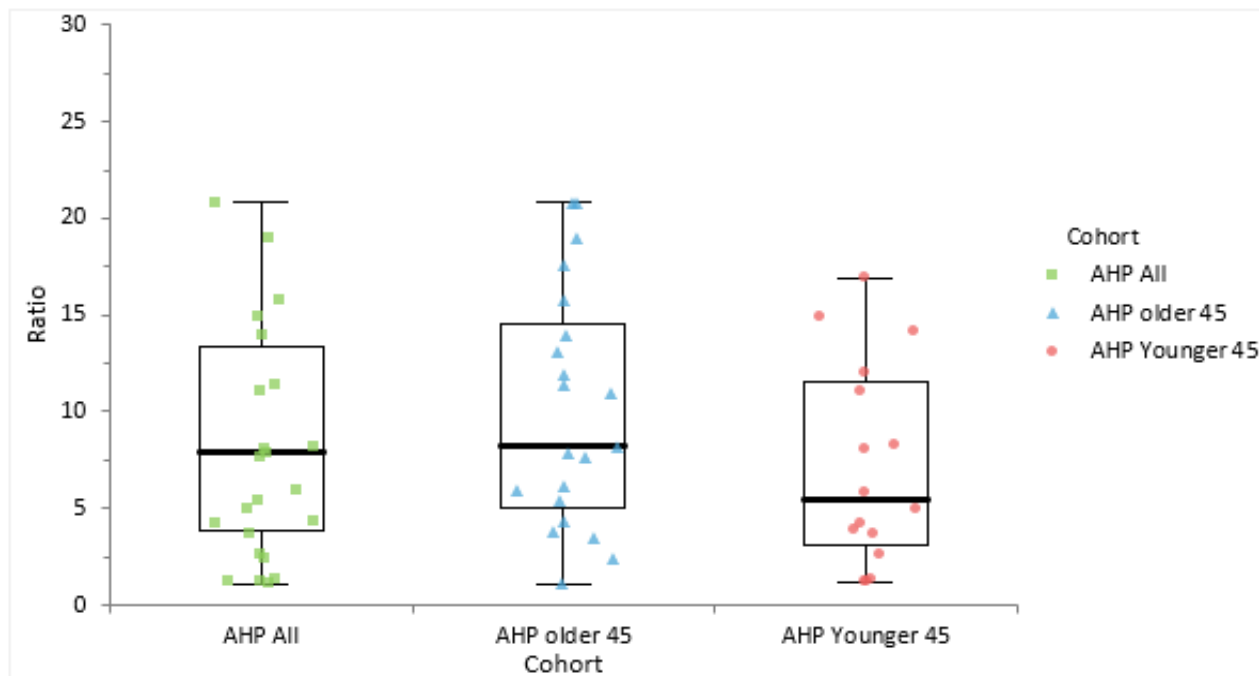
562

563

Figure S2. Reactivity of sera from vaccinated individuals (Vaccine) to a recombinant antigen comprising the RBD of wild type (WT) SARS-CoV-2. The vaccine results were split in those older or younger than 45 years. The median is plotted as a line. The box represents 1st to 3rd quartiles and the whiskers the minimum and maximum of the 95% confidence interval.

564

Descriptives



Multiple Comparisons

Steel-Dwass-Critchlow-Fligner all pairs comparisons

Contrast	Hodges-Lehmann location shift	Simultaneous 95% CI	0	p-value
AHP older 45	2.7155	-1.9120 to 7.7000		0.3516 ¹
AHP All - AHP Younger 45	1.3850	-2.4930 to 5.8180		0.6579
AHP older 45	1.1970	-2.7640 to 5.2150		0.7467 ¹

H0: $\theta = 0$

The shift in location between the distributions of the populations is equal to 0.

H1: $\theta \neq 0$

The shift in location between the distributions of the populations is not equal to 0.

¹ Do not reject the null hypothesis at the 5% significance level.

565

566 **Figure S3.** Reactivity of sera from ambulatory and hospitalized, but not critically ill, population (AHP), to a
 567 recombinant antigen comprising the RBD of wild type (WT) SARS-CoV-2. The AHP results were split in those
 568 older or younger than 45 years. The median is plotted as a line. The box represents 1st to 3rd quartiles and the
 569 whiskers the minimum and maximum of the 95% confidence interval.

570