

Radiological follow-up of adults hospitalised with pneumonia and SARS-CoV-2 infection, in Bristol UK, during the COVID19 pandemic

Gabriella Ruffino¹, Rachel L Williams², Shaney Barratt^{3,5}, Catherine Hyams^{1,3,4}

¹ Acute Medical Unit, Southmead Hospital, Bristol, UK, BS10 5NB

² Research and Innovation, North Bristol NHS Trust, Southmead Hospital, Bristol, UK, BS10 5NB

³ Academic Respiratory Unit, Learning and Research, Southmead Hospital, Bristol, UK, BS10 5NB

⁴ Schools of Population Health Sciences and Cellular and Molecular Medicine, University of Bristol, UK, BS2 8AE

⁵ Department of Respiratory Medicine, Southmead Hospital, Bristol, UK, BS10 5NB

Corresponding Author: Dr Catherine Hyams, MBBS BSc(Hons) PhD
Academic Respiratory Unit,
Learning and Research,
Southmead Hospital,
Bristol, UK, BS10 5NB
catherine.hyams@bristol.ac.uk

Running Title: Radiological follow up of pneumonia and SARS-CoV-2 infection

Keywords: Pneumonia, respiratory infection, COVID19, SARS-CoV-2, radiology

Funding: CH was funded by the National Institute for Health Research [NIHR Academic Clinical Fellowship (ACF-2015-25-002)]. The views expressed are those of the author(s) and not necessarily those of the NIHR or the Department of Health and Social Care.

Declaration of Interests: CH is principal investigator of the Avon CAP study which is an investigator-led University of Bristol study funded by Pfizer and has previously received support from the NIHR in an academic clinical fellowship. The other authors have no relevant conflicts of interest to declare.

Running Title: Radiological follow up of pneumonia and SARS-CoV-2 infection

Word Count: 2264

1 **ABSTRACT 248/250**

2 **Introduction**

3 Radiological change which may be attributed to infection can also be attributable to lung
4 cancer. Patients with SARS-CoV-2 infection can develop groundglass lung opacification
5 which may result in chronic lung changes. Current British Thoracic Society (BTS) guidelines
6 recommend patients with pneumonia and COVID19 undergo repeat chest radiography.

7 **Methods**

8 A single-centre audit of patients hospitalised with community-acquired pneumonia or
9 COVID19 over three time periods during the COVID19 pandemic (Aug-Dec 2020, Jun-Aug
10 2021, Dec-Jan 2022). We assessed whether patients were eligible for radiological follow-up
11 and if repeat radiological investigation occurred.

12 **Results**

13 1040 adults were hospitalised with infective radiological change (pneumonia=596,
14 COVID19=444). 831/1040 patients (80%) required radiological follow-up under BTS
15 guideline criteria: there was minimal difference between the first two time periods studied.
16 Patients hospitalised with CAP were less likely to have radiological follow-up planned than
17 those admitted with COVID19 disease (49% versus 59% respectively). Following a change in
18 hospital policy, follow-up rates increased to 69% and 71% for pneumonia and COVID19.
19 Overall, only 47% eligible patients received follow-up in line with current guidelines.

20 **Conclusion**

21 BTS guideline adherence is important to avoid delay in diagnosing underlying malignancy or
22 chronic lung disease. Radiological follow-up following CAP and COVID19 may be
23 suboptimal, with a paucity of data. Follow-up arranged under the hospital team was more
24 likely to occur than when the GP was responsible for instigating repeat radiological imaging.
25 Further investigation into rates of radiological follow-up should be undertaken, including

26 reasons for non-adherence, to ensure patients receive appropriate treatment following

27 respiratory infection.

28

29

30 INTRODUCTION

31 Pneumonia causes significant morbidity and mortality, and even before the COVID19
32 pandemic the healthcare cost of pneumonia in Europe was estimated at approximately €10
33 billion per annum, with inpatient care accounting for €5.7 billion¹. Community-acquired
34 pneumonia (CAP) has an incidence of 7.99 per 1,000 adults in the UK with disease
35 dramatically increasing with age, particularly in >85-year-olds². However, radiological
36 change which may be attributed to infection (Figure 1A) can also be attributable to lung
37 cancer, and obstructing lung lesions are an underlying cause of pneumonia. Furthermore,
38 obstructing lung lesions can cause pneumonia, and lung cancer remains a leading cause of
39 cancer-related death³. Notably, 2.5% of chest radiographs repeated <90 days of pneumonia
40 diagnosis result in a new diagnosis of lung cancer, with cancer diagnostic predicted to
41 increase if radiographs were only repeated in patients >50 years⁴. Therefore British Thoracic
42 Society (BTS) guidelines recommend repeating chest radiography following CAP diagnosis
43 at 6-weeks in patients 'at higher risk of underlying malignancy'⁵.

44

45 Severe acute respiratory syndrome Coronavirus 2 (SARS-CoV-2) has emerged as a new and
46 highly contagious respiratory pathogen, causing COVID19. Patients with COVID19 are
47 reported to exhibit characteristic radiological changes of groundglass lung opacification
48 (Figure 1B), potentially associated with linear opacities, and which may progress to bilateral
49 consolidation⁶. These radiological changes following SARS-CoV-2 infection are similar to
50 those occurring with other coronaviruses, which can result in chronic lung changes on
51 imaging and reduced lung function^{7,8}. Recent BTS guidelines recommend repeating radiology
52 at 12-weeks post-discharge for patients with a COVID19 diagnosis⁹. We therefore audited
53 patients hospitalised with lobar consolidation due to CAP and opacities consistent with
54 COVID19 pneumonitis to determine current BTS guideline adherence.

55 **Figure 1: Radiological features of pneumonia and SARS-CoV-2 infection**

56 (A) AP chest radiograph showing right middle lobe consolidation (25) and (B) extensive
57 bilateral ground-glass opacities in a patient with confirmed SARS-CoV-2 infection (26).

58



59

60 **METHODS**

61 Adults ≥ 18 years hospitalised to North Bristol NHS Trust were audited (1) from 1st August
62 until 30th November 2020, (2) 1st June until 31st July 2021 and (3) 28th Dec to 19th Jan 2022.

63 These windows reflect time periods during which hospitalisations with COVID19 were
64 increasing in Bristol (Supplementary Data 1) due to the emergence of Alpha or Delta
65 variants, and in a period of established Omicron dominance (Figure 2). The experience of
66 clinical staff and familiarity with treatment protocols would have increased between period 1
67 and 2, as doctors rotate in August in the UK. Between the second and third audit period, the
68 radiological follow-up of patients with CAP or COVID19 became the responsibility of the
69 treating inpatient medical team.

70

71 Patients were screened to identify those admitted with signs/symptoms of acute respiratory
72 disease. Only patients with consolidation (radiologically proven respiratory infection) or
73 opacities consistent with COVID19 pneumonitis on admission radiology were included.

74 Pneumonia was defined as new radiological shadowing with no alternate explanation in the
75 opinion of a consultant radiologist⁵. Patients with hospital-acquired pneumonia were
76 excluded from this audit. COVID19 radiological change was defined as multiple bilateral
77 peripheral opacities or other change in keeping with SARS-CoV-2 infection⁷.

78

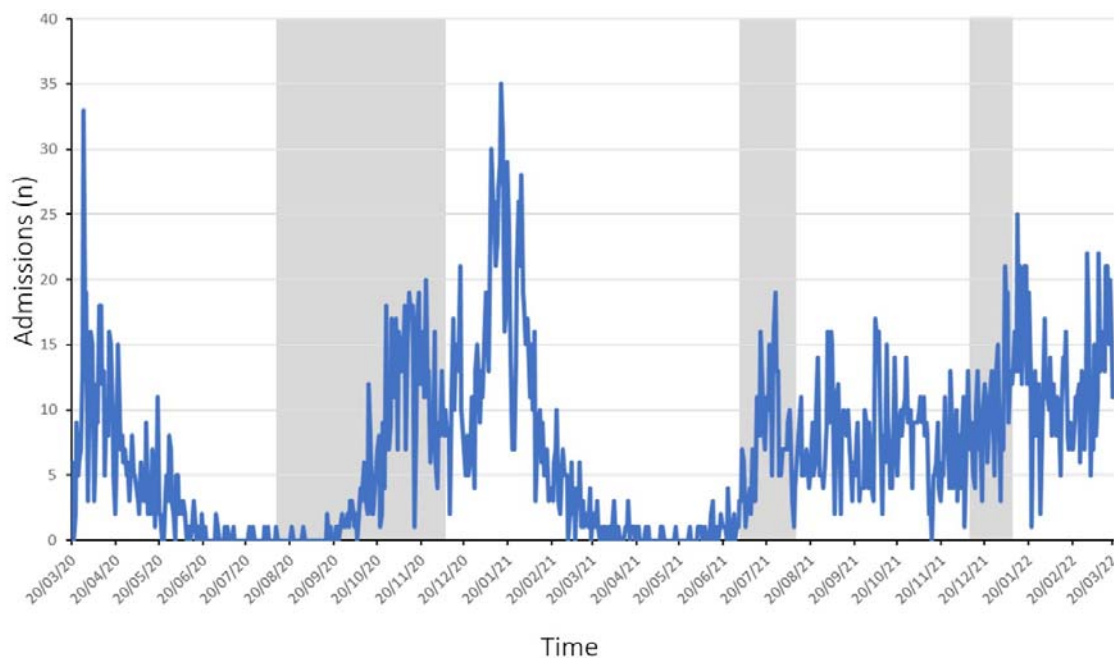
79 Clinical data were collected from medical records. Patient eligibility for repeat radiology was
80 determined separately by two authors: if disagreement occurred then the case was discussed.

81 In both pneumonia and COVID19, patient follow-up was classified as under hospital team
82 (where radiology had to be booked) or GP (which required the discharge summary indicate
83 repeat radiology was required). Follow-up was assessed at 6- or 12-weeks for lobar
84 pneumonia and bilateral COVID19 pneumonitis respectively.

85 **Figure 2: Hospital admissions with SARS-CoV-2 infection**

86 Daily admissions to North Bristol NHS Trust with SARS-CoV-2 infection are shown (blue
87 line) from 20 March 2020 until 20 March 2022. The grey bars represent the periods of time
88 during which this audit was undertaken at the hospital. Data was obtained from UK
89 COVID19 dashboard (27)

90



91

92

93 *Statistical analysis*

94 Categorical variables were presented as counts with percentages; continuous data as means
95 and standard deviations (SD) if normally distributed and medians and interquartile range
96 (IQR) if not normally distributed following testing for normality using the Shapiro-Wilk Test.
97 Proportions were compared using Chi-squared testing; comparison of medians using Mann-
98 Whitney U-Test, with $P < 0.05$ considered significant.

99

100 **RESULTS**

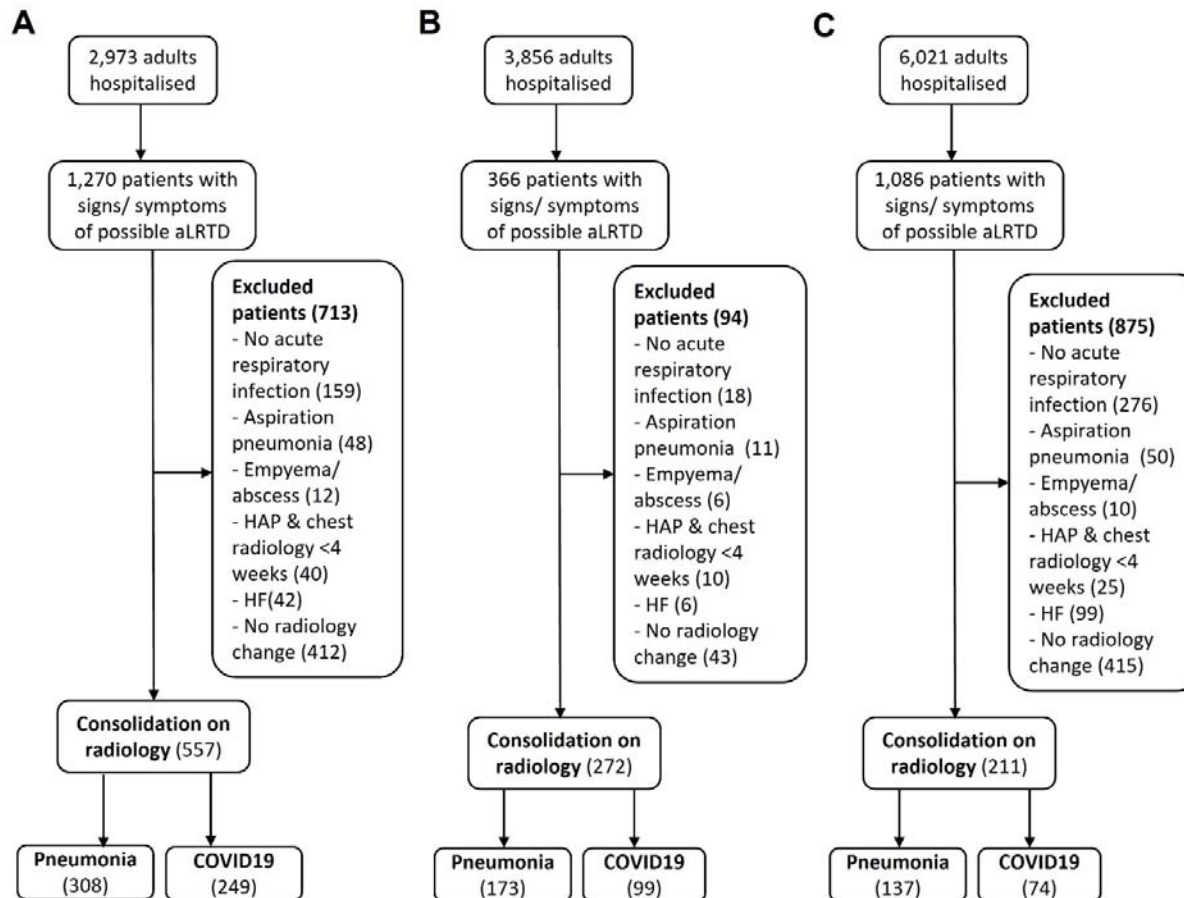
101 Overall, 596 adults were hospitalised with CAP and 444 with COVID19 (Figure 3). There
102 were differences in the number of patients admitted with CAP and COVID19 across the three
103 audit periods (Figure 3). Patient demographics are listed in Table 1. Adults hospitalised with
104 CAP were older, more likely to reside in a long-term care facility and had higher frailty
105 scores than those admitted with COVID19. Additionally, the burden of pre-existing medical
106 conditions was higher in patients hospitalised with CAP, reflected by the higher CCI score
107 for these patients. Importantly, patients hospitalised with CAP had higher rates of existing
108 malignancy in comparison to those with COVID19.

109

110 Patients with COVID19 who were admitted from June-Aug 2021 were younger than those
111 hospitalised in Aug-Dec 2020 and Dec 20–Jan 2021 ($P=0.036$ and $P=0.032$ respectively)
112 (Table 1). Throughout the audit, a high proportion of patients were deemed eligible for
113 follow-up radiology (75% CAP vs 81% COVID19 Aug-Dec 20; 75% vs 93% Jun-Aug 21;
114 and 75% vs 95% Dec 21–Jan 22) (Table 2). Of patients eligible for radiological follow-up,
115 67% (559/831) had follow-up planned by discharge from hospital. In total, 61% (273/447)
116 patients with CAP had follow-up planned by the time of hospital discharge; in comparison,
117 75% (286/384) of adults hospitalised with COVID19 had radiology follow-up planned on
118 discharge. In the first two audit periods, fewer CAP patients had radiology follow-up planned
119 compared to COVID19 patients (Table 2). Overall repeat radiological examination occurred
120 in 54% (446/831) eligible patients and a total of 47% (393/831) underwent investigation
121 within BTS guideline timeframe (Table 2). Overall, 49% (220/447) patients with CAP and
122 59% (226/384) of COVID19 disease patients underwent planned follow-up. A total of 45%
123 (201/447) eligible adults hospitalised with CAP and 43% (192/447) patients with COVID19
124 disease patients received follow-up within BTS guideline timelines.

1 **Figure 3: Study Flow Diagram**

2 In this audit of adults hospitalised at North Bristol NHS Trust, there were (A) 557 adults in Aug-Dec 2020, (B) 272 adults in Jun-July 2021 and
3 (C) 211 adults in Dec 21-Jan 22 with confirmed lobar pneumonia or pneumonitis on their initial chest radiology.
4 aLRTD, acute lower respiratory tract disease; HAP, hospital acquired pneumonia; HF, heart failure



5

9

6 **Table 1: Characteristics of Patients Hospitalised with Radiologically Proven Respiratory Infection**

Characteristic	Cohort One (Aug-Dec 2020)			Cohort Two (June-Aug 2021)			Cohort Three (Dec-Jan 2022)		
	Pneumonia N =308	COVID-19 N =249	Total Cohort N =557	Pneumonia N = 173	COVID-19 N = 99	Total Cohort N =272	Pneumonia N =137	COVID-19 N = 74	Total Cohort N = 211
Age (years) - median (IQR)	80.0 (68.0–87.4)	62.8 (54.2–76.9)	73.7 (59.4–83.9)	75.6 (61.8–85.7)	48.5 (35.0–59.6)	67.1 (48.5–81.7)	75.8 (60.9–85.8)	60.4 (53.5–78.2)	68.9 (57.1–82.3)
Male Gender – N (%)	159 (51.6)	156 (62.7)	315 (56.6)	92 (53.2)	62 (62.6)	154 (56.6)	69 (50.4)	40 (54.1)	109 (51.7)
Care home resident – N (%)	48 (15.6)	11 (4.4)	59 (10.6)	10 (5.8)	0 (0)	10 (3.7)	22 (16.1)	10 (13.5)	32 (15.2)
Smoking – N (%)									
Current	43 (14.0)	8 (3.2)	51 (9.2)	15 (8.7)	5 (5.1)	20 (7.4)	8 (5.8)	8 (10.8)	16 (7.6)
Ex-smokers	130 (42.2)	113 (45.4)	243 (43.6)	94 (54.3)	36 (36.4)	130 (47.8)	71 (51.8)	26 (35.1)	97 (46.0)
Unknown	62 (20.1)	32 (12.9)	94 (16.9)	13 (7.5)	14 (14.1)	27 (9.9)	15 (10.9)	10 (13.5)	25 (11.8)
Comorbidity Scores – N (%)									
Rockwood Frailty 0-4	120 (39.0%)	203 (81.5%)	323 (58.0%)	103 (59.5)	89 (89.9)	192 (70.5)	66 (48.2)	55 (74.3)	121 (57.3)
Rockwood Frailty 5-9	188 (61.0%)	46 (18.5%)	234 (42.0%)	70 (40.5)	10 (10.1)	80 (29.4)	71 (51.8)	19 (25.6)	90 (42.7)
CCI - median (IQR)	5 (4 - 7)	3 (1 - 4)	4 (2 - 6)	4 (2 - 6)	1 (0 - 3)	3 (1-5)	4 (2 - 6)	4 (2 - 6)	4 (2 - 6)
Respiratory – N (%)									
Any	140 (54.5)	68 (27.3)	208 (37.3)	81 (46.8)	28 (28.3)	109 (40.1)	61 (44.5)	25 (36.5)	86 (61.1)
COPD	95 (30.8)	19 (7.6)	114 (20.5)	45 (26.0)	<5 (<5.1)	49 (18.0)	34 (24.8)	13 (17.6)	47 (22.2)
Asthma	35 (11.4)	39 (15.7)	74 (13.3)	34 (19.7)	22 (22.2)	56 (20.6)	26 (19.0)	9 (12.2)	35 (16.6)
Other *	35 (11.4)	16 (6.4)	51 (9.2)	14 (8.1)	<5 (<5.1)	16 (5.9)	12 (8.8)	5 (6.8)	17 (8.1)
Cardiovascular – N (%)									
CCF	54 (17.5)	16 (6.4)	70 (12.6)	21 (12.1)	<5 (<5.1)	24 (8.8)	23 (16.8)	9 (12.2)	31 (15.0)
Ischaemic Heart Disease	62 (20.1)	32 (12.9)	94 (16.9)	24 (13.9)	<5 (<5.1)	28 (10.3)	22 (16.1)	9 (12.2)	21 (10.0)
Neurological – N (%)									
CVA/TIA	39 (12.7)	18 (7.2)	57 (10.2)	21 (12.1)	0 (0)	21 (7.7)	14 (10.2)	5 (6.8)	19 (9.0)
Dementia	40 (13.0)	7 (2.8)	47 (8.4)	12 (6.9)	0 (0)	12 (4.4)	12 (8.8)	6 (8.1)	18 (8.5)
Cognitive impairment	21 (6.8)	7 (2.8)	28 (5.0)	11 (6.4)	0 (0)	11 (4.0)	5 (3.6)	5 (6.8)	10 (4.7)
Other neurological condition ‡	20 (6.5)	10 (4.0)	30 (5.4)	7 (4.0)	<5 (<5.1)	8 (2.9)	11 (8.0)	7 (9.5)	18 (8.5)
Malignancy – N (%)									
None	257 (83.4)	233 (93.6)	490 (88.0)	151 (87.3)	93 (93.9)	244 (89.7)	118 (86.1)	60 (81.1)	178 (84.4)
Solid Organ Cancer	42 (13.6)	10 (4.0)	52 (9.4)	21 (12.4)	5 (5.1)	26 (9.6)	15 (10.9)	8 (10.8)	23 (10.9)
Haematological Malignancy	12 (3.6)	7 (2.9)	19 (3.5)	<5 (<2.8)	<5 (<5.1)	<5 (<1.8)	5 (3.6)	6 (8.1)	11 (5.2)

8

9

* Includes bronchiectasis, pulmonary fibrosis, and other chronic respiratory conditions

10

‡ Includes Parkinson's disease, Huntington's disease, and other chronic neurological conditions not including CVA, TIA, Dementia or Cognitive Impairment

11

CCF, congestive cardiac failure; CVA, cerebrovascular accident; COPD, chronic obstructive pulmonary disease; IQR, interquartile range; TIA, Transient Ischaemic Attack

1 **Table 2: Radiological follow-up of patients with pneumonia and COVID-19**

2

Radiological Follow-Up	Cohort One (Aug-Dec 2020)			Cohort Two (June-Aug 2021)			Cohort Three (Dec-Jan 2022)		
	Pneumonia N =308	COVID-19 N =249	P-value	Pneumonia N =173	COVID-19 N =99	P-value	Pneumonia N =115	COVID-19 N = 96	P-value
Patients Eligible under BTS Guidelines[†] - N (%)									
Not eligible	77/308 (25)	48/249 (20)	-	43/173 (25)	7/99 (7)	-	29/115 (25)	5/96 (5)	-
Eligible for follow-up	231/308 (75)	201/249 (81)	-	130/173 (75)	92/99 (93)	-	86/115 (75)	91/96 (95)	-
Plan on Discharge - N (%)									
No follow-up booked	106/231 (46)	63/201 (31)	0.0001	49/130 (38)	20/92 (22)	0.0116	17/86 (20)	13/91 (14)	0.2887
Self-discharge before follow-up booked	1/231(0)	0/201 (0)	NS	1/130 (1)	0/92 (0)	NS	0/86 (0)	2/91 (2)	0.1887
Radiology plan implemented	124/231 (54)	138/201 (69)	0.0015	80/130 (62)	72/92 (78)	0.0076	69/86 (80)	76/91 (84)	0.2980
- Under hospital team	72/124 (58)	113/138 (82)	<0.0001	62/80 (78)	67/72 (93)	0.0097	58/69 (84)	72/76 (95)	0.1028
- Under GP	43/124(35)	20/138 (14)	0.0002	11/80 (14)	5/72 (7)	NS	6/69 (9)	4/76 (5)	0.5806
- Documented plan not to repeat radiology	9/124 (8)	5/138(4)	NS	7/80 (9)	0/72 (0)	NS	5/69 (7)	0/76 (0)	0.0493
Follow-up Occurrence - N (%)									
Total patients undergoing repeat radiology	97/231 (42)	118/201 (59)	0.0004	64/130 (49)	43/92 (47)	NS	59/86 (69)	65/91 (71)	0.4122
Follow-up occurred within timeframe	87/231 (38)	104/201 (52)	0.0017	60/130 (46)	25/92 (27)	0.0042	54/86 (63)	63/91 (69)	0.2256
- Under hospital team	58/72 (81)	93/113 (82)	NS	51/62 (82)	20/67 (30)	<0.0001	52/58 (90)	61/72 (85)	0.3047
- Under GP	29/43 (67)	11/20 (55)	NS	9/11 (82)	5/5 (100)	NS	2/6 (33)	2/4 (50)	1.0000

3

4 [†] Patient eligibility for repeat chest radiograph under BTS guidelines^{5,9} was determined separately by two authors, and where there was disagreement a
5 discussion to determine eligibility occurred.

6

7 GP, General Practitioner; NS, not significant

8

1 Both planning and occurrence of follow-up for adults with CAP increased between the audit
2 period 1 and 2, alongside improvement of follow-up occurrence within BTS guideline
3 timeframe. Planning of follow-up increased in patients hospitalised with COVID19, there
4 was a decrease in occurrence of repeated radiological investigation from 59% to 47% of
5 eligible individuals occurred. Of those with follow-up planned, most (80%) had this planned
6 under the hospital team. Notably, 30% COVID19 patients admitted in June-Aug 2021
7 underwent follow-up per guidelines when arranged under the hospital team; in all other
8 patient groups approximately 80% patients with hospital follow-up arranged underwent such
9 follow-up. Patients with GP led follow-up tended to be less likely to receive follow-up within
10 guideline criteria ($P=0.03$); although, there are small numbers in this audit group (Table 2).

11

12 In cohort 3, which was audited following the implementation of a policy which required
13 radiological follow-up to occur under the discharging clinical team, there was noticeable
14 increase in the proportion of follow-up for patients with CAP and COVID19 (69% and 71%
15 versus 49% and 47% respectively in previous audit window). Whilst some follow-up still
16 occurred led by the GP, this was lower than in other periods (Table 2).

17

18 **DISCUSSION**

19 This single-centre audit found that initially only 49% of eligible patients under current BTS
20 guidelines underwent such imaging. Appropriate patient follow-up is important to detect
21 early and potentially treatable respiratory disease with 2.5% of chest radiographs repeated
22 <90 days of pneumonia diagnosis result in lung cancer diagnosis, with cancer diagnostics
23 predicted to increase if radiographs were only repeated in patients >50 years⁴. There is sparse
24 literature concerning the occurrence rate of radiological follow-up after a diagnosis of
25 pneumonia. A previous local audit showed 51% (55/107) patients underwent radiological
26 follow-up within 6-weeks of presentation¹⁰. A separate audit found 43% patients ≥50y
27 received appropriate advice concerning follow-up, with only 15% undergoing repeat
28 imaging¹¹. The level of adherence to BTS guidelines following identification of consolidative
29 change is concerning: BTS CAP guidelines⁵ are well established, with repeated imaging to
30 prevent delay in diagnosing lung cancer following demonstration of consolidation. Lung
31 cancer remains the second most common cancer and accounts for 21% of all cancer deaths¹²
32 with 70% of lung cancer diagnosed when it has progressed to Stage 3 or 4¹³. Delay in
33 diagnosis of lung cancer leading to more extensive malignancy at the time of diagnosis
34 results in fewer curative treatment options and is associated with poor outcomes¹⁴. As such
35 BTS guideline adherence should be high to permit early diagnosis and hopefully reduce lung
36 cancer mortality. Further to this, we found 16% of booked follow-up did not take place and
37 this needs to be addressed.

38

39 We found improvement in radiological follow-up rates both overall and within BTS timelines
40 following implementation of a change in responsibility of radiology follow up booking at the
41 study hospital. There were also some changes in guideline adherence between the first two

42 audit periods, with planned follow-up for both COVID19 pneumonitis and CAP increasing
43 between the audit periods. This may be attributable to the time periods which were audited,
44 as UK medical rotations occur in August¹⁵ and therefore the second audit period occurred
45 when doctors were more familiar with the hospital, guidelines or protocols and have received
46 more training. As there are differences in the patient cohorts between the two audit periods, it
47 is possible that the patient groups have different treatment preferences, and this affected
48 patient attendance at follow-up appointments. For example, some patient groups may have
49 higher rates of non-attendance at appointments^{16,17}, or patients may have chosen to avoid
50 hospital for repeated radiology testing as they were concerned about acquiring COVID19^{18,19}.

51

52 This audit demonstrates that radiological follow-up was more likely to occur if arranged
53 under the hospital team rather than under the GP. This may be because the hospital team
54 directly book the radiology test at the same time as writing the discharge summary; whereas
55 asking the patient's GP to request follow-up radiology requires that GP undertake additional
56 action to book the investigation. Additionally, it is possible that patients assign different
57 significance to investigations depending on which clinician instigates the test, how the test
58 and appointment are communicated to patients, or other factors such as perceived healthcare
59 and NHS pressures may affect attendance at follow-up radiology appointments^{19,20}. We
60 highlight that only a small number of patients received follow-up under GP care; however,
61 these results align with concerns about patient safety when hospital physicians request GPs to
62 follow-up on tests requested during hospitalisation²¹. Significant improvement occurred in
63 guideline adherence occurred when GPs were not asked to undertake this task.

64

65 In the first two audit periods, we also found that fewer CAP patients (45%, 161/361)
66 underwent repeat chest radiology in comparison to those admitted with COVID19 (55%,
67 161/293), demonstrating difference in adherence between the two guidelines within the same
68 hospital. Additionally, the hospital team planned follow-up under the GP more frequently for
69 adults hospitalised with CAP than for those admitted with COVID19. The change
70 implemented between audit period 2 and 3 not only increased total adherence but reduced the
71 difference in follow-up rates between CAP and COVID19 patients. This audit did not
72 investigate reasons for difference in CAP and COVID19 follow-up, but the time-period for
73 COVID19 follow-up is longer than that for CAP⁷, and therefore it is possible pressure on
74 healthcare had more effect on COVID19 follow-up. The increased prevalence of SARS-CoV-
75 2 infection coupled with the more recent BTS guidelines⁷, in the context of frequent advances
76 in knowledge and COVID19 disease treatment guidelines, may mean that physicians were
77 more familiar with these guidelines or developed strategies to improve implementation of
78 care pathways for patients with COVID19 disease, thus increasing adherence. It is also
79 possible that the difference in follow-up planning may be attributable to physician and patient
80 treatment preferences for frailer patients, adults with considerable pre-existing medical
81 disease burden or those with malignancy. The known difference in circulating and dominant
82 SARS-CoV-2 variants may have affected either patient or physician treatment preference.
83 The follow-up rate found in our audit during this time was higher than that found in a study
84 conducted at a UK district general hospital, which reported 58% of adults with COVID19
85 underwent radiological follow-up²². As North Bristol NHS Trust has a dedicated specialist
86 pulmonary fibrosis centre, radiological follow-up to detect early change following COVID19
87 may be higher than in non-specialist units, in line with studies demonstrating that specialist
88 units may offer improved patient care^{23,24}.

89

90 This audit has many strengths. Firstly, it was conducted at a University hospital with
91 specialist respiratory services and recruited many patients with CAP and COVID19. We
92 repeated the audit over two time periods at the same hospital, showing similar results within
93 the same healthcare setting. The first two time periods occurred within the same
94 training/rotation year; therefore, this audit was repeated with the same cohort of junior
95 doctors in post and any change in practice occurred within the same group of physicians.
96 There are also some limitations: as this is a single-centre audit, results may not be
97 generalisable. By necessity we audited time periods when the NHS was under considerable
98 pressure, and therefore rates of appropriate follow-up may improve when services are not
99 under such strain. We were unable to fully determine reasons for non-adherence to BTS
100 guidelines in this audit, including why radiological follow-up was not arranged, or why
101 patients did not receive follow-up, which may have been due to patient preference. By
102 necessity, this audit took place in time periods during which different SARS-CoV-2 variants
103 were circulating and/or dominant.

104

105 **CONCLUSION**

106 In conclusion, these data suggest BTS guideline adherence regarding radiological follow-up
107 may be suboptimal, with room for improvement and consequently improved patient
108 outcomes. We found that adherence to BTS guidelines improved, once it was established that
109 this follow-up should be arranged by the inpatient clinical team. This audit should be
110 undertaken at additional hospitals, and potentially nationally, to ensure appropriate BTS
111 guidelines adherence thereby avoiding delay in diagnosing underlying malignancy or chronic
112 lung disease. Furthermore, additional reasons for non-adherence to guidelines should be

113 determined as this will allow these issues to be addressed and the treatment of patients

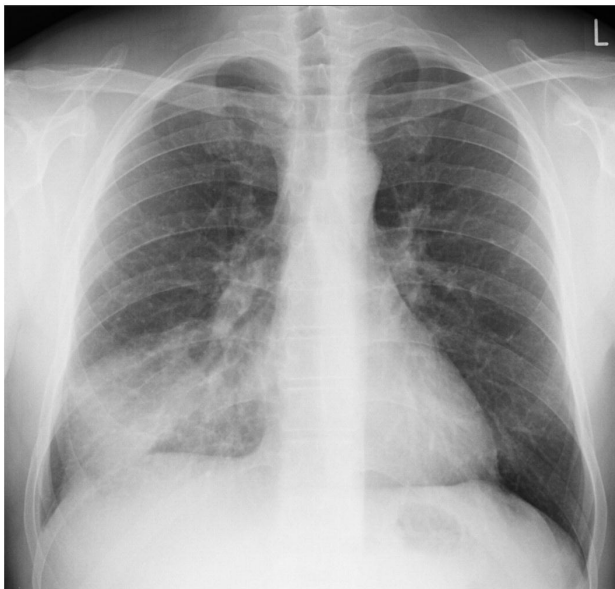
114 improved.

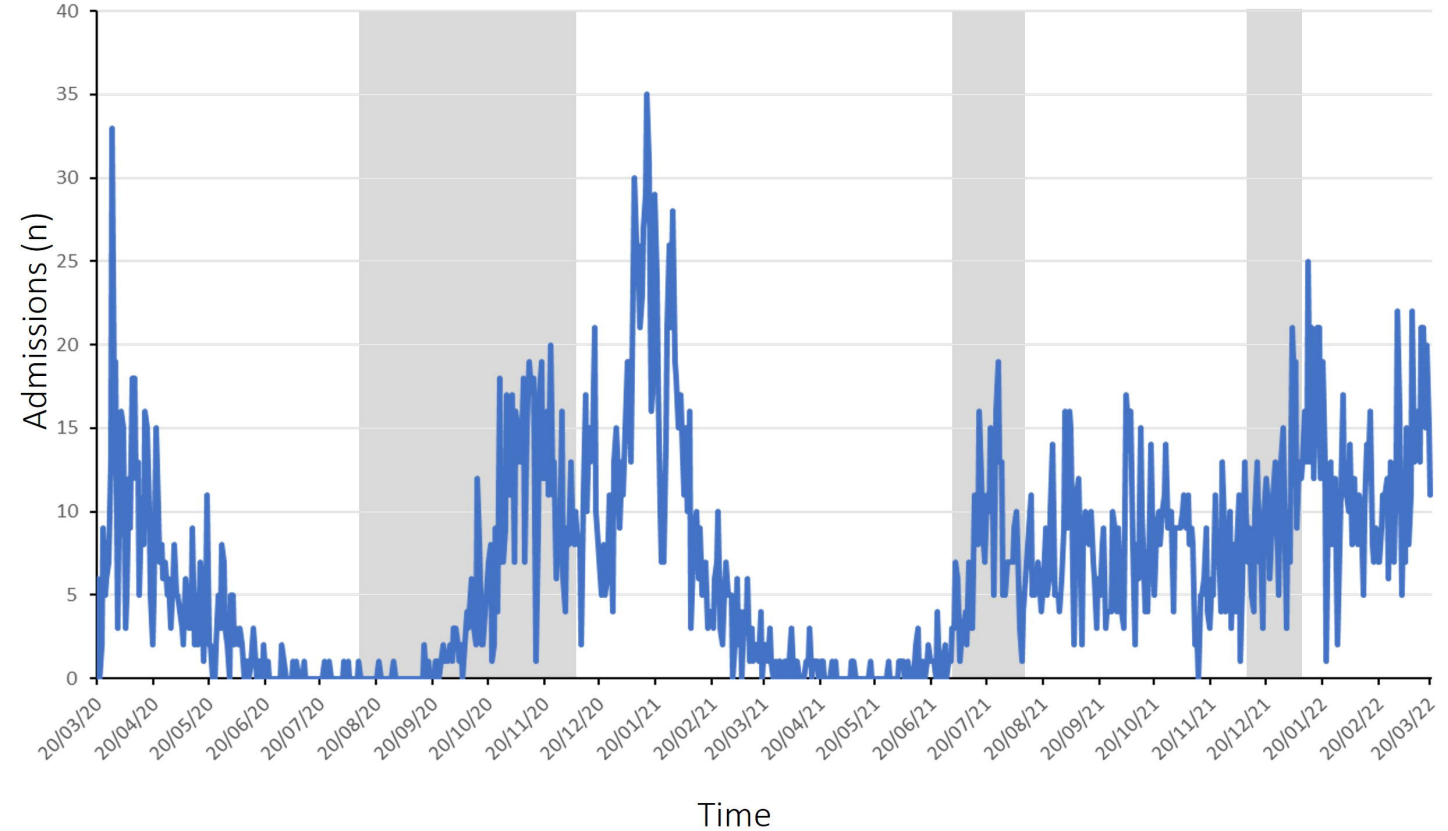
115 REFERENCES

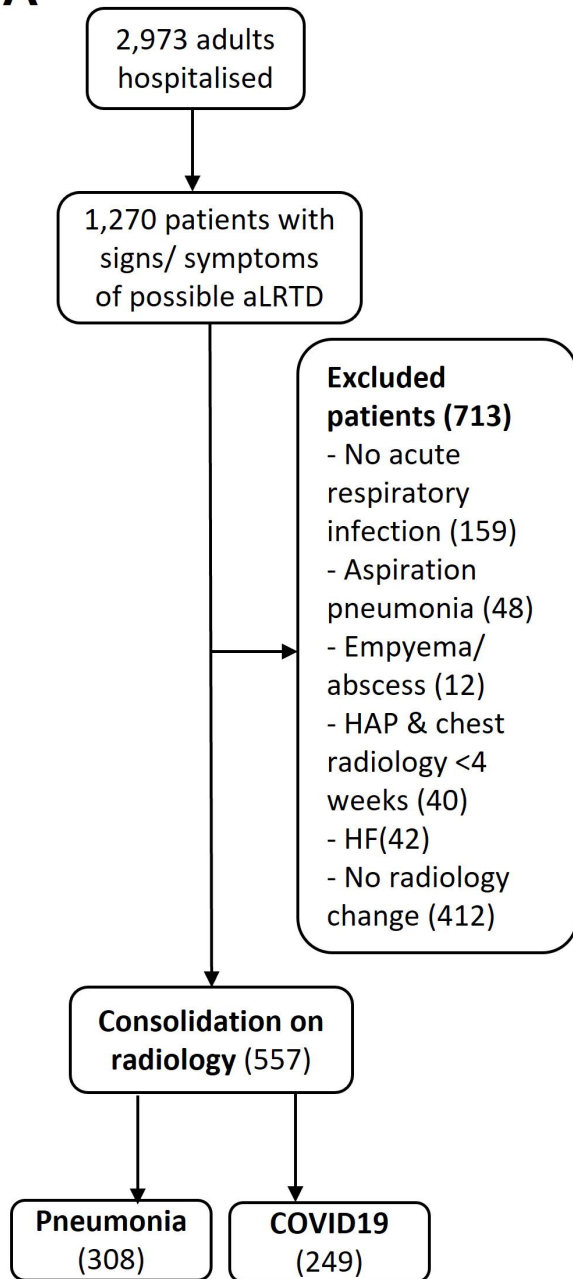
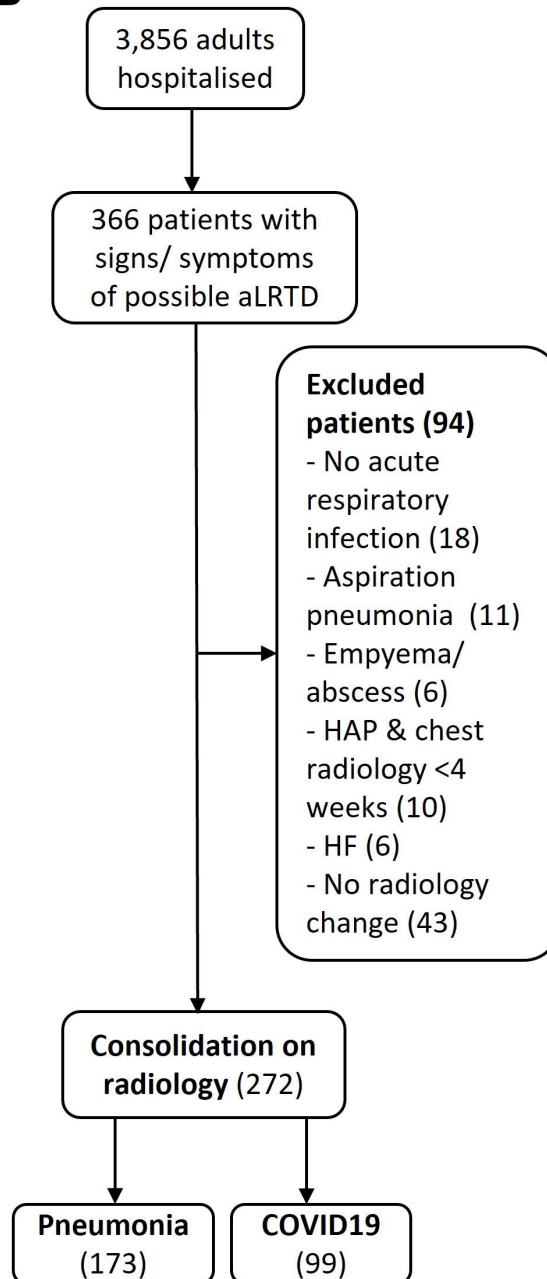
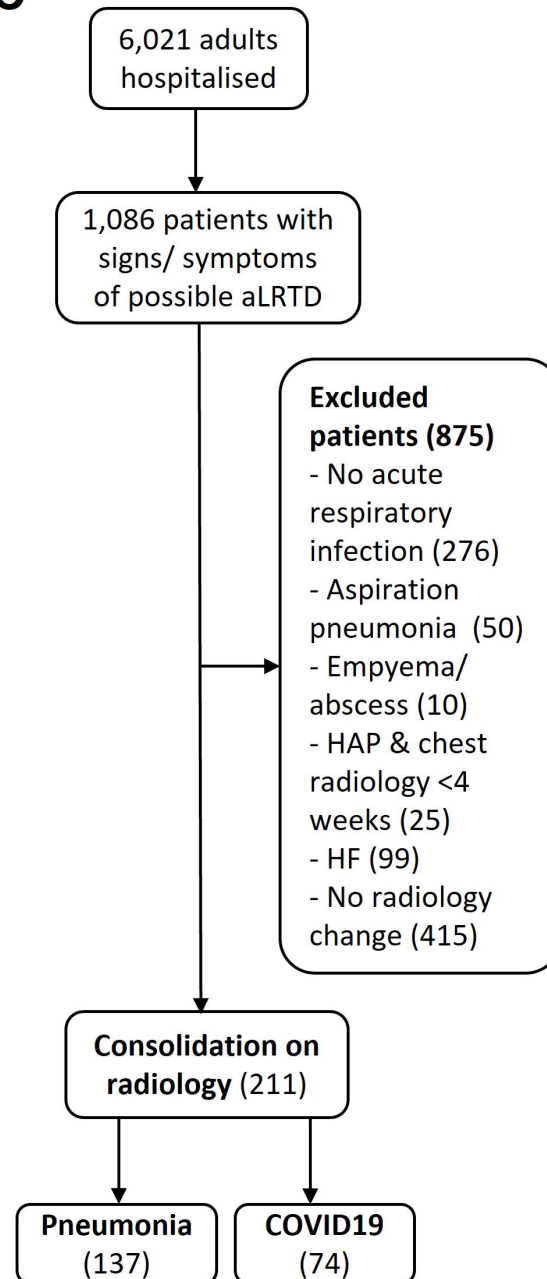
- 116 1. Loddenkemper R. European Lung White Book. The first comprehensive survey on
117 respiratory health in Europe. [Internet]. European Respiratory Society; 2003 [cited 2022
118 Jan 10]. Available from: <https://www.cabdirect.org/cabdirect/abstract/20043035689>
- 119 2. Millett ERC, Quint JK, Smeeth L, Daniel RM, Thomas SL. Incidence of community-
120 acquired lower respiratory tract infections and pneumonia among older adults in the
121 United Kingdom: a population-based study. *PloS One*. 2013;8(9):e75131.
- 122 3. Valvani A, Martin A, Devarajan A, Chandy D. Postobstructive pneumonia in lung
123 cancer. *Ann Transl Med*. 2019 Aug;7(15):357.
- 124 4. Tang KL, Eurich DT, Minhas-Sandhu JK, Marrie TJ, Majumdar SR. Incidence,
125 correlates, and chest radiographic yield of new lung cancer diagnosis in 3398 patients
126 with pneumonia. *Arch Intern Med*. 2011 Jul 11;171(13):1193–8.
- 127 5. Lim WS, Baudouin SV, George RC, Hill AT, Jamieson C, Le Jeune I, et al. BTS
128 guidelines for the management of community acquired pneumonia in adults: update
129 2009. *Thorax*. 2009 Oct;64 Suppl 3:iii1-55.
- 130 6. Cleverley J, Piper J, Jones MM. The role of chest radiography in confirming COVID19
131 pneumonia. *BMJ*. 2020 Jul 16;370:m2426.
- 132 7. George PM, Barratt SL, Condliffe R, Desai SR, Devaraj A, Forrest I, et al. Respiratory
133 follow-up of patients with COVID19 pneumonia. *Thorax*. 2020 Nov;75(11):1009–16.
- 134 8. Rai DK, Sharma P, Kumar R. Post covid 19 pulmonary fibrosis. Is it real threat? *Indian
135 J Tuberc*. 2021 Jul;68(3):330–3.
- 136 9. British Thoracic Society guidance on respiratory follow up of patients with a clinico-
137 radiological diagnosis of COVID19 pneumonia [Internet]. 2020 [cited 2021 Dec 11].
138 Available from: [https://www.brit-thoracic.org.uk/COVID19/COVID19-information-for-
139 the-respiratory-community/](https://www.brit-thoracic.org.uk/COVID19/COVID19-information-for-the-respiratory-community/)
- 140 10. Burt H, Chandratreya L. Are follow-up chest x-rays being performed according to
141 British Thoracic Society Guidelines on adults diagnosed radiologically with Community
142 Acquired Pneumonia? [Internet]. [cited 2021 Dec 11]. Available from:
143 [https://www.eposters.net/poster/are-follow-up-chest-x-rays-being-performed-according-
144 to-british-thoracic-society-guidelines-on](https://www.eposters.net/poster/are-follow-up-chest-x-rays-being-performed-according-to-british-thoracic-society-guidelines-on)
- 145 11. Chisholm C, Rai R, Kaushal N. Audit to assess the follow-up of community acquired
146 pneumonia with chest radiographs. *Clin Radiol*. 2016 Sep 1;71:S13.
- 147 12. Lung cancer statistics [Internet]. Cancer Research UK. 2015 [cited 2021 Dec 10].
148 Available from: [https://www.cancerresearchuk.org/health-professional/cancer-
149 statistics/statistics-by-cancer-type/lung-cancer](https://www.cancerresearchuk.org/health-professional/cancer-statistics/statistics-by-cancer-type/lung-cancer)
- 150 13. Baker C. Cancer: summary of statistics (England) [Internet]. House of Commons
151 Library; 2021. Available from:
152 <https://researchbriefings.files.parliament.uk/documents/SN06887/SN06887.pdf>

- 153 14. Hanna TP, King WD, Thibodeau S, Jalink M, Paulin GA, Harvey-Jones E, et al.
154 Mortality due to cancer treatment delay: systematic review and meta-analysis. *BMJ*.
155 2020 Nov 4;371:m4087.
- 156 15. Suggested start and changeover dates for foundation and specialty trainees | NHS
157 Employers [Internet]. [cited 2022 Jan 17]. Available from:
158 [https://www.nhsemployers.org/articles/suggested-start-and-changeover-dates-](https://www.nhsemployers.org/articles/suggested-start-and-changeover-dates-foundation-and-specialty-trainees)
159 [foundation-and-specialty-trainees](https://www.nhsemployers.org/articles/suggested-start-and-changeover-dates-foundation-and-specialty-trainees)
- 160 16. Wolff DL, Waldorff FB, von Plessen C, Mogensen CB, Sørensen TL, Houliand KC, et
161 al. Rate and predictors for non-attendance of patients undergoing hospital outpatient
162 treatment for chronic diseases: a register-based cohort study. *BMC Health Serv Res*.
163 2019 Jun 14;19(1):386.
- 164 17. Ooi JW, Leong GK, Oh HC. The impact of common variables on non-attendance at
165 a radiology centre in Singapore. *Radiogr Lond Engl* 1995. 2021 Aug;27(3):854–60.
- 166 18. Over a third of people with lung conditions felt pressure to avoid or delay seeking
167 treatment during lockdown [Internet]. British Lung Foundation. 2020 [cited 2022 Jan
168 17]. Available from: [https://www.blf.org.uk/taskforce/press-release/over-a-third-of-](https://www.blf.org.uk/taskforce/press-release/over-a-third-of-people-with-lung-conditions-felt-pressure-to-avoid-or-delay-seeking-treatment)
169 [people-with-lung-conditions-felt-pressure-to-avoid-or-delay-seeking-treatment](https://www.blf.org.uk/taskforce/press-release/over-a-third-of-people-with-lung-conditions-felt-pressure-to-avoid-or-delay-seeking-treatment)
- 170 19. Czeisler MÉ. Delay or Avoidance of Medical Care Because of COVID19–Related
171 Concerns — United States, June 2020. *MMWR Morb Mortal Wkly Rep* [Internet]. 2020
172 [cited 2022 Jan 17];69. Available from:
173 <https://www.cdc.gov/mmwr/volumes/69/wr/mm6936a4.htm>
- 174 20. Robotham D, Satkunanathan S, Reynolds J, Stahl D, Wykes T. Using digital
175 notifications to improve attendance in clinic: systematic review and meta-analysis. *BMJ*
176 *Open*. 2016 Oct 1;6(10):e012116.
- 177 21. Scavone F. Duty of care when test results and drugs are ordered by secondary care
178 [Internet]. The British Medical Association is the trade union and professional body for
179 doctors in the UK. 2020 [cited 2022 Jan 17]. Available from:
180 [https://www.bma.org.uk/advice-and-support/gp-practices/communication-with-](https://www.bma.org.uk/advice-and-support/gp-practices/communication-with-patients/duty-of-care-when-test-results-and-drugs-are-ordered-by-secondary-care)
181 [patients/duty-of-care-when-test-results-and-drugs-are-ordered-by-secondary-care](https://www.bma.org.uk/advice-and-support/gp-practices/communication-with-patients/duty-of-care-when-test-results-and-drugs-are-ordered-by-secondary-care)
- 182 22. Observational study of clinico-radiological follow-up of COVID19 pneumonia: a
183 district general hospital experience in the UK | *BMC Infectious Diseases* | Full Text
184 [Internet]. [cited 2022 Jan 17]. Available from:
185 <https://bmcinfectdis.biomedcentral.com/articles/10.1186/s12879-021-06941-8>
- 186 23. Goldberg SE, Bradshaw LE, Kearney FC, Russell C, Whittamore KH, Foster PER, et al.
187 Care in specialist medical and mental health unit compared with standard care for older
188 people with cognitive impairment admitted to general hospital: randomised controlled
189 trial (NIHR TEAM trial). *BMJ*. 2013 Jul 2;347:f4132.
- 190 24. Tsai C-H, Kung P-T, Kuo W-Y, Tsai W-C. Effect of time interval from diagnosis to
191 treatment for non-small cell lung cancer on survival: a national cohort study in Taiwan.
192 *BMJ Open*. 2020 Apr 1;10(4):e034351.

- 193 25. Sorrentino S. Pneumonia - right middle lobe. Case study, Radiopaedia.org. [Internet].
194 [cited 2022 Mar 29]. Available from: <https://doi.org/10.53347/rID-14979>
- 195 26. Macori F. COVID19 pneumonia. Case study, Radiopaedia.org. [Internet]. [cited 2022
196 Mar 29]. Available from: <https://doi.org/10.53347/rID-74867>
- 197 27. Healthcare in North Bristol NHS Trust | Coronavirus in the UK [Internet]. [cited 2022
198 Mar 31]. Available from:
199 <https://coronavirus.data.gov.uk/details/healthcare?areaType=nhsTrust&areaName=North%20Bristol%20NHS%20Trust>
200
- 201

A**B**



A**B****C**

1 **Table 1: Characteristics of Patients Hospitalised with Radiologically Proven Respiratory Infection**

Characteristic	Cohort One (Aug-Dec 2020)			Cohort Two (June-Aug 2021)			Cohort Three (Dec-Jan 2022)		
	Pneumonia N =308	COVID-19 N =249	Total Cohort N =557	Pneumonia N = 173	COVID-19 N = 99	Total Cohort N =272	Pneumonia N =137	COVID-19 N = 74	Total Cohort N = 211
Age (years) - median (IQR)	80.0 (68.0–87.4)	62.8 (54.2–76.9)	73.7 (59.4–83.9)	75.6 (61.8–85.7)	48.5 (35.0–59.6)	67.1 (48.5–81.7)	75.8 (60.9–85.8)	60.4 (53.5–78.2)	68.9 (57.1–82.3)
Male Gender – N (%)	159 (51.6)	156 (62.7)	315 (56.6)	92 (53.2)	62 (62.6)	154 (56.6)	69 (50.4)	40 (54.1)	109 (51.7)
Care home resident – N (%)	48 (15.6)	11 (4.4)	59 (10.6)	10 (5.8)	0 (0)	10 (3.7)	22 (16.1)	10 (13.5)	32 (15.2)
Smoking – N (%)									
Current	43 (14.0)	8 (3.2)	51 (9.2)	15 (8.7)	5 (5.1)	20 (7.4)	8 (5.8)	8 (10.8)	16 (7.6)
Ex-smokers	130 (42.2)	113 (45.4)	243 (43.6)	94 (54.3)	36 (36.4)	130 (47.8)	71 (51.8)	26 (35.1)	97 (46.0)
Unknown	62 (20.1)	32 (12.9)	94 (16.9)	13 (7.5)	14 (14.1)	27 (9.9)	15 (10.9)	10 (13.5)	25 (11.8)
Comorbidity Scores – N (%)									
Rockwood Frailty 0-4	120 (39.0%)	203 (81.5%)	323 (58.0%)	103 (59.5)	89 (89.9)	192 (70.5)	66 (48.2)	55 (74.3)	121 (57.3)
Rockwood Frailty 5-9	188 (61.0%)	46 (18.5%)	234 (42.0%)	70 (40.5)	10 (10.1)	80 (29.4)	71 (51.8)	19 (25.6)	90 (42.7)
CCI - median (IQR)	5 (4 - 7)	3 (1 - 4)	4 (2 - 6)	4 (2 - 6)	1 (0 - 3)	3 (1-5)	4 (2 - 6)	4 (2 - 6)	4 (2 - 6)
Respiratory – N (%)									
Any	140 (54.5)	68 (27.3)	208 (37.3)	81 (46.8)	28 (28.3)	109 (40.1)	61 (44.5)	25 (36.5)	86 (61.1)
COPD	95 (30.8)	19 (7.6)	114 (20.5)	45 (26.0)	<5 (<5.1)	49 (18.0)	34 (24.8)	13 (17.6)	47 (22.2)
Asthma	35 (11.4)	39 (15.7)	74 (13.3)	34 (19.7)	22 (22.2)	56 (20.6)	26 (19.0)	9 (12.2)	35 (16.6)
Other *	35 (11.4)	16 (6.4)	51 (9.2)	14 (8.1)	<5 (<5.1)	16 (5.9)	12 (8.8)	5 (6.8)	17 (8.1)
Cardiovascular – N (%)									
CCF	54 (17.5)	16 (6.4)	70 (12.6)	21 (12.1)	<5 (<5.1)	24 (8.8)	23 (16.8)	9 (12.2)	31 (15.0)
Ischaemic Heart Disease	62 (20.1)	32 (12.9)	94 (16.9)	24 (13.9)	<5 (<5.1)	28 (10.3)	22 (16.1)	9 (12.2)	21 (10.0)
Neurological – N (%)									
CVA/TIA	39 (12.7)	18 (7.2)	57 (10.2)	21 (12.1)	0 (0)	21 (7.7)	14 (10.2)	5 (6.8)	19 (9.0)
Dementia	40 (13.0)	7 (2.8)	47 (8.4)	12 (6.9)	0 (0)	12 (4.4)	12 (8.8)	6 (8.1)	18 (8.5)
Cognitive impairment	21 (6.8)	7 (2.8)	28 (5.0)	11 (6.4)	0 (0)	11 (4.0)	5 (3.6)	5 (6.8)	10 (4.7)
Other neurological condition ‡	20 (6.5)	10 (4.0)	30 (5.4)	7 (4.0)	<5 (<5.1)	8 (2.9)	11 (8.0)	7 (9.5)	18 (8.5)
Malignancy – N (%)									
None	257 (83.4)	233 (93.6)	490 (88.0)	151 (87.3)	93 (93.9)	244 (89.7)	118 (86.1)	60 (81.1)	178 (84.4)
Solid Organ Cancer	42 (13.6)	10 (4.0)	52 (9.4)	21 (12.4)	5 (5.1)	26 (9.6)	15 (10.9)	8 (10.8)	23 (10.9)
Haematological Malignancy	12 (3.6)	7 (2.9)	19 (3.5)	<5 (<2.8)	<5 (<5.1)	<5 (<1.8)	5 (3.6)	6 (8.1)	11 (5.2)

3

4 * Includes bronchiectasis, pulmonary fibrosis, and other chronic respiratory conditions

5 ‡ Includes Parkinson's disease, Huntington's disease, and other chronic neurological conditions not including CVA, TIA, Dementia or Cognitive Impairment

6 CCF, congestive cardiac failure; CVA, cerebrovascular accident; COPD, chronic obstructive pulmonary disease; IQR, interquartile range; TIA, Transient Ischaemic Attack

Table 2: Radiological follow-up of patients with pneumonia and COVID-19

Radiological Follow-Up	Cohort One (Aug-Dec 2020)			Cohort Two (June-Aug 2021)			Cohort Three (Dec-Jan 2022)		
	Pneumonia N =308	COVID-19 N =249	P-value	Pneumonia N =173	COVID-19 N =99	P-value	Pneumonia N =115	COVID-19 N = 96	P-value
Patients Eligible under BTS Guidelines[†] - N (%)									
Not eligible	77/308 (25)	48/249 (20)	-	43/173 (25)	7/99 (7)	-	29/115 (25)	5/96 (5)	-
Eligible for follow-up	231/308 (75)	201/249 (81)	-	130/173 (75)	92/99 (93)	-	86/115 (75)	91/96 (95)	-
Plan on Discharge - N (%)									
No follow-up booked	106/231 (46)	63/201 (31)	0.0001	49/130 (38)	20/92 (22)	0.0116	17/86 (20)	13/91 (14)	0.2887
Self-discharge before follow-up booked	1/231(0)	0/201 (0)	NS	1/130 (1)	0/92 (0)	NS	0/86 (0)	2/91 (2)	0.1887
Radiology plan implemented	124/231 (54)	138/201 (69)	0.0015	80/130 (62)	72/92 (78)	0.0076	69/86 (80)	76/91 (84)	0.2980
- Under hospital team	72/124 (58)	113/138 (82)	<0.0001	62/80 (78)	67/72 (93)	0.0097	58/69 (84)	72/76 (95)	0.1028
- Under GP	43/124(35)	20/138 (14)	0.0002	11/80 (14)	5/72 (7)	NS	6/69 (9)	4/76 (5)	0.5806
- Documented plan not to repeat radiology	9/124 (8)	5/138(4)	NS	7/80 (9)	0/72 (0)	NS	5/69 (7)	0/76 (0)	0.0493
Follow-up Occurrence - N (%)									
Total patients undergoing repeat radiology	97/231 (42)	118/201 (59)	0.0004	64/130 (49)	43/92 (47)	NS	59/86 (69)	65/91 (71)	0.4122
Follow-up occurred within timeframe	87/231 (38)	104/201 (52)	0.0017	60/130 (46)	25/92 (27)	0.0042	54/86 (63)	63/91 (69)	0.2256
- Under hospital team	58/72 (81)	93/113 (82)	NS	51/62 (82)	20/67 (30)	<0.0001	52/58 (90)	61/72 (85)	0.3047
- Under GP	29/43 (67)	11/20 (55)	NS	9/11 (82)	5/5 (100)	NS	2/6 (33)	2/4 (50)	1.0000

[†] Patient eligibility for repeat chest radiograph under BTS guidelines^{5,9} was determined separately by two authors, and where there was disagreement a discussion to determine eligibility occurred.

GP, General Practitioner; NS, not significant