

1 **The efficacy of *Andrographis paniculata* (Burm.f.) Wall. ex Nees crude extract in**
2 **hospitalised mild COVID-19 patients: a retrospective cohort study**

3 **Authors**

4 Jeeranan Tanwattiyant^a, Napacha Piriyananansorn^b, Lilit Sangsol^b, Benjawan Boonsong^b, Chamlong
5 Sunpapoa^c, Patcharawan Tanamatayarat^{d-e}, Sukrit Kanchanasurakit^{a-b,f,h*}, and Nat Na-Ek^{i,j,*}

6 **Affiliations**

7 ^a Division of Clinical Pharmacy, Department of Pharmaceutical Care, School of Pharmaceutical Sciences,
8 University of Phayao, Phayao, 56000 Thailand

9 ^b Division of Pharmaceutical care, Department of Pharmacy, Phrae Hospital, Phrae, 54000 Thailand

10 ^c Division of Internal Medicine, Department of Nurse, Phrae Hospital, Phrae, 54000 Thailand

11 ^d Division of Pharmacy and Technology, Department of Pharmaceutical Care, School of Pharmaceutical
12 Sciences, University of Phayao, Phayao, 56000 Thailand

13 ^e Unit of Excellence Technologies for Natural Products and Herbs, School of Pharmaceutical Sciences,
14 University of Phayao, Phayao, 56000 Thailand

15 ^f Center of Health Outcomes Research and Therapeutic Safety (Cohorts), School of Pharmaceutical
16 Sciences, University of Phayao, Phayao, 56000 Thailand

17 ^g Unit of Excellence on Clinical Outcomes Research and IntegratioN (UNICORN), School of Pharmaceutical
18 Sciences, University of Phayao, Phayao, 56000 Thailand

19 ^h Unit of Excellence on Herbal Medicine, School of Pharmaceutical Sciences, University of Phayao, Phayao,
20 56000 Thailand

21 ⁱ Pharmacoepidemiology, Social and Administrative Pharmacy (P-SAP) research unit, School of
22 Pharmaceutical Sciences, University of Phayao, Phayao, 56000 Thailand

23 ^j Division of Social and Administration Pharmacy, Department of Pharmaceutical Care, School of
24 Pharmaceutical Sciences, University of Phayao, Phayao, 56000 Thailand

25 **Corresponding author***

26 Nat Na-Ek, PharmD MSc PhD, E-mail: nat.na@up.ac.th

27 And

28 Sukrit Kanchanasurakit, PharmD, E-mail: sukrit.ka@up.ac.th

29

NOTE: This preprint reports new research that has not been certified by peer review and should not be used to guide clinical practice.

1 **Abstract**

2 **Background:** *Andrographis paniculata* (AP) crude extract has been widely used in Thailand to treat mild
3 COVID-19 infection since early 2020; however, supporting evidence was lacking.

4 **Purpose:** To evaluate the efficacy of AP compared with standard treatment among hospitalised mild COVID-
5 19 patients.

6 **Study design:** Single-centre retrospective cohort study

7 **Methods:** We collected data between March 2020 and August 2021 from COVID-19 patients admitted to one
8 hospital in Thailand. Patients whose infection was confirmed by Real-Time Polymerase Chain Reaction (RT-
9 PCR) and had normal chest radiography were included, whereas those receiving favipiravir or had unclear
10 chest X-rays at admission were excluded. Participants were categorised as either AP or standard of care and
11 followed for pneumonia confirmed by chest radiography. Multiple logistic regression was used to analyse the
12 main results controlling for age, sex, history of having diabetes, hypertension, receiving statins, and
13 antihypertensive drugs.

14 **Results:** 605 out of 1,054 patients were included in the analysis. Of these, 59 patients (9.8%) developed
15 pneumonia during the median follow-up of 7 days. The incidence rates of pneumonia were 13.93 (95%CI 10.09,
16 19.23) and 12.47 (95%CI 8.21, 18.94) per 1,000 person-days in AP and standard of care group, respectively.
17 Compared to the standard of care group, the odds ratios of having pneumonia in the AP group were 1.24
18 (95%CI 0.71, 2.16; unadjusted model) and 1.42 (95%CI 0.79, 2.55; fully adjusted model). All sensitivity analyses
19 produced consistent findings with the main results.

20 **Conclusion:** We do not have sufficient evidence to show the efficacy of AP in mild COVID-19 infection.
21 Interestingly, we observed the potentially harmful signal of using AP. While waiting for insights from ongoing
22 trials, AP's use in this condition should be done with caution.

23 **Keywords:** COVID-19, hospitalisation, *Andrographis paniculata*, andrographolide, pneumonia

24 **Key points**

25 *What is already known about this subject?*

- 26 - *Andrographis paniculata* (AP) has been used to treat COVID-19 in Thailand since early 2020.
27 - Clinical evidence supporting the use of AP in COVID-19 infections is still lacking.

28 *What does this study add?*

- 29 - We had insufficient evidence to show the efficacy of using AP in mild COVID-19 cases.
30 - AP might be potentially associated with an increased risk of pneumonia.

31 *How might this impact clinical practice?*

- 32 - While waiting for the ongoing trials, using AP in COVID-19 should be suspended.

33

1 Introduction

2 *Andrographis paniculata* (Burm.f.) Wall. ex Nees (AP), also known as ‘Fa Thalai Chon’ or ‘Fa Thalai’, has been
3 widely used in Thailand for treating upper respiratory tract infections and non-infectious diarrhoea after being
4 in the National List of Herbal Medicines of Thailand in 1999 (Karbwang and Na-Bangchang, 2021). The main
5 phytochemical constituent of the aerial parts of AP is a diterpenoid lactone compound called ‘andrographolide’,
6 which has shown antiviral and immunomodulatory properties from preclinical and clinical studies (Dai et al.,
7 2019). Recently, *in silico* study has shown the potential effect of andrographolide on SAR-CoV-2 as the
8 compound can bind and inhibit the viral protease enzyme and viral spike glycoprotein (Enmozhi et al., 2021;
9 Rajagopal et al., 2020). Moreover, *in vivo* and *in vitro* studies consistently supported the effect of AP extract
10 on COVID-19 infections (Phumiamorn et al., 2020; Sa-ngiamsuntorn et al., 2021).

11 In addition to preclinical studies, two small clinical trials of using a high dose of AP crude extract to treat mild
12 COVID-19 infections has shown its efficacy in terms of reducing COVID-19 symptoms (Rattanakraksa et al.,
13 2021) and C-reactive protein (CRP) levels (Wanaratna et al., 2021). However, its efficacy on an important
14 clinical outcome, such as pneumonia, is unclear. This is because the results from the trial of 57 patients had
15 shown no significant decrease in the incidence of pneumonia in the AP group, compared to placebo, after five
16 days of treatment (p-value = 0.11) (Wanaratna et al., 2021). Currently, five ongoing trials are investigating the
17 efficacy of AP in terms of pneumonia for treating mild COVID-19 cases.

18 Although AP’s efficacy on the major clinical endpoint is still ambiguous, its widespread use has been
19 encouraged. This is due to the situation in which Thailand experienced a shortage of favipiravir and COVID-19
20 vaccines at the start of a new pandemic wave in early 2020. Therefore, the data on the efficacy and safety of
21 AP from a pharmacovigilance study is necessary to support the decision of clinicians and policymakers whether
22 AP’s use in COVID-19 should be further supported.

23 In this study, we primarily aim to use real-world data to investigate the efficacy of AP crude extract for the
24 treatment of hospitalised mild COVID-19 patients. We also examined the course of COVID-19 and the incidence
25 of pneumonia due to COVID-19 in a country-specific context. Our ultimate goal is to make the best use of
26 available data to inform the public and improve patient care.

27 Methods

28 The report of this study followed the Strengthening the Reporting of Observational Studies in Epidemiology
29 (STROBE) guidance for reporting cohort study (Vandenbroucke et al., 2007) (Table S1).

30 *Design, setting, and study population*

31 This is a single-centre retrospective cohort study in which the data were collected from medical records of
32 patients diagnosed with COVID-19 infection. We used the 10th revision of the International Classification of
33 Diseases (ICD-10) code U07.1 to identify potential participants from 1st March 2020 to 31st August 2021. The
34 ethical committee for clinical research of Phrae hospital approved this study (no. 70/2564).

35 The setting of our study is Phrae hospital, a 500-bed secondary hospital located in northern Thailand. Eligible
36 participants were at least 18 years old and diagnosed with COVID-19 infection by Real-Time Polymerase Chain
37 Reaction (RT-PCR) test. According to the definition of mild COVID-19 used in previous work (Zhang et al.,
38 2021), we included only patients who had normal chest radiography by the time of hospital admission. In
39 contrast, individuals who did not have chest radiography results received antiviral drugs (i.e., favipiravir) or
40 received systemic corticosteroids on the first day of admission were excluded. In addition, we also excluded

1 those who recently received AP prior to hospital admission, had a history of allergy to AP, had elevated liver
2 enzyme, or were pregnant or breastfeeding from the analysis. Since the preliminary data suggested that AP's
3 efficacy was shown if it was given to patients as soon as they were diagnosed, we additionally excluded
4 patients who received AP after five days of admission from our analysis. (Thai Clinical Trials Registry, 2009)

5 *Exposure*

6 Included participants who received AP crude extract within five days of admission in addition to a supportive
7 treatment were categorised as an exposed group. AP crude extract was given as a capsule of 500 mg of crude
8 extract containing andrographolide content of approximately 4%w/w (~20 mg/capsule). According to a previous
9 trial, (Wanaratna et al., 2021) the AP product was given three capsules thrice daily after a meal to reach a total
10 dose of andrographolide 180 mg/day for five consecutive days. Song hospital, Phrae, Thailand, produced the
11 AP product used in this setting. The quality of AP product was tested and certified by the Medicinal Plant
12 Research Institute and the regional Medical Sciences Centre, Chiang Rai, Thailand (details can be found in
13 supplementary appendices). Supportive treatment, including antipyretics, mucolytics, expectorants,
14 antihistamines, oral rehydration salts, and anxiolytics, was given to patients who did not receive AP (unexposed
15 group).

16 *Outcomes*

17 The primary outcome was developing pneumonia based on chest radiography during hospital admission. The
18 diagnosis of pneumonia was based solely on chest X-rays (CXR) of category four or above according to the
19 Modified Rama-Co-RADS for the first CXR in confirmed COVID-19 patients (Supplementary appendices). The
20 categorisation was made mainly by infectious disease physicians or radiologists. Patients with ambiguous CXR
21 results were excluded from the analysis. For patients who did not have CXR results during follow-up and did
22 not die or refer to the intensive care unit, we assumed that they did not develop pneumonia and used discharged
23 date as the end of the follow-up.

24 In addition, we analysed the association between receiving AP and a secondary outcome, which was a
25 composite of receiving favipiravir, systemic corticosteroids, or ventilator support; having oxygen saturation drop
26 along with worsening signs and symptoms; or presenting regressive CXR findings (i.e., category three or above)
27 after admission. The CXR results, all clinical data, and relevant medications were collected from electronic
28 medical records.

29 *Covariates*

30 We collected all covariates for the admission date from medical records. These covariates included age, sex,
31 weight, height, comorbidity, current medications, and laboratory parameters. According to our proposed directed
32 acyclic graphs (DAGs, Figure S1), age, body mass index, hypertension, type 2 diabetes (T2DM), ACEIs/ARBs,
33 statins, and COVID-19 severity were associated with both receiving AP (from discussion with a health care
34 team) and developing pneumonia (Table S5) (Centers for Disease Control and Prevention, 2021a, 2021b) and
35 did not lie in a causal pathway between these two variables and were thus considered confounders. Admittedly,
36 during the data collection period, there were only two patients who had received a COVID-19 vaccine before
37 diagnosis and hospital admission. Consequently, we did not include vaccination profiles in our analysis.

38 *Statistical methods*

39 In this study, we included all eligible COVID-19 patients in the analysis. Therefore, sample size calculation was
40 unnecessary, and we planned to calculate statistical power afterwards. Descriptive and inferential statistics

1 were used to compare participants' characteristics at hospital admission according to their exposed groups. In
2 addition to the calculated incidence rate of pneumonia (per 1,000 person-days) according to exposed groups,
3 a Kaplan-Meier plot for the probability of a pneumonia-free event between groups was also created and
4 statistically compared using a log-rank test.

5 The main analysis was performed using a multivariable logistic regression based on a complete-case approach.
6 The justification for using a logistic model is that each participant had a relatively similar follow-up time: a
7 median of 7 days (interquartile range 6 to 9 days). To investigate the association between receiving AP and
8 incident pneumonia, we did serial adjustment as follows: 1) unadjusted model, 2) age-adjusted model, and 3)
9 full adjustment (i.e., adjusting for age, hypertension, T2DM, ACEIs/ARBs, and statins). Regarding BMI, we
10 further performed multiple imputations by chain equation (MICE) to impute missing values. In addition to all
11 variables in the main analysis, the following auxiliary variables were added to the imputation model: follow-up
12 time, age², Nelson-Aalen cumulative hazard function, the use of proton pump inhibitors at baseline, weight,
13 height, and alkaline phosphatase (logarithmic scale). BMI was then included in a model as part of a sensitivity
14 analysis since we assumed that the missing BMI values were unlikely to be under a missing at random (MAR)
15 mechanism (i.e., there are other variables significantly affecting BMI that were not recorded and collected, such
16 as daily caloric intake, physical activity, and smoking status) and using MICE might bias the results. We
17 performed 100 imputations, and results were combined using Rubin's rule.

18 Moreover, for the sensitivity analysis, we analysed the data using Cox's proportional hazards model, in which
19 a fully adjusted model was stratified by diabetes. The Schoenfeld residuals test and log-minus-log plots were
20 checked accordingly to ensure the satisfaction of the proportional hazards assumption. The severity of COVID-
21 19 was conditioned by restricting the analysis to a mild case only. Furthermore, we performed subgroup
22 analyses according to sex, age group (i.e., <60, ≥60), hypertension, T2DM, ACEIs/ARBs, and statins to
23 examine effect modifiers. Lastly, to minimise a cohort effect due to differences in admission period, since some
24 patients in an unexposed group were admitted a few months before an exposed group (Figure S3) and
25 guidelines for COVID-19 treatment and coverage of immunisation can improve drastically over a short period,
26 we, therefore, excluded individuals admitted before the 1st of July, 2021, then re-analysed the main group of
27 patients.

28 All analyses were performed using STATA version 16.1MP (StataCorp LLC, College Station, Texas) and R
29 version 3.3 with a two-sided alpha error of 5%. As we did not adjust for multiplicity, findings of the secondary
30 outcome, sensitivity analyses, and subgroup analyses should be used for exploratory purposes only.

31 **Results**

32 Among 1,054 COVID-19 patients admitted to the hospital between March 2020 and August 2021, 605 were
33 included in the final analysis (Figure 1). Of these, 351 individuals (58%) received AP within five days of
34 admission. Regarding the characteristics of included participants at hospital admission (Table 1), the majority
35 of the participants were male (50.4%), with a mean age of 35.41 years old and a mean BMI of 24.2 kg/m².
36 Only a small proportion of individuals had hypertension (7.3%), T2DM (2.2%), and cardiovascular disease
37 (0.8%). In addition, 3.8% and 2.6% of the patients received ACEIs/ARBs and statins, respectively. Comparing
38 between groups, most of the characteristics were relatively similar, except for alkaline phosphatase (ALP)
39 levels, as the levels in the AP group were slightly higher than in the standard of care group. However, all
40 laboratory parameters were within the normal range (Table 1).

1 During a median follow-up time of 7 days (IQR 6, 9 days) and a median hospital stay of 8 days (IQR 6, 10
2 days), 59 out of 605 participants (9.8%) developed pneumonia – an overall incidence rate of 13.35 (95% CI
3 10.34, 17.23) per 1,000 person-days. Comparing between groups, 37 out of 351 individuals (10.5%) in the AP
4 group developed pneumonia, whereas 22 out of 254 patients (8.7%) in the standard of care group developed
5 pneumonia. This corresponded to a slightly higher (but not statistically significant) incidence rate of pneumonia
6 in the AP group (13.93 [95% CI 10.09, 19.23] per 1,000 person-days) than in the standard of care group (12.47
7 [95% CI 8.21, 18.94] per 1,000 person-days (log-rank p-value = 0.69, Table S3 and Figure S2). According to
8 Table S3-S4, it is worth noting that, regardless of exposure group, 1) the incidence rate of pneumonia before
9 seven days of follow-up was higher than that afterwards, and 2) the incidence rate of pneumonia among
10 patients aged over 60 years was drastically higher than that among younger individuals.

11 According to Table 2, compared to a standard of care, receiving AP was associated with increased but not
12 statistically significant odds of having pneumonia: odds ratio (OR) of 1.24 (95% CI 0.71, 2.16), 1.42 (95% CI
13 0.80, 2.54), and 1.42 (95% CI 0.79, 2.55) in an unadjusted-, age-adjusted-, and fully adjusted-model,
14 respectively. Furthermore, considering follow-up time and censoring yielded slightly attenuated but consistent
15 results: hazard ratio of 1.11 (95% CI 0.66, 1.89), 1.26 (95% CI 0.74, 2.15), and 1.26 (95% CI 0.74, 2.17) in
16 unadjusted-, age-adjusted-, and fully adjusted-model, respectively. Additionally, receiving AP was also
17 associated with a slight but not significant increase in the odds of worsening symptoms. Further adjusting for
18 BMI did not change the direction of the association (Table S6).

19 Interestingly, excluding participants admitted before the 1st of July, 2021 (most were from the standard of care
20 group) further strengthened the association of receiving AP with the increased odds of having outcomes. The
21 OR of having pneumonia in an unadjusted-, age-adjusted-, fully adjusted-model, and a model additionally
22 adjusting for BMI was 1.83 (95% CI 0.93, 3.61), 1.94 (95% CI 0.97, 3.92), 1.88 (95% CI 0.92, 3.81), and 1.72
23 (95% CI 0.78, 3.79), respectively (Table S6).

24 Results from subgroup analyses are shown in Figure 2. It can be observed that sex was not an effect modifier
25 of the association between receiving AP and pneumonia. However, the association seems stronger among the
26 elderly (i.e., >60 years). Although AP might be related to the increased risk of pneumonia in overall populations
27 and all p-values for interaction >0.05, we found the opposite direction of the associations among individuals
28 with hypertension, receiving ACEIs/ARBs, and receiving statins.

29 **Discussion**

30 *Summary of the main findings*

31 In this retrospective cohort study of 605 hospitalised COVID-19 patients who had normal chest radiography at
32 the time of admission, 9.8% of them developed pneumonia after a median follow-up time of 7 days. However,
33 we did not have sufficient evidence to show the efficacy of AP crude extract in decreasing the risk of pneumonia
34 or worsening clinical symptoms. Interestingly, individuals, mainly the elderly, receiving AP were associated with
35 an increased, but not statistically significant, risk of pneumonia and worsening clinical symptoms. Moreover, all
36 sensitivity analyses provided consistent findings, ensuring the robustness of the main results.

37 *Compared with previous studies*

38 So far, the clinical evidence of using AP to treat COVID-19 is still lacking. After performing a systematic search
39 on three databases (i.e., PubMed, Google Scholar, and Thai Clinical Trial Registry), we found only two complete
40 trials (Rattanakraks et al., 2021; Wanaratna et al., 2021) and five ongoing trials relevant to this subject, with
41 the largest trial of 736 patients expected to end in October 2022 (Table S2). One trial investigated the efficacy

1 of AP in improving clinical symptoms and duration of disease in 62 mild COVID-19 patients (Rattanaksa et
2 al., 2021). It showed that all COVID-19 symptoms in the AP group had disappeared by day 7 (i.e., two days
3 after completing an AP course). Compared with our observation, the median length of hospital stays before
4 being discharged alive in an AP group and a standard of care group was eight days (IQR 6, 10 days) and
5 seven days (IQR 6, 9 days), respectively. Therefore, the course of the disease in ours was comparable to the
6 previous one. Another trial reported the incidence of pneumonia in the AP group (0%) and the placebo group
7 (10.7%) after five days of treatment (Wanaratna et al., 2021). The figure was similar to the incidence of
8 pneumonia in our study's standard of care group (8.7%), confirming the validity of our collected data.
9 Furthermore, we found that increased age, having hypertension and diabetes, and receiving ACEIs/ARBs and
10 statins were associated with an increased risk of pneumonia (Table S5). This is consistent with previous reports
11 (Centers for Disease Control and Prevention, 2021b, 2021a) and can further ensure the validity of the data
12 used in our analyses.

13 *Strengths and limitations*

14 To the best of our knowledge, this is the first cohort study of AP's use in treating mild COVID-19. Admittedly,
15 Thailand was confronted with the favipiravir and vaccine shortages at the beginning of the second wave of the
16 pandemic crisis, leading to the unproven AP's use for this condition. Consequently, a pharmacovigilance study
17 is required since the real-world data from using AP has been already available so that its efficacy and safety
18 can be clinically ensured.

19 However, there are some limitations worth noticing. First, we cannot avoid residual confounders embedded in
20 an observational study design. For instance, smoking status and mental disorders (e.g., depression) were
21 suggested to be risk factors for developing severe COVID-19 (Centers for Disease Control and Prevention,
22 2021b, 2021a), and this can be prevalent in people in their 30s and 40s. In addition, patients receiving AP may
23 have a higher risk of developing pneumonia than those who do not (i.e., confounding by indication). Therefore,
24 the observed association might result from residual confounders instead, and the causality cannot be inferred.
25 However, baseline characteristics between groups were mostly similar in terms of statistical (i.e., p-values) and
26 nonstatistical (i.e., eyeballing) consideration. Furthermore, since our study populations were relatively young,
27 many medical conditions that can increase the risk of severe COVID-19, such as cancer, chronic lung disease,
28 and chronic kidney disease, were rare and should not be major concerns. Additionally, the results were less
29 likely to be confounded by favipiravir as proportions of patients receiving favipiravir during admission were
30 similar between groups (i.e., 9.7% in a standard of care group versus 10.6% in an AP group).

31 Second, our results suffered from being underpowered. With the sample size of 605, we had only 11% of power
32 to detect the difference in the incidence of pneumonia between exposed (10.5%) and unexposed groups (8.7%).
33 A total of 9,000 participants would be required to achieve at least 80% of power to detect such a slight
34 difference. However, when one carefully examines the effect size and the lower and upper limit of the
35 confidence interval (e.g., OR 1.42 [95% CI 0.79, 2.55]), increasing the sample size is prone to strengthen the
36 harmful signal of the association.

37 Third, our primary outcome was evaluated based solely on chest radiography by each physician leading to
38 potential misclassification bias. Nevertheless, it is likely to be a non-differential misclassification, since the same
39 data source was used to evaluate the outcome throughout, and this would bias our results toward the null.
40 Accordingly, the actual association should be more potent than our observation. Nevertheless, the results from
41 the secondary outcome were consistent with the primary one, suggesting the robustness of our findings.

1 Lastly, the data on viral strains was lacking, which might affect the external validity of our study. The most
2 prevalent variants initially found in Thailand were B.1.1.7 (Alpha), B.1.351 (Beta), and P.1 (Gamma), whereas
3 the first report of B.1.617.2 (Delta) in Thailand was back in May 2021. Hence, all four strains can be found in
4 study patients at data collection. Nonetheless, since the incidence of pneumonia in the standard of care group
5 in our study was similar to a previous trial (Wanaratna et al., 2021) and no death occurred, it can be assumed
6 that the viral strains in our study were comparable to the previous trial. Additionally, our findings may limit the
7 generalisability to unvaccinated patients. However, since the COVID-19 vaccine's efficacy in the reduction of
8 the severity of symptoms and pneumonia has been proved and widely accepted (Jara et al., 2021), the role of
9 AP in COVID-19 may, unfortunately, become less prominent over time.

10 *Implications*

11 For the clinical implications, while waiting for the results from ongoing trials together with improved availability
12 of favipiravir and the COVID-19 vaccine, we suggested that physicians should suspend the use of AP to treat
13 COVID-19. This is because we observed potentially harmful effects without the proof of efficacy, even though
14 causality cannot be established. For the research implications, collaborated multicentre is required to achieve
15 a sufficient sample size and confirm our findings. In addition, the safety parameters of using AP were rarely
16 monitored. We noticed that less than one-fourth of patients receiving AP underwent liver function (e.g., AST,
17 ALT, ALP) and renal function test (e.g., Scr and eGFR) at baseline and rarely measured afterwards. Although
18 a previous study has shown the safety of AP used in other indications (Worakunphanich et al., 2021), the
19 safety of using such a high dose of AP in COVID-19 is still unclear and needs further investigation.

20 **Conclusion**

21 In summary, there is insufficient evidence to show the effectiveness of AP crude extract for the treatment of
22 mild COVID-19 in our study. Moreover, we observed the signal that AP might potentially harm. Results from
23 ongoing randomised controlled trials should provide insight into this issue. In the meantime, using AP in this
24 condition should be cautious or suspended.

25 **Acknowledgements**

26 This study was financially supported by the Thailand Science Research and Innovation Fund and the University
27 of Phayao (Grant No. UoE62010). However, the funding body did not involve a study design, data collection,
28 data analysis, and study's interpretation. Additionally, we thank members of staff at Phrae hospital for facilitating
29 the data collection process of this study.

30 **Authors' contribution**

31 JT, SK, and NN conceptualised the study objectives and designed and collected the data. JT, SK, and NN
32 contributed to the literature reviewing, data cleaning, data analyses, and interpretation of the findings. JT
33 prepared an initial manuscript, and NN further developed subsequent manuscripts. SK, PT, NP, LS, BB, and
34 CS critically revised the initial manuscript, and all authors participated in further revisions. The final manuscript
35 was read and approved by all authors before submission.

36 **Disclaimers**

37 The funding body and authors' affiliations bear no responsibility for analysing and interpreting this study.

38

1 **References**

- 2 Centers for Disease Control and Prevention, 2021a. Underlying medical conditions associated with higher risk
3 for severe COVID-19: information for healthcare providers [WWW Document]. URL
4 <https://www.cdc.gov/coronavirus/2019-ncov/hcp/clinical-care/underlyingconditions.html> (accessed
5 12.18.21).
- 6 Centers for Disease Control and Prevention, 2021b. Science brief: evidence used to update the list of
7 underlying medical conditions that increase a person’s risk of severe illness from COVID-19 [WWW
8 Document]. URL [https://www.cdc.gov/coronavirus/2019-ncov/science/science-briefs/underlying-
9 evidence-table.html?CDC_AA_refVal=https%3A%2F%2Fwww.cdc.gov%2Fcoronavirus%2F2019-
10 ncov%2Fhcp%2Fclinical-care%2Funderlying-evidence-table.html](https://www.cdc.gov/coronavirus/2019-ncov/science/science-briefs/underlying-evidence-table.html?CDC_AA_refVal=https%3A%2F%2Fwww.cdc.gov%2Fcoronavirus%2F2019-ncov%2Fhcp%2Fclinical-care%2Funderlying-evidence-table.html) (accessed 12.18.21).
- 11 Dai, Y., Chen, S.-R., Chai, L., Zhao, J., Wang, Yitao, Wang, Ying, 2019. Overview of pharmacological
12 activities of *Andrographis paniculata* and its major compound andrographolide. *Crit Rev Food Sci Nutr*
13 59, S17–S29. <https://doi.org/10.1080/10408398.2018.1501657>
- 14 Enmozhi, S.K., Raja, K., Sebastine, I., Joseph, J., 2021. Andrographolide as a potential inhibitor of SARS-
15 CoV-2 main protease: an in silico approach. *J Biomol Struct Dyn* 39, 3092–3098.
16 <https://doi.org/10.1080/07391102.2020.1760136>
- 17 Jara, A., Undurraga, E.A., González, C., Paredes, F., Fontecilla, T., Jara, G., Pizarro, A., Acevedo, J., Leo,
18 K., Leon, F., Sans, C., Leighton, P., Suárez, P., García-Escorza, H., Araos, R., 2021. Effectiveness of
19 an inactivated SARS-CoV-2 vaccine in Chile. *N Engl J Med* 385, 875–884.
20 <https://doi.org/10.1056/NEJMoa2107715>
- 21 Karbwan, J., Na-Bangchang, K., 2021. Repurposed drugs for COVID-19 treatment. *J Thai Trad Alt Med* 19,
22 285–302.
- 23 Phumiamorn, S., Sapsutthipas, S., Pruksakorn, P., Trisiriwanich, S., 2020. In vitro study on antiviral activity of
24 *Andrographis paniculata* against COVID-19 [WWW Document]. URL [https://www3.dmsc.moph.go.th/en/
25](https://www3.dmsc.moph.go.th/en/) (accessed 12.21.21).
- 26 Rajagopal, K., Varakumar, P., Baliwada, A., Byran, G., 2020. Activity of phytochemical constituents of
27 *Curcuma longa* (turmeric) and *Andrographis paniculata* against coronavirus (COVID-19): an in silico
28 approach. *Futur J Pharm Sci* 6, 104. <https://doi.org/10.1186/s43094-020-00126-x>
- 29 Rattanakarsa, D., Khempetch, R., Poolwiwatchaikool, U., Nimitvilai, S., Loatrakul, O., Srimanee, P., 2021.
30 The efficacy and safety of *Andrographis paniculata* extract for treatment of COVID-19 patients with mild
31 symptoms, Nakhonpathom hospital. *Reg 4-5 Med J* 40, 269–281.
- 32 Sa-ngiamsuntorn, K., Suksatu, A., Pewkliang, Y., Thongsri, P., Kanjanasirirat, P., Manopwisedjaroen, S.,
33 Charoensutthivarakul, S., Wongtrakoongate, P., Pitiporn, S., Chaopreecha, J., Kongsomros, S.,
34 Jearawuttanakul, K., Wannalo, W., Khemawoot, P., Chutipongtanate, S., Borwornpinyo, S.,
35 Thitithanyanont, A., Hongeng, S., 2021. Anti-SARS-CoV-2 activity of *Andrographis paniculata* extract
36 and its major component andrographolide in human lung epithelial cells and cytotoxicity evaluation in
37 major organ cell representatives. *J Nat Prod* 84, 1261–1270.
38 <https://doi.org/10.1021/acs.jnatprod.0c01324>
- 39 Thai Clinical Trials Registry, 2009. Identifier TCTR20210809004 - Comparison efficacy and safety of

- 1 Andrographis paniculata extract capsules and placebo in COVID-19 patients: double blind randomized
2 control trial [WWW Document]. Med Res Found. URL
3 <https://www.thaiclinicaltrials.org/show/TCTR20210809004> (accessed 12.16.21).
- 4 Vandenberghe, J.P., von Elm, E., Altman, D.G., Gøtzsche, P.C., Mulrow, C.D., Pocock, S.J., Poole, C.,
5 Schlesselman, J.J., Egger, M., Blettner, M., Boffetta, P., Brenner, H., Chêne, G., Cooper, C., Davey-
6 Smith, G., Gagnon, F., Greenland, P., Greenland, S., Infante-Rivard, C., Ioannidis, J., James, A.,
7 Jones, G., Ledergerber, B., Little, J., May, M., Moher, D., Momen, H., Morabia, A., Morgenstern, H.,
8 Paccaud, F., Rössli, M., Rothenbacher, D., Rothman, K., Sabin, C., Sauerbrei, W., Say, L., Sterne, J.,
9 Syddall, H., White, I., Wieland, S., Williams, H., Zou, G.Y., 2007. Strengthening the Reporting of
10 Observational Studies in Epidemiology (STROBE): explanation and elaboration. PLoS Med 4, e297.
11 <https://doi.org/10.1016/j.ijsu.2014.07.014>
- 12 Wanaratna, K., Leethong, P., Inchai, N., Chueawiang, W., Sriraksa, P., Tabmee, A., Sirinavin, S., 2021.
13 Efficacy and safety of Andrographis paniculata extract in patients with mild COVID-19: a randomized
14 controlled trial (version 3). medRxiv. <https://doi.org/10.1101/2021.07.08.21259912>
- 15 Worakunphanich, W., Thavorncharoensap, M., Youngkong, S., Thadanipon, K., Thakkinstian, A., 2021.
16 Safety of Andrographis paniculata: a systematic review and meta-analysis. Pharmacoepidemiol Drug
17 Saf 30, 727–739. <https://doi.org/10.1002/pds.5190>
- 18 Zhang, X., Lv, L., Zhou, Y., Xie, L., Xu, Q., Zou, X., Ding, Y., Tian, J., Fan, J., Fan, H., Yang, Y., Ye, X.,
19 2021. Efficacy and safety of Xiyanning injection in the treatment of COVID-19: a multicenter,
20 prospective, open-label and randomized controlled trial. Phytother Res 35, 4401–4410.
21 <https://doi.org/10.1002/ptr.7141>
- 22

1 **Table 1** Baseline characteristics of study populations

Baseline characteristics	AP group (n=351)	Standard of care group (n=254)	Total (n=605)	p-value
Male	172 (49.0)	133 (52.4)	305 (50.4)	0.42 ^a
Age (years)	34.84 ± 11.56	36.19 ± 12.13	35.41 ± 11.81	0.17 ^b
Body mass index (kg/m ²) [†]	24.75 ± 5.08	23.62 ± 5.27	24.2 ± 5.17	0.32 ^b
Comorbidity				
Hypertension	24 (6.9)	20 (7.9)	44 (7.3)	0.63 ^a
Diabetes	8 (2.3)	5 (2.0)	13 (2.2)	0.80 ^a
Cardiovascular disease	4 (1.1)	1 (0.4)	5 (0.8)	0.41 ^c
Current medications				
ACEIs/ARBs	14 (4.0)	9 (3.5)	23 (3.8)	0.78 ^a
Statins	9 (2.6)	7 (2.8)	16 (2.6)	0.88 ^a
Antiplatelets	2 (0.6)	3 (1.2)	5 (0.8)	0.65 ^c
Laboratory parameters[†]				
WBC (10 ³ /mm ³)	6.33 ± 2.16	6.43 ± 1.96	6.38 ± 2.05	0.75 ^b
Lymphocyte (%)	33.01 ± 10.22	30.25 ± 10.42	31.57 ± 10.39	0.09 ^b
Neutrophil (%)	56.64 ± 11.45	58.82 ± 11.10	57.77 ± 11.29	0.21 ^b
Platelet (10 ³ /mm ³)	228.78 ± 69.02	221.62 ± 70.46	225.07 ± 69.65	0.51 ^b
BUN (mg/dL)	10.79 ± 3.20	11.58 ± 3.84	11.21 ± 3.56	0.15 ^b
Scr (mg/dL)	0.84 ± 0.22	0.82 ± 0.18	0.83 ± 0.20	0.50 ^b
eGFR (mL/min/1.73 m ²)	101.38 ± 18.85	102.12 ± 17.29	101.77 ± 17.99	0.79 ^b
LDH (units/L), median (IQR)	197 (156, 231)	192 (164, 226)	192.5 (158, 230)	0.69 ^d
AST (units/L), median (IQR)	26 (20, 37.5)	25 (19, 35)	26 (20, 36)	0.44 ^d
ALT (units/L), median (IQR)	34 (22.5, 50.5)	35 (23, 52)	34 (23, 51)	0.92 ^d
ALP (units/L), median (IQR)	77.5 (63, 88)	66 (58, 77)	70 (60, 83)	0.004 ^d

2 **Notes:** Figures represent mean ± SD and frequency (%) unless specified elsewhere, ^aChi-squared test, ^bStudent's t-test with
3 equal variance, ^cFisher's exact test, ^dWilcoxon rank-sum test, [†]Missing values of each covariate were as follows: 83.6% (BMI),
4 72.4% (WBCs), 72.4% (Lymphocyte), 72.4% (Neutrophil), 72.6% (Platelet), 71.9% (BUN), 71.9% (Scr), 72.1% (eGFR), 79.2%
5 (LDH), 72.7% (AST), 72.7% (ALT), and 72.7% (ALP), **Abbreviations:** AP; *Andrographis paniculata*, SD; standard deviation,
6 ACEIs/ARBs; angiotensin-converting enzyme inhibitors/ angiotensin-receptor blockers, BUN; blood urea nitrogen, Scr; serum
7 creatinine, eGFR; estimated glomerular filtration rate, LDH; lactate dehydrogenase, AST; aspartate transaminase, ALT; alanine
8 transaminase, ALP; alkaline phosphatase, WBC; white blood cell

9

1 **Table 2** Efficacy of AP's use in mild COVID-19 patients

Outcomes	Events (%)		Effect size (95% CI)*, p-value (n=605)		
	AP (n=351)	Standard of care (n=254)	Unadjusted model	Age-adjusted model	Fully adjusted model [†]
Primary outcome: pneumonia					
Odds ratio	37 (10.5)	22 (8.7)	1.24 (0.71, 2.16), 0.44	1.42 (0.80, 2.54), 0.23	1.42 (0.79, 2.55), 0.24
Hazard ratio [‡]	13.93 [§] (10.09, 19.23)	12.47 [§] (8.21, 18.94)	1.11 (0.66, 1.89) [‡] , 0.69	1.26 (0.74, 2.15) [‡] , 0.39	1.26 (0.74, 2.17) [‡] , 0.40
Secondary outcome: worsening symptoms[¶]					
Odds ratio	59 (16.8)	39 (15.4)	1.11 (0.72, 1.73), 0.63	1.23 (0.78, 1.94), 0.38	1.22 (0.77, 1.94), 0.39

2 **Notes:** *Effect size of outcome in the AP group, compared to the standard of care group, [†]Adjusting for age,
3 diabetes, hypertension, receiving statins, and receiving ACEIs/ARBs, [§]Incidence rate of pneumonia per 1,000
4 person-days (95% confidence interval), [‡]Analysis using a Cox's proportional hazards model in which the fully
5 adjusted model was additionally stratified by diabetes, [¶]Worsening symptoms were the composite of receiving
6 antiviral drugs, systemic corticosteroids, or ventilator support; having oxygen saturation drop along with
7 worsening signs and symptoms; or presenting regressive chest X-rays findings (i.e., category three or above).
8 **Abbreviations:** AP; *Andrographis paniculata*, CI; confidence interval
9

1
2
3
4
5
6
7
8
9
10
11
12
13
14
15
16
17
18
19

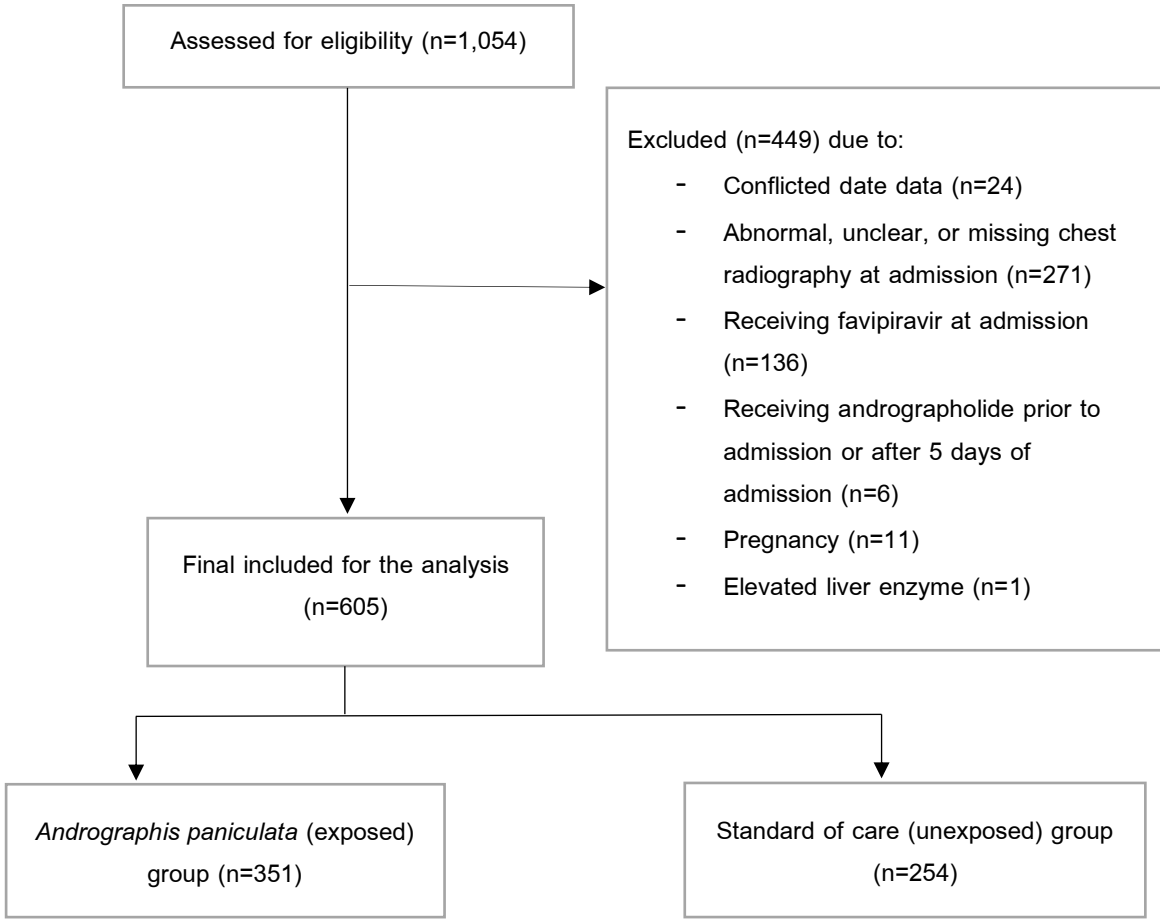
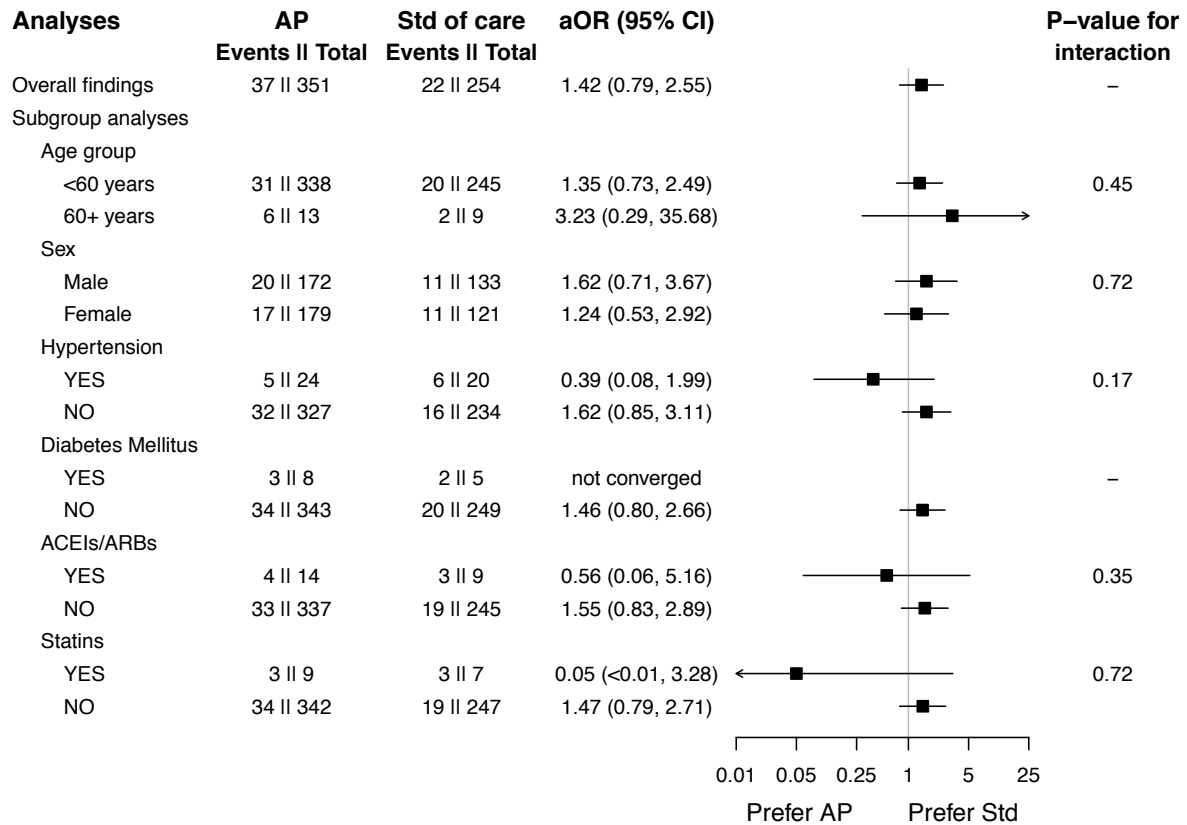


Figure 1 Patient flow diagram



1

2 **Figure 2** Subgroup analysis of *Andrographis paniculata* and the occurrence of pneumonia

3 **Notes:** Odds ratios were adjusted for age, hypertension, diabetes mellitus, previous ACEIs/ARBs therapy, and
 4 previous statins therapy. **Abbreviations:** ACEIs/ARBs; angiotensin-converting enzyme inhibitors/ angiotensin
 5 receptor blockers, aOR; adjusted odds ratio, AP; *Andrographis paniculata*, CI; confidence interval, Std of care;
 6 standard of care

Supplementary Appendices

This is supplement to ‘the efficacy of *Andrographis paniculata* (Burm.f.) Wall. ex Nees crude extract in hospitalised mild COVID-19 patients: a retrospective cohort study’

Quality assurance of <i>Andrographis paniculata</i> product (exposure) used in Phrae hospital.....	4
Modified Rama Co-RADS for first chest X-rays in confirmed COVID-19 patients	6
Systematic search.....	7
eReferences.....	16
Table S1 STROBE checklist for cohort study.....	2
Table S2 Summary of five ongoing trials of <i>Andrographis paniculata</i> used in COVID-19 patients in Thailand..	8
Table S3 Incidence rate of pneumonia by follow-up time	9
Table S4 Incidence rate of pneumonia according to age groups	10
Table S5 The association between baseline characteristics and incident pneumonia	11
Table S6 Sensitivity analyses of andrographolide and efficacy outcomes	12
Figure S1 Directed acyclic graphs (DAGs) of the association between <i>Andrographis paniculata</i> and incidence of pneumonia	13
Figure S2 Probability of pneumonia-free event by exposure	14
Figure S3 The distribution of hospital admission dates between <i>Andrographis paniculata</i> group and standard of care group.....	15

Table S1 STROBE checklist for cohort study

	Item No.	Recommendation	Page No.
Title and abstract	1	(a) Indicate the study's design with a commonly used term in the title or the abstract (b) Provide in the abstract an informative and balanced summary of what was done and what was found	3
Introduction			
Background/rationale	2	Explain the scientific background and rationale for the investigation being reported	4
Objectives	3	State specific objectives, including any prespecified hypotheses	4
Methods			
Study design	4	Present key elements of study design early in the paper	4
Setting	5	Describe the setting, locations, and relevant dates, including periods of recruitment, exposure, follow-up, and data collection	4-5
Participants	6	(a) Give the eligibility criteria, and the sources and methods of selection of participants. Describe methods of follow-up (b) For matched studies, give matching criteria and number of exposed and unexposed	4-5
Variables	7	Clearly define all outcomes, exposures, predictors, potential confounders, and effect modifiers. Give diagnostic criteria, if applicable	5
Data sources/ measurement	8*	For each variable of interest, give sources of data and details of methods of assessment (measurement). Describe comparability of assessment methods if there is more than one group	5
Bias	9	Describe any efforts to address potential sources of bias	5-6
Study size	10	Explain how the study size was arrived at	5-6
Quantitative variables	11	Explain how quantitative variables were handled in the analyses. If applicable, describe which groupings were chosen and why	5-6
Statistical methods	12	(a) Describe all statistical methods, including those used to control for confounding (b) Describe any methods used to examine subgroups and interactions (c) Explain how missing data were addressed (d) If applicable, explain how loss to follow-up was addressed (e) Describe any sensitivity analyses	5-6
Results			
Participants	13*	(a) Report numbers of individuals at each stage of study—eg numbers potentially eligible, examined for eligibility, confirmed eligible, included in the study, completing follow-up, and analysed (b) Give reasons for non-participation at each stage (c) Consider use of a flow diagram	6, Fig 1

	Item No.	Recommendation	Page No.
Outcome data	15*	Report numbers of outcome events or summary measures over time	6-7, Table S3-4, FigS2
Main results	16	(a) Give unadjusted estimates and, if applicable, confounder-adjusted estimates and their precision (eg, 95% confidence interval). Make clear which confounders were adjusted for and why they were included (b) Report category boundaries when continuous variables were categorized (c) If relevant, consider translating estimates of relative risk into absolute risk for a meaningful time period	6-7, Table 2
Other analyses	17	Report other analyses done—eg analyses of subgroups and interactions, and sensitivity analyses	Fig 2, Table S6
Discussion			
Key results	18	Summarise key results with reference to study objectives	7
Limitations	19	Discuss limitations of the study, taking into account sources of potential bias or imprecision. Discuss both direction and magnitude of any potential bias	8-9
Interpretation	20	Give a cautious overall interpretation of results considering objectives, limitations, multiplicity of analyses, results from similar studies, and other relevant evidence	7-9
Generalisability	21	Discuss the generalisability (external validity) of the study results	9
Other information			
Funding	22	Give the source of funding and the role of the funders for the present study and, if applicable, for the original study on which the present article is based	10

*Give such information separately for cases and controls in case-control studies, and, if applicable, for exposed and unexposed groups in cohort and cross-sectional studies.

Quality assurance of *Andrographis paniculata* product (exposure) used in Phrae hospital

Certificate of analysis: The analysis and quality control reported from the Medicinal Plant Research Institute and the regional Medical Sciences Center 1/1, Chiang Rai, Thailand

Test	Results	Methods	Acceptance criteria
Total lactones content, calculated as andrographolide	6.0 %w/w	Thai Herbal Pharmacopoeia	Not less than 6.0 %w/w
Andrographolide content	4.16 %w/w	Thai Herbal Pharmacopoeia	Not less than 1.0 %w/w of andrographolide
Basic chemical tests (Phytochemical tests)	Complied with the standard	Thai Herbal Pharmacopoeia 2017	Positive
Chemical Identification by Thin-Layer Chromatography	Complied with the standard	Thai Herbal Pharmacopoeia 2017	Complied with the standard of <i>Andrographis paniculata</i> (Burm. f.) Wall. ex Nees
Moisture content analysis by gravimetric analysis	5.5 %w/w	Thai Herbal Pharmacopoeia 2017	Not more than 11.0 %w/w
Acid-insoluble ash	0.2 %w/w	Thai Herbal Pharmacopoeia 2017	Not more than 2.0 %w/w
Ethanol (85%)-soluble extractive	17.9 %w/w	Thai Herbal Pharmacopoeia 2017	Not less than 13.0 %w/w
Water-soluble extractive	20.9 %w/w	Thai Herbal Pharmacopoeia 2017	Not less than 18.0 %w/w
Weight variation	Complied with the standard	Thai Herbal Pharmacopoeia 2017	Not more than 2 capsules with weight variation beyond the range of +/- 10% and no individual capsule with weight variation beyond the range of +/- 20%
Disintegration time	8 minutes	Thai Pharmacopoeia 1997 Volume II Part 1	All shall be disintegrated within 30 minutes.
Total aerobic microbial count per gram or milliliter	Less than 10	Thai Herbal Pharmacopoeia	Not more than 500,000 cfu per gram or milliliter
Total combined yeast and mold count per gram or milliliter	Less than 10	Thai Herbal Pharmacopoeia	Not more than 50,000 cfu per gram or milliliter
Bile-tolerant gram-negative bacteria per gram or milliliter	Less than 10	Thai Herbal Pharmacopoeia	Not more than 1,000 cfu per gram or milliliter

Test	Results	Methods	Acceptance criteria
<i>Salmonella</i> spp. per 10 grams or milliliter	Not found	Thai Herbal Pharmacopoeia	Not found per 10 grams or milliliter
<i>Escherichia coli</i> per gram or milliliter	Not found	Thai Herbal Pharmacopoeia	Not found per grams or milliliter
<i>Clostridium</i> spp. per gram or milliliter	Not found	Thai Herbal Pharmacopoeia	Not found per grams or milliliter
Identification A, B, C	A=Purplish color B=Yellow color C=Find dark violet spot chromatogram	Thai Herbal Pharmacopoeia	Complied with the standard
Loss on drying	5.61% w/w	Thai Herbal Pharmacopoeia	Not more than 11.0 %w/w
Ethanol-soluble extractive	18.49 %w/w	Thai Herbal Pharmacopoeia	Not less than 13.0 %w/w
Water-soluble extractive	21.31 %w/w	Thai Herbal Pharmacopoeia	Not less than 18.0 %w/w
Acid-insoluble ash	0.004 %w/w	Thai Herbal Pharmacopoeia	Not more than 2.0 %w/w

Abbreviations: cfu; colony-forming unit, %w/w; percentage weight by weight

Modified Rama Co-RADS for first chest X-rays in confirmed COVID-19 patients

Source (Suwatanapongched et al., n.d.)

Categories 1-6 and C are for the initial chest X-rays (CXR) in a new patient or the first CXR in a home isolation or community isolation patient. In this regard, whenever the patient has an old CXR before having COVID-19, the newly performed CXR after confirmed COVID-19 should be interpreted using categories 1, 2, 3, 4, 5, 6, or C. Details of each category were as follows:

- Category 1: Normal chest X-ray or no abnormality detected
- Category 2: Presence of minor abnormalities unrelated to COVID-19 (e.g., mild cardiomegaly, aortic atherosclerosis, scoliosis, old fractures)
- Category C: Low likelihood or atypical for COVID-19 pneumonia, but with other clinically significant diseases (e.g., bacterial pneumonia, active TB, CHF, pneumothorax, pleural effusion, malignancy) unrelated to COVID-19
- Category 3: Equivocal/indeterminate opacities, which may be due to acute or residual/post-COVID-19 pneumonia or pseudolesions
- Category 4: Single or multifocal poorly defined ground-glass opacities or consolidations in one lung, suspicious for early/mild acute or post-COVID-19 pneumonia ± fibrosis-like changes
- Category 5: Multifocal, peripheral, poorly defined ground-glass opacities or consolidations with or without rounded morphology involving any zones of both lungs, typical for moderate/severe acute or post-COVID-19 pneumonia ± fibrosis-like changes
- Category 6: Acute or post-COVID-19 pneumonia with its related conditions or complications (e.g., atelectasis, PE, pulmonary infarction, OP, AFOP, secondary infection, pneumothorax, pneumomediastinum)

Systematic search

PubMed

("COVID-19"[All Fields] OR "COVID-19"[MeSH Terms] OR "COVID-19 Vaccines"[All Fields] OR "COVID-19 Vaccines"[MeSH Terms] OR "COVID-19 serotherapy"[All Fields] OR "COVID-19 serotherapy"[Supplementary Concept] OR "covid 19 nucleic acid testing"[All Fields] OR "covid 19 nucleic acid testing"[MeSH Terms] OR "covid 19 serological testing"[All Fields] OR "covid 19 serological testing"[MeSH Terms] OR "covid 19 testing"[All Fields] OR "covid 19 testing"[MeSH Terms] OR "sars cov 2"[All Fields] OR "sars cov 2"[MeSH Terms] OR "Severe Acute Respiratory Syndrome Coronavirus 2"[All Fields] OR "NCOV"[All Fields] OR "2019 NCOV"[All Fields] OR ("coronavirus"[MeSH Terms] OR "coronavirus"[All Fields] OR "COV"[All Fields]) AND 2019/11/01:3000/12/31[Date - Publication])) AND ("andrographolide"[Supplementary Concept] OR "Andrographis paniculata"[Text Word] OR "Andrographis paniculata extract"[Text Word] OR "andrographolide"[Text Word])

Searching on 15/12/2021 without language restriction yielded 43 results: found no relevant clinical studies.

Google Scholar

("andrographis" OR "Andrographis paniculata" OR "andrographolide") AND ("sars-cov2" OR "sars cov 2" OR "covid-19" OR "covid") restricted to the range between 2019 and 2021

Searching on 15/12/2021 without language restriction yielded 1,460 results: found 2 relevant studies(Rattanakraksa et al., 2021; Wanaratna et al., 2021).

Thai Clinical Trial Registry (TCTR)

There are seven currently registered RCTs. Two are completed RCTs: One small pilot study with no published results (n=6), another one can be found at <https://doi.org/10.1101/2021.07.08.21259912> (n=57) (Wanaratna et al., 2021). Additionally, there are five ongoing RCTs (Table S2), including the largest one (n=736) anticipated to complete in October 2022 (Thai Clinical Trials Registry, 2009a).

Table S2 Summary of five ongoing trials of *Andrographis paniculata* used in COVID-19 patients in Thailand

Trial	TCTR 20210514003(Thai Clinical Trials Registry, 2009b)	TCTR 20210609001(Thai Clinical Trials Registry, 2009c)	TCTR 20210809004(Thai Clinical Trials Registry, 2009d)	TCTR 20210906002(Thai Clinical Trials Registry, 2009e)	TCTR 20211022002(Thai Clinical Trials Registry, 2009a)
Main sponsor	DTAM	Chulabhorn Royal Academy	Thammasat university	Chulalongkorn University	Health Systems Research Institute
Patient	Asymptomatic COVID-19 patients (n=160)	Mild to moderate COVID-19 patients (n=146)	Asymptomatic or mild COVID-19 patients (n=186)	Mild to moderate COVID-19 patients (n=160)	Asymptomatic or mild COVID-19 patients without pneumonia (n=736)
Intervention	Andrographolide 180 mg/day for 5 days	Andrographolide 180 mg/day for 5 days + Favipiravir 3.6 g day 1 then 1.6 g/ day for 4 days	Andrographolide 180 mg/day	Andrographolide 180 mg for 5 days + Favipiravir (200 mg) 9x2 for 1 day then 4x2 for 4 days.	Andrographis capsule 180 mg/day for 5 days
Comparator	Placebo	Favipiravir 3.6 g day 1 then 1.6 g/ day * 4 days	Placebo	Favipiravir (200 mg) 9x2 for 1 day then 4x2 for 4 days alone.	Placebo
Primary outcome	Hospitalisation rate during 14 days of follow-up	Clinical stable or improvement of symptom at day 4	Symptoms and severity score until discharge	Proportion of patients developing severe pneumonia at 6 months	Pneumonia at day 10
Study design	Randomised, double blind, placebo-controlled trial	Randomised, double blind, placebo-controlled trial	Randomised, double blind, placebo-controlled trial	Randomised, open label, active-controlled trial	Randomised, double blind, placebo-controlled trial
Status	Pending (ethic submitted)	Not yet recruiting	Recruiting	Pending (ethic submitted)	Not yet recruiting
Updated in TCTR	14 May 2021	9 Jun 2021	26 Aug 2021	6 Sep 2021	22 Oct 2021

Notes: Updated on 15 Dec 2021, Abbreviations: DTAM; Department of Thai Traditional and Alternative Medicine, TCTR; Thai Clinical Trial Registry

Table S3 Incidence rate of pneumonia by follow-up time

Group	Events	Person-days of follow-up	Incidence rate per 1,000 person-days (95% CI)
<i>Andrographis paniculata</i> group			
Before 7 days	31	2,203	14.07 (9.90, 20.01)
After 7 days	6	453	13.25 (5.95, 29.48)
Overall	37	2,656	13.93 (10.09, 19.23)
Standard of care group			
Before 7 days	20	1,470	13.61 (8.78, 21.09)
After 7 days	2	294	6.80 (1.70, 27.20)
Overall	22	1,764	12.47 (8.21, 18.94)
Total			
Before 7 days	51	3,673	13.89 (10.55, 18.27)
After 7 days	8	747	10.71 (5.36, 21.41)
Overall	59	4,420	13.35 (10.34, 17.23)

Table S4 Incidence rate of pneumonia according to age groups

Group	Events	Person-days of follow-up	Incidence rate per 1,000 person-days (95% CI)
<i>Andrographis paniculata</i> group			
Age <60	31	2,557	12.12 (8.53, 17.24)
Age 60+	6	99	60.61 (27.23, 134.90)
Overall	37	2,656	13.93 (10.09, 19.23)
Standard of care group			
Age <60	20	1,683	11.88 (7.67, 18.42)
Age 60+	2	81	24.69 (6.18, 98.73)
Overall	22	1,764	12.47 (8.21, 18.94)
Total			
Age <60	51	4,240	12.03 (9.14, 15.83)
Age 60+	8	180	44.44 (22.23, 88.87)
Overall	59	4,420	13.35 (10.34, 17.23)

Table S5 The association between baseline characteristics and incident pneumonia

Baseline characteristics	Pneumonia		Total (n=605)	p-value
	Yes (n=59)	No (n=546)		
Male	31 (52.5)	274 (50.2)	305 (50.4)	0.73
Age (years)	44.71 (12.57)	34.40 (11.29)	35.41 (11.81)	<0.001
Body mass index (kg/m ²) [†]	26.04 (4.07)	23.96 (5.28)	24.2 (5.17)	0.23
Comorbidity				
Hypertension	11 (18.6)	33 (6.0)	44 (7.3)	<0.001
Diabetes	5 (8.47)	8 (1.5)	13 (2.2)	<0.001
Cardiovascular disease	0	5 (0.9)	5 (0.8)	1.00
Current medications				
ACEIs/ARBs	7 (11.9)	16 (2.9)	23 (3.8)	0.001
Statins	6 (10.2)	10 (1.8)	16 (2.6)	<0.001
Antiplatelets	0	5 (0.9)	5 (0.8)	1.00
Laboratory parameters[†]				
WBC (10 ³ /mm ³)	6.31 (1.70)	6.40 (2.16)	6.38 (2.05)	0.80
Lymphocyte (%)	26.79 (9.36)	33.03 (10.28)	31.57 (10.39)	0.001
Neutrophil (%)	62.69 (11.11)	56.27 (10.95)	57.77 (11.29)	0.002
Platelet (10 ³ /mm ³)				
Mean (SD)	218.74 (70.12)	227.01 (69.67)	225.07 (69.65)	0.52
Median (IQR)	209 (155, 255)	218 (181, 261)	215.5 (178, 260)	
BUN (mg/dL)	11.23 (3.85)	11.20 (3.49)	11.21 (3.56)	0.96
Scr (mg/dL)	0.84 (0.17)	0.83 (0.21)	0.83 (0.20)	0.89
eGFR (mL/min/1.73m ²)	97.52 (15.16)	103.05 (18.62)	101.77 (18.0)	0.09
LDH (units/L), median (IQR)	188.5 (155, 228)	201.5 (172.5, 230.5)	192.5 (158, 230)	0.14
AST (units/L), median (IQR)	26 (22, 38)	26 (20, 36)	26 (20, 36)	0.25
ALT (units/L), median (IQR)	35 (25, 47)	34 (22, 55)	34 (23, 51)	0.81
ALP (units/L), median (IQR)	70 (58, 88)	70.5 (61, 83)	70 (60, 83)	0.96

Table S6 Sensitivity analyses of *Andrographis paniculata* and efficacy outcomes

Outcomes	Odds ratio (95% confidence interval)*, p-value			
	Unadjusted model	Age-adjusted model	Fully adjusted model [†]	Additional adjusting model ^{††}
Total participants (n=605, events=59)				
Primary outcome				
Pneumonia	1.24 (0.71, 2.16), 0.44	1.42 (0.80, 2.54), 0.23	1.42 (0.79, 2.55), 0.24	1.29 (0.68, 2.46), 0.44
Pneumonia [‡]	1.12 (0.66, 1.89) [‡] , 0.68	1.27 (0.75, 2.16) [‡] , 0.38	1.27 (0.74, 2.17) [‡] , 0.39	1.20 (0.67, 2.13) [‡] , 0.54
Secondary outcome				
Worsening symptoms [¶]	1.11 (0.72, 1.73), 0.63	1.23 (0.78, 1.94), 0.38	1.22 (0.77, 1.94), 0.39	1.21 (0.74, 1.98), 0.45
Excluding participants admitted before the 1 st of July, 2021 (n=545, events=49)				
Primary outcome				
Pneumonia	1.83 (0.93, 3.61), 0.08	1.94 (0.97, 3.92), 0.06	1.88 (0.92, 3.81), 0.08	1.72 (0.78, 3.79), 0.18
Pneumonia [‡]	1.57 (0.82, 3.02) [‡] , 0.18	1.57 (0.82, 3.03) [‡] , 0.17	1.55 (0.80, 3.02) [‡] , 0.19	1.48 (0.72, 3.03) [‡] , 0.29
Secondary outcome				
Worsening symptoms [¶]	1.34 (0.82, 2.21), 0.25	1.39 (0.83, 2.33), 0.21	1.38 (0.82, 2.33), 0.22	1.32 (0.74, 2.36), 0.19

Notes: *Analysis using multiple imputation by chain equation (MICE), [†]Adjusting for age, diabetes, hypertension, receiving statins, and ACEIs/ARBs, [‡]Incidence rate of pneumonia per 1,000 person-days (95% confidence interval), [‡]Cox's proportional hazards model, in which fully adjusted model was additionally stratified by diabetes, and effect sizes were reported as hazard ratio (95% CI). ^{††}Additional adjusting model was a fully adjusting model with further adjusting for body mass index. [¶]Worsening symptoms were the composite of receiving antiviral drugs, systemic corticosteroids, or ventilator support; having oxygen saturation drop along with worsening signs and symptoms; or presenting regressive chest X-rays findings (i.e., category three or above).

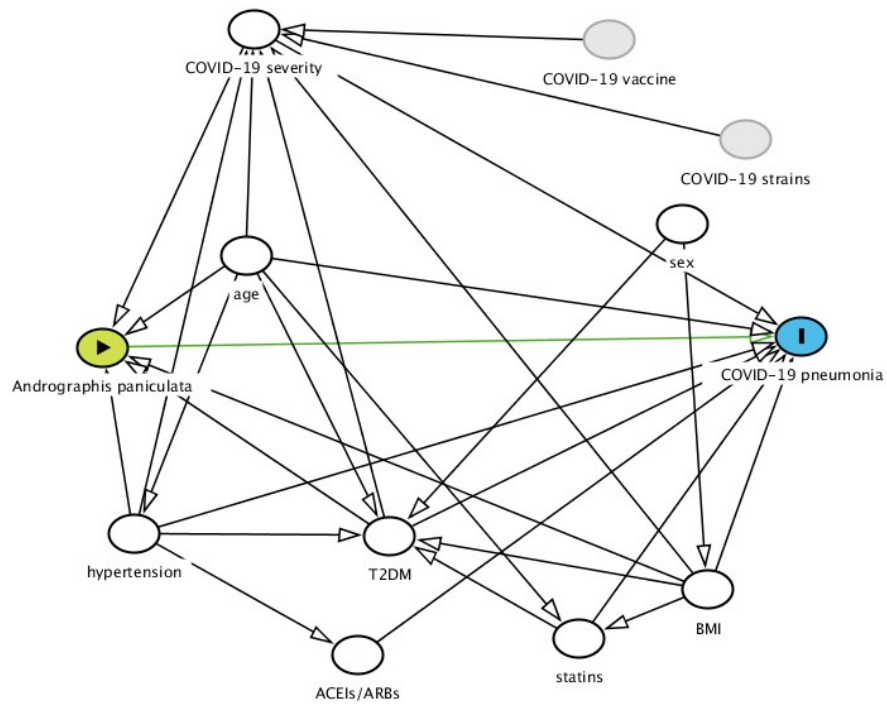


Figure S1 Directed acyclic graphs (DAGs) of the association between *Andrographis paniculata* and incidence of pneumonia

Abbreviations: ACEIs/ARBs; angiotensin converting enzyme inhibitors/ angiotensin receptor blockers, BMI; body mass index, T2DM; type 2 diabetes mellitus, **Sources:**(Centers for Disease Control and Prevention, 2021a, 2021b)

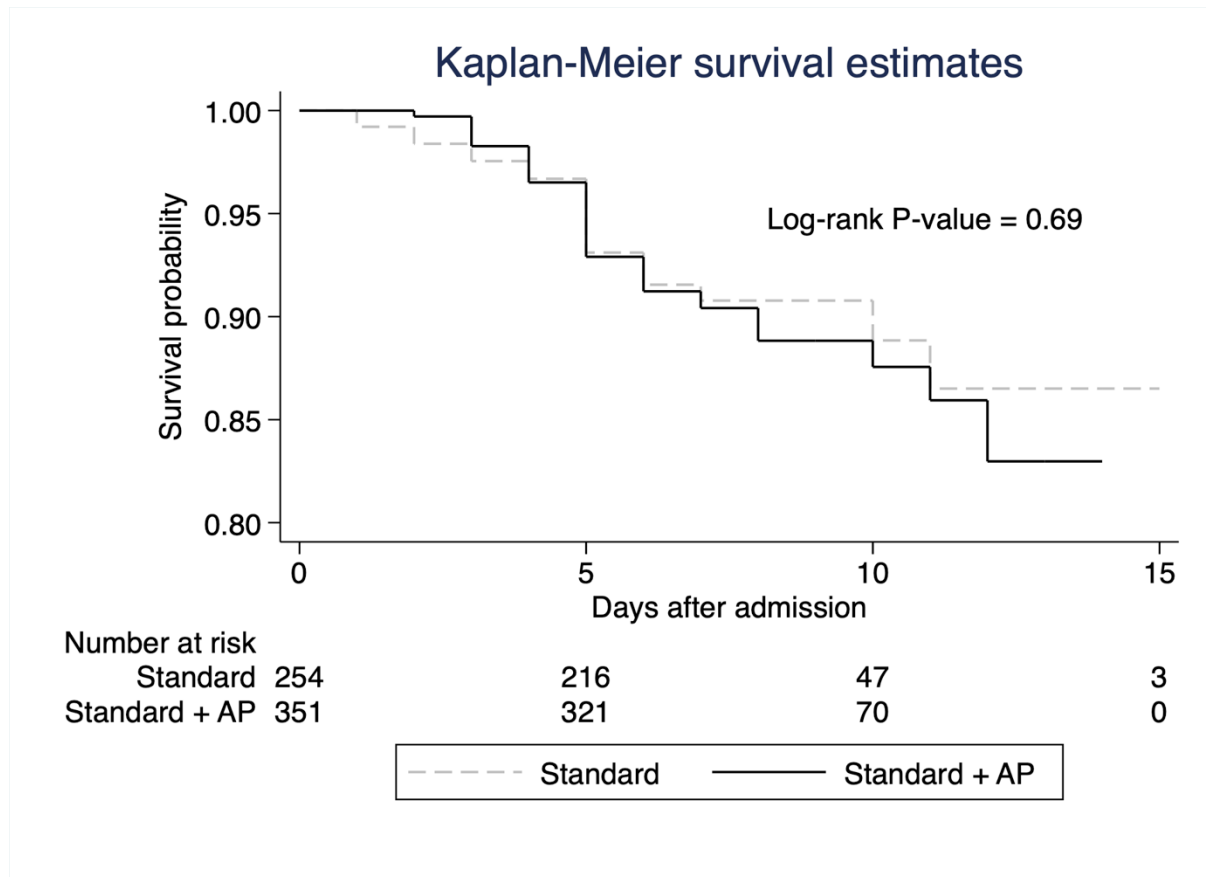


Figure S2 Probability of a pneumonia-free event by exposure

Abbreviation: AP; *Andrographis paniculata*

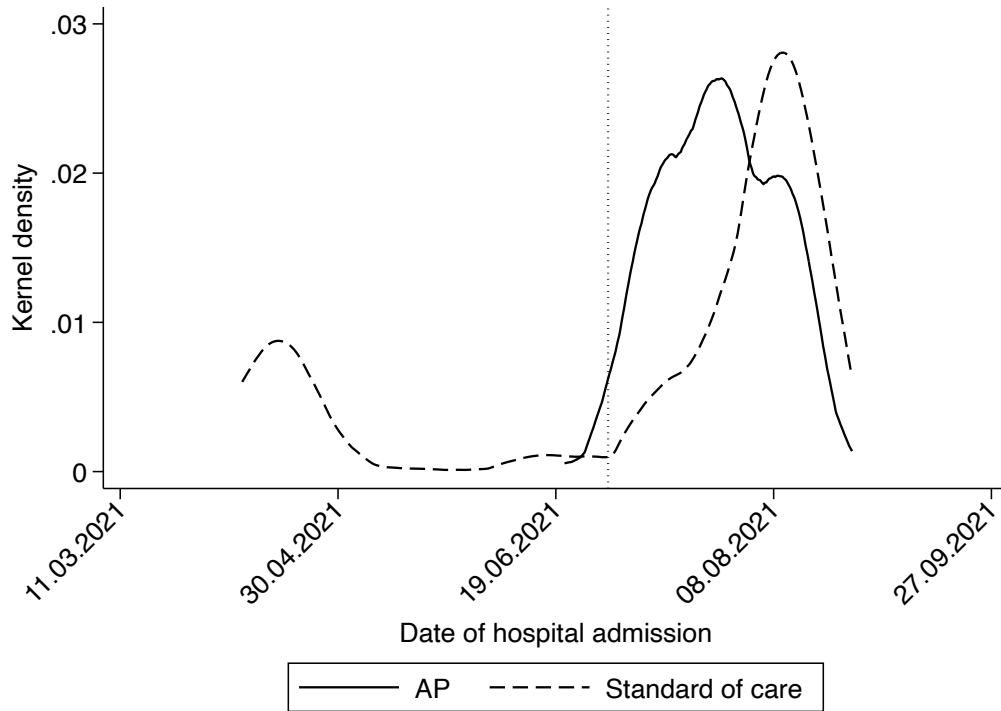


Figure S3 The distribution of hospital admission dates between *Andrographis paniculata* group and standard of care group

Notes: A vertical dotted line represents the 1st of July, 2021. **Abbreviations:** AP; *Andrographis paniculata*

eReferences

- Centers for Disease Control and Prevention, 2021a. Science brief: evidence used to update the list of underlying medical conditions that increase a person's risk of severe illness from COVID-19 [WWW Document]. URL https://www.cdc.gov/coronavirus/2019-ncov/science/science-briefs/underlying-evidence-table.html?CDC_AA_refVal=https%3A%2F%2Fwww.cdc.gov%2Fcoronavirus%2F2019-ncov%2Fhcp%2Fclinical-care%2Funderlying-evidence-table.html (accessed 12.18.21).
- Centers for Disease Control and Prevention, 2021b. Underlying medical conditions associated with higher risk for severe COVID-19: information for healthcare providers [WWW Document]. URL <https://www.cdc.gov/coronavirus/2019-ncov/hcp/clinical-care/underlyingconditions.html> (accessed 12.18.21).
- Rattanakraksa, D., Khempetch, R., Poolwiwatchaikool, U., Nimitvilai, S., Loatrakul, O., Srimanee, P., 2021. The efficacy and safety of *Andrographis paniculata* extract for treatment of COVID-19 patients with mild symptoms, Nakhonpathom hospital. *Reg 4-5 Med J* 40, 269–281.
- Suwatanapongched, T., Nitiwarangkul, C., Taweesakulvashra, R., Chitrapazt, N., n.d. Modified Rama Co-RADS user guideline [WWW Document]. URL <https://med.mahidol.ac.th/radiology/th/knowledge/radiology/09012021-1113-th> (accessed 12.11.21).
- Thai Clinical Trials Registry, 2009a. Identifier TCTR20211022002 - Efficacy and safety of an *Andrographis* capsule compared with standard therapy for the treatment of asymptomatic or mild COVID-19 without pneumonia : a double-blinded randomized-control trial [WWW Document]. *Med Res Found*. URL <https://www.thaiclinicaltrials.org/show/TCTR20211022002> (accessed 12.16.21).
- Thai Clinical Trials Registry, 2009b. Identifier TCTR20210514003 - *Andrographolide* as a medical tool for reduction of hospitalization in mild or asymptomatic COVID-19 patients: a randomized double-blind placebo controlled trial [WWW Document]. *Med Res Found*. URL <https://www.thaiclinicaltrials.org/show/TCTR20210514003> (accessed 12.16.21).
- Thai Clinical Trials Registry, 2009c. Identifier TCTR20210609001 - Efficacy of *Andrographis paniculata* extract combined with favipiravir treatment to prevent disease progression in mild to moderate COVID-19 patients: a double-blind, randomized, placebo-controlled study [WWW Document]. *Med Res Found*. URL <https://www.thaiclinicaltrials.org/show/TCTR20210609001> (accessed 12.16.21).
- Thai Clinical Trials Registry, 2009d. Identifier TCTR20210809004 - Comparison efficacy and safety of *Andrographis paniculata* extract capsules and placebo in COVID-19 patients: double blind randomized control trial [WWW Document]. *Med Res Found*. URL <https://www.thaiclinicaltrials.org/show/TCTR20210809004> (accessed 12.16.21).
- Thai Clinical Trials Registry, 2009e. Identifier TCTR20210906002 - Prospective study of *Andrographolide* and favipiravir versus favipiravir monotherapy to prevent severe pulmonary involvement in patients with COVID-19 [WWW Document]. *Med Res Found*. URL <https://www.thaiclinicaltrials.org/show/TCTR20210906002> (accessed 12.16.21).
- Wanaratna, K., Leethong, P., Inchai, N., Chueawiang, W., Sriraksa, P., Tabmee, A., Sirinavin, S., 2021. Efficacy and safety of *Andrographis paniculata* extract in patients with mild COVID-19: a randomized controlled trial (version 3). medRxiv.