

1 **Longitudinal serologic and viral testing post–SARS-CoV-2 infection and post-receipt of mRNA COVID-**
2 **19 vaccine in a nursing home cohort—Georgia, October 2020–April 2021**

3 Farrell A. Tobolowsky, DO, MS^{1*}, Michelle A. Waltenburg, DVM, MPH^{1*}, Erin D. Moritz, PhD¹, Melia
4 Haile, MPH, CHES¹, Juliana C. DaSilva, MA¹, Amy J. Schuh, PhD, MPH¹, Natalie J. Thornburg, PhD¹,
5 Adrianna Westbrook, MPH¹, Susannah L. McKay, PhD¹, Stephen P. LaVoie, PhD¹, Jennifer M. Folster,
6 PhD¹, Jennifer L. Harcourt, PhD¹, Azaibi Tamin¹, Megan M. Stumpf¹, Lisa Mills¹, Brandi Freeman, PhD,
7 MPH¹, Sandra Lester, PhD¹, Elizabeth Beshearse, PhD¹, Kristin D. Lecy, RN, MPH¹, Laura G. Brown, PhD¹,
8 Geroncio Fajardo¹, Jeanne Negley, MBA², L. Clifford McDonald, MD¹, Preeta K. Kutty, MD, MPH¹, and
9 Allison C. Brown, PhD¹; for the CDC Infection Prevention and Control Team

10 *Both authors contributed equally to this work.

11 **Author Affiliations:**

12 ¹Centers for Disease Control and Prevention, 1600 Clifton Road NE, Atlanta, GA, 30333

13 ²Georgia Department of Public Health, 2 Peachtree Street, Atlanta, GA, 30303

14 **Corresponding Author:**

15 Farrell A. Tobolowsky, DO, MS
16 Centers for Disease Control and Prevention
17 1600 Clifton Road
18 Atlanta, GA, USA 30329
19 Phone: 404-718-3635
20 Email: oqk3@cdc.gov

21 The findings and conclusions in this report are those of the authors and do not necessarily represent the
22 official position of the Centers for Disease Control and Prevention.

23 Use of trade names and commercial sources is for identification only and does not imply endorsement
24 by the U.S. Department of Health and Human Services.

25 **Abstract:**

26 Importance: There are limited data describing SARS-CoV-2–specific immune responses and their
27 durability following infection and vaccination in nursing home residents.

28 Objective: To evaluate the quantitative titers and durability of binding antibodies detected after SARS-
29 CoV-2 infection and subsequent COVID-19 vaccination.

30 Design: A prospective longitudinal evaluation included nine visits over 150 days; visits included
31 questionnaire administration, blood collection for serology, and paired anterior nasal specimen
32 collection for testing by BinaxNOW™ COVID-19 Ag Card (BinaxNOW), reverse transcription polymerase
33 chain reaction (RT-PCR), and viral culture.

34 Setting: A nursing home during and after a SARS-CoV-2 outbreak.

35 Participants: 11 consenting SARS-CoV-2–positive nursing home residents.

36 Main Outcomes and Measures: SARS-CoV-2 testing (BinaxNOW™, RT-PCR, viral culture); quantitative
37 titers of binding SARS-CoV-2 antibodies post-infection and post-vaccination (beginning after the first
38 dose of the primary series).

39 Results: Of 10 participants with post-infection serology results, 9 (90%) had detectable Pan-Ig, IgG, and
40 IgA antibodies and 8 (80%) had detectable IgM antibodies. At first antibody detection post-infection,
41 two-thirds (6/9, 67%) of participants were RT-PCR–positive but none were culture positive. Ten
42 participants received vaccination; all had detectable Pan-Ig, IgG, and IgA antibodies through their final
43 observation ≤90 days post-first dose. Post-vaccination geometric means of IgG titers were 10–200-fold
44 higher than post-infection.

45 Conclusions and Relevance: Nursing home residents in this cohort mounted robust immune responses
46 to SARS-CoV-2 post-infection and post-vaccination. The augmented antibody responses post-vaccination

- 47 are potential indicators of enhanced protection that vaccination may confer on previously infected
- 48 nursing home residents.

49 **Introduction**

50 COVID-19 outbreaks in nursing homes have caused significant morbidity and mortality, including
51 740,034 cases and 141,084 deaths in residents as of December 5, 2021 (1). Although nursing home
52 residents are typically older with multiple comorbidities compared with the general population,
53 preliminary data show they frequently mount an immune response within 15 to 30 days of SARS-CoV-2
54 diagnosis (2, 3). However, the kinetics of SARS-CoV-2–specific binding antibody titers and isotypes that
55 persist beyond the early acute phase of infection are unknown.

56 Vaccination is a key strategy to prevent COVID-19 morbidity and mortality in nursing home
57 residents (4). Residents were prioritized for early COVID-19 vaccination because nursing homes
58 experienced rapid transmission and severe disease outcomes. mRNA vaccines were the first available,
59 and early post-emergency use authorization data demonstrated that the administration of mRNA
60 vaccines led to a decrease in new SARS-CoV-2 infections in nursing home residents (5-7). However, in
61 some instances, especially in the context of emerging SARS-CoV-2 variants, vaccinated residents have
62 tested positive for SARS-CoV-2 and developed COVID-19 during routine screening and outbreaks (8, 9).
63 Despite these infections in vaccinated persons, studies indicate that overall, mRNA vaccines have
64 decreased COVID-19 morbidity and mortality in nursing home residents (10, 11).

65 Characterizing SARS-CoV-2–specific immune responses elicited through natural infection or
66 vaccination, and their durability in nursing home residents, is critical to understanding potential immune
67 protection against infection. While preliminary data show that nursing home residents mount initial
68 immune responses to infection and vaccination, the duration and strength of this immune response
69 remains unknown. Additionally, information on how antibody development relates to viral RNA
70 detection and virus shedding in nursing home residents is limited. In a longitudinal evaluation of SARS-
71 CoV-2–positive nursing home residents, we describe (a) how the clinical course of COVID-19 illness,

72 severity of illness, and underlying medical conditions related to antibody development, (b) how
73 repeated viral testing results correlated with antibody development post-diagnosis, and (c) the
74 comparative titers and durability of immunoglobulin isotypes (i.e., Pan Ig, IgG, IgA, IgM) mounted in
75 response to SARS-CoV-2 infection and receipt of the Pfizer-BioNTech COVID-19 Vaccine.

76 **Methods**

77 A longitudinal evaluation to characterize SARS-CoV-2–specific immune responses was initiated
78 in a 149-bed nursing home that began experiencing an outbreak of SARS-CoV-2 infections in October
79 2020. Residents were eligible to participate if they were medically stable, had decision-making capacity,
80 and provided informed consent after testing SARS-CoV-2–positive using BinaxNOW™ COVID-19 Ag Cards
81 (BinaxNOW) (Abbott; Scarborough, ME) in any of three rounds of Centers for Disease Control and
82 Prevention (CDC)-led facility-wide point prevalence surveys (PPS) or by previous testing results
83 generated by the facility (12, 13). The first facility-generated positive viral test occurred in early October
84 2020. CDC PPS occurred during late October to early November 2020 and the longitudinal evaluation
85 included visits from October 25, 2020 through April 1, 2021.

86 Upon enrollment, the first four visits were conducted every other day. During these visits, CDC
87 administered a standardized questionnaire to each participant, blood specimens were collected for
88 serology, and paired bilateral anterior nasal specimens were collected for testing by BinaxNOW and real-
89 time reverse transcription polymerase chain reaction (RT-PCR) (14). Participants were interviewed to
90 obtain demographics and information about their COVID-19 exposures, signs, symptoms, and
91 hospitalization. After the first four visits, follow-up visits occurred monthly for a total of nine visits
92 (Figure 1). During these monthly follow-up visits, one nasal specimen was collected for RT-PCR, blood
93 specimens were collected for serology, and participants were interviewed about COVID-19 signs,
94 symptoms, and hospitalizations since the previous visit.

95 The facility began administering the primary series of mRNA COVID-19 vaccines during the
96 evaluation period (4); willing participants were vaccinated between January–February 2021. Timing of
97 vaccination was determined by the facility and timing of receipt of the first vaccine dose varied by
98 participant. CDC visits 6–9 occurred after facility vaccine clinics were initiated. In this evaluation,
99 participants were considered fully vaccinated two weeks after receiving the second dose of the mRNA
100 COVID-19 vaccine.

101 Electronic medical chart abstraction was performed to obtain supplemental information on
102 participants' past medical history, medications, laboratory test results, clinical outcomes, and vaccine
103 administration. Information from questionnaires and chart abstraction were entered into a Research
104 Electronic Data Capture (REDCap) database (15, 16). If visits occurred while a participant was
105 hospitalized, specimens and clinical data were not collected from that participant; however, that
106 participant could choose to continue in the evaluation upon return to the nursing home.

107 Reported COVID-19 symptom status was characterized as asymptomatic or symptomatic, and
108 participants' illnesses were further characterized as mild, moderate, or severe. A participant was
109 asymptomatic if he or she did not report any COVID-19 signs or symptoms in the 14 days before testing
110 positive or during the evaluation period. Mild illness included participants with asymptomatic COVID-19
111 infections and those who reported COVID-19 signs or symptoms without dyspnea or evidence of lower
112 respiratory tract involvement. Moderate illness included participants with signs of lower respiratory
113 disease by clinical assessment or imaging, and severe disease included participants with tachypnea (>30
114 breaths per minute), oxygen saturation <90% (or decrease from baseline over 3% for at least two
115 consecutive values), hospitalization, or death (17). An immunocompromised condition included the
116 following: recent or active malignancy, bone marrow transplant, solid organ transplant, primary or
117 secondary immune deficiency, or the use of oral or intravenous steroids or any immunosuppressant
118 drugs.

119 Details of specimen collection, BinaxNOW, RT-PCR, and viral culture methods have been
120 described previously (12). Viral culture was conducted on RT-PCR–positive specimens with a cycle
121 threshold (Ct) value <35. Serum specimens were tested for anti–SARS-CoV-2 antibodies using an
122 enzyme-linked immunosorbent assay targeting the extracellular domain of the SARS-CoV-2 spike protein
123 (18). This assay uses anti–pan-immunoglobulin (Ig) secondary antibodies that detect any SARS-CoV-2
124 immunoglobulin isotype, including IgG, IgM, and IgA. Seroconversion was defined as a signal to
125 threshold >1 at a serum dilution of 1:100 for any isotype; seroreversion occurred when a previously
126 seropositive participant became seronegative.

127 Day 0 for each participant was defined as the day of their first SARS-CoV-2–positive test
128 (BinaxNOW or RT-PCR) by either the facility or CDC PPS. We defined the entire evaluation period as
129 “post-diagnosis”, the time period after each participant’s SARS-CoV-2 diagnosis and before vaccination
130 as “post-infection,” and the time period after a participant received their first vaccine dose of the
131 primary series as “post-vaccination” (Figure 1).

132 Geometric means of serum antibody titers were calculated among all participants with
133 specimens collected during specific post-infection and post-vaccination time periods: 0–14, 15–30, 31–
134 60, and 61–90 days. Ratios for mean titers post-vaccination to mean titers post-infection were
135 calculated for each isotype; only antibody titers >100 were included in these ratios. Median serum
136 antibody titers and ratios of median titers post-vaccination to post-infection were also calculated. Data
137 were analyzed by Microsoft Excel (Microsoft Office 365 Version; Redmond, WA) and SAS, version 9.4
138 (SAS Institute; Cary, NC).

139 This evaluation was reviewed by the National Center for Emerging and Zoonotic Infectious
140 Diseases Human Studies Coordinator at the CDC and was determined to be non-research public health
141 surveillance as defined in 45 CF 46.102 (19-23). It was determined that ethical review by the CDC Human

142 Research Protection Office and IRB review was not required. This work did not receive any non-CDC
143 funding support.

144 **Results**

145 *Demographic and clinical characteristics*

146 Among 127 residents who participated in at least one CDC PPS, 47 (37%) antigen-positive
147 residents were identified; 31 (66%) antigen-positive residents were eligible for enrollment in this
148 longitudinal evaluation, of which 12 (39%) agreed to participate. Eight (67%) participants tested positive
149 by facility testing conducted prior to CDC PPS. One participant died before the second follow-up visit and
150 was excluded from analysis. The median age of the remaining 11 participants was 74 years (range: 37–
151 90 years) and seven (64%) were male (Table 1). Seven (64%) participants were White and four (36%)
152 were Black; no participants reported Hispanic ethnicity. The most common underlying conditions were
153 cardiovascular disease (11, 100%) and diabetes (6, 55%); 10 (91%) participants had ≥ 3 underlying
154 conditions (Table 1). One participant (A) was immunocompromised with B-cell lymphoma. Four (36%)
155 participants (C, D, G, H) were classified as having severe COVID-19 illness, all of whom required
156 hospitalization; one (D) died during follow-up after visit 8. Two (18%) participants (E, J) were
157 asymptomatic. Ten of 11 (91%) participants received two doses of the Pfizer-BioNTech COVID-19
158 Vaccine during the evaluation period; the other participant (C) refused the vaccine.

159 *Laboratory results*

160 A total of 166 anterior nasal specimens (53 paired for RT-PCR and BinaxNOW; 60 unpaired for
161 RT-PCR only) and 61 blood specimens were analyzed. Participants had a median of 6 (interquartile range
162 [IQR]: 5–7) blood specimens collected across a median of 141 days (IQR: 141–163). One participant (G)
163 did not provide blood specimens during the post-infection period but did during the post-vaccination

164 period. All blood specimens from participant C were considered post-infection due to vaccination
165 refusal.

166 *Antibody profile post-infection and prior to vaccination*

167 Of 10 participants with post-infection serology results, 9 (90%) had detectable Pan-Ig, IgG, and
168 IgA antibodies, 8 (80%) had detectable IgM antibodies, and one participant (I) did not mount any binding
169 antibodies post-infection. Among the seven participants with serology conducted within 30 days post-
170 infection, the median time to detection was 13 days for Pan-Ig and IgG (IQR: 11–17); 16 days for IgA
171 (IQR: 12–17). Six (86%) of these participants with IgM antibodies had a median time to detection of 15
172 days (IQR: 12–17).

173 At the time of first antibody detection post-infection, two-thirds (6/9, 67%) of participants were
174 still RT-PCR–positive but none were viral culture positive (Appendix Figure 1). The median Ct value at the
175 time of first antibody detection for these participants was 29 (IQR: 25–34). Participant G did not have
176 blood specimens collected post-infection and participant I did not have detectable antibodies post-
177 infection, but both were RT-PCR–negative and had prior negative viral culture results at the time of first
178 antibody detection. Antibody detection was either concurrent with or subsequent to negative viral
179 culture results but did not correlate with negative RT-PCR or BinaxNOW results (Appendix Figure 1).

180 Pan-Ig and IgG rose and remained elevated post-infection (Figure 2). IgM and IgA titers started
181 to decline during the 31–60 days post-infection; seroreversion in these isotypes occurred in some
182 participants (J, K, L) by 50 days post-infection and before vaccination (Appendix Figure 2). The
183 participant (C) who declined vaccination had detectable Pan-Ig, IgG, and IgA antibodies for at least 150
184 days post-diagnosis (Appendix Figure 3). Participant H had lower post-infection antibody titers overall
185 and had lymphopenia as determined in a blood specimen collected within 30 days prior to enrollment.

186 *Antibody profile post-vaccination*

187 Among the 10 participants vaccinated during the evaluation period, timing of the first vaccine
188 dose varied by participant and occurred between 71–105 days post-diagnosis. All 10 (100%) had
189 detectable Pan-Ig, IgG, and IgA antibodies and six (60%) had detectable IgM antibodies post-vaccination
190 (Appendix Figure 2). Pan-Ig, IgG, and IgA titers began to decrease during 61–90 days post-vaccination
191 (141 days post-diagnosis) (Figure 2).

192 Post-infection geometric means were highest during 15–30 days for IgA, 31–60 days for IgM and
193 IgG, and 61–90 days for Pan-Ig (Table 2). Post-vaccination geometric means were highest during 0–14
194 days for IgM, 15–30 days for Pan-Ig, and 61–90 days for IgG and IgA (Table 2). Participants demonstrated
195 higher Pan-Ig, IgG, and IgA titers post-second vaccine dose than pre-first dose. The largest geometric
196 mean titer ratios were measured during specific post-vaccination and post-infection time periods: 15–30
197 days for Pan-Ig (142.3) and 31–60 days for IgG (200.5) and IgA (4.4). Geometric mean IgM titer ratios
198 were not calculated during 61–90 days because all post-vaccination titers were below the limit of
199 detection. Median serum antibody titers and ratios during post-infection and post-vaccination time
200 periods are displayed in Appendix Table 1.

201 Participant J had a substantial increase in IgG titers post-vaccination; this participant received
202 their first vaccine dose on day 105 post-diagnosis, much later than most participants who received their
203 first vaccine dose earlier (Appendix Figure 3). Participant A who was immunocompromised with B-cell
204 lymphoma and classified as having mild to moderate COVID-19 disease had similar titers as other
205 participants. The unvaccinated participant (C) had lower Pan-Ig and IgG titers than vaccinated
206 participants after 90 days post-diagnosis (Appendix Figure 2).

207 **Discussion:**

208 Although there have been concerns about immunosenescence causing an inadequate immune
209 response to SARS-CoV-2 infection and vaccination in the nursing home population, anti-SARS-CoV-2

210 antibodies were consistently detected throughout the evaluation period in this nursing home cohort.
211 Furthermore, antibody responses in previously infected participants were augmented after vaccination
212 and were still present throughout the evaluation period.

213 Some participants were antigen and RT-PCR positive at the time of first antibody detection;
214 however, no culturable virus was identified in respiratory specimens following detection of antibodies.
215 In general population studies, infected individuals may initially have positive nucleic acid amplification
216 tests (including RT-PCR) when anti-SARS-CoV-2 antibodies are first detected but are markedly less likely
217 to have positive results following antibody development (24). Specifically, detection of binding IgG
218 antibodies is associated with the absence of replication-competent virus (25). As a positive viral culture
219 is a likely indicator of the presence of replication-competent virus, our findings further support
220 seroconversion as a potential marker of non-infectivity post-infection and pre-vaccination (26).

221 Most participants developed all anti-SARS-CoV-2 antibody isotypes that were tested post-
222 infection, highlighting the diversity of antibody development in this nursing home cohort. The
223 participant who did not develop antibodies post-infection was only tested on Days 3 and 8. Pan-Ig and
224 IgG titers rose and remained elevated post-infection while IgM and IgA titers began to dissipate around
225 30 days post-infection. The duration of IgA positivity was longer than IgM. Similar kinetics have been
226 described in previous studies (27, 28). Prior reports have also suggested that higher titers are more
227 commonly associated with severe disease (29-31). In this cohort, quantitative antibody development did
228 not differ between those with mild to moderate and severe illness; however, our small sample size may
229 have limited our ability to detect a meaningful difference.

230 Prior studies reported that post-infection antibodies can be detected for at least six months
231 after diagnosis in the general population (32) and in nursing home cohorts (33). In this assessment, one
232 unvaccinated participant (C) had Pan-Ig, IgG, and IgA antibodies detected at 150 days (five months) post-

233 infection when our evaluation period ended, which may indicate antibody durability even in the absence
234 of vaccination. While our findings add to the growing body of evidence that nursing home residents can
235 maintain detectable binding antibodies for at least five months after diagnosis of SARS-CoV-2 infection,
236 we were unable to determine the maximum duration of post-infection antibodies because most
237 participants in our cohort were vaccinated 71–105 days post-diagnosis.

238 This analysis highlights the augmented impact of COVID-19 vaccination on post-infection
239 antibody titers, and likely enhanced immune protection, in previously infected nursing home residents
240 (34, 35). Evaluating titers of specific binding isotypes, participants had more robust Pan-Ig, IgG, and IgA
241 titers post-vaccination. Post-vaccination geometric mean titers of IgG were 10–200-fold higher than
242 post-infection, which is consistent with reported post-vaccination titer increases in healthcare workers
243 who had previous SARS-CoV-2 infection (36, 37). While more information is needed to understand the
244 correlation of post-mRNA vaccination titers with immune protection, a study by Feng et al. among
245 recipients of the ChAdOx1 nCoV-19 vaccine demonstrated a correlation between binding IgG antibody
246 titers and vaccine efficacy (38). Moreover, Feng et al. were able to derive threshold antibody levels that
247 correlated with differing levels of vaccine efficacy against symptomatic SARS-CoV-2 infection (38).
248 Applying these criteria to our nursing home cohort, all vaccinated participants surpassed the IgG titer
249 threshold that correlated with 80% vaccine efficacy two weeks after receiving their second vaccine dose.

250 Previous studies have shown increases in both IgG and IgA post-vaccination, with IgA detected
251 in both serum and mucosal sources (39-41). Robust IgG and IgA responses likely induce systemic and
252 mucosal protection (42). IgA has been found to dominate the early neutralizing antibody response to
253 SARS-CoV-2; a similar IgA response after mRNA vaccination has been hypothesized (42). In this
254 evaluation, post-vaccination geometric mean titers of IgA were 2–4-fold higher than post-infection
255 titers, suggesting that IgA could be used as an indicator of mRNA vaccine response.

256 Our evaluation had several limitations. We had a small sample size, preventing statistical
257 comparisons and potentially limiting the generalizability of our findings. Participants enrolled in our
258 evaluation only received the Pfizer-BioNTech COVID-19 Vaccine; therefore, we were unable to describe
259 the impact of vaccination with other products. Some participants were unable to provide blood
260 specimens when requested and most visits occurred only monthly, so we likely missed the exact timing
261 of seroconversion, peak antibody titers, and seroreversion. Not detecting antibodies in one participant
262 during this first 30 days post-infection was possibly an artifact of timing our collections relative to their
263 infection. Descriptions of antibody duration were limited by the length of the evaluation period. Seven
264 participants had visits that occurred one day after their first vaccine; though these visits were
265 categorized as post-vaccination, we do not know if titers observed from this visit were a continuation of
266 responses primed by their previous infection or a result of the vaccine already augmenting that
267 response. Therefore, we may have underestimated the scale of post-vaccination augmentation because
268 those titer calculations were influenced by values from measurements that were likely more reflective
269 of the post-infection time period. Limited electronic medical record documentation of vital signs,
270 including oxygen saturation, and the difficulty of discerning COVID-19 symptomology in a nursing home
271 cohort with multiple underlying comorbidities, chronic symptoms, and a modified clinical presentation
272 of particular signs and symptoms made it challenging to classify severity of illness. Lastly, since this
273 evaluation occurred before the rise of the SARS-CoV-2 B.1.617.2 (Delta) and B.1.1.529 (Omicron)
274 variants in the United States, we do not know how participants' post-infection and post-vaccination
275 antibody responses could differ in the setting of these and other emerging SARS-CoV-2 variants.

276 **Conclusion**

277 The duration and diversity of binding antibodies observed in this cohort of nursing home
278 residents could have implications for durability of immunity to SARS-CoV-2. Our findings of augmented
279 Pan-Ig, IgG, and IgA antibody responses post-vaccination in nursing home residents with recent infection

280 underscore the importance of vaccination efforts, especially where there is vaccine hesitancy among
281 nursing home staff (43). While it is unknown how long these anti-SARS-CoV-2 antibodies persist
282 following vaccination, findings from this evaluation suggest that nursing home residents do mount a
283 robust humoral immune response to SARS-CoV-2 post-infection and post-vaccination.

284 Members of the CDC Infection Prevention and Control Team who contributed to this work but did not
285 author it: Amelia Bhatnagar, BS; Jonathan Bryant-Genevier, PhD; Dustin W. Currie, PhD, MPH; Davina
286 Campbell, MS, MPH; Sarah E. Gilbert, MPH; Kelly M. Hatfield, MSPH; David A. Jackson, MD, MPH; John A.
287 Jernigan, MD, MS; James L. Dawson, PhD; Matthew J. Hudson, MD, MPH; Kahaliah Joseph, MSc; Sujan C.
288 Reddy, MD, MSc; and Malania M. Wilson, MS, MBA.

289
290 Acknowledgements: We are grateful to all residents and staff at the nursing home for their participation
291 and support of this evaluation during an especially challenging time. We also thank the Georgia
292 Department of Public Health.

293 **Table 1. Demographic and clinical characteristics of participants* (N=11) in a nursing home cohort—**

294 **Georgia, October 2020–April 2021**

Characteristic	Participants	
	n	%
Age, median [range] in years	74 [37-90]	
Male	7	64
White	7	64
Black	4	36
Non-Hispanic/Latino	11	100
<i>Underlying conditions[†]</i>		
≥3 underlying conditions	10	91
Cardiovascular disease	11	100
Hypertension	10	91
Coronary artery disease	6	55
Hyperlipidemia	3	27
Heart failure	3	27
Cerebrovascular accident	4	36
Diabetes mellitus	6	55
Chronic kidney disease	3	27
Chronic obstructive pulmonary disease	3	37
Neurologic disease	2	18
Cancer [‡]	2	18
Former/current smoker	10	91
<i>Severity of illness[§]</i>		
Mild to moderate disease	7	64
Severe disease	4	36
<i>COVID-19 symptom status</i>		
Symptomatic	9	82
Asymptomatic	2	18
<i>Clinical outcome</i>		
Hospitalized	4	36
Died	1	9

295 * Participants were identified among the cohort of nursing home residents if they were medically stable,
296 had decision-making capacity, and provided informed consent after testing SARS-CoV-2–positive using
297 BinaxNOW™ COVID-19 Ag Cards in any of three rounds of facility-wide point prevalence surveys
298 conducted by Centers for Disease Control and Prevention staff during late October to early November
299 2020.

300 † None of the participants had hepatic disease as an underlying condition.

301 ‡ One participant had unspecified B-cell lymphoma and one participant had a malignant neoplasm of
302 colon, per medical record review.

303 § Mild illness was defined as having signs or symptoms without dyspnea or evidence of lower respiratory
304 tract involvement, moderate illness included signs of lower respiratory disease by clinical assessment or
305 imaging, and severe disease was tachypnea (>30 breaths per minute), oxygen saturation < 90% (or
306 decrease from baseline over 3%), hospitalization, or death. Asymptomatic participants were considered
307 to have mild illness.

308 || Symptoms represent the earliest reported COVID-19 symptoms from 14 days prior to facility-wide CDC
309 testing through the end of the evaluation period.

310 **Table 2. Geometric means of anti-SARS-CoV-2 serum antibody titers and ratios post-vaccination and**
 311 **post-infection by isotype among participants (N=11) in a nursing home cohort—Georgia, October**
 312 **2020–April 2021^{*,†}**

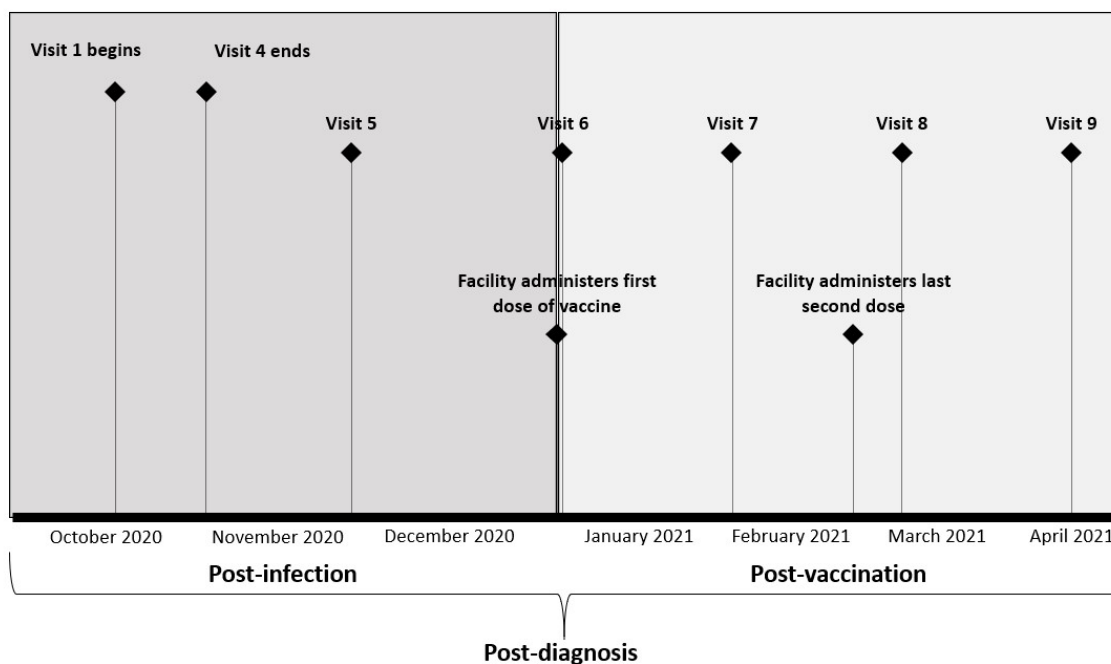
Time period (days)	Post-infection		Post-vaccination		Ratio post-vaccination to post-infection
	No. specimens tested	Geometric mean	No. specimens tested	Geometric mean	
<i>Pan-Ig</i>					
0–14	5	647.9	9	10181.0	15.7
15–30	7	2039.4	8	290111.6	142.3
31–60	9	4432.9	9	79175.1	17.9
61–90	3	4438.9	4	44136.9	9.9
<i>IgG</i>					
0–14	5	885.0	9	11879.3	13.4
15–30	7	4295.0	8	537275.5	125.1
31–60	9	10156.4	9	2036648.2	200.5
61–90	3	6789.3	4	105524.0	15.5
<i>IgA</i>					
0–14	4	198.9	3	397.6	2.0
15–30	7	442.2	8	1663.5	3.8
31–60	7	390.5	9	1734.4	4.4
61–90	2	419.3	4	672.2	1.6
<i>IgM</i>					
0–14	4	324.1	3	1026.2	3.2
15–30	5	536.9	2	400.5	0.7
31–60	5	702.2	3	525.1	0.7
61–90	2	260.0	0	—	—

313 ^{*} The post-infection period was defined as the time from SARS-CoV-2 diagnosis (by BinaxNOW™ COVID-
 314 19 Ag Cards and/or real-time reverse transcription polymerase chain reaction) to receipt of first Pfizer-
 315 BioNTech COVID-19 Vaccine dose. The post-vaccination period was defined as the time after receipt of
 316 first vaccine dose to the end of the evaluation period.

317 [†] Individuals with serum antibody titers below the seroconversion threshold (defined as a signal
 318 threshold >1 at the 1:100 dilution for any isotype) were not included in geometric mean and ratio

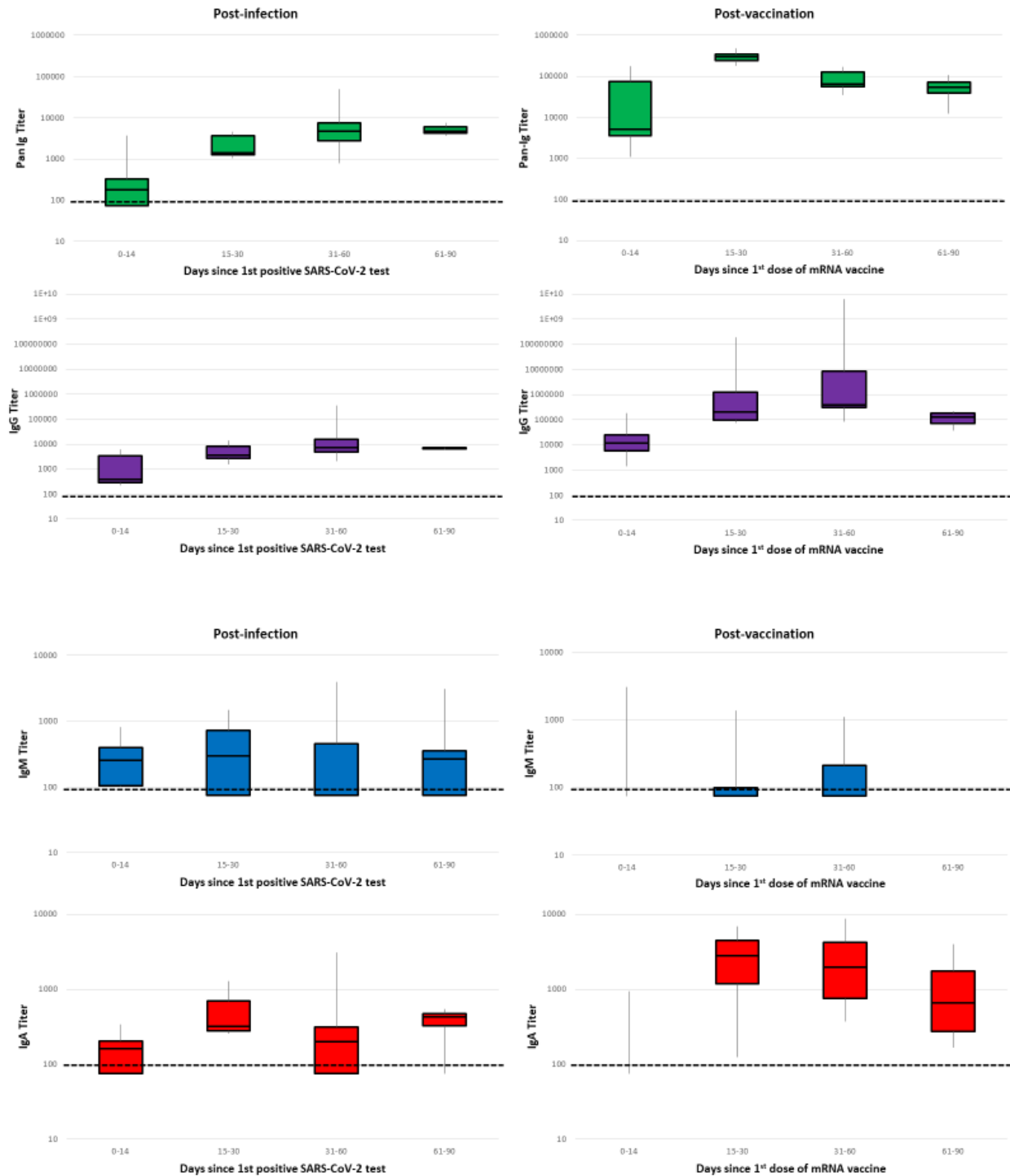
319 calculations. Geometric means of IgM titers and ratios were not calculated during 61–90 days because
320 all post-vaccination titers were below the limit of detection. Participant G was not included in the post-
321 infection analyses because they did not provide blood specimens during this time period. Participant C
322 was not included in the post-vaccination analyses due to vaccination refusal. This participant’s titers
323 ranged from 2437–16977 for Pan-Ig, 4919–7045 for IgG, and 267–710 for IgA during the 90–150 days
324 post-infection; their IgM titers were below the limit of detection during this time period.

325 **Figure 1. Timeline of participant visits and evaluation activities conducted, by time period—Georgia,**
326 **October 2020–April 2021**



328 Upon enrollment after a SARS-CoV-2–positive diagnosis by BinaxNOW™ COVID-19 Ag Cards and/or real-
329 time reverse transcription polymerase chain reaction, the first four visits were conducted every other
330 day. Visits 5–9 occurred monthly. The post-diagnosis period was defined as the time after each
331 participant’s first positive SARS-CoV-2 test result. The post-infection period was defined as the time
332 from SARS-CoV-2 diagnosis to receipt of first Pfizer-BioNTech COVID-19 Vaccine dose. The post-
333 vaccination period was defined as the time after receipt of first vaccine dose to the end of the
334 evaluation period. Nine participants received their two vaccine doses 21 days apart; one participant
335 received their two vaccine doses 28 days apart.

336 **Figure 2. Distribution of anti-SARS-CoV-2 serum antibody titers by isotype and time period among**
 337 **participants (N=11) in a nursing home cohort—Georgia, October 2020–April 2021**



340 The post-infection period was defined as the time from SARS-CoV-2 diagnosis (by BinaxNOW™ COVID-19
341 Ag Cards and/or real-time reverse transcription polymerase chain reaction) to receipt of first Pfizer-
342 BioNTech COVID-19 Vaccine dose. The post-vaccination period was defined as the time after receipt of
343 first vaccine dose to the end of the evaluation period. Participant G was not included in the post-
344 infection analyses because they did not provide blood specimens during this time period. Participant C
345 was not included in the post-vaccination analyses due to vaccination refusal. Participants with serum
346 antibody titers below the seroconversion threshold (defined as a signal threshold >1 at the 1:100
347 dilution for any isotype) were assigned a value of 25 for graphical representation only. In each box and
348 whisker plot, the horizontal line represents the median, and the top and bottom of the box the
349 interquartile range, and the whiskers the minimum and maximum values. The y-axis is plotted in
350 logarithmic scale. Only three observations were above the limit of detection during 0–14 days post-
351 vaccination for IgM and IgA; IgM titers during this time period ranged from 313–3013 and IgA titers
352 ranged from 177–890.

353

354 **References:**

- 355 1. Centers for Medicare & Medicaid Services. COVID-19 nursing home data. 2021. Accessed at
356 <https://data.cms.gov/stories/s/COVID-19-Nursing-Home-Data/bkwz-xpvg> on 17 December
357 2021.
- 358 2. White EM, Saade EA, Yang X, et al. SARS-CoV-2 antibody detection in skilled nursing facility
359 residents. *J Am Geriatr Soc.* 2021;69(7):1722-1728. [PMID: 33544876] doi:10.1111/jgs.17061.
- 360 3. Dora AV, Winnett A, Fulcher JA, et al. Using Serologic Testing to Assess the Effectiveness of
361 Outbreak Control Efforts, Serial PCR Testing, and Cohorting of Positive SARS-CoV-2 Patients in a
362 Skilled Nursing Facility. *Clin Infect Dis.* 2021;73(3):545-548. [PMID: 32857830]
363 doi:10.1093/cid/ciaa1286.
- 364 4. CDC. Interim Clinical Considerations for Use of COVID-19 Vaccines Currently Approved or
365 Authorized in the United States. Updated 17 December 2021. Accessed at
366 <https://www.cdc.gov/vaccines/covid-19/clinical-considerations/covid-19-vaccines-us.html> on 20
367 December 2021.
- 368 5. Mor V, Gutman R, Yang X, et al. Short-term impact of nursing home SARS-CoV-2 vaccinations on
369 new infections, hospitalizations, and deaths. *J Am Geriatr Soc.* 2021;69(8):2063-2069. [PMID:
370 33861873] doi:10.1111/jgs.17176.
- 371 6. U.S. Food and Drug Administration. Vaccines and Related Biological Products Advisory
372 Committee Meeting. 10 December 2020. Accessed at
373 <https://www.fda.gov/media/144245/download> on 11 April 2021.
- 374 7. Dooling K, McClung N, Chamberland M, et al. The Advisory Committee on Immunization
375 Practices' Interim Recommendation for Allocating Initial Supplies of COVID-19 Vaccine - United
376 States, 2020. *MMWR Morb Mortal Wkly Rep.* 2020;69(49):1857-1859. [PMID: 33301429]
377 doi:10.15585/mmwr.mm6949e1.
- 378 8. Cavanaugh AM, Fortier S, Lewis P, et al. COVID-19 Outbreak Associated with a SARS-CoV-2 R.1
379 Lineage Variant in a Skilled Nursing Facility After Vaccination Program — Kentucky, March 2021.
380 *MMWR Morb Mortal Wkly Rep.* 2021;70(17):639-643. [PMID: 33914720] doi:
381 10.15585/mmwr.mm7017e2.
- 382 9. Nanduri S, Pilishvili T, Derado G, et al. Effectiveness of Pfizer-BioNTech and Moderna Vaccines in
383 Preventing SARS-CoV-2 Infection Among Nursing Home Residents Before and During
384 Widespread Circulation of the SARS-CoV-2 B.1.617.2 (Delta) Variant — National Healthcare
385 Safety Network, March 1–August 1, 2021. *MMWR Morb Mortal Wkly Rep.* 2021;70(34):1163-
386 1166. [PMID: 34437519] doi: 10.15585/mmwr.mm7034e3.
- 387 10. Emborg H-D, Valentiner-Branth P, Schelde AB, et al. Vaccine effectiveness of the BNT162b2
388 mRNA COVID-19 vaccine against RT-PCR confirmed SARS-CoV-2 infections, hospitalisations and
389 mortality in prioritised risk groups. *medRxiv [Preprint].* 2021 [cited 20 September 2021].
390 Available from: <https://www.medrxiv.org/content/10.1101/2021.05.27.21257583v1>.
- 391 11. Mazagatos C, Monge S, Olmedo C, et al. Effectiveness of mRNA COVID-19 vaccines in preventing
392 SARS-CoV-2 infections and COVID-19 hospitalisations and deaths in elderly long-term care
393 facility residents, Spain, weeks 53 2020 to 13 2021. *Euro Surveill.* 2021;26(24):2100452. [PMID:
394 34142647] doi: 10.2807/1560-7917.ES.2021.26.24.2100452.
- 395 12. McKay SL, Tobolowsky FA, Moritz ED, et al. Performance Evaluation of Serial SARS-CoV-2 Rapid
396 Antigen Testing During a Nursing Home Outbreak. *Ann Intern Med.* 2021;174(7):945-951.
397 [PMID: 33900791] doi: 10.7326/M21-0422.
- 398 13. Moritz ED, McKay SL, Tobolowsky FA, et al. Repeated Antigen Testing Among SARS-CoV-2-
399 Positive Nursing Home Residents. *Infect Control Hosp Epidemiol.* 2021;1-10. [PMID: 34412728]
400 doi:10.1017/ice.2021.370.

- 401 14. U.S. Food and Drug Administration. In Vitro Diagnostics EUAs - Molecular Diagnostic Tests for
402 SARS-CoV-2. Updated 15 September 2021. Accessed at: [https://www.fda.gov/medical-](https://www.fda.gov/medical-devices/coronavirus-disease-2019-covid-19-emergency-use-authorizations-medical-devices/in-vitro-diagnostics-euas-molecular-diagnostic-tests-sars-cov-2#individual-molecular)
403 [devices/coronavirus-disease-2019-covid-19-emergency-use-authorizations-medical-devices/in-](https://www.fda.gov/medical-devices/coronavirus-disease-2019-covid-19-emergency-use-authorizations-medical-devices/in-vitro-diagnostics-euas-molecular-diagnostic-tests-sars-cov-2#individual-molecular)
404 [vitro-diagnostics-euas-molecular-diagnostic-tests-sars-cov-2#individual-molecular](https://www.fda.gov/medical-devices/coronavirus-disease-2019-covid-19-emergency-use-authorizations-medical-devices/in-vitro-diagnostics-euas-molecular-diagnostic-tests-sars-cov-2#individual-molecular) on 20
405 September 2021.
- 406 15. Harris PA, Taylor R, Minor BL, et al. The REDCap consortium: Building an international
407 community of software platform partners. *J Biomed Inform.* 2019;95:103208. [PMID: 31078660]
408 doi:10.1016/j.jbi.2019.103208.
- 409 16. Harris PA, Taylor R, Thielke R, et al. Research electronic data capture (REDCap)--a metadata-
410 driven methodology and workflow process for providing translational research informatics
411 support. *J Biomed Inform.* 2009;42(2):377-381. [PMID: 18929686] doi:10.1016/j.jbi.2008.08.010.
- 412 17. CDC. Discontinuation of Transmission-Based Precautions and Disposition of Patients with SARS-
413 CoV-2 Infection in Healthcare Settings. Updated 10 September 2021. Accessed at:
414 <https://www.cdc.gov/coronavirus/2019-ncov/hcp/disposition-hospitalized-patients.html> on 20
415 December 2021.
- 416 18. Freeman B, Lester S, Mills L, et al. Validation of a SARS-CoV-2 spike protein ELISA for use in
417 contact investigations and serosurveillance. *bioRxiv [Preprint]*. 2020:2020.04.24.057323. [PMID:
418 32511332] doi: 10.1101/2020.04.24.057323.
- 419 19. Protection of Human Subjects. 45 C.F.R. part 46.102(1)(1) (2018).
- 420 20. Institutional Review Boards. 21 C.F.R. part 56 (1981).
- 421 21. Records Maintained on Individuals. 5 U.S.C. §552a (2018).
- 422 22. Purposes. 44 U.S.C. §3501 (2018).
- 423 23. Research and Investigations Generally. 42 U.S.C. §241(d) (2011).
- 424 24. Harvey RA, Rassen JA, Kabelac CA, et al. Association of SARS-CoV-2 Seropositive Antibody Test
425 With Risk of Future Infection. *JAMA Intern Med.* 2021;181(5):672-679. [PMID: 33625463]
426 doi:10.1001/jamainternmed.2021.0366.
- 427 25. Glans H, Gredmark-Russ S, Olausson M, et al. Shedding of infectious SARS-CoV-2 by hospitalized
428 COVID-19 patients in relation to serum antibody responses. *BMC Infect Dis.* 2021;21(1):494.
429 [PMID: 34044758] doi:10.1186/s12879-021-06202-8.
- 430 26. Surie D, Huang JY, Brown AC, et al. Infectious Period of Severe Acute Respiratory Syndrome
431 Coronavirus 2 in 17 Nursing Home Residents-Arkansas, June-August 2020. *Open Forum Infect*
432 *Dis.* 2021;8(3):ofab048. [PMID: 33723510] doi:10.1093/ofid/ofab048.
- 433 27. Wu LX, Wang H, Gou D, et al. Clinical significance of the serum IgM and IgG to SARS-CoV-2 in
434 coronavirus disease-2019. *J Clin Lab Anal.* 2021;35(1):e23649. [PMID: 33184940]
435 doi:10.1002/jcla.23649.
- 436 28. Shu H, Wang S, Ruan S, et al. Dynamic Changes of Antibodies to SARS-CoV-2 in COVID-19
437 Patients at Early Stage of Outbreak. *Virology.* 2020;35(6):744-751. [PMID: 32720214]
438 doi:10.1007/s12250-020-00268-5.
- 439 29. Staines HM, Kirwan DE, Clark DJ, et al. IgG Seroconversion and Pathophysiology in Severe Acute
440 Respiratory Syndrome Coronavirus 2 Infection. *Emerg Infect Dis.* 2021;27(1):85-91. [PMID:
441 33256890] doi:10.3201/eid2701.203074.
- 442 30. Fu Y, Pan Y, Li Z, et al. The Utility of Specific Antibodies Against SARS-CoV-2 in Laboratory
443 Diagnosis. *Front Microbiol.* 2021;11:603058. [PMID: 33519745] doi:10.3389/fmicb.2020.603058.
- 444 31. Hasan Ali O, Bomze D, Risch L, et al. Severe COVID-19 is associated with elevated serum IgA and
445 antiphospholipid IgA-antibodies. *Clin Infect Dis.* 2021;73(9):1746. [PMID: 34550333]
446 doi:10.1093/cid/ciab532.

- 447 32. Dan JM, Mateus J, Kato Y, et al. Immunological memory to SARS-CoV-2 assessed for up to 8
448 months after infection. *Science*. 2021;371(6529):eabf4063. [PMID: 33408181]
449 doi:10.1126/science.abf4063.
- 450 33. Ruopp MD, Strymish J, Dryjowicz-Burek J, et al. Durability of SARS-CoV-2 IgG Antibody Among
451 Residents in a Long-Term Care Community. *J Am Med Dir Assoc*. 2021;22(3):510-511. [PMID:
452 33515497] doi:10.1016/j.jamda.2021.01.066.
- 453 34. Widge AT, Roupheal NG, Jackson LA, et al. Durability of Responses after SARS-CoV-2 mRNA-1273
454 Vaccination. *N Engl J Med*. 2021;384(1):80-82. [PMID: 33270381] doi:10.1056/NEJMc2032195.
- 455 35. Bradley T, Grundberg E, Selvarangan R, et al. Antibody Responses after a Single Dose of SARS-
456 CoV-2 mRNA Vaccine. *N Engl J Med*. 2021;384(20):1959-1961. [PMID: 33755375]
457 doi:10.1056/NEJMc2102051.
- 458 36. Manisty C, Otter AD, Treibel TA, et al. Antibody response to first BNT162b2 dose in previously
459 SARS-CoV-2-infected individuals. *Lancet*. 2021;397(10279):1057-1058. [PMID: 33640038]
460 doi:10.1016/S0140-6736(21)00501-8.
- 461 37. Gobbi F, Buonfrate D, Moro L, et al. Antibody Response to the BNT162b2 mRNA COVID-19
462 Vaccine in Subjects with Prior SARS-CoV-2 Infection. *Viruses*. 2021;13(3):422. [PMID: 33807957]
463 doi:10.3390/v13030422.
- 464 38. Feng S, Phillips DJ, White T, et al. Correlates of protection against symptomatic and
465 asymptomatic SARS-CoV-2 infection. *Nat Med*. 2021;10.1038/s41591-021-01540-1. [PMID:
466 34588689] doi:10.1038/s41591-021-01540-1.
- 467 39. Wisnewski AV, Campillo Luna J, Redlich CA. Human IgG and IgA responses to COVID-19 mRNA
468 vaccines. *PLoS One*. 2021;16(6):e0249499. [PMID: 34133415]
469 doi:10.1371/journal.pone.0249499.
- 470 40. Ketas TJ, Chaturbhuj D, Cruz-Portillo VM, et al. Antibody responses to SARS-CoV-2 mRNA
471 vaccines are detectable in saliva. *Pathog Immun*. 2021;6(1):116-134. [PMID: 34136730]
472 doi:10.20411/pai.v6i1.441.
- 473 41. Danese E, Montagnana M, Salvagno GL, et al. Comprehensive assessment of humoral response
474 after Pfizer BNT162b2 mRNA Covid-19 vaccination: a three-case series. *Clin Chem Lab Med*.
475 2021;59(9):1585-1591. [PMID: 33838087] doi:10.1515/cclm-2021-0339.
- 476 42. Sterlin D, Mathian A, Miyara M, et al. IgA dominates the early neutralizing antibody response to
477 SARS-CoV-2. *Sci Transl Med*. 2021;13(577):eabd2223. [PMID: 33288662]
478 doi:10.1126/scitranslmed.abd2223.
- 479 43. Unroe KT, Evans R, Weaver L, et al. Willingness of Long-Term Care Staff to Receive a COVID-19
480 Vaccine: A Single State Survey. *J Am Geriatr Soc*. 2021;69(3):593-599. [PMID: 33370448]
481 doi:10.1111/jgs.17022.