

1 **Title:** Increased Long-Term Mortality in Patients Admitted to the Intensive Care Unit with
2 Health-Care Associated Pneumonia

3

4 **Running Title:** Long-Term Pneumonia Mortality

5

6 **Authors:**

7 Kristin R. Wise, MD

8 Assistant Professor of Medicine

9 Medical University of South Carolina, Division of Internal Medicine and Geriatrics

10

11 Jordan A. Kempker, MD, MSc

12 Pulmonary and Critical Care

13 Emory University, Department of Medicine, Division of Pulmonary and Critical Care Medicine

14 Atlanta, GA

15

16 Radu F. Neamu, MD

17 Attending Pulmonologist

18 Bryan Medical Center

19 Lincoln, NE

20

21 Ketino Kobaidze, MD, Ph.D (corresponding author)

22 Associate Professor of Medicine

23 550 Peachtree Street, Atlanta, GA 30308

24 Cell: 404 840 4395

25 E- mail: kkobaid@emory.edu

26 Emory University, Department of Medicine, Division of Hospital Medicine

27 Atlanta, GA

28 **An institution where work was performed:** Emory University, Atlanta, GA

29 **Funding:** None for this current study. The creation of the original prospective cohort database
30 used in this study was funded by grants from the Carlyle Fraser Heart Center and the
31 Department of Medicine at Emory University. The funders had no role in the original study
32 design, data collection, data analysis, and interpretation, or manuscript writing.

33 **Keywords:** Healthcare-Associated Infection; Pneumonia; Mortality; Health Services Research;
34 Critical Illness

35 **Acknowledgments:** The authors have neither financial interests nor conflicts of interest to
36 disclose.

37 **Summary of Key Points:**

38

- 39 • The American Thoracic Society (ATS) and the Infectious Diseases Society of America
40 (IDSA) developed and periodically update guidelines for the diagnosis and management of
41 community-acquired and nosocomial pneumonia based on the patient-care setting in which
42 pneumonia evolved. ATS/IDSA provides guidelines for empiric antibiotic choices based on
43 the category of pneumonia that is diagnosed.
- 44 • Pneumonia is a significant cause of mortality in the United States and when combined with
45 influenza ranks as the eighth leading cause of death nationwide yet little is known about the
46 mortality of critically ill patients with pneumonia that require admission to a medical intensive
47 care unit (ICU).
- 48 • Our findings suggest that older age, higher severity of illness at ICU admission, and chronic
49 comorbid illnesses are the main contributors to long-term mortality from pneumonia requiring
50 ICU admission.
- 51 • In this cohort, we found an independent association between increased mortality and
52 admission from the general hospital ward rather than directly from the emergency
53 department.
- 54 • Our study did not demonstrate that initial guideline-based antibiotic therapy was associated
55 with a reduction in short-term mortality; however, it did demonstrate a high prevalence of
56 resistant pathogens in HCAP/HAP patients, which reflects ATS/IDSA guideline expectations.

57 **Background:** Pneumonia is a leading cause of death in the United States. Guidelines for its
58 diagnosis and management are periodically updated, but long-term mortality in critically ill
59 patients has not been well studied.

60 **Objective:** To determine differences in one-year mortality between patients with community-
61 acquired pneumonia (CAP) and healthcare-associated pneumonia or hospital-acquired
62 pneumonia (HCAP/HAP).

63 **Methods:** A retrospective multivariate analysis of a prospective cohort study that included all
64 patients admitted to a single-center medical intensive care unit (ICU) from October 1, 2007,
65 through September 30, 2008, with a diagnosis of pneumonia.

66 **Results:** There were 181 patients admitted to the medical ICU with a diagnosis of pneumonia,
67 58.0% with HCAP/HAP and 42.0% with CAP. Those with HCAP/HAP had an older age
68 distribution and higher proportions of cardiovascular (79.1% vs. 63.2%, $P=0.02$) and
69 neurological (36.2% vs. 18.4%, $P=0.01$) comorbidities. The HCAP/HAP patients demonstrated
70 an increased risk of death within one a year in the unadjusted analysis (HR 1.6, 95% CI 1.1-2.2,
71 $P=0.01$) that did not remain significant in the multivariate analysis (HR 1.3, 95% CI 0.80-2.10,
72 $P=0.29$) when adjusting for simplified acute physiology score (SAPS) II score, age category,
73 source of admission and a history of diabetes mellitus, neurological disease or malignancy.

74 **Conclusion:** Compared to patients admitted to a medical ICU with CAP, those with HCAP/HAP
75 had a higher one-year mortality that is accounted for by the increased co-morbidities associated
76 with a HCAP/HAP diagnosis.

77

78 INTRODUCTION

79 Pneumonia is a significant cause of mortality in the United States (US) and when
80 combined with influenza ranks as the eighth leading cause of death nationwide, causing an
81 estimated 50,000 deaths a year (1). In an effort to confront this public health concern, the
82 American Thoracic Society (ATS) and the Infectious Diseases Society of America (IDSA)
83 developed and periodically update guidelines for the diagnosis and management of community-
84 acquired and nosocomial pneumonias. In 2005, these guidelines outlined a different approach
85 to what was previously known as nosocomial pneumonia, dividing it into three categories based
86 on the patient-care setting in which the pneumonia evolved (2). These three categories are
87 healthcare-associated pneumonia (HCAP), hospital acquired pneumonia (HAP) and ventilator-
88 associated pneumonia. Similarly, specific guidelines were published in 2007 to help clinicians
89 with the management of community acquired pneumonia (CAP) (3).

90 Since publication, these guidelines have spurred research into the efficacy and safety of
91 their treatment recommendations for each pneumonia class as well as their ability to identify
92 patients at risk for drug-resistant pathogens and higher mortality (4-26). In regards to the latter,
93 six studies have examined mortality differences among the different pneumonia types in
94 hospitalized patients and have shown heterogeneous results (8, 11, 12, 14, 18, 22). Among
95 these studies, there is a paucity of data specifically examining critically ill patients and long-term
96 mortality. To our knowledge, only one recent study has examined this question, demonstrating
97 that pneumonia type for patients admitted to the intensive care unit (ICU) was associated with
98 long term mortality but not short term mortality (12). Given the high incidence of this morbid
99 disease, further information is needed regarding the outcomes of the of the various types of
100 pneumonias presenting to the ICU to better identify the burden of disease they each represent
101 to the community and to help prognosticate for individual patients. In this study, we compared
102 the one-year survival among patients admitted to the medical ICU with CAP, HCAP, and HAP
103 and examined the patient characteristics that are associated with mortality.

104

105 **MATERIALS AND METHODS**

106 *Study population*

107 This study is a retrospective analysis of a previously collected prospective cohort of patients
108 admitted to the medical ICU from October 1, 2007, through September 30, 2008, at a single
109 center 511-bed urban, an academic hospital in Atlanta, Georgia. The details regarding the
110 patient population in the above-mentioned database are described elsewhere (27). The study
111 proposal was approved by the Emory University Institutional Review Board.

112 All adult patients admitted to the ICU within the above period with a diagnosis of
113 pneumonia were included in the study. We excluded patients admitted to the medical ICU with
114 ventilator-associated pneumonia (which generally encompassed patients with tracheostomies
115 from ventilator weaning facilities) and those who did not meet criteria for pneumonia based on
116 documented evidence of a new radiographic infiltrate plus documentation of at least two of the
117 following signs or symptoms: 1) white blood cell count >10,000/ml or <4,000/ml; 2) temperature
118 > 38.3° or < 35° Celsius; 3) purulent secretions from the lower respiratory tract; or 4) new-onset
119 or worsening of dyspnea, oxygen requirements or altered mental status.

120 *Data Sources and Variables*

121 All data were gathered from the electronic medical record by study investigators and
122 entered into an Excel spreadsheet (Microsoft Corporation). The primary variable of interest was
123 the pneumonia type on admission to the medical ICU. Diagnoses of CAP, HCAP, and HAP were
124 determined by study investigators based on documented evidence of criteria according to the
125 2005 ATS/IDSA guideline definitions (2). Furthermore, the diagnosis of HAP required the
126 documented absence of an infiltrates on a chest x-ray at the initial hospital admission with the
127 development of a new infiltrate upon transfer to the medical ICU. The primary outcome of
128 interest was one-year all-cause mortality, which was determined by linking patients to their
129 corresponding death records with the US Social Security database.

130 Patient characteristics collected from the electronic medical record included age, gender,
131 race (self-identified), medical co-morbidities, and source of ICU admission. The severity of
132 illness scores, acute physiology, and chronic health evaluation (APACHE) II and simplified
133 acute physiology score (SAPS) II, were calculated using the standard formula with physiologic
134 variables from the time of the ICU admission. For microbiologic data, we recorded the results of
135 the first blood cultures collected during the period from 6 hours before arrival to the ICU until 3
136 days after. To capture the etiology for pneumonia, all lower respiratory tract (LRT) cultures
137 obtained during the first 5 days after ICU admission were recorded. An LRT culture was defined
138 as a tracheal aspirate, bronchoalveolar lavage (BAL), bronchial wash, protected brush
139 specimen, or mini-BAL. A multi-drug resistant (MDR) gram-negative pathogen was defined as
140 one with documented decreased susceptibility to at least two of the antibiotic classes
141 recommended for treating pneumonia as delineated by the 2005 ATS/IDSA guidelines (2).

142 For treatment variables, we recorded all antibiotics administered during the period of 12
143 hours before arrival in the ICU through ICU discharge. Antibiotic appropriateness was
144 determined by antibiotics given at ICU admission and deemed inappropriate if: 1) they did not
145 include the recommended antibiotic classes for CAP, HCAP, and HAP in the 2005 and 2007
146 ATS/IDSA guidelines, including double coverage for *Pseudomonas aeruginosa* for HCAP and
147 HAP and atypical coverage for CAP, or 2) they included antibiotics outside of those
148 recommended for respective pneumonia (i.e., using HCAP coverage for CAP). Other treatment
149 variables collected include the use and duration of noninvasive or invasive mechanical
150 ventilation. Outcomes recorded included ICU and hospital length of stay and mortality.

151 Statistical Analysis

152 All data analyses were performed using SAS 9.3 (SAS Institute Inc. Cary, NC) statistical
153 software. We initially intended to compare CAP, HAP, and HCAP as separate categories, but
154 only 15 (8.0%) subjects had HAP. Therefore, HAP and HCAP were combined for analysis and
155 are referred to as HCAP/HAP in our study. For the bivariate analyses, categorical variables

156 were compared with a chi-square test or Fisher's exact test. Continuous variables with a normal
157 distribution were compared with a two-tailed t-test. Continuous variables with a non-normal
158 distribution were compared using the Wilcoxon Ranked Sum test. The model for the multivariate
159 analysis was constructed using the covariate selection method described by Hosmer and
160 Lemeshow and is briefly described here (28). Covariates were initially selected for model
161 inclusion if they were associated with both the primary outcome and exposure at a p-value <
162 0.25 in the bivariate analyses. Then, covariates were retained in the model for a p-value < 0.10
163 or if upon removal from the model, the pneumonia classification parameter estimate did not
164 change by $\geq 20\%$. Then each covariate from the entire dataset was entered into this reduced
165 model and retained if they changed the pneumonia classification parameter estimate by $\geq 20\%$.
166 Final p-values of <0.05 were considered statistically significant.

167

168 **RESULTS**

169 *Patient Characteristics*

170 During the study period, 1,357 patients were admitted to the medical ICU of which 181
171 (13.3%) carried a diagnosis of pneumonia. There were 105 (58.0%) patients with HCAP/HAP
172 and 76 (42.0%) with CAP. Table 1 compares the baseline demographics, preexisting
173 comorbidities, and clinical stay characteristics of CAP and HCAP/HAP patients. When
174 compared to CAP, patients with HCAP/HAP had a significantly older age distribution and higher
175 proportions of cardiovascular (79.1% vs. 63.2%, $P=0.02$) and neurological (36.2% vs. 18.4%,
176 $P=0.01$) comorbidities. There were trends towards higher APACHE II and SAPS II scores in
177 HCAP/HAP patients (23.7 vs. 21.8, $P=0.07$ and 45.4 vs. 41.5, $P=0.08$, respectively).

178 *Main Findings*

179 The one-year survival for critically ill pneumonia patients and their characteristics
180 associated with mortality are shown in Table 2 and their Cox proportional survival curves are
181 depicted in Figure 1. The one-year crude mortality of HCAP/HAP and CAP patients was 62.0%

182 and 34.0%, respectively. HCAP/HAP patients had an increased risk of death within one year in
183 the unadjusted analysis (HR 1.6, 95% CI 1.1-2.2, P=0.01). This finding did not remain
184 statistically significant in the multivariate analysis (HR 1.3, 95% CI 0.8-2.1, P=0.29) when
185 adjusting for SAPS II score, age category, source of ICU admission, and preexisting conditions
186 of diabetes mellitus, neurological disease or malignancy (Table 2). We performed a secondary,
187 exploratory analysis examining mortality at different time points, showing an increase in
188 unadjusted mortality among HCAP/HAP patients at 60 days, but not at 30 or 90 days (Table 3).
189 We ran our multivariable model with the 60-day outcome and again HCAP/HAP did not remain a
190 significant risk factor for mortality.

191 *Microbiology of Pneumonias and Antibiotic Treatment*

192 Cultures were not performed in 5.7% and 5.3% of HCAP/HAP and CAP patients,
193 respectively. The first culture obtained was a blood culture in the majority of both HCAP/HAP
194 (84.8%) and CAP (81.6%) patients. Lower respiratory cultures were performed in 32.4% of
195 HCAP/HAP and 27.6% of CAP patients. Figure 2 summarizes the microbiology of the
196 pneumonias in the study group. Blood and respiratory tract cultures remained negative in 52.6%
197 of CAP patients and 43.8% of HCAP/HAP patients. Methicillin-resistant *Staphylococcus aureus*
198 (MRSA) and MDR gram-negative bacilli were not cultured among the CAP patients while these
199 organisms comprised the infectious agent in 6.7% and 3.8% of the HCAP/HAP patients,
200 respectively.

201 When compared to HCAP/HAP patients, those with CAP were more likely to have the
202 appropriate initial antibiotic therapy at admission to the ICU (38.2% vs. 17.1%, P<0.01) as
203 shown in Table 1. However, appropriate antibiotics did not affect one-year mortality,
204 with 27.1% of the survivors and 25.0% of non-survivors receiving appropriate antibiotics
205 (P=0.75).

206 *Other Outcomes*

207 Invasive mechanical ventilation was required in 38.1% of the CAP patients and 38.1% of
208 the HCAP/HAP patients (Table 1). There were no significant differences in the use of non-
209 invasive positive pressure ventilation or ICU or hospital length of stay between the two
210 pneumonia groups.

211

212 **DISCUSSION**

213 This study compares the characteristics and outcomes between patients admitted to a
214 single-center medical ICU with a diagnosis of CAP or HCAP/HAP over one year. Patients with
215 HCAP/HAP were older with more medical comorbidities and more resistant pathogens. While
216 our study identified that the HCAP/HAP patients had an increased, unadjusted one-year
217 mortality when compared to CAP, this finding did not persist when adjusted for SAPS II score,
218 age, source of ICU admission and preexisting diabetes mellitus, neurological disease, or
219 malignancy. These findings suggest that older age, higher severity of illness at ICU admission,
220 and chronic comorbid illnesses are the main contributors to long-term mortality from
221 pneumonias requiring ICU admission.

222 We compared our mortality findings with the existing literature, which focuses mostly on
223 short-term mortality. To date, we know of only one study that has examined long-term mortality
224 by pneumonia type in patients admitted to ICU. This study demonstrated no difference in
225 adjusted short-term mortality but showed a higher unadjusted one-year mortality among patients
226 with HAP (12). This may be similar to our unadjusted findings of an increased risk of death
227 within one year for HCAP/HAP patients that did not remain statistically significant in our
228 multivariate analysis. While five studies have found that HCAP carries higher unadjusted
229 mortality, this association remained in only one of the three studies that adjusted for
230 confounders. Not surprisingly, these data have also shown that patients with HCAP are older
231 with more severe chronic comorbidities and often present with more severe illness (8, 11, 14,
232 18, 22). In regards to the effects of comorbid illnesses, one study examining the long-term

233 mortality of patients hospitalized with CAP also found that older age, cerebrovascular disease,
234 and cardiovascular disease were associated with increased mortality (29). Overall, the sum of
235 these data, combined with our study results, suggest that the current pneumonia classification is
236 not an independent risk factor for mortality but rather a marker of more chronic and severe
237 illness.

238 In addition to our main results, our study identified several other interesting findings. In
239 this cohort, we found an independent association between increased mortality and admission
240 from the general hospital ward rather than directly from the emergency department. A similar
241 association was found in one study that examined the source of ICU admission for patients with
242 septic shock (30). In that study, in comparison to patients admitted from the general ward, those
243 from the emergency department had lower in-hospital mortality, less mechanical ventilation
244 utilization, and shorter times to achieving ScVO₂ goals (30). As our study was not designed to
245 compare the differences between patients admitted to the medical ICU from these two sources,
246 we can only speculate as to whether treatment in the emergency department was protective or
247 whether admission from the hospital ward was confounded by co-morbid and concurrent illness.

248 Finally, our study did not demonstrate that initial guideline-based antibiotic therapy was
249 associated with a reduction in short-term mortality; however, it did demonstrate a high
250 prevalence of resistant pathogens in HCAP/HAP patients, which reflects ATS/IDSA guideline
251 expectations. There were no cultures positive for MDR gram-negative bacilli or MRSA among
252 ICU patients with CAP while these organisms were present in 10.5% of HCAP/HAP patients.
253 The existing published literature demonstrates varying conclusions with only a portion of the
254 studies showing a high prevalence of *Pseudomonas aeruginosa* and MRSA in both HCAP and
255 CAP patients (4, 19, 25, 26, 31). Such discrepancies may explain the inconsistent reported
256 results on the association between guideline-based antibiotic therapy and mortality (7, 10, 13,
257 15-17, 23, 24). Other investigators have sought alternate means to identify those at higher risk

258 of resistant pulmonary pathogens although significant research is still needed in this area (6, 9,
259 20, 21).

260 There are limitations to the present study that must be noted. This is a single-center
261 study and as the microbiology of pneumonia may vary according to the setting, our results may
262 not be generalizable. Although the initial cohort was captured prospectively, study investigators
263 determined the diagnoses of pneumonia on retrospective chart review. While the use of specific
264 criteria to define the various pneumonia types increases internal validity, there may be
265 confounding factors in original medical documentation that led to misclassification errors in the
266 study. Furthermore, the retrospective design may have limited an aggressive approach to the
267 microbiologic diagnosis of pneumonia, resulting in a lower proportion of patients with a LRT
268 culture. Despite these limitations, this study continues research in an important area and is able
269 to provide additional data regarding the clinical characteristics, microbiologic findings and
270 mortality outcomes of patients admitted to ICU with a diagnosis of pneumonia obtained from a
271 realistic practice setting.

272

273 **CONCLUSION**

274 This study demonstrates higher one-year mortality among patients admitted to a medical ICU
275 with HCAP/HAP compared to those admitted with CAP that is likely accounted for by the
276 increased co-morbidities associated with a HCAP/HAP diagnosis. Further evidence is needed to
277 distinguish the true, and likely evolving, microbiologic relevance of the distinction between
278 HCAP/HAP and CAP to guide future treatment recommendations.

279 **References**

- 280 1. Miniño AM, Murphy SL, Xu J, Kochanek KD. Deaths: final data for 2008. Natl Vital Stat
281 Rep. 2011;59(10):1-126.
- 282 2. American Thoracic Society, Infectious Diseases Society of America. Guidelines for the
283 management of adults with hospital-acquired, ventilator-associated, and healthcare-associated
284 pneumonia. Am J Respir Crit Care Med. 2005;171(4):388-416.
- 285 3. Mandell LA, Wunderink RG, Anzueto A, Bartlett JG, Campbell GD, Dean NC, et al.
286 Infectious Diseases Society of America/American Thoracic Society consensus guidelines on the
287 management of community-acquired pneumonia in adults. Clin Infect Dis. 2007;44 Suppl 2:S27-
288 72.
- 289 4. Arancibia F, Bauer TT, Ewig S, Mensa J, Gonzalez J, Niederman MS, et al. Community-
290 acquired pneumonia due to gram-negative bacteria and pseudomonas aeruginosa: incidence,
291 risk, and prognosis. Arch Intern Med. 2002;162(16):1849-58.
- 292 5. Attridge RT, Frei CR, Restrepo MI, Lawson KA, Ryan L, Pugh MJ, et al. Guideline-
293 concordant therapy and outcomes in healthcare-associated pneumonia. Eur Respir J.
294 2011;38(4):878-87.
- 295 6. Brito V, Niederman MS. Healthcare-associated pneumonia is a heterogeneous disease,
296 and all patients do not need the same broad-spectrum antibiotic therapy as complex nosocomial
297 pneumonia. Curr Opin Infect Dis. 2009;22(3):316-25.
- 298 7. Capelastegui A, Espana PP, Quintana JM, Gorordo I, Ortega M, Idoiaga I, et al.
299 Improvement of process-of-care and outcomes after implementing a guideline for the
300 management of community-acquired pneumonia: a controlled before-and-after design study.
301 Clin Infect Dis. 2004;39(7):955-63.
- 302 8. Chalmers JD, Taylor JK, Singanayagam A, Fleming GB, Akram AR, Mandal P, et al.
303 Epidemiology, antibiotic therapy, and clinical outcomes in health care-associated pneumonia: a
304 UK cohort study. Clin Infect Dis. 2011;53(2):107-13.

- 305 9. El Solh AA, Pietrantonio C, Bhat A, Bhora M, Berbary E. Indicators of potentially drug-
306 resistant bacteria in severe nursing home-acquired pneumonia. *Clin Infect Dis*. 2004;39(4):474-
307 80.
- 308 10. Frei CR, Attridge RT, Mortensen EM, Restrepo MI, Yu Y, Oramasionwu CU, et al.
309 Guideline-concordant antibiotic use and survival among patients with community-acquired
310 pneumonia admitted to the intensive care unit. *Clin Ther*. 2010;32(2):293-9.
- 311 11. Grenier C, Pépin J, Nault V, Howson J, Fournier X, Poirier MS, et al. Impact of guideline-
312 consistent therapy on outcome of patients with healthcare-associated and community-acquired
313 pneumonia. *J Antimicrob Chemother*. 2011;66(7):1617-24.
- 314 12. Karhu J, Ala-Kokko TI, Ylipalosaari P, Ohtonen P, Laurila JJ, Syrjälä H. Hospital and
315 long-term outcomes of ICU-treated severe community- and hospital-acquired, and ventilator-
316 associated pneumonia patients. *Acta Anaesthesiol Scand*. 2011;55(10):1254-60.
- 317 13. Kett DH, Cano E, Quartin AA, Mangino JE, Zervos MJ, Peyrani P, et al. Implementation
318 of guidelines for management of possible multidrug-resistant pneumonia in intensive care: an
319 observational, multicentre cohort study. *Lancet Infect Dis*. 2011;11(3):181-9.
- 320 14. Kollef MH, Shorr A, Tabak YP, Gupta V, Liu LZ, Johannes RS. Epidemiology and
321 outcomes of health-care-associated pneumonia: results from a large US database of culture-
322 positive pneumonia. *Chest*. 2005;128(6):3854-62.
- 323 15. Lancaster JW, Lawrence KR, Fong JJ, Doron SI, Garpestad E, Nasraway SA, et al.
324 Impact of an institution-specific hospital-acquired pneumonia protocol on the appropriateness of
325 antibiotic therapy and patient outcomes. *Pharmacotherapy*. 2008;28(7):852-62.
- 326 16. Madaras-Kelly KJ, Remington RE, Sloan KL, Fan VS. Guideline-based antibiotics and
327 mortality in healthcare-associated pneumonia. *J Gen Intern Med*. 2012;27(7):845-52.
- 328 17. McCabe C, Kirchner C, Zhang H, Daley J, Fisman DN. Guideline-concordant therapy
329 and reduced mortality and length of stay in adults with community-acquired pneumonia: playing
330 by the rules. *Arch Intern Med*. 2009;169(16):1525-31.

- 331 18. Micek ST, Kollef KE, Reichley RM, Roubinian N, Kollef MH. Health care-associated
332 pneumonia and community-acquired pneumonia: a single-center experience. *Antimicrob Agents*
333 *Chemother.* 2007;51(10):3568-73.
- 334 19. Quartin AA, Scerpella EG, Puttagunta S, Kett DH. A comparison of microbiology and
335 demographics among patients with healthcare-associated, hospital-acquired, and ventilator-
336 associated pneumonia: a retrospective analysis of 1184 patients from a large, international
337 study. *BMC infectious diseases.* 2013;13:561.
- 338 20. Shorr AF, Zilberberg MD, Micek ST, Kollef MH. Prediction of infection due to antibiotic-
339 resistant bacteria by select risk factors for health care-associated pneumonia. *Arch Intern Med.*
340 2008;168(20):2205-10.
- 341 21. Shorr AF, Zilberberg MD, Reichley R, Kan J, Hoban A, Hoffman J, et al. Validation of a
342 clinical score for assessing the risk of resistant pathogens in patients with pneumonia
343 presenting to the emergency department. *Clin Infect Dis.* 2012;54(2):193-8.
- 344 22. Venditti M, Falcone M, Corrao S, Licata G, Serra P, Medicine SGotISol. Outcomes of
345 patients hospitalized with community-acquired, health care-associated, and hospital-acquired
346 pneumonia. *Ann Intern Med.* 2009;150(1):19-26.
- 347 23. Webb BJ, Dangerfield BS, Pasha JS, Agrwal N, Vikram HR. Guideline-concordant
348 antibiotic therapy and clinical outcomes in healthcare-associated pneumonia. *Respir Med.*
349 2012;106(11):1606-12.
- 350 24. Zilberberg MD, Shorr AF, Micek ST, Mody SH, Kollef MH. Antimicrobial therapy
351 escalation and hospital mortality among patients with health-care-associated pneumonia: a
352 single-center experience. *Chest.* 2008;134(5):963-8.
- 353 25. Chalmers JD, Rother C, Salih W, Ewig S. Healthcare-associated pneumonia does not
354 accurately identify potentially resistant pathogens: a systematic review and meta-analysis. *Clin*
355 *Infect Dis.* 2014;58(3):330-9.

- 356 26. Maruyama T, Fujisawa T, Okuno M, Toyoshima H, Tsutsui K, Maeda H, et al. A new
357 strategy for healthcare-associated pneumonia: a 2-year prospective multicenter cohort study
358 using risk factors for multidrug-resistant pathogens to select initial empiric therapy. *Clin Infect*
359 *Dis.* 2013;57(10):1373-83.
- 360 27. Wise KR, Akopov VA, Williams BR, Ido MS, Leeper KV, Dressler DD. Hospitalists and
361 intensivists in the medical ICU: a prospective observational study comparing mortality and
362 length of stay between two staffing models. *J Hosp Med.* 2012;7(3):183-9.
- 363 28. Hosmer D, Lemeshow S, May S. *Applied survival analysis: regression modeling of time-*
364 *to-event data.* Hoboken, NJ: Wiley-Interscience; 2008.
- 365 29. Waterer GW, Kessler LA, Wunderink RG. Medium-term survival after hospitalization with
366 community-acquired pneumonia. *Am J Respir Crit Care Med.* 2004;169(8):910-4.
- 367 30. Wang Z, Schorr C, Hunter K, Dellinger RP. Contrasting treatment and outcomes of
368 septic shock: presentation on hospital floors versus emergency department. *Chin Med J (Engl).*
369 2010;123(24):3550-3.
- 370 31. Jones RN. Microbial etiologies of hospital-acquired bacterial pneumonia and ventilator-
371 associated bacterial pneumonia. *Clin Infect Dis.* 2010;51 Suppl 1:S81-7.
- 372

373 **Table 1.** Patient Characteristics by Pneumonia Type in Adults Admitted to a Medical Intensive
374 Care Unit.

Variable	CAP <i>n</i> = 76	HCAP/HAP <i>n</i> = 105	P value
Demographic Characteristics			
Age, years, n (%)			0.01
< 35	7 (9.2)	8 (7.6)	
35-49	21 (27.6)	11 (10.5)	
50-64	17 (22.4)	44 (41.9)	
65-80	18 (23.7)	25 (23.8)	
> 80	13 (17.1)	17 (16.2)	
Gender, female, n (%)	33 (43.4)	56 (53.3)	0.19
Race, black, n (%)	54 (71.1)	79 (75.2)	0.81
Preexisting Comorbidities			
Past Medical History, n (%)			
Cardiovascular Disease	48 (63.2)	83 (79.1)	0.02
Pulmonary Disease	24 (31.6)	45 (42.9)	0.12
Diabetes Mellitus	24 (31.6)	45 (42.9)	0.12
Chronic Kidney Disease	17 (22.4)	32 (30.5)	0.23
Neurological Disease	14 (18.4)	38 (36.2)	0.01
Malignancy	12 (15.8)	18 (17.1)	0.81
Human Immunodeficiency Virus	13 (17.1)	15 (14.3)	0.60

Gastroenterological Disease	13 (17.1)	17 (16.2)	0.87
Morbid Obesity (BMI ≥40)	4 (5.3)	8 (7.6)	0.53
Immunocompromise	5 (6.6)	5 (4.8)	0.60
Clinical Stay Characteristics			
Location before ICU Transfer, n (%)			0.06
Emergency Department	53 (69.7)	59 (56.2)	
General Hospital Ward	23 (30.3)	46 (43.8)	
APACHE II Score, mean ±SD	21.8 ± 6.9	23.7 ± 7.2	0.07
SAPS II Score, mean ±SD	41.5 ± 15.1	45.4 ± 14.3	0.08
Appropriate Empiric Antibiotics, n (%)	29 (38.2)	18 (17.1)	<0.01
Lower Respiratory Culture Obtained, n (%)	21 (27.6)	34 (32.4)	0.49
MDR Organism Identified, n (%)	2 (2.6)	12 (11.4)	0.05
Endotracheal Intubation, n (%)	29 (38.1)	40 (38.1)	1.0
Noninvasive Ventilation, n (%)	23 (30.3)	34 (32.4)	0.76
ICU Length of Stay, median days (IQR)	3 (2.0-7.0)	4 (2.0-8.0)	0.41
Hospital Length of Stay, median days (IQR)	9 (5.7 -13.6)	9.8 (5.3-19.7)	0.35

375 APACHE, acute physiology and chronic health evaluation; BMI, body mass index; CAP, community-
 376 acquired pneumonia; HCAP/HAP, healthcare-associated/hospital-acquired pneumonia; ICU, intensive
 377 care unit; IQR, Inter-quartile range; SAPS, simplified acute physiology score; MSSA, Methicillin-sensitive
 378 Staphylococcus aureus; MRSA, Methicillin-resistant Staphylococcus aureus; MDR, Multi-drug resistant.

379

380 **Table 2.** Multivariate Cox Proportional Hazards Model for Time from Intensive Care Unit
381 Admission to Death within One Year Among Patients Admitted to a Medical Intensive Care Unit
382 with Pneumonia, N = 181, Likelihood Ratio Test $p < 0.0001$.

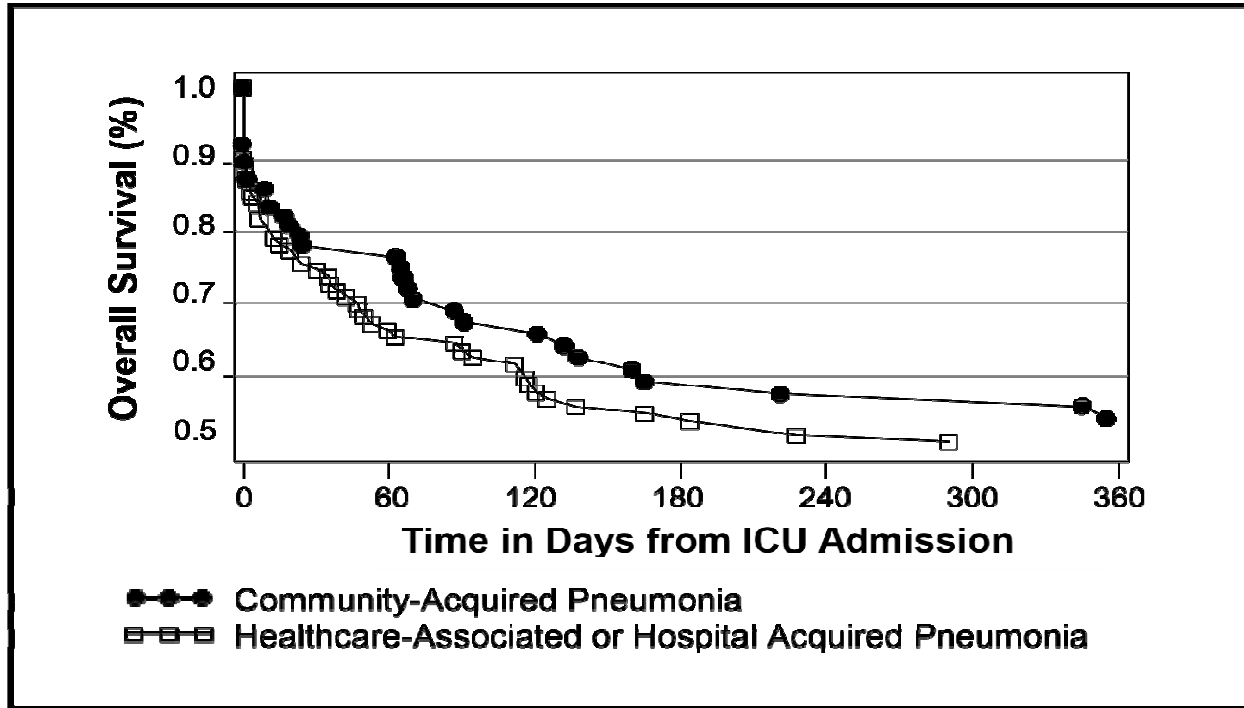
Variable	Hazard Ratio (95% CI)	P value
HCAP/HAP vs. CAP	1.30 (0.80-2.10)	0.29
SAPS II Score	1.02 (1.01-1.04)	<0.01
Admitted From General Hospital Ward vs. ED	1.66 (1.05-2.49)	0.03
Age Category		
< 35	Referent	
35-49	0.81 (0.28-2.40)	0.70
50-64	1.04 (0.39-2.80)	0.94
65-80	1.54 (0.57-4.17)	0.39
> 80	1.92 (0.69-5.39)	0.21
Preexisting Comorbidities		
Neurological Disease	0.98 (0.59-1.62)	0.94
Diabetes Mellitus	0.72 (0.40-1.12)	0.14
Malignancy	2.70 (1.61-4.51)	<0.01

383 CAP, community-acquired pneumonia; ED, emergency department; HCAP/HAP, healthcare-
384 associated/hospital-acquired pneumonia; SAPS, simplified acute physiology score.

385 **Table 3**, Exploratory Analysis of Different Mortality Endpoints in Patients with Pneumonia
386 Admitted to the Intensive Care Unit by Pneumonia Type.

Mortality Endpoint	CAP Mortality n (%)	HCAP/HAP Mortality n (%)	Unadjusted RR (95%CI) HCAP/HAP v. CAP	P value
ICU	7 (9.2)	14 (13.3)	1.3 (0.7-2.4)	0.39
30-Day	17 (22.4)	33 (31.4)	1.3 (0.9-2.1)	0.18
60-Day	17 (22.4)	43 (41.0)	1.7 (1.1-2.7)	0.09
90-Day	23 (30.3)	46 (43.8)	1.4 (1.0-2.1)	0.06
One Year	32 (42.1)	64 (61.0)	1.6 (1.1-2.2)	0.01

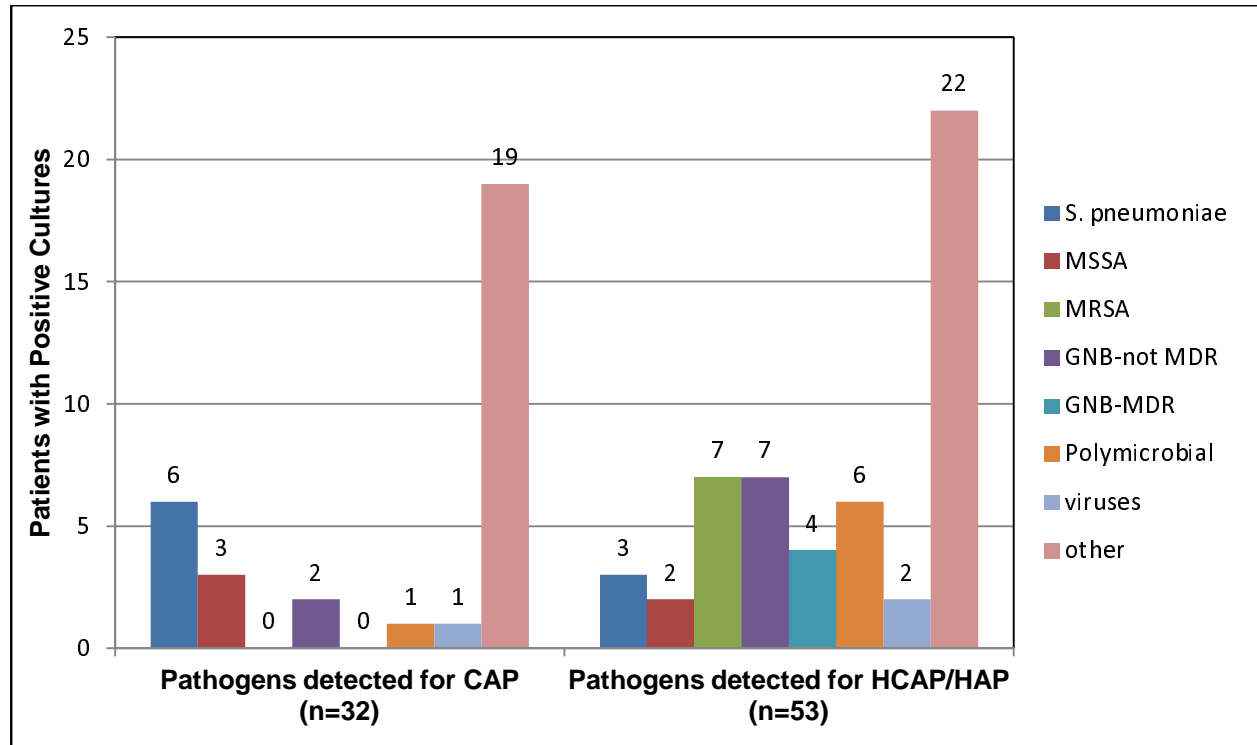
387 CAP, community-acquired pneumonia; HCAP/HAP, healthcare-associated/hospital-acquired
388 pneumonia; ICU, intensive care unit.



389

390

391 **Figure 1.** Cox Proportional Survival Curves for Mortality From Intensive Care Unit (ICU)
392 Admission to One Year Among Patients with Pneumonia Admitted to a Medical ICU. Stratified
393 by Pneumonia Type and Adjusted for Simplified Acute Physiology Score (SAPS) II, Location
394 Before Admission, Age Category and Preexisting of Neurological Disease, Diabetes Mellitus
395 and Malignancy. N = 181.



396

397 **Figure 2.** Pathogens Detected in Respiratory and Blood Cultures According to Pneumonia
398 Type. The other category included yeast, nontuberculous mycobacterial species, unidentified
399 gram positive cocci and pneumocystis jirovecii in decreasing order of frequency. CAP,
400 community-acquired pneumonia; HCAP/HAP, healthcare-associated/hospital-acquired
401 pneumonia; MSSA, Methicillin-sensitive Staphylococcus aureus; MRSA, Methicillin-resistant
402 Staphylococcus aureus; MDR, Multi-drug resistant.