

## TITLE PAGE

### Development of reference equations for the six-minute walk distance of school-aged Nigerian children

#### AUTHORS:

Peter Odion Ubuane,<sup>1</sup> Olufunke Adewumi Ajiboye,<sup>2</sup> Motunrayo Oluwabukola Adekunle,<sup>1</sup> Ayodeji Olushola Akinola,<sup>2</sup> Gbenga Akinyosoye,<sup>1</sup> Mogbafolu Olugbemiga Kayode-Awe,<sup>1</sup> Omotola Aderiyike Ajayi,<sup>1</sup> Chidimma Imma Ohagwu, Barakat Adeola Animasahun,<sup>1,3</sup> Fidelis Olisamedua Njokanma<sup>1,3</sup>

#### AFFILIATION:

1. Department of Paediatrics, Lagos State University Teaching Hospital (LASUTH), 1-5 Oba Akinjobi Way, GRA, Ikeja, Lagos, Nigeria
2. Department of Physiotherapy, Lagos University Teaching Hospital (LUTH), Idi-Araba, Lagos, Nigeria
3. Department of Paediatrics & Child Health, Lagos State University College of Medicine (LASUCOM)/Lagos State University Teaching Hospital, Ikeja, Lagos, 1-5 Oba Akinjobi Way, GRA, Ikeja, Lagos, Nigeria

#### CORRESPONDING AUTHOR:

Dr Peter Odion Ubuane, Department of Paediatrics, Lagos State University Teaching Hospital (LASUTH), 1-5 Oba Akinjobi Way, GRA, Ikeja, Lagos, Nigeria; [peterubuane@gmail.com](mailto:peterubuane@gmail.com); +2348085645675

## ABSTRACT

**Background:** The six-minute walk test (6MWT), a simple, reliable and valid test that uses the distance walked in six minutes (six-minute walk distance, 6MWD) to quantify *functional capacity*, is widely used in chronic cardiopulmonary and non-cardiopulmonary disorders. However, absence of reference standards for Nigerian school-age children limits its use in this age group.

**Objectives:** To develop normative values and equations for the 6MWT of school-aged Nigerian children.

**Methods:** In a cross-sectional study, healthy children aged 6-11 years in Lagos, Nigeria, completed 6MWT on 20-meter straight outdoor courses in their schools following standardized guidelines.

*Potential predictors:* demographic (age, sex), anthropometric (height, weight, chest circumference, leg

length) and physiologic data [pre-walk, immediate post-walk and 5<sup>th</sup> minute-post-walk heart rate (*HR*), oxygen saturation (*SpO<sub>2</sub>*), systolic pressure (*SBP*), diastolic blood pressure (*DBP*) and rating of perceived exertion (*RPE*)] and difference between pre-walk and post-walk HR ( $\Delta HR$ ), *SpO<sub>2</sub>* ( $\Delta SpO_2$ ), *SBP* ( $\Delta SBP$ ), *DBP* ( $\Delta DBP$ ) and *RPE* ( $\Delta RPE$ ). *Primary outcome*: six-minute walk distance (6MWD) in metres.

**Results:** Overall, 627 pupils (52.1% girls) walked  $504.6 \pm 66.6$  m (95% CI: 499.4, 509.8), ranging from 326.6 m to 673.0 m; 16 m longer in boys ( $p=0.002$ ). Stepwise linear regression yielded: 6MWD (m) =  $347.9 + 14$  (Age) +  $1.6$  ( $\Delta HR$ ) +  $17.6$  (Sex) +  $1.2$  ( $\Delta SBP$ );  $R^2 = 0.25$ . Previously published reference equations over-estimated Nigerian children's 6MWD.

**Conclusion:** The reference values and prediction equations, after validation in other Nigerian populations, may be useful for functional evaluation of Nigerian children aged 6-11 years with chronic childhood disorders.

**Key words:**

Functional exercise capacity, cardiopulmonary exercise test (CPET), regression equation, normative values, sub-Saharan Africa

## INTRODUCTION

Functional exercise capacity, which is the ability to conduct day-to-day activities, is frequently impaired in chronic cardio-pulmonary and non-cardiopulmonary disorders. This functional impairment worsens quality of life, morbidity and mortality, independent of the effect of the underlying disease.(1–3) Thus, detecting, quantifying and managing this functional impairment is required for optimal management of chronic disorders.(4, 5) The *gold-standard* objective measure of functional capacity—the maximal oxygen consumption ( $VO_{2max}$ ) from a cardiopulmonary exercise test (CPET)—(6) requires sophisticated equipment and expertise largely unavailable in developing countries.(4, 7, 8) But, the six-minute walk test (6MWT), which evolved from pre-existing field walk tests, (1, 9, 10) is a cheap but valid and reliable potential alternative measure of functional capacity using the self-paced distance walked in six minutes (six-minute walk distance, 6MWT) on a smooth hard surface. It is widely used for the functional evaluation, prognostication and rehabilitation of pediatric and adult populations with cardiopulmonary and cardiopulmonary disorders (4, 7, 10–13)

However, its clinical utility in sub-Saharan Africa is limited largely because of lack of locally-derived normative standards.(14–17) Published references from other ethno-geographic populations are unreliable when applied to another because of wide variations in the mean 6MWD and its predictors among studies even from same country.(1, 7, 16, 18) Although, the 6MWD of children is mostly influenced by age and height, the effect of other factors like sex, weight or body mass index (BMI) vary widely among studies.(14–16, 18–20) The American Thoracic Society (ATS) and European Respiratory Society (ERS) thus recommend development of reference standards from local populations.(7) In Nigeria, although reference standards are available for adolescents(21) and adults(8, 22), none is available in pre-adolescents school-age children. This cross-sectional study thus determined the mean 6MWD of healthy 6 to 11-year-old Nigerian children, its predictors (including

chest circumference, which has not been previously evaluated) and reference equations; we also assessed the predictive performance of previously published equations. We used 20 m long tracks, rather than ATS-recommended 30m long tracks for adults, because shorter tracks are more likely to be available in schools and hospitals.(23, 24). Parts of these data have been published as a dissertation and conference abstract.(25)

## **METHODS**

Our study design, sample selection, data collection/measurements and statistical analyses procedures are detailed in the online supplement.

### **POPULATION**

In this cross-sectional study, we used multi-stage random sampling to select Nigerian children aged 6-11 years from primary schools within Ikeja Local Government Area of Lagos State, Nigeria, excluding those with cardiopulmonary, hematologic, neuro-musculoskeletal disorders and those with recent respiratory infections or hospitalization.

### **SAMPLE SIZE**

Although we needed at least 417 pupils to estimate the mean 6MWD of Nigerian children within 1% precision (sample size formula for single mean, based on standard deviation of 73 m among North African children(26)), we exceeded this minimum size to enhance precision of our statistical estimates and prediction equations.(27)

### **ETHICS**

The study was approved by the Health Research & Ethics Committee of the Lagos State University Teaching Hospital (LREC/10/06/486), Lagos State Universal Basic Education and Ministry of Education. We also obtained written parental consent and pupil's assent.

## DATA COLLECTION

We conducted field work from April 2016 to June 2017 (8.00AM - 2.30PM).

### Baseline pre-walk measurements and instructions

Before the 6MWT, each participant rested for 5-10 minutes, during which we conducted standardized anthropometric (weight, height, leg length and chest circumference), spirometric (peak expiratory flow, *PEF*; forced expiratory volume in 1 second, *FEV<sub>1</sub>*), blood pressure (systolic blood pressure, *preSBP*; diastolic blood pressure, *preDBP*), oximetric (oxygen saturation, *preSpO<sub>2</sub>*); heart rate (*preHR*) and rating of perceived exertion (*preRPE*) measurements.

### 6MWT procedure

We followed ATS/ERS standardized test instructions to administer the 6MWT on one participant at a time on 20-m long straight tracks on outdoor flat, smooth-surfaced corridors or paved walkways in each school.(1, 5, 7) We instructed participants to walk as *far as they can walk* without running/jogging; they could rest or stop during the test while we continued timing. At the end of six minutes, we measured the distance walked (6MWD) and repeated the physiological measurements immediately (*postHR*, *postSpO<sub>2</sub>*, *postSBP*, *postDBP*, *postRPE*) and after a five-minute rest (*5mHR*, *5mSpO<sub>2</sub>*, *5mSBP*, *5mDBP*). We also asked for specific symptoms felt while walking.

## DATA MANAGEMENT

We conducted statistical analyses with Bluesky® Statistics version 7.30 and JASP® statistics version 0.14 (graphical user interphases for R) with significance at p value < 0.05 at 95% confidence interval (CI). We computed: change in physiological measurements ( $\Delta HR$ ,  $\Delta SpO_2$ ,  $\Delta SBP$ ,  $\Delta DBP$ ,  $\Delta RPE$ ) as the difference between the corresponding immediate post-walk and baseline values; predicted maximal HR as ( $PredHR_{max}$ )= 208 – (0.7 x age in years)(28); and percentage predicted maximal heart rate

(% $PredHR_{max}$ ) as ( $postHR/PredHR_{max}$ ) x100%. We conducted univariable (descriptives), bivariable (student's t-test, Mann-Whitney U-test, paired t-test, Wilcoxon signed-rank test, ANOVA, linear correlation, chi square, Bland-Altman analysis) and multivariable analyses (stepwise multivariable linear regression). The effect sizes of statistically significant comparisons were quantified with Cohen's d (trivial: < 0.1, small/weak: 0.2, medium/moderate: 0.5 and large/strong: 0.8), rank biserial or Pearson's correlation (trivial: < 0.1, small: 0.1, medium/moderate: 0.3 and large/strong: 0.5) and partial eta squared,  $\eta^2p$  (trivial: < 0.1, small: 0.01, medium/moderate: 0.06 and large/strong: 0.14).

## RESULTS

We recruited 956 pupils from 14 schools (9 public schools). Of this, 627 completed the 6MWT (Figure 1).

### DEMOGRAPHIC, ANTHROPOMETRIC AND NUTRITIONAL CHARACTERISTICS

About half (52.1%) were girls, almost half (42 %) were of Yoruba ethnicity and over one-quarter (28.7%) were overweight/obese (Table 1). Overall, girls and boys had comparable age, weight, height, BMI, chest circumference, leg length and school type and nutritional status ( $p > 0.05$  for all variables). However, 11-yr old girls were taller than their male counterparts (Table E2).

### SIX-MINUTE WALK DISTANCE

Overall, 6MWD ranged from 326.6 m to 673.0 m, with mean  $\pm$  SD of  $504.6 \pm 66.6$  m (95% CI: 499.4, 509.8) (Table 2).

### PREDICTORS OF THE 6MWD OF NIGERIAN CHILDREN

#### *Sex and age*

Boys walked 16.3 m longer than girls [513.1 (95% CI: 505.3, 520.9) vs 496.8 (95% CI: 489.8, 503.7)];  $p = 0.002$ ; Cohen's d (95% CI) = -0.25 (-0.40, -0.09)]. The 6MWD increased linearly by 62.9 m

between ages six to eleven years [ $F(5,621) = 20.31, p < 0.001, \eta^2p = 0.14$ , linear trend  $p < 0.001$ ; Fig 2), with the steepest year-to-year increase of 26.8 m between 9 to 10 years ( $t = -3.35, p = 0.006$ ). In each age-group, there was no significant sex difference in 6MWD except amongst six-year olds ( $p = 0.004$ ) (Table 2). Between ages 10 and 11, the walk distance plateaued in girls and dipped in boys and the total cohort (Fig 2).

#### **BIVARIABLE LINEAR CORRELATION**

Overall, 6MWD moderately positively correlated with age ( $r=0.37$ ), height ( $r=0.32$ ), PEF ( $r=0.31$ ) and *postSBP* (0.30); moderately negatively correlated with *PredHR<sub>max</sub>* ( $r=-0.37$ ); and weakly positively correlated with  $\% \Delta HR$  ( $r=0.29$ ), FEV1 ( $r=0.29$ ),  $\Delta HR$  ( $r=0.28$ ), LLL ( $r=0.28$ ),  $\Delta SBP$  ( $r=0.27$ ), weight ( $r=0.19$ ),  $\%PredHR_{max}$  ( $r=0.12$ ) and *preRPE* ( $r=0.10$ ) (Table 3).

#### **OTHER POTENTIALLY CONFOUNDING FACTORS**

Table 4 shows that pupils in public schools walked 18.8 m longer distance than those in private schools [ $p < 0.0001$ , Cohen's  $d = -0.28 (-0.44, -0.13)$ ]. However, 6MWD was not influenced by ethnicity ( $p = 0.244$ ), time of testing ( $p = 0.205$ ), overweight/obesity ( $p = 0.077$ ), stunting ( $p = 0.288$ ) or participation in extra-curricular sports ( $p = 0.270$ ). Compared to pupils in public schools, those in primary schools were significantly taller, heavier, and had wider chest circumference and longer lower limb length, despite similar mean age.

#### **PHYSIOLOGICAL RESPONSES DURING THE 6MWT**

Changes in heart rate, SpO<sub>2</sub>, BP and RPE are detailed and illustrated (Figure E2, Table E3) in the supplementary file.

## **POST-WALK SYMPTOMS**

About one-third (190/627, 30.3%) of our participants had one or more symptoms when specifically asked at the end of the walk test, the commonest being leg pain (19.6%) (Table 5). The symptoms were mild and resolved at the stop of the walk test. None of this group terminated the test while walking.

## **MULTIVARIABLE ANALYSIS**

An initial exploratory stepwise linear regression model (Table E4) was further simplified to yield  $6MWD (m) = 347.9 + 14Age + 1.6\Delta HR + 17.6Sex + 1.2\Delta SBP (R^2=0.25)$  and two additional equations which may serve as alternative when blood pressure and heart rate are not measured as part of a 6MWT (Table 6). All the three models satisfied the assumptions of multiple linear regression (Table E5 and Figure E3).

## **Comparison with previously published reference equations**

Although the Taiwanese equation by Chen et al(29) correlated excellently with our measured 6MWD, with small bias and acceptable LoA in Bland-Altman analysis (Table 7), the plot showed a proportional bias, tending towards over-estimation with increasing age (Figure 3C). Equations from Nigerian adolescents, Brazilian and Swiss children correlated moderately with our 6MWD with small biases, however the LoAs were wide (Figure 3A,J,K). Other equations over-estimated the 6MWD of Nigerian children with wide limits of agreement (LoA) despite weak to moderate correlations.



## DISCUSSION

In this first study of normative standards for the 6MWT of healthy school-age Nigerian children, we report mean 6MWD of 504 m, with age, male sex, change in heart rate ( $\Delta HR$ ) and change in systolic blood pressure ( $\Delta SBP$ ) independently explaining 25% of the variability;  $\Delta SBP$  as an independent predictor of the 6MWD is a novel finding. Also, none of previously published reference equations satisfactorily predicted our cohort's 6MWD. Our data adds to existing published ones for Nigerian adolescents(21) and adults,(8, 22) thus completing Nigerian references spanning school-age to adulthood, while also filling an acknowledged paucity of 6MWT data from sub-Saharan Africa.(9, 15)

The 6MWT is a valid and reliable measure of functional exercise capacity widely used in adults and children with disorders like asthma, congenital heart diseases, sickle cell disorders and others. (4, 5, 7, 13). These chronic disorders, and post-recovery phases of some acute illnesses like COVID-19, are associated with impaired functional capacity due to both the underlying pathophysiologic derangements and associated sedentariness.(13, 30) Conceptually, 6MWT measures both *walk capacity* and *functional capacity*- interrelated but distinct concepts in the bio-psychological model of health(2, 3) Thus, 6MWT offer an advantage over CPET which assesses just *walk capacity* which is only a component of an individual's daily functioning.(3) Also, compared to CPET, 6MWT is easier to perform in sick children because it is self-paced and less exerting.(31)

A mean of 504 m in our study falls within the range of published studies, including systematic reviews by Mylius et al(14) and Cacau et al,(16) of mean 6MWD from healthy children. Compared with previous study by Abdulkadir et al(21) amongst Nigerian adolescents, 10-11-year-old boys and girls in our study walked 544 and 530 m, respectively, while 10-12-year old boys and girls walked 545 m and 491

m, respectively, suggesting similar performances at least in boys. Our 6MWD also compares with 518 m walked by 7-11 year-old North American children.(24)

However, apart from British children aged 4-11 years who walked 470 m,(32) our 6MWD is shorter than published values from North African,(26) European,(23, 33–37) South American(35, 38) and Asian(39) children: the weighted mean 6MWD of European, Asian and South American children were 627m, 604m and 593m, respectively.(15) Summarily, wide differences in mean 6MWD between studies from different, and within countries, can be explained by variations in test procedures, study designs, sample sizes, selection methods, included age groups, and true ethno-racial differences. Methodological modifications are commoner in LMICs mostly due to the use of tracks shorter than the ATS-recommended 30 m.(40) We, and previous authors,(23, 41) conducted the test on 20-meter because shorter corridors are more likely to be available in resource-limited space-constraint settings. Although shorter tracks may result in shorter 6MWD because of frequent slowing down to turn at the ends,(24) this effect seems small especially in children and thus not clinically relevant in tracks at least 15 m long.(13, 24, 41)

Aside the use of shorter track, we adhered to the ATS/ERS recommendations for the 6MWT. For example, we instructed the children to ‘*walk as far as possible*’,(23, 29, 31, 39, 42) rather than ‘*walk as fast as possible*’(11, 24, 32, 34, 35, 38) which could introduce additional motivation to walking faster and longer 6MWD.(4, 43) Also, we tested participants one-at-a-time, rather than in groups or ‘overlapping’(37, 44) which may introduce a competitive motivation to longer distances.(36) We also avoided modifications like the use of measuring wheels,(23) safety chasers(33) or trailing participants to measure  $SpO_2$  or  $HR$ (32) may add additional motivation or distract the participant.(32)

Similar to others,(16) we observed a wide range in our participants’ 6MWD, attributable to its self-paced nature variably influenced by individual mood, emotional state or comprehension.(17)(39)

However, our large randomly-selected sample size was fairly representative of the target population, evidenced by the narrow confidence intervals.

### **Independent predictors**

Growth is associated with increasing height, leg length, stride, weight, muscle mass/strength and neuromuscular coordination which all combine to increasing pace and walk distance as a child in age.(18, 33) Thus, in agreement with published pediatric studies,(19, 23, 32, 45) age was the most influential predictor of 6MWD in our cohort.(15) Generally, 6MWD increases with age till about 10-12years, after which a plateau or reduction is observed- attributed to puberty-induced changes in body composition, energy utilization and estrogenic effect.(11, 15, 32, 33, 36, 37, 44, 46, 47) Surprisingly, height was not an independent predictor of 6MWD in our study. Multivariable analysis showed that the observed bivariable correlation between 6MWD and each of height, leg length,  $FEV_1$  or PEF was due to the confounding influence of age. Some authors included height, along with age, in their equations but often not stating whether due consideration was given to its potential multi-collinearity with height. The attainment of longer distance by boys compared to girls in our study, albeit of small effect size, agrees with some paediatric studies,(23, 38, 45, 48) attributable to higher muscle mass, strength, energy levels and activity in boys. (49, 50) In contrast, no significant sex difference was observed in among Tunisian,(26) Thai,(51) Brazilian,(35) Turkish,(19) British and US children.

### **Physiological changes during 6MWT**

Physiological responses to exercise may reveal cardiopulmonary, hematologic, neuro-musculoskeletal or metabolic abnormalities detectable only when these systems are stressed.(1) Thus, we also provide data on walk-induced physiological changes (SpO<sub>2</sub>, HR, BP and RPE changes in online supplement) which may serve as comparative standards for exercise-induced changes of sick children before, during and after treatment. For example, 6MWT-associated desaturation, being correlated with nocturnal

desaturation,(52) may provide alternative clinically-useful information in children with SCD in the absence of sleep studies facilities. The observed 6MWT-associated changes in HR, SPO<sub>2</sub>, SBP, DBP and RPE in our study were at most modest and by the 5th minute, all values were close to baseline; similar to reports in British and Brazilian children.(32, 35)

Heart rate change ( $\Delta HR$ ), an indicator of the degree of motivation and exertion, is a known independent predictor of 6MWD in both adults and paediatric 6MWT studies.(14, 16–18) The higher the effort exerted during 6MWT, the higher the  $\Delta HR$  and the longer the 6MWD.(18) However, our mean  $\Delta HR$  of 6.5 beats per minute (8% increase from baseline and 45% of predicted maximal heart rate) was small, implying a small degree of exertion similar to 8-10 beats/minute in Turkish(37) children but smaller than others. (33, 39) (35) The higher mean pre-walk, post-walk and 5th minute heart rate values in girls is expected (23, 53) because girls have smaller cardiac size, and hence smaller stroke volume, compared to boys of similar age. They compensate for this smaller heart size with faster heart rate to maintain comparable cardiac output.(49) However, two studies in Indian and Chinese children reported higher mean heart rate values in boys attributed, by the authors, to possible influence of genetics and race on autonomic response to walk.

Inclusion of  $\Delta SBP$  in our model was a unique finding as no published prediction equations in adults or children (after a careful search) have this variable in their equations; 6MWD was not associated with SBP in North African children.(14, 16) Similar to  $\Delta HR$ ,  $\Delta SBP$  reflects the effort exerted during an activity.(49) The absence of sex difference in SBP in our study contrasts with an expected exercise-induced physiological response whereby boys have higher walk-induced SBP response due to larger cardiac muscle mass, stronger contractile force and higher stroke volume.(49) The contrasting observation in our study may be due to the low level of exertion as reflected in the small  $\Delta HR$ . The possibility of racial difference in BP response however cannot be excluded. After a careful search, we found no published studies on the physiological response of Nigerian children to walk for comparison.

## Reference equations

Our main equation explained only 25% of our participants' 6MWD- one of the lowest reported  $R^2$ - similar to 19% and 25% in Croatian(20) and Italian(54) children, respectively. We paid careful attention to avoid over-fitting our model with variables that violated assumptions of regression such as multi-collinearity to assure goodness-of-fit.(27, 32) Interestingly, the  $R^2$  from Nigerian adults was similarly small (30%). Perhaps, anthropometric variables exert less influence on the 6MWD of sub-Saharan Africans compared to other populations, possibly reflecting racial differences in body proportion, composition and movement dynamics. Unfortunately, we found no reference data from other sub-Saharan populations for comparison. An ERS/ATS systematic review in 2014 by Sally et al(7) noted that the  $R^2$  in adults ranged from 20-70%.(7) Thus, in both adult and paediatric populations, up to 80% of the variability in 6MWD may remain unexplained by anthro-demographic and physiologic variables due to difficult-to-measure constructs like mood/emotions with wide intra- and inter-individual variations.

## Confounding factors

We cannot explain the reason for the association between 6MWD and school category. Perhaps it indirectly reflects socioeconomic effect mediated through habitual speed of walking rather than anthropometric differences. We did not however include retained school category in the final model as it may be subject to variability from locality to locality. Other anthropometric (BMI, nutritional class), physiologic (SPO2) and psycho-social factors (RPE, physical activity level, ethnicity, time of testing) did not influence the 6MWD of our population. Perhaps, *participation in sports outside school*, rather than objective measurement with accelerometers, may be inadequate as a measure of physical activity. However, this non-association with physical activity agrees with most studies in which PA was

measured,(34) except amongst Turkish adolescent where physical activity was an independent predictor of 6MWD.

### **Comparison with published reference equations**

Similar to previous reports, most published equations significantly over-estimated the performance of our population highlighting need for local reference data.(1, 16) Also, the previous equation from Nigerian adolescents also agreed poorly with our adolescent data despite the narrow bias. This further suggests that 6MWD is also influenced by environmental and geographical factors which may influence habitual speed of walking, aside true ethno-racial, genetic and mood influences.

### **Safety**

The 6MWT is generally safe, even in ill persons. Although about a third of our cohort reported symptoms such as chest pain while walking, these were clinically non-significant. Among Thai children aged 9-12 years, thigh/leg pain were the commonest complaint (17%) followed by chest discomfort (9%) and dizziness (4%).

### **Limitation and recommendations**

The absence of repeat testing, as recommended by ATS/ERS updated guidelines for adults, may potentially underestimate our 6MWD. However, practice test exerts comparatively less influence on paediatric 6MWD than adults, thus precluding its necessity.(5, 11, 35) Overall, 7 trained testers performed the 6MWT in our study possibly introducing considerable measurement errors. However, we standardized our procedures and our observed variability are similar to previous reports. Although we did not observe ethnic influence in our data, our findings might not extrapolate to the whole of Nigeria since we conducted it in 1 of over 500 local government areas of Nigeria. Thus, similar study should be conducted in other parts of the country to compare findings and validate our equations.

Unlike Saad et al and Jalili et al, we did not externally validation our equation on a geographically or spatially separate sample as recommended by the TRIPOD consensus statement.(55) However, we used bootstrap procedures for internal validation (our bootstrapped equations demonstrated small biases); this is statistically superior to a split-sample or cross-validation technique reported in some paediatric studies. Because the peak/maximal HR occurred at about the 5th to 6th minute returning rapidly to baseline within one minute of stopping to walk(32, 41), especially in children,(41) our use of intermittent, rather than continuous,(4, 5) measurement of heart rate may have underestimated the true peak/maximal and immediate post-walk HR values and consequently the predictive contribution of  $\Delta HR$  in our equation. Hence other researchers should employ continuous heart rate monitoring during 6MWT. To further reduce variability in 6MWT procedural methodologies and its influence on the variability in reported 6MWD, there is need for paediatric-specific guidelines for 6MWT.

## CONCLUSIONS

Nigerian school-aged children achieved 6MWD shorter than most published reference values, except those of British children. The independent predictors of the walk distance were age, male sex,  $\Delta HR$  and  $\Delta SBP$  – the latter a unique finding; all explaining only 25% of the 6MWD variability. Published equations from North Africa and non-African countries mostly over-estimated the 6MWD but there were none from other sub-Saharan populations to compare with. Till date, large variability in reported 6MWD and its predictors precludes the development of a global reference equations for the 6MWT as was possible with the Global Lung function initiative.(14–16, 56)

## ACKNOWLEDGEMENT:

The authors acknowledge Dr ‘Titi Ogunlana who deputised for the PI especially while away from administrative clinical responsibilities; the Research Assistants (namely Raphael Adebayo, BSc ‘Niyi

Olusanya, Ebere David, ‘Tobi Yekini and Chibuzor Nwosu, Bsc) for being part of this project; Chris Ubuane for helping to procure some of the devices and accessories from the UK. Our thanks also goes to the Lagos State Universal Basic Education Board (SUBEB) and the Lagos State Ministry of Education for granting permission to conduct the study, Head Teachers, Proprietors and School Staff, the amiable and enthusiastic pupils, along with their parents/guardians- who participated in the study are specially appreciated.

Footnotes: part of this data has been submitted as a dissertation to the Faculty of Pediatrics of the West African College of Physicians and as conference abstract

**AUTHORS’ ROLES:**

POU: conceptualization, design, data acquisition, statistical analysis, initial draft, revision, final draft

OAA: design, training, revision, final draft

OAA: data acquisition, revision, final draft

GA: data acquisition, revision, final draft

CIA: data acquisition, revision, final draft

MOK: data acquisition, revision, final draft

OAA: data acquisition, revision, final draft

MOA: data acquisition, revision, final draft

BAA: conceptualization, design, initial draft, revision, final draft, supervision/senior author

FON: conceptualization, design, statistical analysis, initial draft, revision, final draft, supervision/senior author

FUNDING: None

CONFLICTS OF INTEREST: All authors declare none



## REFERENCES

1. ATS Committee on Proficiency Standards for Clinical Pulmonary Function Laboratories. ATS Statement : Guidelines for the Six-Minute Walk Test. *Am J Respir Crit Care Med* 2002;166:111–117.
2. Bui K-L, Nyberg A, Maltais F, Saey D. Functional Tests in Chronic Obstructive Pulmonary Disease, Part 2: Measurement Properties. *Ann Am Thorac Soc* 2017;14:785–794.
3. Bui K-L, Nyberg A, Maltais F, Saey D. Functional Tests in Chronic Obstructive Pulmonary Disease, Part 1: Clinical Relevance and Links to the International Classification of Functioning, Disability, and Health. *Ann Am Thorac Soc* 2017;14:778–784.
4. Holland AE, Spruit MA, Troosters T, Puhan MA, Pepin V, Saey D, McCormack MC, Carlin BW, Sciruba FC, Pitta F, Wanger J, MacIntyre N, Kaminsky DA, Culver BH, Reville SM, Hernandez NA, Andrianopoulos V, Camillo CA, Mitchell KE, Lee AL, Hill CJ, Singh SJ. An official European Respiratory Society/American Thoracic Society technical standard: field walking tests in chronic respiratory disease. *Eur Respir J* 2014;44:1428–1446.
5. Przybyłowski T, Tomalak W, Siergiejko Z, Jastrzębski D, Maskey-Warzęchowska M, Piorunek T, Wojda E, Boros P. Polish Respiratory Society guidelines for the methodology and interpretation of the 6 minute walk test (6MWT). *Pneumonol Alergol Pol* 2015;83:283–297.
6. Takken T, Bongers BC, Van Brussel M, Haapala E, Hulzebos EH. Cardiopulmonary Exercise Testing in Pediatrics. *Ann Am Thorac Soc* 2017;14:S123–S128.
7. Singh SJ, Puhan MA, Andrianopoulos V, Hernandez NA, Mitchell KE, Hill CJ, Lee AL, Camillo CA, Troosters T, Spruit MA, Carlin BW, Wanger J, Pepin V, Saey D, Pitta F, Kaminsky DA, McCormack MC, Macintyre N, Culver BH, Sciruba FC, Reville SM, Delafosse V,

- Holland AE. An official systematic review of the European Respiratory Society/American Thoracic Society: measurement properties of field walking tests in chronic respiratory disease. *Eur Respir J* 2014;44:1447–1478.
8. Ajiboye OA, Anigbogu CN, Ajuluchukwu JN, Jaja SI. Prediction equations for 6-minute walk distance in apparently healthy Nigerians. *Hong Kong Physiother J* 2014;32:65–72.
  9. Ubuane PO, Animasahun BA, Ajiboye OA, Kayode-awe O, Ajayi OA, Njokanma FO, Kayode-Awe MO, Ajayi OA, Njokanma FO. The historical evolution of the six-minute walk test as a measure of functional exercise capacity: a narrative review. *J Xiangya Med* 2018;3:40.
  10. Solway S, Brooks D, Lacasse Y, Thomas S. A qualitative systematic overview of the measurement properties of functional walk tests used in the cardiorespiratory domain. *Chest* 2001;119:256–270.
  11. Jalili M, Nazem F. [Design and Cross-Validation of Six-Minute Walk Test (6MWT) Prediction Equation in Iranian healthy Males Aged 7 to 16 Years]. *J Ergon* 2017;5:1-9. Arabic.
  12. Li AM, Yin J, Yu CC, Tsang T, So HK, Wong E, Chan D, Hon EKL, Sung R. The six-minute walk test in healthy children: reliability and validity. *Eur Respir J* 2005;25:1057–1060.
  13. Bartels B, de Groot JF, Terwee CB. The six-minute walk test in chronic pediatric conditions: a systematic review of measurement properties. *Phys Ther* 2013;93:529–41.
  14. Mylius CF, Paap D, Takken T. Reference value for the 6-minute walk test in children and adolescents: a systematic review. *Expert Rev Respir Med* 2016;10:1335–1352.
  15. Rodríguez-Núñez I, Mondaca F, Casas B, Ferreira C, Zenteno D. [Normal values of 6-minute walk test in healthy children and adolescents: A systematic review and meta-analysis]. *Rev Chil pediatría* 2018;89:128-136. Spanish.

16. de Assis Pereira Cacau L, Joviniano de Santana-Filho V, Maynard LG, Gomes Neto M, Fernandes M, Oliveira Carvalho V. Reference Values for the Six-Minute Walk Test in Healthy Children and Adolescents: a Systematic Review. *Brazilian J Cardiovasc Surg Braz J Cardiovasc Surg* 2016;31:381–8.
17. Salbach NM, Brien KKO, Brooks D, Irvin E, Martino R, Takhar P, Chan S, Howe J. Reference values for standardized tests of walking speed and distance : A systematic review. *Gait Posture* 2014;41:341–360.
18. Dourado VZ. Reference Equations for the 6-Minute Walk Test in Healthy Individuals. *Arq Bras Cardiol* 2011;96:128–138.
19. Kahraman BO, Yuksel E, Nalbant A, Kocak UZ, Unver B. Arm span as a predictor of the six-minute walk test in healthy children. *Brazilian J Phys Ther* 2020;doi:10.1016/j.bjpt.2020.07.003.
20. Kasović M, Štefan L, Petrić V. Normative data for the 6-min walk test in 11–14 year-olds: a population-based study. *BMC Pulm Med* 2021;21:297.
21. Abdulkadir MB, Ibraheem RM, Akintade OO, Suberu HD, Issa A, Alabi K. Reference values for the six-minute walk test in Nigerian adolescents aged 10 to 18. *Res J Heal Sci* 2019;7:334–343.
22. Mbada CE, Jaiyeola OA, Johnson OE, Dada OO, Ogundele AO, Awotidebe TO, Akinwande OA. Reference Values for Six Minute Walk Distance in Apparently Healthy Young Nigerian Adults (Age 18-35 Years). *Int J Sport Sci* 2015;5:19–26.
23. Geiger R, Strasak A, Tremml B, Gasser K, Kleinsasser A, Fischer V, Geiger H, Loeckinger A, Stein JI. Six-minute walk test in children and adolescents. *J Pediatr* 2007;150:395–399.
24. Klepper SE, Muir N. Reference values on the 6-minute walk test for children living in the

- United States. *Pediatr Phys Ther* 2011;23:32–40.
25. Ubuane PO, Akinola AO, Kayode-Awe MO, Akinyosoye GF, Ajayi OA, Ohagwu CI, Ajiboye OA, Animasahun BA, Njokanma FO. Abstract: Reference equations for the six-minute walk distance of healthy Nigerian school-aged children. Abuja, Nigeria: Annual General Meeting & Scientific Conference of the Nigerian Thoracic Society (NTS), November; 2018.
  26. Saad H Ben, Prefaut C, Missaoui R, Mohamed IH, Tabka Z, Hayot M. Reference equation for 6-min walk distance in healthy North African children 6-16 years old. *Pediatr Pulmonol* 2009;44:316–324.
  27. Barton B, Peat J. Correlation and regression. *Med Stat A Guid to Data Anal Crit Apprais*, 2nd editio. West Sussex: John Wiley & Sons Ltd; 2014. p. 205–247.
  28. Tanaka H, Monahan KD, Seals DR. Age-predicted maximal heart rate revisited. *J Am Coll Cardiol* 2001;37:153–156.
  29. Chen C-A, Chang C-H, Lin M-T, Hua Y-C, Fang W-Q, Wu M-H, Jou-KouWangLue H-C. Six-Minute Walking Test : Normal Reference Values for Taiwanese Children and Adolescents. *Acta Cardiol Siin* 2015;31:193–201.
  30. Owens S, Gutin B. Exercise intolerance. *Pediatr Rev* 2000;21:6–9.
  31. Li AM, Yin J, Au JT, So HK, Tsang T, Wong E, Fok TF, Ng PC. Standard reference for the six-minute-walk test in healthy children aged 7 to 16 years. *Am J Respir Crit Care Med* 2007;176:174–180.
  32. Lammers AE, Hislop AA, Flynn Y, Haworth SG. The 6-minute walk test: normal values for children of 4-11 years of age. *Arch Dis Child* 2008;93:464–468.
  33. Goemans N, Klingels K, Van Den Hauwe M, Boons S, Verstraete L, Peeters C, Feys H, Buyse

- G. Six-minute walk test: Reference values and prediction equation in healthy boys aged 5 to 12 years. *PLoS One* 2013;8:.
34. Ulrich S, Hildenbrand FF, Treder U, Fischler M, Keusch S, Speich R, Fasnacht M. Reference values for the 6-minute walk test in healthy children and adolescents in Switzerland. *BMC Pulm Med* 2013;13:49.
  35. Priesnitz CV, Rodrigues GH, Stumpf C da S, Viapiana G, Cabral CP, Stein RT, Marostica PJ, Donadio MV. Reference Values for the 6-min Walk Test in Healthy Children Aged 6 – 12 Years. *Pediatr Pulmonol* 2009;44:1174–1179.
  36. Sahin G, Yaykin N, Aksoy A, Gultekin K, Canpolat O, Isik S, Katra H, Karakoyun B, Kaya N, Kocak O, Durukan O, Sahin A, Bavli O. The Six-Minutes Walking Test ( 6MWT ) in healthy Turkish children and its comparative review. *Turkish J Sport Exerc* 2014;16:62–66.
  37. Kanburoglu MK, Ozdemir FM, Ozkan S, Tunaoglu FS. Reference values of the 6-minute walk test in healthy Turkish children and adolescents between 11 and 18 years of age. *Respir Care* 2014;59:1369–75.
  38. Oliveira AC, Rodrigues CC, Rolim DS, Souza AA, Nascimento OA, Jardim JR, Rozov T. Six-Minute Walk Test in Healthy Children : Is the Leg Length Important ? *Pediatr Pulmonol* 2013;48:921–926.
  39. D'silva C, Vaishali K, Venkatesan P. Six-minute walk test-normal values of school children aged 7-12 y in India: a cross-sectional study. *Indian J Pediatr* 2012;79:597–601.
  40. Fell BL, Hanekom S, Heine M. Six-minute walk test protocol variations in low-resource settings - A scoping review. *South African J Physiother* 2021;77:1549.
  41. Aquino ES, Mourão F a G, Souza RK V, Glicério BM, Coelho CC. Comparative analysis of the

- six-minute walk test in healthy children and adolescents. *Rev Bras Fisioter* 2010;14:75–80.
42. Rahman SAA, Alnegimshi AA. Normative Values of Six-Minute Walk Distance for Healthy Saudi Girls. *World Appl Sci J* 2014;32:1721–1730.
  43. Weir NA, Brown AW, Shlobin OA, Smith MA, Reffett T, Battle E, Ahmad S, Nathan SD. The influence of alternative instruction on 6-min walk test distance. *Chest* 2013;144:1900–5.
  44. Tonklang N, Roymanee S, Sopontammarak S. Developing standard reference data for Thai children from a six-minute walk test. *J Med Assoc Thai* 2011;94:470–475.
  45. Garcia AE, Rodriguez SL, Baron MA, Sanchez A. [Six-minute walk test in school children]. *Salus* 2012;16:25–29.
  46. Saraff V, Schneider J, Colleselli V, Ruepp M, Rauchenzauner M, Neururer S, Geiger R, Högler W. Sex-, age-, and height-specific reference curves for the 6-min walk test in healthy children and adolescents. *Eur J Pediatr* 2015;174:837–840.
  47. Vandoni Id M, Correale L, Puci MV, Galvani C, Codellaid R, Togni F, Torre A La, Casolo F, Passi A, Orizio C, Montomoliid C. Six minute walk distance and reference values in healthy Italian children: A cross-sectional study. 2018;doi:10.1371/journal.pone.0205792.
  48. de Assis Pereira Cacau L, Carvalho VO, dos Santos Pin A, Araujo Daniel CR, Ykeda DS, de Carvalho EM, Francica JV, Faria LM, Gomes-Neto M, Fernandes M, Velloso M, Karsten M, de Sá Barros P, de Santana-Filho VJ. Reference values for the maximum walking distance on the 6-Minute Walk Test in healthy children aged 7 to 12 years in Brazil: Main Results of the TC6minBRASIL Multi-Center Study. *Respir Care* 2018;63:339–346.
  49. Armstrong N, editor. *Paediatric exercise physiology*. Elsevier Health Sciences; 2007.
  50. Senbanjo IO, Oshikoya KA. Physical activity and body mass index of school children and

- adolescents in Abeokuta, Southwest Nigeria. *World J Pediatr* 2010;6:217–222.
51. Limsuwan A, Wongwandee R KP. Correlation between 6-min walk test and exercise stress test in healthy children. *Acta Paediatr* 2010;99:438–41.
  52. Halphen I, Elie C, Brousse V, Le Bourgeois M, Bonnet D, De Montalembert M. Children with sickle cell anemia experience severe oxygen desaturation during night and after six-minute walk distance test (Abstract). *Blood* 2012;120:4766.
  53. Ben Saad H, Prefaut C, Tabka Z, Hadj Mtir A, Chemit M, Hassaoune R, Ben Abid T, Zara K, Mercier G, Zbidi A, Hayot M. 6-Minute walk distance in healthy North Africans older than 40 years: Influence of parity. *Respir Med* 2009;103:74–84.
  54. Innocenti D, Masi E, Masolini M, Gambazza S, Zuffo S, Lombardi E, Innocenti D, , Matteo Masolini SG, Zuffo S. Reference values for the 6 minute walk test in healthy Italian children aged 6-11 years. *Lung Funct sleep Stud Child Tech Asp Clin Appl* 2013. p. P4657.
  55. Moons KGM, Altman DG, Reitsma JB, Ioannidis JPA, Macaskill P, Steyerberg EW, Vickers AJ, Ransohoff DF, Collins GS. Transparent Reporting of a multivariable prediction model for Individual Prognosis Or Diagnosis (TRIPOD): Explanation and Elaboration. *Ann Intern Med* 2015;162:W1.
  56. Stanojevic S, Quanjer P, Miller MR, Stocks J. The Global Lung Function Initiative: Dispelling some myths of lung function test interpretation. *Breathe* 2013;9:462–474.

## TABLES

Table 1. Demographic, anthropometric and nutritional characteristics of study participants

	Female (N=327)	Male (N=300)	Total (N=627)	t*	p
<b>Age, years, Mean <math>\pm</math> SD</b>	8.8 $\pm$ 1.6	9.0 $\pm$ 1.5	8.9 $\pm$ 1.6	-1.12	0.27
<i>(Min - Max)</i>	6.0 - 11.9	6.0 - 11.8	6.0 - 11.9		
<b>Age group, years, n (%)</b>					
6	49 (15.0)	38 (12.7)	87 (13.9)	3.24	0.66
7	54 (16.5)	38 (12.7)	92 (14.7)		
8	70 (21.4)	70 (23.3)	140 (22.3)		
9	59 (18.0)	62 (20.7)	121 (19.3)		
10	62 (19.0)	58 (19.3)	120 (19.1)		
11	33 (10.1)	34 (11.3)	67 (10.7)		
<b>School type, n (%)</b>					
Public	174 (53.2)	150 (50.0)	324 (51.7)	0.65 <sup>†</sup>	0.42
Private	153 (46.8)	150 (50.0)	303 (48.3)		
<b>Ethnic group, n (%)</b>					
Yoruba	131 (40.3)	134 (44.8)	265 (42.5)	1.34 <sup>†</sup>	0.72
Igbo	104 (32.0)	89 (29.8)	193 (30.9)		
Hausa	19 (5.8)	17 (5.7)	36 (5.8)		
Others	71 (21.8)	59 (19.7)	130 (20.8)		
<b>Anthropometrics</b>					
<b>Height, cm, mean <math>\pm</math> SD</b>	129.1 $\pm$ 11.0	129.7 $\pm$ 10.3	129.4 $\pm$ 10.6	-0.60	0.55



	(Min - Max)	105.5 - 168.0	103.2-158.9	103.2-168.0		
<b>Weight, kg, median, IQR</b>		30.3 ± 9.4	30.4 ± 9.2	30.3 ± 9.3	- 0.18	0.85
	(Min - Max)	15.6 - 72.2	15.2 - 75.6	15.2 - 75.6		
<b>BMI, kg/cm<sup>2</sup>, median, IQR</b>		16.9 ± 3.2	16.8 ± 3.1	16.8 ± 3.2	49037 <sup>‡</sup>	0.99
	(Min - Max)	12.8 - 34.6	13.3 - 30.7	12.8 - 34.6		
<b>LLL, cm, mean ± SD</b>		79.3 ± 8.1	78.8 ± 7.6	79.1 ± 7.9	0.85	0.40
	(Min - Max)	59.1 - 104.0	55.1 - 100.2	55.1 - 104.0		
<b>CC, cm, mean ± SD</b>		62.6 ± 6.5	63.3 ± 6.6	61.8 ± 6.5	-1.36	0.17
	(Min - Max)	50.3- 90.3	50.2 - 98.0	50.2 - 98.0		
<b>HAZ</b>		-0.4 ± 1.2	-0.4 ± 1.2	-0.4 ± 1.2	0.30	0.76
		-3.7 - 3.0	-4.0 - 3.2	-4.0 - 3.2		
<b>WAZ</b>		0.3 ± 1.4	0.3 ± 1.3	0.3 ± 1.4	0.34	0.74
		-2.8 - 5.0	-3.5 - 4.9	-3.5 - 5.0		
<b>BAZ</b>		0.5 ± 1.1	0.6 ± 1.2	0.6 ± 1.2	-0.93	0.35
		-2.4 - 4.9	-2.3 - 5.2	-2.4 - 5.2		
<b>Nutritional status<sup>§</sup></b>						
Normal weight		232 (70.9)	212 (70.7)	444 (70.8)	3.58 <sup>†</sup>	0.47
Overweight		49 (15.0)	48 (16.0)	97 (15.5)		
Obese		36 (11.0)	24 (8.0)	60 (9.6)		
Severely obese		9 (2.7)	14 (4.7)	23 (3.7)		
Thin		1 (0.3)	3 (0.7)	3 (0.5)		
Normal height		301 (92.0)	274 (91.3)	575 (91.7)	0.77 <sup>†</sup>	0.75
Stunted		26 (8.0)	26 (8.7)	52 (8.3)		

**Abbreviations:** *SD: standard deviation; N: number of cases; %: percentage; BMI: body-mass index; LL: lower limb length (from anterior superior iliac spine to just below medial malleolus of right limb while standing); CC: chest circumference (circumference at xiphisternal junction end-inspiration); HAZ: height-for-age z-score; WAZ: weight-for-age z-score; BAZ: BMI-for-age z-score*

*Missing values: WAZ missing for 90 girls and 86 boys; ethnic group missing for 2 girls and 1 boy*

*\*t and p values derived from comparison between sexes with Student t-test;*

*†Chi-square value derived Chi square test with Yates's correction or Fisher's exact test*

*‡W value derived from comparison between sexes with Mann-Whitney U test;*

*§ Nutritional class based on WHO's BAZ scores (thin =BAZ ≤ -2, Normal weight=BAZ ≥ -2 to +1, overweight=BAZ >+1 to +2, obese= BAZ>+2 to +3, severely obese=BAZ>+3, stunting=HAZ< -2) and HAZ scores (normal height ≥ - 2.0 and stunted < 2)*

Table 2. Mean and percentile values for the six-minute walk distance of Nigerian children

Age group (years)	Sex	N	6MWD, m						
			Mean $\pm$ SD	<i>p</i> *	5thP	25 <sup>th</sup> P	50 <sup>th</sup> P	75 <sup>th</sup> P	95 <sup>th</sup> P
6	<i>F</i>	49	454.4 $\pm$ 52.1	0.004	377.0	415.0	452.2	496.7	549.6
	<i>M</i>	38	490.4 $\pm$ 59.5		386.8	450.6	489.0	541.4	573.4
	<i>All</i>	87	470.1 $\pm$ 58.0		379.6	421.8	469.3	511.4	559.7
7	<i>F</i>	54	467.8 $\pm$ 54.0	0.143	398.5	424.7	464.3	504.0	556.6
	<i>M</i>	38	485.2 $\pm$ 58.0		385.6	447.1	486.3	525.2	573.6
	<i>All</i>	92	475 $\pm$ 56.0		391.1	436.3	479.3	513.8	568.9
8	<i>F</i>	70	496.9 $\pm$ 53.4	0.973	418.7	458.9	503.2	538.4	566.5
	<i>M</i>	70	496.6 $\pm$ 65.2		395.7	453.1	510.3	538.2	593.2
	<i>All</i>	140	496.8 $\pm$ 59.4		396.2	457.7	506.7	539.5	576.3
9	<i>F</i>	59	505.3 $\pm$ 71.2	0.336	364.0	465.2	517.2	549.0	600.5
	<i>M</i>	62	517.7 $\pm$ 69.7		396.1	472.2	527.4	562.1	627.3
	<i>All</i>	121	511.0 $\pm$ 70.4		379.0	469.0	521.1	560.0	623.5
10	<i>F</i>	62	528.8 $\pm$ 54.0	0.067	459.1	502.4	532.6	560.0	620.5
	<i>M</i>	58	548.8 $\pm$ 63.4		453.7	503.6	537.9	599.9	643.3
	<i>All</i>	120	538.5 $\pm$ 59.3		454.0	502.9	533.9	583.2	637.7
11	<i>F</i>	33	531.3 $\pm$ 65.1	0.839	444.4	482.6	534.0	580.0	627.8
	<i>M</i>	34	534.7 $\pm$ 72.7		424.3	479.6	540.4	588.1	654.2
	<i>All</i>	67	533.0 $\pm$ 68.5		432.4	481	540	585.5	640.8
Overall	<i>F</i>	327	496.8 $\pm$ 63.9	0.002	393.0	453.2	501.5	543.8	599.5
	<i>M</i>	300	513.1 $\pm$ 68.6		396.2	466.7	513.8	560	628.0

It is made available under a [CC-BY-NC-ND 4.0 International license](#) .

All 627 504.6 ± 66.6 395.2 459.6 507.9 551.5 615.4

---

**Abbreviations:** *N*=number of participants; *6MWD*= six-minute walk distance; *SD*=standard

deviation; *P*: percentile; *F*:female; *M*: male

*\*p* values derived from comparison between sexes with Student *t*-test for each age group;

Table 3. Bivariable linear correlation between 6MWD and continuous variables

Variables	Girls			Boys			All		
	<i>n</i>	<i>r</i>	<i>p</i>	<i>n</i>	<i>r</i>	<i>p</i>	<i>n</i>	<i>r</i>	<i>p</i>
Age	327	0.41	<0.0001	300	0.32	<0.0001	627	0.37	<0.0001
<i>PredHR<sub>max</sub></i>	327	-0.41	<0.0001	300	-0.32	<0.0001	627	-0.37	<0.0001
Height	327	0.38	<0.0001	300	0.25	0.0035	627	0.32	<0.0001
<i>PEF</i>	327	0.34	<0.0001	300	0.26	0.001	627	0.31	<0.0001
<i>PostSBP</i>	327	0.30	<0.0001	300	0.31	<0.0001	627	0.30	<0.0001
<i>%ΔHR</i>	326	0.26	<0.0001	299	0.34	<0.0001	625	0.29	<0.0001
<i>FEV<sub>1</sub></i>	327	0.34	<0.0001	300	0.21	0.0655	627	0.29	<0.0001
<i>ΔHR</i>	326	0.25	0.001	299	0.34	<0.0001	625	0.28	<0.0001
LLL	327	0.34	<0.0001	300	0.23	0.019	627	0.28	<0.0001
<i>ΔSBP</i>	327	0.25	0.002	300	0.31	<0.0001	627	0.27	<0.0001
Weight	327	0.25	<0.0001	300	0.13	0.05	627	0.19	<0.0001
<i>%PredMaxHR</i>	327	0.07	0.702	300	0.25	<0.0001	627	0.12	0.005
<i>PreRPE</i>	320	0.06	0.431	298	0.15	0.05	618	0.10	0.035
<i>PostHR</i>	327	0.05	1.000	300	0.23	0.011	627	0.11	1.000
<i>PostRPE</i>	324	-0.07	0.431	294	0.12	0.08	618	0.02	1.000
BMI	327	0.06	0.254	300	0.0012	0.98	627	0.03	0.389

$\Delta RPE$	317	-0.1	0.272	292	0.07	0.21	609	-0.02	1.000
$PreHR$	326	-0.17	0.4249	299	-0.03	1.000	625	-0.12	0.42

---

**Abbreviations:**  $n$ = number;  $r$ = Pearson's correlation coefficient;  $*p$  values are adjusted for multiple comparisons with Bonferroni-Holms' test;  $PredHR_{max}$  = predicted maximal heart rate in beats per minute;  $PEF$ =peak expiratory flow in litres per minute;  $PostSBP$ : immediate post-walk systolic blood pressure;  $\% \Delta HR$  = percentage of heart rate change from baseline to immediate post-walk;  $FEV_1$ = forced expiratory volume in 1 second in litres;  $\Delta HR$ = heart rate change from baseline to immediate post-walk;  $LLL$ = lower limb length in cm;  $\Delta SBP$ = change in SBP from baseline to immediate post-walk in mmHg;  $\%PredMaxHR$ = percentage of predicted maximal heart rate;

$PreRPE$ : pre-walk/baseline rating of perceived exertion;  $PostHR$ : immediate post-walk HR;  $PostRPE$ : immediate post-walk rating of perceived exertion;  $BMI$ = body-mass index in  $kg/cm^2$ ;  $\Delta RPE$ = change in rating of perceived exertion from baseline/pre-walk to immediate post-walk.

For each of the following variables not shown in this table,  $r$  was  $\leq 0.14$  and  $p$  was 1.000 in both sexes and in the total sample:  $PreSBP$  (baseline SBP),  $PreDBP$  (baseline DBP),  $PostDBP$  (immediate post-walk SBP), chest circumference,  $PreSpO_2$  (baseline oxygen saturation),  $PredPEF$  (percentage predicted PEF),  $HAZ$  (height for age z-score),  $PostSpO_2$  (immediate post-walk  $SpO_2$ ),  $\Delta DBP$  (change in DBP from baseline to immediate post-walk DBP),  $\Delta SpO_2$  (change in  $SpO_2$  from baseline to immediate post-walk  $SpO_2$ ),  $PredFEV_1$  (percentage predicted  $FEV_1$ ),  $WAZ$  (weight for age z-score) and  $BAZ$  (BMI for age z-score)



Table 4. Other potentially confounder variables for the 6MWD

Factors	N	6MWD, <i>m</i> Mean ± SD	<i>t</i> *	<i>p</i>
<b>Ethnic group</b>				
Yoruba	265	500.5	1.4 <sup>†</sup>	0.244
Igbo	193	511.1		
Others	166	504.2		
<b>School category</b>				
Public	324	513 ± 59.7	-3.54	< 0.0001
Private	303	494.9 ± 72		
<b>Obesity<sup>‡</sup></b>				
Overweight/obese	180	497.2 ± 67.7	1.77	0.077
Normal weight	447	507.6 ± 66.0		
<b>Stunting<sup>‡</sup></b>				
Yes	52	503.8 ± 66.0	-1.06	0.288
No	575	514.0 ± 73.6,		
<b>Sports<sup>§</sup></b>				
Yes	227	500.7 ± 66.9	1.1	0.27
No	400	506.8 ± 66.5		



Time of testing

AM	257	502.5 ± 69.9	-1.27	0.205
PM	255	510.1 ± 65.2		

---

**Abbreviations:** *N*=number of participants; *6MWD*= six-minute walk distance; *SD*=standard deviation; *AM*=before and up till 12.00 noon; *PM*= after 12.00 noon till about 2.30 pm

\**t* derived with student *t*-test except otherwise indicated

†*F* derived with one-way ANOVA

Overweight/obesity= *BAZ* >+1; Stunting= *HAZ* < -2

§*Extra-curricular sports activity assessed with the question 'Is your child an athlete or is he/she actively involved in sport activities apart from the regular school activities?'*

Table 5. Symptoms experienced by healthy Nigerian children during 6MWT

	Sex		Total
	Girls	Boys	N (%)
Exercise-induced symptoms	N (%)	N (%)	
Chest Pain	28 (8.6)	25 (8.3)	53 (8.4)
Chest Tightness	18 (5.5)	17 (5.7)	35 (5.6)
Dizziness	21 (6.4)	23 (7.7)	44 (7.0)
Palpitation	17 (5.2)	12 (4.0)	29 (4.6)
Leg Cramps	0	2 (0.7)	2 (0.3)
Leg Pains	59 (18.0)	64 (21.3)	123 (19.6)
Total*	97 (29.7)	93 (31.1)	190*(30.3)

*Abbreviations: N= number of participants; %= percentage of total number of girls (n=327), total number of boys (n=300) and total cohort (n=627)*

*\*Total counts exceeds 97 because some children had more than one symptom*

Table 6: Bootstrapped regression models for the 6MWD of Nigerian children aged 6-11 years

	B*	Bias	95% bca* CI		SE	t	p
			Lower	Upper			
<b><i>First model</i></b>							
Intercept	347.9	-0.15	322.4	374.6	13.4	25.63	< .001
Age	14	0.02	11.0	16.8	1.5	9.33	< .001
$\Delta HR$	1.6	0.01	1.1	2.1	0.3	6.25	< .001
$\Delta SBP$	1.2	0.00	0.7	1.8	0.3	4.53	< .001
Sex	17.6	-0.09	8.4	26.8	4.7	3.79	< .001
<b><i>Second model</i></b>							
Intercept	352.2	-0.12	326.0	378.1	13.3	25.61	< .001
Age	14.8	1.9508e -5	11.9	17.7	1.5	9.81	< .001
$\Delta HR$	1.9	0.02	1.4	2.4	0.3	7.74	< .001
Sex	17	-0.10	7.7	26.7	4.8	3.6	< .001
<b><i>Third model</i></b>							
Intercept	360.7	-0.14	332.4	387.2	13.8	25.18	< .001
Age	15.4	0.01	12.5	18.6	1.5	9.8	< .001
Sex	14.4	0.07	4.2	23.6	5	2.88	0.0041

*Abbreviations: B= unstandardised beta; bca= Bias corrected accelerated*

*\*Resulting bootstrapped equations (5000 replicates with coefficient estimate based on the median of the bootstrap distribution) and their statistics: Equation 1: 6MWD (m) = 347.9 + 14Age + 1.6 $\Delta$ HR + 17.6Sex + 1.2 $\Delta$ SBP [F(4,620) = 50.5, R = 0.50, R<sup>2</sup> = 0.25, adjusted R<sup>2</sup> = 0.24, SEE=58.08]; Equation*

---

2:  $6MWD(m) = 352.2 + 14.8Age + 1.9\Delta HR + 17.0Sex$  [F (3,621) = 58.6,  $R = 0.47$ ,  $R^2 = 0.22$ ,  
 $SEE=59.0$ , adjusted  $R^2 = 0.22$ ]; Equation 3:  $6MWD(m) = 360.7 + 15.4Age + 14.4Sex$  [F (2,624) =  
53.5,  $R = 0.38$ ,  $R^2 = 0.0.15$ ; adjusted  $R^2 = 0.14$ ,  $SEE = 61.7$ ]

*Note: Rather than have separate equations for boys and girls, we dichotomised sex to preserve the size and power of our sample; sex is 0 for girls and 1 for boys. Clinical application of our equation is demonstrated in the online data supplement, used along the lower limit of normal (LLN) defined as the 5th percentile value*

**Table 7. Comparison of the 6MWD of Nigerian children with previously published regression equations**

First Author	Country	Track	Age range (years)	<i>r</i>	<i>p</i>	<i>d</i> (lower, upper)
Geiger	Austria	30 m	3 -18	0.38	<0.0001	-103.9 (-227.0, 19.2)
Garcia	Venezuela	30 m	6 - 11	0.37	<0.0001	-188.0 (-315.1, -60.9)
Ulrich	Switzerland	30 m	5 - 17	0.31	<0.0001	-25.6 (-150.1, 99.0)
Priesnitz	Brazil	30 m	6 - 12	0.45	<0.0001	-45.9 (-162.6, 70.8)
Oliveira	Brazil	22 m	6 - 13	0.40	<0.0001	-194.9 (-316.7, -73.1)
Saad	Tunisia	40 m	6 - 16	0.40	<0.0001	-250.6 (-267.6, -141.3)
Li	Hongkong	30 m	7 - 16	0.25	<0.0001	-164.3 (-312.6, -16.1)
Gatica	Chile	30 m	6 - 14	0.46	<0.0001	-60.9 (-178.2, 56.4)
Vandoni	Italy	20 m	6 -11	0.40	<0.0001	-97.8 (-223., 28.0)
Cacao	Brazil	30 m	7 - 12	0.46	<0.0001	28.7 (-87.1, 144.8)

Kahraman	Turkey	30 m	6 - 12	0.37	<0.0001	-52.0 (-203.6, 99.5)
Jalili	Iran	30 m	8 - 16	0.29	<0.0001	-151.7 (-283.1, -20.2)
Goemans	Belgium	25 m	5 - 12	0.30	<.0001	-74.2 (-206.7, 58.2)
Abdulkadir	Nigeria	30 m	10 - 18	0.10	0.749	26.7 (-113.5, 166.8)
Chen*	Taiwan	30 m	7 - 17	0.96	<0.0001	-0.37 (-1.03, 0.29)

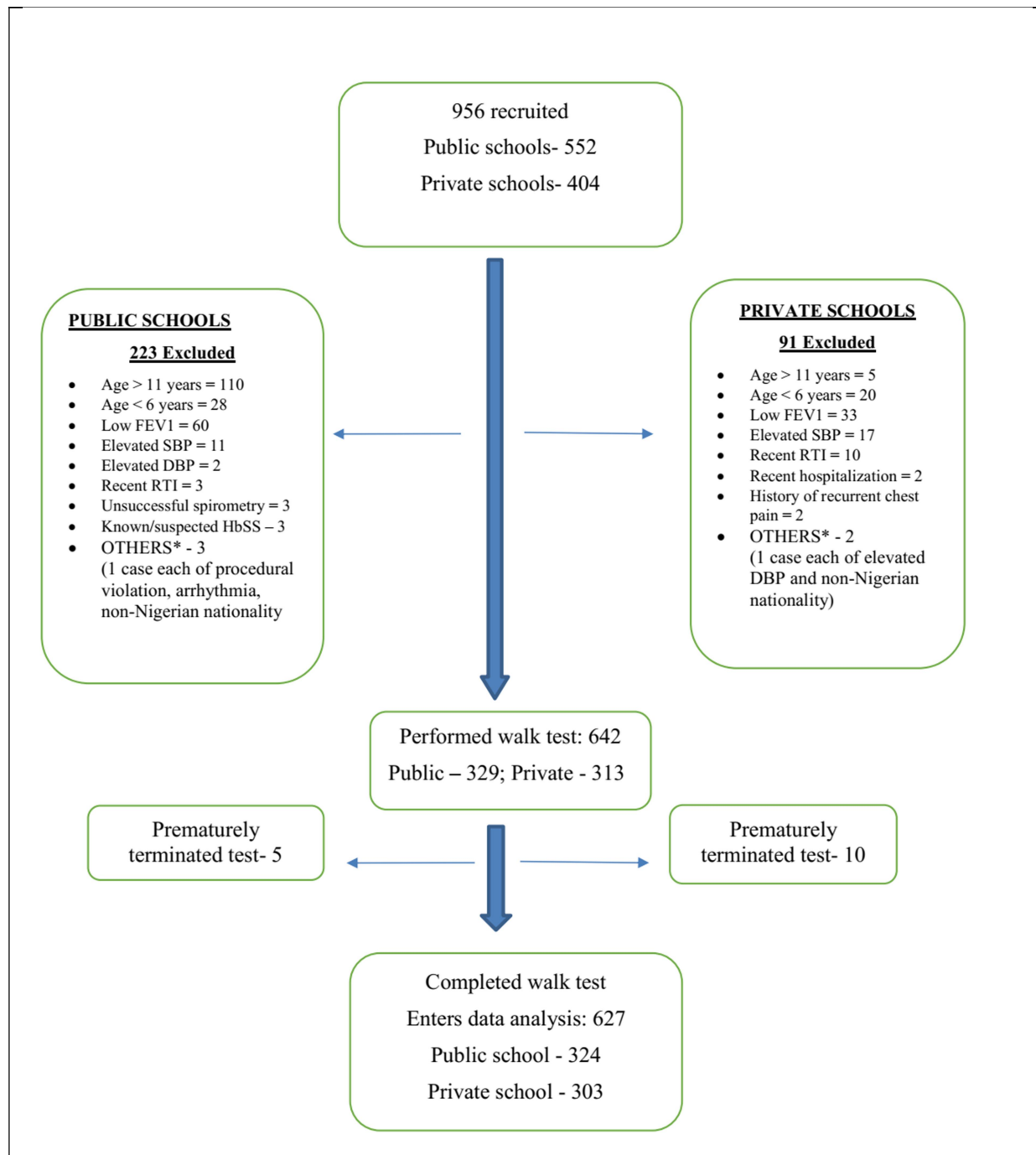
---

*Abbreviations: r=Pearson's correlation coefficient except otherwise indicated; p= p value of linear correlation between observed 6MWD and 6MWD predicted by respective equation; d (lower, upper)= mean bias (mean difference) with lower and upper 95% limits of agreement*

\* Spearman correlation of z scores of observed 6MWD and predicted 6MWD z scores derived with Chen et al's equation

Missing values: for all these analyses n=627, except for comparisons with equations by Jalili for Iranian boys only (n=300), Goemans for Belgian boys only (n=300, boys) and Abdulkadir for Nigerian adolescents only (n=187, 10-11 year-olds).

## FIGURES



**Figure 1: Participants' Flow chart**

DBP: diastolic blood pressure; SBP: systolic blood pressure; RTI: respiratory tract infection; low FEV1 was defined as FEV1 < 80% of predicted local reference; high DBP and SBP were defined as > 90th percentile using CDC's chart

It is made available under a [CC-BY-NC-ND 4.0 International license](https://creativecommons.org/licenses/by-nc-nd/4.0/).

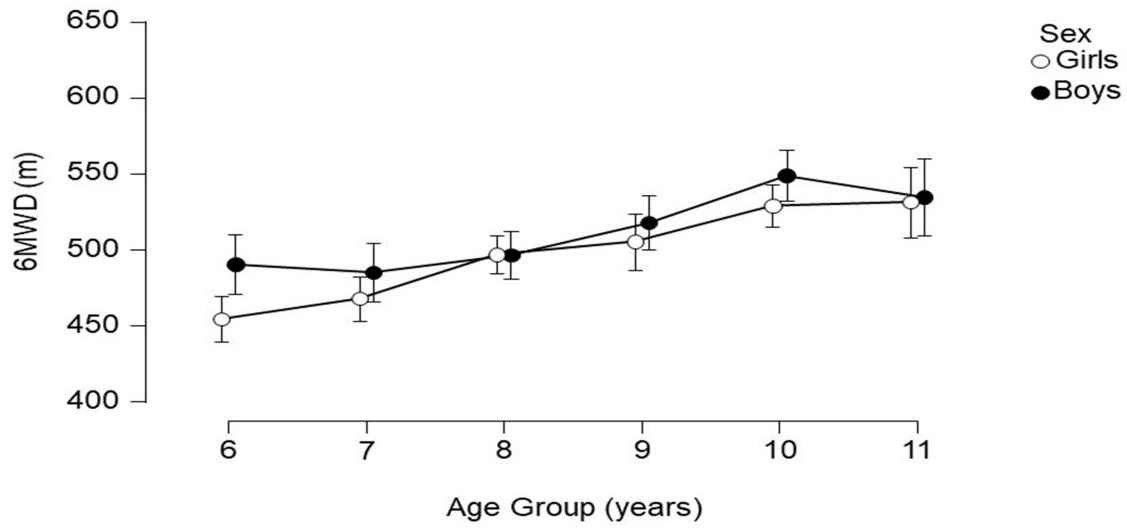
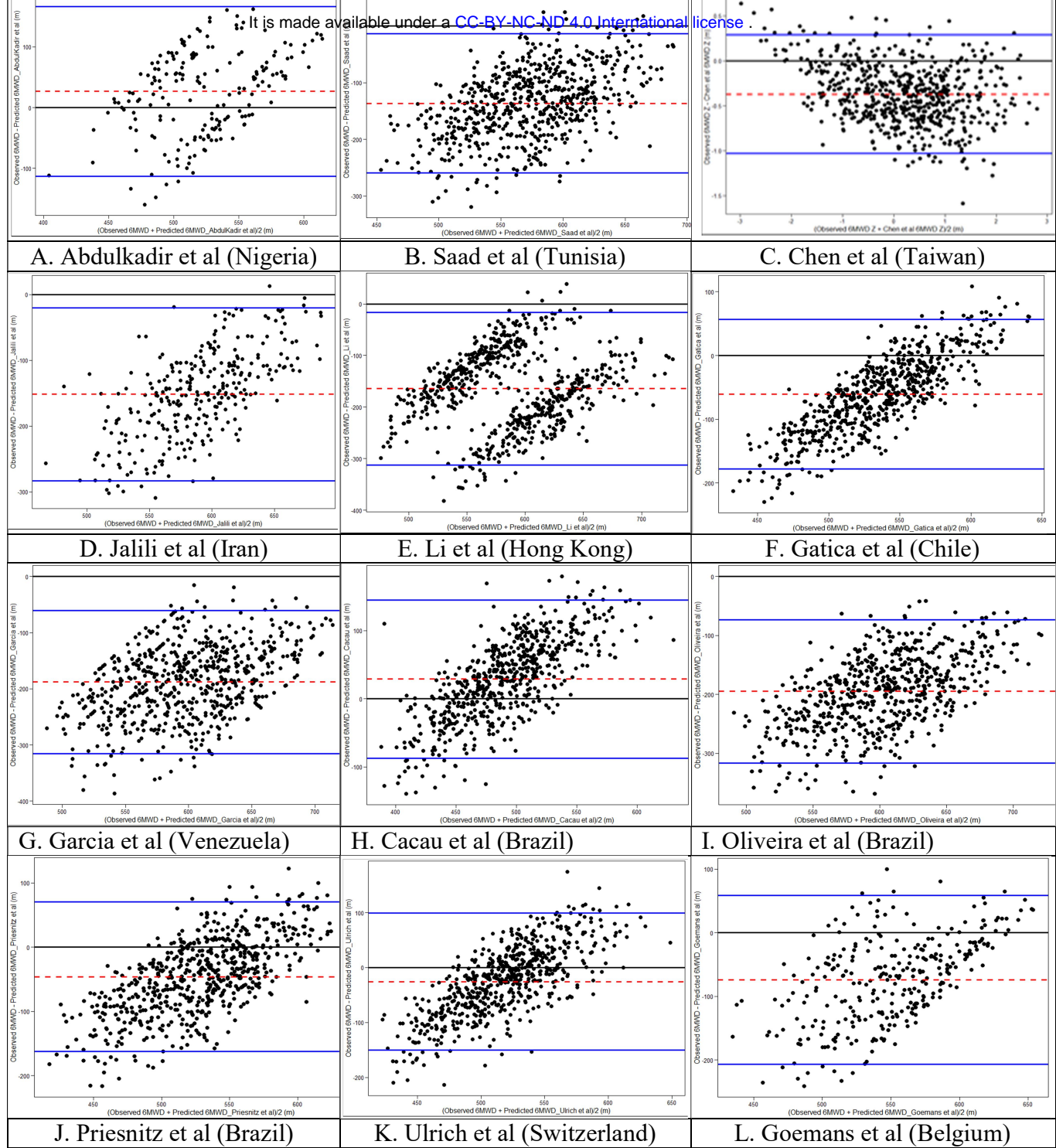
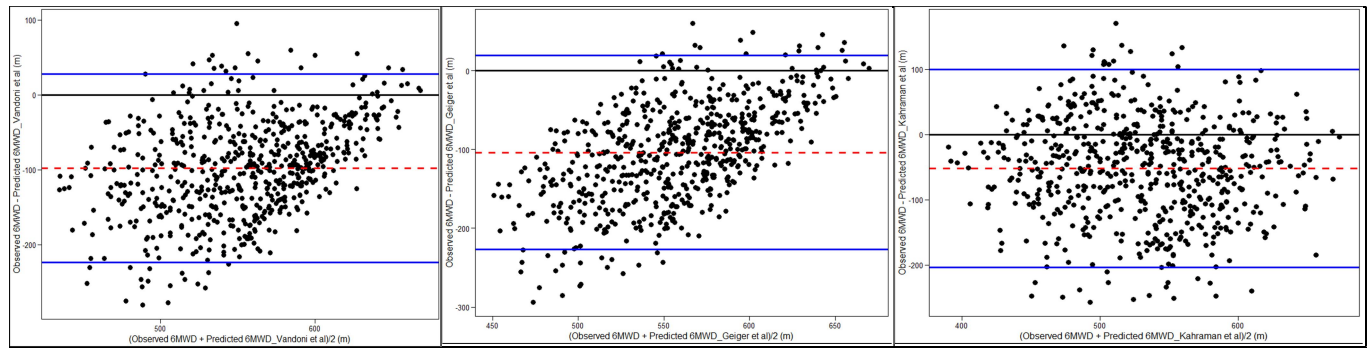


Fig 2: Change in Six-minute walk distance with increasing age in girls and boys

Abbreviations: 6MWD, six-minute walk distance in metres;







M. Vandoni et al (Italy)

N. Geiger et al (Austria)

O. Kahraman et al (Turkey)

Bland-Altman plots comparing measured 6MWD of Nigerian children aged 6-11 years with predicted 6MWD derived with previously published equations from other populations

Keys: dash lines (red) shows the mean difference (bias); outer solid line shows the 95% upper and lower limits of agreement; dots are data points