

Triangulating evidence for the causal impact of single-dose zinc supplement on glycemic control for type-2 diabetes

Zhiyang Wang^{1*}, Carine Ronsmans¹, Benjamin Woolf^{1,2,3}

¹ Faculty of Epidemiology and Population Health, London School of Hygiene and Tropical Medicine, London, UK

² Medical Research Council Integrative Epidemiology Unit, University of Bristol, Bristol, UK

³ Department of Psychological Science, University of Bristol, Bristol, UK

*Corresponding author

Contact information:

Zhiyang Wang: zhiyang.wang1@alumni.lshtm.ac.uk, +358-0414981545, address:
Tukholmankatu 8b, 00290 Helsinki, Finland

Competing Interests

The Z.W., C.R., and B.W. declare that they have no actual or potential conflict of interest.

1 **Abstract**

2 **Background:** Although previous studies suggested the protective effect of zinc for type-2
3 diabetes, the unitary causal effect remains inconclusive.

4 **Objective:** We investigated the causal effect of zinc as a single intervention on glycemic
5 control in type-2 diabetes patients, using a systematic review of RCTs and two-sample
6 Mendelian randomization (MR).

7 **Methods:** Four outcomes were identified: fasting blood glucose/fasting glucose, hemoglobin
8 A1c (HbA1c), homeostasis model assessment of insulin resistance (HOMA-IR), and serum
9 insulin/fasting insulin level. In the systematic review, four databases were searched up to
10 June 2021. Results were synthesized through the random-effects meta-analysis. Single
11 nucleotide polymorphisms (SNPs) that are independent and are strongly related to zinc
12 supplements were selected from MR-base to perform the two-sample MR with inverse-
13 variance weighted (IVW) coefficient.

14 **Results:** In the systematic review, 14 trials were included. The zinc supplement led to a
15 significant reduction in the post-trial mean of fasting blood glucose (mean difference (MD): -
16 26.52, 95%CI: -35.13, -17.91), HbA1C (MD: -0.52, 95%CI: -0.90, -0.13), and HOMA-IR
17 (MD: -1.65, 95%CI: -2.62, -0.68), compared to the control group. In the two-sample MR,
18 zinc supplement with 2 SNPs associated with lower fasting glucose (IVW coefficient: -2.04,
19 95%CI: -3.26, -0.83), but not specified type-2 diabetes.

20 **Conclusion:** Although the study was limited by the few trials (review) and SNPs (two-
21 sample MR), we demonstrated that the single zinc supplementary improved glycemic control
22 among type-2 diabetes patients with causal evidence to a certain extent.

24 **1. Introduction**

25 Type 2 diabetes (T2D) is a chronic disease in that patient's body dose not normally
26 respond to insulin, called insulin resistance. Impaired insulin sensitivity reduces the
27 absorption and reserve of insulin in organs, decreasing serum insulin and increasing blood
28 sugar levels¹. Its common symptoms include polydipsia, fatigue, and unintended weight loss.
29 Individually, diabetes causes lower self-evaluation of physical and mental health, inducing
30 psychological comorbidity². Globally, the age-standardized incidence rate increased by 3.23%
31 to 279.13 per one million from 2007 to 2017 and the disability-adjusted life years increased
32 by 5.07%³. The growing number of T2D cases leads to a heavier burden for global health.

33 T2D brings multiple challenges to medicine, primary care, and the economy. Four-fifths
34 of diabetes patients currently live in low- and middle-income countries (LMIC), and the
35 susceptibility to infection and worse outcomes such as hepatitis B and HIV would also
36 increase⁴. In India, nearly half of patients did not receive a proper diagnosis of T2D, and the
37 hidden progression of complications was more threatening⁵. Moreover, patients faced
38 substantial cost-of-illness and lower employment chances, and the government's health
39 expenditure on T2D was projected to incline^{6,7}. It is therefore critical to find a cost-effective
40 and accessible intervention to address the threat of T2D. Zinc is a common commercial
41 supplement, which makes it a good candidate solution.

42 Zinc supplementation was demonstrated to have a protective effect on insulin and
43 metabolism in the hyperglycemic environment in animal models⁸⁻¹⁰. The zinc ion plays an
44 essential role with insulin in the pancreatic β cell, activating multiple cell signaling cascades¹¹.
45 Zinc ions coordinate six insulin monomers (hexamerization), which enhance the stability of

46 insulin and the storage capacity of the insulin-secreting vesicles¹²⁻¹⁴. Moreover, zinc is
47 known for its antioxidative property as a cofactor of the important antioxidative enzyme,
48 which may reduce the lipid peroxidation and development of insulin resistance in diabetes
49 mellitus¹⁵⁻¹⁷.

50 There are many randomized controlled trials (RCT) which evaluate the impact of zinc or
51 co-supplements on various types and progression of diabetes^{18,19}. One meta-analysis
52 published in 2019 included 36 studies and found that zinc supplements in both single factor
53 and co-supplements significantly reduced glycemic indicators such as fasting glucose²⁰. In a
54 2021 meta-analysis of 27 studies, researchers suggested that low-dose and long-duration
55 single zinc supplements had a beneficial impact on many T2D and cardiovascular disease risk
56 factors²¹. The multi-nutrients intervention in the previous review incorporated the interaction
57 between nutrients, so that we may not get a valid estimate of zinc's own effect. For example,
58 excess amounts of iron and calcium compromised the zinc level and inhibited its
59 bioaccessibility, and the interaction mechanism within more micronutrients remained
60 complicated^{22,23}. Both studies did not limit the type of diabetes or even included healthy
61 participants at high risk so that the real effect of the single zinc supplement on prevalent T2D
62 patients was masked and needed more emphasis.

63 Mendelian randomization (MR) also helps us to evaluate the causality between single
64 zinc supplements and diabetes. MR is regarded as a "natural experiment", which leverages
65 the random inheritance of genetic variants to approximate the random allocation of the
66 participants to a modifiable exposure which the variants are robustly associated with²⁴⁻²⁷.
67 Because genes are inherited at birth, MR estimates are interpreted as the lifetime effect of the

68 exposure, while RCT studies can only provide the effects over shorter periods of time. This
69 innovative method has been used in previous nutrition and metabolism studies to obtain an
70 unbiased assessment of nutritional status to the outcome of interest. Researchers notably
71 demonstrated the association of long-term testosterone exposure with health outcomes by
72 MR²⁸. Collaborating with RCT, MR could help to strengthen the causal estimation,
73 particularly in cumulating exposure inside the body or capturing a sensitive period of the life
74 course²⁹

75 In this study, we aimed to systematically assess the possible causal inference about the
76 association between zinc supplements and glycemic control among T2D patients, using a
77 systematic review of RCTs and two-sample MR.

78 **2. Method**

79 **2.1 Systematic review**

80 **2.1.1 Protocol and ethnics**

81 This meta-analysis followed the Preferred Reporting Items for Systematic Reviews and
82 Meta-analyses (PRISMA) reporting guideline³⁰. This study received ethics approval from the
83 London School of Hygiene and Tropical Medicine MSc Research Ethics Committee. The
84 methodology of the review and analysis was approved in advance by the LSHTM
85 epidemiology MSc course directors.

86 **2.1.2 Eligibility criteria**

87 The study eligibility criteria were specified using Population, Intervention, Comparison,
88 Outcomes, and Study (PICOS) frame³⁰.

89 *Inclusion criteria:*

- 90 ♦ Study population: Any human participants with type-2 diabetes. There was no
91 restriction on the demographic characteristics.
- 92 ♦ Intervention: Zinc administration as the single supplement intervention.
- 93 ♦ Comparison: Use of placebo.
- 94 ♦ Outcome: Primary outcomes included fasting blood glucose, hemoglobin A1C
95 (HbA1c), homeostatic model assessment for insulin resistance (HOMA-IR), and serum
96 insulin level. Secondary outcomes included any other quantitative outcomes related to
97 diabetes control.
- 98 ♦ Study design: Any randomized controlled trial evaluating the association between zinc
99 intervention and glycemic control.

100 *Exclusion criteria:*

- 101 ♦ Full-text not available or accessible.
- 102 ♦ Co-supplement with other nutrition would not be included to concentrate on the zinc-
103 only effect.

104 **2.1.3 Information sources and search strategy**

105 PubMed, CINAHL Plus, EMBASE, and Web of Science were searched from the
106 establishment time of each database to June 2021. We also checked the references and
107 citations of all included studies for eligibility criteria. The search strategy was developed by
108 and modified from the previous systematic review²⁰. The terms were structured according to
109 each database's guidelines and searched by titles and abstracts. The detail was presented in
110 supplementary material 1.

111 **2.1.4 Selection process**

112 The abstracts and titles were screened by the eligibility criteria. The first unblinded
113 reviewer screened all the citations and the second one checked a random 10% sample of all
114 citations, due to the limitation of human resources. The percentage agreement and the Gwet
115 AC (agreement change adjusted) between the two reviewers were calculated to test the
116 interrater reliability³¹.

117 **2.1.5 Data extraction and item**

118 The standard form for intervention reviews for RCTs developed by the Cochrane
119 Collaboration was used to extract the data³². The extraction process was conducted twice to
120 minimize bias or entry error. The specific data items are shown below:

- 121 ♦ Eligibility criteria: inclusion and exclusion criteria
- 122 ♦ Study design (parallel or crossover), assignment of each arm, and analysis plan
123 (intention-to-treat or per-protocol)
- 124 ♦ Participants: the total number of randomized and analyzed participants, numbers in each
125 arm (pre-trial and post-trial), geographic information, and demographic characteristics.
- 126 ♦ Intervention and control arms: formulation and dosage of Zinc, administration method,
127 description of the control arm (placebo), and study duration.
- 128 ♦ Results: the measure of effect (means, mean difference, or change score), standard error
129 of effect measure, statistical significance, and any other results such as odds ratio.
- 130 ♦ Information about risk-of-bias: any information causing bias, such as missing
131 participants.

132 **2.1.6 Effect measure**

133 The primary measure was the post-trial mean difference (MD) with standard error (SE)

134 for each outcome. The change scores are the change of mean from pre-trial to post-trial in
135 each arm so that the difference of change scores between zinc intervention and control was
136 our secondary effect measure. Converting units or the standardized mean difference (SMD)
137 were used to get the uniform scale³³.

138 **2.1.7 Synthesis methods**

139 The overall meta-analyses and the subgroup meta-analyses were conducted to synthesize
140 the results. The subgroup analyses were stratified by studies that clearly stated the
141 participants were T2D patients and that did not specify the participant's diabetes type.

142 The Cochran-Q χ^2 test and the I^2 index were used to assess the statistical heterogeneity. If
143 there was no statistically significant heterogeneity ($P > 0.05$ and $I^2 < 40\%$), a pooled effect was
144 calculated with a fixed-effects model, which assumed that the observed differences among
145 study results are due solely to chance³³. If there was significant heterogeneity, the summary
146 estimate and confidence/prediction interval would come from the random-effects model,
147 which assumed that the different studies are estimating differently providing average
148 intervention effect³³.

149 If the study included more than two intervention arms, we reviewed only interventions
150 that met the eligibility criteria or summarized at arm level. We only interpreted studies that
151 were judged as low risk of overall bias in the main result section to avoid biases.

152 **2.1.8 Reporting bias assessment**

153 If there were 5 or more studies in the meta-analysis, we assessed publication bias by
154 graphical methods (funnel plots, which indicate the potential presence of reporting biases)³⁴.

155 In the plots, the x-axis represents the effect estimate, and the y-axis represents the standard

156 error of the effect estimate. If there was publication bias, it would lead to an asymmetrical
157 appearance of the plot³⁵. Furthermore, the Egger test was used for reporting bias to evaluate
158 the small study effect³⁶.

159 **2.1.9 Additional analysis**

160 If the heterogeneity was significant in the meta-analysis, the linear random-effect meta-
161 regression was used to explore the trial-level covariates that contributed to the heterogeneity³⁷.
162 The candidate covariates were zinc dose, trial duration, and whether the trial specified the
163 participant's diabetes type (T2D, not specified types). The first two were treated as
164 continuous variables and the third was a binary variable.

165 We illustrated the effect of interest if only one study reported a type of secondary
166 outcome. If more than one study reported a type of secondary outcome, a meta-analysis was
167 conducted regardless of the risk-of-bias. We also performed a sensitivity analysis which
168 included all trials into meta-analysis regardless of risk assessment for comparing the results
169 to evaluate the impact of bias.

170 **2.2 two-sample Mendelian randomization**

171 This two-sample MR study followed STROBE-MR Guideline³⁸.

172 **2.2.1 Study design and data sources**

173 Sample sizes and GWAS data including both exposure and outcome was utilized from
174 the MR-base. MR-base is the platform that thousands of GWAS summary datasets were
175 updated from different research group. It contained the database of GWAS summary
176 association statistics which structured into complete summary data for SNP-phenotype
177 associations³⁹.

178 We included all “zinc supplement” SNPs (Open GWAS ID: ukb-b-10567, ukb-b-13891,
179 ukb-a-496) that meet the p-value threshold of $<5 \times 10^{-8}$ from the MR-base GWAS catalog. We
180 also extracted the summary data (beta and SE) for the diabetes outcomes: fasting blood
181 glucose (Open GWAS ID: ieu-b-114, GCST000568, ebi-a-GCST007858, ebi-a-GCST005186,
182 ieu-b-113), HbA1C (Open GWAS ID: ieu-b-103, ieu-b-104), HOMA-IR (Open GWAS ID:
183 ieu-b-118, ebi-a-GCST005179), and fasting insulin (Open GWAS ID: ebi-a-GCST005185,
184 ebi-a-GCST000571, ebi-a-GCST007857, ieu-b-115, ieu-b-116). Proxy SNPs were included
185 based on an LD of 0.001 and kb 10000 from the 1000 genomes European reference sample.
186 Description of the methods used for these GWASs can be found in reference⁴⁰⁻⁴².

187 For exposure data, the clumping genetic distance for LD was also set to 10000 kilobases.
188 For outcome data, the minimum linkage disequilibrium (LD) value was set to 0.8 to prevent
189 the non-random occurrence of genetic variants⁴³. And, there was a threshold for minor allele
190 frequency at <0.3 , for ambiguities, allowing palindromic SNPs^{44,45}. We allowed MR-Base to
191 automatically harmonize the exposure and outcome data, and attempt to align palindromic
192 SNPs based off their minor allele frequency.

193 **2.2.2 Assumptions and assessment**

194 There are three routine assumptions and two additional assumptions in two-sample MR.

195 1. Relevance: The genetic variants are associated with the exposure of interest.

196 ✓ This assumption was assessed via F statistic for the gene-exposure relationship.

197 2. Independence: The genetic variants share no unmeasured cause with the outcome.

198 ✓ This assumption was by ensuring that the GWASs have adequately controlled for

199 plausible confounders of the gene-outcome association by adjusting for at least 10

200 principle components or using a linear mixed model.

201 3. Exclusion restriction: The genetic variants do not affect the outcome except through their
202 potential effect on the exposure of interest.

203 ✓ Pleiotropy can violate this assumption when genes influence two or more traits.

204 Serval secondary analyses were used to detect and adjust the pleiotropy such as MR-
205 Egger regression, weighted median, and weighted mode analysis.

206 4. The samples for exposure and outcome assessment are independent.

207 ✓ We excluded the outcome summary data which had the same consortium as the
208 exposure data to meet this assumption.

209 5. The samples for exposure and outcome assessment are from the same population.

210 ✓ We chose the same outcome population category such as European with the
211 exposure population, ensuring the fifth assumption.

212 **2.2.3 Statistical methods**

213 We used the “TwoSampleMR” package in the R environment (version 4.1.0) to conduct
214 the 2-sample MR analyses³⁹. This package supported the harmonization process to ensure
215 that both SNPs were coded from the same strand when SNPs were palindromic⁴⁴. We used
216 the inverse variance weighting (IVW) estimator to evaluate the causal inference. It is meta-
217 analyzing Wald ratios which is the ratio of the SNP-outcome association/SNP-exposure
218 association. Due to the difference in MR-base, the two outcomes were slightly changed
219 compared to the review: fasting glucose and fasting insulin.

220 Cochran Q statistics can be used to assess evidence of heterogeneity in consideration of
221 pleiotropy⁴⁶. The statistically significant level was at the $P < 0.05$. Steiger filtering checked the

222 direction of causation between the exposure and outcome for each SNP⁴⁷.

223 We therefore used the exposure of calcium supplement and outcome of hair color as the
224 negative controls to detect the potential residual bias due to nutrients supplementation and
225 population structure respectively. These were chosen because calcium supplementation is a
226 type of nutritional supplement which is not thought to impact diabetes, and hair color is
227 known to vary with population structure within the UK but is unlikely to have any true causal
228 association with zinc supplementation.

229 **3. Results**

230 **3.1 Systematic review**

231 **3.1.1 Study selection**

232 A total of 15 studies, reporting on 14 trials, were identified for inclusion in the review
233 (Fig. 1). One trial generated two studies (Parham 2008⁴⁸ and Heidarian 2009⁴⁹). From the
234 four databases, 1557 citations were found, and 3 studies were identified by reference reading.
235 1531 citations were removed because of duplication or unfulfilling inclusion criteria with title
236 or abstract. After the full-text screening of 29 studies, 14 studies were excluded because they
237 did not meet the criteria. There were 11, 12, 7, and 8 studies measuring fasting blood glucose,
238 HbA1C, HOMA-IR, and serum insulin levels respectively.

239 The percentage agreement was 96.32% and Gwet AC was 0.9619 between two reviewers,
240 with strong evidence of significance ($P < 0.05$), which indicated a very good inter-reviewer
241 reliability for the selection process. No unpublished relevant studies were obtained.

242 **3.1.2 Study characteristics**

243 There were 13 trials in parallel design and one in crossover design (Parham 2008⁴⁸ and

244 Heidarian 2009⁴⁹). Details of each trial are presented in table 1. A total of 897 participants
245 were randomly allocated, and all trials had a relatively small sample size. The time of
246 publication ranged from 2003 to 2021. Most trials had claimed that there was no significant
247 imbalance (n=7), or they used matched methods (n=2) for age and sex. One trial clearly
248 demonstrated that their participants were adolescents, while the other's average age was
249 above 45-year-old. Four trials did not specify the type of diabetes in the inclusion criteria and
250 patients had complications: diabetic foot ulcer⁵⁰, diabetic hemodialysis with Zn-deficiency⁵¹,
251 diabetic retinopathy⁵², and b-thalassemia major complicated⁵³.

252 The duration of zinc supplementation ranged from 1.5 to 12 months, with a mean and
253 median duration of 3.53 months and 3 months. Three trials contained basic supplements care
254 besides the zinc administration and placebo: oral hypoglycemic agent (in Burki 2017⁵⁴ and
255 Khan 2013⁵⁵) and multivitamin/mineral (in Gunasekara 2011⁵⁶). Each dose of zinc gluconate
256 and zinc sulfate was multiplied by 0.143 or 0.227 to obtain the appropriate dose of elemental
257 zinc²¹. The mean dose of elemental zinc included in these interventions was 25.83 mg/d
258 (range: 4.29–149.82 mg/d; median: 9.25 mg/d).

259 **3.1.3 Results of individual studies**

260 Nine trials measured post-trial means with SE of fasting blood glucose as outcomes.
261 Seven of the nine trials were at low risk of bias. Eight trials including the crossover trial
262 measured post-trial HbA1C as an outcome. Six of the eight trials were at low risk of bias. Six
263 trials with low risk-of-bias had eligible measured post-trial HOMA-IR scores. Six trials with
264 low risk-of-bias had eligible measured post-trial serum insulin as an outcome. Notably, we
265 standardized the measurement of serum insulin on a single scale through Hedges' g score and

266 presented the SMD.

267 **3.1.4 Synthesis of results**

268 According to the I^2 and p-value of the Cochran-Q χ^2 test, the random-effects model was
269 used for meta-analysis for all outcomes. Results were presented in figure 2

270 *Fasting blood glucose*

271 Among the T2D patients, the pooled mean difference was -27.68 mg/dL (95%CI: -37.26,
272 -18.11), comparing zinc intervention to the control arm (Fig. 2A). Among the participants
273 without specified diabetes type, the pooled mean difference was -28.17 mg/dL (95%CI: -
274 43.88, -12.45). Both stratified analyses showed strong evidence of effect and the two types of
275 trials were not significantly different (Test of group difference $P=0.96$). The overall pooled
276 mean difference showed that the zinc intervention had a significantly lower level of fasting
277 blood glucose at the end of the trial, compared to the control arm (MD: -26.52, 95%CI: -
278 35.11, -17.91).

279 *Hemoglobin A1C*

280 T2D patients have a decrease (MD: 0.48, 95%CI: -1.06, 0.11) in HbA1C, but this
281 difference was not significant between arms (Fig. 2B). Among the participants without
282 specified type, the pooled mean difference was -0.57% (95%CI: -0.96, -0.17) in HbA1C,
283 compared to zinc intervention and control arm. There was no significant difference between
284 those two types of trials (Test of group difference $P=0.80$). Overall, there was a significant
285 reduction in post-trial HbA1C percentage between zinc intervention and control at end of the
286 trial (MD: -0.52, 95%CI: -0.90, -0.13).

287 *HOMA-IR*

288 The pooled mean difference was -0.49 (95%CI: -1.26, 0.28) in T2D patients and -2.23
289 (95%CI: -3.05, -1.42) among patients with unspecified type in the post-trial HOMA-IR (Fig.
290 2C). There was a significant difference detected between those two types of trials (Test of
291 group difference $P < 0.01$). The pooled result shows that the zinc intervention arm had a 1.65
292 lower (95%CI: -0.90, -0.13) HOMA-IR score than the control arm with strong evidence.

293 *Serum insulin level*

294 For serum insulin level (Fig. 2D), the SMD was 0.25 (95%CI: -0.04, 0.54) in T2D
295 patients and -0.53 (95%CI: -1.11, 0.05) among the participants without specified diabetes
296 type, with only weak evidence. Overall, the pooled result shows that there was no significant
297 standardized mean difference in serum insulin level between zinc intervention and control
298 arms at end of the trial (SMD: -0.12, 95%CI: -0.55, 0.30).

299 The results of score change are presented in supplementary material 4. Some secondary
300 outcomes were found after full-text reading, and their results in post-hoc analysis are
301 presented in supplementary material 5.

302 **3.1.5 Reporting bias assessment**

303 We observed a slight asymmetry in the funnel plot of the fasting blood glucose in figure
304 3A. One study fell out of the 95% confidence limits. The p-value of the Egger test for small-
305 study effects was 0.1649 (> 0.05), which meant there was no strong reporting bias.

306 Visual assessment of the funnel plots of HbA1C (Fig. 3B), HOMA-IR (Fig. 3C), and
307 serum insulin level (Fig. 3D) suggested that there was no asymmetry. Further, the p-value of
308 the Egger test for small-study effects was 0.7341, 0.2697, and 0.1514 for HbA1c, HOMA-IR,
309 and serum insulin level, respectively, which rejected the null hypothesis of no asymmetry and

310 suggested no significant reporting bias exist.

311 **3.1.6 Additional analysis: meta-regression**

312 Second, through meta-regression, we found evidence to support a linear association of
313 fasting blood glucose (regression coefficient: 8.42, 95%CI: 0.52, 16.33) and HbA1C
314 (regression coefficient: -0.46, 95%CI: -0.73, -0.19) with trial duration, which was the
315 significant explanatory variable on heterogeneity. Whether specified diabetes types
316 significantly explained the heterogeneity for the outcome of HOMA-IR (regression
317 coefficient: -1.68, 95%CI: -2.84, -0.51) and serum insulin level (regression coefficient: -0.78,
318 95%CI: -1.31, -0.25) in the meta-analyses. We shall be conscious about the results because
319 none of the outcomes had more than 10 trials. These results are presented in Table 2.

320 **3.2 two-sample Mendelian randomization**

321 **3.2.1 Description of exposure-SNP summary**

322 Three SNPs were extracted out, which represented zinc supplement: rs6756297,
323 rs4861163, and rs10822145, and their GWAS all were conducted from the UK biobank (Tab.
324 3). Their number of participants for GWAS was 461384.

325 **3.2.2 Description of outcome-SNP summary**

326 The summary statistics of each outcome with each SNP were reported in table 4. Since
327 the exposure data was from the UK biobank, we chose the MAGIC consortium with the
328 European population for each outcome.

329 **3.2.3 Results of two-sample MR**

330 The results including the heterogeneity test were presented in figure 4. Zinc supplement
331 with 2 SNPs led to signification decrease of fasting glucose (coefficient: -2.04, 95%CI: -3.26,

332 -0.83). The unit of fasting glucose was mmol/L⁶³ (-2.04 mmol/L = -37.09 mg/dL). While
333 there was no strong evidence supporting the relationship of zinc supplements with HbA1C,
334 HOMA-IR, and insulin level. The p-value for heterogeneity of fasting glucose, HbA1C,
335 HOMA-IR, and insulin level were 0.29, 0.66, 0.37, and 0.47. Neither of these results had
336 significant heterogeneity, which suggested no pleiotropy with the null hypothesis.

337 **4. Discussion**

338 *Principal findings*

339 This systematic review, including 14 RCTs between 2003 and 2021, reported how single
340 zinc supplements impacted glycemic control in type-2 diabetes. In meta-analyses with
341 random-effect models, zinc supplements were shown to lead to a significant reduction in the
342 level of post-trial fasting blood glucose, HbA1C, and HOMA-IR, but not in the serum insulin
343 level. These results had moderate certainty of evidence. Trial duration contributed to the
344 heterogeneity in the results of fasting blood glucose and HbA1C and diabetes type specified
345 contributed to the heterogeneity in HOMA-IR and serum insulin level. In the two-sample MR
346 analysis, with 2 SNPs, zinc supplement also significantly associated with a lower level of
347 fasting glucose. The difference in effect sizes between review and two-sample MR were
348 small (-26.52 vs -37.09, overlapping in CI).

349 *Previous literature*

350 The protective power of zinc supplements was demonstrated in the previous literature
351 across different populations and diabetes types. In a cohort study encompassing 14,140
352 Japanese, the dietary intake of zinc was associated with a lower odds ratio of type-2 diabetes
353 mellitus among the younger (age 40-55 years)⁶⁴. The result of lower T2D risk was also

354 consistent with an Australian women`s longitudinal cohort⁶⁵. Furthermore, de Carvalho and
355 colleagues found a negative correlation between %HbA1c and plasma zinc levels, and
356 women with deficient zinc levels had higher scores of HOMA-IR and C peptide values in a
357 systematic review⁶⁶. Besides, a study with two cohorts observed an 11% decrease in the risk
358 of gestational hyperglycemia by every 1 mg/d zinc intake in women, which might be used to
359 prevent gestational diabetes⁶⁷.

360 In 2019, Wang et. al indicated that zinc supplementation could significantly reduce key
361 glycemic indicators in a systematic review of RCT that included all diabetes types. This
362 review involved 1700 participants and found a larger net change among fasting glucose, 2-h
363 postprandial glucose, HbA1C, and HOMA-IR in zinc intervention arm²⁰. Zinc supplements
364 had a larger effect on fasting glucose in diabetes patients than people at high risk and a
365 preventative effect among prediabetes²⁰. These findings were consistent with our results on
366 zinc`s favorable effect on glycemic control and the magnitude of HbA1C`s MD was similar
367 to ours. But they did not specify the diabetes type in their population included. A systematic
368 review of RCT published in early 2021, specified zinc as a single factor of intervention. and
369 found that low-dose and short-duration zinc supplements also showed significant
370 improvements in some T2D indicators, compared with the high-dose and long-duration²¹. The
371 specific effect also supported our result in meta-regression about the heterogeneity
372 contribution of the trial duration, which plays a critical role in the zinc supplement`s effect.
373 However, the true effect of zinc might be masked by the multi-supplement intervention or
374 non-specified diabetes type with differential biological mechanisms.

375 There were not many MR studies that directly linked zinc as exposure to diabetes. An

376 MR study in 2019 did not find any significant causal relationship between zinc level in blood
377 with 2 SNPs and odds of T2D⁶⁸. The difference with our results may be due to the
378 supplementary effect of zinc.

379 *Strength*

380 To our knowledge, this study is the first to use mixed methods by the systematic review
381 of RCT and MR to triangulate evidence of causal inference in the field of nutritional
382 supplementation. This systematic review included the newest, until 2021, literature with
383 scientific rigor and delivered a clear statement of the zinc supplement's protection on type-2
384 diabetes at the individual level. Our result of improving glycemic control was consistent with
385 previous literature. Not only that, we narrowed the intervention into a single supplement to
386 emphasize the effect of zinc with less concern of contamination bias. Moreover, on the basis
387 of the review, the application of two-sample Mendelian randomization minimized residual
388 confounding or reverse causality due to imperfect randomization or short duration and gave a
389 more comprehensive lifelong evaluation. MR assumed that the effect of instrumental SNPs
390 was only from the exposure of interest to the outcome, independent of other factors.
391 Compared with one-sample MR, two-sample increased statistical power with larger
392 population from multiple GWAS consortia⁶⁹.

393 *Limitation of included studies, systematic review*

394 The majority of the studies had relatively small groups in each arm (around 30
395 participants). Although this may limit the power and confounder adjustment, the method of
396 meta-analysis could combine them to get stronger results. Moreover, the trials with at least
397 some concerns of bias were not included in the main interpretation. In the sensitivity analysis

398 of all trials, the effect estimate of sensitivity results was similar to the main, which reduced
399 our concern (supplementary material 6). Suspicious publication bias of fasting blood glucose
400 perhaps came from the small number of trials included. Also, there may exist the problem of
401 generalizability that most of the trials were in Asia, which may induce the problem of
402 extrapolation. A possible explanation is that researchers from high-income countries prefer to
403 perform trials with co-supplement and target a wider population of all types of diabetes. Thus,
404 further RCT with larger sample sizes in a variety of geographic regions would be preferred.

405 *Limitation of review processes, systematic review*

406 In the review process, the study was limited in that only one reviewer screened every
407 paper and extracted information. The high percentage agreement and Gwet AC in the random
408 set reduced our concerns. Second, we found some degree of heterogeneity in each outcome
409 analysis. Due to the limited number of trials, the meta-regression was not strong enough to
410 detect explanatory variables. We may expand our criteria to include more trials in the
411 situation of not affecting the directness.

412 *Limitation of two-sample MR*

413 The MR part was limited to the low number of SNPs included. This meant that
414 sensitivity analysis like MR-Egger for exclusion restriction assumptions, and leave-one-out
415 could not be used. MR studies are often low powered, the small number of SNPs will have
416 additionally reduced power of the MR analyses. Although there is a potential bias from the
417 effect of supplementary, the negative control using calcium supplementation implied that this
418 is unlikely to have produced a substantive bias (supplementary material 7). The two-sample
419 MR results of negative control: hair color suggested no significant association between zinc

420 supplementary and hair color (supplementary material 8), which reduced the threat from bias
421 due to residual population structure. Third, pooled analysis of individual studies made us not
422 access to the individual patient data to specify the T2D population.

423 *Biological plausibility*

424 Zinc's antioxidant properties are the biologically plausible connection to T2D. Oxidative
425 stress reflected an imbalance between the production of reactive oxygen species (ROS) and
426 antioxidant defenses, and excess ROS could cause lipid peroxidation, leading to the lesion of
427 cell membranes and lipoproteins, and ultimately damage insulin secretion to increase
428 resistance through signaling pathway within the β -cells of pancreatic islets^{70,71}. Plasma
429 advanced oxidation protein products generated during oxidative stress were indicated as a
430 biomarker of endothelial dysfunction as early events for T2D diabetes⁷². As a catalytic role
431 for zinc superoxide dismutase, zinc involves the conversion of superoxide radicals to
432 molecular oxygen and hydrogen peroxide through the antagonism, which could reduce the
433 reactive oxygen species (ROS) toxicity^{73,74}. For chronic effects, zinc is also an inducer of
434 metallothionein in multiple organs⁷⁴. The metallothionein immunoreactivity levels were
435 higher in the tubular areas of the zinc-supplemented group, suggesting zinc's stimulation
436 effect to regulate the oxidative stress in rat⁷⁵. The sulfhydryl stabilization by zinc protection
437 was another mechanism against the oxidative damage⁷⁶.

438 Many studies have investigated the metabolism of zinc in the pathogenesis of diabetes
439 mellitus. In the spontaneously diabetic mice, researchers observed the *in vitro*
440 insulinomimetic activity, hypoglycemic effect in glucose, and insulin resistance attenuation
441 by administration of Zn complexes⁷⁷. In the population study, diabetic patients had a higher

442 level of 8-hydroxy-2-deoxyguanosine, oxidative damage to DNA, and a lower level of zinc,
443 which suggested more serious oxidative lesion⁷⁸. By analogy, people with higher dietary
444 antioxidant capacity (richer antioxidants in diet) associated with a lower risk of T2D and a
445 lower score of HOMA-IR across sexes in the Rotterdam study⁷⁹. Antioxidants become
446 therapeutic options to manage diabetes and its serious complications such as Metformin,
447 which reduce the production of ROS and increase insulin sensitivity⁸⁰. So that, zinc
448 administration has huge potential to be a first-line intervention treatment for T2D due to its
449 antioxidant mechanism.

450 *Implications*

451 Optimal ways to utilize the zinc supplement intervention in real-world health practices
452 need more concrete explorations, in particular in the context of disrupted routine care due to
453 the COVID pandemic. According to a rapid WHO assessment, nearly 50% of diabetes and
454 diabetic complications management services were partially or completely disrupted, which
455 was an essential service in most of the countries, especially among LMICs⁸¹. Timely
456 nutritional interventions are essential for successful and sustainable diabetes care to
457 overcome the negative effect from the implication of strict infection prevention and control⁸².
458 Self-care practice should be encouraged during this extreme health workforce shortage⁸³.
459 Immediate implementation of zinc as an efficient tool or complement is needed for patients
460 who struggle with limited medical resources and primary care systems which are
461 considerably disrupted.

462 **5. Conclusion**

463 The study found that a single zinc supplement was strongly associated with a lower level

464 of glycemc indicators in type-2 diabetes, suggesting a protective effect. The systematic
465 review and two-sample Mendelian randomization supported a causal association, but need to
466 be further validated. We advocate the use of zinc supplements as an efficient nutritional
467 intervention to support routine diabetic care.
468

469 **Reference**

- 470 1. Czech, M. P. Insulin action and resistance in obesity and type 2 diabetes. *Nat. Med.* **23**,
471 804–814 (2017).
- 472 2. Wexler, D. J. *et al.* Diabetes Differentially Affects Depression and Self-Rated Health
473 by Age in the U.S. *Diabetes Care* **35**, 1575 LP – 1577 (2012).
- 474 3. Yu, M., Zhan, X., Yang, Z. & Huang, Y. Measuring the global, regional, and national
475 burden of type 2 diabetes and the attributable risk factors in all 194 countries. *J.*
476 *Diabetes* **13**, 613–639 (2021).
- 477 4. Dunachie, S. & Chamnan, P. The double burden of diabetes and global infection in
478 low and middle-income countries. *Trans. R. Soc. Trop. Med. Hyg.* **113**, 56–64 (2019).
- 479 5. Joshi, S. R. Diabetes Care in India. *Ann. Glob. Heal.* **81**, 830–838 (2016).
- 480 6. Seuring, T., Archangelidi, O. & Suhrcke, M. The Economic Costs of Type 2 Diabetes:
481 A Global Systematic Review. *Pharmacoeconomics* **33**, 811–831 (2015).
- 482 7. Hex, N., Bartlett, C., Wright, D., Taylor, M. & Varley, D. Estimating the current and
483 future costs of Type 1 and Type 2 diabetes in the UK, including direct health costs
484 and indirect societal and productivity costs. *Diabet. Med.* **29**, 855–862 (2012).
- 485 8. Simon, S. F. & Taylor, C. G. Dietary Zinc Supplementation Attenuates Hyperglycemia
486 in db/db Mice. *Exp. Biol. Med.* **226**, 43–51 (2001).
- 487 9. Koerner, J. D. *et al.* Zinc has insulin-mimetic properties which enhance spinal fusion
488 in a rat model. *Spine J.* **16**, 777–783 (2016).
- 489 10. Qi, S. *et al.* Zinc Supplementation Increased Bone Mineral Density, Improves Bone
490 Histomorphology, and Prevents Bone Loss in Diabetic Rat. *Biol. Trace Elem. Res.* **194**,

- 491 493–501 (2020).
- 492 11. Norouzi, S., Adulcikas, J., Sohal, S. S. & Myers, S. Zinc transporters and insulin
493 resistance: therapeutic implications for type 2 diabetes and metabolic disease. *J.*
494 *Biomed. Sci.* **24**, 87 (2017).
- 495 12. Chabosseau, P. & Rutter, G. A. Zinc and Diabetes.
- 496 13. Manoharan, C. & Singh, J. Addition of Zinc Improves the Physical Stability of Insulin
497 in the Primary Emulsification Step of the Poly(lactide-co-glycolide) Microsphere
498 Preparation Process. *Polymers* vol. 7 (2015).
- 499 14. Li, Y. V. Zinc and insulin in pancreatic beta-cells. *Endocrine* **45**, 178–189 (2014).
- 500 15. Vincent, H. K. *et al.* Effects of antioxidant supplementation on insulin sensitivity,
501 endothelial adhesion molecules, and oxidative stress in normal-weight and overweight
502 young adults. *Metabolism.* **58**, 254–262 (2009).
- 503 16. Niki, E. Antioxidants in relation to lipid peroxidation. *Chem. Phys. Lipids* **44**, 227–253
504 (1987).
- 505 17. Cruz, K. J. C., de Oliveira, A. R. S. & Marreiro, D. do N. Antioxidant role of zinc in
506 diabetes mellitus. *World J. Diabetes* **6**, 333–337 (2015).
- 507 18. Derosa, G., D'Angelo, A., Romano, D. & Maffioli, P. A Clinical Trial about a Food
508 Supplement Containing α -Lipoic Acid on Oxidative Stress Markers in Type 2 Diabetic
509 Patients. *International Journal of Molecular Sciences* vol. 17 (2016).
- 510 19. Islam, M. R. *et al.* Zinc supplementation for improving glucose handling in pre-
511 diabetes: A double blind randomized placebo controlled pilot study. *Diabetes Res. Clin.*
512 *Pract.* **115**, 39–46 (2016).

- 513 20. Wang, X. *et al.* Zinc supplementation improves glycemic control for diabetes
514 prevention and management: a systematic review and meta-analysis of randomized
515 controlled trials. *Am. J. Clin. Nutr.* **110**, 76–90 (2019).
- 516 21. Pompano, L. M. & Boy, E. Effects of Dose and Duration of Zinc Interventions on Risk
517 Factors for Type 2 Diabetes and Cardiovascular Disease: A Systematic Review and
518 Meta-Analysis. *Adv. Nutr.* **12**, 141–160 (2021).
- 519 22. Melse-Boonstra, A. Bioavailability of Micronutrients From Nutrient-Dense Whole
520 Foods: Zooming in on Dairy, Vegetables, and Fruits. *Front. Nutr.* **7**, 101 (2020).
- 521 23. Jayalakshmi, S. & Platel, K. Supplemental levels of iron and calcium interfere with
522 repletion of zinc status in zinc-deficient animals. *Food Funct.* **7**, 2288–2293 (2016).
- 523 24. Lawlor, D. A., Harbord, R. M., Sterne, J. A. C., Timpson, N. & Davey Smith, G.
524 Mendelian randomization: Using genes as instruments for making causal inferences in
525 epidemiology. *Stat. Med.* **27**, 1133–1163 (2008).
- 526 25. Davey Smith, G. & Hemani, G. Mendelian randomization: genetic anchors for causal
527 inference in epidemiological studies. *Hum. Mol. Genet.* **23**, R89–R98 (2014).
- 528 26. Evans, D. M. & Davey Smith, G. Mendelian Randomization: New Applications in the
529 Coming Age of Hypothesis-Free Causality. *Annu. Rev. Genomics Hum. Genet.* **16**,
530 327–350 (2015).
- 531 27. Davies, N. M., Holmes, M. V. & Davey Smith, G. Reading Mendelian randomisation
532 studies: A guide, glossary, and checklist for clinicians. *BMJ* (2018)
533 doi:10.1136/bmj.k601.
- 534 28. Mohammadi-Shemirani, P. *et al.* Effects of lifelong testosterone exposure on health

- 535 and disease using Mendelian randomization. *Elife* **9**, e58914 (2020).
- 536 29. Yarmolinsky, J. *et al.* Causal Inference in Cancer Epidemiology: What Is the Role of
537 Mendelian Randomization? *Cancer Epidemiol. Biomarkers Prev.* **27**, 995–1010 (2018).
- 538 30. Moher, D., Liberati, A., Tetzlaff, J. & Altman, D. G. Preferred reporting items for
539 systematic reviews and meta-analyses: the PRISMA statement. *BMJ* **339**, b2535
540 (2009).
- 541 31. Gwet, K. L. Computing inter-rater reliability and its variance in the presence of high
542 agreement. *Br. J. Math. Stat. Psychol.* **61**, 29–48 (2008).
- 543 32. Data extraction forms | Cochrane Developmental, Psychosocial and Learning Problems.
544 <https://dplp.cochrane.org/data-extraction-forms>.
- 545 33. Deeks, J. J., Higgins, J. P. T., Altman, D. G. & Group, on behalf of the C. S. M.
546 Analysing data and undertaking meta-analyses. *Cochrane Handbook for Systematic
547 Reviews of Interventions* 241–284 (2019)
548 doi:<https://doi.org/10.1002/9781119536604.ch10>.
- 549 34. Brown, J., Ceysens, G. & Boulvain, M. Exercise for pregnant women with gestational
550 diabetes for improving maternal and fetal outcomes. *Cochrane database Syst. Rev.* **6**,
551 CD012202–CD012202 (2017).
- 552 35. Sterne, J. A. C. & Harbord, R. M. Funnel plots in meta-analysis. 127–141 (2004).
- 553 36. Harbord, R. M., Harris, R. J. & Sterne, J. A. C. Updated tests for small-study effects in
554 meta-analyses. *Stata J.* **9**, 197–210 (2009).
- 555 37. Thompson, S. G. & Higgins, J. P. T. How should meta-regression analyses be
556 undertaken and interpreted? *Stat. Med.* **21**, 1559–1573 (2002).

- 557 38. Skrivankova, V. W. *et al.* Strengthening the reporting of observational studies in
558 epidemiology using mendelian randomisation (STROBE-MR): explanation and
559 elaboration. *BMJ* **375**, n2233 (2021).
- 560 39. Hemani, G. *et al.* The MR-Base platform supports systematic causal inference across
561 the human phenome. *Elife* **7**, e34408 (2018).
- 562 40. Bycroft, C. *et al.* The UK Biobank resource with deep phenotyping and genomic data.
563 *Nature* **562**, 203–209 (2018).
- 564 41. Silverwood, R. J. *et al.* Testing for non-linear causal effects using a binary genotype in
565 a Mendelian randomization study: application to alcohol and cardiovascular traits. *Int.*
566 *J. Epidemiol.* **43**, 1781–1790 (2014).
- 567 42. Mitchell, R. *et al.* TR (2019): MRC IEU UK Biobank GWAS pipeline version 2.
- 568 43. Smith, G. D. & Ebrahim, S. Mendelian Randomization: Genetic Variants as
569 Instruments for Strengthening Causal Inference in Observational Studies. (2008).
- 570 44. Hartwig, F. P., Davies, N. M., Hemani, G. & Smith, G. D. Two-sample Mendelian
571 randomization: avoiding the downsides of a powerful, widely applicable but
572 potentially fallible technique. *Int. J. Epidemiol.* 1717–1726 (2016)
573 doi:10.1093/ije/dyx028.
- 574 45. Walker, V. M. *et al.* Using the MR-Base platform to investigate risk factors and drug
575 targets for thousands of phenotypes. *Wellcome Open Res.* **4**, 113 (2019).
- 576 46. Bowden, J., Hemani, G. & Davey Smith, G. Invited Commentary: Detecting Individual
577 and Global Horizontal Pleiotropy in Mendelian Randomization-A Job for the Humble
578 Heterogeneity Statistic? *Am. J. Epidemiol.* **187**, 2681–2685 (2018).

- 579 47. Hemani, G., Tilling, K. & Davey Smith, G. Orienting the causal relationship between
580 imprecisely measured traits using GWAS summary data. *PLoS Genet.* **13**, e1007081–
581 e1007081 (2017).
- 582 48. Parham, M., Amini, M., Aminorroaya, A. & Heidarian, E. Effect of zinc
583 supplementation on microalbuminuria in patients with type 2 diabetes: A double blind,
584 randomized, placebo-controlled, cross-over trial. *Rev. Diabet. Stud.* **5**, 102–109 (2008).
- 585 49. Heidarian, E., Amini, M., Parham, M. & Aminorroaya, A. Effect of Zinc
586 Supplementation on Serum Homocysteine in Type 2 Diabetic Patients with
587 Microalbuminuria. *Rev. Diabet. Stud.* **6**, 64–70 (2009).
- 588 50. Momen-Heravi, M. *et al.* The effects of zinc supplementation on wound healing and
589 metabolic status in patients with diabetic foot ulcer: A randomized, double-blind,
590 placebo-controlled trial. *Wound Repair Regen.* **25**, 512–520 (2017).
- 591 51. Hosseini, R. *et al.* The Effects of Zinc Sulfate Supplementation on Serum Copeptin, C-
592 Reactive Protein and Metabolic Markers in Zinc-Deficient Diabetic Patients on
593 Hemodialysis: A Randomized, Double-Blind, Placebo-Controlled Trial. *Biol. Trace*
594 *Elem. Res.* (2021) doi:10.1007/s12011-021-02649-7.
- 595 52. Naghizadeh, S., Kheirouri, S., Ojaghi, H. & Kaffash, A. J. Zinc supplementation
596 attenuate diabetic indices in patients with diabetic retinopathy. *Prog. Nutr.* **20**, 263–
597 269 (2018).
- 598 53. Matter, R. M. *et al.* Zinc supplementation improves glucose homeostasis in patients
599 with β -thalassemia major complicated with diabetes mellitus: A randomized controlled
600 trial. *Nutrition* **73**, (2020).

- 601 54. Burki, Z. G. *et al.* EFFECT OF ZINC SUPPLEMENTATION ON SERUM FASTING
602 BLOOD SUGAR AND HbA1c IN ADULT DIABETICS ON ORAL
603 HYPOGLYCEMIC AGENTS. *Gomal J. Med. Sci.* **15**, 8–11 (2017).
- 604 55. Khan, M. I. *et al.* Effect of high-dose zinc supplementation with oral hypoglycemic
605 agents on glycemic control and inflammation in type-2 diabetic nephropathy patients. *J.*
606 *Nat. Sci. Biol. Med.* **4**, 336–340 (2013).
- 607 56. Gunasekara, P., Hettiarachchi, M., Liyanage, C. & Lekamwasam, S. Effects of zinc
608 and multimineral vitamin supplementation on glycemic and lipid control in adult
609 diabetes. *Diabetes, Metab. Syndr. Obes. Targets Ther.* **4**, 53–60 (2011).
- 610 57. Afkhani-Ardekani, M., Karimi, M., Mohammadi, S. M. & Nourani, F. Effect of zinc
611 sulfate supplementation on lipid and glucose in type 2 diabetic patients. *Pakistan J.*
612 *Nutr.* **7**, 550–553 (2008).
- 613 58. Asghari, S., Hosseinzadeh-Attar, M. J., Alipoor, E., Sehat, M. & Mohajeri-Tehrani, M.
614 R. Effects of zinc supplementation on serum adiponectin concentration and glycemic
615 control in patients with type 2 diabetes. *J. Trace Elem. Med. Biol.* **55**, 20–25 (2019).
- 616 59. Nazem, M. R., Asadi, M., Jabbari, N. & Allameh, A. Effects of zinc supplementation
617 on superoxide dismutase activity and gene expression, and metabolic parameters in
618 overweight type 2 diabetes patients: A randomized, double-blind, controlled trial. *Clin.*
619 *Biochem.* **69**, 15–20 (2019).
- 620 60. Pérez, A. *et al.* Zinc Supplementation Does Not Affect Glucagon Response to
621 Intravenous Glucose and Insulin Infusion in Patients with Well-Controlled Type 2
622 Diabetes. *Biol. Trace Elem. Res.* **185**, 255–261 (2018).

- 623 61. Roussel, A. M. *et al.* Antioxidant effects of zinc supplementation in tunisians with type
624 2 diabetes mellitus. *J. Am. Coll. Nutr.* **22**, 316–321 (2003).
- 625 62. Witwit, G. T., Ali, B. M., Alsaffar, Y. & Ghazala, A. D. Effect of Zinc
626 Supplementation on Insulin Resistance, Lipid Profile, BMI in Type II Diabetic Patients.
627 *Indian J. Forensic Med. Toxicol.* **15**, 1487–1493 (2021).
- 628 63. Scott, R. A. *et al.* Large-scale association analyses identify new loci influencing
629 glycemic traits and provide insight into the underlying biological pathways. *Nat. Genet.*
630 **44**, 991–1005 (2012).
- 631 64. Eshak, E. S., Iso, H., Maruyama, K., Muraki, I. & Tamakoshi, A. Associations
632 between dietary intakes of iron, copper and zinc with risk of type 2 diabetes mellitus:
633 A large population-based prospective cohort study. *Clin. Nutr.* **37**, 667–674 (2018).
- 634 65. Vashum, K. P. *et al.* Is dietary zinc protective for type 2 diabetes? Results from the
635 Australian longitudinal study on women’s health. *BMC Endocr. Disord.* **13**, 40 (2013).
- 636 66. de Carvalho, G. B., Brandão-Lima, P. N., Maia, C. S. C., Barbosa, K. B. F. & Pires, L.
637 V. Zinc’s role in the glycemic control of patients with type 2 diabetes: a systematic
638 review. *BioMetals* **30**, 151–162 (2017).
- 639 67. Bo, S. *et al.* Gestational hyperglycemia, zinc, selenium, and antioxidant vitamins.
640 *Nutrition* **21**, 186–191 (2005).
- 641 68. Cheng, W.-W., Zhu, Q. & Zhang, H.-Y. Mineral Nutrition and the Risk of Chronic
642 Diseases: A Mendelian Randomization Study. *Nutrients* **11**, 378 (2019).
- 643 69. Lawlor, D. A. Commentary: Two-sample Mendelian randomization: opportunities and
644 challenges. *Int. J. Epidemiol.* **45**, 908–915 (2016).

- 645 70. Rehman, K. & Akash, M. S. H. Mechanism of Generation of Oxidative Stress and
646 Pathophysiology of Type 2 Diabetes Mellitus: How Are They Interlinked? *J. Cell.*
647 *Biochem.* **118**, 3577–3585 (2017).
- 648 71. Pizzino, G. *et al.* Oxidative Stress: Harms and Benefits for Human Health. *Oxid. Med.*
649 *Cell. Longev.* **2017**, 8416763 (2017).
- 650 72. Liang, M. *et al.* Increased plasma advanced oxidation protein products is an early
651 marker of endothelial dysfunction in type 2 diabetes patients without albuminuria. *J.*
652 *Diabetes* **6**, 417–426 (2014).
- 653 73. Tainer, J. A., Getzoff, E. D., Richardson, J. S. & Richardson, D. C. Structure and
654 mechanism of copper, zinc superoxide dismutase. *Nature* **306**, 284–287 (1983).
- 655 74. Powell, S. R. The Antioxidant Properties of Zinc. *J. Nutr.* **130**, 1447S-1454S (2000).
- 656 75. Özcelik, D. *et al.* Zinc Supplementation Attenuates Metallothionein and Oxidative
657 Stress Changes in Kidney of Streptozotocin-Induced Diabetic Rats. *Biol. Trace Elem.*
658 *Res.* **150**, 342–349 (2012).
- 659 76. Lee, S. R. Critical Role of Zinc as Either an Antioxidant or a Prooxidant in Cellular
660 Systems. *Oxid. Med. Cell. Longev.* **2018**, 9156285 (2018).
- 661 77. Yoshikawa, Y., Adachi, Y., Yasui, H., Hattori, M. & Sakurai, H. Oral Administration
662 of Bis(aspirinato)zinc(II) Complex Ameliorates Hyperglycemia and Metabolic
663 Syndrome-Like Disorders in Spontaneously Diabetic KK-*A^y* Mice:
664 Structure–Activity Relationship on Zinc–Salicylate Complexes. *Chem.*
665 *Pharm. Bull.* **59**, 972–977 (2011).
- 666 78. Mahmoud, H. M., Ali, A. F. & Al-Timimi, D. J. Relationship Between Zinc Status and

- 667 DNA Oxidative Damage in Patients with Type 2 Diabetes Mellitus. *Biol. Trace Elem.*
668 *Res.* **199**, 1276–1279 (2021).
- 669 79. van der Schaft, N. *et al.* Dietary antioxidant capacity and risk of type 2 diabetes
670 mellitus, prediabetes and insulin resistance: the Rotterdam Study. *Eur. J. Epidemiol.*
671 **34**, 853–861 (2019).
- 672 80. Teodoro, J. S., Nunes, S., Rolo, A. P., Reis, F. & Palmeira, C. M. Therapeutic Options
673 Targeting Oxidative Stress, Mitochondrial Dysfunction and Inflammation to Hinder
674 the Progression of Vascular Complications of Diabetes. *Front. Physiol.* **9**, 1857 (2019).
- 675 81. World Health Organization. *The impact of the COVID-19 pandemic on*
676 *noncommunicable disease resources and services: results of a rapid assessment.*
677 *World Health Organization* (2020).
- 678 82. Oni, T. *et al.* Implications of COVID-19 control measures for diet and physical activity,
679 and lessons for addressing other pandemics facing rapidly urbanising countries.
680 <https://doi.org/10.1080/16549716.2020.1810415> **13**, (2020).
- 681 83. Yadav, U. N., Rayamajhee, B., Mistry, S. K., Parsekar, S. S. & Mishra, S. K. A
682 Syndemic Perspective on the Management of Non-communicable Diseases Amid the
683 COVID-19 Pandemic in Low- and Middle-Income Countries. *Frontiers in Public*
684 *Health* vol. 8 508 (2020).
- 685

Content of tables

Table 1: Summary of included studies evaluating the effect of zinc intervention

Table 2: Meta-regression of potential explanatory variables on heterogeneity in each outcome`s meta-analysis

Table 3: Description of the exposure-SNP association

Table 4: Description of the outcome-SNP association

Table 1: Summary of included studies evaluating the effect of zinc intervention

Study ID	RCT design	Country	Total N. randomized	Duration (month)	Gender, M/F	Age mean (control vs intervention) or age inclusion range	Formulation/elemental zinc dose, mg/day	Health status
Afkhami - Ardekani 2008 ⁵⁴	Parallel	Iran	40	1.5	16/24	52.67 ± 8.60	zinc sulfate/149.82	T2D
Asghari 2019 ⁵⁵	Parallel	Iran	64	3	32/28	45.5 ± 5.4 vs 46.2 ± 5.3	zinc gluconate/4.29	T2D
Burki 2017 ⁵¹	Parallel	Pakistan	101	3	NA	NA	zinc sulphate/4.54 ^a	T2D
Gunasekara 2011 ^{53*}	Parallel	Sri Lanka	96	4	33/63	51.2 ± 6.0 vs 54.1 ± 6.0	elemental zinc/22 ^b	T2D
Hosseini 2021 ⁴⁸	Parallel	Iran	46	2	25/21	54.1 ± 5.4 vs 55.6 ± 7.3	elemental zinc/50	Diabetic hemodialysis patients with Zn-deficiency
Khan 2013 ⁵²	Parallel	India	54	3	NA	56.0 ± 0.86 vs 56.3 ± 6.6	zinc sulphate/11.35	T2D
Matter 2020 ⁵⁰	Parallel	Egypt	80	3	18/32	16.1 ± 1.4 vs 16.4 ± 1.4	zinc gluconate/7.72	Diabetes with b-thalassemia major complicated
Momen-Heravi 2017 ⁴⁷	Parallel	Iran	60	3	42/18	60.0 ± 10.0 vs 58.3 ± 8.6	elemental zinc/50	Diabetes with diabetic foot ulcer
Naghizadeh 2018 ⁴⁹	Parallel	Iran	50	3	20/25	58.0 ± 5.9 vs 57.4 ± 5.8	zinc gluconate/4.29	Patients with diabetic retinopathy
Nazem 2019 ⁵⁶	Parallel	Iran	70	2	19/16	54.3 ± 7.2 vs 53.3 ± 7.4	zinc gluconate/7.15	T2D
Parham 2008 ⁴⁵ , Heidarian 2009 ⁴⁶	Crossover	Iran	50	2.5	24/18	52.0 ± 9.3 / 54.5 ± 9.2	elemental zinc/30	T2D
Pérez 2018 ⁵⁷	Parallel	Chile	80	12	13/15	30 - 65	elemental zinc/6.81	T2D with further selection criteria
Roussel 2003 ⁵⁸	Parallel	Tunis	56	6	NA	55.5 ± 1.4 vs 51.5 ± 1.6	zinc gluconate/4.29	T2D
Witwit 2021 ⁵⁹	Parallel	Iraq	50	1.5	NA	25 - 60	zinc sulphate/11.35	T2D

*: It was a three-arm study and we only extracted zinc and its control arm.

a: Oral hypoglycemic arm and zinc plus oral hypoglycemic arm.

b: multivitamin/mineral arm and zinc plus multivitamin/mineral arm.

Table 2: Meta-regression of potential explanatory variables on heterogeneity in each outcome's meta-analysis

Outcome	N. of study	Dose of zinc intervention		Duration of trial		Diabetes type specified	
		Mean (mg)	Coefficient (95%CI)	Mean (mo.)	Coefficient (95%CI)	N. of T2D specified	Coefficient (95%CI)
Fasting blood glucose	7	34.75	-0.01 (-0.24, 0.23)	2.64	8.42 (0.52, 16.33)*	3	1.31 (-18.43, 21.05)
HbA1C	6	39.59	0.00 (-0.01, 0.01)	2.75	-0.46 (-0.73, -0.19)*	4	-0.13 (-1.06, 0.77)
HOMA-IR	6	20.24	-0.05 (-0.11, 0.01)	2.67	-0.46 (-2.85, 1.93)	2	-1.68 (-2.84, -0.51)*
Serum insulin level	6	22.96	-0.00 (-0.03, 0.02)	2.83	-0.04 (-0.73, 0.65)	3	-0.78 (-1.31, -0.25)*

Table 3: Description of the exposure-SNP association

SNP	Exposure: Zinc supplement				
	Sample size	Beta	SE	Population	Consortium
rs4861163	461384	0.006	0.001	European	UK Biobank
rs10822145	461384	0.002	0.000	European	UK Biobank
rs6756297	461384	-0.003	0.000	European	UK Biobank

Table 4: Description of the outcome-SNP association

SNP	Outcome									
	Fasting glucose					HbA1C				
	N.	β	SE.	Population	Consortium	N.	β	SE.	Population	Consortium
rs4861163	133010	0.004	0.002	European	MAGIC	46368	-0.004	0.004	European	MAGIC
rs10822145	133010	-0.005	0.002	European	MAGIC	46368	0.001	0.003	European	MAGIC
rs6756297	58074	-0.003	0.008	European	MAGIC	46368	-0.003	0.009	European	MAGIC
	HOMA-IR					Fasting insulin				
rs4861163	37037	0.004	0.005	European	MAGIC	51750	0.004	0.003	European	MAGIC
rs10822145	NA	NA	NA	NA	NA	51750	-0.006	0.004	European	MAGIC
rs6756297	37037	0.004	0.010	European	MAGIC	51750	-0.002	0.008	European	MAGIC

Figure 1: PRISMA flow diagram of information through the different phases of the systematic review

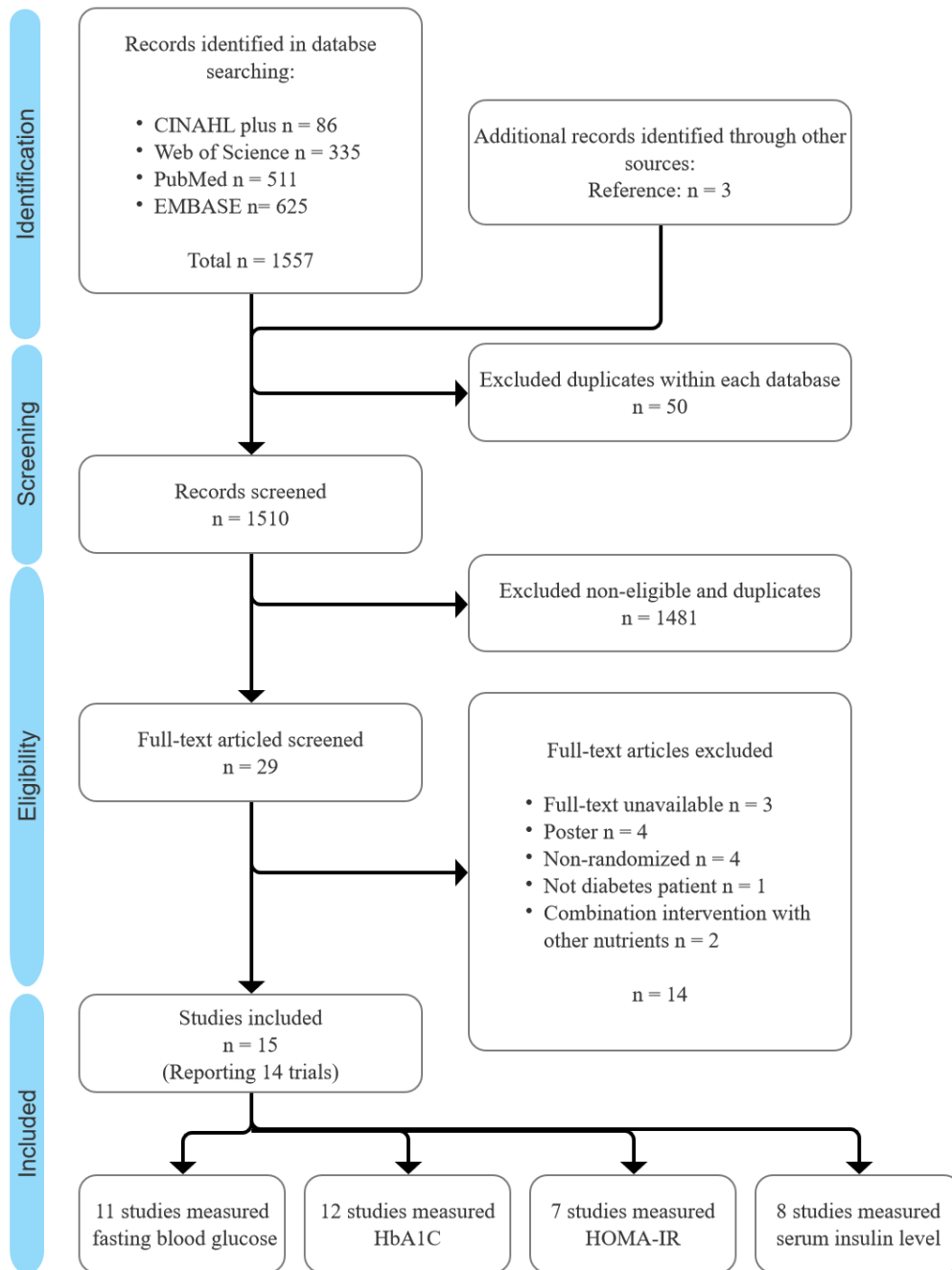
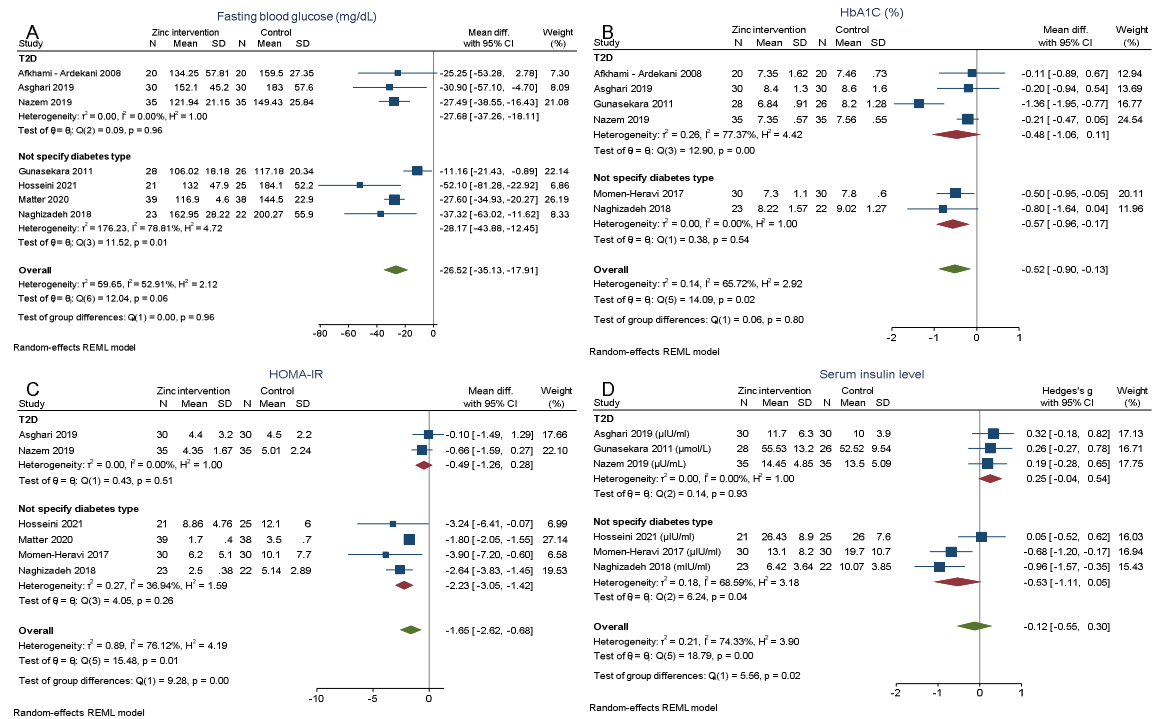
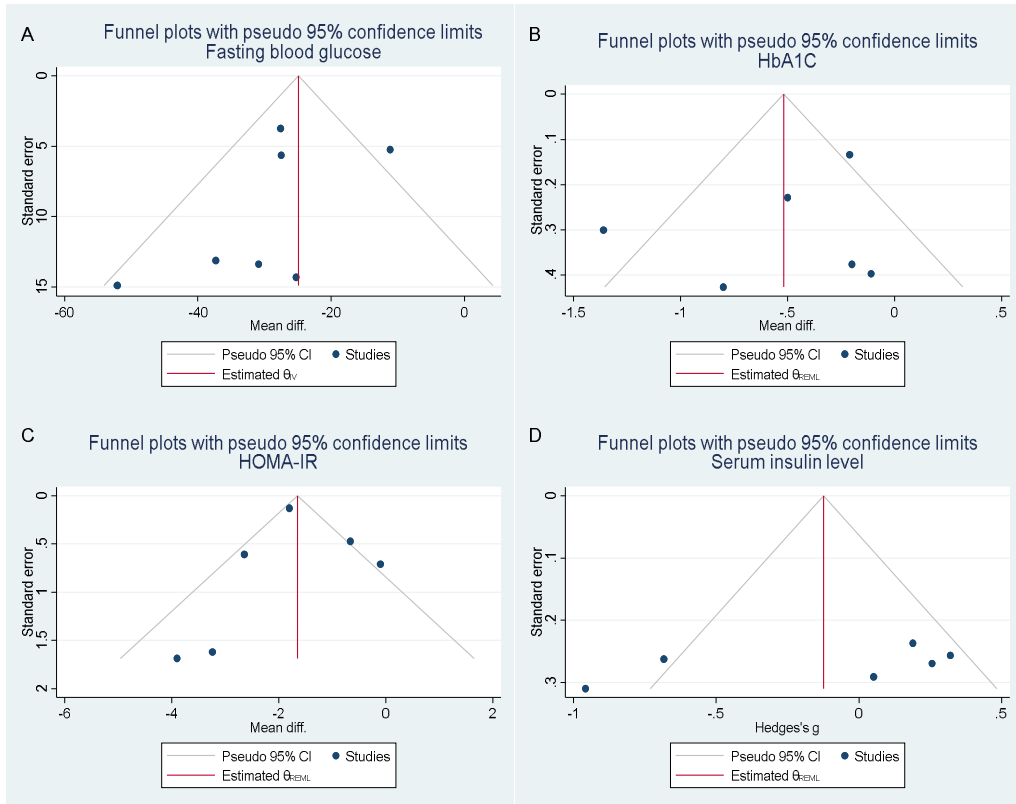


Figure 2: Forest plot of the standardized mean difference of each outcome insulin level between zinc intervention and control arms for low risk-of-bias trials



A: outcome is the fasting blood glucose; B: outcome is the HbA1C; C: outcome is the HOMA-IR; D: outcome is the serum insulin level.

Figure 3: Funnel plot with pseudo 95% confidence limits for the standardized mean difference of each outcome at post-trial



A: outcome is the fasting blood glucose; B: outcome is the HbA1C; C: outcome is the HOMA-IR; D: outcome is the serum insulin level.

Figure 4: two-sample MR results with IVW coefficient

