

1 **TITLE:** Comparative evaluation of rapid isothermal amplification and antigen assays for
2 screening testing of SARS-CoV-2

3

4 **AUTHORS:** Nol Salcedo^{1*}, Brena F. Sena^{1*}, Xiyang Qu^{1a}, Bobby Brooke Herrera^{1,2}

5

6 **AFFILIATIONS:** ¹E25Bio, Inc., Cambridge, MA, USA

7 ²Department of Immunology and Infectious Diseases, Harvard T.H. Chan School of Public
8 Health, Boston, MA, USA

9 ^aCurrent Address: Flagship Pioneering 75, Cambridge, MA 02139, USA

10 *Equal contribution

11 #Corresponding authors: BBH, bbherrera@e25bio.com

12

13

14

15

16

17

18

19

20

21

22

23

24 **ABSTRACT**

25 Human transmission of SARS-CoV-2 and emergent variants of concern has
26 continued to occur globally, despite mass vaccination campaigns. Public health strategies
27 to reduce virus spread should therefore rely, in part, on frequent screening with rapid,
28 inexpensive, and sensitive tests. We evaluated two digitally integrated rapid tests and
29 assessed their performance using stored nasal swab specimens collected from
30 individuals with or without COVID-19. An isothermal amplification assay combined with a
31 lateral flow test had a limit of detection of 10 RNA copies per reaction, and a positive
32 percent agreement (PPA)/negative percent agreement (NPA) during the asymptomatic
33 and symptomatic phases of 100%/100% and 95.83/100%, respectively. Comparatively,
34 an antigen-based lateral flow test, had a limit of detection of 30,000 copies, and a
35 PPA/NPA during the asymptomatic and symptomatic phases of 82.86%/98.68% and
36 91.67/100%, respectively. Both the isothermal amplification and antigen-based lateral
37 flow tests had optimized detection of SARS-CoV-2 during the peak period of transmission;
38 however, the antigen-based test had reduced sensitivity in clinical samples with qPCR Ct
39 values greater than 29.8. Low-cost, high-throughput screening enabled by isothermal
40 amplification or antigen-based techniques have value for outbreak control.

41

42

43

44

45

46

47 INTRODUCTION

48

49 Alongside widespread vaccine campaigns, strategies continue to be implemented
50 to reduce the human transmission of severe acute respiratory syndrome coronavirus 2
51 (SARS-CoV-2) (1-4). Testing, in particular, has played an important role throughout the
52 coronavirus disease 2019 (COVID-19) pandemic in detecting the virus and emergent
53 variants of concern, enabling responses at the national, community, and individual levels
54 (5, 6). However, most testing occurs in centralized settings that utilize quantitative
55 polymerase chain reaction (qPCR) assays (7). While these molecular techniques can
56 detect minute amounts of viral RNA and therefore most appropriate for clinical diagnosis,
57 they cannot be scaled to meet demands for extensive public health surveillance or
58 frequent screening of individuals, especially in resource limited settings. Inexpensive,
59 accurate tests that can be self-administered or performed at the point-of-care, and provide
60 actionable results, will further facilitate outbreak suppression.

61 Diagnostic testing for COVID-19 focuses on establishing the presence or absence
62 of SARS-CoV-2 in symptomatic or asymptomatic individuals (8). In general, healthcare
63 professionals collect respiratory specimens via nasopharyngeal swabs or use less
64 invasive approaches such as anterior nares swabs or saliva collection (9, 10). The
65 respiratory specimens then are processed by centralized high-complexity laboratories
66 with specialized equipment using qPCR assays with results being reported within 24 to
67 48 hours. In some regions, bottlenecks in laboratory-based testing have led to turnaround
68 times exceeding several days, diminishing the efficacy of this approach to prevent
69 ongoing transmission.

70 Surveillance testing estimates the infection dynamics of SARS-CoV-2 in
71 representative sample sets, with the primary goal to inform public health policy.
72 Molecular-based techniques that are highly sensitive and specific, and report qPCR cycle
73 thresholds (Ct) and viral loads, are typically used for surveillance testing (11-13). An
74 emerging approach involves surveillance of SARS-CoV-2 via wastewater monitoring
75 using qPCR assays (14, 15). While surveillance testing is performed in centralized
76 settings, the resulting information can be used to monitor epidemic trajectory in specific
77 communities and allow for real-time evaluation and/or implementation of mitigation
78 programs.

79 Identification of individuals who are likely infectious with screening testing is one
80 of the most effective, but underused, strategies to limit the ongoing transmission of SARS-
81 CoV-2 (16). In approximately 20-40% of COVID-19 cases, the infection remains
82 asymptomatic, and symptomatic disease is preceded by a pre-symptomatic incubation
83 period (17). Yet, pre-symptomatic and asymptomatic cases contribute significantly to
84 SARS-CoV-2 spread, challenging our ability to contain outbreaks (17).

85 Breaks in transmission chains can be most effectively achieved when screening
86 testing is applied frequently and serially using self-administered rapid tests (18-20).
87 Antigen-based tests, which utilize combinations of monoclonal antibodies and
88 nanoparticles to detect viral proteins, do not require instruments or skilled operators; as
89 of December 2021, 10 antigen tests for SARS-CoV-2 have been approved for at-home
90 use in the United States (21). Although antigen tests have lower analytical sensitivity and
91 specificity compared to qPCR assays, they have increased ability to detect SARS-CoV-2

92 during the acute phase of COVID-19 when an infected individual is most likely to transmit
93 the virus (22-24).

94 Moreover, isothermal amplification technologies offer the simplicity and speed of
95 antigen tests but have higher sensitivity and specificity (25-27). One of the most promising
96 isothermal amplification technologies is recombinase polymerase amplification (RPA)
97 (28, 29). In RPA, double stranded DNA denaturation and strand invasion is achieved by
98 a cocktail of enzymes including recombinases, single-stranded binding proteins, and DNA
99 polymerases; typically, this occurs by multiple heat cycles in PCR (30). RPA has added
100 benefits over other isothermal amplification technologies (i.e., loop-mediated isothermal
101 amplification, LAMP or CRISPR) as reactions occur at ambient temperatures (37-42°C),
102 in shorter time periods, and results that can be visualized on a lateral flow test. One of
103 three isothermal amplification technologies currently available in the United States for at-
104 home detection of SARS-CoV-2 utilizes reverse transcription RPA (RT-RPA), and has
105 been shown to detect the virus in nasal swab specimens with as low as twenty genome
106 copies (31, 32). Given their robust sensitivity and specificity, RT-RPA assays are
107 optimized to detect SARS-CoV-2 during the peak period of transmission in individuals
108 with pre-symptomatic, symptomatic, and/or asymptomatic infections (28, 33, 34).

109 Here, we performed a comparative evaluation of a RT-RPA assay and an antigen
110 test. Using previously characterized nasal swab dilution specimens, we assessed the
111 analytical sensitivity of the two tests. We show that the RT-RPA assay allows for detection
112 of SARS-CoV-2 down to 10 RNA copies per reaction compared to folds higher with the
113 antigen test. We then calculated the positive percent agreement (PPA, or sensitivity) and
114 negative percent agreement (NPA, or specificity) using stored, unextracted nasal swab

115 specimens collected from individuals with or without COVID-19. We demonstrate that the
116 RT-RPA assay has increased sensitivity in nasal swab specimens, particularly in qPCR
117 Ct values greater than 29.8, regardless of if the sample was collected during the
118 asymptomatic or symptomatic phases. Supporting the innovation, manufacturing,
119 approval, and distribution of isothermal amplification screening tests will enable more
120 effective control of infectious disease outbreaks.

121

122 MATERIALS AND METHODS

123

124 Clinical samples

125 The nasal swab dilution panel was provided by the non-profit PATH
126 (www.path.org). Nasal swab dilutions were prepared from human nasal swab eluate
127 discards from suspected COVID-19 patients, collected within seven days post-symptoms
128 onset. A single swab eluate positive for SARS-CoV-2 by qPCR was diluted into a single
129 nasal eluate negative for SARS-CoV-2 by qPCR. For the dilution specimens with lower
130 than 5,000 RNA copies, known quantities of RNA (ATCC, Manassas, VA) were spiked
131 into nasal eluates negative for SARS-CoV-2. Dilution specimens were de-identified,
132 coded, and then aliquoted and frozen at -80°C. Aliquots were thawed and characterized
133 by qPCR as previously described (24). The primary studies under which the samples
134 were collected received ethical clearance from the PATH Institutional Review Board (IRB)
135 (approval number 0004244).

136 Additionally, nasal swab specimens were collected from a cohort of suspected
137 COVID-19 patients with or without symptoms at a point-of-care site (POC nasal swab

138 specimens); for individuals with symptoms, specimen were collected within the first 3 days
139 of symptoms onset. The nasal swabs were mixed in tubes containing 1X PBS
140 (MilliporeSigma, Burlington, MA). Aliquots were de-identified, coded, and then frozen at -
141 80°C. The study under which the samples were collected received ethical clearance from
142 the Advarra, Inc. IRB (approval number Pro00044496).

143

144 qPCR

145 200 µl of the POC nasal swab specimens were used for extraction with the
146 MagMAX Viral/Pathogen II Nucleic Acid Isolation Kit (ThermoFisher Scientific, Waltham,
147 MA) on an epMotion 5075 (Eppendorf, Hamburg, Germany) liquid handler. Nucleic acids
148 were eluted in 50 µl; 2 µl were used for qPCR confirmation using the GoTaq Probe 1-
149 Step RT-qPCR System (Promega, Madison, WI) on a QuantStudio 7 Flex Real-Time PCR
150 Instrument (ThermoFisher Scientific, Waltham, MA). The SARS-CoV-2 (2019-nCoV)
151 CDC qPCR Probe Assay was used to detect the human RNaseP gene and two viral
152 targets 2019-nCoV_N1 and 2019-nCoV_N2 (Integrated DNA Technologies, Coralville,
153 IA).

154

155 RT-RPA assay

156 Prior to isothermal amplification testing, the nasal swab dilution specimens or POC
157 nasal swab specimens were lysed at 95°C using a heat block (Southern Labware,
158 Cumming, GA) for 3 minutes. Isothermal amplification reactions were conducted using
159 AmpliFast enzymes and buffer (E25Bio, Inc., Cambridge, MA), 1 µl RNase H (5U/µl;
160 ThermoFisher Scientific, Waltham, MA), 0.5 µl SuperScript IV RT (200 U/µl;

161 ThermoFisher Scientific, Waltham, MA), 0.5 μ l of SARS-CoV-2 nucleocapsid (N) forward
162 and reverse primers (300 nM final concentration), and 2 μ l input template (nasal swab
163 dilution specimen or POC nasal swab specimen). This mix was activated by addition of 1
164 μ l of magnesium acetate (14 nM final concentration), MilliporeSigma, Burlington, MA)
165 followed by thorough mixing. Reactions were incubated at 38°C for 20 minutes. A
166 hybridization mix was prepared by combining 1 μ l SARS-Cov-2 N biotinylated probe
167 (0.167 nM final concentration) with 19 μ l Tris pH 8 (10 mM). 20 μ l of the hybridization mix
168 was added to each reaction, and samples were heated to 95°C for 3 minutes followed by
169 a cooling step at room temperature for 3 minutes. 40 μ l of buffer (Pocket Diagnostic, York,
170 United Kingdom) were added to each reaction, then the mixture was applied to the PCRD
171 nucleic acid lateral flow test (Pocket Diagnostic, York, United Kingdom) and allowed to
172 react for 10 minutes. Interactions of the immobilized test and control line antibodies with
173 amplified nucleic acids and the nanoparticle conjugate produced visible bands, indicating
174 whether a test was positive or negative.

175

176 Antigen test

177 Rapid antigen tests (E25Bio, Inc., Cambridge, MA) contain a monoclonal antibody
178 and a nanoparticle conjugate that detect SARS-CoV-2 N. 100 μ l of the nasal swab dilution
179 specimens or POC nasal swab specimens were applied to the antigen test and allowed
180 to react for 15 minutes. Interactions of the immobilized test and control line antibodies
181 with antigen and the nanoparticle conjugate produced visible bands, indicating whether a
182 test was positive or negative.

183

184 Image analysis

185 Results from the isothermal amplification lateral flow tests and antigen-based
186 lateral flow tests were captured via the Passport App (currently available through Apple,
187 Inc.'s TestFlight; E25Bio, Inc., Cambridge, MA). The images were machine-read and
188 processed to quantify test results. The average pixel intensity was quantified at the test
189 line, control line, and background areas. The background-subtracted test line signal was
190 then normalized to the background-subtracted control line signal and the final test signal
191 was expressed as percent of control. The Passport App only stores images and
192 identifiable test results locally on the user's mobile device, and the individual can share
193 the results with whomever, whenever they choose.

194

195 Statistics

196 GraphPad Prism 9.0 (San Diego, CA) was used to analyze and report the
197 performance of the isothermal amplification and antigen tests compared to qPCR. The
198 sensitivity was defined as the fraction of total qPCR confirmed positive samples that are
199 true positives according to the test. The specificity was defined as the fraction of total
200 qPCR confirmed negative samples that are true negatives according to the test. Where
201 appropriate, test signals were plotted using symbol and line graphs according to
202 asymptomatic or symptomatic infection status and qPCR Ct thresholds.

203

204 Data availability

205 All relevant data have been included in the manuscript. We will provide any
206 additional data upon request.

207

208 RESULTS

209 In the RT-RPA assay, viral RNA is first copied to cDNA by reverse transcriptase,
210 then degraded by RNase H. The cDNA product is amplified by RPA using a forward and
211 a FAM-labeled reverse pair of primers specific to the target sequence. The amplified
212 nucleic acid target is denatured and hybridized to a biotinylated probe. Dual FAM-labeled
213 and biotin-labeled products are then detected on a lateral flow test that contain
214 nanoparticles and detection molecules (i.e., anti-FAM antibody and streptavidin) specific
215 for FAM and biotin (Fig. 1A). In the antigen test, the interaction of antibodies and
216 nanoparticles with protein targets produces detectable bands (Fig. 1B). Both the RT-RPA
217 assay and the antigen test used in this study target SARS-CoV-2 N. To reduce errors in
218 user-based interpretation, we used a mobile phone application to machine read and
219 quantify the RT-RPA and antigen test results (Fig. 1C). Mobile phone image processing
220 allowed test users to obtain an objective analysis of their results, despite varied use
221 conditions, and share data in real-time.

222 We evaluated the analytical sensitivity of the RT-RPA assay and the antigen test
223 using well-characterized nasal swab dilution specimens. The dilution specimens
224 contained SARS-CoV-2 RNA copies ranging from 1 (Ct value 39.6) to 200,000 (Ct value
225 25.2). Consistent with expectations from qPCR, the RT-RPA assay yielded positive
226 results with an input of 10 RNA copies per reaction (Ct value 37.3) (Fig. 2A-B). The
227 antigen test reproducibly had detectable results with dilution specimens between 40,000
228 and 30,000 copies (Ct values 28.3 and 29.2, respectively) of SARS-CoV-2 (Fig. 2C-D).

229 The RT-RPA assay had a detection limit several orders of magnitude lower than the
230 antigen test.

231 To further evaluate the RT-RPA and antigen tests, we compared their sensitivity
232 and specificity using stored, unextracted nasal swab specimens collected from individuals
233 with or without COVID-19. A total of 114 nasal swab specimens were negative and 59
234 were positive for SARS-CoV-2 by qPCR. Of the 114 negative specimens, 76 were
235 collected from asymptomatic cases and 24 were collected from symptomatic cases. Of
236 the 59 SARS-CoV-2 positive specimens, 35 and 24 were collected from asymptomatic
237 or symptomatic cases, respectively. All 114 negative specimens were negative by the RT-
238 RPA assay, regardless of symptoms, corresponding to a 100% specificity (Fig. 3, Table
239 1-2). Only 1 of 76 negative specimen from asymptomatic cases was positive by the
240 antigen test, corresponding to a 98.68% specificity (Fig. 3A, Table 1). All negative
241 specimens from 24 symptomatic cases were negative by the antigen test (100%
242 specificity) (Fig. 3B, Table 2). These results confirmed a low false positive rate for the RT-
243 RPA assay and antigen test.

244 All 35 SARS-CoV-2 positive specimens from asymptomatic cases were positive by
245 the RT-RPA assay, corresponding to a 100% sensitivity (Fig. 3A, Table 1). Of the 24
246 positive specimens from the symptomatic phase, only 1 tested negative (95.83%
247 sensitivity) (Fig. 3B, Table 2). In contrast, the antigen test detected 29 out of 35 (82.86%
248 sensitivity) asymptomatic SARS-CoV-2 positives and 22 out of 24 (91.67% sensitivity)
249 symptomatic positives (Fig. 3, Tables 1-2). Of note, the sensitivity of the antigen test
250 decreased significantly in Ct values greater than 30.1, while the sensitivity of the RT-RPA
251 assay was maintained (Fig. 3). Altogether, these results demonstrated that the true

252 positive rate of the RT-RPA assay was much higher than the antigen test especially during
253 the asymptomatic phase and particularly in specimens with higher Ct values.

254

255 DISCUSSION

256 One of the most promising strategies aimed at SARS-CoV-2 outbreak suppression
257 is the screening of infectious individuals. This type of testing requires frequent and serial
258 testing of large populations that can be self-administered or performed at the point-of-
259 care in high-transmission settings (i.e., schools, workplaces, etc.). The primary goal of
260 screening testing is to achieve population-wide effects by breaking transmission chains
261 through detection of cases, especially during the pre-symptomatic or asymptomatic
262 phases.

263 Modeling studies have demonstrated that frequent rapid testing of large
264 populations, even with varied test accuracies, can help achieve herd effects thereby
265 suppressing transmission of SARS-CoV-2 (18, 20, 35). In Slovakia, ~80% of the
266 population was screened for COVID-19 using antigen tests (36). In a 2-week period,
267 50,000 cases were identified, and along with other public health measures (i.e., wearing
268 masks, quarantining, etc.), the incidence was reduced by 82%. Further, at-home antigen
269 testing was performed twice per week in a coworking environment in Cambridge, MA over
270 a 6-month period (19). In the case of a positive test, an individual would undergo a 10-
271 day quarantine prior to returning to the workplace. Twice-weekly testing identified 15
272 individuals infected with SARS-CoV-2, with a test sensitivity of 96.2% on days 0-3 of
273 symptoms. This testing strategy allowed the activities of the coworking sites to continue

274 without pause. To our knowledge, screening testing using isothermal amplification
275 techniques has not been extensively evaluated.

276 In this study, we performed a comparative evaluation of a RT-RPA assay and an
277 antigen test for SARS-CoV-2. We tested the analytical sensitivity using a nasal swab
278 dilution panel. The RT-RPA assay had a detection limit far lower than the antigen test.
279 We then analyzed the performance of the tests using qPCR characterized nasal swab
280 specimens collected from individuals with or without COVID-19. The RT-RPA assay had
281 a high sensitivity (>95%) and specificity (100%) in specimens from asymptomatic or
282 symptomatic cases. In contrast, the sensitivity of the antigen test during the asymptomatic
283 phase was much lower at 82.86%, and especially with specimens that had Ct values
284 greater than 30. A likely explanation is that during the asymptomatic phase SARS-CoV-
285 2 viremia has not peaked, resulting in reduced viral antigens in respiratory specimens.
286 Additionally, Ct values >30 typically appear later in the course of SARS-CoV-2 infection
287 (i.e., 7 days after exposure), when virus is being eliminated by the immune system,
288 clearing antigen levels. In support of our hypotheses, the sensitivity of the antigen test
289 increased to >90% in nasal swab specimens collected from symptomatic cases within 3
290 days of symptoms onset.

291 Future work should broaden the evaluation of isothermal amplification and antigen
292 assays to additional settings, sample types, and disease states (i.e., pre-symptomatic
293 phase). Performance testing on prospectively collected samples will further corroborate
294 preliminary findings. As the RT-RPA assay used in this study uses an inexpensive water
295 bath and heat block, there is a need to for these types of assays to perform reactions with
296 consumer-designed hardware that would allow for at-home or point-of-care testing.

297 Optimizing reaction mixes can also help reduce the temperatures and time required for
298 test processing. Finally, the mobile phone application used in this study lessens user error
299 by interpreting the results via pre-designed algorithms. Additional open-source, low-cost
300 methods for data capture and reporting are warranted.

301 Public health screening requires rapid, inexpensive, and sensitive tests that can
302 be scaled for frequent and serial testing in large numbers. Antigen tests and upcoming
303 isothermal amplification assays fit these needs and could be scaled to millions of tests
304 per day. Despite being shown to be highly effective at detecting infectious individuals,
305 there are only a handful of rapid tests currently available for self-administration or at-home
306 use in the United States. Even with approvals, these manufacturers have been unable to
307 meet the scale and demand, leaving individuals without access to these valuable
308 inexpensive, rapid testing options. The support of manufacturing, rapid approval
309 processes, and distribution of screening tests will help control COVID-19 outbreaks.

310

311 ACKNOWLEDGEMENTS

312 We thank the staff of Cataldo Ambulance Service, notably David, Karen, and
313 Pippa, for their help with patient recruitment and sample collection. We thank Professor
314 Phyllis Kanki for critical reading of the manuscript.

315

316 COMPETING INTERESTS

317 This work was supported by E25Bio, Inc. NS, BFS, and BBH are employed by
318 E25Bio, Inc., a company that develops rapid diagnostic tests for infectious diseases. At

319 the time of the study, XQ was employed by E25Bio, Inc. BBH is an inventor on a U.S.
320 Provisional Patent Application (63/189,502).

321

322 REFERENCES

323 1. El Sahly HM, Baden LR, Essink B, Doblecki-Lewis S, Martin JM, Anderson EJ, et
324 al. Efficacy of the mRNA-1273 SARS-CoV-2 Vaccine at Completion of Blinded Phase. N
325 Engl J Med. 2021;385(19):1774-85.

326 2. Barda N, Dagan N, Ben-Shlomo Y, Kepten E, Waxman J, Ohana R, et al. Safety
327 of the BNT162b2 mRNA Covid-19 Vaccine in a Nationwide Setting. N Engl J Med.
328 2021;385(12):1078-90.

329 3. Sadoff J, Gray G, Vandebosch A, Cardenas V, Shukarev G, Grinsztejn B, et al.
330 Safety and Efficacy of Single-Dose Ad26.COV2.S Vaccine against Covid-19. N Engl J
331 Med. 2021;384(23):2187-201.

332 4. CDC. Mitigation measures for COVID-19 in households and markets in non-US
333 low-resource settings. 2021.

334 5. CDC. Testing Strategies for SARS-CoV-2. 2021.

335 6. Erster O, Beth-Din A, Asraf H, Levy V, Kabat A, Mannasse B, et al. SPECIFIC
336 DETECTION OF SARS-COV-2 B.1.1.529 (OMICRON) VARIANT BY FOUR RT-qPCR
337 DIFFERENTIAL ASSAYS. medRxiv. 2021:2021.12.07.21267293.

338 7. Binnicker MJ. Challenges and Controversies to Testing for COVID-19. J Clin
339 Microbiol. 2020;58(11).

340 8. Vandenberg O, Martiny D, Rochas O, van Belkum A, Kozlakidis Z. Considerations
341 for diagnostic COVID-19 tests. Nat Rev Microbiol. 2021;19(3):171-83.

- 342 9. Bwire GM, Majigo MV, Njiro BJ, Mawazo A. Detection profile of SARS-CoV-2 using
343 RT-PCR in different types of clinical specimens: A systematic review and meta-analysis.
344 J Med Virol. 2021;93(2):719-25.
- 345 10. LeBlanc JJ, Heinstein C, MacDonald J, Pettipas J, Hatchette TF, Patriquin G. A
346 combined oropharyngeal/nares swab is a suitable alternative to nasopharyngeal swabs
347 for the detection of SARS-CoV-2. J Clin Virol. 2020;128:104442.
- 348 11. Kahn R, Kennedy-Shaffer L, Grad YH, Robins JM, Lipsitch M. Potential Biases
349 Arising From Epidemic Dynamics in Observational Seroprotection Studies. Am J
350 Epidemiol. 2021;190(2):328-35.
- 351 12. Hay JA, Kennedy-Shaffer L, Kanjilal S, Lennon NJ, Gabriel SB, Lipsitch M, et al.
352 Estimating epidemiologic dynamics from cross-sectional viral load distributions. Science.
353 2021;373(6552).
- 354 13. Tom MR, Mina MJ. To Interpret the SARS-CoV-2 Test, Consider the Cycle
355 Threshold Value. Clin Infect Dis. 2020;71(16):2252-4.
- 356 14. Peccia J, Zulli A, Brackney DE, Grubaugh ND, Kaplan EH, Casanovas-Massana
357 A, et al. Measurement of SARS-CoV-2 RNA in wastewater tracks community infection
358 dynamics. Nat Biotechnol. 2020;38(10):1164-7.
- 359 15. Randazzo W, Truchado P, Cuevas-Ferrando E, Simon P, Allende A, Sanchez G.
360 SARS-CoV-2 RNA in wastewater anticipated COVID-19 occurrence in a low prevalence
361 area. Water Res. 2020;181:115942.
- 362 16. Mina MJ, Parker R, Larremore DB. Rethinking Covid-19 Test Sensitivity - A
363 Strategy for Containment. N Engl J Med. 2020;383(22):e120.

- 364 17. He X, Lau EHY, Wu P, Deng X, Wang J, Hao X, et al. Temporal dynamics in viral
365 shedding and transmissibility of COVID-19. *Nat Med.* 2020;26(5):672-5.
- 366 18. Larremore DB, Wilder B, Lester E, Shehata S, Burke JM, Hay JA, et al. Test
367 sensitivity is secondary to frequency and turnaround time for COVID-19 screening. *Sci*
368 *Adv.* 2021;7(1).
- 369 19. Harmon A, Chang C, Salcedo N, Sena B, Herrera BB, Bosch I, et al. Validation of
370 an At-Home Direct Antigen Rapid Test for COVID-19. *JAMA Netw Open.*
371 2021;4(8):e2126931.
- 372 20. Nash B, Badea A, Reddy A, Bosch M, Salcedo N, Gomez A. Validating and
373 Modeling the Impact of High-Frequency Rapid Antigen Screening on Covid-19 Spread
374 and Outcomes. *J Clin Trials.* 2021;11:483.
- 375 21. U.S. FDA. In Vitro Diagnostics EUAs - Antigen Diagnostic Tests for SARS-CoV-2.
- 376 22. Corman VM, Haage VC, Bleicker T, Schmidt ML, Muhlemann B, Zuchowski M, et
377 al. Comparison of seven commercial SARS-CoV-2 rapid point-of-care antigen tests: a
378 single-centre laboratory evaluation study. *Lancet Microbe.* 2021;2(7):e3111-e9.
- 379 23. Pickering S, Batra R, Merrick B, Snell LB, Nebbia G, Douthwaite S, et al.
380 Comparative performance of SARS-CoV-2 lateral flow antigen tests and association with
381 detection of infectious virus in clinical specimens: a single-centre laboratory evaluation
382 study. *Lancet Microbe.* 2021;2(9):e461-e71.
- 383 24. Salcedo N, Harmon A, Herrera BB. Pooling of Samples for SARS-CoV-2 Detection
384 Using a Rapid Antigen Test. *Front Trop Dis.* 2021;2:707865.

- 385 25. Ganguli A, Mostafa A, Berger J, Aydin MY, Sun F, Ramirez SAS, et al. Rapid
386 isothermal amplification and portable detection system for SARS-CoV-2. *Proc Natl Acad*
387 *Sci U S A*. 2020;117(37):22727-35.
- 388 26. Baek YH, Um J, Antigua KJC, Park JH, Kim Y, Oh S, et al. Development of a
389 reverse transcription-loop-mediated isothermal amplification as a rapid early-detection
390 method for novel SARS-CoV-2. *Emerg Microbes Infect*. 2020;9(1):998-1007.
- 391 27. Rabe BA, Cepko C. SARS-CoV-2 detection using isothermal amplification and a
392 rapid, inexpensive protocol for sample inactivation and purification. *Proc Natl Acad Sci U*
393 *S A*. 2020;117(39):24450-8.
- 394 28. Qian J, Boswell SA, Chidley C, Lu ZX, Pettit ME, Gaudio BL, et al. An enhanced
395 isothermal amplification assay for viral detection. *Nat Commun*. 2020;11(1):5920.
- 396 29. Mancuso CP, Lu ZX, Qian J, Boswell SA, Springer M. A Semi-Quantitative
397 Isothermal Diagnostic Assay Utilizing Competitive Amplification. *Anal Chem*.
398 2021;93(27):9541-8.
- 399 30. Piepenburg O, Williams CH, Stemple DL, Armes NA. DNA detection using
400 recombination proteins. *PLoS Biol*. 2006;4(7):e204.
- 401 31. U.S. FDA. In Vitro Diagnostics EUAs - Molecular Diagnostic Tests for SARS-CoV-
402 2.
- 403 32. Donato LJ, Trivedi VA, Stransky AM, Misra A, Pritt BS, Binnicker MJ, et al.
404 Evaluation of the Cue Health point-of-care COVID-19 (SARS-CoV-2 nucleic acid
405 amplification) test at a community drive through collection center. *Diagn Microbiol Infect*
406 *Dis*. 2021;100(1):115307.

- 407 33. Ptasinska A, Whalley C, Bosworth A, Poxon C, Bryer C, Machin N, et al. Diagnostic
408 accuracy of loop-mediated isothermal amplification coupled to nanopore sequencing
409 (LamPORE) for the detection of SARS-CoV-2 infection at scale in symptomatic and
410 asymptomatic populations. *Clin Microbiol Infect.* 2021;27(9):1348 e1- e7.
- 411 34. Dong Y, Wu X, Li S, Lu R, Li Y, Wan Z, et al. Comparative evaluation of 19 reverse
412 transcription loop-mediated isothermal amplification assays for detection of SARS-CoV-
413 2. *Sci Rep.* 2021;11(1):2936.
- 414 35. Paltiel AD, Zheng A, Walensky RP. Assessment of SARS-CoV-2 Screening
415 Strategies to Permit the Safe Reopening of College Campuses in the United States.
416 *JAMA Netw Open.* 2020;3(7):e2016818.
- 417 36. Pavelka M, Van-Zandvoort K, Abbott S, Sherratt K, Majdan M, group CC-w, et al.
418 The impact of population-wide rapid antigen testing on SARS-CoV-2 prevalence in
419 Slovakia. *Science.* 2021;372(6542):635-41.

420

421

422

423

424

425

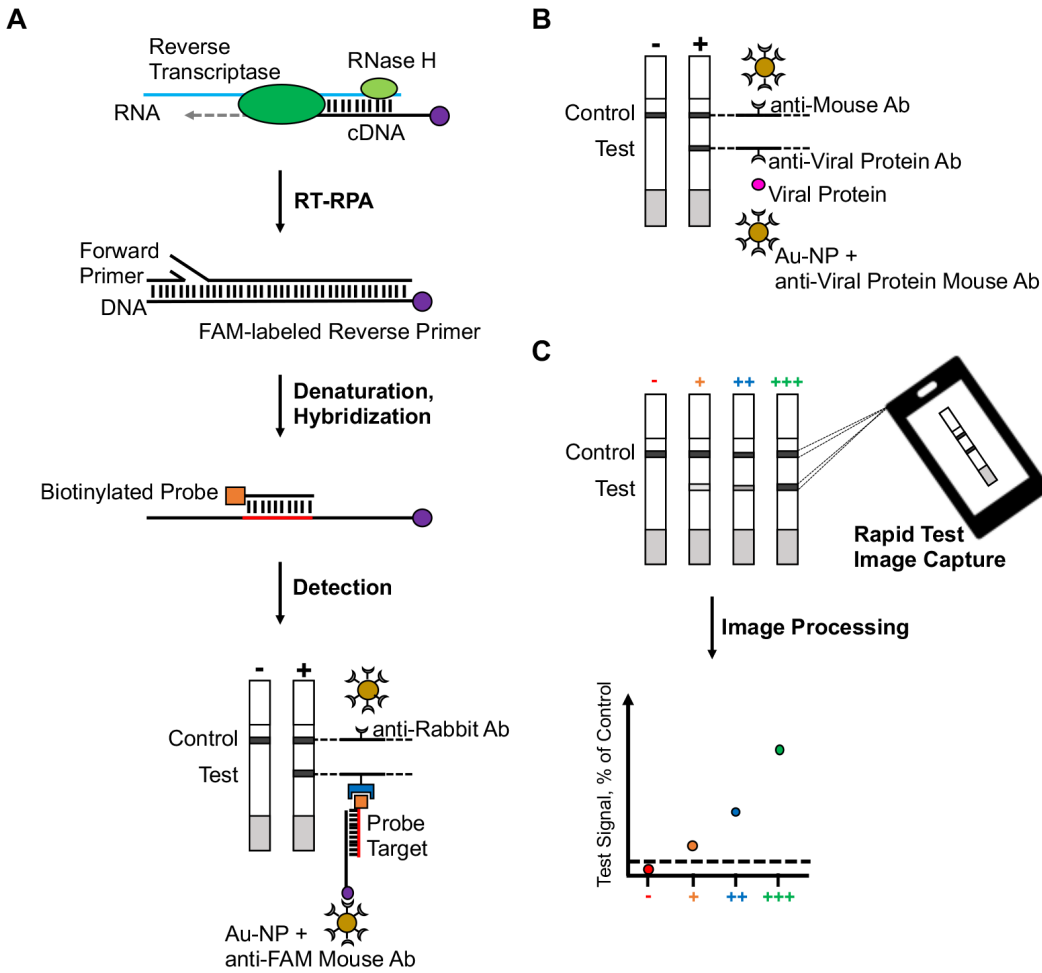
426

427

428

429

430 FIGURES



431

432 Figure 1. Schematic of RT-RPA assay versus antigen-based test. A) In RT-RTPA, viral

433 RNA is copied to cDNA by reverse transcriptase, then degraded by RNase H. Using a

434 forward and a FAM-labeled reverse pair of primers specific to a target sequence, the

435 cDNA product is amplified by RPA, then denatured and hybridized to a biotinylated probe.

436 FAM-labeled and biotin-labeled products are detected on a lateral flow strip using

437 molecules specific for FAM and biotin and nanoparticles.

438 targets are detected by a lateral flow strip using protein-specific antibodies and

439 nanoparticles. C) A mobile phone application was used to image capture, machine-read,

440 and quantify test results. The average pixel intensity is quantified at the test line, control
441 line, and background areas. The background-subtracted test line signal is then
442 normalized to the background-subtracted control line and expressed at % of control.

443

444

445

446

447

448

449

450

451

452

453

454

455

456

457

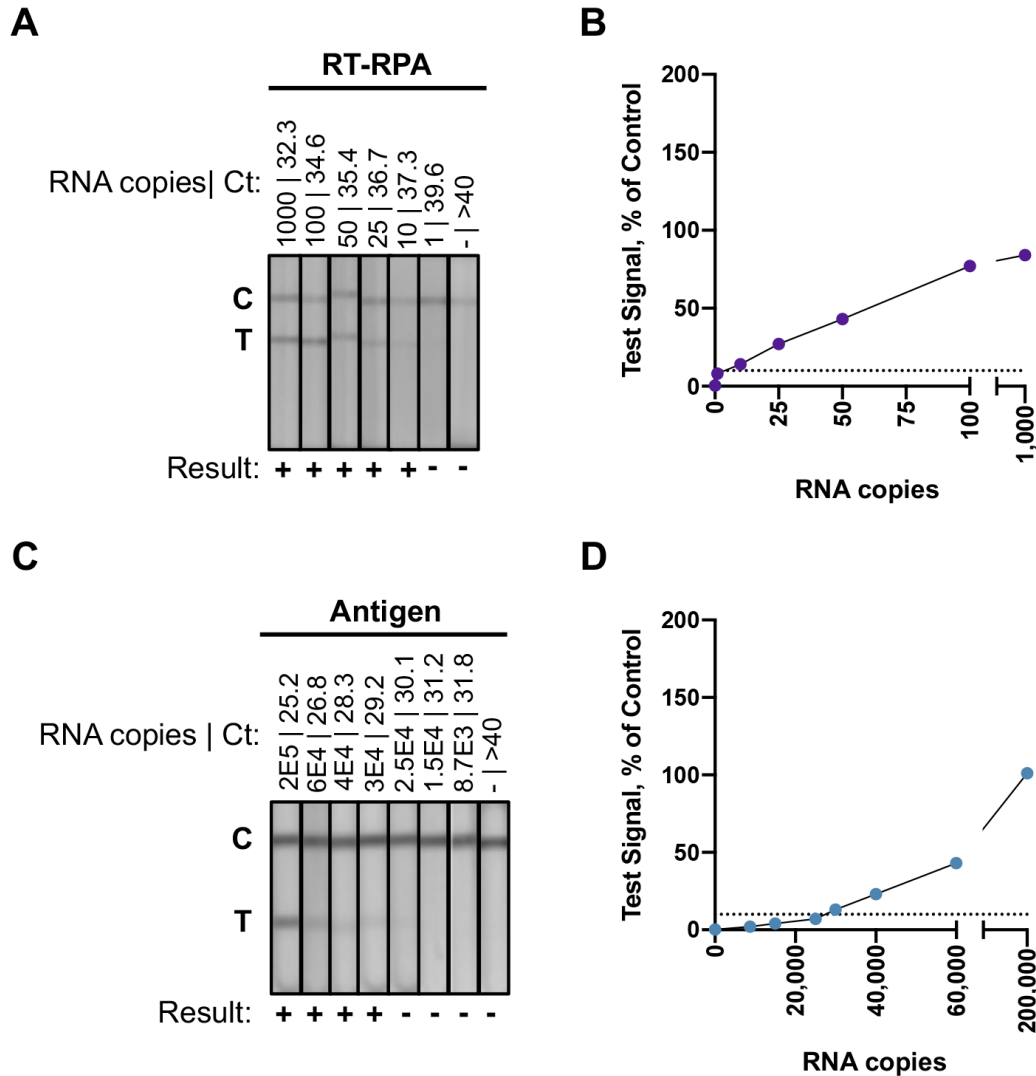
458

459

460

461

462



463

464 Figure 2. Analytical sensitivity of the RT-RPA assay and the antigen test using nasal
 465 swab dilution specimens. A) Lateral flow strips for the RT-RPA reactions with dilution
 466 specimens containing RNA copies ranging from 0-1,000. B) Plot from the RT-RPA assay
 467 results quantified by the mobile phone application. The x-axis corresponds to dilutions
 468 specimens with known input copies of SARS-CoV-2 RNA. The y-axis corresponds to
 469 background subtracted test signal normalized to the control line for each lateral flow strip.
 470 Test results less than 10% of control are considered negative results, which is indicated
 471 by the black dashed line. C) Lateral flow strips for the antigen tests with dilution specimens

472 containing RNA copies ranging from 0-200,000 D) Plot from the antigen tests results
473 quantified by the mobile phone application. The x-axis corresponds to dilutions specimens
474 with known input copies of SARS-CoV-2 RNA. The y-axis corresponds to background
475 subtracted test signal normalized to the control line for each lateral flow strip. Test results
476 less than 10% of control are considered negative results, which is indicated by the black
477 dashed line.

478

479

480

481

482

483

484

485

486

487

488

489

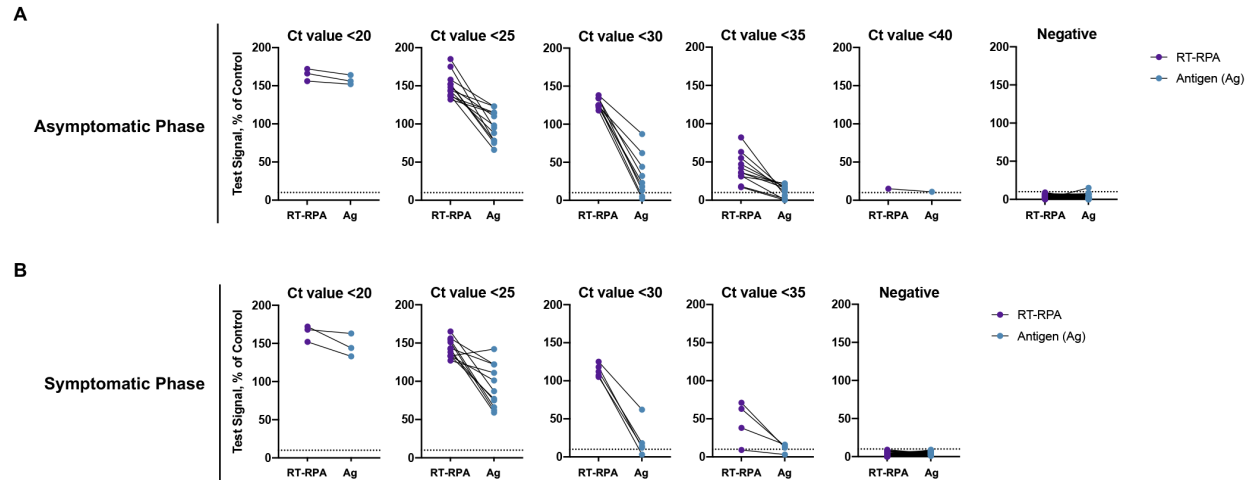
490

491

492

493

494



495

496 Figure 3. Clinical performance of the RT-RPA assay and the antigen test using nasal
497 swab specimens collected from individuals with or without COVID-19. A) Comparative
498 evaluation of the RT-RPA assay (purple) and the antigen test (blue) using nasal swab
499 specimens from asymptomatic cases. Comparative performance between the tests was
500 plotted according to qPCR positive (Ct values between <20 to <40) and negative results.
501 B) Comparative evaluation of the RT-RPA assay (purple) and the antigen test (blue) using
502 nasal swab specimens from symptomatic cases. Comparative performance between the
503 tests was plotted according to qPCR positive (Ct values between <20 to <40) and
504 negative results.

505

506

507

508

509

510

511

512 TABLES

513

514 Table 1. Comparative performance of the RT-RPA assay and the antigen test against
 515 qPCR in asymptomatic cases.

Asymptomatic Phase								
		qPCR					95% CI	
		+	-	Total	PPA	100.00%	90.00%	100.00%
RT-RPA	+	35	0	35	NPA	100.00%	95.26%	100.00%
	-	0	76	76	PPV	100.00%		
Total		35	76	111	NPV	100.00%		
Asymptomatic Phase								
		qPCR					95% CI	
		+	-	Total	PPA	82.86%	66.35%	93.44%
Antigen	+	29	1	30	NPA	98.68%	92.89%	99.97%
	-	6	75	81	PPV	96.67%	80.45%	99.51%
Total		35	76	111	NPV	92.59%	85.78%	96.28%

516

517

518

519

520

521

522

523

524

525

526

527

528

529 Table 2. Comparative performance of the RT-RPA assay and the antigen test against
 530 qPCR in symptomatic cases.

Symptomatic Phase								
		qPCR					95% CI	
		+	-	Total	PPA	95.83%	78.88%	99.89%
RT-RPA	+	23	0	23	NPA	100.00%	90.75%	100.00%
	-	1	38	39	PPV	100.00%		
Total		24	38	62	NPV	97.44%	84.80%	99.62%
		qPCR					95% CI	
		+	-	Total	PPA	91.67%	73.00%	98.97%
Antigen	+	22	0	22	NPA	100.00%	90.75%	100.00%
	-	2	38	40	PPV	100.00%		
Total		24	38	62	NPV	95.00%	83.45%	98.62%

531