

COVID-19 and Indian population: a comparative genetic analysis

1 Saurabh Patil¹, Sandhya Kiran Pemmasani^{1*}, Neelima Chitturi¹, Ishita Bhatnagar¹, Anuradha
2 Acharya¹, Lingareddy Venkata Subash¹

3 ¹ Research and Development Division, Mapmygenome India Limited, Hyderabad, India

4

5 *** Correspondence:**

6 Dr. Sandhya Kiran Pemmasani

7 drsandhyakiran@mapmygenome.in

8

9 **Keywords: COVID-19, COVID-19 susceptibility, COVID-19 severity, comparative genetics,**
10 **corona virus, SARS-CoV2**

11

12

13

14

15

16

17

18

19

20

21

22

23

24

25

26

27 **ABSTRACT**

28

29 **Background**

30 Major risk factors of COVID-19 include older age, male gender, and comorbidities. In addition, host
31 genetic makeup is also known to play a major role in COVID-19 susceptibility and severity. To
32 assess the genetic predisposition of the Indian population to COVID-19, a comparative analysis of
33 the frequencies of polymorphisms directly or potentially associated with COVID-19 susceptibility,
34 severity, immune response, and fatal outcomes was done between the Indian population and other
35 major populations (European, African, East Asian, South Asian, and American).

36

37 **Materials and methods**

38 Polymorphisms directly or potentially associated with COVID-19 susceptibility, severity, immune
39 response, and mortality were mined from genetic association studies, comparative genetic studies,
40 expression quantitative trait loci studies among others. Genotype data of these polymorphisms were
41 either sourced from the GenomegaDBTM database of Mapmygenome India Ltd. (sample size = 3054;
42 Indian origin) or were imputed. Polymorphisms with minor allele frequency ≥ 0.05 and that are in
43 Hardy-Weinberg equilibrium in the Indian population were considered for allele frequency
44 comparison between the Indian population and 1000 Genome population groups.

45

46 **Results**

47 Allele frequencies of 421 polymorphisms were found to be significantly different in the Indian
48 population compared to European, African, East Asian, South Asian, and American populations. 128
49 polymorphisms were shortlisted based on linkage disequilibrium and were analyzed in detail. Apart
50 from well-studied genes, like ACE2, TMPRSS2, ADAM17, and FURIN, variants from AHSG,
51 IFITM3, PTPN2, CD209, CCL5, HEATR9, SELENBP9, AGO1, HLA-G, MX1, ICAM3, MUC5B,
52 CRP, C1GALT1, and other genes were also found to be significantly different in Indian population.
53 These variants might be implicated in COVID-19 susceptibility and progression.

54

55 **Conclusion**

56 Our comparative study unraveled multiple genetic variants whose allele frequencies were
57 significantly different in the Indian population and might have a potential role in COVID-19
58 susceptibility, its severity, and fatal outcomes. This study can be very useful for selecting candidate
59 genes/variants for future COVID-19 related genetic association studies.

60

61

62

63

64

65 1 INTRODUCTION

66 Coronavirus disease - 2019 (COVID-19), caused by severe acute respiratory syndrome coronavirus 2
67 (SARS-CoV2), has strained the healthcare system and economy of a majority of nations and has
68 crippled the human population [1, 2, 3]. COVID-19 is characterized by a range of clinical features
69 which are categorized as most common, less common, and rare (severe). The most common
70 symptoms are fever, dry cough, and fatigue, while less common symptoms are pneumonia without
71 noticeable hypoxemia, sputum production, sore throat, headache, chest pain, and diarrhea [4, 5].
72 Acute respiratory distress syndrome, sepsis, acute cardiac injury, heart failure, acute kidney injury,
73 hypoxic encephalopathy are more common in severe cases [4, 5, 6]. Severe patients show elevated
74 levels of pro-inflammatory cytokines, indicating the presence of cytokine storm [4]. Self-reported
75 loss of smell and taste was also observed in some cases [7].

76 Major risk factors for COVID-19 severity are older age, male gender, and comorbidities. A higher
77 case fatality rate (CFR) has been observed in older adults as compared to the younger population [8,
78 9, 10, 11, 12]. Relatively fewer female deaths are consistently observed as compared to males [10,
79 11, 12]. COVID-19 patients with comorbidities like hypertension, obesity, diabetes, and others are
80 more likely to develop severe complications than ones without any underlying diseases [13, 14, 15,
81 16, 17, 18]. ABO blood groups also seem to be contributing to COVID-19 related risk. While blood
82 group A is associated with an increased risk of severe COVID-19 outcomes, blood group O seems to
83 be protective [19, 20, 21].

84 In addition to the above risk factors, host genetics can modulate susceptibility and severity of the
85 disease by regulating viral entry and host immune response [22, 23]. For example, rs12329760
86 (p.Val197Met) affects the stability of TMPRSS2 protein, which is implicated in SARS-CoV2 viral
87 entry into host cells. This polymorphism was found to be less frequent in severe COVID-19 cases as
88 compared to others, suggesting its protective role against severe outcomes of COVID-19 [24]. The C
89 allele of rs12252 in the IFITM3 gene that is known for inhibiting influenza virus entry into host cells
90 was found to be a genetic risk factor for COVID-19 hospitalization and severe outcomes [25, 26].
91 3p21.31 gene cluster confers genetic susceptibility to COVID-19 with respiratory failure in Italian
92 and Spanish populations [27]. Genetic variants present in immune-related genes like HLA [24, 28,
93 29, 30], IL-6 [24], TNF-alpha [31], C5 [32, 33] are associated with COVID-19 severity.

94 While the majority of these studies were done on European and East Asian populations, limited
95 studies were done on the Indian population [34, 35, 36]. Considering the significant role of host
96 genetics in COVID-19 susceptibility and severity in the Indian population, we analyzed the
97 frequencies of the polymorphisms that are directly or indirectly implicated in COVID-19. We have
98 also made a comparison between Indian and other populations to understand allele frequency
99 distribution globally.

100

101 2 MATERIALS AND METHODS

102 2.1 Literature mining and polymorphism selection:

103 Research articles related to COVID-19 genetic associations were searched in Pubmed using
104 keywords such as 'COVID', 'COVID-19', 'Corona virus', 'GWAS', 'genetic susceptibility',
105 'polymorphism', 'severity', 'susceptibility' among other relevant terms. A total of 1418 research

106 articles were found, which were thoroughly screened and 99 relevant articles were selected. A total of
107 1974 polymorphisms were shortlisted from the selected articles.

108 **2.2 Genotype data for Indian population:**

109 The GenomeDB™ database of Mapmygenome India Ltd. [153] was accessed to obtain genotype
110 data for the present study. It is a human polymorphism genotype database developed and owned by
111 Mapmygenome. It contains genotype data of more than 20000 individuals of various ethnicities.
112 Genotype data of 3035 individuals with confirmed Indian origin were considered in this study. For
113 polymorphisms not present in the database, genotypes were imputed with IMPUTE2 using 1000
114 Genomes Phase3 data as reference [37, 38]. Filtration was performed with an imputation certainty
115 score (Info metric) set at 0.3.

116 **2.3 Genotype data for other populations:**

117 Allelic and genotypic frequency data of selected polymorphisms for African (AFR), East Asian
118 (EAS), European (EUR), South Asian (SAS), and American (AMR) populations were taken from
119 1000 Genomes Phase 3 data [38].

120 **2.4 Statistical analysis:**

121 Polymorphisms having minor allele frequency (MAF) greater than 0.05 in the Indian population
122 (study population) and are in Hardy-Weinberg equilibrium (HWE) ($p > 0.001$) in the Indian
123 population were considered. Pearson's chi-square test was conducted to compare allele frequencies
124 between the Indian population and other populations (AFR, AMR, EUR, EAS, SAS). False discovery
125 rate (FDR) was applied to correct for multiple comparisons. These statistical tests were done with the
126 R packages HardyWeinberg and stats [39]. LDLink tool [40] was used to calculate linkage
127 disequilibrium (LD) among the polymorphisms.

128 **2.5 eQTL data:**

129 To analyze the effect of polymorphisms on gene expressions, expression quantitative trait loci
130 (eQTL) data from publicly available GTEx Project portal was used [41]

131

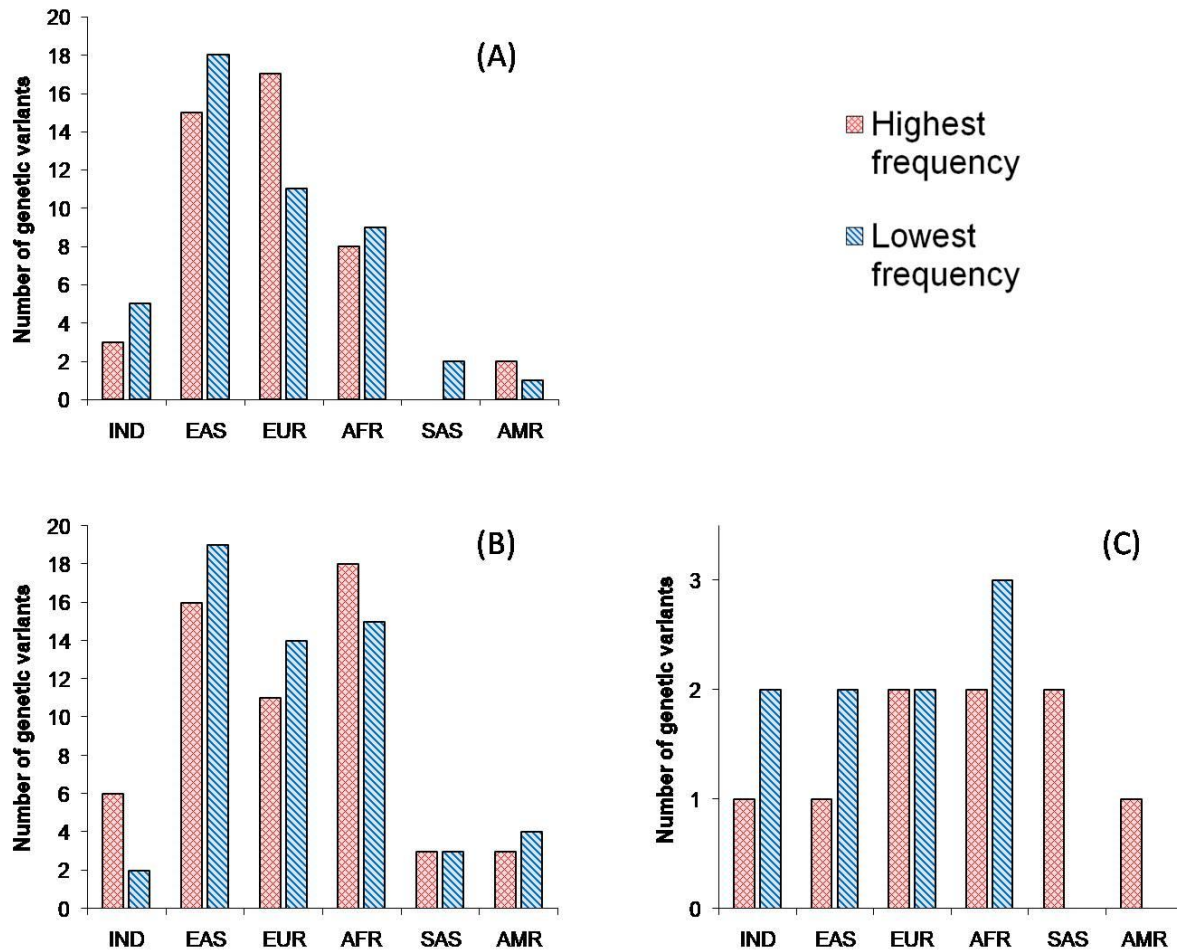
132 **3 RESULTS**

133 Out of 1974 shortlisted polymorphisms, 936 polymorphisms had genotype information, either from
134 GenomeDB™ or from imputation. Among them, 670 polymorphisms that had $MAF \geq 0.05$ in the
135 Indian population were considered for further analysis. Followed by this, 589 polymorphisms that
136 were in HWE ($p > 0.001$) were selected. Their allele frequencies in the Indian population were
137 compared with those in other populations using Pearson's chi-square test of significance
138 (Supplementary File 1, Supplementary Table 1). 421 polymorphisms had significant differences
139 (FDR ≤ 0.01) in at least three populations with respect to the Indian population (Supplementary File
140 1, Supplementary Table 2). To rule out redundancy, LD blocks were obtained, and finally, 128
141 representative polymorphisms were considered to discuss in detail (Supplementary File 2).

142 Polymorphisms were categorized based on their effect on susceptibility to COVID-19, immune
143 response to SARS-CoV2 infection, COVID-19 severity, mortality related to COVID-19, and
144 comorbidities. Fifty polymorphisms directly or indirectly associated with COVID-19 susceptibility

145 (Table 1), eighteen polymorphisms implicated in the immune response to SARS-CoV2 infection
146 (Table 2), fifty-eight polymorphisms directly or indirectly associated with COVID-19 severity (Table
147 3), nine polymorphisms associated with COVID-19 related mortality/fatal outcomes (Table 4), and
148 twelve polymorphisms associated with comorbidities of COVID-19 (Table 5) were analyzed.

149



150

151 **Figure 1 Comparison of populations based on the number of variants with highest / lowest risk**
152 **allele frequency related to (A) Susceptibility to COVID-19, (B) COVID-19 severity, and (C)**
153 **COVID-19 related mortality or fatal outcomes. IND – India, EUR – Europe, AMR**

154

155 Comparing the risk allele frequencies of a variant between multiple populations can help gain insight
156 into relative genetic predisposition to the associated condition at the population level [42, 43]. In the
157 absence of case-control studies, determining the number of risk variants for different populations
158 might help understand the cumulative genetic effect, hence simplifying the comparison. Here, we
159 applied this approach to ‘COVID-19 susceptibility’, ‘COVID-19 severity’ and ‘COVID-19 related
160 mortality’ categories. Risk conferring variants were assigned to the populations where their
161 frequencies were either highest or lowest. For each population, the number of variants with the
162 highest risk allele frequency and lowest risk allele frequency was counted (Supplementary File 1,
163 Supplementary Table 3). In the ‘COVID-19 susceptibility’ category, the number of variants with the

164 highest risk allele frequency was less than the variants with the lowest risk allele frequency in the
165 IND population. A similar trend was observed in EAS and AFR populations. However, an opposite
166 trend was observed in EUR and AMR populations (Fig. 1A). In IND and AFR populations, COVID-
167 19 severity-related variants with the highest risk allele frequencies were more than the lowest
168 frequency variants, while in EAS, EUR, and AMR populations this was found to be opposite (Fig.
169 1B). The number of variants associated with COVID-19 related mortality and having the highest risk
170 allele frequency was less than the variants with the lowest risk allele frequency in IND, EAS, and
171 AFR populations, while in SAS and AMR only the highest frequency variants were observed (Fig.
172 1C).

173

174 4 DISCUSSION

175 4.1 COVID-19 susceptibility

176 SARS-CoV-2 gains entry into human cells by binding its spike protein to ACE2 receptors. ACE2, a
177 part of the renin-angiotensin-aldosterone system (RAAS), is crucial in regulating blood pressure and
178 maintaining electrolyte balance in the body, physiology of the heart, kidneys, and lungs [44, 45].
179 Genetic variations in ACE2 are known to be associated with its increased expression levels in
180 COVID-19 patients. These variants affect ACE2 transcription/translation and also alter binding
181 affinity to SARS-CoV2 spike protein, thereby affecting the susceptibility to SARS-CoV-2 infection
182 [46, 47]. Six ACE2 polymorphisms (rs2285666 [A], rs4240157 [T], rs4646188 [G], rs2158083 [T],
183 rs1978124 [C] and rs233574 [T]), which are known to be associated with increased ACE2
184 expression, were found to have allele frequencies significantly different in Indian population as
185 compared to others [48, 49, 41, 50, 51, 52]. Their effect allele frequencies in Indian population are
186 0.459, 0.69, 0.062, 0.76, 0.724 and 0.176, respectively (Table 1). For four of these variants, effect
187 allele frequencies in EAS are highest suggesting that the EAS population might be predisposed to an
188 increased susceptibility to COVID-19. In addition, the frequencies of rs1996225 [T] and rs4060 [A]
189 of CA5BP1 gene and rs1893217 [G] of PTPN2 gene associated with increased expression of ACE2
190 are also highest in EAS. IND population has intermediate frequencies for most of these variants
191 indicating moderate susceptibility, while EUR has the lowest frequencies indicating reduced
192 susceptibility.

193 ACE (angiotensin-converting enzyme) is a vital part of the vascular system. It negatively regulates
194 ACE2 and causes vasoconstriction. Alu Insertion in the ACE coding region inhibits ACE expression,
195 while deletion promotes ACE expression. Increased ACE2 expression is observed when homozygous
196 Alu insertion is present in the ACE gene and vice-versa. rs4343 is in high LD with this Alu element
197 and thus used as its tag SNP [53]. The A and G alleles of rs4343 correspond to Alu insertion and
198 deletion, respectively [54]. Thus A allele signifies reduced ACE expression and consequently
199 increased ACE2 expression, potentially leading to increased SARS-CoV-2 susceptibility. In Indians,
200 the frequency of the A allele (0.604) is significantly higher than Europeans (0.435) but lesser than
201 other populations (Table 1).

202 On infection with SARS-CoV-2, the ADAM17 shedding is activated, leading to the release of ACE2
203 from the cell membrane into serum – thus inhibiting the virus infection. But, this effect would be
204 compromised, if the infection rate is high [55, 56, 57, 58]. Thus ADAM17 mediated ACE2 levels
205 may modulate COVID-19 susceptibility. ADAM17 releases the precursor TNF- α from the membrane
206 to its active form – which is a crucial player in triggering an inflammatory response, leading to
207 cytokine storm and is associated with severe lung damage in COVID-19 patients [59,60]. Thus,

208 ADAM17 might be playing role in ACE2 mediated COVID-19 susceptibility and TNF- α mediated
209 COVID-19 severity. rs55790676 [G] and rs1524668 [C] associated with decreased ADAM17
210 expression have high frequencies in IND population (0.925 and 0.403, respectively), lesser only than
211 EAS, indicating increased susceptibility of COVID-19 in IND population.

212

213 FURIN is an endoprotease that is implicated in cleaving the SARS-CoV2 spike protein at the S1/S2
214 site and this cleavage is crucial for viral entry into pulmonary cells [61]. Increased FURIN expression
215 affects monocyte adhesion and transendothelial migration [62] that can lead to tissue damage which
216 is seen in severe COVID-19 patients [63]. In this study, three genetic variants that affect FURIN
217 expression were identified whose allele frequencies are significantly different in the IND population.
218 rs4702 [A] and rs4932178 [T], present in FURIN coding region, are associated with increased
219 FURIN expression [64, 41]. It was also found that rs4702 [A] is associated with increased SARS-
220 CoV2 infection [65]. The frequency of rs4702 [A] in IND (0.499) is one of the lowest suggesting
221 relatively lesser COVID-19 susceptibility in the IND population. The frequency of rs4932178 [T] in
222 the IND population (0.276) is intermediate as compared to others, indicating moderate COVID-19
223 susceptibility in IND. rs17514846 [A] is associated with the increased FURIN expression in vascular
224 endothelial cells, where it affects monocyte adhesion and transendothelial migration [62].
225 Recruitment of monocytes and their transendothelial migration can lead to tissue damage which is
226 seen in severe COVID-19 patients [63, 66]. The frequency of rs17514846 [A] in IND (0.371) is
227 significantly higher than EAS and AMR populations and lesser than EUR (Table 3).

228 IFITM-family proteins are major players in antiviral responses [67]. Severe inflammation and
229 enhanced activation of natural killer cells are observed in influenza-infected IFITM3 deficient mice
230 [68]. IFITM3 is up-regulated in SARS-CoV2 infected lung epithelial cells of COVID-19 patients
231 [69], and IFITM3 seems to restrict SARS-CoV2 infection by modulating the cell membrane
232 properties [70]. This indicates that IFITM3 might be modulating susceptibility to SARS-CoV2
233 infection. rs11246066 [A] allele is associated with increased IFITM3 expression in whole blood and
234 it is also an eQTL of other IFITM family genes in multiple tissues [71]. rs11246066 [A] allele
235 frequency in the Indian population (0.189) is significantly greater only than the African population.
236 rs9666637 [T] and rs7931303 [G] are associated with increased IFITM2 expression. rs9666637 [T]
237 allele frequency in the Indian population (0.912) is highest among all populations, while rs7931303
238 [G] allele frequency in the Indian population (0.398) is higher only than AFR. Considering the
239 significance of the IFITM family, Indian population might be less susceptible to COVID-19 due to
240 rs9666637 [T].

241 CTSL gene is involved in many biological processes such as antigen processing and presentation,
242 proteolysis, macrophage apoptotic process, and immune response. It is associated with many diseases
243 such as cancer, diabetes, kidney failure, and viral infections [72]. It regulates viral entry into host
244 cells and is up-regulated during COVID-19 infection suggesting its potential role in COVID-19
245 susceptibility and severity [72, 73]. rs3128509 [G] is associated with decreased CTSL expression in
246 various tissues [41] and its frequency is significantly lesser in Indians (0.809) compared to African
247 and East Asian populations but greater than European and American populations. This suggests that
248 the Indian population might be more susceptible to COVID-19 than European and American
249 populations but lesser than African and East populations.

250 Progesterone acts as a potent immunomodulator in regulating innate and adaptive immune responses
251 and vascular system functions. Progesterone receptors (PGRs) are intracellular receptors that on

252 binding to progesterone or its derivative regulate target gene expression. An Alu insertion in intron 7
253 of the PGR gene reduces transcript stability, consequently affecting PGR protein structure and
254 function [74]. As a result of this insertion, PGR modulated differential expression of ACE2 may
255 potentially affect SARS-CoV2 infection susceptibility. This Alu insertion is in complete LD with
256 rs1042838. A and G alleles of rs1042838 correspond to Alu insertion and deletion, respectively [53].
257 The frequency of rs1042838 [A] in IND (0.078) is significantly lesser than AMR (0.137) and EUR
258 (0.179) populations while greater than AFR (0.006) and EAS (0.01) populations.

259 TMPRSS2 is a serine protease that plays an important role in SARS-COV2 entry into the host cell.
260 The viral spike (S) protein on binding to ACE2 on the host cell is cleaved at its S1/S2 position by
261 TMPRSS2 thus facilitating viral entry into the host cell [75]. Increased SARS-CoV2 infection
262 correlates with increased TMPRSS2 expression [76]. Eleven polymorphisms (rs35477708 [GA],
263 rs468259 [C], rs363981 [T], rs1638369 [T], rs469288 [G], rs468699 [C], rs462698 [A], rs8134378
264 [G], rs467375 [A], rs4818239 [C], rs35899679 [A]) whose allele frequencies are significantly in
265 Indian population are associated with increased TMPRSS2 expression [77, 64, 47, 41]. Except for
266 rs8134378 [G], frequencies of remaining variants are highest in EUR and lowest in EAS, suggesting
267 EUR might be at increased susceptibility of COVID-19 while EAS at lowest. Their frequencies in
268 IND are intermediate thus potentially conferring moderate susceptibility in the IND population.

269 Zinc deficiency is associated with increased COVID-19 susceptibility in the Asian population [78].
270 Among the genetic variants associated with decreased zinc levels (rs2120019 [C], rs1532423 [G],
271 rs4826508 [C]) and thereby increased susceptibility to COVID-19, rs1532423 [G] from CA1 gene
272 and rs4826508 [C] from the NBDY gene have the lowest frequencies in IND (0.494 and 0.273,
273 respectively), which might be conferring reduced susceptibility to COVID-19 in Indian population.
274 However, rs2120019 [C] from the PPCDC gene might be having an opposite effect as its frequency
275 in IND (0.62) is highest.

276

277 **4.2 Immune response to SARS-CoV2 infection**

278 IFIH1 gene encodes a protein that recognizes the viral RNA and initiates immune and
279 proinflammatory responses. rs1990760 [T], which is present in the IFIH1 coding region, is associated
280 with autoimmune disorders and protects against viral infection [79]. T allele frequency in Indians is
281 0.516, second only to Europeans (Table 2). Thus, this might be conferring increased protection to the
282 Indian population against viral infections, including SARS-CoV2.

283 The chemokines CCL5, CCL4, and CCL3 play an important role in inflammation where they recruit
284 immune cells [80, 81]. They are expressed during respiratory viral infections, and their expression
285 levels are associated with disease severity [82, 83, 84]. In severely affected COVID-19 patients, their
286 expression levels are significantly high, leading to liver toxicity and kidney failure, which are the
287 most common complications associated with COVID-19 infection [82, 83, 84, 85]. rs2526327 [A] in
288 RDM1 gene, rs1994182 [G] in MMP28 gene, rs3826404 [G] in MMP28 gene, rs2107538 [T] and
289 rs3817655 [T] in CCL5 genes are associated with decreased CCL5 expression in whole blood [71]
290 while rs4239252 [A] in TAF15 gene is associated with increased expression of CCL5 in whole blood
291 [71]. All of these alleles are minor alleles in the Indian population. rs3817655, which lies in the
292 CCL5 coding gene, is also associated with SARS-COV susceptibility [42]. The frequency of
293 rs3817655 [T] allele in the Indian population (0.127) is least as compared to other populations.

294

295 **4.3 COVID-19 severity**

296 IGFBP2 is involved in the regulation of insulin-like growth factor receptor signaling pathways, and
297 its expression level is used as a marker for many cancers. The intronic variant rs2270360 [A] in the
298 IGFBP2 gene was found to be associated with increased COVID-19 severity [86]. The risk allele [A]
299 frequency in the Indian population is 0.927 which is significantly higher than other populations,
300 indicating the predisposition of the Indian population to the severity of the disease.

301 Low calcium levels in the serum are associated with COVID-19 severity, and maintaining proper
302 calcium is a prerequisite to managing COVID-19 in the initial infection stage. RYR3 is a part of the
303 calcium channel complex and releases calcium for intracellular activities [87]. rs2229117 [G] in the
304 RYR3 gene is shown to be associated with increased COVID-19 severity [86]. G allele frequency in
305 the Indian population (0.913) is higher than American and European populations but lesser than
306 African and East Asian populations (Table 3). Thus this variant might be conferring a moderate risk
307 of COVID-19 severity in the Indian population.

308 CCL2 and CCR1 play major roles in immune and inflammatory responses. CCL2 is a chemo-
309 attractant cytokine that modulates the recruitment of monocytes, T cells, B cells, natural killer cells,
310 macrophages, and dendritic cells [88]. Increased CCL2 levels are observed in severe COVID-19
311 patients as compared to less severe COVID-19 patients [89]. CCR1 is a chemokine receptor that is
312 strongly expressed in monocytes and macrophages and promotes their infiltration into the lungs in
313 severe COVID-19 cases [90]. rs1024611 [G] and rs1015164 [G] alleles are associated with increased
314 CCL2 expression [91] and increased CCR1 expression in whole blood [63], respectively. rs1024611
315 [G] frequency in Indians (0.316) is significantly greater than only the African population, while
316 rs1015164 [G] frequency in Indians (0.753) is significantly greater than only the European
317 population (Table 3).

318 MX1 is known to be implicated in the generation of protective immune responses against influenza
319 infection [92]. Increased MX1 expression in the nasopharynx of COVID-19 patients is observed to
320 be proportional to SARS-CoV2 viral load. However, its expression seems to reduce with increased
321 age, suggesting inadequate antiviral immune response in older adults causing severe COVID-19 [92].
322 These results suggest that increased expression of MX1 might be restricting the COVID-19 severity.
323 Six polymorphisms (rs35477708 [G], rs468259 [G], rs363981 [G], rs1638369 [G], rs469288 [A],
324 rs468699 [T], rs462698 [G]) associated with decreased MX1 expression [41, 47] might be increasing
325 risk of COVID-19 severity. Effect allele frequencies of each of these variants are highest in EAS and
326 lowest in the EUR population. This indicates that the EAS population might be vulnerable to
327 increased risk of COVID-19 severity, while EUR and IND populations might be at reduced and
328 moderate risk, respectively.

329 TNF encodes a proinflammatory cytokine secreted by macrophages is a major player contributing to
330 the development of cytokine storms. rs1800630 [A] in the TNF gene is associated with an increased
331 risk of developing acute respiratory distress syndrome (ARDS) [93]. The frequency of risk allele [A]
332 in the Indian population (0.283) is highest as compared to other populations, suggesting that the
333 allele might be conferring increased risk of COVID-19 severity to the Indian population.

334 AHSG levels are critical for regulating macrophage deactivation. Decreased AHSG leads to impaired
335 macrophage deactivation thus causing excess pro-inflammatory cytokine release in SARS-COV
336 infection. rs2248690 [T] is associated with increased AHSG levels and decreased SARS-COV
337 infection severity [94]. T allele frequency in the Indian population is 0.17 which is the least as

338 compared to other populations, indicating that the Indian population might be at an increased risk of
339 COVID-19 severity.

340 rs10735079 in OAS gene cluster (OAS1, OAS2, OAS3) is associated with antiviral mechanisms by
341 producing 2',5'-oligoadenylate (2-5A), which is a mediator in the antiviral process. This mediator
342 activates RNaseL which degrades double-stranded RNA of corona virus [95]. rs10735079 [A] allele
343 is associated with an increased risk of severe COVID-19. rs10735079 [A] allele corresponds to lower
344 OAS1 activity and higher odds of severe COVID-19 [95]. A allele frequency in the Indian population
345 (0.698) is lower than African, American, and East Asian populations but greater than Europeans,
346 suggesting that the Indian population might be at a reduced risk of COVID-19 severity.

347 Decreased levels of E-selectin and IL-3Ra proteins and increased levels of B3GN2 and C1GLC
348 proteins are associated with increased COVID-19 severity [96]. rs2519093 [T] is associated with
349 decreased E-selectin and IL-3Ra protein levels and increased B3GN2 and C1GLC protein levels.
350 Thus, rs2519093 [T] might be increasing COVID-19 severity through modulating these protein
351 levels. T allele frequency in the Indian population (0.128) (Table 3), is greater than only the African
352 population, suggesting that Indian population might be at a reduced risk of COVID-19 severity.

353 Vitamin D deficiency is associated with COVID-19 positivity and severity [97, 98]. GC gene
354 encodes a protein that binds to vitamin D and transports it to targeted tissues. rs1155563 [C] allele,
355 that is present in the GC gene, is associated with decreased serum vitamin-D levels [99], and its
356 frequency in the Indian population (0.29) is greater than that of African, American, and European
357 populations (Table 3). This suggests that rs1155563 [C] might be increasing COVID-19
358 susceptibility and severity in the Indian population through reduced vitamin-D levels.

359

360 **4.4 COVID-19 related mortality or fatal outcomes**

361 Kim YC and Jeong BH [71] found the frequencies of T allele of rs2074192 in the ACE2 gene, and G
362 allele of rs2298659 in the TMPRSS2 gene to be positively correlated with case fatality rate. Indians
363 have lowest frequency of rs2074192 [T] (0.222) compared to Africans (0.351), Americans (0.405),
364 East Asians (0.43) and Europeans (0.432). But they have highest frequency of rs2298659 [G] (0.834)
365 compared to Africans (0.825), Americans (0.782), Europeans (0.77) and East Asians (0.751). Indians
366 have lesser frequency of G allele of rs6598045 in the IFITM3 gene (0.159), which is associated with
367 decreased case fatality rate, compared to Africans (0.299) and Americans (0.222).

368 DES/SPEG genes code for muscle-specific proteins and mutations in these genes are involved with
369 cardiomyopathies [100, 101]. Acute damage to the heart is a common complication in COVID-19
370 patients. A allele of rs71040457 that is located downstream of the DES and upstream of the SPEG
371 genes was found to be associated with an increased risk of COVID-19 mortality in the white British
372 ancestry population [102]. While East Asians have the lowest frequency of this allele (0.177), Indians
373 have a lesser frequency (0.276) compared to European (0.376), American (0.385), and African
374 (0.939) populations.

375 SLC39A10 gene plays an important role in mediating immune cell homeostasis. It has been reported
376 to facilitate anti-apoptotic signaling during early B-cell development, modulate B-cell receptor signal
377 strength, and control macrophage survival. rs113892140 located in this gene is associated with an
378 increased risk of COVID-19 mortality [102]. Risk allele [A] frequency in the Indian population is

379 0.078 (Table 4), which is significantly greater than only the European population (0.046). Its
380 frequency is highest in the African population (0.256).

381

382 **4.5 COVID-19 related comorbidities**

383 Twelve polymorphisms associated with comorbidities of COVID-19 were also analyzed (Table 5).
384 Hypertension, coronary artery disease, type 2 diabetes are among the major comorbidities of COVID-
385 19 severity. rs2074192 [T] is associated with an increased risk of developing hypertension [49]. T
386 allele frequency in the Indian population (0.222) is least as compared to other populations.

387

388 **5 CONCLUSION**

389 The potential role of several polymorphisms in COVID-19 susceptibility and severity suggests that
390 host genetics plays an important role in the pathology and progression of the infection. We found
391 multiple genetic variants that might be affecting the COVID-19 susceptibility, immune response,
392 severity, and mortality. Some of these variants were observed in genetic association studies, while
393 others were found to be relevant based on gene regulation and signaling pathways.

394 COVID-19 positivity rate in India is one of the least in the world despite India being the second most
395 populated nation [154, 155]. Due to the high population density in India, the spread of an airborne
396 pathogen can be limited only to a certain extent [103]. Hence, a low COVID-19 positivity rate in
397 India might be due to the lower genetic predisposition of Indians to COVID-19 susceptibility. The
398 fatality rate of COVID-19 in India was relatively high during the peak phases of the first and second
399 waves. However, when the peaks subsided the fatality rate reduced significantly. Inadequate medical
400 facilities seem to be one of the major reasons which caused preventable deaths during these periods.
401 [104]. Thus, the role of genetics in COVID-19 severity risk in the Indian population remains unclear.
402 More detailed studies are warranted to confirm the COVID-19 related relevance of the variants
403 discussed in this article. The current study will act as a good source to shortlist variants/genes for
404 conducting genetic association studies to assess COVID-19 susceptibility, its severity, and mortality.

405

406 **6 REFERENCES**

- 407 1. Zhou P, Yang XL, Wang XG, et al. A pneumonia outbreak associated with a new coronavirus
408 of probable bat origin. *Nature*. 2020;579(7798):270-273. doi:10.1038/s41586-020-2012-7
- 409 2. Zhu N, Zhang D, Wang W, et al. A Novel Coronavirus from Patients with Pneumonia in
410 China, 2019. *N Engl J Med*. 2020;382(8):727-733. doi:10.1056/NEJMoa2001017
- 411 3. Guo YR, Cao QD, Hong ZS, et al. The origin, transmission and clinical therapies on
412 coronavirus disease 2019 (COVID-19) outbreak - an update on the status. *Mil Med Res*.
413 2020;7(1):11. Published 2020 Mar 13. doi:10.1186/s40779-020-00240-0

- 414 4. Huang C, Wang Y, Li X, et al. Clinical features of patients infected with 2019 novel
415 coronavirus in Wuhan, China [published correction appears in *Lancet*. 2020 Jan 30;:]. *Lancet*.
416 2020;395(10223):497-506. doi:10.1016/S0140-6736(20)30183-5
- 417 5. Chen N, Zhou M, Dong X, et al. Epidemiological and clinical characteristics of 99 cases of
418 2019 novel coronavirus pneumonia in Wuhan, China: a descriptive study. *Lancet*.
419 2020;395(10223):507-513. doi:10.1016/S0140-6736(20)30211-7
- 420 6. Chen T, Wu D, Chen H, et al. Clinical characteristics of 113 deceased patients with
421 coronavirus disease 2019: retrospective study [published correction appears in *BMJ*. 2020 Mar
422 31;368:m1295]. *BMJ*. 2020;368:m1091. Published 2020 Mar 26. doi:10.1136/bmj.m1091
- 423 7. Giacomelli A, Pezzati L, Conti F, et al. Self-reported Olfactory and Taste Disorders in
424 Patients With Severe Acute Respiratory Coronavirus 2 Infection: A Cross-sectional Study. *Clin*
425 *Infect Dis*. 2020;71(15):889-890. doi:10.1093/cid/ciaa330
- 426 8. Zhang JJ, Cao YY, Tan G, et al. Clinical, radiological, and laboratory characteristics and risk
427 factors for severity and mortality of 289 hospitalized COVID-19 patients. *Allergy*. 2021;76(2):533-
428 550. doi:10.1111/all.14496
- 429 9. Rubin SJS, Falkson SR, Degner NR, Blish C. Clinical characteristics associated with COVID-
430 19 severity in California. *J Clin Transl Sci*. 2020;5(1):e3. Published 2020 Apr 16.
431 doi:10.1017/cts.2020.40
- 432 10. Riccardo F, Ajelli M, Andrianou XD, et al. Epidemiological characteristics of COVID-19
433 cases and estimates of the reproductive numbers 1 month into the epidemic, Italy, 28 January to 31
434 March 2020. *Euro Surveill*. 2020;25(49):2000790. doi:10.2807/1560-7917.ES.2020.25.49.2000790
- 435 11. Cao M, Zhang D, Wang Y, et al. Clinical Features of Patients Infected with the 2019 Novel
436 Coronavirus (COVID-19) in Shanghai, China. Preprint. medRxiv. 2020;2020.03.04.20030395.
437 Published 2020 Mar 6. doi:10.1101/2020.03.04.20030395
- 438 12. Jin JM, Bai P, He W, et al. Gender Differences in Patients With COVID-19: Focus on
439 Severity and Mortality. *Front Public Health*. 2020;8:152. Published 2020 Apr 29.
440 doi:10.3389/fpubh.2020.00152
- 441 13. Guo L, Shi Z, Zhang Y, et al. Comorbid diabetes and the risk of disease severity or death
442 among 8807 COVID-19 patients in China: A meta-analysis. *Diabetes Res Clin Pract*.
443 2020;166:108346. doi:10.1016/j.diabres.2020.108346
- 444 14. Bode B, Garrett V, Messler J, et al. Glycemic Characteristics and Clinical Outcomes of
445 COVID-19 Patients Hospitalized in the United States [published correction appears in *J Diabetes Sci*
446 *Technol*. 2020 Jun 10;:1932296820932678]. *J Diabetes Sci Technol*. 2020;14(4):813-821.
447 doi:10.1177/1932296820924469
- 448 15. Huang S, Wang J, Liu F, et al. COVID-19 patients with hypertension have more severe
449 disease: a multicenter retrospective observational study. *Hypertens Res*. 2020;43(8):824-831.
450 doi:10.1038/s41440-020-0485-2

- 451 16. Wang D, Hu B, Hu C, et al. Clinical Characteristics of 138 Hospitalized Patients With 2019
452 Novel Coronavirus-Infected Pneumonia in Wuhan, China [published correction appears in JAMA.
453 2021 Mar 16;325(11):1113]. JAMA. 2020;323(11):1061-1069. doi:10.1001/jama.2020.1585
- 454 17. Ran J, Song Y, Zhuang Z, et al. Blood pressure control and adverse outcomes of COVID-19
455 infection in patients with concomitant hypertension in Wuhan, China. Hypertens Res.
456 2020;43(11):1267-1276. doi:10.1038/s41440-020-00541-w
- 457 18. Fresán U, Guevara M, Elía F, et al. Independent Role of Severe Obesity as a Risk Factor for
458 COVID-19 Hospitalization: A Spanish Population-Based Cohort Study. Obesity (Silver Spring).
459 2021;29(1):29-37. doi:10.1002/oby.23029
- 460 19. Hoiland RL, Fergusson NA, Mitra AR, et al. The association of ABO blood group with
461 indices of disease severity and multiorgan dysfunction in COVID-19. Blood Adv. 2020;4(20):4981-
462 4989. doi:10.1182/bloodadvances.2020002623
- 463 20. Pourali F, Afshari M, Alizadeh-Navaei R, Javidnia J, Moosazadeh M, Hessami A.
464 Relationship between blood group and risk of infection and death in COVID-19: a live meta-analysis.
465 New Microbes New Infect. 2020;37:100743. doi:10.1016/j.nmni.2020.100743
- 466 21. Garg I, Srivastava S, Dogra V, et al. Potential association of COVID-19 and ABO blood
467 group: An Indian study. Microb Pathog. 2021;158:105008. doi:10.1016/j.micpath.2021.105008
- 468 22. Kwok AJ, Mentzer A, Knight JC. Host genetics and infectious disease: new tools, insights
469 and translational opportunities. Nat Rev Genet. 2021;22(3):137-153. doi:10.1038/s41576-020-00297-
470 6
- 471 23. Di Maria E, Latini A, Borgiani P, Novelli G. Genetic variants of the human host influencing
472 the coronavirus-associated phenotypes (SARS, MERS and COVID-19): rapid systematic review and
473 field synopsis. Hum Genomics. 2020;14(1):30. Published 2020 Sep 11. doi:10.1186/s40246-020-
474 00280-6
- 475 24. Wang F, Huang S, Gao R, et al. Initial whole-genome sequencing and analysis of the host
476 genetic contribution to COVID-19 severity and susceptibility. Cell Discov. 2020;6(1):83. Published
477 2020 Nov 10. doi:10.1038/s41421-020-00231-4
- 478 25. Gómez J, Albaiceta GM, Cuesta-Llavona E, et al. The Interferon-induced transmembrane
479 protein 3 gene (IFITM3) rs12252 C variant is associated with COVID-19. Cytokine.
480 2021;137:155354. doi:10.1016/j.cyto.2020.155354
- 481 26. Zhang Y, Qin L, Zhao Y, et al. Interferon-Induced Transmembrane Protein 3 Genetic Variant
482 rs12252-C Associated With Disease Severity in Coronavirus Disease 2019. J Infect Dis.
483 2020;222(1):34-37. doi:10.1093/infdis/jiaa224
- 484 27. Severe Covid-19 GWAS Group, Ellinghaus D, Degenhardt F, et al. Genomewide Association
485 Study of Severe Covid-19 with Respiratory Failure. N Engl J Med. 2020;383(16):1522-1534.
486 doi:10.1056/NEJMoa2020283
- 487 28. Littera R, Campagna M, Deidda S, et al. Human Leukocyte Antigen Complex and Other
488 Immunogenetic and Clinical Factors Influence Susceptibility or Protection to SARS-CoV-2 Infection

- 489 and Severity of the Disease Course. The Sardinian Experience. *Front Immunol.* 2020;11:605688.
490 Published 2020 Dec 4. doi:10.3389/fimmu.2020.605688
- 491 29. Yung YL, Cheng CK, Chan HY, et al. Association of HLA-B22 serotype with SARS-CoV-2
492 susceptibility in Hong Kong Chinese patients. *HLA.* 2021;97(2):127-132. doi:10.1111/tan.14135
- 493 30. Amoroso A, Magistrini P, Vespasiano F, et al. HLA and ABO Polymorphisms May Influence
494 SARS-CoV-2 Infection and COVID-19 Severity. *Transplantation.* 2021;105(1):193-200.
495 doi:10.1097/TP.0000000000003507
- 496 31. Saleh A, Sultan A, Elashry MA, et al. Association of TNF- α G-308 a Promoter
497 Polymorphism with the Course and Outcome of COVID-19 Patients [published online ahead of print,
498 2020 Nov 23]. *Immunol Invest.* 2020;1-12. doi:10.1080/08820139.2020.1851709
- 499 32. Java A, Apicelli AJ, Liszewski MK, et al. The complement system in COVID-19: friend and
500 foe?. *JCI Insight.* 2020;5(15):e140711. Published 2020 Aug 6. doi:10.1172/jci.insight.140711
- 501 33. Valenti L, Griffini S, Lamorte G, et al. Chromosome 3 cluster rs11385942 variant links
502 complement activation with severe COVID-19 [published correction appears in *J Autoimmun.* 2021
503 Jun;120:102646]. *J Autoimmun.* 2021;117:102595. doi:10.1016/j.jaut.2021.102595
- 504 34. Srivastava A, Bandopadhyay A, Das D, et al. Genetic Association of ACE2 rs2285666
505 Polymorphism With COVID-19 Spatial Distribution in India. *Front Genet.* 2020;11:564741.
506 Published 2020 Sep 25. doi:10.3389/fgene.2020.564741
- 507 35. Ravikanth V, Sasikala M, Naveen V, et al. A variant in TMPRSS2 is associated with
508 decreased disease severity in COVID-19. *Meta Gene.* 2021;29:100930.
509 doi:10.1016/j.mgene.2021.100930
- 510 36. Singh PP, Srivastava A, Sultana GNN, et al. The major genetic risk factor for severe COVID-
511 19 does not show any association among South Asian populations [published correction appears in
512 *Sci Rep.* 2021 Aug 5;11(1):16296]. *Sci Rep.* 2021;11(1):12346. Published 2021 Jun 11.
513 doi:10.1038/s41598-021-91711-4
- 514 37. Howie B, Marchini J, Stephens M. Genotype imputation with thousands of genomes. *G3*
515 (Bethesda). 2011;1(6):457-470. doi:10.1534/g3.111.001198
- 516 38. 1000 Genomes Project Consortium, Auton A, Brooks LD, et al. A global reference for human
517 genetic variation. *Nature.* 2015;526(7571):68-74. doi:10.1038/nature15393
- 518 39. R Core Team (2020). R: A language and environment for statistical computing. R Foundation
519 for Statistical Computing, Vienna, Austria. URL <https://www.R-project.org/>
- 520 40. Machiela MJ, Chanock SJ. LDlink: a web-based application for exploring population-specific
521 haplotype structure and linking correlated alleles of possible functional variants. *Bioinformatics.*
522 2015;31(21):3555-3557. doi:10.1093/bioinformatics/btv402
- 523 41. GTEx Consortium. The Genotype-Tissue Expression (GTEx) project. *Nat Genet.*
524 2013;45(6):580-585. doi:10.1038/ng.2653

- 525 42. Smatti MK, Al-Sarraj YA, Albagha O, Yassine HM. Host Genetic Variants Potentially
526 Associated With SARS-CoV-2: A Multi-Population Analysis. *Front Genet.* 2020;11:578523.
527 Published 2020 Oct 2. doi:10.3389/fgene.2020.578523
- 528 43. Secolin R, de Araujo TK, Gonsales MC, et al. Genetic variability in COVID-19-related genes
529 in the Brazilian population. *Hum Genome Var.* 2021;8:15. Published 2021 Apr 2.
530 doi:10.1038/s41439-021-00146-w
- 531 44. Bhalla V, Blish CA, South AM. A historical perspective on ACE2 in the COVID-19 era. *J*
532 *Hum Hypertens.* 2021;35(10):935-939. doi:10.1038/s41371-020-00459-3
- 533 45. Santos RAS, Sampaio WO, Alzamora AC, et al. The ACE2/Angiotensin-(1-7)/MAS Axis of
534 the Renin-Angiotensin System: Focus on Angiotensin-(1-7). *Physiol Rev.* 2018;98(1):505-553.
535 doi:10.1152/physrev.00023.2016
- 536 46. Calcagnile M, Forgez P, Iannelli A, Bucci C, Alifano M, Alifano P. ACE2 polymorphisms
537 and individual susceptibility to SARS-CoV-2 infection: insights from an in silico study. Preprint.
538 bioRxiv. 2020; 2020.04.23.057042v1. Published 2020 April 24. doi: 10.1101/2020.04.23.057042
- 539 47. Lanjanian H, Moazzam-Jazi M, Hedayati M, et al. SARS-CoV-2 infection susceptibility
540 influenced by ACE2 genetic polymorphisms: insights from Tehran Cardio-Metabolic Genetic Study.
541 *Sci Rep.* 2021;11(1):1529. Published 2021 Jan 15. doi:10.1038/s41598-020-80325-x
- 542 48. Wu YH, Li JY, Wang C, Zhang LM, Qiao H. The ACE2 G8790A Polymorphism:
543 Involvement in Type 2 Diabetes Mellitus Combined with Cerebral Stroke. *J Clin Lab Anal.*
544 2017;31(2):e22033. doi:10.1002/jcla.22033
- 545 49. Bosso M, Thanaraj TA, Abu-Farha M, Alanbaei M, Abubaker J, Al-Mulla F. The Two Faces
546 of ACE2: The Role of ACE2 Receptor and Its Polymorphisms in Hypertension and COVID-19. *Mol*
547 *Ther Methods Clin Dev.* 2020;18:321-327. Published 2020 Jun 25. doi:10.1016/j.omtm.2020.06.017
- 548 50. Brest P, Refae S, Mograbi B, Hofman P, Milano G. Host Polymorphisms May Impact SARS-
549 CoV-2 Infectivity. *Trends Genet.* 2020;36(11):813-815. doi:10.1016/j.tig.2020.08.003
- 550 51. Paniri A, Hosseini MM, Moballegh-Eslam M, Akhavan-Niaki H. Comprehensive in silico
551 identification of impacts of ACE2 SNPs on COVID-19 susceptibility in different populations. *Gene*
552 *Rep.* 2021;22:100979. doi:10.1016/j.genrep.2020.100979
- 553 52. Pouladi N, Abdolahi S. Investigating the ACE2 polymorphisms in COVID-19 susceptibility:
554 An in silico analysis. *Mol Genet Genomic Med.* 2021;9(6):e1672. doi:10.1002/mgg3.1672
- 555 53. Li M, Schifanella L, Larsen PA. Alu retrotransposons and COVID-19 susceptibility and
556 morbidity. *Hum Genomics.* 2021;15(1):2. Published 2021 Jan 4. doi:10.1186/s40246-020-00299-9
- 557 54. Abdollahi MR, Huang S, Rodriguez S, et al. Homogeneous assay of rs4343, an ACE I/D
558 proxy, and an analysis in the British Women's Heart and Health Study (BWHHS). *Dis Markers.*
559 2008;24(1):11-17. doi:10.1155/2008/813679
- 560 55. Schreiber B, Patel A, Verma A. Shedding light on COVID-19: ADAM17 the missing link?.
561 *American Journal of Therapeutics.* 2021; 28(3),e358-e360.

- 562 56. Bastolla U, Chambers P, Abia D, García-Bermejo ML, Fresno M. Is Covid-19 severity
563 associated with ACE2 degradation?. Preprint. arXiv. 2021;2102.13210.
- 564 57. Lambert DW, Yarski M, Warner FJ, et al. Tumor necrosis factor-alpha convertase
565 (ADAM17) mediates regulated ectodomain shedding of the severe-acute respiratory syndrome-
566 coronavirus (SARS-CoV) receptor, angiotensin-converting enzyme-2 (ACE2). *J Biol Chem.*
567 2005;280(34):30113-30119. doi:10.1074/jbc.M505111200
- 568 58. Palau V, Riera M, Soler MJ. ADAM17 inhibition may exert a protective effect on COVID-
569 19. *Nephrol Dial Transplant.* 2020;35(6):1071-1072. doi:10.1093/ndt/gfaa093
- 570 59. Gooz M. ADAM-17: the enzyme that does it all. *Crit Rev Biochem Mol Biol.*
571 2010;45(2):146-169. doi:10.3109/10409231003628015
- 572 60. Zipeto D, Palmeira JDF, Argañaraz GA, Argañaraz ER. ACE2/ADAM17/TMPRSS2
573 Interplay May Be the Main Risk Factor for COVID-19. *Front Immunol.* 2020;11:576745. Published
574 2020 Oct 7. doi:10.3389/fimmu.2020.576745
- 575 61. Hoffmann M, Kleine-Weber H, Pöhlmann S. A Multibasic Cleavage Site in the Spike Protein
576 of SARS-CoV-2 Is Essential for Infection of Human Lung Cells. *Mol Cell.* 2020;78(4):779-784.e5.
577 doi:10.1016/j.molcel.2020.04.022
- 578 62. Yang X, Yang W, McVey DG, et al. FURIN Expression in Vascular Endothelial Cells Is
579 Modulated by a Coronary Artery Disease-Associated Genetic Variant and Influences Monocyte
580 Transendothelial Migration. *J Am Heart Assoc.* 2020;9(4):e014333. doi:10.1161/JAHA.119.014333
- 581 63. Meidaninikjeh S, Sabouni N, Marzouni HZ, Bengar S, Khalili A, Jafari R. Monocytes and
582 macrophages in COVID-19: Friends and foes. *Life Sci.* 2021;269:119010.
583 doi:10.1016/j.lfs.2020.119010
- 584 64. Ragia G, Manolopoulos VG. Assessing COVID-19 susceptibility through analysis of the
585 genetic and epigenetic diversity of ACE2-mediated SARS-CoV-2 entry. *Pharmacogenomics.*
586 2020;21(18):1311-1329. doi:10.2217/pgs-2020-0092
- 587 65. Dobrindt K, Hoagland DA, Seah C, et al. Common genetic variation in humans impacts in
588 vitro susceptibility to SARS-CoV-2 infection. Preprint. bioRxiv. 2020;2020.09.20.300574. Published
589 2020 Sep 21. doi:10.1101/2020.09.20.300574
- 590 66. Varga Z, Flammer AJ, Steiger P, et al. Endothelial cell infection and endotheliitis in COVID-
591 19. *Lancet.* 2020;395(10234):1417-1418. doi:10.1016/S0140-6736(20)30937-5
- 592 67. Bailey CC, Zhong G, Huang IC, Farzan M. IFITM-Family Proteins: The Cell's First Line of
593 Antiviral Defense. *Annu Rev Virol.* 2014;1:261-283. doi:10.1146/annurev-virology-031413-085537
- 594 68. Sun Q, Lei N, Lu J, et al. Interferon-induced Transmembrane Protein 3 Prevents Acute
595 Influenza Pathogenesis in Mice. *Biomed Environ Sci.* 2020;33(5):295-305. doi:10.3967/bes2020.041
- 596 69. Hachim MY, Al Heialy S, Hachim IY, et al. Interferon-Induced Transmembrane Protein
597 (IFITM3) Is Upregulated Explicitly in SARS-CoV-2 Infected Lung Epithelial Cells. *Front Immunol.*
598 2020;11:1372. Published 2020 Jun 10. doi:10.3389/fimmu.2020.01372

- 599 70. Shi G, Kenney AD, Kudryashova E, et al. Opposing activities of IFITM proteins in SARS-
600 CoV-2 infection. *EMBO J.* 2021;40(3):e106501. doi:10.15252/embj.2020106501
- 601 71. Kim YC, Jeong BH. Strong Correlation between the Case Fatality Rate of COVID-19 and the
602 rs6598045 Single Nucleotide Polymorphism (SNP) of the Interferon-Induced Transmembrane
603 Protein 3 (IFITM3) Gene at the Population-Level. *Genes (Basel).* 2020;12(1):42. Published 2020 Dec
604 30. doi:10.3390/genes12010042
- 605 72. Gomes CP, Fernandes DE, Casimiro F, et al. Cathepsin L in COVID-19: From
606 Pharmacological Evidences to Genetics. *Front Cell Infect Microbiol.* 2020;10:589505. Published
607 2020 Dec 8. doi:10.3389/fcimb.2020.589505
- 608 73. Zhao MM, Yang WL, Yang FY, et al. Cathepsin L plays a key role in SARS-CoV-2 infection
609 in humans and humanized mice and is a promising target for new drug development. *Signal*
610 *Transduct Target Ther.* 2021;6(1):134. Published 2021 Mar 27. doi:10.1038/s41392-021-00558-8
- 611 74. Romano A, Delvoux B, Fischer DC, Groothuis P. The PROGINS polymorphism of the
612 human progesterone receptor diminishes the response to progesterone. *J Mol Endocrinol.* 2007;38(1-
613 2):331-350. doi:10.1677/jme.1.02170
- 614 75. Hoffmann M, Kleine-Weber H, Schroeder S, et al. SARS-CoV-2 Cell Entry Depends on
615 ACE2 and TMPRSS2 and Is Blocked by a Clinically Proven Protease Inhibitor. *Cell.*
616 2020;181(2):271-280.e8. doi:10.1016/j.cell.2020.02.052
- 617 76. Sarker J, Das P, Sarker S, Roy AK, Momen AZMR. A Review on Expression, Pathological
618 Roles, and Inhibition of TMPRSS2, the Serine Protease Responsible for SARS-CoV-2 Spike Protein
619 Activation. *Scientifica (Cairo).* 2021;2021:2706789. Published 2021 Jul 24.
620 doi:10.1155/2021/2706789
- 621 77. Clinckemalie L, Spans L, Dubois V, et al. Androgen regulation of the TMPRSS2 gene and
622 the effect of a SNP in an androgen response element. *Mol Endocrinol.* 2013;27(12):2028-2040.
623 doi:10.1210/me.2013-1098
- 624 78. Ali N, Fariha KA, Islam F, et al. Assessment of the role of zinc in the prevention of COVID-
625 19 infections and mortality: A retrospective study in the Asian and European population. *J Med*
626 *Viro.* 2021;93(7):4326-4333. doi:10.1002/jmv.26932
- 627 79. Gorman JA, Hundhausen C, Errett JS, et al. The A946T variant of the RNA sensor IFIH1
628 mediates an interferon program that limits viral infection but increases the risk for autoimmunity. *Nat*
629 *Immunol.* 2017;18(7):744-752. doi:10.1038/ni.3766
- 630 80. Maurer M, von Stebut E. Macrophage inflammatory protein-1. *Int J Biochem Cell Biol.*
631 2004;36(10):1882-1886. doi:10.1016/j.biocel.2003.10.019
- 632 81. Krensky AM, Ahn YT. Mechanisms of disease: regulation of RANTES (CCL5) in renal
633 disease. *Nat Clin Pract Nephrol.* 2007;3(3):164-170. doi:10.1038/ncpneph0418
- 634 82. Marques RE, Guabiraba R, Russo RC, Teixeira MM. Targeting CCL5 in inflammation.
635 *Expert Opin Ther Targets.* 2013;17(12):1439-1460. doi:10.1517/14728222.2013.837886

- 636 83. Patterson BK, Seethamraju H, Dhody K, et al. Disruption of the CCL5/RANTES-CCR5
637 Pathway Restores Immune Homeostasis and Reduces Plasma Viral Load in Critical COVID-19.
638 Preprint. medRxiv. 2020;2020.05.02.20084673. Published 2020 May 5.
639 doi:10.1101/2020.05.02.20084673
- 640 84. Coperchini F, Chiovato L, Ricci G, Croce L, Magri F, Rotondi M. The cytokine storm in
641 COVID-19: Further advances in our understanding the role of specific chemokines involved.
642 Cytokine Growth Factor Rev. 2021;58:82-91. doi:10.1016/j.cytogfr.2020.12.005
- 643 85. Patterson BK, Seethamraju H, Dhody K, et al. CCR5 inhibition in critical COVID-19 patients
644 decreases inflammatory cytokines, increases CD8 T-cells, and decreases SARS-CoV2 RNA in
645 plasma by day 14. Int J Infect Dis. 2021;103:25-32. doi:10.1016/j.ijid.2020.10.101
- 646 86. Dite GS, Murphy NM, Allman R. An integrated clinical and genetic model for predicting risk
647 of severe COVID-19: A population-based case-control study. PLoS One. 2021;16(2):e0247205.
648 Published 2021 Feb 16. doi:10.1371/journal.pone.0247205
- 649 87. Zhou X, Chen D, Wang L, et al. Low serum calcium: a new, important indicator of COVID-
650 19 patients from mild/moderate to severe/critical [published online ahead of print, 2020 Nov 30].
651 Biosci Rep. 2020;40(12):BSR20202690. doi:10.1042/BSR20202690
- 652 88. Gschwandtner M, Derler R, Midwood KS. More Than Just Attractive: How CCL2 Influences
653 Myeloid Cell Behavior Beyond Chemotaxis. Front Immunol. 2019;10:2759. Published 2019 Dec 13.
654 doi:10.3389/fimmu.2019.02759
- 655 89. Coperchini F, Chiovato L, Croce L, Magri F, Rotondi M. The cytokine storm in COVID-19:
656 An overview of the involvement of the chemokine/chemokine-receptor system. Cytokine Growth
657 Factor Rev. 2020;53:25-32. doi:10.1016/j.cytogfr.2020.05.003
- 658 90. Stikker B, Stik G, Hendriks RW, Stadhouders R. Severe COVID-19 associated variants
659 linked to chemokine receptor gene control in monocytes and macrophages. Preprint. bioRxiv.
660 2021;2021.01.22.427813. Published 2021 Jun 11. doi:10.1101/2021.01.22.427813
- 661 91. Pham MH, Bonello GB, Castiblanco J, et al. The rs1024611 regulatory region polymorphism
662 is associated with CCL2 allelic expression imbalance. PLoS One. 2012;7(11):e49498.
663 doi:10.1371/journal.pone.0049498
- 664 92. Bizzotto J, Sanchis P, Abbate M, et al. SARS-CoV-2 Infection Boosts MX1 Antiviral
665 Effector in COVID-19 Patients. iScience. 2020;23(10):101585. doi:10.1016/j.isci.2020.101585
- 666 93. Azevedo ZM, Moore DB, Lima FC, et al. Tumor necrosis factor (TNF) and lymphotoxin-
667 alpha (LTA) single nucleotide polymorphisms: importance in ARDS in septic pediatric critically ill
668 patients. Hum Immunol. 2012;73(6):661-667. doi:10.1016/j.humimm.2012.03.007
- 669 94. Zhu X, Wang Y, Zhang H, et al. Genetic variation of the human α -2-Heremans-Schmid
670 glycoprotein (AHSG) gene associated with the risk of SARS-CoV infection. PLoS One.
671 2011;6(8):e23730. doi:10.1371/journal.pone.0023730
- 672 95. Pairo-Castineira, Erola, Clohisey S, Klaric L, Bretherick AD, Rawlik K, Pasko D, Walker S
673 et al. Nature. 2021; 591(7848): 92-98. doi:10.1038/s41586-020-03065-y. Epub 2020 Dec 11.

- 674 96. Zhu J, Wu C, Wu L. Associations Between Genetically Predicted Protein Levels and COVID-
675 19 Severity. *J Infect Dis.* 2021;223(1):19-22. doi:10.1093/infdis/jiaa660
- 676 97. Demir M, Demir F, Aygun H. Vitamin D deficiency is associated with COVID-19 positivity
677 and severity of the disease. *J Med Virol.* 2021;93(5):2992-2999. doi:10.1002/jmv.26832
- 678 98. Weir EK, Thenappan T, Bhargava M, Chen Y. Does vitamin D deficiency increase the
679 severity of COVID-19?. *Clin Med (Lond).* 2020;20(4):e107-e108. doi:10.7861/clinmed.2020-0301
- 680 99. Galmés S, Serra F, Palou A. Current State of Evidence: Influence of Nutritional and
681 Nutrigenetic Factors on Immunity in the COVID-19 Pandemic Framework. *Nutrients.*
682 2020;12(9):2738. Published 2020 Sep 8. doi:10.3390/nu12092738
- 683 100. Agrawal PB, Pierson CR, Joshi M, et al. SPEG interacts with myotubularin, and its deficiency
684 causes centronuclear myopathy with dilated cardiomyopathy. *Am J Hum Genet.* 2014;95(2):218-226.
685 doi:10.1016/j.ajhg.2014.07.004
- 686 101. Brodehl A, Gaertner-Rommel A, Milting H. Molecular insights into cardiomyopathies
687 associated with desmin (DES) mutations. *Biophys Rev.* 2018;10(4):983-1006. doi:10.1007/s12551-
688 018-0429-0
- 689 102. Hu J, Li C, Wang S, Li T, Zhang H. Genetic variants are identified to increase risk of
690 COVID-19 related mortality from UK Biobank data. Preprint. medRxiv. 2020;2020.11.05.20226761.
691 Published 2020 Nov 9. doi:10.1101/2020.11.05.20226761
- 692 103. Bhadra A, Mukherjee A, Sarkar K. Impact of population density on Covid-19 infected and
693 mortality rate in India [published online ahead of print, 2020 Oct 14]. *Model Earth Syst Environ.*
694 2020;1-7. doi:10.1007/s40808-020-00984-7
- 695 104. Asrani P, Eapen MS, Hassan MI, Sohal SS. Implications of the second wave of COVID-19 in
696 India. *Lancet Respir Med.* 2021;9(9):e93-e94. doi:10.1016/S2213-2600(21)00312-X
- 697 105. Ghafouri-Fard S, Noroozi R, Vafae R, et al. Effects of host genetic variations on response to,
698 susceptibility and severity of respiratory infections. *Biomed Pharmacother.* 2020;128:110296.
699 doi:10.1016/j.biopha.2020.110296
- 700 106. Sainz J, Lupiáñez CB, Segura-Catena J, et al. Dectin-1 and DC-SIGN polymorphisms
701 associated with invasive pulmonary Aspergillus infection. *PLoS One.* 2012;7(2):e32273.
702 doi:10.1371/journal.pone.0032273
- 703 107. Avendaño-Tamayo E, Rúa A, Parra-Marín MV, et al. Evaluation of variants in IL6R, TLR3,
704 and DC-SIGN genes associated with dengue in sampled Colombian population. Evaluación de
705 variantes en los genes IL6R, TLR3 y DC-SIGN asociadas con dengue en una población colombiana
706 muestreada. *Biomedica.* 2019;39(1):88-101. Published 2019 Mar 31.
707 doi:10.7705/biomedica.v39i1.4029
- 708 108. Vargas-Alarcón G, Posadas-Sánchez R, Ramírez-Bello J. Variability in genes related to
709 SARS-CoV-2 entry into host cells (ACE2, TMPRSS2, TMPRSS11A, ELANE, and CTSL) and its
710 potential use in association studies. *Life Sci.* 2020;260:118313. doi:10.1016/j.lfs.2020.118313

- 711 109. Mortaz E, Tabarsi P, Varahram M, Folkerts G, Adcock IM. The Immune Response and
712 Immunopathology of COVID-19. *Front Immunol.* 2020;11:2037. Published 2020 Aug 26.
713 doi:10.3389/fimmu.2020.02037
- 714 110. Solerte SB, Di Sabatino A, Galli M, Fiorina P. Dipeptidyl peptidase-4 (DPP4) inhibition in
715 COVID-19. *Acta Diabetol.* 2020;57(7):779-783. doi:10.1007/s00592-020-01539-z
- 716 111. Nelson CP, Sama IE, Codd V, et al. Genetic Associations With Plasma Angiotensin
717 Converting Enzyme 2 Concentration: Potential Relevance to COVID-19 Risk. *Circulation.*
718 2020;142(11):1117-1119. doi:10.1161/CIRCULATIONAHA.120.049007
- 719 112. Pedersen KB, Chhabra KH, Nguyen VK, Xia H, Lazartigues E. The transcription factor
720 HNF1 α induces expression of angiotensin-converting enzyme 2 (ACE2) in pancreatic islets from
721 evolutionarily conserved promoter motifs. *Biochim Biophys Acta.* 2013;1829(11):1225-1235.
722 doi:10.1016/j.bbagr.2013.09.007
- 723 113. Iyer GR, Samajder S, Zubeda S, et al. Infectivity and Progression of COVID-19 Based on
724 Selected Host Candidate Gene Variants. *Front Genet.* 2020;11:861. Published 2020 Sep 4.
725 doi:10.3389/fgene.2020.00861
- 726 114. Prelli Bozzo C, Nchioua R, Volcic M, et al. IFITM proteins promote SARS-CoV-2 infection
727 and are targets for virus inhibition in vitro. *Nat Commun.* 2021;12(1):4584. Published 2021 Jul 28.
728 doi:10.1038/s41467-021-24817-y
- 729 115. Zhang Y, Yang H, Li S, Li WD, Wang J, Wang Y. Association analysis framework of genetic
730 and exposure risks for COVID-19 in middle-aged and elderly adults. *Mech Ageing Dev.*
731 2021;194:111433. doi:10.1016/j.mad.2021.111433
- 732 116. Evans DM, Zhu G, Dy V, et al. Genome-wide association study identifies loci affecting blood
733 copper, selenium and zinc. *Hum Mol Genet.* 2013;22(19):3998-4006. doi:10.1093/hmg/ddt239
- 734 117. Spalinger MR, Hai R, Li J, et al. Identification of a Novel Susceptibility Marker for SARS-
735 CoV-2 Infection in Human Subjects and Risk Mitigation with a Clinically Approved JAK Inhibitor in
736 Human/Mouse Cells. Preprint. *bioRxiv.* 2020;2020.12.09.416586. Published 2020 Dec 9.
737 doi:10.1101/2020.12.09.416586
- 738 118. Paniri A, Hosseini MM, Akhavan-Niaki H. First comprehensive computational analysis of
739 functional consequences of TMPRSS2 SNPs in susceptibility to SARS-CoV-2 among different
740 populations. *J Biomol Struct Dyn.* 2021;39(10):3576-3593. doi:10.1080/07391102.2020.1767690
- 741 119. Karakas Celik S, Cakmak Genc G, Dursun A. A bioinformatic approach to investigating
742 cytokine genes and their receptor variants in relation to COVID-19 progression. *Int J Immunogenet.*
743 2021;48(2):211-218. doi:10.1111/iji.12522
- 744 120. Stairiker CJ, van Meurs M, Leon LG, et al. Heatr9 is an infection responsive gene that affects
745 cytokine production in alveolar epithelial cells. *PLoS One.* 2020;15(7):e0236195. Published 2020 Jul
746 17. doi:10.1371/journal.pone.0236195
- 747 121. Montoya MC, Sancho D, Bonello G, et al. Role of ICAM-3 in the initial interaction of T
748 lymphocytes and APCs. *Nat Immunol.* 2002;3(2):159-168. doi:10.1038/ni753

- 749 122. Hashemi SMA, Thijssen M, Hosseini SY, Tabarraei A, Pourkarim MR, Sarvari J. Human
750 gene polymorphisms and their possible impact on the clinical outcome of SARS-CoV-2 infection.
751 Arch Virol. 2021;166(8):2089-2108. doi:10.1007/s00705-021-05070-6
- 752 123. Maiti AK. The African-American population with a low allele frequency of SNP rs1990760
753 (T allele) in IFIH1 predicts less IFN-beta expression and potential vulnerability to COVID-19
754 infection. Immunogenetics. 2020;72(6-7):387-391. doi:10.1007/s00251-020-01174-6
- 755 124. Chong WP, Ip WK, Tso GH, et al. The interferon gamma gene polymorphism +874 A/T is
756 associated with severe acute respiratory syndrome. BMC Infect Dis. 2006;6:82. Published 2006 May
757 4. doi:10.1186/1471-2334-6-82
- 758 125. Farhan S, Nadeem M, Ahmed RS, Nadeem MT, Arshad MS, and Ullah A. Studying the
759 impact of nutritional immunology underlying the modulation of immune responses by nutritional
760 compounds—a review. Food and agricultural immunology. 2016; 27(2):205-229. doi:
761 org/10.1080/09540105.2015.1079600
- 762 126. Shane B, Pangilinan F, Mills JL, et al. The 677C→T variant of MTHFR is the major genetic
763 modifier of biomarkers of folate status in a young, healthy Irish population. Am J Clin Nutr.
764 2018;108(6):1334-1341. doi:10.1093/ajcn/nqy209
- 765 127. Schmiedel BJ, Singh D, Madrigal A, et al. Impact of Genetic Polymorphisms on Human
766 Immune Cell Gene Expression. Cell. 2018;175(6):1701-1715.e16. doi:10.1016/j.cell.2018.10.022
- 767 128. Smadja DM, Guerin CL, Chocron R, et al. Angiopoietin-2 as a marker of endothelial
768 activation is a good predictor factor for intensive care unit admission of COVID-19 patients.
769 Angiogenesis. 2020;23(4):611-620. doi:10.1007/s10456-020-09730-0
- 770 129. Nagy B Jr, Fejes Z, Szentkereszty Z, et al. A dramatic rise in serum ACE2 activity in a
771 critically ill COVID-19 patient. Int J Infect Dis. 2021;103:412-414. doi:10.1016/j.ijid.2020.11.184
- 772 130. Hamet P, Pausova Z, Attaoua R, et al. SARS-CoV-2 Receptor ACE2 Gene Is Associated with
773 Hypertension and Severity of COVID 19: Interaction with Sex, Obesity, and Smoking. Am J
774 Hypertens. 2021;34(4):367-376. doi:10.1093/ajh/hpaa223
- 775 131. Wooster L, Nicholson CJ, Sigurslid HH, Cardenas CLL, Malhotra R. Polymorphisms in the
776 ACE2 locus associate with severity of COVID-19 infection. Preprint. medRxiv. 2020. doi:
777 <https://doi.org/10.1101/2020.06.18.20135152>
- 778 132. Sun BB, Maranville JC, Peters JE, et al. Genomic atlas of the human plasma proteome.
779 Nature. 2018;558(7708):73-79. doi:10.1038/s41586-018-0175-2
- 780 133. Ali N. Elevated level of C-reactive protein may be an early marker to predict risk for severity
781 of COVID-19. J Med Virol. 2020;92(11):2409-2411. doi:10.1002/jmv.26097
- 782 134. Du Clos TW. Function of C-reactive protein. Ann Med. 2000;32(4):274-278.
783 doi:10.3109/07853890009011772

- 784 135. Sheu WH, Wang WC, Wu KD, et al. CRP-level-associated polymorphism rs1205 within the
785 CRP gene is associated with 2-hour glucose level: The SAPPHiRe study. *Sci Rep.* 2017;7(1):7987.
786 Published 2017 Aug 11. doi:10.1038/s41598-017-08696-2
- 787 136. Chou SC, Ko HW, Lin YC. CRP/IL-6/IL-10 Single-Nucleotide Polymorphisms Correlate
788 with the Susceptibility and Severity of Community-Acquired Pneumonia [published correction
789 appears in *Genet Test Mol Biomarkers.* 2019 Jun;23(6):433]. *Genet Test Mol Biomarkers.*
790 2016;20(12):732-740. doi:10.1089/gtmb.2016.0156
- 791 137. Chan KY, Ching JC, Xu MS, et al. Association of ICAM3 genetic variant with severe acute
792 respiratory syndrome. *J Infect Dis.* 2007;196(2):271-280. doi:10.1086/518892
- 793 138. Meyer NJ, Feng R, Li M, et al. IL1RN coding variant is associated with lower risk of acute
794 respiratory distress syndrome and increased plasma IL-1 receptor antagonist. *Am J Respir Crit Care*
795 *Med.* 2013;187(9):950-959. doi:10.1164/rccm.201208-1501OC
- 796 139. Magro G. SARS-CoV-2 and COVID-19: Is interleukin-6 (IL-6) the 'culprit lesion' of ARDS
797 onset? What is there besides Tocilizumab? *SGP130Fc. Cytokine X.* 2020;2(2):100029.
798 doi:10.1016/j.cyttox.2020.100029
- 799 140. Nakanishi T, Pigazzini S, Degenhardt F, et al. Age-dependent impact of the major common
800 genetic risk factor for COVID-19 on severity and mortality. Preprint. medRxiv.
801 2021;2021.03.07.21252875. Published 2021 Mar 12. doi:10.1101/2021.03.07.21252875
- 802 141. Ali RMM, Ghonimy MBI. Post-COVID-19 pneumonia lung fibrosis: a worrisome sequelae in
803 surviving patients. *The Egyptian Journal of Radiology and Nuclear Medicine.* 2021;52(1):101.
804 doi:10.1186/s43055-021-00484-3
- 805 142. Seibold MA, Wise AL, Speer MC, et al. A common MUC5B promoter polymorphism and
806 pulmonary fibrosis. *N Engl J Med.* 2011;364(16):1503-1512. doi:10.1056/NEJMoa1013660
- 807 143. Andolfo I, Russo R, Lasorsa VA, et al. Common variants at 21q22.3 locus influence MX1
808 and TMPRSS2 gene expression and susceptibility to severe COVID-19. *iScience.*
809 2021;24(4):102322. doi:10.1016/j.isci.2021.102322
- 810 144. Hu J, Li C, Wang S, Li T, Zhang H. Genetic variants are identified to increase risk of
811 COVID-19 related mortality from UK Biobank data. *Hum Genomics.* 2021;15(1):10. Published 2021
812 Feb 3. doi:10.1186/s40246-021-00306-7
- 813 145. Gómez J, Albaiceta GM, García-Clemente M, et al. Angiotensin-converting enzymes (ACE,
814 ACE2) gene variants and COVID-19 outcome. *Gene.* 2020;762:145102.
815 doi:10.1016/j.gene.2020.145102
- 816 146. Liu C, Pei J, Lai Y, et al. Association of ACE2 variant rs4646188 with the risks of atrial
817 fibrillation and cardioembolic stroke in Uygur patients with type 2 diabetes. *BMC Cardiovasc*
818 *Disord.* 2021;21(1):103. Published 2021 Feb 18. doi:10.1186/s12872-021-01915-9
- 819 147. Pan Y, Wang T, Li Y, et al. Association of ACE2 polymorphisms with susceptibility to
820 essential hypertension and dyslipidemia in Xinjiang, China. *Lipids Health Dis.* 2018;17(1):241.
821 Published 2018 Oct 20. doi:10.1186/s12944-018-0890-6

- 822 148. Luo Y, Liu C, Guan T, et al. Association of ACE2 genetic polymorphisms with hypertension-
823 related target organ damages in south Xinjiang [published correction appears in *Hypertens Res.* 2019
824 Jan 23;:]. *Hypertens Res.* 2019;42(5):681-689. doi:10.1038/s41440-018-0166-6
- 825 149. Kochetova OV, Avzaletdinova DS, Morugova TV, Mustafina OE. Chemokine gene
826 polymorphisms association with increased risk of type 2 diabetes mellitus in Tatar ethnic group,
827 Russia. *Mol Biol Rep.* 2019;46(1):887-896. doi:10.1007/s11033-018-4544-6
- 828 150. polymorphism with tuberculosis susceptibility: A meta-analysis. *Innate Immun.*
829 2020;26(5):358-363. doi:10.1177/1753425919891662 rs2107538 Sheng YF, Qi Q. Association of
830 chemotactic chemokine ligand 5
- 831 151. Lu S, Wang Y, Wang Y, et al. The IL-6 rs1800795 and rs1800796 polymorphisms are
832 associated with coronary artery disease risk. *J Cell Mol Med.* 2020;24(11):6191-6207.
833 doi:10.1111/jcmm.15246
- 834 152. Oosterveer DM, Versmissen J, Defesche JC, et al. Low-density lipoprotein receptor mutations
835 generate synthetic genome-wide associations. *Eur J Hum Genet.* 2013;21(5):563-566.
836 doi:10.1038/ejhg.2012.207
- 837 153. <https://mapmygenome.in/>
- 838 154. <https://covid19.who.int/>
- 839 155. <https://ourworldindata.org/coronavirus>
- 840
- 841
- 842
- 843
- 844
- 845
- 846
- 847
- 848
- 849
- 850
- 851
- 852

853
854
855
856

Table 1: Genetic variants related to COVID-19 susceptibility.

^p Effect allele frequency in Indian population. ^q EAF (India) compared with EAF in other populations (IND – India, EUR – Europe, AMR – America, SAS – South Asia, AFR – Africa, EAS – East Asia. ‘=’ denotes no significant difference between EAF of Indian and the other population. (EA – effect allele, OA – other allele, Ref – references).

rsid	Gene	EA	OA	IND ^p (EAF)	AFR (EAF)	AMR (EAF)	EAS (EAF)	EUR (EAF)	SAS (EAF)	EAF comparison ^q	Effect	Ref
rs4343	ACE	A	G	0.604	0.805	0.607	0.68	0.435	0.627	EUR < IND = AMR = SAS < EAS < AFR	Increased susceptibility to COVID-19	53, 54
rs2285666	ACE2	A	G	0.459	0.207	0.326	0.536	0.239	0.487	AFR < EUR < AMR < IND = SAS < EAS	Increased levels of ACE2 in serum; increased susceptibility to COVID-19	48
rs4240157	ACE2	T	C	0.69	0.459	0.712	0.965	0.657	0.724	AFR < EUR < IND = AMR = SAS < EAS	Increased expression of ACE2; increased susceptibility to COVID-19	49, 41
rs4646188	ACE2	G	A	0.062	0.003	0.032	0	0.136	0.061	EAS < AFR < AMR = SAS = IND < EUR	Increased expression of ACE2; increased susceptibility to COVID-19	50, 51, 41
rs2158083	ACE2	T	C	0.76	0.828	0.755	0.995	0.664	0.812	EUR < AMR = IND < SAS < AFR < EAS	Increased expression of PIR and ACE2; increased susceptibility to COVID-19	41, 50
rs1978124	ACE2	C	T	0.724	0.902	0.71	0.995	0.544	0.792	EUR < AMR = IND < SAS < AFR < EAS	Increased expression of PIR and ACE2; increased susceptibility to COVID-19	41, 50
rs233574	ACE2	T	C	0.176	0.084	0.235	0.004	0.315	0.177	EAS < AFR < IND < SAS < AMR < EUR	Increased expression of ACE2; increased susceptibility to COVID-19	52
rs55790676	ADAM17	G	T	0.925	0.919	0.866	0.98	0.816	0.904	EUR < AMR < SAS = AFR = IND < EAS	Decreased ADAM17 expression; increased susceptibility to COVID-19	41, 50
rs1524668	ADAM17	A	C	0.597	0.297	0.569	0.906	0.338	0.573	AFR < EUR < AMR = SAS = IND < EAS	Decreased ADAM17 expression; increased susceptibility to COVID-19	50, 41
rs2248690	AHSG	T	A	0.17	0.278	0.365	0.161	0.244	0.177	EAS = IND = SAS < EUR < AFR < AMR	Decreased AHSG levels and increased SARS-COV susceptibility; increased susceptibility to COVID-19	94
rs1532423	CA1	G	A	0.494	0.862	0.565	0.468	0.629	0.459	SAS = EAS = IND < AMR < EUR < AFR	Decreased zinc levels; increased susceptibility to COVID-19	99
rs1996225	CA5BP1	T	C	0.541	0.607	0.586	0.782	0.48	0.622	EUR < IND < AMR < AFR < SAS < EAS	Increased expression of ACE2; increased susceptibility to COVID-19	41, 105
rs4060	CA5BP1	A	C	0.645	0.692	0.69	0.931	0.544	0.702	EUR < IND = AMR < AFR < SAS < EAS	Increased expression of ACE2; increased susceptibility to COVID-19	41, 105
rs7248637	CD209	C	T	0.948	0.624	0.903	0.685	0.885	0.83	AFR < EAS < SAS < EUR < AMR < IND	Increased susceptibility to COVID-19	106, 107
rs3128509	CTSL	A	G	0.191	0.126	0.408	0.018	0.413	0.204	EAS < AFR < IND = SAS < AMR < EUR	Increased CTSL expression in various tissues; increased susceptibility to COVID-19	41, 108
rs17823744	DMGDH	A	G	0.94	0.992	0.938	1	0.87	0.942	EUR < AMR = IND = SAS < AFR < EAS	Decreased selenium levels; decreased immune response; increased susceptibility to COVID-19	99
rs13015258	DPP4	T	G	0.315	0.318	0.602	0.621	0.4	0.327	IND = AFR = SAS < EUR < AMR < EAS	Increased DPP4 (CD26) expression in lungs; increased COVID-19 susceptibility	109, 110, 41

rs9340799	ESR1	G	A	0.377	0.265	0.272	0.193	0.308	0.373	EAS < AFR < AMR < EUR < SAS = IND	Potential alteration of expression of ESR-alpha, thereby affecting ACE2 expression	64
rs4702	FURIN	A	G	0.499	0.941	0.589	0.525	0.563	0.499	SAS = IND = EAS < EUR < AMR < AFR	Increased FURIN expression; increased susceptibility to COVID-19	65
rs4932178	FURIN	T	C	0.276	0.287	0.209	0.16	0.356	0.286	EAS < AMR < IND = SAS = AFR < EUR	Increased FURIN expression; increased susceptibility to COVID-19	64, 41
rs71076692	HNF1A	CT	C	0.313	0.592	0.48	0.487	0.456	0.369	IND < SAS < EUR < AMR < EAS < AFR	Increased plasma ACE2 concentration in males; increased susceptibility to COVID-19	111, 112
rs9666637	IFITM3	T	A	0.912	0.757	0.689	0.393	0.864	0.81	EAS < AMR < AFR < SAS < EUR < IND	Increased expression of IFITM3 in cultured fibroblast cells; increased susceptibility to COVID-19	114, 41, 113
rs11246066	IFITM3 - LOC105376504	A	C	0.189	0.026	0.29	0.554	0.258	0.219	AFR < IND = SAS < EUR < AMR < EAS	Increased IFITM3 expression in whole blood; increased susceptibility to COVID-19	114, 41, 113
rs7931303	IFITM3 - LOC105376504	G	A	0.398	0.077	0.526	0.558	0.676	0.422	AFR < IND = SAS < AMR < EAS < EUR	Increased IFITM1 and IFITM2 expression in whole blood; increased susceptibility to COVID-19	114, 41
rs2093932	KCNT2	C	T	0.933	0.998	0.991	0.998	0.969	0.944	IND = SAS < EUR < AMR < AFR < EAS	Increased susceptibility to COVID-19	115
rs35477708	MX1	GA	G	0.35	0.556	0.602	0.191	0.633	0.521	EAS < IND < SAS < AFR < AMR < EUR	Increased TMPRSS2 expression; increased susceptibility to COVID-19	41, 47
rs468259	MX1	C	G	0.485	0.36	0.334	0.249	0.54	0.485	EAS < AMR < AFR < SAS = IND < EUR	Increased TMPRSS2 expression, increased susceptibility to COVID-19	41, 47
rs363981	MX1	T	G	0.261	0.104	0.29	0.01	0.484	0.249	EAS < AFR < SAS = IND = AMR < EUR	Increased TMPRSS2 expression, increased susceptibility to COVID-19	41, 47
rs1638369	MX1	T	G	0.341	0.382	0.448	0.106	0.573	0.364	EAS < IND = SAS = AFR < AMR < EUR	Increased TMPRSS2 expression, increased susceptibility to COVID-19	41, 47
rs469288	MX1	G	A	0.551	0.443	0.468	0.348	0.588	0.547	EAS < AFR < AMR < SAS = IND = EUR	Increased TMPRSS2 expression, increased susceptibility to COVID-19	41, 47
rs468699	MX1	C	T	0.347	0.468	0.336	0.101	0.539	0.366	EAS < AMR = IND = SAS < AFR < EUR	Increased TMPRSS2 expression, increased susceptibility to COVID-19	41, 47
rs462698	MX1	A	G	0.341	0.382	0.448	0.106	0.574	0.364	EAS < IND = SAS = AFR < AMR < EUR	Increased TMPRSS2 expression, increased susceptibility to COVID-19	41, 47
rs4826508	NBDY	C	T	0.273	0.372	0.408	0.364	0.272	0.294	EUR = IND = SAS < EAS < AFR < AMR	Decreased zinc levels, increased susceptibility to COVID-19	116, 99
rs1042838	PGR	A	C	0.078	0.006	0.137	0.01	0.179	0.066	AFR < EAS < SAS = IND < AMR < EUR	Affects PGR protein function, increased susceptibility to COVID-19	53, 74
rs2120019	PPCDC	C	T	0.62	0.486	0.246	0.611	0.208	0.595	EUR < AMR < AFR < SAS = EAS = IND	Decreased serum zinc levels, increased susceptibility to COVID-19	99
rs1893217	PTPN2	G	A	0.183	0.036	0.061	0.192	0.141	0.178	AFR < AMR < EUR < SAS = IND = EAS	Increased ACE2 expression, increased susceptibility to COVID-19	117, 41

rs35746115	SDK2	C	A	0.926	0.916	0.865	0.973	0.764	0.926	EUR < AMR < AFR = IND = SAS < EAS	Increased risk of COVID-19 susceptibility	115
rs12950851	SDK2	C	T	0.947	0.991	0.873	0.971	0.769	0.914	EUR < AMR < SAS < IND < EAS < AFR	Increased risk of COVID-19 susceptibility	115
rs461194	TMPRSS2	G	C	0.916	0.995	0.772	0.653	0.969	0.887	EAS < AMR < SAS < IND < EUR < AFR	Predicted to alter the splicing silencer motif of TMPRSS2 which is likely to affect TMPRSS2 structure and function	118
rs456016	TMPRSS2	T	C	0.056	0.02	0.231	0.349	0.019	0.075	EUR < AFR < IND = SAS < AMR < EAS	Predicted to modify and/or create splice enhancer site, donor site and silencer site thereby affecting TMPRSS2 splicing	118
rs467375	TMPRSS2	A	G	0.372	0.093	0.239	0.006	0.441	0.384	EAS < AFR < AMR < IND = SAS < EUR	Increased TMPRSS2 expression in lungs, increased susceptibility to COVID-19	41, 47
rs2094881	TMPRSS2	C	T	0.681	0.476	0.509	0.256	0.748	0.676	EAS < AFR < AMR < SAS = IND < EUR	Predicted to modify the splice enhancer site in TMPRSS2 gene, potentially affecting TMPRSS2 expression	118
rs4818239	TMPRSS2	C	T	0.425	0.25	0.336	0.008	0.502	0.446	EAS < AFR < AMR < IND = SAS < EUR	Increased TMPRSS2 expression in lungs, increased susceptibility to COVID-19	41, 47
rs35899679	TMPRSS2	A	C	0.374	0.107	0.288	0.007	0.463	0.384	EAS < AFR < AMR < IND = SAS < EUR	Increased TMPRSS2 expression in lungs, increased susceptibility to COVID-19	41, 47
rs12627374	TMPRSS2	C	T	0.884	0.995	0.996	0.85	0.998	0.863	EAS = SAS = IND < AFR < AMR < EUR	Binding site for hsa-miR-345 created, might be altering TMPRSS2 expression	108
rs8134378	TMPRSS2	G	A	0.949	0.821	0.951	0.999	0.885	0.922	AFR < EUR < SAS < IND = AMR < EAS	Increased TMPRSS2 expression, increased susceptibility to COVID-19	77, 64, 41
rs140092351	LOC101928923	GTT TCT CTA GTT TGG A	G	0.143	0.597	0.334	0.228	0.223	0.148	IND = SAS < EUR < EAS < AMR < AFR	Increased susceptibility to COVID-19	115
rs80066318	LOC105370282 - LOC105370283	G	A	0.214	0.382	0.03	0.168	0.032	0.303	AMR < EUR < EAS < IND < SAS < AFR	Increased susceptibility to COVID-19	115
rs56248709	LOC105374172 - LOC100419750	C	T	0.071	0.263	0.094	0.031	0.153	0.073	EAS < IND = SAS = AMR < EUR < AFR	Increased susceptibility to COVID-19	115
rs62436931	LOC105378093	C	T	0.16	0.122	0.174	0	0.278	0.142	EAS < AFR < SAS = IND = AMR < EUR	Increased susceptibility to COVID-19	115

857
858
859
860
861
862
863

864
865
866
867

Table 2: Genetic variants related to host immune response to SARS-CoV2 infection.

^p Effect allele frequency in Indian population. ^q EAF (India) compared with EAF in other populations (IND – India, EUR – Europe, AMR – America, SAS – South Asia, AFR – Africa, EAS – East Asia. ‘=’ denotes no significant difference between EAF of Indian and the other population. (EA – effect allele, OA – other allele, Ref – references).

rsid	Gene	EA	OA	IND ^p (EAF)	AFR (EAF)	AMR (EAF)	EAS (EAF)	EUR (EAF)	SAS (EAF)	EAF comparison ^q	Literature data	Ref
rs1719152	CCL4	A	T	0.121	0.049	0.118	0.276	0.249	0.228	AFR < AMR = IND < SAS < EUR < EAS	Increased CCL4 and CCL3 expression in lungs, might be causing impaired immune response	41, 119
rs3817655	CCL5	A	T	0.873	0.546	0.78	0.679	0.841	0.823	AFR < EAS < AMR < SAS < EUR = IND	Increased CCL5 expression in whole blood, might be causing impaired immune response	41, 83, 42
rs2107538	CCL5	T	C	0.281	0.451	0.225	0.322	0.161	0.309	EUR < AMR < IND = SAS = EAS < AFR	Decreased CCL5 levels in whole blood, might be causing impaired immune response	41, 105
rs1015164	CCRL2 - LINC02009	G	A	0.753	0.953	0.777	0.813	0.683	0.717	EUR < SAS = IND = AMR < EAS < AFR	Increased CCR1 expression in whole blood, might be causing impaired immune response	41, 90
rs2306630	HEATR9	A	G	0.099	0.191	0.199	0.308	0.111	0.108	IND = SAS = EUR < AFR < AMR < EAS	Decreased HEATR9 and CCL5 expression in whole blood, might be causing impaired immune response	41, 120
rs4611572	ICAM3 - TYK2	G	C	0.575	0.38	0.486	0.658	0.579	0.547	AFR < AMR < SAS = IND = EUR < EAS	Decreased ICAM3 expression, might be causing impaired immune response	121, 41, 42, 122
rs1990760	IFIH1	T	C	0.516	0.126	0.39	0.187	0.605	0.564	AFR < EAS < AMR < IND < SAS < EUR	Protects against viral infection	79, 123
rs2430561	IFNG	A	T	0.364	0.167	0.254	0.159	0.462	0.39	EAS < AFR < AMR < IND = SAS < EUR	Increased SARS susceptibility	124
rs1024611	LINC01989 - CCL2	G	A	0.316	0.228	0.486	0.547	0.316	0.321	AFR < EUR = IND = SAS < AMR < EAS	Increased CCL2 expression, might be causing impaired immune response	91
rs1994182	MMP28	G	C	0.341	0.651	0.295	0.572	0.167	0.38	EUR < AMR = IND = SAS < EAS < AFR	Decreased CCL5 levels in whole blood, might be causing impaired immune response	41, 42, 89
rs3826404	MMP28	G	T	0.272	0.362	0.213	0.315	0.165	0.31	EUR < AMR < IND = SAS = EAS < AFR	Decreased CCL5 expression in whole blood, might be causing impaired immune response	41, 42, 89
rs1801133	MTHFR	A	G	0.165	0.09	0.474	0.296	0.365	0.119	AFR < SAS < IND < EAS < EUR < AMR	Decreased serum folate levels, might be causing impaired immune response	125, 126, 99
rs13303010	NOC2L	G	A	0.142	0.837	0.303	0.292	0.098	0.125	EUR < SAS = IND < EAS < AMR < AFR	Increased PLEKHN1 expression in CD4 T-cells (T cell, CD4, TFH)	127
rs2526327	RDM1	A	G	0.273	0.444	0.202	0.21	0.145	0.293	EUR < AMR < EAS < IND = SAS < AFR	Decreased CCL5 expression in whole blood, might be causing impaired immune response	41, 42
rs2769264	SELENBP1	T	G	0.792	0.703	0.588	0.714	0.839	0.785	AMR < AFR < EAS < SAS = IND < EUR	Decreased levels of copper in serum, might be causing impaired immune response	116
rs1175550	SMIM1	A	G	0.842	0.399	0.846	0.998	0.781	0.857	AFR < EUR < IND = AMR = SAS < EAS	Decreased levels of copper in serum, might be causing impaired immune response	99, 41

868
869
870
871
872
873

rs4239252	TAF15	A	G	0.32	0.607	0.288	0.456	0.162	0.366	EUR < AMR = IND = SAS < EAS < AFR	Increased expression of CCL5 in whole blood	41, 42
rs1061622	TNFRSF1B	G	T	0.249	0.187	0.127	0.15	0.218	0.276	AMR < EAS < AFR < EUR = IND = SAS	Increased TNFRSF1B expression in whole blood	41, 119

Table 3: Genetic variants related to COVID-19 severity.

^p Effect allele frequency in Indian population. ^q EAF (India) compared with EAF in other populations (IND – India, EUR – Europe, AMR – America, SAS – South Asia, AFR – Africa, EAS – East Asia. ‘=’ denotes no significant difference between EAF of Indian and the other population. (EA – effect allele, OA – other allele, Ref – references).

rsid	Gene	EA	OA	IND ^p (EAF)	AFR (EAF)	AMR (EAF)	EAS (EAF)	EUR (EAF)	SAS (EAF)	EAF comparison ^q	Effect	Ref
rs2519093	ABO	T	C	0.128	0.087	0.121	0.19	0.185	0.134	AFR < AMR = IND = SAS < EUR < EAS	Increased risk of COVID-19 severity	96, 128, 129
rs2074192	ACE2	T	C	0.222	0.351	0.405	0.43	0.432	0.227	IND < SAS < AFR < AMR < EAS < EUR	Increased risk of COVID-19 severity	130
rs4240157	ACE2	T	C	0.69	0.459	0.712	0.965	0.657	0.724	AFR < EUR < IND = AMR = SAS < EAS	Increased hospitalization due to COVID-19, increased risk of COVID-19 severity	131
rs13282163	ADAM9	A	C	0.94	0.995	0.944	0.915	0.912	0.839	SAS < EUR < EAS < IND = AMR < AFR	Increased risk of COVID-19 severity	86
rs12692386	ADAM17	G	A	0.509	0.983	0.484	0.219	0.669	0.531	EAS < AMR = IND = SAS < EUR < AFR	Increased ADAM17 expression in severe sepsis, increased risk of COVID-19 severity	50, 41
rs2765013	AGO1	C	T	0.881	0.477	0.61	0.364	0.913	0.864	EAS < AFR < AMR < SAS < IND = EUR	Increased risk of COVID-19 severity	86
rs1892429	ANKRD30A	A	G	0.907	0.992	0.759	0.917	0.757	0.912	EUR < AMR < IND = SAS = EAS < AFR	Increased risk of COVID-19 severity	86
rs10039856	ARHGAP26	C	T	0.813	0.555	0.847	0.324	0.915	0.794	EAS < AFR < SAS = IND = AMR < EUR	Increased risk of COVID-19 severity	86
rs7787942	C1GALT1	T	A	0.297	0.828	0.46	0.699	0.466	0.293	SAS = IND < AMR < EUR < EAS < AFR	Increased C1GALT1C1 protein levels in blood serum, and associated with COVID-19 severity	132, 96
rs1205	CRP	C	T	0.692	0.83	0.625	0.434	0.69	0.667	EAS < AMR < SAS = EUR = IND < AFR	Increased serum CRP levels, one of the major hallmarks of severe COVID-19, associated with susceptibility and severity of community acquired pneumonia	133, 134, 135, 136
rs3774882	EVC	C	G	0.848	0.687	0.937	0.9	0.93	0.781	AFR < SAS < IND < EAS < EUR < AMR	Increased risk of COVID-19 severity	86
rs3774881	EVC	T	C	0.786	0.193	0.64	0.751	0.857	0.745	AFR < AMR < SAS = EAS = IND < EUR	Increased risk of COVID-19 severity	86
rs17514846	FURIN	A	C	0.371	0.883	0.295	0.159	0.461	0.39	EAS < AMR < IND = SAS < EUR < AFR	Increased FURIN expression in vascular endothelial cells, increased risk of COVID-19 severity	62, 64
rs1155563	GC	C	T	0.296	0.057	0.186	0.336	0.244	0.316	AFR < AMR < EUR < IND = SAS = EAS	Decreased serum vitamin-D levels, increased risk of COVID-19 severity	99

rs3895472	GLIS3 - RNU6-694P	C	T	0.896	0.796	0.915	0.992	0.936	0.889	AFR < SAS = IND = AMR < EUR < EAS	Increased risk of COVID-19 severity	86
rs1799945	HFE	C	G	0.912	0.989	0.885	0.971	0.828	0.929	EUR < AMR = IND = SAS < EAS < AFR	Decreased iron bioavailability, increased risk of COVID-19 severity	99
rs10755709	HIVEP1	A	G	0.176	0.634	0.69	0.591	0.7	0.572	IND < SAS < EAS < AFR < AMR < EUR	Increased risk of COVID-19 severity	86
rs9380142	HLA-G	A	G	0.84	0.809	0.719	0.651	0.656	0.85	EAS < EUR < AMR < AFR < IND = SAS	Increased risk of COVID-19 severity	95
rs2304237	ICAM3	C	T	0.261	0.141	0.174	0.113	0.234	0.248	EAS < AFR < AMR < EUR = SAS = IND	Increased risk of COVID-19 severity	137
rs2236757	IFNAR2	A	G	0.425	0.193	0.428	0.565	0.294	0.468	AFR < EUR < IND = AMR = SAS < EAS	Increased risk of COVID-19 severity	95
rs13050728	IFNAR2	T	C	0.487	0.194	0.451	0.576	0.333	0.519	AFR < EUR < AMR = IND = SAS < EAS	Increased risk of COVID-19 severity	95
rs2270360	IGFBP2	A	C	0.927	0.976	0.659	0.585	0.695	0.776	EAS < AMR < EUR < SAS < IND < AFR	Increased risk of COVID-19 severity	86
rs1800872	IL10	T	G	0.435	0.436	0.333	0.676	0.24	0.458	EUR < AMR < IND = AFR = SAS < EAS	Increased risk of COVID-19 severity	136, 105, 41
rs315952	IL1RN	T	C	0.887	0.534	0.785	0.444	0.72	0.851	EAS < AFR < EUR < AMR < SAS < IND	Increased risk of developing acute respiratory distress syndrome (ARDS)	138
rs1800797	IL6	A	G	0.17	0.017	0.184	0.001	0.408	0.134	EAS < AFR < SAS = IND = AMR < EUR	Increased risk of severe community acquired pneumonia and increased IL6 expression in cultured fibroblast cells, might be associated with increased COVID-19 severity	139, 136, 41
rs10766439	KCNQ1DN - CDKN1C	A	G	0.351	0.241	0.199	0.008	0.365	0.374	EAS < AMR < AFR < IND = EUR = SAS	Increased risk of COVID-19 severity	86
rs1870377	KDR - VEGFR2	A	T	0.173	0.09	0.131	0.465	0.235	0.149	AFR < AMR = SAS = IND < EUR < EAS	Decreased stability of VEGFR2, contributing to COVID-19 progression or pathogenesis	119
rs4240376	LINC01170 - ZNF608	G	T	0.69	0.887	0.713	0.578	0.789	0.704	EAS < IND = SAS = AMR < EUR < AFR	Increased risk of COVID-19 severity	86
rs1800630	LTA - TNF	A	C	0.283	0.1	0.134	0.164	0.145	0.241	AFR < AMR < EUR < EAS < SAS = IND	Increased risk of developing acute respiratory distress syndrome (ARDS), increased risk of COVID-19 severity	93
rs10490770	LZTFL1	C	T	0.251	0.004	0.043	0.005	0.081	0.296	AFR < EAS < AMR < EUR < IND = SAS	Increased risk of COVID-19 severity, COVID-19 related severe respiratory failure, COVID-19 related Venous thromboembolism and COVID-19 related hepatic injury	140
rs113791144	MGAT1	T	C	0.194	0.043	0.143	0.036	0.083	0.168	EAS < AFR < EUR < AMR < SAS = IND	Increased risk of COVID-19 severity	86
rs35619543	MUC5B	T	G	0.085	0.362	0.245	0.033	0.26	0.195	EAS < IND < SAS < AMR < EUR < AFR	Increased risk of pulmonary fibrosis, increased risk of COVID-19 severity	141, 142, 113
rs35477708	MX1	G	GA	0.65	0.444	0.398	0.809	0.367	0.479	EUR < AMR < AFR < SAS < IND < EAS	Decreased MX1 expression, increased risk of COVID-19 severity	41, 47

rs468259	MX1	G	C	0.515	0.64	0.666	0.751	0.46	0.515	EUR < IND = SAS < AFR < AMR < EAS	Decreased MX1 expression, increased risk of COVID-19 severity	41, 47
rs363981	MX1	G	T	0.739	0.896	0.71	0.99	0.516	0.751	EUR < AMR = IND = SAS < AFR < EAS	Decreased MX1 expression, increased risk of COVID-19 severity	41, 47
rs1638369	MX1	G	T	0.659	0.618	0.552	0.894	0.427	0.636	EUR < AMR < AFR = SAS = IND < EAS	Decreased MX1 expression, increased risk of COVID-19 severity	41, 47
rs469288	MX1	A	G	0.449	0.557	0.532	0.652	0.412	0.453	EUR = IND = SAS < AMR < AFR < EAS	Decreased MX1 expression, increased risk of COVID-19 severity	41, 47
rs468699	MX1	T	C	0.653	0.532	0.664	0.899	0.461	0.634	EUR < AFR < SAS = IND = AMR < EAS	Decreased MX1 expression, increased risk of COVID-19 severity	41, 47
rs462698	MX1	G	A	0.659	0.618	0.552	0.894	0.426	0.636	EUR < AMR < AFR = SAS = IND < EAS	Decreased MX1 expression, increased risk of COVID-19 severity	41
rs10735079	OAS1-OAS3	A	G	0.698	0.812	0.756	0.748	0.636	0.717	EUR < IND = SAS < EAS < AMR < AFR	Increased risk of COVID-19 severity	95
rs10808999	PLEKHA2	G	A	0.861	0.977	0.925	0.921	0.859	0.883	EUR = IND = SAS < EAS < AMR < AFR	Increased risk of COVID-19 severity	86
rs6065904	PLTP	A	G	0.325	0.212	0.38	0.337	0.244	0.35	AFR < EUR < IND = EAS = SAS < AMR	Increased risk of COVID-19 severity	96, 132
rs2010843	RDH10-AS1	C	T	0.539	0.066	0.659	0.628	0.556	0.538	AFR < SAS = IND = EUR < EAS < AMR	Increased risk of COVID-19 severity	86
rs2238187	RGS6	G	A	0.308	0.185	0.29	0.624	0.389	0.3	AFR < AMR = SAS = IND < EUR < EAS	Increased risk of COVID-19 severity	86
rs12083278	RPL21P22 - LOC107984935	C	G	0.941	0.83	0.637	0.721	0.642	0.843	AMR < EUR < EAS < AFR < SAS < IND	Increased risk of COVID-19 severity	86
rs2229117	RYR3	G	C	0.913	0.969	0.824	0.963	0.867	0.918	AMR < EUR < IND = SAS < EAS < AFR	Increased risk of COVID-19 severity	86
rs12593288	RYR3	C	T	0.805	0.976	0.738	0.486	0.811	0.71	EAS < SAS < AMR < IND = EUR < AFR	Increased risk of COVID-19 severity	86
rs34761447	STX8	C	T	0.851	0.992	0.951	0.815	0.905	0.788	SAS < EAS = IND < EUR < AMR < AFR	Increased risk of COVID-19 severity	86
rs2220543	SUMO2P6 - LOC105377740	T	A	0.548	0.585	0.633	0.491	0.704	0.512	EAS < SAS = IND = AFR < AMR < EUR	Increased risk of COVID-19 severity	86
rs2274122	TEKT2	A	G	0.662	0.191	0.519	0.27	0.82	0.613	AFR < EAS < AMR < SAS < IND < EUR	Increased risk of COVID-19 severity	86
rs12329760	TMPRSS2	T	C	0.243	0.287	0.154	0.362	0.236	0.226	AMR < SAS = EUR = IND < AFR < EAS	Increased risk of COVID-19 severity	143
rs2094881	TMPRSS2	C	T	0.681	0.476	0.509	0.256	0.748	0.676	EAS < AFR < AMR < SAS = IND < EUR	Increased risk of COVID-19 severity	118, 143
rs60744406	ZNF155	G	A	0.505	0.18	0.376	0.257	0.571	0.492	AFR < EAS < AMR < SAS < IND < EUR	Increased risk of COVID-19 severity	86

rs71481792	LINC02676 - LOC10192 8272	A	T	0.615	0.762	0.51	0.65	0.35	0.626	EUR < AMR < IND = SAS = EAS < AFR	Increased risk of COVID-19 severity	86
rs1984162	LOC10537 0111 - LOC10537 0112	G	A	0.173	0.222	0.187	0.083	0.269	0.176	EAS < IND = SAS = AMR < AFR < EUR	Increased risk of COVID-19 severity	86
rs9386484	LOC10537 7923	T	A	0.789	0.616	0.548	0.637	0.72	0.615	AMR < SAS < AFR < EAS < EUR < IND	Increased risk of COVID-19 severity	86
rs7027911	LOC10798 7083 - MTCO1P5 0	A	G	0.535	0.887	0.569	0.662	0.417	0.517	EUR < SAS = IND = AMR < EAS < AFR	Increased risk of COVID-19 severity	86
rs12133284	LOC11226 8258	T	A	0.148	0.34	0.14	0.013	0.233	0.148	EAS < AMR = IND = SAS < EUR < AFR	Increased risk of COVID-19 severity	115

874
875
876
877
878
879

Table 4: Genetic variants related to COVID-19 related fatal outcomes or mortality.

^p Effect allele frequency in Indian population. ^q EAF (India) compared with EAF in other populations (IND – India, EUR – Europe, AMR – America, SAS – South Asia, AFR – Africa, EAS – East Asia. ‘=’ denotes no significant difference between EAF of Indian and the other population. (EA – effect allele, OA – other allele, Ref – references).

rsid	Gene	EA	OA	IND ^p (EAF)	AFR (EAF)	AMR (EAF)	EAS (EAF)	EUR (EAF)	SAS (EAF)	EAF comparison ^q	Effect	Ref
rs2074192	ACE2	T	C	0.222	0.351	0.405	0.43	0.432	0.227	IND < SAS < AFR < AMR < EAS < EUR	Increased risk of COVID-19 related mortality	71
rs2874140	CPQ	T	A	0.336	0.419	0.287	0.627	0.21	0.328	EUR < AMR = SAS = IND < AFR < EAS	Increased risk of COVID-19 related mortality	102
rs71040457	DES - SPEG	A	AG	0.276	0.939	0.385	0.177	0.376	0.293	EAS < IND = SAS < EUR < AMR < AFR	Increased risk of COVID-19 related mortality	102
rs6598045	IFITM3	A	G	0.841	0.701	0.778	0.859	0.894	0.723	AFR < SAS < AMR < IND < EAS < EUR	Increased risk of COVID-19 related mortality	71
rs73060484	LOC105376 755	C	A	0.065	0.115	0.236	0.235	0.077	0.134	IND = EUR < AFR < SAS < EAS < AMR	Increased risk of COVID-19 related mortality	144
rs10490770	LZTFL1	C	T	0.251	0.004	0.043	0.005	0.081	0.296	AFR < EAS < AMR < EUR < IND = SAS	Increased risk of COVID-19 related mortality	140
rs55986907	RPS26P32 - TOMM7	T	C	0.373	0.123	0.337	0.159	0.284	0.374	AFR < EAS < EUR < AMR = IND = SAS	Increased risk of COVID-19 related mortality	102
rs113892140	SLC39A10	A	G	0.078	0.256	0.238	0.202	0.046	0.077	EUR < SAS = IND < EAS < AMR < AFR	Increased risk of COVID-19 related mortality	102
rs2298659	TMPRSS2	G	A	0.834	0.825	0.782	0.751	0.77	0.811	EAS < EUR < AMR < SAS = AFR = IND	Increased risk of COVID-19 related mortality	71

880
881

882
883
884
885

Table 5: Genetic variants related to comorbidities that are risk factors of COVID-19 susceptibility/severity.

^p Effect allele frequency in Indian population. ^q EAF (India) compared with EAF in other populations (IND – India, EUR – Europe, AMR – America, SAS – South Asia, AFR – Africa, EAS – East Asia. ‘=’ denotes no significant difference between EAF of Indian and the other population. (EA – effect allele, OA – other allele, Ref – references).

rsid	Gene	EA	OA	IND ^p (EAF)	AFR (EAF)	AMR (EAF)	EAS (EAF)	EUR (EAF)	SAS (EAF)	EAF comparison ^q	Effect	Ref
rs2285666	ACE2	A	G	0.459	0.207	0.326	0.536	0.239	0.487	AFR < EUR < AMR < IND = SAS < EAS	Increased risk of developing hypertension, which might increase the risk for COVID-19 severity	145
rs4240157	ACE2	C	T	0.31	0.541	0.288	0.035	0.343	0.276	EAS < SAS = AMR = IND < EUR < AFR	Increased risk of developing hypertension and Type 2 diabetes, which might increase the risk for COVID-19 severity	50, 49
rs4646188	ACE2	A	G	0.938	0.997	0.968	1	0.864	0.939	EUR < IND = SAS = AMR < AFR < EAS	Increased risk of developing hypertension, which might alter COVID-19 severity Increased risk of developing atrial fibrillation and cardioembolic stroke in diabetic patients	50, 146
rs2158083	ACE2	C	T	0.24	0.172	0.245	0.005	0.336	0.188	EAS < AFR < SAS < IND = AMR < EUR	Associated with changes in blood pressure, potentially affecting COVID-19 susceptibility and severity	50
rs1978124	ACE2	T	C	0.276	0.098	0.29	0.005	0.456	0.208	EAS < AFR < SAS < IND = AMR < EUR	Increased risk of developing hypertension, which might increase the risk for COVID-19 severity	50, 130
rs2074192	ACE2	T	C	0.222	0.351	0.405	0.43	0.432	0.227	IND < SAS < AFR < AMR < EAS < EUR	Increased risk of developing hypertension, potentially affecting COVID-19 susceptibility and severity	49
rs4646155	ACE2	T	C	0.069	0.136	0.019	0.032	0.002	0.085	EUR < AMR < EAS < IND = SAS < AFR	Increased risk of developing essential hypertension, thereby modulating COVID-19 susceptibility and severity,	147
rs2106809	ACE2	T	C	0.545	0.913	0.687	0.477	0.751	0.509	EAS < SAS = IND < AMR < EUR < AFR	Increased risk of developing essential hypertension, thereby modulating COVID-19 susceptibility and severity,	148
rs55790676	ADAM17	T	G	0.075	0.081	0.134	0.02	0.184	0.096	EAS < IND = AFR = SAS < AMR < EUR	Decreased total cholesterol levels and increased HDL levels, potentially affecting COVID-19 severity	50
rs2107538	CCL5	T	C	0.281	0.451	0.225	0.322	0.161	0.309	EUR < AMR < IND = SAS = EAS < AFR	Associated with type 2 diabetes and tuberculosis, which might affect COVID-19 susceptibility and severity	149, 150
rs1800796	IL6	C	G	0.348	0.103	0.295	0.791	0.048	0.395	EUR < AFR < AMR = IND = SAS < EAS	Increased risk of coronary artery disease, which might affect COVID-19 severity	151
rs3745264	RAVER1	A	C	0.201	0.057	0.297	0.178	0.157	0.213	AFR < EUR < EAS = IND = SAS < AMR	Increased risk of developing familial hypercholesterolemia	152, 42

886