

1 **Ferritin trajectories over repeated whole blood donations: results from the FIND+ study**

2 Sara Moazzen¹, Maike G Sweegers¹, Mart Janssen², Boris M Hogema³, Trynke Hoekstra⁴, Katja van den Hurk¹

3

- 4 1. Department of Donor Medicine Research, Donor Studies, Sanquin Research, Amsterdam, the
5 Netherlands
6 2. Department of Donor Medicine Research, Transfusion Technology Assessment, Sanquin Research,
7 Amsterdam, The Netherlands
8 3. Department of Donor Medicine Research, Blood-borne Infections, Sanquin Research, Amsterdam, The
9 Netherlands.
10 4. Department of Health Sciences and Amsterdam Public Health Research Institute, Vrije Universiteit
11 Amsterdam, Amsterdam, The Netherlands
12

13

14

15

16

17

18

19

20

21 **Corresponding author**

22 Katja van den Hurk
23 Plesmanlaan 125
24 PO box 9137
25 1006 AC Amsterdam, the Netherlands
26 E-mail: k.vandenhurk@sanquin.nl
27

28 Funding: European Blood Alliance (EBA) Grant 2019

29 "Funding for this project has been provided in full or in part through an Agreement with the
30 European Blood Alliance (EBA). The contents of this document do not necessarily reflect the
31 views and policies of the EBA, nor does mention of trade names or commercial products
32 constitute endorsement or recommendation of use."
33

34 **Abstract**

35 **Background:** Whole blood donors lose approximately 200-250 mg of iron per donation. Depending
36 on post-donation erythropoiesis, available iron stores, and iron absorption rates, optimal donation
37 intervals may differ between donors. This project aims to define subpopulations of donors with
38 different ferritin trajectories over repeated donations.

39 **Methods:** Ferritin levels of 300 new whole blood donors were measured from stored (lookback)
40 samples from each donation over a two-year period in an observational cohort study. Latent classes of
41 ferritin level trajectories were investigated using growth mixture models for male and female donors,
42 separately. Associations of ferritin levels with subsequent iron deficiency and/or low haemoglobin
43 were assessed with generalized linear mixed models.

44 **Results:** In both genders two groups of donors were identified using group-based trajectory modelling.
45 Ferritin levels showed rather linear reductions among 42.9% of male donors and 87.7% of female
46 donors. For the remaining groups of donors, steeper declines in ferritin levels were observed. Ferritin
47 levels at baseline and the end of follow-up varied greatly between groups.

48 **Conclusion:** Repeated ferritin measurements show depleting iron stores in all new whole blood
49 donors, the level at which mainly depends on baseline ferritin levels. Tailored, less intensive donation
50 strategies might help to prevent low iron in donors, and could be supported with ferritin monitoring
51 and/or iron supplementation.

52 **Introduction**

53 Repeated whole blood donations often result in low iron stores, potentially leading to donor deferral
54 for low hemoglobin (Hb) and iron deficiency-related symptoms [1-3]. With the reporting of negative
55 findings on the health and availability of donors, it is of paramount importance for blood collection
56 centres to gain more insight into whole blood donors' iron status and how low iron stores in blood
57 donors should be managed.

58 Currently, international consensus on an appropriate policy for donor iron management is lacking [4].
59 Schotten et al. (2016) have found that ferritin levels on average require at least 180 days to return to
60 pre-donation levels in a sample of 50 male whole blood donors aged 30-50 years [5]. At day 57, in
61 only 32% of repeat donors and 25% of new donors ferritin levels returned to pre-donation levels.
62 Optimal donation intervals may differ between donors, depending on the decrease in ferritin levels
63 after a whole blood donation and an individual's capability of restoring ferritin to pre-donation levels.
64 This may be influenced by dietary and supplemental iron intake and other lifestyle behaviours, as well
65 as by genetic traits that affect iron absorption and release [6].

66 Repeated measurements of ferritin levels over consecutive donations are generally lacking, as ferritin
67 levels are only measured in cross-sectional studies or in policies with limited measurements; at every
68 5th or 10th donation [7, 8]. The prevalence of iron deficiency in repeat donors, even in those with
69 normal Hb levels, is remarkably high [8-12] . In addition, once donors have become iron-deficient,
70 their risk of subsequent Hb deferral is over tenfold increased [13]. Several investigations have
71 assessed appropriate methods for lowering the rates of Hb deferrals, among which a recent study that
72 assessed changes in Hb levels through repeated donations to identify donors at risk for quick declines
73 in Hb levels [14]. Hb level recovery in donors depends on the availability of iron [15, 16]. Hence,
74 insights into changes in ferritin levels over consecutive donations are needed to better understand how
75 quickly iron deficiency develops, and whether or not this differs inter-individually. Eventually this
76 could aid in the development of better tailored donor deferral strategies.

77 We therefore aimed at distinguishing ferritin trajectories based on measurements of ferritin levels from
78 samples collected during consecutive whole blood donations over a 2-year time period. Additionally,

79 we investigated risks of donors returning to donate with low iron levels, defined as either being iron-
80 deficient or deferred for low Hb, in relation to ferritin levels at the preceding donation.

81 **Methods**

82 *Study population*

83 Sanquin is by law the only organisation authorised for the collection and supply of blood (products) in
84 the Netherlands. All donors undergo routine eligibility testing prior to donating, and plasma samples
85 from every donation are stored for 2 years for quality control purposes. In January 2020, we
86 retrospectively included 300 new donors, who donated at least twice in the two years follow up period
87 from September 11th 2017 onwards, in an observational cohort study. We only selected donors who
88 donated at centres that did not implement Sanquin's ferritin measurement policy before September
89 2019. Pseudonymized blood donor data, including age, sex, Hb levels, number of donations, height
90 and weight were obtained from the donor database (eProgesa software application; MAK-SYSTEMS,
91 Paris, France). Samples were analysed only from voluntary, non-remunerated, adult donors who
92 provided written informed consent as part of routine donor selection and blood collection procedures.
93 Sanquin's Ethical Advisory Board reviewed and approved the study protocol.

94

95 *Ferritin measurements*

96 Sanquin's National Screening Laboratory routinely stores 850 μ L from blood samples collected in
97 K3EDTA tubes (Greiner) taken from the sampling pouch at each whole blood donation. These
98 samples are pipetted into 96 well plates and stored for 2 years at -30 \square C. One day before testing, plates
99 containing selected samples were defrosted. The TECAN pipetting robot (TECAN Trading AG,
100 Switzerland) was used for pipetting selected samples from wells to sample tubes and ferritin levels
101 were determined by the Architect i2000sr (Abbott Diagnostics). For the validation of ferritin levels
102 from stored samples, we compared ferritin levels from stored samples with ferritin levels measured in
103 fresh samples (see Supplement). This showed a slight underestimation of ferritin levels (-4.4 ng/ml on
104 average) and differences between measurements mainly ranging from -30.1 to 21.3 ng/ml (limits of
105 agreement). Measurement differences were larger with higher ferritin levels. At Sanquin, all donors
106 undergo a screening visit before being invited to make their first donation. As ferritin levels were
107 measured twice before the first donation the mean ferritin level was used as baseline level.

108

109

110 *Statistical analysis*

111 The donor characteristics were described as medians and interquartile ranges, or as percentages in case
112 of proportions, stratified by gender. To capture the longitudinal trajectories of ferritin levels and the
113 variation in these trajectories among donors, we applied growth mixture models [17, 18]. Growth
114 mixture models are used to assign individuals to one of several subgroups (latent classes) based on
115 temporal patterns in the data. In this case, donors with similar ferritin trajectories are assigned to one
116 subgroup, and the subgroups are most different from each other in terms of ferritin trajectories.

117 We conducted the analyses in several steps. First, the heterogeneity of individual ferritin trajectories
118 was visualized and assessed by plotting variations in ferritin levels through the donation time points
119 for all study subjects (spaghetti plots). To identify clusters of donors with a similar pattern of ferritin
120 levels over the repeated donation times within two years, we conducted growth mixture models [18-
121 21]. We considered the ferritin levels as a dependent variable and donation numbers in two years
122 (September 2017-September 2019) as the main independent variable. Given the fact that a finite set of
123 polynomial functions of time could summarize the individual differences in trajectories, we fitted the
124 first order linear and second order quadratic polynomial models. Bayesian Information Criterion (BIC)
125 was applied to compare the less complex model (i.e. smaller number of latent classes) to the complex
126 model (i.e. more classes) [22] and logarithm of the Bayes factor ($2*\Delta\text{BIC}$), where $\Delta\text{BIC} = \text{BIC}$
127 (complex) – BIC (less complex) [23]. Also, when the absolute value of the logarithm of the Bayes
128 factor $2*\Delta\text{BIC}$ would indicate trivial (0-2), positive (2-6), strong (6-10) or very strong (>10), this
129 provides the level of evidence for the null hypothesis that the less complex model is the best fit. In the
130 first step we assessed a single quadratic polynomial trajectory model. We conducted a quadratic two-
131 trajectory model if the quadratic component in one trajectory model was significant. The model was
132 repeated with a linear trajectory, if the quadratic term was not significant, to determine the BIC value.
133 The BIC value of the appropriate two-trajectory model was compared to the BIC value of the
134 appropriate one-trajectory model and the procedure was repeated by increasing the number of
135 trajectories until the best-fitting model. We stopped the modeling once ΔBIC became a negative value.
136 Given the possible confounding effect of varying donation intervals on ferritin levels, we also

137 conducted the trajectory analyses with adjustment for time since the previous donation. To assess the
138 effect of ferritin level distributions on the trajectory modeling the analyses were also conducted with
139 log-transformed ferritin levels.

140 After assigning all donors to one of several trajectories, the characteristics of donors with differing
141 ferritin trajectories were described as medians and interquartile ranges, or percentages in case of
142 proportions, stratified by gender. The characteristics of the donors in differing trajectories in each
143 gender, were compared using Mann Whitney U test for continuous variables and Pearson's Chi-
144 square test for categorical variables.

145 Associations between ferritin levels at a certain donation and subsequent low iron level was assessed
146 by generalized linear mixed models adjusted for age, sex and time since previous donation (a low iron
147 was defined as ferritin levels <15 ng/ml, or low-Hb deferral with Hb levels <8.4 mmol/L for men or
148 <7.8 mmol/L for women, corresponding with 135 and 125 g/L, respectively). Receiver operating
149 characteristic (ROC) analysis was applied to compute the sensitivity and specificity of different
150 ferritin levels for the prediction of subsequent low iron levels. The analyses were conducted in IBM
151 SPSS Statistics for Windows, Version 26.0. Armonk, NY: IBM Corp and Traj module in STATA
152 version 16 for windows (StataCorp. 2019. Stata Statistical Software: Release 16. College Station, TX:
153 StataCorp LLC.).

154 **Results**

155 In total, 300 donors were included in the study, of whom 101 (33.7%) were male. Male donors on
156 average made 4 donations within two years (median number of donations, IQR=2 to 6) and female
157 donors 3 (IQR=2 to 4), enabling the analysis of 1447 stored samples from successful donations. The
158 median age of male donors was 29.96 years (IQR=25.08 to 38.12) and of female donors 24.62 years
159 (IQR=22.58 to 29.60). Median levels of ferritin at baseline were 103.35 µg/L (IQR= 56.77 to 137.76)
160 and 28.13 µg/L (17.80 to 43.24) at the last donation for male donors. Among female donors the
161 median ferritin levels at first and last donations were 36.66 (IQR= 23.21 to 56.59) and 13.04 µg/L
162 (IQR= 10.63 to 29.30), respectively (Table 1).

163 The spaghetti plots in Figure 1 demonstrate the individual crude changes in ferritin levels by number
164 of donations. According to the smallest BIC and the logarithm of the Bayes factor, a two-group ferritin
165 level trajectory model (separately) for male and female donors was very strongly favoured. The
166 findings were similar with log-transformed ferritin levels, therefore results on non-transformed data
167 are shown to enable easier interpretation. In male donors, the value of logarithm of the Bayes factor
168 was 18.46 (>10), therefore, favouring the two-cluster model over a three-cluster model. In female
169 donors, the value of logarithm of the Bayes factor was 88.46 (>10), favouring the three-trajectory
170 model over a four-cluster model, however due to the small proportion of observations in the third
171 cluster (<5%), the two-cluster model was more appropriate. The final analyses confirmed that models
172 with two latent classes fit the data best, for both male and female donors, both with and without
173 adjustment for donation intervals (Figures 2A and 2B). Class I, encompassing 42.9% of male donors
174 and 87.7% of female donors, represent a linear reduction in ferritin levels, with a rather mild slope at
175 earlier donations, later leading to steady ferritin levels. Despite a mild linear reduction in ferritin levels
176 in class one, it is worth noticing that donors in this class from both genders have relatively low ferritin
177 levels at baseline. In class two, baseline ferritin levels are relatively high, and there are more drastic
178 reductions in ferritin levels over repeated donations. The donors in class one (with relatively low
179 baseline levels of ferritin) are younger, have lower BMI, have lower ferritin levels at baseline and after
180 two years, and have shorter donation intervals as compared to the donors in class two (Table 2).

181 The odds for iron deficiency, at any timepoint for the next donation, among donors with ferritin levels
182 of <30 ng/ml, were 1.43 to 3.83-fold higher in comparison to those with ferritin levels of >30 ng/ml
183 (Table 3). Based on the ROC curve of subsequent iron deficiency or low Hb detection at different
184 ferritin levels, ferritin levels between 25 and 30 ng/ml showed both the sensitivity and specificity to be
185 above 70% (Figure 3).

186

187 **Discussion**

188 In this study among 300 new whole blood donors whose ferritin levels were measured retrospectively
189 and repeatedly over donations during a period of 2 years, we found two latent classes of ferritin
190 trajectories for separately genders. All trajectories show declining ferritin levels, which vary in
191 baseline ferritin levels and slope. Additionally, we found that low ferritin levels (<30 ng/ml), if not
192 acted upon, are significantly associated with a subsequent increased risk of returning to donate while
193 iron-deficient or having low Hb levels.

194 Generally, in male and female donors, it appears that all donors show some level of decline in
195 ferritin levels, and the degree of this decline may depend on baseline ferritin levels. Based on previous
196 studies showing a high prevalence of iron deficiency in repeat donors, and a relatively long recovery
197 of iron stores, this finding might not be very surprising [1, 5, 9, 24]. While Hb levels may remain
198 stable over consecutive donations, iron stores continue to be depleted which remains unnoticed when
199 ferritin levels are not measured [13, 14]. The finding that this decline is steeper with higher baseline
200 ferritin levels can probably be explained by hepcidin levels only being downregulated in case of an
201 iron shortage, in order to increase iron absorption and release [25].

202 Among men, a minority of donors with high baseline ferritin levels showed relatively fast declines
203 in ferritin levels. Among these donors, the levels of ferritin generally dropped to levels of iron
204 deficiency after 6 to 10 donations. For the group with lower baseline ferritin levels, a less steep linear
205 reduction was observed in ferritin levels, but also after 3-4 donations on average the level of iron
206 deficiency was reached. Adjusting the models for donation intervals resulted in two trajectories with
207 more similar starting points and slopes, indicating that the donation interval is often shorter in donors
208 with high baseline ferritin levels and as a result show more steeply declining ferritin levels.

209 Female donors who were assigned to the trajectory with more steeply declining ferritin levels were
210 of older age and had higher baseline ferritin levels than those in the other latent class. The higher
211 baseline iron status among women of older age is in line with expectations and probably due to the
212 cessation of menstrual blood loss after menopause [15]. Female donors with high baseline ferritin
213 levels generally had ferritin levels higher than 15 ng/ml after 5 donations in two years. Nonetheless,

214 those with lower baseline levels dropped to below this level after 4 donations. Adjusting for donation
215 intervals resulted in a more gradual slope of reductions in ferritin levels.

216 In earlier studies, prediction models for Hb levels and low-Hb deferrals were developed [26, 27].
217 These models included regression models, transition models, or a combination of these two
218 approaches for predicting Hb levels based on routinely collected information on blood donors and
219 their donations [26]. The findings from Donor InSight presented four different Hb trajectories among
220 5388 new? donors [26]. The latter suggests that relying on a single trajectory for describing changes in
221 Hb levels of donors through successive donations is not a suitable approach for dealing with the
222 underlying changes in iron status among this population.

223 A major strength of the study is that ferritin levels were measured retrospectively at every
224 donation over a period of two years. This allowed for detecting trajectories of iron stores among
225 donors, presenting both inter- and intra-individual differences in ferritin levels over repeated
226 donations. Moreover, this enabled showing that low ferritin not only predicts subsequent low Hb, but
227 also iron deficiency [13]. Yet, our study suffered from a limited sample size, which calls for future
228 studies with larger sample sizes to verify these results. Another limitation, applying to any study on
229 ferritin levels, is the fact that ferritin measurements, despite being calibrated in collaboration with
230 other laboratories, are not standardized internationally. This may hamper external validity and thus
231 generalizability of ferritin levels and the cut-offs in particular.

232 Symptoms that are frequently related to whole blood donation-induced low iron include decreased
233 physical endurance and work capacity, fatigue, and impairment in concentration, attention, and other
234 cognitive functions as well as restless leg syndrome and craving and consuming of non-nutritive
235 substances (pica) [28-36]. Given the significant magnitude of undesired effects of blood donation-
236 induced iron depletion, with on the other hand the high impact on donor availability when deferring
237 too many donors, it is of high importance to determine appropriate cut-off levels for ferritin-guided
238 donor deferrals. The results of our study showed ferritin levels of 25-30 ng/ml to have the highest
239 sensitivity and specificity for subsequent low iron (defined as ferritin levels <15 ng/ml or Hb deferral).

240 Even though the ferritin trajectories seem to mainly depend on initial ferritin levels, the detected
241 two different trajectories in both genders differ greatly in terms of age and BMI. Furthermore, based

242 on previous findings, these groups might differ in terms of genetic predisposition to differences in iron
243 metabolism and of lifestyle behaviours [15, 37-39]. In future studies, carefully modelling the interplay
244 between iron stores and Hb levels, thereby also considering individual differences in demographics,
245 lifestyle behaviours and -if appropriate- environmental influences, could help to better predict low iron
246 and develop tailored donor iron management strategies.

247 Proposed strategies for donors at risk of low iron might be to increase donation intervals in order
248 to prevent rapid reductions in iron stores through successive donations. Making 5 or 6 donations
249 within two years might not result in iron deficiency or low-Hb deferrals in men and women with high
250 baseline ferritin levels. As a proper strategy for maintaining iron stores among risk groups, it might be
251 helpful to restrict donations to four per two years in this subgroup. Iron supplementation could aid to
252 increase donation intensities without inducing risks of low iron [40]. In addition, ferritin level
253 monitoring could help to monitor and adjust individual donor strategies.

254

255 **Conclusion**

256 In conclusion, repeated ferritin measurements show depleting iron stores in all new whole blood
257 donors, the level of which depends on baseline ferritin levels. Tailored, less intensive donation
258 strategies might help to prevent low iron in donors, and could be supported with ferritin monitoring
259 and iron supplementation.

260 Table 1. Descriptive of donors included in the FIND+ dataset: new whole blood donors with more than two
261 blood donations between September 2017 and September 2019. ¹

Variables	Male donors (n=101)	Female donors (n=199)
Age (years)	29.96 (25.08-38.12)	24.62 (22.58-29.60)
BMI (kg/m ²)	24.22 (22.48-26.10)	23.14 (21.55-26.44)
Number of donations	4 (2-6)	3 (2-4)
Hb at screening visit (mmol/l)	9.30 (8.90-9.60)	8.30 (8.00-8.70)
Baseline ferritin levels (ng/ml)	103.35 (56.77-137.76)	36.66 (23.21-56.59)
Ferritin at last donation ² (ng/ml)	28.13 (17.80-43.24)	13.04 (10.63-29.30)
Inter-donation interval (weeks)	37.00 (19.00-63.00)	46.00 (24.00-69.00)
Donation in cold seasons (%)	47.1	48.2

262

263 ¹The variables are presented as median and interquartile range or as stated otherwise.

264 ²Ferritin levels at 6th donation in men and 4th donation in women during study period (September 2017-
265 September 2019).

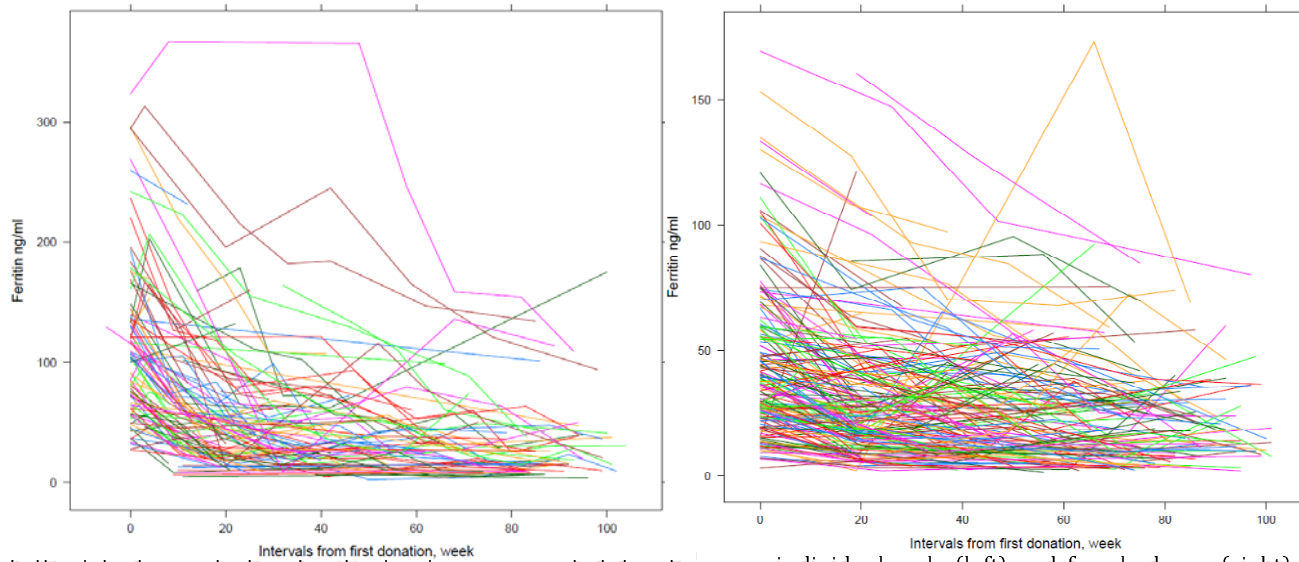


Figure 1. Spaghetti plots demonstrating ferritin levels over repeated donations per individual male (left) and female donor (right) in the FIND+ study by time since baseline, September 2017_September 2019.

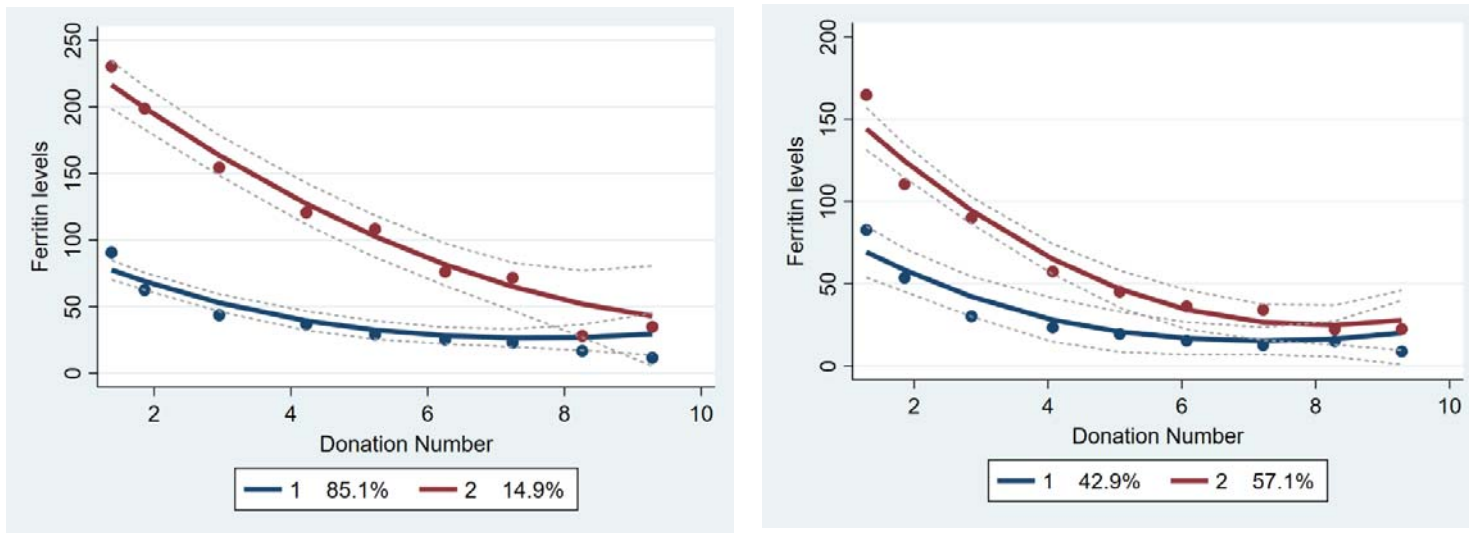


Figure 2A. Group based trajectory analyses exhibiting changes in ferritin levels by donation number in each of the latent classes for male donors in unadjusted models (left) and models adjusted for time since the previous donation (right) in the FIND+ study, September 2017_September 2019.

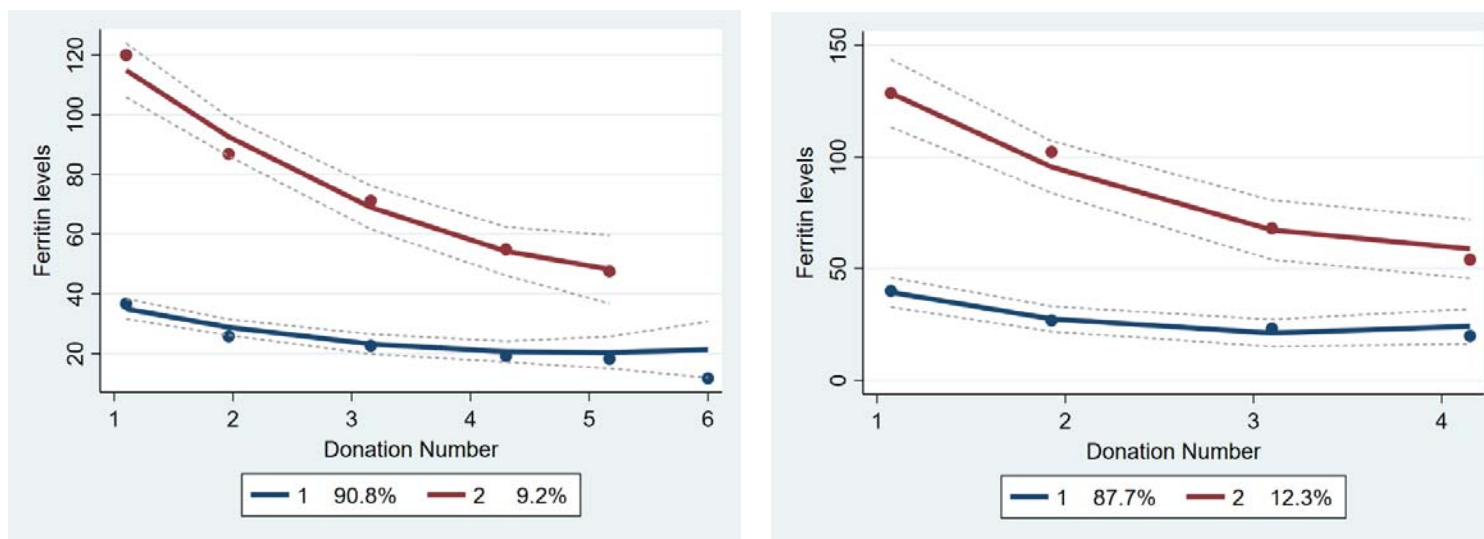


Figure 2B. Group based trajectory analyses exhibiting changes in ferritin levels by donation number in each of the latent classes for female donors in unadjusted models (left) and models adjusted for time since the previous donation (right) in the FIND+ study, September 2017_September 2019.

Table 2. Descriptive of donors in the FIND+ dataset by gender and group-based trajectory of the growth mixture model¹

Variables	Male donors		Female donors	
	Class 1 (n=87)	Class 2 (n=14)	Class 1 (n=181)	Class 2 (n=18)
Age (years)	28.11 (24.82-34.27)	39.43 (31.74-47.64)	24.42 (22.36-27.98)	35.00 (27.28-47.59)
BMI (kg/m ²)	23.86 (22.15-25.69)	27.46 (24.81-28.34)	22.85 (21.48-26.23)	25.18 (23.23-29.04)
Number of donations	4 (2-6)	4 (2-6)	3 (2-4)	3 (2-5)
Hb at screening visit (ng/ml)	9.40 (8.90-9.80)	9.05 (8.82-9.65)	8.30 (8.00-8.80)	8.35 (8.17-8.55)
Ferritin at screening visit (ng/ml)	85.40 (56.10-120.24)	239.62 (181.63-294.61)	32.69 (20.34-48.90)	114.13 (102.55-135.31)
Ferritin at last donation ² (ng/ml)	24.89 (14.16-31.10)	53.26 (43.78-133.74)	13.52 (6.30-28.46)	53.45 (39.01-68.89)
Inter-donation interval (weeks)	37 (19.00-62.00)	42 (20.00-71.00)	45 (24.00-69.00)	48 (22.00-69.00)

¹The variables are presented as median and interquartile range or as stated otherwise.

²Ferritin levels at 6th donation in men and 4th donation in women during study period (September 2017-September 2019).

³P-Value are calculated using Mann Whitney U test for continuous variables and Pearson's Chi-square test for categorical variables.

Table 3. Associations between ferritin levels and subsequent low iron levels (ferritin levels <15 ng/ml or low-Hb deferral) at any of the first 4 donations over 895 whole blood donations, made by 300 donors in

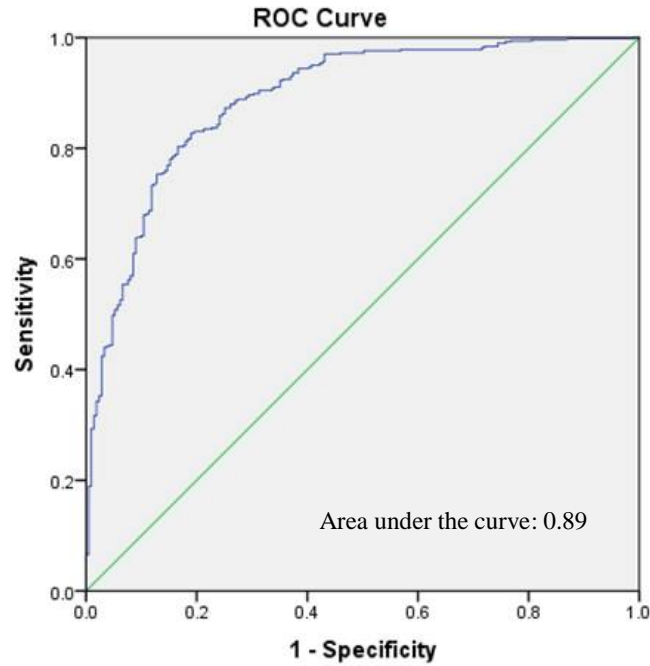
Donor ferritin levels (ng/ml) ¹	N ²	Odds Ratio	95% Confidence interval	P-value
Ferritin levels <15	99/193	3.83	3.19 to 4.48	<0.001
Ferritin levels 15-19.9	26/82	2.44	1.73 to 3.15	<0.001
Ferritin levels 20.1-24.9	15/62	2.10	1.31 to 2.89	<0.001
Ferritin levels 25-29.9	16/85	1.45	0.71 to 2.22	0.08
Ferritin levels > 30	20/473	Ref	Ref	-

total.

The odds ratios and confidence intervals are calculated using generalized linear mixed models adjusted for age, gender and time since previous donation. Low iron was defined as ferritin levels <15 ng/ml, or low-Hb deferral: Hb levels <8.4 mmol/L for men or <7.8 mmol/L for women, corresponding with 135 and 125 g/L, respectively.

1. Indicate the level of ferritin at subsequent donation

2. Indicated number of donations



Ferritin levels (ng/ml)	Sensitivity (%)	Specificity (%)
15	95.0	62.1
25	85.9	76.0
30	77.1	84.0

Diagonal segments are produced by ties.

Figure 3. Receiver operating characteristic curve for predicting low iron (defined as ferritin <15 ng/ml or low-Hb deferral) at a subsequent donation attempt based on ferritin levels at any of the first 4 donations in new whole blood donors.

References:

1. Spencer, B., *Blood donor iron status: are we bleeding them dry?* Curr Opin Hematol, 2013. **20**(6): p. 533-9.
2. Zalpuri, S., et al., *Iron deficiency-related symptoms in whole blood donors: a systematic review.* Transfusion, 2019. **59**(10): p. 3275-3287.
3. Kiss, J.E. and R.R. Vassallo, *How do we manage iron deficiency after blood donation?* Br J Haematol, 2018. **181**(5): p. 590-603.
4. Zalpuri, S., et al., *Variations in hemoglobin measurement and eligibility criteria across blood donation services are associated with differing low-hemoglobin deferral rates: a BEST Collaborative study.* Transfusion, 2020. **60**(3): p. 544-552.
5. Schotten, N., et al., *The donation interval of 56 days requires extension to 180 days for whole blood donors to recover from changes in iron metabolism.* Blood, 2016. **128**(17): p. 2185-2188.
6. Timmer, T.C., et al., *Dietary intake of heme iron is associated with ferritin and hemoglobin levels in Dutch blood donors: results from Donor InSight.* Haematologica, 2020. **105**(10): p. 2400-2406.
7. Sweegers, M.G., et al., *Ferritin measurement IN Donors-Effectiveness of iron Monitoring to diminish iron deficiency and low haemoglobin in whole blood donors (FIND'EM): study protocol for a stepped wedge cluster randomised trial.* Trials, 2020. **21**(1): p. 823.
8. Baart, A.M., et al., *High prevalence of subclinical iron deficiency in whole blood donors not deferred for low hemoglobin.* Transfusion, 2013. **53**(8): p. 1670-7.
9. Vinkenoog, M., et al., *First results of a ferritin-based blood donor deferral policy in the Netherlands.* Transfusion, 2020. **60**(8): p. 1785-1792.
10. Fillet, A.M., et al., *Iron deficiency among French whole-blood donors: first assessment and identification of predictive factors.* Vox Sang, 2021. **116**(1): p. 42-52.
11. Terada, C.T., et al., *Iron deficiency and frequency of HFE C282Y gene mutation in Brazilian blood donors.* Transfus Med, 2009. **19**(5): p. 245-51.
12. Spencer, B.R., et al., *Iron status and risk factors for iron depletion in a racially/ethnically diverse blood donor population.* Transfusion, 2019. **59**(10): p. 3146-3156.
13. Prinsze, F.J., et al., *Donation-induced iron depletion is significantly associated with low hemoglobin at subsequent donations.* Transfusion, 2021.
14. Nasserinejad, K., et al., *Prevalence and determinants of declining versus stable hemoglobin levels in whole blood donors.* Transfusion, 2015. **55**(8): p. 1955-63.
15. Baart, A.M., et al., *Development and validation of a prediction model for low hemoglobin deferral in a large cohort of whole blood donors.* Transfusion, 2012. **52**(12): p. 2559-69.
16. Mast, A.E., et al., *Hepcidin level predicts hemoglobin concentration in individuals undergoing repeated phlebotomy.* Haematologica, 2013. **98**(8): p. 1324-30.
17. Mo, W. and T.E. Bodner, *Growth Mixture Modeling: Identifying and Predicting Unobserved Subpopulations With Longitudinal Data.* Organizational Research Methods, 2007. **10**(4): p. 635-656.
18. Nagin, D.S. and C.L. Odgers, *Group-based trajectory modeling in clinical research.* Annu Rev Clin Psychol, 2010. **6**: p. 109-38.
19. JONES, B.L., D.S. NAGIN, and K. ROEDER, *A SAS Procedure Based on Mixture Models for Estimating Developmental Trajectories.* Sociological Methods & Research, 2001. **29**(3): p. 374-393.
20. Nagin, D.S., *Analyzing developmental trajectories: A semiparametric, group-based approach.* Psychological Methods, 1999. **4**: p. 139-157.
21. Niyonkuru, C., et al., *Group-based trajectory analysis applications for prognostic biomarker model development in severe TBI: a practical example.* J Neurotrauma, 2013. **30**(11): p. 938-45.
22. G., S., *Estimating the dimension of a model.* Ann Stat 1978;**6**:461-464.

23. Wit, E.C., E.v.d. Heuvel, and J.-W. Romeijn, *All models are wrong...: an introduction to model uncertainty*. American Journal of Botany, 2012.
24. Mantilla-Gutiérrez, C.Y. and J.A. Cardona-Arias, [*Iron deficiency prevalence in blood donors: a systematic review, 2001-2011*]. Rev Esp Salud Publica, 2012. **86**(4): p. 357-69.
25. Yook, J.S., et al., *Essential role of systemic iron mobilization and redistribution for adaptive thermogenesis through HIF2- α /hepcidin axis*. Proc Natl Acad Sci U S A, 2021. **118**(40).
26. Nasserinejad, K., et al., *Predicting hemoglobin levels in whole blood donors using transition models and mixed effects models*. BMC Med Res Methodol, 2013. **13**: p. 62.
27. Baart, A.M., et al., *Prediction of low haemoglobin levels in whole blood donors*. Vox Sang, 2011. **100**(2): p. 204-11.
28. Brittenham, G.M., *Iron deficiency in whole blood donors*. Transfusion, 2011. **51**(3): p. 458-61.
29. Schiepers, O.J., et al., *Serum iron parameters, HFE C282Y genotype, and cognitive performance in older adults: results from the FACIT study*. J Gerontol A Biol Sci Med Sci, 2010. **65**(12): p. 1312-21.
30. Dallman, P.R., *Biochemical basis for the manifestations of iron deficiency*. Annu Rev Nutr, 1986. **6**: p. 13-40.
31. Newman, B.H., et al., *The effect of whole-blood donor adverse events on blood donor return rates*. Transfusion, 2006. **46**(8): p. 1374-9.
32. Popovsky, M.A., *Anemia, iron depletion, and the blood donor: it's time to work on the donor's behalf*. Transfusion, 2012. **52**(4): p. 688-92.
33. Ulfberg, J. and B. Nyström, *Restless legs syndrome in blood donors*. Sleep Med, 2004. **5**(2): p. 115-8.
34. Birgegård, G., K. Schneider, and J. Ulfberg, *High incidence of iron depletion and restless leg syndrome (RLS) in regular blood donors: intravenous iron sucrose substitution more effective than oral iron*. Vox Sang, 2010. **99**(4): p. 354-61.
35. Bryant, B.J., et al., *Ascertainment of iron deficiency and depletion in blood donors through screening questions for pica and restless legs syndrome*. Transfusion, 2013. **53**(8): p. 1637-44.
36. Spencer, B.R., et al., *Restless legs syndrome, pica, and iron status in blood donors*. Transfusion, 2013. **53**(8): p. 1645-52.
37. Soranzo, N., et al., *A genome-wide meta-analysis identifies 22 loci associated with eight hematological parameters in the HaemGen consortium*. Nat Genet, 2009. **41**(11): p. 1182-90.
38. van der Harst, P., et al., *Seventy-five genetic loci influencing the human red blood cell*. Nature, 2012. **492**(7429): p. 369-75.
39. Cvejic, A., et al., *SMIM1 underlies the Vel blood group and influences red blood cell traits*. Nat Genet, 2013. **45**(5): p. 542-545.
40. Kiss, J.E., et al., *Oral iron supplementation after blood donation: a randomized clinical trial*. Jama, 2015. **313**(6): p. 575-583.