

1 ***Plasmodium vivax* malaria serological exposure markers: assessing the degree**
2 **and implications of cross-reactivity with *P. knowlesi***

3 Rhea J Longley^{1,2*}, Matthew J Grigg³, Kael Schoffer¹, Thomas Obadia^{4,5}, Stephanie
4 Hyslop¹, Kim A. Piera³, Narimane Nekkab⁴, Ramin Mazhari^{1,2}, Eizo Takashima⁶,
5 Takafumi Tsuboi⁶, Matthias Harbers^{7,8}, Kevin Tetteh⁹, Chris Drakeley⁹, Chetan E.
6 Chitnis¹⁰, Julie Healer^{1,2}, Wai-Hong Tham^{1,2}, Jetsumon Sattabongkot¹¹, Michael T
7 White⁴, Daniel J Cooper^{3,12}, Giri S Rajahram¹³, Bridget E. Barber³, Timothy
8 William^{14,15}, Nicholas M Anstey³, Ivo Mueller^{1,2}

9

10 ¹Population Health and Immunity Division, WEHI, Parkville 3052, Australia.

11 ²Department of Medical Biology, University of Melbourne, Parkville 3052, Australia.

12 ³Menzies School of Health Research and Charles Darwin University, Darwin, NT,
13 Australia.

14 ⁴Institut Pasteur, Université de Paris, Infectious Disease Epidemiology and Analytics
15 G5 Unit, F-75015, Paris, France.

16 ⁵Institut Pasteur, Université de Paris, Bioinformatics and Biostatistics Hub, F-75015,
17 Paris, France.

18 ⁶Division of Malaria Research, Proteo-Science Center, Ehime University,
19 Matsuyama, Japan.

20 ⁷CellFree Sciences Co., Ltd., Yokohama, Japan.

21 ⁸RIKEN Center for Integrative Medical Sciences, Yokohama, Japan.

22 ⁹London School of Hygiene and Tropical Medicine, London, United Kingdom.

23 ¹⁰Malaria Parasite Biology and Vaccines Unit, Department of Parasites and Insect
24 Vectors, Institut Pasteur, Paris.

25 ¹¹Mahidol Vivax Research Unit, Faculty of Tropical Medicine, Mahidol University,
26 Bangkok, Thailand.

27 ¹²Department of Medicine, University of Cambridge, Cambridge, UK.

28 ¹³Queen Elizabeth II Hospital, Clinical Research Centre, Kota Kinabalu, Sabah,
29 Malaysia.

30 ¹⁴Infectious Diseases Society Kota Kinabalu Sabah, Kota Kinabalu Sabah, Malaysia.

31 ¹⁵Gleneagles Hospital, Kota Kinabalu, Sabah, Malaysia.

32

33 *email: Longley.r@wehi.edu.au

34

35 Short title: *Plasmodium* cross-species immune reactivity

36

37

38 **Summary**

39 Serological exposure markers are a promising tool for surveillance and targeted
40 interventions for *Plasmodium vivax* malaria. *P. vivax* is closely related to the zoonotic
41 parasite *P. knowlesi*, which also infects humans. *P. vivax* and *P. knowlesi* are co-
42 endemic across much of South East Asia, making it important to design *P. vivax*
43 serological markers that minimise cross-reactivity in this region. Our objective was to
44 determine the degree of IgG antibody cross-reactivity against a panel of *P. vivax*
45 serological markers in samples from human participants with *P. knowlesi* malaria. We
46 observed higher levels of IgG antibody reactivity against *P. vivax* proteins that had
47 high levels of sequence identity with their *P. knowlesi* ortholog. IgG reactivity peaked
48 at 7 days post *P. knowlesi* infection and was short-lived, with minimal responses
49 detected at 1-year post-infection. Using these data, we designed a panel of 8 *P. vivax*
50 proteins with low-levels of cross-reactivity with *P. knowlesi*. This panel was able to
51 accurately classify recent *P. vivax* infections whilst reducing misclassification of
52 recent *P. knowlesi* infections.

53

54 **Introduction**

55 In order to accelerate towards malaria elimination, new tools and interventions are
56 needed. Malaria is caused by the parasite *Plasmodium*, with the majority of disease in
57 humans caused by *P. falciparum*, *P. vivax*, *P. malariae*, *P. ovale*, and *P. knowlesi*. *P.*
58 *falciparum* and *P. vivax* account for the largest burdens of disease. In many co-
59 endemic regions outside Africa, infection with *P. vivax* has become the predominant
60 cause of malaria as the overall level of transmission has declined (reviewed in¹).
61 Thus, whilst standard malaria control tools (such as those targeting the mosquito
62 vector and case management) have had a significant impact on reducing transmission
63 of *P. falciparum*, they have not had the same level of effect on *P. vivax*. This is most
64 likely due to a number of distinct biological features of *P. vivax* infections that
65 promote transmission. These include a cryptic endosplenic life-cycle leading to a
66 large hidden splenic reservoir of *P. vivax* parasites^{2,3} which sustains a high prevalence
67 of low-density asymptomatic blood stage infections⁴ that are still capable of onward
68 transmission⁵. Furthermore, an additional life-cycle stage in the liver, known as the
69 hypnozoite, can remain arrested or dormant in the liver for months to years following
70 the initial mosquito-bite induced infection, before being reactivated by currently
71 unknown signals to re-join the life-cycle. Hepatic hypnozoites are major reservoirs for
72 transmission in communities, with up to 80% of detected blood-stage infections
73 attributed to hypnozoite relapse rather than new mosquito bite-induced infections⁶⁻⁸.

74

75 To address the unique challenge to malaria elimination posed by *P. vivax*, we have
76 developed a novel surveillance tool: *P. vivax* serological exposure markers. By
77 measuring total IgG antibody responses to a carefully selected panel of 8 *P. vivax*
78 proteins, we can classify individuals as recently exposed to a blood-stage *P. vivax*

79 infection within the past 9-months with 80% sensitivity and 80% specificity⁹. Due to
80 the frequency of *P. vivax* relapses¹⁰, we hypothesize our *P. vivax* serological exposure
81 markers can be used to indirectly identify hypnozoite carriers – individuals who are
82 more likely to go on to develop recurrent *P. vivax* infections. Our serological markers
83 can thus be used as an effective surveillance tool for identifying clusters of *P. vivax*
84 infections for efficient targeting of resources¹¹, and for designing public health
85 interventions relying on “serological testing and treatment” (seroTAT)¹². SeroTAT
86 can be used to identify hypnozoite carriers who can then be treated with appropriate
87 anti-malarial drugs (including an anti-liver stage component such as primaquine or
88 tafenoquine) as part of an elimination campaign⁹.

89

90 The major species of *Plasmodium* causing disease in humans have different
91 geographic distributions¹³ and different levels of relatedness¹⁴. It is therefore
92 important to characterise potential cross-reactivity against our *P. vivax* serological
93 exposure markers in individuals who have had recent exposure to other *Plasmodium*
94 infections. We identified no patterns of cross-reactivity with recent *P. falciparum*
95 exposure in our original cohort studies⁹, with the caveat that few individuals had *P.*
96 *falciparum* infections in those observational cohorts (in Thailand, Brazil and the
97 Solomon Islands). In the limited number of prior studies assessing *P. vivax* – *P.*
98 *falciparum* cross-reactive antibody responses¹⁵, mixed results were observed with
99 both species-specific¹⁶ and cross-reactive antibodies detected^{17,18}. However, even if
100 cross-reactivity between our *P. vivax* proteins in individuals with recent *P. falciparum*
101 infections becomes evident, this is not necessarily of programmatic concern. Similar
102 risk-factors for exposure in co-endemic regions are present and there is potential
103 benefit in treating individuals with *P. falciparum* infections with anti-hypnozoite

104 drugs¹⁹ (due to the high risk of *P. vivax* recurrence following *P. falciparum*
105 infections²⁰⁻²²). *P. vivax* is more closely related to the zoonotic parasite *P. knowlesi*
106 than *P. falciparum*¹⁴ and serological cross-reactivity has been reported²³⁻²⁵. *P. vivax*
107 and *P. knowlesi* are co-endemic in humans across much of South East Asia²⁶. Risk-
108 factors for exposure to *P. knowlesi* and *P. vivax* also differ²⁷, as do spatial clusters of
109 infections²⁵, treatment²⁸ and risk mitigation strategies²⁷. For these reasons, and to
110 optimise the utility of serological markers in South East Asia, it is of particular
111 importance to characterise cross-reactivity against the *P. vivax* serological exposure
112 markers in individuals with recent *P. knowlesi* infections.

113

114 Here, we aimed to assess cross-reactivity against a panel of *P. vivax* serological
115 exposure markers (including our previously identified top combination of 8 markers⁹)
116 in samples from two clinical cohorts of patients with confirmed *P. knowlesi* malaria.
117 We assessed whether our algorithm would classify these *P. knowlesi* patients as *P.*
118 *vivax*-exposed or not, and whether we could improve our serological markers for use
119 in *P. vivax*-*P. knowlesi* co-endemic areas by selecting proteins with absent or lower
120 levels of cross-reactivity.

121

122 **Results**

123

124 **Comparison of *P. vivax* and *P. knowlesi* protein sequences**

125 We hypothesized that potential antibody cross-reactivity could relate to the level of
126 sequence identity and thus we first constructed a pipeline to identify and then
127 compare the sequences of our *P. vivax* serological exposure markers with their
128 identified *P. knowlesi* orthologs. Two different analytical approaches were used: 1) by

129 accessing the list of orthologs on PlasmoDB for each *P. vivax* protein and 2) through
130 a NCBI BlastP search of the protein sequence construct. *P. knowlesi* orthologs were
131 found for 17 of 21 *P. vivax* proteins via PlasmoDB (using either the original macaque
132 H strain²⁹ or the later human red blood cell adapted A1H1 line³⁰) and for 20/21 by
133 NCBI BlastP (any strain) (Table 1). Using both methods each of the 21 *P. vivax*
134 proteins had at least one identified *P. knowlesi* ortholog. When multiple orthologs
135 were found, the top hit was selected by highest identity. The similarity and identity
136 values for the hits on PlasmoDB were obtained by aligning the full-length protein
137 sequences provided in the database using the EMBOSS Needle protein alignment
138 tool; the identity values for the NCBI BlastP hits were obtained from the BlastP
139 search using only the protein construct sequence. The sequence identity of the full-
140 length protein sequences (search strategy 1) ranged from 11-19% for MSP7F (A1H1
141 line or H strain, respectively) to 83.4% for MSP8. A similar trend was found using the
142 specific protein construct and NCBI BlastP (search strategy 2) however the percent
143 identity was often higher using this method (Table 1).

144 **Table 1: Sequence comparison of the *P. vivax* proteins with their *P. knowlesi* orthologs.** Full-length protein sequences were first compared
 145 using the orthologs listed in the PlasmoDB database, then the protein construct sequences were compared using NCBI BlastP to identify the top
 146 hits (see Table S1 for the amino acid region of each construct). NA indicates there were no matches for the database search. Proteins are ordered
 147 by highest percentage sequence identity using the NCBI BlastP method. The H strain and A1H1 line gave identical results except for MSP7F;
 148 the H strain results are listed, A1H1 gave 11.5% identity and 18.8% similarity. * Indicates top 8 *P. vivax* protein serological exposure marker.

<i>P. vivax</i>		<i>P. knowlesi</i>						
		PlasmoDB (H or A1H1 strain)				NCBI (any strain)		
<i>P. vivax</i> Protein	PlasmoDB code	# Hits	Top Hit	Syteny	Similarity (%)	Identity (%)	Top Hit	Identity (%)
MSP8 *	PVX_097625	1	PKNH_1031500	Y	91.2	83.4	AFL93300.1	84.52
Pv-fam-a*	PVX_112670	24	PKNH_1300800	Y	72.8	65.8	OTN66803.1	83.11
MSP1-19*	PVX_099980	1	PKNH_0728900	Y	74.4	64.2	AZL87433.1	81.31
RAMA*	PVX_087885	0	NA	NA	NA	NA	OTN68698.1	73.61
RIPR	PVX_095055	1	PKNH_0817000	Y	82.9	71.9	XP_002258810.1	73.43
Pv-fam-a*	PVX_096995	24	PKNH_0200900	Y	50.9	41.1	OTN66147.1	70.28
PTEX150	PVX_084720	1	PKNH_0422900	Y	83.9	73.2	OTN66840.1	72.02
DBPII Sal 1	PVX_110810	3	PKNH_0623500	Y	64.7	52.1	OTN68355.1	68.72
DBPII AH	AAV34130.1	3	PKNH_0623500	Y	64.7	51.9	OTN68355.1	68.21
Sexual stage antigen s16	PVX_000930	1	PKNH_0304300	Y	78.6	67.1	OTN68464.1	65.45
TRAP	PVX_082735	1	PKNH_1265400	Y	81.4	69.1	AAG24613.1	64.23
MSP3b	PVX_097680	15	PKNH_1457400	N	42	28.6	OTN63878.1	62.5
MSP5	PVX_003770	2	PKNH_0414200	Y	65.4	49.9	AAT77929.1	46.26
Hypothetical	PVX_097715	0	NA	NA	NA	NA	ANP24393.1	40.65
EBP region II*	KMZ83376.1	0	NA	NA	NA	NA	QPL17772.1	35
RBP2b ₁₉₈₆₋₂₆₅₃	PVX_094255	2	PKNH_0700200	N	52.2	29.1	OTN67427.1	34.53
MSP7F	PVX_082670	15	PKNH_0726500	N	30.1	19	AND94835.1	27.53
RBP2b ₁₆₁₋₁₄₅₄ *	PVX_094255	2	PKNH_0700200	N	52.2	29.1	OTN67427.1	26.1
RBP2a	PVX_121920	2	PKNH_0700200	N	46.7	25.4	OTN67427.1	25.77
MSP7L	PVX_082700	0	NA	NA	NA	NA	AND94835.1	24.29
MSP3a*	PVX_097720	15	PKNH_1457400	N	45.8	31.6	NA	NA

149 ***P. vivax* protein-specific IgG antibody response in *P. knowlesi* clinical case**
150 **samples**

151 To assess potential cross-reactivity against the *P. vivax* proteins we measured
152 longitudinal total IgG antibody responses in patients with PCR-confirmed *P. knowlesi*
153 monoinfection, enrolled in two clinical trials, denoted ACTKNOW (recruited over
154 2012-2014³¹) and PACKNOW (recruited over 2016-2018³²) (Table 2). The two
155 sample sets were initially analysed separately given the risk of prior *P. vivax* infection
156 was lower at the time of the PACKNOW trial³³. There were no differences in
157 demographic variables such as age, sex and self-reported history of malaria infections
158 between the patients in the two trials (Table 2).

159

160 **Table 2: Characteristics of patients in two *P. knowlesi* clinical trial cohorts used in the current study.**

	ACTKNOW (n=99)	PACKNOW (n=41)
PCR-confirmed <i>Plasmodium spp.</i>	<i>P. knowlesi</i>	<i>P. knowlesi</i>
Collection year	2012-2014	2016-2018
Age (years), median (range) ^a	34 (3-78)	36 (20-70)
Sex, number female ^b (percent)	29 (29.3%)	6 (14.6%)
Self-reported fever days, median (range) ^a	5 (0-14)	4 (3-14)
Self-reported previous malaria infection, number yes ^b (percent)	34 (34.3%)	17 (41.5%)
Parasitaemia (parasites/ μ l), median (range) ^a	2857 (56-43,721)	2690 (37-185,553)
Treatment administered	Randomised to artesunate-mefloquine (n=52) or chloroquine (n=47)	Artemether-lumefantrine
<i>Serology details</i>		
Sample size at enrolment	99	41
Follow-up timepoints	3: day 0, 7, 28	5: day 0, 7, 14, 28, 365
Total # samples assessed	296 ^c	166 ^d

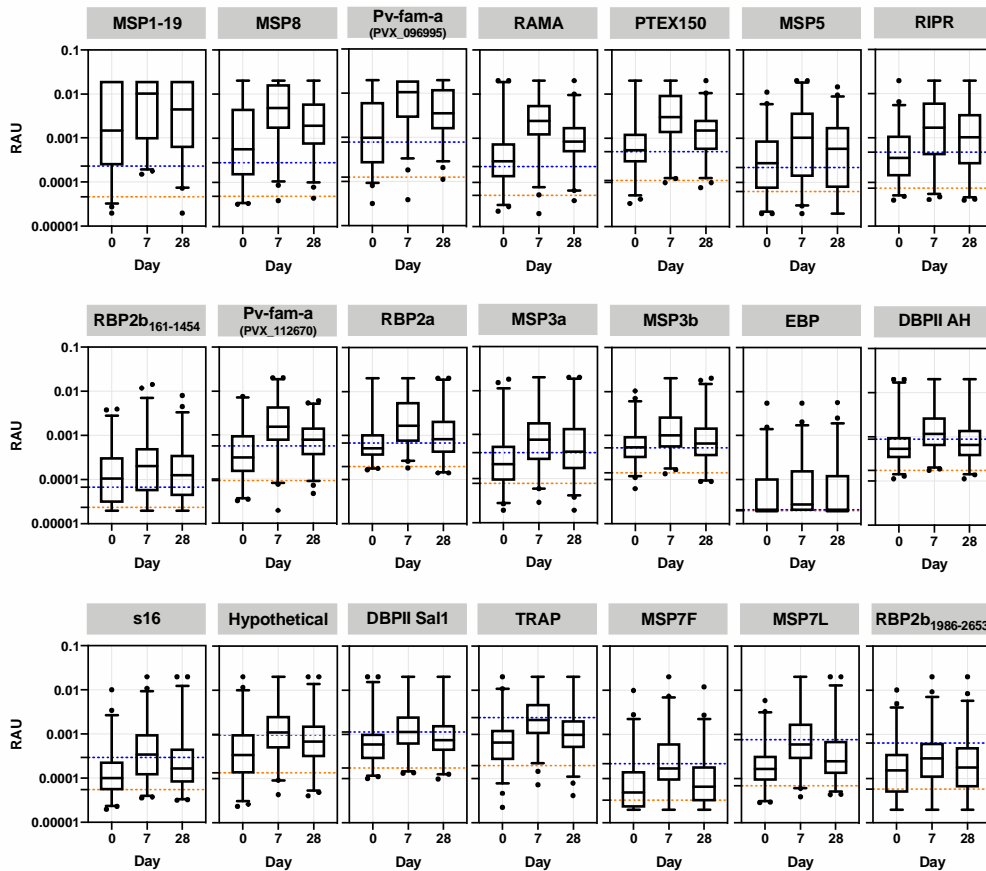
161 ^aStatistical difference between ACTKNOW and PACKNOW cohorts assessed by Mann-Whitney test, not significant. ^bStatistical difference
 162 between ACTKNOW and PACKNOW cohorts assessed by Fisher's exact test, not significant. ^cOne sample missing serology data at day 0.

163 ^dSamples were not available at all time-points for all patients.

164

165 We first assessed potential cross-reactivity against the *P. vivax* proteins using 99
166 patients from the ACTKNOW *P. knowlesi* clinical trial cohort, with plasma samples
167 available at the time of diagnosis of *P. knowlesi* infection (day 0) and follow-up at
168 day 7 and day 28. Median parasitemia prior to treatment (day 0) was 2,857
169 parasites/ μ L (IQR 648-7,177), with all subjects negative for asexual stage parasites
170 and 95% negative for sexual stages by the day 7 timepoint³¹. Antibody responses
171 were compared to malaria-naïve negative control samples from the non-endemic
172 cities of Melbourne, Australia, Bangkok, Thailand and Rio, Brazil (n=369), with a
173 protein-specific seropositivity cut-off defined as the average of the negative controls
174 plus two times the standard deviation. We observed an increase in the median IgG
175 antibody response against all *P. vivax* proteins at day 7 compared to day 0, with IgG
176 levels declining from the peak response by day 28 (Fig. 1). For 17 of 21 *P. vivax*
177 proteins, median IgG levels at day 7 (the peak of the response) were above the sero-
178 positivity cut-off. Of those 17 proteins, for five the median IgG level had dropped
179 below the sero-positivity cut-off by day 28. For all *P. vivax* proteins there were at
180 least some patients with responses above the sero-positivity cut-off at all three time-
181 points (see Supplementary Figure 1 for the change in IgG levels at the individual level
182 over time, n=98 patients with matched data from all three time-points). We explored
183 whether acquisition of cross-reactive IgG antibodies at day 0 was related to delayed
184 presentation to the clinic (and therefore delayed enrolment into the study), using
185 duration of fever as a surrogate for delayed presentation/duration of infection. There
186 was no correlation between day 0 IgG antibodies and duration of fever for 19/21 *P.*
187 *vivax* proteins; there was a weak negative correlation for both DBPII constructs
188 (Spearman correlation, AH $r=-0.25$, Sal1 $r=-0.2$, $p<0.05$ see Figure S2). The highest
189 levels of potential cross-reactivity were observed for MSP1-19, MSP8, Pv-fam-a

190 (PVX_096995) and RAMA, with median IgG levels at day 7 greater than 10-fold
191 compared to the seropositivity cut-off. All 4 of these proteins are used in the
192 classification algorithm based on a combination of antibody responses to 8 proteins,
193 with MSP1-19 and RAMA particularly having an important contribution to the
194 classification performance based on a variable importance plot⁹.
195

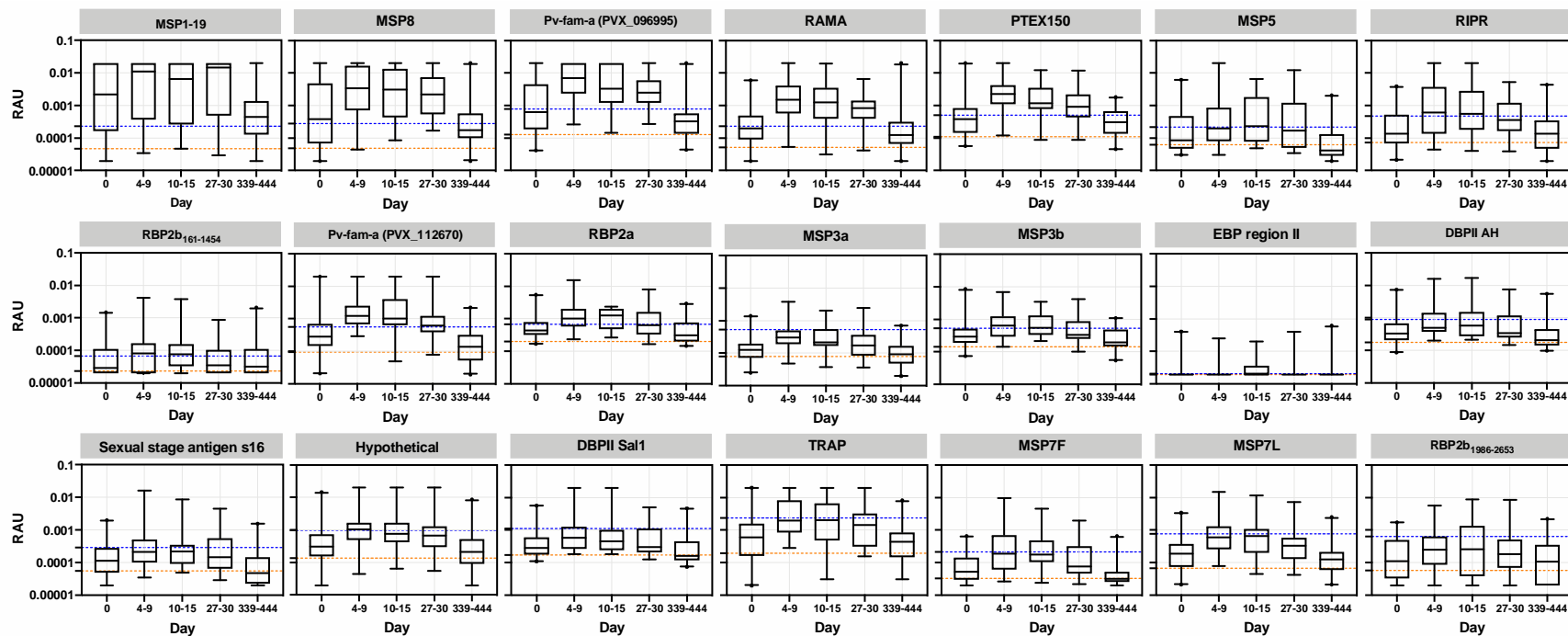


196
197 **Fig. 1. IgG antibody levels against 21 *P. vivax* proteins in patients with clinical *P.***
198 ***knowlesi* infections.** IgG levels were measured against the 21 *P. vivax* proteins using
199 a multiplexed antibody assay. Individual patients (n=99) had longitudinal samples
200 obtained and run at the time of diagnosis of *P. knowlesi* infection (day 0), and days 7
201 and 28 following enrolment (ACTKNOW cohort). Day 0 has data from 98 samples
202 due to the wrong sample being re-run following quality control. Results are expressed
203 as the relative antibody units (RAU). Proteins are ordered by highest level of median
204 IgG at day 7 compared to the seropositivity cut-off. Dashed lines indicate the malaria-
205 naïve negative control samples: orange = average of the negative control samples;
206 blue = seropositivity cut-off (average plus 2x standard deviation).
207

208

209 In order to confirm the results of the ACTKNOW study and to determine the
210 longevity of the cross-reactive antibody response over 1 year (median 369 days; IQR
211 365-394) post *P. knowlesi*-infection, we measured IgG antibody levels against the 21
212 *P. vivax* proteins in the PACKNOW clinical trial cohort samples (n=41 patients with
213 up to 5 time-points available, recruited over 2016-2018, at a time of near-elimination
214 of *P. vivax* in Sabah). These patients were all treated with artemether-lumefantrine.
215 Median parasitemia prior to treatment (day 0) was 2,690 parasites/ μ L (IQR 572-
216 14,317), with all subjects negative for asexual stage parasites by the day 7
217 timepoint³². There was no significant difference in parasitaemia at day 0 between the
218 ACTKNOW and PACKNOW subjects (median 2857 vs 2690 respectively, see Table
219 2). Similar to the ACTKNOW cohort, we observed a peak in the total IgG response to
220 all 21 *P. vivax* proteins at days 4-15 post enrolment, with responses generally
221 declining by the day 27-30 time-point (Fig. 2). Total IgG antibodies against the
222 protein *P. vivax* MSP1-19 were an exception, with elevated levels maintained at the
223 day 27-30 time-point and also at 1-year. By 1-year after *P. knowlesi* infection, the
224 median *P. vivax* total IgG antibodies had declined to below the sero-positivity cut-off
225 for all other proteins (Fig. 2). There were fewer *P. vivax* proteins (n=11/21) with a
226 peak median total IgG response above the sero-positivity cut-off in the PACKNOW
227 samples (collected across 2016-2018) compared to the ACTKNOW samples
228 (collected across 2012-2014) (n=17/21), although this was not statistically significant
229 (Fisher's exact test, p=0.1). There was a significantly higher magnitude total IgG
230 response to 9/21 *P. vivax* proteins in the ACTKNOW compared to PACKNOW
231 cohorts at day 7 (Mann-Whitney U test, see Figure S3). The top 4 *P. vivax* proteins
232 with the highest levels of cross-reactivity evident were the same as the ACTKNOW

233 cohort, being MSP1-19, MSP8, Pv-fam-a (PVX_096995) and RAMA (median IgG
234 levels at day 7 more than 6-fold higher than the sero-positivity cut-off).



236

237

238

239

240

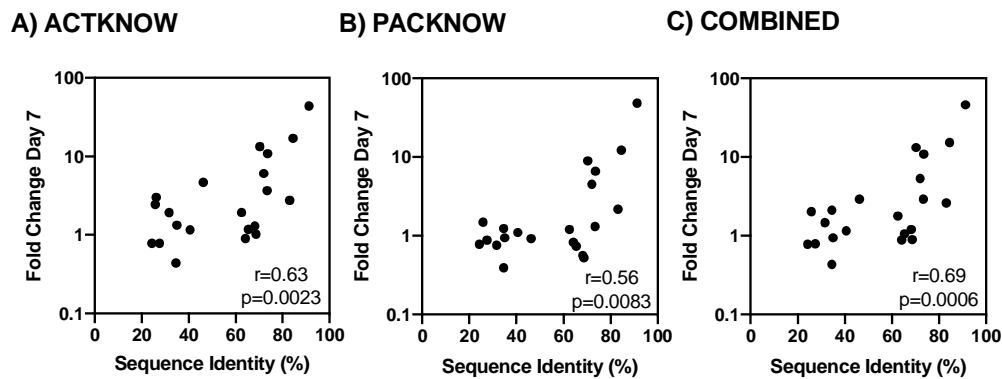
241

242

Figure 2: IgG antibody levels against 21 *P. vivax* proteins in patients up to 1 year post clinical *P. knowlesi* infections. IgG levels were measured against the 21 *P. vivax* proteins using a multiplexed antibody assay. Samples were obtained and run at the time of *P. knowlesi* infection (day 0) (n=41), days 4-9 (n=35), days 10-15 (n=15), days 27-30 (n=33) and days 339-444 (n=42) following enrolment (PACKNOW cohort). Results are expressed as the relative antibody units (RAU). Proteins are ordered as per Figure 1. Dashed lines indicate the malaria-naïve negative control samples: orange = average of the negative control samples; blue = seropositivity cut-off (average plus 2x standard deviation).

243 There was a statistically significant correlation between the fold change comparing
244 the median IgG level at the peak at day 7 with the seropositivity cut-off and the
245 percentage sequence identity of the *P. knowlesi* and *P. vivax* orthologs for both the
246 ACTKNOW and PACKNOW cohorts (Fig. 3A-B) (Spearman correlation, $r=0.63$,
247 $p=0.0023$ and $r=0.56$, $p=0.0083$, respectively) and using median IgG antibody data
248 from both patient cohorts combined ($r=0.69$ $p=0.0006$, Fig. 3C).

249



250

251 **Fig. 3. Correlation between the peak anti-*P. vivax* IgG level at day 7 and the**
252 **percentage sequence similarity of the *P. vivax* and *P. knowlesi* orthologs.** The
253 median IgG level at day 7 (the peak of the response) was divided by the seropositivity
254 cut-off to generate the fold change at the peak compared to the background. The
255 percentage sequence identity was calculated for the protein construct sequence (not
256 full-length for all proteins) using NCBI BlastP. Where there was no hit for NCBI
257 BlastP the PlasmoDB method was used (see Table 1). A Spearman's correlation was
258 performed to determine the relationship of the fold change with the sequence identity
259 using data from all 21 *P. vivax* proteins, for the A) ACTKNOW $r=0.63$ $p=0.0023$, B)
260 PACKNOW cohorts $r=0.56$ $p=0.0083$ and C) ACTKNOW and PACKNOW
261 combined (median antibody level of $n=134$ *P. knowlesi* patients at Day 7 divided by
262 the seropositivity cut-off) $r=0.69$ $p=0.0006$.

263

264 **Classification of recent exposure to *P. vivax* blood-stage infections in the *P.***

265 ***knowlesi* cohorts**

266 As high levels of cross-reactivity (>6-10 fold increase over the sero-positivity cut-off)

267 were evident between four of our top 8 *P. vivax* proteins in the two series of *P.*

268 *knowlesi* clinical case samples (MSP1-19, MSP8, Pv-fam-a (PVX_096995), RAMA),

269 we next used these data in our previously developed classification algorithm to
270 determine whether any of the samples from patients with current or recent *P. knowlesi*
271 infections were classified as recently exposed to *P. vivax*. The top 8 *P. vivax* proteins
272 used in the classification algorithm are: MSP1-19, MSP8, Pv-fam-a (PVX_096995),
273 RAMA, RBP2b₁₆₁₋₁₄₅₄, Pv-fam-a (PVX_112670), MSP3a, and EBP. We utilised a
274 balanced sensitivity and specificity target of 79%. We ran the algorithm on both the
275 ACTKNOW and PACKNOW cohorts at all time-points for which we had data, and
276 the proportion of patients classified as positive by the algorithm varied between 17-
277 82% (Table 3). The trend was for the highest numbers of *P. knowlesi* patients to be
278 classified as recently exposed to *P. vivax* at the day 7 timepoint in both cohorts (82%
279 ACTKNOW, 77% PACKNOW), in line with the highest peak IgG activity. The
280 lowest proportion of *P. knowlesi* patients classified as positive was for the
281 PACKNOW cohort at Day 365 (7/42, 17%).

282

283 For the ACTKNOW cohort, of the 99 patients, 46 were classified positive by the
284 algorithm at all three time-points. 20 were classified positive at day 7 and day 28, 14
285 at day 7 only, two at day 28 only and one at day 0 and day 7. 16 patients were not
286 classified as positive at any timepoint. Whilst there was variability in the available
287 plasma samples post enrolment for the PACKNOW cohort, 9 patients were not
288 classified positive at any timepoint and all those who were positive at a later
289 timepoint (day 28 or day 365) were previously positive for at least one of the earlier
290 timepoints (i.e. day 0, 7 or 14). The exceptions were 1 patient who was positive at
291 only day 28 and 1 patient positive at only day 365 (the latter had notably high
292 antibody levels at day 365, reaching equivalent to a 1/50 dilution of the positive
293 control pool against 4 of 8 antigens).

294

295 **Table 3: Output from *P. vivax* classifier using IgG antibody responses from top 8**

296 ***P. vivax* serological exposure markers. A balanced 79% specificity, 79% sensitivity**

297 **target was used.**

Samples	Total number (n)	Classified Positive (n)	Percent Positive (%)
<i>ACTKNOW</i>			
Day 0	98	47	48.0
Day 7	99	81	81.8
Day 28	99	68	68.7
<i>PACKNOW</i>			
Day 0	41	21	51.2
Day 7	35	27	77.1
Day 14	15	11	73.3
Day 28	33	20	60.6
Day 365	42	7	16.7

298

299 **Design and application of an adjusted *P. vivax*-specific serological marker panel**

300 In both the ACTKNOW and PACKNOW *P. knowlesi* clinical cohorts, more than half

301 the patients at day 7 and day 28 post-infection were classified as recently exposed to

302 *P. vivax* blood-stage parasites using our existing algorithm with our set of 8 *P. vivax*

303 serological exposure markers. This indicated our current serological exposure marker

304 panel was not *P. vivax*-specific. We hypothesized that using proteins with low-levels

305 of cross-reactivity in the *P. knowlesi* infected patients would reduce misclassification.

306 We thus designed a new panel of 8 *P. vivax* serological exposure markers by selecting

307 the proteins with the lowest levels of cross-reactivity in the *P. knowlesi* clinical

308 samples (as determined by the median IgG level at Day 7 from the ACTKNOW

309 sample set compared to the background, as described for Fig. 3). These proteins were:

310 RBP2b₁₉₈₆₋₂₆₅₃, MSP7L, MSP7F, TRAP, DBPII Sal1, hypothetical (PVX_097715),

311 sexual stage antigen s16, and EBP (all with a fold change of less than 2). DBPII AH

312 was not selected given this is a variant of the DBP region II that was already included

313 (Sal1 strain included). We re-trained the algorithm on our existing Thai, Brazilian and

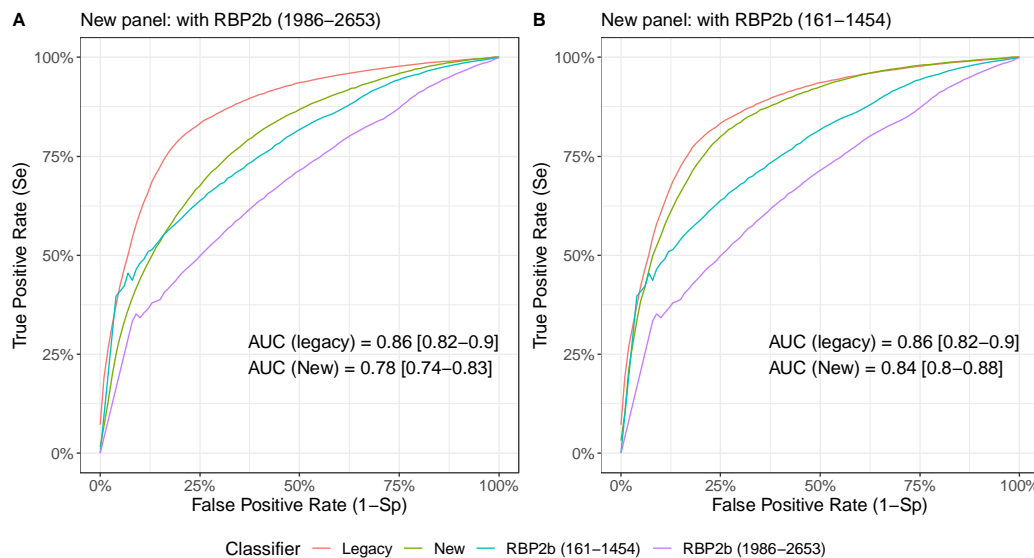
314 Solomon Islands datasets⁹ for these 8 *P. vivax* proteins. Youden's J was used to
315 determine the best trade-off balancing sensitivity and specificity, assuming equal
316 importance of false positives and false negatives in the classification process. The
317 algorithm trained with the new panel of 8 *P. vivax* proteins achieved 72.4% sensitivity
318 and 70.8% specificity respectively, for classifying recent *P. vivax* infections within
319 the prior 9-months (Fig. 4A). When applied to confirmed *P. knowlesi* clinical cases,
320 we identified a reduced number of 210/462 (45%) samples being classed as recently
321 exposed to *P. vivax* (Table 4) (compared to 281/462 (61%) using the original panel).
322 Misclassification was still high at day 7 post-*P. knowlesi* infection (69.7%
323 ACTKNOW and 80% PACKNOW) but less than 58% at day 28 and 7% at day 365.
324 The greatest reduction in numbers and proportions of *P. knowlesi* patients classified
325 positive by the algorithm was for the ACTKNOW cohort.

326

327 Whilst the new combination of 8 *P. vivax* proteins reduced overall misclassification of
328 *P. knowlesi* clinical cases, the sensitivity and specificity for correctly classifying
329 recent *P. vivax* infections (72.4%, 70.8%) was substantially lower than the original 8
330 (80% for both⁹). We hypothesized this was because the new panel did not include the
331 top classifier RBP2b₁₆₁₋₁₄₅₄ (see Fig. 4. and Longley, White et al., 2020⁹). As this
332 protein also had relatively low-levels of cross-reactivity in the *P. knowlesi* samples at
333 day 7 (fold change 2.9 compared to the seropositivity cut-off), we replaced
334 RBP2b₁₉₈₆₋₂₆₅₃ in the new panel with RBP2b₁₆₁₋₁₄₅₄. This improved classification of
335 recent *P. vivax* infections in the Thai, Brazilian and Solomon Islands datasets to
336 78.7% sensitivity and 76.9% specificity (Fig. 4B), which is more comparable to the
337 original classifier. Applying this trained classification algorithm to the *P. knowlesi*
338 sample sets resulted in 215/462 (47%) samples being misclassified (Table 4), which is

339 less than when using the original algorithm (281) and similar to the 210 misclassified
340 when using RBP2b₁₉₈₆₋₂₆₅₃ in the new panel (new algorithm RBP2b₁₉₈₆₋₂₆₅₃ vs
341 RBP2b₁₆₁₋₁₄₅₄ P=0.79, Fisher's exact test). At day 7 post-*P. knowlesi* infection 68-
342 71% were classified as recently exposed to *P. vivax*, reducing to 42-50% at day 28
343 and 10% at day 365. Those patients positive at day 365 were also classified positive at
344 earlier timepoints.

345



346

347 **Fig. 4. Classification of recent *P. vivax* infections using an adjusted *P. vivax***
348 **antigen panel.** Receiver operator characteristic curve for classifying individuals with
349 PCR-detected *P. vivax* infections within the prior 9 months, using a random forest
350 classification algorithm with antibody responses to a modified set of 8 *P. vivax*
351 antigens (green, “new”) compared to the original 8 (red, “legacy”). In panel A)
352 RBP2b₁₉₈₆₋₂₆₅₃, MSP7L, MSP7F, TRAP, DBPII Sal1, hypothetical (PVX_097715),
353 s16 and EBP, and B) RBP2b₁₆₁₋₁₄₅₄, MSP7L, MSP7F, TRAP, DBPII Sal1,
354 hypothetical (PVX_097715), s16 and EBP. Both panels A and B also include
355 classification using either of the RBP2b₁₉₈₆₋₂₆₅₃ (purple) or RBP2b₁₆₁₋₁₄₅₄ (blue)
356 responses alone.

357

358

359 **Table 4: Output from *P. vivax* classifier using IgG antibody responses from two**
360 **adjusted panels of 8 *P. vivax* serological exposure markers with low levels of *P.***
361 ***knowlesi*-cross-reactivity.** A classification of previous exposure was taken when
362 predicted probability was greater than a cut off corresponding to the respective

363 sensitivity and specificity targets of 72.4% and 70.8% (RBP2b₁₉₈₆₋₂₆₅₃) or 78.7% and
364 76.9% (RBP2b₁₆₁₋₁₄₅₄). The results from Table 2 are included for comparison.

Samples	Total N	Classified Positive Legacy 8, number (%)	Classified Positive New 8, with RBP2b ₁₉₈₆₋₂₆₅₃ , number (%)	Classified Positive New 8, with RBP2b ₁₆₁₋₁₄₅₄ , number (%)
<i>ACTKNOW</i>				
Day 0	98	47 (48.0%)	26 (26.5%)	36 (36.7%)
Day 7	99	81 (81.8%)	69 (69.7%)	67 (67.7%)
Day 28	99	68 (68.7%)	43 (43.4%)	49 (49.5%)
<i>PACKNOW</i>				
Day 0	41	21 (51.2%)	12 (29.3%)	12 (29.3%)
Day 7	35	27 (77.1%)	28 (80.0%)	25 (71.4%)
Day 14	15	11 (73.3%)	10 (66.7%)	8 (53.3%)
Day 28	33	20 (60.6%)	19 (57.8%)	14 (42.4%)
Day 365	42	7 (16.7%)	3 (7.1%)	4 (9.5%)

365

366 **Association of peak antibody levels with age and *P. knowlesi* parasitaemia**

367 Antibody levels are commonly associated with age (i.e. increasing antibodies with
368 increasing age, due to both being a proxy for exposure and age itself), and sometimes
369 with the antigenic input as measured by blood-stage parasitaemia. We further
370 explored whether the cross-reactive antibodies identified at day 7 were associated
371 with either age or *P. knowlesi* parasitaemia (as recorded at enrolment) through
372 regression analyses. This analysis was performed using peak antibody levels at day 7
373 from both the ACTKNOW and PACKNOW cohorts (n=134). There was a weak
374 positive association with age (range 3-78 years) for 11/21 *P. vivax* antigens (Table 5).
375 In prior studies of *P. knowlesi* malaria age is associated with parasitaemia^{34,35}, thus we
376 also adjusted the age analyses for parasitaemia and the findings remained the same
377 (Table 5). Parasitaemia ranged from 56-185,553 parasites/ μ L, and there was no
378 association between *P. knowlesi* parasitaemia and peak antibody levels at day 7 for
379 19/21 *P. vivax* antigens (Table S2). For DBPII AH there was a negative association

380 between parasitaemia and antibody levels, whereas for MSP7F there was a positive
381 association between parasitaemia and antibody levels. There were also higher
382 antibody levels in females compared to males for four proteins (MSP5, MSP3b,
383 MSP3a, DBPII AH) (Table S2); three of these also had a significant positive
384 association with age which remained after adjustment for sex. No pattern was
385 observed between these associations with the ranking of antigens by cross-reactivity
386 (Table 5).
387

388 **Table 5: Associations between peak IgG anti-*P. vivax* antibody levels at day 7 in the both *P. knowlesi* cohorts combined with age.** Sample
 389 size = 134. Regression analyses were performed univariably and adjusted with parasitaemia. Antigens are ordered by the fold change in the peak
 390 antibody level at day 7 in the ACTKNOW cohort compared to the seropositivity cut-off based on the negative control samples (=Fold Δ IgG). CI
 391 = confidence interval.

Protein	Fold Δ IgG	Age (unadjusted)		Age (adjusted)	
		Coefficient (95% CI)	<i>p</i> value	Coefficient (95% CI)	<i>p</i> value
MSP1-19	43.98	0.012 (0.0052-0.02)	0.001	0.012 (0.0052-0.020)	0.001
MSP8	17.07	0.005 (-0.0012-0.011)	0.11	0.005 (-0.0012-0.011)	0.111
Pv-fam-a (PVX_096995)	13.39	0.0047 (-0.00062-0.01)	0.083	0.0047 (-0.00064-0.01)	0.084
RAMA	10.86	0.0046 (-0.0021-0.011)	0.175	0.0046 (-0.0021-0.011)	0.175
PTEX150	6.08	0.013 (0.0053-0.020)	0.001	0.013 (0.0053-0.02)	0.001
MSP5	4.70	0.021 (0.013-0.029)	<0.0001	0.021 (0.013-0.029)	<0.0001
RIPR	3.66	0.014 (0.0073-0.021)	<0.0001	0.014 (0.0073-0.0211)	<0.0001
RBP2b ₁₆₁₋₁₄₅₄	3.00	0.0077 (0.0012-0.014)	0.02	0.0077 (0.0011-0.014)	0.021
Pv-fam-a (PVX_112670)	2.76	-0.0048 (-0.01-0.0036)	0.068	-0.0048 (-0.01-0.00038)	0.069
RBP2a	2.45	0.012 (0.0071-0.018)	<0.0001	0.012 (0.007-0.018)	<0.0001
MSP3b	1.93	0.0064 (0.0014-0.011)	0.013	0.0064 (0.0013-0.012)	0.014
MSP3a	1.92	0.015 (0.0088-0.021)	<0.0001	0.015 (0.0088-0.021)	<0.0001
EBP	1.33	0.012 (0.0072-0.016)	<0.0001	0.012 (0.0072-0.016)	<0.0001
DBPII AH	1.31	0.0044 (-0.00086-0.0097)	0.1	0.0044 (-0.0008-0.0096)	0.099
S16	1.18	0.0061 (0.00020-0.012)	0.043	0.0061 (0.00018-0.012)	0.044
Hypothetical	1.16	0.0038 (-0.0028-0.010)	0.258	0.0038 (-0.0028-0.01)	0.26
DBPII Sal1	1.02	0.0051 (-0.001-0.011)	0.102	0.0051 (-0.001-0.011)	0.102
TRAP	0.90	0.007 (0.0014-0.013)	0.015	0.007 (0.014-0.013)	0.015
MSP7L	0.78	0.0057 (-0.00012-0.012)	0.055	0.0057 (-0.00013-0.0115)	0.055

MSP7F	0.78	0.0066 (-0.0029-0.013)	0.06	0.0066 (-0.0025-0.013)	0.059
RBP2b ₁₉₈₆₋₂₆₅₃	0.44	0.0042 (-0.0063-0.012)	0.266	0.0042 (-0.0033-0.118)	0.272

392 **Discussion**

393 *P. vivax* serological markers, that reflect recent exposure to blood-stage *P. vivax*
394 parasites and can indirectly identify hypnozoite carriers, could play an important role
395 in accelerating malaria elimination programs. In this study, we aimed to identify
396 whether cross-reactive antibodies against our *P. vivax* serological markers were
397 present in patients with recent *P. knowlesi* infections. Using serial plasma samples
398 from two cohorts of patients with *P. knowlesi* malaria, we found that cross-reactive
399 antibodies are induced against some of the *P. vivax* proteins assessed. A statistically
400 significant association was seen with the level of sequence identity between the *P.*
401 *vivax* and *P. knowlesi* orthologs. The peak cross-reactive antibody response was at
402 day 7 following infection, which is the same timing as the peak *P. knowlesi*-antibody
403 response reported previously using a similar sample set from Sabah, Malaysia²⁴. This
404 is also in line with the timing of peak IgG antibody responses reported for other
405 species such as *P. falciparum* and *P. vivax* (within the first two weeks post-
406 treatment)³⁶⁻³⁸. Antibodies against the *P. vivax* proteins had reduced in magnitude by
407 day 28 post-infection, and the median IgG levels were below the seropositivity cut-off
408 for all but one *P. vivax* protein (MSP1-19) at 1-year post-*P. knowlesi* infection.

409

410 The two cohorts of *P. knowlesi* clinical case samples used here were obtained during
411 different time periods, 2012-2014 and 2016-2018. The incidence of *P. vivax*
412 infections in Sabah, Malaysia in 2012-2014 was modest and transmission had
413 declined even further by 2016-2018³³. Therefore, the risk that the *P. knowlesi*-infected
414 patients had recent past exposure to *P. vivax* was low in both cohorts (notably, 14
415 patients were retrospectively excluded from the ACTKNOW study due to *P. vivax*
416 infections detected by PCR whilst only 1 was excluded from the PACKNOW study,

417 see Methods). The number of *P. vivax* proteins with antibody levels above the sero-
418 positive cut-off at the peak of the response was higher in the ACTKNOW cohort in
419 2012-2014 at 80.95% (17/21) compared to 52.38% (11/21) in the PACKNOW cohort
420 in 2016-2018 (this difference was not statistically significant). There was also a
421 significantly higher magnitude of the IgG response in the ACTKNOW cohort
422 compared to the PACKNOW cohort for 9/21 *P. vivax* proteins at day 7. There was no
423 significant difference in the age between the two cohorts nor the parasitaemia at
424 enrolment (Table 2). Overall, there were still anti-*P. vivax* antibody responses present
425 in the later PACKNOW cohort and thus our interpretation of these responses as cross-
426 reactive is by far the most likely explanation given the evidence (rather than recent
427 past exposure to *P. vivax* infections). Furthermore, the *P. vivax* protein RBP2b is the
428 top serological exposure marker and highly accurate at predicting recent *P. vivax*
429 infections even when used alone⁹. The lack of antibody responses detected against
430 RBP2b in the *P. knowlesi*-clinical cohorts suggests it is unlikely these patients also
431 had recent *P. vivax* infections.

432

433 Our findings are in line with, but extend upon, past research. An extensive study of *P.*
434 *vivax* –*P. knowlesi* antibody cross-reactivity to 19 blood-stage proteins was recently
435 published²³, which included four of the proteins we assessed in the current study
436 (MSP1, MSP8, DBP, RAMA). The authors generated rabbit antibodies against the 19
437 *P. vivax* proteins and found they recognised *P. knowlesi* blood-stage parasites through
438 immunofluorescence assays, and were able to inhibit invasion of *P. knowlesi* into
439 erythrocytes *in vitro*²³. Naturally acquired antibodies from individuals living in
440 endemic areas were also analysed, with evidence of cross-reactive antibodies from
441 either of *P. vivax* or *P. knowlesi* patients against *P. vivax* or *P. knowlesi* recombinant

442 proteins (building upon the authors' prior work on one *P. vivax* protein, apical
443 asparagine rich protein³⁹). Of relevance to our study, they found significant levels of
444 reactivity in *P. knowlesi* patient sera against *P. vivax* MSP8²³, which is supported by
445 our current data. The 19 *P. vivax* proteins assessed by Muh and colleagues had high
446 levels of sequence identity with their *P. knowlesi* orthologs (>58.2%)²³, with the
447 exception of two RBP proteins (1a and 1b, 22.3 and 26.9%, respectively), and this
448 could explain the universal cross-reactivity they identified. In contrast, our panel of *P.*
449 *vivax* proteins had a large spread of sequence identity with their *P. knowlesi*
450 orthologs, with 9 proteins having less than 50% sequence identity, which enabled us
451 to demonstrate the positive relationship between sequence identity and antibody
452 cross-reactivity. A lower level of sequence identity comes with a decrease in the
453 likelihood of continuous linear epitopes, which is in support of our finding. Further
454 work would need to be undertaken to determine how lower sequence identity affects
455 discontinuous conformational epitopes. Overall, we found the presence and/or level of
456 cross-reactivity is antigen-specific. Our work further extends upon existing findings
457 by demonstrating that cross-reactive antibody responses in *P. knowlesi* patients
458 against *P. vivax* proteins are short-lived.

459

460 The most cross-reactive protein in our panel was MSP1-19 (>40-fold increase at day 7
461 compared to sero-positivity cut-off). This magnitude of response is equivalent to that
462 reached against a *P. knowlesi*-specific protein (*PkSERA* antigen 3) in a subset of
463 these same *P. knowlesi* patient samples (50-fold at day 7 compared to day 0)²⁴.
464 Previous assessment of antibody responses against MSP1-19 in *P. falciparum*, *P.*
465 *vivax*, *P. malariae* and *P. ovale* (but notably did not include assessment of *P.*
466 *knowlesi*) indicated a highly species-specific response¹⁶. However, high-levels of

467 cross-reactivity for MSP1-19 between *P. vivax* and *P. knowlesi* (>81% sequence
468 identity between the Sall and H strains, respectively) have been reported in other
469 studies in-line with our work^{23,24}. *P. vivax* MSP1-19 was a vaccine candidate⁴⁰,
470 though has not progressed to clinical trials⁴¹. There remains interest in this
471 candidate^{42,43}, and the high levels of cross-reactivity in our study with *P. knowlesi*
472 suggest that potential cross-species immunity could be possible¹⁵. Recent work has
473 used *P. knowlesi* as a model for screening inhibitory activity of *P. vivax* antibodies⁴⁴.
474 Polyclonal antibodies against the *P. vivax* proteins DBP, two 6-cysteine proteins
475 (Pv12, Pv14) and the GPI-anchored micronemal antigen (GAMA) were able to inhibit
476 invasion of wild-type *P. knowlesi*, demonstrating that cross-species functional
477 immunity is possible (at least *in vitro*). No inhibition was evident against wild-type *P.*
478 *knowlesi* when using antibodies against *P. vivax* MSP3a and MSP7L, which is
479 consistent with our findings of minimal cross-reactivity in *P. knowlesi* patients for
480 these proteins. In addition to MSP1-19, we observed high levels of potential cross-
481 reactive antibody responses against the *P. vivax* proteins MSP8, Pv-fam-a
482 (PVX_096995) and RAMA. These antigens could thus be considered for assessment
483 of growth inhibitory activity in the *P. knowlesi* model⁴⁴ and considered as potential
484 targets for cross-species protection. This is an important consideration given the
485 currently limited landscape of vaccine development specifically for *P. knowlesi*⁴⁵. In
486 some previously co-endemic areas of South East Asia, the rise in incidence of
487 symptomatic *P. knowlesi* malaria has followed the decline in *P. vivax* malaria,
488 supporting the idea for development of a *P. vivax* vaccine that provides cross-reactive
489 immunity against *P. knowlesi*⁴⁵. To-date there has been limited assessment of these
490 three *P. vivax* proteins as vaccine candidates. Unfortunately, a number of the most
491 promising *P. vivax* vaccine candidates (including RBP2b, EBP, MSP3a⁴⁶) have low

492 sequence identify with their *P. knowlesi* orthologs and limited evidence of cross-
493 reactivity in our study. Whilst not an objective of our current study, we did identify a
494 number of interesting associations between infection related variables and antibodies
495 against *P. vivax* DBPII, including shorter fever duration and lower parasitemia in *P.*
496 *knowlesi* patients with higher antibodies. This suggests some effect of pre-existing
497 immunity leading to a better ability to control the infection, thus warrants further
498 attention.

499

500 All four of the most highly cross-reactive proteins are within our top 8 panel of *P.*
501 *vivax* serological exposure markers⁹. However, levels of antibodies against our top
502 serological marker, RBP2b (N and C terminal constructs), were low. When we
503 applied our previously trained classification algorithm to the current *P. knowlesi*
504 clinical data sets, 77-82% of *P. knowlesi* patients at the peak antibody time-point (Day
505 7) in each cohort were classified as recently exposed to *P. vivax* blood-stage parasites
506 in the past 9-months. This reduced to 61-69% at Day 28 and 17% at Day 365. As
507 mentioned, at the time of the PACKNOW cohort (2016-2018) local *P. vivax*
508 transmission in Sabah, Malaysia had approached elimination and nearly all malaria
509 was from *P. knowlesi*³³. Thus, in this cohort there is less risk that the anti-*P. vivax*
510 antibody responses measured are due to past exposure to *P. vivax*, and a lower
511 proportion of *P. knowlesi* patients were accordingly classified as recently exposed
512 compared to the earlier ACTKNOW cohort. However, 77% of PACKNOW patients
513 at Day 7 were classified as recently exposed to *P. vivax*, and thus the substantial
514 cross-reactivity identified against four of our top eight proteins is resulting in this
515 (likely) misclassification. It is important to consider this level of misclassification in

516 areas endemic for both *P. vivax* and *P. knowlesi* in the context of how the serological
517 exposure markers will be applied.

518

519 Multiple use-cases for *P. vivax* serological markers exist¹². For an intervention, such
520 as seroTAT, even with potential misclassification due to recent exposure to *P.*
521 *knowlesi*, the serological markers would still outperform mass drug administration in
522 terms of specificity. For surveillance purposes, such as identifying clusters of
523 infections or levels of residual transmission to better target the limited resources of
524 malaria control programs, it will be important to define whether the recent exposure
525 was due to *P. vivax* or *P. knowlesi*. We therefore assessed performance of an adjusted
526 panel of 8 *P. vivax* serological markers, which were selected due to low-levels of
527 cross-reactivity in the *P. knowlesi* clinical cases. Suboptimal performance was
528 initially observed, but after substituting one fragment of RBP2b₁₉₈₆₋₂₆₅₃ for the top
529 performing RBP2b₁₆₁₋₁₄₅₄, this new panel of 8 markers were still able to classify
530 recent *P. vivax* infections with 78.7% sensitivity and 76.9% specificity, whilst
531 reducing the misclassification of recent *P. knowlesi* infections to 68-71% at the peak
532 day 7 timepoint. By day 28 this was <50% and importantly at one year post *P.*
533 *knowlesi* infection, 10%. This provides proof of principle that an adjusted panel of
534 serological markers could be applied for use in co-endemic areas, but further
535 optimisation would be needed to completely reduce the risk of misclassifying recent
536 *P. knowlesi* infections. This residual cross-reactivity at one year may assume greater
537 importance for sero-surveillance purposes, as the proportion of all *Plasmodium*
538 infections due to *P. knowlesi* rises with *P. vivax* elimination strategies in co-endemic
539 areas⁴⁵. It would be useful to have plasma samples collected between 1-12 months
540 post *P. knowlesi*-infection to better understand the dynamics of the cross-reactive

541 antibody response. An alternative approach would be to include a panel of *P.*
542 *knowlesi*-specific markers into the *P. vivax* serological assay, which could be cross-
543 referenced to inform on recent *P. knowlesi* exposure. Recently a panel of recombinant
544 *P. knowlesi* proteins has been developed for use as serological tools with care being
545 taken in their design to avoid regions of sequence with high levels of identity with
546 other *Plasmodium* species²⁴. Whilst further validation of species-specificity is
547 required, at least one protein (*P. knowlesi* serine repeat antigen 3 antigen 2) was able
548 to identify *P. knowlesi* exposed individuals²⁴. Further work could also assess the use
549 of other Ig isotypes or IgG subclasses detected against the *P. vivax* serological
550 exposure markers, instead of total IgG, as another avenue for reducing
551 misclassification at later time-points post *P. knowlesi*-exposure given the possible
552 variability in their longevity^{36,47}. It may also be possible to design smaller *P. vivax*
553 protein fragments of the top markers that have very low sequence identity with their
554 *P. knowlesi* orthologs.

555

556 Our study provides important evidence of antibody cross-reactivity against *P. vivax*
557 proteins in patients with *P. knowlesi* infections, that are relatively short-lived, and
558 provides an approach for limiting the potential misclassification of *Plasmodium*
559 species by serology in co-endemic areas. This data will be useful when interpreting *P.*
560 *vivax* sero-surveillance results in settings co-endemic for *P. knowlesi*. It will be
561 important to expand upon our findings to assess potential cross-reactivity with other
562 zoonotic⁴⁸ and non-zoonotic *Plasmodium* species, even though for the latter the levels
563 are expected to be lower due to the further divergence in genetic relatedness with
564 other species¹⁴. Further assessment of recently developed *P. knowlesi* markers of
565 exposure²⁴ in *P. vivax* endemic areas is warranted to confirm limited cross-reactivity

566 for those specific proteins between the two species. For our findings to be applied, the
567 new panel of 8 *P. vivax* proteins with limited evidence of cross-reactivity with *P.*
568 *knowlesi* needs to be validated for a) the ability to identify individuals at risk of
569 recurrent *P. vivax* infections and b) the ability to identify *P. vivax* hypnozoite carriers.
570

571 **Materials and Methods**

572 **Ethical approvals**

573 Samples from two clinical trials conducted in Sabah, Malaysia, were used for this
574 study (ACTKNOW³¹ and PACKNOW³²). Ethical approvals for these studies were
575 obtained from the Human Research Ethics Committee at the Menzies School of
576 Health Research, Darwin, Australia (approval numbers 2012-1815 and 16-2544) and
577 the Medical Research and Ethics Committee of the Ministry of Health Malaysia,
578 Malaysia (approval numbers NMRR-12-89-11005 and NMRR-16-29088). All
579 patients gave written informed consent or an attending relative gave informed
580 consent. Ethical approval was provided by the Human Research Ethics Committee at
581 the Walter and Eliza Hall Institute of Medical Research for use of the Malaysian and
582 negative control samples in Melbourne (approval number 14/02).

583

584 **Study samples**

585 Longitudinal plasma samples were collected from patients enrolled in two *P. knowlesi*
586 clinical trials conducted in Sabah, Malaysia, denoted as ACTKNOW and
587 PACKNOW, and four panels of malaria-naïve negative controls.

588

589 The ACTKNOW study recruited patients over 2012-2014, with the aim of comparing
590 artesunate-mefloquine versus chloroquine for the treatment of acute uncomplicated *P.*

591 *knowlesi* malaria³¹ (clinicaltrials.gov registration number NCT01708876). Patients
592 were recruited from three hospitals (Kudat, Kota Marudu, Pitas) and were eligible for
593 inclusion if they had microscopic diagnosis of *P. knowlesi* mono-infection, were more
594 than 1 year of age, more than 10kg, had a negative *P. falciparum* rapid diagnostic test,
595 and had a fever ($\leq 37.5^{\circ}\text{C}$) or history of fever in the past 48 hours. Patients who were
596 not confirmed by PCR to have *P. knowlesi* mono-infection were retrospectively
597 excluded³¹. Of those excluded, 14 were due to *P. vivax* infections detected upon PCR.
598 The duration of self-reported history of fever (days) was recorded. Patients were
599 treated as previously described³¹, with approximately half randomised to receive
600 chloroquine and half to receive artemisinin-based combination therapy. Plasma
601 samples were available for the current study from 99 patients at day 0 (time of
602 enrolment), day 7 and day 28. Data is presented from 98 samples at day 0 for 20/21 *P.*
603 *vivax* proteins due to one sample failing quality control of the antibody data, and the
604 incorrect sample being repeated by mistake.

605

606 The PACKNOW study recruited patients over 2016-2018, with the aim of comparing
607 regularly dosed paracetamol versus no paracetamol on renal function in *P. knowlesi*
608 malaria³² (clinicaltrials.gov registration number NCT03056391). All patients
609 received antimalarial drug treatment with artemether-lumefantrine. Patients were
610 recruited from four hospitals (Queen Elizabeth Hospital, Keningau, Ranau, Kota
611 Marudu) and were eligible for inclusion if they had a microscopic diagnosis of *P.*
612 *knowlesi* mono-infection, fever ($\geq 38^{\circ}\text{C}$) on admission or during the preceding 48
613 hours, and were more than 5 years of age. Patients were enrolled within 18 hours of
614 commencing antimalarial treatment³². Patients who were not confirmed by PCR to
615 have *P. knowlesi* mono-infection were retrospectively excluded, using a validated PCR

616 assay⁴⁹. In contrast to the ACTKNOW study, this only included 1 excluded due to *P.*
617 *vivax* infection detected by PCR (unpublished data). Plasma samples were available
618 for the current study from 41 patients at day 0 (time of enrolment), 7, 14, 28 and 365
619 (these exact time-points were not always available, exact days post-enrolment are
620 stated in the results and relevant figure legends).

621

622 For both the ACTKNOW and PACKNOW cohorts, all patients were PCR-negative
623 for *P. vivax* co-infection at enrolment, however it was unknown whether the *P.*
624 *knowlesi* patients had past exposure to *P. vivax* parasites. *P. vivax* has been endemic
625 in Sabah, Malaysia, but the number of malaria cases due to *P. vivax* has substantially
626 declined from 2009 – 2017 (whilst the number of cases due to *P. knowlesi* has
627 risen)³³. In line, the number of patients retrospectively excluded from these studies
628 due to *P. vivax* infection detected by PCR was 14 in ACTKNOW and only 1 in
629 PACKNOW. All patient data variables are provided in additional file 1.

630

631 We utilised four panels of malaria-naïve negative control plasma samples as
632 previously described⁹. Briefly, this included 102 individuals from the Volunteer
633 Blood Donor Registry in Melbourne, Australia; 100 individuals from the Australian
634 Red Cross, Melbourne, Australia; 72 individuals from the Thai Red Cross, Bangkok,
635 Thailand; and 96 individuals from the Rio de Janeiro State Blood Bank, Rio de
636 Janeiro, Brazil.

637

638 ***P. vivax* proteins**

639 21 *P. vivax* proteins were selected for assessment of antibody responses due to their
640 ability to classify individuals as recently exposed to *P. vivax* parasites within the prior

641 9-months, as previously described⁹. These included eight *P. vivax* proteins that,
642 together, can classify recent *P. vivax* infections with 80% sensitivity and specificity.
643 Details on the 21 *P. vivax* proteins, including the sequence construct and expression
644 system, are provided in Table S1. In this manuscript we have referred to proteins by
645 their annotation, with the PlasmoDB (plasmodb.org/) code in brackets if necessary.
646 Notations for MSP7 were from Garzón-Ospina 2016⁵⁰ and MSP3 from Kuamsab
647 2020⁵¹.

648

649 Sequence comparisons between the *P. vivax* proteins with their *P. knowlesi* orthologs
650 was performed by identifying the orthologs in PlasmoDB or through NCBI BlastP.
651 Only H strain and A1H1 line orthologs were selected using PlasmoDB whereas NCBI
652 BlastP included all *P. knowlesi* strains. Sequence identity and similarity percentages
653 were obtained using the EMBOSS Needle protein alignment tool
654 (https://www.ebi.ac.uk/Tools/psa/emboss_needle/)⁵² or NCBI Blast
655 (<https://blast.ncbi.nlm.nih.gov/Blast.cgi>) directly. PlasmoDB comparisons were made
656 between full-length protein sequences whereas NCBI Blast used the protein
657 sequences of expression constructs as the query sequence.

658

659 **Total IgG antibody assay**

660 We used a multiplexed assay based on Luminex xMAP technology to measure total
661 IgG antibody responses to the 21 *P. vivax* proteins. This assay was run on a MAGPIX
662 instrument, as previously described⁵³. Briefly, the 21 *P. vivax* proteins were coupled
663 to individual sets of internally labelled magnetic COOH beads at previously
664 determined optimal concentrations (see Table S1) following standard methods⁵³.
665 Antigen-specific total IgG was detected in plasma samples by incubating 500 coupled

666 beads of each antigen per well with plasma diluted at 1:100 in PBT (1x PBS with 1%
667 BSA and 0.05% Tween-20), followed after incubation by the addition of 0.5mg/ml
668 PE-conjugated Donkey F(ab)₂ anti-human IgG (JIR 709-116-098). On each plate, a
669 two-fold serial dilution from 1/50 to 1/25,600 of a positive control hyperimmune
670 plasma pool (generated from adults from PNG, a non-knowlesi-endemic region) was
671 included. At least 15 beads per region were then acquired and read on a MAGPIX
672 instrument as per the manufacturer's instructions, with results expressed as the mean
673 fluorescent intensity (MFI). All serology data is available in additional files 2 and 3.

674

675 Existing datasets of total IgG antibodies against the same *P. vivax* proteins in three
676 observational cohort studies (in *P. vivax*-endemic areas) were also used⁹. These data
677 were generated as previously described⁹ using a similar multiplexed assay, but with
678 non-magnetic beads and run on a Luminex-200 instrument. Briefly, yearlong cohort
679 studies were conducted in Thailand (Kanchanaburi and Ratchaburi provinces), and in
680 non-knowlesi endemic Brazil (Manaus) and the Solomon Islands (Ngella) across
681 2013-2014. Each site enrolled between 928-1274 individuals with blood samples
682 taken every month for qPCR detection of *P. vivax* infections and plasma stored for
683 antibody measurements. This enabled total IgG antibody responses measured at the
684 final visit of the yearlong cohorts to be related to the time since prior *P. vivax*
685 infection. These existing datasets are available here: [https://github.com/MWhite-](https://github.com/MWhite-InstitutPasteur/Pvivax_serology_dx)
686 [InstitutPasteur/Pvivax_serology_dx](https://github.com/MWhite-InstitutPasteur/Pvivax_serology_dx).

687

688 **Statistical analysis**

689 The raw MFI results were converted to relative antibody units (RAU) using protein-
690 specific standard curve data, as previously described⁵³. A five-parameter logistic

691 function was used to obtain an equivalent dilution value (expressed as the RAU)
692 compared to the PNG control plasma, with extrapolation one step beyond the lowest
693 dilution resulting in a range of values from 1.95×10^{-5} to 0.02 RAU. The standard
694 curve conversion was performed in R version 4.1.1. Spearman's r correlations were
695 performed to correlate sequence identity with relative cross-reactivity levels.
696 Spearman r values <0.3 were considered weak, $0.3-0.7$ moderate, and >0.7 strong
697 correlations. Mann-Whitney U tests were used to compare antibody levels between
698 various patient variables, or to compare antibody levels across cohorts. Fisher's exact
699 tests were used to compare categorical variables or outcomes. Correlations, Mann-
700 Whitney U tests and Fisher's exact tests were performed in Prism version 9. Linear
701 regression analyses to assess associations between peak antibody levels with age, sex
702 and parasitaemia were performed in Stata version 12. Antibody levels were first log₁₀
703 transformed to better for a normal distribution.

704

705 Classification of recent *P. vivax* infections within the prior 9-months was performed
706 using a Random Forest classification algorithm. The algorithm used antibody data
707 against the top eight *P. vivax* serological exposure markers that we had previously
708 identified⁹, and was trained with 4 existing datasets from our previous work (Thailand
709 $n=826$, Brazil $n=925$, Solomon Islands $n=754$ and negative controls $n=274$)⁹. The top
710 eight proteins were: MSP1-19, Pv-fam-a (PVX_096995), Pv-fam-a (PVX_112670),
711 RAMA, MSP8, MSP3a, RBP2b₁₆₁₋₁₄₅₄, and EBP. A diagnostic target of 79%
712 specificity and 79% sensitivity was selected.

713

714 Two modified sets of eight proteins were also tested in the classification algorithm,
715 based on low cross-reactivity in the *P. knowlesi* clinical patient samples. A random

716 forest classification algorithm was trained, using existing antibody data generated
717 against the modified sets of eight proteins in our Thai, Brazilian and Solomon Islands
718 studies⁹. The classification algorithm was cross-validated using 1000 randomly
719 sampled, disjoint training and testing subsets, and the data presented in a receiver
720 operating characteristic curve, with credible intervals corresponding to percentiles
721 calculated among replicates. At every iteration, 2/3 of each cohort was used for
722 training and 1/3 for testing. This newly modified and trained random forest algorithm
723 was subsequently used to classify the samples from the *P. knowlesi* clinical cohorts as
724 recently exposed to *P. vivax* blood-stage parasites in the prior 9-months, or not, with
725 the optimal balanced diagnostic target that was achievable as per Youden's J.

726

727 **Acknowledgments**

728 We acknowledge the efforts of the original study teams for collecting the *P. knowlesi*
729 clinical samples. We thank Shazia Ruybal for support generating an automated
730 quality control platform through R, based on prior work by Connie Li-Wai-Suen,
731 which was also used for the standard curve conversion. We thank Sarah Miller for
732 assistance with ethical approvals. We would like to thank the Director-General,
733 Ministry of Health, Malaysia, for permission to publish this manuscript. We also
734 acknowledge the Victorian State Government Operational Infrastructure Support and
735 Australian Government NHMRC IRIISS.

736

737 **Funding**

738 WEHI Innovation Fund (RL, TT, IM)

739 Clinical Trials Funding: Malaysian Ministry of Health (grant number BP00500420),
740 the Asia Pacific Malaria Elimination Network (108-07), and the Australian National
741 Health and Medical Research Council (NHMRC; 1037304, 1045156, 115680)
742 NHMRC Fellowships to NMA #1135820, MJG #1138860 and RL #1173210
743 NHMRC grants #1092789, #1134989, #1132975 and #1043345 (IM)

744

745 **Author contributions**

746 Conceptualization: RL, MG, NA, IM

747 Methodology – clinical trials & control samples: RL, MG, KP, JS, BB, DC, TW, NA,

748 IM

749 Methodology – protein expression: ET, TT, MH, CEC, JH, WHT

750 Methodology – antibody assays & analytics: RL, KS, RM, NN, TO, MW

751 Investigation - laboratory: RL, KS, SH, RM

752 Investigation – analytics: RL, KS, TO, MW

753 Visualization: RL, KS, TO, MW

754 Supervision: NA, IM

755 Writing – original draft: RL

756 Writing – reviewing & editing: RL, MG, KS, SH, KP, NN, TO, RM, ET, TT, MH,

757 CEC, DC, KT, CD, JH, WHT, JS, MW, BB, TW, NA, TM

758

759 **Competing interests**

760 RL, MW, TT and IM are inventors on filed patent PCT/US17/67926 on a system,

761 method, apparatus and diagnostic test for *P. vivax*. MH was an employee of the

762 company CellFree Sciences Co., Ltd. All other authors declare they have no

763 competing interests.

764

765 **Data and materials availability**

766 All data are available in the main text or the supplementary materials. Additional File

767 1 contains patient variables, Additional File 2 contains IgG antibody data from the *P.*

768 *knowlesi* cohorts and Additional File 3 IgG antibody data from the malaria-naïve

769 controls.

770

771 **References**

772 1. Price, R.N., Commons, R.J., Battle, K.E., Thriemer, K., and Mendis, K. (2020).
773 *Plasmodium vivax* in the Era of the Shrinking *P. falciparum* Map. *Trends*
774 *Parasitol* 36, 560-570. [10.1016/j.pt.2020.03.009](https://doi.org/10.1016/j.pt.2020.03.009).

775 2. Kho, S., Qotrunnada, L., Leonardo, L., Andries, B., Wardani, P.A.I., Fricot, A.,
776 Henry, B., Hardy, D., Margyaningsih, N.I., Apriyanti, D., et al. (2021).
777 Hidden Biomass of Intact Malaria Parasites in the Human Spleen. *The*
778 *New England journal of medicine* 384, 2067-2069.
779 [10.1056/NEJMc2023884](https://doi.org/10.1056/NEJMc2023884).

780 3. Kho, S., Qotrunnada, L., Leonardo, L., Andries, B., Wardani, P.A.I., Fricot, A.,
781 Henry, B., Hardy, D., Margyaningsih, N.I., Apriyanti, D., et al. (2021).
782 Evaluation of splenic accumulation and colocalization of immature
783 reticulocytes and *Plasmodium vivax* in asymptomatic malaria: A
784 prospective human splenectomy study. *PLoS Med* 18, e1003632.
785 [10.1371/journal.pmed.1003632](https://doi.org/10.1371/journal.pmed.1003632).

786 4. Moreira, C.M., Abo-Shehada, M., Price, R.N., and Drakeley, C.J. (2015). A
787 systematic review of sub-microscopic *Plasmodium vivax* infection. *Malar J*
788 14, 360. [10.1186/s12936-015-0884-z](https://doi.org/10.1186/s12936-015-0884-z).

789 5. Kiattibutr, K., Roobsoong, W., Sriwichai, P., Saeseu, T., Rachaphaew, N.,
790 Suansomjit, C., Buates, S., Obadia, T., Mueller, I., Cui, L., et al. (2017).
791 Infectivity of symptomatic and asymptomatic *Plasmodium vivax*
792 infections to a Southeast Asian vector, *Anopheles dirus*. *Int J Parasitol* 47,
793 163-170. [10.1016/j.ijpara.2016.10.006](https://doi.org/10.1016/j.ijpara.2016.10.006).

794 6. Robinson, L.J., Wampfler, R., Betuela, I., Karl, S., White, M.T., Li Wai Suen,
795 C.S., Hofmann, N.E., Kinboro, B., Waltmann, A., Brewster, J., et al. (2015).
796 Strategies for understanding and reducing the *Plasmodium vivax* and
797 *Plasmodium ovale* hypnozoite reservoir in Papua New Guinean children:
798 a randomised placebo-controlled trial and mathematical model. *PLoS Med*
799 12, e1001891. [10.1371/journal.pmed.1001891](https://doi.org/10.1371/journal.pmed.1001891).

800 7. Commons, R.J., Simpson, J.A., Watson, J., White, N.J., and Price, R.N. (2020).
801 Estimating the Proportion of *Plasmodium vivax* Recurrences Caused by
802 Relapse: A Systematic Review and Meta-Analysis. *The American journal of*
803 *tropical medicine and hygiene* 103, 1094-1099. [10.4269/ajtmh.20-0186](https://doi.org/10.4269/ajtmh.20-0186).

804 8. Adekunle, A., Pinkevych, M., McGready, R., Luxemburger, C., White, L.,
805 Nosten, F., Cromer, D., and Davenport, M. (2015). Modeling the dynamics

- 806 of *Plasmodium vivax* infection and hypnozoite reactivation in vivo. *PLoS*
807 *Negl Trop Dis* 9, e0003595.
- 808 9. Longley, R.J., White, M.T., Takashima, E., Brewster, J., Morita, M., Harbers,
809 M., Obadia, T., Robinson, L.J., Matsuura, F., Liu, Z.S.J., et al. (2020).
810 Development and validation of serological markers for detecting recent
811 *Plasmodium vivax* infection. *Nature medicine* 26, 741-749.
812 [10.1038/s41591-020-0841-4](https://doi.org/10.1038/s41591-020-0841-4).
- 813 10. White, N.J. (2011). Determinants of relapse periodicity in *Plasmodium*
814 *vivax* malaria. *Malar J* 10, 297. [10.1186/1475-2875-10-297](https://doi.org/10.1186/1475-2875-10-297).
- 815 11. Chotirat, S., Nekkab, N., Kumpitak, C., Hietanen, J., White, M.T., Kiattibutr,
816 K., Sa-angchai, P., Brewster, J., Schoffer, K., Takashima, E., et al. (2021).
817 Application of 23 Novel Serological Markers for Identifying Recent
818 Exposure to *Plasmodium vivax* Parasites in an Endemic Population of
819 Western Thailand. *Frontiers in Microbiology* 12.
820 [10.3389/fmicb.2021.643501](https://doi.org/10.3389/fmicb.2021.643501).
- 821 12. Greenhouse, B., Daily, J., Guinovart, C., Goncalves, B., Beeson, J., Bell, D.,
822 Chang, M.A., Cohen, J.M., Ding, X., Domingo, G., et al. (2019). Priority use
823 cases for antibody-detecting assays of recent malaria exposure as tools to
824 achieve and sustain malaria elimination. *Gates Open Res* 3, 131.
825 [10.12688/gatesopenres.12897.1](https://doi.org/10.12688/gatesopenres.12897.1).
- 826 13. WHO (2020). World Malaria Report. World Health Organisation.
- 827 14. Loy, D.E., Liu, W., Li, Y., Learn, G.H., Plenderleith, L.J., Sundararaman, S.A.,
828 Sharp, P.M., and Hahn, B.H. (2017). Out of Africa: origins and evolution of
829 the human malaria parasites *Plasmodium falciparum* and *Plasmodium*
830 *vivax*. *Int J Parasitol* 47, 87-97. [10.1016/j.ijpara.2016.05.008](https://doi.org/10.1016/j.ijpara.2016.05.008).
- 831 15. Mitran, C.J., and Yanow, S.K. (2020). The Case for Exploiting Cross-Species
832 Epitopes in Malaria Vaccine Design. *Front Immunol* 11, 335.
833 [10.3389/fimmu.2020.00335](https://doi.org/10.3389/fimmu.2020.00335).
- 834 16. Priest, J.W., Plucinski, M.M., Huber, C.S., Rogier, E., Mao, B., Gregory, C.J.,
835 Candrinho, B., Colborn, J., and Barnwell, J.W. (2018). Specificity of the IgG
836 antibody response to *Plasmodium falciparum*, *Plasmodium vivax*,
837 *Plasmodium malariae*, and *Plasmodium ovale* MSP1(19) subunit proteins
838 in multiplexed serologic assays. *Malar J* 17, 417. [10.1186/s12936-018-2566-0](https://doi.org/10.1186/s12936-018-2566-0).
- 839
- 840 17. Woodberry, T., Minigo, G., Piera, K.A., Hanley, J.C., de Silva, H.D., Salwati, E.,
841 Kenangalem, E., Tjitra, E., Coppel, R.L., Price, R.N., et al. (2008). Antibodies
842 to *Plasmodium falciparum* and *Plasmodium vivax* merozoite surface
843 protein 5 in Indonesia: species-specific and cross-reactive responses. *J*
844 *Infect Dis* 198, 134-142. [10.1086/588711](https://doi.org/10.1086/588711).
- 845 18. Diggs, C.L., and Sadun, E.H. (1965). SEROLOGICAL CROSS REACTIVITY
846 BETWEEN PLASMODIUM VIVAX AND PLASMODIUM FALCIPARUM AS
847 DETERMINED BY A MODIFIED FLUORESCENT ANTIBODY TEST. *Exp*
848 *Parasitol* 16, 217-223. [10.1016/0014-4894\(65\)90046-9](https://doi.org/10.1016/0014-4894(65)90046-9).
- 849 19. Lacerda, M.V.G., and Bassat, Q. (2019). Primaquine for all: is it time to
850 simplify malaria treatment in co-endemic areas? *Lancet Infect Dis* 19, 10-
851 12. [10.1016/s1473-3099\(18\)30612-1](https://doi.org/10.1016/s1473-3099(18)30612-1).
- 852 20. Looareesuwan, S., White, N.J., Chittamas, S., Bunnag, D., and Harinasuta, T.
853 (1987). High rate of *Plasmodium vivax* relapse following treatment of
854 *falciparum* malaria in Thailand. *Lancet* 2, 1052-1055.

- 855 21. Douglas, N.M., Nosten, F., Ashley, E.A., Phaiphun, L., van Vugt, M.,
856 Singhasivanon, P., White, N.J., and Price, R.N. (2011). Plasmodium vivax
857 recurrence following falciparum and mixed species malaria: risk factors
858 and effect of antimalarial kinetics. *Clin Infect Dis* 52, 612-620.
859 10.1093/cid/ciq249.
- 860 22. Hossain, M.S., Commons, R.J., Douglas, N.M., Thriemer, K., Alemayehu, B.H.,
861 Amaratunga, C., Anvikar, A.R., Ashley, E.A., Asih, P.B.S., Carrara, V.I., et al.
862 (2020). The risk of Plasmodium vivax parasitaemia after P. falciparum
863 malaria: An individual patient data meta-analysis from the WorldWide
864 Antimalarial Resistance Network. *PLoS Med* 17, e1003393.
865 10.1371/journal.pmed.1003393.
- 866 23. Muh, F., Kim, N., Nyunt, M.H., Firdaus, E.R., Han, J.H., Hoque, M.R., Lee, S.K.,
867 Park, J.H., Moon, R.W., Lau, Y.L., et al. (2020). Cross-species reactivity of
868 antibodies against Plasmodium vivax blood-stage antigens to Plasmodium
869 knowlesi. *PLoS Negl Trop Dis* 14, e0008323.
870 10.1371/journal.pntd.0008323.
- 871 24. Herman, L.S., Fornace, K., Phelan, J., Grigg, M.J., Anstey, N.M., William, T.,
872 Moon, R.W., Blackman, M.J., Drakeley, C.J., and Tetteh, K.K.A. (2018).
873 Identification and validation of a novel panel of Plasmodium knowlesi
874 biomarkers of serological exposure. *PLoS Negl Trop Dis* 12, e0006457.
875 10.1371/journal.pntd.0006457.
- 876 25. Fornace, K.M., Herman, L.S., Abidin, T.R., Chua, T.H., Daim, S., Lorenzo, P.J.,
877 Grignard, L., Nuin, N.A., Ying, L.T., Grigg, M.J., et al. (2018). Exposure and
878 infection to Plasmodium knowlesi in case study communities in Northern
879 Sabah, Malaysia and Palawan, The Philippines. *PLoS Negl Trop Dis* 12,
880 e0006432. 10.1371/journal.pntd.0006432.
- 881 26. Cuenca, P.R., Key, S., Jumail, A., Surendra, H., Ferguson, H.M., Drakeley, C.J.,
882 and Fornace, K. (2021). Epidemiology of the zoonotic malaria
883 Plasmodium knowlesi in changing landscapes. *Adv Parasitol* 113, 225-
884 286. 10.1016/bs.apar.2021.08.006.
- 885 27. Grigg, M.J., Cox, J., William, T., Jelip, J., Fornace, K.M., Brock, P.M., von
886 Seidlein, L., Barber, B.E., Anstey, N.M., Yeo, T.W., and Drakeley, C.J. (2017).
887 Individual-level factors associated with the risk of acquiring human
888 Plasmodium knowlesi malaria in Malaysia: a case-control study. *Lancet*
889 *Planet Health* 1, e97-e104. 10.1016/s2542-5196(17)30031-1.
- 890 28. Barber, B.E., Grigg, M.J., William, T., Yeo, T.W., and Anstey, N.M. (2017).
891 The Treatment of Plasmodium knowlesi Malaria. *Trends Parasitol* 33,
892 242-253. 10.1016/j.pt.2016.09.002.
- 893 29. Pain, A., Böhme, U., Berry, A.E., Mungall, K., Finn, R.D., Jackson, A.P.,
894 Mourier, T., Mistry, J., Pasini, E.M., Aslett, M.A., et al. (2008). The genome
895 of the simian and human malaria parasite Plasmodium knowlesi. *Nature*
896 455, 799-803. 10.1038/nature07306.
- 897 30. Benavente, E.D., de Sessions, P.F., Moon, R.W., Grainger, M., Holder, A.A.,
898 Blackman, M.J., Roper, C., Drakeley, C.J., Pain, A., Sutherland, C.J., et al.
899 (2018). A reference genome and methylome for the Plasmodium knowlesi
900 A1-H.1 line. *Int J Parasitol* 48, 191-196. 10.1016/j.ijpara.2017.09.008.
- 901 31. Grigg, M.J., William, T., Menon, J., Dhanaraj, P., Barber, B.E., Wilkes, C.S.,
902 von Seidlein, L., Rajahram, G.S., Pasay, C., McCarthy, J.S., et al. (2016).
903 Artesunate-mefloquine versus chloroquine for treatment of

- 904 uncomplicated Plasmodium knowlesi malaria in Malaysia (ACT KNOW):
905 an open-label, randomised controlled trial. *Lancet Infect Dis* 16, 180-188.
906 [10.1016/s1473-3099\(15\)00415-6](https://doi.org/10.1016/s1473-3099(15)00415-6).
- 907 32. Cooper, D.J., Plewes, K., Grigg, M.J., Rajahram, G.S., Piera, K.A., William, T.,
908 Chatfield, M.D., Yeo, T.W., Dondorp, A.M., Anstey, N.M., and Barber, B.E.
909 (2018). The effect of regularly dosed paracetamol versus no paracetamol
910 on renal function in Plasmodium knowlesi malaria (PACKNOW): study
911 protocol for a randomised controlled trial. *Trials* 19, 250.
912 [10.1186/s13063-018-2600-0](https://doi.org/10.1186/s13063-018-2600-0).
- 913 33. Cooper, D.J., Rajahram, G.S., William, T., Jelip, J., Mohammad, R., Benedict,
914 J., Alaza, D.A., Malacova, E., Yeo, T.W., Grigg, M.J., et al. (2020). Plasmodium
915 knowlesi Malaria in Sabah, Malaysia, 2015-2017: Ongoing Increase in
916 Incidence Despite Near-elimination of the Human-only Plasmodium
917 Species. *Clin Infect Dis* 70, 361-367. [10.1093/cid/ciz237](https://doi.org/10.1093/cid/ciz237).
- 918 34. Barber, B.E., Grigg, M.J., William, T., Piera, K.A., Boyle, M.J., Yeo, T.W., and
919 Anstey, N.M. (2017). Effects of Aging on Parasite Biomass, Inflammation,
920 Endothelial Activation, Microvascular Dysfunction and Disease Severity in
921 Plasmodium knowlesi and Plasmodium falciparum Malaria. *J Infect Dis*
922 215, 1908-1917. [10.1093/infdis/jix193](https://doi.org/10.1093/infdis/jix193).
- 923 35. Grigg, M.J., William, T., Barber, B.E., Rajahram, G.S., Menon, J., Schimann, E.,
924 Piera, K., Wilkes, C.S., Patel, K., Chandna, A., et al. (2018). Age-Related
925 Clinical Spectrum of Plasmodium knowlesi Malaria and Predictors of
926 Severity. *Clin Infect Dis* 67, 350-359. [10.1093/cid/ciy065](https://doi.org/10.1093/cid/ciy065).
- 927 36. Rogier, E., Nace, D., Dimbu, P.R., Wakeman, B., Pohl, J., Beeson, J.G.,
928 Drakeley, C., Tetteh, K., and Plucinski, M. (2021). Framework for
929 Characterizing Longitudinal Antibody Response in Children After
930 Plasmodium falciparum Infection. *Front Immunol* 12, 617951.
931 [10.3389/fimmu.2021.617951](https://doi.org/10.3389/fimmu.2021.617951).
- 932 37. Yman, V., White, M.T., Asghar, M., Sundling, C., Sondén, K., Draper, S.J.,
933 Osier, F.H.A., and Färnert, A. (2019). Antibody responses to merozoite
934 antigens after natural Plasmodium falciparum infection: kinetics and
935 longevity in absence of re-exposure. *BMC Med* 17, 22. [10.1186/s12916-019-1255-3](https://doi.org/10.1186/s12916-019-1255-3).
- 936
937 38. Liu, Z.S.-J., Sattabongkot, J., White, M., Chotirat, S., Kumpitak, C.,
938 Takashima, E., Harbers, M., Tham, W.-H., Healer, J., Chitnis, C.E., et al.
939 (2021). Naturally acquired antibody kinetics against Plasmodium vivax
940 antigens in people from a low malaria transmission region in western
941 Thailand. *bioRxiv*, 2021.2010.2021.464164. [10.1101/2021.10.21.464164](https://doi.org/10.1101/2021.10.21.464164).
- 942 39. Muh, F., Ahmed, M.A., Han, J.H., Nyunt, M.H., Lee, S.K., Lau, Y.L., Kaneko, O.,
943 and Han, E.T. (2018). Cross-species analysis of apical asparagine-rich
944 protein of Plasmodium vivax and Plasmodium knowlesi. *Scientific reports*
945 8, 5781. [10.1038/s41598-018-23728-1](https://doi.org/10.1038/s41598-018-23728-1).
- 946 40. Rosa, D.S., Iwai, L.K., Tzelepis, F., Bargieri, D.Y., Medeiros, M.A., Soares, I.S.,
947 Sidney, J., Sette, A., Kalil, J., Mello, L.E., et al. (2006). Immunogenicity of a
948 recombinant protein containing the Plasmodium vivax vaccine candidate
949 MSP1(19) and two human CD4+ T-cell epitopes administered to non-
950 human primates (*Callithrix jacchus jacchus*). *Microbes Infect* 8, 2130-
951 2137. [10.1016/j.micinf.2006.03.012](https://doi.org/10.1016/j.micinf.2006.03.012).

- 952 41. De, S.L., Ntumngia, F.B., Nicholas, J., and Adams, J.H. (2021). Progress
953 towards the development of a *P. vivax* vaccine. *Expert Rev Vaccines* 20,
954 97-112. [10.1080/14760584.2021.1880898](https://doi.org/10.1080/14760584.2021.1880898).
- 955 42. Kale, S., Yadav, C.P., Rao, P.N., Shalini, S., Eapen, A., Srivasatava, H.C.,
956 Sharma, S.K., Pande, V., Carlton, J.M., Singh, O.P., and Mallick, P.K. (2019).
957 Antibody responses within two leading *Plasmodium vivax* vaccine
958 candidate antigens in three geographically diverse malaria-endemic
959 regions of India. *Malar J* 18, 425. [10.1186/s12936-019-3066-6](https://doi.org/10.1186/s12936-019-3066-6).
- 960 43. McCaffery, J.N., Fonseca, J.A., Singh, B., Cabrera-Mora, M., Bohannon, C.,
961 Jacob, J., Arévalo-Herrera, M., and Moreno, A. (2019). A Multi-Stage
962 *Plasmodium vivax* Malaria Vaccine Candidate Able to Induce Long-Lived
963 Antibody Responses Against Blood Stage Parasites and Robust
964 Transmission-Blocking Activity. *Front Cell Infect Microbiol* 9, 135.
965 [10.3389/fcimb.2019.00135](https://doi.org/10.3389/fcimb.2019.00135).
- 966 44. Ndegwa, D.N., Kundu, P., Hostetler, J.B., Marin-Menendez, A., Sanderson,
967 T., Mwikali, K., Verzier, L.H., Coyle, R., Adjalley, S., and Rayner, J.C. (2021).
968 Using *Plasmodium knowlesi* as a model for screening *Plasmodium vivax*
969 blood-stage malaria vaccine targets reveals new candidates. *PLoS Pathog*
970 17, e1008864. [10.1371/journal.ppat.1008864](https://doi.org/10.1371/journal.ppat.1008864).
- 971 45. Anstey, N.M., and Grigg, M.J. (2019). Zoonotic Malaria: The Better You
972 Look, the More You Find. *J Infect Dis* 219, 679-681. [10.1093/infdis/jiy520](https://doi.org/10.1093/infdis/jiy520).
- 973 46. Franca, C.T., White, M.T., He, W.Q., Hostetler, J.B., Brewster, J., Frato, G.,
974 Malhotra, I., Gruszczyk, J., Huon, C., Lin, E., et al. (2017). Identification of
975 highly-protective combinations of *Plasmodium vivax* recombinant
976 proteins for vaccine development. *Elife* 6. [10.7554/eLife.28673](https://doi.org/10.7554/eLife.28673).
- 977 47. Ssewanyana, I., Rek, J., Rodriguez, I., Wu, L., Arinaitwe, E., Nankabirwa, J.I.,
978 Beeson, J.G., Mayanja-Kizza, H., Rosenthal, P.J., Dorsey, G., et al. (2021).
979 Impact of a Rapid Decline in Malaria Transmission on Antimalarial IgG
980 Subclasses and Avidity. *Frontiers in Immunology* 11.
981 [10.3389/fimmu.2020.576663](https://doi.org/10.3389/fimmu.2020.576663).
- 982 48. Yap, N.J., Hossain, H., Nada-Raja, T., Ngui, R., Muslim, A., Hoh, B.P., Khaw,
983 L.T., Kadir, K.A., Simon Divis, P.C., Vythilingam, I., et al. (2021). Natural
984 Human Infections with *Plasmodium cynomolgi*, *P. inui*, and 4 other Simian
985 Malaria Parasites, Malaysia. *Emerg Infect Dis* 27, 2187-2191.
986 [10.3201/eid2708.204502](https://doi.org/10.3201/eid2708.204502).
- 987 49. Nuin, N.A., Tan, A.F., Lew, Y.L., Piera, K.A., William, T., Rajahram, G.S., Jelip,
988 J., Dony, J.F., Mohammad, R., Cooper, D.J., et al. (2020). Comparative
989 evaluation of two commercial real-time PCR kits (QuantiFast™ and
990 abTES™) for the detection of *Plasmodium knowlesi* and other
991 *Plasmodium* species in Sabah, Malaysia. *Malar J* 19, 306. [10.1186/s12936-020-03379-2](https://doi.org/10.1186/s12936-020-03379-2).
- 993 50. Garzón-Ospina, D., Forero-Rodríguez, J., and Patarroyo, M.A. (2016).
994 Evidence of functional divergence in MSP7 paralogous proteins: a
995 molecular-evolutionary and phylogenetic analysis. *BMC Evol Biol* 16, 256.
996 [10.1186/s12862-016-0830-x](https://doi.org/10.1186/s12862-016-0830-x).
- 997 51. Kuamsab, N., Putaporntip, C., Pattanawong, U., and Jongwutiwes, S.
998 (2020). Insights into the molecular diversity of *Plasmodium vivax*
999 merozoite surface protein-3γ (pvmSP3γ), a polymorphic member in the

- 1000 msp3 multi-gene family. *Scientific reports* *10*, 10977. [10.1038/s41598-](https://doi.org/10.1038/s41598-020-67222-z)
1001 [020-67222-z](https://doi.org/10.1038/s41598-020-67222-z).
- 1002 52. Needleman, S.B., and Wunsch, C.D. (1970). A general method applicable to
1003 the search for similarities in the amino acid sequence of two proteins. *J*
1004 *Mol Biol* *48*, 443-453. [10.1016/0022-2836\(70\)90057-4](https://doi.org/10.1016/0022-2836(70)90057-4).
- 1005 53. Mazhari, R., Brewster, J., Fong, R., Bourke, C., Liu, Z.S.J., Takashima, E.,
1006 Tsuboi, T., Tham, W.H., Harbers, M., Chitnis, C., et al. (2020). A comparison
1007 of non-magnetic and magnetic beads for measuring IgG antibodies against
1008 *Plasmodium vivax* antigens in a multiplexed bead-based assay using
1009 Luminex technology (Bio-Plex 200 or MAGPIX). *PLoS One* *15*, e0238010.
1010 [10.1371/journal.pone.0238010](https://doi.org/10.1371/journal.pone.0238010).
1011

Supplementary Information

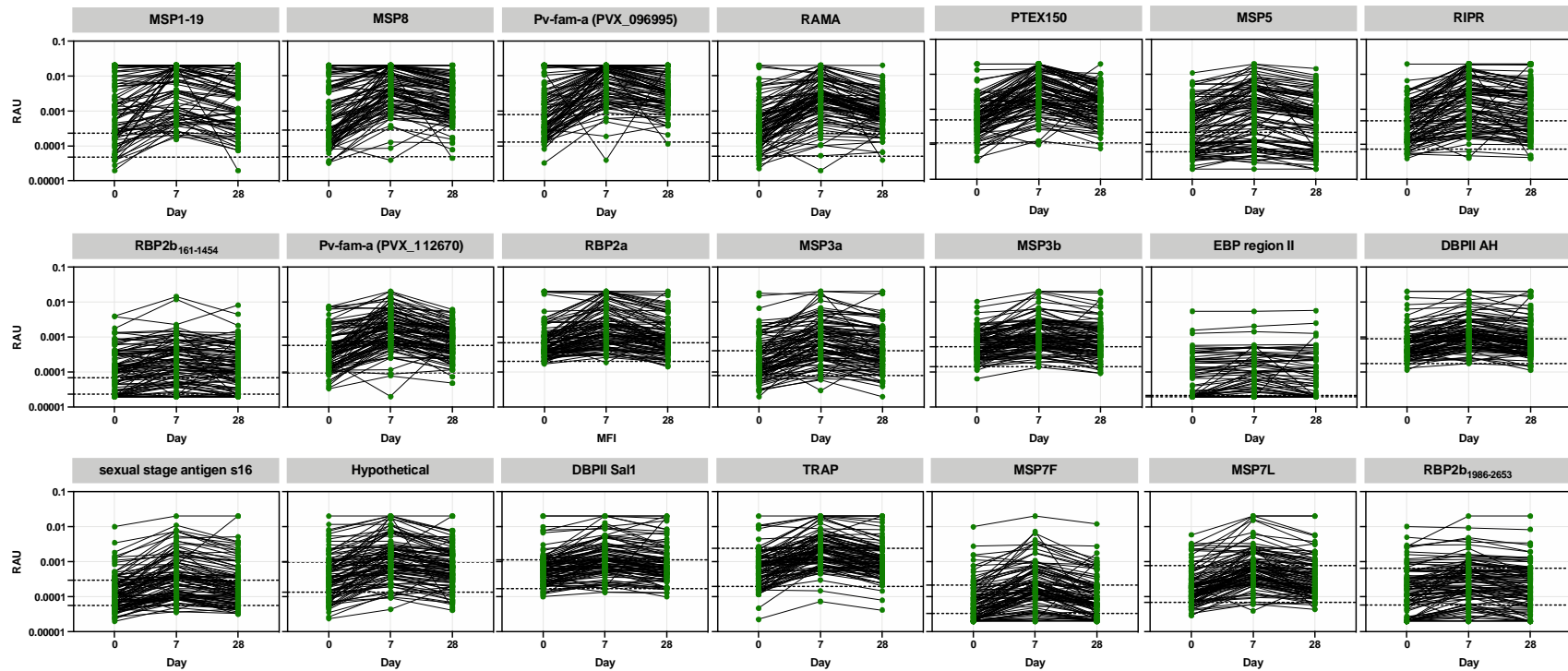


Figure S1: IgG antibody levels against 21 *P. vivax* proteins in 98 individuals with matched data over time. IgG levels were measured against the 21 *P. vivax* proteins using a multiplexed antibody assay. Samples were obtained and run at the time of *P. knowlesi* infection (day 0), and days 7 and 28 following enrolment (ACTKNOW cohort). Results are expressed as the relative antibody units (RAU). Proteins are ordered by highest level of median IgG at day 7 compared to the seropositivity cut-off. Dashed lines indicate the malaria-naïve negative control samples: lower = average of the negative control samples; upper = seropositivity cut-off (average plus 2x standard deviation).

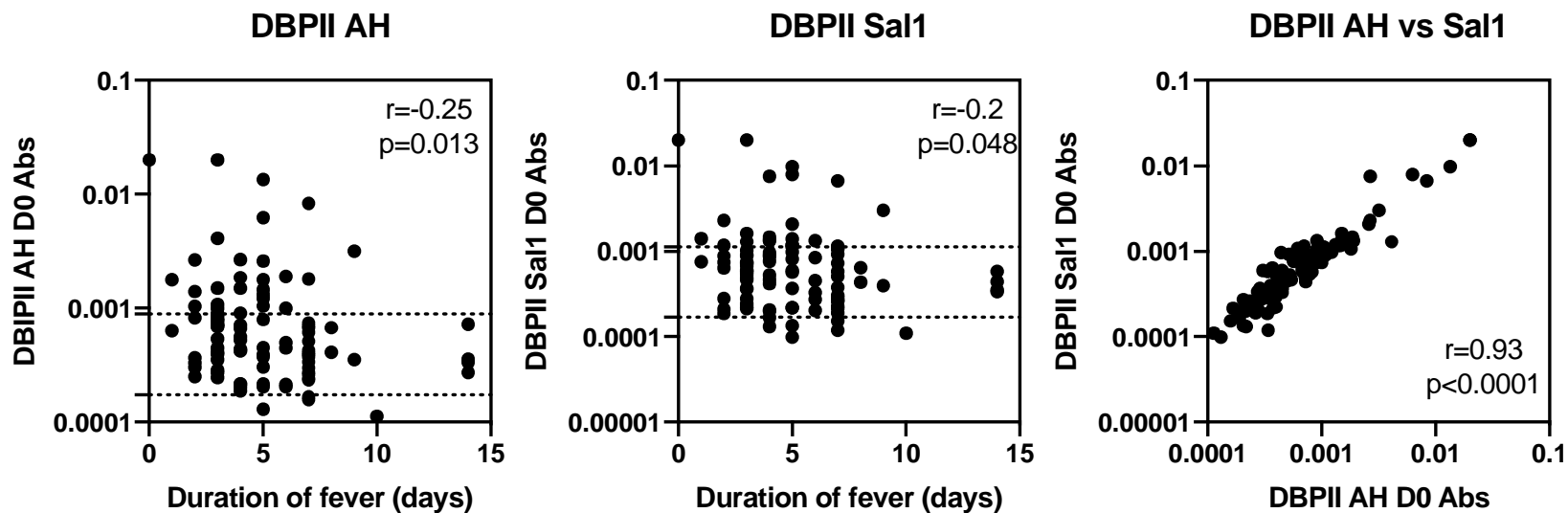


Figure S2: Correlation between acquisition of IgG antibodies at Day 0 to *P. vivax* DBP II constructs and duration of fever of *P. knowlesi* patients. IgG levels were measured against the 21 *P. vivax* proteins using a multiplexed antibody assay. Samples were obtained and run at the time of *P. knowlesi* infection (day 0), and days 7 and 28 following enrolment (ACTKNOW cohort). Results are expressed as the relative antibody units (RAU). Here, IgG antibody data at day 0 were correlated with the duration of fever (days) reported by the *P. knowlesi* patients. Data are shown for the only two proteins with a statistically significant correlation, DBP II AH and Sal1. Dashed lines indicate the malaria-naïve negative control samples: lower = average of the negative control samples; upper = seropositivity cut-off (average plus 2x standard deviation). The third plot shows the correlation between antibodies between both DBP II constructs. Spearman correlation co-efficients are shown.

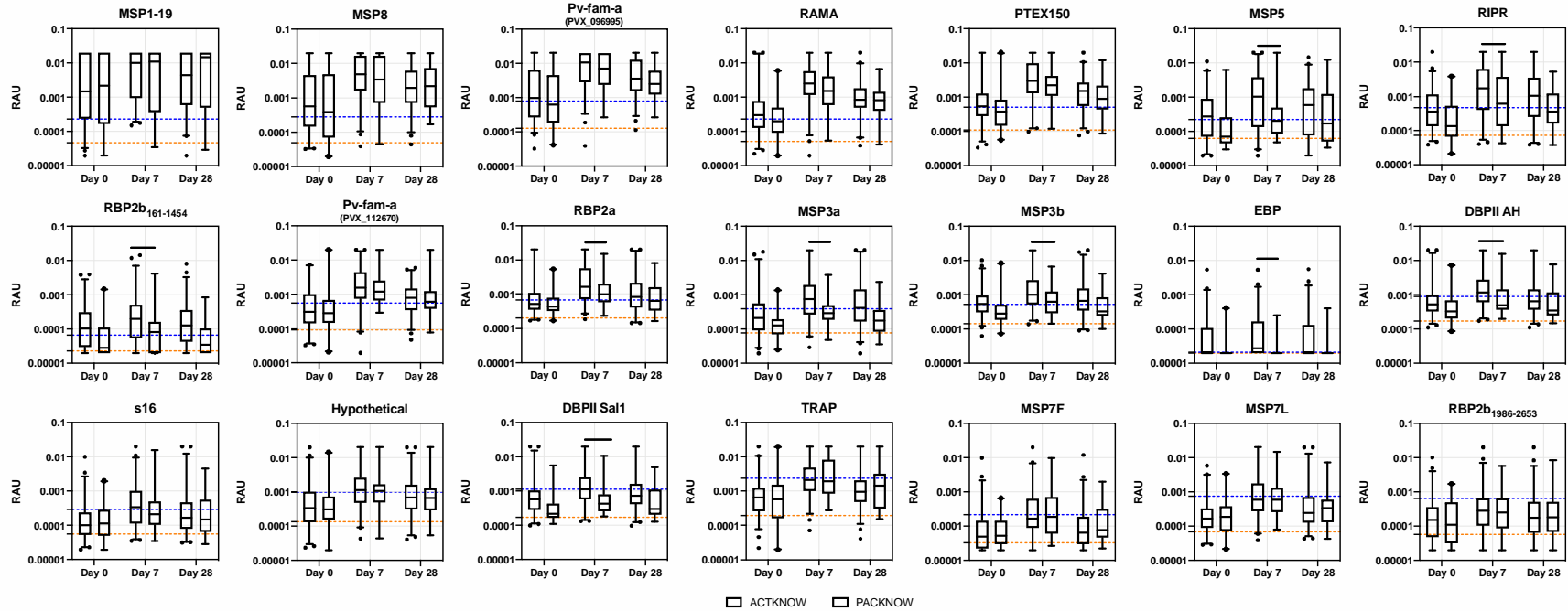


Figure S3: IgG antibody levels against 21 *P. vivax* proteins in *P. knowlesi* patients split via clinical trial. IgG levels were measured against the 21 *P. vivax* proteins using a multiplexed antibody assay. Samples were obtained and run at the time of *P. knowlesi* infection (day 0), and days 7 and 28 following enrolment (ACTKNOW and PACKNOW cohorts). Further data timepoints were available for PACKNOW but are not shown. Results are expressed as the relative antibody units (RAU). Proteins are ordered by highest level of median IgG at day 7 compared to the seropositivity cut-off. Dashed lines indicate the malaria-naïve negative control samples: lower = average of the negative control samples; upper = seropositivity cut-off (average plus 2x standard deviation). Data are split via clinical trial; the ACTKNOW cohort (n=99) and the PACKNOW cohort (n=41 at day 0). Statistical difference in antibody levels between clinical trial groups was only assessed at the peak timepoint of day 7, using Mann-Whitney U tests. 9 of 21 *P. vivax* proteins induced significantly higher levels in ACTKNOW vs PACKNOW: RBP2b₁₆₁₋₁₄₅₄ (p=0.0019), MSP3b (p=0.0095), DBPII AH (p=0.0064), RIPR (p=0.013), MSP3a (p=0.0002), MSP5 (p=0.021), RBP2a (p=0.046), DBPII Sal1 (p=0.0049) and EBP (p=0.0007).

Table S1: Proteins used in this study.

Protein	PlasmoDB code/GenBank ID	Full Annotation	Region, amino acids (size)	Expression system	µg protein coupled to 2.5x10 ⁶ beads
RBP2b ₁₆₁₋₁₄₅₄	PVX_094255	Reticulocyte binding protein 2b (n-terminal fragment)	161-1454 (1294)	<i>E. coli</i> , WEHI	0.6
MSP1-19	PVX_099980	Merozoite surface protein 1 - 19	1622-1729 (108)	WGCF, CellFree Sciences	4
RBP2b ₁₉₈₆₋₂₆₅₃	PVX_094255	Reticulocyte binding protein 2b (c-terminal fragment)	1986-2653 (667)	WGCF, CellFree Sciences	8
EBP	KMZ83376.1	Erythrocyte binding protein	109-432 (324)	<i>E. coli</i> , Institut Pasteur	0.5
s16	PVX_000930	Sexual stage antigen S16	31-end (110)	WGCF, CellFree Sciences	2
RIPR	PVX_095055	Rh5 interacting protein	552-1075 (524)	<i>E. coli</i> , WEHI	2
MSP3a	PVX_097720	Merozoite surface protein 3	25-end (828)	WGCF, CellFree Sciences	2
Hypothetical	PVX_097715	Hypothetical protein	20-end (431)	WGCF, CellFree Sciences	3
DBPII AH	AAAY34130.1	Duffy binding protein region II (strain AH)	1-237 (237)	<i>E. coli</i> , Institut Pasteur	1.4
MSP8	PVX_097625	Merozoite surface protein 8	24-463 (440)	WGCF, CellFree Sciences	1.4
Pv-fam-a	PVX_112670	Pv-fam-a	34-end (302)	WGCF, CellFree Sciences	2.26
RAMA	PVX_087885	Rhoptry associated membrane antigen	462-730 (269)	WGCF, CellFree Sciences	1.2
Pv-fam-a	PVX_096995	Pv-fam-a	61-end (420)	WGCF, CellFree Sciences	3
MSP3b	PVX_097680	Merozoite surface protein 3	21-end (996)	WGCF, CellFree Sciences	0.8
MSP7L	PVX_082700	Merozoite surface protein 7	23-end (397)	WGCF, CellFree Sciences	1.5
MSP5	PVX_003770	Merozoite surface protein 5	23-365 (343)	WGCF, CellFree Sciences	0.2
MSP7F	PVX_082670	Merozoite surface protein 7	24-end (388)	WGCF, CellFree Sciences	1
TRAP	PVX_082735	Thrombospondin related adhesion protein (also known as SSP2)	26-493 (468)	WGCF, CellFree Sciences	2
DBPII Sal1	PVX_110810	Duffy binding protein region II (strain Sal1)	193-521 (329)	<i>E. coli</i> , Institut Pasteur	1.5
PTEX150	PVX_084720	translocon component PTEX150, putative	24-908 (885)	WGCF, CellFree Sciences	1
RBP2a	PVX_121920	Reticulocyte binding protein 2a	160-1135 (976)	<i>E. coli</i> , WEHI	1.5

Table S2: Association between peak antibody levels at day 7 with parasitaemia and sex. Sample size = 134. Regression analyses were performed univariably. Antigens are ordered by the fold change in the peak antibody level at day 7 compared to the seropositivity cut-off based on the negative control samples (=Fold Δ IgG). Fold change data shown is from the ACTKNOW cohort. CI = confidence interval.

Protein	Fold Δ IgG	Parasitaemia		Sex	
		Coefficient (95% CI)	p value	Coefficient (95% CI)	p value
MSP1-19	43.98	-2.22e-6 (-8.69e-6-4.25e-6)	0.498	0.051 (-0.23-0.33)	0.724
MSP8	17.07	-3.31e-7 (-3.9e-6 - 3.24e-6)	0.855	0.17 (-0.06-0.42)	0.146
Pv-fam-a (PVX_096995)	13.39	-5.35e-7 (-4.02e-6-2.94e-6)	0.761	0.12 (-0.07-0.32)	0.207
RAMA	10.86	-1.41e-6 (-4.02e-6-1.2e-6)	0.287	0.23 (-0.015-0.47)	0.065
PTEX150	6.08	3.64e-7 (-2.59e-6-3.32e-6)	0.808	0.11 (-0.13-0.34)	0.376
MSP5	4.70	-1.92e-6 (-5.28e-6-1.43e-6)	0.258	0.34 (0.049-0.64)	0.023
RIPR	3.66	-2.8e-6 (-7.78e-6-2.18e-6)	0.267	0.25 (-0.015-0.51)	0.065
RBP2b ₁₆₁₋₁₄₅₄	3.00	1.59e-6 (-3.74e-6 - 6.95e-6)	0.557	0.073 (-0.18-0.32)	0.56
Pv-fam-a (PVX_112670)	2.76	9.23e-7 (-1.62e-6-3.46e-6)	0.473	-0.036 (-.24-0.17)	0.724
RBP2a	2.45	-2.78e-6 (-5.99e-6-4.35e-7)	0.09	-0.02 (-2.2-0.18)	0.842
MSP3b	1.93	7.7e-7 (-1.16e-6 - 2.7e-6)	0.432	0.26 (0.053-0.46)	0.014
MSP3a	1.92	-7.73e-7 (-3.5e-6-1.95e-6)	0.575	0.28 (0.047-0.52)	0.019
EBP	1.33	-2.02e-6 (-4.83e-6-7.94e-7)	0.158	0.057 (-0.16-0.27)	0.603
DBPII AH	1.31	-3.6e-9 (-5.52e-6 - -6.03e-7)	0.015	0.178 (0.005-0.35)	0.044
S16	1.18	8.4e-7 (-3.57e-6-5.25e-6)	0.707	0.23 (-0.035-0.49)	0.089
Hypothetical	1.16	-7.69e-7 (-4.23e-6-2.69e-6)	0.661	0.18 (-0.067-0.430)	0.152
DBPII Sal1	1.02	-2.13e-6 (-5.29e-6-1.03e-6)	0.185	0.17 (-0.022-0.36)	0.082
TRAP	0.90	3.31e-7 (-3.95e-6 - 4.61e-6)	0.878	0.11 (-0.096-0.31)	0.297
MSP7L	0.78	-8.79e-7 (-3.09e-6-1.34e-6)	0.434	0.16 (-0.077-0.40)	0.185
MSP7F	0.78	4.55e-6 (1.29e-6-7.82e-6)	0.007	0.16 (-0.093-0.41)	0.217
RBP2b ₁₉₈₆₋₂₆₅₃	0.44	2.67e-6 (-1.06e-6 - 6.4e-6)	0.159	0.20 (-0.055-0.45)	0.125