

Title

Long-term ozone exposure and associated cause-specific mortality risks with adjusted metrics by cohort studies: A systematic review and meta-analysis

Authors

Haitong Zhe Sun^{1,2}, Pei Yu³, Changxin Lan^{4,5}, Michelle Wan¹, Sebastian Hickman¹, Jayaprakash Murulitharan¹, Huizhong Shen⁶, Le Yuan¹, Yuming Guo^{3*}, Alexander Thomas Archibald^{1,7*}

Affiliations

- ¹ Centre for Atmospheric Science, Yusuf Hamied Department of Chemistry, University of Cambridge, Cambridge CB2 1EW, United Kingdom
 - ² Department of Earth Sciences, University of Cambridge, Cambridge CB2 3EQ, United Kingdom
 - ³ School of Public Health and Preventive Medicine, Monash University, Melbourne, Victoria 3004, Australia
 - ⁴ Institute of Reproductive and Child Health, Key Laboratory of Reproductive Health, National Health Commission of the People's Republic of China, Beijing 100191, China
 - ⁵ Department of Epidemiology and Biostatistics, School of Public Health, Peking University, Beijing 100191, China
 - ⁶ School of Environmental Science and Engineering, Southern University of Science and Technology, Shenzhen 518055, China
 - ⁷ National Centre for Atmospheric Science, Cambridge CB2 1EW, United Kingdom
- * Correspondence to: Alexander Thomas Archibald (ata27@cam.ac.uk) and Yuming Guo (yuming.guo@monash.edu)

main-text 4965 words + 3 tables + 6 figures

ABSTRACT

BACKGROUND: Long-term ozone (O₃) exposure could lead to a series of non-communicable diseases and increase the mortality risks. However, cohort-based studies were still rather rare, and inconsistent exposure metrics might impair the credibility of epidemiological evidence synthesis. To provide more accurate meta-estimation, this review updated the systematic review with inclusion of recent studies and summarised the quantitative associations between O₃ exposure and cause-specific mortality risks based on unified exposure metrics.

METHODS: Research articles reporting relative risks between incremental long-term O₃ exposure and causes of mortality covering all-cause, cardiovascular diseases, respiratory diseases, chronic obstructive pulmonary disease, pneumonia, ischaemic heart diseases, ischaemic stroke, congestive heart failure, cerebrovascular diseases, and lung cancer, estimated from cohort studies were identified through systematic searches in MEDLINE, Embase and Web of Science. Cross-metric conversion factors were estimated linearly by decadal observations during 1990-2019. DerSimonian and Laird random effect meta-regression was applied to pool the relative risks.

RESULTS: A total of 20 studies involving 97,766,404 participants were included in the systematic review. After linearly adjusting the inconsistent O₃ exposure metrics into congruity, the pooled relative risks (RR) associated with every 10 nmol mol⁻¹ (ppbV) incremental O₃ exposure, by mean of warm-season daily maximum 8-hour average metric, was: 1.010 with 95% confidence interval (CI) ranging 1.005–1.015 for all-cause mortality; 1.027 (95% CI: 1.004–1.049) for respiratory mortality; 1.061 (95% CI: 1.006–1.119) for COPD mortality; 1.028 (95% CI: 1.001–1.058) for cardiovascular mortality; and 1.102 (95% CI: 1.046–1.162) for congestive heart failure mortality. Positive but insignificant mortality risk associations were found for ischaemic heart diseases, stroke, pneumonia, and lung cancer.

DISCUSSIONS: This review covered up-to-date studies, expanded the O₃-exposure associated mortality causes into wider range of categories, and firstly highlighted the issue of inconsistency in O₃ exposure metrics. Non-intercept linear regression-based cross-metric RR conversion was another innovation, but limitation lay in the observation reliance, indicating further calibration with more credible observations available. Large uncertainties in the multi-study pooled RRs would inspire more future studies to corroborate or contradict the results from this review.

CONCLUSIONS: Adjustment for exposure metrics laid more solid foundation for multi-study meta-analysis, the results of which revealed unneglectable cardiopulmonary hazards from long-term O₃ exposure.

REGISTRATION: The review was registered in PROSPERO (CRD42021270637).

FUNDING: This study is mainly funded by UK Natural Environment Research Council, UK National Centre for Atmospheric Science, Australian Research Council and Australian National Health and Medical Research Council.

Keywords

Ozone; long-term exposure; mortality; cohort; metric; respiratory; cardiovascular

Highlights

- 1. Updated evidence for O₃-mortality associations from 20 cohorts has been provided.*
- 2. Adjusted various O₃ exposure metrics can provide more accurate risk estimations.*
- 3. Long-term O₃-exposure was associated with increased mortality from all-causes, respiratory disease, COPD, cardiovascular disease and congestive heart failure.*

1 INTRODUCTION

Atmospheric ozone (O₃) is a short-lived climate forcer.¹ Besides warming the global atmosphere, O₃ in the stratosphere can abate the radiation hazards from ultraviolet rays onto organisms, while O₃ in the ambient air is of detrimental effects on ecosystem and human health,²⁻⁴ and hence health effects caused from exposure to surface O₃ have become a serious public concern. Short-term (i.e. hours to days) exposure to high-level O₃ can cause a series of acute symptoms like asthma, respiratory tract infection, myocardial infarction, and cardiac arrest;⁵⁻⁸ and long-term (i.e. over years) exposure can lead to chronic health outcomes including but not limited to preterm delivery, stroke, chronic obstructive pulmonary diseases, and cerebrovascular diseases.⁹⁻¹² Long-term ambient O₃ exposure was estimated to be responsible for over 0.36 million premature deaths globally in 2019 in the Global Burden of Disease (GBD).¹³

Systematic reviews summarising the associations between negative health outcomes and O₃ exposures, for both the short-term and long-term, have been performed in previous studies.¹⁴⁻¹⁶ Studies on short-term O₃ exposure-induced morbidities are comparatively more abundant than the long-term O₃ exposure studies where the epidemiological evidences are less congruous; and some deficiencies are spotted in the two reviews for long-term O₃ exposure-associated mortality risk studies,^{15,16} the primary issue of which is the inconsistent use of various O₃ exposure metrics. As a secondary photolytic gaseous air pollutant, the warm-season and diurnal concentrations of surface O₃ will be much higher than cool-season and nocturnal concentrations,^{17,18} and thus the average and peak metrics of O₃ concentrations shall be of drastically different realistic implications.¹⁹ Under this circumstance, directly pooling the relative risks scaled in different metrics might lead to biases.

Atkinson et al. (2016) explored 6 types of mortality causes, but searched the literatures only till 2015;¹⁶ while Huangfu et al. (2019) updated the searches to 2018, but only 3 types of mortality causes were considered.¹⁵ We thus determine to update the review on the health effects of O₃ to include more categories of mortalities together with covering the most recent publications. Additionally, GBD estimations ascribed long-term O₃-exposure induced all-cause mortality for chronic obstructive pulmonary disease,¹³ which might lead to underestimations without considering other causes. It is reasonable to deduce that long-term O₃ exposure will exacerbate the mortality of certain diseases given that the short-term exposure increases the morbidity risks of the same diseases, and thus scrutinising epidemiological evidences for multiple causes of mortality will provide more credible supports to fill in this gap.

To fill the gaps not addressed by the previous two reviews, we updated the systematic review and meta-analysis for long-term O₃ exposure and cause-specific mortality risks. We took advantages of global systemic stationary observations to explore the approaches to adjust the various exposure metrics, and pooled the multi-study risks with the unified exposure metric, the mean of warm-season daily maximum 8-hour average, in response to suggestions from the Lancet global environmental health collaboration.²⁰

2. METHODS

2.1 Search strategy

We searched 3 research databases (MEDLINE, Embase, and Web of Science) from 1 September, 2015 till 15 July, 2021 to finish our systematic review and meta-analysis, updated from 2 previous reviews on long-term O₃ exposure-associated mortality.^{15, 16} Search strategies referred to these 2 previous systematic reviews with modifications as listed in [Table S1](#). Health outcomes considered in the systematic review were: mortality from (1) all causes (AC, ICD9: 001-799, ICD10: A00-R99); (2) all respiratory diseases (RESP, ICD9: 460-519, ICD10: J00-J98); (3) chronic obstructive pulmonary diseases and allied conditions (COPD, ICD9: 490-496, ICD10: J19-J46); (4) all cardiovascular diseases (CVD, ICD9: 390-459, ICD10: I00-I98); (5) all cerebrovascular diseases (CEVD, ICD9: 430-438, ICD10: I60-I69); (6) ischaemic heart disease (IHD, ICD9: 410-414, ICD10: I20-I25); (7) congestive heart failure (CHF, ICD9: 428, ICD10: I50); (8) ischaemic stroke (ICD9: 434, ICD10: I61-I64); (9) pneumonia (ICD9: 480-487, ICD10: J12-J18); and (10) lung cancer (LC, ICD9: 162, ICD10: C33-C34).

2.2 Study eligibility criteria

Studies were included during screening following the criteria as: (1) the epidemiological research should be conducted based on cohorts; (2) the exposure should include O₃ as an individual risk factor; (3) the health outcomes should be all-cause or cause-specific deaths at individual level; (4) studies provided hazard ratio (HR), risk ratio (RR) or odds ratio (OR) and their 95% confidence intervals (CIs) clearly and reported by every increase unit (e.g. 10-ppbV) of exposure concentrations, assuming linear risk

relationship with adjusting key confounders; (6) the study should be published as an original research article in scholarly peer-reviewed journals in English. For articles from the same cohort, only one single study covering the widest populations and the longest follow-up period was reserved for meta-analysis, unless the subgroups of participants and study follow-up periods are clearly stated to be of mild overlapping; We followed the Preferred Reporting Items for Systematic Review and Meta-Analyses (PRISMA) guidelines to process the included studies on ambient O₃ exposure induced mortality.

2.3 Study selection and scrutinisation

All searched literatures were archived in Clarivate™ Analytics Endnote X9.3.1 reference manager software. Two literature review investigators (HZS and CL) conducted title and abstract pre-screening independently for all web-searched records and reviewed the full text for the pre-screened studies. Disagreements were resolved by discussions with a third reviewer (PY).

2.4 Data extraction

Details from each screened-out literatures were extracted and labelled for the purpose of meta-analysis, including (1) the authors with publication year as study labels of reference; (2) basic descriptive information of the study cohort embracing the cohort name, country, follow-up periods, numbers of cases and total participants, population genders and ethnics, exposure metrics, health outcomes, and major confounders; (3) the risk association effects preferably quantified in HR (and also RR/OR as substitute choices) per unit incremental exposure with 95% confidence interval (CI).

2.5 Study quality assessment

All screened-out studies underwent quality evaluation using the Quality Assessment Tool of Observational Cohort and Cross-Sectional Studies developed by National Institute of Health (NIH) (<https://www.nhlbi.nih.gov/health-topics/study-quality-assessment-tools>), aiming to ensure the studies considered for meta-analysis are adequately reliable. The assessments were cross-validated by two authors (HZS and CL) independently, with the third author (PY) supervising any disagreements. **Table S2** listed 14 assessment items assigned with 1 score for each, and the tallied scores were translated

into a literature-specific rating of quality. Studies scoring full-mark 14 were categorised to be “Good”, while 10-13 as “Fair” and <10 as “Poor”.

Besides the quality assessment tool to determine which reviewed studies should be included for meta-analysis, characterising the epidemiological evidence quality from the included literatures for each cause of mortality was finished through the Grading of Recommendations Assessment, Development, and Evaluation (GRADE) system^{21,22} to yield rating bands ranging across “high”, “moderate”, “low”, and “very low”. This grading system by default rated “high-quality” for cohort studies as the starting point of evaluation, and the rank would be downgraded by five reasons as existence of (1) risk of bias, (2) imprecision, (3) inconsistency, (4) indirectness and (5) publication bias, and upgraded by reporting (1) exposure-response trend, (2) residual confounding, and (3) reporting strong associations. Publication biases were tested by trim-and-fill method.²³ The review was registered in PROSPERO (CRD42021270637).

2.6 Exposure adjustment

2.6.1 Unit unification

There were two major units used to quantify the surface O₃ concentrations, nmol mol⁻¹ or parts per billion by volume mixing ratio (ppbV) more frequently used by atmospheric modelling researchers,^{17,18,24} and milligram per cubic metre by mass concentration (μg/m³) widely used by public health studies.¹² These two units are interchangeable to each other based on the ideal gas law $PV = nRT$, if the air temperatures (T) and pressures (P) are given, as presented in eqs 1–4.

$$1 \text{ ppbV } O_3 = \frac{1 \times 10^{-9} \text{ mol } O_3}{1 \text{ mol air}} \quad (\text{eq. 1})$$

$$1 \text{ mol air} \Leftrightarrow \frac{RT}{P} \times 1 \text{ mol } (m^3) = \frac{8.314 \text{ Pa} \cdot m^3 \cdot K^{-1} \times T}{P} (m^3) \quad (\text{eq. 2})$$

$$1 \times 10^{-9} \text{ mol } O_3 \times 47.997 \text{ g} \cdot \text{mol}^{-1} = 47.997 \times 10^{-9} \text{ g } O_3 \quad (\text{eq. 3})$$

$$1 \text{ ppbV } O_3 = \frac{47.997 \times 10^{-9} \text{ g} \times 10^6 \mu\text{g} \cdot \text{g}^{-1} O_3}{8.314 \text{ Pa} \cdot m^3 \cdot K^{-1} \times T/P \text{ m}^3 \text{ air}} = 5.773 \times 10^{-3} \times \frac{P(\text{Pa})}{T(\text{K})} \frac{O_3}{\text{air}} \mu\text{g} \cdot \text{m}^{-3} \quad (\text{eq. 4})$$

Assuming $T = 298.65 \text{ K}$ (25.5°C) and $P = 101.325 \text{ kPa}$, the $\text{ppbV}-\mu\text{g}/\text{m}^3$ conversion factor could be approximated as $1 \text{ ppbV} \sim 1.96 \mu\text{g}/\text{m}^3$. Though the surface air temperatures and pressures would vary across seasons, such simplification was still widely used in previous studies,^{15, 25, 26} being of more credibility for long-term surface O_3 studies averaging the surface air temperatures and pressures at longer periods. For example, even at very low temperature of 270 K , the conversion factor was 2.17, which corroborated the stability of linear conversion.

2.6.2 Metric unification

Surface O_3 , as a secondary photochemistry pollutant involving photolysis of NO_2 to trigger chains of radical reactions, has concentrations that will vary significantly between day and night-time, and between warm and cool seasons, as discussed by numbers of studies.^{17, 27-30} Under this circumstance, various daily metrics to quantify the surface O_3 concentrations emerged due to series of considerations, which however brought in more difficulties to assimilate epidemiological evidences. The previous reviews simply pooled the reported risk association strengths without adjusting the diverse metrics,^{15, 16} which we thought was a fatal defect requiring improvements.

We therefore designed to update the meta-analysis by unifying the exposure metrics for pooled O_3 exposure-associated risks. As suggested by U.S. EPA final report of *Air Quality Criteria for Ozone and Other Photochemical Oxidants*,³¹ linear relationships were assumed to estimate the cross-metric conversion factors using long-term reliable observations as the Tropospheric Ozone Assessment Report (TOAR) archive¹⁹ and China National Environmental Monitoring Centre (CNEMC, <http://www.cnemc.cn/en/>) in our review, and correlation matrix was used to validate that the presumptions of linearity were not violated. We considered 6 complex metrics for mutual conversion as (1) annual mean of 24-hour daily average (ADA24), (2) 6-month warm season mean of 24-hour daily average (6mDA24), (3) annual mean of daily maximum 8-hour average (ADMA8), (4) 6-month warm season mean of daily maximum 8-hour average (6mDMA8), (5) annual mean of daily maximum 1-hour average (ADMA1), and (6) 6-month warm season mean of daily maximum 1-hour average (6mDMA1). The linear conversion factors (k) were mathematically defined by eq 5, to adjust the original metric into the target one with irreducible regression errors ϵ .

$$C_{Adjusted} = k_{Original \rightarrow Adjusted} \times C_{Original} + \epsilon \quad (\text{eq. 5})$$

2.7 Meta-analysis

We collectively named relative risks (RR) for HR/RR/OR throughout our meta-analysis. All literature-reported RRs were converted into adjusted incremental risk ratios with a 10-ppbV O₃-exposure increase by target metric (i.e. 6mDMA8 in this study), following eq 6 as shown below:

$$RR_{Adjusted} = e^{\left(\frac{\ln RR_{Original}}{k_{Original \rightarrow Adjusted}}\right)} \quad (\text{eq. 6})$$

where \ln is the natural logarithm, $RR_{Original}$ is the originally reported risk estimates scaled into 10-ppbV incremental exposure, and $k_{Original \rightarrow Adjusted}$ is the conversion factor for metric unification. Multi-study pooled risks with 95% confidence interval (CI) were calculated from the adjusted RRs by DerSimonian and Laird random effect meta-regression given the fact that population and methodologies of included researches differed with each other.³²

We applied the Higgins I^2 to quantify the heterogeneity across studies. The Higgins statistics I^2 is defined as

$$I^2 = \frac{Q - df}{Q} \times 100 \% \quad (\text{eq. 6})$$

where Q is the Cochran's non-parametric heterogeneity statistic assessing whether there are any cross-study differences in risks based on χ^2 distribution and df is the corresponding degrees of freedom.³³ Low I^2 values indicate no important heterogeneity observed and high I^2 values, especially >75%, indicate considerable heterogeneity.

Subgroup analyses were conducted by grouping the meta-analysis included studies upon the six O₃ exposure metrics. One-dropout sensitivity analyses were also accomplished to test the robustness of synthesised overall risks by meta-analysis. All meta-analyses were performed in R 4.1.1 with packages *meta* and *metafor*.

The most widely recognised approach to construct the integrated exposure-response (IER)³⁴ relationships required sufficient epidemiological studies to comprehensively sample the population exposure levels. However, studies on long-term O₃ exposure health effects were relatively limited, under which circumstance we made methodological modifications to make better use of the variabilities in exposure levels by statistically

imputing the exposure distributions for each study from the provided statistics (e.g. mean, standard deviation, and percentiles) for curve fitting as elaborated in [Supplementary Text S1](#). [Supplementary Text S2](#) described the detailed procedures of exposure distribution imputations with a demonstration provided in [S3](#), through which high uncertainties were observed in the fitted IER curves due to limited number of available studies.

3. RESULTS

3.1 Study characters

From the 3 databases during September 2015 till July 2021, a total of 308 studies (70 from MEDLINE, 93 from Embase, and 145 from Web of Science) were searched; and together with 34 additional literatures added manually from the 2 previous systematic reviews,^{15, 16} 342 studies underwent duplication censoring, deleting 95 duplicated studies. After detailed scrutinisation for 247 studies, a total of 20 studies concerning long-term O₃ exposure and multi-cause mortalities were finally enrolled for quality evaluation, meta-analysis and further discussions ([Figure 1](#)).³⁵⁻⁵⁴ [Table 1](#) summarised the basic information of the 20 included studies sorted by the publication year and surname of the first author.

3.2 Metrics and exposure assignments

Our updated systematic review stressed more on the exposure metrics and methodologies to obtain O₃ exposure, as summarised in [Table 2](#). Abbey et al. (1999),³⁵ Jerrett et al. (2013)⁴³ and Lipsett et al. (2011)⁴⁰ did not state the metric they used clearly, but based on comparisons between the reported surface O₃ concentrations and TOAR observational archives, we reasonably assumed ADA24 for the first study, and ADMA8 for the last two. Details of the metric matching were given in [Supplementary Text \(S4\)](#). Lipfert et al. (2006)³⁶ used the highest 95th percentile by hourly resolved O₃ concentrations as the peak exposure metric, which was only used in this one singular study, and hence approximated to DMA1. Krewski et al. (2009)³⁸ and Smith et al. (2009)³⁹ were both studies on ACS CPS II, and thus the same exposure assignment methodologies and metrics were assumed as Jerrett et al. (2009).³⁷ Likewise, Cakmak et al. (2018)⁴⁹ and Weichenthal et al. (2017)⁴⁸ were assumed to inherit Crouse et al. (2015)⁴⁵

as all these 3 studies were on CANCHEC. Warm season was defined as 6 months from April to September by default, but we made no exceptions to 3 studies as Zanobetti et al. (2011)⁴¹ using May to September, and Crouse et al. (2015)⁴⁵ and Paul et al. (2020)⁵⁴ using May to October, due to limited number of studies searched.

Across all included studies, multiple methods were applied to assign O₃ exposure onto individual-level cohort participants. The most basic way was the nearest neighbour matching between participant residential locations and *in situ* observation sites, which were more frequently used in earlier studies.^{36, 37} A comparatively more complicated way was statistical spatial interpolation, by inverse distance weighting⁴³ or ordinary kriging³⁸. Full spatial coverage products, such as satellite-based remote-sensing⁵⁰ and chemistry transport models⁵³, were used in some studies by data fusion techniques including but not limited to universal kriging,⁴⁴ Bayesian hierarchical model⁴⁷ and ensemble learning⁵⁰ to enhance the spatial extrapolation accuracy, which were evaluated to be of higher credibility than the basic ones described previously. We also ranked higher the finer spatiotemporal resolved surface O₃ concentration datasets for exposure assignments.

Based on the TOAR and CNEMC *in situ* observations, the cross-metric linear conversion factors were estimated with regression accuracies given in **Figure 2**. Synthesising from recent relevant studies, the 6mDMA8 metric was recommended to highlight the peak exposure (**Table 2**); and therefore, we chose to convert the originally reported RRs uniformly into the 6mDMA8 scale as reference. The adjusted RRs for each 10-ppbV incremental O₃ exposure by 6mDMA8 were listed in **Table S3**. Demonstrations for the conversion interpretation and procedures were presented in **Supplementary Text S5**, respectively.

3.3 Meta-analysis results

We conducted meta-analyses for long-term O₃ exposure-associated into 10 categories of mortalities as (1) all causes (AC), (2) all respiratory diseases (RESP), (3) chronic obstructive pulmonary diseases and allied conditions (COPD), (4) all cardiovascular diseases (CVD), (5) all cerebrovascular diseases (CEVD), (6) ischaemic heart disease (IHD), (7) congestive heart failure (CHF), (8) lung cancer (LC), (9) ischaemic stroke, and (10) pneumonia, with the exposure metrics adjusted into 6mDMA8.

3.3.1 All-cause mortality

A total of 18 studies were included into O₃ exposure-associated all-cause mortality meta-analysis, pooling the overall risk into RR = 1.010 (95% CI: 1.005–1.015, I²: 93.0%) with every 10-ppbV incremental exposure by 6mDMA8 as presented in **Figure 3**. Sub-group meta-analysis by originally reported metrics concluded the significances of risks vary across metrics, as high-concentration highlighted metrics like 6mDMA8 were of the highest positive risk (RR = 1.029, 95% CI: 1.001–1.061) while the smoothed metric ADA24 reported negative association (RR = 0.992, 95% CI: 0.982–1.002), as shown in **Figure S1**. Another sub-group meta-analysis by cohort population ethnics performed significant discrepancies of the risk pattern, as the studies in North America revealed positive associations as RR = 1.011 (95% CI: 1.006–1.016), while researches on European populations showed reversed risks as RR = 0.921 (95% CI: 0.869–0.976), as shown in **Figure S2**. This manifested that high cross-study heterogeneities originated from both metric differentiations and ethnic divergences, the latter of which should have attributed more. The funnel plot was visually symmetrical (**Figure S3**), and studies reporting risks below the pooled value were slightly more, indicating no severe potential publication biases.

3.3.2 Respiratory mortality

Meta-analysis for O₃ exposure-associated all respiratory mortality includes 13 studies, pooling gave the overall RR = 1.027 (95% CI: 1.004–1.049, I²: 82.5%) for every 10-ppbV incremental by O₃ exposure 6mDMA8 (**Figure 4**). Based on sub-group meta-analysis for different metrics (**Figure S4**), peak metrics showed more significant increasing risks than ADA24, where most of the heterogeneities from (I² = 86.5%). Cross-metric divergences were generally higher than intra-metric discrepancies. Studies on North America populations showed better homogeneity in positive risks (RR = 1.028, 95% CI: 1.011–1.047, I² = 82.1%, **Figure S5**) than the European cohorts, pooling from which the overall risks were congruously insignificant (RR = 0.949, 95% CI: 0.795–1.131, I² = 18.0%). No apparent positive publication biases were detected according to the funnel plot. For the O₃-COPD mortality association, pooled RR = 1.061 (95% CI: 1.006–1.119, I² = 94.7%) for 10-ppbV incremental O₃ exposure by 6mDMA8 from 6 studies.

3.3.3 Cardiovascular mortality

A total of 12 studies were included to pool the overall O₃ exposure-induced CVD mortality risks as RR = 1.028 (95% CI: 1.001–1.058, I² = 97.9%) for each 10-ppbV additional O₃ exposure by 6mDMA8 (**Figure 5**). Heavy heterogeneities (I² > 81.6%) were observed through all 4 metric-grouped studies as presented in **Figure S6**. Positive risk associations were found for 10 North American cohorts (RR = 1.038, 95% CI: 1.008–1.068) while oppositely for 2 European cohorts (RR = 0.936, 95% CI: 0.898–0.975), as shown in **Figure S7**. Mild positive publication biases were detected, reflecting the actual risk could potentially be lower than the meta-analysis estimation. For congestive heart failure-induced mortality, the pooled risk was RR = 1.102 (95% CI: 1.046–1.162, I² = 88.6%) with every 10-ppbV elevated O₃ exposure by 6mDMA8, but might be slightly overestimated by detected positive publication bias.

3.3.4 Other causes mortality

The other cause-specific mortality risks attributable to long-term O₃ exposure were not statistically significant (**Figure 6**), as IHD mortality risk pooled from 9 studies was RR = 1.023 (95% CI: 0.992–1.055, I² = 97.7%), CEVD mortality risk pooled from 5 studies was RR = 0.997 (95% CI: 0.973–1.020, I² = 73.6%), LC mortality risk pooled from 10 studies was RR = 0.984 (95% CI: 0.961–1.008, I² = 80.8%), ischaemic stroke mortality risk pooled from 2 studies was RR = 1.003 (95% CI: 0.991–1.016), and pneumonia mortality risk pooled from 3 studies was RR = 1.034 (95% CI: 0.954–1.121).

Potential publication biases were discovered for CEVD and lung cancer, though the pooled risks were insignificant, suggesting the authentic risks could moderately deviate from our meta-analysis results. Though we conducted meta-analyses for ischaemic stroke and pneumonia mortality risks, the included studies were rather few with high heterogeneities, and thus it could be improper to conclude no associations between long-term O₃ exposure and mortality risks of ischaemic stroke or pneumonia based on the limited evidences collected in our study. For the 8 mortality sub-categories involving no less than 4 studies, we also provided pooled risks by 4 widely used metrics in **Table 3**.

3.4 Study assessment

All 20 studies included into our final meta-analysis were rated to be above “Fair” by the quality assessment tool for observational cohort studies, as listed in **Table S4**. **Tables**

S5 presented GRADE epidemiological evidence assessment results for each mortality cause from all involved corresponding studies. In brief, the overall judgements for all-cause, respiratory, and lung cancer mortality risks were “High”, for cerebrovascular mortality risk was “Low”, and for the rest cause-specific mortality risks were all “Moderate”. The assessment results verified the acceptability of our meta-analyses, with more details given in Supplementary Text (S6).

3.5 Sensitivity analysis

One-dropout sensitivity analyses showed stable risk estimates as summarised in Table S6, except for the lung cancer mortality risks after eliminating Kazemiparkouhi et al. (2019), the only study reporting positive risk association,⁵² while the rest 9 studies concluded insignificant or negative risks. Since the metric harmonisation in our study was an innovative attempt, we provided both metric-adjusted and unadjusted crude results for reference as presented in Table 3.

4. DISCUSSIONS

4.1 Improvements as an updated review

This work improves on 2 previous high-quality reviews^{15, 16} by covering up-to-date peer-reviewed studies, and expanding the O₃-exposure associated causes of mortality into wider range of categories. It is the first systematic review of the association between long-term O₃ exposure and cause-specific mortality highlighting the issue of inconsistent use of exposure metrics to our best knowledge. Since tropospheric O₃ is a photochemical pollutant which largely depends on solar radiation, the surface O₃ concentrations can vary drastically between day and night, as well as warmer and cooler seasons. We pointed out that a 10-ppbV increase in annual daily 24-hour average concentration (ADA24) is more constrained in magnitude than a 10-ppbV increase in warm-season daily 8-hour maximum average concentration (6mDMA8) owing to the wider variability in the range of the latter metric. Taking the observations by TOAR and CNEMC *in situ* monitoring networks during 1990-2019 as an example, the surface O₃ concentrations were 27.6 ± 6.1 (IQR: 24.1–31.0) ppbV by ADA24, while correspondingly 53.1 ± 10.6 (IQR: 47.7–61.4) ppbV by 6mDMA8, which indicated a 10-ppbV change fell below the IQR by the

6mDMA8, but could exceed the IQR using the ADA24 metric. This was why we believe adjusting the exposure metrics was necessary for O₃ exposure-attributable health risk meta-analysis.

We also put forward a feasible approach to mutually convert the O₃ exposure concentrations and corresponding risk strengths in various metrics by non-intercept linear projections following the methodological suggestions from EPA,³¹ but update the linear conversion factors based on global *in situ* surface O₃ observations during 1990-2019. The methodological innovation took advantages of multi-dimensional information from the original studies, but still inspiring further observation collections and researches for corroborations and improvements.

4.2 Metric relevant issues

Although linear coefficients were applied onto the cross-metric conversions, irreducible noises still existed given the high root mean squared errors (RMSE) as shown in **Figure 2**, which exposed the limitation of risk strength adjustment into the same exposure metric by simple linear conversion, as the actual cross-metric relationships could be way more complicated. However, there was no other way but using the linear conversion coefficients as surrogates to unify the RRs by different metric reported in original studies, and thus to avoid uncertainties brought by the conversion of metrics, using a promissory consistent exposure metric or estimating the unit excess RRs in multiple metrics would be highly advocated in future long-term O₃-exposure epidemiology studies.

Such linear conversion of risk associations could be validated by Kazemiparkouhi et al. (2020),⁵² where multiple metrics were applied to estimate the mortality risks. For COPD mortality, the RR was 1.072 (95% CI: 1.067–1.077) by 6mDMA1 for every 10-ppbV additional exposure; and after converting into 6mDMA8 metric using the linear coefficient 0.831 (**Figure 2**), the estimated RR was 1.087 (95% CI: 1.081–1.093), close to the literature reported 1.084 (95% CI: 1.079–1.089),⁵² which justified our linear conversion method. Converting Cross-metric linear conversions would not change the risk association direction, but using different exposure metrics when estimating the O₃-exposure attributable mortality risks could potentially cause discrepancies. For an instance, Kazemiparkouhi et al. (2020) concluded excess hazards of long-term O₃ exposure on all-cause mortality using 6mDMA1 and 6mDMA8 as quantitative metrics, but 6mDA24 led to a specious prevention effect (RR = 0.990, 95% CI: 0.988–0.991), which should be attributed to the existence of a theoretical exposure safety level for O₃ below which no negative health effects should occur. Under this circumstance, lower-

level metrics (e.g. ADA24) by averaging the peak O₃ exposures might obscure the effective doses above the threshold, and also reduce the signal-to-noise ratios, so that were of lower credibility in recognising hazardous population exposures than higher-level metrics (e.g. 6mDMA8).

Data mining techniques were able to realise high-accuracy predictions of surface O₃ concentrations, but errors were never avoidable. Carey et al. (2013) used a basic IDW spatial interpolation approach to obtain the surface O₃ concentrations where the R² were 0.24–0.76,⁴² while years later Di et al. (2018) applied an ensemble learning approach, achieving R² = 0.80, RMSE = 2.91 ppbV.⁵⁰ Carey et al. (2013) reported the IQR of O₃ exposure concentrations as 3.0 ppbV, which was comparable to the RMSE of Di et al. (2018).⁵⁰ Besides, lower R² could be accompanied with higher prediction errors, which might have concealed the highest and lowest quartiles, and led to failures in distinguishing the population-level exposures. This concern had been reflected in our subgroup meta-analysis by exposure metrics, that lower-level metrics were more inclined to report insignificant risks, which also cast sceptics on the reliability of studies covering narrow exposure variabilities. We therefore are in favour of the Lancet suggestions to use peak metrics to quantify the long-term O₃ exposure such as 6mDMA8, and also think highly of the state-of-the-art data techniques to reduce errors in O₃ concentration prediction, so as to make a distinction between the high- and low-exposure populations.

4.3 Hierarchical classification of diseases

The causes of mortalities analysed in our study followed hierarchical subordinate relationships, as the all-cause mortality consisted of cardiovascular diseases, respiratory diseases, cancer and other causes; chronic obstructive pulmonary disease belonged to respiratory category; and ischaemic heart disease, stroke, congestive heart failure and other cerebrovascular diseases all subordinated to cardiovascular symptoms. On this occasion, estimating all O₃-exposure induced mortalities could follow a bottom-up scheme by adding up subgroups of diseases. However, for the historical O₃-associated mortalities, GBD attributed all O₃-associated mortalities onto COPD-induced premature deaths,²⁰ which we thought were of spaces for further explorations. Long-term O₃ exposure had shown significant association with excess cardiovascular mortalities, and thus we should update the mortality estimations in further studies by including CVD altogether into consideration.

4.4 Application of risks

The widest applications of the estimated risk association strengths were to project how many people would be affected by long-term ambient O₃ exposure. For example, Malley et al. (2017) estimated 1.23 (95% UI: 0.85–1.62) million respiratory deaths attributable to O₃ exposure in 2010,⁵⁵ using the risk strength by Turner et al. (2016) as HR = 1.12 (95% UI: 1.08–1.16).⁴⁷ This estimation was much higher than the 2019 GBD report: 0.31 (95% UI: 0.15–0.49) million, as had been highlighted in another recent study,²⁴ which should be attributed to the use of high HR value among all included studies. We had also found some other studies using one singular HR value for population risk estimations,^{17, 56-59} but we would still encourage further relevant studies consider multi-study pooled RRs, which could effectively reduce potential biases from a single study.

4.5 Limitations

According to our literature search, cohort-based O₃-health studies were still rather rare, which could be responsible for the relatively large uncertainties in the meta-analysis pooled RRs. Scarcity of credible evidences also restricted the effects of conventional approaches to construct exposure-response curves, and our methodological innovation would require further relevant studies for substantiation. The cross-metric linear conversion factors were estimated relying on observations from available sites, which however might not be sufficiently representative of the global residential areas, as observational sites in India, Africa, and Latin America were still sparse. With ever-increasing popularisation of the *in situ* monitoring networks, the cross-metric conversion factors might need calibration with more comprehensive observations, so that the pooled RRs should also be updated accordingly.

4.6 Further study suggestions

We suggest that further environmental epidemiology studies, especially long-term O₃ exposure related researches, clearly report i) the methodologies to obtain ambient O₃ concentrations, the spatiotemporal resolution, and prediction accuracy of the database; ii) the exposure metrics used for risk estimation; and iii) the statistical distribution of the O₃ exposure concentrations. The data-oriented methodologies to accomplish full spatial coverage ambient air O₃ concentrations for individual-level exposure assignment should

be transparent as the construction credibility of air pollution concentration database should also be rigorously assessed, which were the foundation of epidemiological follow-up studies. We would advocate the report of exposure metrics in future O₃-health studies so as to avoid confusions when comparing the risks with literature and conducting meta-regression; and empirically, warm-season average (6mDMA8) or daily 8-hour maximum by annual average (ADMA8) were more preferred as epidemiological study metrics.¹⁹ We also recommend future studies estimate risks with multiple O₃ metrics; and describing the statistical distribution of the O₃ exposure concentrations are another suggested element to assess the reliability of risk estimation models, and would also be useful in exposure-response tendency exploration.

Our review highlights a deficiency existing in current environmental health research literatures, that studies on long-term O₃ exposure health effects are still rather rare compared to particulate matter-based studies.⁶⁰ Also, the meta-analysis results might be geographically-biased, since large-scale O₃ exposure health risk studies till 2021 did not cover Asia, Africa or Latin America regions. However, there are some thriving cohorts such as the Multi-Country Multi-City (MCC) Collaborative Research Network covering over 22 countries or regions,⁶¹ and the China Kadoorie Biobank (CKB) enrolling over 0.5 million people,⁶² working on environmental exposure projects. We are optimistic that more research will come out to fill in the literature gap of multi-region population-based studies.

5. CONCLUSIONS

Our state-of-the-science systematic review has summarised cohort studies exploring the associations between long-term ambient O₃ exposure and multi-cause mortality risks. Current studies support O₃-exposure attributable additional mortalities caused from all causes, respiratory diseases, chronic obstructive pulmonary disease, cardiovascular diseases, and congestive heart failure, but no significant mortality risks are found for ischaemic heart diseases, all-type cerebrovascular diseases, stroke, pneumonia, and lung cancer based on the current evidences. Exposure metrics are crucial for health risk estimations of long-term O₃ exposure and meta-analysis to pool the multi-study risks, for which we develop a linear conversion approach to harmonise the different metrics. Further researches on long-term O₃ observations and exposure-induced mortalities are encouraged to corroborate or contradict our linear conversion factors and meta-analysis results by providing more solid evidences, so as to strengthen the O₃-health literatures.

Copyright

The Corresponding Author has the right to grant on behalf of all authors and does grant on behalf of all authors, a worldwide licence to the Publishers and its licensees in perpetuity, in all forms, formats and media (whether known now or created in the future), to i) publish, reproduce, distribute, display and store the Contribution, ii) translate the Contribution into other languages, create adaptations, reprints, include within collections and create summaries, extracts and/or, abstracts of the Contribution, iii) create any other derivative work(s) based on the Contribution, iv) to exploit all subsidiary rights in the Contribution, v) the inclusion of electronic links from the Contribution to third party material where-ever it may be located; and, vi) licence any third party to do any or all of the above.

Competing Interest Statement

All authors have completed the Unified Competing Interest form and declare: no support from any organisation for the submitted work; no financial relationships with any organisations that might have an interest in the submitted work in the previous three years; and no other relationships or activities that could appear to have influenced the submitted work.

Author Contributions

ATA and YG conceived the idea for the review; HZS, CL and PY performed the literature search; HZS and PY conducted statistical analyses; HZS, ATA, YG, PY, SH, JM, HS and LY contributed to discussions; HZS wrote the article; and MW scrutinised the languages. HZS is the guarantor who accepted the full responsibility for the finished article, owned full access to all relevant data, and controlled the decision to publish. The two joint corresponding authors, ATA and YG, attests that all listed authors meet authorship criteria and that no others meeting the criteria have been omitted. The guarantor, HZS, affirms that the manuscript is an honest, accurate, and transparent account of the study being reported, and no important aspects of the study have been omitted. No ethical approval is needed for a systematic review and meta-analysis.

Funding Acknowledgement

This study is funded by UK Natural Environment Research Council (NERC), UK National Centre for Atmospheric Science (NCAS), Australian Research Council (DP210102076) and Australian National Health and Medical Research Council (APP2000581). HZS, MW, and SH receive funding from Engineering and Physical Sciences Research Council (EPSRC) via the UK Research and Innovation (UKRI) Centre for Doctoral Training in Application of Artificial Intelligence to the study of Environmental Risks (AI4ER, EP/S022961/1). ATA acknowledges funding from NERC (NE/P016383/1) and through the Met Office UKRI Clean Air Programme. YG is supported by a Career Development Fellowship of the Australian National Health and Medical Research Council (APP1163693). All contents in this study are solely the responsibility of the grantees and do not represent the official views of the supporting agencies.

Data Availability

The surface O₃ observations are archived in the Tropospheric Ozone Assessment Report (TOAR, <https://b2share.fz-juelich.de/communities/TOAR>) repository and China National Environmental Monitoring Centre (CNEMC, <http://www.cnemc.cn/en/>) repository, which are accessible to the public. The cohort-based long-term O₃ exposure-associated cause-specific mortality risks are all available in the main text or supplementary materials of the selected studies.

Supplementary Information

Further detailed information can be found in the **Supplementary Materials** (PDF) consisting of 17 pages with 6 sections of texts as “imputation procedures for exposure distribution” (S1), “enhanced integrated exposure-response curve-fitting” (S2), “demonstrative procedures of enhanced exposure-response trend curve-fitting” (S3), “undefined metric imputation” (S4), “interpretation and procedure of cross-metric linear conversion” (S5), and “detailed study assessment” (S6), as well as 6 tables and 7 figures to strengthen the results and discussions presented in the main text. A **PRISMA Checklist** (PDF) was provided to verify the integrity of this study.

TABLES

Table 1 Summary of cohort characteristics included for meta-analysis.

Study	Cohort	Country	Follow-up Duration	Population Type	Sample Size	Sex	Age	Key Confounding Adjustment	Mortality Causes
Abbey et al. 1999 ³⁵	AHSMOG	USA	1977-1992	Occupational	6,182	FM	27-95	age, sex, BMI, smoking, individual demographic features [‡] , lifestyle features [‡] , medical history	AC, RESP, LC
Lipfert et al. 2006 ³⁶	WU-EPRI	USA	1976-1996	General	90,070	M	51.2 (12.0) [§]	age, ethnicity, BMI, smoking, traffic density, NO ₂ , CO	AC
Jerrett et al. 2009 ³⁷	ACS CPS II	USA	1977-2000	General	448,850	FM	56.6	age, sex, ethnicity, BMI, smoking, individual demographic features, lifestyle features, PM _{2.5}	AC, RESP, CVD, IHD
Krewski et al. 2009 ³⁸	ACS CPS II	USA	1982-2000	General	531,185	FM	≥ 30		AC, IHD, LC
Smith et al. 2009 ³⁹	ACS CPS II	USA	1982-2000	General	352,242	FM	56.6		AC, RESP, CVD
Lipsett et al. 2011 ⁴⁰	CTS	USA	1998-2005	Occupational	124,614	F	≥ 20	age, ethnicity, BMI, smoking, lifestyle features, medical treatment	AC, RESP, CVD, IHD, stroke, CEVD, LC
Zanobetti et al. 2011 ⁴¹	Medicare	USA	1985-2006	General	3,210,511	FM	≥ 65	age, sex, ethnicity, medical history	COPD
Carey et al. 2013 ⁴²	CPRD	UK	2003-2007	General	824,654	FM	40-89	age, sex, BMI, smoking, individual demographic features	AC, RESP, LC
Jerrett et al. 2013 ⁴³	ACS CPS II	USA	1982-2000	General	73,711	FM	57.4 (10.6)	age, sex, smoking, individual demographic features, lifestyle features	AC, RESP, CVD, IHD, stroke, LC
Bentayeb et al. 2015 ⁴⁴	GAZEL	France	1989-2013	Occupational	20,327	FM	43.7 (3.5)	age, sex, BMI, smoking, individual demographic features, lifestyle features	AC, RESP, CVD
Crouse et al. 2015 ⁴⁵	CANCHEC	Canada	1991-2006	General	2,521,525	FM	≥ 25	age, sex, individual and area-level demographic features, PM _{2.5} , NO ₂	AC, RESP, COPD, CVD, IHD, CEVD, LC
Tonne et al. 2016 ⁴⁶	MINAP	UK	2003-2010	General	18,138	FM	68 (14)	age, sex, ethnicity, smoking, medical history, area-level demographic features	AC
Turner et al. 2016 ⁴⁷	ACS CPS II	USA	1982-2004	General	669,046	FM	≥ 30	age, sex, BMI, smoking, individual and area-level demographic features, PM _{2.5} , NO ₂	AC, RESP, COPD, CVD, IHD, CEVD, pneumonia
Weichenthal et al. 2017 ⁴⁸	CANCHEC	Canada	2001-2011	General	2,448,500	FM	25-89	age, sex, ethnicity, individual and area-level demographic features	AC, RESP, CVD
Cakmak et al. 2018 ⁴⁹	CANCHEC	Canada	1991-2011	General	2,291,250	FM	≥ 25	age, sex, individual demographic features, PM _{2.5}	AC, COPD, IHD, LC
Di et al. 2018 ⁵⁰	Medicare	USA	2000-2012	General	60,925,443	FM	≥ 65	age, sex, ethnicity, BMI, smoking, individual and area-level demographic features, meteorological features, PM _{2.5}	AC
Hvidtfeldt et al. 2019 ⁵¹	DDCH	Denmark	1993-1997	General	49,596	FM	50-64	age, sex, BMI, smoking, individual and area-level demographic features, noise	AC, RESP, CVD
Kazemiparkouhi et al. 2019 ⁵²	Medicare	USA	2000-2008	General	22,159,190	FM	≥ 65	age, sex, ethnicity, area-level demographic features, PM _{2.5}	AC, RESP, COPD, CVD, IHD, CEVD, LC, pneumonia
Lim et al. 2019 ⁵³	NIH-AARP	USA	1995-2011	General	548,780	FM	50-71	age, sex, ethnicity, BMI, smoking, individual demographic features, PM _{2.5} , NO ₂ , daily maximum temperature	AC, RESP, COPD, CVD, IHD, CEVD, LC, pneumonia
Paul et al. 2020 ⁵⁴	ONPHEC	Canada	1996-2015	Diabetes	452,590	FM	35-85	age, sex, area-level demographic features	CVD

Cohort abbreviations: AHSMOG, *Adventist Health Study of Smog*; WU-EPRI, *Washington University–Electric Power Research Institute*; ACS CPS, *American Cancer Society Cancer Prevention Study*; CTS, *California Teacher Study*; CPRD, *Clinical Practice Research Datalink*; GAZEL, *GAZ de France and Électricité*; CANCHEC, *Canadian Census Health and Environment Cohort*; MINAP, *National Audit of Myocardial Infarction Project*; DDCH, *Danish Diet, Cancer and Health*; NIH-AARP, *National Institute of Health, American Association of Retired Persons*; ONPHEC, *Ontario Population Health and Environment Cohort*.

[‡] Demographic features included marital status, education attainment, employment status and occupational class, aboriginal ancestry, visible minority ethnicities, immigrant status and residence location (urban or rural), income level and socioeconomic status (SES), and regional population density. Different studies adjusted various combinations of demographic features.

[‡] Lifestyle features included consumptions of alcohol, dietary fat, vegetables and fruits (dietary fibre), and vitamins, and physical activity frequency. Different studies adjusted various combinations of lifestyle features.

[§] Population ages were reported by mean with standard deviation (in bracket).

Table 2 Data sources and statistical methods of O₃ exposure assignment.

Methodological ratings were based on spatial interpolation and multi-data assimilation approaches. Spatial resolutions, exposure metrics, and levels of incremental risk ratio were also listed.

Study	Data Sources	Methods	Resolution	Rating	Metrics	Level of incremental risk ratio
Abbey et al. 1999 ³⁵	monitoring station observations	IDW interpolation	NR	Low	ADMA8	12.03 ppbV
Lipfert et al. 2006 ³⁶	monitoring station observations	nearest matching (assumed) [†]	NR	Low	ADMA1	40 ppbV
Jerrett et al. 2009 ³⁷	monitoring station observations	nearest matching (assumed)	NR	Low	6mDMA1	10 ppbV
Krewski et al. 2009 ³⁸	monitoring station observations	ordinary kriging interpolation	NR	Low	6mDMA1	10 ppbV
Smith et al. 2009 ³⁹	monitoring station observations	nearest matching (assumed)	NR	Low	6mDMA1	1 µg/m ³
Lipsett et al. 2011 ⁴⁰	monitoring station observations	IDW interpolation	250 m	Low	ADA24	22.96 ppbV
Zanobetti et al. 2011 ⁴¹	monitoring station observations	nearest matching (assumed)	NR	Low	6mDMA8	5 ppbV
Carey et al. 2013 ⁴²	monitoring station observations	interpolation (IDW assumed)	1 km	Low	ADA24	3.0 µg/m ³
Jerrett et al. 2013 ⁴³	monitoring station observations	IDW interpolation	NR	Low	ADA24	24.1782 ppbV
Bentayeb et al. 2015 ⁴⁴	monitoring station observations, model simulation, other auxiliary predictors	universal kriging interpolation	2 km	Moderate	6mDMA8	12.3 µg/m ³
Crouse et al. 2015 ⁴⁵	monitoring station observations, model simulation	linear data assimilation	21 km	Good	6mDMA8	9.5 ppbV
Tonne et al. 2016 ⁴⁶	KCLurban air dispersion model simulation	NR	20 m	Moderate	ADA24	5.3 µg/m ³
Turner et al. 2016 ⁴⁷	monitoring station observations, CMAQ model simulation	hierarchical Bayesian space-time data assimilation	12 km	High	ADMA8 6mDMA8	10 ppbV
Weichenthal et al. 2017 ⁴⁸	monitoring station observations, model simulation	linear data assimilation	21 km	Good	6mDMA8	10.503 ppbV
Cakmak et al. 2018 ⁴⁹	monitoring station observations, model simulation	linear data assimilation	21 km	Good	6mDMA8	10 ppbV
Di et al. 2018 ⁵⁰	monitoring station observations, model simulation, satellite remote sensing observations, other auxiliary predictors	ensemble machine learning	1 km	High	6mDA24	10 ppbV
Hvidtfeldt et al. 2019 ⁵¹	AirGIS dispersion model simulation	NR	1 km	Moderate	ADA24	10 µg/m ³
Kazemparkouhi et al. 2019 ⁵²	monitoring station observations	nearest matching (assumed)	6 km	Low	6mDMA1 6mDMA8 6mDA24	10 ppbV
Lim et al. 2019 ⁵³	monitoring station observations, CMAQ model simulation	Bayesian space-time downscaling	12 km	High	6mDMA8	10 ppbV
Paul et al. 2020 ⁵⁴	monitoring station observations, model simulation	linear data assimilation	21 km	Good	6mDMA8	6.4 ppbV

[†] The statistical methods were not clearly stated in literatures, and thus the most basic method was assumed. The nearest neighbourhood matching shall be the simplest way to assign spatially sparse observations onto cohort participants, and the inverse distance weighting (IDW) is the simplest spatial interpolation approach.

Table 3 Pooled RRs for long-term 10-ppbV incremental O₃-exposure attributable multi-cause mortalities by 4 most widely used metrics and unit unified crude risks without metric harmonisation.

Mortality causes	6mDMA8	6mDA24	ADMA8	ADA24	Crude
All causes	1.010 (1.005, 1.015)	1.016 (1.009, 1.025)	1.011 (1.006, 1.017)	1.019 (1.010, 1.029)	1.011 (1.005–1.017)
Respiratory diseases	1.027 (1.004, 1.049)	1.046 (1.007, 1.085)	1.031 (1.005, 1.057)	1.054 (1.009, 1.100)	1.034 (1.010–1.059)
Chronic obstructive pulmonary disease	1.061 (1.006, 1.119)	1.106 (1.010, 1.211)	1.071 (1.007, 1.139)	1.125 (1.012, 1.250)	1.060 (1.010–1.113)
Cardiovascular diseases	1.028 (1.001, 1.058)	1.049 (1.001, 1.100)	1.033 (1.001, 1.067)	1.057 (1.002, 1.118)	1.039 (1.007–1.073)
Ischaemic heart disease	1.023 (0.992, 1.055)	1.040 (0.987, 1.096)	1.027 (0.991, 1.064)	1.047 (0.985, 1.112)	1.027 (0.995–1.061)
Congestive heart failure	1.102 (1.046, 1.162)	1.180 (1.079, 1.290)	1.119 (1.053, 1.189)	1.213 (1.093, 1.346)	1.104 (1.042–1.170)
Cerebrovascular diseases	0.997 (0.973, 1.020)	0.994 (0.955, 1.034)	0.996 (0.969, 1.023)	0.993 (0.947, 1.040)	0.997 (0.970–1.024)
Lung cancer	0.984 (0.961, 1.008)	0.974 (0.934, 1.013)	0.982 (0.955, 1.009)	0.969 (0.924, 1.015)	0.982 (0.958–1.002)

FIGURES

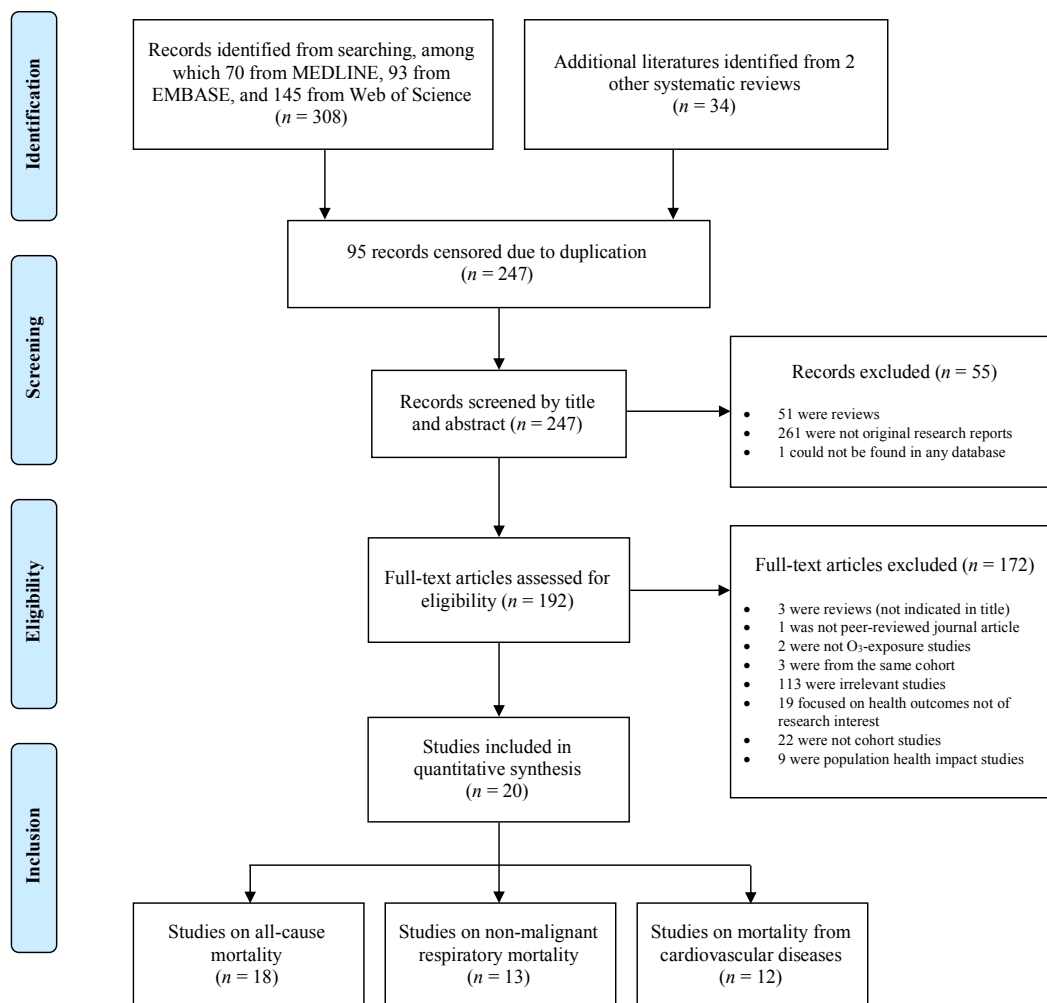


Figure 1 Schematic flowchart of study assessment and selection processes for literature review and meta-analysis.

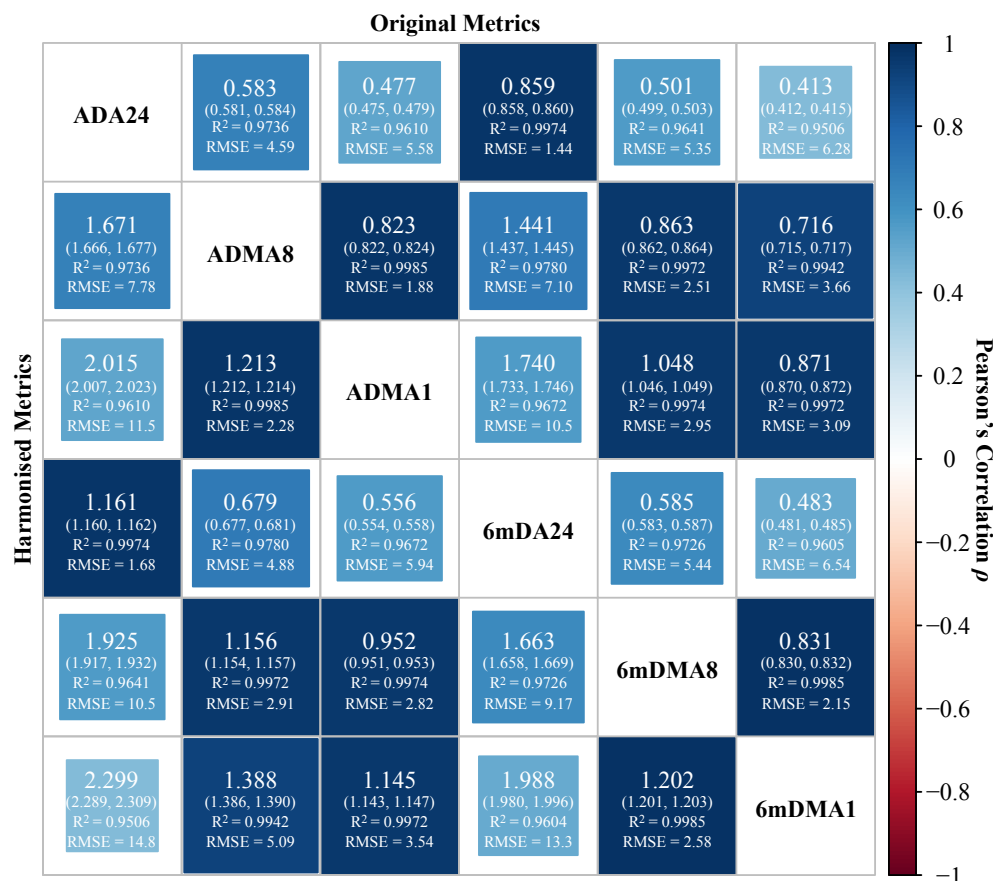


Figure 2 Cross-metric linear relationships and conversion accuracies. The cross-metric linear relationships were scaled by Pearson's correlation coefficients. The cross-metric conversion factors with 95% confidence intervals (95% CI) were estimated by non-intercept linear regression models, accompanied with fitting accuracies quantified by coefficient of determination (R^2) and root mean square error (RMSE) in ppbV. The conversion factors were defined as multiples from the original metric by column into the target harmonised metric by row, e.g. $ADMA8 = 1.671 ADA24$, $R^2 = 0.9736$, $RMSE = 7.78$ ppbV.

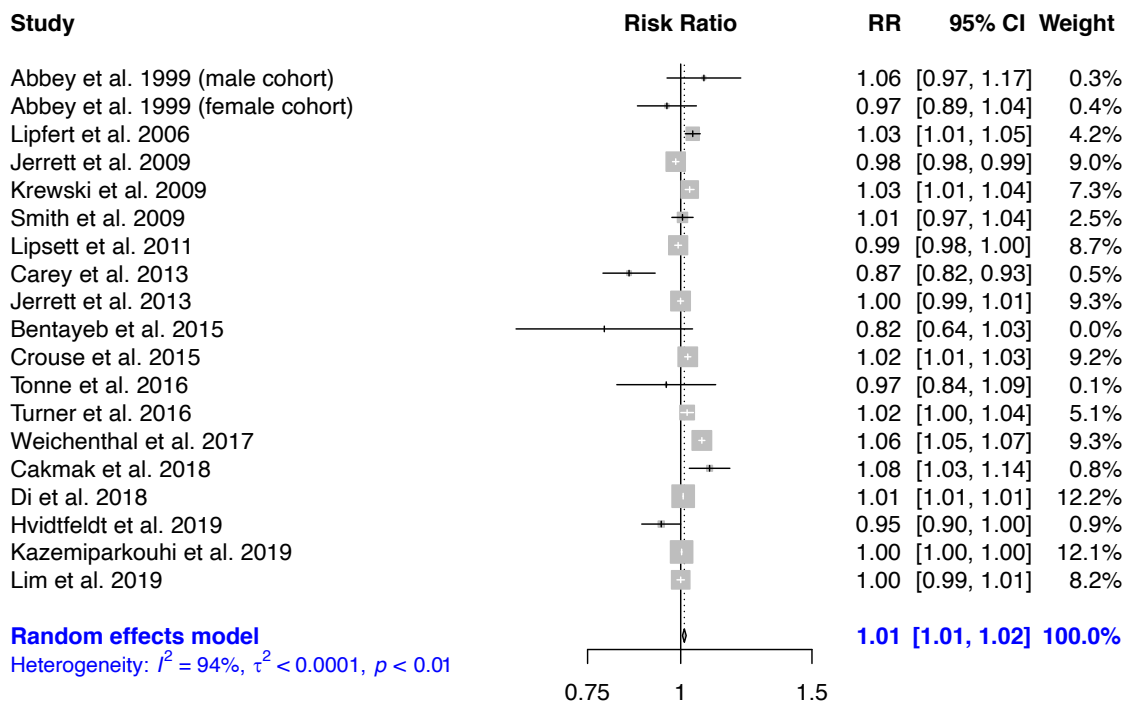
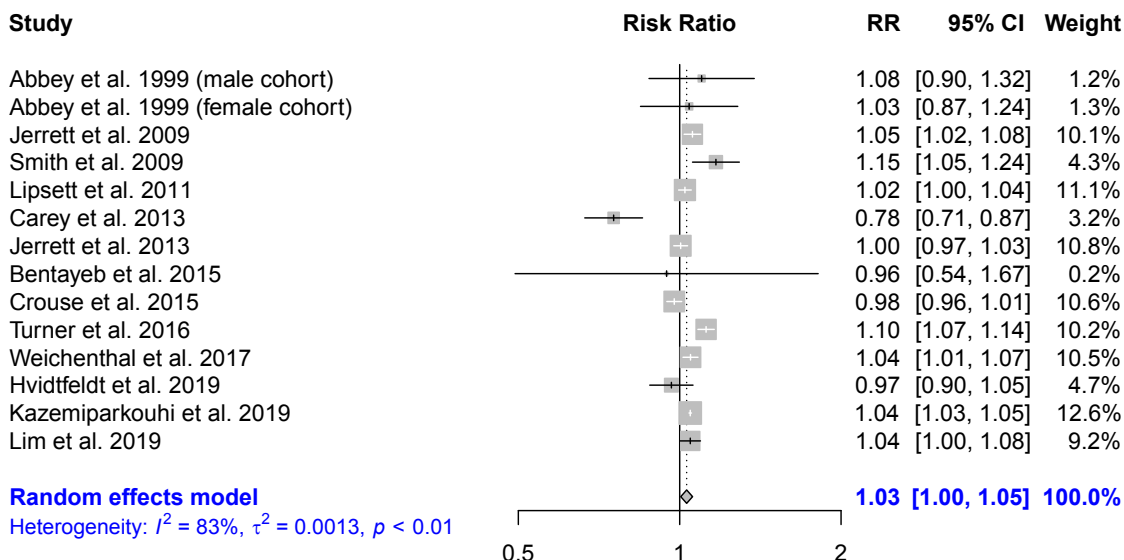


Figure 3 Pooled estimates of all-cause mortality risk associated with every 10-ppbV incremental O₃ exposure by 6mDMA8 metric.

Respiratory Diseases



Chronic Obstructive Pulmonary Disease

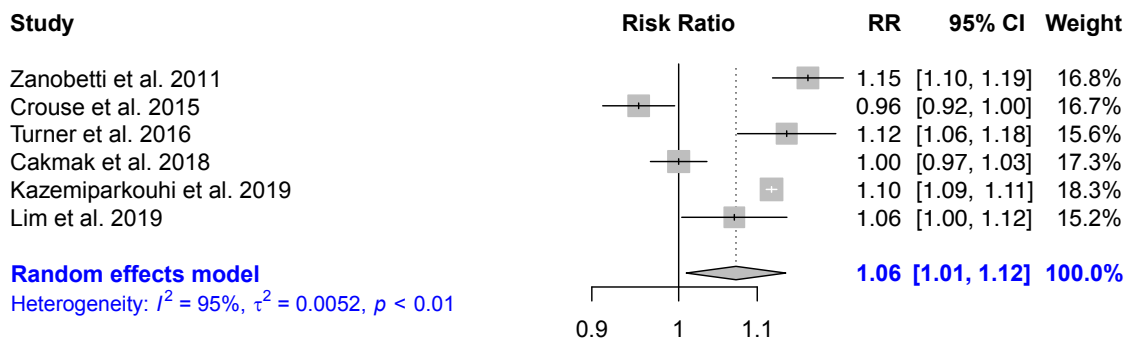
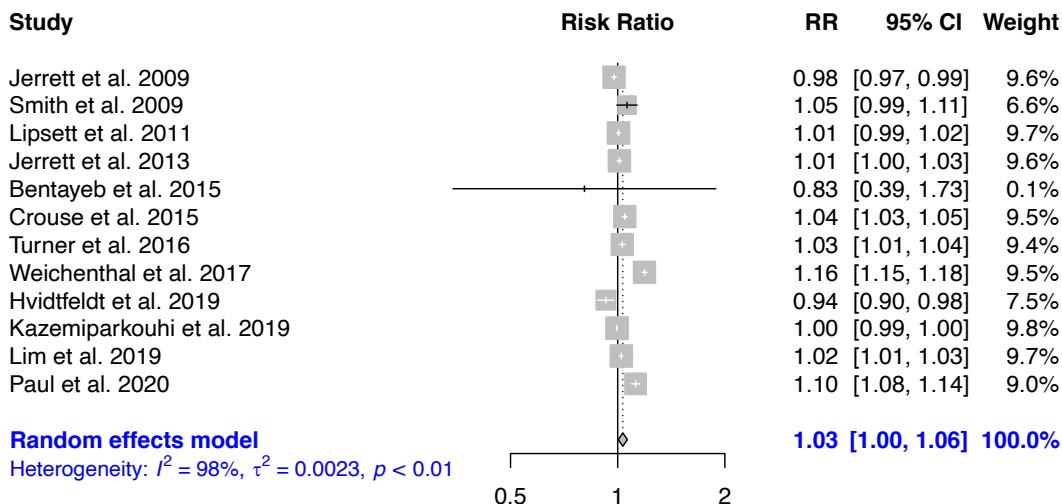


Figure 4 Pooled estimates of respiratory diseases and COPD mortality risks associated with every 10-ppbV incremental O₃ exposure by 6mDMA8 metric.

Cardiovascular Diseases



Congestive Heart Failure

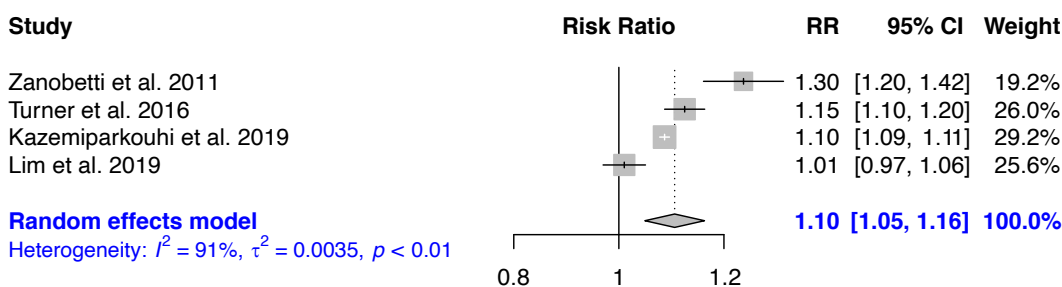


Figure 5 Pooled estimates of cardiovascular diseases and congestive heart failure mortality risk associated with every 10-ppbV incremental O₃ exposure by 6mDMA8 metric.

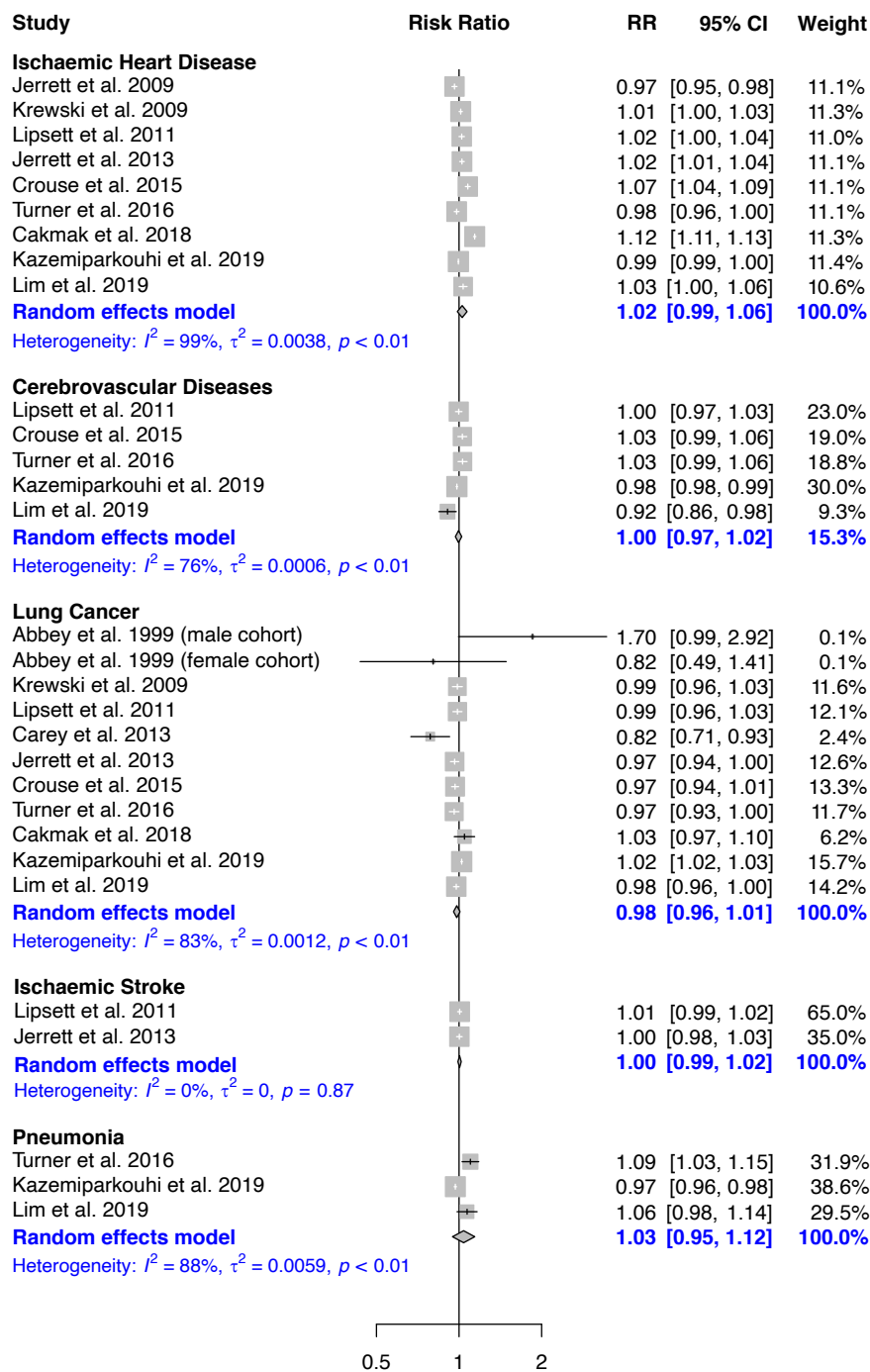


Figure 6 Pooled estimates of ischaemic heart disease, cerebrovascular diseases, lung cancer, ischaemic stroke, and pneumonia mortality risks associated with every 10-ppbV incremental O₃ exposure by 6mDMA8 metric.

REFERENCES

1. Fu, B.; Gasser, T.; Li, B.; Tao, S.; Ciais, P.; Piao, S.; Balkanski, Y.; Li, W.; Yin, T.; Han, L., Short-lived climate forcers have long-term climate impacts via the carbon-climate feedback. *Nat Clim Change* **2020**, *10*, (9), 851-855.
2. Wilson, S. R.; Madronich, S.; Longstreth, J. D.; Solomon, K. R., Interactive effects of changing stratospheric ozone and climate on tropospheric composition and air quality, and the consequences for human and ecosystem health. *Photochem Photobiol Sci* **2019**, *18*, (3), 775-803.
3. Stolarski, R. S., The Antarctic ozone hole. *Scientific American* **1988**, *258*, (1), 30-37.
4. Ghude, S. D.; Jena, C.; Chate, D. M.; Beig, G.; Pfister, G. G.; Kumar, R.; Ramanathan, V., Reductions in India's crop yield due to ozone. *Geophys Res Lett* **2014**, *41*, (15), 5685-5691.
5. Zhang, F.; Zhang, H.; Wu, C.; Zhang, M.; Feng, H.; Li, D.; Zhu, W., Acute effects of ambient air pollution on clinic visits of college students for upper respiratory tract infection in Wuhan, China. *Environ Sci Pollut Res Int* **2021**, 1-11.
6. Zheng, X.-Y.; Orellano, P.; Lin, H.-L.; Jiang, M.; Guan, W.-J., Short-term exposure to ozone, nitrogen dioxide, and sulphur dioxide and emergency department visits and hospital admissions due to asthma: A systematic review and meta-analysis. *Environ Int* **2021**, *150*, 106435.
7. Liu, Y.; Pan, J.; Fan, C.; Xu, R.; Wang, Y.; Xu, C.; Xie, S.; Zhang, H.; Cui, X.; Peng, Z.; Shi, C.; Zhang, Y.; Sun, H.; Zhou, Y.; Zhang, L., Short-Term Exposure to Ambient Air Pollution and Mortality From Myocardial Infarction. *J Am Coll Cardiol* **2021**, *77*, (3), 271-281.
8. Zhao, R.; Chen, S.; Wang, W.; Huang, J.; Wang, K.; Liu, L.; Wei, S., The impact of short-term exposure to air pollutants on the onset of out-of-hospital cardiac arrest: A systematic review and meta-analysis. *Int J Cardiol* **2017**, *226*, 110-117.
9. Han, C.; Lu, Y.; Cheng, H.; Wang, C.; Chan, P., The impact of long-term exposure to ambient air pollution and second-hand smoke on the onset of Parkinson disease: a review and meta-analysis. *Public Health* **2020**, *179*, 100-110.
10. Li, J.; Huang, J.; Cao, R.; Yin, P.; Wang, L.; Liu, Y.; Pan, X.; Li, G.; Zhou, M., The association between ozone and years of life lost from stroke, 2013-2017: A retrospective regression analysis in 48 major Chinese cities. *J Hazard Mater* **2021**, *405*, 124220.
11. Liu, G.; Sun, B.; Yu, L.; Chen, J.; Han, B.; Li, Y.; Chen, J., The Gender-Based Differences in Vulnerability to Ambient Air Pollution and Cerebrovascular Disease Mortality: Evidences Based on 26781 Deaths. *Glob Heart* **2020**, *15*, (1), 46.
12. Sun, Z.; Yang, L.; Bai, X.; Du, W.; Shen, G.; Fei, J.; Wang, Y.; Chen, A.; Chen, Y.; Zhao, M., Maternal ambient air pollution exposure with spatial-temporal variations and preterm birth risk assessment during 2013-2017 in Zhejiang Province, China. *Environ Int* **2019**, *133*, (Pt B), 105242.
13. Global Burden of Disease Collaborative Network, Global Burden of Disease Study 2019 (GBD 2019) Results. In Institute for Health Metrics and Evaluation (IHME): Seattle, United States, 2020.
14. Niu, Z.; Liu, F.; Yu, H.; Wu, S.; Xiang, H., Association between exposure to ambient air pollution and hospital admission, incidence, and mortality of stroke: an updated systematic review and meta-analysis of more than 23 million participants. *Environ Health Prev Med* **2021**, *26*, (1), 1-14.
15. Huangfu, P.; Atkinson, R., Long-term exposure to NO₂ and O₃ and all-cause and respiratory mortality: A systematic review and meta-analysis. *Environ Int* **2020**, *144*, 105998.
16. Atkinson, R. W.; Butland, B. K.; Dimitroulopoulou, C.; Heal, M. R.; Stedman, J. R.; Carslaw, N.; Jarvis, D.; Heaviside, C.; Vardoulakis, S.; Walton, H.; Anderson, H. R., Long-term exposure to ambient ozone and mortality: a quantitative systematic review and meta-analysis of evidence from cohort studies. *BMJ Open* **2016**, *6*, (2), e009493.
17. Shen, H.; Sun, Z.; Chen, Y.; Russell, A. G.; Hu, Y.; Odman, M. T.; Qian, Y.; Archibald, A. T.; Tao, S., A novel method for ozone isopleth construction and diagnosis for ozone control strategy of China cities. *Environ Sci Technol* **2021**.
18. Sun, Z.; Archibald, A. T., Multi-stage Ensemble-learning-based Model Fusion for Surface Ozone Simulations: A Focus on CMIP6 Models. *Environmental Science and Ecotechnology* **2021**, *8*, 100124.

19. Schultz, M. G.; Schroder, S.; Lyapina, O.; Cooper, O. R.; Galbally, I.; Petropavlovskikh, I.; von Schneidmesser, E.; Tanimoto, H.; Elshorbany, Y.; Naja, M.; Seguel, R. J.; Dauert, U.; Eckhardt, P.; Feigenspan, S.; Fiebig, M.; Hjellbrekke, A. G.; Hong, Y. D.; Kjeld, P. C.; Koide, H.; Lear, G.; Tarasick, D.; Ueno, M.; Wallasch, M.; Baumgardner, D.; Chuang, M. T.; Gillett, R.; Lee, M.; Molloy, S.; Moolla, R.; Wang, T.; Sharps, K.; Adame, J. A.; Ancellet, G.; Apadula, F.; Artaxo, P.; Barlasina, M. E.; Bogucka, M.; Bonasoni, P.; Chang, L.; Colomb, A.; Cuevas-Agullo, E.; Cupeiro, M.; Degorska, A.; Ding, A. J.; FrHlich, M.; Frolova, M.; Gadhavi, H.; Gheusi, F.; Gilge, S.; Gonzalez, M. Y.; Gros, V.; Hamad, S. H.; Helmig, D.; Henriques, D.; Hermansen, O.; Holla, R.; Hueber, J.; Im, U.; Jaffe, D. A.; Komala, N.; Kubistin, D.; Lam, K. S.; Laurila, T.; Lee, H.; Levy, I.; Mazzoleni, C.; Mazzoleni, L. R.; McClure-Begley, A.; Mohamad, M.; Murovec, M.; Navarro-Comas, M.; Nicodim, F.; Parrish, D.; Read, K. A.; Reid, N.; Ries, N. R. L.; Saxena, P.; Schwab, J. J.; Scorgie, Y.; Senik, I.; Simmonds, P.; Sinha, V.; Skorokhod, A. I.; Spain, G.; Spangl, W.; Spoor, R.; Springston, S. R.; Steer, K.; Steinbacher, M.; Suharguniyawan, E.; Torre, P.; Trickl, T.; Lin, W. L.; Weller, R.; Xu, X. B.; Xue, L. K.; Ma, Z. Q., Tropospheric Ozone Assessment Report: Database and metrics data of global surface ozone observations. *Elem Sci Anthropol* **2017**, *5*, 58-83.
20. Institute for Health Metrics and Evaluation (IHME), GBD 2019 Cause and Risk Summary: Ambient Ozone Pollution. In IHME, University of Washington: Seattle, USA, 2020.
21. Guyatt, G. H.; Oxman, A. D.; Vist, G. E.; Kunz, R.; Falck-Ytter, Y.; Alonso-Coello, P.; Schunemann, H. J.; Group, G. W., GRADE: an emerging consensus on rating quality of evidence and strength of recommendations. *BMJ* **2008**, *336*, (7650), 924-6.
22. Guyatt, G.; Oxman, A. D.; Akl, E. A.; Kunz, R.; Vist, G.; Brozek, J.; Norris, S.; Falck-Ytter, Y.; Glasziou, P.; DeBeer, H.; Jaeschke, R.; Rind, D.; Meerpohl, J.; Dahm, P.; Schunemann, H. J., GRADE guidelines: 1. Introduction-GRADE evidence profiles and summary of findings tables. *J Clin Epidemiol* **2011**, *64*, (4), 383-94.
23. Duval, S.; Tweedie, R., A nonparametric "trim and fill" method of accounting for publication bias in meta-analysis. *J Am Stat Assoc* **2000**, *95*, (449), 89-98.
24. Sun, H. Z.; Shin, Y. M.; Xia, M.; Ke, S.; Yuan, L.; Guo, Y.; Archibald, A. T., Spatial Resolved Surface Ozone with Urban and Rural Differentiation during 1990-2019: A Space-time Bayesian Neural Network Downscaler. *Environ Sci Technol* **2021**.
25. Krupa, S.; McGrath, M. T.; Andersen, C. P.; Booker, F. L.; Burkey, K. O.; Chappelka, A. H.; Chevone, B. I.; Pell, E. J.; Zilinskis, B. A., Ambient Ozone and Plant Health. *Plant Dis* **2001**, *85*, (1), 4-12.
26. Finlayson-Pitts, B.; Pitts Jr, J., Atmospheric chemistry of tropospheric ozone formation: scientific and regulatory implications. *J Air Manag Waste Assoc* **1993**, *43*, (8), 1091-1100.
27. Fleming, Z. L.; Doherty, R. M.; Von Schneidmesser, E.; Malley, C. S.; Cooper, O. R.; Pinto, J. P.; Colette, A.; Xu, X.; Simpson, D.; Schultz, M. G.; Lefohn, A. S.; Hamad, S.; Moolla, R.; Solberg, S.; Feng, Z., Tropospheric Ozone Assessment Report: Present-day ozone distribution and trends relevant to human health. *Elem Sci Anth* **2018**, *6*, 12.
28. Griffiths, P. T.; Murray, L. T.; Zeng, G.; Archibald, A. T.; Emmons, L. K.; Galbally, I.; Hassler, B.; Horowitz, L. W.; Keeble, J.; Liu, J.; Moeini, O.; Naik, V.; Connor, F. M.; Shin, Y. M.; Tarasick, D.; Tilmes, S.; Turnock, S. T.; Wild, O.; Young, P. J.; Zanis, P., Tropospheric ozone in CMIP6 Simulations. *Atmos Chem Phys* **2021**, *21*, 4187-4218.
29. Archibald, A. T.; O'Connor, F. M.; Abraham, N. L.; Archer-Nicholls, S.; Chipperfield, M. P.; Dalvi, M.; Folberth, G. A.; Dennison, F.; Dhomse, S. S.; Griffiths, P. T.; Hardacre, C.; Hewitt, A. J.; Hill, R.; Johnson, C. E.; Keeble, J.; Köhler, M. O.; Morgenstern, O.; Mulchay, J. P.; Ordóñez, C.; Pope, R. J.; Rumbold, S.; Russo, M. R.; Savage, N.; Sellar, A.; Stringer, M.; Turnock, S.; Wild, O.; Zeng, G., Description and evaluation of the UKCA stratosphere-troposphere chemistry scheme (StratTrop v1.0) implemented in UKESM1. *Geosci Model Dev* **2019**, *13*, (3), 1223-1266.
30. Tong, L.; Zhang, H.; Yu, J.; He, M.; Xu, N.; Zhang, J.; Qian, F.; Feng, J.; Xiao, H., Characteristics of surface ozone and nitrogen oxides at urban, suburban and rural sites in Ningbo, China. *Atmos Res* **2017**, *187*, 57-68.
31. U.S. EPA *Air Quality Criteria For Ozone and Related Photochemical Oxidants (Final Report, 2006)*; U.S. Environmental Protection Agency: Washington, DC, 2006.
32. DerSimonian, R.; Laird, N., Meta-analysis in clinical trials. *Control Clin Trials* **1986**, *7*, (3), 177-88.
33. Higgins, J. P.; Thompson, S. G.; Deeks, J. J.; Altman, D. G., Measuring inconsistency in meta-analyses. *BMJ* **2003**, *327*, (7414), 557-60.
34. Burnett, R. T.; Pope, C. A., 3rd; Ezzati, M.; Olives, C.; Lim, S. S.; Mehta, S.; Shin, H. H.; Singh, G.; Hubbell, B.; Brauer, M.; Anderson, H. R.; Smith, K. R.; Balmes, J. R.; Bruce, N. G.; Kan, H.; Laden, F.; Pruss-Ustun, A.; Turner, M. C.; Gapstur, S. M.; Diver, W. R.; Cohen, A., An integrated risk function for estimating the global burden of disease attributable to ambient fine particulate matter exposure. *Environ Health Perspect* **2014**, *122*, (4), 397-403.

35. Abbey, D. E.; Nishino, N.; McDonnell, W. F.; Burchette, R. J.; Knutsen, S. F.; Lawrence Beeson, W.; Yang, J. X., Long-term inhalable particles and other air pollutants related to mortality in nonsmokers. *Am J Respir Crit Care Med* **1999**, *159*, (2), 373-82.
36. Lipfert, F. W.; Wyzga, R. E.; Baty, J. D.; Miller, J. P., Traffic density as a surrogate measure of environmental exposures in studies of air pollution health effects: Long-term mortality in a cohort of US veterans. *Atmos Environ* **2006**, *40*, (1), 154-169.
37. Jerrett, M.; Burnett, R. T.; Pope, C. A., 3rd; Ito, K.; Thurston, G.; Krewski, D.; Shi, Y.; Calle, E.; Thun, M., Long-term ozone exposure and mortality. *N Engl J Med* **2009**, *360*, (11), 1085-95.
38. Krewski, D.; Jerrett, M.; Burnett, R. T.; Ma, R.; Hughes, E.; Shi, Y.; Turner, M. C.; Pope III, C. A.; Thurston, G.; Calle, E. E., *Extended follow-up and spatial analysis of the American Cancer Society study linking particulate air pollution and mortality*. Health Effects Institute Boston, MA: 2009.
39. Smith, K. R.; Jerrett, M.; Anderson, H. R.; Burnett, R. T.; Stone, V.; Derwent, R.; Atkinson, R. W.; Cohen, A.; Shonkoff, S. B.; Krewski, D.; Pope, C. A., 3rd; Thun, M. J.; Thurston, G., Public health benefits of strategies to reduce greenhouse-gas emissions: health implications of short-lived greenhouse pollutants. *Lancet* **2009**, *374*, (9707), 2091-2103.
40. Lipsett, M. J.; Ostro, B. D.; Reynolds, P.; Goldberg, D.; Hertz, A.; Jerrett, M.; Smith, D. F.; Garcia, C.; Chang, E. T.; Bernstein, L., Long-term exposure to air pollution and cardiorespiratory disease in the California teachers study cohort. *Am J Respir Crit Care Med* **2011**, *184*, (7), 828-35.
41. Zanobetti, A.; Schwartz, J., Ozone and survival in four cohorts with potentially predisposing diseases. *Am J Respir Crit Care Med* **2011**, *184*, (7), 836-41.
42. Carey, I. M.; Atkinson, R. W.; Kent, A. J.; van Staa, T.; Cook, D. G.; Anderson, H. R., Mortality associations with long-term exposure to outdoor air pollution in a national English cohort. *Am J Respir Crit Care Med* **2013**, *187*, (11), 1226-33.
43. Jerrett, M.; Burnett, R. T.; Beckerman, B. S.; Turner, M. C.; Krewski, D.; Thurston, G.; Martin, R. V.; van Donkelaar, A.; Hughes, E.; Shi, Y.; Gapstur, S. M.; Thun, M. J.; Pope, C. A., 3rd, Spatial analysis of air pollution and mortality in California. *Am J Respir Crit Care Med* **2013**, *188*, (5), 593-9.
44. Bentayeb, M.; Wagner, V.; Stempfelet, M.; Zins, M.; Goldberg, M.; Pascal, M.; Larrieu, S.; Beaudeau, P.; Cassadou, S.; Eilstein, D., Association between long-term exposure to air pollution and mortality in France: a 25-year follow-up study. *Environ Int* **2015**, *85*, 5-14.
45. Crouse, D. L.; Peters, P. A.; Hystad, P.; Brook, J. R.; van Donkelaar, A.; Martin, R. V.; Villeneuve, P. J.; Jerrett, M.; Goldberg, M. S.; Pope III, C. A., Ambient PM_{2.5}, O₃, and NO₂ exposures and associations with mortality over 16 years of follow-up in the Canadian Census Health and Environment Cohort (CanCHEC). *Environ Health Perspect* **2015**, *123*, (11), 1180-1186.
46. Tonne, C.; Halonen, J. I.; Beevers, S. D.; Dajnak, D.; Gulliver, J.; Kelly, F. J.; Wilkinson, P.; Anderson, H. R., Long-term traffic air and noise pollution in relation to mortality and hospital readmission among myocardial infarction survivors. *Int J Hyg Environ Health* **2016**, *219*, (1), 72-78.
47. Turner, M. C.; Jerrett, M.; Pope, C. A., 3rd; Krewski, D.; Gapstur, S. M.; Diver, W. R.; Beckerman, B. S.; Marshall, J. D.; Su, J.; Crouse, D. L.; Burnett, R. T., Long-Term Ozone Exposure and Mortality in a Large Prospective Study. *Am J Respir Crit Care Med* **2016**, *193*, (10), 1134-42.
48. Weichenthal, S.; Pinault, L. L.; Burnett, R. T., Impact of oxidant gases on the relationship between outdoor fine particulate air pollution and nonaccidental, cardiovascular, and respiratory mortality. *Sci Rep* **2017**, *7*, (1), 1-10.
49. Cakmak, S.; Hebborn, C.; Pinault, L.; Lavigne, E.; Vanos, J.; Crouse, D. L.; Tjepkema, M., Associations between long-term PM_{2.5} and ozone exposure and mortality in the Canadian Census Health and Environment Cohort (CANCHEC), by spatial synoptic classification zone. *Environ Int* **2018**, *111*, 200-211.
50. Di, Q.; Wang, Y.; Zanobetti, A.; Wang, Y.; Koutrakis, P.; Choirat, C.; Dominici, F.; Schwartz, J. D., Air Pollution and Mortality in the Medicare Population. *N Engl J Med* **2017**, *376*, (26), 2513-2522.
51. Hvidtfeldt, U. A.; Sorensen, M.; Geels, C.; Ketzel, M.; Khan, J.; Tjonneland, A.; Overvad, K.; Brandt, J.; Raaschou-Nielsen, O., Long-term residential exposure to PM_{2.5}, PM₁₀, black carbon, NO₂, and ozone and mortality in a Danish cohort. *Environ Int* **2019**, *123*, 265-272.
52. Kazemiparkouhi, F.; Eum, K. D.; Wang, B.; Manjourides, J.; Suh, H. H., Long-term ozone exposures and cause-specific mortality in a US Medicare cohort. *J Expo Sci Environ Epidemiol* **2020**, *30*, (4), 650-658.
53. Lim, C. C.; Hayes, R. B.; Ahn, J.; Shao, Y.; Silverman, D. T.; Jones, R. R.; Garcia, C.; Bell, M. L.; Thurston, G. D., Long-Term Exposure to Ozone and Cause-Specific Mortality Risk in the United States. *Am J Respir Crit Care Med* **2019**, *200*, (8), 1022-1031.
54. Paul, L. A.; Burnett, R. T.; Kwong, J. C.; Hystad, P.; van Donkelaar, A.; Bai, L.; Goldberg, M. S.; Lavigne, E.;

- Copes, R.; Martin, R. V., The impact of air pollution on the incidence of diabetes and survival among prevalent diabetes cases. *Environ Int* **2020**, *134*, 105333.
55. Malley, C. S.; Henze, D. K.; Kuynlenstierna, J. C. I.; Vallack, H. W.; Davila, Y.; Anenberg, S. C.; Turner, M. C.; Ashmore, M. R., Updated Global Estimates of Respiratory Mortality in Adults ≥ 30 Years of Age Attributable to Long-Term Ozone Exposure. *Environ Health Perspect* **2017**, *125*, (8), 087021.
56. Anenberg, S. C.; Horowitz, L. W.; Tong, D. Q.; West, J. J., An estimate of the global burden of anthropogenic ozone and fine particulate matter on premature human mortality using atmospheric modeling. *Environ Health Perspect* **2010**, *118*, (9), 1189-1195.
57. Fann, N.; Lamson, A. D.; Anenberg, S. C.; Wesson, K.; Risley, D.; Hubbell, B. J., Estimating the national public health burden associated with exposure to ambient PM_{2.5} and ozone. *Risk Anal* **2012**, *32*, (1), 81-95.
58. Silva, R. A.; West, J. J.; Zhang, Y.; Anenberg, S. C.; Lamarque, J.-F.; Shindell, D. T.; Collins, W. J.; Dalsoren, S.; Faluvegi, G.; Folberth, G., Global premature mortality due to anthropogenic outdoor air pollution and the contribution of past climate change. *Environ Res Lett* **2013**, *8*, (3), 034005.
59. West, J. J.; Smith, S. J.; Silva, R. A.; Naik, V.; Zhang, Y.; Adelman, Z.; Fry, M. M.; Anenberg, S.; Horowitz, L. W.; Lamarque, J.-F., Co-benefits of mitigating global greenhouse gas emissions for future air quality and human health. *Nat Clim Change* **2013**, *3*, (10), 885-889.
60. Yu, P.; Guo, S.; Xu, R.; Ye, T.; Li, S.; Sim, M.; Abramson, M. J.; Guo, Y., Cohort studies of long-term exposure to outdoor particulate matter and risks of cancer: A systematic review and meta-analysis. *The Innovation* **2021**, 100143.
61. Meng, X.; Liu, C.; Chen, R.; Sera, F.; Vicedo-Cabrera, A. M.; Milojevic, A.; Guo, Y.; Tong, S.; Coelho, M.; Saldiva, P. H. N.; Lavigne, E.; Correa, P. M.; Ortega, N. V.; Osorio, S.; Garcia, Kysely, J.; Urban, A.; Orru, H.; Maasikmets, M.; Jaakkola, J. J. K.; Rytty, N.; Huber, V.; Schneider, A.; Katsouyanni, K.; Analitis, A.; Hashizume, M.; Honda, Y.; Ng, C. F. S.; Nunes, B.; Teixeira, J. P.; Holobaca, I. H.; Fratianni, S.; Kim, H.; Tobias, A.; Iniguez, C.; Forsberg, B.; Astrom, C.; Ragettli, M. S.; Guo, Y. L.; Pan, S. C.; Li, S.; Bell, M. L.; Zanobetti, A.; Schwartz, J.; Wu, T.; Gasparrini, A.; Kan, H., Short term associations of ambient nitrogen dioxide with daily total, cardiovascular, and respiratory mortality: multilocation analysis in 398 cities. *BMJ* **2021**, *372*, n534.
62. Yu, K.; Lv, J.; Qiu, G.; Yu, C.; Guo, Y.; Bian, Z.; Yang, L.; Chen, Y.; Wang, C.; Pan, A.; Liang, L.; Hu, F. B.; Chen, Z.; Li, L.; Wu, T.; China Kadoorie Biobank, S., Cooking fuels and risk of all-cause and cardiopulmonary mortality in urban China: a prospective cohort study. *Lancet Glob Health* **2020**, *8*, (3), e430-e439.