

1 **Title:** COVID-19 infections post-vaccination by HIV status in the United States

2  
3 **Authors:** Sally B. Coburn, PhD MPH<sup>1</sup>, Elizabeth Humes, MPH<sup>1</sup>, Raynell Lang, MD MSc<sup>1,2</sup>,  
4 Cameron Stewart, MS<sup>1</sup>, Brenna C Hogan, MPH<sup>1</sup>, Kelly A. Gebo, MD, MPH<sup>3</sup>, Sonia Napravnik,  
5 PhD<sup>4,5</sup>, Jessie K. Edwards, PhD, MSPH<sup>5</sup>, Lindsay E. Browne, BA<sup>4</sup>, Lesley S. Park, PhD, MPH<sup>6</sup>,  
6 Amy C. Justice, MD, PhD<sup>7,8,9</sup>, Kirsha Gordon, PhD, MS<sup>8,9</sup>, Michael A. Horberg, MD, MAS<sup>10</sup>, Julia  
7 M. Certa, MPH<sup>10</sup>, Eric Watson, BA<sup>10</sup>, Celeena R Jefferson, MIT<sup>10</sup>, Michael Silverberg, PhD,  
8 MPH<sup>11</sup>, Jacek Skarbinski MD<sup>11,12</sup>, Wendy A Leyden, MPH<sup>11</sup>, and Carolyn F. Williams, PhD<sup>13</sup>,  
9 Keri N. Althoff, PhD MPH<sup>1</sup> for the Corona-Infectious-Virus Epidemiology Team (CIVETs) of the  
10 NA-ACCORD of IeDEA

- 11
- 12 1. Department of Epidemiology, Johns Hopkins Bloomberg School of Public Health,  
13 Baltimore, MD, USA
- 14 2. Department of Medicine, University of Calgary, Calgary, Canada
- 15 3. Department of Medicine, Johns Hopkins School of Medicine, Baltimore, MD, USA
- 16 4. Department of Medicine, School of Medicine, University of North Carolina at Chapel Hill,  
17 Chapel Hill, NC, USA
- 18 5. Department of Epidemiology, University of North Carolina at Chapel Hill, Chapel Hill,  
19 NC, USA
- 20 6. Stanford Center for Population Health Sciences, Palo Alto, CA, USA
- 21 7. Department of Health Policy and Management, Yale School of Public Health, New  
22 Haven, CT, USA
- 23 8. Department of Medicine, Yale School of Medicine, New Haven, CT, USA
- 24 9. VA Connecticut Healthcare System, West Haven, CT, USA
- 25 10. Kaiser Permanente Mid-Atlantic Permanente Research Institute, Rockville, MD, USA
- 26 11. Kaiser Permanente Northern California, Division of Research, Oakland CA, USA
- 27 12. Department of Infectious Diseases, Oakland Medical Center, Oakland CA, USA
- 28 13. Epidemiology Branch, Division of AIDS at National Institute of Allergy and Infectious  
29 Diseases (NIAID), National Institute of Health (NIH), Rockville, MD, USA
- 30
- 31

32 **Corresponding author:**

33 Keri N Althoff, PhD, MPH  
34 Associate Professor  
35 Department of Epidemiology  
36 Johns Hopkins Bloomberg School of Public Health  
37 615 N Wolfe St, Rm E7142  
38 Baltimore, MD 20295  
39 [kalthoff@jhu.edu](mailto:kalthoff@jhu.edu)  
40  
41

42 **Funding statement:**

43 This project was made possible with supplemental funds to the North American AIDS Cohort  
44 Collaboration on Research and Design (NA-ACCORD, U01AI069918) from the National Institute  
45 of Allergy and Infectious Diseases (NIAID).

46  
47 The NA-ACCORD is supported by National Institutes of Health grants U01AI069918,  
48 F31AI124794, F31DA037788, G12MD007583, K01AI093197, K01AI131895, K23EY013707,  
49 K24AI065298, K24AI118591, K24DA000432, KL2TR000421, N01CP01004, N02CP055504,  
50 N02CP91027, P30AI027757, P30AI027763, P30AI027767, P30AI036219, P30AI050409,

51 P30AI050410, P30AI094189, P30AI110527, P30MH62246, R01AA016893, R01DA011602,  
52 R01DA012568, R01AG053100, R24AI067039, R34DA045592, U01AA013566, U01AA020790,  
53 U01AI038855, U01AI038858, U01AI068634, U01AI068636, U01AI069432, U01AI069434,  
54 U01DA036297, U01DA036935, U10EY008057, U10EY008052, U10EY008067, U01HL146192,  
55 U01HL146193, U01HL146194, U01HL146201, U01HL146202, U01HL146203, U01HL146204,  
56 U01HL146205, U01HL146208, U01HL146240, U01HL146241, U01HL146242, U01HL146245,  
57 U01HL146333, U24AA020794, U54GM133807, UL1RR024131, UL1TR000004, UL1TR000083,  
58 UL1TR002378, Z01CP010214 and Z01CP010176; contracts CDC-200-2006-18797 and CDC-  
59 200-2015-63931 from the Centers for Disease Control and Prevention, USA; contract 90047713  
60 from the Agency for Healthcare Research and Quality, USA; contract 90051652 from the Health  
61 Resources and Services Administration, USA; the Grady Health System; grants CBR-86906,  
62 CBR-94036, HCP-97105 and TGF-96118 from the Canadian Institutes of Health Research,  
63 Canada; Ontario Ministry of Health and Long Term Care, and the Government of Alberta,  
64 Canada. Additional support was provided by the National Institute Of Allergy And Infectious  
65 Diseases (NIAID), National Cancer Institute (NCI), National Heart, Lung, and Blood Institute  
66 (NHLBI), Eunice Kennedy Shriver National Institute Of Child Health & Human Development  
67 (NICHD), National Human Genome Research Institute (NHGRI), National Institute for Mental  
68 Health (NIMH) and National Institute on Drug Abuse (NIDA), National Institute On Aging (NIA),  
69 National Institute Of Dental & Craniofacial Research (NIDCR), National Institute Of Neurological  
70 Disorders And Stroke (NINDS), National Institute Of Nursing Research (NINR), National  
71 Institute on Alcohol Abuse and Alcoholism (NIAAA), National Institute on Deafness and Other  
72 Communication Disorders (NIDCD), and National Institute of Diabetes and Digestive and Kidney  
73 Diseases (NIDDK).

74  
75 The content is solely the responsibility of the authors and does not necessarily represent the  
76 official views of the National Institutes of Health or the US Centers for Disease Control and  
77 Prevention.

78  
79 **Competing interests:**

80 KN Althoff reports grants from the National Institutes of Health (NIH, paid to institution) and  
81 consultancy to the All of Us Research Program (NIH), TrioHealth, Kennedy Dundas, and MedIQ  
82 (paid to her).

83  
84 S Napravnik, LE Brown, JK Edwards, LS Park, MA Horberg, CR Jefferson, JM Certa, J  
85 Skarbinski report grants from the NIH (paid to institution).

86  
87 BC Hogan, SB Coburn, E Humes, R Lang, W Leyden, C Stewart, E Watson, K Gordon, KA  
88 Gebo, AC Justice, MJ Silverberg, CF Williams report no conflicts of interest.

89  
90 **Keywords:** HIV, COVID-19, SARS-CoV-2, vaccination, breakthrough

91 **ABSTRACT**

92

93 **Importance:** Recommendations for additional doses of COVID vaccine are restricted to people  
94 with HIV who have advanced disease or unsuppressed HIV viral load. Understanding SARS-  
95 CoV-2 infection risk post-vaccination among PWH is essential for informing vaccination  
96 guidelines.

97

98 **Objective:** Estimate the risk of breakthrough infections among fully vaccinated people with  
99 (PWH) and without (PWoH) HIV in the US.

100

101 **Design, setting, and participants:** The Corona-Infectious-Virus Epidemiology Team (CIVET)-II  
102 cohort collaboration consists of 4 longitudinal cohorts from integrated health systems and  
103 academic health centers. Each cohort identified individuals  $\geq 18$  years old, in-care, and fully  
104 vaccinated for COVID-19 through 30 June 2021. PWH were matched to PWoH on date fully  
105 vaccinated, age group, race/ethnicity, and sex at birth. Incidence rates per 1,000 person-years  
106 and cumulative incidence of breakthrough infections with 95% confidence intervals ([,]) were  
107 estimated by HIV status. Cox proportional hazards models estimated adjusted hazard ratios  
108 (aHR) of breakthrough infections by HIV status adjusting for demographic factors, prior COVID-  
109 19 illness, vaccine type (BNT162b2, [Pfizer], mRNA-1273 [Moderna], Jansen Ad26.COVS.2.S  
110 [J&J]), calendar time, and cohort. Risk factors for breakthroughs among PWH, were also  
111 investigated.

112

113 **Exposure:** HIV infection

114

115 **Outcome:** COVID-19 breakthrough infections, defined as laboratory evidence of SARS-CoV-2  
116 infection or COVID-19 diagnosis after an individual was fully vaccinated.

117

118 **Results:** Among 109,599 individuals (31,840 PWH and 77,759 PWoH), the rate of breakthrough  
119 infections was higher in PWH versus PWoH: 44 [41, 48] vs. 31 [29, 33] per 1,000 person-years.  
120 Cumulative incidence at 210 days after date fully vaccinated was low, albeit higher in PWH  
121 versus PWoH overall (2.8% versus 2.1%, log-rank  $p < 0.001$ , risk difference=0.7% [0.4%, 1.0%])  
122 and within each vaccine type. Breakthrough infection risk was 41% higher in PWH versus  
123 PWoH (aHR=1.41 [1.28, 1.56]). Among PWH, younger age (18-24 versus 45-54), history of  
124 COVID-19 prior to fully vaccinated date, and J&J vaccination (versus Pfizer) were associated  
125 with increased risk of breakthroughs. There was no association of breakthrough with HIV viral  
126 load suppression or CD4 count among PWH.

127

128 **Conclusions and Relevance:** COVID-19 vaccination is effective against infection with SARS-  
129 CoV-2 strains circulating through 30 Sept 2021. PWH have an increased risk of breakthrough  
130 infections compared to PWoH. Recommendations for additional vaccine doses should be  
131 expanded to all PWH.

132 **INTRODUCTION**

133 As vaccines for COVID-19 continue to be distributed in the United States (US),  
134 breakthrough infections are occurring in a small percentage of vaccinated individuals, observed  
135 in both clinical trials<sup>1-3</sup> and observational settings.<sup>4-9</sup> Characterizing breakthrough infections is  
136 critical for efforts to curb the pandemic and to deepen our understanding of the scope of  
137 population immunity conferred by vaccination. Additionally, the rate of breakthrough infections is  
138 necessary information for setting public health policies, including prioritization of additional  
139 doses for the primary series and boosters.

140 Immunocompromised individuals may be particularly at risk for breakthrough infections  
141 relative to the US general population. Studies have indicated that solid-organ transplant  
142 recipients are at increased risk of breakthrough infections relative to individuals who are not  
143 immunocompromised.<sup>10-12</sup> People with HIV (PWH) are an immunocompromised population who  
144 may benefit from additional vaccination doses to minimize their risk of acquiring SARS-CoV-2  
145 infection, though this has not been comprehensively investigated. Clinical trial data for vaccines  
146 available in the US were insufficiently powered to stratify outcomes by HIV status.<sup>1-3</sup> Although  
147 two observational studies have compared the risk of breakthrough infection among PWH versus  
148 without HIV (PWoH), these were limited in geographic scope, number of individuals with HIV,  
149 and generalizability to the broader population of PWH in the US.<sup>10,13</sup> These studies also did not  
150 address differences in breakthrough rates among PWH by vaccine type or by clinically relevant  
151 factors including HIV viral suppression or CD4 count at the time of vaccination, which could  
152 impact risk.

153 The US Centers for Disease Control and Prevention's (CDC's) guidance for PWH is  
154 specific to those with advanced or untreated HIV and includes the recommendation of an  
155 additional primary dose 28 days after a second dose of the mRNA-1273 (Moderna) or BNT162  
156 (Pfizer) vaccines and eligibility for a subsequent booster dose; there is no recommendation for

157 an additional primary series does of Janssen Ad26.COVS.S (J&J), however, a booster (of any  
158 vaccine type) is recommended 2 months after a single J&J dose.<sup>14</sup> Current recommendations  
159 do not consider treated PWH who are HIV suppressed, many of whom have chronic immune  
160 impairment such as partially recovered CD4 counts, or persistent immune activation and  
161 dysfunction from their HIV infection.<sup>15</sup> These PWH may still be at increased risk for  
162 breakthrough infections compared to PWH and may benefit from an additional dose in their  
163 mRNA primary series or a booster 2 months after a single dose of J&J. More detailed and  
164 generalizable evaluations of breakthrough infections among PWH versus PWH are needed to  
165 inform US vaccine guidelines on the primary vaccine schedule for all PWH.

166 Our objective was to determine if HIV status is associated with an increased rate or risk  
167 of breakthrough infection among fully vaccinated individuals in a collaboration of four  
168 longitudinal cohorts from integrated health systems or academic health centers in the US, by  
169 vaccination type, and by immune/viral suppression status at the time of vaccination among  
170 PWH.

171

## 172 **METHODS**

### 173 *Study population*

174 The Corona-Infectious-Virus Epidemiology Team (CIVET)-II cohort, established in  
175 September 2021, is comprised of four cohorts from integrated health systems and academic  
176 health centers that contribute longitudinal data on PWH to the North American AIDS Cohort  
177 Collaboration on Research and Design (NA-ACCORD).<sup>16</sup> A collaboration allowed for a large  
178 and geographically diverse sample of PWH from which inferences could be made. The cohorts  
179 span several US geographic regions and include the following: Kaiser Permanente Mid-Atlantic  
180 States (Maryland, District of Columbia, northern Virginia), Kaiser Permanente Northern  
181 California, University of North Carolina Chapel Hill HIV Clinic, and the Veterans Aging Cohort

182 Study (VACS) which is a sample of all PWH receiving care within the National US Veterans  
183 Affairs Healthcare System. The four cohorts received approval from their local institutional  
184 review boards (IRB) and the overall project was approved by the Johns Hopkins Bloomberg  
185 School of Public Health IRB.

186 The CIVET-II cohort collaboration participants include PWH and PWOH observed during  
187 the COVID-19 pandemic. Adults ( $\geq 18$  years old) “in-care” (determined by unique criteria for  
188 each site; see **Supplement Table S1**) and fully vaccinated against COVID-19 between  
189 December 11, 2020 (date of Emergency Use Authorization of the first COVID-19 vaccine) and  
190 June 30, 2021 were eligible. Full vaccination status was defined using CDC criteria depending  
191 on the vaccine type: a) 14 days after the second dose for those receiving Pfizer or Moderna  
192 mRNA vaccines; or b) 14 days after the single dose of the J&J viral vector vaccine.<sup>17</sup> Individuals  
193 were excluded from the study population if they received a vaccine that was not authorized in  
194 the US.

195 Each fully vaccinated PWH was matched to three PWOH on the date considered fully  
196 vaccinated ( $\pm 14$  days), 10-year age group (18-24, 25-34, 35-44, 45-54, 55-64, 65-74,  $\geq 75$   
197 years), race/ethnicity (Black/African American, white, Hispanic, Asian, other, unknown), and sex  
198 at birth (female or male). When necessary, PWH could be matched to individuals either one age  
199 group above or below their category. If three matches were not available, PWH could be  
200 matched to one or two PWOH to maximize the study population size. All cohorts completed this  
201 matching schema except for VACS (N=65,440), which has its own long-standing schema to  
202 match each veteran with HIV to two veterans without HIV on age, race/ethnicity, sex, and  
203 clinical site at the establishment of the cohort and during its dynamic enrollment as veterans  
204 enter HIV care; the VACS participants were not matched on vaccination date.<sup>18</sup> All variables,  
205 irrespective of HIV status, including matching factors described above, were abstracted from  
206 electronic medical records.

207

208 *Outcome: Breakthrough infection after fully vaccinated*

209       The first infection with SARS-CoV-2 or COVID-19 illness diagnosed after the date an  
210 individual is fully vaccinated (14 days after the last required dose) was defined as a  
211 breakthrough case (**Supplemental Figure S1**). Incident COVID-19 cases were identified using:  
212 1) positive or detectable SARS-CoV-2 nucleic acid amplification assay (NAAT) or antigen test;  
213 and/or 2) International Statistical Classification of Diseases and Related Health Problems (ICD)-  
214 10 codes U07.1 (specific to COVID), B34.2 (Coronavirus infection, unspecified), B97.21 (SARS-  
215 associated coronavirus causing disease classified elsewhere), B97.29 (other coronavirus as the  
216 cause of diseases classified elsewhere, or J12.81 (pneumonia due to SARS-associated  
217 coronavirus).

218       For each patient, all positive SARS-CoV-2 laboratory tests were identified. Any  
219 additional positive laboratory tests and/or ICD-10 diagnoses occurring within +/- 90 days of that  
220 date of a positive or detectable SARS-CoV-2 test result were considered persistent infection  
221 (**Supplemental Figure S1**). The 90-day window was implemented based on the CDC's  
222 suggestion that diagnosis of re-infections should not be considered until 90-days after evidence  
223 of initial infection as test positivity and symptoms can be prolonged.<sup>19</sup> In instances where there  
224 was a COVID-19 diagnosis within the 90-day window of a positive or detectable test result, only  
225 the date of the laboratory test was used to define the date of the breakthrough case; positive  
226 laboratory results were prioritized over diagnosis codes for calculation of breakthrough date due  
227 to their greater specificity. This same process was completed for ICD-10 diagnoses that did not  
228 occur within +/- 90 window of another laboratory test.

229

230 *Exposure: HIV infection*



231 PWH were identified using HIV registries or ICD diagnosis codes for HIV, depending on  
232 the participating cohort (see **Supplemental Table S1**). PWOH were classified as such if there  
233 was no evidence of infection using these same sources as of December 11, 2020 (including no  
234 positive ELISA or Western blot tests, no HIV RNA measurements, no ICD diagnosis codes, and  
235 not found in an HIV registry).

236

### 237 *Covariates*

238 In addition to demographics used to match fully vaccinated PWH to PWOH (i.e., age,  
239 race and ethnicity, sex at birth), covariates of interest included the type of primary series  
240 vaccine (Pfizer, Moderna, J&J), vaccine dose received  $\geq 90$  days after the completion of the  
241 primary series, and evidence of COVID-19 infection prior to date fully vaccinated (history of  
242 COVID-19). COVID-19 diagnoses prior to date fully vaccinated included both infection prior to  
243 any vaccination and those that occurred in the window between the first dose but before full  
244 vaccination (partial breakthrough). These were identified using the approach used to identify our  
245 main outcome.

246 Among PWH, CD4 count and HIV-1 RNA viral suppression status were collected as  
247 close to date full vaccination as possible (within a window of 1 Jan 2020 to full vaccination) and  
248 at antiretroviral therapy (ART) initiation (within a window of 12 months prior to 1 month after).  
249 HIV viral suppression was defined as  $< 50$  copies/mL, which was the highest lower limit of  
250 quantification used across the health systems. History of AIDS diagnosis (clinical diagnosis<sup>20</sup> or  
251 CD4 count  $< 200$  cells/mm<sup>3</sup>, depending on the cohort) prior to date fully vaccinated was  
252 included.

253

### 254 *Statistical analysis*



255 Study entry for eligible individuals was the date they were fully vaccinated (defined as 14  
256 days after final dose of series). Individuals were followed to the date of breakthrough infection,  
257 death, disenrollment from the health system (applicable to only 2 of the 4 health systems), 210  
258 days (7 months) post-fully vaccinated date, or until September 30<sup>th</sup>, 2021, whichever occurred  
259 first.

260 We assessed the distributions of demographic and clinical characteristics to determine  
261 potential differences between PWH and PWOH. Differences were detected using  $\chi^2$  tests for  
262 categorical variables.

263 Incidence rates and 95% confidence intervals ([,]) of COVID-19 breakthrough infections  
264 after the date fully vaccinated were calculated per 1,000 person-years (PY) for each month  
265 overall, by HIV status, and by vaccine type.

266 The 7-month (210 days) cumulative incidence of breakthrough infections by HIV status  
267 was estimated from the date fully vaccinated. Cumulative incidence estimates were stratified by  
268 HIV status, and among PWH, CD4 count (<200, 200-349, 350-499, and 500 cells/mm<sup>3</sup>) and viral  
269 suppression status (<50 copies/mL). Cumulative incidence was also estimated by HIV status for  
270 each vaccine type. Log-rank tests were calculated to test for significant differences in  
271 cumulative incidence on Kaplan-Meier curves.

272 We compared the risk of breakthrough infection by HIV status using a Cox proportional  
273 hazard models to estimate unadjusted and adjusted hazard ratios (aHR) with 95% confidence  
274 intervals. Adjustment factors included: sex, race/ethnicity, age, primary vaccine series type,  
275 cohort, and an interaction between a history of COVID-19 and 3-month calendar period  
276 (January-March, April-June, and July-September 2021). The interaction term was included  
277 because Schoenfeld's residuals suggested the hazard of breakthrough was not proportional for  
278 those with a history of COVID-19 during our study period [p<0.01], and a likelihood ratio test  
279 suggested a better fit of the model with the interaction [p<0.01]. Subgroup analyses included: a)

280 excluding those with a history of COVID-19 prior to full vaccination; b) excluding VACS  
281 participants due to the differences in matching strategies.

282 Among PWH, HIV-associated risk factors for breakthrough infections were examined,  
283 including CD4 count (<200 cells/mm<sup>3</sup>, 200-349 cells/mm<sup>3</sup>, 350-499 cells/mm<sup>3</sup>, and ≥500  
284 cells/mm<sup>3</sup>), and detectable viral load (<50 copies/mL), accounting for the covariates included in  
285 the main analysis of PWH and PWOH. Sub-group analyses excluding those with a history of  
286 COVID-19 prior to full vaccination and VACS participants were conducted.

287 All analyses were conducted in R and a p-value<0.05 was considered statistically  
288 significant.

289

## 290 RESULTS

291 Of the 109,719 fully vaccinated patients, 120 (40 PWH and 80 PWOH) were excluded  
292 due to mixing of vaccine type within the primary series, resulting in a study population of  
293 109,599 patients (31,840 PWH and 77,759 PWOH) (**Table 1**). Most patients were 55 years and  
294 older (71%), male (92%), and non-Hispanic Black (41%). Most participants received either the  
295 Pfizer (51%) or the Moderna (43%) vaccines. A small minority received J&J (6%). Although we  
296 did not match on vaccine type, the distribution of vaccine type by HIV status did not differ by  
297 more than 2 percentage points. Twenty-six percent of PWH received an additional COVID-19  
298 vaccine dose after their primary series compared to 12% of PWOH. Differences in the  
299 characteristics of PWH who did and did not receive an additional vaccine dose after their  
300 primary series can be found in **Supplementary Table S2**). Among PWH, 15% had a history of  
301 AIDS prior to vaccination. At the time of full vaccination, 88% of PWH were virally suppressed  
302 and the median CD4 count was 622 cells/mm<sup>3</sup> (IQR: 424, 846).

303 The overall incidence rate of breakthrough infections was 35 [33, 36] per 1,000 person-  
304 years (1,767 breakthroughs among 50,731 PY). The incidence rate of breakthrough infections

305 was higher in PWH (44 [41, 48] per 1,000 PY) versus PWOH (31 [29, 33] per 1,000 PY). The  
306 incidence rate of breakthrough infections was highest with the J&J vaccine (59 [51, 69] per  
307 1,000 PY), followed by Pfizer (40 [37, 42] per 1,000 PY), and Moderna (26 [24, 28] per 1,000  
308 PY, **Supplemental Table S3**). Stratified by vaccine type, the rate of breakthroughs was  
309 consistently higher among PWH versus PWOH. The higher rate of breakthroughs among PWH  
310 remained after stratifying by calendar time, especially in July and August of 2021 (**Figure 1**).  
311 There was a bimodal distribution of breakthrough infections by calendar month which was  
312 congruent with waves of the US epidemic occurring in January-February 2021 and July-  
313 September 2021.

314 The cumulative incidence of breakthrough infections regardless of vaccine type at 210  
315 days (i.e., 7 months) after date fully vaccinated was 2.3% [2.2%, 2.5%] (**Figure 2a**), and higher  
316 among PWH (2.8% [2.6%, 3.1%]) versus PWOH (2.1% [2.0% 2.3%], log rank  $p < 0.01$ ). The risk  
317 difference between the cumulative incidence of breakthrough infections was 0.68% (95% CI  
318 0.38, 0.98) higher in PWH. When stratified by CD4 count, PWH with lower CD4 counts at full  
319 vaccination had higher cumulative incidence of breakthroughs, although this was not statistically  
320 significant (log-rank  $p = 0.18$  after excluding PWOH, **Figure 2b**). Similarly, PWH with  
321 unsuppressed HIV viral load had a higher risk of breakthrough infection those with suppressed  
322 viral load, but this was not statistically significant (log-rank  $p = 0.47$  after excluding PWOH, **Figure**  
323 **2c**). PWH had higher cumulative incidence of breakthrough, regardless of CD4 count or HIV  
324 viral load suppression, as compared to PWOH (**Figures 2b and 2c**).

325 The risk of breakthrough infection differed by vaccine type (**Figure 3**). The overall risk of  
326 breakthrough was highest with J&J (3.3% [2.7, 3.8%]), followed by Pfizer (2.6% [2.5%, 2.8%])  
327 and Moderna (1.7% [1.6%, 1.9%]) at 210 days post-full vaccination. The risk remained  
328 consistently higher among PWH versus PWOH across vaccine types.

329 PWH had a significantly higher risk of breakthrough infection compared to PWOH  
330 (aHR=1.41 [1.28, 1.56]) after adjusting for covariates of interest (described above) (**Table 2**).  
331 The association was robust in subgroup analyses where: a) individuals with of history of COVID-  
332 19 were excluded (103,036 individuals after exclusion; aHR=1.40 [1.26, 1.56]); and b) VACS  
333 individuals were excluded (44,159 individuals after exclusion; aHR=1.54 [1.33, 1.79]).

334 Among PWH (25,478 after exclusion for missing risk factor data), older age (55-74  
335 years) was associated with decreased risk of breakthrough, and younger age (18-24 years) was  
336 associated with increased risk, as compared to individuals ages 44-54 (**Table 2**). Compared to  
337 those with Pfizer, individuals who received the Moderna primary vaccination series had a  
338 reduced risk of breakthrough (aHR: 0.61 [0.51, 0.74]), while those with the J&J primary  
339 vaccination series had an increased risk of breakthrough (aHR: 1.35 [1.01, 1.82]). The risk of  
340 breakthrough infection was higher during the Delta variant (B.1.617.2) surge in the July-  
341 September 2021 3-month calendar period relative to April-June 2021 (reference period). There  
342 was no association with unsuppressed (vs. suppressed) HIV viral load and the risk or  
343 breakthrough decreased with increasing CD4 count, but this was not statistically significant.  
344 There was a near three-fold increase in the risk of breakthrough among those with evidence of a  
345 history of COVID-19 (aHR: 2.87 [2.30, 3.56]). After removing those with a history of COVID-19  
346 prior to the date fully vaccinated (23,630 individuals after exclusion), the estimated associations  
347 of age, vaccine type, 3-month calendar period, unsuppressed viral load, and CD4 count were  
348 similar (data not shown). After removing VACS participants (9,517 individuals after exclusion),  
349 the risk of breakthrough among those with a history of COVID-19 prior to the date fully  
350 vaccinated was attenuated to a null association (aHR=0.93 [0.56, 1.56]) and the estimated  
351 associations of age, vaccine type, 3-month calendar period, unsuppressed viral load, and CD4  
352 count were similar (data not shown).

353

354 **DISCUSSION**

355           Among 109,599 fully vaccinated individuals receiving care at four academic or integrated  
356 health care systems across varied geographic regions in the US, breakthroughs were  
357 uncommon in vaccinated PWH and PWOH. As anticipated, only 2.3% of vaccinated individuals  
358 had breakthrough infections in the 7 months after being fully vaccinated, further demonstrating  
359 the effectiveness of the vaccines against the SARS-CoV-2 variants circulating prior to 30 Sept  
360 2021. However, there was a consistently higher occurrence of breakthrough infections among  
361 PWH (compared to PWOH) following full COVID-19 vaccination. The higher risk of breakthrough  
362 infection among PWH versus PWOH persisted in regression analyses after adjustment for  
363 demographic factors and other covariates of interest. The cumulative incidence 210 days post  
364 full vaccination was higher in PWH compared with PWOH (2.8% vs. 2.1%). The higher rates and  
365 risk remained when stratified by vaccine type, though breakthrough occurrence overall was  
366 highest in J&J and lowest in Moderna vaccine preparations. Among PWH, the cumulative  
367 incidence and relative risks of breakthroughs was not statistically significantly different by CD4  
368 count or HIV viral load suppression. Even among PWH with higher CD4 counts and suppressed  
369 HIV viral loads, the risk of breakthrough was greater than in PWOH, suggesting the CDC's  
370 recommendations for an additional dose in the primary mRNA vaccination series and a booster  
371 after a single dose of J&J should not be restricted to PWH who have advanced disease or  
372 unsuppressed HIV viral load.

373           This is a time-to-event investigation of breakthrough infections by HIV status in a large  
374 study population followed longitudinally across several geographic regions in the US. Two prior  
375 observational studies found no significant association between HIV status and breakthrough  
376 infection risk.<sup>10,13</sup> In the present analysis, we found a 41% increased risk of breakthrough  
377 infection in PWH versus PWOH after adjusting for demographic factors. This discrepancy may  
378 be due to differences in sample size and/or calendar periods of follow-up. Our findings are

379 consistent with studies that implicate other immunocompromising conditions (e.g., solid-organ  
380 transplant, use of immune suppressing medications, active cancer diagnosis) have increased  
381 risk of breakthrough.<sup>10–12</sup> Regardless of CD4 count, the cumulative incidence of breakthroughs  
382 was higher among PWH versus PWOH, which is suggestive of residual immune function  
383 abnormalities despite CD4 count recovery.

384 Our observation of differential breakthrough risk by vaccine type is consistent with  
385 studies showing lower effectiveness for J&J relative to the mRNA vaccines,<sup>21</sup> and, among  
386 mRNA vaccines, more breakthroughs among those with Pfizer primary series than Moderna  
387 (though estimates were not always statistically significant).<sup>10,13,22</sup>

388 Among PWH, the finding that older age was associated with lower risk of breakthrough  
389 infections are likely not representative of a biological association, but rather behavioral  
390 modifications by older individuals to follow prevention guidelines more closely.<sup>23,24</sup> The  
391 observation that breakthrough risk varied by calendar period was expected, given the state of  
392 the pandemic during those months, which aligns with the surge of infections seen with the Delta  
393 variant.<sup>25</sup> The association we observed between history of COVID-19 prior to vaccination and  
394 increased breakthrough risk among PWH may be a reflection of increased exposure and/or  
395 adoption (or lack thereof) of prevention measures. For example, PWH with increased exposure  
396 (perhaps occupational) prior to being fully vaccinated may have had persistent increased  
397 exposure post-full vaccination, leading to increased breakthroughs. This may also reflect the  
398 increased burden of underlying comorbidities among people aging with HIV that increased their  
399 vulnerability to COVID-19. Detecting COVID-19 prior to, and after, being fully vaccinated may  
400 also be a function of lower barriers to accessing care and regularly seek care. These  
401 hypotheses are supported by the attenuation (to null) of the association of a history of COVID-  
402 19 prior to fully vaccinated with breakthrough in the subgroup analysis excluding VACS  
403 participants.

404 Our findings are not necessarily reflective of all PWH in the US, as we were only able to  
405 assess individuals with access to care. We may not have captured those who had less regular  
406 access to health care, who may also be at greater risk for infection. For instance, one study  
407 showed that individuals with substance use disorders have a higher risk of breakthrough  
408 infections.<sup>22</sup> Individuals engaged in HIV care may have more health-seeking behaviors,  
409 including regular COVID-19 testing, which could lead to higher detection of breakthrough  
410 infections than what is observed in the general population. Future analyses should account for  
411 testing practices when assessing breakthrough infection risk in this population. Relatedly, PWH  
412 are at higher risk for severe COVID-19 outcomes compared to PWOH.<sup>26,27</sup> Because  
413 symptomatic disease is identified more frequently than asymptomatic disease, this could lead to  
414 differentially higher detection in PWH. Similarly, differentially higher detection of SARS-CoV-2 in  
415 PWH (vs. PWOH) could occur if PWH are more likely to have detectable SARS-CoV-2 virus  $\geq 90$   
416 days after infection, as has been shown in a case report of a PWH with advanced disease and  
417 other who are immune-compromised.<sup>28-30</sup> Though our matching schema was not consistent,  
418 with one cohort having already matched on demographic factors, distributions of our matching  
419 factors indicate that our sample of PWH and PWOH were comparable; we included the matching  
420 factors in multivariable analyses to address residual confounding. Lastly, observation time for  
421 individuals was necessarily short (<1 year per person) given when vaccines became available.  
422 We will continue to monitor breakthroughs monthly to accrue more follow-up time and assess  
423 breakthrough risk among PWH through December 2021. This will become especially relevant as  
424 more primary series doses and booster vaccines are administered (given recent changes in  
425 CDC recommendations) and variants, including Omicron (B.1.1.529), emerge and circulate.

426 For PWH, the CDC recommends an additional primary series dose 28 days after the  
427 second mRNA dose, or a booster dose 2 months after a single J&J dose, among those with  
428 advanced or untreated HIV. Our findings indicate all PWH should be included in this



429 recommendation as the risk of breakthrough was higher in PWH than PWoH regardless of CD4  
430 count (reflecting advanced disease) or HIV viral suppression (reflecting treatment). Given our  
431 findings of breakthrough by vaccine type, clinicians should consider a booster immediately  
432 among PWH who received J&J, potentially initiating a two-dose mRNA series, as recommended  
433 by HIV Medical Association and the Infectious Diseases Society of America.<sup>31</sup> The increased  
434 risk of breakthrough infections in PWH merits continued monitoring by vaccine type as the  
435 COVID-19 pandemic persists, immunity to primary vaccine series wane, boosters are widely  
436 recommended, and new variants emerge.  
437

## 438 REFERENCES

- 439 1. Polack FP, Thomas SJ, Kitchin N, et al. Safety and Efficacy of the BNT162b2 mRNA  
440 Covid-19 Vaccine. *N Engl J Med*. 2020;383(27):2603-2615. doi:10.1056/nejmoa2034577
- 441 2. Baden LR, El Sahly HM, Essink B, et al. Efficacy and Safety of the mRNA-1273 SARS-  
442 CoV-2 Vaccine. *N Engl J Med*. 2021;384(5):403-416. doi:10.1056/nejmoa2035389
- 443 3. Sadoff J, Gray G, Vandebosch A, et al. Safety and Efficacy of Single-Dose Ad26.COV2.S  
444 Vaccine against Covid-19. *N Engl J Med*. 2021;384(23):2187-2201.  
445 doi:10.1056/nejmoa2101544
- 446 4. Birhane M, Bressler S, Chang G, et al. COVID-19 Vaccine Breakthrough Infections  
447 Reported to CDC — United States, January 1–April 30, 2021. *MMWR Morb Mortal Wkly*  
448 *Rep*. 2021;70(21):792-793. doi:10.15585/mmwr.mm7021e3
- 449 5. Teran RA, Walblay KA, Shane EL, et al. Postvaccination SARS-CoV-2 infections among  
450 skilled nursing facility residents and staff members — Chicago, Illinois, December 2020–  
451 March 2021. *Am J Transplant*. 2021;21(6):2290-2297. doi:10.1111/ajt.16634
- 452 6. Butt AA, Yan P, Shaikh OS, Mayr FB. Outcomes among patients with breakthrough  
453 SARS-CoV-2 infection after vaccination in a high-risk national population.  
454 *EClinicalMedicine*. 2021;40:101117. doi:10.1016/j.eclinm.2021.101117
- 455 7. Hacısuleyman E, Hale C, Saito Y, et al. Vaccine Breakthrough Infections with SARS-  
456 CoV-2 Variants. *N Engl J Med*. 2021;384(23):2212-2218. doi:10.1056/nejmoa2105000
- 457 8. Thompson MG, Burgess JL, Naleway AL, et al. Interim Estimates of Vaccine  
458 Effectiveness of BNT162b2 and mRNA-1273 COVID-19 Vaccines in Preventing SARS-  
459 CoV-2 Infection Among Health Care Personnel, First Responders, and Other Essential  
460 and Frontline Workers — Eight U.S. Locations, December 2020–March . *MMWR Morb*  
461 *Mortal Wkly Rep*. 2021;70(13):495-500. doi:10.15585/mmwr.mm7013e3
- 462 9. Tang L, Hijano DR, Gaur AH, et al. Asymptomatic and Symptomatic SARS-CoV-2  
463 Infections after BNT162b2 Vaccination in a Routinely Screened Workforce. *JAMA - J Am*  
464 *Med Assoc*. 2021;325(24):2500-2502. doi:10.1001/jama.2021.6564
- 465 10. Liu C, Lee J, Ta C, et al. A Retrospective Analysis of COVID-19 mRNA Vaccine  
466 Breakthrough Infections – Risk Factors and Vaccine Effectiveness. *medRxiv*. October  
467 2021. doi:10.1101/2021.10.05.21264583
- 468 11. Malinis M, Cohen E, Azar MM. Effectiveness of SARS-CoV-2 vaccination in  
469 fully-vaccinated solid organ transplant recipients. *Am J Transplant*. 2021;21(8):2916-  
470 2918. doi:10.1111/AJT.16713
- 471 12. Anjan S, Natori Y, Betances AAF, et al. Breakthrough COVID-19 Infections After mRNA  
472 Vaccination in Solid Organ Transplant Recipients in Miami, Florida. *Transplantation*.  
473 2021;105(10):e139. doi:10.1097/TP.0000000000003902
- 474 13. Butt AA, Khan T, Yan P, Shaikh OS, Omer SB, Mayr F. Rate and risk factors for  
475 breakthrough SARS-CoV-2 infection after vaccination. *J Infect*. 2021;83(2).  
476 doi:10.1016/j.jinf.2021.05.021
- 477 14. Centers for Disease Control and Prevention. COVID-19 Vaccines for Moderately to  
478 Severely Immunocompromised People | CDC. <https://www.cdc.gov/coronavirus/2019-ncov/vaccines/recommendations/immuno.html>. Accessed October 28, 2021.
- 479 15. Deeks SG. HIV Infection, Inflammation, Immunosenescence, and Aging. *Annu Rev Med*.  
480 2011;62:141-155. doi:10.1146/annurev-med-042909-093756
- 481 16. Gange SJ, Kitahata MM, Saag MS, et al. Cohort profile: the North American AIDS Cohort  
482 Collaboration on Research and Design (NA-ACCORD). *Int J Epidemiol*. 2007;36(2):294-  
483 301. doi:10.1093/ije/dyl286
- 484 17. When You've Been Fully Vaccinated | CDC. <https://www.cdc.gov/coronavirus/2019-ncov/vaccines/fully-vaccinated.html>. Accessed November 4, 2021.
- 485
- 486

- 487 18. Fultz SL, Skanderson M, Mole LA, et al. Development and verification of a “virtual” cohort  
488 using the national VA health information system. *Med Care*. 2006;44(8 SUPPL. 2).  
489 doi:10.1097/01.mlr.0000223670.00890.74
- 490 19. Investigative Criteria for Suspected Cases of SARS-CoV-2 Reinfection (ICR) | CDC.  
491 <https://www.cdc.gov/coronavirus/2019-ncov/php/invest-criteria.html>. Accessed November  
492 10, 2021.
- 493 20. Centers for Disease Control and Prevention. AIDS-Defining Conditions. MMWR  
494 Recommendations and Reports.  
495 <https://www.cdc.gov/mmwr/preview/mmwrhtml/rr5710a2.htm>. Published December 5,  
496 2008. Accessed November 17, 2021.
- 497 21. Cohn BA, Cirillo PM, Murphy CC, Krigbaum NY, Wallace AW. SARS-CoV-2 vaccine  
498 protection and deaths among US veterans during 2021. *Science (80- )*. November 2021.  
499 doi:10.1126/SCIENCE.ABM0620
- 500 22. Wang L, Wang QQ, Davis PB, Volkow ND, Xu R. Increased risk for COVID-19  
501 breakthrough infection in fully vaccinated patients with substance use disorders in the  
502 United States between December 2020 and August 2021. *World Psychiatry*. 2021.  
503 doi:10.1002/WPS.20921
- 504 23. Margraf J, Brailovskaia J, Schneider S. Behavioral measures to fight COVID-19: An 8-  
505 country study of perceived usefulness, adherence and their predictors. *PLoS One*.  
506 2020;15(12). doi:10.1371/JOURNAL.PONE.0243523
- 507 24. Lu P, Kong D, Shelley M. Risk Perception, Preventive Behavior, and Medical Care  
508 Avoidance among American Older Adults During the COVID-19 Pandemic. *J Aging*  
509 *Health*. 2021;33(7-8):577-584. doi:10.1177/08982643211002084
- 510 25. CDC COVID Data Tracker. CDC COVID-19 Case Line-Level Data, 2019 US Census,  
511 HHS Protect. <https://covid.cdc.gov/covid-data-tracker/#demographicsovertime>. Accessed  
512 November 6, 2021.
- 513 26. Yang X, Sun J, Patel RC, et al. Associations between HIV infection and clinical spectrum  
514 of COVID-19: a population level analysis based on US National COVID Cohort  
515 Collaborative (N3C) data. *Lancet HIV*. 2021;8(11):e690-e700. doi:10.1016/S2352-  
516 3018(21)00239-3/ATTACHMENT/8C85A77E-AEF3-4AD8-A2D0-  
517 3CEAE40AEEA7/MMC1.PDF
- 518 27. Tesoriero JM, Swain C-AE, Pierce JL, et al. COVID-19 Outcomes Among Persons Living  
519 With or Without Diagnosed HIV Infection in New York State. *JAMA Netw open*.  
520 2021;4(2):e2037069. doi:10.1001/JAMANETWORKOPEN.2020.37069
- 521 28. Yousaf M, Hameed M, Alsoub H, Khatib M, Jamal W, Ahmad M. COVID-19: Prolonged  
522 viral shedding in an HIV patient with literature review of risk factors for prolonged viral  
523 shedding and its implications for isolation strategies. *Clin Case Reports*. 2021;9(3):1397-  
524 1401. doi:10.1002/CCR3.3786
- 525 29. Corsini Campioli C, Cano Cevallos E, Assi M, Patel R, Binnicker MJ, O'Horo JC. Clinical  
526 predictors and timing of cessation of viral RNA shedding in patients with COVID-19. *J*  
527 *Clin Virol*. 2020;130. doi:10.1016/J.JCV.2020.104577
- 528 30. Li TZ, Cao ZH, Chen Y, et al. Duration of SARS-CoV-2 RNA shedding and factors  
529 associated with prolonged viral shedding in patients with COVID-19. *J Med Virol*.  
530 2021;93(1):506-512. doi:10.1002/JMV.26280
- 531 31. HIV Medicine Association. COVID-19 Vaccines and People with HIV Frequently Asked  
532 Questions. [www.hivma.org](http://www.hivma.org). Accessed November 15, 2021.
- 533

## TABLES AND FIGURES

**Table 1:** Characteristics at date SARS-CoV-2 fully vaccinated of people with (PWH) and without HIV (PWoH), N=109,599

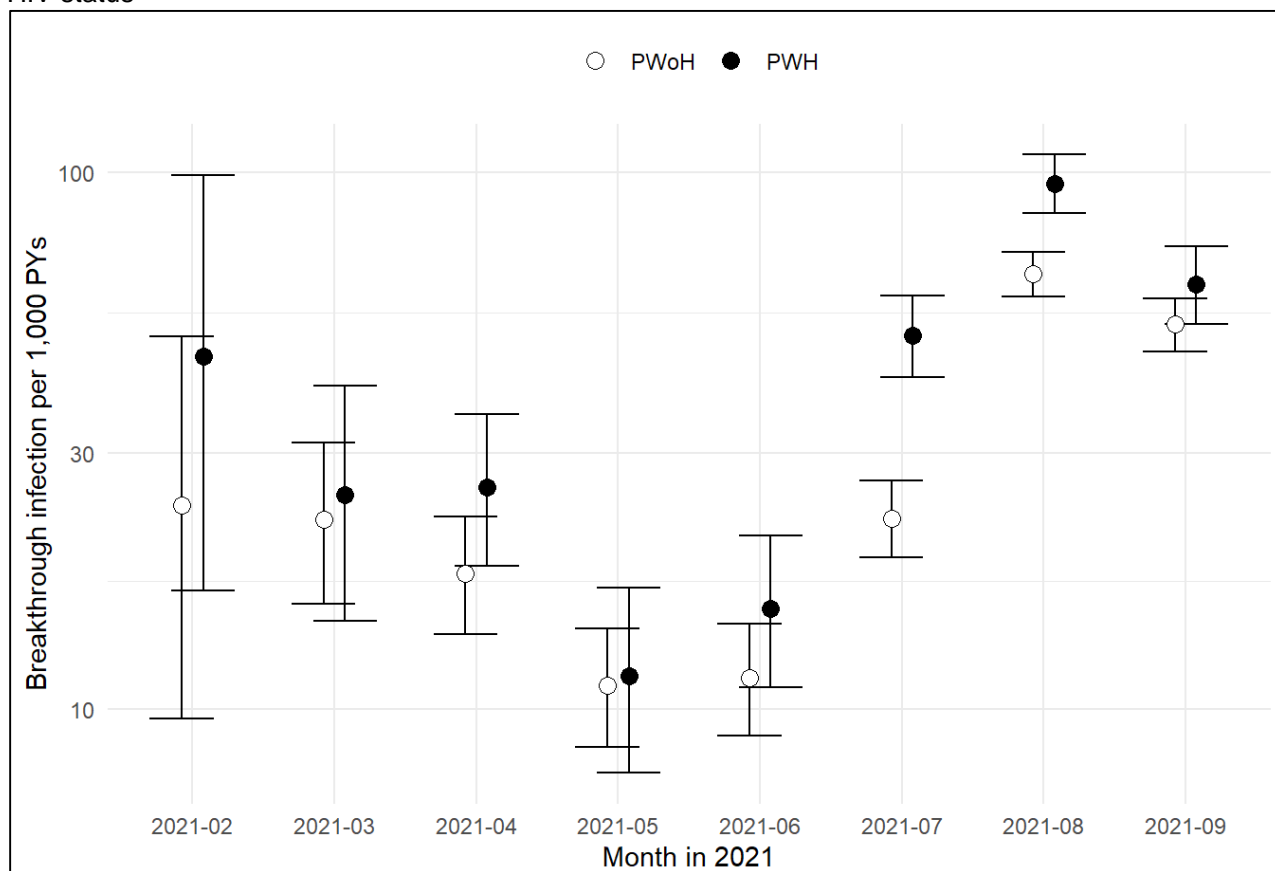
Characteristic	Overall, N = 109,599 <sup>1</sup>	PWoH, N = 77,759 <sup>1</sup>	PWH, N = 31,840 <sup>1</sup>
<b>Age (years)</b>			
18-24	293 (0.3%)	212 (0.3%)	81 (0.3%)
25-34	4,273 (3.9%)	2,754 (3.5%)	1,519 (4.8%)
35-44	9,827 (9.0%)	6,595 (8.5%)	3,232 (10.2%)
45-54	17,791 (16.2%)	12,275 (15.8%)	5,516 (17.3%)
55-64	35,529 (32.4%)	24,907 (32.0%)	10,622 (33.4%)
65-74	31,981 (29.2%)	23,631 (30.4%)	8,350 (26.2%)
75+	9,905 (9.0%)	7,385 (9.5%)	2,520 (7.9%)
<b>Sex</b>			
Male	101,187 (92.3%)	71,551 (92.0%)	29,636 (93.1%)
Female	8,412 (7.7%)	6,208 (8.0%)	2,204 (6.9%)
<b>Ethnicity and Race</b>			
Non-Hispanic white	42,005 (38.3%)	29,374 (37.8%)	12,631 (39.7%)
Non-Hispanic Black/African American	44,487 (40.6%)	31,635 (40.7%)	12,852 (40.4%)
Hispanic	14,707 (13.4%)	10,709 (13.8%)	3,998 (12.6%)
Non-Hispanic Asian	3,857 (3.5%)	2,837 (3.6%)	1,020 (3.2%)
Other	3,432 (3.1%)	2,392 (3.1%)	1,040 (3.3%)
Unknown	1,111 (1.0%)	812 (1.0%)	299 (0.9%)
<b>Month fully vaccinated</b>			
January 2021	1,169 (1.1%)	826 (1.1%)	343 (1.1%)
February 2021	11,603 (10.6%)	7,963 (10.2%)	3,640 (11.4%)
March 2021	28,775 (26.3%)	20,293 (26.1%)	8,482 (26.6%)
April 2021	41,680 (38.0%)	29,770 (38.3%)	11,910 (37.4%)
May 2021	19,793 (18.1%)	14,288 (18.4%)	5,505 (17.3%)
June 2021	6,579 (6.0%)	4,619 (5.9%)	1,960 (6.2%)

Characteristic	Overall, N = 109,599 <sup>1</sup>	PWoH, N = 77,759 <sup>1</sup>	PWH, N = 31,840 <sup>1</sup>
<b>Primary vaccination series type</b>			
Pfizer	55,906 (51.0%)	39,186 (50.4%)	16,720 (52.5%)
Moderna	46,529 (42.5%)	33,355 (42.9%)	13,174 (41.4%)
J&J	7,164 (6.5%)	5,218 (6.7%)	1,946 (6.1%)
<b>Additional dose after primary series</b>	17,334 (15.8%)	9,071 (11.7%)	8,263 (26.0%)
<b>COVID prior to fully vaccinated</b>	6,563 (6.0%)	4,417 (5.7%)	2,146 (6.7%)
<b>CD4 at ART initiation (cells/mm<sup>3</sup>)</b>			366.00 (200.00, 580.00)
Unknown			14,530
<b>AIDS before fully vaccinated</b>			1,644 (14.8%)
Unknown			20,738
<b>CD4 at fully vaccinated (cells/mm<sup>3</sup>)</b>			622.00 (424.00, 846.00)
Unknown			6,090
<b>Suppressed HIV RNA at fully vaccinated (&lt;50 copies/mL)</b>			24,500 (88.1%)
Unknown			4,031

<sup>1</sup>n (%) except for CD4 counts where the medians (interquartile ranges) are reported

P-values for all demographic characteristics were statistically significantly different comparing PWH versus PWoH using  $\alpha=0.05$  as the threshold

**Figure 1:** Trends in SARS-CoV-2 vaccine breakthrough incidence rates and 95% confidence intervals, by HIV status

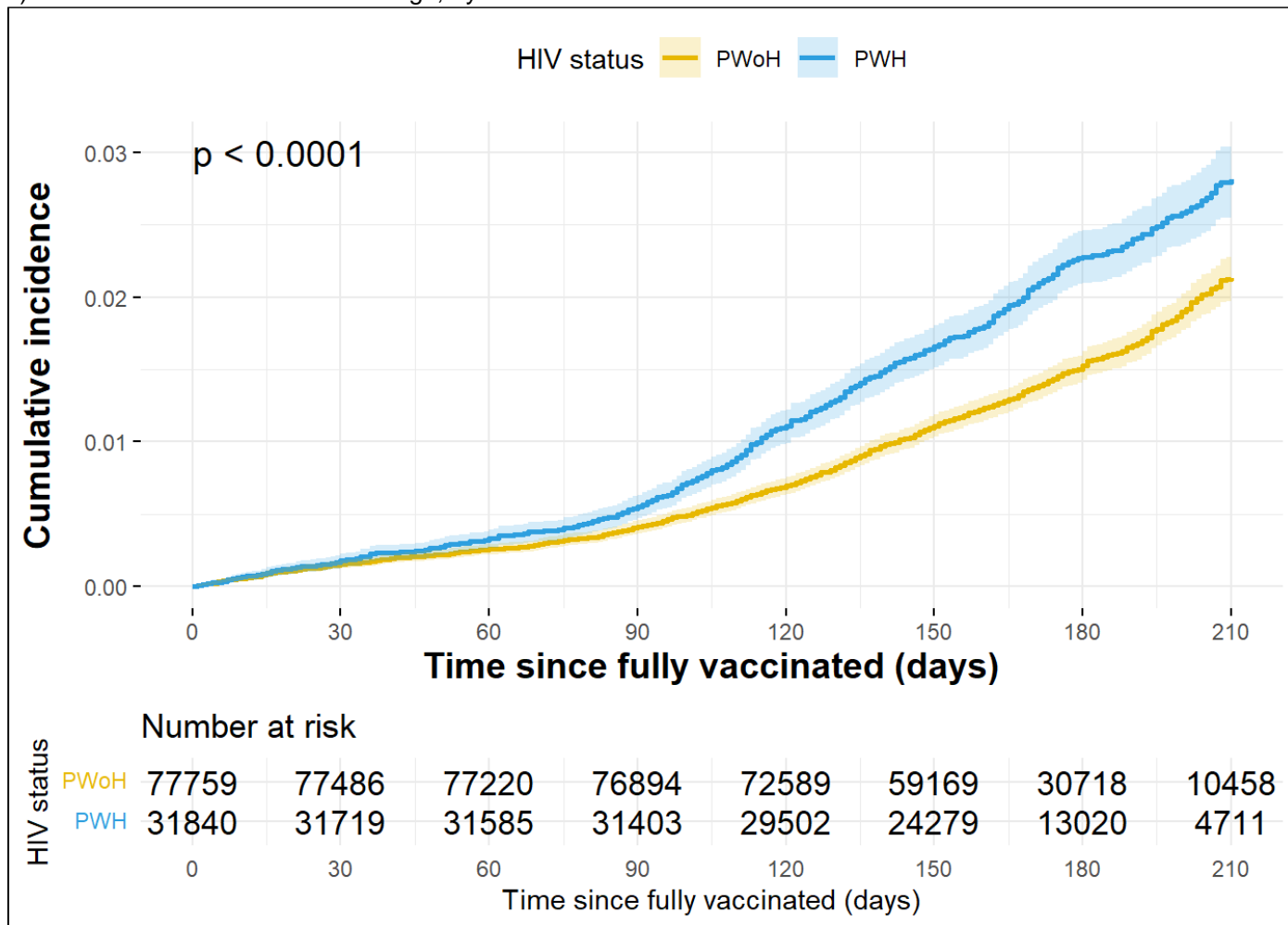


Footnotes:

The incidence rate estimates for January 2021 are IR=0 [0, 516.0] per 1,000 person-year in PWH and IR=60.3 [1.5, 335.8] per 1,000 in PWoH; these estimates are not included in the plot.

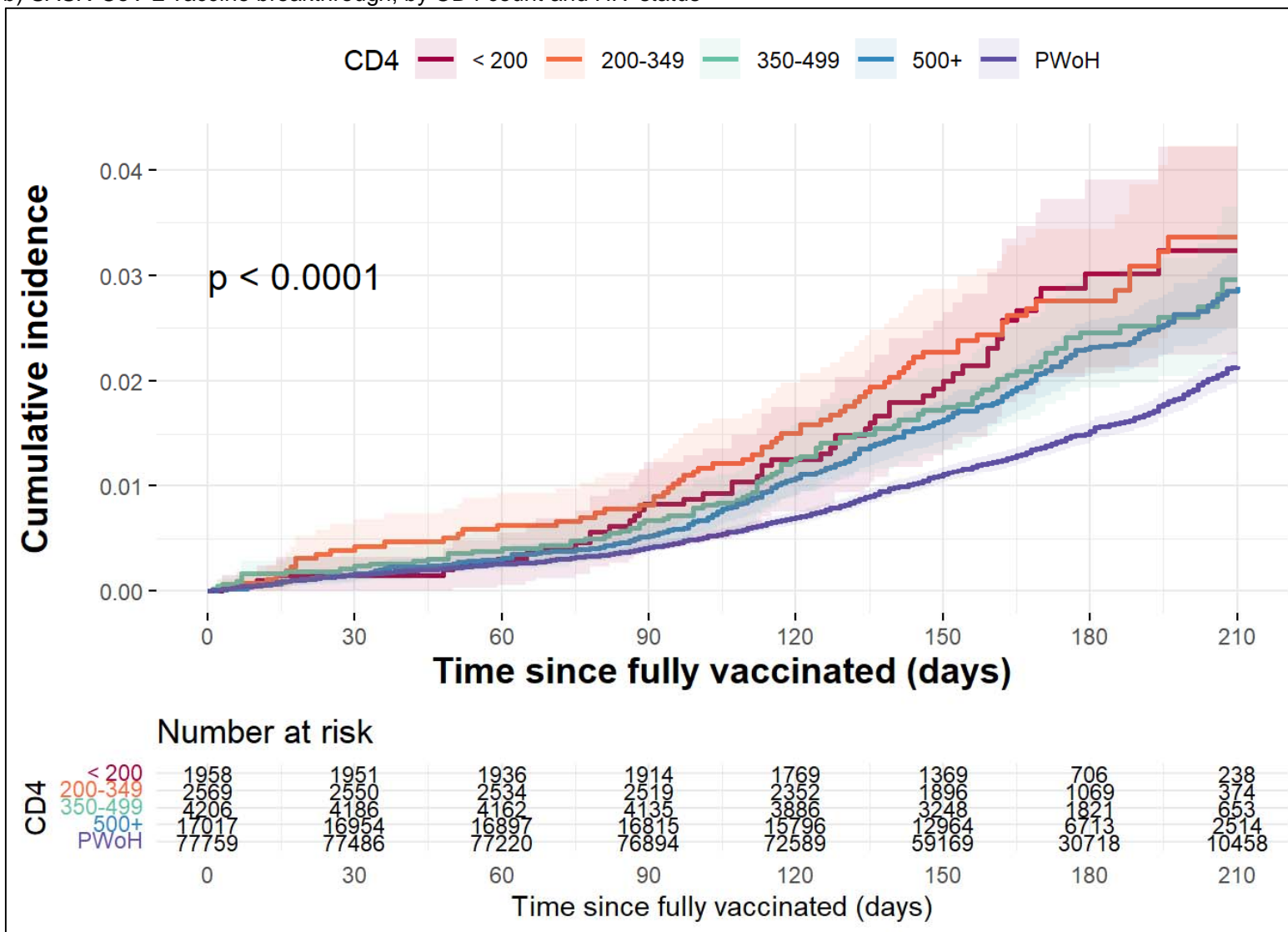
**Figure 2:** Cumulative incidence of SARS-CoV-2 vaccine breakthrough (and 95% confidence intervals represented by the shading), stratified by a) HIV status, b) CD4 count and HIV status, and c) HIV viral suppression and HIV status

a) SARS-CoV-2 vaccine breakthrough, by HIV status





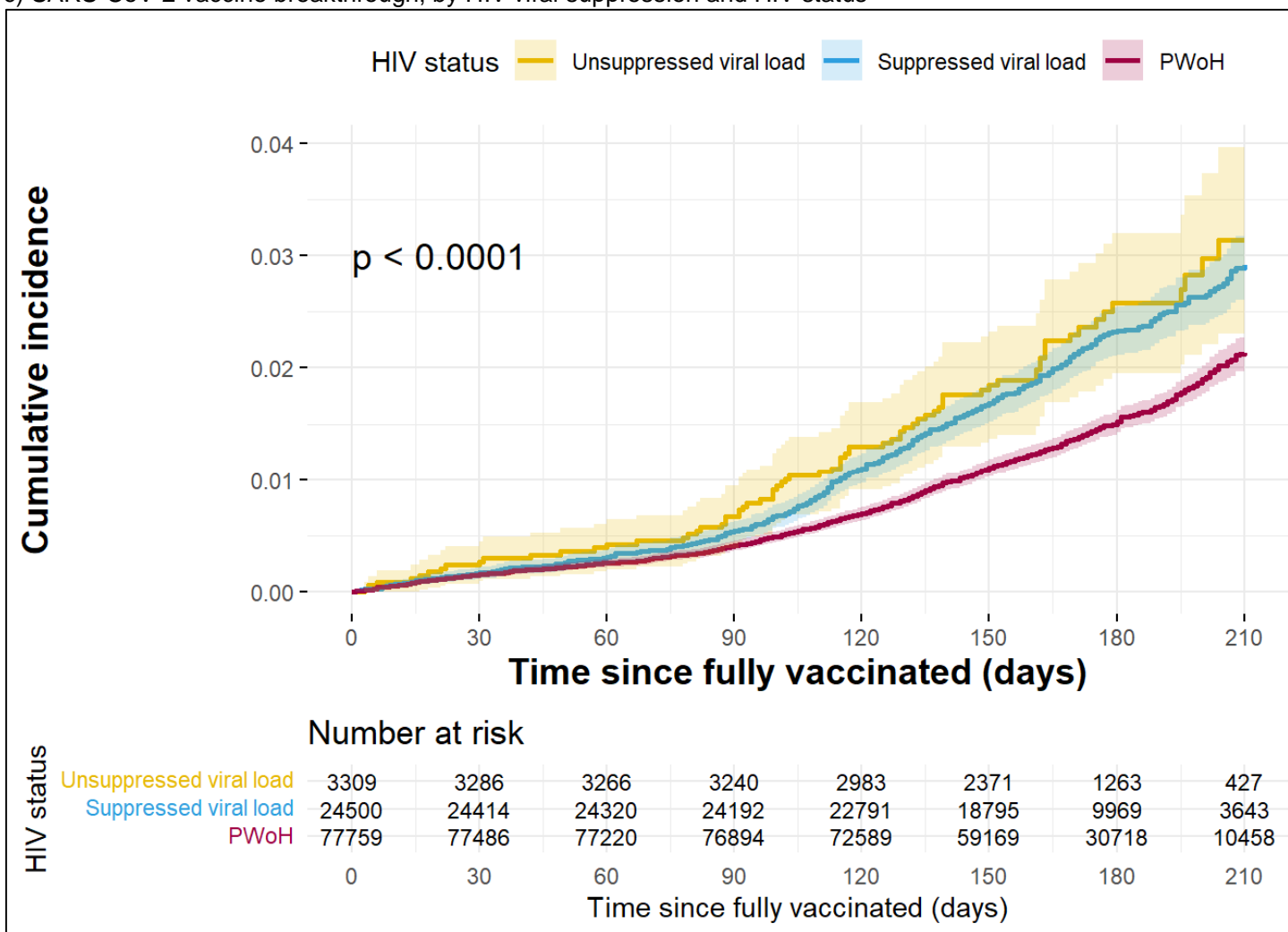
b) SARS-CoV-2 vaccine breakthrough, by CD4 count and HIV status



Footnotes:

Log-rank test for  $p=0.18$  after excluding PWoH.

c) SARS-CoV-2 vaccine breakthrough, by HIV viral suppression and HIV status

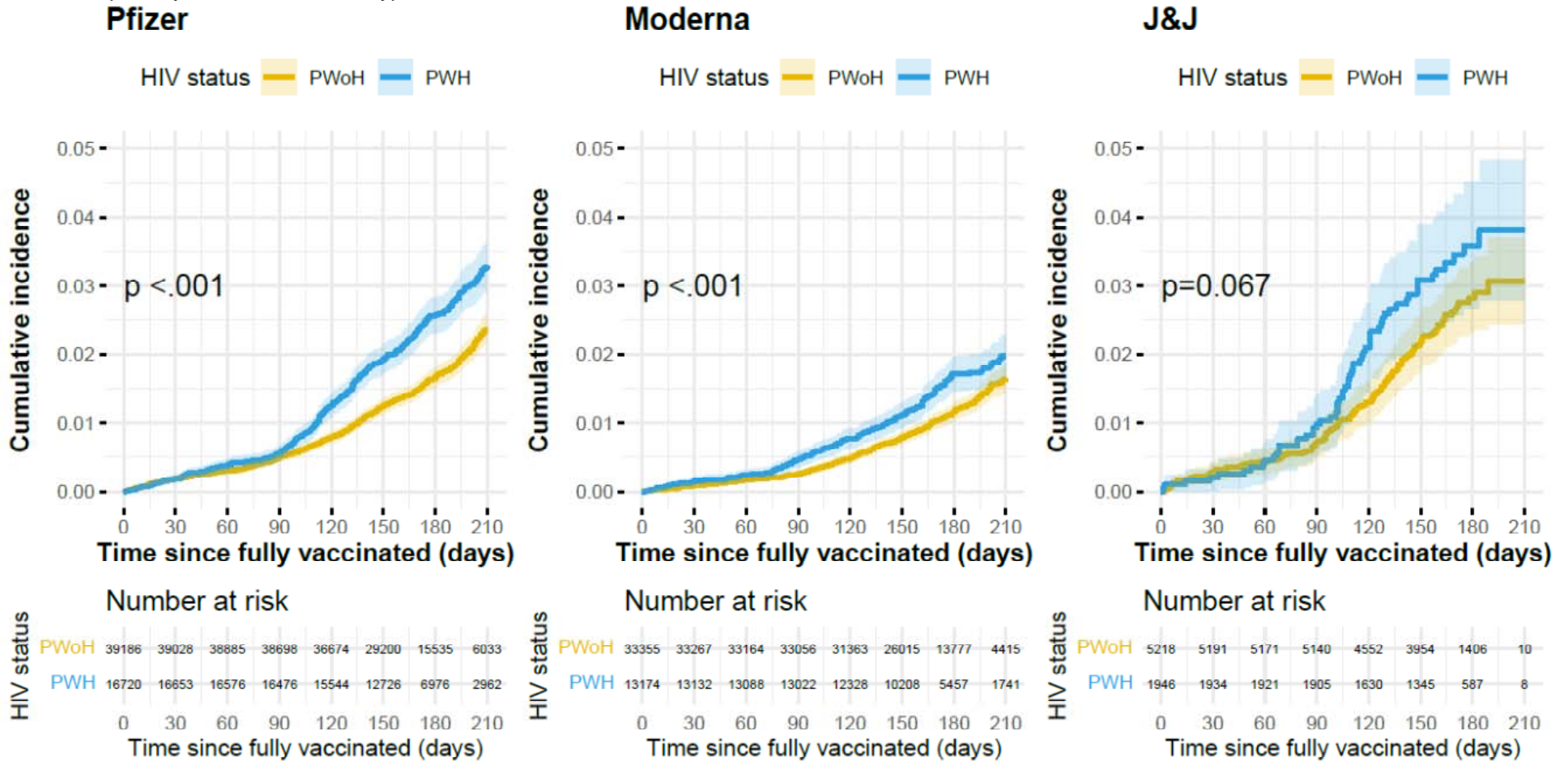


Footnotes:

Log-rank test for  $p=0.47$  after excluding PWOH.

Virally suppressed defined by HIV-1 RNA viral load  $<50$  copies/mL.

**Figure 3:** Cumulative incidence of SARS-CoV-2 vaccine breakthrough infection (and 95% confidence intervals represented by the shading), stratified by HIV status and primary vaccination series type



**Footnotes:**

J&J was authorized for emergency use in February 2021. Therefore, the maximum follow-up time for the majority of individuals who received J&J in these analyses is 180 days, except for a few individuals who received the J&J vaccine prior to February 2021 (e.g. vaccination clinical trial participants)

**Table 2:** Crude and adjusted hazard ratios and 95% confidence intervals SARS-CoV-2 vaccination breakthrough infections

	HR	95% CI	aHR	95% CI
<b>Among PWH and PWoH (N=109,599)<sup>a</sup></b>				
HIV status				
PWoH	1.00	--	1.00	--
PWH	<b>1.43</b>	<b>1.30, 1.58</b>	<b>1.41</b>	<b>1.28, 1.56</b>
<b>Among PWH (N=25,478)<sup>b</sup></b>				
Sex				
Male	1.00		1.00	
Female	0.98	0.70, 1.37	0.96	0.67, 1.36
Ethnicity and Race				
Non-Hispanic white	1.00		1.00	
Non-Hispanic Black/African American	1.08	0.89, 1.31	1.04	0.85, 1.27
Hispanic	<b>1.32</b>	<b>1.02, 1.70</b>	1.05	0.81, 1.37
Non-Hispanic Asian	1.32	0.84, 2.07	1.02	0.64, 1.62
Other	0.98	0.59, 1.63	0.91	0.55, 1.52
Unknown	1.31	0.58, 2.95	1.01	0.44, 2.29
Age (years)				
18-24	<b>3.21</b>	<b>1.31, 7.86</b>	<b>2.94</b>	<b>1.19, 7.24</b>
25-34	1.09	0.74, 1.60	0.98	0.66, 1.46
35-44	1.06	0.79, 1.42	1.00	0.74, 1.34
45-54	1.00		1.00	
55-64	<b>0.73</b>	<b>0.58, 0.93</b>	<b>0.76</b>	<b>0.60, 0.96</b>
65-74	<b>0.63</b>	<b>0.49, 0.81</b>	<b>0.73</b>	<b>0.56, 0.95</b>
75+	<b>0.63</b>	<b>0.44, 0.91</b>	0.76	0.52, 1.11
Primary vaccination series type				
Moderna	<b>0.61</b>	<b>0.51, 0.74</b>	<b>0.61</b>	<b>0.51, 0.74</b>
Pfizer	1.00		1.00	
J&J	<b>1.56</b>	<b>1.17, 2.09</b>	<b>1.35</b>	<b>1.01, 1.82</b>
COVID-19 prior to fully vaccinated				
No	1.00		1.00	
Yes	<b>3.08</b>	<b>2.49, 3.83</b>	<b>2.87</b>	<b>2.30, 3.56</b>
Calendar period				
Jan – March	1.57	0.92, 2.69	1.68	0.99, 2.88
April – June	1.00		1.00	
July – Sept	<b>3.22</b>	<b>2.34, 4.44</b>	<b>2.92</b>	<b>2.12, 4.03</b>
HIV RNA				
Unsuppressed ( $\geq 50$ copies/mL)	1.00		1.00	
Suppressed ( $< 50$ copies/mL)	0.97	0.75, 1.26	1.04	0.80, 1.35
CD4 count at fully vaccinated (cells/mm <sup>3</sup> )				
$< 200$	1.00		1.00	
200-349	1.03	0.71, 1.50	1.02	0.70, 1.48
350-499	0.84	0.59, 1.19	0.83	0.59, 1.19
$\geq 500$	0.79	0.59, 1.07	0.74	0.54, 1.01

Footnotes:

Abbreviations: HR=crude hazard ratio. aHR=adjusted hazard ratio. 95% CI=95% confidence interval.

<sup>a</sup>Adjusted for age, sex, race and ethnicity, primary vaccination series type, COVID-19 prior to fully vaccinated, 3-month calendar period, an interaction of COVID-19 prior to fully vaccinated and 3-month calendar period, and cohort.

<sup>b</sup>N=6,362 (20% of all PWH) were excluded due to missing CD4 or HIV RNA measurements.

Adjusted for the covariates in the table and cohort.