

- There are differences in plasma PUFA and OXL seen in HIS, independent of obesity.
- In NAFL, HIS had lower plasma LC-PUFA, independent of histological severity.
- Compared to CAU, HIS with NASH had lower arachidonic acid derived OXLs.
- Compared to CAU, HIS with NASH showed lower LOX and up-regulated sEH pathway(s).
- Plasma OXL profiles can discriminate between HIS and CAU with NASH.

1 **Title: Plasma oxylipin profile discriminates ethnicities in subjects with Non-alcoholic**
2 **steatohepatitis: An exploratory analysis**

3 **Authors:** Tagreed A. Mazi^{1,2}, Kamil Borkowski³, Oliver Fiehn³, Christopher L. Bowlus⁴, Souvik Sarkar⁴,
4 Karen Matsukuma⁵, Mohamed R. Ali⁶, Dorothy A. Kieffer⁴, Yu-Jui Y. Wan⁵, Kimber L. Stanhope⁷, Peter
5 J. Havel^{1,7}, John W. Newman^{1,3,8}, Valentina Medici^{4*}

6
7 **Author Affiliations:**

- 8 1. Department of Nutrition, University of California Davis, 3135 Meyer Hall, One Shields Avenue, Davis,
9 CA 95616, USA
- 10 2. Department of Community Health Sciences-Clinical Nutrition, College of Applied Medical Sciences,
11 King Saud University, P.O. Box 10219, Riyadh 11433, Saudi Arabia; e-mail: tmazi@ksu.edu.sa
- 12 3. West Coast Metabolomic Center, Genome Center, University of California-Davis, Davis, CA 95616,
13 USA
- 14 4. Department of Internal Medicine, Division of Gastroenterology and Hepatology, University of
15 California Davis, 4150 V Street, Suite 3500 Sacramento, CA 95817, USA
- 16 5. Department of Pathology and Laboratory Medicine, University of California-Davis, Sacramento, CA
17 95817, USA
- 18 6. Department of Surgery, University of California, Davis, 2221 Stockton Boulevard, Cypress Building,
19 Sacramento, CA 95817, USA
- 20 7. Department of Molecular Biosciences, School of Veterinary Medicine, University of California, Davis,
21 CA 95616, USA
- 22 8. United States Department of Agriculture-Agriculture Research Service-Western Human Nutrition
23 Research Center, Davis, CA 95616, USA

24
25 ***Corresponding author**

26 Valentina Medici M.D., F.A.A.S.L.D.
27 University of California, Davis
28 Department of Internal Medicine
29 Division of Gastroenterology and Hepatology

30 4150 V Street, Suite 3500

31 Sacramento, CA 95817

32 Office: 916-734-3751, Fax: 916-734-7908

33 Email: ymedici@ucdavis.edu

34 **Short Title: Ethnicity and lipidomic profile in non-alcoholic fatty liver**

35 **Word count:** 4763 words (excluding abstract, references, and figure legends)

36 **Number of Figures:** 3

37 **Number of Tables:** 2

38 **Abstract** (252 words)

39 Non-alcoholic fatty liver disease (NAFLD) includes a range of liver pathologies from steatosis
40 (NAFL) to non-alcoholic steatohepatitis (NASH). With no clear mechanism, it affects Hispanics in the
41 U.S. disproportionately compared to other ethnicities. Polyunsaturated fatty acids (PUFAs) metabolism
42 and downstream inflammatory lipid mediators including oxylipin (OXL) and endocannabinoid (eCB) are
43 altered in NAFLD and thought to contribute to its pathogenesis. It is not clear if variations in PUFA
44 metabolism and downstream lipid mediators characterize ethnicity in NAFLD. This pilot study employed
45 targeted lipidomic profiling for plasma PUFAs, non-esterified OXLs and eCBs in White Hispanics (HIS,
46 $n=10$) and Caucasians (CAU, $n=8$) with obesity and biopsy-confirmed NAFL, compared with healthy
47 control subjects (HC; $n=14$ HIS; $n=8$ CAU). Results indicate diminished long chain PUFA profile in
48 HIS with NAFL and NASH, independent of obesity and histological severity. The profiling data also
49 detected differences in plasma OXLs and eCBs profiles by ethnicity group in NASH, including lower
50 levels of arachidonic acid derived OXLs observed in HIS. We conducted a secondary analysis to compare
51 ethnicities within NASH ($n=12$ HIS; $n=17$ CAU). Results showed that plasma OXL profiles
52 distinguished ethnicities with NASH and confirmed ethnicity-related differences in arachidonic acid
53 metabolism. Our data also suggest lower lipoxygenase(s) and higher soluble epoxide hydrolase(s)
54 activities in HIS compared to CAU with NASH. The underlying causes and implications of these
55 differences on NAFLD severity are not clear and worth further investigation. Our findings provide
56 preliminary data suggesting ethnicity-specific plasma lipidomic signature characterizing NASH that
57 requires validation.

58

59 **Keywords**

60 Hispanic, Caucasian, Non-alcoholic steatohepatitis, Lipidomic, Oxylipins, Endocannabinoids.

61 **Abbreviations**

62 **0-NASH** - NASH-free; **CAU** - Caucasian; **COX** -Cyclooxygenases; **CYP** - Cytochrome P450; **eCBs** -
63 Endocannabinoids; **FADS** - Fatty acid desaturases; **FC** - Fold change; **FDR** -False discovery rate; **HC** -
64 Healthy control; **HIS** - Hispanic; **LOOCV**- leave- one-out cross validation; **LOX** - Lipoxygenases **NAFL**
65 -Steatosis; **NAFLD** - Non-alcoholic fatty liver disease; **NAS** - The NAFLD Activity Score; **NASH** -Non-
66 alcoholic steatohepatitis; **n-3 PUFA** - Omega–3 polyunsaturated fatty acids; **n-6 PUFA** - Omega–6
67 polyunsaturated fatty acids; **NASH-CRN** - The NASH Clinical Research Network; **OXLs** - Oxylipins;
68 **PCA** - Principal component analysis; **PLS-DA** - Partial least square-discriminant analysis; **PUFA** -
69 Polyunsaturated fatty acids; **sEH** - Soluble epoxide hydrolases; **SPMs** - Specialized pro-resolving
70 mediators; **SNP** - single nucleotide polymorphisms; **VIP** - Variable importance in projection; **Δ-5**
71 **desaturase** - Delta fatty acid desaturase-5.

72 1. Introduction

73 Non-alcoholic fatty liver disease (NAFLD) is a chronic liver condition affecting one in four
74 adults worldwide and this rate increases with coexisting components of metabolic syndrome [1]. Its
75 histological presentation includes hepatocellular steatosis, or non-alcoholic fatty liver (NAFL) with a
76 range of necroinflammation with or without fibrosis. When hepatocellular damage and ballooning are
77 present with NAFL, this is clinically defined as non-alcoholic steatohepatitis (NASH) [2]. The
78 pathogenesis of NAFLD is not fully elucidated. However, its onset involves an interplay between genetics
79 and environmental factors with coexisting comorbidities while the progression to NASH appears to be
80 provoked by multiple or parallel metabolic hits including oxidative stress and inflammation [3, 4]. In the
81 U.S., the risk and severity of NAFLD vary among ethnic/racial groups with Hispanics (HIS) being
82 affected disproportionately and presenting more frequently with advanced inflammation and fibrosis
83 compared to other ethnicities [5-7]. The metabolic drivers underlying this disparity are not clear.

84 Polyunsaturated fatty acid (PUFAs) are bioactive lipids and precursors to inflammatory lipid
85 mediators including oxylipins (OXLs) and endocannabinoids (eCBs). OXLs are produced from PUFAs
86 by mono- and di-oxygenases, including lipoxygenases (e.g. 5-LOX, 12-LOXs, and 15-LOXs);
87 cyclooxygenases (i.e. COX-1 and -2), and a variety of cytochrome P450s (CYPs) [8]. PUFAs can also
88 undergo non-enzymatic oxygenation mediated by free radicals and the rate of this production is increased
89 under oxidative stress [9]. In general, OXLs from n-3 PUFAs have anti-inflammatory or less pro-
90 inflammatory effect compared to those derived from n-6 PUFAs [10, 11]. The fatty acid ethanolamide
91 (i.e. N-acylethanolamides), one class of eCB, are synthesized by complex interactions of lipases and
92 fatty acid amide hydrolase from PUFAs and membrane associated precursors [12]. Collectively, these
93 lipids work through receptor-mediated mechanisms and likely contribute to NAFLD by modulating
94 processes including lipogenesis, inflammation, and mitochondrial β -oxidation [8, 13].

95 Previous lipidomic analyses showed that NAFLD is associated with dysregulated PUFAs
96 metabolism [14-18]. Alterations in circulating OXL and eCB profiles are reported in NAFLD and other
97 liver pathologies. In fact, numerous lipid mediators have been shown to predict NAFL or NASH [16, 19-
98 24]. However, metabolomic profiling in NAFLD with regards to ethnicity is limited. Our prior semi-
99 quantitative lipidomic profiling study indicated ethnicity-specific differences in plasma PUFA profiles in
100 subjects with NAFL, with higher abundance of linoleic and α -linolenic acid seen in Caucasians (CAU)
101 compared to ethnicity-matched lean subjects [25]. In the same study, the progression to NASH was
102 characterized by ethnicity-specific differences in hepatic lipidomic profiles with higher levels of saturated
103 and unsaturated fatty acids seen in NASH-HIS. Ethnicity was not previously addressed in OXL and eCB
104 profiling efforts. Examining such lipidomic differences between ethnicities may shed light on potential
105 mechanisms modulating the disparity in NAFLD prevalence and severity.

106 The objective of this “proof-of-concept” study is to examine ethnicity-related changes in PUFAs
107 and their downstream inflammatory mediators in a group of subjects with obesity and biopsy-confirmed
108 NAFL and NASH. We employed targeted lipidomic analysis of plasma PUFAs, OXLs, and the N-
109 acylethanolamides class of eCBs to compare HIS and CAU subjects with medically complicated obesity
110 to ethnicity-matched lean healthy controls (HC). Profiles in subjects diagnosed with NASH were also
111 compared to ethnicity and BMI-matched participants without NASH (0-NASH). In addition, we
112 conducted a secondary analysis including prospectively collected subjects to compare OXL profile
113 between ethnicities in NASH.

114 **2. Subjects and methods**

115 **2.1. Subjects and samples**

116 All subjects self-reported ethnicity as either HIS or CAU. HC subjects ($n = 22$) were recruited via
117 public posts. Plasma and liver samples from bariatric surgery patients with medically complicated obesity
118 were retrieved from the biobank repository of the Division of Gastroenterology and Hepatology, UC
119 Davis Medical Center. The primary cohort ($n = 18$) consisted of subjects with NAFL and various degrees
120 of necroinflammation. Only subjects with NASH were included in the secondary analysis ($n = 9$) and this
121 cohort was expanded with prospectively collected subjects diagnosed with NASH ($n = 20$). Subject
122 inclusion and exclusion criteria and details on data collection are described elsewhere [25]. Briefly,
123 plasma samples were collected preoperatively, and liver tissue samples were collected by biopsy
124 performed during bariatric surgery. Liver histopathological evaluations were performed in a blinded
125 fashion in the UC Davis Medical Center Department of Pathology. Samples were scored according to the
126 NASH Clinical Research Network (NASH-CRN) histology system, The NAFLD Activity Score (NAS)
127 and fibrosis scores were calculated [26]. NASH diagnosis was determined using a diagnostic algorithm
128 based on the semi-quantitative scoring of steatosis, inflammation, and fibrosis [27]. All subjects were
129 consented and the Institutional Review Board at the University of California, Davis approved the study
130 protocol (# 856052).

131

132 **2.2. Targeted lipidomic analysis**

133 Plasma quantitative lipidomic profiling of PUFAs, OXLDLs and NAEs was performed by ultra-
134 high-performance liquid chromatography-electrospray ionization-tandem mass spectrometry (UPLC-ESI-
135 MS/MS), as previously described [28]. Briefly, plasma samples were enriched with deuterated surrogates,

136 isolated by liquid/liquid extraction, and separated and quantified by UPLC-ESI-MS/MS. In the primary
137 analysis, ESI-polarity switching facilitated the simultaneous detection of eCBs (positive mode) and
138 oxylipins and PUFAs (negative mode) on an API 6500 QTRAP (AB Sciex, Framingham, MA, USA).
139 Metabolites were quantified against authentic analytical standards with 6-to-10-point calibration curves
140 and calculated concentrations were corrected for analytical surrogate recovery. This method detected 5
141 PUFAs and 66 lipid mediators, including 10 eCBs and 46 OXLs.

142 The secondary analysis was done on an API 4000 QTrap (AB Sciex, Framingham, MA, USA)
143 and restricted to the negative mode electrospray ionization to increase the power of the OXLs discovery.
144 This approach detected 46 OXLs and 2 nitrolipids. Details on the analysis protocols and reported data are
145 available on the Metabolomics Workbench (<http://www.metabolomicsworkbench.org>), ID numbers
146 (ST000977 and ST001845). Analyses were carried out at the UC Davis West Coast Metabolomics Center.
147 In this manuscript, abbreviations used for OXLs and eCBs follow standard consensus and are detailed
148 with lipid identifiers in Table S1.

149

150 **2.3. The ratio of n-6 to n-3-PUFAs and estimation of enzymatic surrogates**

151 The ratio of n-6 to n-3 PUFAs was calculated as arachidonic (20:4n6)/eicosapentaenoic (20:5n3)
152 + docosahexaenoic acids (22:6n3). The production rate of docosahexaenoic acid was estimated as
153 docosahexaenoic/ (α -linolenic (18:3n3) + eicosapentaenoic acids. The product to substrate ratio was used
154 to estimate multiple enzymatic indices. Fatty acid desaturase-1 (*FADS1*, Δ -5 desaturase) was estimated as
155 arachidonic /dihomo- γ -linolenic acids (20:3n6). Various dihydroxy/epoxy regioisomeric ratios were
156 calculated to provide soluble epoxide hydrolase (sEH) activity indices: 12,13-DiHOME/12(13)-EpOME;
157 9,10-DiHOME/9(10)-EpOME; 15,16-DiHODE/15(16)-EpODE; 12,13-DiHODE/12(13)-EpODE; 9,10-
158 DiHODE/9(10)-EpODE; 17,18-DiHETE/17(18)-EpETE; and 14,15-DiHETrE/14(15)-DiHETrE.

159 2.4. Statistical analysis

160 Statistical analyses were performed using JMP Pro 14.1 (SAS Institute Inc., Cary,
161 NC; <http://www.jmp.com>). Outliers were identified and excluded using “robust Huber M test”. Lipids
162 with >30% missing data were excluded. Missing data were imputed by “multivariate normal imputation”.
163 Data normality was achieved through application of Johnson’s transformation. To inspect for outliers,
164 especially in subjects with stage 4 fibrosis ($n=2$), principal component analysis (PCA) was used to
165 visualize data after processing and no outliers were detected (Figure S1).

166 Non-normalized data were used to calculate metabolite geometric means. Fold change (FC) was
167 calculated for each ethnicity separately as $(A - B)/B$ where A is the geometric mean of (NAFL or NASH)
168 and B is the geometric mean of (HC or 0-NASH). A FC >0 indicates an increase and <0 indicates
169 decrease and $\pm 20\%$ FC was set as a threshold. Student’s t-test of Johnson normalized data was used to
170 examine differences between (NAFL vs. HC) and (0-NASH vs. NASH) in each ethnicity. Full factorial
171 analysis of covariates (ANCOVA) was employed to evaluate the interaction of ethnicity x health status.
172 This model included ethnicity (HIS or CAU), health status (NAFL or HC; 0-NASH or NASH), ethnicity
173 x health status interaction as fixed effects, with age and sex as covariates. To check any effect of fibrosis
174 or advance NAS score on the differences observed, we repeated the analysis on a subset of histology-
175 matched subjects ($n=5$ HIS and $n=5$ CAU). Pathways/network visualization with fold change and p -
176 values were plotted using Cytoscape 3.8.2 (<https://cytoscape.org>) [29]. Mean differences were considered
177 likely at $p < 0.05$. To adjust for false discovery rate (FDR), Benjamini-Hochberg FDR correction was
178 performed [30]. A $q=0.2$ was set as a threshold, given the pilot nature and small sample size of the study.

179 For the secondary analysis, raw data were auto-scaled to correct for batch effect (Figure S2) [31].
180 Lipids affected by batch were excluded (3 lipids) and data were normalized by Johnson’s transformation.

181 Partial least square-discriminant analysis (PLS-DA) was performed to discriminate ethnicities in NASH
182 subjects with leave- one-out cross validation (LOOCV) [32]. An R^2 and $Q^2 > 0.5$ are acceptable values to
183 indicate reliability of the model in explaining differences between groups [33]. A variable importance in
184 projection (VIP) score of >1.0 was set as a threshold for variable selection. To check any effect of
185 advanced fibrosis, we repeated the analysis after excluding subjects with fibrosis grade 3 and 4 ($n = 3$ HIS
186 and $n = 4$ CAU).

187 3. Results

188 3.1. Subject characteristics

189 The clinical and histological features of NAFL subjects from the primary cohort are presented in
190 Table 1. The mean age was 47 ± 15 and 43 ± 14.2 in NAFL-HIS and HC-HIS groups, respectively; $50 \pm$
191 18 and 44 ± 12 in NAFL-CAU and HC-CAU, respectively (n.s). In HIS, the mean BMI was 46 ± 6 in
192 NAFL and 26 ± 2.4 in HC (p -value <0.05). In CAU, the mean BMI was 42 ± 8 in NAFL and 25 ± 3 in
193 HC (p -value <0.05). Within NAFL group, the mean NAS score was 3.2 ± 2.6 and 2.8 ± 1.4 for HIS and
194 CAU, respectively (n.s). No difference in clinical and histological parameters was found between
195 ethnicities. In subjects with NASH compared to 0-NASH, the mean NAS score was 4.8 ± 1.7 and 4 ± 1
196 for HIS and CAU, respectively (n.s) (data not shown).

197 The secondary cohort included NASH subject with various degrees of necroinflammation and
198 fibrosis (Table 2). When comparing NASH-HIS and NASH-CAU, no difference was found with BMI and
199 other clinical and histological parameters. The mean NAS score was 5.1 ± 2 and 5.1 ± 1.3 for NASH-HIS
200 and NASH-CAU, respectively (n.s).

201

202 3.2. Ethnicity-related alterations in plasma PUFAs and lipid mediator profiles characterize NAFL

203 We examined differences in plasma fatty acids and lipid mediators between NAFL and HC
204 (Figure 1 and Table S2). Compared to corresponding HC, 25 (38% of total detected) and 7 (11%) lipid
205 levels were found different in NAFL-HIS and NAFL-CAU, respectively (FDR-adjusted $p <0.2$).
206 Ethnicity-specific changes observed in NAFL, with interaction ethnicity x NAFL, include 8 lipids (15%)
207 and 2 enzymatic ratios (raw p -Interaction <0.05) but did not survive FDR-correction ($q =0.2$). As NAFL-
208 HIS presented with more NASH and fibrosis, and to rule out any effect of histological severity on the

209 differences observed between ethnicities, the analysis was repeated on a subset of histology-matched
210 subjects (Table S3). As a result, 12 lipids (19%) and one enzymatic ratio were found altered (raw *p*-
211 Interaction <0.05), with 3 lipids (i.e., α -linolenic, linoleic acids, and 9-HpODE) surviving FDR
212 correction.

213 When compared to HC, there were overlapping differences seen in NAFL for both ethnicities as
214 well as ethnicity-specific differences (Figure 1). In both ethnicities, NAFL showed higher levels of
215 several eCBs derived from PUFA and other fatty acids. The 18 carbon (C18) PUFAs, α -linolenic and
216 linoleic acids showed similar higher trend with higher levels of downstream fatty acid alcohols,
217 hydroperoxide, ketones, epoxides, and vicinal diols. Specific to NAFL-HIS, there were differentially
218 higher levels of linoleic acid-triols (i.e., TriHOMEs; raw *p*-Interaction <0.05). On histology-matched
219 analysis, a higher TriHOMEs and linoleic acid epoxide, 12(13)-EpOME, were found significant (raw *p*-
220 Interaction <0.05). Of note, the n-6 to n-3 ratio was higher, however, with no ethnicity x NAFL
221 interaction. In NAFL-CAU, there was differentially higher α -linolenic and linoleic acid and its
222 hydroperoxide, 9-HpODE (raw *p*-Interaction <0.05). On histology adjustment analysis these lipids
223 retained significance with linoleic acid, and 9-HpODE passing the FDR- threshold.

224 The 20 carbon (C20) and longer chain PUFAs (LC-PUFA), showed opposite trends with higher
225 levels in NAFL-CAU and lower in NAFL-HIS. The ratio of docosahexaenoic/ eicosapentanoic +
226 α -linolenic acids was found lower in both ethnicities (FDR-adjusted *p*-value). In HIS, arachidonic acid-
227 derived alcohols, ketones, thromboxane were higher, however, with no interaction (ethnicity x NAFL).
228 Docosahexaenoic acid and its vicinal diol, 19,20-DiHDoPA, levels were differentially lower (raw *p*-
229 Interaction <0.05) with tendency shown for lower eicosapentanoic acid. On histology-matched analysis,
230 lower levels of these lipids were found significant (raw *p*-Interaction <0.05). Specific to CAU, there was
231 differentially higher arachidonic acid and its vicinal diol, 14,15-DiHETrE that remained significant after

232 histology adjustment (raw $p < 0.05$). While these findings show common alterations seen in NAFL for
233 both ethnicities, they also highlight ethnicity-specific changes. This includes a divergence in LC-PUFA
234 profile, mainly with lower eicosapentanoic and docosahexaenoic acids seen in HIS. Although these
235 differences did not pass FDR adjustment, histology-matched analysis yielded consistent and stronger
236 differences, suggesting ethnicity-specific differences characterized NAFL, independently of liver
237 histology severity. It also suggests that fibrosis may weaken the differences between ethnicities.

238

239 **3.3. Ethnicity-related differences in plasma PUFAs and lipid mediators' independent of obesity**

240 Ethnicity-specific differences in plasma fatty acids and lipid mediators within lean HC were
241 examined (Figure S3 and Table S2). Among the differences observed, HIS had higher linoleic acid (raw
242 $p < 0.05$), α -linolenic acid, 9-HpODE, and TriHOMEs levels (FDR-adjusted p -value), and lower
243 arachidonic acid-derived prostaglandin, PGE₂ (FDR-adjusted p -value) levels. These findings indicate
244 alterations in plasma PUFAs and lipid mediator profiles in HIS independent of obesity.

245

246 **3.4. The progression to NASH is characterized by ethnicity-related alterations in plasma PUFAs 247 and lipid mediator profiles**

248 We examined differences in plasma fatty acids and lipid mediators between 0-NASH and NASH
249 (Figure 2 and Table S4). Compared to corresponding 0-NASH, 7 (11% of total detected) and 6 (9%)
250 lipids were found different in NASH-HIS and NASH-CAU, respectively (raw p -value < 0.05). None
251 passed the FDR-correction threshold. There were differentially altered lipids by ethnicity group (raw p -
252 Interaction < 0.05), including 11 lipids (17%) and two enzymatic ratios. Three of these lipids and the two
253 enzymatic ratios passed the FDR-correction threshold.

254 With the progression from 0-NASH to NASH, less marked differences in plasma PUFA profile
255 were observed. Compared to 0-NASH, NASH-HIS showed a trend for lower plasma PUFAs, only
256 affecting arachidonic acid (raw p -value <0.05). There was a general trend for higher C18-PUFA derived
257 alcohols, triol, epoxides and vicinal diols, with TriHOMEs being differentially higher (raw p -Interaction
258 <0.05). We also observed a trend for lower LC-PUFA derived lipid mediators, mainly affecting
259 arachidonic acid alcohols, 5-HETE; thromboxane, TXB₂; and prostaglandin, PGE₂. The levels of 5-HETE
260 and TXB₂ were found differentially changed between ethnicities in NASH (raw p -Interaction <0.05).
261 Also, the oleic acid-derived N-oleoyl glycine levels were lower with NASH (raw p -Interaction <0.05).

262 In NASH-CAU, there was a trend of higher C18, LC-PUFAs and downstream lipid mediators.
263 Interaction (ethnicity x NASH) was shown with higher 9-HpODE, TXB₂, and in eicosapentaenoic acid
264 epoxide, 17(18)-EpETE (raw p -Interaction <0.05). There was an opposite trend for vicinal diols derived
265 from C18-PUFA that were higher in HIS and lower in CAU, compared to corresponding 0-NASH, with
266 interaction (ethnicity x NASH) shown for 12,13- and 15,16-DiHODE (raw p -Interaction <0.05). Multiple
267 sEH enzymatic indices were higher in HIS and lower in CAU, including 9_10-DiHOME/9(10)-EpOME
268 and 9_10-DiHODE/9(10)-EpODE (raw p -Interaction <0.05). Also, with NASH, there were higher levels
269 of many eCBs, including dihomono- γ -linolenylethanolamide, palmitoleylethanolamide,
270 palmitoleylethanolamide, oleylethanolamide and N-oleoyl glycine (raw p -Interaction <0.05). Although
271 PUFA changes are less marked in NASH, trends are consistent with changes seen in NAFL and support
272 divergence in LC-PUFA profiles. It also highlights ethnicity-related differences in OXLs and eCBs
273 associated with NASH progression. Given that NASH groups in both ethnicities had comparable NAS
274 scores, this suggests the ethnicity-related differences observed with NASH are not likely driven by
275 histological severity.

276

277 **3.5. Plasma OXLs profile discriminate between ethnicities with NASH**

278 A supervised PLS-DA was performed including all profiled lipids to examine if plasma OXLs
279 profile can discriminate between ethnicities with NASH. The model demonstrated separation between
280 HIS and CAU with 22 (49%) contributing lipids having $VIP > 1$. This indicates differences in OXLs
281 profile characterizes HIS and CAU with NASH (Figure S4 and Table S5). The Q^2 and R^2 for the model
282 were 0.62 and 0.72, respectively, indicating a fair reliability of the model. Of note, an overlap between
283 ethnic groups was observed and subjects within this area shared advanced fibrosis (grade 3 and 4),
284 indicating that HIS and CAU subjects with NASH and advanced fibrosis share similar plasma OXLs
285 profile. Also, it suggests that advanced fibrosis may be attenuating the multivariate model. Therefore, we
286 repeated the analysis after excluding subjects with advance fibrosis (Figure 3 and Table S5). As a result,
287 the model exhibited complete separation between ethnicities in NASH with 20 (44%) lipids contributing
288 to this separation ($VIP > 1.0$). The Q^2 , R^2 were 0.99 and 0.98, respectively, indicating optimal prediction
289 and reliability of the multivariate model.

290 In subjects with NASH and mild to moderate fibrosis, OXLs profiles showed opposite direction
291 of change between ethnicities in some arachidonic acid-derived mediators, with TXB_2 , 15-Keto PGE_2 , 5-
292 HETE and 5,6-DiHETrE being lower in HIS compared to CAU. Many OXLs derived via LOX pathway
293 and/or auto-oxidative routes were lower in NASH-HIS, including TriHOMEs, 13-KODE, 9-KODE, 13-
294 HOTE, 9-HOTE, and 5-HETE. Some CYP-derived OXLs were lower in NASH-HIS, as 9(10)-EpOME,
295 12(13)-EpOME and 12(13)-EpODE. Multiple sEH enzymatic indices were found higher in NASH-HIS,
296 compared to NASH-CAU, including 12,13-DiHOME/12(13)-EpOME; 9,10-DiHOME/9(10)-EpOME;
297 17_18-DiHETE/17(18)-EpETE along with higher levels of the vicinal diol, 14,15-DiHETrE. These
298 findings further confirm lower arachidonic acid OXLs in HIS with NASH, which are also characterized

299 by lower LOX and higher sEH derived lipid mediators compared to CAU. They also indicate that plasma
300 OXL profiles can discriminate between ethnicities in NASH.

301 4. Discussion

302 This study is the first to examine targeted plasma PUFAs, OXs, and eCBs profiles with regards
303 to ethnicity in a group of HIS and CAU subjects with obesity and biopsy-diagnosed NAFL and NASH.
304 Our findings indicate that: 1) NAFL and NASH are characterized by ethnicity-related differences in
305 plasma PUFA profiles, independent of histological severity; 2) Ethnicity-related differences in plasma
306 OXs profiles characterize NASH, independent of histological scores; 3) Plasma PUFA profile is altered
307 in apparently healthy HIS, independent of obesity.

308 The hepatic and serum/plasma PUFA profiles are dysregulated in NAFLD [14-18]. Our results
309 expand on these findings and show ethnicity-related differences in plasma PUFA profile in NAFL and
310 NASH. With NAFL, both ethnicities showed higher α -linolenic and linoleic acid levels, which were
311 pronounced in CAU but not in HIS. This can be attributed to differences in the levels of these PUFAs in
312 lean and healthy subjects, with HIS having higher levels compared to their CAU counterpart. There was
313 also a divergence in LC-PUFA profiles between ethnicities. CAU showed higher levels mainly affecting
314 arachidonic acid, while HIS displayed lower levels mainly affecting docosahexaenoic and
315 eicosapentanoic acids. Consistent trends were shown with the progression from 0-NASH to NASH with
316 arachidonic almost reaching significance (p -Interaction =0.07). This is in line with our previous
317 untargeted profiling in NAFL done on the same subjects showing higher C18-PUFAs in CAU, and a trend
318 for lower LC-PUFA with tendencies shown for docosahexaenoic and eicosapentanoic acids in HIS [25].
319 The lack of significant difference in LC-PUFA in our previous analysis may be due to the semi-
320 quantitative nature and the clustering statistical approach. Also in agreement with our current finding is
321 the lower serum/plasma docosahexaenoic and eicosapentanoic levels reported in obese HIS, compared to
322 non-HIS [34, 35]. Together, this implies diminished plasma LC-PUFA characterizes obese HIS with
323 NAFL and NASH. As dietary intake affects PUFA circulating and tissue levels [36], the ethnicity-

324 dependent differences in n-3 PUFAs intake which is reportedly lower in HIS could be responsible for
325 these observed changes [35, 37]. While we did not account for diet, our findings suggest a possible role as
326 we observed higher linoleic and α -linolenic acid levels independent of obesity in lean healthy HIS
327 compared to CAU. Beside diet, genetic variants in cluster region of fatty acid desaturases (*FADS*) can
328 predict LC-PUFA serum/blood levels [38, 39]. Single nucleotide polymorphisms (SNP) in
329 *FADS1* and *FADS2*, which encode fatty acid desaturases, were robustly associated with NAFLD [40,
330 41]. Lower Δ -5 desaturase levels are reported in both NAFL and NASH [14, 15, 18]. Notably, SNPs in
331 *FADS* that are associated with insufficient biosynthesis of LC-PUFA present with high frequency in
332 Amerindians, a subgroup of HIS [42]. However, genotype was not examined in current study, and both
333 ethnicities had lower estimated Δ -5 desaturase activity with NAFL. Therefore, diet and/or genetic factors
334 may contribute to the observed ethnicity-related PUFA alterations but await further assessment.

335 Other key findings include the ethnicity-related differences in OXLs and eCBs profiles. The COX
336 pathway exerts pro-inflammatory effects as it catalyzes the conversion of arachidonic acid to
337 prostaglandin PGE₂, thromboxane TXB₂, and other fatty acid alcohols [8]. In animal models of NASH,
338 the expression and activity of COX-2 were upregulated, and its inhibition ameliorated NAFL and NASH
339 [43, 44]. Previously, high TXB₂ and PGE₂ levels were reported in subjects with NAFL and NASH [20].
340 Findings in NASH-CAU from our secondary analysis are consistent with this literature, as TXB₂ and 15-
341 Keto PGE₂ discriminated between ethnicities with NASH with higher levels in CAU and lower levels in
342 HIS. When comparing within ethnicities, the progression from 0-NASH to NASH in HIS was marked
343 with a trend for lower arachidonic acid, almost reaching statistical significance (p -Interaction =0.07) and
344 downstream OXLs with TXB₂ being differentially lower (p -Interaction <0.05). These findings suggest
345 ethnicity-related alteration in arachidonic acid metabolism and downstream COX-derived OXLs in
346 NASH.

347 Evidence from animal studies indicates a role for LOX pathways in NAFL and inflammation [45,
348 46]. LOX pathways lead to the synthesis of fatty acid alcohols, ketones, hydroperoxides, and the
349 specialized pro-resolving mediators (SPMs). With exceptions, n-6 PUFA derived alcohols are pro-
350 inflammatory [8]. Under oxidative stress, PUFAs can also undergo auto oxidation to form alcohols,
351 ketones, hydroperoxides [9]. Previous studies reported higher LOX and auto-oxidation metabolites in
352 NAFL and increased arachidonic acid metabolites via LOX with the progression to NASH [16, 20, 21,
353 47]. In our results, compared to control groups, NAFL and NASH in both ethnicities presented higher
354 alcohols and ketones derived from C18-PUFAs, indicating an upregulated LOX pathway(s). In NAFL, we
355 observed a positive correlation between some fatty acid alcohols and the oxidative stress markers, F₂-
356 isoprostanes and 9-HETE (Table S6), implying a contribution of non-enzymatic auto-oxidation.
357 Interestingly, our secondary analysis showed many LOX derived OXLs being higher in NASH-CAU
358 compared to NASH-HIS, with a similar trend found for the oxidative stress marker, 9-HETE (VIP=0.98).
359 Together, these indicate that while LOX and oxidative pathways are upregulated with NAFL in both
360 ethnicities, the magnitude of these alterations is lesser in HIS with NASH, compared to CAU. Based on
361 this finding, we reasoned that LOX, and possibly oxidative stress, may be pivotal for NASH severity in
362 CAU but not in HIS.

363 CYP enzymes catalyze the synthesis of fatty acids epoxides and alcohols. With some exceptions,
364 fatty acid alcohols are pro-inflammatory and epoxides are anti-inflammatory, transient and rapidly
365 hydrolyzed by the action of sEH to form inactive or less active vicinal diols [8, 48]. A role for sEH in
366 NAFLD progression is indicated by animal studies, showing that sEH inhibition improves NAFL, NASH
367 and fibrosis [48]. In subjects with NASH, compared to NAFL, arachidonic acid derived vicinal diols are
368 higher [20]. Our results show, with the progression to NASH, an ethnicity-dependent opposite trend for
369 vicinal diols derived from C18-PUFA, which were higher in HIS and lower in CAU. Some of these

370 vicinal diols and sEH enzymatic indices showed interaction (ethnicity x NASH) and were found higher in
371 NAHS-HIS and lower in NASH-CAU, compared corresponding 0-NASH. This may suggest higher
372 activity of sEH in NASH-HIS. Our secondary analysis also shows higher ratios of multiple sEH
373 enzymatic indices in HIS compared to CAU, and lower C18-PUFA epoxides possibly due higher
374 hydrolysis rate. NASH-CAU showed higher levels of many PUFA epoxides, compared to NASH-HIS,
375 indicating upregulated CYP pathway(s) and/or less hydrolysis. Together, our finding highlights ethnicity-
376 related differences in sEH activity that was higher in HIS with NASH.

377 Extensive evidence from animal studies indicates a role for eCB system in NAFL, mitochondrial
378 dysfunction and inflammation and fibrosis [49, 50]. In NAFL, both ethnicities had higher levels of several
379 eCBs. However, many eCBs were higher in CAU and lower in HIS with the progression to NASH,
380 compared to corresponding 0-NASH (raw p -Interaction <0.05). We also observed levels of the oleic acid-
381 derived mediators N-oleoyl glycine, and oleoylethanolamide. These observations could not be examined
382 in our secondary analysis as we detected limited numbers of eCBs and did not profile for fatty acids.
383 Nevertheless, this may indicate ethnicity-related variations in eCBs profiles and oleic acid metabolism
384 with NAFLD in HIS that need to be further examined.

385 The observed ethnicity-related alterations may be relevant to NAFLD severity. Eicosapentaenoic
386 and docosahexaenoic acids modulate hepatic fatty acid oxidation, *de novo* lipogenesis, redox balance and
387 inflammation via direct interaction with nuclear receptors and transcription factors [51]. These LC-
388 PUFAs are also precursors to potent SPMs which drive inflammatory resolution [8]. Also, the
389 proinflammatory cascade of arachidonic acid via COX is necessary for the biosynthesis of SPMs and
390 initiating inflammatory resolution [11, 52]. Therefore, a diminished level of these PUFAs may abolish
391 anti-steatogenic and anti-inflammatory mechanisms. Likewise, a higher sEH activity may result in
392 deactivation of anti-inflammatory PUFA epoxides [8, 48]. Interestingly, our findings suggest that

393 upregulated LOX pathway(s) may be imperative to NASH severity in CAU with a lesser extent in HIS.
394 Collectively, we postulate that the observed ethnicity-related changes translate to the more advanced
395 NASH histological presentation seen in HIS. Of note, these changes are independent of fibrosis or NAS
396 scores, in fact, histology adjustment resulted in stronger differences in both analyses, implying that
397 subjects with advanced fibrosis may share similar lipidomic profile.

398 Our findings have clinical/diagnostic implications. The stage of liver fibrosis in NASH is critical
399 to guide decisions on therapy [53]. Given that liver biopsy is subjected to risks and limitations, there is an
400 ongoing search for noninvasive biomarker for NAFLD [54]. Several OXLs derived from arachidonic acid
401 were shown to predict liver histological features. For example, NASH was characterized by a stepwise
402 increase in 5- and 15-HETE; PGE₂; and some vicinal diols [16, 20]. While our findings in NASH-CAU
403 show trends consistent with current literature, findings in HIS indicate otherwise. Ethnicity-related
404 differences in plasma metabolomic profile have been reported before in Alzheimer's disease and bladder
405 cancer [55, 56]. Based on our finding, we propose that ethnicity-specific plasma signature may
406 characterize NASH. On another note, clinical evidence supports a role of eicosapentaenoic and
407 docosahexaenoic acids supplementation in improving NAFL and its risk factors [57, 58]. Also, there is
408 growing data on the utility of sEH inhibitors in NASH treatment with sEH inhibitors entering clinical
409 trials [48, 59, 60]. Therefore, evaluating these interventions for the treatment of NASH, particularly in the
410 HIS population seems warranted.

411 This “proof-of-concept” analysis is based on a small, single-center study. The limited sample size
412 may have compromised the correction for multiple testing in the primary analysis. However, findings
413 from the secondary analysis were consistent and the multivariate model is validated for overfitting and
414 predictability. Other strengths include subjects were biopsy-characterized and analysis was adjusted for
415 BMI and histology. In conclusion, we performed targeted lipidomic profiling for PUFAs and related lipid

416 mediators with regards to ethnicity. Results show ethnicity-related divergence in LC-PUFA and
417 downstream OXLs profiles with NAFL and NASH progression, independent of histological scores. Our
418 secondary analysis indicates that in NASH and compared to CAU, HIS are characterized by lower levels
419 of arachidonic acid derived OXLs, downregulated LOX with an upregulated sEH pathway(s). The
420 implications of these differences on the disparity reported in NAFLD rate and severity are not clear but
421 worth further investigations. Our findings suggest ethnicity-specific lipidomic signature may characterize
422 NASH. Although preliminary, these novel observations support the need for larger validation studies.

423 **5. Data Availability Statement:**

424 Analysis protocol and reported data are available at the Metabolomics Workbench
425 (<http://www.metabolomicsworkbench.org>), study ID numbers (ST000977 and ST001845).

426

427 **6. Conflict of interest:**

428 V.M. serves on the Advisory Board of Alexion Pharmaceuticals.

429

430 **7. Author Contributions:**

431 Original draft writing, T.A.M.; Draft editing, T.A.M., V.M., K.B., J.W.N., Formal analysis and
432 visualization, T.A.M., K.B; Methodology, T.A.M, V.M., O.F., D.K, K.M and Y.Y.W.; Investigation,
433 T.A.M, K.M.; Resources, V.M., O.F., S.S., K.L.S., P.J.H. and M.A.; Funding Acquisition- V.M., J.W.N.
434 and P.J.H.

435

436 **8. Funding:**

437 This work was funded by The National Institutes of Health (NIH)-West Coast Metabolomic Center
438 (WCMC) grant number U24 DK097154, by R01 DK104770 (to V.M.), by 1R01 HL09133 (to P.H.)
439 and 1R01 HL107256 (to P.H.). Additional fund was provided by The United States Department of
440 Agriculture (USDA) project 2032-51530-025-00D (to J.W.N). The USDA is an equal opportunity
441 provider and employer. The content is exclusively the responsibility of the authors and does not represent
442 the official views of the NIH, the WCMC or the USDA.

443

444 9. References

- 445 1. Younossi, Z.M., et al., *Global epidemiology of nonalcoholic fatty liver disease—Meta-analytic*
446 *assessment of prevalence, incidence, and outcomes*. Hepatology, 2016. **64**(1): p. 73-84.
- 447 2. Chalasani, N., et al., *The diagnosis and management of nonalcoholic fatty liver disease: practice*
448 *guidance from the American Association for the Study of Liver Diseases*. Hepatology, 2018. **67**(1): p.
449 328-357.
- 450 3. Yu, J., et al., *The pathogenesis of nonalcoholic fatty liver disease: interplay between diet, gut*
451 *microbiota, and genetic background*. Gastroenterology research and practice, 2016. **2016**.
- 452 4. Tilg, H. and A.R. Moschen, *Evolution of inflammation in nonalcoholic fatty liver disease: the multiple*
453 *parallel hits hypothesis*. Hepatology, 2010. **52**(5): p. 1836-1846.
- 454 5. Lazo, M., et al., *Prevalence of nonalcoholic fatty liver disease in the United States: the Third National*
455 *Health and Nutrition Examination Survey, 1988–1994*. American journal of epidemiology, 2013.
456 **178**(1): p. 38-45.
- 457 6. Rich, N.E., et al., *Racial and Ethnic Disparities in Nonalcoholic Fatty Liver Disease Prevalence,*
458 *Severity, and Outcomes in the United States: A Systematic Review and Meta-analysis*. Clin
459 Gastroenterol Hepatol, 2018. **16**(2): p. 198-210.e2.
- 460 7. Mohanty, S.R., et al., *Influence of ethnicity on histological differences in non-alcoholic fatty liver*
461 *disease*. Journal of hepatology, 2009. **50**(4): p. 797-804.
- 462 8. Gabbs, M., et al., *Advances in Our Understanding of Oxylipins Derived from Dietary PUFAs*.
463 *Advances in Nutrition*, 2015. **6**(5): p. 513-540.
- 464 9. Roy, J., et al., *Non-enzymatic cyclic oxygenated metabolites of omega-3 polyunsaturated fatty acid:*
465 *Bioactive drugs?* Biochimie, 2016. **120**: p. 56-61.
- 466 10. Dennis, E.A. and P.C. Norris, *Eicosanoid storm in infection and inflammation*. Nature Reviews
467 Immunology, 2015. **15**(8): p. 511-523.
- 468 11. Serhan, C.N., *Treating inflammation and infection in the 21st century: new hints from decoding*
469 *resolution mediators and mechanisms*. The FASEB Journal, 2017. **31**(4): p. 1273-1288.
- 470 12. Mallat, A., et al., *The endocannabinoid system as a key mediator during liver diseases: new insights*
471 *and therapeutic openings*. British journal of pharmacology, 2011. **163**(7): p. 1432-1440.
- 472 13. Tam, J., et al., *Endocannabinoids in liver disease*. Hepatology, 2011. **53**(1): p. 346-355.
- 473 14. Puri, P., et al., *A lipidomic analysis of nonalcoholic fatty liver disease*. Hepatology, 2007. **46**(4): p.
474 1081-1090.
- 475 15. Chiappini, F., et al., *Metabolism dysregulation induces a specific lipid signature of nonalcoholic*
476 *steatohepatitis in patients*. Scientific reports, 2017. **7**: p. 46658.
- 477 16. Puri, P., et al., *The plasma lipidomic signature of nonalcoholic steatohepatitis*. Hepatology, 2009.
478 **50**(6): p. 1827-1838.
- 479 17. Kalhan, S.C., et al., *Plasma metabolomic profile in nonalcoholic fatty liver disease*. Metabolism-
480 Clinical and Experimental, 2011. **60**(3): p. 404-413.
- 481 18. Walle, P., et al., *Fatty acid metabolism is altered in non-alcoholic steatohepatitis independent of*
482 *obesity*. Metabolism, 2016. **65**(5): p. 655-666.
- 483 19. Maciejewska, D., et al., *Metabolites of arachidonic acid and linoleic acid in early stages of non-*
484 *alcoholic fatty liver disease—A pilot study*. Prostaglandins & other lipid mediators, 2015. **121**: p. 184-
485 189.
- 486 20. Loomba, R., et al., *Polyunsaturated fatty acid metabolites as novel lipidomic biomarkers for*
487 *noninvasive diagnosis of nonalcoholic steatohepatitis*. J Lipid Res, 2015. **56**(1): p. 185-92.

- 488 21. Feldstein, A.E., et al., *Mass spectrometric profiling of oxidized lipid products in human nonalcoholic*
489 *fatty liver disease and nonalcoholic steatohepatitis*. Journal of lipid research, 2010: p. jlr. M007096.
- 490 22. Gorden, D.L., et al., *Biomarkers of NAFLD progression: a lipidomics approach to an epidemic*.
491 Journal of lipid research, 2015. **56**(3): p. 722-736.
- 492 23. Kimberly, W.T., et al., *Metabolite profiling identifies anandamide as a biomarker of nonalcoholic*
493 *steatohepatitis*. JCI insight, 2017. **2**(9).
- 494 24. Zelber-Sagi, S., et al., *Serum levels of endocannabinoids are independently associated with*
495 *nonalcoholic fatty liver disease*. Obesity, 2017. **25**(1): p. 94-101.
- 496 25. Mazi, T.A., et al., *Ethnicity-specific alterations of plasma and hepatic lipidomic profiles are related to*
497 *high NAFLD rate and severity in Hispanic Americans, a pilot study*. Free Radic Biol Med, 2021. **172**:
498 p. 490-502.
- 499 26. Kleiner, D.E., et al., *Design and validation of a histological scoring system for nonalcoholic fatty liver*
500 *disease*. Hepatology, 2005. **41**(6): p. 1313-21.
- 501 27. Bedossa, P., et al., *Histopathological algorithm and scoring system for evaluation of liver lesions in*
502 *morbidly obese patients*. Hepatology, 2012. **56**(5): p. 1751-1759.
- 503 28. Pedersen, T.L., I.J. Gray, and J.W. Newman, *Plasma and serum oxylipin, endocannabinoid, bile acid,*
504 *steroid, fatty acid and nonsteroidal anti-inflammatory drug quantification in a 96-well plate format*.
505 Analytica Chimica Acta, 2021. **1143**: p. 189-200.
- 506 29. Shannon, P., et al., *Cytoscape: a software environment for integrated models of biomolecular*
507 *interaction networks*. Genome research, 2003. **13**(11): p. 2498-2504.
- 508 30. Benjamini, Y. and D. Yekutieli, *Quantitative trait loci analysis using the false discovery rate*.
509 Genetics, 2005. **171**(2): p. 783-789.
- 510 31. Berg, R., Hoefsloot HCJ van den, Westerhuis JA, Smilde AK, Werf MJ, van der: *Centering, scaling,*
511 *and transformations: improving the biological information content of metabolomics data*. BMC
512 Genomics, 2006. **7**: p. 142.
- 513 32. Westerhuis, J.A., et al., *Assessment of PLS-DA cross validation*. Metabolomics, 2008. **4**(1): p. 81-89.
- 514 33. Eriksson, L., et al., *Multi- and megavariate data analysis basic principles and applications*. Vol. 1.
515 2013: Umetrics Academy.
- 516 34. Murphy, R.A., et al., *Long-chain omega-3 fatty acid serum concentrations across life stages in the*
517 *USA: an analysis of NHANES 2011–2012*. BMJ open, 2021. **11**(5): p. e043301.
- 518 35. Steffen, B., et al., *Ethnicity, plasma phospholipid fatty acid composition and inflammatory/endothelial*
519 *activation biomarkers in the Multi-Ethnic Study of Atherosclerosis (MESA)*. European journal of
520 clinical nutrition, 2012. **66**(5): p. 600-605.
- 521 36. Wood, K.E., et al., *The effect of modifying dietary LA and ALA intakes on omega-3 long chain*
522 *polyunsaturated fatty acid (n-3 LCPUFA) status in human adults: a systematic review and*
523 *commentary*. Prostaglandins, Leukotrienes and Essential Fatty Acids, 2015. **95**: p. 47-55.
- 524 37. Ramírez-Silva, I., et al., *Fatty acids intake in the Mexican population. Results of the National*
525 *Nutrition Survey 2006*. Nutrition & metabolism, 2011. **8**(1): p. 33.
- 526 38. Schaeffer, L., et al., *Common genetic variants of the FADS1 FADS2 gene cluster and their*
527 *reconstructed haplotypes are associated with the fatty acid composition in phospholipids*. Human
528 molecular genetics, 2006. **15**(11): p. 1745-1756.
- 529 39. Koletzko, B., et al., *Genetic variants of the fatty acid desaturase gene cluster predict amounts of red*
530 *blood cell docosahexaenoic and other polyunsaturated fatty acids in pregnant women: findings from*
531 *the Avon Longitudinal Study of Parents and Children*. The American journal of clinical nutrition,
532 2011. **93**(1): p. 211-219.

- 533 40. Wang, L., et al., *Fatty acid desaturase 1 gene polymorphisms control human hepatic lipid*
534 *composition*. Hepatology, 2015. **61**(1): p. 119-128.
- 535 41. Vernekar, M., et al., *Gene polymorphisms of desaturase enzymes of polyunsaturated fatty acid*
536 *metabolism and adiponutrin and the increased risk of nonalcoholic fatty liver disease*. Meta Gene,
537 2017. **11**: p. 152-156.
- 538 42. Yang, C., et al., *Amerind ancestry predicts the impact of FADS genetic variation on omega-3 PUFA*
539 *deficiency, cardiometabolic and inflammatory risk in Hispanic populations*. medRxiv, 2021.
- 540 43. Cheng, Q., et al., *Cyclooxygenase-2 promotes hepatocellular apoptosis by interacting with TNF- α and*
541 *IL-6 in the pathogenesis of nonalcoholic steatohepatitis in rats*. Digestive diseases and sciences, 2013.
542 **58**(10): p. 2895-2902.
- 543 44. Chen, J., et al., *Celecoxib attenuates liver steatosis and inflammation in non-alcoholic steatohepatitis*
544 *induced by high-fat diet in rats*. Molecular medicine reports, 2011. **4**(5): p. 811-816.
- 545 45. Lazic, M., et al., *Reduced dietary omega-6 to omega-3 fatty acid ratio and 12/15-lipoxygenase*
546 *deficiency are protective against chronic high fat diet-induced steatohepatitis*. PloS one, 2014. **9**(9): p.
547 e107658.
- 548 46. López-Parra, M., et al., *Regulatory effects of arachidonate 5-lipoxygenase on hepatic microsomal TG*
549 *transfer protein activity and VLDL-triglyceride and apoB secretion in obese mice*. Journal of lipid
550 research, 2008. **49**(12): p. 2513-2523.
- 551 47. Li, Q., et al., *Plasma Oxylipins Levels in Nonalcoholic Fatty Liver Disease*. Digestive Diseases and
552 Sciences, 2020: p. 1-9.
- 553 48. Warner, J., et al., *Soluble Epoxide Hydrolase Inhibition in Liver Diseases: A Review of Current*
554 *Research and Knowledge Gaps*. Biology, 2020. **9**(6): p. 124.
- 555 49. Jourdan, T., et al., *CB1 antagonism exerts specific molecular effects on visceral and subcutaneous fat*
556 *and reverses liver steatosis in diet-induced obese mice*. Diabetes, 2010. **59**(4): p. 926-934.
- 557 50. Osei-Hyiaman, D., et al., *Hepatic CB 1 receptor is required for development of diet-induced steatosis,*
558 *dyslipidemia, and insulin and leptin resistance in mice*. The Journal of clinical investigation, 2008.
559 **118**(9): p. 3160-3169.
- 560 51. de Castro, G.S. and P.C. Calder, *Non-alcoholic fatty liver disease and its treatment with n-3*
561 *polyunsaturated fatty acids*. Clinical nutrition, 2018. **37**(1): p. 37-55.
- 562 52. Musso, G., et al., *Specialized proresolving mediators: enhancing nonalcoholic steatohepatitis and*
563 *fibrosis resolution*. Trends in pharmacological sciences, 2018. **39**(4): p. 387-401.
- 564 53. Dufour, J.-F., C. Caussy, and R. Loomba, *Combination therapy for non-alcoholic steatohepatitis:*
565 *rationale, opportunities and challenges*. Gut, 2020. **69**(10): p. 1877-1884.
- 566 54. Golabi, P., et al., *Current complications and challenges in nonalcoholic steatohepatitis screening and*
567 *diagnosis*. Expert review of gastroenterology & hepatology, 2016. **10**(1): p. 63-71.
- 568 55. Vardarajan, B., et al., *Differences in plasma metabolites related to Alzheimer's disease, APOE ϵ 4*
569 *status, and ethnicity*. Alzheimer's & Dementia: Translational Research & Clinical Interventions, 2020.
570 **6**(1): p. e12025.
- 571 56. Vantaku, V., et al., *Large-scale profiling of serum metabolites in African American and European*
572 *American patients with bladder cancer reveals metabolic pathways associated with patient survival*.
573 Cancer, 2019. **125**(6): p. 921-932.
- 574 57. Musa-Veloso, K., et al., *Systematic review and meta-analysis of controlled intervention studies on the*
575 *effectiveness of long-chain omega-3 fatty acids in patients with nonalcoholic fatty liver disease*.
576 Nutrition reviews, 2018. **76**(8): p. 581-602.

- 577 58.Lu, W., et al., *Effects of omega-3 fatty acid in nonalcoholic fatty liver disease: a meta-analysis.*
578 Gastroenterology research and practice, 2016. **2016**.
- 579 59.Hammock, B.D., et al., *Movement to the clinic of soluble epoxide hydrolase inhibitor EC5026 as an*
580 *analgesic for neuropathic pain and for use as a nonaddictive opioid alternative.* Journal of medicinal
581 chemistry, 2021. **64**(4): p. 1856-1872.
- 582 60.Lazaar, A.L., et al., *Pharmacokinetics, pharmacodynamics and adverse event profile of GSK2256294,*
583 *a novel soluble epoxide hydrolase inhibitor.* British journal of clinical pharmacology, 2016. **81**(5): p.
584 971-979.
- 585

586 **Table 1. Demographic, clinical, and histological characteristics of study subjects in primary analysis**

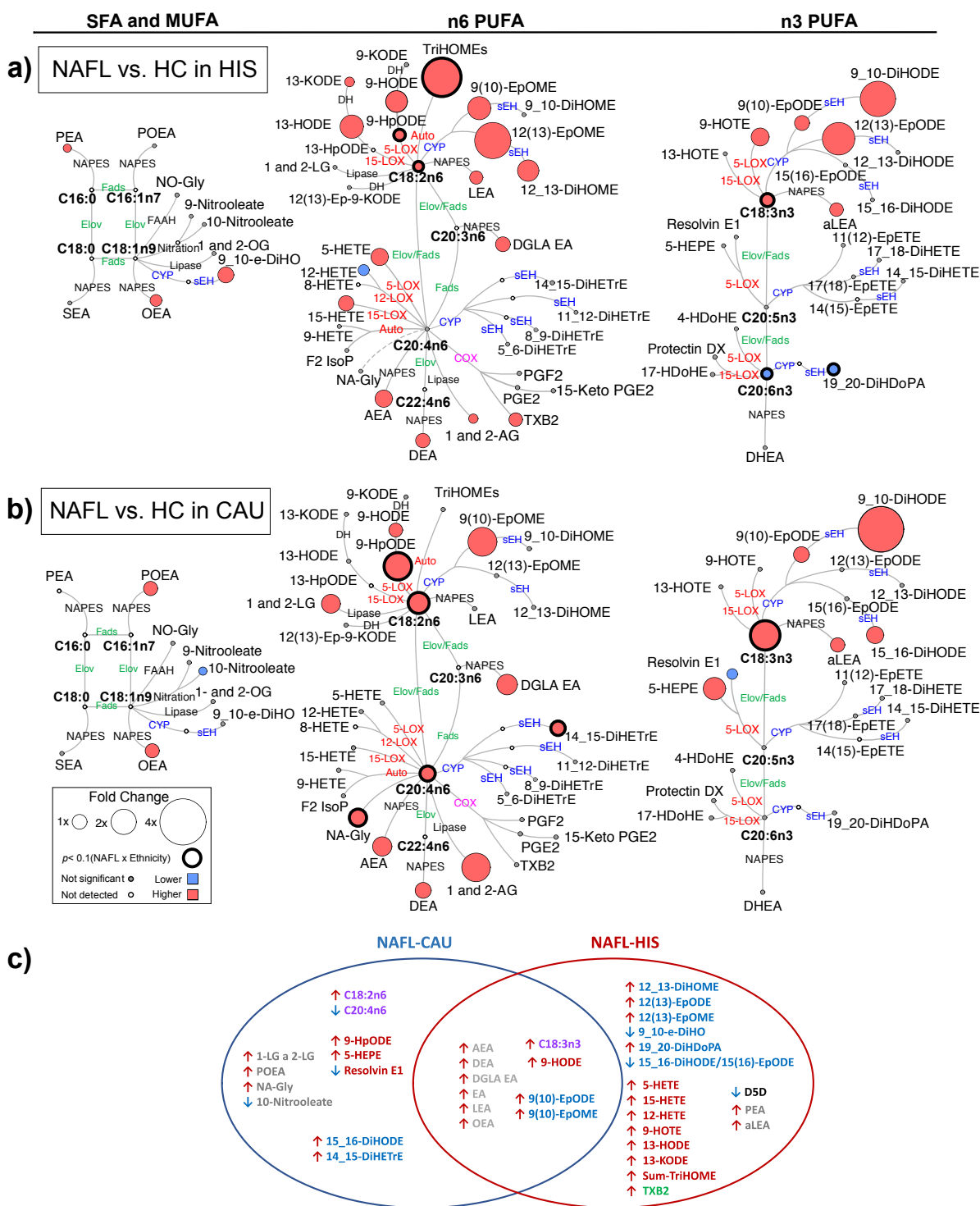
	NAFL-HIS	NAFL-CAU	<i>p</i> -value *
Plasma, <i>n</i> (F/M)	10 (7/3)	8 (4/4)	
Age (Yrs.)	47 ± 15	50 ± 18	0.6
DM, yes (%)	4 (40)	4 (50.0)	1.0
FBG mmol/L	101 ± 14	94 ± 13	0.3
Cholesterol (mg/dL)	172 ± 28	166 ± 34	0.7
TG (mg/dL)	135 ± 79	129 ± 70	0.8
HDL (mg/dL)	44 ± 6	43 ± 8	0.7
LDL (mg/dL)	107 ± 24	99 ± 35	0.4
HbA1c (%)	6 ± 1	6 ± 1	0.7
AST (U/L)	31 ± 13	26 ± 9	0.6
ALT(U/L)	40 ± 27	31 ± 11	0.9
Platelet	280 ± 84	302 ± 110	0.8
Steatosis	23 ± 25	20 ± 15	0.9
NAS	3.2 ± 2.62	2.75 ± 1.41	0.7
Steatosis (%)			
< 5%	4 (40)	1(12.5)	0.9
5 to ≤ 33%	3 (30)	5(62.5)	
34 to ≤ 66 %	2 (20)	2 (25.0)	
> 66%	1 (10.0)	0 (0.0)	
Inflammation (%)			
None	3 (30)	1 (12.5)	0.6
Mild	1 (10)	4 (50.0)	
Moderate	4 (40)	3 (37.5)	
Severe	2 (20)	0 (0.0)	
Ballooning (%)			
None	4 (40)	5 (62.0)	0.3
Few	5 (50)	3 (37.5)	
Many	1 (10)	0 (0.0)	
Fibrosis (%)			
None	7 (70)	7 (87.5)	0.3
1A	0 (0.0)	1 (12.1)	
2	1 (10.0)	0 (0.0)	
4	2 (20.0)	0 (0.0)	

587 General characteristics of NAFL group in both ethnicities shown as percent (for categorical data) and mean ± SEM
588 (for nominal data). Comparisons were performed by *t*- test (nominal) or chi-square test (categorical). ALT - alanine
589 aminotransferase; AST - aspartate aminotransferase; CAU - Caucasian; DM -diabetes mellitus; FBG - fasting blood
590 glucose; HbA1c - hemoglobin A1c; HDL - high-density lipoprotein, HIS -Hispanic; LDL - low density lipoprotein;
591 NAFL – Non-alcoholic fatty liver; NAS - the NAFLD Activity Score; TG - triglycerides. (*) NAFL-HIS vs. NAFL-
592 CAU.

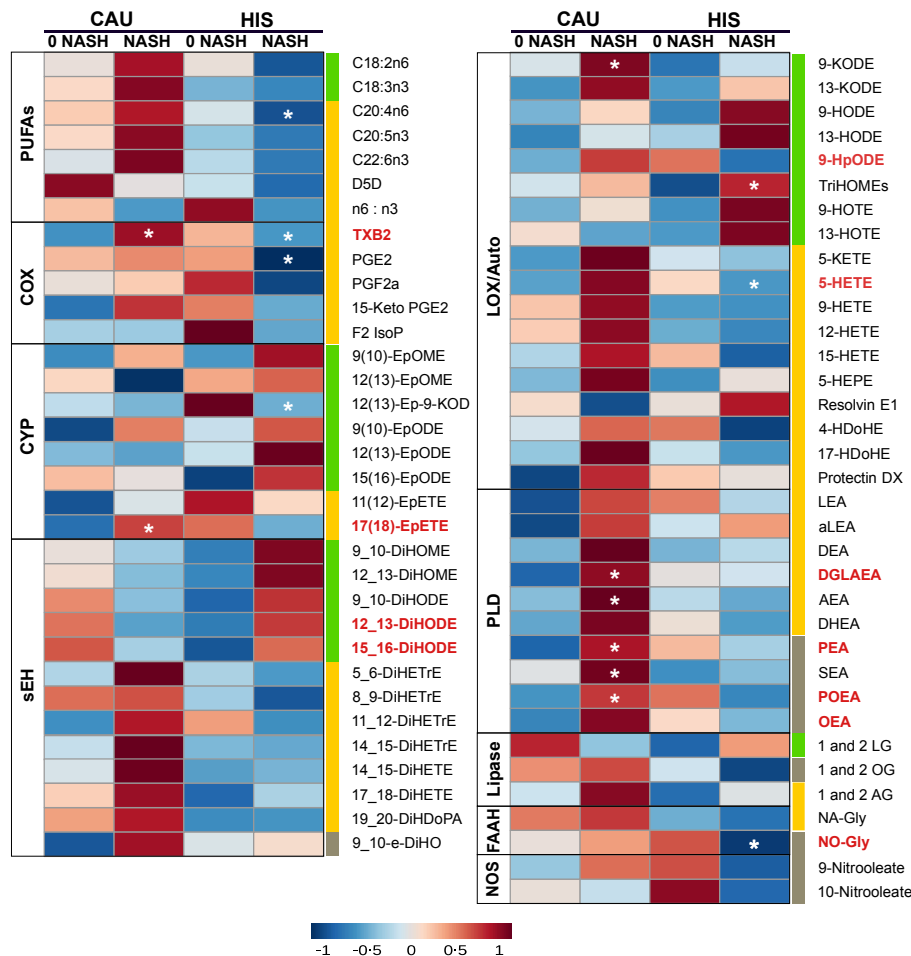
593 **Table 2. Demographic, clinical, and histological characteristics of NASH subjects in secondary analysis**

	NASH-HIS	NASH-CAU	<i>p</i> -value
Plasma, <i>n</i> (F/M)	12 (9/3)	17 (11/6)	
Age (Yrs.)	49.4 ± 8.1	50.4 ± 13.3	0.816
BMI (Kg/m ²)	41 ± 7.65	36.6 ± 7.35	0.585
NAS	5.08 ± 1.98	5.06 ± 1.3	0.97
Steatosis (%)			
< 5%	2(16.7)	0(0)	
5 to ≤ 33%	4(33.3)	7(41.2)	
34 to ≤ 66 %	3(25)	4(23.5)	0.363
> 66%	3(25)	6(35.3)	
Inflammation (%)			
None	0	0(0)	
Mild	2(16.7)	3(17.7)	
Moderate	6(50.0)	13(76.5)	0.147
Severe	4(33.3)	1(5.8)	
Ballooning (%)			
None	0(0)	0(0)	
Few	8(66.7)	13(76.5)	
Many	4(33.3)	4(23.5)	0.56
Fibrosis (%)			
None	5(41.6)	4(23.4)	
1a, b, c	2(16.8)	6(35.3)	
2	2(16.8)	3(17.7)	0.766
3	2(16.8)	2(11.8)	
4	1(8.3)	2(11.8)	

594 General characteristics of subjects included in the secondary analysis shown as percent (for categorical data) and
 595 mean ± SEM (for nominal data). Comparisons were performed by *t*- test (nominal) or chi-square test (categorical).
 596 BMI - body mass index; CAU - Caucasian; HIS - Hispanic; NASH – Non-alcoholic steatohepatitis; NAS - the
 597 NAFLD Activity Score. (*) NAFL-HIS vs. NAFL-CAU.

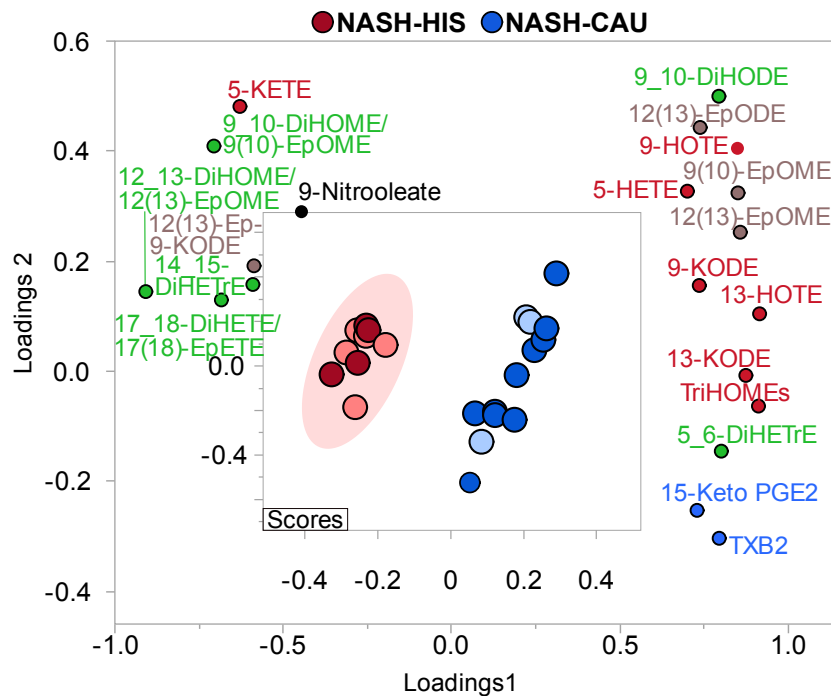


599 **Figure 1. Differences in plasma PUFA and lipid mediators between NAFL compared to HC in primary**
600 **cohort.** Metabolic network for (a) HIS; (b) CAU illustrating saturated (SFAs), monounsaturated (MUFAs) and
601 polyunsaturated fatty acids (PUFAs), including n-3 and n-6 fatty acids with pathway of oxylipins and
602 endocannabinoids synthesis. Node size represents the fold change of lipids, calculated for each ethnicity separately
603 as (HC - NAFL)/HC. Node's color represents the directionality of metabolite differences: higher in NAFL (red);
604 lower in NAFL (blue); no change (grey). Only fold change for lipids with differences between NAFL vs. HC (*t*-test
605 raw *p* <0.05) and/or with interaction (ethnicity x NAFL) (ANCOVA raw *p* <0.05) are shown. Lipids with interaction
606 (ethnicity x NAFL) (ANCOVA raw *p* <0.05) are marked with a solid circle and lipids. Lipids means and
607 corresponding *p*-values are detailed in Table S3. NAFL (*n* =10 HIS and 8 CAU); HC (*n* =14 HIS and 8 CAU). (b)
608 Venn-Diagram illustrating overlapping and unshared differences in plasma PUFA and lipid mediators between
609 NAFL and HC in both ethnicities. Metabolites with FDR-adjusted *p* <0.2 are shown. Fatty acids are shown in
610 (purple). Other metabolites are colored according to their metabolizing enzymes pathways, lipoxygenase, and
611 autoxidation (red); cytochrome p450 epoxygenase and soluble epoxide hydrolase (blue); cyclooxygenase (green); N-
612 acylphosphatidylethanolamide-phospholipase D (grey); other (black). Fatty acids are described by number of
613 carbons and double bounds of the fatty acyl moiety (i.e., C18:2n6). CAU, Caucasian; HIS, Hispanics; HC, Healthy
614 control; NAFL, Non-alcoholic fatty liver; ADH, alcohol dehydrogenase; AEA, arachidonoyl ethanolamine; AG,
615 arachidonoyl glycerol; Auto, autoxidation; COX, cyclooxygenase; CYP, cytochrome P450; DEA, docosatetraenyl
616 ethanolamide; DGLEA, dihomo-gamma-linolenoyl ethanolamide; DH, dehydrogenase; DHEA, docosahexaenoyl
617 ethanolamide; DiHDoPA, dihydroxydocosapentaenoic acid; DiHETE, dihydroxyeicosatetraenoic acid; DiHETrE,
618 dihydroxyeicosatrienoic acid; DiHO, dihydroxyoctadecanoic acid; DiHODE, dihydroxyoctadecadienoic acid;
619 DiHOME, dihydroxyoctadecenoic acid; Elov, fatty acid elongase; Ep-KODE, epoxyoxooctadecenoic acid; EpETE,
620 epoxyeicosatetraenoic acid; EpODE, epoxyoctadecadienoic acid; EpOME, epoxyoctadecenoic acid; F2-IsoP, F2
621 isoprostanes; FAAH, fatty acid amide hydrolase; Fads, fattyacididesaturase; HDoHE, hydroxydocosahexaenoic acid;
622 HEPE, hydroxyeicosapentaenoic acid; HETE, hydroxyeicosatetraenoic acid; HODE, hydroxyoctadecadienoic acid;
623 HOTE, hydroxyoctadecatrienoic acid; HpODE, hydroperoxyoctadecadienoic acid; KETE, keto-eicosatetraenoic;
624 KODE, keto-octadecadienoic acid; LEA, Linoleyl ethanolamine; LG, linoleoylglycerol; LOX, lipoxygenase;
625 MUFA, Monounsaturated fatty acid; NA-Gly, arachidonylglycine; NAPES, N-acylphosphatidyl ethanolamine-
626 specific; NO-Gly; OEA, oleoyl ethanolamine; OG, oleoylglycerol; PEA, palmitoyl ethanolamine; PGE,
627 prostaglandin E; PGF, prostaglandin F; POEA, palmitoleoyl ethanolamide; PUFA, Polyunsaturated fatty acids;
628 SEA, stearoyl ethanolamide; sEH, soluble epoxide hydrolase; SFA, Saturated fatty acids; TriHOME,
629 trihydroxyoctadecaenoic acid; TXB, thromboxane.



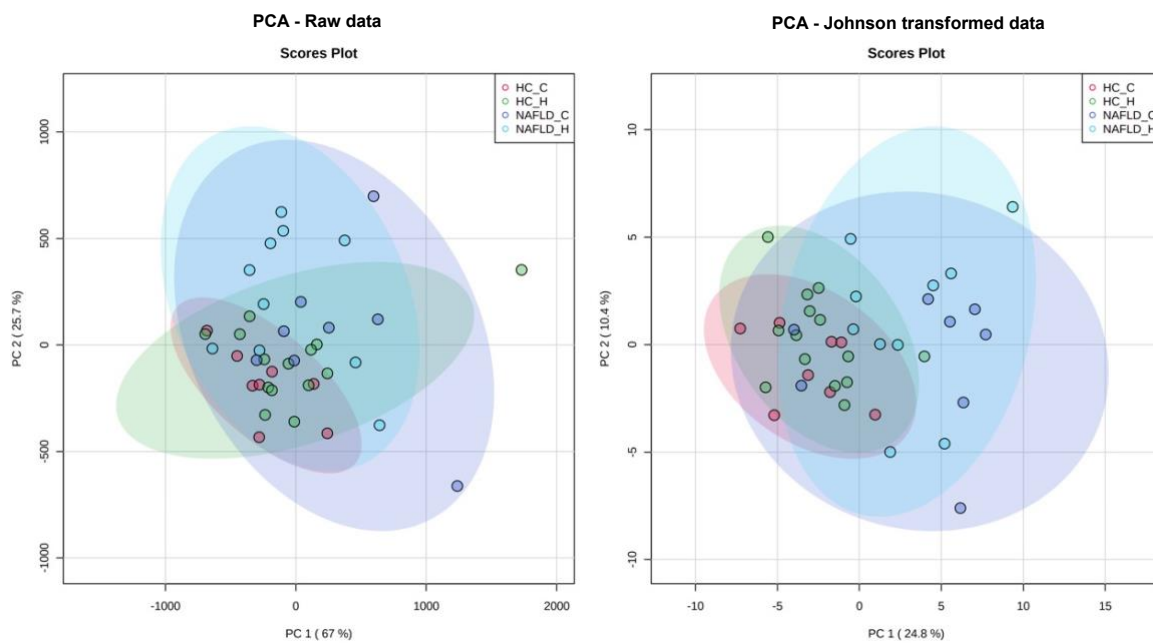
630
 631
 632 **Figure 2. Heatmap illustrating fold changes and differences in plasma PUFA and lipid mediators between**
 633 **NASH compared to 0-NASH in primary cohort.** Fold changes are indicated by color and intensity, with red
 634 indicating an increase, and blue indicating a decrease. Lipids different in NASH vs. 0_NASH (*t*-test raw *p* < 0.05)
 635 are noted by (*). Lipids with ethnicity-related changes, or interaction (ethnicity x NASH), (ANCOVA raw *p* < 0.05)
 636 are marked with bold red color. Fatty acids are described by number of carbons and double bounds of the fatty acyl
 637 moiety (i.e., C18:2n6). C18 PUFAs and related lipids are marked with “green”; LC-PUFAs and related lipids are
 638 marked with “yellow”; SFA and MUFA related lipids are marked with “grey”. Details on Lipids means, and
 639 corresponding *p*-values are detailed in Table S5. NASH (*n*=6 HIS and 3 CAU); 0-NASH (*n*=4 HIS and 5 CAU).
 640 Fatty acids are described by number of carbons and double bounds of the fatty acyl moiety (i.e., C18:2n6). CAU,
 641 Caucasian; HIS, Hispanics; NASH, Non-alcoholic steatohepatitis; ADH, alcohol dehydrogenase; AEA,
 642 arachidonoyl ethanolamine; AG, arachidonoyl glycerol; Auto, autoxidation; COX, cyclooxygenase; CYP,

643 cytochrome P450; DEA, docosatetraenyl ethanolamide; DGLEA, dihomogamma-linolenoyl ethanolamide; DH,
644 dehydrogenase; DHEA, docosahexaenoyl ethanolamide; DiHDoPA, dihydroxydocosapentaenoic acid; DiHETE,
645 dihydroxyeicosatetraenoic acid; DiHETrE, dihydroxyeicosatrienoic acid; DiHO, dihydroxyoctadecanoic acid;
646 DiHODE, dihydroxyoctadecadienoic acid; DiHOME, dihydroxyoctadecenoic acid; Elov, fatty acid elongase; Ep-
647 KODE, epoxyxooctadecenoic acid; EpETE, epoxyeicosatetraenoic acid; EpODE, epoxyoctadecadienoic acid;
648 EpOME, epoxyoctadecenoic acid; F2-IsoP, F2 isoprostanes; FAAH, fatty acid amide hydrolase; Fads,
649 fattyacid desaturase; HDoHE, hydroxydocosahexaenoic acid; HEPE, hydroxyeicosapentaenoic acid; HETE,
650 hydroxyeicosatetraenoic acid; HODE, hydroxyoctadecadienoic acid; HOTE, hydroxyoctadecatrienoic acid; HpODE,
651 hydroperoxyoctadecadienoic acid; KETE, keto-eicosatetraenoic; KODE, keto-octadecadienoic acid; LEA, Linoleyl
652 ethanolamine; LG, linoleoylglycerol; LOX, lipoxygenase; MUFA, Monounsaturated fatty acid; NA-Gly,
653 arachidonylglycine; NAPES, N-acylphosphatidyl ethanolamine-specific; NOS - Nitric oxide synthase; NO-Gly;
654 OEA, oleoyl ethanolamine; OG, oleoylglycerol; PEA, palmitoyl ethanolamine; PGE, prostaglandin E; PGF,
655 prostaglandin F; PLD- N-acylphosphatidylethanolamide-phospholipase D; POEA, palmitoleoyl ethanolamide;
656 PUFA, Polyunsaturated fatty acids; SEA, stearyl ethanolamide; sEH, soluble epoxide hydrolase; SFA, Saturated
657 fatty acids; TriHOME, trihydroxyoctadecaenoic acid; TXB, thromboxane.

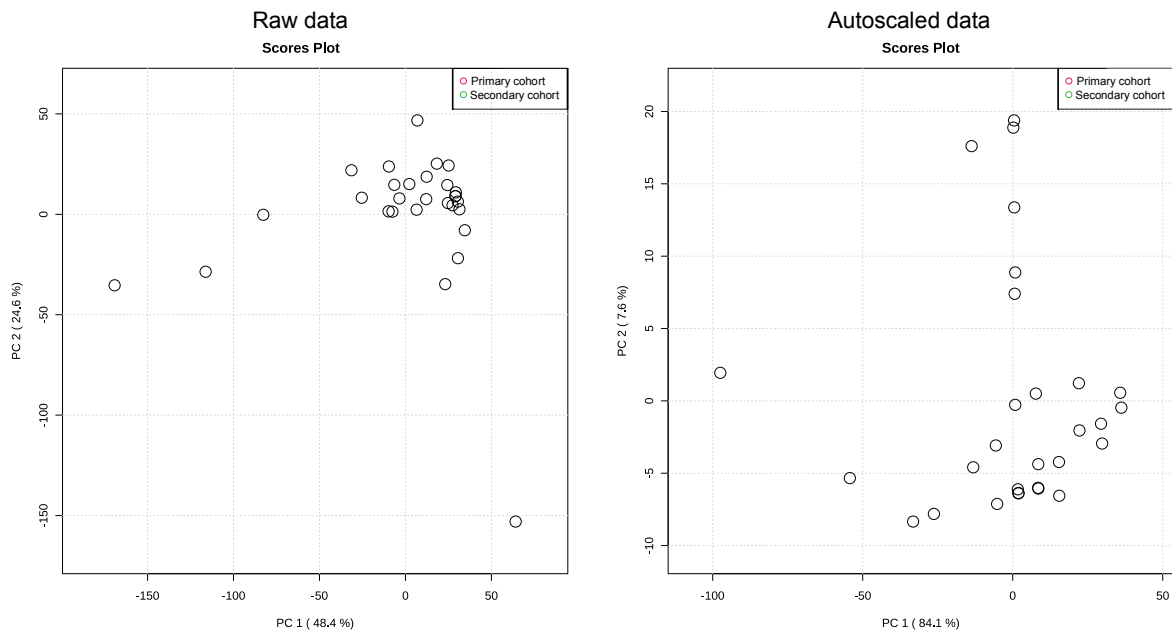


658
 659 **Figure 3. Supervised multivariate clustering model demonstrating ethnicity specific OXLs profile**
 660 **discriminates HIS and CAU with NASH without advanced fibrosis.** Score plot for NASH-HIS (red) vs. NASH-
 661 CAU (blue) when excluding when excluding stage 3 and 4 fibrosis ($n = 9$ HIS and 13 CAU). Light color represents
 662 subjects from primary cohort and dark color represents secondary cohort. The model was performed on all profiled
 663 lipids. Lipid mediators are colored according to their metabolizing enzymes pathways, lipoxygenase, and
 664 autoxidation (red); cytochrome p450 epoxygenase (brown); and soluble epoxide hydrolase (green); cyclooxygenase
 665 (blue); other (black). The model was validated with leave-one-out cross validation (LOOCV). The (Q^2) and (R^2) is
 666 0.99 and 0.98, respectively. Details on variable importance into the projection (VIP) scores and cross validation are
 667 shown in Table S6. Caucasian; HIS, Hispanics; NASH, Non-alcoholic steatohepatitis; DiHETE,
 668 dihydroxyeicosatetraenoic acid; DiHETrE, dihydroxyeicosatrienoic acid; DiHODE, dihydroxyoctadecadienoic acid;
 669 DiHOME, dihydroxyoctadecenoic acid; Ep-KODE, epoxyxooctadecenoic acid; EpETE, epoxyeicosatetraenoic
 670 acid; EpODE, epoxyoctadecadienoic acid; EpOME, epoxyoctadecenoic acid; HETE, hydroxyeicosatetraenoic acid;
 671 HOTE, hydroxyoctadecatrienoic acid; KETE, keto-eicosatetraenoic; KODE, keto-octadecadienoic acid; PGE,
 672 prostaglandin E; TriHOME, trihydroxyoctadecaenoic acid; TXB, thromboxane.

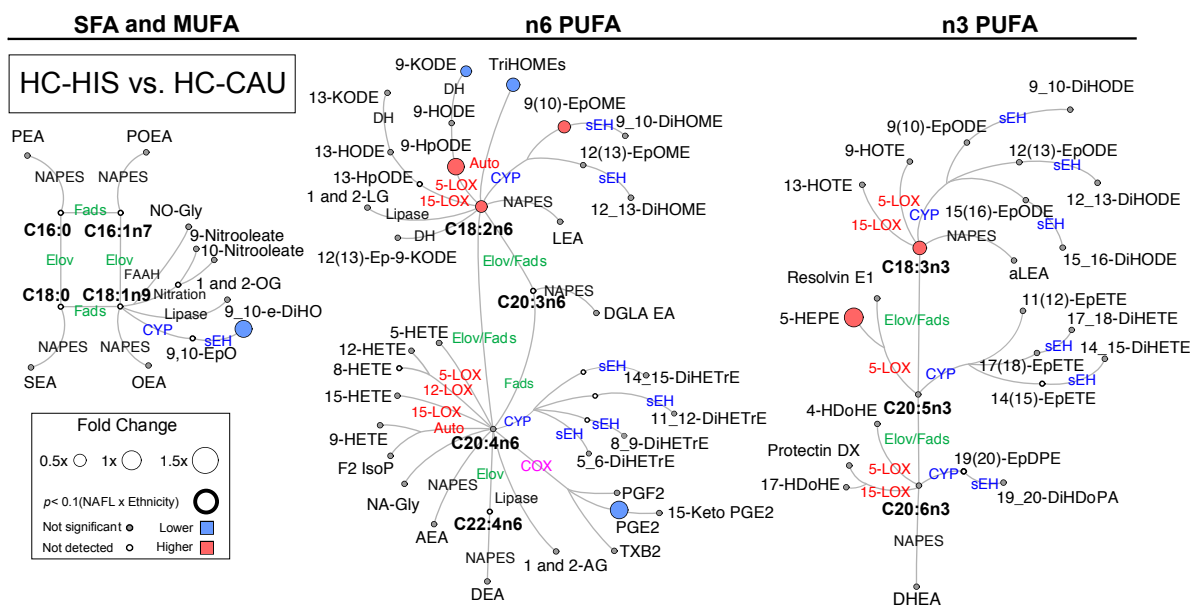
673 **Supplemental Figure**



674
675 **Figure S1. Principle component analysis (PCA) illustrating outliers before (left) and after (right) data**
676 **normalization.**

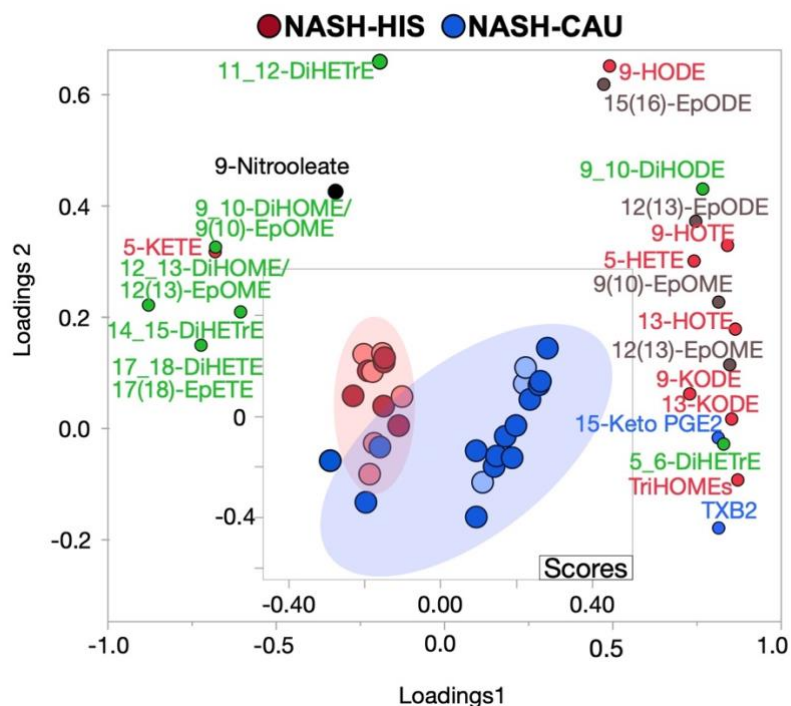


677
678 **Figure S2. Principle component analysis (PCA) illustrating the unsupervised clustering of samples from**
679 **primary (red) and secondary cohort (green) shown before (left) and after (right) batch correction.**



680
 681 **Figure S3. Differences in plasma PUFA and lipid mediators between HIS and CAU in lean healthy subjects.**
 682 Metabolic network illustrating saturated (SFAs), monounsaturated (MUFAs) and polyunsaturated fatty acids
 683 (PUFAs), including n-3 and n-6 fatty acids with pathway of oxylipins and endocannabinoids synthesis. Node size
 684 represents the fold change of lipids, calculated for each ethnicity separately as (HIS - CAU)/CAU. Node's color
 685 represents the directionality of metabolite differences: higher in NAFL (red); lower in NAFL (blue); no change
 686 (grey). Only fold change for lipids with differences between HIS vs. CAU (t -test raw $p < 0.05$) are shown. Lipids
 687 means and corresponding p -values are detailed in Table S3. ($n = 14$ HIS and 8 CAU). Fatty acids are described by
 688 number of carbons and double bounds of the fatty acyl moiety (i.e., C18:2n6). CAU, Caucasian; HC, Healthy
 689 control; HIS, Hispanics; ADH, alcohol dehydrogenase; AEA, arachidonoyl ethanolamine; AG, arachidonoyl
 690 glycerol; Auto, autoxidation; COX, cyclooxygenase; CYP, cytochrome P450; DEA, docosatetraenyl ethanolamide;
 691 DGLEA, dihomo-gamma-linolenoyl ethanolamide; DH, dehydrogenase; DHEA, docosahexaenoyl ethanolamide;
 692 DiHDoPA, dihydroxydocosapentaenoic acid; DiHETE, dihydroxyeicosatetraenoic acid; DiHETrE,
 693 dihydroxyeicosatrienoic acid; DiHO, dihydroxyoctadecanoic acid; DiHODE, dihydroxyoctadecadienoic acid;
 694 DiHOME, dihydroxyoctadecenoic acid; Elov, fatty acid elongase; Ep-KODE, epoxyoxooctadecenoic acid; EpETE,
 695 epoxyeicosatetraenoic acid; EpODE, epoxyoctadecadienoic acid; EpOME, epoxyoctadecenoic acid; F2-IsoP, F2
 696 isoprostanes; FAAH, fatty acid amide hydrolase; Fads, fattyacididesaturase; HDoHE, hydroxydocosahexaenoic acid;
 697 HEPE, hydroxyeicosapentaenoic acid; HETE, hydroxyeicosatetraenoic acid; HODE, hydroxyoctadecadienoic acid;
 698 HOTE, hydroxyoctadecatrienoic acid; HpODE, hydroperoxyoctadecadienoic acid; KETE, keto-eicosatetraenoic;
 699 KODE, keto-octadecadienoic acid; LEA, Linoleyl ethanolamine; LG, linoleoylglycerol; LOX, lipoxigenase;

700 MUFA, Monounsaturated fatty acid; NA-Gly, arachidonylglycine; NAPES, N-acylphosphatidyl ethanolamine-
701 specific; NO-Gly; OEA, oleoyl ethanolamine; OG, oleoylglycerol; PEA, palmitoyl ethanolamine; PGE,
702 prostaglandin E; PGF, prostaglandin F; POEA, palmitoleoyl ethanolamide; PUFA, Polyunsaturated fatty acids;
703 SEA, stearoyl ethanolamide; sEH, soluble epoxide hydrolase; SFA, Saturated fatty acids; TriHOME,
704 trihydroxyoctadecaenoic acid; TXB, thromboxane.



705
 706 **Figure S4. Supervised multivariate clustering model demonstrating comparing OXLs profile in HIS and CAU**
 707 **with NASH and advance fibrosis.** Score plot for NASH-HIS vs. NASH-CAU when including stage 3 and 4 ($n = 12$
 708 HIS and 17 CAU). Light color represents subjects from primary cohort and dark color represents secondary cohort.
 709 The model was performed on all profiled lipids. Lipid mediators are colored according to their metabolizing
 710 enzymes pathways, lipoxygenase, and autoxidation (red); cytochrome p450 epoxygenase (brown); and soluble
 711 epoxide hydrolase (green); cyclooxygenase (blue); other (black). The model was validated with leave-one-out cross
 712 validation (LOOCV). The (Q^2) and (R^2) is 0.62 and 0.72. Details on variable importance into the projection (VIP)
 713 scores and cross validation are shown in Table S6. CAU, Caucasian; HIS, Hispanics; DiHETE,
 714 dihydroyeicosatetraenoic acid; DiHETrE, dihydroyeicosatrienoic acid; DiHODE, dihydroxyoctadecadienoic acid;
 715 DiHOME, dihydroxyoctadecenoic acid; EpETE, epoxyeicosatetraenoic acid; EpETrE, epoxyeicosatrienoic acid;
 716 EpODE, epoxyoctadecadienoic acid; EpOME, epoxyoctadecenoic acid; HETE, hydroxyeicosatetraenoic acid;
 717 HODE, hydroxyoctadecadienoic acid; HOTE, hydroxyoctadecatrienoic acid; KETE, keto-eicosatetraenoic; KODE,
 718 keto-octadecadienoic acid; PGE, prostaglandin E; TriHOME, trihydroxyoctadecaenoic acid; TXB, thromboxane.

719 **List of tables**

720 **Table 1. Demographic, clinical, and histological characteristics of study subjects in primary analysis.** General
721 characteristics of NAFL and HC groups in both ethnicities shown as percent (for categorical data) and mean \pm SD
722 (for nominal data). Comparisons were performed by *t*- test (nominal) or chi-square test (categorical). ALT, alanine
723 aminotransferase; AST, aspartate aminotransferase; BMI, body mass index; DM, diabetes mellitus; FBG, fasting
724 blood glucose; HbA1c, hemoglobin A1c; HDL, high-density lipoprotein, low density lipoprotein; NAS, the NAFLD
725 Activity Score; TG, triglycerides. ^(a) NAFL-HIS vs. HC-HIS; ^(b) NAFL-CAU vs. HC-CAU; ^(c) NAFL-HIS vs.
726 NAFL-CAU.

727 **Table 2. Demographic, clinical, and histological characteristics of NASH subjects in secondary analysis.**
728 General characteristics of subjects included in the secondary analysis shown as percent (for categorical data) and
729 mean \pm SEM (for nominal data). Comparisons were performed by *t*- test (nominal) or chi-square test (categorical).
730 BMI - body mass index; CAU - Caucasian; HIS - Hispanic; NASH - Non-alcoholic steatohepatitis; NAS - the
731 NAFLD Activity Score. (*) NAFL-HIS vs. NAFL-CAU.

732 **Supplemental figure captions**

733 **Figure S1. Principle component analysis (PCA) illustrating outliers before (left) and after (right) data**
734 **normalization.**

735 **Figure S2. Principle component analysis (PCA) illustrating the unsupervised clustering of samples from**
736 **primary (red) and secondary cohort (green) shown before (left) and after (right) batch correction.**

737 **Figure S3. Differences in plasma PUFA and lipid mediators between HIS and CAU in lean healthy subjects.**

738 Metabolic network illustrating saturated (SFAs), monounsaturated (MUFAs) and polyunsaturated fatty acids
739 (PUFAs), including n-3 and n-6 fatty acids with pathway of oxylipins and endocannabinoids synthesis. Node size
740 represents the fold change of lipids, calculated for each ethnicity separately as (HIS - CAU)/CAU. Node's color
741 represents the directionality of metabolite differences: higher in NAFL (red); lower in NAFL (blue); no change
742 (grey). Only fold change for lipids with differences between HIS vs. CAU (*t*-test raw $p < 0.05$) are shown. Lipids
743 means and corresponding *p*-values are detailed in Table S3. ($n = 14$ HIS and 8 CAU). Fatty acids are described by
744 number of carbons and double bounds of the fatty acyl moiety (i.e., C18:2n6). CAU, Caucasian; HC, Healthy
745 control; HIS, Hispanics; ADH, alcohol dehydrogenase; AEA, arachidonoyl ethanolamine; AG, arachidonoyl
746 glycerol; Auto, autoxidation; COX, cyclooxygenase; CYP, cytochrome P450; DEA, docosatetraenyl ethanolamide;
747 DGLEA, dihomo-gamma-linolenoyl ethanolamide; DH, dehydrogenase; DHEA, docosahexaenoyl ethanolamide;
748 DiHDoPA, dihydroxydocosapentaenoic acid; DiHETE, dihydroxyeicosatetraenoic acid; DiHETrE,
749 dihydroxyeicosatrienoic acid; DiHO, dihydroxyoctadecanoic acid; DiHODE, dihydroxyoctadecadienoic acid;
750 DiHOME, dihydroxyoctadecenoic acid; Elov, fatty acid elongase; Ep-KODE, epoxyoxooctadecenoic acid; EpETE,
751 epoxyeicosatetraenoic acid; EpODE, epoxyoctadecadienoic acid; EpOME, epoxyoctadecenoic acid; F2-IsoP, F2
752 isoprostanes; FAAH, fatty acid amide hydrolase; Fads, fattyacididesaturase; HDoHE, hydroxydocosahexaenoic acid;
753 HEPE, hydroxyeicosapentaenoic acid; HETE, hydroxyeicosatetraenoic acid; HODE, hydroxyoctadecadienoic acid;
754 HOTE, hydroxyoctadecatrienoic acid; HpODE, hydroperoxyoctadecadienoic acid; KETE, keto-eicosatetraenoic;
755 KODE, keto-octadecadienoic acid; LEA, Linoleyl ethanolamine; LG, linoleoylglycerol; LOX, lipoxygenase;
756 MUFA, Monounsaturated fatty acid; NA-Gly, arachidonylglycine; NAPES, N-acylphosphatidyl ethanolamine-
757 specific; NO-Gly; OEA, oleoyl ethanolamine; OG, oleoylglycerol; PEA, palmitoyl ethanolamine; PGE,
758 prostaglandin E; PGF, prostaglandin F; POEA, palmitoleoyl ethanolamide; PUFA, Polyunsaturated fatty acids;
759 SEA, stearoyl ethanolamide; sEH, soluble epoxide hydrolase; SFA, Saturated fatty acids; TriHOME,
760 trihydroxyoctadecaenoic acid; TXB, thromboxane.

761 **Figure S4. Supervised multivariate clustering model demonstrating comparing OXLs profile in HIS and CAU**
762 **with NASH and advance fibrosis.** Score plot for NASH-HIS vs. NASH-CAU when including stage 3 and 4 ($n = 12$
763 HIS and 17 CAU). Light color represents subjects from primary cohort and dark color represents secondary cohort.

764 The model was performed on all profiled lipids. Lipid mediators are colored according to their metabolizing
765 enzymes pathways, lipoxygenase, and autoxidation (red); cytochrome p450 epoxygenase (brown); and soluble
766 epoxide hydrolase (green); cyclooxygenase (blue); other (black). The model was validated with leave-one-out cross
767 validation (LOOCV). The (Q^2) and (R^2) is 0.62 and 0.72. Details on variable importance into the projection (VIP)
768 scores and cross validation are shown in Table S6. CAU, Caucasian; HIS, Hispanics; DiHETE,
769 dihydroyeicosatetraenoic acid; DiHETrE, dihydroyeicosatrienoic acid; DiHODE, dihydroxyoctadecadienoic acid;
770 DiHOME, dihydroxyoctadecenoic acid; EpETE, epoxyeicosatetraenoic acid; EpETrE, epoxyeicosatrienoic acid;
771 EpODE, epoxyoctadecadienoic acid; EpOME, epoxyoctadecenoic acid; HETE, hydroxyeicosatetraenoic acid;
772 HODE, hydroxyoctadecadienoic acid; HOTE, hydroxyoctadecatrienoic acid; KETE, keto-eicosatetraenoic; KODE,
773 keto-octadecadienoic acid; PGE, prostaglandin E; TriHOME, trihydroxyoctadecaenoic acid; TXB, thromboxane.

774 **Supplemental tables captions**

775

776 **Table S1. Details on detected lipid class and identifiers.**

777 **Table S2. Targeted quantification data table for comparisons of Hispanic (HIS) and Caucasian (CAU) obese**

778 **subjects with Non-alcoholic fatty liver disease (NAFL) vs. lean healthy control (HC).** Comparisons between

779 NAFL vs. HC performed separately in each ethnicity. ($n=10$ HIS and 8 CAU); HC ($n=14$ HIS and 8 CAU). Details

780 are shown for p -values; means (upper-lower 95% mean); fold change (FC); t -test and ANCOVA p -values for

781 individual lipids. Values are rounded to 3 significant figures.

782 **Table S3. Demographic, clinical, and histological characteristics of histology-matched subjects.** General

783 characteristics of NAFL and HC groups in both ethnicities shown as percent (for categorical data) and mean \pm SEM

784 (for nominal data). Comparisons were performed by t -test (nominal) or chi-square test (categorical). ALT - alanine

785 aminotransferase; AST - aspartate aminotransferase; BMI - body mass index; CAU - Caucasian; DM -diabetes

786 mellitus; FBG - fasting blood glucose; HbA1c - hemoglobin A1c; HDL - high-density lipoprotein, HIS -Hispanic;

787 LDL - low density lipoprotein; NAFL – Non-alcoholic fatty liver; NAS - the NAFLD Activity Score; TG,

788 triglycerides. ^(a) NAFL-HIS vs. HC-HIS; ^(b) NAFL-CAU vs. HC-CAU; ^(c) NAFL-HIS vs. NAFL-CAU.

789 **Table S4. Targeted quantification data table for comparisons of Hispanic (HIS) and Caucasian (CAU) with**

790 **Non-alcoholic steatohepatitis (NASH) vs. 0-NASH.** Comparisons between NASH vs. 0-NASH performed

791 separately in each ethnicity. NASH ($n=6$ HIS and 3 CAU); 0-NASH ($n=4$ HIS and 5 CAU). Details are shown for

792 p -values; means (upper-lower 95% mean); fold change (FC); t -test and ANCOVA p -values for individual lipids.

793 Values are rounded to 3 significant figures.

794 **Table S5: Targeted quantification data table for comparisons of Hispanic (HIS) and Caucasian (CAU) with**

795 **Non-alcoholic steatohepatitis (NASH) in the secondary analysis.** Details on variable importance into the

796 projection (VIP) scores and cross validation for multivariate clustering model demonstrating ethnicity specific OXLs

797 profile discriminates HIS and CAU with NASH. ^(a) including stage 3 and 4 ($n=12$ HIS and 17 CAU); ^(b) when

798 excluding when excluding stage 3 and 4 ($n=9$ HIS and 13 CAU). CAU - Caucasian; HIS - White Hispanic; Non-

799 alcoholic steatohepatitis.

800 **Table S6: Pearson's correlation analysis between LOX metabolites and markers of oxidative stress.**

801 Correlation analysis between alcohols and ketones derived from 5, 12 and 15 LOX with and autoxidative markers,

802 F2 isoprostanes and 9-HETE in ^(a) NAFL subjects (examined in primary cohort); ^(b) NASH subjects (examined in

803 secondary cohort). CAU - Caucasian; HIS - White Hispanic; NAFL – Non-alcoholic fatty liver; Non-alcoholic

804 steatohepatitis.