

1 Comparison of Saliva and Mid-Turbinate Swabs for Detection of COVID-19

2
3 Jianyu Lai, B.Med., M.P.H.^{a,b}, Jennifer German, Ph.D.^b, Filbert Hong, Ph.D.^b, S.-H. Sheldon Tai,
4 Ph.D.^b, Kathleen M. McPhaul, Ph.D., M.P.H.^b, Donald K. Milton, M.D., Dr.P.H.^b for the
5 University of Maryland StopCOVID Research Group*

6
7 ^a Department of Epidemiology and Biostatistics, University of Maryland School of Public
8 Health, College Park, Maryland, USA

9 ^b Public Health Aerobiology and Biomarker Laboratory, Institute for Applied Environmental
10 Health, University of Maryland School of Public Health, College Park, Maryland, USA

11
12
13 * Dr. Donald K. Milton, University of Maryland School of Public Health, 4200 Valley Drive,
14 College Park, MD 20742 email: dmilton@umd.edu; phone: 301-405-0389
15 (Alternate: Dr. Filbert Hong, at the same address, email fhong@umd.edu, phone: 301-405-4081)
16

17 Abstract

18

19 **Background:** Saliva is an attractive sample for detecting SARS-CoV-2. However, contradictory
20 reports exist concerning the sensitivity of saliva versus nasal swabs.

21

22 **Methods:** We followed close contacts of COVID-19 cases for up to 14 days from last exposure
23 and collected self-reported symptoms, mid-turbinate swabs (MTS), and saliva every two or three
24 days. Ct values, viral load, and frequency of viral detection by MTS and saliva were compared.

25

26 **Results:** 58 contacts provided 200 saliva-MTS pairs; 14 contacts (13 with symptoms) had one or
27 more positive samples. Saliva and MTS had similar rates of viral detection ($p=0.78$) and
28 substantial agreement ($\kappa=0.83$). However, sensitivity varied significantly with time since
29 symptom onset. Early on (days -3 to 2), saliva had 12 times (95%CI: 1.2, 130) greater likelihood
30 of viral detection and 3.2 times (95% CI: 2.8, 3.8) higher RNA copy numbers compared to MTS.
31 After day 2 post-symptoms, there was a non-significant trend toward greater sensitivity using
32 MTS.

33

34 **Conclusion:** Saliva and MTS demonstrated high agreement making saliva a suitable alternative
35 to MTS for COVID-19 detection. Saliva was more sensitive early in the infection when
36 transmission is most likely to occur, suggesting that it may be a superior and cost-effective
37 screening tool for COVID-19.

38

39 Introduction

40 The U.S. Centers for Disease Control and Prevention (CDC) recommend the use of upper
41 respiratory specimens, including but not limited to nasopharyngeal, mid-turbinate nasal, anterior
42 nasal and saliva specimens for the initial diagnosis of COVID-19¹. Although nasopharyngeal
43 swabs (NPS) are considered to be the standard for the detection of COVID-19 by most
44 researchers, collection requires the use of trained professionals, can cause discomfort to the
45 patients, and may pose greater risks to healthcare workers during sample collection¹⁻⁴. Mid-
46 turbinate swabs (MTS) are sometimes used as an alternative to NPS in an effort to reduce patient
47 discomfort and occupational exposures to healthcare workers⁴⁻⁶. Compared to swab-based
48 collection, saliva is even less invasive, more affordable, and can be self-collected with minimal
49 or no supervision^{1,7,8}.

50
51 Existing studies focusing on the sensitivity of NPS compared to MTS, and NPS compared to
52 saliva have produced contradictory results^{2,4,9-11}. Few studies directly compare saliva and MTS
53 specimens. Furthermore, there is strong evidence that pre-symptomatic transmission results in
54 higher secondary attack rates for both symptomatic and asymptomatic transmission^{12,13}.
55 However, most of the existing studies only looked at detection of symptomatic cases after
56 symptom onset^{2,4,9,10} and few looked at detection sensitivity starting with the pre-symptomatic
57 period. Therefore, research that conducts a direct comparison of MTS and saliva, including an
58 assessment of sensitivity over time (starting during the pre-symptomatic period) is critical to
59 identifying optimally sensitive methods for early detection and effective control of SARS-CoV-2
60 transmission.

61
62 The purpose of this study was to compare the sensitivity of MTS and saliva specimens for
63 detecting SARS-CoV-2 by actively following close contacts of COVID-19 cases and collecting
64 MTS and saliva samples for real-time reverse transcription polymerase chain reaction (RT-PCR)
65 during their post-exposure quarantine period.

67 Results

68 We enrolled 58 individuals with known close contact with an active COVID-19 case. Contacts
69 provided a total of 200 saliva and MTS pairs. The number of days of sample collection per
70 participant ranged from one to seven. Among the contacts, 14 (24%) had at least one positive
71 sample including 11 with both positive saliva and MTS samples over the course of follow-up.
72 One contact had only positive saliva on 3 out of 3 samples (on days -3, 0, and 1 post symptom
73 onset) and 2 had only positive MTS samples; one was positive on 2 of 2 swabs (on days 7 and
74 10) and one on 1 of 5 swabs (day 21, negative on days 14, 17, 19, and 24). Most of the positive
75 participants (92.9%) were symptomatic, whereas only one (2.3%) participant from the test
76 negative group reported symptoms. Symptomatic participants were enrolled -3 to 14 days since
77 symptom onset and gave samples for up to 24 days from onset of symptoms. Symptoms were
78 mild across the follow-up period. One participant had an oral temperature ≥ 38 °C at the time of
79 sampling; three in total had temperatures ≥ 37.8 °C, and six in total had temperatures ≥ 37.5 °C;
80 all were in the positive group. No other significant differences were identified between the
81 positive and negative groups (Table 1).

82

83 *Viral RNA detection in and agreement between saliva and MTS*

84 Among 200 pairs of saliva and MTS samples we detected viral RNA in 32 (16%) of the saliva
85 and 29 (14.5%) of the MTS samples. The frequency of detection was similar for both sample
86 types ($p=0.781$) (see Supplementary Table S1 online). Cohen's Kappa demonstrated substantial
87 agreement ($\kappa=0.83$) with 26 (14%) positive and 165 (82.5%) negative sample pairs (Table 2).
88 The 14 participants who became positive by either sample type during the follow-up period
89 provided 41 saliva-MTS sample pairs, among which 71% of MTS and 78% of saliva samples
90 were positive (see Supplementary Table S2 online), without respect to time since symptom
91 onset. When focusing on positive participants, however, the agreement was weak ($\kappa=0.43$ for all
92 and $\kappa=0.42$ for those who were symptomatic) (see Supplementary Table S3a and Table S3b
93 online).

94

95 *Comparison of Ct (cycle threshold) values between saliva and MTS*

96 Each RT-PCR reaction contained 10 μL of heat-treated saliva sample or RNA extracted from
97 MTS. Assuming no loss in the process, each reaction represented 7.78 μL of saliva sample or 40
98 μL of the MTS eluate. The Ct values for paired samples were highly correlated ($\rho = 0.84$, $r^2 =$
99 0.74 , Figure 1a). The Ct values for saliva were on average slightly but significantly greater than
100 for MTS samples (mean difference = 0.64, $p=0.01$) among all 58 participants (see Figure 1b and
101 Supplementary Fig. S1 online), partially reflecting the difference in their input amounts.

102

103 *Relationship between days since symptom onset, probability of detection, and viral RNA copy*
104 *numbers*

105 The Ct values among the positive symptomatic participants increased over time (days -3 through
106 24), along with decreasing viral RNA copy numbers. Saliva tended to have lower Ct values and
107 higher viral RNA copy numbers compared to MTS from days -3 to 1.5, whereas MTS samples
108 had lower Ct values and higher viral load thereafter (Figure 2A and Figure 2B).

109

110 Among symptomatic participants who had one or more positive saliva or MTS samples, the
111 probability (sensitivity) of detecting viral RNA in saliva samples was 91% (10/11) from day -3
112 to day 2 (Table 3), was 89% (16/18) from day 3 through 8, and declined significantly thereafter
113 (see Figure 2C and Supplementary Fig. S2 online). The probability of detecting virus in MTS
114 samples from day -3 through day 2 was 45% (5/11), was 94% (17/18) from day 3 through 8, and
115 then declined.

116

117 Early in the course of infection (days -3 through 2) saliva had 12 times the odds of being positive
118 (95% CI: 1.2, 130) and 3.2 times higher viral RNA copy numbers (95% CI: 2.8, 3.8) compared
119 to MTS. There was a trend toward greater sensitivity and higher viral RNA copy numbers in
120 MTS than saliva samples after day 2 post onset of symptoms (Table 3).

121

122 *Asymptomatic case*

123 Only one participant from our study population was an asymptomatic case. They provided one
124 pair of saliva and MTS samples, both of which were positive, with an average Ct value of 25.8
125 for MTS and 34.7 for saliva (see Supplementary Table S4 online).

126

127 *Discussion*

128 Early in the course of infection, saliva was significantly more sensitive than mid-turbinate nasal
129 swabs (MTS). We found that the optimal performance of saliva was in the pre-symptomatic
130 period and was more sensitive than MTS before symptom onset. Several studies have shown that
131 pre-symptomatic transmission plays a more important role than symptomatic and asymptomatic
132 transmission in the spread of SARS-CoV-2^{12,13}. Furthermore, saliva tended to have lower Ct
133 values and higher viral load compared to MTS from the pre-symptomatic period through the first
134 days post symptom onset. Together, these findings suggest that saliva may be the most effective
135 method for detecting SARS-CoV-2 early during the course of infection.

136
137 The CDC and the Infectious Disease Society of American recommendations for COVID-19
138 testing allow MTS, NPS, oral swabs, anterior nasal swabs, and saliva swabs as well as saliva.^{1,14}
139 Some studies have shown differences in the sensitivity between NPS and MTS. In older, more
140 acutely ill populations, NPS appears to be more sensitive than MTS, especially later in the course
141 of illness (greater than 7 days)^{4,9}. In a study of ambulatory and symptomatic participants whose
142 ages were more evenly distributed, NPS and MTS swabs were highly correlated with a mean of 7
143 days since onset of symptoms¹⁵. Congrave-Wilson et al., in agreement with the current study,
144 found that saliva had the highest sensitivity in the first seven days post COVID-19 onset when
145 using NPS as the reference². Similarly, Savela et al. noticed that although the peak viral load of
146 SARS-CoV-2 in nasal swabs were higher than saliva, the latter was more likely to be positive in
147 the first six days since the participants' first positive sample was detected¹⁶. Becker et al.
148 compared the sensitivity of saliva and NPS for detecting COVID-19 in a convalescent cohort 8-
149 56 days since first symptom and found that NPS performed better¹⁷. They also showed that
150 saliva was about 30% less sensitive than NPS in a separate diagnostic cohort, however, days
151 since symptom onset were not reported, so we cannot make direct comparison with our findings.
152 Finally, a systematic review by Bastos et al. found that saliva had similar sensitivity to NPS and
153 costs less¹¹.

154
155 Our findings have implications for improving public acceptance of COVID-19 testing, reducing
156 the cost of mass COVID-19 screening, and improving the safety of healthcare workers who
157 conduct testing. These findings are extremely important when considering large-scale screening
158 of COVID-19 in schools and workplaces. In addition to its higher sensitivity in the early stage of
159 the disease as demonstrated in our data, saliva has quite a few other advantages that make it an
160 appealing screening tool. Saliva collection is less invasive and more acceptable to the general
161 population^{7,18}. One of the barriers hindering COVID-19 testing is people's fear of nasal swabs
162 due to misinformation¹⁹. Also, the discomfort brought by nasal swabs may also reduce people's
163 willingness to get tested regularly, especially among children^{20,21}. With the use of saliva,
164 screening large groups with increased frequency may be more practicable. Saliva is cheaper than
165 swab-based methods, especially if pooled samples are used^{11,22}. Bastos et al. estimated that
166 when sampling 100,000 individuals, using saliva saved more than \$600,000 in comparison to
167 using NPS¹¹, using a method that is more expensive than the SalivaDirect method used here.
168 These cost savings are especially important in the context of low resource settings.

169
170 Saliva collection is also safer for healthcare workers (HCWs). Amid the pandemic, one of the
171 key concerns among HCWs is the occupational exposure to SARS-CoV-2 aerosols during some
172 medical procedures²³. The collection of nasal swabs introduces such exposure via the close
173 interaction between patients and HCWs and by patients' coughing and sneezing as a result of the

174 procedures²⁴. In contrast, saliva is the only upper respiratory specimen suggested by the CDC
175 that can be self-collected without supervision¹ and hence protects HCWs from directly
176 contacting the patients when the samples are being collected. Given all these advantages of
177 saliva compared to NPS, our findings further support the use of saliva for large-scale screening,
178 especially of pre-symptomatic patients.

179
180 The current study has several limitations. The contacts enrolled in this study who eventually
181 tested positive for SARS-CoV-2 developed mild, and in some cases, transient infections. Some
182 of these mild (low viral titer) infections would not have been detected by less frequent testing
183 protocols and may not have posed a risk for onward transmission. The sample size of those who
184 tested positive is relatively small. Only one asymptomatic case was identified in our study so we
185 could not compare the sensitivity of the two types of samples among asymptomatic COVID-19
186 cases. The evidence for using saliva to detect asymptomatic cases was mixed in previous studies
187^{2,10} and further studies are needed to clarify this issue.

188
189 Future research should focus on the development of rapid saliva tests with high sensitivity and
190 specificity. Tng et al. proposed an amplified parallel antigen rapid test (AP-ART) using saliva to
191 test SARS-CoV-2 with a turnaround time of only 30 minutes²⁵. This test was reported to have a
192 sensitivity as high as 97%. However, the researchers did not compare this AP-ART with saliva-
193 based RT-PCR but instead NPS-based RT-PCR and estimated the specificity of this test to be
194 only 90%. As our study showed, this is likely an underestimate of specificity because saliva can
195 be more sensitive than nasal swabs early in the course of the infection. Hence, further studies are
196 needed to evaluate saliva rapid tests with a reference method that is also based on saliva.

197
198 In conclusion, the use of saliva is preferable for testing pre-symptomatic populations. It is more
199 acceptable to people, which reduces barriers to testing. It is also more cost effective for
200 individuals to collect their own saliva rather than using highly trained professionals to collect
201 NPS and/or MTS. Finally, self-collected saliva samples eliminate the exposure to aerosols
202 produced by sneezing, coughing and gagging of patients undergoing NPS/MTS.

203 204 *Methods*

205 *Study population*

206 We analyzed MTS and saliva sample data from individuals who reported close contact with
207 confirmed COVID-19 cases as part of the University of Maryland StopCOVID study²⁶ from
208 May 2020 to April 2021.

209 210 *Questionnaire and sample collection*

211 Participants were followed every two or three days for up to 14 days from their last exposure or
212 until SARS-CoV-2 was detected in their samples. If one or more of their screening samples
213 became positive, results were confirmed by an appropriate clinical diagnostic test and they were
214 recruited to participate in the exhaled breath aspect of the study that also involved the collection
215 of saliva and MTS²⁶. On each day of sample collection, participants answered an online
216 questionnaire to update their current symptoms and medications. For those who reported having
217 any symptom, they also reported their symptom onset date (i.e., “When did you begin to feel
218 sick?”).

219

220 The symptoms checklist in the baseline and follow-up questionnaires, as previously described²⁶,
221 included runny nose, stuffy nose, sneezing, sore throat, earache, malaise, headache, muscle
222 and/or joint ache, sweat/feverish/chills, nausea, loss of appetite, vomiting, abdominal pain or
223 diarrhea, chest tightness, shortness of breath, and cough. Participants self-reported for each of
224 these 16 symptoms on a scale of 0 to 3 (0 = “no symptoms,” 1 = “just noticeable,” 2 = “clearly
225 bothersome from time to time, but didn’t stop me from participating in activities,” 3 = “quite
226 bothersome most or all of the time and stopped me from participating in activities”).

227
228 For saliva collection, participants were instructed to not eat or drink 30 minutes prior to the visit
229 and then collect approximately 0.5-1 mL of saliva drooled into a plastic collection tube. For
230 MTS collection, trained clinical staff inserted a mid-turbinate swab approximately 1.5-2 inches
231 into one of the participants’ nostrils, rotated once, and then withdrawn. This procedure was
232 repeated in the other nostril for a total of two MTS per participant per visit.

233 234 *Laboratory analyses*

235 Saliva samples were processed using the SalivaDirect method⁸ as previously described²⁶.
236 Briefly, 50 μ L of individual saliva samples were treated with Proteinase K (New England
237 Biolabs), heated at 95°C for 5 minutes, and kept at 4°C. MTS from both nostrils were combined
238 and processed as previously described²⁶. Briefly, total nucleic acid was extracted from 200 μ L
239 of MTS with MagMax Pathogen RNA/DNA Kit (Applied Biosystems) on KingFisher Duo Prime
240 (Thermo Fisher Scientific), following the manufacturers’ protocols. The sample was eluted in 50
241 μ L of Elution Buffer and kept at 4 °C. MS2 phage was spiked in each heat-treated saliva sample
242 and extraction to control for extraction and PCR failure. RT-PCR was set up on the same day;
243 each reaction consisted of 1X TaqPath 1-Step Master Mix, No ROX, 1X TaqPath COVID-19
244 Real Time PCR Assay Multiplex (both from Thermo Fisher Scientific), and 10 μ L of heat-
245 treated saliva or eluted nucleic acids. Each PCR plate contained a positive control provided in the
246 TaqPath COVID-19 Combo Kit (Thermo Fisher Scientific) and a no template control. Viral
247 loads in saliva and MTS were quantified as previously described²⁶. RNA copy numbers were
248 reported per mL for saliva and per sample for MTS. The limit of detection was 75 copies per
249 sample and the limit of quantification was 250 copies per sample. A positive sample was defined
250 as having Ct values < 40 for at least two out of three SARS-CoV-2 targets (ORF1ab, N gene, and
251 S gene)²⁷. The average Ct values of all positive targets were used in the following analyses.

252 253 *Statistical analyses*

254 We analyzed only paired same-day saliva and MTS samples to ensure the comparability of the
255 two samples. Group comparisons were made between participants having a positive result for
256 either sample and those with both samples being negative. Continuous variables (age and BMI)
257 were compared using t-test, and categorical variables were compared using Chi-square test (sex
258 and chronic respiratory illness) and Fisher’s exact test (age group, race, and ever smoker).

259
260 To compare the Ct values from saliva and MTS, we conducted paired t-test and Bland-Altman
261 analysis, and calculated the coefficient of determination (i.e., R squared from linear regression)
262 and Pearson correlation coefficient. The Chi-square test was used to explore the relationship
263 between detection and sample types. Cohen’s Kappa was calculated to demonstrate the degree of
264 agreement between the two sample types.

265

266 For participants with a positive saliva or MTS sample, we used a generalized additive logistic
267 model²⁸ to estimate and plot the probability of having a positive result by days since symptom
268 onset for the two sample types. We also created a plot using the LOESS (locally weighted
269 smoothing) method with 95% confidence interval for the change of Ct values and viral RNA
270 copy numbers by days since symptom onset for the two sample types. Logistic regression was
271 used to estimate the relative odds of detection of SARS-CoV-2 in saliva over specified intervals
272 since symptom onset.

273
274 For the estimate of geometric means of viral RNA copy numbers and the ratio of RNA copy
275 numbers of saliva to MTS, we applied linear mixed-effect models with censored responses^{29,30} to
276 handle censored observations below the limit of detection and control for random effects of
277 subjects and sample nested within subjects.

278
279 All the analyses were carried out using RStudio and R (version 4.0.4)³¹.

280
281 *Ethics statement*

282 This study was approved by the University of Maryland Institutional Review Board and the
283 Human Research Protection Office of the Department of the Navy. Electronically signed
284 informed consent was obtained from all participants and questionnaire data were collected and
285 stored with REDCap³².

286
287 *Data Availability*

288 The datasets generated during and/or analyzed during the current study were deposited at Open
289 Science Framework (OSF) repository: DOI 10.17605/OSF.IO/9YP3Z (<https://osf.io/9yp3z/>)

290

291 [References](#)

292

- 293 1. Centers for Disease Control and Prevention. Interim Guidelines for Collecting and Handling
294 of Clinical Specimens for COVID-19 Testing. *Centers for Disease Control and Prevention*
295 <https://www.cdc.gov/coronavirus/2019-ncov/lab/guidelines-clinical-specimens.html> (2020).
- 296 2. Congrave-Wilson, Z. *et al.* Change in Saliva RT-PCR Sensitivity Over the Course of SARS-
297 CoV-2 Infection. *JAMA* (2021) doi:10.1001/jama.2021.13967.
- 298 3. Lee, R. A., Herigon, J. C., Benedetti, A., Pollock, N. R. & Denking, C. M. Performance of
299 Saliva, Oropharyngeal Swabs, and Nasal Swabs for SARS-CoV-2 Molecular Detection: a
300 Systematic Review and Meta-analysis. *Journal of Clinical Microbiology* **59**, e02881-20.
- 301 4. Jamal, A. J. *et al.* Sensitivity of midturbinate versus nasopharyngeal swabs for the detection
302 of severe acute respiratory syndrome coronavirus 2 (SARS-CoV-2). *Infect Control Hosp*
303 *Epidemiol* 1–3 doi:10.1017/ice.2020.1326.
- 304 5. Chu, C. Y. *et al.* Performance of saliva and mid-turbinate swabs for detection of the beta
305 variant in South Africa. *Lancet Infect Dis* **21**, 1354 (2021).
- 306 6. Yp, T. *et al.* Swabs Collected by Patients or Health Care Workers for SARS-CoV-2 Testing.
307 *The New England journal of medicine* **383**, (2020).
- 308 7. Tan, S. H., Allicock, O., Armstrong-Hough, M. & Wyllie, A. L. Saliva as a gold-standard
309 sample for SARS-CoV-2 detection. *The Lancet Respiratory Medicine* **9**, 562–564 (2021).
- 310 8. Vogels, C. B. F. *et al.* SalivaDirect: A simplified and flexible platform to enhance SARS-
311 CoV-2 testing capacity. *Med* **2**, 263-280.e6 (2021).
- 312 9. Pinninti, S. *et al.* Comparing Nasopharyngeal and Mid-Turbinate Nasal Swab Testing for the
313 Identification of SARS-CoV-2. *Clin Infect Dis* (2020) doi:10.1093/cid/ciaa882.

- 314 10. Teo, A. K. J. *et al.* Saliva is more sensitive than nasopharyngeal or nasal swabs for diagnosis
315 of asymptomatic and mild COVID-19 infection. *Scientific Reports* **11**, 3134 (2021).
- 316 11. Bastos, M. L., Perlman-Arrow, S., Menzies, D. & Campbell, J. R. The Sensitivity and Costs
317 of Testing for SARS-CoV-2 Infection With Saliva Versus Nasopharyngeal Swabs : A
318 Systematic Review and Meta-analysis. *Ann Intern Med* **174**, 501–510 (2021).
- 319 12. Bender, J. K., Brandl, M., Höhle, M., Buchholz, U. & Zeitlmann, N. Analysis of
320 Asymptomatic and Presymptomatic Transmission in SARS-CoV-2 Outbreak, Germany,
321 2020. *Emerg. Infect. Dis.* **27**, (2021).
- 322 13. Qiu, X. *et al.* The role of asymptomatic and pre-symptomatic infection in SARS-CoV-2
323 transmission—a living systematic review. *Clinical Microbiology and Infection* **27**, 511–519
324 (2021).
- 325 14. Hanson, K. E. *et al.* The Infectious Diseases Society of America Guidelines on the Diagnosis
326 of COVID-19: Molecular Diagnostic Testing. *Clinical Infectious Diseases* ciab048 (2021)
327 doi:10.1093/cid/ciab048.
- 328 15. Tu, Y.-P. *et al.* Swabs Collected by Patients or Health Care Workers for SARS-CoV-2
329 Testing. *N Engl J Med* **383**, 494–496 (2020).
- 330 16. Savela, E. S. *et al.* Quantitative SARS-CoV-2 viral-load curves in paired saliva and nasal
331 swabs inform appropriate respiratory sampling site and analytical test sensitivity required for
332 earliest viral detection. *medRxiv* 2021.04.02.21254771 (2021)
333 doi:10.1101/2021.04.02.21254771.
- 334 17. Becker, D. *et al.* Saliva is less sensitive than nasopharyngeal swabs for COVID-19 detection
335 in the community setting. *medRxiv* 2020.05.11.20092338 (2020)
336 doi:10.1101/2020.05.11.20092338.

- 337 18. Byrne, R. L. *et al.* Saliva Alternative to Upper Respiratory Swabs for SARS-CoV-2
338 Diagnosis - Volume 26, Number 11—November 2020 - Emerging Infectious Diseases
339 journal - CDC. doi:10.3201/eid2611.203283.
- 340 19. Yangchen, S., Ha, S., Assan, A. & Tobgay, T. *Factors Influencing COVID-19 Testing: A*
341 *Qualitative Study in Bhutan*. <https://www.researchsquare.com/article/rs-885659/v1> (2021)
342 doi:10.21203/rs.3.rs-885659/v1.
- 343 20. Clifford, V. & Curtis, N. Saliva testing for severe acute respiratory syndrome coronavirus 2
344 in children. *Clinical Microbiology and Infection* **27**, 1199–1201 (2021).
- 345 21. Leach, A. J., Stubbs, E., Hare, K., Beissbarth, J. & Morris, P. S. Comparison of Nasal Swabs
346 with Nose Blowing for Community-Based Pneumococcal Surveillance of Healthy Children.
347 *Journal of Clinical Microbiology* **46**, 2081–2082 (2008).
- 348 22. Watkins, A. E. *et al.* Increased SARS-CoV-2 Testing Capacity with Pooled Saliva Samples.
349 *Emerg Infect Dis* **27**, (2021).
- 350 23. Nicholson, P. J. & Sen, D. Healthcare workers and protection against inhalable SARS-CoV-2
351 aerosols. *Occupational Medicine* **71**, 118–120 (2021).
- 352 24. Qian, Y. *et al.* Safety management of nasopharyngeal specimen collection from suspected
353 cases of coronavirus disease 2019. *Int J Nurs Sci* **7**, 153–156 (2020).
- 354 25. Tng, D. J. H. *et al.* Amplified parallel antigen rapid test for point-of-care salivary detection
355 of SARS-CoV-2 with improved sensitivity. *Microchim Acta* **189**, 1–12 (2022).
- 356 26. Adenaiye, O. O. *et al.* Infectious SARS-CoV-2 in Exhaled Aerosols and Efficacy of Masks
357 During Early Mild Infection. *Clin Infect Dis* ciab797 (2021) doi:10.1093/cid/ciab797.
- 358 27. ThermoFisher Scientific. TaqPath™ COVID-19 Combo Kit and TaqPath™ COVID-19
359 Combo Kit Advanced* Instructions for Use. <https://www.fda.gov/media/136112/download>.

- 360 28. Hastie, T. & Tibshirani, R. Generalized additive models for medical research. *Stat Methods*
361 *Med Res* **4**, 187–196 (1995).
- 362 29. Vaida, F., Fitzgerald, A. P. & DeGruttola, V. Efficient Hybrid EM for Linear and Nonlinear
363 Mixed Effects Models with Censored Response. *Comput Stat Data Anal* **51**, 5718–5730
364 (2007).
- 365 30. Vaida, F. & Liu, L. Fast Implementation for Normal Mixed Effects Models With Censored
366 Response. *J Comput Graph Stat* **18**, 797–817 (2009).
- 367 31. R Core Team. *R: A Language and Environment for Statistical Computing*. (R Foundation for
368 Statistical Computing, 2021).
- 369 32. Harris, P. A. *et al.* The REDCap consortium: Building an international community of
370 software platform partners. *Journal of Biomedical Informatics* **95**, 103208 (2019).
371

372 [Acknowledgements](#)

373 We thank all the other members of the University of Maryland StopCOVID Research Group for
374 their efforts in recruiting participants and sample collection and processing: Oluwasanmi
375 Oladapo Adenaiye, Barbara Albert, P. Jacob Bueno de Mesquita, Yi Esparza, Aaron Kassman,
376 Michael Lutchenkov, Dewansh Rastogi, Maria Schanz, Isabel Sierra Maldonado, Aditya
377 Srikakulapu, Delwin Suraj, Faith Touré, Rhonda Washington-Lewis, Somayeh Youssefi, Stuart
378 Weston, Matthew Frieman, Mara Cai, Ashok Agrawala. We also thank Dr. Jamal Fadul and his
379 clinic in College Park, Maryland, for assistance in recruiting study participants.

380

381 [Author Contributions](#)

382 Conceptualization, D.M., J.G., F.H., S.T., J.L.; Data curation, F.H.; Formal analysis, J.L.;
383 Investigation, S.T., J.G., J.L., K.M.; Methodology, D.M., J.G., S.T., J.L.; Project administration,
384 D.M., F.H.; Writing-original draft, J. L., J.G.; Writing-review & editing, all authors; Supervision,
385 D.M.

386

387 [Competing Interests](#)

388 This work was supported by Prometheus-UMD, sponsored by the Defense Advanced Research
389 Projects Agency (DARPA) BTO under the auspices of Col. Matthew Hepburn through
390 agreement N66001-18-2-4015. This work was also supported by the National Institute of Allergy
391 and Infectious Diseases Centers of Excellence for Influenza Research and Surveillance (CEIRS)
392 Contract Number HHSN272201400008C, and the Centers for Disease Control and Prevention
393 Contract Number 200-2020-09528. The findings and conclusions in this report are those of the
394 authors and do not necessarily represent the official position or policy of these funding agencies
395 and no official endorsement should be inferred.

396

397 This work was also supported by a grant from the Bill & Melinda Gates Foundation, and a
398 generous gift from The Flu Lab (<https://theflulab.org>). The funders had no role in study design,
399 data collection, analysis, decision to publish, or preparation of the manuscript.

400

401 None of the authors have a potential conflicting interest or funding source.

402

403 Tables

404

405 Table 1. Characteristics of the study population

	Never positive	Positive for MTS or saliva	All participants	
Number of participants	44	14	58	
Number of sample pairs	159	41	200	
Number of days of sample collection per participant, median (range)	4 (1, 7)	3 (1, 6)	3 (1, 7)	
Female, N (%)	20 (46)	8 (57)	28 (48)	
Age, mean \pm SD	26.5 \pm 15.5	27.3 \pm 13.8	26.7 \pm 15	
Age group, N (%)				
<18	2 (4)	1 (7)	3 (5)	
18-45	38 (86)	11 (79)	49 (84)	
>45	4 (9)	2 (14)	6 (10)	
White, N (%)	30 (68)	11 (79)	41 (71)	
BMI, mean \pm SD	25.6 \pm 4.9	25.2 \pm 4.4	25.5 \pm 4.7	
Chronic respiratory illness ^a , N (%)	17 (39)	5 (36)	22 (38)	
Ever smoker, N (%)	1 (2)	1 (7)	2 (3)	
Ever symptomatic ^b , N (%)	1 (2)	13 (93)	14 (24)	
Symptomatic participants	Days since symptom onset at enrollment, median (range)	2 (-)	3 (-3, 14)	2.5 (-3, 14)
	Overall days since symptom onset of sample collection, median (range)	6.5 (2, 12)	5 (-3, 24)	5 (-3, 24)
	Loss of taste/smell, N (%)	0	2 (15)	2 (14)
	Median upper ^c respiratory symptoms (IQR)	3 (1.2, 6.2)	2 (0, 3)	2 (0.2, 3)
	Median lower respiratory symptoms (IQR)	0 (0, 0)	0 (0, 1)	0 (0, 1)
	Median systemic symptoms (IQR)	0.5 (0, 1.8)	0 (0, 1.2)	0 (0, 1.8)
	Median gastrointestinal symptoms (IQR)	0 (0, 0)	0 (0, 0)	0 (0, 0)
	Temperature, mean Celsius \pm SD	37 \pm 0.3	37.2 \pm 0.5	37.2 \pm 0.4

406 ^a Chronic respiratory illness = volunteers with any Chronic obstructive pulmonary disease,
 407 Asthma, Other lung diseases.

408 ^b Group comparison, p<0.05.

409 ^c Symptoms at the time of each sample collection visit. Sixteen individual symptoms were rated
410 from 0 to 3. Systemic (max score of 12) = malaise + headache + muscle/joint ache +
411 sweats/fever/chills; Gastrointestinal (max score of 12) = loss of appetite + nausea + vomit +
412 diarrhea; Lower Respiratory (max score of 9) = chest tightness + shortness of breath + cough;
413 Upper Respiratory (max score of 15) = runny nose + stuffy nose + sneeze + earache + sore
414 throat.
415

416 Table 2. Viral RNA detection in paired saliva and MTS samples from all participants (N=58) ^a

<i>Saliva Positive</i>	<i>MTS Positive</i>		<i>Total</i>
	No	Yes	
No	165	3	168
Yes	6	26	32
<i>Total</i>	171	29	200

417 ^a Cohen's Kappa between the two sample types was calculated as $\kappa=0.83$

418

419 Table 3. Sensitivity of saliva and MTS and relative odds of detection and ratio of viral RNA
 420 copy numbers of SARS-CoV-2 in saliva by day since symptom onset among 13 mildly
 421 symptomatic contacts of known cases

Days since symptom onset^a	Saliva Positive/N (Sensitivity %)	MTS Positive/N (Sensitivity %)	Odds Ratio^b Saliva:MTS	Estimates^c Saliva:MTS
All samples^d	31/40(78)	28/40(70)	1.5 (0.54, 4)	0.083 (0.069, 0.099)
-3 through 2	10/11 (91)	5/11 (45)	12 (1.2, 130)	3.2 (2.8, 3.8)
3 through 8	16/18 (89)	17/18 (94)	0.47 (0.037, 6)	0.03 (0.026, 0.036)
9 through 24	5/11 (45)	6/11 (55)	0.7 (0.13, 3.8)	0.065 (0.057, 0.073)

422 ^a. Days since symptom onset inclusive of the start and end day

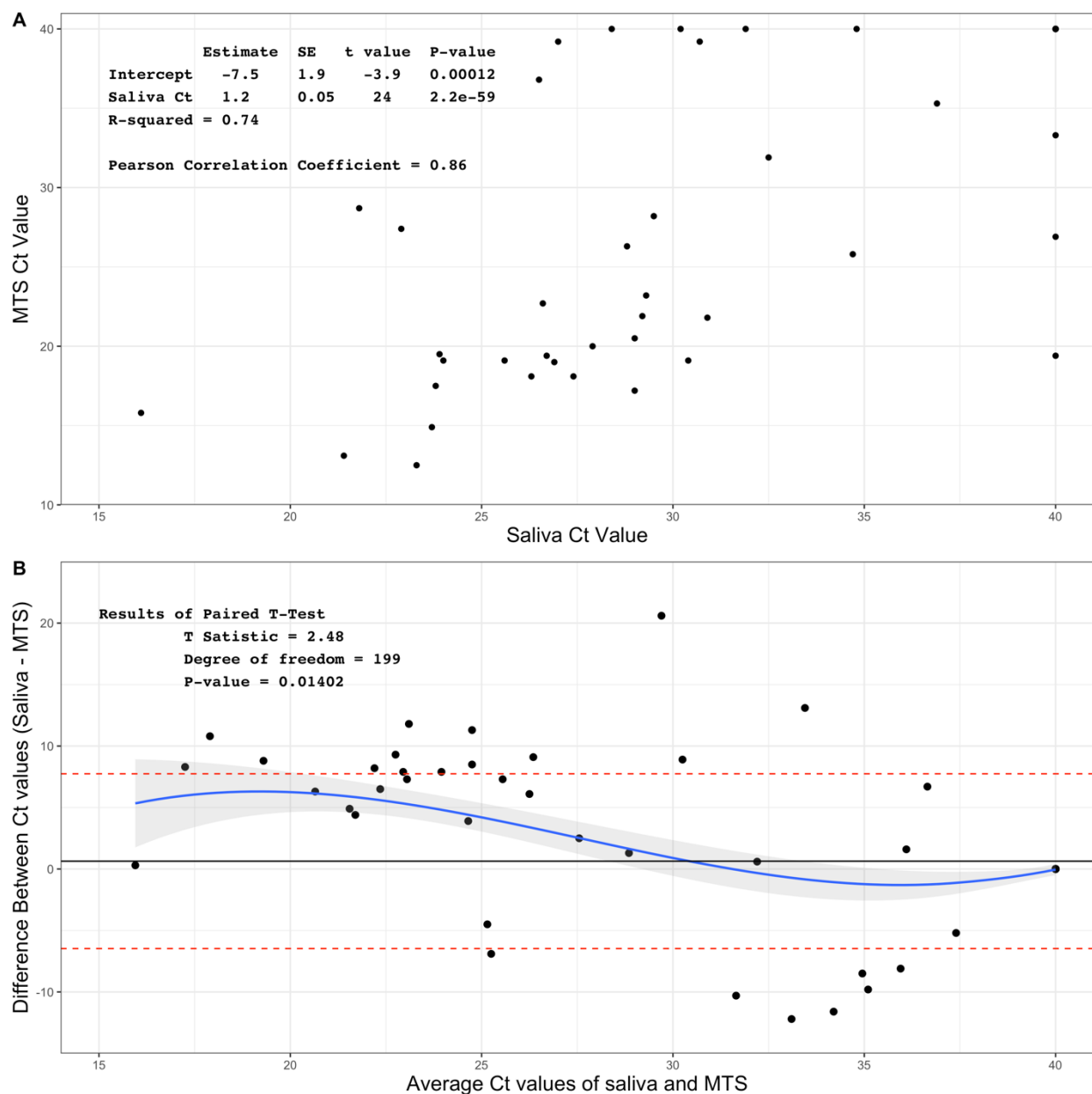
423 ^b. Odds ratios and their 95% confidence intervals were estimated using logistic regression.

424 ^c. Effect estimates and their 95% confidence intervals are shown as the ratio of RNA copy
 425 numbers of saliva to MTS. Analyses were controlled for random effects of subjects and sample
 426 nested within subjects and for censoring by the limit of detection using a linear mixed-effects
 427 model for censored responses (R Project lme4-package).

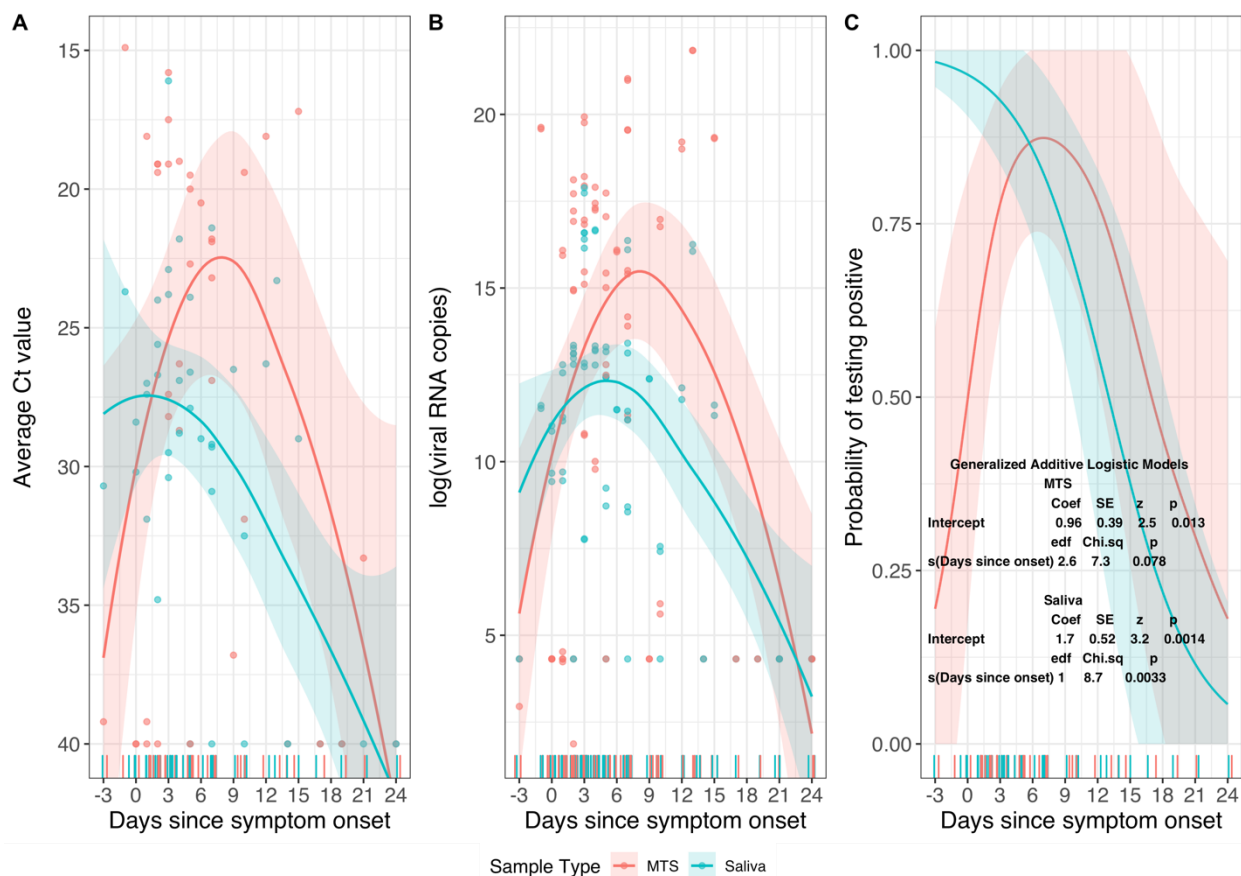
428 ^d. All samples from the 13 mildly symptomatic contacts of known cases with days since symptom
 429 onset from day -3 through day 24.

430

431 Figures
432



433
434 Figure 1. Association between Ct values of saliva and MTS samples. Data were from 58
435 participants and 400 samples.
436 A. Scatter plot of Ct values of saliva and MTS
437 B. Bland-Altman plot for comparison of saliva and MTS
438



439
440
441
442
443
444
445
446
447
448
449

Figure 2. The change of Ct values and probability of testing positive by days since symptom onset. Data were for MTS and saliva samples from 13 participants who provided a total of 40 pairs of samples and had one or more samples positive for SARS-CoV-2 RNA.

A. Change of Ct values by days since symptom onset,
B. Change of viral RNA copy numbers (natural log scale) by days since symptom onset,
C. Probability of being tested positive by days since symptom onset estimated from a generalized additive logistic model.