

1 **Treatment-seeking for children with suspected severe malaria attending community**
2 **health workers and primary health centres in Adamawa State, Nigeria**

3 Tristan T. Lee^{1,2,#}, Elizabeth Omoluabi^{3,#,*}, Kazeem Ayodeji³, Ocheche Yusuf³, Charles Okon³,
4 Nina C. Brunner^{1,2}, Giulia Delvento^{1,2}, Aita Signorell^{1,2}, Mark Lambiris^{1,2}, Marek Kwiatkowski^{1,2},
5 Christian Burri^{1,2}, Christian Lengeler^{1,2}, Emmanuel Emedo⁴, Fatima Cheshi⁴, Manuel W.
6 Hetzel^{1,2}

7 ¹ Swiss Tropical and Public Health Institute, Basel, Switzerland

8 ² University of Basel, Basel, Switzerland

9 ³ Akena Associates, Abuja, Nigeria

10 ⁴ UNICEF, New York, NY, USA

11

12 # Contributed equally

13 * Corresponding author: elizomoluabi@akenaresearch.com

14 **Abstract**

15 **Background:** The Community Access to Rectal Artesunate for Malaria project investigated
16 the feasibility of introducing pre-referral rectal artesunate into existing community-based health
17 services. In that study, the case fatality rate of children visiting primary health centres (PHCs)
18 was 19% compared to 6% in children first visiting community health workers, locally called
19 Community Oriented Resource Persons (CORPs). As case management practices did not fully
20 explain this finding, this publication investigates other reasons underlying the observed
21 difference in case fatality.

22 **Methods:** The observational study enrolled 589 children under the age of five years with fever
23 and danger signs indicative of severe malaria attending CORPs and PHCs in Adamawa State,
24 Nigeria, between June 2018 and July 2020. After 28 days, follow-up visits were conducted with
25 caregivers to understand background characteristics, severity of symptoms, home treatment
26 administration, and treatment seeking practices during the child's illness. These factors were
27 compared between children visiting CORPs versus those visiting PHCs as their first health
28 provider.

29 **Results:** Children visiting PHCs were more likely to display danger signs indicative of central
30 nervous system involvement (90% vs. 74%, $p < 0.01$) and have four or more danger signs
31 (50% vs. 39%, $p = 0.02$). The delay between illness onset and visiting the community-based
32 provider did not differ between children attending a CORP and children attending a PHC. PHC
33 attendances more often lived in urban areas (16% vs 4%, $p=0.01$) and travelled farther to their
34 first health provider, which was usually a community-based provider. Although practicing home
35 treatment was common, especially among children attending PHCs (42% vs 33%, $p=0.04$),
36 almost none of the children were given an antimalarial. PHCs were visited for their
37 professionalism and experience while CORPs were visited for their low cost and because
38 caregivers personally knew and trusted the provider.

39 **Conclusions:** Our comparison of children with suspected severe malaria seeking care from
40 two kinds of community-based health care providers in Nigeria suggest that illness severity
41 may be the primary driver behind the observed difference in case fatality rate.

42 **Keywords:** treatment seeking, primary health care, severe febrile illness, malaria

43 **Background**

44 Uncomplicated malaria can quickly progress to severe malaria and death if left untreated (1-
45 3). Therefore, early diagnosis and prompt, effective treatment are essential to further reduce
46 malaria mortality (4). Treatment of uncomplicated malaria is generally provided by primary
47 health centres (PHC) and, in several countries in sub-Saharan Africa and beyond, by
48 community health workers implementing the integrated community case management (iCCM)
49 strategy (5).

50 Health workers at that level can conduct a malaria rapid diagnostic test (mRDT) or sometimes
51 perform microscopy diagnosis of malaria, and provide oral artemisinin-based combination
52 therapy (ACT) to children with uncomplicated malaria. Children with severe malaria have to be
53 referred to health centres or hospitals with inpatient facilities that can manage severe malaria
54 comprehensively. These referral facilities are often more difficult to reach, particularly for
55 communities in remote rural areas.

56 In 2018 the World Health Organization (WHO) granted pre-qualification to two products of
57 rectal artesunate (RAS) that could be used as a pre-referral treatment for cases of suspected
58 severe malaria in children diagnosed at community level (6). In a clinical trial, pre-referral RAS
59 was shown to reduce death or permanent disability when administered to children under the
60 age of six years with suspected severe malaria who delayed referral to a higher level health
61 facility (7).

62 Nigeria accounts for 27% of the world's malaria cases and 23% of malaria deaths (8). In
63 addition to having the world's highest burden of malaria, the country is also challenged with
64 high levels of poverty, a large rural population with few transportation options, and a poorly
65 functioning health system (9). This situation makes prompt and appropriate treatment seeking
66 for severe malaria difficult to achieve in many places. Considering the potential of RAS to
67 improve children's health outcomes in such a context, pre-referral RAS was added to the
68 treatment guidelines of local community-based providers, including community health workers
69 implementing iCCM, known locally as Community Oriented Resource Persons (CORPs), and
70 primary health centers (PHCs) implementing the integrated management of childhood
71 illnesses (IMCI). Even though the national treatment guidelines had already included RAS as
72 pre-referral treatment option before the WHO pre-qualification (10), RAS was not widely used
73 and not at all provided by CORPs.

74 In an observational study, the Community Access to Rectal Artesunate for Malaria (CARAMAL)
75 project investigated the health impact of introducing RAS in remote populations in the
76 Democratic Republic of the Congo, Nigeria, and Uganda (11). In Nigeria, the study did not find

77 a positive health effect of introducing pre-referral RAS in three Local Government Areas (LGA)
78 of Adamawa State. The case fatality rate (CFR) among children with suspected severe malaria
79 during pre and post-RAS implementation phases were 4.2% and 16.1%, respectively.
80 Meanwhile, the study found that the CFR was higher in children first attending a PHC (18.5%)
81 compared to those first attending a CORP (5.7%). These differences in CFR may be
82 attributable to factors such as the health condition at the time of treatment seeking, care
83 seeking practices, and treatments provided. Two critical aspects of the continuum of care for
84 severe malaria cases, namely referral completion and post-referral treatment, have been
85 described in other manuscripts (Signorell et al, manuscript in preparation, (12)). But neither
86 seem to provide an explanation of the difference in CFR between the two groups of patients
87 (11).

88 Understanding the reasons underlying these differences in CFR is crucial to ensure that
89 appropriate measures are taken to reduce child deaths at each level of care. In this article, we
90 therefore investigate whether there are underlying differences between children who visited
91 CORPs and those who visited PHCs as community level providers. Currently, the literature
92 lacks studies comparing the characteristics of children seeking treatment from different
93 community-based providers. We specifically focused on the severity of symptoms, home
94 treatment and treatment seeking delay, while taking into account background characteristics
95 of the patients.

96 **Methods**

97 **Study design**

98 This research was conducted as part of the CARAMAL project that accompanied the roll-out
99 of pre-referral RAS into existing iCCM and IMCI systems. The complete methods are detailed
100 elsewhere (Lengeler et al., manuscript in preparation, (11)). This analysis includes children
101 with suspected severe malaria enrolled by community-based providers (CORPs or PHCs) in
102 Nigeria.

103 **Setting**

104 Data was collected in Fufore, Mayo-Belwa and Song LGAs of Adamawa State in northeastern
105 Nigeria. The estimated total population of these LGAs was 746,949 in 2018, of which 130,430
106 (17%) were under the age of five years (13). The population in the three LGAs is served by
107 over 500 CORPs, 77 PHCs, and 3 referral health facilities (Cottage Hospitals). In the study
108 area, malaria occurs seasonally.

109 CORPs and PHCs provide primary health care services at community level. Both use similar
110 guidelines for the assessment and treatment of childhood illnesses, with CORPs implementing
111 iCCM and PHCs implementing IMCI guidelines. PHCs are small health facilities with nurses
112 and intermediate staff. These staff have an educational background in health, in contrast to
113 CORPs who may not have a medical background. CORPs are provided with medical supplies
114 and supervision through nearby PHCs. CORPs were introduced in 2014 to fill an accessibility
115 gap and were placed in communities more than 5 km away from a health facility and in
116 communities hard to reach due to bad road conditions, or natural barriers like rivers and
117 mountains.

118 **Data collection**

119 Children under five years visiting a PHC or a CORP with a history of fever and at least one
120 danger sign indicative of suspected severe malaria according to Nigerian iCCM guidelines
121 (unusually sleepy or unconscious, not able to drink or feed, vomiting everything, convulsions,
122 or yellow eyes) were enrolled between June 2018 and July 2020. CARAMAL staff attempted
123 to reach community-based providers weekly by phone calls or text message to identify and
124 register children meeting the inclusion criteria. Follow-up visits were done 28 days later in
125 person at the child's residence, or by phone during the COVID-19 pandemic lockdown.
126 Caregiver interviews were conducted in the local language (Hausa or Fulfulde) to collect
127 information about the child's health status, signs and symptoms of disease, treatment seeking
128 perceptions and practices, and medicines the child received. Geolocations of the child's house
129 were recorded. Children who died were followed up two to three months after enrolment to
130 respect the mourning period. Additional details about the circumstances of the death were
131 asked. Data was collected electronically on tablets using ODK Collect, and saved on a
132 password protected ODK Aggregate server hosted at the Swiss Tropical and Public Health
133 Institute in Switzerland.

134 **Data analysis**

135 Study participants were included in the analysis if they were successfully followed-up on day
136 28, their caregiver provided consent, and children were under the age of five, had a history of
137 fever and a Nigeria specific iCCM danger sign, and had a positive mRDT test at enrolment.
138 For consistency with complementary publications (11), children who died after more than 31
139 days were excluded from the analysis.

140 This study compares children attending a CORP with children attending a PHC. The main
141 variables of interest were background characteristics, home treatment, treatment seeking
142 delay, disease severity and reasons for going to the CORP or the PHC. Treatment seeking
143 delay was defined as the reported number of days between illness onset and attending the

144 CORP or PHC, categorized into two-day periods. We used the presence of danger signs
145 involving the central nervous system (convulsions, unusually sleepy or unconscious), number
146 of danger signs (out of convulsions, unusually sleepy or unconscious, vomits everything,
147 unable to drink or feed, unable to sit or stand, blood in stool, swelling of both feet), and
148 caregiver-perceived severity as proxies for disease severity. RAS implementation started in
149 May 2019. COVID-19 movement restrictions were in place between April 1, 2020 and the end
150 of the study. The rainy season usually lasts from May to October, and was defined as such.
151 Living in a rural or urban setting was determined based on the child's residence geolocation
152 and the LandScan HD: Nigeria version 1.1 geodatabase (Oak Ridge National Laboratory,
153 2018) per settlement patterns defined by Weber et al. (14).

154 Descriptive analyses comparing CORP and PHC attendance were done using logistic
155 regression models with clustered standard errors (clustering at the level of the enrolling health
156 care provider). These were adjusted for the effect of the COVID-19 pandemic as the pandemic
157 was likely to affect treatment seeking. P-values were calculated using the likelihood ratio test
158 for categorical variables and on the odds ratio for binary variables. P-values of <0.05 were
159 considered statistically significant. Unadjusted models, sensitivity analysis using Generalized
160 Estimating Equations, and a further explanation on statistical methods are presented in the
161 supplementary materials. Statistical analyses were conducted in Stata SE version 16.1.

162 **Results**

163 **Study population**

164 CORPs and PHCs provisionally enrolled 724 children. Of those, 66 (9%) were lost to follow-
165 up or the caregiver did not provide consent. We excluded another 69 (10%) children due to
166 children not having a history of fever (n=7), no danger sign (n=26), dying > 31 days after
167 enrolment (n=2), or no positive mRDT at enrolment (n=34) (Figure S1). Thus, the analysis
168 included 589 children with suspected severe malaria, of which 314 (53%) were enrolled by
169 CORPs and 275 (47%) by PHCs (Table 1).

170 Children were enrolled from 139 community-based providers in the study area. The number of
171 enrolled patients per provider varied from 1 to 42 (median=2, IQR: 2 – 4), with fewer PHCs
172 and a tendency for larger numbers in PHCs. Heterogeneity of almost all variables was high
173 within children enrolled by the same health provider.

174 **Patient characteristics**

175 Overall, there were more male than female patients in the study and the mean patient age was
176 2.0 years. Caregivers were most often female and between the ages of 25 to 34. More children

177 were enrolled in the rainy season than the dry season. There were no differences in the
178 aforementioned aspects between patients enrolled by CORPs and PHCs (Table 1). Children
179 first attending PHCs were more likely to live in an urban area (adjusted odds ratio [AOR]: 4.6,
180 95%CI: 1.4 – 15.4) and less likely to visit the facility during a weekend (AOR: 0.5, 95%CI: 0.3
181 – 0.9). They were also more often enrolled after the introduction of RAS in the study area
182 (AOR: 3.3, 95%CI: 1.7 – 6.4), and during the COVID-19 pandemic (AOR: 1.9, 95%CI: 1.0 –
183 3.6).

184 **Table 1.** Patient characteristics by type of provider visited

	CORP		PHC		AOR*	95% CI*	P-value*
	N	%	N	%			
Total	314		275				
Child sex							
Male	188	60	164	60	Ref.		
Female	126	40	111	40	1.0	(0.7 - 1.3)	0.91
Child age (years)							
0	40	13	27	10	Ref.		0.34
1	86	27	74	27	1.3	(0.7 - 2.6)	
2	82	26	82	30	1.5	(0.8 - 2.9)	
3	68	22	55	20	1.3	(0.6 - 2.4)	
4	38	12	37	13	1.5	(0.7 - 3.4)	
Caregiver sex							
Male	102	32	95	35	Ref.		
Female	212	68	180	65	0.9	(0.6 - 1.3)	0.48
Caregiver age							
< 25	42	13	46	17	Ref.		0.17
25 - 34	167	53	128	47	0.7	(0.4 - 1.2)	
35 - 45	75	24	72	26	0.8	(0.5 - 1.5)	
≥ 45	30	10	28	10	0.9	(0.4 - 1.7)	
Missing	0	0	1	0	-		
Caregiver education**							
Never attended school	54	17	65	24	Ref.		0.77
Primary or lower	15	5	26	9	1.5	(0.6 - 3.4)	
Secondary or higher	28	9	44	16	1.3	(0.6 - 2.6)	
Quranic	22	7	39	14	1.5	(0.7 - 3.1)	
Missing	195	62	101	37	-		
LGA							
Fufore	143	46	94	34	Ref.		0.02
Mayo-Belwa	95	30	154	56	2.3	(0.5 - 10.4)	
Song	76	24	27	10	0.5	(0.1 - 1.9)	
Residence							
Rural	298	95	227	83	Ref.		
Urban	14	4	43	16	4.6	(1.4 - 15.4)	0.01
Missing	2	1	5	2	-		
Day of enrolment							
Workday	241	77	239	87	Ref.		
Weekend	73	23	36	13	0.5	(0.3 - 0.9)	0.02
Season							

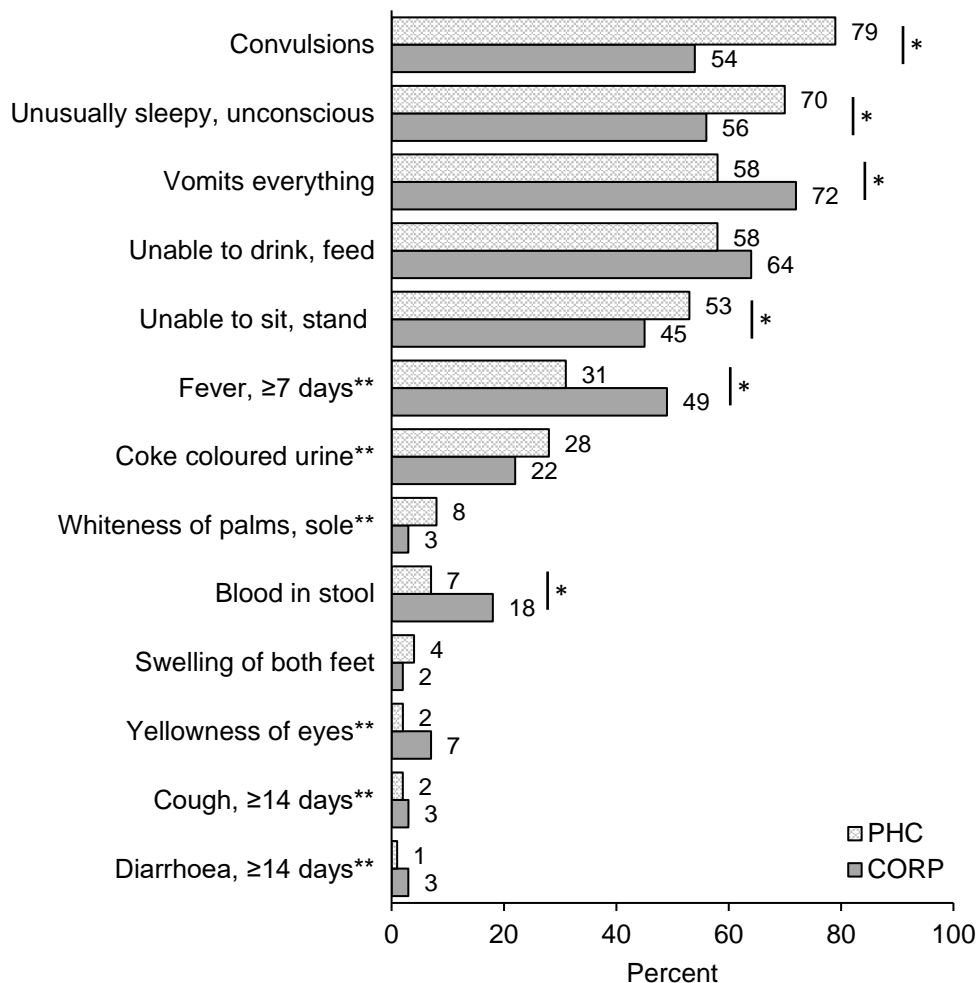
Dry season	83	26	66	24	Ref.		
Rainy season	231	74	209	76	1.0	(0.6 - 1.6)	0.95
RAS implementation phase							
Pre-RAS	156	50	61	22	Ref.		
Post-RAS	158	50	214	78	3.3	(1.7 - 6.4)	<0.01
COVID-19 pandemic							
Pre-COVID-19	268	85	207	75	Ref.		
COVID-19 period	46	15	68	25	1.9	(1.0 - 3.6)	0.04

185 *Logistic regression adjusting for the COVID-19 pandemic, with standard errors clustered at the level of
 186 the health care provider. Likelihood ratio test used to calculate p-values for categorical variables. **Data
 187 not collected during the entire study period.

188 **Signs and symptoms**

189 Convulsions (79%) and being unusually sleepy or unconscious (70%) were more common in
 190 children visiting a PHC (Figure 1). Together, these two symptoms involving the Central
 191 Nervous System (CNS) were reported more frequently in children first visiting a PHC (90%)
 192 than in children first visiting a CORP (74%) (AOR: 3.5, 95%CI: 1.9 – 6.1). There was no
 193 significant difference in the proportion of children with CNS symptoms during the COVID-19
 194 pandemic (79%) compared to prior to the pandemic (82%).

195 Children enrolled at CORPs were more often reported to vomit everything (72%) or be unable
 196 to drink or feed anything (64%). Vomiting everything, prolonged fever (≥ 7 days) and blood in
 197 the stool were reported significantly more frequently among children first attending a CORP
 198 (Figure 1).



199

200 **Figure 1.** Signs and symptoms of severity during the child's case of severe illness stratified by first
 201 community-based health provider visited. *Considered statistically significant at $p < 0.05$. **Data not
 202 collected during the entire study period.

203 Children often presented with multiple symptoms: proportionately more children attending a
 204 PHC (50%) had ≥ 4 danger signs compared to children taken to a CORP (39%) ($p = 0.02$) (Table
 205 2). Danger signs that were often reported together included convulsions and being unusually
 206 sleepy/unconscious (CORP: 36%, PHC: 59%), being unusually sleepy/unconscious and not
 207 being able to eat/drink (CORP: 39%, PHC: 46%), being unable to eat/drink and being unable
 208 to sit/stand (CORP: 35%, PHC: 41%). The following combination of three danger signs was
 209 also commonly reported: convulsions, unusually sleepy/unconscious, and unable to eat/drink
 210 anything (32% overall, 26% among CORPs visits, 39% among PHC visits).

211 In three-quarters of the cases, caregivers perceived their child's illness to be serious but not
 212 fatal with no statistically significant difference between the two compared groups.

213 **Table 2.** Number of danger signs and caregiver’s perceived severity of the illness

	CORP		PHC		AOR*	95% CI*	p-value*
	N	%	N	%			
Total	314		275				
Number of danger signs ***	314		275				
0 - 1	52	17	32	12	Ref.		0.02
2 - 3	138	44	106	39	1.4	(0.8 - 2.4)	
≥ 4	124	39	137	50	2.0	(1.2 - 3.4)	
Perceived severity of the illness							
Not fatal	236	75	193	70	Ref.		
Fatal	76	24	79	29	1.3	(0.8 - 2.0)	0.25
Don’t know/Missing	2	1	3	1	-		

214 *Logistic regression adjusting for the COVID-19 pandemic, with standard errors clustered at the level of
 215 the health care provider. Likelihood ratio test used to calculate p-values for categorical variables. ***
 216 children were not said to have any danger signs by caregivers at follow-up but health providers noted
 217 danger signs at enrolment. ***Only includes danger signs collected across the whole study period.

218 Home treatment

219 Home treatment was more common among patients attending a PHC than those attending a
 220 CORP (AOR: 1.5, 95%CI: 1.0 – 2.1) (Table 3). Treatments included modern medicines,
 221 traditional medicines or herbs, and washing or sponging to cool the fever. Caregivers who were
 222 able to name the medicine most often gave paracetamol (CORP: 85%, PHC: 92%) and
 223 occasionally artemether-lumefantrine, the first-line antimalarial drug (CORP: 15%, PHC: 14%).
 224 The type of home treatment did not differ between the two groups.

225 **Table 3.** Actions taken at home prior to consulting health providers

	CORP		PHC		AOR*	95% CI*	P-value*
	N	%	N	%			
Total	314		275				
Any home treatment							
No	209	67	157	57	Ref.		
Yes	103	33	116	42	1.5	(1.0 - 2.1)	0.04
Missing	2	1	2	1	-		
Actions taken							
Traditional medicines/herbs	22	21	26	22	1.1	(0.5 - 2.2)	0.86
Tepid sponging	7	7	17	15	2.4	(0.9 - 6.4)	0.09
Given medicine	79	77	85	73	0.8	(0.5 - 1.5)	0.55
Medicines given (if known)							
Artemether-lumefantrine	10	15	11	14	1.0	(0.3 - 3.2)	0.99
Oral rehydration solution (ORS)	1	1	1	1	0.8	(0.1 - 13.4)	0.89
Paracetamol	57	85	70	92	2.1	(0.6 - 7.0)	0.23
Other	6	9	5	7	0.7	(0.2 - 2.5)	0.56

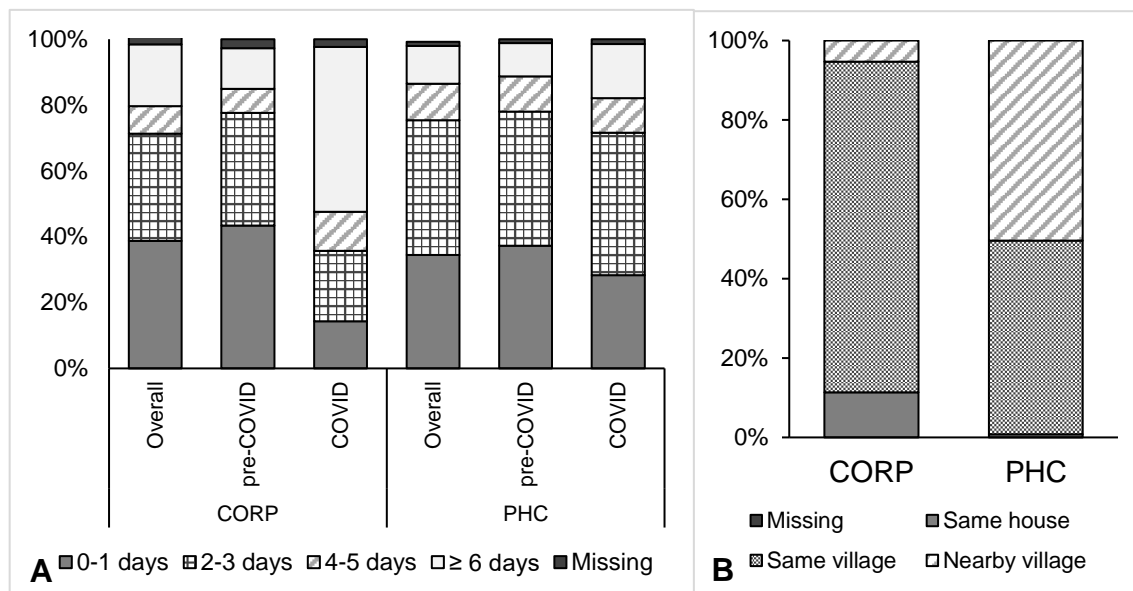
226 *Logistic regression adjusting for the COVID-19 pandemic, with standard errors clustered at the level of
227 the health care provider.

228 Treatment seeking

229 Further details on treatment seeking were collected for 264 children who attended a CORP
230 and 242 who attended a PHC. Of these, 14% of children attending a PHC and 7% of those
231 attending a CORP had previously been to another provider (AOR: 2.2, 95%CI: 1.1 – 4.4). In
232 most cases, the previous provider was a chemist/pharmacy/drug shop for both CORP (47%,
233 9/19) and PHC (71%, 24/34) enrolments (Fisher’s test $p=0.85$).

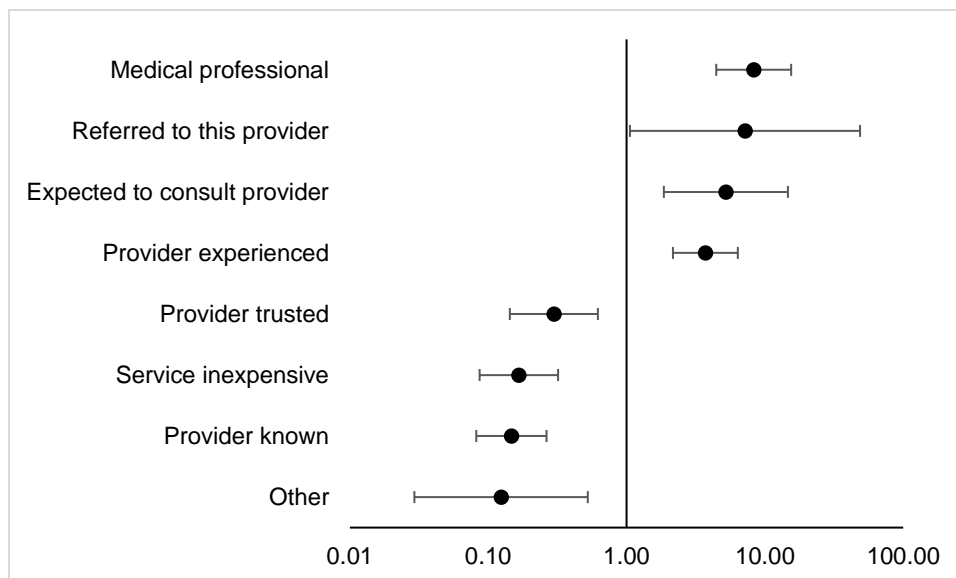
234 There was no substantial difference overall in treatment seeking delay to the community-based
235 provider between children first visiting CORPs compared to those first visiting PHCs (Figure
236 2A). Across the study period, in children seeing CORPs, 38% of children sought care the same
237 day or the day after becoming ill and 32% sought care 2-3 days after becoming ill. In PHC
238 enrolments, slightly more children went to the enrolling provider 2-3 days after symptom onset
239 (41%) compared to the same day or day after (35%). Home treatment was also associated
240 with delay to a community-based provider. Children seeking care promptly had the lowest rates
241 of home treatment administration (CORP: 18% and PHC: 32%) compared to those with greater
242 delays (CORP: 44% and PHC: 52% in delays greater than one day) ($p<0.01$). The COVID-19
243 pandemic was found to decrease timely treatment seeking (same or following day) to CORPs
244 (AOR: 5.1, 95%CI: 1.8 – 14.3) but not to PHCs (AOR: 1.5, 95%CI: 0.7 – 3.1).

245 PHCs, offering a wider range of services and being much fewer than CORPs, were significantly
 246 more likely to be located outside the child's village than CORPs (50% vs. 6%; AOR: 18.0,
 247 95%CI: 6.8 – 47.2) (Figure 2B).



248 **Figure 2.** Treatment seeking to the first community-based provider: A) Treatment seeking delay
 249 between the time of illness onset and going to the enrolling provider in days by enrolment period. B)
 250 Location of the enrolling provider in relation to the child's residence.

251 A total of 456 caregivers provided reasons for taking their child to the CORP or the PHC (Figure
 252 3). The most common reasons for visiting a CORP were knowing (76%) and trusting (26%) the
 253 provider and low cost (22%). In contrast, reasons for attending a PHC included the experience
 254 (49%) and medical professionalism (34%) of PHC health workers, as well as knowing the
 255 provider (32%). Caregivers who brought their child to a CORP were significantly more likely to
 256 list knowing or trusting the provider, and the service being inexpensive as reasons for visiting,
 257 whereas those attending a PHC were more likely to list the experience and professionalism of
 258 the provider, and an expectation or custom to consult the provider as reasons.



259

260 **Figure 3.** Odds ratio for reasons caregivers took their child with severe febrile illness to the initial CORP
261 compared to the PHC provider. Logistic regression adjusting for the COVID-19 pandemic, with standard
262 errors clustered at the level of the health care provider.

263 **Discussion**

264 Early diagnosis and prompt effective treatment are critical in the management of malaria to
265 prevent progression to severe disease, lasting disability, and death (4). We previously found
266 that children with suspected severe malaria who first attended a PHC were three times more
267 likely to die than those who visited a CORP (CFR 18.5% vs. 5.7%), a finding that could not be
268 explained by differences in referral delay or post-referral treatment (11). Here, we investigated
269 differences in the characteristics and treatment history of patients relative to their visit to the
270 first community provider (CORP or PHC).

271 There were no differences in the demographic characteristics of patients attending CORPs or
272 PHCs. However, children who first saw PHCs appeared to be more severely ill than those who
273 first saw CORPs as reflected in the presence of CNS danger signs (90% vs. 74%) and the
274 number of reported danger signs. The lack of an expert clinical examination of all patients
275 included in this study limited the extent to which differences in illness severity could be
276 examined, although using presence of CNS symptoms as a proxy for severe disease has been
277 done previously (15-18). Additionally, caregivers were asked about signs and symptoms at
278 any point during their child's complete illness course. Thus, the causal relationship between
279 severity and the complexity of disease progression and treatment seeking is difficult to
280 elucidate. Warsame *et al.* (2016) previously found that children attending community health
281 workers, in settings comparable to ours, had higher rates of CNS symptoms compared to those
282 attending other health providers such as trained mothers or traditional healers, suggesting that

283 children with more severe symptoms may be more likely to be taken to particular health
284 providers, possibly based on the perceived professional capacity of the providers (18). In
285 Burkina Faso, cases of severe disease often bypass community health workers in favour of a
286 professional health worker (19). Higher degrees of severity among children with severe febrile
287 illness, defined by the symptoms altered consciousness or coma, convulsions, and difficulties
288 in breathing, have also been positively associated with hospital attendance in rural Tanzania
289 (20).

290 In our study, caregivers mentioned taking children to a PHC for the provider's professionalism
291 and experience. This may be due to the higher illness severity of these children even though
292 this was not reflected in caregiver's reported perception of illness severity. However, this data
293 was quantitatively collected and did not explore multidimensional aspects of perceived severity
294 (eg. emotions, knowledge about severe malaria, economic consequences in seeking or not
295 seeking treatment) (21).

296 Home treatment was provided slightly more often to children brought to a PHC compared to
297 those brought to a CORP (AOR: 1.5). This treatment consisted in most cases of an antipyretic
298 drug which, on its own, would be counter-productive in the treatment of an episode of severe
299 malaria as it would alleviate symptoms and suggest an improvement of the child's condition.
300 While previous qualitative evidence from Nigeria suggested that children with suspected
301 malaria were usually given paracetamol and an antimalarial or traditional medicine at home
302 (22), home treatment with an antimalarial was uncommon in children in this study.

303 Children attending PHCs were also more likely to have attended another provider, mostly a
304 drug shop/chemist/pharmacy. While such providers may facilitate access to medicines in a
305 similar way as CORPs, attending such a provider may also unnecessarily delay a visit to a
306 health facility. This is particularly problematic when children suffer from an episode of severe
307 malaria (or another severe illness) and the treatment provided at the drug outlet is inadequate.

308 Our study found that approximately two-thirds of children with suspected severe malaria did
309 not attend one of the community-based providers on the day or the day after the onset of
310 symptoms. This may in part explain the overall high CFR seen among children in this study.
311 We did not find a significant difference in treatment seeking delay between patients attending
312 CORPs and PHCs even though the latter were more likely to attend another provider
313 beforehand. On the other hand, during COVID-19 pandemic restrictions on movement
314 imposed by the government, delay in seeking treatment increased substantially among those
315 going to a CORP but only marginally among those attending a PHC. CORPs experienced
316 stockouts of commodities and delay in replenishment during the COVID-19 lockdown (data not
317 shown), which could have contributed to discouraging attendance. Considering the

318 retrospective assessment of treatment seeking in this study, the recall period of 28 days may
319 have limited how precisely the time of illness onset and treatment initiation have been
320 remembered. Smaller changes in treatment delay may hence have remained undetected.

321 Longer delay in attending the first community-based provider was associated with the
322 administration of home treatments. In consideration of the infrequent use of antimalarial
323 medicines at home, any delay in seeking treatment for the episode of suspected severe malaria
324 is therefore likely to have aggravated the severity of the condition. While our study explored
325 treatment seeking delay in number of days, we lack background information on the actual
326 travel time it took and the circumstances of reaching a provider. This may be more relevant in
327 the case of PHCs, which were located outside the patient's village in 50% of the cases (as
328 opposed to 6% for CORPs). A strenuous transport may negatively affect the condition of a
329 severely sick child.

330 Other characteristics may have influenced the choice of first community-based provider without
331 necessarily affecting the observed difference in CFR. In Nigeria, PHCs are not located in the
332 most remote areas, although they are often at a considerable distance from the nearest referral
333 health facility (23). This is reflected in our data where children attending a PHC more often
334 resided in urban areas compared to those attending a CORP. Similarly, Druetz *et al.* (2015)
335 showed that in rural areas of Burkina Faso, the decision to consult a community health worker
336 for malaria increased with increased distance to the nearest health facility (24). Provider
337 operating hours also affect health-seeking behaviours. PHCs likely have more standard
338 operating hours and certainly do not provide 24-hour service, while CORPs, who are
339 volunteers and may have other jobs or household activities, may have more flexible hours. We
340 found that on weekends, patients rather attended CORPs than PHCs. A different finding was
341 published by Koce *et al.* (2020) who qualitatively investigated factors influencing self-referral
342 to higher level facilities in Nigeria and demonstrated that the limited staff and operating hours
343 of community-based providers (compared to referral facilities) resulted in patients directly
344 seeking care from higher level facilities (25). Other factors predicting community level provider
345 choice including knowledge of malaria and costs associated with treatment seeking were not
346 assessed.

347 Taken together, the findings from this analysis suggest that, compared to those attending a
348 CORP, children who first attended a PHC may have been more severely ill, potentially
349 aggravated by inadequate home management, delay in attending the health facility, and
350 possibly a longer and more strenuous travel. Considering that all included children had danger
351 signs of severe illness, caregivers may have underestimated the severity of the child's
352 condition in many cases.

353 Together, these factors may have contributed to a higher CFR among children attending a
354 PHC. Other factors affecting the health outcome of children in this study were investigated in
355 previous analyses. For example, the likelihood of death was higher among children who were
356 treated with pre-referral RAS (AOR: 2.42, 95%CI: 1.25 – 4.70), whereas a higher proportion of
357 children first attending PHCs received RAS compared to those attending CORPs (11). This
358 finding may be related to subsequent referral and treatment patterns rather than to RAS itself.
359 For example, only 48% of children completed referral to a Cottage Hospital after administration
360 of RAS by a CORP or PHC (though those attending a PHC were much more likely to complete
361 referral) (12). Post-referral treatment with an injectable antimalarial was common but few
362 children were subsequently treated with the required full course of oral artemisinin-based
363 combination therapy (Signorell et al. manuscript in preparation).

364 The factors explored in this article in light of other findings are likely to contribute to the high
365 (11.7%) CFR observed in Nigeria but they do not explain the differences between children
366 attending CORPs and those attending PHCs. The higher CFR in those attending a PHC was
367 unexpected since PHCs have higher treatment capacities compared to CORPs.

368 Previous investigations found an increased risk of dying in the period after the roll-out of RAS
369 in the study area (May 2019 to July 2020) (11), which coincided with the period in which more
370 patients first attended a PHC. This finding is unlikely to be related to RAS itself but may have
371 been influenced by circumstantial changes including the emergence of other infectious
372 diseases with similar clinical presentations. Several suspected viral outbreaks occurred in
373 Adamawa State during the study period, including Lassa Fever and Yellow Fever (26, 27). The
374 symptoms of these diseases are often unspecific and overlap with severe malaria. Differential
375 diagnosis of these diseases was not available for the study patients.

376 This study provides insight into differences in background characteristics and care seeking
377 between patients attending different community-based providers in Nigeria, contributing to an
378 explanation of the difference in CFRs between patients attending different community-based
379 health care providers in Nigeria. Additionally, it contributes to the limited literature on care
380 seeking for severely ill children, a population which is comparably small and for which
381 published evidence is scarce (21). While findings from this study may not necessarily be
382 directly applicable to other settings, they point to issues that warrant careful attention when
383 promoting the management of severe childhood illness at community level in rural African
384 settings.

385 **Conclusions**

386 This research provides context on treatment seeking for children with suspected severe
387 malaria between community-based health providers in Nigeria to explain the higher CFRs seen
388 in children visiting PHCs compared to those visiting CORPs in the CARAMAL project. The
389 higher illness severity seen in children visiting PHCs as their first community-based provider
390 likely drives the high CFR.

391 **List of Abbreviations**

392 ACT – Artemisinin-based Combination Therapy

393 AOR – Adjusted Odds Ratio

394 CARAMAL – Community Access to Rectal Artesunate for Malaria

395 CFR – Case Fatality Rate

396 CNS – Central Nervous System

397 CORP – Community Oriented Resource Person

398 iCCM – integrated Community Case Management

399 IMCI – Integrated Management of Childhood Illnesses

400 LGA – Local Government Areas

401 mRDT – malaria Rapid Diagnostic Test

402 PHC – Primary Health Center

403 RAS – Rectal Artesunate

404 WHO – World Health Organization

405 **Acknowledgements**

406 We would like to acknowledge the children and their caregivers who participated in the study
407 and the large number of community health providers, data collectors, local coordinators, local
408 CHAI, UNICEF, and WHO colleagues who made this work possible. We additionally would like
409 to thank Amanda Ross for her statistical support.

410 **Declarations**

411 **Ethics approval and consent to participate**

412 The CARAMAL study protocol was approved by the Research Ethics Review Committee of
413 the World Health Organization (WHO ERC, No. ERC.0003008), the Health Research Ethics
414 Committee of the Adamawa State Ministry of Health (S/MoH/1131/I), the National Health
415 Research Ethics Committee of Nigeria (NHREC/01/01/2007-05/05/2018), and the Scientific
416 and Ethical Review Committee of CHAI (No. 112, 21 Nov 2017). The study is registered on
417 ClinicalTrials.gov (NCT03568344). Provisional verbal informed consent was obtained from
418 caregivers by the community-based provider, while full written informed consent was obtained
419 during a follow-up contact at a referral facility or on day 28. Only patients whose caregivers
420 provided written informed consent were officially enrolled in the study.

421 **Consent for publication**

422 Not applicable. Results not linkable to individual participants.

423 **Availability of data and materials**

424 The datasets generated during and/or analysed during the current study are available in the
425 Zenodo repository, (DOI: 10.5281/zenodo.5733006), upon reasonable request to the
426 corresponding author.

427 **Competing interests**

428 None declared.

429 **Funding**

430 This study was funded by Unitaid.

431 References

- 432 1. Kendjo E, Agbenyega T, Bojang K, Newton CR, Bouyou-Akotet M, Pedross F, et al.
433 Mortality patterns and site heterogeneity of severe malaria in African children. *PLoS One*.
434 2013;8(3):e58686.
- 435 2. Bassat Q, Guinovart C, Sigaúque B, Aide P, Sacarlal J, Nhampossa T, et al. Malaria in
436 rural Mozambique. Part II: children admitted to hospital. *Malar J*. 2008;7:37.
- 437 3. Orimadegun AE, Fawole O, Okereke JO, Akinbami FO, Sodeinde O. Increasing burden
438 of childhood severe malaria in a Nigerian tertiary hospital: implication for control. *J Trop*
439 *Pediatr*. 2007;53(3):185-9.
- 440 4. World Health Organization. Guidelines for the treatment of malaria – 3rd edition. 2015.
- 441 5. Consortium HEFD. Integrated Community Case Management (iCCM) in Sub-Saharan
442 Africa: Successes & Challenges with Access, Speed & Quality. September 2018. Health
443 Economic Finance Development Consortium; 2018.
- 444 6. Strides Shasun's rectal artesunate product receives WHO prequalification.
445 [https://www.mmv.org/newsroom/news/strides-shasun-s-rectal-artesunate-product-receives-](https://www.mmv.org/newsroom/news/strides-shasun-s-rectal-artesunate-product-receives-who-prequalification)
446 [who-prequalification](https://www.mmv.org/newsroom/news/strides-shasun-s-rectal-artesunate-product-receives-who-prequalification). Accessed August 23, 2021.
- 447 7. Gomes MF, Faiz MA, Gyapong JO, Warsame M, Agbenyega T, Babiker A, et al. Pre-
448 referral rectal artesunate to prevent death and disability in severe malaria: a placebo-controlled
449 trial. *Lancet*. 2009;373(9663):557-66.
- 450 8. World Health Organization. World malaria report 2020: 20 years of global progress and
451 challenges. Geneva: World Health Organization; 2020. Report No.: Licence: CC BY-NC-SA
452 3.0 IGO.
- 453 9. Welcome MO. The Nigerian health care system: Need for integrating adequate medical
454 intelligence and surveillance systems. *J Pharm Bioallied Sci*. 2011;3(4):470-8.
- 455 10. Federal Ministry of Health. National Guidelines for Diagnosis and Treatment of Malaria
456 (Third Edition). Abuja; 2015.
- 457 11. Hetzel MW, Okitawutshu J, Tshetu A, Omoluabi E, Awor P, Signorell A, et al.
458 Effectiveness of rectal artesunate as pre-referral treatment for severe malaria in children <5
459 years of age. Preprint at <https://doi.org/10.1101/2021.09.24.21263966> (2021).
- 460 12. Brunner NC, Omoluabi E, Awor P, Okitawutshu J, Tshetu A, Signorell A, et al. Pre-
461 referral rectal artesunate and referral completion among children with suspected severe
462 malaria in the Democratic Republic of the Congo, Nigeria and Uganda. Preprint at
463 <https://doi.org/10.1101/2021.09.27.21264073> (2021).
- 464 13. WorldPop. World Population Demographics: Subnational Age/Sex Structures - 2000-
465 2020. <https://www.portal.worldpop.org/demographics/>. Accessed July 6, 2021.
- 466 14. Weber EM, Seaman VY, Stewart RN, Bird TJ, Tatem AJ, McKee JJ, et al. Census-
467 independent population mapping in northern Nigeria. *Remote Sens Environ*. 2018;204:786-98.
- 468 15. Simba DO, Warsame M, Kimbute O, Kakoko D, Petzold M, Tomson G, et al. Factors
469 influencing adherence to referral advice following pre-referral treatment with artesunate
470 suppositories in children in rural Tanzania. *Trop Med Int Health*. 2009;14(7):775-83.
- 471 16. Siribié M, Ajayi IO, Nsungwa-Sabiiti J, Sanou AK, Jegede AS, Afonne C, et al.
472 Compliance With Referral Advice After Treatment With Prereferral Rectal Artesunate: A Study
473 in 3 Sub-Saharan African Countries. *Clin Infect Dis*. 2016;63(suppl 5):S283-s9.
- 474 17. Ajayi IO, Nsungwa-Sabiiti J, Siribié M, Falade CO, Sermé L, Balyeku A, et al. Feasibility
475 of Malaria Diagnosis and Management in Burkina Faso, Nigeria, and Uganda: A Community-
476 Based Observational Study. *Clin Infect Dis*. 2016;63(suppl 5):S245-s55.
- 477 18. Warsame M, Gyapong M, Mpeka B, Rodrigues A, Singlovic J, Babiker A, et al. Pre-
478 referral Rectal Artesunate Treatment by Community-Based Treatment Providers in Ghana,
479 Guinea-Bissau, Tanzania, and Uganda (Study 18): A Cluster-Randomized Trial. *Clin Infect*
480 *Dis*. 2016;63(suppl 5):S312-s21.
- 481 19. Sauerborn R, Nougbara A, Diesfeld HJ. Low utilization of community health workers:
482 results from a household interview survey in Burkina Faso. *Soc Sci Med*. 1989;29(10):1163-
483 74.

- 484 20. Castellani J, Mihaylova B, Evers SM, Paulus AT, Mrango ZE, Kimbute O, et al. Out-of-
485 pocket costs and other determinants of access to healthcare for children with febrile illnesses:
486 a case-control study in rural Tanzania. *PLoS One*. 2015;10(4):e0122386.
- 487 21. Brunner N, Awor P, Hetzel M. Definitions of Severity in Treatment Seeking Studies of
488 Febrile Illness in Children in Low and Middle Income Countries: A Scoping Review.
489 *International Journal of Public Health*. 2021;66(74).
- 490 22. Elimian KO, Myles PR, Phalkey R, Sadoh A, Pritchard C. 'Everybody in Nigeria is a
491 doctor...': a qualitative study of stakeholder perspectives on lay diagnosis of malaria and
492 pneumonia in Nigeria. *J Public Health (Oxf)*. 2020;42(2):353-61.
- 493 23. Kuupiel D, Adu KM, Bawontuo V, Mashamba-Thompson TP. Geographical
494 Accessibility to District Hospitals/Medical Laboratories for Comprehensive Antenatal Point-of-
495 Care Diagnostic Services in the Upper East Region, Ghana. *EClinicalMedicine*. 2019;13:74-
496 80.
- 497 24. Druetz T, Ridde V, Kouanda S, Ly A, Diabaté S, Haddad S. Utilization of community
498 health workers for malaria treatment: results from a three-year panel study in the districts of
499 Kaya and Zorgho, Burkina Faso. *Malar J*. 2015;14:71.
- 500 25. Koce FG, Randhawa G, Ochieng B. A qualitative study of health care providers'
501 perceptions and experiences of patients bypassing primary healthcare facilities: a focus from
502 Nigeria. *Journal of Global Health Reports*. 2020.
- 503 26. World Health Organization. Yellow Fever – Nigeria. Accessed October 19, 2021.
- 504 27. Agbonlahor DE, Akpede GO, Happi CT, Tomori O. 52 Years of Lassa Fever Outbreaks
505 in Nigeria, 1969-2020: An Epidemiologic Analysis of the Temporal and Spatial Trends. *Am J*
506 *Trop Med Hyg*. 2021.

507