

1 **Title Page**

2 **Title:** Polymethylation Scores for Prenatal Maternal Smoke Exposure Persist Until Age
3 15 and Are Detected in Saliva in the Fragile Families and Child Wellbeing Cohort

4 **Authors:** Freida A. Blostein¹, Jonah Fisher², John Dou¹, Lisa Schneper³, Erin B. Ware²
5 Daniel A. Notterman^{3*}, Colter Mitchell^{2*}, Kelly M. Bakulski^{1*+}

6 **Affiliations:**

7 ¹Department of Epidemiology, University of Michigan School of Public Health, Ann
8 Arbor, Michigan, United States of America

9 ²Institute for Social Research, University of Michigan, Ann Arbor, Michigan, United
10 States of America

11 ³Department of Molecular Biology, Princeton University, Princeton, New Jersey, United
12 States of America

13 *Co-senior authors

14 ⁺Corresponding author

15 **Abstract**

16 Prenatal maternal smoking is associated with low birthweight, neurological disorders,
17 and asthma in exposed children. DNA methylation signatures can function as
18 biomarkers of prenatal smoke exposure. However, the robustness of these DNA
19 methylation signatures across child ages, genetic ancestry groups, or tissues is not

1 clear. Using coefficients from a meta-analysis of prenatal maternal smoke exposure and
2 DNA methylation in newborn cord blood, we created polymethylation scores of saliva
3 DNA methylation from children at ages 9 and 15 in the Fragile Families and Child
4 Wellbeing study. In the full sample at age 9 (n=753), prenatal maternal smoke exposure
5 was associated with a 0.51 (95%CI: 0.35, 0.66) standard deviation higher
6 polymethylation score. The direction and magnitude of the association was consistent in
7 European and African genetic ancestry samples. In the full sample at age 15 (n=747),
8 prenatal maternal smoke exposure was associated with a 0.48 (95%CI: 0.32, 0.63)
9 standard deviation higher polymethylation score, and the association was attenuated
10 among the European and Admixed - Latin genetic ancestry samples. The
11 polymethylation score classified prenatal maternal smoke exposure accurately (AUC
12 age 9=0.77, age 15=0.76). Including the polymethylation score increased the AUC of
13 base model covariates by 5 (95% CI: (2.1, 7.2)) percentage points, while including a
14 single candidate site in the *AHRR* gene did not (P -value=0.19). Polymethylation scores
15 for prenatal maternal smoking were portable across genetic ancestries and more
16 accurate than an individual DNA methylation site. DNA polymethylation scores from
17 saliva samples could serve as robust and practical clinical biomarkers of prenatal
18 maternal smoke exposure.

19 **Keywords**

20 DNA methylation, prenatal maternal smoking, salivary biomarker, cohort

1 Introduction

2 *In utero* cigarette smoke exposure causes low birth weight and preterm birth [1].
3 Exposure to cigarette smoking *in utero* is also associated with a variety of short- and
4 long-term postnatal adverse health outcomes [2]. These include conditions with life-long
5 consequences, including negative neurodevelopmental outcomes, obesity, and asthma
6 [3]. Although 11% of US pregnant people in 2018 reported any past-month cigarette use
7 [4], this is considered an underestimate. When compared to biomarker measures,
8 maternal prenatal smoking is underreported - presumably due to stigma [5, 6]. The gold-
9 standard smoking biomarker, serum cotinine levels, has a half-life of nine hours in
10 pregnant people, and is rarely available outside of birth cohort research [7]. Alternative
11 biomarkers of prenatal maternal smoke exposure with a larger window of measurement
12 could improve measurement of prenatal smoke exposure in older children and adults.
13 DNA methylation is a possible biomarker of prenatal smoke exposure. Smoking during
14 pregnancy is associated with offspring DNA methylation signatures at birth in placental
15 and cord blood samples, and postnatally in peripheral blood samples [8–13]. Another
16 postnatal biospecimen option is saliva, which is easier to collect than blood and
17 increasingly collected in large epidemiological cohorts [14]. However, associations of
18 pregnancy smoking with offspring salivary DNA methylation have not been measured.
19 Since DNA methylation contributes to cell differentiation and cell type proportions differ
20 across tissue types, it is important to verify associations in new tissues [15]. In addition,
21 most studies of prenatal maternal smoking and childhood DNA methylation have been
22 conducted in primarily European genetic ancestry populations [9, 13, 16–19], and it will
23 be important to test generalizability to other groups. Few studies have assessed

1 multiple genetic ancestry groups in the same cohort and no study has evaluated
2 associations between pregnancy cigarette smoking and salivary DNA methylation in
3 children.

4 Using the findings from large-scale association testing in independent populations, DNA
5 methylation-based exposure biomarkers can be developed and assessed by evaluating
6 their classification accuracy. Biomarkers can range from single DNA methylation sites to
7 summary measures across multiple sites, termed polymethylation scores [22]. In a
8 polymethylation score, DNA methylation sites are weighted by their effect size from a
9 previously conducted analysis in an independent sample and then summed to a single
10 score [23, 24]. DNA polymethylation scores for *in utero* smoke exposure have
11 performed well (area under the curves (AUCs) >0.8) in cord blood samples from
12 newborns and peripheral blood samples from young children [16, 21]. Polymethylation
13 scores have also classified *in utero* smoke exposure when using from DNA methylation
14 in peripheral blood from middle-aged adults (AUC of 0.72 (95% confidence interval
15 0.69, 0.76)) [12]. Yet few studies have assessed the longitudinal persistence of DNA-
16 methylation-based smoking biomarker accuracy.

17 DNA methylation differences hold promise as an exposure biomarker for *in utero*
18 cigarette smoke. We must understand how the signal varies across tissue, genetic
19 ancestry, and age. In the Fragile Families and Child Wellbeing Study, a diverse
20 longitudinal birth cohort, we aimed to assess salivary DNA methylation biomarkers for
21 pregnancy cigarette smoking. We tested associations between pregnancy smoke
22 exposure and DNA methylation, measured at ages 9 and 15. We compared the
23 magnitude and specificity of these signals to other DNA methylation measures including

1 individual a priori DNA methylation sites, global DNA methylation, and epigenetic
2 clocks. We then performed genetic ancestry- and age-stratified analyses to test the
3 hypothesis that DNA methylation could serve as a portable and persistent biomarker of
4 prenatal maternal smoking.

5 **Methods**

6 **Cohort**

7 The Fragile Families and Child Wellbeing Study is a birth cohort of nearly 5,000 children
8 born in 20 cities in the United States between 1998 and 2000 [25]. Participants were
9 selected at delivery using a three-stage stratified random sample design which
10 oversampled unmarried mothers by a ratio of 3:1 [25]. Participants were excluded at the
11 baseline wave on the following criteria: the parents who planned to place the child for
12 adoption, the father was deceased, the parents did not speak English or Spanish well
13 enough to be interviewed, the mother or baby were too ill to complete the interview, or
14 the baby died before the interview could take place. Children were followed
15 longitudinally with assessments at ages 1, 3, 5, 9, and 15; at age 22, follow up is
16 ongoing. Across certain child ages, assessments included medical record extraction,
17 biosample collection, in-home assessments, and surveys of the mother, father, primary
18 caregiver, teacher, and child. At ages 9 and 15, a saliva sample was taken from the
19 child [25]. A subsample of the Fragile Families cohort was selected for saliva DNA and
20 DNA methylation processing [25]. To be eligible for the DNA methylation assessment,
21 children had to have participated and given saliva at both ages 9 and 15, after which a
22 random sample of these eligible participants was then selected. One exception to this,
23 all participants from Detroit, Toledo, and Chicago (participants in the sub-Study of

1 Adolescent Neurodevelopment (SAND) [26]) were assayed for DNA methylation, even if
2 they only provided a sample at one time-point. All analyses account for oversampling of
3 these participants.

4 **Pre- and postnatal exposure measurement**

5 At time of child's birth, mothers answered categorical questions about their pregnancy
6 smoking, drug, and alcohol use. For maternal prenatal smoking, mothers were asked:
7 "During your pregnancy, how many cigarettes did you smoke?" Responses were
8 categorical: 2 or more packs a day, 1 or more but less than 2 packs per day, less than 1
9 pack a day, or none. Few participants reported smoking a pack or more a day. Thus, for
10 our primary exposure variable, we created a dichotomous (any versus no prenatal
11 smoke exposure) variable.

12 Mothers were also asked how frequently they drank during their pregnancy. We created
13 a dichotomous any versus no prenatal alcohol exposure variable. Similarly, mothers
14 were asked how frequently they used any other drug during their pregnancy. We again
15 created a binary variable (any versus no prenatal use of other drugs).

16 When the children were 1, 5, 9, and 15 years of age, primary caregivers responded to
17 questions about smoking in the household. To encapsulate early life postnatal
18 secondhand smoke exposure, we created a binary variable for caregiver smoking
19 behavior at ages 1 and/or 5 (any versus no). To encapsulate recent postnatal smoke
20 exposure to the age 9 and 15 interview where DNA methylation was collected, we used
21 a caregiver categorical variable for packs per day (no smoking, less than one pack/day,
22 one or more packs/day) in the month prior to each interview.

1 At age 9 children were asked if they had ever smoked a cigarette or used tobacco
2 (yes/no), and at age 15 they were asked if they had ever smoked an entire cigarette
3 (yes/no).

4 **Covariate measurement**

5 We used household income-to-poverty ratio at baseline as a proxy for socioeconomic
6 status. Income-to-poverty ratio was the ratio of total household income (as self-reported
7 by the mother) to the official poverty thresholds designated by the United States Census
8 Bureau for the year preceding the interview.

9 Mothers reported sex (male/female) of their child at baseline.

10 Child genetic ancestry was calculated. Principal components (PC) of child genetic
11 ancestry were calculated from genetic data measured using PsychChip (Illumina, San
12 Diego, California) with child saliva samples [27]. Genetic ancestry was assigned by
13 comparing PC loadings to 1000 Genomes super population clusters. Samples with PC1
14 > 0.018 and PC2 > -0.0075 were assigned to European ancestry. Samples with PC1 $< -$
15 0.005 and PC2 $> 0.007 + 0.75(PC1)$ were assigned to African ancestry. Samples with
16 PC1 > 0.018 and $-0.055 < PC2 < 0.025$ were assigned to Admixed ancestry [27].

17 Samples assigned to Admixed ancestry were primarily from individuals whose mothers
18 self-reported Hispanic ethnicity (76% of samples), so we label this group Admixed -
19 Latin ancestry.

20 **DNA methylation measurement**

21 Salivary samples from the children were collected at ages 9 and 15 using the Oragene
22 DNA sample collection kit (DNA Genotek Inc., Ontario). Saliva DNA was extracted

1 manually using DNA Genotek's purification protocol using prepIT L2P. DNA was
2 bisulfite treated and cleaned using the EZ DNA Methylation kit (Zymo Research,
3 California). Age 9 and 15 samples were run on the same slide to minimize technical
4 variation, and otherwise samples were randomized. Saliva DNA methylation was
5 measured using the Illumina HumanMethylation 450k BeadArray [28] and imaged using
6 the Illumina iScan system. The bead arrays were processed at the Genome Sciences
7 Core Facility at the Pennsylvania University College of Medicine (Hershey, PA).

8 DNA methylation image data were processed in R statistical software (4.1) using the
9 Enmix package [29]. We used the February 2022 data freeze of the Fragile Families
10 and Child Wellbeing DNA methylation data. The red and green image pairs (n=1,811)
11 were read into R and the ENmix *preprocessENmix* and *rcp* functions were used to
12 normalize dye bias, apply background correction and adjust for probe-type bias. Further
13 quality control was applied using the ewastools packages [30]. We dropped samples
14 using the following criteria: if >10% of DNA methylation sites had detection p-value
15 >0.01 or a beadcount under 4 (n=34), if there was sex discordance between DNA
16 methylation predicted sex and recorded sex (n=11), if samples had outlier methylation
17 values (n=6) or if two sequential samples from the same individual exhibited genetic
18 discordance between visits (n=27) (Figure 1). Technical replicates were removed
19 (n=49). DNA methylation sites were removed if they had detection p-value >0.01 or a
20 beadcount under 4 in $\geq 5\%$ of samples (n=47,930) [31]. Relative proportions of immune
21 and epithelial cell types were estimated from DNA methylation measures using a
22 childhood saliva reference panel [32].

1 Our primary outcome variable was a polymethylation score for prenatal maternal smoke
2 exposure. From an independent meta-analysis of prenatal smoke exposure and DNA
3 methylation (the 2016 Joubert meta-analysis), we extracted the regression coefficients
4 of 6,073 DNA methylation sites associated with prenatal maternal smoking at a false
5 discovery ratio corrected P value <0.05 [9]. Of the 6,073 CpG sites with regression
6 coefficients, 5,666 were available in our dataset after quality filtering (Supplemental
7 Table 1). For our main analysis we used coefficients from a regression of sustained
8 smoking exposure and DNA methylation in newborn cord blood with cell-type control.
9 We mean-centered the DNA methylation beta values in our study, weighted them by the
10 independent regression coefficients, and took the sum across sites. This resulted in a
11 single smoking polymethylation score per sample. To facilitate interpretation, we z-score
12 standardized the polymethylation scores.

13 We investigated several sensitivity measures of DNA methylation, including several
14 alternative polymethylation scores for smoke exposure, single DNA methylation sites,
15 mean global DNA methylation, and DNA methylation clocks.

16 To assess the robustness of polymethylation scores to the source of coefficients for
17 weights, we generated two sensitivity polymethylation scores from the 2016 Joubert
18 meta-analysis [9]. First, we used the regression of cord blood DNA methylation sites
19 associated with prenatal maternal smoking at a strict Bonferroni threshold ($n=569$ sites,
20 549 sites available in our data), when analyses were not adjusted for cell proportions
21 [9]. Second, we used the regression coefficients of child peripheral blood DNA
22 methylation sites associated with prenatal maternal smoking at the strict Bonferroni

1 threshold (n=19 sites, 19 sites available in our data) when analyses were not adjusted
2 for cell proportions [9].

3 To assess the robustness of polymethylation scores to the source and selection of DNA
4 methylation sites, we generated two additional sensitivity polymethylation scores. One
5 score was generated using DNA methylation sites and coefficients prioritized from a
6 LASSO regression of prenatal maternal smoking and cord blood methylation in the
7 Norwegian Mother and Child Cohort Study (n=28 sites, 27 sites available in our data)
8 [21]. Another score was generated using DNA methylation sites and coefficients
9 prioritized from an elastic net regression of prenatal maternal smoking and DNA
10 methylation in adolescent peripheral blood (n=204 sites, 191 sites available in our data)
11 [33]. This score was calculated using the coefficients and code provided by the authors
12 in the R code accompanying the manuscript [34]. We provide a table detailing the exact
13 CpG sites and coefficients available for each score used in this analysis (Supplemental
14 Table 1).

15 To compare the utility of polymethylation scores relative to single site biomarkers, we
16 selected the top DNA methylation site from the 2016 Joubert meta-analysis, *AHRR*:
17 cg05575921. As a sensitivity analyses, we also selected four other *a priori* DNA
18 methylation sites which were identified from meta-analyses of prenatal maternal
19 smoking and DNA methylation in children's cord and peripheral blood samples: *GFI1*:
20 cg14179389, *CYP1A1*: cg05549655, *MYO1G*: cg22132788, and *MYO1G*: cg04180046
21 [9, 35].

22 To assess the specificity of the impact of prenatal smoke exposure on DNA methylation,
23 we compared the polymethylation scores to mean global and regulatory regional DNA

1 methylation and DNA methylation-derived age measures. Global DNA methylation was
2 calculated for each sample as the mean methylation value of each sample across the
3 pre-processed array. Mean DNA methylation for each genomic regions (CpG island,
4 shore, shelf or open sea, as identified in the R package
5 IlluminaHumanMethylation450kanno.ilmn12.hg19 v 0.6.0) was also calculated. Pediatric
6 epigenetic age was calculated for each sample using the coefficients and methods
7 provided by the creators (see <https://github.com/kobor-lab/Public-Scripts>) [36]. As a
8 sensitivity analysis, the GRIM-age clock, which was neither trained nor validated in a
9 pediatric population, was calculated as previously described [37].

10 To control for unmeasured confounding and potential technical variation, we calculated
11 surrogate variables from DNA methylation data using the sva R package (version 3.38)
12 [38]. The relationship between prenatal maternal smoking and DNA methylation was
13 protected. To describe variability in the DNA methylation data, we evaluated the
14 association between surrogate variables and technical covariates (sample plate, slide,
15 and position on slide) using a heatmap of P values from appropriate statistical tests.

16 **Statistical analyses**

17 *Inclusion exclusion criteria*

18 Among samples with pre-processed DNA methylation values, we excluded samples
19 missing any data on the following variables: maternal prenatal smoking, maternal
20 prenatal alcohol use, maternal prenatal other drug use, maternal income to poverty
21 ratio, postnatal secondhand smoke exposure variables, child sex, or child age. We also
22 excluded samples that were missing genetic data. To ensure we measured the direct
23 effect of prenatal exposure to cigarette smoke, rather than the effect of personal

1 postnatal smoking, we also excluded children who reported own-smoking. Specifically,
2 samples from children who reported ever smoking a cigarette or using tobacco at age 9
3 or were missing own-smoking data were excluded. Samples from children who reported
4 smoking a cigarette at age 9 or at age 15 or were missing own-smoking data were
5 excluded. Children who were missing a response to the question at age 9 but answered
6 that they had never smoked a whole cigarette at age 15 were kept in the sample.
7 Sample inclusion was visualized using a flow chart.

8 *Descriptive statistics*

9 We described the distribution of continuous variables using the mean and standard
10 deviation. We described the distribution of categorical variables using frequencies. We
11 compared the distribution of included to excluded samples using the Welch's t-test for
12 continuous variables and the Chi-Square test for categorical variables. We reported the
13 correlation between continuous measures of DNA methylation (including
14 polymethylation scores, single sites, mean global DNA methylation and estimated cell
15 type proportions) using pairwise Pearson correlation coefficients. We reported the
16 correlation of these DNA methylation measures between visits using pairwise Pearson
17 correlation coefficients and scatter plots. We compared the distribution of variables by
18 exposure status to prenatal maternal smoking using the Welch's t-test for continuous
19 variables and the Chi-Square test for categorical variables. For select continuous DNA
20 methylation measures we compared the distributions across prenatal smoke exposure
21 status using violin plots with captive box plots.

1 *Regression analyses*

2 To assess the association between our primary exposure variable (prenatal maternal
3 smoking) and primary outcome variable (salivary DNA methylation polymethylation
4 score), we performed age-stratified, multivariable linear regressions. We adjusted for an
5 indicator variable for maternal residence in one of the oversampled cities (Chicago,
6 Detroit, or Toledo), maternal income to poverty ratio at baseline, child sex, child age,
7 plate from DNA methylation processing (approximately 96 samples per plate), estimated
8 immune cell proportion from DNA methylation data, and the first two components of
9 genetic ancestry from principal component analysis. While children provided saliva
10 samples at two visits corresponding to ages 9 and 15, there was variation in the
11 children's age in months at each visit. To account for this potential variability, age of the
12 child in months was controlled for within age-stratified models. While child sex, child
13 age, plate from DNA methylation processing, and immune cell proportions are not
14 confounders (as they cannot causally affect prenatal maternal smoke exposure), these
15 variables can strongly affect DNA methylation and so were adjusted for as precision
16 variables. We reported the effect estimate for polymethylation score term and the 95%
17 confidence interval (CI). We visualized our findings using forest plots.

18 To assess the portability of the association between our primary exposure variable of
19 prenatal maternal smoking and salivary DNA methylation across genetic ancestry, we
20 additionally stratified by genetic ancestry and reran the models described above. In
21 ancestry-stratified models, the first two principal components from principal component
22 analysis run within each ancestry strata were used.

1 To compare the utility of the polymethylation score to a single site biomarker, we used
2 percent methylation at AHRR: cg05575921 as the outcome in the models described
3 above. To assess the specificity of the impact of prenatal maternal smoking on DNA
4 methylation, we used mean percent global DNA methylation and the pediatric DNA
5 methylation clock as outcome variables.

6 *Regression sensitivity analyses*

7 To assess the specificity of the DNA methylation signal to the type and timing of
8 exposure, we additionally adjusted for the following variables in sensitivity analyses: 1)
9 prenatal drug and alcohol use and 2) postnatal second-hand smoke exposure in
10 addition to prenatal drug and alcohol use. To assess the robustness of the association
11 between prenatal maternal smoking and DNA methylation to technical variation and
12 residual confounding, we also regressed DNA methylation against prenatal maternal
13 smoking exposure while adjusting for surrogate variables calculated from the DNA
14 methylation data.

15 To assess the robustness of the association to the choice of polymethylation score, we
16 performed the same regression analyses described above with sensitivity
17 polymethylation scores as the outcome. Similarly, we replaced the outcome variable of
18 AHRR: cg05575921 with other *a priori* selected DNA methylation sites in sensitivity
19 analyses. We plotted the estimates and 95% CI for each DNA methylation site along
20 with the previously reported estimates from the literature using forest plots [9, 35]

21 *Receiver operator curve analysis*

22 To evaluate the accuracy of the DNA methylation summary measures as biomarkers of
23 prenatal maternal smoking, we used a receiver operating curve [39]. First, we regressed

1 exposure to prenatal maternal smoking (outcome) against the DNA methylation
2 summary measures in individual logistic regressions, while adjusting for the base model
3 variables from regression analyses. The base model variables included indicator
4 variable for maternal residence in one of the oversampled cities (Chicago, Detroit or
5 Toledo), maternal income to poverty ratio at baseline, child sex, child age, plate from
6 DNA methylation processing, estimated immune cell proportion from DNA methylation
7 data, and the first two components of genetic ancestry from principal component
8 analysis. Next, we calculated receiver operating curves (ROC) and area under the
9 curves (AUCs) using the function *roc* from the R library pROC version 1.18.0 [40]. We
10 compared ROC curves and AUCs from models with only base model variables to those
11 which included base model variables and the methylation summary measure using the
12 Delong method and the function *roc.test* from the pROC library. This is appropriate as
13 the base model is nested within the base model variable + methylation summary
14 measures model.

15 *Receiver operator curve sensitivity analyses*

16 To assess the robustness of polymethylation scores classification accuracy to the
17 choice of polymethylation score coefficients, we used polymethylation scores calculated
18 using different coefficient sets as predictors for the receiver operating curve analysis in
19 sensitivity analyses.

20 To compare the performance of saliva-based polymethylation scores to previous reports
21 of blood-based polymethylation scores, we used a forest plot. We plotted the AUC and
22 95% CI (when available) for each polymethylation score in our cohort and in the cohorts
23 previously reported in the literature [12, 33].

1 **Results**

2 **Study sample descriptive statistics**

3 Among participants in the Fragile Families and Child Wellbeing Study, saliva DNA
4 methylation was measured on 1,812 samples from 897 unique child participants with
5 the Illumina 450K array. Complete data on covariates of interest was available on 1,500
6 samples from 805 participants who were included in the analysis (Figure 1). There were
7 695 participants with both age 9 and age 15 DNA methylation samples. Excluded
8 participants were similar to included participants, except that included participants were
9 slightly more likely to be of African genetic ancestry and less likely to be of Admixed-
10 Latin genetic ancestry (Supplemental Table 2). In the analytic sample, 20% percent of
11 the mothers reported any prenatal maternal smoking, 12% reported prenatal alcohol
12 use, and 5% reported prenatal drug use. The mean income to poverty ratio of mothers
13 at birth was 2.22. Of the included children, 50% were male, 61% were of African genetic
14 ancestry, and 24% were of Admixed-Latin genetic ancestry.

15 All of the polymethylation scores for prenatal smoke exposure were correlated with each
16 other (Supplemental Figure 1). Our primary polymethylation score for prenatal smoke
17 exposure, which was calculated using coefficients from a cell-type corrected regression,
18 was weakly correlated with estimated cell-type proportion of immune cells (Pearson
19 $r=0.11$; P -value <0.001).

20 Among the 695 individuals with data from both the ages 9 and 15 visits, we compared
21 epigenetic measures over time (Supplemental Figure 2). The correlation across ages
22 was strongest for the polymethylation scores for prenatal smoke exposure constructed
23 using the 2016 Joubert meta-analysis coefficients from newborn cord blood (Pearson

1 $r=0.91$, P -value<0.0001). Global DNA methylation ($r=0.68$, P -value<0.0001) and
2 epigenetic clocks were less strongly correlated across ages (Pediatric: $r=0.49$; P -
3 value<0.0001, GRIM: $r=0.49$; P -value<0.0001) Epigenetic ages were higher at the age
4 15 visit than the age 9 visit, as expected (Supplemental Figure 3). The distributions of
5 global methylation and polymethylation scores were more consistent (Supplemental
6 Figure 3). Almost all saliva samples consisted of primarily immune cells, based on
7 estimated cell-type proportions. At age 9, the mean estimated immune cell proportion
8 was 96% (minimum=25%, first quartile=99%, third quartile=100%, maximum=100%). At
9 age 15, the mean estimated immune cell proportion was 93 % (minimum=3%, first
10 quartile=92%, third quartile=100%, maximum=100%).

11 **Bivariate associations between prenatal maternal smoking and DNA** 12 **methylation summary measures**

13 Mothers who reported smoking during pregnancy had lower income to poverty ratios
14 (mean=1.5) than those who did not (mean=2.4). Mothers who smoked were more likely
15 to report prenatal alcohol use (30% vs 7%), prenatal drug use (18% vs 2%), and
16 postnatal smoking (96% vs 25%) than mothers who did not report prenatal maternal
17 smoking (Table 1). Children of mothers who reported smoking during pregnancy were
18 more likely to be of European genetic ancestry (62%) than children of mothers who did
19 not (60%, P -value=<0.001). Children of mothers who reported smoking during
20 pregnancy had higher prenatal maternal smoking polymethylation scores than children
21 of mothers who did not at both age 9 (0.1 vs -0.04, P -value<0.001) and age 15 (0.13 vs
22 -0.01, P -value<0.001) visits (Table 1, Supplemental Table 3). At age 9, children
23 exposed to prenatal maternal smoking had lower DNA methylation at cg05575921

1 (76.7%) than children of non-smoking mothers (77.6%, P -value=0.07). At age 15,
2 children exposed to prenatal smoking had lower DNA methylation at cg05575921
3 (75.8%) than children of non-smoking mothers (76.5% P -value= 0.22). Epigenetic age
4 from the pediatric and GRIM clocks and global DNA methylation did not differ between
5 children exposed versus unexposed to prenatal maternal smoking (Figure 2).

6 **Multivariable associations between prenatal maternal smoking and DNA** 7 **methylation summary measures**

8 The association between prenatal maternal smoking and the polymethylation score for
9 prenatal smoke exposure was also observed in multivariable models, adjusting for base
10 model covariates of city indicator, child sex, maternal income to poverty ratio at
11 baseline, proportion of salivary immune cells, sample plate from DNA methylation
12 analysis, child age, and the first two principal components of genetic ancestry (Figure 3;
13 Supplemental Table 4). At age 9, prenatal maternal smoke exposure was associated
14 with 0.51 (95%CI: 0.35, 0.66) standard deviation higher polymethylation score for
15 prenatal smoke exposure. At age 15, prenatal maternal smoke exposure was
16 associated with 0.48 (95%CI: 0.32, 0.63) standard deviation higher prenatal smoke
17 exposure polymethylation score for prenatal smoke exposure.

18 A consistent association was observed when stratifying by genetic ancestry. In the
19 African genetic ancestry sample ($n= 488$) at age 9, prenatal maternal smoking was
20 associated with 0.54 (95%CI: 0.33, 0.74) standard deviation higher polymethylation
21 score for prenatal smoke exposure. The effect was similar among European ancestry
22 children at age 9 (0.55 (95%CI: 0.15, 0.95)) and consistent in direction but attenuated at
23 age 15 (0.23 (95%CI: -0.23, 0.68)). The association was attenuated among Admixed -

1 Latin ancestry children at ages 9 (0.2 (95%CI: -0.19, 0.58)) and 15 (0.34 (95%CI: -0.04,
2 0.73)) (Figure 3; Supplemental Table 4).

3 At age 9, prenatal maternal smoking was associated with 0.93 percentage point lower
4 DNA methylation at cg055975921 (95% CI: -1.61, -0.25) after adjusting for base model
5 covariates. Similarly, at age 15 prenatal maternal smoking was associated with 0.93
6 percent lower DNA methylation at cg055975921 (95%CI: (-1.73, -0.13)). Prenatal
7 maternal smoking remained significantly associated with a decrease in cg05575921
8 DNA methylation in the African genetic ancestry sample at age 9 (-1.33 (95%CI: -2.21, -
9 0.46)) and age 15 (-1.1 (95%CI: -2.14, -0.06); Figure 3). In the European genetic
10 ancestry sample, the association was consistent in direction at age 9 (-0.85 (95%CI: -
11 2.47, 0.76)) and age 15 (-1.98 (95%CI: -3.7, -0.26)). In the Admixed-Latin genetic
12 ancestry sample, the association was no longer significant and not consistent in
13 direction (Age 9: 0.01 (95%CI: -1.67, 1.7); Age 15: 0.92 (95%CI: -1.19, 3.03)) (Figure 3).
14 Prenatal maternal smoking was not associated with global DNA methylation or
15 epigenetic age (Figure 3).

16 **Sensitivity analysis: Specificity of DNA methylation signal to type and time of** 17 **exposure**

18 To assess the specificity of the DNA methylation signal to prenatal maternal cigarette
19 smoking, we additionally adjusted for any other prenatal maternal drug use and prenatal
20 maternal alcohol use. The association between prenatal maternal smoking and the
21 polymethylation score was robust to this adjustment. The association between prenatal
22 maternal smoking and cg05575921 was slightly attenuated (Supplemental Figure 4,
23 Supplemental Table 3).

1 To assess the specificity of the DNA methylation signal to the timing of cigarette smoke
2 exposure, we additionally adjusted for exposure to postnatal maternal smoking. Very
3 few children exposed to maternal smoking prenatally were unexposed postnatally
4 (Supplemental Figure 5). In bivariate analyses, children exposed to only postnatal
5 smoking had lower polymethylation scores than those exposed to pre- and postnatal
6 smoking. However, they did not have higher polymethylation scores than children
7 unexposed to both pre-and postnatal smoking (Supplemental Figure 5). In multivariable
8 analyses, prenatal maternal smoking was still associated with the polymethylation
9 scores when adjusting for postnatal smoke exposure, though effect estimates were
10 attenuated (Age 9: 0.39 (95%CI: 0.19, 0.59), Age 15: 0.33 (95%CI: 0.13, 0.54)).
11 Prenatal maternal smoking was no longer associated with cg05575921 methylation after
12 adjusting for postnatal smoke exposure (Age 9: -0.65 (95%CI: -1.52, 0.23), Age 15: -
13 0.37 (95%CI: -1.41, 0.67)).
14 Effect estimates were also similar when controlling for surrogate variables instead of
15 known covariates, which corrects for both known and unknown sources of technical
16 variation (Supplemental Figures 3 and 6; Supplemental Table 4). Effect estimates were
17 also similar when additionally controlling for array position on DNA methylation slide in
18 multivariable models with known covariates (data not shown).

19 **Sensitivity analysis: Choice of coefficients for constructing polymethylation**
20 **score and associations with other *a priori* DNA methylation sites**

21 Results were also similar when using sensitivity polymethylation scores (see Methods,
22 Supplemental Figure 7).

1 In addition to cg055975921 in the *AHRR* gene, we tested the association of four other *a*
2 *priori* DNA methylation sites identified from previous meta-analyses. We replicated the
3 association of prenatal maternal smoking with DNA methylation at *GFI1*: cg14179389,
4 *CYP1A1*: cg05549655, *MYO1G*: cg22132788, and *MYO1G*: cg04180046
5 (Supplemental Figure 8).

6 **Polymethylation scores improve classification of prenatal smoke exposure while**
7 ***AHRR*: cg05575921 alone does not**

8 Next, we assessed whether including DNA methylation summary measures increased
9 the accuracy of classifying prenatal smoke exposure over a base model consisting of
10 child sex, maternal income to poverty ratio at baseline, child age at DNA methylation
11 measurement, estimated immune cell proportion, plate from methylation processing, the
12 first two genetic principal components and an indicator variable for oversampled city
13 (Figure 4). At age 9, including the polymethylation score increased the AUC by 5 (95%
14 CI: (2.1, 7.2)) percentage points over the nested base model (*P*-value from DeLong
15 test=0.0004). At age 15 including the polymethylation score for prenatal smoke
16 exposure increased the AUC by 5 (95% CI: (2.1, 7.2)) percentage points (*P*-value from
17 DeLong test=0.0004). Including DNA methylation at *AHRR*: cg0557591 with base model
18 covariates did not improve the classification compared to using base model covariates
19 alone (Supplemental Tables 5 and 6). Classification accuracy when including the
20 polymethylation score from both age 9 and 15 was very similar to classification
21 accuracy when using the polymethylation score from age 9 only (Figure 4B).

1 **Sensitivity analysis: Impact of choice of coefficients on polymethylation score** 2 **accuracy and comparison to AUCs reported in the literature**

3 The AUC for classification of prenatal maternal smoke exposure in the Fragile Families
4 study was similar across all polymethylation scores (Figure 5, Supplemental Table 6).
5 The highest observed AUC was from the 568-site score (using strict coefficients from
6 the regression of prenatal smoke exposure and DNA methylation in newborn cord
7 blood). Performance was similar to previous reports. Neither the 28-site score from a
8 LASSO regression nor the 204-site score from an elastic net regression performed as
9 well in Fragile Families as has been reported previously in the literature (Figure 5).

10 **Discussion**

11 In the longitudinal Fragile Families and Child Wellbeing birth cohort, prenatal maternal
12 smoking was associated with saliva DNA methylation in children at ages 9 and 15.
13 Children with prenatal smoke exposure had 0.51 (95%CI: 0.35, 0.66) standard deviation
14 higher polymethylation scores at age 9 than children not exposed. These findings were
15 robust across strata of genetic ancestry and children's age. These signatures were
16 specific, as global DNA methylation and epigenetic clocks were not associated with
17 prenatal smoke exposure. When assessing biomarker utility, the polymethylation score
18 for prenatal smoke exposure improved the classification of self-reported prenatal
19 maternal smoking over a base model by 5 (95% CI: (2.1, 7.2)) percentage points at age
20 9. A single *a priori* DNA methylation site, *AHRR*: cg05575921, did not (1 (95% CI: (-0.5,
21 2.6) percentage point increase). Our results suggest salivary DNA methylation can be
22 used as an alternative to peripheral blood DNA methylation for biomarkers of prenatal
23 maternal smoking. A saliva-based DNA methylation biomarker may be particularly

1 useful in cases where blood collection, processing, and storage is not possible. Saliva
2 can often be collected directly by participants and saliva sample collection kits have
3 stabilizers allowing room temperature storage prior to DNA methylation measurement.

4 Our findings are consistent with the previous literature in different tissues and at
5 different ages on associations between prenatal maternal smoking and DNA
6 methylation. We replicated top hits from the seminal epigenome wide association meta-
7 analysis of prenatal smoke exposure and DNA methylation of cord blood from newborns
8 including *AHRR*: cg05575921, *GFI1*: cg14179389 and *MYO1G1*: cg22132788.

9 Consistent with a meta-analysis of peripheral blood from children and adults over 16
10 years of age, the association at *MYO1G1*: cg22132788 was larger than in newborn cord
11 blood [9, 35]. Again, consistent with a meta-analysis of peripheral blood from children
12 and adults over 16 years of age, the associations at *AHRR*: cg05575921 and *GFI1*:
13 cg14179389 were smaller than in newborn cord blood [9, 35]. There are no previous
14 studies of prenatal maternal smoking and saliva DNA methylation. However, immune
15 cell types are present in both blood and saliva, and saliva samples in our study were
16 primarily composed of immune cells. Additionally, fewer than 4% of DNA methylation
17 sites in blood and saliva samples displayed significantly different methylation values
18 ($|\Delta\beta| > 0.2$ and $p_{adj} < 0.001$) when measured on the 450K chip in samples of adults
19 [41] and 11-year-old children [14].

20 We also advance the prenatal smoking - DNA methylation literature by evaluating the
21 generalizability of association between prenatal maternal smoking and DNA methylation
22 across genetic ancestry groups. The portability of polygenic risk scores across genetic
23 ancestries is a complex research area [42] and evaluating the portability of epigenetic

1 summary measures has been identified as a key area for evaluation [43]. Our results
2 suggest polymethylation scores for prenatal maternal smoking are portable across
3 genetic ancestry groups. At age 9, the effect estimates for prenatal maternal smoking
4 on the polymethylation score in the European and African genetic ancestry samples
5 were within 0.01 standard deviation and were both significant at an alpha of 0.05. This
6 finding is in line with a recent epigenome-wide association study in which children of
7 both black and non-black identifying mothers exhibited similar directions of associations
8 between prenatal smoke exposure and peripheral blood methylation at 38 DNA
9 methylation sites [44]. In our analysis, the association between prenatal smoke
10 exposure and polymethylation scores was attenuated in children of admixed genetic
11 ancestry (primarily of Hispanic ethnicity) at both ages and in children of European
12 genetic ancestry at age 15. This could reflect differences in DNA methylation by genetic
13 sequence at prenatal smoke sensitive DNA methylation sites [18]. While genetic
14 ancestry is distinct from racial and ethnic social and cultural constructs [45], it can
15 correlate with different social and environmental exposures. Differences in other social
16 and environmental exposures could also contribute to the attenuation observed in the
17 admixed genetic ancestry group.

18 We contribute to the understanding of the impact of tissue on classification accuracy of
19 DNA methylation biomarkers for prenatal maternal smoking. Polymethylation scores
20 using coefficients from the Joubert meta-analysis coefficients had similar AUCs in
21 Fragile Families saliva samples (AUCs between 0.61 and 0.78) and in previous
22 applications in peripheral blood samples from ages 17-, 30- and 31-years (AUCs
23 between 0.69 and 0.72) [12, 33]. Thus, using polymethylation scores from saliva may be

1 an acceptable alternative when peripheral blood samples are unavailable or difficult to
2 obtain. However, other polymethylation scores for prenatal maternal smoking have
3 performed better in peripheral blood samples. The greatest classification accuracy of
4 prenatal smoke exposure from previous studies was with a 28-site LASSO regression
5 score trained in and then applied to a Norwegian cord blood cohort (AUC=0.90) [21].
6 This score also accurately classified prenatal smoking from peripheral blood from
7 adolescents and adults (AUCs between 0.85 and 0.73) [33]. A 204-site elastic net score
8 trained and then applied to peripheral blood from 17-year-old's peripheral blood
9 samples also performed very well (AUC=0.87) [33]. This score also performed well
10 when applied to additional validation cohorts of peripheral blood from adolescents and
11 adults (AUCs between 0.8 and 0.87). However, neither of these scores performed as
12 well when applied in the Fragile Families cohort. The difference in classification
13 accuracy could reflect cell proportion differences across tissues. Using coefficients from
14 an epigenome-wide association analysis of saliva could improve classification and is a
15 direction for future research.

16 While polymethylation scores significantly improved classification of prenatal smoke
17 exposure over a base model, using *AHRR: cg05575921* methylation as a classifier did
18 not (percentage point increase in AUC: 1 (95% CI: (-0.5, 2.6))). Prenatal smoke
19 exposed newborns consistently exhibit lower DNA methylation at *AHRR: cg05575291*
20 than unexposed newborns [9]. However, the association between prenatal smoke
21 exposure and *AHRR: cg05575291* methylation did not persist in peripheral blood
22 samples from adult women [12]. Additionally, a previous longitudinal analysis of
23 children's blood samples from birth to 17 years of age in the ALSPAC cohort found that

1 the prenatal smoke exposure difference in DNA methylation at AHRR: cg05575291 had
2 the highest magnitude at birth, with attenuated differences at 17 years of age [12]. The
3 attenuated differences in DNA methylation at AHRR: cg05575291 in adolescence was
4 partially mediated by postnatal own-smoking [12], thus in our analysis we excluded the
5 few children who reported postnatal own-smoking. They observed that prenatal smoke
6 exposure associated DNA methylation differences at other sites were more persistent
7 throughout development [12]. As the persistence and accuracy of *AHRR*: cg05575291
8 and other single CpG site biomarkers may be influenced by time-since-exposure and
9 new environmental exposures, incorporating information across multiple sites of DNA
10 methylation may yield a more robust biomarker.

11 Additionally, we found that prenatal maternal smoke exposure was not associated with
12 global DNA methylation or a pediatric saliva and the GrimAge DNA methylation clocks,
13 underlining the specificity of the DNA methylation signature of prenatal smoke
14 exposure. DNA methylation clocks attempt to measure aspects of biological aging and
15 are trained in specific populations. We note that the pediatric DNA methylation clock,
16 which was specifically trained for use in pediatric populations, accurately recapitulated
17 our subjects chronological ages. However, the GRIM age clock, which was trained in
18 adults to measure proximity to mortality, overestimated chronological ages in our
19 population by 10-15 years. In an analysis of four pediatric cohorts of children under 20
20 years of age, GRIM age estimates were 30-35 years greater than chronological in
21 buccal cell samples and 10-15 years greater than chronological age in blood samples
22 [46]. GRIM age was neither trained nor validated in a pediatric population [37], which
23 may explain this overestimation.

1 Our analysis is not without its limitations. We used maternal self-report of prenatal
2 maternal smoke exposure, as serum cotinine levels were not available. As mothers may
3 be reluctant to report smoking during pregnancy, some of our children may be
4 misclassified as unexposed to prenatal smoke. We would expect this to bias our results
5 towards the null. Analyses of prenatal exposures and postnatal outcomes are
6 conditioned on live birth and survival or enrollment until the point of outcome
7 measurement. Because prenatal maternal smoking is associated with miscarriage [47],
8 this could result in selection bias if an unmeasured variable is associated with both live
9 birth and the outcome. This selection bias can create a downward bias in the effect
10 estimate. This could produce a spurious protective effect (which we did not observe), or,
11 in the case of a true positive association between exposure and outcome, will attenuate
12 the association toward the null [48, 49]. Additionally, while we controlled for postnatal
13 secondhand smoke exposure and excluded children who reported any own-smoking,
14 we cannot exclude the possibility some of the observed effects are mediated through
15 these alternative sources of smoke exposure. Personal smoking behavior among
16 children in our cohort was relatively rare, and we excluded those participants from our
17 analysis to focus on the prenatal exposure window. Future studies may focus on
18 enriched risk samples to examine the joint effect of prenatal smoke exposure and
19 personal smoking. In adults, DNA methylation has also been associated with BMI,
20 alcohol consumption, and inflammation [50–53]. Future work could also investigate how
21 these postnatal exposures associate with prenatal smoking and DNA methylation in a
22 joint exposure or mixtures analysis. While we demonstrate that changes to DNA
23 methylation observed in children’s cord blood can still be detected in saliva samples

1 from adolescence, future studies of adults will be necessary to confirm if these changes
2 persist to adulthood.

3 Our analysis is strengthened by our prospective study design, diverse study participants
4 sampled, rigorous outcome measures, and advanced analytics. We analyzed samples
5 from a large cohort of diverse participants, with African, Admixed-Latin, and European
6 genetic ancestry participants, including those who are currently underrepresented in
7 genetic and epigenetic research [54, 55]. Our measurement of prenatal maternal smoke
8 exposure was prospectively assessed at birth and preceded outcome measurements of
9 DNA methylation measures, limiting the potential for recall bias. We analyzed repeated
10 measures of DNA methylation with reproducible array measures conducted in a single
11 batch, reducing the impacts of batch effects. We tested associations between prenatal
12 maternal smoking and multiple DNA summary measures to evaluate the specificity of
13 the polymethylation scores. To examine the specificity of the biomarker to the nature
14 and timing of exposure, we adjusted for prenatal maternal drinking, other prenatal
15 maternal drug use, and postnatal secondhand smoke exposure.

16 **Conclusions**

17 In a large, prospective study of diverse participants, we showed that DNA methylation in
18 children's saliva had strong associations with and reasonable classification accuracy for
19 prenatal maternal smoke exposure. Further, we demonstrated that polymethylation
20 scores could be applied as a biomarker of prenatal maternal smoke exposure across
21 genetic ancestry groups, an important consideration for the equitable biomarker
22 development. The development and application of biomarkers for prenatal maternal

1 smoke exposure has important implications for epidemiological research and clinical
2 practice. Given the difficulty of measuring prenatal maternal smoke exposure, such a
3 biomarker could allow for confounder control in research areas where such control is
4 currently impossible. Prenatal maternal smoke exposure is prevalent and has negative
5 health consequences for developing fetuses, including associations with postnatal
6 conditions such as obesity, asthma, and neurodevelopmental disorders [1–3]. Thus, a
7 salivary exposure biomarker could be used to identify exposed children at risk of these
8 outcomes and provide support and health interventions.

9 **Declarations**

10 **Ethics approval and consent to participate**

11 Participants provided written informed consent for the study. The data used in this
12 manuscript were prepared by the Fragile Families and Childhood Wellbeing Study
13 administrators following approval of the manuscript proposal. These secondary data
14 analyses were approved by the University of Michigan Institutional Review Board (IRB,
15 HUM00129826).

16 **Consent for publication**

17 Not applicable

18 **Availability of data and materials**

19 Code to perform all analyses is available (www.github.com/bakulskilab). Survey data for
20 the Fragile Families and Child Wellbeing study are publicly available
21 (<https://fragilefamilies.princeton.edu/documentation>). DNA methylation and genetic data
22 in the Fragile Families and Child Wellbeing study are available through the Restricted

1 Use Contract (<https://fragilefamilies.princeton.edu/restricted>), upon demonstrated
2 Institutional Review Board approval of the proposed research and data protection plan.

3 **Competing interests**

4 The authors have no competing interests to declare.

5 **Funding**

6 This research was made possible through several grants (Fragile Families Core Data
7 Collection: R01 HD036916, genetic data processing R01 HD36916, R01 HD073352,
8 R01 MD011716, and R01 HD076592). FB was supported by F31 DE029992 and R25
9 AG053227. KB was supported by R01 AG074887 and R01 MD013299. EBW was
10 supported by R01 AG055406, R01 AG067592, and R01 MD011716. LS, DN, and JF
11 were supported by R01 HD076592, R01 MD011716. CM was supported by R01
12 AG07107, R01 MD011716, R01 HD076592.

13 **Authors' contributions**

14 FB performed the analysis with contributions from JD, JF, and EBW. FB and KB wrote
15 the paper with all authors contributing to revisions. CM, DN and LS contributed to the
16 design and processing of the DNA methylation data subcohort. DN, CM, KM, EBW, and
17 FB all contributed to the design and conception of the analytic plan. All authors
18 reviewed and revised the manuscript.

19 **Acknowledgements**

20 Not applicable

21

22

1 *Table 1: Bivariate associations between prenatal maternal smoking (no/yes) and selected DNA*
 2 *methylation summary measures and important covariates among a diverse sample of 805*
 3 *children in the Fragile Families and Child Wellbeing study*

Characteristic	Age 9				Age 15			
	N	Not exposed, N = 598 ¹	Smoke exposed, N = 155 ¹	p-value ²	N	Not exposed, N = 604 ¹	Smoke exposed, N = 143 ¹	p-value ²
Child characteristics								
Polymethylation score for smoke exposure (coefficients from 2016 Joubert meta-analysis of newborn cord blood with cell-type control, 6073 DNA methylation sites)	753	-0.04 (0.24)	0.10 (0.25)	<0.001	747	-0.01 (0.25)	0.13 (0.25)	<0.001
<i>AHRR</i> gene: percent cg05575921 methylation	753	77.6 (5.4)	76.7 (5.6)	0.070	747	77 (6)	76 (6)	0.2
Pediatric epigenetic clock (years)	753	9.80 (1.07)	9.70 (1.13)	0.3	747	13.27 (2.64)	13.24 (2.57)	0.9
Percent global DNA methylation	753	50.32 (0.95)	50.34 (1.08)	0.9	747	50.19 (1.07)	50.28 (1.01)	0.3
Immune cell proportion (saliva)	753	0.96 (0.10)	0.97 (0.08)	0.3	747	0.93 (0.15)	0.93 (0.14)	0.9
Epithelial cell proportion (saliva)	753	0.04 (0.10)	0.03 (0.08)	0.3	747	0.07 (0.15)	0.07 (0.14)	0.9
Ancestry categorization from child principal components of genetic data	753			0.001	747			0.002

Characteristic	Age 9				Age 15			
	N	Not exposed, N = 598 ¹	Smoke exposed, N = 155 ¹	p-value ²	N	Not exposed, N = 604 ¹	Smoke exposed, N = 143 ¹	p-value ²
Admixed ancestry - Latin heritage		157 (26%)	23 (15%)			150 (25%)	21 (15%)	
African ancestry		358 (60%)	96 (62%)			369 (61%)	88 (62%)	
European ancestry		83 (14%)	36 (23%)			85 (14%)	34 (24%)	
Child gender	753			0.8	747			0.9
Boy		301 (50%)	76 (49%)			295 (49%)	69 (48%)	
Girl		297 (50%)	79 (51%)			309 (51%)	74 (52%)	
Maternal characteristics								
Oversampled cities	753			0.13	747			0.6
Detroit, Chicago or Toledo		149 (25%)	48 (31%)			175 (29%)	45 (31%)	
Not Detroit, Chicago or Toledo		449 (75%)	107 (69%)			429 (71%)	98 (69%)	
Maternal prenatal alcohol use	753	44 (7.4%)	47 (30%)	<0.001	747	40 (6.6%)	43 (30%)	<0.001
Maternal prenatal any drug use	753	10 (1.7%)	26 (17%)	<0.001	747	9 (1.5%)	28 (20%)	<0.001

Characteristic	Age 9				Age 15			
	N	Not exposed, N = 598 ¹	Smoke exposed, N = 155 ¹	p-value ²	N	Not exposed, N = 604 ¹	Smoke exposed, N = 143 ¹	p-value ²
Maternal income to poverty threshold (at baseline)	753	2.42 (2.60)	1.53 (1.56)	<0.001	747	2.43 (2.60)	1.53 (1.64)	<0.001
Postnatal maternal smoking at ages 1 or 5	753			<0.001	747			<0.001
No maternal smoking at age 1 and 5		448 (75%)	7 (4.5%)			450 (75%)	7 (4.9%)	
Maternal smoking at age 1 or age 5		150 (25%)	148 (95%)			154 (25%)	136 (95%)	
Postnatal primary caregiver smoking in past month prior to visit	753			<0.001	747			<0.001
No smoking		476 (80%)	23 (15%)			511 (85%)	42 (29%)	
Less than pack a day		95 (16%)	85 (55%)			81 (13%)	78 (55%)	
Pack or more a day		27 (4.5%)	47 (30%)			12 (2.0%)	23 (16%)	

¹ Mean (SD); n (%)

² Welch Two Sample t-test; Pearson's Chi-squared test

1 **Figure 1 - Selection of samples from the Fragile Families and Child Wellbeing study into**
2 **analytic subset.** *N* represents the number of individuals at each step in the selection procedure,
3 *M* represents the number of samples. Individuals with repeated measures can have more than
4 one sample.

5 **Figure 2 - Differences in selected DNA methylation summary measures by self-report of**
6 **prenatal maternal smoking among 805 children in the Fragile Families and Child Wellbeing**
7 **study at ages 9 and 15.** Samples from children exposed to prenatal maternal smoke in grey,
8 samples from children unexposed to prenatal maternal smoke in black. From top-left, clockwise:
9 Polymethylation scores for prenatal maternal smoke exposure, constructed using regression
10 coefficients for prenatal smoke exposure predicting DNA methylation in newborn cordblood
11 samples, accounting for cell-type control. DNA methylation values from samples in the Fragile
12 Families and ChildWellbeing study were mean-centered, then multiplied by these regression
13 coefficients and summed. Pediatric epigenetic clock (years). AHRR gene: percent cg05575921
14 methylation. Percent global DNA methylation.

15 **Figure 3 - Prenatal maternal smoke exposure is consistently associated with polymethylation**
16 **scores at ages 9 and 15 and is portable across genetic ancestry groups in a sample of 805**
17 **children in the Fragile Families and Child Wellbeing study** All models shown controlled for: first
18 two principal components of child genetic ancestry (from ancestry-stratified principal
19 components for ancestry stratified models), child sex, maternal income-to-poverty ratio at birth,
20 immune cell proportion estimated from methylation data, yes/no other maternal prenatal drug
21 use, yes/no maternal prenatal alcohol use, postnatal maternal smoking when child age 1 or age
22 5, postnatal maternal/primary care give smoking packs/day in month prior to saliva sample.

23 **Figure 4 - Polymethylation scores accurately classify prenatal maternal smoke exposure at**
24 **ages 9 and 15 among 805 children in the Fragile Families and Child Wellbeing study** A)
25 Receiver operator curve for select DNA methylation measures for predicting prenatal smoke
26 exposure using no other variables (light colors) or using base model variables (dark colors, other
27 variables included: child sex, maternal income-poverty ratio at birth, immune cell proportion
28 and batch of methylation data processing). B) Receiver operator curve for include
29 polymethylation scores individually at each visit (black & light grey) or jointly (dark grey).

30 **Figure 5 - Comparison of different polymethylation scores and their accuracy at classifying**
31 **prenatal smoke exposure among 805 children with saliva samples in the Fragile Families and**
32 **Child Wellbeing study as opposed to previously reported results in cord and peripheral blood**
33 **samples**

34

35

1 **References**

- 2 1. U.S. Department of Health and Human Services (2020) Smoking cessation. A report
3 of the surgeon general. Atlanta, GA: U.S. Department of Health and Human Services, Centers
4 for Disease Control and Prevention, National Center for Chronic Disease Prevention and
5 Health Promotion, Office on Smoking and Health
- 6 2. Avşar TS, McLeod H, Jackson L (2021) Health outcomes of smoking during
7 pregnancy and the postpartum period: an umbrella review. BMC Pregnancy and Childbirth.
8 <https://doi.org/10.1186/s12884-021-03729-1>
- 9 3. Banderali G, Martelli A, Landi M, Moretti F, Betti F, Radaelli G, Lassandro C, Verduci
10 E (2015) Short and long term health effects of parental tobacco smoking during pregnancy
11 and lactation: A descriptive review. J Transl Med 13:327
- 12 4. U.S. Department of Health and Human services, Substance Abuse and Mental Health
13 Services Administration, Center for Behavioral Health Statistics and Quality (2019)
14 National Survey on Drug Use and Health 2018. retrieved from:
15 <https://www.samhsa.gov/data/report/2018-nsduh-detailed-tables>
- 16 5. Kvalvik LG, Nilsen RM, Skjærven R, Vollset SE, Midttun O, Ueland PM, Haug K (2012)
17 Self-reported smoking status and plasma cotinine concentrations among pregnant women
18 in the norwegian mother and child cohort study. Pediatr Res 72:101–7
- 19 6. Dietz PM, Homa D, England LJ, Burley K, Tong VT, Dube SR, Bernert JT (2011)
20 Estimates of nondisclosure of cigarette smoking among pregnant and nonpregnant women
21 of reproductive age in the united states. Am J Epidemiol 173:355–9
- 22 7. Dempsey D, Jacob P 3rd, Benowitz NL (2002) Accelerated metabolism of nicotine
23 and cotinine in pregnant smokers. J Pharmacol Exp Ther 301:594–8
- 24 8. Rousseaux S, Seyve E, Chuffart F, et al (2020) Immediate and durable effects of
25 maternal tobacco consumption alter placental DNA methylation in enhancer and imprinted
26 gene-containing regions. BMC Medicine. <https://doi.org/10.1186/s12916-020-01736-1>
- 27 9. Joubert BR, Felix JF, Yousefi P, et al (2016) DNA methylation in newborns and
28 maternal smoking in pregnancy: Genome-wide consortium meta-analysis. Am J Hum Genet
29 98:680–696
- 30 10. Everson TM, Vives-Usano M, Seyve E, et al (2021) Placental DNA methylation
31 signatures of maternal smoking during pregnancy and potential impacts on fetal growth.
32 Nat Commun 12:5095
- 33 11. Cardenas A, Lutz SM, Everson TM, Perron P, Bouchard L, Hivert M-F (2019)
34 Mediation by Placental DNA Methylation of the Association of Prenatal Maternal Smoking
35 and Birth Weight. American Journal of Epidemiology 188:1878–1886

- 1 12. Richmond RC, Suderman M, Langdon R, Relton CL, Davey Smith G (2018) DNA
2 methylation as a marker for prenatal smoke exposure in adults. *Int J Epidemiol* 47:1120–
3 1130
- 4 13. Tehranifar P, Wu H-C, McDonald JA, Jasmine F, Santella RM, Gurvich I, Flom JD, Terry
5 MB (2018) Maternal cigarette smoking during pregnancy and offspring DNA methylation in
6 midlife. *Epigenetics* 13:129–134
- 7 14. Langie SAS, Moisse M, Declerck K, Koppen G, Godderis L, Vanden Berghe W, Drury S,
8 De Boever P (2017) Salivary DNA Methylation Profiling: Aspects to Consider for Biomarker
9 Identification. *Basic & Clinical Pharmacology & Toxicology* 121:93–101
- 10 15. Bakulski KM, Halladay A, Hu VW, Mill J, Fallin MD (2016) Epigenetic Research in
11 Neuropsychiatric Disorders: the “Tissue Issue”. *Current Behavioral Neuroscience Reports*
12 3:264–274
- 13 16. Ladd-Acosta C, Shu C, Lee BK, et al (2016) Presence of an epigenetic signature of
14 prenatal cigarette smoke exposure in childhood. *Environ Res* 144:139–148
- 15 17. Zhang B, Hong X, Ji H, Tang W, Kimmel M, Ji Y, Pearson C, Zuckerman B, Surkan PJ,
16 Wang X (2018) Maternal smoking during pregnancy and cord blood DNA methylation: new
17 insight on sex differences and effect modification by maternal folate levels. *Epigenetics*
18 13:505–518
- 19 18. Gonseth S, de Smith AJ, Roy R, et al (2016) Genetic contribution to variation in DNA
20 methylation at maternal smoking-sensitive loci in exposed neonates. *Epigenetics* 11:664–
21 673
- 22 19. Neophytou AM, Oh SS, Hu D, Huntsman S, Eng C, Rodriguez-Santana JR, Kumar R,
23 Balmes JR, Eisen EA, Burchard EG (2019) In utero tobacco smoke exposure, DNA
24 methylation, and asthma in latino children. *Environmental Epidemiology* 3:
- 25 20. Philibert R, Dogan M, Beach SRH, Mills JA, Long JD (2019) AHRR methylation
26 predicts smoking status and smoking intensity in both saliva and blood DNA. *American*
27 *Journal of Medical Genetics Part B: Neuropsychiatric Genetics* 183:51–60
- 28 21. Reese SE, Zhao S, Wu MC, et al (2017) DNA methylation score as a biomarker in
29 newborns for sustained maternal smoking during pregnancy. *Environ Health Perspect*
30 125:760–766
- 31 22. Philibert RA, Beach SRH, Lei M-K, Brody GH (2013) Changes in DNA methylation at
32 the aryl hydrocarbon receptor repressor may be a new biomarker for smoking. *Clinical*
33 *Epigenetics*. <https://doi.org/10.1186/1868-7083-5-19>
- 34 23. Chen J, Zang Z, Braun U, et al (2020) Association of a Reproducible Epigenetic Risk
35 Profile for Schizophrenia With Brain Methylation and Function. *JAMA Psychiatry* 77:628
- 36 24. Bakulski KM, Fisher JD, Dou JF, Gard A, Schnepfer L, Notterman DA, Ware EB,
37 Mitchell C (2021) Prenatal Particulate Matter Exposure Is Associated with Saliva DNA

- 1 Methylation at Age 15: Applying Cumulative DNA Methylation Scores as an Exposure
2 Biomarker. *Toxics* 9:262
- 3 25. Reichman NE, Teitler JO, Garfinkel I, McLanahan SS (2001) Fragile families: Sample
4 and design. *Children and Youth Services Review* 23:303–326
- 5 26. Gard AM, Maxwell AM, Shaw DS, Mitchell C, Brooks-Gunn J, McLanahan SS, Forbes
6 EE, Monk CS, Hyde LW (2020) Beyond family-level adversities: Exploring the
7 developmental timing of neighborhood disadvantage effects on the brain. *Developmental*
8 *Science*. <https://doi.org/10.1111/desc.12985>
- 9 27. Ware EB, Fisher J, Schnepfer L, Notterman D, Mitchell C (2021) FFCWS polygenic
10 scores - release 1. Survey Research Center, Institute for Social Research, University of
11 Michigan; Department of Molecular Biology, Princeton University
- 12 28. Sandoval J, Heyn H, Moran S, Serra-Musach J, Pujana MA, Bibikova M, Esteller M
13 (2011) Validation of a DNA methylation microarray for 450,000 CpG sites in the human
14 genome. *Epigenetics* 6:692–702
- 15 29. Xu Z, Niu L, Taylor JA (2021) The ENmix DNA methylation analysis pipeline for
16 Illumina BeadChip and comparisons with seven other preprocessing pipelines. *Clinical*
17 *Epigenetics*. <https://doi.org/10.1186/s13148-021-01207-1>
- 18 30. Heiss JA, Just AC (2018) Identifying mislabeled and contaminated DNA methylation
19 microarray data: an extended quality control toolset with examples from GEO. *Clinical*
20 *Epigenetics*. <https://doi.org/10.1186/s13148-018-0504-1>
- 21 31. Chen Y, Lemire M, Choufani S, Butcher DT, Grafodatskaya D, Zanke BW, Gallinger S,
22 Hudson TJ, Weksberg R (2013) Discovery of cross-reactive probes and polymorphic CpGs
23 in the Illumina Infinium HumanMethylation450 microarray. *Epigenetics* 8:203–209
- 24 32. Middleton LYM, Dou J, Fisher J, et al (2021) Saliva cell type DNA methylation
25 reference panel for epidemiological studies in children. *Epigenetics* 1–17
- 26 33. Rauschert S, Melton PE, Heiskala A, et al (2020) Machine Learning-Based DNA
27 Methylation Score for Fetal Exposure to Maternal Smoking: Development and Validation in
28 Samples Collected from Adolescents and Adults. *Environmental Health Perspectives*
29 128:097003
- 30 34. Rauschert S (2019) DNAsmokeR: DNA methylation based score for in utero
31 exposure to maternal smoking.
- 32 35. Wiklund P, Karhunen V, Richmond RC, et al (2019) DNA methylation links prenatal
33 smoking exposure to later life health outcomes in offspring. *Clinical Epigenetics*.
34 <https://doi.org/10.1186/s13148-019-0683-4>
- 35 36. McEwen LM, O'Donnell KJ, McGill MG, et al (2019) The PedBE clock accurately
36 estimates DNA methylation age in pediatric buccal cells. *Proceedings of the National*
37 *Academy of Sciences* 117:23329–23335

- 1 37. Lu AT, Quach A, Wilson JG, et al (2019) DNA methylation GrimAge strongly predicts
2 lifespan and healthspan. *Aging* 11:303–327
- 3 38. Leek JT, Johnson WE, Parker HS, Fertig EJ, Jaffe AE, Zhang Y, Storey JD, Torres LC
4 (2021) Sva: Surrogate variable analysis.
- 5 39. Robin X, Turck N, Hainard A, Tiberti N, Lisacek F, Sanchez J-C, Müller M (2011)
6 pROC: an open-source package for R and S+ to analyze and compare ROC curves. *BMC*
7 *Bioinformatics*. <https://doi.org/10.1186/1471-2105-12-77>
- 8 40. Robin X, Turck N, Hainard A, Tiberti N, Lisacek F, Sanchez J-C, Müller M (2011)
9 pROC: An open-source package for r and s+ to analyze and compare ROC curves. *BMC*
10 *Bioinformatics* 12:77
- 11 41. Langie SAS, Szarc vel Szic K, Declerck K, Traen S, Koppen G, Van Camp G, Schoeters
12 G, Vanden Berghe W, De Boever P (2016) Whole-Genome Saliva and Blood DNA
13 Methylation Profiling in Individuals with a Respiratory Allergy. *PLOS ONE* 11:e0151109
- 14 42. Martin AR, Kanai M, Kamatani Y, Okada Y, Neale BM, Daly MJ (2019) Clinical use of
15 current polygenic risk scores may exacerbate health disparities. *Nature Genetics* 51:584–
16 591
- 17 43. Hüls A, Czamara D (2019) Methodological challenges in constructing DNA
18 methylation risk scores. *Epigenetics* 15:1–11
- 19 44. Xu R, Hong X, Zhang B, Huang W, Hou W, Wang G, Wang X, Igusa T, Liang L, Ji H
20 (2021) DNA methylation mediates the effect of maternal smoking on offspring birthweight:
21 a birth cohort study of multi-ethnic US mothernewborn pairs. *Clinical Epigenetics*.
22 <https://doi.org/10.1186/s13148-021-01032-6>
- 23 45. Borrell LN, Elhawary JR, Fuentes-Afflick E, et al (2021) Race and Genetic Ancestry in
24 Medicine A Time for Reckoning with Racism. *New England Journal of Medicine* 384:474–
25 480
- 26 46. Okazaki S, Otsuka I, Shinko Y, Horai T, Hirata T, Yamaki N, Sora I, Hishimoto A
27 (2021) Epigenetic Clock Analysis in Children With Fetal Alcohol Spectrum Disorder.
28 *Alcoholism: Clinical and Experimental Research* 45:329–337
- 29 47. Pineles BL, Park E, Samet JM (2014) Systematic Review and Meta-Analysis of
30 Miscarriage and Maternal Exposure to Tobacco Smoke During Pregnancy. *American Journal*
31 *of Epidemiology* 179:807–823
- 32 48. Leung M, Kioumourtzoglou M-A, Raz R, Weisskopf MG (2021) Bias due to Selection
33 on Live Births in Studies of Environmental Exposures during Pregnancy: A Simulation
34 Study. *Environmental Health Perspectives*. <https://doi.org/10.1289/ehp7961>
- 35 49. Liew Z, Olsen J, Cui X, Ritz B, Arah OA (2015) Bias from conditioning on live birth in
36 pregnancy cohorts: an illustration based on neurodevelopment in children after prenatal
37 exposure to organic pollutants. *International Journal of Epidemiology* 44:345–354

- 1 50. Liu C, Marioni RE, Hedman ÅK, et al (2016) A DNA methylation biomarker of alcohol
2 consumption. *Molecular Psychiatry* 23:422–433
- 3 51. Ligthart S, Marzi C, Aslibekyan S, et al (2016) DNA methylation signatures of chronic
4 low-grade inflammation are associated with complex diseases. *Genome Biology*.
5 <https://doi.org/10.1186/s13059-016-1119-5>
- 6 52. Sayols-Baixeras S, Subirana I, Fernández-Sanlés A, Sentí M, Lluís-Ganella C, Marrugat
7 J, Elosua R (2017) DNA methylation and obesity traits: An epigenome-wide association
8 study. The REGICOR study. *Epigenetics* 12:909–916
- 9 53. Wahl S, Drong A, Lehne B, et al (2016) Epigenome-wide association study of body
10 mass index, and the adverse outcomes of adiposity. *Nature* 541:81–86
- 11 54. Sirugo G, Williams SM, Tishkoff SA (2019) The Missing Diversity in Human Genetic
12 Studies. *Cell* 177:26–31
- 13 55. Bentley AR, Callier S, Rotimi CN (2017) Diversity and inclusion in genomic research:
14 why the uneven progress? *Journal of Community Genetics* 8:255–266

15

Fragile Families cohort
n=4898

Cohort with 450K methylation data
n=897 individuals with m=1812 samples

Methylation data QC:
1 sample with idat file irregularity
34 samples with probe failure percentage >10%
11 samples with predicted sex mismatch
6 samples with outlier methylation values
27 samples with genetic discordance
49 technical replicates

Cohort with quality controlled 450K data
n=876 individuals with m=1684 samples

Missing maternal data:
m=0 samples & n=0 individuals with missing prenatal maternal smoking
m=4 samples & n=2 individuals with missing prenatal alcohol
m=6 samples & n=3 individuals with missing prenatal other drug use
m=0 samples & n=0 individuals with missing maternal income to poverty ratio data
m=88 samples & n=47 individuals with missing early life postnatal smoke exposure data
m=17 samples & n=17 individuals with missing past month primary care giver smoking packs/day

m=1569 samples & n=822 individuals with maternal covariate data

Missing child data:
m=19 samples & n=10 individuals with missing ancestry/genetic data
m=0 samples & n=0 individuals with missing child sex data
m=0 samples & n=0 individuals with missing child age at sample

m=1550 samples & n=812 individuals with child covariate data

n=759 individuals with a 9 year visit

n=791 individuals with a 15 year visit

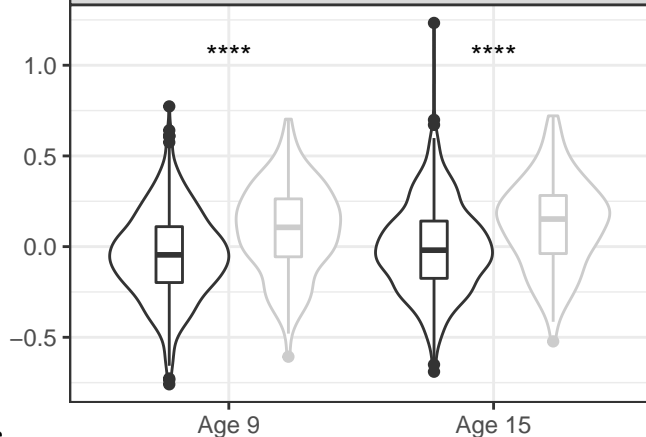
n=6 individuals smoking or missing child smoking data at 9 year visit

n=44 individuals smoking or missing focal child smoking data at 15 year visit

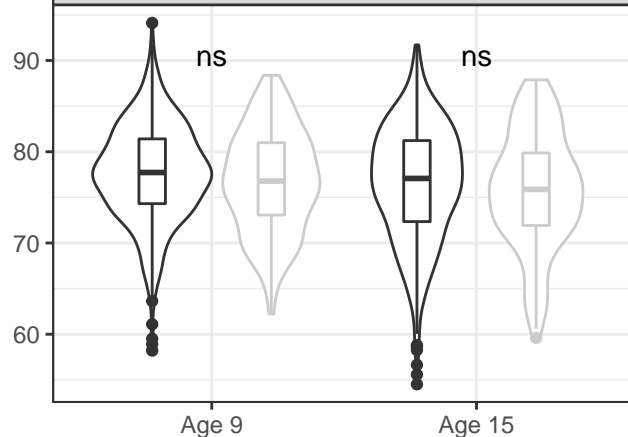
Exclude children who smoke:
n=753 individuals with a 9 year visit

Exclude children who smoke:
n=747 individuals with a 15 year visit

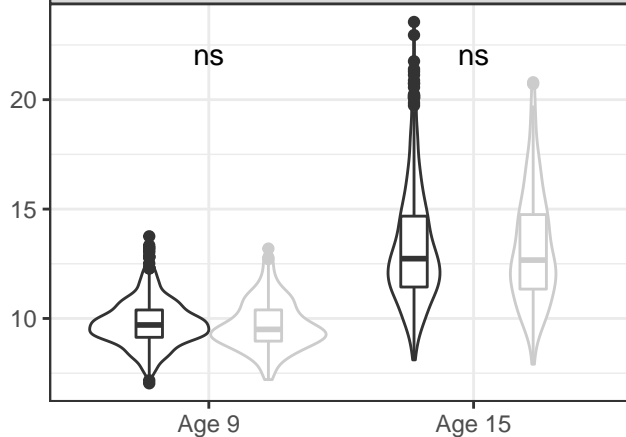
6073 site polymethylation score:
coefficients for sustained smoking from
Joubert newborn cord blood
meta-analysis with cell-type correction
(mean-centered)



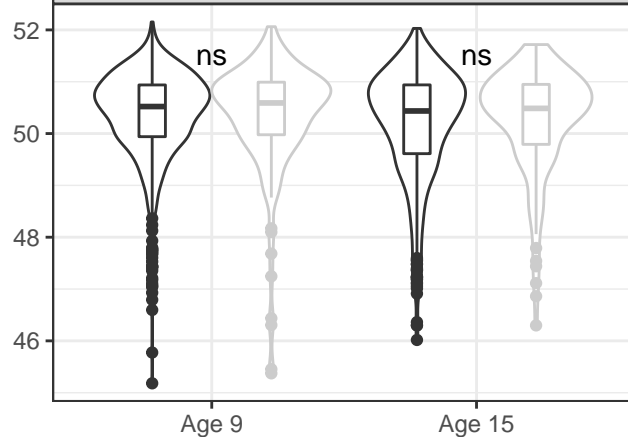
AHRR gene: percent cg05575921
methylation



Pediatric epigenetic clock (years)



Percent global DNA methylation



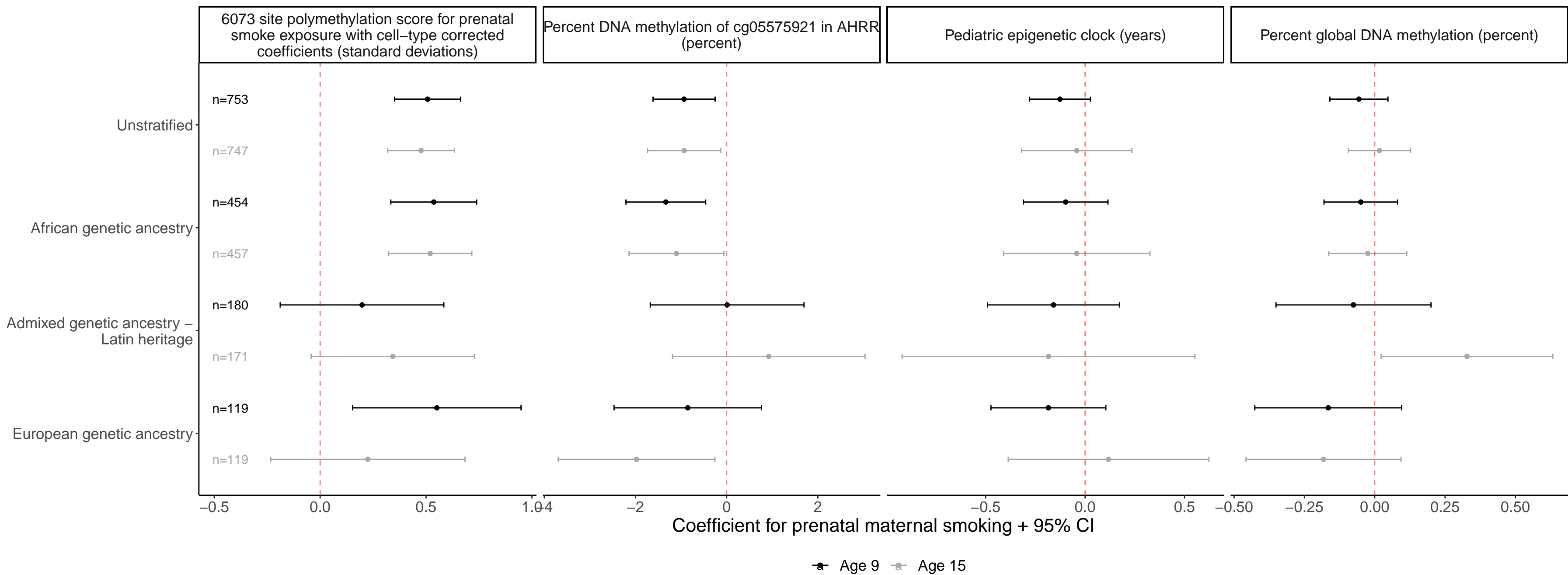
Visit

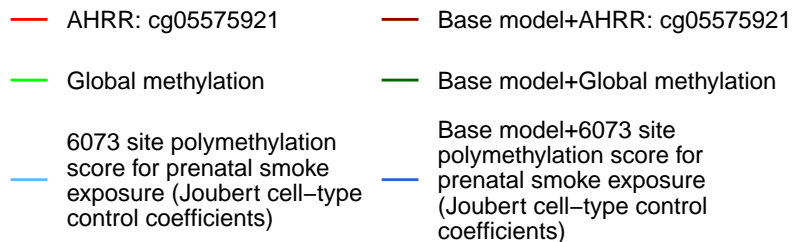
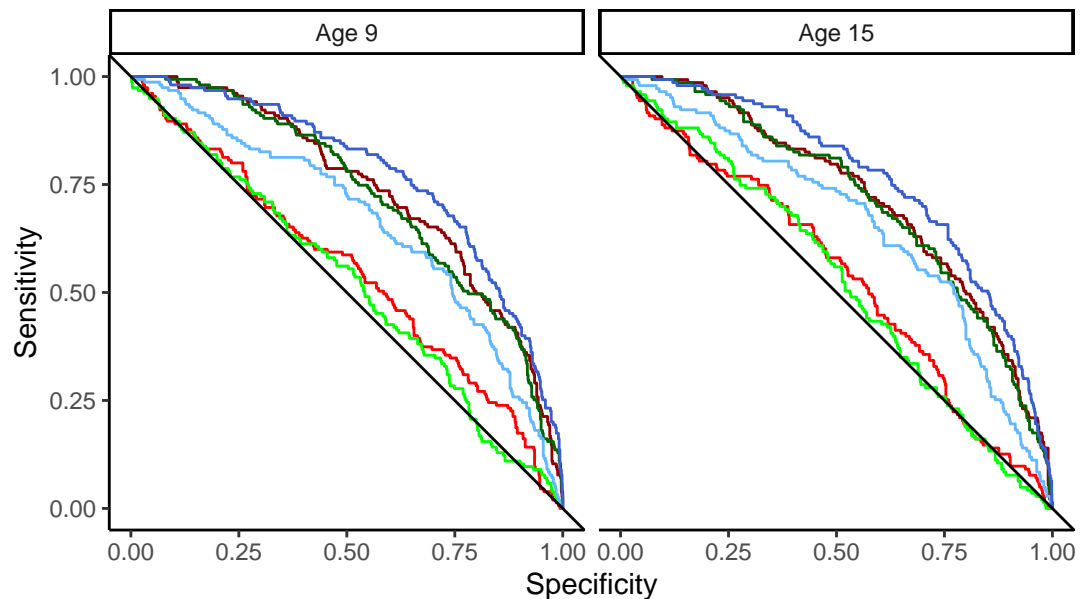


Not prenatal maternal smoke exposed



Prenatal smoke exposed



A**B**