

1 Normalisation of SARS-CoV-2 concentrations in wastewater:
2 the use of flow, conductivity and CrAssphage.

3 Authors and their affiliations

4 Jeroen Langeveld*^{1,2}, Remy Schilperoort², Leo Heijnen³, Goffe Elsinga³, Claudia E.M.
5 Schapendonk⁴, Ewout Fanoy⁷, Evelien I.T. de Schepper⁵, Marion P. G. Koopmans⁴, Miranda
6 de Graaf⁴, Gertjan Medema^{1,3,6}

7 ¹ Sanitary Engineering, Delft University of Technology, Stevinweg 1 2628CN Delft, The
8 Netherlands,

9 ² Partners4UrbanWater, Graafseweg 274, 6532 ZV Nijmegen, The Netherlands

10 ³ KWR Water Research Institute, Groningenhaven 7, 3433PE Nieuwegein, The Netherlands

11 ⁴ Department of Viroscience, Erasmus University Medical Center, Dr. Molewaterplein 40,
12 3015 GD Rotterdam, The Netherlands

13 ⁵ Department of General Practice, Erasmus University Medical Center, Dr. Molewaterplein
14 40, 3015 GD Rotterdam, The Netherlands

15 ⁶ Natural resources, Michigan State University, 1405 S Harrison Rd, East-Lansing, 48823
16 Michigan, USA

17 ⁷ GGD Department public health, municipality Rotterdam, Schiedamsedijk 95, 3000 LP
18 Rotterdam, the Netherlands

19 *Corresponding author:

20 Jeroen Langeveld: jeroen.langeveld@urbanwater.nl

21

22

23

24 Abstract

25 Over the course of the COVID-19 pandemic in 2020-2021, monitoring of SARS-CoV-2 RNA
26 in wastewater has rapidly evolved into a supplementary surveillance instrument for public
27 health. Short term trends (2 weeks) are used as a basis for policy and decision making on
28 measures for dealing with the pandemic. Normalization is required to account for the varying
29 dilution rates of the domestic wastewater, that contains the shedded virus RNA. The dilution
30 rate varies due to runoff, industrial discharges and extraneous waters. Three normalization
31 methods using flow, conductivity and CrAssphage, have been investigated on 9 monitoring
32 locations between Sep 2020 and Aug 2021, rendering 1071 24-hour flow-proportional
33 samples. In addition, 221 stool samples have been analyzed to determine the daily
34 CrAssphage load per person. Results show that flow normalization supported by a quality
35 check using conductivity monitoring is the advocated normalization method in case flow
36 monitoring is or can be made available. Although CrAssphage shedding rates per person
37 vary greatly, the CrAssphage loads were very consistent over time and space and direct
38 CrAssphage based normalization can be applied reliably for populations of 5600 and above.

39 Keywords

40 Sewage surveillance, COVID-19, wastewater-based epidemiology, public health,
41 normalisation

42

43 1. Introduction

44 Over the course of the COVID-19 pandemic in 2020-2021, monitoring of SARS-CoV-2 RNA
45 in wastewater has rapidly evolved into a supplementary surveillance instrument for public
46 health. (Lodder and de Roda Husman 2020, Medema et al. 2020b, Kirby et al., 2021). It is
47 currently used in many countries ([COVIDPoops19 Dashboard | covid19wbec.org](#)) at different
48 scales, from national surveillance at all ([Virus particles in wastewater | Coronavirus](#)

49 [Dashboard | Government.nl](#)) or selected wastewater treatment plants ([Szennyvizekben mért](#)
50 [SARS-CoV-2 vírus koncentrációja \(gov.hu\)](#); [Koronaviruksen jätevesiseurannan viikkoraportti](#)
51 [\(thl.fi\)](#); [Données ouvertes - Réseau OBEPINE \(reseau-obepine.fr\)](#); [Coronastep | Luxembourg](#)
52 [Institute of Science and Technology \(list.lu\)](#); [SARS-CoV-2 in Wastewater \(sensors-](#)
53 [eawag.ch\)](#)) to regional (Wolfe et al., 2021; Ai et al., 2021; [Sarsaigua \(icra.cat\)](#)), (sub) city level
54 (Rasero et al., 2021; Yaniv et al., 2021) and building level (Davo et al., 2021; Sweetapple et
55 al., 2021; Betancourt et al., 2021). The concentration of SARS-CoV-2 RNA in wastewater
56 has shown to reflect and even precede the trends of the newly reported cases or COVID-19
57 hospitalizations (Medema et al. 2020a; Prado, Fumian et al. 2021; Ho et al., 2021). In
58 situations with low COVID-19 prevalence, wastewater surveillance is being used as an early
59 warning system (Betancourt et al. 2020, Medema et al. 2020a, Ahmed et al. 2021) enabling
60 rapid and targeted measures to limit the COVID-19 transmission. Wastewater surveillance is
61 also an efficient tool to monitor the emergence of (signature mutations of) new variants-of-
62 concern in communities, using targeted sequencing (Rios et al., 2021; Rothman et al., 2021;
63 Jahn et al., 2021) or targeted PCR methods (Graber et al., 2021, Heijnen et al. 2021). A key
64 advantage of wastewater surveillance is the possibility to obtain objective information about
65 virus circulation in a community. The 'traditional' surveillance of reported cases is subject to
66 bias by (changes in) testing strategies, access to testing, and compliance of communities,
67 and reflect only those that get tested. SARS-CoV-2 concentrations in community wastewater
68 are independent of testing behavior, thereby providing a more complete and objective image
69 of the virus circulation in the community provided there is unrestricted access to sanitation.
70 Public health agencies use the wastewater signal to spot changes in testing behavior over
71 time or between communities (de Graaf et al, in preparation) and to verify the trends in
72 reported cases in communities. Decision-making on (partial) lockdowns and travel
73 restrictions requires up-to-date and reliable information on trends in virus circulation,
74 preferably at a high spatial resolution. The relevant time window of many of these decisions
75 is the information of 1 - 2 antecedent weeks; i.e. the weekly updates of the epidemiological
76 situation (e.g. <https://www.rivm.nl/en/coronavirus-covid-19/weekly-figures>) and the maps in

77 support of the Council Recommendation on a coordinated approach to travel measures in
78 the EU at [https://www.ecdc.europa.eu/en/covid-19/situation-updates/weekly-maps-](https://www.ecdc.europa.eu/en/covid-19/situation-updates/weekly-maps-coordinated-restriction-free-movement)
79 [coordinated-restriction-free-movement](https://www.ecdc.europa.eu/en/covid-19/situation-updates/weekly-maps-coordinated-restriction-free-movement), that is based on the testing, positivity and notification
80 rate over a time frame of 2 weeks. To monitor trends in SARS-CoV-2 circulation via
81 wastewater in a similar time frame, frequent and representative sampling of a community is
82 necessary. Sample collection typically takes place as 24 h composite samples to account for
83 the typical diurnal pattern associated with wastewater production and toilet use (Medema et
84 al., 2020b; Ort et al. 2010). In addition, wastewater concentrations can be affected by the
85 dilution of domestic wastewater in other water in the sewerage network, such as stormwater
86 runoff, groundwater or industrial discharges. This dilution may vary in time; wet weather
87 discharges can be many times the dry weather discharge of sewers. To account for this
88 variable dilution, normalisation of the measured concentrations by the (daily) flow of
89 wastewater into daily loads is a common procedure in Wastewater Based Epidemiology
90 (WBE), building on methods and procedures developed over the last decade mainly for drug
91 use monitoring (Castiglioni et al., 2014). For SARS-CoV-2 normalisation, the measured RNA
92 concentration in the 24h composite sample can be multiplied by the wastewater flow of the
93 last 24h at the sampling site to compute the daily viral load. This load can in turn be
94 normalised for the population of the sewershed to be able to compare the loads between
95 different areas. The underlying assumption of this flow normalisation approach (Castiglioni et
96 al., 2014) is that the sample taken is representative of the domestic wastewater volume
97 being discharged by the population served by the pumping station or wastewater treatment
98 plant (WWTP). However, there are several situations where this assumption does not hold.
99 They may be attributed to short term changes in population size due to commuters or
100 tourism, or to sewer system dynamics, such as spills of SSOs (sanitary sewer overflows) due
101 to blockages, spills of CSOs during heavy rainfall, transport delays in pressure mains which
102 vary strongly during dry weather and wet weather or delays in the transport of wastewater to
103 the WWTP due to pump failures or other operational issues. In these situations, the
104 wastewater flow at the inlet of the wastewater treatment plant is not representing the amount

105 of wastewater that is produced in that sewershed on that day. Consequently, there is a need
106 for additional quality control in WBE. Normalisation by two independent parameters could be
107 the way forward to check for representativeness of the sample for the shedding of SARS-
108 CoV-2. In addition, in many locations flow data is unavailable, resulting in a need for other
109 types of normalisation parameters.

110 Many examples of parameters that may be used to normalise wastewater samples are
111 available. Launay et al. (2016) propose the use of electric conductivity (EC) as a proxy of the
112 dilution of wastewater due to storm water or ground water dilution. They showed that the
113 dilution calculated based on EC gives similar results as the use of inert human wastewater
114 tracers such as ibuprofen, naproxen and diclofenac. Many other human wastewater tracers
115 are less applicable as tracer due to e.g. a higher back ground variation or degradation in the
116 sewer (Gao et al., 2017). EC was selected as a cheap parameter which can be reliably
117 measured. Tandukar et al. (2020), Bivins et al. (2020) and Medema et al. (2020b) assessed
118 the applicability of several chemical and biological markers for human input in wastewater.
119 Like others (Crank et al., 2020; Hillary et al., 2021; Wilder et al., 2021; Heijnen et al., 2021),
120 we selected CrAssphage, given it is a highly abundant virus (almost) exclusively found in
121 human feces and is present in humans world-wide (Edwards et al., 2019). High CrAssphage
122 concentrations are reported in domestic wastewater globally, and the concentrations do not
123 show significant seasonal variation (Balleste et al., 2019), making them a potentially useful
124 index for the human fecal fraction of wastewater.

125 The aim of this study was to develop a procedure for quality control and normalisation of
126 wastewater samples, in order to allow quantitative trend analysis of SARS-CoV-2 in support
127 of public health decision-making. We compared and evaluated three methods for
128 normalisation: the 'standard' daily wastewater flow rate and population normalisation, electric
129 conductivity (EC) as a proxy for dilution and the human fecal biomarker crAssphage. In
130 addition, we analysed whether a combination of two normalisation methods can be used as a
131 quality check and normaliser of SARS-CoV-2 RNA concentration data.

132 2. Material and methods

133 2.1. Wastewater surveillance Rotterdam Rijnmond

134 In and around the city of Rotterdam (the Netherlands), 9 catchment areas were selected for
135 wastewater sampling (Figure 1). Four catchment areas were sampled at the wastewater
136 treatment plant Dokhaven (INF2, INF3, INF4 and INF5-6), sampling from the pressure mains
137 arriving at the Wastewater Treatment Plants (WWTP). These four areas make up about half
138 of the urban area of the city of Rotterdam and vary in population between 27.044 and
139 138.280 people (CBS, 2020). Catchment area Pretorialaan (71.325 inhabitants) constitutes
140 roughly half of the Dokhaven INF3 area, and catchment area Katendrecht (4.884 inhabitants)
141 is a small subcatchment of the Pretorialaan catchment. Both catchments are sampled at their
142 respective sewer pumping stations serving the area. The sewer system is cascading
143 meaning that wastewater from Katendrecht is first sampled at sewer pumping station
144 Katendrecht, then again at sewer pumping station Pretorialaan (diluted with wastewater from
145 the rest of the Pretorialaan area), and finally again at Dokhaven INF3 (further diluted).
146 Outside the WWTP Dokhaven area, three predominantly residential areas have been
147 selected for surveillance: Ommoord (28.434 inhabitants), Bergschenhoek (18.750
148 inhabitants) and Rozenburg (12.374 inhabitants). Ommoord and Bergschenhoek were
149 sampled at their respective sewer pumping stations, Rozenburg at the WWTP serving
150 exclusively the Rozenburg area.
151 The sewer network in the Rotterdam area is largely combined, with separate sewer only in
152 more recently developed and renovated areas.

153 [2.2. Wastewater sampling and data](#)

154 At all sampling sites automated composite samplers (Endress+Hauser Liquistation CSF48
155 and ASP2000 stations) were used to collect flow-proportional 24h composite wastewater
156 samples. The autosamplers were programmed to collect 50 mL aliquots per fixed volume of
157 wastewater (as measured by the flow sensors at the WWTPs/pumping stations). This fixed
158 volume varied between 12 m³ (Katendrecht) and 170 m³ (Dokhaven INF3) and was selected
159 to ensure a minimum of 100 aliquots (5 L of sample) for each 24h sample throughout the
160 year (NEN6600). All locations followed the same sampling schedule: three 24h samples per
161 week (Sun 08h00 - Mon 08h00, Tue 08h00 - Wed 08h00 and Thu 08h00 - Fri 08h00) from
162 September 2020 (Bergschenhoek: January 2021) to August 2021. Samples were stored
163 inside the autosampler at a temperature between 1°C and 5°C until sample collection (Mon,
164 Wed and Fri between 08h00 and 16h00). At the time of sample collection, the collected
165 composite sample was mixed by manual stirring and an aliquot of 250 mL was collected from
166 the container in the autosampler, stored in a sterile flask and transported at 4°C to the
167 laboratory.

168 Upon sample collection the quality of each sample was assessed comparing the theoretical
169 sample volume (number of aliquots in 24h, multiplied by aliquot volume) with the actual
170 sample volume. In case of sampling 'failure' (> 7,5% difference according to NEN6600),
171 details of the sampling process were further studied to determine whether the sample could
172 still be included in the data set. Overall approximately 5-7% (depending on the location) of all
173 sampling failed completely (not a single aliquot in the container in a 24h period) due to e.g. a
174 power cut, maintenance activities, clogging of the autosampler, public holidays etc. For
175 another 5-15 % of samples a deviation of more than 7,5% was observed. These were
176 caused mainly by (partial or temporal) clogging of the equipment (relatively often coinciding
177 with storm events) or logistical errors in the field. Overall, 89,6 % of potential samples could
178 be used for processing.

179

180 [2.3. Virus concentration and nucleic acid extraction](#)

181 Samples were processed within one week after sampling using the procedure as previously
182 described (Medema et al 2020). In short, centrifugation was used as pre-treatment to remove
183 larger particles. Virus particles were concentrated from 50 ml supernatant by ultrafiltration
184 through Centricon® Plus-70 centrifugal ultrafilters with a cut-off of 30 kDa (Millipore,
185 Amsterdam, Netherlands). Mouse Hepatitis Virus (MHV)-A59 (Department Medical
186 Microbiology, Leiden University Medical Center, Leiden, Netherlands) was spiked to each
187 concentrate as quality control. Nucleic acid was extracted from the concentrate with the
188 Biomerieux Nuclisens kit (Biomerieux, Amersfoort, Netherlands) in combination with the
189 semi-automated KingFisher mL (Thermo Scientific, Bleiswijk, Netherlands) as previously
190 described. Extracted nucleic acid was eluted in a volume of 100 µl.

191

192 [2.4. RT-qPCR for Coronavirus RNA-quantification in wastewater](#)

193 The N2 and E_Sarbeco gene fragments of SARS-CoV-2 were used as qRT-PCR targets,
194 N2 was used for quantification, E_Sarbeco for confirmation (both needed to be present for a
195 positive result). Reagents and reaction conditions were as previously described (Medema et
196 al. 2020; Heijnen et al. 2021). All RT-PCR's were run as technical duplicates on 5 µl
197 extracted nucleic acid. Reactions were considered positive if the cycle threshold was below
198 40 cycles. Spiked MHV-A59 RNA was detected by performing a MHV-A59 specific RT-qPCR
199 targeting the N-gene using the primers and reaction profile described by (Raabenet al. 2007).

200

201 [2.5. PCR for CrAssphage quantification in wastewater and feces](#)

202 A CrAssphage CPQ_064 specific PCR (Stachler, Kelty et al. 2017) was used to quantify this
203 DNA-virus. Assays were performed in duplicate on 5 µl 1:10 diluted extracted nucleic acid as
204 described previously (Heijnen et al. 2021).

205

206 2.6. PCR for CrAssphage quantification in stool samples

207 Feces swabs from 221 patients from the Rotterdam Rijnmond region that were tested
208 positive for SARS-CoV-2, were collected in 3 ml of viral transport medium. Samples were
209 spun down for 5 min at 17,000 g, nucleic acids were isolated from 200µl supernatant using
210 the high pure RNA isolation kit (Roche) while omitting the DNase I step. The RT-PCR
211 described in 2.5 was used to quantify levels of CrAssphage. This study was approved by the
212 Medical Ethical Committee of Erasmus MC under MEC-2020-0617

213

214 2.7. Normalisation procedure

215 In the study, three normalisation procedures have been developed to be able to assess flow,
216 EC and crAssphage as normalisation parameters. In each procedure, the percentage of
217 *domestic* wastewater in was determined. The flow based normalisation procedure comprises
218 the following steps:

- 219 1. Preparation step: determine the number of inhabitants in the catchment and
220 determine the domestic dry weather flow (ddwf) expressed in litres per person per
221 day. In the Netherlands, the ddfw is very stable at 120 l pppd (www.riool.net). In other
222 countries, the ddfw may vary per location and can typically be obtained via local
223 sewer authorities.
- 224 2. Determine the proportion of domestic sewage in a wastewater sample using flow
225 data:

$$226 \quad \% \text{ domestic sewage}(Q) = \frac{\# \text{ inhabitants} * \text{ddwf}}{V_{24h}} * 100\% \quad (1)$$

227 where ddfw = average daily domestic wastewater production per person, V_{24h} = measured
228 wastewater volume over 24 h sampling time

229 The EC based normalisation procedure requires more additional data to enable direct
230 comparison with the flow base normalisation:

- 231 1. Determine number of inhabitants, the average domestic dry weather flow in litres per
232 person per day and the average sewage dry weather flow, which is used as a
233 reference to account for the dilution with extraneous water during dry weather. This
234 average dry weather flow can be extracted as the 40th percentile from a time series of
235 flow data at the sampling site (Mulder et al., 2020). For most monitoring locations, the
236 difference between the 30th and 50th percentile value is relatively small. For
237 catchments with a strong seasonal variation of the amount of extraneous waters, it
238 may be necessary to derive a reference for the wet and dry season. This assessment
239 is easy to make using the methods as described in Weiß et al, 2002.
- 240 2. Determine the reference EC value during dry weather flow by taking the average of all
241 days with a daily flow volumes ranging between the 10th and 50th percentile derived
242 from a 1 year time series. Days with flows smaller than the 10th percentile could be
243 affected by operational irregularities, such pump failures or drinking water outage,
244 while flows above the 50th percentile could be affected by (small) storm events.
- 245 3. Determine the proportion of domestic sewage in a wastewater sample using EC data:

$$246 \quad \% \text{ domestic sewage (EC)} = \frac{\# \text{ inhabitants} * d d w f}{V_{D W F \text{ ref}}} * \frac{E C_{\text{sample}}}{E C_{D W F \text{ ref}}} 100\% \quad (2)$$

247 where $V_{D W F \text{ ref}}$ = average wastewater volume during dry weather flow (40th percentile of daily
248 volumes derived from 1 year time series of flow monitoring, $E C_{\text{sample}}$ = measured EC in
249 sample, $E C_{D W F \text{ ref}}$ = average EC of all samples with flows ranging between 10th and 50th
250 percentile of daily volumes derived from 1 year time series of flow monitoring).

251 Please note that the $V_{D W F \text{ ref}}$ also contains industrial wastewater and extraneous water. The
252 first term in equation 2 in fact describes the dilution during dry weather flow, the second term
253 in the equation the additional dilution during storm event.

254

255 The crAssphage based normalisation follows the same approach as the EC based
256 normalisation and only differs in the parameter used: CrAssphage instead of EC:

257 1. The concentration during dry weather flow is taken as a reference to enable
258 calculating the proportion of domestic sewage during wet weather using eq 3).

$$259 \quad \% \text{ domestic sewage } (CrAss) = \frac{\# \text{ inhabitants} * dwf}{V_{DWF \text{ ref}}} * \frac{CrAss_{\text{sample}}}{CrAss_{DWF \text{ ref}}} 100\% \quad (3)$$

260 where $V_{DWF \text{ ref}}$ = average wastewater volume during dry weather flow (40th percentile of daily
261 volumes derived from 1 year time series of flow monitoring), $CrAss_{\text{sample}}$ = measured CrAss in
262 sample (genome copies/ml sample), $CrAss_{DWF \text{ ref}}$ = average CrAss of all samples with flows
263 ranging between 10th and 50th percentile of daily volumes derived from 1 year time series of
264 flow monitoring, (genome copies/ml sample)).

265
266 For all three normalisation parameters, normalisation of the SARS-CoV-2 RNA concentration
267 in wastewater is performed by multiplying the measured concentration with the reciprocal of
268 the proportion of domestic sewage in the sample. This is expressed as SARS-CoV-2 N2
269 RNA concentration (in gene copies) per mL of domestic wastewater, and enables direct
270 comparison of the three normalisation parameters.

271 3. Results and discussion

272 3.1. Normalisation factors differ in time and space

273 In total, data from 1207 samples from the 9 different city areas from September 2020-August
274 2021 are available. Flow based normalisation was applied after performing the normalisation
275 procedure by multiplying the lab result (# SARS-CoV-2 N2 gene copies/ml sample) with the
276 reciprocal of the proportion of domestic wastewater. Figure 2 gives an overview of the
277 proportion of domestic wastewater per sample. The large range is due to the fact that all
278 catchments are served by combined sewer systems, which show high dilutions and
279 consequently, low proportions of domestic wastewater, during storm events. As example,
280 Figure 3 shows how storm events affect the observed SARS-CoV-2 concentration for INF3,
281 with a variable normalisation factor up to 2.8. In addition to dilution due to rain water, the
282 median of the correction factors ranges between 2.0 and 3.5. This indicates that also during
283 dry weather a significant proportion of the wastewater sampled consists of non-domestic
284 sources, such as extraneous waters and industrial wastewater. The sewer system of
285 Rotterdam is known for its high proportion of extraneous waters. At WWTP Dokhaven, the
286 average amount of extraneous waters during dry weather flow is 43% of the total influent
287 (Vosse, 2013). Catchment INF 2 Everlo Waalhaven also discharges a substantial amount of
288 industrial wastewater, while catchment Ommoord shows a strongly time-varying amount of
289 extraneous water (see figures S1) with a rather high salinity. This is most likely brackish
290 drainage water in this catchment which is at 5 meters below sea level. The large differences
291 in correction factors implicate that directly comparing measured SARS-CoV-2 concentrations
292 in different city areas without normalisation could result in an incorrect assessment of the
293 relative concentration levels, both within a location over time (trends) and between locations.

294

295

296 [3.2. Impact of dilution on observed SARS-CoV-2 trends](#)

297 Flow based normalisation corrects the measured SARS-CoV-2 concentration for the dilution
298 rate of the domestic part of the wastewater. Figure 4 gives an example for the INF3
299 catchment, all other sites are in the supplementary material. During storm (= high flow)
300 events, the correction factor is higher while on dry days the correction factor is smaller. The
301 long-term trend is not affected, as the catchment in Rotterdam does not show a season-
302 dependent runoff volume and also does not show a seasonal trend in the amount of
303 extraneous water (Vosse, 2013).

304

305

306 As stated before, the relevant timescale of trend information for public health agencies is in
307 the range of 1-2 weeks. On such a short notice, 2 weeks of consecutive dry weather as well
308 as 2 weeks of consecutive wet weather are both not unlikely. Especially longer periods with
309 wet weather could result in several subsequent samples being diluted. Figure 5 zooms in on
310 the first 4 months of the time series of site INF3. On several occasions, October 5th-12th,
311 November 11th-16th, and December 18th –30th, uncorrected lab results clearly suggested a
312 downward trend in SARS-CoV-2 levels in the sewage. All were in weeks with rain, and the
313 normalised SARS-CoV-2 levels in domestic sewage in the same periods clearly showed a
314 different trend. From October 30th – November 6th, the uncorrected lab results suggested an
315 upward trend, while the normalised SARS-CoV-2 levels showed a downward trend as
316 dilution decreased due to less inflow. Similar differences were observed at the other sites
317 (SI).

318

319

320 [3.3. Flow based normalisation versus EC and CrAssphage based](#)

321 [normalisation](#)

322 The three types of normalisation, flow based, EC based and CrAssphage based, result in
323 comparable long term trends in normalised SARS-CoV-2 levels of INF3 (figure 6), apart from
324 a few aberrations. In the second week of February 2021, an increased EC was observed due
325 to road de-icing and as a consequence, the EC based correction factors were lower than the
326 flow based correction factors. CrAssphage based normalisation deviated strongly from flow
327 based and EC based normalisation in the period between March 8th – 15th. Figure 7 shows
328 the CrAssphage load per person and day for the entire monitoring period of INF3 (other
329 areas in SI), showing a fairly constant load over the monitoring period, with the exception of
330 the mentioned period. This deviation was observed at all monitoring locations with a similar
331 trend, indicating an issue in the analyses of CrAssphage in this period, even though re-
332 inspection of the procedure and data did not show deviations. Apart from this, differences
333 between flow based, EC based and CrAssphage based normalisation seem to be incidental
334 with a slight underestimation of the EC and CrAss based normalisation, see figure 8. The
335 flow based normalisation results in exactly the same trend as the daily load calculation as
336 applied in the Dutch national sewage surveillance conducted by the National Institute for
337 Public Health and the Environment (SARS-CoV-2 concentration in sample * daily flow per
338 100.000 inhabitants [https://coronadashboard.rijksoverheid.nl/verantwoording#virusdeeltjes-](https://coronadashboard.rijksoverheid.nl/verantwoording#virusdeeltjes-in-rioolwater)
339 [in-rioolwater](https://coronadashboard.rijksoverheid.nl/verantwoording#virusdeeltjes-in-rioolwater)). The EC based normalisation showed an R^2 of 0,96 with the daily load, while
340 the CrAss based normalisation results in an R^2 of 0.92. Flow based normalisation gave the
341 best correspondence with the standard daily load calculation (Castiglioni et al., 2014), while
342 EC based and CrAss based normalisation yielded very comparable results.

343

344 .

345 **3.4. Parallel normalisation methods provide quality control**

346 The relative close agreement between flow, EC and CrAssphage based normalisation
347 provides a good basis for quality control of SARS-CoV-2 samples. Of our 1207 SARS-CoV-2
348 samples, 32 (2.8%) yielded a low CrAssphage concentration ($<10^4$ GC/ml). 20 of those were
349 from Ommoord, the site with the most variable proportion of extraneous waters, and these
350 samples also had a high EC (>2000 $\mu\text{S}/\text{cm}$). In these low CrAssphage samples, SARS-CoV-
351 2 N2 concentration was also low or absent. The recovery efficiency of the detection methods
352 for both viruses was low in these samples, possibly due to the presence of humic acids in
353 brackish groundwater coming via clay and peat layers entering the sewer network at this site.
354 Recovery efficiency did not decrease due to high EC due to road de-icing. The data from
355 these samples were therefore excluded from further analysis. Similarly, CrAssphage
356 provided a basis for quality control of detection methods, In August 2020, supply shortages
357 forced us to use other ultrafilters than Centricon. Even though an initial comparison between
358 Centricon and the alternative filters indicated comparable SARS-CoV-2 recoveries, the
359 CrAssphage concentrations obtained in successive wastewater samples processed with
360 these alternative filters were more than 10-fold lower than in the previous sample series.
361 Therefore, data obtained with these alternative filters were not used (data not shown).
362 Moreover, CrAssphage, as a quantitative marker of human feces, also provides the
363 opportunity to check the most basic number in WBE: the population size. When we prepared
364 the monitoring project in summer 2020, we have checked the population size via the
365 municipality of Rotterdam and the Dutch institute of statistics, CBS. These numbers are
366 shown in figure 1. For each monitoring location, we calculated the average CrAssphage
367 concentration in dwf samples, shown in SI. The proportion of domestic wastewater of figure 2
368 agreed to a large extend with the average CrAssphage concentration during dwf, except for
369 catchment Katendrecht. A check of the population data of Katendrecht, based on 2020 and
370 2021 data, learnt that the population in Katendrecht was no longer 4.884 inhabitants, but
371 5.600 in 2020 and 5.700 in 2021. After adjusting this population number, the adjusted
372 normalisation factors showed good agreement with average CrAssphage during dwf.
373

374 The EC and CrAssphage data also provided a quality control for the flow normalisation. We
375 developed a procedure to perform the flow and EC based normalisations in parallel. If these
376 two normalisations result in domestic wastewater proportions that differ less than 10%, the
377 flow based normalisation is considered successful and reliable. If the two methods differ
378 more than 10%, it is necessary to analyse the data in more depth and identify the cause of
379 the difference. Figure 9 gives an example for the catchment Katendrecht. Overall, there is a
380 good agreement between the flow and EC based normalisation with a few exceptions. Two
381 of the exceptions occurred close after each other in January 2021. On these days, the
382 pumping station was non-operational between January 19th 14h00 and January 21st 11h00.
383 Consequently, the flow proportional sampling of January 20th only collected samples from
384 08h00 until the pump failure at 14h00, hence only representing a fraction of the full
385 wastewater production of the area on that day (the other fraction being stored in the sewer
386 system during the pump failure). On January 22nd the opposite occurred: after the re-start,
387 the pumping station processed all wastewater of the preceding 48 hours that had been
388 stored in the sewer system (daily volume: 4635 m³), leading to a 24h sample that was not
389 representative of the targeted 24 hours. This is an example of a situation where the flow at
390 the monitoring location was no longer representative of the domestic wastewater produced in
391 the catchment. In both cases, EC based normalisation has been applied instead of flow
392 based normalisation. Figure 9 also shows that on these days, CrAssphage and EC based
393 normalisation would have resulted in similar normalised SARS-CoV-2 concentrations.

394

395 [3.5. CrAssphage based normalisation](#)

396 In order to be able to compare CrAssphage based normalisation with flow and EC based
397 normalisation, flow data were needed to calculate the dwf average value for the CrAssphage
398 and EC normalisation. In situations where flow data is unavailable, it is not possible to first
399 derive this dwf average to serve as a reference for calculation dilution of the domestic
400 wastewater with industrial wastewater, runoff and extraneous waters. In those situations,
401 direct normalisation using the ratio SARS-CoV-2/CrAssphage can be applied, as
402 CrAssphage based normalisation using the dwf average renders the exact same SARS-CoV-
403 2 concentration trends as using the ratio SARS-CoV-2/CrAssphage. In the catchments of
404 Rotterdam, with population varying from 5.600 to 138.280, the CrAssphage load per person
405 per day was very comparable between city areas (Figure 10) and constant over time (Figure
406 7 and Figures S2), making CrAssphage suitable for direct normalisation for the human faecal
407 fraction in wastewater samples at the population sizes in this study (5.600 and up).

408 3.6. CrAssphage in stool samples

409 Stool samples were collected from SARS-CoV-2 positive adults (N=221) that notified their
410 general practitioner of a positive SARS-CoV-2 test performed at the GGD testing streets. The
411 CrAssphage concentrations in these stool samples showed very large variation, spanning
412 more than $10 \log^{10}$ units (Figure 11). A small percentage (4.5%) had no detectable (<140
413 GC/ml faeces) CrAssphage in their stool sample. In the positive stool samples, a bimodal
414 distribution was observed, with peaks at $10^{3.5}$ and at $10^{8.5}$ GC/ml faeces.

415 The arithmetic average concentration of CrAssphage in stool samples is 3.39×10^9 GC/ml
416 faeces. This average was largely determined by a single stool sample contained an
417 extremely high concentration (10^{12} /ml). The high concentration was confirmed by re-analysis
418 of the sample. Because of the bimodal distribution of CrAssphage in stool samples, the very
419 high concentration in the small proportion of samples is dominant in determining the
420 arithmetic average. To be less dependent on data from a single stool sample, the shedding
421 data were fitted to two separate Normal distribution after log-transformation, one for the low
422 shedding part of the population (66.1%, including the non-detects), with an average of 3.474
423 LOG GC/ml and a standard deviation of 0.843 LOG GC/ml, and one for the high shedding
424 part (33.9%, with an average of 8.413 LOG GC/ml and a standard deviation of 0.950 LOG
425 GC/ml. With the average of the high shedding proportion of the population, and an average
426 stool production of 128 g wet weight (\approx ml) pppd (Rose et al., 2015), the average CrAssphage
427 load of the population would be 1.12×10^{10} GC pppd. This is close to the average measured
428 CrAssphage load in the wastewater of the city areas of 1.9×10^{10} pppd. CrAssphage is quite
429 stable in the environment (Balleste et al, 2019). The lack of correlation between daily flow
430 and daily CrAssphage-load per person (Figure 7) suggests that there is no significant build-
431 up of CrAssphage in sediments or biofilm in the sewer network (Balleste et al., 2019), unlike
432 for other parameters such as COD and TSS (Schilperoort et al., 2012), see also figures in
433 S3, or pollutants that show a strong adsorption to TSS (Gasperi et al., 2014).

434 Compared to the variability of CrAssphage shedding per person, the observed CrAssphage
435 concentration in wastewater was very comparable between different city areas and over
436 time. This indicates that, even though the variation in CrAssphage shedding between
437 individuals is very high, the ‘population shedding’ is fairly constant in population sizes of
438 5.600 and above. Although CrAssphage has been shown to reside in the human gut for
439 months (Siranosian et al., 2020; Honap et al., 2020; Tamburini et al., 2021), little is known
440 about the CrAssphage shedding dynamics per person over time. A longitudinal study in three
441 infants showed considerable variation over the first year of life (Taboada et al, 2021), but a
442 study among ten healthy adults showed that the human gut virome composition is
443 personalized and relatively stable over time, including for CrAssphage (Shkoporov et al.,
444 2019). The high variability in CrAssphage concentration in stool samples observed in this
445 study, would imply that CrAssphage would become less suitable as normaliser in small
446 populations.

447 4. Conclusions

448 This study showed that without normalisation SARS-CoV-2 sewage data may misrepresent
449 the actual short-term trends of COVID-19 circulation in the population due to the impact of
450 rain and snowmelt in a combined sewer network. Unnormalised data do show similar long-
451 term trends as normalized data, but it is the short-term (1-2 weeks) trends are the most
452 relevant to support public health actions to limit the transmission of the virus and where
453 discrepancies were considerable. Also, for comparison of SARS-CoV-2 circulation in city
454 areas (or cities), normalisation is needed to compensate for the different proportions of
455 extraneous water in different (parts of the) sewer networks.

456 Flow appears to be most appropriate normalizer, for only a few examples in our many data
457 (2/1207; 0.17%) flow was not appropriate, due to sewer blocking. Since EC captured these
458 errors, we propose flow-based normalisation in combination with an EC check. In our study,
459 EC had the added value of picking up brackish groundwater intrusion and road de-icing, the
460 latter being associated with reduced recoveries of the CrAssphage and SARS-CoV-2
461 detection methods.

462 The CrAssphage loads per population per day was very comparable between city areas and
463 constant over time, making CrAssphage-based normalisation an adequate alternative
464 normalization procedure in the absence of flow data or in situations where flow data become
465 unreliable. CrAssphage could also be used to normalize the results of passive samplers, an
466 upcoming method of monitoring SARS-CoV-2 (Shang et al., 2021) by serving as index for the
467 human fecal matter captured in the samplers. CrAssphage shedding per person in stool data
468 was highly variable. This would imply that CrAssphage normalization may become unreliable
469 if the sampled population is small. Further research on the limits of application is necessary.
470

471 Acknowledgements

472 The authors are very grateful for the assistance of the Water Authorities and WWTP and
473 pumping station operators of Waterschap Hollandse Delta and municipality of Rotterdam,
474 staff of IMD for installing and maintaining the autosamplers and sampling specialists of
475 AQUON, Toke Mulder – van Kempen and Eline Hoogteijling for assisting with the inclusion of
476 the patients for the fecal sampling study. This study was financed by STOWA, TKI
477 Watertechnology in collaboration with Erasmus Foundation, Adessium Foundation, European
478 Union's Horizon H2020 grant VEO (grant no. 874735), Ministry of Health, Welfare and Sport,
479 H2020 and Waterboards Waterschap Hollandse Delta, Hoogheemraadschap van Delfland
480 and Hoogheemraadschap Schieland en Krimpenerwaard. The authors would like to thank all
481 the patients that contributed to the fecal sampling study as well as all the included GP-
482 practices.
483

484 References

- 485 Ahmed, W, Bivins A., Bertsch, P.M., Bibby, K., Gyawali P., Sherchan, S.P., Simpson, S.L.,
486 Thomas, K.V., Verhagen, R., Kitajima, M.,Mueller, J.F., Korajkic, A., (2021). Intraday
487 variability of indicator and pathogenic viruses in 1-h and 24-h composite wastewater
488 samples: Implications for wastewater-based epidemiology. *Environmental Research* 193
489 (2021) 110531
- 490 Ahmed, W., Tscharke, B. Bertsch, P. M. Bibby, K. Bivins, A. Choi, P. Clarke, L. Dwyer, J.
491 Edson, J. Nguyen, T. M. H. O'Brien, J. W. Simpson, S. L. Sherman, P. Thomas, K. V.
492 Verhagen, R. Zaugg J. and Mueller J. F. (2021). "SARS-CoV-2 RNA monitoring in
493 wastewater as a potential early warning system for COVID-19 transmission in the
494 community: A temporal case study." *Sci Total Environ* 761: 144216.
- 495 Ahmed, W.D., Paul M.; Bibby, K., Haramoto, E., Hewitt, J., Huygens, F., Gyawali, P.,
496 Korajkic, A., Riddell, S., Sherchan, S.P., Simpson, S.L., Sirikanchana, K., Symonds, E.R.,
497 Verhagen, R., Vasan, S.S., Kitajima, M., Bivins, A. (2020). Decay of SARS-CoV-2 and
498 surrogate murine hepatitis virus RNA in untreated wastewater to inform application in
499 wastewater-based epidemiology, *Environmental Research* (2020).
- 500 Ai Y, Davis A, Jones D, Lemeshow S, Tu H, He F, Ru P, Pan X, Bohrerova Z, Lee J. (2021).
501 Wastewater SARS-CoV-2 monitoring as a community-level COVID-19 trend tracker and
502 variants in Ohio, United States. *Sci Total Environ*. 2021 Dec 20;801:149757. doi:
503 10.1016/j.scitotenv.2021.149757.
- 504 Altmann, D. M., R. J. Boyton and R. Beale (2021). "Immunity to SARS-CoV-2 variants of
505 concern." *Science* 371(6534): 1103-1104.
- 506 Asero FJR, Moya Ruano LA, Del Real PR, Gómez LC, Lorusso N. (2021). Associations
507 between SARS-CoV-2 RNA concentrations in wastewater and COVID-19 rates in days after
508 sampling in small urban areas of Seville: A time series study. *Sci Total Environ*. 2021 Sep
509 25;806:150573. doi: 10.1016/j.scitotenv.2021.150573.

510 Ballesté,E., Pascual-Benito, M. Martín-Díaz, J. , Blanch, A.R. , Lucena, F. , Muniesa, M.
511 Jofre, J. García-Aljaro, C. (2019). Dynamics of crAssphage as a human source tracking
512 marker in potentially faecally polluted environments,Water Research, 155 233-244
513 <https://doi.org/10.1016/j.watres.2019.02.042>.
514 Betancourt WQ, Schmitz BW, Innes GK, Prasek SM, Pogreba Brown KM, Stark ER, Foster
515 AR, Sprissler RS, Harris DT, Sherchan SP, Gerba CP, Pepper IL. (2021). COVID-19
516 containment on a college campus via wastewater-based epidemiology, targeted clinical
517 testing and an intervention. Sci Total Environ. 2021 Jul 20;779:146408. doi:
518 10.1016/j.scitotenv.2021.146408.
519 Betancourt, W. W., B. W. Schmitz, G. K. Innes, K. M. Pogreba Brown, S. M. Prasek, E. R.
520 Stark, A. R. Foster, R. S. Sprissler, D. T. Harris, S. P. Sherchan, C. P. Gerba and I. L.
521 Pepper (2020). "Wastewater-based Epidemiology for Averting COVID-19 Outbreaks on The
522 University of Arizona Campus." medRxiv: 2020.2011.2013.20231340.
523 Bivins A., Crank K., Greaves J., North D., Wu Z., Bibby K. (2020) Cross-assembly phage and
524 pepper mild mottle virus as viral water quality monitoring tools—potential, research gaps, and
525 way forward. Current Opinion in Environmental Science and Health Volume 16, Pages 54 –
526 61 August 2020
527 Bivins, A., D. North, A. Ahmad, W. Ahmed, E. Alm, F. Been, P. Bhattacharya, L. Bijlsma, A.
528 B. Boehm, J. Brown, G. Buttiglieri, V. Calabro, A. Carducci, S. Castiglioni, Z. Cetecioglu
529 Gurol, S. Chakraborty, F. Costa, S. Curcio, F. L. de Los Reyes, 3rd, J. Delgado Vela, K.
530 Farkas, X. Fernandez-Casi, C. Gerba, D. Gerrity, R. Girones, R. Gonzalez, E. Haramoto, A.
531 Harris, P. A. Holden, M. T. Islam, D. L. Jones, B. Kasprzyk-Hordern, M. Kitajima, N. Kotlarz,
532 M. Kumar, K. Kuroda, G. La Rosa, F. Malpei, M. Mautus, S. L. McLellan, G. Medema, J. S.
533 Meschke, J. Mueller, R. J. Newton, D. Nilsson, R. T. Noble, A. van Nuijs, J. Peccia, T. A.
534 Perkins, A. J. Pickering, J. Rose, G. Sanchez, A. Smith, L. Stadler, C. Stauber, K. Thomas,
535 T. van der Voorn, K. Wigginton, K. Zhu and K. Bibby (2020). "Wastewater-Based
536 Epidemiology: Global Collaborative to Maximize Contributions in the Fight Against COVID-
537 19." Environ Sci Technol 54(13): 7754-7757.

538 Bivins, A., Greaves, J., Fischer, R., Yinda, K.C. , Ahmed, W., Kitajima, M., Munster, V. J.,
539 Bibby. K. (2020). Persistence of SARS-CoV-2 in water and wastewater, *Environ. Sci.*
540 *Technol. Lett.* 7 (2020) 937–942.

541 Challen, R., E. Brooks-Pollock, J. M. Read, L. Dyson, K. Tsaneva-Atanasova and L. Danon
542 (2021). "Risk of mortality in patients infected with SARS-CoV-2 variant of concern 202012/1:
543 matched cohort study." *BMJ* 372: n579.

544 Crank, K., Xiang, L., North, D., Bonanno Ferraro, G., Iaconelli, M., Mancini, P., La Rosa, G.,
545 Bibby,K.,(2020). CrAssphage abundance and correlation with molecular viral markers in
546 Italian wastewater, *Water Research* 184 (2020) 116161

547 Davies, N. G., S. Abbott, R. C. Barnard, C. I. Jarvis, A. J. Kucharski, J. D. Munday, C. A. B.
548 Pearson, T. W. Russell, D. C. Tully, A. D. Washburne, T. Wenseleers, A. Gimma, W. Waites,
549 K. L. M. Wong, K. van Zandvoort, J. D. Silverman, K. Diaz-Ordaz, R. Keogh, R. M. Eggo, S.
550 Funk, M. Jit, K. E. Atkins and W. J. Edmunds (2021). "Estimated transmissibility and impact
551 of SARS-CoV-2 lineage B.1.1.7 in England." *Science*: eabg3055.

552 Davo, L., Seguí, R., Botija, P., Beltr, M.J., Albert, E., Torres, I., Lopez-Fernandez, P.A., Ortí,
553 R., Maestre, J.F. Sanchez, G.,Navarro, D., (2021). Early detection of SARS-CoV-2 infection
554 cases or outbreaks at nursing homes by targeted wastewater tracking. *Clinical Microbiology*
555 *and Infection* 27 (2021) 1061-1063

556 de Graaf, M., Langeveld,J., Pos, J., Balmont, C.C., Franz, E., Izquierdo-Lara, R.W., Fanoy, E.,
557 de Schepper,E.I.T., Koopmans, M.P.G. and Medema, G.J., (in prep.) Capturing the SARS-
558 CoV-2 infection pyramid within the municipality of Rotterdam.

559 Esri-Nederland (2021). "Website: COVID-19 - Historische gegevens RIVM (accessed March
560 2021)." <https://nlcovid-19-esri.nl-content.hub.arcgis.com/>.

561 Eurosurveillance-editorial-team (2021). "Updated rapid risk assessment from ECDC on the
562 risk related to the spread of new SARS-CoV-2 variants of concern in the EU/EEA – first
563 update." *Eurosurveillance* 26(3): 2101211.

564 Faria, N. R., T. A. Mellan, C. Whittaker, I. M. Claro, D. D. S. Candido, S. Mishra, M. A. E.
565 Crispim, F. C. Sales, I. Hawryluk, J. T. McCrone, R. J. G. Hulswit, L. A. M. Franco, M. S.
566 Ramundo, J. G. de Jesus, P. S. Andrade, T. M. Coletti, G. M. Ferreira, C. A. M. Silva, E. R.
567 Manuli, R. H. M. Pereira, P. S. Peixoto, M. U. Kraemer, N. Gaburo, C. D. C. Camilo, H.
568 Hoeltgebaum, W. M. Souza, E. C. Rocha, L. M. de Souza, M. C. de Pinho, L. J. T. Araujo, F.
569 S. V. Malta, A. B. de Lima, J. D. P. Silva, D. A. G. Zauli, A. C. S. Ferreira, R. P.
570 Schnekenberg, D. J. Laydon, P. G. T. Walker, H. M. Schlüter, A. L. P. Dos Santos, M. S.
571 Vidal, V. S. Del Caro, R. M. F. Filho, H. M. Dos Santos, R. S. Aguiar, J. L. P. Modena, B.
572 Nelson, J. A. Hay, M. Monod, X. Miscouridou, H. Coupland, R. Sonabend, M. Vollmer, A.
573 Gandy, M. A. Suchard, T. A. Bowden, S. L. K. Pond, C. H. Wu, O. Ratmann, N. M. Ferguson,
574 C. Dye, N. J. Loman, P. Lemey, A. Rambaut, N. A. Fraiji, M. Carvalho, O. G. Pybus, S.
575 Flaxman, S. Bhatt and E. C. Sabino (2021). "Genomics and epidemiology of a novel SARS-
576 CoV-2 lineage in Manaus, Brazil." medRxiv.
577 Feng, S., Roguet, A., McClary-Gutierrez, J.S., Newton, R.J., Kloczko, N., Meiman, J.G. and
578 McLellan, s., (2021). Evaluation of Sampling, Analysis, and Normalisation Methods for
579 SARS-CoV-2 Concentrations in Wastewater to Assess COVID-19 Burdens in Wisconsin
580 Communities. ACS EST Water 2021, 1, 1955–1965
581 Gao, J., Banks, A., Li, J., Jiang, G., Lai, F.Y., Mueller, J.F., Thai, P.K., 2017. Evaluation of in-
582 sewer transformation of selected illicit drugs and pharmaceutical biomarkers. Sci. Total
583 Environ. 609, 1172–1181.
584 Gasperi, J., Sebastian, C., Ruban, v., Delamain, M., Percot, S., Wiest, L., Mirande, C., Caupos,
585 E., Demare, D., Diallo, Kessoo Kessoo, M., Saad, M., Schwartz, J. J. Dubois, P. Fratta, C.
586 Wolff, H., Moilleron. R., Chebbo, G., Cren, C., Millet, M., Barraud, S., Gromaire, M. C. (2014).
587 Micropollutants in urban stormwater: occurrence, concentrations, and atmospheric
588 contributions for a wide range of contaminants in three French catchments Environ Sci Pollut
589 Res (2014) 21:5267–5281

590 Garcia-Beltran, W. F., E. C. Lam, K. S. Denis, A. D. Nitido, Z. H. Garcia, B. M. Hauser, J.
591 Feldman, M. N. Pavlovic, D. J. Gregory, M. C. Poznansky, A. Sigal, A. G. Schmidt, A. J.
592 lafrate, V. Naranbhai and A. B. Balazs (2021). "Circulating SARS-CoV-2 variants escape
593 neutralization by vaccine-induced humoral immunity." medRxiv.
594 Graber T.E., Mercier É., Bhatnagar K., Fuzzen M., D'Aoust P.M., Hoang H.D., Tian X.,
595 Towhid S.T., Plaza-Diaz J., Eid W., Alain T., Butler A., Goodridge L., Servos M., Delatolla R.
596 (2021). Near real-time determination of B.1.1.7 in proportion to total SARS-CoV-2 viral load
597 in wastewater using an allele-specific primer extension PCR strategy. *Water Res.* 2021 Oct
598 15;205:117681. doi: 10.1016/j.watres.2021.117681.
599 Heijnen, L., Elsinga, G.S., de Graaf, M., Molenkamp, R., Koopmans, R., Medema, G.J.
600 (2021) – Droplet Digital RT-PCR to detect SARS-CoV-2 variants of concern in wastewater –
601 MedRxiv (2021) – DOI: 10.1101/2021.03.25.21254324
602 Hillary, L.S., Farkas, K., Maher, K.H., Lucaci, A., Thorpe, J., Distaso, M.A., Gaze, W.H.,
603 Paterson, S., Burke, T., Connor, T.R., McDonald, J.E., Malham, S.K., Jones, D.L., (2020).
604 Monitoring SARS-CoV-2 in municipal wastewater to evaluate the success of lockdown
605 measures for controlling COVID-19 in the UK. *Water Research* 200 (2021) 117214
606 Ho, J., C. Stange, R. Suhrborg, C. Wurzbacher, J.E. Drewes, A. Tiehm (2021). SARS-CoV-2
607 wastewater surveillance in Germany: long-term PCR monitoring, suitability of primer/probe
608 combinations and biomarker stability. medrxiv 2021.09.16.21263575
609 Honap TP, Sankaranarayanan K, Schnorr SL, Ozga AT, Warinner C, et al. (2020)
610 Biogeographic study of human gut-associated crAssphage suggests impacts from
611 industrialization and recent expansion. *PLOS ONE* 15(1): e0226930.
612 <https://doi.org/10.1371/journal.pone.0226930>
613 [https://www.ecdc.europa.eu/en/covid-19/situation-updates/weekly-maps-coordinated-](https://www.ecdc.europa.eu/en/covid-19/situation-updates/weekly-maps-coordinated-restriction-free-movement)
614 [restriction-free-movement](https://www.ecdc.europa.eu/en/covid-19/situation-updates/weekly-maps-coordinated-restriction-free-movement)
615 <https://www.riool.net/huishoudelijk-afvalwater> (assessed 21-09-2021)
616 <https://www.rivm.nl/en/coronavirus-covid-19/weekly-figures>

617 Izquierdo-Lara, R., G. Elsinga, L. Heijnen, B. B. Oude Munnink, C. M. E. Schapendonk, D.
618 Nieuwenhuijse, M. Kon, L. Lu, F. M. Aarestrup, S. Lycett, G. Medema, M. P. G. Koopmans
619 and M. de Graaf (2020). "Monitoring SARS-CoV-2 circulation and diversity through
620 community wastewater sequencing." medRxiv: 2020.2009.2021.20198838.
621 Jahn, K., Dreifuss, D., Topolsky, I., Kull, A., Ganesanandamoorthy, P., Fernandez-Cassi, X.
622 Bänziger, C. Devaux, A.J., Stachler, E., Caduff, L., Cariti, F., Corzón, A. T., Fuhrmann, L.,
623 Chen, C., Jablonski, K.P., Nadeau, S., Feldkamp, M., Beisel, C., Aquino, C., Stadler, T., Ort,
624 C., Kohn, T., Julian, T.R., Beerenwinkel, N., (2021). Detection and surveillance of SARS-
625 CoV-2 genomic variants in wastewater. <https://doi.org/10.1101/2021.01.08.21249379>
626 Jones, D. L., M. Q. Baluja, D. W. Graham, A. Corbishley, J. E. McDonald, S. K. Malham, L.
627 S. Hillary, T. R. Connor, W. H. Gaze, I. B. Moura, M. H. Wilcox and K. Farkas (2020).
628 "Shedding of SARS-CoV-2 in feces and urine and its potential role in person-to-person
629 transmission and the environment-based spread of COVID-19." Science of The Total
630 Environment 749: 141364.
631 Kantor, R. S., K. L. Nelson, H. D. Greenwald and L. C. Kennedy (2021). "Challenges in
632 Measuring the Recovery of SARS-CoV-2 from Wastewater." Environ Sci Technol.
633 Kim, D., J.-Y. Lee, J.-S. Yang, J. W. Kim, V. N. Kim and H. Chang (2020). "The Architecture
634 of SARS-CoV-2 Transcriptome." Cell 181(4): 914-921.e910.
635 Kirby AE, Walters MS, Jennings WC, Fugitt R, LaCross N, Mattioli M, Marsh ZA, Roberts VA,
636 Mercante JW, Yoder J, Hill VR. (2021). Using Wastewater Surveillance Data to Support the
637 COVID-19 Response - United States, 2020-2021. MMWR Morb Mortal Wkly Rep. 2021 Sep
638 10;70(36):1242-1244. doi: 10.15585/mmwr.mm7036a2. PMID: 34499630; PMCID:
639 PMC8437053.
640 Launay, M.A., Dittmer, U., Steinmetz, H. (2016) Organic micropollutants discharged by
641 combined sewer overflows - Characterisation of pollutant sources and stormwater-related
642 processes. Water Research 104 (2016) 82-92

643 Li, X., Zhang, S., Shi,, J., Luby, S.P., Jiang, G., (2021). Uncertainties in estimating SARS-
644 CoV-2 prevalence by wastewater-based epidemiology. *Chemical Engineering Journal* 415
645 (2021) 129039

646 Liu, H., Q. Zhang, P. Wei, Z. Chen, K. Aviszus, J. Yang, W. Downing, S. Peterson, C. Jiang,
647 B. Liang, L. Reynoso, G. P. Downey, S. K. Frankel, J. Kappler, P. Marrack and G. Zhang
648 (2021). "The basis of a more contagious 501Y.V1 variant of SARS-COV-2." *bioRxiv*.

649 Lodder, W. and de Roda Husman A. M. (2020). "SARS-CoV-2 in wastewater: potential
650 health risk, but also data source." *Lancet Gastroenterol Hepatol* 5(6): 533-534.

651 Medema, G., F. Been, L. Heijnen and S. Petterson (2020a) "Implementation of
652 environmental surveillance for SARS-CoV-2 virus to support public health decisions:
653 Opportunities and challenges." *Curr Opin Environ Sci Health* 17: 49-71.

654 Medema, G., L. Heijnen, G. Elsinga, R. Italiaander and A. Brouwer (2020b). "Presence of
655 SARS-Coronavirus-2 RNA in Sewage and Correlation with Reported COVID-19 Prevalence
656 in the Early Stage of the Epidemic in The Netherlands." *Environmental Science &*
657 *Technology Letters* 7(7): 511-516.

658 Mulder, M. , van Voorthuizen, E., Langeveld, J. (2020). Verwijdering van organische
659 microverontreinigingen. STOWA rapport 2020-06. (*in Dutch: Removal of organic*
660 *micropollutants*)

661 NEN 6600 2019. Water – Sampling – Part 1: Wastewater

662 Ort,C. , Lawrence, M.G., Reungoat, J., Mueller, J.F. (2010). Sampling for PPCPs in
663 wastewater systems: comparison of different sampling modes and optimization strategies,
664 *Environ. Sci. Technol.* 44 (2010) 6289–6296.

665 Pekin, D., Y. Skhiri, J. C. Baret, D. Le Corre, L. Mazutis, C. B. Salem, F. Millot, A. El Harrak,
666 J. B. Hutchison, J. W. Larson, D. R. Link, P. Laurent-Puig, A. D. Griffiths and V. Taly (2011).
667 "Quantitative and sensitive detection of rare mutations using droplet-based microfluidics."
668 *Lab Chip* 11(13): 2156-2166.

669 Prado, T., T. M. Fumian, C. F. Mannarino, P. C. Resende, F. C. Motta, A. L. F. Eppinghaus,
670 V. H. Chagas do Vale, R. M. S. Braz, J. d. S. R. de Andrade, A. G. Maranhão and M. P.
671 Miagostovich (2021). "Wastewater-based epidemiology as a useful tool to track SARS-CoV-2
672 and support public health policies at municipal level in Brazil." *Water research* 191: 116810-
673 116810.

674 Raaben, M., A. W. C. Einerhand, L. J. A. Taminiau, M. van Houdt, J. Bouma, R. H.
675 Raatgeep, H. A. Büller, C. A. M. de Haan and J. W. A. Rossen (2007). "Cyclooxygenase
676 activity is important for efficient replication of mouse hepatitis virus at an early stage of
677 infection." *Virology journal* 4: 55-55.

678 Rios G, Lacoux C, Leclercq V, Diamant A, Lebrigand K, Lazuka A, Soyeux E, Lacroix S,
679 Fassy J, Couesnon A, Thiery R, Mari B, Pradier C, Waldmann R, Barbry P. (2021).
680 Monitoring SARS-CoV-2 variants alterations in Nice neighborhoods by wastewater nanopore
681 sequencing. *Lancet Reg Health Eur.* 2021 Aug 17:100202. doi:
682 10.1016/j.lanepe.2021.100202. Epub ahead of print. PMID: 34423327; PMCID:
683 PMC8372489.

684 Rose, C., Parker, A., Jefferson, B., & Cartmell, E. (2015). The Characterization of Feces and
685 Urine: A Review of the Literature to Inform Advanced Treatment Technology. *Critical reviews*
686 *in environmental science and technology*, 45(17), 1827–1879.
687 <https://doi.org/10.1080/10643389.2014.1000761>

688 Rothman JA, Loveless TB, Kaptcia J 3rd, Adams ED, Steele JA, Zimmer-Faust AG, Langlois
689 K, Wanless D, Griffith M, Mao L, Chokry J, Griffith JF, Whiteson KL. (2021). RNA viromics of
690 Southern California wastewater and detection of SARS-CoV-2 single nucleotide variants.
691 *Appl Environ Microbiol.* 2021 Sep 22:AEM0144821. doi: 10.1128/AEM.01448-21. Epub
692 ahead of print. PMID: 34550753.

693 Rynkiewicz, P., G. A. Babbitt, F. Cui, A. O. Hudson and M. L. Lynch (2021). "A comparative
694 survey of Betacoronavirus binding dynamics relevant to the functional evolution of the highly
695 transmissible SARS-CoV-2 variant N501Y." *bioRxiv*.

696 Schilperoort, R.P.S., Dirksen, J., Langeveld, J.G., Clemens, F.H.L.R. (2012). Assessing
697 characteristic time and space scales of in-sewer processes by analysis of one year of
698 continuous in-sewer monitoring data. *Water Science and Technology*, 66 (8), pp. 1614-1620.

699 Schang C., Crosbie N.D., Nolan M., Poon R., Wang M., Jex A., John N., Baker L., Scales P.,
700 Schmidt J., Thorley B.R., Hill K., Zamyadi A., Tseng C.-W., Henry R., Kolotelo P., Langeveld
701 J., Schilperoort R., Shi B., Einsiedel S., Thomas M., Black J., Wilson S., McCarthy D.T.
702 (2021). Passive Sampling of SARS-CoV-2 for Wastewater Surveillance. *Environmental*
703 *Science and Technology* 55 (15). 10432-10441

704 Shkoporov A. N. Clooney, A.G., Sutton, T.D.S., Ryan, F.J., Daly, K.M., Nolan, J.A.,
705 McDonnell, S.A., Khokhlova, E.V., Draper, L.A., Forde, A., Guerin, E., Velayudhan, V.,
706 Ross, R.P., Hill, C. (2019). The Human Gut Virome Is Highly Diverse, Stable, and Individual
707 Specific. *Cell Host & Microbe* 26, 527–541. <https://doi.org/10.1016/j.chom.2019.09.009>

708 Siranosian, B.A., Tamburini, F.B., Sherlock, G. et al. Acquisition, transmission and strain
709 diversity of human gut-colonizing crAss-like phages. *Nat Commun* 11, 280 (2020).
710 <https://doi.org/10.1038/s41467-019-14103-3>

711 Stachler, E., C. Kelty, M. Sivaganesan, X. Li, K. Bibby and O. C. Shanks (2017).
712 "Quantitative CrAssphage PCR Assays for Human Fecal Pollution Measurement." *Environ*
713 *Sci Technol* 51(16): 9146-9154.

714 Sweetapple C, Melville-Shreeve P, Chen AS, Grimsley JMS, Bunce JT, Gaze W, Fielding S,
715 Wade MJ. Building knowledge of university campus population dynamics to enhance near-to-
716 source sewage surveillance for SARS-CoV-2 detection. *Sci Total Environ*. 2021 Sep
717 20;806(Pt 1):150406. doi: 10.1016/j.scitotenv.2021.150406. Epub ahead of print. PMID:
718 34571237; PMCID: PMC8450208.

719 Taboada B, Morán P, Serrano-Vázquez A, Iša P, Rojas-Velázquez L, et al. (2021) The gut
720 virome of healthy children during the first year of life is diverse and dynamic. *PLOS ONE*
721 16(4): e0240958. <https://doi.org/10.1371/journal.pone.0240958>

722 Tandukar, S., Sherchan, S., P., &Haramoto, E. (2020) Applicability of crAssphage, pepper
723 mild mottle virus, and tobacco mosaic virus as indicators of reduction of enteric viruses
724 during wastewater treatment. www.nature.com/scientificreports. 10:3616 |
725 <https://doi.org/10.1038/s41598-020-60547-9>

726 Tegally, H., E. Wilkinson, M. Giovanetti, A. Iranzadeh, V. Fonseca, J. Giandhari, D. Doolabh,
727 S. Pillay, E. J. San, N. Msomi, K. Mlisana, A. von Gottberg, S. Walaza, M. Allam, A. Ismail, T.
728 Mohale, A. J. Glass, S. Engelbrecht, G. Van Zyl, W. Preiser, F. Petruccione, A. Sigal, D.
729 Hardie, G. Marais, M. Hsiao, S. Korsman, M. A. Davies, L. Tyers, I. Mudau, D. York, C.
730 Maslo, D. Goedhals, S. Abrahams, O. Laguda-Akingba, A. Alisoltani-Dehkordi, A. Godzik, C.
731 K. Wibmer, B. T. Sewell, J. Lourenço, L. C. J. Alcantara, S. L. Kosakovsky Pond, S. Weaver,
732 D. Martin, R. J. Lessells, J. N. Bhiman, C. Williamson and T. de Oliveira (2021). "Emergence
733 of a SARS-CoV-2 variant of concern with mutations in spike glycoprotein." *Nature*.
734 US-CDC (2020). "2019-Novel Coronavirus (2019-nCoV) Real-Time rRT-PCR Panel Primers
735 and Probes." <https://www.cdc.gov/coronavirus/2019-ncov/lab/rt-pcr-panel-primer-probes.html>
736 (accessed May 19, 2020).

737 Volz, E., S. Mishra, M. Chand, J. C. Barrett, R. Johnson, L. Geidelberg, W. R. Hinsley, D. J.
738 Laydon, G. Dabrera, Á. O'Toole, R. Amato, M. Ragonnet-Cronin, I. Harrison, B. Jackson, C.
739 V. Ariani, O. Boyd, N. J. Loman, J. T. McCrone, S. Gonçalves, D. Jorgensen, R. Myers, V.
740 Hill, D. K. Jackson, K. Gaythorpe, N. Groves, J. Sillitoe, D. P. Kwiatkowski, S. Flaxman, O.
741 Ratmann, S. Bhatt, S. Hopkins, A. Gandy, A. Rambaut and N. M. Ferguson (2021).
742 "Transmission of SARS-CoV-2 Lineage B.1.1.7 in England: Insights from linking
743 epidemiological and genetic data." medRxiv: 2020.2012.2030.20249034.

744 Vosse, M. (2013). Rioolvreemd water rioolwaterzuiveringsinrichting Dokhaven. Technical
745 report of RoyalHaskoningDHV (in Dutch).

746 Wang, D., B. Hu, C. Hu, F. Zhu, X. Liu, J. Zhang, B. Wang, H. Xiang, Z. Cheng, Y. Xiong, Y.
747 Zhao, Y. Li, X. Wang and Z. Peng (2020). "Clinical Characteristics of 138 Hospitalized
748 Patients With 2019 Novel Coronavirus–Infected Pneumonia in Wuhan, China." *JAMA*
749 323(11): 1061-1069.

750 Wang, P., L. Liu, S. Iketani, Y. Luo, Y. Guo, M. Wang, J. Yu, B. Zhang, P. D. Kwong, B. S.
751 Graham, J. R. Mascola, J. Y. Chang, M. T. Yin, M. Sobieszczyk, C. A. Kyratsous, L. Shapiro,
752 Z. Sheng, M. S. Nair, Y. Huang and D. D. Ho (2021). "Increased Resistance of SARS-CoV-2
753 Variants B.1.351 and B.1.1.7 to Antibody Neutralization." bioRxiv.
754 Weiß, G., Brombach, H., and Haller, B., (2002). Infiltration and inflow in combined sewer
755 systems: long-term analysis. *Water Science & Technology* 45 (7) 11-19
756 Wilder, M.L., Middleton, F., Larsen, D.A., Du Q., Fenty A., Zeng, T., Insaf, T., Kilaru, P.,
757 Collins M., Kmush, B., Green, H.C., (2020). Co-quantification of crAssphage increases
758 confidence in wastewater-based epidemiology for SARS-CoV-2 in low prevalence areas.
759 *Water Research X* 11 (2021) 100100
760 Wolfe MK, Topol A, Knudson A, Simpson A, White B, Vugia DJ, Yu AT, Li L, Balliet M,
761 Stoddard P, Han GS, Wigginton KR, Boehm AB. High-Frequency, High-Throughput
762 Quantification of SARS-CoV-2 RNA in Wastewater Settled Solids at Eight Publicly Owned
763 Treatment Works in Northern California Shows Strong Association with COVID-19 Incidence.
764 *mSystems*. 2021 Oct 26;6(5):e0082921. doi: 10.1128/mSystems.00829-21. Epub 2021 Sep
765 14. PMID: 34519528; PMCID: PMC8547422.
766 Wölfel, R., V. M. Corman, W. Guggemos, M. Seilmaier, S. Zange, M. A. Müller, D. Niemeyer,
767 T. C. Jones, P. Vollmar, C. Rothe, M. Hoelscher, T. Bleicker, S. Brünink, J. Schneider, R.
768 Ehmann, K. Zwirgmaier, C. Drosten and C. Wendtner (2020). "Virological assessment of
769 hospitalized patients with COVID-2019." *Nature* 581(7809): 465-469.
770 Wu, F., Xiao, A., Zhang, J., Moniz, K., Endo, N., Armas, F., Bushman, M., Chai, P.R.
771 Duvallet, C., Erickson, T.B., Foppe, K., Ghaeli, N., Gu, X., Hanage, W.P., Huang, K.H., Lin,
772 W., Lee, Matus, M., McElroy, K.E., Rhode, S.F., Wuertz, S., Thompson, J., Alm, E.J., (2021)
773 Wastewater Surveillance of 1 SARS-CoV-2 across 40 U.S. states. medRxiv preprint doi:
774 <https://doi.org/10.1101/2021.03.10.21253235>
775 Xiao, F., M. Tang, X. Zheng, Y. Liu, X. Li and H. Shan (2020). "Evidence for Gastrointestinal
776 Infection of SARS-CoV-2." *Gastroenterology* 158(6): 1831-1833

777 Yaniv K, Shagan M, Lewis YE, Kramarsky-Winter E, Weil M, Indenbaum V, Elul M, Erster O,
778 Brown AS, Mendelson E, Mannasse B, Shirazi R, Lakkakula S, Miron O, Rinott E, Baibich
779 RG, Bigler I, Malul M, Rishti R, Brenner A, Friedler E, Gilboa Y, Sabach S, Alfiya Y, Cheruti
780 U, Nadav Davidovich, Moran-Gilad J, Berchenko Y, Bar-Or I, Kushmaro A. (2021). City-level
781 SARS-CoV-2 sewage surveillance. *Chemosphere*. 2021 Nov;283:131194. doi:
782 10.1016/j.chemosphere.2021.131194.
783

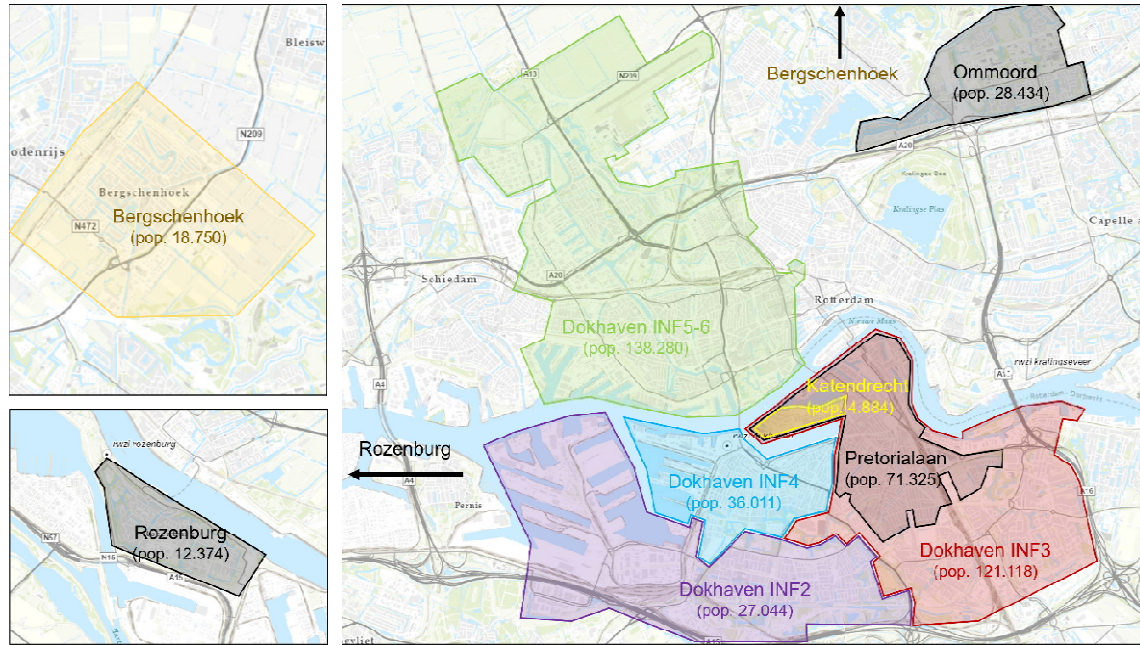


Figure 1. Catchment areas in the Rotterdam Rijnmond area used for wastewater surveillance with their population size.

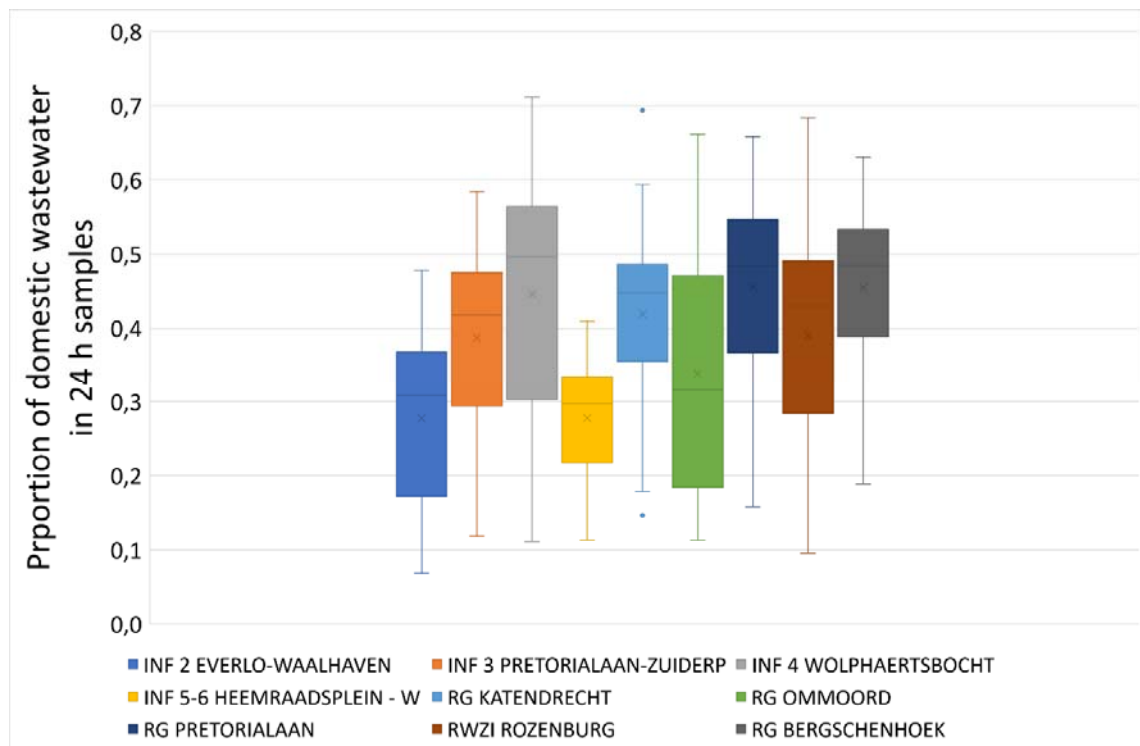


Figure 2. Boxplot with proportion of domestic wastewater in 24h samples. Proportion of domestic wastewater is calculated per sample by dividing the theoretical domestic wastewater production ($\#$ inhabitants from figure 1 * 120 lpppd) by the measured 24 flow.

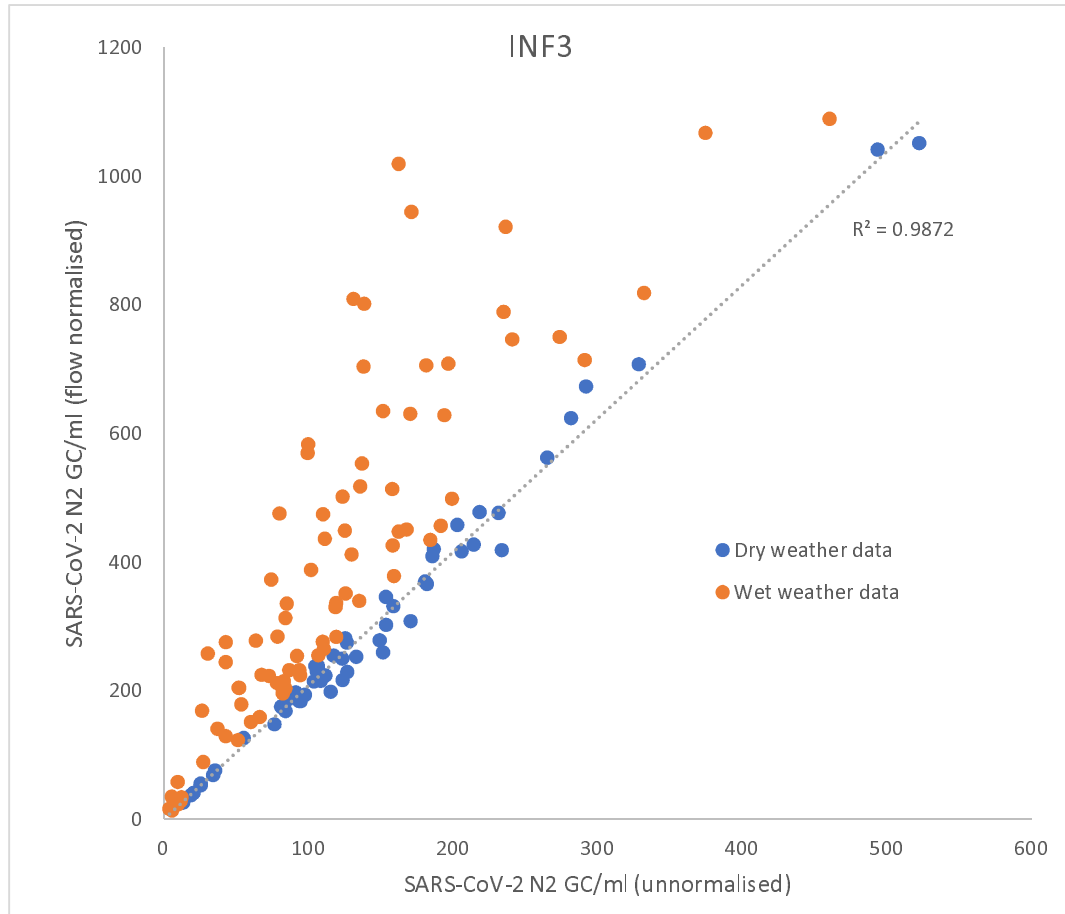


Figure 3. Flow normalised versus unnormalised SARS-CoV-2 concentrations at site INF3 during dry weather and wet weather. The trendline for the dry weather data (flow $< V_{dwf\ ref}$) shows a high correlation between normalized and unnormalised data, but this is lost in the wet weather data.

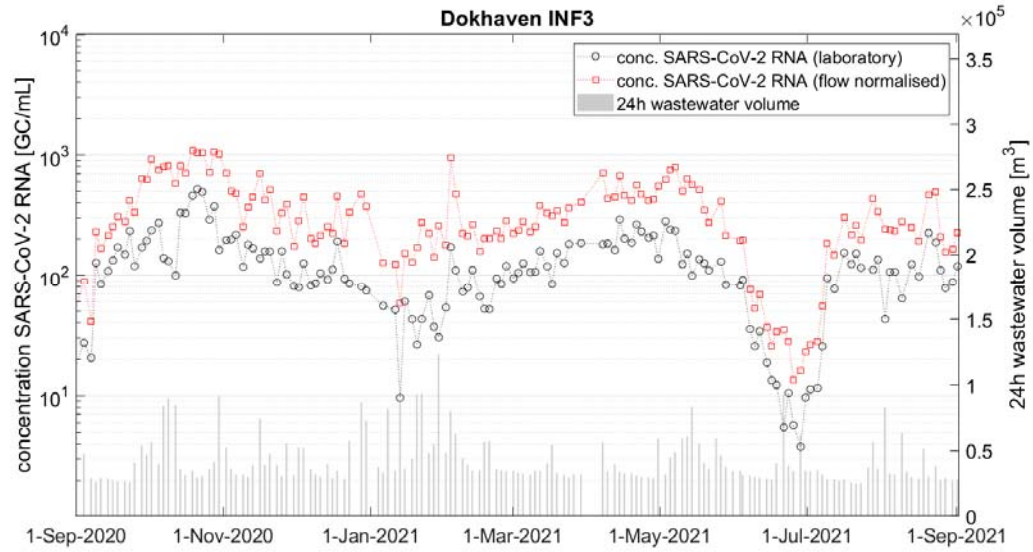


Figure 4. Flow normalised vs unnormalised for catchment INF3

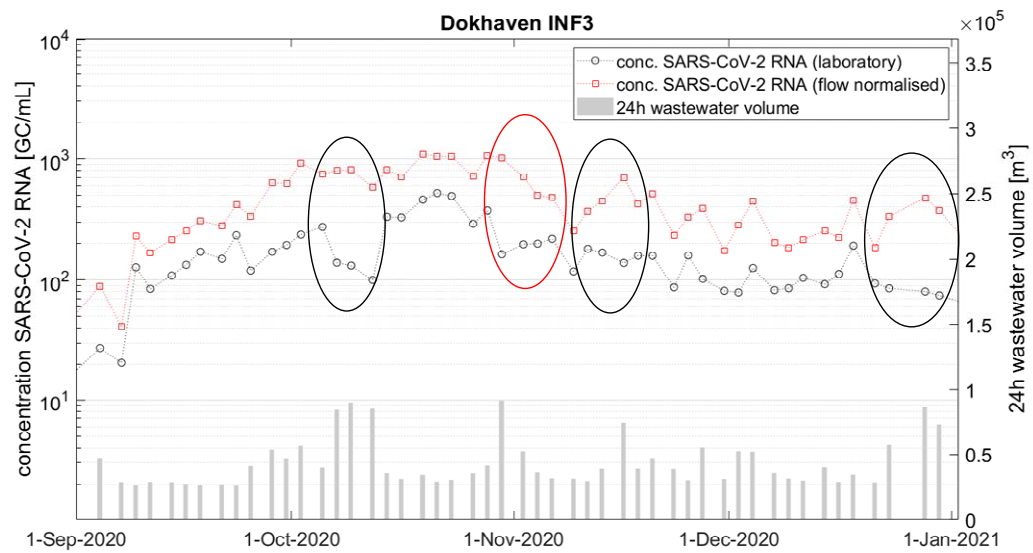


Figure 5. Short-term trends normalised vs unnormalised for catchment INF3. Weeks with a differing trend are indicated

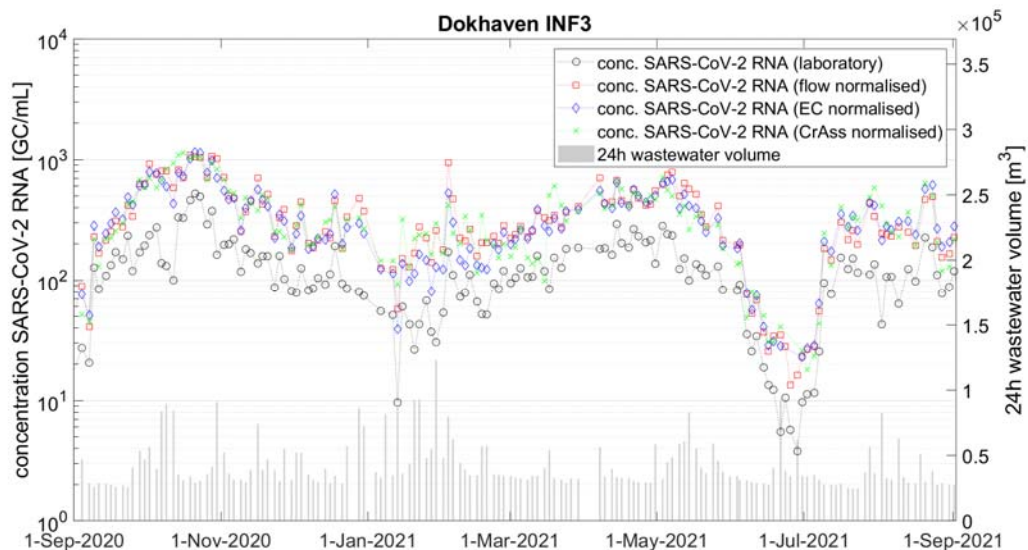


Figure 6. SARS-CoV-2 trends in INF3 catchment. On left axis lab results, flow normalised, CrAss normalised and EC normalised, on right axis the daily flow volume.

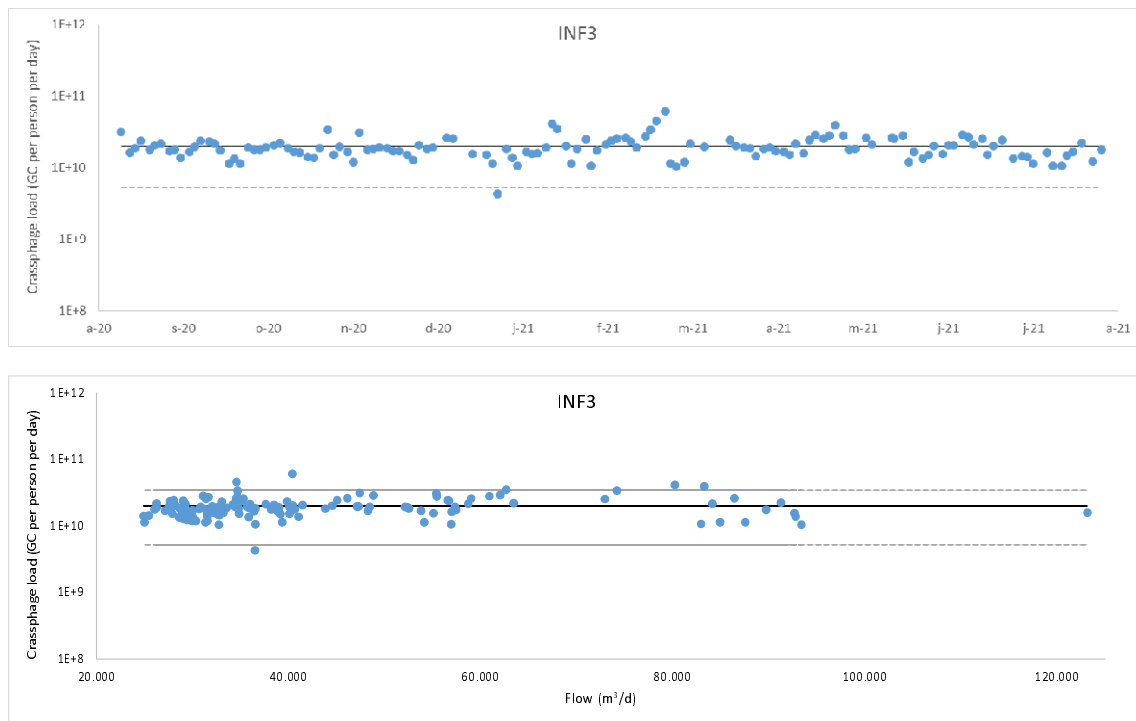


Figure 7. CrAssphage daily load per person in INF3 catchment related to time (top) and related to daily flow (bottom). The solid lines shows the average ($2.0 \cdot 10^{10}$ GC/ml) and the dotted lines are the 2s boundaries ($5.2 \cdot 10^9 - 3.4 \cdot 10^{10}$ GC/ml).

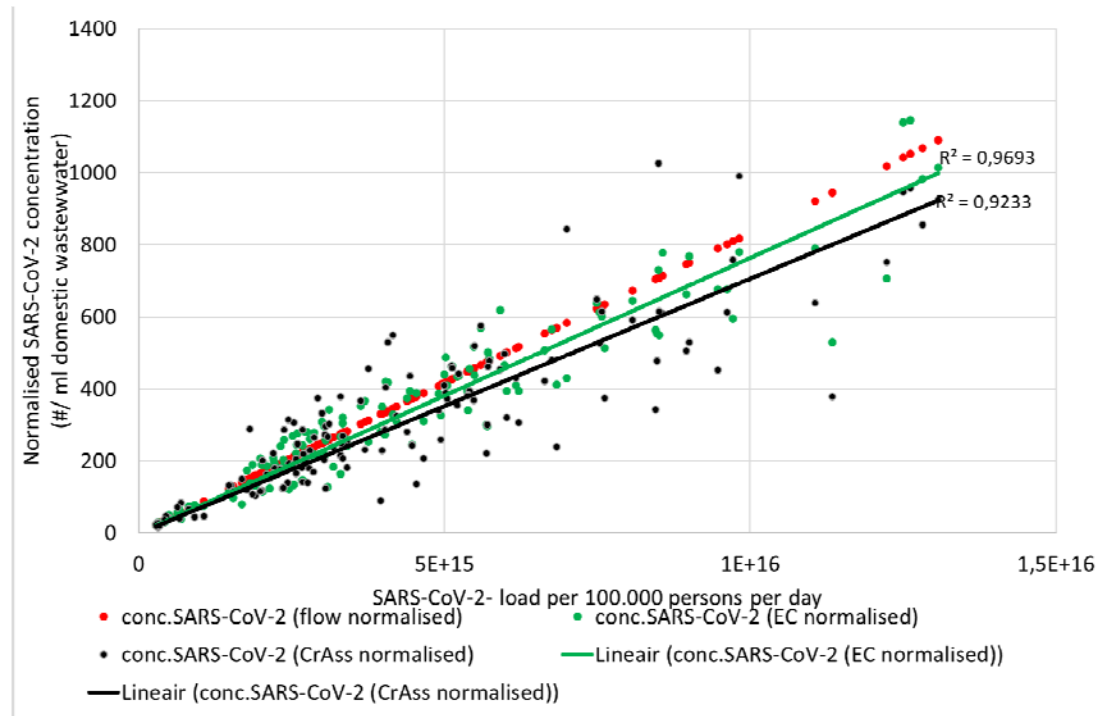


Figure 8. Correlation between daily SARS-CoV-2 load per 100.000 inhabitants and flow based, EC based and CrAss based normalisation for INF3 catchment

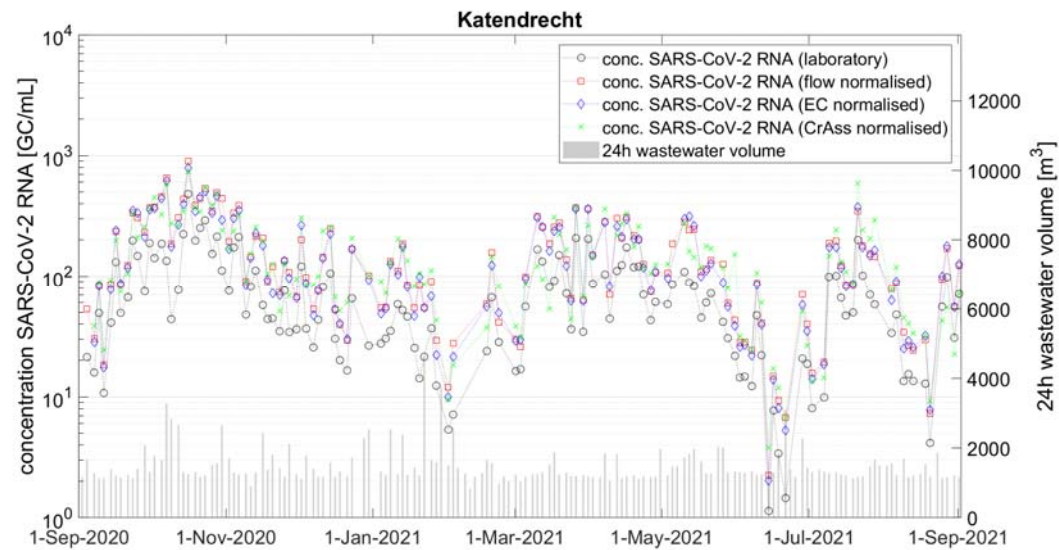


Figure 9. Normalisation of SARS-CoV-2 at the Katendrecht catchment

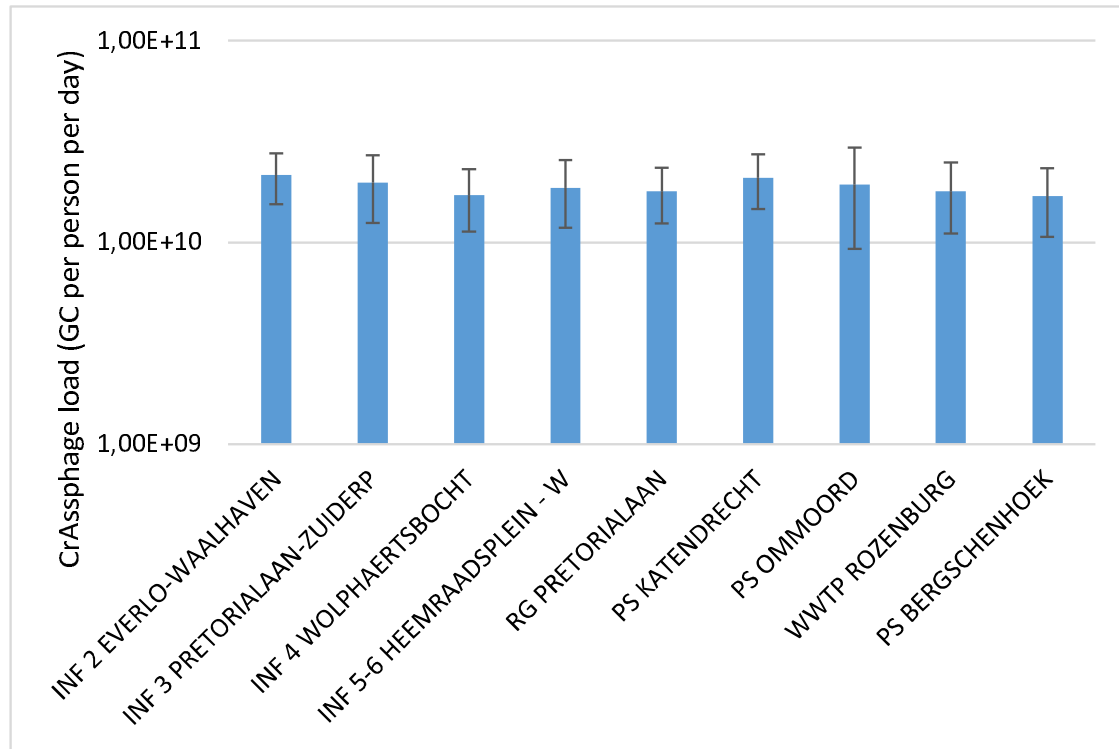


Figure 10. Average CrAssphage load per person per day in the different city areas. Error bars show the standard deviation.

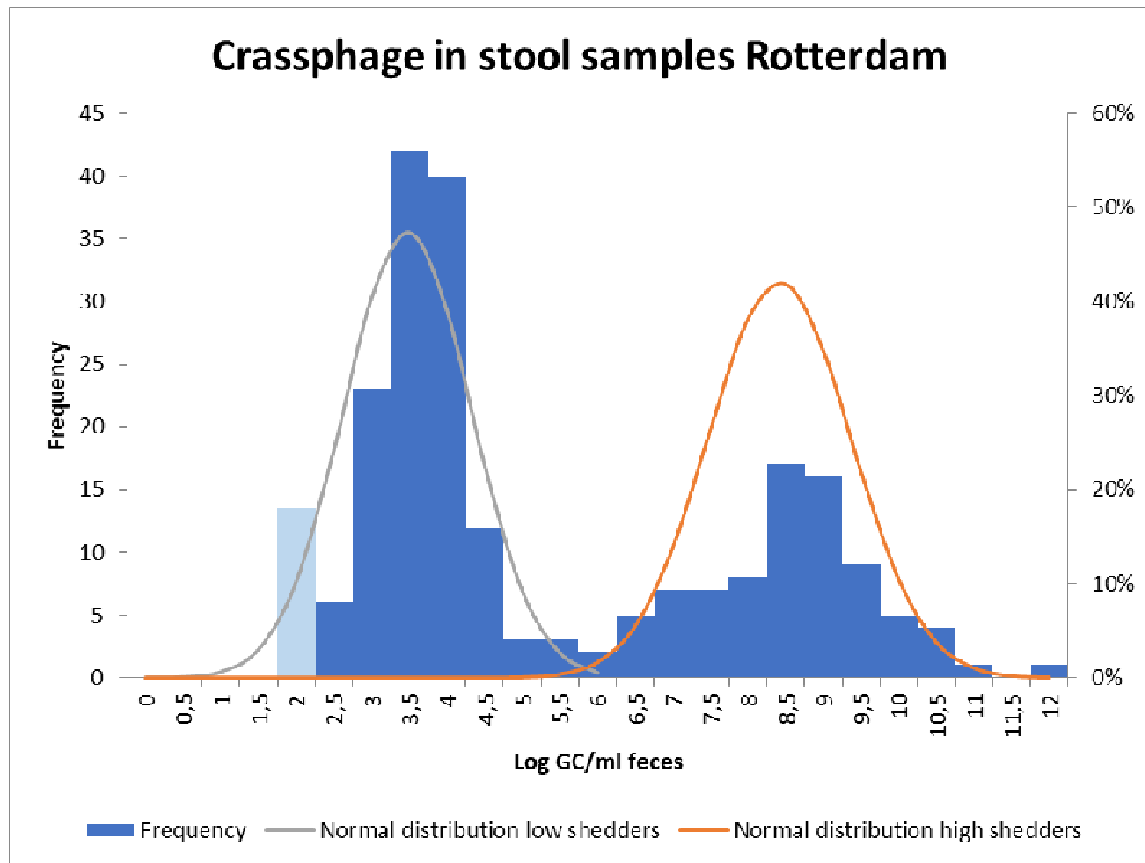


Figure 11. Distribution of CrAssphage GC/ml in human stool samples (n=221) from Rotterdam. Frequency of data below the detection limit (140 GC/ml) is shown in light blue. Normal distribution fitted through the log-transformed concentrations in stool samples of the low shedder ($<10^{6.5}$ GC/ml; mean: 3.474; standard deviation 0.843; in grey) and the high shedder ($\geq 10^{6.5}$ GC/ml; mean: 8.413; standard deviation 0.950; in orange).