

- 1 Long Title
- 2 Stressors, Manifestations and Course of COVID-19 Related Distress Among Nurses and Midwives in Tasmania
- 3
- 4 Short Title
- 5 The Course of COVID-19 Related Psychological Distress Among Nurses and Midwives in Tasmania
- 6
- 7 Authors
- 8 Kathryn M. Marsden (1) Julie M. Porter (1) K. Robertson (2)
- 9
- 10 Affiliations
- 11 1 Tasmanian Health Service South, Hobart, Tasmania, Australia
- 12 2 University of Tasmania, Tasmania, Australia

13 ABSTRACT

14 Introduction

15 The deleterious effects relating to the COVID-19 pandemic on the mental health of healthcare workers has now been
16 widely established. Understanding how COVID-19 affects their work and life is complex and multidimensional. This
17 longitudinal study describes the critical stressors and how they manifest within both the work and larger social
18 environment for nurses and midwives in Tasmania, Australia.

19 Methods

20 This longitudinal, descriptive survey explores the trajectory of the psychological health of Tasmanian public sector
21 nurses and midwives during the COVID-19 pandemic. The survey was distributed at 3 timepoints over a 12-month
22 period and consisted of a battery of psychological tests which included the Patient Health Questionnaire, General
23 Anxiety Disorder, Insomnia Severity Index, and the Impact of Events Scale-Revised, together with free text
24 comments.

25 Analysis

26 The associations between outcome and predictor variables were assessed using mixed effects linear regression and
27 linear mixed model analyses. Free text comments were themed.

28 Results

29 High levels of stress and mental exhaustion were attributed to threatened workplace team culture; compromised
30 quality of patient care; the impact on family, home, financial and economic domains; lack of clear communication;
31 issues surrounding personal protective equipment; and female gender. Study data show younger nurses and
32 midwives suffered higher levels of stress and mental exhaustion than older.

33 Conclusion

34 This study highlights the need for stable and functional relationships at home and at work for nurses and midwives.
35 Factors which will help preserve the mental health of nurses and midwives include strong workplace culture with
36 ongoing processes to monitor organisational burnout; building resilience, particularly among younger nurses and
37 midwives; protection of healthcare worker safety; clear communication processes and supporting stable and

38 functional relationships at home. The health service has an imperative to ensure optimum service delivery by
39 safeguarding staff, despite the inevitable health stress imposed by the nature of the work.

40 INTRODUCTION

41 The deleterious effects relating to the COVID-19 pandemic on the mental health of nurses has now been widely
42 established. An abundance of literature consistently reports the increased prevalence and severity of depression,
43 anxiety, stress, sleep disturbance among nurses in Australia (1-6) and globally (7, 8). Understanding how COVID-19
44 affects a nurse's work and life is complex and multidimensional. This longitudinal study describes the stressors and
45 how they manifest in the context of the larger social environment. This will assist the design of comprehensive
46 support and prevention strategies to reduce psychological distress for nurses and midwives in Australia.

47 International research data relating to COVID-19 and healthcare workers (7, 8) show one third of nurses have
48 experienced greater psychological distress, evidenced by level of nervousness, agitation, psychological fatigue and
49 depression in the past four weeks compared with the general population (9) and are at high risk for developing
50 stress response syndromes, post-traumatic stress disorder, chronic illness, and burnout (10).

51 Maqbali et. al. noted in their systematic review and meta-analysis of over 93,000 nurses, summary prevalence of
52 stress, anxiety, depression, and sleep disturbance among participants at 43%, 37%, 35%, and 43% respectively (7).
53 Publications describing high psychological distress among healthcare workers predominately originate from
54 countries with high COVID-19 prevalence, directly associating high risk of infection from patients to high risk of
55 psychological distress. Authors acknowledge a longitudinal study is needed to distinguish psychological symptoms
56 during and after the infectious disease outbreaks and the design of comprehensive support strategies to reduce
57 psychological distress (7, 11).

58 Lessons learned from previous epidemics help us understand reactions to COVID-19. Previous studies on Severe
59 Acute Respiratory Syndrome (SARS) and Ebola uncover the serious nature of psychological distress endured by
60 healthcare workers, revealing the long-standing nature of the distress with many nurses suffering PTSD, depression,
61 anxiety, and burnout persist even after the outbreaks (12, 13). Research experiences of health service staff during
62 the SARS outbreak in 2003 identified additional factors including quarantine, job stress, poor organisational support,
63 and stigmatisation which all impacted on nurses' psychological distress (14-16). We are learning that psychological
64 distress from COVID-19 and natural disasters (17) have long-standing effects in the general population (18) and will

55 not merely snap-back to a pre-COVID state of life. From experience with bushfires and trauma, it is often a few
56 months down the track when psychological issues come to the fore (17). As circumstances ease and communities
57 once again adopt freer living conditions, there may still be residual psychological distress experienced by many.
58 Acute psychological distress can progress to a chronic state and for healthcare workers this can precipitate
59 burnout(19). Unlike Coronaphobia (20), or Covid Stress Disorder, considered a type of adjustment disorder which
60 subsides once the pandemic subsides, the COVID-19 Stress Syndrome persists (11).

61
62
63
64
65
66
67
68
69
70
71 The Australian COVID-19 experience has been mild in comparison to the international scene, with relatively low case
72 numbers, mortality rates and hospitalisations. Still, Australian population data related to COVID-19 uncovers
73 significantly greater negative emotions among nurses compared to Australian norms (21, 22). Published data relating
74 to the mental health effects of COVID-19 among Australian nurses and healthcare workers (1-3) shows significant
75 symptoms ranging from mild to extremely severe levels of depression, anxiety, posttraumatic stress disorder and
76 sleep disturbance. Research has confirmed from SARS-Cov-1 and Ebola that nurses are vulnerable to psychosocial
77 harm from the COVID-19 pandemic, regardless of the volume of cases or deaths (23-25).

78
79
80
81
82
83
84
85
86
87
88
89
90
91
92
93
94
95
96
97
98
99
100
101
102
103
104
105
106
107
108
109
110
111
112
113
114
115
116
117
118
119
120
121
122
123
124
125
126
127
128
129
130
131
132
133
134
135
136
137
138
139
140
141
142
143
144
145
146
147
148
149
150
151
152
153
154
155
156
157
158
159
160
161
162
163
164
165
166
167
168
169
170
171
172
173
174
175
176
177
178
179
180
181
182
183
184
185
186
187
188
189
190
191
192
193
194
195
196
197
198
199
200
201
202
203
204
205
206
207
208
209
210
211
212
213
214
215
216
217
218
219
220
221
222
223
224
225
226
227
228
229
230
231
232
233
234
235
236
237
238
239
240
241
242
243
244
245
246
247
248
249
250
251
252
253
254
255
256
257
258
259
260
261
262
263
264
265
266
267
268
269
270
271
272
273
274
275
276
277
278
279
280
281
282
283
284
285
286
287
288
289
290
291
292
293
294
295
296
297
298
299
300
301
302
303
304
305
306
307
308
309
310
311
312
313
314
315
316
317
318
319
320
321
322
323
324
325
326
327
328
329
330
331
332
333
334
335
336
337
338
339
340
341
342
343
344
345
346
347
348
349
350
351
352
353
354
355
356
357
358
359
360
361
362
363
364
365
366
367
368
369
370
371
372
373
374
375
376
377
378
379
380
381
382
383
384
385
386
387
388
389
390
391
392
393
394
395
396
397
398
399
400
401
402
403
404
405
406
407
408
409
410
411
412
413
414
415
416
417
418
419
420
421
422
423
424
425
426
427
428
429
430
431
432
433
434
435
436
437
438
439
440
441
442
443
444
445
446
447
448
449
450
451
452
453
454
455
456
457
458
459
460
461
462
463
464
465
466
467
468
469
470
471
472
473
474
475
476
477
478
479
480
481
482
483
484
485
486
487
488
489
490
491
492
493
494
495
496
497
498
499
500
501
502
503
504
505
506
507
508
509
510
511
512
513
514
515
516
517
518
519
520
521
522
523
524
525
526
527
528
529
530
531
532
533
534
535
536
537
538
539
540
541
542
543
544
545
546
547
548
549
550
551
552
553
554
555
556
557
558
559
560
561
562
563
564
565
566
567
568
569
570
571
572
573
574
575
576
577
578
579
580
581
582
583
584
585
586
587
588
589
590
591
592
593
594
595
596
597
598
599
600
601
602
603
604
605
606
607
608
609
610
611
612
613
614
615
616
617
618
619
620
621
622
623
624
625
626
627
628
629
630
631
632
633
634
635
636
637
638
639
640
641
642
643
644
645
646
647
648
649
650
651
652
653
654
655
656
657
658
659
660
661
662
663
664
665
666
667
668
669
670
671
672
673
674
675
676
677
678
679
680
681
682
683
684
685
686
687
688
689
690
691
692
693
694
695
696
697
698
699
700
701
702
703
704
705
706
707
708
709
710
711
712
713
714
715
716
717
718
719
720
721
722
723
724
725
726
727
728
729
730
731
732
733
734
735
736
737
738
739
740
741
742
743
744
745
746
747
748
749
750
751
752
753
754
755
756
757
758
759
760
761
762
763
764
765
766
767
768
769
770
771
772
773
774
775
776
777
778
779
780
781
782
783
784
785
786
787
788
789
790
791
792
793
794
795
796
797
798
799
800
801
802
803
804
805
806
807
808
809
810
811
812
813
814
815
816
817
818
819
820
821
822
823
824
825
826
827
828
829
830
831
832
833
834
835
836
837
838
839
840
841
842
843
844
845
846
847
848
849
850
851
852
853
854
855
856
857
858
859
860
861
862
863
864
865
866
867
868
869
870
871
872
873
874
875
876
877
878
879
880
881
882
883
884
885
886
887
888
889
890
891
892
893
894
895
896
897
898
899
900
901
902
903
904
905
906
907
908
909
910
911
912
913
914
915
916
917
918
919
920
921
922
923
924
925
926
927
928
929
930
931
932
933
934
935
936
937
938
939
940
941
942
943
944
945
946
947
948
949
950
951
952
953
954
955
956
957
958
959
960
961
962
963
964
965
966
967
968
969
970
971
972
973
974
975
976
977
978
979
980
981
982
983
984
985
986
987
988
989
990
991
992
993
994
995
996
997
998
999
1000

32 arguably add to nurses' existing distress (31), compounding their risk of stress responses, post-traumatic stress
33 disorder, anxiety, depression, chronic illness, and burnout (27). Burnout has been associated with increased risk of
34 medical errors and poor clinical decision making and may manifest as psychological distress, negative emotions,
35 cause dependence on negative coping mechanisms, and has the potential to exacerbate existing mental unwellness
36 (29).

37 Understanding fears relating to the pandemic is anything but simple. Overarching factors which precipitate COVID-
38 19 related stress in the general population relate primarily to direct increases in COVID-19 (20). For health
39 professionals, the complexities associated with management of COVID-19 pandemic are multidimensional and each
40 nuance deserves recognition and discussion. COVID-19 impacts immediate and distant home and family, work and
41 employment networks such as conflicting loyalties about commitment to safety for self and risk of viral transmission
42 to family members and commitment to the profession and their employer (29). COVID-19 challenges contamination
43 fears, fears of adverse local and global economic consequences, xenophobia (18) and personal belief systems.

44 The psychological health of nurses can directly impact patient care. The psychological health of nurses during the
45 COVID-19 pandemic can impact their performance and reduce the quality of patient care. Not being able to provide
46 evidenced-based care, missed care or not being able to maintain standards of care, can further predispose nurses to
47 ethical stress and burnout, compounding the impact on patient care (32). Retaining and supporting the nursing work
48 force requires a focus on promoting and protecting their physical, mental and spiritual health (29).

49 Healthcare workers are also subject to challenges and changes to daily life. Lockdowns and social restrictions to
50 'flatten the curve' or reduce direct COVID-19 exposure and transmission have also been endured by nurses. Lifestyle
51 changes such as lack of social, leisure and recreation activities impact on physical, mental and spiritual health and
52 can precipitate psychological distress (29, 33, 34). The dynamic effect of isolation and varying stages or levels of fear
53 and vulnerability and its fluctuation over time can overlie or augment precipitating stress factors. Risk factors for
54 psychological distress within the general population include having an underlying illness or disease, living in rural
55 areas, female sex, being at risk of contact with COVID-19 patients and in addition, being a health care worker (8, 11).

56 Surprisingly while Australia has seen low community prevalence, hospital care workers are shown to have nearly 3
57 times the risk of infection (35). Tasmania led the way with hospital outbreaks. The rural North West region of
58 Tasmania was unique in that it experienced the first major hospital-based outbreak of COVID-19 in Australia. This

19 nosocomial outbreak occurred during March 2020 (36), at a very early stage of the pandemic which was labelled by
20 the media as the “Epicentre of infection” (37). Local newspaper headlines at the time questioned health workforce
21 integrity indicating that “Misconduct of people impacts on disease transmission”(36). While there was praise of
22 health care workers in the Northern and Southern regions of Tasmania, fear and stigmatisation was instilled amongst
23 the health care workforce in the North West. This left health care workers at the centre of the COVID-19 outbreak
24 feeling a sense of fear, helplessness and blame for their community (36).

25 Since then, several hospital-based outbreaks have occurred elsewhere in Australia, including the Royal Melbourne
26 Hospital, a major metropolitan hospital. This occurred despite considerable planning, preparation, and resourcing to
27 prevent the nosocomial transmission, escalating the threat and fear among nurses and throughout the entire
28 Tasmanian community. An independent review of this incident in North West Tasmania presented key findings and
29 directions in the areas of protection and prevention for the health workforce to help future-proof the health system
30 for future pandemics (26). Therefore, it is important to examine the Tasmanian nurses and midwives COVID-19 story.

31 METHODS

32 *Study design and participants*

33 This was an on-line, longitudinal, self-reporting, descriptive survey exploring the trajectory of the psychological
34 health of public sector nurses and midwives during the COVID-19 pandemic.

35 Following ethics approval, the study was emailed to all public sector nurses and midwives in Tasmania using the
36 Tasmanian Government staff email. Information sheets were attached to the survey as well as distributed to all
37 clinical areas. Posters were erected across health facilities advertising the study. Completion of the online surveys
38 implied consent. The survey was anonymous with respondents entering their own personal identifier on each
39 survey for longitudinal analyses. Survey completion took approximately 20 minutes.

40 Survey timepoints:

41 Survey 1: initial survey (April 2020)

42 Survey 2: 3 months (July 2020) and

43 Survey 3: 12 months (April 2021).

14 Each survey was closed out after 3 weeks. Of note is that survey 2 was not circulated to nurses in the North West
15 region due to the critical nature of the COVID-19 hospital outbreak at that time, when all communications were
16 limited to just essential communique.

17 *Data variables*

18 Data variables included a broad set of demographic and other relevant predictor variables, as below:

- 19 ○ Sociodemographic variables. The sociodemographic variables include age, sex, education level, social
20 situation, smoking status, employee classification
- 21 ○ Exposure to COVID-19, COVID-19 status, work exposure, community exposure
- 22 ○ Workplace support. Access to PPE, COVID-19 testing, access to information and communications,
23 preparation for deployment, workplace team support, workplace support (food, accommodation, and
24 transportation)
- 25 ○ Home and family general and financial stress.
- 26 ○ Self-perceived health status
- 27 ○ Free text comments

28
29 Likert scales were used to classify these predictors, and these scales were rank ordered in nature.

30 *Primary and Secondary Outcome Measures*

31 The primary outcome was self-reported levels of psychological distress (symptoms of anxiety, depression, general
32 stress/PTSD and insomnia) experienced during the 2 weeks prior to the survey.

33 *Mental Health Assessment Battery*

- 34 ○ Patient Health Questionnaire (PHQ-9)
- 35 ○ General Anxiety Disorder (GAD-7)
- 36 ○ Insomnia Severity Index (ISI)
- 37 ○ Impact of Events Scale-Revised (IES-R)

38 *Patient Health Questionnaire (PHQ-9)*

39 The PHQ-9 is a 9-item measure of depression based on the diagnose criteria of DSM IV. The PHQ-9 has a dual-
70 purpose to screen for the presence of a depressive disorder as well as to grade depressive symptom severity.

71 The PHQ-9 score ranges from 0 to 27, based on the 9 items scored from 0 = “not at all” to 3 = “nearly every day”. The
72 suggested cut-points are 5, 10, 15, and 20, which represent the thresholds for mild, moderate, moderately severe,
73 and severe depression, respectively (38). Depression severity: 0-4 none, 5-9 mild, 10-14 moderate, 15-19 moderately
74 severe, 20-27 severe. PHQ-9 shows adequate internal consistency at pre- and post-treatment, $\alpha = 0.74$ and 0.81 . The
75 internal consistency for the PHQ-9 based on the current sample was $\alpha = 0.77$.

76 General Anxiety Disorder (GAD-7)

77 The GAD-7 is a 7-item measure created as a screening tool for general anxiety disorder and has been used across
78 various settings and populations (39-41) and has a range from 0-21. Anxiety severity ranges: 0-4 none to minimal, 5-
79 7 mild (recommended to monitor symptoms), 8-9 mild though likely to be diagnosed with an anxiety disorder, 10-14
30 moderate symptoms are clinically significant, 15-21 severe symptoms warrant active treatment. A cut-off score of 10
31 has been identified as the optimal point for sensitivity (89%) and specificity (82%) (39). GAD-7 has demonstrated
32 strong psychometric properties in the general population and adequate internal consistency across subgroups
33 ($\alpha = 0.89$). The internal consistency of the GAD-7 based on the current sample was $\alpha = 0.89$.

34 Insomnia Severity Index (ISI)

35
36 The ISI (42) consists of 7 items to assesses the nature, severity, and impact of insomnia. Items include severity of
37 sleep onset, sleep maintenance, early morning awakening problems, sleep dissatisfaction, interference of sleep
38 difficulties with daytime functioning, noticeability of sleep problems by others, and distress caused by the sleep
39 difficulties. A 5-point rating scale is used to rate each item, with 0 = no problem and 4 = very severe problem,
30 yielding a total score ranging from 0 to 28. The total score is interpreted as follows: absence of insomnia (0–7), sub-
31 threshold insomnia (8–14), moderate insomnia (15–21), and severe insomnia (22–28) (43). The ISI has been
32 evaluated in a population-based sample and the internal consistency was excellent, $\alpha = 0.90$. It is suggested a cut-off
33 score of 10 (86.1% sensitivity and 87.7% specificity) for detecting insomnia in a general population (44). The internal
34 consistency for the ISI-7 in the present study was $\alpha = 0.90$.

35 Impact of Events Scale-Revised (IES-R)

36 PTSD often coexists and interacts with anxiety and depression, and contributes to delayed recovery, suboptimal
37 functional outcome, poor quality of life, sleep disorders and feelings of being detached. The IES-R provides a
38 dimensional assessment of PTSD. Participants specify the frequency with which they have had intrusion-, avoidance-,
39 and hyperarousal- related thoughts in the previous 7 days on a Likert scale. The scores for the intrusion component

00 of the scale range from 0-24, for the avoidance component, 0-32 and hyperarousal 0-24 with a total score between
01 0-88. The higher the score, the greater the level of distress indicated. For the identification of coping disorders,
02 scores above the cut-off point of 35 were classified as a high level of PTSD-related symptoms (45).

03 Weiss and Marmar (46) report the IES-R showed high internal consistency, with coefficient alphas ranging from 0.87-
04 0.92 for intrusion, 0.84-0.85 for avoidance and 0.79-0.90 for hyperarousal. Test-retest correlation coefficients ranged
05 from 0.57-0.94 for intrusion, 0.51-0.89 for avoidance and 0.59-0.92 for hyperarousal. The IES-R has been used in
06 numerous studies with a wide variety of adult populations and has proved valuable in documenting the course of
07 posttraumatic phenomena over time (47).

08 STATISTICAL ANALYSIS

09 *Quantitative components of analysis*

10 Being a descriptive study, *a priori* calculation of the sample size required for attaining statistical significance was not
11 undertaken.

12 The four primary outcome scales derived from the battery of psychological tests (PHQ9, GAD7, ISI, IESR 22) are rank
13 ordered with relatively broad ranges but are usually treated as continuous interval variables for purposes of
14 statistical analysis.

15 The associations between outcome and predictor variables were assessed with mixed effects linear regression and
16 mixed effects ordered logistic regression (linear mixed models), representing “parametric” and the equivalent “non-
17 parametric” analyses to account for the non-interval nature of the measurements. Where it was possible to identify
18 repeated survey completions by the same respondent, this was done, although such identification may have been
19 incomplete.

20 The mean outcome scores were estimated using mixed effects linear regression, to describe the mean values in the
21 different reported subgroups. Predictor variables were presented as z-scores or standardised normal transformation:
22 $(\text{score} - \text{mean}) / \text{standard deviation}$. This allows direct comparison of ORs of each predictor. The relative impact of different
23 predictors on the outcome scores was estimated as odds ratios using multivariate mixed effects ordered logistic
24 regression. An “odds ratio for trend” was estimated in each model representing a way of describing the relative
25 strength and direction of association between two rank-ordered, non-interval measures. All the listed predictors

26 were included in the model for each separate outcome score. The nurse group and sampling time were treated as
27 fixed effects whilst individual effects were assumed to be random.

28 Missing data for predictor variables were replaced by mean values (a z-score of zero). Missing data for outcome
29 variables was not substituted. Thus, all respondents who completed the outcome questions were included in the
30 regression models, whether or not they completed all the predictor variable questions. All quantitative analyses
31 were performed using Stata MP2 version 16.1 (StataCorp LLC, College Station, Tx USA).

32 *Qualitative components of analysis*

33 Thematic analysis was used to analyse participant narrative's looking for patterns, meanings, and potential points of
34 interest at the end of each survey. Thematic analysis was used to derive understanding directly from the participant
35 data. Narrative thematic analysis has been used in conjunction with study data to increase methodological rigour.
36 This person-centred approach compliments the inventory of standardised criteria and outcome severity.

37 A deductive thematic approach to analysis was used to ascertain themes from the participant narratives, looking for
38 patterns, meaning and potential points of interest in the data, while constantly referencing associated raw data.

39 RESULTS

40 This longitudinal study distributed surveys via email at 3 timepoints during the first 12 months of the COVID-19
41 pandemic in Australia. Survey 1 n=725, survey 2 n=634 and survey 3, n=456. The dataset was reduced from an
42 apparent 1815 cases to 1676 cases (S1 684; S2 553; S3 439) due to apparent duplicates (survey completions at the
43 same survey time-points by the same respondent, with the exclusion of the second duplicate)

44 *Demographics*

45 Approximately 90% of respondents across all surveys were female with an average of 66% of respondents older than
46 51 years, 20% older than 41 years and 14% between 18-40 years of age, which is representative and consistent with
47 2018 Tasmanian Health Workforce data, which shows an aging nursing workforce (Table 1).

48 Table 1: Demographics

Demographic variable	Classifications	Survey 1		Survey 2		Survey 3	
		N	%	N	%	N	%
Age group	18 - 30	46	6	41	7	29	7
	31 - 50	194	28	140	26	118	27
	51 +	444	66	371	97	290	66
Employee	Registered Nurse	572	84	473	86	362	82

classification	Midwife	40	6	26	5	26	6
	Enrolled Nurse	56	8	32	6	38	9
	Assistant in Nursing	8	1	8	1	5	1
	Not answered	8	1	14	1	8	1
Education Level	Undergraduate	9	1.6	6	1	4	1
	Bachelor	210	31	171	31	130	30
	Grad Certificate/ higher	355	51	283	51	219	50
	Diploma /Hospital training certificate	96	14	79	14	80	18
	Not answered	14	1	14	1	6	1
Region employed	Northern Tasmania	125	18	112	20	97	22
	North West Tasmania	42	6	14	2	63	14
	Southern Tasmania	500	74	403	73	262	61
	Statewide	8	1	9	1	11	1
	Not answered	9	1	15	1	6	1
Social situation	Living with family	373	82	434	78	352	80
	Living with friends	11	3	78	14	8	2
	Living alone	65	14	78	14	69	16
	Other	6	1	11	2	4	1
	Not answered	229	33	15	1	6	1

19

20 Approximately 84% of the study sample were Registered Nurses (incorporating RN-Midwife), 17% Enrolled Nurses
 21 and 6% Midwives. The educational level of participants across all surveys shows 15% of participants hold a TAFE
 22 Diploma /Hospital training certificate, 31% of participants hold a bachelor's degree and 50% a graduate certificate or
 23 higher. The state of Tasmania has 3 regions with 70% of study respondents living in the Southern region. Eighteen
 24 percent of respondents indicated they looked after COVID-19 positive patients at timepoint 1, dropping to 9% at
 25 timepoint 2 and 7% at timepoint 3. Living situations showed across all surveys, 80% of nurses live with family, 15%
 26 live alone, and 3% live with friends. The number of nurses who reported they were smokers remained consistent
 27 across all surveys, reporting a rate of 7%.

28 *Workplace predictors over time*

29 Nurses and midwives were asked about a range of workplace issues specific to the COVID-19 pandemic. Fifty-five
 30 percent of respondents consistently felt 'definitely confident' or 'moderately confident' to provide competent care
 31 in the event they were deployed with only 9 percent of nurses reporting they did not feel confident across all
 32 timepoints. Sixty-nine percent of respondents felt adequately supported by their workplace team (colleagues and
 33 line manager) 'all of the time' or 'most of the time' across all timepoints with 27% indicating 'some of the time' or
 34 'never'. Fifty-four percent of respondents felt they were definitely providing quality patient care, 27% moderately
 35 and 10% only slightly or not at all. When asked if they have adequate information, clear communication, and
 36 guidelines about COVID-19, 72% of respondents reported 'all of the time' or 'most of the time' and only 25%

57 indicating ‘some of the time’ or ‘never’. Respondents were asked if they were concerned about the access to
 58 personal protective equipment (PPE), 61% stated they were ‘very concerned’ or ‘moderately concerned’. Sixty-four
 59 percent of respondents indicated they had access to rapid COVID-19 testing ‘all the time’ or ‘most of the time’ across
 70 all timepoints. Concern around the access to PPE and rapid testing was slightly higher at timepoint.

71 *Psychological Outcomes*

72 Table 2 shows mean scores for all respondents for surveys 1, 2 and 3. Scores show moderate to severe levels of
 73 anxiety and depression together with low mean scores of general stress/PTSD and insomnia across all timepoints.
 74 Levels of general stress / PTSD are highest at timepoint 1 then trend downward.

75 Table 2: Psychological test mean (SD) scores, and numbers (%) in each classification range

	Survey 1				Survey 2				Survey 3						
	Mean	n	SD	%	N	Mean	n	SD	%	N	Mean	n	SD	%	N
GAD7 Anxiety (GAD7)	6.4		5.2		641	5.8		5.3		514	6.2		6.6		422
Nil/minimal: 0-4		260		41%			228		44%			182		43%	
Mild: 5-7		167		26%			148		29%			115		37%	
Mild: 8-9		64		10%			38		7%			37		9%	
Moderate: 10-14		94		15%			59		11%			38		9%	
Severe: 15-21		56		9%			41		8%			50		12%	
ISI Insomnia (ISI)	9.3		5.8		650	9.2		6.1		522	9.8		6.2		427
Nil/minimal: 0-4		260		41%			277		44%			168		40%	
Mild: 5-7		261		41%			190		37%			166		39%	
Mild: 8-9		115		18%			85		17%			74		18%	
Moderate: 10-14		14		2%			20		4%			19		5%	
Stress, PTSD (IES-R)	18.1		14.9		617	15.9		15.1		496	12.9		14.4		396
Insignificant: 0-23		423		66%			371		72%			322		76%	
Concerning: 24-32		97		15%			65		13%			38		9%	
Diagnostic: 33-36		20		3%			10		2%			6		1%	
Immune suppression: 37-88		76		12%			47		9%			30		7%	
Depression (PHQ9)	6.0		5.4		406	6.1		5.7		486	6.5		6.2		386
None: 0-4		201		31%			237		46%			189		45%	
Mild: 5-9		120		19%			143		29%			94		22%	
Moderate: 10-14		51		8%			57		11%			49		12%	
Moderately severe: 15-19		20		3%			28		5%			35		8%	
Severe: 20-27		14		2%			21		4%			19		5%	

76 IES-R: >37- stress is high enough to suppress your immune system’s functioning (even 10 years after an impact event)

77
 78 While mean scores of general stress/PTSD scores indicate no clinical case, standard deviations indicate outliers or
 79 respondents with extremely high scores which well above the mean, indicating levels of general stress/PTSD of
 30 clinical concern. These outlier respondents will be described through the analysis the association of predictors and
 31 psychological outcomes.

32 *Trends in association of demographic variables and psychological outcomes*

33 Table 3 shows significant negative relationships exist between level of education and insomnia throughout all study
34 timepoints: when levels of education decrease, the levels of insomnia increase (clinically subthreshold levels).

35 There were no significant relationships between employment classification, levels of education and outcomes of
36 anxiety, depression, or general stress/PTSD.

37 There was significant relationships between age and anxiety; there were higher levels of anxiety among younger
38 nurses across all timepoints (Table 3).

39 Table 3. Trend of association between psychological scale and highest education level in the three surveys

Scale	Age group	Survey	N	Mean	SD	OR for trend	95%CI	P-value			
GAD7	18-29	1	33	9.5	6.4	0.62	(0.46, 0.83)	0.0015			
			182	7.1	5.3						
			426	5.8	5.0						
	18-29	2	27	6.8	5.2				0.37	(0.21, 0.63)	0.0003
			127	7.1	6.1						
			360	5.3	4.8						
	18-29	3	20	8.4	6.3				0.56	(0.30, 1.03)	0.064
			115	8.3	5.9						
			287	5.2	5.2						
Scale	Education level	Survey	N	Mean	SD	OR for trend	95%CI	P-value			
Insom7	Diploma/Certificate	1	107	10.4	5.9	0.65	(0.52, 0.92)	0.0003			
			200	9.8	5.4						
			343	8.7	6.0						
	Diploma/Certificate	2	82	9.6	6.3				0.62	(0.48, 0.80)	0.0003
			165	10.2	6.8						
			275	8.4	5.6						
	Diploma/Certificate	3	83	10.5	6.6				0.70	(0.53, 0.92)	0.011
			126	10.1	5.9						
			218	9.3	6.2						

30 Unadjusted mean (and standard deviation) scale value for insomnia subgroup; Odds ratio for trend denotes trend of adjusted association
31 between psychological scale and education level (expressed as a z-score). Total score cut-off points: absence of insomnia (0–7), sub-threshold
32 insomnia (8–14), moderate insomnia (15–21), and severe insomnia (22–28)

33 *Workplace COVID exposure*

34 Study data examined associations between the psychological responses of nurses who worked on COVID-19
35 positive and negative wards. Data show only one significant relationship with anxiety - as the threat of COVID-
36 19 increased; levels of anxiety increased to clinically moderate levels in Survey 1 only. There were no significant
37 relationships with the other psychological outcome measures at any other timepoints.

38 *Relative impact of predictors on psychological outcomes*

39

J0 The relative impact of different predictors on the outcome scores (Tables 4 & 5) was estimated as odds ratios
 J1 for trend using multivariate non-parametric regression.

J2 Table 4. Relative impact of predictors on GAD7 and Insom7 scores in combined responses from all three surveys

Predictor	OR for trend	95%CI	P-value	Predictor	OR for trend	95%CI	P-value
GAD7				Insom7			
Current home/family stress	2.25	(1.88, 2.70)	<0.0001	Current home/family stress	1.75	(1.47, 2.09)	<0.0001
Poor clinical team support	1.77	(1.51, 2.09)	<0.0001	Poor clinical team support	1.51	(1.28, 1.77)	<0.0001
Female gender	1.31	(1.12, 1.53)	0.0007	Current financial stress	1.37	(1.13, 1.66)	0.0015
Future home/family stress	1.25	(1.05, 1.50)	0.014	Poor access to rapid tests	1.27	(1.09, 1.48)	0.0026
Future financial stress	1.25	(1.02, 1.52)	0.028	Concerned about PPE	1.24	(1.07, 1.44)	0.0046
Poor ability for quality care	1.23	(1.05, 1.43)	0.0009	Poor ability for quality care	1.23	(1.05, 1.44)	0.0095
Concerned about PPE	1.23	(1.05, 1.43)	0.0009	Future home/family stress	1.22	(1.02, 1.46)	0.029
Poor access to rapid tests	1.12	(0.96, 1.31)	0.15	Female gender	1.12	(0.96, 1.31)	0.16
Covid ward status	1.10	(0.95, 1.29)	0.19	Future financial stress	1.10	(0.90, 1.34)	0.33
Current financial stress	1.10	(0.95, 1.29)	0.35	Covid ward status	1.08	(0.94, 1.26)	0.28
Social situation	0.99	(0.84, 1.15)	0.86	Social situation	1.04	(0.89, 1.22)	0.59
Higher staff grade	0.99	(0.85, 1.16)	0.94	Intensity of exposure	0.97	(0.84, 1.13)	0.71
Public sector	0.96	(0.84, 1.09)	0.52	Smoking	0.96	(0.83, 1.11)	0.58
Intensity of exposure	0.93	(0.81, 1.08)	0.37	Higher staff grade	0.94	(0.81, 1.10)	0.43
Smoking	0.89	(0.77, 1.03)	0.11	Age	0.89	(0.75, 1.05)	0.17
Higher education level	0.87	(0.75, 1.02)	0.098	Adequacy of information	0.83	(0.71, 0.97)	0.021
Adequacy of information	0.86	(0.73, 1.00)	0.055	Public sector	0.81	(0.71, 0.92)	0.0009
Age	0.56	(0.48, 0.67)	<0.0001	Higher education level	0.67	(0.57, 0.79)	<0.0001

J3
 J4 Table 5. Relative impact of predictors on IESR and PHQ scores in combined responses from all three surveys

Predictor	OR for trend	95%CI	P-value	Predictor	OR for trend	95%CI	P-value
IESR22				PHQ9			
Current home/family stress	2.27	(1.91, 2.71)	<0.0001	Current home/family stress	1.78	(1.44, 2.20)	<0.0001
Concerned about PPE	1.52	(1.31, 1.76)	<0.0001	Poor clinical team support	1.59	(1.32, 1.92)	<0.0001
Poor clinical team support	1.47	(1.27, 1.70)	<0.0001	Future home/family stress	1.35	(1.09, 1.68)	0.0059
Female gender	1.37	(1.19, 1.59)	<0.0001	Female gender	1.30	(1.08, 1.57)	0.0064
Future home/family stress	1.32	(1.12, 1.52)	0.0013	Current financial stress	1.29	(1.02, 1.62)	0.033
Future financial stress	1.30	(1.08, 1.56)	0.0059	Social situation	1.27	(1.06, 1.52)	0.010
Current financial stress	1.25	(1.04, 1.49)	0.015	Concerned about PPE	1.26	(1.05, 1.51)	0.012
Poor ability for quality care	1.22	(1.06, 1.41)	0.0066	Poor ability for quality care	1.18	(0.98, 1.42)	0.075
Covid ward status	1.20	(1.04, 1.38)	0.013	Future financial stress	1.16	(0.91, 1.46)	0.22
Public sector	1.15	(1.02, 1.29)	0.026	Covid ward status	1.11	(0.93, 1.34)	0.24
Social situation	1.12	(0.97, 1.30)	0.11	Poor access to rapid tests	1.06	(0.88, 1.28)	0.52
Intensity of exposure	1.00	(0.87, 1.15)	0.97	Intensity of exposure	1.06	(0.89, 1.26)	0.51
Age	0.95	(0.82, 1.10)	0.50	Lower staff grade	0.97	(0.81, 1.16)	0.72
Poor access to rapid tests	0.92	(0.80, 1.07)	0.28	Higher education level	0.92	(0.76, 1.11)	0.39
Smoking	0.87	(0.76, 0.99)	0.039	Smoking	0.88	(0.77, 1.10)	0.34
Lower staff grade	0.86	(0.75, 0.99)	0.041	Public sector	0.88	(0.71, 1.09)	0.25
Higher education level	0.84	(0.72, 0.97)	0.016	Adequacy of information	0.75	(0.62, 0.92)	0.0045
Adequacy of information	0.76	(0.66, 0.89)	0.0004	Age	0.61	(0.50, 0.75)	<0.0001

J5

36 Tables 4 and 5 show the relative impact of predictors on psychological outcomes and show there are strong
37 relationships consistently across many psychological outcomes. Describing effects over time will help
38 contextualise the responses and enable some insight into how nurses and midwives adapt to the pandemic.

39 Workplace predictors and psychological outcomes

10 1. *Effect of 'CONCERN ABOUT ACCESS TO PPE' across all psychological domains*

11
12

13 Figure 1. Effect of concern about access to PPE across all psychological domains.

14

15 **PLACE FIGURE 1 HERE**

16

17

18 Box plots 1A, 1B, 1C and 1D show the strong and consistent statistical relationship between the effect of concern
19 about adequate access to PPE across all psychological domains, showing as concern about adequate access to PPE
20 increase, so do the levels of anxiety, depression, insomnia (all reach clinically severe levels) and general stress/PTSD
21 which reaches such severe levels which can compromise immune system function. Though the relationship with
22 anxiety does not show significance when the 3 surveys are taken together, the trends in Survey 2 at 3 months (odds
23 ratio for trend 1.43; 95%CI 1.12, 1.82; P=0.004) and Survey 3 at 12 months (OR for trend 1.20; 95%CI 0.93, 1.56;
24 P=0.17) compared to Survey 1 at the start of the pandemic (OR for trend 1.05; 95%CI 0.85, 1.31; P=0.64) are
25 consistent with the other psychological outcome measures, but insignificant initially reaching a maximum at 3
26 months and then diminishing. Mean scores of insomnia relating to PPE show an upwards trend up over time,
27 reaching highest levels at 12 months (OR for trend 1.43; 95%CI 1.08, 1.90; P=0.013).

28

29 2. *Effect of CONCERN FOR LACK OF CLINICAL TEAM SUPPORT across all psychological domains*

30

31 Figure 2. Effect of concern for lack of clinical team support across all psychological domains.

32 **PLACE FIGURE 2 HERE**

33

34

35 Box plots 2A, 2B, 2C and 2D show the strong and consistent statistical relationship between the effect of
36 concern of adequate support from the workplace team across all psychological domains, showing as concern for
37 adequate support from the workplace team increase, so do the levels of anxiety, depression, insomnia (all reach
38 clinically severe levels) and general stress/PTSD which reach such severe levels which can compromise immune
39 system function. Of note are the levels of anxiety and depression which increase over time: GAD7 (initial OR for

40 trend 1.69; 95%CI 1.35, 2.12; P<0.0001), (3month OR for trend 1.65; 95%CI 1.28, 2.13; P=0.0001), (12 month OR
 41 for trend 2.28; 95%CI 1.74, 2.98; P<0.0001); ISI-7 (initial OR for trend 1.26; 95%CI 1.00, 1.60; P=0.054), (3month
 42 OR for trend 1.70; 95%CI 1.30, 2.23; P=0.0001), (12 month OR for trend 2.28; 95%CI 1.74, 2.98; P<0.0001); IESR-
 43 22 (initial OR for trend 1.69; 95%CI 1.35, 2.12; P<0.0001), (3month OR for trend 1.65; 95%CI 1.28, 2.13;
 44 P=0.0001), (12 month OR for trend 1.86; 95%CI 1.39, 2.48; P<0.0001).

45
 46 *3. Effect of 'CONCERN FOR ADEQUATE INFORMATION' across anxiety, depression and general stress/PTSD*
 47 *psychological domains*

48
 49 Figure 3. Effect of concern for adequate information across all psychological domains.

50 **PLACE FIGURE 3 HERE**

51 Box plots 3A, and 3B, show the negative statistical relationship between adequacy of information and anxiety and
 52 depression domains, showing as concern about adequate information increases, so do the levels of anxiety and
 53 depression. This effect diminishes over time, more for GAD7 scores than for PHQ9 scores: GAD7 (initial OR for trend
 54 0.75; 95%CI 0.60, 0.93; P=0.0089), (3month OR for trend 0.88; 95%CI 0.68, 1.12; P=0.31), (12 month OR for trend
 55 0.92; 95%CI 0.70, 1.21; P=0.56); PHQ9 (initial OR for trend 0.60; 95%CI 0.44, 0.83; P=0.0019), (3month OR for trend
 56 0.75; 95%CI 0.56, 1.01; P=0.059), (12 month OR for trend 0.71; 95%CI 0.51, 1.00; P=0.051);

57 A strong focal relationship exists between concern for adequate information and general stress/PTSD at the 3-month
 58 survey (Table 6); as levels of concern increase, so do levels of general stress/PTSD, with mean scores reaching levels
 59 of clinical concern.

50
 51 Table 6. Trend of association between IESR scale and lack of adequate information in 3 surveys.

Scale	Adequacy of information	Survey	N	Mean ²	SD	OR for trend	95%CI	P-value
IESR22	All of the time	1	13	28.4	11.1	0.80	(0.64, 1.00)	0.051
	Most of the time		171	23.8	16.9			
	Some of the time		270	15.5	13.1			
	None of the time		156	14.6	13.5			
	All of the time	2	8	34.1	24.2	0.62	(0.48, 0.81)	0.0004
	Most of the time		101	22.0	17.5			
	Some of the time		238	15.6	13.9			
	None of the time		146	10.2	12.2			
	All of the time	3	11	28.5	25.2	0.87	(0.65, 1.16)	0.35
	Most of the time		83	16.5	16.5			
	Some of the time		183	13.0	13.5			
	None of the time		116	8.6	10.7			

52 IES-R severity: 24-33- PTSD is of clinical concern; 33-37- Probable PTSD diagnosis; >37- stress is high enough to suppress your immune system's
 53 functioning (even 10 years after an impact event); OR – Odds ratio for trend estimated by ordered logistic regression adjusted for covariates.

54
55 *4. Effect of ‘CONCERN FOR PROVIDING QUALITY CARE’ across anxiety, depression domains.*

56
57 A strong focal relationship is seen at 3 months in the area of concern for providing quality care and anxiety and
58 depression. As the concern for the provision of quality care increases so does the levels of anxiety and
59 depression, both reaching severe levels (Table 7).

70
71 Table 7. Trend of association between GAD and PHQ scale and poor-quality care delivery in the 3 surveys

Scale	Ability for quality care	Survey	N	Mean ²	SD	OR for trend	95%CI	P-value
GAD7	Definitely	1	340	11.0	7.3	1.14	(0.92, 1.15)	0.23
	Moderately		181	12.6	7.2			
	Slightly		54	12.7	7.2			
	Not at all		14	14.5	5.6			
	Definitely	2	257	14.2	5.5	1.38	(1.08, 1.77)	0.011
	Moderately		164	16.6	6.0			
	Slightly		48	19.5	8.0			
	Not at all		9	24.4	8.7			
	Definitely	3	221	14.3	6.2	1.24	(0.94, 1.62)	0.12
	Moderately		127	17.7	6.5			
	Slightly		38	18.1	6.1			
	Not at all		10	22.4	8.6			
PHQ9	Definitely	1	226	14.8	5.9	1.08	(0.80, 1.47)	0.59
	Moderately		120	16.6	5.8			
	Slightly		28	17.4	7.1			
	Not at all		10	17.0	5.4			
	Definitely	2	241	14.2	5.2	1.40	(1.03, 1.89)	0.028
	Moderately		157	16.8	6.6			
	Slightly		47	19.9	8.0			
	Not at all		7	22.9	6.7			
	Definitely	3	207	14.7	6.2	1.02	(0.73, 1.43)	0.88
	Moderately		112	18.6	7.5			
	Slightly		35	18.8	6.6			
	None of the time		7	22.9	6.9			

72 PHQ severity: 0-4 none, 5-9 mild, 10-14 moderate, 15-19 moderately severe, 20-27 severe. GAD severity: 0-4 none to minimal, 5-7 mild
73 (recommended to monitor symptoms), 8-9 mild though likely to be diagnosed with an anxiety disorder, 10-14 moderate symptoms are
74 clinically significant, 15-21 severe symptoms warranting active treatment; OR – Odds ratio for trend estimated by ordered logistic regression
75 adjusted for covariates.

76 There were no significant relationships identified for both predictors, ‘access to rapid COVID-19 testing’ and
77 ‘confidence to provide competent care in the event they were deployed’ across all psychological domains.

78 *Social predictors and psychological outcomes*

79 *5. Effect of ‘CURRENT (and FUTURE) HOME AND FAMILY STRESS’ across all psychological domains*

30 Nurses were asked to what degree does COVID-19 affect current (and future) home and family stress. Box plots 5A,
31 5B, 5C and 5D show the strong and consistent statistical relationship between the effect of current home and family
32 stress across all psychological domains, showing as current home and family stress increase, so do the levels of
33 anxiety, depression, insomnia (clinically severe levels) and general stress/PTSD which reach such severe levels which

34 can compromise immune system function. The effect for anxiety and depression continues increases over time with
35 highest levels of anxiety and depression occurring at timepoint 3.

36 There were no significant relationships across any psychological domains associated with future home and family
37 stress.

38 Figure 4. Effect of current home and family stress across all psychological domains.

39 **PLACE FIGURE 4 HERE**

30

31

32

33

34 6. *Effect of CURRENT (AND FUTURE) FINANCIAL STRESS' across all psychological domains.*

35

36

37 Figure 5. Effect of current (and future) financial stress' across anxiety, depression and general stress/PTSD
38 domains

39 **PLACE FIGURE 5 HERE**

30

31

32 Nurses were asked to what degree does COVID-19 affect current (and future) financial stress. Box plots 6A, 6B

33 and 6C show the strong and consistent statistical relationship between the effect of current financial stress

34 across anxiety, depression and general stress/PTSD psychological domains, showing as financial stress increase,

35 so do the levels of anxiety, depression, and general stress/PTSD which reach such severe levels which can

36 compromise immune system function. Results show (Table 8) increasing statistical relationships and high scores

37 for general stress/PTSD, particularly at 3 months and 12 months. Strong associations together with high mean

38 scores are apparent for depression (3 months and 12 months) anxiety (12 months) and insomnia at 12 months.

39 Trend patterns throughout all the graphs are similar, showing increasing median scores as the study progresses.

10 Future financial stress was associated with anxiety (OR for trend 1.64; 95%CI 1.21, 2.23; P=0.0015), and general

11 stress/PTSD (OR for trend 1.58; 95%CI 1.18, 2.11; P=0.0022) psychological domains at the initial survey, but no

12 associations were found with any of the psychological domains at 3 months or 12 months.

13 Table 8. Trend of association between psychological outcomes and scale and CURRENT FINANCIAL STRESS in the
14 three surveys

Scale	Current financial stress	Survey	N	Mean ²	SD	OR for trend	95%CI	P-value
GAD7	Not at all	1	362	10.6	6.8	0.97	(0.73, 1.29)	0.82
			142	11.9	7.3			
			100	13.6	7.8			
			37	14.3	8.4			
	Some	2	292	14.6	5.9	1.12	(0.82, 1.54)	0.47
			133	16.8	5.9			
			63	17.0	6.2			
			26	21.3	8.8			
	Moderately	3	265	14.2	5.7	1.59	(1.02, 2.39)	0.042
			79	17.5	6.4			
			58	18.9	7.6			
			20	21.7	7.2			
Insom7	Not at all	1	368	8.2	5.6	1.27	(0.95, 1.69)	0.11
			143	9.9	5.7			
			102	11.1	5.6			
			37	13.6	6.3			
	Some	2	296	7.9	5.8	1.18	(0.86, 1.62)	0.30
			137	10.0	5.7			
			63	11.2	6.2			
			26	14.2	6.8			
	Moderately	3	269	8.4	5.8	2.12	(1.39, 3.24)	0.0005
			80	11.2	5.8			
			58	12.2	6.2			
			20	16.0	6.2			
IESR22	Not at all	1	348	14.2	12.6	1.07	(82, 1.41)	0.61
			136	20.4	14.8			
			96	22.6	15.7			
			37	32.1	19.1			
	Some	2	284	12.5	12.9	1.38	(1.01, 1.88)	0.044
			129	17.1	14.6			
			58	19.5	14.8			
			25	34.4	23.8			
	Moderately	3	248	8.4	10.6	1.97	(0.31, 2.96)	0.0011
			73	16.4	13.9			
			56	21.4	15.5			
			19	31.6	23.6			
PHQ9	Not at all	1	238	14.5	5.4	1.34	(0.91, 1.98)	0.14
			83	15.8	5.4			
			63	17.7	6.8			
			22	21.0	8.8			
	Some	2	279	14.8	6.0	1.17	(0.82, 1.67)	0.38
			127	16.6	6.0			
			56	17.4	6.9			
			24	20.9	8.3			
	Moderately	3	241	14.6	5.9	1.67	(1.04, 2.66)	0.033
			71	17.8	6.7			
			55	19.4	8.4			
			19	21.4	8.4			

15 PHQ severity: 0-4 none, 5-9 mild, 10-14 moderate, 15-19 moderately severe, 20-27 severe. GAD severity: 0-4 none to minimal, 5-7 mild
16 (recommended to monitor symptoms), 8-9 mild though likely to be diagnosed with an anxiety disorder, 10-14 moderate symptoms are
17 clinically significant, 15-21 severe symptoms warranting active treatment. IES-R severity: 24-33- PTSD is of clinical concern; 33-37- Probable
18 PTSD diagnosis; >37- stress is high enough to suppress your immune system's functioning (even 10 years after an impact event). ISI severity:
19 absence of insomnia (0-7), sub-threshold insomnia (8-14), moderate insomnia (15-21), and severe insomnia (22-28)

20 *Thematic Analysis*

21 A thematic approach to analysing narratives was used to look for patterns, meaning and potential points of interest

22 in the data and ensures an honest interpretation is maintained throughout the by constant reference to the raw data

23 source(48). Nurses and midwives discussed their perceptions, experiences and memories of their COVID-19
24 experience at each time point. Narratives are subjective and may be influenced and altered with time. Narratives
25 contained both factual and emotional memories, some explicit often chronologically pieced together.

26 Narrations were broadly separated into 5 themes:

- 27 1. Communication, advice and planning,
- 28 2. Vulnerability and accessibility of care,
- 29 3. Lack of social support, isolation and disconnect,
- 30 4. Work-related pressures
- 31 5. Positivity and reassurance.

32 Theme 1. COMMUNICATION, ADVICE AND PLANNING

33 Narratives uncovered nurses' frustration around communication, advice, and planning. They included lack of clear
34 communication, inconsistent advice, information, and planning with staff forced to change work practices in an
35 attempt to reduce density of staff and patients in clinical areas. There was confusion around the use and meaning of
36 evolving COVID-19 terminology, the rapidly changing directions and inconsistent enforcement of infection control
37 procedures including access to supplies and training and use of PPE. There was frustration and confusion related to
38 changes to hospital infrastructure and associated models of care, staff leave entitlements such as pandemic leave
39 and the perceived lack of organisational support, all of which were changing almost daily.

40 *"Our daily lives are currently saturated with Covid19 from all sources, there is very little in the way of relief. We are expected to*
41 *know so much, but it's a rapidly moving feast. ID T1200"*

42 *"It was farcical – to keep 1.5 meters away from patients and staff in clinical practice was impossible. The process of patient*
43 *handover became disjoint and dangerous. Patients were isolated until negative screening swabs came back which meant*
44 *constantly moving patients around the ward and terminal cleaning bedspaces to accommodate this. " ID T264*

45 With the lack of clear communication with staff, many nurses turned to alternative sources of information such as
46 the general and social media. The initial months in Tasmania has been described by respondents as 'feeling
47 unprepared' and 'disjoint with a lack of organised health planning', causing nurses to feel 'confused, frightened, and

48 unsupported'. There was lack of advice around what was considered appropriate regarding work and the risk to
49 family, and the potential harm they posed as a viral vector. Professional and personal communications were blurred
50 leaving staff feeling unsupported and perpetuated the spread of inaccurate information.

51 *"It was hard to get or discuss any clear information each day. The [Nurse Unit Managers] NUMs stopped having ward meetings
52 and started writing newsletters once a month. The rest we read in the [local newspaper]. We knew things were changing
53 constantly but had no idea what we should be doing. We all just did whatever we thought was a reasonable thing." ID T1312*

54 There was much role change with new administrative or managerial positions created as part of the COVID-19
55 taskforce. Adopting new roles during an emergency, developing new lines of authority and accountability without
56 adequate training provided many unique challenges.

57 *"The greatest stress for me is feeling unsupported by management and their refusal to acknowledge their appalling lack of
58 communication. Being almost yelled at down the phone and told emails have been sent advised of change of my role at work. [I
59 am] upset that I am expected to put my clients on the back burner to support others." ID T1238*

50 *"I feel poorly supported by nursing management..... I feel they are simply over-promoted nurses who lack management skills.
51 They fail to advocate for us and for patients or deal with bullying and other unprofessional behaviours. This has contributed
52 enormously to my anxiety and led me to requiring medical assistance." ID T1243*

53 Many highlighted problems managing their existing workload, expressing feelings of failure and doubt about their
54 capability to take on more while others expressed guilt if unable to work. There were grief reactions in response to
55 the chaotic losses taking place. Nurses and midwives worried the current system did not have the surge capability or
56 capacity to successfully manage the COVID-19 pandemic.

57 *"The current stress of nurses, staff and colleagues within the acute care facilities at this time does not stem from the COVID
58 pandemic directly, but indirectly. The stress and workload demand that stems from the influx of highly acute patients and high
59 level of patient flow and bed block is now daily life or "normal". If there was an outbreak in Tasmania of COVID where would all
60 the current ICU patients and respiratory patients go, if all of a sudden it was needed to support/treat COVID patients?" ID T1412*

71 *"I worry (and still do sometimes) for the staff and their wellbeing, more because I feel it would have been terrible for those*
72 *involved. My initial reactions were relief because I was removed from the outbreak, and later guilt because of that relief, but also*
73 *because I wasn't able to lend a hand when people were working hours on end or make it better for those involved."* ID T1273

74 Theme 2. VULNERABILITY AND ACCESSIBILITY OF CARE

75 Nurses felt ill-prepared and vulnerable as frontline health care workers. Perceived vulnerabilities stemmed from
76 inadequate training, inadequate staff support protocols, insufficient PPE supplies, perceived lack of faith in the
77 organisations' infection control procedures, comorbid physical health conditions and older age. The organisation
78 attempted to meet a need for consistent PPE training by providing a PPE training video which became both a support
79 and a stressor. It was supportive as it was available on demand, however it also became a stressor for many
80 clinicians, where PPE use was unfamiliar territory.

31 *"... There was no PPE for training. We don't use PPE day-to-day so it was all new. We were told to watch a video."* ID T2374

32 *"My ward has no changing facilities or showering facilities and minimal staff facilities. All staff are expected to change in a toilet*
33 *cubicle (we have 1 toilet) and there's only a sink in the cubicle where they can clean themselves after the shift. I'm informed that*
34 *senior staff have discussed with the ward manager the lack of facilities and they were basically told it is what it is."* ID T3384

35 Just like the general population, nurse's personal lifestyles were impacted by the pandemic with gym closures and
36 limited social opportunities which impacted on their ability to cope with the ever-changing and threatening
37 environment. Negative coping mechanisms such as substance misuse increased alcohol and over-eating were
38 evident creating psychological distress and precipitated mental health disorders.

39 *"This pandemic has taken away my coping mechanisms. I am finding it difficult to create new ones when all the rules are so*
80 *strict."* ID T2610

31 *"In the last two weeks have had a depressive episode related to my mental health illness not related to the COVID pandemic but*
32 *the COVID pandemic has added another stressor to the mix."* ID: T251

33 *"A glass or two of wine have become a daily in my house just to take the edge off."* ID T2473

34 Nurses were conflicted with managing the welfare of their family unit with the welfare of their patients. Nurses with
35 physical comorbidities or were immunocompromised, deemed high-risk, and those with young children or elderly
36 family felt vulnerable, with many immediately withdrawing from work to reduce the risk of potential transmission.

37 *"I have immunosuppressed people in my immediate family and my partner works with an extremely vulnerable demographic so
38 this has created stress by not being able to see my family as well as feeling a heightened sense of responsibility and pressure to
39 ensure I do not get COVID to pass onto my partner who could then pass it on to their mega vulnerable patients. I am also
40 petrified of the media and how they would villainise me and/or my partner if I would become positive as they have done to my
41 NW colleagues." ID: T2188*

42 Many older nurses either came to work, feeling scared, vulnerable, having to take on extremely busy workloads or
43 withdrew from the workforce, precipitating many retire. This caused a sudden loss of experienced nurses from the
44 workforce.

45 *".... [I am] concerned about the level of risk we are put under every day at work. What if I catch a superbug, get abused, night
46 shifts and body clock/diet dysfunction, other influenza-like illnesses while we only seem to concentrate on COVID19. It been a
47 hard few months." ID T482*

48 *"I think that this approach of 'oh we'll send out a brochure or tell people about the EAP [Employee Assistance Program] or what
49 have you is totally missing the point. Healthcare workers need practical assistance with the difficulties caused by this crisis -
50 childcare, support to take breaks and leave on time, release of pressure to work extra shifts, or hazard pay to provide adequate
51 compensation for the added risk and stress. And literally just a genuine acknowledgement from leadership that this is hard, that
52 it is having flow on effects to our families, and that they're grateful. And tacking that sentence onto the end of an email is NOT
53 satisfactory." ID T381*

54 Maintenance of their own personal health proved difficult. Nurses also endured the difficulties accessing medical
55 and health care treatment, moving to telehealth for their own healthcare. There were many comments of fear and
56 stress as nurses waited for COVID-19 test results; fearful of media portrayal as a COVID-19 positive health care
57 worker. Nurses were aware their workplace decisions could potentially result in front-page news headlines if there
58 was nosocomial spread. The information or directives which they based these clinical decisions upon did not exist.

19 To society, nurses were both heroes and villains. Nurses endured societal stigma, regarded as COVID-19 vectors and
20 felt vulnerable travelling to and from work in uniform enduring public verbal attacks.

21 *"I am annoyed that today I am regarded as a hero yet I am just doing the same job I did yesterday"* ID T171

22 *"I am afraid to use public transport and walk for exercise alone for fear of attacks."* ID T323

23 *"...a lot of my mental health issues are less related to covid and more to do with personal circumstances, raising young children,
24 social isolation, lack of external support, self-esteem issues."* ID T2153

25 *"I feel there is a current hunt from the media in trying to establish blame."* ID T1424

26 The vulnerability of patients caused much stress and anxiety for nurses. Nurses were sensitive to the disruption of
27 patient treatments and services and the difficulty many patients had accessing routine health care. Change in
28 practice, coping with staff shortages and with less face-to-face time with patients caused a lot of general and ethical
29 stress for nurses; nurses felt patient care was compromised.

30 *"My father is having weekly radiotherapy and chemotherapy which has been missed because different staff give him different
31 instructions as to what he needs to do and no one seems to know or care. One nurse told him he needed a COVID test before
32 coming in for treatment which he had to book, wait for the test, (often the next day) then find a way to get back to the testing
33 clinic, then wait a day for the results. He can't walk far and has no energy and is now scared he has lost valuable months of life"*
34 *ID T3203*

35 As time progressed together with low COVID-19 case numbers seen in Tasmania, nurses were finding the impact of
36 COVID-19 less compared with impact of other personal stresses. Tensions between partners increased as their daily
37 routines changed, personal space decreased and financial pressures increased. Relationships were described as
38 'unhappy,' 'yelling,' 'frightened and scared,' 'bullied,' 'unpredictable,' 'drinking a lot'.

39 *'...we already have relationship problems and now with significantly less personal space I feel scared and stressed.'* ID T1327

40 *"I have previously struggled with anxiety & depression, COVID adds another layer. Other stressors in my life like study are also
41 contributing to my general wellbeing. How I feel each day is different, things were definitely worse and more stressful earlier.
42 Now systems are in place and there is planning/ resources it is much better."* T3:240

13 *"it is difficult to separate feelings and life impacts of COVID and other personal circumstances when they all happened at the*
14 *same time.was a tumultuous time in my personal life including divorce, homelessness and job stress. The COVID situation*
15 *itself actually had very little impact on me in the larger scheme of things."* ID: T312

16 Theme 3. LACK OF SOCIAL SUPPORTS, ISOLATION AND DISCONNECT

17 With the work environment rapidly changing, so was the nurses' social environment. Like the rest of the community,
18 nurses faced personal lifestyle struggles. These included home schooling, caring for children with disabilities,
19 managing stepchildren with dual custody, providing ongoing support to elderly relatives, the impact of family
20 unemployment and the change to online tertiary education. Nurses were always cognisant of the potential of viral
21 transmission from the workplace to the home. Nurses were self-isolating from family to prevent transmission from
22 work. Nurses commented at length about the isolation from family locally, interstate and around the world, from
23 saying goodbye to dying relatives and attending funerals.

24 *"4 kids at home- several weeks of home schooling (before school holidays).... Chaotic house.... Both of us essential workers (also*
25 *picking up additional hours to support the COVID demands) but some fear regarding keeping kids at school when advice is to*
26 *keep home if you can.... No family in south, they are in NW where COVID outbreak occurred!elderly neighbours in*
27 *quarantine from cruise ship so shopping for them as well. Lot of products unavailable and quantity restrictions in supermarkets is*
28 *stressful for large family, in addition to queuing, packing own bags etc. Studying COVID every night and weekends, ever changing*
29 *information and advice. Trying to disseminate information and make changes at work accordingly. Poor internet reliability,*
30 *not enough technology for all members of family to be schooling on-line at once, data insufficient for additional use at home.*
31 *Updating Will. Not enough hours in the day to get everything done resulting in less sleep."* ID: T256

32 *"I care for my aged mother who lives on her own with dementia. The support groups are no longer able to provide the same*
33 *amount of care for her which has added more pressure on family members..."* ID: T2299

34 *"My parents living in London and I don't know if I will see them again."* ID: T3450

35 *"I decided to self-isolate and live at our holiday home to protect my family."* T2:52

36 Theme 4. FINANCIAL AND ECONOMIC IMPACT

57 While the COVID-19 pandemic caused much financial hardship and economic downturn throughout the nation with
58 effects felt worldwide, most study respondents felt relatively unaffected as essential workers, grateful to have
59 employment. Many indicated they saved money due to free childcare entitlements, less discretionary spending, and
60 a halt in face-to-face allied healthcare spending. Still, nurses endured the effects of widespread unemployment of
61 family members or family business and superannuation investment losses. Loss of the second incomes resulted in
62 mortgages put on hold.

73 *"We (my husband and I) have been fortunate enough to work in a low-risk area in a position that keeps requiring us to be at*
74 *work. This is fortunate because our children may need our assistance in maintaining a roof over their heads."* T3:82

75 *"Have jobs!! Very lucky to work in essential services. Even picking up additional hours to help out with COVID response.*
76 *Superannuation impacted. Kids fees for after school activities cancelled despite paying term fees. Cheaper petrol a huge bonus!*
77 *Parking for work less stressful with less traffic and demands for parking. Youngest child in childcare one day/week- now free for a*
78 *term or so if I get her back in Term 2, this is definitely a bonus. Some businesses offering discounts to essential workers- enables*
79 *you to utilise them more readily and bypass supermarket occasionally."* T2:374

30 Nurses facing immediate retirement indicated the loss associated with superannuation investments would impact
31 their retirement plans by extending their working life.

32 *"My superannuation has taken a hit and I will have to work longer."* T2:62

33 Changes to pandemic related leave entitlements occurred initially causing confusion with the lack of clarity around
34 leave while waiting for test results. Annual leave and long service leave entitlements were used to supplement sick
35 leave.

36 *"Having to take sick days and get tested every time I get a cold, once negative there is pressure to return to work with staff*
37 *shortages despite potentially being infectious still as virus' are more than a 2-day thing. Sick leave has run out, have a very*
38 *vulnerable cohort of patients too."* ID: T194

39 Theme 5. WORK-RELATED PRESSURES

30 The chronic shortage of nurses was compounded as numbers dropped further. Health services immediately changed
31 their model in an attempt to re-direct resources to the emergency pandemic cause.

32 *“the instability of each day has been the hardest thing to work through, change and information fatigue is the thing I am feeling
33 most. My ability to keep my 'day to day' work on track has been impacted greatly.” T2: 79*

34 However, absenteeism of health care staff placed additional demands on the remaining workers, leading to
35 increased workload, unsafe staffing levels and in turn increased sick leave. Staff leave was cancelled. Nurses
36 indicated the work stress was causing sleep issues, with many concerned about the plight of colleagues intrastate
37 and interstate.

38 *“The thing that has impacted me most at work is that others are not coping - huge impact on absenteeism across the
39 workforce.”T3: 289*

30 *“It was really hard as some nurses were coming to work but lots weren't. This meant we worked down. Yesterday on the late
31 shift, we normally run with 11 nurses, we had only 5 and 3 of them were doing doubles. I had 6 patients needing full hoists that
32 day. Families get angry with us for not giving their loved one enough care. This happens day after day and we're getting so
33 tired.” T1:451*

34 Increasing capacity meant changes to hospital infrastructure seeing the relocation and redesign of acute wards and
35 services. Increasing human resources is always a priority in nursing and April 2020 saw the commencement of
36 nursing graduates to the workforce, adding to the stress of existing staff and the transition of graduates very
37 challenging.

38 *“Approx 130 Graduate nurses have started, how are these already stressed young nurses at the start of their career meant to feel
39 supported , when the current staff feel the ongoing stressors and struggle to come to work?” T3:561*

10 *“I'm mature aged and a late starter in nursing. One of the most stressful careers I have ever had and not sustainable.” T2:29*

11 *“I'm much more disengaged with the workplace than ever before now. I seek fulfillment in other areas so nursing is now just
12 money” T2:413*

13 Many nurses were forced to change and expand their role and responsibilities. As intensive care departments were
14 put under pressure, staff from other areas were told they may be redeployed to assist in these areas. These ‘surge’
15 nurses described training as rushed, stressful and inadequate, seeing staff from acute and subacute areas
16 completing short online education with no associated clinical training. This left experienced intensive care nurses
17 feeling devalued, fearing standards of patient care would not be maintained and raised the issue of building capacity
18 for critical care nurses in the future.

19 *“This training devalues all the experienced critical care nurses....I only have 3 years of experience and still feel junior...it takes*
20 *years and years of experience to work here” “T3:455*

21 Overall nurses felt there was a lack of acknowledgement and understanding of the impact of COVID-19 on their role
22 change by workplace management. Nurses described a department culture of yelling, belittling, passive aggression
23 resulting in low job satisfaction. Nurses described tense relationships with management with little recognition of
24 staff.

25 *“...we are always pushed to do more and more; management does not acknowledge how tired and stressed staff are.” ID: T2314*

26 *“The times I feel anxious are the hours before I go to work and when team leaders are not carrying out instructions as they*
27 *should be. I try not to let them get to me, but anxious staff are making me feel more anxious, particularly when they are*
28 *supposed to be more experienced than me! It’s hard putting on a brave face all the time as it is exhausting.” ID: T3266*

29 *“I think I would have liked regular debriefing and problem-solving sessions on a ward level (more difficult due to social distancing*
30 *etc. We eventually set up Facebook group, but then had to set up another one as our temporary manager at the time did not like*
31 *us venting our frustrations). There was an online stress reduction program but finding time to do that after work was not realistic*
32 *and found it did not address specific concerns I had. Mostly about how do I manage my home life and be a nurse at the same*
33 *time and keep everyone safe....” ID: T3269*

34 Theme 6. POSITIVITY AND RECOVERY

35 Nurses wrote at length about the positives of the COVID-19 pandemic. They described positive benefits, particularly
36 in home and family relationships, more time to focus on reading and gardening and valuing their job security. Nurses

37 never lost sight of the difficulties their colleagues were enduring locally and internationally and considered
38 themselves very grateful to have a lifestyle of relative freedom and economic and health security.

39 *"I reduced my work hours and undertook value reflection as a result of COVID. My quality of live and feelings of happiness have
40 improved as a result." ID: T3321*

41 *"We are more financially secure now and more connected as a family than ever. Home-schooling works for us, our mortgage is
42 on hold for 6 months and my partner is currently being supported with a Jobseeker payment. Applying for Jobseeker was stressful
43 and before commencing home school we were anxious about how to do it, but now these things are in place we are not
44 stressed)."ID: T3466*

45 By 12-month timepoint, nurses were working towards the COVID-19 vaccine roll out which provided a focus of
46 positivity and end to the pandemic.

47 *"I feel like I'm getting through the worst of it now! I'm normally anxious & going through perimenopause, so i don't
48 think COVID can be blamed for everything! Also, it feels like the THS [Tasmanian Health Service] is a little more
49 informed & ready now, so that's comforting." ID: T3271*

50 DISCUSSION

51 While the COVID-19 pandemic was foreseen by the Commission on Global Health Risk (49) in 2015, governments did
52 not invest in pandemic preparedness and as predicted, the delay cost the world many lives and livelihoods. As the
53 largest cohort of health professionals, nurses and midwives around the world were thrust into the public eye as they
54 waged the war against COVID-19. Health service management have a responsibility for the welfare of its staff and
55 optimum service delivery.

56 This study was accessible by all public sector nurses and midwives in Tasmania, with 66% of study respondents
57 greater than 51 years, which is an older representative sample compared with the average age of nurses in Australia
58 of 44.3 years (50). Response rates changed over time with notable drop-off at the 3- and 12-month timepoints. The
59 survey was promoted at different times across the three Tasmanian regions due to the changes occurring in
60 response to the pandemic according to regional needs. This variation in the timing of survey distribution may have
61 had impact on response rates, together with survey fatigue; witnessing a plethora of staff surveys circulated at this

52 time. With fewer COVID-19 cases in Tasmania (Tasmania registering only 7 new cases of COVID-19 in the 12 months
53 up to May 2021 (51) nurses may have seen the survey as a lesser priority than in the initial months.

54 The immediate area of concern for nurses and midwives as the pandemic unfolded was disease transmission
55 prevention and mitigating spread. The focus quickly became personal protection; the correct, efficient, and effective
56 use of PPE. Nurses and midwives articulated PPE as a source of stress: access to PPE and the correct use of PPE,
57 which is consistent across the literature (21). Nurses and midwives concern about adequate access to PPE was
58 reflected across all psychological domains, showing as concern about adequate access to PPE increased, so did levels
59 of anxiety, depression, and insomnia. Stress associated with potential COVID-19 exposure was high and was coupled
60 with emotional exhaustion (high levels of stress, anxiety, depression aligning with rates of insomnia). The sudden
61 reliance on PPE by nurses who do not regularly use PPE, the abolition of fit testing (except in high-risk areas) and the
62 introduction of the staff PPE 'buddy' system to support precautionary measures all signalled change, and sources of
63 anxiety. The organisation's strategy to provide a PPE training video for consistent education and training became
64 both a stressor and support. It was supportive being available on demand, however a stressor for those where PPE
65 use was unfamiliar. The introduction of PPE buddies exposed knowledge and practice deficits among staff who
66 regularly use PPE, leaving staff feeling scrutinised. Working in wards, corridors or medication/treatment rooms and
67 sharing staff tea rooms and communal areas where reducing staff density was not feasible, represented double
68 standards for nurses and heightened their risk of exposure and transmission. The use of PPE for other healthcare
69 associated infections were reduced so PPE could be conserved for COVID-19 patients. These eroded the confidence
70 in infection control systems and the perceived organisational support.

71 Working in PPE is hot, physically restrictive, makes communication difficult and is both physically and mentally
72 exhausting. While actual numbers of COVID-19 cases were low in Tasmania, there remained a constant stream of
73 suspected COVID-19 admissions throughout Tasmanian hospitals as the state supported repatriation of international
74 and interstate residents, essential workers including seasonal workers and border re-openings. Nurses and midwives
75 working in COVID-19 designated areas were affected by the constancy of the increased workload, and constant
76 threat of COVID-19. Free text comments uncovered this group of nurses and midwives who felt isolated and
77 unrecognised, suffering mental stress and exhaustion while the majority felt all was 'back to normal.' The overall
78 psychological effects of stress and mental exhaustion related to PPE were seen to slightly diminish by the 12-month
79 timepoint, yet there remained a minority of nurses still working in the high-risk zones throughout Tasmanian

30 hospitals, suffering mental stress and exhaustion, which study numbers do not readily reflect yet are evidenced in
31 free text responses.

32 Levels of stress, anxiety, depression, and insomnia relating to the current family and home situation were high with
33 levels continuing to climb throughout all surveys. Respondents free text spoke about the impact of the pandemic on
34 their personal and family lives. This study shows nurses and midwives shared similar fears to the general population.
35 They feared the unknown, feared for their family and significant others which became heightened with border
36 closures, preventing many accesses to their friends and families interstate and internationally for long periods. Many
37 were impacted by family bereavement, unable to attend funerals or celebrate family events. This effect was evident
38 at all time points as the strain of lack of contact continued to be felt, triggering a process of grieving and a sense of
39 loss of missed time and opportunities. Many nurses felt at risk, stating 'they did not sign up for this' describing
40 unacceptable levels of risk for healthcare professionals during the pandemic. Nurses and midwives described their
41 discord towards Government power, nature of consent and human rights when it came to proposed mandatory
42 vaccination for healthcare workers all the while protective of the capacity of the healthcare system and society.
43 Financial stress soared to high levels among respondents, peaking at 3 months though remaining at extremely high
44 levels throughout the 12 months. Results show many nurses and midwives and their families suffered financial
45 hardship and were very grateful to have assured employment while others felt financially stronger though
46 economically vulnerable.

47 Lack of clear communications and advice greatly contributed to the stress felt by responders as they attempted to
48 make sense of their rapidly changing world. 'Fear spreads even more quickly than infections,' (49) particularly true up
49 to the 3-month timepoint. Nurses and midwives indicated extremely high levels of stress and anxiety in relation to
50 the inadequacy of information and the misinformation generated from both the general and social media. During
51 this time and equipped with very little pandemic preparedness, the organisation was forced to undertake
52 considerable role change which included the formation of the COVID-19 emergency-response management
53 structure. This strategy unsurprisingly resulted in confusion, unclear lines of responsibility, accountability and
54 authority for hospital executives and senior clinicians. Initially information flow seemed blocked; strategic plans
55 made at senior management level were not translated to staff on the frontline. Nurses and midwives were chastised
56 for not following directions by senior management however were not aware of the strategic plan. By 12- month

17 timepoint ward relocations had been completed, systems of communication were now structured and becoming
18 embedded, and health care workers were understanding and adapting to the overall coordination of the pandemic.
19 Measured levels of stress were seen to reduce by 12-months timepoint.

20 Past studies looking at nursing culture (52) show nurses place great value in workplace team support and the
21 pandemic has shown two extremes; both nurses and midwives working together and the other extreme of feeling
22 alone, isolated, and unsupported. Maintaining workplace team support was of great concern for nurses, with results
23 showing extremely high levels of anxiety, depression, insomnia and general stress relating to concern for adequate
24 team support increasing across the study period. Workplace team support has been shown to have direct effect on
25 patient safety and missed care (53) and burnout (54). Given the downturn of the perceived threat of COVID-19 at the
26 12-month timepoint yet persistently high levels of distress with an increasing trajectory across all domains, highlights
27 the need for further research to understand the ongoing causes of stress and mental exhaustion in the
28 organisational domain. Australian Institute of Health and Welfare acknowledge burnout as part of the 11th Revision
29 of the International Classification of Diseases (ICD-11-AM) (55) as an occupational phenomenon resulting from
30 chronic workplace stress, not successfully managed. Study data show risk factors associated with a pre-disposition to
31 burnout.

32 Respondents' comments indicate exhaustion stemming from working long hours with unrelenting pressure which
33 has seen to precipitate both absenteeism (56) and presenteeism (57) due to high mental distress rather than
34 physical unwellness. Nurses' often put the needs of the team before their own and hold a cultural ideal of team
35 loyalty (58). Nurses will come to work when they are sick to not let the team down. While COVID-19 screening for
36 respiratory illness may have reduced the rate of presenteeism from physical unwellness, (59) study results show
37 there were high levels of presenteeism among Tasmanian nurses suffering mental distress.

38 As a profession, nurses are altruistic (60) having a strong sense of doing the best they can with limited resources
39 available (61). Study results align with this trait, showing nurses carry high levels of stress, anxiety, depression and
40 stress in relation to the provision of poor-quality care, particularly up to the 3-month timepoint. We saw nurses still
41 going to work, under greater pressure with the desire to do 'what was right' for the patients; struggling to meet their
42 own high expectations of quality patient care yet unwittingly subjecting the patients to high risk of adverse patient
43 safety events (62). At times the sense of not being able to do enough was heightened when nurses felt alone and at

14 times in a professional void without an end in sight. Free text comments show the words ‘burnt out’, ‘disengaged’
15 with nurses questioning their loyalty for the profession into the future. Nevertheless, the additional demands placed
16 on nurses during the pandemic were not conceptual, they were very real. For nurses, the imperative of providing
17 high-quality patient care is very highly valued, integral to their professionalism. The responsibility for balancing
18 quality of care with availability of resources rests firmly with senior political and professional managers of the health
19 service. In practical terms, for nurses, there was little recognition of that responsibility, and no explanation of how
20 they might be going about managing this balance. As a result, the pressure-points were transferred to the frontline
21 workers, who were unable to handle the balancing or the strategic planning processes. At the 12-month timepoint,
22 levels of concern start to reduce though study results cannot confirm this trend and recommends further study this
23 area.

24 Health services normally operate in a climate where there is always more demand than can be satisfied. The COVID-
25 19 pandemic placed massive additional demand on nurses and midwives particularly in public hospitals, taking their
26 pre-existing high stress to extreme levels or overload. Health service management responded by cutting-back the
27 provision of other services, however this resulted in the move from familiar practice to unfamiliar practice. To a
28 variable extent, management was aware of this and has responded with varying degrees of skill and comprehension.

29 By 12-months, surge plans and capacity preparedness became part of the norm. The World Health Organisation
30 provided guidelines for organisations (27), reinforcing that as the pandemic progressed, more information and
31 scientific knowledge will be gained, and the response enacted accordingly. Among emergency service operations and
32 planning, the question arises as to the adequacy of plans with respect to dealing with the psychological effect of
33 demand changes, and whether the line managers were adequately trained and appropriately selected to implement
34 the plans that were devised. Even if the emergency plans were appropriately designed, the question remained
35 around what to do about the care burden of postponed services, and the nagging awareness of that deficit in service
36 among the health professionals who were required to change priorities.

37 High personal expectations enhanced by a sense of duty, coupled with professional and personal demands placed on
38 nurses by the pandemic created personal discord. It was evident at the 3-month timepoint nurses were being
39 confronted with anti-social public behaviour and recommended to wear plain clothes when travelling to and from
40 work to minimise the risk of abuse. Such behaviour placed even more stress on nurses, the profession who are

71 protectors, now requiring protecting and measures to look after themselves in order to care for the patients. Though
72 nursing and midwifery are stressful professions (63) stress may originate from the working environment, individual
73 or organisational factors or a combination.

74 By 12-month timepoint, plans for the COVID-19 vaccine roll out had commenced. Nurses were able to access the
75 vaccine as frontline workers, and this began to give some a sense of relief that there would be a slow return of
76 border openings and with that national and international economic stability, reducing uncertainty and frustration.
77 This study was very sensitive to the possibility questions may precipitate existing stress among respondents. Levels
78 of extreme stress with thoughts of self-harm and feeling as though there was no end and no way out were
79 uncovered in study responses. Extreme levels of stress have the potential to manifest as Post Traumatic Stress
80 Disorder (PTSD) which need to be addressed by organisations. The study survey provided links to support services for
81 respondents.

82 *Study Limitations*

83 Study limitations include the broad classification of nurses without providing the breakdown of nursing positions and
84 therefore cannot accurately describe the stress associated with nursing positions.

85 Study authors underestimated the longevity of the pandemic. Extending the study beyond 1 year would provide a
86 truer reflection of the long-term psychological health of nurses and its association with the pandemic or association
87 with pre-existing organisational factors.

88 CONCLUSION

89 Entering a pandemic unprepared, proved a test for the community, health system and esprit de corps. Primary
90 findings include:

91 Workplace team support directly affected stress and mental exhaustion among nurses and midwives and a strategic
92 priority should include building and strengthening the workplace team, supports and culture into the future. The
93 provision of quality patient care shows a direct effect on levels of stress and mental exhaustion with the lack of
94 quality patient care causing staff disengagement. Nurses described ethical stress from practice change; forced to
95 adopt practices which did not adhere to best practice due to social distancing (such as changes to clinical handover,

36 ward rounds and team meetings, meal breaks, management, and committee meetings). Strategies looking at
37 resource allocation against the provision of quality patient care are essential for the mitigation of adverse patient
38 risks may assist in nurse retention.

39 The impact of COVID-19 on current and future nurses and midwife's family, home, financial and economic domains,
40 caused extremely high levels of stress and mental exhaustion. While the provision of stable and functional
41 relationships at home cannot be controlled by the health service, there may be opportunities to provide targeted
42 support (e.g. in domestic violence situations). Understanding strategies to provide support at home for nurses and
43 midwives may provide protection, social care, improve wellbeing and the culture of valuing nurses and midwives.

44 Lack of a strong communication program proved an important factor for nurses and midwives during the COVID-19
45 pandemic. The initial 3-month period of COVID-19 was particularly difficult for nurses and midwives, dealing with the
46 rapidly changing scene with no clear governance. Provision of up-to-date information around workplace processes
47 and patient access including staff and patient safety are paramount. Professional employment issues, such as
48 pandemic leave and associated changes to leave entitlements were also rapidly changing leaving nurses and
49 midwives without clear scope of employment boundaries. The provision of clear and specific information and
50 processes for health care workers may help to mitigate this confusion and stress in the future.

51 Issues relating to PPE was the focus of much stress and mental exhaustion. Nurse's regard being protected at work
52 as a priority for themselves and their families and felt this reflected the level respect and regard the organisation had
53 for their profession. Furthermore, the overall provision of PPE management and the idea of "just-in-time" inventory
54 management has been shown to be a serious mistake in any event that have major disruptive effects on supply-
55 chains. The safety of all healthcare workers must be a priority for the organisation, ensuring readily available and
56 accessible stocks with staff being trained in its use, in the future.

57 This study shows younger, female nurses and midwives suffered higher levels of stress and mental exhaustion within
58 the cohort. Planning projections for the nursing workforce show that Australia's demand for nurses will significantly
59 exceed supply, with a huge projected shortfall of nurses by 2015 (64) due to an aging workforce. Teaching resilience
60 will help support the future nursing and midwifery workforce rather than fuel further attrition while fostering
61 retention.

22 Recommendations for managers, before the memories of COVID-19 fade:

23 A health service is reliant upon its staff to deliver its health services. It has an imperative to deliver high quality
24 management, firstly to ensure optimum delivery of care and secondly to assure the welfare of its staff, despite the
25 inevitable health stress imposed by the nature of the work.

- 26 1. Workplace team support is a critical driver among nurses and midwives and if not met can precipitate stress
27 and possibly burnout. Burnout is recognised in the ICD-11-AM and systems to monitor burnout among
28 nurses and midwives need to embed within the organisation's culture.
- 29 2. The provision of quality patient care is a critical driver for organisational culture among nurses and
30 midwives. Inclusive strategies looking at resource provision against optimal service delivery will potentially
31 strengthen organisational culture for nurses and midwives, mitigate adverse patient risks and assist in nurse
32 retention.
- 33 3. The design of a strong program for communication with processes specific for health care workers using
34 prompt alerts and rapid dissemination of relevant information are essential for effective outbreak response.
- 35 4. The safety of all healthcare workers must be a priority for the organisation, with readily available and
36 accessible PPE stocks with staff being well trained in its use.
- 37 5. Building resilience particularly among the younger members of the nursing and midwife team will help
38 preserve the mental health of the upcoming nursing workforce, protecting against further attrition and
39 potentially increase retention.
- 40 6. Provision of family, home, and financial support for nurses and midwives will protect the health workforce
41 and the provision of quality patient care. While the health service cannot directly control the relationships at
42 home, there may be opportunities to provide targeted support.

43 *Recommendations for further research*

44 Trial systems to monitor burnout among nurses and midwives within the healthcare organisation

45 Trial interventions to support nurses and midwives which foster resilience.

46 **Author Contributions:** Conceptualization, methodology KMM & JP; formal data analysis and reporting, IKR & KM;
47 data curation, IKR; data interpretation, KMM, JP, IKR; writing original draft preparation, KMM; editing input and

18 review, KMM, JP, IKR; supervision and project management and administration, KMM & JP; All authors have read
19 and agreed to the published version of the manuscript.

50 **Funding:** This research received funding from Florence Nightingale Grants, Tasmania, Australia.

51 **Institutional Review Board Statement:** The study was conducted according to the guidelines of the Declaration of
52 Helsinki and approved by the Human Research Ethics Committee (Tasmanian Network) Reference No. H0021677 on
53 the 29th April 2020.

54 **Informed Consent Statement:** In line with the Tasmanian PIP Act 2004 defines sensitive information. This is a low-
55 risk on-line survey of nurses and midwives in Tasmania. All data accessed was de-identified and coded prior to
56 exporting for statistical analysis to protect confidentiality. Any reported data has been pooled amalgamated data
57 with no identifying features. Safeguards are in place for appropriate and ethical use of data and limited access by
58 nominated researchers. The data is appropriately archived to protect confidentiality. Waiver of consent was sort and
59 approved for the ethical use of the data prior to commencing data collection.

50 **Data Availability Statement:** A minimum dataset of the survey data is included in the Additional Materials

51 **Acknowledgments:** The authors gratefully acknowledge the Clifford Craig Foundation, the University of Tasmania
52 and the Tasmanian Health Service for their support in kind, providing statistical analysis and input from all
53 investigators to develop and support this process.

54 **Conflicts of Interest:** The authors declare no conflict of interest.

55 References

- 56 1. Poonian J. WN, Kilner T., Bradbury E., Brooks K., West E. Managing healthcare worker well-being in an
57 Australian emergency department during the COVID-19 pandemic. *Emergency Medicine Australasia*. 2020;32:700-2.
- 58 2. Muhi S. IL, Buising KL., COVID-19 in Australian health care workers: early experience of the Royal Melbourne
59 Hospital emphasises the importance of community acquisition. *Med J Aust* 2020;213(1):44-.
- 70 3. Stephen M. IL, Buising K. COVID-19 in Australian health care workers: early experience of the Royal
71 Melbourne Hospital emphasises the importance of community acquisition. *Med J Aust*. 2020;1:44.
- 72 4. Hammond NE. CL, Abbenbroek B., et. al. Impact of the coronavirus disease 2019 pandemic on critical care
73 healthcare workers' depression, anxiety, and stress levels. *Aust Crit Care*. 2021;134:146-54.
- 74 5. Halcombe E. MS, Williams A., Ashley C. Experiences of Primary Healthcare Nurses during the COVID-19
75 Pandemic in Australia. *J of Nursing Scholarship*. 2020;52(5).
- 76 6. Ashley C. JS, Stephen C., Mursa R. Primary Health Care Nurses' Perception of Risk During COVID-19: A
77 Qualitative Study. *Journal of Nursing Scholarship*. 2021;00:1-9.
- 78 7. Maqballi M. SM, Al-Lenjawi B. Prevalence of stress, depression, anxiety and sleep disturbance among nurses
79 during th eOCVID-19 pandemic: A systematic review and meta-analysis. *Journal of Psychosomatic Research*.
30 2021;141.

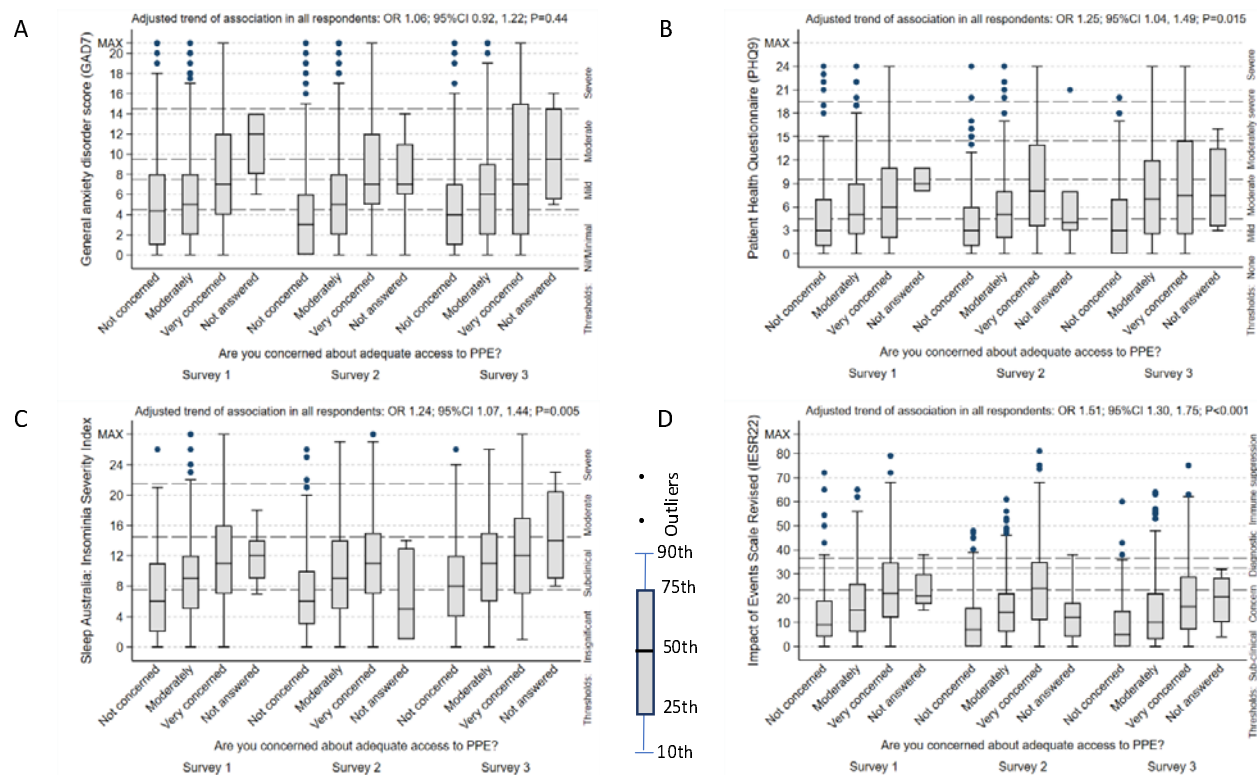
- 31 8. Alimoradi Z. BA, Tsang H., Griffiths M., Haghayegh S., Ohayon M., Lin C., Pakpour A. Sleep problems during
32 COVID-19 pandemic and its' association to psychological distress: A systematic review and meta-analysis. *EClinical*
33 *Medicine*. 2021;36.
- 34 9. Shi L. LZ-A, Que J., Huang X. et. al. Prevalence of and risk factors associated with mental health symptoms
35 among the genral population in China during the coronavirus disease 2019 pandemic. *JAMA*. 2020;3.
- 36 10. Organisation WH. State of the world's nursing 2020: investing in education, jobs and leadership. 2020.
- 37 11. McEvoy M. PC, Crombie A., Skinner T., Begg S., Faulkner P., McEvoy A., Bamforth L., Cacaviello G. Loddon
38 Mallee Healthcare Worker COVID-19 Study—protocol for a prospective cohort study examining the health and well-
39 being of rural Australian healthcare workers during the COVID-19 pandemic. *BMJ Open*. 2021;11.
- 30 12. Lee S. KW, Cho A., Kim T., Park I. Psychological impact of the 2015 MERS outbreak on hospital workers and
31 quarantined hemodialysis patients. *Compr Psychiatry*. 2018;87:123-7.
- 32 13. Phua D. TH, Tham K. Coping mechanisms of emergency physicians and nurses to the 2003 severe acute
33 respiratory syndrome outbreak. *Acad Emerg Med*. 2003;12:322-8.
- 34 14. Chong MY. WW, Hsieh WC., Lee CY., Chiu NM., Yeh WC., Huang TL., Wen JK., Chen CL. Psychological impact
35 of severe acute respiratory syndrome on health workers in a tertiary hospital. *Br J Psychiatry* 2004;185:127–33.
- 36 15. Nickell LA. CE, Tracy CS., Al-Enazy H., Bolaji Y., Hanjrah S., Hussain A., Makhoulf S., Upshur R. Psychosocial
37 effects of SARS on hospital staff: survey of a large tertiary care institution. *CMAJ* 2004;170:793–8.
- 38 16. Wong TW. YJ, Chan CLW., Kwong RSY., Ho SMY., Lau CC., Lau FL., Lit CH. . The psychological impact of severe
39 acute respiratory syndrome outbreak on healthcare workers in emergency departments and how they cope. *Eur J*
30 *Emerg Med*. 2005;12:13-8.
- 31 17. Gibbs L. WE, Bryant R., Pattison P., Lusher D., Harms L., Richardson J., MacDougall C., Block K., Snowdon E.,
32 Gallagher H., Sinnott V., Ireton G., Forbes D. Beyond Bushfires: Community, Resilience and Recovery - a longitudinal
33 mixed method study of the medium to long term impacts of bushfires on mental health and social connectedness.
34 *BMC Public Health* 2013;13.
- 35 18. Taylor S. LC, Paluszek M., Fergus T., McKay D., Asmundson G. Development and initial validation of the
36 COVID Stress Scales. *Journal of Anxiety Disorders*. 2020;72(May).
- 37 19. S. K. Burnout and doctors: prevalence, prevention and intervention. *Healthcare*. 2016;4(37).
- 38 20. Asmundson G. TS. Coronaphobia revisited: A state-of-the-art on pandemic-related fear, anxiety, and stress.
39 *Journal of Anxiety Disorders*. 2020;76.
- 10 21. Rossell S. NE, Phillipou A., Tan E., Toh W., Rheenen T., Meyer D. An overview of current mental health in the
11 general population of Australia during the COVID-19 pandemic: Results from the COLLATE project. *Psychiatry*
12 *Research*. 2021;296.
- 13 22. Neill E. MD, Toh WL., Kisely S., Warren N., McMahon L., et. al. . Alcohol use in Australia during the early days
14 of the COVID-19 pandemic: initial results from the COLLATE project. *Clin Neurosci*. 2020;74:542-9.
- 15 23. Chew QH. WK, Vasoo S., et. al. . Narrative synthesis of psychological and coping responses towards
16 emerging infectious disease outbreaks in the general population: practical considerations for the COVID-19
17 pandemic. *Singapore Med J*. 2020;61:350-6.
- 18 24. Maunder R. LM, Savage D., et. al. Applying the lessons of SARS to pandemic influenza. *Revue Canadienne de*
19 *Sante Publique*. 2008;99(6).
- 20 25. Chan AO HC. Psychological impact of the 2003 severe acute respiratory syndrome outbreak on health care
21 workers in a medium size regional general hospital in Singapore. *Occup Med* 2004;54:190-6.
- 22 26. Melick G. Independent Review: Response to the North-West COVID-19 Outbreak Tasmania: DPAC
23 Tasmania; 2020.
- 24 27. Organisation WH. Critical preparedness, readiness and response actions for COVID-19 2020 [Available from:
25 <https://apps.who.int/iris/handle/10665/336373>.
- 26 28. Litton E. BT, Charvan G., Ho Y., Holby A., Howard G. et. al. Surge capacity of intensive care units in case of
27 acute increase in demand caused by COVID-19 in Australia. *The Med J of Aust*. 2020;212(10).
- 28 29. McKay D. HM, Mishori R., Catton H., Kloiber O. Attacks against health-cae personnel must stop, especially as
29 the world fights COVID-19. *The Lancet*. 2020;395(10239).
- 30 30. Heath C. SA, von Ungern-Sternberg B. Resilience strategies to manage psychological distress among
31 healthcare workers during the COVID-19 pandemic: a narrative review. *Anaesthesia*. 2020;75(10):1364-71.
- 32 31. ICN calls for government action to stop attacks on nurses at a time when their mental health and wellbeing
33 are already under threat because of COVID-19 paandemic [press release]. 2021.
- 34 32. Bergman L. FA, Wolf A., Larsson M. Registered nurses' experiences of working in the intensive care unit
35 during the COVID-19 pandemic. *Nurs Crit Care*. 2021;10.

- 36 33. Balanza-Maartinez V. KF, de Azevedo Cardoso T. et. al. The assessment of lifestyle changes during the
37 COVID-19 pandemic using a multidimensional scale. *Revista de Psiquiatria y Salud Mental*. 2021;14(1):14-26.
- 38 34. Rodriguez-Rey R. G-HH, Collado S. Psychological impact and associated factors during the initial stage of the
39 coronavirus (COVID-19) pandemic among the general population in Spain. *Frontiers in Psychology*. 2020;11(1540).
- 40 35. Quigley A. SH, Nguyen P., Chughtai A., MacIntyre C. Estimating the burden of COVID-19 on the Australian
41 healthcare workers and health system during the first six months of the pandemic. *International Journal of Nursing
42 Studies*. 2020;114.
- 43 36. Hammersley J. MC, Francis K. Lesons for Workforce Disaster Planning from the First Nosocomial Outbreak of
44 COVID-19 in Rural Tasmania, Australia: A Case Study. *International Journal of Environmental Research and Public
45 Health*. 2021;18.
- 46 37. Information for Tasmanian State Service Staff. [press release]. 2020.
- 47 38. Kroenke K. SR, Williams JB. . The PHQ-9: validity of a brief depression severity measure. *J Gen Intern Med*
48 2001;16:606-13.
- 49 39. Kroenke K. SR, Williams J., Monahan P., Löwe B. Anxiety disorders in primary care: Prevalence, impairment,
50 comorbidity, and detection. *Annals of Internal Medicine*. 2007;146:317-25.
- 51 40. Rutter L. BT. Psychometric properties of the Generalized Anxiety Disorder Scale-7 (GAD-7) in outpatients
52 with anxiety and mood disorders. *Journal of Psychopathology and Behavioral Assessment*. 2017;39:140-6.
- 53 41. Beard C. BT. Beyond generalized anxiety disorder: Psychometric properties of the GAD-7 in a heterogeneous
54 psychiatric sample. *Journal of Anxiety Disorders*. 2014;28:547-52.
- 55 42. Wilson J. KT. Assessing psychological trauma and PTSD. New York: Guilford Press; 2004.
- 56 43. Bastien C. VA, Morin C. Validation of the insomnia severity index as an outcome measure for insomnia
57 research. *Sleep Medicine*. 2001;2:297-307.
- 58 44. Morin C. BG, Belanger L., Ivers H. The insomnia severity index: Psychometric indicators to detect insomnia
59 cases and evaluate treatment response. 2011;34:601-8.
- 60 45. Neal L. BW, Rollins J., Herepath R., Strike P. Convergent validity of measures of post traumatic stress disorder
61 in mixed military and civilian population. *J Trauma Stress*. 1994;7:447-55.
- 62 46. Weiss D. MC. The Impact of Events Scale Revised: Assessing Psychological Trauma and PTSD. New York
63 Guilford Press; 1997.
- 64 47. Rothbaum B. FE, Riggs D., Murdock T., Walsh W. A prospective examination of post traumatic stress disorder
65 in rape victims. *Journal of Traumatic Stress*. 1992;7:669-90.
- 66 48. Braun V. CV. Using thematic analysis in psychology *Qualitative Research in Psychology*. 2006;3.
- 67 49. Sands P. M-SC, Dzau V. The Neglected Dimension of Global Security — A Framework for Countering
68 Infectious-Disease Crises. *N Engl J Med*. 2016;374.
- 69 50. Australia-Aphra NaMBo. Nursing and Midwifery Board of Australia-Aphra Registrant Data. 2020.
- 70 51. Cabinet TGDoPa. <https://www.coronavirus.tas.gov.au/> 2021 [11/10/2021].
- 71 52. Bourgault A. GC. Embrace Teamwork to Create and Maintain a Positive Workplace Culture Critical Care
72 Nurse. 2021;41(3):8-10.
- 73 53. Huang CH. WY, Wu H., Yii-Ching L. Assessment of patient safety culture during COVID-19: a cross-sectional
74 study in a tertiary a-level hospital in China. *The TQM Journal*. 2021;ahead-of-print.(ahead-of-print.).
- 75 54. Dobson H. MCea. Burnout and psychological distress amongst Australian healthcare workers during the
76 COVID-19 pandemic. *Australasiann Psychiartry*. 2020;29(1):26-30.
- 77 55. Organisation Wh. ICD-11, International Classification of Diseases 11th Revision: The global standard for
78 diagnostic health information 2021 [03/11/2021]. Available from: <https://icd.who.int/en>.
- 79 56. Henriksen L. LM. Burnout among Norwegian midwives and the contribution of personal and work-related
80 factors: A crosssectional study. . *Sexual & Reproductive Healthcare*. 2016;9:42-7.
- 81 57. Vandebroek S. VG, E., DeWitte H., Vanhaecht K., Godderis L. Burnout in Belgian physicians and nurses
82 *Occupational Medicine*. 2017;67(7):546-54.
- 83 58. Crout LA. CE, Cioffi J. . Why do registered nurses work when ill? . *Journal of Nursing Administration*.
84 2005;35(1):23-8.
- 85 59. Wilmont S. NN, Hill-Ricciuti A., Alba L., Prill MM., Whitaker, B. Active surveillance for acute respiratory
86 infections among pediatric long-term care facility staff. *American Journal of Infection Control*. 2020;48:1474–7.
- 87 60. Slettmyr A. SA, Arman M. The ambiguity of altruism in nursing: A qualitative study. *Nursing Ethics*.
88 2019;26(2).
- 89 61. Anton N. HT, Modlin S.,Haque M., Crites M., Yu D. Identifying factors that nurses consider in the decision-
90 making process related to patient care during the COVID-19 pandemic. *PLOS ONE*. 2021.

- 31 62. Letvak S. RC, Gupta S. . Nurses' presenteeism and its effects on self-reported quality of care and costs.
32 American Journal of Nursing. 2012;112:30-8.
- 33 63. Moustaka E. CT. Sources and effects of work-related stress in nursing. Health Science Journal. 2010;4(4):210-
34 6.
- 35 64. Australia HW. Health Workforce Australia 2014: Australia's Future Health Workforce –Nurses Detailed. 2014.

36

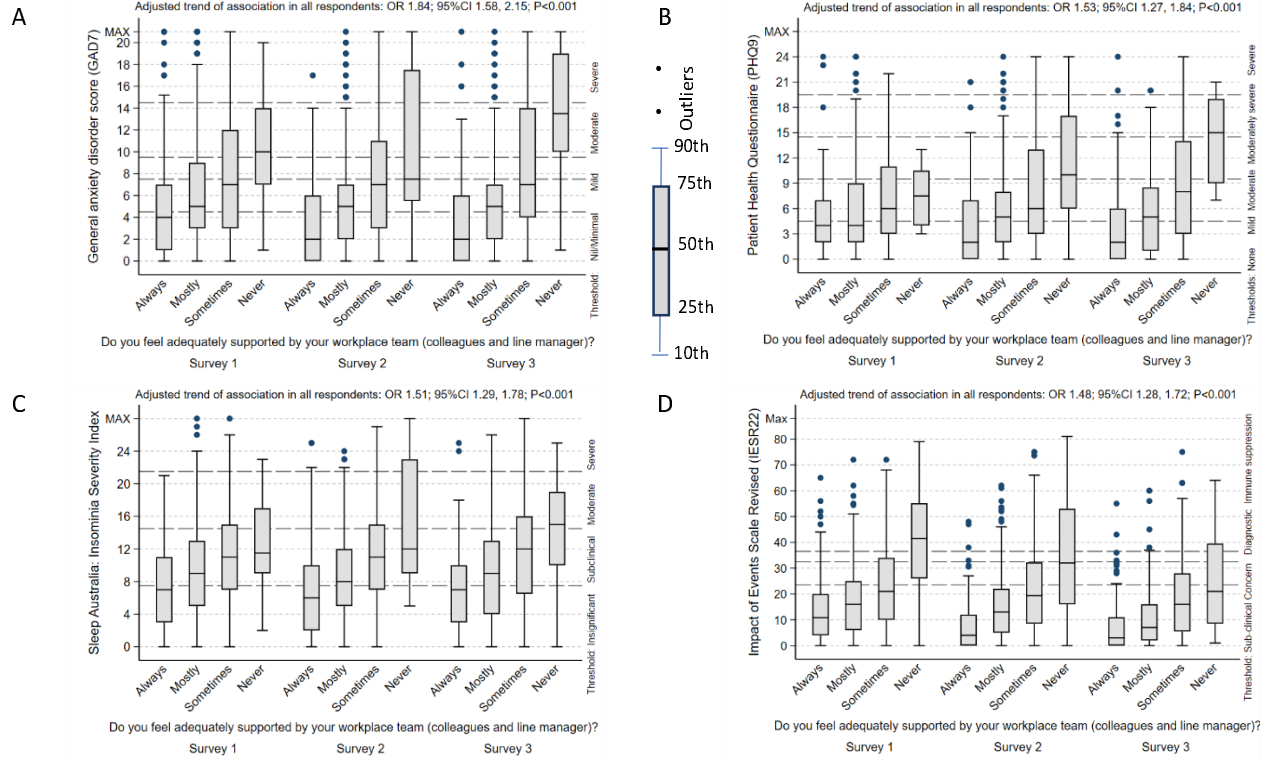
Figure 1. Effect of concern about access to PPE across all psychological domains.



Note that the boxplots are not adjusted for the other covariates, whilst the odds ratios for trend are adjusted for other covariates.

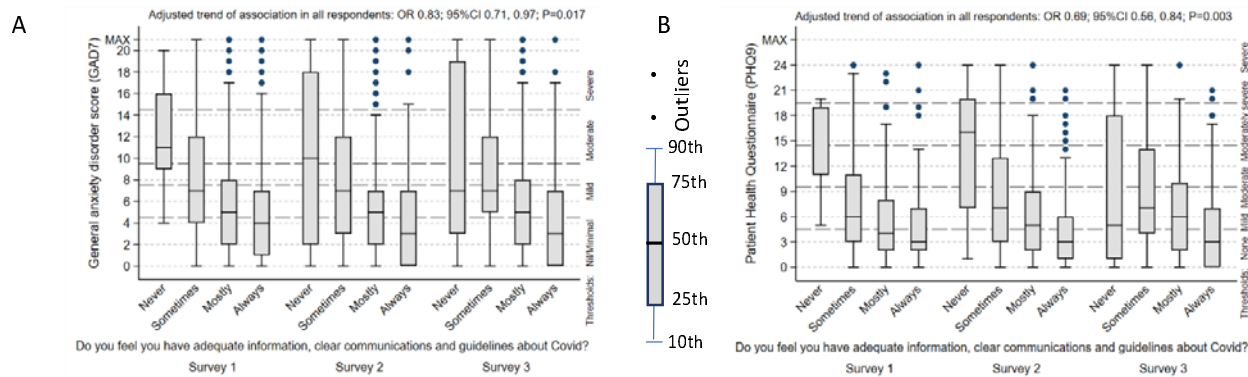
2. Effect of CONCERN FOR LACK OF CLINICAL TEAM SUPPORT across all psychological domains

Figure 2. Effect of concern for lack of clinical team support across all psychological domains.



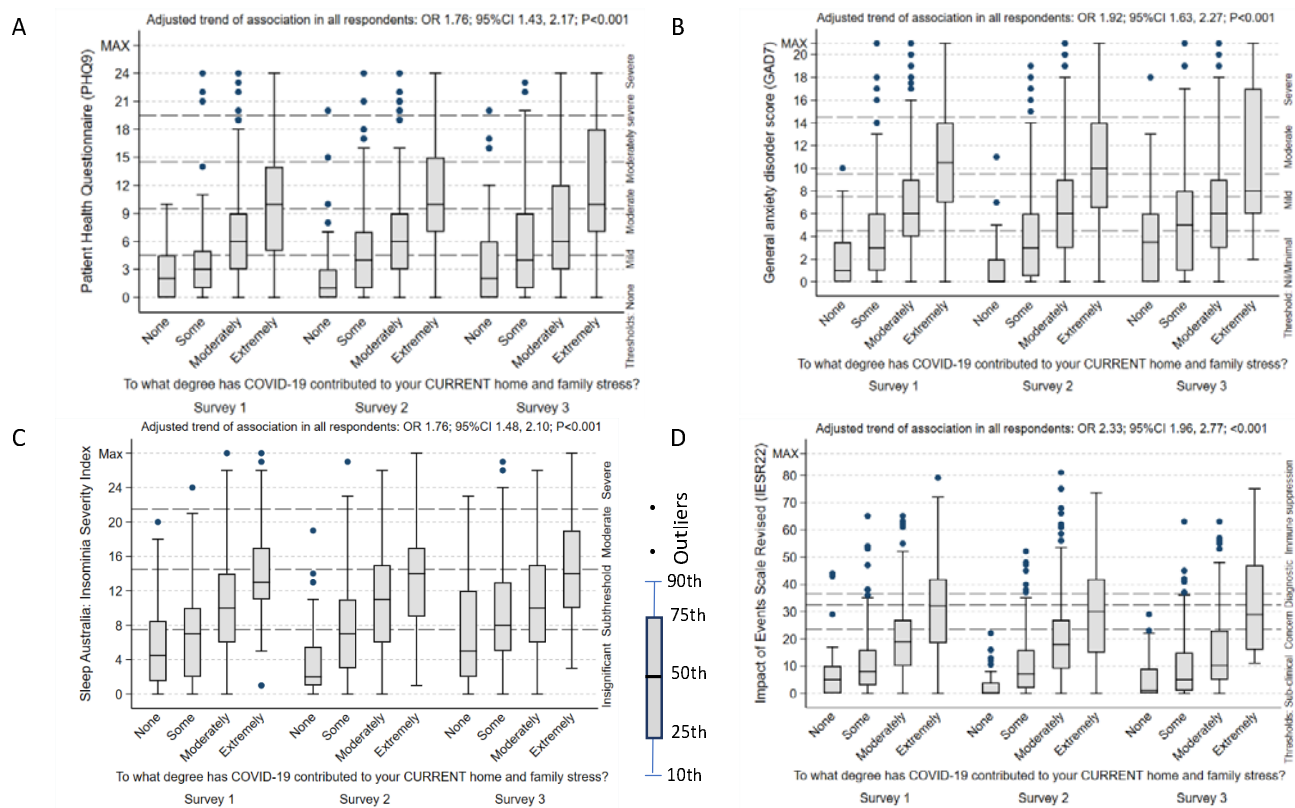
Note that the boxplots are not adjusted for the other covariates, whilst the odds ratios for trend are adjusted for other covariates.

Figure 3. Effect of concern for adequate information across all psychological domains.



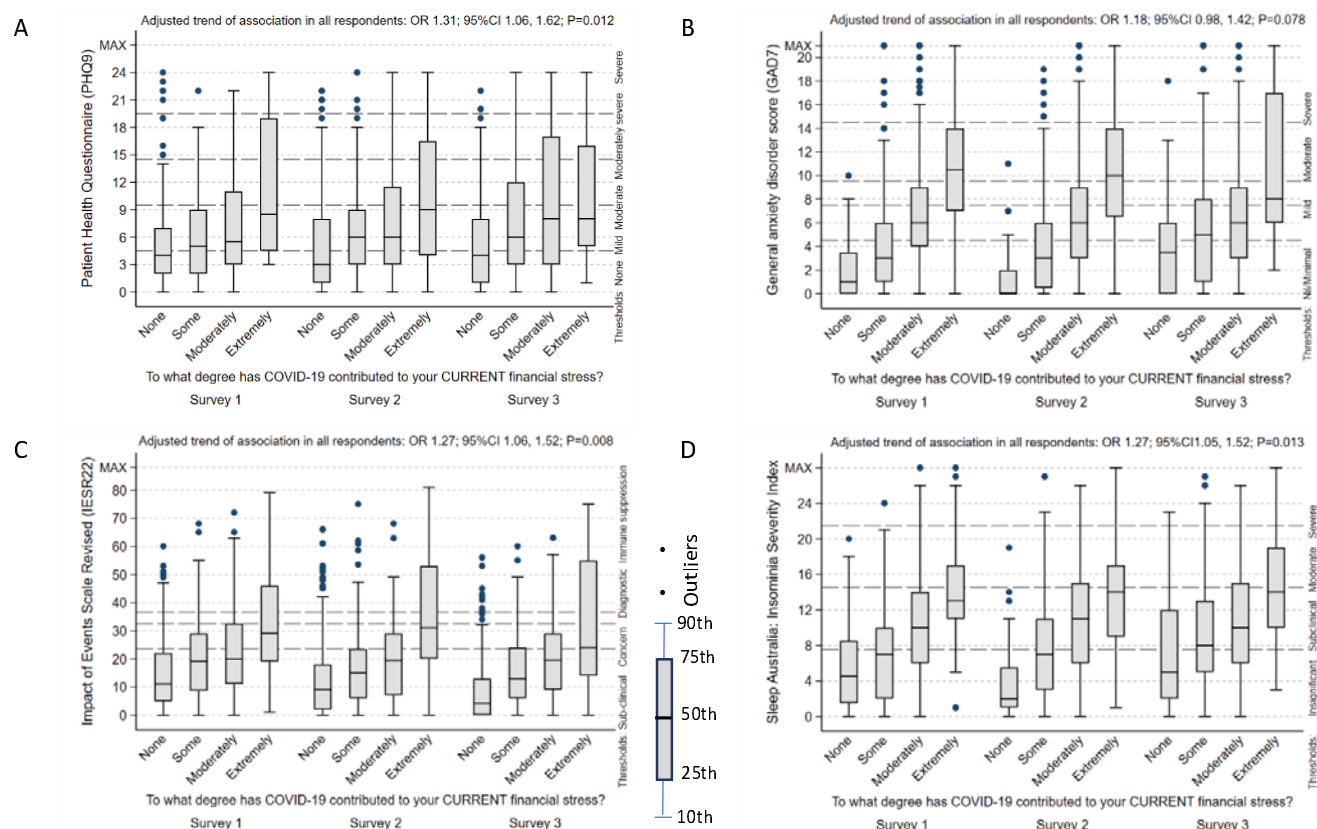
Note that the boxplots are not adjusted for the other covariates, whilst the odds ratios for trend are adjusted for other covariates.

Figure 4. Effect of current home and family stress across all psychological domains.



Note that the boxplots are not adjusted for the other covariates, whilst the odds ratios for trend are adjusted for other covariates.

Figure 5. Effect of current (and future) financial stress' across anxiety, depression and general stress/PTSD domains



Note that the boxplots are not adjusted for the other covariates, whilst the odds ratios for trend are adjusted for other covariates.