

1 *KRAS* mutations predict better response to first-line monotherapy with pembrolizumab
2 for patients with PD-L1^{high} metastatic Non-Small Cell Lung Cancer: a retrospective study

3

4 Ella A. Eklund^{1,2,3}, Clotilde Wiel^{1,2}, Henrik Fagman^{4,5}, Levent M. Akyürek^{4,5}, Sukanya
5 Raghavan⁶, Jan Nyman^{3,7}, Andreas Hallqvist^{3,7}, Volkan I. Sayin^{1,2}

6

7 ¹Department of Surgery, Institute of Clinical Sciences, Sahlgrenska Center for Cancer
8 Research, University of Gothenburg, Gothenburg, Sweden; ²Wallenberg Centre for
9 Molecular and Translational Medicine, University of Gothenburg, Gothenburg, Sweden;
10 ³Department of Oncology, Sahlgrenska University Hospital, Gothenburg, Sweden;
11 ⁴Department of Laboratory Medicine, Institute of Biomedicine, University of Gothenburg,
12 Gothenburg, Sweden; ⁵Department of Clinical Pathology, Sahlgrenska University
13 Hospital, Gothenburg, Sweden; ⁶Department of Microbiology and Immunology, Institute
14 for Biomedicine, Sahlgrenska Academy, University of Gothenburg, Gothenburg,
15 Sweden; ⁷Department of Oncology, Institute of Clinical Sciences, University of
16 Gothenburg, Gothenburg, Sweden

17

18

19 Correspondence to:

20 V.I.S volkan.sayin@wlab.gu.se

21 Keywords: lung cancer, *KRAS*, PD-L1, immunotherapy, biomarker

22 ¹ Abbreviations

23 Word count: 3048

24

25

List of abbreviations: ECOG: Eastern Cooperative Oncology Group; ICB: Immune Checkpoint Blockade; NSCLC: Non-Small Cell Lung Cancer; NGS: Next Generation Sequencing; PD: Platinum Doublet; PD-1: Programmed Cell Death 1; PD-L1: Programmed Death Ligand 1; PS: Performance Status; OS: Overall Survival; TPS: Tumor Proportion Score

Mutant KRAS is a biomarker for response to pembrolizumab for patients with metastatic NSCLC

26 **Abstract**

27 **Background:** Pembrolizumab, a humanized antibody targeting Programmed Cell Death 1 (PD-
28 1), is used as first-line therapy for patients with metastatic Non-Small Cell Lung Cancer (NSCLC)
29 expressing Programmed Death Ligand 1 (PD-L1). However, not all PD-L1 expressing patients
30 respond to pembrolizumab. Thus, there is an urgent need to identify new predictive biomarkers
31 for response to immune checkpoint blockade (ICB) therapy. KRAS mutational status has been
32 suggested to affect treatment outcome, but no clear consensus could be drawn for previous
33 studies.

34 **Methods:** All consecutive patients diagnosed between 2016-2018 with metastatic NSCLC
35 (stage IV) in the region of West Sweden with molecular characterization available were included
36 in this multi-centers retrospective study. Primary study outcome was overall survival (OS).
37 Baseline patients' characteristics, histology type, mutational status, PD-L1 expression and first-
38 line treatment were collected from patient charts and the Swedish Lung Cancer registry.

39 **Results:** Out of 580 stage IV NSCLC patients, 35.5% harbored a mutation in the *KRAS* gene
40 ($KRAS^{MUT}$). Compared to *KRAS* wild-type ($KRAS^{WT}$), $KRAS^{MUT}$ was a negative factor for OS ($p =$
41 0.014). On multivariate analysis, $KRAS^{MUT}$ persisted as a negative factor for OS (HR 1.288, 95%
42 CI 1.091-1.521, $p = 0.003$). When treated with first-line platinum doublet, $KRAS^{MUT}$ ($n = 219$) is a
43 significant ($p = 0.001$) negative factor for survival with median OS 9 months vs $KRAS^{WT}$ 14
44 months. Patients on *KRAS* mutational status and PD-L1 expression levels had a significant
45 better OS in $KRAS^{MUT}$ with increased PD-L1 expression ($p = 0.036$) but not for $KRAS^{WT}$. On first-
46 line ICB, $KRAS^{MUT}$ had a significant ($p = 0.006$) better outcome than $KRAS^{WT}$ with a median OS
47 23 vs 6 months. On multivariable Cox analysis, $KRAS^{MUT}$ status and Performance Status (PS) 0-
48 1 were independent prognostic factors for better OS (HR 0.349, 95%CI 0.148-0.822, $p = 0.016$
49 and HR 0.398, 95 % CI 0.165-0.963, $p = 0.041$).

Mutant KRAS is a biomarker for response to pembrolizumab for patients with metastatic NSCLC

50 **Conclusions:** KRAS mutations combined with PD-L1^{high} is a better predictive marker for
51 response to first-line monotherapy with pembrolizumab than only PD-L1^{high} in patients with
52 metastatic NSCLC.
53

Mutant KRAS is a biomarker for response to pembrolizumab for patients with metastatic NSCLC

54 **Background**

55 **Non-small cell lung cancer** (NSCLC) is the most commonly diagnosed cancer worldwide with
56 2.1 million new cases and 1.8 million deaths annually [1]. NSCLC can be treated effectively with
57 local management of the primary tumor in early stages but the 5-year survival for patients with
58 advanced NSCLC metastasis (stage IV) is below 10% [2, 3]. NSCLC generally tends to have a
59 high overall mutational burden mainly due to exposure of exogenous mutagens like tobacco
60 smoke but also air pollution, causing high genomic instability and inter-patient heterogeneity [4].

61 The treatment options for stage IV patients have become dependent on molecular profiling
62 because of the introduction of small molecular kinase inhibitors (SMKIs) targeting activating
63 mutations in EGFR, ALK, BRAF, RET and ROS1 oncogenes [5]. Unfortunately, the majority of
64 stage IV patients do not harbor a targetable driving mutation, for which platinum-based
65 chemotherapy doublets (PD) has been the only available treatment option until recently. The
66 introduction of immune checkpoint blockade (ICB) targeting programmed death ligand 1 (PD-L1)
67 or programmed cell death 1 (PD-1) proteins led to impressive clinical results [6-8].
68 Consequently, all stage IV patients without any clinically actionable mutations are assessed for
69 ICB, single or in combination with chemotherapy, as a first-line treatment option [9-12]. PD-L1
70 expression is the only validated predictive marker for response to immunotherapy. Yet, its
71 accuracy as an individual prediction tool is not as good as initially assumed since on one hand
72 PD-L1 negative patients have been reported as ICB responders while on the other, many
73 patients with tumors expressing high levels of PD-L1 are being reported as non-responders to
74 ICB therapy [9, 13]. Along these lines, a meta-analysis of six randomized controlled trials with
75 ICB showed that PD-L1 expression levels was neither prognostic nor predictive for OS [14].

76 The most frequent oncogenic driver in NSCLC is the Kirsten rat sarcoma viral oncogene (*KRAS*)
77 present in up to 40% of all cases and the most common mutations are G12C, G12V and G12D
78 [15, 16]. *KRAS* mutations have been considered to negatively influence the prognosis of

Mutant KRAS is a biomarker for response to pembrolizumab for patients with metastatic NSCLC

79 NSCLC, as attempts to target mutant KRAS and its downstream mediators in cancer therapy
80 remain largely unsuccessful [4, 17]. However, two inhibitors targeting mutant KRAS-G12C have
81 been developed but the clinical efficacy is yet to be determined in ongoing trials [18-22].
82 Concurrently, it has been suggested that NSCLC harboring *KRAS* mutations might benefit from
83 ICB therapy compared to KRAS wild type tumors [23]. Nevertheless, retrospective real-world
84 data have so far shown inconclusive results [23-28].

85 With the gradual introduction of ICB treatment in recent years, a new era for stage IV NSCLC
86 patients began, leading to high expectations. Clinical trials have shown ICB as being superior to
87 chemotherapy in patients harboring tumors with high tumor proportion score (TPS) $\geq 50\%$ for PD-
88 L1. These results were confirmed in a recent network meta – analysis [7, 8, 10, 29]. However,
89 the impact of mutant KRAS was not addressed in these analyses. In addition, multiple real-world
90 studies have reported conflicting results regarding the impact of mutant KRAS on ICB response.
91 In early days of immunotherapy, only PD-L1 $\geq 50\%$ patients were included in first-line ICB-
92 treatment. We know now that PD-L1 negative patients may also respond to ICB [9, 13]. Data on
93 PD-L1 expression is being accumulated en masse and some studies even suggest that PD-L1
94 expression per se might have a prognostic impact on NSCLC [30, 31].

95 In the present retrospective cohort study, we determined the impact of *KRAS* mutations and PD-
96 L1 expression on survival outcome in stage IV NSCLC patients following first-line treatment in
97 the region of West Sweden between 2016 and 2018.

98 In the Swedish national public healthcare system, all patients have access to the same cancer
99 treatments. Thus, by including all consecutive patients diagnosed with stage IV metastatic
100 NSCLC with molecular assessment available, this retrospective cohort study covers real-world
101 data from West Sweden. Indeed, each NSCLC patient diagnosed in the region with available
102 tissue sample where an adenocarcinoma component could not be excluded, gets their lung

Mutant KRAS is a biomarker for response to pembrolizumab for patients with metastatic NSCLC

103 cancer systematically assessed for known driver mutations, including mutations in *KRAS*, using
104 Next Generation Sequencing (NGS) technology. Hence the current retrospective cohort study
105 offers a unique opportunity for assessing the impact of *KRAS* mutations on OS in patients with
106 stage IV metastatic NSCLC receiving first-line standard of care, including patients receiving
107 platinum doublet chemotherapy and immune checkpoint blockade.

108 **Materials and Methods**

109 ***Patient population***

110 We conducted a multi-centers retrospective study including all consecutive NSCLC patients
111 diagnosed with stage IV NSCLC and having molecular assessment performed between 2016-
112 2018 in the Region Västra Götaland (region of West Sweden), Sweden ($n = 580$). Approval from
113 the Swedish Ethical Review Authority (Dnr 2019-04771) was obtained prior to study
114 commencement. All patients with available tissue sample where an adenocarcinoma component
115 could not be excluded were systematically assessed with NGS for known genetic drivers (see
116 below) within clinical praxis. Patient demographics (including age, gender, Eastern Cooperative
117 Oncology Group (ECOG) performance status and smoking history), cancer stage, number of
118 metastasis locations, pathological details (histology, mutation status including *KRAS* mutational
119 status and subtype), treatment and outcome data were retrospectively collected from patient
120 charts and the Swedish Lung Cancer Registry.

121 ***Mutational status***

122 Patients were assessed with NGS for mutational status on DNA from FFPE blocks or cytological
123 smears using the Ion AmpliSeq™ Colon and Lung Cancer Panel v2 from Thermo Fisher
124 Scientific as a part of the diagnostic workup process at the Department of Clinical Pathology at
125 Sahlgrenska University Hospital, assessing hotspot mutations in EGFR, BRAF, KRAS and
126 NRAS. Until June 2017, ALK-fusions were assessed with immunohistochemistry (IHC), and with

Mutant KRAS is a biomarker for response to pembrolizumab for patients with metastatic NSCLC

127 fluorescence in situ hybridization (FISH) if positive or inconclusive IHC; ROS1 was analyzed
128 upon request with FISH. Thereafter, ALK, ROS1 and RET fusions were assessed on RNA using
129 the Oncomine Solid Tumor Fusion Panel from Thermo Fisher Scientific.

130 ***PD-L1 expression***

131 Programmed death ligand 1 (PD-L1) expression was determined based on percentage of tumor
132 cells with positive membranous staining and was reported as the tumor proportion score (TPS).
133 PD-L1; negative TPS <1%, low TPS 1%-49%, high TPS ≥50%. PD-L1 expression was detected
134 using the PD-L1 IHC 28-8 pharmDx system during routine diagnostic workup and staining was
135 assessed by lung pathologists.

136 ***ICB treatment***

137 During the time period of this study, the only ICB treatment approved for first-line treatment was
138 Pembrolizumab, a humanized antibody targeting PD-1. The criteria was PD-L1^{high} TPS ≥50% for
139 first-line and PD-L1^{low} TPS ≥1% for second line of treatment.

140 ***PD treatment***

141 Platinum doublet treatment consists of carboplatin or cisplatin in combination with one more non-
142 platinum chemotherapy agent such as pemetrexed, vinorelbine, gemcitabine, paclitaxel,
143 etoposide or vincristine.

144 ***Study objectives***

145 The primary outcome of this study was OS, defined as the interval between the date of
146 diagnostic sample collection and the date of death from any cause. Patients alive or lost to
147 follow-up at data were censored at last contact. Median follow up time was 7 months.

148 We compared OS stratified on KRAS^{WT} and KRAS^{MUT} for the entire cohort, for all patients
149 receiving life extending treatment (excluding patients receiving best supportive care or palliative

Mutant KRAS is a biomarker for response to pembrolizumab for patients with metastatic NSCLC

150 radiotherapy (e.g., single tumor radiation for pain relief), and for all patients receiving PD or ICB
151 as first-line treatment. We also investigated the impact of TPS score (negative, low and high) on
152 OS, stratified on KRAS mutational status.

153 **Statistical analysis**

154 Clinical characteristics were summarized using descriptive statistics and evaluated with
155 univariate analysis. Kaplan Meier survival curves were generated to assess OS. Log-Rank cox-
156 regression was used to assess significant differences in OS between groups. Multivariable Cox
157 analysis was conducted to compensate for potential confounders. Statistical significance was set
158 at $p < 0.05$ and no adjustments were made for multiple comparisons. Data analysis was
159 conducted using IBM SPSS Statistics version 27 and GraphPad Prism version 9.

160

161 **Results**

162 **Patients and tumor characteristics**

163 A total of 580 consecutive patients were diagnosed with stage IV NSCLC during 2016-2018 in
164 West Sweden and for which genetic data were available were all included in this retrospective
165 cohort study. Among these 580 patients, more than a third harbored a *KRAS* mutation (206,
166 35.5%), the majority were female (326, 56.2%), the median age was 71 years and 80 % were
167 current or former smokers (Table 1). The majority of patients (322, 55.5%) had a good
168 Performance Status (PS) with low ECOG 0-1 at diagnosis (Table 1). Histologically, the vast
169 majority of NSCLCs were adenocarcinoma of the lung (498, 85.9%) while squamous cell
170 carcinoma cases were relatively low which was expected due to the selection of histological type
171 for NGS assessment (32, 5.5%) (Table 1). In line with earlier studies, patients diagnosed with a
172 good PS and low ECOG had a significantly better overall survival (OS), compared to patients
173 diagnosed with a higher ECOG score ($p = 0.0001$) (Supplemental Figure. 1A) [3, 32]. In addition,
174 higher number of metastasis locations at diagnosis correlated with poor OS ($p = 0.0002$)

Mutant KRAS is a biomarker for response to pembrolizumab for patients with metastatic NSCLC

175 (Supplemental Figure. 1B), which was expected [3, 32]. Furthermore, there was a trend towards
176 better OS for females compared to males ($p = 0.064$) (Supplemental Figure. 1C) [32, 33]. When
177 comparing the baseline characteristics of KRAS^{WT} with KRAS^{MUT} patients, there were more
178 females and a higher proportion of current and former smokers in the KRAS^{MUT} population
179 (Table 1).

180 **KRAS mutations is a negative factor for overall survival in stage IV NSCLC**

181 Survival estimates for the whole study cohort displayed that KRAS mutations was a significant
182 negative factor for overall survival ($p = 0.014$) (Figure. 1A). On multivariate Cox analysis,
183 KRAS^{MUT} status and male sex were independent prognostic factors for worse OS (HR 1.288,
184 95%CI 1.091-1.521, $p = 0.003$ and HR 1.179, 95%CI 1.009-1.378, $p = 0.038$). The population
185 that received any type of life extending treatment ($n = 388$), excluding patients only receiving
186 best supportive care or palliative radiotherapy (e.g., single tumor radiation for pain relief) did not
187 show a significant difference in OS between KRAS^{MUT} and KRAS^{WT} ($p = 0.095$) (Figure. 1B).

188 When treated with first-line PD, one of standard treatments at the time, ($n = 219$), KRAS^{MUT} is a
189 significant negative factor for survival ($p = 0.001$) with median OS 9 months vs KRAS^{WT} 14
190 months (Figure. 2A). Baseline characteristics of the PD treated group show that the KRAS^{WT}
191 population is composed of a slightly larger fraction of squamous cell carcinoma than the
192 KRAS^{MUT} population (Supplemental Table 1). Moreover, around 20% of KRAS^{WT} patients
193 presented an ALK or EGFR mutation (Supplemental Table 1). To eliminate the risk of these
194 patients driving the difference due to receiving SMKIs in the second line of treatment, we
195 excluded all patients with EGFR mutations and ALK fusions from the KRAS^{WT} group. In first-line
196 PD treated patients without ALK and EGFR mutations ($n = 195$), KRAS^{MUT} is a significant ($p =$
197 0.018) negative factor for survival (Figure. 2B), with median OS 9 months for KRAS^{MUT} vs 11
198 months for KRAS^{WT}.

199

Mutant KRAS is a biomarker for response to pembrolizumab for patients with metastatic NSCLC

200 **Overall survival for stage IV NSCLC treated with first-line PD or ICB stratifies based on**
201 **KRAS mutational status**

202 When comparing OS for all stage IV patients receiving PD ($n = 219$) or ICB ($n = 37$) in a first-line
203 setting, there was no difference between the two treatment groups ($p = 0.723$), median OS 11
204 months for PD vs 13 months for ICB (Figure. 3A). KRAS^{MUT} patients treated with ICB ($n = 20$)
205 had a significantly ($p = 0.003$) better outcome compared to patients treated with PD ($n = 104$),
206 median OS 23 vs 9 months (Figure. 3B). KRAS^{WT} patients treated with ICB ($n = 17$) had
207 significantly ($p = 0.005$) worse survival than patients treated with PD ($n = 115$), median OS 6 vs
208 14 months (Figure. 3C).

209 **PD-L1 expression in tumors from stage IV patients is a positive factor for overall survival**
210 **of KRAS^{MUT} but not KRAS^{WT} patients**

211 Currently, tumoral PD-L1 expression is the only biomarker for ICB treatment widely used in the
212 clinic for NSCLC [34, 35]. When analyzing all treated stage IV NSCLC patients with known PD-
213 L1 status ($n = 261$) stratified on KRAS mutational status and PD-L1 expression levels (negative,
214 low or high) (Figure. 4A), we observed that increased PD-L1 expression correlated with
215 significant better OS in KRAS^{MUT} patients ($p = 0.036$, Figure 4B). KRAS^{MUT} patients clearly
216 separate on OS between PD-L1 negative, low and high groups with median OS 6, 11 and 17
217 months respectively (Figure. 4B). No correlation between PD-L1 expression and OS in KRAS^{WT}
218 patients was observed (Figure. 4C). There was a larger proportion of PD-L1^{high} in the KRAS^{MUT}
219 population compared to KRAS^{WT} (43.0% vs 32.7%).

220 **The combination of KRAS mutations and ICB treatment is a positive factor for overall**
221 **survival**

222 Furthermore, we analyzed the specific impact of PD-L1^{high} expression on OS comparing all PD-
223 treated vs ICB-treated patients: outcome was significantly improved for KRAS^{MUT} patients on
224 ICB treatment ($p = 0.028$) with median OS being 9 vs 23 months (Figure. 5A). KRAS^{WT} PD-L1^{high}

Mutant KRAS is a biomarker for response to pembrolizumab for patients with metastatic NSCLC

225 patients displayed a significant worse outcome for patients on ICB treatment compared to PD
226 treatment ($p = 0.010$) with median OS 6 months vs 28 months for each respective treatment
227 (Figure. 5B).

228 **Impact of *KRAS* mutational status on the outcome of first-line ICB treatment in stage IV** 229 **NSCLC patients with PD-L1^{high} tumors**

230 The KRAS^{MUT} group had a significantly ($p = 0.006$) better outcome on ICB treatment compared
231 to the KRAS^{WT} group with a median OS 23 vs 6 months (Figure. 5C, Supplemental Table 2). On
232 multivariate Cox analysis, KRAS^{MUT} status and ECOG PS 0-1 were independent prognostic
233 factors for better OS following first-line ICB (HR 0.349, 95%CI 0.148-0.822, $p = 0.016$ and HR
234 0.398, 95%CI 0.165-0.963, $p = 0.041$).

235

236 **Discussion**

237 Whether *KRAS* mutations is a predictive negative factor for survival is still undetermined in the
238 literature because of conflicting results. While some studies have previously reported *KRAS*
239 mutations to be a negative factor for survival estimates [3, 17, 36], others have shown this not to
240 be the case [37]. This retrospective study shows a clear overall survival disadvantage for
241 KRAS^{MUT} stage IV NSCLC patients, also when receiving platinum doublet treatment compared
242 to patients that are KRAS^{WT} independently of patients harboring EGFR and ALK mutations.
243 However, when comparing overall survival for patients receiving first-line treatment with
244 pembrolizumab monotherapy, the outcome was dramatically reversed with a clear disadvantage
245 for KRAS^{WT} patients as compared to KRAS^{MUT}.

246 Translational studies have suggested that KRAS^{MUT} patients might respond well to ICB due to a
247 larger proportion of smokers and a higher immunologically active tumor environment as a
248 consequence of constitutive activation of *KRAS* signaling pathways [23-27, 32, 38, 39]. We show
249 that KRAS^{MUT} patients respond better to pembrolizumab monotherapy than platinum doublet

Mutant KRAS is a biomarker for response to pembrolizumab for patients with metastatic NSCLC

250 treatment. Surprisingly, KRAS^{WT} patients showed a worse response to pembrolizumab
251 monotherapy than platinum doublet treatment. This could partly be explained by KRAS^{WT} being
252 a heterogeneous group with the majority of patients not having an identified driving mutation. It is
253 clear that additional levels of molecular profiling will be needed to stratify the responders from
254 the non-responders. Recently, mutations in *KEAP1/NFE2L2* and *STK11* have both been shown
255 to be negative factors on NSCLC prognosis as well as implicated in treatment outcome for ICB,
256 chemotherapy and radiation therapy [40-48].

257 Nevertheless, our data shows that the combination of KRAS^{MUT} and PD-L1^{high} is a better
258 predictive marker for response to pembrolizumab monotherapy than PD-L1^{high} alone. This is
259 further supported by the finding that PD-L1 status has a clear and significant impact on
260 stratifying OS in the KRAS^{MUT} group receiving treatment (Figure. 4B) whereas there was no
261 difference for the KRAS^{WT} group (Figure. 4C) in line with a previous study reporting a similar
262 trend for KRAS-mutant NSCLC receiving ICB [28].

263 There are several retrospective studies showing different outcomes when comparing KRAS^{MUT}
264 and KRAS^{WT} response to pembrolizumab. These discrepancies could be explained by major
265 study design differences such as inclusion of several and different stages at diagnosis, multiple
266 treatment lines considered and inclusion of patients with no known PD-L1 status [23-28, 32]. A
267 recent registry study from the Netherlands reported no difference in OS for PD-L1^{high} patients
268 receiving first-line pembrolizumab monotherapy but the fraction of patients where *KRAS*
269 mutations status had been assessed and reported to the registry was uncertain and could only
270 be approximated (at around 75%) [32]. However, a meta-analysis of randomized controlled trials
271 showed a significant OS benefit for KRAS^{MUT} patients in first-line immunotherapy with or without
272 chemotherapy vs. chemotherapy alone [39], which is in line with the current study. Among these,
273 the retrospective analysis of the phase 3 study KEYNOTE042 indicated a clear trend towards
274 better OS in the KRAS^{MUT} group when comparing first-line pembrolizumab versus platinum-
275 containing chemotherapy (28 vs 11 months) than for the patients with KRAS^{WT} (15 vs 12

Mutant KRAS is a biomarker for response to pembrolizumab for patients with metastatic NSCLC

276 months) [38], albeit only 69 KRAS^{MUT} patients were identified among 782. In our cohort, 580
277 patients were assessed and 206 KRAS^{MUT} patients were identified. To the best of our
278 knowledge, our retrospective cohort study is the largest to date comparing response to first-line
279 ICB and PD therapy in stage IV NSCLC patients where the *KRAS* mutational status is known for
280 all patients.

281 New predictive markers are emerging for NSCLC and our findings suggest that *KRAS* mutations
282 in combination with PD-L1^{high} is a better predicative compound biomarker than PD-L1^{high} alone
283 for monotherapy with pembrolizumab. We also show that patients with *KRAS* mutations respond
284 poorly to platinum doublet treatment and therefore we suggest that they would benefit from a
285 first-line treatment including ICB.

286

287 **Limitations**

288 Although this study provides real-world evidence of ICB efficacy in NSCLC patients, it is limited
289 by its retrospective nature. All stage IV NSCLC patients that were molecularly assessed by NGS
290 in the region of West Sweden 2016-2018 were included in this cohort study. In this time period, a
291 relatively small number of patients were treated with first-line ICB, hence pooled analyses from
292 multi-cohort studies will be important to expand and validate our findings. Furthermore, given
293 that multiple *KRAS*-G12C-targeted therapies are showing promises in clinical trials, future
294 studies comparing these agents and ICB in NSCLC patients with *KRAS* mutations will be
295 important. Finally, our study did not take into account any potential impact of co-mutations such
296 as *STK11*, *TP53*, *SMARCA4*, *KEAP1* and *NFE2L2* on ICB efficacy, which is something future
297 studies will address.

298

299 **Conclusion**

300 Here we report that metastatic NSCLC patients harboring *KRAS* mutations respond better to
301 monotherapy with pembrolizumab than platinum doublet chemotherapy. We also report that

Mutant KRAS is a biomarker for response to pembrolizumab for patients with metastatic NSCLC

302 *KRAS* mutations combined with PD-L1^{high} is a better predictive marker for response to first-line
303 monotherapy with pembrolizumab than only PD-L1^{high} in patients with metastatic NSCLC.

304

305 **Acknowledgements**

306 We thank the Swedish Lung Cancer Registry, and the continuous reporting by Swedish
307 healthcare employees, that made the project possible.

308 **Funding**

309 This work was supported by the Swedish Society for Medical Research (2018; S18-034), the
310 Swedish Cancer Society, the Medical Research Council (2018; 2018-02318), AG Fond (2020),
311 the Knut and Alice Wallenberg Foundation and the Wallenberg Centre for Molecular and
312 Translational Medicine (to V.I.S.); the Gothenburg Society of Medicine (2019; 19/889991) and
313 Department of Oncology, Sahlgrenska University Hospital (to E.A.E.); the Swedish Cancer
314 Society and The Healthcare Board for the Region of West Sweden (to S.R); Sahlgrenska
315 Academy, Gothenburg University (2019; GU2019-3467) (to C.W.); the Swedish government
316 under the LUA/ALF agreement (to H.F.); the Swedish Cancer Society (2017; 17-0171) and the
317 Swedish government under the LUA/ALF agreement (ALFGBG-495961) (to L.M.A.)

318

319 **Declaration of potential conflict of interest**

320 The authors have declared no conflicts of interest.

321

Mutant KRAS is a biomarker for response to pembrolizumab for patients with metastatic NSCLC

322 References

- 323 1. World Health Organization, International Agency for Research on Cancer. *Globocan*
324 *2020: Lung Cancer*. International Agency for Research on Cancer. Available at
325 <http://qco.iarc.fr/today/data/factsheets/cancers/15-Lung-fact-sheet.pdf>. Accessed:
326 March 2, 2021.
- 327 2. Swedish Lung cancer registry- Available from:
328 [https://cancercentrum.se/samverkan/cancerdiagnoser/lunga-och-](https://cancercentrum.se/samverkan/cancerdiagnoser/lunga-och-lungsack/vardprogram/)
329 [lungsack/vardprogram/](https://cancercentrum.se/samverkan/cancerdiagnoser/lunga-och-lungsack/vardprogram/).
- 330 3. El Osta, B., et al., *Characteristics and Outcomes of Patients With Metastatic KRAS-*
331 *Mutant Lung Adenocarcinomas: The Lung Cancer Mutation Consortium Experience*. *J*
332 *Thorac Oncol*, 2019. **14**(5): p. 876-889.
- 333 4. Herbst, R.S., D. Morgensztern, and C. Boshoff, *The biology and management of non-*
334 *small cell lung cancer*. *Nature*, 2018. **553**(7689): p. 446-454.
- 335 5. König, D., S. Savic Prince, and S.I. Rothschild, *Targeted Therapy in Advanced and*
336 *Metastatic Non-Small Cell Lung Cancer. An Update on Treatment of the Most Important*
337 *Actionable Oncogenic Driver Alterations*. *Cancers (Basel)*, 2021. **13**(4).
- 338 6. Herbst, R.S., et al., *Atezolizumab for First-Line Treatment of PD-L1-Selected Patients with*
339 *NSCLC*. *N Engl J Med*, 2020. **383**(14): p. 1328-1339.
- 340 7. Reck, M., et al., *Five-Year Outcomes With Pembrolizumab Versus Chemotherapy for*
341 *Metastatic Non-Small-Cell Lung Cancer With PD-L1 Tumor Proportion Score \geq 50*. *J Clin*
342 *Oncol*, 2021. **39**(21): p. 2339-2349.
- 343 8. Reck, M., et al., *Updated Analysis of KEYNOTE-024: Pembrolizumab Versus Platinum-*
344 *Based Chemotherapy for Advanced Non-Small-Cell Lung Cancer With PD-L1 Tumor*
345 *Proportion Score of 50% or Greater*. *J Clin Oncol*, 2019. **37**(7): p. 537-546.
- 346 9. Borghaei, H., et al., *Pembrolizumab plus chemotherapy versus chemotherapy alone in*
347 *patients with advanced non-small cell lung cancer without tumor PD-L1 expression: A*
348 *pooled analysis of 3 randomized controlled trials*. *Cancer*, 2020. **126**(22): p. 4867-4877.
- 349 10. Ferrara, R., et al., *Single or combined immune checkpoint inhibitors compared to first-line*
350 *platinum-based chemotherapy with or without bevacizumab for people with advanced*
351 *non-small cell lung cancer*. *Cochrane Database Syst Rev*, 2021. **4**(4): p. Cd013257.
- 352 11. Frederickson, A.M., et al., *Pembrolizumab plus chemotherapy for first-line treatment of*
353 *metastatic nonsquamous non-small-cell lung cancer: a network meta-analysis*.
354 *Immunotherapy*, 2019. **11**(5): p. 407-428.
- 355 12. Gandhi, L., et al., *Pembrolizumab plus Chemotherapy in Metastatic Non-Small-Cell Lung*
356 *Cancer*. *N Engl J Med*, 2018. **378**(22): p. 2078-2092.
- 357 13. Rittmeyer, A., et al., *Atezolizumab versus docetaxel in patients with previously treated*
358 *non-small-cell lung cancer (OAK): a phase 3, open-label, multicentre randomised*
359 *controlled trial*. *Lancet*, 2017. **389**(10066): p. 255-265.
- 360 14. Zhang, B., et al., *Predictive effect of PD-L1 expression for immune checkpoint inhibitor*
361 *(PD-1/PD-L1 inhibitors) treatment for non-small cell lung cancer: A meta-analysis*. *Int*
362 *Immunopharmacol*, 2020. **80**: p. 106214.

Mutant KRAS is a biomarker for response to pembrolizumab for patients with metastatic NSCLC

- 363 15. Adderley, H., F.H. Blackhall, and C.R. Lindsay, *KRAS-mutant non-small cell lung cancer:*
364 *Converging small molecules and immune checkpoint inhibition.* EBioMedicine, 2019. **41**:
365 p. 711-716.
- 366 16. Ferrer, I., et al., *KRAS-Mutant non-small cell lung cancer: From biology to therapy.* Lung
367 Cancer, 2018. **124**: p. 53-64.
- 368 17. Meng, D., et al., *Prognostic value of K-RAS mutations in patients with non-small cell lung*
369 *cancer: a systematic review with meta-analysis.* Lung Cancer, 2013. **81**(1): p. 1-10.
- 370 18. Addeo, A., G.L. Banna, and A. Friedlaender, *KRAS G12C Mutations in NSCLC: From Target*
371 *to Resistance.* Cancers (Basel), 2021. **13**(11).
- 372 19. Burns, T.F., et al., *Targeting KRAS-Mutant Non-Small-Cell Lung Cancer: One Mutation at*
373 *a Time, With a Focus on KRAS G12C Mutations.* J Clin Oncol, 2020. **38**(35): p. 4208-4218.
- 374 20. Indini, A., et al., *Targeting KRAS in Solid Tumors: Current Challenges and Future*
375 *Opportunities of Novel KRAS Inhibitors.* Pharmaceuticals, 2021. **13**(5).
- 376 21. Mathieu, M., et al., *KRAS G12C fragment screening renders new binding pockets.* Small
377 GTPases, 2021: p. 1-14.
- 378 22. Skoulidis, F., et al., *Sotorasib for Lung Cancers with KRAS p.G12C Mutation.* N Engl J Med,
379 2021.
- 380 23. Liu, C., et al., *The superior efficacy of anti-PD-1/PD-L1 immunotherapy in KRAS-mutant*
381 *non-small cell lung cancer that correlates with an inflammatory phenotype and increased*
382 *immunogenicity.* Cancer Lett, 2020. **470**: p. 95-105.
- 383 24. Cinausero, M., et al., *KRAS and ERBB-family genetic alterations affect response to PD-1*
384 *inhibitors in metastatic nonsquamous NSCLC.* Ther Adv Med Oncol, 2019. **11**: p.
385 1758835919885540.
- 386 25. Gianoncelli, L., et al., *Efficacy of Anti-PD1/PD-L1 Therapy (IO) in KRAS Mutant Non-small*
387 *Cell Lung Cancer Patients: A Retrospective Analysis.* Anticancer Res, 2020. **40**(1): p. 427-
388 433.
- 389 26. Karatrasoglou, E.A., et al., *Association between PD-L1 expression and driver gene*
390 *mutations in non-small cell lung cancer patients: correlation with clinical data.* Virchows
391 Arch, 2020. **477**(2): p. 207-217.
- 392 27. Torralvo, J., et al., *The Activity of Immune Checkpoint Inhibition in KRAS Mutated Non-*
393 *small Cell Lung Cancer: A Single Centre Experience.* Cancer Genomics Proteomics, 2019.
394 **16**(6): p. 577-582.
- 395 28. Jeanson, A., et al., *Efficacy of Immune Checkpoint Inhibitors in KRAS-Mutant Non-Small*
396 *Cell Lung Cancer (NSCLC).* J Thorac Oncol, 2019. **14**(6): p. 1095-1101.
- 397 29. Herbst, R., et al., *A Network Meta-Analysis of Cancer Immunotherapies Versus*
398 *Chemotherapy for First-Line Treatment of Patients With Non-Small Cell Lung Cancer and*
399 *High Programmed Death-Ligand 1 Expression.* Front Oncol, 2021. **11**: p. 676732.
- 400 30. Arak, H., et al., *Prognostic and Predictive Significance of PD-L1 Expression in Non-Small*
401 *Cell Lung Cancer Patients: A Single-Center Experience.* Turk Patoloji Derg, 2021. **37**(3): p.
402 239-248.
- 403 31. Wang, A., et al., *The prognostic value of PD-L1 expression for non-small cell lung cancer*
404 *patients: a meta-analysis.* Eur J Surg Oncol, 2015. **41**(4): p. 450-6.

Mutant KRAS is a biomarker for response to pembrolizumab for patients with metastatic NSCLC

- 405 32. Noordhof, A.L., et al., *Prognostic impact of KRAS mutation status for patients with stage*
406 *IV adenocarcinoma of the lung treated with first-line pembrolizumab monotherapy.* Lung
407 Cancer, 2021. **155**: p. 163-169.
- 408 33. Dogan, S., et al., *Molecular Epidemiology of EGFR and KRAS*
409 *Mutations in 3,026 Lung Adenocarcinomas: Higher Susceptibility of Women to Smoking-*
410 *Related KRAS-Mutant Cancers.* 2012. **18**(22): p. 6169-6177.
- 411 34. Darabi, S., et al., *Predictive Biomarkers for Immunotherapy Response Beyond PD-1/PD-*
412 *L1.* Oncology (Williston Park), 2020. **34**(8): p. 321-327.
- 413 35. Niu, M., et al., *Predictive biomarkers of anti-PD-1/PD-L1 therapy in NSCLC.* Exp Hematol
414 Oncol, 2021. **10**(1): p. 18.
- 415 36. Hallqvist, A., et al., *Mutated KRAS Is an Independent Negative Prognostic Factor for*
416 *Survival in NSCLC Stage III Disease Treated with High-Dose Radiotherapy.* Lung Cancer
417 Int, 2012. **2012**: p. 587424.
- 418 37. Sebastian, M., et al., *KRAS G12C-mutated advanced non-small cell lung cancer: A real-*
419 *world cohort from the German prospective, observational, nation-wide CRISP Registry*
420 *(AIO-TRK-0315).* Lung Cancer, 2021. **154**: p. 51-61.
- 421 38. Herbst, R.S., et al., *LBA4 Association of KRAS mutational status with response to*
422 *pembrolizumab monotherapy given as first-line therapy for PD-L1-positive advanced non-*
423 *squamous NSCLC in Keynote-042.* Annals of Oncology, 2019. **30**: p. xi63-xi64.
- 424 39. Landre, T., et al., *Anti-PD-(L)1 for KRAS-mutant advanced non-small-cell lung cancers: a*
425 *meta-analysis of randomized-controlled trials.* Cancer Immunol Immunother, 2021.
- 426 40. *Comprehensive molecular profiling of lung adenocarcinoma.* Nature, 2014. **511**(7511): p.
427 543-50.
- 428 41. Goeman, F., et al., *Mutations in the KEAP1-NFE2L2 Pathway Define a Molecular Subset of*
429 *Rapidly Progressing Lung Adenocarcinoma.* J Thorac Oncol, 2019. **14**(11): p. 1924-1934.
- 430 42. Jeong, Y., et al., *Role of KEAP1/NFE2L2 Mutations in the Chemotherapeutic Response of*
431 *Patients with Non-Small Cell Lung Cancer.* Clin Cancer Res, 2020. **26**(1): p. 274-281.
- 432 43. Jeong, Y., et al., *Role of KEAP1/NRF2 and TP53 Mutations in Lung Squamous Cell*
433 *Carcinoma Development and Radiation Resistance.* Cancer Discov, 2017. **7**(1): p. 86-101.
- 434 44. Nadal, E., R. Palmero, and C. Muñoz-Pinedo, *Mutations in the Antioxidant KEAP1/NRF2*
435 *Pathway Define an Aggressive Subset of NSCLC Resistant to Conventional Treatments.* J
436 Thorac Oncol, 2019. **14**(11): p. 1881-1883.
- 437 45. Papillon-Cavanagh, S., et al., *STK11 and KEAP1 mutations as prognostic biomarkers in an*
438 *observational real-world lung adenocarcinoma cohort.* ESMO Open, 2020. **5**(2).
- 439 46. Romero, R., et al., *Keap1 loss promotes Kras-driven lung cancer and results in*
440 *dependence on glutaminolysis.* Nat Med, 2017. **23**(11): p. 1362-1368.
- 441 47. Scalera, S., et al., *KEAP1 and TP53 frame genomic, evolutionary and immunological*
442 *subtypes of lung adenocarcinoma with different sensitivity to immunotherapy.* J Thorac
443 Oncol, 2021.
- 444 48. Wang, H., et al., *Less immune cell infiltration and worse prognosis after immunotherapy*
445 *for patients with lung adenocarcinoma who harbored STK11 mutation.* Int
446 Immunopharmacol, 2020. **84**: p. 106574.
- 447
- 448

Mutant KRAS is a biomarker for response to pembrolizumab for patients with metastatic NSCLC

449 **Figure legends**

450 **Table 1** Characteristics of the total cohort as well as stratified on KRAS^{WT} and KRAS^{MUT}. Data
451 are presented as n (%).

452 ECOG PS, Eastern Cooperative Oncology Group Performance Status.

453

454 **Figure 1. KRAS mutations is a negative factor for overall survival**

455 **A.** Kaplan-Meier estimates comparing overall survival and median survival stratified on KRAS^{WT}
456 vs KRAS^{MUT} for the full cohort ($n = 580$). Pie chart showing patient distribution between KRAS^{WT}
457 and KRAS^{MUT}.

458 **B.** Kaplan-Meier estimates comparing overall survival for all receiving life extending treatment
459 (no treatment and only palliative radiotherapy excluded) stratified on KRAS^{WT} vs KRAS^{MUT}. Pie
460 chart showing patient distribution between KRAS^{WT} and KRAS^{MUT}.

461

462 **Figure 2. KRAS^{MUT} is a negative factor for overall survival when treated with platinum
463 doublet independently of EGFR and ALK mutations.**

464 **A.** Kaplan-Meier estimates comparing overall survival for all receiving treatment with platinum
465 doublet stratified on KRAS^{WT} vs KRAS^{MUT}. Pie chart showing patient distribution between
466 KRAS^{WT} and KRAS^{MUT}.

467 **B.** Kaplan-Meier estimates comparing overall survival for all receiving treatment with platinum
468 doublet stratified on KRAS^{WT} vs KRAS^{MUT}. EGFR and ALK mutated patients are excluded from
469 KRAS^{WT} group. Pie chart showing patient distribution between KRAS^{WT} and KRAS^{MUT}.

470

471 **Figure 3. KRAS^{MUT}, but not KRAS^{WT}, has a better outcome on ICB than platinum doublet
472 treatment.**

473 **A.** Kaplan-Meier estimates comparing overall survival for all receiving treatment with platinum
474 doublet vs ICB. Pie chart showing patient distribution between PD and ICB.

Mutant KRAS is a biomarker for response to pembrolizumab for patients with metastatic NSCLC

475 **B.** Kaplan-Meier estimates comparing overall survival for all KRAS^{MUT} receiving treatment with
476 PD vs ICB. Pie chart showing patient distribution between platinum doublet and ICB.

477 **C.** Kaplan-Meier estimates comparing overall survival for all KRAS^{WT} receiving treatment with
478 platinum doublet vs ICB. Pie chart showing patient distribution between PD and ICB.

479 ICB: Immune Checkpoint Blockade; PD: Platinum Doublet

480

481 **Figure 4. PD-L1 status has an impact on overall survival for treated patients with KRAS^{MUT}**

482 **A.** IHC depicting examples of PD-L1 staining used to assess PD-L1 status in both KRAS^{WT} and
483 KRAS^{MUT} NSCLC patients. PD-L1 expression is classified as negative, < 50% or ≥50% based on

484 tumor proportion score.

485 **B.** Kaplan-Meier estimates comparing overall survival for KRAS^{MUT} treated patients stratified on
486 PD-L1 status. Pie chart showing patient distribution between PD-L1 negative, <50% and ≥50%.

487 **C.** Kaplan-Meier estimates comparing overall survival for KRAS^{WT} treated patients stratified on
488 PD-L1 status. Pie chart showing patient distribution between PD-L1 negative, <50% and ≥50%.

489 IHC: Immunohistochemistry; PD-L1: Programmed Death Ligand 1

490

491 **Figure 5. KRAS^{MUT} patients have a better outcome on ICB treatment than KRAS^{WT} patients**

492 **A.** Kaplan-Meier estimates comparing overall survival for KRAS^{MUT} PD-L1 ≥50% treated patients
493 receiving PD or ICB. Pie chart showing patient distribution receiving PD or ICB treatment.

494 **B.** Kaplan-Meier estimates comparing overall survival for KRAS^{WT} PD-L1 ≥50% treated patients
495 receiving PD or ICB. Pie chart showing patient distribution receiving PD or ICB treatment.

496 **C.** Kaplan-Meier estimates comparing overall survival for all patients receiving ICB treatment in a
497 first-line setting. Pie chart showing patient distribution between KRAS^{WT} and KRAS^{MUT}.

498 ICB: Immune Checkpoint Blockade; PD: Platinum Doublet

499

Mutant KRAS is a biomarker for response to pembrolizumab for patients with metastatic NSCLC

500

501 **Supplemental Figure 1**

502 **A.** Kaplan-Meier estimates comparing overall survival for the full cohort stratified on ECOG PS.

503 Pie chart showing patient distribution between ECOG stages.

504 **B.** Kaplan-Meier estimates comparing overall survival for the full cohort stratified on number of

505 metastasis locations. Pie chart showing patient distribution between number of metastasis

506 locations.

507 **C.** Kaplan-Meier estimates comparing overall survival for the full cohort stratified on gender. Pie

508 chart showing patient distribution between male and female.

509 ECOG: Eastern Cooperative Oncology Group; PS: Performance Status

510

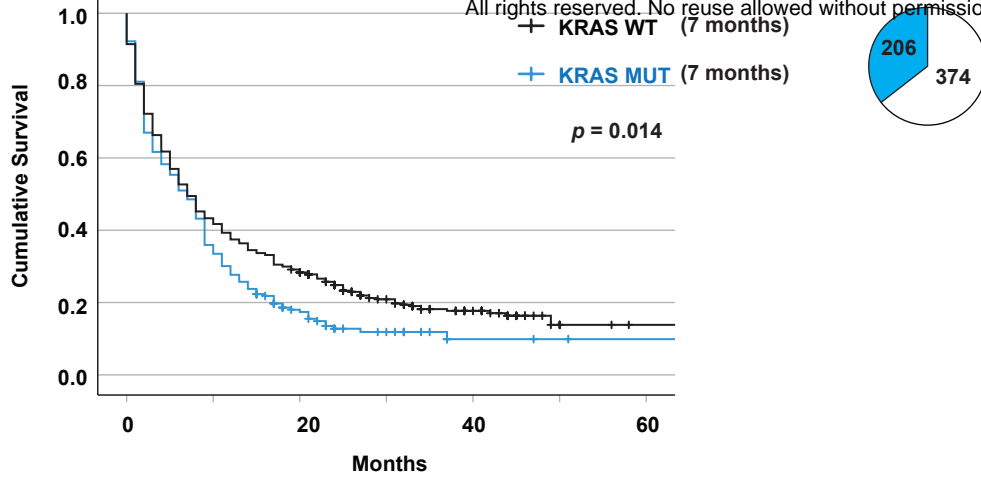
511 **Supplemental Table 1** (Related to Figure. 2A)

512 Characteristics of all PD treated patients.

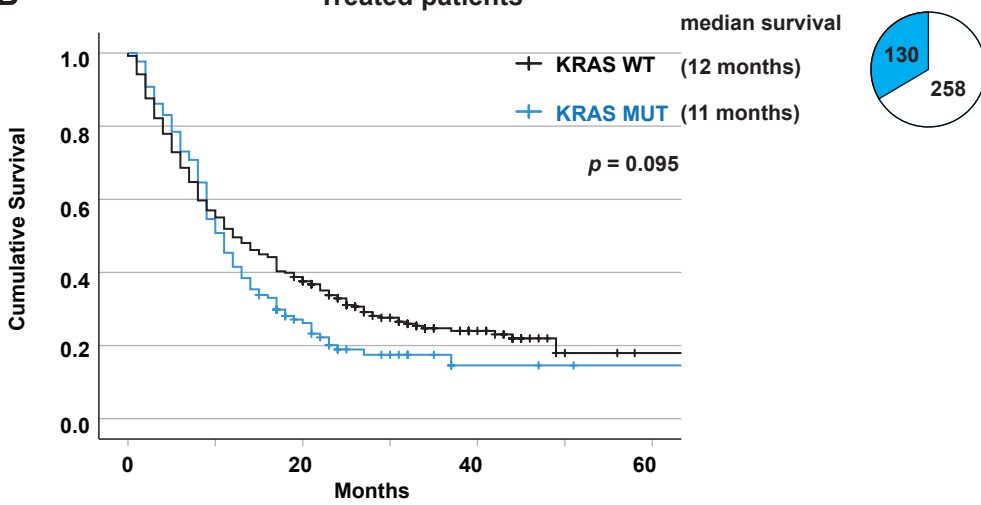
513 **Supplemental Table2** (Related to Figure 5A)

514 Characteristics all patients treated with first-line ICB

A All stage IV patients
medRxiv preprint doi: <https://doi.org/10.1101/2021.11.27.21266822>; this version posted November 28, 2021. The copyright holder for this preprint (which was not certified by peer review) is the author/funder, who has granted medRxiv a license to display the preprint in perpetuity. All rights reserved. No reuse allowed without permission.



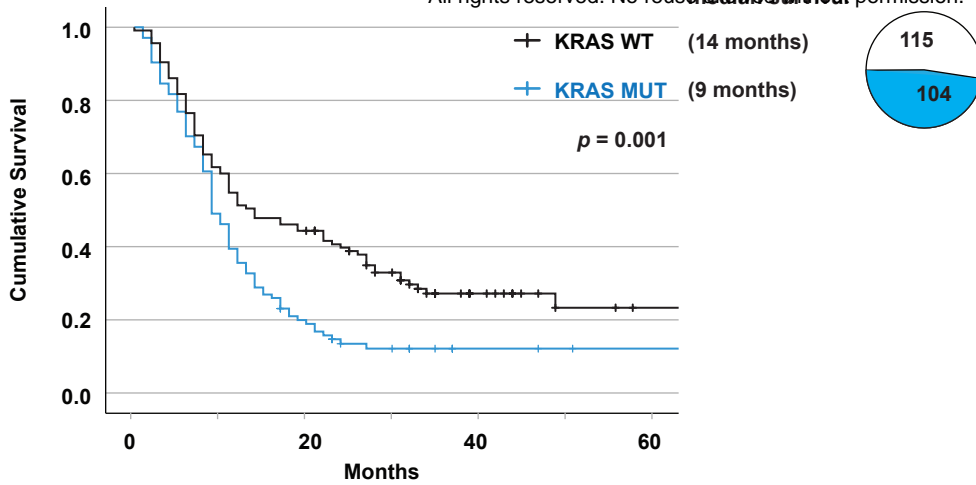
B Treated patients
median survival



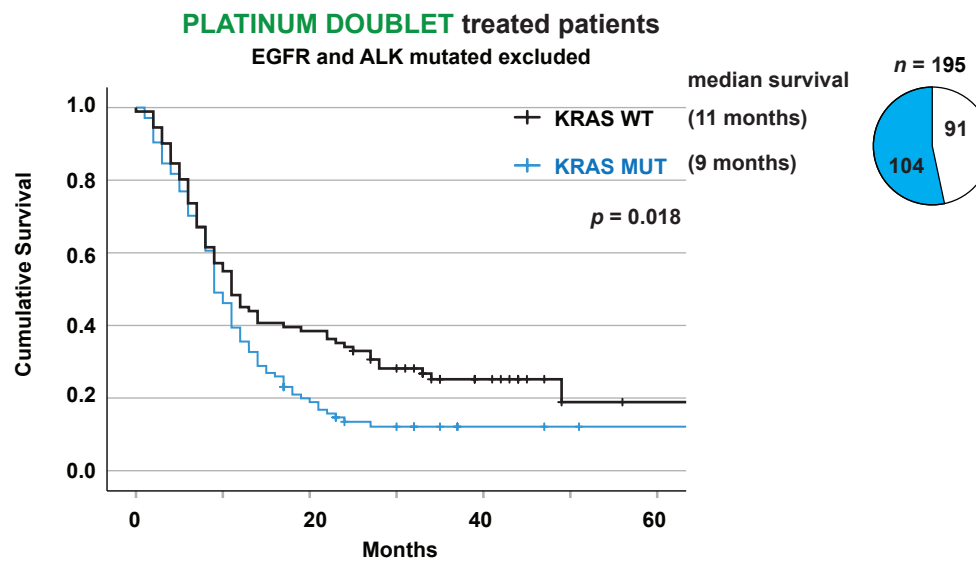
Eklund et al. Figure 2

A

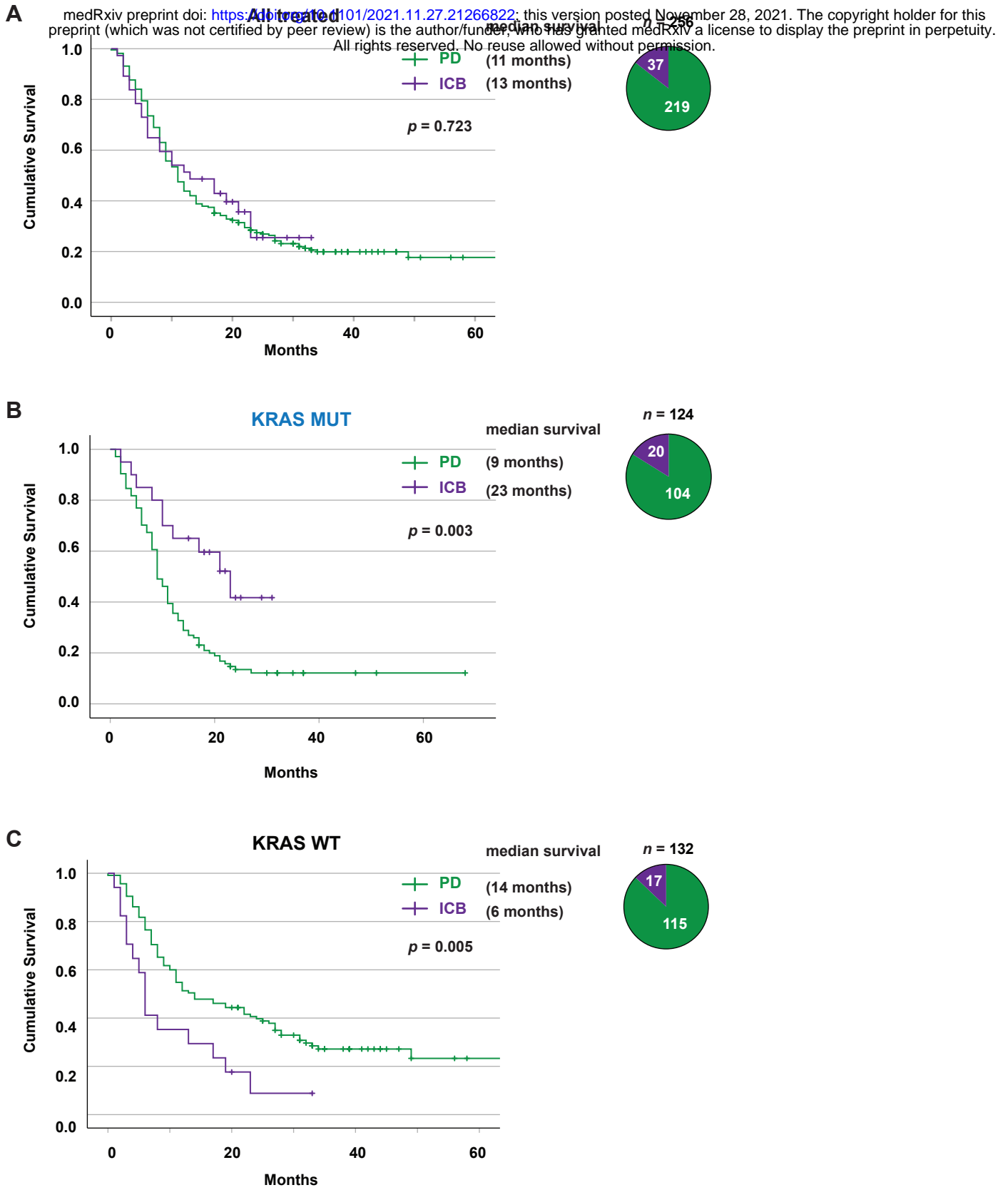
medRxiv preprint doi: <https://doi.org/10.1101/2021.11.27.21266822>; this version posted November 28, 2021. The copyright holder for this preprint (which was not certified by peer review) is the author/funder, who has granted medRxiv a license to display the preprint in perpetuity. All rights reserved. No reuse allowed without permission.



B

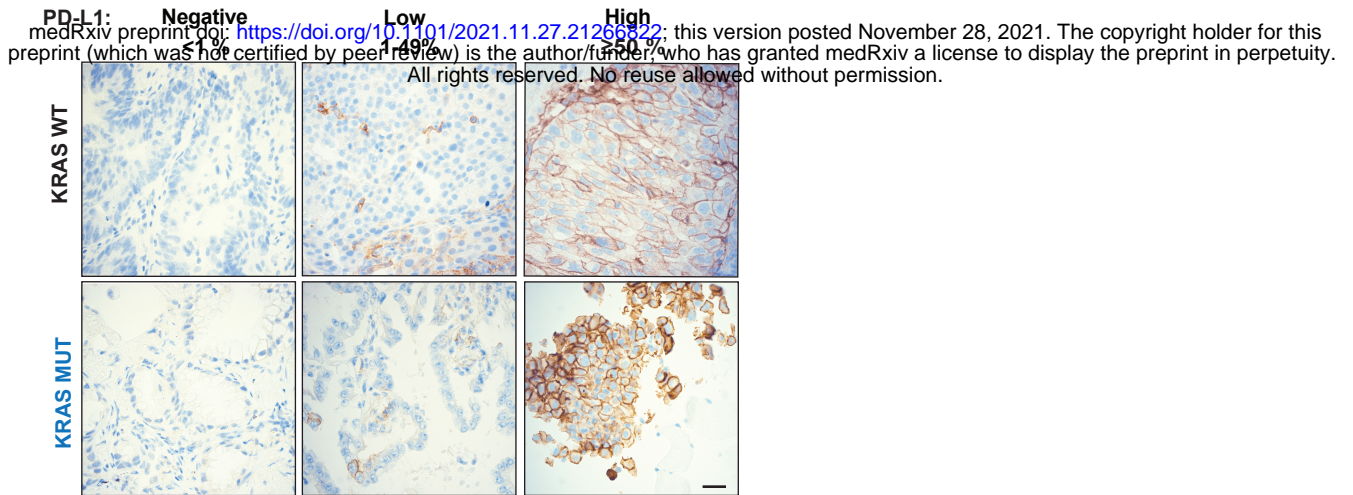


Eklund et al. Figure 3

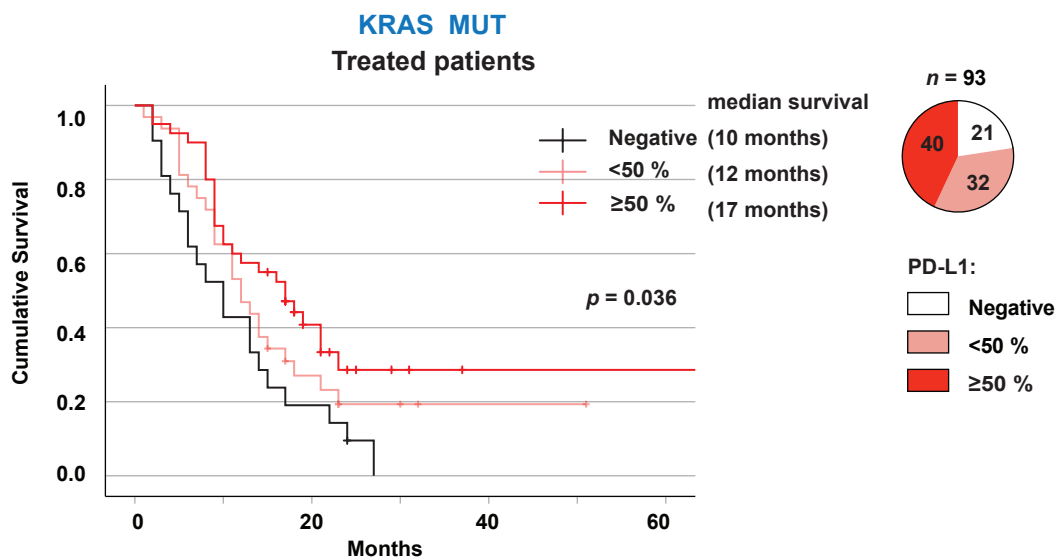


Eklund et al. Figure 4

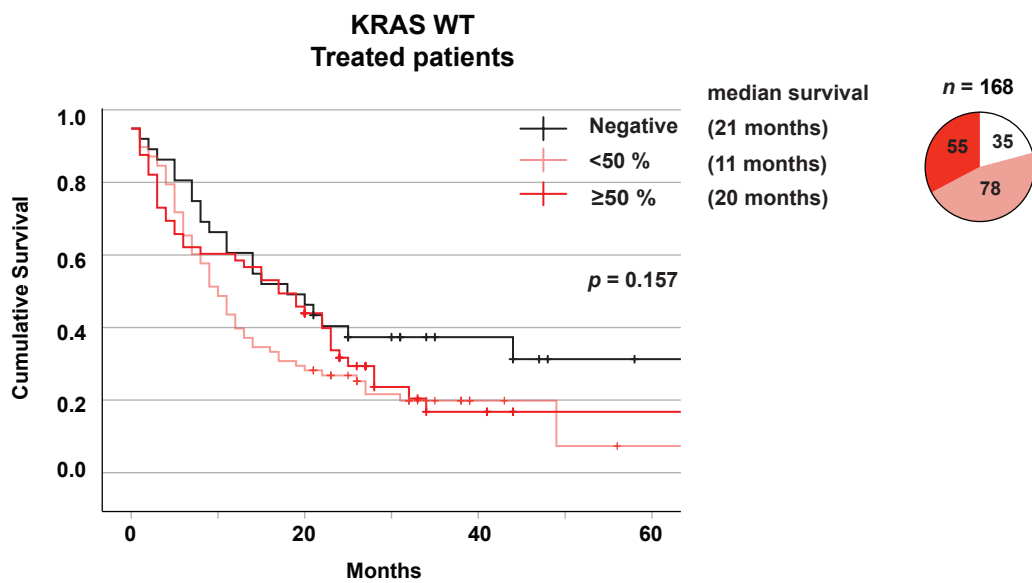
A



B

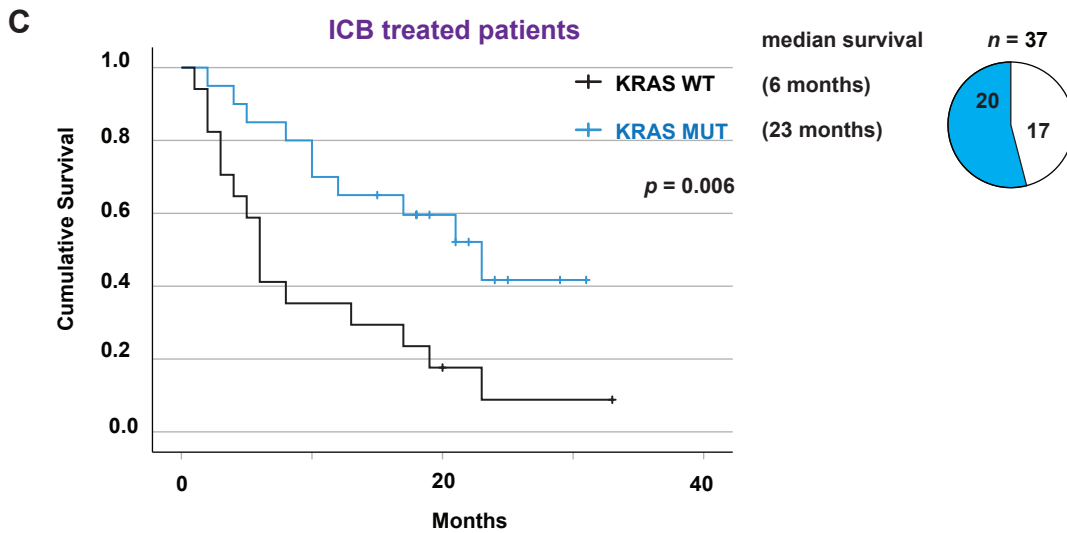
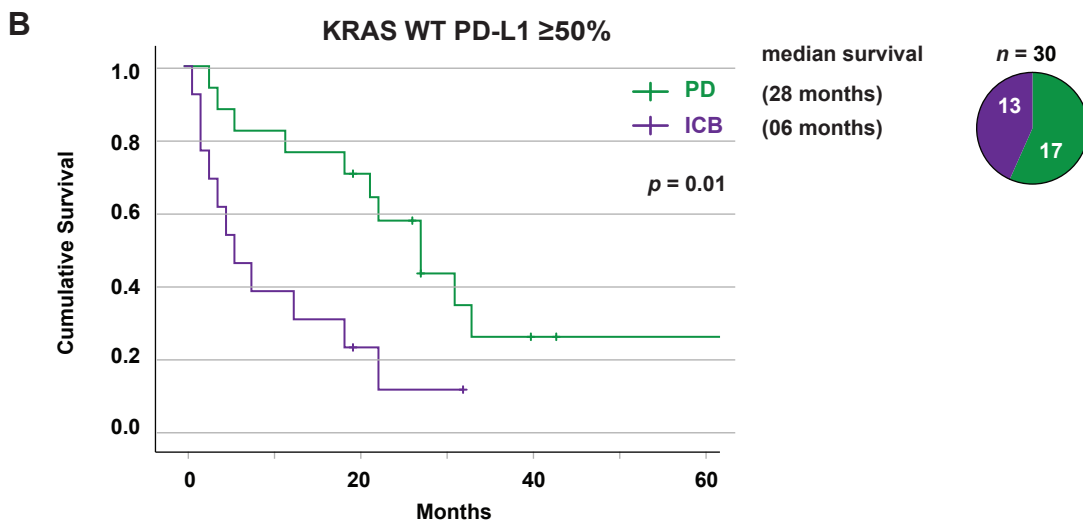
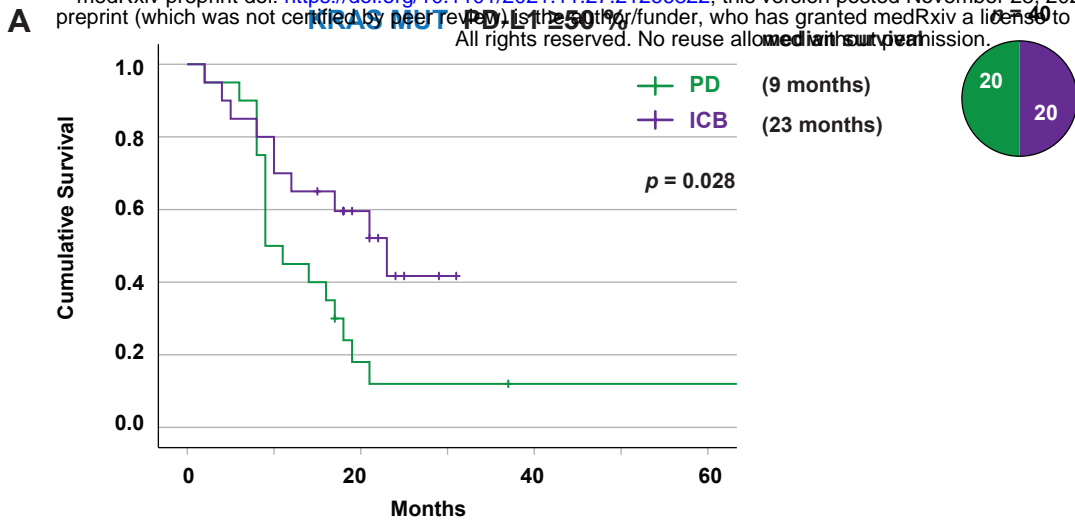


C



Eklund et al. Figure 5

medRxiv preprint doi: <https://doi.org/10.1101/2021.11.27.21266822>; this version posted November 28, 2021. The copyright holder for this preprint (which was not certified by peer review) is the author/funder, who has granted medRxiv a license to display the preprint in perpetuity. All rights reserved. No reuse allowed without permission.



Characteristics all patients stage IV	Total	KRAS WT	KRAS MUT
	n (%)	n (%)	n (%)
Total	580 (100)	374 (64,5)	206 (35,5)
Age in years, median (range)	71 (24-94)	70,5 (24-94)	71 (46-90)
Sex			
Male	254 (43,8)	173 (46,3)	81 (39,3)
Female	326 (56,2)	201 (53,7)	125 (60,7)
Smoking history			
Current smoker	192 (33,1)	117 (31,4)	75 (36,4)
Former smoker	270 (46,6)	152 (40,6)	118 (57,3)
Never smoker	116 (20)	103 (27,5)	13 (6,3)
Missing	2 (0,3)	2 (0,5)	0
Performance status			
ECOG 0	79 (13,6)	48 (12,8)	31 (15,0)
ECOG 1	243 (41,9)	142 (38,0)	101 (49,0)
ECOG 2	154 (26,6)	99 (26,5)	55 (26,7)
ECOG 3	74 (12,8)	57 (15,2)	17 (8,3)
ECOG 4	19 (3,3)	17 (4,5)	2 (1,0)
Missing	11 (1,9)	11 (2,9)	0
Histology			
Adenocarcinoma	498 (85,9)	316 (84,5)	128 (85,9)
NSCLC NOS	50 (8,6)	28 (7,5)	19 (12,8)
Squamous cell carcinoma	32 (5,5)	30 (8,0)	2 (1,3)
Mutation status			
None known	231 (39,8)	231 (71,8)	
ALK	19 (3,3)	19 (5,1)	
EGFR	85 (14,7)	85 (22,7)	
BRAF	20 (3,4)	20 (5,3)	
Other	15 (2,6)	15 (4)	
ROS1	2 (0,3)	2 (0,5)	
RET	2 (0,3)	2 (0,5)	
KRAS	206 (35,5)		
KRAS submutation			
G12A			14 (6,8)
G12C			83 (40,3)
G12D			23 (11,2)
G12V			43 (20,9)
Q61H			10 (4,9)
Others			33 (16)
At last follow up			
Alive	97 (16,7)	69 (18,4)	28 (13,6)
Deceased	483 (83,3)	305 (81,6)	178 (86,4)
Survival			
Median survival (months)	7	7	7
No. of metastatic locations at diaagnosis			
1	361 (62,2)	234 (62,6)	127 (61,7)
2	153 (26,4)	101 (27,0)	52 (25,2)
3	47 (8,1)	30 (8,0)	17 (8,3)
>3	11 (1,9)	3 (0,8)	8 (3,9)
Missing	8 (1,4)	6 (1,6)	2 (1,0)