

1 **It Takes Two to Tango: Combining Conventional Culture with Molecular Diagnostics**
2 **Enhances Accuracy of *Streptococcus pneumoniae* Detection**
3 **and Pneumococcal Serogroup/Serotype determination in Carriage**
4

5 Willem R. Miellet^{1,2}, Janieke van Veldhuizen², David Litt³, Rob Mariman²,
6 Alienke J. Wijmenga-Monsuur², Paul Badoux⁴, Tessa Nieuwenhuijsen¹, Rebecca Thombre³,
7 Sanaa Mayet³, Seyi Eletu³, Carmen Sheppard³, Marlies A. van Houten⁵, Nynke Y. Rots²,
8 Elizabeth Miller⁶, Norman K. Fry^{3,6}, Elisabeth A.M. Sanders^{1,2}, and Krzysztof Trzciński^{1#}
9

10
11 ¹ Department of Pediatric Immunology and Infectious Diseases, Wilhelmina Children's
12 Hospital, University Medical Center Utrecht (UMCU), The Netherlands
13

14 ² Centre for Infectious Disease Control Netherlands, National Institute for Public Health and
15 the Environment (RIVM), Bilthoven, The Netherlands
16

17 ³ Respiratory and Vaccine Preventable Bacterial Reference Unit (RVPBRU), Public Health
18 England – National Infection Service, Colindale, London, United Kingdom
19

20 ⁴ Regional Laboratory of Public Health (Streeklab) Haarlem, The Netherlands
21

22 ⁵ Spaarne Gasthuis, Hoofddorp, The Netherlands
23

24 ⁶ Immunisation and Countermeasures Division, Public Health England (PHE) – National
25 Infection Service, Colindale, London, United Kingdom
26

27 #Corresponding author
28

29 UMCU
30 Heidelberglaan 100, HP – G04.614
31 3508 AB Utrecht
32 The Netherlands
33 K.Trzcinski@umcutrecht.nl
34 Phone: +31 645 707 151
35
36

37 Running title: Two to Tango.
38

39 **ABSTRACT**

40 **Background:** The specificity of molecular methods for the detection of *Streptococcus*
41 *pneumoniae* carriage is under debate. We propose a procedure that increases the accuracy of
42 molecular detection of live pneumococci in polymicrobial respiratory samples.

43

44 **Methods:** Culture and qPCR methods were applied to detect *S. pneumoniae* and
45 pneumococcal serotypes in 1549 nasopharyngeal samples collected in the Netherlands
46 (n=972) and England (n=577) from 946 toddlers and 603 adults, and in paired oropharyngeal
47 samples collected exclusively from 319 Dutch adults. Samples with no live pneumococci
48 isolated at primary diagnostic culture yet generating pneumococcus-specific signal in qPCRs
49 were re-examined with a second, qPCR-guided culture. Optimal C_q cut-offs for positivity in
50 qPCRs were determined via receiver operating characteristic (ROC) curve analysis using
51 isolation of live pneumococci from the primary and qPCR-guided cultures as reference.

52

53 **Results:** Detection of *S. pneumoniae* and pneumococcal serotypes with qPCRs in cultured
54 (culture-enriched) nasopharyngeal samples exhibited near-perfect agreement with
55 conventional culture (Cohen's kappa: 0.95). Molecular methods also displayed increased
56 sensitivity of detection for multiple serotype carriage. Among paired samples from adults, the
57 sensitivity of *S. pneumoniae* detection in primary nasopharyngeal plus oropharyngeal cultures
58 was significantly lower compared with molecular detection in both culture-enriched samples
59 together ($p < 0.0001$) and also in culture-enriched oropharyngeal samples alone ($p < 0.05$).

60

61 **Conclusions:** The sensitivity of *S. pneumoniae* carriage surveillance can be greatly improved
62 by complementing conventional culture with qPCR and *vice versa*. The specificity of
63 molecular methods for the detection of live pneumococci can be enhanced by incorporating
64 statistical procedures based on ROC curve analysis. The procedure we propose improves
65 detection of *S. pneumoniae* carriage in adults in particular and enhances specificity of
66 serotype carriage detection.

67

68 **Keywords:** *Streptococcus pneumoniae*, carriage, diagnostic accuracy.

69 INTRODUCTION

70 *Streptococcus pneumoniae* (pneumococcus) is the most common aetiological agent of
71 invasive bacterial disease [1] and of community-acquired pneumonia of bacterial aetiology
72 [2]. Despite being vaccine-preventable, pneumococcal disease remains among the leading
73 causes of death in childhood [3] as available vaccines target only a various subsets of only
74 twenty-four from ca. 100 of the known serotypes. Due to high pneumococcal carriage rates
75 [4, 5] children are considered the primary reservoir of pneumococcus and the main drivers of
76 transmission and infections in any population [6-8]. Children are also the primary group
77 targeted with pneumococcal vaccination [9].

78

79 With pneumococcal vaccines protecting not only against disease but also against
80 colonization, carriage is now an accepted endpoint in vaccination studies [10]. Following the
81 introduction of pneumococcal conjugate vaccines (PCV), of which ten-valent (PHiD-CV,
82 GSK) and thirteen-valent (PCV13, Pfizer) are currently marketed, epidemiological
83 surveillance of carriage became an essential tool for monitoring the direct and indirect (herd
84 protection) effects of vaccination. Surveillance of carriage is also used to detect the
85 emergence and track expansion of non-vaccine serotypes, the phenomenon described as
86 vaccine-induced serotype replacement [11]. Finally, carriage studies are instrumental in
87 monitoring serotype-associated invasiveness [12].

88

89 To understand the trends in pneumococcal epidemiology and guide strategies for PCV use, it
90 is critical to establish methodology for *S. pneumoniae* carriage detection that is sufficiently
91 sensitive across all ages [13, 14]. However, conventional culture, which is considered to be
92 the gold standard method in carriage detection, is not suitable for detection of multiple
93 serotype carriage [15] and lacks the sensitivity when used to detect *S. pneumoniae* in age
94 groups other than children [16]. There is also evidence that testing solely a single site within
95 the upper airways reduces sensitivity of carriage detection [17-19].

96

97 Molecular methods have largely improved the sensitivity of *S. pneumoniae* detection and
98 have made multiple serotype carriage detection feasible [4, 20]. Using assays developed by
99 our groups and others, we have tested the serotype composition of respiratory samples from
100 children and adults and have demonstrated an under-detection of *S. pneumoniae* and of
101 individual pneumococcal serotypes by culture when compared with molecular methods [7,
102 18, 21-24]. However, some caution that molecular methods exhibit poor specificity due to the
103 presence of pneumococcal genes among commensal streptococci [25-27]. It could also be
104 argued that molecular detection is unable to discriminate between live bacteria and presence
105 of relic DNA [28].

106

107 Here, we outline the protocol that combines conventional culturing with pneumococcus-
108 specific qPCRs and employs statistical procedures to interpret the molecular results and
109 enhances the specificity of the molecular methods. We show that molecular methods applied
110 to nasopharyngeal samples demonstrate near-perfect agreement with primary culture and yet
111 the sensitivity of *S. pneumoniae* carriage surveillance can be greatly enhanced by

112 complementing conventional culture with qPCRs and *vice versa*. We also show that testing
113 nasopharyngeal samples alone leads to underestimation of pneumococcal carriage in adults.
114

115 **MATERIALS AND METHODS**

116 **Study Design and Ethics Statement**

117 Pneumococcal carriage was investigated in two cross-sectional prospective observational
118 studies conducted in 2015/2016 in community-dwelling individuals in the Netherlands [29]
119 and in England [30]. The study conducted in the Netherlands was approved by the Medical
120 Ethics Committee Noord Holland (NTR5405 on <http://www.trialregister.nl>). The study
121 conducted in England was approved by the NHS Health Research Authority and the London
122 Fulham Research Ethics Committee (reference 15/LO/0458) and was registered on
123 clinicaltrials.gov (reference NCT02522546). Both studies were conducted in accordance with
124 Good Clinical Practice and the Declaration of Helsinki.

125

126 **Sample Collection and Laboratory Processing**

127 Respiratory samples were collected in the Netherlands between October 2015 and March
128 2016 in the study on carriage of respiratory bacterial pathogens coordinated by National
129 Institute of Public Health and the Environment. Nasopharyngeal samples were collected in
130 children aged 24 months (± 1 month) vaccinated with PHiD-CV according to “2 primary + 1
131 booster” (2p+1b) dose schedule, children aged 44 to 49 months vaccinated with PHiD-CV in
132 3p+1b schedule, and parents of the 24-month-old children (one parent per child).
133 Oropharyngeal swabs were also collected from Dutch adults [29, 31]. The English study took
134 place between July 2015 and June 2016 and was conducted by the National Vaccine
135 Evaluation Consortium which included Public Health England [30]. In England,
136 nasopharyngeal samples were collected in children aged 1-5 years vaccinated with PCV13
137 according to a 2p+1b schedule and in their household contacts (adults aged >20 years).

138

139 All samples were obtained according to World Health Organization standard procedures [4].
140 Immediately after sampling, swabs in the Netherlands were placed in liquid Amies transport
141 medium (Copan, Brescia, Italy) and within 8 hours transported to the diagnostic laboratory.
142 In England swabs were placed in skim-milk, tryptone, glucose and glycerol (STGG) broth
143 and delivered to a diagnostic laboratory within 48 hours (**Table S1**).

144

145

146 **Conventional Culture**

147 Approximately 50 μ l of specimen was used as an inoculum in detection of pneumococci by
148 conventional culture (primary culture). In the Netherlands samples were cultured on SB7-
149 Gent agar selective for streptococci (BA-GENT, Oxoid, Badhoeve Dorp, The Netherlands)
150 and on non-selective Columbia blood agar (CBA, Oxoid). In England samples were cultured
151 on Streptococcus-selective Blood Agar (COBA, Oxoid, Basinstoke, United Kingdom) and
152 CBA (Oxoid). Remaining of transport media were stored frozen at -70°C . In the Netherlands,
153 samples were aliquoted into 200 μ l volumes, and a single aliquot was supplemented with
154 glycerol (10% v/v final concentration) prior to freezing.

155

156 After overnight incubation at 37°C and 5% CO_2 , cultures were screened for pneumococcus-
157 like colonies to be re-cultured. Once screened, in the Netherlands all colony growth was
158 harvested from BA-GENT plate into 10% glycerol in brain heart infusion broth (Oxoid) [24].

159 In England, all colony growth was harvested from any plates containing alpha-haemolytic
160 colonies into PBS, centrifuged, the supernatant removed, and any growth stored as a pellet
161 [30]. These samples were considered culture-enriched (CE) for pneumococci and stored at -
162 80°C. Cultured strains (one per sample, but more if distinct pneumococcal morphotypes were
163 apparent) were serotyped by Quellung method in the Netherlands [29] and with the
164 previously described PneumoCaT bioinformatic pipeline in England that was supplemented
165 with slide agglutination when required [30, 32].

166

167 **Molecular Detection of *Streptococcus pneumoniae***

168 Molecular detection of *S. pneumoniae* in respiratory samples was conducted as described
169 previously [24]. For this, Amies medium, STGG medium, and culture-enriched samples were
170 shipped on dry ice from primary diagnostic sites to the study central laboratory in the
171 Netherlands. There, pellets of culture-enriched samples collected in England were
172 reconstituted to the original volume. Next, nucleic acids were extracted from 100 µl of
173 medium using the DNeasy Blood and Tissue Kit (Qiagen) and eluted into 200 µl. These
174 extractions represented minimally processed samples. For culture-enriched samples, 100 µl
175 of a bacterial growth harvest was centrifuged for 2 min at 14,000 ×g, the pellet was
176 resuspended with 90 µl of TE buffer (20 mM Tris-HCl [pH 8.0], 2 mM EDTA) and incubated
177 for 15 min at 95°C. Next, 90 µl of lysis buffer (20 mM Tris-HCl [pH 8.0], 2 mM EDTA, 2.4
178 % Triton X-100 and 40 mg/ml lysozyme) was added, and the samples were processed as
179 above. Pneumococcal DNA was detected via single plex qPCR using primers and probe
180 targeting sequences within genes coding for the pneumococcal iron uptake ABC transporter
181 lipoprotein PiaB [18], and for the major pneumococcal autolysin LytA [33] by testing 5.5 µl
182 DNA from minimally processed or 1.0 µl of culture-enriched samples.

183

184 **Molecular Detection of Pneumococcal Serotypes**

185 DNA extracted from culture-enriched harvests was used to determine the serotype
186 composition of nasopharyngeal and oropharyngeal samples using a panel of primers and
187 probes [34-36], targeting all serotypes covered by pneumococcal vaccines available either in
188 the Netherlands or in England at the time of sample collection (PHiD-CV, PCV13 and 23-
189 valent polysaccharide vaccine, PPV23, Merc Sharp Dohme) except for serotype 2. The panel
190 also covered selected non-vaccine serotypes (serotypes 6C, 6D, 7A, 10B, 12A, 12B, 15A,
191 15C, 15F, 16F, 21, 22A, 23A, 23B, 33A, 34, 35B, 35F, 37 and 38). However, with certain
192 assays targeting more than one serotype it was not possible to distinguish between serotypes
193 6A and 6B; 6C and 6D; 7A and 7F; 9A, 9L, 9N and 9V; 10A and 10B; 11A and 11D; 12A,
194 12B and 12F; 15A, 15B, 15C and 15F; 33A, 33F and 37; 35B and 35C when detected with
195 qPCR. A sample pooling strategy was employed when testing for serotypes in order to reduce
196 the number of serotype-specific qPCRs. For this, samples generating any signal below C_q 40
197 for either *piaB* or *lytA* were pooled in groups of five to be tested [7] and all remaining
198 samples were pooled in groups of ten. Samples negative for *piaB* and *lytA* were tested to
199 assess specificity of serotype/serogroup-specific assays [7]. Samples from pools generating a
200 signal for a particular serotype/serogroup were tested individually. In the Netherlands, the

201 PCRs were performed on the LightCycler 2 platform and in England they were performed on
202 the QuantStudio 7 platform, using identical PCR conditions.

203

204 **qPCR-guided Recovery of Live *S. pneumoniae* Strains**

205 Culture-enriched samples classified as negative in primary diagnostic culture but positive by
206 qPCR were revisited with culture in a second attempt to isolate live pneumococci. For this,
207 CBA plates were inoculated with 100 μ l of 10^{-1} - 10^{-3} and 10^{-3} - 10^{-5} dilution of culture-enriched
208 nasopharyngeal and culture-enriched oropharyngeal samples, respectively, and incubated at
209 37°C and 5% CO₂. Pneumococcus-like colonies were individually tested in qPCR for *piaB*
210 and *lytA* and confirmed to be *S. pneumoniae* based on susceptibility to optochin.

211

212 **Statistical Analysis**

213 Data analysis was performed in GraphPad Prism software version 9.1.0 and R version 4.1.0.
214 Receiver operating characteristic (ROC) curve analysis was performed using the “cutpointr”
215 R package to validate qPCR results with culture results (primary culture plus qPCR-guided
216 culture). Maximum Youden index values, the sum of sensitivity and specificity minus one,
217 were estimated via bootstrapping (n=1000) on *piaB* and *lytA* qPCR data from respiratory
218 samples to determine optimal cut-off values for qPCR detection [37]. Two-way mixed effects
219 intraclass correlations (ICCs) [38] and Bland-Altman plots [39] were used to evaluate
220 agreement for quantitative results using the “irr” and “blandr” R packages, respectively.
221 Carriage rates were compared with McNemar’s test unless otherwise stated. Estimates for
222 accuracy of diagnostic tests between methods (subgroups) were compared with a test of
223 interaction [40]. A *p* value of <0.05 was considered significant. Diagnostic test parameters
224 (predictive values, sensitivity, and specificity) were calculated using an in-house made R
225 function (<https://github.com/wmiellet/test-comparison-R>), and 95% confidence intervals were
226 calculated with Wilson-Brown score. Cohen’s kappa, a measure of chance-corrected
227 agreement, and its 95% confidence interval was calculated as described by McHugh [41] and
228 ratios of ≤ 0 , 0.01-0.20, 0.21-0.40, 0.41-0.60, 0.61-0.80 and >0.81 were interpreted as
229 exhibiting poor, slight, fair, moderate, substantial, and near-perfect agreement, respectively
230 [42]. For comparison between serotyping by culture and by qPCR, analysis was limited to
231 qPCR-targeted serotypes. For serogroup-specific qPCR assays a result was considered
232 congruent when a serogroup was detected in qPCR that matched the serogroup of the
233 serotype detected by culture.

234

235 **Assessment of method’s inter-laboratory reproducibility**

236 One-hundred seventy-six nasopharyngeal samples collected in England and n=59
237 oropharyngeal samples collected in the Netherlands have been selected to evaluate the inter-
238 laboratory reproducibility of molecular methods. For this, an aliquot of minimally processed
239 STGG nasopharyngeal sample, a fresh preparation of culture enriched nasopharyngeal
240 sample from a subset of the English study samples and culture-enriched oropharyngeal
241 samples from a subset of the Dutch study samples were tested at the study site in England, as
242 described above. Results for paired samples were compared between centres by calculating
243 the percent agreement and Cohen’s kappa. Quantitative results of both laboratories were also
244 compared by calculating an intraclass correlation coefficient (ICC) and by comparing results

245 in Bland-Altman plots. Carriage rates between both laboratories were compared using
246 Cohen's kappa.

247 RESULTS

248 We evaluated the performance of conventional and molecular methods applied to detect *S.*
249 *pneumoniae* and pneumococcal serotypes in 1549 nasopharyngeal samples collected from
250 946 children aged 1-5 years (n=653 in the Netherlands and n=293 in England) and from 603
251 adults (n=319 in the Netherlands and n=284 in England), and on oropharyngeal samples from
252 319 adults in the Netherlands. All PCR results shown were generated by testing the Dutch
253 and English samples in the Dutch laboratory, except were stated otherwise.

254

255 Detection of *Streptococcus pneumoniae*

256 When analysing culturing results without the addition of PCR-guided culturing, live *S.*
257 *pneumoniae* was isolated from 29% (445/1549) of primary cultures of nasopharyngeal swabs
258 (**Fig. 1A**), with significantly higher fraction of samples from children (45% or 422/946)
259 compared with adults (4% or 23/603) positive for pneumococcus (Pearson's chi-square,
260 $p<0.0001$). Among 319 adults sampled in the Netherlands (**Fig. 1B**), live pneumococcus was
261 significantly more often cultured from nasopharyngeal (n=15 or 5%) compared with
262 oropharyngeal (n=3 or 1%) samples ($p<0.01$).

263

264 Next, we conducted qPCRs on minimally processed and culture-enriched samples. To
265 enhance the specificity of detection we used a “two-to-tango” approach by quantifying *piaB*
266 and *lytA* genes and considering a sample to be positive for *S. pneumoniae* when both targets
267 were detected. When applying an arbitrary quantification cycle ($^A C_q$) of $<40 C_q$ as criterium
268 for positivity altogether 583 nasopharyngeal swabs (38% of 1549) were identified as positive
269 for pneumococcus (**Fig. 2A** and **2B**). The fraction of positive samples was significantly
270 higher among minimally processed compared with culture-enriched swabs (561 or 36%
271 versus 479 or 31% of 1549; $p<0.0001$). In line with results of primary diagnostic culture, here
272 too the proportion of positive samples was higher in children compared with adults
273 (Pearson's chi-square, $p<0.0001$) whenever nasopharyngeal swabs were tested minimally
274 processed (56% or 528/946 versus 5% or 33/603) or culture-enriched (48% or 454/946 versus
275 4% or 25/603). However, contrary to results of primary diagnostic culture, among adults
276 significantly larger proportions of oropharyngeal compared with nasopharyngeal samples
277 ($p<0.0001$) have been classified as positive for pneumococcus with qPCR whenever tested
278 minimally processed (26% or 83/319 versus 6% or 19/319) or culture-enriched (18% or
279 58/319 versus 6% or 18/319).

280

281 Next, samples negative for pneumococcus in primary diagnostic cultures yet generating
282 signal in qPCRs for *piaB* and *lytA* were cultured again. This qPCR-guided culture effort
283 increased the number of samples from which live pneumococci was cultured, in relatively
284 small albeit significant increase of 3% (from 445 vs. 460 of 1549; $p<0.0001$) for
285 nasopharyngeal (**Fig. 1A, 2A, and 2B**) and 666% increase (from 3 to 23 of 319; $p<0.0001$)
286 for oropharyngeal samples (**Fig. 1B, 2E, and 2F**).

287

288 To validate qPCR results using culture and to further enhance the specificity of qPCR
289 methods for the detection of live pneumococci we performed receiver operating characteristic
290 (ROC) curve analysis and identified C_q cut-off values that yielded maximum Youden indices

291 (Table 1). Reliability of positive qPCR results was assessed with Bland-Altman plots (Fig.
292 2C and 2D and Fig. 2G and 2H and supplementary information Table S2) and by calculating
293 the intraclass correlation coefficient between *piaB* and *lytA*. Samples with C_q values below
294 the ROC-derived C_q criterium ($^{ROCd}C_q$) demonstrated excellent agreement between *piaB* and
295 *lytA* while samples with a C_q value above the $^{ROCd}C_q$ threshold displayed poor agreement
296 (Table S2). Using the $^{ROCd}C_q$ criterium we classified 33% (512/1549) of minimally processed
297 nasopharyngeal samples as positive for pneumococcus (Fig. 1A). It included 52% (489/946)
298 samples from children and 4% (23/603) from adults. For culture-enriched samples
299 application of $^{ROCd}C_q$ resulted in 30% (469/1549) classified as positive including 47%
300 (447/946) samples from children and 4% (22/603) from adults (Fig. 1A). With $^{ROCd}C_q$, the
301 adults in the Netherlands were again significantly more often positive for pneumococcus in
302 oropharyngeal compared to nasopharyngeal samples whenever tested minimally processed
303 (19% or 59/319 versus 5% or 15/319; $p<0.0001$) or culture-enriched (12% or 39/319 versus
304 5% or 15/319; $p<0.01$) (Fig. 1B).

305

306 Comparison of Molecular Methods to Culturing Live *S. pneumoniae*

307 We compared the diagnostic accuracy of detection methods using the combined results of
308 primary diagnostic and qPCR-guided culturing as reference and applying $^{ROCd}C_q$ criteria for
309 positivity in qPCRs (Fig. 1A). For nasopharyngeal samples alone (Table 2), molecular
310 detection of pneumococcus displayed near-perfect, and substantial agreement to the reference
311 for culture-enriched and minimally processed samples, respectively. This represented
312 significantly reduced agreement for minimally processed compared with culture-enriched
313 samples ($p<0.0001$). Molecular detection in minimally processed samples identified
314 significantly more samples positive for pneumococcus compared with culture-enriched
315 samples from children ($p<0.0001$) but not adults ($p=1$), the difference we attributed to low
316 number of positive nasopharyngeal samples among collected from adults. Exclusively for
317 children, molecular detection of pneumococcus in culture-enriched samples demonstrated
318 significantly increased sensitivity ($p<0.001$) and specificity ($p<0.0001$) compared with
319 molecular detection in minimally processed samples.

320

321 For paired nasopharyngeal and oropharyngeal samples from adults, the isolation of *S.*
322 *pneumoniae* in primary or qPCR-guided culture in either nasopharyngeal or oropharyngeal
323 swab was used as the reference in method accuracy analysis (Table 3). Although the
324 sensitivity of *S. pneumoniae* detection with primary nasopharyngeal culture was significantly
325 higher compared with corresponding values for primary oropharyngeal cultures ($p<0.001$),
326 every detection method when applied to a single sample type displayed only slight to
327 moderate agreement to the reference. Moreover, the sensitivity of *S. pneumoniae* detection
328 with either nasopharyngeal and oropharyngeal primary cultures was significantly lower
329 compared with molecular detection in culture-enriched oropharyngeal samples ($p<0.05$) and
330 also when compared with molecular detection with either culture-enriched sample of either
331 type ($p<0.0001$). To this extent, molecular detection in culture-enriched oropharyngeal plus
332 nasopharyngeal samples displayed the highest agreement to the reference out of all other
333 evaluated approaches (Table 3).

334

335

336

337 **Comparison of Serotype Carriage Detection Methods**

338 With conventional culture (without PCR-guided additional culture), 29% (445/1549) of
339 nasopharyngeal samples including 45% (422/946) from children and 4% (23/603) from adults
340 were positive for a serotype (nontypeable pneumococci excluded), as already described
341 above. Next, we assessed the accuracy of molecular methods when applied to detect carriage
342 of pneumococcal serotypes. **Figure S1** depicts results of serotype detection in culture-
343 enriched samples tested with serotype-specific qPCR assays. None of the samples generated
344 any signal in qPCRs targeting serotype 1, and 23F and serogroup 18, nor was positive for any
345 of these serotypes by culture. The assays targeting serotypes 4, 5 showed a lack of specificity
346 and the assay targeting serotype 17F showed lack of sensitivity when applied to both,
347 nasopharyngeal and to oropharyngeal samples. Results of these three assays were excluded
348 from analysis.

349

350 Four-hundred and twenty-three nasopharyngeal samples were positive for one or more
351 serotypes targeted in qPCRs either by culture (n=393 samples) or with molecular methods
352 (n=411 samples) and applying $^{ROCd}C_q$ criterium for positivity for a serotype. It included 42%
353 (395/946) samples from children and 3% (16/603) from adults. Altogether, there were n=479
354 serotypes carriage events detected by testing nasopharyngeal samples with either
355 conventional culture or molecular methods (**Table S3**). For serotypes targeted by qPCRs
356 detected in nasopharyngeal samples the results of molecular detection displayed excellent
357 agreement (ICC 0.93, 95% CI 0.92-0.94) with *piaB* and *lytA* C_{qs} (**Fig. 3**) and, with exception
358 of serotype 3, almost perfect agreement (Cohen's kappa >0.81) with isolation of live strain of
359 a particular serotype from nasopharyngeal swab (**Fig. 4**). Also, results of serotype detection
360 in oropharyngeal samples from adults displayed excellent agreement with *piaB* and *lytA* C_{qs}
361 (ICC 0.96, 95% CI 0.92-0.98) (**Fig. S2**). Finally, there was near-perfect agreement between
362 overall serotypes carriage events detected by qPCR compared with detected by culture
363 (**Table 4**).

364

365 Multiple-serotype carriage events were significantly more often detected using molecular
366 methods compared with culture ($p<0.0001$). Furthermore, despite a limited number of
367 different serotypes tested by qPCR, observed multiple-serotype carriage frequencies were not
368 significantly different from expected frequencies based on molecular detection on culture-
369 enriched NP samples (11% versus 9%, respectively; one proportion Z-test, $p=0.2669$) unlike
370 detection of multiple-serotype carriage by culture which significantly underestimated
371 expected frequencies (2% versus 9%, respectively; one-proportion Z-test, $p<0.0001$).

372

373 **Interlaboratory Comparison of Methods**

374 To evaluate the reproducibility of molecular methods and to assess the agreement in
375 laboratory results between the Netherlands and England we processed a subset of culture-
376 enriched samples from both countries in both laboratories. Results for *piaB* and *lytA* qPCRs
377 demonstrated good reliability between both laboratories (**Table S4**). We observed near-
378 perfect agreement identifying culture-enriched samples as positive for pneumococcus with

379 molecular methods, and substantial agreement for minimally processed nasopharyngeal
380 samples (**Table S5**). For culture-enriched nasopharyngeal samples we evaluated agreement
381 between both laboratories for serotype carriage detection by qPCR. Overall, near-perfect
382 agreement was observed (Cohen's kappa 0.82, 95% CI 0.74 – 0.90).

383 **DISCUSSION**

384 In the current study we have demonstrated that molecular methods exhibit near-perfect
385 agreement to conventional culture in the detection and serotyping of *S. pneumoniae* in
386 children and adults when a nasopharyngeal swab is the only sample tested. Furthermore, we
387 have observed increased sensitivity of *S. pneumoniae* carriage detection among adults by
388 testing oropharyngeal samples with molecular methods and conducting qPCR-guided
389 culturing. We highlight several statistical procedures that can be used to evaluate the
390 reliability of molecular results and enhance the specificity of molecular methods for the
391 detection of live *S. pneumoniae*.

392

393 The current gold standard method for carriage detection is the isolation of live pneumococci
394 from cultures of deep trans-nasal nasopharyngeal swab, in adults complemented with culture
395 of a swab collected trans-orally (OP) [4]. However, the gold standard lacks sensitivity in case
396 of low-density carriage or when applied to poly-microbial samples in which *S. pneumoniae* is
397 not a dominant bacterium and it does not allow the detection of co-carriage of pneumococcal
398 strains [7, 18, 19, 21, 43]. Since the density of pneumococcal carriage episodes in adults is
399 much lower than in children [18], sampling multiple sites increases sensitivity of carriage
400 detection [7, 16, 18]. However, carriage surveillance based exclusively on primary diagnostic
401 cultures of nasopharyngeal and oropharyngeal samples often provides low quality data in
402 adults. This limitation of the gold standard method is of particular concern for surveillance of
403 carriage in older adults [19, 24], the age group with the largest incidence and burden of
404 pneumococcal pneumonia and invasive pneumococcal disease [2, 44] as carriage is often
405 reported to be virtually absent when the gold standard method is applied [16, 45].

406

407 To overcome these limitations, we complement conventional culture with molecular methods
408 to improve the overall sensitivity of *S. pneumoniae* carriage detection [7, 18, 21-24]. This
409 approach is particularly effective when applied to highly poly-microbial samples from the
410 oral niche. To validate this method, we have compared the performance of molecular
411 methods to the gold standard. While demonstrating near-perfect agreement with primary
412 nasopharyngeal cultures from children, application of qPCR-based methods still significantly
413 increased the number of carriers detected. Near perfect agreement was also observed in adults
414 when analysis focused explicitly on nasopharyngeal swabs. In adults, application of qPCR-
415 based methods to nasopharyngeal samples did not increase sensitivity of carriage detection.

416

417 Importantly, in adults testing oropharyngeal samples changed the results dramatically. By
418 revisiting samples negative in primary culture yet positive by qPCR with culture qPCR-
419 guided culturing we have significantly increased the number of adult carriers from whom
420 viable pneumococci were isolated. It demonstrates that molecular methods can improve the
421 overall sensitivity of *S. pneumoniae* detection, a result in line with previous reports by us and
422 others [7, 16, 18, 22, 46]. It also highlights that the gold standard method applied to
423 oropharyngeal cultures severely underestimates presence of *S. pneumoniae* in adults as
424 qPCR-guided culturing increased by 7.7-fold the number of oropharyngeal samples from
425 which viable pneumococci were isolated. Interestingly, there is evidence that testing

426 oropharyngeal in addition to nasopharyngeal samples substantially enhances sensitivity of
427 carriage detection also in children [17].

428

429 Concerns have been raised that the molecular methods are overly sensitive and lack
430 specificity for the detection of live bacteria as “relic DNA” (DNA from non-intact cells)
431 could be detected as well [28]. Indeed, live pathogens are less likely to be cultured from
432 samples displaying weak positivity by qPCR [21, 47]. While this may reflect limitations in
433 current culturing techniques, it could also indicate presence of relic DNA that may reflect
434 recent exposure to pneumococcus instead of colonization proper [28]. The addition of the
435 culture-enrichment procedure prior to molecular detection reduces the risk of misclassifying
436 these events as carriage, thus improving the specificity of detection for live pneumococci.
437 Culture-enrichment also increases the sensitivity of carriage surveillance, in particular for
438 poly-microbial samples [7, 18, 21-24, 46-48]. Indeed, we observed that *S. pneumoniae*
439 detection in culture-enriched samples displayed significantly increased, sensitivity,
440 specificity, and agreement with culture and qPCR-guided culture when compared with
441 detection in minimally processed samples.

442

443 To further improve the specificity of molecular methods for live pneumococci we performed
444 ROC curve analysis to estimate with the Youden index C_q cut-off values that display an
445 optimal combination of sensitivity and specificity for samples positive for *S. pneumoniae* by
446 culture in primary cultures or qPCR-guided cultures [37]. This approach excluded samples
447 that exhibited minimal positivity for targeted genes by qPCR or displayed poor agreement
448 between *piaB* and *lytA* genes as shown in Bland-Altman graphs and with the intra-class
449 correlation coefficient. The use of the Youden index in a ROC curve analysis to identify
450 optimal C_q cut-off values enhances the specificity of molecular methods for detection of live
451 pneumococcus, and the $^{ROCd}C_q$ criteria can be used to direct qPCR-guided culturing. The
452 success of this approach is dependent on culturing methods, therefore care should be taken to
453 employ sensitive culturing techniques, such as the use selective culture plates [4].
454 Furthermore, for molecular methods to be informative for culturing efforts DNA extraction
455 should be performed irrespective of the identification of pneumococcal growth in cultures.
456 ROC curve analysis with the Youden index may yield overly stringent C_q cut-off values if
457 qPCR-guided culturing efforts are not conducted, which could result in classifying samples
458 containing live pneumococci as negative by qPCR. Recent advances in culturing techniques
459 may further enhance the specificity of molecular methods for the detection of live *S.*
460 *pneumoniae* [49].

461

462 Some studies have cautioned against the use of molecular methods due to the presence of
463 pneumococcal genes among commensal streptococci [25-27]. This phenomenon is likely to
464 be common among bacterial species co-existing in a shared niche [50-52] and of particular
465 concern for highly poly-microbial samples, hence careful selection of targeted genes is
466 important [53]. As previously described by our group [18, 22, 23] and others [54] a “two-to-
467 tango” approach, quantifying both *piaB* and *lytA* genes with molecular methods enhances the
468 specificity of *S. pneumoniae* detection in poly-microbial samples. This approach allows for
469 measurements to be evaluated in a reliability analysis on a per sample basis [39] and for bias

470 between measurements to be identified. While systemic biases between quantified genes
471 could reflect dissimilarities between qPCR assay efficiencies, non-systemic biases can arise
472 due to the presence of a gene or closely related sequence in DNA from other bacterial
473 species. In case of multiple serotype carriage, serotype-specific abundance of the dominant
474 serotype should display high agreement to targeted genes used to detect pneumococcus (e.g.,
475 *piaB* and *lytA*) while serotype-specific abundances of nondominant serotypes may display
476 reduced agreement. Serotypes that exhibit greater abundances than *piaB* or *lytA*, or appear to
477 be present in samples classified as negative for *S. pneumoniae* are likely to be due to
478 commensal streptococci harbouring genes involved in the biosynthesis of the pneumococcal
479 polysaccharide capsule [55, 56]. As such, certain serotype-specific assays may be nonreliable
480 in poly-microbial sample types.

481

482 Insights into the co-occurrence of multiple serotypes in carriage is critical for understanding
483 the dynamics of the serotypes during colonization, host-to-host transmission, and carriage
484 progression into disease. Detection of secondary strains present in co-carriage is also
485 important when distinguishing between unmasking and serotype replacement in assessment
486 of pneumococcal vaccines impact [57]. However, as demonstrated in our study, and
487 described previously the gold standard method does not readily allow detection of multiple
488 serotypes, an event that is likely to occur often in carriage [57]. Furthermore, using our
489 methodology we have observed no significant difference in observed and expected
490 frequencies of multiple-serotype carriage despite what has been reported previously by others
491 whom exclusively used data from conventional culture as method of detection [58].

492

493 An important strength of our study is the application of the procedure to two different
494 carriage studies conducted in two different countries, and the evaluation of reproducibility in
495 an interlaboratory comparison. Another strength of our study is that the procedure described
496 is flexible and can be readily adapted to the carriage surveillance of other bacteria, such as
497 *Neisseria meningitidis* [47].

498

499 Our study had a number of limitations, the impact of testing oropharyngeal samples was only
500 evaluated for Dutch adults and not adults sampled in England nor for any children. Since
501 oropharyngeal samples tested were collected explicitly from Dutch adults, our findings could
502 be unique for that demographic group and geographic location. In the protocol described we
503 only used *piaB* and *lytA* to detect *S. pneumoniae* with molecular methods and we did not
504 evaluate the procedure with alternative targets described by others [54, 59]. Furthermore, we
505 tested for a limited number of serotypes by qPCR. Finally, not all serotypes were shown to be
506 equally reliably detected with molecular methods and for a number of qPCR assays we were
507 not able to identify the serotype within a serogroup.

508

509 In summary, we argue that accurate detection of pneumococcal carriage using qPCR requires
510 concordant quantification of two genes ('two-targets-to-tango') to classify a sample as
511 positive for pneumococcus. Similarly, qPCR-based detection requires concordance between
512 pneumococcal and serotype-specific quantification to assure specificity of the method (two-
513 targets-to-tango). We provide evidence that accurate detection of pneumococcal carriage in

514 adults requires at least testing of both, nasopharyngeal and oropharyngeal samples ('two-
515 samples-to-tango') and requires molecular detection to be intertwined with culture ('two
516 methods-to-tango'). Finally, we advise revisiting samples for qPCR-guided culturing ('two-
517 cultures-to-tango') when positive by qPCR but negative at primary diagnostic culture. The
518 use of qPCR-guided culturing is of utmost importance for oropharyngeal swabs.

519

520 We have outlined the procedure that enhances the specificity of molecular methods for the
521 surveillance of pneumococci and of pneumococcal serotypes in nasopharyngeal and
522 oropharyngeal samples. Our results demonstrate near-perfect agreement between
523 conventional culture and molecular methods when applied to nasopharyngeal samples from
524 children. We have shown that the sensitivity of *S. pneumoniae* carriage surveillance can be
525 greatly enhanced by complementing conventional culture with qPCRs. In adults, testing
526 oropharyngeal on the top of nasopharyngeal samples was of paramount importance for
527 accuracy of pneumococcal carriage detection. Studies investigating impact of testing
528 oropharyngeal samples on detection of pneumococcal carriage in children are needed.

529 **Authors' contribution.** E.A.M.S. and K.T. had an idea and initiated the study. N.R., E.M.,
530 N.K.F., E.A.M.S. and K.T. secured financial support. N.F. and K.T. led the project. A.J.W-
531 M., P.B., C.S., M.v.H., N.R., E.M., and N.K.F. conducted carriage studies, collected the data
532 and provided study materials. W.R.M., J.v.V., and K.T. developed and validated laboratory
533 methods, and wrote the laboratory protocol. W.R.M., J.v.V., D.L., P.B., T.N., S.M., R.T.,
534 S.E., and C.S. analysed samples and collected the data. W.R.M., R.M., and K.T. contributed
535 analytical tools. W.R.M., J.v.V., and D.L. curated the data. W.R.M., D.L., N.K.F., and K.T.
536 managed the study. W.R.M., and K.T. performed formal analysis of study data, visualized
537 presentation of the results and drafted the manuscript. All authors amended, critically
538 reviewed, and commented on the final manuscript.

539

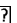
540 **Financial support.** Funding for this study was provided to UMCU and PHE by
541 GlaxoSmithKline Biologicals SA. GlaxoSmithKline Biologicals SA was provided the
542 opportunity to review a preliminary version of this paper for factual accuracy, but the authors
543 are solely responsible for final content and interpretation. The authors received no financial
544 support or other form of compensation related to the development of the paper.

545

546 **Potential Conflicts of Interest.** K.T. received funds for an unrestricted research grant from
547 GlaxoSmithKline Biologicals SA, consultation fees, fees for participation in advisory boards,
548 speaking fees and funds for unrestricted research grants from Pfizer, and fees for
549 participating in advisory boards from Merck Sharp & Dohme, all paid directly to his home
550 institution. Except for the funds from GlaxoSmithKline Biologicals SA none was received in
551 the relation to the work reported here. Public Health England (PHE) has provided vaccine
552 manufacturers (GSK, Pfizer, Sanofi) with post-marketing surveillance reports on
553 pneumococcal infection which the companies are required to submit to the UK Licensing
554 authority in compliance with their Risk Management Strategy. A cost recovery charge is
555 made for these reports. PHE's Respiratory and Vaccine Preventable Bacteria Reference Unit
556 has received unrestricted research grants from Pfizer to participate in pneumococcal
557 surveillance projects.

558

559 REFERENCES

- 560 1. O'Brien KL, Wolfson LJ, Watt JP, et al. Burden of disease caused by Streptococcus
561 pneumoniae in children younger than 5 years: global estimates. *Lancet* **2009**; 374(9693):
562 893-902.
- 563 2. Welte T, Torres A, Nathwani D. Clinical and economic burden of community-acquired
564 pneumonia among adults in Europe. *Thorax* **2012**; 67(1): 71-9.
- 565 3. World Health Organization = Organisation mondiale de la S. Pneumococcal conjugate
566 vaccines in infants and children under 5 years of age: WHO position paper –February 2019 
567 Vaccins antipneumococques conjugués chez les nourrissons et les enfants de moins de 5
568 ans: note de synthèse de l'OMS – février 2019. *Weekly Epidemiological Record = Relevé*
569 *épidémiologique hebdomadaire* **2019**; 94(08): 85-103.
- 570 4. Satzke C, Turner P, Virolainen-Julkunen A, et al. Standard method for detecting upper
571 respiratory carriage of Streptococcus pneumoniae: updated recommendations from the
572 World Health Organization Pneumococcal Carriage Working Group. *Vaccine* **2013**; 32(1):
573 165-79.

- 574 5. Bogaert D, De Groot R, Hermans PW. Streptococcus pneumoniae colonisation: the key to
575 pneumococcal disease. *Lancet Infect Dis* **2004**; 4(3): 144-54.
- 576 6. Wyllie AL, Warren JL, Regev-Yochay G, Givon-Lavi N, Dagan R, Weinberger DM. Serotype
577 patterns of pneumococcal disease in adults are correlated with carriage patterns in older
578 children. *Clin Infect Dis* **2020**.
- 579 7. Wyllie AL, Rumke LW, Arp K, et al. Molecular surveillance on Streptococcus pneumoniae
580 carriage in non-elderly adults; little evidence for pneumococcal circulation independent
581 from the reservoir in children. *Sci Rep* **2016**; 6: 34888.
- 582 8. Flasche S, Lipsitch M, Ojal J, Pinsent A. Estimating the contribution of different age strata to
583 vaccine serotype pneumococcal transmission in the pre vaccine era: a modelling study. *BMC*
584 *Med* **2020**; 18(1): 129.
- 585 9. Berical AC, Harris D, Dela Cruz CS, Possick JD. Pneumococcal Vaccination Strategies. An
586 Update and Perspective. *Ann Am Thorac Soc* **2016**; 13(6): 933-44.
- 587 10. Auranen K, Rinta-Kokko H, Goldblatt D, et al. Colonisation endpoints in Streptococcus
588 pneumoniae vaccine trials. *Vaccine* **2013**; 32(1): 153-8.
- 589 11. Weinberger DM, Malley R, Lipsitch M. Serotype replacement in disease after pneumococcal
590 vaccination. *Lancet* **2011**; 378(9807): 1962-73.
- 591 12. Sleeman KL, Griffiths D, Shackley F, et al. Capsular serotype-specific attack rates and
592 duration of carriage of Streptococcus pneumoniae in a population of children. *J Infect Dis*
593 **2006**; 194(5): 682-8.
- 594 13. Weinberger DM, Grant LR, Weatherholtz RC, Warren JL, O'Brien KL, Hammitt LL. Relating
595 Pneumococcal Carriage Among Children to Disease Rates Among Adults Before and After the
596 Introduction of Conjugate Vaccines. *Am J Epidemiol* **2016**; 183(11): 1055-62.
- 597 14. Slotved HC. Other age groups than children need to be considered as carriers of
598 Streptococcal pneumoniae serotypes. *Hum Vaccin Immunother* **2016**; 12(10): 2670-4.
- 599 15. Valente C, de Lencastre H, Sa-Leao R. Selection of distinctive colony morphologies for
600 detection of multiple carriage of Streptococcus pneumoniae. *Pediatr Infect Dis J* **2013**; 32(6):
601 703-4.
- 602 16. Krone CL, van de Groep K, Trzcinski K, Sanders EA, Bogaert D. Immunosenescence and
603 pneumococcal disease: an imbalance in host-pathogen interactions. *Lancet Respir Med*
604 **2014**; 2(2): 141-53.
- 605 17. Korona-Glowniak I, Niedzielski A, Malm A. Upper respiratory colonization by Streptococcus
606 pneumoniae in healthy pre-school children in south-east Poland. *Int J Pediatr*
607 *Otorhinolaryngol* **2011**; 75(12): 1529-34.
- 608 18. Trzcinski K, Bogaert D, Wyllie A, et al. Superiority of trans-oral over trans-nasal sampling in
609 detecting Streptococcus pneumoniae colonization in adults. *PLoS One* **2013**; 8(3): e60520.
- 610 19. Almeida ST, Pedro T, Paulo AC, de Lencastre H, Sa-Leao R. Re-evaluation of Streptococcus
611 pneumoniae carriage in Portuguese elderly by qPCR increases carriage estimates and unveils
612 an expanded pool of serotypes. *Sci Rep* **2020**; 10(1): 8373.
- 613 20. Turner P, Hinds J, Turner C, et al. Improved detection of nasopharyngeal cocolonization by
614 multiple pneumococcal serotypes by use of latex agglutination or molecular serotyping by
615 microarray. *J Clin Microbiol* **2011**; 49(5): 1784-9.
- 616 21. Wyllie AL, Chu ML, Schellens MH, et al. Streptococcus pneumoniae in saliva of Dutch primary
617 school children. *PLoS One* **2014**; 9(7): e102045.
- 618 22. Krone CL, Wyllie AL, van Beek J, et al. Carriage of Streptococcus pneumoniae in aged adults
619 with influenza-like-illness. *PLoS One* **2015**; 10(3): e0119875.
- 620 23. Wyllie AL, Wijmenga-Monsuur AJ, van Houten MA, et al. Molecular surveillance of
621 nasopharyngeal carriage of Streptococcus pneumoniae in children vaccinated with
622 conjugated polysaccharide pneumococcal vaccines. *Sci Rep* **2016**; 6: 23809.
- 623 24. Mielliet WR, van Veldhuizen J, Nicolaie MA, et al. Influenza-like illness exacerbates
624 Pneumococcal Carriage in Older Adults. *Clin Infect Dis* **2020**.

- 625 25. Carvalho Mda G, Bigogo GM, Junghae M, et al. Potential nonpneumococcal confounding of
626 PCR-based determination of serotype in carriage. *J Clin Microbiol* **2012**; 50(9): 3146-7.
- 627 26. Carvalho Mda G, Pimenta FC, Moura I, et al. Non-pneumococcal mitis-group streptococci
628 confound detection of pneumococcal capsular serotype-specific loci in upper respiratory
629 tract. *PeerJ* **2013**; 1: e97.
- 630 27. Boelsen LK, Dunne EM, Gould KA, et al. The Challenges of Using Oropharyngeal Samples To
631 Measure Pneumococcal Carriage in Adults. *mSphere* **2020**; 5(4).
- 632 28. Lennon JT, Muscarella ME, Placella SA, Lehmkuhl BK. How, When, and Where Relic DNA
633 Affects Microbial Diversity. *mBio* **2018**; 9(3).
- 634 29. Vissers M, Wijmenga-Monsuur AJ, Knol MJ, et al. Increased carriage of non-vaccine
635 serotypes with low invasive disease potential four years after switching to the 10-valent
636 pneumococcal conjugate vaccine in The Netherlands. *PLoS One* **2018**; 13(3): e0194823.
- 637 30. Southern J, Andrews N, Sandu P, et al. Pneumococcal carriage in children and their
638 household contacts six years after introduction of the 13-valent pneumococcal conjugate
639 vaccine in England. *PLoS One* **2018**; 13(5): e0195799.
- 640 31. Watt JP, O'Brien KL, Katz S, et al. Nasopharyngeal versus oropharyngeal sampling for
641 detection of pneumococcal carriage in adults. *J Clin Microbiol* **2004**; 42(11): 4974-6.
- 642 32. Kapatai G, Sheppard CL, Al-Shahib A, et al. Whole genome sequencing of *Streptococcus*
643 *pneumoniae*: development, evaluation and verification of targets for serogroup and
644 serotype prediction using an automated pipeline. *PeerJ* **2016**; 4: e2477.
- 645 33. Carvalho Mda G, Tondella ML, McCaustland K, et al. Evaluation and improvement of real-
646 time PCR assays targeting *lytA*, *ply*, and *psaA* genes for detection of pneumococcal DNA. *J*
647 *Clin Microbiol* **2007**; 45(8): 2460-6.
- 648 34. Azzari C, Moriondo M, Indolfi G, et al. Realtime PCR is more sensitive than multiplex PCR for
649 diagnosis and serotyping in children with culture negative pneumococcal invasive disease.
650 *PLoS One* **2010**; 5(2): e9282.
- 651 35. Azzari C, Moriondo M, Cortimiglia M, et al. Potential serotype coverage of three
652 pneumococcal conjugate vaccines against invasive pneumococcal infection in Italian
653 children. *Vaccine* **2012**; 30(16): 2701-5.
- 654 36. Pimenta FC, Roundtree A, Soysal A, et al. Sequential triplex real-time PCR assay for detecting
655 21 pneumococcal capsular serotypes that account for a high global disease burden. *J Clin*
656 *Microbiol* **2013**; 51(2): 647-52.
- 657 37. Nutz S, Doll K, Karlovsky P. Determination of the LOQ in real-time PCR by receiver operating
658 characteristic curve analysis: application to qPCR assays for *Fusarium verticillioides* and *F.*
659 *proliferatum*. *Anal Bioanal Chem* **2011**; 401(2): 717-26.
- 660 38. Koo TK, Li MY. A Guideline of Selecting and Reporting Intraclass Correlation Coefficients for
661 Reliability Research. *J Chiropr Med* **2016**; 15(2): 155-63.
- 662 39. Bland JM, Altman DG. Statistical methods for assessing agreement between two methods of
663 clinical measurement. *Lancet* **1986**; 1(8476): 307-10.
- 664 40. Altman DG, Bland JM. Interaction revisited: the difference between two estimates. *BMJ*
665 **2003**; 326(7382): 219.
- 666 41. McHugh ML. Interrater reliability: the kappa statistic. *Biochem Med (Zagreb)* **2012**; 22(3):
667 276-82.
- 668 42. Landis JR, Koch GG. The measurement of observer agreement for categorical data.
669 *Biometrics* **1977**; 33(1): 159-74.
- 670 43. Heffron R. *Pneumonia; with Special Reference to Pneumococcus Lobar Pneumonia*: H.
671 Milford, Oxford University Press, **1939**.
- 672 44. Jansen AG, Rodenburg GD, de Greeff SC, et al. Invasive pneumococcal disease in the
673 Netherlands: Syndromes, outcome and potential vaccine benefits. *Vaccine* **2009**; 27(17):
674 2394-401.

- 675 45. Arguedas A, Trzcinski K, O'Brien KL, et al. Upper respiratory tract colonization with
676 *Streptococcus pneumoniae* in adults. *Expert Rev Vaccines* **2020**: 1-14.
- 677 46. Almeida ST, Paulo AC, Froes F, de Lencastre H, Sa-Leao R. Dynamics of Pneumococcal
678 Carriage in Adults: A New Look at an Old Paradigm. *J Infect Dis* **2021**; 223(9): 1590-600.
- 679 47. Miellet WR, Mariman R, Pluister G, et al. Detection of *Neisseria meningitidis* in Saliva and
680 Oropharyngeal Samples from College Students. *bioRxiv* **2021**: 2021.06.09.447670.
- 681 48. Rodrigues F, Christensen H, Morales-Aza B, et al. Viable *Neisseria meningitidis* is commonly
682 present in saliva in healthy young adults: Non-invasive sampling and enhanced sensitivity of
683 detection in a follow-up carriage study in Portuguese students. *PLoS One* **2019**; 14(2):
684 e0209905.
- 685 49. York A, Mbodj S, Yolda-Carr D, Hislop M, Weinberger DM, Wyllie AL. Magnetic Bead-Based
686 Separation (MBS) of Pneumococcal Serotypes. *bioRxiv* **2021**: 2021.06.06.447277.
- 687 50. Kilian M, Riley DR, Jensen A, Bruggemann H, Tettelin H. Parallel evolution of *Streptococcus*
688 *pneumoniae* and *Streptococcus mitis* to pathogenic and mutualistic lifestyles. *mBio* **2014**;
689 5(4): e01490-14.
- 690 51. Kroll JS, Wilks KE, Farrant JL, Langford PR. Natural genetic exchange between *Haemophilus*
691 and *Neisseria*: intergeneric transfer of chromosomal genes between major human
692 pathogens. *Proc Natl Acad Sci U S A* **1998**; 95(21): 12381-5.
- 693 52. Price EP, Sarovich DS, Nosworthy E, et al. *Haemophilus influenzae*: using comparative
694 genomics to accurately identify a highly recombinogenic human pathogen. *BMC Genomics*
695 **2015**; 16: 641.
- 696 53. Greve T, Moller JK. Accuracy of using the *lytA* gene to distinguish *Streptococcus pneumoniae*
697 from related species. *J Med Microbiol* **2012**; 61(Pt 4): 478-82.
- 698 54. Tavares DA, Handem S, Carvalho RJ, et al. Identification of *Streptococcus pneumoniae* by a
699 real-time PCR assay targeting SP2020. *Sci Rep* **2019**; 9(1): 3285.
- 700 55. Pimenta F, Gertz RE, Jr., Park SH, et al. *Streptococcus infantis*, *Streptococcus mitis*, and
701 *Streptococcus oralis* Strains With Highly Similar *cps5* Loci and Antigenic Relatedness to
702 Serotype 5 Pneumococci. *Front Microbiol* **2018**; 9: 3199.
- 703 56. Lessa FC, Milucky J, Roupael NG, et al. *Streptococcus mitis* Expressing Pneumococcal
704 Serotype 1 Capsule. *Sci Rep* **2018**; 8(1): 17959.
- 705 57. Huebner RE, Dagan R, Porath N, Wasas AD, Klugman KP. Lack of utility of serotyping multiple
706 colonies for detection of simultaneous nasopharyngeal carriage of different pneumococcal
707 serotypes. *Pediatr Infect Dis J* **2000**; 19(10): 1017-20.
- 708 58. Numminen E, Cheng L, Gyllenberg M, Corander J. Estimating the transmission dynamics of
709 *Streptococcus pneumoniae* from strain prevalence data. *Biometrics* **2013**; 69(3): 748-57.
- 710 59. Shafeeq S, Kuipers OP, Kloosterman TG. Cellobiose-mediated gene expression in
711 *Streptococcus pneumoniae*: a repressor function of the novel GntR-type regulator BguR.
712 *PLoS One* **2013**; 8(2): e57586.

713

Figure 1. (A) Matrix layout for observed intersections of the *Streptococcus pneumoniae* detection procedures applied to n=1549 nasopharyngeal samples, sorted by size. (B) Matrix layout for observed intersections of the *S. pneumoniae* detection procedures applied to nasopharyngeal and oropharyngeal samples from n=319 adults sampled in the Netherlands, sorted by size. Circles in the matrix indicate sets that are part of the intersection, and circles are coloured by sample type with nasopharyngeal and oropharyngeal samples coloured in green and blue, respectively. The bar diagram displaying the intersection size is coloured using the same scheme, with orange indicating an intersection that represents positivity in both sample types.

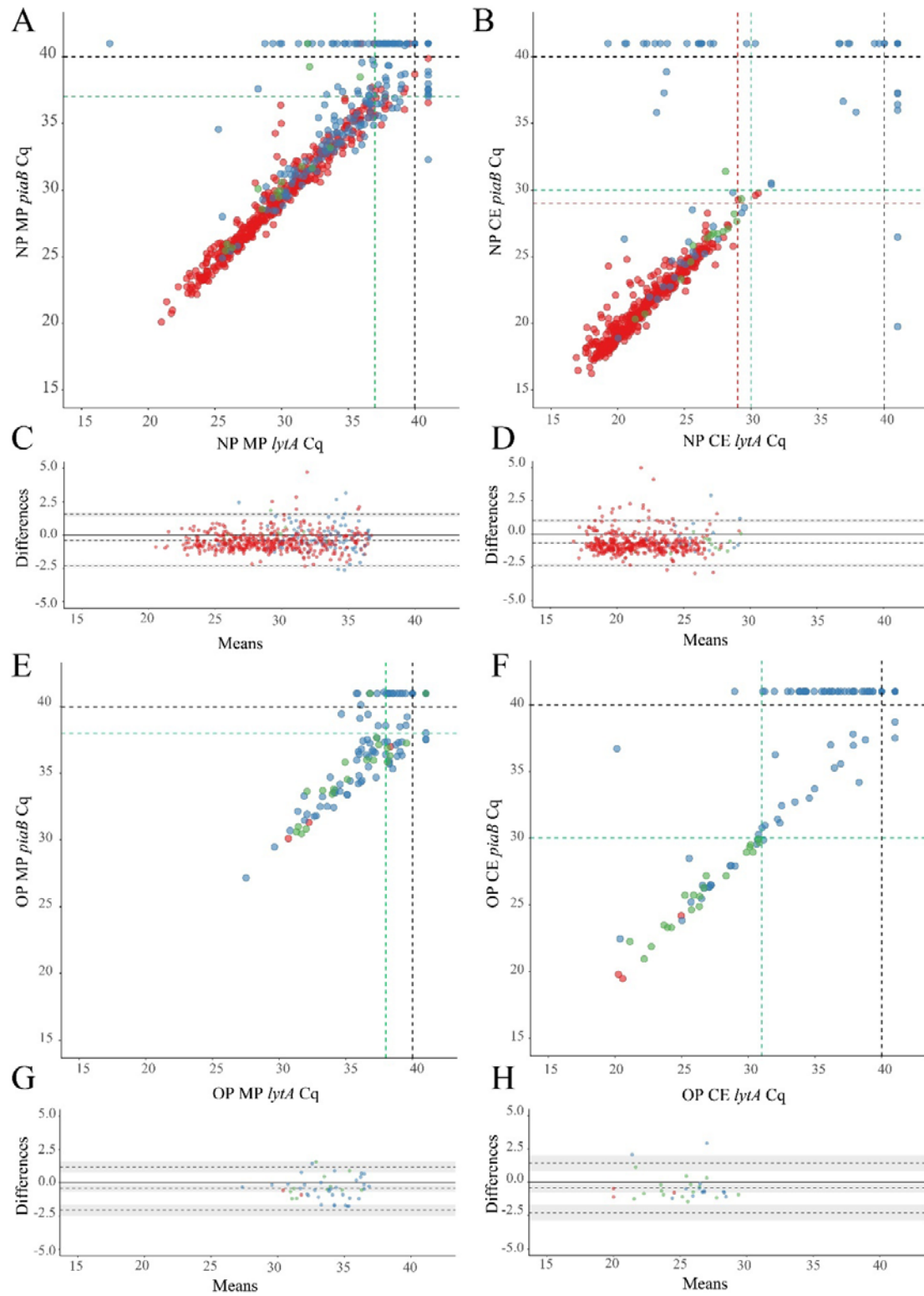


Figure 2. Scatter plots (**A**, **B**, **E** and **F**) displaying correlation between cycle threshold (C_q) from real-time PCR assays targeting the *Streptococcus pneumoniae* genes *piaB* and *lytA* for minimally processed (**A** and **E**) and culture-enriched (**B** and **F**) nasopharyngeal (**A** and **B**) and oropharyngeal (**E** and **F**) samples followed by the Bland-Altman plots (**C**, **D**, **G** and **H**) displaying agreement between *piaB* and *lytA* for samples positive with minimally processed (**C** and **G**) and culture-enriched (**D** and **H**) $^{ROCD}C_q$ criteria in nasopharyngeal (**C** and **D**) and oropharyngeal (**G** and **H**) samples. The shaded grey areas mark the 95% confidence interval of the upper limit of agreement, bias and lower limit of agreement. The Bland-Altman plots show the absence of systematic bias between *piaB* and *lytA* because the line of equality (grey solid line) is within the limits of agreement. Bias between *piaB* and *lytA* is more often observed in high C_q samples. Primary culture-positive and qPCR-guided culture-positive samples are indicated with red and green dots, respectively. Culture-negative samples are indicated with blue dots. In panels **A**, **B**, **E** and **F** black dashed lines indicate the arbitrary C_q criterium ($<40 C_q$), green dashed lines indicate $^{ROCD}C_q$ criteria derived by validating qPCR results with primary and qPCR-guided cultures results, and red dashed lines in panels **A** and **B** indicate $^{ROCD}C_q$ criteria derived by validating qPCR results with primary culture alone.

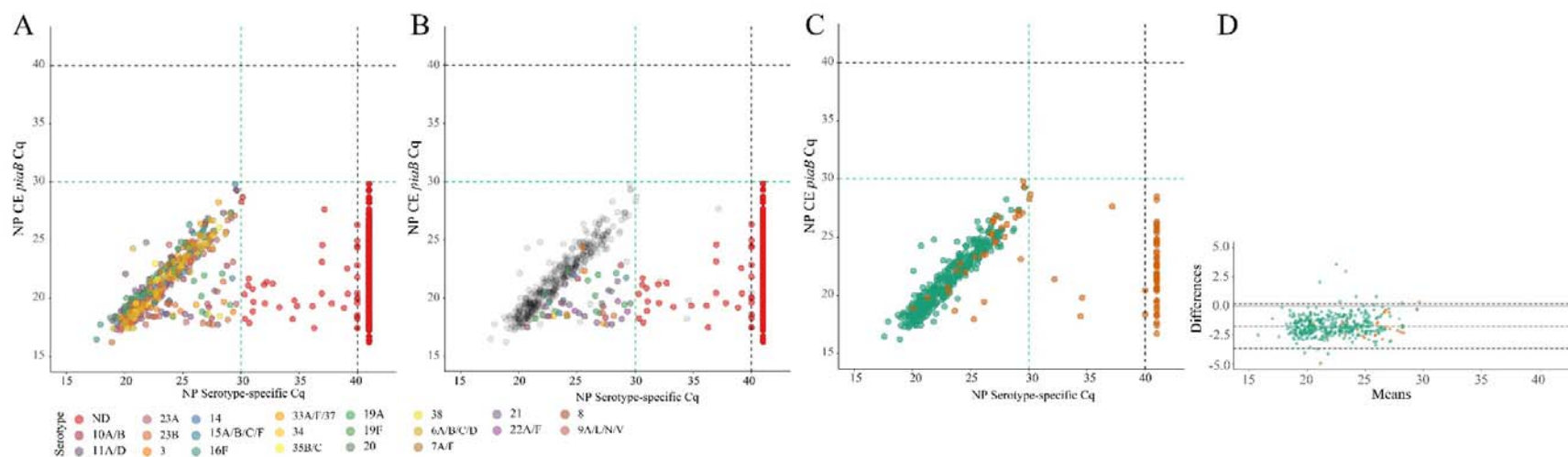


Figure 3 Scatter plots (A-C) displaying correlation between cycle threshold (C_q) from real-time PCR (qPCR) assays targeting the *Streptococcus pneumoniae* *piaB* and serotype/serogroup specific signal detected with qPCR for nasopharyngeal samples classified positive for *S. pneumoniae* according to ^{ROC}C_q criterion (green dashed lines). Bland-Altman plot (D) displaying agreement between *piaB* and dominant serotype detected by qPCR. Each dot represents an individual serotype carriage event detected by qPCR in culture-enriched nasopharyngeal sample (A-C). Dots in panel A depicts serotypes detected with qPCR. Dots are color-coded according to serotypes/serogroup targeted in an assay (see legend). Colour dots in panel B depict subdominant serotypes detected qPCR while grey dots mark dominant serotypes. Red dots in panel A and B depict samples not generating any signal in serotype/serogroup-specific qPCRs or with the signal of C_q higher than the ^{ROC}C_q threshold, hence classified as negative for a serotype. In panels C and D green dots mark samples with congruent serotype between culture and molecular methods and orange dots mark samples with noncongruent result. In panel D shaded grey areas mark the 95% confidence interval of the upper limit of agreement, bias and lower limit of agreement. The solid line grey line marks the line of equality.

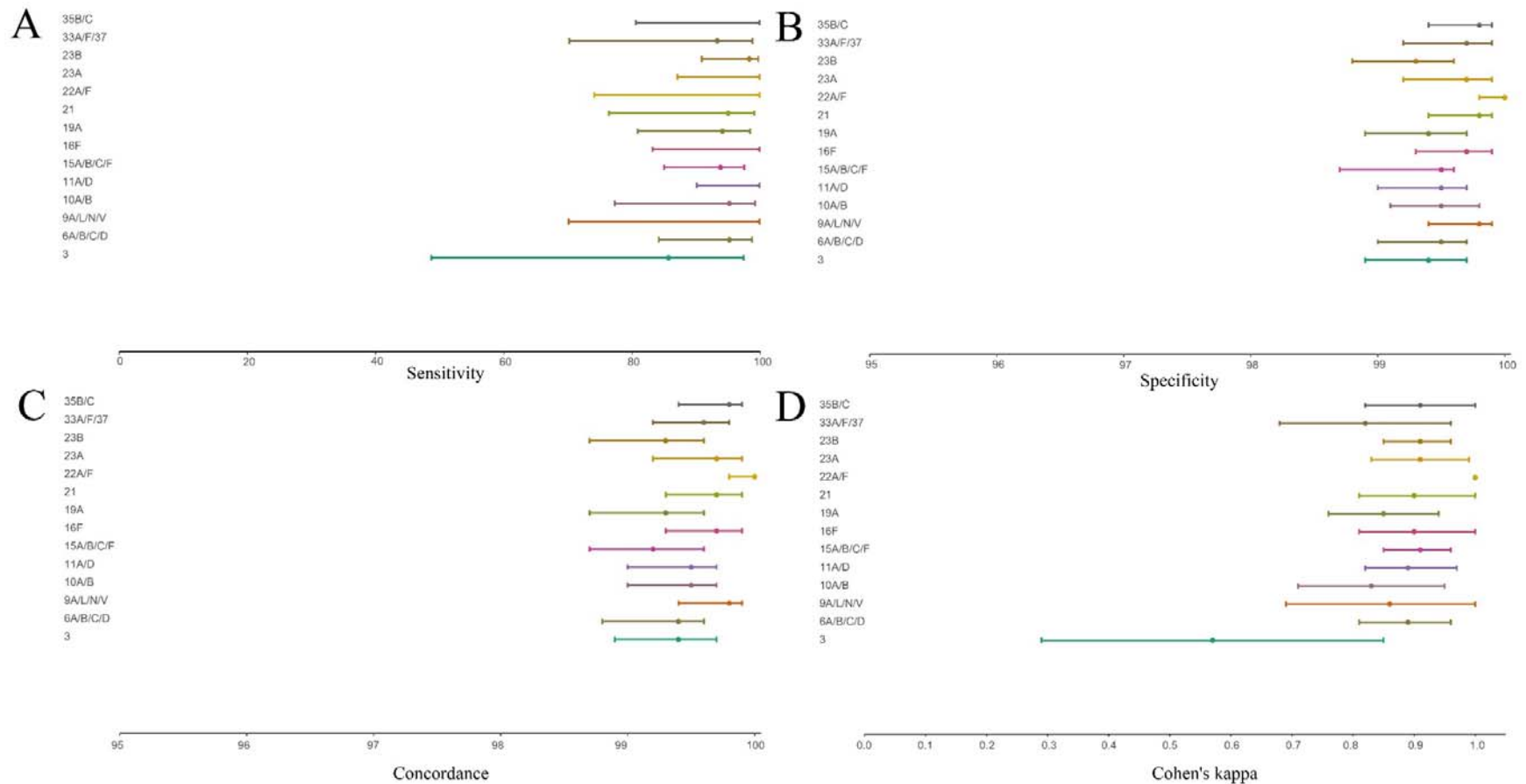
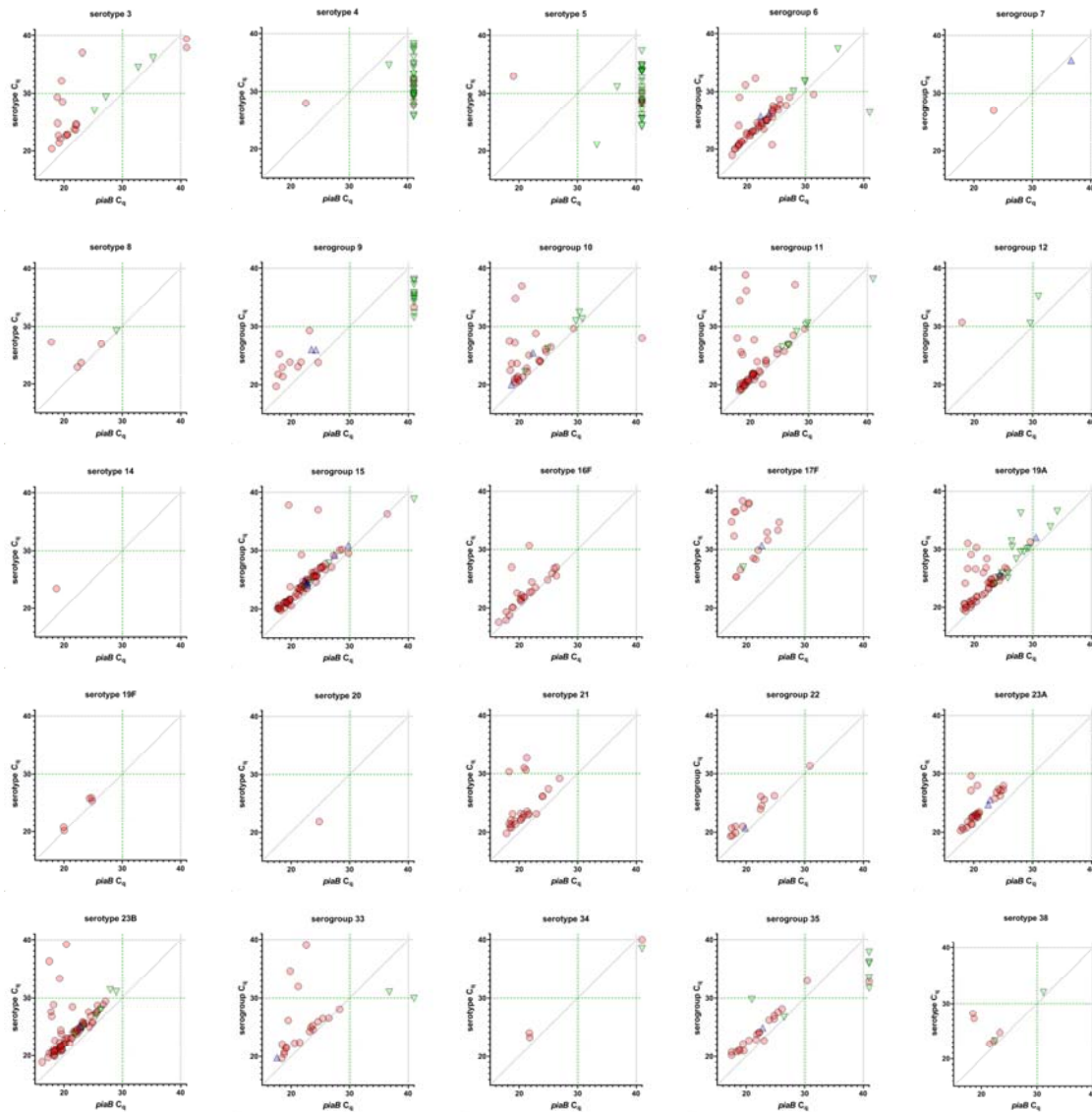
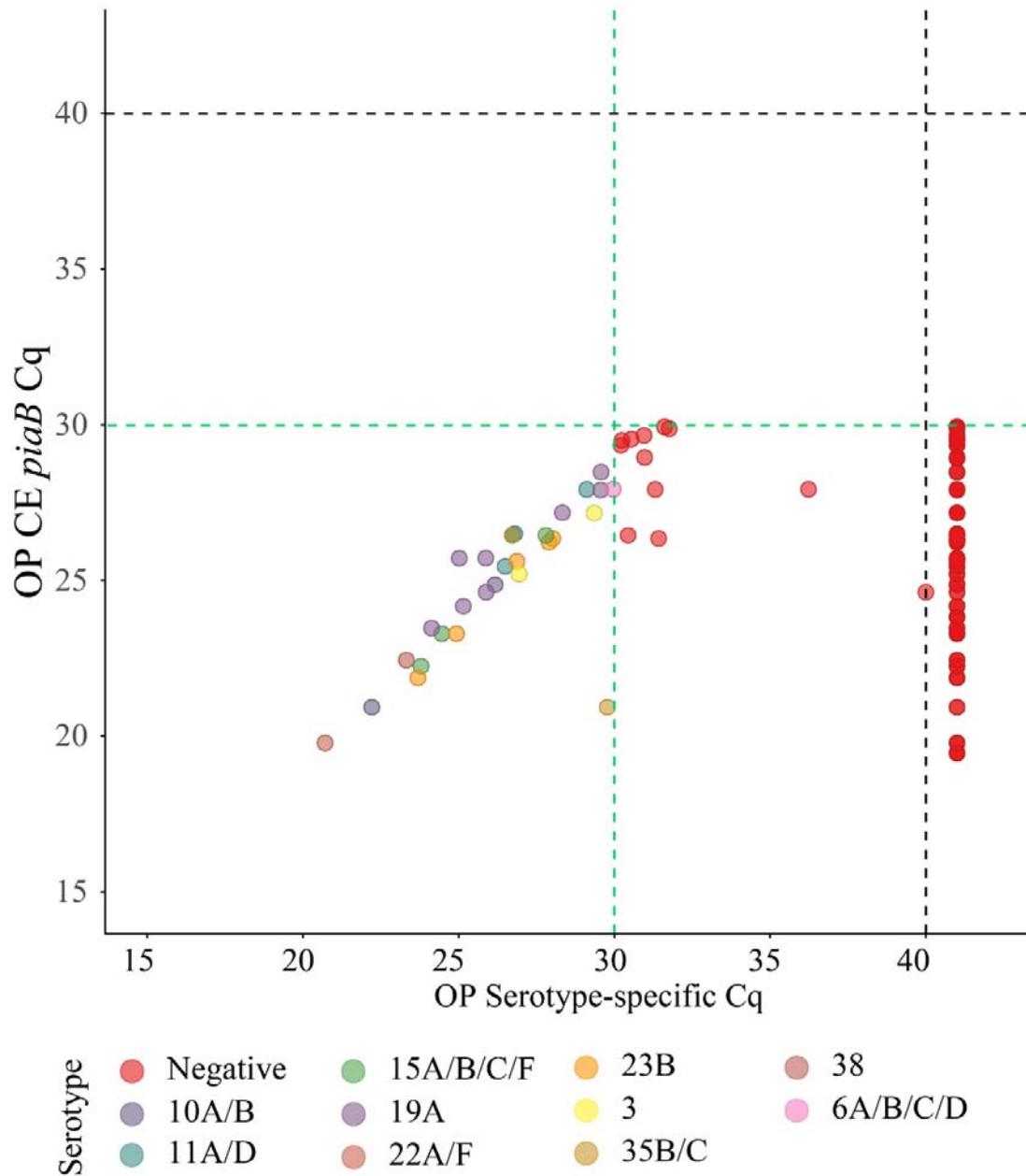


Figure 4. Forest plot displaying the point estimate and 95% confidence of intervals sensitivity (A), specificity (B), concordance (C) and Cohen's kappa (D) for molecular diagnostic tests applied to culture-enriched samples when compared to isolation of *S. pneumoniae* strains of particular serotype/serogroup from nasopharyngeal swabs collected in the study. Graphs displayed results for serotypes/serogroups that have been cultured from >5 nasopharyngeal samples.

It is made available under a [CC-BY-NC-ND 4.0 International license](https://creativecommons.org/licenses/by-nc-nd/4.0/) .



Supplementary Figure S1. Results of molecular method based quantification of serogroups/serotypes-specific sequences in DNA from culture-enriched nasopharyngeal and oropharyngeal samples. Individual scatter plots depict results of a single serotype-specific or serogroup-specific qPCR assay as labelled above the panel. Each symbol represents an individual sample: pale-red dots represent nasopharyngeal samples from children; blue triangles and green triangles represent nasopharyngeal and oropharyngeal samples from adults, respectively. Sample was classified as positive for a serotype/serogroup with molecular method when the signal detected by qPCR for *piab* (X-axis) and serotype/serogroup (Y-axis) were both below the $^{ROCD}C_q$ cut-off threshold of 30 C_q . Only samples that generated a signal of $C_q < 40$ in a particular serogroup/serotype-specific qPCR are depicted. Symbols of $C_q > 40$ for *piab* depict individual samples or pools of samples negative for pneumococcus by qPCR. None of the samples generated any signal in qPCRs targeting serotype 1, serotype 23F and serogroup 18. In addition, no samples were identified as positive for serogroup 12 according to study criteria.



Supplementary Figure S2. Scatter plot displaying correlation between cycle threshold (C_q) from real-time PCR (qPCR) assays targeting the *Streptococcus pneumoniae piaB* and serotype/serogroup specific signal detected with qPCR for culture-enriched (CE) oropharyngeal samples from adults classified positive for *S. pneumoniae* according to $^{ROC}C_q$ criterium (green dashed lines). Dots depicts serotypes detected with qPCR. Dots are color-coded according to serotypes/serogroup targeted in an assay (see legend).

Table 1. Optimal qPCR cycle threshold C_q and corresponding parameters for *Streptococcus pneumoniae* carriage detection in nasopharyngeal (n=1549) and oropharyngeal (n=319) samples. Results from qPCR were validated in a receiver operating characteristic curve analysis with culture as reference.

Parameter	Sample	Reference	Optimal threshold <i>piaB</i> (95% CI)	Youden index <i>piaB</i>	Sensitivity <i>piaB</i>	Specificity <i>piaB</i>	Optimal threshold <i>lytA</i> (95% CI)	Youden index <i>lytA</i>	Sensitivity <i>lytA</i>	Specificity <i>lytA</i>
Minimally processed	NP	Primary cultures	37.13 (36.49 – 37.76)	0.85	0.95	0.90	37.47 (36.44 – 38.39)	0.82	0.94	0.87
	NP	Primary culture & reculture	37.21 (36.51 – 38.46)	0.85	0.95	0.90	37.29 (36.52 – 38.61)	0.83	0.94	0.89
	OP	Primary culture & reculture	38.73 (37.29 – 39.39)	0.69	0.91	0.78	37.47 (36.52 – 37.66)	0.69	0.87	0.82
Culture-enriched	NP	Primary cultures	28.71 (26.59 – 29.69)	0.94	0.98	0.97	29.19 (27.41 – 30.25)	0.93	0.98	0.95
	NP	Primary culture & reculture	30.26 (29.91 – 30.47)	0.96	0.98	0.98	29.99 (28.91 – 30.47)	0.94	0.98	0.96
	OP	Primary culture & reculture	29.78 (28.84 – 29.93)	0.91	0.96	0.95	30.73 (29.42 – 30.81)	0.85	0.91	0.94

With *S. pneumoniae* isolated from only three samples there was insufficient statistical power to perform the receiver operating characteristic curve analysis on oropharyngeal samples with primary cultures as a reference.

Table 2. The accuracy of *Streptococcus pneumoniae* detection in n=1549 nasopharyngeal samples from children (n=946) and adults (n=603) tested using conventional diagnostic culture and molecular methods applied to DNA extracted from minimally processed and culture-enriched samples and applying $^{ROCD}C_q$ thresholds for a sample positivity in qPCRs. Measures of diagnostic accuracy were calculated by comparing the number of detected samples positive per method with the number of (n=460 for all individuals, and n=437 and n=23 for nasopharyngeal samples from children and adults, respectively) individuals positive for *S. pneumoniae* based on isolation of live pneumococcus either from the primary diagnostic or qPCR-guided culture.

Method	Study population	Percent (n) of positive samples (95%CI)	PPV % (95%CI)	NPV % (95%CI)	Sensitivity % (95%CI)	Specificity % (95%CI)	Concordance % (95%CI)	κ (95%CI)
primary culture	All	28.7 (445) (26.5 – 31.0)	100 (99.1 – 100)	98.6 (97.8 – 99.2)	96.7 (94.7 – 98.0)	100 (99.6 – 100)	99.0 (98.4 – 99.4)	0.98 (0.96 – 0.99)
	Children	44.6 (422) (41.5 – 47.8)	100 (99.1 – 100)	97.1 (95.3 – 98.3)	96.6 (94.4 – 97.9)	100 (99.3 – 100)	98.4 (97.4 – 99.0)	0.97 (0.95 – 0.98)
	Adults	3.8 (23) (2.6 – 5.7)	100 (85.7 – 100)	100 (99.3 – 100)	100 (85.7 – 100)	100 (99.3 – 100)	100 (99.4 – 100)	1
qPCRs on minimally processed samples	All	33.1 (512) (30.8 – 35.4)	83.2 (79.7 – 86.2)	96.7 (95.5 – 97.6)	92.6 (89.8 – 94.7)	92.1 (90.3 – 93.6)	92.3 (90.8 – 93.5)	0.82 (0.79 – 0.85)
	Children	51.7 (489) (48.5 – 54.9)	83.6 (80.1 – 86.7)	93.9 (91.3 – 95.7)	93.6 (90.9 – 95.5)	84.3 (80.9 – 87.2)	88.6 (86.4 – 90.5)	0.77 (0.73 – 0.81)
	Adults	3.8 (23) (2.6 – 5.7)	73.9 (53.5 – 87.5)	99.0 (97.8 – 99.5)	73.9 (53.5 – 87.5)	99.0 (97.8 – 99.5)	98.0 (96.6 – 98.9)	0.73 (0.58 – 0.88)
qPCRs on culture-enriched samples	All	30.3 (469) (28.0 – 32.6)	95.7 (93.5 – 97.2)	99.0 (98.2 – 99.4)	97.6 (95.8 – 98.7)	98.2 (97.2 – 98.8)	98.0 (97.2 – 98.6)	0.95 (0.94 – 0.97)
	Children	47.3 (447) (44.1 – 50.4)	96.0 (93.7 – 97.4)	98.4 (96.9 – 99.2)	98.2 (96.4 – 99.1)	96.5 (94.5 – 97.8)	97.3 (96.0 – 98.1)	0.94 (0.92 – 0.97)
	Adults	3.7 (22) (2.4 – 5.5)	90.9 (72.2 – 97.5)	99.5 (98.5 – 99.8)	87.0 (67.9 – 95.5)	99.7 (98.8 – 99.9)	99.2 (98.1 – 99.6)	0.88 (0.78 – 0.99)

PPV – positive predictive value; NPV – negative predictive value; 95%CI – 95% confidence interval; κ – Cohen’s kappa where ≤ 0 , 0.01-0.20, 0.21-0.40, 0.41-0.60, 0.61-0.80, >0.81 are interpreted as poor agreement, slight, fair, moderate, substantial, and almost perfect agreement, respectively.

Table 3. The accuracy of *Streptococcus pneumoniae* detection in paired nasopharyngeal and oropharyngeal samples from n=319 adults tested using molecular methods applied to DNA extracted from minimally processed and culture-enriched samples and applying $ROC_d C_q$ thresholds for a sample positivity in qPCRs. Measures of diagnostic accuracy were calculated by comparing the number of detected samples positive per method with the overall number of n=37 individuals identified as carriers of *S. pneumoniae* based on isolation of live pneumococcus either at the primary diagnostic or qPCR-guided culture and either from nasopharyngeal or oropharyngeal sample.

Method	Positivity in	Percent (n) of positive samples (95%CI)	PPV % (95%CI)	NPV % (95%CI)	Sensitivity % (95%CI)	Specificity % (95%CI)	Concordance % (95%CI)	κ (95%CI)
Primary culture alone	NP	4.7 (15) (2.9 – 7.6)	100 (79.6 – 100)	92.8 (89.3 – 95.2)	40.5 (26.3 – 56.5)	100 (98.7 – 100)	93.1 (89.8 – 95.4)	0.55 (0.36 – 0.73)
	OP	0.9 (3) (0.3 – 0.7)	100 (43.9 – 100)	89.2 (85.3 – 92.2)	8.1 (2.8 – 21.3)	100 (98.7 – 100)	89.3 (85.5 – 92.3)	0.13 (-0.14 – 0.41)
	either NP or OP	5.6 (18) (3.6 – 8.7)	100 (82.4 – 100)	93.7 (90.4 – 95.9)	48.6 (33.4 – 64.1)	100 (98.7 – 100)	94.0 (90.9 – 96.2)	0.63 (0.46 – 0.79)
qPCRs on minimally processed samples	NP	4.7 (15) (2.9 – 7.6)	73.3 (48.0 – 89.1)	91.4 (87.8 – 94.1)	29.7 (17.5 – 45.8)	98.6 (96.4 – 99.4)	90.6 (86.9 – 93.3)	0.38 (0.17 – 0.59)
	OP	15.7 (50) (12.1 – 20.1)	34.0 (22.4 – 47.8)	92.6 (88.8 – 95.1)	45.9 (31.0 – 61.6)	88.3 (84.0 – 91.5)	83.4 (78.9 – 87.1)	0.30 (0.12 – 0.47)
	either NP or OP	19.1 (61) (15.2 – 23.8)	41.0 (29.5 – 53.5)	95.3 (92.0 – 97.3)	67.6 (51.5 – 80.4)	87.2 (82.8 – 90.6)	85.0 (80.6 – 88.5)	0.43 (0.28 – 0.58)
qPCRs on culture-enriched samples	NP	4.7 (15) (2.9 – 7.6)	86.7 (62.1 – 96.3)	92.1 (88.5 – 94.6)	35.1 (21.8 – 51.2)	99.3 (88.3 – 94.4)	91.8 (88.3 – 94.4)	0.46 (0.27 – 0.66)
	OP	12.2 (39) (9.1 – 16.3)	61.5 (45.9 – 75.1)	95.4 (92.2 – 97.3)	64.9 (48.8 – 78.2)	94.7 (91.4 – 96.8)	91.2 (87.6 – 93.9)	0.58 (0.43 – 0.73)
	either NP or OP	16.3 (52) (12.7 – 20.8)	67.5 (53.8 – 78.5)	99.3 (97.3 – 99.8)	94.6 (82.3 – 98.5)	94.0 (90.6 – 96.2)	94.0 (90.9 – 96.2)	0.75 (0.65 – 0.86)

NP – nasopharyngeal; OP – oropharyngeal; PPV – positive predictive value; NPV – negative predictive value; 95%CI – 95% confidence interval; κ – Cohen’s kappa where ≤ 0 , 0.01-0.20, 0.21-0.40, 0.41-0.60, 0.61-0.80, >0.81 are interpreted as poor agreement, slight, fair, moderate, substantial, and almost perfect agreement, respectively.

Table 4. The accuracy of *Streptococcus pneumoniae* serotype detection in n=1549 nasopharyngeal samples from children (n=946) and adults (n=603) tested using molecular methods applied to DNA extracted culture-enriched samples. Measures of diagnostic accuracy were calculated by comparing the numbers of serotype carriage events detected with molecular methods with n=393 samples from which serotypes were cultured that were targeted by serotype-specific qPCR assays.

study population	PPV % (95%CI)	NPV % (95%CI)	Sensitivity % (95%CI)	Specificity % (95%CI)	Concordance % (95%CI)	κ (95%CI)
all (n=1549)	100 (99.0 – 100)	98.7 (97.9 – 99.2)	96.2 (93.8 – 97.7)	100 (99.7 – 100)	99.0 (99.7 – 100)	0.97 (0.96 – 0.99)
children (n=946)	98.1 (96.6 – 98.9)	98.1 (96.6 – 98.9)	97.1 (94.8 – 98.4)	100 (99.3 – 100)	98.8 (97.9 – 99.3)	0.98 (0.96 – 0.99)
adults (n=603)	100 (78.5 – 100)	99.3 (98.3 – 99.7)	77.8 (54.8 – 91.0)	100 (99.3 – 100)	99.3 (98.3 – 99.7)	0.87 (0.75 – 1)

PPV – positive predictive value; NPV – negative predictive value; 95%CI – 95% confidence interval; κ – Cohen’s Kappa where ≤ 0 , 0.01-0.20, 0.21-0.40, 0.41-0.60, 0.61-0.80, > 0.81 are interpreted as poor agreement, slight, fair, moderate, substantial, and almost perfect agreement, respectively.

Supplementary Table S1. Methodological differences between *Streptococcus pneumoniae* carriage studies conducted in the Netherlands and in England.

Processing step	The Netherlands	England
transport medium	1 ml Amies	1 ml STGG
transport temperature	ambient	2-8°C
duration of transport	<8 hours	<48 hours
arrival to the diagnostic lab	culturing on receipt	storage at -80°C
culture medium	BA-GENT and CBA	COBA and CBA
inoculum volume	35 ul	50 ul
identification of <i>S. pneumoniae</i>	optochin-susceptibility & bile solubility tests	bioinformatics-based method applied to bacterial DNA
minimally processed (MP) sample	an aliquot of Amies stored at -80°C	an aliquot of skim milk tryptone glucose and glycerine broth medium (STGG) stored at -80°C
culture-enriched (CE) sample	whole BA-GENT plate colony growth washed with 2.1 ml of BHI with 10% glycerol	swab of α -haemolytic colonies from COBA (first choice) or CBA, and into 1 ml of STGG

STGG: skim milk tryptone glucose and glycerine broth medium, CBA: Columbia blood agar plate, BA-GENT: blood agar plate gentamycin, COBA: blood agar plate with Streptococcus selective medium.

Supplementary Table S2. Results of an intraclass correlation coefficient (ICC) reliability analysis for $^{ROCD}C_q$ -based criteria in a subset of samples classified as positive for *S. pneumoniae* according to the AC_q criterium of <40.

Sample	C_q score	Number of samples	ICC (95% CI)	p-value
Minimally processed nasopharyngeal	$<^{ROCD}C_q$	512	0.96 (0.94-0.97)	< 0.0001
	$>^{ROCD}C_q$	49	-0.15 (-0.42-0.14)	0.845
Culture-enriched nasopharyngeal	$<^{ROCD}C_q$	469	0.92 (0.73-0.97)	< 0.0001
	$>^{ROCD}C_q$	10	-0.19 (-0.59-0.41)	0.751
Minimally processed oropharyngeal	$<^{ROCD}C_q$	59	0.96 (0.93-0.97)	< 0.0001
	$>^{ROCD}C_q$	24	-0.323 (-0.62-0.08)	0.947
Culture-enriched oropharyngeal	$<^{ROCD}C_q$	39	0.99 (0.99-1)	< 0.0001
	$>^{ROCD}C_q$	19	0.31 (-0.19-0.66)	0.104

ICC: intraclass correlation coefficient - a single score intraclass correlation coefficient with two-way model was used for reliability analysis. ICC values <0.50, 0.50-0.75, 0.75-0.90 and >0.90 are indicative of poor, moderate, good, and excellent reliability, respectively.

Supplementary Table S3. Number of serotypes/serogroups detected with any method.

number of detected serotypes	nasopharyngeal samples from children n (%)	nasopharyngeal samples from adults n (%)
0	543 (57.4)	583 (96.7)
1 [#]	357 (37.7)	19 (3.2)
2	40 (4.2)	1 (0.2)
3	4 (0.4)	0 (-)
4	1 (0.1)	0 (-)
5	1 (0.1)	0 (-)

[#] - includes samples pneumococcus-positive in qPCR with no signal for any serotype

Table S4. Optimal qPCR cycle threshold C_q and corresponding parameters for *Streptococcus pneumoniae* carriage detection in a subset of nasopharyngeal (n=176) and oropharyngeal (n=100) samples processed independently in England and in the Netherlands. Results from qPCR were validated in a receiver operating characteristic curve analysis with culture as reference*.

Sample	Target	ICC (95% CI)	England				Netherlands			
			Optimal threshold (95% CI)	Youden index	Sensitivity	Specificity	Optimal threshold (95% CI)	Youden index	Sensitivity	Specificity
MP NP	<i>piaB</i>	0.76 (0.64 – 0.84)	37.85 (35.05 – 39.25)	0.66	0.81	0.85	36.99 (35.92 – 37.44)	0.94	0.96	0.98
MP NP	<i>lytA</i>	0.79 (0.69 – 0.85)	36.77 (34.33 – 37.34)	0.66	0.78	0.88	35.17 (32.6 – 36.74)	0.73	0.85	0.88
CE NP	<i>piaB</i>	0.82 (0.56 – 0.91)	24.30 (21.61 – 28.87)	0.86	0.95	0.91	27.51 (24.12 – 29.26)	0.96	0.99	0.97
CE NP	<i>lytA</i>	0.86 (0.52 – 0.94)	26.51 (22.09 – 30.01)	0.81	0.96	0.85	25.47 (24.36 – 27.93)	0.91	0.96	0.95
CE OP	<i>piaB</i>	0.78 (0.62 – 0.87)	28.71 (26.36 – 29.11)	0.75	0.89	0.86	29.43 (26.72 – 29.64)	0.74	0.89	0.85
CE OP	<i>lytA</i>	0.87 (0.81 – 0.91)	31.50 (28.65 – 32.59)	0.77	0.89	0.88	30.28 (27.50 – 30.77)	0.72	0.89	0.83

MP: minimally processed; CE: culture-enriched; NP: nasopharyngeal; OP: oropharyngeal. 95%CI – 95% confidence interval.

*Consents given by study participants in the Netherlands were not explicit about export of minimally processed samples outside the country. Consequently, detection of pneumococcus in minimally processed samples collected in the Netherlands could not be performed independently in England and results of culture (primary and qPCR-guided) in the country of samples origin, England for NP and the Netherlands for OP samples, were used as the references.

Table S5. The accuracy of *Streptococcus pneumoniae* detection in n=176 nasopharyngeal samples and n=59 oropharyngeal tested independently in both countries using molecular methods applied to DNA extracted from minimally processed and culture-enriched samples and applying $ROC^d C_q$ thresholds for a sample positivity in qPCRs. Measures of diagnostic accuracy were calculated by comparing the number of detected nasopharyngeal and oropharyngeal samples positive per method with the number of individuals positive for *S. pneumoniae* based on isolation of live pneumococcus either from the primary diagnostic or qPCR-guided culture (n=101 of nasopharyngeal samples culture-positive in UK and n=19 oropharyngeal samples culture-positive in the Netherlands).

Method	Percent (n) of samples tested positive in the Netherlands (95%CI)	Percent (n) of samples tested positive in England (95%CI)	Concordance % (95%CI)	κ (95%CI)
qPCRs on minimally processed NP samples	42.0 (74) (35.0 – 49.4)	54.5 (96) (47.2 – 61.7)	83.0 (76.7 – 87.8)	0.66 (0.55 – 0.77)
qPCRs on culture-enriched NP samples	59.1 (104) (51.7 – 66.1)	55.1 (97) (47.7 – 62.3)	93.8 (89.2 – 96.5)	0.87 (0.80 – 0.95)
qPCRs on culture-enriched OP samples	22.0 (13) (13.4 – 34.1)	25.4 (15) (16.1 – 37.8)	98.0 (93.0 – 99.4)	0.95 (0.88 – 1)

95%CI – 95% confidence interval; κ – Cohen’s Kappa where ≤ 0 , 0.01-0.20, 0.21-0.40, 0.41-0.60, 0.61-0.80, >0.81 are interpreted as no agreement, none to slight, fair, moderate, substantial, and almost perfect agreement, respectively.